



PARTS CATALOGUE

YFM80WR (5TH5) USA, OCEANIA

YFM80 (5TH5) JAPAN

YFM80WR (5TH6) CANADA

YFM80WR (5TH7) FRANCE

YFM80WR/YFM80
PARTS CATALOGUE
E2002 by Yamaha Motor Co., Ltd.
1st Edition, May. 2002
All rights reserved.
Any reprinting or unauthorized use
without the written permission of
Yamaha Motor Co., Ltd.
is expressly prohibited.
Printed in Japan

A3



A4

FOREWORD

This Parts Catalogue is related to the parts for the model(s) in the below frame. When you are ordering replacement parts, please refer to this Parts Catalogue and quote both part numbers and part names correctly.

YFM80WR(5TH5/5TH6/5TH7), YFM80(5TH5)

1. Modifications or additions which have been made after issue of the Parts Catalogue will be announced in the Yamaha Parts News.
It is advisable that you make necessary corrections to the Parts Catalogue according to the Yamaha Parts News.

2. Abbreviations

The Following abbreviations are used in this Parts Catalogue.

“UR” Use specified parts number.

“UN” Use as many as needed.

“AP” Alternate Parts

“LM” Local Made (Parts need to be ordered locally)

“F#” Frame No. (Applicable machine No.)

3. Parts, which are to be supplied in an assembly, are listed with a dot(.) in front of the part name as shown below.

EXAMPLE

CARBURETOR ASSY

.JET, PILOT

.NOZZLE, MAIN

4. Number of component for assembly

The numeral appearing to the right of each component part indicates the quantity of parts for each assembly unit.

EXAMPLE

PART NO.	DESCRIPTION	Q'TY	REMARKS
2F5-83310-60	FRONT FLASHER LIGHT ASSY	2	
115-83311-60	.BULB (6V-18W)	1	
1M1-83309-60	.REFLECTOR	1	

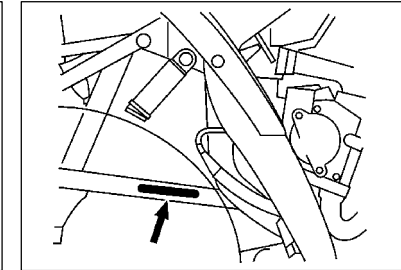
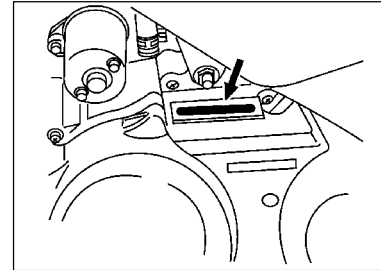
5. Applicable colors of graphics are represented in the “REMARKS” as shown below.

PART NO.	DESCRIPTION	Q'TY	REMARKS
2N4-24110-00-X5	FUEL TANK COMP.	1	MXR
3J1-24240-10	.GRAPHIC, FUEL TANK	1	FOR MXR

6. Applicable Serial No.

Engine Serial No.

Frame Serial No.



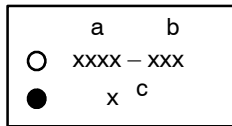
7. Note that the illustrations for reference in finding parts numbers, not to be used for assembling. When assembling, please use the applicable service manual.

8. The asterisk (*) before a reference number indicates modification items after the first edition.

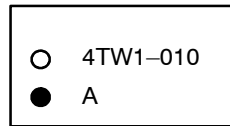
MODEL LABEL

(1) A label called "Model Label" is affixed in the location as indicated in (3) below.
When using this parts catalogue, please be sure to cross-refer the "model code – production code No." in the catalogue to the "model code – production code No." indicated on the Model Label affixed onto the product concerned.

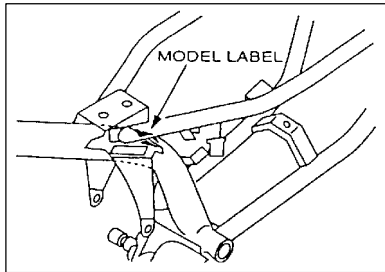
(2) "Model Label" Indication



a: Model Type Code
b: Production Code No.
c: Colouring Type



(3) Model Label Affixing Location



(4) Model Code – Production Code Number of Model Listed in This Parts Catalog

Model Code	Production Code No.	Country (destination)	Model Code	Production Code No.	Country (destination)
5TH5	010	USA			
	020	AUSTRALIA			
		NEW ZEALAND			
	030	JAPAN			
5TH6	010	CANADA			
5TH7	010	FRANCE			

(5) Colouring Information

Model Code	Colouring type code	Colour code	Colour Name	Abbreviation
5TH5 5TH6 5TH7	A	0583	DEEP PURPLISH BLUE SOLID E	DPBSE
5TH5 5TH6	B	0033	YAMAHA BLACK	YB

CONTENTS

ENGINE

CYLINDER	B2
CRANKSHAFT. PISTON	B3
VALVE	B4
CAMSHAFT. CHAIN	B5
OIL PUMP	B6
INTAKE	B7
EXHAUST	B9
CRANKCASE	B10
CRANKCASE COVER 1	B11
STARTER CLUTCH	B12
CLUTCH	B13
TRANSMISSION	B15
MIDDLE DRIVE GEAR	C2
SHIFT CAM. FORK	C3
SHIFT SHAFT	C4

CHASSIS

FRAME	C5
FRONT FENDER	C6
REAR FENDER	C8
REAR ARM	C9
DRIVE SHAFT	C10
REAR SUSPENSION	C12
STEERING	C13
FRONT SUSPENSION. WHEEL	C14
FUEL TANK	C15
SEAT	D2
FRONT WHEEL	D3
REAR WHEEL	D5

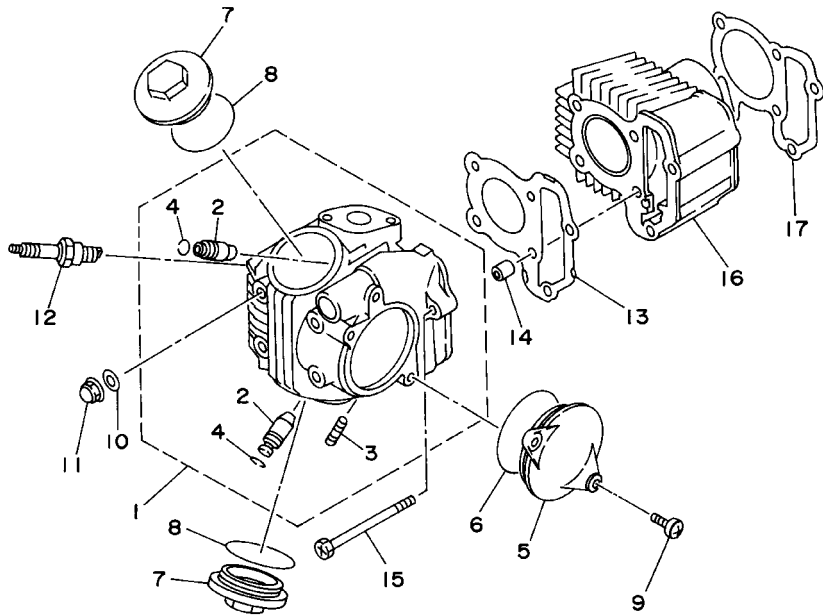
STEERING HANDLE. CABLE	D7
STAND. FOOTREST	D9
GUARD	D10
GENERATOR	D11
STARTING MOTOR	D12
HEADLIGHT	D13
HANDLE SWITCH. LEVER	D14
ELECTRICAL 1	D15
ELECTRICAL 2	E3
EMBLEM.LABEL 1	E4
EMBLEM.LABEL 2	E5
EMBLEM.LABEL 3	E6
EMBLEM.LABEL 4	E7
EMBLEM.LABEL 5	E9

INDEX

NUMERICAL INDEX	M1
-----------------------	----

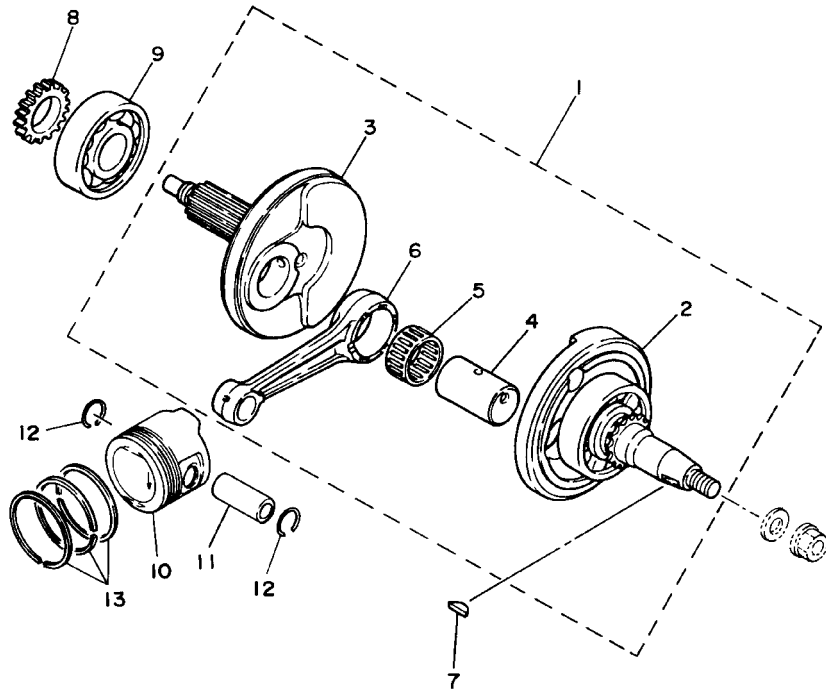
FIG. 1 CYLINDER

REF. NO.	PART NO.	DESCRIPTION	USA	OCÉ	JPN	CAN	FRA	REMARKS
1	35T-11110-01	CYLINDER HEAD ASSY	1	1	1	1	1	
2	22F-11134-10	.GUIDE, EXHAUST VALVE	2	2	2	2	2	
3	22F-14651-00	.BOLT	2	2	2	2	2	
4	93440-10109	.CIRCLIP	2	2	2	2	2	
5	22F-11185-01	COVER, CYLINDER HEAD SIDE 1	1	1	1	1	1	
6	93210-63556	O-RING	1	1	1	1	1	
7	22F-11186-00	COVER, CYLINDER HEAD SIDE 2	2	2	2	2	2	
8	93210-44704	O-RING	2	2	2	2	2	
9	98507-06016	SCREW	2	2	2	2	2	
10	90201-066F0	WASHER, PLATE	4	4	4	4	4	
11	90176-06065	NUT, CROWN	4	4	4	4	4	
12	94701-00250	PLUG, SPARK (NGK CR7HS)	1	1		1	1	
	90793-20071	PLUG, SPARK (NGK CR7HS)			1			
13	55X-11181-00	GASKET, CYLINDER HEAD 1	1	1	1	1	1	
14	99530-08012	PIN, DOWEL	2	2	2	2	2	
15	95027-06085	BOLT, FLANGE	2	2	2	2	2	
16	22K-11311-02	CYLINDER 1	1	1	1	1	1	
17	22F-11351-01	GASKET, CYLINDER	1	1	1	1	1	



4EM1100-2010

FIG. 2 CRANKSHAFT. PISTON



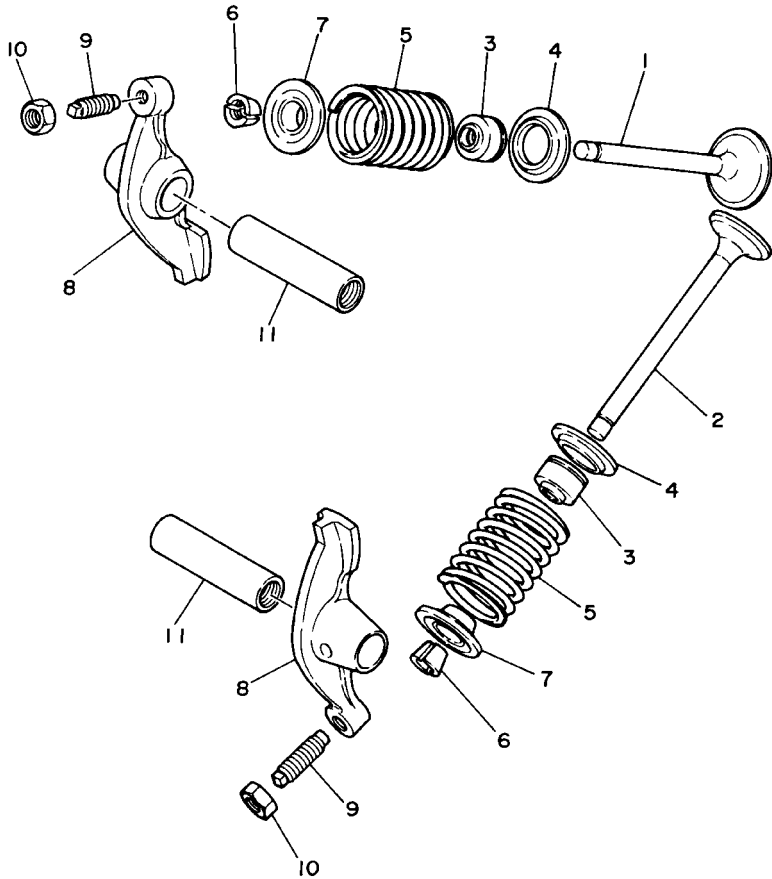
REF. NO.	PART NO.	DESCRIPTION	USA	OCE	JPN	CAN	FRA	REMARKS
1	22K-11400-01	CRANKSHAFT ASSY	1	1	1	1	1	
2	22K-W1141-00	.CRANK 1	1	1	1	1	1	
3	22K-11422-00	.CRANK 2	1	1	1	1	1	
4	22F-11681-00	.PIN, CRANK 1	1	1	1	1	1	
5	93311-32353	.BALL BEARING	1	1	1	1	1	
6	22K-11651-02	.ROD, CONNECTING	1	1	1	1	1	
7	90280-03017	KEY, WOODRUFF	1	1	1	1	1	
8	46J-13324-00	GEAR, PUMP DRIVE	1	1	1	1	1	
9	93306-30433	BEARING	1	1	1	1	1	
10	55X-11631-00-96	PISTON (STD)	1	1	1	1	1	
	55X-11636-00	PISTON (0.50MM O/S)	1	1	1	1	1	AP
	55X-11638-00	PISTON (1.00MM O/S)	1	1	1	1	1	AP
11	22K-11633-01	PIN, PISTON	1	1	1	1	1	
12	93450-14088	CIRCLIP	2	2	2	2	2	
13	55X-11610-00	PISTON RING SET (STD)	1	1	1	1	1	
	55X-11610-20	PISTON RING SET (0.50MM O/S)	1	1	1	1	1	AP
	55X-11610-40	PISTON RING SET (1.00MM O/S)	1	1	1	1	1	AP



55X110-5020

FIG. 3 VALVE

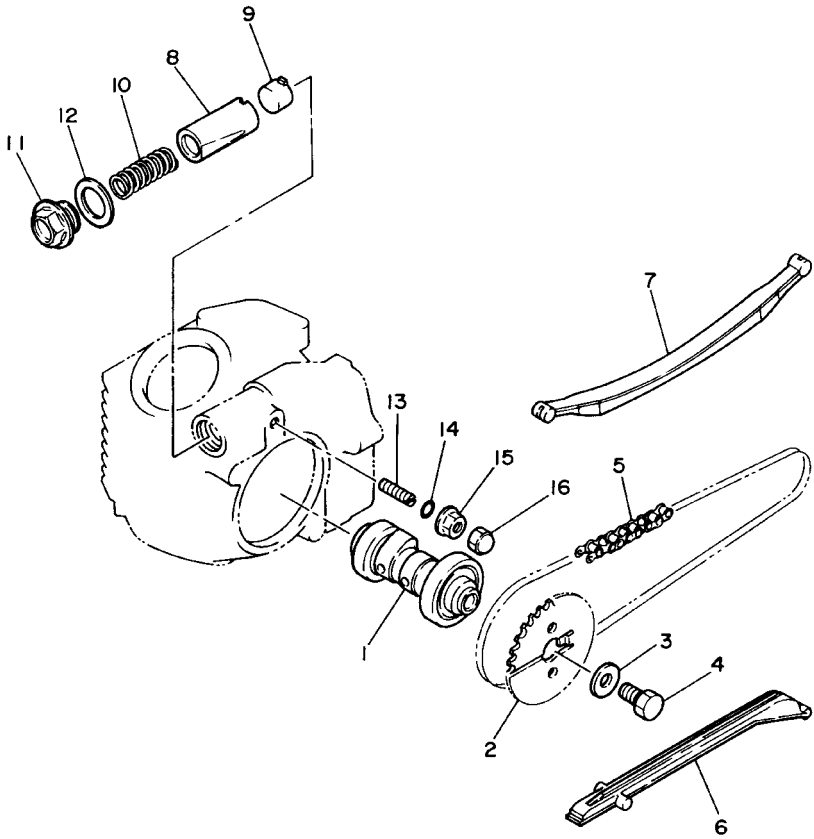
REF. NO.	PART NO.	DESCRIPTION	USA	OCE	JPN	CAN	FRA	REMARKS
1	22K-12111-03	VALVE, INTAKE	1	1	1	1	1	
2	22K-12121-02	VALVE, EXHAUST	1	1	1	1	1	
3	2HX-12119-00	SEAL, VALVE STEM	2	2	2	2	2	
4	22F-12116-00	SEAT, VALVE SPRING	2	2	2	2	2	
5	22F-12114-00	SPRING, VALVE OUTER	2	2	2	2	2	
6	22F-12118-01	COTTER, VALVE	4	4	4	4	4	
7	22F-12117-02	RETAINER, VALVE SPRING	2	2	2	2	2	
8	50M-12151-00	ARM, VALVE ROCKER	2	2	2	2	2	
9	22F-12159-00	SCREW, VALVE ADJUSTING	2	2	2	2	2	
10	90170-05302	NUT	2	2	2	2	2	
11	22F-12156-00	SHAFT, ROCKER 2	2	2	2	2	2	



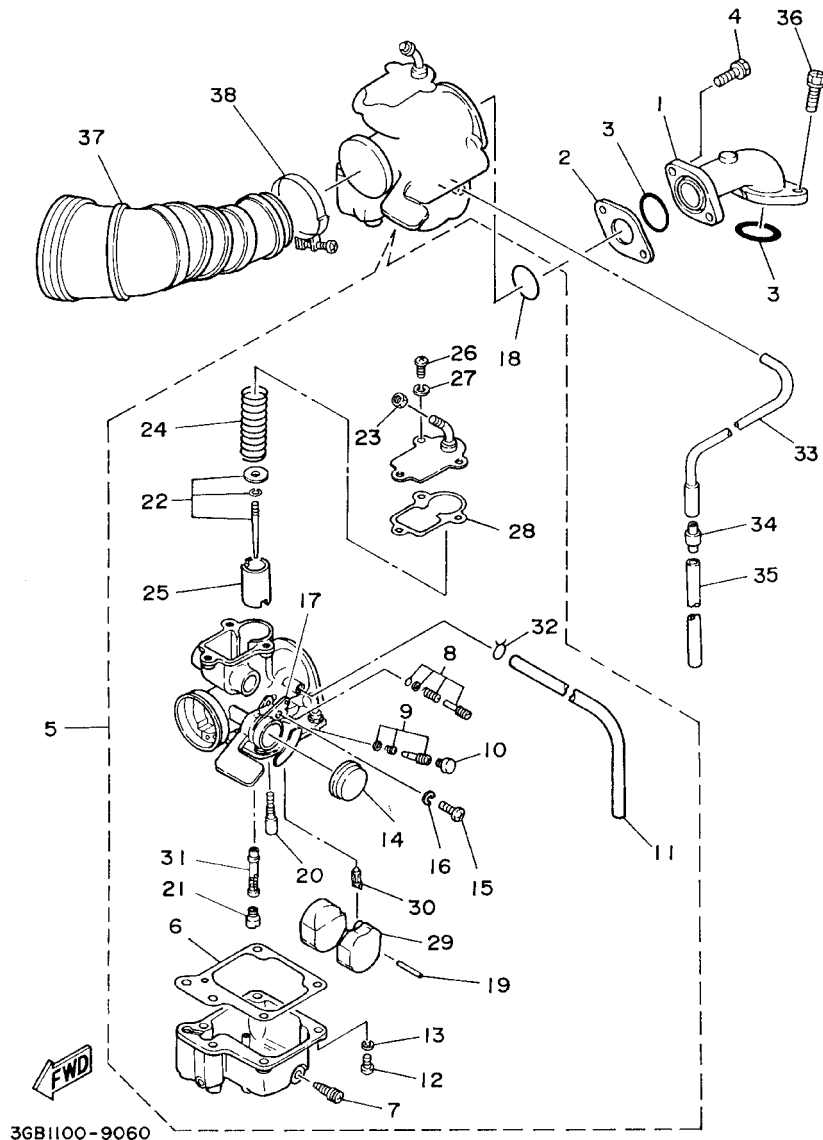
55X110-5030

FIG. 4 CAMSHAFT. CHAIN

REF. NO.	PART NO.	DESCRIPTION	USA	OC	JPN	CAN	FRA	REMARKS
1	55X-12170-00	CAMSHAFT ASSY 1	1	1	1	1	1	
2	50M-12176-00	SPROCKET, CAM CHAIN (28T)	1	1	1	1	1	
3	90201-08326	WASHER, PLATE	1	1	1	1	1	
4	90101-08590	BOLT	1	1	1	1	1	
5	94580-25082	CHAIN	1	1	1	1	1	
6	22F-12231-01	GUIDE, STOPPER 1	1	1	1	1	1	
7	22F-12241-00	GUIDE, STOPPER 2	1	1	1	1	1	
8	22F-12217-01	ROD, CHAIN TENSIONER	1	1	1	1	1	
9	90334-14037	PLUG, STRAIGHT	1	1	1	1	1	
10	90501-10710	SPRING, COMPRESSION	1	1	1	1	1	
11	90340-18092	PLUG, STRAIGHT SCREW	1	1	1	1	1	
12	90201-186F1	WASHER, PLATE	1	1	1	1	1	
13	90113-06009	BOLT, SET	1	1	1	1	1	
14	93210-06564	O-RING	1	1	1	1	1	
15	90179-06387	NUT	1	1	1	1	1	
16	95307-06800	NUT	1	1	1	1	1	



55X110-5040

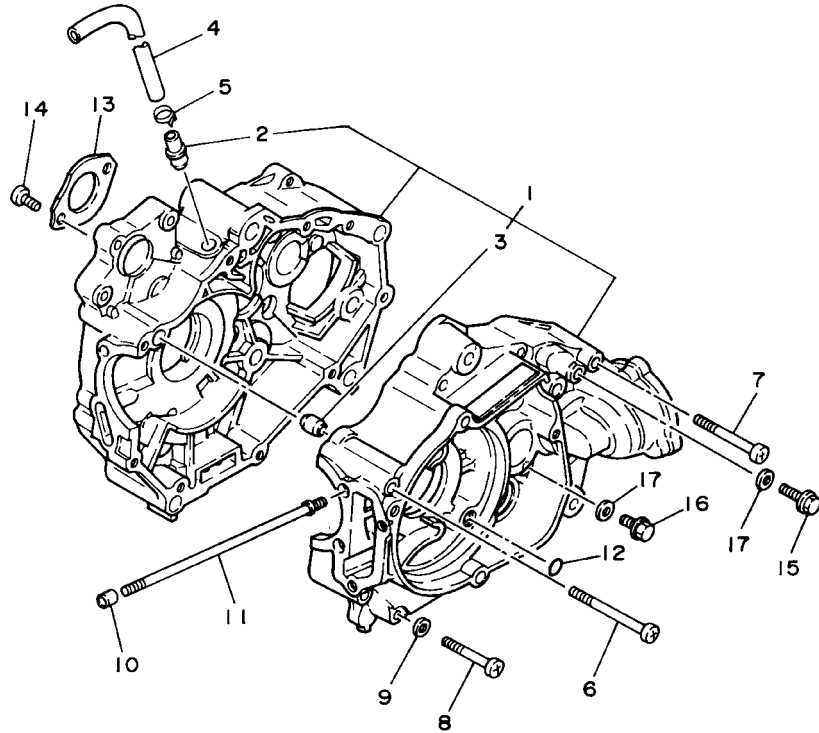


3GB1100-9060

FIG. 6 INTAKE

REF. NO.	PART NO.	DESCRIPTION	USA	OC	JPN	CAN	FRA	REMARKS
1	55X-13586-00	JOINT, CARBURETOR 1	1	1	1	1	1	
2	22K-13595-00	JOINT	1	1	1	1	1	
3	93210-25552	O-RING	2	2	2	2	2	
4	90159-06076	SCREW, WITH WASHER	2	2	2	2	2	
5	5TH-14101-00	CARBURETOR ASSY 1	1	1	1	1	1	
6	22F-14184-00	.GASKET, FLOAT CHAMBER	1	1	1	1	1	
7	12R-14191-00	.PLUG, DRAIN	1	1	1	1	1	
8	22F-14103-00	.THROTTLE SCREW SET	1	1	1	1	1	
9	22K-14104-00	.AIR SCREW SET	1	1	1	1	1	
10	22F-14991-00	.CAP	1	1	1	1	1	
11	26H-14197-00	.PIPE	1	1	1	1	1	
12	98502-04014	.SCREW, PAN HEAD	4	4	4	4	4	
13	92902-04100	.WASHER, SPRING	4	4	4	4	4	
14	22F-14169-00	.CAP	1	1	1	1	1	
15	98502-04008	.SCREW, PAN HEAD	1	1	1	1	1	
16	92902-04100	.WASHER, SPRING	1	1	1	1	1	
17	55X-14146-00	.PLATE	1	1	1	1	1	
18	22K-14147-00	.O-RING	1	1	1	1	1	
19	127-14186-00	.PIN, FLOAT	1	1	1	1	1	
20	22F-14142-12	.JET, PILOT (#12.5)	1	1	1	1	1	
21	18A-1414E-30	.JET, MAIN(#76.3)	1	1	1	1	1	
22	2HX-1490J-20	.NEEDLE SET	1	1	1	1	1	
23	802-14161-00	.NUT, CABLE ADJUSTING	1	1	1	1	1	
24	260-14131-00	.SPRING, THROTTLE VALVE	1	1	1	1	1	
25	2HX-14112-35	.VALVE, THROTTLE 1	1	1	1	1	1	
26	98502-04010	.SCREW, PAN HEAD	3	3	3	3	3	
27	92902-04100	.WASHER, SPRING	3	3	3	3	3	

FIG. 8 CRANKCASE

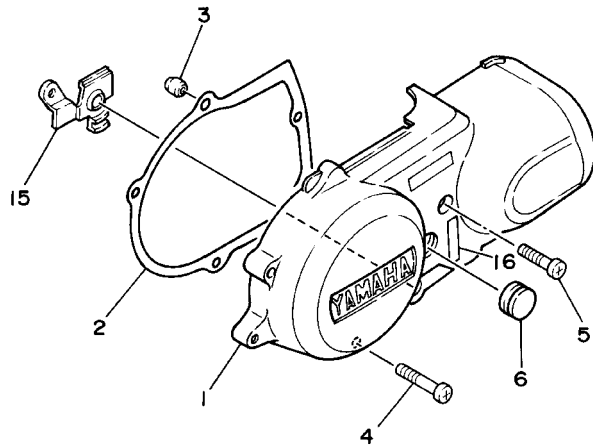
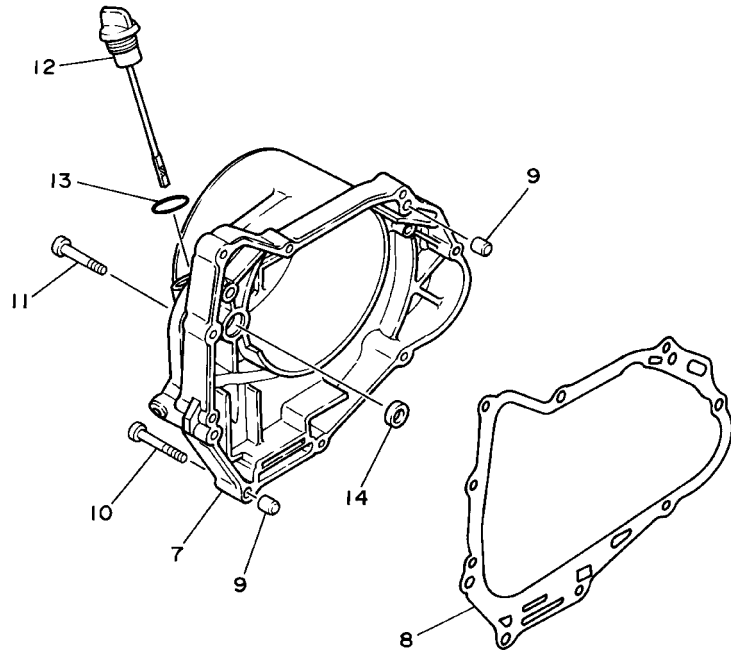


REF. NO.	PART NO.	DESCRIPTION	USA	OC	JPN	CAN	FRA	REMARKS
1	2FJ-15100-01	CRANKCASE ASSY	1	1	1	1	1	
2	59V-11167-00	.PIPE, BREATHER 2	1	1	1	1	1	
3	99530-12016	.PIN, DOWEL	2	2	2	2	2	
4	90445-121F6	HOSE (L700)	1	1	1	1	1	
5	90467-13064	CLIP	1	1	1	1	1	
6	98507-06075	SCREW	1	1	1	1	1	
7	98507-06060	SCREW	2	2	2	2	2	
8	98507-06045	SCREW	6	6	6	6	6	
9	90430-06014	GASKET	2	2	2	2	2	
10	99530-08012	PIN, DOWEL	2	2	2	2	2	
11	90116-06399	BOLT, STUD	4	4	4	4	4	
12	93210-06564	O-RING	2	2	2	2	2	
13	22F-15383-01	PLATE, BEARING COVER	1	1	1	1	1	
14	98507-06012	SCREW	2	2	2	2	2	
15	95817-06025	BOLT, FLANGE	2	2	2	2	2	
16	95817-06016	BOLT, FLANGE	1	1	1	1	1	
17	90430-06166	GASKET	3	3	3	3	3	



4EMK100-8080

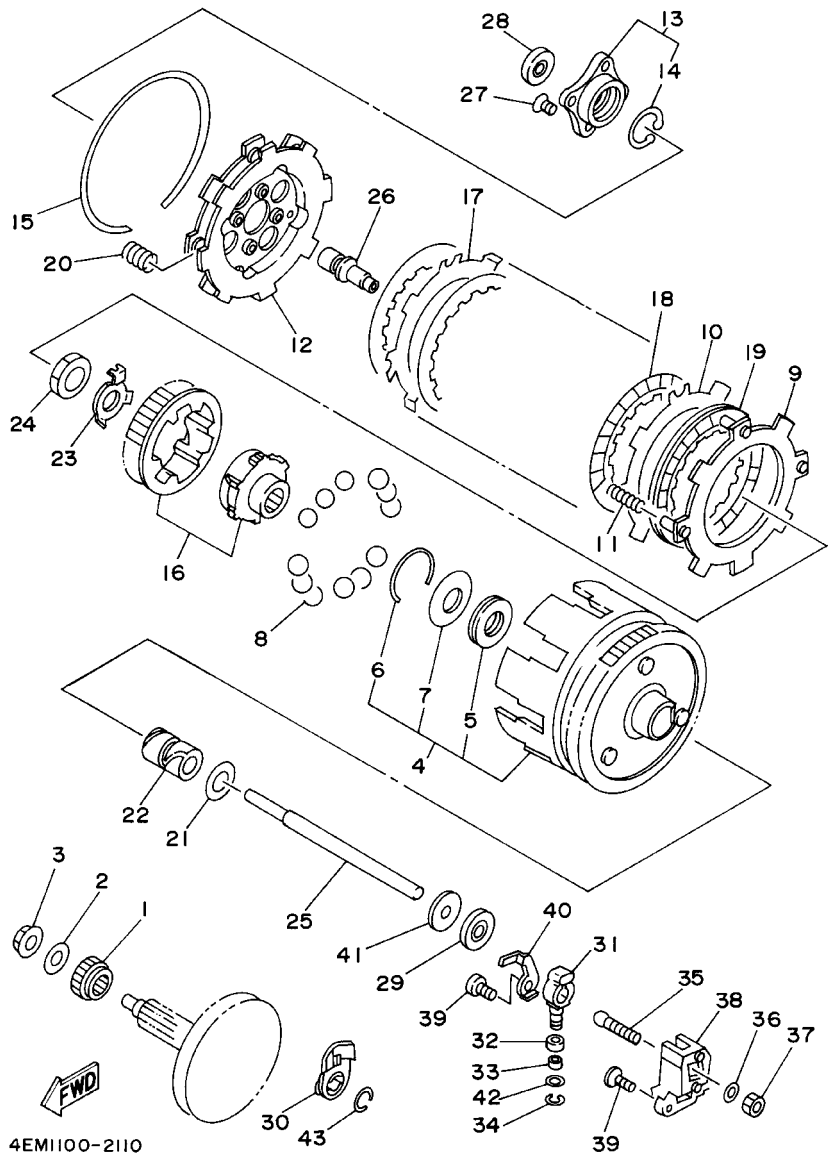
FIG. 9 CRANKCASE COVER 1



2FJ110-7090

REF. NO.	PART NO.	DESCRIPTION	USA	OC	JPN	CAN	FRA	REMARKS
1	22F-15411-01	COVER, CRANKCASE 1	1	1	1	1	1	
2	3GB-15451-00	GASKET, CRANKCASE COVER 1	1	1	1	1	1	
3	99530-10114	PIN, DOWEL	2	2	2	2	2	
4	98507-06040	SCREW	1	1	1	1	1	
5	98507-06030	SCREW	2	2	2	2	2	
6	22F-15417-00	COVER, CAP	1	1	1	1	1	
7	2FJ-15421-00	COVER, CRANKCASE 2	1	1	1	1	1	
8	3GB-15461-00	GASKET, CRANKCASE COVER 2	1	1	1	1	1	
9	99530-10120	PIN, DOWEL	2	2	2	2	2	
10	98507-06045	SCREW	1	1	1	1	1	
11	98507-06035	SCREW	8	8	8	8	8	
12	55X-15362-02	PLUG, OIL LEVEL	1	1	1	1	1	
13	93210-19123	O-RING	1	1	1	1	1	
14	93101-10142	OIL SEAL	1	1	1	1	1	
15	90209-11269	WASHER	1	1	1	1	1	
16	4EM-15443-01	EMBLEM	1	1	1	1	1	

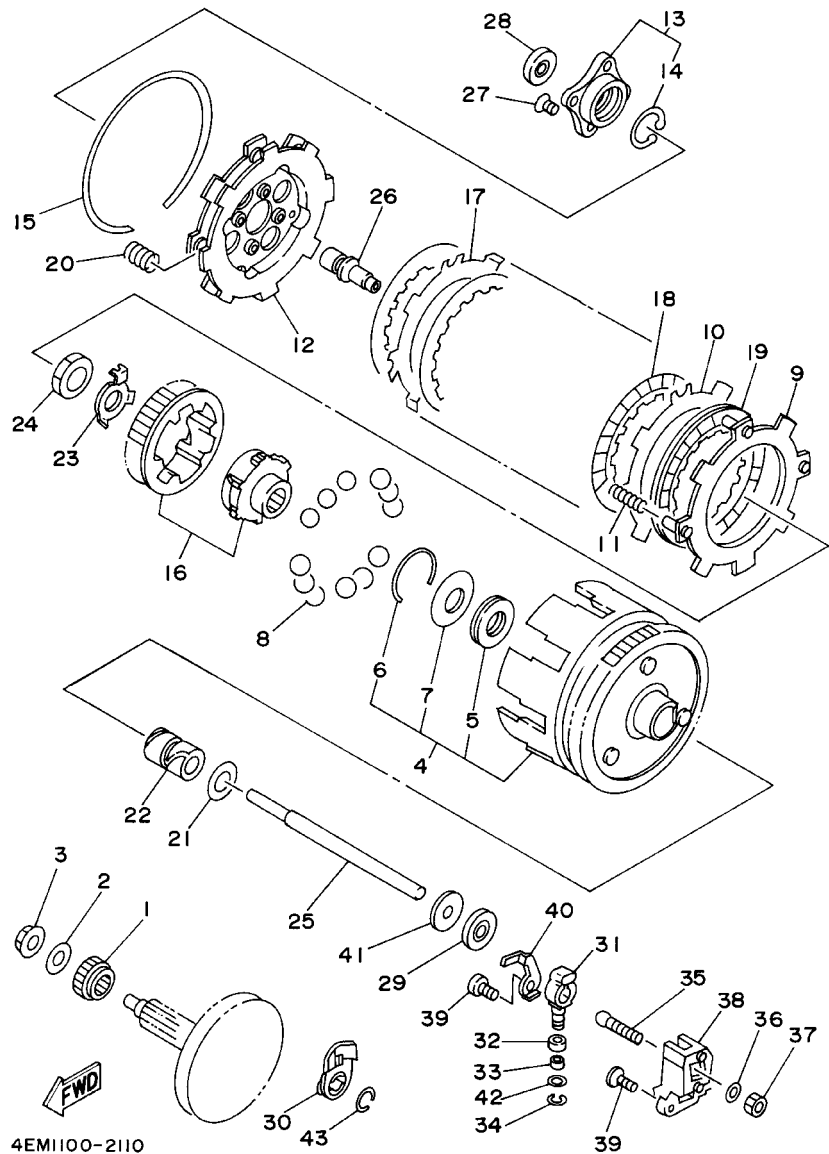
FIG. 11 CLUTCH



4EM1100-2110

REF. NO.	PART NO.	DESCRIPTION	USA	OC	JPN	CAN	FRA	REMARKS
1	22K-16111-00	GEAR, PRIMARY DRIVE	1	1	1	1	1	
2	90208-12015	WASHER, CONICAL SPRING	1	1	1	1	1	
3	90179-12659	NUT	1	1	1	1	1	
4	3GB-16150-00	PRIMARY DRIVEN GEAR COMP.	1	1	1	1	1	
5	93341-22302	.BEARING	1	1	1	1	1	
6	93450-42112	.CIRCLIP	1	1	1	1	1	
7	22F-16153-10	.WASHER, THRUST (1.9T)	1	1	1	1	1	UR
	22F-16153-20	.WASHER, THRUST (2.1T)	1	1	1	1	1	UR
	22F-16153-30	.WASHER, THRUST (2.3T)	1	1	1	1	1	UR
	22F-16153-40	.WASHER, THRUST (1.7T)	1	1	1	1	1	UR
8	93505-08030	BALL	12	12	12	12	12	
9	22K-16520-00	PLATE, THRUST WEIGHT	1	1	1	1	1	
10	517-16524-10	PLATE, CLUTCH 1 (1.2T)	4	4	4	4	4	UR
	517-16524-20	PLATE, CLUTCH 1 (1.4T)	4	4	4	4	4	UR
	517-16524-30	PLATE, CLUTCH 1 (1.6T)	4	4	4	4	4	UR
11	90501-105A5	SPRING, COMPRESSION	4	4	4	4	4	
12	22F-16550-00	PRESSURE PLATE ASSY	1	1	1	1	1	
13	22K-16590-00	PUSH PLATE ASSY	1	1	1	1	1	
14	93420-26077	.CIRCLIP	1	1	1	1	1	
15	93451-08094	CIRCLIP	1	1	1	1	1	
16	22K-W1657-00	CLUTCH BOSS SET	1	1	1	1	1	
17	22F-16524-01	PLATE, CLUTCH 1	1	1	1	1	1	
18	3E5-16521-00	PLATE, FRICTION	5	5	5	5	5	
19	22F-16521-00	PLATE, FRICTION	1	1	1	1	1	
20	90501-135A4	SPRING, COMPRESSION	8	8	8	8	8	
21	122-16164-00	PLATE, THRUST 2	1	1	1	1	1	
22	90560-17146	SPACER	1	1	1	1	1	

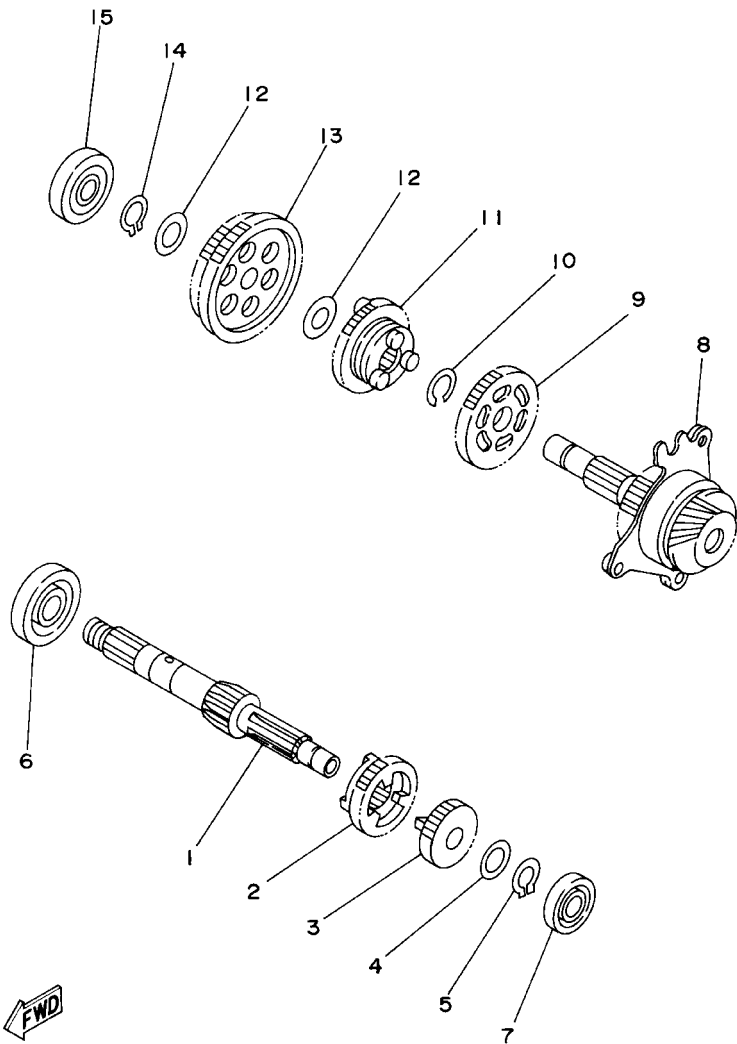
FIG. 11 CLUTCH



REF. NO.	PART NO.	DESCRIPTION	USA	OC	JPN	CAN	FRA	REMARKS
23	90215-14249	WASHER, LOCK	1	1	1	1	1	
24	90170-14284	NUT	1	1	1	1	1	
25	22F-16357-01	ROD, PUSH 2	1	1	1	1	1	
26	22K-16356-00	ROD, PUSH 1	1	1	1	1	1	
27	90151-06028	SCREW, COUNTERSUNK	4	4	4	4	4	
28	93104-10076	OIL SEAL	1	1	1	1	1	
29	93102-07292	OIL SEAL	1	1	1	1	1	
30	22F-16362-01	LEVER, PUSH 2	1	1	1	1	1	
31	22F-16342-01	LEVER, PUSH	1	1	1	1	1	
32	90387-062G9	COLLAR	1	1	1	1	1	
33	90387-062G8	COLLAR	1	1	1	1	1	
34	99001-04600	CIRCLIP	1	1	1	1	1	
35	22F-16382-00	AXLE, PUSH LEVER	1	1	1	1	1	
36	92907-06600	WASHER, PLATE	1	1	1	1	1	
37	95307-06600	NUT	1	1	1	1	1	
38	22F-16399-00	GUIDE, PUSH ROD	1	1	1	1	1	
39	98507-06016	SCREW	2	2	2	2	2	
40	22F-16383-00	SPRING, CLUTCH BOSS	1	1	1	1	1	
41	90380-07118	BUSH, SOLID	1	1	1	1	1	
42	22F-16163-00	WASHER, THRUST 2	1	1	1	1	1	
43	93440-11128	CIRCLIP	1	1	1	1	1	

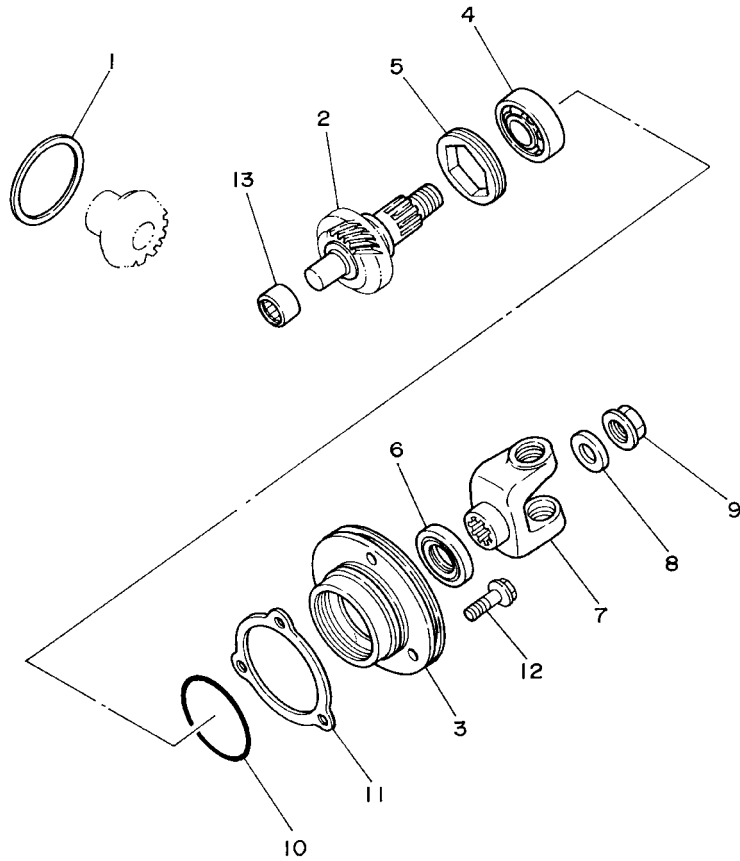
FIG. 12 TRANSMISSION

REF. NO.	PART NO.	DESCRIPTION	USA	OCE	JPN	CAN	FRA	REMARKS
1	2HX-17411-01	AXLE, MAIN	1	1	1	1	1	
2	55X-17131-00	GEAR, 3RD PINION (22T)	1	1	1	1	1	
3	2HX-17121-00	GEAR, 2ND PINION (17T)	1	1	1	1	1	
4	90201-124F8	WASHER, PLATE	1	1	1	1	1	
5	99009-12400	CIRCLIP	1	1	1	1	1	
6	93306-20301	BEARING	1	1	1	1	1	
7	93306-00105	BEARING (B6001)	1	1	1	1	1	
8	3GB-17402-00	DRIVE AXLE ASSY	1	1	1	1	1	
9	55X-17231-00	GEAR, 3RD WHEEL (31T)	1	1	1	1	1	
10	93440-16089	CIRCLIP	1	1	1	1	1	
11	55X-17241-00	GEAR, 4TH WHEEL (27T)	1	1	1	1	1	
12	90201-132G5	WASHER, PLATE	2	2	2	2	2	
13	3GB-17211-00	GEAR, 1ST WHEEL (39T)	1	1	1	1	1	
14	99009-12400	CIRCLIP	1	1	1	1	1	
15	93306-30101	BEARING (B6301)	1	1	1	1	1	



4EM1100-2120

FIG. 13 MIDDLE DRIVE GEAR

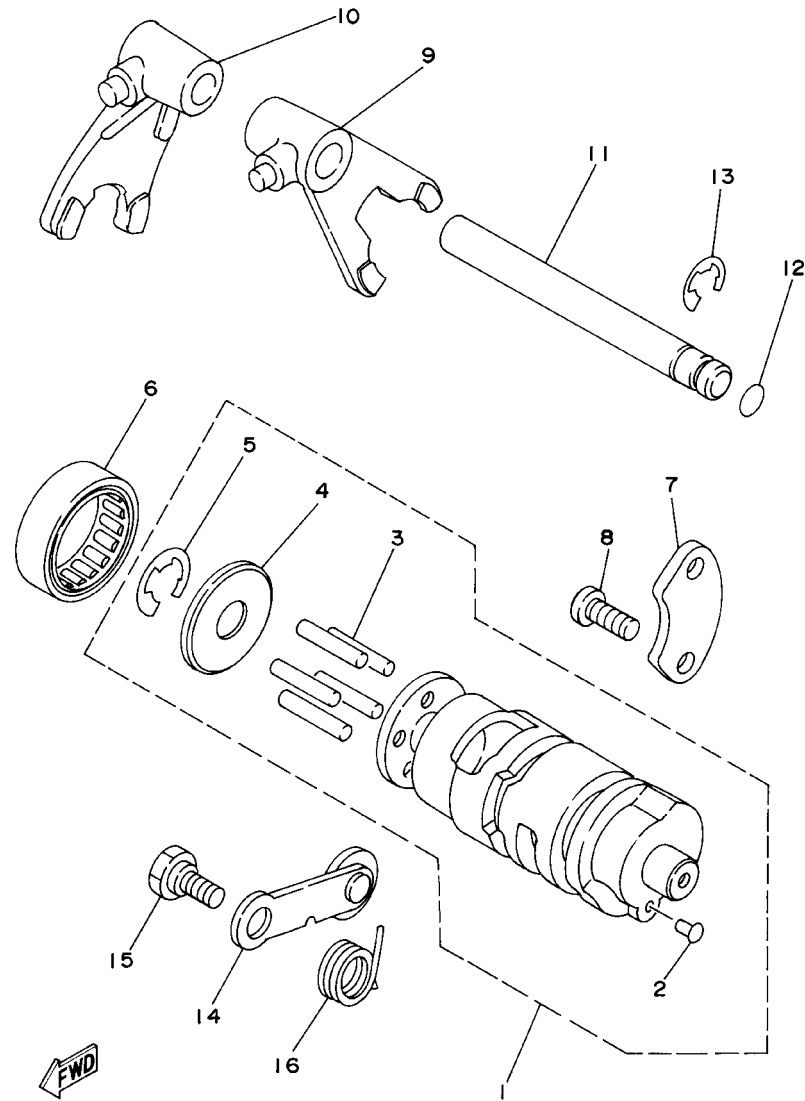


REF. NO.	PART NO.	DESCRIPTION	USA	OC	JPN	CAN	FRA	REMARKS
1	22F-17537-00	SHIM, THRUST	1	1	1	1	1	
2	3GB-17508-00	MIDDLE DRIVEN GEAR COMP.	1	1	1	1	1	
3	22F-17551-00	HOUSING, BEARING	1	1	1	1	1	
4	93306-20309	BEARING (B6203)	1	1	1	1	1	
5	90179-42480	NUT	1	1	1	1	1	
6	93101-24110	OIL SEAL	1	1	1	1	1	
7	22F-17556-01	YOKE, JOINT	1	1	1	1	1	
8	90201-125F7	WASHER, PLATE	1	1	1	1	1	
9	90179-12248	NUT	1	1	1	1	1	
10	93210-50553	O-RING	1	1	1	1	1	
11	22F-17531-00-15	SHIM, PINION (0.15T)	1	1	1	1	1	UR
	22F-17531-00-30	SHIM, PINION (0.30T)	1	1	1	1	1	UR
	22F-17531-00-50	SHIM, PINION (0.50T)	1	1	1	1	1	UR
12	95827-06020	BOLT, FLANGE	3	3	3	3	3	
13	93317-21236	BEARING	1	1	1	1	1	



3GB100-9130

FIG. 14 SHIFT CAM. FORK



4EMK100-8140

REF. NO.	PART NO.	DESCRIPTION	USA	OCE	JPN	CAN	FRA	REMARKS
1	4EM-18540-00	SHIFT CAM ASSY	1	1	1	1	1	
2	136-18542-00	.POINT, NEUTRAL	1	1	1	1	1	
3	93604-22050	.PIN, DOWEL	5	5	5	5	5	
4	296-18561-00	.PLATE, SIDE 1	1	1	1	1	1	
5	99001-09600	.CIRCLIP	1	1	1	1	1	
6	93315-23208	BEARING	1	1	1	1	1	
7	22F-18562-01	PLATE, STOPPER 2	1	1	1	1	1	
8	98507-06014	SCREW	2	2	2	2	2	
9	2MK-18511-00	FORK, SHIFT 1	1	1	1	1	1	
10	29F-18512-00	FORK, SHIFT 2	1	1	1	1	1	
11	22F-18531-00	BAR, SHIFT FORK GUIDE 1	1	1	1	1	1	
12	93210-07003	O-RING	1	1	1	1	1	
13	93430-08007	CIRCLIP	1	1	1	1	1	
14	29F-18140-00	STOPPER LEVER ASSY	1	1	1	1	1	
15	90109-063F6	BOLT	1	1	1	1	1	
16	90508-20576	SPRING, TORSION	1	1	1	1	1	

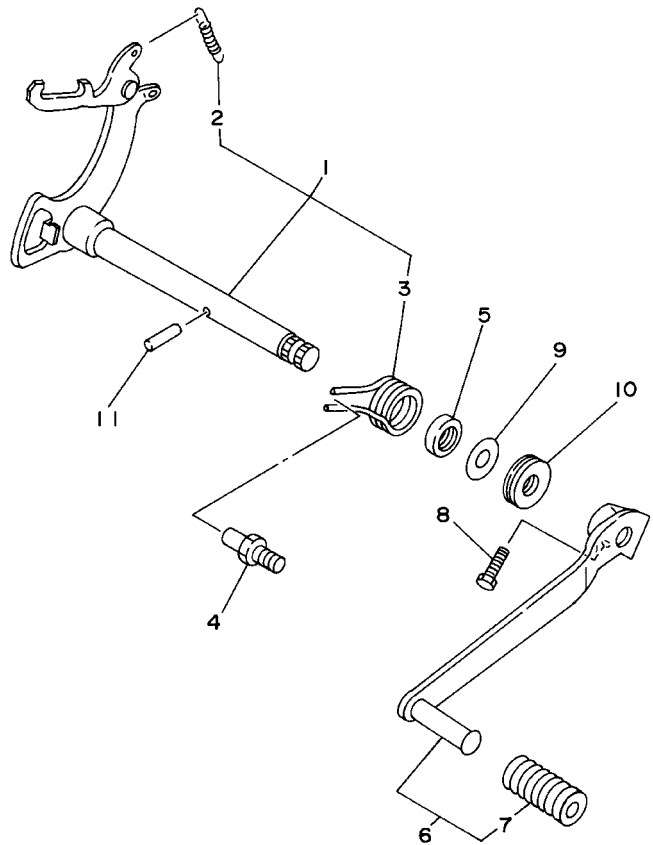


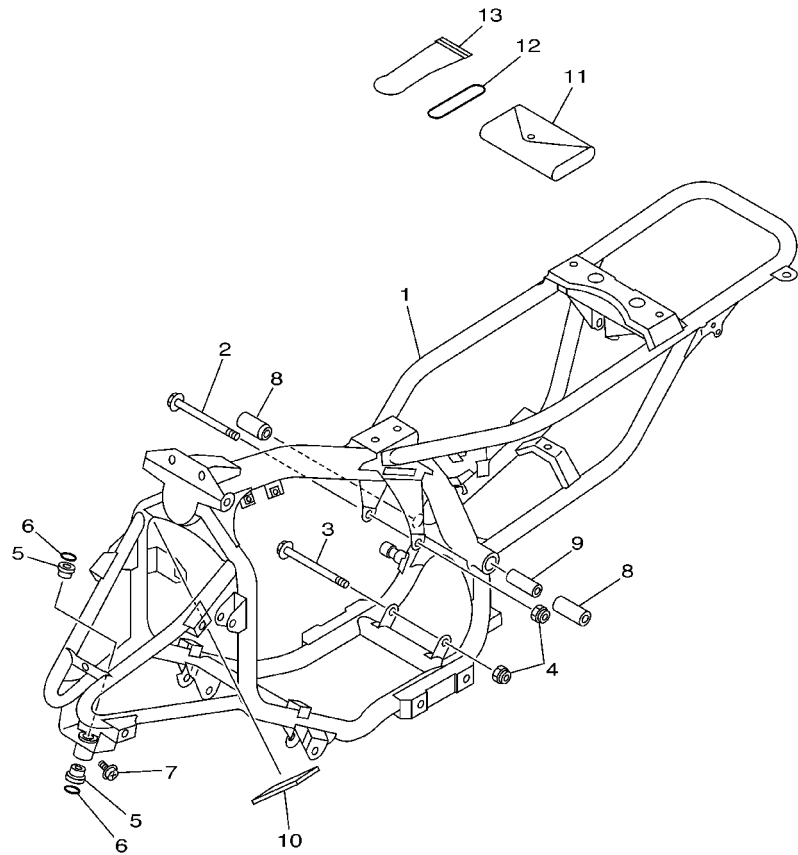
FIG. 15 SHIFT SHAFT

REF. NO.	PART NO.	DESCRIPTION	USA	OC	JPN	CAN	FRA	REMARKS
1	22F-18101-02	SHIFT SHAFT ASSY	1	1	1	1	1	
2	90506-08122	.SPRING, TENSION	1	1	1	1	1	
3	90508-32563	.SPRING, TORSION	1	1	1	1	1	
4	278-18127-01	STOPPER, SCREW	1	1	1	1	1	
5	93102-12106	OIL SEAL (SD 12-22-5 HS)	1	1	1	1	1	
6	2HX-18110-00	SHIFT PEDAL ASSY	1	1	1	1	1	
7	132-18113-01	.COVER, SHIFT PEDAL	1	1	1	1	1	
8	97027-06020	BOLT	1	1	1	1	1	
9	90201-127F4	WASHER, PLATE	1	1	1	1	1	
10	93340-21209	BEARING	1	1	1	1	1	
11	93604-20156	PIN, DOWEL	1	1	1	1	1	



4EM1100-2150

FIG. 16 FRAME

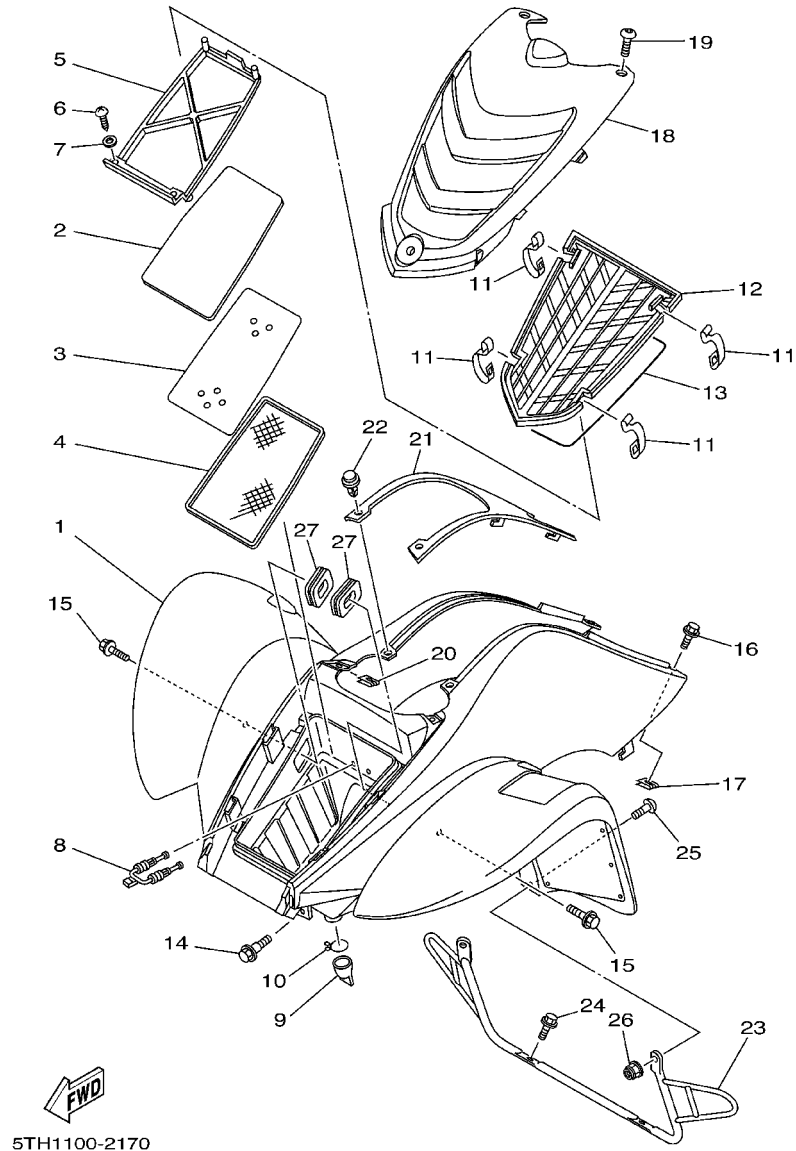


REF. NO.	PART NO.	DESCRIPTION	USA	OCE	JPN	CAN	FRA	REMARKS
1	5TH-21110-00	FRAME COMP.	1	1	1			
	5TH-21110-10	FRAME COMP.				1	1	
2	95817-08115	BOLT, FLANGE	1	1	1	1	1	
3	95817-08120	BOLT, FLANGE	1	1	1	1	1	
4	95607-08200	NUT, SELF-LOCKING	2	2	2	2	2	
5	90381-15040	BUSH, SOLID	2	2	2	2	2	
6	93210-15414	O-RING	2	2	2	2	2	
7	93700-06004	NIPPLE, GREASE	1	1	1	1	1	
8	3GB-22123-00	BUSH 1	2	2	2	2	2	
9	3GB-22155-00	PIPE	1	1	1	1	1	
10	5TH-21268-00	SEAL	1	1	1	1	1	
11	3GB-28100-00	TOOL KIT	1	1	1	1	1	
12	93210-40407	O-RING	1	1	1	1	1	
13	1NV-2811A-01	GAUGE, AIR	1	1	1	1	1	



5TH1100-2160

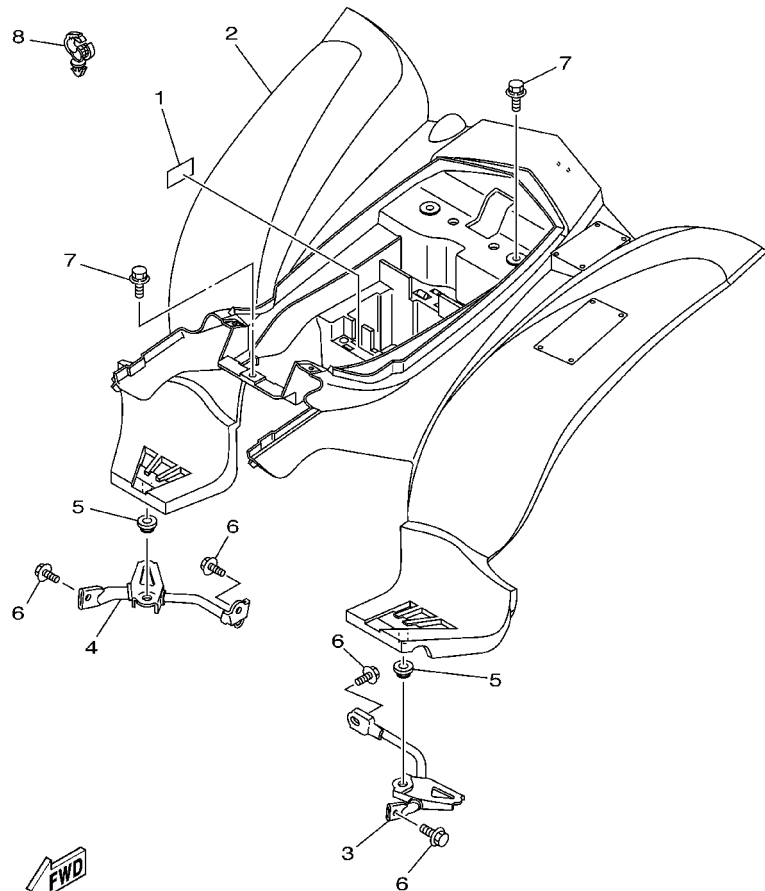
FIG. 17 FRONT FENDER



5TH1100-2170

REF. NO.	PART NO.	DESCRIPTION	USA	OC	JPN	CAN	FRA	REMARKS
1	5TH-W2151-00	FRONT FENDER COMP.	1					UR FOR DPBSE
	5TH-W2151-10	FRONT FENDER COMP.	1					UR FOR YB
	5TH-W215D-00	FRONT FENDER COMP.		1	1			UR FOR DPBSE
	5TH-W215D-10	FRONT FENDER COMP.		1				UR FOR YB
	5TH-W215C-00	FRONT FENDER COMP.2				1		UR FOR DPBSE
	5TH-W215C-10	FRONT FENDER COMP.2				1		UR FOR YB
	5TH-W215B-00	FRONT FENDER COMP. 2					1	FOR DPBSE
2	55X-14451-00	ELEMENT, AIR CLEANER	1	1	1	1	1	
3	5TH-14477-00	PLATE	1	1	1	1	1	
4	55X-14472-01	PLATE, ELEMENT	1	1	1	1	1	
5	55X-14458-00	GUIDE	1	1	1	1	1	
6	97707-40116	SCREW, TAPPING	2	2	2	2	2	
7	92907-04200	WASHER	2	2	2	2	2	
8	55X-14436-00	HOOK	1	1	1	1	1	
9	59V-14457-00	SEAL	1	1	1	1	1	
10	90467-22080	CLIP	1	1	1	1	1	
11	5TH-14436-00	HOOK	4	4	4	4	4	
12	5TH-14412-00	CAP, CLEANER CASE 1	1	1	1	1	1	
13	5TH-14452-00	SEAL	1	1	1	1	1	
14	90109-063F1	BOLT	1	1	1	1	1	
15	90119-06044	BOLT, WITH WASHER	2	2	2	2	2	
16	90119-05193	BOLT, WITH WASHER	2	2	2	2	2	
17	90183-05008	NUT, SPRING	2	2	2	2	2	
18	5TH-21556-00	FENDER, FRONT 2	1	1	1	1	1	UR DPBSE
	5TH-21556-10	FENDER, FRONT 2	1	1		1		UR YB
19	90110-05201	BOLT, HEXAGON SOCKET HEAD	2	2	2	2	2	
20	90183-05008	NUT, SPRING	2	2	2	2	2	

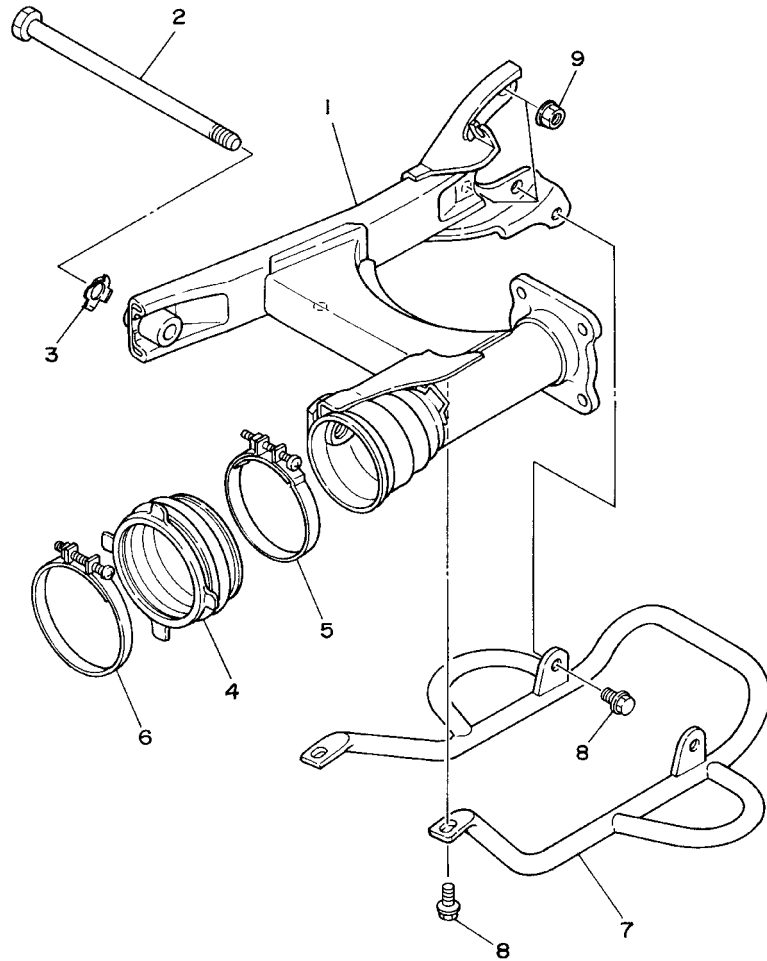
FIG. 18 REAR FENDER



5TH1100-2180

REF. NO.	PART NO.	DESCRIPTION	USA	OCE	JPN	CAN	FRA	REMARKS
1	5TH-2179T-10	PLATE, EPA 3(CALIFORNIA)	1					
2	5TH-W2161-00	REAR FENDER COMP.	1	1	1			UR FOR DPBSE
	5TH-W2161-10	REAR FENDER COMP.	1	1				UR FOR YB
	5TH-W216C-00	REAR FENDER COMP.2				1		UR FOR DPBSE
	5TH-W216C-10	REAR FENDER COMP.2				1		UR FOR YB
	5TH-W216B-00	REAR FENDER COMP.2					1	FOR DPBSE
3	3GB-21613-00	STAY, FENDER 1	1	1	1	1	1	
4	3GB-21614-00	STAY, FENDER 2	1	1	1	1	1	
5	90480-18171	GROMMET	2	2	2	2	2	
6	95807-08012	BOLT, FLANGE	4	4	4	4	4	
7	90119-06056	BOLT, WITH WASHER	4	4	4	4	4	
8	90464-13249	CLAMP	1	1	1	1	1	

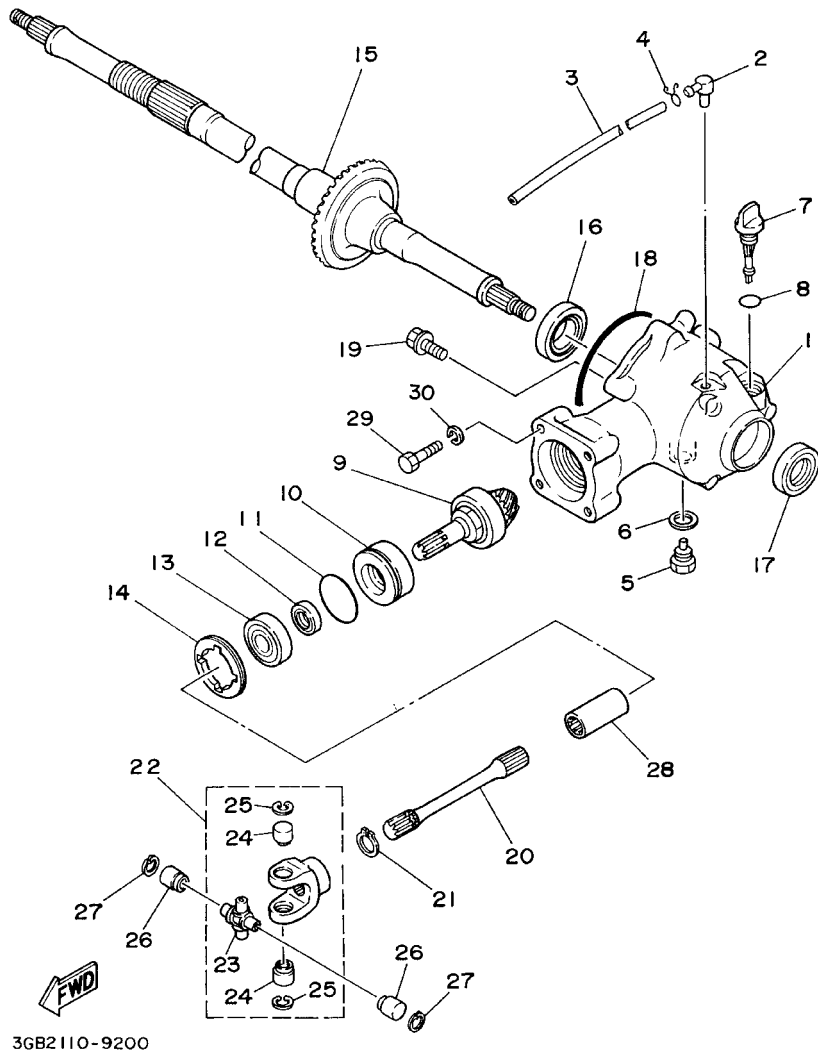
FIG. 19 REAR ARM



REF. NO.	PART NO.	DESCRIPTION	USA	OCE	JPN	CAN	FRA	REMARKS
1	3GB-22110-00-33	REAR ARM COMP.	1	1	1	1	1	YB
2	22W-25181-01	AXLE, WHEEL	1	1	1	1	1	
3	3GB-22156-00	WASHER, PLATE	1	1	1	1	1	
4	55X-22189-00	BOOT, RUBBER	1	1	1	1	1	
5	90460-75020	CLAMP, HOSE	1	1	1	1	1	
6	90460-85135	CLAMP, HOSE	1	1	1	1	1	
7	3GB-2219X-00	COVER	1	1	1	1	1	
8	95817-08014	BOLT, FLANGE	4	4	4	4	4	
9	90185-10115	NUT, SELF-LOCKING	3	3	3	3	3	


3GB1100-9190

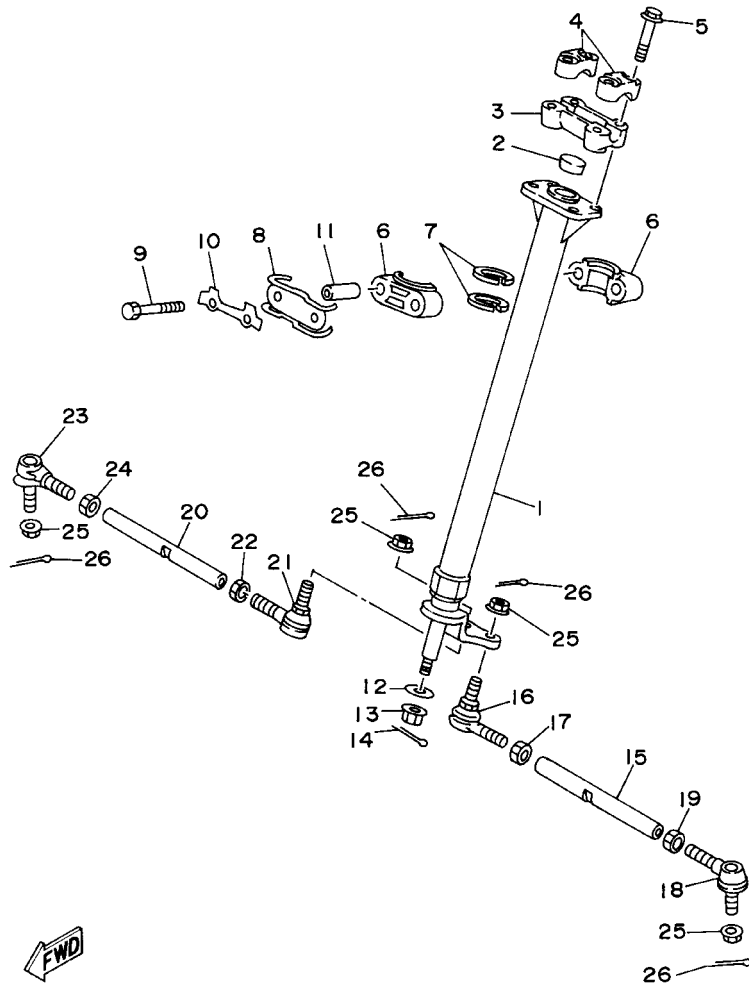
FIG. 20 DRIVE SHAFT



3GB2110-9200

REF. NO.	PART NO.	DESCRIPTION	USA	OC	JPN	CAN	FRA	REMARKS
1	3GB-46151-00	HOUSING, DRIVE SHAFT	1	1	1	1	1	
2	2N4-15371-00	BREATHER	1	1	1	1	1	
3	90445-073F9	HOSE (L1200)	1	1	1	1	1	
4	90467-07029	CLIP	1	1	1	1	1	
5	90340-14132	PLUG, STRAIGHT SCREW	1	1	1	1	1	
6	214-11198-01	GASKET	1	1	1	1	1	
7	3GB-15362-00	PLUG, OIL LEVEL	1	1	1	1	1	
8	93210-14104	O-RING	1	1	1	1	1	
9	3GB-46120-00	DRIVE PINION COMP.	1	1	1	1	1	
10	90560-23355	SPACER	1	1	1	1	1	
11	93210-43713	O-RING	1	1	1	1	1	
12	93102-17271	OIL SEAL	1	1	1	1	1	
13	93306-30306	BEARING (B6303)	1	1	1	1	1	
14	90179-55464	NUT	1	1	1	1	1	
15	3GB-46110-10	RING GEAR COMP.	1	1	1	1	1	
16	93306-07801	BEARING	1	1	1	1	1	
17	93102-28022	OIL SEAL	1	1	1	1	1	
18	93211-066A9	O-RING	1	1	1	1	1	
19	95817-06016	BOLT, FLANGE	6	6	6	6	6	
20	3GB-46172-01	SHAFT, DRIVE	1	1	1	1	1	
21	99009-17400	CIRCLIP	1	1	1	1	1	
22	2HX-46180-00	CROSS JOINT COMP.	1	1	1	1	1	
23	22F-46187-00	.SPIDER	1	1	1	1	1	
24	93311-20952	.BALL BEARING	2	2	2	2	2	
25	99009-17500	.CIRCLIP	2	2	2	2	2	
26	93311-20952	BALL BEARING	2	2	2	2	2	
27	99009-17500	CIRCLIP	2	2	2	2	2	

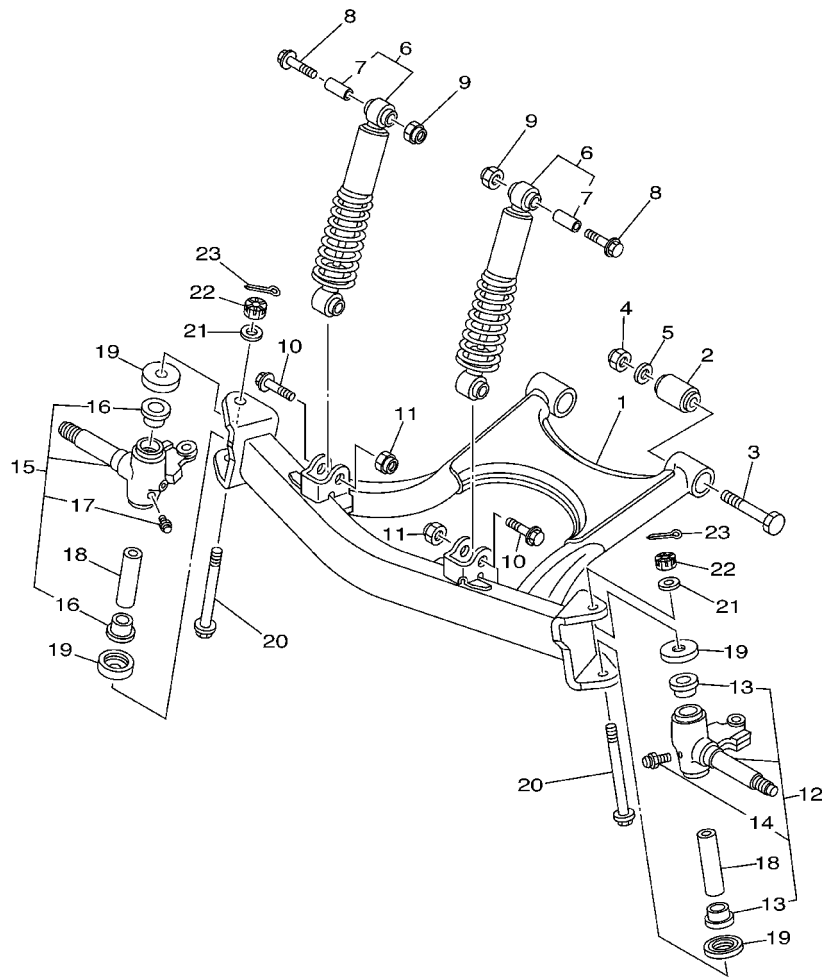
FIG. 22 STEERING



4EMF100-7230

REF. NO.	PART NO.	DESCRIPTION	USA	OC	JPN	CAN	FRA	REMARKS
1	4EM-23813-01	COLUMN, STEERING 2	1	1	1	1	1	
2	90336-28053	PLUG, TAPER	1	1	1	1	1	
3	8G5-23814-00	HOLDER, HANDLE UNDER	1	1	1	1	1	
4	8K1-23814-00	HOLDER, HANDLE	2	2	2	2	2	
5	95827-08055	BOLT, FLANGE	4	4	4	4	4	
6	1UY-23812-00	PLANE BEARING, STEERING	2	2	2	2	2	
7	93112-31011	OIL SEAL	2	2	2	2	2	
8	3GB-23868-00	BRACKET, STEERING LOWER	1	1	1	1	1	
9	97027-08060	BOLT	2	2	2	2	2	
10	1UY-23894-01	WASHER, LOCK 1	1	1	1	1	1	
11	90387-090R0	COLLAR	2	2	2	2	2	
12	90201-10774	WASHER, PLATE	1	1	1	1	1	
13	90185-10115	NUT, SELF-LOCKING	1	1	1	1	1	
14	91401-20020	PIN, COTTER	1	1	1	1	1	
15	3GB-23831-00	ROD, TIE	1	1	1	1	1	
16	55X-23841-01	JOINT, UNIVERSAL 1	1	1	1	1	1	
17	95307-10700	NUT	1	1	1	1	1	
18	52H-23845-01	JOINT, UNIVERSAL 2	1	1	1	1	1	
19	90170-10186	NUT	1	1	1	1	1	(L.H. THREAD)
20	3GB-23831-00	ROD, TIE	1	1	1	1	1	
21	55X-23841-01	JOINT, UNIVERSAL 1	1	1	1	1	1	
22	95307-10700	NUT	1	1	1	1	1	
23	52H-23845-01	JOINT, UNIVERSAL 2	1	1	1	1	1	
24	90170-10186	NUT	1	1	1	1	1	(L.H. THREAD)
25	90185-10115	NUT, SELF-LOCKING	4	4	4	4	4	
26	91401-20020	PIN, COTTER	4	4	4	4	4	

FIG. 23 FRONT SUSPENSION. WHEEL

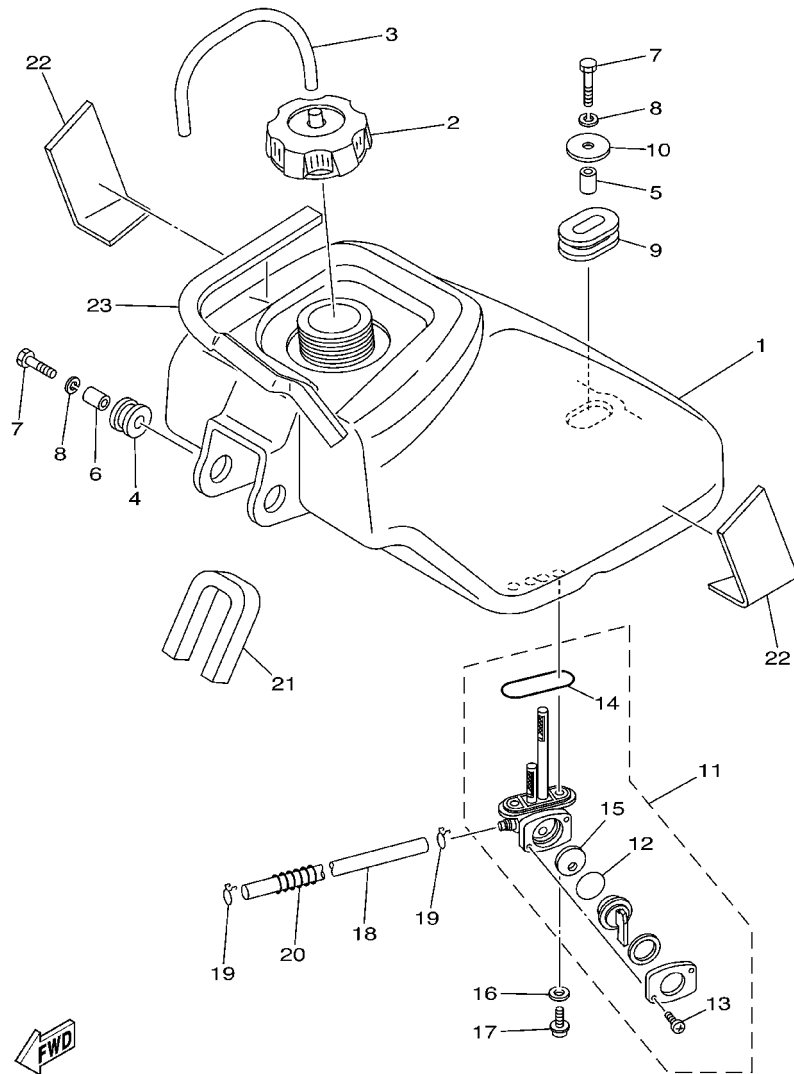


REF. NO.	PART NO.	DESCRIPTION	USA	OC	JPN	CAN	FRA	REMARKS
1	3GB-23570-00-33	FRONT LOWER ARM COMP.	1	1	1	1	1	YB
2	307-22123-00	BUSH 1	2	2	2	2	2	
3	90101-12498	BOLT	2	2	2	2	2	
4	90185-12046	NUT, SELF-LOCKING	2	2	2	2	2	
5	90201-12688	WASHER, PLATE	2	2	2	2	2	
6	2HX-23350-00-36	SHOCK ABSORBER ASSY	2	2	2	2	2	UR WW FOR DPBSE
	2HX-23350-00-6W	SHOCK ABSORBER ASSY	2	2		2		UR NTR FOR YB
7	2HX-2331U-00	.COLLAR, DISTANCE	1	1	1	1	1	
8	90105-10561	BOLT, FLANGE	2	2	2	2	2	
9	90185-10091	NUT, SELF-LOCKING	2	2	2	2	2	
10	90105-12460	BOLT, FLANGE	2	2	2	2	2	
11	90185-12046	NUT, SELF-LOCKING	2	2	2	2	2	
12	3GB-23501-10	STEERING KNUCKLE ASSY (LEFT)	1	1	1	1	1	
13	90381-17067	.BUSH, SOLID	2	2	2	2	2	
14	93700-06004	.NIPPLE, GREASE	1	1	1	1	1	
15	3GB-23502-10	STEERING KNUCKLE ASSY (RIGHT)	1	1	1	1	1	
16	90381-17067	.BUSH, SOLID	2	2	2	2	2	
17	93700-06004	.NIPPLE, GREASE	1	1	1	1	1	
18	3GB-23448-00	SPACER	2	2	2	2	2	
19	2NL-23517-00	COVER, THRUST 1	4	4	4	4	4	
20	90109-104A8	BOLT	2	2	2	2	2	
21	90201-08759	WASHER, PLATE	2	2	2	2	2	
22	90171-10004	NUT, CASTLE	2	2	2	2	2	
23	91401-20020	PIN, COTTER	2	2	2	2	2	



4EMT100-0230

FIG. 24 FUEL TANK

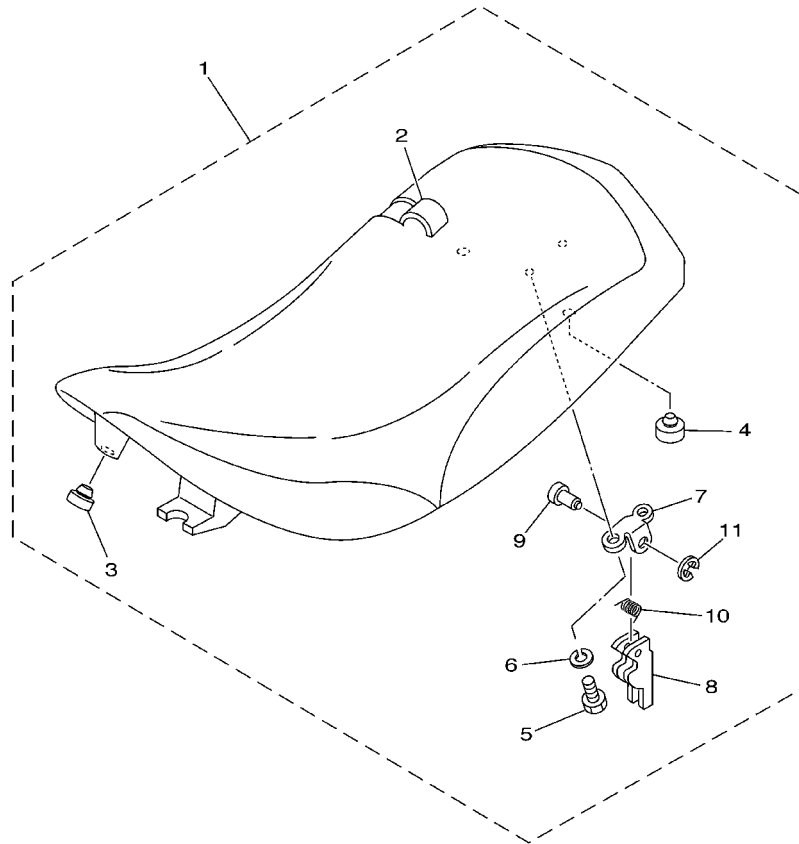


REF. NO.	PART NO.	DESCRIPTION	USA	OC	JPN	CAN	FRA	REMARKS
1	2HX-24110-00	FUEL TANK COMP.	1	1	1	1	1	
2	2FJ-24610-00	CAP ASSY	1	1	1	1	1	
3	90445-083J4	HOSE (L340)	1	1	1	1	1	
4	90480-18290	GROMMET	2	2	2	2	2	
5	90387-07598	COLLAR	1	1	1	1	1	
6	90387-066J1	COLLAR	2	2	2	2	2	
7	97027-06030	BOLT	3	3	3	3	3	
8	92907-06100	WASHER, SPRING	3	3	3	3	3	
9	90480-01400	GROMMET	1	1	1	1	1	
10	90201-060L5	WASHER, PLATE	1	1	1	1	1	
11	55X-24500-01	FUEL COCK ASSY 1	1	1	1	1	1	
12	3AJ-24534-00	.SEAL, COCK	1	1	1	1	1	
13	97801-03008	.SCREW, PAN HEAD	2	2	2	2	2	
14	4X8-24512-00	.O-RING	1	1	1	1	1	
15	3AJ-24523-00	.VALVE PACKING	1	1	1	1	1	
16	90202-05193	WASHER, PLATE	2	2	2	2	2	
17	90149-06011	SCREW	2	2	2	2	2	
18	90445-10638	HOSE (L145)	1	1	1	1	1	
19	90467-09006	CLIP	2	2	2	2	2	
20	90504-06030	SPRING, COMPRESSION	1	1	1	1	1	
21	2HX-24181-00	DAMPER, LOCATING 1	1	1	1	1	1	
22	12R-21747-00	DAMPER	2	2	2	2	2	
23	5TH-2414H-00	DAMPER, PLATE 1	1	1	1	1	1	



5TH1100-2240

FIG. 25 SEAT

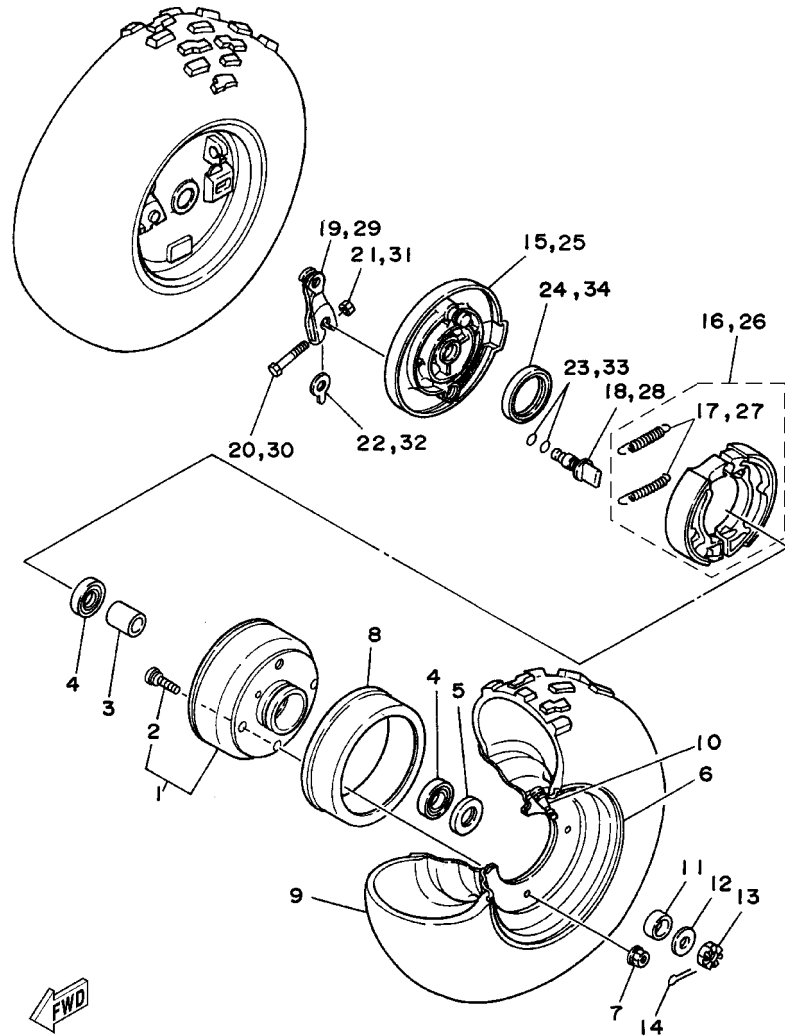


REF. NO.	PART NO.	DESCRIPTION	USA	OCE	JPN	CAN	FRA	REMARKS
1	5TH-24710-00	SINGLE SEAT ASSY	1	1	1	1	1	
2	5TH-2470F-00	.SEAT COVER COMP.	1	1	1	1	1	
3	22W-24741-00	.PAD, SEAT	1	1	1	1	1	
4	371-27114-00	.STOPPER, MAIN STAND	2	2	2	2	2	
5	97007-06012	.BOLT	2	2	2	2	2	
6	92907-06100	.WASHER, SPRING	2	2	2	2	2	
7	4K0-24775-00	.BRACKET, SEAT LEVER	1	1	1	1	1	
8	29U-24776-00	.LEVER, SEAT	1	1	1	1	1	
9	4K0-24774-A0	.PIN	1	1	1	1	1	
10	90508-20454	.SPRING, TORSION	1	1	1	1	1	
11	93430-04002	.CIRCLIP	1	1	1	1	1	



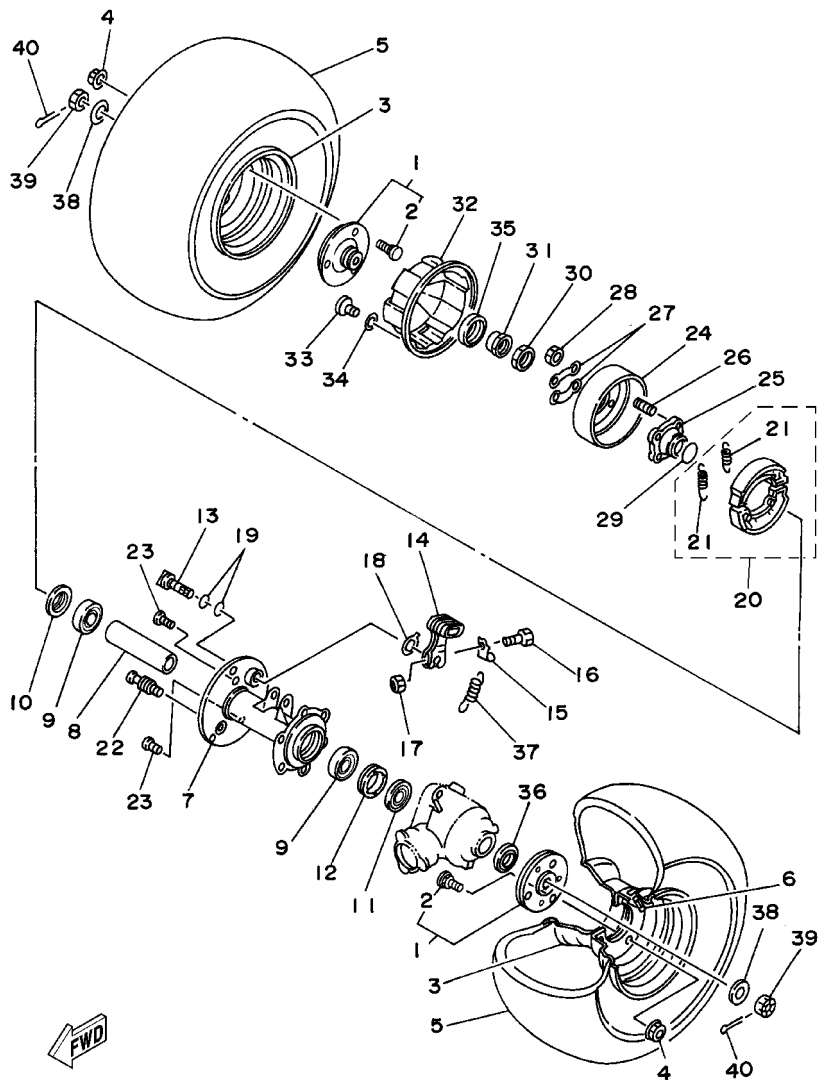
5TH1100-2250

FIG. 26 FRONT WHEEL



5TH5100-B260

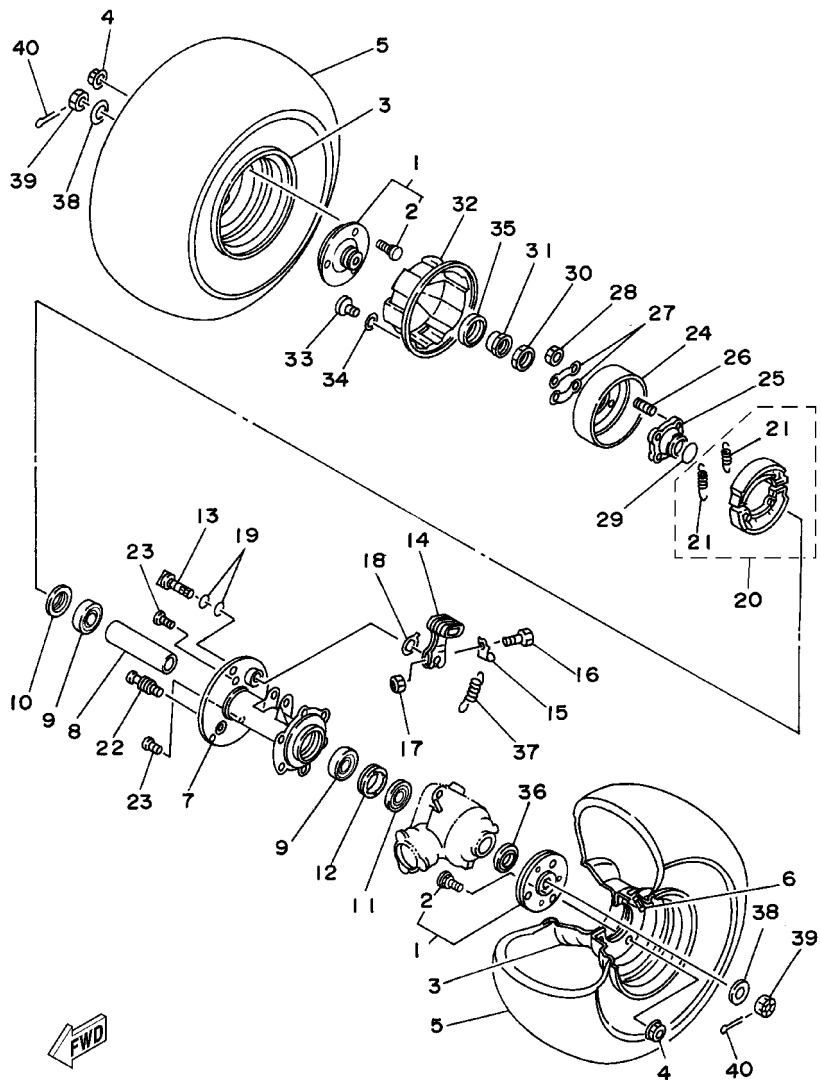
REF. NO.	PART NO.	DESCRIPTION	USA	OC	JPN	CAN	FRA	REMARKS
1	2FJ-25111-00	HUB, FRONT	2	2	2	2	2	
2	90109-08745	.BOLT	4	4	4	4	4	
3	3FA-25117-00	SPACER, BEARING	2	2	2	2	2	
4	93306-00308	BEARING (B6003)	4	4	4	4	4	
5	93102-23275	OIL SEAL	2	2	2	2	2	
6	2FJ-25180-00-35	WHEEL COMP.	2	2	2	2	2	SL
7	95707-08500	NUT, FLANGE	8	8	8	8	8	
8	3GB-25185-00	RING 1	2	2	2	2	2	
9	94107-073Y9	TIRE (AT18X7-7 *KT586T/L N)	2	2	2	2	2	DUNLOP
10	93900-00022	VALVE, RIM	2	2	2	2	2	TAIHEIYO
11	90387-175R2	COLLAR	2	2	2	2	2	
12	90201-14586	WASHER, PLATE	2	2	2	2	2	
13	90171-14020	NUT, CASTLE	2	2	2	2	2	
14	91401-30025	PIN, COTTER	2	2	2	2	2	
15	2FJ-25121-00	PLATE, BRAKE SHOE	1	1	1	1	1	
16	4KN-W253E-11	BRAKE SHOE KIT	1	1	1	1	1	
17	90506-15260	.SPRING, TENSION	2	2	2	2	2	
18	3GB-25151-00	CAMSHAFT	1	1	1	1	1	
19	2FJ-25155-00	LEVER, CAMSHAFT 1	1	1	1	1	1	
20	90101-06278	BOLT	1	1	1	1	1	
21	95307-06600	NUT	1	1	1	1	1	
22	52H-2513A-00	PLATE, INDICATOR	1	1	1	1	1	
23	93210-12327	O-RING	2	2	2	2	2	
24	93102-40367	OIL SEAL	1	1	1	1	1	
25	2FJ-25169-00	PLATE, BRAKE SHOE 2	1	1	1	1	1	
26	4KN-W253E-11	BRAKE SHOE KIT	2	2	2	2	2	
27	90506-15260	.SPRING, TENSION	2	2	2	2	2	



5TH5100-B270

FIG. 27 REAR WHEEL

REF. NO.	PART NO.	DESCRIPTION	USA	OCÉ	JPN	CAN	FRA	REMARKS
1	55X-25383-00	COLLAR, WHEEL	2	2	2	2	2	
2	90109-08745	.BOLT	3	3	3	3	3	
3	2FJ-25390-00-35	REAR WHEEL COMP.	2	2	2	2	2	SL
4	95707-08500	NUT, FLANGE	6	6	6	6	6	
5	94108-073Y8	TIRE (AT18X8-7**KT587T/L N)	2	2	2	2	2	DUNLOP
6	93900-00022	VALVE, RIM	2	2	2	2	2	TAIHEIYO
7	3GB-25311-00-33	HUB, REAR	1	1	1	1	1	YB
8	3GB-25317-00	SPACER, BEARING	1	1	1	1	1	
9	93306-00612	BEARING	2	2	2	2	2	
10	93102-38383	OIL SEAL	1	1	1	1	1	
11	93102-36409	OIL SEAL	1	1	1	1	1	
12	3GB-25382-00	NUT, AXLE	1	1	1	1	1	
13	3Y6-25351-00	CAMSHAFT	1	1	1	1	1	
14	55X-25355-00	LEVER, CAMSHAFT	1	1	1	1	1	
15	55X-2533H-00	HOOK, SPRING	1	1	1	1	1	
16	90101-06562	BOLT	1	1	1	1	1	
17	95307-06600	NUT	1	1	1	1	1	
18	23F-2533A-00	PLATE, INDICATOR	1	1	1	1	1	
19	93210-14104	O-RING	2	2	2	2	2	
20	3KG-W253E-00	BRAKE SHOE KIT	1	1	1	1	1	
21	90506-15260	.SPRING, TENSION	2	2	2	2	2	
22	3GB-25326-00	PIN, PIVOT	1	1	1	1	1	
23	90114-10005	BOLT, SERRATION	2	2	2	2	2	
24	3GB-2531E-00	DRUM, BRAKE	1	1	1	1	1	
25	3GB-25343-00	BOSS	1	1	1	1	1	
26	90116-08507	BOLT, STUD	4	4	4	4	4	
27	390-25412-01	WASHER	2	2	2	2	2	

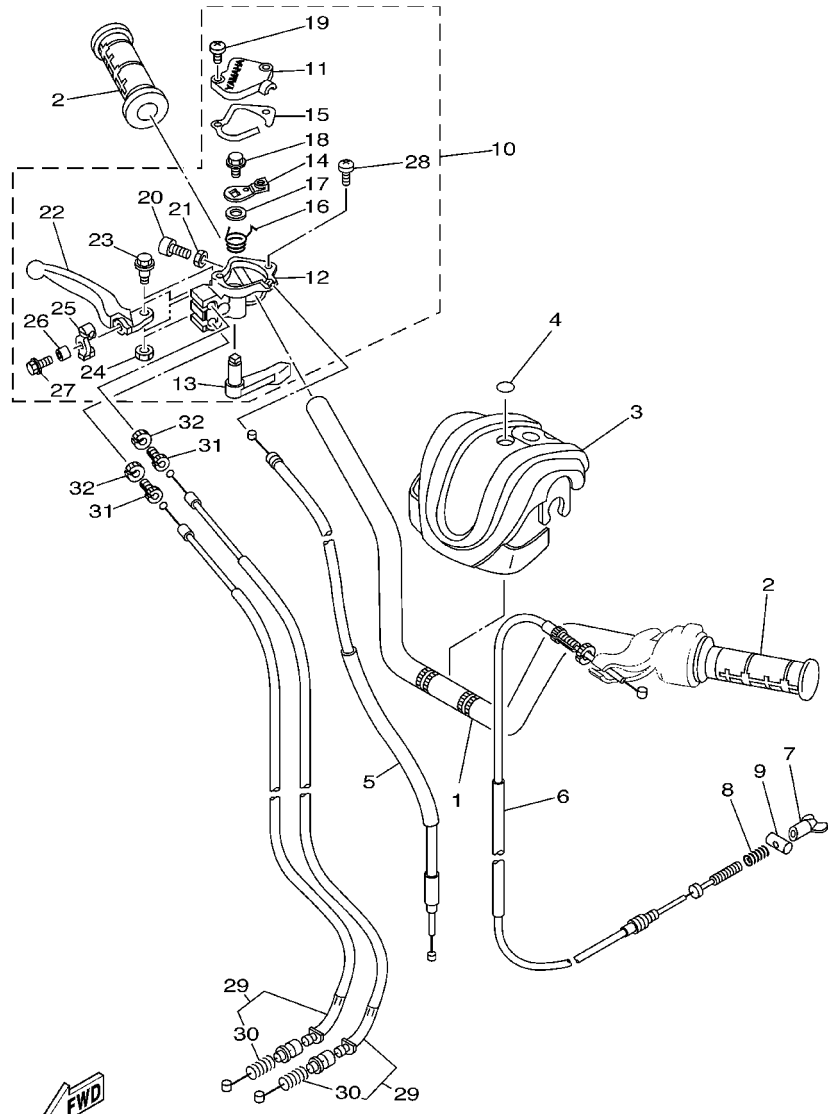


5TH5100-B270

FIG. 27 REAR WHEEL

REF. NO.	PART NO.	DESCRIPTION	USA	OCE	JPN	CAN	FRA	REMARKS
28	95307-08600	NUT	4	4	4	4	4	
29	93210-26606	O-RING	1	1	1	1	1	
30	90170-28379	NUT	1	1	1	1	1	
31	90179-28573	NUT	1	1	1	1	1	
32	3GB-25715-00	COVER 1	1	1	1	1	1	
33	98507-06012	SCREW	3	3	3	3	3	
34	92907-06100	WASHER, SPRING	3	3	3	3	3	
35	93102-35349	OIL SEAL	1	1	1	1	1	
36	3GB-25367-00	COVER, HUB DUST	1	1	1	1	1	
37	90507-15038	SPRING, TENSION	1	1	1	1	1	
38	90201-126A7	WASHER, PLATE	2	2	2	2	2	
39	90171-12039	NUT, CASTLE	2	2	2	2	2	
40	91401-25025	PIN, COTTER	2	2	2	2	2	

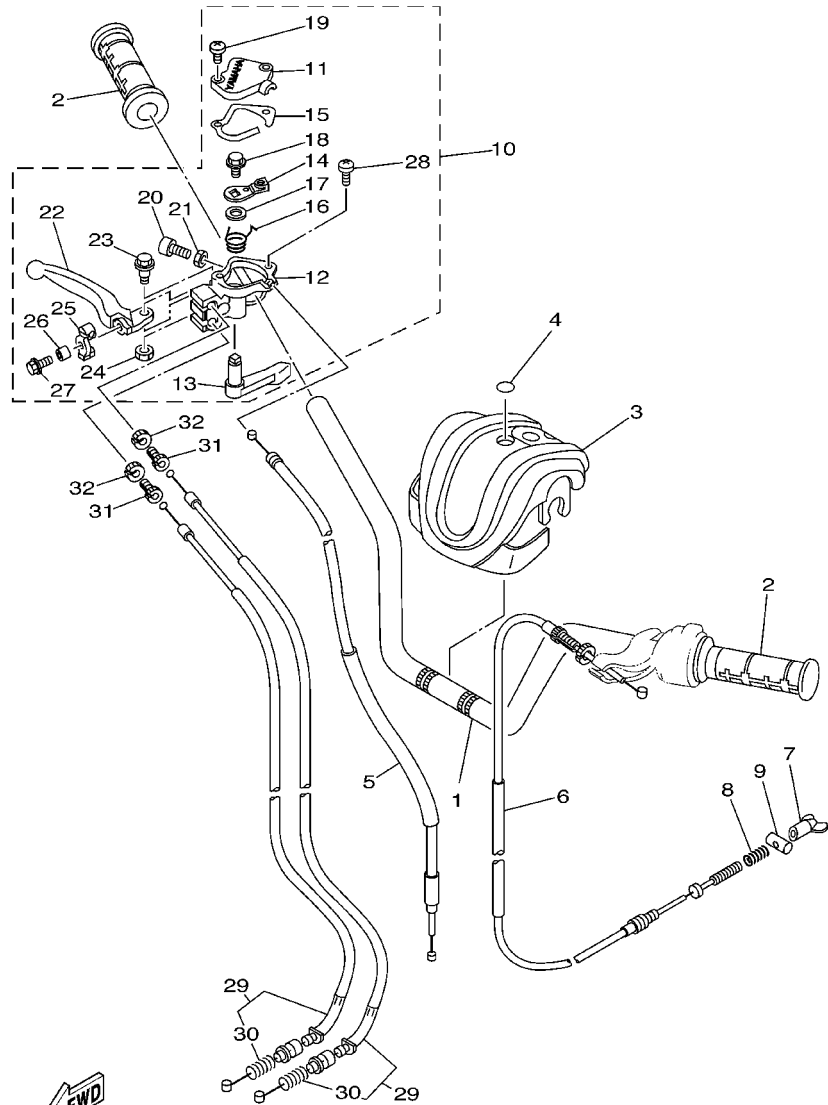
FIG. 28 STEERING HANDLE. CABLE



5TH1100-2280

REF. NO.	PART NO.	DESCRIPTION	USA	OC	JPN	CAN	FRA	REMARKS
1	5TH-26111-00	HANDLEBAR	1	1	1	1	1	
2	5LP-26241-00	GRIP	2	2	2	2	2	
3	5TH-26124-00	PROTECTOR, HANDLEBAR	1	1	1	1	1	UR DPBSE
	5TH-26124-10	PROTECTOR, HANDLEBAR	1	1		1		UR YB
4	5GT-2836B-10	TUNING FORK MARK	1	1	1	1	1	
5	3GB-26311-02	CABLE, THROTTLE 1	1	1	1	1	1	
6	3GB-26341-01	CABLE, BRAKE	1	1	1	1	1	
7	20E-26343-00	NUT, ADJUSTING	1	1	1	1	1	
8	90501-10782	SPRING, COMPRESSION	1	1	1	1	1	
9	90249-12008	PIN	1	1	1	1	1	
10	5TH-26250-00	THROTTLE LEVER ASSY	1	1	1	1	1	
11	3GB-2628F-00	.CAP, GEAR	1	1	1	1	1	
12	3GB-2625E-01	.BODY, THROTTLE	1	1	1	1	1	
13	3GB-2625G-00	.LEVER, THROTTLE	1	1	1	1	1	
14	3GB-2625H-00	.ARM, THROTTLE	1	1	1	1	1	
15	3GB-2628G-01	.GASKET	1	1	1	1	1	
16	90508-10775	.SPRING, TORSION	1	1	1	1	1	
17	90201-145M4	.WASHER, PLATE	1	1	1	1	1	
18	95807-08012	.BOLT, FLANGE	1	1	1	1	1	
19	98507-04016	.SCREW	2	2	2	2	2	
20	91317-05025	.BOLT	1	1	1	1	1	
21	95307-05700	.NUT	1	1	1	1	1	
22	5TH-83922-00	.LEVER 2	1	1	1	1	1	
23	90109-061F3	.BOLT	1	1	1	1	1	
24	95607-06100	.NUT, U	1	1	1	1	1	
25	3GB-26347-00	.JOINT, CABLE	1	1	1	1	1	
26	90387-066V8	.COLLAR	1	1	1	1	1	

FIG. 28 STEERING HANDLE. CABLE

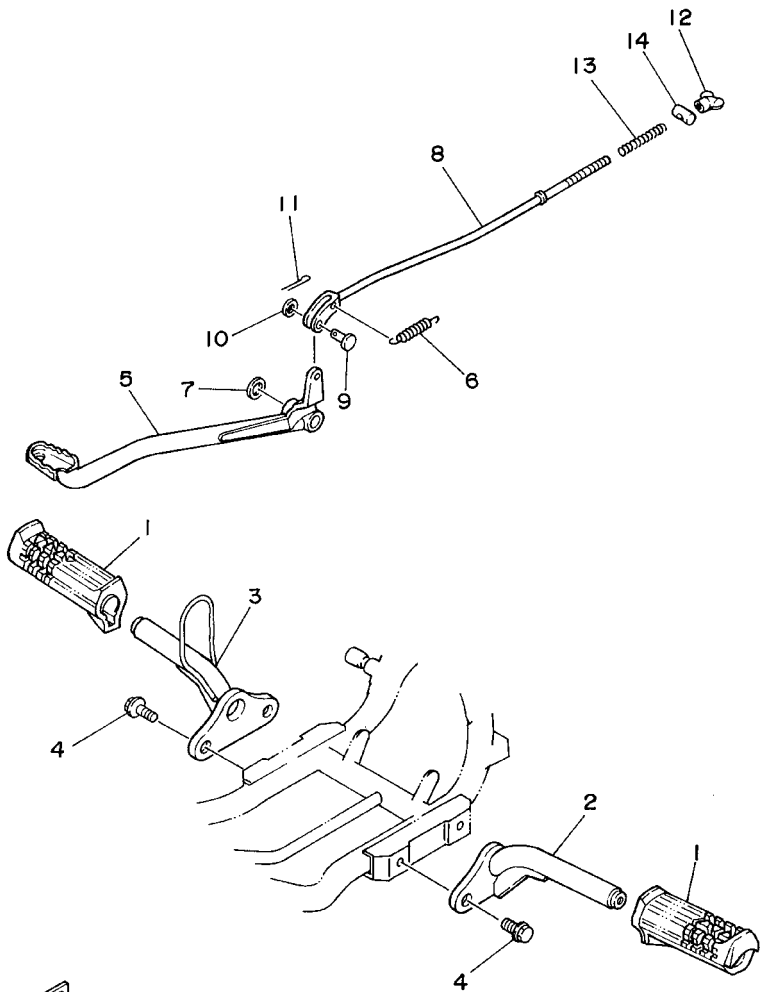


5TH1100-2280

REF. NO.	PART NO.	DESCRIPTION	USA	OCE	JPN	CAN	FRA	REMARKS
27	95807-06016	.BOLT, FLANGE	1	1	1	1	1	
28	98507-06020	.SCREW	1	1	1	1	1	
29	3GB-26361-03	CABLE, BRAKE	2	2	2	2	2	
30	90501-08511	.SPRING, COMPRESSION	1	1	1	1	1	
31	90123-08106	BOLT	2	2	2	2	2	
32	90179-08148	NUT	2	2	2	2	2	

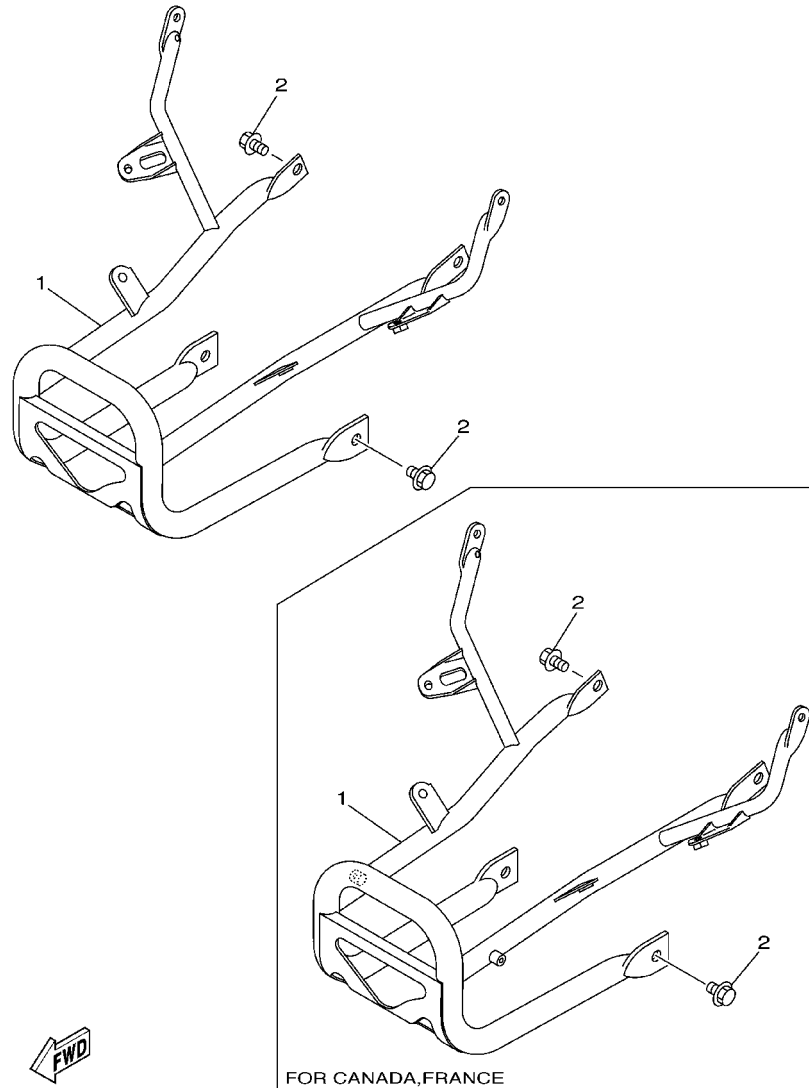
FIG. 29 STAND. FOOTREST

REF. NO.	PART NO.	DESCRIPTION	USA	OCÉ	JPN	CAN	FRA	REMARKS
1	55X-27413-00	COVER, FOOTREST	2	2	2	2	2	
2	3GB-27411-10	FOOTREST 1	1	1	1	1	1	
3	3GB-27421-10	FOOTREST 2	1	1	1	1	1	
4	95817-12020	BOLT, FLANGE	4	4	4	4	4	
5	3GB-27211-00	PEDAL, BRAKE	1	1	1	1	1	
6	90506-16318	SPRING, TENSION	1	1	1	1	1	
7	90201-15797	WASHER, PLATE	1	1	1	1	1	
8	3GB-27231-00	ROD, BRAKE	1	1	1	1	1	
9	90240-06076	PIN, CLEVIS	1	1	1	1	1	
10	92907-06200	WASHER	1	1	1	1	1	
11	91401-20012	PIN, COTTER	1	1	1	1	1	
12	20E-26343-00	NUT, ADJUSTING	1	1	1	1	1	
13	90501-10245	SPRING, COMPRESSION	1	1	1	1	1	
14	90249-12008	PIN	1	1	1	1	1	



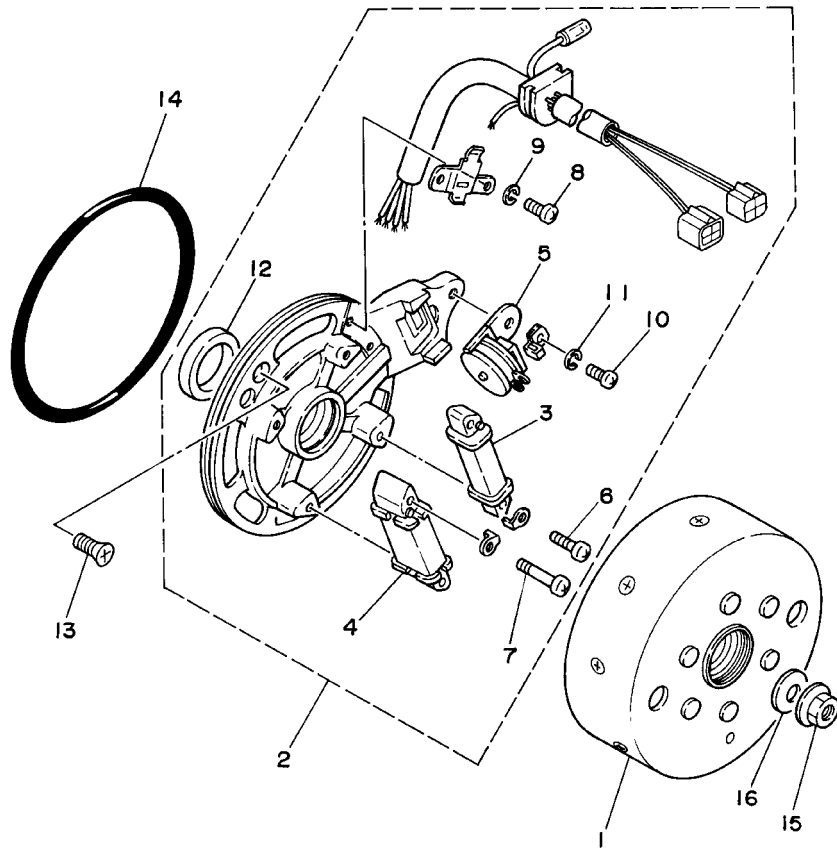
 3GB1100-9290

FIG. 30 GUARD



REF. NO.	PART NO.	DESCRIPTION	USA	OCE	JPN	CAN	FRA	REMARKS
1	5TH-2845N-00	BAR, CARRY FRONT	1	1	1			
	5TH-2845N-10	BAR, CARRY FRONT				1	1	
2	95817-08014	BOLT, FLANGE	4	4	4	4	4	

FIG. 31 GENERATOR

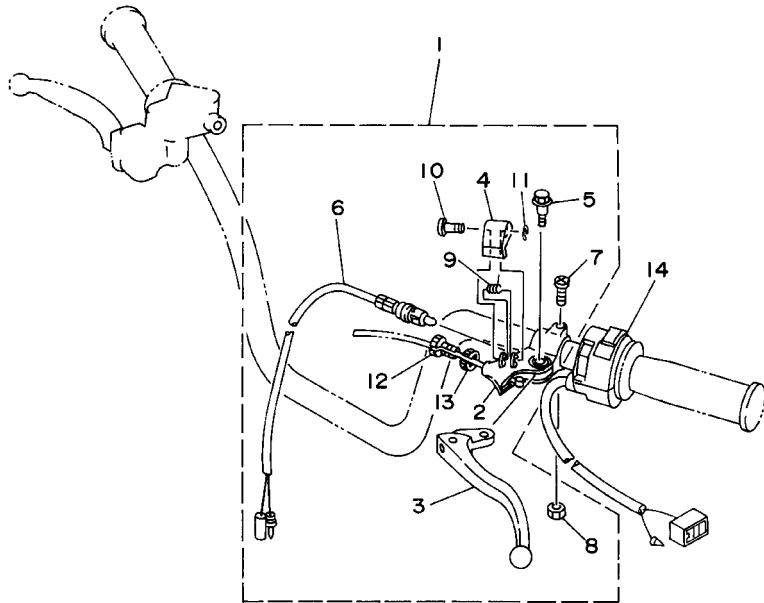


REF. NO.	PART NO.	DESCRIPTION	USA	OC	JPN	CAN	FRA	REMARKS
1	2FM-85550-M0	ROTOR ASSY	1	1	1	1	1	
2	4EM-85560-10	BASE ASSY	1	1	1	1	1	
3	5G3-85520-M1	.COIL, CHARGE	1	1	1	1	1	
4	55X-81313-M0	.COIL, LIGHTING 1	1	1	1	1	1	
5	22K-85595-M0	.COIL, PULSER	1	1	1	1	1	
6	98511-04012	.SCREW, PAN HEAD	2	2	2	2	2	
7	98511-04020	.SCREW, PAN HEAD	2	2	2	2	2	
8	98501-04006	.SCREW, PAN HEAD	2	2	2	2	2	
9	92901-04100	.WASHER, SPRING	2	2	2	2	2	
10	98501-05010	.SCREW, PAN HEAD	1	1	1	1	1	
11	92901-05100	.WASHER, SPRING	1	1	1	1	1	
12	93102-19276	.OIL SEAL	1	1	1	1	1	
13	98707-06016	SCREW, FLAT HEAD	2	2	2	2	2	
14	93211-02703	O-RING	1	1	1	1	1	
15	90179-10394	NUT	1	1	1	1	1	
16	90201-101A4	WASHER, PLATE	1	1	1	1	1	



4EM9100-5320

FIG. 34 HANDLE SWITCH. LEVER

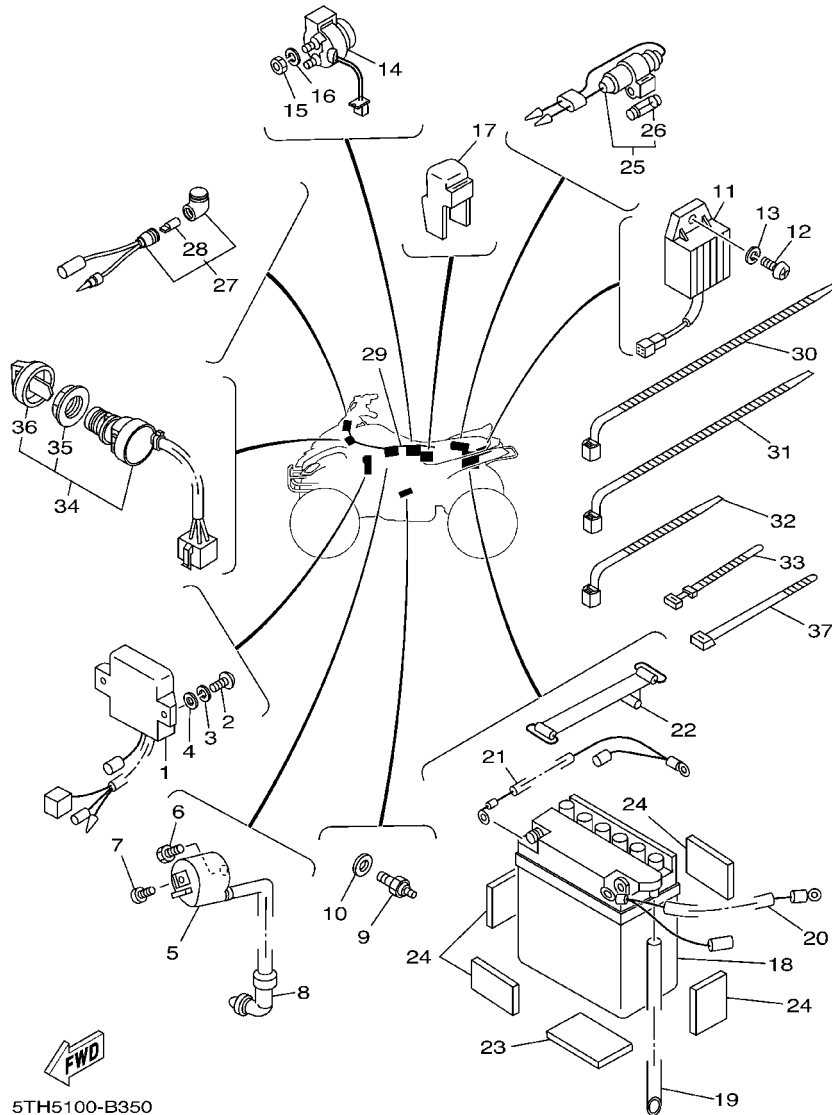


REF. NO.	PART NO.	DESCRIPTION	USA	OC	JPN	CAN	FRA	REMARKS
1	5TH-82910-00	LEVER HOLDER ASSY (LEFT)	1	1	1	1	1	
2	3FA-82911-00	.HOLDER, LEVER 1	1	1	1	1	1	
3	23X-83912-00	.LEVER 1	1	1	1	1	1	
4	3FA-83965-00	.LEVER, LOCK	1	1	1	1	1	
5	90109-06799	.BOLT	1	1	1	1	1	
6	1YW-83980-00	.FRONT STOP SWITCH ASSY	1	1	1	1	1	
7	98507-06020	.SCREW	1	1	1	1	1	
8	95607-06100	.NUT, U	1	1	1	1	1	
9	3FA-83966-00	.SPRING, RETURN	1	1	1	1	1	
10	3FA-83967-00	.PIN, LOCK 1	1	1	1	1	1	
11	3FA-26466-00	.RING, SNAP	1	1	1	1	1	
12	90123-08046	.BOLT	1	1	1	1	1	
13	90179-08148	.NUT	1	1	1	1	1	
14	4EM-83975-00	SWITCH, HANDLE 2	1	1	1	1	1	



4EM9100-5340

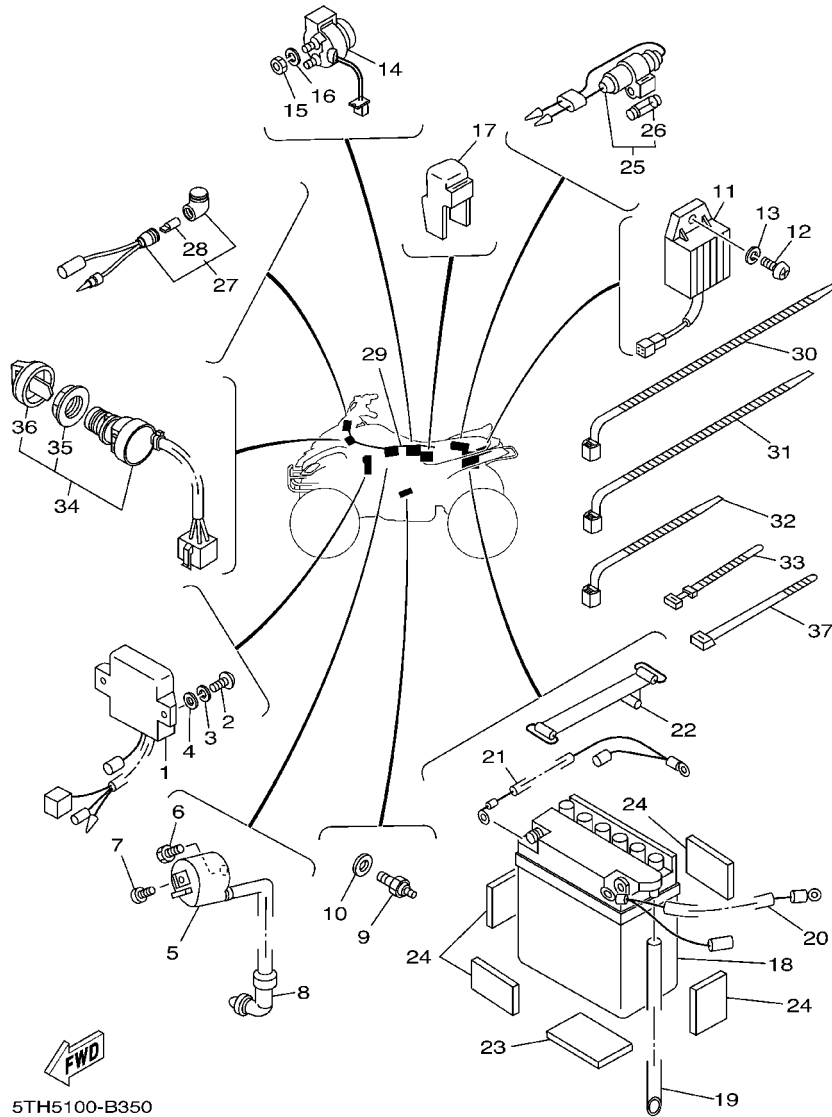
FIG. 35 ELECTRICAL 1



FWD
5TH5100-B350

REF. NO.	PART NO.	DESCRIPTION	USA	OC	JPN	CAN	FRA	REMARKS
1	4EM-85540-10	C.D.I. UNIT ASSY	1	1	1	1	1	
2	98507-06020	SCREW	2	2	2	2	2	
3	92907-06100	WASHER, SPRING	2	2	2	2	2	
4	92907-06600	WASHER, PLATE	2	2	2	2	2	
5	4KJ-82310-10	IGNITION COIL ASSY	1	1	1	1	1	
6	97007-06016	BOLT	1	1	1	1	1	
7	90153-06034	SCREW, HEXAGON	1	1	1	1	1	
8	55X-82370-00	PLUG CAP ASSY	1	1	1	1	1	
9	3GB-82540-01	NEUTRAL SWITCH ASSY	1	1	1	1	1	
10	90430-10148	GASKET	1	1	1	1	1	
11	5TH-81960-00	RECTIFIER & REGULATOR ASSY	1	1	1	1	1	
12	98507-06016	SCREW	1	1	1	1	1	
13	92907-06100	WASHER, SPRING	1	1	1	1	1	
14	4KD-81940-00	STARTER RELAY ASSY	1	1	1	1	1	
15	95307-06700	NUT	2	2	2	2	2	
16	92907-06100	WASHER, SPRING	2	2	2	2	2	
17	1RL-81950-92	RELAY ASSY	1	1	1	1	1	
18	55X-82110-61	BATTERY ASSY (GS 12N7D-3B)	1	1		1	1	
	90793-25013	BATTERY ASSY (GS 12N7D-3B)			1			
19	90445-085E0	HOSE (L450)	1	1	1	1	1	
20	55X-82115-00	WIRE, PLUS LEAD	1	1	1	1	1	
21	3GB-82116-00	WIRE, MINUS LEAD	1	1	1	1	1	
22	4J2-82131-01	BAND, BATTERY	1	1	1	1	1	
23	55X-82122-00	SEAT, BATTERY	1	1	1	1	1	
24	29W-82123-00	SEAT, BATTERY	4	4	4	4	4	
25	3GB-82150-00	FUSE HOLDER ASSY	1	1	1	1	1	
26	3GB-82151-00	.FUSE (5A)	2	2	2	2	2	

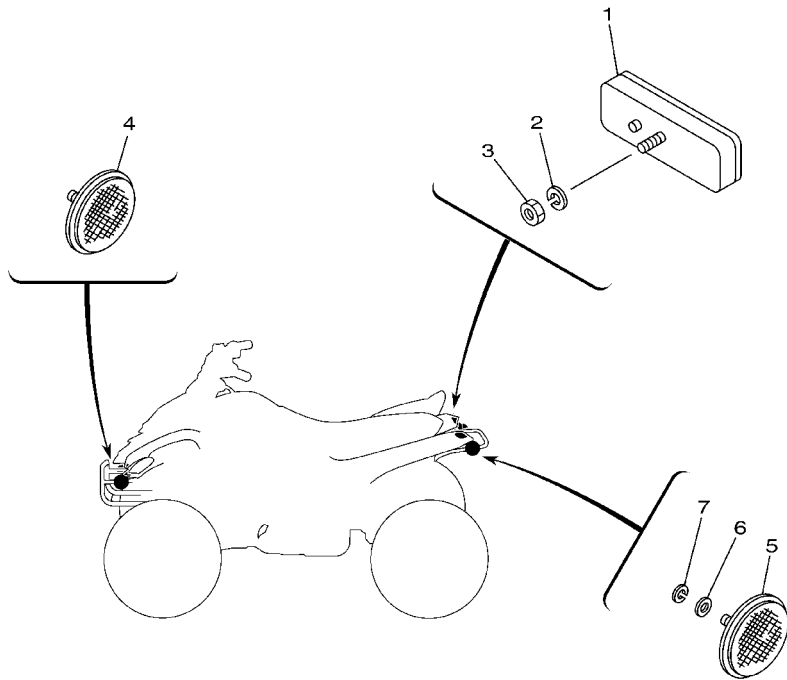
FIG. 35 ELECTRICAL 1



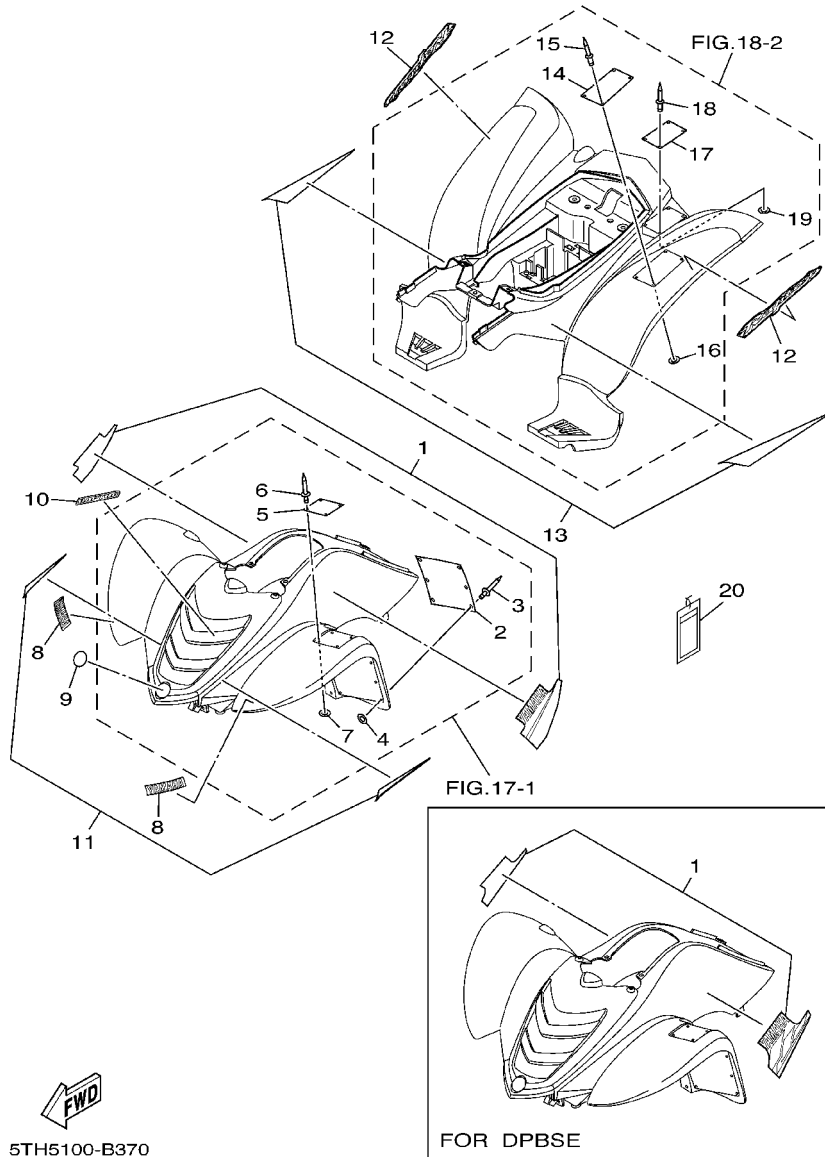
REF. NO.	PART NO.	DESCRIPTION	USA	OCE	JPN	CAN	FRA	REMARKS
27	4KB-83530-00	PILOT LIGHT ASSY	1	1	1	1	1	GREEN (NEUTRAL INDICATOR)
28	5GH-83516-00	.BULB (14V-1.7W)	1	1	1	1	1	
29	5TH-82590-00	WIRE HARNESS ASSY	1	1	1	1	1	
30	90460-15126	CLAMP, HOSE	1	1	1	1	1	
31	90464-12045	CLAMP	1	1	1	1	1	
32	90464-13073	CLAMP	3	3	3	3	3	
33	437-83936-01	BAND, SWITCH CORD	1	1	1	1	1	
34	4GB-82510-11	MAIN SWITCH ASSY	1	1	1	1	1	
35	3HN-82569-00	.NUT, MAIN SWITCH	1	1	1	1	1	
36	3HN-82579-00	.CAP, KEY	1	1	1	1	1	
37	90465-10098	CLAMP	1	1	1	1	1	

FIG. 36 ELECTRICAL 2

REF. NO.	PART NO.	DESCRIPTION	USA	OCE	JPN	CAN	FRA	REMARKS
1	3Y6-85130-02	REAR REFLECTOR ASSY	1	1	1	1	1	
2	92907-05100	WASHER, SPRING	1	1	1	1	1	
3	95307-05600	NUT	1	1	1	1	1	
4	2EK-85111-00	REFLECTOR, FRONT 1				2	2	
5	449-85131-02	REFLECTOR, REAR 1				2	2	
6	92907-05200	WASHER				4	4	
7	92907-05100	WASHER, SPRING				4	4	



5TH1100-2360

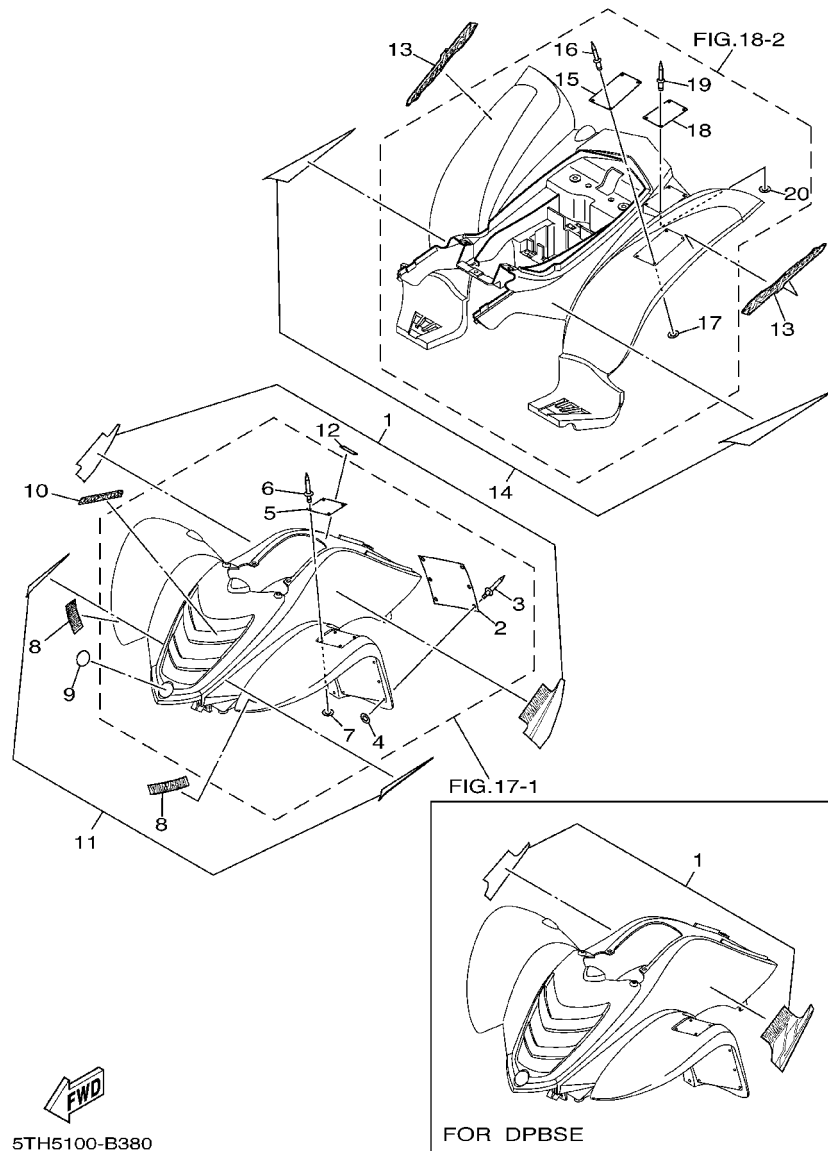



 5TH5100-B370

FIG. 37 EMBLEM.LABEL 1

REF. NO.	PART NO.	DESCRIPTION	USA	OCE	JPN	CAN	FRA	REMARKS
1	5TH-21570-30	GRAPHIC SET, FRONT FENDER	1					UR FOR DPBSE
	5TH-21570-40	GRAPHIC SET, FRONT FENDER	1					UR FOR YB
2	5FE-21568-01	LABEL, WARNING	1					
3	90267-32004	RIVET, BLIND	6					
4	90201-03313	WASHER, PLATE	6					
5	4EM-21697-31	LABEL, CAUTION 2	1					
6	90267-32004	RIVET, BLIND	4					
7	90201-03313	WASHER, PLATE	4					
8	4ES-2153E-01	EMBLEM, YAMAHA	2					UR FOR DPBSE
	4ES-2153E-10	EMBLEM, YAMAHA	2					UR FOR YB
9	5KM-2175B-00	TUNING FORK MARK	1					
10	5TH-21565-30	EMBLEM, 2	1					UR FOR DPBSE
	5TH-21565-40	EMBLEM, 2	1					UR FOR YB
11	5TH-2159A-10	GRAPHIC SET 1	1					FOR YB
12	5TH-21609-40	EMBLEM	2					UR FOR DPBSE
	5TH-21609-50	EMBLEM	2					UR FOR YB
13	5TH-2165A-10	GRAPHIC SET,REAR FENDER	1					FOR YB
14	4EM-21696-11	LABEL, CAUTION	1					
15	90267-32004	RIVET, BLIND	4					
16	90201-03313	WASHER, PLATE	4					
17	5FE-2151H-01	LABEL 5	1					
18	90267-32004	RIVET, BLIND	4					
19	90201-03313	WASHER, PLATE	4					
20	4EM-2819R-00	TAG, WARNING	1					

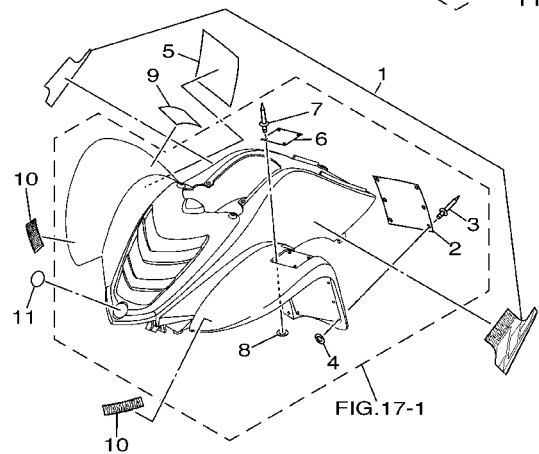
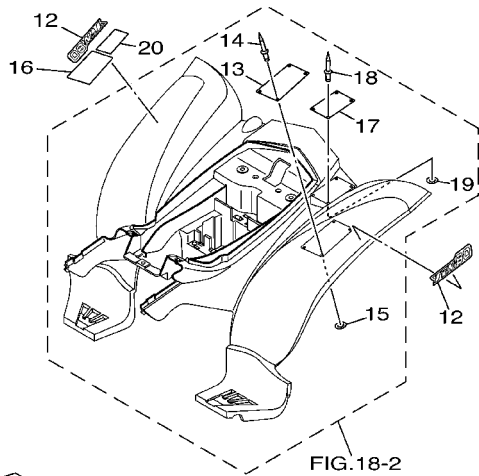
FIG. 38 EMBLEM.LABEL 2



REF. NO.	PART NO.	DESCRIPTION	USA	OCE	JPN	CAN	FRA	REMARKS
1	5TH-21570-30	GRAPHIC SET, FRONT FENDER		1				UR FOR DPBSE
	5TH-21570-40	GRAPHIC SET, FRONT FENDER		1				UR FOR YB
2	5FE-21568-11	LABEL, WARNING		1				
3	90267-32004	RIVET, BLIND		6				
4	90201-03313	WASHER, PLATE		6				
5	4EM-21697-31	LABEL, CAUTION 2		1				
6	90267-32004	RIVET, BLIND		4				
7	90201-03313	WASHER, PLATE		4				
8	4ES-2153E-01	EMBLEM, YAMAHA		2				UR FOR DPBSE
	4ES-2153E-10	EMBLEM, YAMAHA		2				UR FOR YB
9	5KM-2175B-00	TUNING FORK MARK		1				
10	5TH-21565-30	EMBLEM, 2		1				UR FOR DPBSE
	5TH-21565-40	EMBLEM, 2		1				UR FOR YB
11	5TH-2159A-10	GRAPHIC SET 1		1				FOR YB
12	5JJ-2415A-00	LABEL, CAUTION		1				
13	5TH-21609-40	EMBLEM		2				UR FOR DPBSE
	5TH-21609-50	EMBLEM		2				UR FOR YB
14	5TH-2165A-10	GRAPHIC SET,REAR FENDER		1				FOR YB
15	4EM-21696-11	LABEL, CAUTION		1				
16	90267-32004	RIVET, BLIND		4				
17	90201-03313	WASHER, PLATE		4				
18	5FE-2151H-01	LABEL 5		1				
19	90267-32004	RIVET, BLIND		4				
20	90201-03313	WASHER, PLATE		4				

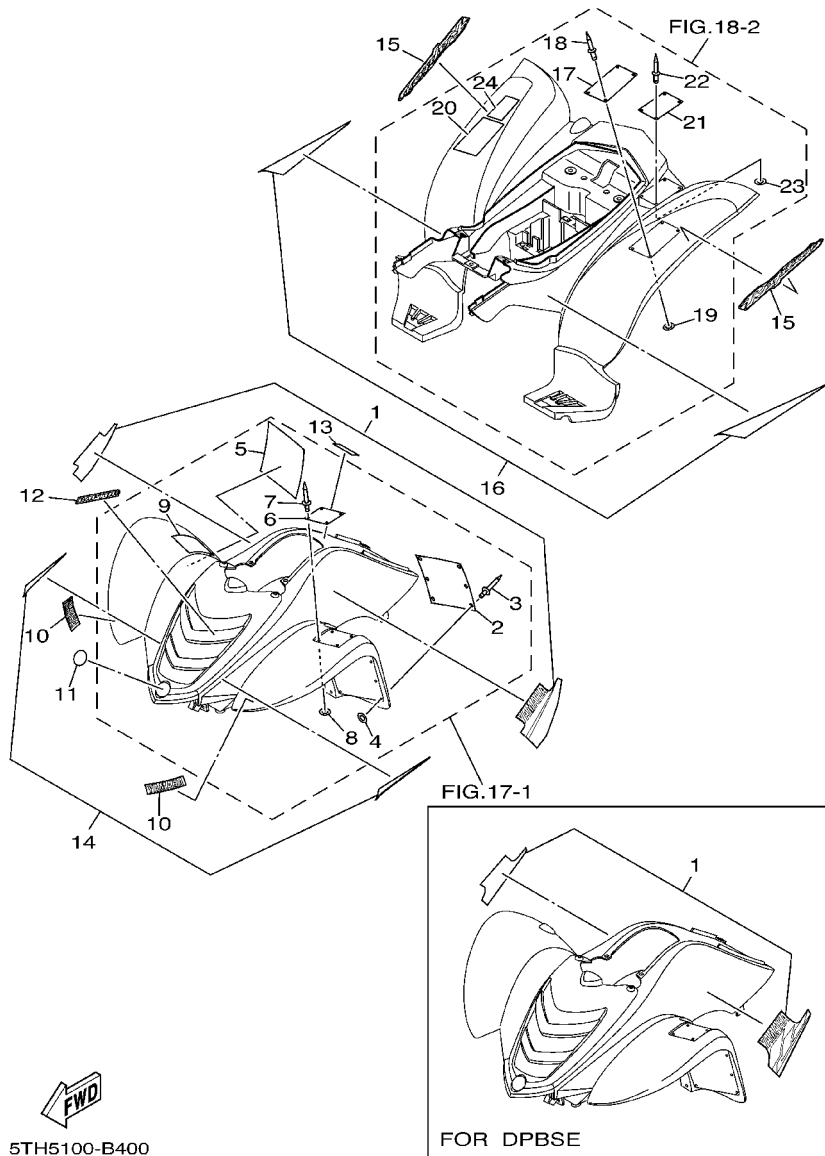
FIG. 39 EMBLEM.LABEL 3

REF. NO.	PART NO.	DESCRIPTION	USA	OCE	JPN	CAN	FRA	REMARKS
1	5TH-21570-30	GRAPHIC SET, FRONT FENDER			1			
2	5FE-21568-11	LABEL, WARNING			1			
3	90267-32004	RIVET, BLIND			6			
4	90201-03313	WASHER, PLATE			6			
5	4SH-21568-00	LABEL, WARNING			1			
6	4EM-21697-31	LABEL, CAUTION 2			1			
7	90267-32004	RIVET, BLIND			4			
8	90201-03313	WASHER, PLATE			4			
9	4EM-21697-00	LABEL, CAUTION 2			1			
10	4ES-2153E-01	EMBLEM, YAMAHA			2			
11	5KM-2175B-00	TUNING FORK MARK			1			
12	5TH-21609-11	EMBLEM			2			
13	4EM-21696-11	LABEL, CAUTION			1			
14	90267-32004	RIVET, BLIND			4			
15	90201-03313	WASHER, PLATE			4			
16	4EM-21696-00	LABEL, CAUTION			1			
17	5FE-2151H-01	LABEL 5			1			
18	90267-32004	RIVET, BLIND			4			
19	90201-03313	WASHER, PLATE			4			
20	4LB-2151H-01	LABEL 5			1			



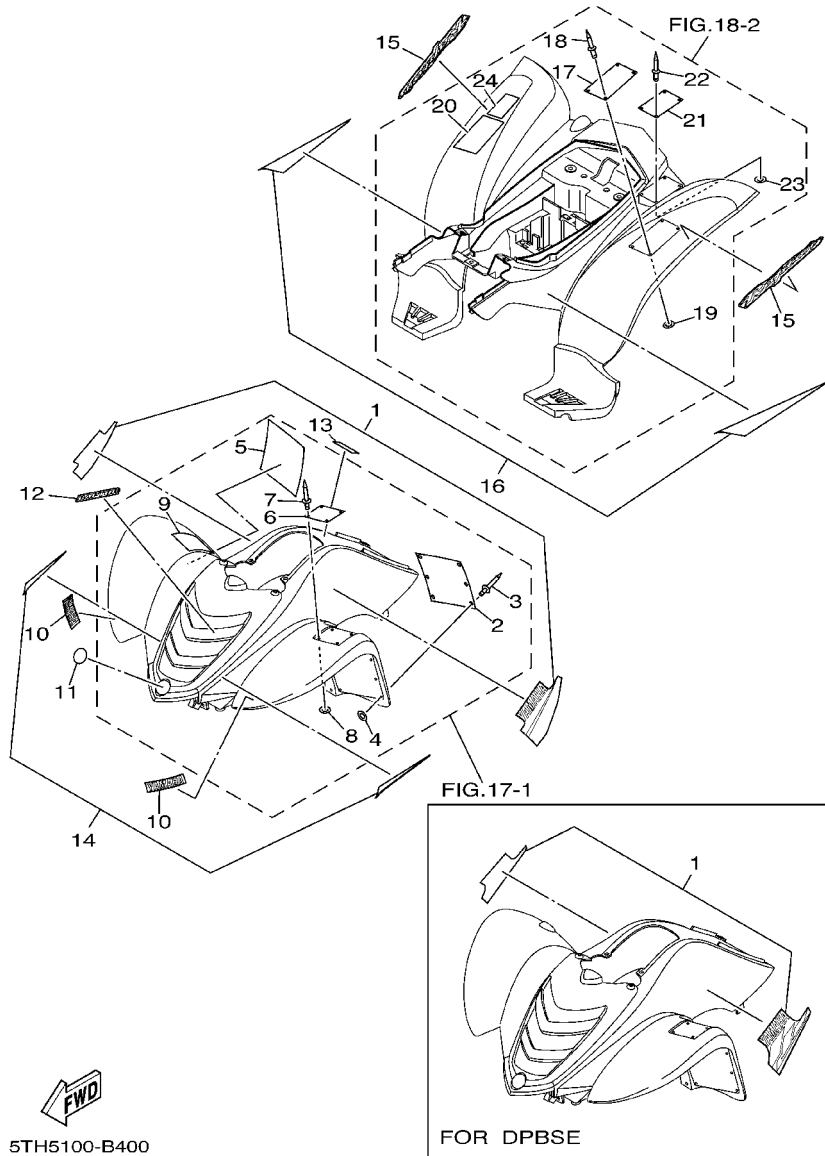
5TH5100-B390

FIG. 40 EMBLEM.LABEL 4



REF. NO.	PART NO.	DESCRIPTION	USA	OCE	JPN	CAN	FRA	REMARKS
1	5TH-21570-30	GRAPHIC SET, FRONT FENDER				1		UR FOR DPBSE
	5TH-21570-40	GRAPHIC SET, FRONT FENDER				1		UR FOR YB
2	5FE-21568-01	LABEL, WARNING				1		
3	90267-32004	RIVET, BLIND				6		
4	90201-03313	WASHER, PLATE				6		
5	4WU-21568-10	LABEL, WARNING				1		FRENCH
6	4EM-21697-31	LABEL, CAUTION 2				1		
7	90267-32004	RIVET, BLIND				4		
8	90201-03313	WASHER, PLATE				4		
9	4EM-21697-20	LABEL, CAUTION 2				1		IN FRENCH
10	4ES-2153E-01	EMBLEM, YAMAHA				2		UR FOR DPBSE
	4ES-2153E-10	EMBLEM, YAMAHA				2		UR FOR YB
11	5KM-2175B-00	TUNING FORK MARK				1		
12	5TH-21565-30	EMBLEM, 2				1		UR FOR DPBSE
	5TH-21565-40	EMBLEM, 2				1		UR FOR YB
13	4SH-2416E-00	LABEL, CAUTION CANADA				1		
14	5TH-2159A-10	GRAPHIC SET 1				1		FOR YB
15	5TH-21609-40	EMBLEM				2		UR FOR DPBSE
	5TH-21609-50	EMBLEM				2		UR FOR YB
16	5TH-2165A-10	GRAPHIC SET, REAR FENDER				1		FOR YB
17	4EM-21696-11	LABEL, CAUTION				1		
18	90267-32004	RIVET, BLIND				4		
19	90201-03313	WASHER, PLATE				4		
20	4EM-21696-B0	LABEL, CAUTION				1		
21	5FE-2151H-01	LABEL 5				1		
22	90267-32004	RIVET, BLIND				4		
23	90201-03313	WASHER, PLATE				4		

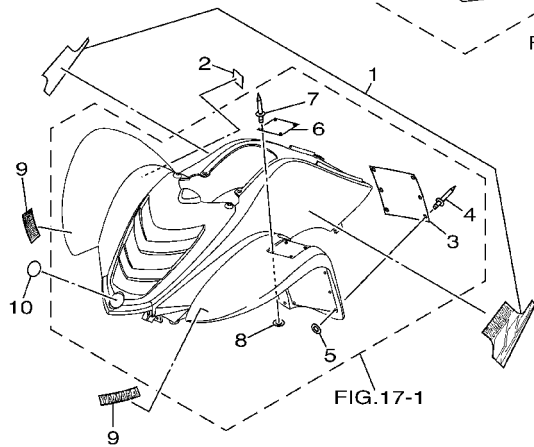
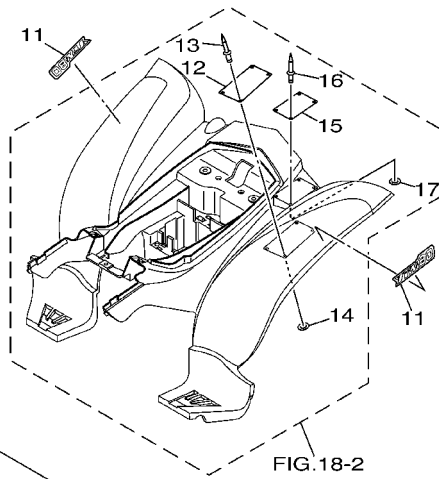
FIG. 40 EMBLEM.LABEL 4



REF. NO.	PART NO.	DESCRIPTION	USA	OCE	JPN	CAN	FRA	REMARKS
24	4WU-2151H-10	LABEL 5				1		FRENCH

FIG. 41 EMBLEM.LABEL 5

REF. NO.	PART NO.	DESCRIPTION	USA	OCE	JPN	CAN	FRA	REMARKS
1	5TH-21570-30	GRAPHIC SET, FRONT FENDER					1	
2	4GB-2155A-00	MARK,EC					1	
3	5FK-21568-00	LABEL, WARNING					1	
4	90267-32004	RIVET, BLIND					6	
5	90201-03313	WASHER, PLATE					6	
6	5NE-21697-00	LABEL, CAUTION 2					1	
7	90267-32004	RIVET, BLIND					4	
8	90201-03313	WASHER, PLATE					4	
9	4ES-2153E-01	EMBLEM, YAMAHA					2	
10	5KM-2175B-00	TUNING FORK MARK					1	
11	5TH-21609-11	EMBLEM					2	
12	5NE-21696-M0	LABEL, CAUTION					1	
13	90267-32004	RIVET, BLIND					4	
14	90201-03313	WASHER, PLATE					4	
15	5FK-2151H-00	LABEL 5					1	
16	90267-32004	RIVET, BLIND					4	
17	90201-03313	WASHER, PLATE					4	



5TH5100-B410

NUMERICAL INDEX

PART NO.	GRID NO.	PART NO.	GRID NO.	PART NO.	GRID NO.	PART NO.	GRID NO.	PART NO.	GRID NO.	PART NO.	GRID NO.
22K-W1141-00	B-3	50M-12176-00	B-5	2HX-1490J-20	B-7	3GB-17402-00	B-15	5TH-21565-40	E-7	12R-21747-00	C-15
22K-W1657-00	B-13	22F-12217-01	B-5	55X-14937-00	B-8	2HX-17411-01	B-15	4SH-21568-00	E-6	5KM-2175B-00	E-4
5TH-W215B-00	C-6	22F-12231-01	B-5	22F-14991-00	B-7	3GB-17508-00	C-2	4WU-21568-10	E-7		E-5
5TH-W215C-00	C-6	22F-12241-00	B-5	2FJ-15100-01	B-10	22F-17531-00-15	C-2	5FE-21568-01	E-4		E-6
5TH-W215C-10	C-6	2FJ-13300-00	B-6	3GB-15362-00	C-10	22F-17531-00-30	C-2		E-7		E-7
5TH-W215D-00	C-6	46J-13324-00	B-3	55X-15362-02	B-11	22F-17531-00-50	C-2	5FE-21568-11	E-5		E-9
5TH-W215D-10	C-6	46J-13325-00	B-6	2N4-15371-00	C-10	22F-17537-00	C-2		E-6	5TH-2179T-10	C-8
5TH-W2151-00	C-6	22F-13329-01	B-6	22F-15383-01	B-10	22F-17551-00	C-2	5FK-21568-00	E-9	3GB-22110-00-33	C-9
5TH-W2151-10	C-6	22F-13411-01	B-6	22F-15411-01	B-11	22F-17556-01	C-2	5TH-21570-30	E-4	3GB-22123-00	C-5
5TH-W216B-00	C-8	22M-13450-10	B-12	22F-15417-00	B-11	22F-18101-02	C-4		E-5	307-22123-00	C-14
5TH-W216C-00	C-8	55X-13586-00	B-7	2FJ-15421-00	B-11	2HX-18110-00	C-4		E-6	3GB-22155-00	C-5
5TH-W216C-10	C-8	22K-13595-00	B-7	4EM-15443-01	B-11	132-18113-01	C-4		E-7	3GB-22156-00	C-9
5TH-W2161-00	C-8	5TH-14101-00	B-7	3GB-15451-00	B-11	278-18127-01	C-4		E-9	55X-22189-00	C-9
5TH-W2161-10	C-8	22F-14103-00	B-7	3GB-15461-00	B-11	29F-18140-00	C-3	5TH-21570-40	E-4	3GB-2219X-00	C-9
3KG-W253E-00	D-5	22K-14104-00	B-7	2HX-15517-10	B-12	2MK-18511-00	C-3		E-5	3GB-22210-00-36	C-12
4KN-W253E-11	D-3	2HX-14112-35	B-7	2HX-15520-00	B-12	29F-18512-00	C-3		E-7	3GB-22210-00-6W	C-12
35T-11110-01	B-2	260-14131-00	B-7	22M-15570-10	B-12	22F-18531-00	C-3	5TH-2159A-10	E-4	59V-22216-00	C-12
22F-11134-10	B-2	18A-1414E-30	B-7	22M-15580-10	B-12	4EM-18540-00	C-3		E-5	2HX-2331U-00	C-14
59V-11167-00	B-10	4EM-14141-78	B-8	3AY-15583-00	B-12	136-18542-00	C-3		E-7	2HX-23350-00-36	C-14
55X-11181-00	B-2	22F-14142-12	B-7	22K-16111-00	B-13	296-18561-00	C-3	5TH-21609-11	E-6	2HX-23350-00-6W	C-14
22F-11185-01	B-2	55X-14146-00	B-7	3GB-16150-00	B-13	22F-18562-01	C-3		E-9	3GB-23448-00	C-14
22F-11186-00	B-2	22K-14147-00	B-7	22F-16153-10	B-13	5TH-21110-00	C-5	5TH-21609-40	E-4	3GB-23501-10	C-14
214-11198-01	C-10	22F-14150-00	B-8	22F-16153-20	B-13	5TH-21110-10	C-5		E-5	3GB-23502-10	C-14
812-11198-00	B-6	802-14161-00	B-7	22F-16153-30	B-13	5TH-21268-00	C-5		E-7	2NL-23517-00	C-14
22K-11311-02	B-2	22F-14169-00	B-7	22F-16153-40	B-13	4LB-2151H-01	E-6	5TH-21609-50	E-4	3GB-23570-00-33	C-14
22F-11351-01	B-2	22F-14184-00	B-7	22F-16163-00	B-14	4WU-2151H-10	E-8		E-5	1UY-23812-00	C-13
22K-11400-01	B-3	22F-14185-00	B-8	122-16164-00	B-13	5FE-2151H-01	E-4		E-7	4EM-23813-01	C-13
22K-11422-00	B-3	127-14186-00	B-7	22F-16342-01	B-14		E-5	3GB-21613-00	C-8	8G5-23814-00	C-13
55X-11610-00	B-3	12R-14191-00	B-7	22K-16356-00	B-14		E-6	3GB-21614-00	C-8	8K1-23814-00	C-13
55X-11610-20	B-3	24W-14193-00	B-8	22F-16357-01	B-14		E-7	5TH-2165A-10	E-4	3GB-23831-00	C-13
55X-11610-40	B-3	55X-14196-00	B-8	22F-16362-01	B-14	5FK-2151H-00	E-9		E-5	55X-23841-01	C-13
55X-11631-00-96	B-3	26H-14197-00	B-7	22F-16382-00	B-14	5TH-21513-00	C-7		E-7	52H-23845-01	C-13
22K-11633-01	B-3	55X-14198-00	B-8	22F-16383-00	B-14	4ES-2153E-01	E-4	4EM-21696-B0	E-7	3GB-23868-00	C-13
55X-11636-00	B-3	5TH-14412-00	C-6	22F-16399-00	B-14		E-5	4EM-21696-00	E-6	1UY-23894-01	C-13
55X-11638-00	B-3	5TH-14436-00	C-6	22K-16520-00	B-13		E-6	4EM-21696-11	E-4	2HX-24110-00	C-15
22K-11651-02	B-3	55X-14436-00	C-6	22F-16521-00	B-13		E-7		E-5	5TH-2414H-00	C-15
22F-11681-00	B-3	2HX-14437-01	C-7	3E5-16521-00	B-13		E-9		E-6	5JJ-2415A-00	E-5
22K-12111-03	B-4	55X-14451-00	C-6	22F-16524-01	B-13	4ES-2153E-10	E-4		E-7	4SH-2416E-00	E-7
22K-12114-00	B-4	5TH-14452-00	C-6	517-16524-10	B-13		E-5	5NE-21696-M0	E-9	2HX-24181-00	C-15
22F-12116-00	B-4	3GB-14453-00	B-8	517-16524-20	B-13		E-7	4EM-21697-00	E-6	55X-24500-01	C-15
22F-12117-02	B-4	59V-14457-00	C-6	517-16524-30	B-13	4GB-2155A-00	E-9	4EM-21697-20	E-7	4X8-24512-00	C-15
22F-12118-01	B-4	55X-14458-00	C-6	22F-16550-00	B-13	5TH-21556-00	C-6	4EM-21697-31	E-4	3AJ-24523-00	C-15
2HX-12119-00	B-4	55X-14472-01	C-6	22K-16590-00	B-13	5TH-21556-10	C-6		E-5	3AJ-24534-00	C-15
22K-12121-02	B-4	5TH-14477-00	C-6	2HX-17121-00	B-15	5TH-21565-30	E-4		E-6	2FJ-24610-00	C-15
50M-12151-00	B-4	3DM-14613-00	B-9	55X-17131-00	B-15		E-5		E-7	5TH-2470F-00	D-2
22F-12156-00	B-4	22F-14651-00	B-2	3GB-17211-00	B-15		E-7	5NE-21697-00	E-9	5TH-24710-00	D-2
22F-12159-00	B-4	5TH-14711-00	B-9	55X-17231-00	B-15	5TH-21565-40	E-4	5TH-2171A-00	C-7	22W-24741-00	D-2
55X-12170-00	B-5	55X-14752-00	B-9	55X-17241-00	B-15		E-5	5TH-2171A-10	C-7	4K0-24774-A0	D-2

NUMERICAL INDEX

PART NO.	GRID NO.	PART NO.	GRID NO.	PART NO.	GRID NO.	PART NO.	GRID NO.	PART NO.	GRID NO.	PART NO.	GRID NO.
4K0-24775-00	D-2	3GB-27211-00	D-9	23X-83912-00	D-14	90151-06028	B-14	90201-145M4	D-7	90465-10098	E-2
29U-24776-00	D-2	3GB-27231-00	D-9	5TH-83922-00	D-7	90153-06034	D-15	90201-14586	D-3	90467-07029	C-10
2FJ-25111-00	D-3	3GB-27411-10	D-9	437-83936-01	E-2	90154-05052	C-7	90201-15797	D-9	90467-09006	C-15
3FA-25117-00	D-3	55X-27413-00	D-9	3FA-83965-00	D-14	90155-06007	B-6	90201-186F1	B-5	90467-13064	B-10
2FJ-25121-00	D-3	3GB-27421-10	D-9	3FA-83966-00	D-14	90159-06076	B-7	90202-05193	C-15	90467-22080	C-6
52H-2513A-00	D-3	3GB-28100-00	C-5	3FA-83967-00	D-14		B-8	90208-12015	B-13	90480-01400	C-15
	D-4	1NV-2811A-01	C-5	4EM-83975-00	D-14	90170-05302	B-4	90209-11269	B-11	90480-18171	C-8
3GB-25151-00	D-3	4EM-2819R-00	E-4	1YW-83980-00	D-14	90170-10186	C-13	90215-14249	B-14	90480-18290	C-15
	D-4	5GT-2836B-10	D-7	5TH-8411B-00	D-13	90170-14284	B-14	90240-06076	D-9	90501-03799	B-12
2FJ-25155-00	D-3	5TH-2845N-00	D-10	5TH-84111-00	D-13	90170-28379	D-6	90249-12008	D-7	90501-08511	D-8
2FJ-25156-00	D-4	5TH-2845N-10	D-10	5TH-84121-00	D-13	90171-10004	C-14		D-9	90501-10245	D-9
2FJ-25169-00	D-3	3GB-46110-10	C-10	2EK-85111-00	E-3	90171-12039	D-6	90267-32004	E-4	90501-105A5	B-13
2FJ-25180-00-35	D-3	3GB-46120-00	C-10	3Y6-85130-02	E-3	90171-14020	D-3		E-5	90501-10710	B-5
22W-25181-01	C-9	22F-46123-01	C-11	449-85131-02	E-3	90176-06065	B-2		E-6	90501-10782	D-7
3GB-25185-00	D-3	3GB-46151-00	C-10	3GB-46151-M1	D-11	90179-06387	B-5		E-7	90501-135A4	B-13
3GB-2531E-00	D-5	3GB-46172-01	C-10	4EM-85540-10	D-15	90179-08148	D-14		E-9	90504-06030	C-15
3GB-25311-00-33	D-5	2HX-46180-00	C-10	2FM-85550-M0	D-11		D-8	90269-06002	C-7	90506-08122	C-4
3GB-25317-00	D-5	22F-46187-00	C-10	4EM-85560-10	D-11	90179-10394	D-11	90280-03017	B-3	90506-15260	D-3
3GB-25326-00	D-5	55X-81313-M0	D-11	22K-85595-M0	D-11	90179-12248	C-2	90334-14037	B-5		D-5
23F-2533A-00	D-5	55X-81800-51	D-12	90101-06278	D-3	90179-12659	B-13	90336-28053	C-13	90506-16318	D-9
55X-2533H-00	D-5	22J-81801-50	D-12		D-4	90179-28573	D-6	90340-12097	B-6	90507-10538	D-6
3GB-25343-00	D-5	55X-81826-50	D-12	90101-06562	D-5	90179-42480	C-2	90340-14132	C-10	90508-10775	D-7
3Y6-25351-00	D-5	5J3-81846-50	D-12	90101-06576	B-9	90179-55464	C-10	90340-18092	B-5	90508-20454	D-2
55X-25355-00	D-5	22J-81847-50	D-12	90101-08461	C-11	90183-05008	C-6	90380-07118	B-14	90508-20576	C-3
3GB-25367-00	D-6	5J3-81847-50	D-12	90101-08590	B-5	90185-05007	C-7	90381-15040	C-5	90508-32563	C-4
3GB-25382-00	D-5	55X-81855-50	D-12	90101-12498	C-14	90185-10091	C-12	90381-17067	C-14	90560-17146	B-13
55X-25383-00	D-5	4KD-81940-00	D-15	90105-10388	C-12		C-14	90387-062G8	B-14	90560-20196	B-12
2FJ-25390-00-35	D-5	1RL-81950-92	D-15	90105-10561	C-14	90185-10115	C-13	90387-062G9	B-14	90560-23355	C-10
390-25412-01	D-5	5TH-81960-00	D-15	90105-12460	C-14		C-9	90387-066J1	C-15	90793-20071	B-2
3GB-25715-00	D-6	55X-82110-61	D-15	90109-061F3	D-7	90185-12046	C-14	90387-066V8	D-7	90793-25013	D-15
5TH-26111-00	D-7	55X-82115-00	D-15	90109-063F1	C-6	90201-03313	E-4	90387-07598	C-15	91A20-07010	B-8
5TH-26124-00	D-7	3GB-82116-00	D-15	90109-063F6	C-3		E-5	90387-090R0	C-13	91317-05025	D-7
5TH-26124-10	D-7	55X-82122-00	D-15	90109-06799	D-14		E-6	90387-175R2	D-3	91317-06035	D-12
5LP-26241-00	D-7	29W-82123-00	D-15	90109-08745	D-3		E-7	90430-06014	B-10	91401-20012	D-9
3GB-2625E-01	D-7	4J2-82131-01	D-15		D-5		E-9	90430-06166	B-10	91401-20020	C-13
3GB-2625G-00	D-7	3GB-82150-00	D-15	90109-104A8	C-14	90201-060L5	C-15	90430-10148	D-15		C-14
3GB-2625H-00	D-7	3GB-82151-00	D-15	90110-05201	C-6	90201-066F0	B-2	90445-073F9	C-10	91401-25025	D-6
5TH-26250-00	D-7	4KJ-82310-10	D-15	90113-06009	B-5	90201-08326	B-5	90445-083J4	C-15	91401-30025	D-3
3GB-2628F-00	D-7	55X-82370-00	D-15	90114-10005	D-5		B-9	90445-085E0	D-15	92901-04100	D-11
3GB-2628G-01	D-7	4GB-82510-11	E-2	90116-06399	B-10	90201-08759	C-14	90445-10638	C-15	92901-05100	D-11
3GB-26311-02	D-7	3GB-82540-01	D-15	90116-08507	D-5	90201-101A4	D-11	90445-121F6	B-10	92902-04100	B-7
3GB-26341-01	D-7	3HN-82569-00	E-2	90119-05193	C-6	90201-10774	C-13	90460-15126	E-2	92907-04200	C-6
20E-26343-00	D-7	3HN-82579-00	E-2	90119-06044	C-6	90201-124F8	B-15	90460-43053	B-8	92907-05100	E-3
	D-9	5TH-82590-00	E-2		D-13	90201-125F7	C-2	90460-75020	C-9	92907-05200	E-3
3GB-26347-00	D-7	5TH-82910-00	D-14	90119-06056	C-8	90201-126A7	D-6	90460-85135	C-9	92907-06100	C-15
3GB-26361-03	D-8	3FA-82911-00	D-14	90123-08046	D-14	90201-12688	C-14	90464-12045	E-2		D-15
3FA-26466-00	D-14	5GH-83516-00	E-2	90123-08106	D-8	90201-127F4	C-4	90464-13073	E-2		D-2
371-27114-00	D-2	4KB-83530-00	E-2	90149-06011	C-15	90201-132G5	B-15	90464-13249	C-8		D-6

NUMERICAL INDEX

PART NO.	GRID NO.	PART NO.	GRID NO.	PART NO.	GRID NO.	PART NO.	GRID NO.	PART NO.	GRID NO.	PART NO.	GRID NO.
92907-06200	D - 12	93311-20952	C - 10	95817-06016	B - 10	99009-12400	B - 15				
	D - 9	93311-32353	B - 9		C - 10	99009-17400	C - 10				
92907-06600	B - 14	93315-23208	C - 3	95817-06025	B - 10	99009-17500	C - 10				
	B - 9	93317-21236	C - 2	95817-08014	C - 9	99530-08012	B - 10				
	D - 15	93340-21209	C - 4		D - 10		B - 2				
92907-08100	C - 11	93341-22302	B - 13	95817-08016	B - 9	99530-10114	B - 11				
93101-10142	B - 11	93420-26077	B - 13	95817-08115	C - 5	99530-10120	B - 11				
93101-24110	C - 2	93430-04002	D - 2	95817-08120	C - 5	99530-12016	B - 10				
93102-07292	B - 14	93430-08007	C - 3	95817-12020	D - 9						
93102-12106	C - 4	93440-10109	B - 2	95827-06020	C - 2						
93102-17271	C - 10	93440-11128	B - 14	95827-08055	C - 13						
93102-19276	D - 11	93440-16089	B - 15	97007-06012	D - 2						
93102-23275	D - 3	93450-14088	B - 3	97007-06016	D - 15						
93102-28022	C - 10	93450-42112	B - 13	97027-06020	C - 4						
93102-35349	D - 6	93451-08094	B - 13	97027-06030	C - 15						
93102-36409	D - 5	93505-08030	B - 13	97027-08060	C - 13						
93102-38383	D - 5	93604-20156	C - 4	97707-40116	C - 6						
93102-40367	D - 3	93604-22050	C - 3	97801-03008	C - 15						
	D - 4	93610-10174	B - 12	98501-04006	D - 11						
93104-10076	B - 14	93700-06004	C - 14	98501-05010	D - 11						
93112-31011	C - 13		C - 5	98502-04008	B - 7						
93210-06564	B - 10	93900-00022	D - 3	98502-04010	B - 7						
	B - 5		D - 5	98502-04014	B - 7						
93210-07003	C - 3	94107-073Y9	D - 3	98507-04016	D - 7						
93210-12327	D - 3	94108-073Y8	D - 5	98507-06010	B - 9						
	D - 4	94580-25082	B - 5	98507-06012	B - 10						
93210-14104	C - 10	94701-00250	B - 2		D - 6						
	D - 5	95027-06085	B - 2	98507-06014	C - 3						
93210-15414	C - 5	95307-05600	E - 3	98507-06016	B - 14						
93210-19123	B - 11	95307-05700	D - 7		B - 2						
93210-25552	B - 7	95307-06600	B - 14		D - 15						
93210-26606	D - 6		D - 3	98507-06020	D - 14						
93210-40407	C - 5		D - 4		D - 15						
93210-43713	C - 10		D - 5		D - 8						
93210-44704	B - 2	95307-06700	D - 15	98507-06030	B - 11						
93210-50553	C - 2	95307-06800	B - 5	98507-06035	B - 11						
93210-63556	B - 2	95307-08600	D - 6	98507-06040	B - 11						
93211-02703	D - 11	95307-10700	C - 13	98507-06045	B - 10						
93211-066A9	C - 10	95607-06100	D - 14		B - 11						
93306-00105	B - 15		D - 7	98507-06060	B - 10						
93306-00308	D - 3	95607-08200	C - 5	98507-06075	B - 10						
93306-00612	D - 5	95707-06500	B - 9	98511-04012	D - 11						
93306-07801	C - 10	95707-08500	D - 3	98511-04020	D - 11						
93306-20301	B - 15		D - 5	98701-06018	B - 12						
93306-20309	C - 2	95807-06010	C - 7	98707-06016	D - 11						
93306-30101	B - 15	95807-06016	D - 8	99001-04600	B - 14						
93306-30306	C - 10	95807-08012	C - 8	99001-05600	B - 6						
93306-30433	B - 3		D - 7	99001-09600	C - 3						