

CONTENTS

ENGINE

Cylinder	B2
Crankshaft, Piston	B3 ~ B4
Oil Pump	B5
Intake	B6
Carburetor	B7 ~ B8
Exhaust	B9
Crankcase	B10
Crankcase Cover 1	B11
Starter	B12
Clutch	B13
Transmission	B14 ~ B15
Shift Cam. Fork	C2
Shift Shaft	C3

CHASSIS

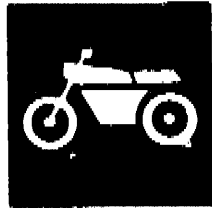
Frame	C4
Front Fender	C5
Rear Fender	C6
Oil Tank	C7
Rear Arm	C8
Rear Suspension	C9
Front Suspension, Wheel	C10 ~ C11
Steering	C12 ~ C13
Fuel Tank	C14
Seat	C15
Front Wheel	D2 ~ D3
Rear Wheel	D4 ~ D5
Rear Brake Caliper	D6
Steering Handle, Cable	D7 ~ D8

Stand, Footrest	D9
Guard	D10
Generator	D11
Headlight	D12
Taillight 1 (For CANADA)	D13
Taillight 2 (For EUROPE)	D14
Handle Switch, Lever	D15 ~ E2
Electrical 1	E3
Electrical 2 (For CANADA, EUROPE)	E4
Emblem, Label 1	E5

INDEX

Numerical Index	M1 ~ M3
-----------------------	---------

YAMAHA



**PARTS
CATALOGUE**

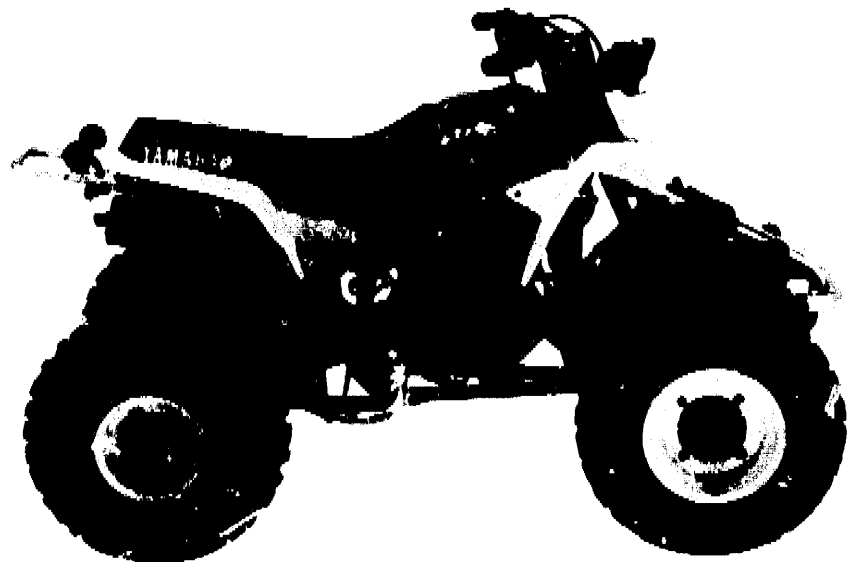
YFS200E (1JMB) CANADA

YFS200'93 (3JMB) EUROPE

YAMAHA
ONLINE
Parts & Accessories

233JM-300E1

A2



A3

FOREWORD

This Parts Catalogue is related to the parts in use for the Yamaha YF830DE/YF830D'83(3JMB). When you are ordering replacement parts for the YF830DE/YF830D'83(3JMB), refer to this Parts Catalogue and quote both part numbers and part names correctly.

1. Modifications or additions which have been made after issue of the Parts Catalogue will be announced in the Yamaha Parts News. It is advisable that according to the Yamaha Parts News you make necessary corrections to the Parts Catalogue on hand to keep it up-to-date.

2. Abbreviations

The following abbreviations are used in this Parts Catalogue.

- U.R. Use size (thickness) and/or number as required.
- U.N. Use as many as you need.
- A.P. Alternate Parts
- L.M. Local Made
- F# Frame No. (Applicable machine No.)

3. The parts marked with (+) in the parts number column of this Catalogue are not supplied with by Yamaha, those have to be found locally.
4. Parts, which are to be supplied in the form of assemblies, are listed with an indentation of one letter's space, and a dot (.) is put against the name of each part.

EXAMPLE

CARBURETOR ASS'Y
 . JET, pilot
 . NOZZLE, main

5. Indication of No. of constituent parts for assembly

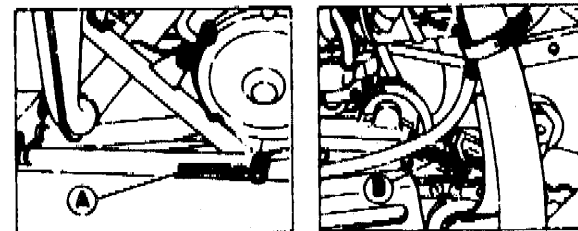
The numeral appearing to the right of each constituent part under the description indicates the quantity of such parts for each individual assembly unit

EXAMPLE

Part No.	Description	Qty	Remarks
2F5-83310-60	FRONT FLASHER LIGHT ASS'Y	2	
115-83311-60	. BULB (6V-18W)	1	
1M1-83309-60	. REFLECTOR	1	

6. Initial Serial No. and Color Code

Ⓐ Frame Serial No.	3JM-166101 and following
Ⓑ Engine Serial No.	3JM-166101 and following



Color Code	Color Name	Abbreviate
0206	PURPLISH WHITE SOLID 1	PWS1

7. Applicable colors of graphics are represented in the "Remarks" column by the letter(s) appropriately picked out of the full word(s) showing such colors.

EXAMPLE

Part No.	Description	Qty	Remarks
2N4-24110-00-X5	FUEL TANK COMP.	1	MAXIM RED
3J1-24240-10	. GRAPHIC, fuel tank set	1	for MXR

CONTENTS

ENGINE

Cylinder	B2
Crankshaft, Piston	B3 ~ B4
Oil Pump	B5
Intake	B6
Carburetor	B7 ~ B8
Exhaust	B9
Crankcase	B10
Crankcase Cover 1	B11
Starter	B12
Clutch	B13
Transmission	B14 ~ B15
Shift Cam, Fork	C2
Shift Shaft	C3

CHASSIS

Frame	C4
Front Fender	C5
Rear Fender	C6
Oil Tank	C7
Rear Arm	C8
Rear Suspension	C9
Front Suspension, Wheel	C10 ~ C11
Steering	C12 ~ C13
Fuel Tank	C14
Seat	C15
Front Wheel	D2 ~ D3
Rear Wheel	D4 ~ D5
Rear Brake Caliper	D6
Steering Handle, Cable	D7 ~ D8

Stand, Footrest	D9
Guard	D10
Generator	D11
Headlight	D12
Taillight 1 (For CANADA)	D13
Taillight 2 (For EUROPE)	D14
Handle Switch, Lever	D15 ~ E2
Electrical 1	E3
Electrical 2 (For CANADA, EUROPE)	E4
Emblem, Label 1	E5

INDEX

Numerical Index	M1 ~ M3
-----------------------	---------

CONTENTS

ENGINE

Cylinder	B2
Crankshaft. Piston	B3 ~ B4
Oil Pump	B5
Intake	B6
Carburetor	B7 ~ B8
Exhaust	B9
Crankcase	B10
Crankcase Cover 1	B11
Starter	B12
Clutch	B13
Transmission	B14 ~ B15
Shift Cam. Fork	C2
Shift Shaft	C3

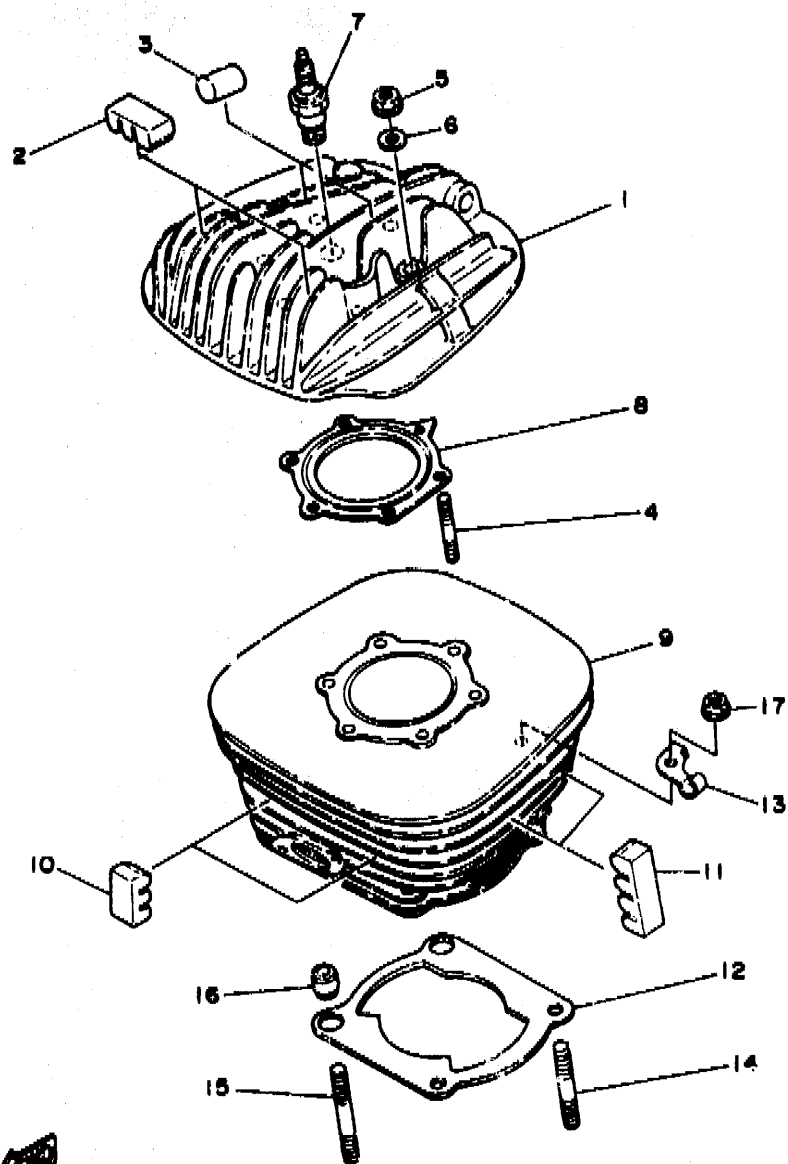
CHASSIS

Frame	C4
Front Fender	C5
Rear Fender	C6
Oil Tank	C7
Rear Arm	C8
Rear Suspension	C9
Front Suspension. Wheel	C10 ~ C11
Steering	C12 ~ C13
Fuel Tank	C14
Seat	C15
Front Wheel	D2 ~ D3
Rear Wheel	D4 ~ D5
Rear Brake Caliper	D6
Steering Handle. Cable	D7 ~ D8

Stand. Footrest	D9
Guard	D10
Generator	D11
Headlight	D12
Taillight 1 (For CANADA)	D13
Taillight 2 (For EUROPE)	D14
Handle Switch. Lever	D15 ~ E2
Electrical 1	E3
Electrical 2 (For CANADA, EUROPE)	E4
Emblem. Label 1	E5

INDEX

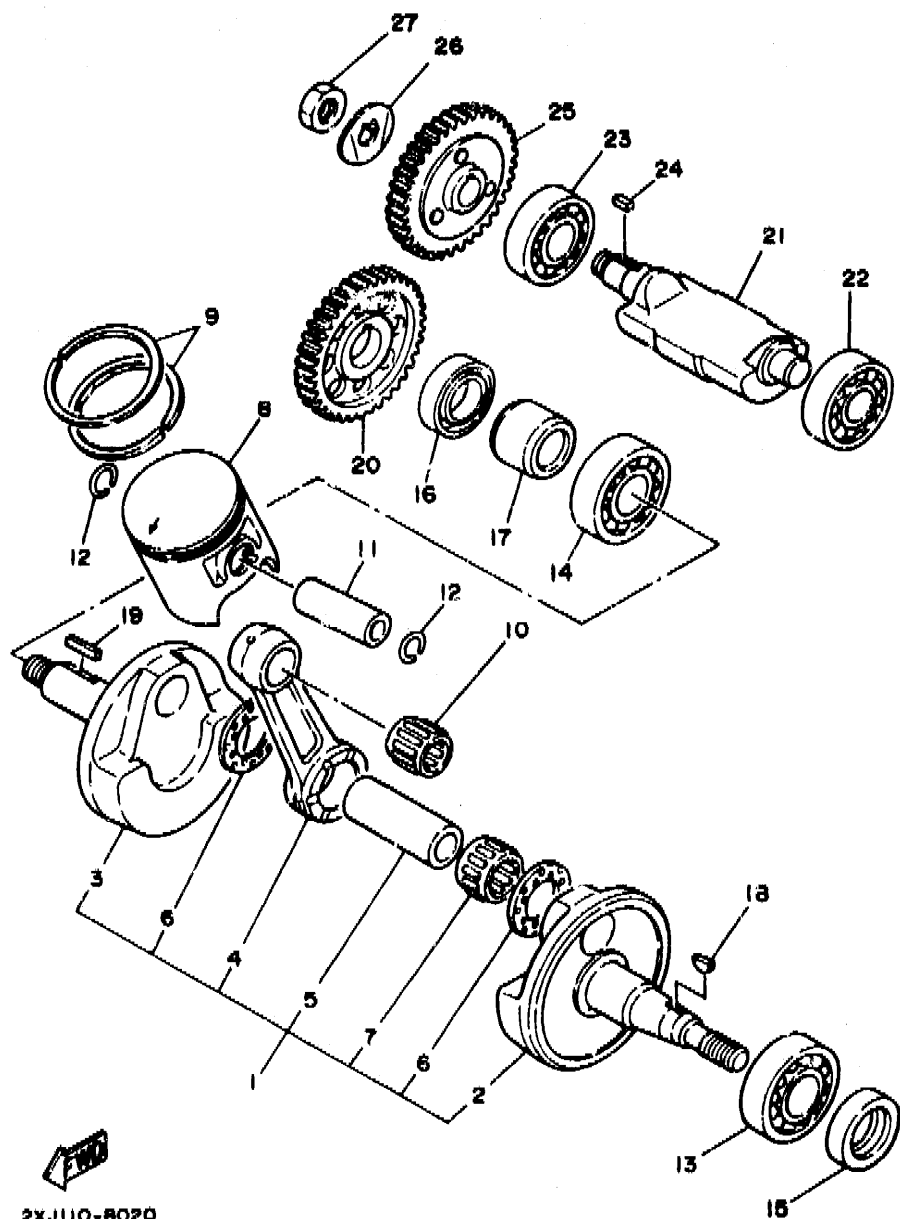
Numerical Index	M1 ~ M3
-----------------------	---------



3JM2100-0010

FIG. 1 CYLINDER

REF. NO.	PART NO.	DESCRIPTION	Q'TY	REMARKS
1	2XJ-11111-00	HEAD, cylinder 1	1	
2	3R9-11162-00	ABSORBER 2	2	
3	576-11127-00	ABSORBER 3	2	
4	90116-08394	BOLT, stud	6	
5	95311-08600	NUT	6	
6	90201-08649	WASHER, plate	6	
7	94702-00204	PLUG, spark (NGK 3RBES)	1	UR
	94702-00045	PLUG, spark (NGK B8ES)	1	UR
	94702-00182	PLUG, spark (ND W24ES)	1	UR
8	2XJ-11181-00	GASKET, cylinder head 1	1	
9	2XJ-11311-01	CYLINDER 1	1	
10	3R9-11162-00	ABSORBER 2	2	
11	3R6-11162-00	ABSORBER 2	4	
12	3JM-11351-00	GASKET, cylinder	1	
13	10V-1131E-00	HOLDER 1	1	
14	90116-08318	BOLT, stud	2	
15	90116-08388	BOLT, stud	2	
16	99510-10114	PIN, dowel	2	
17	90179-08491	NUT	4	



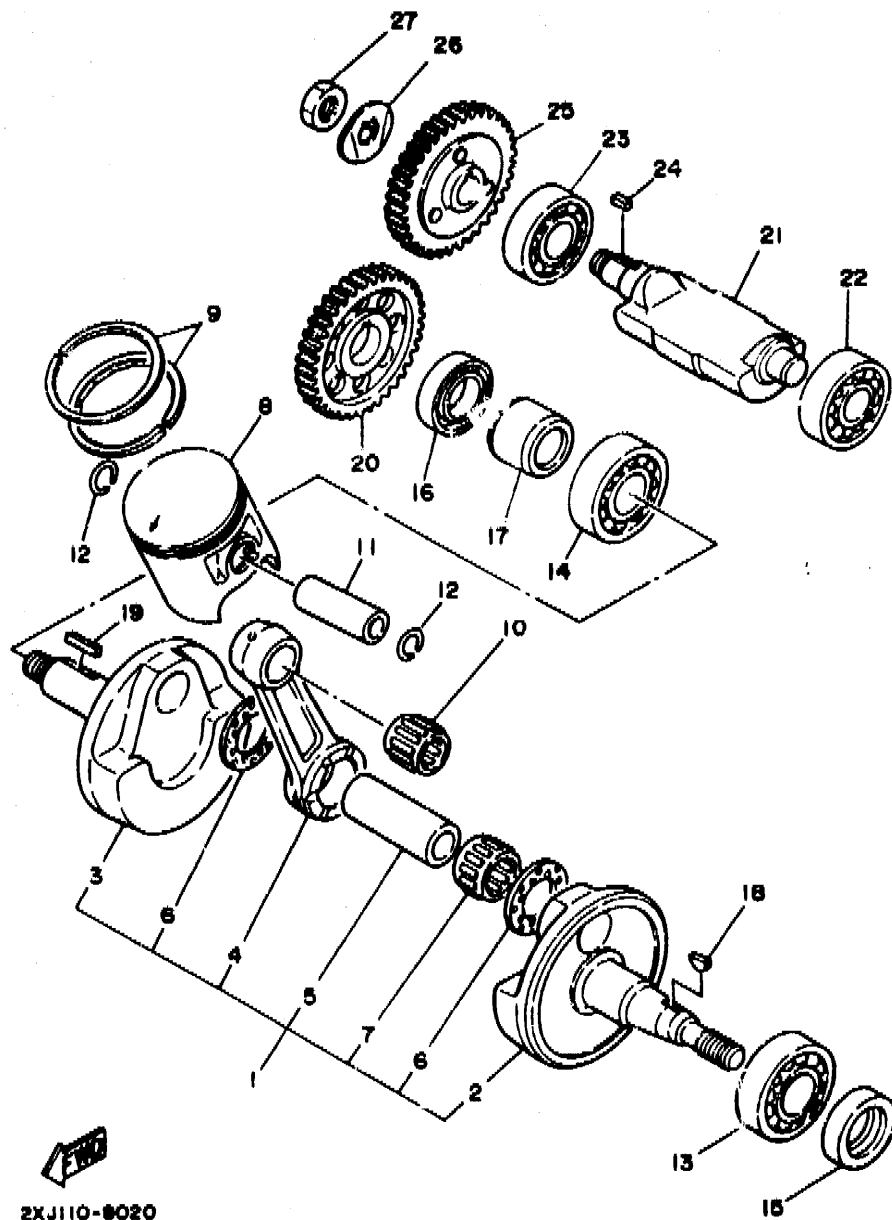
2XJ110-8020

FIG. 2 CRANKSHAFT. PISTON

REF. NO.	PART NO.	DESCRIPTION	Q'TY	REMARKS
1	37F-11460-00	CRANKSHAFT ASSY	1	
2	37F-11412-00	.CRANK 1	1	
3	37F-11422-00	.CRANK 2	1	
4	43G-11651-00	.ROD, connecting	1	
5	37F-11681-00	.PIN, crank 1	1	
6	90209-22248	.WASHER	2	
7	93310-522L4	.SEARING, cylindrical	1	
8	2XJ-11631-01-97	PISTON (STD)	1	
	2XJ-11635-01	PISTON (0.25MM O/S)	1	AP
	2XJ-11636-01	PISTON (0.50MM O/S)	1	AP
9	3JM-11601-00	PISTON RING SET (STD)	1	
	3JM-11601-10	PISTON RING SET (0.25MM O/S)	1	AP
	3JM-11601-20	PISTON RING SET (0.50MM O/S)	1	AP
10	93310-316H6	BEARING, cylindrical	1	
11	4L0-11623-00	PIN, piston	1	
12	93450-17044	CIRCLIP	2	
13	92306-20562	BEARING	1	
14	93306-30556	BEARING	1	
15	93102-25331	OIL SEAL	1	
16	93103-32099	OIL SEAL	1	
17	90387-206K3	COLLAR	1	
18	90280-03045	KEY, woodruff	1	
19	90282-05047	KEY, straight	1	
20	10V-11536-01	GEAR, drive	1	
21	37F-11454-00	WEIGHT 1	1	
22	93306-20211	BEARING	1	
23	93306-20335	BEARING	1	
24	90282-05013	KEY, straight	1	

B3

FIG. 2 CRANKSHAFT, PISTON



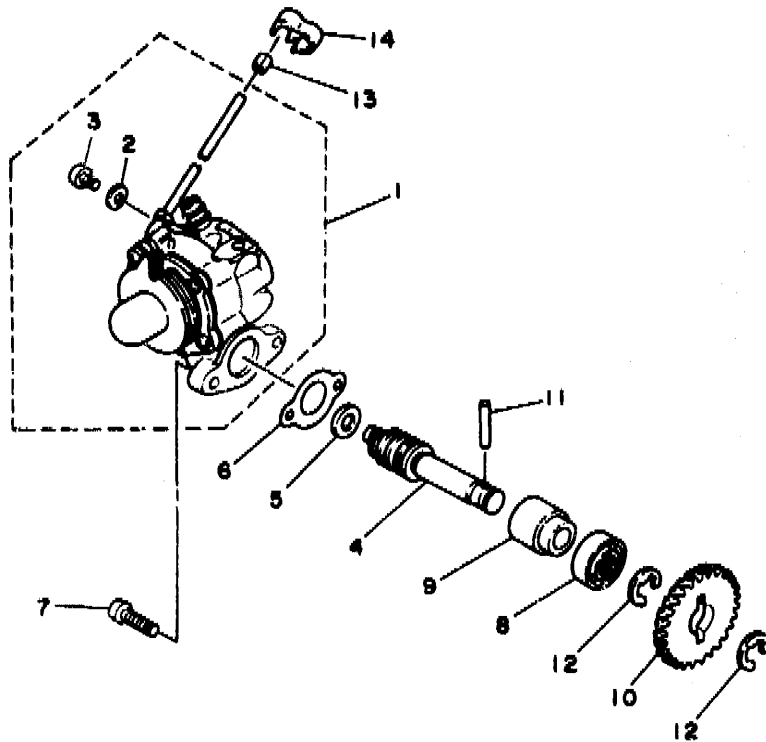
REF. NO.	PART NO.	DESCRIPTION	Q'TY	REMARKS
25	37F-11530-00	BALANCER WEIGHT GEAR COMP.	1	
26	70215-12235	WASHER, Lock	1	
27	90170-12337	NUT	1	

2XJ110-8020

B4

FIG. 3 OIL PUMP

REF. NO.	PART NO.	DESCRIPTION	QTY	REMARKS
1	2XJ-13101-00	OIL PUMP ASSY	1	
2	90430-04004	.GASKET	1	
3	98901-04008	.SCREW, blind	1	
4	10V-13175-00	SHAFT, worm	1	
5	90201-08624	WASHER, plate	1	
6	3MT-13116-00	GASKET, pump case	1	
7	98501-05016	SCREW, pan head	2	
8	93101-10090	OIL SEAL	1	
9	1E7-13176-00	METAL, worm shaft outer	1	
10	10V-13178-01	GEAR, pump drive	1	
11	93603-2202R	PIN, dowel	1	
12	93430-08036	CIRCLIP	2	
13	90468-02033	CLIP	1	
14	90468-15020	CLIP	1	

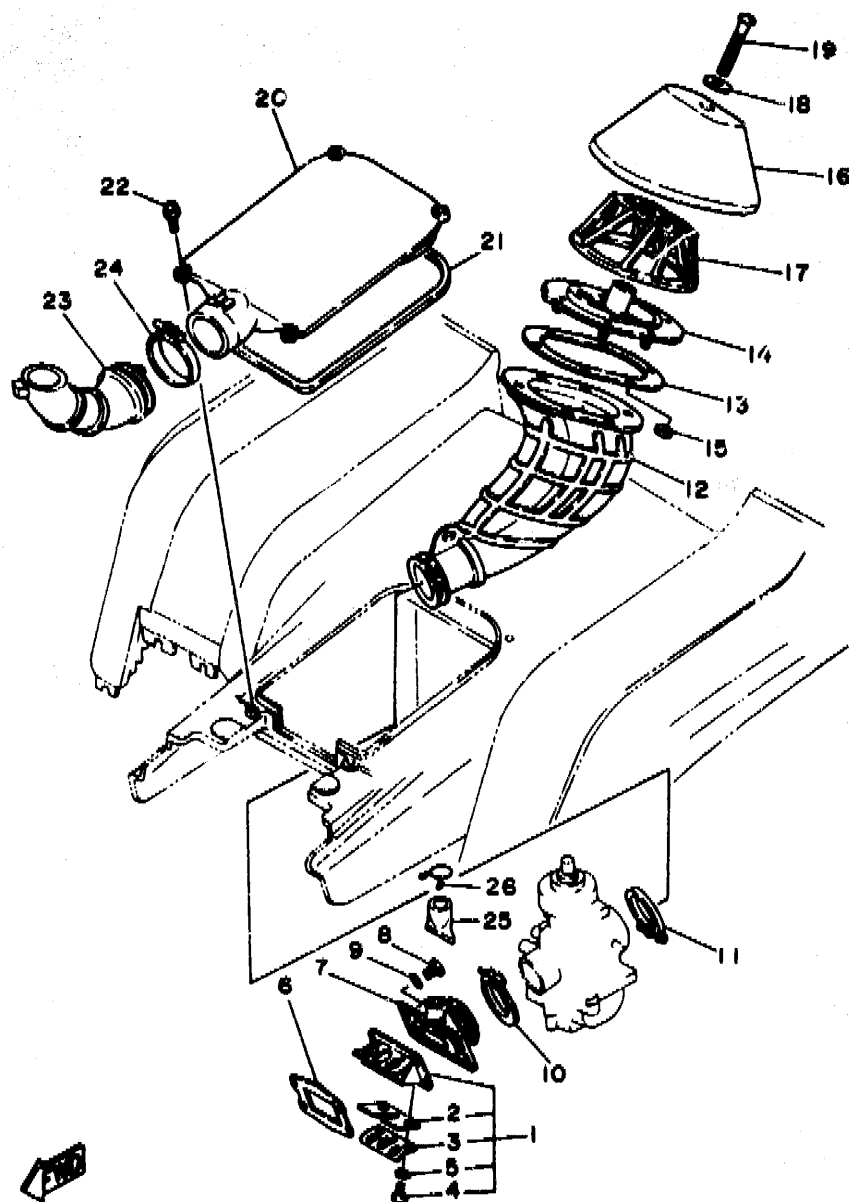



3JM2100-0050

B5

FIG. 4 INTAKE

REF. NO.	PART NO.	DESCRIPTION	Q'TY	REMARKS
1	2HF-13610-01	REED VALVE ASSY	1	
2	2HF-13613-00	.REED, valve	2	
3	58T-13616-01	.STOPPER, reed valve	2	
4	98501-03008	.SCREW, pan head	4	
5	92990-03100	.WASHER, spring	4	
6	3JM-13621-00	GASKET, valve seat	1	
7	2XJ-13565-00	JOINT, carburetor	1	
8	97001-06025	BOLT	4	
9	92906-06600	WASHER, plate	4	
10	90450-44046	HOSE CLAMP ASSY	1	
11	90460-49058	CLAMP, hose	1	
12	2XJ-14453-00	JOINT, air cleaner 1	1	
13	2XJ-14477-00	PLATE	1	
14	2XJ-14459-00	HOLDER, guide	1	
15	95601-05100	NUT, w	6	
16	2XJ-14451-00	ELEMENT, air cleaner	1	
17	2XJ-14458-00	GUIDE	1	
18	90209-06096	WASHER	1	
19	98501-06060	SCREW, pan head	1	
20	2XJ-14412-01	CAP, cleaner case 1	1	
21	35F-14452-00	SEAL	1	
22	90159-06085	SCREW, with washer	4	
23	2XJ-14437-00	DUCT	1	
24	90460-56105	CLAMP, hose	1	
25	55V-14457-00	SEAL	1	
26	90467-22080	CLIP	1	

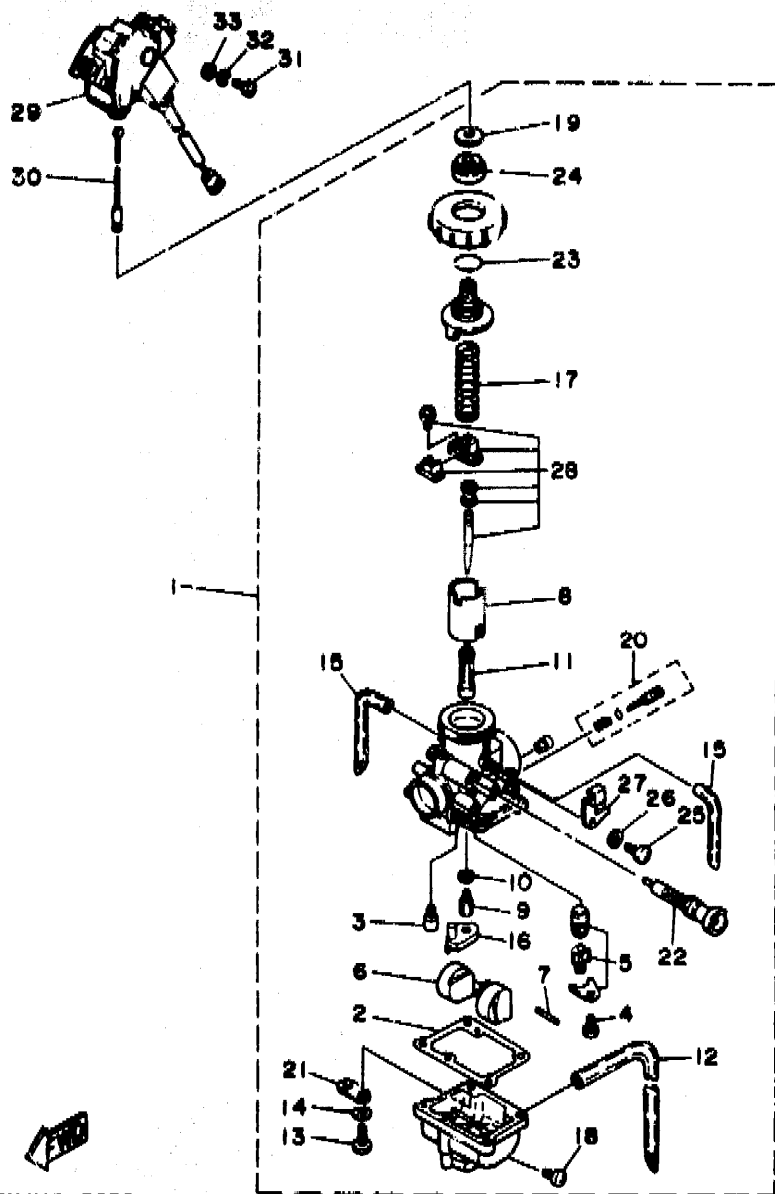


3JM2100-0040

B6

FIG. 5 CARBURETOR

REF. NO.	PART NU.	DESCRIPTION	Q'TY	REMARKS
1	2XJ-14101-01	CARBURETOR ASSY 1	1	
2	304-14184-00	.GASKET, float chamber	1	
3	260-14142-32	.JET, pilot (# 32.5)	1	
4	98580-04008	.SCREW, pan head	1	
5	2MA-14107-28	.NEEDLE VALVE SET	1	
6	4L0-14185-00	.FLOAT	1	
7	537-14186-00	.PIN, float	1	
8	2XJ-14112-20	.VALVE, throttle 1	1	
9	137-14143-46-A0	.JET, main (#230)	1	
10	137-14153-00	.WASHER, main jet	1	
11	4L0-14141-46	.NOZZLE, main	1	
12	90445-08376	.HOSE	1	
13	98511-04016	.SCREW, pan head	4	
14	92990-04100	.WASHER, spring	4	
15	4L0-14197-00	.PIPE	2	
16	2GU-14153-00	.RING	1	
17	248-14131-00	.SPRING, throttle valve	1	
18	12R-14191-00	.PLUG, drain	1	
19	2GU-14952-00	.WASHER	1	
20	10W-14104-00	.AIR SCREW SET	1	
21	F00-14146-00	.PLATE	1	
22	2GU-14171-00	.PLUNGER, starter	1	
23	558-14147-00	.O-RING	1	
24	2GU-14161-00	.NUT, cable adjusting	1	
25	98501-05008	.SCREW, pan head	1	
26	92990-05100	.WASHER, spring	1	
27	2GU-14243-00	.PLATE	1	
28	2XJ-1490J-00	.NEEDLE SET	1	

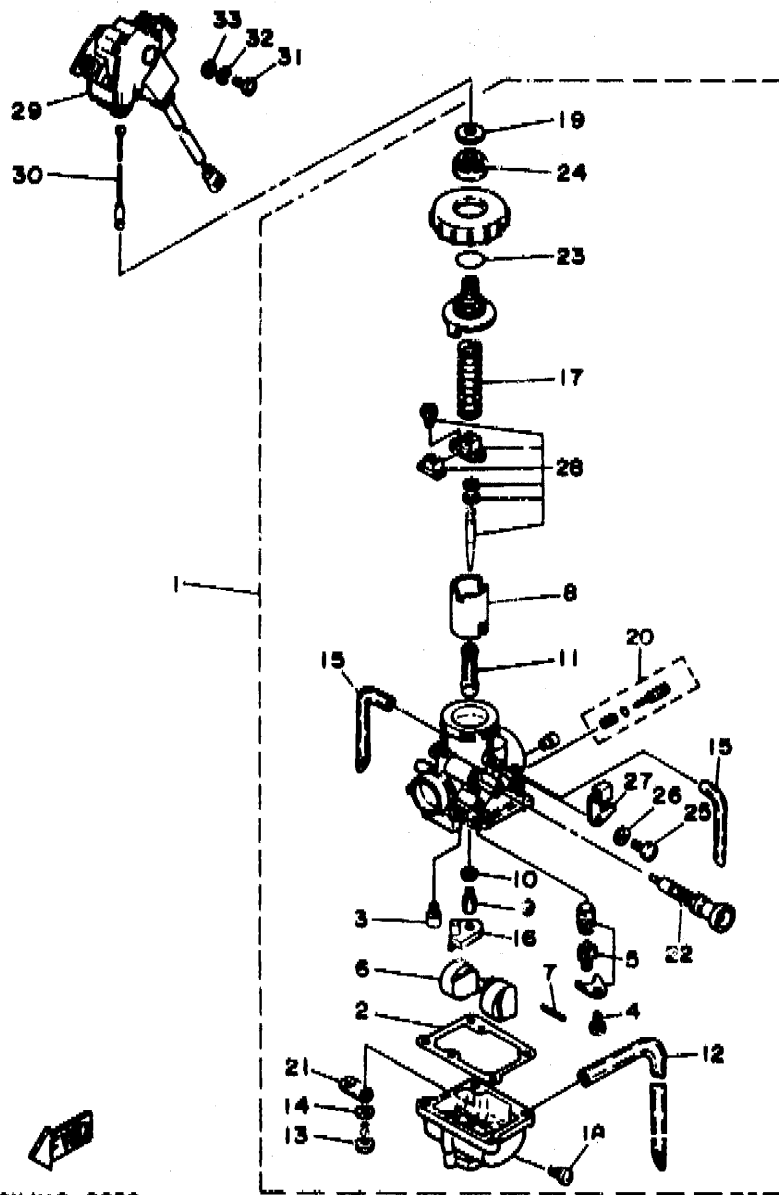


2XJ110-8050

B7

FIG. 5 CARBURETOR

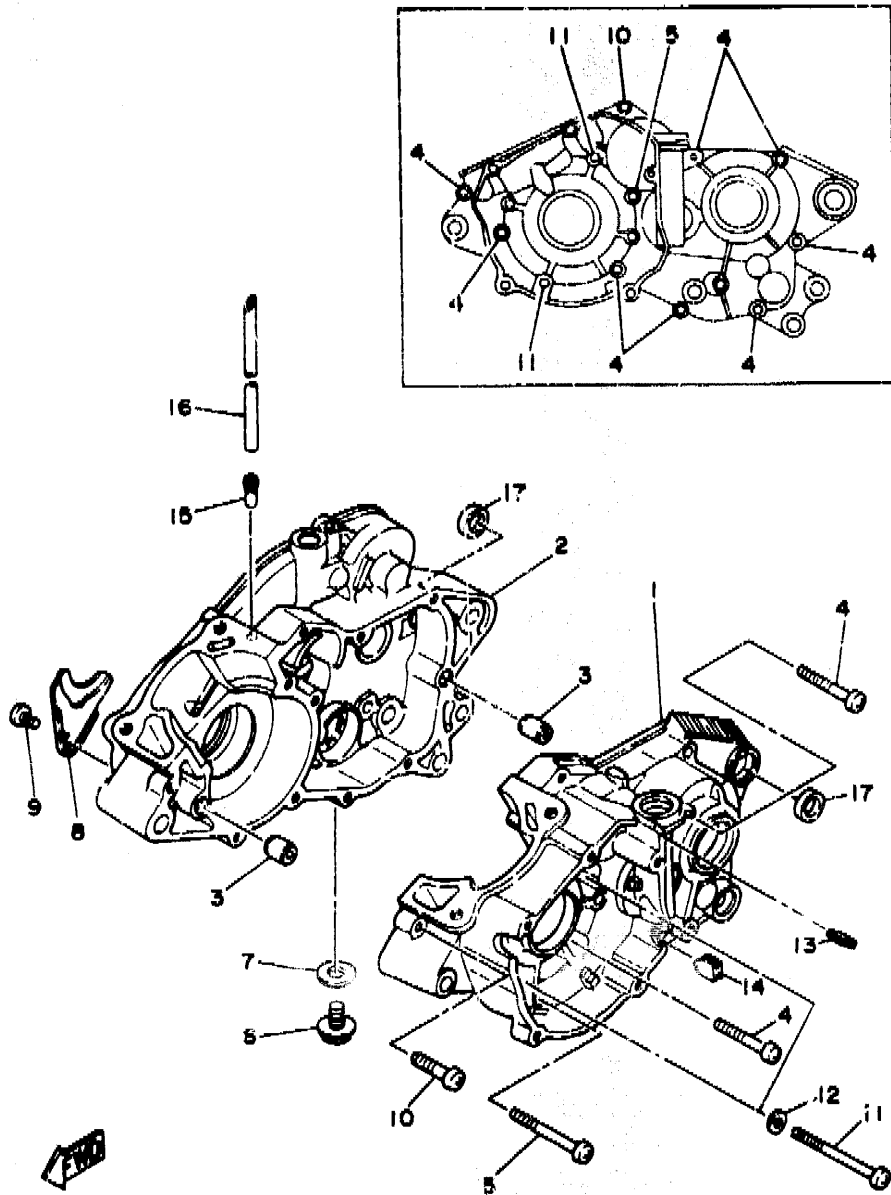
REF. NO.	PART NO.	DESCRIPTION	Q'TY	REMARKS
29	2XJ-8259E-01	SWITCH ASSY	1	
30	2GU-2633K-00	WIRE, inner 1	1	
31	98580-03010	SCREW, pan head	3	
32	92990-03100	WASHER, spring	3	
33	92902-03600	WASHER, plate	3	



2XJ110-8050

B8

FIG. 7 CRANKCASE



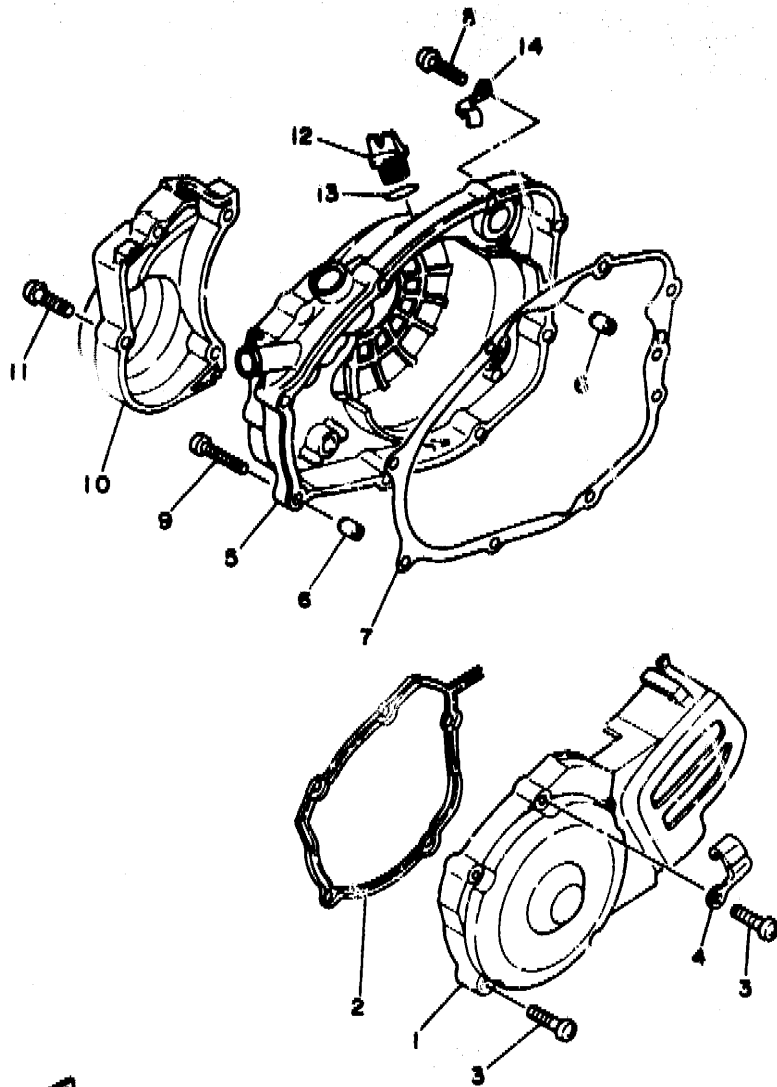
REF. NO.	PART NO.	DESCRIPTION	Q'TY	REMARKS
1	2XJ-15111-01	CRANKCASE 1	1	
2	2XJ-15121-00	CRANKCASE 2	1	
3	99510-12016	PIN, dowel	2	
4	92503-06045	SCREW, pan head	8	
5	98501-06060	SCREW, pan head	1	
6	90340-12059	PLUG, straight screw	1	
7	90201-12172	WASHER, plate	1	
8	37F-15128-00	HOLDER	1	
9	92501-08010	SCREW, pan head	1	
10	92501-06030	SCREW, pan head	1	
11	92501-06075	SCREW, pan head	2	
12	92901-06600	WASHER, plate	2	
13	90480-01209	GROMMET	1	
14	90338-09206	PLUG	1	
15	137-13115-00	CONNECTOR, suction pipe	1	
16	90446-09155	HOSE	1	
17	90201-166L5	WASHER, plate	2	

3JMA110-3070

B10

FIG. 8 CRANKCASE COVER 1

REF. NO.	PART NO.	DESCRIPTION	Q'TY	REMARKS
1	2XJ-15411-00	COVER, crankcase 1	1	
2	2XJ-15379-00	SEAL, crankcase	1	
3	92516-06030	SCREW, pan head	5	
4	90465-10069	CLAMP	1	
5	2XJ-15420-00	CRANKCASE COVER ASSY 2	1	
6	99530-1G014	PIN, dowel	2	
7	3JM-15451-00	GASKET, crankcase cover 1	1	
8	92516-C6030	SCREW, pan head	7	
9	92506-06035	SCREW, pan head	1	
10	37F-15416-00	COVER, oil pump	1	
11	92516-06030	SCREW, pan head	4	
12	1RG-15363-00	PLUG, oil	1	
13	93210-19123	O-RING	1	
14	367-13174-00	HOLDER, oil pipe	1	

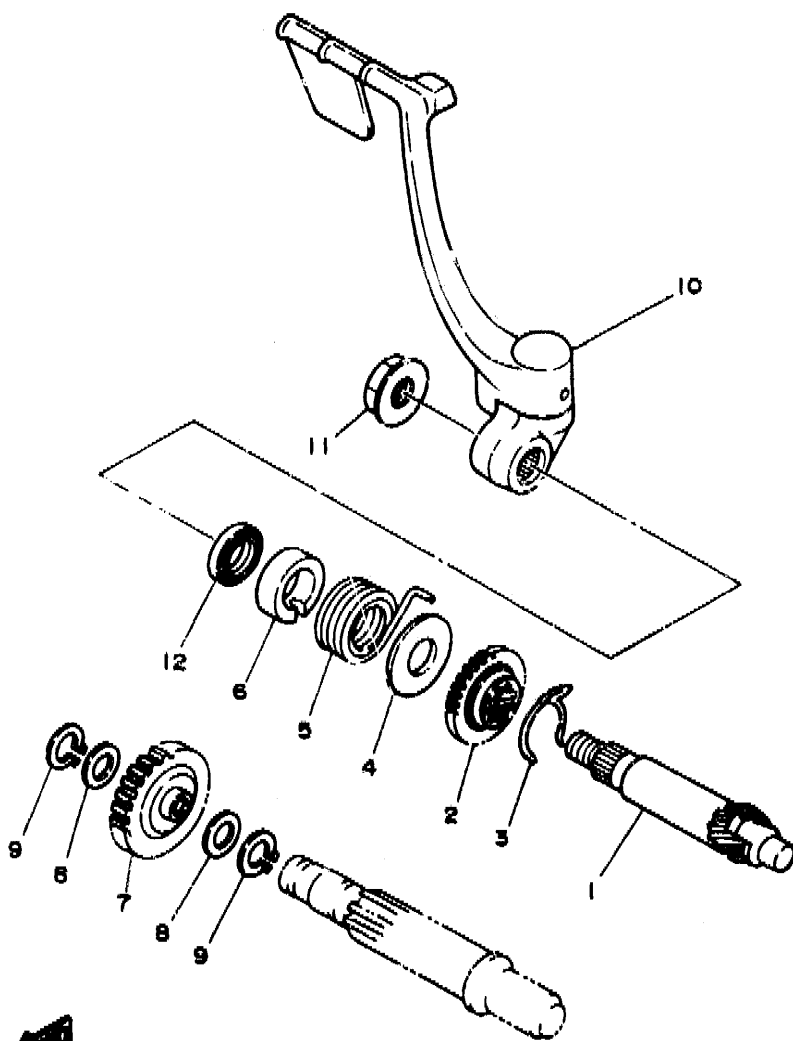


2XJ110-8080

B11

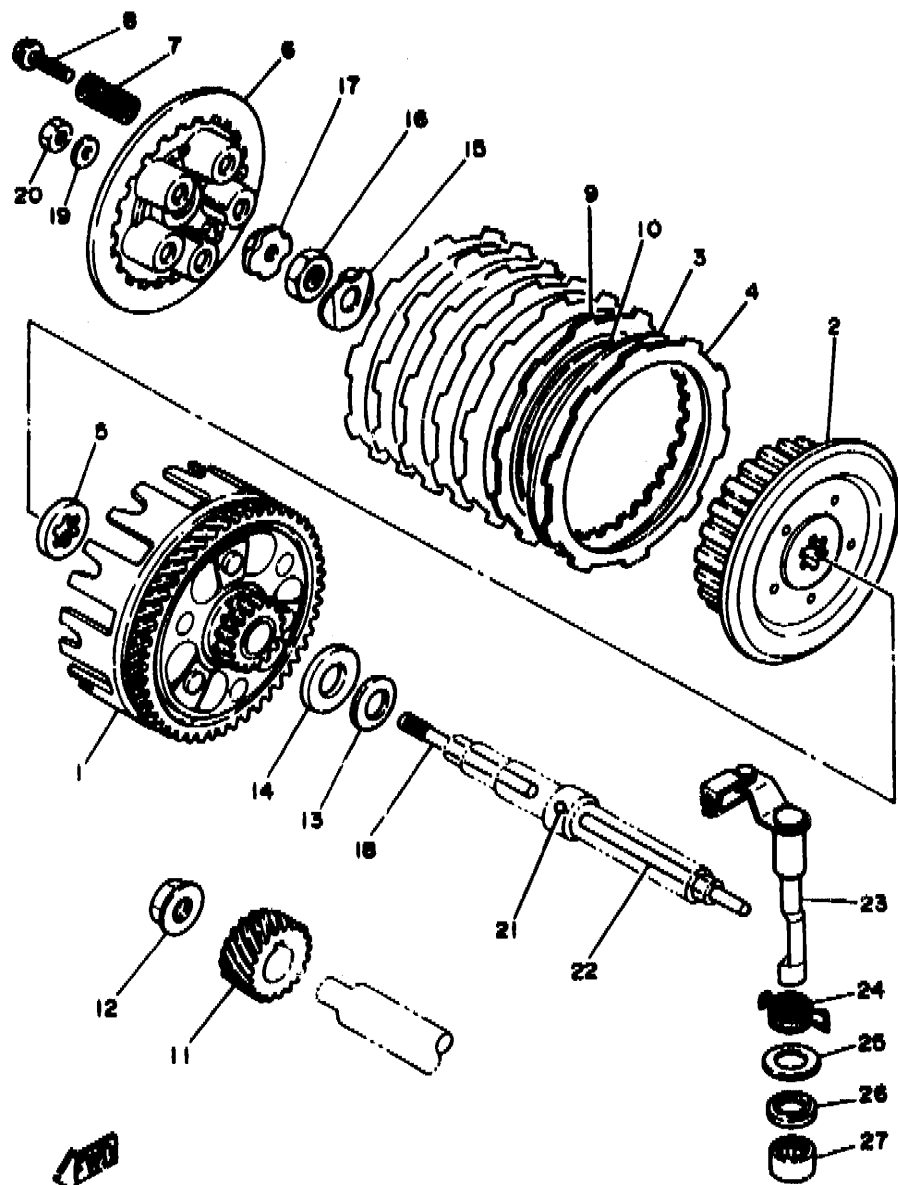
FIG. 9 STARTER

REF. NO.	PART NO.	DESCRIPTION	Q'TY	REMARKS
1	10V-15660-00	KICK AXLE ASSY	1	
2	10V-15641-00	GEAR, kick (23T)	1	
3	90468-26048	CLIP	1	
4	90201-200J7	WASHER, plate	1	
5	90508-26667	SPRING, torsion	1	
6	10V-15666-00	SPACER	1	
7	10V-15651-00	GEAR, kick idle (29T)	1	
8	90201-154E8	WASHER, plate	2	
9	93440-15012	CIRCLIP	2	
10	2XJ-15620-10	KICK CRANK ASSY	1	
11	90179-12374	NUT	1	
12	93102-20309	OIL SEAL	1	



2XJ110-8090

B12



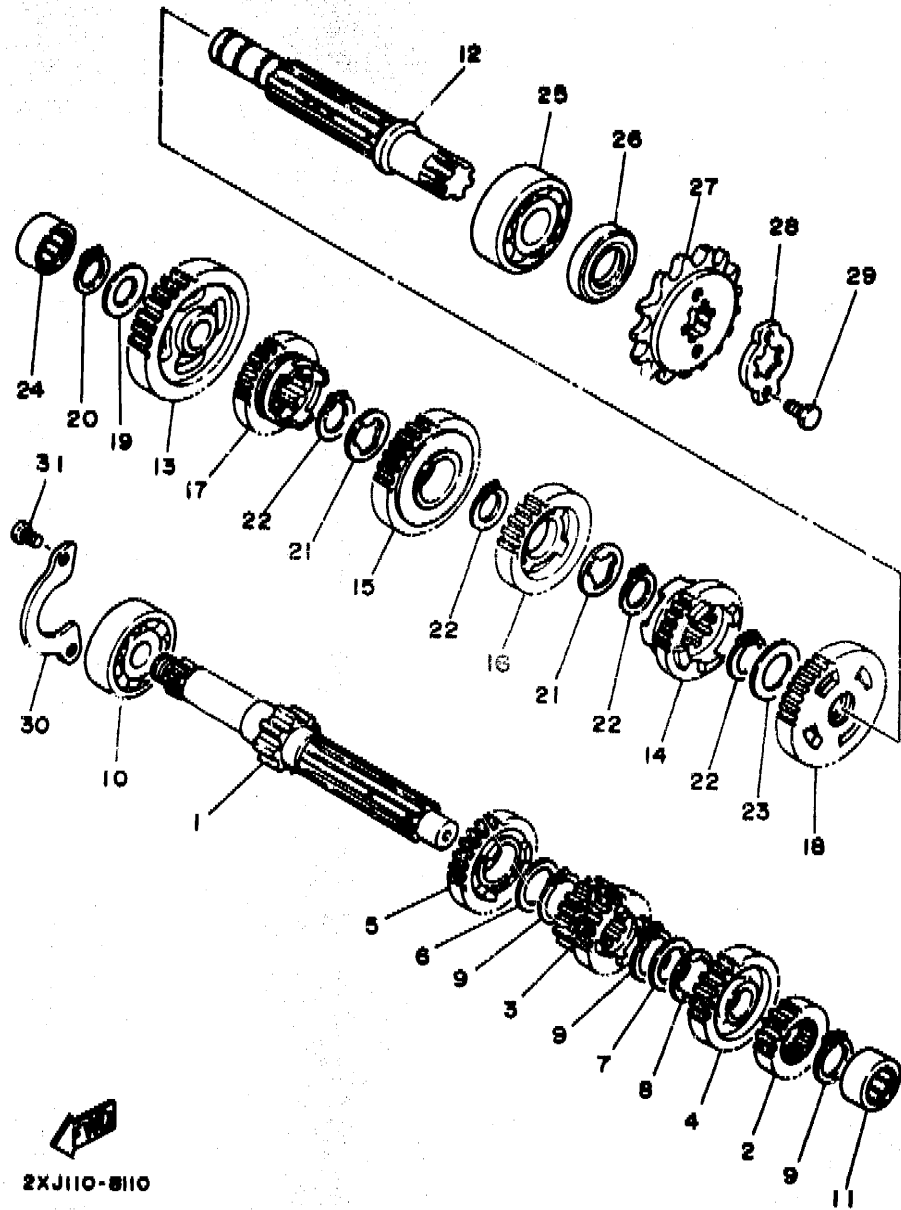
2XJ110-8100

FIG. 10 CLUTCH

REF. NO.	PART NO.	DESCRIPTION	Q'TY	REMARKS
1	3JM-16150-01	PRIMARY DRIVEN GEAR COMP.	1	
2	2TV-16371-00	BOSS, clutch	1	
3	1V1-16324-00	PLATE, clutch 1	6	
4	21V-16321-00	PLATE, friction	6	
5	21V-16154-00	PLATE, thrust 1	1	
6	37F-16351-00	PLATE, pressure 1	1	
7	90501-20568	SPRING, compression	5	
8	90119-05001	BOLT, with washer	5	
9	1HX-16331-00	PLATE, friction 2	1	
10	1HX-16383-00	SPRING, clutch boss	1	
11	2A6-16111-00	GEAR, primary drive (22T)	1	
12	90179-12567	NUT	1	
13	90208-18046	WASHER, conical spring	1	
14	90201-180P2	WASHER, plate	1	
15	90215-12271	WASHER, lock	1	
16	90170-12370	NUT	1	
17	30X-16358-00	PLATE, push	1	
18	1W1-16356-02	ROD, push 1	1	
19	92901-06200	WASHER, plain	1	
20	95303-06600	NUT	1	
21	93503-16010	BALL	1	
22	2J5-16357-00	ROD, push 2	1	
23	37F-16380-02	PUSH LEVER ASSY	1	
24	90508-20555	SPRING, torsion	1	
25	90201-14217	WASHER, plate	1	
26	93104-14004	OIL SEAL	1	
27	93315-21429	BEARING, cylindrical	1	

B13

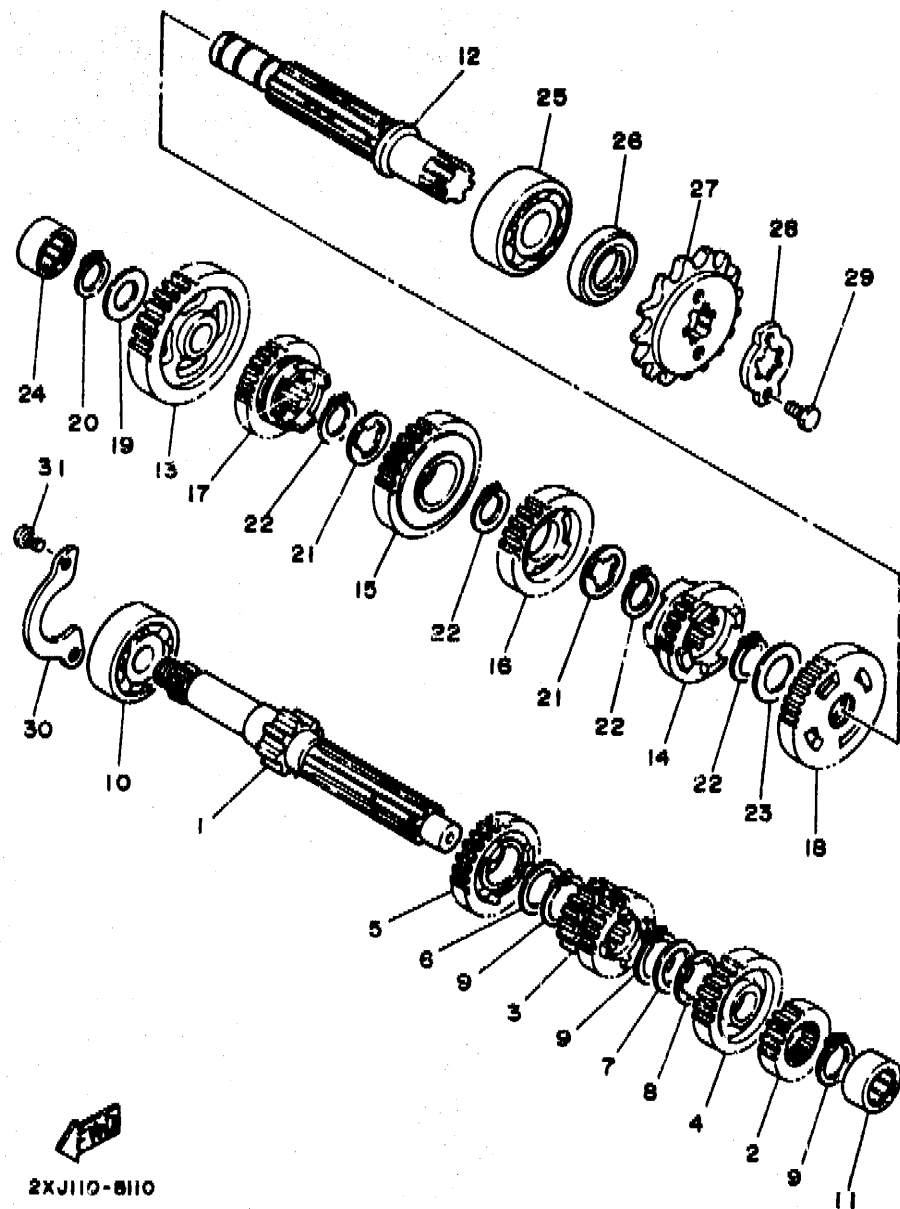
FIG. 11 TRANSMISSION



REF. NO.	PART NO.	DESCRIPTION	Q'TY	REMARKS
1	2XJ-17411-00	AXLE, main	1	
2	2XJ-17121-00	GEAR, 2nd pinion (14T)	1	
3	2XJ-17131-00	GEAR, 3rd-4th pinion (15T-16T)	1	
4	2XJ-17161-00	GEAR, 6th pinion (21T)	1	
5	2XJ-17151-00	GEAR, 5th pinion (18T)	1	
6	90201-20266	WASHER, plate (1.0T)	1	
7	90201-206L6	WASHER, plate	1	
8	90209-16133	WASHER	1	
9	93410-20038	CIRCLIP	3	
10	93306-20431	BEARING (B6204Z)	1	
11	93311-31576	BEARING, cylindrical	1	
12	37F-17421-00	AXLE, drive	1	
13	2XJ-17211-00	GEAR, 1st wheel (34T)	1	
14	2XJ-17261-00	GEAR, 6th wheel (19T)	1	
15	2XJ-17231-00	GEAR, 3rd wheel (25T)	1	
16	2XJ-17241-00	GEAR, 4th wheel (20T)	1	
17	2XJ-17251-00	GEAR, 5th wheel (19T)	1	
18	2XJ-17221-00	GEAR, 2nd wheel (31T)	1	
19	90201-150J4	WASHER, plate	1	
20	93440-15012	CIRCLIP	1	
21	90209-18135	WASHER	2	
22	93410-22039	CIRCLIP	4	
23	90201-22555	WASHER, plate	1	
24	93311-51554	BEARING, cylindrical	1	
25	93306-30438	BEARING	1	
26	93102-20143	OIL SEAL	1	
27	93832-13164	SPROCKET, drive (13T)	1	
28	5H0-17456-00	HOLDER, sprocket	1	

B14

FIG. 11 TRANSMISSION



REF. NO.	PART NO.	DESCRIPTION	Q'TY	REMARKS
29	97021-06012	BOLT	2	
30	10V-17471-00	PLATE, cover	1	
31	98501-06012	SCREW, pan head	2	

2XJ110-8110

B15

CONTENTS

ENGINE

Cylinder	B2
Crankshaft, Piston	B3 ~ B4
Oil Pump	B5
Intake	B6
Carburetor	B7 ~ B8
Exhaust	B9
Crankcase	B10
Crankcase Cover 1	B11
Starter	B12
Clutch	B13
Transmission	B14 ~ B15
Shift Cam. Fork	C2
Shift Shaft	C3

CHASSIS

Frame	C4
Front Fender	C5
Rear Fender	C6
Oil Tank	C7
Rear Arm	C8
Rear Suspension	C9
Front Suspension, Wheel	C10 ~ C11
Steering	C12 ~ C13
Fuel Tank	C14
Seat	C15
Front Wheel	D2 ~ D3
Rear Wheel	D4 ~ D5
Rear Brake Caliper	D6
Steering Handle, Cable	D7 ~ D8

Stand. Footrest	D9
Guard	D10
Generator	D11
Headlight	D12
Taillight 1 (For CANADA)	D13
Taillight 2 (For EUROPE)	D14
Handle Switch, Lever	D15 ~ E2
Electrical 1	E3
Electrical 2 (For CANADA, EUROPE)	E4
Emblem, Label 1	E5

INDEX

Numerical Index	M1 ~ M3
-----------------------	---------

CONTENTS

ENGINE

Cylinder	B2
Crankshaft, Piston	B3 ~ B4
Oil Pump	B5
Intake	B6
Carburetor	B7 ~ B8
Exhaust	B9
Crankcase	B10
Crankcase Cover 1	B11
Starter	B12
Clutch	B13
Transmission	B14 ~ B15
Shift Cam, Fork	C2
Shift Shaft	C3

CHASSIS

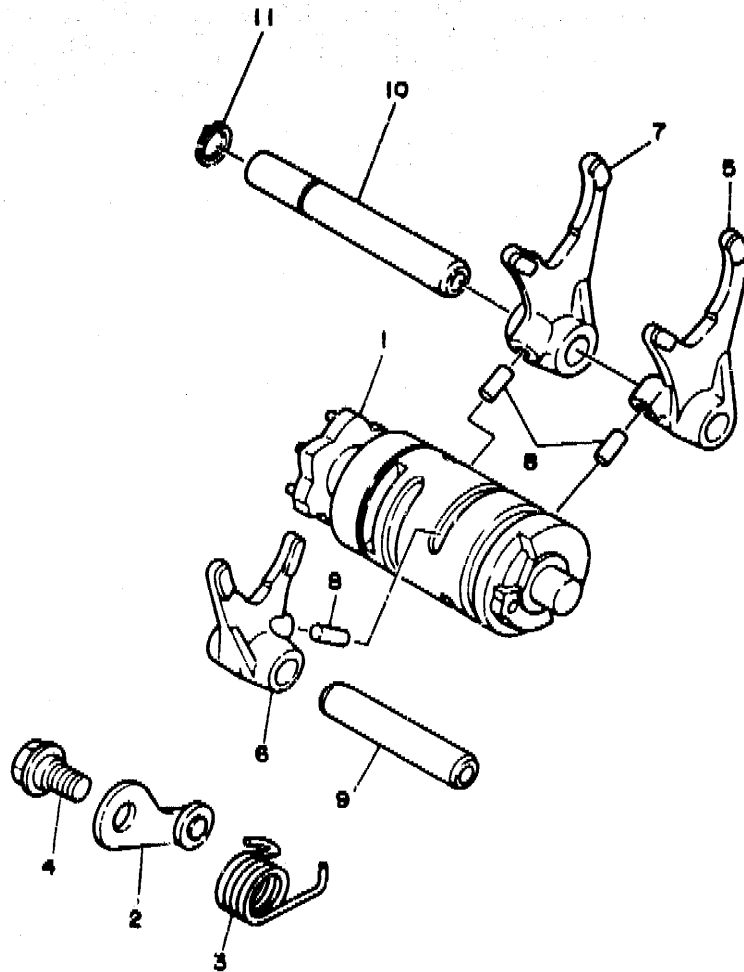
Frame	C4
Front Fender	C5
Rear Fender	C6
Oil Tank	C7
Rear Arm	C8
Rear Suspension	C9
Front Suspension, Wheel	C10 ~ C11
Steering	C12 ~ C13
Fuel Tank	C14
Coat	C15
Front Wheel	D2 ~ D3
Rear Wheel	D4 ~ D5
Rear Brake Caliper	D6
Steering Handle, Cable	D7 ~ D8

Stand, Footrest	D9
Guard	D10
Generator	D11
Headlight	D12
Taillight 1 (For CANADA)	D13
Taillight 2 (For EUROPE)	D14
Handle Switch, Lever	D15 ~ E2
Electrical 1	E3
Electrical 2 (For CANADA, EUROPE)	E4
Emblem, Label 1	E5

INDEX

Numerical Index	M1 ~ M3
-----------------------	---------

FIG. 12 SHIFT CAM. FORK



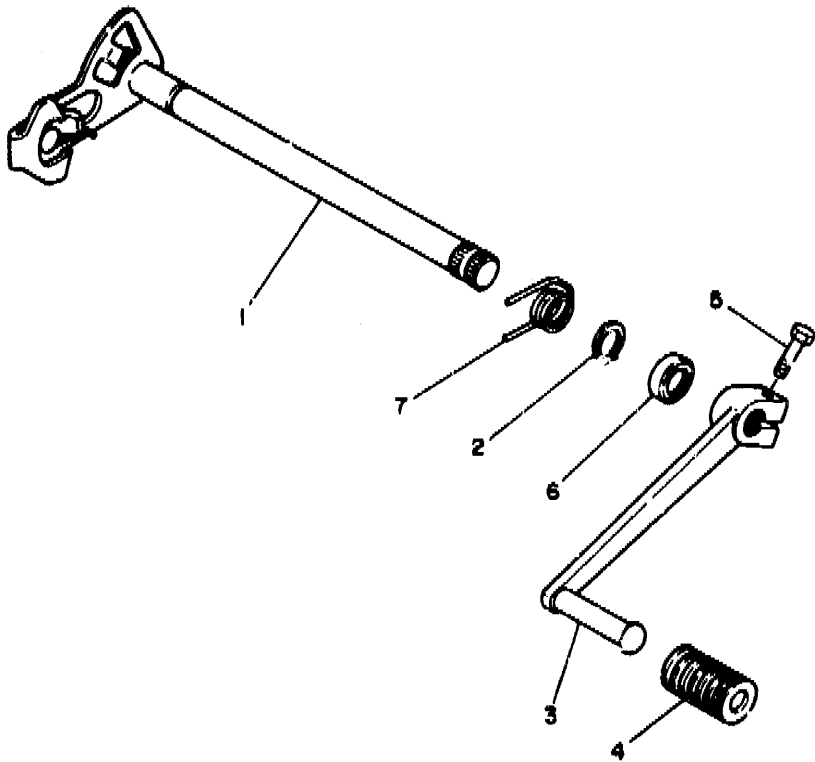
REF. NO.	PART NO.	DESCRIPTION	Q'TY	REMARKS
1	2XJ-18540-01	SHIFT CAM ASSY	1	
2	10V-18140-00	STOPPER LEVER ASSY	1	
3	90508-29749	SPRING, torsion	1	
4	90109-063F7	BOLT	1	
5	37F-18511-00	FORK, shift 1	1	
6	37F-18512-00	FORK, shift 2	1	
7	37F-18513-00	FORK, shift 3	1	
8	90250-06013	PIN, straight	3	
9	5X5-18531-01	BAR, shift fork guide 1	1	
10	34X-18535-00	BAR, shift fork guide 2	1	
11	99009-10400	CIRCLIP	1	


2XJ110-B120

C2

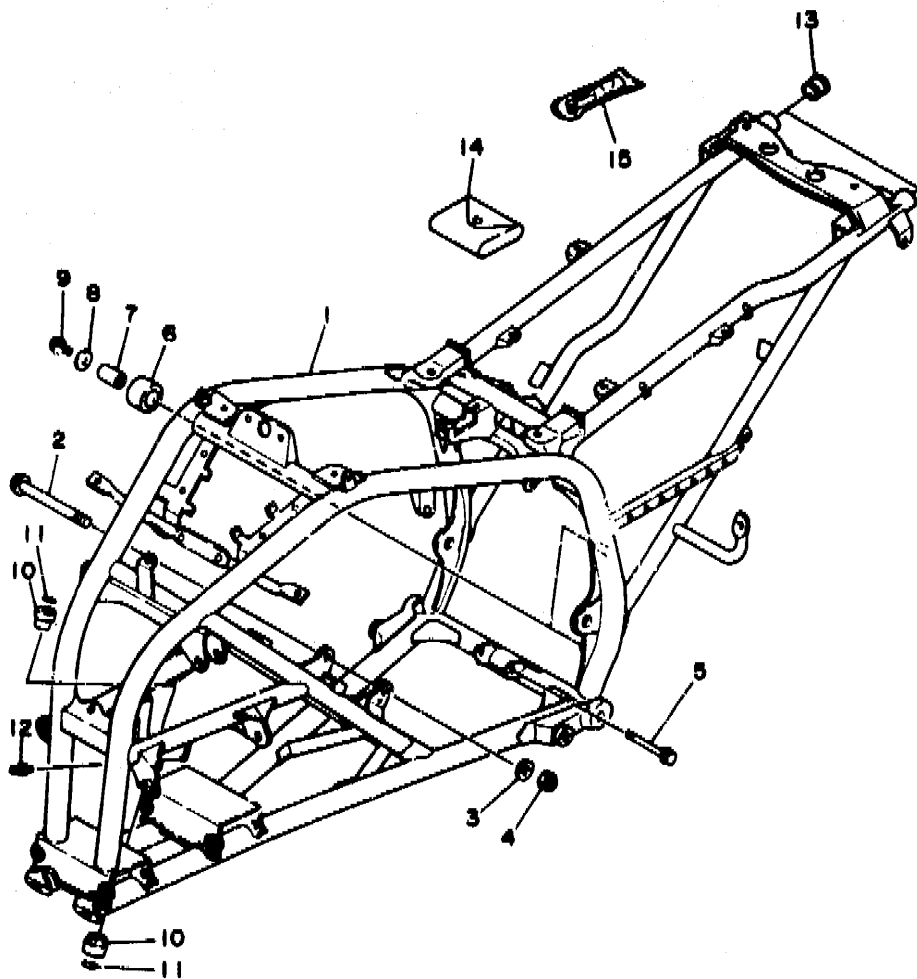
FIG. 13 SHIFT SHAFT

REF. NO.	PART NO.	DESCRIPTION	Q'TY	REMARKS
1	37F-18101-02	SHIFT SHAFT ASSY	1	
2	99001-10600	CIRCLIP	1	
3	2XJ-18111-00	PEDAL, shift	1	
4	132-18113-01	COVER, shift pedal	1	
5	97016-06020	BOLT	1	
6	93101-12060	OIL SEAL	1	
7	90508-32553	SPRING, torsion	1	



2XJ110-B130

C3



3JW00-9140

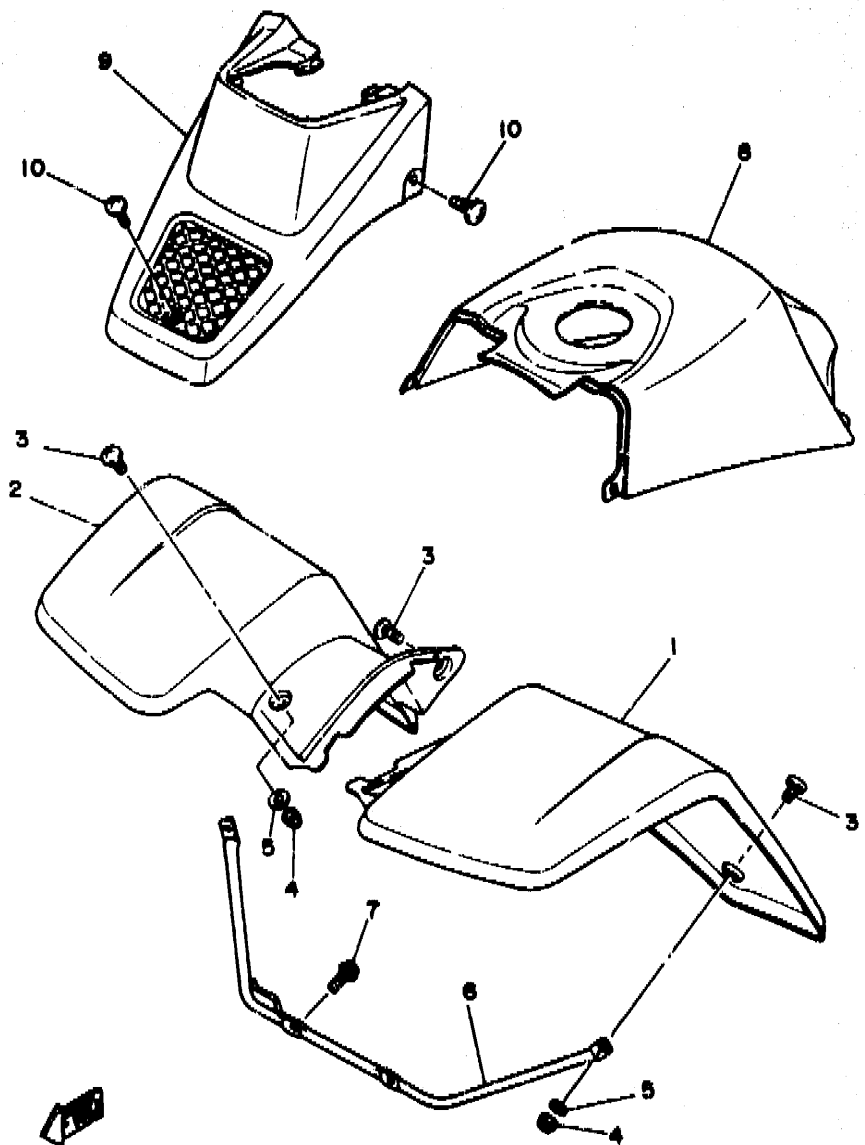
FIG. 14 FRAME

REF. NO.	PART NO.	DESCRIPTION	Q'TY	REMARKS
1	2XJ-21110-10-35	FRAME COMP.	1	SILVER
2	90105-10328	BOLT, washer based	1	
3	90201-10774	WASHER, plate	1	
4	90185-10060	NUT, self-locking	1	
5	90105-08221	BOLT, washer based	1	
6	30X-22178-00	TENSIONER	2	
7	4V4-22184-00	BUSH	2	
8	90201-08753	WASHER, plate	2	
9	95801-08012	BOLT, flange	2	
10	90331-15040	BUSH, solid	2	
11	93210-15566	O-RING	2	
12	93700-06004	NIPPLE, grease	1	
13	90338-23172	PLUG	2	
14	2XJ-28100-00	TOOL KIT	1	
15	1NV-2811A-00	GAUGE, air	1	

C4

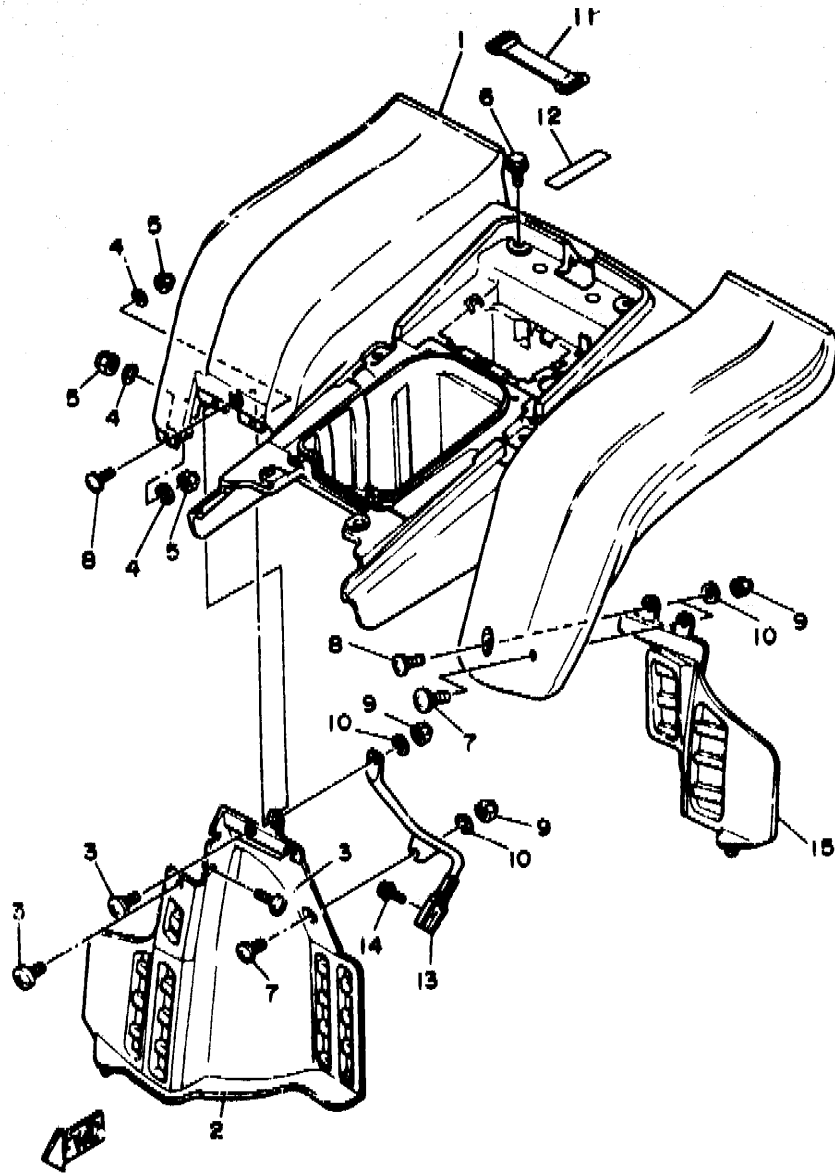
FIG. 15 FRONT FENDER

REF. NO.	PART NO.	DESCRIPTION	Q'TY	REMARKS
1	2XJ-21511-40	FENDER, front	1	PURPLISH WHITE SOLID 1
2	2XJ-21556-40	FENDER, front 2	1	PURPLISH WHITE SOLID 1
3	90149-0630	SCREW	6	
4	95601-06100	NUT, u	4	
5	92901-06200	WASHER, plain	4	
6	2XJ-21513-00	STAY, fender 1	1	
7	95811-06012	BOLT, flange	2	
8	2XJ-2171A-70	COVER, top	1	DEEP VIOLET SOLID 1
9	2XJ-23391-70	PANEL, front	1	DEEP VIOLET SOLID 1
10	90154-05051	SCREW, binding	3	



3JM100-9150

C5



3JM2100-0160

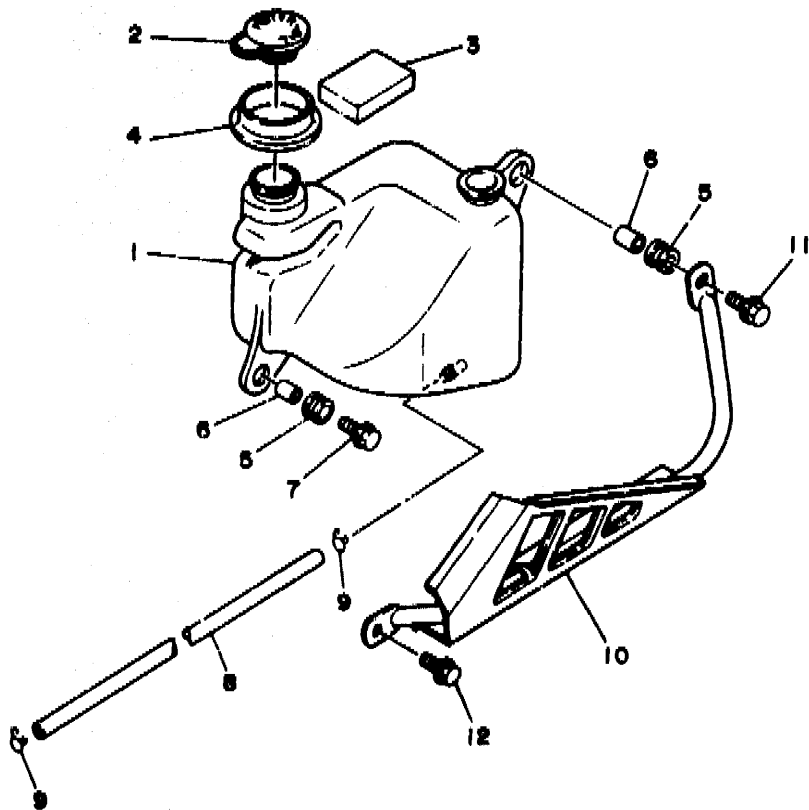
FIG. 16 REAR FENDER

REF. NO.	PART NO.	DESCRIPTION	Q'TY	REMARKS
1	2XJ-21611-90	FENDER, rear	1	PURPLISH WHITE SOLID 1
2	3JM-21621-00	FLAP	1	
3	90154-05005	SCREW, binding	5	
4	92990-05200	WASHER, plain	5	
5	95601-05100	NUT, u	5	
6	90119-06056	BOLT, with washer	6	
7	90149-06007	SCREW	2	
8	90150-06037	SCREW, round head	2	
9	95601-06100	NUT, u	4	
10	92901-06200	WASHER, plain	4	
11	2T4-82131-00	BAND, battery	1	
12	93210-61750	O-RING	1	
13	2XJ-21614-00	STAY, fender 2	1	
14	92016-08012	SCREW	1	
15	3JM-21691-00	FLAP	1	

C6

FIG. 17 OIL TANK

REF. NO.	PART NO.	DESCRIPTION	Q'TY	REMARKS
1	2XJ-21751-01	TANK, oil	1	
2	2N3-21771-01	BODY, cap	1	
3	2XJ-21746-00	DAMPER	1	
4	90480-48493	GROMMET	1	
F	90480-13238	GROMMET	2	
6	90387-07391	COLLAR	2	
7	95816-06025	BOLT, flange	1	
8	90445-096F4	HOSE	1	
9	90467-08003	CLIP	2	
10	2XJ-2172W-00	COVER	1	
11	95816-06025	BOLT, flange	1	
12	95816-06025	BOLT, flange	1	

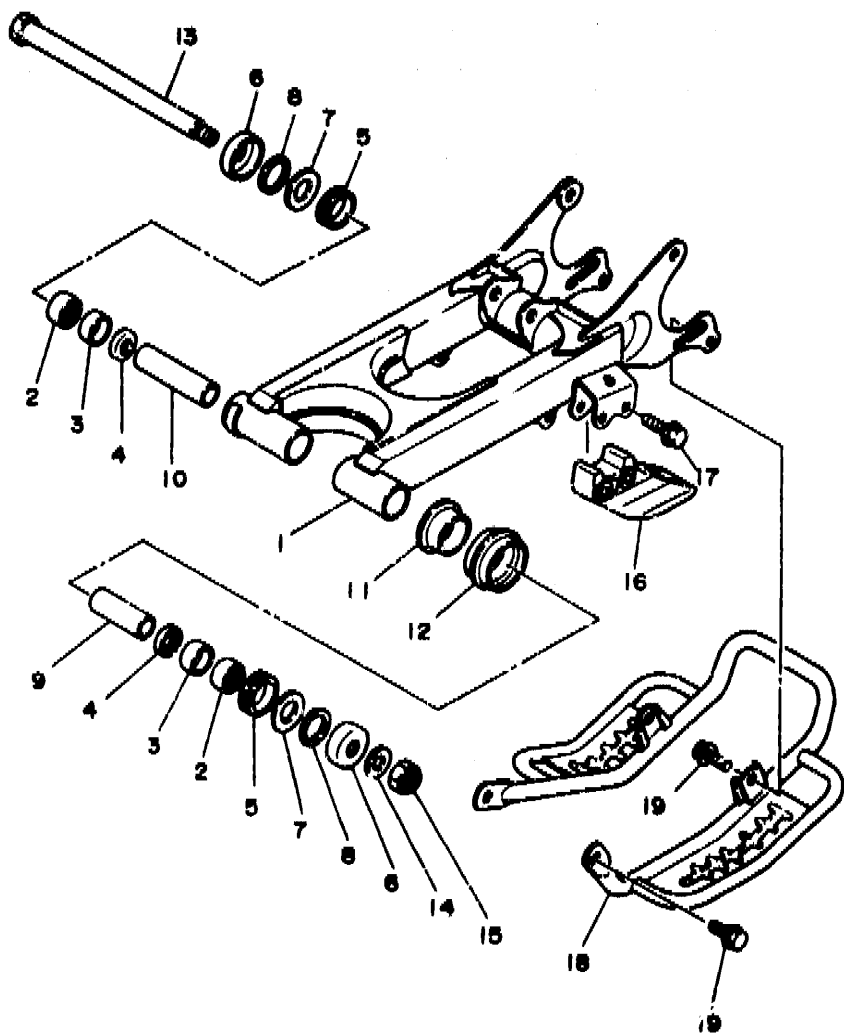


EXJ110-8170

C7

FIG. 18 REAR ARM

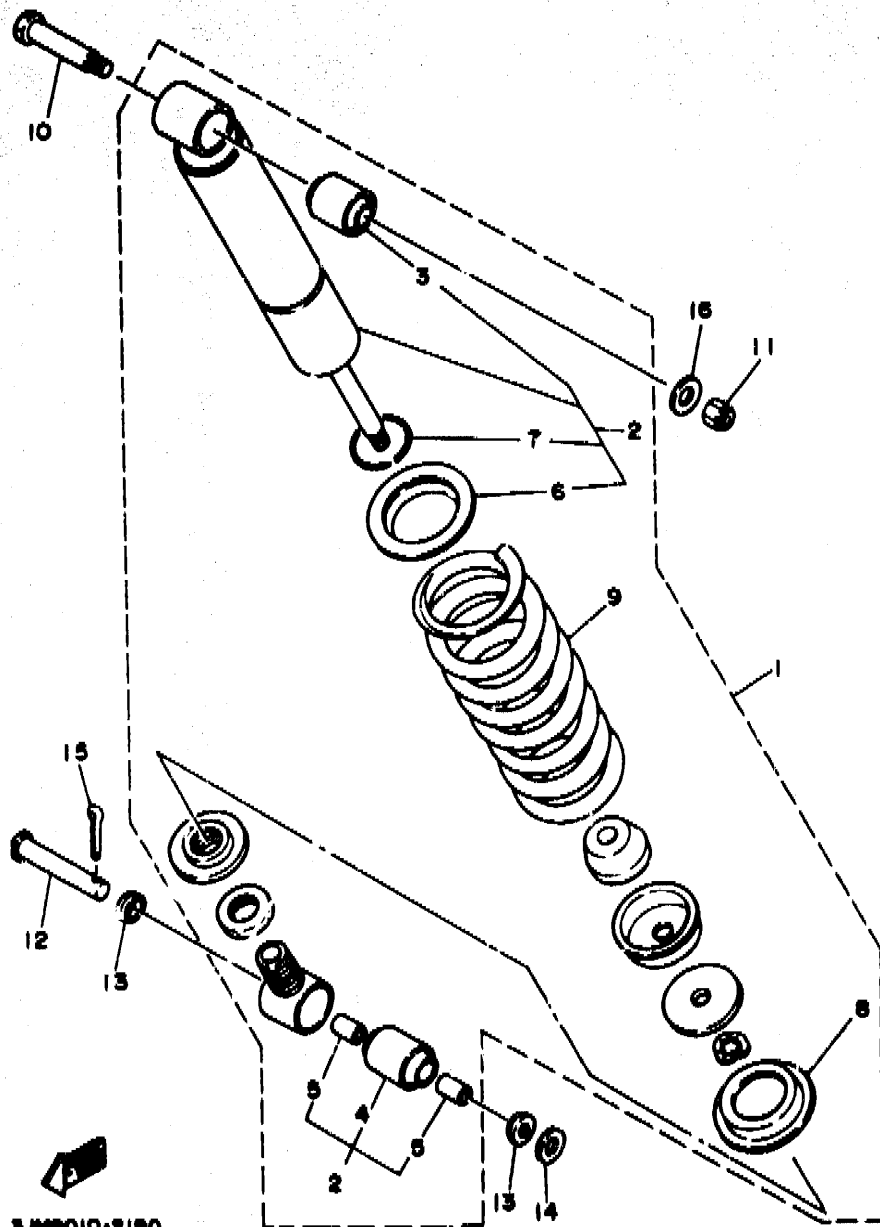
REF. NO.	PART NO.	DESCRIPTION	Q'TY	REMARKS
1	2XJ-22110-00-35	REAR ARM COMP.	1	SILVER
2	93317-32231	BEARING, cylindrical	2	
3	90380-22111	BUSH, solid	2	
4	93106-22019	OIL SEAL (DC 22-28-8)	2	
5	93108-35004	OIL SEAL (35-41-8)	2	
6	2K6-22128-01	COVER, thrust 1	2	
7	50201-244A9	WASHER, plate (2.05T)	2	
8	156-22127-00	SHIM (0.3T)	1	UN
9	2XJ-22123-00	BUSH 1	1	
10	2XJ-22124-00	BUSH 2	1	
11	2GU-22155-00	PIPE	1	
12	2GU-22151-10	SEAL, guard	1	
13	2JN-22141-00	SHAFT, pivot	1	
14	90201-14218	WASHER, plate	1	
15	90185-14070	NUT, self-locking	1	
16	38W-22159-00	SUPPORT, chain	1	
17	95801-08040	BOLT, flange	2	
18	2XJ-2219X-00	COVER	1	
19	91021-08012	BOLT, flange	4	



2XJ110-0180

FIG. 19 REAR SUSPENSION

REF. NO.	PART NO.	DESCRIPTION	Q'TY	REMARKS
1	2XJ-22210-20-P1	SHOCK ABSORBER ASSY, rear	1	VIVID MAGENTA SOLID 2
2	2XJ-22201-20	.DAMPER SUB ASSY	1	
3	1NU-22216-00	..BUSH, rear shock absorber	1	
4	1NU-22226-00	..BUSH, shock absorber lower	1	
5	90380-12051	..BUSH, solid	2	
6	22W-22223-00	..SEAT, spring lower	1	
7	93440-12101	..CIRCLIP	1	
8	22W-22214-01	.GUIDE, spring 1	1	
9	2XJ-22212-00-P1	.SPRING	1	VIVID MAGENTA SOLID 2
10	90109-10736	BOLT	1	
11	95602-10100	NUT, u	1	
12	90240-12092	PIN, clevis	1	
13	1W1-22128-00	COVER, thrust 1	2	
14	92990-12600	WASHER, plate	1	
15	91401-30030	PIN, cotter	1	
16	90201-10269	WASHER, plate	1	

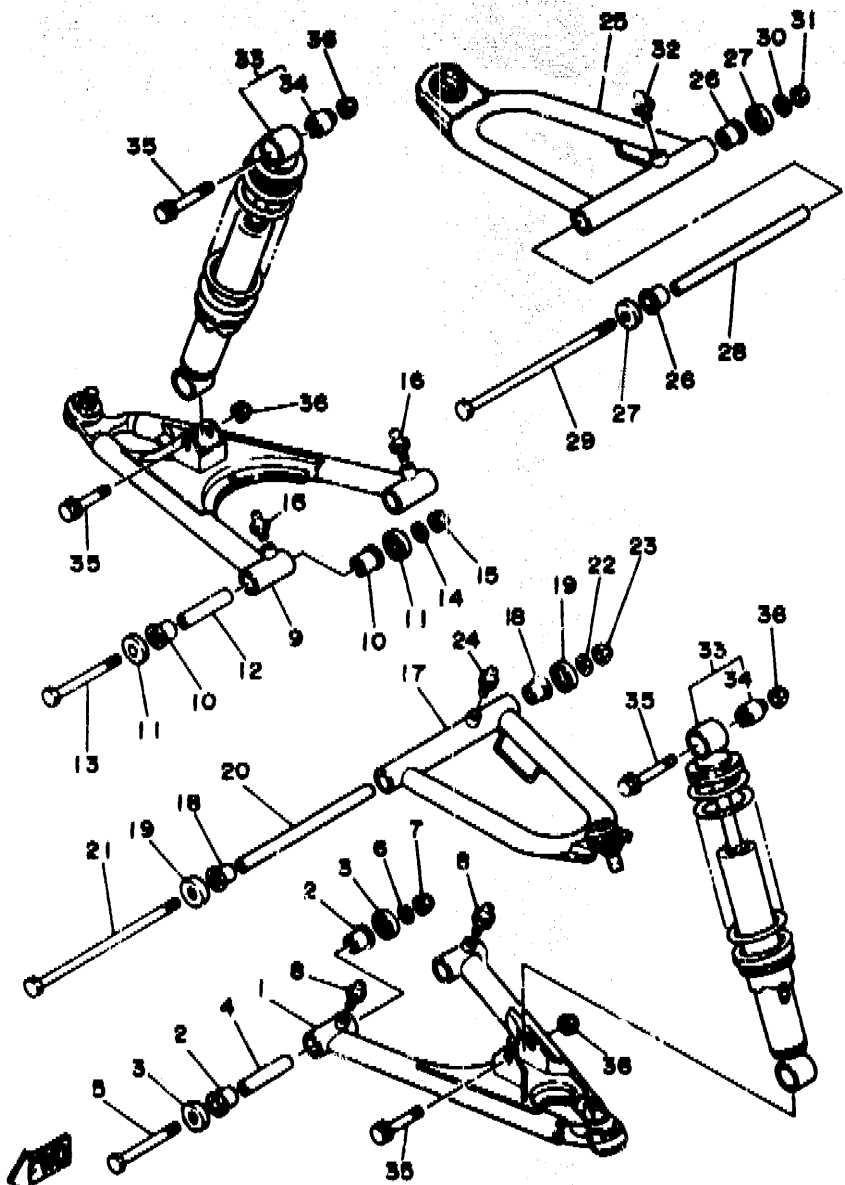


3-JMB010-2190

C9

FIG. 20 FRONT SUSPENSION. WHEEL

REF. NO.	PART NO.	DESCRIPTION	Q'TY	REMARKS
1	3JM-23570-00-35	FRONT LOWER ARM COMP. (LEFT)	1	SILVER
2	90381-15088	BUSH, solid	4	
3	1UY-23517-00	COVER, thrust 1	4	
4	90387-101R3	COLLAR	2	
5	90101-10655	BOLT	2	
6	90201-100F7	WASHER, plate	2	
7	90185-10120	NUT, self-locking	2	
8	93700-06004	NIPPLE, grease	2	
9	3JM-23580-00-35	FRONT LOWER ARM COMP. (RIGHT)	1	SILVER
10	90381-15088	BUSH, solid	4	
11	1UY-23517-00	COVER, thrust 1	4	
12	90387-101R3	COLLAR	2	
13	90101-10655	BOLT	2	
14	90201-100F7	WASHER, plate	2	
15	90185-10120	NUT, self-locking	2	
16	93700-06004	NIPPLE, grease	2	
17	2XJ-23540-00-35	FRONT UPPER ARM COMP. (LEFT)	1	SILVER
18	90381-15088	BUSH, solid	2	
19	1UY-23517-00	COVER, thrust 1	2	
20	90387-101U6	COLLAR	1	
21	336-22141-00	SHAFT, pivot	1	
22	90201-100F7	WASHER, plate	1	
23	90185-10120	NUT, self-locking	1	
24	93700-06004	NIPPLE, grease	1	
25	2XJ-23550-00-35	FRONT UPPER ARM COMP. (RIGHT)	1	SILVER
26	90381-15088	BUSH, solid	2	
27	1UY-23517-00	COVER, thrust 1	2	
28	90387-101U6	COLLAR	1	

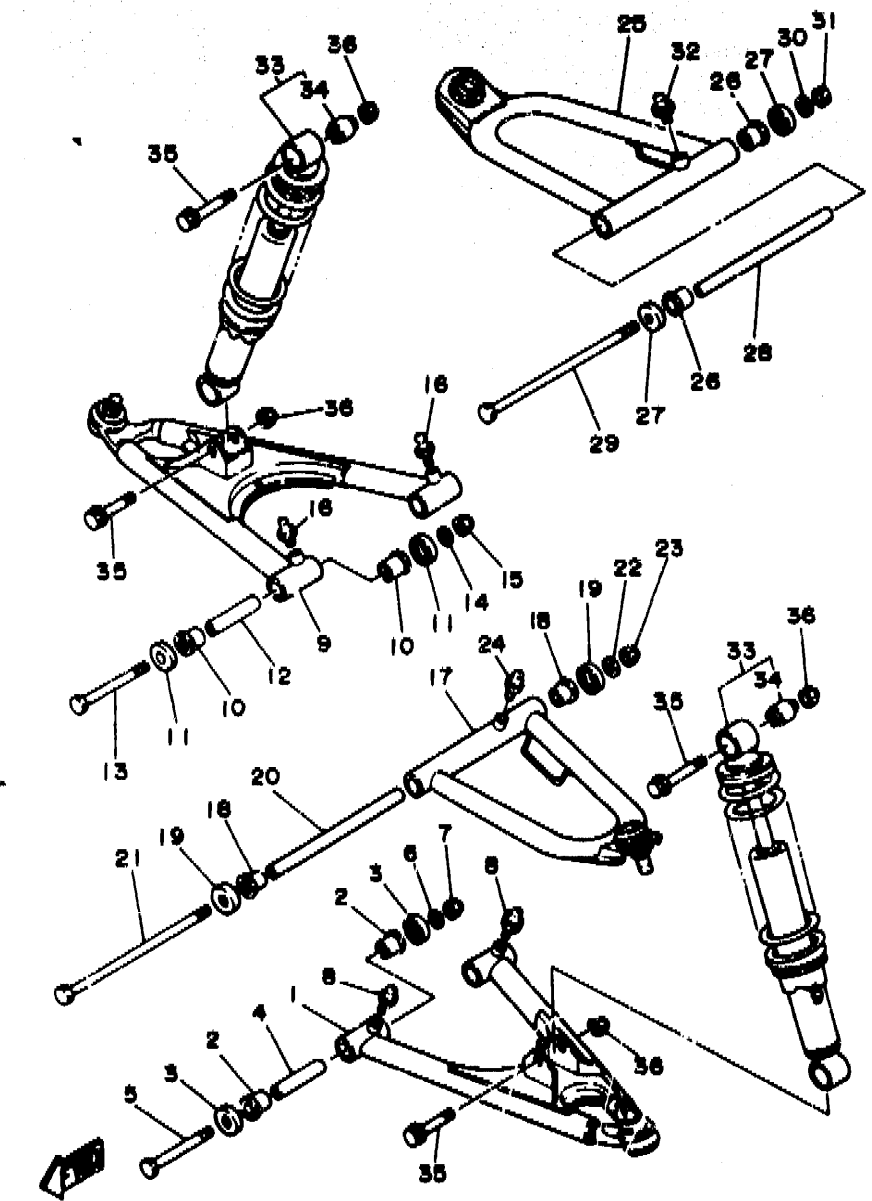


2XJ110-M200

C10

FIG. 20 FRONT SUSPENSION. WHEEL

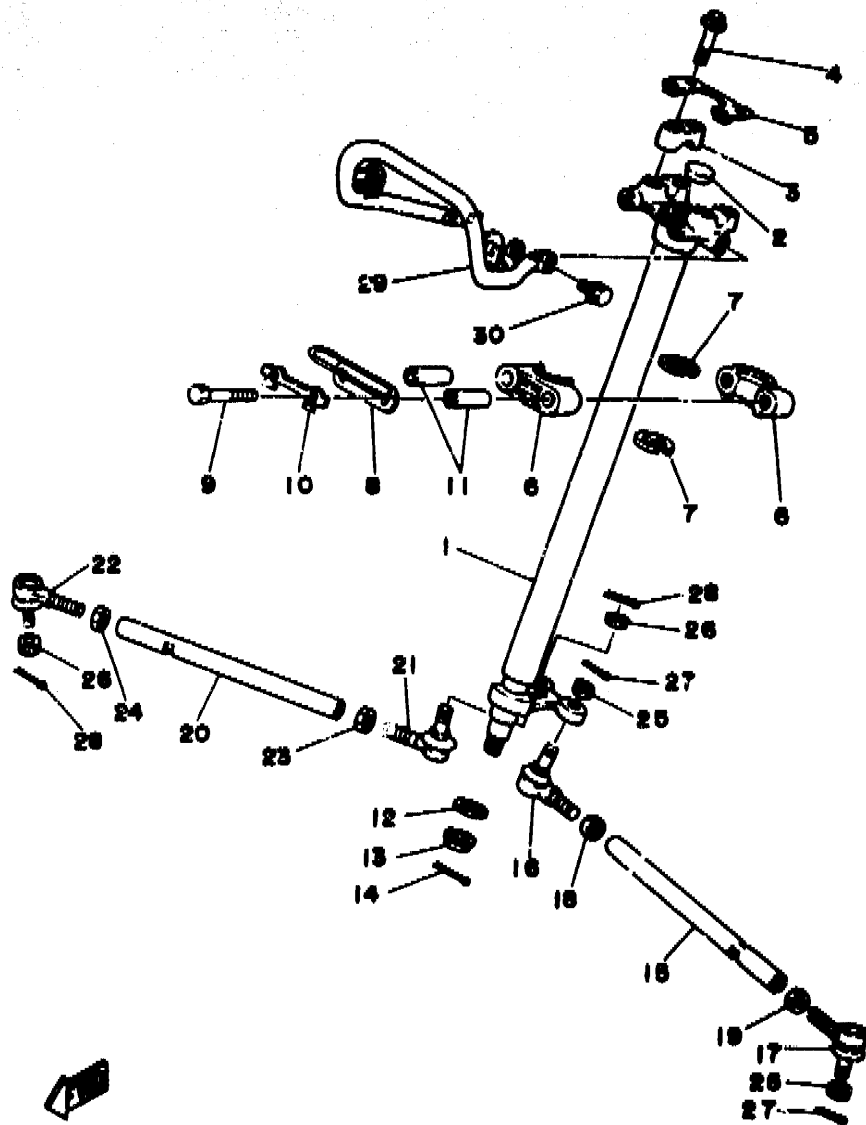
REF. NO.	PART NO.	DESCRIPTION	Q'TY	REMARKS
29	336-22141-00	SHAFT, pivot	1	
30	90201-100F7	WASHER, plate	1	
31	90185-10120	NUT, self-locking	1	
32	93700-06004	NIPPLE, grease	1	
33	2XJ-23350-00-P1	SHOCK ABSORBER ASSY	2	VIVID MAGENTA SOLID 2
34	2XJ-2331R-00	.DAMPER, bush b	2	
35	90105-10388	BOLT, washer based	4	
36	90185-10060	NUT, self-locking	4	



2XJ110-8200

C11

FIG. 21 STEERING



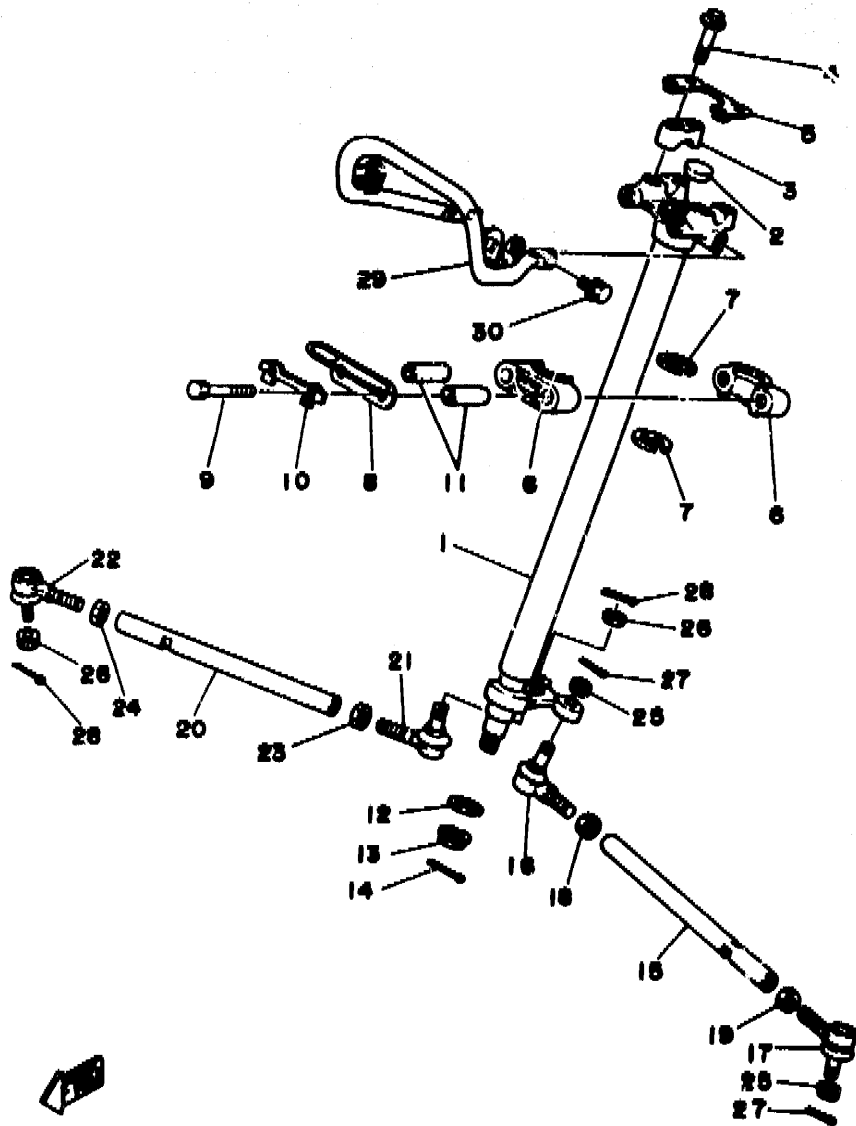
2XJ110-0210

REF. NO.	PART NO.	DESCRIPTION	Q'TY	REMARKS
1	2XJ-23813-00	COLUMN, steering 2	1	
2	90336-28053	PLUG, taper	1	
3	1E6-23441-00	HOLDER, handle upper	2	
4	95871-08035	BOLT, flange	4	
5	2GU-2629K-00	STAY	1	
6	1UY-23812-00	PLANE BEARING, steering	2	
7	93112-31011	OIL SEAL	2	
8	2XJ-23868-00	BRACKET, steering lower	1	
9	98021-08060	BOLT	2	
10	1UY-23894-01	WASHER, lock 1	1	
11	90387-09080	COLLAR	2	
12	90201-10774	WASHER, plate	1	
13	90185-10115	NUT, self-locking	1	
14	91401-20020	PIN, cotter	1	
15	2XJ-23831-01	ROD, tie	1	
16	1UY-23841-01	JOINT, universal 1	1	
17	1UY-23845-01	JOINT, universal 2	1	
18	95303-10700	NUT	1	
19	90170-10186	NUT	1	
20	2XJ-23831-01	ROD, tie	1	
21	1UY-23841-01	JOINT, universal 1	1	
22	1UY-23845-01	JOINT, universal 2	1	
23	95303-10700	NUT	1	
24	90170-10186	NUT	1	
25	90171-10046	NUT, castle	2	
26	90171-10046	NUT, castle	2	
27	91401-20020	PIN, cotter	2	
28	91401-20020	PIN, cotter	2	

C12

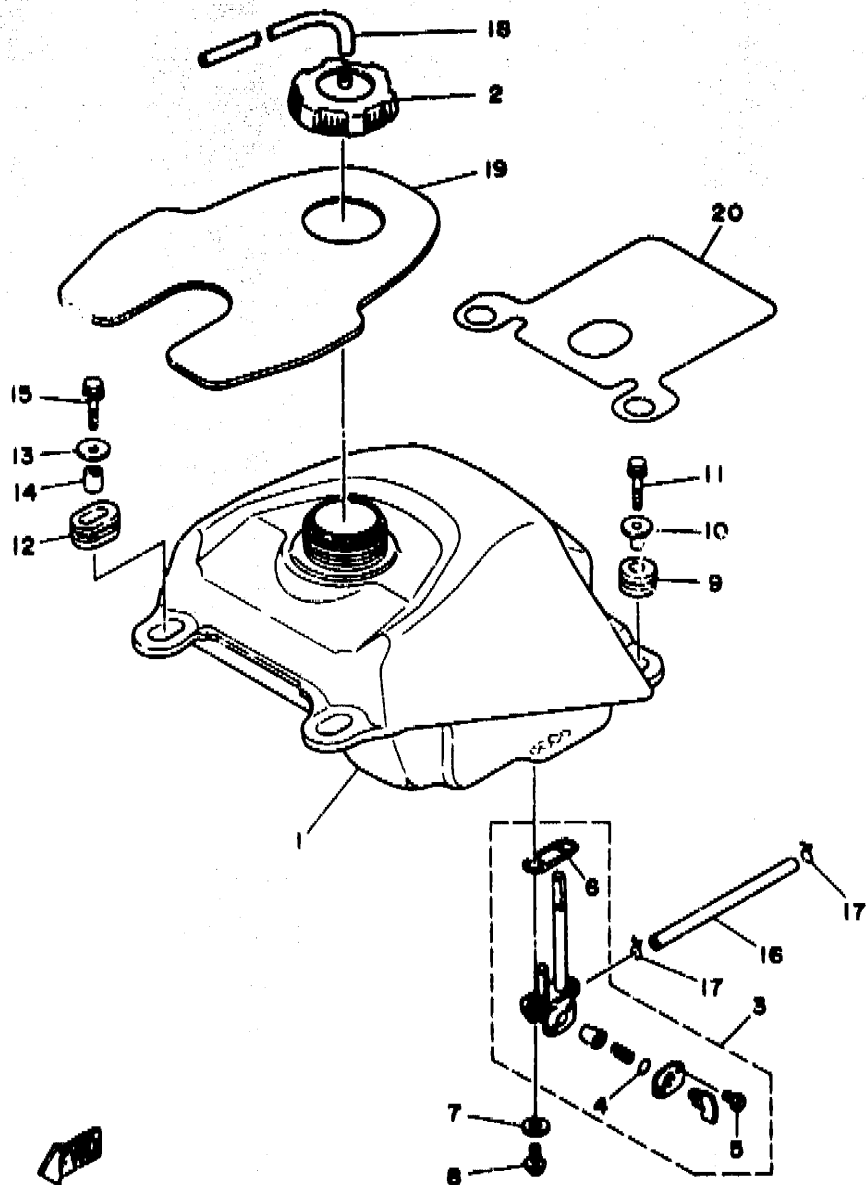
FIG. 21 STEERING

REF. NO.	PART NO.	DESCRIPTION	Q'TY	REMARKS
29	2XJ-23174-00	STAY, headlight	1	
30	95806-08014	BOLT, flange	4	



2XJ110-8210

C13



3JM4110-1220

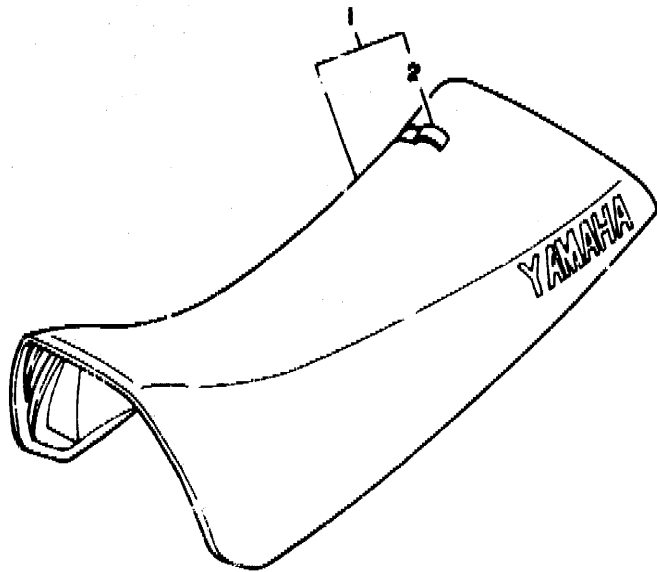
FIG. 22 FUEL TANK

REF. NO.	PART NO.	DESCRIPTION	Q'TY	REMARKS
1	2XJ-24110-00	FUEL TANK COMP.	1	
2	1UY-24610-00	CAP ASSY	1	
3	55W-24500-01	FUEL COCK ASSY 1	1	
4	4X8-24534-00	.SEAL, cock	1	
5	98503-03008	.SCREW, pan head	2	
6	4X8-24512-00	.GASKET	1	
7	90202-05193	WASHER, plate	2	
8	90149-06011	SCREW	2	
9	90480-13290	GROMMET	2	
10	90387-066H4	COLLAR	2	
11	90119-06073	BOLT, with washer	2	
12	90480-01400	GROMMET	2	
13	90201-060L5	WASHER, plate	2	
14	90387-07598	COLLAR	2	
15	90119-06073	BOLT, with washer	2	
16	90445-100E9	HOSE	1	
17	90467-09006	CLIP	2	
18	90445-09111	HOSE	1	
19	2XJ-2414H-01	DAMPER, plate 1	1	
20	3JM-2414J-00	DAMPER, plate 2	1	

C14

FIG. 23 SEAT

REF. NO.	PART NO.	DESCRIPTION	Q'TY	REMARKS
1	2XJ-24710-90	SINGLE SEAT ASSY	1	DEEP VIOLET SOLID 1
2	2XJ-24731-90	.COVER, seat	1	DEEP VIOLET SOLID 1



2XJ110-0230

C15

CONTENTS

ENGINE

Cylinder	B2
Crankshaft, Piston	B3 ~ B4
Oil Pump	B5
Intake	B6
Carburetor	B7 ~ B8
Exhaust	B9
Crankcase	B10
Crankcase Cover 1	B11
Starter	B12
Clutch	B13
Transmission	B14 ~ B15
Shift Cam. Fork	C2
Shift Shaft	C3

CHASSIS

Frame	C4
Front Fender	C5
Rear Fender	C6
Oil Tank	C7
Rear Arm	C8
Rear Suspension	C9
Front Suspension, Wheel	C10 ~ C11
Steering	C12 ~ C13
Fuel Tank	C14
Seat	C15
Front Wheel	D2 ~ D3
Rear Wheel	D4 ~ D5
Rear Brake Caliper	D6
Steering Handle, Cable	D7 ~ D8

Stand. Footrest	D9
Guard	D10
Generator	D11
Headlight	D12
Taillight 1 (For CANADA)	D13
Taillight 2 (For EUROPE)	D14
Handle Switch, Lever	D15 ~ E2
Electrical 1	E3
Electrical 2 (For CANADA, EUROPE)	E4
Emblem, Label 1	E5

INDEX

Numerical Index	M1 ~ M3
-----------------------	---------

CONTENTS

ENGINE

Cylinder	B2
Crankshaft, Piston	B3 ~ B4
Oil Pump	B5
Intake	B6
Carburetor	B7 ~ B8
Exhaust	B9
Crankcase	B10
Crankcase Cover 1	B11
Starter	B12
Clutch	B13
Transmission	B14 ~ B15
Shift Cam, Fork	C2
Shift Shaft	C3

CHASSIS

Frame	C4
Front Fender	C5
Rear Fender	C6
Oil Tank	C7
Rear Arm	C8
Rear Suspension	C9
Front Suspension, Wheel	C10 ~ C11
Steering	C12 ~ C13
Fuel Tank	C14
Seat	C15
Front Wheel	D2 ~ D3
Rear Wheel	D4 ~ D5
Rear Brake Caliper	D6
Steering Handle, Cable	D7 ~ D8

Stand, Footrest	D9
Guard	D10
Generator	D11
Headlight	D12
Taillight 1 (For CANADA)	D13
Taillight 2 (For EUROPE)	D14
Handle Switch, Lever	D15 ~ E2
Electrical 1	E3
Electrical 2 (For CANADA, EUROPE)	E4
Emblem, Label 1	E5

INDEX

Numerical Index	M1 ~ M3
-----------------------	---------

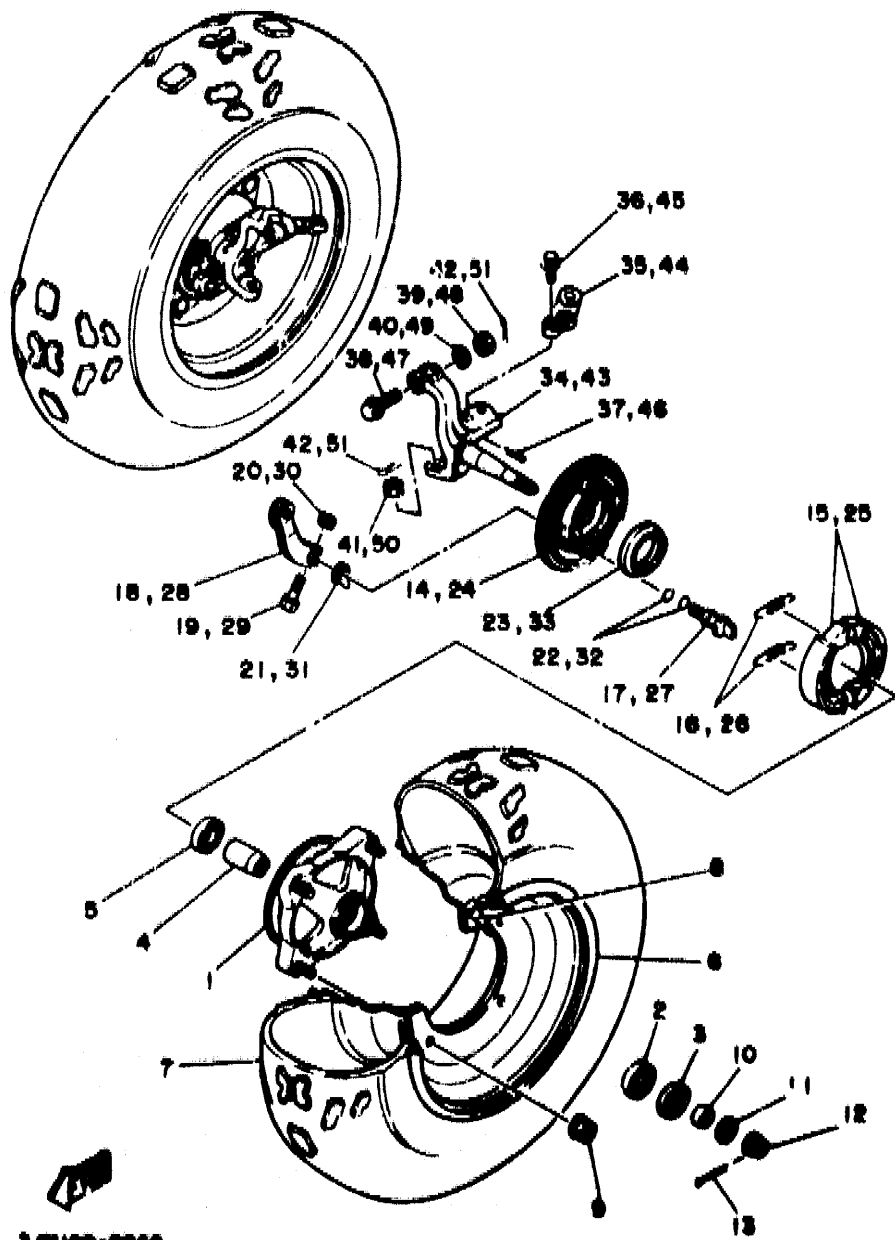
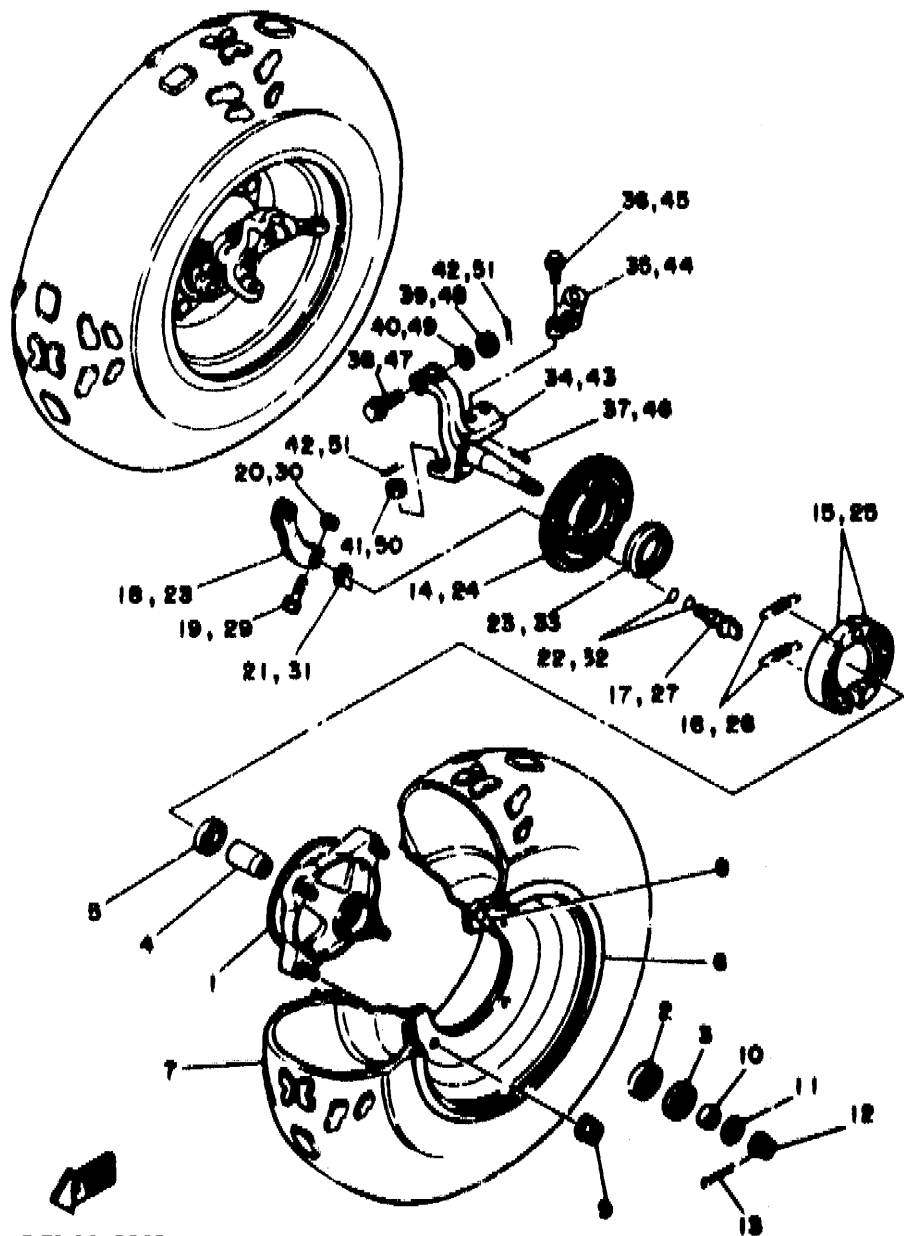


FIG. 24 FRONT WHEEL

REF. NO.	PART NO.	DESCRIPTION	Q'TY	REMARKS
1	2XJ-25111-00	HUB, front	2	
2	93306-20209	BEARING (B6202)	2	
3	93102-22216	OIL SEAL	2	
4	1UY-25117-00	SPACER, bearing	2	
5	93306-90403	BEARING	2	
6	2XJ-25180-00-UJ	FRONT WHEEL COMP.	2	RADICAL WHITE
7	94107-106W0	TIRE (AT21X7-10**KT894A T/L)	2	DUNLOP
8	03900-00030	VALVE, rim	2	
9	95701-10500	NUT, flange	8	
10	90387-150R1	COLLAR	2	
11	90201-14566	WASHER, plate	2	
12	90171-14020	NUT, castle	2	
13	91401-30030	PIN, cotter	2	
14	2XJ-25121-00	PLATE, brake shoe	1	
15	5H0-W2536-00	BRAKE SHOE SET	1	
16	90506-15260	SPRING, tension	2	
17	563-25351-02	CAMSHAFT	1	
18	52H-25155-00	LEVER, camshaft 1	1	
19	90101-06278	BOLT	1	
20	95303-06000	NUT	1	
21	52H-2513A-01	PLATE, indicator	1	
22	93210-12327	O-RING	2	
23	93105-49023	OIL SEAL	1	
24	2XJ-25169-00	PLATE, brake shoe 2	1	
25	5H0-W2536-00	BRAKE SHOE SET	1	
26	90506-15260	SPRING, tension	2	
27	563-25351-02	CAMSHAFT	1	
28	52H-25155-00	LEVER, camshaft 2	1	

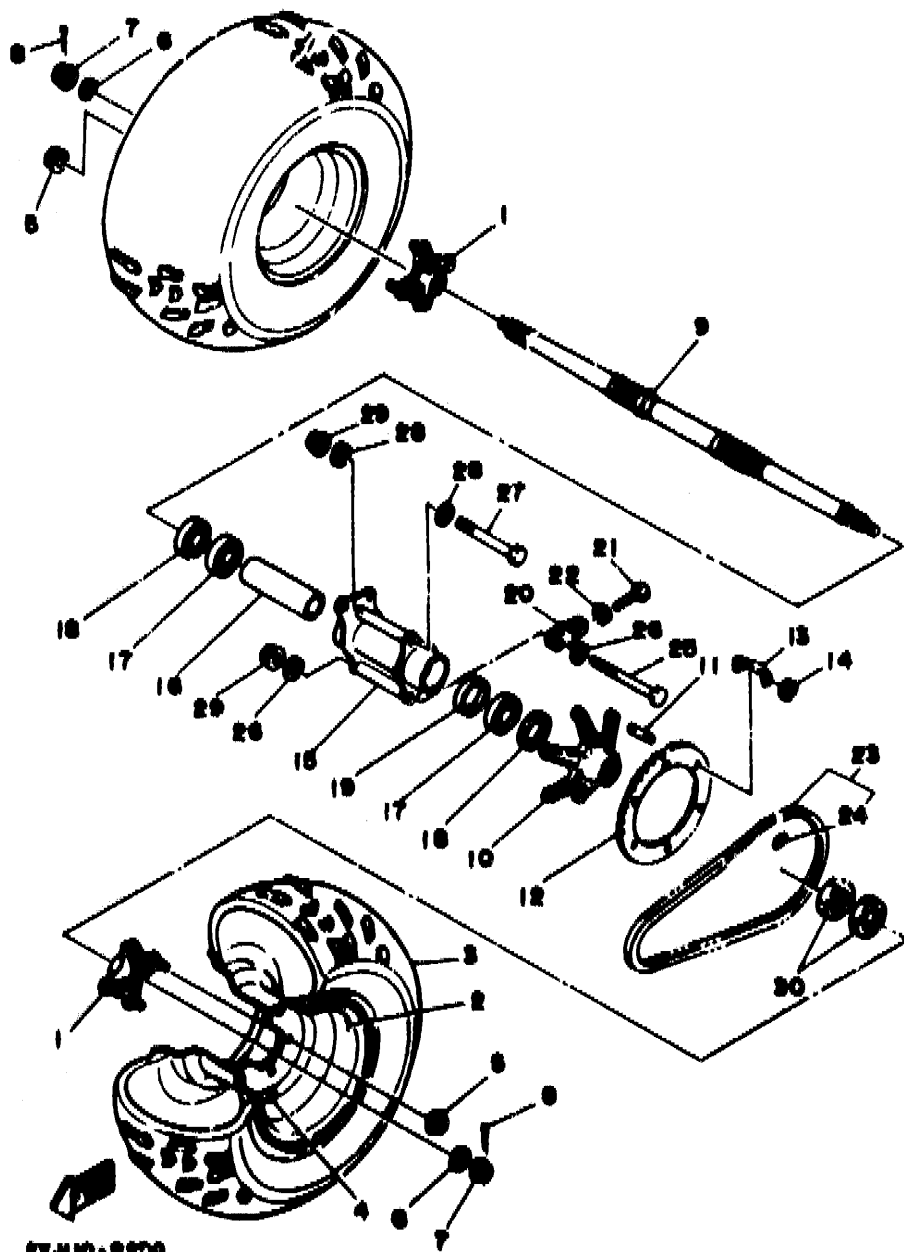


3JM100-0240

FIG. 24 FRONT WHEEL

REF. NO.	PART NO.	DESCRIPTION	Q'TY	REMARKS
29	90101-06278	BOLT	1	
30	95303-06600	NUT	1	
31	52H-2513A-00	PLATE, indicator	1	
32	93210-12327	O-RING	2	
33	93105-49023	OIL SEAL	1	
34	3JM-23511-00	KNUCKLE, steering 1	1	
35	2XJ-23512-00	ARM, knuckle 1 (LEFT)	1	
36	90105-10507	BOLT, washer based	2	
37	91401-20020	PIN, cotter	2	
38	90105-10549	BOLT, washer based	1	
39	95332-10600	NUT	1	
40	90201-100F7	WASHER, plate	1	
41	90171-10046	NUT, castle	1	
42	91401-20020	PIN, cotter	2	
43	3JM-23521-00	KNUCKLE, steering 2	1	
44	2XJ-23522-00	ARM, knuckle 2 (RIGHT)	1	
45	90105-10507	BOLT, washer based	2	
46	91401-20020	PIN, cotter	2	
47	90105-10549	BOLT, washer based	1	
48	95332-10600	NUT	1	
49	90201-100F7	WASHER, plate	1	
50	90171-10046	NUT, castle	1	
51	91401-20020	PIN, cotter	2	

D3

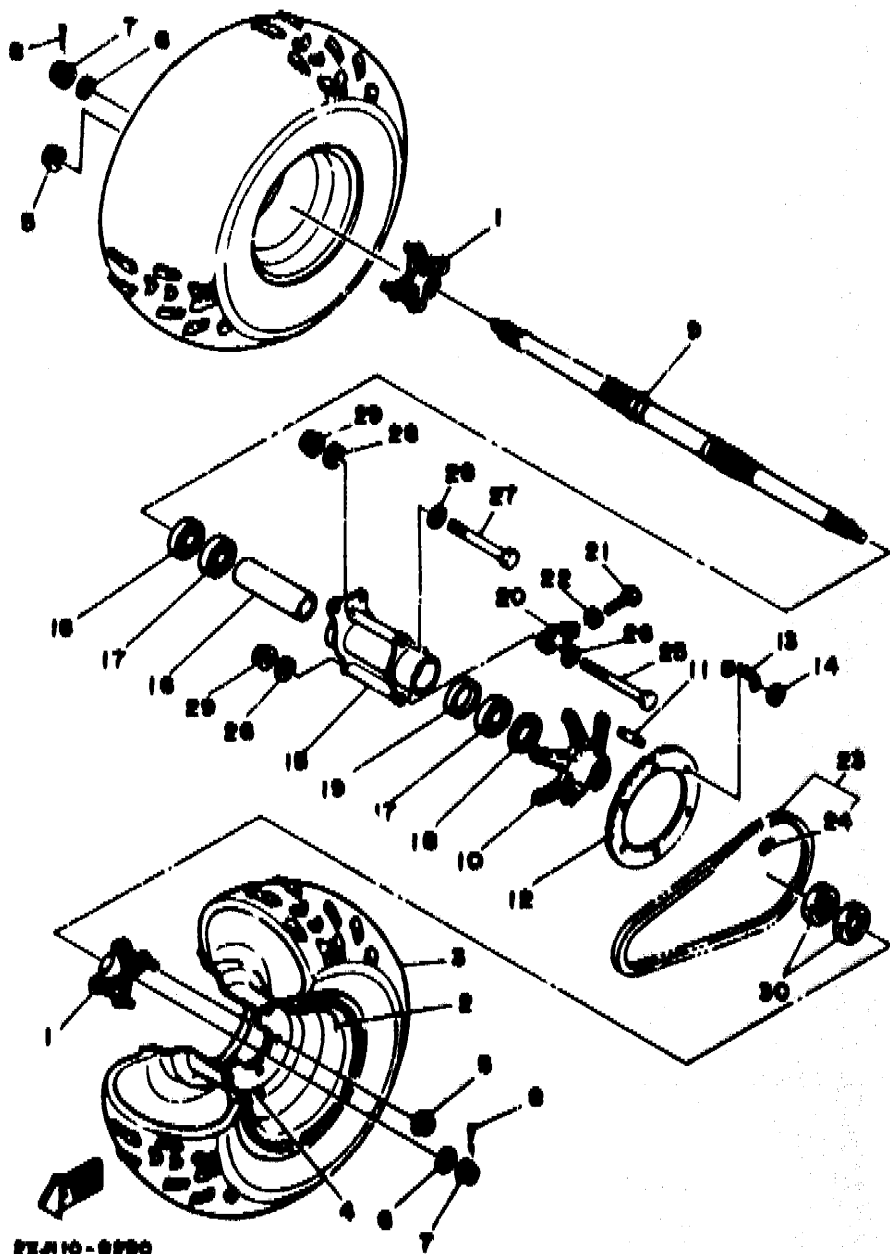


2XJ10-0200

FIG. 25 REAR WHEEL

REF. NO.	PART NO.	DESCRIPTION	Q'TY	REMARKS
1	2XJ-25383-00	COLLAR, wheel	2	
2	2VY-25390-00-UJ	REAR WHEEL COMP.	2	RADICAL WHITE
3	94110-085W9	TIRE (A721X10-8*KT895A T/L)	2	DUNLOP
4	93900-00030	VALVE, rim	2	
5	95701-10500	NUT, flange	8	
6	90201-140A6	WASHER, plate	2	
7	90171-14037	NUT, castle	2	
8	91401-3003G	PIN, cotter	2	
9	2XJ-25381-00	AXLE, wheel	1	
10	2XJ-25386-00	COLLAR, s'cket axle	1	
11	90116-08507	BOLT, stud	6	
12	2XJ-25440-20	SPROCKET, driven (40T)	1	
13	2XJ-25412-00	WASHER	3	
14	90170-08258	NUT	6	
15	2XJ-25311-00-35	HUB, rear	1	SILVER
16	2XJ-25317-00	SPACER, bearing	1	
17	93306-00705	BEARING	2	
18	93106-42026	OIL SEAL	2	
19	90387-561U7	COLLAR	1	
20	2XJ-25388-00	PULLER, chain 1	2	
21	90101-08615	BOLT	2	
22	95303-08600	NUT	2	
23	94581-08092	CHAIN	1	
24	94681-08011	JOINT, chain (D.I.D 520V6-FJ)	1	
25	90101-10678	BOLT	1	
26	90201-106F2	WASHER, plate	2	
27	90101-106/8	BOLT	1	
28	90201-106F2	WASHER, plate	2	

D4



EX-110-0200

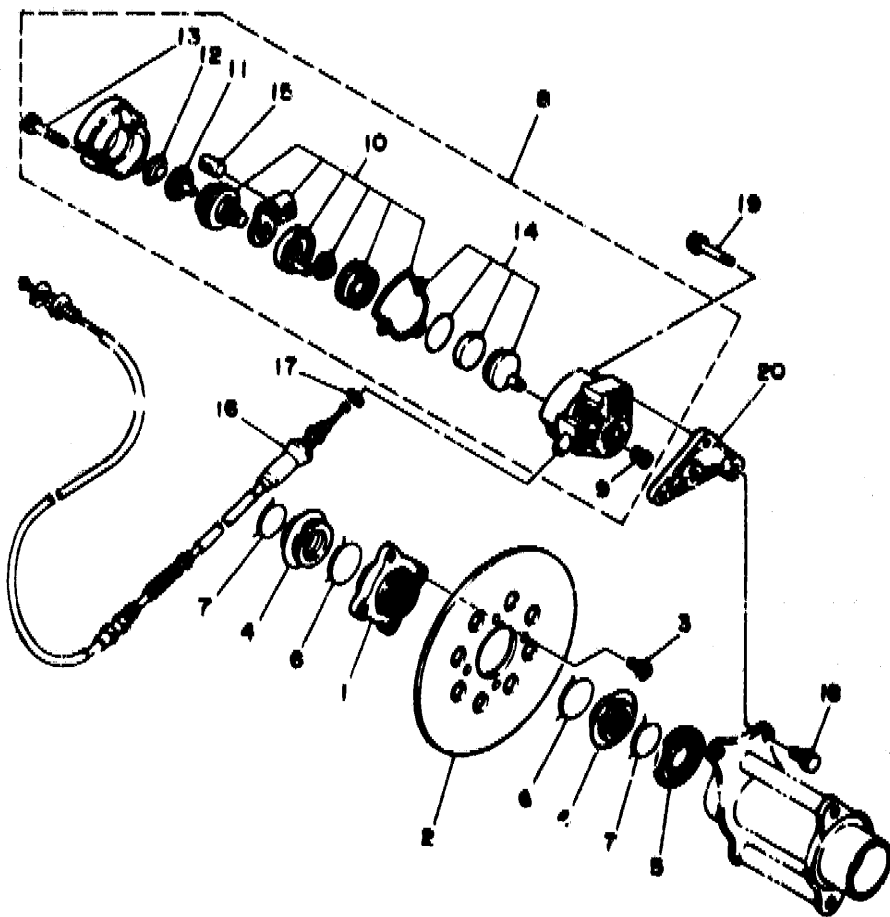
FIG. 26 REAR WHEEL

REF. NO.	PART NO.	DESCRIPTION	Q'TY	REMARKS
29	95702-10500	NUT, flange	2	
30	90170-33376	NUT	2	



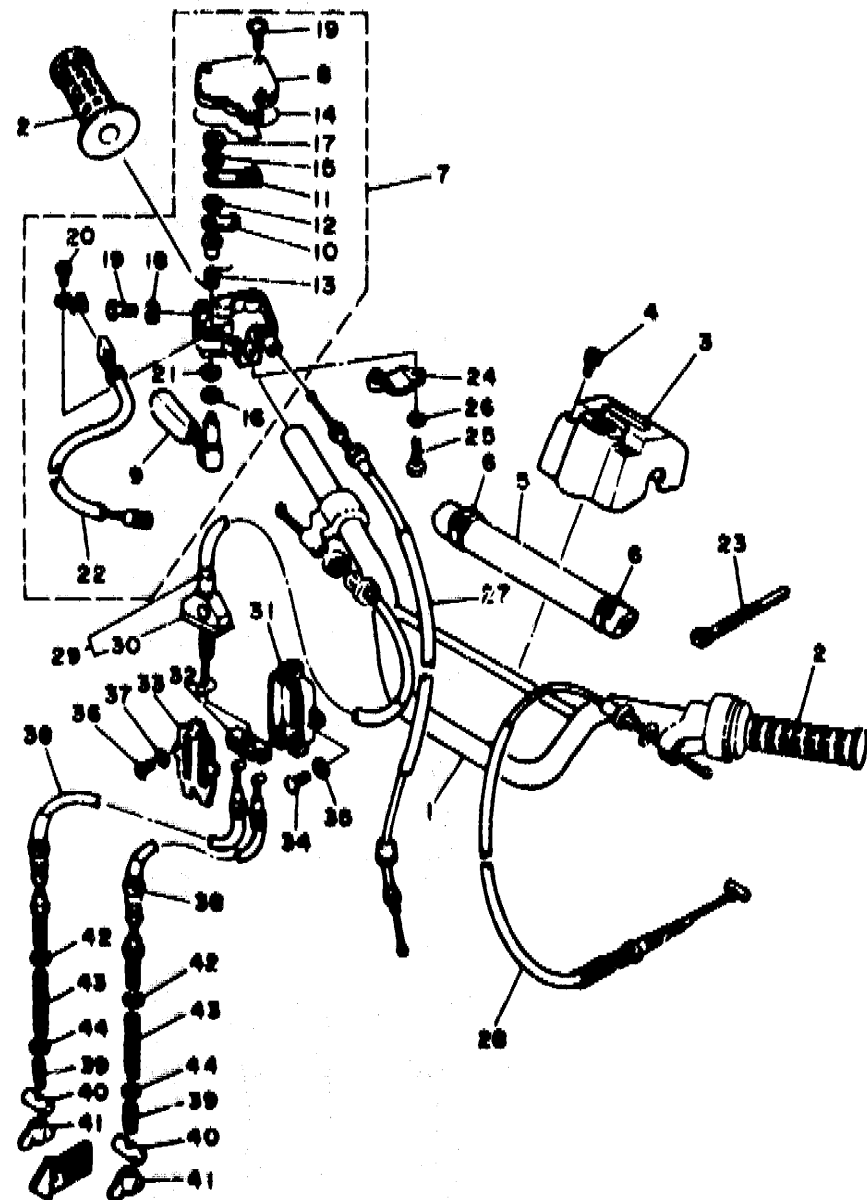
FIG. 26 REAR BRAKE CALIPER

REF. NO.	PART NO.	DESCRIPTION	QTY	REMARKS
1	2XJ-25712-00	BRACKET, disc	1	
2	2XJ-25831-50	DISC, brake	1	
3	90109-081F0	BOLT	4	
4	2XJ-25715-00	COVER 1	2	
5	2XJ-25367-00	COVER, hub dust	1	
6	93440-44158	CIRCLIP	2	
7	93440-36159	CIRCLIP	2	
8	2XJ-25810-50	CALIPER ASSY	1	
9	2XJ-25916-00	.PLUG	1	
10	2XJ-25726-01	.LEVER, brake	1	
11	2XJ-25771-00	.RATCHET, adjusting	1	
12	2XJ-25772-00	.SPRING, ratchet fix	1	
13	2XJ-25818-00	.BOLT, caliper	3	
14	2XJ-25811-00	.PAD, caliper 2	1	
15	2XJ-25734-00	.PIN 1	1	
16	2XJ-26551-00	CABLE, brake	1	
17	90201-080L7	WASHER, plate	1	
18	90105-08520	BOLT, washer based	2	
19	90105-08521	BOLT, washer based	2	
20	2XJ-25721-00	BRACKET, caliper	1	



3-770010-2200





34M7110-2270

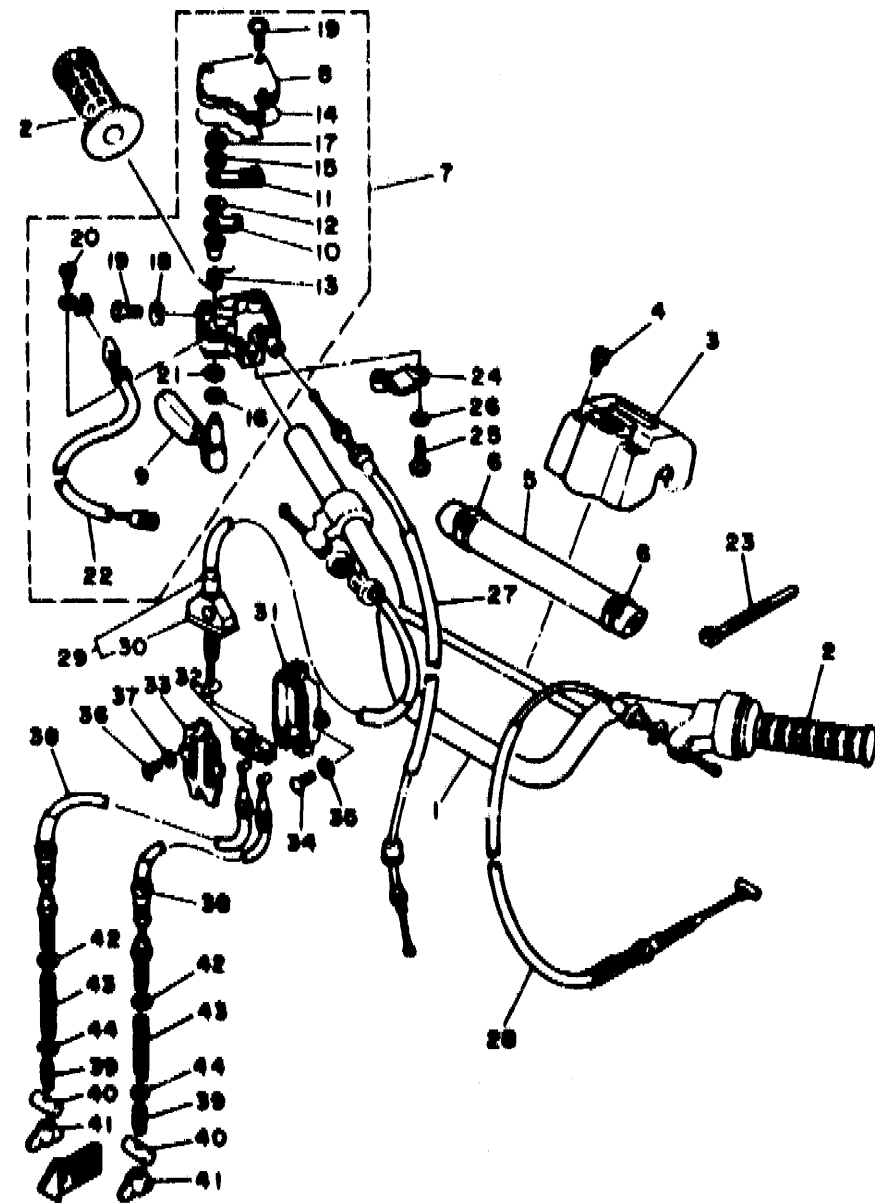
FIG. 27 STEERING HANDLE. CABLE

REF. NO.	PART NO.	DESCRIPTION	Q'TY	REMARKS
1	2GU-26111-00	HANDLEBAR	1	
2	3GB-26241-00	GRIP	2	
3	2GU-26124-00	PROTECTOR, handlebar	1	
4	90159-06093	SCREW, with washer	2	
5	3GD-2622K-00	PROTECTOR 1	1	
6	437-83936-01	BAND, switch cord	2	
7	2GU-26250-01	THROTTLE LEVER ASSY	1	
8	2GU-2628F-00	.CAP, gear	1	
9	2GU-2625G-01	.LEVER, throttle	1	
10	2GU-2625H-00	.ARM, throttle	1	
11	2GU-2625J-00	.ARM, throttle 2	1	
12	2GU-26259-00	.COLLAR	1	
13	2GU-26314-00	.SPRING	1	
14	2GU-2628G-00	.GASKET	1	
15	2GU-26398-00	.WASHER	1	
16	1NV-26129-00	.WASHER	1	
17	95612-05100	.NUT, u	1	
18	95306-05700	.NUT	1	
19	98506-05020	.SCREW, pan head	4	
20	98902-03006	.SCREW, blind	1	
21	93104-09025	.OIL SEAL	1	
22	2GU-82567-00	.SWITCH, throttle	1	
23	437-83936-01	BAND, switch cord	2	
24	4V4-82913-00	HOLDER, lever lower 1	1	
25	98506-05020	SCREW, pan head	2	
26	92906-05100	WASHER, spring	2	
27	2XJ-26311-00	CABLE, throttle 1	1	
28	2XJ-26335-00	CABLE, clutch	1	

D7

FIG. 27 STEERING HANDLE, CABLE

REF. NO.	PART NO.	DESCRIPTION	QTY	REMARKS
29	2XJ-26373-00	CABLE, brake 4	1	
30	52H-26362-00	.BOOT	1	
31	52H-26371-00	HOUSING, brake link	1	
32	52H-26347-01	JOINT, cable	1	
33	52H-26316-00	PLATE	1	
34	98501-05016	SCREW, pan head	2	
35	92901-05600	WASHER, plate	2	
36	98501-03008	SCREW, pan head	2	
37	92902-03600	WASHER, plate	2	
38	2XJ-26361-00	CABLE, brake	2	
39	90501-10782	SPRING, compression	2	
40	90249-12008	PIN	2	
41	90175-06019	NUT, wing	2	
42	99009-06600	CIRCLIP	2	
43	90501-123A0	SPRING, compression	2	
44	90209-06265	WASHER	2	



3407110-2270



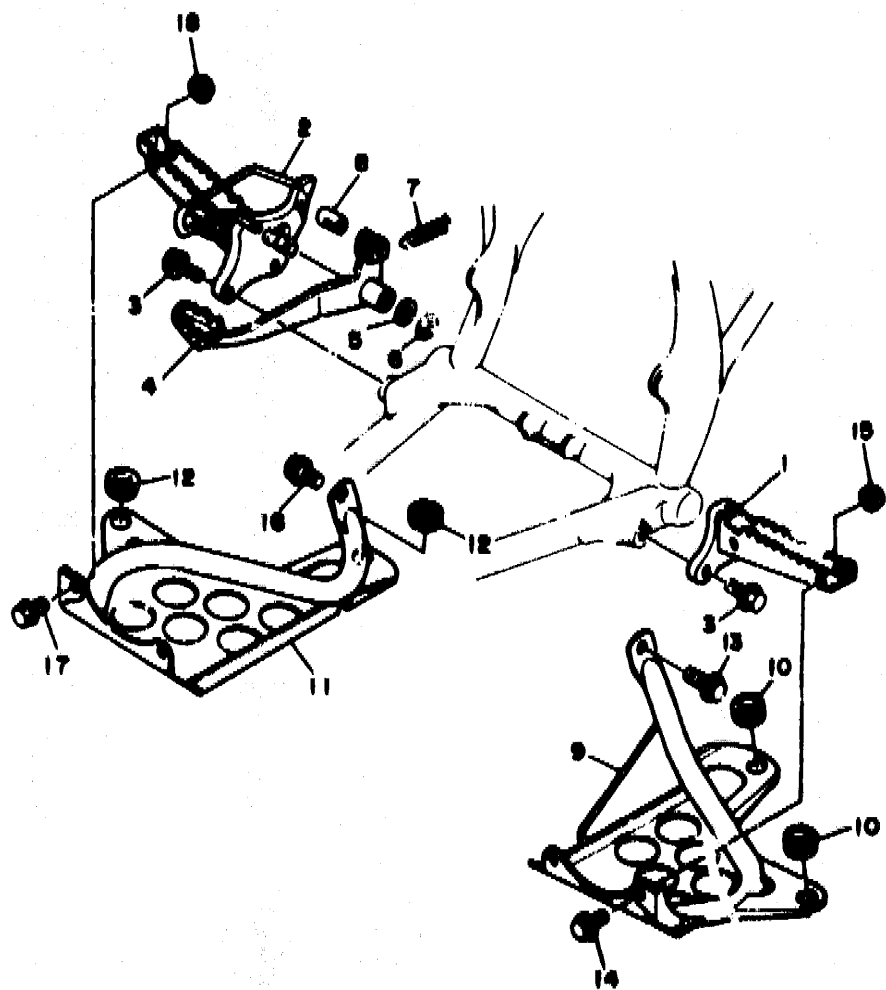


FIG. 28 STAND. FOOTREST

REF. NO.	PART NO.	DESCRIPTION	Q'TY	REMARKS
1	3JM-27411-00	FOOTREST 1	1	
2	3JM-27421-00	FOOTREST 2	1	
3	95811-10025	BOLT, flange	4	
4	3JM-27211-00	PEDAL, brake	1	
5	90201-15797	WASHER, plate	1	
6	93430-12008	CIRCLIP	1	
7	90506-20193	SPRING, tension	1	
8	90249-14202	PIN	1	
9	3JM-27445-00	PLATE 1	1	
10	90480-18411	GROMMET	2	
11	3JM-27446-00	PLATE 2	1	
12	90480-18411	GROMMET	2	
13	95821-08016	BOLT, flange	1	
14	92011-08016	SCREW	2	
15	95701-08500	NUT, flange	2	
16	95821-08016	BOLT, flange	1	
17	92011-08016	SCREW	2	
18	95701-08500	NUT, flange	2	

3JM200-0800

D2

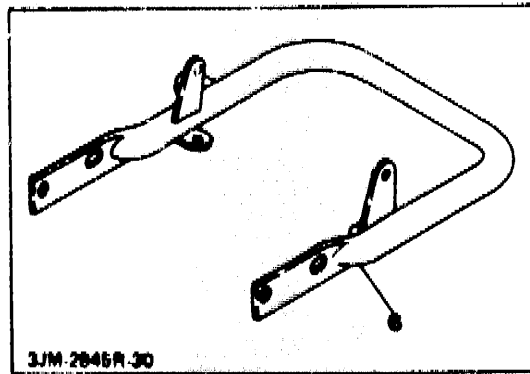
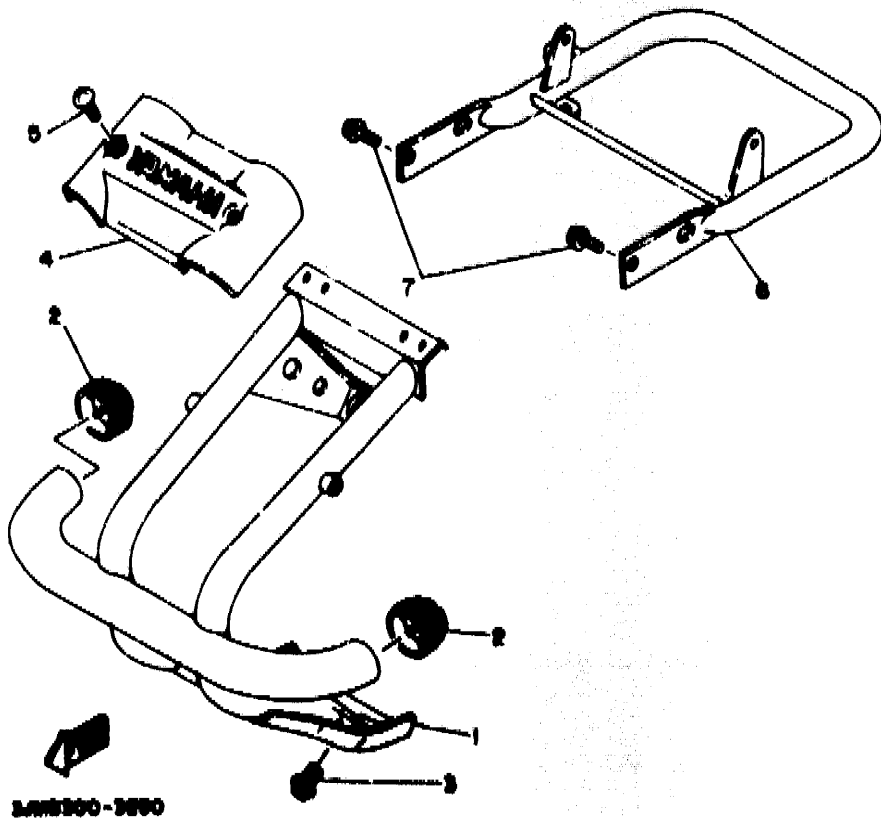


FIG. 29 GUARD

REF. NO.	PART NO.	DESCRIPTION	Q'TY	REMARKS
1	3JM-2845N-10	BAR, carry front	1	
2	2HR-28415-00	DAMPER 1	2	
3	95811-08016	BOLT, flange	3	
4	2XJ-2842M-00	COVER 1	1	
5	90154-05001	SCREW, binding	2	
6	3JM-2845R-10	BAR, carry rear	1	UR FOR CANADA
	3JM-2845R-30	BAR, carry rear	1	UR FOR EUROPE
7	95811-08016	BOLT, flange	3	



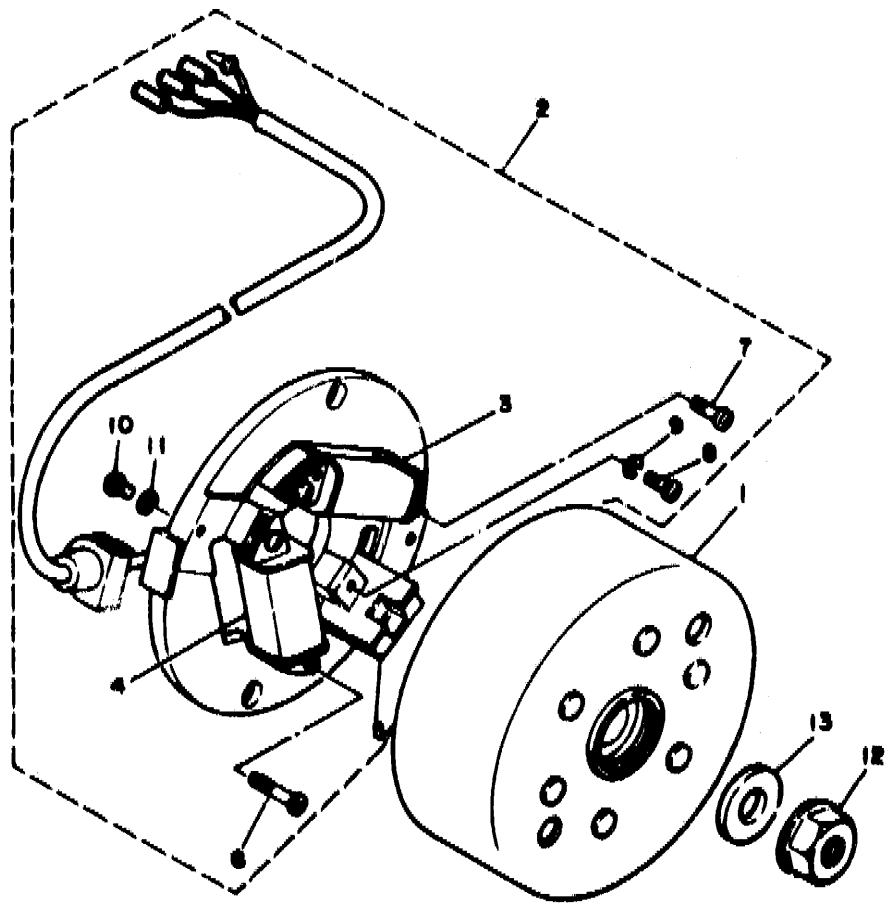


FIG. 30 GENERATOR

REF. NO.	PART NO.	DESCRIPTION	Q'TY	REMARKS
1	2XJ-85550-M0	ROTOR ASSY	1	
2	3JM-85560-00	BASE ASSY	1	
3	37A-85520-M1	.COIL, charge	1	
4	2XJ-81313-M0	.COIL, lighting 1	1	
5	2AL-85530-M0	.COIL, pulser	1	
6	98511-04020	.SCREW, pan head	2	
7	98511-04012	.SCREW, pan head	2	
8	98580-04010	.SCREW, pan head	1	
9	92901-04100	.WASHER, spring	1	
10	98580-04008	.SCREW, pan head	1	
11	92901-04100	.WASHER, spring	1	
12	90179-12421	NUT	1	
13	90201-123L6	WASHER, plate	1	

3-WE100-0300

D11

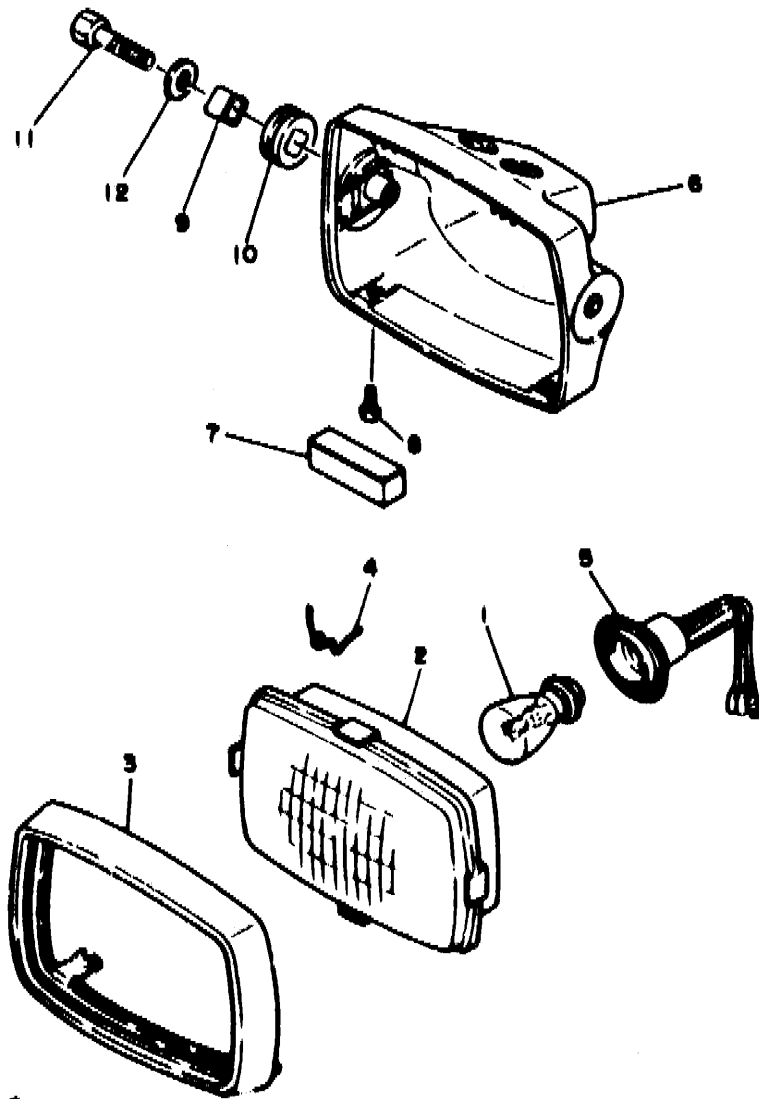
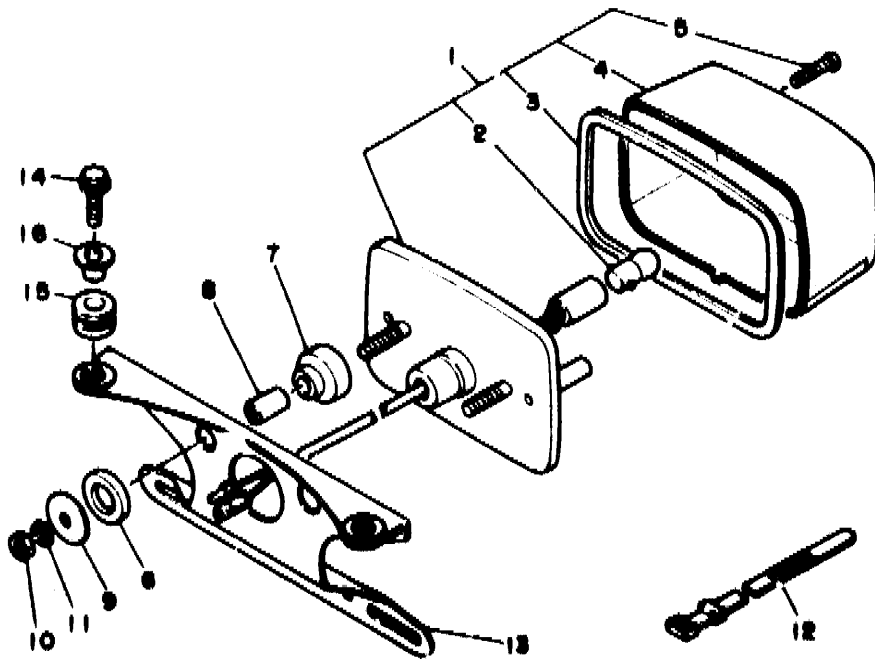


FIG. 31 HEADLIGHT

REF. NO.	PART NO.	DESCRIPTION	Q'TY	REMARKS
1	21V-84314-00	BULB, head light (12V-45/45W)	1	
2	52H-84320-00	LENS ASSY	1	
3	52H-84315-00	RIM, headlight	1	
4	52H-84324-00	SPRING, reflector	4	
5	52H-84340-00	SOCKET CORD ASSY 1	1	
6	2XJ-84330-00	BODY ASSY	1	
7	2XJ-84345-00	DAMPER, headlight	1	
8	98501-05012	SCREW, pan head	2	
9	52H-84338-00	COLLAR, body fitting	2	
10	52H-84345-00	DAMPER, headlight	2	
11	97001-08030	BOLT	2	
12	90201-08753	WASHER, plate	2	

2.1000-0010

FIG. 32 TAILLIGHT 1 (FOR CANADA)

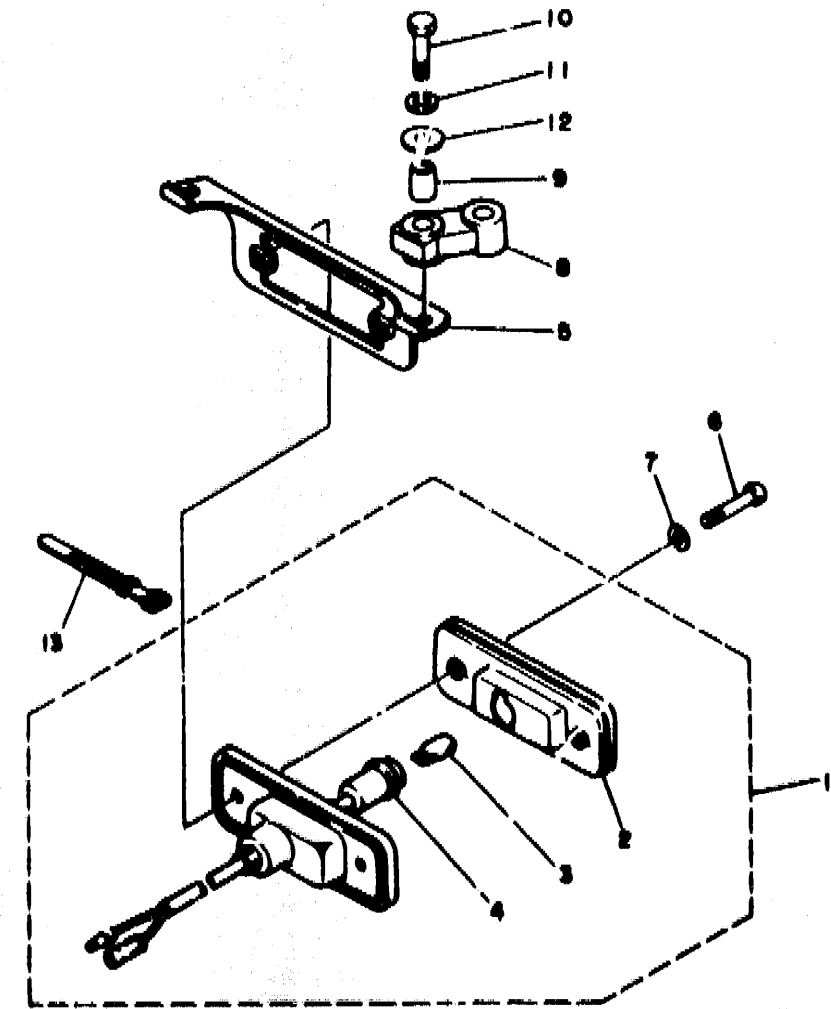


REF. NO.	PART NO.	DESCRIPTION	Q'TY	REMARKS
1	3GD-84710-00	TAILLIGHT UNIT ASSY	1	
2	3GD-84714-00	.BULB (12V-7.5W)	1	
3	1KB-84523-00	.GASKET, lens	1	
4	1KB-84521-00	.LENS, taillight	1	
5	2E9-84524-00	.SCREW, lens fitting	2	
6	90202-14077	WASHER, plate	2	
7	90480-10509	GROMMET	2	
8	90387-06387	COLLAR	2	
9	90201-06074	WASHER, plate	4	
10	95303-06600	NUT	2	
11	92990-06100	WASHER, spring	2	
12	437-83936-01	BAND, switch cord	1	
13	3GB-84702-00	BRACKET, taillight	1	
14	95801-06025	BOLT, flange	2	
15	90480-14023	GROMMET	2	
16	90387-06388	COLLAR	2	

3.0000-0000

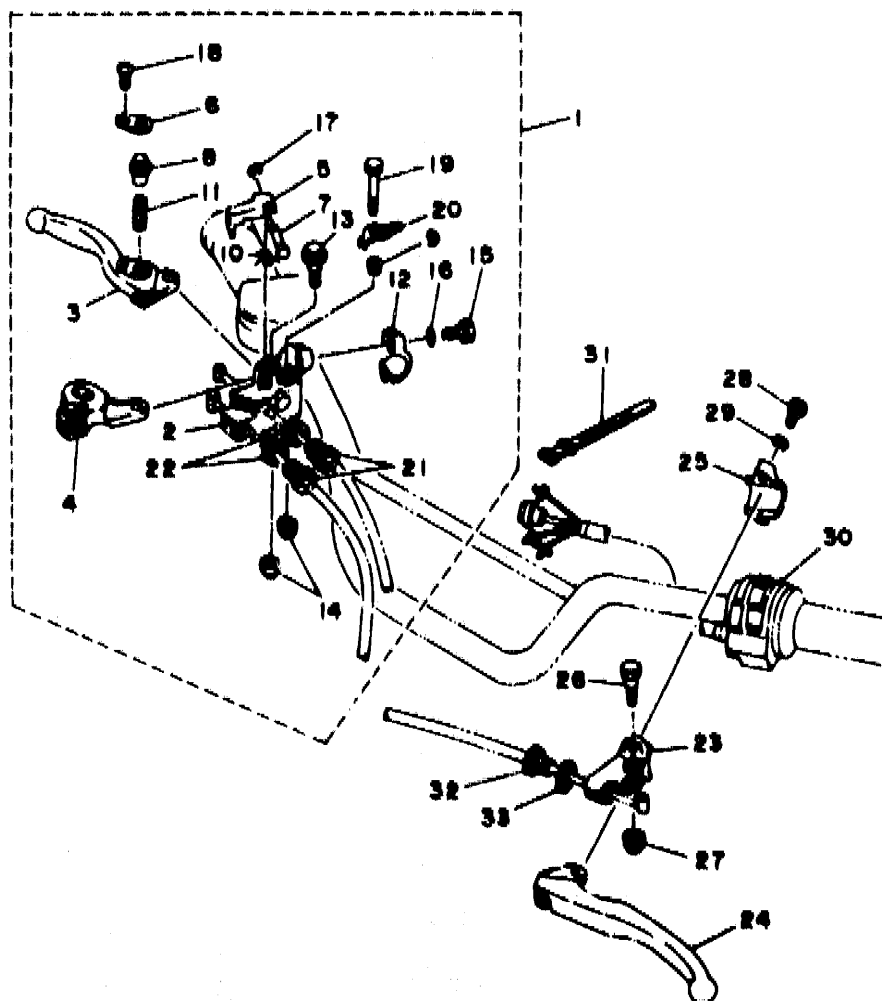
FIG. 33 TAILLIGHT 2 (FOR EUROPE)

REF. NO.	PART NO.	DESCRIPTION	Q'TY	REMARKS
1	38W-84710-00	TAILLIGHT UNIT ASSY	1	
2	38W-84721-00	.LENS, taillight	1	
3	3F9-84744-00	.BULB (12V-3.8W)	1	
4	38W-84717-00	.CORD, taillight	1	
5	1UY-84702-00	BRACKET, taillight	1	
6	98511-04020	SCREW, pan head	2	
7	92901-04600	WASHER, plate	2	
8	38W-84736-00	DAMPER, tail 1	2	
9	90387-06299	COLLAR	4	
10	97001-06025	BOLT	4	
11	92906-06100	WASHER, spring	4	
12	90201-06059	WASHER, plate	4	
13	437-83936-01	BAND, switch cord	1	



38W-84710-000

D14



3JM7110-2330

FIG. 34 HANDLE SWITCH, LEVER

REF. NO.	PART NO.	DESCRIPTION	Q'TY	REMARKS
1	3JM-82920-10	LEVER HOLDER ASSY (RIGHT)	1	
2	3GH-82921-01	.HOLDER, lever 2	1	
3	3GH-83922-00	.LEVER 2	1	
4	3GH-83912-00	.LEVER 1	1	
5	3JM-83965-00	.LEVER, lock	1	
6	1UY-83935-00	.COVER	1	
7	3FA-83967-00	.PIN, lock 1	1	
8	1UY-83967-00	.PIN, lock 1	1	
9	1UY-83913-00	.COLLAR, lever 1	1	
10	3GH-83966-00	.SPRING, return	1	
11	1UY-83962-00	.SPRING	1	
12	2XJ-82913-00	.HOLDER, lever lower 1	1	
13	90109-06797	.BOLT	1	
14	95601-06100	.NUT, u	2	
15	97026-06022	.BOLT	2	
16	92906-06100	.WASHER, spring	2	
17	3FA-26466-00	.RING, snap	1	
18	98506-03008	.SCREW, pan head	1	
19	95806-06040	.BOLT	1	
20	3JM-8331L-10	.PLATE, stopper	1	
21	90123-08046	.BOLT	2	
22	90179-08148	.NUT	2	
23	38V-82911-00	HOLDER, lever 1	1	
24	1NV-83912-00	LEVER 1	1	
25	38V-82913-00	HOLDER, lever lower 1	1	
26	90109-06799	BOLT	1	
27	95601-06100	NUT, u	1	
28	98506-05018	SCREW, pan head	2	

D15

CONTENTS

ENGINE

Cylinder	B2
Crankshaft, Piston	B3 ~ B4
Oil Pump	B5
Intake	B6
Carburetor	B7 ~ B8
Exhaust	B9
Crankcase	B10
Crankcase Cover 1	B11
Starter	B12
Clutch	B13
Transmission	B14 ~ B15
Shift Cam. Fork	C2
Shift Shaft	C3

CHASSIS

Frame	C4
Front Fender	C5
Rear Fender	C6
Oil Tank	C7
Rear Arm	C8
Rear Suspension	C9
Front Suspension, Wheel	C10 ~ C11
Steering	C12 ~ C13
Fuel Tank	C14
Seat	C15
Front Wheel	D2 ~ D3
Rear Wheel	D4 ~ D5
Rear Brake Caliper	D6
Steering Handle, Cable	D7 ~ D8

Stand, Footrest	D9
Guard	D10
Generator	D11
Headlight	D12
Taillight 1 (For CANADA)	D13
Taillight 2 (For EUROPE)	D14
Handle Switch, Lever	D15 ~ E2
Electrical 1	E3
Electrical 2 (For CANADA, EUROPE)	E4
Emblem, Label 1	E5

INDEX

Numerical Index	M1 ~ M3
-----------------------	---------

CONTENTS

ENGINE

Cylinder	B2
Crankshaft, Piston	B3 ~ B4
Oil Pump	B5
Intake	B6
Carburetor	B7 ~ B8
Exhaust	B9
Crankcase	B10
Crankcase Cover 1	B11
Starter	B12
Clutch	B13
Transmission	B14 ~ B15
Shift Cam, Fork	C2
Shift Shaft	C3

CHASSIS

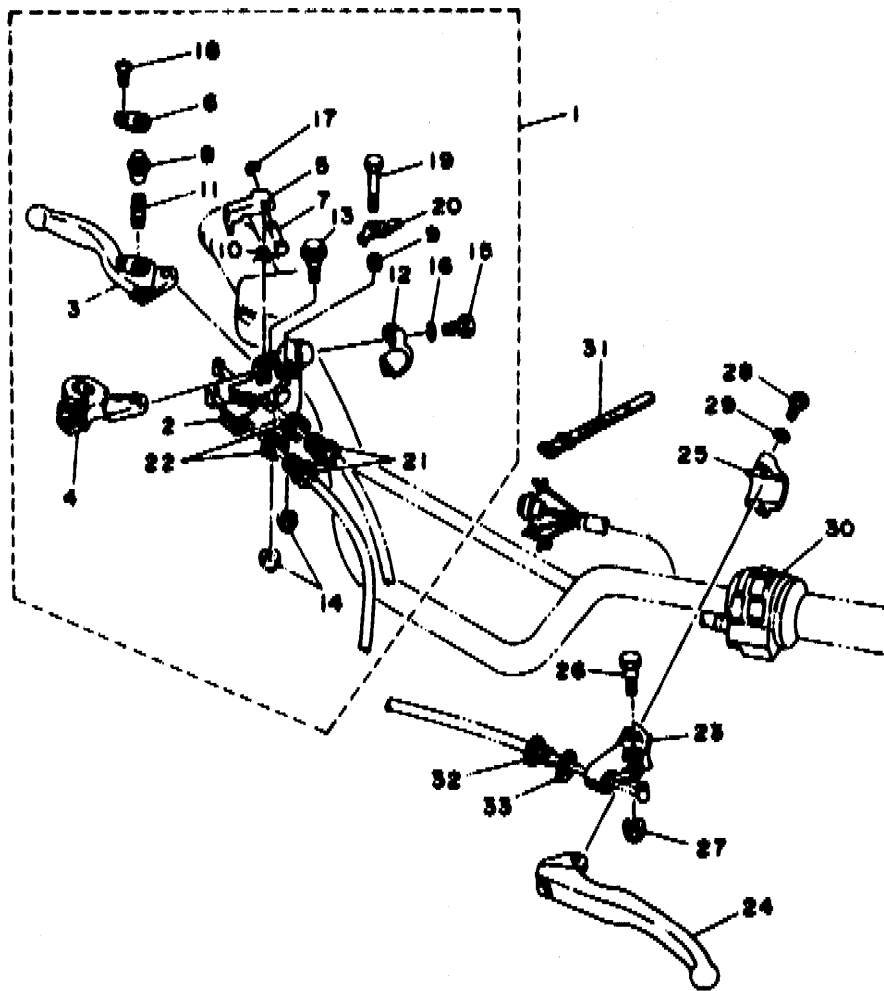
Frame	C4
Front Fender	C5
Rear Fender	C6
Oil Tank	C7
Rear Arm	C8
Rear Suspension	C9
Front Suspension, Wheel	C10 ~ C11
Steering	C12 ~ C13
Fuel Tank	C14
Seat	C15
Front Wheel	D2 ~ D3
Rear Wheel	D4 ~ D5
Rear Brake Caliper	D6
Steering Handle, Cable	D7 ~ D8

Stand, Footrest	D9
Guard	D10
Generator	D11
Headlight	D12
Taillight 1 (For CANADA)	D13
Taillight 2 (For EUROPE)	D14
Handle Switch, Lever	D15 ~ E2
Electrical 1	E3
Electrical 2 (For CANADA, EUROPE)	E4
Emblem, Label 1	E5

INDEX

Numerical Index	M1 ~ M3
-----------------------	---------

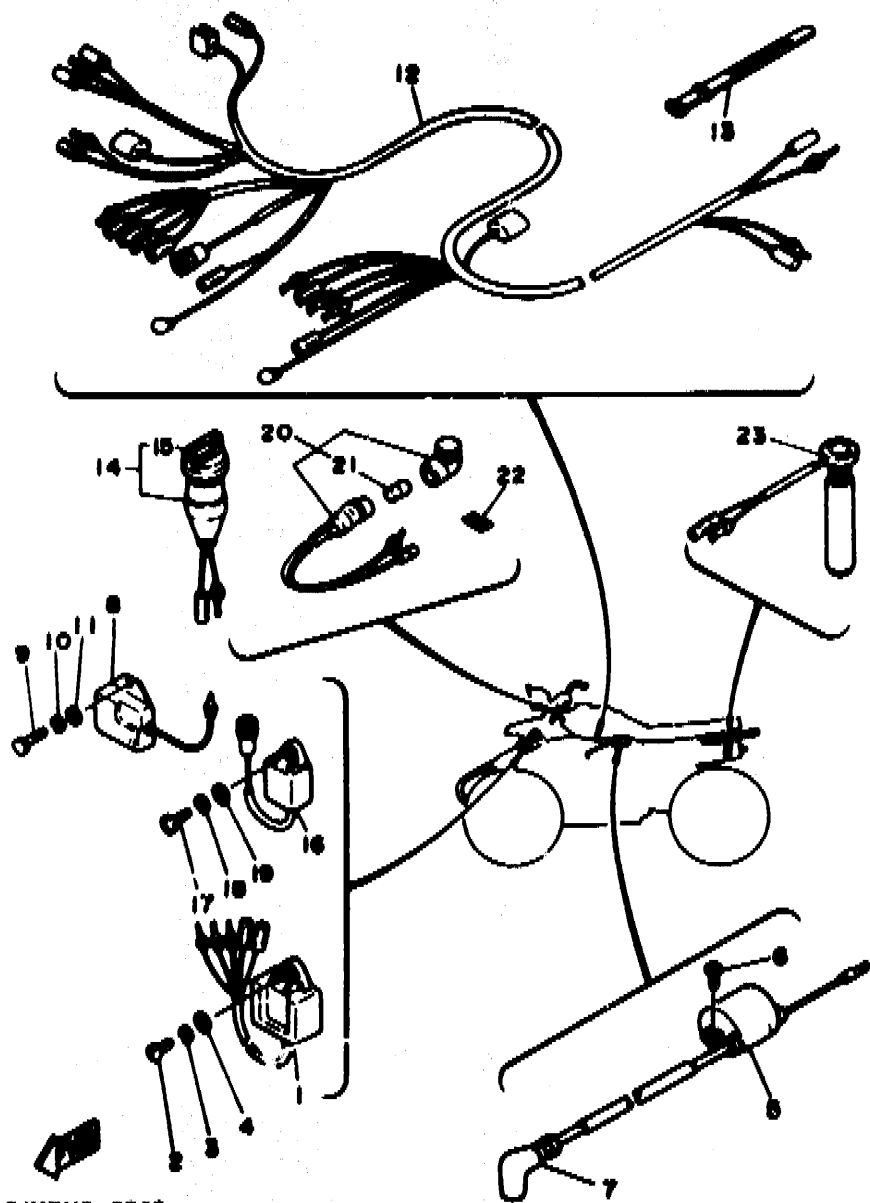
FIG. 34 HANDLE SWITCH, LEVER



REF. NO.	PART NO.	DESCRIPTION	Q'TY	REMARKS
29	92906-05100	WASHER, spring	2	
30	2XJ-83975-01	SWITCH, handle 2	1	
31	427-83936-01	CAND, switch cord	2	
32	90123-08046	BOLT	1	
33	90179-08148	NUT	1	

3JM7110-2330

E2



BJM7110-2840

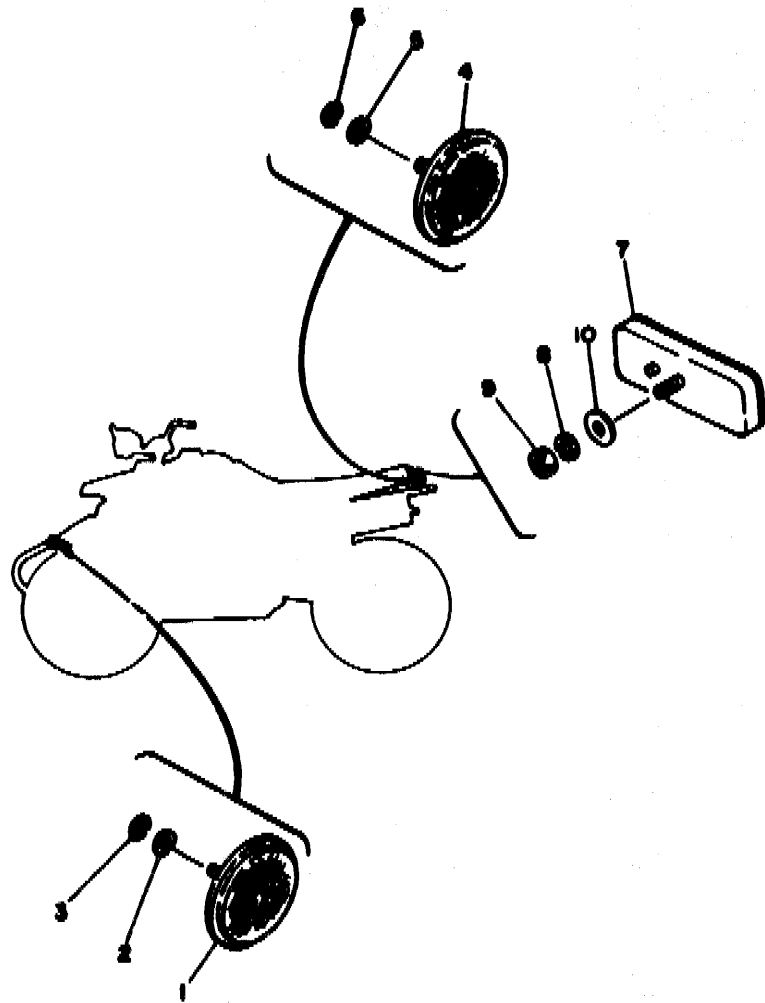
FIG. 36 ELECTRICAL 1

REF. NO.	PART NO.	DESCRIPTION	Q'TY	REMARKS
1	3FL-85540-00	C.D.I. UNIT ASSY	1	
2	92501-06020	SCREW, pan head	1	
3	92990-06100	WASHER, spring	1	
4	92901-06600	WASHER, plate	1	
5	5MC-82310-M0	IGNITION COIL ASSY	1	
6	98502-06016	SCREW, pan head	2	
7	2TV-82370-00	PLUG CAP ASSY	1	WITH NOISE SUPPRESSOR
8	82F-81910-A0	VOLTAGE REGULATOR ASSY	1	
9	92501-06020	SCREW, pan head	2	
10	92990-06100	WASHER, spring	2	
11	92901-06600	WASHER, plate	2	
12	2XJ-82590-00	WIRE HARNESS ASSY	1	
13	803-82591-00	BAND	3	
14	2XJ-82510-01	MAIN SWITCH ASSY	1	
15	3HN-82579-00	.CAP, key	1	
16	2GU-85590-M0	CONTROL UNIT ASSY	1	
17	92501-06020	SCREW, pan head	1	
18	92990-06100	WASHER, spring	1	
19	92901-06600	WASHER, plate	1	
20	2XJ-83530-00	PILOT LIGHT ASSY	1	
21	2XJ-83516-00	.BULB (12V-3.4W)	1	
22	4U3-83585-00	LABEL	1	
23	2XJ-85720-01	OIL LEVEL GAUGE ASSY	1	

E3

FIG. 36 ELECTRICAL 2 (FOR CANADA, EUROPE)

REF. NO.	PART NO.	DESCRIPTION	Q'TY	REMARKS
1	2EK-85111-00	REFLECTOR, front 1	2	
2	92990-05200	WASHER, plain	2	
3	92901-05100	WASHER, spring	2	
4	449-85131-02	REFLECTOR, rear 1	2	
5	92990-05200	WASHER, plain	2	
6	92901-05100	WASHER, spring	2	
7	3Y6-85130-01	REAR REFLECTOR ASSY	1	
8	92901-05100	WASHER, spring	1	
9	95303-05600	NUT	1	
10	90201-05029	WASHER, plate	1	



3-8860-0000

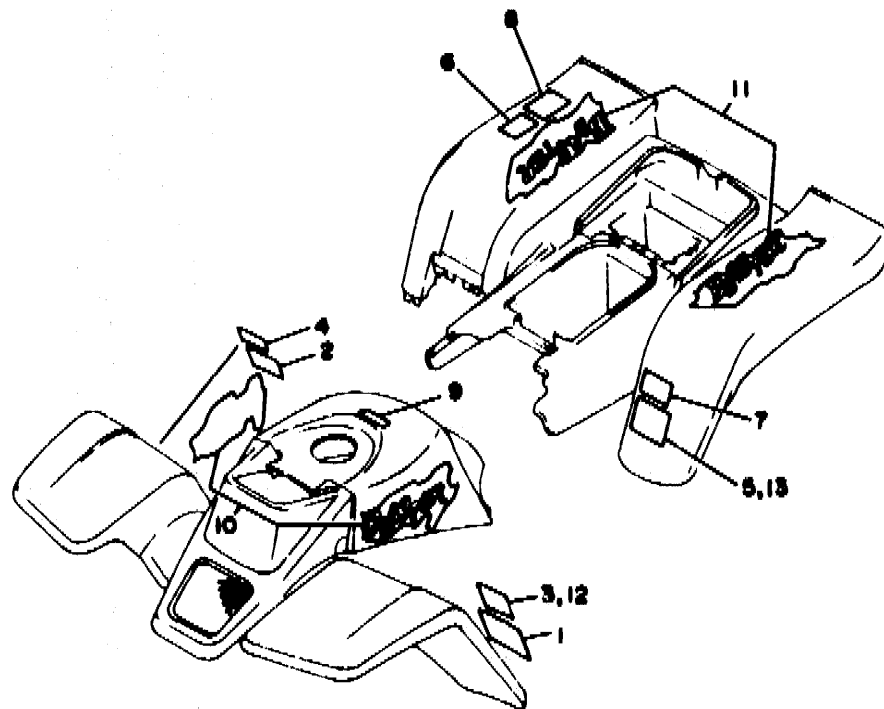


FIG. 37 EMBLEM LABEL 1

REF. NO.	PART NO.	DESCRIPTION	Q'TY	REMARKS
1	3JN-21568-00	LABEL, warning	1	FOR ENGLISH
2	3JN-21568-11	LABEL, warning	1	FOR FRENCH IN CANADA
3	3FA-2415A-00	LABEL, caution	1	FOR ENGLISH
4	3FA-2415A-10	LABEL, caution	1	FOR FRENCH
5	3JM-21696-00	LABEL, caution	1	FOR ENGLISH
6	3JM-21696-10	LABEL, caution	1	FOR FRENCH
7	3JN-2151H-00	LABEL 5	1	FOR ENGLISH
8	3JN-2151H-11	LABEL 5	1	FOR FRENCH IN CANADA
9	3GH-2416E-00	LABEL, caution canada	1	UR FOR CANADA
10	3JM-21570-40	GRAPHIC SET, front fender	1	
11	3JM-2165A-40	GRAPHIC SET, rear fender	1	
12	3HP-21568-10	LABEL, warning	1	FOR FRENCH
13	3HP-21668-10	LABEL, tire	1	FOR FRENCH

3.45300-3370

E3

CONTENTS

ENGINE

Cylinder	B2
Crankshaft, Piston	B3 ~ B4
Oil Pump	B5
Intake	B6
Carburetor	B7 ~ B8
Exhaust	B9
Crankcase	B10
Crankcase Cover 1	B11
Starter	B12
Clutch	B13
Transmission	B14 ~ B15
Shift Cam, Fork	C2
Shift Shaft	C3

CHASSIS

Frame	C4
Front Fender	C5
Rear Fender	C6
Oil Tank	C7
Rear Arm	C8
Rear Suspension	C9
Front Suspension, Wheel	C10 ~ C11
Steering	C12 ~ C13
Fuel Tank	C14
Seat	C15
Front Wheel	D2 ~ D3
Rear Wheel	D4 ~ D5
Rear Brake Caliper	D6
Steering Handle, Cable	D7 ~ D8

Stand, Footrest	D9
Guard	D10
Generator	D11
Headlight	D12
Taillight 1 (For CANADA)	D13
Taillight 2 (For EUROPE)	D14
Handle Switch, Lever	D15 ~ E2
Electrical 1	E3
Electrical 2 (For CANADA, EUROPE)	E4
Emblem, Label 1	E5

INDEX

Numerical Index	M1 ~ M3
-----------------------	---------

NUMERICAL INDEX

PART NO.	GRID NO.	PART NO.	GRID NO.	PART NO.	GRID NO.	PART NO.	GRID NO.	PART NO.	GRID NO.	PART NO.	GRID NO.
5HO-W2536-00	D- 2	137-14153-00	B- 7	1V1-16324-00	B-13	3JM-21691-00	C- 6	2XJ-23813-00	C-12	2XJ-25772-00	D- 6
	D- 2	2GU-14153-00	B- 7	1HX-16331-00	B-13	3JM-21696-00	E- 5	2XJ-23831-01	C-12	2XJ-25810-50	D- 6
2XJ-11111-00	B- 2	2GU-14161-00	B- 7	37F-16351-00	B-13	3JM-21696-10	E- 5		C-12	2XJ-25811-00	D- 6
576-11127-00	B- 2	2GU-14171-00	B- 7	1W1-16356-02	B-13	2XJ-2171A-70	C- 5	1UY-23841-01	C-12	2XJ-25818-00	D- 6
3R6-11162-00	B- 2	304-14184-00	B- 7	2J5-16357-00	B-13	2XJ-2172W-00	C- 7		C-12	2XJ-25831-50	D- 6
3R9-11162-00	B- 2	4LO-14185-00	B- 7	30X-16358-00	B-13	2XJ-21746-00	C- 7	1UY-23845-01	C-12	2XJ-25916-00	D- 6
	B- 2	537-14186-00	B- 7	2TV-16371-00	B-13	2XJ-21751-01	C- 7		C-12	2GU-26111-00	D- 7
2XJ-11181-00	B- 2	12R-14191-00	B- 7	37F-16380-02	B-13	2N3-21771-01	C- 7	2XJ-23868-00	C-12	2GU-26124-00	D- 7
10V-1131E-00	B- 2	4LO-14197-00	B- 7	1HX-16383-00	B-13	2XJ-22110-00-35	C- 8	1UY-23894-01	C-12	1NV-26129-00	D- 7
2XJ-11311-01	B- 2	2GU-14243-00	B- 7	2XJ-17121-00	B-14	2XJ-22123-00	C- 8	2XJ-24110-00	C-14	3GD-2622K-00	D- 7
3JM-11351-00	B- 2	2XJ-14412-01	B- 6	2XJ-17131-00	B-14	2XJ-22124-00	C- 8	2XJ-2414H-01	C-14	3GB-26241-00	D- 7
37F-11400-00	B- 3	2XJ-14437-00	B- 6	2XJ-17151-00	B-14	156-22127-00	C- 8	3JM-2414J-00	C-14	2GU-2625G-01	D- 7
37F-11412-00	B- 3	2XJ-14451-00	B- 6	2XJ-17161-00	B-14	1W1-22128-00	C- 9	3FA-2415A-00	E- 5	2GU-2625H-00	D- 7
37F-11422-00	B- 3	36F-14452-00	B- 6	2XJ-17211-00	B-14	2K6-22128-01	C- 8	3FA-2415A-10	E- 5	2GU-2625J-00	D- 7
37F-11454-00	B- 3	2XJ-14453-00	B- 6	2XJ-17221-00	B-14	2JN-22141-00	C- 8	3GH-2416E-00	E- 5	2GU-26250-01	D- 7
37F-11530-00	B- 4	59V-14457-00	B- 6	2XJ-17231-00	B-14	336-22141-00	C-10	55W-24500-01	C-14	2GU-26259-00	D- 7
10V-11536-01	B- 3	2XJ-14458-00	B- 6	2XJ-17241-00	B-14		C-11	4X8-24512-00	C-14	2GU-2628F-00	D- 7
3JM-11601-00	B- 3	2XJ-14459-00	B- 6	2XJ-17251-00	B-14	2GU-22151-10	C- 8	4X8-24534-00	C-14	2GU-2628G-00	D- 7
3JM-11601-10	B- 3	2XJ-14477-00	B- 6	2XJ-17261-00	B-14	2GU-22155-00	C- 8	1UY-24610-00	C-14	2GU-2629K-00	C-12
3JM-11601-20	B- 3	2XJ-14610-00	B- 9	2XJ-17411-00	B-14	30X-22178-00	C- 4	2XJ-24710-90	C-15	52H-2631G-00	D- 8
2XJ-11631-01-97	B- 3	3PA-14613-10	B- 9	37F-17421-00	B-14	4V4-22184-00	C- 4	2XJ-24731-90	C-15	2GU-26311-00	D- 7
4LO-11633-00	B- 3	1W2-14714-00	B- 9	5HO-17456-00	B-14	2XJ-2219X-00	C- 8	2XJ-25111-00	D- 2	2GU-26314-00	D- 7
2XJ-11635-01	B- 3	2XJ-14718-00	B- 9	10V-17471-00	B-15	38W-22199-00	C- 8	1UY-25117-00	D- 2	2GU-2633K-00	B- 8
2XJ-11636-01	B- 3	2XJ-14752-00	B- 9	37F-18101-02	C- 3	2XJ-22201-20	C- 9	2XJ-25121-00	D- 2	2XJ-26335-00	D- 7
436-11651-00	B- 3	2XJ-14753-00	B- 9	2XJ-18111-00	C- 3	2XJ-22210-20-P1	C- 9	52H-2513A-00	D- 2	52H-26347-01	D- 8
37F-11681-00	B- 3	2XJ-14755-10	B- 9	132-18113-01	C- 3	2XJ-22212-00-P1	C- 9		D- 3	2XJ-26351-00	D- 6
2XJ-13101-00	B- 5	4BD-14766-00	B- 9	10V-18140-00	C- 2	22W-22214-01	C- 9	524-25155-00	D- 2	2XJ-26361-00	D- 8
137-13115-00	B-10	565-14771-00	B- 9	37F-18511-00	C- 2	1MU-22216-00	C- 9	52H-25156-00	D- 2	52H-26362-00	D- 8
3MT-13116-00	B- 5	2XJ-1490J-00	B- 7	37F-18512-00	C- 2	22W-22223-00	C- 9	2XJ-25169-00	D- 2	52H-26371-00	D- 8
367-13174-00	B-11	2GU-14952-00	B- 7	37F- 8513-00	C- 2	1NU-22226-00	C- 9	2XJ-25180-00-UJ	D- 2	2XJ-26373-00	D- 8
10V-13175-00	B- 5	2XJ-15111-01	B-10	5X5- 8531-01	C- 2	2YJ-23174-00	C-13	2XJ-25311-00-35	D- 4	2GU-26398-00	D- 7
1E7-13176-00	B- 5	2XJ-15121-00	B-10	34X- 8535-00	C- 2	2XJ-2331R-00	C-11	2XJ-25317-00	D- 4	3FA-26466-00	D-15
10V-13178-01	B- 5	37F-15128-00	B-10	2XJ- 8540-01	C- 2	2XJ-23350-00-P1	C-11	5G3-25351-02	D- 2	3JM-27211-00	D- 9
2XJ-13565-00	B- 6	1RG-15363-00	B-11	2XJ- 11110-10-35	C- 4	2XJ-23391-70	C- 5		D- 2	3JM-27411-00	D- 9
2HF-13610-01	B- 6	2XJ-15379-00	B-11	3JN-2151H-00	E- 5	1E6-23441-00	C-12	2XJ-25367-00	D- 6	3JM-27421-00	D- 9
2HF-13613-00	B- 6	2XJ-15411-00	B-11	3JN-2151H-11	E- 5	3JM-23511-00	D- 3	2XJ-25381-00	D- 4	3JM-27445-00	D- 9
58T-13616-01	B- 6	37F-15416-00	B-11	2XJ-21511-40	C- 5	2XJ-23512-00	D- 3	2XJ-25383-00	D- 4	3JM-27446-00	D- 9
3JM-13621-00	B- 6	2XJ-15420-00	B-11	2XJ-21513-00	C- 5	1UY-23517-00	C-10	2XJ-25386-00	D- 4	2XJ-28100-00	C- 4
2XJ-14101-01	B- 7	3JM-15451-00	B-11	2XJ-21556-40	C- 5		C-10	2XJ-25388-00	D- 4	1NV-2811A-00	C- 4
10V-14104-00	B- 7	2XJ-15620-10	B-12	3HP-21568-10	E- 5		C-10	2VY-25390-00-UJ	D- 4	2HR-28415-00	D-10
2MA-14107-28	B- 7	10V-15641-00	B-12	3JN-21568-00	E- 5		C-10	2XJ-25412-00	D- 4	2XJ-2842M-00	D-10
2XJ-14112-20	B- 7	10V-15651-00	B-12	3JN-21568-11	E- 5	3JM-23521-00	D- 3	2XJ-25440-20	D- 4	3JM-2845N-10	D-10
248-14131-00	B- 7	10V-15660-00	B-12	3JM-21570-40	E- 5	2XJ-23522-00	D- 3	2XJ-25712-00	D- 6	3JM-2845R-10	D-10
4LO-14141-46	B- 7	10V-15666-00	B-12	2XJ-21611-90	C- 6	2XJ-23540-00-35	C- 6	2XJ-25715-00	D- 6	3JM-2845R-30	D-10
260-14142-32	B- 7	2A6-16111-00	B-13	2XJ-21614-00	C- 6	2XJ-23550-00-35	C-10	2XJ-25721-00	D- 6	2XJ-81313-M0	D-11
137-14143-46-A0	B- 7	3JM-16150-01	B-13	3JM-21621-00	C- 6	3JM-23570-00-35	C-10	2XJ-25726-01	D- 6	82F-81910-A0	E- 3
500-14146-00	B- 7	2TV-16154-00	B-13	3JM-2165A-40	E- 5	3JM-23580-00-35	C-10	2XJ-25734-00	D- 6	2T4-82131-00	C- 6
558-14147-00	B- 7	21V-16321-00	B-13	3HP-21668-10	E- 5	1UY-23812-00	C-12	2XJ-25771-00	D- 6	5M0-82310-M0	E- 3

M1

NUMERICAL INDEX

PART NO.	GRID NO.	PART NO.	GRID NO.	PART NO.	GRID NO.	PART NO.	GRID NO.	PART NO.	GRID NO.	PART NO.	GRID NO.
2TV-82370-00	E- 3	38W-84710-00	D-14	90149-06007	C- 6	90201-100F7	C- 6	90380-22111	C- 8	90501-20568	B-13
2XJ-82510-01	E- 3	3GD-84714-00	D-13	90149-06011	C-14		C-11	90381-15040	C- 4	90506-15260	D- 2
2GU-82567-00	D- 7	38W-84717-00	D-14	90149-06306	C- 5		D- 3	90381-15088	C-10		D- 2
3HN-82579-00	E- 3	38W-84721-00	D-14	90150-06037	C- 6		C- 3		C-10	90506-20193	D- 9
2XJ-8259E-01	B- 8	38W-84736-00	D-14	90154-05001	D-10	90201-10269	C- 9		C-10	90508-20555	B-13
2XJ-82590-00	E- 3	3F9-84744-00	D-14	90154-05005	C- 6	90201-106F2	D- 4		C-10	90508-26667	B-12
803-82591-00	E- 3	2EK-85111-00	E- 4	90154-05051	C- 5		D- 4	90387-06299	D-14	90508-29749	C- 2
38V-82911-00	D-15	3Y6-85130-01	E- 4	90159-06085	B- 6	90201-10774	C- 4	90387-06387	D-13	90508-32553	C- 3
2XJ-82913-00	D-15	449-85131-02	E- 4	90159-06093	D- 7		C-12	90387-06388	D-13	91021-08012	C- 8
38V-82913-00	D-15	37A-85520-M1	D-11	90170-08258	D- 4	90201-12172	B-10	90387-066H4	C-14	91401-20020	C-12
4V4-82913-00	D- 7	3FL-85540-00	E- 3	90170-10186	C-12	90201-123L6	D-11	90387-07391	C- 7		C-12
3JM-82920-10	D-15	2XJ-85550-M0	D-11		C-12	90201-140A6	D- 4	90387-07598	C-14		C-12
3GH-82921-01	D-15	3JM-85560-00	C-11	90170-12337	B- 4	90201-14217	B-13	90387-090R0	C-12		D- 3
3JM-8331L-10	D-15	2AL-85580-M0	D-11	90170-12370	B-13	90201-14218	C- 8	90387-101R3	C-10		D- 3
2XJ-83516-00	E- 3	2GU-85590-M0	E- 3	90170-33376	D- 5	90201-14586	D- 2		C-10		D- 3
2XJ-83530-00	E- 3	2XJ-85720-01	E- 3	90171-10046	C-12	90201-150J4	B-14	90387-101U6	C-10		D- 3
4U3-83585-00	E- 3	90101-06278	D- 2		C-12	90201-154E8	B-12		C-10	91401-30030	C- 9
1NV-83912-00	D-15		D- 3		D- 3	90201-15797	D- 9	90387-150R1	D- 2		D- 2
3GH-83912-00	D-15	90101-08615	D- 4		D- 3	90201-166L5	B-10	90387-206K3	B- 3		D- 4
1UY-83913-00	D-15	90101-10655	C-10	90171-14020	D- 2	90201-180P2	B-13	90387-561U7	D- 4	92011-08016	D- 9
3GH-83922-00	D-15		C-10	90171-14037	D- 4	90201-200J7	B-12	90430-04004	B- 5		D- 9
1UY-83935-00	D-15	90101-10678	D- 4	90175-06019	D- 8	90201-20266	B-14	90445-08376	B- 7	92016-08012	C- 6
427-83936-01	D- 7		D- 4	90179-08148	D-15	90201-206L6	B-14	90445-09111	C-14	92501-06020	E- 3
	D- 7	90105-08221	C- 4		E- 2	90201-22555	B-14	90445-096F4	C- 7		E- 3
	D-13	90105-08520	D- 6	90179-08270	B- 9	90201-244A9	C- 8	90445-100E9	C-14		E- 3
	D-14	90105-08521	D- 6	90179-08491	B- 2	90202-05193	C-14	90446-09155	B-10	92501-05030	B-10
	E- 2	90105-10328	C- 4	90179-12374	B-12	90202-14077	D-13	90450-37022	B- 9	92501-06075	B-10
1UY-83962-00	D-15	90105-10388	C-11	90179-12421	D-11	90206-06060	B- 9	90450-44046	B- 6	92501-08010	B-10
3JM-83965-00	D-15	90105-10507	D- 3	90179-12567	B-13	90208-18046	B-13	90460-49058	B- 5	92503-06045	B-10
3GH-83966-00	D-15		D- 3	90185-10060	C- 4	90209-06096	B- 6	90460-56105	B- 6	92506-06035	B-11
1UY-83967-00	D-15	90105-10549	D- 3		C-11	90209-06265	D- 8	90465-10069	B-11	92515-06030	B-11
3FA-83967-00	D-15		D- 3	90185-10115	C-12	90209-16133	B-14	90467-08003	C- 7		B-11
2XJ-83975-01	E- 2	90109-063F7	C- 2	90185-10120	C-10	90209-18135	B-14	90467-09006	C-14		B-11
21V-84314-00	D-12	90109-06797	D-15		C-10	90209-22248	B- 3	90467-22080	B- 6	92901-04100	D-11
52H-84315-00	D-12	90109-06799	D-15		C-10	90215-12235	B- 4	90468-02033	B- 5		D-11
52H-84320-00	D-12	90109-081F0	D- 6		C-11	90215-12271	B-13	90468-15020	B- 5	92901-04600	D-14
52H-84324-00	D-12	90109-10736	C- 9	90185-14070	C- 8	90240-12092	C- 9	90468-26048	B-12	92901-05100	E- 4
2XJ-84330-00	D-12	90116-08042	B- 9	90201-05029	E- 4	90249-12008	D- 8	90480-01209	B-10		E- 4
52H-84338-00	D-12	90116-08318	B- 2	90201-050L5	C-14	90249-14202	D- 9	90480-01400	C-14		E- 4
52H-84340-00	D-12	90116-08388	B- 2	90201-06059	D-14	90250-06013	C- 2	90480-10509	D-13	92901-05600	D- 8
2XJ-84345-00	D-12	90116-08394	B- 2	90201-06074	D-13	90280-03045	B- 3	90480-13238	C- 7	92901-06200	B-13
52H-84345-00	D-12	90116-08507	D- 4	90201-C80L7	D- 6	90282-05013	B- 3	90480-14023	D-13		C- 5
1K8-84521-00	D-13	90119-05001	B-13	90201-08624	B- 5	90282-05047	B- 3	90480-18290	C-14		C- 6
1K8-84523-00	D-13	90119-06056	C- 6	90201-08649	B- 2	90336-28053	C-12	90480-18411	D- 9	92901-06600	B-10
2E9-84524-00	D-13	90119-06073	C-14	90201-08753	C- 4	90338-09206	B-10		D- 9		E- 3
1UY-84702-00	D-14		C-14		D-12	90338-23172	C- 4	90480-48493	C- 7		E- 3
3GB-84702-00	D-13	90123-08046	D-15	90201-100F7	C-10	90340-12059	B-10	90501-10782	D- 8		E- 3
3GD-84710-00	D-13		E- 2		C-10	90380-12051	C- 9	90501-123A0	D- 8	92902-03600	B- 8

NUMERICAL INDEX

PART NO.	GRID NO.	PART NO.	GRID NO.	PART NO.	GRID NO.	PART NO.	GRID NO.	PART NO.	GRID NO.	PART NO.	GRID NO.
92902-03600	D- 8	93310-522L4	B- 3	95601-06100	D-15	98511-04012	D-11				
92906-05100	D- 7	93311-31576	B-14		D-15	98511-04016	B- 7				
	E- 2	93311-51554	B-14	95602-10100	C- 9	98511-04020	D-11				
92906-06100	D-14	93315-21429	B-13	95612-05100	D- 7		D-14				
	D-15	93317-32231	C- 8	95701-08500	D- 9	98580-03010	B- 8				
92906-06600	B- 6	93410-20038	B-14		D- 9	98580-04008	B- 7				
92990-03100	B- 6	93410-22039	B-14	95701-10500	D- 2		D-11				
	B- 8	93430-08036	B- 5		D- 4	98580-04010	D-11				
92990-04100	B- 7	93430-12008	D- 9	95702-10500	D- 5	98901-04008	B- 5				
92990-05100	B- 7	93440-15012	B-12	95801-06025	D-13	98902-03006	D- 7				
92990-05200	C- 6		B-14	95801-08012	C- 4	98906-06010	B- 9				
	E- 4	93440-36159	D- 6	95801-08040	C- 8		B- 9				
	E- 4	93440-42101	C- 9	95806-06040	D-15	99001-10600	C- 3				
92990-06100	D-13	93440-44158	D- 6	95806-08014	C-13	99009-06600	D- 8				
	E- 3	93450-17044	B- 3	95811-06012	C- 5	99009-10400	C- 2				
	E- 3	93503-16010	B-13	95811-08016	B- 9	99510-10114	B- 2				
	E- 3	93603-22028	B- 5		D-10	99510-12016	B-10				
92990-12600	C- 9	93700-06004	C- 4		D-10	99530-10014	B-11				
93101-10090	B- 5		C-10	95811-08035	C-12						
93101-12060	C- 3		C-10	95811-10025	D- 9						
93102-20143	B-14		C-10	95816-06012	B- 9						
93102-20309	B-12		C-11	95816-06025	C- 7						
93102-22216	D- 2	93832-13164	B-14		C- 7						
93102-25331	B- 3	93900-00030	D- 2		C- 7						
93103-32099	B- 3		D- 4	95821-08016	D- 9						
93104-09025	D- 7	94107-106W0	D- 2		D- 9						
93104-14004	B-13	94110-085W9	D- 4	97001-06025	B- 6						
93105-49023	D- 2	94581-08092	D- 4		D-14						
	D- 3	94681-08011	D- 4	97001-08030	D-12						
93106-22019	C- 8	94702-00045	B- 2	97016-06020	C- 3						
93106-42026	D- 4	94702-00182	B- 2	97021-06012	B-15						
93108-35004	C- 8	94702-00204	B- 2	97026-06022	D-15						
93112-31011	C-12	95303-05600	E- 4	98021-08060	C-12						
93210-12327	D- 2	95303-06600	B-13	98501-03008	B- 6						
	D- 3		D- 2		D- 8						
93210-15566	C- 4		D- 3	98501-05008	B- 7						
93210-19123	B-11		D-13	98501-05012	D-12						
93210-61750	C- 6	95303-08600	D- 4	98501-05016	B- 5						
93306-00705	D- 4	95303-10700	C-12		D- 8						
93306-20209	D- 2		C-12	98501-06012	B-15						
93306-20211	B- 3	95306-05700	D- 7	98501-06060	B- 6						
93306-20335	B- 3	95311-08600	B- 2		B-10						
93306-20431	B-14	95332-10600	D- 3	98502-06016	E- 3						
93306-20562	B- 3		D- 3	98503-03008	C-14						
93306-30438	B-14	95601-05100	B- 6	98506-03008	D-15						
93306-30556	B- 3		C- 6	98506-05018	D-15						
93306-90403	D- 2	95601-06100	C- 5	98506-05020	D- 7						
93310-316H6	B- 3		C- 6		D- 7						