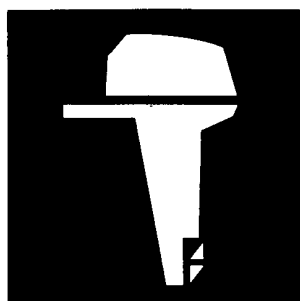


YAMAHA



**PARTS
CATALOGUE
CATALOGO
DE REPUESTOS**

9.9FMH '98(63V)

15FMH '98(63W)

E9.9CMH'98(65E)

E15CMH '98(65F)

YAMAHA
GENUINE
Parts & Accessories

1W63V-200S1

FOREWORD

This Parts Catalogue is related to the parts for the model(s) in the below frame. When you are ordering replacement parts, please refer to this Parts Catalogue and quote both part numbers and part names correctly.

9.9FMH'98(63V), 15FMH'98(63W)
E9.9CMH'98(65E), E15CMH'98(65F)

1. Modifications or additions which have been made after issue of the Parts Catalogue will be announced in the Yamaha Parts News. It is advisable that you make necessary corrections to the Parts Catalogue according to the Yamaha Parts News.

2. Abbreviations

The following abbreviations are used in this Parts Catalogue.

"UR"	Use specified parts number.	"M"	Manual start model
"UN"	Use as many as needed.	"E"	Electric start model
"AP"	Alternate Parts	"PTT"	Power Trim & Tilt model
"LM"	Local Made (Parts need to be ordered locally)	"H/T"	Hydro Tilt model
"O/S"	Over Size	"M/T"	Manual Tilt model
		"T.H/D"	Tiller Handle model

3. Parts, which are to be supplied in an assembly, are listed with a dot (.) in front of the part name as shown below.

EXAMPLE

CARBURETOR ASSY
. JET, PILOT
. NOZZLE, MAIN

4. Number of component for assembly

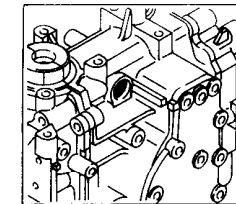
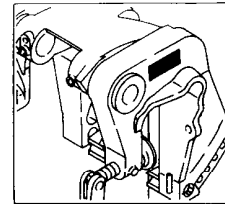
The numeral appearing to the right of each component part indicates the quantity of parts for each assembly unit.

EXAMPLE

PART NO.	DESCRIPTION	Q'TY	REMARKS
6E0-85500-70	C.D.I. MAGNETO ASSY	1	
6E0-85550-70	. ROTOR ASSY	1	
6E0-15723-00-94	.. PULLY, STARTER	1	

5. Applicable Serial No. and Color Code

Engine Serial No.	9.9FMH	S : 158582 ~
		L : 458780 ~
	15FMH	S : 411130 ~
		L : 156538 ~
	E9.9CMH	S : 100546 ~
		L : 410780 ~
		U : 950116 ~
	E15CMH	S : 141215 ~
		L : 506407 ~
		U : 700106 ~



Color Code	Color Name	Abbreviation
4D	DARK BLUISH GRAY METALLIC 2	DBNM2

6. Note that the illustrations are for reference in finding parts numbers, not to be used for assembling. When assembling, please use the applicable service manual.

PROLOGO

Este Catálogo de Repuestos corresponde a las piezas para el(los) modelo(s) del recuadro siguiente. Al formular el pedido de repuestos, se ruega citar este Catálogo de Repuestos y especificar correctamente los números de parte y los nombres de parte.

9.9FMH'98(63V), 15FMH'98(63W)
E9.9CMH'98(65E), E15CMH'98(65F)

1. Las modificaciones y agregados que se hayan realizado después de la edición de este Catálogo de Repuestos, serán anunciados en las Informaciones de Recambios Yamaha.

2. Abreviaciones

En este Catálogo de Repuestos se emplean las siguientes abreviaciones.

- "UR" Usar el número de partes especificado
- "UN" Usar la cantidad necesaria
- "AP" Piezas sustitutivas
- "OS" Sobre Tamaño
- "LM" Fabricación local (Partes necesarias que se pedirán localmente)
- "M" Modelo de arranque manual
- "E" Modelo de arranque eléctrico
- "PTT" Modelo de asiento e inclinación asistidos
- "H/T" Modelo de inclinación hidráulica
- "M/T" Modelo de inclinación manual
- "T.H/D" Modelo de control de caña de timon

3. Las piezas suministradas como conjunto se describen con un punto (.) que precede al nombre de la pieza como se indica a continuación.

EJEMPLO

CONJUNTO CARBURADOR

- . INYECTOR, piloto
- . BOQUILLA, principal

4. Cantidad de componentes de un conjunto

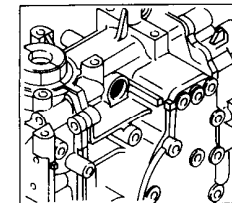
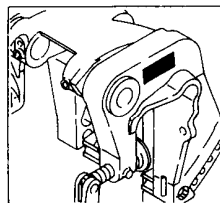
La numeración que aparece a la derecha de cada descripción, indica la cantidad de piezas por cada unidad de conjunto.

EJEMPLO

PIEZAS NO.	DESCRIPCION	CANT.	OBSERVACION
6E0-85500-70	MAGNETO C.D.I COMPLETO	1	
6E0-85550-70	. ROTOR COMPLETO	1	
6E0-15723-00-94	. . POLEA DE ARRANQUE	1	

5. Números de Serie y Códigos de Color aplicables

No. de Serie del motor	9.9FMH	S : 158582 ~	
		L : 458780 ~	
	15FMH	S : 411130 ~	
		L : 156538 ~	
	E9.9CMH	S : 100546 ~	
		L : 410780 ~	
		U : 950116 ~	
	E15CMH	S : 141215 ~	
		L : 506407 ~	
		U : 700106 ~	



Código de Color	Nombre del Color	Abreviación
4D	DARK BLUISH GRAY METALLIC 2	DBNM2

6 Debe tenerse en cuenta que las ilustraciones sirven como guía para la búsqueda de las referencias y no deben usarse para el montaje. Durante el montaje, se recomienda usar el manual de Taller correspondiente.

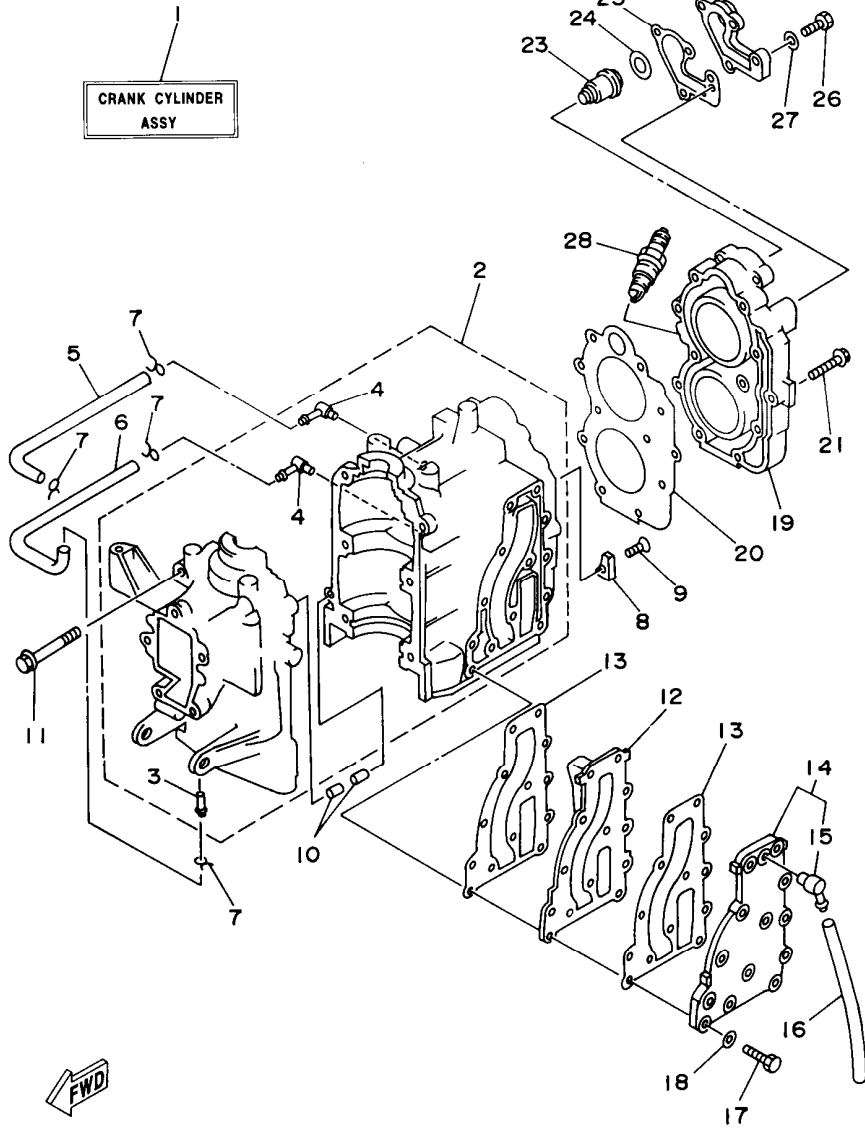
CONTENTS

FIG. 1	CYLINDER. CRANKCASE.....	A6, A7
FIG. 2	CRANKSHAFT. PISTON	B1, B2
FIG. 3	INTAKE	B3
FIG. 4	CARBURETOR	B4, B5
FIG. 5	STARTER	B6, B7
FIG. 6	FUEL	C1
FIG. 7	TOP COWLING 1 (9.9F/15F).....	C2
FIG. 8	TOP COWLING 2 (E9.9C/E15C)	C3
FIG. 9	BOTTOM COWLING	C4
FIG. 10	BRACKET 1	C5~C7
FIG. 11	BRACKET 2	D1, D2
FIG. 12	STEERING	D3, D4
FIG. 13	CONTROL.....	D5, D6
FIG. 14	UPPER CASING	D7
FIG. 15	LOWER CASING. DRIVE 1	E1~E3
FIG. 16	LOWER CASING. DRIVE 2	E4, E5
FIG. 17	GENERATOR	E6
FIG. 18	ELECTRICAL 1	E7
FIG. 19	REPAIR KIT 1	F1
FIG. 20	REPAIR KIT 2	F2, F3
	NUMERICAL INDEX	

CONTENIDO

FIG. 1	CYLINDRO. CARTER	A6, A7
FIG. 2	CIGUENAL. PISTON	B1, B2
FIG. 3	ADMISION	B3
FIG. 4	CARBURADOR	B4, B5
FIG. 5	ARRANQUE	B6, B7
FIG. 6	COMBUSTIBLE	C1
FIG. 7	CUBIERTA SUPERIOR 1 (9.9F/15F)	C2
FIG. 8	CUBIERTA SUPERIOR 2 (E9.9C/E15C)	C3
FIG. 9	CUBIERTA INFERIOR	C4
FIG. 10	SOPORTE 1	C5~C7
FIG. 11	SOPORTE 2	D1, D2
FIG. 12	DIRECCION	D3, D4
FIG. 13	CONTROL	D5, D6
FIG. 14	FUNDA SUPERIOR	D7
FIG. 15	IMPULSOR E INFERIOR 1	E1~E3
FIG. 16	IMPULSOR E INFERIOR 2	E4, E5
FIG. 17	GENERADOR	E6
FIG. 18	EQUIPO ELECTRICO	E7
FIG. 19	ESTUCHE REPARACION 1	F1
FIG. 20	ESTUCHE REPARACION 2	F2, F3

INDICE NUMERICO



CRANK CYLINDER
ASSY



63VJA-5011

FIG. 1 CYLINDER. CRANKCASE CYLINDRO. CARTER

REF. NO.	PART NO. CODIGO NO.	DESCRIPTION DESCRIPCION	Q'TY CANT.	REMARKS OBSERVACION
1	63V-W0090-02-4D	CRANK CYLINDER ASSY BLOQUE MOTOR COMPLETO (REF.NO. 2 ~ 27, FIG. 2, REF.NO. 1 ~ 26)	1	
2	63V-15100-02-94	CRANKCASE ASSY CARTER COMPLETO	1	
3	624-14485-00	.PIPE, JOINT .TUBO DE UNION	1	
4	650-14485-02	.PIPE, JOINT .TUBO DE UNION	2	
5	90445-07M08	HOSE TUBO	1	
6	90445-07M08	HOSE TUBO	1	
7	90467-06016	CLIP PRESILLA	4	
8	682-11325-00	ANODE ANODO	1	
9	98780-05016	SCREW, FLAT HEAD TORNILLO CABEZA PLANA	1	
10	93606-12019	PIN, DOWEL PASADOR DE CLAVIJA	2	
11	90119-08M07	BOLT, WITH WASHER TORNILLO CON ARANDELA	6	
12	63V-41111-00-9M	INNER COVER, EXHAUST CUBIERTA INTERIOR DE ESCAPE	1	
13	63V-41112-A0	GASKET, EXHAUST INNER COVER EMPAQUE	2	
14	63V-41113-00-9M	OUTER COVER, EXHAUST CUBIERTA EXTERIOR DE ESCAPE	1	
15	676-11372-00	.NIPPLE, HOSE .NIPLA DE MANGUERA	1	
16	90445-093J2	HOSE TUBO	1	
17	97095-06030	BOLT PERNO	13	
18	92990-06600	WASHER, PLATE ARANDELA PLANA	13	
19	6E7-11111-01-94	HEAD, CYLINDER 1 CULATA CILINDRO 1	1	
20	63V-11181-A1	GASKET, CYLINDER HEAD 1 JUNTA, DE CULATA 1	1	
21	90105-07M05	BOLT, WASHER BASED TORNILLO CON ARANDELA	11	
22	682-12413-00-9M	COVER, THERMOSTAT CUBIERTA TERMOSTATO	1	
23	6E5-12411-20	THERMOSTAT TERMOSTAT	1	
24	90201-16M03	WASHER, PLATE ARANDELA PLANA	1	
25	682-12414-A1	GASKET, COVER EMPAQUE	1	
26	97013-06020	BOLT PERNO	4	
27	92990-06600	WASHER, PLATE ARANDELA PLANA	4	

A6

1
**CRANK CYLINDER
 ASSY**

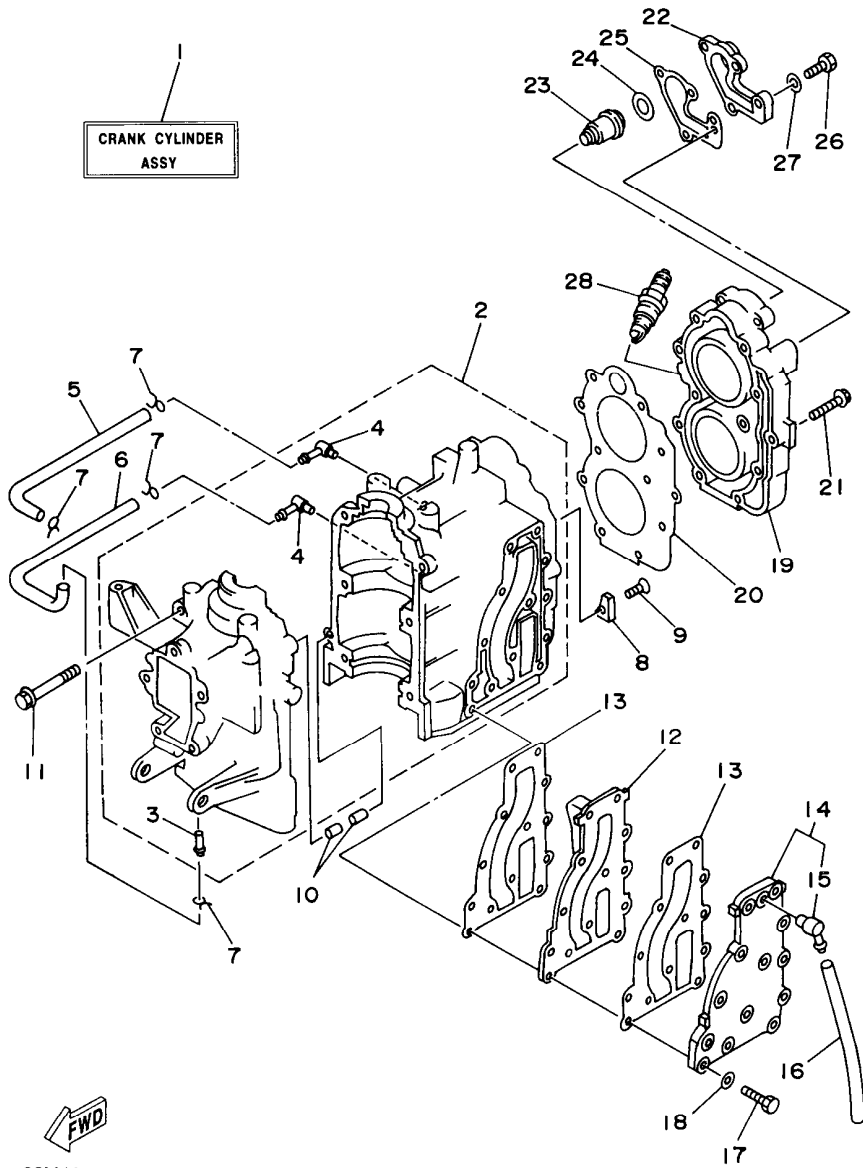


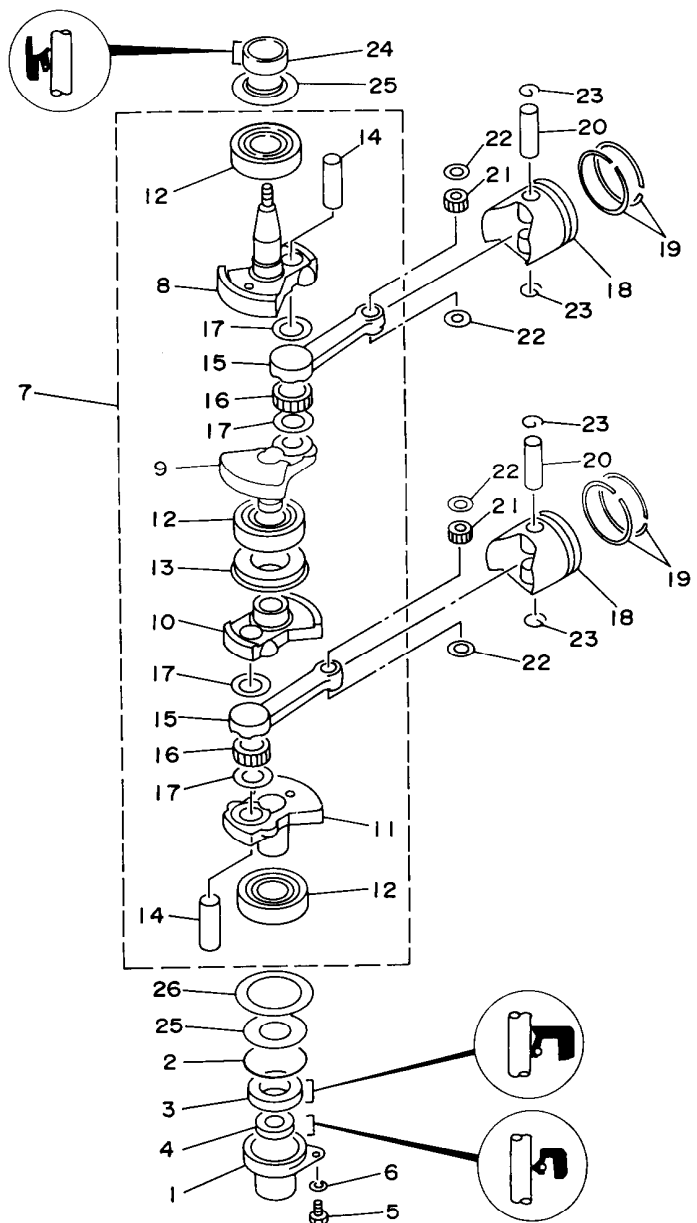
FIG. 1 CYLINDER. CRANKCASE CYLINDRO. CARTER

REF. NO.	PART NO. CODIGO NO.	DESCRIPTION DESCRIPCION	Q'TY CANT.	REMARKS OBSERVACION
28	94701-00217	PLUG, SPARK (NGK B7HS-10) BUJIA (NGK B7HS-10)	2 UR	
	94702-00271	PLUG, SPARK (NGK BR7HS-10) BUJIA (NGK BR7HS-10)	2 UR	



63VJA-5011

A7



63VJA-5020

FIG. 2 CRANKSHAFT. PISTON

CIGUENAL. PISTON

REF. NO.	PART NO. CODIGO NO.	DESCRIPTION DESCRIPCION	Q'TY CANT.	REMARKS OBSERVACION
1	63V-15396-00	HOUSING, OIL SEAL CAJA DE SELLO DE ACEITE	1	
2	93210-46M16	O-RING	1	
3	93102-25M48	JUNTA TORICA OIL SEAL	1	
4	93101-13M11	RETEN DE ACEITE OIL SEAL	1	
5	97095-06016	BOLT PERNO	1	
6	92990-06600	WASHER, PLATE ARANDELA PLANA	1	
7	63V-11400-00	CRANKSHAFT ASSY CIGUENAL COMPLETO	1	
8	63V-11412-00	.CRANK 1 .MANIVELA 1	1	
9	63V-11422-00	.CRANK 2 .MANIVELA 2	1	
10	63V-11432-00	.CRANK 3 .MANIVELA 3	1	
11	63V-11442-00	.CRANK 4 .MANIVELA 4	1	
12	93306-205U7	.BEARING .COJINETE	3	
13	63V-11515-00	.SEAL, LABYRINTH 1 .SELLO LABERINTO 1	1	
14	682-11681-00	.PIN, CRANK 1 .PASADOR MANIVELA 1	2	
15	650-11651-04	.ROD, CONNECTING .BIELA	2	
16	93310-620V5	.BEARING, CYLINDRICAL .COJINETE DE RODILLOS	2	
17	90209-20159	.WASHER .ARANDELA DE SEPARACION	4	
18	6E7-11631-00-97	PISTON (STD)	2	
	6E7-11635-00	PISTON (0.25MM O/S)	2	AP
	6E7-11636-00	PISTON (0.50MM O/S)	2	AP
19	682-11610-01	PISTON RING SET (STD)	2	
	682-11610-11	JUEGO DE AROS (NORMA) PISTON RING SET (0.25MM O/S)	2	AP
	682-11610-21	JUEGO DE AROS (0.50MM O/S) PISTON RING SET (0.50MM O/S)	2	AP
20	634-11633-00	PIN, PISTON PASADOR, PISTON	2	
21	93602-14104	PIN, DOWEL PASADOR DE CLAVIJA	50	
22	90201-14377	WASHER, PLATE ARANDELA PLANA	4	
23	93450-15023	CIRCLIP SEGURO	4	
24	93110-23M00	OIL SEAL SELLO ACEITE	1	

B1

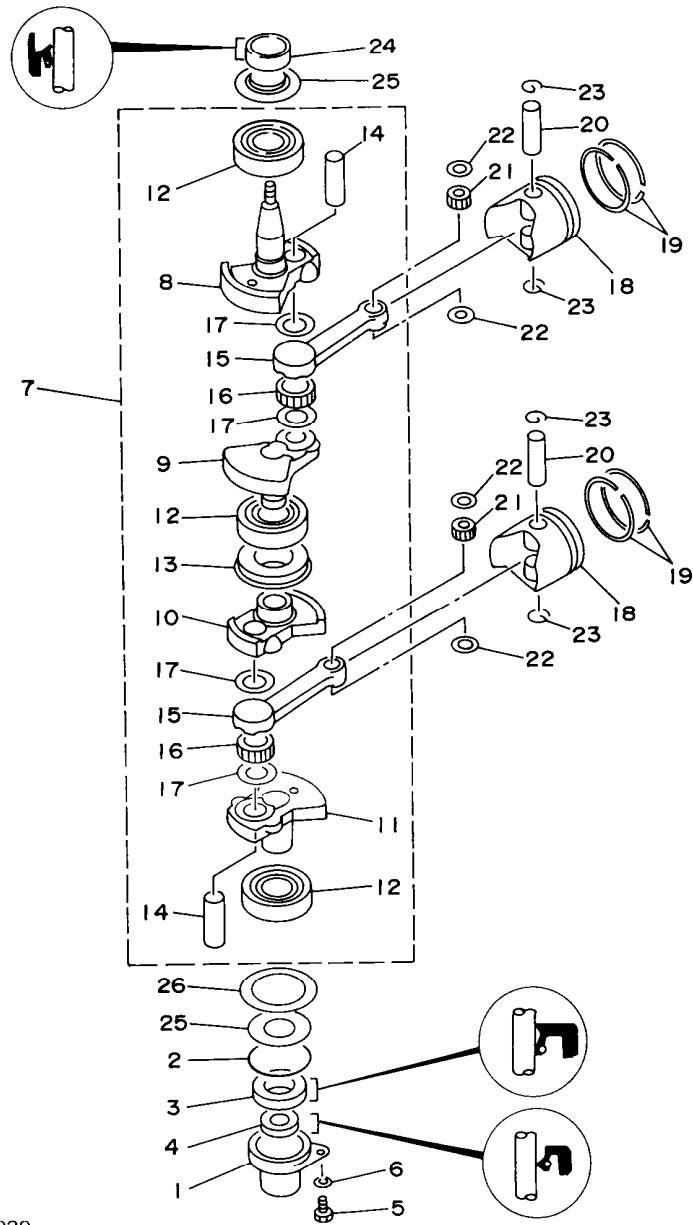


FIG. 2 CRANKSHAFT. PISTON

CIGUENAL. PISTON

REF. NO.	PART NO. CODIGO NO.	DESCRIPTION DESCRIPCION	Q'TY CANT.	REMARKS OBSERVACION
25	63V-11445-00	SPACER ESPACIADOR	2	
26	90201-46M29	WASHER, PLATE ARANDELA PLANA	1	


63VJA-5020

B2

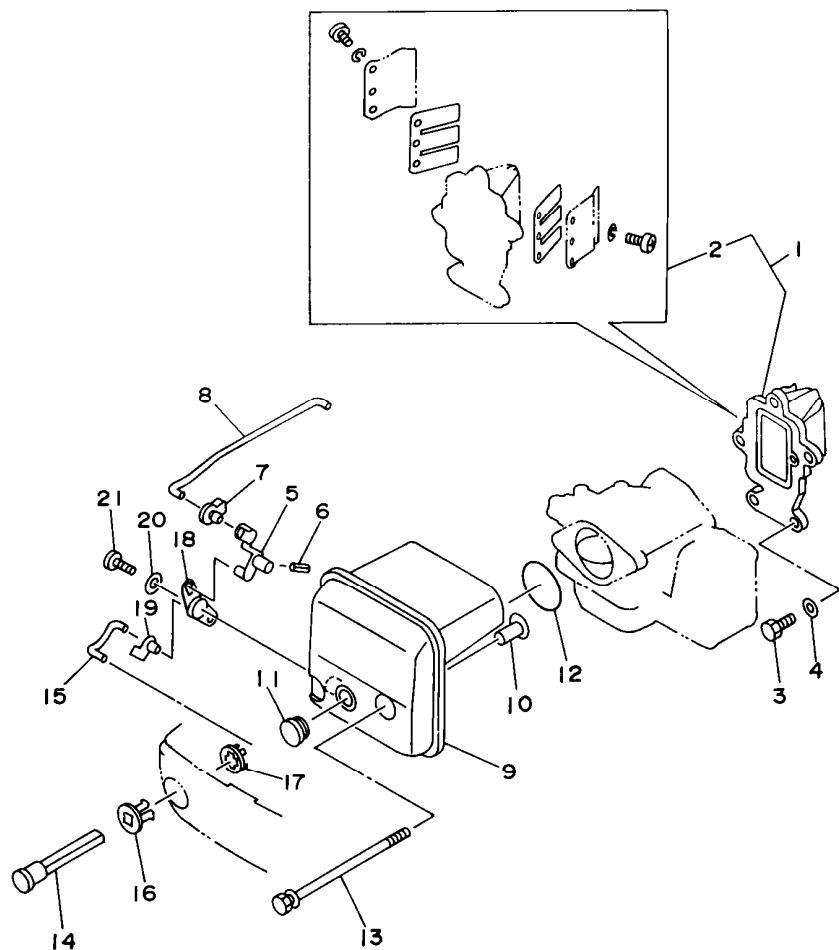


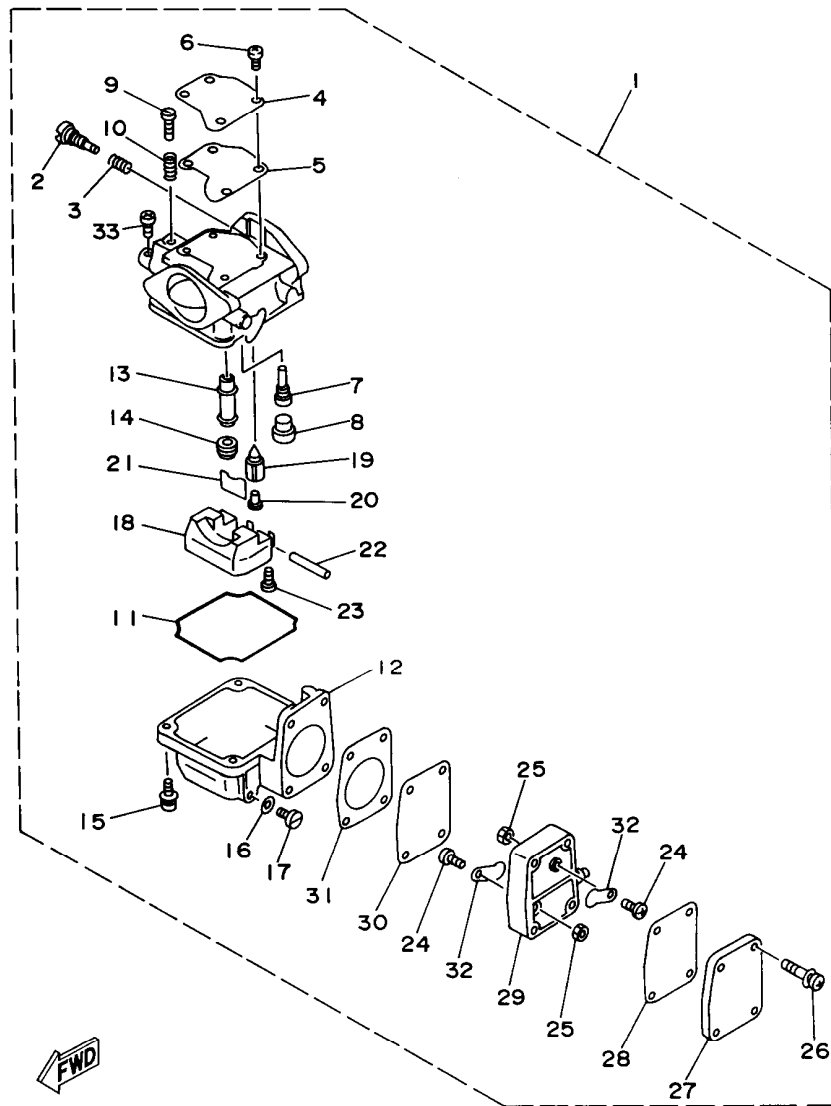
FIG. 3 INTAKE

ADMISION

REF. NO.	PART NO. CODIGO NO.	DESCRIPTION DESCRIPCION	Q'TY CANT.	REMARKS OBSERVACION
1	63V-13610-10	REED VALVE ASSY VALVULA DE LAMINAS COMPLETA	1	UR 9.9F/E9.9C
	63W-13610-10	REED VALVE ASSY VALVULA DE LAMINAS COMPLETA	1	UR 15F/E15C
2	682-W0004-00	.REED SET .JUEGO DE VALVULAS DE LENGUETA	1	
3	97095-06020	BOLT PERNO	3	
4	92990-06600	WASHER, PLATE ARANDELA PLANA	3	
5	63V-41253-00	LEVER, CHOKE PALANCA AHOGADOR	1	
6	91690-20010	PIN, SPRING PASADOR DE RESORTE	1	
7	63V-41262-00	JOINT, CHOKE LEVER CONECTOR DE AHOGADOR	1	9.9F/15F
8	63V-41257-00	ROD, CHOKE 2 VARILLA DE AHOGADOR	1	9.9F/15F
9	63V-14440-00	SILENCER ASSY, INTAKE SILENCIADOR COMPL DE ADMISION	1	
10	90387-06M15	COLLAR CASQUILLO CON VALONA	2	
11	90480-12M25	GROMMET TAPON	1	
12	93210-35M86	O-RING JUNTA TORICA	1	
13	90119-06M94	BOLT, WITH WASHER TORNILLO CON ARANDELA	2	
14	6H4-41271-01	KNOB, CHOKE PERILLA AHOGADOR	1	
15	63V-41256-00	ROD, CHOKE 1 VARILLA DE AHOGADOR	1	
16	689-41273-00	GROMMET TAPON PROTECTOR	1	
17	6J8-41274-00	GROMMET 2 TAPON 2	1	
18	63V-41252-00	LEVER, CHOKE 1 PALANCA AHOGADOR 1	1	
19	661-41262-02	JOINT, CHOKE LEVER CONECTOR DE AHOGADOR	1	
20	90201-05M09	WASHER, PLATE ARANDELA PLANA	1	
21	90164-05M03	SCREW, TAPPING TORNILLO ROSCA HEMBRA	1	



63VJA-5031



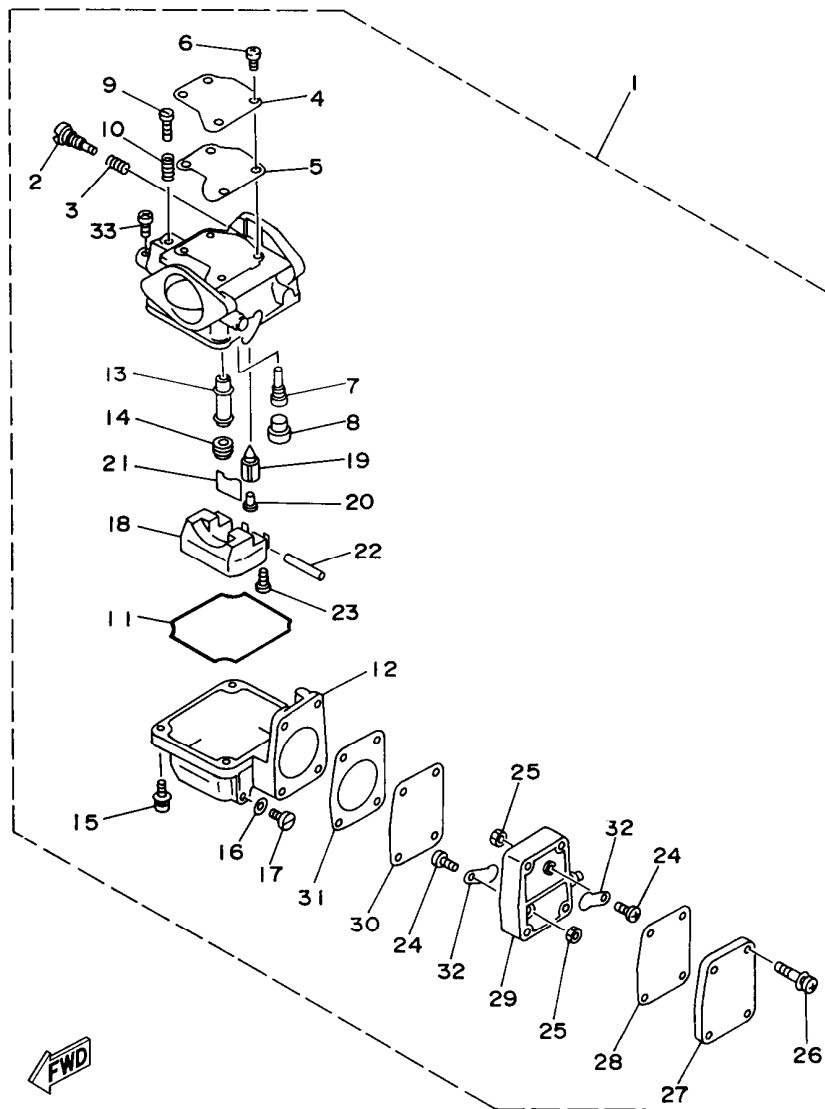
63VJA-5040

FIG. 4 CARBURETOR

CARBURADOR

REF. NO.	PART NO. CODIGO NO.	DESCRIPTION DESCRIPCION	Q'TY CANT.	REMARKS OBSERVACION
1	63V-14301-00	CARBURETOR ASSY 1 CARBURADOR COMPLETO 1	1	
2	679-14923-00	.SCREW, PILOT .TORNILLO DE AJUSTE	1	
3	679-14555-00	.SPRING .RESORTE	1	
4	63V-14527-00	.PLATE .PLACA	1	
5	63V-14126-00	.GASKET .EMPAQUE	1	
6	98580-04010	.SCREW, PAN HEAD .TORNILLO DE CABEZA CRUZADA	4	
7	63V-14948-06	.JET (#48) .INYECTOR (#48)	1	
8	679-14966-00	.RUBBER CAP .CAUCHOCHAPEAU	1	
9	63V-14523-00	.SCREW, STOP .TORNILLO DE TOPE	1	
10	90501-10326	.SPRING, COMPRESSION .RESORTE DE COMPRESION	1	
11	63V-14984-00	.GASKET, FLOAT CHAMBER .EMPAQUE CAMARA DE BOIA	1	
12	63V-14980-00	.BODY, FLOAT CHAMBER .CUERPO CAMARA DE BOIA	1	
13	63V-14947-00	.JET, NEEDLE .INYECTOR DE AGUJA	1	
14	676-14943-29	.JET, MAIN (#110) .INYECTOR PRINCIPAL (#110)	1	
15	97980-04114	.SCREW, WITH WASHER .TORNILLO, CON ARANDELA	4	
16	661-14398-00	.WASHER .EMPAQUE	1	
17	661-14992-00	.SCREW, DRAIN .TORNILLO, SEGURO	1	
18	63V-14985-00	.FLOAT .BOIA	1	
19	661-14546-00	.VALVE, NEEDLE .VALVULA DE AGUJA	1	
20	676-14186-00	.PIN, FLOAT .PASADOR DE LA BOYA	1	
21	663-14159-00	.CLIP .PRESILLA	1	
22	6H4-14548-00	.PIN, FLOAT ARM .PASADOR DE BRAZO DE BOIA	1	
23	98580-04008	.SCREW, PAN HEAD .TORNILLO DE CABEZA CRUZADA	1	
24	98980-03006	.SCREW, BIND .TORNILLO DE AJUSTE	2	
25	95380-03600	.NUT .TUERCA	2	
26	97980-04125	.SCREW, WITH WASHER .TORNILLO, CON ARANDELA	4	
27	661-24452-00	.COVER .CUBIERTA	1	
28	63V-24411-00	.DIAPHRAGM .DIAFRAGMA	1	

B4



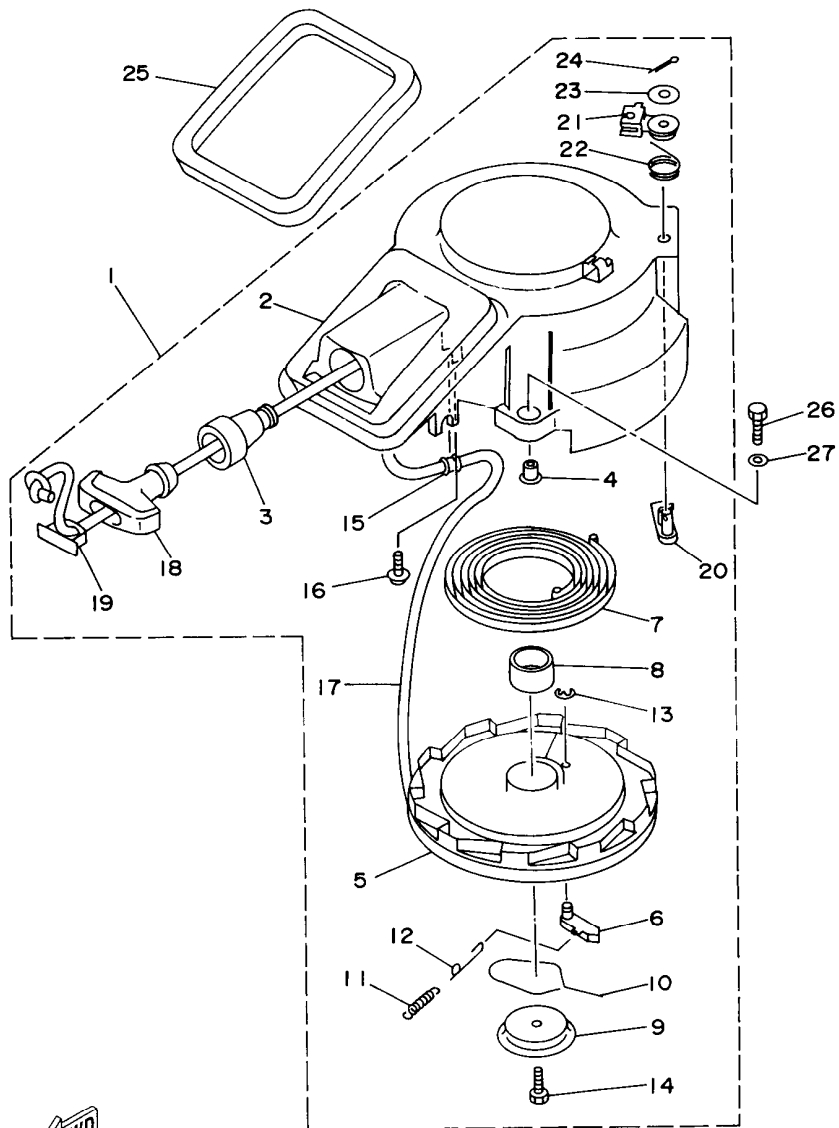
FWD
63VJA-5040

FIG. 4 CARBURETOR

CARBURADOR

REF. NO.	PART NO. CODIGO NO.	DESCRIPTION DESCRIPCION	Q'TY CANT.	REMARKS OBSERVACION
29	6G1-24412-01	.BODY 1 .CUERPO 1	1	
30	6G1-24411-00	.DIAPHRAGM .DIAFRAGMA	1	
31	6G1-24431-01	.GASKET, FUEL PUMP 1 .EMPAQUE BOMBA COMBUST 1	1	
32	6L5-24421-00	.VALVE, CHECK .VALVULA DE RETENCION	2	
33	98580-04006	.SCREW, PAN HEAD .TORNILLO DE CABEZA CRUZADA	1	

B5



FWD
63VJA-5051

FIG. 5 STARTER

ARRANQUE

REF. NO.	PART NO. CODIGO NO.	DESCRIPTION DESCRIPCION	Q'TY CANT.	REMARKS OBSERVACION
1	63V-15710-12	STARTER ASSY ARRANQUE COMPLETO	1	
2	63V-15711-01	.CASE, STARTER .CAJA DE ARRANQUE	1	
3	63V-15795-01	.GUIDE, ROPE .GUIA DE CUEEDA	1	
4	90387-06M05	.COLLAR .CASQUILLO CON VALONA	3	
5	63V-15714-00	.DRUM, SHEAVE .TAMBOR ROLDANA	1	
6	63V-15741-00	.PAWL, DRIVE .TRINQUETE DE TRACCION	1	
7	63V-15713-00	.SPRING, STARTER .RESORTE DE ARRANQUE	1	
8	63V-15753-00	.BUSH .BUJE	1	
9	63V-15716-00	.PLATE, DRIVE .PLACA DE TRACCION	1	
10	63V-15705-01	.SPRING, DRIVE PAWL .RESORTE	1	
11	63V-15767-01	.SPRING .RESORTE	1	
12	63V-15784-01	.SPRING, RETURN .RESORTE DE RETORNO	1	
13	63V-15744-00	.CIRCLIP .SEGURO	1	
14	63V-15768-00	.BOLT .TORNILLO	1	
15	63V-15764-00	.COLLAR 1 .COLLAR 1	1	
16	63V-15793-00	.SCREW .TORNILLO	1	
17	*	.WIRE, STARTER (L:1800MM) .CUERDA DE ARRANQUE (L:1800MM)	1	
18	661-15755-00	.HANDLE, STARTER .MANIJA DE ARRANQUE	1	
19	661-15779-00	.COVER .CUBIERTA	1	
20	63V-15794-00	.STOPPER .TOPE	1	
21	63V-15748-00	.PLUNGER, STARTER STOP .EMBOLO SEGURO DE ARRANQUE	1	
22	63V-15734-00	.SPRING, RETURN .RESORTE DE RETORNO	1	
23	63V-15726-00	.WASHER, FLAT .ARANDELA PLANA	1	
24	91490-16020	.PIN, COTTER .CHAVETA	1	
25	63V-15762-00	SEAL, RUBBER 2 SELLO DE GOMA 2	1	

* CUT FROM 50M ROLLS, PARTS NO. 90890-44373, CUTTING LENGTH 1.8M.

* CORTE DE UN RODILLO DE 50M. PARTE NUMERO 90890-44373, LARGO DEL CORTE 1.8M.

B6

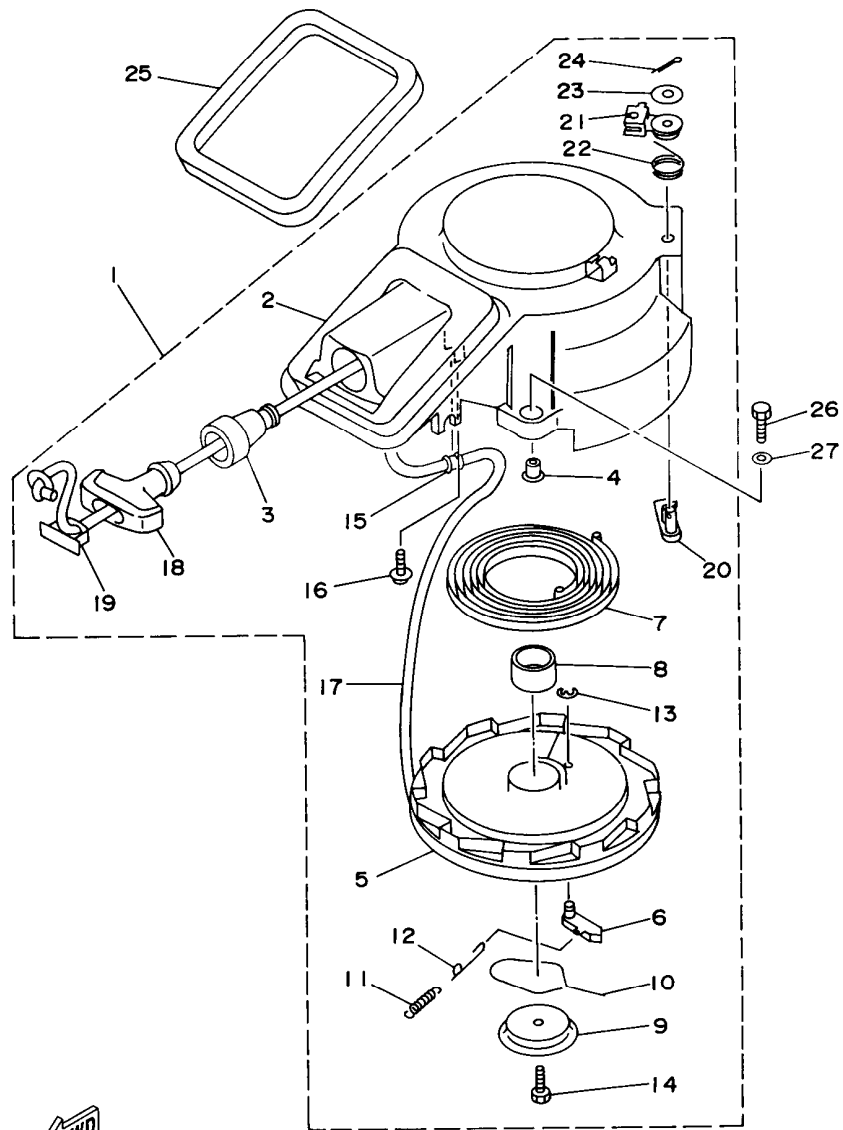


FIG. 5 STARTER

ARRANQUE

REF. NO.	PART NO. CODIGO NO.	DESCRIPTION DESCRIPCION	Q'TY CANT.	REMARKS OBSERVACION
26	97095-06020	BOLT PERNO	3	
27	92990-06600	WASHER, PLATE ARANDELA PLANA	3	

FWD
63VJA-5051

B7

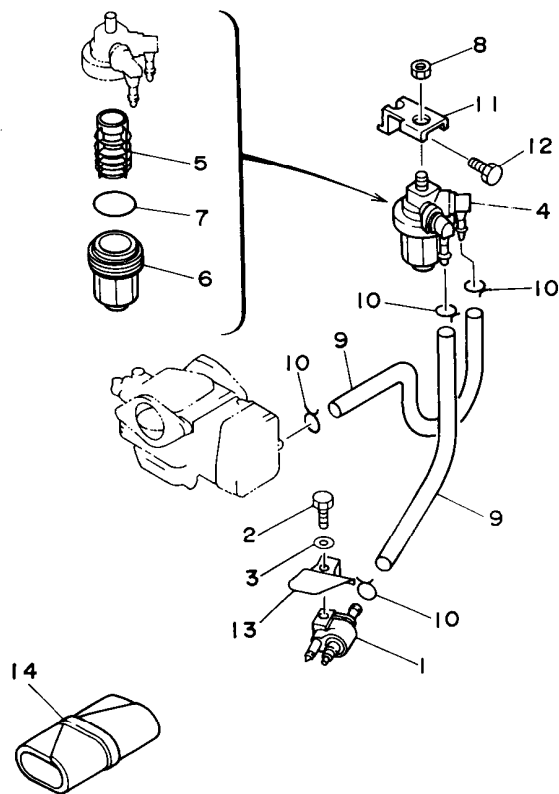


FIG. 6 FUEL

COMBUSTIBLE

REF. NO.	PART NO. CODIGO NO.	DESCRIPTION DESCRIPCION	Q'TY CANT.	REMARKS OBSERVACION
1	6G1-24304-02	FUEL PIPE JOINT COMP. 1 CONECTOR MANGUERA COMBUST.1	1	
2	97095-06020	BOLT PERNO	1	
3	92990-06600	WASHER, PLATE ARANDELA PLANA	1	
4	61N-24560-00	FILTER ASSY FILTRO COMPLETO	1	
5	61N-24563-00	ELEMENT, FILTER ELEMENTO DEL FILTRO	1	
6	61N-24521-00	CUP, FILTER COPA DE FILTRO	1	
7	93210-32738	O-RING JUNTA TORICA	1	
8	95380-08600	NUT TUERCA	1	
9	90445-09M00	HOSE TUBO	2	
10	90467-08004	CLIP PRESILLA	4	
11	682-24566-00	BRACKET, FILTER SOPORTE DEL FILTRO	1	
12	97013-06010	BOLT PERNO	1	
13	63V-24396-00	PLATE PLACA	1	
14	656-W2810-02	TOOL KIT JUEGO DE HERRAMIENTAS	1	



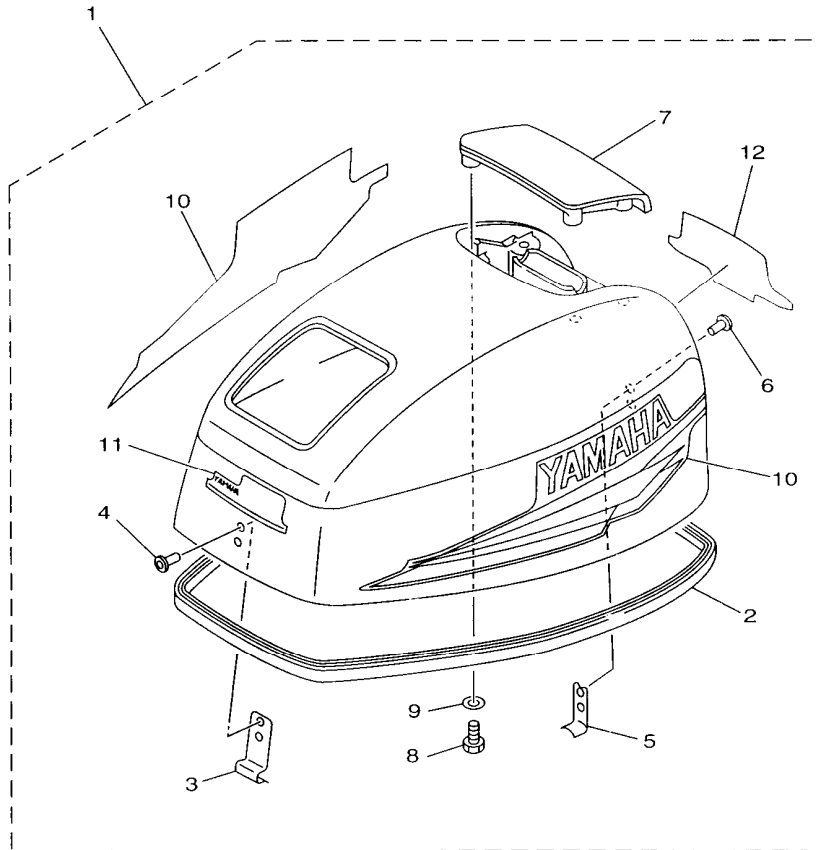
63VJA-5061

C1

FIG. 7 TOP COWLING 1 (9.9F/15F)

CUBIERTA SUPERIOR 1 (9.9F/15F)

REF. NO.	PART NO. CODIGO NO.	DESCRIPTION DESCRIPCION	Q'TY CANT.	REMARKS OBSERVACION
1	63V-42610-11-4D	TOP COWLING ASSY SOPORTE SUPERIOR COMPL.	1	UR 9.9F
	63W-42610-11-4D	TOP COWLING ASSY SOPORTE SUPERIOR COMPL.	1	UR 15F
2	63V-42615-00	.SEAL .SELLO	1	
3	6G1-42651-02	.HOOK .GANCHO	1	
4	90266-04M04	.RIVET .REMACHE	2	
5	6L2-42647-00	.HOLDER, CLAMP BAND .MORDAZA DE ABRAZADERA	1	
6	90266-04M04	.RIVET .REMACHE	2	
7	6G1-42613-01-4D	.MOLDING, AIR DUCT .MOLDURA CONDUCTO AIRE	1	
8	97095-06016	.BOLT .PERNO	4	
9	92990-06600	.WASHER, PLATE .ARANDELA PLANA	4	
10	63V-W0070-11	.GRAPHIC SET .JUEGO DE EMBLEMA	1	
11	63V-42677-11	.GRAPHIC, FRONT .CALCAMONIA FRONTAL	1	UR 9.9F
	63W-42677-11	.GRAPHIC, FRONT .CALCAMONIA FRONTAL	1	UR 15F
12	63V-42678-10	.GRAPHIC, REAR .CALCAMONIA TRASERA	1	UR 9.9F
	63W-42678-10	.GRAPHIC, REAR .CALCAMONIA TRASERA	1	UR 15F

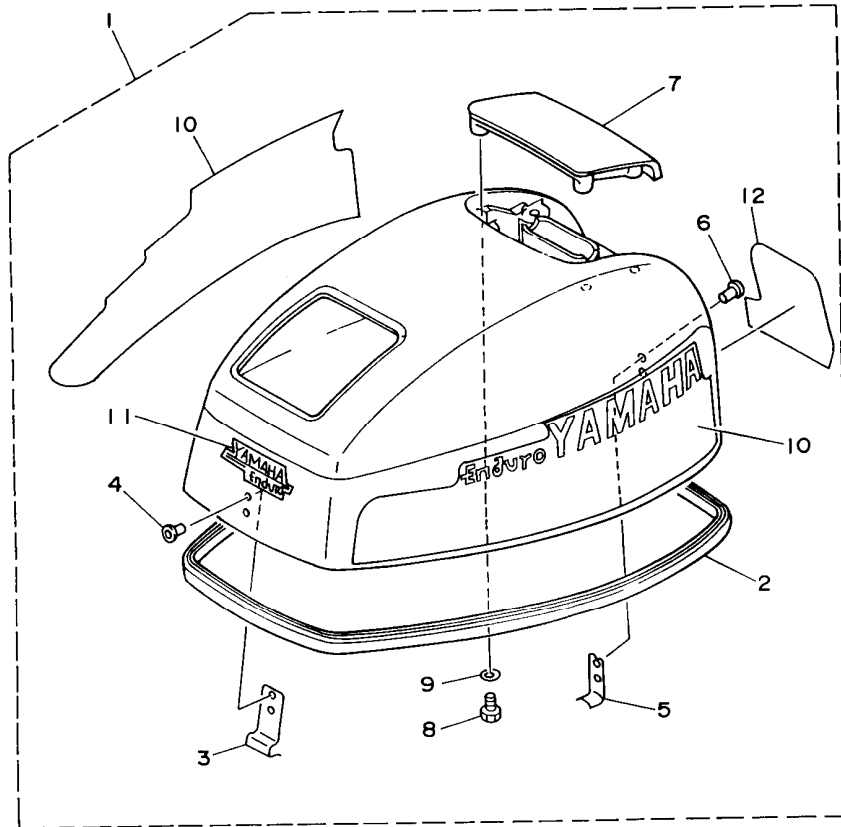


63VJA-8070

C2

FIG. 8 TOP COWLING 2 (E9.9C/E15C) CUBIERTA SUPERIOR 2 (E9.9C/E15C)

REF. NO.	PART NO. CODIGO NO.	DESCRIPTION DESCRIPCION	Q'TY CANT.	REMARKS OBSERVACION
1	65E-42610-H1-4D	TOP COWLING ASSY SOPORTE SUPERIOR COMPL.	1	UR E9.9C
	65F-42610-H1-4D	TOP COWLING ASSY SOPORTE SUPERIOR COMPL.	1	UR E15C
2	63V-42615-00	.SEAL .SELLO	1	
3	6G1-42651-02	.HOOK .GANCHO	1	
4	90266-04M04	.RIVET .REMACHE	2	
5	6L2-42647-00	.HOLDER, CLAMP BAND .MORDAZA DE ABRAZADERA	1	
6	90266-04M04	.RIVET .REMACHE	2	
7	6G1-42613-01-4D	.MOLDING, AIR DUCT .MOLDURA CONDUCTO AIRE	1	
8	97095-06016	.BOLT .PERNG	4	
9	92990-06600	.WASHER, PLATE .ARANDELA PLANA	4	
10	65E-W0070-H0	.GRAPHIC SET .JUEGO DE EMBLEMA	1	UR E9.9C
	65F-W0070-H0	.GRAPHIC SET .JUEGO DE EMBLEMA	1	UR E15C
11	682-42677-H0	.GRAPHIC, FRONT .CALCAMONIA FRONTAL	1	
12	65E-42678-H0	.GRAPHIC, REAR .CALCAMONIA TRASERA	1	UR E9.9C
	65F-42678-H0	.GRAPHIC, REAR .CALCAMONIA TRASERA	1	UR E15C

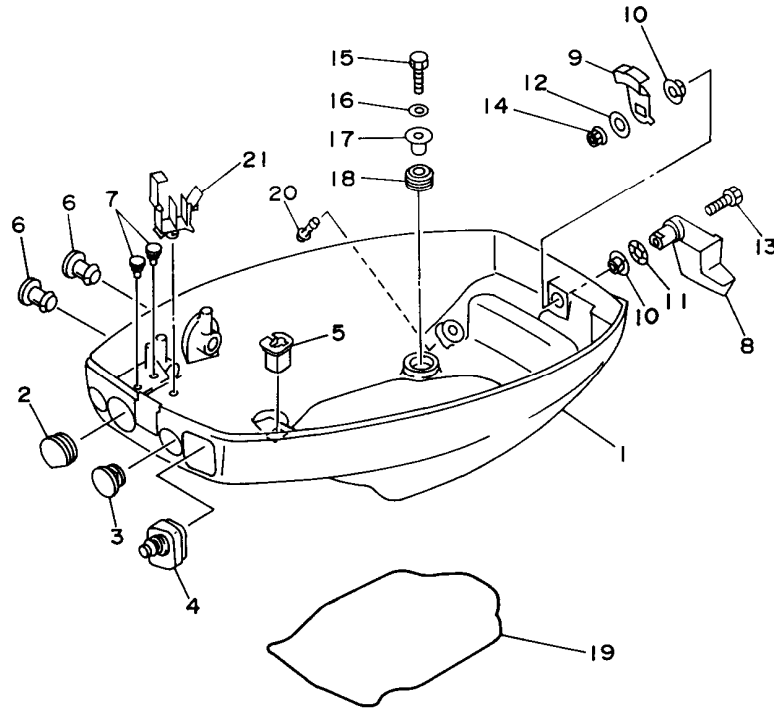


65GGE-7070

C3

FIG. 9 BOTTOM COWLING

CUBIERTA INFERIOR

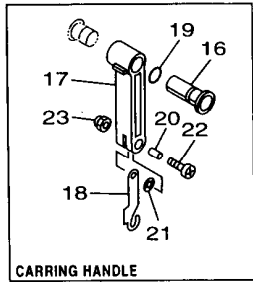


REF. NO.	PART NO. CODIGO NO.	DESCRIPTION DESCRIPCION	Q'TY CANT.	REMARKS OBSERVACION
1	63V-42711-03-4D	COWLING, BOTTOM CUBIERTA INFERIOR	1	
2	682-42724-00	GROMMET TAPON	1	
3	682-42725-02	GROMMET TAPON	1	
4	63V-42726-00	GROMMET TAPON	1	
5	682-42727-00	GROMMET TAPON	1	
6	6G1-42748-00	GROMMET TAPON	2	
7	90480-06M19	GROMMET TAPON	2	
8	63V-42815-01-4D	LEVER, CLAMP PALANCA ABRAZADERA	1	
9	6E7-42816-00	LEVER, CLAMP PALANCA ABRAZADERA	1	
10	90386-12M45	BUSH BUJE	2	
11	90206-12052	WASHER, WAVE ARANDELA ONDULADA	1	
12	90201-06M02	WASHER, PLATE ARANDELA PLANA	1	
13	97095-06025	BOLT PERNO	1	
14	95380-06700	NUT TUERCA	1	
15	97095-06025	BOLT PERNO	4	
16	92990-06600	WASHER, PLATE ARANDELA PLANA	4	
17	90387-06M52	COLLAR CASQUILLO CON VALONA	4	
18	90480-15M31	GROMMET TAPON	4	
19	63V-42716-01	RUBBER, SEAL 1 HULE	1	
20	6H3-44391-01	NIPPLE, HOSE NIPLE MANGUERA	1	
21	90465-25M57	CLAMP BRIDA	1	

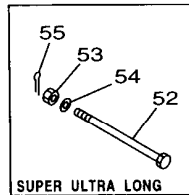
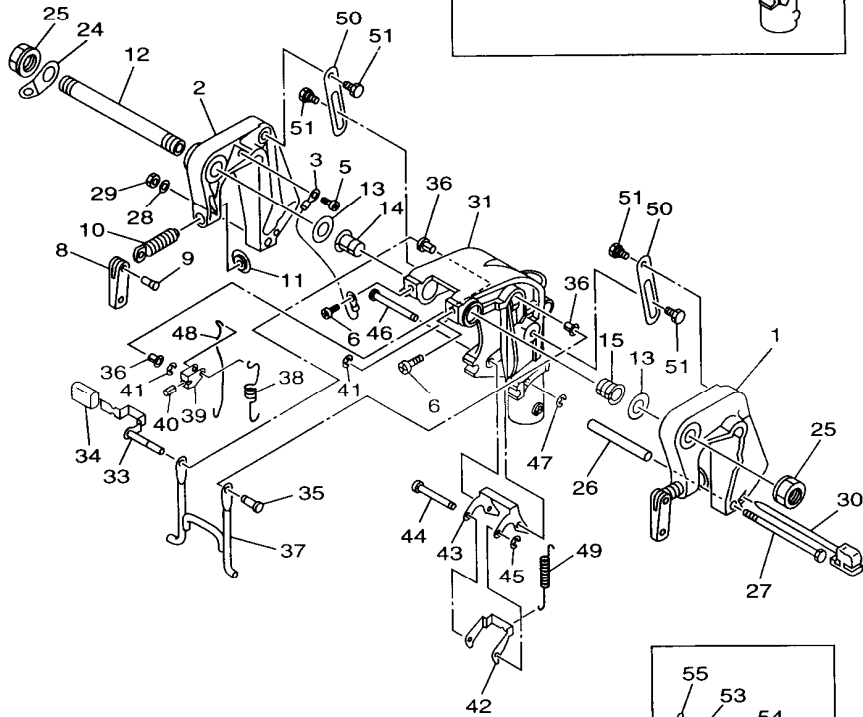
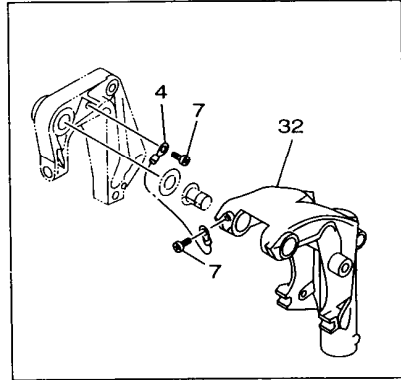


63VJA-5081

C4



CARRYING HANDLE



SUPER ULTRA LONG



63VGE-8100

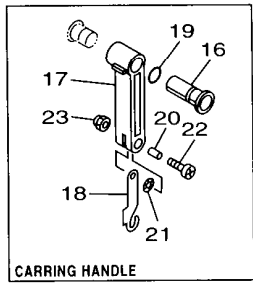
FIG. 10 BRACKET 1

SOPORTE 1

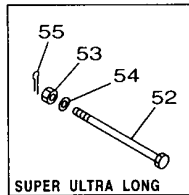
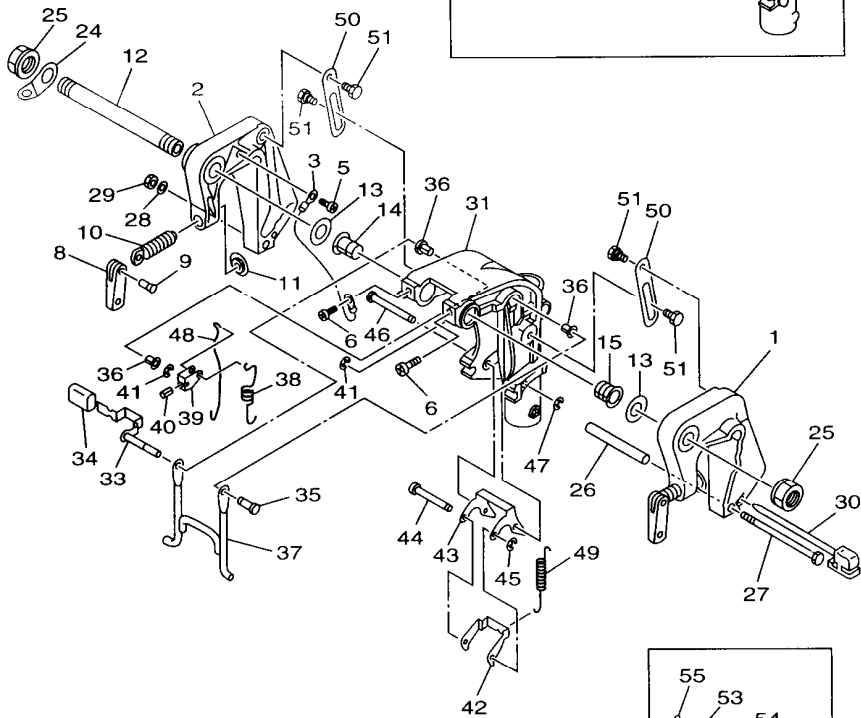
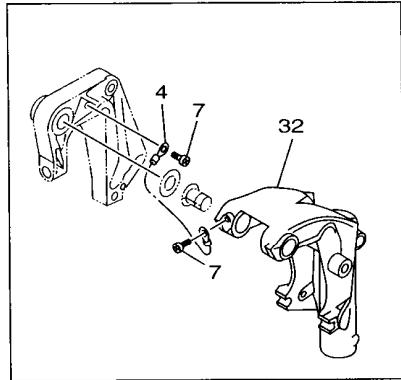
REF. NO.	PART NO. CODIGO NO.	DESCRIPTION DESCRIPCION	Q'TY CANT.	REMARKS OBSERVACION
1	63V-43111-02-4D	BRACKET, CLAMP SOPORTE DE LA ABRAZADERA	1	
2	63V-43112-03-4D	BRACKET, CLAMP SOPORTE DE LA ABRAZADERA	1	
▶ 3	66M-82148-00	WIRE, LEAD 4 CABLE CONDUCTOR 4	1	
◀ 4	6E5-82148-00	WIRE, LEAD 4 CABLE CONDUCTOR 4	1	
▶ 5	97885-06008	SCREW, PAN HEAD TORNILLO DE CABEZA CON PLANA	1	
▶ 6	97885-08010	SCREW, PAN HEAD TORNILLO DE CABEZA CON PLANA	2	
◀ 7	97885-06008	SCREW, PAN HEAD TORNILLO DE CABEZA CON PLANA	3	
8	6E0-43118-01	HANDLE, TRANSOM CLAMP MANIJA DE LA ABRAZADERA DEL ES	2	
9	90243-04M01	PIN PASADOR	2	
10	6E7-43116-00	SCREW, TRANSOM CLAMP TORNILLO DE ABRAZADERA	2	
11	648-43114-01	PAD, TRANSOM CLAMP ARANDELA DE ABRAZADERA	2	
12	63V-43131-00	BOLT, CLAMP BRACKET TORNILLO DE ABRAZADERA DEL SOP	1	
13	90202-22M54	WASHER, PLATE ARANDELA DE PLANA	2	
14	90386-22M94	BUSH BUJE	1	
15	90386-22M94	BUSH BUJE	1	
16	90386-22M69	BUSH BUJE	1 AP	
17	63V-42731-00-4D	CARRYING HANDLE MANIJA	1 AP	
18	63V-43676-00	HOOK GANCHO	1 AP	
19	93210-20M65	O-RING JUNTA TORICA	1 AP	
20	90387-06M75	COLLAR CASQUILLO CON VALONA	1 AP	
21	90206-08010	WASHER, WAVE ARANDELA ONDULADA	1 AP	

▶	9.9FMH S:159298~	E9.9CMH S:100605~	E15CMH S:142031~
	9.9FMH L:459840~	E9.9CMH L:410955~	E15CMH L:508213~
	15FMH S:413013~	E9.9CMH U:950116~	E15CMH U:700126~
	15FMH L:157339~		
◀	9.9FMH S:~159297	E9.9CMH S:~100604	E15CMH S:~142030
	9.9FMH L:~459839	E9.9CMH L:~410954	E15CMH L:~508212
	15FMH S:~413012	E9.9CMH U: —	E15CMH U:~700125
	15FMH L:~157338		

C5



CARRING HANDLE



SUPER ULTRA LONG



63VGE-8100

FIG. 10 BRACKET 1

SOPORTE 1

REF. NO.	PART NO. CODIGO NO.	DESCRIPTION DESCRIPCION	Q'TY CANT.	REMARKS OBSERVACION
22	97885-06025	SCREW, PAN HEAD TORNILLO DE CABEZA CON PLANA	1	AP
23	95780-06300	NUT, FLANGE TUERCA	1	AP
24	6J8-43113-01	PLATE, CLAMP BRACKET PLACA ABRAZADERA SOPORTE	1	
25	63V-43145-00	CAP, CLAMP BRACKET TAPA	2	
26	90387-06M13	COLLAR CASQUILLO CON VALONA	1	
27	90101-06M29	BOLT TORNILLO	1	
28	92990-06600	WASHER, PLATE ARANDELA PLANA	1	
29	95380-06700	NUT TUERCA	1	
30	6L2-43160-00	TILT ROD ASSY VARILLA DE BASCULACION COMPL.	1	SHORT/LONG
▶ 31	63V-43311-02-40	BRACKET, SWIVEL SOPORTE GIRATORIO	1	
◀ 32	63V-43311-01-40	BRACKET, SWIVEL SOPORTE GIRATORIO	1	
33	63V-43630-00	TILT LEVER ASSY PLANCA DE INCLINACION COMPL	1	
34	682-43318-01	COVER CUBIERTA	1	
35	63V-43191-00	SHAFT, STOPPER EJE DE TOPE	1	
36	90386-07M95	BUSH BUJE	3	
37	63V-43350-00	RECEIVER ASSY RECIBIDOR COMPL	1	
38	90507-20M00	SPRING, TENSION RESORTE DE TENSION	1	
39	63V-43641-00	LEVER, TILT PALANCA DE INCLINACION	1	
40	91690-30012	PIN, SPRING PASADOR DE RESORTE	1	
41	99080-05600	CIRCLIP PRESILLA REDONDA	2	
42	63V-43614-00	PLATE, TILT LOCK PLACA DE SEGURO DE INCLINACION	1	

▶	9.9FMH S:159298~	E9.9CMH S:100605~	E15CMH S:142031~
	9.9FMH L:459840~	E9.9CMH L:410955~	E15CMH L:508213~
	15FMH S:413013~	E9.9CMH U:950116~	E15CMH U:700126~
	15FMH L:157339~		
◀	9.9FMH S:~159297	E9.9CMH S:~100604	E15CMH S:~142030
	9.9FMH L:~459839	E9.9CMH L:~410954	E15CMH L:~508212
	15FMH S:~413012	E9.9CMH U: —	E15CMH U:~700125
	15FMH L:~157338		

C6

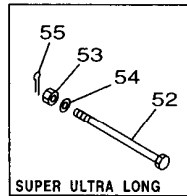
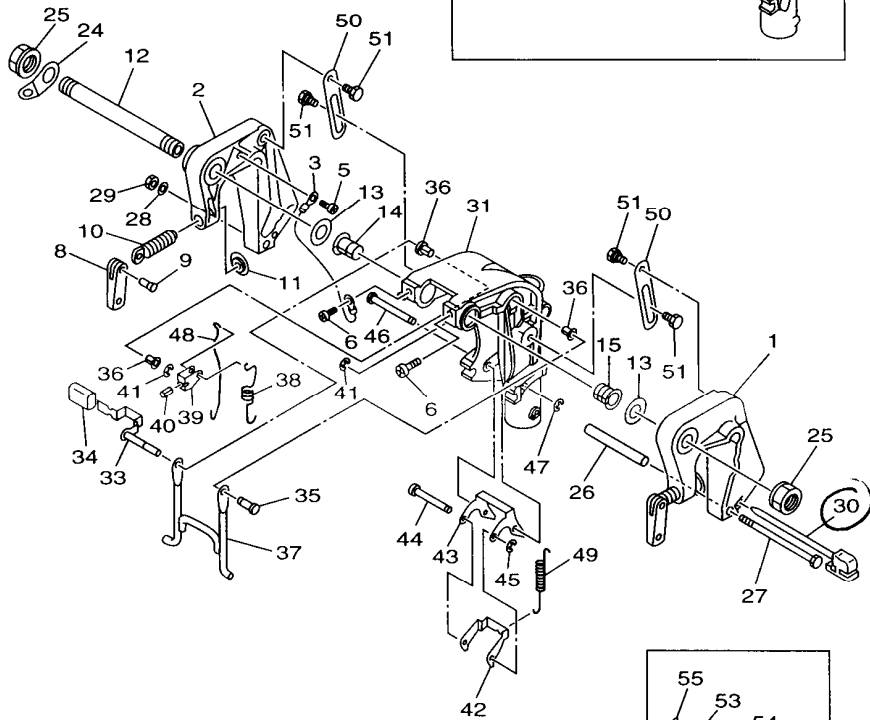
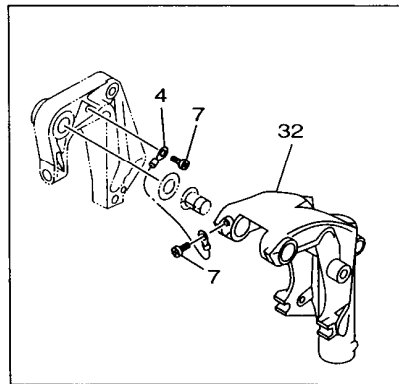
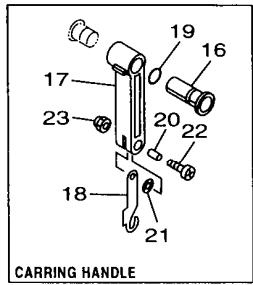


FIG. 10 BRACKET 1

SOPORTE 1

REF. NO.	PART NO. CODIGO NO.	DESCRIPTION DESCRIPCION	Q'TY CANT.	REMARKS OBSERVACION
43	63V-43615-00	PLATE, TILT LOCK PLACA DE SEGURO DE INCLINACION	1	
44	63V-43611-00	SHAFT, TILT LOCK EJE SEGURO INCLINACION	1	
45	99080-05600	CIRCLIP PRESILLA REDONDA	1	
46	63V-43659-00	SHAFT, REVERSE LOCK EJE SEGURO DE REVERSA	1	
47	99080-05600	CIRCLIP PRESILLA REDONDA	1	
48	63V-43617-00	ROD, TILT LOCK VARILLA SEGURO DE INCLINACION	1	
49	90507-26M00	SPRING, TENSION RESORTE DE TENSION	1	
50	63V-43181-00	LEVER, TILT STOP PALANCA TOPE INCLINACION	2	
51	90109-06M69	BOLT PERNO	4	
52	90102-08M03	BOLT, WITH HOLE PERNO CON ORIFICIO	1	SUPER ULTRA LONG
53	90171-08M00	NUT, CASTLE TUERCA ENTALLADA	1	SUPER ULTRA LONG
54	92995-08600	WASHER ARANDELA	1	SUPER ULTRA LONG
55	91490-20015	PIN, COTTER CHAVETA	1	SUPER ULTRA LONG

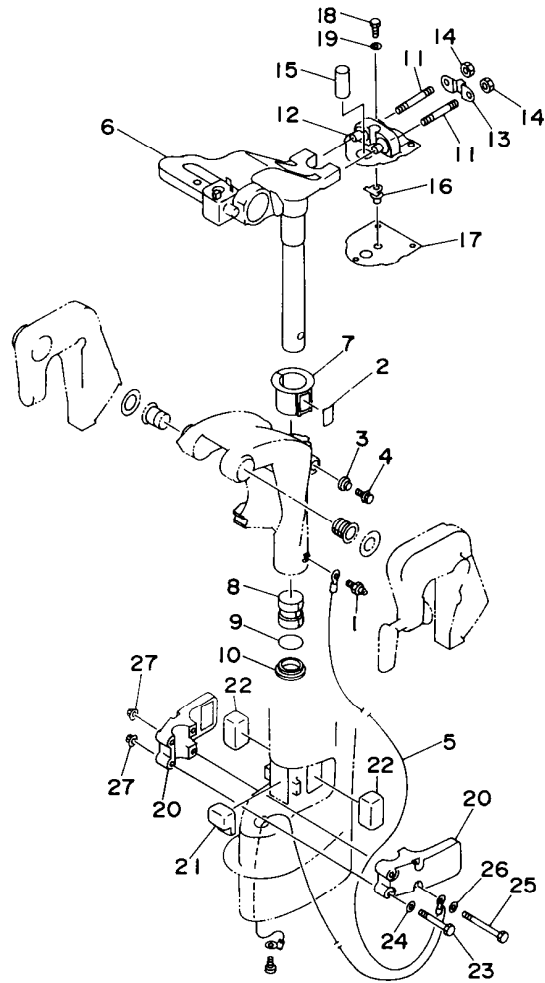


63VGE-8100

C7

FIG. 11 BRACKET 2

SOPORTE 2



REF. NO.	PART NO. CODIGO NO.	DESCRIPTION DESCRIPCION	Q'TY CANT.	REMARKS OBSERVACION
27	90179-06M28	NUT TUERCA	4	



63VJA-5101

D2

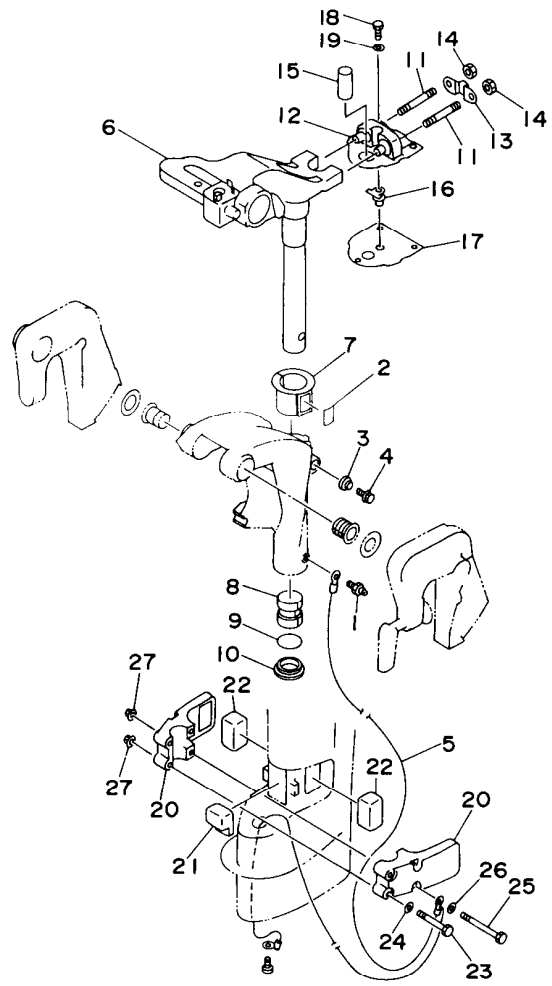


FIG. 11 BRACKET 2

SOPORTE 2

REF. NO.	PART NO. CODIGO NO.	DESCRIPTION DESCRIPCION	Q'TY CANT.	REMARKS OBSERVACION
1	93700-06M03	NIPPLE, GREASE BOUILLA DE ENGRASAR	1	
2	63V-42528-00	PLATE, FRICTION PIEZA DE FRICCION	1	
3	689-43373-01	SEAL, DAMPER SELLO DE GOMA	1	
4	90105-06M07	BOLT, WASHER BASED TORNILLO CON ARANDELA	1	
5	63V-82127-00	WIRE, LEAD 2 CABLE CONDUCTOR 2	1	
6	63V-42511-03-4D	BRACKET, STEERING SOPORTE DE DIRECCION	1	
7	63V-42537-00	BUSHING, PIVOT SHAFT BUJE DEL PIVOTE DE LA FLECHA	1	
8	90386-30048	BUSH BUJE	1	
9	93210-29M94	O-RING JUNTA TORICA	1	
10	90386-30M60	BUSH BUJE	1	
11	90116-08M54	BOLT, STUD ESPARRAGO	2	
12	63V-44514-00-5B	MOUNT DAMPER, UPPER SIDE AMORTIGUADOR LADO SUPERIOR	1	UR SHORT/LONG
	63V-44514-30-5B	MOUNT DAMPER, UPPER SIDE AMORTIGUADOR LADO SUPERIOR	1	UR SUPER ULTRA LONG
13	63V-44526-00	PLATE PLACA 1	1	
14	95380-08600	NUT TUERCA	2	
15	90387-16M01	COLLAR COLLAR	1	
16	63V-44366-00	CASQUILLO CON VALONA DAMPER, WATER SEAL GOMA DEL SELLO DE AGUA	1	
17	63V-45114-00	GASKET, UPPER CASING EMPAQUE	1	
18	97095-06018	BOLT PERNO	3	
19	92990-06600	WASHER, PLATE ARANDELA PLANA	3	
20	63V-44551-01-4D	HOUSING, LOWER MOUNT RUBBER CAJA AMORTIGUADOR INFERIOR HU	2	
21	63V-44557-00	MOUNT DAMPER, LOWER FRONT AMORTIGUADOR DE HULE FRENTE IN	1	
22	682-44555-00	MOUNT DAMPER, LOWER SIDE AMORTIGUADOR DE HULE LADO INFE	2	UR SHORT/LONG
	682-44555-30	MOUNT DAMPER, LOWER SIDE AMORTIGUADOR DE HULE LADO INFE	2	UR SUPER ULTRA LONG
23	97075-06055	BOLT PERNO	2	
24	92990-06600	WASHER, PLATE ARANDELA PLANA	2	
25	97075-06075	BOLT PERNO	2	
26	92990-06600	WASHER, PLATE ARANDELA PLANA	2	


63VJA-5101

D1

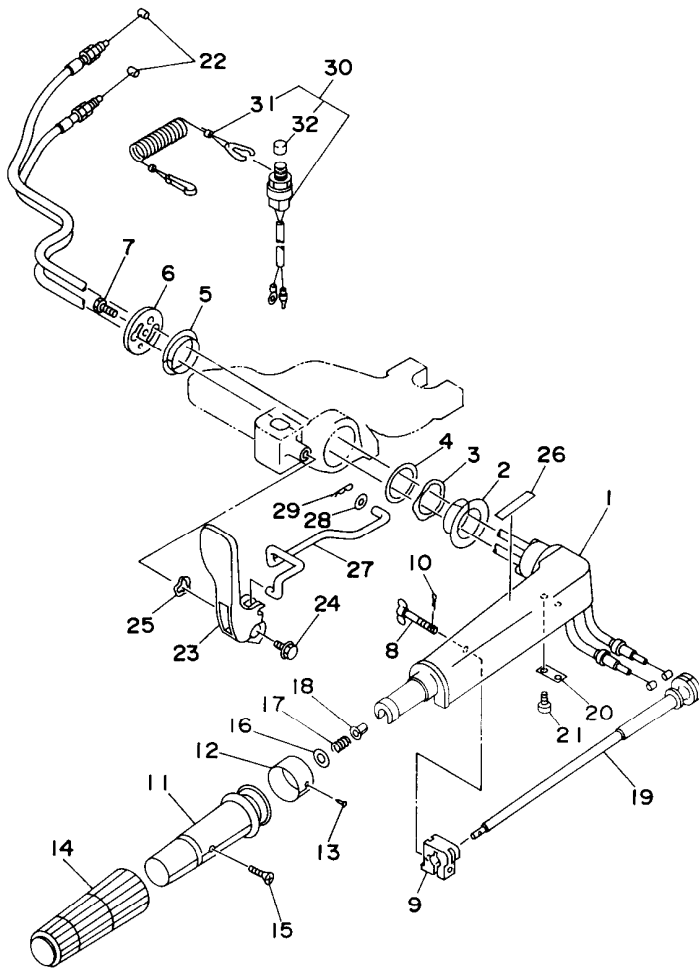


FIG. 12 STEERING

DIRECCION

REF. NO.	PART NO. CODIGO NO.	DESCRIPTION DESCRIPCION	Q'TY CANT.	REMARKS OBSERVACION
28	90202-06009	WASHER, PLATE ARANDELA DE PLANA	1	
29	90468-10003	CLIP PRESILLA	1	
30	63V-82575-00	ENGINE STOP SWITCH ASSY INTERRUPTOR DE PARADA COMPL	1	
31	682-82556-00	.STOPPER .RETEN	1	
32	689-8257Y-00	.CAP .CASQUILLO	1	



63VJA-5113

D4

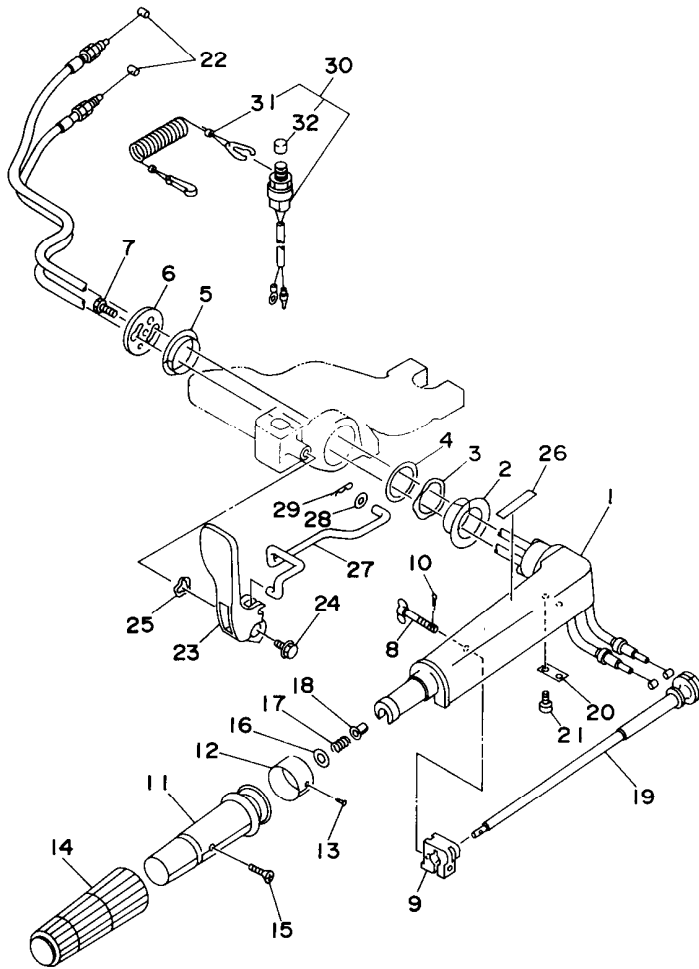


FIG. 12 STEERING

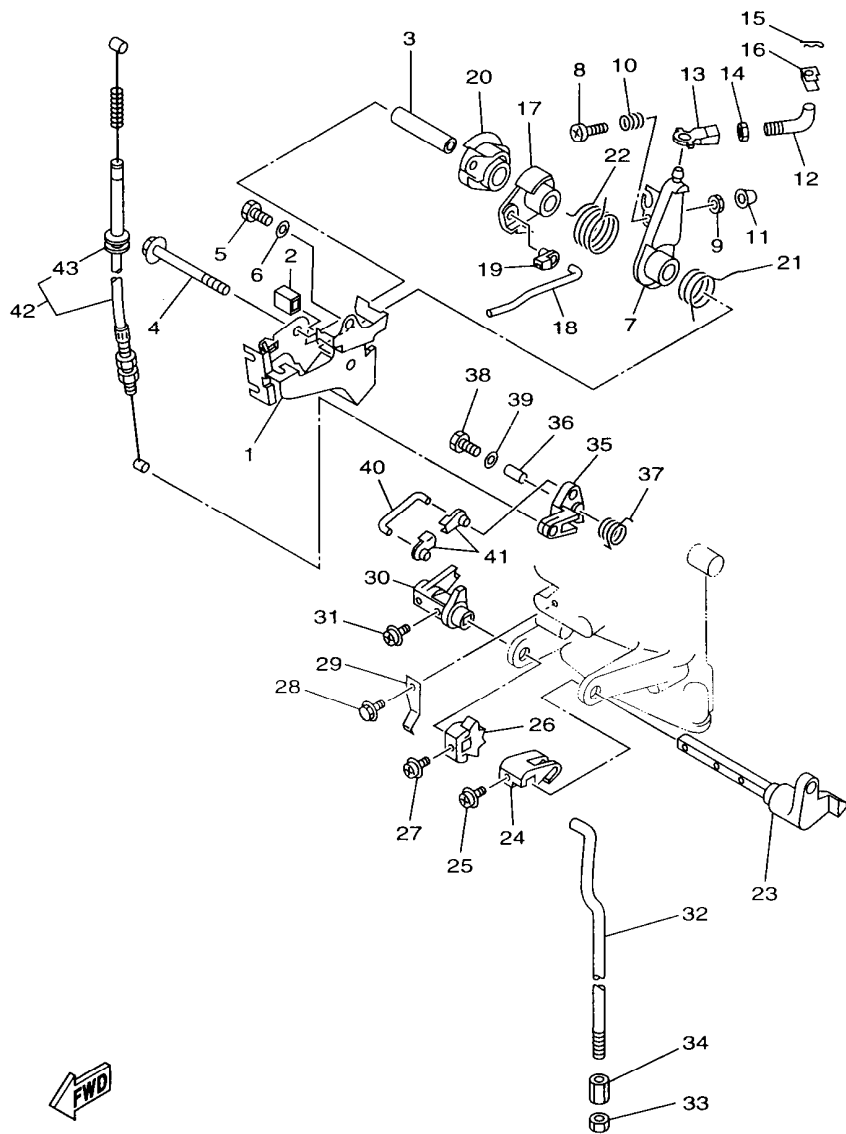
DIRECCION

REF. NO.	PART NO. CODIGO NO.	DESCRIPTION DESCRIPCION	Q'TY CANT.	REMARKS OBSERVACION
1	6G1-42111-11-4D	HANDLE, STEERING MANIJA DE DIRECCION	1	
2	90386-34M97	BUSH BUJE	1	
3	90206-36M21	WASHER, WAVE ARANDELA ONDULADA	1	
4	90202-36M55	WASHER, PLATE ARANDELA DE PLANA	1	
5	90386-33M96	BUSH BUJE	1	
6	6G1-42131-01	COVER, HANDLE STEERING CUBIERTA MANIJA DIRRECCION	1	
7	97095-06020	BOLT PERNO	1	
8	6G1-42125-01	BOLT, FRICTION ADJUSTING TORNILLO FRICCION ADJUSTA	1	
9	6G1-42126-00	FRICTION, STEERING HANDLE GRIP FRICCION DE MANGO DIRECCION	1	
10	91490-16010	PIN, COTTER CHAVETA	1	
11	664-42119-00	GRIP, STEERING HANDLE MANGO, MANIJA DE DIRRECCION	1	
12	6H2-42137-00	INDICATOR, THROTTLE INDICADOR ACELERADOR	1	UR 9.9F/15F
	697-42137-10	INDICATOR, THROTTLE INDICADOR ACELERADOR	1	UR E9.9C/E15C
13	90269-02M09	RIVET REMACHE	1	
14	6G1-42177-00	RUBBER, HANDLE HULE DE MANIJA	1	
15	90149-05M13	SCREW TORNILLO DE REGLAJE	1	
16	92990-10600	WASHER, PLATE ARANDELA PLANA	1	
17	90501-23215	SPRING, COMPRESSION RESORTE DE COMPRESION	1	
18	90386-08032	BUSH BUJE	1	
19	6G1-42138-01	LEVER, THROTTLE PLANCA DE ACELERACION	1	
20	6E0-42159-02	STAY SOPORTE	1	
21	97885-05012	SCREW, PAN HEAD TORNILLO DE CABEZA CON PLANA	2	
22	6L2-26301-00	THROTTLE CABLE ASSY CABLE DE ACELERADOR COMPLETO	2	
23	63V-44111-01	HANDLE, GEAR SHIFT MANIJA DE CAMBIO DE MARCHAS	1	
24	90019-06M09	BOLT, WITH WASHER TORNILLO CON ARANDELA	1	
25	90206-13M10	WASHER, WAVE ARANDELA ONDULADA	1	
26	6E0-44191-11	INDICATOR, SHIFT INDICADOR DE CAMBIOS	1	
27	63V-44124-01	LINK, SHIFT ROD ESLABON	1	



63VJA-5113

D3



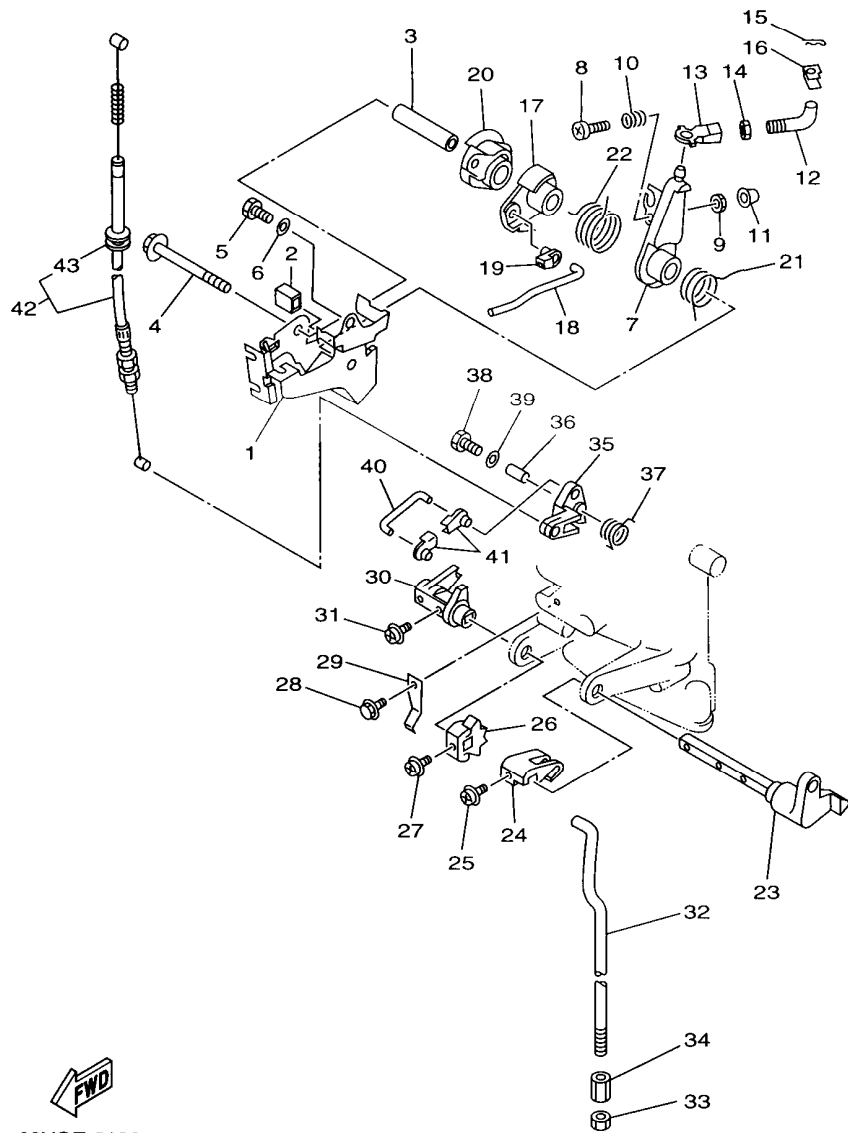

 63VGE-8130

FIG. 13 CONTROL

CONTROL

REF. NO.	PART NO. CODIGO NO.	DESCRIPTION DESCRIPCION	Q'TY CANT.	REMARKS OBSERVACION
29	63V-44116-00	SPRING RESORTE	1	
30	63V-44122-00	BUSHING, SHIFT ROD LEVER BUJE PALANCA VARILLA DE CAMBIO	1	
31	90159-05M25	SCREW, WITH WASHER TORNILLO CON VALONA	1	
32	63V-44143-01	ROD, SHIFT VARILLA DE CAMBIO	1	
33	95380-06700	NUT TUERCA	1	
34	90170-06015	NUT TUERCA	1	
35	63V-15746-10	ARM BRAZO	1	
36	90387-06M06	COLLAR CASQUILLO CON VALONA	1	
37	90508-08M39	SPRING, TORSION RESORTE DE TORSION	1	
38	97095-06020	BOLT PERNO	1	
39	92990-06600	WASHER, PLATE ARANDELA PLANA	1	
40	6L2-15747-00	LINK ESLABON	1	
41	661-41262-02	JOINT, CHOKE LEVER CONECTOR DE AHOGADOR	2	
42	63V-15770-00	CABLE COMP., STARTER STOP CABLECOMPL DE SEGURO ARRANQUE	1	
43	90480-10M16	GROMMET .TAPON	1	

D6



FWD
63VGE-8130

FIG. 13 CONTROL

CONTROL

REF. NO.	PART NO. CODIGO NO.	DESCRIPTION DESCRIPCION	Q'TY CANT.	REMARKS OBSERVACION
1	63V-14497-01	STAY, THROTTLE WIRE SOPORTE VALVULA DE OBTURACION	1	
2	689-44194-00	CAP TAPA	1	
3	90387-06M50	COLLAR CASQUILLO CON VALONA	1	
4	95895-06065	BOLT, FLANGE TORNILLO DE REBORDE	1	
5	97095-06012	BOLT PERNO	1	
6	92990-06600	WASHER, PLATE ARANDELA PLANA	1	
7	63V-41631-00	LEVER, MAGNETO CONTROL PALANCA DE CONTROL DE MAGNETO	1	
8	97885-06030	SCREW, PAN HEAD TORNILLO DE CABEZA CON PLANA	1	
9	95380-06600	NUT TUERCA	1	
10	90501-12M16	SPRING, COMPRESSION RESORTE DE COMPRESSION	1	
11	688-44194-00	CAP TAPA	1	
12	63V-41238-00	JOINT, LINK CONECTOR	1	
13	6H4-41237-00	JOINT, LINK CONECTOR	1	
14	95380-05700	NUT TUERCA	1	
15	90468-10005	CLIP PRESILLA	1	
16	63V-41223-00	WASHER, LOCK 1 ARANDELA DE SEGURO 1	1	
17	63V-41283-01	LEVER, FREE ACCEL. PALANCA	1	
18	63V-41211-00	LINK, ACCEL. ESLABON, ACELERADOR	1	
19	661-41262-02	JOINT, CHOKE LEVER CONECTOR DE AHOGADOR	1	
20	63V-41638-00	PULLEY POLEA	1	
21	90508-16M37	SPRING, TORSION RESORTE DE TORSION	1	
22	90508-20M38	SPRING, TORSION RESORTE DE TORSION	1	
23	63V-44123-01	ARM, SHIFT ROD BRAZO VARILLA DE CAMBIOS	1	
24	63V-44121-01	LEVER, SHIFT ROD PALANCA VARILLA CAMBIOS	1	
25	90159-05M25	SCREW, WITH WASHER TORNILLO CON VALONA	1	
26	63V-44125-00	LEVER, SHIFT ROD PLANCA VARILLA CAMBIOS	1	
27	90159-05M25	SCREW, WITH WASHER TORNILLO CON VALONA	1	
28	97595-06512	BOLT, WITH WASHER TORNILLO CON ARANDELA	1	

D5

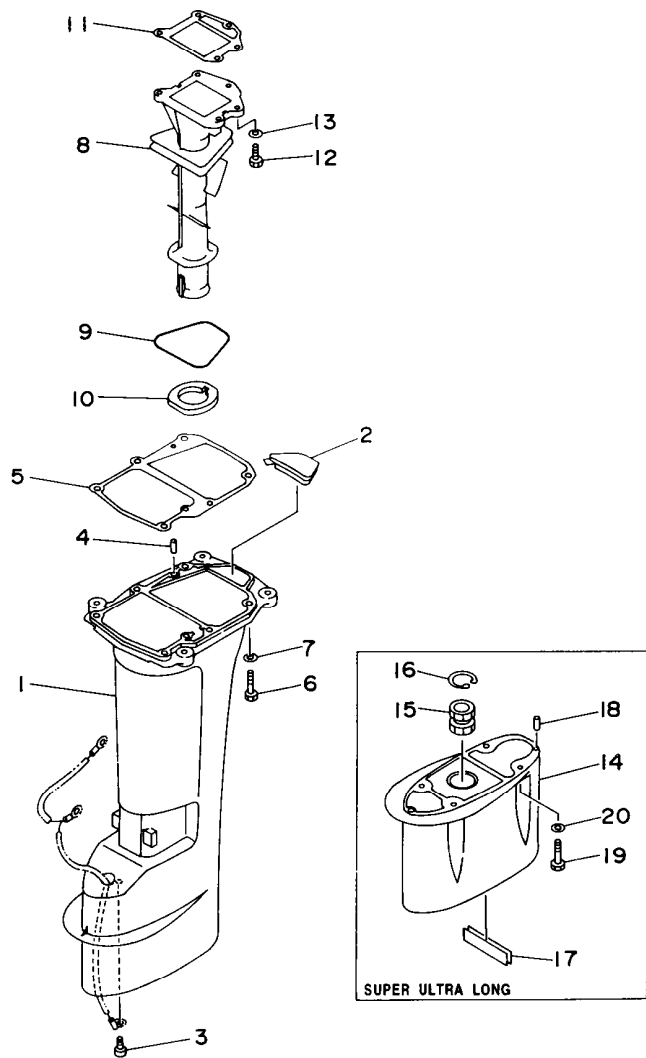


FIG. 14 UPPER CASING

FUNDA SUPERIOR

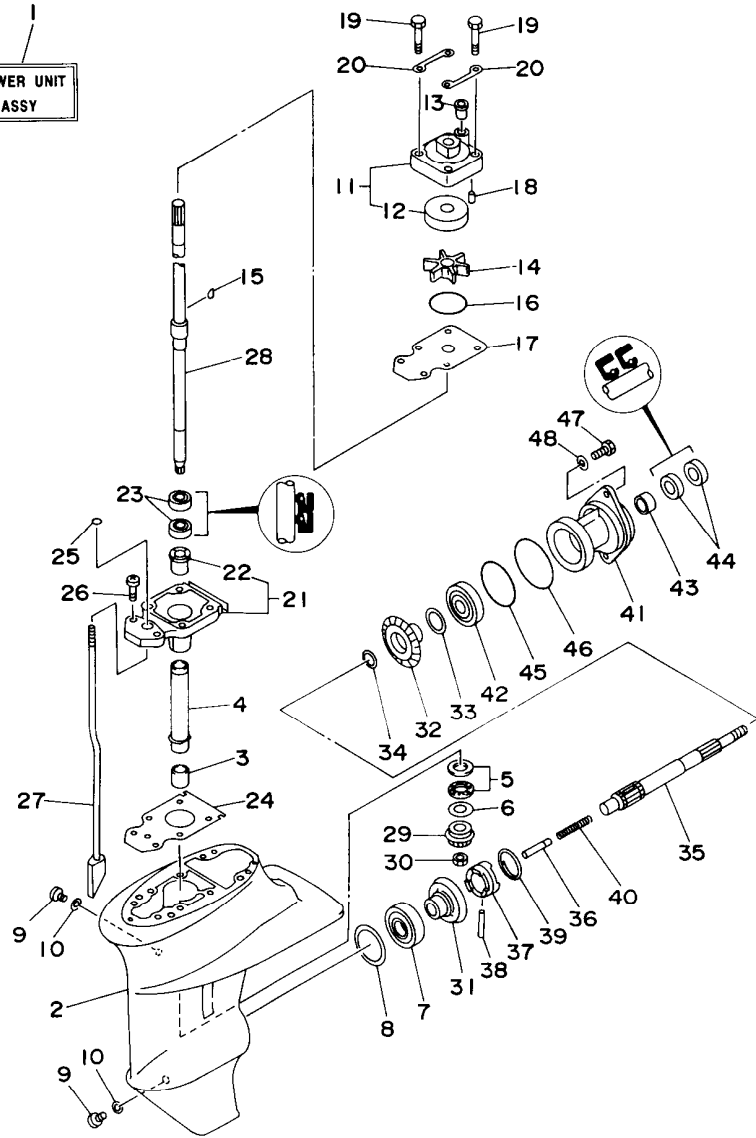
REF. NO.	PART NO. CODIGO NO.	DESCRIPTION DESCRIPCION	Q'TY CANT.	REMARKS OBSERVACION
1	63V-45111-04-4D	CASING, UPPER CAJA SUPERIOR	1	UR SHORT
	63V-45111-14-4D	CASING, UPPER CAJA SUPERIOR	1	UR LONG/SUPER ULTRA LONG
2	63V-45126-00	PLATE, SEAL DAMPER PLACA DE SELLO DE HULE	1	
3	90157-06M06	SCREW, PAN HEAD TORNILLO CABEZA CONICA PLANA	1	
4	93606-12019	PIN, DOWEL PASADOR DE CLAVIJA	2	
5	63V-45113-01	GASKET, UPPER CASING EMPAQUE	1	
6	97095-08030	BOLT PERNO	6	
7	92995-08600	WASHER ARANDELA	6	
8	63V-41131-02-5B	MANIFOLD, EXT. 1 TUBO MULTIPLE DE ESCAPE	1	
9	93210-71MH6	O-RING JUNTA TORICA	1	
10	63V-41135-00	GASKET, EXHAUST MANIFOLD EMPAQUE	1	
11	63V-41133-A1	GASKET, EXHAUST MANIFOLD 1 EMPAQUE ESCAPE MULTIPLE	1	
12	97095-06020	BOLT PERNO	5	
13	92990-06600	WASHER, PLATE ARANDELA PLANA	5	
14	63V-45211-30-4D	EXTENSION EXTENSION	1	SUPER ULTRA LONG
15	682-45318-00	BUSHING, DRIVE SHAFT BUJE, EJE DE MANDO	1	SUPER ULTRA LONG
16	93420-30042	CIRCLIP CIRCLIP	1	SUPER ULTRA LONG
17	63V-45127-00	SEAL SELLO DE GOMA	1	SUPER ULTRA LONG
18	93604-10M03	PIN, DOWEL PASADOR DE CLAVIJA	2	SUPER ULTRA LONG
19	97075-08030	BOLT PERNO	4	SUPER ULTRA LONG
20	92995-08600	WASHER ARANDELA	4	SUPER ULTRA LONG



63VJA-5130

D7

LOWER UNIT
ASSY



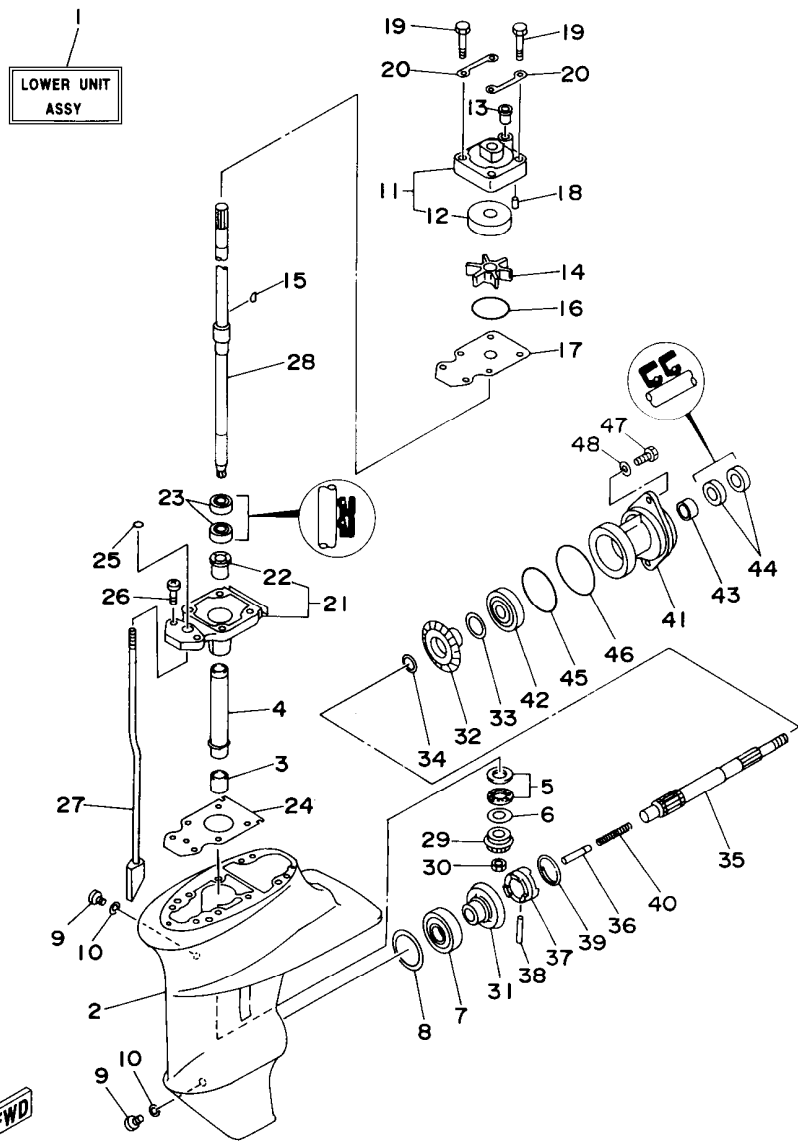
63VJA-5142

FIG. 15 LOWER CASING. DRIVE 1

IMPULSOR E INFERIOR 1

REF. NO.	PART NO. CODIGO NO.	DESCRIPTION DESCRIPCION	Q'TY CANT.	REMARKS OBSERVACION
33	626-45577-00-03	SHIM (0.3MM) LAMINA (0.3MM)	1	UR
	626-45577-00-05	SHIM (0.5MM) LAMINA (0.5MM)	1	UR
34	90201-17682	WASHER, PLATE ARANDELA PLANA	1	
35	683-45611-00	SHAFT, PROPELLER EJE PROPUSOR	1	
36	650-45635-00	PLUNGER, SHIFT EMBOLO DE CAMBIO	1	
37	682-45631-00	CLUTCH, DOG EMBRAGUE DE GARRA	1	
38	90250-05010	PIN, STRAIGHT PASADOR CILINDRICO	1	
39	648-45633-00	RING, CROSS PIN ANILLO DE PASADOR	1	
40	90501-14M06	SPRING, COMPRESSION RESORTE DE COMPRESION	1	
41	683-45361-02-4D	CAP, LOWER CASING FUNDA INFERIOR	1	
42	93306-00519	BEARING COJINETE	1	
43	93315-317U2	BEARING, CYLINDRICAL COJINETE DE RODILLOS	1	
44	93101-17054	OIL SEAL RETEN DE ACEITE	2	
45	93210-57M09	O-RING JUNTA TORICA	1	
46	93210-56M80	O-RING JUNTA TORICA	1	
47	97095-06020	BOLT PERNO	2	
48	92990-06600	WASHER, PLATE ARANDELA PLANA	2	

E3

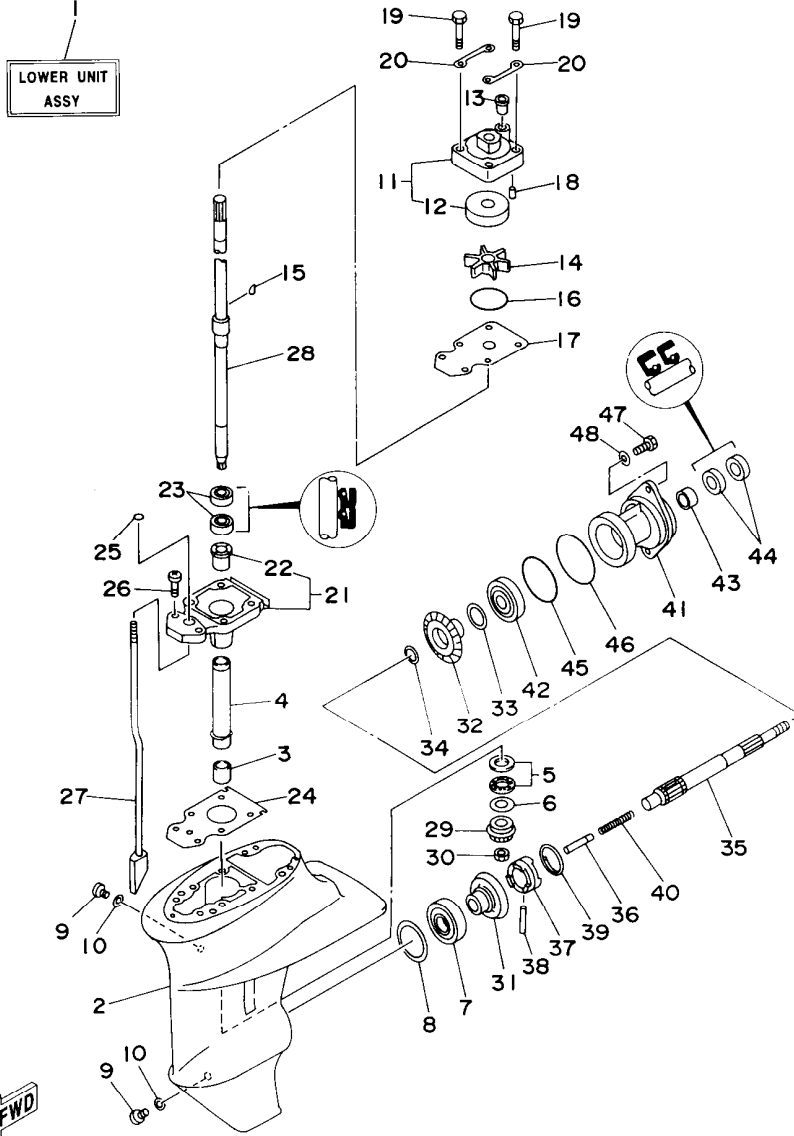


63VJA-5142

FIG. 15 LOWER CASING. DRIVE 1 IMPULSOR E INFERIOR 1

REF. NO.	PART NO. CODIGO NO.	DESCRIPTION DESCRIPCION	Q'TY CANT.	REMARKS OBSERVACION
12	63V-44322-00	.INSERT, CARTRIDGE .CARTUCHO	1 UR	
	63V-44322-40	.INSERT, CARTRIDGE .CARTUCHO	1 UR CHROMATE	
13	647-44366-00	DAMPER, WATER SEAL GOMA DEL SELLO DE AGUA	1	
14	63V-44352-00	IMPELLER IMPULSOR	1	
15	664-44338-00	KEY, WOODRUFF CUNA WOODRUFF	1	
16	93210-44704	O-RING JUNTA TORICA	1	
17	63V-44323-00	OUTER PLATE, CARTRIDGE PLACA EXTERIOR DEL CARTUCHO	1 UR	
	63V-44323-40	OUTER PLATE, CARTRIDGE PLACA EXTERIOR DEL CARTUCHO	1 UR CHROMATE	
18	93604-10M03	PIN, DOWEL PASADOR DE CLAVIJA	2	
19	97080-08045	BOLT PERNO	4	
20	63V-44328-00	PLATE PLACA	2	
21	63V-45331-00-5B	HOUSING, BEARING CAJA DE COJINETE	1	
22	626-45316-09	.BUSHING, DRIVE SHAFT .BUJE, EJE DE MANDO	1	
23	93101-20048	OIL SEAL RETEN DE ACEITE	2	
24	63V-45315-A0	PACKING, LOWER CASING EMPAQUE	1	
25	93210-06ME6	O-RING JUNTA TORICA	1	
26	98980-08025	SCREW, BIND TORNILLO DE AJUSTE	2	
27	63V-44150-00	SHIFT CAM ASSY CONJUNTO EJE LEVA COMPL.	1 UR SHORT	
	63V-44150-10	SHIFT CAM ASSY CONJUNTO EJE LEVA COMPL.	1 UR LONG	
	63V-44150-30	SHIFT CAM ASSY CONJUNTO EJE LEVA COMPL.	1 UR SUPER ULTRA LONG	
28	63V-45510-01	DRIVE SHAFT ASSY EJE DE MANDO COMPL.	1 UR SHORT	
	63V-45510-11	DRIVE SHAFT ASSY EJE DE MANDO COMPL.	1 UR LONG	
	63V-45510-31	DRIVE SHAFT ASSY EJE DE MANDO COMPL.	1 UR SUPER ULTRA LONG	
29	63V-45551-00	PINION PINON	1	
30	90179-08M06	NUT TUERCA	1	
31	6E7-45560-00	GEAR ENGRANE COMPLE 1	1	
32	6E7-45571-00	GEAR ENGRANAJE	1	
33	626-45577-00-01	SHIM (0.1MM) LAMINA (0.1MM)	1 UR	

E2



63VJA-5142

FIG. 15 LOWER CASING. DRIVE 1

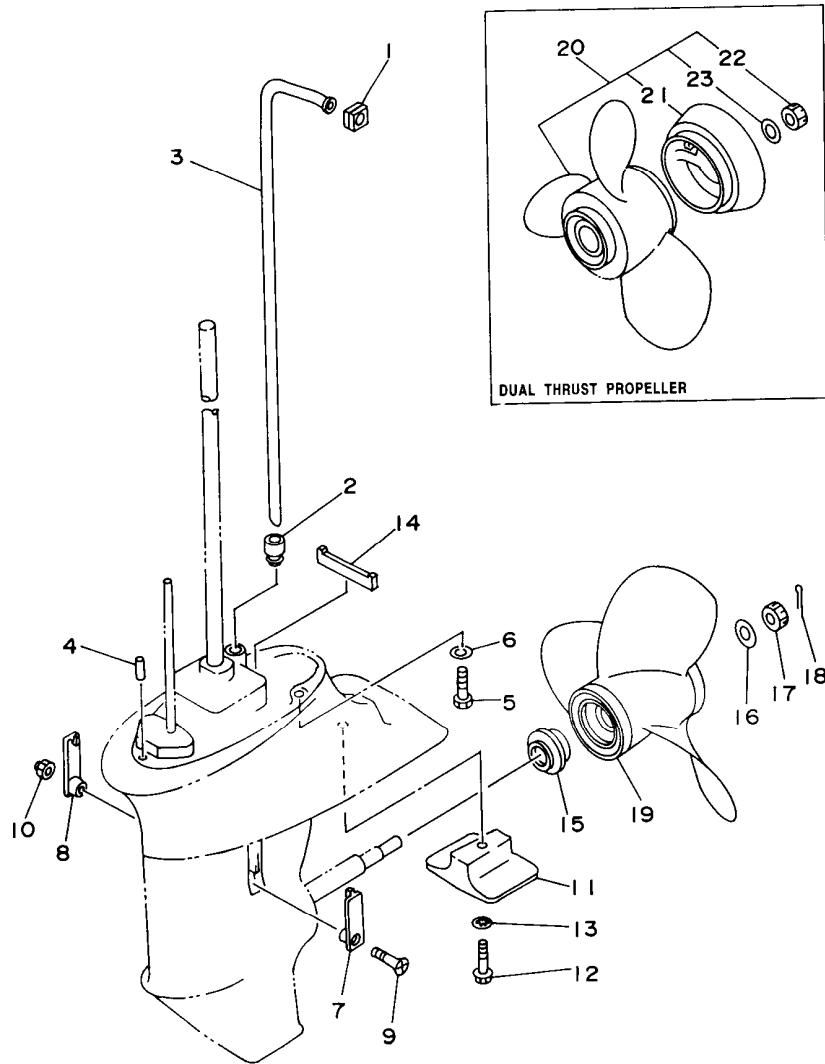
IMPULSOR E INFERIOR 1

REF. NO.	PART NO. CODIGO NO.	DESCRIPTION DESCRIPCION	Q'TY CANT.	REMARKS OBSERVACION
1	63V-45300-02-4D	LOWER UNIT ASSY CONJUNTO UNIDAD INFERIOR (REF.NO. 2 ~ 48)	1	UR SHORT
	63V-45300-12-4D	LOWER UNIT ASSY CONJUNTO UNIDAD INFERIOR (REF.NO. 2 ~ 48)	1	UR LONG
	63V-45300-32-4D	LOWER UNIT ASSY CONJUNTO UNIDAD INFERIOR (REF.NO. 2 ~ 48)	1	UR SUPER ULTRA LONG
	65E-45300-01-4D	LOWER UNIT ASSY CONJUNTO UNIDAD INFERIOR (REF.NO. 2 ~ 48)	1	UR SHORT (CHROMATE)
	65E-45300-11-4D	LOWER UNIT ASSY CONJUNTO UNIDAD INFERIOR (REF.NO. 2 ~ 48)	1	UR LONG (CHROMATE)
	65E-45300-31-4D	LOWER UNIT ASSY CONJUNTO UNIDAD INFERIOR (REF.NO. 2 ~ 48)	1	UR SUPER ULTRA LONG (CHROMATE)
2	63V-45311-01-4D	CASING, LOWER FUNDA INFERIOR	1	
3	93315-314V8	BEARING, CYLINDRICAL COJINETE DE RODILLOS	1	
4	63V-45536-00	SLEEVE, DRIVE SHAFT CAMISA EJE DE MANDO	1	
5	93341-414V1	BEARING, THRUST COJINETES CON RODAMIENTOS	1	
6	6E8-45587-00-13	SHIM (T:1.13MM)	1	UR
	6E8-45587-00-20	LAMINA (T:1.20MM)	1	UR
		LAMINA (T:1.20MM)		
7	93332-00005	BEARING COJINETE DE RODILLOS AHUSADO	1	
8	664-45567-01-10	SHIM (T:0.10MM)	1	UR
	664-45567-01-12	LAMINA (T:0.10MM)	1	UR
	664-45567-01-15	SHIM (T:0.12MM)	1	UR
	664-45567-01-18	LAMINA (T:0.15MM)	1	UR
	664-45567-01-30	SHIM (T:0.18MM)	1	UR
	664-45567-01-40	LAMINA (T:0.30MM)	1	UR
	664-45567-01-50	SHIM (T:0.40MM)	1	UR
		LAMINA (T:0.40MM)		
		SHIM (T:0.50MM)	1	UR
		LAMINA (T:0.50MM)		
9	90340-08M04	PLUG, STRAIGHT SCREW TORNILLO, DE DRENAJE	2	
10	90430-08020	GASKET JUNTA	2	
11	63V-44301-00	WATER PUMP HOUSING COMP. CAJA DE BOMBE DE AGUA COMPL	1	UR
	63V-44301-40	WATER PUMP HOUSING COMP. CAJA DE BOMBE DE AGUA COMPL	1	UR CHROMATE

E1

FIG. 16 LOWER CASING. DRIVE 2

IMPULSOR E INFERIOR 2



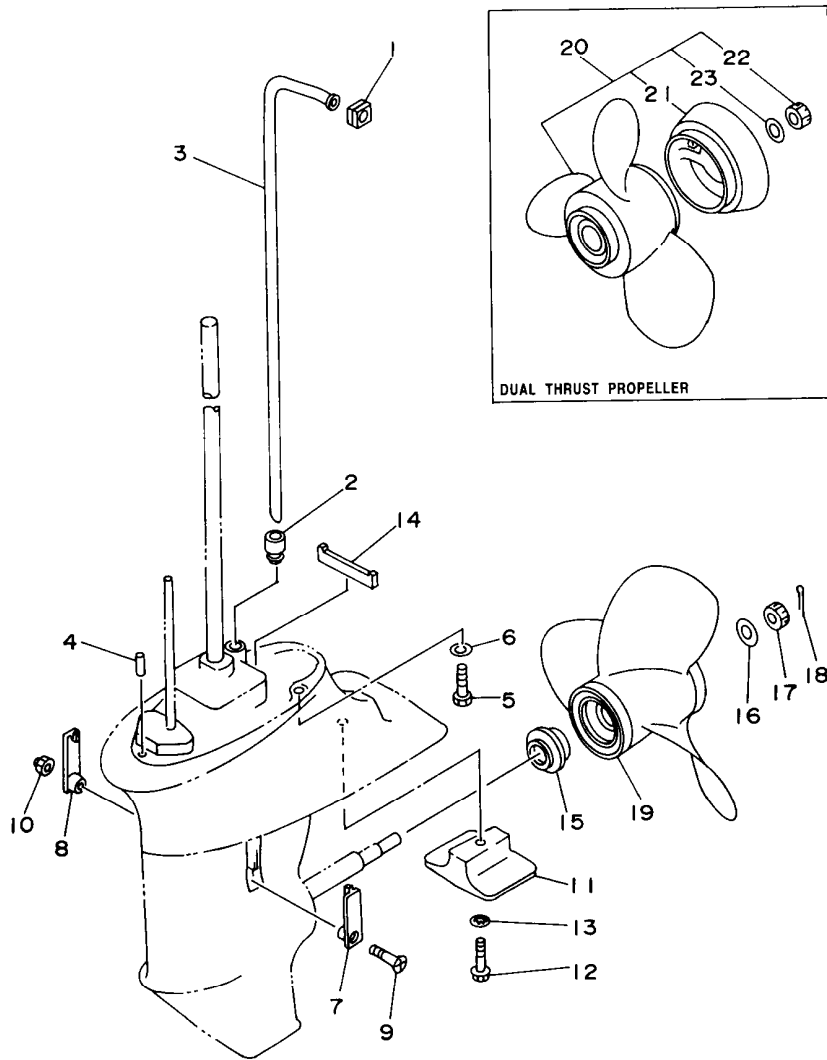
REF. NO.	PART NO. CODIGO NO.	DESCRIPTION DESCRIPCION	Q'TY CANT.	REMARKS OBSERVACION
21	6E7-45986-00	.RING, DEFLECTOR .ANILLO REFLECTOR	1	
22	90171-10M07	.NUT, CASTLE .TUERCA ENTALLADA	1	
23	90201-10M02	.WASHER, PLATE .ARANDELA PLANA	1	

63VJA-5150

E5

FIG. 16 LOWER CASING. DRIVE 2

IMPULSOR E INFERIOR 2



63VJA-5150

REF. NO.	PART NO. CODIGO NO.	DESCRIPTION DESCRIPCION	Q'TY CANT.	REMARKS OBSERVACION
1	63V-44365-10	DAMPER, WATER SEAL HULE DE SELLO DE AGUA	1	
2	63V-44368-00	RUBBER, WATER SEAL 4 CAUCHO AGUA SERTISSURE 4	1	
3	63V-44361-00	TUBE, WATER TUBO DE AGUA	1	UR SHORT
	63V-44361-10	TUBE, WATER TUBO DE AGUA	1	UR LONG
	63V-44361-30	TUBE, WATER TUBO DE AGUA	1	UR SUPER ULTRA LONG
4	93604-10M03	PIN, DOWEL PASADOR DE CLAVIJA	2	
5	97075-08030	BOLT PERNO	4	
6	92995-08600	WASHER ARANDELA	4	
7	6G1-45214-00	COVER, WATER INLET CUBIERTA ENTRADA AGUA	1	
8	63V-45215-00	COVER, WATER INLET CUBIERTA ENTRADA AGUA	1	
9	98780-05525	SCREW, FLAT HEAD TORNILLO CABEZA PLANA	1	
10	90185-05904	NUT, SELF-LOCKING TUERCA AUTOBLOCANTE	1	
11	61N-45251-00	ANODE CATODE	1	
12	95895-06030	BOLT, FLANGE TORNILLO DE REBORDE	1	
13	92990-06300	WASHER, INTERNAL TOOTH ARANDELA PLANA	1	
14	63V-45375-00	DAMPER, SEAL GOMA DE SELLO	1	
15	6E7-45987-01	SPACER ESPACIADOR	1	
16	90201-10M01	WASHER, PLATE ARANDELA PLANA	1	
17	90171-10M01	NUT, CASTLE TUERCA ENTALLADA	1	
18	91490-30020	PIN, COTTER CHAVETA	1	
19	683-45945-00-EL	PROPELLER (3X9-1/4"X9"-J) PROPELA (3X9-1/4"X9"-J)	1	UR
	683-45941-00-EL	PROPELLER (3X9-1/4"X12"-J) PROPELA (3X9-1/4"X12"-J)	1	UR
	683-45943-00-EL	PROPELLER (3X9-1/4"X10-1/2"-J) PROPELA (3X9-1/4"X10-1/2"-J)	1	UR
	683-45947-00-EL	PROPELLER (3X9-1/4"X8"-J) PROPELA (3X9-1/4"X8"-J)	1	UR
	683-45949-00-EL	PROPELLER (3X9-1/2"X6-1/2"-J) PROPELA (3X9-1/2"X6-1/2"-J)	1	UR
	683-45952-00-EL	PROPELLER (3X9-1/4"X9-3/4"-J) PROPELA (3X9-1/4"X9-3/4"-J)	1	UR
20	683-W4591-02-EL	PROPELLER (3X9-3/4"X8"-J) PROPELA (3X9-3/4"X8"-J)	1	UR DUAL THRUST PROP.
	683-W4592-02-EL	PROPELLER (3X9-3/4"X6-1/2"-J) PROPELA (3X9-3/4"X6-1/2"-J)	1	UR DUAL THRUST PROP.

E4

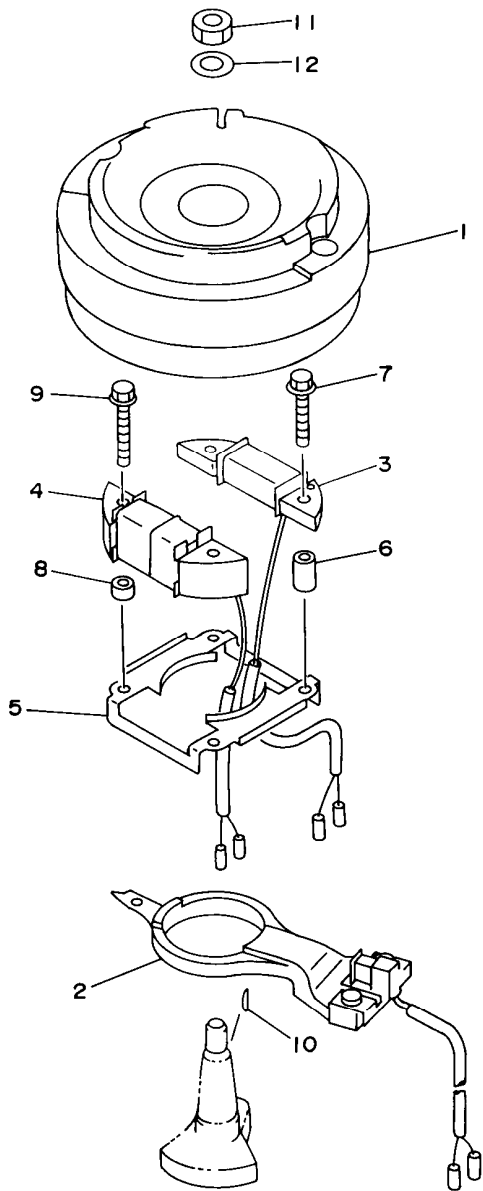


FIG. 17 GENERATOR

GENERADOR

REF. NO.	PART NO. CODIGO NO.	DESCRIPTION DESCRIPCION	Q'TY CANT.	REMARKS OBSERVACION
1	63V-85550-10	ROTOR ASSY ROTOR COMPLETO	1	
2	63V-85580-00	COIL, PULSER BOBINA DE PULSACION	1	
3	63V-85520-00	COIL, CHARGE BOBINA DE CARGA	1	
4	63V-85533-00	COIL, LIGHTING BOBINA DE LUZ	1	9.9F/15F, E9.9C/E15C (COLOMBIA)
5	63V-41611-00	RETAINER, MAGNETO BASE RETENEDOR BASE MAGNETO	1	
6	90387-06M53	COLLAR CASQUILLO CON VALONA	2	
7	90105-06M68	BOLT, WASHER BASED TORNILLO CON ARANDELA	2	
8	90387-06M24	COLLAR CASQUILLO CON VALONA	2	9.9F/15F, E9.9C/E15C (COLOMBIA)
9	90105-06M69	BOLT, WASHER BASED TORNILLO CON ARANDELA	2	UR 9.9F/15F, E9.9C/E15C (COLOMBIA)
	97095-06012	BOLT PERNO	2	UR E9.9C/E15C
10	90280-16053	KEY, WOODRUFF CUNA WOODRUFF	1	
11	90170-12066	NUT TUERCA	1	
12	90201-12472	WASHER, PLATE ARANDELA PLANA	1	



63VJA-5160

E6

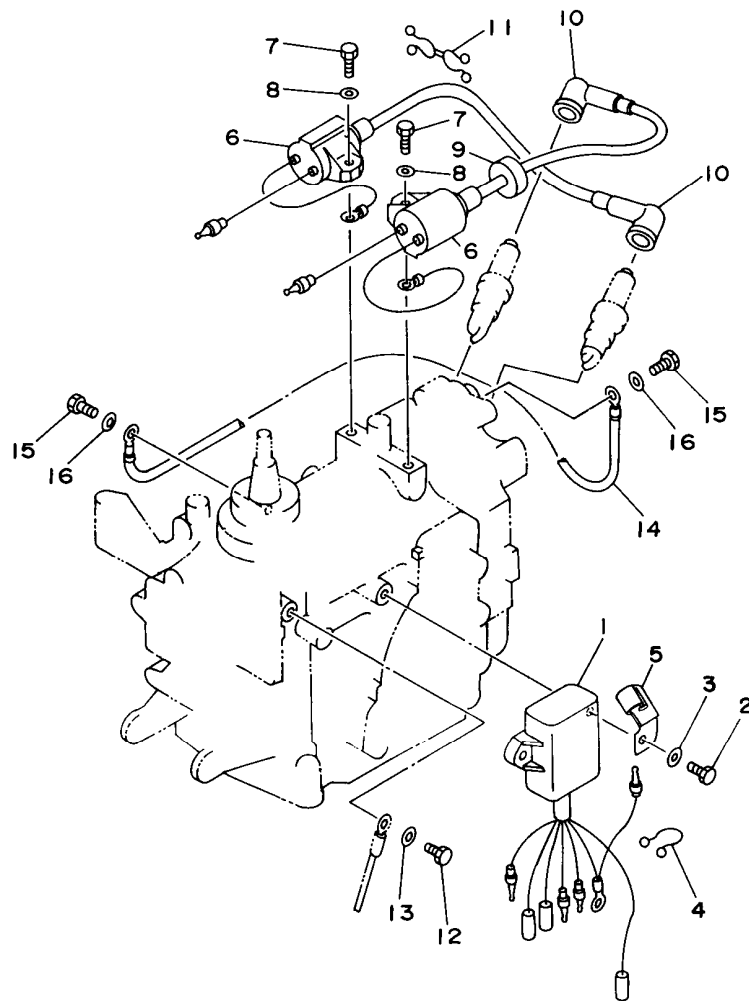


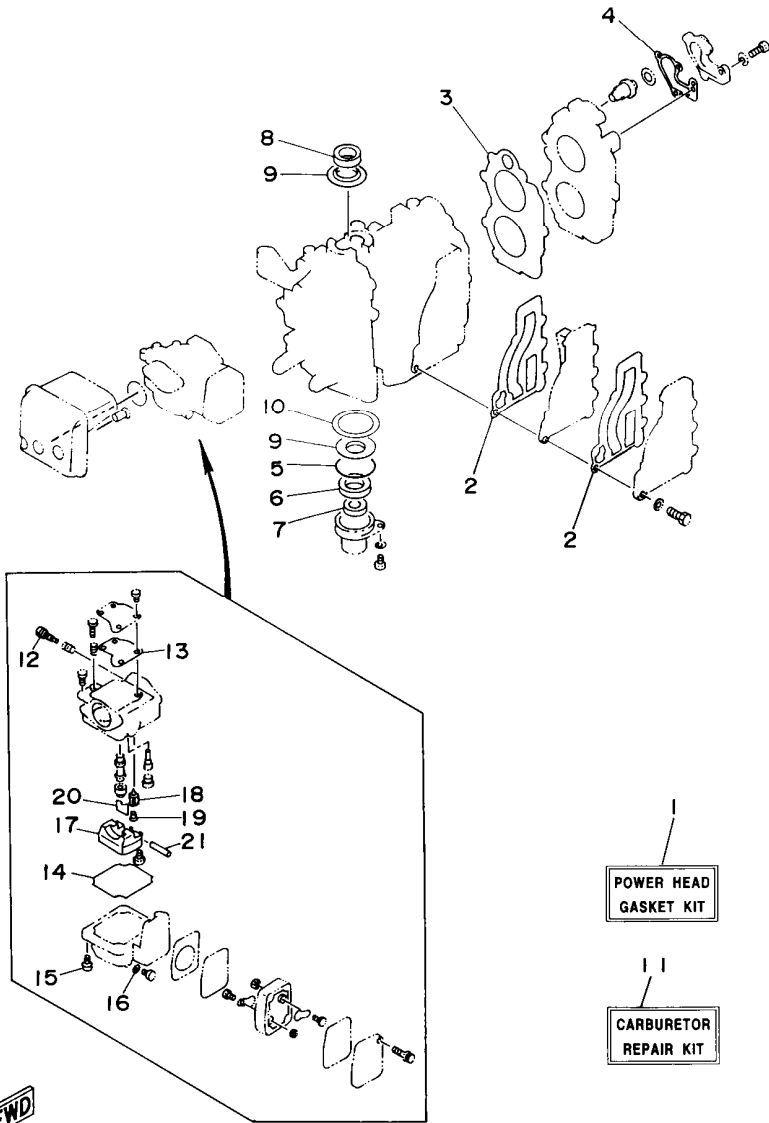
FIG. 18 ELECTRICAL 1

EQUIPO ELECTRICO 1

REF. NO.	PART NO. CODIGO NO.	DESCRIPTION DESCRIPCION	Q'TY CANT.	REMARKS OBSERVACION
1	63V-85540-01	C.D.I. UNIT ASSY UNIDAD C.D.I. COMPLETA	1	
2	97095-06020	BOLT PERNO	2	
3	92990-06600	WASHER, PLATE ARANDELA PLANA	2	
4	90464-16039	CLAMP BRIDA	1	
5	90465-08M61	CLAMP BRIDA	1	
6	63V-85570-00	IGNITION COIL ASSY BOBINA DE IGNICION COMPLETO	2	
7	97095-06018	BOLT PERNO	2	
8	92990-06600	WASHER, PLATE ARANDELA PLANA	2	
9	90480-25161	GROMMET TAPON	1	
10	663-82370-01	PLUG CAP ASSY TAPON DE BUJIA COMPLT	2	UR 9.9F/15F
	682-82370-00	PLUG CAP ASSY TAPON DE BUJIA COMPLT	2	UR E9.9C/E15C
11	90464-08M02	CLAMP BRIDA	1	
12	97095-06012	BOLT PERNO	1	
13	92990-06600	WASHER, PLATE ARANDELA PLANA	1	
14	662-82519-00	WIRE, EARTH LEAD CABLE CONDUCTOR A TIERRA	1	
15	97095-06012	BOLT PERNO	2	
16	92990-06600	WASHER, PLATE ARANDELA PLANA	2	


63VJA-5182

E7



1
POWER HEAD
GASKET KIT

11
CARBURETOR
REPAIR KIT

FIG. 19 REPAIR KIT 1

ESTUCHE REPARATION 1

REF. NO.	PART NO. CODIGO NO.	DESCRIPTION DESCRIPCION	Q'TY CANT.	REMARKS OBSERVACION
1	63V-W0001-01	POWER HEAD GASKET KIT .JUEGO DE EMPAQUE	1	UR 9.9F/15F
	65E-W0001-00	POWER HEAD GASKET KIT .JUEGO DE EMPAQUE	1	UR E9.9C/E15C
2	63V-41112-A0	.GASKET, EXHAUST INNER COVER .EMPAQUE	2	
3	63V-11181-A1	.GASKET, CYLINDER HEAD 1 .JUNTA, DE CULATA 1	1	
4	682-12414-A1	.GASKET, COVER .EMPAQUE	1	
5	93210-46M16	.O-RING .JUNTA TORICA	1	
6	93102-25M48	.OIL SEAL .RETEN DE ACEITE	1	
7	93101-13M11	.OIL SEAL .RETEN DE ACEITE	1	
8	93110-23M00	.OIL SEAL .SELLO ACEITE	1	
9	63V-11445-00	.SPACER .ESPACIADOR	2	
10	90201-46M29	.WASHER, PLATE .ARANDELA PLANA	1	
11	63V-W0093-00	CARBURETOR REPAIR KIT KIT REPARACION CARBURADOR	1	
12	679-14923-00	.SCREW, PILOT .TORNILLO DE AJUSTE	1	
13	63V-14126-00	.GASKET .EMPAQUE	1	
14	63V-14984-00	.GASKET, FLOAT CHAMBER .EMPAQUE CAMARA DE BOIA	1	
15	97980-04114	.SCREW, WITH WASHER .TORNILLO, CON ARANDELA	4	
16	661-14398-00	.WASHER .EMPAQUE	1	
17	63V-14985-00	.FLOAT .BOIA	1	
18	661-14546-00	.VALVE, NEEDLE .VALVULA DE AGUJA	1	
19	676-14186-00	.PIN, FLOAT .PASADOR DE LA BOYA	1	
20	663-14159-00	.CLIP .PRESILLA	1	
21	6H4-14548-00	.PIN, FLOAT ARM .PASADOR DE BRAZO DE BOIA	1	

FWD
63VJA-5200

FIG. 20 REPAIR KIT 2

ESTUCHE REPARACION 2

REF. NO.	PART NO. CODIGO NO.	DESCRIPTION DESCRIPCION	Q'TY CANT.	REMARKS OBSERVACION
24	63V-W0078-0A	CHROME PUMP KIT ESTUCHE REPARACION BOMBA AGUA	1 AP	
25	63V-44322-40	.INSERT, CARTRIDGE .CARTUCHO	1 AP	
26	63V-44323-40	.OUTER PLATE, CARTRIDGE .PLACA EXTERIOR DEL CARTUCHO	1 AP	
27	63V-44352-00	.IMPELLER .IMPULSOR	1 AP	

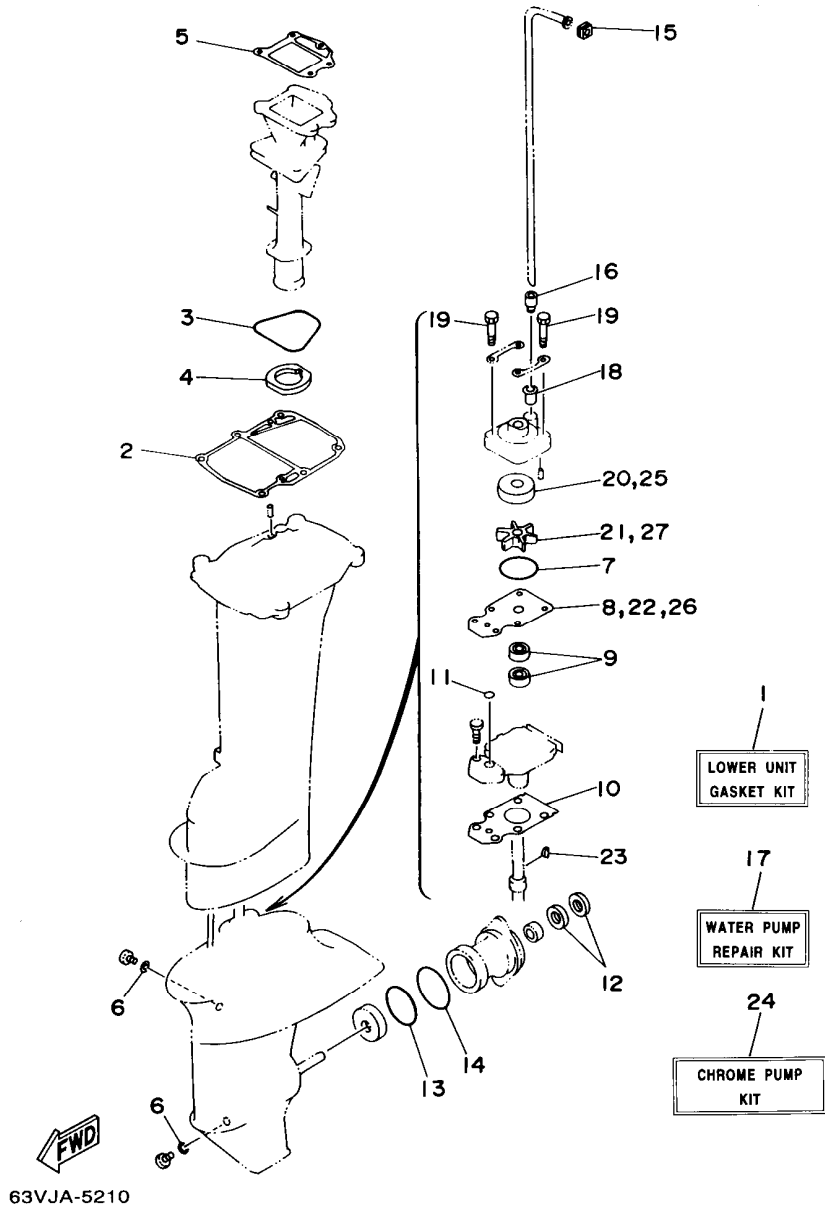
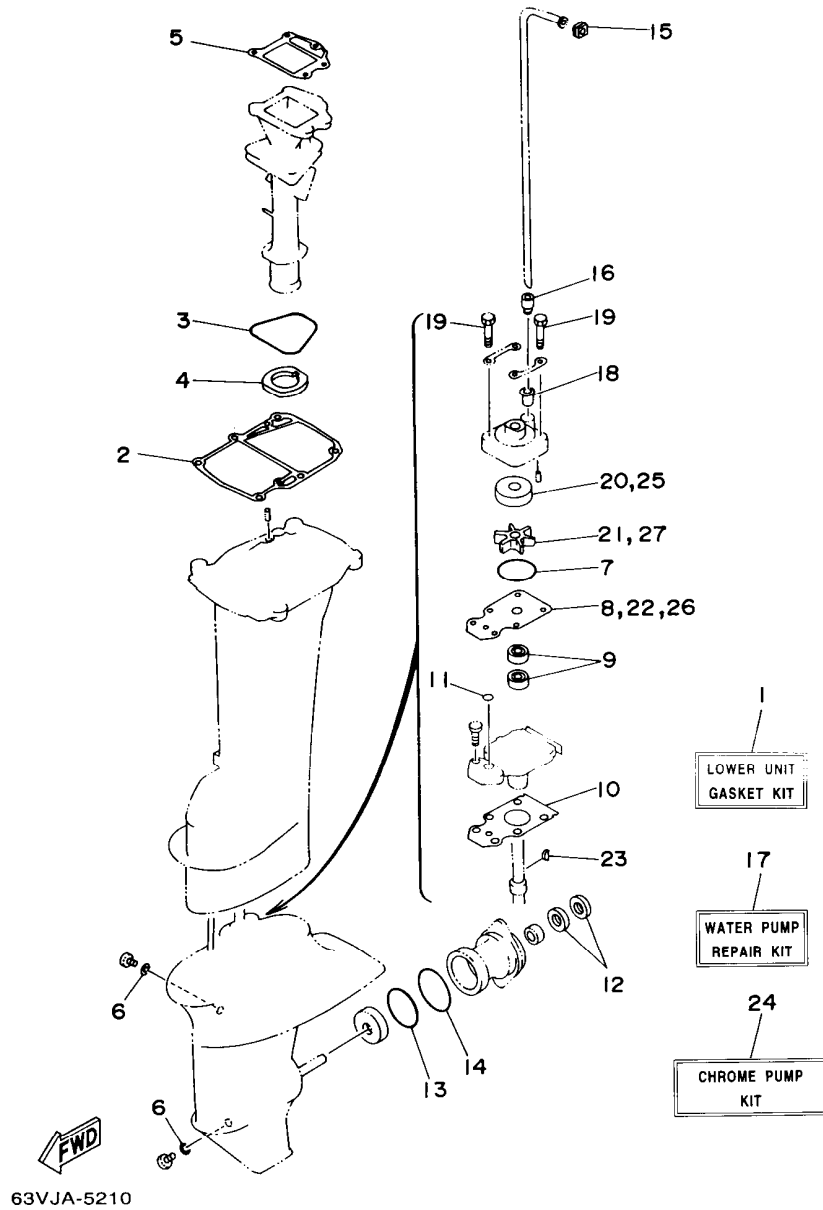


FIG. 20 REPAIR KIT 2

ESTUCHE REPARACION 2



REF. NO.	PART NO. CODIGO NO.	DESCRIPTION DESCRIPCION	Q'TY CANT.	REMARKS OBSERVACION
1	63V-W0001-21	LOWER UNIT GASKET KIT	1	UR
	65G-W0001-C0	LOWER UNIT GASKET KIT	1	UR CHROMATE
2	63V-45113-01	JUEGO DE EMPAQUE UNIDAD INFER.	1	
3	93210-71MH6	.GASKET, UPPER CASING	1	
4	63V-41135-00	.EMPAQUE	1	
5	63V-41133-A1	.O-RING	1	
6	90430-08020	.JUNTA TORICA	1	
7	93210-44704	.GASKET, EXHAUST MANIFOLD	1	
8	63V-44323-00	.EMPAQUE	1	
9	93101-20048	.GASKET, EXHAUST MANIFOLD 1	1	
10	63V-45315-A0	.EMPAQUE ESCAPE MULTIPLE	2	
11	93210-06ME6	.GASKET	1	
12	93101-17054	.JUNTA	2	
13	93210-57M09	.O-RING	1	
14	93210-56M80	.JUNTA TORICA	1	
15	63V-44365-10	.OIL SEAL	2	
16	63V-44368-00	.RETEN DE ACEITE	1	
17	63V-W0078-00	.PACKING, LOWER CASING	1	
18	647-44366-00	.EMPAQUE	1	
19	97080-08045	.O-RING	4	
20	63V-44322-00	.JUNTA TORICA	1	
21	63V-44352-00	.OIL SEAL	1	
22	63V-44323-00	.RETEN DE ACEITE	1	
23	664-44338-00	.O-RING	1	
		.JUNTA TORICA	1	
		.DAMPER, WATER SEAL	1	
		.HULE DE SELLO DE AGUA	1	
		.RUBBER, WATER SEAL 4	1	
		.CAUCHO AGUA SERTISSURE 4	1	
		WATER PUMP REPAIR KIT	1	UR
		ESTUCHE REPARACION BOMBA AGUA	1	UR CHROMATE
		WATER PUMP REPAIR KIT	1	
		ESTUCHE REPARACION BOMBA AGUA	1	
		.DAMPER, WATER SEAL	1	
		.HULE DE SELLO DE AGUA	1	
		.BOLT	4	
		.PERNO	1	
		.INSERT, CARTRIDGE	1	UR
		.CARTUCHO	1	
		.INSERT, CARTRIDGE	1	UR CHROMATE
		.CARTUCHO	1	
		.IMPELLER	1	
		.IMPULSOR	1	
		.OUTER PLATE, CARTRIDGE	1	UR
		.PLACA EXTERIOR DEL CARTUCHO	1	UR CHROMATE
		.OUTER PLATE, CARTRIDGE	1	UR CHROMATE
		.PLACA EXTERIOR DEL CARTUCHO	1	
		.KEY, WOODRUFF	1	
		.CUNA WOODRUFF	1	

F2

NUMERICAL INDEX
INDICE NUMERICO

PART NO. CODIGO NO.	REF. NO. REF. NO.	PART NO. CODIGO NO.	REF. NO. REF. NO.	PART NO. CODIGO NO.	REF. NO. REF. NO.	PART NO. CODIGO NO.	REF. NO. REF. NO.	PART NO. CODIGO NO.	REF. NO. REF. NO.	PART NO. CODIGO NO.	REF. NO. REF. NO.
63V-45510-11	15-28	90105-06M07	11- 4	90340-08M04	15- 9	90508-20M38	13-22	93210-29M94	11- 9	97080-08045	15-19
63V-45510-31	15-28	90105-06M68	17- 7	90386-07M95	10-36	90890-44373	5-17	93210-32738	6- 7		20-19
63V-45536-00	15- 4	90105-06M69	17- 9	90386-08032	12-18	91490-16010	12-10	93210-35M86	3-12	97095-06012	13- 5
63V-45551-00	15-29	90105-07M05	1-21	90386-12M45	9-10	91490-16020	5-24	93210-44704	15-16		17- 9
6E7-45560-00	15-31	90109-06M69	10-51	90386-22M69	10-16	91490-20015	10-55		20- 7		18-12
664-45567-01-10	15- 8	90116-08M54	11-11	90386-22M94	10-14	91490-30020	16-18	93210-46M16	2- 2		18-15
664-45567-01-12	15- 8	90119-06M94	3-13		10-15	91690-20010	3- 6		19- 5	97095-06016	2- 5
664-45567-01-15	15- 8	90119-08M07	1-11	90386-30M60	11-10	91690-30012	10-40	93210-56M80	15-46		7- 8
664-45567-01-18	15- 8	90149-05M13	12-15	90386-30048	11- 8	92990-06300	16-13		20-14		8- 8
664-45567-01-30	15- 8	90157-06M06	14- 3	90386-33M96	12- 5	92990-06600	1-18	93210-57M09	15-45	97095-06018	11-18
664-45567-01-40	15- 8	90159-05M25	13-25	90386-34M97	12- 2		1-27		20-13		18- 7
664-45567-01-50	15- 8		13-27	90387-06M05	5- 4		2- 6	93210-71MH6	14- 9	97095-06020	3- 3
6E7-45571-00	15-32		13-31	90387-06M06	13-36		3- 4		20- 3		5-26
626-45577-00-01	15-33	90164-05M03	3-21	90387-06M13	10-26		5-27	93306-00519	15-42		6- 2
626-45577-00-03	15-33	90170-06015	13-34	90387-06M15	3-10		6- 3	93306-205U7	2-12		12- 7
626-45577-00-05	15-33	90170-12066	17-11	90387-06M24	17- 8		7- 9	93310-620V5	2-16		13-38
6E8-45587-00-13	15- 6	90171-08M00	10-53	90387-06M50	13- 3		8- 9	93315-314V8	15- 3		14-12
6E8-45587-00-20	15- 6	90171-10M01	16-17	90387-06M52	9-17		9-16	93315-317U2	15-43		15-47
683-45611-00	15-35	90171-10M07	16-22	90387-06M53	17- 6		10-28	93332-00005	15- 7		18- 2
682-45631-00	15-37	90179-06M28	11-27	90387-06M75	10-20		11-19	93341-414V1	15- 5	97095-06025	9-13
648-45633-00	15-39	90179-08M06	15-30	90387-16M01	11-15		11-24	93420-30042	14-16		9-15
650-45635-00	15-36	90185-05904	16-10	90430-08020	15-10		11-26	93450-15023	2-23	97095-06030	1-17
683-45941-00-EL	16-19	90201-05M09	3-20		20- 6		13- 6	93602-14104	2-21	97095-08030	14- 6
683-45943-00-EL	16-19	90201-06M02	9-12	90445-07M08	1- 5		13-39	93604-10M03	14-18	97595-06512	13-28
683-45945-00-EL	16-19	90201-10M01	16-16		1- 6		14-13		15-18	97885-05012	12-21
683-45947-00-EL	16-19	90201-10M02	16-23	90445-09M00	6- 9		15-48		16- 4	97885-06008	10- 5
683-45949-00-EL	16-19	90201-12472	17-12	90445-093J2	1-16		18- 3	93606-12019	1-10		10- 7
683-45952-00-EL	16-19	90201-14377	2-22	90464-08M02	18-11		18- 8		14- 4	97885-06025	10-22
6E7-45986-00	16-21	90201-16M03	1-24	90464-16039	18- 4		18-13	93700-06M03	11- 1	97885-06030	13- 8
6E7-45987-01	16-15	90201-17682	15-34	90465-08M61	18- 5		18-16	94701-00217	1-28	97885-08010	10- 6
63V-82127-00	11- 5	90201-46M29	2-26	90465-25M57	9-21	92990-10600	12-16	94702-00271	1-28	97980-04114	4-15
6E5-82148-00	10- 4		19-10	90467-06016	1- 7	92995-08600	10-54	95380-03600	4-25		19-15
66M-82148-00	10- 3	90202-06009	12-28	90467-08004	6-10		14- 7	95380-05700	13-14	97980-04125	4-26
663-82370-01	18-10	90202-22M54	10-13	90468-10003	12-29		14-20	95380-06600	13- 9	98580-04006	4-33
682-82370-00	18-10	90202-36M55	12- 4	90468-10005	13-15		16- 6	95380-06700	9-14	98580-04008	4-23
662-82519-00	18-14	90206-08010	10-21	90480-06M19	9- 7	93101-13M11	2- 4		10-29	98580-04010	4- 6
682-82556-00	12-31	90206-12052	9-11	90480-10M16	13-43		19- 7		13-33	98780-05016	1- 9
689-8257Y-00	12-32	90206-13M10	12-25	90480-12M25	3-11	93101-17054	15-44	95380-08600	6- 8	98780-05525	16- 9
63V-82575-00	12-30	90206-36M21	12- 3	90480-15M31	9-18		20-12		11-14	98980-03006	4-24
63V-85520-00	17- 3	90209-20159	2-17	90480-25161	18- 9	93101-20048	15-23	95780-06300	10-23	98980-08025	15-26
63V-85533-00	17- 4	90243-04M01	10- 9	90501-10326	4-10		20- 9	95895-06030	16-12	99080-05600	10-41
63V-85540-01	18- 1	90250-05010	15-38	90501-12M16	13-10	93102-25M48	2- 3	95895-06065	13- 4		10-45
63V-85550-10	17- 1	90266-04M04	7- 4	90501-14M06	15-40		19- 6	97013-06010	6-12		10-47
63V-85570-00	18- 6		7- 6	90501-23215	12-17	93110-23M00	2-24	97013-06020	1-26		
63V-85580-00	17- 2		8- 4	90507-20M00	10-38		19- 8	97075-06055	11-23		
90019-06M09	12-24		8- 6	90507-26M00	10-49	93210-06ME6	15-25	97075-06075	11-25		
90101-06M29	10-27	90269-02M09	12-13	90508-08M39	13-37		20-11	97075-08030	14-19		
90102-08M03	10-52	90280-16053	17-10	90508-16M37	13-21	93210-20M65	10-19		16- 5		

NUMERICAL INDEX
INDICE NUMERICO

PART NO. CODIGO NO.	REF. NO. REF. NO.	PART NO. CODIGO NO.	REF. NO. REF. NO.	PART NO. CODIGO NO.	REF. NO. REF. NO.	PART NO. CODIGO NO.	REF. NO. REF. NO.	PART NO. CODIGO NO.	REF. NO. REF. NO.	PART NO. CODIGO NO.	REF. NO. REF. NO.
63V-W0001-01	19- 1	676-14186-00	4-20	63V-15768-00	5-14	6G1-42111-11-4D	12- 1	63V-43131-00	10-12	664-44338-00	20-23
63V-W0001-21	20- 1		19-19	63V-15770-00	13-42	664-42119-00	12-11	63V-43145-00	10-25	63V-44352-00	15-14
65E-W0001-00	19- 1	63V-14301-00	4- 1	6G1-15779-00	5-19	6G1-42125-01	12- 8	6L2-43160-00	10-30		20-21
65G-W0001-C0	20- 1	6G1-14398-00	4-16	63V-15784-01	5-12	6G1-42126-00	12- 9	63V-43181-00	10-50		20-27
682-W0004-00	3- 2		19-16	63V-15793-00	5-16	6G1-42131-01	12- 6	63V-43191-00	10-35	63V-44361-00	16- 3
63V-W0070-11	7-10	63V-14440-00	3- 9	63V-15794-00	5-20	6H2-42137-00	12-12	63V-43311-01-4D	10-32	63V-44361-10	16- 3
65E-W0070-H0	8-10	624-14485-00	1- 3	63V-15795-01	5- 3	697-42137-10	12-12	63V-43311-02-4D	10-31	63V-44361-30	16- 3
65F-W0070-H0	8-10	650-14485-02	1- 4	6G1-24304-02	6- 1	6G1-42138-01	12-19	682-43318-01	10-34	63V-44365-10	16- 1
63V-W0078-OA	20-24	63V-14497-01	13- 1	63V-24396-00	6-13	6E0-42159-02	12-20	63V-43350-00	10-37		20-15
63V-W0078-00	20-17	63V-14523-00	4- 9	6G1-24411-00	4-30	6G1-42177-00	12-14	689-43373-01	11- 3	63V-44366-00	11-16
65G-W0078-00	20-17	63V-14527-00	4- 4	63V-24411-00	4-28	63V-42511-03-4D	11- 6	63V-43611-00	10-44	647-44366-00	15-13
63V-W0090-02-4D	1- 1	6G1-14546-00	4-19	6G1-24412-01	4-29	63V-42528-00	11- 2	63V-43614-00	10-42		20-18
63V-W0093-00	19-11		19-18	6L5-24421-00	4-32	63V-42537-00	11- 7	63V-43615-00	10-43	63V-44368-00	16- 2
656-W2810-02	6-14	6H4-14548-00	4-22	6G1-24431-01	4-31	63V-42610-11-4D	7- 1	63V-43617-00	10-48		20-16
683-W4591-02-EL	16-20		19-21	6G1-24452-00	4-27	63W-42610-11-4D	7- 1	63V-43630-00	10-33	6H3-44391-01	9-20
683-W4592-02-EL	16-20	679-14555-00	4- 3	61N-24521-00	6- 6	65E-42610-H1-4D	8- 1	63V-43641-00	10-39	63V-44514-00-5B	11-12
6E7-11111-01-94	1-19	679-14923-00	4- 2	61N-24560-00	6- 4	65F-42610-H1-4D	8- 1	63V-43659-00	10-46	63V-44514-30-5B	11-12
63V-11181-A1	1-20		19-12	61N-24563-00	6- 5	6G1-42613-01-4D	7- 7	63V-43676-00	10-18	63V-44526-00	11-13
	19- 3	676-14943-29	4-14	682-24566-00	6-11		8- 7	63V-44111-01	12-23	63V-44551-01-4D	11-20
682-11325-00	1- 8	63V-14947-00	4-13	6L2-26301-00	12-22	63V-42615-00	7- 2	63V-44116-00	13-29	682-44555-00	11-22
676-11372-00	1-15	63V-14948-06	4- 7	63V-41111-00-9M	1-12		8- 2	63V-44121-01	13-24	682-44555-30	11-22
63V-11400-00	2- 7	679-14966-00	4- 8	63V-41112-AA	1-13	6L2-42647-00	7- 5	63V-44122-00	13-30	63V-44557-00	11-21
63V-11412-00	2- 8	63V-14980-00	4-12		19- 2		8- 5	63V-44123-01	13-23	63V-45111-04-4D	14- 1
63V-11422-00	2- 9	63V-14984-00	4-11	63V-41113-00-9M	1-14	6G1-42651-02	7- 3	63V-44124-01	12-27	63V-45111-14-4D	14- 1
63V-11432-00	2-10		19-14	63V-41131-02-5B	14- 8		8- 3	63V-44125-00	13-26	63V-45113-01	14- 5
63V-11442-00	2-11	63V-14985-00	4-18	63V-41133-A1	14-11	63V-42677-11	7-11	63V-44143-01	13-32		20- 2
63V-11445-00	2-25		19-17		20- 5	63W-42677-11	7-11	63V-44150-00	15-27	63V-45114-00	11-17
	19- 9	6G1-14992-00	4-17	63V-41135-00	14-10	682-42677-H0	8-11	63V-44150-10	15-27	63V-45126-00	14- 2
63V-11515-00	2-13	63V-15100-02-94	1- 2		20- 4	63V-42678-10	7-12	63V-44150-30	15-27	63V-45127-00	14-17
682-11610-01	2-19	63V-15396-00	2- 1	63V-41211-00	13-18	63W-42678-10	7-12	6E0-44191-11	12-26	63V-45211-30-4D	14-14
682-11610-11	2-19	63V-15705-01	5-10	63V-41223-00	13-16	65E-42678-H0	8-12	688-44194-00	13-11	6G1-45214-00	16- 7
682-11610-21	2-19	63V-15710-12	5- 1	6H4-41237-00	13-13	65F-42678-H0	8-12	689-44194-00	13- 2	63V-45215-00	16- 8
6E7-11631-00-97	2-18	63V-15711-01	5- 2	63V-41238-00	13-12	63V-42711-03-4D	9- 1	63V-44301-00	15-11	61N-45251-00	16-11
634-11633-00	2-20	63V-15713-00	5- 7	63V-41252-00	3-18	63V-42716-01	9-19	63V-44301-40	15-11	63V-45300-02-4D	15- 1
6E7-11635-00	2-18	63V-15714-00	5- 5	63V-41253-00	3- 5	682-42724-00	9- 2	63V-44322-00	15-12	63V-45300-12-4D	15- 1
6E7-11636-00	2-18	63V-15716-00	5- 9	63V-41256-00	3-15	682-42725-02	9- 3		20-20	63V-45300-32-4D	15- 1
650-11651-04	2-15	63V-15726-00	5-23	63V-41257-00	3- 8	63V-42726-00	9- 4	63V-44322-40	15-12	65E-45300-01-4D	15- 1
682-11681-00	2-14	63V-15734-00	5-22	63V-41262-00	3- 7	682-42727-00	9- 5		20-20	65E-45300-11-4D	15- 1
6E5-12411-20	1-23	63V-15741-00	5- 6	661-41262-02	3-19	63V-42731-00-4D	10-17		20-25	65E-45300-31-4D	15- 1
682-12413-00-9M	1-22	63V-15744-00	5-13		13-19	6G1-42748-00	9- 6	63V-44323-00	15-17	63V-45311-01-4D	15- 2
682-12414-A1	1-25	63V-15746-10	13-35		13-41	63V-42815-01-4D	9- 8		20- 8	63V-45315-A0	15-24
	19- 4	6L2-15747-00	13-40	6H4-41271-01	3-14	6E7-42816-00	9- 9		20-22		20-10
63V-13610-10	3- 1	63V-15748-00	5-21	689-41273-00	3-16	63V-43111-02-4D	10- 1	63V-44323-40	15-17	626-45316-09	15-22
63W-13610-10	3- 1	63V-15753-00	5- 8	6J8-41274-00	3-17	63V-43112-03-4D	10- 2		20- 8	682-45318-00	14-15
63V-14126-00	4- 5	6G1-15755-00	5-18	63V-41283-01	13-17	6J8-43113-01	10-24		20-22	63V-45331-00-5B	15-21
	19-13	63V-15762-00	5-25	63V-41611-00	17- 5	648-43114-01	10-11		20-26	683-45361-02-4D	15-41
663-14159-00	4-21	63V-15764-00	5-15	63V-41631-00	13- 7	6E7-43116-00	10-10	63V-44328-00	15-20	63V-45375-00	16-14
	19-20	63V-15767-01	5-11	63V-41638-00	13-20	6E0-43118-01	10- 8	664-44338-00	15-15	63V-45510-01	15-28

*COPYRIGHT : All rights reserved. No part of this publication
may be reproduced without permission.*

*RESERVADO : EL DERECHO DE REPRODUCCION
NO SE PUEDE REPRODUCIR NINGUNA PARTE
DE ESTA LISTA SIN PERMISO.*

PRINTED ON RECYCLED PAPER
IMPRESO EN PAPEL RECICLADO

YAMAHA
YAMAHA MOTOR CO., LTD.
2500 SHINGAI IWATA SHIZUOKA JAPAN
SERVICE INFORMATION DIV.

Printed in Japan
First edition AUG., 1997
TG

PUBLICADO EN JAPON
Primera edición AGO., 1997
TG