

**PARTS
CATALOGUE
CATALOGO
DE REPUESTOS**

9.9FMH '99(63V)

15FMH '99(63W)

E9.9CMH '99(65E)

E15CMH '99(65F)

1X63V-200S1

FOREWORD

This Parts Catalogue is related to the parts for the model(s) in the below frame. When you are ordering replacement parts, please refer to this Parts Catalogue and quote both part numbers and part names correctly.

9.9FMH'99(63V), 15FMH'99(63W),
E9.9CMH'99(65E), E15CMH'99(65F)

1. Modifications or additions which have been made after issue of the Parts Catalogue will be announced in the Yamaha Parts News.
It is advisable that you make necessary corrections to the Parts Catalogue according to the Yamaha Parts News.

2. Abbreviations

The Following abbreviations are used in this Parts Catalogue.

- "UR" Use specified parts number.
- "UN" Use as many as needed.
- "AP" Alternate Parts
- "LM" Local Made
(Parts need to be ordered locally)
- "O/S" Over Size

3. Parts, which are to be supplied in an assembly, are listed with a dot(.) in front of the part name as shown below.

EXAMPLE

- CARBURETOR ASSY
- .JET, PILOT
- .NOZZLE, MAIN

4. Number of component for assembly

The numeral appearing to the right of each component part indicates the quantity of parts for each assembly unit.

EXAMPLE

PART NO.	DESCRIPTION	ω	Ⓔ	EHT	REMARKS
6E0-85500-70	C.D.I. MAGNETO ASSY	1			
6E0-85550-70	.ROTOR ASSY	1			
6E0-15723-00-94.	.PULLY, STARTER	1			

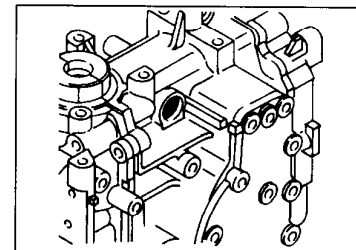
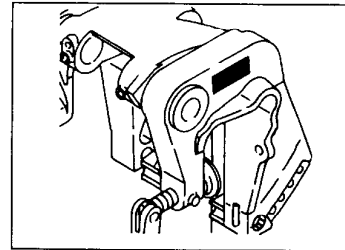
5. Quantity Column Information

NAME for Q'TY COLUMN	APPLICABLE MODEL
9.9F	9.9FMH
15F	15FMH
E99C	E9.9CMH
E15C	E15CMH

6. Applicable Serial No. and Color Code

1) Engine Sserial No.

9.9FMH	S : 162731 ~ L : 462515 ~	E9.9CMH	S : 100930 ~ L : 411575 ~
15FMH	S : 417692 ~ L : 158763 ~	15FMH	U : 950116 ~ S : 145464 ~ L : 514499 ~ U : 700131 ~



2) Color Code

Color Code	Color Name	Abbreviation
004D	DARK BLUIISH GRAY METALLIC 2	DBNM2

7. Note that the illustrations for reference in funding parts numbers, not to be used for assembling. When assembling, pleas use the applicable service manual.
8. The asterisk (*) before a reference number indicates modification items after the first edition.

PROLOGO

Este Catálogo de Repuestos corresponde a las piezas para el(los) modelo(s) del recuadro siguiente. Al formular el pedido de repuestos, se ruega citar este Catálogo de Repuestos y especificar correctamente los números de parte y los nombres de parte.

9.9FMH'99(63V), 15FMH'99(63W),
E9.9CMH'99(65E), E15CMH'99(65F)

1. Las modificaciones y agregados que se hayan realizado después de la edición de este Catálogo de Repuestos, serán anunciados en las Informaciones de Recambios Yamaha.
2. Abreviaciones
En este Catálogo de Repuestos se emplean las siguientes abreviaciones.
"UR" Usar el número de partes especificado
"UN" Usar la cantidad necesaria
"AP" Piezas sustitutivas
"LM" Fabricación local (Partes necesarias que se pedirán localmente)
"F#" No. de bastidor aplicable
3. Las piezas suministradas como conjunto se describen con un punto (.) que precede al nombre de la pieza como se indica a continuación.

EJEMPLO

CONJUNTO CARBURADOR
.INYECTOR, piloto
.BOQUILLA, principal

4. Cantidad de componentes de un conjunto
La numeración que aparece a la derecha de cada descripción, indica la cantidad de piezas por cada unidad de conjunto.

EJEMPLO

PIEZAS NO.	DESCRIPTION	E	EH	EHT	EHT	EHT	OBSERVACION
6E0-85500-70	C.D.I. MAGNETO ASSY	1					
6E0-85550-70	.ROTOR ASSY	1					
6E0-15723-00-94..	PULLY, STARTER	1					

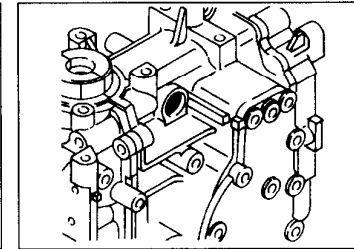
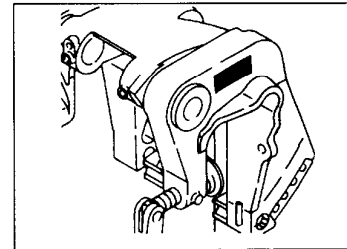
5. Información para columna de Cantidad

NOMBRE PARA COLUMNA DE CANTI.	MODELO APLICABLE
9.9F	9.9FMH
15F	15FMH
E99C	E9.9CMH
E15C	E15CMH

6. Números de Serie y Códigos de color aplicables

1) No. de Serie del motor.

<p>9.9FMH S : 162731 ~ L : 462515 ~</p> <p>15FMH S : 417692 ~ L : 158763 ~</p>	<p>E9.9CMH S : 100930 ~ L : 411575 ~ U : 950116 ~</p> <p>15FMH S : 145464 ~ L : 514499 ~ U : 700131 ~</p>
--	---



2) Código de color

Código de color	Nombre de color	Abreviación
004D	DARK BLUIISH GRAY METALLIC 2	DBNM2

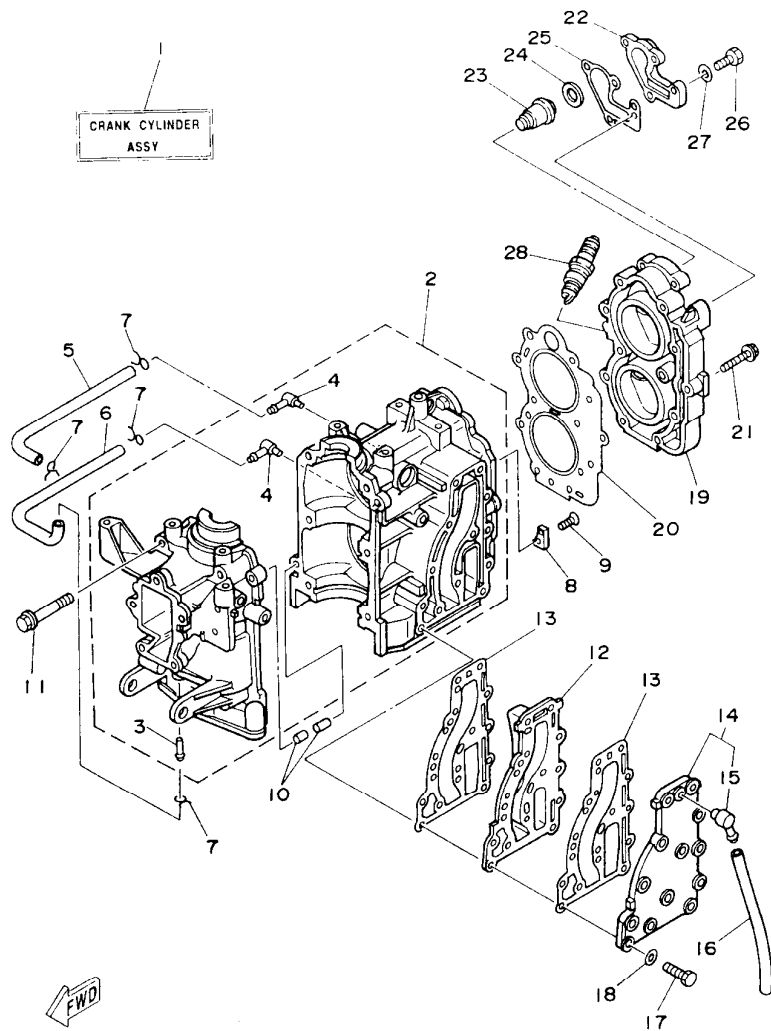
7. Debe tenerse en cuenta que las ilustraciones sirven como guía para la búsqueda de las referencias y no deben usarse para el montaje. Durante el montaje, se recomienda usar el manual de Taller correspondiente.
8. EL asterisco (*) antes del número de referencia indica los elementos modificados después de la primera edición.

CONTENTS

CYLINDER, CRANKCASE	A4
CRANKSHAFT, PISTON	A6
INTAKE	B1
CARBURETOR	B2
STARTER	B4
FUEL	B6
FUEL TANK	B7
TOP COWLING	C1
BOTTOM COWLING	C2
BRACKET 1	C3
BRACKET 2	C6
STEERING	D1
CONTROL	D3
REMOTE CONTROL ATTACHMENT	D5
STEERING GUIDE	D6
REMOTE CONTROL BOX	D7
REMOTE CONTROL ASSY	E1
UPPER CASING	E3
LOWER CASING, DRIVE 1	E4
LOWER CASING, DRIVE 2	E7
GENERATOR	F2
ELECTRICAL	F3
METER	F4
REPAIR KIT 1	F5
REPAIR KIT 2	F6
INDEX	
NUMERICAL INDEX	G1

CONTENIDO

CYLINDRO. CARTER	A4
CIGUENAL. PISTON	A6
ADMISION	B1
CARBURADOR	B2
ARRANQUE	B4
COMBUSTIBLE	B6
DEPOSITO DE COMBUSTIBLE	B7
SOPORTE SUPERIOR	C1
CUBIERTA INFERIOR	C2
SOPORTE 1	C3
SOPORTE 2	C6
DIRECCION	D1
CONTROL	D3
CONJUNTO ADITAMENTO	D5
DIRECCIONGUIAR	D6
CONTROL REMOTO COMPL.	D7
CONTROL REMOTO COMPL.	E1
FUNDA SUPERIOR	E3
IMPULSOR E INFERIOR 1	E4
IMPULSOR E INFERIOR 2	E7
GENERADOR	F2
EQUIPO ELECTRICO	F3
MEDIDOR	F4
ESTUCHE REPARATION 1	F5
ESTUCHE REPARATION 2	F6
INDICE	
NUMERICAL INDEX	G1



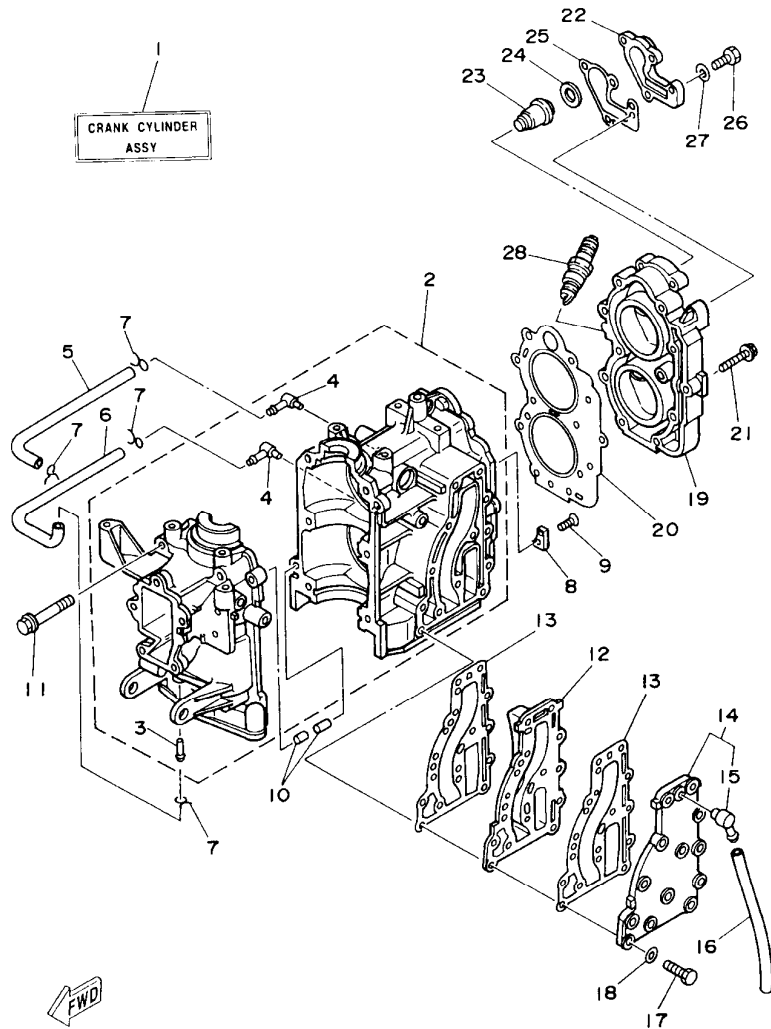
G3V0010-5010

FIG. 1 CYLINDER, CRANKCASE CYLINDRO, CARTER

REF. NO.	PART NO. CODIGO NO.	DESCRIPTION DESCRIPTION	99F	15F	E99C	E15C	REMARKS OBSERVACION
1	63V-W0090-02-1S	CRANK CYLINDER ASSY BI OQUE MOTOR COMPLETO (REF.NO. 2-27, FIG.2, REF.NO. 1-26)	1	1	1	1	
2	63V-15100-02-1S	CRANKCASE ASSY CARTER COMPLETO	1	1	1	1	
3	624-14485-00	.PIPE, JOINT .TUBO DE UNION	1	1	1	1	
4	650-14485-02	.PIPE, JOINT .TUBO DE UNION	2	2	2	2	
5	90445-07M08	HOSE TUBO	1	1	1	1	
6	90445-07M08	HOSE TUBO	1	1	1	1	
7	90467-06016	CLIP PRESILLA	4	4	4	4	
8	682-11325-00	ANODE ANODO	1	1	1	1	
9	98780-05015	SCREW, FLAT HEAD .TORNILLO DE CABEZA PLANA	1	1	1	1	
10	93606-12019	PIN, DOWEL PASADOR DE CLAVIJA	2	2	2	2	
11	90119-08M07	BOLT, WITH WASHER TORNILLO CON ARANDELA	6	6	6	6	
12	63V-41111-00-1S	INNER COVER, EXHAUST CUBIERTA INTERIOR DE ESCAPE	1	1	1	1	
13	63V-41112-A0	GASKET, EXHAUST INNER COVER EMPAQUE	2	2	2	2	
14	63V-41113-00-1S	OUTER COVER, EXHAUST CUBOERTA EXTERIOR DE ESCAPE	1	1	1	1	
15	676-11372-00	.NIPPLE, HOSE .NIPLE DE MANGUERA	1	1	1	1	
16	90445-09105	HOSE TUBO	1	1	1	1	
17	97013-06030	BOLT PERNO	13	13	13	13	
18	92903-06600	WASHER, PLATE ARANDELA	13	13	13	13	
19	6E7-11111-01-1S	HEAD, CYLINDER 1 CULATA CILINDRO 1	1	1	1	1	
20	63V-11181-A1	GASKET, CYLINDER HEAD 1 JUNTA, DE CULATA 1	1	1	1	1	
21	90105-07M05	BOLT, WASHER BASED TORNILLO CON ARANDELA	11	11	11	11	
22	682-12413-00-1S	COVER, THERMOSTAT CUBIERTA TERMOSTATO	1	1	1	1	
23	6E5-12411-20	THERMOSTAT TERMOSTAT	1	1	1	1	
24	90201-16M03	WASHER, PLATE ARANDELA PLANA	1	1	1	1	
25	682-12414-A1	GASKET, COVER EMPAQUE	1	1	1	1	
26	97013-06020	BOLT PERNO	4	4	4	4	

A4

CRANK CYLINDER
ASSY



63V0010-5010

FIG. 1 CYLINDER, CRANKCASE CYLINDRO, CARTER

REF. NO.	PART NO. CODIGO NO.	DESCRIPTION DESCRIPTION	9.9F	15F	E99C	E15C	REMARKS OBSERVACION
27	92903-06600	WASHER, PLATE ARANDELA	4	4	4	4	
28	94702-00217	PLUG, SPARK (NGK B7HS-10) BUJIA (NGK B7HS-10)	2	2	2	2	UR
	94702-00271	PLUG, SPARK (NGK BR7HS-10) BUJIA (NGK BR7HS-10)	2	2			UR FOR CHINA

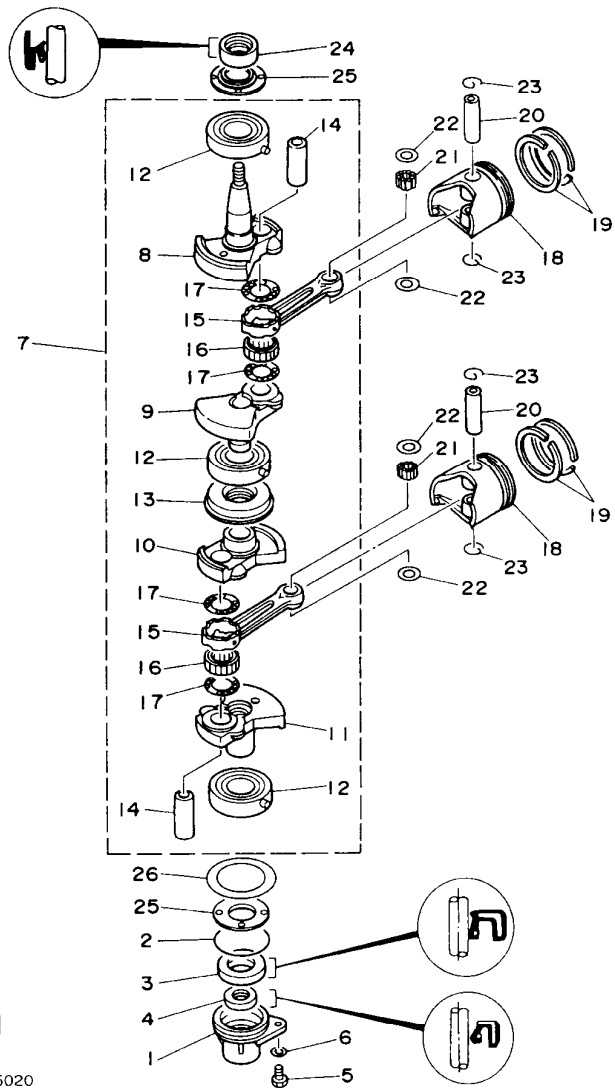
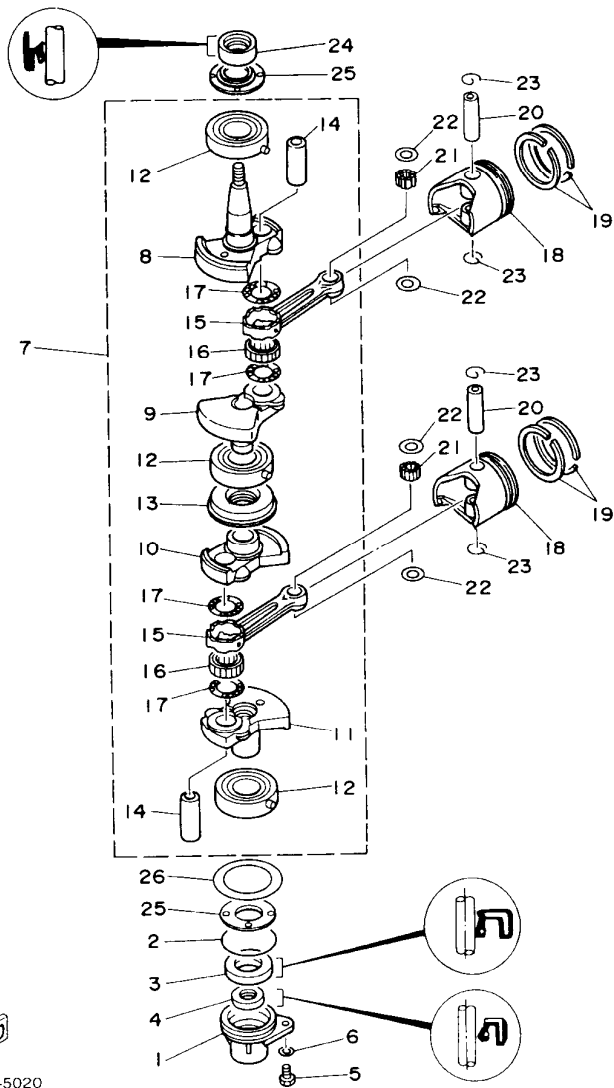


FIG. 2 CRANKSHAFT. PISTON CIGUENAL. PISTON

REF. NO.	PART NO. CODIGO NO.	DESCRIPTION DESCRIPTION	99F	15F	E99C	E15C	REMARKS OBSERVACION
1	63V-15396-00	HOUSING, OIL SEAL CAJA DE SELLO DE ACEITE	1	1	1	1	
2	93210-46M16	O-RING ANILLO O	1	1	1	1	
3	93102-25M48	OIL SEAL SELLO ACEITE	1	1	1	1	
4	93101-13M11	OIL SEAL SELLO ACEITE	1	1	1	1	
5	97095-06016	BOLT PERNO	1	1	1	1	
6	92995-06600	WASHER ARANDELA	1	1	1	1	
7	63V-11400-00	CRANKSHAFT ASSY CIGUENAL COMPLETO	1	1	1	1	
8	63V-11412-00	.CRANK 1 .MANIVELA 1	1	1	1	1	
9	63V-11422-00	.CRANK 2 .MANIVELA 2	1	1	1	1	
10	63V-11432-00	.CRANK 3 .MANIVELA 3	1	1	1	1	
11	63V-11442-00	.CRANK 4 .MANIVELA 4	1	1	1	1	
12	93306-205U7	.BEARING .COJINETE	3	3	3	3	
13	63V-11515-01	.SEAL, LABYRINTH 1 .SELLO LABERINTO 1	1	1	1	1	
14	682-11681-00	.PIN, CRANK 1 .PASADOR MANIVELA 1	2	2	2	2	
15	650-11651-04	.ROD, CONNECTING BIELA	2	2	2	2	
16	93310-620V5	.BEARING .COJINETE	2	2	2	2	
17	90209-20M23	.WASHER .ARANDELA DE SEPARACION	4	4	4	4	
18	6E7-11631-00-97	PISTON (STD) PISTON(STD)	2	2	2	2	
	6E7-11635-00	PISTON (0.25MM O/S) PISTON (0.25MM O/S)	2	2	2	2	AP
	6E7-11636-00	PISTON (0.50MM O/S) PISTON (0.50MM O/S)	2	2	2	2	AP
19	682-11610-01	PISTON RING SET (STD) JUEGO DE AROS (NORMA)	2	2	2	2	
	682-11610-11	PISTON RING SET (0.25MM O/S) JUEGO DE AROS (0.25MM O/S)	2	2	2	2	AP
	682-11610-21	PISTON RING SET (0.50MM O/S) JUEGO DE AROS (0.50MM O/S)	2	2	2	2	AP
20	634-11633-00	PIN, PISTON PASADOR, PISTON	2	2	2	2	
21	93602-14104	PIN, DOWEL PASADOR DE CLAVIJA	50	50	50	50	
22	90201-14377	WASHER, PLATE ARANDELA PLANA	4	4	4	4	
23	93450-15023	CIRCLIP BOLA	4	4	4	4	

FWD
63V0010-5020



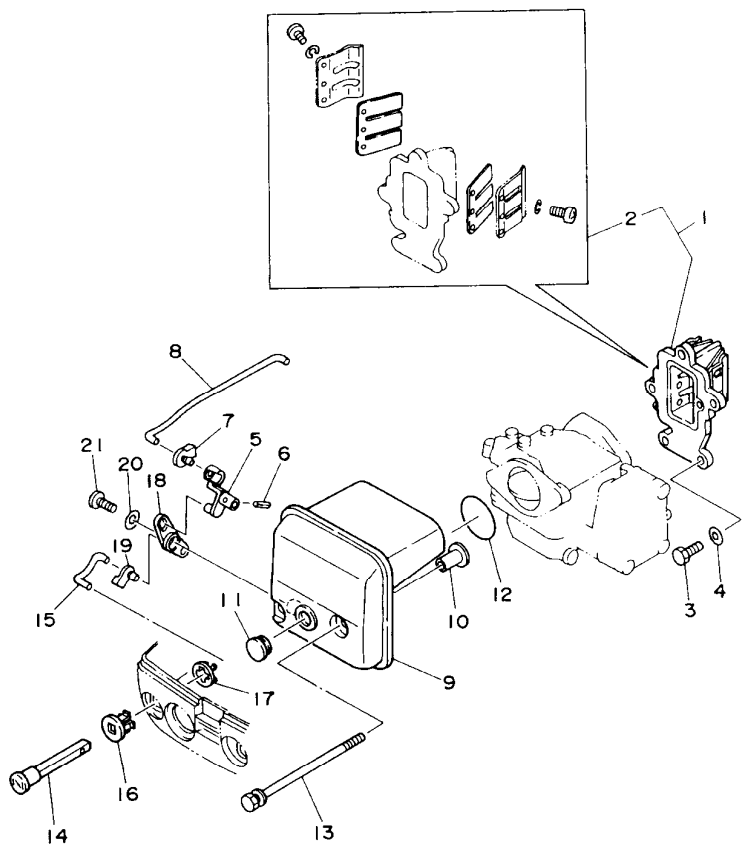
FWD
63V0010-5020

FIG. 2 CRANKSHAFT. PISTON CIGUENAL. PISTON

REF. NO.	PART NO. CODIGO NO.	DESCRIPTION DESCRIPTION	9.9F	15F	E99C	E15C	REMARKS OBSERVACION
24	93110-23M00	OIL SEAL SELLO ACEITE	1	1	1	1	
25	63V-11445-00	SPACER ESPACIADOR	2	2	2	2	
26	90201-46M29	WASHER, PLATE ARANDELA PLANA	1	1	1	1	

FIG. 3 INTAKE

ADMISION



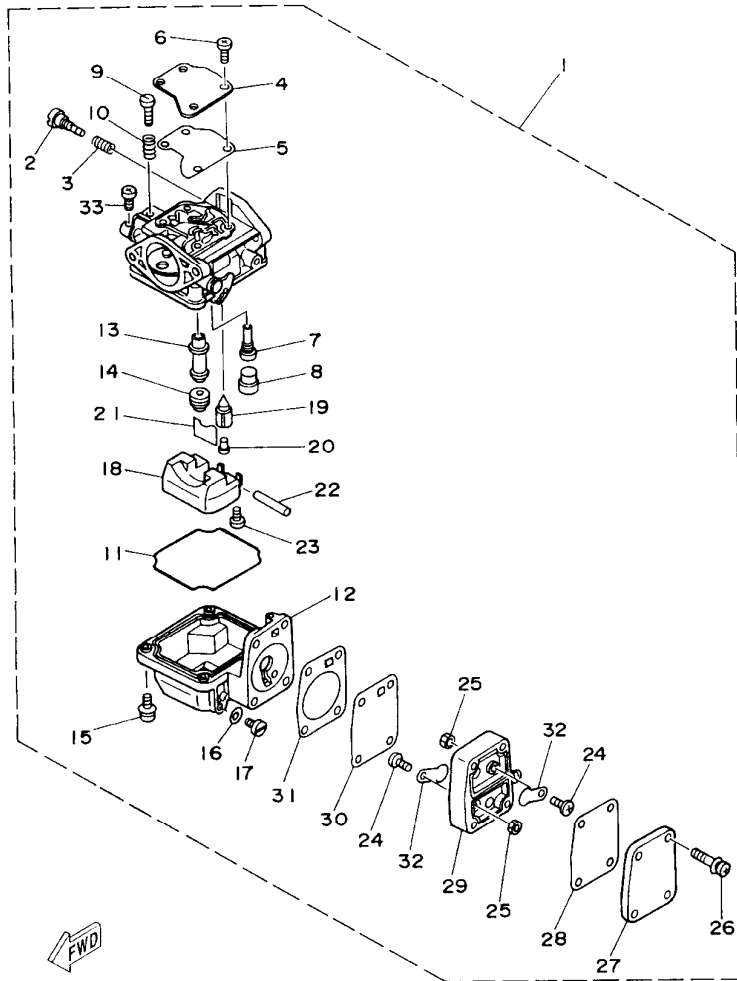
REF. NO.	PART NO. CODIGO NO.	DESCRIPTION DESCRIPTION	9.9F	15F	E99C	E15C	REMARKS OBSERVACION
1	63V-13610-10	REED VALVE ASSY VALVULA DE LAMINAS COMPLETA	1		1		UR
	63W-13610-00	REED VALVE ASSY VALVULA DE LAMINAS COMPLETA		1		1	UR
2	682-W0004-00	.REED SET .JUEGO DE VALVULAS DE LENGUETA	1	1	1	1	
3	97095-06020	BOLT PERNO	3	3	3	3	
4	92995-06600	WASHER ARANDELA	3	3	3	3	
5	63V-41253-00	LEVER, CHOKE PALANCA AHOGADOR	1	1	1	1	
6	91690-20010	PIN, SPRING PASADOR DE RESORTE	1	1	1	1	
7	63V-41262-00	JOINT, CHOKE LEVER CONECTOR DE AHOGADOR	1	1			
8	63V-41257-00	ROD, CHOKE 2 VARILLA DE AHOGADOR	1	1			
9	63V-14440-00	SILENCER ASSY, INTAKE SILENCIADOR COMPL_DE ADMISION	1	1	1	1	
10	90387-06M15	COLLAR CASQUILLO CON VALONA	2	2	2	2	
11	90480-12M25	GROMMET TAPON	1	1	1	1	
12	93210-35M86	O-RING ANILLO O	1	1	1	1	
13	90119-06M94	BOLT, WITH WASHER TORNILLO CON ARANDELA	2	2	2	2	
14	6H4-41271-01	KNOB, CHOKE PERILLA AHOGADOR	1	1	1	1	
15	63V-41256-00	ROD, CHOKE 1 VARILLA DE AHOGADOR	1	1	1	1	
16	689-41273-00	GROMMET TAPON PROTECTOR	1	1	1	1	
17	6J8-41274-00	GROMMET 2 TAPON 2	1	1	1	1	
18	63V-41252-00	LEVER, CHOKE 1 PALANCA AHOGADOR 1	1	1	1	1	
19	661-41262-02	JOINT, CHOKE LEVER CONECTOR DE AHOGADOR	1	1	1	1	
20	90201-05M09	WASHER, PLATE ARANDELA PLANA	1	1	1	1	
21	90164-05M03	SCREW, TAPPING TORNILLO ROSCA HEMBRA	1	1	1	1	


63V0010-5030

B1

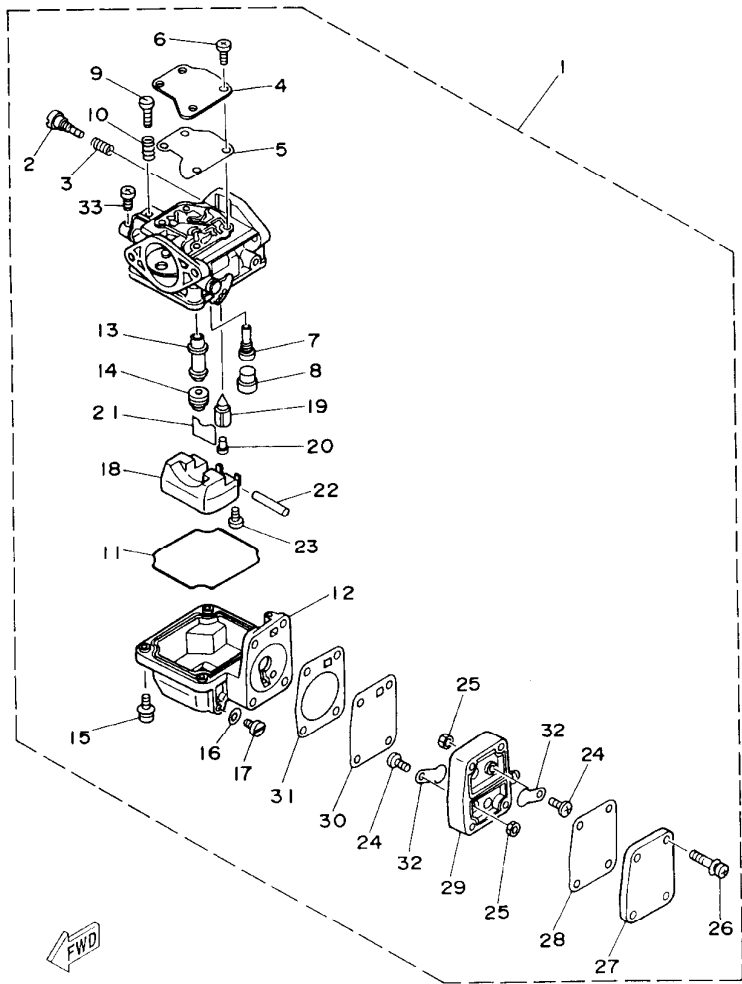
FIG. 4 CARBURETOR

CARBURADOR



63V0010-5040

REF. NO.	PART NO. CODIGO NO.	DESCRIPTION DESCRIPTION	9.9F	15F	E99C	E15C	REMARKS OBSERVACION
1	63V-14301-00	CARBURETOR ASSY 1 CARBURADOR COMPLETO 1	1	1	1	1	
2	679-14923-00	.SCREW, PILOT .TORNILLO DE AJUSTE	1	1	1	1	
3	679-14555-00	.SPRING .RESORTE	1	1	1	1	
4	63V-14527-00	.PLATE .PLACA	1	1	1	1	
5	63V-14126-00	.GASKET .EMPAQUE	1	1	1	1	
6	97803-04010	.SCREW, PAN HEAD .TORNILLO DE CABEZA CON PLANA	4	4	4	4	
7	63V-14948-06	.JET (#48) .INYECTOR (#48)	1	1	1	1	
8	679-14966-00	.RUBBER CAP .CAUCHOCHAPEAU	1	1	1	1	
9	63V-14523-00	.SCREW, STOP .TORNILLO DE TOPE	1	1	1	1	
10	90501-10326	.SPRING, COMPRESSION .RESORTE DE COMPRESION	1	1	1	1	
11	63V-14984-00	.GASKET, FLOAT CHAMBER .EMPAQUE CAMARA DE BOIA	1	1	1	1	
12	63V-14980-00	.BODY, FLOAT CHAMBER .CUERPO CAMARA DE BOIA	1	1	1	1	
13	63V-14947-00	.JET, NEEDLE .INYECTOR DE AGUJA	1	1	1	1	
14	676-14943-29	.JET, MAIN (#110) .INYECTOR PRINCIPAL (#110)	1	1	1	1	
15	97980-04114	.SCREW, WITH WASHER .TORNILLO, CON ARANDELA	4	4	4	4	
16	6G1-14398-00	.WASHER .EMPAQUE	1	1	1	1	
17	6G1-14992-00	.SCREW, DRAIN .TORNILLO, SEGURO	1	1	1	1	
18	63V-14985-00	.FLOAT .BOIA	1	1	1	1	
19	6G1-14546-00	.VALVE, NEEDLE .VALVULA DE AGUJA	1	1	1	1	
20	676-14186-00	.PIN, FLOAT .PASADOR DE LA BOYA	1	1	1	1	
21	663-14159-00	.CLIP .PRESILLA	1	1	1	1	
22	6H4-14548-00	.PIN, FLOAT ARM .PASADOR DE BRAZO DE BOIA	1	1	1	1	
23	98580-04008	.SCREW, PAN HEAD .TORNILLO DE CABEZA CON PLANA	1	1	1	1	
24	98980-03006	.SCREW, BIND .TORNILLO DE LIGAR	2	2	2	2	
25	95380-03600	.NUT .TUERCA	2	2	2	2	
26	97980-04125	.SCREW, WITH WASHER .TORNILLO, CON ARANDELA	4	4	4	4	
27	6G1-24452-00	.COVER .CUBIERTA	1	1	1	1	



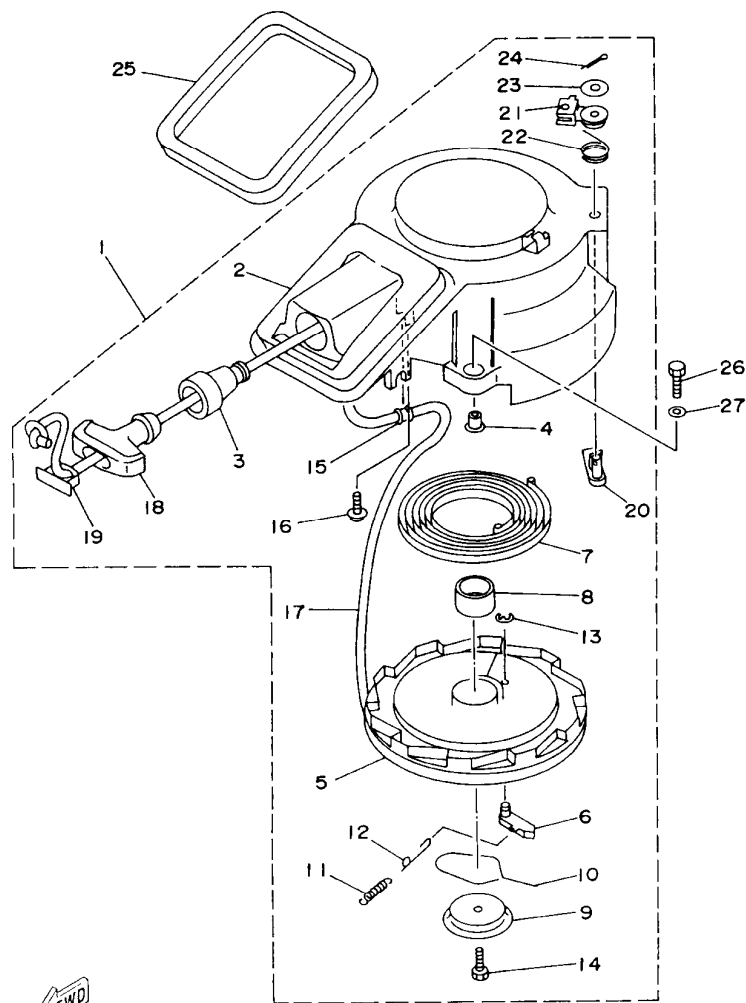
FWD
63V0010-5040

FIG. 4 CARBURETOR CARBURADOR

REF. NO.	PART NO. CODIGO NO.	DESCRIPTION DESCRIPTION	9.9F	15F	E99C	E15C	REMARKS OBSERVACION
28	63V-24411-00	.DIAPHRAGM .DIAFRAGMA	1	1	1	1	
29	6G1-24412-01	.BODY 1 .CUERPO 1	1	1	1	1	
30	6G1-24411-00	.DIAPHRAGM .DIAFRAGMA	1	1	1	1	
31	6G1-24431-01	.GASKET, FUEL PUMP 1 .EMPAQUE BOMBA COMBUST 1	1	1	1	1	
32	6L5-24421-00	.VALVE, CHECK .VALVULA DE RETENCION	2	2	2	2	
33	98580-04006	.SCREW, PAN HEAD .TORNILLO DE CABEZA CON PLANA	1	1	1	1	

FIG. 5 STARTER

ARRANQUE



REF. NO.	PART NO. CODIGO NO.	DESCRIPTION DESCRIPTION	9.9F	15F	E99C	E15C	REMARKS OBSERVACION
1	63V-15710-12	STARTER ASSY ARRANQUE COMPLETO	1	1	1	1	
2	63V-15711-01	CASE, STARTER CAJA DE ARRANQUE	1	1	1	1	
3	63V-15795-01	GUIDE, ROPE GUIA DE CUEEDA	1	1	1	1	
4	90387-06M05	COLLAR CASQUILLO CON VALONA	3	3	3	3	
5	63V-15714-00	DRUM, SHEAVE TAMBOR BOLDANA	1	1	1	1	
6	63V-15741-00	PAWL, DRIVE TRINQUETE DE TRACCION	1	1	1	1	
7	63V-15713-00	SPRING, STARTER RESORTE DE ARRANQUE	1	1	1	1	
8	63V-15753-00	BUSH BUJE	1	1	1	1	
9	63V-15716-00	PLATE, DRIVE PLACA DE TRACCION	1	1	1	1	
10	63V-15705-01	SPRING, DRIVE PAWL RESORTE	1	1	1	1	
11	63V-15767-01	SPRING RESORTE	1	1	1	1	
12	63V-15784-01	SPRING, RETURN RESORTE DE RETORNO	1	1	1	1	
13	63V-15744-00	CIRCLIP SEGURO	1	1	1	1	
14	63V-15768-00	BOLT TORNILLO	1	1	1	1	
15	63V-15764-00	COLLAR 1 COLLAR 1	1	1	1	1	
16	63V-15793-00	SCREW TORNILLO	1	1	1	1	
17	*	WIRE, STARTER (L:1800MM) CUERDA DE ARRANQUE (L:1800MM)	1	1	1	1	
18	6G1-15755-00	HANDLE, STARTER MANIJA DE ARRANQUE	1	1	1	1	
19	6G1-15779-00	COVER CUBIERTA	1	1	1	1	
20	63V-15794-00	STOPPER TOPE	1	1	1	1	
21	63V-15748-00	PLUNGER, STARTER STOP EMBOLO SEGURO DE ARRANQUE	1	1	1	1	
22	63V-15734-00	SPRING, RETURN RESORTE DE RETORNO	1	1	1	1	
23	63V-15726-00	WASHER, FLAT ARANDELA PLANA	1	1	1	1	
24	91490-16018	PIN, COTTER PASADOR DE CHAVETA	1	1	1	1	
25	63V-15762-00	SEAL, RUBBER 2 SELLO DE GOMA 2	1	1	1	1	

* CUT FROM 50M ROLLS, PART NO. 90890-44373, CUTTING LENGTH 1.8M

* CORTE DE UN RODILLO DE 50M, PARTS NUMERO 90890-44373, LARGO DEL CORTE 1.8M

FWD
G3V0010-5050

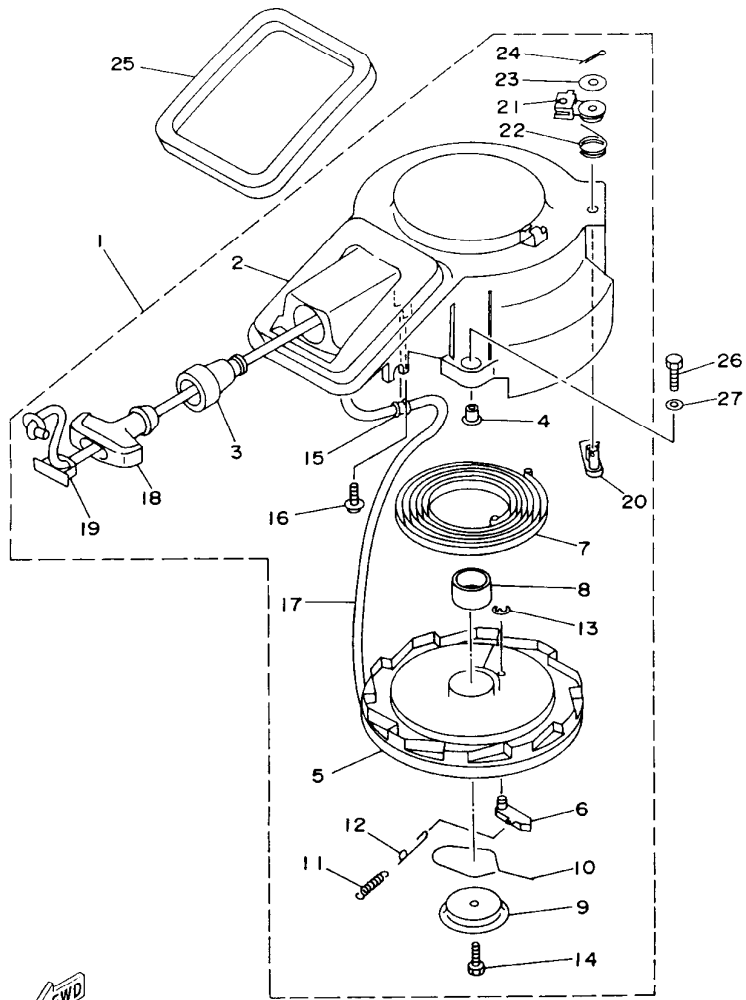


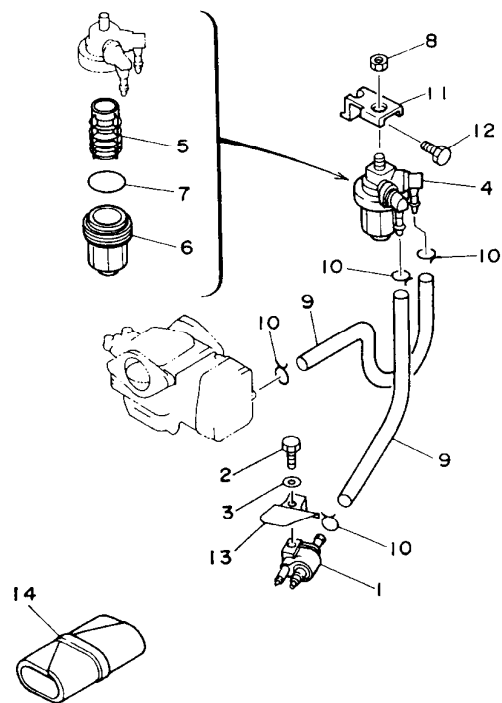
FIG. 5 STARTER

ARRANQUE

REF. NO.	PART NO. CODIGO NO.	DESCRIPTION DESCRIPTION	9.9F	15F	E99C	E15C	REMARKS OBSERVACION
26	97095-06020	BOLT PERNO	3	3	3	3	
27	92995-06600	WASHER ARANDELA	3	3	3	3	

FWD
G3V0010-5050

FIG. 6 FUEL COMBUSTIBLE

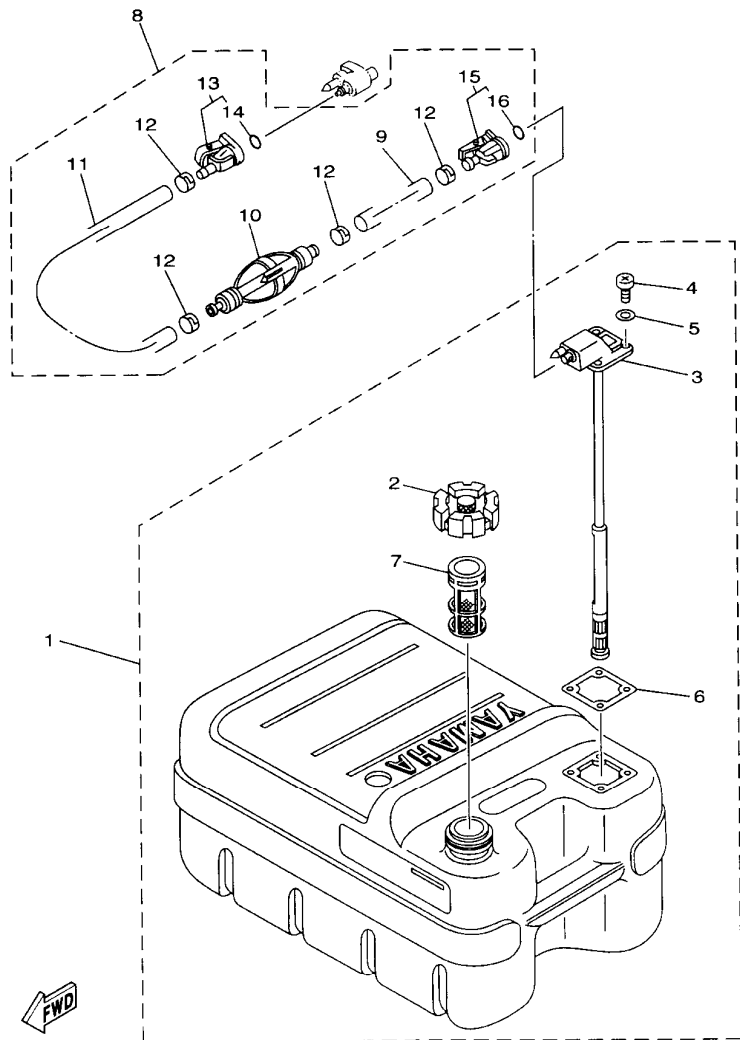


REF. NO.	PART NO. CODIGO NO.	DESCRIPTION DESCRIPTION	9.9F	15F	E99C	E15C	REMARKS OBSERVACION
1	6G1-24304-02	FUEL PIPE JOINT COMP. 1 CONECTOR MANGUERA COMBUST.1	1	1	1	1	
2	97095-06020	BOLT PERNO	1	1	1	1	
3	92995-06600	WASHER ARANDELA	1	1	1	1	
4	61N-24560-00	FILTER ASSY FILTRO COMPLETO	1	1	1	1	
5	61N-24563-00	ELEMENT, FILTER ELEMENTO DEL FILTRO	1	1	1	1	
6	61N-24521-00	CUP, FILTER COPA DE FILTRO	1	1	1	1	
7	93210-32738	O-RING ANILLO O	1	1	1	1	
8	95380-08600	NUT TUERCA	1	1	1	1	
9	90445-09M00	HOSE TUBO	2	2	2	2	
10	90467-08004	CLIP PRESILLA	4	4	4	4	
11	682-24566-01	BRACKET, FILTER SOPORTE DEL FILTRO	1	1	1	1	
12	97013-06010	BOLT PERNO	1	1	1	1	
13	63V-24396-00	PLATE PLACA	1	1	1	1	
14	656-W2810-02	TOOL KIT JUEGO DE HERRAMIENTAS	1	1	1	1	



G3V0010-5060

B6



6J8US-9080

FIG. 7 FUEL TANK

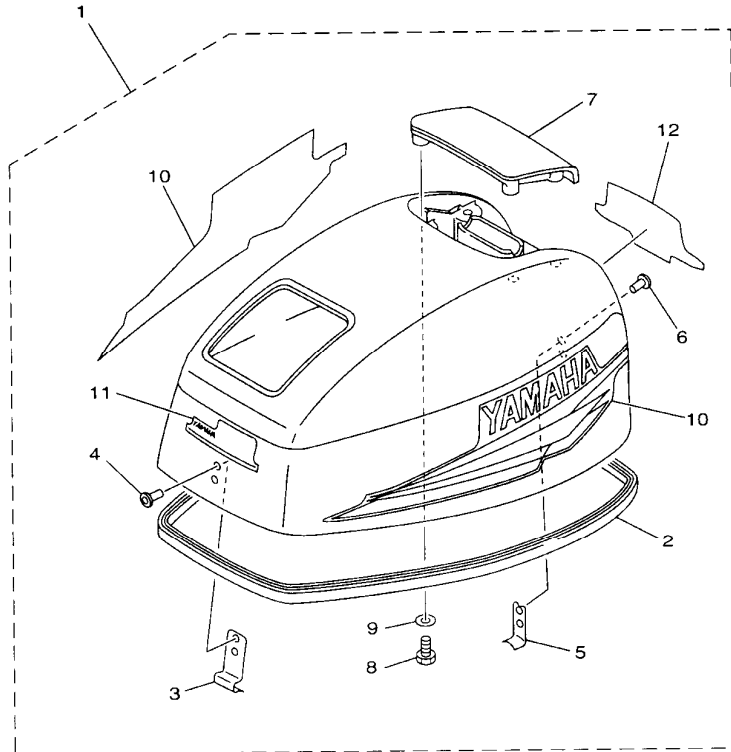
DEPOSITO DE COMBUSTIBLE

REF. NO.	PART NO. CODIGO NO.	DESCRIPTION DESCRIPTION	9.9F	15F	E99C	E15C	REMARKS OBSERVACION
1	6YJ-24201-00	FUEL TANK ASSY (24L) TANQUE DEL COMBUSTIBLE (24L)	1	1	1	1	AP
	6YJ-24201-10	FUEL TANK ASSY (24L) TANQUE DEL COMBUSTIBLE (24L)	1	1			AP WITH INDICATOR
2	6YJ-24610-01	.CAP ASSY .TAPA COMPLETA	1	1	1	1	
3	6YJ-24260-00	.FUEL METER ASSY .MEDIDOR DE COMBUSTIBLE COMPL.	1	1	1	1	UR
	6Y1-24260-12	.FUEL METER ASSY .MEDIDOR DE COMBUSTIBLE COMPL.	1	1			UR WITH INDICATOR
4	98586-05016	.SCREW, PAN HEAD .TORNILLO DE CABEZA CON PLANA	4	4	4	4	
5	6Y1-24329-00	.SEAL .SELLO	4	4	4	4	
6	6Y1-24268-00	.GASKET, FUEL METER .EMPAQ MEDIDOR DE COMBUSTIBLE	1	1	1	1	
7	6YJ-24167-00	.STRAINER .COLADOR	1	1	1	1	
8	6Y1-24306-51	FUEL PIPE COMP. 1 TUBO COMBUST. COMPL 1	1	1	1	1	
9	90445-11M06	.HOSE (L:2050MM) .MANGUERA (L:2050MM)	1	1	1	1	
10	6Y1-24360-51	.PRIMER PUMP ASSY .SOPORTE BOMBA	1	1	1	1	
11	90445-11M05	.HOSE (L:850MM) .MANGUERA (L:850MM)	1	1	1	1	
12	650-24351-51	.BAND 1 .ABRAZADERA 1	4	4	4	4	
13	6G1-24305-01	.FUEL PIPE JOINT COMP. 2 .CONECTOR MANGUERA COMBUST.2	1	1	1	1	
14	93210-08287	.O-RING .ANILLO O	1	1	1	1	
15	6Y1-24305-02	.FUEL PIPE JOINT COMP. 2 .CONECTOR MANGUERA COMBUST.2	1	1	1	1	
16	93210-08287	.O-RING .ANILLO O	1	1	1	1	

B7

FIG. 8 TOP COWLING

SOPORTE SUPERIOR



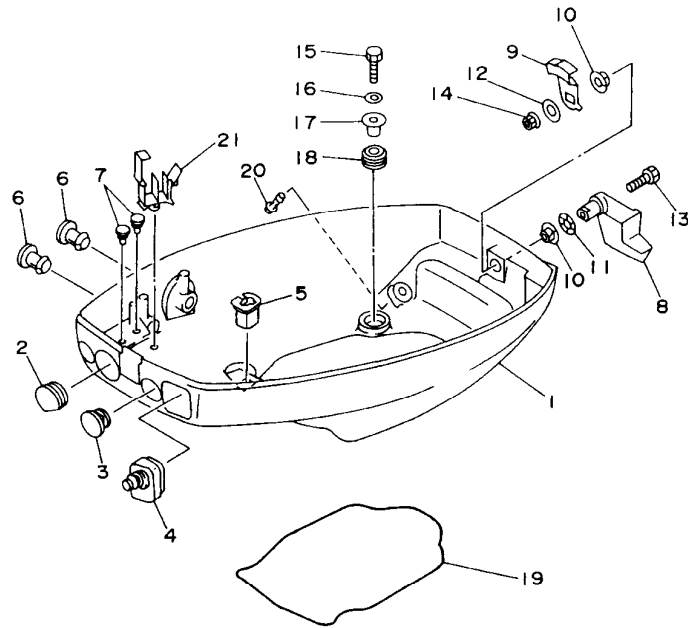
REF. NO.	PART NO. CODIGO NO.	DESCRIPTION DESCRIPTION	9.9F	15F	E99C	E15C	REMARKS OBSERVACION
1	63V-42610-11-4D	TOP COWLING ASSY SOPORTE SUPERIOR COMPL.	1				UR
	63W-42610-11-4D	TOP COWLING ASSY SOPORTE SUPERIOR COMPL.		1			UR
	65E-42610-H1-4D	TOP COWLING ASSY SOPORTE SUPERIOR COMPL.			1		UR
	65F-42610-H1-4D	TOP COWLING ASSY SOPORTE SUPERIOR COMPL.				1	UR
	65F-42610-J0-4D	TOP COWLING ASSY SOPORTE SUPERIOR COMPL.				1	UR FOR SIDE SHIFT
2	63V-42615-00	.SEAL .SELLO	1	1	1	1	
3	6G1-42651-02	.HOOK .GANCHO	1	1	1	1	
4	90266-04M04	.RIVET .REMACHE	2	2	2	2	
5	6L2-42647-00	.HOLDER, CLAMP BAND .MORDAZA DE ABRAZADERA	1	1	1	1	
6	90266-04M04	.RIVET .REMACHE	2	2	2	2	
7	6G1-42613-01-4D	.MOLDING, AIR DUCT .MOLDURA CONDUCTO AIRE	1	1	1	1	
8	97095-06016	.BOLT .PERNO	4	4	4	4	
9	92995-06600	.WASHER .ARANDELA	4	4	4	4	
10	63V-W0070-11	.GRAPHIC SET .JUEGO DE EMBLEMA	1	1			UR
	65E-W0070-H1	.GRAPHIC SET .JUEGO DE EMBLEMA			1		UR
	65F-W0070-H1	.GRAPHIC SET .JUEGO DE EMBLEMA				1	UR
	65F-W0070-J0	.GRAPHIC SET .JUEGO DE EMBLEMA				1	UR FOR SIDE SHIFT
11	63V-42677-11	.GRAPHIC, FRONT .CALCAMONIA FRONTAL	1				UR
	63W-42677-11	.GRAPHIC, FRONT .CALCAMONIA FRONTAL		1			UR
	682-42677-H0	.GRAPHIC, FRONT .CALCAMONIA FRONTAL			1	1	UR
12	63V-42678-10	.GRAPHIC, REAR .CALCAMONIA TRASERA	1				UR
	63W-42678-10	.GRAPHIC, REAR .CALCAMONIA TRASERA		1			UR
	65E-42678-H0	.GRAPHIC, REAR .CALCAMONIA TRASERA			1		UR
	65F-42678-H0	.GRAPHIC, REAR .CALCAMONIA TRASERA				1	UR



63V0010-8070

FIG. 9 BOTTOM COWLING

CUBIERTA INFERIOR



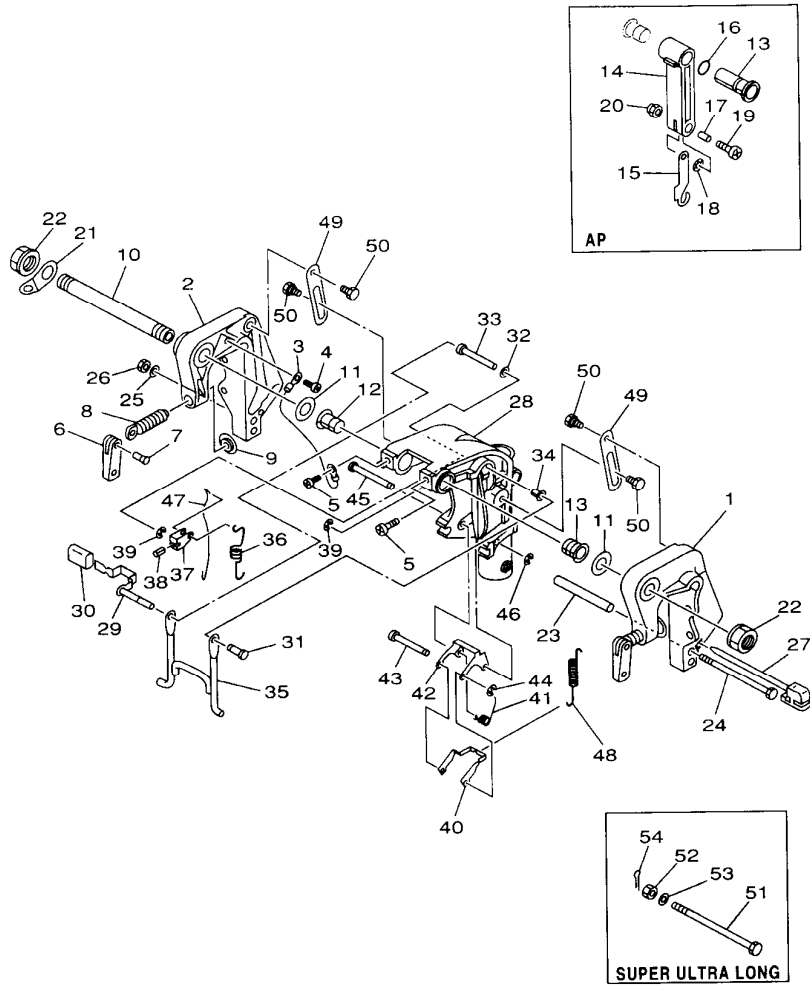
REF. NO.	PART NO. CODIGO NO.	DESCRIPTION DESCRIPTION	9.9F	15F	E99C	E15C	REMARKS OBSERVACION
1	63V-42711-03-4D	COWLING, BOTTOM CUBIERTA INFERIOR	1	1	1	1	
2	682-42724-00	GROMMET TAPON	1	1	1	1	
3	682-42725-02	GROMMET TAPON	1	1	1	1	
4	63V-42726-00	GROMMET TAPON	1	1	1	1	UR
	65F-42726-00	GROMMET TAPON				1	UR FOR SIDE SHIFT
5	682-42727-00	GROMMET TAPON	1	1	1	1	
6	6G1-42748-00	GROMMET TAPON	2	2	2	2	UR
	6G1-42748-00	GROMMET TAPON				1	UR FOR SIDE SHIFT
7	90480-06M19	GROMMET TAPON	2	2	2	2	
8	63V-42815-01-4D	LEVER, CLAMP PALANCA ABRAZADERA	1	1	1	1	
9	6E7-42816-00	LEVER, CLAMP PALANCA ABRAZADERA	1	1	1	1	
10	90386-12M45	BUSH BUJE	2	2	2	2	
11	90206-12052	WASHER, WAVE ARANDELA ONDULADA	1	1	1	1	
12	90201-06068	WASHER, PLATE ARANDELA PLANA	1	1	1	1	
13	97095-06025	BOLT PERNO	1	1	1	1	
14	95380-06700	NUT TUERCA	1	1	1	1	
15	97095-06025	BOLT PERNO	4	4	4	4	
16	92995-06600	WASHER ARANDELA	4	4	4	4	
17	90387-06M52	COLLAR CASQUILLO CON VALONA	4	4	4	4	
18	90480-15M31	GROMMET TAPON	4	4	4	4	
19	63V-42716-01	RUBBER, SEAL HULE	1	1	1	1	
20	6H3-44391-01	NIPPLE, HOSE NIPLE MANGUERA	1	1	1	1	
21	90465-25M57	CLAMP BRIDA	1	1	1	1	



63V0010-5080

FIG. 10 BRACKET 1

SOPORTE 1

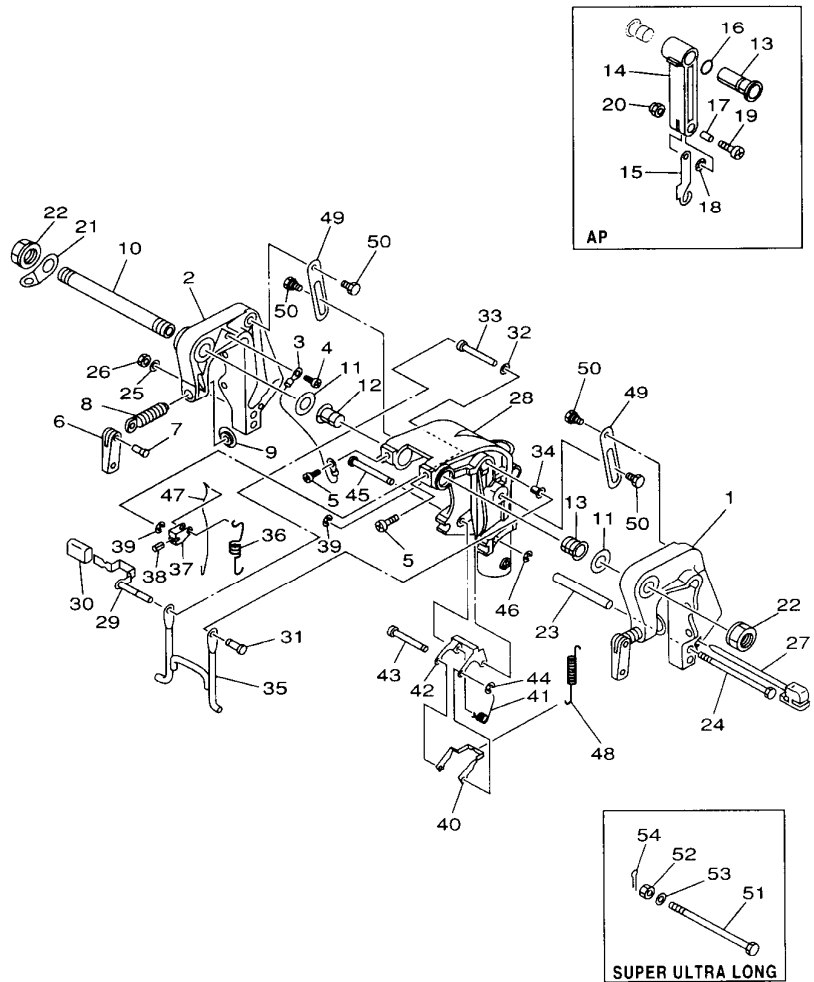


REF. NO.	PART NO. CODIGO NO.	DESCRIPTION DESCRIPTION	9.9F	15F	E99C	E15C	REMARKS OBSERVACION
1	63V-43111-04-4D	BRACKET, CLAMP SOPORTE DE LA ABRAZADERA	1	1	1	1	
2	63V-43112-05-4D	BRACKET, CLAMP SOPORTE DE LA ABRAZADERA	1	1	1	1	
3	66M-82148-00	WIRE, LEAD 4 CABLE CONDUCTOR 4	1	1	1	1	
4	97885-06008	SCREW, PAN HEAD TORNILLO DE CABEZA CON PLANA	1	1	1	1	
5	97885-08010	SCREW, PAN HEAD TORNILLO DE CABEZA CON PLANA	2	2	2	2	
6	6E0-43118-01	HANDLE, TRANSOM CLAMP MANIJA DE LA ABRAZADERA DEL ES	2	2	2	2	
7	90243-04M01	PIN PASADOR	2	2	2	2	
8	6E7-43116-00	SCREW, TRANSOM CLAMP TORNILLO DE ABRAZADERA	2	2	2	2	
9	648-43114-01	PAD, TRANSOM CLAMP ARANDELA DE ABRAZADERA	2	2	2	2	
10	63V-43131-00	BOLT, CLAMP BRACKET TORNILLO DE ABRAZADERA DEL SOP	1	1	1	1	L:214MM
11	90202-22M54	WASHER, PLATE ARANDELA DE PLANA	2	2	2	2	
12	90386-22M94	BUSH BUJE	1	1	1	1	
13	90386-22M94	BUSH BUJE	1	1	1	1	
	90386-22M69	BUSH BUJE	1	1	1	1	AP CARRING HANDLE
14	63V-42731-00-4D	CARRYING HANDLE MANIJA	1	1	1	1	AP CARRING HANDLE
15	63V-43676-01	HOOK GANCHO	1	1	1	1	AP CARRING HANDLE
16	93210-20M65	O-RING ANILLO O	1	1	1	1	AP CARRING HANDLE
17	90387-06M75	COLLAR CASQUILLO CON VALONA	1	1	1	1	AP CARRING HANDLE
18	90206-08010	WASHER, WAVE ARANDELA ONDULADA	1	1	1	1	AP CARRING HANDLE
19	97885-06025	SCREW, PAN HEAD TORNILLO DE CABEZA CON PLANA	1	1	1	1	AP CARRING HANDLE
20	95780-06300	NUT, FLANGE TUERCA DE BRIDA	1	1	1	1	AP CARRING HANDLE
21	6J8-43113-01	PLATE, CLAMP BRACKET PLACA ABRAZADERA SOPORTE	1	1	1	1	
22	63V-43145-00	CAP, CLAMP BRACKET TAPA	2	2	2	2	
23	90387-06M13	COLLAR CASQUILLO CON VALONA	1	1	1	1	
24	90101-06M29	BOLT TORNILLO	1	1	1	1	
25	92995-06600	WASHER ARANDELA	1	1	1	1	
26	95380-06700	NUT TUERCA	1	1	1	1	

FWD
63V0200-9100

FIG. 10 BRACKET 1

SOPORTE 1

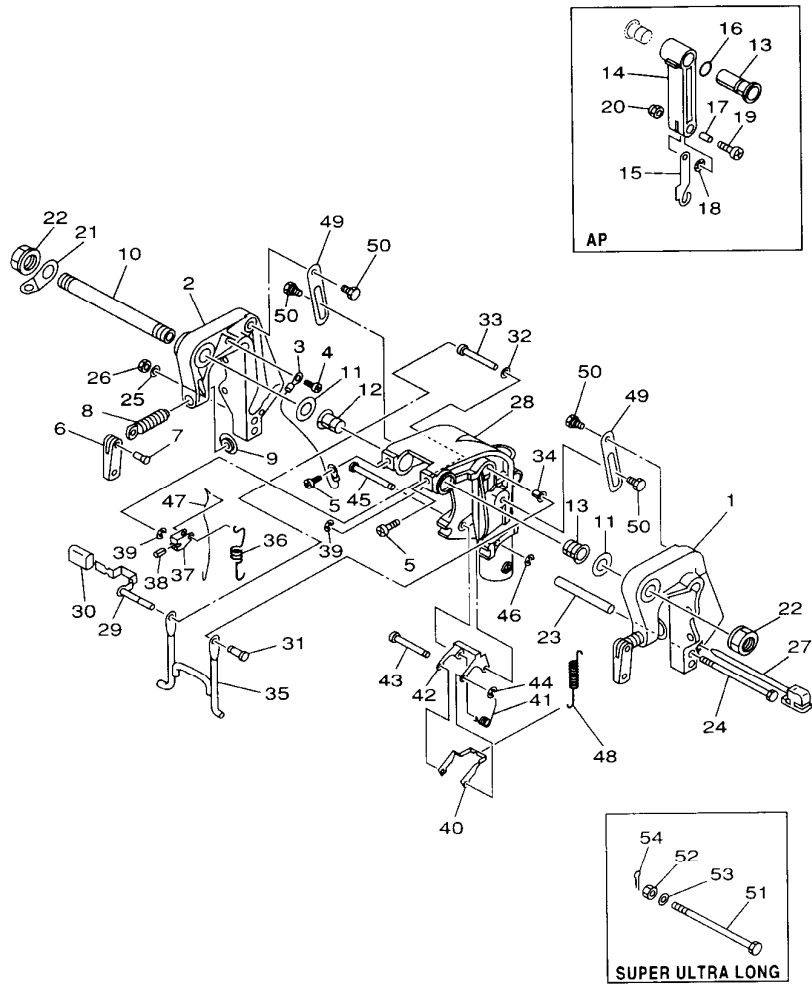


REF. NO.	PART NO. CODIGO NO.	DESCRIPTION DESCRIPTION	9.9F	15F	E99C	E15C	REMARKS OBSERVACION
27	6L2-43160-00	TILT ROD ASSY VARILLA DE BASCULACION COMPL.	1	1	1	1	S, L
28	63V-43311-02-4D	BRACKET, SWIVEL SOPORTE GIRATORIO	1	1	1	1	
29	66M-43630-00	TILT LEVER ASSY PLANCA DE INCLINACION COMPL	1	1	1	1	
30	682-43318-01	COVER CUBIERTA	1	1	1	1	
31	63V-43191-00	SHAFT, STOPPER EJE DE TOPE	1	1	1	1	
32	90202-07M60	WASHER, PLATE ARANDELA DE PLANA	1	1	1	1	
33	90387-07M07	COLLAR CASQUILLO CON VALONA	1	1	1	1	
34	90386-07M95	BUSH BUJE	1	1	1	1	
35	66M-43350-01	RECEIVER ASSY RECIBIDOR COMPL	1	1	1	1	
36	90507-20M00	SPRING, TENSION RESORTE DE TENSION	1	1	1	1	
37	63V-43641-00	LEVER, TILT PALANCA DE INCLINACION	1	1	1	1	
38	91690-30012	PIN, SPRING PASADOR DE RESORTE	1	1	1	1	
39	93430-05027	CIRCLIP BOLA	2	2	2	2	
40	66R-43614-00	PLATE, TILT LOCK PLACA DE SEGURO DE INCLINACION	1	1	1	1	
41	90508-18M41	SPRING, TORSION RESORTE DE TORSION	1	1	1	1	
42	66R-43615-00	PLATE, TILT LOCK PLACA DE SEGURO DE INCLINACION	1	1	1	1	
43	66R-43611-00	SHAFT, TILT LOCK EJE SEGURO INCLINACION	1	1	1	1	
44	93430-04M03	CIRCLIP BOLA	1	1	1	1	
45	63V-43659-00	SHAFT, REVERSE LOCK EJE SEGURO DE REVERSA	1	1	1	1	
46	93430-05027	CIRCLIP BOLA	1	1	1	1	
47	66R-43617-00	ROD, TILT LOCK VARILLA SEGURO DE INCLINACION	1	1	1	1	
48	90506-26M38	SPRING, TENSION RESORTE DE TENSION	1	1	1	1	
49	63V-43181-00	LEVER, TILT STOP PALANCA TOPE INCLINACION	2	2	2	2	
50	90109-06M84	BOLT PERNO	4	4	4	4	
51	90102-08M03	BOLT, WITH HOLE PERNO CON ORIFICIO			1	1	U
52	90171-08M00	NUT, CASTLE TUERCA ENTALLADA			1	1	U
53	92995-08600	WASHER ARANDELA			1	1	U

FWD
63V0200-9100

FIG. 10 BRACKET 1

SOPORTE 1



REF. NO.	PART NO. CODIGO NO.	DESCRIPTION DESCRIPTION	9.9F	15F	E99C	E15C	REMARKS OBSERVACION
54	91490-20015	PIN, COTTER PASADOR DE CHAVETA			1	1	U

63V0200-9100

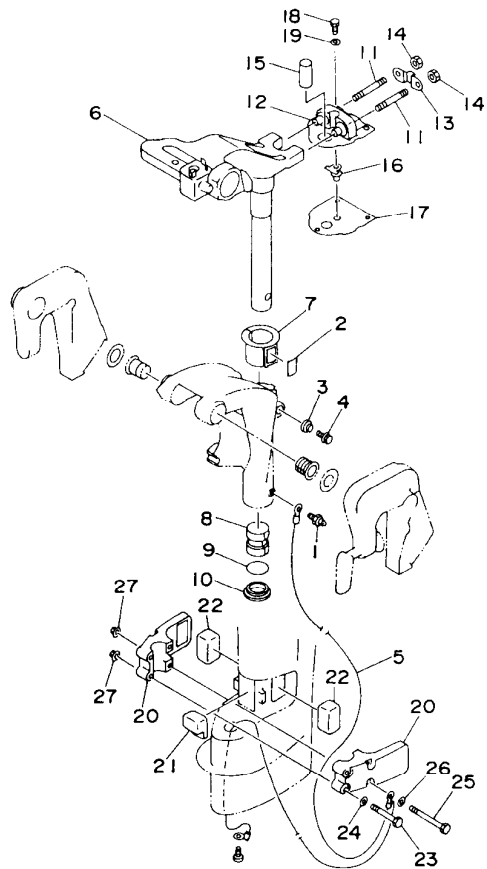


FIG. 11 BRACKET 2

SOPORTE 2

REF. NO.	PART NO. CODIGO NO.	DESCRIPTION DESCRIPTION	99F	15F	E99C	E15C	REMARKS OBSERVACION
1	93700-06M03	NIPPLE, GREASE NIPLE DE ENGRASAR	1	1	1	1	
2	63V-42528-00	PLATE, FRICTION PIEZA DE FRICCION	1	1	1	1	
3	689-43373-01	SEAL, DAMPER SELLO DE GOMA	1	1	1	1	
4	90105-06M07	BOLT, WASHER BASED TORNILLO CON ARANDELA	1	1	1	1	
5	63V-82127-00	WIRE, LEAD 2 CABLE CONDUCTOR 2	1	1	1	1	
6	63V-42511-03-4D	BRACKET, STEERING SOPORTE DE DIRECCION	1	1	1	1	
7	63V-42537-00	BUSHING, PIVOT SHAFT BUJE DEL PIVOTE DE LA FLECHA	1	1	1	1	
8	90386-30048	BUSH BUJE	1	1	1	1	
9	93210-29M94	O-RING ANILLO O	1	1	1	1	
10	90386-30M60	BUSH BUJE	1	1	1	1	
11	90116-08M54	BOLT, STUD ESPARRAGO	2	2	2	2	
12	63V-44514-00-5B	MOUNT DAMPER, UPPER SIDE AMORTIGUADOR LADO SUPERIOR	1	1	1	1	UR S, L
	63V-44514-30-5B	MOUNT DAMPER, UPPER SIDE AMORTIGUADOR LADO SUPERIOR			1	1	UR U
13	63V-44526-00	PLATE PLACA 1	1	1	1	1	
14	95380-08600	NUT TUERCA	2	2	2	2	
15	90387-16M01	COLLAR CASQUILLO CON VALONA	1	1	1	1	
16	63V-44366-00	DAMPER, WATER SEAL GOMA DEL SELLO DE AGUA	1	1	1	1	
17	63V-45114-00	GASKET, UPPER CASING EMPAQUE	1	1	1	1	
18	97095-06018	BOLT PERNO	3	3	3	3	
19	92995-06600	WASHER ARANDELA	3	3	3	3	
20	63V-44551-01-4D	HOUSING, LOWER MOUNT RUBBER CAJA AMORTIGUADOR INFERIOR HU	2	2	2	2	
21	63V-44557-00	MOUNT DAMPER, LOWER FRONT AMORTIGUADOR DE HULE FRENTE IN	1	1	1	1	
22	682-44555-00	MOUNT DAMPER, LOWER SIDE AMORTIGUADOR DE HULE LADO INFE	2	2	2	2	UR S, L
	682-44555-30	MOUNT DAMPER, LOWER SIDE AMORTIGUADOR DE HULE LADO INFE			2	2	UR U
23	97075-06055	BOLT PERNO	2	2	2	2	
24	92995-06600	WASHER ARANDELA	2	2	2	2	
25	97075-06075	BOLT PERNO	2	2	2	2	



63V0010-5100

C6

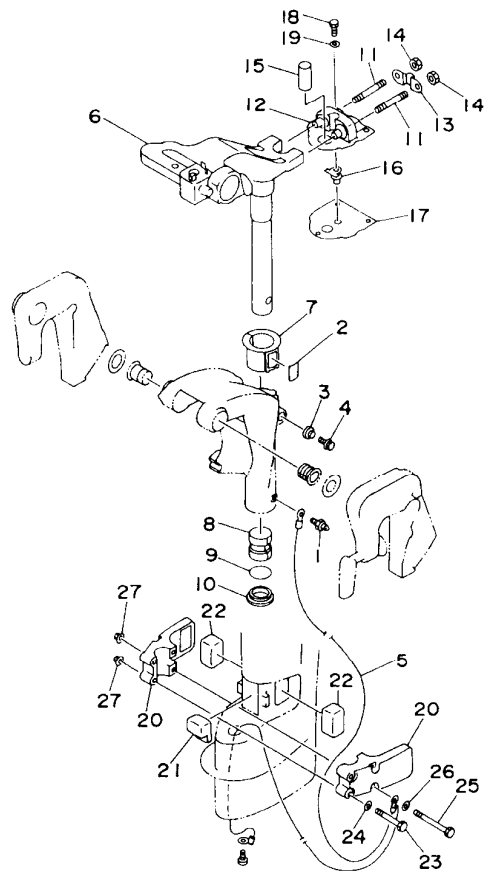


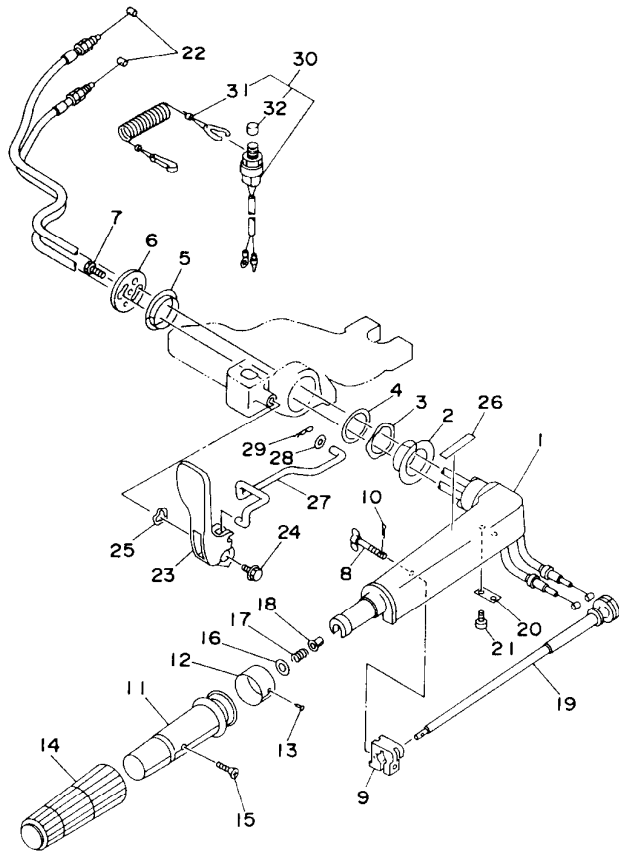
FIG. 11 BRACKET 2

SOPORTE 2

REF. NO.	PART NO. CODIGO NO.	DESCRIPTION DESCRIPTION	9.9F	15F	E99C	E15C	REMARKS OBSERVACION
26	92995-06600	WASHER ARANDELA	2	2	2	2	
27	90179-06M28	NUT TUERCA	4	4	4	4	



63V0010-5100



63V0010-5110

FIG. 12 STEERING

DIRECCION

REF. NO.	PART NO. CODIGO NO.	DESCRIPTION DESCRIPTION	99F	15F	E99C	E15C	REMARKS OBSERVACION
1	6G1-42111-11-4D	HANDLE, STEERING MANIJA DE DIRECCION	1	1	1	1	
2	90386-34M97	BUSH BUJE	1	1	1	1	
3	90206-36M21	WASHER, WAVE ARANDELA ONDULADA	1	1	1	1	
4	90202-36M55	WASHER, PLATE ARANDELA DE PLANA	1	1	1	1	
5	90386-33M96	BUSH BUJE	1	1	1	1	
6	6G1-42131-01	COVER, HANDLE STEERING CUBIERTA MANIJA DIRRECCION	1	1	1	1	
7	97095-06020	BOLT PERNO	1	1	1	1	
8	6G1-42125-01	BOLT, FRICTION ADJUSTING TORNILLO FRICCION ADJUSTA	1	1	1	1	
9	6G1-42126-00	FRICTION, STEERING HANDLE GRIP FRICCION DE MANGO DIRECCION	1	1	1	1	
10	91490-16010	PIN, COTTER PASADOR DE CHAVETA	1	1	1	1	
11	664-42119-00	GRIP, STEERING HANDLE MANGO, MANIJA DE DIRRECCION	1	1	1	1	
12	6H2-42137-00	INDICATOR, THROTTLE INDICADOR ACELERADOR	1	1			
	697-42137-10	INDICATOR, THROTTLE INDICADOR ACELERADOR			1	1	
13	90269-02M09	RIVET REMACHE	1	1	1	1	
14	6G1-42177-00	RUBBER, HANDLE HULE DE MANIJA	1	1	1	1	
15	90149-05M13	SCREW TORNILLO DE REGLAJE	1	1	1	1	
16	92903-10600	WASHER, PLATE ARANDELA	1	1	1	1	
17	90501-23215	SPRING, COMPRESSION RESORTE DE COMPRESION	1	1	1	1	
18	90386-08032	BUSH BUJE	1	1	1	1	
19	6G1-42138-01	LEVER, THROTTLE PLANCA DE ACELERACION	1	1	1	1	
20	6E0-42159-02	STAY SOPORTE	1	1	1	1	
21	97885-05012	SCREW, PAN HEAD TORNILLO DE CABEZA CON PLANA	2	2	2	2	
22	6L2-26301-00	THROTTLE CABLE ASSY CABLE DE ACELERADOR COMPLETO	2	2	2	2	
23	63V-44111-01	HANDLE, GEAR SHIFT MANIJA DE CAMBIO DE MARCHAS	1	1	1	1	
24	90119-06M09	BOLT, WITH WASHER TORNILLO CON ARANDELA	1	1	1	1	
25	90206-13M10	WASHER, WAVE ARANDELA ONDULADA	1	1	1	1	
26	6E0-44191-11	INDICATOR, SHIFT INDICADOR DE CAMBIOS	1	1	1	1	

D1

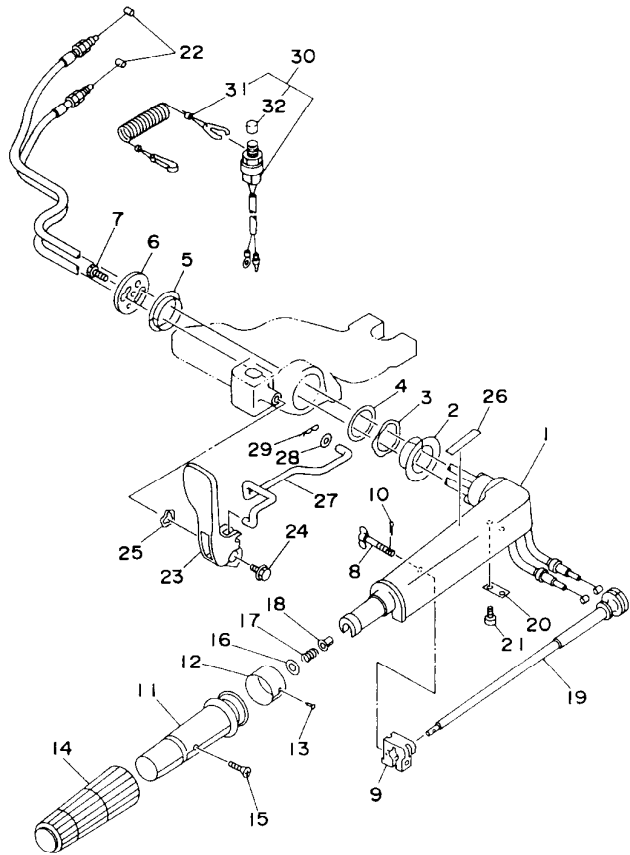


FIG. 12 STEERING

DIRECCION

REF. NO.	PART NO. CODIGO NO.	DESCRIPTION DESCRIPTION	9.9F	15F	E99C	E15C	REMARKS OBSERVACION
27	63V-44124-01	LINK, SHIFT ROD ESLABON	1	1	1	1	
28	90202-06009	WASHER, PLATE ARANDELA DE PLANA	1	1	1	1	
29	90468-18008	CLIP PRESILLA	1	1	1	1	
30	63V-82575-00	ENGINE STOP SWITCH ASSY INTERRUPTOR DE PARADA COMPL	1	1	1	1	
31	682-82556-00	STOPPER RETEN	1	1	1	1	
32	689-8257Y-00	CAP CASQUILLO	1	1	1	1	



63V0010-5110

D2

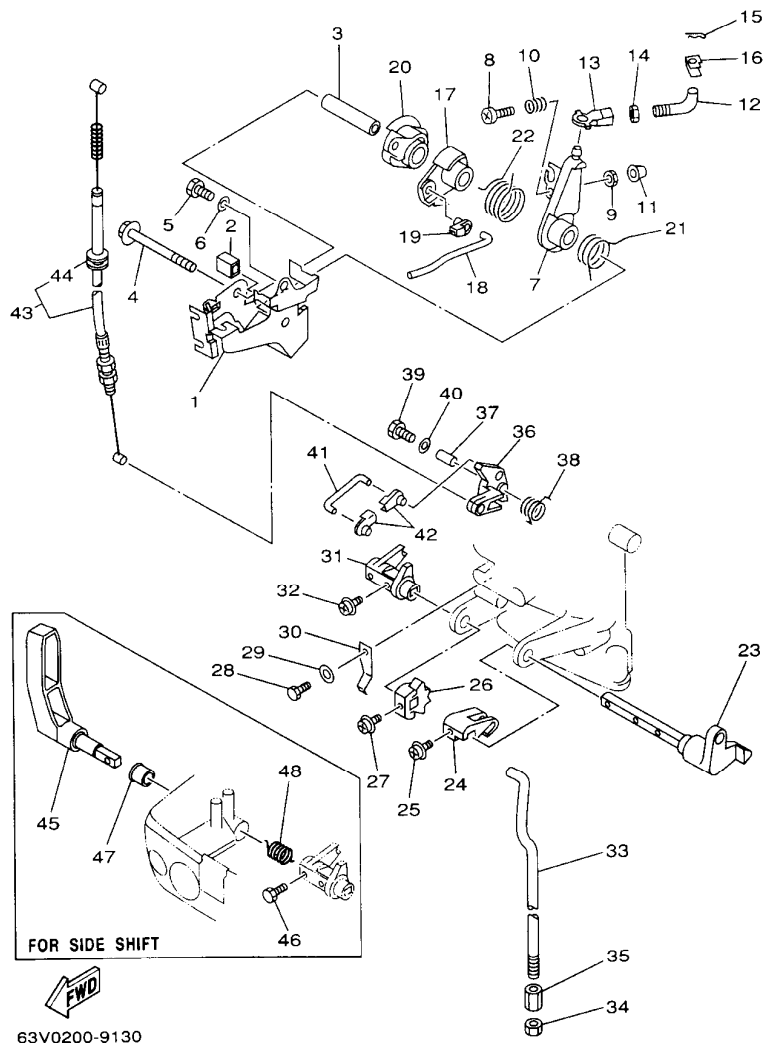


FIG. 13 CONTROL

CONTROL

REF. NO.	PART NO. CODIGO NO.	DESCRIPTION	9.9F	15F	E99C	E15C	REMARKS OBSERVACION
1	63V-14497-01	STAY, THROTTLE WIRE SOPORTE VALVULA DE OBTURACION	1	1	1	1	
2	689-44194-00	CAP TAPA	1	1	1	1	
3	90387-06M50	COLLAR CASQUILLO CON VALONA	1	1	1	1	
4	95895-06065	BOLT, FLANGE TUERCA DE REBORDE	1	1	1	1	
5	97095-06012	BOLT PERNO	1	1	1	1	
6	92995-06600	WASHER ARANDELA	1	1	1	1	
7	63V-41631-00	LEVER, MAGNETO CONTROL PALANCA DE CONTROL DE MAGNETO	1	1	1	1	
8	97885-06030	SCREW, PAN HEAD TORNILLO DE CABEZA CON PLANA	1	1	1	1	
9	95380-06600	NUT TUERCA	1	1	1	1	
10	90501-12M16	SPRING, COMPRESSION RESORTE DE COMPRESION	1	1	1	1	
11	688-44194-00	CAP TAPA	1	1	1	1	
12	63V-41238-00	JOINT, LINK CONECTOR	1	1	1	1	
13	6H4-41237-00	JOINT, LINK CONECTOR	1	1	1	1	
14	95380-05700	NUT TUERCA	1	1	1	1	
15	90468-10005	CLIP PRESILLA	1	1	1	1	
16	63V-41223-00	WASHER, LOCK 1 ARANDELA DE SEGURO1	1	1	1	1	
17	63V-41283-01	LEVER, FREE ACCEL. PALANCA	1	1	1	1	
18	63V-41211-00	LINK, ACCEL. ESLABON, ACELERADOR	1	1	1	1	
19	661-41262-02	JOINT, CHOKE LEVER CONECTOR DE AHOGADOR	1	1	1	1	
20	63V-41638-00	PULLEY POLEA	1	1	1	1	
21	90508-16M37	SPRING, TORSION RESORTE DE TORSION	1	1	1	1	
22	90508-20M38	SPRING, TORSION RESORTE DE TORSION	1	1	1	1	
23	63V-44123-01	ARM, SHIFT ROD BRAZO VARILLA DE CAMBIOS	1	1	1	1	
24	63V-44121-01	LEVER, SHIFT ROD PALANCA VARILLA CAMBIOS	1	1	1	1	
25	90159-05M25	SCREW, WITH WASHER TORNILLO CON VALONA	1	1	1	1	
26	63V-44125-00	LEVER, SHIFT ROD PALANCA VARILLA CAMBIOS	1	1	1	1	
27	90159-05M25	SCREW, WITH WASHER TORNILLO CON VALONA	1	1	1	1	

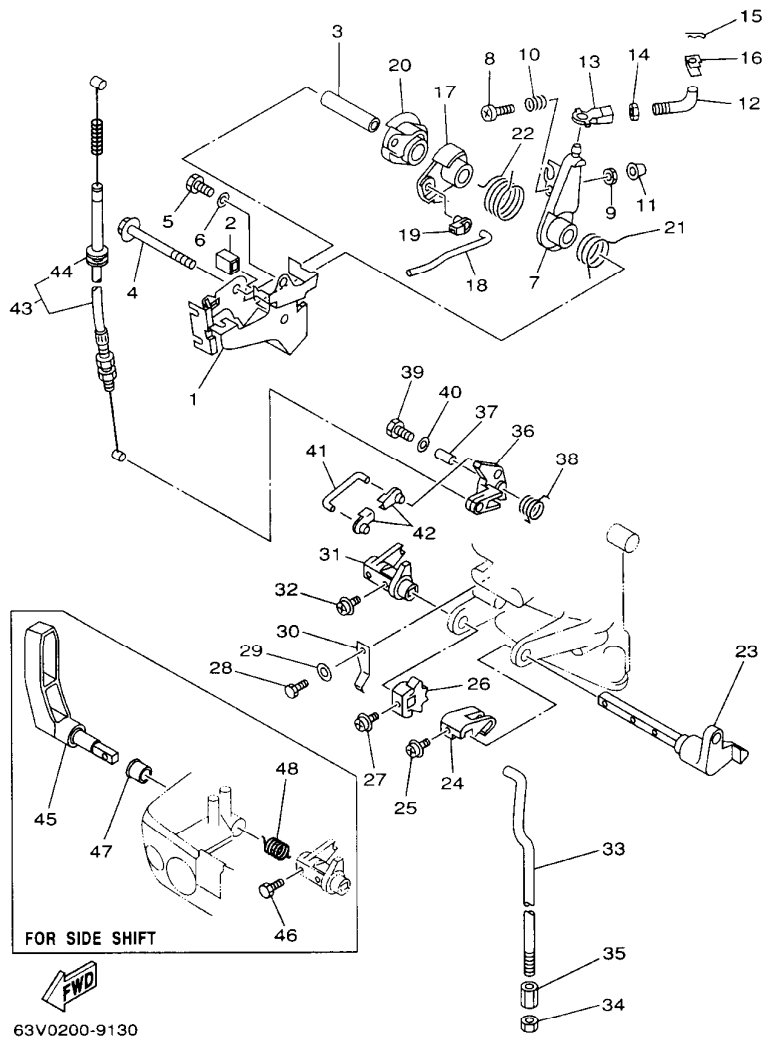
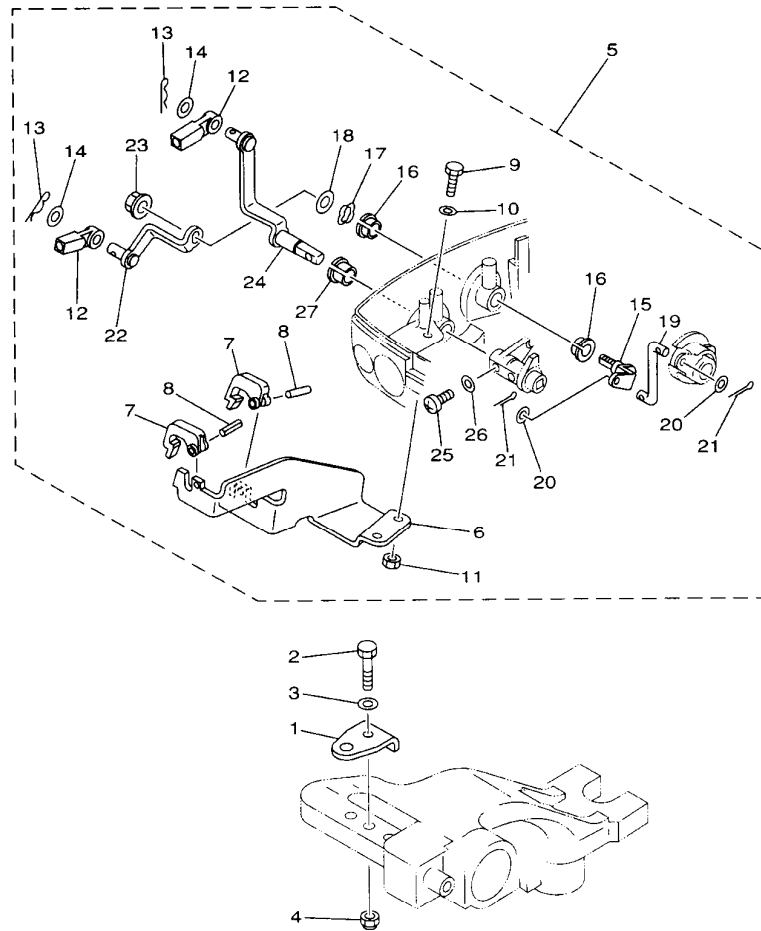


FIG. 13 CONTROL

CONTROL

REF. NO.	PART NO. CODIGO NO.	DESCRIPTION DESCRIPTION	99F	15F	E99C	E15C	REMARKS OBSERVACION
28	97095-06012	BOLT PERNO	1	1	1	1	
29	92995-06600	WASHER ARANDELA	1	1	1	1	
30	63V-44116-00	SPRING RESORTE	1	1	1	1	
31	63V-44122-00	BUSHING, SHIFT ROD LEVER BUJE PALANCA VARILLA DE CAMBIO	1	1	1	1	
32	90159-05M25	SCREW, WITH WASHER TORNILLO CON VALONA	1	1	1	1	
33	63V-44143-01	ROD, SHIFT VARILLA DE CAMBIO	1	1	1	1	
34	95380-06700	NUT TUERCA	1	1	1	1	
35	90170-06015	NUT TUERCA	1	1	1	1	
36	63V-15746-00	ARM BRAZO	1	1	1	1	AP
37	90387-06M06	COLLAR CASQUILLO CON VALONA	1	1	1	1	AP
38	90508-08M39	SPRING, TORSION RESORTE DE TORSION	1	1	1	1	AP
39	97095-06020	BOLT PERNO	1	1	1	1	AP
40	92995-06600	WASHER ARANDELA	1	1	1	1	AP
41	6L2-15747-00	LINK ESLABON	1	1	1	1	AP
42	661-41262-02	JOINT, CHOKE LEVER CONECTOR DE AHOGADOR	2	2	2	2	AP
43	63V-15770-00	CABLE COMP., STARTER STOP CABLECOMPL DE SEGURO ARRANQUE	1	1	1	1	AP
44	90480-10M16	GROMMET TAPON	1	1	1	1	AP
45	65F-44111-00	HANDLE, GEAR SHIFT MANIJA DE CAMBIO DE MARCHAS				1	FOR SIDE SHIFT
46	90105-05M79	BOLT, WASHER BASED TORNILLO CON ARANDELA				1	FOR SIDE SHIFT
47	90386-10009	BUSH BUJE				1	FOR SIDE SHIFT
48	90501-12M85	SPRING, COMPRESION RESORTE DE COMPRESION				1	FOR SIDE SHIFT



63V0100-9140

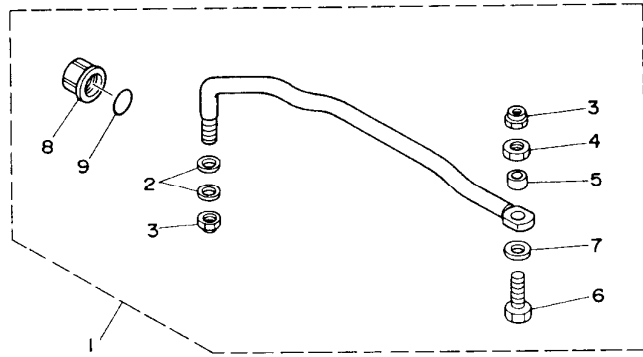
FIG. 14 REMOTE CONTROL ATTACHMENT CONJUNTO ADITAMENTO

REF. NO.	PART NO. CODIGO NO.	DESCRIPTION DESCRIPTION	9.9F	15F	E99C	E15C	REMARKS OBSERVACION
1	63V-48511-01	HOOK, STEERING GANCHO DIRECCION	1	1	1	1	
2	97075-08035	BOLT PERNO	1	1	1	1	
3	92995-08600	WASHER ARANDELA	1	1	1	1	
4	90185-08057	NUT, SELF-LOCKING TUERCA AUTOBLOCANTE	1	1	1	1	
5	63V-48501-00	REMOTE CONT. ATTACHMENT ASSY. CONJUNTO ADITAMENTO	1	1	1	1	
6	63V-48531-00	BRACKET, REMOTE CONTROL 1 SOPORTE DE CONTROL REMOTO	1	1	1	1	
7	682-48538-50	CLAMP, CABLE 1 GRAMPA DE CABLE	2	2	2	2	
8	91590-30012	PIN, CLEVIS PASADOR DE ABRAZADERA	2	2	2	2	
9	97095-06016	BOLT PERNO	2	2	2	2	
10	92990-06600	WASHER, PLATE ARANDELA	2	2	2	2	
11	95380-06600	NUT TUERCA	2	2	2	2	
12	663-48344-00	CABLE END, REMOTE CONTROL BASE CONTROL	2	2	2	2	
13	90468-18008	CLIP PRESILLA	2	2	2	2	
14	90201-08M12	WASHER, PLATE ARANDELA PLANA	2	2	2	2	
15	63V-42154-00	LEVER, THROTTLE CONTROL PALANCA CONTROL ACELERADOR	1	1	1	1	
16	90386-10025	BUSH BUJE	2	2	2	2	
17	90206-10M04	WASHER, WAVE ARANDELA ONDULADA	1	1	1	1	
18	90201-10M02	WASHER, PLATE ARANDELA PLANA	1	1	1	1	
19	63V-42192-00	ROD 2 VARILLA 2	1	1	1	1	
20	90201-04M06	WASHER, PLATE ARANDELA PLANA	2	2	2	2	
21	91490-20010	PIN, COTTER PASADOR DE CHAVETA	2	2	2	2	
22	63V-48534-00	THROTTLE LEVER, CONTROL PALANCA DE CONTROL DE ACELERA	1	1	1	1	
23	95780-08300	NUT, FLANGE TUERCA DE BRIDA	1	1	1	1	
24	63V-48544-00	LEVER, SHIFTCONTROL PALANCA, CONTROL CAMBIOS	1	1	1	1	
25	97885-05012	SCREW, PAN HEAD TORNILLO DE CABEZA CON PLANA	1	1	1	1	
26	92990-05600	WASHER, PLATE ARANDELA	1	1	1	1	
27	90386-10009	BUSH BUJE	1	1	1	1	

D5

FIG. 15 STEERING GUIDE

DIRECCIONGUIAR

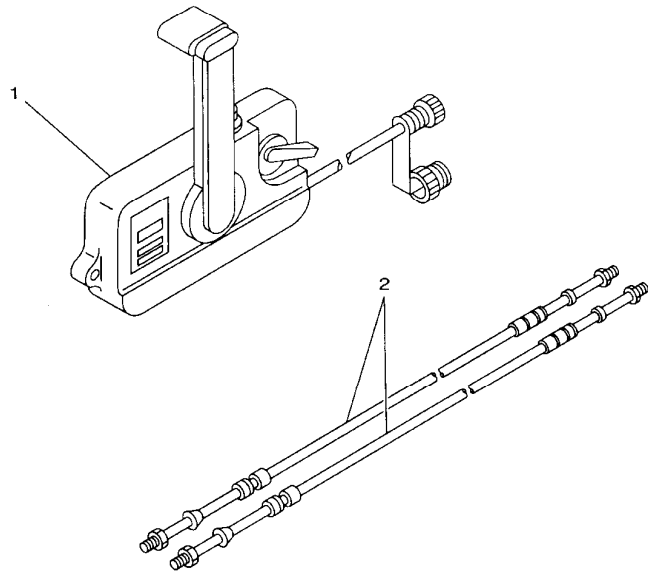


REF. NO.	PART NO. CODIGO NO.	DESCRIPTION DESCRIPTION	9.9F	15F	E99C	E15C	REMARKS OBSERVACION
1	63V-61350-00	STEERING GUIDE ATTACHMENT KIT ESTUCHE ADITAMENTO GUIA DE TIM	1	1	1	1	
2	90201-10M20	.WASHER, PLATE .ARANDELA PLANA	2	2	2	2	
3	90185-09M01	.NUT, SELF-LOCKING .TUERCA AUTOBLOCANTE	2	2	2	2	
4	90170-09M03	.NUT .TUERCA	1	1	1	1	
5	90387-10M42	.COLLAR .CASQUILLO CON VALONA	1	1	1	1	
6	6E5-61355-00	.BOLT .TORNILLO	1	1	1	1	
7	90201-10M63	.WASHER, PLATE .ARANDELA PLANA	1	1	1	1	
8	6E5-43145-01	.CAP, CLAMP BRACKET .TAPA	1	1	1	1	
9	93210-16275	.O-RING .ANILLO O	1	1	1	1	

G3V0100-5150

D6

FIG. 16 REMOTE CONTROL BOX CONTROL REMOTO COMPL.

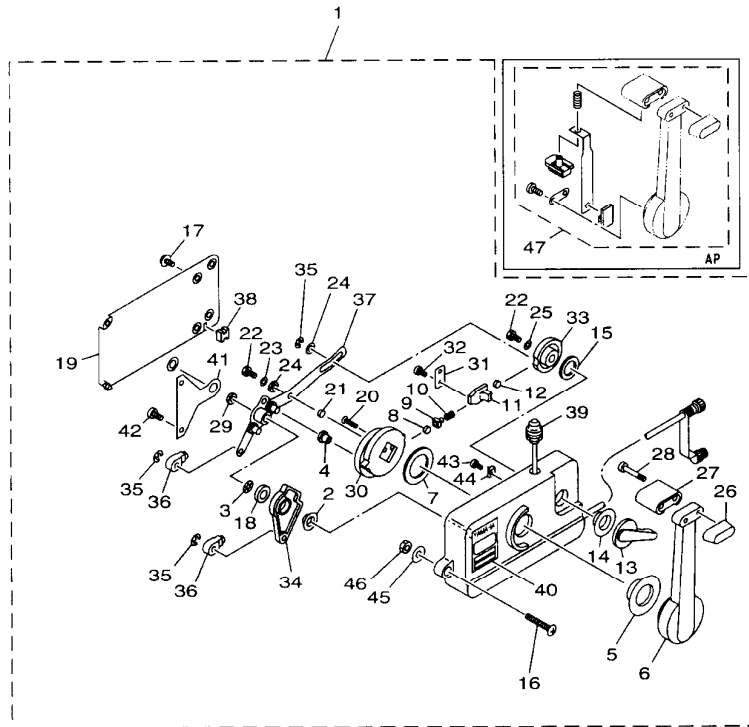


REF. NO.	PART NO. CODIGO NO.	DESCRIPTION DESCRIPTION	9.9F	15F	E99C	E15C	REMARKS OBSERVACION
1	701-48130-02	REMOTE CONTROL ASSY 3 REMOTO CONTROL COMPL 3	1	1	1	1	AP
2	701-48310-80	CABLE, REMOTE CONTROL L=10F CABLE CONTROL REMOTO L=10F	2	2	2	2	UR
	701-48310-90	CABLE, REMOTE CONTROL L=11F CABLE CONTROL REMOTO L=11F	2	2	2	2	UR
	701-48320-00	CABLE, REMOTE CONTROL L=12F CABLE CONTROL REMOTO L=12F	2	2	2	2	UR
	701-48320-20	CABLE, REMOTE CONTROL L=13F CABLE CONTROL REMOTO L=13F	2	2	2	2	UR
	701-48320-30	CABLE, REMOTE CONTROL L=14F CABLE CONTROL REMOTO L=14F	2	2	2	2	UR
	701-48320-50	CABLE, REMOTE CONTROL L=15F CABLE CONTROL REMOTO L=15F	2	2	2	2	UR


6770200-9130

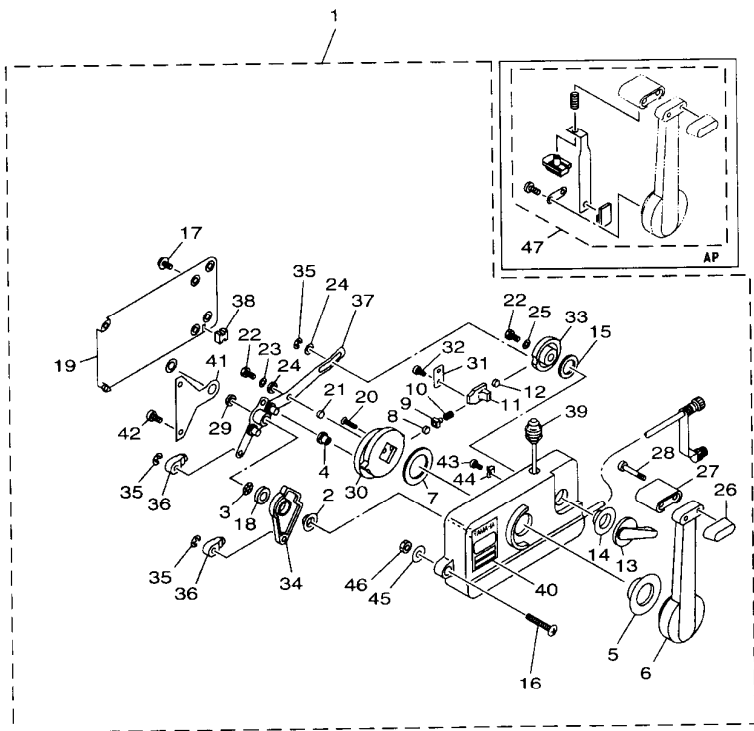
D7

FIG. 17 REMOTE CONTROL ASSY CONTROL REMOTO COMPL.



REF. NO.	PART NO. CODIGO NO.	DESCRIPTION DESCRIPTION	9.9F	15F	E99C	E15C	REMARKS OBSERVACION
1	701-48130-02	REMOTE CONTROL ASSY 3 REMOTO CONTROL COMPL 3	1	1	1	1	AP
2	701-48235-00	.BUSHING .BUJE	1	1	1	1	
3	701-48197-10	.WASHER, WAVE .RONDANA ONDULADA 2	1	1	1	1	
4	701-48252-00	.ROLLER, CAM .RODILLO LEVA	1	1	1	1	
5	701-48234-00	.BUSHING 1 .BUJE	1	1	1	1	
6	701-48221-00	.LEVER, CONTROL .PALANCA CONTROL	1	1	1	1	
7	701-48196-11	.WASHER, WAVE .ARANDELA ONDULADA	1	1	1	1	
8	701-48236-00	.ROLLER, DETENT .RODILLO	1	1	1	1	
9	702-48237-00	.ADAPTOR .ADAPTADOR	1	1	1	1	
10	702-48238-00	.SPRING, DETENT .RESORTE	1	1	1	1	
11	701-48249-00	.ADAPTOR, SPRING .RESORTE ADAPTADOR	1	1	1	1	
12	701-48248-00	.ROLLER, FREE ACCEL. .RODILLO ACELERADOR LIBRE	1	1	1	1	
13	701-48152-11	.KNOB, FREE ACCEL. .PERILLA	1	1	1	1	SINGLE
14	701-48243-00	.BUSHING .BUJE 3	1	1	1	1	
15	701-48198-10	.WASHER, WAVE .RONDANA ONDULADA 3	1	1	1	1	
16	701-48281-10	.SCREW .TORNILLO 1	3	3	3	3	
17	98580-05010	.SCREW, PAN HEAD .TORNILLO DE CABEZA CON PLANA	4	4	4	4	
18	701-48268-00	.SPACER .ESPACIADOR 3	1	1	1	1	
19	701-48213-00	.BACK PLATE 2 .PLACA TRASERA 2	1	1	1	1	
20	98780-06025	.SCREW, FLAT HEAD .TORNILLO DE CABEZA PLANA	2	2	2	2	
21	701-48255-00	.COLLAR .COLLAR 1	1	1	1	1	
22	97080-06018	.BOLT .PERNO	2	2	2	2	
23	702-48288-00	.WASHER, PLAIN .ARANDELA	1	1	1	1	
24	701-48246-00	.SPACER .ESPACIADOR	2	2	2	2	
25	92990-06300	.WASHER, INTERNAL TOOTH .ARANDELA	1	1	1	1	
26	701-48229-00	.GRIP, CONTROL LEVER .MANGO DE PALANCA CONTROL 2	1	1	1	1	
27	701-48222-00	.GRIP, CONTROL LEVER .MANGO DE PALANCA CONTROL	1	1	1	1	

FIG. 17 REMOTE CONTROL ASSY CONTROL REMOTO COMPL.



REF. NO.	PART NO. CODIGO NO.	DESCRIPTION DESCRIPTION	9.9F	15F	E98C	E15C	REMARKS OBSERVACION
28	98580-05555	.SCREW, PAN HEAD .TORNILLO DE CABEZA CON PLANA	2	2	2	2	
29	701-48266-00	.SPACER .ESPACIADOR 2	1	1	1	1	
30	701-48232-00	.GEAR .ENGRANAJE 1	1	1	1	1	
31	701-48189-11	.RETAINER .RETENEDOR	1	1	1	1	
32	98580-05010	.SCREW, PAN HEAD .TORNILLO DE CABEZA CON PLANA	2	2	2	2	
33	701-48153-12	.SHAFT, FREE ACCEL. .EJE	1	1	1	1	
34	701-48271-00	.ARM, SHIFT .BRAZO CAMBIADOR	1	1	1	1	SINGLE
35	93430-06024	.CIRCLIP .BOLA	3	3	3	3	
36	703-48345-01	.CABLE END,REMOTE CONTROL 2 .TERMINAL CABLE DE CONTROL REM	2	2	2	2	
37	701-48261-20	.ARM, THROTTLE .BRAZO ACELERADOR	1	1	1	1	
38	701-48358-00	.ANCHOR, CABLE .ABRAZADERA CABLE	1	1	1	1	
39	701-82550-51	.ENGINE STOP SWITCH ASSY .INTERRUP. DE PARADA COMPLETO	1	1	1	1	
40	701-48126-00	.GRAPHIC .MARCADOR	1	1	1	1	
41	701-48133-00	.PLATE, LINK .PLACA DE ESLABON	1	1	1	1	
42	98580-05020	.SCREW, PAN HEAD .TORNILLO DE CABEZA CON PLANA	2	2	2	2	
43	701-48283-00	.SCREW .TORNILLO 3	1	1	1	1	
44	701-82594-00	.CLAMP .GRAMPA	1	1	1	1	
45	701-48287-00	.WASHER .ARANDELA	3	3	3	3	
46	95380-06600	.NUT .TUERCA	3	3	3	3	
47	701-48280-00	NEUTRAL LOCK KIT TORNILLO	1	1	1	1	AP

FWD
OMACC-9040

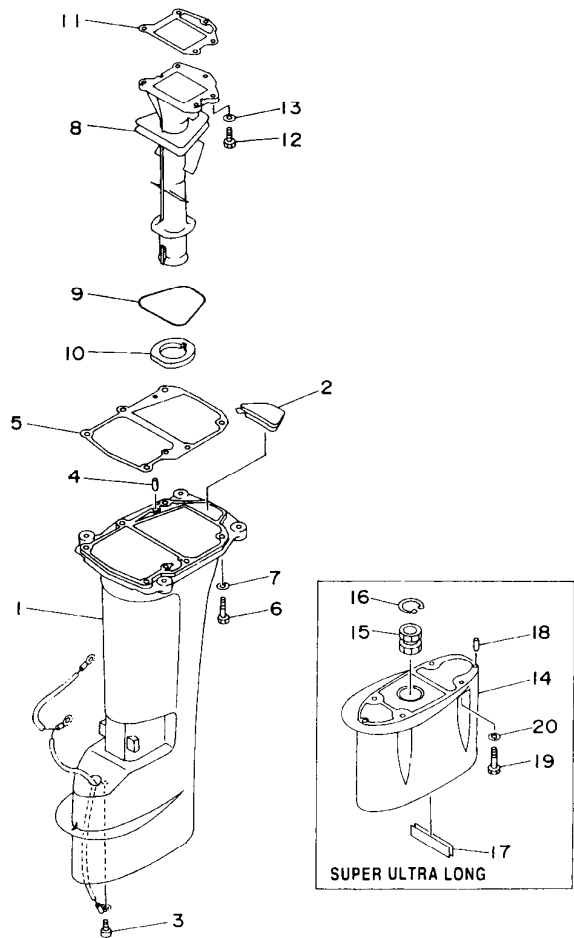


FIG. 18 UPPER CASING FUNDA SUPERIOR

REF. NO.	PART NO. CODIGO NO.	DESCRIPTION DESCRIPTION	9.9F	15F	E99C	E15C	REMARKS OBSERVACION
1	63V-45111-04-4D	CASING, UPPER CAJA SUPERIOR	1	1	1	1	UR S
	63V-45111-14-4D	CASING, UPPER CAJA SUPERIOR	1	1	1	1	UR L, U
2	63V-45126-00	PLATE, SEAL DAMPER PLACA DE SELLO DE HULE	1	1	1	1	
3	90157-06M06	SCREW, PAN HEAD TORNILLO CABEZA CONICA PLANA	1	1	1	1	
4	93606-12019	PIN, DOWEL PASADOR DE CLAVIJA	2	2	2	2	
5	63V-45113-A1	GASKET, UPPER CASING EMPAQUE	1	1	1	1	
6	97095-08030	BOLT PERNO	6	6	6	6	
7	92995-08600	WASHER ARANDELA	6	6	6	6	
8	63V-41131-02-5B	MANIFOLD, EXT. 1 TUBO MULTIPLE DE ESCAPE	1	1	1	1	
9	93210-71MH6	O-RING ANILLO O	1	1	1	1	
10	63V-41135-00	GASKET, EXHAUST MANIFOLD EMPAQUE	1	1	1	1	
11	63V-41133-A1	GASKET, EXHAUST MANIFOLD 1 EMPAQUE ESCAPE MULTIPLE	1	1	1	1	
12	97095-06020	BOLT PERNO	5	5	5	5	
13	92995-06600	WASHER ARANDELA	5	5	5	5	
14	63V-45211-30-4D	EXTENSION EXTENSION				1	U
15	682-45318-00	BUSHING, DRIVE SHAFT BUJE, EJE DE MANDO				1	U
16	93420-30042	CIRCLIP BOLA				1	U
17	63V-45127-00	SEAL SELLO DE GOMA				1	U
18	93604-12M07	PIN, DOWEL PASADOR DE CLAVIJA				2	U
19	97075-08030	BOLT PERNO				4	U
20	92995-08600	WASHER ARANDELA				4	U

FWD
63V0010-5130

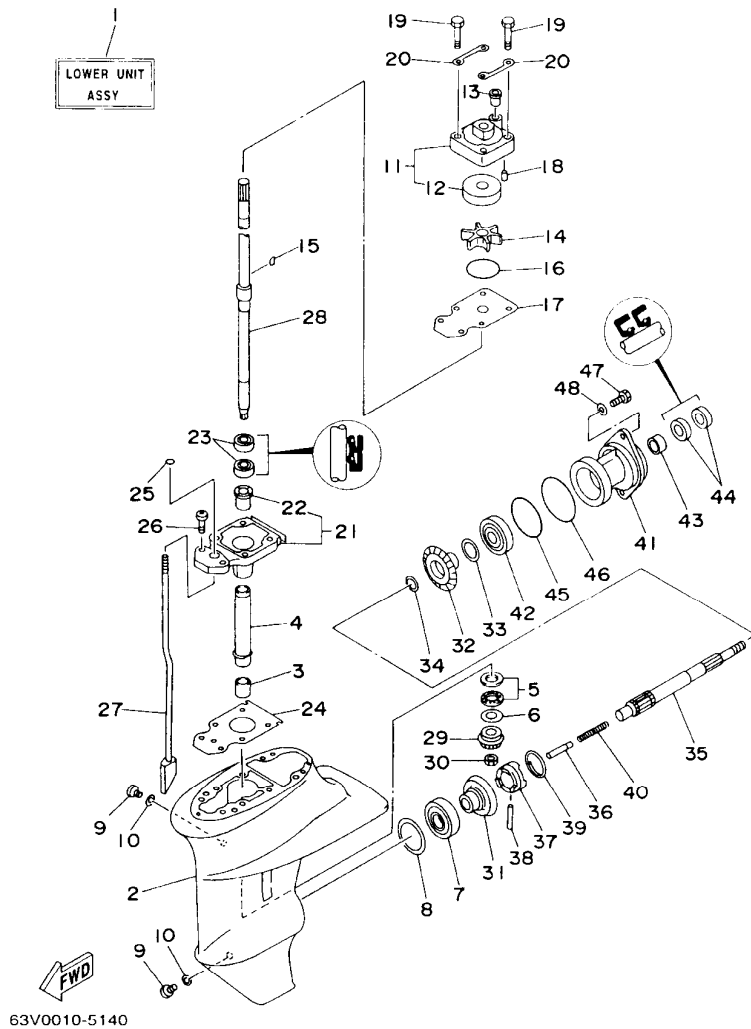


FIG. 19 LOWER CASING. DRIVE 1 IMPULSOR E INFERIOR 1

REF. NO.	PART NO. CODIGO NO.	DESCRIPTION DESCRIPTION	99F	15F	E99C	E15C	REMARKS OBSERVACION
1	63V-45300-02-4D	LOWER UNIT ASSY CONJUNTO UNIDAD INFERIOR (REF.NO. 2-48)	1	1			UR S
	63V-45300-12-4D	LOWER UNIT ASSY CONJUNTO UNIDAD INFERIOR (REF.NO. 2-48)	1	1			UR L
	65E-45300-01-4D	LOWER UNIT ASSY CONJUNTO UNIDAD INFERIOR (REF.NO. 2-48)			1	1	UR S(CHROMATE)
	65E-45300-11-4D	LOWER UNIT ASSY CONJUNTO UNIDAD INFERIOR (REF.NO. 2-48)			1	1	UR L(CHROMATE)
	65E-45300-31-4D	LOWER UNIT ASSY CONJUNTO UNIDAD INFERIOR (REF.NO. 2-48)			1	1	UR U(CHROMATE)
2	63V-45311-01-4D	CASING, LOWER FUNDA INFERIOR	1	1	1	1	
3	93315-314V8	BEARING COJINETE	1	1	1	1	
4	63V-45536-00	SLEEVE, DRIVE SHAFT CAMISA EJE DE MANDO	1	1	1	1	
5	93341-414V1	BEARING COJINETE	1	1	1	1	
6	6E8-45587-00-13	SHIM (T:1.13MM) LAINA(T:1.13MM)	1	1	1	1	UR
	6E8-45587-00-20	SHIM (T:1.20MM) LAINA(T:1.20MM)	1	1	1	1	UR
7	93332-00005	BEARING COJINETE	1	1	1	1	
8	664-45567-01-10	SHIM (T:0.10MM) LAINA(T:0.10MM)	1	1	1	1	UR
	664-45567-01-12	SHIM (T:0.12MM) LAINA(T:0.12MM)	1	1	1	1	UR
	664-45567-01-15	SHIM (T:0.15MM) LAINA (T:0.15MM)	1	1	1	1	UR
	664-45567-01-18	SHIM (T:0.18MM) LAINA (T:0.18MM)	1	1	1	1	UR
	664-45567-01-30	SHIM (T:0.30MM) LAINA(T:0.30MM)	1	1	1	1	UR
	664-45567-01-40	SHIM (T:0.40MM) LAINA (T:0.40MM)	1	1	1	1	UR
	664-45567-01-50	SHIM (T:0.50MM) LAINA(T:0.50MM)	1	1	1	1	UR
9	90340-08M04	PLUG, STRAIGHT SCREW TORNILLO, DE DRENAJE	2	2	2	2	
10	90430-08020	GASKET JUNTA	2	2	2	2	
11	63V-44301-00	WATER PUMP HOUSING COMP. CAJA DE BOMBE DE AGUA COMPL	1	1			UR

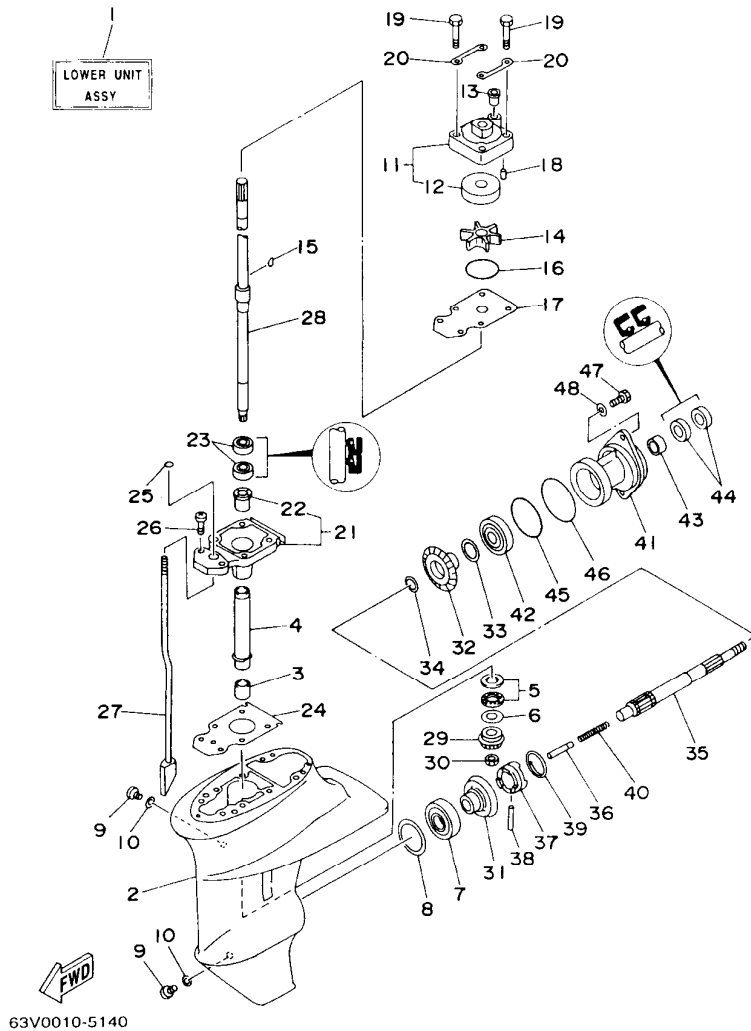
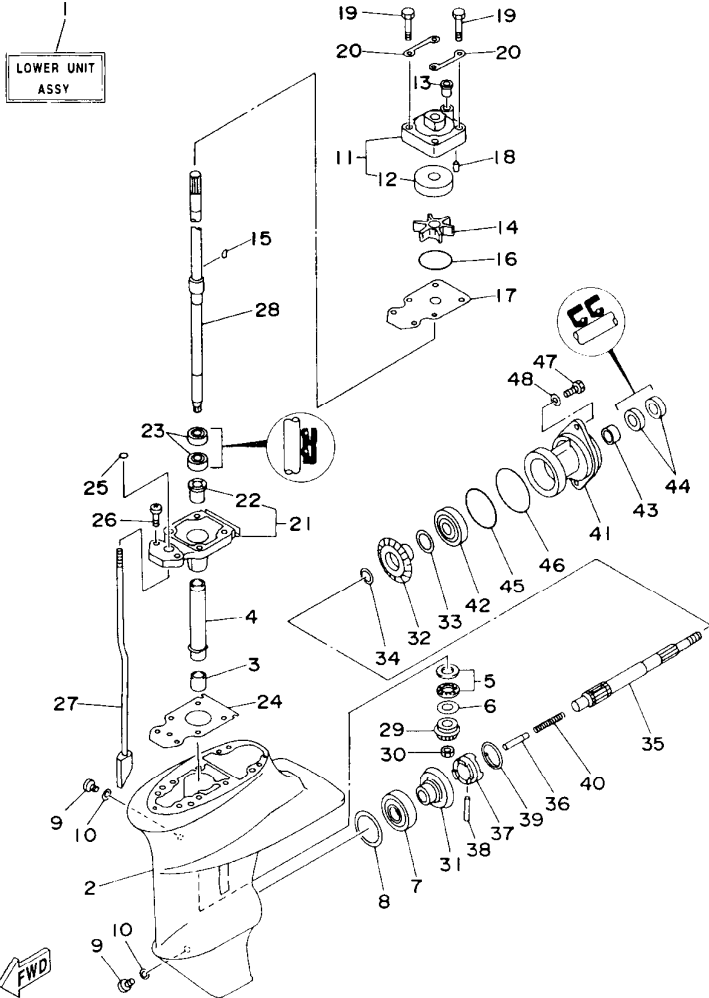


FIG. 19 LOWER CASING. DRIVE 1 IMPULSOR E INFERIOR 1

REF. NO.	PART NO. CODIGO NO.	DESCRIPTION DESCRIPTION	9.9F	15F	E99C	E15C	REMARKS OBSERVACION
11	63V-44301-40	WATER PUMP HOUSING COMP. CAJA DE BOMBE DE AGUA COMPL.			1	1	UR CHROMATE
12	63V-44322-00	.INSERT, CARTRIDGE .CARTUCHO	1	1			UR
	63V-44322-40	.INSERT, CARTRIDGE .CARTUCHO			1	1	UR CHROMATE
13	647-44366-00	DAMPER, WATER SEAL GOMA DEL SELLO DE AGUA	1	1	1	1	
14	63V-44352-01	IMPELLER IMPULSOR	1	1	1	1	
15	664-44338-00	KEY, WOODRUFF CUNA WOODRUFF	1	1	1	1	
16	93210-44398	O-RING ANILLO O	1	1	1	1	
17	63V-44323-00	OUTER PLATE, CARTRIDGE PLACA EXTERIOR DEL CARTUCHO	1	1			UR
	63V-44323-40	OUTER PLATE, CARTRIDGE PLACA EXTERIOR DEL CARTUCHO			1	1	UR CHROMATE
18	93604-12M07	PIN, DOWEL PASADOR DE CLAVIJA	2	2	2	2	
19	97080-08045	BOLT PERNO	4	4	4	4	
20	63V-44328-00	PLATE PLACA	2	2	2	2	
21	63V-45331-00-5B	HOUSING, BEARING CAJA DE COJINETE	1	1	1	1	
22	90381-14020	.BUSH, SOLID .BUJE SOLIDO	1	1	1	1	
23	93101-20048	OIL SEAL SELLO ACEITE	2	2	2	2	
24	63V-45315-A0	PACKING, LOWER CASING EMPAQUE	1	1	1	1	
25	93210-06ME6	O-RING ANILLO O	1	1	1	1	
26	97080-08025	BOLT PERNO	2	2	2	2	
27	63V-44150-00	SHIFT CAM ASSY CONJUNTO EJE LEVA COMPL.	1	1	1	1	UR S
	63V-44150-10	SHIFT CAM ASSY CONJUNTO EJE LEVA COMPL.	1	1	1	1	UR L
	63V-44150-30	SHIFT CAM ASSY CONJUNTO EJE LEVA COMPL.			1	1	UR U
28	63V-45510-01	DRIVE SHAFT ASSY EJE DE MANDO COMPL.	1	1	1	1	UR S
	63V-45510-11	DRIVE SHAFT ASSY EJE DE MANDO COMPL.	1	1	1	1	UR L
	63V-45510-31	DRIVE SHAFT ASSY EJE DE MANDO COMPL.			1	1	UR U
29	63V-45551-00	PINION PINON	1	1	1	1	
30	90179-08M06	NUT TUERCA	1	1	1	1	
31	6E7-45560-01	GEAR ENGRANE COMPLE 1	1	1	1	1	

E5

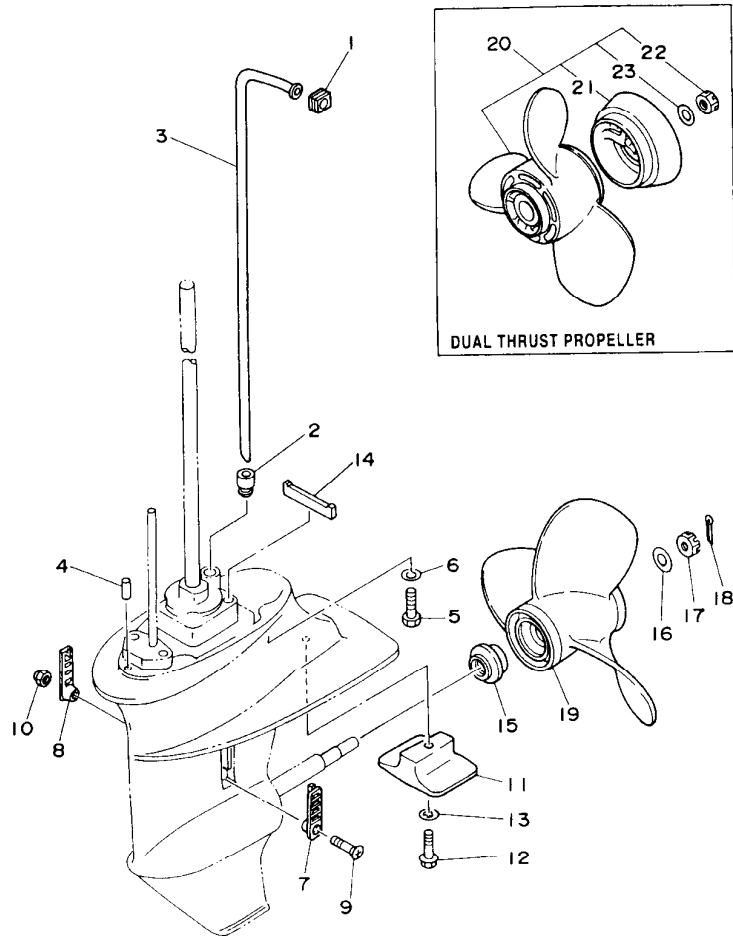


63V0010-5140

FIG. 19 LOWER CASING. DRIVE 1 IMPULSOR E INFERIOR 1

REF. NO.	PART NO. CODIGO NO.	DESCRIPTION DESCRIPTION	9.9F	15F	E99C	E15C	REMARKS OBSERVACION
32	6E7-45571-00	GEAR ENGRANAJE	1	1	1	1	
33	626-45577-00-01	SHIM (T:0.10MM) LAINA (T:0.10MM)	1	1	1	1	UR
	626-45577-00-03	SHIM (T:0.30MM) LAINA (T:0.30MM)	1	1	1	1	UR
	626-45577-00-05	SHIM (T:0.50MM) LAINA (T:0.50MM)	1	1	1	1	UR
34	90201-17682	WASHER, PLATE ARANDELA PLANA	1	1	1	1	
35	683-45611-00	SHAFT, PROPELLER EJE PROPUSOR	1	1	1	1	
36	650-45635-00	PLUNGER, SHIFT EMBOLO DE CAMBIO	1	1	1	1	
37	682-45631-00	CLUTCH, DOG EMBRAGUE DE GARRA	1	1	1	1	
38	90250-05010	PIN, STRAIGHT PASADOR CILINDRICO	1	1	1	1	
39	648-45633-00	RING, CROSS PIN ANILLO DE PASADOR	1	1	1	1	
40	90501-14M06	SPRING, COMPRESSION RESORTE DE COMPRESION	1	1	1	1	
41	683-45361-02-4D	CAP, LOWER CASING FUNDA INFERIOR	1	1	1	1	
42	93306-00501	BEARING (B6005) COJINETE	1	1	1	1	
43	93315-317U2	BEARING COJINETE	1	1	1	1	
44	93101-17054	OIL SEAL SELLO ACEITE	2	2	2	2	
45	93210-57M09	O-RING ANILLO O	1	1	1	1	
46	93210-56M80	O-RING ANILLO O	1	1	1	1	
47	97095-06020	BOLT PERNO	2	2	2	2	
48	92995-06600	WASHER ARANDELA	2	2	2	2	

E6



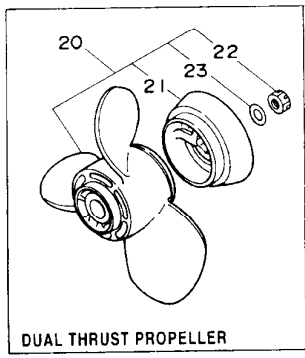
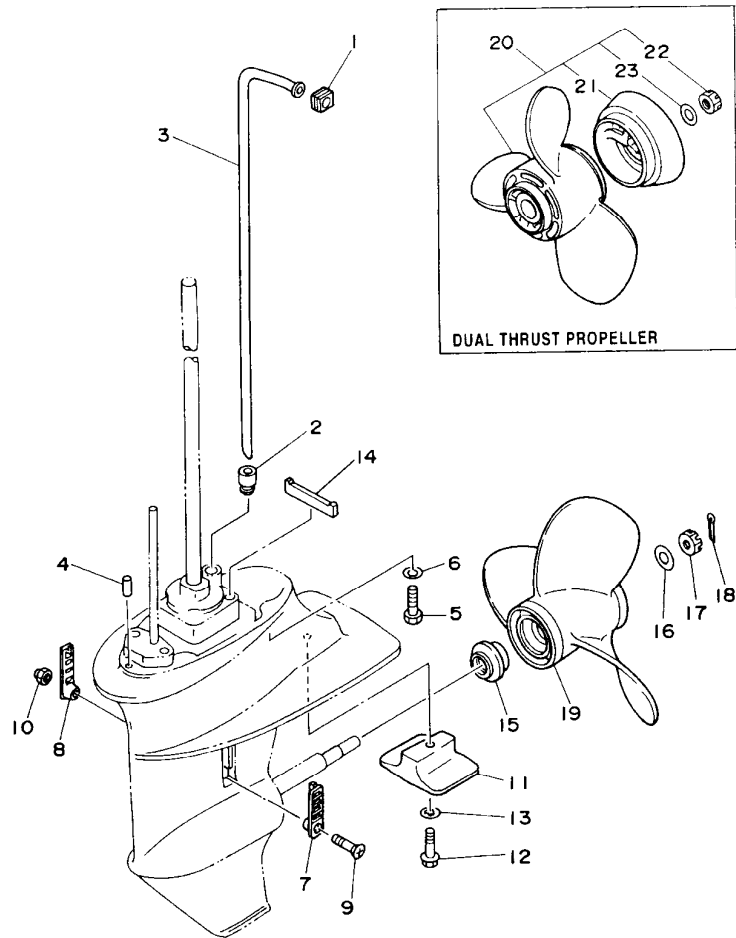
FWD
63V0010-5150

FIG. 20 LOWER CASING. DRIVE 2 IMPULSOR E INFERIOR 2

REF. NO.	PART NO. CODIGO NO.	DESCRIPTION DESCRIPTION	9.9F	15F	E99C	E15C	REMARKS OBSERVACION
1	63V-44365-10	DAMPER, WATER SEAL HULE DE SELLO DE AGUA	1	1	1	1	
2	63V-44368-00	RUBBER, WATER SEAL 4 CAUCHO AGUA SERTISSURE 4	1	1	1	1	
3	63V-44361-01	TUBE, WATER TUBO DE AGUA	1	1	1	1	UR S
	63V-44361-11	TUBE, WATER TUBO DE AGUA	1	1	1	1	UR L
	63V-44361-31	TUBE, WATER TUBO DE AGUA			1	1	UR U
4	93604-12M07	PIN, DOWEL PASADOR DE CLAVIJA	2	2	2	2	
5	97075-08030	BOLT PERNO	4	4	4	4	
6	92995-08600	WASHER ARANDELA	4	4	4	4	
7	6G1-45214-00	COVER, WATER INLET CUBIERTA ENTRADA AGUA	1	1	1	1	
8	63V-45215-00	COVER, WATER INLET CUBIERTA ENTRADA AGUA	1	1	1	1	
9	98180-05025	SCREW, OVAL HEAD TORNILLO DE CABEZA OVALADA	1	1	1	1	
10	90185-05002	NUT, SELF-LOCKING TUERCA AUTOBLOCANTE	1	1	1	1	
11	61N-45251-00	ANODE CATODE	1	1	1	1	
12	95895-06030	BOLT, FLANGE TUERCA DE REBORDE	1	1	1	1	
13	92990-06300	WASHER, INTERNAL TOOTH ARANDELA	1	1	1	1	
14	63V-45375-00	DAMPER, SEAL GOMA DE SELLO	1	1	1	1	
15	6E7-45987-01	SPACER ESPACIADOR	1	1	1	1	
16	90201-10M01	WASHER, PLATE ARANDELA PLANA	1	1	1	1	
17	90171-10M01	NUT, CASTLE TUERCA ENTALLADA	1	1	1	1	
18	91490-30020	PIN, COTTER PASADOR DE CHAVETA	1	1	1	1	
19	683-45941-00-EL	PROPELLER (3X9-1/4"X12"-J) PROPERA (3X9-1/4" X12" -J)	1	1	1	1	UR
	683-45943-00-EL	PROPELLER (3X9-1/4"X10-1/2"-J) PROPERA (3X9-1/4"X10-1/2"-J)	1	1	1	1	UR
	683-45945-00-EL	PROPELLER (3X9-1/4"X9"-J) PROPELA (3X9-1/4" X9" -J)	1	1	1	1	UR
	63V-45947-00-EL	PROPELLER (3X9-1/4"X8-3/8"-J) PROPELA (3X9-1/4"X8-3/8"-J)			1	1	UR
	683-45947-00-EL	PROPELLER (3X9-1/4"X8"-J) PROPELA (3X9-1/4"X8"-J)	1	1	1	1	UR
	683-45949-00-EL	PROPELLER (3X9-1/2"X6-1/2"-J) PROPELA (3X9-1/2"X6-1/2"-J)	1	1	1	1	UR
	683-45952-00-EL	PROPELLER (3X9-1/4"X9-3/4"-J) PROPELA (3X9-1/4"X9-3/4"-J)	1	1	1	1	UR

E7

FIG. 20 LOWER CASING. DRIVE 2 IMPULSOR E INFERIOR 2



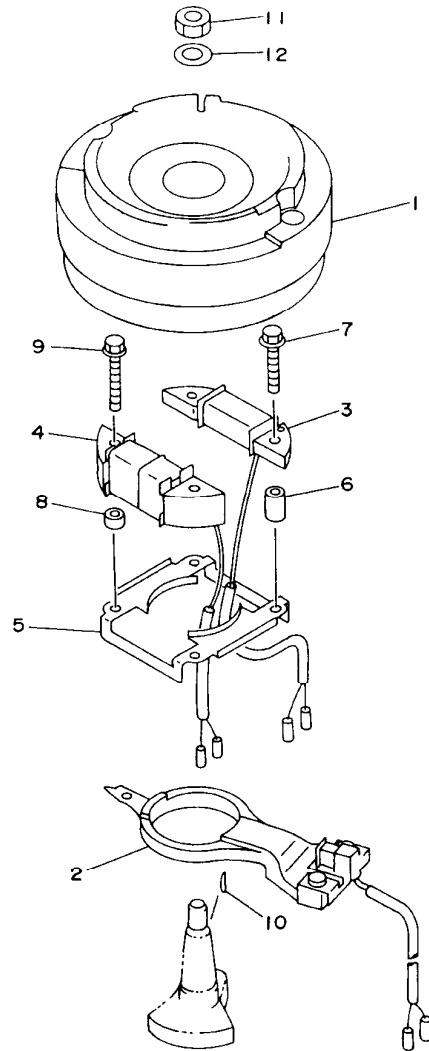
REF. NO.	PART NO. CODIGO NO.	DESCRIPTION DESCRIPTION	9.9F	15F	E99C	E15C	REMARKS OBSERVACION
20	683-W4591-02-EL	PROPELLER (3X9-3/4"X8"-J) PROPELA (3X9-3/4"X8"-J)	1	1	1	1	UR DUAL THRUST PROP.
	683-W4592-02-EL	PROPELLER (3X9-3/4"X6-1/2"-J) PROPELA (3X9-3/4"X6-1/2"-J)	1	1	1	1	UR DUAL THRUST PROP.
21	6E7-45986-00	.RING, DEFLECTOR .ANILLO REFLECTOR	1	1	1	1	
22	90171-10M07	.NUT, CASTLE .TUERCA ENTALLADA	1	1	1	1	
23	90201-10M02	.WASHER, PLATE .ARANDELA PLANA	1	1	1	1	

FWD
63V0010-5150

F1

FIG. 21 GENERATOR

GENERADOR



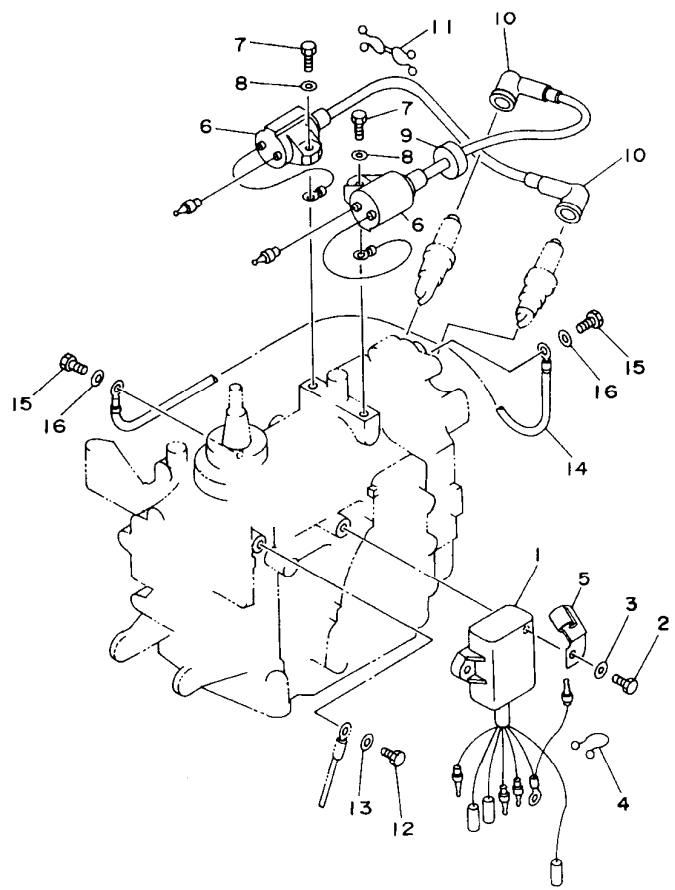
REF. NO.	PART NO. CODIGO NO.	DESCRIPTION DESCRIPTION	9.9F	15F	E99C	E15C	REMARKS OBSERVACION
1	63V-85550-10	ROTOR ASSY ROTOR COMPLETO	1	1	1	1	
2	63V-85580-00	COIL, PULSER BOBINA DE PULSACION	1	1	1	1	
3	63V-85520-00	COIL, CHARGE BOBINA DE CARGA	1	1	1	1	
4	63V-85533-00	COIL, LIGHTING BOBINA DE LUZ	1	1	1	1	
5	63V-41611-00	RETAINER, MAGNETO BASE RETENEDOR, BASE MAGNETO	1	1	1	1	
6	90387-06M53	COLLAR CASQUILLO CON VALONA	2	2	2	2	
7	90105-06M68	BOLT, WASHER BASED TORNILLO CON ARANDELA	2	2	2	2	
8	90387-06M24	COLLAR CASQUILLO CON VALONA	2	2	2	2	
9	90105-06M69	BOLT, WASHER BASED TORNILLO CON ARANDELA	2	2	2	2	UR
	97095-06012	BOLT PERNO			2	2	UR WITHOUT #4
10	90280-05013	KEY, WOODRUFF CUNA WOODRUFF	1	1	1	1	
11	90170-12066	NUT TUERCA	1	1	1	1	
12	90201-12472	WASHER, PLATE ARANDELA PLANA	1	1	1	1	



63V0010-5160

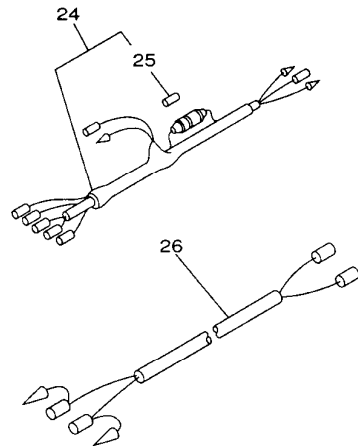
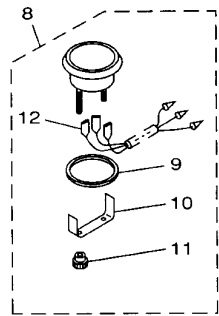
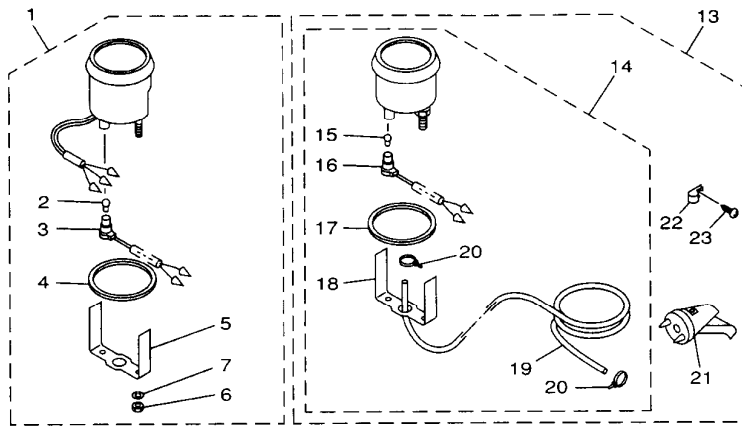
FIG. 22 ELECTRICAL

EQUIPO ELECTRICO



REF. NO.	PART NO. CODIGO NO.	DESCRIPTION DESCRIPTION	9.9F	15F	E99C	E15C	REMARKS OBSERVACION
1	63V-85540-01	C.D.I. UNIT ASSY UNIDAD C.D.I. COMPLETA	1	1	1	1	
2	97095-06020	BOLT PERNO	2	2	2	2	
3	92995-06600	WASHER ARANDELA	2	2	2	2	
4	90464-15M11	CLAMP BRIDA	1	1	1	1	
5	90465-08M61	CLAMP BRIDA	1	1	1	1	
6	63V-85570-00	IGNITION COIL ASSY BOBINA DE IGNICION COMPLETO	2	2	2	2	
7	97095-06018	BOLT PERNO	2	2	2	2	
8	92995-06600	WASHER ARANDELA	2	2	2	2	
9	90480-25161	GROMMET TAPON	1	1	1	1	
10	663-82370-01	PLUG CAP ASSY TAPON DE BUJIA COMPLT	2	2			UR
	682-82370-00	PLUG CAP ASSY TAPON DE BUJIA COMPLT			2	2	UR
11	90464-08M02	CLAMP BRIDA	1	1	1	1	
12	97095-06012	BOLT PERNO	1	1	1	1	
13	92995-06600	WASHER ARANDELA	1	1	1	1	
14	662-82519-00	WIRE, EARTH LEAD CABLE CONDUCTOR A TIERRA	1	1	1	1	
15	97095-06012	BOLT PERNO	2	2	2	2	
16	92995-06600	WASHER ARANDELA	2	2	2	2	


63V0010-5180



63V0100 9250

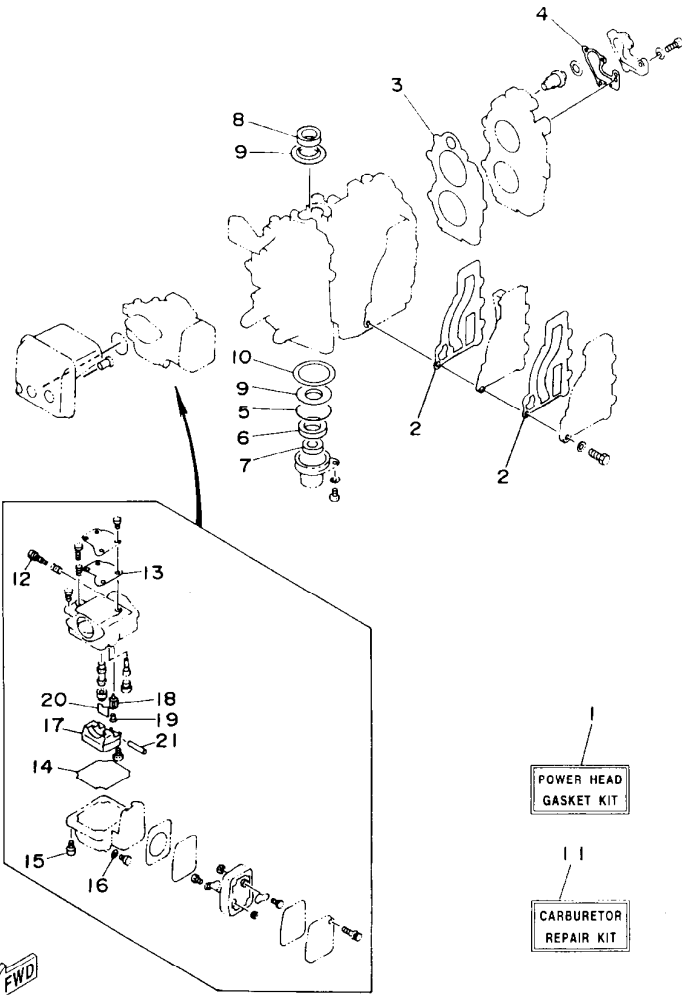
FIG. 23 METER

MEDIDOR

REF. NO.	PART NO. CODIGO NO.	DESCRIPTION DESCRIPTION	99F	15F	E99C	E15C	REMARKS OBSERVACION
1	6Y5-83540-14	TACHOMETER ASSY TACOMETRO COMPLETO	1	1	1	1	WITHOUT OIL LAMP
2	6Y5-83517-00	BULB (12V-1.7W, T10) BOMBILLA (12V-1.7W, T10)	1	1	1	1	
3	6Y5-83536-10	SOCKET, METER ENCASTRE DE MEDIDOR	1	1	1	1	
4	6Y5-83523-00	DAMPER AMORTIGUADOR	1	1	1	1	
5	6Y5-83514-00	PLATE, FITTING PLACA ACCESORIA	1	1	1	1	
6	95380-05600	NUT TUERCA	2	2	2	2	
7	92990-05100	WASHER, SPRING ARANDELA	2	2	2	2	
8	6Y5-83504-10	HOUR METER ASSY MEDIDOR DE HORAS COMPLETO	1	1	1	1	
9	6Y5-83513-10	DAMPER AMORTIGUADOR	1	1	1	1	
10	6Y5-83514-10	PLATE, FITTING PLACA ACCESORIA	1	1	1	1	
11	6Y5-83554-10	NUT TUERCA	2	2	2	2	
12	6Y5-8350U-00	WIRE, LEAD CABLE CONDUCTOR	1	1	1	1	
13	6Y5-W0081-40	SPEEDOMETER KIT JUEGO DE VELOCIMETRO	1	1	1	1	WITH SENDER
14	6Y5-83510-30	SPEEDOMETER ASSY VELOCIMETRO COMPL.	1	1	1	1	
15	6Y5-83517-00	BULB (12V-1.7W, T10) BOMBILLA (12V-1.7W, T10)	1	1	1	1	
16	6Y5-83536-10	SOCKET, METER ENCASTRE DE MEDIDOR	1	1	1	1	
17	6Y5-83523-00	DAMPER AMORTIGUADOR	1	1	1	1	
18	6Y5-83514-00	PLATE, FITTING PLACA ACCESORIA	1	1	1	1	
19	688-83557-00	TUBE ENCHUFE DE ACEITE	1	1	1	1	
20	90465-11M10	CLAMP BRIDA	2	2	2	2	
21	688-83556-01	SENDER CONDUCTOR	1	1	1	1	
22	90601-31402	CLIP, NYLON 14 CLIP, NYLON 14	5	5	5	5	
23	97780-40116	SCREW, TAPPING TORNILLO ROSCA HEMBRA	5	5	5	5	
24	6Y5-83553-00	WIRE, LEAD CABLE CONDUCTOR	1	1	1	1	
25	1E6-82151-00	FUSE (10A) FUSIBLE	1	1	1	1	
26	6Y5-83553-10	WIRE, LEAD CABLE CONDUCTOR	1	1	1	1	

FIG. 24 REPAIR KIT 1

ESTUCHE REPARATION 1

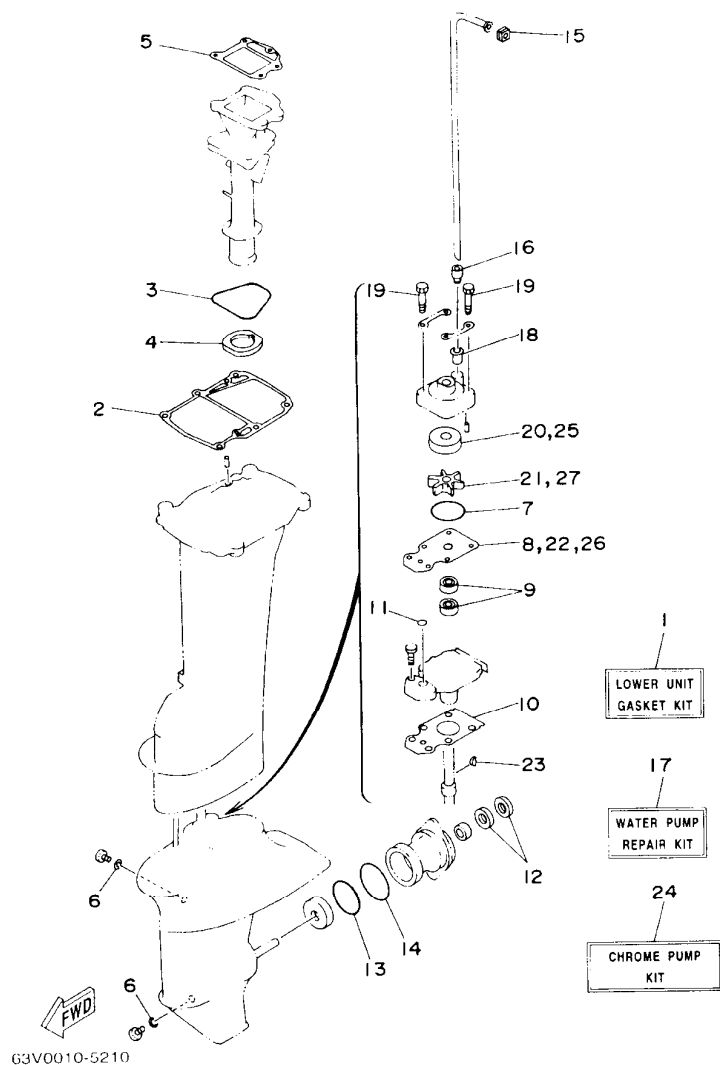


63V0010-5200

REF. NO.	PART NO. CODIGO NO.	DESCRIPTION DESCRIPTION	99F	15F	E99C	E15C	REMARKS OBSERVACION
1	63V-W0001-01	POWER HEAD GASKET KIT JUEGO DE EMPAQUE	1	1			UR
	65E-W0001-00	POWER HEAD GASKET KIT JUEGO DE EMPAQUE DE MOTOR			1	1	UR
2	63V-41112-A0	.GASKET, EXHAUST INNER COVER .EMPAQUE	2	2	2	2	
3	63V-11181-A1	.GASKET, CYLINDER HEAD 1 .JUNTA, DE CULATA 1	1	1	1	1	
4	682-12414-A1	.GASKET, COVER .EMPAQUE	1	1	1	1	
5	93210-46M16	.O-RING .ANILLO O	1	1	1	1	
6	93102-25M48	.OIL SEAL .SELLO ACEITE	1	1	1	1	
7	93101-13M11	.OIL SEAL .SELLO ACEITE	1	1	1	1	
8	93110-23M00	.OIL SEAL .SELLO ACEITE	1	1	1	1	
9	63V-11445-00	.SPACER .ESPACIADOR	2	2	2	2	
10	90201-46M29	.WASHER, PLATE .ARANDELA PLANA	1	1	1	1	
11	63V-W0093-00	CARBURETOR REPAIR KIT KIT REPARACION CARBURADOR	1	1	1	1	
12	679-14923-00	.SCREW, PILOT .TORNILLO DE AJUSTE	1	1	1	1	
13	63V-14126-00	.GASKET .EMPAQUE	1	1	1	1	
14	63V-14984-00	.GASKET, FLOAT CHAMBER .EMPAQUE CAMARA DE BOIA	1	1	1	1	
15	97980-04114	.SCREW, WITH WASHER .TORNILLO, CON ARANDELA	4	4	4	4	
16	6G1-14398-00	.WASHER .EMPAQUE	1	1	1	1	
17	63V-14985-00	.FLOAT .BOIA	1	1	1	1	
18	6G1-14546-00	.VALVE, NEEDLE .VALVULA DE AGUJA	1	1	1	1	
19	676-14186-00	.PIN, FLOAT .PASADOR DE LA BOYA	1	1	1	1	
20	663-14159-00	.CLIP .PRESILLA	1	1	1	1	
21	6H4-14548-00	.PIN, FLOAT ARM .PASADOR DE BRAZO DE BOIA	1	1	1	1	

FIG. 25 REPAIR KIT 2

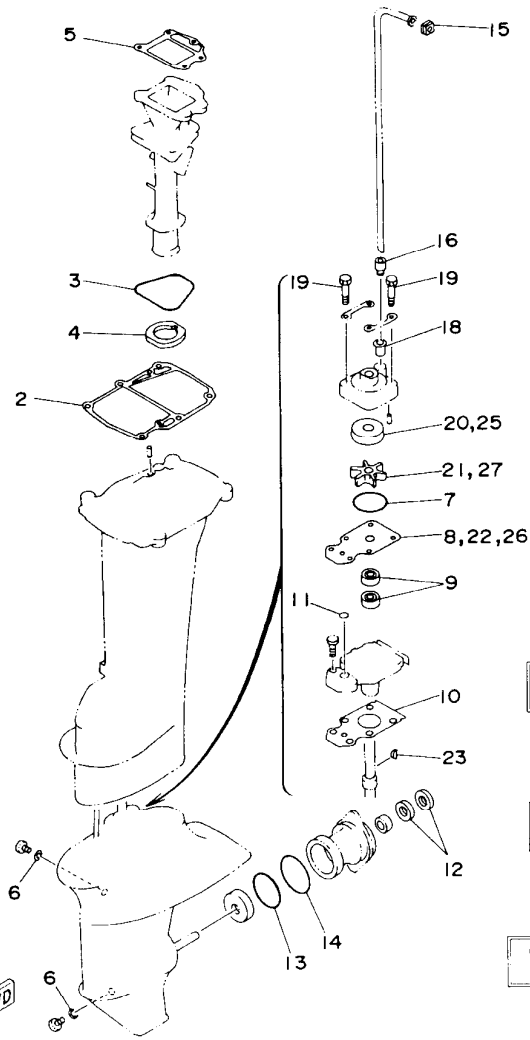
ESTUCHE REPARATION 2



REF. NO.	PART NO. CODIGO NO.	DESCRIPTION	9.9F	15F	E99C	E15C	REMARKS OBSERVACION
1	63V-W0001-21	LOWER UNIT GASKET KIT JUEGO DE EMPAQUE UNIDAD INFER.	1	1			UR
	65G-W0001-C0	LOWER UNIT GASKET KIT JUEGO DE EMPAQUE UNIDAD INFER			1	1	UR CHROMATE
2	63V-45113-A1	GASKET, UPPER CASING EMPAQUE	1	1	1	1	
3	93210-71MH6	O-RING ANILLO O	1	1	1	1	
4	63V-41135-00	GASKET, EXHAUST MANIFOLD EMPAQUE	1	1	1	1	
5	63V-41133-A1	GASKET, EXHAUST MANIFOLD 1 EMPAQUE ESCAPE MULTIPLE	1	1	1	1	
6	90430-08020	GASKET JUNTA	2	2	2	2	
7	93210-44398	O-RING ANILLO O	1	1	1	1	
8	63V-44323-00	OUTER PLATE, CARTRIDGE PLACA EXTERIOR DEL CARTUCHO	1	1			UR
	63V-44323-40	OUTER PLATE, CARTRIDGE PLACA EXTERIOR DEL CARTUCHO			1	1	UR CHROMATE
9	93101-20048	OIL SEAL SELLO ACEITE	2	2	2	2	
10	63V-45315-A0	PACKING, LOWER CASING EMPAQUE	1	1	1	1	
11	93210-06ME6	O-RING ANILLO O	1	1	1	1	
12	93101-17054	OIL SEAL SELLO ACEITE	2	2	2	2	
13	93210-57M09	O-RING ANILLO O	1	1	1	1	
14	93210-56M80	O-RING ANILLO O	1	1	1	1	
15	63V-44365-10	DAMPER, WATER SEAL HULE DE SELLO DE AGUA	1	1	1	1	
16	63V-44368-00	RUBBER, WATER SEAL 4 CAUCHO AGUA SERTISSURE 4	1	1	1	1	
17	63V-W0078-00	WATER PUMP REPAIR KIT ESTUCHE REPARACION BOMBA AGUA	1	1			UR
	65G-W0078-00	WATER PUMP REPAIR KIT ESTUCHE REPARACION BOMBA AGUA			1	1	UR CHROMATE
18	647-44366-00	DAMPÉR, WATER SEAL GOMA DEL SELLO DE AGUA	1	1	1	1	
19	97080-08045	BOLT PERNO	4	4	4	4	
20	63V-44322-00	INSERT, CARTRIDGE CARTUCHO	1	1			UR
	63V-44322-40	INSERT, CARTRIDGE CARTUCHO			1	1	UR CHROMATE
21	63V-44352-01	IMPELLER IMPULSOR	1	1	1	1	
22	63V-44323-00	OUTER PLATE, CARTRIDGE PLACA EXTERIOR DEL CARTUCHO	1	1			UR
	63V-44323-40	OUTER PLATE, CARTRIDGE PLACA EXTERIOR DEL CARTUCHO			1	1	UR CHROMATE

FIG. 25 REPAIR KIT 2

ESTUCHE REPARATION 2



G3V0010-5210

REF. NO.	PART NO. CODIGO NO.	DESCRIPTION DESCRIPTION	9.9F	15F	E99C	E15C	REMARKS OBSERVACION
23	664-44338-00	.KEY, WOODRUFF .CUNA WOODRUFF	1	1	1	1	
24	63V-W0078-0A	CHROME PUMP KIT ESTUCHE REPARACION BOMBA AGUA	1	1			AP
25	63V-44322-40	.INSERT, CARTRIDGE .CARTUCHO	1	1			
26	63V-44323-40	.OUTER PLATE, CARTRIDGE .PLACA EXTERIOR DEL CARTUCHO	1	1			
27	63V-44352-01	.IMPELLER .IMPULSOR	1	1			

**NUMERICAL INDEX
INDICE NUMERICO**

PART NO. CODIGO NO.	REF. NO.	PART NO. CODIGO NO.	REF. NO.	PART NO. CODIGO NO.	REF. NO.	PART NO. CODIGO NO.	REF. NO.	PART NO. CODIGO NO.	REF. NO.	PART NO. CODIGO NO.	REF. NO.
63V-W0001-01	24 - 1	663-14159-00	4 - 21	63V-15764-00	5 - 15	63V-41252-00	3 - 18	682-42724-00	9 - 2	63V-44301-00	19 - 11
63V-W0001-21	25 - 1		24 - 20	63V-15767-01	5 - 11	63V-41253-00	3 - 5	682-42725-02	9 - 3	63V-44301-40	19 - 11
65E-W0001-00	24 - 1	676-14186-00	4 - 20	63V-15768-00	5 - 14	63V-41256-00	3 - 15	63V-42726-00	9 - 4	63V-44322-00	19 - 12
65G-W0001-C0	25 - 1		24 - 19	63V-15770-00	13 - 43	63V-41257-00	3 - 8	65F-42726-00	9 - 4		25 - 20
682-W0004-00	3 - 2	63V-14301-00	4 - 1	6G1-15779-00	5 - 19	63V-41262-00	3 - 7	682-42727-00	9 - 5	63V-44322-40	19 - 12
63V-W0070-11	8 - 10	6G1-14398-00	4 - 16	63V-15784-01	5 - 12	661-41262-02	3 - 19	63V-42731-00-4D	10 - 14		25 - 20
65E-W0070-H1	8 - 10		24 - 16	63V-15793-00	5 - 16		13 - 19	6G1-42748-00	9 - 6		25 - 25
65F-W0070-H1	8 - 10	63V-14440-00	3 - 9	63V-15794-00	5 - 20		13 - 42	63V-42815-01-4D	9 - 8	63V-44323-00	19 - 17
65F-W0070-J0	8 - 10	624-14485-00	1 - 3	63V-15795-01	5 - 3	6H4-41271-01	3 - 14	6E7-42816-00	9 - 9		25 - 8
63V-W0078-0A	25 - 24	650-14485-02	1 - 4	6YJ-24167-00	7 - 7	689-41273-00	3 - 16	63V-43111-04-4D	10 - 1		25 - 22
63V-W0078-00	25 - 17	63V-14497-01	13 - 1	6YJ-24201-00	7 - 1	6J8-41274-00	3 - 17	63V-43112-05-4D	10 - 2	63V-44323-40	19 - 17
65G-W0078-00	25 - 17	63V-14523-00	4 - 9	6YJ-24201-10	7 - 1	63V-41283-01	13 - 17	6J8-43113-01	10 - 21		25 - 8
6Y5-W0081-40	23 - 13	63V-14527-00	4 - 4	6YJ-24260-00	7 - 3	63V-41611-00	21 - 5	648-43114-01	10 - 9		25 - 22
63V-W0090-02-1S	1 - 1	6G1-14546-00	4 - 19	6Y1-24260-12	7 - 3	63V-41631-00	13 - 7	6E7-43116-00	10 - 8		25 - 26
63V-W0093-00	24 - 11		24 - 18	6Y1-24268-00	7 - 6	63V-41638-00	13 - 20	6E0-43118-01	10 - 6	63V-44328-00	19 - 20
656-W2810-02	6 - 14	6H4-14548-00	4 - 22	6G1-24304-02	6 - 1	6G1-42111-11-4D	12 - 1	63V-43131-00	10 - 10	664-44338-00	19 - 15
683-W4591-02-EL	20 - 20		24 - 21	6G1-24305-01	7 - 13	664-42119-00	12 - 11	6E5-43145-01	15 - 8		25 - 23
683-W4592-02-EL	20 - 20	679-14555-00	4 - 3	6Y1-24305-02	7 - 15	6G1-42125-01	12 - 8	63V-43145-00	10 - 22	63V-44352-01	19 - 14
6E7-11111-01-1S	1 - 19	679-14923-00	4 - 2	6Y1-24306-51	7 - 8	6G1-42126-00	12 - 9	6L2-43160-00	10 - 27		25 - 21
63V-11181-A1	1 - 20		24 - 12	6Y1-24329-00	7 - 5	6G1-42131-01	12 - 6	63V-43181-00	10 - 49		25 - 27
	24 - 3	676-14943-29	4 - 14	650-24351-51	7 - 12	6H2-42137-00	12 - 12	63V-43191-00	10 - 31	63V-44361-01	20 - 3
682-11325-00	1 - 8	63V-14947-00	4 - 13	6Y1-24360-51	7 - 10	697-42137-10	12 - 12	63V-43311-02-4D	10 - 28	63V-44361-11	20 - 3
676-11372-00	1 - 15	63V-14948-06	4 - 7	63V-24396-00	6 - 13	6G1-42138-01	12 - 19	682-43318-01	10 - 30	63V-44361-31	20 - 3
63V-11400-00	2 - 7	679-14966-00	4 - 8	6G1-24411-00	4 - 30	63V-42154-00	14 - 15	66M-43350-01	10 - 35	63V-44365-10	20 - 1
63V-11412-00	2 - 8	63V-14980-00	4 - 12	63V-24411-00	4 - 28	6E0-42159-02	12 - 20	689-43373-01	11 - 3		25 - 15
63V-11422-00	2 - 9	63V-14984-00	4 - 11	6G1-24412-01	4 - 29	6G1-42177-00	12 - 14	66R-43611-00	10 - 43	63V-44366-00	11 - 16
63V-11432-00	2 - 10		24 - 14	6L5-24421-00	4 - 32	63V-42192-00	14 - 19	66R-43614-00	10 - 40	647-44366-00	19 - 13
63V-11442-00	2 - 11	63V-14985-00	4 - 18	6G1-24431-01	4 - 31	63V-42511-03-4D	11 - 6	66R-43615-00	10 - 42		25 - 18
63V-11445-00	2 - 25		24 - 17	6G1-24452-00	4 - 27	63V-42528-00	11 - 2	66R-43617-00	10 - 47	63V-44368-00	20 - 2
	24 - 9	6G1-14992-00	4 - 17	61N-24521-00	6 - 6	63V-42537-00	11 - 7	66M-43630-00	10 - 29		25 - 16
63V-11515-01	2 - 13	63V-15100-02-1S	1 - 2	61N-24560-00	6 - 4	63V-42610-11-4D	8 - 1	63V-43641-00	10 - 37	6H3-44391-01	9 - 20
682-11610-01	2 - 19	63V-15396-00	2 - 1	61N-24563-00	6 - 5	63W-42610-11-4D	8 - 1	63V-43659-00	10 - 45	63V-44514-00-5B	11 - 12
682-11610-11	2 - 19	63V-15705-01	5 - 10	682-24566-01	6 - 11	65E-42610-H1-4D	8 - 1	63V-43676-01	10 - 15	63V-44514-30-5B	11 - 12
682-11610-21	2 - 19	63V-15710-12	5 - 1	6YJ-24610-01	7 - 2	65F-42610-H1-4D	8 - 1	63V-44111-01	12 - 23	63V-44526-00	11 - 13
6E7-11631-00-97	2 - 18	63V-15711-01	5 - 2	6L2-26301-00	12 - 22	65F-42610-J0-4D	8 - 1	65F-44111-00	13 - 45	63V-44551-01-4D	11 - 20
634-11633-00	2 - 20	63V-15713-00	5 - 7	63V-41111-00-1S	1 - 12	6G1-42613-01-4D	8 - 7	63V-44116-00	13 - 30	682-44555-00	11 - 22
6E7-11635-00	2 - 18	63V-15714-00	5 - 5	63V-41112-A0	1 - 13	63V-42615-00	8 - 2	63V-44121-01	13 - 24	682-44555-30	11 - 22
6E7-11636-00	2 - 18	63V-15716-00	5 - 9		24 - 2	6L2-42647-00	8 - 5	63V-44122-00	13 - 31	63V-44557-00	11 - 21
650-11651-04	2 - 15	63V-15726-00	5 - 23	63V-41113-00-1S	1 - 14	6G1-42651-02	8 - 3	63V-44123-01	13 - 23	63V-45111-04-4D	18 - 1
682-11681-00	2 - 14	63V-15734-00	5 - 22	63V-41131-02-5B	18 - 8	63V-42677-11	8 - 11	63V-44124-01	12 - 27	63V-45111-14-4D	18 - 1
6E5-12411-20	1 - 23	63V-15741-00	5 - 6	63V-41133-A1	18 - 11	63W-42677-11	8 - 11	63V-44125-00	13 - 26	63V-45113-A1	18 - 5
682-12413-00-1S	1 - 22	63V-15744-00	5 - 13		25 - 5	682-42677-H0	8 - 11	63V-44143-01	13 - 33		25 - 2
682-12414-A1	1 - 25	63V-15746-00	13 - 36	63V-41135-00	18 - 10	63V-42678-10	8 - 12	63V-44150-00	19 - 27	63V-45114-00	11 - 17
	24 - 4	6L2-15747-00	13 - 41		25 - 4	63W-42678-10	8 - 12	63V-44150-10	19 - 27	63V-45126-00	18 - 2
63V-13610-10	3 - 1	63V-15748-00	5 - 21	63V-41211-00	13 - 18	65E-42678-H0	8 - 12	63V-44150-30	19 - 27	63V-45127-00	18 - 17
63W-13610-00	3 - 1	63V-15753-00	5 - 8	63V-41223-00	13 - 16	65F-42678-H0	8 - 12	6E0-44191-11	12 - 26	63V-45211-30-4D	18 - 14
63V-14126-00	4 - 5	6G1-15755-00	5 - 18	6H4-41237-00	13 - 13	63V-42711-03-4D	9 - 1	688-44194-00	13 - 11	6G1-45214-00	20 - 7
	24 - 13	63V-15762-00	5 - 25	63V-41238-00	13 - 12	63V-42716-01	9 - 19	689-44194-00	13 - 2	63V-45215-00	20 - 8

G1

NUMERICAL INDEX
INDICE NUMERICO

PART NO. CODIGO NO.	REF. NO.	PART NO. CODIGO NO.	REF. NO.	PART NO. CODIGO NO.	REF. NO.	PART NO. CODIGO NO.	REF. NO.	PART NO. CODIGO NO.	REF. NO.	PART NO. CODIGO NO.	REF. NO.
61N-45251-00	20 - 11	701-48133-00	17 - 41	6E5-61355-00	15 - 6	90119-08M07	1 - 11	90280-05013	21 - 10	90480-12M25	3 - 11
63V-45300-02-4D	19 - 1	701-48152-11	17 - 13	63V-82127-00	11 - 5	90149-05M13	12 - 15	90340-08M04	19 - 9	90480-15M31	9 - 18
63V-45300-12-4D	19 - 1	701-48153-12	17 - 33	66M-82148-00	10 - 3	90157-06M06	18 - 3	90381-14020	19 - 22	90480-25161	22 - 9
65E-45300-01-4D	19 - 1	701-48189-11	17 - 31	1E6-82151-00	23 - 25	90159-05M25	13 - 25	90386-07M95	10 - 34	90501-10326	4 - 10
65E-45300-11-4D	19 - 1	701-48196-11	17 - 7	663-82370-01	22 - 10			90386-08032	12 - 18	90501-12M16	13 - 10
65E-45300-31-4D	19 - 1	701-48197-10	17 - 3	682-82370-00	22 - 10			90386-10009	13 - 47	90501-12M85	13 - 48
63V-45311-01-4D	19 - 2	701-48198-10	17 - 15	662-82519-00	22 - 14	90164-05M03	3 - 21		14 - 27	90501-14M06	19 - 40
63V-45315-A0	19 - 24	701-48213-00	17 - 19	701-82550-51	17 - 39	90170-06015	13 - 35	90386-10025	14 - 16	90501-23215	12 - 17
	25 - 10	701-48221-00	17 - 6	682-82556-00	12 - 31	90170-09M03	15 - 4	90386-12M45	9 - 10	90506-26M38	10 - 48
682-45318-00	18 - 15	701-48222-00	17 - 27	689-8257Y-00	12 - 32	90170-12066	21 - 11	90386-22M69	10 - 13	90507-20M00	10 - 36
63V-45331-00-5B	19 - 21	701-48229-00	17 - 26	63V-82575-00	12 - 30	90171-08M00	10 - 52	90386-22M94	10 - 12	90508-08M39	13 - 38
683-45361-02-4D	19 - 41	701-48232-00	17 - 30	701-82594-00	17 - 44	90171-10M01	20 - 17		10 - 13	90508-16M37	13 - 21
63V-45375-00	20 - 14	701-48234-00	17 - 5	6Y5-8350U-00	23 - 12	90171-10M07	20 - 22	90386-30M60	11 - 10	90508-18M41	10 - 41
63V-45510-01	19 - 28	701-48235-00	17 - 2	6Y5-83504-10	23 - 8	90179-06M28	11 - 27	90386-30048	11 - 8	90508-20M38	13 - 22
63V-45510-11	19 - 28	701-48236-00	17 - 8	6Y5-83510-30	23 - 14	90179-08M06	19 - 30	90386-33M96	12 - 5	90601-31402	23 - 22
63V-45510-31	19 - 28	702-48237-00	17 - 9	6Y5-83513-10	23 - 9	90185-05002	20 - 10	90386-34M97	12 - 2	91490-16010	12 - 10
63V-45536-00	19 - 4	702-48238-00	17 - 10	6Y5-83514-00	23 - 5	90185-08057	14 - 4	90387-06M05	5 - 4	91490-16018	5 - 24
63V-45551-00	19 - 29	701-48243-00	17 - 14		23 - 18	90185-09M01	15 - 3	90387-06M06	13 - 37	91490-20010	14 - 21
6E7-45560-01	19 - 31	701-48246-00	17 - 24	6Y5-83514-10	23 - 10	90201-04M06	14 - 20	90387-06M13	10 - 23	91490-20015	10 - 54
664-45567-01-10	19 - 8	701-48248-00	17 - 12	6Y5-83517-00	23 - 2	90201-05M09	3 - 20	90387-06M15	3 - 10	91490-30020	20 - 18
664-45567-01-12	19 - 8	701-48249-00	17 - 11		23 - 15	90201-06068	9 - 12	90387-06M24	21 - 8	91590-30012	14 - 8
664-45567-01-15	19 - 8	701-48252-00	17 - 4	6Y5-83523-00	23 - 4	90201-08M12	14 - 14	90387-06M50	13 - 3	91690-20010	3 - 6
664-45567-01-18	19 - 8	701-48255-00	17 - 21		23 - 17	90201-10M01	20 - 16	90387-06M52	9 - 17	91690-30012	10 - 38
664-45567-01-30	19 - 8	701-48261-20	17 - 37	6Y5-83536-10	23 - 3	90201-10M02	14 - 18	90387-06M53	21 - 6	92903-06600	1 - 18
664-45567-01-40	19 - 8	701-48266-00	17 - 29		23 - 16		20 - 23	90387-06M75	10 - 17		1 - 27
664-45567-01-50	19 - 8	701-48268-00	17 - 18	6Y5-83540-14	23 - 1	90201-10M20	15 - 2	90387-07M07	10 - 33	92903-10600	12 - 16
6E7-45571-00	19 - 32	701-48271-00	17 - 34	6Y5-83553-00	23 - 24	90201-10M63	15 - 7	90387-10M42	15 - 5	92990-05100	23 - 7
626-45577-00-01	19 - 33	701-48280-00	17 - 47	6Y5-83553-10	23 - 26	90201-12472	21 - 12	90387-16M01	11 - 15	92990-05600	14 - 26
626-45577-00-03	19 - 33	701-48281-10	17 - 16	6Y5-83554-10	23 - 11	90201-14377	2 - 22	90430-08020	19 - 10	92990-06300	17 - 25
626-45577-00-05	19 - 33	701-48283-00	17 - 43	688-83556-01	23 - 21	90201-16M03	1 - 24		25 - 6		20 - 13
6E8-45587-00-13	19 - 6	701-48287-00	17 - 45	688-83557-00	23 - 19	90201-17682	19 - 34	90445-07M08	1 - 5	92990-06600	14 - 10
6E8-45587-00-20	19 - 6	702-48288-00	17 - 23	63V-85520-00	21 - 3	90201-46M29	2 - 26		1 - 6	92995-06600	2 - 6
683-45611-00	19 - 35	701-48310-80	16 - 2	63V-85533-00	21 - 4		24 - 10	90445-09M00	6 - 9		3 - 4
682-45631-00	19 - 37	701-48310-90	16 - 2	63V-85540-01	22 - 1	90202-06009	12 - 28	90445-09105	1 - 16		5 - 27
648-45633-00	19 - 39	701-48320-00	16 - 2	63V-85550-10	21 - 1	90202-07M60	10 - 32	90445-11M05	7 - 11		6 - 3
650-45635-00	19 - 36	701-48320-20	16 - 2	63V-85570-00	22 - 6	90202-22M54	10 - 11	90445-11M06	7 - 9		8 - 9
683-45941-00-EL	20 - 19	701-48320-30	16 - 2	63V-85580-00	21 - 2	90202-36M55	12 - 4	90464-08M02	22 - 11		9 - 16
683-45943-00-EL	20 - 19	701-48320-50	16 - 2	90101-06M29	10 - 24	90206-08010	10 - 18	90464-15M11	22 - 4		10 - 25
683-45945-00-EL	20 - 19	663-48344-00	14 - 12	90102-08M03	10 - 51	90206-10M04	14 - 17	90465-08M61	22 - 5		11 - 19
63V-45947-00-EL	20 - 19	703-48345-01	17 - 36	90105-05M79	13 - 46	90206-12052	9 - 11	90465-11M10	23 - 20		11 - 24
683-45947-00-EL	20 - 19	701-48358-00	17 - 38	90105-06M07	11 - 4	90206-13M10	12 - 25	90465-25M57	9 - 21		11 - 26
683-45949-00-EL	20 - 19	63V-48501-00	14 - 5	90105-06M68	21 - 7	90206-36M21	12 - 3	90467-06016	1 - 7		13 - 6
683-45952-00-EL	20 - 19	63V-48511-01	14 - 1	90105-06M69	21 - 9	90209-20M23	2 - 17	90467-08004	6 - 10		13 - 29
6E7-45986-00	20 - 21	63V-48531-00	14 - 6	90105-07M05	1 - 21	90243-04M01	10 - 7	90468-10005	13 - 15		13 - 40
6E7-45987-01	20 - 15	63V-48534-00	14 - 22	90109-06M84	10 - 50	90250-05010	19 - 38	90468-18008	12 - 29		18 - 13
701-48126-00	17 - 40	682-48538-50	14 - 7	90116-08M54	11 - 11	90266-04M04	8 - 4		14 - 13		19 - 48
701-48130-02	16 - 1	63V-48544-00	14 - 24	90119-06M09	12 - 24		8 - 6	90480-06M19	9 - 7		22 - 3
	17 - 1	63V-61350-00	15 - 1	90119-06M94	3 - 13	90269-02M09	12 - 13	90480-10M16	13 - 44		22 - 8

NUMERICAL INDEX
INDICE NUMERICO

PART NO. CODIGO NO.	REF. NO.	PART NO. CODIGO NO.	REF. NO.	PART NO. CODIGO NO.	REF. NO.	PART NO. CODIGO NO.	REF. NO.	PART NO. CODIGO NO.	REF. NO.	PART NO. CODIGO NO.	REF. NO.
92995-06600	22 - 13	93450-15023	2 - 23	97095-06020	5 - 26						
	22 - 16	93602-14104	2 - 21		6 - 2						
92995-08600	10 - 53	93604-12M07	18 - 18		12 - 7						
	14 - 3		19 - 18		13 - 39						
	18 - 7		20 - 4		18 - 12						
	18 - 20	93606-12019	1 - 10		19 - 47						
	20 - 6		18 - 4		22 - 2						
93101-13M11	2 - 4	93700-06M03	11 - 1	97095-06025	9 - 13						
	24 - 7	94702-00217	1 - 28		9 - 15						
93101-17054	19 - 44	94702-00271	1 - 28	97095-08030	18 - 6						
	25 - 12	95380-03600	4 - 25	97780-40116	23 - 23						
93101-20048	19 - 23	95380-05600	23 - 6	97803-04010	4 - 6						
	25 - 9	95380-05700	13 - 14	97885-05012	12 - 21						
93102-25M48	2 - 3	95380-06600	13 - 9		14 - 25						
	24 - 6		14 - 11	97885-06008	10 - 4						
93110-23M00	2 - 24		17 - 46	97885-06025	10 - 19						
	24 - 8	95380-06700	9 - 14	97885-06030	13 - 8						
93210-06ME6	19 - 25		10 - 26	97885-08010	10 - 5						
	25 - 11		13 - 34	97980-04114	4 - 15						
93210-08287	7 - 14	95380-08600	6 - 8		24 - 15						
	7 - 16		11 - 14	97980-04125	4 - 26						
93210-16275	15 - 9	95780-06300	10 - 20	98180-05025	20 - 9						
93210-20M65	10 - 16	95780-08300	14 - 23	98580-04006	4 - 33						
93210-29M94	11 - 9	95895-06030	20 - 12	98580-04008	4 - 23						
93210-32738	6 - 7	95895-06065	13 - 4	98580-05010	17 - 17						
93210-35M86	3 - 12	97013-06010	6 - 12		17 - 32						
93210-44398	19 - 16	97013-06020	1 - 26	98580-05020	17 - 42						
	25 - 7	97013-06030	1 - 17	98580-05555	17 - 28						
93210-46M16	2 - 2	97075-06055	11 - 23	98586-05016	7 - 4						
	24 - 5	97075-06075	11 - 25	98780-05015	1 - 9						
93210-56M80	19 - 46	97075-08030	18 - 19	98780-06025	17 - 20						
	25 - 14		20 - 5	98980-03006	4 - 24						
93210-57M09	19 - 45	97075-08035	14 - 2								
	25 - 13	97080-06018	17 - 22								
93210-71MH6	18 - 9	97080-08025	19 - 26								
	25 - 3	97080-08045	19 - 19								
93306-00501	19 - 42		25 - 19								
93306-205U7	2 - 12	97095-06012	13 - 5								
93310-620V5	2 - 16		13 - 28								
93315-314V8	19 - 3		21 - 9								
93315-317U2	19 - 43		22 - 12								
93332-00005	19 - 7		22 - 15								
93341-414V1	19 - 5	97095-06016	2 - 5								
93420-30042	18 - 16		8 - 8								
93430-04M03	10 - 44		14 - 9								
93430-05027	10 - 39	97095-06018	11 - 18								
	10 - 46		22 - 7								
93430-06024	17 - 35	97095-06020	3 - 3								

—MEMO—

A series of horizontal dotted lines for writing.

*COPYRIGHT : All rights reserved. No part of this publication
may be reproduced without permission.*

**RESERVADO : EL DERECHO DE REPRODUCCION
NO SE PUEDE REPRODUCIR NINGUNA PARTE
DE ESTA LISTA SIN PERMISO.**

PRINTED ON RECYCLED PAPER
IMPRESO EN PAPEL RECICLADO



YAMAHA MOTOR CO., LTD.
2500 SHINGAI IWATA SHIZUOKA JAPAN
SERVICE INFORMATION DIV.

Printed in Japan
First edition AUG., 1998
T6

PUBLICADO EN JAPON
Primera edición AGO., 1998
T6