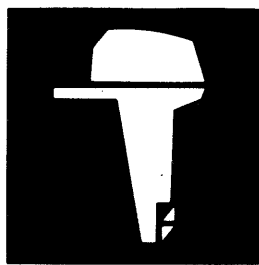


YAMAHA

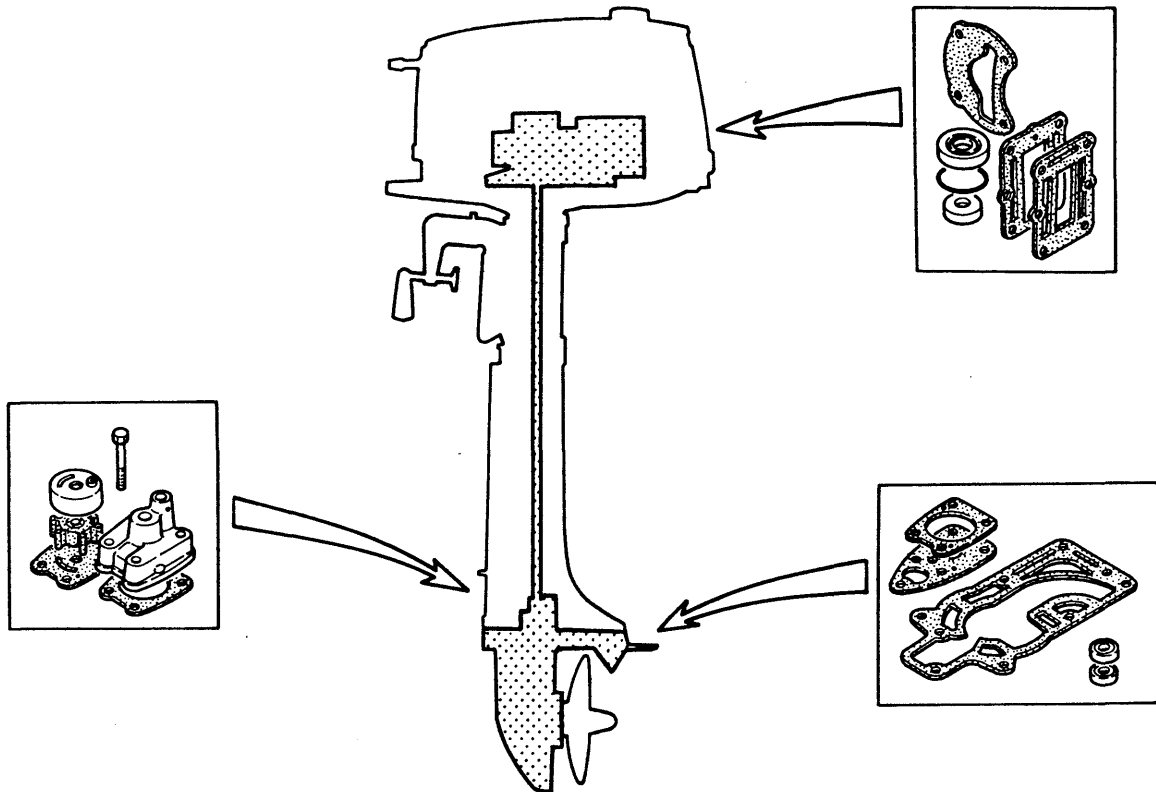
parts list 1980



outboard
motor

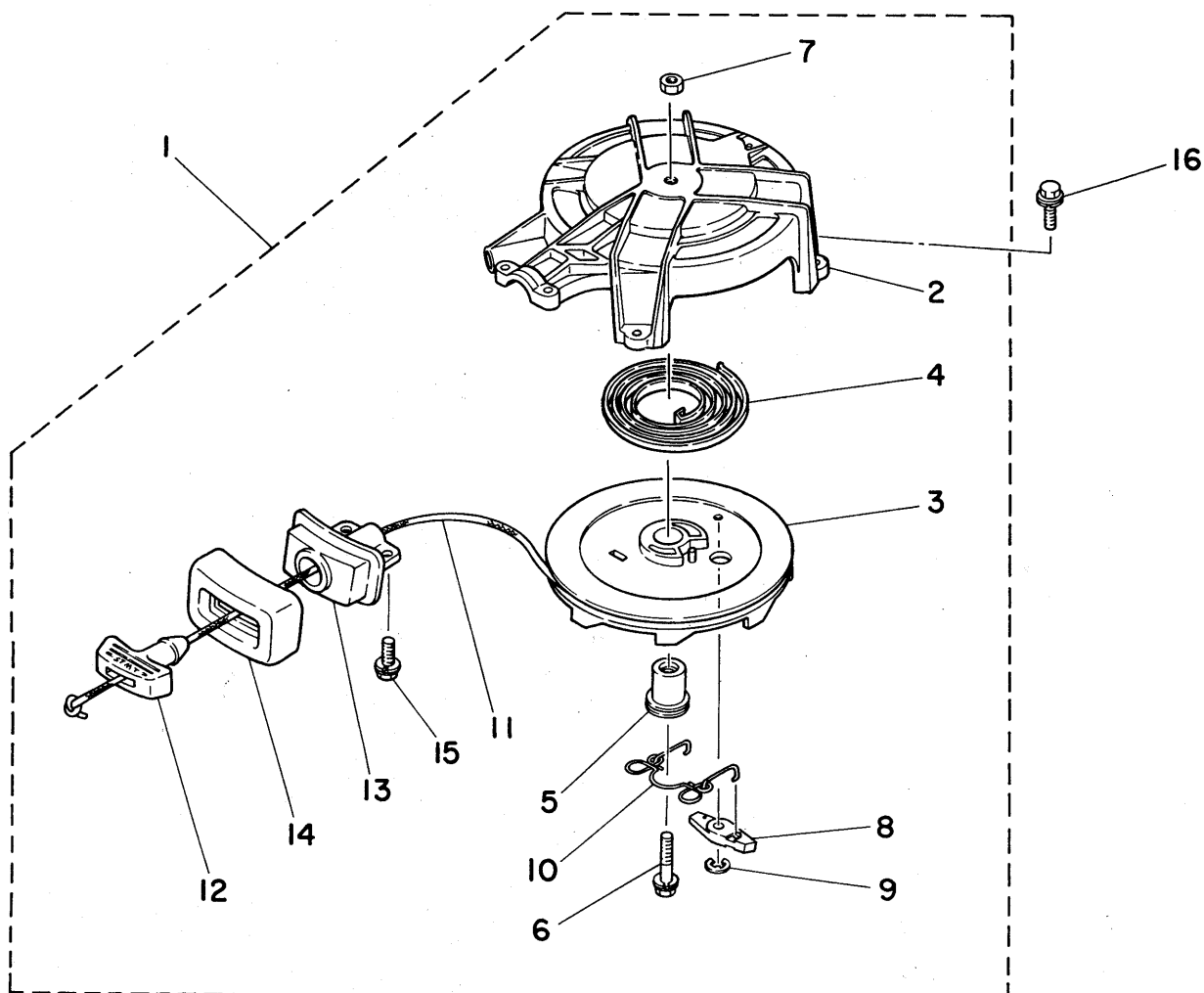
4A

REPAIR KIT



POWER HEAD GASKET KIT	6E0-W0001-00
LOWER UNIT GASKET KIT	6E0-W0001-20
REED SET	6E0-W0004-00
WATER PUMP REPAIR KIT	6E0-W0078-00
CHROME PUMP KIT	6E0-W0078-0A
CRANK CYLINDER ASS'Y	6E0-W0090-00
CARBURETOR REPAIR SET	6E0-W0093-00
PISTON ASS'Y (Standard)	6E0-11630-00
LOWER UNIT ASS'Y (Short)	6E0-45300-00-F6
LOWER UNIT ASS'Y (Long)	6E0-45300-10-F6
LOWER UNIT ASS'Y (Short)-Without Clutch Type	6E2-45300-00-F6
LOWER UNIT ASS'Y (Long)-Without Clutch Type	6E2-45300-10-F6

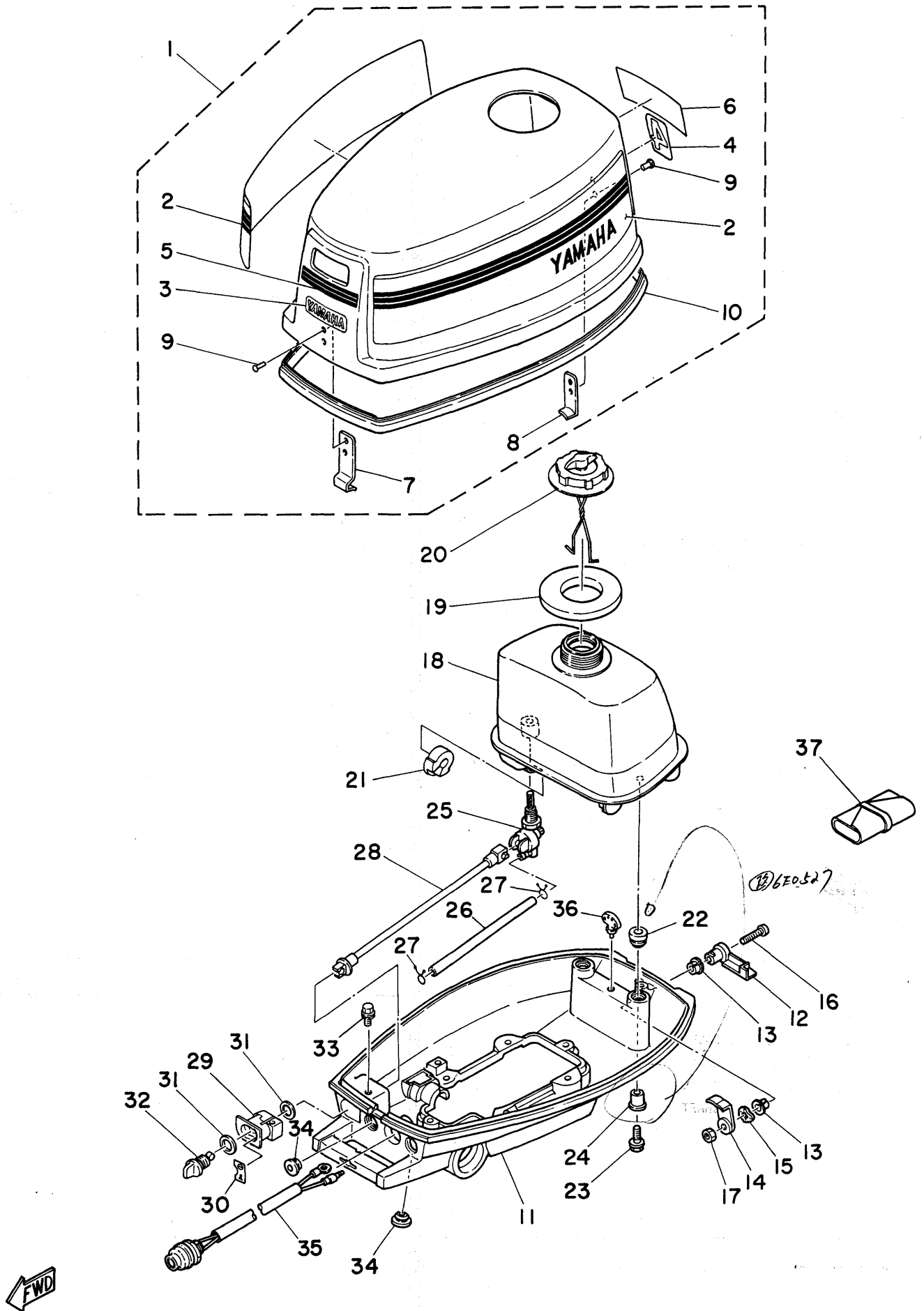
Fig. 1 STARTER -1980



Ref.No.	Parts No.	Description	Q'ty	Ref.No.	Parts No.	Description	Q'ty
1	6E0-15710-00-94	STARTER ASS'Y	1	9	93430-06M02	. CIRCLIP	1
2	6E0-15711-00-94	. CASE, starter	1	10	6E0-15705-00	. SPRING, drive pawl	1
3	6E0-15714-00	. DRUM, sheave	1	11	*	. WIRE (1400mm)	1
4	90510-08M01	. SPRING, spiral	1	12	6E0-15755-00	. HANDLE, starter	1
5	6E0-15717-00-94	. SHAFT	1	13	6E0-15758-00	. GUIDE, wire	1
6	90105-06M16	. BOLT	1	14	6E0-15761-00	. SEAL, rubber	1
7	95303-06600	. NUT	1	15	90105-06M14	. BOLT	2
8	677-15741-01	. PAWL, drive	1	16	90105-06M15	BOLT	3

* Cut from 50 m roll, parts No. 90890-44373, cutting length 1.4m.

Fig. 2 COWLING & FUEL SECTION -1980



COWLING & FUEL SECTION -1980

Ref.No.	Parts No.	Description	Q'ty	Ref.No.	Parts No.	Description	Q'ty
1	6E0-42610-00-F6	TOP COWLING ASS'Y	1	21	6E0-24181-00	DAMPER, locating 1	2
2	6E0-W0070-00	. GRAPHIC SIDE SET	1s	22	6E0-24182-00	DAMPER, locating 2	2
3	6E0-42677-00	. GRAPHIC, front	1	23	95895-06025	BOLT	2
4	6E0-42678-00	. GRAPHIC, rear	1	24	6E0-42542-00	PIPE 1 <i>6E0-42542</i>	2
5	6E0-42681-00	. MARK, cowling 1	1	25	6E0-24500-00	FUEL COOK ASS'Y	1
6	6E0-42682-00	. MARK, cowling 2	1	26	90445-09M37	HOSE (5ø-9ø-240mm)	1
7	6E0-42651-00	. HOOK 1	1	27	90467-08004	CLIP, pipe 1	2
8	6E0-42647-00	. HOLDER, clamp band	1	28	6E0-24572-00	SHAFT, fuel change	1
9	90266-04M00	. RIVET 2	4	29	6E0-24571-00	BUSHING	1
10	6E0-42615-00	. SEAL	1	30	6E0-24591-00	GRAPHIC, change lever	1
11	6E0-42711-00-F6	COWLING, bottom	1	31	90202-12M17	WASHER (12ø-18.5ø-4mm)	2
12	6E0-42815-00	LEVER, clamp 1	1	32	6E0-24575-00	LEVER, fuel change	1
13	90386-12069	BUSHING	2	33	90105-06M15	BOLT	1
14	6E0-42816-00	LEVER, clamp 2	1	34	90480-14M14	GROMMET	2
15	90206-12052	WASHER, wave (12.5ø-19ø-0.5mm)	1	35	6E0-82550-00	STOP SWITCH ASS'Y	1
16	97890-06030	SCREW, panhead	1	36	606-42591-00	HOLDER, share pin	1
17	95303-06700	NUT	1	37	670-28100-60	TOOL ASS'Y	1
18	6E0-24110-00-F6	FUEL TANK COMP.	1				
19	6E0-24641-00	GASKET, cap <i>70</i>	1				
20	6E0-24610-00	CAP ASS'Y	1				

Fig. 3 C·D·I· MAGNETO -1980

Ref.No.	Parts No.	Description	Q'ty
1	6E0-85500-70	C.D.I. MAGNETO ASS'Y	1
2	6E0-85550-70	. ROTOR ASS'Y	1
3	6E0-15723-00-94	. . PULLY, starter	1
4	90105-06M14	. . BOLT	3
5	6E0-85560-70	. BASE ASS'Y	1
6	6E0-15359-00-94	. . HOUSING, oil seal 1	1
7	6E0-85520-70	. . CHARGE COIL ASS'Y	1
8	90159-05038	. . SCREW, with washer	2
9	6E0-85595-70	. . PULSER COIL ASS'Y 1	1
10	90159-04036	. . SCREW, with washer	2
11	6E0-85592-70	. . PULSER COIL ASS'Y 2	1
12	90159-05037	. . SCREW, with washer	2
13	6E0-81336-70	. . GROMMET	1
14	6E0-81328-70	. . CLAMP	1
15	90159-04035	. . SCREW, with washer	1
■ 16	93210-42159	O-RING (2.4φ-42.4φ)	1
■ 17	93102-20M15	OIL SEAL (SD-20φ-36φ-7mm)	1
18	90105-06M16	BOLT	2
19	6E0-24183-00	DAMPER, locating 3	2
20	90170-10113	NUT	1
21	90201-10126	WASHER (10.2φ-20φ-2.6mm)	1
22	90280-04006	KEY, woodruff	1
23	6E0-81303-40	LIGHTING COIL ASS'Y (40W)	1
24	90159-05038	. SCREW, with washer	2

■ Contents of power head gasket kit
(Parts No. 6E0-W0001-00)

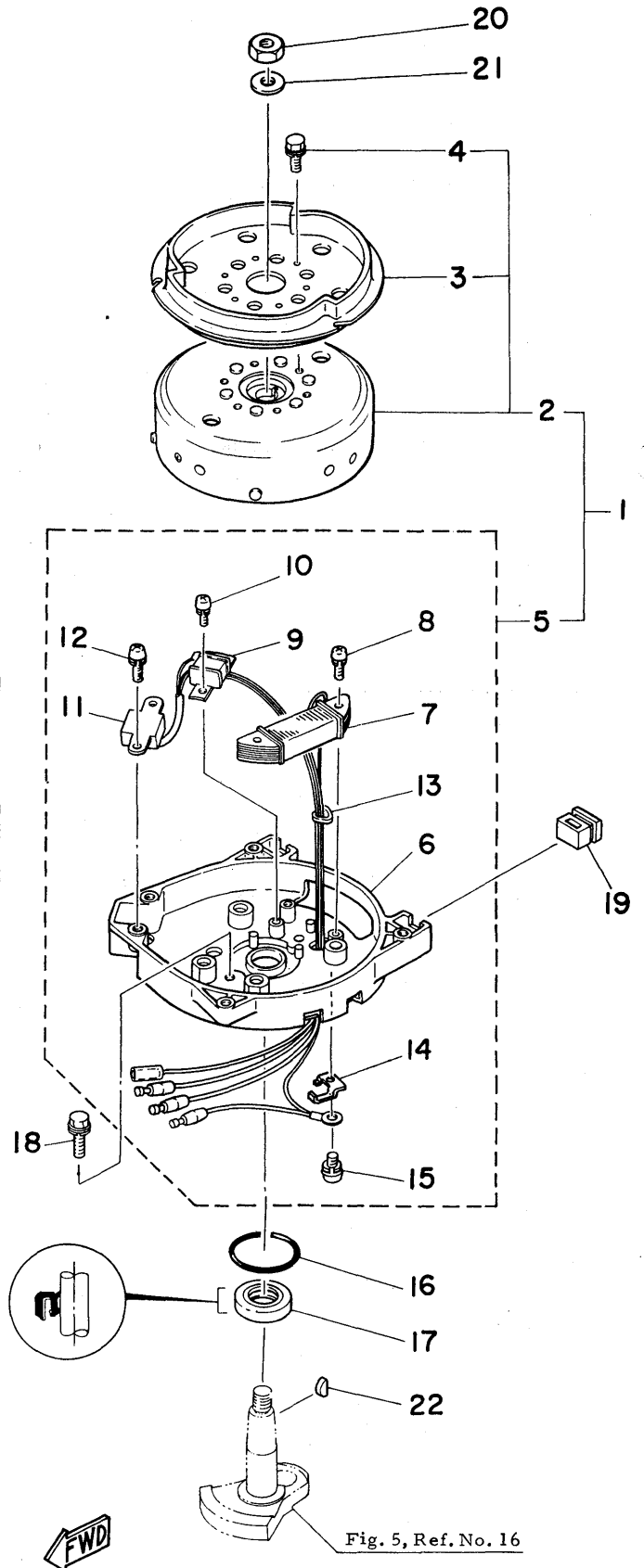
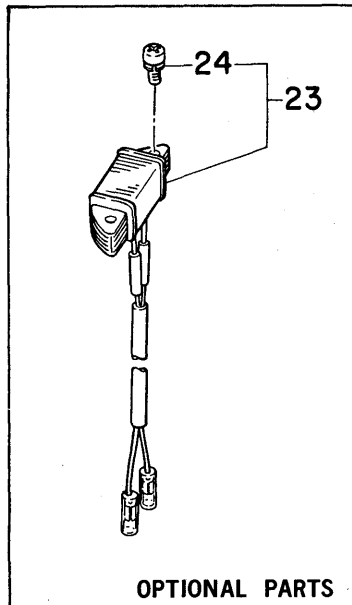
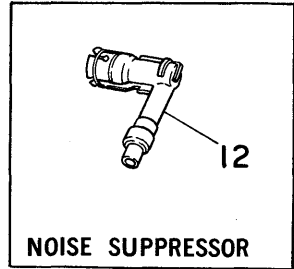
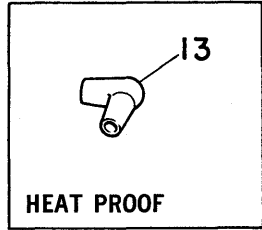
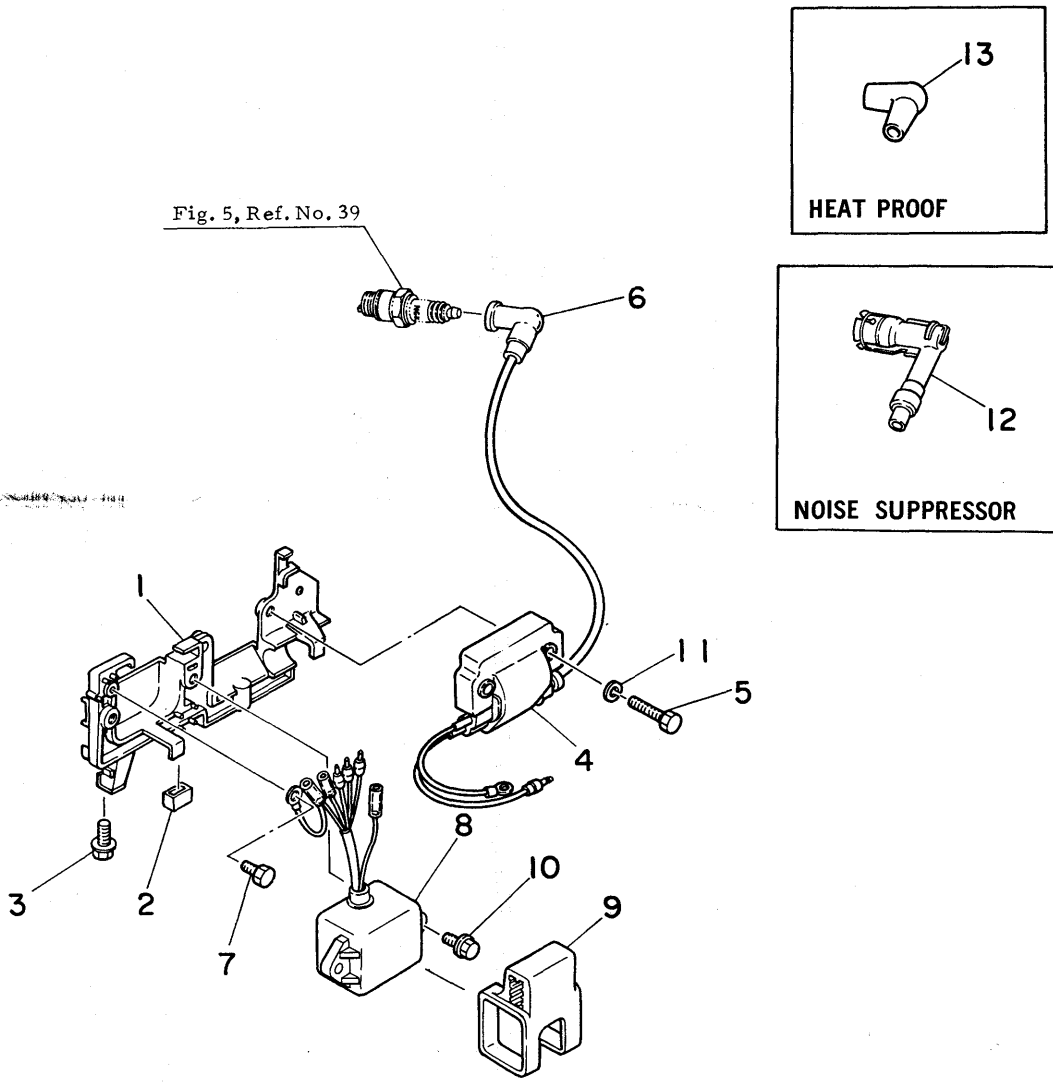


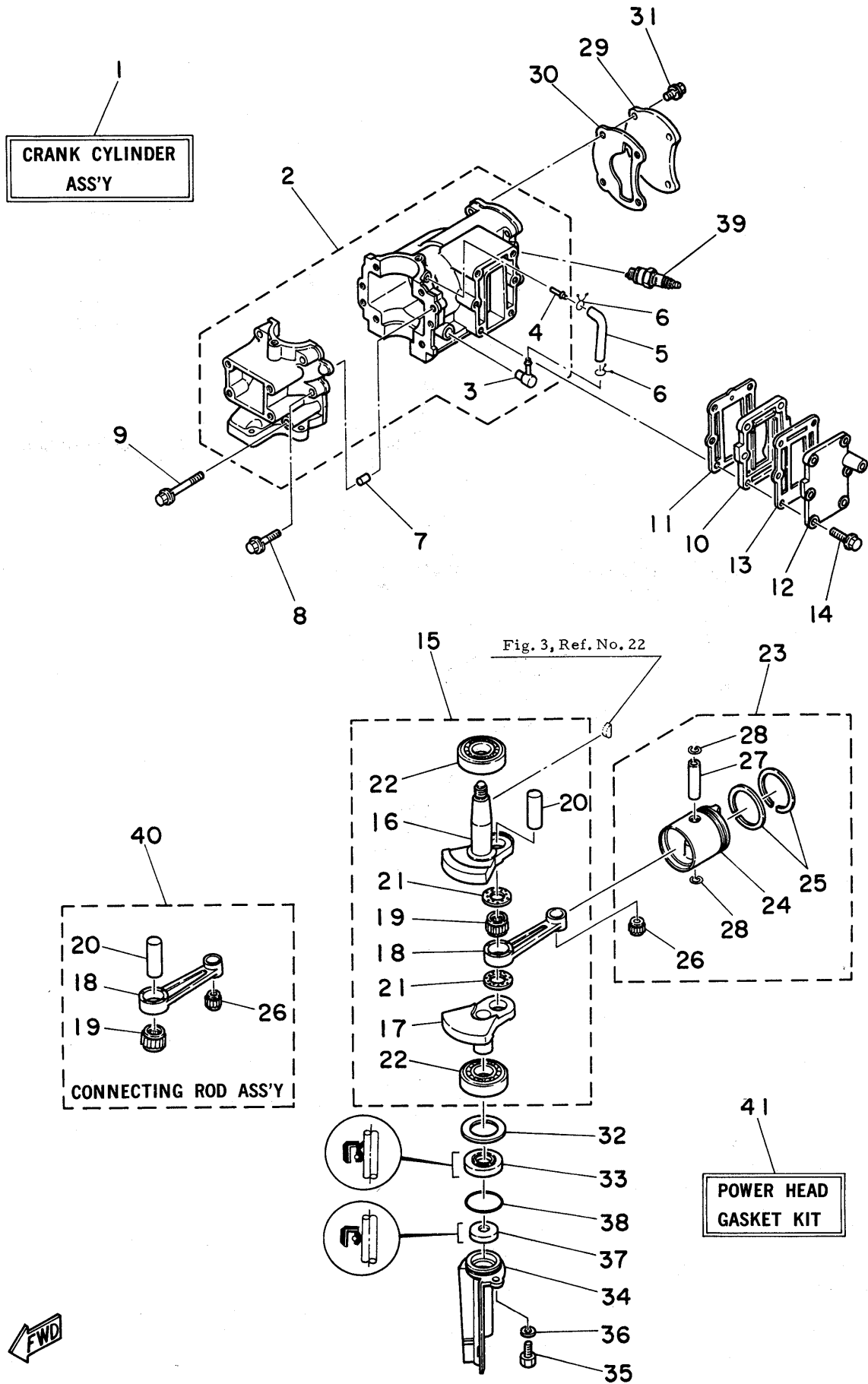
Fig. 4 ELECTRIC PARTS -1980



FWD

Ref.No.	Parts No.	Description	Q'ty	Ref.No.	Parts No.	Description	Q'ty
1	6E0-82316-00-94	BRACKET, ignition coil	1	8	6E0-85540-70	C.D.I. UNIT ASS'Y	1
2	6E0-82317-00	DAMPER	2	9	6E0-85548-00	HOLDER, wire harness	1
3	95895-06016	BOLT	2	10	90105-06M15	BOLT	2
4	6E0-85570-10	IGNITION COIL ASS'Y	1	11	92903-06100	WASHER	2
5	97313-06030	BOLT	2				
						OPTIONAL PARTS	
6	663-82370-01	PLUG CAP ASS'Y	1	12	677-82370-00	PLUG CAP ASS'Y (Noise Suppressor)	1
7	97313-06010	BOLT	1	13	682-82370-00	PLUG CAP ASS'Y (Heat Proof)	1

Fig. 5 CRANKCASE, CYLINDER & PISTON -1980



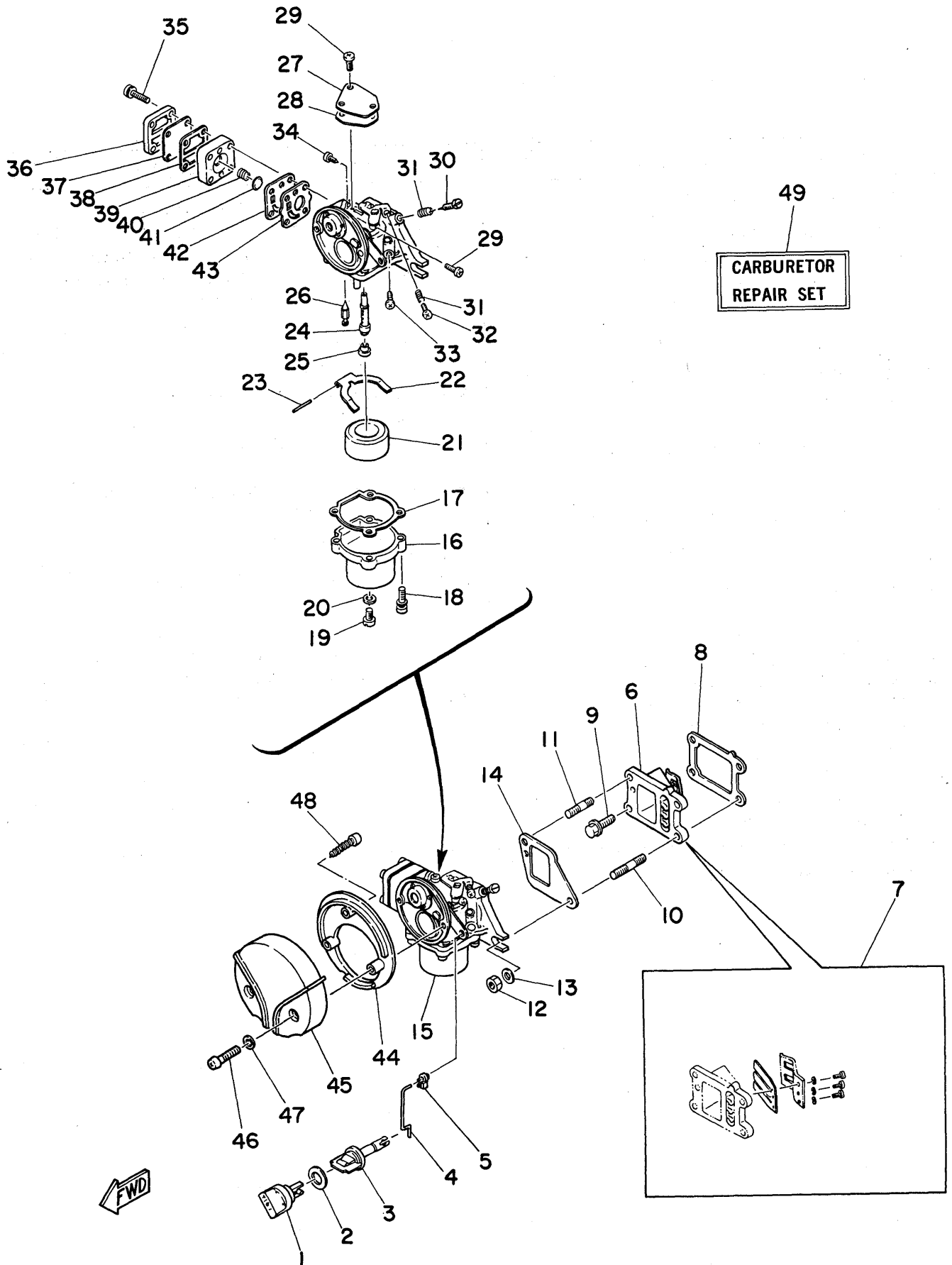
FWD

CRANKCASE, CYLINDER & PISTON -1980

Ref.No.	Parts No.	Description	Q'ty	Ref.No.	Parts No.	Description	Q'ty
1	6E0-W0090-00	CRANK CYLINDER ASS'Y (Ref. No. 2 to 39)	1	24	6E0-11631-00-98	. PISTON (Standard)	} U.R. 1
2	6E0-15100-00-94	CRANKCASE ASS'Y	1		6E0-11631-00-99	. PISTON (Standard)	
3	650-11370-00	. CHECK VALVE ASS'Y	1	25	6E0-11610-00	. PISTON RING SET (Standard)	1s
4	624-14485-00	. PIPE, joint	1	26	93310-112V0	. BEARING, con-rod small end	1
5	90445-07M28	HOSE	1	27	677-11633-00	. PIN, piston	1
6	90467-06016	CLIP	2	28	93450-13022	. CIRCLIP	2
7	93606-12019	PIN, dowel B (6φ-12mm)	2	29	6E0-11191-00-9M	COVER, cylinder head	1
8	90105-06M16	BOLT	4	■ 30	6E0-11193-00	GASKET, head cover	1
9	90105-06M17	BOLT	2	31	90105-06M14	BOLT	4
10	6E0-41111-00-9M	INNER COVER, exhaust	1	32	90201-32M48	WASHER	1
■ 11	6E0-41112-00	GASKET, exhaust inner cover	1	■ 33	93102-20M06	OIL SEAL (SD-20φ-36φ-7mm)	1
12	6E0-41113-00-9M	OUTER COVER, exhaust	1	34	6E0-15396-00-9M	HOUSING, oil seal 2	1
■ 13	6E0-41114-00	GASKET, exhaust outer cover	1	35	97395-06016	BOLT	1
14	90105-06M13	BOLT	6	36	92990-06600	WASHER	1
15	6E0-11400-00	CRANK ASS'Y	1	■ 37	93101-11M14	OIL SEAL (S-10.8φ-21φ-7mm)	1
16	6E0-11412-00	. CRANK 1	1	■ 38	93210-31114	O-RING (2.4φ-31φ)	1
17	6E0-11422-00	. CRANK 2	1	39	94701-00040	PLUG, spark (B-7HS) NGK	1
18	6E0-11651-00	. ROD, connecting	1	40	6E0-11650-00	CONNECTING ROD ASS'Y	1
19	93310-418V1	. BEARING, con-rod big end	1	■ 41	6E0-W0001-00	POWER HEAD GASKET KIT	1s
20	677-11681-00	. PIN, crank	1				
21	90209-18112	. WASHER	2				
22	93306-20411	. BEARING (B6204)	2				
23	6E0-11630-00	PISTON ASS'Y (Standard)	1				

■ Contents of power head gasket kit.

Fig. 6 INTAKE -1980



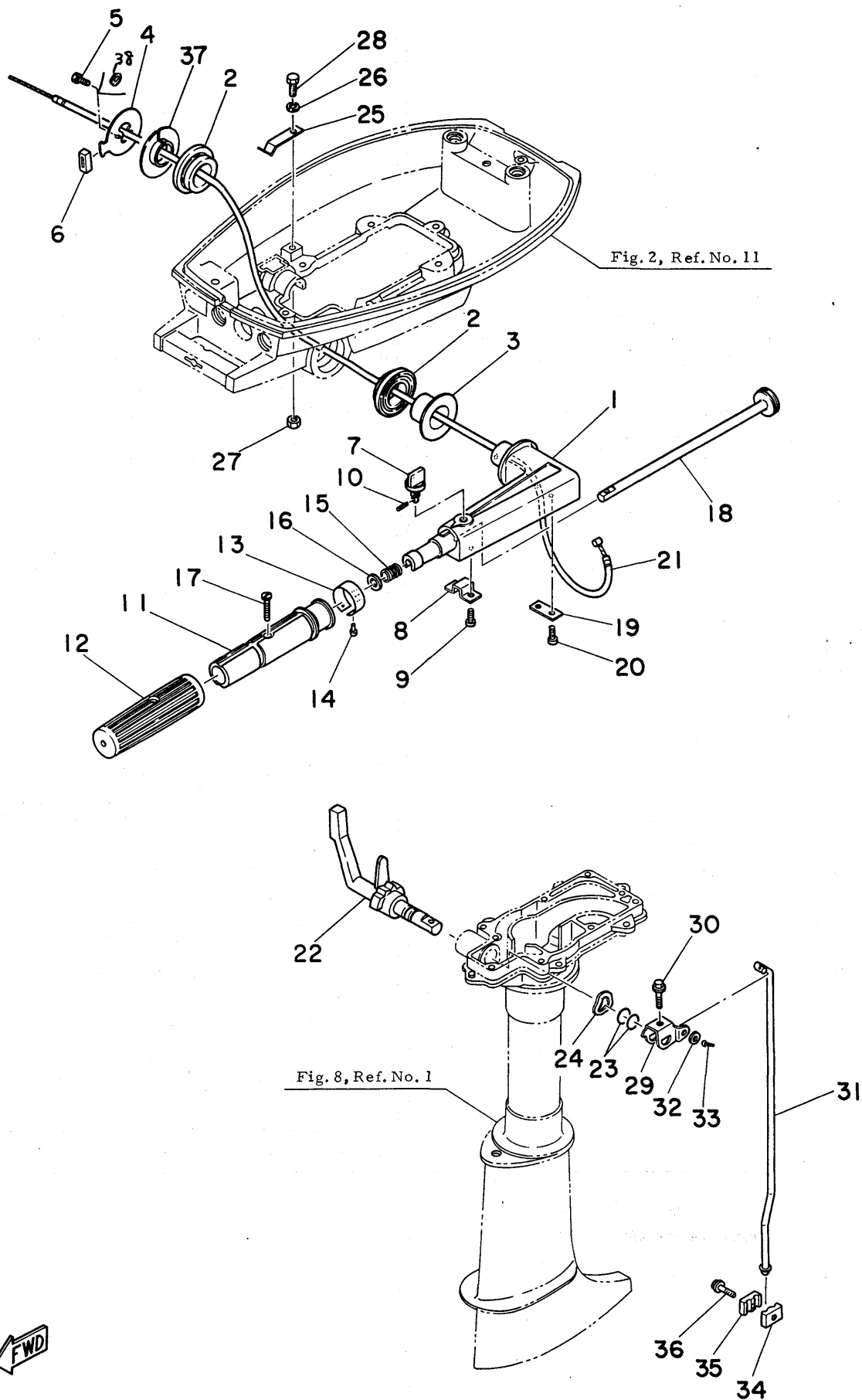
INTAKE -1980

Ref.No.	Parts No.	Description	Q'ty	Ref.No.	Parts No.	Description	Q'ty
1	6E0-41271-00	KNOB, choke 1	1	♣23	647-14386-00	. PIN, float	1
2	90202-12M16	WASHER	1	24	6E0-14341-00	. NOZZLE, main	1
3	6E0-41272-00	KNOB, choke 2	1	25	648-14343-43	. JET, main (#86)	1
4	6E0-41256-00	ROD, choke link	1	♣26	6E0-14392-00	. VALVE, needle	1
5	661-41262-02	JOINT, choke lever	1	27	6E0-14157-00	. COVER, plate	1
6	6E0-13610-00	REED VALVE ASS'Y	1	♣28	6E0-14227-00	. PACKING	1
7	6E0-W0004-00	. REED SET	1s	29	97803-04007	. SCREW	4
■8	6E0-13621-00	PACKING, valve seat	1	♣30	647-14323-00	. SCREW, air adjusting	1
9	90105-06M14	BOLT	2	31	646-14212-01	. SPRING, pilot adjusting	2
10	95621-06325	BOLT, stud	1	32	648-14321-00	. SCREW, throttle	1
11	90116-06M08	BOLT, stud	1	33	648-14342-23	. JET, pilot (#46)	1
12	95303-06700	NUT	2	34	647-14326-00	. SCREW, guide	1
13	92903-06600	WASHER	2	35	98503-04020	. SCREW	1
♣■14	6E0-14198-00	GASKET	1	36	6E0-24413-00	. COVER, pump	1
15	6E0-14301-00	CARBURETOR ASS'Y	1	♣37	6E0-24471-00	. DIAPHRAGM	1
16	6E0-14381-00	. BODY, float chamber	1	38	6E0-24435-00	. GASKET, pump cover	1
♣■17	654-14384-00	. GASKET, float chamber	1	39	6E0-24412-00	. BODY, pump	1
♣18	97803-04016	. SCREW	4	40	6E0-24423-00	. SPRING	1
19	677-14383-00	. SCREW, drain	1	41	6E0-14346-00	. PLATE	1
♣■20	6A1-14398-00	. GASKET	1	♣42	6E0-24411-00	. DIAPHRAGM	1
♣21	647-14385-00	. FLOAT	1	43	6E0-24434-00	. GASKET, pump body	1
♣22	6E0-14387-00	. ARM	1	44	6E0-14417-00	COVER 1	1
				45	6E0-14418-00	COVER 2	1
				46	97803-05025	SCREW, panhead	2
				47	92903-05600	WASHER	2
				48	97780-40720	SCREW, ovalhead tapping	1
				♣49	6E0-W0093-00	CARBURETOR REPAIR SET	1s

■ Contents of power head gasket kit (Parts No. 6E0-W0001-00)

♣ Contents of carburetor repair set

Fig. 7 CONTROL -1980



CONTROL - 1980

Ref.No.	Parts No.	Description	Q'ty	Ref.No.	Parts No.	Description	Q'ty
1	6E0-42111-00-F6	HANDLE, steering	1	20	97890-05012	SCREW, panhead	2
2	6E0-42129-00	BUSHING, rubber 1	2	21	6E0-26301-00	THROTTLE WIRE ASS'Y	1
3	90386-26M30	BUSHING	1	22	6E0-44111-00-F6	HANDLE, gear shift	1
4	6E0-42131-00-F6	COVER, handle steering	1	23	93210-12327	O-RING (2.4φ-11.8φ)	2
5	97313-05012	BOLT	2	24	90206-16M06	WASHER, wave (16.5φ-24φ-0.4mm)	1
6	6E0-42171-00	BUSHING, rubber 2	1	25	6E0-44116-00	SPRING	1
7	6E0-42125-00	BOLT, friction adjust	1	26	92903-06600	WASHER	1
8	6E0-42134-00	COVER	1	27	95380-06700	NUT	1
9	97890-05012	SCREW, panhead	2	28	97395-06012	BOLT	1
10	91690-16008 91490-12008	PIN, spring cotter	1	29	6E0-44121-00	LEVER, shift rod 1	1
11	6E0-42119-00	GRIP, steering handle	1	30	95895-06025	BOLT	1
12	6E0-42117-00	RUBBER, handle	1	31	6E0-44143-00	ROD, shift 1 (Short)	1
13	6E0-42137-00	INDICATOR, throttle	1	*	6E0-44143-10	ROD, shift 1 (Long)	1
14	90269-02001	RIVET	1	32	92990-05600	WASHER	1
15	90501-23215	SPRING, compression	1	33	91490-16010	PIN, cotter	1
16	90201-10119	WASHER (10φ-16φ-1mm)	1	34	6E0-44145-07 6E0-44145-00	CONNECTOR, shift rod 1	1
17	98180-05025	SCREW	1	35	6E0-44146-07 6E0-44146-00	CONNECTOR, shift rod 2	1
18	6E0-42138-00	LEVER, throttle	1	36	95895-06020	BOLT	1
19	6E0-42159-00	STAY	1	37	90386-26M33	BUSHING	1

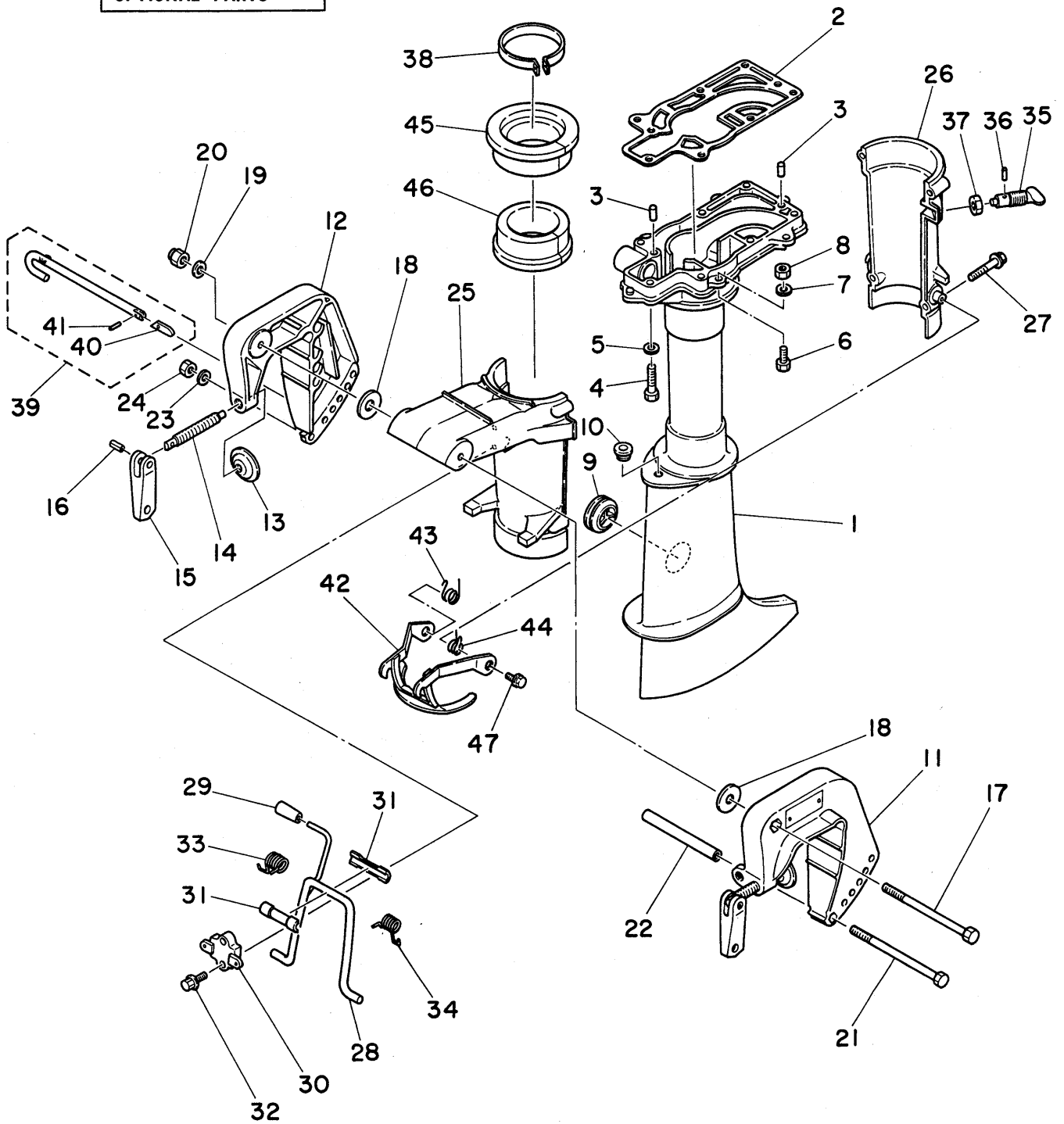
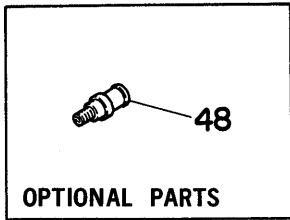
* Not shown

38 92903-05600 *Washer* 2
 ⑥ 6E0467

4AC5: 004021~
 L: 302046~
 4AS5: 201231~
 L: 500751~

*⑥ 6E0500 55/72~ set 4
 50/*

Fig. 8 UPPER CASING & BRACKET -1980



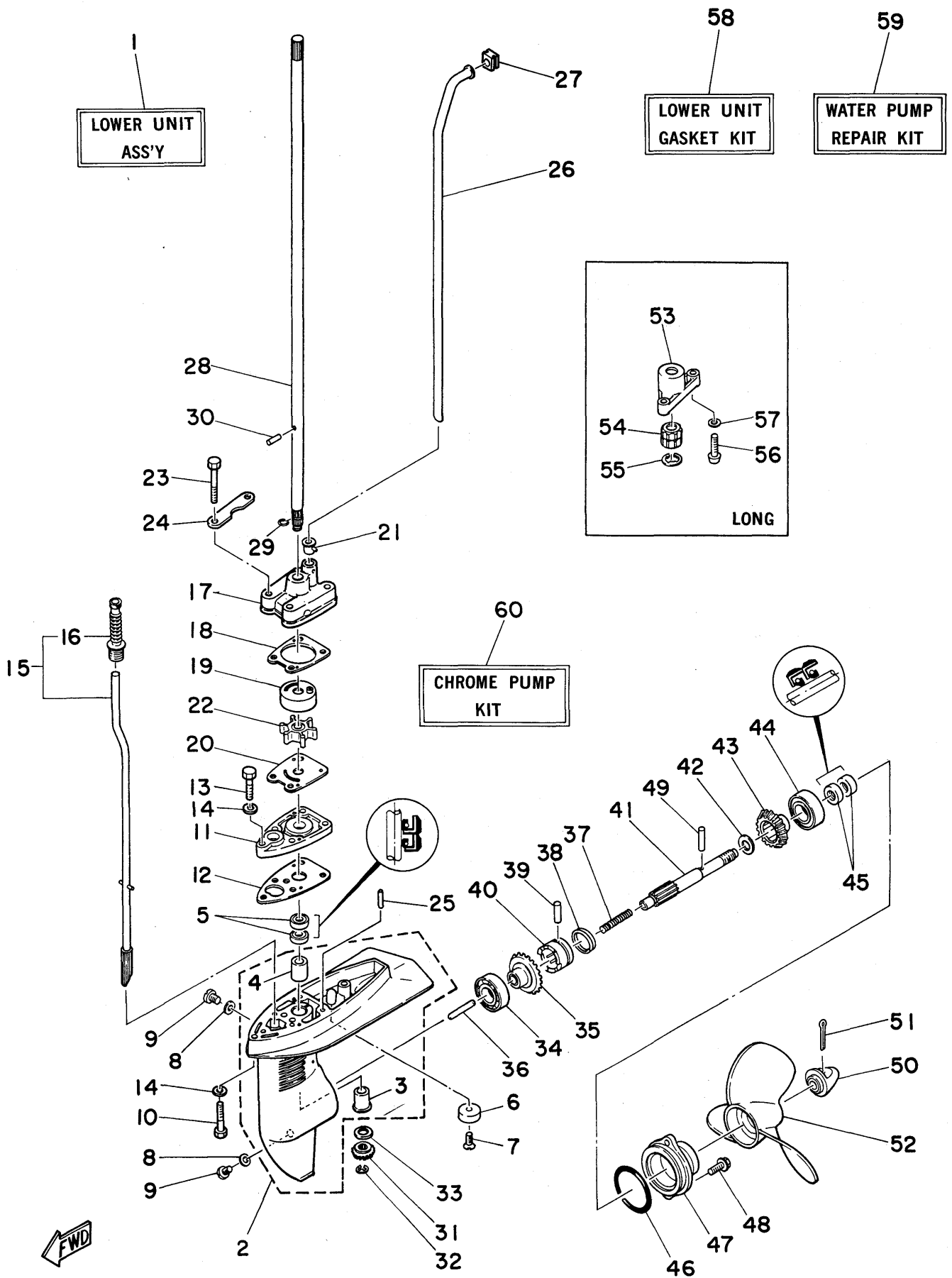
UPPER CASING & BRACKET -1980

Ref.No.	Parts No.	Description	Q'ty	Ref.No.	Parts No.	Description	Q'ty
1	6E0-45111-00-F6	CASING, upper (Short)	1	25	6E0-43311-00-F6	BRACKET, swivel 1	1
*	6E0-45111-10-F6	CASING, upper (Long)	1	26	6E0-43312-00-F6	BRACKET, swivel 2	1
■	6E0-45113-00	GASKET, upper casing	1	27	95895-06035	BOLT	4
3	93606-12019	PIN, dowel B (6φ-12mm)	2	28	6E0-43181-00-F6	LEVER, tilt stop	1
4	97395-06030	BOLT	7	29	6E0-43632-00	KNOB, tilt	1
5	92990-06600	WASHER	7	30	6E0-43313-00-F6	BRACKET, swivel 3	1
6	97395-06016	BOLT	4	31	620-43189-00	BUSHING 2	2
7	92990-06600	WASHER	4	32	95895-06020	BOLT	2
8	95380-06700	NUT	4	33	90508-16020	SPRING, torsion 1	1
9	647-45151-01	COVER, upper casing	1	34	90508-16021	SPRING, torsion 2	1
10	90480-10M13	GROMMET	1	35	6E0-42529-00	SCREW, friction piece	1
11	6E0-43111-00-F6	BRACKET clamp 1	1	36	91690-20010	PIN, spring	1
12	6E0-43112-00-F6	BRACKET clamp 2	1	37	95380-08600	NUT	1
13	648-43114-01	PAD, transom clamp	2	38	6E0-42528-00	PIECE, friction	1
14	6E0-43116-00	SCREW, transom clamp	2	39	6E0-43160-00	TILT ROD ASS'Y	1
15	6E0-43118-00	HANDLE, transom clamp	2	40	656-43165-01	STOPPER PLATE	1
16	91690-40020 9254-04M00	PIN, spring (2) 910790	2	41	91690-30008	PIN, spring	1
17	90101-08M61	BOLT	1	42	6E0-43614-00-F6	PLATE, tilt lock 1	1
18	90201-08M47	WASHER (8.2φ-30φ-1mm)	2	43	90508-14M10	SPRING, torsion	1
19	92990-08600	WASHER	1	44	90508-14M11	SPRING, torsion	1
20	90185-08M00	NUT, self-locking	1	45	6E0-42537-00	BUSHING, pivot shaft 1	1
21	90101-06335	BOLT	1	46	6E0-42538-00	BUSHING, pivot shaft 2	1
22	90560-06088	SPACER	1	47	95895-06008 06010	BOLT 6E0517	2
23	92990-06600	WASHER	1	OPTIONAL PARTS			
24	95380-06600	NUT	1	48	626-28193-01-94	PLUG, water check 1	1

* Not shown

■ Contents of power head gasket kit (Parts No. 6E0-W0001-00)

Fig. 9 LOWER & DRIVE -1980



LOWER & DRIVE -1980

Ref.No.	Parts No.	Description	Q'ty	Ref.No.	Parts No.	Description	Q'ty
1	6E0-45300-00-F6	LOWER UNIT ASS'Y (Short) (Ref. No. 2 to 25, 28 to 48)	1	29	90467-08M01	CLIP	1
※	6E0-45300-10-F6	LOWER UNIT ASS'Y (Long) (Ref. No. 2 to 25, 28 to 48)	1	★30	93604-09066	PIN, dowel B	1
2	6E0-45311-00-F6	CASING, lower	1	31	6E0-45551-00	PINION	1
3	6E0-45316-09	. BUSHING, solid	1	32	93430-06005	CIRCLIP (E-6φ)	1
4	6E0-45317-09	. BUSHING, solid	1	33	90201-11M49	WASHER (11φ-18φ-1.9mm)	1
▲5	93101-11M14	OIL SEAL (S-10.8φ-21φ-7mm)	2	34	93306-00401	BEARING (B6004)	1
6	616-45251-30	ANODE	1	35	6E0-45560-00	GEAR 1 ASS'Y	1
7	90142-06M01	SCREW, slotted	1	36	654-45635-00	PLUNGER, shift	1
▲8	90430-08020	GASKET	3	37	90501-10064	SPRING, compression	1
9	90340-08014	PLUG, straight screw	3	38	654-45633-00	RING, cross pin	1
10	97395-06035	BOLT	2	39	90250-05046	PIN, cross	1
11	6E0-45321-00	PLATE	1	40	6E0-45631-00	CLUTCH, dog	1
▲12	6E0-45315-00	PACKING, lower casing	1	41	6E0-45611-00	SHAFT, propeller	1
13	97395-06025	BOLT	1	42	90201-13M50	WASHER (13.2φ-17.8φ-1.4mm)	1
14	92990-06600	WASHER	3	43	6E0-45570-00	GEAR 2 ASS'Y	1
15	6E0-44150-00	SHIFT CAM ASS'Y (Short)	1	44	93306-00401	BEARING (B6004)	1
※	6E0-44150-10	SHIFT CAM ASS'Y (Long)	1	▲45	93101-13M12	OIL SEAL (S-13φ-22φ-7mm)	2
16	655-44147-00	. BOOT, shift rod	1	▲46	93210-48214	O-RING (3.5φ-47.7φ)	1
★17	6E0-44311-00	HOUSING, water pump	1	47	6E0-45361-00-F6	CAP, lower casing	1
★▲18	6E0-44315-00	GASKET, water pump	1	48	95895-06016	BOLT	2
★19	6E0-44322-00	INSERT, cartridge	1	49	90250-05009	PIN, straight	1
☆※	6E0-44322-40	INSERT, cartridge (Chromate)	1	50	647-45616-02	NUT, propeller	1
★20	6E0-44323-00	OUTER PLATE, cartridge	1	51	91490-30030	PIN, cotter	1
☆※	6E0-44323-40	OUTER PLATE, cartridge (Chromate)	1	52	6E0-45941-00-36	PROPELLER ASS'Y 1(3x7½"x8"-B)	} U.R. 1
★21	646-44366-01	RUBBER, water seal 2	1		6E0-45943-00-36	PROPELLER ASS'Y 2(3x7½"x7"-B)	
★22	6E0-44352-00	IMPELLER	1		6E0-45945-00-36	PROPELLER ASS'Y 3(3x7½"x7¼"-B)	
★23	97395-06045	BOLT	4		6E0-45947-00-36	PROPELLER ASS'Y 4(3x7½"x8¼"-B)	
24	6E0-44328-00	PLATE	2	53	6E0-45331-00-9M	HOUSING, bearing (Long)	1
25	93604-18080	PIN, dowel B (4φ-18.4mm)	2	54	6E0-45318-00	BUSHING, drive shaft 3 (Long)	1
26	6E0-44361-00	TUBE, water (Short)	1	55	93420-22M03	CIRCLIP (Long)	1
※	6E0-44361-10	TUBE, water (Long)	1	56	97890-05025	SCREW, panhead (Long)	2
■27	646-44365-00	RUBBER, water seal 1	1	57	92990-05600	WASHER (Long)	2
28	6E0-45511-00	SHAFT, drive (Short)	1	▲58	6E0-W0001-20	LOWER UNIT GASKET KIT	1
※	6E0-45511-10	SHAFT, drive (Long)	1	★59	6E0-W0078-00	WATER PUMP REPAIR KIT	1
				☆60	6E0-W0078-0A	CHROME PUMP KIT	1

※ Not shown

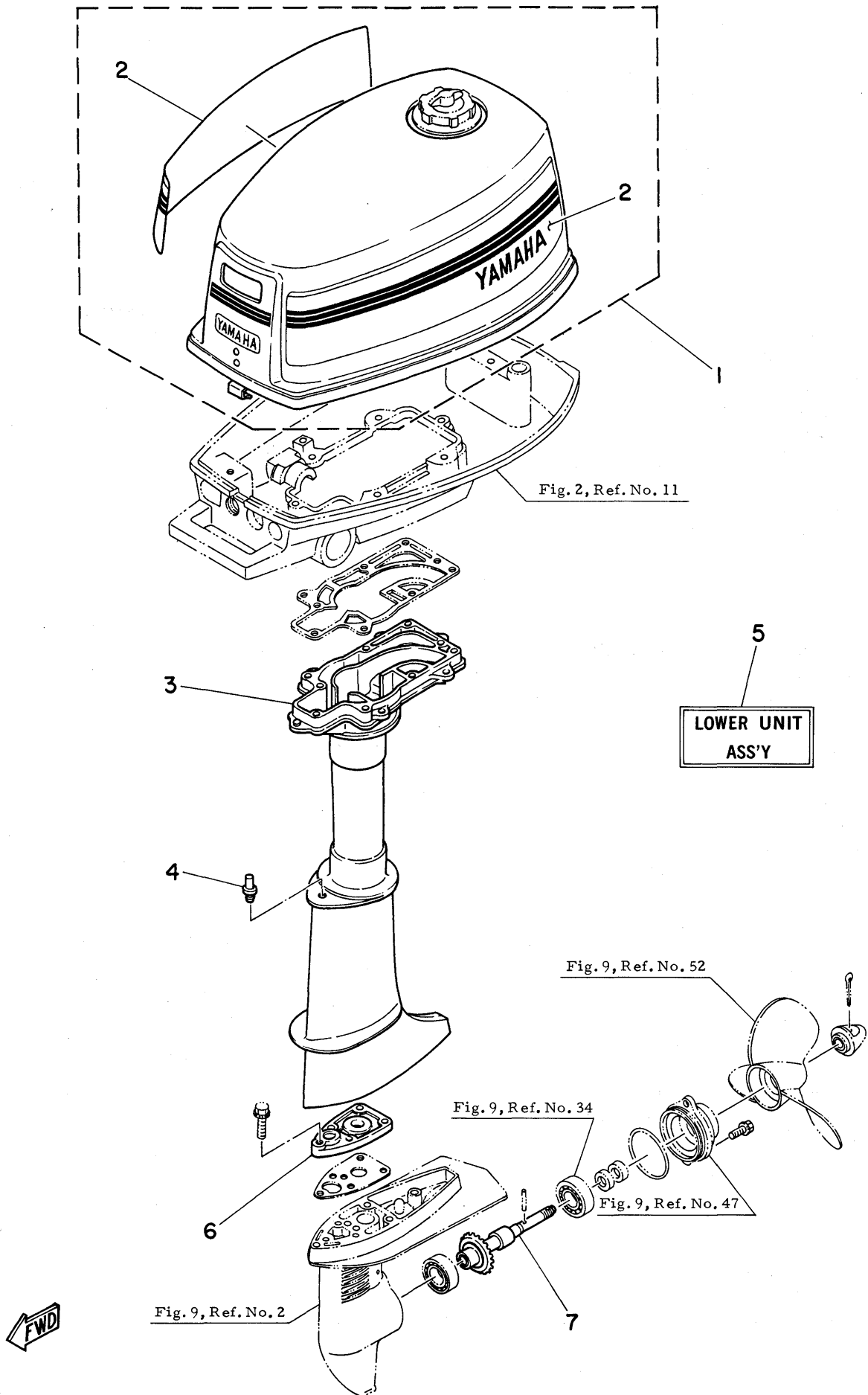
■ Contents of power head gasket kit (Parts No. 6E0-W0001-00)

▲ Contents of lower unit gasket kit

★ Contents of water pump repair kit

☆ Contents of chrome pump kit

Fig. 10 WITHOUT CLUTCH TYPE -1980



WITHOUT CLUTCH TYPE - 1980

Ref.No.	Parts No.	Description	Q'ty	Ref.No.	Parts No.	Description	Q'ty
1	6E2-42610-00-F6	TOP COWLING ASS'Y	1	◆5	6E2-45300-00-F6	LOWER UNIT ASS'Y (Short)	1
2	6E2-W0070-00	. GRAPHIC SIDE SET	1s	◆※	6E2-45300-10-F6	LOWER UNIT ASS'Y (Long)	1
3	6E2-45111-00-F6	CASING, upper (Short)	1	◆6	6E2-45321-00	PLATE	1
※	6E2-45111-10-F6	CASING, upper (Long)	1	◆7	6E2-45560-00	GEAR 1 ASS'Y	1
4	6E2-45151-00	COVER, upper casing	1				

The following parts are not used when using the without clutch type.

2- 1	6E0-42610-00-F6	TOP COWLING ASS'Y	1	8- 1	6E0-45111-00-F6	CASING, upper (Short)	1
2- 2	6E0-W0070-00	. GRAPHIC SIDE SET	1s	※	6E0-45111-10-F6	CASING, upper (Long)	1
7-22	6E0-44111-00-F6	HANDLE, gear shift	1	8- 9	647-45151-01	COVER, upper casing	1
7-23	93210-12327	O-RING (2.4φ-11.8φ)	2	8-10	90480-10M13	GROMMET	1
7-24	90206-16M06	WASHER, wave (16.5φ-24φ-0.4mm)	1	9-11	6E0-45321-00	PLATE	1
7-25	6E0-44116-00	SPRING	1	9-15	6E0-44150-00	SHIFT CAM ASS'Y (Short)	1
7-26	92903-06600	WASHER	1	※	6E0-44150-10	SHIFT CAM ASS'Y (Long)	1
7-27	95380-06700	NUT	1	9-16	655-44147-00	. BOOT, shift rod	1
7-28	97395-06012	BOLT	1	9-35	6E0-45560-00	GEAR 1 ASS'Y	1
7-29	6E0-44121-00	LEVER, shift rod 1	1	9-36	654-45635-00	PLUNGER, shift	1
7-30	95895-06025	BOLT	1	9-37	90501-10064	SPRING, compression	1
7-31	6E0-44143-00	ROD, shift 1 (Short)	1	9-38	654-45633-00	RING, cross pin	1
※	6E0-44143-10	ROD, shift 1 (Long)	1	9-39	90250-05046	PIN, cross	1
7-32	92990-05600	WASHER	1	9-40	6E0-45631-00	CLUTCH, dog	1
7-33	91490-16010	RIN, cotter	1	9-41	6E0-45611-00	SHAFT, propeller	1
7-34	616-44145-01	CONNECTOR, shift rod 1	1	9-42	90201-13M50	WASHER (13.2φ-17.8φ-1.4mm)	1
7-35	616-44146-01	CONNECTOR, shift rod 2	1	9-43	6E0-45570-00	GEAR 2 ASS'Y	1
7-36	95895-06020	BOLT	1				

※ Not shown

◆ Contents of lower unit ass'y

Fig. 1 | SEPARATE FUEL TANK TYPE -1980

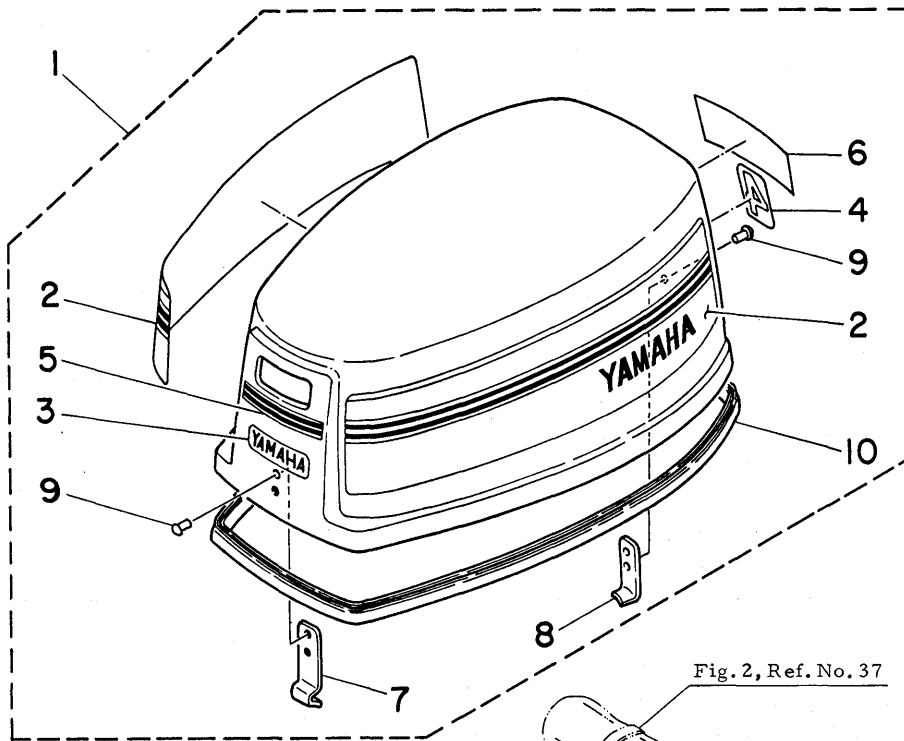


Fig. 2, Ref. No. 37

Fig. 1, Ref. No. 2

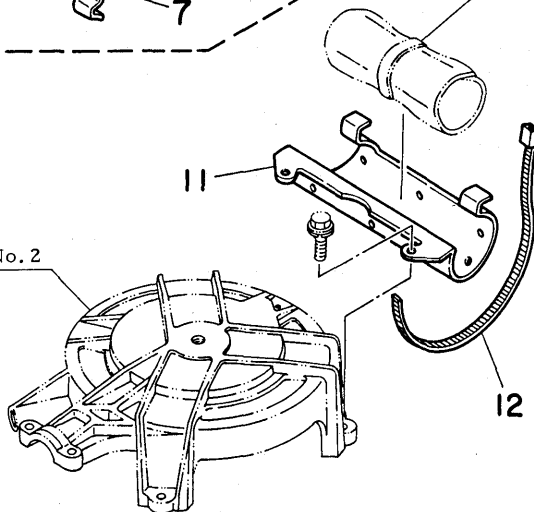


Fig. 6, Ref. No. 15

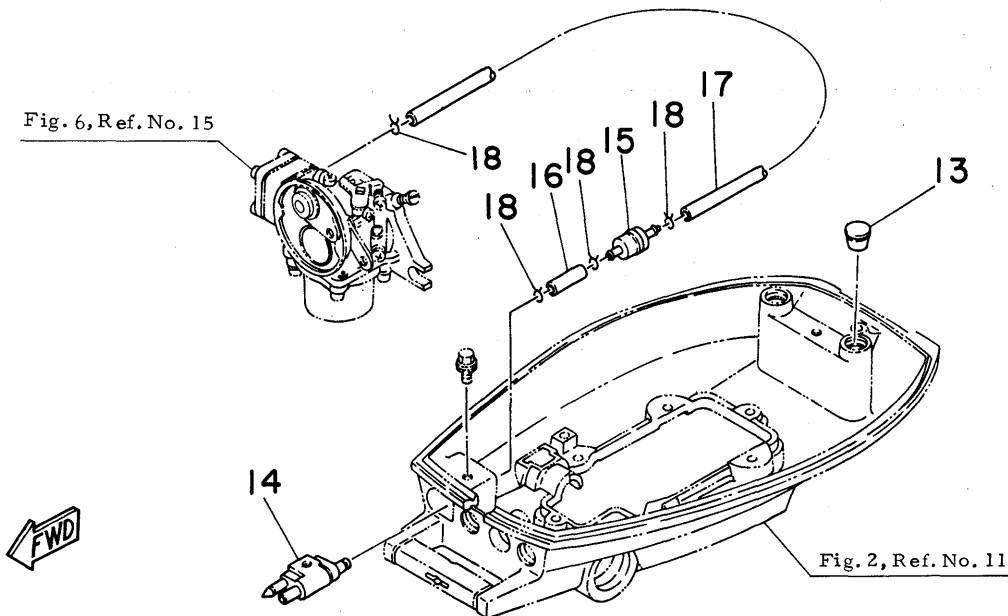


Fig. 2, Ref. No. 11



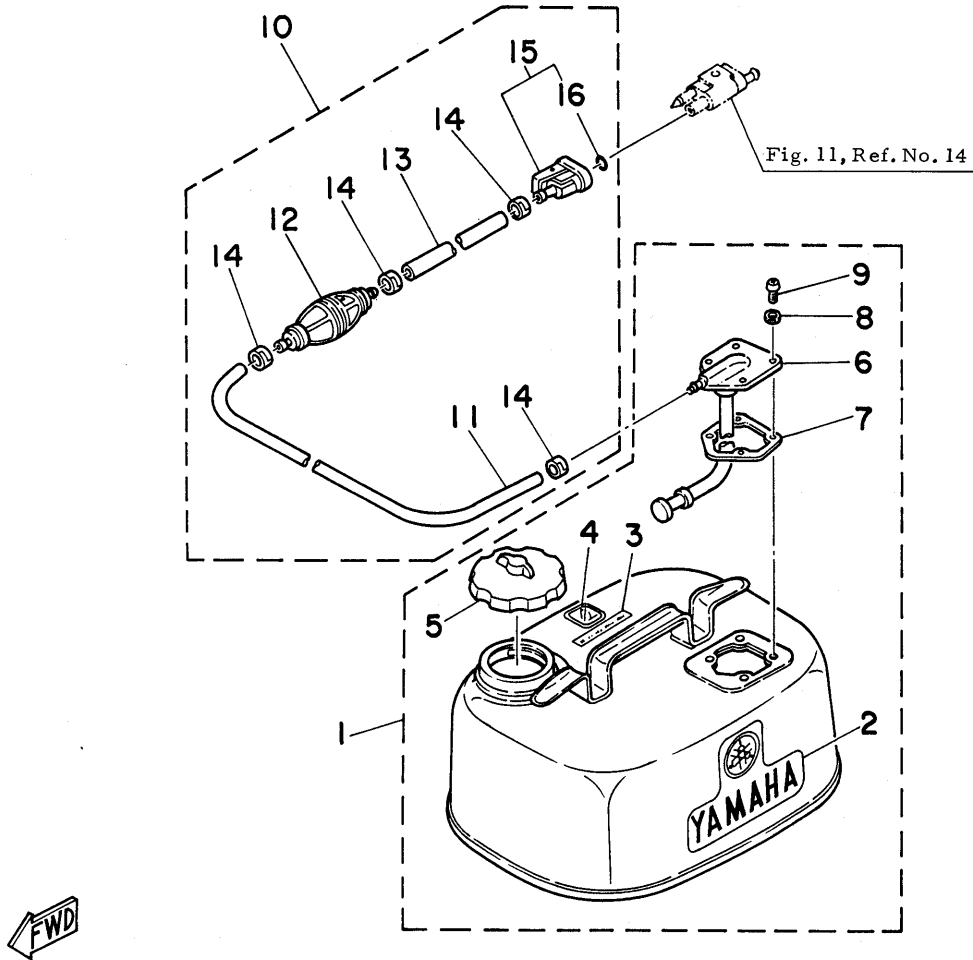
SEPARATE FUEL TANK TYPE -1980

Ref.No.	Parts No.	Description	Q'ty	Ref.No.	Parts No.	Description	Q'ty
1	6E1-42610-00-F6	TOP COWLING ASS'Y	1	10	6E0-42615-00	. SEAL	1
2	6E0-W0070-00	. GRAPHIC SIDE SET	1s	11	6E1-42643-00	PLATE, clamp	1
3	6E0-42677-00	. GRAPHIC, front	1	12	6E1-42694-00	BAND 1	1
4	6E0-42678-00	. GRAPHIC, rear	1	13	6E1-24182-00	DAMPER, locating	2
5	6E0-42681-00	. MARK, cowling 1	1	14	655-24304-01	FUEL PIPE JOINT COMP.	1
6	6E0-42682-00	. MARK, cowling 2	1	15	646-24251-01	STRAINER	1
7	6E0-42651-00	. HOOK 1	1	16	90445-09068	HOSE (5 ϕ -9 ϕ -110mm)	1
8	6E0-42647-00	. HOLDER, clamp band	1	17	90445-09057	HOSE (5 ϕ -9 ϕ -43mm)	1
9	90266-04M00	. RIVET	4	18	90467-08004	CLIP	4

The following parts are not used when using the separate fuel tank type.

2- 1	6E0-42610-00-F6	TOP COWLING ASS'Y	1	2-25	6E0-24500-00	FUEL COOK ASS'Y	1
2-18	6E0-24110-00-F6	FUEL TANK COMP.	1	2-26	90445-09M37	HOSE (5 ϕ -9 ϕ -240mm)	1
2-19	6E0-24641-00	GASKET, cap	1	2-27	90467-08004	CLIP, pipe 1	2
2-20	6E0-24610-00	CAP ASS'Y	1	2-28	6E0-24572-00	SHAFT, fuel change	1
2-21	6E0-24181-00	DAMPER, locating 1	2	2-29	6E0-24571-00	BUSHING	1
2-22	6E0-24182-00	DAMPER, locating 2	2	2-30	6E0-24591-00	GRAPHIC, change lever	1
2-23	95895-06025	BOLT	2	2-31	90202-12M17	WASHER (12 ϕ -18.5 ϕ -4mm)	2
2-24	624-42542-00	PIPE 1	2	2-32	6E0-24575-00	LEVER, fuel change	1

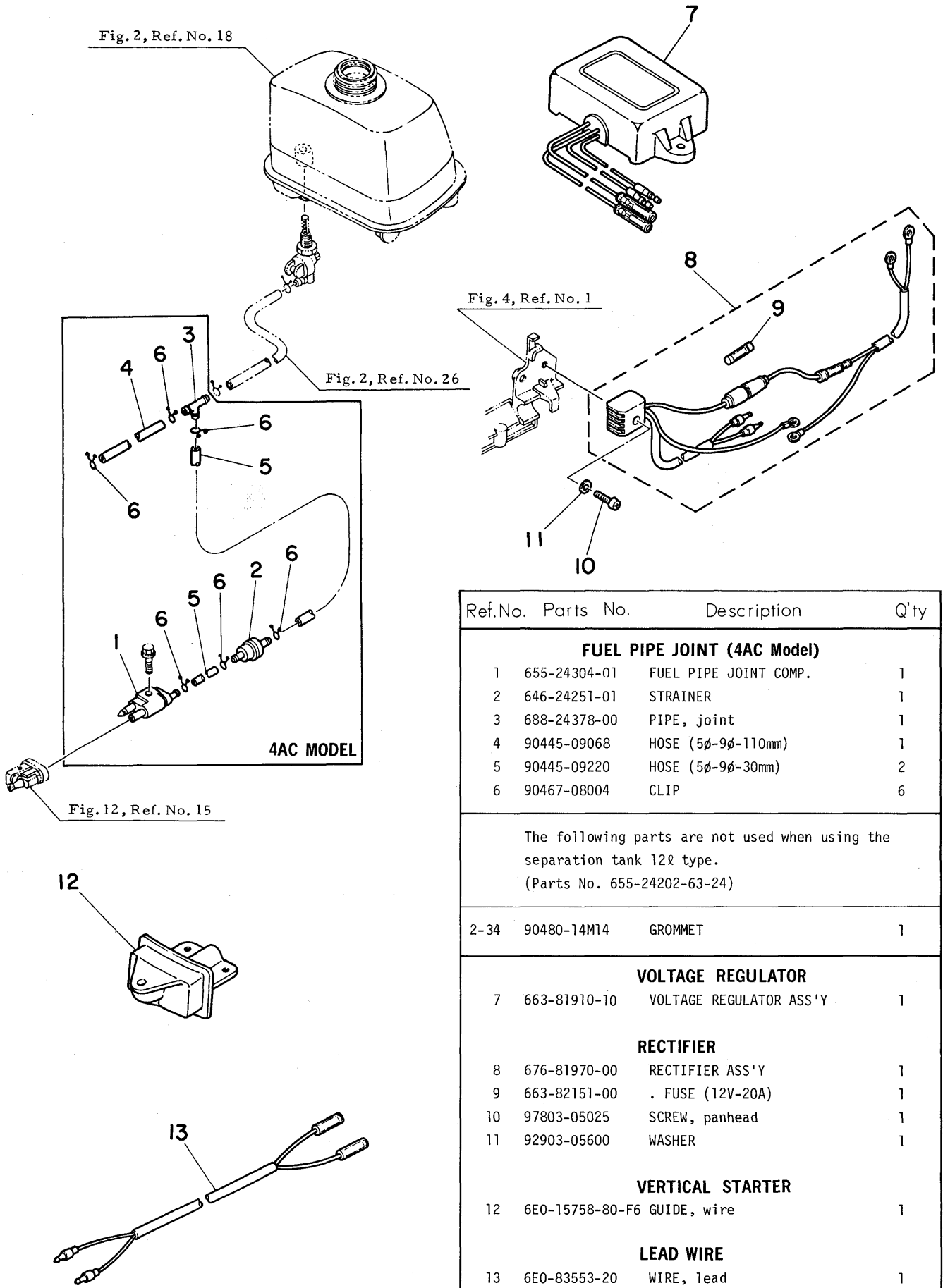
Fig. 12 SEPARATE FUEL TANK TYPE -1980



Ref.No.	Parts No.	Description	Q'ty	Ref.No.	Parts No.	Description	Q'ty
1	655-24202-63-24	FUEL TANK ASS'Y	1	9	98580-05015	SCREW, panhead	4
2	655-24244-01	GRAPHIC, side	1	10	655-24310-00	FUEL PIPE ASS'Y	1
3	656-24245-00	GRAPHIC	1	*11	90445-12156	HOSE (6φ-11.5φ-1500mm)	1
4	656-24248-00	GRAPHIC	1	12	650-24360-01	PRIMARY PUMP ASS'Y	1
5	647-24610-02	CAP. ASS'Y	1	*13	90445-12155	HOSE (6φ-11.5φ-1000mm)	1
6	655-24275-60	FUEL METER COMP.	1	14	650-24351-00	BAND, fuel pipe 1	4
7	663-24268-00	GASKET, fuel meter housing	1	15	655-24305-01	FUEL PIPE JOINT COMP. 2	1
8	630-24329-00	SEAL	4	16	93210-08287	O-RING (3.0φ-8.0φ)	1

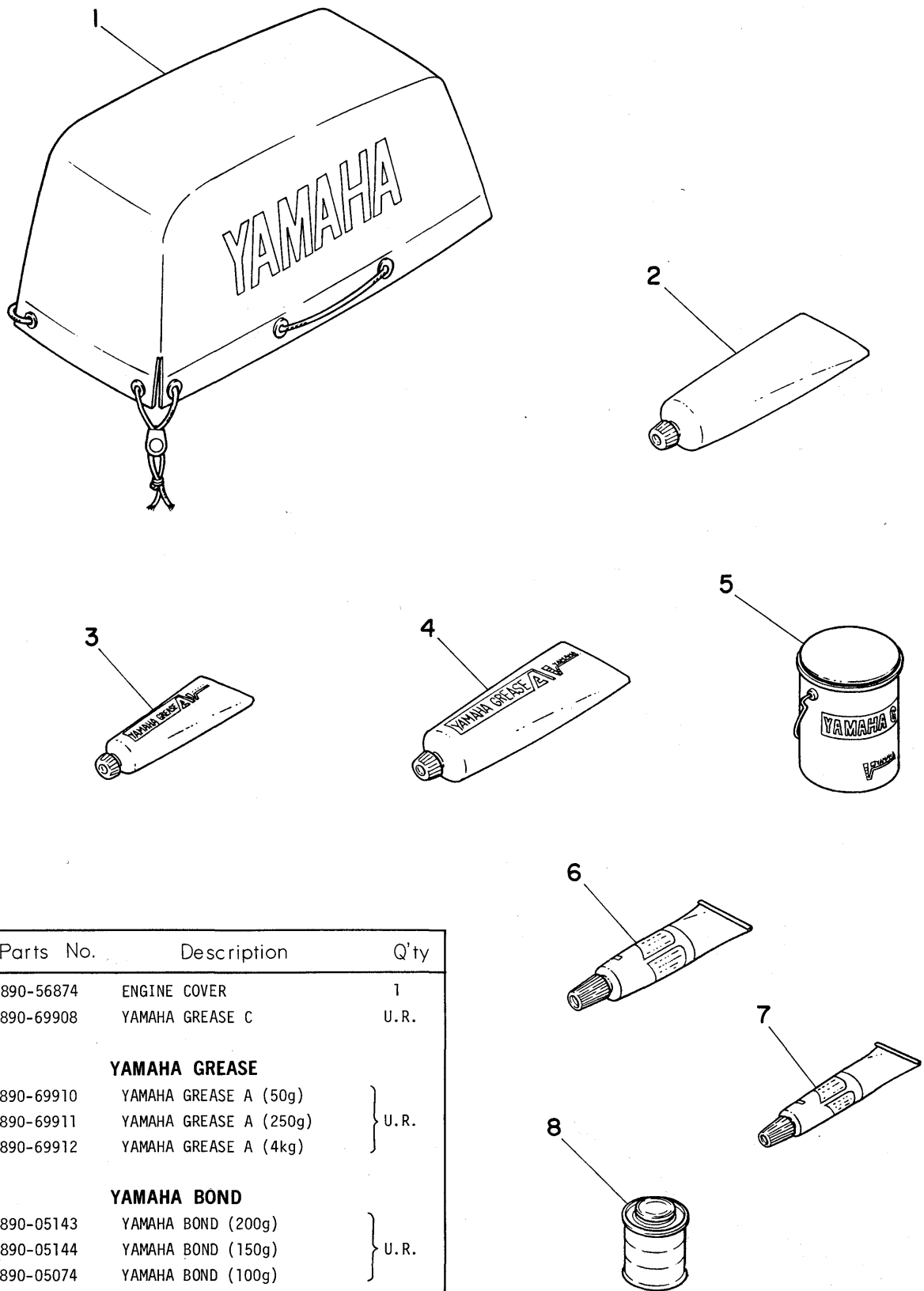
* Also available in 30m rolls (Parts No. 90890-56878)

Fig. 13 ACCESSORY PARTS I -1980



Ref.No.	Parts No.	Description	Q'ty
FUEL PIPE JOINT (4AC Model)			
1	655-24304-01	FUEL PIPE JOINT COMP.	1
2	646-24251-01	STRAINER	1
3	688-24378-00	PIPE, joint	1
4	90445-09068	HOSE (5φ-9φ-110mm)	1
5	90445-09220	HOSE (5φ-9φ-30mm)	2
6	90467-08004	CLIP	6
The following parts are not used when using the separation tank 12ℓ type. (Parts No. 655-24202-63-24)			
2-34	90480-14M14	GROMMET	1
VOLTAGE REGULATOR			
7	663-81910-10	VOLTAGE REGULATOR ASS'Y	1
RECTIFIER			
8	676-81970-00	RECTIFIER ASS'Y	1
9	663-82151-00	FUSE (12V-20A)	1
10	97803-05025	SCREW, panhead	1
11	92903-05600	WASHER	1
VERTICAL STARTER			
12	6E0-15758-80-F6	GUIDE, wire	1
LEAD WIRE			
13	6E0-83553-20	WIRE, lead	1

Fig. 14 ACCESSORY PARTS 2 -1980



Ref.No.	Parts No.	Description	Q'ty
1	90890-56874	ENGINE COVER	1
2	90890-69908	YAMAHA GREASE C	U.R.
YAMAHA GREASE			
3	90890-69910	YAMAHA GREASE A (50g)	} U.R.
4	90890-69911	YAMAHA GREASE A (250g)	
5	90890-69912	YAMAHA GREASE A (4kg)	
YAMAHA BOND			
6	90890-05143	YAMAHA BOND (200g)	} U.R.
7	90890-05144	YAMAHA BOND (150g)	
8	90890-05074	YAMAHA BOND (100g)	

NUMERICAL INDEX

Parts No.	Ref. No.	Parts No.	Ref. No.	Parts No.	Ref. No.	Parts No.	Ref. No.	Parts No.	Ref. No.
6A1-14398-00	6-20	6E0-24413-00	6-36	6E0-43111-00-F6	8-11	6E0-81328-70	3-14	650-11370-00	/ 5- 3
6E0-W0001-00	2 5-41	6E0-24423-00	6-40	6E0-43112-00-F6	8-12	6E0-81336-70	3-13	650-24351-00	12-14
6E0-W0001-20	2 9-58	6E0-24434-00	6-43	6E0-43116-00	8-14	6E0-82316-00-94	4- 1	650-24360-01	12-12
6E0-W0004-00	6- 7	6E0-24435-00	6-38	6E0-43118-00	8-15	6E0-82317-00	4- 2	654-14384-00	6-17
6E0-W0070-00	2- 2	6E0-24471-00	6-37	6E0-43160-00	8-39	6E0-82550-00	2-35	654-45633-00	9-38
	11- 2	6E0-24500-00	2-25	6E0-43181-00-F6	8-28	6E0-83553-20	13-13	654-45635-00	9-36
6E0-W0078-0A	9-60	6E0-24571-00	2-29	6E0-43311-00-F6	8-25	6E0-85500-70	3- 1	655-24202-63-24	12- 1
6E0-W0078-00	/ 9-59	6E0-24572-00	2-28	6E0-43312-00-F6	8-26	6E0-85520-70	3- 7	655-24244-01	12- 2
6E0-W0090-00	5- 1	6E0-24575-00	2-32	6E0-43313-00	8-30	6E0-85540-70	4- 8	655-24275-60	12- 6
6E0-W0093-00	2 6-49	6E0-24591-00	2-30	6E0-43614-00-F6	8-42	6E0-85548-00	4- 9	655-24304-01	11-14
6E0-11191-00-9M	5-29	6E0-24610-00	2-20	6E0-43632-00	8-29	6E0-85550-70	3- 2		13- 1
6E0-11193-00	/ 5-30	6E0-24641-00	2-19	6E0-44111-00-F6	7-22	6E0-85560-70	3- 5	655-24305-01	12-15
6E0-11400-00	5-15	6E0-26301-00	/ 7-21	6E0-44116-00	7-25	6E0-85570-10	4- 4	655-24310-00	12-10
6E0-11412-00	5-16	6E0-41111-00-9M	5-10	6E0-44121-00	7-29	6E0-85592-70	3-11	655-44147-00	9-16
6E0-11422-00	5-17	6E0-41112-00	5-11	6E0-44143-00	7-31	6E0-85595-70	3- 9	656-24245-00	12- 3
6E0-11610-00	/ 5-25	6E0-41113-00-9M	5-12	6E0-44143-10	7-31	6E1-24182-00	11-13	656-24248-00	12- 4
6E0-11630-00	5-23	6E0-41114-00	5-13	6E0-44150-00	9-15	6E1-42610-00-F6	11- 1	656-43165-01	8-40
6E0-11631-00-98	5-24	6E0-41256-00	6- 4	6E0-44150-10	9-15	6E1-42643-00	11-11	661-41262-02	6- 5
6E0-11631-00-99	/ 5-24	6E0-41271-00	6- 1	6E0-44311-00	9-17	6E1-42694-00	11-12	663-24268-00	12- 7
6E0-11650-00	5-40	6E0-41272-00	6- 3	6E0-44315-00	9-18	6E2-W0070-00	10- 2	663-81910-10	13- 7
6E0-11651-00	5-18	6E0-42111-00-F6	7- 1	6E0-44322-00	/ 9-19	6E2-42610-00-F6	10- 1	663-82151-00	13- 9
6E0-13610-00	6- 6	6E0-42117-00	7-12	6E0-44322-40	9-19	6E2-45111-00-F6	10- 3	663-82370-01	4- 6
6E0-13621-00	6- 8	6E0-42119-00	7-11	6E0-44323-00	/ 9-20	6E2-45111-10-F6	10- 3	670-28100-60	2-37
6E0-14157-00	6-27	6E0-42125-00	7- 7	6E0-44323-40	9-20	6E2-45151-00	10- 4	676-81970-00	13- 8
6E0-14198-00	6-14	6E0-42129-00	7- 2	6E0-44328-00	9-24	6E2-45300-00-F6	10- 5	677-11633-00	/ 5-27
6E0-14227-00	6-28	6E0-42131-00-F6	7- 4	6E0-44352-00	2 9-22	6E2-45300-10-F6	10- 5	677-11681-00	5-20
6E0-14301-00	6-15	6E0-42134-00	7- 8	6E0-44361-00	9-26	6E2-45321-00	10- 6	677-14383-00	6-19
6E0-14341-00	6-24	6E0-42137-00	7-13	6E0-44361-10	9-26	6E2-45560-00	10- 7	677-15741-01	1- 8
6E0-14346-00	6-41	6E0-42138-00	7-18	6E0-45111-00-F6	8- 1	606-42591-00	2-36	677-82370-00	4-12
6E0-14381-00	6-16	6E0-42159-00	7-19	6E0-45111-10-F6	8- 1	616-44145-01	7-34	682-82370-00	4-13
6E0-14387-00	6-22	6E0-42171-00	7- 6	6E0-45113-00	8- 2	616-44146-01	7-35	688-24378-00	13- 3
6E0-14392-00	6-26	6E0-42528-00	8-38	6E0-45300-00-F6	9- 1	616-45251-30	9- 6	90101-06335	8-21
6E0-14417-00	6-44	6E0-42529-00	8-35	6E0-45300-10-F6	9- 1	620-43189-00	8-31	90101-08M61	8-17
6E0-14418-00	6-45	6E0-42537-00	8-45	6E0-45311-00-F6	9- 2	624-14485-00	5- 4	90105-06M13	5-14
6E0-15100-00-94	5- 2	6E0-42538-00	8-46	6E0-45315-00	9-12	624-42542-00	2-24	90105-06M14	1-15
6E0-15359-00-94	3- 6	6E0-42610-00-F6	2- 1	6E0-45316-09	9- 3	626-28193-01-94	8-48		3- 4
6E0-15396-00-9M	5-34	6E0-42615-00	2-10	6E0-45317-09	9- 4	630-24329-00	12- 8		5-31
6E0-15705-00	1-10		11-10	6E0-45318-00	9-54	646-14212-01	6-31		6- 9
6E0-15710-00-94	1- 1	6E0-42647-00	2- 8	6E0-45321-00	9-11	646-24251-01	11-15	90105-06M15	1-16
6E0-15711-00-94	1- 2		11- 8	6E0-45331-00-9M	9-53		13- 2		2-33
6E0-15714-00	1- 3	6E0-42651-00	2- 7	6E0-45361-00-F6	9-47	646-44365-00	9-27		4-10
6E0-15717-00-94	1- 5		11- 7	6E0-45511-00	9-28	646-44366-01	9-21	90105-06M16	1- 6
6E0-15723-00-94	3- 3	6E0-42677-00	2- 3	6E0-45511-10	9-28	647-14323-00	6-30		3-18
6E0-15755-00	1-12		11- 3	6E0-45551-00	/ 9-31	647-14326-00	6-34		5- 8
6E0-15758-00	1-13	6E0-42678-00	2- 4	6E0-45560-00	/ 9-35	647-14385-00	6-21	90105-06M17	5- 9
6E0-15758-80-F6	13-12		11- 4	6E0-45570-00	/ 9-43	647-14386-00	6-23	90116-06M08	6-11
6E0-15761-00	1-14	6E0-42681-00	2- 5	6E0-45611-00	9-41	647-24610-02	12- 5	90142-06M01	9- 7
6E0-24110-00-F6	2-18		11- 5	6E0-45631-00	9-40	647-45151-01	8- 9	90159-04035	3-15
6E0-24181-00	2-21	6E0-42682-00	2- 6	6E0-45941-00-36	9-52	647-45616-02	9-50	90159-04036	3-10
6E0-24182-00	2-22		11- 6	6E0-45943-00-36	9-52	648-14321-00	6-32	90159-05037	3-12
6E0-24183-00	3-19	6E0-42711-00-F6	2-11	6E0-45945-00-36	9-52	648-14342-23	6-33	90159-05038	3- 8
6E0-24411-00	6-42	6E0-42815-00	2-12	6E0-45947-00-36	9-52	648-14343-43	6-25		3-24
6E0-24412-00	6-39	6E0-42816-00	2-14	6E0-81303-40	3-23	648-43114-01	8-13	90170-10113	3-20

NUMERICAL INDEX

Parts No.	Ref. No.	Parts No.	Ref. No.	Parts No.	Ref. No.	Parts No.	Ref. No.	Parts No.	Ref. No.
90185-08M00	8-20	90890-69911	14- 4	95895-06008	8-47				
90201-08M47	8-18	90890-69912	14- 5	95895-06016	4- 3				
90201-10119	7-16	91490-16010	7-33	95895-06016	9-48				
90201-10126	3-21	91490-30030	9-51	95895-06020	7-36				
90201-11M49	9-33	91690-16008	7-10		8-32				
90201-13M50	9-42	91690-20010	8-36	95895-06025	2-23				
90201-32M48	5-32	91690-30008	8-41		7-30				
90202-12M16	6- 2	91690-40020	8-16	95895-06035	8-27				
90202-12M17	2-31	92903-05600	6-47	97313-05012	7- 5				
90206-12052	2-15		13-11	97313-06010	4- 7				
90206-16M06	7-24	92903-06100	4-11	97313-06030	4- 5				
90209-18112	5-21	92903-06600	6-13	97395-06012	7-28				
90250-05009	9-49		7-26	97395-06016	5-35				
90250-05046	9-39	92990-05600	7-32		8- 6				
90266-04M00	2- 9		9-57	97395-06025	9-13				
	11- 9	92990-06600	5-36	97395-06030	8- 4				
90269-02001	7-14		8- 5	97395-06035	9-10				
90280-04006	3-22		8- 7	97395-06045	9-23				
90340-08014	9- 9		8-23	97780-40720	6-48				
90386-12069	2-13		9-14	97803-04007	6-29				
90386-26M30	7- 3	92990-08600	8-19	97803-04016	6-18				
90386-26M33	7-37	93101-11M14	2 5-37	97803-05025	6-46				
90430-08020	9- 8		9- 5		13-10				
90445-07M28	5- 5	93101-13M12	2 9-45	97890-05012	7- 9				
90445-09M37	2-26	93102-20M06	5-33		7-20				
90445-09057	11-17	93102-20M15	/ 3-17	97890-05025	9-56				
90445-09068	11-16	93210-08287	12-16	97890-06030	2-16				
90445-09068	13- 4	93210-12327	7-23	98180-05025	7-17				
90445-09220	13- 5	93210-31114	5-38	98503-04020	6-35				
90445-12155	12-13	93210-42159	3-16	98580-05015	12- 9				
90445-12156	12-11	93210-48214	9-46						
90467-06016	5- 6	93306-00401	9-34						
90467-08M01	9-29		9-44						
90467-08004	2-27	93306-20411	5-22						
	11-18	93310-112V0	/ 5-26						
	13- 6	93310-418V1	5-19						
90480-10M13	8-10	93420-22M03	9-55						
90480-14M14	2-34	93430-06M02	1- 9						
90501-10064	9-37	93430-06005	9-32						
90501-23215	7-15	93450-13022	2 5-28						
90508-14M10	8-43	93604-09066	9-30						
90508-14M11	8-44	93604-18080	9-25						
90508-16020	8-33	93606-12019	5- 7						
90508-16021	8-34		8- 3						
90510-08M01	1- 4	94701-00040	5-39						
90560-06088	8-22	95303-06600	1- 7						
90890-05074	14- 8	95303-06700	2-17						
90890-05143	14- 6		6-12						
90890-05144	14- 7	95380-06600	8-24						
90890-44373	1-11	95380-06700	7-27						
90890-56874	14- 1		8- 8						
90890-69908	14- 2	95380-08600	8-37						
90890-69910	14- 3	95621-06325	6-10						



YAMAHA MOTOR CO., LTD.

2500 SHINGAI IWATA-SHI SHIZUOKA-KEN JAPAN

Copyright

All rights reserved.

No part of this publication may be
reproduced without permission.

Printed in Japan

Sep. 1980

6E0-28198-00 (英語)

03215