



PARTS CATALOGUE

50TR'07 (62XC)

40V'07 (63DG)

50H'07 (62XC)

50TR
40V/50H
PARTS CATALOGUE
©2006 by Yamaha Motor Co., Ltd.
1st edition, April 2006
All rights reserved.
Any reprinting or unauthorized use
without the written permission of
Yamaha Motor Co., Ltd.
is expressly prohibited.
Printed in Japan.

FOREWORD

This Parts Catalogue is related to the parts for the model(s) on the cover page. When you are ordering replacement parts, please refer to this Parts Catalogue and quote both part numbers and part names correctly.

1. Modifications or additions which have been made after the issue of the Parts Catalogue will be announced in the Parts News.
It is advisable that you make the necessary corrections to the Parts Catalogue according to the Parts News.

2. Abbreviations

The following abbreviations are used in this Parts Catalogue.

“UR” Use specified parts number.

“UN” Use as many as needed.

“AP” Alternate Parts

“LM” Locally Made (Parts need to be ordered locally)

“F#” Frame No. (Applicable machine No.)

“O/S” Over Size

3. The number of components for assembly

- Parts, which are to be supplied in an assembly, are listed with a dot (.) in front of the part name as shown below.
- The numeral appearing to the right of each component part indicates the quantity of parts for each assembly unit.

PART NO.	DESCRIPTION	Q'TY	REMARKS
2F5-83310-60	FRONT FLASHER LIGHT ASSY	2	
115-83311-60	.BULB (6V-18W)	1	

4. Applicable colours of graphics are represented in the “REMARKS” as shown below.

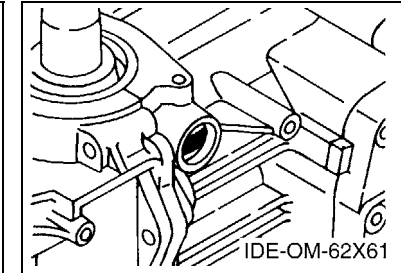
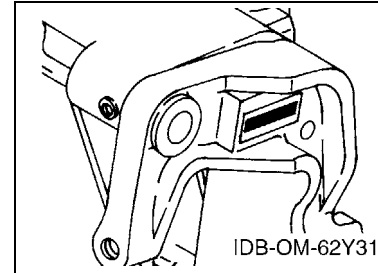
PART NO.	DESCRIPTION	Q'TY	REMARKS
2N4-24110-00-X5	FUEL TANK COMP.	2	MXR
3J1-24240-10	.GRAPHIC, FUEL TANK	1	FOR MXR

5. Note that the illustrations for reference in finding parts numbers are not to be used for assembling. When assembling, please use the applicable service manual.

6. The asterisk (*) before a reference number indicates modified items after the first edition.

7. Applicable Serial No.

Engine Serial No.



8. Applicable Engine Starting Serial No.

Model	Serial No.	Model	Serial No.
40V	6H4K-1012144	50	6H5K-1013173
50H	6H5K-1013173		

9. Applicable Colour Code

Abbreviation	Colour Name	Colour Code
DBNM2	DARK BLUISH GRAY METALLIC 2	004D

10. Quantity Column Information

Column No.	Name Of Q'ty Column	Applicable Model
1	ETO	50TR,40VETO,50HETO
2	WHTO	40VWHTO,50HWHTO

CONTENTS

TOP COWLING	1
CYLINDER & CRANKCASE	2
CRANKSHAFT & PISTON	4
INTAKE	5
CARBURETOR	6
OIL PUMP 1	9
OIL PUMP 2	11
FUEL 1	13
FUEL 2	15
STARTER	16
GENERATOR	18
ELECTRICAL 1	19
ELECTRICAL 2	20
STARTING MOTOR	22
BOTTOM COWLING	24
STEERING 1	26
STEERING 2	29
STEERING FRICTION	30
CONTROL	31
BRACKET 1	33
BRACKET 2	35
POWER TRIM & TILT ASSY 1	37
POWER TRIM & TILT ASSY 2	40
UPPER CASING	41
LOWER CASING & DRIVE 1	42
LOWER CASING & DRIVE 2	45
FUEL TANK	47
STEERING GUIDE	48
REMOTE CONTROL BOX	49
REMOTE CONTROL ASSY	50
METER	53
OPTIONAL PARTS	54
REPAIR KIT 1	55
REPAIR KIT 2	57

INDEX

NUMERICAL INDEX	59
-----------------------	----

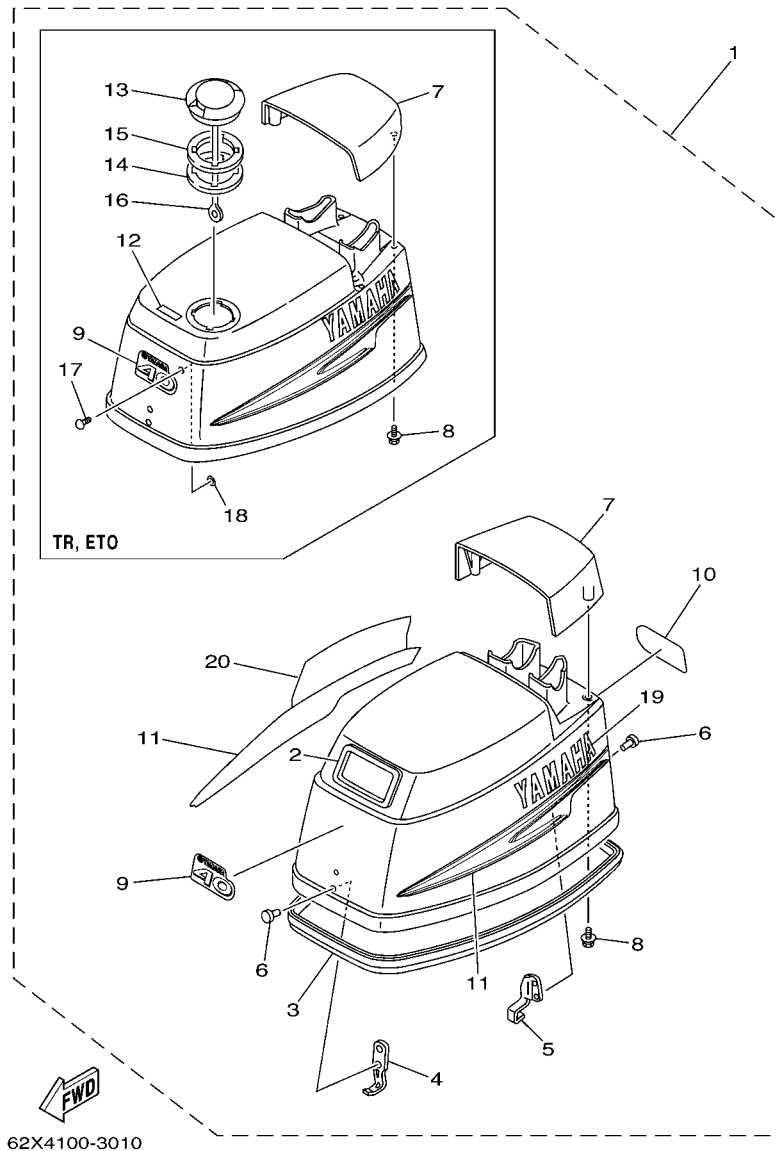
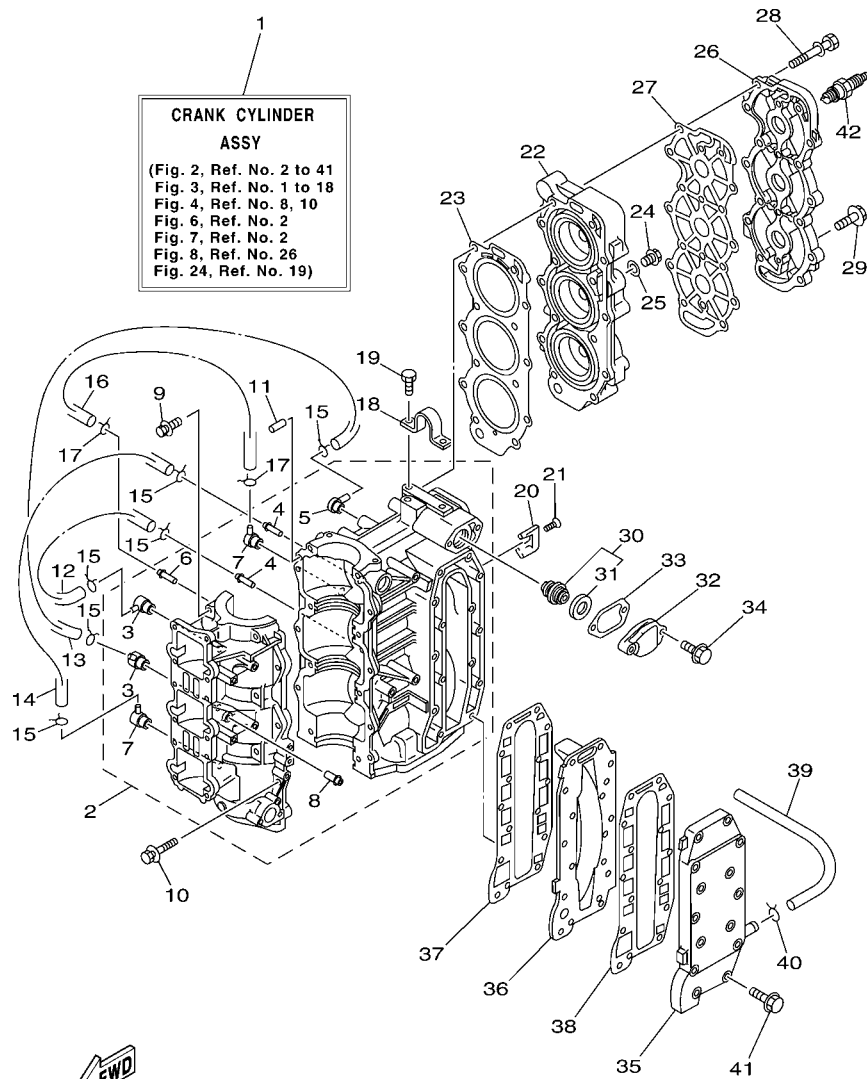


FIG. 1 TOP COWLING

REF. NO.	PART NO.	DESCRIPTION	ETO	WHTO	REMARKS
1	63D-42610-60-4D	TOP COWLING ASSY	1		40VETO
	63B-42610-30-4D	TOP COWLING ASSY		1	40VWHTO
	62X-42610-60-4D	TOP COWLING ASSY	1		50TR,50HETO
	62X-42610-80-4D	TOP COWLING ASSY		1	50HWHTO
2	6H4-15761-00	.SEAL, RUBBER 1		1	
3	6H4-42615-00	.SEAL	1	1	
4	6H4-42651-00	.HOOK	1	1	
5	6H4-42652-00	.HOOK	1	1	
6	90266-04M01	.RIVET	4	4	
7	6H4-42613-11-4D	.MOLDING, AIR DUCT	1		
	6H4-42613-01-4D	.MOLDING, AIR DUCT		1	
8	90119-06M99	.BOLT, WITH WASHER	4	4	
9	63D-42677-30	.GRAPHIC, FRONT	1	1	40V
	62X-42677-30	.GRAPHIC, FRONT	1	1	50,50H
10	63D-42678-20	.GRAPHIC, REAR	1	1	40V
	62X-42678-20	.GRAPHIC, REAR	1	1	50,50H
11	63D-W0070-20	.GRAPHIC SET	1	1	
12	63D-13436-40	.MARK	1		
13	63D-2177H-00	.DISK CAP 2	1		
14	6H3-21732-00	.SEAL 1	1		
15	6H3-21735-00	.SEAL 2	1		
16	6H1-42694-00	.BAND	1		
17	90338-05M03	.PLUG	1		
18	90183-05M06	.NUT, SPRING	1		
19	63D-42681-20	.MARK, COWLING	1	1	
20	63D-42682-20	.MARK, COWLING	1	1	



62XA664-E020

FIG. 2 CYLINDER & CRANKCASE

REF. NO.	PART NO.	DESCRIPTION	ETO	WHTO	REMARKS
1	63D-W0090-11-1S	CRANK CYLINDER ASSY	1	1	
2	6H4-15100-13-1S	CRANKCASE ASSY	1	1	
3	650-11370-01	.CHECK VALVE ASSY	2	2	
4	624-14485-00	.PIPE, JOINT	2	2	
5	6H4-11372-01	.NIPPLE, HOSE	1	1	
6	624-14485-00	.PIPE, JOINT	1	1	
7	688-11370-01	.CHECK VALVE ASSY	2	2	
8	650-24378-00	.PIPE, JOINT 4	1	1	
9	90119-08019	BOLT, WITH WASHER	8	8	
10	90119-06M13	BOLT, WITH WASHER	6	6	
11	93606-12019	PIN, DOWEL	2	2	
12	90445-07M46	HOSE (L360)	1	1	
13	90445-07M27	HOSE (L310)	1	1	
14	90445-07M24	HOSE (L240)	1	1	
15	90467-06016	CLIP	6	6	
16	90445-07MA3	HOSE (L200)	1	1	
17	90467-06016	CLIP	2	2	
18	6H4-11119-01	HANGER, ENGINE	1	1	
19	90101-06021	BOLT	2	2	
20	688-11325-00	ANODE	2	2	
21	98780-04016	SCREW, FLAT HEAD	2	2	
22	63D-11111-00-1S	HEAD, CYLINDER 1	1	1	
23	63D-11181-A1	GASKET, CYLINDER HEAD 1	1	1	
24	90340-14M00	PLUG, STRAIGHT SCREW	1	1	
25	90430-14115	GASKET	1	1	
26	63D-11191-00-1S	COVER, CYLINDER HEAD 1	1	1	
27	63D-11193-A0	GASKET, HEAD COVER 1	1	1	

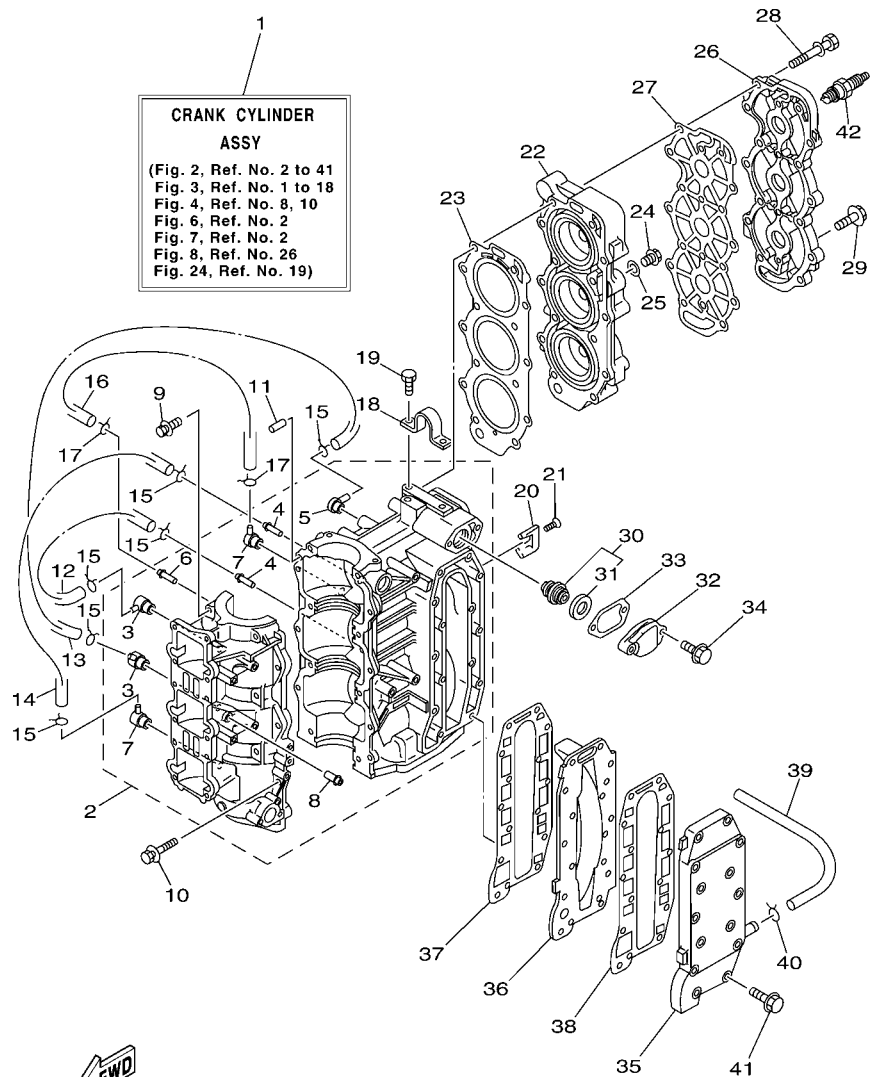


FIG. 2 CYLINDER & CRANKCASE

REF. NO.	PART NO.	DESCRIPTION	ETO	WHTO	REMARKS
28	90119-08015	BOLT, WITH WASHER	14	14	
29	90119-06MA3	BOLT, WITH WASHER	4	4	
30	6E5-12411-30	THERMOSTAT	1	1	
31	688-12412-00	.SEAL, THERMOSTAT	1	1	
32	6H4-12413-00-1S	COVER, THERMOSTAT	1	1	
33	6J8-12414-A0	GASKET, COVER	1	1	
34	90119-06MA3	BOLT, WITH WASHER	2	2	
35	6H4-41113-00-1S	OUTER COVER, EXHAUST	1	1	
36	6H4-41111-00-1S	INNER COVER, EXHAUST	1	1	
37	6H4-41112-A0	GASKET, EXHAUST INNER COVER	1	1	
38	6H4-41114-A0	GASKET, EXHAUST OUTER COVER	1	1	
39	90445-09M37	HOSE (L240)	1	1	
40	90467-08004	CLIP	1	1	
41	90119-06MA5	BOLT, WITH WASHER	13	13	
42	94702-00271	PLUG, SPARK (NGK BR7HS-10)	3	3	40V
	94702-00160	PLUG, SPARK (NGK B8HS-10)	3		50-FOR USA
	94702-00247	PLUG, SPARK (NGK BR8HS-10)	3	3	50H-FOR OCE

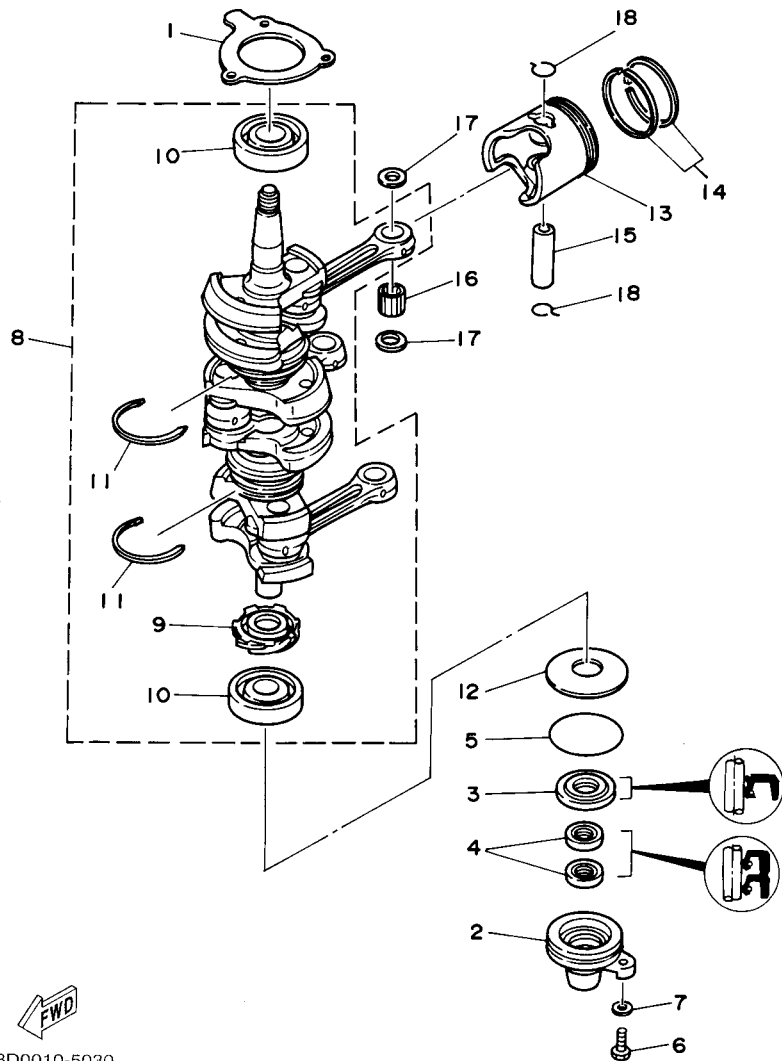
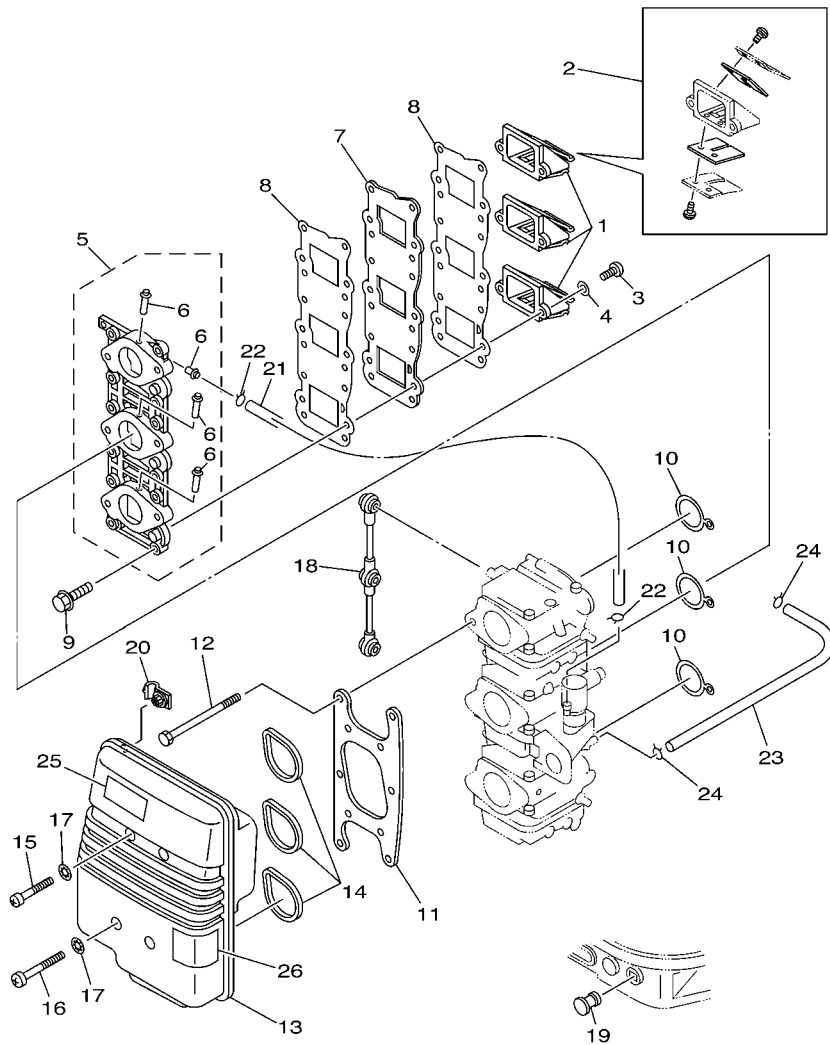


FIG. 3 CRANKSHAFT & PISTON

REF. NO.	PART NO.	DESCRIPTION	ETO	WHTO	REMARKS
1	6H4-15369-A1	GASKET, OIL SEAL HOUSING	1	1	
2	6H4-15396-03-5B	HOUSING, OIL SEAL	1	1	
3	93102-25M28	OIL SEAL	1	1	
4	93104-16M01	OIL SEAL	2	2	
5	93210-58M21	O-RING	1	1	
6	97095-06020	BOLT	1	1	
7	92995-06600	WASHER	1	1	
8	6H4-11400-14	CRANKSHAFT ASSY	1	1	
9	6H4-11536-00	.GEAR, DRIVE	1	1	
10	93306-305U8	.BEARING	2	2	
11	93440-62057	.CIRCLIP	2	2	
12	90201-50306	WASHER, PLATE	1	1	
13	6H4-11631-01-95	PISTON (STD)	3	3	
	6H4-11635-01	PISTON (0.25MM O/S)	3	3	AP
	6H4-11636-01	PISTON (0.50MM O/S)	3	3	AP
14	63D-11603-00	PISTON RING SET (STD)	3	3	
	63D-11604-00	PISTON RING SET (0.25MM O/S)	3	3	AP
	63D-11605-00	PISTON RING SET (0.50MM O/S)	3	3	AP
15	648-11633-00	PIN, PISTON	3	3	
16	93602-20M02	PIN, DOWEL	93	93	
17	6H4-11641-00	WASHER, PISTON PIN	6	6	
18	6H4-11634-01	CLIP, PISTON PIN	6	6	

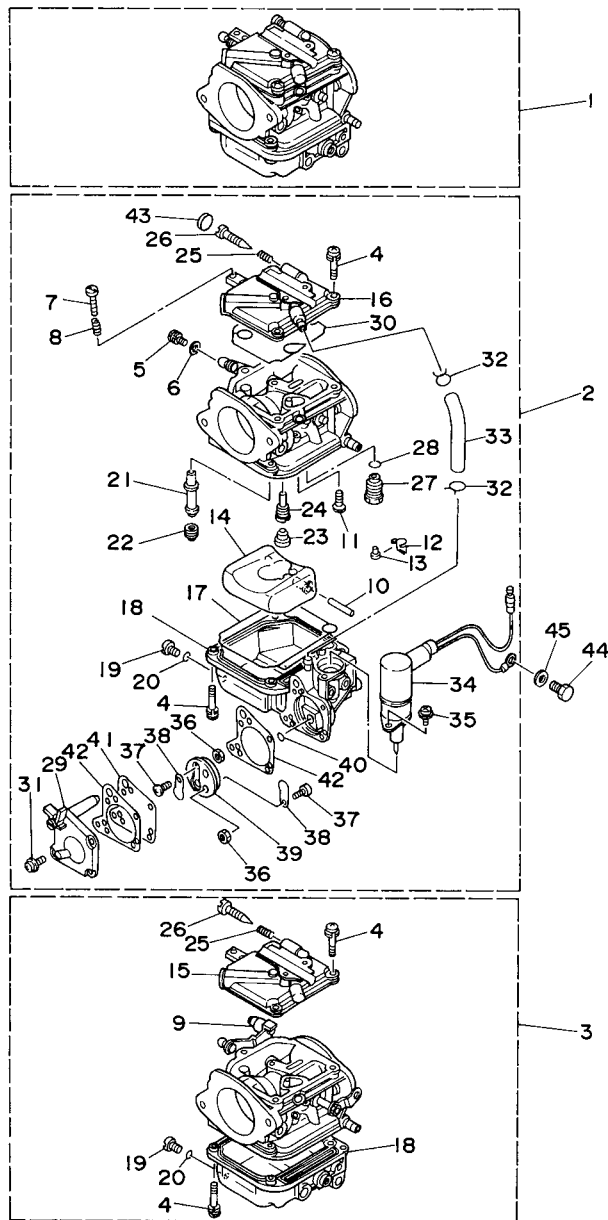
FWD
63D0010-5030



63D3010-2040

FIG. 4 INTAKE

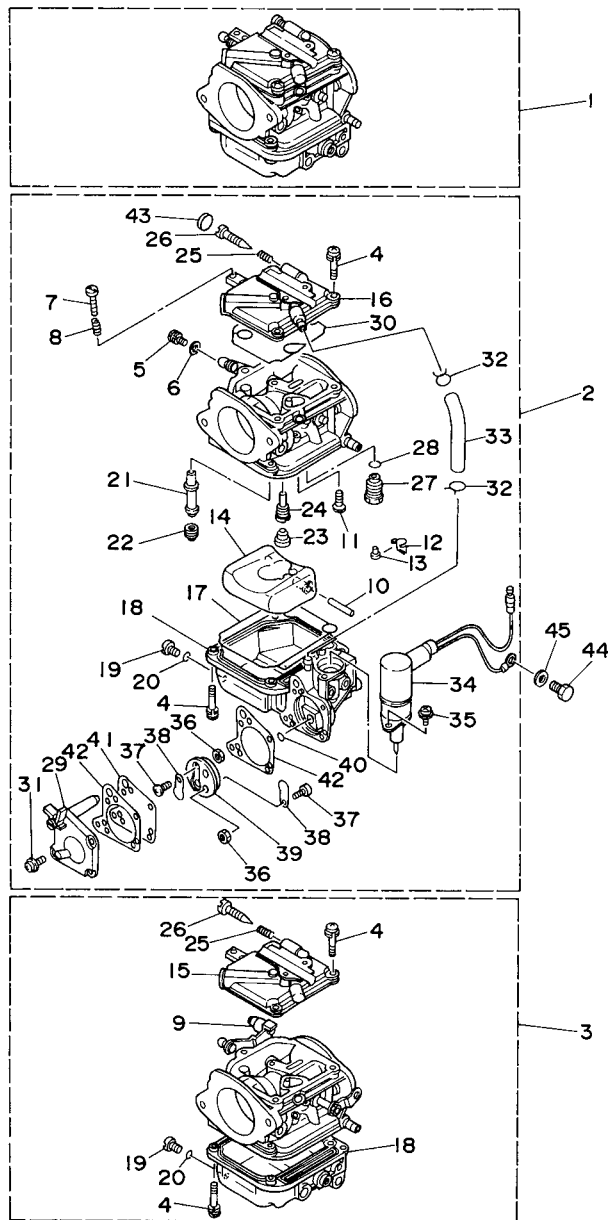
REF. NO.	PART NO.	DESCRIPTION	ETO	WHTO		REMARKS
1	6H5-13610-00	REED VALVE ASSY	3	3		
2	6H4-W0004-00	.REED SET	1	1		
3	97880-05014	SCREW, PAN HEAD	6	6		
4	92990-05600	WASHER, PLATE	6	6		
5	6H4-13641-12-94	MANIFOLD 1	1	1		
6	6H1-14485-00	.PIPE, JOINT	4	4		
7	6H4-13624-01-94	PLATE, REED VALVE	1	1		
8	6H4-13621-A1	GASKET, VALVE SEAT	2	2		
9	90119-06MA2	BOLT, WITH WASHER	12	12		
10	6H4-14198-01	GASKET	3	3		
11	6H4-14406-00	HINGE	1	1		
12	97095-06095	BOLT	6	6		
13	6H4-14431-02	SILENCER, INTAKE 1	1			
	6H4-14431-13	SILENCER, INTAKE 1		1		
14	6H3-14457-01	SEAL	3	3		
15	97885-06040	SCREW, PAN HEAD	2	2		
16	97885-06055	SCREW, PAN HEAD	2	2		
17	90209-06M05	WASHER	4	4		
18	6H4-41217-01	ROD, ACCEL. LEVER	1	1		
19	6G1-42748-00	GROMMET	1	1		
20	90464-06M19	CLAMP		1		
21	90445-07MA5	HOSE (L150)	1	1		
22	90467-06016	CLIP	2	2		
23	6H3-14349-00	PIPE	1	1		
24	90467-08004	CLIP	2	2		
25	6A1-83625-41	MARK 5	1	1		
26	6H1-85711-60	MARK, CAUTION	1	1		



FWD
62X6100-C050

FIG. 5 CARBURETOR

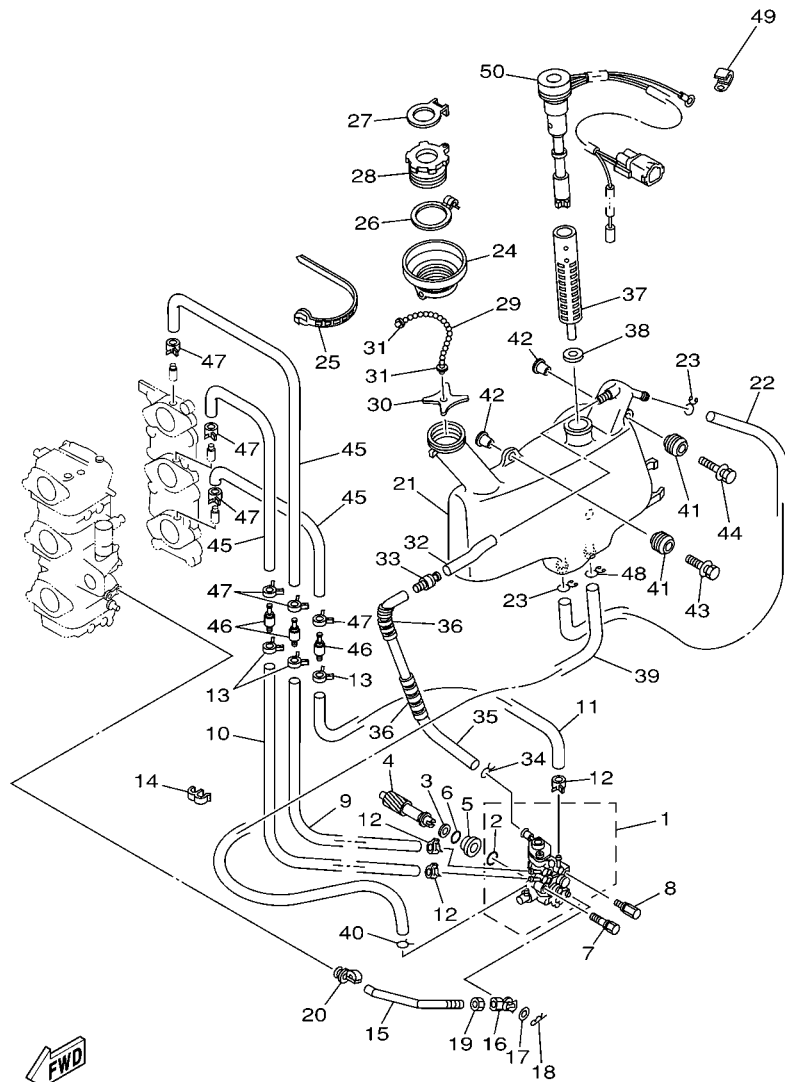
REF. NO.	PART NO.	DESCRIPTION	ETO	WHTO	REMARKS
1	63D-14301-00	CARBURETOR ASSY 1	1	1	40V
	62X-14301-10	CARBURETOR ASSY 1	1		50-FOR USA
	62X-14301-00	CARBURETOR ASSY 1	1	1	50H-FOR OCE
2	63D-14302-00	CARBURETOR ASSY 2	1	1	40V
	62X-14302-10	CARBURETOR ASSY 2	1		50-FOR USA
	62X-14302-00	CARBURETOR ASSY 2	1	1	50H-FOR OCE
3	63D-14303-00	CARBURETOR ASSY 3	1	1	40V
	62X-14303-10	CARBURETOR ASSY 3	1		50-FOR USA
	62X-14303-00	CARBURETOR ASSY 3	1	1	50H-FOR OCE
4	97980-04114	.SCREW, WITH WASHER	21	21	
5	6K5-14592-00	.SCREW	3	3	
6	90201-05652	.WASHER, PLATE	3	3	
7	63V-14523-00	.SCREW, STOP	1	1	#2
8	90501-10326	.SPRING, COMPRESSION	1	1	#2
9	6H2-14578-00	.COLLAR	1	1	#3
10	6H4-14548-00	.PIN, FLOAT ARM	3	3	
11	98580-04008	.SCREW, PAN HEAD	3	3	
12	663-14159-00	.CLIP	3	3	
13	676-14186-00	.PIN, FLOAT	3	3	
14	6H4-14985-01	.FLOAT	3	3	
15	6H4-14146-30	.PLATE	2		50-FOR USA-#1,3
	6H4-14146-10	.PLATE	2	2	#1,3
16	6H3-14146-20	.PLATE	1		50-FOR USA-#2
	6H3-14146-10	.PLATE	1	1	#2
17	6H4-14984-00	.GASKET, FLOAT CHAMBER	3	3	
18	6H4-14980-00	.BODY, FLOAT CHAMBER	2	2	#1,3
	6H3-14980-10	.BODY, FLOAT CHAMBER	1	1	#2



FWD
62X6100-C050

FIG. 5 CARBURETOR

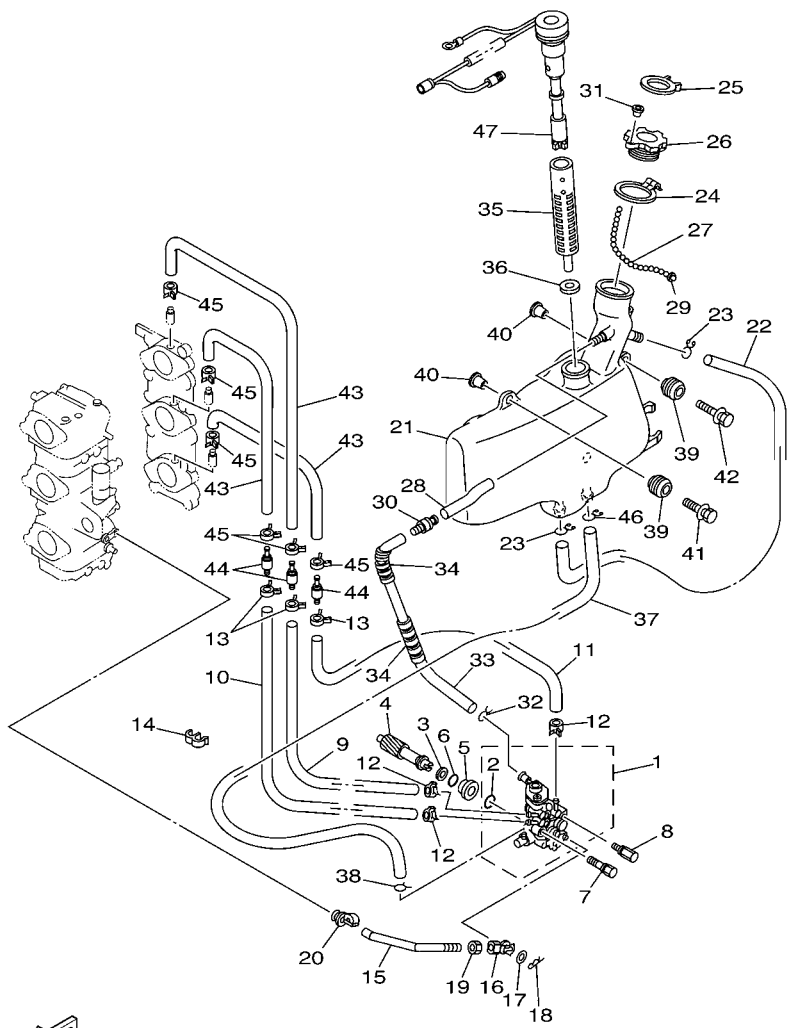
REF. NO.	PART NO.	DESCRIPTION	ETO	WHTO	REMARKS
19	6H3-14992-00	.SCREW, DRAIN	3	3	
20	93210-04230	.O-RING	3	3	
21	63D-14947-00	.JET, NEEDLE	3	3	40V
	62X-14947-00	.JET, NEEDLE	3	3	50,50H
22	676-14943-30	.JET, MAIN (#115)	2	2	40V-#1,3
	63D-14943-81	.JET, MAIN (#118)	1	1	40V-#2
	676-14943-33	.JET, MAIN (#130)	3	3	50,50H
23	676-14966-00	.CAP	3	3	
24	6H4-14948-11	.JET (#60)	3	3	40V
	6H4-14948-12	.JET (#62)	3	3	50,50H
25	679-14555-00	.SPRING	3	3	
26	692-14923-00	.SCREW, PILOT	3	3	
27	6H4-14590-01	.NEEDLE VALVE ASSY	3	3	
28	93210-04228	.O-RING	3	3	
29	6H3-24452-10	.COVER	1	1	#2
30	6H4-14147-00	.O-RING	3	3	
31	6H4-14567-00	.SCREW	4	4	#2
32	6H3-14137-00	.CLIP	2	2	#2
33	6H3-14349-00	.PIPE	1	1	#2
34	63D-14380-00	.PRIME STARTER ASSY	1	1	#2
35	97803-04010	.SCREW, PAN HEAD	2	2	#2
36	95380-03600	.NUT	2	2	#2
37	98980-03006	.SCREW, BIND	2	2	#2
38	6L5-24421-00	.VALVE, CHECK	2	2	#2
39	6H4-24413-00	.BODY 2	1	1	#2
40	6H4-24486-00	.O-RING	1	1	#2
41	6H3-24411-10	.DIAPHRAGM	1	1	#2



63B0100-0070

FIG. 6 OIL PUMP 1

REF. NO.	PART NO.	DESCRIPTION	ETO	WHTO	REMARKS
1	63D-13200-00	OIL INJECTION PUMP ASSY	1		
2	93210-19MA7	.O-RING	1		
3	90201-08M93	WASHER, PLATE	1		
4	6H4-11537-01	GEAR, DRIVEN	1		
5	6H1-13117-01	COLLAR, DISTANCE	1		
6	93210-13M04	O-RING	1		
7	90109-06M39	BOLT	1		
8	90109-06M40	BOLT	1		
9	90445-07M44	HOSE (L250)	1		
10	90445-07M23	HOSE (L408)	1		
11	90445-07MA6	HOSE (L90)	1		
12	90468-07M02	CLIP	3		
13	90468-07M02	CLIP	3		
14	90464-07M20	CLAMP	1		
15	6H4-41241-01	ROD, LINK	1		
16	6H1-41237-00	JOINT, LINK	1		
17	90202-05088	WASHER, PLATE	1		
18	90468-05M03	CLIP	1		
19	95380-05600	NUT	1		
20	6E9-41237-00	JOINT, LINK	1		
21	63D-21707-00	OIL TANK COMP.	1		
22	90445-11M15	HOSE (L360)	1		
23	90467-11M08	CLIP	2		
24	6H4-21752-00	TUBE, FILLER 1	1		
25	90465-13M30	CLAMP	1		
26	63D-2175R-00	HOOK, BAND	1		
27	63D-2176M-00	HOOK	1		



63B0100-0060

FIG. 7 OIL PUMP 2

REF. NO.	PART NO.	DESCRIPTION	ETO	WHTO	REMARKS
1	63D-13200-00	OIL INJECTION PUMP ASSY		1	
2	93210-19MA7	.O-RING		1	
3	90201-08M93	WASHER, PLATE		1	
4	6H4-11537-01	GEAR, DRIVEN		1	
5	6H1-13117-01	COLLAR, DISTANCE		1	
6	93210-13M04	O-RING		1	
7	90109-06M39	BOLT		1	
8	90109-06M40	BOLT		1	
9	90445-07M44	HOSE (L250)		1	
10	90445-07M23	HOSE (L408)		1	
11	90445-07MA6	HOSE (L90)		1	
12	90468-07M02	CLIP		3	
13	90468-07M02	CLIP		3	
14	90464-07M20	CLAMP		1	
15	6H4-41241-01	ROD, LINK		1	
16	6H1-41237-00	JOINT, LINK		1	
17	90202-05088	WASHER, PLATE		1	
18	90468-05M03	CLIP		1	
19	95380-05600	NUT		1	
20	6E9-41237-00	JOINT, LINK		1	
21	63D-21707-10	OIL TANK COMP.		1	
22	90445-11M15	HOSE (L360)		1	
23	90467-11M08	CLIP		2	
24	63D-2175R-00	HOOK, BAND		1	
25	63D-2176M-00	HOOK		1	
26	6H4-21770-00	OIL TANK CAP ASSY		1	
27	6H4-24633-00	CHAIN, BALL		1	

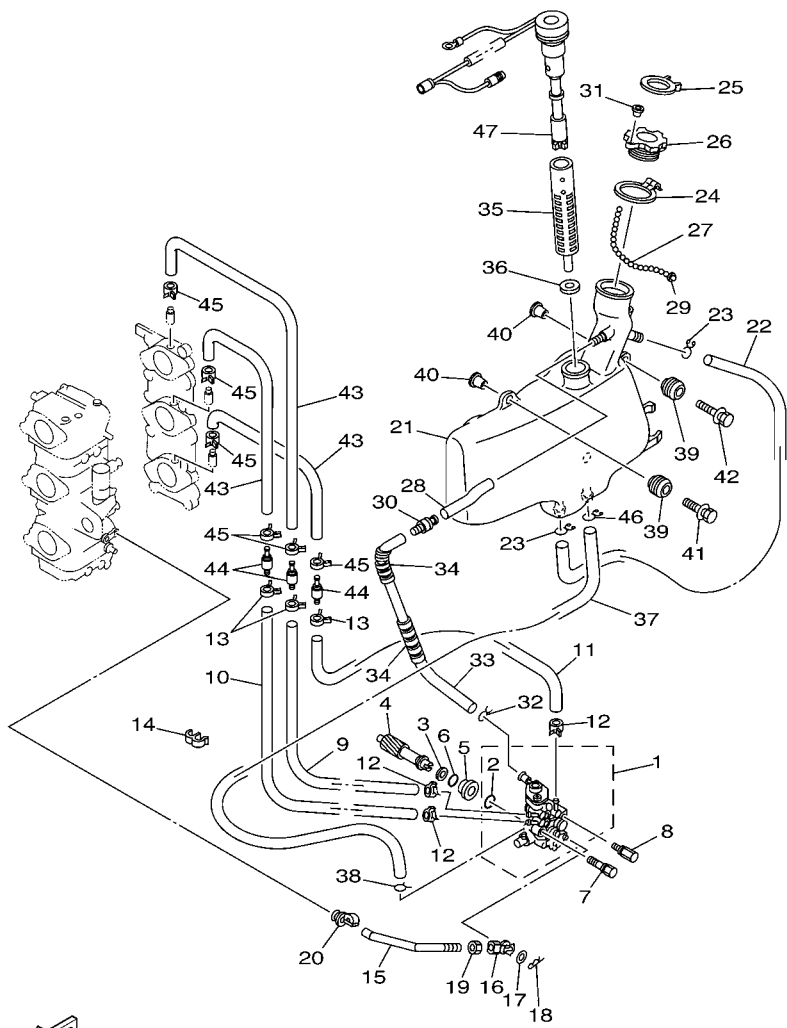


FIG. 7 OIL PUMP 2

REF. NO.	PART NO.	DESCRIPTION	ETO	WHTO	REMARKS
28	90445-11M23	HOSE (L85)		1	
29	6H4-21757-00	WASHER, SPECIAL 1		1	
30	63D-21744-00	BREATHER		1	
31	6H4-24634-00	HOOK, CHAIN BALL		1	
32	90467-10M04	CLIP		1	
33	90445-11M17	HOSE (L300)		1	
34	90446-10M01	HOSE (L60)		2	
35	6J8-13411-00	STRAINER, OIL		1	
36	6J8-13414-00	GASKET, STRAINER COVER		1	
37	6L2-13416-00	PIPE, OIL 1		1	
38	90467-08004	CLIP		1	
39	6A0-82317-00	DAMPER, IGNITION COIL		3	
40	90387-06119	COLLAR		3	
41	90119-06M65	BOLT, WITH WASHER		2	
42	90119-06M67	BOLT, WITH WASHER		1	
43	90445-07M87	HOSE (L110)		3	
44	6E9-13183-70	VALVE, CHECK		3	
45	90468-07M02	CLIP		6	
46	90467-11M08	CLIP		1	
47	63D-85720-10	OIL LEVEL GAUGE ASSY		1	

FWD
63B0100-0060

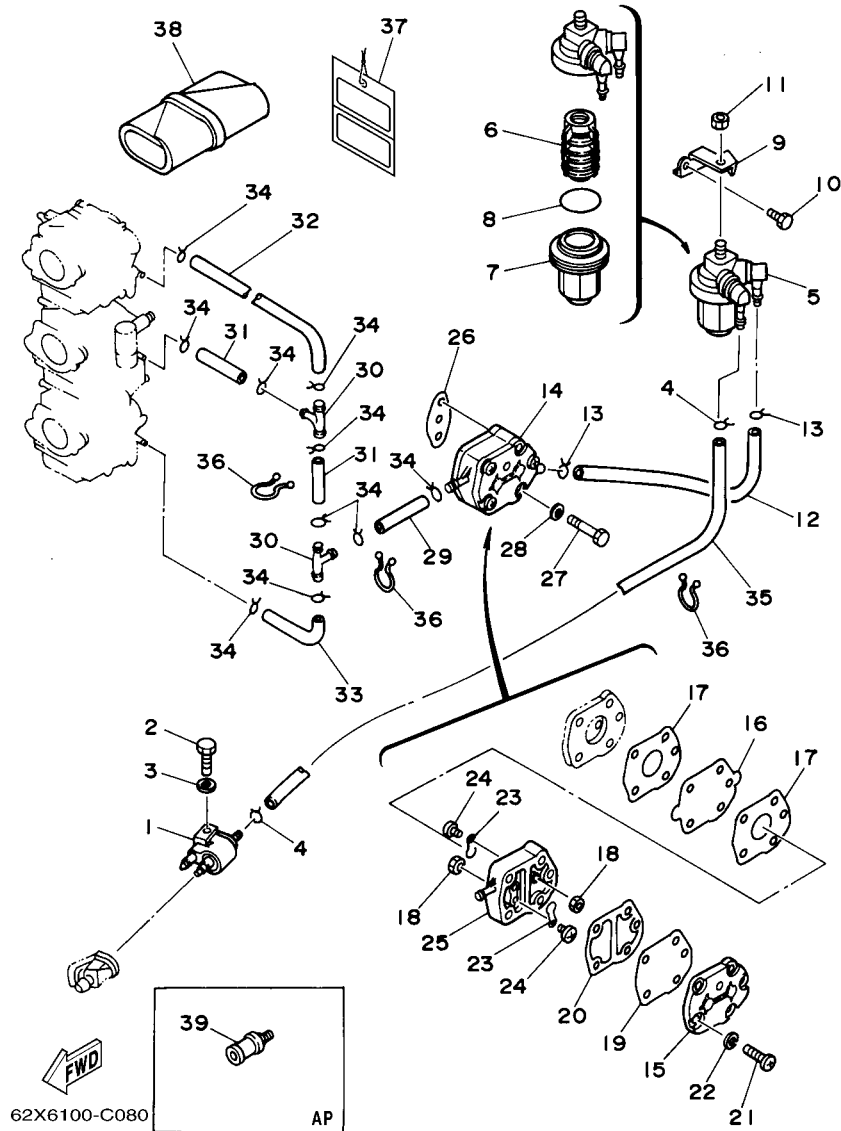
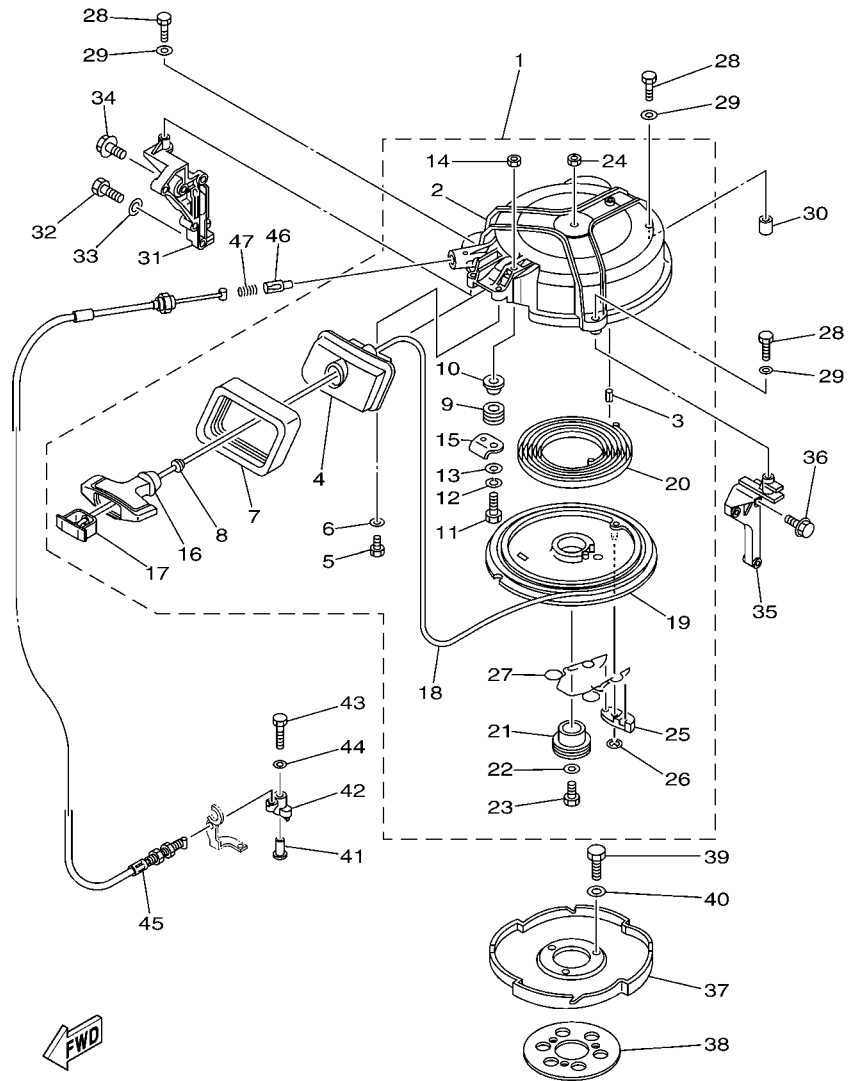


FIG. 8 FUEL 1

REF. NO.	PART NO.	DESCRIPTION	ETO	WHTO	REMARKS
1	6G1-24304-02	FUEL PIPE JOINT COMP. 1	1	1	
2	97095-06025	BOLT	1	1	
3	92995-06600	WASHER	1	1	
4	90467-08004	CLIP	2	2	
5	61N-24560-00	FILTER ASSY	1	1	
6	61N-24563-00	.ELEMENT, FILTER	1	1	
7	61N-24521-00	.CUP, FILTER	1	1	
8	93210-32738	.O-RING	1	1	
9	6H4-24566-02	BRACKET, FILTER	1	1	
10	97013-06014	BOLT	1	1	
11	95380-08600	NUT	1	1	
12	6H4-24314-00	PIPE 4	1	1	
13	90467-08004	CLIP	2	2	
14	692-24410-00	FUEL PUMP ASSY	1	1	
15	6A0-24413-00	.BODY 2	1	1	
16	692-24411-00	.DIAPHRAGM	1	1	
17	648-24434-01	.GASKET, BODY	2	2	
18	95380-03600	.NUT	2	2	
19	663-24411-00	.DIAPHRAGM	1	1	
20	648-24435-02	.GASKET, BODY 2	1	1	
21	98503-05028	.SCREW, PAN HEAD	3	3	
22	92990-05100	.WASHER, SPRING	3	3	
23	6A0-24421-01	.VALVE, CHECK	2	2	
24	6A0-14325-00	.SCREW, PAN HEAD	2	2	
25	6A0-24412-02	.BODY 1	1	1	
26	650-24431-A0	GASKET, FUEL PUMP 1	1	1	
27	97095-06040	BOLT	2	2	

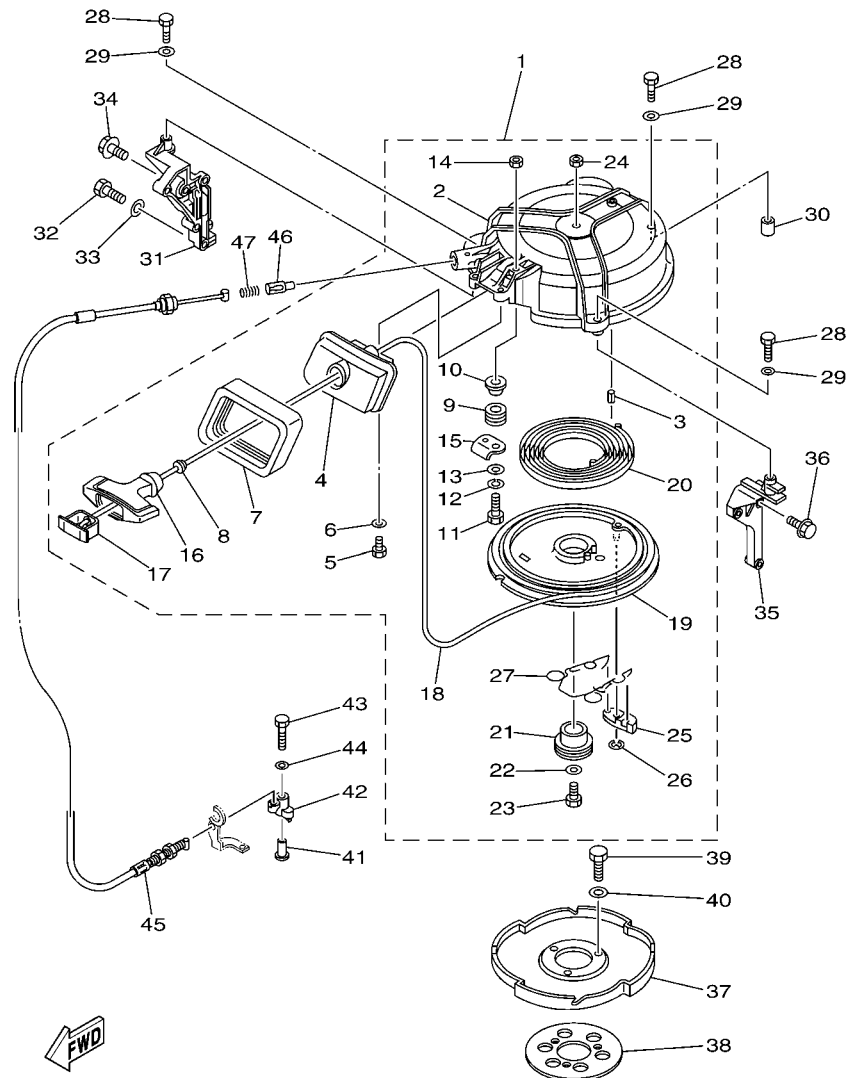


62X6100-C100

*1: CUT FROM 50M ROLLS, PART NO.90890-44373, CUTTING LENGTH 2.095M

FIG. 10 STARTER

REF. NO.	PART NO.	DESCRIPTION	ETO	WHTO	REMARKS
1	6H4-15710-04-4D	STARTER ASSY		1	
2	6H4-15711-02-94	.CASE, STARTER		1	
3	91690-40018	.PIN, SPRING		1	
4	6H4-15758-01-4D	.GUIDE, ROPE		1	
5	97095-06016	.BOLT		2	
6	92995-06600	.WASHER		2	
7	6H4-15762-00	.SEAL, RUBBER 2		1	
8	6A0-15789-00	.DAMPER		1	
9	6F5-15752-00	.ROLLER, WIRE		1	
10	90387-06M69	.COLLAR		1	
11	97013-06030	.BOLT		1	
12	92903-06100	.WASHER, SPRING		1	
13	92903-06600	.WASHER, PLATE		1	
14	95380-06600	.NUT, HEXAGON		1	
15	6H4-15787-01	.STAY		1	
16	689-15755-01	.HANDLE, STARTER		1	
17	6F5-15779-02	.COVER		1	
18	*	.WIRE (L:2095MM)		1	*1
19	6H4-15714-00	.DRUM, SHEAVE		1	
20	90510-08002	.SPRING, SPIRAL		1	
21	6H4-15717-01	.SHAFT, STARTER		1	
22	90201-06060	.WASHER, PLATE		1	
23	97095-06020	.BOLT		1	
24	95380-06600	.NUT, HEXAGON		1	
25	676-15741-03	.PAWL, DRIVE		1	
26	93430-06M02	.CIRCLIP		1	
27	6H4-15705-00	.SPRING, DRIVE PAWL		1	

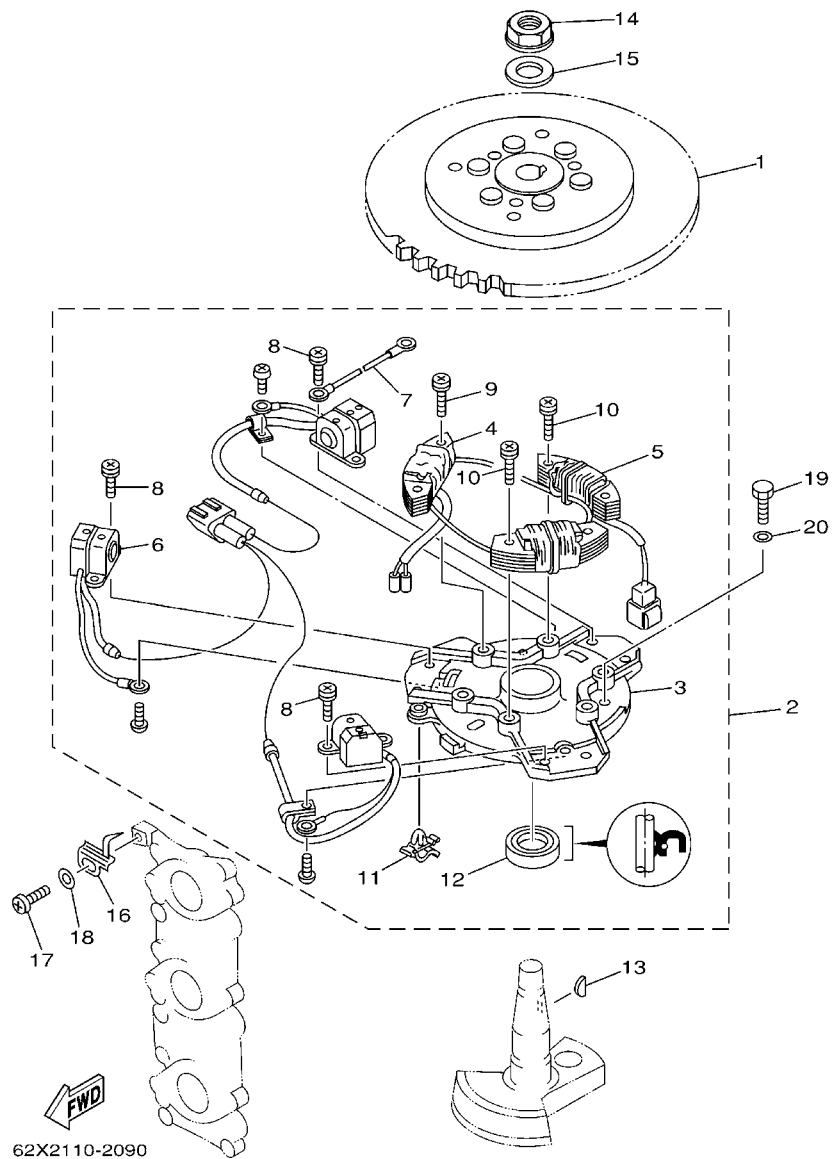


*1: CUT FROM 50M ROLLS, PART NO. 90890-44373, CUTTING LENGTH 2.095M

FIG. 10 STARTER

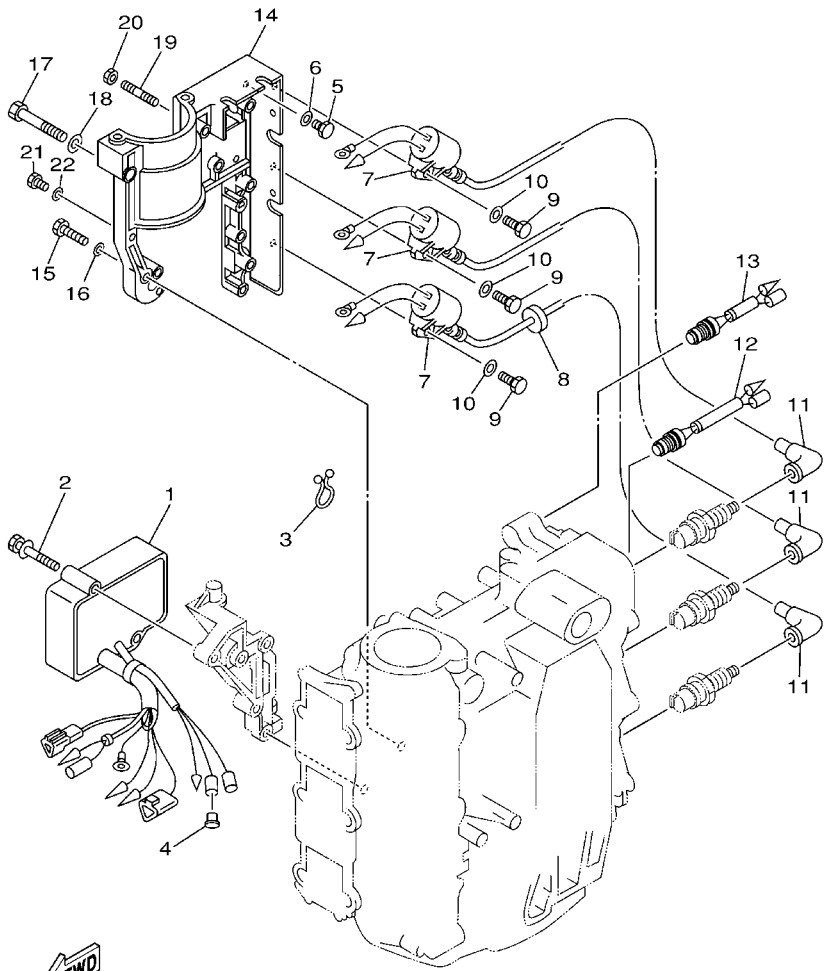
REF. NO.	PART NO.	DESCRIPTION	ETO	WHTO	REMARKS
28	97095-06035	BOLT		3	
29	92995-06600	WASHER		3	
30	99530-10014	PIN, DOWEL		1	
31	63D-15771-00-4D	STAY 1		1	
32	97013-08025	BOLT		2	
33	92903-08600	WASHER, PLATE		2	
34	90119-06MA2	BOLT, WITH WASHER		1	
35	6H4-15772-02-94	STAY 2		1	
36	90119-06MA3	BOLT, WITH WASHER		3	
37	6H4-15723-01-94	PULLEY, STARTER		1	
38	6J8-81365-A0	GASKET, HOLE COVER		1	
39	97013-08020	BOLT		3	
40	92903-08600	WASHER, PLATE		3	
41	90387-06M66	COLLAR		1	
42	63D-15746-00	ARM		1	
43	97095-06040	BOLT		1	
44	92995-06600	WASHER		1	
45	63D-15770-00	CABLE COMP., STARTER STOP		1	
46	656-15748-00	PLUNGER, STARTER STOP		1	
47	90501-10227	SPRING, COMPRESSION		1	

FIG. 11 GENERATOR



62X2110-2090

REF. NO.	PART NO.	DESCRIPTION	ETO	WHTO	REMARKS
1	63D-85550-00	ROTOR ASSY	1	1	
2	63D-85560-10	BASE ASSY	1	1	
3	6H4-15359-04-94	.HOUSING, OIL SEAL	1	1	
4	63D-85520-01	.COIL, CHARGE	1	1	
5	63D-85533-10	.COIL, LIGHTING	1	1	
6	63D-85580-00	.COIL, PULSER	1	1	
7	6H4-83354-00	.WIRE, EARTH LEAD 1	1	1	
8	63D-81345-00	.SCREW, WITH WASHER (M5X12)	6	6	
9	63D-81345-10	.SCREW, WITH WASHER (M6X25)	2	2	
10	63D-81345-20	.SCREW, WITH WASHER (M6X30)	4	4	
11	90464-03M15	.CLAMP	1	1	
12	93102-23096	.OIL SEAL	1	1	
13	6H4-11545-00	KEY, WOODRUFF	1	1	
14	90179-16M05	NUT	1	1	
15	90201-16M44	WASHER, PLATE	1	1	
16	6H4-81332-00	PLATE, TIMING	1	1	
17	97885-05010	SCREW, PAN HEAD	1	1	
18	92995-05600	WASHER	1	1	
19	97013-06018	BOLT	3	3	
20	92903-06600	WASHER, PLATE	3	3	



62X2110-2100

FIG. 12 ELECTRICAL 1

REF. NO.	PART NO.	DESCRIPTION	ETO	WHTO	REMARKS
1	63D-85540-03	C.D.I. UNIT ASSY	1	1	
2	90119-06M51	BOLT, WITH WASHER	2	2	
3	90464-15M11	CLAMP	1	1	
4	703-82119-00	COVER, LEAD WIRE	1		50,50H
5	97095-06014	BOLT	1	1	
6	92995-06600	WASHER	1	1	
7	6H5-85570-00	IGNITION COIL ASSY	3	3	
8	90480-25161	GROMMET	1	1	
9	97095-06020	BOLT	3	3	
10	92995-06600	WASHER	3	3	
11	663-82370-01	PLUG CAP ASSY	3		FOR USA
	6G1-82370-21	PLUG CAP ASSY	3	3	FOR OCE
12	689-82560-00	THERMO SWITCH ASSY	1	1	
13	6H4-82560-00	THERMO SWITCH ASSY	1	1	
14	6H4-81822-02-98	BRACKET, STARTING MOTOR	1	1	
15	97095-06030	BOLT	4	4	
16	92995-06600	WASHER	4	4	
17	97013-08050	BOLT	1	1	
18	92903-08600	WASHER, PLATE	1	1	
19	95670-06640	BOLT, STUD	1	1	
20	90179-06M24	NUT	1	1	
21	97095-06014	BOLT	2	2	
22	92995-06600	WASHER	2	2	

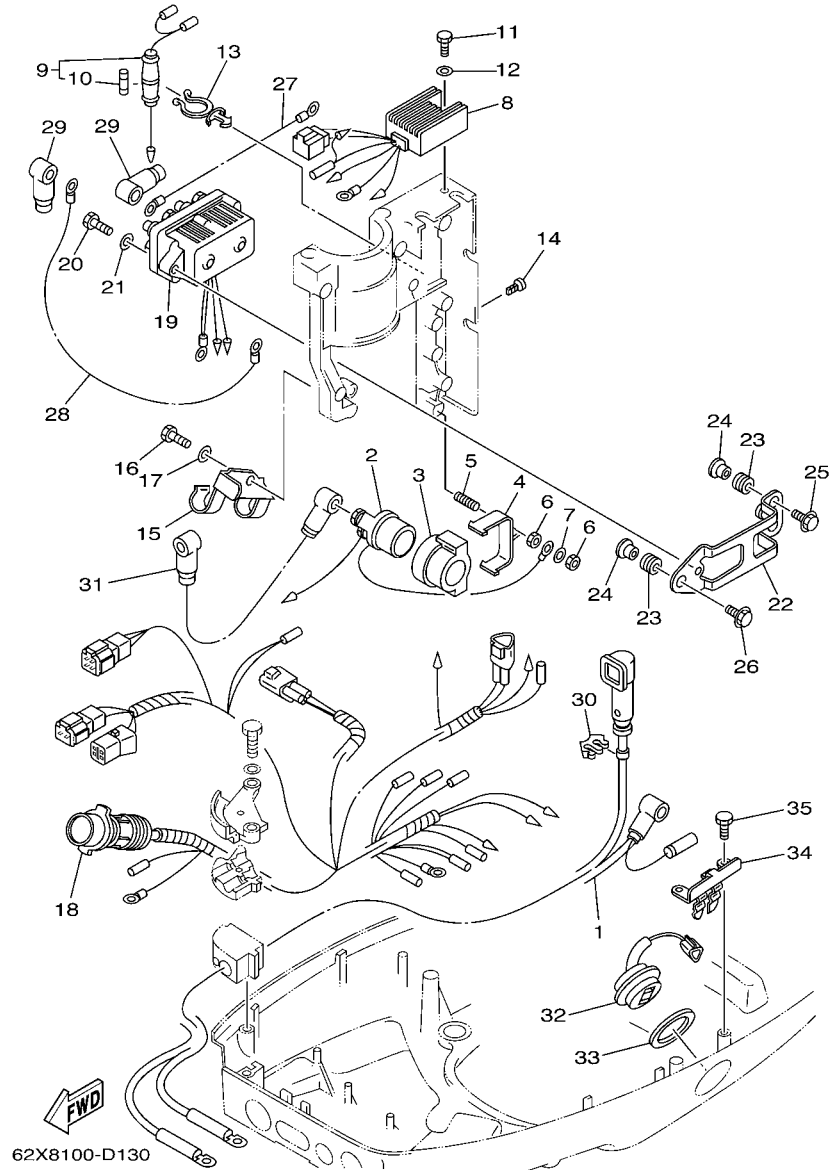


FIG. 13 ELECTRICAL 2

REF. NO.	PART NO.	DESCRIPTION	ETO	WHTO	REMARKS
1	63D-82105-U0	WIRE HARNESS	1	1	
2	6G1-81941-10	STARTER RELAY ASSY	1	1	
3	6H4-81952-00	HOLDER, RELAY	1	1	
4	6H4-81945-00	PLATE, SWITCH FITTING	1	1	
5	90116-06M22	BOLT, STUD	1	1	
6	95380-06600	NUT, HEXAGON	2	2	
7	92990-06600	WASHER, PLATE	1	1	
8	6H2-81960-10	RECTIFIER & REGULATOR ASSY	1	1	
9	6H4-82150-00	FUSE HOLDER ASSY	1	1	
10	663-82151-00	.FUSE (12V-20A)	1	1	
11	97095-06014	BOLT	1	1	
12	92995-06600	WASHER	1	1	
13	90464-15M27	CLAMP	1	1	
14	90338-05M11	PLUG	2	2	
15	63D-82594-00	CLAMP	1	1	
16	97095-06012	BOLT	1	1	
17	92995-06600	WASHER	1	1	
18	63D-82590-40	WIRE HARNESS ASSY (10P)	1		FOR USA
	63D-82590-20	WIRE HARNESS ASSY (10P)	1	1	FOR OCE
19	6H1-81950-00	RELAY ASSY	1	1	
20	97095-06025	BOLT	2	2	
21	92995-06600	WASHER	2	2	
22	6H4-81945-20	PLATE, SWITCH FITTING	1	1	
23	90480-13M24	GROMMET	3	3	
24	90387-06M05	COLLAR	3	3	
25	90105-06M15	BOLT, FLANGE	2	2	
26	90105-06M16	BOLT, FLANGE	1	1	

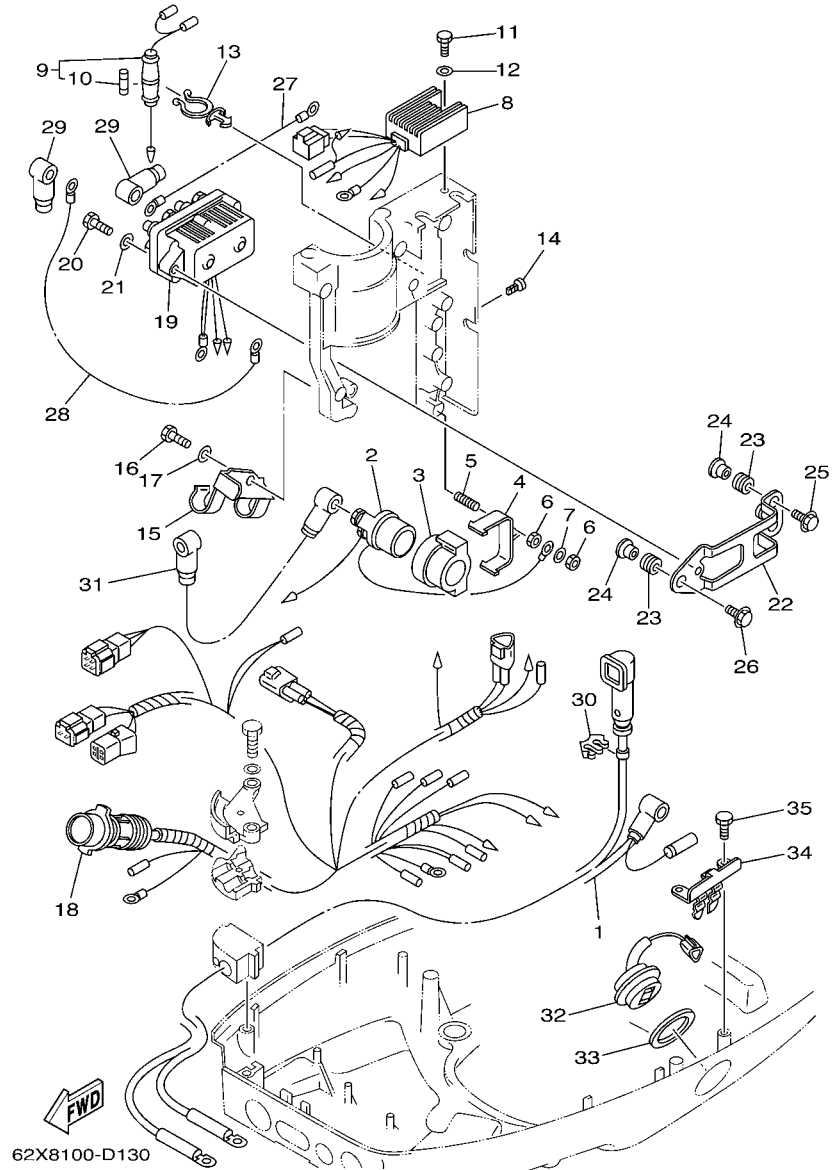


FIG. 13 ELECTRICAL 2

REF. NO.	PART NO.	DESCRIPTION	ETO	WHTO	REMARKS
27	6H5-81949-00	WIRE, LEAD	1	1	
28	61A-81949-00	WIRE, LEAD	1	1	
29	682-82119-01	COVER, LEAD WIRE	4	4	
30	90464-07M20	CLAMP	1	1	
31	6H4-82117-00	WIRE, LEAD	1	1	
32	63D-82563-10	TRIM & TILT SWITCH ASSY	1	1	
33	6E5-82587-00	GASKET	1	1	
34	6R3-83614-00	BRACKET	1	1	
35	97095-06016	BOLT	2	2	

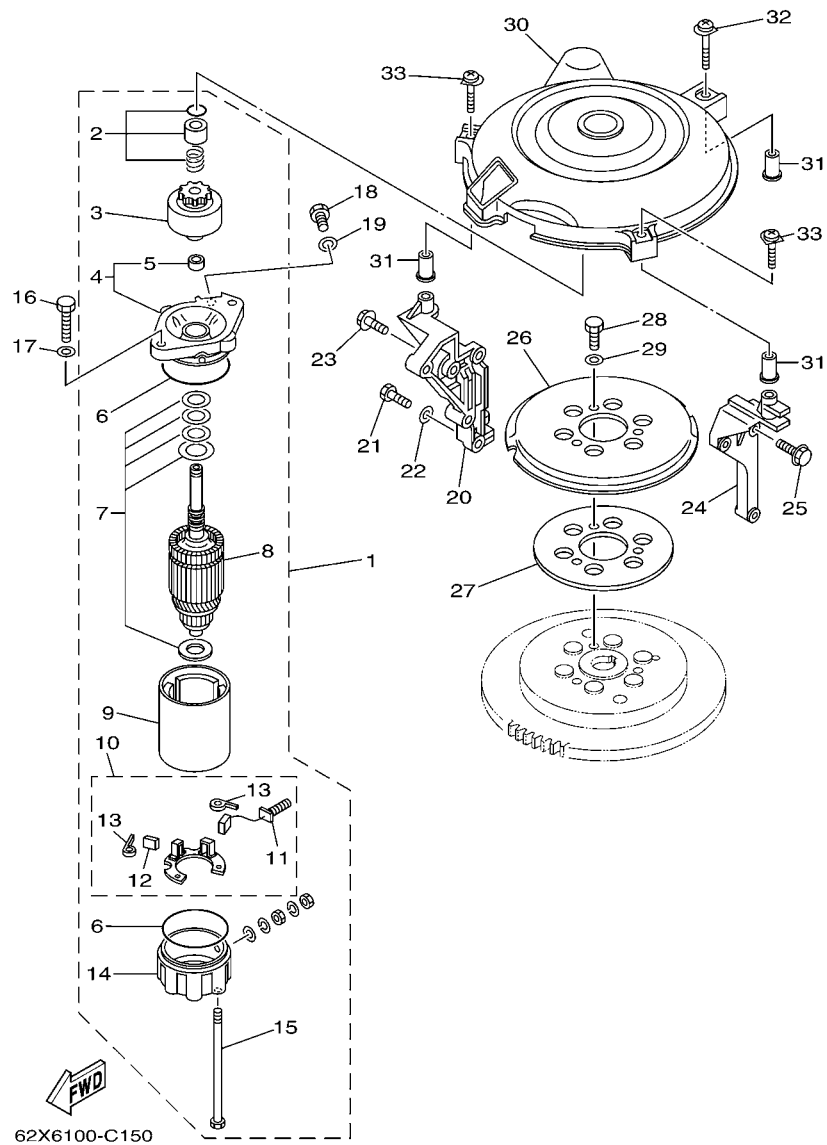
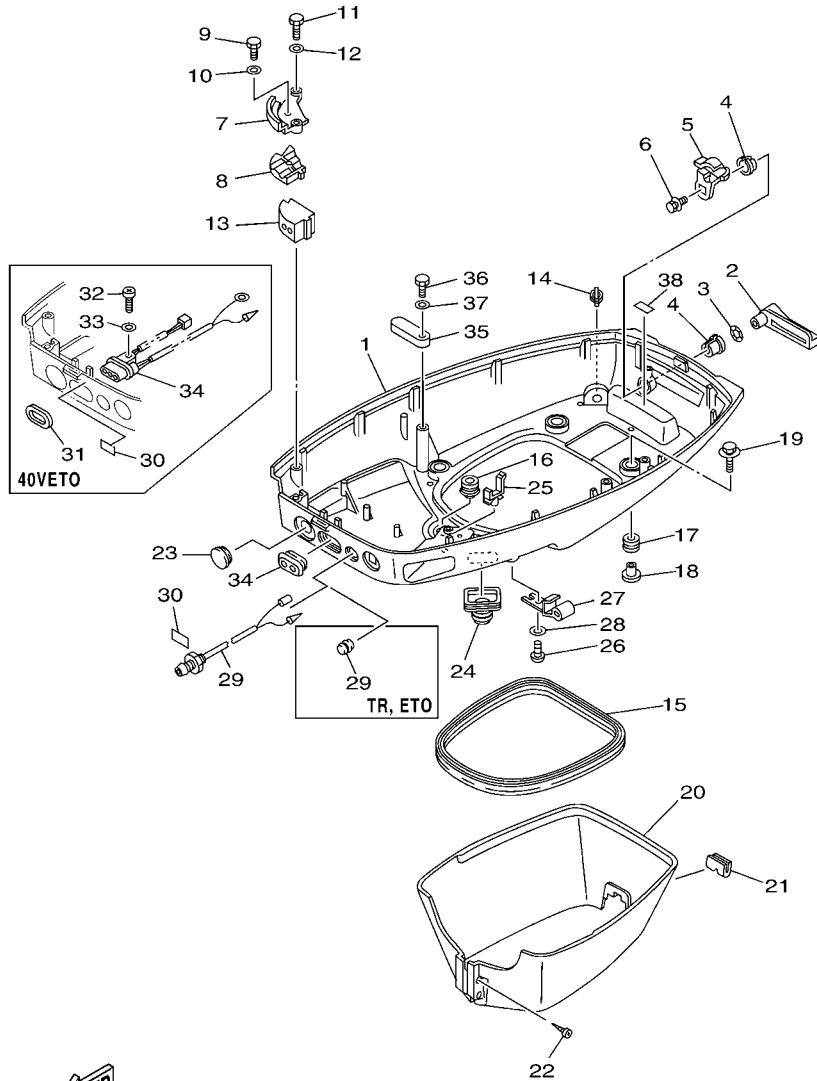


FIG. 14 STARTING MOTOR

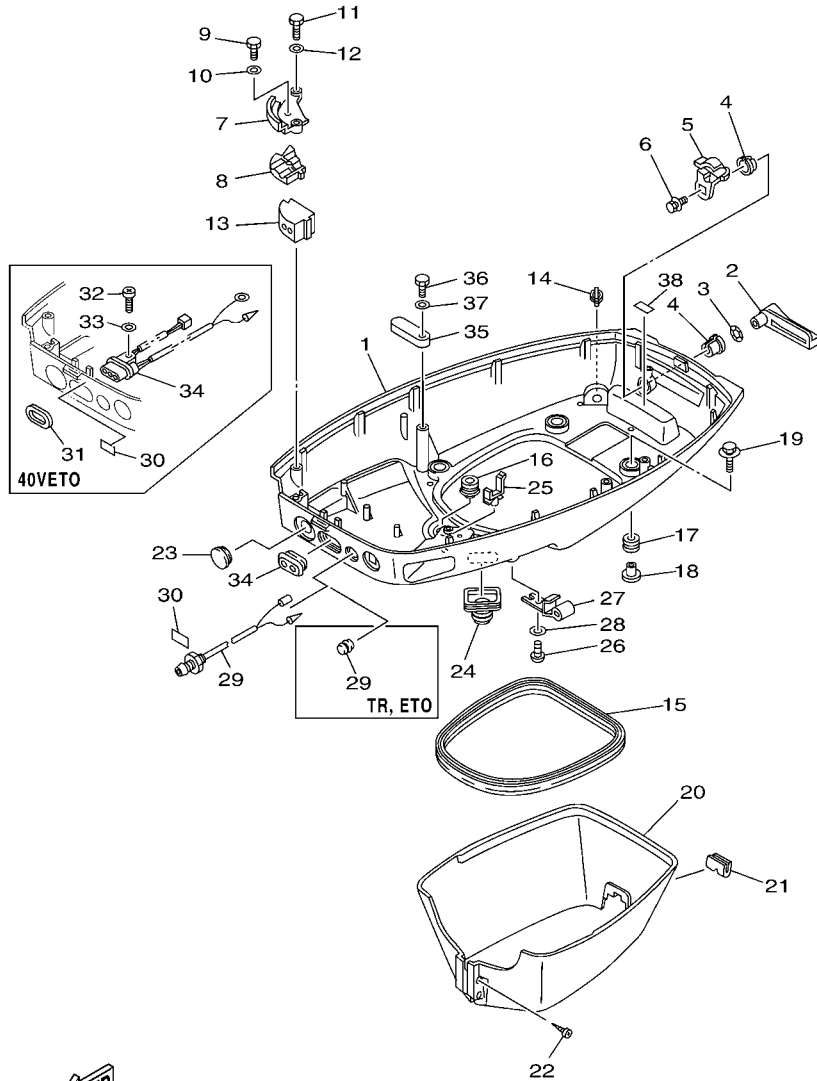
REF. NO.	PART NO.	DESCRIPTION	ETO	WHTO	REMARKS
1	6F5-81800-11	STARTING MOTOR ASSY	1	1	
2	689-81857-11	.PINION STOPPER SET	1	1	
3	689-81807-12	.GEAR ASSY, STARTING MOTOR	1	1	
4	6F5-81830-11	.FRONT BRACKET ASSY	1	1	
5	689-81831-00	..METAL, FRONT	1	1	
6	689-81847-11	.O-RING	2	2	
7	689-81809-11	.WASHER KIT	1	1	
8	689-81850-12	.ARMATURE ASSY	1	1	
9	689-81810-11	.STATOR ASSY	1	1	
10	689-81840-11	.BRUSH HOLDER ASSY	1	1	
11	689-81811-11	..BRUSH 1	1	1	
12	689-81812-11	..BRUSH 2	1	1	
13	689-81813-10	..SPRING, BRUSH	2	2	
14	689-81820-11	.REAR BRACKET ASSY	1	1	
15	689-81826-10	.BOLT	2	2	
16	97013-08030	BOLT	2	2	
17	92903-08600	WASHER, PLATE	2	2	
18	97013-08016	BOLT	1	1	
19	92903-08600	WASHER, PLATE	1	1	
20	63D-15771-00-4D	STAY 1	1		
21	97013-08025	BOLT	2		
22	92903-08600	WASHER, PLATE	2		
23	90119-06MA2	BOLT, WITH WASHER	1		
24	6H4-15772-02-94	STAY 2	1		
25	90119-06MA3	BOLT, WITH WASHER	3		
26	6J8-15723-E1	PULLEY, STARTER	1		
27	6J8-81365-A0	GASKET, HOLE COVER	1		



FWD
62XC100-F150

FIG. 15 BOTTOM COWLING

REF. NO.	PART NO.	DESCRIPTION	ETO	WHTO	REMARKS
1	6H4-42711-25-4D	COWLING, BOTTOM 1	1	1	
2	6H4-42815-00	LEVER, CLAMP	1	1	
3	90206-12052	WASHER, WAVE	1	1	
4	90386-12069	BUSH	2	2	
5	6H4-42816-00	LEVER, CLAMP	1	1	
6	90119-06M73	BOLT, WITH WASHER	1	1	
7	6H4-48531-11-94	BRACKET, REMOTE CONTROL 1	1	1	
8	6H4-48532-11-94	BRACKET, REMOTE CONTROL 2	1	1	
9	97095-05016	BOLT	1	1	
10	92995-05600	WASHER	1	1	
11	97095-06020	BOLT	2	2	
12	92995-06600	WASHER	2	2	
13	6H4-42724-30	GROMMET	1		
	6H4-42724-20	GROMMET		1	
14	6E5-44391-00	NIPPLE, HOSE	1	1	
15	6H4-42716-00	RUBBER, SEAL 1	1	1	
16	6E5-42724-00	GROMMET	1	1	
17	90480-09M21	GROMMET	4	4	
18	90387-06M41	COLLAR	4	4	
19	90119-06M61	BOLT, WITH WASHER	4	4	
20	63D-42741-00-4D	APRON	1	1	
21	63D-42717-00	RUBBER, SEAL 2	1	1	
22	97780-60525	SCREW, TAPPING	2	2	
23	676-42726-00	GROMMET	1	1	
24	688-42726-10	GROMMET	1	1	
25	90464-09M13	CLAMP	1	1	
26	90157-06M01	SCREW, PAN HEAD	1	1	



62XC100-F150

FIG. 15 BOTTOM COWLING

REF. NO.	PART NO.	DESCRIPTION	ETO	WHTO	REMARKS
27	6E5-24367-01	CLAMP, FUEL PIPE 2	1	1	
28	92990-06600	WASHER, PLATE	1	1	
29	6H4-42725-00	GROMMET	1		
	6J8-85410-00	EMERGENCY SIGNAL LIGHT ASSY		1	
30	63D-84342-00	SEAT, EMBLEM	1		40V
	6H4-85415-10	MARK, SIGNAL LAMP		1	
31	6H4-83589-00	GASKET	1		40V
32	97880-06014	SCREW, PAN HEAD	1		40V
33	92990-06600	WASHER, PLATE	1		40V
34	63D-84301-00	PILOT LIGHT ASSY 1	1		40V
	6H3-42727-00	GROMMET	1	1	ETO-50,50H
35	6E5-82588-00	PLATE	1	1	
36	97095-06020	BOLT	1	1	
37	92995-06600	WASHER	1	1	
38	6E7-42791-10	MARK 1	1	1	40V
	6G5-42791-00	MARK 1	1		50-FOR USA
	6G5-42791-10	MARK 1	1	1	50H-FOR OCE

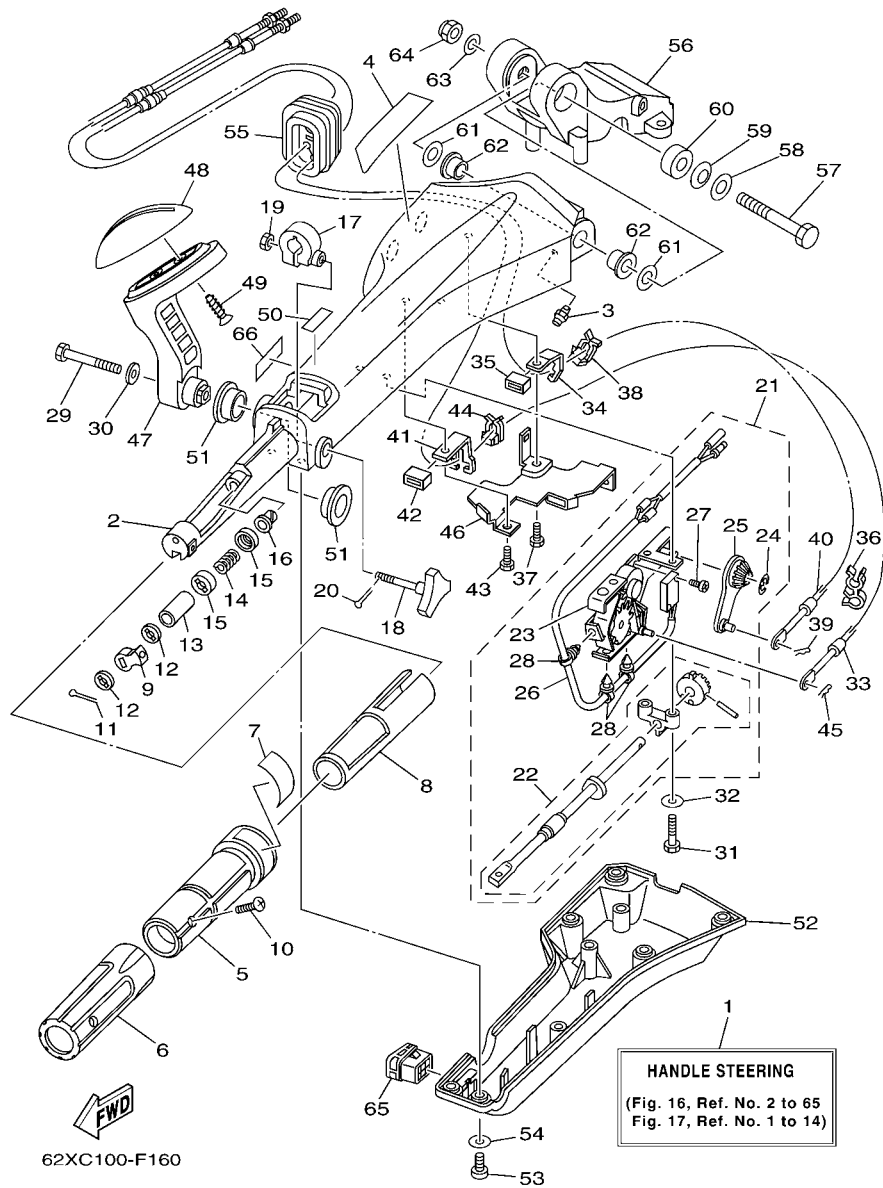


FIG. 16 STEERING 1

REF. NO.	PART NO.	DESCRIPTION	ETO	WHTO	REMARKS
1	6X4-42101-S1-4D	HANDLE, STEERING		1	
2	6X4-42111-01-4D	HANDLE, STEERING		1	
3	93700-06M03	NIPPLE, GREASE		1	
4	6X4-48215-00	GRAPHIC		1	
5	6X4-42119-00	GRIP, STEERING HANDLE		1	
6	6X4-42177-00	RUBBER, HANDLE		1	
7	6X4-42137-00	INDICATOR, THROTTLE		1	
8	6X4-41291-00	BUSHING		1	
9	6X4-44139-00	COLLAR		1	
10	90142-05001	SCREW, COUNTERSUNK		1	
11	91490-20010	PIN, COTTER		1	
12	6X4-44177-00	WASHER		2	
13	6X4-42128-00	COLLAR, DISTANCE 1		1	
14	90501-23215	SPRING, COMPRESSION		1	
15	6X4-44188-00	WASHER		2	
16	90386-08032	BUSH		1	
17	63D-42126-00	FRICION, STEERING HANDLE GRIP		1	
18	6X4-48154-00	KNOB, THROTTLE		1	
19	95380-06600	NUT, HEXAGON		1	
20	91490-20010	PIN, COTTER		1	
21	6X4-44100-00	SHIFT LINK ASSY		1	
22	6X4-42115-00	.SHAFT, STEERING HANDLE		1	
23	6X4-44102-00	.SHIFT ASSIST ASSY.		1	
24	6X4-14137-00	.CLIP		1	
25	6X4-48261-00	.ARM, THROTTLE		1	
26	6X4-82540-00	.NEUTRAL SWITCH ASSY		1	
27	6A5-48129-10	.SCREW 3		2	

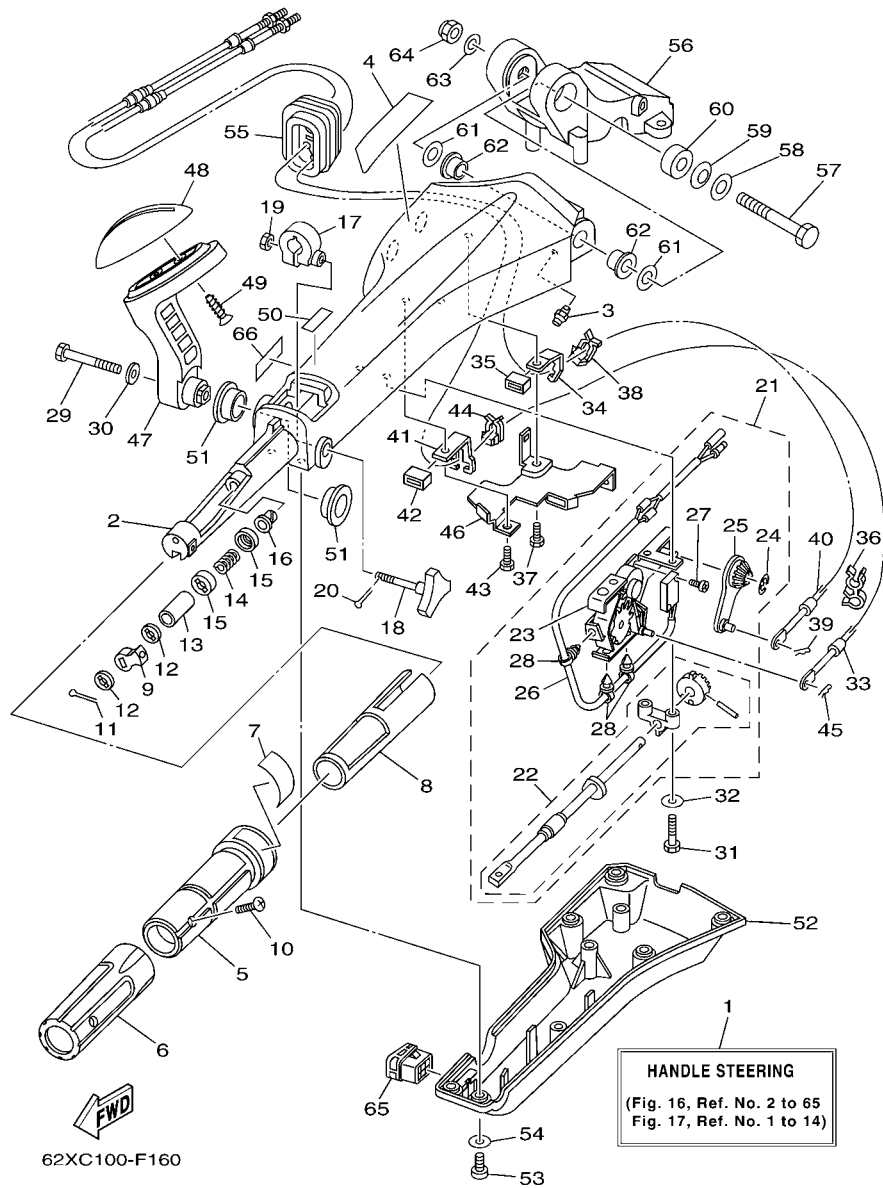
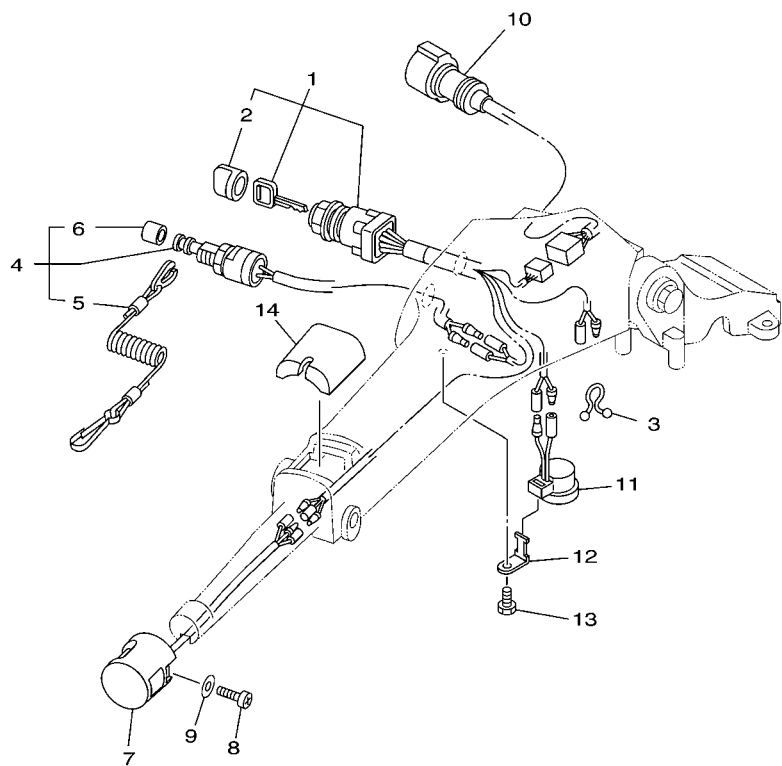


FIG. 16 STEERING 1

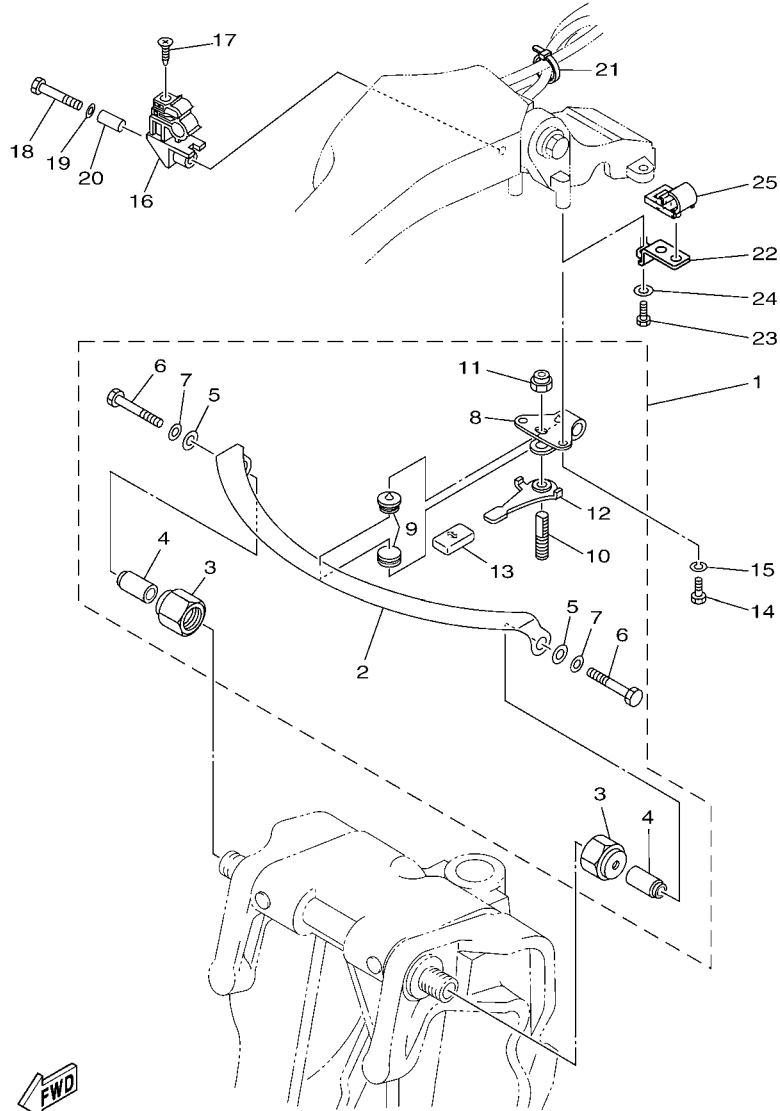
REF. NO.	PART NO.	DESCRIPTION	ETO	WHTO	REMARKS
28	6X4-42821-00	.BAND, CLAMP		3	
29	97095-08040	BOLT		1	
30	92995-08600	WASHER		1	
31	97095-06030	BOLT		2	
32	92995-06600	WASHER		2	
33	63D-48321-10	CABLE		1	
34	6X4-48538-00	CLAMP, CABLE 1		1	
35	6X4-26367-00	PROTECTOR		1	
36	90464-09M42	CLAMP		1	
37	97095-06014	BOLT		1	
38	63D-48538-00	CLAMP, CABLE 1		1	
39	90468-10005	CLIP		1	
40	63D-26301-01	THROTTLE CABLE ASSY		1	
41	6X4-48538-10	CLAMP, CABLE 1		1	
42	6X4-26367-00	PROTECTOR		1	
43	97095-06014	BOLT		1	
44	63D-48538-00	CLAMP, CABLE 1		1	
45	90468-10005	CLIP		1	
46	6X4-42159-00	STAY		1	
47	6X4-44159-00-4D	HANDLE, GEAR SHIFT		1	
48	6X4-44173-00	LEVER, SHIFT CONTROL		1	
49	97780-60920	SCREW, TAPPING		2	
50	6G8-44191-00	INDICATOR, SHIFT		1	
51	90386-26MA3	BUSH		2	
52	6X4-42131-01	COVER, HANDLE STEERING		1	
53	97885-06016	SCREW, PAN HEAD		6	
54	92995-06600	WASHER		6	

FIG. 17 STEERING 2



REF. NO.	PART NO.	DESCRIPTION	ETO	WHTO	REMARKS
1	6X4-82510-30	MAIN SWITCH ASSY		1	
2	676-82577-00	.CAP, KEY		1	
3	90464-08M07	CLAMP		1	
4	69W-82575-00	ENGINE STOP SWITCH ASSY		1	
5	682-82556-00	.LANYARD, STOP SWITCH		1	
6	689-8257Y-00	.CAP		1	
7	6X4-82563-00	TRIM & TILT SWITCH ASSY		1	
8	97880-06016	SCREW, PAN HEAD		1	
9	92990-06600	WASHER, PLATE		1	
10	6X4-82586-00	EXT., WIRE HARNESS (L: 700MM)		1	
11	6X4-83383-00	BUZZER		1	
12	6X4-83386-00	STAY, BUZZER		1	
13	97095-06014	BOLT		1	
14	6X4-81942-00	COVER		1	

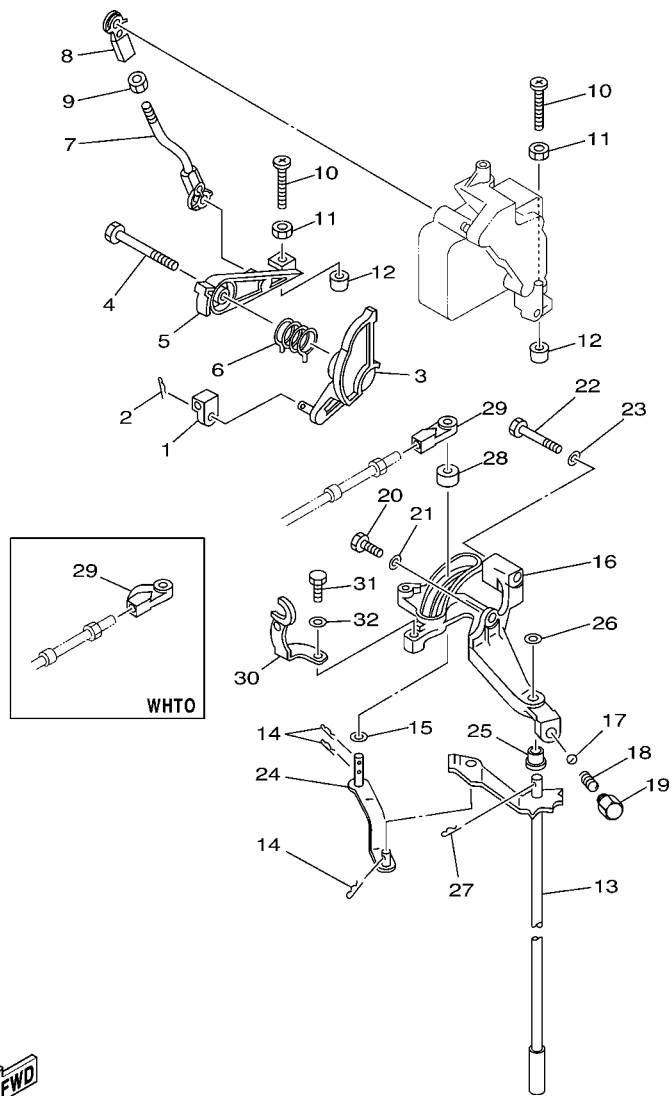

62XC100-F170



62XA100-E180

FIG. 18 STEERING FRICTION

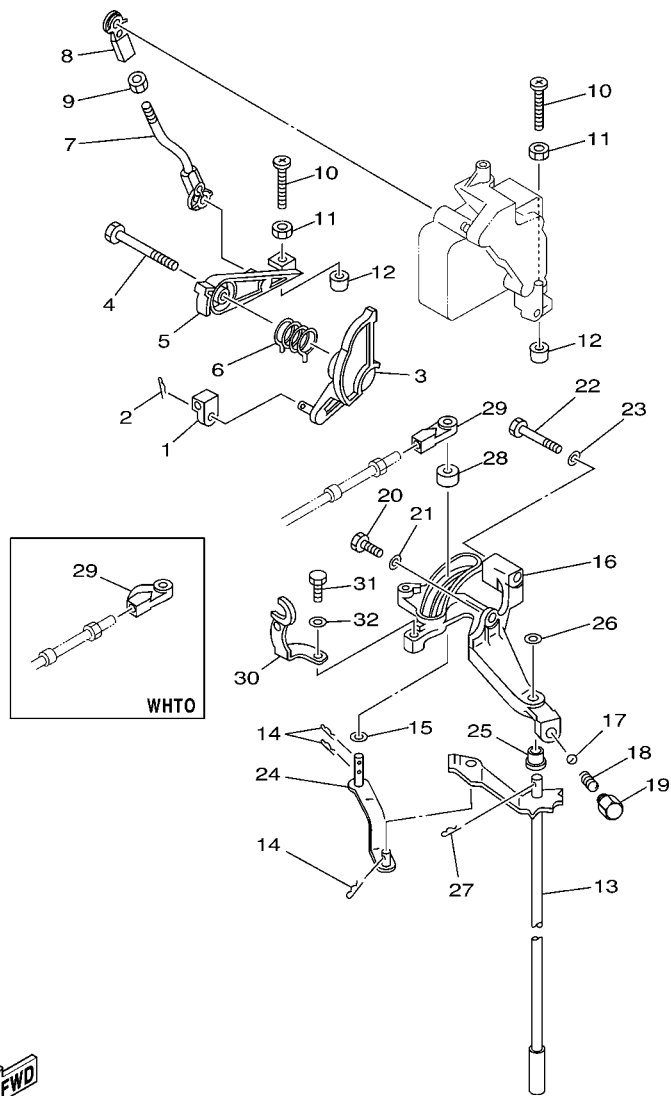
REF. NO.	PART NO.	DESCRIPTION	ETO	WHTO	REMARKS
1	63D-42508-00	STEERING FRICTION ASSY		1	
2	63D-42527-00	.PLATE, FRICTION		1	
3	63D-42546-00	.NUT		2	
4	63D-42541-00	.DAMPER		2	
5	90201-08M01	.WASHER, PLATE		2	
6	97095-08050	.BOLT		2	
7	92995-08600	.WASHER		2	
8	63D-42526-00	.PLATE, FRICTION		1	
9	63D-42528-00	.PLATE, FRICTION		2	
10	63D-42562-00	.SHAFT, STEERING LOCK		1	
11	90185-10M01	.NUT, SELF-LOCKING		1	
12	63D-42561-00	.KNOB, STEERING LOCK		1	
13	682-43318-01	.COVER		1	
14	97095-06016	BOLT		2	
15	92995-06100	WASHER, SPRING		2	
16	63D-82361-00	CLAMP, CORD		1	
17	90161-06M00	SCREW, TAPPING		1	
18	97095-06035	BOLT		1	
19	92995-06600	WASHER		1	
20	90387-06M26	COLLAR		1	
21	90465-13M36	CLAMP		1	
22	63D-24364-10	STAY		1	
23	97095-06016	BOLT		1	
24	92995-06600	WASHER		1	
25	63D-24367-00	CLAMP, FUEL PIPE 2		1	



FWD
62X4100-3190

FIG. 19 CONTROL

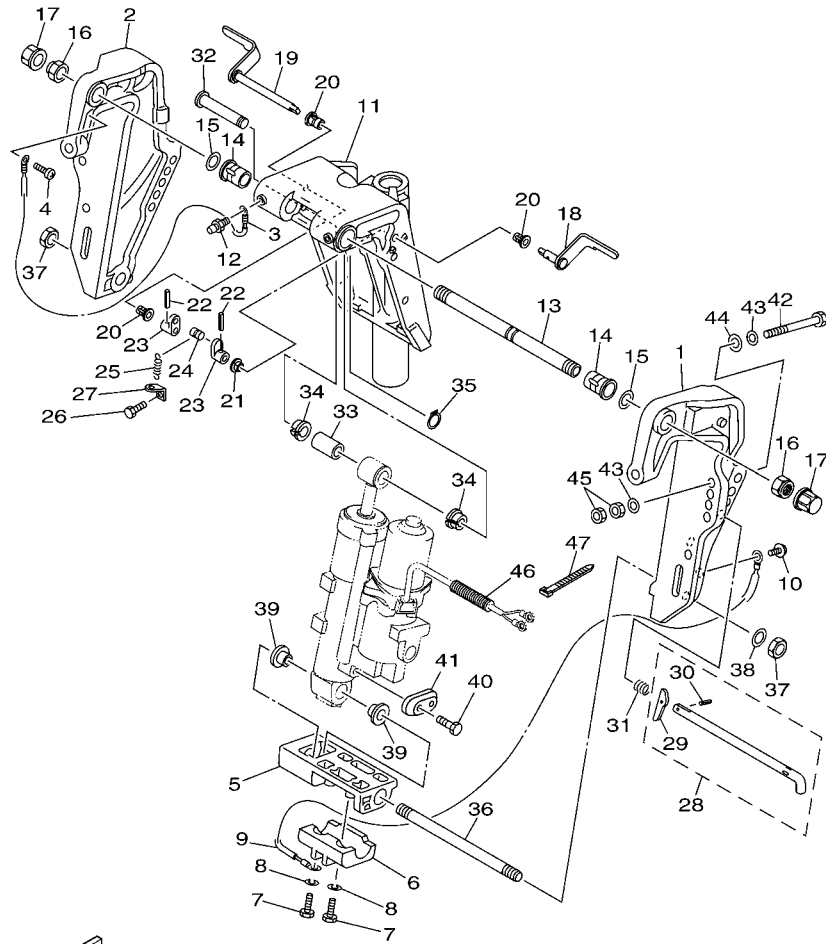
REF. NO.	PART NO.	DESCRIPTION	ETO	WHTO	REMARKS
1	6H4-48344-00	CABLE END, REMOTE CONTROL	1	1	
2	90468-18008	CLIP	1	1	
3	63D-41213-00	CAM, ACCEL.	1	1	
4	90109-06M43	BOLT	1	1	
5	63D-41632-00	LEVER, MAGNETO CONTROL	1	1	
6	90508-26M35	SPRING, TORSION	1	1	
7	63D-41636-00	ROD, MAGNETO CONTROL	1	1	
8	6H4-41237-00	JOINT, LINK	1	1	
9	95380-05600	NUT	1	1	
10	90157-06M13	SCREW, PAN HEAD	2	2	
11	95303-06600	NUT	2	2	
12	688-44194-00	CAP	2	2	
13	63D-44120-10	HANDLE GEAR SHIFT ASSY	1	1	L(21.0")
14	90468-18008	CLIP	3	3	
15	90202-07M07	WASHER, PLATE	1	1	
16	63D-44117-00	BRACKET	1	1	
17	93501-04M02	BALL	1	1	
18	90501-12082	SPRING, COMPRESSION	1	1	
19	648-42715-00	BUSHING	1	1	
20	97013-06020	BOLT	1	1	
21	92903-06600	WASHER, PLATE	1	1	
22	97013-06045	BOLT	1	1	
23	92903-06600	WASHER, PLATE	1	1	
24	63D-44121-00	LEVER, SHIFT ROD	1	1	
25	90386-07M58	BUSH	1	1	
26	92990-08200	WASHER, PLAIN	1	1	
27	91490-20012	PIN, COTTER	1	1	



FWD
62X4100-3190

FIG. 19 CONTROL

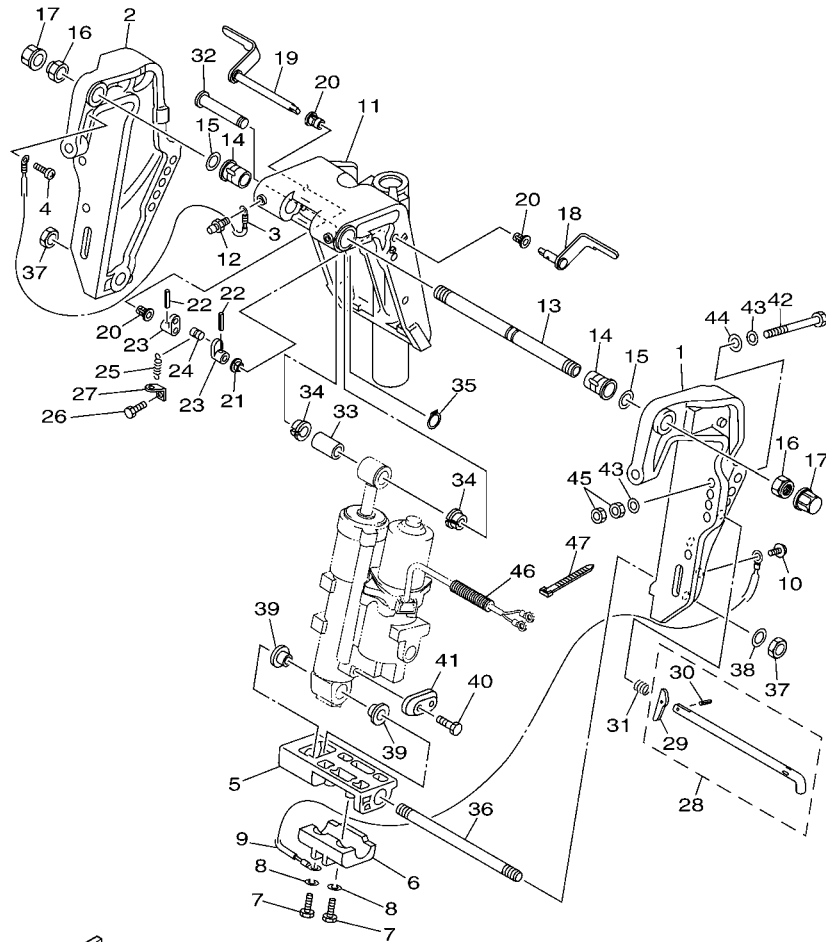
REF. NO.	PART NO.	DESCRIPTION	ETO	WHTO			REMARKS
28	688-44122-00	BUSHING, SHIFT ROD LEVER	1	1			
29	663-48344-00	CABLE END, REMOTE CONTROL	1				
	63D-48344-00	CABLE END, REMOTE CONTROL		1			
30	63D-15774-00	STAY 4	1	1			
31	97095-06016	BOLT	1	1			
32	92995-06600	WASHER	1	1			
<hr/>							
<hr/>							
<hr/>							
<hr/>							
<hr/>							
<hr/>							
<hr/>							
<hr/>							
<hr/>							
<hr/>							



62XC100-F200

FIG. 20 BRACKET 1

REF. NO.	PART NO.	DESCRIPTION	ETO	WHTO		REMARKS
1	63D-43111-01-4D	BRACKET, CLAMP 1	1	1		
2	63D-43112-01-4D	BRACKET, CLAMP 2	1	1		
3	63D-82148-00	WIRE, LEAD 4	1	1		
4	97885-06008	SCREW, PAN HEAD	1	1		
5	63D-43128-01-4D	SPACER, CLAMP BRACKET	1	1		
6	63D-45251-01	ANODE	1	1		
7	97095-06025	BOLT	2	2		
8	92995-06100	WASHER, SPRING	2	2		
9	6H1-82148-00	WIRE, LEAD 4	1	1		
10	97595-06510	BOLT, WITH WASHER	1	1		
11	63D-43311-13-4D	BRACKET, SWIVEL 1	1	1		
12	93700-06M03	NIPPLE, GREASE	3	3		
13	63D-43131-01	BOLT, CLAMP BRACKET	1	1		
14	90386-22M15	BUSH	2	2		
15	90201-22M03	WASHER, PLATE	2	2		
16	90185-22M11	NUT, SELF-LOCKING	2	2		
17	6G5-43145-01	CAP, CLAMP BRACKET	2	2		
18	6H5-43181-03	LEVER, TILT STOP	1	1		
19	6H5-43185-03	LEVER, TILT STOP	1	1		
20	90386-10M16	BUSH	3	3		
21	90386-10025	BUSH	1	1		
22	91690-30020	PIN, SPRING	2	2		
23	6G5-43148-00	COLLAR, DISTANCE	2	2		
24	90249-06M19	PIN	1	1		
25	90506-14M24	SPRING, TENSION	1	1		
26	97095-06010	BOLT	1	1		
27	6G5-43144-00	HOOK, SPRING	1	1		



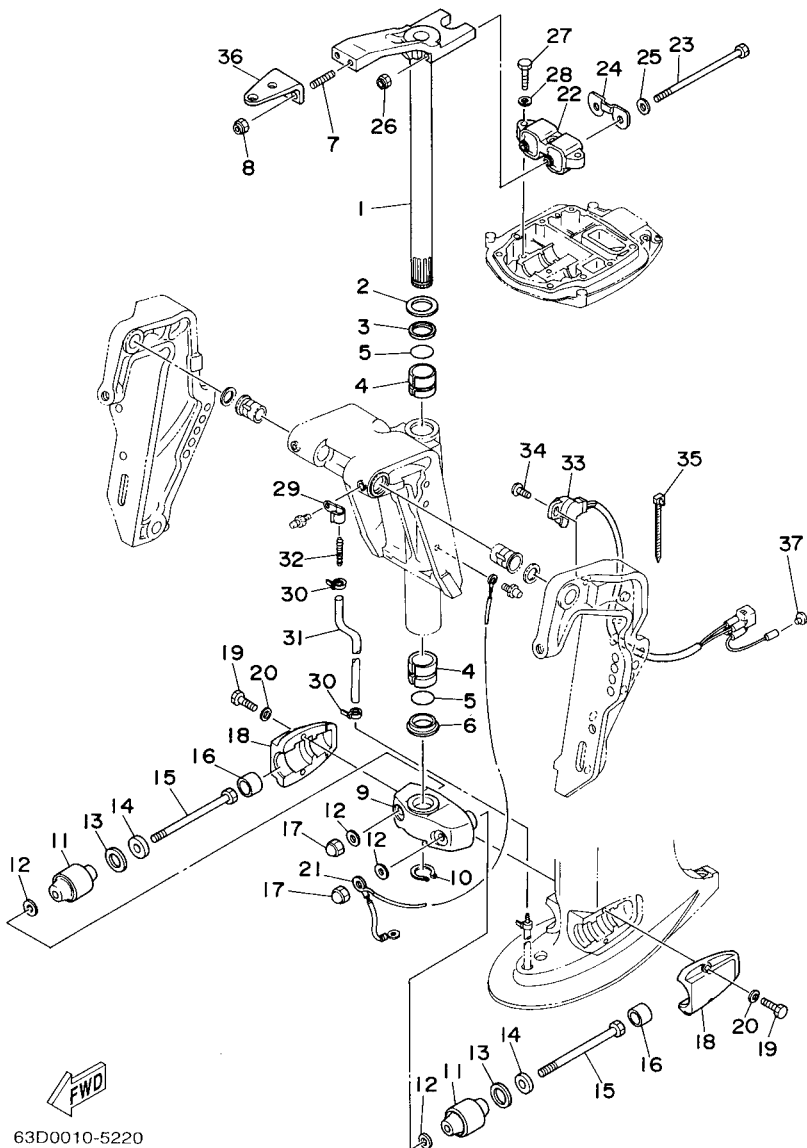
62XC100-F200

FIG. 20 BRACKET 1

REF. NO.	PART NO.	DESCRIPTION	ETO	WHTO	REMARKS
28	688-43160-01	TILT ROD ASSY	1	1	
29	688-43165-00	.PLATE, TILT LOCK	1	1	
30	91690-30012	.PIN, SPRING	1	1	
31	90502-16M02	SPRING, CONICAL	1	1	
32	6E5-43126-02	PIN, UPPER SHOCK MOUNT	1	1	
33	90386-18M92	BUSH	1	1	
34	90386-18M35	BUSH	2	2	
35	93410-18M02	CIRCLIP	1	1	
36	90116-18M52	BOLT, STUD	1	1	
37	90170-18M10	NUT	2	2	
38	92995-18600	WASHER	1	1	
39	90386-18M44	BUSH	2	2	
40	90101-06020	BOLT	2	2	
41	65W-45251-00	ANODE	1	1	
42	90101-12M65	BOLT	4	4	
43	92995-12200	WASHER	8	8	
44	90201-12426	WASHER, PLATE	4	4	
45	95380-12600	NUT	8	8	
46	90440-14M00	PIPE	1	1	
47	90465-11M10	CLAMP	3	3	

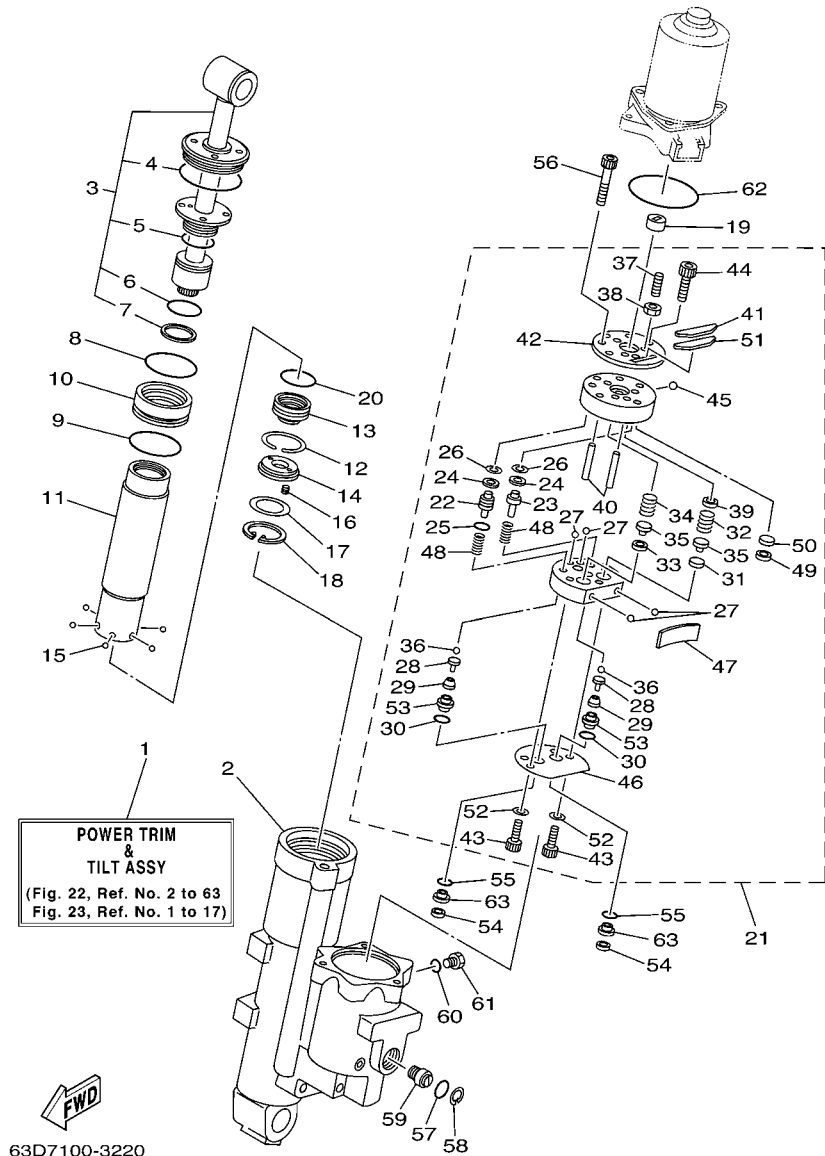
FIG. 21 BRACKET 2

REF. NO.	PART NO.	DESCRIPTION	ETO	WHTO	REMARKS
1	63D-42510-12-4D	STEERING BRACKET ASSY	1	1	
2	90201-30M00	WASHER, PLATE	1	1	
3	90386-30M78	BUSH	1	1	
4	90386-30M77	BUSH	2	2	
5	93210-29M94	O-RING	2	2	
6	90386-30M60	BUSH	1	1	
7	90116-10175	BOLT, STUD	2	2	
8	90185-10051	NUT, SELF-LOCKING	2	2	
9	63D-44551-01-4D	HOUSING, LOWER MOUNT RUBBER	1	1	
10	93410-28M06	CIRCLIP	1	1	
11	63D-44555-00-94	MOUNT DAMPER, LOWER SIDE	2	2	
12	90201-12M16	WASHER, PLATE	4	4	
13	90202-25M04	WASHER, PLATE	2	2	
14	90201-13M19	WASHER, PLATE	2	2	
15	90109-12M21	BOLT	2	2	
16	663-44575-00	DAMPER, LOWER MOUNT RUBBER	2	2	
17	95380-12800	NUT, CROWN	2	2	
18	63D-44552-01-4D	HOUSING, LOWER MOUNT RUBBER	2	2	
19	97075-08030	BOLT	4	4	
20	92995-08100	WASHER	4	4	
21	63D-82127-10	WIRE, LEAD 2	1	1	
22	63D-44514-01-94	MOUNT DAMPER, UPPER SIDE	1	1	
23	90101-08M15	BOLT	2	2	
24	63D-44526-00	PLATE	1	1	
25	90201-09425	WASHER, PLATE	2	2	
26	90185-08045	NUT, SELF-LOCKING	2	2	
27	97075-08030	BOLT	3	3	

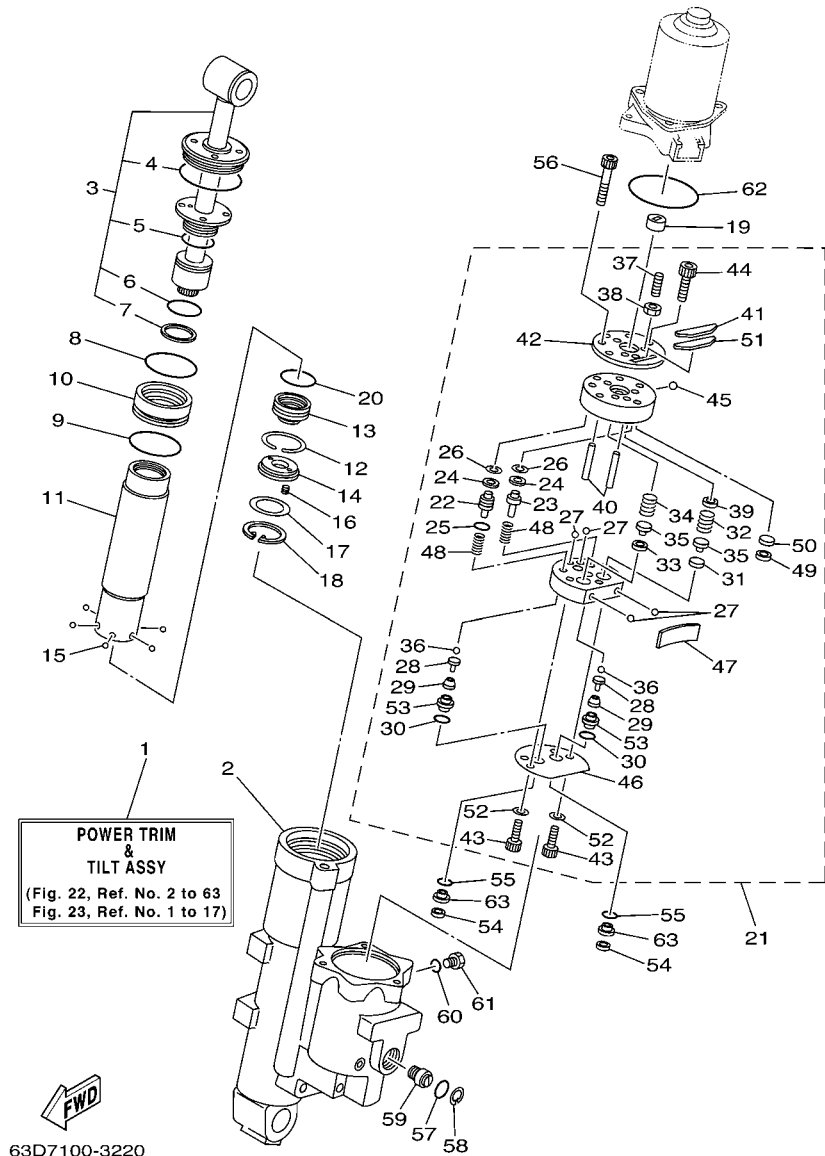


63D0010-5220

FIG. 22 POWER TRIM & TILT ASSY 1



REF. NO.	PART NO.	DESCRIPTION	ETO	WHTO	REMARKS
1	62Y-43800-01-4D	POWER TRIM & TILT ASSY	1	1	
2	62Y-4380K-01	CYLINDER, TILT SUB ASSY	1	1	
3	62X-43810-01	TILT PISTON SUB ASSY	1	1	
4	62X-43861-00	.O-RING	1	1	
5	62X-43862-00	.O-RING	1	1	
6	93210-29375	.O-RING	1	1	
7	62X-43871-00	.RING, BACK UP	1	1	
8	93210-44383	O-RING	1	1	
9	93210-48214	O-RING	1	1	
10	62X-4388A-00	PISTON, TRIM	1	1	
11	62Y-22471-00	CYLINDER, SHOCK ABSORBER	1	1	
12	67F-43875-00	RING, SNAP	1	1	
13	69W-4381B-00	FREE PISTON SUB ASSY	1	1	
14	62X-43899-00	PLATE STOPPER	1	1	
15	93503-16003	BALL	6	6	
16	62X-4384H-00	SPRING	2	2	
17	1UF-22434-00	PLATE, VALVE 1	1	1	
18	62X-43875-00	RING, SNAP	1	1	
19	6H1-43831-10	CONNECTOR, SHAFT	1	1	
20	93210-29375	O-RING	1	1	
21	62Y-43830-01	GEAR PUMP ASSY	1	1	
22	69J-43841-00	.PISTON, SHUTTLE	1	1	
23	69J-4384M-00	.PISTON, SHUTTLE 2	1	1	
24	69A-4384F-00	.SEAL, MAIN VALVE	2	2	
25	6H1-43883-00	.O-RING	1	1	
26	99002-03600	.CIRCLIP	2	2	
27	93505-32038	.BALL	4	4	



63D7100-3220

FIG. 22 POWER TRIM & TILT ASSY 1

REF. NO.	PART NO.	DESCRIPTION	ETO	WHTO	REMARKS
28	65W-4386A-00	.PIN, ABSORBER VALVE	2	2	
29	69J-43853-00	.SPRING, MAIN VALVE	2	2	
30	69J-4389J-00	.O-RING	2	2	
31	6H1-4384G-11	.SEAL, RELIEF VALVE	1	1	
32	62Y-43855-00	.SPRING, UP RELIEF	1	1	
33	6H1-4384F-10	.SEAL, MAIN VALVE	1	1	
34	6H1-43856-10	.SPRING, DOWN RELIEF	1	1	
35	6H1-43844-10	.PIN, VALVE SUPPORT	2	2	
36	93505-32038	.BALL	2	2	
37	92A08-03110	.SCREW SET	1	1	
38	95302-03600	.NUT	1	1	
39	62Y-4382A-00	.ADAPTOR 1	1	1	
40	93604-26256	.PIN, DOWEL	2	2	
41	62Y-43816-00	.FILTER 1	1	1	
42	62Y-4382L-00	.CAP, RELIEF VALVE	1	1	
43	91318-05020	.BOLT	2	2	
44	91318-05008	.BOLT	2	2	
45	93501-08001	.BALL	1	1	
46	69W-4384G-00	.SEAL, RELIEF VALVE	1	1	
47	62Y-43854-00	.SPRING, MANUAL RELEASE	1	1	
48	69J-43894-00	.SPRING, SHUTTLE RETURN	2	2	
49	62Y-4387J-00	.WASHER, SPECIAL 2	1	1	
50	62Y-22434-00	.PLATE, VALVE 1	1	1	
51	62Y-43871-00	.RING, BACK UP	1	1	
52	62Y-4387G-00	.WASHER	2	2	
53	69J-43893-00	.WASHER	2	2	
54	6H1-43816-00	FILTER 1	2	2	

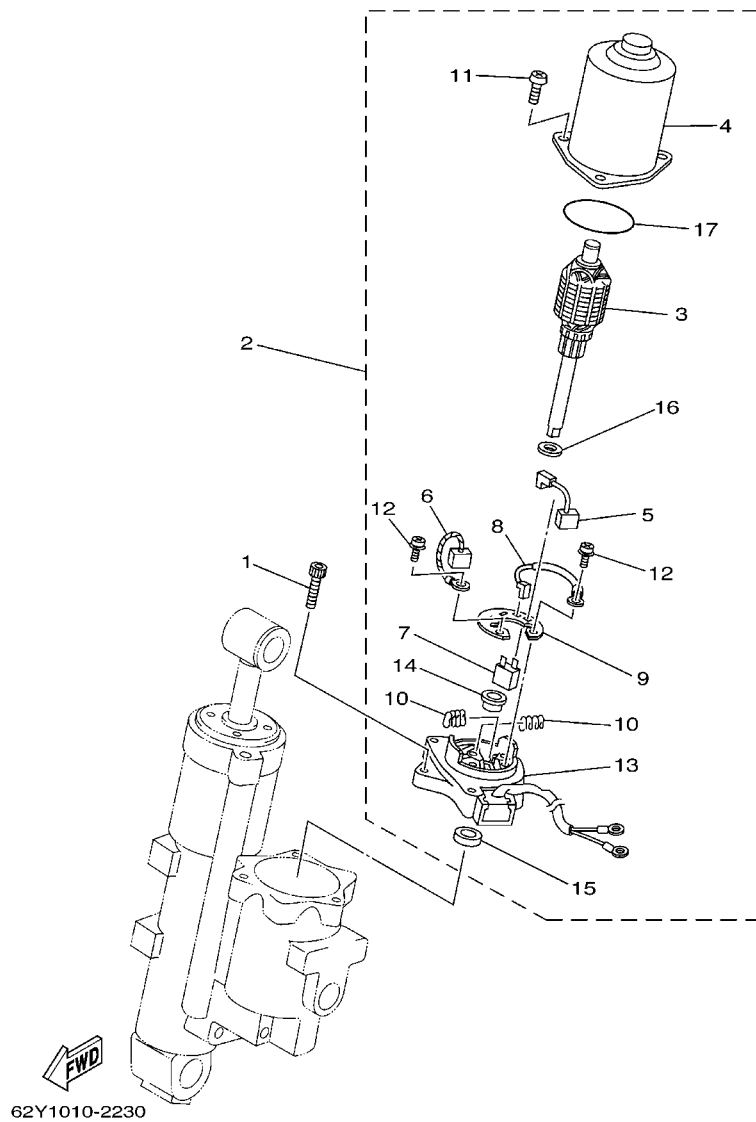


FIG. 23 POWER TRIM & TILT ASSY 2

REF. NO.	PART NO.	DESCRIPTION	ETO	WHTO	REMARKS
1	62X-43888-00	BOLT, SOCKET	3	3	
2	62Y-43880-01	MOTOR ASSY	1	1	
3	62Y-43805-00	.ARMATURE ASSY	1	1	
4	62X-43804-01	.STATOR ASSY	1	1	
5	62Y-43892-00	.BRUSH 2	1	1	
6	62Y-43891-00	.BRUSH 1	1	1	
7	62Y-82181-01	.CIRCUIT BREAKER COMP.	1	1	
8	62X-43807-00	.WIRE SUB ASSY	1	1	
9	69W-4380F-00	.PLATE, BRUSH HOLDER	1	1	
10	62X-4386K-00	.SPRING, BRUSH	2	2	
11	97880-05020	.SCREW, PAN HEAD	3	3	
12	97602-04212	.SCREW, PAN HEAD WITH WASHER	2	2	
13	62Y-43881-00	.FRAME, END	1	1	
14	62X-4380H-00	.METAL	1	1	
15	93102-08414	.OIL SEAL	1	1	
16	90201-083J8	.WASHER, PLATE	1	1	
17	93210-52449	.O-RING	1	1	

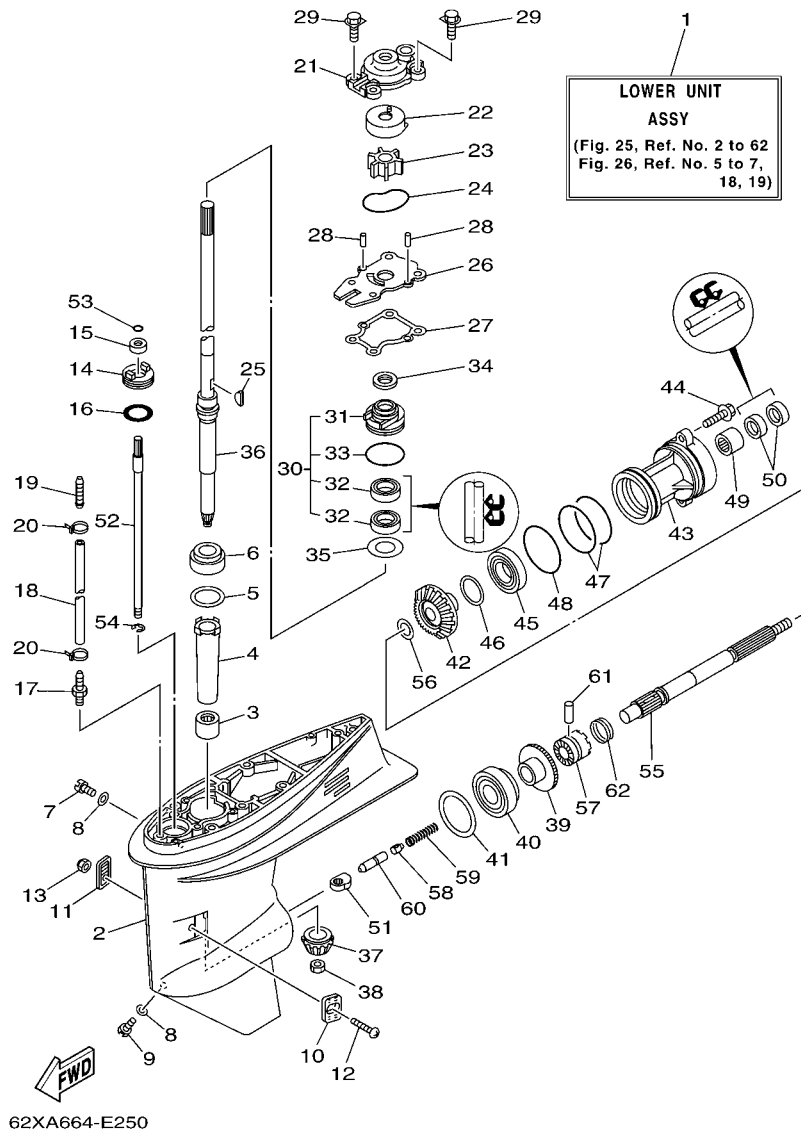


FIG. 25 LOWER CASING & DRIVE 1

REF. NO.	PART NO.	DESCRIPTION	ETO	WHTO	REMARKS
1	63D-45300-12-4D	LOWER UNIT ASSY	1	1	L(21.0")
2	63D-45301-03-4D	CASING, LOWER	1	1	
3	93315-32224	BEARING	1	1	
4	6H4-45536-00	SLEEVE, DRIVE SHAFT	1	1	
5	663-45587-01	SHIM (T:0.10MM)	1	1	UR
6	663-45587-10	SHIM (T:0.12MM)	1	1	UR
7	663-45587-20	SHIM (T:0.15MM)	1	1	UR
8	663-45587-30	SHIM (T:0.18MM)	1	1	UR
9	663-45587-40	SHIM (T:0.30MM)	1	1	UR
10	663-45587-50	SHIM (T:0.40MM)	1	1	UR
11	663-45587-60	SHIM (T:0.50MM)	1	1	UR
12	93332-00001	BEARING	1	1	
13	90340-08002	PLUG, STRAIGHT SCREW	1	1	
14	90430-08020	GASKET	2	2	
15	688-45341-10	PLUG, DRAIN	1	1	
16	63D-45214-00	COVER, WATER INLET 1	1	1	
17	63D-45215-00	COVER, WATER INLET 2	1	1	
18	90142-05M06	SCREW, COUNTERSUNK	1	1	
19	95380-05600	NUT	1	1	
20	63D-45321-00	PLATE	1	1	
21	93106-09014	OIL SEAL	1	1	
22	93210-33MG4	O-RING	1	1	
23	6E5-45378-00	NIPPLE, HOSE	1	1	
24	90445-07M31	HOSE (L200)	1	1	L(21.0")
25	6E5-83558-10	END, NIPPLE	1	1	
26	90465-11M10	CLAMP	2	2	
27	63D-44311-00	HOUSING, WATER PUMP	1	1	

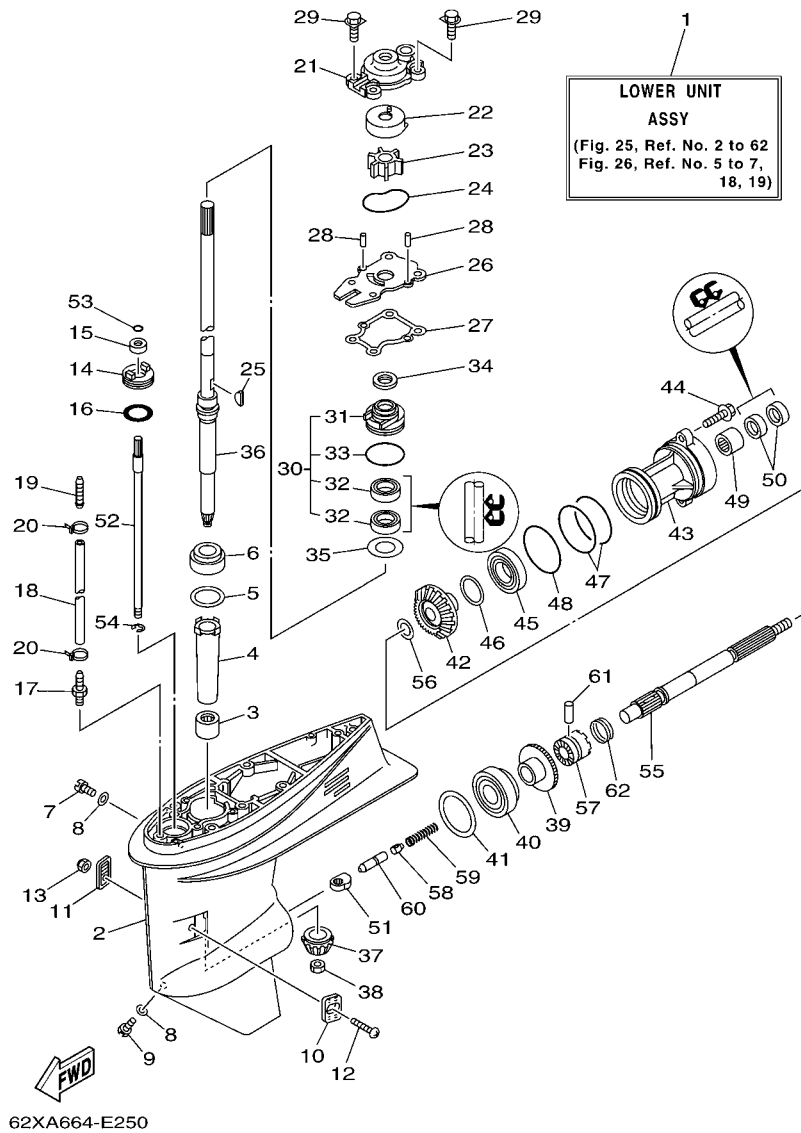


FIG. 25 LOWER CASING & DRIVE 1

REF. NO.	PART NO.	DESCRIPTION	ETO	WHTO	REMARKS
22	63D-44322-00	INSERT, CARTRIDGE	1	1	
23	6H3-44352-00	IMPELLER	1	1	
24	93210-59MG7	O-RING	1	1	
25	90280-03024	KEY, WOODRUFF	1	1	
26	63D-44323-00	OUTER PLATE, CARTRIDGE	1	1	
27	63D-44316-00	GASKET, WATER PUMP	1	1	
28	93604-08062	PIN, DOWEL	2	2	
29	90119-08M15	BOLT, WITH WASHER	4	4	
30	63D-W4434-00	WATER PUMP HOUSING ASSY	1	1	
31	63D-44341-00	.HOUSING, WATER PUMP	1	1	
32	93101-25M57	.OIL SEAL	2	2	
33	93210-48MG8	.O-RING	1	1	
34	63D-45344-00	COVER, OIL SEAL	1	1	
35	90201-27M00	WASHER, PLATE	1	1	
36	63D-45501-10	DRIVE SHAFT COMP.	1	1	L(21.0")
37	6H4-45551-01	PINION (13T)	1	1	
38	90170-12138	NUT	1	1	
39	6H4-45560-01	GEAR 1 (24T)	1	1	
40	93332-00003	BEARING	1	1	
41	663-45567-01	SHIM (T:0.10MM)	1	1	UR
	663-45567-10	SHIM (T:0.12MM)	1	1	UR
	663-45567-20	SHIM (T:0.15MM)	1	1	UR
	663-45567-30	SHIM (T:0.18MM)	1	1	UR
	663-45567-40	SHIM (T:0.30MM)	1	1	UR
	663-45567-50	SHIM (T:0.40MM)	1	1	UR
	663-45567-60	SHIM (T:0.50MM)	1	1	UR
42	6H4-45571-01	GEAR 2 (24T)	1	1	

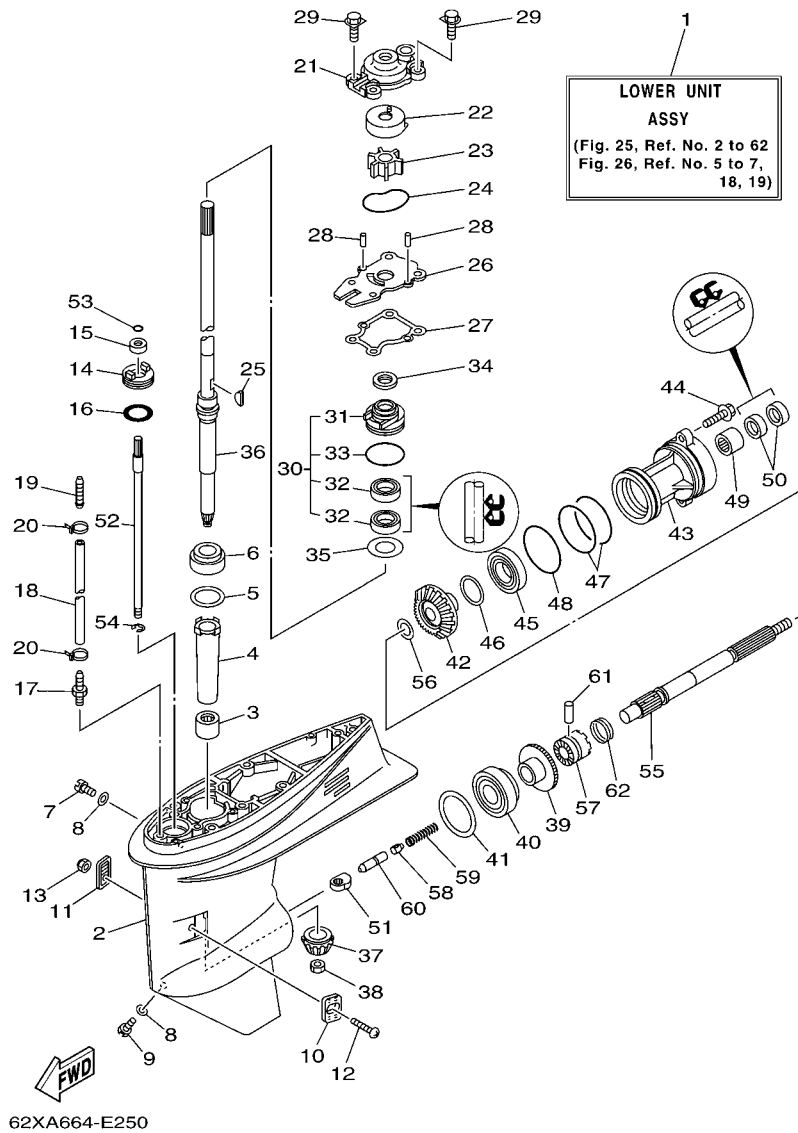
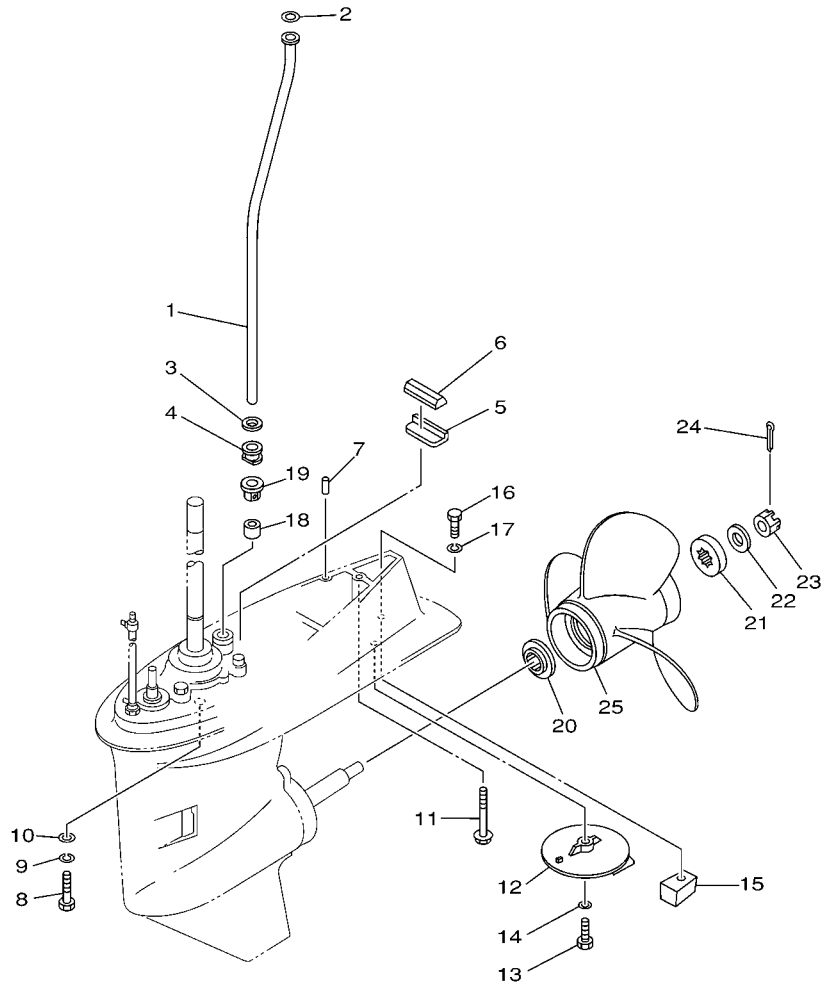


FIG. 25 LOWER CASING & DRIVE 1

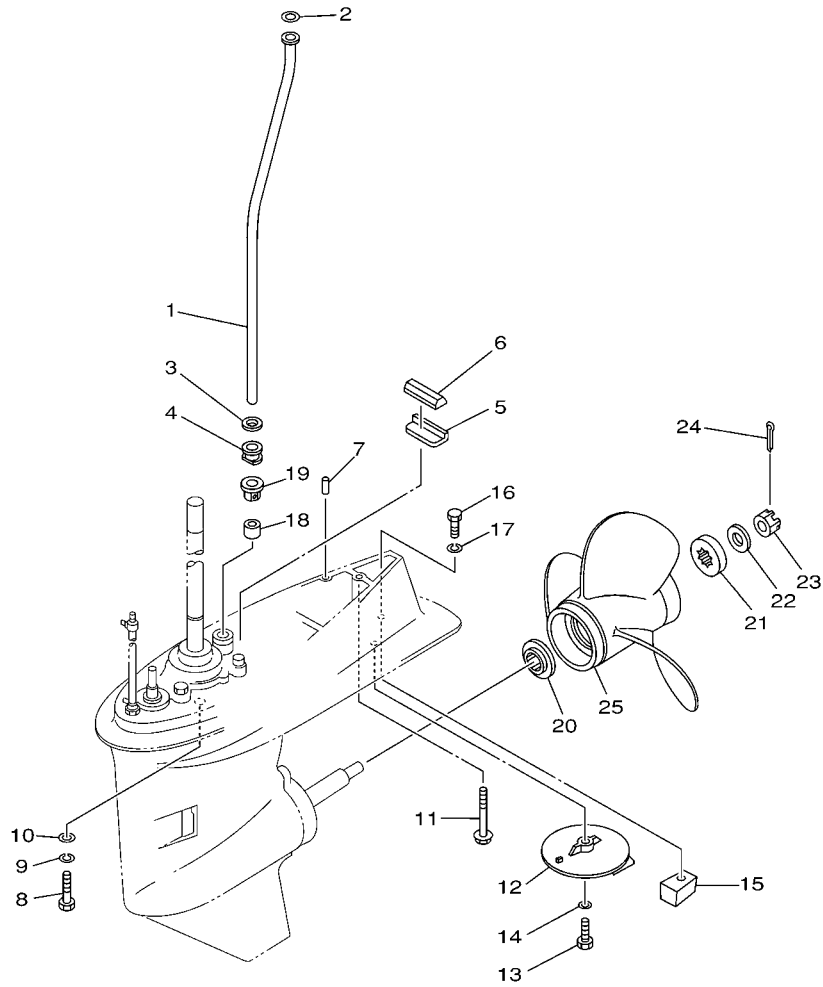
REF. NO.	PART NO.	DESCRIPTION	ETO	WHTO	REMARKS
43	63D-45361-02-4D	CAP, LOWER CASING	1	1	
44	90105-08M61	BOLT, FLANGE	2	2	
45	93306-001U1	BEARING	1	1	
46	63D-45577-00	SHIM (T:0.10MM)	1	1	UR
	63D-45577-10	SHIM (T:0.12MM)	1	1	UR
	63D-45577-20	SHIM (T:0.15MM)	1	1	UR
	63D-45577-30	SHIM (T:0.18MM)	1	1	UR
	63D-45577-40	SHIM (T:0.30MM)	1	1	UR
	63D-45577-50	SHIM (T:0.40MM)	1	1	UR
	63D-45577-60	SHIM (T:0.50MM)	1	1	UR
47	93210-74MG5	O-RING	2	2	
48	93210-69MG6	O-RING	1	1	
49	93317-22204	BEARING	1	1	
50	93101-22M00	OIL SEAL	2	2	
51	663-44151-00	CAM, SHIFT	1	1	
52	63D-44144-00	ROD, SHIFT	1	1	
53	93210-07003	O-RING	1	1	
54	99001-08600	CIRCLIP	1	1	
55	63D-45611-00	SHAFT, PROPELLER	1	1	
56	90201-22429	WASHER, PLATE	1	1	
57	63D-45631-01	CLUTCH, DOG	1	1	
58	663-45634-00	SLIDE, SHIFT	1	1	
59	90501-16M01	SPRING, COMPRESSION	1	1	
60	63D-45635-00	PLUNGER, SHIFT	1	1	
61	90250-06023	PIN, STRAIGHT	1	1	
62	663-45633-00	RING, CROSS PIN	1	1	



FWD
63D0100-0241

FIG. 26 LOWER CASING & DRIVE 2

REF. NO.	PART NO.	DESCRIPTION	ETO	WHTO	REMARKS
1	63D-44361-10	TUBE, WATER	1	1	L(21.0")
2	90202-12060	WASHER, PLATE	1	1	
3	90430-12072	GASKET	1	1	
4	63D-44367-00	DAMPER, WATER SEAL	1	1	
5	663-45376-00-94	GUIDE, SEAL DAMPER	1	1	
6	63D-45375-00	DAMPER, SEAL	1	1	
7	93606-12019	PIN, DOWEL	2	2	
8	97075-10040	BOLT	4	4	
9	92995-10100	WASHER	4	4	
10	92995-10600	WASHER	4	4	
11	90119-08M84	BOLT, WITH WASHER	1	1	
12	664-45371-01	TAB-TRIM	1	1	
13	97095-08025	BOLT	1	1	
14	92995-08100	WASHER	1	1	
15	67C-45251-00	ANODE	1	1	
16	97095-08035	BOLT	1	1	
17	92995-08100	WASHER	1	1	
18	663-44366-00	DAMPER, WATER SEAL	1	1	
19	63D-44312-00	COVER, WATER PUMP HOUSING	1	1	
20	663-45987-02	SPACER	1	1	
21	670-45997-02	SPACER	1	1	
22	92990-16200	WASHER, PLAIN	1	1	
23	90171-16011	NUT, CASTLE	1	1	
24	91490-30025	PIN, COTTER	1	1	
25	663-45941-01-EL	PROPELLER (3X10-3/4"X17"-G)	1	1	UR
	663-45949-01-EL	PROPELLER (3X10-3/4"X16"-G)	1	1	UR
	663-45952-02-EL	PROPELLER (3X11-3/8"X12"-G)	1	1	UR




63D0100-0241

FIG. 26 LOWER CASING & DRIVE 2

REF. NO.	PART NO.	DESCRIPTION	ETO	WHTO		REMARKS
25	663-45954-01-EL	PROPELLER (3X11-3/4"X10"-G)	1	1		UR
	663-45956-01-EL	PROPELLER (3X12-1/4"X9"-G)	1	1		UR
	663-45958-01-EL	PROPELLER (3X11-1/4"X14"-G)	1	1		UR
	69W-45943-00-EL	PROPELLER (3X11"X15"-G)	1	1		UR
	69W-45945-00-EL	PROPELLER (3X11-1/8"X13"-G)	1	1		UR
	69W-45947-00-EL	PROPELLER (3X11-5/8"X11"-G)	1	1		UR
	69W-45952-00-EL	PROPELLER (3X11-3/8"X12"-G)	1	1		UR
	69W-45958-00-EL	PROPELLER (3X11-1/4"X14"-G)	1	1		UR
	6H5-45943-00-EL	PROPELLER (3X10"X15"-G)	1	1		UR WITH LIP CUP
	6H5-45945-00-EL	PROPELLER (3X10-3/8"X13"-G)	1	1		UR WITH LIP CUP
	6H5-45952-00-EL	PROPELLER (3X10-5/8"X12"-G)	1	1		UR WITH LIP CUP
	6H5-45958-00-EL	PROPELLER (3X10-1/4"X14"-G)	1	1		UR WITH LIP CUP
	663-45930-00-98	PROPELLER (3X10-1/4"X14"-G)	1	1		UR
	663-45974-02-98	PROPELLER (3X10-5/8"X13"-G)	1	1		UR
	663-45976-00-98	PROPELLER (3X10-1/4"X15"-G)	1	1		UR
	663-45978-00-98	PROPELLER (3X10-1/4"X16"-G)	1	1		UR
	663-45970-60-98	PROPELLER (3X11-3/4"X12"-G)	1	1		UR
	663-45972-60-98	PROPELLER (3X12"X11"-G)	1	1		UR
	663-45974-60-98	PROPELLER (3X11-1/2"X13"-G)	1	1		UR
	697-45970-00-98	PROPELLER (3X11-1/4"X14"-G)	1	1		UR

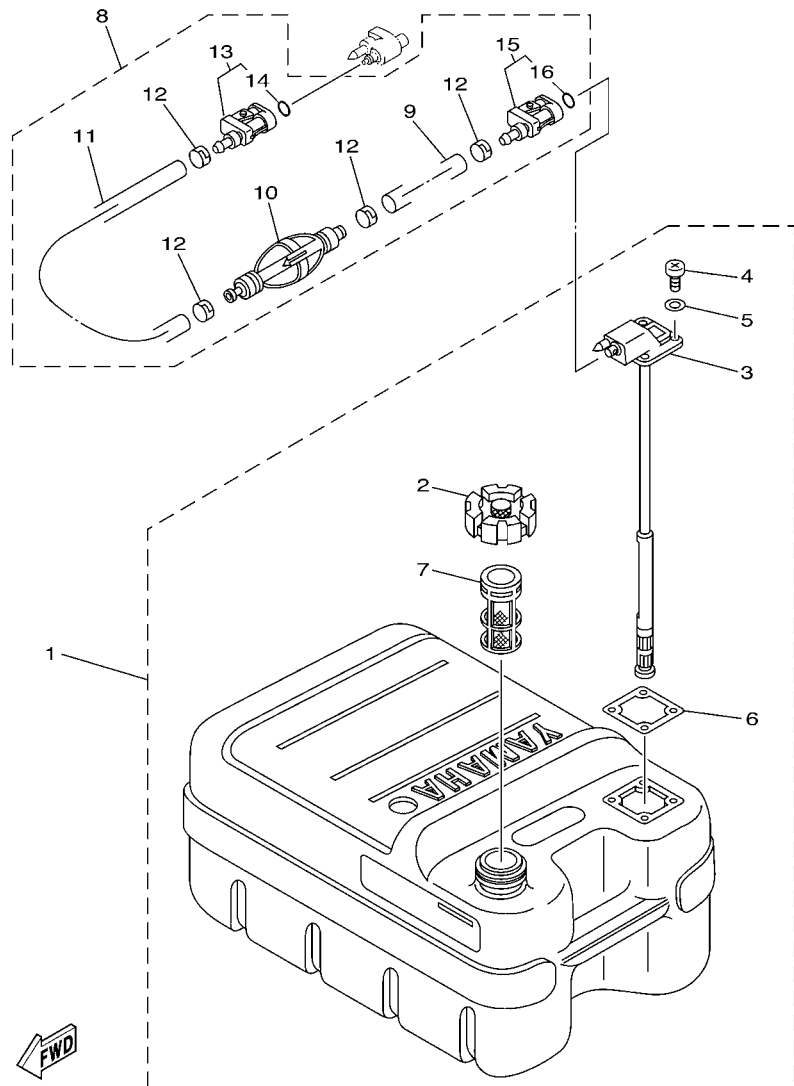
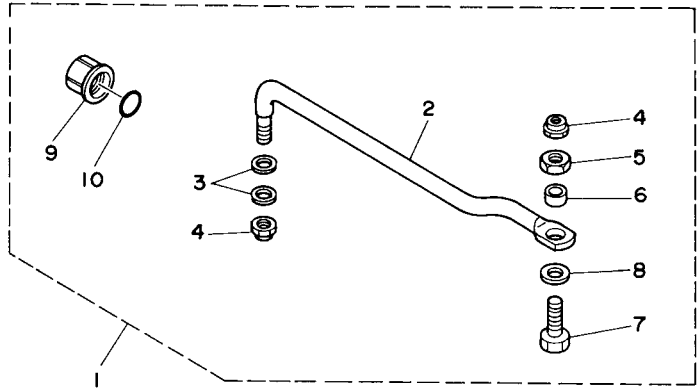


FIG. 27 FUEL TANK

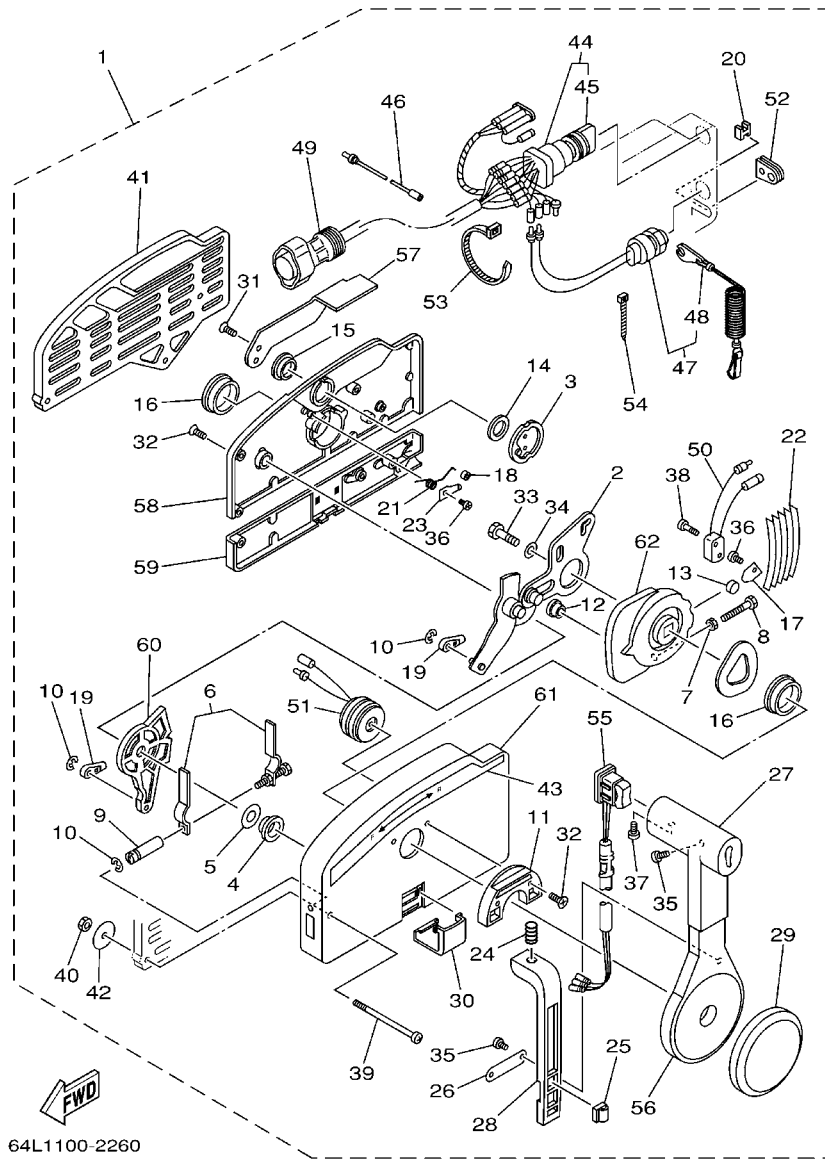
REF. NO.	PART NO.	DESCRIPTION	ETO	WHTO	REMARKS
1	6YJ-24201-10	FUEL TANK ASSY (24L)	1	1	AP FOR OCE
2	6YJ-24610-01	.CAP ASSY	1	1	
3	6Y1-24260-12	.FUEL METER ASSY	1	1	WITH INDICATOR
4	90157-05M19	.SCREW, PAN HEAD	4	4	
5	6Y1-24329-00	.SEAL	4	4	
6	6Y1-24268-00	.GASKET, FUEL METER	1	1	
7	6YJ-24167-00	.STRAINER	1	1	
8	61J-24306-04	FUEL PIPE COMP. 1	1	1	AP FOR OCE
9	90445-11M06	.HOSE (L2050)	1	1	
10	61J-24360-00	.PRIMER PUMP ASSY	1	1	
11	90445-11M05	.HOSE (L850)	1	1	
12	650-24351-01	.BAND 1	4	4	
13	6G1-24305-05	.FUEL PIPE JOINT COMP. 2	1	1	
14	93210-08287	..O-RING	1	1	
15	6Y1-24305-06	.FUEL PIPE JOINT COMP. 2	1	1	
16	93210-08287	..O-RING	1	1	



62Y0010-5200

FIG. 28 STEERING GUIDE

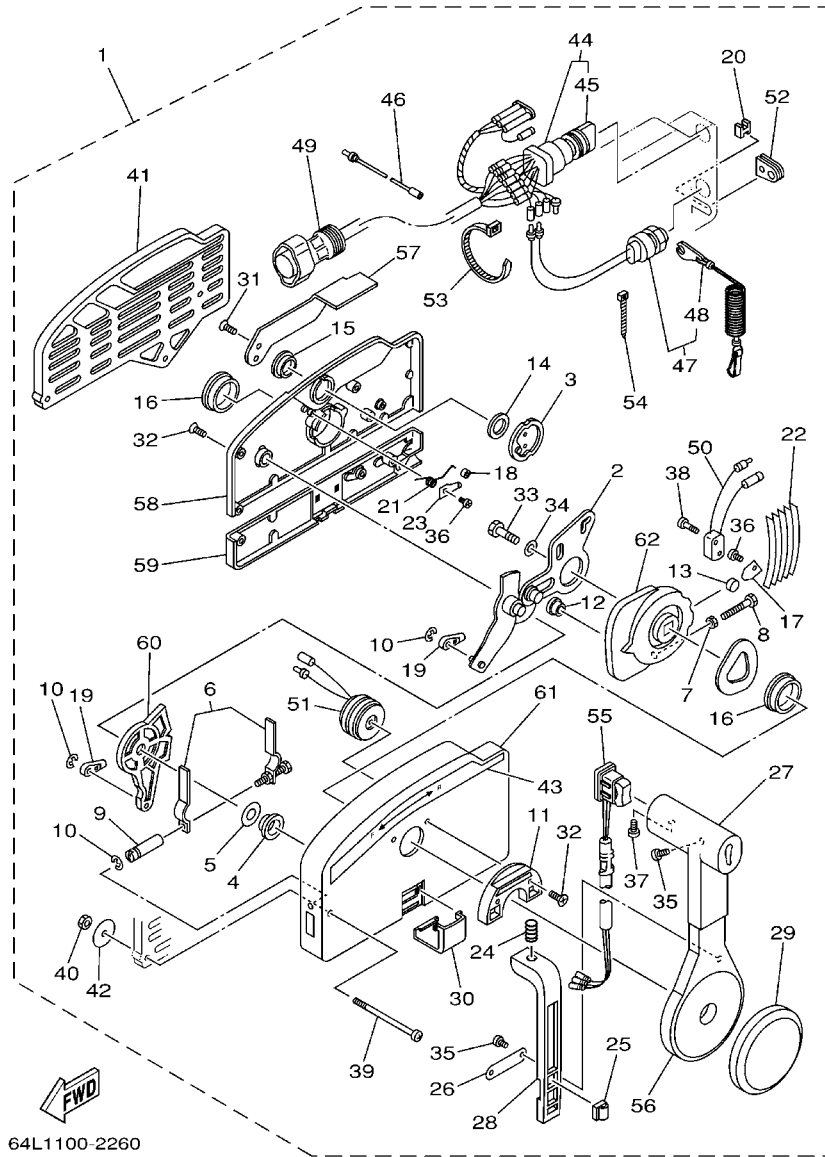
REF. NO.	PART NO.	DESCRIPTION	ETO	WHTO		REMARKS
1	63D-61350-00	STEERING GUIDE ATTACHMENT KIT	1			AP
2	63D-61351-00	.ROD, STEERING LINK	1			
3	90201-10M20	.WASHER, PLATE	2			
4	90185-09M01	.NUT, SELF-LOCKING	2			
5	90170-09M03	.NUT	1			
6	90387-10M42	.COLLAR	1			
7	90101-09M01	.BOLT	1			
8	90201-10M63	.WASHER, PLATE	1			
9	6E5-43145-01	.CAP, CLAMP BRACKET	1			
10	93210-16275	.O-RING	1			



64L1100-2260

FIG. 30 REMOTE CONTROL ASSY

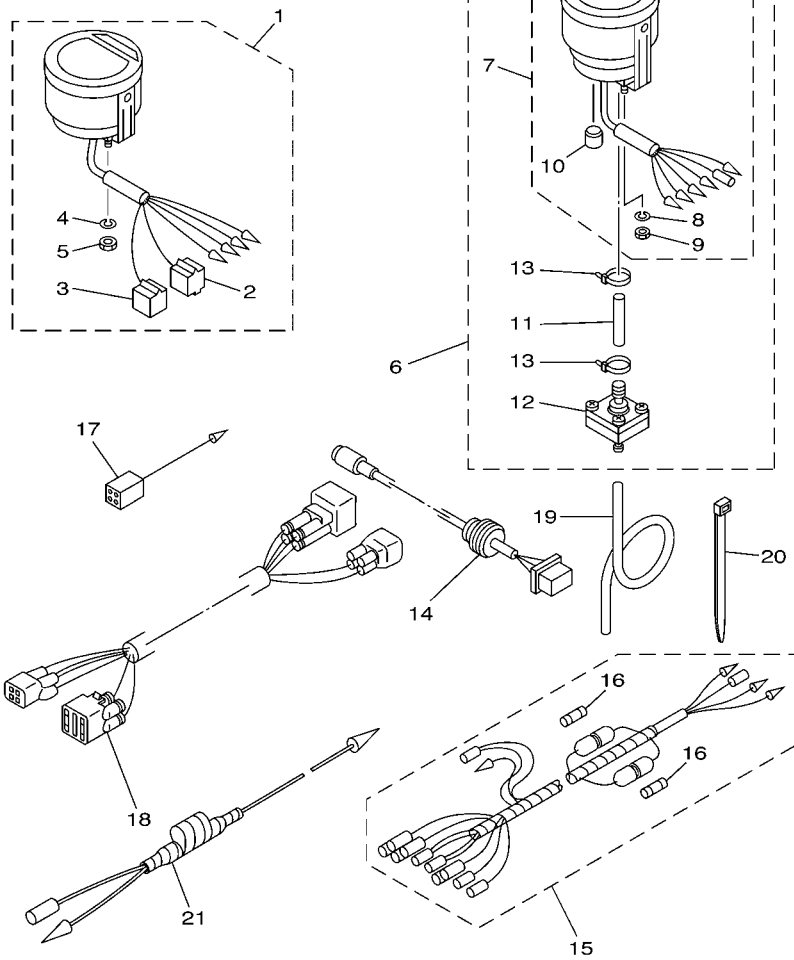
REF. NO.	PART NO.	DESCRIPTION	ETO	WHTO	REMARKS
1	703-48205-17	REMOTE CONTROL ASSY (10P)	1		AP WITH PT/T SW.
2	703-48261-01	.ARM, THROTTLE	1		
3	703-48153-00	.SHAFT, FREE ACCEL.	1		
4	703-48235-00	.BUSHING	1		
5	703-48268-00	.SPACER	1		
6	703-48264-00	.FRICTION, THROTTLE	1		
7	95380-05600	.NUT	1		
8	97380-05025	.BOLT	1		
9	703-48265-00	.SHAFT, FRICTION	1		
10	93430-06024	.CIRCLIP	3		
11	703-48245-00	.PLATE, LOCK	1		
12	703-48252-00	.ROLLER, CAM	1		
13	701-48248-00	.ROLLER, FREE ACCEL.	1		
14	703-48198-00	.WASHER, WAVE	1		
15	703-48243-00	.BUSHING	1		
16	703-48236-00	.BUSHING 1	2		
17	703-48189-00	.RETAINER	1		
18	703-48234-00	.ROLLER, DETENT	1		
19	703-48345-01	.CABLE END, REMOTE CONTROL 2	2		
20	703-48358-00	.ANCHOR, CABLE	1		
21	703-48244-00	.SPRING, FREE ACCEL.	1		
22	703-48238-00	.SPRING, DETENT	5		
23	703-48246-00	.SPACER	1		
24	703-48227-00	.SPRING, NEUTRAL LOCK	1		
25	703-82594-00	.CLAMP	1		WITH PT/T SW.
26	703-48226-00	.PLATE, STOPPER	1		
27	703-48222-00	.GRIP, CONTROL LEVER	1		SINGLE



64L1100-2260

FIG. 30 REMOTE CONTROL ASSY

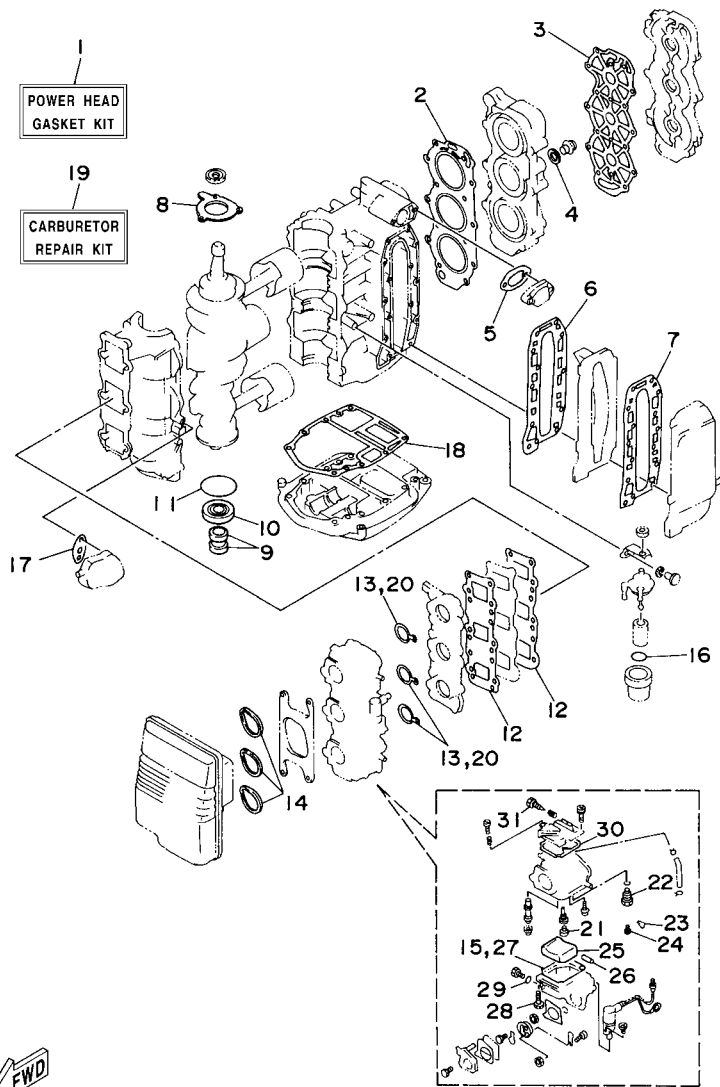
REF. NO.	PART NO.	DESCRIPTION	ETO	WHTO	REMARKS
28	703-48223-00	.LOCK, NEUTRAL	1		
29	703-48225-00	.COVER	1		
30	703-48219-00	.COVER, LEAD	1		
31	703-48281-00	.SCREW	2		
32	703-48282-00	.SCREW	7		
33	97380-08030	.BOLT	1		
34	92990-08600	.WASHER, PLATE	1		
35	98580-04010	.SCREW, PAN HEAD	3		
36	98580-04006	.SCREW, PAN HEAD	2		
37	98580-05010	.SCREW, PAN HEAD	1		
38	98580-03015	.SCREW, PAN HEAD	2		
39	703-48291-10	.SCREW (M6)	3		
40	95380-06600	.NUT, HEXAGON	3		
41	703-48293-10	.SPACER, REMOTE CONTROL	1		SINGLE
42	701-48287-00	.WASHER	3		
43	703-48215-00	.GRAPHIC	1		
44	703-82510-43	.MAIN SWITCH ASSY	1		
45	703-82577-00	..CAP, KEY	1		
46	703-82531-00	.WIRE, LEAD	1		
47	688-82575-01	.ENGINE STOP SWITCH ASSY	1		
48	682-82556-00	..LANYARD, STOP SWITCH	1		
49	688-8258A-20	.EXTENSION, WIRE HARNESS	1		L:5M (10P)
50	703-82540-00	.NEUTRAL SWITCH ASSY	1		
51	703-83383-02	.BUZZER	1		
52	703-48284-00	.GROMMET	1		
53	703-82591-00	.BAND	1		
54	703-82592-00	.BAND	1		



62X4100-3310

FIG. 31 METER

REF. NO.	PART NO.	DESCRIPTION	ETO	WHTO	REMARKS
1	6Y5-8350T-03	DIGITAL TACHOMETER ASSY	1		AP FOR OCE
2	9E450-04433	.CONNECTOR	1		M-4-W
3	9E450-04533	.CONNECTOR	1		F-4-W
4	92990-04100	.WASHER, SPRING	2		
5	95380-04600	.NUT	2		
6	6Y5-83500-S5	DIGITAL SPEEDOMETER ASSY	1		AP 50H-FOR OCE
7	6Y5-83570-S5	.SPEEDOMETER ASSY	1		
8	92990-04100	..WASHER, SPRING	2		
9	95380-04600	..NUT	2		
10	6Y5-83533-T2	..GROMMET	1		
11	6Y5-83557-31	.TUBE	1		
12	6Y5-83728-00	.CONNECTOR ASSY	1		
13	90465-11M10	.CLAMP	2		
14	6Y5-87122-S0	CORD ASSY 1	1		AP 50H-FOR OCE
15	6Y5-83553-M0	WIRE, LEAD (L=2.5M)	1		AP 50H-FOR OCE
	6Y5-83553-00	WIRE, LEAD (L=2.5M)	1		AP 40V-FOR OCE
16	1E6-82151-00	.FUSE (10A)	2		FOR 6Y5-83553-M0
	1E6-82151-00	.FUSE (10A)	1		FOR 6Y5-83553-00
17	6Y5-82117-00	WIRE, LEAD (BLACK)	1		AP 50H-FOR OCE
18	68F-82553-80	EXTENSION, WIRE LEAD (L=8.0M)	1		AP 50H-FOR OCE
	68F-82553-70	EXTENSION, WIRE LEAD (L=7.0M)	1		AP 40V-FOR OCE
19	6Y5-83557-10	TUBE (8M)	1		AP 50H-FOR OCE
20	90465-11M10	CLAMP	2		AP 50H-FOR OCE
21	6H4-81315-11	LEAD WIRE ASSY	1		AP



63D0010-5270

FIG. 33 REPAIR KIT 1

REF. NO.	PART NO.	DESCRIPTION	ETO	WHTO	REMARKS
1	63D-W0001-00	POWER HEAD GASKET KIT	1	1	
2	63D-11181-A1	.GASKET, CYLINDER HEAD 1	1	1	
3	63D-11193-A0	.GASKET, HEAD COVER 1	1	1	
4	90430-14115	.GASKET	1	1	
5	6J8-12414-A0	.GASKET, COVER	1	1	
6	6H4-41112-A0	.GASKET, EXHAUST INNER COVER	1	1	
7	6H4-41114-A0	.GASKET, EXHAUST OUTER COVER	1	1	
8	6H4-15369-A1	.GASKET, OIL SEAL HOUSING	1	1	
9	93104-16M01	.OIL SEAL	2	2	
10	93102-25M28	.OIL SEAL	1	1	
11	93210-58M21	.O-RING	1	1	
12	6H4-13621-A1	.GASKET, VALVE SEAT	2	2	
13	6H4-14198-01	.GASKET	3	3	
14	6H3-14457-01	.SEAL	3	3	
15	6H4-14984-00	.GASKET, FLOAT CHAMBER	3	3	
16	93210-32738	.O-RING	1	1	
17	650-24431-A0	.GASKET, FUEL PUMP 1	1	1	
18	6H4-45113-A0	.GASKET, UPPER CASING	1	1	
19	6H4-W0093-03	CARBURETOR REPAIR KIT	1	1	
20	6H4-14198-01	.GASKET	3	3	
21	676-14966-00	.CAP	3	3	
22	6H4-14590-01	.NEEDLE VALVE ASSY	3	3	
23	663-14159-00	.CLIP	3	3	
24	676-14186-00	.PIN, FLOAT	3	3	
25	6H4-14985-01	.FLOAT	3	3	
26	6H4-14548-00	.PIN, FLOAT ARM	3	3	
27	6H4-14984-00	.GASKET, FLOAT CHAMBER	3	3	

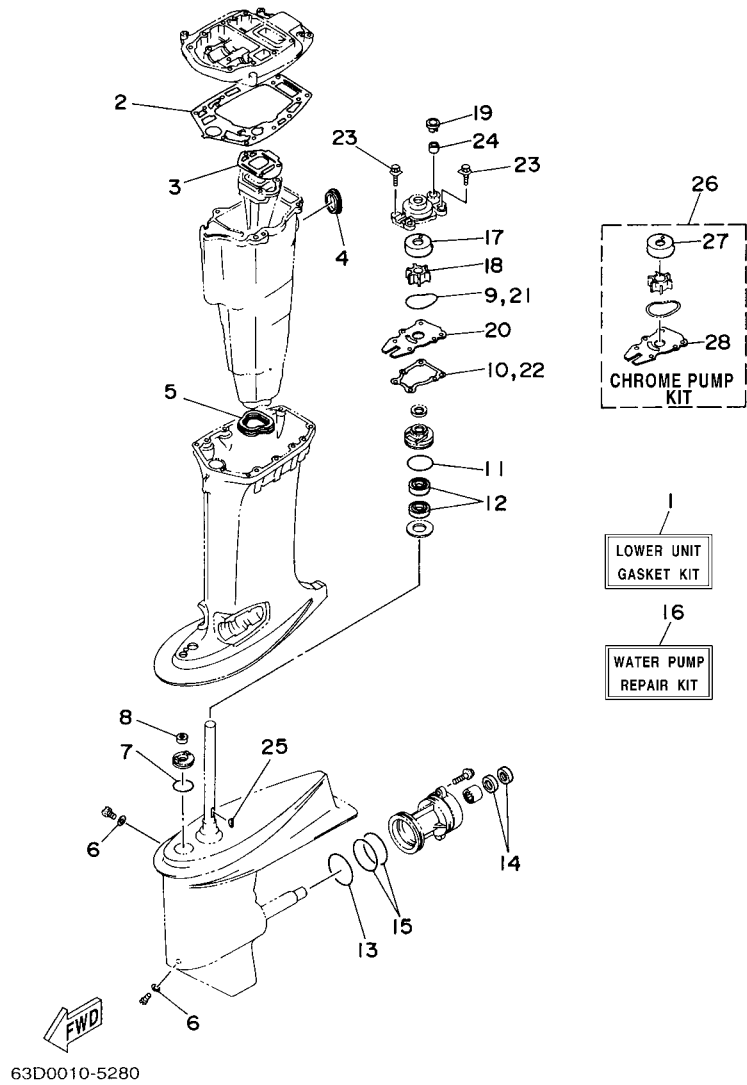


FIG. 34 REPAIR KIT 2

REF. NO.	PART NO.	DESCRIPTION	ETO	WHTO	REMARKS
1	63D-W0001-20	LOWER UNIT GASKET KIT	1	1	
2	63D-45114-A0	.GASKET, UPPER CASING	1	1	
3	6H4-41134-A0	.GASKET, EXHAUST MANIFOLD	1	1	
4	6H3-45127-00	.SEAL	1	1	
5	63D-45123-00	.GASKET, MUFFLER	1	1	
6	90430-08020	.GASKET	2	2	
7	93210-33MG4	.O-RING	1	1	
8	93106-09014	.OIL SEAL	1	1	
9	93210-59MG7	.O-RING	1	1	
10	63D-44316-00	.GASKET, WATER PUMP	1	1	
11	93210-48MG8	.O-RING	1	1	
12	93101-25M57	.OIL SEAL	2	2	
13	93210-69MG6	.O-RING	1	1	
14	93101-22M00	.OIL SEAL	2	2	
15	93210-74MG5	.O-RING	2	2	
16	63D-W0078-01	WATER PUMP REPAIR KIT	1	1	
17	63D-44322-00	.INSERT, CARTRIDGE	1	1	
18	6H3-44352-00	.IMPELLER	1	1	
19	63D-44312-00	.COVER, WATER PUMP HOUSING	1	1	
20	63D-44323-00	.OUTER PLATE, CARTRIDGE	1	1	
21	93210-59MG7	.O-RING	1	1	
22	63D-44316-00	.GASKET, WATER PUMP	1	1	
23	90119-08M15	.BOLT, WITH WASHER	4	4	
24	663-44366-00	.DAMPER, WATER SEAL	1	1	
25	90280-03024	.KEY, WOODRUFF	1	1	
26	63D-W0078-0A	CHROME PUMP KIT	1	1	
27	63D-44322-40	.INSERT, CARTRIDGE	1	1	

NUMERICAL INDEX

PART NO.	REF. NO.	PART NO.	REF. NO.	PART NO.	REF. NO.	PART NO.	REF. NO.	PART NO.	REF. NO.	PART NO.	REF. NO.
63D-11111-00-1S	2 - 22	63D-13436-40	1 - 12	6H2-14578-00	5 - 9	6H4-15772-02-94	14 - 24	6E5-24367-01	15 - 27	6H1-41237-00	7 - 16
6H4-11119-01	2 - 18	6H5-13610-00	4 - 1	6H4-14590-01	5 - 27	63D-15774-00	19 - 30	650-24378-00	2 - 8	6H4-41237-00	19 - 8
63D-11181-A1	2 - 23	6H4-13621-A1	4 - 8		33 - 22	6F5-15779-02	10 - 17	688-24378-00	8 - 30	6H4-41241-01	6 - 15
	33 - 2		33 - 12	6K5-14592-00	5 - 5	6H4-15787-01	10 - 15	692-24410-00	8 - 14		7 - 15
63D-11191-00-1S	2 - 26	6H4-13624-01-94	4 - 7	63D-14711-11-5B	24 - 11	6A0-15789-00	10 - 8	663-24411-00	8 - 19	6X4-41291-00	16 - 8
63D-11193-A0	2 - 27	6H4-13641-12-94	4 - 5	692-14923-00	5 - 26	63D-21707-00	6 - 21	692-24411-00	8 - 16	63D-41632-00	19 - 5
	33 - 3	6H3-14137-00	5 - 32		33 - 31	63D-21707-10	7 - 21	6H3-24411-10	5 - 41	63D-41636-00	19 - 7
688-11325-00	2 - 20	6X4-14137-00	16 - 24	676-14943-30	5 - 22	6H3-21732-00	1 - 14	6A0-24412-02	8 - 25	6X4-42101-S1-4D	16 - 1
650-11370-01	2 - 3	6H3-14146-10	5 - 16	676-14943-33	5 - 22	6H3-21735-00	1 - 15	6A0-24413-00	8 - 15	6X4-42111-01-4D	16 - 2
688-11370-01	2 - 7	6H4-14146-10	5 - 15	63D-14943-81	5 - 22	63D-21744-00	6 - 33	6H4-24413-00	5 - 39	6X4-42115-00	16 - 22
6H4-11372-01	2 - 5	6H3-14146-20	5 - 16	62X-14947-00	5 - 21		7 - 30	6L5-24421-00	5 - 38	6X4-42119-00	16 - 5
6H4-11400-14	3 - 8	6H4-14146-30	5 - 15	63D-14947-00	5 - 21	6H4-21752-00	6 - 24	6A0-24421-01	8 - 23	63D-42121-22-4D	16 - 56
6H4-11536-00	3 - 9	6H4-14147-00	5 - 30	6H4-14948-11	5 - 24	6H1-21757-00	6 - 31	650-24431-A0	8 - 26	63D-42126-00	16 - 17
6H4-11537-01	6 - 4		33 - 30	6H4-14948-12	5 - 24	6H4-21757-00	7 - 29		33 - 17	6X4-42128-00	16 - 13
	7 - 4	663-14159-00	5 - 12	676-14966-00	5 - 23	6J8-21758-00	6 - 30	648-24434-01	8 - 17	6X4-42131-01	16 - 52
	11 - 13		33 - 23		33 - 21	63D-2175R-00	6 - 26	6H3-24434-10	5 - 42	6X4-42137-00	16 - 7
6H4-11545-00	3 - 14	676-14186-00	5 - 13	6H4-14980-00	5 - 18		7 - 24	648-24435-02	8 - 20	6X4-42159-00	16 - 46
63D-11603-00	3 - 14		33 - 24	6H3-14980-10	5 - 18	63D-2176M-00	6 - 27	6H3-24452-10	5 - 29	6X4-42177-00	16 - 6
63D-11604-00	3 - 14	6H4-14198-01	4 - 10	6H4-14984-00	5 - 17		7 - 25	6H4-24486-00	5 - 40	63D-42508-00	18 - 1
63D-11605-00	3 - 14		33 - 13		33 - 15	6H4-21770-00	6 - 28	61N-24521-00	8 - 7	63D-42510-12-4D	21 - 1
6H4-11631-01-95	3 - 13		33 - 20		33 - 27		7 - 26	61N-24560-00	8 - 5	63D-42526-00	18 - 8
648-11633-00	3 - 15			6H4-14985-01	5 - 14	63D-2177H-00	1 - 13	61N-24563-00	8 - 6	63D-42527-00	18 - 2
6H4-11634-01	3 - 18	62X-14301-00	5 - 1		33 - 25	1UF-22434-00	22 - 17	6H4-24566-02	8 - 9	63D-42528-00	18 - 9
6H4-11635-01	3 - 13	63D-14301-00	5 - 1	6H3-14992-00	5 - 19	62Y-22434-00	22 - 50	6YJ-24610-01	27 - 2	63D-42541-00	18 - 4
6H4-11636-01	3 - 13	62X-14301-10	5 - 1	6H4-15100-13-1S	2 - 2	62Y-22471-00	22 - 11	6H4-24633-00	7 - 27	63D-42546-00	18 - 3
6H4-11641-00	3 - 17	62X-14302-00	5 - 2	6H4-15359-04-94	11 - 3	6YJ-24167-00	27 - 7	6H5-24633-00	6 - 29	63D-42561-00	18 - 12
6E5-12411-30	2 - 30	63D-14302-00	5 - 2	6H4-15369-A1	3 - 1	6YJ-24201-10	27 - 1	6H4-24634-00	7 - 31	63D-42562-00	18 - 10
688-12412-00	2 - 31	62X-14302-10	5 - 2		33 - 8	6Y1-24260-12	27 - 3	63D-26301-01	16 - 40	63B-42610-30-4D	1 - 1
6H4-12413-00-1S	2 - 32	62X-14303-00	5 - 3	6H4-15396-03-5B	3 - 2	6Y1-24268-00	27 - 6	6X4-26367-00	16 - 35	62X-42610-60-4D	1 - 1
6J8-12414-A0	2 - 33	63D-14303-00	5 - 3	6H4-15705-00	10 - 27	6G1-24304-02	8 - 1		16 - 42	63D-42610-60-4D	1 - 1
	33 - 5	62X-14303-10	5 - 3	6H4-15710-04-4D	10 - 1	6G1-24305-05	27 - 13	6E0-28193-00-94	8 - 39	62X-42610-80-4D	1 - 1
	32 - 1	6A0-14325-00	8 - 24	6H4-15711-02-94	10 - 2	6E5-24305-06	9 - 2	61H-2819R-31	8 - 37	6H4-42613-01-4D	1 - 7
63D-12440-51	32 - 6	67C-1432A-00	5 - 43	6H4-15714-00	10 - 19	6Y1-24305-06	27 - 15	6H4-41111-00-1S	2 - 36	6H4-42613-11-4D	1 - 7
6H4-12466-A0	32 - 7	6H3-14349-00	4 - 23	6H4-15717-01	10 - 21	6Y2-24305-06	9 - 4	6H4-41112-A0	2 - 37	6H4-42615-00	1 - 3
6H4-12466-B0	32 - 7		5 - 33	6H4-15723-01-94	10 - 37	61J-24306-04	27 - 8		33 - 6	6H4-42651-00	1 - 4
63D-12469-00	32 - 4	63D-14380-00	5 - 34	6J8-15723-E1	14 - 26	6Y2-24306-56	9 - 1	6H4-41113-00-1S	2 - 35	6H4-42652-00	1 - 5
6H4-12469-01	32 - 2	6H4-14406-00	4 - 11	676-15741-03	10 - 25	6H4-24311-00	8 - 35	6H4-41114-A0	2 - 38	62X-42677-30	1 - 9
6E5-12481-00	32 - 5	6H4-14431-02	4 - 13	63D-15746-00	10 - 42	6H4-24312-00	8 - 33		33 - 7	63D-42677-30	1 - 9
6H1-13117-01	6 - 5	6H4-14431-13	4 - 13	656-15748-00	10 - 46	6H4-24313-00	8 - 32	6H5-41131-00-5B	24 - 10	62X-42678-20	1 - 10
	7 - 5	6H3-14457-01	4 - 14	6F5-15752-00	10 - 9	6H4-24314-00	8 - 12	6H4-41131-01-5B	24 - 10	63D-42678-20	1 - 10
6E9-13183-70	6 - 46		33 - 14	689-15755-01	10 - 16	6E5-24315-00	32 - 3	6H4-41134-A0	24 - 22	63D-42681-20	1 - 19
	7 - 44	624-14485-00	2 - 4	6H4-15758-01-4D	10 - 4	6Y1-24329-00	27 - 5		34 - 3	63D-42682-20	1 - 20
63D-13200-00	6 - 1		2 - 6	6H4-15761-00	1 - 2	650-24351-01	27 - 12	63D-41137-01-5B	24 - 8	6H1-42694-00	1 - 16
	7 - 1	6H1-14485-00	4 - 6	6H4-15762-00	10 - 7	6E5-24351-51	9 - 7	63D-41213-00	19 - 3	6H4-42711-25-4D	15 - 1
6J8-13411-00	6 - 37	63V-14523-00	5 - 7	63D-15770-00	10 - 45	61J-24360-00	27 - 10	6H4-41217-01	4 - 18	648-42715-00	19 - 19
	7 - 35	6H4-14548-00	5 - 10	63D-15771-00-4D	10 - 31	6Y2-24360-60	9 - 9	6E9-41237-00	6 - 20	6H4-42716-00	15 - 15
6J8-13414-00	6 - 38		33 - 26		14 - 20	63D-24364-10	18 - 22		7 - 20	63D-42717-00	15 - 21
	7 - 36	679-14555-00	5 - 25	6H4-15772-02-94	10 - 35	63D-24367-00	18 - 25	6H1-41237-00	6 - 16	6E5-42724-00	15 - 16
6L2-13416-00	6 - 39	6H4-14567-00	5 - 31								
	7 - 37										

NUMERICAL INDEX

PART NO.	REF. NO.	PART NO.	REF. NO.	PART NO.	REF. NO.	PART NO.	REF. NO.	PART NO.	REF. NO.	PART NO.	REF. NO.
6H4-42724-20	15 - 13	6H1-43844-10	22 - 35	6X4-44177-00	16 - 12	688-45341-10	25 - 9	663-45952-02-EL	26 - 25	703-48264-00	30 - 6
6H4-42724-30	15 - 13	62Y-43845-00	22 - 59	6X4-44188-00	16 - 15	63D-45344-00	25 - 34	663-45954-01-EL	26 - 25	703-48265-00	30 - 9
6H4-42725-00	15 - 29	69A-4384F-00	22 - 24	6G8-44191-00	16 - 50	63D-45361-02-4D	25 - 43	663-45956-01-EL	26 - 25	703-48268-00	30 - 5
6X4-42725-00	16 - 55	6H1-4384F-10	22 - 33	688-44194-00	19 - 12	664-45371-01	26 - 12	69W-45958-00-EL	26 - 25	703-48271-00	30 - 60
676-42726-00	15 - 23	69W-4384G-00	22 - 46	63D-44311-00	25 - 21	63D-45375-00	26 - 6	6H5-45958-00-EL	26 - 25	703-48281-00	30 - 31
688-42726-10	15 - 24	6H1-4384G-11	22 - 31	63D-44312-00	26 - 19	663-45376-00-94	26 - 5	663-45958-01-EL	26 - 25	703-48282-00	30 - 32
6H3-42727-00	15 - 34	62X-4384H-00	22 - 16		34 - 19	6E5-45378-00	25 - 17	697-45970-00-98	26 - 25	703-48284-00	30 - 52
6X4-42728-10	16 - 65	69J-4384M-00	22 - 23	63D-44316-00	25 - 27	63D-45501-10	25 - 36	663-45970-60-98	26 - 25	701-48287-00	30 - 42
63D-42741-00-4D	15 - 20	69J-43853-00	22 - 29		34 - 10	6H4-45536-00	25 - 4	663-45972-60-98	26 - 25	703-48291-10	30 - 39
6G1-42748-00	4 - 19	62Y-43854-00	22 - 47		34 - 22	6H4-45551-01	25 - 37	663-45974-02-98	26 - 25	703-48293-10	30 - 41
6G5-42791-00	15 - 38	62Y-43855-00	22 - 32	63D-44322-00	25 - 22	6H4-45560-01	25 - 39	663-45974-60-98	26 - 25	701-48320-00	29 - 2
6E7-42791-10	15 - 38	6H1-43856-10	22 - 34		34 - 17	663-45567-01	25 - 41	663-45976-00-98	26 - 25	701-48320-20	29 - 2
6G5-42791-10	15 - 38	62X-43861-00	22 - 4	63D-44322-40	34 - 27	663-45567-10	25 - 41	663-45978-00-98	26 - 25	701-48320-30	29 - 2
6H4-42815-00	15 - 2	62X-43862-00	22 - 5	63D-44323-00	25 - 26	663-45567-20	25 - 41	663-45987-02	26 - 20	701-48320-50	29 - 2
6H4-42816-00	15 - 5	62X-43865-00	22 - 62		34 - 20	663-45567-30	25 - 41	670-45997-02	26 - 21	701-48320-60	29 - 2
6X4-42821-00	16 - 28	65W-4386A-00	22 - 28	63D-44323-40	34 - 28	663-45567-40	25 - 41	6A5-48129-10	16 - 27	701-48320-80	29 - 2
63D-43111-01-4D	20 - 1	62X-4386K-00	23 - 10	63D-44341-00	25 - 31	663-45567-50	25 - 41	703-48152-10	30 - 57	63D-48321-10	16 - 33
63D-43112-01-4D	20 - 2	62X-43871-00	22 - 7	6H3-44352-00	25 - 23	663-45567-60	25 - 41	703-48153-00	30 - 3	63D-48344-00	19 - 29
6E5-43126-02	20 - 32	62Y-43871-00	22 - 51		34 - 18	6H4-45571-01	25 - 42	6X4-48154-00	16 - 18	663-48344-00	19 - 29
63D-43128-01-4D	20 - 5	62X-43875-00	22 - 18	63D-44361-10	26 - 1	63D-45577-00	25 - 46	703-48189-00	30 - 17	6H4-48344-00	19 - 1
63D-43131-01	20 - 13	67F-43875-00	22 - 12	663-44366-00	26 - 18	63D-45577-10	25 - 46	703-48198-00	30 - 14	703-48345-01	30 - 19
6G5-43144-00	20 - 27	6H1-43875-00	22 - 58		34 - 24	63D-45577-20	25 - 46	703-48205-17	29 - 1	703-48358-00	30 - 20
6E5-43145-01	28 - 9	62Y-4387G-00	22 - 52	63D-44367-00	26 - 4	63D-45577-30	25 - 46		30 - 1	63D-48511-00-4D	21 - 36
6G5-43145-01	20 - 17	62Y-4387J-00	22 - 49	6E5-44391-00	15 - 14	63D-45577-40	25 - 46	703-48211-01	30 - 61	6H4-48531-11-94	15 - 7
6G5-43148-00	20 - 23	62Y-43880-01	23 - 2	63D-44514-01-94	21 - 22	63D-45577-50	25 - 46	703-48212-00	30 - 58	6H4-48532-11-94	15 - 8
688-43160-01	20 - 28	62Y-43881-00	23 - 13	63D-44526-00	21 - 24	63D-45577-60	25 - 46	703-48213-00	30 - 59	63D-48538-00	16 - 38
688-43165-00	20 - 29	6H1-43883-00	22 - 25	63D-44551-01-4D	21 - 9	663-45587-01	25 - 5	6X4-48215-00	16 - 4		16 - 44
6H5-43181-03	20 - 18	62X-43888-00	23 - 1	63D-44552-01-4D	21 - 18	663-45587-10	25 - 5	703-48215-00	30 - 43	6X4-48538-00	16 - 34
6H5-43185-03	20 - 19	62X-4388A-00	22 - 10	63D-44555-00-94	21 - 11	663-45587-20	25 - 5	703-48219-00	30 - 30	6X4-48538-10	16 - 41
63D-43311-13-4D	20 - 11	62Y-43891-00	23 - 6	663-44575-00	21 - 16	663-45587-30	25 - 5	703-48221-00	30 - 56	63D-61350-00	28 - 1
682-43318-01	18 - 13	62Y-43892-00	23 - 5	63D-45111-11-4D	24 - 1	663-45587-40	25 - 5	703-48222-00	30 - 27	63D-61351-00	28 - 2
62Y-43800-01-4D	22 - 1	69J-43893-00	22 - 53	6H4-45113-A0	24 - 19	663-45587-50	25 - 5	703-48223-00	30 - 28	6H4-81315-11	31 - 21
62X-43804-01	23 - 4	69J-43894-00	22 - 48		33 - 18	663-45587-60	25 - 5	703-48225-00	30 - 29	6H4-81332-00	11 - 16
62Y-43805-00	23 - 3	62X-43899-00	22 - 14	63D-45114-A0	24 - 9	63D-45611-00	25 - 55	703-48226-00	30 - 26	6H4-81337-01	14 - 30
62X-43807-00	23 - 8	69W-43899-01	22 - 63		34 - 2	63D-45631-01	25 - 57	703-48227-00	30 - 24	63D-81345-00	11 - 8
69W-4380F-00	23 - 9	69J-4389J-00	22 - 30	63D-45123-00	24 - 12	663-45633-00	25 - 62	703-48232-00	30 - 62	63D-81345-10	11 - 9
62X-4380H-00	23 - 14		22 - 55		34 - 5	663-45634-00	25 - 58	703-48234-00	30 - 18	63D-81345-20	11 - 10
62Y-4380K-01	22 - 2	6X4-44100-00	16 - 21	6H3-45127-00	24 - 18	63D-45635-00	25 - 60	703-48235-00	30 - 4	6J8-81365-A0	10 - 38
62X-43810-01	22 - 3	6X4-44102-00	16 - 23		34 - 4	663-45930-00-98	26 - 25	703-48236-00	30 - 16		14 - 27
62Y-43816-00	22 - 41	63D-44117-00	19 - 16	63D-45155-00	24 - 4	663-45941-01-EL	26 - 25	703-48238-00	30 - 22	6F5-81800-11	14 - 1
6H1-43816-00	22 - 54	63D-44120-10	19 - 13	63D-45214-00	25 - 10	69W-45943-00-EL	26 - 25	703-48243-00	30 - 15	689-81807-12	14 - 3
69W-4381B-00	22 - 13	63D-44121-00	19 - 24	63D-45215-00	25 - 11	6H5-45943-00-EL	26 - 25	703-48244-00	30 - 21	689-81809-11	14 - 7
6H1-43829-00	22 - 61	688-44122-00	19 - 28	65W-45251-00	20 - 41	69W-45945-00-EL	26 - 25	703-48245-00	30 - 11	689-81810-11	14 - 9
62Y-4382A-00	22 - 39	6X4-44139-00	16 - 9	67C-45251-00	26 - 15	6H5-45945-00-EL	26 - 25	703-48246-00	30 - 23	689-81811-11	14 - 11
62Y-4382L-00	22 - 42	63D-44144-00	25 - 52	63D-45251-01	20 - 6	69W-45947-00-EL	26 - 25	701-48248-00	30 - 13	689-81812-11	14 - 12
62Y-43830-01	22 - 21	663-44151-00	25 - 51	63D-45300-12-4D	25 - 1	663-45949-01-EL	26 - 25	703-48252-00	30 - 12	689-81813-10	14 - 13
6H1-43831-10	22 - 19	6X4-44159-00-4D	16 - 47	63D-45301-03-4D	25 - 2	69W-45952-00-EL	26 - 25	6X4-48261-00	16 - 25	689-81820-11	14 - 14
69J-43841-00	22 - 22	6X4-44173-00	16 - 48	63D-45321-00	25 - 14	6H5-45952-00-EL	26 - 25	703-48261-01	30 - 2	6H4-81822-02-98	12 - 14

NUMERICAL INDEX

PART NO.	REF. NO.	PART NO.	REF. NO.	PART NO.	REF. NO.	PART NO.	REF. NO.	PART NO.	REF. NO.	PART NO.	REF. NO.
689-81826-10	14 - 15	63D-82563-10	13 - 32	6H1-85711-60	4 - 26	90119-06MA3	14 - 25	90201-50306	3 - 12	90445-07M23	6 - 10
6F5-81830-11	14 - 4	69W-82575-00	17 - 4	63D-85720-00	6 - 50	90119-06MA5	2 - 41	90202-05088	6 - 17		7 - 10
689-81831-00	14 - 5	688-82575-01	30 - 47	63D-85720-10	7 - 47	90119-08015	2 - 28		7 - 17	90445-07M24	2 - 14
689-81840-11	14 - 10	676-82577-00	17 - 2	6Y5-87122-S0	31 - 14	90119-08019	2 - 9	90202-07M07	19 - 15	90445-07M27	2 - 13
689-81847-11	14 - 6	63D-82577-00	30 - 45	63D-W0001-00	33 - 1	90119-08M15	25 - 29	90202-12060	26 - 2	90445-07M31	25 - 18
689-81850-12	14 - 8	689-8257Y-00	17 - 6	63D-W0001-20	34 - 1		34 - 23	90202-25M04	21 - 13	90445-07M44	6 - 9
689-81857-11	14 - 2	6X4-82586-00	17 - 10	6H4-W0004-00	4 - 2	90119-08M79	24 - 17	90206-12052	15 - 3		7 - 9
6G1-81941-10	13 - 2	6E5-82587-00	13 - 33	63D-W0070-20	1 - 11	90119-08M83	24 - 7	90206-12M22	16 - 59	90445-07M46	2 - 12
6X4-81942-00	17 - 14	6E5-82588-00	15 - 35	63D-W0078-01	34 - 16	90119-08M84	26 - 11	90209-06M05	4 - 17	90445-07M87	6 - 45
6H4-81945-00	13 - 4	688-8258A-20	30 - 49	63D-W0078-0A	34 - 26	90142-05001	16 - 10	90249-06M19	20 - 24		7 - 43
6H4-81945-20	13 - 22	63D-82590-20	13 - 18	63D-W0090-11-1S	2 - 1	90142-05M06	25 - 12	90250-06023	25 - 61	90445-07MA3	2 - 16
61A-81949-00	13 - 28	63D-82590-40	13 - 18	6H4-W0093-03	33 - 19	90157-05M19	27 - 4	90266-04M01	1 - 6	90445-07MA5	4 - 21
6H5-81949-00	13 - 27	703-82591-00	30 - 53	656-W2810-02	8 - 38	90157-06M01	15 - 26	90280-03024	25 - 25	90445-07MA6	6 - 11
6H1-81950-00	13 - 19	703-82592-00	30 - 54	63D-W4434-00	25 - 30	90157-06M13	19 - 10		34 - 25		7 - 11
6H4-81952-00	13 - 3	63D-82594-00	13 - 15	90101-06020	20 - 40	90159-06M21	14 - 32	90338-05M03	1 - 17	90445-07MF1	21 - 31
6H2-81960-10	13 - 8	703-82594-00	30 - 25	90101-06021	2 - 19	90159-06M22	14 - 33	90338-05M11	13 - 14	90445-09057	8 - 31
63D-82105-U0	13 - 1	6H4-83354-00	11 - 7	90101-06128	32 - 11	90161-06M00	18 - 17	90340-08002	25 - 7	90445-09063	8 - 29
6H4-82117-00	13 - 31	6X4-83383-00	17 - 11	90101-08M15	21 - 23	90170-09M03	28 - 5	90340-14M00	2 - 24	90445-09M37	2 - 39
6Y5-82117-00	31 - 17	703-83383-02	30 - 51	90101-09M01	28 - 7	90170-12138	25 - 38	90386-07M58	19 - 25	90445-11M05	27 - 11
703-82119-00	12 - 4	6X4-83386-00	17 - 12	90101-12014	16 - 57	90170-18M10	20 - 37	90386-08032	16 - 16	90445-11M06	27 - 9
	21 - 37	6Y5-83500-S5	31 - 6	90101-12M65	20 - 42	90171-16011	26 - 23	90386-10025	20 - 21	90445-11M15	6 - 22
	13 - 29	6Y5-8350T-03	31 - 1	90105-06M15	13 - 25	90179-06M24	12 - 20	90386-10M16	20 - 20		7 - 22
682-82119-01	21 - 21	6Y5-83533-T2	31 - 10	90105-06M16	13 - 26	90179-16M05	11 - 14	90386-12003	16 - 62	90445-11M17	6 - 35
63D-82127-10	20 - 3	6Y5-83553-00	31 - 15	90105-08M61	25 - 44	90183-05M06	1 - 18	90386-12069	15 - 4		7 - 33
63D-82148-00	20 - 9	6Y5-83553-M0	31 - 15	90109-06M39	6 - 7	90185-08045	21 - 26	90386-18M35	20 - 34	90445-11M23	6 - 32
6H1-82148-00	13 - 9	6Y5-83557-10	31 - 19		7 - 7	90185-09M01	28 - 4	90386-18M44	20 - 39		7 - 28
6H4-82150-00	31 - 16	6Y5-83557-31	31 - 11	90109-06M40	6 - 8	90185-10051	21 - 8	90386-18M92	20 - 33	90445-11M30	32 - 8
1E6-82151-00	31 - 16	6E5-83558-00	21 - 32		7 - 8	90185-10M01	18 - 11	90386-22M15	20 - 14	90445-11M66	32 - 9
	13 - 10	6E5-83558-10	25 - 19	90109-06M43	19 - 4	90185-12M12	16 - 64	90386-26MA3	16 - 51	90445-13M00	9 - 8
663-82151-00	23 - 7	6Y5-83570-S5	31 - 7	90109-12M21	21 - 15	90185-22M11	20 - 16	90386-30M60	21 - 6	90445-13M01	9 - 6
62Y-82181-01	6 - 41	6H4-83589-00	15 - 31	90116-06M22	13 - 5	90201-05652	5 - 6	90386-30M77	21 - 4	90446-10M01	6 - 36
6A0-82317-00	7 - 39	6R3-83614-00	13 - 34	90116-10175	21 - 7	90201-06060	10 - 22	90386-30M78	21 - 3		7 - 34
	18 - 16	6A1-83625-41	4 - 25	90116-18M52	20 - 36	90201-083J8	23 - 16	90387-06119	6 - 42	90464-03M15	11 - 11
63D-82361-00	12 - 11	6E0-83627-41	16 - 66	90119-06M13	2 - 10	90201-08M01	18 - 5		7 - 40	90464-06M19	4 - 20
663-82370-01	12 - 11	63D-83672-01	21 - 33	90119-06M51	12 - 2	90201-08M93	6 - 3	90387-06M05	13 - 24	90464-07M20	6 - 14
6G1-82370-21	17 - 1	63D-83672-10	21 - 33	90119-06M61	15 - 19		7 - 3	90387-06M26	18 - 20		7 - 14
6X4-82510-30	30 - 44	6Y5-83728-00	31 - 12	90119-06M65	6 - 43	90201-09425	21 - 25	90387-06M41	15 - 18		13 - 30
703-82510-43	30 - 46	63D-84301-00	15 - 34		7 - 41	90201-10M20	28 - 3	90387-06M65	14 - 31	90464-08M07	17 - 3
703-82531-00	16 - 26	63D-84342-00	15 - 30	90119-06M67	6 - 44	90201-10M63	28 - 8	90387-06M66	10 - 41	90464-09M13	15 - 25
6X4-82540-00	30 - 50	6J8-85410-00	15 - 29		7 - 42	90201-12035	16 - 61	90387-06M69	10 - 10	90464-09M42	16 - 36
703-82540-00	31 - 18	6H4-85415-10	15 - 30	90119-06M73	15 - 6	90201-12426	20 - 44	90387-10M42	28 - 6	90464-15M11	8 - 36
68F-82553-70	31 - 18	63D-85520-01	11 - 4	90119-06M99	1 - 8	90201-12M16	21 - 12	90387-12M02	16 - 60		12 - 3
68F-82553-80	17 - 5	63D-85533-10	11 - 5	90119-06MA2	4 - 9	90201-13M19	21 - 14	90430-08020	25 - 8	90464-15M27	13 - 13
682-82556-00	30 - 48	63D-85540-03	12 - 1		10 - 34	90201-16M44	11 - 15		34 - 6	90465-06M86	6 - 49
	12 - 12	63D-85550-00	11 - 1		14 - 23	90201-22429	25 - 56	90430-12072	26 - 3		21 - 29
689-82560-00	12 - 13	63D-85560-10	11 - 2	90119-06MA3	2 - 29	90201-22M03	20 - 15	90430-14115	2 - 25	90465-11M10	20 - 47
6H4-82560-00	17 - 7	6H5-85570-00	12 - 7		2 - 34	90201-27M00	25 - 35		33 - 4		21 - 30
6X4-82563-00	30 - 55	63D-85580-00	11 - 6		10 - 36	90201-30M00	21 - 2	90440-14M00	20 - 46		25 - 20

NUMERICAL INDEX

PART NO.	REF. NO.	PART NO.	REF. NO.	PART NO.	REF. NO.	PART NO.	REF. NO.	PART NO.	REF. NO.	PART NO.	REF. NO.
90465-11M10	31 - 13	91318-05020	22 - 43	92995-06600	12 - 16	93210-16275	28 - 10	93700-06M03	16 - 3	97095-06014	12 - 21
	31 - 20	91318-06040	22 - 56		12 - 22	93210-18397	22 - 57		20 - 12		13 - 11
90465-13M11	21 - 35	91490-20010	16 - 11		13 - 12	93210-19MA7	6 - 2	94702-00160	2 - 42		16 - 37
90465-13M30	6 - 25		16 - 20		13 - 17		7 - 2	94702-00247	2 - 42		16 - 43
90465-13M36	18 - 21	91490-20012	19 - 27		13 - 21	93210-29375	22 - 6	94702-00271	2 - 42		17 - 13
90467-06016	2 - 15	91490-30025	26 - 24		15 - 12		22 - 20	95302-03600	22 - 38	97095-06016	10 - 5
	2 - 17	91690-30012	20 - 30		15 - 37	93210-29M94	21 - 5	95303-06600	19 - 11		13 - 35
	4 - 22	91690-30020	20 - 22		16 - 32	93210-32738	8 - 8	95380-03600	5 - 36		18 - 14
90467-08004	2 - 40	91690-40018	10 - 3		16 - 54		33 - 16		8 - 18		18 - 23
	4 - 24	92903-06100	10 - 12		18 - 19	93210-33MG4	25 - 16	95380-04600	31 - 5		19 - 31
	6 - 40	92903-06600	5 - 45		18 - 24		34 - 7		31 - 9	97095-06020	3 - 6
	7 - 38		10 - 13		19 - 32	93210-44383	22 - 8	95380-05600	6 - 19		10 - 23
	8 - 4		11 - 20	92995-08100	21 - 20	93210-48214	22 - 9		7 - 19		12 - 9
	8 - 13		19 - 21		21 - 28	93210-48MG8	25 - 33		19 - 9		15 - 11
	8 - 34		19 - 23		26 - 14		34 - 11		25 - 13		15 - 36
90467-10M04	6 - 34	92903-08600	10 - 33		26 - 17	93210-52449	23 - 17		30 - 7	97095-06025	8 - 2
	7 - 32		10 - 40	92995-08600	16 - 30	93210-58M21	3 - 5	95380-06600	10 - 14		13 - 20
	32 - 10		12 - 18		18 - 7		33 - 11		10 - 24		20 - 7
90467-11M08	6 - 23		14 - 17		24 - 14	93210-59MG7	25 - 24		13 - 6	97095-06030	12 - 15
	6 - 48		14 - 19		24 - 16		34 - 9		16 - 19		16 - 31
	7 - 23		14 - 22	92995-10100	26 - 9		34 - 21		30 - 40	97095-06035	10 - 28
	7 - 46		14 - 29	92995-10600	26 - 10	93210-69MG6	25 - 48	95380-08600	8 - 11		18 - 18
	32 - 12	92990-04100	31 - 4	92995-12200	20 - 43		34 - 13	95380-12600	20 - 45	97095-06040	8 - 27
90468-05M03	6 - 18		31 - 8	92995-18600	20 - 38	93210-74MG5	25 - 47	95380-12800	21 - 17		10 - 43
	7 - 18	92990-05100	8 - 22	92A08-03110	22 - 37		34 - 15	95670-06640	12 - 19	97095-06095	4 - 12
90468-07M02	6 - 12	92990-05600	4 - 4	93101-22M00	25 - 50	93306-001U1	25 - 45	97013-06012	5 - 44	97095-08025	26 - 13
	6 - 13	92990-06600	13 - 7		34 - 14	93306-305U8	3 - 10	97013-06014	8 - 10	97095-08035	26 - 16
	6 - 47		15 - 28	93101-25M57	25 - 32	93315-32224	25 - 3	97013-06018	11 - 19	97095-08040	16 - 29
	7 - 12		15 - 33		34 - 12	93317-22204	25 - 49	97013-06020	19 - 20	97095-08050	18 - 6
	7 - 13		17 - 9	93102-08414	23 - 15	93332-00001	25 - 6	97013-06030	10 - 11	97380-05025	30 - 8
	7 - 45	92990-08200	19 - 26	93102-23096	11 - 12	93332-00003	25 - 40	97013-06045	19 - 22	97380-08030	30 - 33
90468-10005	16 - 39	92990-08600	30 - 34	93102-25M28	3 - 3	93410-18M02	20 - 35	97013-08014	14 - 28	97575-08445	24 - 5
	16 - 45	92990-12200	16 - 58		33 - 10	93410-28M06	21 - 10	97013-08016	14 - 18		24 - 21
90468-18008	19 - 2	92990-12600	16 - 63	93104-16M01	3 - 4	93430-06024	30 - 10	97013-08020	10 - 39	97595-06510	20 - 10
	19 - 14	92990-16200	26 - 22		33 - 9	93430-06M02	10 - 26	97013-08025	10 - 32	97602-04212	23 - 12
90480-09M21	15 - 17	92995-05600	11 - 18	93106-09014	25 - 15	93440-62057	3 - 11		14 - 21	97780-60525	15 - 22
90480-13M24	13 - 23		15 - 10		34 - 8	93501-04M02	19 - 17	97013-08030	14 - 16	97780-60920	16 - 49
90480-25161	12 - 8	92995-06100	18 - 15	93210-04228	5 - 28	93501-08001	22 - 45	97013-08050	12 - 17	97803-04010	5 - 35
90501-10227	10 - 47		20 - 8	93210-04230	5 - 20	93503-16003	22 - 15	97075-08030	21 - 19	97880-05014	4 - 3
90501-10326	5 - 8		24 - 3		33 - 29	93505-32038	22 - 27		21 - 27	97880-05020	23 - 11
90501-12082	19 - 18	92995-06600	3 - 7	93210-07003	25 - 53		22 - 36		24 - 13	97880-06014	15 - 32
90501-16M01	25 - 59		8 - 3	93210-08287	9 - 3	93602-20M02	3 - 16		24 - 15	97880-06016	17 - 8
90501-23215	16 - 14		8 - 28		9 - 5	93604-08062	25 - 28	97075-10040	26 - 8	97885-05010	11 - 17
90502-16M02	20 - 31		10 - 6		27 - 14	93604-26256	22 - 40	97095-05016	15 - 9	97885-06008	20 - 4
90506-14M24	20 - 25		10 - 29		27 - 16	93606-12019	2 - 11	97095-06010	20 - 26	97885-06016	16 - 53
90508-26M35	19 - 6		10 - 44	93210-09165	22 - 60		24 - 6	97095-06012	13 - 16		21 - 34
90510-08002	10 - 20		12 - 6	93210-13M04	6 - 6		24 - 20		24 - 2	97885-06040	4 - 15
91318-05008	22 - 44		12 - 10		7 - 6		26 - 7	97095-06014	12 - 5	97885-06055	4 - 16

NUMERICAL INDEX

PART NO.	REF. NO.	PART NO.	REF. NO.	PART NO.	REF. NO.	PART NO.	REF. NO.	PART NO.	REF. NO.
97980-04114	5 - 4								
	33 - 28								
98503-05028	8 - 21								
98580-03015	30 - 38								
98580-04006	30 - 36								
98580-04008	5 - 11								
98580-04010	30 - 35								
98580-05010	30 - 37								
98780-04016	2 - 21								
98980-03006	5 - 37								
99001-08600	25 - 54								
99002-03600	22 - 26								
99530-10014	10 - 30								
9E450-04433	31 - 2								
9E450-04533	31 - 3								