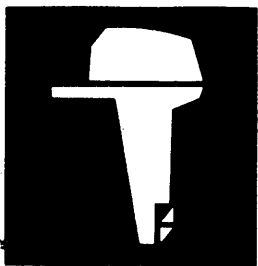


# YAMAHA

parts list 1980



outboard  
motor

serial no.

8B S : 020251 and up

L : 328451 and up

UL : 701441 and up

SUL : 800826 and up

# 8B

# INTERCHANGEABILITY MARK

Whether or not there is interchangeability between the parts having the previous and new parts numbers is indicated by interchangeability marks.

Ref.No.	Parts No.	Description	Q'ty
▶ 1 *	677-42610-02-F6	TOP COWLING ASS'Y	1
◀ *	677-42610-01-F6	TOP COWLING ASS'Y	1
2	677-W0070-00	. GRAPHIC SIDE SET	1s
3	677-42677-00	. GRAPHIC, front	1

Interchangeability Mark

\* Indicates new parts number

▶ } This mark is indicated serial number of marginal notes.

Mark A : The both new and previous parts are able to use for either previous or new engines.

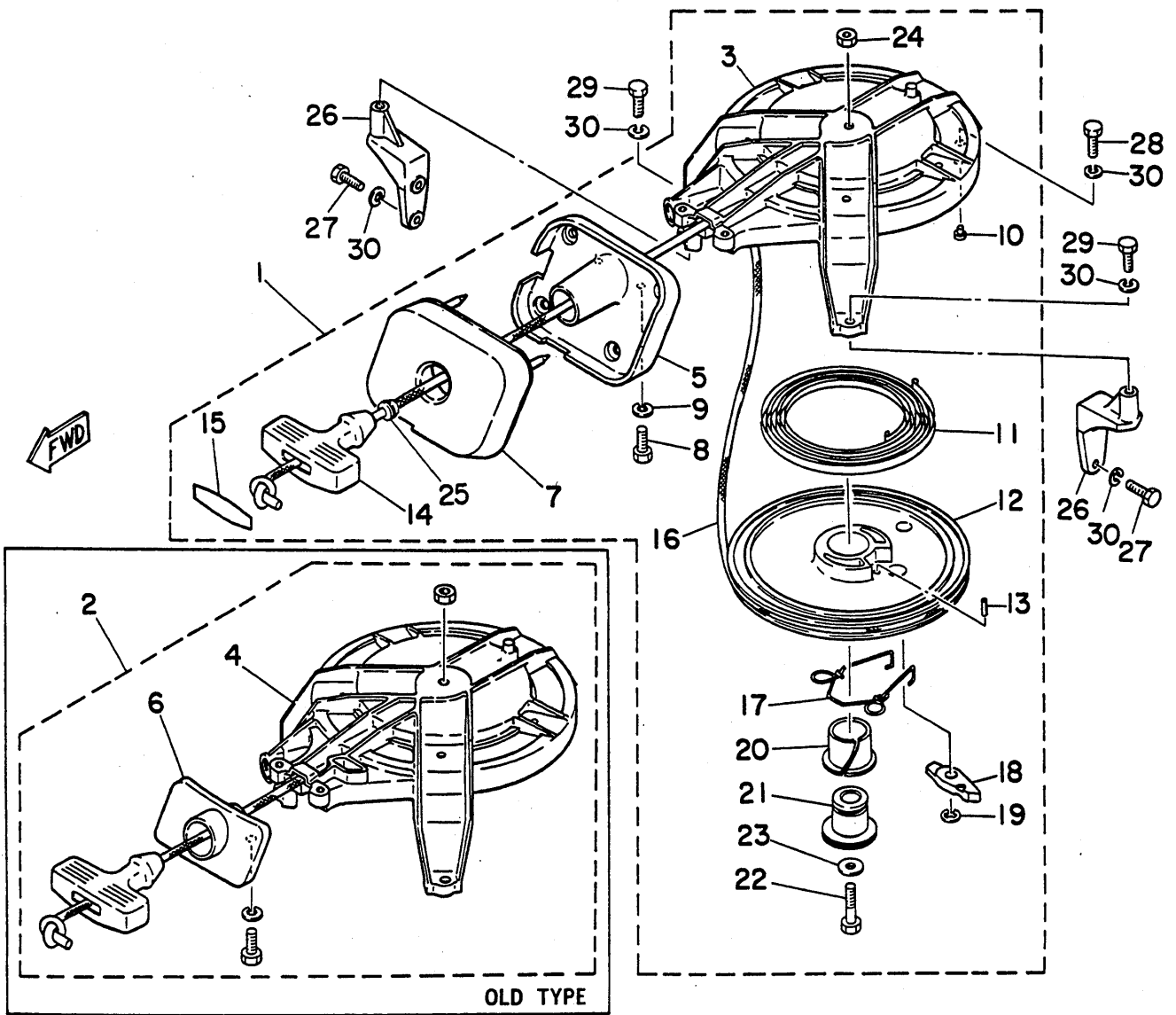
Mark B : Not interchangeable, refer to serial number of marginal notes for ordering or using of parts.

Mark C : Interchangeable, but the previous parts are not able to use for new engines.

## REPAIR KIT

POWER HEAD GASKET KIT .....	677-W0001-00
LOWER UNIT GASKET KIT .....	677-W0001-20
REED SET .....	677-W0004-00
EXTENSION KIT (Long) .....	677-W0072-00
EXTENSION KIT (Ultra Long) .....	677-W0073-00
EXTENSION KIT (Super Ultra Long) .....	677-W0074-00
WATER PUMP REPAIR KIT .....	655-W0078-10
CHROME PUMP KIT .....	655-W0078-1A
SAFETY STARTER KIT .....	677-W0079-01
CRANK CYLINDER ASS'Y .....	677-W0090-01 -
CARBURETOR REPAIR SET .....	677-W0093-00
PISTON ASS'Y (Standard) .....	677-11630-00
PISTON ASS'Y (Over Size 51.25mm) .....	677-11630-10
PISTON ASS'Y (Over Size 51.50mm) .....	677-11630-20
LOWER UNIT ASS'Y (Short) .....	677-45300-00-F6
LOWER UNIT ASS'Y (Long) .....	677-45300-10-F6

# Fig. 1 STARTER -1980



Ref.No.	Parts No.	Description	Q'ty	Ref.No.	Parts No.	Description	Q'ty
▶ 1 *	677-15710-01-F6	STARTER ASS'Y	1	16	✱	WIRE (1650mm)	1
▶ 2	677-15710-00-F6	STARTER ASS'Y	1	17	677-15705-01	SPRING, pawl drive	1
▶ 3 *	682-15711-71-94	CASE, starter	1	18	677-15741-01	PAWL, drive	1
▶ 4	677-15711-00-94	CASE, starter	1	19	93430-06M02	CIRCLIP	1
▶ 5 *	677-15758-01-94	GUIDE, wire	1	20	90386-25M05	BUSHING	1
▶ 6	677-15758-00-F6	GUIDE, wire	1	21	677-15717-00	SHAFT	1
▶ 7 *	677-15762-00	SEAL, rubber	1	22	97313-06020	BOLT	1
8	97313-06016	BOLT	2	23	90201-06060	WASHER (60-180-1.6mm)	1
9	92903-06100	WASHER	2	24	95303-06600	NUT	1
10	648-15773-00	STAY 3	1	▶ 25 *	6A0-15789-00-94	DAMPER	1
11	90510-08002	SPRING, spiral	1	26	677-15771-00-94	STAY 1	2
12	677-15714-00-94	DRUM, sheave	1	27	97313-06018	BOLT	4
13	91690-40020	PIN, spring	1	28	97313-06035	BOLT	1
14	619-15755-01	HANDLE, starter	1	29	97313-06020	BOLT	2
15	689-15779-00	COVER	1	30	92903-06100	WASHER	7

Interchangeability Mark

Interchangeability Mark

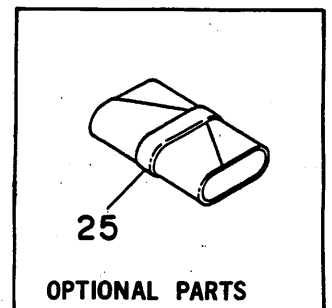
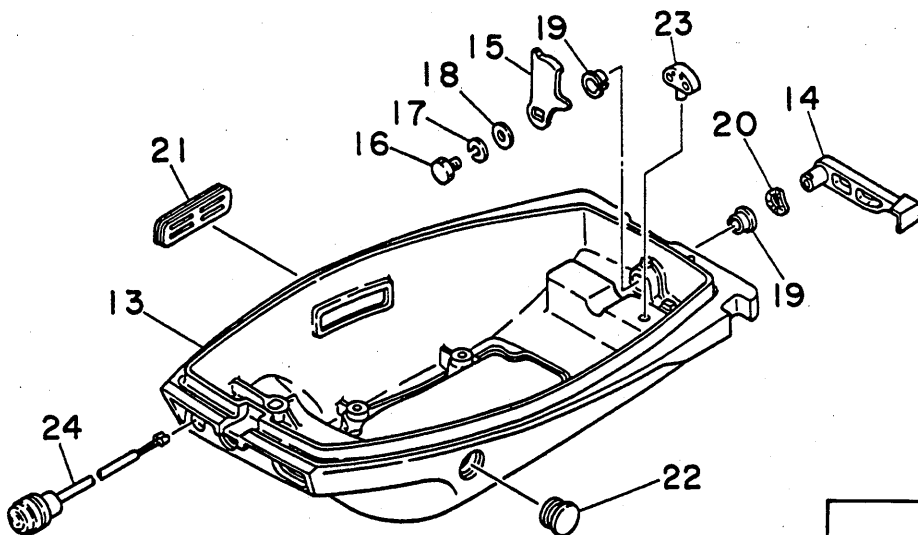
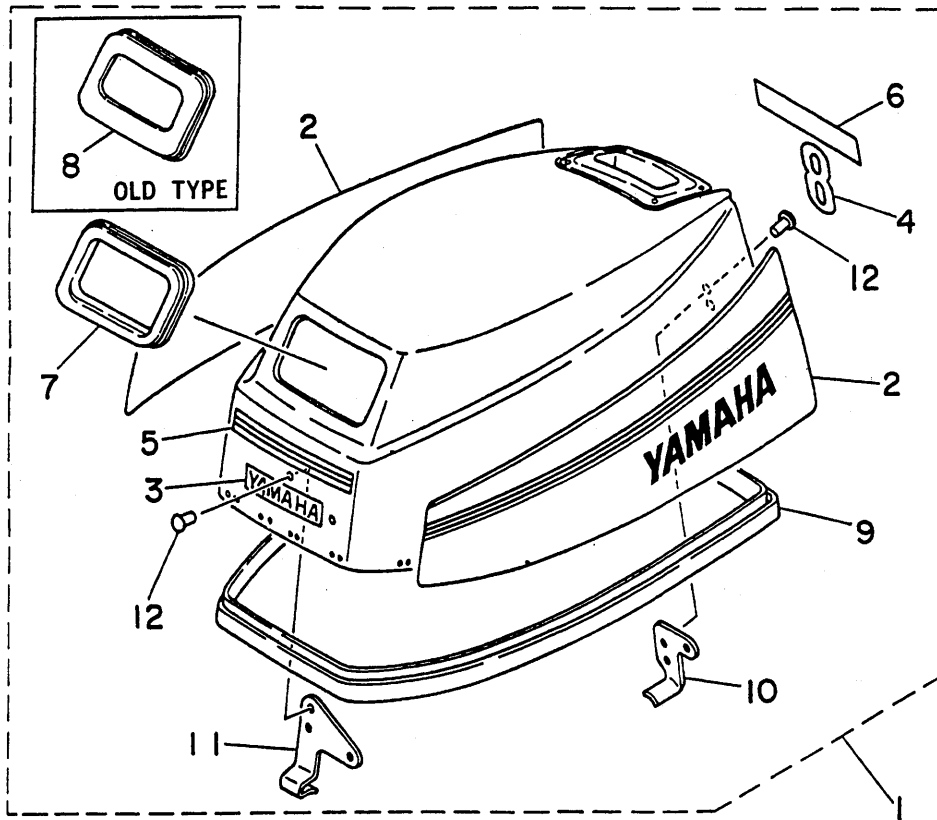
88 S: 030635 and below  
L: 342080 and below  
UL: 701935 and below  
SUL: 801095 and below

88 S: 030636 and up  
L: 342081 and up  
UL: 701936 and up  
SUL: 801096 and up

\* New parts number

✱ Cut from 50m roll, Parts No. 90890-44373, cutting length 1.65m

Fig. 2 COWLING -1980



# COWLING - 1980

Ref.No.	Parts No.	Description	Q'ty	Ref.No.	Parts No.	Description	Q'ty
▶ 1 *	677-42610-02-F6	TOP COWLING ASS'Y	1	15 *	689-42816-00	LEVER, clamp 2	1
◀ *	677-42610-01-F6	TOP COWLING ASS'Y	1	※	656-42816-00	LEVER, clamp 2	1
2	677-W0070-00	. GRAPHIC SIDE SET	1S	16	97313-06012	BOLT	1
3	677-42677-00	. GRAPHIC, front	1	17	92903-06100	WASHER	1
4	677-42678-00	. GRAPHIC, rear	1	18	90201-06068	WASHER (6.5 $\phi$ -20 $\phi$ -2.0mm)	1
5	677-42681-00	. MARK, cowling 1	1	19	90386-12069	BUSHING	2
6	677-42682-00	. MARK, cowling 2	1	20	90206-12052	WASHER (12.5 $\phi$ -19 $\phi$ -0.5mm)	1
▶ 7 *	677-15761-01	. SEAL, rubber 1	1	21	677-42725-00	GROMMET 2	1
◀ 8	677-15761-00	. SEAL, rubber	1	22	677-42724-00	GROMMET 1	1
9	677-42615-00	. SEAL	1	23	606-42591-00	HOLDER, share pin	1
10	677-42647-00	. HOLDER, clamp band	1	24	677-82550-00	STOP SWITCH ASS'Y	1
11	677-42651-01	. HOOK 1	1	25	670-28100-60	TOOL ASS'Y	1
12	90266-04004	. RIVET	4				
13	677-42711-01-F6	COWLING, bottom 1	1				
14	677-42815-00-F6	LEVER, clamp 1	1				

Interchangeability Mark

Interchangeability Mark

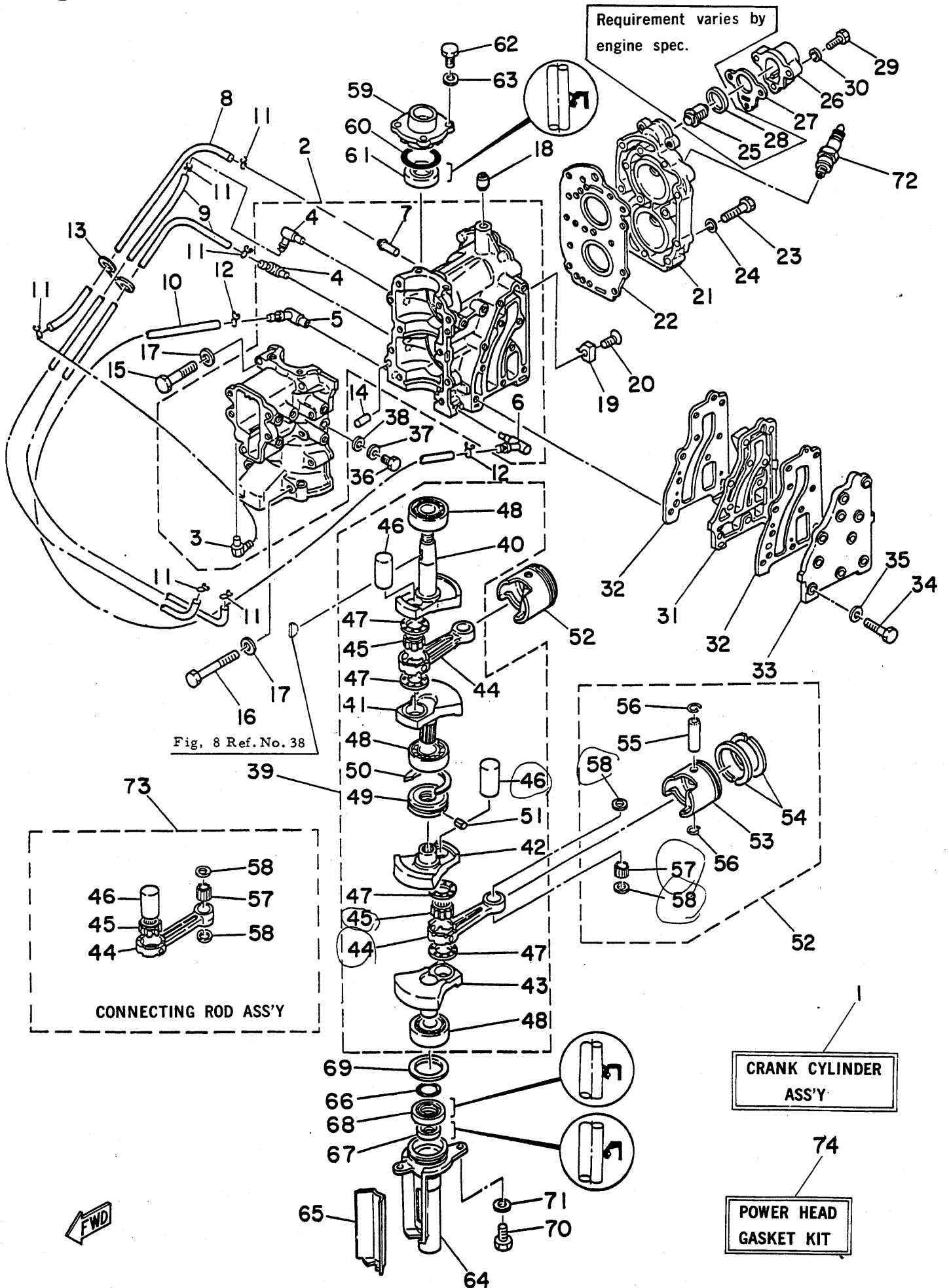
BB S: 030635 and below  
L: 342080 and below  
UL: 701935 and below  
SUL: 801095 and below

BB S: 030636 and up  
L: 342081 and up  
UL: 701936 and up  
SUL: 801096 and up

\* New parts number

※ Not shown

# Fig. 3 CRANKCASE, CYLINDER & PISTON - 1980



# CRANKCASE, CYLINDER & PISTON - 1980

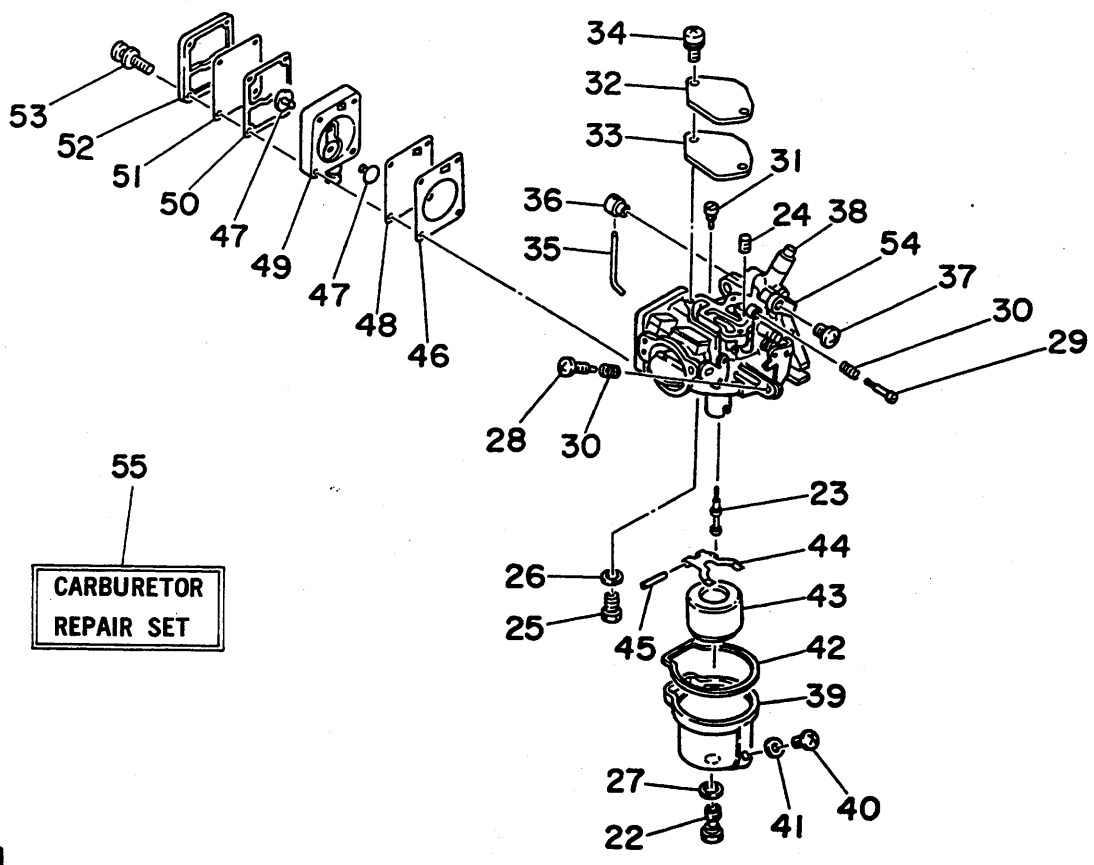
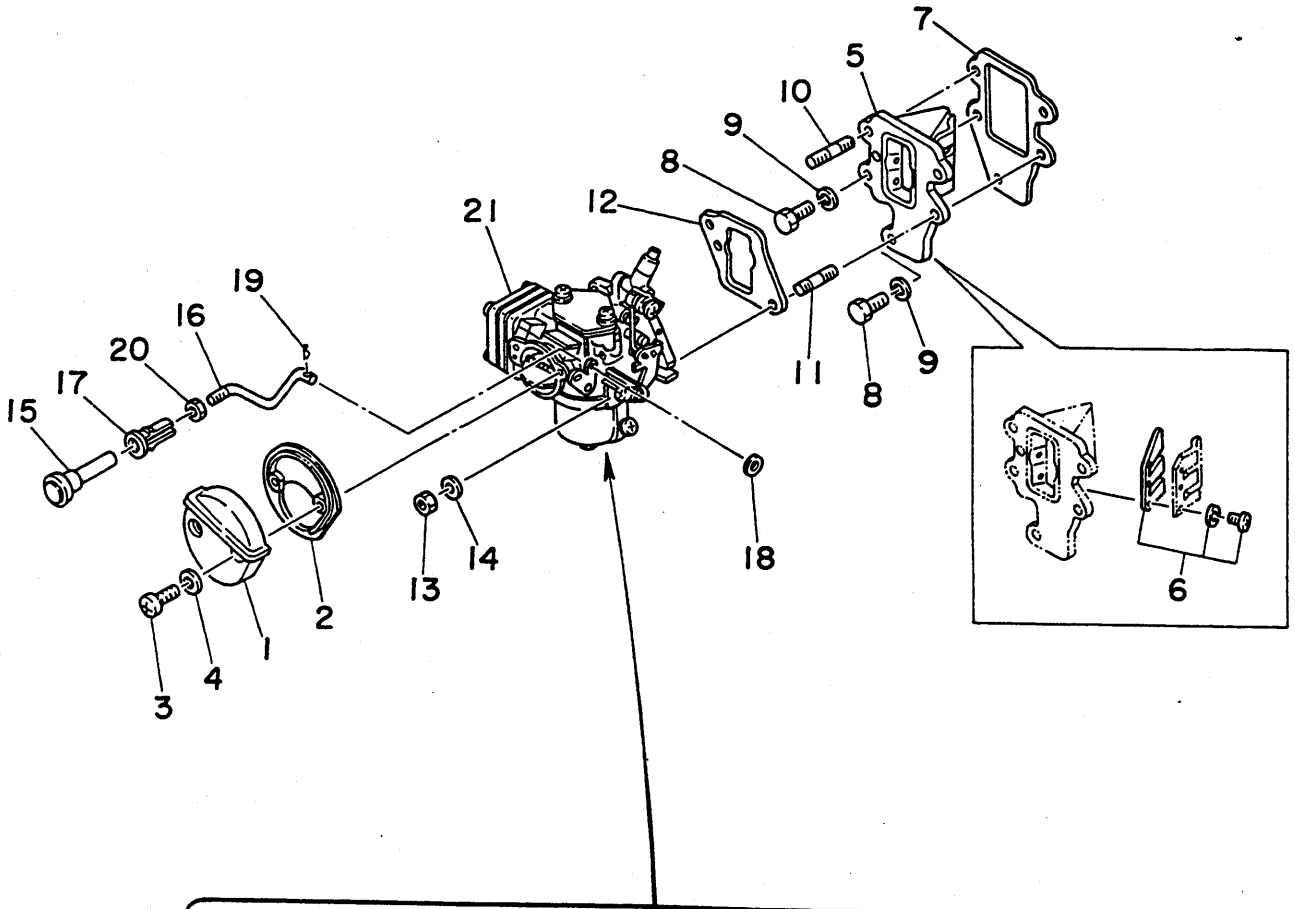
Ref.No.	Parts No.	Description	Q'ty	Ref.No.	Parts No.	Description	Q'ty
1	677-W0090-01	CRANK CYLINDER ASS'Y (Ref. No. 2 to 72)	1	45	93310-41800	BEARING, con-rod big end	2
2	677-15100-01-94	CRANKCASE ASS'Y	1	46	677-11681-00	PIN, crank	2
3	650-11370-00	CHECK VALVE ASS'Y	1	47	90209-18112	WASHER (18.20-310-1.0mm)	4
4	646-11370-00	CHECK VALVE ASS'Y	2	48	93306-20411	BEARING (B6204C3 special)	3
5	677-11372-00	NIPPLE, hose	1	49	677-11515-00	SEAL, labyrinth	1
6	676-11372-00	NIPPLE, hose 2	1	50	93440-47055	CIRCLIP (450 special)	1
7	624-14485-00	PIPE, joint	1	51	91690-30010	PIN, spring	1
8	90445-07M02	HOSE (2.50-70-167mm)	1	52	677-11630-00	PISTON ASS'Y (Standard)	1
9	90445-07258	HOSE (2.50-70-200mm)	2	*	677-11630-10	PISTON ASS'Y (Over Size 51.25mm)	1
10	90445-10M03	HOSE (50-100-240mm)	1	*	677-11630-20	PISTON ASS'Y (Over Size 51.50mm)	1
11	90467-06016	CLIP	6	53	677-11631-00-96	PISTON (Standard 50.96mm)	} U.R. 2
12	648-24356-00	CLIP	2		677-11631-00-97	PISTON (Standard 50.97mm)	
13	90464-07015	CLAMP	1		677-11631-00-98	PISTON (Standard 50.98mm)	
14	93605-08041	PIN, dowel B (50-8mm)	2	*	677-11635-00	PISTON (Over Size 51.25mm)	2
15	97313-06045	BOLT	8	*	677-11636-00	PISTON (Over Size 51.50mm)	2
16	97313-06065	BOLT	2	54	647-11610-00	PISTON RING SET (Standard)	2S
17	90201-06043	WASHER (6.40-12.50-2.0mm)	10	*	647-11610-10	PISTON RING SET (Over Size 51.25mm)	2S
18	91830-21014	PIN, dowel A (6.40-100-14mm)	1	*	647-11610-20	PISTON RING SET (Over Size 51.50mm)	2S
19	664-11325-00	ANODE	1	55	527-11633-00	PIN, piston	2
20	98280-06018	SCREW, flathead	1	56	93450-13022	CIRCLIP	4
21	677-11111-00-94	HEAD, cylinder 1	1	57	93602-14118	BEARING, con-rod small end	56
■ 22	677-11181-00	GASKET, cylinder head	1	58	90201-12565	WASHER (12.20-14.50-1.3mm)	4
23	97313-06035	BOLT	13	59	677-15359-00-94	HOUSING, oil seal 1	1
24	90201-06043	WASHER (6.40-12.50-2.0mm)	13	■ 60	93210-42159	O-RING (2.40-42.40)	1
25	677-12411-00	THERMOSTAT	1	■ 61	93102-20092	OIL SEAL (SD-200-360-7mm)	1
26	677-12413-00-94	COVER, thermostat	1	62	97313-06018	BOLT	4
■ 27	677-12414-00	GASKET, cover	1	63	92903-06600	WASHER	4
28	90201-21567	WASHER (21.50-27.50-2.0mm)	1	64	677-15396-01-94	HOUSING, oil seal 2	1
29	97313-06025	BOLT	3	65	677-15379-02	SEAL	1
30	92903-06600	WASHER	3	66	93210-42162	O-RING (2.40-42.80)	1
31	677-41111-00-94	INNER COVER, exhaust	1	■ 67	93101-14M01	OIL SEAL (S-140-250-6mm)	1
■ 32	677-41112-00	GASKET, exhaust cover	2	■ 68	93102-20M06	OIL SEAL (SD-200-360-7mm)	1
33	677-41113-00-94	OUTER COVER, exhaust	1	69	90201-41528	WASHER (410-500-1.5mm)	1
34	97313-06030	BOLT <i>67765F</i>	10	70 *	97395-06016	BOLT	} A 2
35	92903-06600	WASHER	10	*	97375-06016	BOLT	
36	97313-06012	BOLT	1	71	92990-06600	WASHER	2
37	92903-06600	WASHER	1	72	94701-00040	PLUG, spark (B-7HS) NGK	2
38	90430-06015	GASKET (6.50-10.50-1.5mm)	1	73	677-11650-01	CONNECTING ROD ASS'Y	2
39	677-11400-00	CRANK ASS'Y	1	■ 74	677-W0001-00	POWER HEAD GASKET KIT	1
40	677-11412-00	CRANK 1	1				
41	677-11422-00	CRANK 2	1				
42	677-11432-00	CRANK 3	1				
43	677-11442-00	CRANK 4	1				
44	677-11651-01	ROD, connecting	2				

Interchangeability Mark

Interchangeability Mark

- \* New parts number
- ※ Not shown
- Contents of power head gasket kit

Fig. 4 INTAKE -1980





# INTAKE - 1980

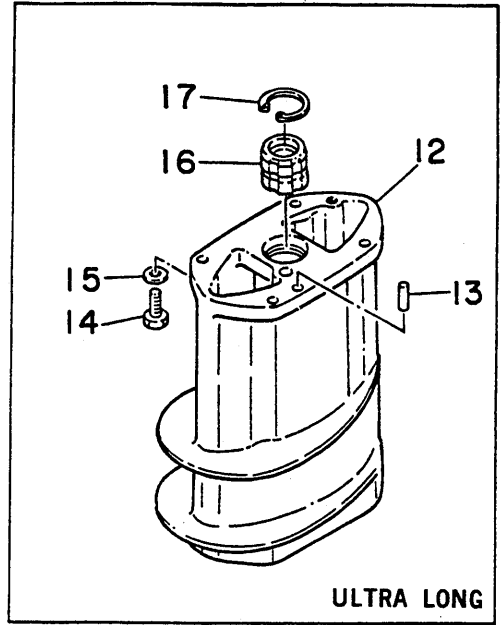
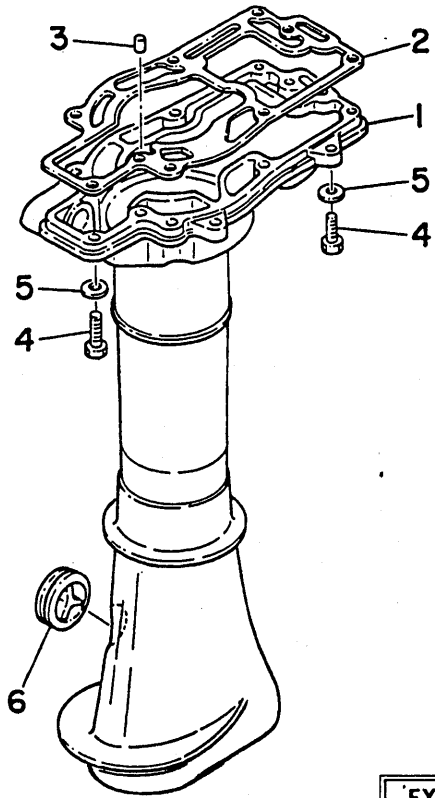
Ref.No.	Parts No.	Description	Q'ty	Ref.No.	Parts No.	Description	Q'ty
1	677-14431-00	SILENCER 1	1	♣ 29	647-14323-00	. SCREW, air adjusting	1
2	677-14441-00	SILENCER 2	1	30	646-14212-01	. SPRING, pilot adjusting	2
3	97803-05020	SCREW, panhead	2	31	647-14326-00	. SCREW, guide	1
4	92903-05600	WASHER	2	32	677-14157-01	. PLATE	1
5	677-13610-00	REED VALVE ASS'Y	1	♣ 33	677-14227-00	. GASKET	1
6	677-W0004-00	. REED SET	1S	34	677-14325-00	. SCREW	2
■ 7	677-13621-00	PACKING, valve seat 1	1	35	677-41241-00	. ROD	1
8	97313-06018	BOLT	3	36	677-41226-00	. END, throttle lever	1
9	92903-06100	WASHER	3	37	677-14327-00	. SCREW (M5-6mm)	1
10	95621-06325	BOLT, stud	1	38	626-42658-00	. BUSHING	1
11	90116-06M04	BOLT, stud	1	39	677-14381-00	. BODY, float chamber	1
♣ ■ 12	677-14198-00	GASKET	1	40	97803-04005	. SCREW, panhead	1
13	95303-06700	NUT	2	■ ♣ 41	655-14398-00	. GASKET 1	1
14	92903-06600	WASHER	2	■ ♣ 42	677-14384-00	. GASKET, float chamber	1
15	677-41271-00	KNOB, choke 1	1	♣ 43	647-14385-00	. FLOAT	1
16	677-41256-00	ROD, choke link	1	44	626-14387-00	. ARM, float	1
17	90480-14M02	GROMMET 1	1	♣ 45	626-14386-00	. PIN, float	1
18	92903-04200	WASHER	1	46	677-24434-01	. GASKET, pump 1	1
19	90468-10004	CLIP	1	47	682-24421-00	. VALVE, check	2
20	95303-04700	NUT	1	48	677-24411-01	. DIAPHRAGM	1
21	677-14301-03	CARBURETOR ASS'Y	1	49	677-24412-01	. COVER, pump	1
22	677-14343-39	. JET, main (#78)	1	50	677-24435-01	. GASKET, body 2	1
23	677-14341-00	. NOZZLE, main (2.5Ø-13mm)	1	51	677-24471-01	. DIAPHRAGM	1
24	647-14342-23	. JET, pilot (#46)	1	52	677-24413-01	. COVER 2	1
♣ 25	626-14390-90	. VALVE SEAT ASS'Y	1	53	677-24444-00	. SCREW (M5-13mm)	4
♣ 26	367-14195-00	. WASHER, valve seat	1	54	677-41210-00	. ACCEL. ARM ASS'Y	1
♣ 27	1J2-14398-00	. GASKET	1	♣ 55	677-W0093-00	CARBURETOR REPAIR SET	1S
28	664-14321-00	. SCREW, throttle	1				

Interchangeability Mark

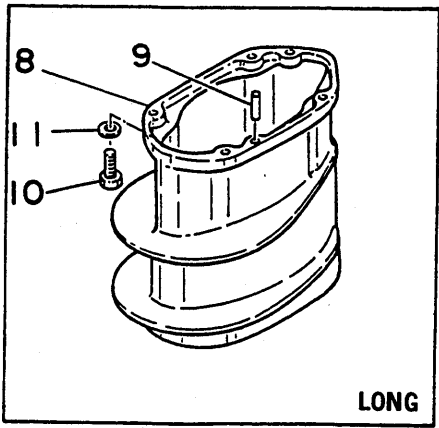
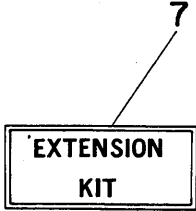
Interchangeability Mark

- Contents of power head gasket kit (Parts No. 677-W0001-00)
- ♣ Contents of carburetor repair set

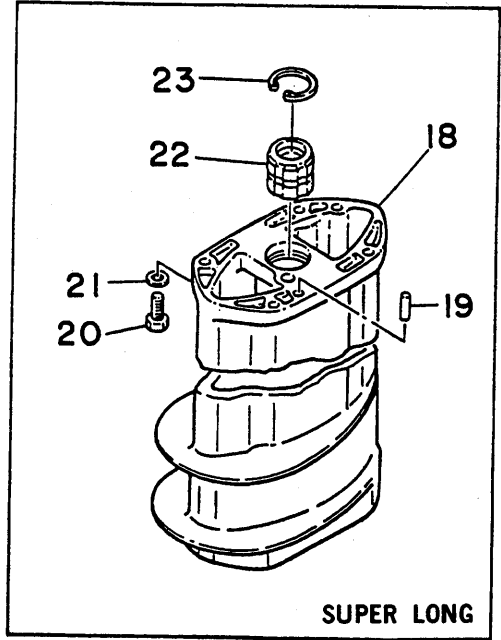
Fig. 5 UPPER CASING - 1980



ULTRA LONG



LONG



SUPER LONG



# UPPER CASING - 1980

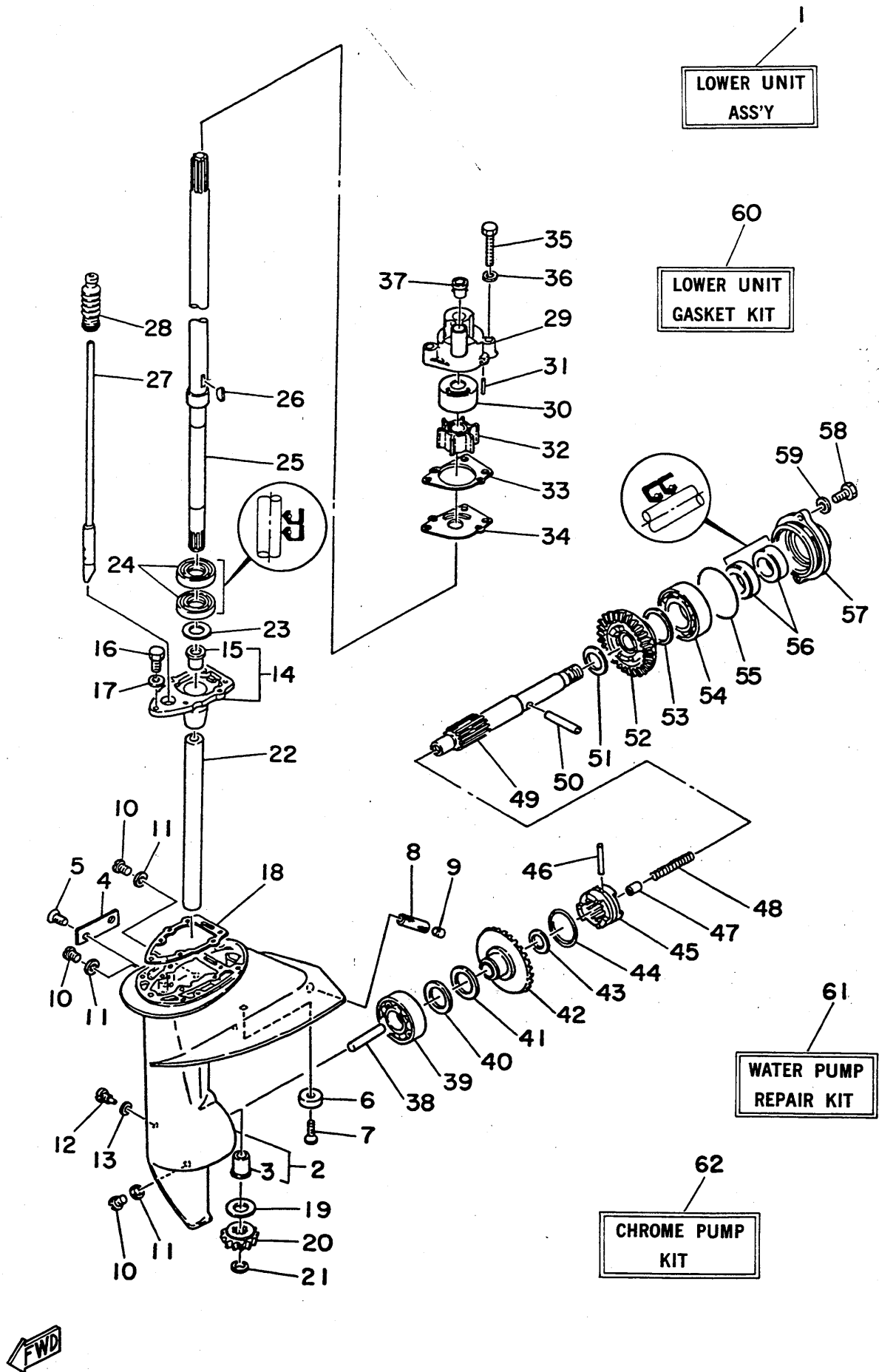
Ref.No.	Parts No.	Description	Q'ty		Ref.No.	Parts No.	Description	Q'ty
1	677-45111-00-F6	CASING, upper	1				<b>ULTRA LONG</b>	
■ 2	677-45113-00	GASKET, upper casing	1		● 12	655-45211-20-F6	EXTENSION (Ultra Long 190mm)	1
3	93605-08041	PIN, dowel B (5ø-8mm)	2		● 13	93604-08062	PIN, dowel B (4ø-8mm)	2
4 *	97395-06025	BOLT	7	} A	● 14 *	97395-06020	BOLT	4
※	97375-06025	BOLT	7		● ※	97375-06020	BOLT	4
5	92990-06600	WASHER	7		● 15	92990-06600	WASHER	4
6	647-45151-01	COVER, upper casing 1	1		● 16	655-45318-00	BUSHING, drive shaft	1
● 7	677-W0072-00	EXTENSION KIT (Long)	1		● 17	93420-26M00	CIRCLIP	1
● ※	677-W0073-00	EXTENSION KIT (Ultra Long)	1				<b>SUPER ULTRA LONG</b>	
● ※	677-W0074-00	EXTENSION KIT (Super Ultra Long)	1		● 18	655-45211-30-F6	EXTENSION (Super Ultra Long 267mm)	1
		<b>LONG</b>			● 19	93604-08062	PIN, dowel B (4ø-8mm)	2
● 8	647-45211-10-F6	EXTENSION (Long 140mm)	1		● 20 *	97395-06020	BOLT	4
● 9	93604-08062	PIN, dowel B (4ø-8mm)	2		● ※	97375-06020	BOLT	4
● 10 *	97395-06020	BOLT	4	} A	● 21	92990-06600	WASHER	4
● ※	97375-06020	BOLT	4		● 22	655-45318-00	BUSHING, drive shaft	1
● 11	92990-06600	WASHER	4		● 23	93420-26M00	CIRCLIP	1

Interchangeability Mark

Interchangeability Mark

- \* New parts number
- ※ Not shown
- Contents of power head gasket kit (Parts No. 677-W0001-00)
- Contents of extension kit (Parts No. 677-W0072-00, 677-W0073-00, 677-W0074-00)

Fig. 6 LOWER & DRIVE I -1980



# LOWER & DRIVE I -1980

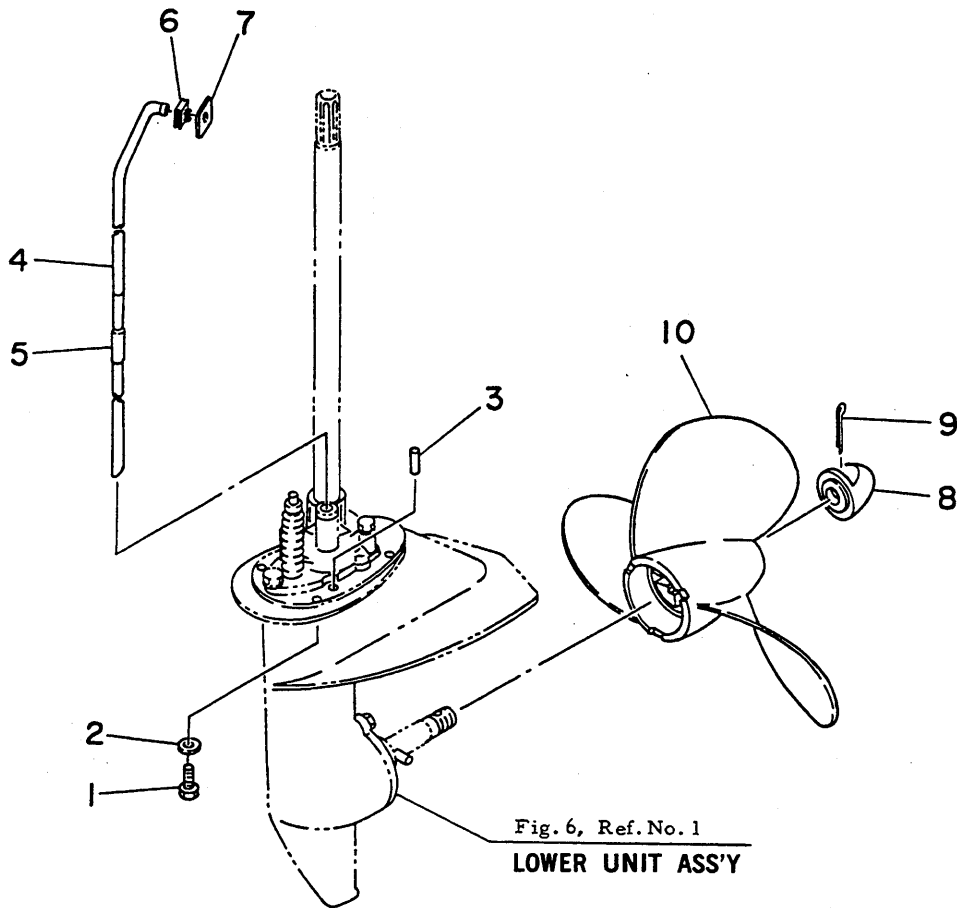
Ref.No.	Parts No.	Description	Q'ty	Ref.No.	Parts No.	Description	Q'ty	
1	677-45300-00-F6	LOWER UNIT ASS'Y (Short) (Ref. No. 2 to 59)	1S	28	655-44147-00	BOOT, shift rod	1	
*	677-45300-10-F6	LOWER UNIT ASS'Y (Long) (Ref. No. 2 to 59)	1S	29	655-44311-03	HOUSING, water pump	1	
2	655-45310-01-F6	LOWER CASING ASS'Y	1	★30	650-44322-01	INSERT, cartridge	1	
3	647-45316-09	BUSHING, drive shaft	1	☆*	655-44322-41	INSERT, cartridge (Chromate)	1	
4	655-45214-02-F6	COVER, water inlet	1	31	93604-18080	PIN, dowel B (4φ-18.4mm)	2	
5	98180-05015	SCREW, ovalhead	2	☆☆32	662-44352-00	IMPELLER	1	
6	616-45251-30	ANODE	1	☆☆★33	655-44315-00	GASKET, water pump	1	
7	90142-06M00	SCREW, ovalhead	1	★34	655-44323-01	OUTER PLATE, cartridge	1	
8	626-45215-00	COVER, water inlet 2	1	☆*	655-44323-41	OUTER PLATE, cartridge(Chromate)	1	
9	90334-10008	PLUG, blind	1	☆☆★35 *	97390-06040	BOLT	3 } A	
10	90340-08014	PLUG, straight screw	3	☆☆*	97375-06040	BOLT	3 } A	
▲11	90430-08020	GASKET (8φ-12.5φ-1.5mm)	3	36	92990-06600	WASHER	3	
12	90149-06003	SCREW, detent	1	☆☆37	647-44366-00	RUBBER, water seal 2	1	
▲13	90430-06015	GASKET (6.5φ-10.5φ-1.5mm)	1	38	654-45635-00	PLUNGER, shift	1	
14	647-45331-00-94	HOUSING, bearing	1	39	93306-00401	BEARING (B6004)	1	
15	647-45316-09	BUSHING	1	40	647-45567-00	SHIM, gear adjust (0.1mm)	U.R.	
16 *	97390-06020	BOLT	2 } A	41	624-45567-00-03	SHIM, gear adjust (0.3mm)	} U.R.	
※	97370-06020	BOLT	2 } A	42	647-45560-00	GEAR 1 ASS'Y (27T)		1
17	92990-06600	WASHER	2	43	90201-13198	WASHER (13.3φ-20.5φ-1.5mm)	1	
▲18	647-45315-00	PACKING, lower casing	1	44	655-45633-00	RING, cross pin	1	
19	647-45533-00-08	WASHER, thrust 1 (0.8mm)	} U.R.	45	655-45631-00	CLUTCH, dog	1	
	647-45533-00-10	WASHER, thrust 1 (1.0mm)			46	93605-29098	PIN, dowel B (5φ-29.0mm)	1
	647-45533-00-12	WASHER, thrust 1 (1.2mm)			47	648-45634-00	SLIDE, shift	1
	647-45533-00-14	WASHER, thrust 1 (1.4mm)			48	90501-10064	SPRING	1
20	647-45551-00	PINION (13T)	1	49	655-45611-00	SHAFT, propeller	1	
21	93430-07012	CIRCLIP (E-7φ)	1	50	90250-05036	PIN, straight	1	
22	90387-14108	COLLAR (14φ-16φ-124mm)	1	51	90201-15229	WASHER, thrust (15.3φ-20.5φ-15mm)	1	
23	90201-12161	WASHER (12.1φ-16.5φ-0.5mm)	U.R.	52	647-45570-01	GEAR 2 ASS'Y (27T)	1	
▲24	93101-18050	OIL SEAL (S-18φ-28φ-6mm)	2	53	626-45577-00-01	SHIM, gear adjust 2 (0.1mm)	} U.R.	
25	655-45501-00	DRIVE SHAFT COMP. (Short 644mm)	1		626-45577-00-03	SHIM, gear adjust 2 (0.3mm)		
●※	655-45501-10	DRIVE SHAFT COMP. (Long 784mm)	1		626-45577-00-05	SHIM, gear adjust 2 (0.5mm)		
●※	655-45501-20	DRIVE SHAFT COMP. (Ultra Long 834mm)	1	54	93306-00501	BEARING (B6005)	1	
●※	655-45501-30	DRIVE SHAFT COMP. (Super Ultra Long 911mm)	1	▲55	93210-58144	O-RING (3.1φ-58.4φ)	1	
☆☆26	90280-03024	KEY, woodruff	1	▲56	93101-15074	OIL SEAL (S-15φ-28φ-6mm)	2	
27	655-44150-00	SHIFT CAM ASS'Y (Short 311mm)	1	57	655-45361-02-F6	CAP, lower casing	1	
●※	655-44150-10	SHIFT CAM ASS'Y (Long 451mm)	1	58 *	97395-06020	BOLT	2 } A	
●※	655-44150-20	SHIFT CAM ASS'Y (Ultra Long 501mm)	1	※	97375-06020	BOLT	2 } A	
●※	655-44150-30	SHIFT CAM ASS'Y (Super Ultra Long 578mm)	1	59	92990-06600	WASHER	2	
				▲60	677-W0001-20	LOWER UNIT GASKET KIT	1	
				★61	655-W0078-10	WATER PUMP REPAIR KIT	1	
				☆62	655-W0078-1A	CHROME PUMP KIT	1	

Interchangeability Mark

Interchangeability Mark

- \* New parts number
- ※ Not shown
- ▲ Contents of lower unit gasket
- Contents of extension kit (Parts No. 677-W0072-00, 677-W0073-00, 677-W0074-00)
- ★ Contents of water pump repair kit
- ☆ Contents of chrome pump kit

# Fig. 7 LOWER & DRIVE 2 -1980



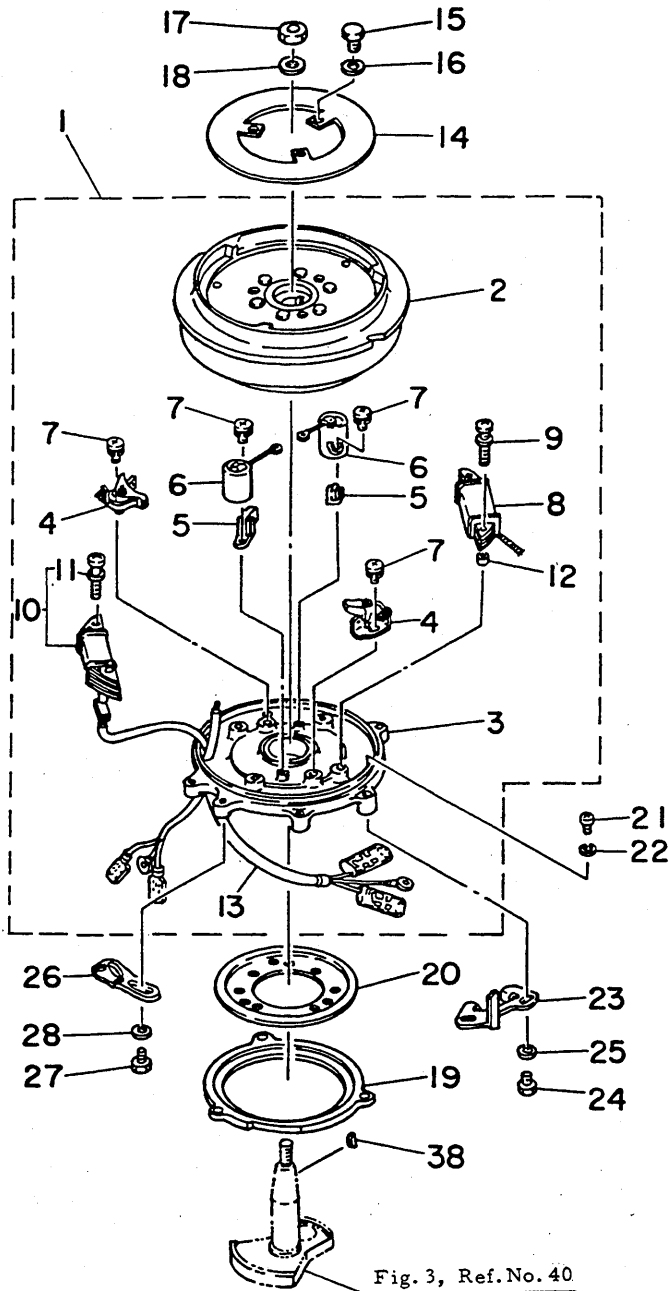
Ref.No.	Parts No.	Description	Q'ty	Ref.No.	Parts No.	Description	Q'ty
1 *	97395-06020	BOLT	4	● 7	655-44373-00	SET PLATE, water tube	1
※	97375-06020	BOLT	4	⑧	647-45616-02	NUT, propeller	1
2	92990-06600	WASHER	4	⑨	91490-30030	PIN, cotter	1
3	93604-08062	PIN, dowel B (4φ-8mm)	2	10	647-45941-00-36	PROPELLER ASS'Y 1(2X9"X9"-C)	} U.R. 1
4	655-44361-00	TUBE, water (Short 373mm)	1	↘	647-45943-00-36	PROPELLER ASS'Y 2(3X9"X7"-C)	
●※	655-44361-10	TUBE, water (Long 513mm)	1	↘	655-45945-00-36	PROPELLER ASS'Y 3(3X9"X6½"-C)	
●※	655-44361-20	TUBE, water (Ultra Long 563mm)	1	↘	647-45947-00-36	PROPELLER ASS'Y 4(3X9"X9"-C)	
●※	655-44361-30	TUBE, water (Super Ultra Long 640mm)	1	↘	655-45947-01-36	PROPELLER ASS'Y 4(3X9"X5½"-C)	
5	90445-11262	HOSE (Short, Long) (7.0φ-11.0φ-30.0mm)	1		655-45949-00-36	PROPELLER ASS'Y 5(3X9"X5"-C)	
■● 6	655-44365-00	RUBBER, water seal 1	1		647-45926-00-36	PROPELLER ASS'Y 8(2X9"X7"-C)	

Interchangeability Mark

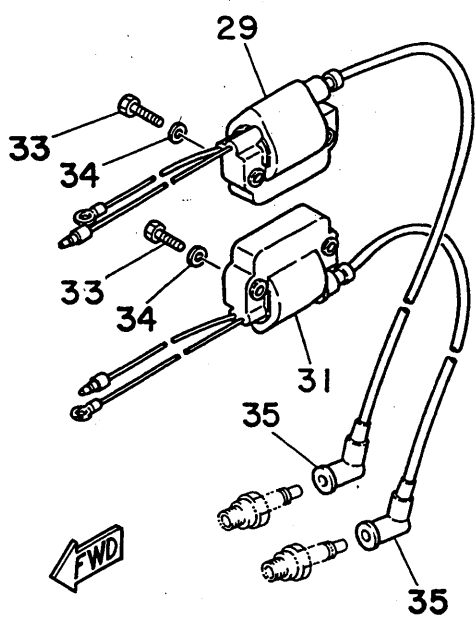
Interchangeability Mark

- \* New parts number
- ※ Not shown
- Contents of power head gasket kit (Parts No. 677-W0001-00)
- Contents of extension kit (Parts No. 677-W0072-00, 677-W0073-00, 677-W0074-00)

# Fig. 8 FLYWHEEL MAGNETO - 1980



Ref.No.	Parts No.	Description	Q'ty
1	677-81300-61	FLYWHEEL MAGNETO ASS'Y (40W)	1
2	677-81350-11	. ROTOR ASS'Y	1
3	677-81309-11	. BASE, magneto	1
4	650-81321-10	. CONTACT BREAKER ASS'Y	2
5	207-81331-10	. LUBRICATOR	2
6	647-81325-11	. CONDENSER	2
7	164-81246-21	. SCREW	4
8	677-81311-10	. COIL, ignition	1
9	647-81324-10	. SCREW (M5 X 30mm)	2
10	677-81303-60	. LIGHTING COIL ASS'Y (40W)	1
11	647-81324-10	. . SCREW (M5 X 30mm)	2
12	647-81318-10	. SPACER, tube	2
13	677-81315-11	. LEAD WIRE ASS'Y	1
14	677-81362-00	COVER, hole	1
15	97313-06012	BOLT	3
16	92903-06100	WASHER	3
17	90170-10113	NUT	1
18	90201-10126	WASHER (10.20-200-2.6mm)	1
19	677-41611-00-94	RETAINER, magneto base 1	1
20	677-41612-00	RETAINER, magneto base 2	1
21	97803-05010	SCREW, panhead	3
22	92903-05100	WASHER	3
23	677-41615-01	STOPPER, magneto base 1	1
24	97313-06016	BOLT	2
25	92903-06600	WASHER	2
26	677-41213-00-94	CAM, accel.	1
27	97313-05014	BOLT	2
28	92903-05600	WASHER	2
▶ 29	677-82310-12	IGNITION COIL ASS'Y 1	1
◀ 30	677-82310-11	IGNITION COIL ASS'Y 1	1
▶ 31	677-82320-12	IGNITION COIL ASS'Y 2	1
◀ 32	677-82320-11	IGNITION COIL ASS'Y 2	1
33	97313-06030	BOLT	4
34	92903-06600	WASHER	4
35	683-82370-01	PLUG CAP ASS'Y	2
36	677-82370-00	PLUG CAP ASS'Y (Noise Suppressor)	2
37	682-82370-00	PLUG CAP ASS'Y (Optional)	2
38	90280-04006	KEY, woodruff	1

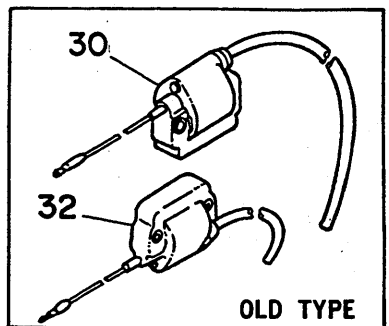
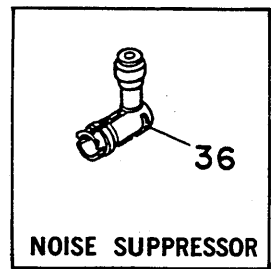
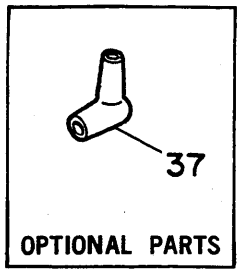


Interchangeability Mark

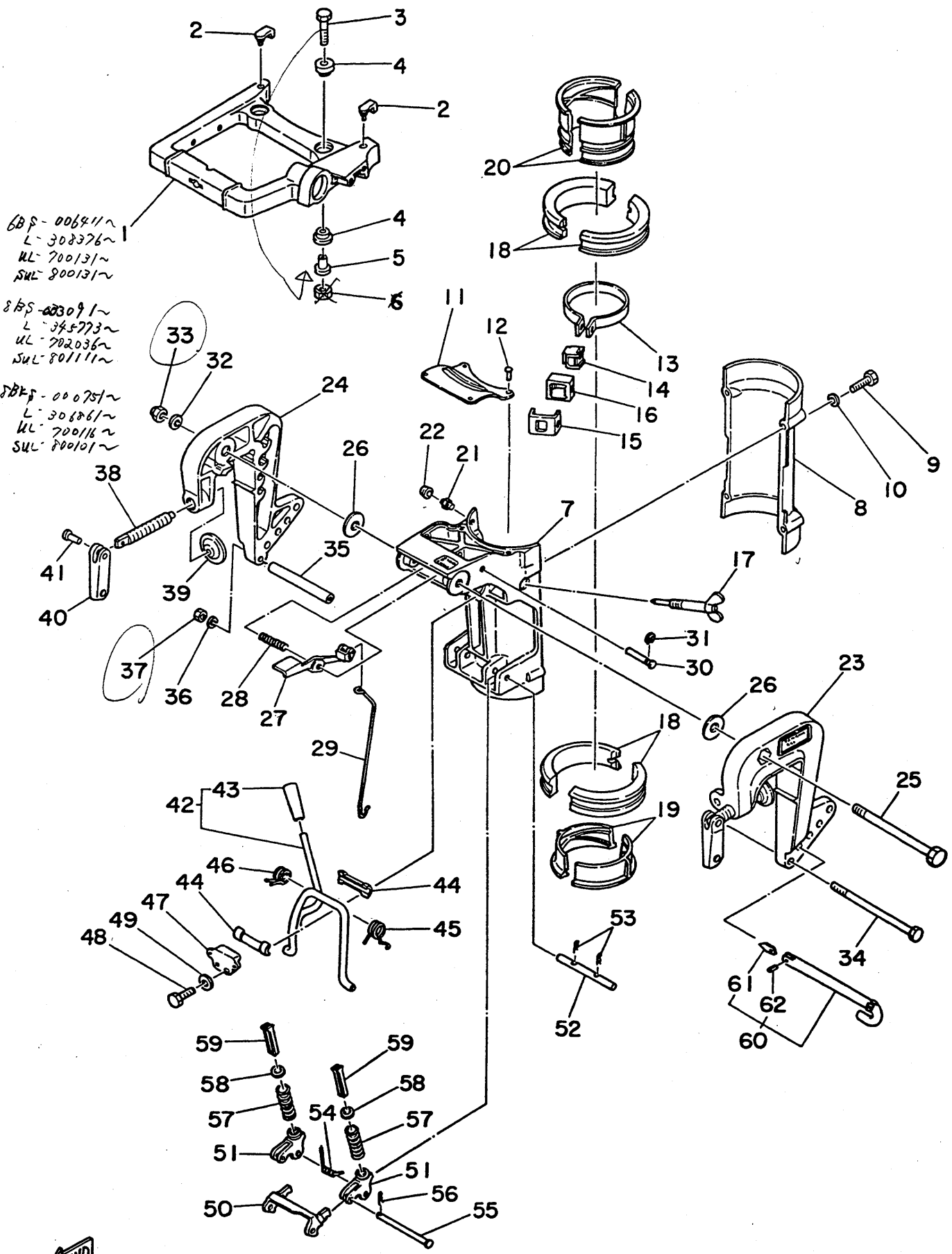
88 S: 030635 and below  
L: 342080 and below  
UL: 701935 and below  
SUL: 801095 and below

88 S: 030636 and up  
L: 342081 and up  
UL: 701936 and up  
SUL: 801096 and up

\* New parts number



# Fig. 9 BRACKET -1980





# BRACKET - 1980

Ref.No.	Parts No.	Description	Q'ty	Ref.No.	Parts No.	Description	Q'ty
1	655-42511-00-F6	BRACKET, steering	1	33	90185-10051	NUT, self-locking	1 ✓
2	647-42523-00	SPACER, friction	2	34	90101-06336	BOLT	1
3 *	97395-08035	BOLT	2	35	90560-06088	SPACER, tube	1
※	97375-08035	BOLT	2 } A	36	92990-06100	WASHER	1
4	647-42541-00	RUBBER	4	37	95380-06600	NUT	1 ✓
5	655-42542-00	PIPE 1	2	38	90149-12029	SCREW, transom clamp	2
6	<del>95303-08600</del>	NUT <i>⇒ 677535</i>	2	39	648-43114-01	PAD, transom clamp	2
7	677-43311-00-F6	BRACKET, swivel 1	1	40	616-43118-00-F6	HANDLE, transom clamp	2
8	647-43312-00-F6	BRACKET, swivel 2	1	41	90243-04001	PIN	2
9 *	97395-06040	BOLT	4 } A	42	647-43180-09	TILT STOP LEVER ASS'Y	1
※	97375-06040	BOLT	4	43	620-43632-00	. KNOB, tilt	1
10	92990-06600	WASHER	4	44	620-43189-00	BUSHING	2
11	655-43318-00-F6	COVER	1	45	90508-16021	SPRING, torsion 1	1
12	90269-02002	RIVET	4	46	90508-16020	SPRING, torsion 2	1
13	655-42525-00	PLATE, friction 1	1	47	654-43313-00-94	BRACKET, swivel 3	1
14	655-42526-00	PLATE, friction 2	1	48 *	97395-06025	BOLT	2 } A
15	655-42527-00	PLATE, friction 3	1	※	97375-06025	BOLT	2 } A
16	655-42532-00	COVER 1	1	49	92990-06600	WASHER	2
17	655-42529-00	SCREW, friction piece	1	50	647-43614-00	PLATE, tilt lock 1	1
18	655-42539-00	BUSHING, pivot shaft 3	4	51	647-43615-01	PLATE, tilt lock 2	2
19	647-42538-00	BUSHING, pivot shaft 2	2	52	647-43659-00	SHAFT, reverse lock	1
20	647-42537-00	BUSHING, pivot shaft 1	2	53	90468-10003	PIN, hair	2
21	93700-06004	NIPPLE, grease	2	54	90508-18022	SPRING, torsion	1
22	663-45119-00	CAP, grease nipple	2	55	90240-05047	PIN, with hole	1
23	620-43111-00-F6	BRACKET, clamp 1	1	56	90468-10005	PIN, hair	1
24	672-43112-00-F6	BRACKET, clamp 2	1	57	90501-26147	SPRING (Short, Long)	2
25	90101-10M28 ✓	BOLT	1	●※	90501-26146	SPRING (Ultra Long, Super Ultra Long) 2	
26	90201-10524	WASHER (10.5φ-32φ-2mm)	2	58	647-43627-01	STOPPER 1	2
27	677-43630-00	TILT LEVER ASS'Y	1	59	647-43613-00	ARM, tilt lock	2
28	90501-16104	SPRING, compression	1	60	650-43160-11	TILT ROD ASS'Y	1
29	677-43616-00	ROD, tilt lock	1	61	656-43165-01	. PLATE, tilt lock	1
30	90249-04M05	PIN	1	62	91690-30008	. PIN, spring	1
31	93430-04003	CIRCLIP	1				
32	90201-10130	WASHER (10.5φ-20φ-1.5mm)	1				

Interchangeability Mark

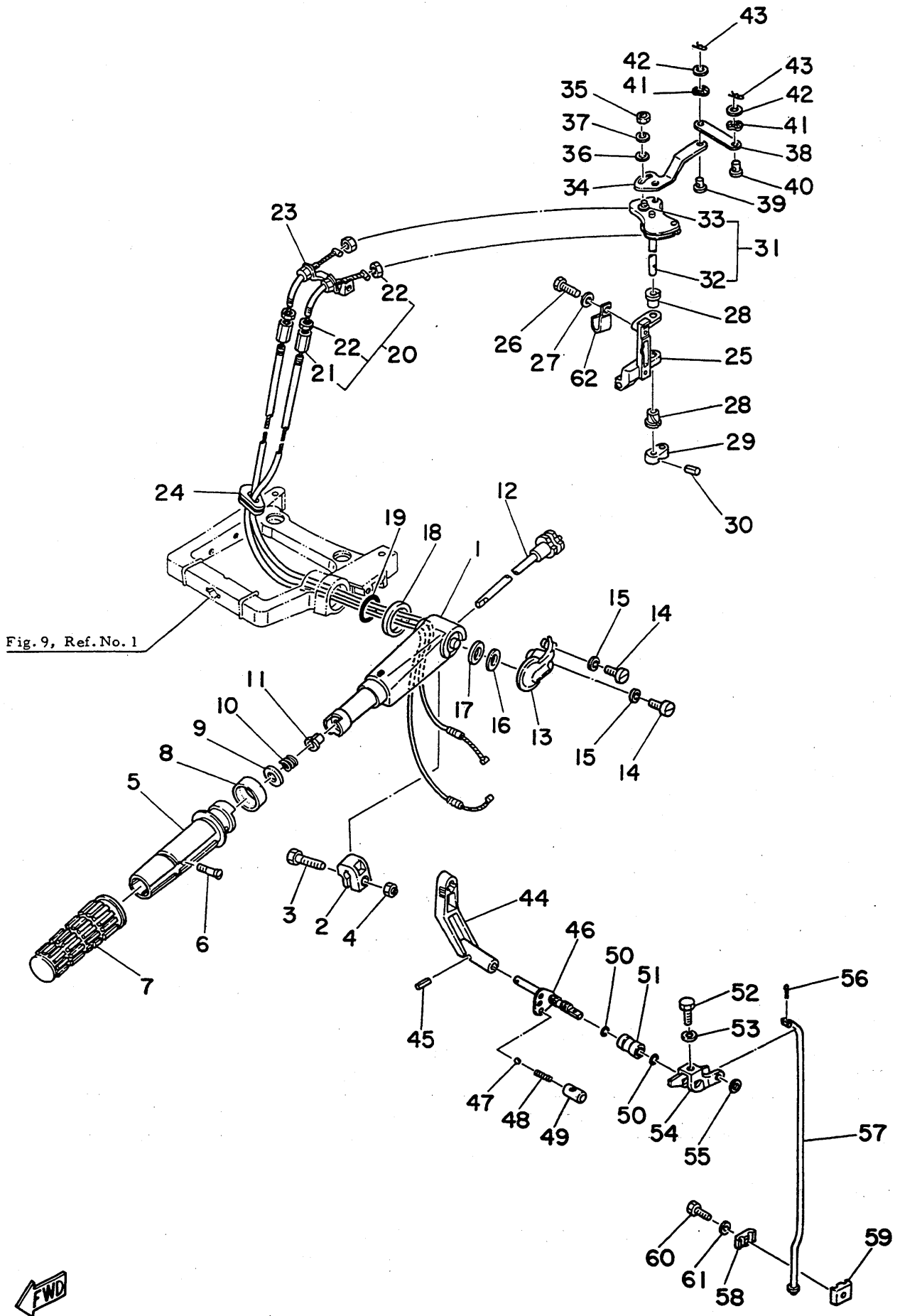
Interchangeability Mark

\* New parts number

※ Not shown

● Contents of extension kit (Parts No. 677-W0073-00, 677-W0074-00)

Fig. 10 CONTROL -1980



Ref.No.	Parts No.	Description	Q'ty		Ref.No.	Parts No.	Description	Q'ty
1	647-42111-02-F6	HANDLE, steering	1		32	655-41635-00	. SHAFT, link connecting	1
2	656-42126-01	PIECE, friction	1		33	650-41641-00	. BOSS, lever	1
3	* 97395-06020	BOLT	1	] A	34	677-41631-00	LEVER, magneto control	1
*	97375-06020	BOLT	1		35	95303-06600	NUT	1
4	90185-06062	NUT, self-locking	1		36	92903-06600	WASHER	1
5	647-42119-02	GRIP, steering handle	1		37	92903-06100	WASHER	1
6	98180-05025	SCREW, ovalhead	1		38	677-41632-00	LEVER, magneto control 2	1
7	647-42177-00	RUBBER, handle 1	1		39	647-41652-00	SET PIN, magneto control 2	1
8	677-42137-00	INDICATOR, throttle	1		40	90240-05004	PIN, with hole	1
9	92903-10600	WASHER	1		41	90206-05005	WASHER, wave (5.50-110-1.5mm)	2
10	90501-23215	SPRING	1		42	92990-05200	WASHER	2
11	90386-08032	BUSHING	1		43	90468-10005	PIN, hair	2
12	* 655-42138-01	LEVER, throttle	1	] A	44	655-44111-02-F6	HANDLE, gear shift	1
*	655-42138-01-94	LEVER, throttle	1		45	91690-40016	PIN, spring	1
13	647-42112-00-F6	HANDLE, steering 2	1		46	655-44119-01	SHAFT, change	1
14	92380-06020	SCREW, cylinderhead	2		47	93505-16024	BALL (5/16")	1
15	92990-06100	WASHER	2		48	90501-12274	SPRING	1
16	647-42157-00-05	SPACER 3 (0.5mm)	} U.R.		49	655-42715-00	BUSHING 2	1
	647-42157-00-06	SPACER 3 (0.6mm)			▲ 50	93210-09165	O-RING (1.90-8.80)	2
	647-42157-00-08	SPACER 3 (0.8mm)			51	655-44122-03	BUSHING, shift rod lever	1
17	90560-12075	SPACER, handle 1	1		52	* 97390-05020	BOLT	1
18	90560-30085	SPACER, handle 2	1		*	97370-05020	BOLT	1
19	93210-25032	O-RING (3.00-24.50)	1		53	92990-05100	WASHER	1
20	677-26301-00	THROTTLE WIRE ASS'Y	2		54	655-44121-01	LEVER, shift rod 1	1
21	90179-06045	. NUT, adjusting	2		55	92990-06200	WASHER	1
22	90170-06011	. NUT	6		56	91490-16010	PIN, cotter	1
23	655-14497-01	STAY, throttle wire	1		57	655-44143-01	ROD, shift 1	1
24	90480-16M03	GROMMET	1		58	616-44145-01	CONNECTOR, shift rod 1	1
25	677-41661-00-94	BRACKET 1	1		59	616-44146-01	CONNECTOR, shift rod 2	1
26	97313-06035	BOLT	2		60	* 97395-06020	BOLT	1
27	92903-06600	WASHER	2		*	97375-06020	BOLT	1
28	90386-08032	BUSHING	2		61	92990-06600	WASHER	1
29	655-48541-00-F6	STAY	1		62	90465-06020	CLAMP	1
30	91690-30016	PIN, spring	1					
31	655-41638-01	PULLEY	1					

Interchangeability Mark

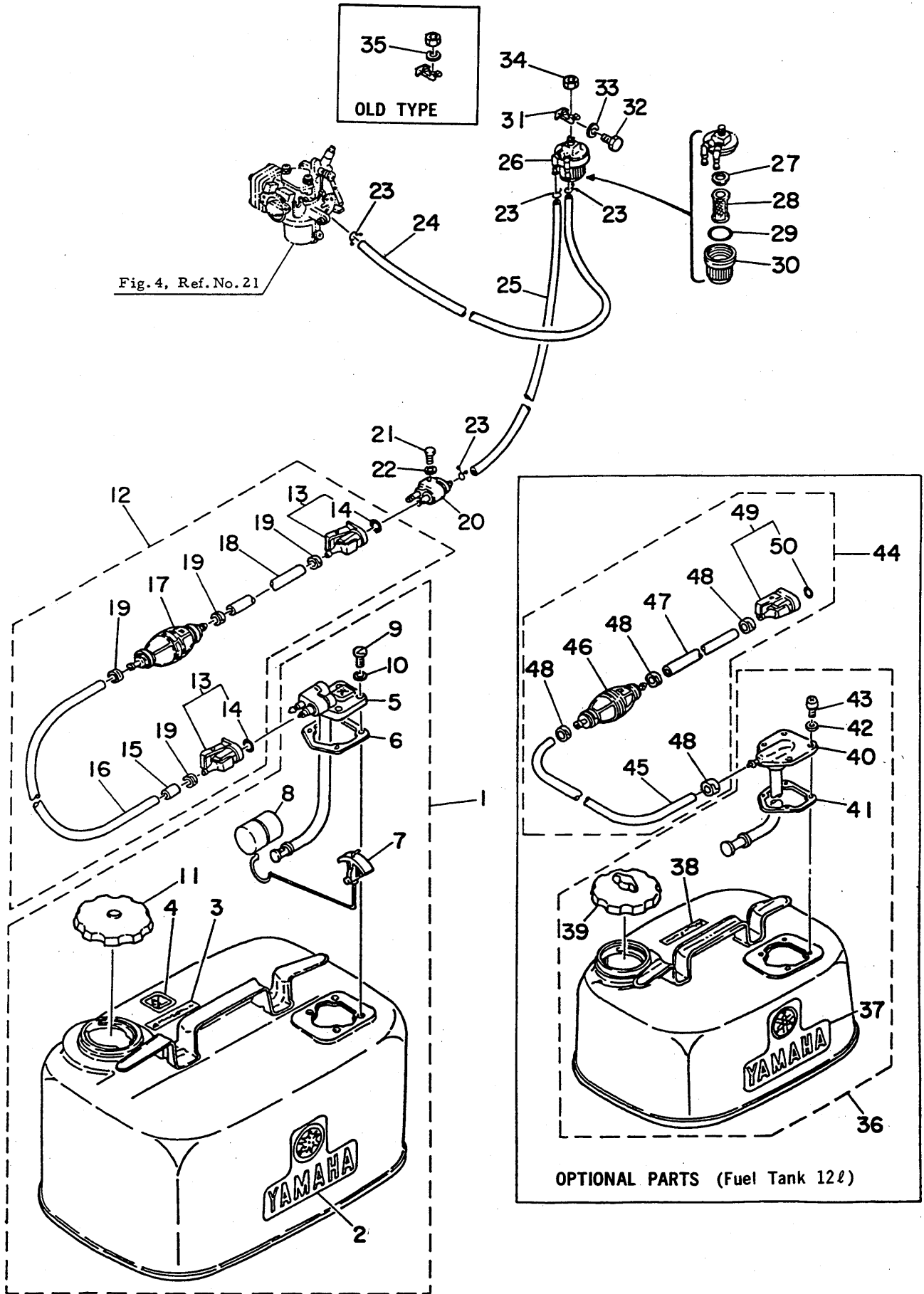
Interchangeability Mark

\* New parts number

\* Not shown

▲ Contents of lower unit gasket (Parts No. 677-W0001-20)

# Fig. 1 | FUEL SECTION -1980



# FUEL SECTION - 1980

Ref.No.	Parts No.	Description	Q'ty	Ref.No.	Parts No.	Description	Q'ty
<b>FUEL TANK ASS'Y (24ℓ)</b>				25	90445-09163	HOSE (50-90-235mm)	1
1	656-24202-04-24	FUEL TANK ASS'Y	1	26	655-24560-00	FILTER ASS'Y	1
*	656-24202-90-24	FUEL TANK ASS'Y (For Brazil)	1	■ 27	655-24564-00	. PACKING, filter	1
2	656-24244-01	. GRAPHIC, side	2	28	655-24563-00	. ELEMENT, filter	1
3	656-24245-00	. GRAPHIC	1	■ 29	93210-37M25	. O-RING (2.00-34.50)	1
4	656-24248-00	. GRAPHIC	1	30	655-24521-00	. CUP, filter	1
5	656-24275-03	. FUEL METER COMP.	1	31	648-24566-01	BRACKET, filter	1
*	663-24275-03	. FUEL METER COMP. (For Brazil)	1	32	97313-06012	BOLT	1
6	663-24268-00	. GASKET, housing fuel meter	1	33	92903-06100	WASHER	1
7	656-24241-03	. INDICATOR, fuel meter 1	1	34	95303-08600	NUT	1
8	663-24264-00	. FLOAT	1	▽ 35	92903-08100	WASHER	1 A
9	98380-05018	. SCREW, cylinderhead	4	<b>OPTIONAL PARTS (Fuel Tank 12ℓ)</b>			
10	630-24329-00	. SEAL	4	36	655-24202-62-24	FUEL TANK ASS'Y	1
11	802-24610-00	. CAP ASS'Y	1	37	655-24244-01	. GRAPHIC, side	2
12	663-24310-61	FUEL PIPE ASS'Y	1	38	656-24245-00	. GRAPHIC	1
13	655-24305-01	. FUEL PIPE JOINT COMP. 2	2	39	647-24610-02	. CAP ASS'Y	1
14	93210-08287	. . O-RING (3.00-8.00)	2	40	655-24275-60	. FUEL METER COMP.	1
15	663-24397-00	. COLLAR	1	41	663-24268-00	. GASKET, housing fuel meter	1
+ 16	90445-12M04	. HOSE (60-11.50-1900mm)	1	42	630-24329-00	. SEAL	4
17	650-24360-01	. PRIMARY PUMP ASS'Y	1	43	98580-05015	. SCREW, panhead	4
+ 18	90445-12155	. HOSE (60-11.50-1000mm)	1	44	655-24310-00	FUEL PIPE ASS'Y	1
19	650-24351-00	. BAND, fuel pipe 1	4	+ 45	90445-12156	. HOSE (60-11.50-1500mm)	1
20	655-24304-01	FUEL PIPE JOINT COMP. 1	1	46	650-24360-01	. PRIMARY PUMP ASS'Y	1
▽ 21	* 97313-06020	BOLT	1	+ 47	90445-12155	. HOSE (60-11.50-1000mm)	1
△ *	97313-06025	BOLT	1	48	650-24351-00	. BAND, fuel pipe 1	4
22	92903-06100	WASHER	1	49	655-24305-01	. FUEL PIPE JOINT COMP. 2	1
23	90467-08004	CLIP	4	50	93210-08287	. . O-RING (3.00-8.00)	1
24	90445-09068	HOSE (50-90-110mm)	1				

Interchangeability Mark

Interchangeability Mark

△ { BB S: 028965 and below  
L: 339450 and below  
UL: 701880 and below  
SUL: 801075 and below

▽ { BB S: 028966 and up  
L: 339451 and up  
UL: 701881 and up  
SUL: 801076 and up

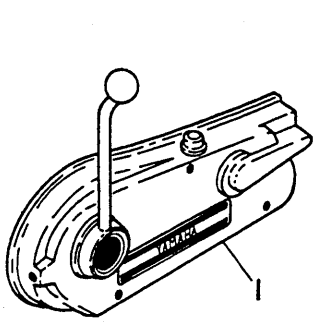
\* New parts number

\* Not shown

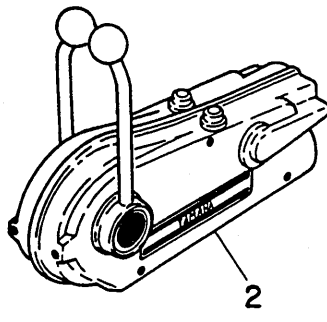
■ Contents of power head gasket kit (Parts No. 677-W0001-00)

+ Also available in 30m rolls (Parts No. 90890-56878)

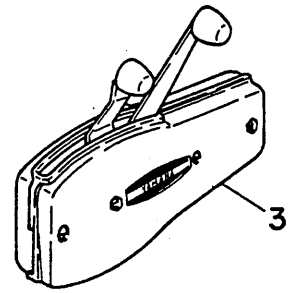
# Fig. 12 REMOTE CONTROL -1980



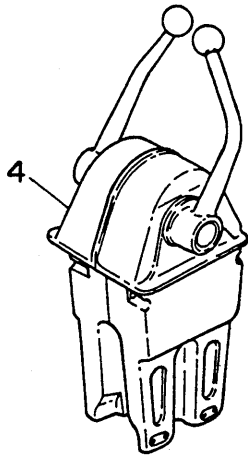
Single



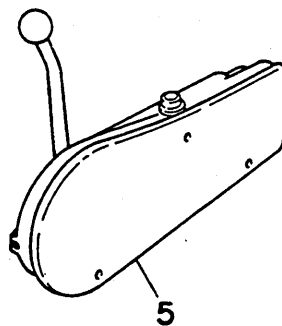
Twin



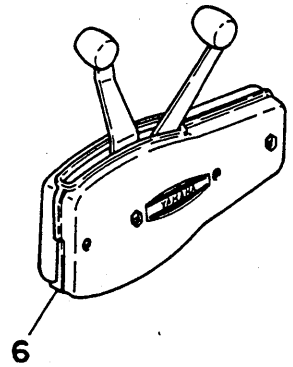
Double



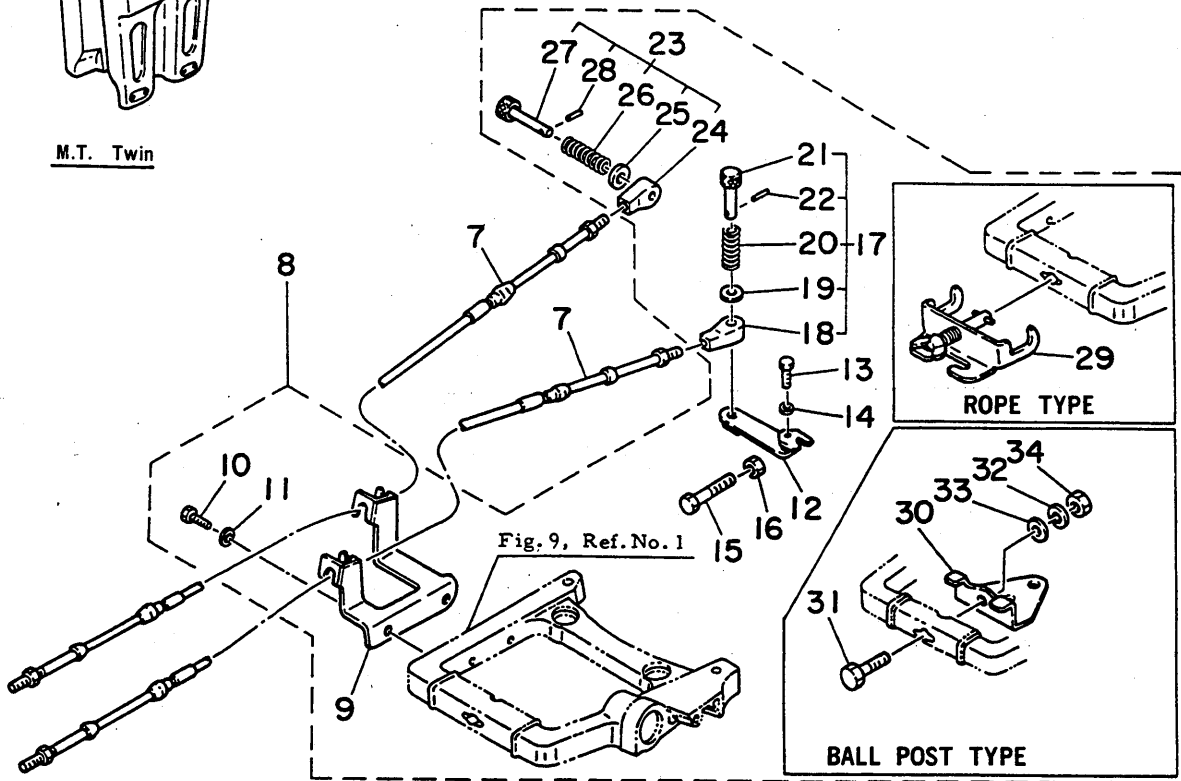
M.T. Twin



Single For Left Handle



Double For Left Handle



# REMOTE CONTROL - 1980

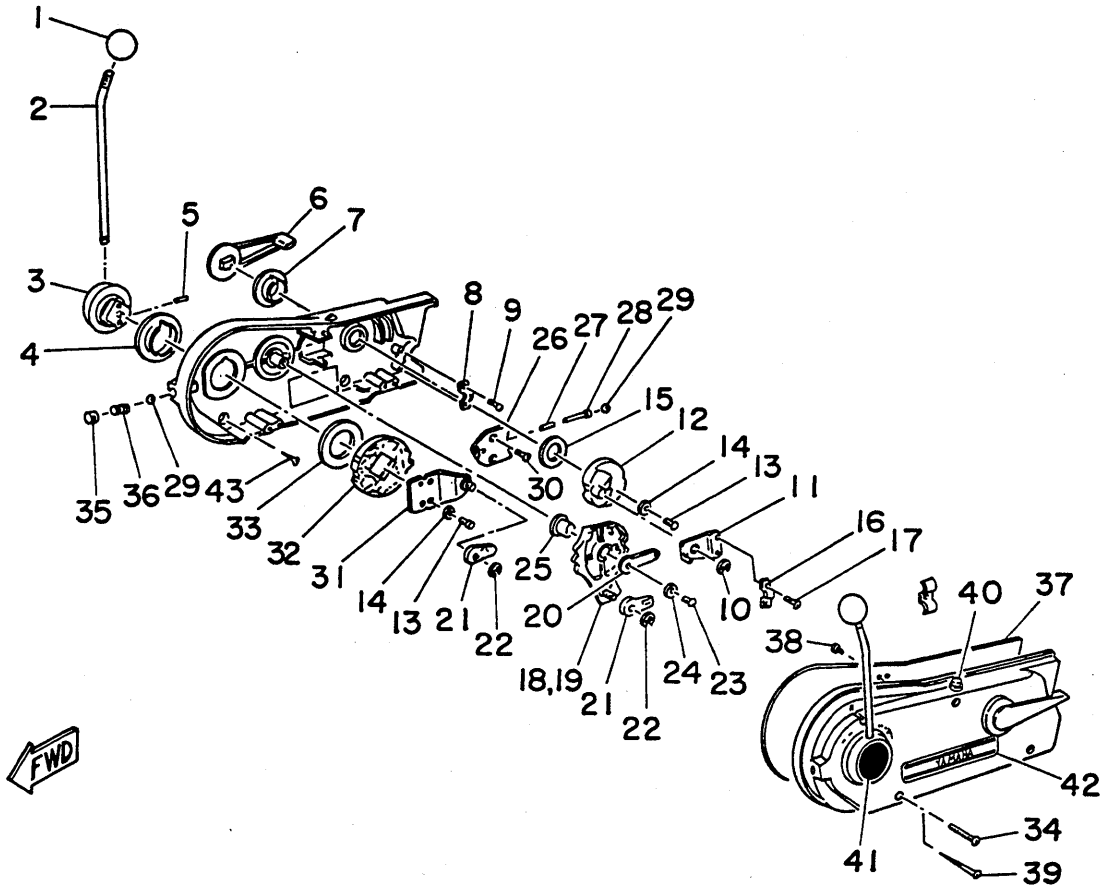
Ref.No.	Parts No.	Description	Q'ty		Ref.No.	Parts No.	Description	Q'ty
<b>REMOTE CONTROL</b>					12	647-48534-50	. THROTTLE LEVER, control	1
▲ 1	701-48110-11	REMOTE CONTROL ASS'Y 1	} U.R.		13 *	97390-05020	. BOLT	1
▲ 2	701-48110-21	REMOTE CONTROL ASS'Y 2			*	97370-05020	. BOLT	1 } <sup>A</sup>
3	701-48110-31	REMOTE CONTROL ASS'Y 3			14	92990-05600	. WASHER	1
4	701-48110-80	REMOTE CONTROL ASS'Y 8			15 *	97390-06045	. BOLT	1 } <sup>A</sup>
5	701-48120-11	REMOTE CONTROL ASS'Y 1	} U.R.		*	97370-06045	. BOLT	1 } <sup>A</sup>
6	701-48120-31	REMOTE CONTROL ASS'Y 3			16	95390-06600	. NUT	1
7	701-48310-10	CABLE, remote control 6F	} U.R.		17	647-48340-50	. CABLE END ASS'Y (Throttle)	1
	701-48310-20	CABLE, remote control 7F			18	647-48346-50	. . CABLE END, remote control	1
	701-48310-40	CABLE, remote control 8F			19	92990-08600	. . WASHER	1
	701-48310-60	CABLE, remote control 9F			20	90501-10264	. . SPRING, compression	1
	701-48310-90	CABLE, remote control 11F			21	617-48361-90	. . HOOK, cable 2	1
	701-48320-00	CABLE, remote control 12F			22	91690-30012	. . PIN, spring	1
	701-48320-20	CABLE, remote control 13F			23	647-48330-50	. CABLE END ASS'Y (Shift)	1
	701-48320-30	CABLE, remote control 14F			24	617-48346-90	. . CABLE END, remote control	1
	701-48320-50	CABLE, remote control 15F			25	92990-08600	. . WASHER	1
	701-48320-60	CABLE, remote control 16F			26	90501-10071	. . SPRING, compression	1
	701-48320-80	CABLE, remote control 17F		27	617-48331-90	. . HOOK, cable 1	1	
	701-48320-90	CABLE, remote control 18F		28	91690-30012	. . PIN, spring	1	
<b>REMOTE CONTROL ATTACHMENT</b>					<b>ROPE TYPE</b>			
8	655-48501-02	ATTACHMENT ASS'Y (Rope Type) (Ref. No. 9 to 29)	1		29	700-48510-12	. STEERING HOOK ASS'Y	1
	655-48501-10	ATTACHMENT ASS'Y (Ball Post Type) (Ref. No. 9 to 28, 30 to 34)	1		<b>BALL POST TYPE</b>			
9	655-48531-51	. BRACKET, remote control	1		30	676-48511-10	. HOOK, steering	1
10 *	97390-06018	. BOLT	2 } <sup>A</sup>		31 *	97395-10040	. BOLT	1 } <sup>A</sup>
*	97370-06018	. BOLT	2 } <sup>A</sup>		*	97375-10040	. BOLT	1 } <sup>A</sup>
					32	92990-10100	. WASHER	1
11	92990-06600	. WASHER	2		33	92990-10600	. WASHER	1
					34	95380-10600	. NUT	1

Interchangeability Mark

Interchangeability Mark

- \* New parts number
- \* Not shown
- ▲ See Fig. 13 for detail service parts.

# Fig. 13 REMOTE CONTROL ASS'Y -1980



Ref.No.	Parts No.	Description	Q'ty Single Twin	Ref.No.	Parts No.	Description	Q'ty Single Twin
*	701-48110-11	REMOTE CONTROL ASS'Y 1 (See Fig. 12, Ref. No. 1)	1 -	21	701-48345-30	. CABLE END, remote control	2 4
*	701-48110-21	REMOTE CONTROL ASS'Y 2 (See Fig. 12, Ref. No. 2)	- 1	22	93430-06024	. CIRCLIP (E-60)	2 4
1	701-48118-10	. GRIP, shift lever	1 2	23	90140-05008	. SCREW	1 2
2	701-48137-10	. LEVER, control	1 2	24	92990-05300	. WASHER, tooth	1 2
3	701-48114-10	. BOSS, control lever	1 2	25	701-48165-10	. BUSHING	1 2
4	701-48116-10	. BUSHING	1 2	26	701-48189-10	. RETAINER	1 2
5	701-48127-10	. SCREW	1 2	27	701-48159-10	. SPRING 2	1 2
6	701-48152-10	. KNOB, free accel.	1 2	28	701-48155-10	. PLUNGER	1 2
7	701-48191-10	. WASHER 1	1 2	29	93503-08025	. BALL, steel	2 4
8	701-48352-10	. ANCHOR, cable	1 2	30	90141-05005	. SCREW	2 4
9	90146-05004	. SCREW, ovalhead	2 4	31	701-48132-10	. LEVER, throttle 2	1 2
10	93430-10025	. CIRCLIP (E-100)	1 2	32	701-48131-10	. LEVER, throttle 1	1 2
11	701-48133-10	. PLATE, link	1 2	33	701-48196-10	. WASHER, wave	1 2
12	701-48153-10	. SHAFT, free accel.	1 2	34	90141-05006	. SCREW	- 3
13	90146-06003	. SCREW, ovalhead	3 6	35	701-48171-10	. BOLT	1 2
14	92990-06300	. WASHER, tooth	3 6	36	701-48158-10	. SPRING	1 2
15	701-48191-10	. WASHER 1	1 2	37	701-48119-10	. COVER	1 1
16	701-48352-10	. ANCHOR, cable	1 2	38	90140-05009	. SCREW	3 -
17	90146-05004	. SCREW, ovalhead	2 4	39	90130-05003	. SCREW	3 -
18	701-48148-10	. LEVER, shift	- 1	40	701-82550-51	. STOP SWITCH ASS'Y	1 2
19	701-48136-10	. LEVER, shift	1 1	41	701-48125-51	. MARK 1	1 1
20	701-48147-10	. PLATE, lock	1 2	42	701-48126-51	. MARK 2	1 1
				43	90130-05002	. SCREW	3 3

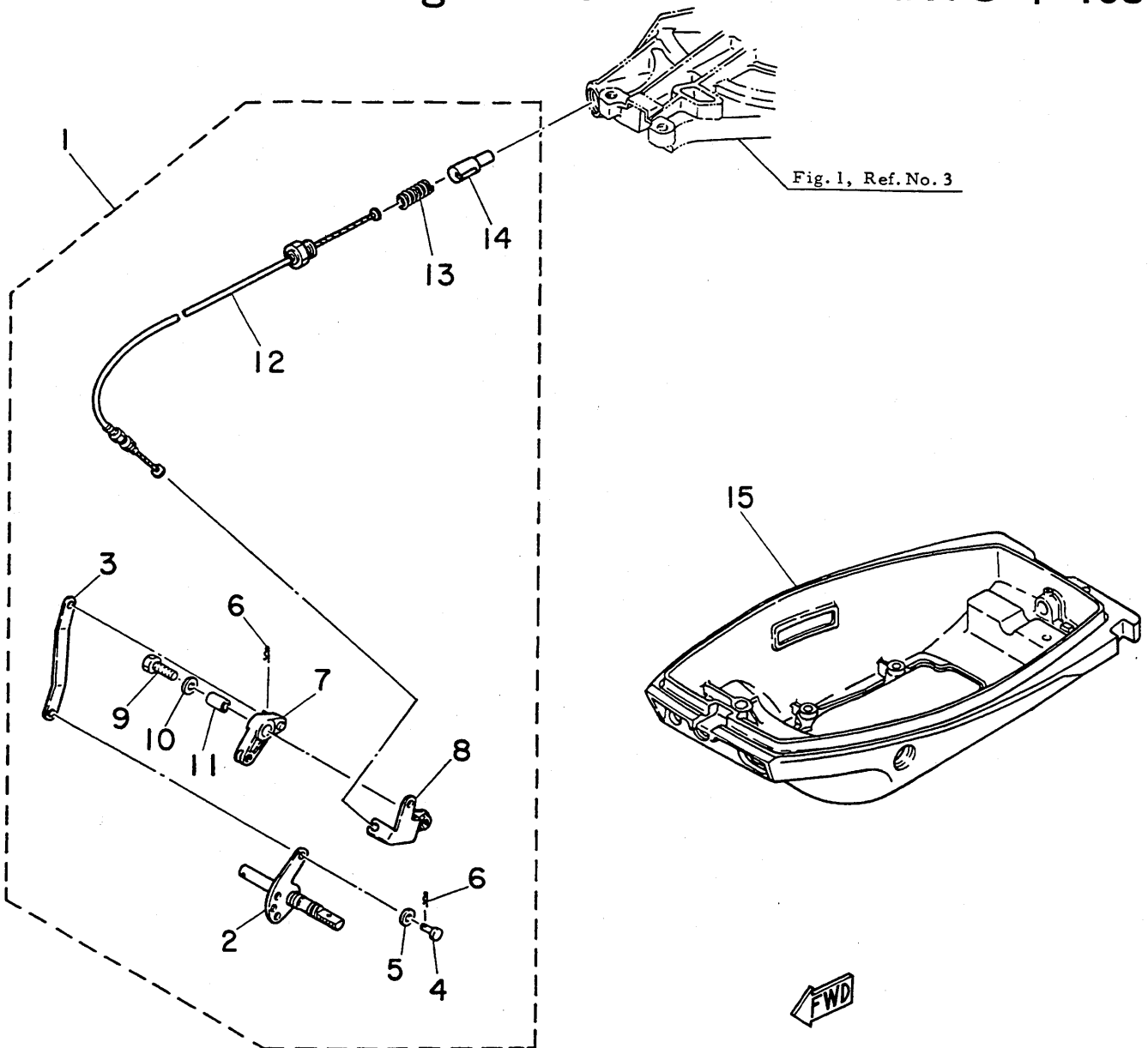
Interchangeability Mark

Interchangeability Mark

\* Not shown



# Fig. 14 OPTIONAL PARTS I -1980



Ref.No.	Parts No.	Description	Q'ty	Ref.No.	Parts No.	Description	Q'ty
<b>SAFETY STARTER</b>							
▶ 1 *	677-W0079-01	SAFETY STARTER KIT	1	8	677-15772-00	STAY 2	1
◀ *	677-W0079-00	SAFETY STARTER KIT	1	9	97313-06020	BOLT	1
2	677-44119-00	SHAFT, change	1	10	90201-06052	WASHER (6.50-150-1.2mm)	1
3	677-15747-00	LINK	1	11	90387-06504	COLLAR	1
4	647-41652-00	SET PIN, magneto control	1	▶ 12 *	677-15770-01	WIRE COMP., starter stop	1
5	90202-05088	WASHER (50-100-1.0mm)	1	◀ *	677-15770-00	WIRE COMP., starter stop	1
6	90468-10005	PIN, hair	2	13	90501-10227	SPRING, compression	1
7	677-15746-00	ARM	1	14	656-15748-00	PLUNGER, starter stop	1
				15	677-42711-71-F6	COWLING, bottom	1

Interchangeability Mark

Interchangeability Mark

The following parts are not used when using the safety starter.

2-13	677-42711-01-F6	COWLING, bottom	1	10-46	655-44119-01	SHAFT, change	1
------	-----------------	-----------------	---	-------	--------------	---------------	---

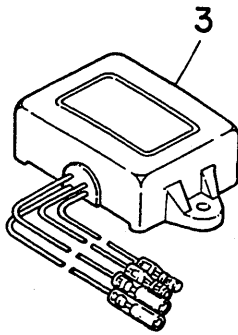
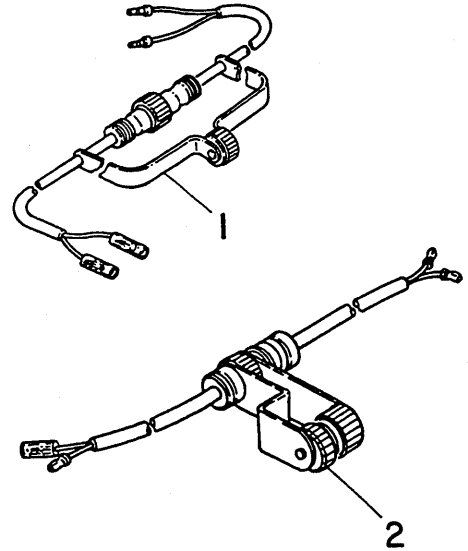
8B S: 030635 and below  
L: 342080 and below  
UL: 701935 and below  
SUL: 801095 and below

8B S: 030636 and up  
L: 342081 and up  
UL: 701936 and up  
SUL: 801096 and up

\* New parts number  
\* Not shown

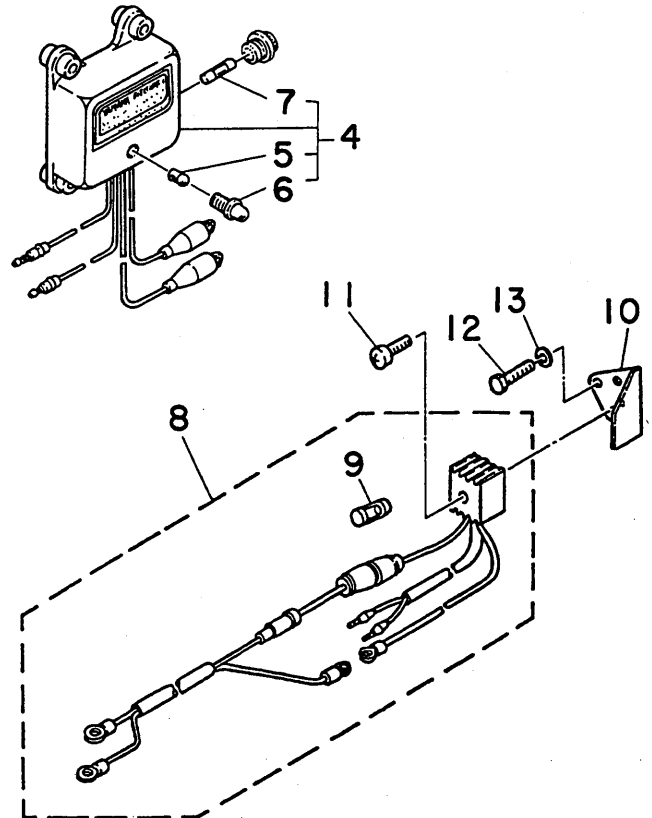
# Fig. 15 OPTIONAL PARTS 2 -1980

Ref.No.	Parts No.	Description	Q'ty
<b>CONCENT 2P</b>			
1	616-83180-30	CONCENT 2P ASS'Y	1
2	682-84380-00	CONCENT 2P ASS'Y	1
<div style="border: 1px solid black; display: inline-block; padding: 2px;">Interchangeability Mark</div>			
The following parts are not used when using the concent 2P ass'y (Parts No. 682-84380-00)			
2-22	677-42724-00	GROMMET 1	1



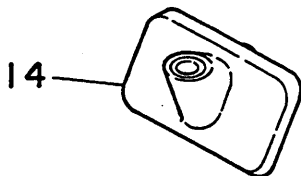
Ref.No.	Parts No.	Description	Q'ty
<b>VOLTAGE REGULATOR</b>			
3	663-81910-10	VOLTAGE REGULATOR ASS'Y	1

Interchangeability Mark



Ref.No.	Parts No.	Description	Q'ty
<b>RECTIFIER</b>			
4	648-81970-41	RECTIFIER ASS'Y	1
5	648-81977-40	. BULB, rectifier (12V-3W)	1
6	648-81978-40	. LENS, rectifier	1
7	648-82151-41	. FUSE, rectifier (12V-7A)	1
8	676-81970-00	RECTIFIER ASS'Y (Small Type)	1
9	663-82151-00	. FUSE (12V-20A)	1
10	677-81975-00	PLATE, rectifier fitting	1
11	97803-05025	SCREW, panhead	1
12	97313-06010	BOLT	2
13	92903-06600	WASHER	2

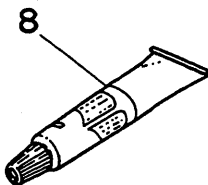
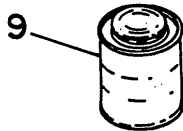
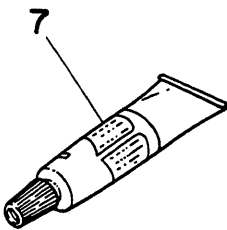
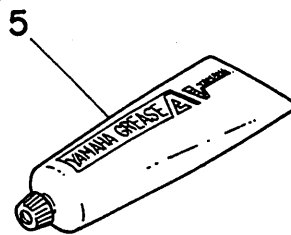
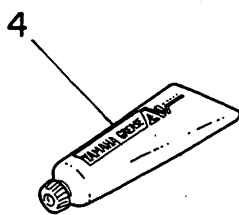
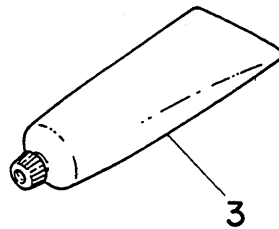
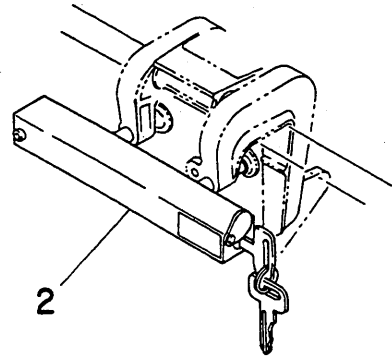
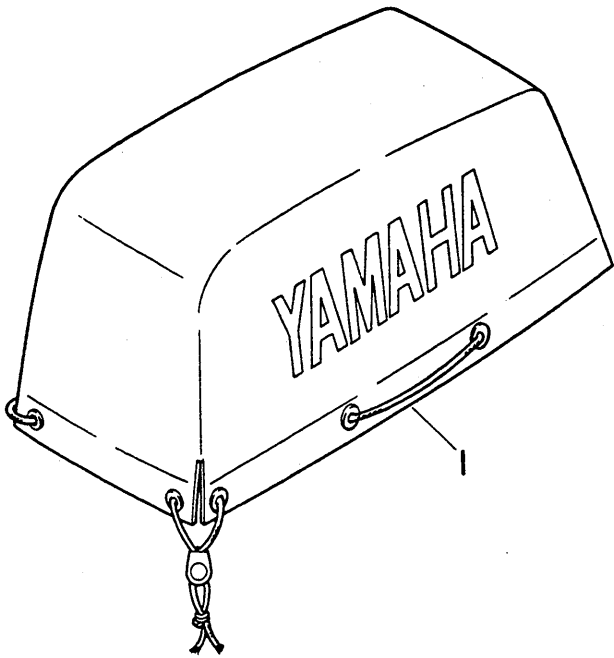
Interchangeability Mark



Ref.No.	Parts No.	Description	Q'ty
<b>VERTICAL STARTER</b>			
14	677-15758-81-F6	GUIDE, wire (Vertical Type)	1

Interchangeability Mark

# Fig. 16 ACCESSORY PARTS -1980



Ref.No.	Parts No.	Description	Q'ty
1	90890-56874	ENGINE COVER	1
2	90890-46000	OUTBOARD LOCK	1
3	90890-69908	YAMAHA GREASE C (150g)	U.R.
<b>YAMAHA GREASE</b>			
4	90890-69910	YAMAHA GREASE A (50g)	} U.R.
5	90890-69911	YAMAHA GREASE A (250g)	
6	90890-69912	YAMAHA GREASE A (4kg)	
<b>YAMAHA BOND</b>			
7	90890-05143	YAMAHA BOND (200g)	} U.R.
8	90890-05144	YAMAHA BOND (150g)	
9	90890-05074	YAMAHA BOND (100g)	

Interchangeability Mark

# NUMERICAL INDEX

Parts No.	Ref. No.	Parts No.	Ref. No.	Parts No.	Ref. No.	Parts No.	Ref. No.	Parts No.	Ref. No.
1J2-14398-00	4-27	647-42538-00	9-19	650-44322-01	6-30	655-44373-00	7- 7	677-W0001-20	6-60
164-81246-21	8- 7	647-42541-00	9- 4	650-81321-10	8- 4	655-45211-20-F6	5-12	677-W0004-00	4- 6
207-81331-10	8- 5	647-43180-09	9-42	654-43313-00-94	9-47	655-45211-30-F6	5-18	677-W0070-00	2- 2
367-14195-00	4-26	647-43312-00-F6	9- 8	654-45635-00	6-38	655-45214-02-F6	6- 4	677-W0072-00	5- 7
527-11633-00	3-55	647-43613-00	9-59	655-W0078-1A	6-62	655-45310-01-F6	6- 2	677-W0073-00	5- 7
6A0-15789-00-94	1-25	647-43614-00	9-50	655-W0078-10	6-61	655-45318-00	5-16	677-W0074-00	5- 7
606-42591-00	2-23	647-43615-01	9-51	655-14398-00	4-41		5-22	677-W0079-01	14- 1
616-43118-00-F6	9-40	647-43627-01	9-58	655-14497-01	10-23	655-45361-02-F6	6-57	677-W0079-00	14- 1
616-44145-01	10-58	647-43659-00	9-52	655-24202-62-24	11-36	655-45501-00	6-25	677-W0090-01	3- 1
616-44146-01	10-59	647-44366-00	6-37	655-34344-01	11-37	655-45501-10	6-25	677-W0093-00	4-55
616-45251-30	6- 6	647-45151-01	5- 6	655-24275-60	11-40	655-45501-20	6-25	677-11111-00-94	3-21
616-83180-30	15- 1	647-45211-10-F6	5- 8	655-24304-01	11-20	655-45501-30	6-25	677-11181-00	3-22
617-48331-90	12-27	647-45315-00	6-18	655-24305-01	11-13	655-45611-00	6-49	677-11372-00	3- 5
617-48346-90	12-24	647-45316-09	6- 3		11-49	655-45631-00	6-45	677-11400-00	3-39
617-48361-90	12-21		6-15	655-24310-00	11-44	655-45633-00	6-44	677-11412-00	3-40
619-15755-01	1-14	647-45331-00-94	6-14	655-24521-00	11-30	655-45945-00-36	7-10	677-11422-00	3-41
620-43111-00-F6	9-23	647-45533-00-08	6-19	655-24560-00	11-26	655-45947-01-36	7-10	677-11432-00	3-42
620-43189-00	9-44	647-45533-00-10	6-19	655-24563-00	11-28	655-45949-00-36	7-10	677-11442-00	3-43
620-43632-00	9-43	647-45533-00-12	6-19	655-24564-00	11-27	655-48501-02	12- 8	677-11515-00	3-49
624-14485-00	3- 7	647-45533-00-14	6-19	655-41635-00	10-32	655-48501-10	12- 8	677-11630-00	3-52
624-45567-00-03	6-41	647-45551-00	6-20	655-41638-01	10-31	655-48531-51	12- 9	677-11630-10	3-52
624-45567-00-05	6-41	647-45560-00	6-42		10-12	655-48541-00-F6	10-29	677-11630-20	3-52
624-14386-00	4-45	647-45567-00	6-40	655-42138-01-94	10-12	656-15748-00	14-14	677-11631-00-96	3-53
626-14387-00	4-44	647-45570-01	6-52	655-42511-00-F6	9- 1	656-24202-04-24	11- 1	677-11631-00-97	3-53
626-14390-90	4-25	647-45616-02	7- 8	655-42525-00	9-13	656-24202-90-24	11- 1	677-11631-00-98	3-53
626-42658-00	4-38	647-45926-00-36	7-10	655-42526-00	9-14	656-24241-03	11- 7	677-11635-00	3-53
626-45215-00	6- 8	647-45941-00-36	7-10	655-42527-00	9-15	656-24244-01	11- 2	677-11636-00	3-53
626-45577-00-01	76-53	647-45943-00-36	7-10	655-42529-00	9-17	656-24245-00	11- 3	677-11650-01	3-73
626-45577-00-03	6-53	647-45947-00-36	7-10	655-42532-00	9-16		11-38	677-11651-01	3-44
626-45577-00-05	6-53	647-48330-50	12-23	655-42539-00	9-18	656-24248-00	11- 4	677-11681-00	3-46
630-24329-00	11-10	647-48340-50	12-17	655-42542-00	9- 5	656-24275-03	11- 5	677-12411-00	3-25
		647-48346-50	12-18	655-42715-00	10-49	656-42126-01	10- 2	677-12413-00-94	3-26
646-11370-00	3- 4	647-48534-50	12-12	655-43318-00-F6	9-11	656-42816-00	2-15	677-12414-00	3-27
646-14212-01	4-30	647-81318-10	8-12	655-44111-02-F6	10-44	656-43165-01	9-61	677-13610-00	4- 5
647-11610-00	3-54	647-81324-10	8- 9	655-44119-01	10-46	662-44352-00	6-32	677-13621-00	4- 7
647-11610-10	3-54		8-11	655-44121-01	10-54	663-24264-00	11- 8	677-14157-01	4-32
647-11610-20	3-54	647-81325-11	8- 6	655-44122-03	10-51	663-24268-00	11- 6	677-14198-00	4-12
647-14323-00	4-29	648-15773-00	1-10	655-44143-01	10-57	663-24268-00	11-41	677-14227-00	4-33
647-14326-00	4-31	648-24356-00	3-12	655-44147-00	6-28	663-24275-03	11- 5	677-14301-03	4-21
647-14342-23	4-24	648-24566-01	11-31	655-44150-00	6-27	663-24310-61	11-12	677-14325-00	4-34
647-14385-00	4-43	648-43114-01	9-39	655-44150-10	6-27	663-24397-00	11-15	677-14327-00	4-37
647-24610-02	11-39	648-45634-00	6-47	655-44150-20	6-27	663-45119-00	9-22	677-14341-00	4-23
647-41652-00	10-39	648-81970-41	15- 4	655-44150-30	6-27	663-81910-10	15- 3	677-14343-39	4-22
		648-81977-40	15- 5	655-44311-03	6-29	663-82151-00	15- 9	677-14381-00	4-39
647-42111-02-F6	10- 1	648-81978-40	15- 6	655-44315-00	6-33	663-82370-01	8-35	677-14384-00	4-42
647-42112-00-F6	10-13	648-82151-41	15- 7	655-44322-41	6-30	664-11325-00	3-19	677-14431-00	4- 1
647-42119-02	10- 5	650-11370-00	3- 3	655-44323-01	6-34	664-14321-00	4-28	677-14441-00	4- 2
647-42157-00-05	10-16	650-24351-00	11-19	655-44323-41	6-34	670-28100-60	2-25	677-15100-01-94	3- 2
647-42157-00-06	10-16		11-48	655-44361-00	7- 4	672-43112-00-F6	9-24	677-15359-00-94	3-59
647-42157-00-08	10-16	650-24360-01	11-17	655-44361-10	7- 4	676-11372-00	3- 6	677-15379-02	3-65
647-42177-00	10- 7		11-46	655-44361-20	7- 4	676-48511-10	12-30	677-15396-01-94	3-64
647-42523-00	9- 2	650-41641-00	10-33	655-44361-30	7- 4	676-81970-00	15- 8	677-15705-01	1-17
647-42537-00	9-20	650-43160-11	9-60	655-44365-00	7- 6	677-W0001-00	3-74	677-15710-00-F6	1- 2

8B

# NUMERICAL INDEX

Parts No.	Ref. No.	Parts No.	Ref. No.	Parts No.	Ref. No.	Parts No.	Ref. No.	Parts No.	Ref. No.
677-15710-01-F6	1- 1	677-42725-00	2-21	701-48155-10	13-28	90201-10524	9-26	90501-10071	12-26
677-15711-00-94	1- 4	677-42815-00-F6	2-14	701-48158-10	13-36	90201-12161	6-23	90501-10227	14-13
677-15714-00-94	1-12	677-43311-00-F6	9- 7	701-48159-10	13-27	90201-12565	3-58	90501-10264	12-20
677-15717-00	1-21	677-43616-00	9-29	701-48165-10	13-25	90201-13198	6-43	90501-12274	14-48
677-15741-01	1-18	677-43630-00	9-27	701-48171-10	13-35	90201-15229	6-51	90501-16104	9-28
677-15746-00	14- 7	677-44119-00	14- 2	701-48189-10	13-26	90201-21567	3-28	90501-23215	10-10
677-15747-00	14- 3	677-45111-00-F6	5- 1	701-48191-10	13- 7	90201-41528	3-69	90501-26146	9-57
677-15758-00-F6	1- 6	677-45113-00	5- 2		13-15	90202-05088	14- 5	90501-26147	9-57
677-15758-01-94	1- 5	677-45300-00-F6	6- 1	701-48196-10	13-33	90206-05005	10-41	90508-16020	9-46
677-15758-81-F6	15-14	677-45300-10-F6	6- 1	701-48310-10	12- 7	90206-12052	2-20	90508-16021	9-45
677-15761-00	2- 8	677-81300-61	8- 1	701-48310-20	12- 7	90209-18112	3-47	90508-18022	9-54
677-15761-01	2- 7	677-81303-60	8-10	701-48310-40	12- 7	90240-05004	10-40	90510-08002	1-11
677-15762-00	1- 7	677-81309-11	8- 3	701-48310-60	12- 7	90240-05047	9-55	90560-06088	9-35
677-15770-00	14-12	677-81311-10	8- 8	701-48310-90	12- 7	90243-04001	9-41	90560-12075	10-17
677-15770-01	14-12	677-81315-11	8-13	701-48320-00	12- 7	90249-04M05	9-30	90560-30085	10-18
677-15771-00-94	1-26	677-81350-11	8- 2	701-48320-20	12- 7	90250-05036	6-50	90890-05074	16- 9
677-15772-00	14- 8	677-81362-00	8-14	701-48320-30	12- 7	90266-04004	2-12	90890-05143	16- 7
677-24411-01	4-48	677-81975-00	15-10	701-48320-50	12- 7	90269-02002	9-12	90890-05144	16- 8
677-24412-01	4-49	677-82310-11	8-30	701-48320-60	12- 7	90280-03024	6-26	90890-44373	1-16
677-24413-01	4-52	677-82310-12	8-29	701-48320-80	12- 7	90280-04006	8-38	90890-46000	16- 2
677-24434-01	4-46	677-82320-11	8-32	701-48320-90	12- 7	90334-10008	6- 9	90890-56874	16- 1
677-24435-01	4-50	677-82320-12	8-31	701-48345-30	13-21	90340-08014	6-10	90890-69908	16- 3
677-24444-00	4-53	677-82370-00	8-36	701-48352-10	13-16	90386-08032	10-11	90890-69910	16- 4
677-24471-01	4-51	677-82550-00	2-24	701-48352-10	13- 8		10-28	90890-69911	16- 5
677-26301-00	10-20	682-15711-71-94	1- 3	701-82550-51	13-40	90386-12069	2-19	90890-69912	16- 6
677-41111-00-94	3-31	682-24421-00	4-47	802-24610-00	11-11	90386-25M05	1-20	91490-16010	10-56
677-41112-00	3-32	682-82370-00	8-37	90101-06336	9-34	90387-06504	14-11	91490-30030	7- 9
677-41113-00-94	3-33	682-84380-00	15- 2	90101-10M28	9-25	90387-14108	6-22	91690-30008	9-62
677-41210-00	4-54	689-15779-00	1-15	90116-06M04	4-11	90430-06015	3-38	91690-30010	3-51
677-41213-00-94	8-26	689-42816-00	2-15	90130-05002	13-43		6-13	91690-30012	12-22
677-41226-00	4-36	700-48510-12	12-29	90130-05003	13-39	90430-08020	6-11		12-28
677-41241-00	4-35	701-48110-11	12- 1	90140-05008	13-23	90445-07M02	3- 8	91690-30016	10-30
677-41256-00	4-16	701-48110-21	12- 2	90140-05009	13-38	90445-07258	8- 9	91690-40016	10-45
677-41271-00	4-15	701-48110-31	12- 3	90141-05005	13-30	90445-09068	11-24	91690-40020	1-13
677-41611-00-94	8-19	701-48110-80	12- 4	90141-05006	13-34	90445-09163	11-25	91830-21014	3-18
677-41612-00	8-20	701-48114-10	13- 3	90142-06M00	6- 7	90445-10M03	3-10	92380-06020	10-14
677-41615-01	8-23	701-48116-10	13- 4	90146-05004	13- 9	90445-11262	7- 5	92903-04200	4-18
677-41631-00	10-34	701-48118-10	13- 1		13-17	90445-12M04	11-16	92903-05100	8-22
677-41632-00	10-38	701-48119-10	13-37	90146-06003	13-13	90445-12155	11-18	92903-05600	4- 4
677-41661-00-94	10-25	701-48120-11	12- 5		6-12	90445-12155	11-47		8-28
677-42137-00	10- 8	701-48120-31	12- 6	90149-12029	9-38	90445-12156	11-45	92903-06100	1- 9
677-42610-01-F6	2- 1	701-48125-51	13-41	90170-06011	10-22	90464-07015	3-13		1-30
677-42610-02-F6	2- 1	701-48126-51	13-42	90170-10113	8-17	90465-06020	10-62		2-17
677-42615-00	2- 9	701-48127-10	13- 5	90179-06045	10-21	90467-06016	3-11		4- 9
677-42647-00	2-10	701-48131-10	13-32	90185-06062	10- 4	90467-08004	11-23		8-16
677-42651-01	2-11	701-48132-10	13-31	90-85-10051	9-33	90468-10003	9-53		10-37
677-42677-00	2- 3	701-48133-10	13-11	90201-06043	3-17	90468-10004	4-19		11-22
677-42678-00	2- 4	701-48136-10	13-19		3-24	90468-10005	9-56		11-33
677-42681-00	2- 5	701-48137-10	13- 2	90201-06052	4-10		10-43	92903-06600	3-30
677-42682-00	2- 6	701-48147-10	13-20	90201-06060	1-23		14- 6		3-35
677-42711-01-F6	2-13	701-48148-10	13-18	90201-06068	2-18	90480-14M02	4-17		3-37
677-42711-71-F6	14-15	701-48152-10	13- 6	90201-10126	8-18	90480-16M03	10-24		3-63
677-42724-00	2-22	701-48153-10	13-12	90201-10130	9-32	90501-10064	6-48		4-14

23

# NUMERICAL INDEX

Parts No.	Ref. No.	Parts No.	Ref. No.	Parts No.	Ref. No.	Parts No.	Ref. No.	Parts No.	Ref. No.
92903-06600	8-25	93430-06024	13-22	97370-05020	12-13				
	8-34	93430-07012	6-21	97370-06018	12-10				
	10-27	93430-10025	13-10	97370-06020	6-16				
	10-36	93440-47055	3-50	97370-06045	12-15				
	15-13	93450-13022	3-56	97375-06016	3-70				
92903-08100	11-35	93503-08025	13-29	97375-06020	5-10				
92903-10600	10- 9	93505-16024	10-47		5-20				
92990-05100	10-53	93602-14118	3-57		5-14				
92990-05200	10-42	93604-08062	5- 9		6-58				
92990-05300	13-24		5-13		7- 1				
92990-05600	12-14		5-19		10- 3				
92990-06100	9-36		7- 3		10-60				
	10-15	93604-18080	6-31	97375-06025	5- 4				
92990-06200	10-55	93605-08041	3-14		9-48				
92990-06300	13-14		5- 3	97375-06040	6-35				
92990-06600	3-71	93605-29098	6-46		9- 9				
	5- 5	93700-06004	9-21	97375-08035	9- 3				
	5-11	94701-00040	3-72	97375-10040	12-31				
	5-15	95303-04700	4-20	97390-05020	10-52				
	5-21	95303-06600	1-24		12-13				
	6-17		10-35	97390-06018	12-10				
	6-36	95303-06700	4-13	97390-06020	6-16				
	6-59	95303-08600	9- 6	97390-06040	6-35				
	7- 2		11-34	97390-06045	12-15				
	9-10	95380-06600	9-37	97395-06016	3-70				
	9-49	95380-10600	12-34	97395-06020	5-10				
	10-61	95390-06600	12-16		5-14				
	12-11	95621-06325	4-10		5-20				
92990-08600	12-19	97313-05014	8-27		6-58				
	12-25	97313-06010	15-12		7- 1				
92990-10100	12-32	97313-06012	2-16		10- 3				
92990-10600	12-33		3-36		10-60				
93101-14M01	3-67		8-15	97395-06025	5- 4				
93101-15074	6-56		11-32		9-48				
93101-18050	6-24	97313-06016	1- 8	97395-06040	9- 9				
93102-20M06	3-68		8-24	97395-08035	9- 3				
93102-20092	3-61	97313-06018	1-27	97395-10040	12-31				
93210-08287	11-14		3-62	97803-04005	4-40				
	11-50		4- 8	97803-05010	8-21				
93210-09165	10-50	97313-06020	1-22	97803-05020	4- 3				
93210-25032	10-19		1-29	97803-05025	15-11				
93210-37M25	11-29		11-21	98180-05015	6- 5				
93210-42159	3-60		14- 9	98180-05025	10- 6				
93210-42162	3-66	97313-06025	3-29	98280-06018	3-20				
93210-58144	6-55		11-21	98380-05018	11- 9				
93306-00401	6-39	97313-06030	3-34	98580-05015	11-43				
93306-00501	6-54		8-33						
93306-20411	3-48	97313-06035	1-28						
93310-418U0	3-45		3-23						
93420-26M00	5-17		10-26						
	5-23	97313-06045	3-15						
93430-04003	9-31	97313-06065	3-16						
93430-06M02	1-19	97370-05020	10-52						





**YAMAHA MOTOR CO., LTD.**  
2500 SHINGAI IWATA-SHI SHIZUOKA-KEN JAPAN

Copyright

All rights reserved.

No part of this publication may be  
reproduced without permission.

Printed in Japan

May 1980

677-28198-03 (英語)

**03169**