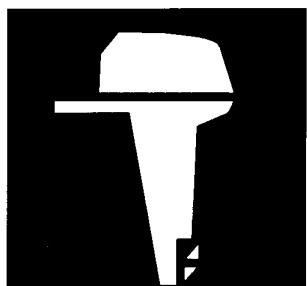


YAMAHA



**PARTS
CATALOGUE**

60FE (T)'95 (6H2)

YAMAHA
GENUINE
Parts & Accessories

1T6H2-200E1

FOREWORD

This Parts Catalogue is related to the parts for the model(s) in the below frame. When you are ordering replacement parts, please refer to this Parts Catalogue and quote both part numbers and part names correctly.

60FE(T) '95 (6H2)

1. Modifications or additions which have been made after issue of the Parts Catalogue will be announced in the Yamaha Parts News.
It is advisable that you make necessary corrections to the Parts Catalogue according to the Yamaha Parts News.

2. Abbreviations

The following abbreviations are used in this Parts Catalogue.

"UR" Use specified parts number.	"M" Manual start model
"UN" Use as many as needed.	"E" Electric start model
"AP" Alternate Parts	"PTT" Power Trim & Tilt model
"LM" Local Made (Parts need to be ordered locally)	"H/T" Hydro Tilt model
"O/S" Over Size	"M/T" Manual Tilt model
	"T.H/D" Tiller Handle model

3. Parts, which are to be supplied in an assembly, are listed with a dot (.) in front of the part name as shown below.

EXAMPLE

CARBURETOR ASSY
 . JET, PILOT
 . NOZZLE, MAIN

4. Number of component for assembly

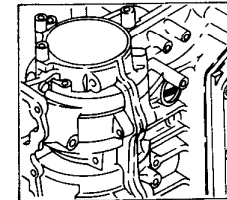
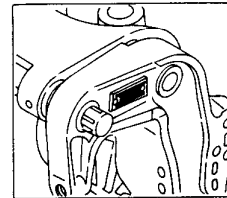
The numeral appearing to the right of each component part indicates the quantity of parts for each assembly unit.

EXAMPLE

PART NO.	DESCRIPTION	Q'TY	REMARKS
6E0-85500-70	C.D.I. MAGNETO ASSY	1	
6E0-85550-70	. ROTOR ASSY	1	
6E0-15723-00-94	. . PULLY, STARTER	1	

5. Applicable Serial No. and Color Code

Engine Serial No.	60FE	S : 001038 ~			
		L : 304844 ~			
	60FET	S : 050435 ~			
		L : 352002 ~			



Color Code	Color Name	Abbreviation
4D	DARK BLUIISH GRAY METALLIC 2	DBNM2

6. Note that the illustrations are for reference in finding parts numbers, not to be used for assembling. When assembling, please use the applicable service manual.

CONTENTS

FIG. 1	CYLINDER. CRANKCASE	A4, A5
FIG. 2	CRANKSHAFT. PISTON	A6
FIG. 3	INTAKE	A7
FIG. 4	CARBURETOR	B1, B2
FIG. 5	FUEL	B3, B4
FIG. 6	TOP COWLING	B5
FIG. 7	BOTTOM COWLING	B6, B7
FIG. 8	BRACKET 1-1 (SHORT TRANSOM)	C1, C2
FIG. 9	BRACKET 1-2 (LONG TRANSOM)	C3, C4
FIG. 10	BRACKET 2	C5, C6
FIG. 11	MANUAL TILT	C7
FIG. 12	POWER TRIM & TILT ASSY 1 (SHORT)	D1~D3
FIG. 13	POWER TRIM & TILT ASSY 2 (LONG)	D4~D6
FIG. 14	CONTROL	D7, E1
FIG. 15	UPPER CASING	E2
FIG. 16	LOWER CASING. DRIVE 1	E3~E6
FIG. 17	LOWER CASING. DRIVE 2	E7, F1
FIG. 18	GENERATOR	F2
FIG. 19	STARTING MOTOR	F3
FIG. 20	ELECTRICAL 1	F4, F5
FIG. 21	REPAIR KIT 1	F6, F7
FIG. 22	REPAIR KIT 2	G1, G2
	NUMERICAL INDEX	

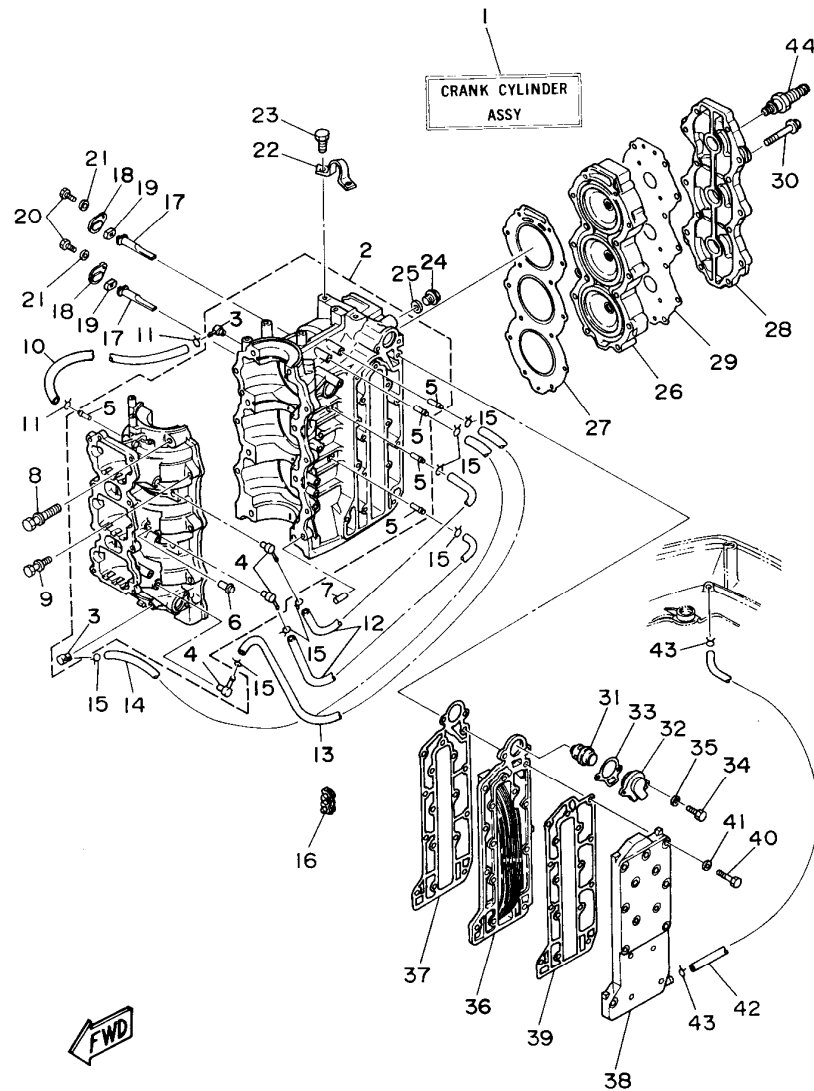


FIG. 1 CYLINDER. CRANKCASE

REF. NO.	PART NO.	DESCRIPTION	Q'TY	REMARKS
1	6H3-W0090-05-4D	CRANK CYLINDER ASSY (REF.NO. 2 TO 43, FIG. 2, REF.NO. 1 TO 17)	1	
2	6H3-15100-04-94	CRANKCASE ASSY	1	
3	688-11370-00	.CHECK VALVE ASSY	2	
4	650-11370-00	.CHECK VALVE ASSY	3	
5	624-14485-00	.PIPE, JOINT	5	
6	650-24378-00	.PIPE, JOINT 4	1	
7	93608-12063	PIN, DOWEL	2	
8	90119-10M07	BOLT, WITH WASHER	8	
9	90119-08M17	BOLT, WITH WASHER	6	
10	90445-07M44	HOSE	1	
11	90467-06016	CLIP	2	
12	90445-07M02	HOSE	2	
13	90445-07M45	HOSE	1	
14	90445-07M82	HOSE	1	
15	90467-06016	CLIP	8	
16	90464-07M05	CLAMP	1	
17	6H3-11325-00	ANODE	2	
18	6H3-11327-00-94	COVER, ANODE	2	
19	6H3-11328-00	GROMMET, ANODE	2	
20	97095-06016	BOLT	2	
21	92990-06600	WASHER, PLATE	2	
22	688-11119-00	HANGER, ENGINE	1	
23	97313-08020	BOLT	2	
24	90340-14M00	PLUG, STRAIGHT SCREW	1	
25	90430-14115	GASKET	1	
26	6H3-11111-01-94	HEAD, CYLINDER 1	1	

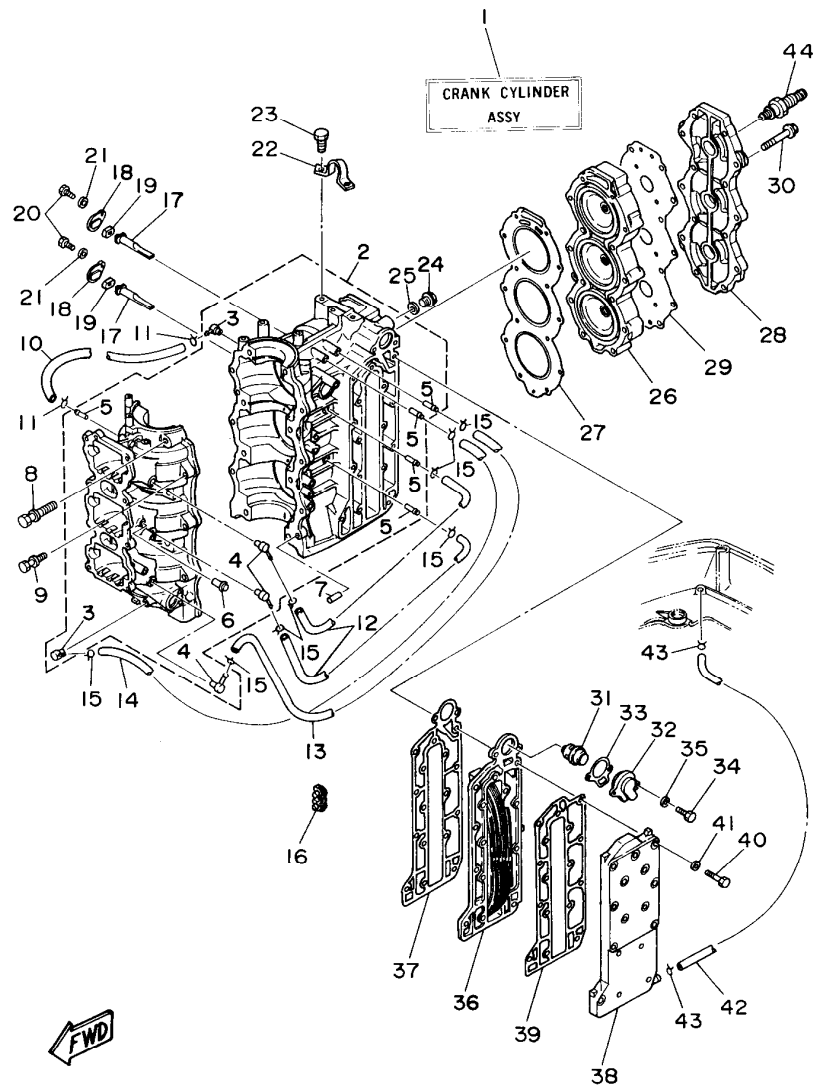


FIG. 1 CYLINDER. CRANKCASE

REF. NO.	PART NO.	DESCRIPTION	Q'TY	REMARKS
27	6H3-11181-A0	GASKET, CYLINDER HEAD 1	1	
28	6H3-11191-00-9M	COVER, CYLINDER HEAD 1	1	
29	6H3-11193-A1	GASKET, HEAD COVER 1	1	
30	90119-08M09	BOLT, WITH WASHER	14	
31	6H3-12411-10	THERMOSTAT	1	
32	6H3-12413-00-9M	COVER, THERMOSTAT	1	
33	6H3-12414-A1	GASKET, COVER	1	
34	97095-06025	BOLT	2	
35	92990-06600	WASHER, PLATE	2	
36	6H3-41111-00-9M	INNER COVER, EXHAUST	1	
37	6H3-41112-A0	GASKET, EXHAUST INNER COVER	1	
38	6H3-41113-00-9M	OUTER COVER, EXHAUST	1	
39	6H3-41114-A0	GASKET, EXHAUST OUTER COVER	1	
40	97013-06035	BOLT	16	
41	92990-06600	WASHER, PLATE	16	
42	663-24312-01	PIPE 2	1	
43	90467-08004	CLIP	2	
44	94702-00247	PLUG, SPARK (NGK BR8HS-10)	3	

A5

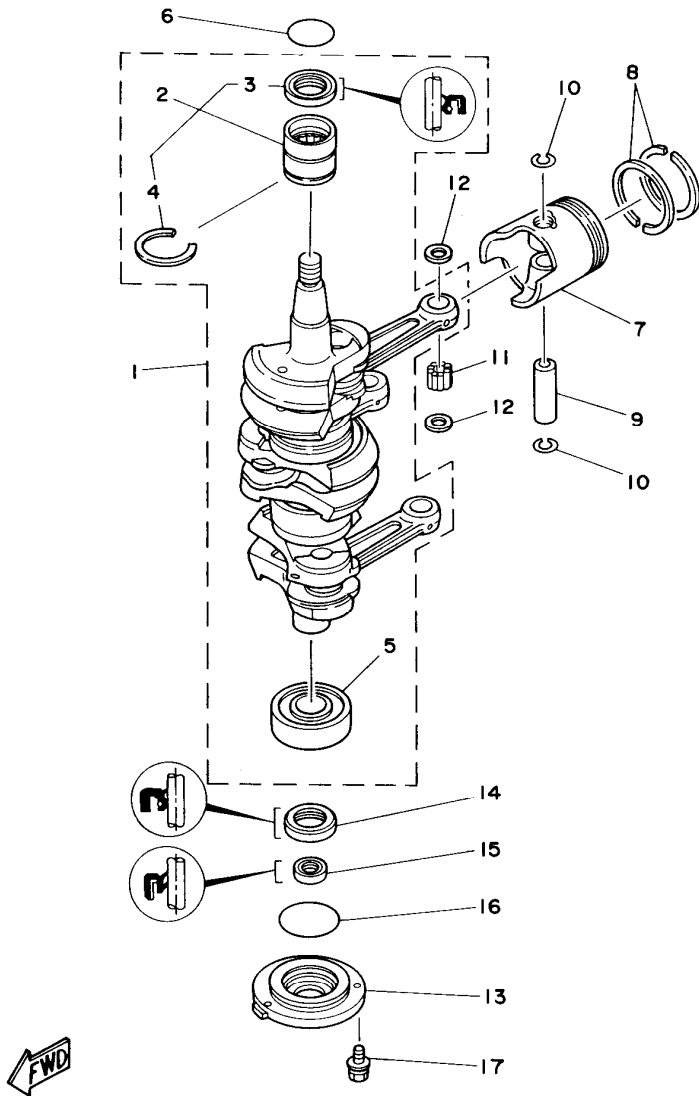


FIG. 2 CRANKSHAFT. PISTON

REF. NO.	PART NO.	DESCRIPTION	Q'TY	REMARKS
1	6H3-11400-03	CRANKSHAFT ASSY	1	
2	93311-636U6	.BEARING, CYLINDRICAL	1	
3	93102-36M24	..OIL SEAL	1	
4	93440-49M04	..CIRCLIP	1	
5	93306-306V1	.BEARING	1	
6	93210-46M16	O-RING	1	
7	6H3-11631-01-96	PISTON (STD)	3	
	6H3-11635-01	PISTON (0.25MM O/S)	3	AP
	6H3-11636-01	PISTON (0.50MM O/S)	3	AP
8	6K5-11601-02	PISTON RING SET (STD)	3	
	6K5-11601-12	PISTON RING SET (0.25MM O/S)	3	AP
	6K5-11601-22	PISTON RING SET (0.50MM O/S)	3	AP
9	6H3-11633-00	PIN, PISTON	3	
10	688-11634-10	CLIP, PISTON PIN	6	
11	93603-18M09	PIN, DOWEL	84	
12	90201-20417	WASHER, PLATE	6	
13	6H3-15359-00-94	HOUSING, OIL SEAL	1	
14	93102-30M23	OIL SEAL	1	
15	93106-18M01	OIL SEAL	1	
16	93210-65M50	O-RING	1	
17	97595-06520	BOLT, WITH WASHER	3	

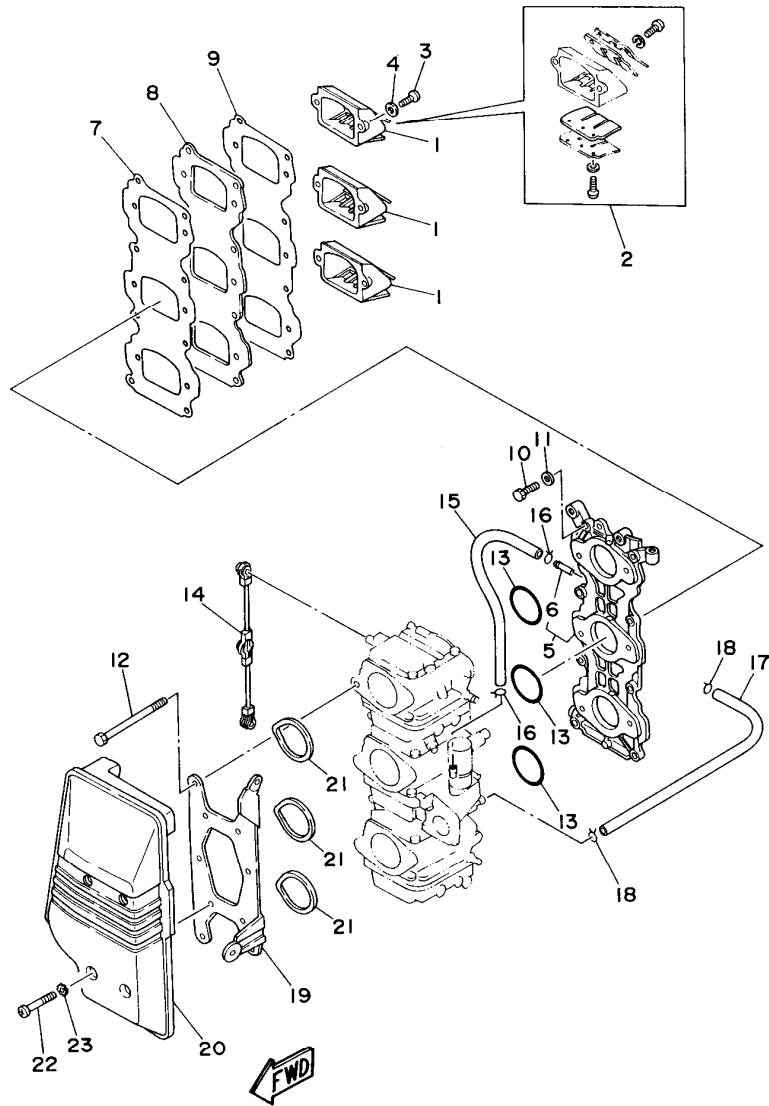


FIG. 3 INTAKE

REF. NO.	PART NO.	DESCRIPTION	Q'TY	REMARKS
1	6H2-13610-00	REED VALVE ASSY	3	
2	688-W0004-00	.REED SET	1	
3	98580-05016	SCREW, PAN HEAD	6	
4	92990-05600	WASHER, PLATE	6	
5	6H3-13641-21-94	MANIFOLD 1	1	
6	6H1-14485-00	.PIPE, JOINT	1	
7	6H3-13621-A1	GASKET, VALVE SEAT	1	
8	6H3-13624-00-94	PLATE, REED VALVE	1	
9	6H3-13622-A1	GASKET, VALVE SEAT	1	
10	97095-06025	BOLT	8	
11	92990-06600	WASHER, PLATE	8	
12	97095-06095	BOLT	6	
13	93210-39ME4	O-RING	3	
14	6H3-41217-00	ROD, ACCEL. LEVER	1	
15	90445-07M02	HOSE	1	
16	90467-06016	CLIP	2	
17	6H3-14349-00	PIPE	1	
18	90467-08004	CLIP	2	
19	6H3-14413-10	STAY	1	
20	6H3-14440-02	SILENCER ASSY, INTAKE	1	
21	6H3-14457-01	SEAL	3	
22	97885-06045	SCREW, PAN HEAD	4	
23	90209-06M05	WASHER	4	

A7

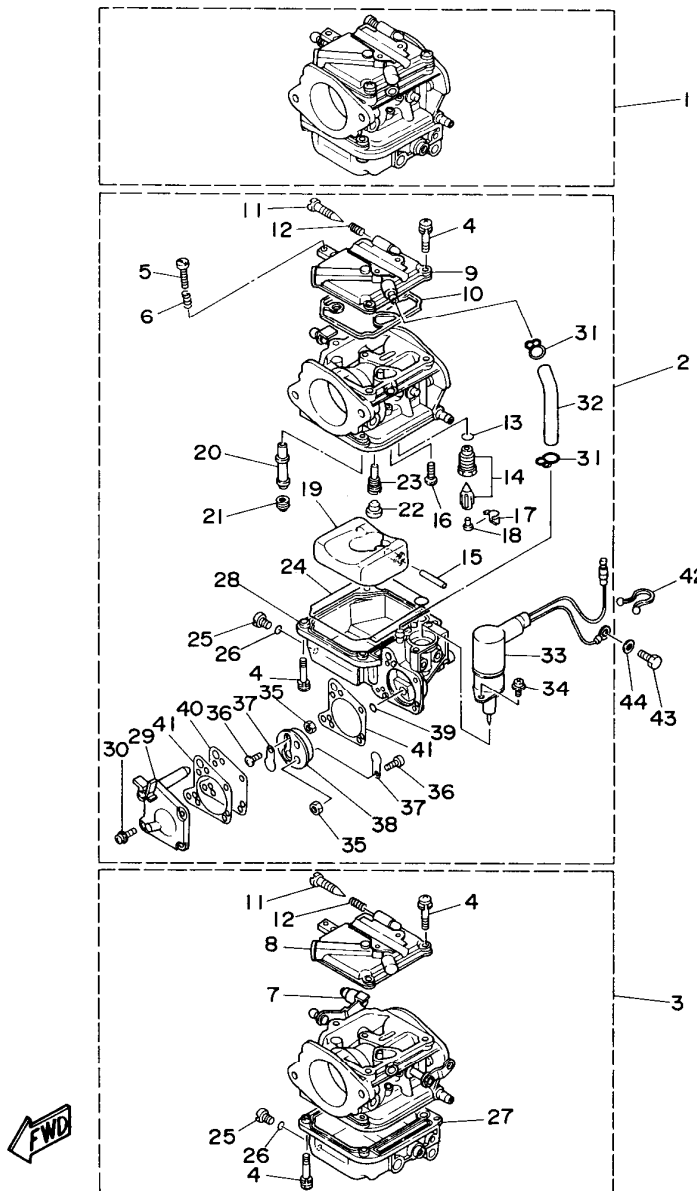


FIG. 4 CARBURETOR

REF. NO.	PART NO.	DESCRIPTION	Q'TY	REMARKS
1	6H2-14301-0A	CARBURETOR ASSY 1	1	
2	6H2-14302-0A	CARBURETOR ASSY 2	1	
3	6H2-14303-0A	CARBURETOR ASSY 3	1	
4	97980-04114	.SCREW, WITH WASHER	21	
5	6H1-14523-00	.SCREW, STOP	1	
6	90501-10326	.SPRING, COMPRESSION	1	
7	6H2-14578-00	.COLLAR	1	LOWER
8	6H4-14146-00	.PLATE	2	UR UPPER/LOWER
9	6H3-14146-10	.PLATE	1	UR CENTER
10	6H4-14147-00	.O-RING	3	
11	692-14923-00	.SCREW, PILOT	3	
12	697-14555-00	.SPRING	3	
13	93210-04228	.O-RING	3	
14	6H3-14590-00	.NEEDLE VALVE ASSY	3	
15	6H4-14548-00	.PIN, FLOAT ARM	3	
16	98580-04008	.SCREW, PAN HEAD	3	
17	663-14159-00	.CLIP	3	
18	676-14186-00	.PIN, FLOAT	3	
19	6H4-14985-01	.FLOAT	3	
20	6H2-14947-71	.JET, NEEDLE	3	
21	6H3-14943-35	.JET, MAIN (#140)	2	UR UPPER/CENTER
	6H3-14943-36	.JET, MAIN (#145)	1	UR LOWER
22	676-14966-00	.CAP	3	
23	6H3-14948-13	.JET (#65)	3	
24	6H4-14984-00	.GASKET, FLOAT CHAMBER	3	
25	6H3-14992-00	.SCREW, DRAIN	3	
26	93210-04230	.O-RING	3	
27	6H4-14980-00	.BODY, FLOAT CHAMBER	2	UR UPPER/LOWER

B1

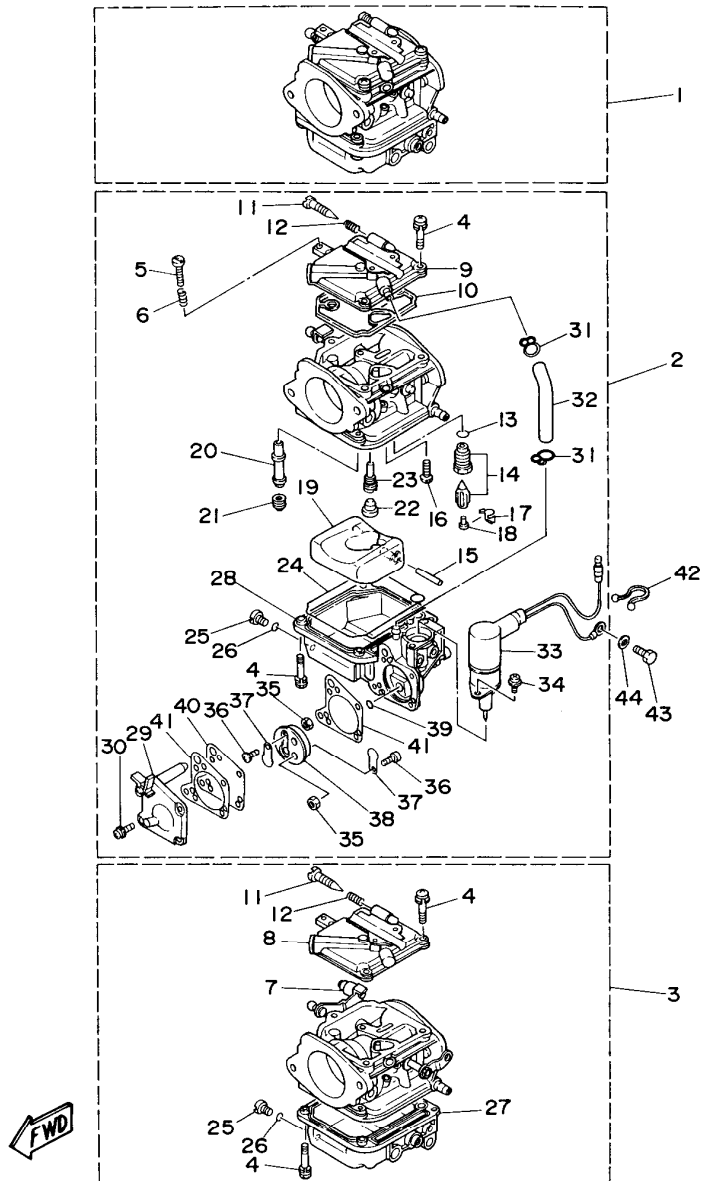


FIG. 4 CARBURETOR

REF. NO.	PART NO.	DESCRIPTION	Q'TY	REMARKS
28	6H3-14980-10	.BODY, FLOAT CHAMBER	1	UR CENTER
29	6H3-24452-10	.COVER	1	CENTER
30	6H4-14567-00	.SCREW	4	CENTER
31	6H3-14137-00	.CLIP	2	CENTER
32	6H3-14349-00	.PIPE	1	CENTER
33	6H3-14380-00	.STARTER ASSY	1	CENTER
34	98580-04010	.SCREW, PAN HEAD	2	CENTER
35	95380-03600	.NUT	2	CENTER
36	98980-03006	.SCREW, BIND	2	CENTER
37	6L5-24421-00	.VALVE, CHECK	2	CENTER
38	6H4-24413-00	.BODY 2	1	CENTER
39	6H4-24486-00	.O-RING	1	CENTER
40	6H3-24411-10	.DIAPHRAGM	1	CENTER
41	6H3-24434-10	.GASKET, BODY	2	CENTER
42	90465-18147	CLAMP	1	
43	97013-06012	BOLT	1	
44	92990-06600	WASHER, PLATE	1	

B2

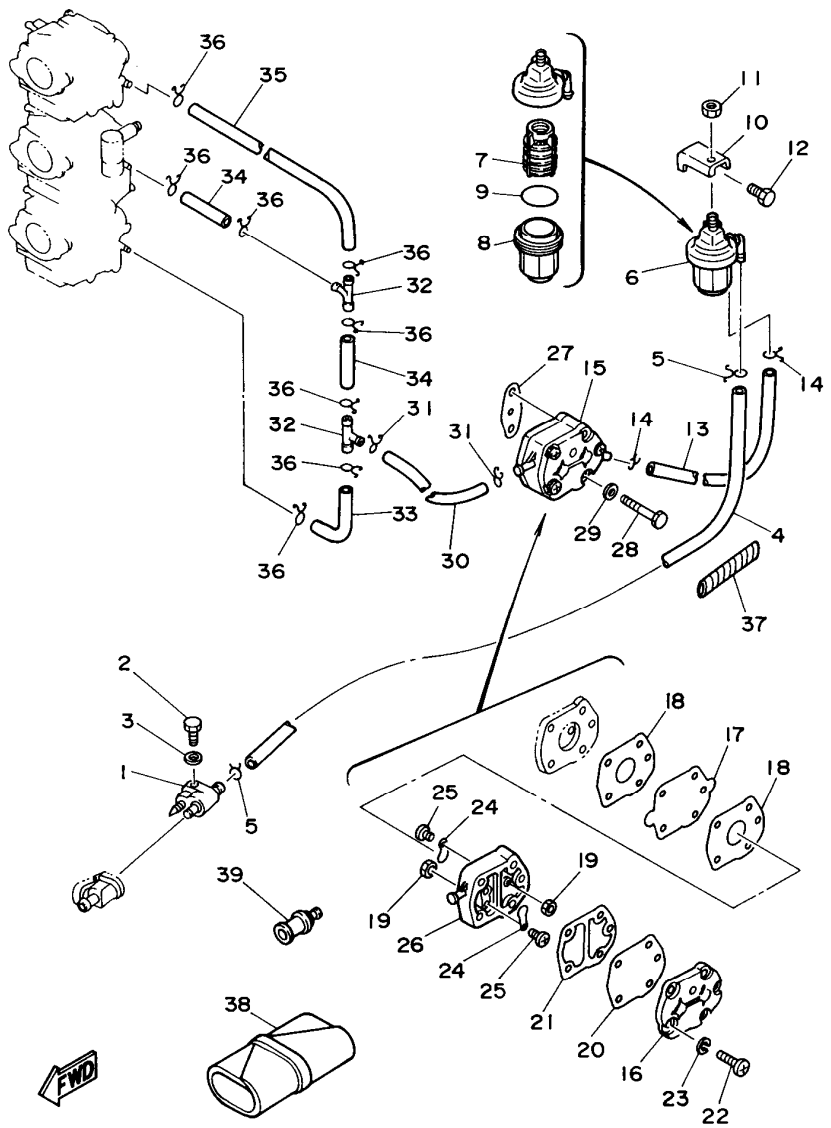


FIG. 5 FUEL

REF. NO.	PART NO.	DESCRIPTION	Q'TY	REMARKS
1	6G1-24304-02	FUEL PIPE JOINT COMP. 1	1	
2	97095-06025	BOLT	1	
3	92990-06600	WASHER, PLATE	1	
4	90445-09M75	HOSE	1	
5	90467-08004	CLIP	2	
6	61N-24560-00	FILTER ASSY	1	
7	61N-24563-00	.ELEMENT, FILTER	1	
8	61N-24521-00	.CUP, FILTER	1	
9	93210-32738	.O-RING	1	
10	648-24566-01	BRACKET, FILTER	1	
11	95380-08600	NUT	1	
12	97313-06014	BOLT	1	
13	90445-09072	HOSE	1	
14	90467-08004	CLIP	2	
15	692-24410-00	FUEL PUMP ASSY	1	
16	648-24413-01	.BODY 2	1	
17	692-24411-00	.DIAPHRAGM	1	
18	648-24434-01	.GASKET, BODY	2	
19	95380-03600	.NUT	2	
20	663-24411-00	.DIAPHRAGM	1	
21	648-24435-02	.GASKET, BODY 2	1	
22	98580-05530	.SCREW, PAN HEAD	3	
23	92990-05100	.WASHER, SPRING	3	
24	6A0-24421-01	.VALVE, CHECK	2	
25	6A0-14325-00	.SCREW, PAN HEAD	2	
26	6A0-24412-02	.BODY 1	1	
27	650-24431-A0	GASKET, FUEL PUMP 1	1	
28	97095-06040	BOLT	2	

B3

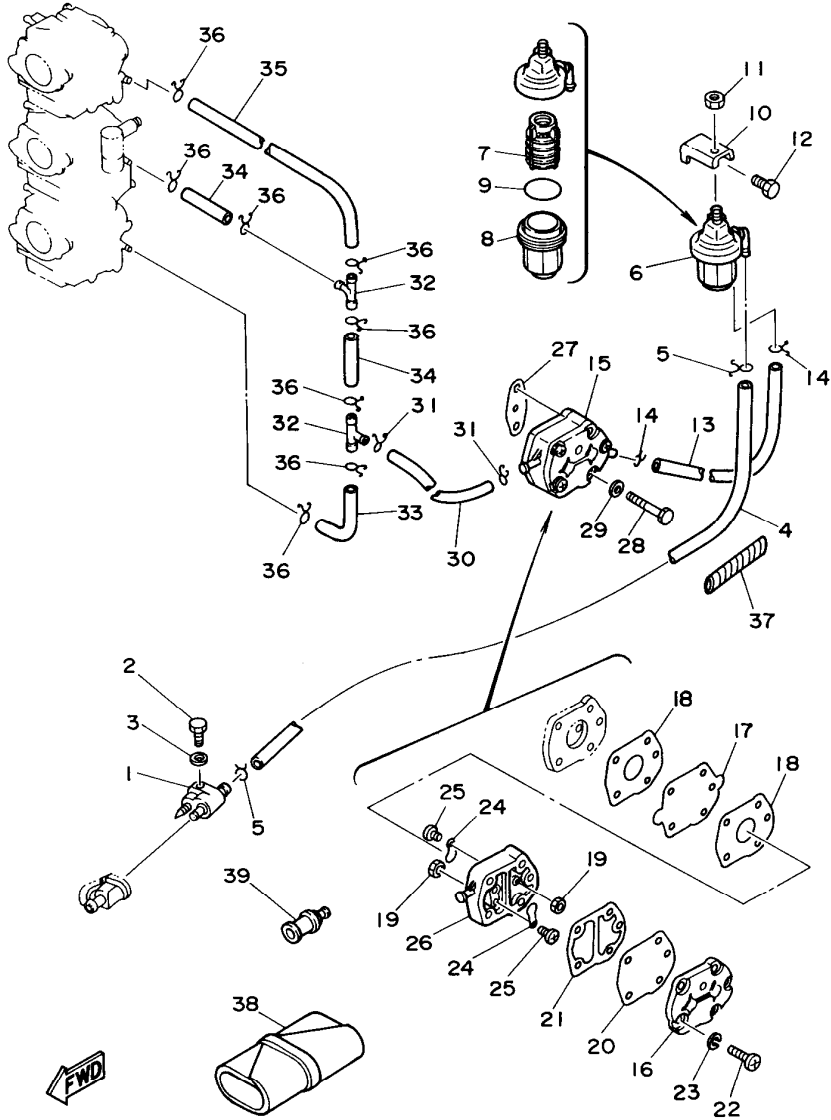


FIG. 5 FUEL

REF. NO.	PART NO.	DESCRIPTION	Q'TY	REMARKS
29	92990-06600	WASHER, PLATE	2	
30	90445-09072	HOSE	1	
31	90467-08004	CLIP	2	
32	688-24378-00	PIPE, JOINT 4	2	
33	6H3-24313-00	PIPE 3	1	
34	90445-09220	HOSE	2	
35	6H3-24314-00	PIPE 4	1	
36	90467-08004	CLIP	8	
37	90446-10M01	HOSE	1	
38	656-W2810-02	TOOL KIT	1	
39	626-28193-01-94	PLUG, WATER CHECK	1	UR D:15
	6E0-28193-00-94	PLUG, WATER CHECK	1	AP D:12.5

B4

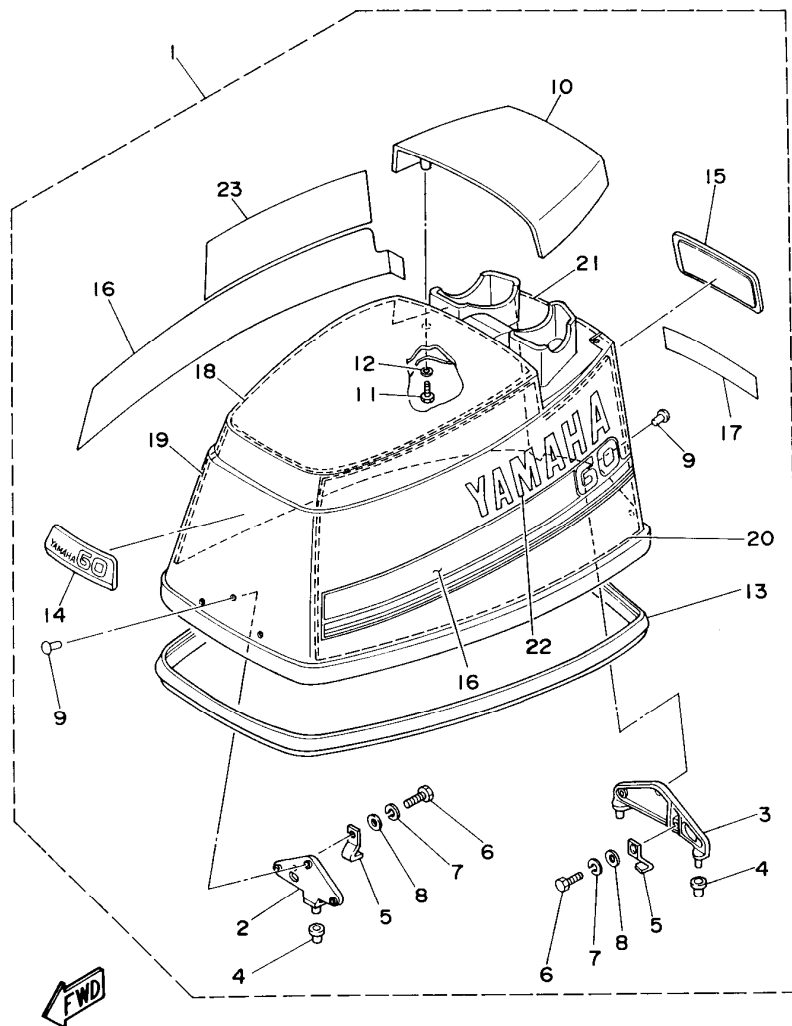
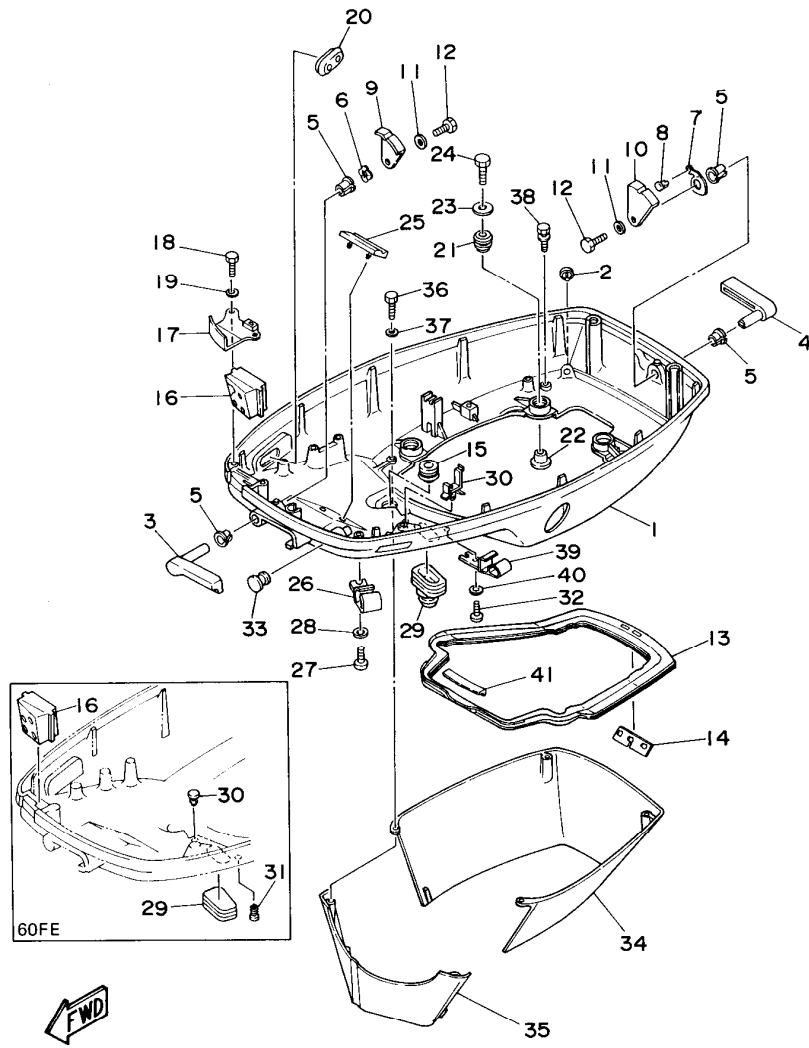


FIG. 6 TOP COWLING

REF. NO.	PART NO.	DESCRIPTION	Q'TY	REMARKS
1	6H2-42610-31-4D	TOP COWLING ASSY	1	
2	6H3-42647-00-94	.HOLDER, CLAMP BAND	1	
3	6H3-42649-00-94	.HOLDER, CLAMP BAND	1	
4	663-42662-00	.DAMPER	3	
5	6H3-42652-00	.HOOK	2	
6	97095-06016	.BOLT	2	
7	92995-06100	.WASHER, SPRING	2	
8	92990-06600	.WASHER, PLATE	2	
9	90266-06M02	.RIVET	6	
10	6H3-42613-00-4D	.MOLDING, AIR DUCT	1	
11	97095-06016	.BOLT	4	
12	92990-06600	.WASHER, PLATE	4	
13	6H3-42615-00	.SEAL	1	
14	6H2-42686-01	.EMBLEM, FRONT	1	
15	6H2-42687-01	.EMBLEM, REAR	1	
16	6H2-W0070-30	.GRAPHIC SET	1	
17	6H3-4267A-40	.GRAPHIC, REAR 2	1	
18	689-W4266-20	.DAMPER, FORM	1	
19	689-W4266-40	.DAMPER, FORM	1	
20	689-W4266-40	.DAMPER, FORM	1	
21	689-W4266-10	.DAMPER, FORM	1	
22	6H3-42681-40	.MARK, COWLING	1	
23	6H3-42682-41	.MARK, COWLING	1	

FIG. 7 BOTTOM COWLING



REF. NO.	PART NO.	DESCRIPTION	Q'TY	REMARKS
1	6H3-42711-04-4D	COWLING, BOTTOM	1	UR 60FE
	6H3-42711-23-4D	COWLING, BOTTOM	1	UR 60FET
2	6H3-44391-01	NIPPLE, HOSE	1	
3	6H3-42815-00-4D	LEVER, CLAMP	1	
4	6H3-42817-00-4D	LEVER, CLAMP	1	
5	90386-13M38	BUSH	4	
6	90206-13M10	WASHER, WAVE	1	
7	6H3-42813-00	SPRING, CLAMP LEVER	1	
8	90269-04M03	RIVET	1	
9	6H3-42816-00	LEVER, CLAMP	1	
10	6H3-42818-00	LEVER, CLAMP	1	
11	90201-06M02	WASHER, PLATE	2	
12	97013-06012	BOLT	2	
13	6H3-42716-02	RUBBER, SEAL 1	1	
14	6K5-42717-00	RUBBER, SEAL 2	1	
15	6E5-42724-00	GROMMET	1	
16	6H3-42725-00	GROMMET	1	UR 60FE
	6H3-42725-10	GROMMET	1	UR 60FET
17	6H3-42738-00-5B	PLATE, FITTING	1	
18	97095-06016	BOLT	2	
19	92990-06600	WASHER, PLATE	2	
20	6H3-42727-00	GROMMET	1	
21	90480-09M12	GROMMET	4	
22	90387-06M69	COLLAR	4	
23	90201-06416	WASHER, PLATE	4	
24	97095-06030	BOLT	4	
25	6H3-42768-00	DAMPER	1	
26	6E5-24367-01	CLAMP, FUEL PIPE 2	1	

B6

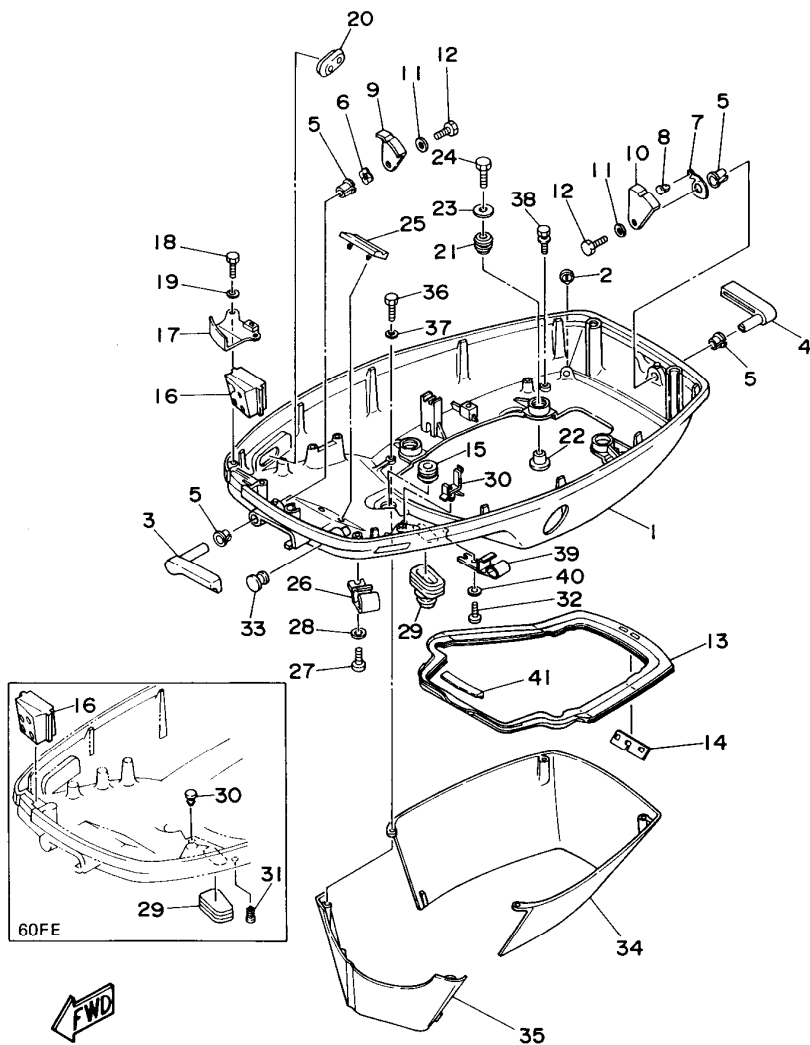


FIG. 7 BOTTOM COWLING

REF. NO.	PART NO.	DESCRIPTION	Q'TY	REMARKS
27	90157-06M01	SCREW, PAN HEAD	1	
28	92990-06600	WASHER, PLATE	1	
29	6H4-42726-00	GROMMET	1	UR 60FE
	688-42726-10	GROMMET	1	UR 60FET
30	703-82119-00	COVER, LEAD WIRE	2	UR 60FE
	90464-15M08	CLAMP	1	UR 60FET
31	90338-05M03	PLUG	1	UR 60FE
32	90157-06M01	SCREW, PAN HEAD	1	UR 60FET
33	6G1-42748-00	GROMMET	1	
34	6H3-42741-00-4D	APRON	1	
35	6H3-42771-00-4D	APRON	1	
36	97095-06025	BOLT	2	
37	92990-06600	WASHER, PLATE	2	
38	97595-06520	BOLT, WITH WASHER	2	
39	6E5-24367-01	CLAMP, FUEL PIPE 2	1	
40	92990-06600	WASHER, PLATE	1	
41	6H3-42718-00	RUBBER, SEAL 3	1	

B7

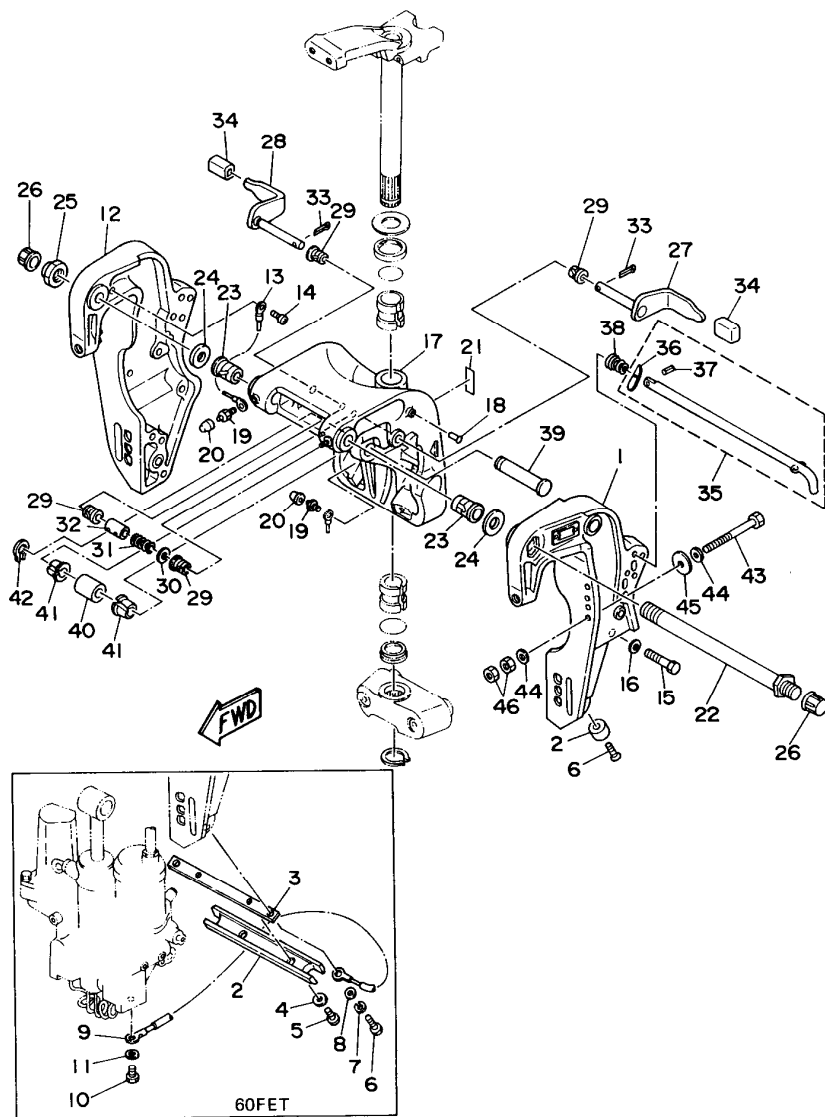


FIG. 8 BRACKET 1-1 (SHORT TRANSOM)

REF. NO.	PART NO.	DESCRIPTION	Q'TY	REMARKS
1	697-43111-04-4D	BRACKET, CLAMP	1	
2	663-45251-00	ANODE	2	UR 60FE
	6H1-45251-02	ANODE	1	UR 60FET
3	6H1-44526-00	PLATE	1	60FET
4	90201-06M31	WASHER, PLATE	2	60FET
5	97095-06012	BOLT	2	60FET
6	92180-06025	SCREW, OVAL HEAD	2	UR 60FE
	97095-06016	BOLT	2	UR 60FET
7	92995-06100	WASHER, SPRING	2	60FET
8	92990-06600	WASHER, PLATE	2	60FET
9	6H1-82148-00	WIRE, LEAD 4	1	60FET
10	97095-06010	BOLT	1	60FET
11	92990-06600	WASHER, PLATE	1	60FET
12	697-43112-03-4D	BRACKET, CLAMP	1	
13	6E5-82148-00	WIRE, LEAD 4	1	
14	98580-06012	SCREW, PAN HEAD	1	
15	97395-10045	BOLT	6	
16	92990-10100	WASHER, SPRING	6	
17	697-43311-03-4D	BRACKET, SWIVEL	1	
18	90269-03010	RIVET	1	
19	93700-06M03	NIPPLE, GREASE	3	
20	663-45119-00	CAP, GREASE NIPPLE	3	AP
21	688-43691-01	INDICATOR, TILT	1	60FE
22	688-43131-03	BOLT, CLAMP BRACKET	1	
23	90386-22M15	BUSH	2	
24	90201-22M67	WASHER, PLATE	2	
25	90185-22M11	NUT, SELF-LOCKING	1	
26	665-43145-00	CAP, CLAMP BRACKET	2	

C1

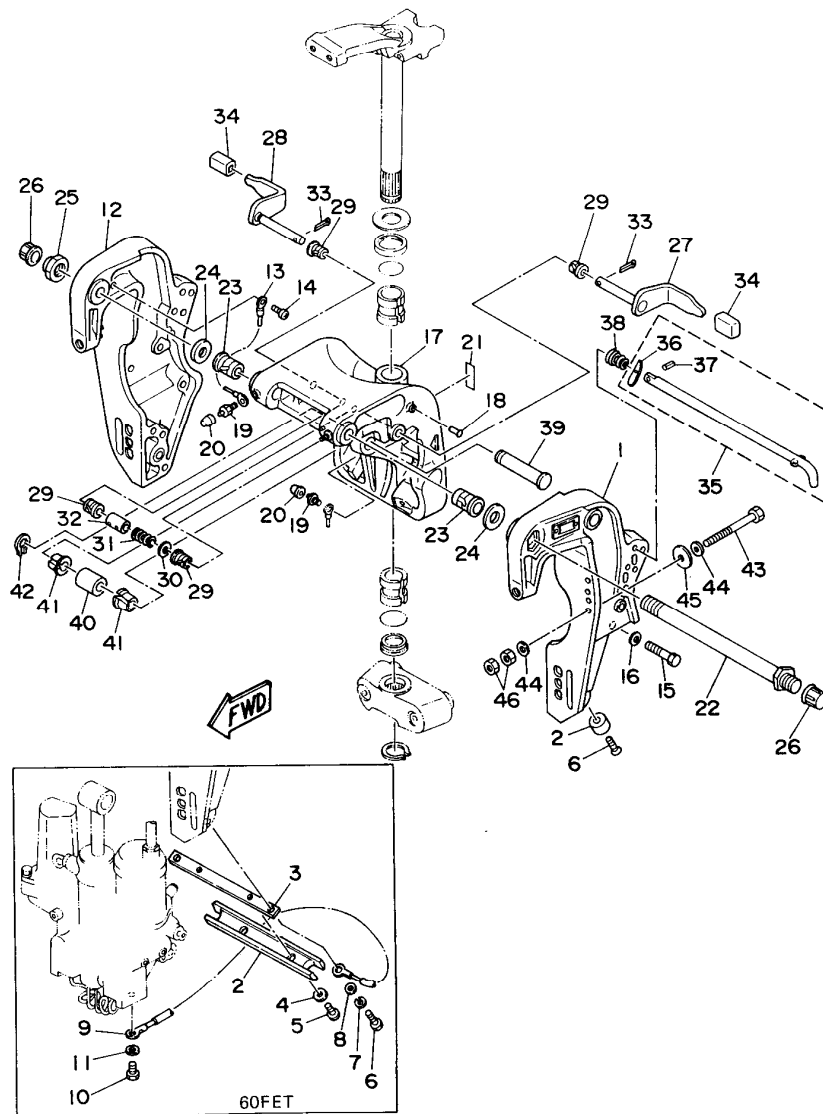


FIG. 8 BRACKET 1-1 (SHORT TRANSOM)

REF. NO.	PART NO.	DESCRIPTION	Q'TY	REMARKS
27	688-43181-04	LEVER, TILT STOP	1	
28	688-43185-04	LEVER, TILT STOP	1	
29	90386-10M16	BUSH	4	
30	92990-10600	WASHER, PLATE	1	
31	90501-10M21	SPRING, COMPRESSION	1	
32	90387-10M38	COLLAR	1	
33	91490-30030	PIN, COTTER	2	
34	663-43318-00	COVER	2	
35	697-43160-00	TILT ROD ASSY	1	
36	688-43165-00	.PLATE, TILT LOCK	1	
37	91690-30012	.PIN, SPRING	1	
38	90502-20M03	SPRING, CONICAL	1	
39	6E5-43126-02	PIN, UPPER SHOCK MOUNT	1	
40	90386-18M21	BUSH	1	UR 60FE
	90386-18M63	BUSH	2	UR 60FET
41	90386-18M35	BUSH	2	
42	93410-18M02	CIRCLIP	1	
43	90101-12M65	BOLT	4	
44	92995-12200	WASHER	8	
45	90201-12426	WASHER, PLATE	4	
46	95380-12600	NUT	8	

C2

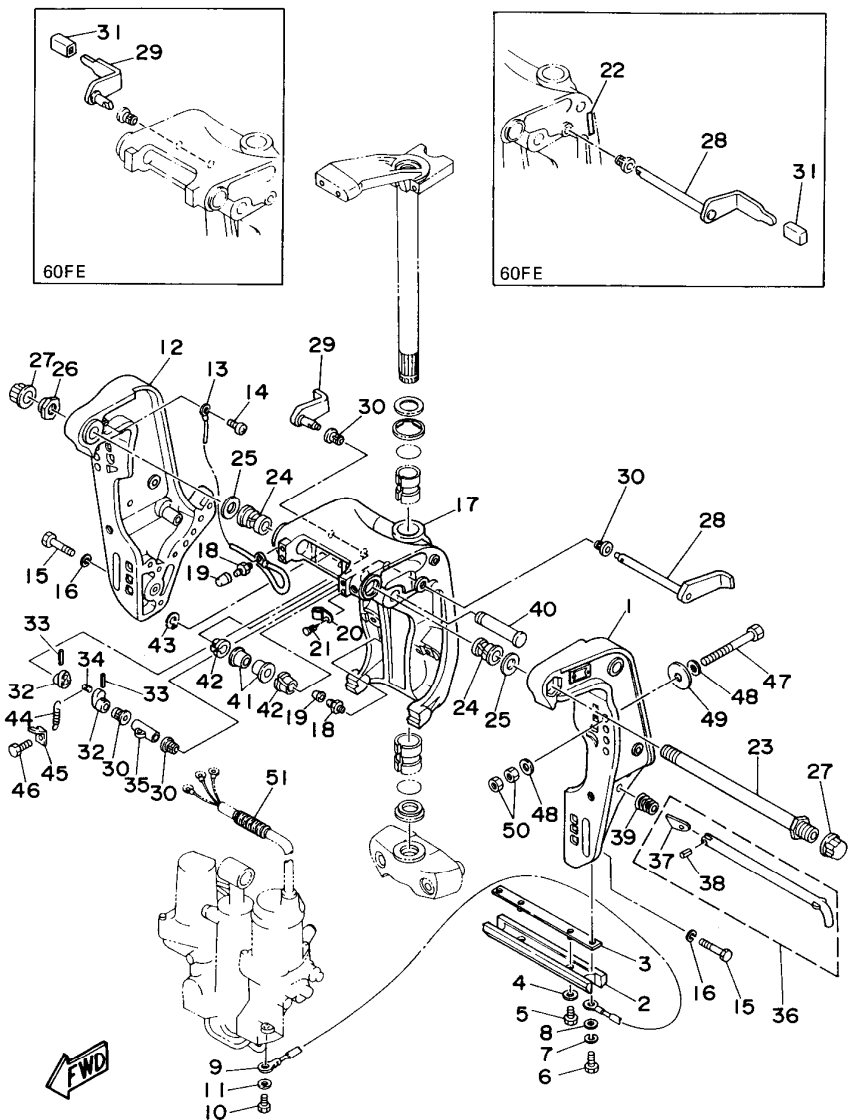


FIG. 9 BRACKET 1-2 (LONG TRANSOM)

REF. NO.	PART NO.	DESCRIPTION	Q'TY	REMARKS
1	6H1-43111-00-4D	BRACKET, CLAMP	1	UR 60FET
	688-43111-12-4D	BRACKET, CLAMP	1	UR 60FE
2	6H1-45251-02	ANODE	1	
3	6H1-44526-00	PLATE	1	
4	90201-06M31	WASHER, PLATE	2	
5	97095-06012	BOLT	2	
6	97095-06016	BOLT	2	
7	92995-06100	WASHER, SPRING	2	
8	92990-06600	WASHER, PLATE	2	
9	6H1-82148-00	WIRE, LEAD 4	1	60FET
10	97095-06010	BOLT	1	60FET
11	92990-06600	WASHER, PLATE	1	60FET
12	6H1-43112-00-4D	BRACKET, CLAMP	1	UR 60FET
	688-43112-12-4D	BRACKET, CLAMP	1	UR 60FE
13	6E5-82148-00	WIRE, LEAD 4	1	
14	98580-06012	SCREW, PAN HEAD	1	
15	97395-10045	BOLT	6	
16	92990-10100	WASHER, SPRING	6	
17	6H1-43311-01-4D	BRACKET, SWIVEL	1	
18	93700-06M03	NIPPLE, GREASE	3	
19	663-45119-00	CAP, GREASE NIPPLE	3	AP
20	90464-11M18	CLAMP	1	
21	90338-05M03	PLUG	1	
22	688-43691-01	INDICATOR, TILT	1	60FE
23	688-43131-03	BOLT, CLAMP BRACKET	1	
24	90386-22M15	BUSH	2	
25	90201-22M67	WASHER, PLATE	2	
26	90185-22M11	NUT, SELF-LOCKING	1	

C3

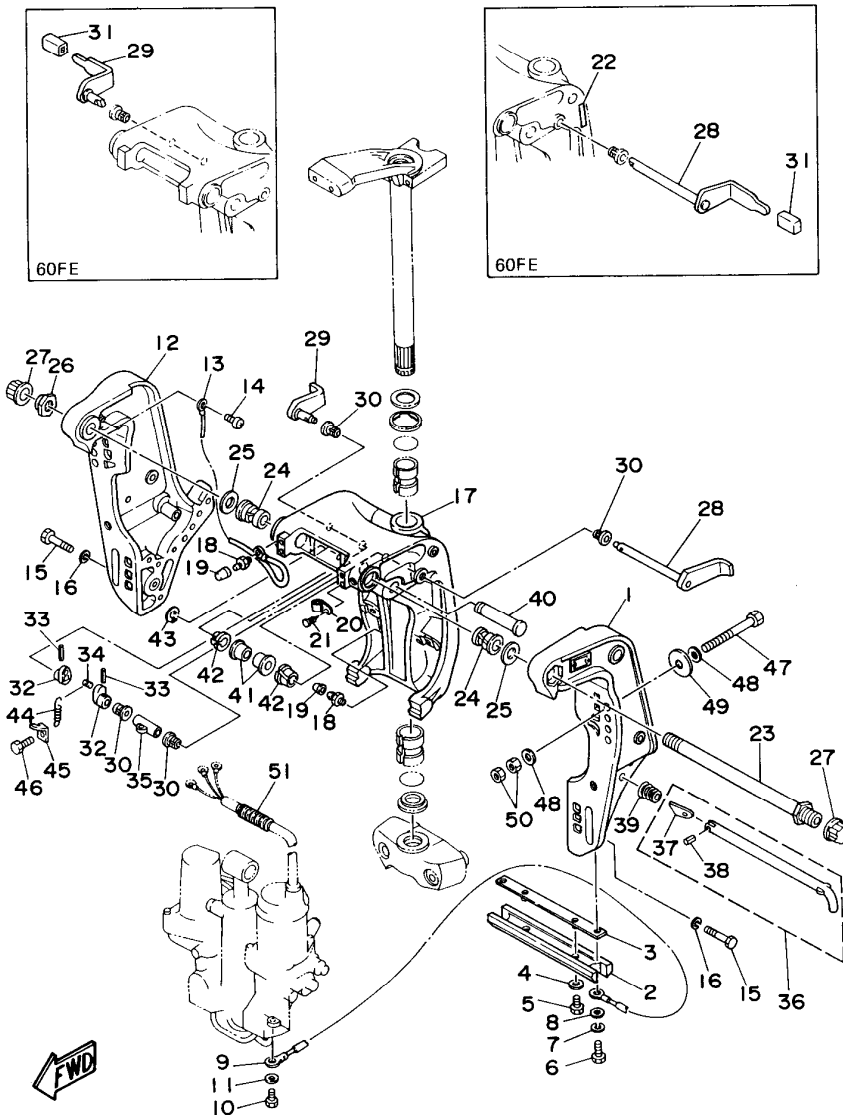


FIG. 9 BRACKET 1-2 (LONG TRANSOM)

REF. NO.	PART NO.	DESCRIPTION	Q'TY	REMARKS
27	6G5-43145-00	CAP, CLAMP BRACKET	2	
28	6H1-43181-01	LEVER, TILT STOP	1	UR 60FET
	688-43181-10	LEVER, TILT STOP	1	UR 60FE
29	6H1-43185-01	LEVER, TILT STOP	1	UR 60FET
	688-43185-10	LEVER, TILT STOP	1	UR 60FE
30	90386-10M16	BUSH	4	
31	663-43318-00	COVER	2	60FE
32	6G5-43148-00	COLLAR, DISTANCE	2	
33	91690-30020	PIN, SPRING	2	
34	90249-06M19	PIN	1	
35	90387-10M02	COLLAR	1	
36	688-43160-01	TILT ROD ASSY	1	
37	688-43165-00	.PLATE, TILT LOCK	1	
38	91690-30012	.PIN, SPRING	1	
39	90502-16M02	SPRING, CONICAL	1	
40	6E5-43126-02	PIN, UPPER SHOCK MOUNT	1	
41	90386-18M63	BUSH	2	UR 60FET
	90386-18M21	BUSH	1	UR 60FE
42	90386-18M35	BUSH	2	
43	93410-18M02	CIRCLIP	1	
44	90506-14M24	SPRING, TENSION	1	
45	6G5-43144-00	HOOK, SPRING	1	
46	97095-06010	BOLT	1	
47	90101-12M65	BOLT	4	
48	92995-12200	WASHER	8	
49	90201-12426	WASHER, PLATE	4	
50	95380-12600	NUT	8	
51	90440-14M00	PIPE	1	

C4

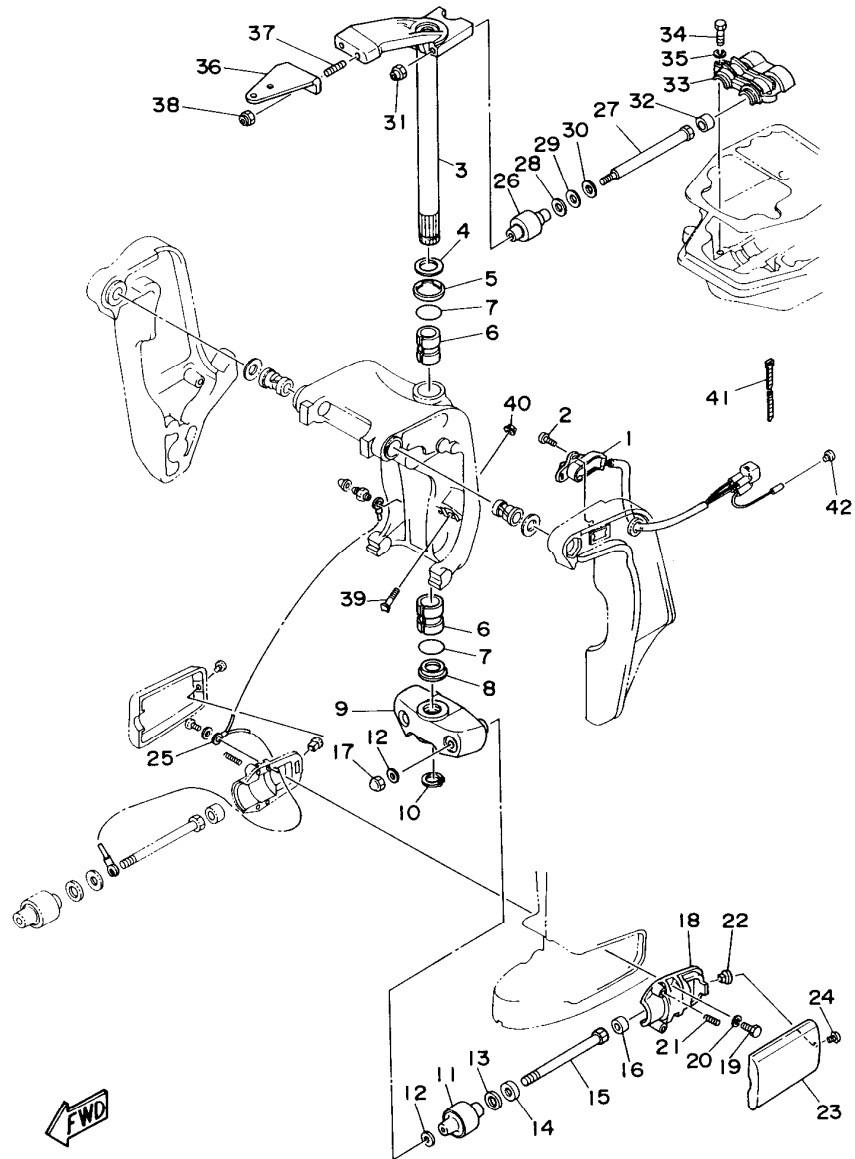


FIG. 10 BRACKET 2

REF. NO.	PART NO.	DESCRIPTION	Q'TY	REMARKS
1	6H5-83672-01	TRIM SENDER (SHORT)	1	UR 60FET
	6H1-83672-11	TRIM SENDER (LONG)	1	UR 60FET
2	98580-06016	SCREW, PAN HEAD	2	60FET
3	6H3-42510-02-4D	STEERING BRACKET ASSY	1	UR SHORT
	6H3-42510-12-4D	STEERING BRACKET ASSY	1	UR LONG
4	90201-30M00	WASHER, PLATE	1	
5	90386-30M78	BUSH	1	
6	90386-30M77	BUSH	2	
7	93210-29M94	O-RING	2	
8	90386-30M60	BUSH	1	
9	6H3-44551-00-4D	HOUSING, LOWER MOUNT RUBBER	1	
10	93410-28M06	CIRCLIP	1	
11	687-44555-00-94	MOUNT DAMPER, LOWER SIDE	2	
12	90201-12M16	WASHER, PLATE	4	
13	90202-25M04	WASHER, PLATE	2	
14	90201-13M19	WASHER, PLATE	2	
15	90109-12M21	BOLT	2	
16	663-44575-00	DAMPER, LOWER MOUNT RUBBER	2	
17	95380-12800	NUT, CROWN	2	
18	6H3-44552-01-94	HOUSING, LOWER MOUNT RUBBER	2	
19	97395-08025	BOLT	4	
20	92990-08100	WASHER, SPRING	4	
21	90501-14236	SPRING, COMPRESSION	4	
22	90179-06066	NUT	2	
23	6H3-44553-00-4D	COVER, LOWER MOUNT	2	
24	98580-06016	SCREW, PAN HEAD	2	
25	697-82127-01	WIRE, LEAD 2	1	UR SHORT
	688-82127-02	WIRE, LEAD 2	1	UR LONG

C5

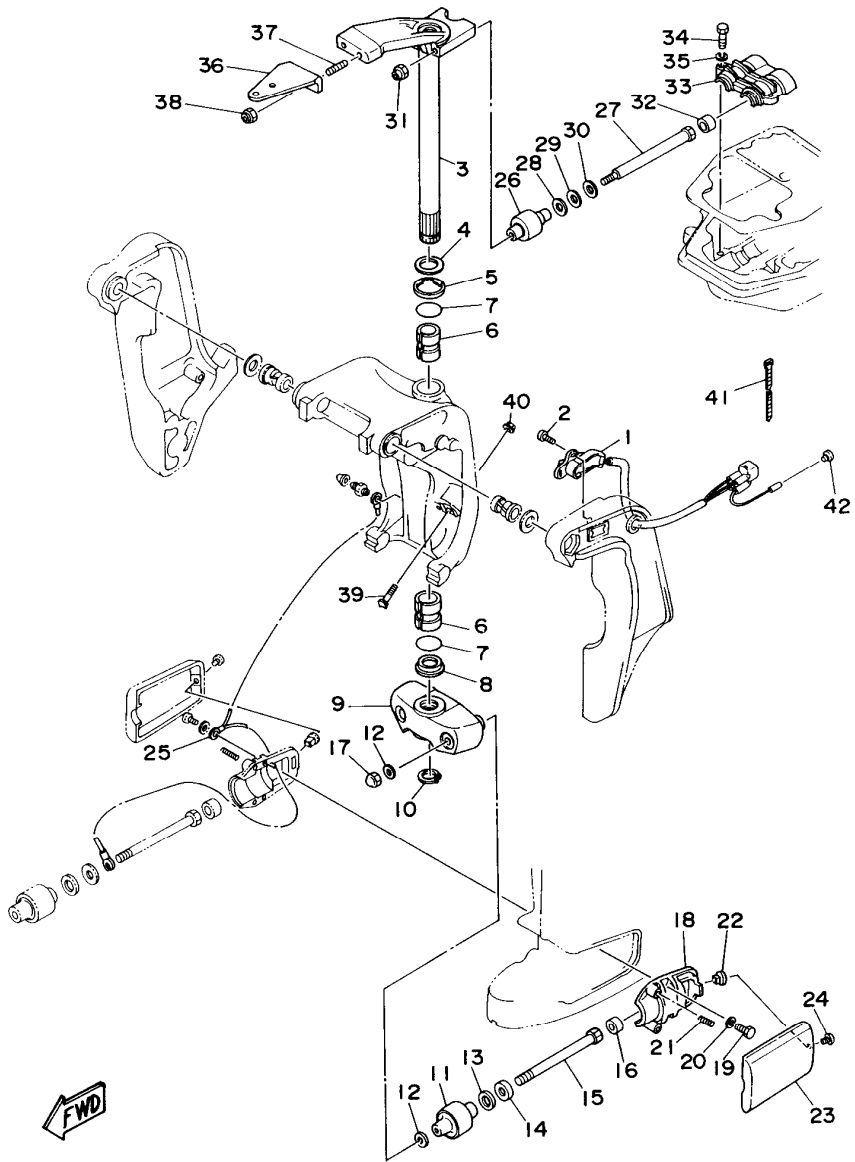


FIG. 10 BRACKET 2

REF. NO.	PART NO.	DESCRIPTION	Q'TY	REMARKS
26	688-44514-00-94	MOUNT DAMPER, UPPER SIDE	2	
27	90101-10M49	BOLT	2	
28	90201-20M21	WASHER, PLATE	2	
29	90202-20M06	WASHER, PLATE	2	
30	90201-11M22	WASHER, PLATE	2	
31	90185-10051	NUT, SELF-LOCKING	2	
32	663-44575-00	DAMPER, LOWER MOUNT RUBBER	2	
33	688-44511-00-94	COVER, UPPER MOUNT	1	
34	97090-08035	BOLT	3	
35	92990-08100	WASHER, SPRING	3	
36	688-48511-01-4D	HOOK, STEERING	1	UR BALL POST TYPE
	6H3-48511-51-4D	HOOK, STEERING	1	UR STEERING GUIDE TYPE
37	90116-10175	BOLT, STUD	2	
38	90185-10051	NUT, SELF-LOCKING	2	
39	688-43376-01	BOLT, THRUST RECEIVER	2	UR SHORT
	6H1-43376-00	BOLT, THRUST RECEIVER	2	UR LONG
40	95780-08300	NUT, FLANGE	2	
41	90465-11M10	CLAMP	3	
42	703-82119-00	COVER, LEAD WIRE	1	AP

C6

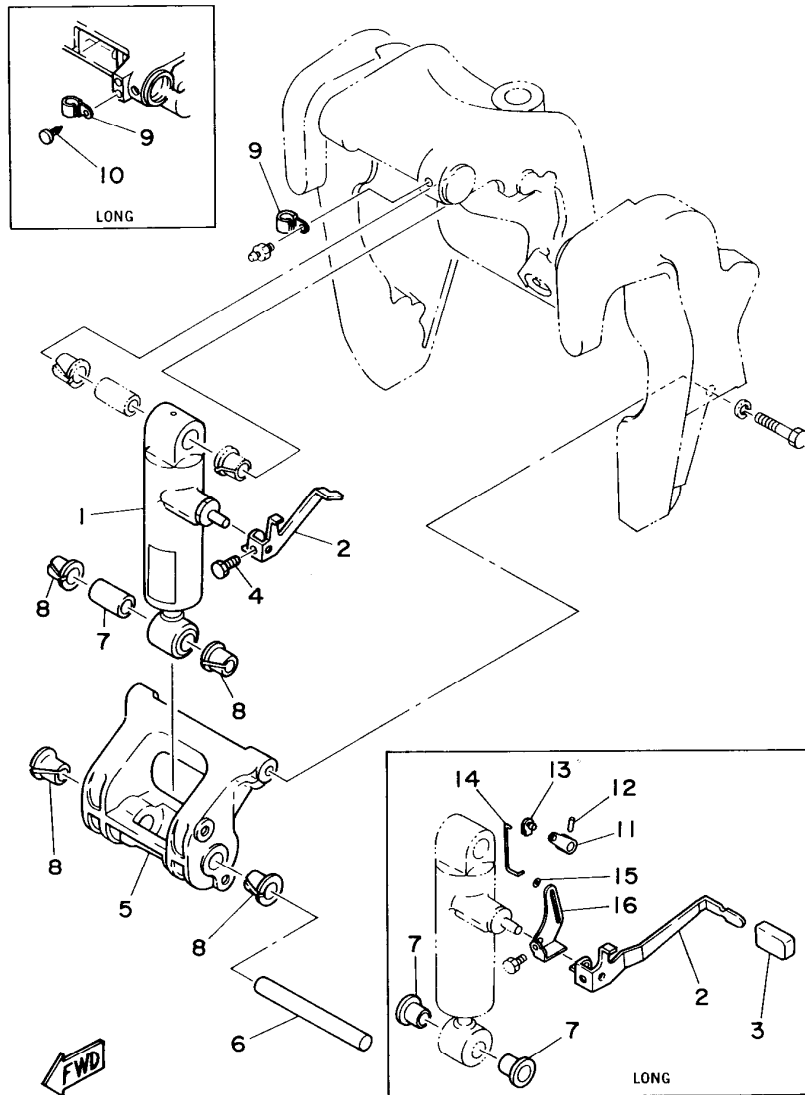


FIG. 11 MANUAL TILT

REF. NO.	PART NO.	DESCRIPTION	Q'TY	REMARKS
1	697-43170-03-4D	SHOCK ABSORBER ASSY	1	UR SHORT
	688-43170-04-4D	SHOCK ABSORBER ASSY	1	UR LONG
2	688-43631-00	LEVER, TILT	1	UR SHORT
	688-43631-10	LEVER, TILT	1	UR LONG
3	682-43318-01	COVER	1	
4	97095-06010	BOLT	1	
5	697-43128-01-4D	SPACER, CLAMP BRACKET	1	UR SHORT
	688-43128-01-4D	SPACER, CLAMP BRACKET	1	UR LONG
6	688-43124-02	PIN, LOWER SHOCK MOUNT	1	
7	90386-18M21	BUSH	1	UR SHORT
	90386-18M63	BUSH	2	UR LONG
8	90386-18M35	BUSH	4	
9	90465-08028	CLAMP	1	UR SHORT
	90464-11M18	CLAMP	1	UR LONG
10	90338-05M03	PLUG	1	LONG
11	688-43186-00	LEVER	1	LONG
12	91690-30020	PIN, SPRING	1	LONG
13	6J8-41262-00	JOINT, CHOKE LEVER	1	LONG
14	688-43616-00	ROD, TILT LOCK	1	LONG
15	90202-03M51	WASHER, PLATE	1	LONG
16	688-43651-00	LEVER, REVERSE LOCK 1	1	LONG

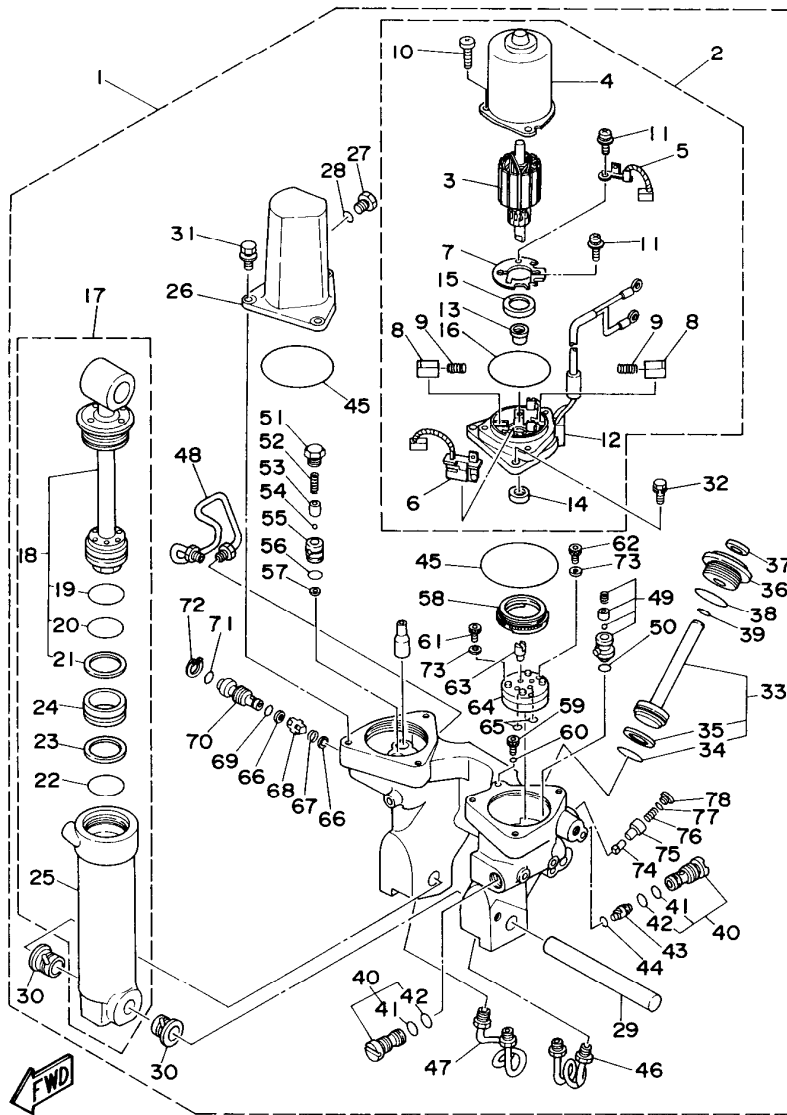


FIG. 12 POWER TRIM & TILT ASSY 1 (SHORT)

REF. NO.	PART NO.	DESCRIPTION	Q'TY	REMARKS
1	6H3-43800-07-4D	POWER TRIM & TILT ASSY	1	
2	6H1-43880-02	..MOTOR ASSY	1	
3	6H1-43805-10	..ARMATURE ASSY	1	
4	6H1-43804-10	..STATOR ASSY	1	
5	6H1-43891-10	..BRUSH 1	1	
6	6H1-43892-10	..BRUSH 2	1	
7	6H1-4380F-10	..PLATE, BRUSH HOLDER	1	
8	6H1-4380J-10	..HOLDER, BRUSH	2	
9	6H1-4386K-10	..SPRING, BRUSH	2	
10	97885-05016	..SCREW, PAN HEAD	3	
11	97607-04310	..SCREW, PAN HEAD WITH WASHER	2	
12	6H1-43881-10	..FRAME, END	1	
13	6H1-4380H-10	..METAL	1	
14	93102-08M43	..OIL SEAL	1	
15	6H1-4380G-10	..PLATE	1	
16	6H1-43865-10	..O-RING	1	
17	697-4380E-01	..TILT CYLINDER ASSY	1	
18	697-43810-02	..PISTON SUB ASSY	1	
19	6E5-43861-00	...O-RING	1	
20	6E5-43862-00	...O-RING	1	
21	6E5-43872-00	...RING, BACK UP	1	
22	6E5-43862-00	..O-RING	1	
23	6E5-43872-00	..RING, BACK UP	1	
24	6E5-43814-01	..PISTON, FREE	1	
25	6E5-43813-02	..CYLINDER, TILT	1	
26	6E5-43828-00	..BODY, RESERVOIR	1	
27	6E5-43829-00	..PLUG, RESERVOIR	1	
28	6E5-43863-00	..O-RING	1	

D1

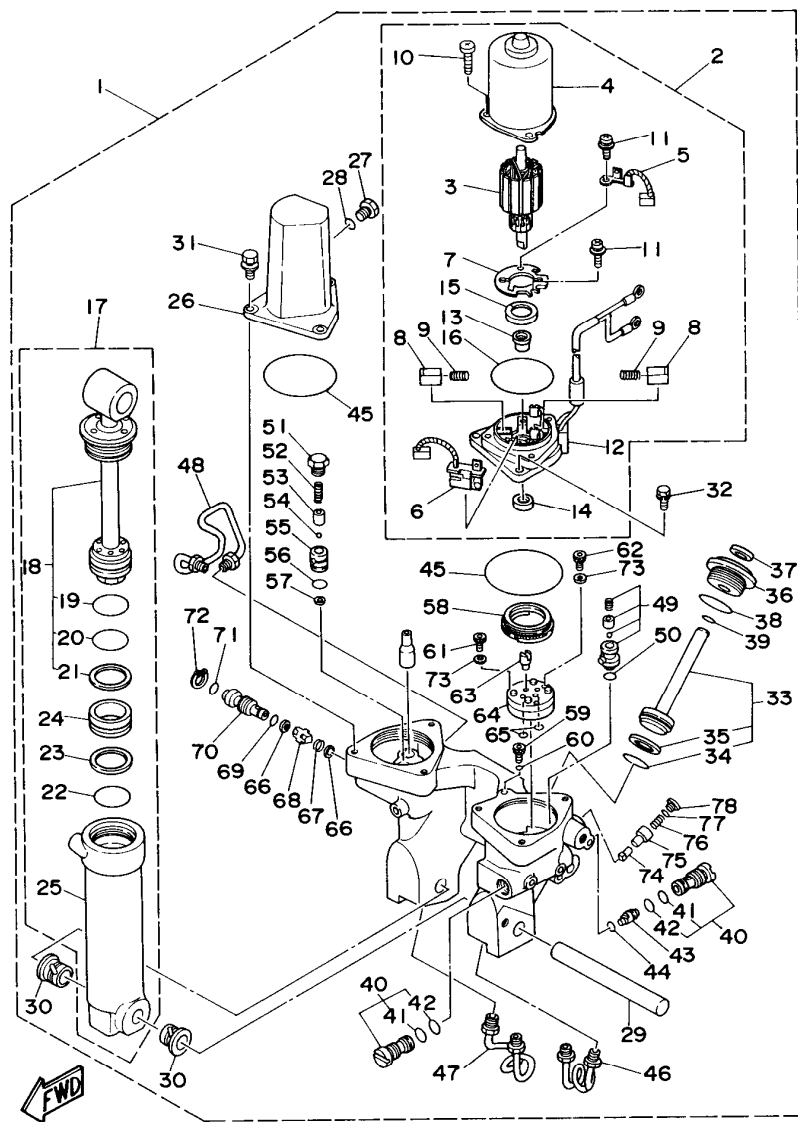


FIG. 12 POWER TRIM & TILT ASSY 1 (SHORT)

REF. NO.	PART NO.	DESCRIPTION	Q'TY	REMARKS
29	6E5-43818-00	.PIN, LOWER SHOCK MOUNT	1	
30	90386-18M14	.BUSH	2	
31	90119-06M42	.BOLT, WITH WASHER	3	
32	90119-06M71	.BOLT, WITH WASHER	3	
33	6E5-43820-03	.PISTON SUB ASSY	2	
34	6E5-43864-00	..O-RING	1	
35	6E5-43874-01	..RING, BACK UP	1	
36	6E5-43821-01	.SCREW, TRIM CYLINDER END	2	
37	6E5-43822-01	.SEAL, TRIM DUST	2	
38	6E5-43862-00	.O-RING	2	
39	6E5-43865-00	.O-RING	2	
40	6E5-43802-00	.VALVE SUB ASSY	2	
41	6E5-43866-00	..O-RING	1	
42	6E5-43867-00	..O-RING	1	
43	6E5-43841-01	.PISTON, SHUTTLE	1	
44	6E5-43868-00	.O-RING	1	
45	6E5-43869-00	.O-RING	2	
46	6E5-43833-01	.PIPE	1	
47	6E5-43834-01	.PIPE	1	
48	6E5-43835-01	.PIPE	1	
49	6E5-43808-02	.SEAT VALVE COMP. 1	1	
50	6E5-43883-00	.O-RING	1	
51	6E5-43843-00	.SCREW, VALVE LOCK	1	
52	6H3-43855-00	.SPRING, UP RELIEF	1	
53	6E5-43859-00	.PIN, VALVE SUPPORT	1	
54	6E5-43877-01	.BALL	1	
55	6E5-43895-00	.SEAT, RELIEF VALVE	1	
56	6E5-43896-00	.O-RING	1	

D2

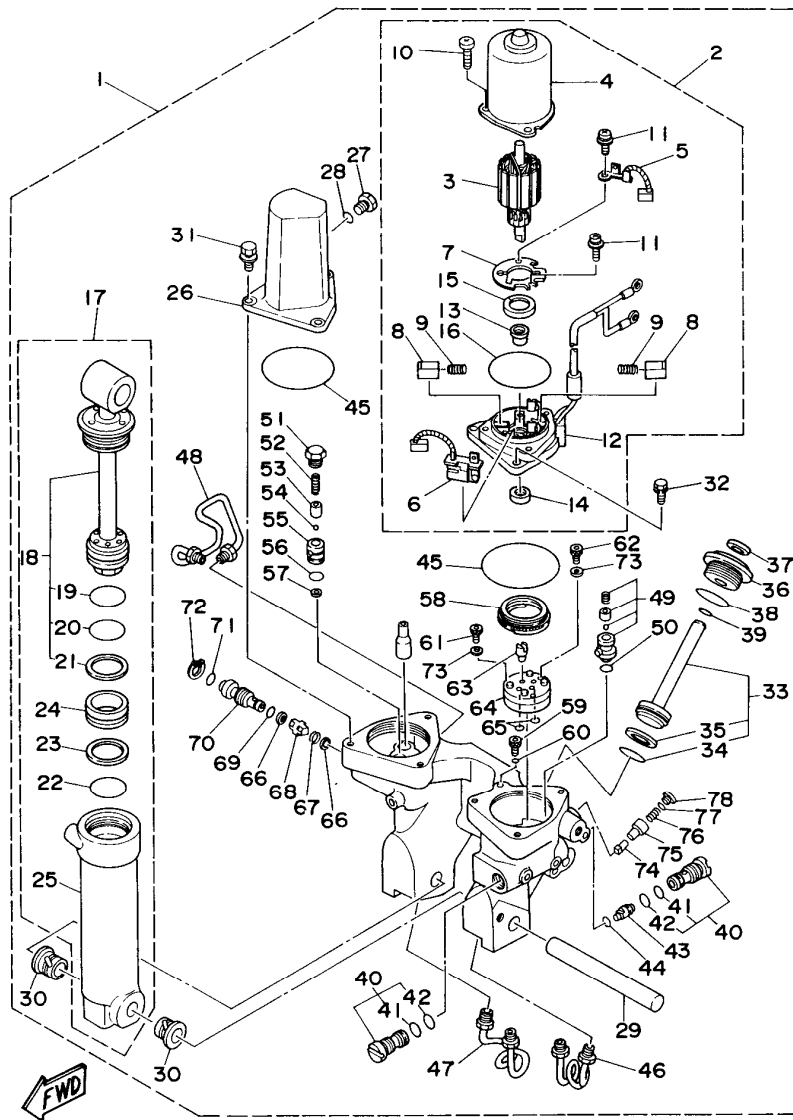
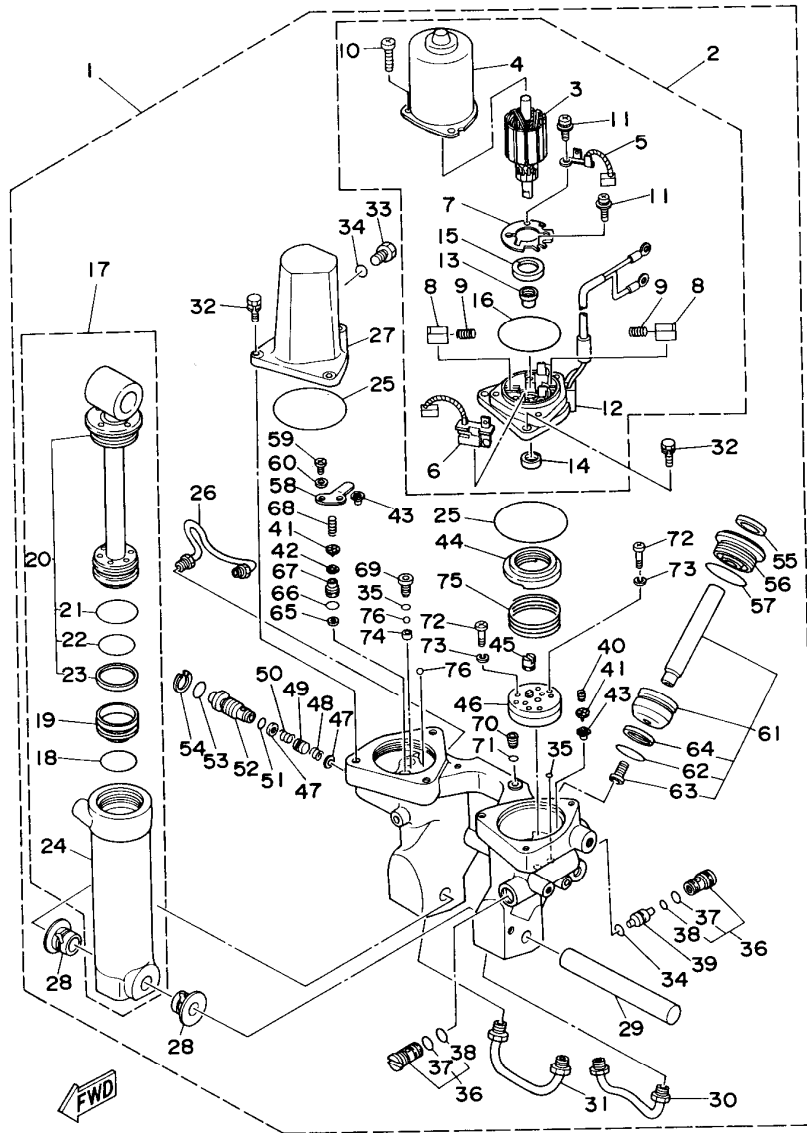


FIG. 12 POWER TRIM & TILT ASSY 1 (SHORT)

REF. NO.	PART NO.	DESCRIPTION	Q'TY	REMARKS
57	6E5-43816-10	.FILTER 1	1	
58	6E5-43817-10	.FILTER 2	1	
59	90109-06M21	.BOLT	1	
60	6E5-43897-00	.O-RING	1	
61	6E5-43878-01	.BOLT, SOCKET	2	
62	6E5-43888-01	.BOLT, SOCKET	1	
63	6E5-43831-00	.CONNECTOR, SHAFT	1	
64	6E5-43830-00	.GEAR PUMP ASSY	1	
65	93210-07M78	.O-RING	2	
66	6E5-43847-00	.SEAT, MANUAL VALVE	2	
67	6E5-43854-01	.SPRING, MANUAL RELEASE	1	
68	6E5-4382A-00	.ADAPTOR 1	1	
69	93210-10M74	.O-RING	1	
70	6E5-43845-01	.SCREW, MANUAL RELEASE	1	
71	93210-18M75	.O-RING	1	
72	6H1-43875-00	.RING, SNAP	1	
73	90201-05M00	.WASHER, PLATE	3	
74	6E5-4381A-00	.SHAFT	1	
75	6E5-43849-01	.PIN, VALVE SUPPORT	1	
76	6E5-43824-01	.SPRING, COMPRESSION	1	
77	93210-06M77	.O-RING	1	
78	6E5-43842-00	.SCREW, VALVE SEAT	1	

D3

FIG. 13 POWER TRIM & TILT ASSY 2 (LONG)



REF. NO.	PART NO.	DESCRIPTION	Q'TY	REMARKS
1	6H1-43800-13-4D	POWER TRIM & TILT ASSY	1	
2	6H1-43880-02	..MOTOR ASSY	1	
3	6H1-43805-10	..ARMATURE ASSY	1	
4	6H1-43804-10	..STATOR ASSY	1	
5	6H1-43891-10	..BRUSH 1	1	
6	6H1-43892-10	..BRUSH 2	1	
7	6H1-4380F-10	..PLATE, BRUSH HOLDER	1	
8	6H1-4380J-10	..HOLDER, BRUSH	2	
9	6H1-4386K-10	..SPRING, BRUSH	2	
10	97885-05016	..SCREW, PAN HEAD	3	
11	97607-04310	..SCREW, PAN HEAD WITH WASHER	2	
12	6H1-43881-10	..FRAME, END	1	
13	6H1-4380H-10	..METAL	1	
14	93102-08M43	..OIL SEAL	1	
15	6H1-4380G-10	..PLATE	1	
16	6H1-43865-10	..O-RING	1	
17	6H1-43840-11	..POWER TILT ASSY	1	
18	6H1-43861-10	..O-RING	1	
19	6H1-43814-11	..PISTON, FREE	1	
20	6H1-43810-11	..PISTON SUB ASSY	1	
21	6H1-43861-00	...O-RING	1	
22	6H1-43861-10	...O-RING	1	
23	6H1-43871-10	...RING, BACK UP	1	
24	6H1-43813-10	..CYLINDER, TILT	1	
25	93210-65752	..O-RING	2	
26	6H1-43835-10	..PIPE	1	
27	6H1-43828-10	..BODY, RESERVOIR	1	
28	90386-18M14	..BUSH	2	

D4

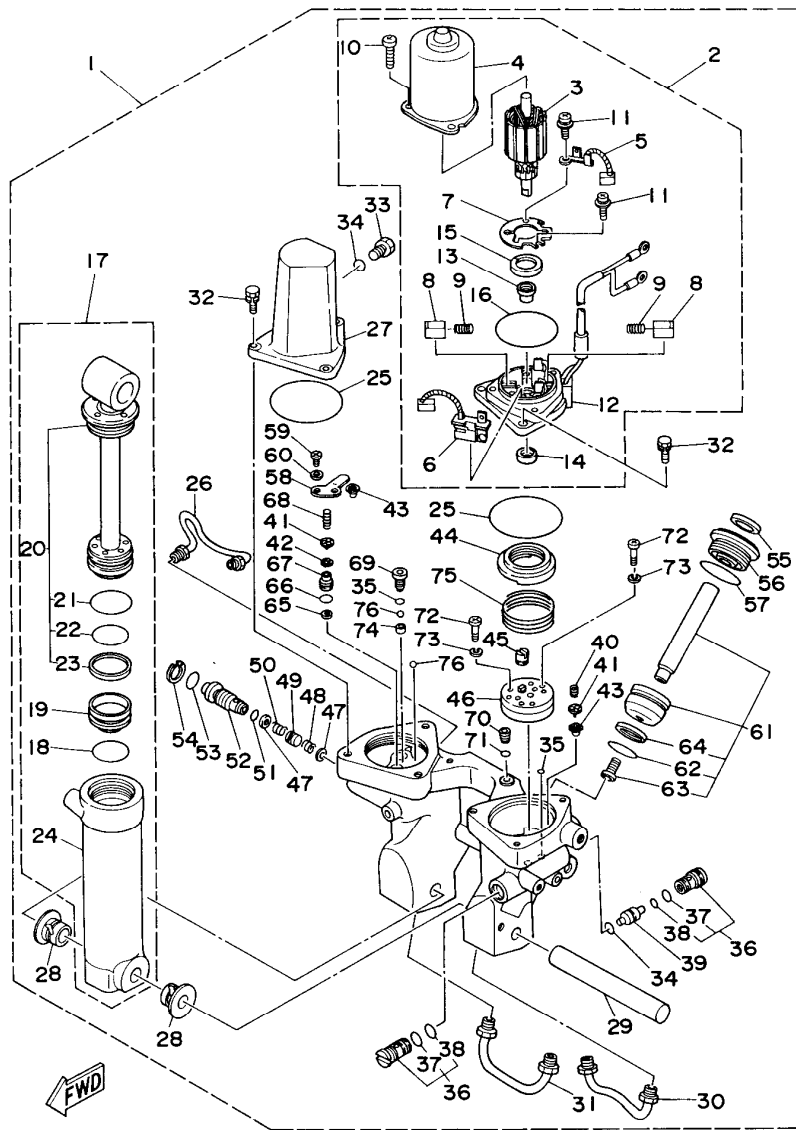


FIG. 13 POWER TRIM & TILT ASSY 2 (LONG)

REF. NO.	PART NO.	DESCRIPTION	Q'TY	REMARKS
29	6E5-43818-00	.PIN, LOWER SHOCK MOUNT	1	
30	6H1-43833-10	.PIPE	1	
31	6H1-43834-00	.PIPE	1	
32	97595-06420	.BOLT, WITH WASHER	6	
33	6H1-43829-00	.PLUG, RESERVOIR	1	
34	93210-09350	.O-RING	2	
35	93210-06519	.O-RING	3	
36	6T4-43802-01	.VALVE SUB ASSY	2	
37	6H1-43866-00	.O-RING	1	
38	6H1-43867-00	.O-RING	1	
39	6H1-43841-10	.PISTON, SHUTTLE	1	
40	6H1-43856-10	.SPRING, DOWN RELIEF	1	
41	6H1-43844-10	.PIN, VALVE SUPPORT	2	
42	6H1-43846-11	.SEAL, RELIEF VALVE	1	
43	61A-4384F-00	.SEAL, MAIN VALVE	2	
44	6H1-43817-01	.FILTER 2	1	
45	6H1-43831-10	.CONNECTOR, SHAFT	1	
46	6H1-43830-11	.GEAR PUMP ASSY	1	
47	6H1-43847-00	.SEAT, MANUAL VALVE	2	
48	6H1-43899-00	.SPRING, MANUAL RELEASE	1	
49	6H1-4382A-10	.ADAPTOR 1	1	
50	6H1-43854-00	.SPRING, MANUAL RELEASE	1	
51	93210-10M74	.O-RING	1	
52	6H1-43845-01	.SCREW, MANUAL RELEASE	1	
53	93210-18M75	.O-RING	1	
54	6H1-43875-00	.RING, SNAP	1	
55	6H1-43822-10	.SEAL, TRIM DUST	2	
56	6H1-43821-11	.SCREW, TRIM CYLINDER END	2	

D5

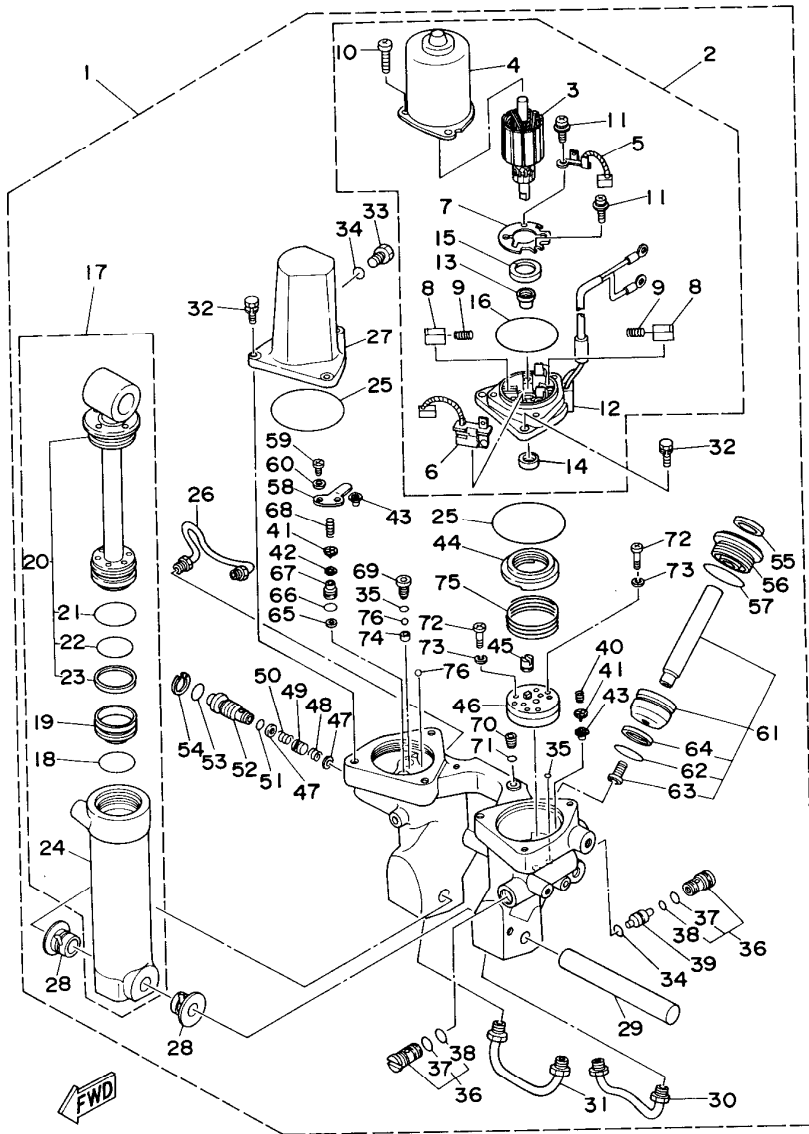


FIG. 13 POWER TRIM & TILT ASSY 2 (LONG)

REF. NO.	PART NO.	DESCRIPTION	Q'TY	REMARKS
57	6H1-43861-10	.O-RING	2	
58	6H1-4384E-20	.SPRING, TRIM	1	
59	98507-05010	.SCREW, PAN HEAD	2	
60	92990-05200	.WASHER, PLAIN	2	
61	6H1-43820-11	.PISTON SUB ASSY	2	
62	6H1-43864-00	.O-RING	1	
63	91316-08016	.BOLT	1	
64	6H1-43874-00	.RING, BACK UP	1	
65	6H1-43816-00	.FILTER 1	1	
66	6H1-43896-00	.O-RING	1	
67	6H1-43895-11	.SEAT, RELIEF VALVE	1	
68	6H1-43855-11	.SPRING, UP RELIEF	1	
69	6H1-43843-11	.SCREW, VALVE LOCK	1	
70	6H1-4388E-11	.PLUG, TAPER SCREW	1	
71	6H1-43868-00	.O-RING	1	
72	98511-04025	.SCREW, PAN HEAD	4	
73	92901-04100	.WASHER, SPRING	4	
74	6H1-4387J-00	.WASHER, SPECIAL 2	1	
75	6H1-4385H-00	.SPRING, SEAL	1	
76	93505-32038	.BALL	2	

D6

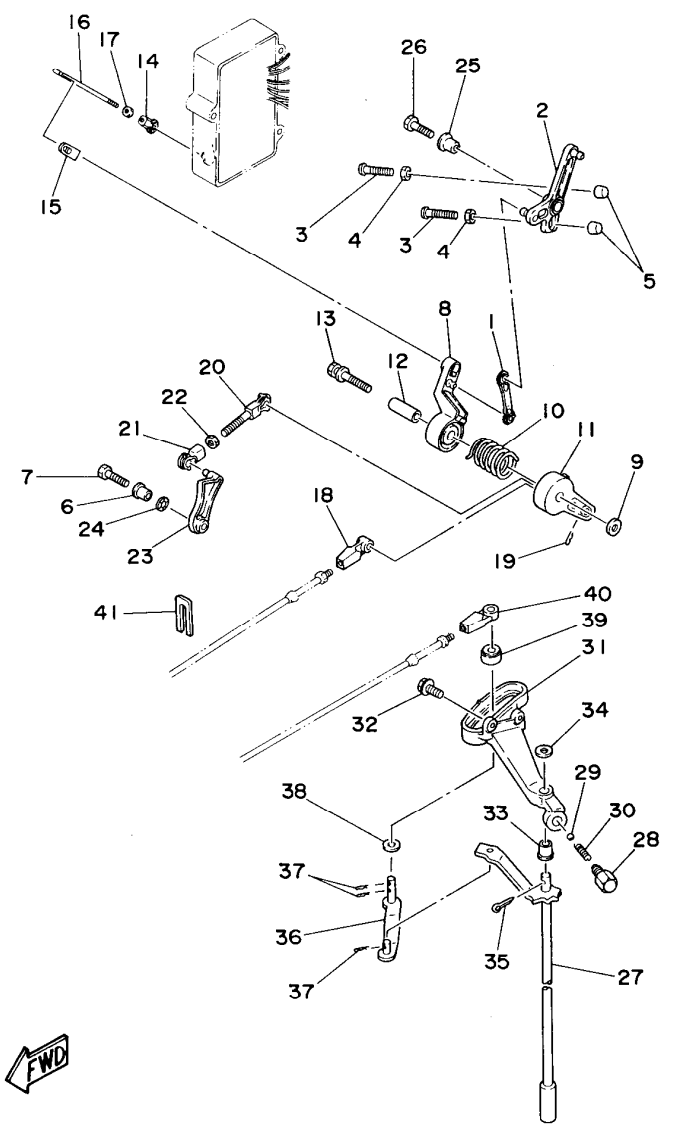


FIG. 14 CONTROL

REF. NO.	PART NO.	DESCRIPTION	Q'TY	REMARKS
1	682-41238-51	JOINT, LINK	1	
2	6H3-41631-00	LEVER, MAGNETO CONTROL	1	
3	90157-06M13	SCREW, PAN HEAD	2	
4	95380-06600	NUT	2	
5	688-44194-00	CAP	2	
6	90387-06M60	COLLAR	1	
7	97095-06025	BOLT	1	
8	6H3-41632-10	LEVER, MAGNETO CONTROL	1	
9	90201-06M31	WASHER, PLATE	1	
10	90508-29M19	SPRING, TORSION	1	
11	6H3-41633-00	LEVER, MAGNETO CONTROL	1	
12	90387-06M59	COLLAR	1	
13	90119-06M91	BOLT, WITH WASHER	1	
14	6H1-41237-00	JOINT, LINK	1	
15	6F5-41237-00	JOINT, LINK	1	
16	6H3-41636-00-94	ROD, MAGNETO CONTROL	1	
17	95380-05600	NUT	1	
18	663-48344-00	CABLE END, REMOTE CONTROL	1	
19	90468-18008	CLIP	1	
20	682-41237-50	JOINT, LINK	1	
21	6H1-41237-00	JOINT, LINK	1	
22	95380-05600	NUT	1	
23	6H3-41213-01	CAM, ACCEL.	1	
24	90206-10M04	WASHER, WAVE	1	
25	90387-06M60	COLLAR	1	
26	97095-06025	BOLT	1	
27	6H3-44120-01	HANDLE GEAR SHIFT ASSY	1	UR SHORT
	6H3-44120-11	HANDLE GEAR SHIFT ASSY	1	UR LONG

D7

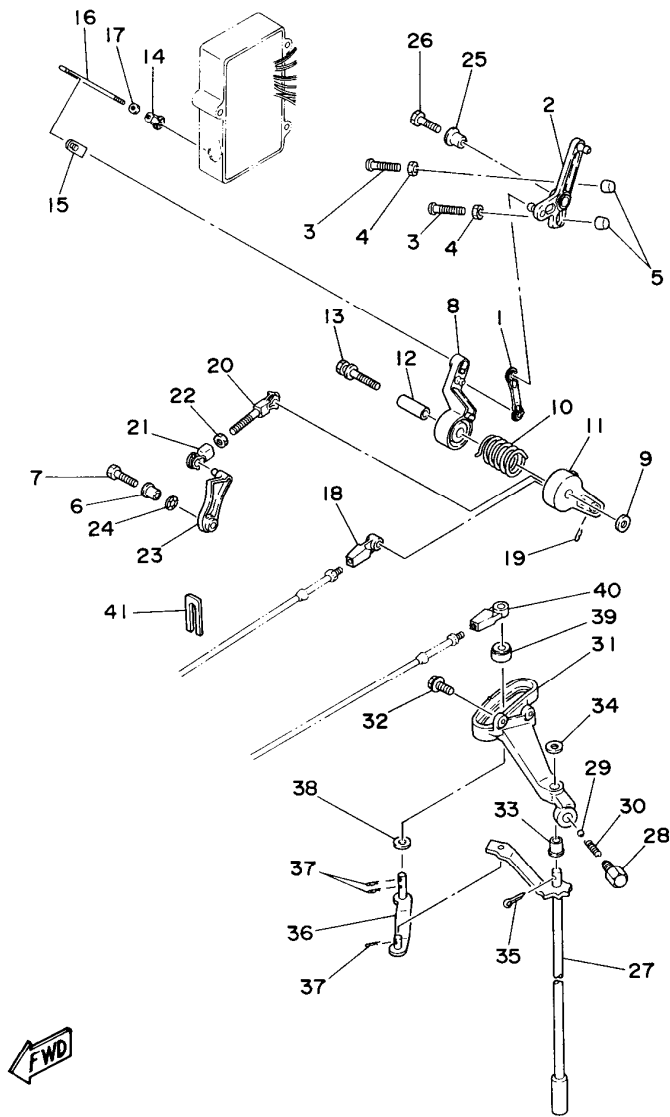


FIG. 14 CONTROL

REF. NO.	PART NO.	DESCRIPTION	Q'TY	REMARKS
28	648-42715-00	BUSHING	1	
29	93501-04M02	BALL	1	
30	90501-12082	SPRING, COMPRESSION	1	
31	6H3-44117-00-94	BRACKET	1	
32	97595-06520	BOLT, WITH WASHER	2	
33	90386-07M58	BUSH	1	
34	92990-08200	WASHER, PLAIN	1	
35	91490-20015	PIN, COTTER	1	
36	6H3-44121-01	LEVER, SHIFT ROD	1	
37	90468-18008	CLIP	3	
38	90202-07M07	WASHER, PLATE	1	
39	688-44122-00	BUSHING, SHIFT ROD LEVER	1	
40	663-48344-00	CABLE END, REMOTE CONTROL	1	
41	6H3-48538-00	CLAMP, CABLE 1	1	

E1

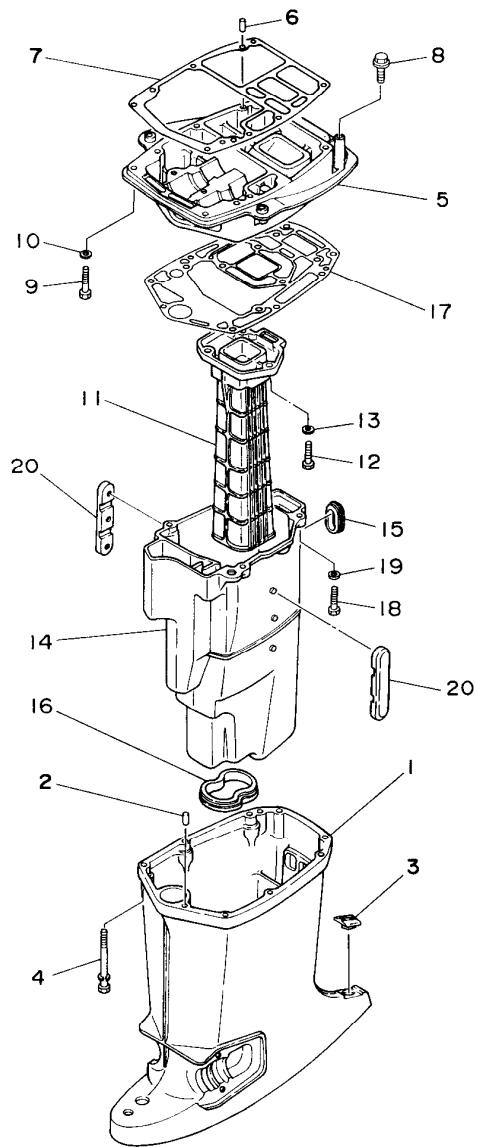


FIG. 15 UPPER CASING

REF. NO.	PART NO.	DESCRIPTION	Q'TY	REMARKS
1	6H3-45111-00-4D	CASING, UPPER	1	UR SHORT
	6H3-45111-10-4D	CASING, UPPER	1	UR LONG
2	93606-12019	PIN, DOWEL	2	
3	6H3-45155-00	CAP	1	
4	90119-08M81	BOLT, WITH WASHER	6	
5	6H3-41137-00-94	GUIDE, EXHAUST	1	
6	93606-12019	PIN, DOWEL	2	
7	6H3-45113-A0	GASKET, UPPER CASING	1	
8	90119-08M79	BOLT, WITH WASHER	2	
9	97090-08035	BOLT	2	
10	92990-08100	WASHER, SPRING	2	
11	6H2-41131-00-5B	MANIFOLD, EXT. 1	1	
12	97395-08030	BOLT	3	
	92990-08100	WASHER, SPRING	3	
14	6H3-14711-00-5B	MUFFLER 1	1	UR SHORT
	6H3-14711-10-5B	MUFFLER 1	1	UR LONG
15	6H3-45127-00	SEAL	1	
16	6H3-45123-00	GASKET, MUFFLER	1	
17	6H3-45114-A1	GASKET, UPPER CASING	1	
18	97395-08030	BOLT	4	
19	92990-08100	WASHER, SPRING	4	
20	6H3-14737-00	DAMPER, MUFFLER	2	UR SHORT
	6H3-14737-10	DAMPER, MUFFLER	2	UR LONG

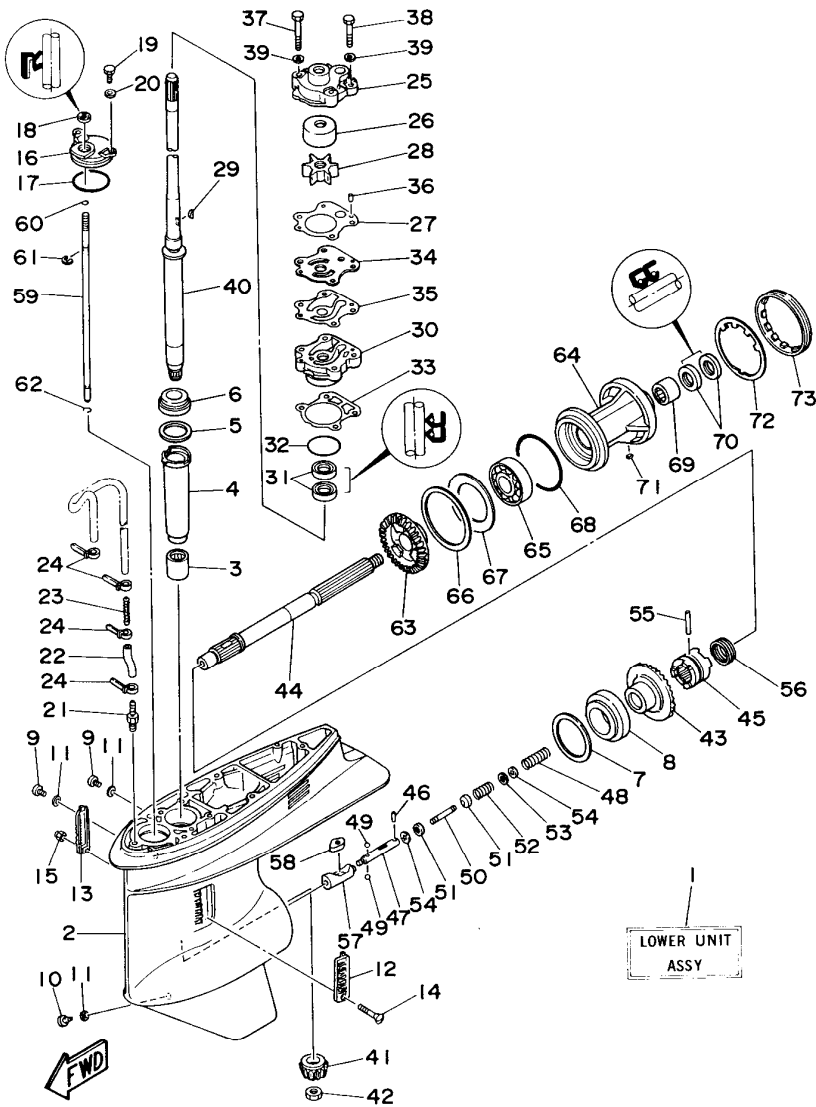


FIG. 16 LOWER CASING. DRIVE 1

REF. NO.	PART NO.	DESCRIPTION	Q'TY	REMARKS
1	6H3-45300-04-4D	LOWER UNIT ASSY		
		(REF.NO. 2 TO 73)	1	UR SHORT
	6H3-45300-14-4D	LOWER UNIT ASSY		
		(REF.NO. 2 TO 73)	1	UR LONG
2	6H1-45301-02-4D	CASING, LOWER	1	
3	93315-325V1	BEARING, CYLINDRICAL	1	
4	688-45536-01	SLEEVE, DRIVE SHAFT	1	
5	688-45587-01-10	SHIM (T:0.10MM)	1	UR
	688-45587-01-12	SHIM (T:0.12MM)	1	UR
	688-45587-01-15	SHIM (T:0.15MM)	1	UR
	688-45587-01-18	SHIM (T:0.18MM)	1	UR
	688-45587-01-30	SHIM (T:0.30MM)	1	UR
	688-45587-01-40	SHIM (T:0.40MM)	1	UR
	688-45587-01-50	SHIM (T:0.50MM)	1	UR
6	93332-000U3	BEARING	1	
7	688-45567-01-10	SHIM (T:0.10MM)	1	UR
	688-45567-01-12	SHIM (T:0.12MM)	1	UR
	688-45567-01-15	SHIM (T:0.15MM)	1	UR
	688-45567-01-18	SHIM (T:0.18MM)	1	UR
	688-45567-01-30	SHIM (T:0.30MM)	1	UR
	688-45567-01-40	SHIM (T:0.40MM)	1	UR
	688-45567-01-50	SHIM (T:0.50MM)	1	UR
8	93332-000W7	BEARING	1	
9	90340-08M04	PLUG, STRAIGHT SCREW	2	
10	688-45341-00	PLUG, DRAIN	1	
11	90430-08020	GASKET	3	
12	688-45214-02	COVER, WATER INLET	1	
13	688-45215-02	COVER, WATER INLET	1	

E3

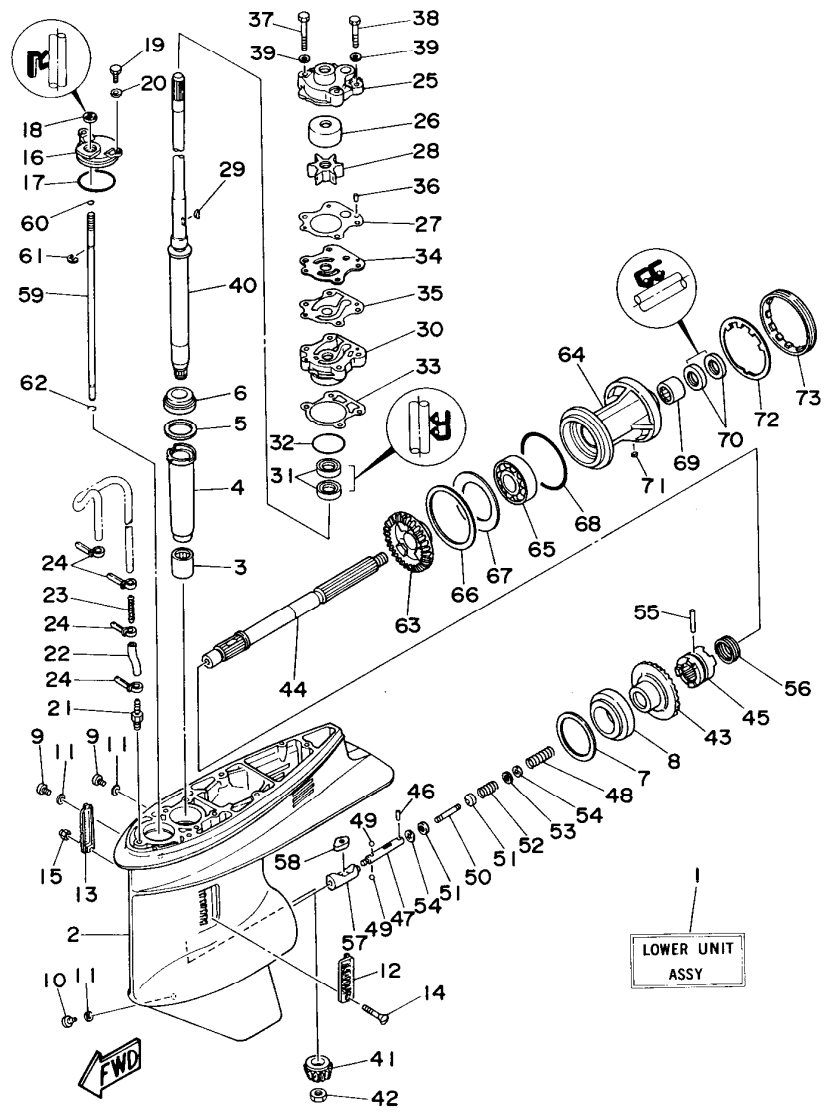


FIG. 16 LOWER CASING. DRIVE 1

REF. NO.	PART NO.	DESCRIPTION	Q'TY	REMARKS
14	98680-05545	SCREW, OVAL HEAD	1	
15	90185-05002	NUT, SELF-LOCKING	1	
16	688-45321-00	PLATE	1	
17	93210-49046	O-RING	1	
18	93106-09014	OIL SEAL	1	
19	97095-06016	BOLT	2	
20	92990-06600	WASHER, PLATE	2	
21	6E5-45378-00	NIPPLE, HOSE	1	
22	90445-07ME8	HOSE	1	UR SHORT
	90445-07ME9	HOSE	1	UR LONG
23	6E5-83558-10	END, NIPPLE	1	
24	90465-11M10	CLAMP	4	
25	6H3-44311-00	HOUSING, WATER PUMP	1	
26	663-44322-00	INSERT, CARTRIDGE	1	
27	6H3-44315-A0	GASKET, WATER PUMP	1	
28	6H3-44352-00	IMPELLER	1	
29	90280-03M03	KEY, WOODRUFF	1	
30	6H3-44341-00-94	HOUSING, WATER PUMP	1	
31	93101-23070	OIL SEAL	2	
32	93210-46044	O-RING	1	
33	688-44316-A0	GASKET, WATER PUMP	1	
34	6H3-44323-00	OUTER PLATE, CARTRIDGE	1	
35	6H3-44324-A0	GASKET, CARTRIDGE	1	
36	93604-10M03	PIN, DOWEL	2	
37	97395-08055	BOLT	2	
38	97395-08045	BOLT	2	
39	90209-08M02	WASHER	4	
40	6H3-45501-00	DRIVE SHAFT COMP.	1	UR SHORT

E4

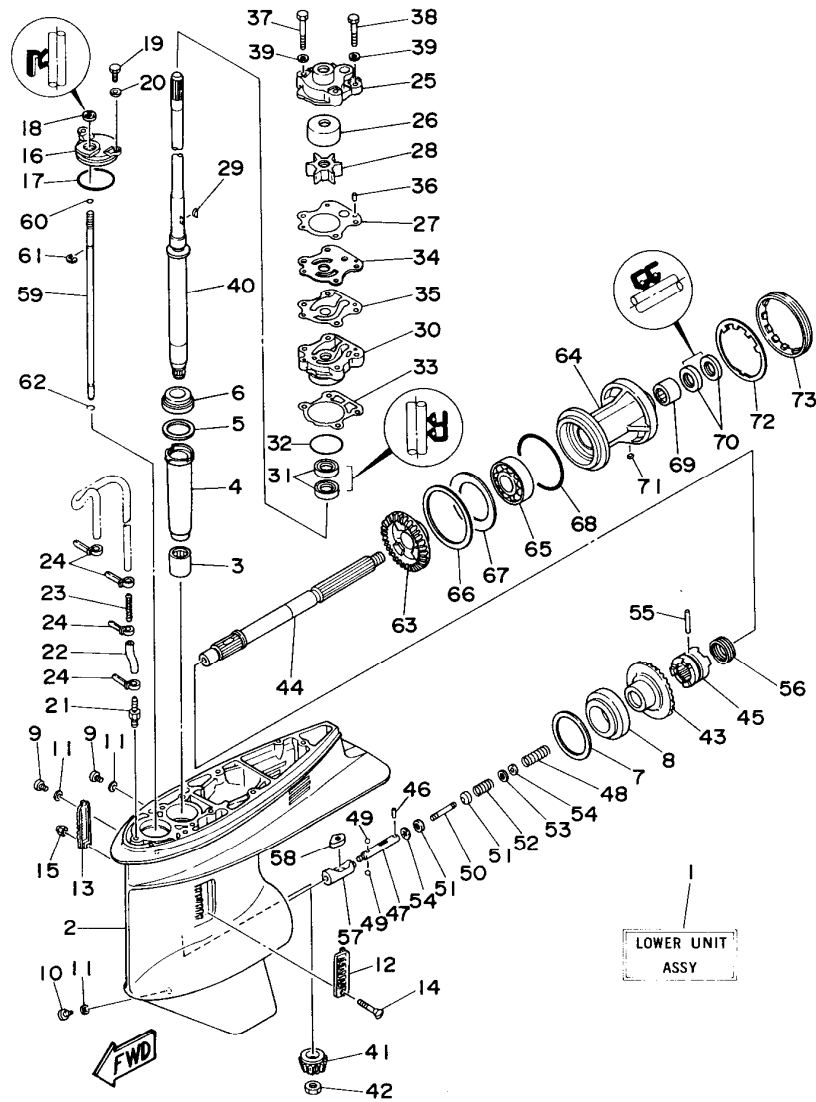


FIG. 16 LOWER CASING. DRIVE I

REF. NO.	PART NO.	DESCRIPTION	Q'TY	REMARKS
40	6H3-45501-10	DRIVE SHAFT COMP.	1	UR LONG
41	6K5-45551-00	PINION (12T)	1	
42	90170-16M01	NUT	1	
43	6K5-45560-00	GEAR (28T)	1	
44	6H1-45611-02	SHAFT, PROPELLER	1	
45	6H1-45631-01	CLUTCH, DOG	1	
46	93603-12M11	PIN, DOWEL	1	
47	6H1-45634-02	SLIDE, SHIFT	1	
48	90501-16M65	SPRING, COMPRESSION	1	
49	93503-16010	BALL	2	
50	6H1-45668-00	SHAFT, FREE	1	
51	6H1-45635-00	PLUNGER, SHIFT	2	
52	90501-12M48	SPRING, COMPRESSION	1	
53	90201-03313	WASHER, PLATE	1	
54	90183-02M03	NUT, SPRING	2	
55	90250-07M02	PIN, STRAIGHT	1	
56	688-45633-00	RING, CROSS PIN	1	
57	6H1-45641-01	SHIFTER	1	
58	6H1-44151-00	CAM, SHIFT	1	
59	6H1-44144-00	ROD, SHIFT	1	
60	93210-07540	O-RING	1	
61	99001-08600	CIRCLIP	1	
62	93450-07M00	CIRCLIP	1	
63	6H3-45571-00	GEAR	1	
64	688-45331-00-94	HOUSING, BEARING	1	
65	93306-207U0	BEARING	1	
66	688-45577-01-10	SHIM (T:0.10MM)	1	UR
	688-45577-01-12	SHIM (T:0.12MM)	1	UR

E5

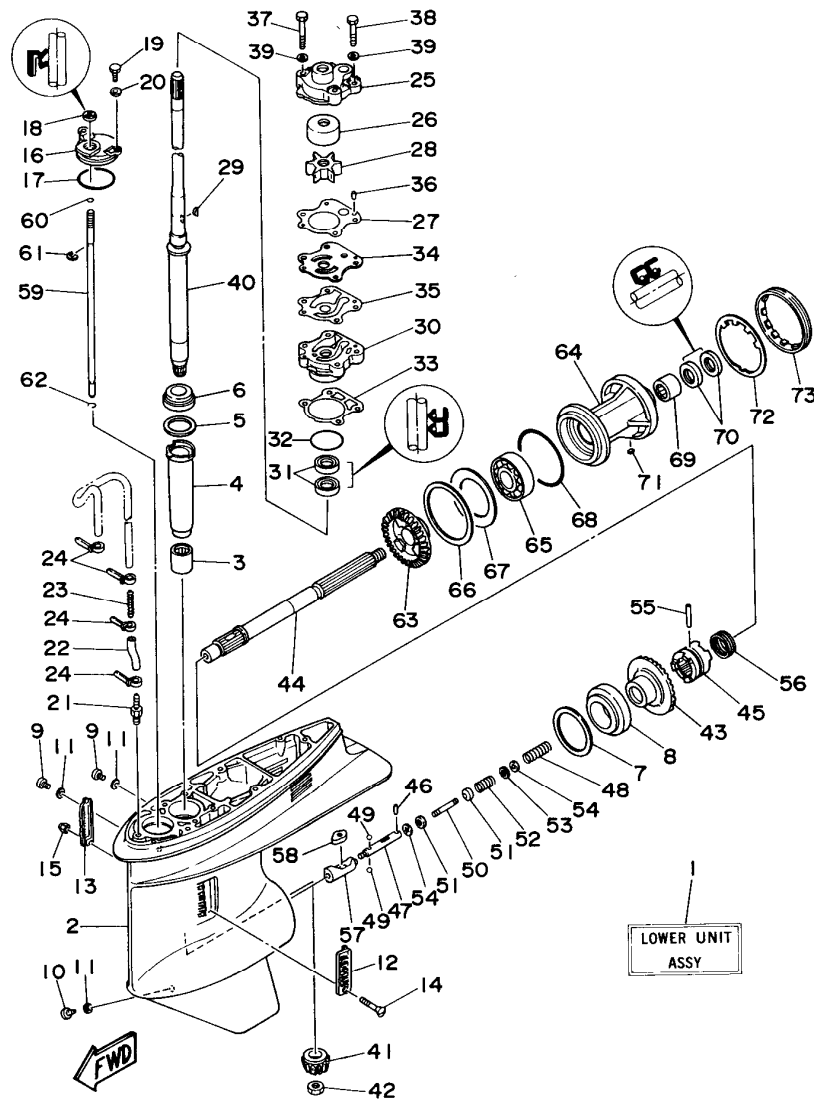


FIG. 16 LOWER CASING. DRIVE 1

REF. NO.	PART NO.	DESCRIPTION	Q'TY	REMARKS
66	688-45577-01-15	SHIM (T:0.15MM)	1	UR
	688-45577-01-18	SHIM (T:0.18MM)	1	UR
	688-45577-01-30	SHIM (T:0.30MM)	1	UR
	688-45577-01-40	SHIM (T:0.40MM)	1	UR
	688-45577-01-50	SHIM (T:0.50MM)	1	UR
67	688-45576-00	WASHER, THRUST	1	
68	93210-85M97	O-RING	1	
69	93317-325U0	BEARING, CYLINDRICAL	1	
70	93101-25M03	OIL SEAL	2	
71	90282-04010	KEY, STRAIGHT	1	
72	688-45383-02	WASHER, CLAW	1	
73	688-45384-00	NUT	1	

E6

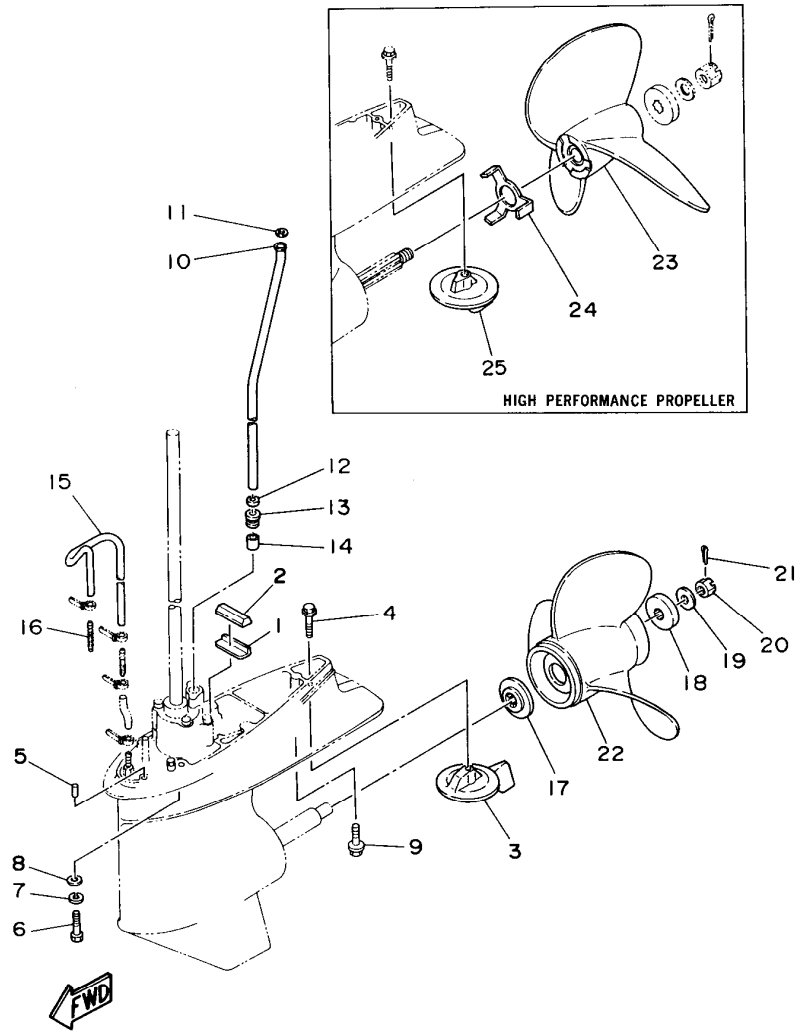


FIG. 17 LOWER CASING. DRIVE 2

REF. NO.	PART NO.	DESCRIPTION	Q'TY	REMARKS
1	663-45376-00-94	GUIDE, SEAL DAMPER	1	
2	688-45375-00	DAMPER, SEAL	1	
3	688-45371-02	TAB-TRIM	1	
4	90105-10M67	BOLT, WASHER BASED	1	
5	93606-12019	PIN, DOWEL	2	
6	97395-10040	BOLT	4	
7	92990-10100	WASHER, SPRING	4	
8	92990-10600	WASHER, PLATE	4	
9	90119-08M84	BOLT, WITH WASHER	1	
10	6H3-44361-00	TUBE, WATER	1	UR SHORT
	6H3-44361-10	TUBE, WATER	1	UR LONG
11	90202-12060	WASHER, PLATE	1	
12	90430-12072	GASKET	1	
13	663-44367-00	DAMPER, WATER SEAL	1	
14	663-44366-00	DAMPER, WATER SEAL	1	
15	90445-07MF1	HOSE	1	
16	6E5-83558-00	END, NIPPLE	1	
17	688-45987-02	SPACER	1	
18	688-45997-01	SPACER	1	
19	90201-17M00	WASHER, PLATE	1	
20	90171-16011	NUT, CASTLE	1	
21	91490-40030	PIN, COTTER	1	
22	6E5-45945-01-EL	PROPELLER (3X13-1/4"X17"-K)	1	UR
	6E5-45941-00-EL	PROPELLER (3X13"X19"-K)	1	UR
	6E5-45943-00-EL	PROPELLER (3X12-5/8"X21"-K)	1	UR
	6E5-45947-00-EL	PROPELLER (3X13-1/2"X15"-K)	1	UR
	6E5-45949-00-EL	PROPELLER (3X13-5/8"X13"-K)	1	UR
	6E5-45952-00-EL	PROPELLER (3X13"X23"-K)	1	UR

E7

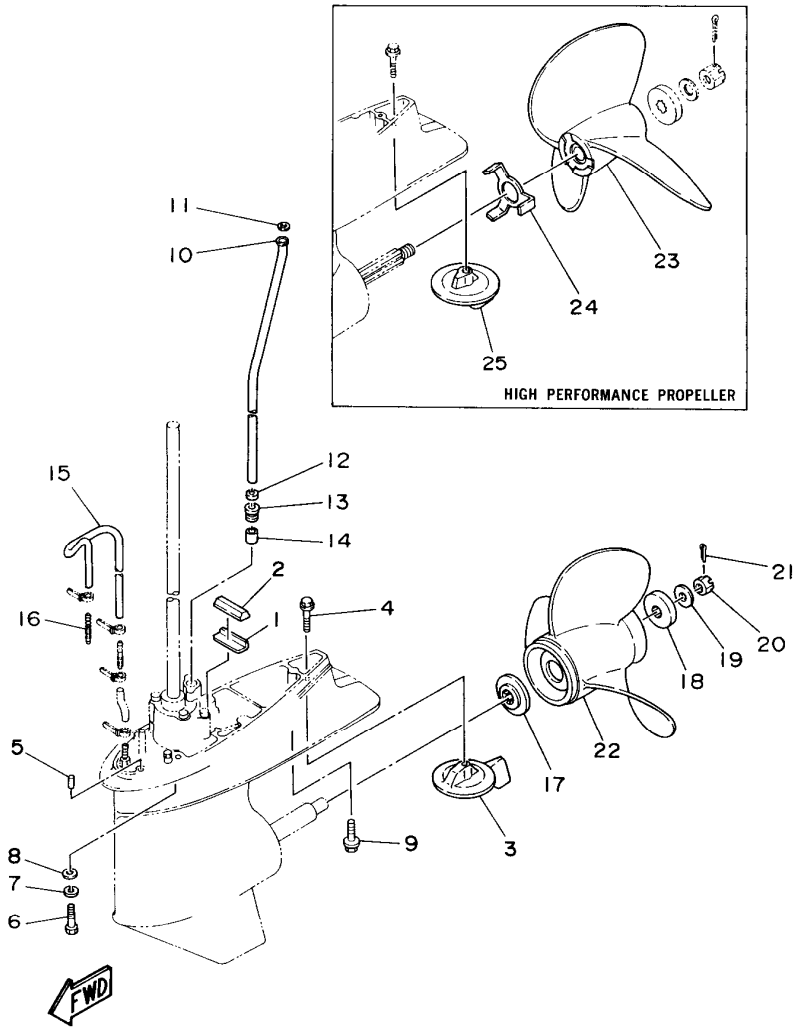


FIG. 17 LOWER CASING. DRIVE 2

REF. NO.	PART NO.	DESCRIPTION	Q'TY	REMARKS
22	6E5-45954-00-EL	PROPELLER (3X14"X11"-K)	1	UR
	6E5-45956-00-EL	PROPELLER (3X13"X25"-K)	1	UR
STAINLESS STEEL PROPELLER				
	688-45970-03-98	PROPELLER (3X13"X19"-K)	1	UR
	688-45972-02-98	PROPELLER (3X13"X21"-K)	1	UR
	688-45974-02-98	PROPELLER (3X13"X23"-K)	1	UR
	688-45976-01-98	PROPELLER (3X13"X25"-K)	1	UR
	688-45978-60-98	PROPELLER (3X13-1/2"X16"-K)	1	UR
	688-45930-01-98	PROPELLER (3X13"X17"-K)	1	UR
	688-45932-60-98	PROPELLER (3X13-1/2"X14"-K)	1	UR
HIGH PERFORMANCE PROPELLER				
23	6E5-45970-10	PROPELLER (3X14"X20"-P)	1	UR
	6E5-45972-10	PROPELLER (3X14"X24"-P)	1	UR
	6E5-45974-10	PROPELLER (3X14"X28"-P)	1	UR
	6E5-45976-10	PROPELLER (3X14"X22"-P)	1	UR
	6E5-45978-10	PROPELLER (3X14"X26"-P)	1	UR
24	6E5-45994-10	PLATE, TOOTH	1	
25	6E5-45371-10	TAB-TRIM	1	

F1

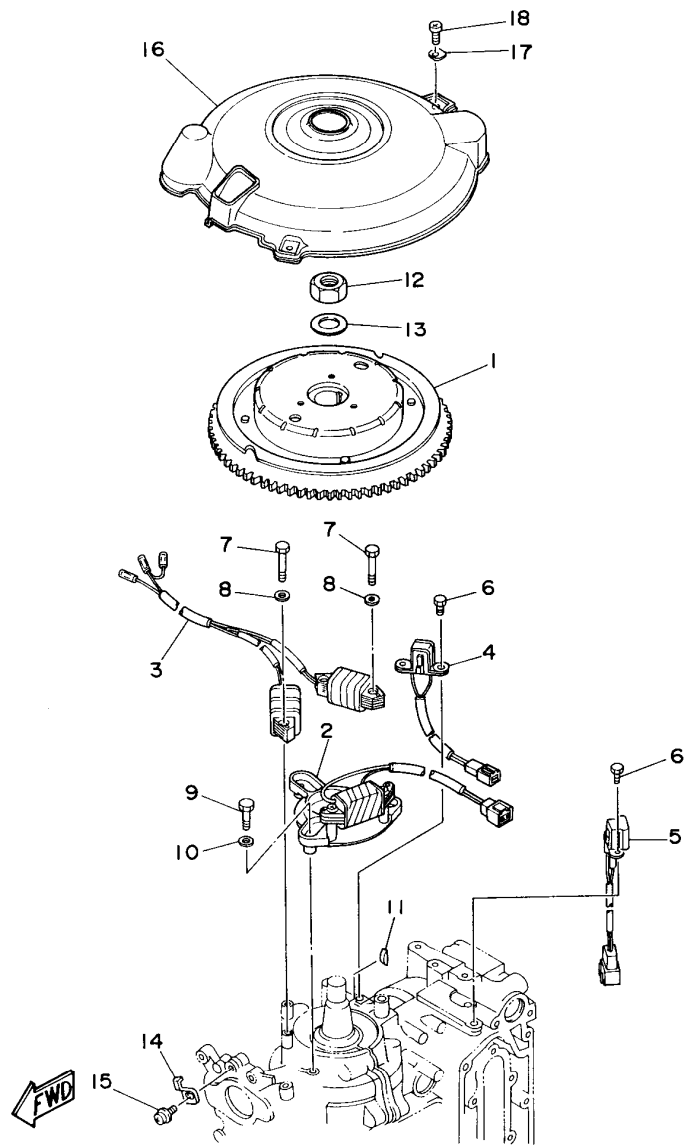
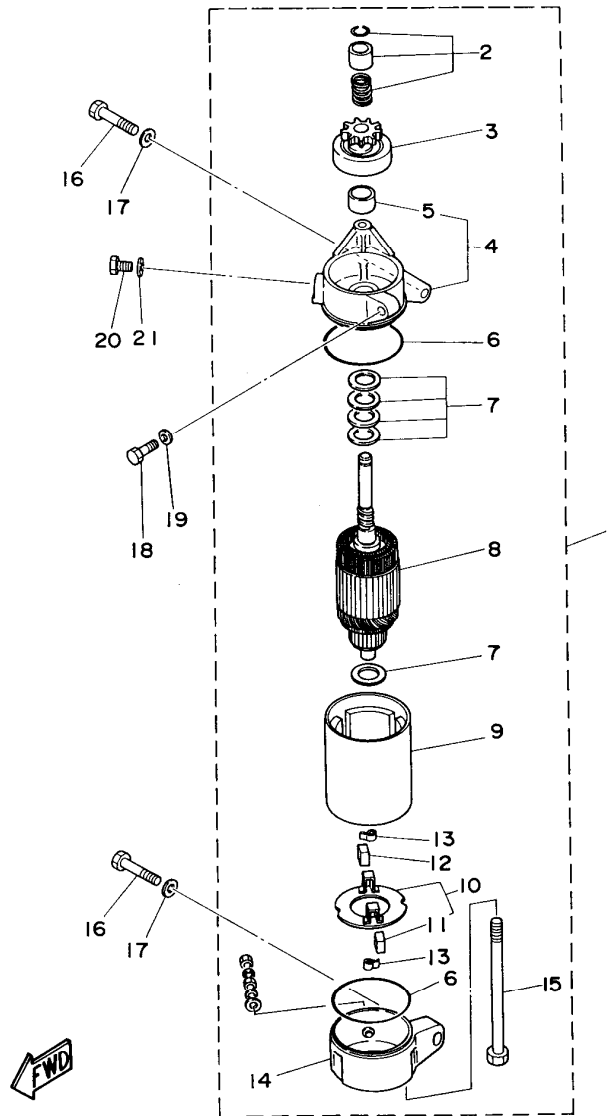


FIG. 18 GENERATOR

REF. NO.	PART NO.	DESCRIPTION	Q'TY	REMARKS
1	6H2-85550-00	ROTOR ASSY	1	
2	6H2-85520-01	COIL, CHARGE	1	
3	6H2-85533-00	COIL, LIGHTING	1	
4	6H2-85580-01	COIL, PULSER	1	
5	6H2-85895-01	CRANK POSITION SENDER	1	
6	97395-05012	BOLT	4	
7	97095-06035	BOLT	4	
8	92990-06600	WASHER, PLATE	4	
9	97095-06025	BOLT	3	
10	92990-06600	WASHER, PLATE	3	
11	90280-05049	KEY, WOODRUFF	1	
12	90170-20137	NUT	1	
13	90201-21M18	WASHER, PLATE	1	
14	6E5-81332-00	PLATE, TIMING	1	
15	97985-06210	SCREW, WITH WASHER	1	
16	6H3-81337-01	COVER, FLYWHEEL	1	
17	90209-06M04	WASHER	3	
18	97885-06016	SCREW, PAN HEAD	3	

F2

FIG. 19 STARTING MOTOR



REF. NO.	PART NO.	DESCRIPTION	Q'TY	REMARKS
1	6H3-81800-11	STARTING MOTOR ASSY	1	
2	689-81857-11	.PINION STOPPER SET	1	
3	6H3-81807-10	.GEAR ASSY, STARTING MOTOR	1	
4	6H3-81830-10	.FRONT BRACKET ASSY	1	
5	689-81831-00	..METAL, FRONT	1	
6	689-81847-11	.O-RING	2	
7	689-81809-11	.WASHER KIT	1	
8	689-81850-12	.ARMATURE ASSY	1	
9	6H3-81810-10	.STATOR ASSY	1	
10	689-81840-11	.BRUSH HOLDER ASSY	1	
11	689-81812-11	..BRUSH 2	1	
12	689-81811-11	.BRUSH 1	1	
13	689-81813-10	.SPRING, BRUSH	2	
14	6H3-81820-11	.REAR BRACKET ASSY	1	
15	689-81826-10	.BOLT	2	
16	97313-08035	BOLT	2	
17	92990-08600	WASHER, PLATE	2	
18	97095-06025	BOLT	1	
19	92990-06600	WASHER, PLATE	1	
20	97313-08016	BOLT	1	
21	92990-08600	WASHER, PLATE	1	

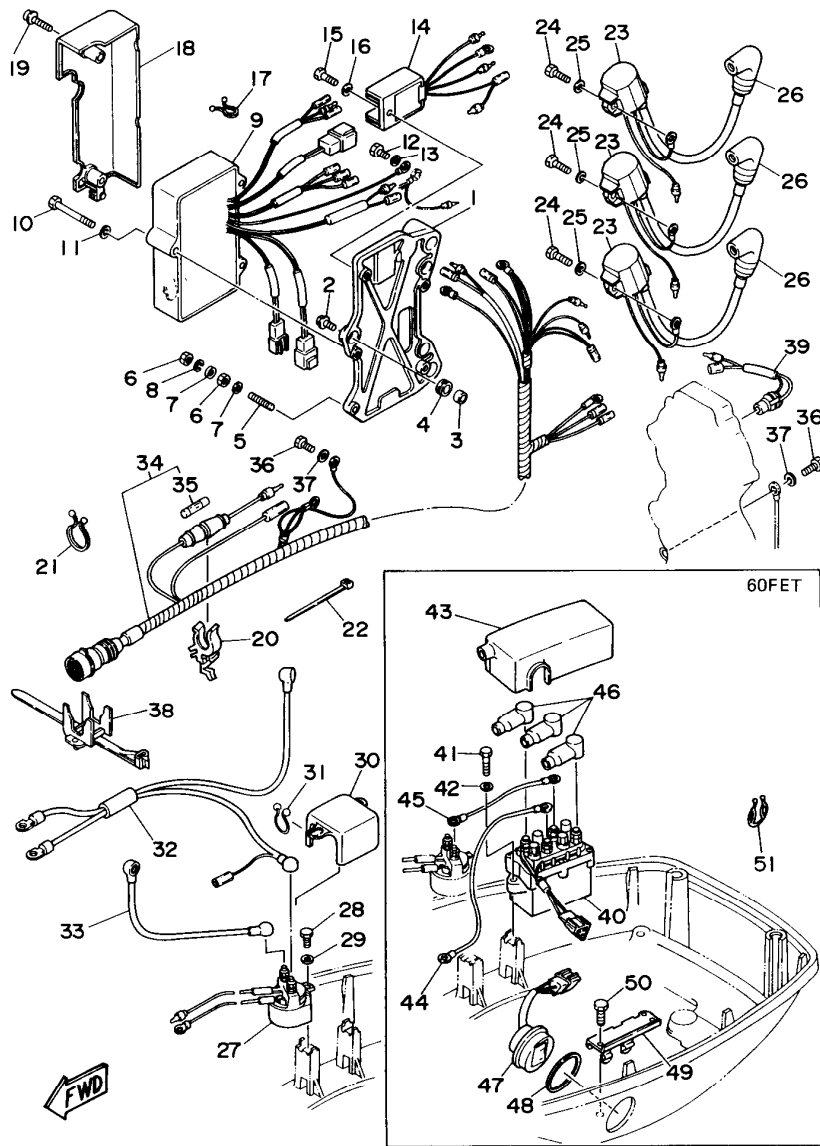


FIG. 20 ELECTRICAL 1

REF. NO.	PART NO.	DESCRIPTION	Q'TY	REMARKS
1	6H3-85542-11-94	BRACKET	1	
2	90105-06M14	BOLT, WASHER BASED	3	
3	90387-06M43	COLLAR	3	
4	90480-13M54	GROMMET	3	
5	90116-06M07	BOLT, STUD	1	
6	95380-06700	NUT	2	
7	92990-06200	WASHER, PLAIN	2	
8	92995-06100	WASHER, SPRING	1	
9	6H2-85540-03	C.D.I. UNIT ASSY	1	
10	97395-06050	BOLT	3	
11	92990-06600	WASHER, PLATE	3	
12	97013-06012	BOLT	1	
13	92990-06600	WASHER, PLATE	1	
14	6H2-81960-00	RECTIFIER & REGULATOR ASSY	1	
15	97095-06016	BOLT	1	
16	92990-06600	WASHER, PLATE	1	
17	90464-05M16	CLAMP	1	
18	6H3-81916-10	COVER, TERMINAL	1	
19	90159-06M01	SCREW, WITH WASHER	2	
20	6G5-82152-00	HOLDER, FUSE	1	
21	90464-23M22	CLAMP	1	
22	90465-13M11	CLAMP	1	
23	6H2-85570-00	IGNITION COIL ASSY	3	
24	97095-06020	BOLT	3	
25	92990-06600	WASHER, PLATE	3	
26	6G1-82370-20	PLUG CAP ASSY	3	
27	688-81950-10	RELAY ASSY	1	
28	97095-06016	BOLT	1	

F4

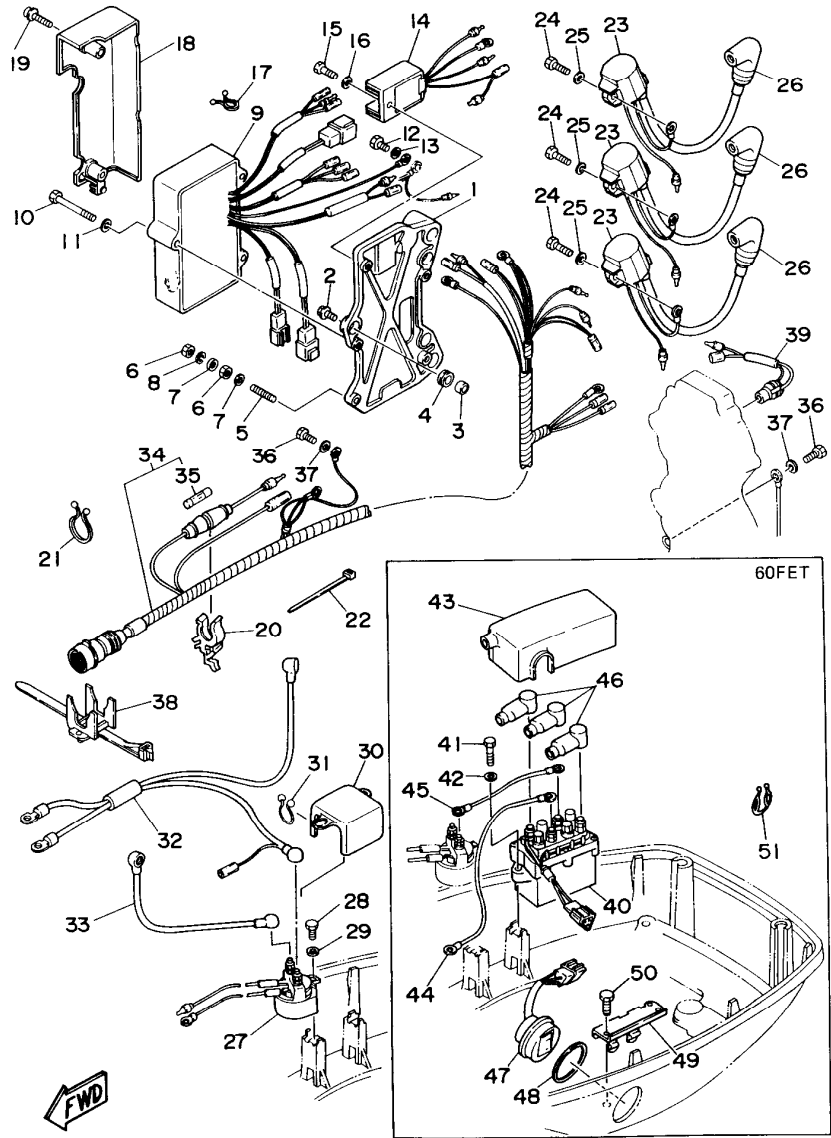


FIG. 20 ELECTRICAL 1

REF. NO.	PART NO.	DESCRIPTION	Q'TY	REMARKS
29	92990-06600	WASHER, PLATE	1	
30	6H3-82164-00	CASE 2	1	
31	90464-16039	CLAMP	1	
32	6H3-82105-01	WIRE HARNESS	1	
33	6H3-82117-00	WIRE, LEAD	1	
34	6H2-82590-01	WIRE HARNESS ASSY	1	UR 60FE
	6H2-82590-12	WIRE HARNESS ASSY	1	UR 60FET
35	682-82151-00	.FUSE (20A)	1	
36	97013-06012	BOLT	2	
37	92990-06600	WASHER, PLATE	2	
38	688-82594-00	CLAMP	1	
39	688-82560-10	THERMO SWITCH ASSY	1	
40	61A-81950-00	RELAY ASSY	1	60FET
41	97095-06025	BOLT	2	60FET
42	92990-06600	WASHER, PLATE	2	60FET
43	6H3-82154-11	CASE	1	60FET
44	6H2-81949-11	WIRE, LEAD	1	60FET
45	6H2-81949-01	WIRE, LEAD	1	60FET
46	682-82119-01	COVER, LEAD WIRE	3	60FET
47	6H1-82563-10	TRIM & TILT SWITCH ASSY	1	60FET
48	6E5-82587-00	GASKET	1	60FET
49	6E5-83614-01	BRACKET	1	60FET
50	97095-06016	BOLT	2	60FET
51	90464-18M14	CLAMP	1	60FET

F5

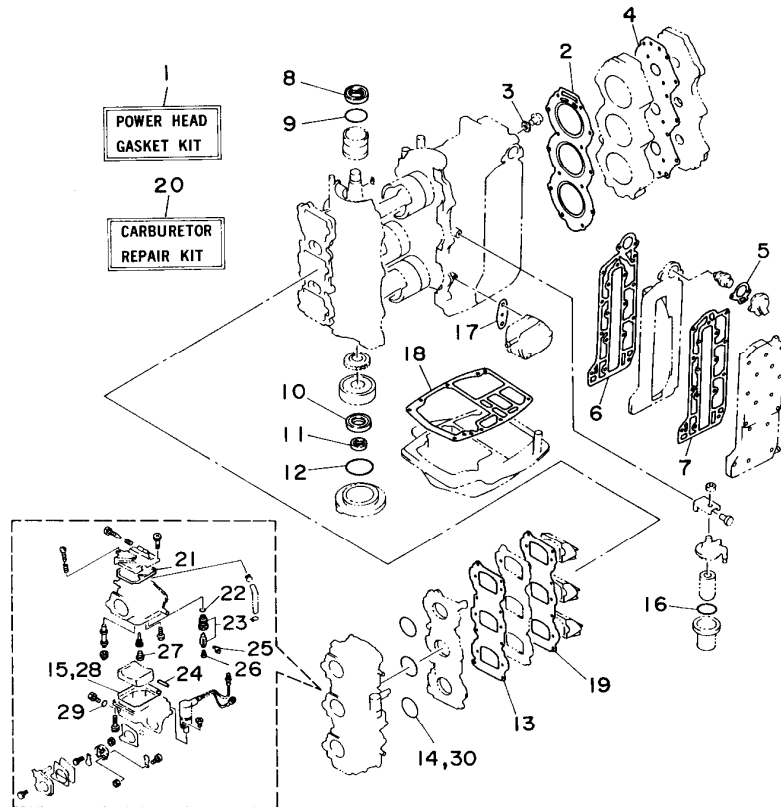


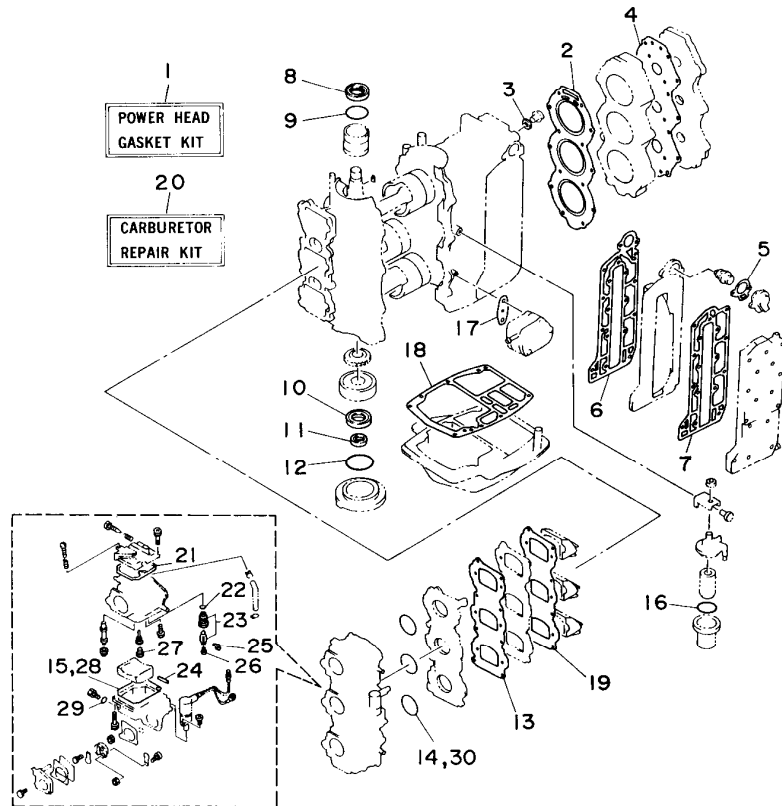
FIG. 21 REPAIR KIT 1

REF. NO.	PART NO.	DESCRIPTION	Q'TY	REMARKS
1	6H3-W0001-02	POWER HEAD GASKET KIT	1	
2	6H3-11181-A0	.GASKET, CYLINDER HEAD 1	1	
3	90430-14115	.GASKET	1	
4	6H3-11193-A1	.GASKET, HEAD COVER 1	1	
5	6H3-12414-A1	.GASKET, COVER	1	
6	6H3-41112-A0	.GASKET, EXHAUST INNER COVER	1	
7	6H3-41114-A0	.GASKET, EXHAUST OUTER COVER	1	
8	93102-36M24	.OIL SEAL	1	
9	93210-46M16	.O-RING	1	
10	93102-30M23	.OIL SEAL	1	
11	93106-18M01	.OIL SEAL	1	
12	93210-65M50	.O-RING	1	
13	6H3-13621-A1	.GASKET, VALVE SEAT	1	
14	93210-39ME4	.O-RING	3	
15	6H4-14984-00	.GASKET, FLOAT CHAMBER	3	
16	93210-32738	.O-RING	1	
17	650-24431-A0	.GASKET, FUEL PUMP 1	1	
18	6H3-45113-A0	.GASKET, UPPER CASING	1	
19	6H3-13622-A1	.GASKET, VALVE SEAT	1	
20	6H2-W0093-10	CARBURETOR REPAIR KIT	1	
21	6H4-14147-00	.O-RING	1	
22	93210-04228	.O-RING	1	
23	6H3-14590-00	.NEEDLE VALVE ASSY	1	
24	6H4-14548-00	.PIN, FLOAT ARM	1	
25	663-14159-00	.CLIP	1	
26	676-14186-00	.PIN, FLOAT	1	
27	676-14966-00	.CAP	1	
28	6H4-14984-00	.GASKET, FLOAT CHAMBER	1	

F6

FIG. 21 REPAIR KIT 1

REF. NO.	PART NO.	DESCRIPTION	Q'TY	REMARKS
29	93210-04230	.O-RING	1	
30	93210-39ME4	.O-RING	1	



FWD

F7

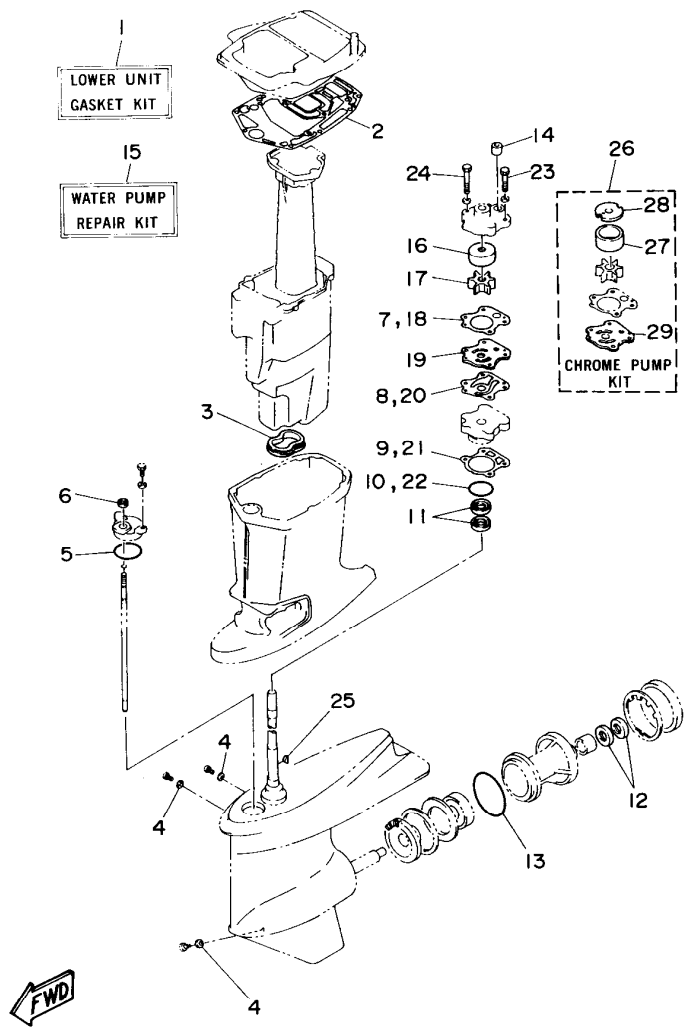


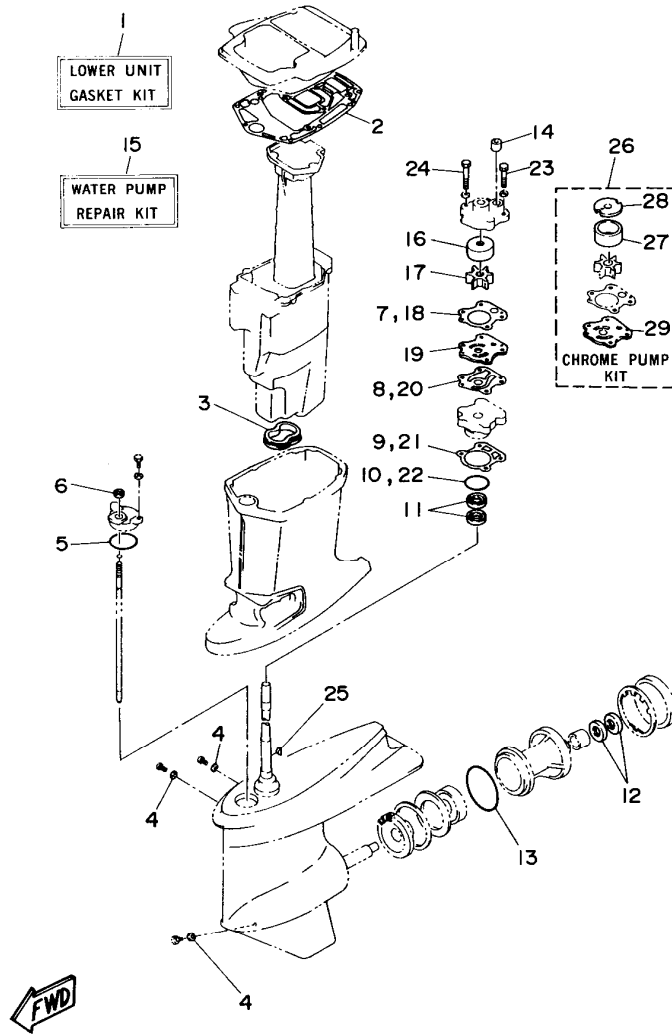
FIG. 22 REPAIR KIT 2

REF. NO.	PART NO.	DESCRIPTION	Q'TY	REMARKS
1	6H3-W0001-22	LOWER UNIT GASKET KIT	1	
2	6H3-45114-A1	.GASKET, UPPER CASING	1	
3	6H3-45123-00	.GASKET, MUFFLER	1	
4	90430-08020	.GASKET	3	
5	93210-49046	.O-RING	1	
6	93106-09014	.OIL SEAL	1	
7	6H3-44315-A0	.GASKET, WATER PUMP	1	
8	6H3-44324-A0	.GASKET, CARTRIDGE	1	
9	688-44316-A0	.GASKET, WATER PUMP	1	
10	93210-46044	.O-RING	1	
11	93101-23070	.OIL SEAL	2	
12	93101-25M03	.OIL SEAL	2	
13	93210-85M97	.O-RING	1	
14	663-44366-00	.DAMPER, WATER SEAL	1	
15	6H3-W0078-01	WATER PUMP REPAIR KIT	1	
16	663-44322-00	.INSERT, CARTRIDGE	1	
17	6H3-44352-00	.IMPELLER	1	
18	6H3-44315-A0	.GASKET, WATER PUMP	1	
19	6H3-44323-00	.OUTER PLATE, CARTRIDGE	1	
20	6H3-44324-A0	.GASKET, CARTRIDGE	1	
21	688-44316-A0	.GASKET, WATER PUMP	1	
22	93210-46044	.O-RING	1	
23	97395-08045	.BOLT	2	
24	97395-08055	.BOLT	2	
25	90280-03M03	.KEY, WOODRUFF	1	
26	6H3-W0078-0A	CHROME PUMP KIT	1	
27	670-44322-01	.INSERT, CARTRIDGE	1	
28	670-44321-00	.INNER PLATE, CARTRIDGE	1	

G1

FIG. 22 REPAIR KIT 2

REF. NO.	PART NO.	DESCRIPTION	Q'TY	REMARKS
29	6H3-44323-40	.OUTER PLATE, CARTRIDGE	1	



G2

NUMERICAL INDEX

PART NO.	REF. NO.	PART NO.	REF. NO.	PART NO.	REF. NO.	PART NO.	REF. NO.	PART NO.	REF. NO.	PART NO.	REF. NO.
6H3-W0001-02	21- 1	6H4-14147-00	4-10	6H3-24313-00	5-33	6H3-42510-02-4D	10- 3	688-43131-03	9-23	6G5-43808-02	12-49
6H3-W0001-22	22- 1		21-21	6H3-24314-00	5-35	6H3-42510-12-4D	10- 3	6G5-43144-00	9-45	6E5-4381A-00	12-74
688-W0004-00	3- 2	663-14159-00	4-17	6E5-24367-01	7-26	6H2-42610-31-4D	6- 1	6G5-43145-00	8-26	6H1-43810-11	13-20
6H2-W0070-30	6-16		21-25		7-39	6H3-42613-00-4D	6-10		9-27	697-43810-02	12-18
6H3-W0078-0A	22-26	676-14186-00	4-18	650-24378-00	1- 6	6H3-42615-00	6-13	6G5-43148-00	9-32	6E5-43813-02	12-25
6H3-W0078-01	22-15		21-26	688-24378-00	5-32	6H3-42647-00-94	6- 2	688-43160-01	9-36	6H1-43813-10	13-24
6H3-W0090-05-4D	1- 1	6H2-14301-0A	4- 1	692-24410-00	5-15	6H3-42649-00-94	6- 3	697-43160-00	8-35	6E5-43814-01	12-24
6H2-W0093-10	21-20	6H2-14302-0A	4- 2	6H3-24411-10	4-40	6H3-42652-00	6- 5	688-43165-00	8-36	6H1-43814-11	13-19
656-W2810-02	5-38	6H2-14303-0A	4- 3	663-24411-00	5-20	663-42662-00	6- 4		9-37	6E5-43816-10	12-57
689-W4266-10	6-21	6A0-14325-00	5-25	692-24411-00	5-17	6H3-4267A-40	6-17	688-43170-04-4D	11- 1	6H1-43816-00	13-65
689-W4266-20	6-18	6H3-14349-00	3-17	6A0-24412-02	5-26	6H3-42681-40	6-22	697-43170-03-4D	11- 1	6E5-43817-10	12-58
689-W4266-40	6-19		4-32	6A4-24413-00	4-38	6H3-42682-41	6-23	6H1-43181-01	9-28	6H1-43817-01	13-44
	6-20	6H3-14380-00	4-33	648-24413-01	5-16	6H2-42686-01	6-14	688-43181-04	8-27	6E5-43818-00	12-29
6H3-11111-01-94	1-26	6H3-14413-10	3-19	6A0-24421-01	5-24	6H2-42687-01	6-15	688-43181-10	9-28		13-29
688-11119-00	1-22	6H3-14440-02	3-20	6L5-24421-00	4-37	6H3-42711-04-4D	7- 1	6H1-43185-01	9-29	6E5-4382A-00	12-68
6H3-11181-A0	1-27	6H3-14457-01	3-21	650-24431-A0	5-27	6H3-42711-23-4D	7- 1	688-43185-04	8-28	6H1-4382A-10	13-49
	21- 2	6H1-14485-00	3- 6		21-17	648-42715-00	14-28	688-43185-10	9-29	6E5-43820-03	12-33
6H3-11191-00-9M	1-28	624-14485-00	1- 5	6H3-24434-10	4-41	6H3-42716-02	7-13	688-43186-00	11-11	6H1-43820-11	13-61
6H3-11193-A1	1-29	6H1-14523-00	4- 5	648-24434-01	5-18	6K5-42717-00	7-14	6H1-43311-01-4D	9-17	6E5-43821-01	12-36
	21- 4	6H4-14548-00	4-15	648-24435-02	5-21	6H3-42718-00	7-41	697-43311-03-4D	8-17	6H1-43821-11	13-56
6H3-11325-00	1-17		21-24	6H3-24452-10	4-29	6E5-42724-00	7-15	663-43318-00	8-34	6E5-43822-01	12-37
6H3-11327-00-94	1-18	697-14555-00	4-12	6H4-24486-00	4-39	6H3-42725-00	7-16		9-31	6H1-43822-10	13-55
6H3-11328-00	1-19	6H4-14567-00	4-30	61N-24521-00	5- 8	6H3-42725-10	7-16	682-43318-01	11- 3	6E5-43824-01	12-76
650-11370-00	1- 4	6H2-14578-00	4- 7	61N-24560-00	5- 6	6H4-42726-00	7-29	6H1-43376-00	10-39	6E5-43828-00	12-26
688-11370-00	1- 3	6H3-14590-00	4-14	61N-24563-00	5- 7	688-42726-10	7-29	688-43376-01	10-39	6H1-43828-10	13-27
6H3-11400-03	2- 1		21-23	648-24566-01	5-10	6H3-42727-00	7-20	688-43616-00	11-14	6E5-43829-00	12-27
6K5-11601-02	2- 8	6H3-14711-00-5B	15-14	6E0-28193-00-94	5-39	6H3-42738-00-5B	7-17	688-43631-00	11- 2	6H1-43829-00	13-33
6K5-11601-12	2- 8	6H3-14711-10-5B	15-14	626-28193-01-94	5-39	6H3-42741-00-4D	7-34	688-43631-10	11- 2	6E5-43830-00	12-64
6K5-11601-22	2- 8	6H3-14737-00	15-20	6H3-41111-00-9M	1-36	6G1-42748-00	7-33	688-43651-00	11-16	6H1-43830-11	13-46
6H3-11631-01-96	2- 7	6H3-14737-10	15-20	6H3-41112-A0	1-37	6H3-42768-00	7-25	688-43691-01	8-21	6E5-43831-00	12-63
6H3-11633-00	2- 9	692-14923-00	4-11		21- 6	6H3-42771-00-4D	7-35		9-22	6H1-43831-10	13-45
688-11634-10	2-10	6H3-14943-35	4-21	6H3-41113-00-9M	1-38	6H3-42813-00	7- 7	697-4380E-01	12-17	6E5-43833-01	12-46
6H3-11635-01	2- 7	6H3-14943-36	4-21	6H3-41114-A0	1-39	6H3-42815-00-4D	7- 3	6H1-4380F-10	12- 7	6H1-43833-10	13-30
6H3-11636-01	2- 7	6H2-14947-71	4-20		21- 7	6H3-42816-00	7- 9		13- 7	6E5-43834-01	12-47
6H3-12411-10	1-31	6H3-14948-13	4-23	6H2-41131-00-5B	15-11	6H3-42817-00-4D	7- 4	6H1-4380G-10	12-15	6H1-43834-00	13-31
6H3-12413-00-9M	1-32	676-14966-00	4-22	6H3-41137-00-94	15- 5	6H3-42818-00	7-10		13-15	6E5-43835-01	12-48
6H3-12414-A1	1-33		21-27	6H3-41213-01	14-23	6H1-43111-00-4D	9- 1	6H1-4380H-10	12-13	6H1-43835-10	13-26
	21- 5	6H3-14980-10	4-28	6H3-41217-00	3-14	688-43111-12-4D	9- 1		13-13	6H1-4384E-20	13-58
6H2-13610-00	3- 1	6H4-14980-00	4-27	6F5-41237-00	14-15	697-43111-04-4D	8- 1	6H1-4380J-10	12- 8	61A-4384F-00	13-43
6H3-13621-A1	3- 7	6H4-14984-00	4-24	6H1-41237-00	14-14	6H1-43112-00-4D	9-12		13- 8	6H1-4384G-11	13-42
	21-13		21-15		14-21	688-43112-12-4D	9-12	6H1-43800-13-4D	13- 1	6H1-43840-11	13-17
6H3-13622-A1	3- 9		21-28	682-41237-50	14-20	697-43112-03-4D	8-12	6H3-43800-07-4D	12- 1	6E5-43841-01	12-43
	21-19	6H4-14985-01	4-19	682-41238-51	14- 1	688-43124-02	11- 6	6E5-43802-00	12-40	6H1-43841-10	13-39
6H3-13624-00-94	3- 8	6H3-14992-00	4-25	6J8-41262-00	11-13	6E5-43126-02	8-39	6T4-43802-01	13-36	6E5-43842-00	12-78
6H3-13641-21-94	3- 5	6H3-15100-04-94	1- 2	6H3-41631-00	14- 2		9-40	6H1-43804-10	12- 4	6E5-43843-00	12-51
6H3-14137-00	4-31	6H3-15359-00-94	2-13	6H3-41632-10	14- 8	688-43128-01-4D	11- 5		13- 4	6H1-43843-11	13-69
6H3-14146-10	4- 9	6G1-24304-02	5- 1	6H3-41633-00	14-11	697-43128-01-4D	11- 5	6H1-43805-10	12- 3	6H1-43844-10	13-41
6H4-14146-00	4- 8	663-24312-01	1-42	6H3-41636-00-94	14-16	688-43131-03	8-22		13- 3	6E5-43845-01	12-70

NUMERICAL INDEX

PART NO.	REF. NO.	PART NO.	REF. NO.	PART NO.	REF. NO.	PART NO.	REF. NO.	PART NO.	REF. NO.	PART NO.	REF. NO.
6H1-43845-01	13-52	6H1-43881-10	13-12	688-44514-00-94	10-26	688-45567-01-30	16- 7	688-45997-01	17-18	6H2-82590-01	20-34
6E5-43847-00	12-66	6E5-43883-00	12-50	6H1-44526-00	8- 3	688-45567-01-40	16- 7	663-48344-00	14-18	6H2-82590-12	20-34
6H1-43847-00	13-47	6E5-43888-01	12-62		9- 3	688-45567-01-50	16- 7		14-40	688-82594-00	20-38
6E5-43849-01	12-75	6H1-43891-10	12- 5	6H3-44551-00-4D	10- 9	6H3-45571-00	16-63	6H3-48511-51-4D	10-36	6E5-83558-00	17-16
6H1-4385H-00	13-75		13- 5	6H3-44552-01-94	10-18	688-45576-00	16-67	688-48511-01-4D	10-36	6E5-83558-10	16-23
6E5-43854-01	12-67	6H1-43892-10	12- 6	6H3-44553-00-4D	10-23	688-45577-01-10	16-66	6H3-48538-00	14-41	6E5-83614-01	20-49
6H1-43854-00	13-50		13- 6	687-44555-00-94	10-11	688-45577-01-12	16-66	6E5-81332-00	18-14	6H1-83672-11	10- 1
6H1-43855-11	13-68	6E5-43895-00	12-55	663-44575-00	10-16	688-45577-01-15	16-66	6H3-81337-01	18-16	6H5-83672-01	10- 1
6H3-43855-00	12-52	6H1-43895-11	13-67		10-32	688-45577-01-18	16-66	6H3-81800-11	19- 1	6H2-85520-01	18- 2
6H1-43856-10	13-40	6E5-43896-00	12-56	6H3-45111-00-4D	15- 1	688-45577-01-30	16-66	6H3-81807-10	19- 3	6H2-85533-00	18- 3
6E5-43859-00	12-53	6H1-43896-00	13-66	6H3-45111-10-4D	15- 1	688-45577-01-40	16-66	689-81809-11	19- 7	6H2-85540-03	20- 9
6H1-4386K-10	12- 9	6E5-43897-00	12-60	6H3-45113-A0	15- 7	688-45577-01-50	16-66	6H3-81810-10	19- 9	6H3-85542-11-94	20- 1
	13- 9	6H1-43899-00	13-48		21-18	688-45587-01-10	16- 5	689-81811-11	19-12	6H2-85550-00	18- 1
6E5-43861-00	12-19	6H3-44117-00-94	14-31	6H3-45114-A1	15-17	688-45587-01-12	16- 5	689-81812-11	19-11	6H2-85570-00	20-23
6H1-43861-00	13-21	6H3-44120-01	14-27		22- 2	688-45587-01-15	16- 5	689-81813-10	19-13	6H2-85580-01	18- 4
6H1-43861-10	13-18	6H3-44120-11	14-27	663-45119-00	8-20	688-45587-01-18	16- 5	6H3-81820-11	19-14	6H2-85895-01	18- 5
	13-22	6H3-44121-01	14-36		9-19	688-45587-01-30	16- 5	689-81826-10	19-15	90101-10M49	10-27
	13-57	688-44122-00	14-39	6H3-45123-00	15-16	688-45587-01-40	16- 5	6H3-81830-10	19- 4	90101-12M65	8-43
6E5-43862-00	12-20	6H1-44144-00	16-59		22- 3	688-45587-01-50	16- 5	689-81831-00	19- 5		9-47
	12-22	6H1-44151-00	16-58	6H3-45127-00	15-15	6H1-45611-02	16-44	689-81840-11	19-10	90105-06M14	20- 2
	12-38	688-44194-00	14- 5	6H3-45155-00	15- 3	6H1-45631-01	16-45	689-81847-11	19- 6	90105-10M67	17- 4
6E5-43863-00	12-28	6H3-44311-00	16-25	688-45214-02	16-12	688-45633-00	16-56	689-81850-12	19- 8	90109-06M21	12-59
6E5-43864-00	12-34	6H3-44315-A0	16-27	688-45215-02	16-13	6H1-45634-02	16-47	689-81857-11	19- 2	90109-12M21	10-15
6H1-43864-00	13-62		22- 7	6H1-45251-02	8- 2	6H1-45635-00	16-51	6H3-81916-10	20-18	90116-06M07	20- 5
6E5-43865-00	12-39		22-18		9- 2	6H1-45641-01	16-57	6H2-81949-01	20-45	90116-10175	10-37
6H1-43865-10	12-16	688-44316-A0	16-33	663-45251-00	8- 2	6H1-45668-00	16-50	6H2-81949-11	20-44	90119-06M42	12-31
	13-16		22- 9	6H3-45300-04-4D	16- 1	688-45930-01-98	17-22	61A-81950-00	20-40	90119-06M71	12-32
6E5-43866-00	12-41		22-21	6H3-45300-14-4D	16- 1	688-45932-60-98	17-22	688-81950-10	20-27	90119-06M91	14-13
6H1-43866-00	13-37	670-44321-00	22-28	6H1-45301-02-4D	16- 2	6E5-45941-00-EL	17-22	6H2-81960-00	20-14	90119-08M09	1-30
6E5-43867-00	12-42	663-44322-00	16-26	688-45321-00	16-16	6E5-45943-00-EL	17-22	6H3-82105-01	20-32	90119-08M17	1- 9
6H1-43867-00	13-38		22-16	688-45331-00-94	16-64	6E5-45945-01-EL	17-22	6H3-82117-00	20-33	90119-08M79	15- 8
6E5-43868-00	12-44	670-44322-01	22-27	688-45341-00	16-10	6E5-45947-00-EL	17-22	682-82119-01	20-46	90119-08M81	15- 4
6H1-43868-00	13-71	6H3-44323-00	16-34	6E5-45371-10	17-25	6E5-45949-00-EL	17-22	703-82119-00	7-30	90119-08M84	17- 9
6E5-43869-00	12-45		22-19	688-45371-02	17- 3	6E5-45952-00-EL	17-22		10-42	90119-10M07	1- 8
6H1-4387J-00	13-74	6H3-44323-40	22-29	688-45375-00	17- 2	6E5-45954-00-EL	17-22	688-82127-02	10-25	90157-06M01	7-27
6H1-43871-10	13-23	6H3-44324-A0	16-35	663-45376-00-94	17- 1	6E5-45956-00-EL	17-22	697-82127-01	10-25		7-32
6E5-43872-00	12-21		22- 8	6E5-45378-00	16-21	6E5-45970-10	17-23	6E5-82148-00	8-13	90157-06M13	14- 3
	12-23		22-20	688-45383-02	16-72	688-45970-03-98	17-22		9-13	90159-06M01	20-19
6E5-43874-01	12-35	6H3-44341-00-94	16-30	688-45384-00	16-73	6E5-45972-10	17-23	6H1-82148-00	8- 9	90170-16M01	16-42
6H1-43874-00	13-64	6H3-44352-00	16-28	6H3-45501-00	16-40	688-45972-02-98	17-22		9- 9	90170-20137	18-12
6H1-43875-00	12-72		22-17	6H3-45501-10	16-40	6E5-45974-10	17-23	682-82151-00	20-35	90171-16011	17-20
	13-54	6H3-44361-00	17-10	688-45536-01	16- 4	688-45974-02-98	17-22	6G5-82152-00	20-20	90179-06066	10-22
6E5-43877-01	12-54	6H3-44361-10	17-10	6H3-45551-00	16-41	6E5-45976-10	17-23	6H3-82154-11	20-43	90183-02M03	16-54
6E5-43878-01	12-61	663-44366-00	17-14	6K5-45560-00	16-43	688-45976-01-98	17-22	6H3-82164-00	20-30	90185-05002	16-15
6H1-4388E-11	13-70		22-14	688-45567-01-10	16- 7	6E5-45978-10	17-23	6G1-82370-20	20-26	90185-10051	10-31
6H1-43880-02	12- 2	663-44367-00	17-13	688-45567-01-12	16- 7	688-45978-60-98	17-22	688-82560-10	20-39		10-38
	13- 2	6H3-44391-01	7- 2	688-45567-01-15	16- 7	688-45987-02	17-17	6H1-82563-10	20-47	90185-22M11	8-25
6H1-43881-10	12-12	688-44511-00-94	10-33	688-45567-01-18	16- 7	6E5-45994-10	17-24	6E5-82587-00	20-48		9-26

NUMERICAL INDEX

PART NO.	REF. NO.	PART NO.	REF. NO.	PART NO.	REF. NO.	PART NO.	REF. NO.	PART NO.	REF. NO.	PART NO.	REF. NO.
90201-03313	16-53	90386-18M14	13-28	90464-23M22	20-21	92990-06600	5- 3	93102-30M23	2-14	93410-28M06	10-10
90201-05M00	12-73	90386-18M21	8-40	90465-08028	11- 9		5-29		21-10	93440-49M04	2- 4
90201-06M02	7-11		9-41	90465-11M10	10-41		6- 8	93102-36M24	2- 3	93450-07M00	16-62
90201-06M31	8- 4		11- 7		16-24		6-12		21- 8	93501-04M02	14-29
	9- 4	90386-18M35	8-41	90465-13M11	20-22		7-19	93106-09014	16-18	93503-16010	16-49
	14- 9		9-42	90465-18147	4-42		7-28		22- 6	93505-32038	13-76
90201-06416	7-23		11- 8	90467-06016	1-11		7-37	93106-18M01	2-15	93603-12M11	16-46
90201-11M22	10-30	90386-18M63	8-40		1-15		7-40		21-11	93603-18M09	2-11
90201-12M16	10-12		9-41		3-16		8- 8	93210-04228	4-13	93604-10M03	16-36
90201-12426	8-45		11- 7	90467-08004	1-43		8-11		21-22	93606-12019	15- 2
	9-49	90386-22M15	8-23		3-18		9- 8	93210-04230	4-26		15- 6
90201-13M19	10-14		9-24		5- 5		9-11		21-29		17- 5
90201-17M00	17-19	90386-30M60	10- 8		5-14		16-20	93210-06M77	12-77	93608-12063	1- 7
90201-20M21	10-28	90386-30M77	10- 6		5-31		18- 8	93210-06519	13-35	93700-06M03	8-19
90201-20417	2-12	90386-30M78	10- 5		5-36		18-10	93210-07M78	12-65		9-18
90201-21M18	18-13	90387-06M43	20- 3	90468-18008	14-19		19-19	93210-07540	16-60	94702-00247	1-44
90201-22M67	8-24	90387-06M59	14-12		14-37		20-11	93210-09350	13-34	95380-03600	4-35
	9-25	90387-06M60	14- 6	90480-09M12	7-21		20-13	93210-10M74	12-69		5-19
	10- 4		14-25	90480-13M54	20- 4		20-16		13-51	95380-05600	14-17
90202-03M51	11-15	90387-06M69	7-22	90501-10M21	8-31		20-25	93210-18M75	12-71		14-22
90202-07M07	14-38	90387-10M02	9-35	90501-10326	4- 6		20-29		13-53	95380-06600	14- 4
90202-12060	17-11	90387-10M38	8-32	90501-12M48	16-52		20-37	93210-29M94	10- 7	95380-06700	20- 6
90202-20M06	10-29	90430-08020	16-11	90501-12082	14-30		20-42	93210-32738	5- 9	95380-08600	5-11
90202-25M04	10-13		22- 4	90501-14236	10-21	92990-08100	10-20		21-16	95380-12600	8-46
90206-10M04	14-24	90430-12072	17-12	90501-16M65	16-48		10-35	93210-39ME4	3-13		9-50
90206-13M10	7- 6	90430-14115	1-25	90502-16M02	9-39		15-10		21-14	95380-12800	10-17
90209-06M04	18-17		21- 3	90502-20M03	8-38		15-13		21-30	95780-08300	10-40
90209-06M05	3-23	90440-14M00	9-51	90506-14M24	9-44		15-19	93210-46M16	2- 6	97013-06012	4-43
90209-08M02	16-39	90445-07ME8	16-22	90508-29M19	14-10	92990-08200	14-34		21- 9		7-12
90249-06M19	9-34	90445-07ME9	16-22	91316-08016	13-63	92990-08600	19-17	93210-46044	16-32		20-12
90250-07M02	16-55	90445-07MF1	17-15	91490-20015	14-35		19-21		22-10		20-36
90266-06M02	6- 9	90445-07M02	1-12	91490-30030	8-33	92990-10100	8-16		22-22	97013-06035	1-40
90269-03010	8-18		3-15	91490-40030	17-21		9-16	93210-49046	16-17	97090-08035	10-34
90269-04M03	7- 8	90445-07M44	1-10	91690-30012	8-37		17- 7		22- 5		15- 9
90280-03M03	16-29	90445-07M45	1-13		9-38	92990-10600	8-30	93210-65M50	2-16	97095-06010	8-10
	22-25	90445-07M82	1-14	91690-30020	9-33		17- 8		21-12		9-10
90280-05049	18-11	90445-09M75	5- 4		11-12	92995-06100	6- 7	93210-65752	13-25		9-46
90282-04010	16-71	90445-09072	5-13	92180-06025	8- 6		8- 7	93210-85M97	16-68		11- 4
90338-05M03	7-31		5-30	92901-04100	13-73		9- 7		22-13	97095-06012	8- 5
	9-21	90445-09220	5-34	92990-05100	5-23		20- 8	93306-207U0	16-65		9- 5
	11-10	90446-10M01	5-37	92990-05200	13-60	92995-12200	8-44	93306-306V1	2- 5	97095-06016	1-20
90340-08M04	16- 9	90464-05M16	20-17	92990-05600	3- 4		9-48	93311-636U6	2- 2		6- 6
90340-14M00	1-24	90464-07M05	1-16	92990-06200	20- 7	93101-23070	16-31	93315-325V1	16- 3		6-11
90386-07M58	14-33	90464-11M18	9-20	92990-06600	1-21		22-11	93317-325U0	16-69		7-18
90386-10M16	8-29		11- 9		1-35	93101-25M03	16-70	93332-000U3	16- 6		8- 6
	9-30	90464-15M08	7-30		1-41		22-12	93332-000W7	16- 8		9- 6
90386-13M38	7- 5	90464-16039	20-31		3-11	93102-08M43	12-14	93410-18M02	8-42		16-19
90386-18M14	12-30	90464-18M14	20-51		4-44		13-14		9-43		20-15

NUMERICAL INDEX

PART NO.	REF. NO.	PART NO.	REF. NO.	PART NO.	REF. NO.	PART NO.	REF. NO.	PART NO.	REF. NO.
97095-06016	20-28	98580-05016	3- 3						
	20-50	98580-05530	5-22						
97095-06020	20-24	98580-06012	8-14						
97095-06025	1-34		9-14						
	3-10	98580-06016	10- 2						
	5- 2		10-24						
	7-36	98680-05545	16-14						
	14- 7	98980-03006	4-36						
	14-26	99001-08600	16-61						
	18- 9								
	19-18								
	20-41								
97095-06030	7-24								
97095-06035	18- 7								
97095-06040	5-28								
97095-06095	3-12								
97313-06014	5-12								
97313-08016	19-20								
97313-08020	1-23								
97313-08035	19-16								
97395-05012	18- 6								
97395-06050	20-10								
97395-08025	10-19								
97395-08030	15-12								
	15-18								
97395-08045	16-38								
	22-23								
97395-08055	16-37								
	22-24								
97395-10040	17- 6								
97395-10045	8-15								
	9-15								
97595-06420	13-32								
97595-06520	2-17								
	7-38								
	14-32								
97607-04310	12-11								
	13-11								
97885-05016	12-10								
	13-10								
97885-06016	18-18								
97885-06045	3-22								
97980-04114	4- 4								
97985-06210	18-15								
98507-05010	13-59								
98511-04025	13-72								
98580-04008	4-16								
98580-04010	4-34								

*COPYRIGHT: All rights reserved. No part of this publication
may be reproduced without permission.*

YAMAHA
YAMAHA MOTOR CO., LTD.
2500 SHINGA I IWATA SHIZUOKA JAPAN
SERVICE INFORMATION DIV.

Printed in Japan
First edition FEB.,1995