

# PARTS CATALOGUE

## F60CET'06 (6C52)

---



2009/3/31

1E6C5-280E1

( )

NEWS NO.	DATE	COMMENT
PE0-OM-090024	March,2,2009	MOD:FIG.24 PTT(6C5-43800-01-8D) P/No. REVISION

F60CET  
PARTS CATALOGUE  
©2006 by Yamaha Motor Co., Ltd.  
1st edition, August 2006  
All rights reserved.  
Any reprinting or unauthorized use  
without the written permission of  
Yamaha Motor Co., Ltd.  
is expressly prohibited.  
Printed in Japan.

# FOREWORD

This Parts Catalogue is related to the parts for the model(s) on the cover page. When you are ordering replacement parts, please refer to this Parts Catalogue and quote both part numbers and part names correctly.

1. Modifications or additions which have been made after the issue of the Parts Catalogue will be announced in the Parts News.  
It is advisable that you make the necessary corrections to the Parts Catalogue according to the Parts News.

2. Abbreviations

The following abbreviations are used in this Parts Catalogue.

“UR” Use specified parts number.

“UN” Use as many as needed.

“AP” Alternate Parts

“LM” Locally Made (Parts need to be ordered locally)

“F#” Frame No. (Applicable machine No.)

“O/S” Over Size

3. The number of components for assembly

- Parts, which are to be supplied in an assembly, are listed with a dot (.) in front of the part name as shown below.
- The numeral appearing to the right of each component part indicates the quantity of parts for each assembly unit.

PART NO.	DESCRIPTION	Q'TY	REMARKS
2F5-83310-60	FRONT FLASHER LIGHT ASSY	2	
115-83311-60	.BULB (6V-18W)	1	

4. Applicable colours of graphics are represented in the “REMARKS” as shown below.

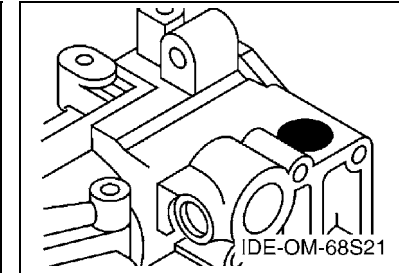
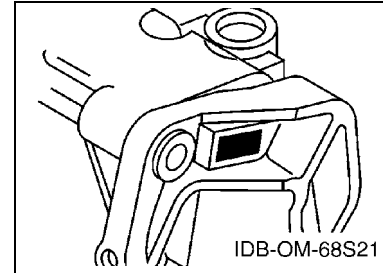
PART NO.	DESCRIPTION	Q'TY	REMARKS
2N4-24110-00-X5	FUEL TANK COMP.	2	MXR
3J1-24240-10	.GRAPHIC, FUEL TANK	1	FOR MXR

5. Note that the illustrations for reference in finding parts numbers are not to be used for assembling. When assembling, please use the applicable service manual.

6. The asterisk (\*) before a reference number indicates modified items after the first edition.

7. Applicable Serial No.

Engine Serial No.



8. Applicable Engine Starting Serial No.

Model	Serial No.	Model	Serial No.
F60C	6C5-1007597		

9. Applicable Colour Code

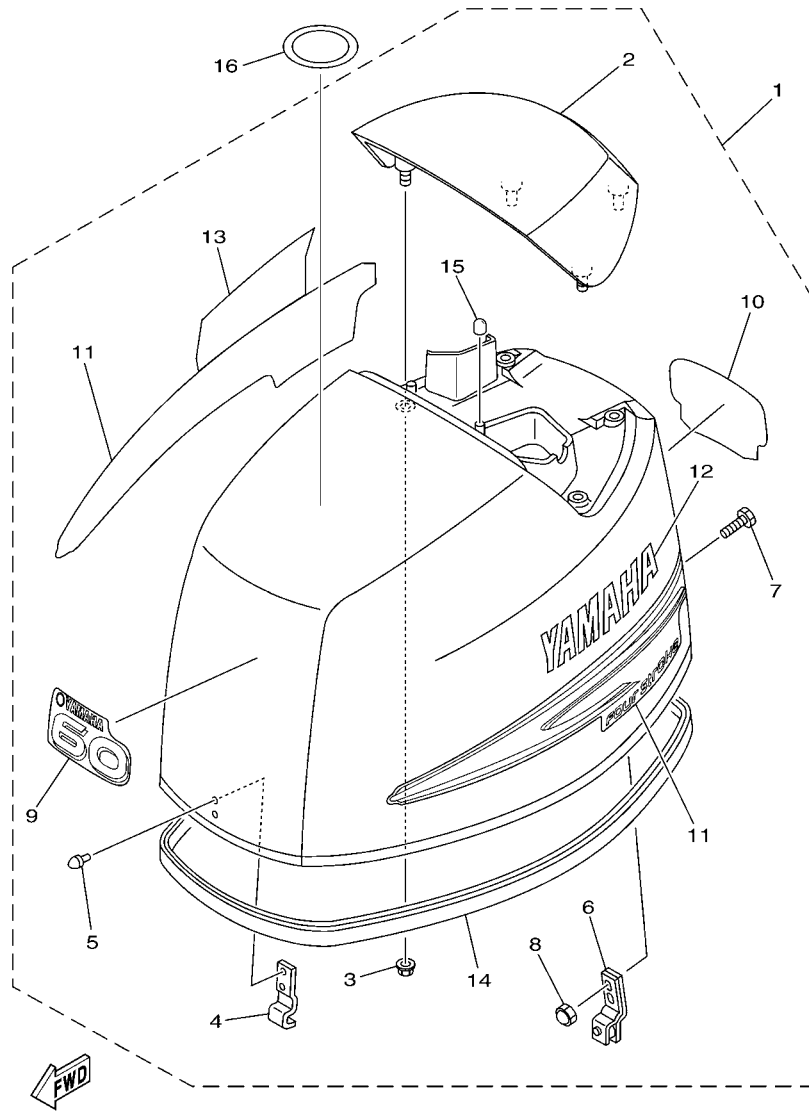
Abbreviation	Colour Name	Colour Code
DBNM2	DARK BLUISH GRAY METALLIC 2	004D

10. Quantity Column Information

Column No.	Name Of Q'ty Column	Applicable Model
1	6C52	F60CET

# CONTENTS

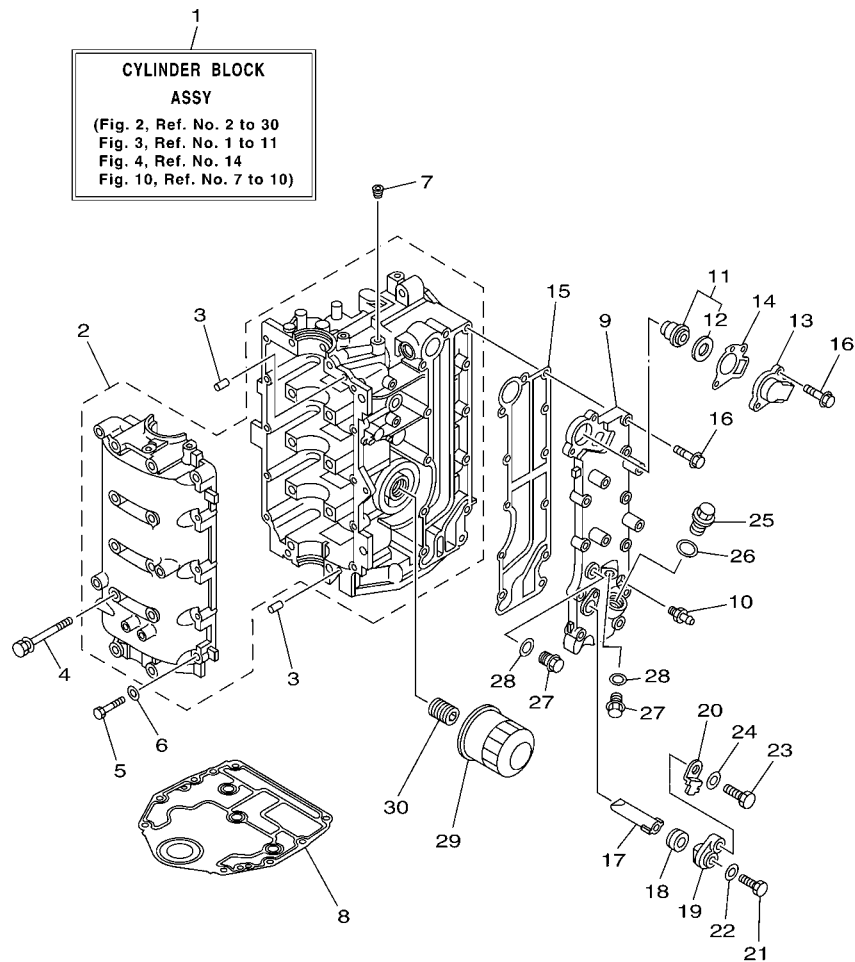
TOP COWLING .....	1
CYLINDER & CRANKCASE 1 .....	2
CRANKSHAFT & PISTON .....	4
CYLINDER & CRANKCASE 2 .....	5
VALVE .....	7
INTAKE 1 .....	8
INTAKE 2 .....	9
FUEL INJECTION PUMP 1 .....	10
FUEL INJECTION PUMP 2 .....	11
OIL PUMP .....	12
FUEL 1 .....	13
FUEL 2 .....	15
GENERATOR .....	16
ELECTRICAL 1 .....	17
ELECTRICAL 2 .....	18
ELECTRICAL 3 .....	20
ELECTRICAL 4 .....	22
STARTING MOTOR .....	23
BOTTOM COWLING 1 .....	24
BOTTOM COWLING 2 .....	26
CONTROL .....	27
BRACKET 1 .....	29
BRACKET 2 .....	31
POWER TRIM & TILT ASSY 1 .....	33
POWER TRIM & TILT ASSY 2 .....	36
UPPER CASING .....	37
OIL PAN .....	38
LOWER CASING & DRIVE 1 .....	39
LOWER CASING & DRIVE 2 .....	42
STEERING GUIDE .....	44
REMOTE CONTROL BOX .....	45
REMOTE CONTROL ASSY .....	46
METER .....	49
REPAIR KIT 1 .....	50
REPAIR KIT 2 .....	51
<b>INDEX</b>	
NUMERICAL INDEX .....	53



6C11010-D010

FIG. 1 TOP COWLING

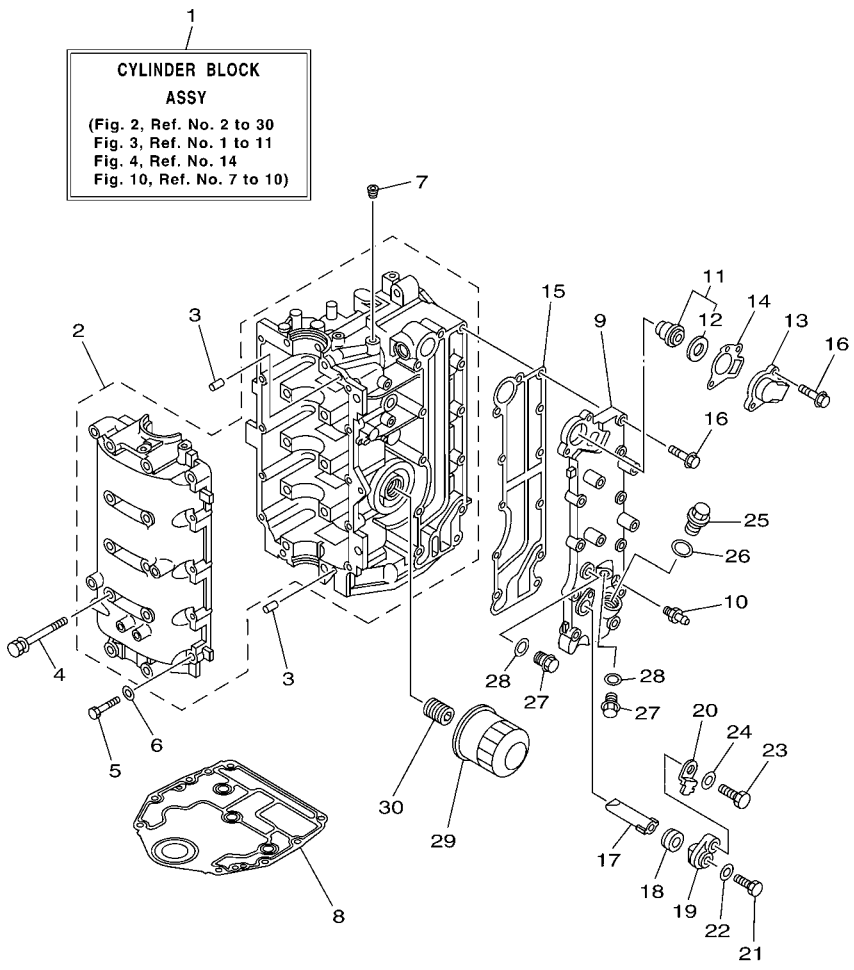
REF. NO.	PART NO.	DESCRIPTION	6C52				REMARKS
1	6C5-42610-00-4D	TOP COWLING ASSY	1				
2	67C-42613-00-4D	.MOLDING, AIR DUCT	1				
3	90179-06029	.NUT	4				
4	6C5-42651-00	.HOOK	1				
5	90266-06M02	.RIVET	2				
6	67C-42652-02	.HOOK	1				
7	90109-06047	.BOLT	2				
8	90185-06M05	.NUT, SELF-LOCKING	2				
9	69W-42677-00	.GRAPHIC, FRONT	1				
10	6C5-42678-00	.GRAPHIC, REAR	1				
11	69W-W0070-00	.GRAPHIC SET	1				
12	69W-42681-00	.MARK, COWLING	1				
13	69W-42682-00	.MARK, COWLING	1				
14	6C5-42615-00	.SEAL	1				
15	69W-13448-00	.CAP	2				
16	67F-13434-03	LABEL, CAUTION	1				



6C12100-E021

FIG. 2 CYLINDER & CRANKCASE 1

REF. NO.	PART NO.	DESCRIPTION	6C52				REMARKS
1	6C5-W009B-01-1S	CYLINDER BLOCK ASSY	1				
2	6C5-15100-00-1S	CRANKCASE ASSY	1				
3	93606-12019	PIN, DOWEL	4				
4	90119-08M01	BOLT, WITH WASHER	10				
5	97013-06035	BOLT	10				
6	92903-06600	WASHER, PLATE	10				
7	90344-51003	PLUG, TAPER SCREW	1				
8	67C-11351-01	GASKET, CYLINDER	1				
9	6C5-41113-00-1S	OUTER COVER, EXHAUST	1				
10	62Y-12481-10	PIPE 1	1				
11	6G8-12411-03	THERMOSTAT	1				
12	688-12412-00	.SEAL, THERMOSTAT	1				
13	6H3-12413-00-1S	COVER, THERMOSTAT	1				
14	62Y-12414-00	GASKET, COVER	1				
15	6C5-41114-00	GASKET, EXHAUST OUTER COVER	1				
16	90119-06MA5	BOLT, WITH WASHER	12				
17	62Y-11325-00	ANODE	1				
18	66M-11328-00	GROMMET, ANODE	1				
19	66M-11327-00-94	COVER, ANODE	1				
20	66M-12535-00	PLATE	1				
21	97095-05012	BOLT	1				
22	92995-05600	WASHER	1				
23	97095-06020	BOLT	1				
24	92995-06600	WASHER	1				
25	90340-18M09	PLUG, STRAIGHT SCREW	1				
26	90430-18130	GASKET	1				
27	90340-14M06	PLUG, STRAIGHT SCREW	2				

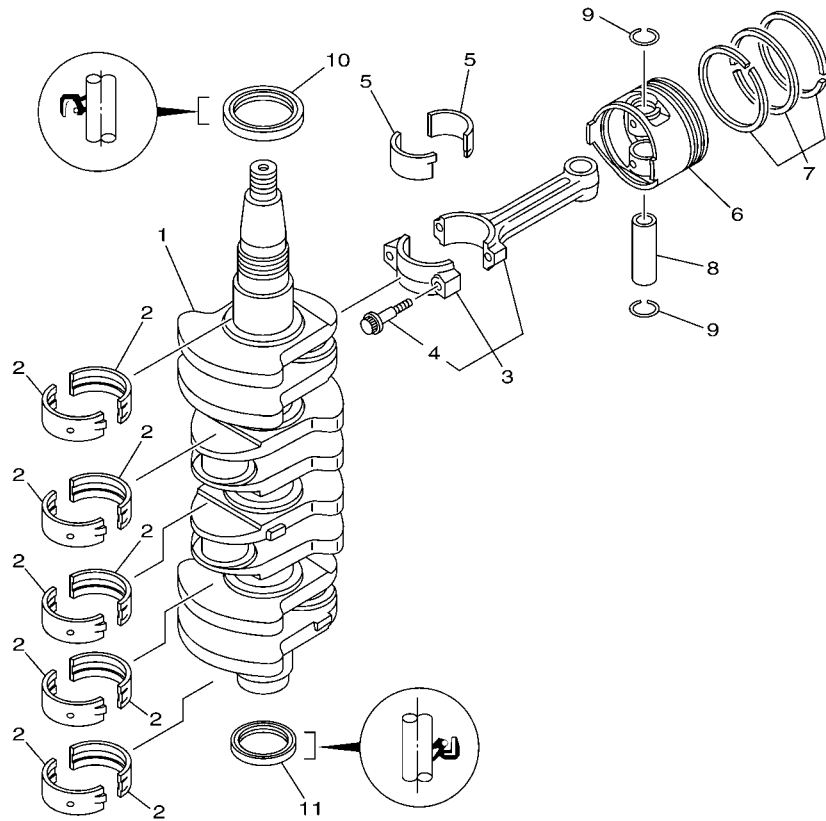


1  
**CYLINDER BLOCK  
 ASSY**  
 (Fig. 2, Ref. No. 2 to 30  
 Fig. 3, Ref. No. 1 to 11  
 Fig. 4, Ref. No. 14  
 Fig. 10, Ref. No. 7 to 10)

**FIG. 2 CYLINDER & CRANKCASE 1**

REF. NO.	PART NO.	DESCRIPTION	6C52				REMARKS
28	90430-14115	GASKET	2				
29	5GH-13440-20	ELEMENT ASSY, OIL CLEANER	1				
30	6C5-12858-00	BOLT, UNION	1				
-----							
-----							
-----							
-----							
-----							
-----							
-----							
-----							

  
 6C12100-E021

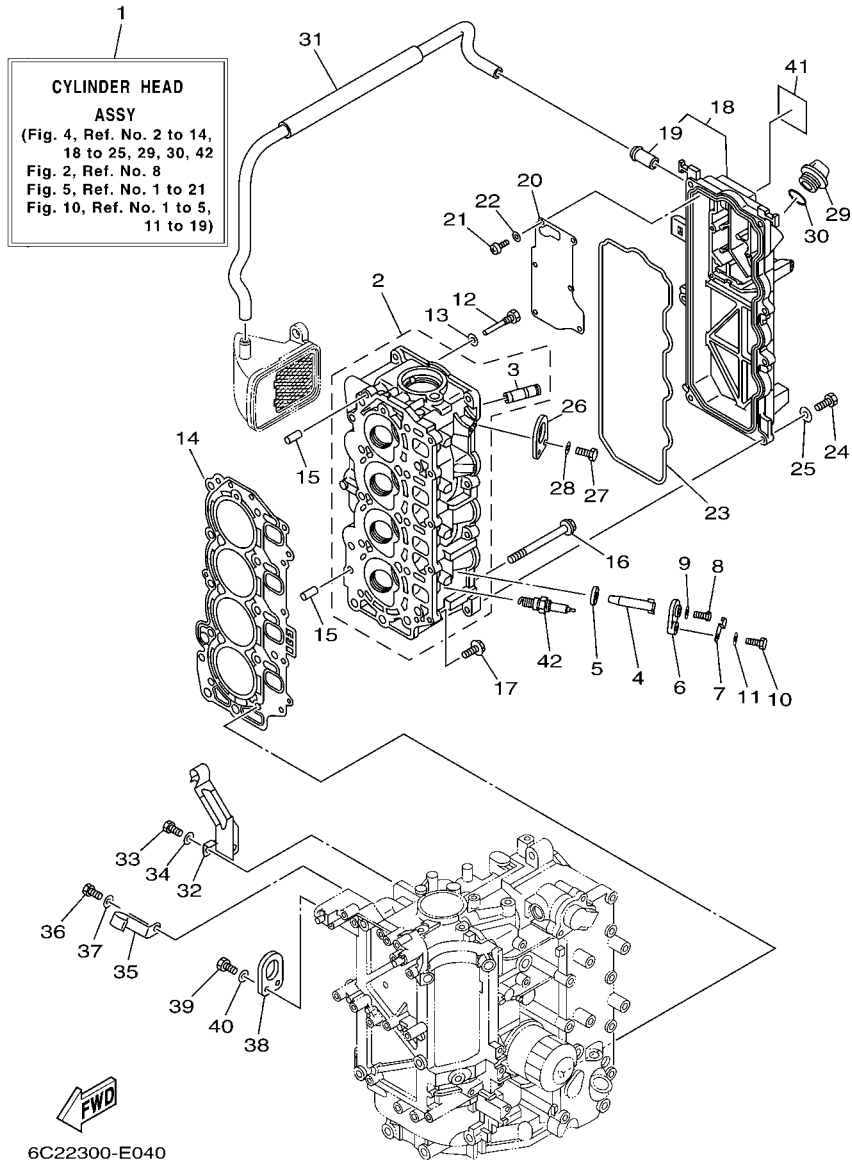


6C11010-D030

FIG. 3 CRANKSHAFT & PISTON

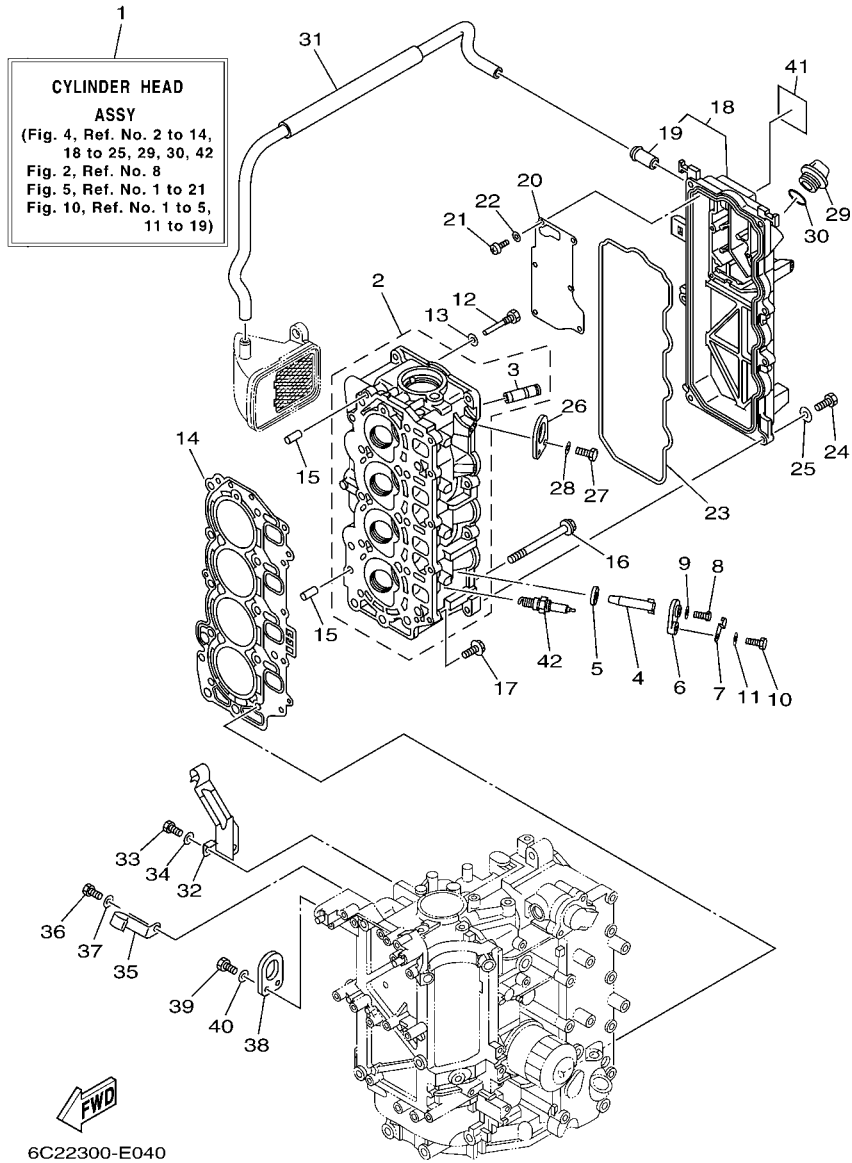
REF. NO.	PART NO.	DESCRIPTION	6C52			REMARKS
1	6C5-11411-00	CRANKSHAFT	1			
2	6C5-11416-00	PLANE BEARING, CRANKSHAFT 1	10			UR YELLOW
	6C5-11416-10	PLANE BEARING, CRANKSHAFT 1	10			UR RED
	6C5-11416-20	PLANE BEARING, CRANKSHAFT 1	10			UR PINK
	6C5-11416-30	PLANE BEARING, CRANKSHAFT 1	10			UR GREEN
3	6C5-11650-00	CONNECTING ROD ASSY	4			
4	6C5-11654-00	.BOLT, CONNECTING ROD	2			
5	6C5-11656-00	PLANE BEARING, CONNECTING ROD	8			UR YELLOW
	6C5-11656-10	PLANE BEARING, CONNECTING ROD	8			UR RED
	6C5-11656-20	PLANE BEARING, CONNECTING ROD	8			UR PINK
	6C5-11656-30	PLANE BEARING, CONNECTING ROD	8			UR GREEN
6	69W-11631-00-97	PISTON (STD)	4			
	69W-11635-00	PISTON (0.25MM O/S)	4			AP
	69W-11636-00	PISTON (0.50MM O/S)	4			AP
7	67C-11603-00	PISTON RING SET (STD)	4			
	67C-11604-00	PISTON RING SET (0.25MM O/S)	4			AP
	67C-11605-00	PISTON RING SET (0.50MM O/S)	4			AP
8	62Y-11633-00	PIN, PISTON	4			
9	93450-17129	CIRCLIP	8			
10	93102-43M42	OIL SEAL	1			
11	93101-35002	OIL SEAL	1			





**FIG. 4 CYLINDER & CRANKCASE 2**

REF. NO.	PART NO.	DESCRIPTION	6C52				REMARKS
1	6C5-W009A-01-1S	CYLINDER HEAD ASSY	1				
2	6C5-11111-00-1S	HEAD, CYLINDER 1	1				
3	62Y-11133-30	.GUIDE, VALVE 1	8				
4	62Y-11325-00	ANODE	4				
5	66M-11328-00	GROMMET, ANODE	4				
6	66M-11327-00-94	COVER, ANODE	4				
7	66M-12535-00	PLATE	4				
8	97095-05012	BOLT	4				
9	92995-05600	WASHER	4				
10	97095-06020	BOLT	4				
11	92995-06600	WASHER	4				
12	90109-06M65	BOLT	1				
13	90430-06014	GASKET	1				
14	6C5-11181-01	GASKET, CYLINDER HEAD 1	1				
15	99530-08012	PIN, DOWEL	2				
16	90105-09005	BOLT, FLANGE	10				
17	90119-06MA3	BOLT, WITH WASHER	5				
18	6C5-11191-01-1S	COVER, CYLINDER HEAD 1	1				
19	62Y-14485-00	.PIPE, JOINT	1				
20	6C5-11168-00	COVER, BREATHER	1				
21	98507-04010	SCREW, PAN HEAD	6				
22	92907-04600	WASHER	6				
23	62Y-11356-00	SEAL, CYLINDER 2	1				
24	97095-06020	BOLT	7				
25	92995-06600	WASHER	7				
26	62Y-11119-00	HANGER, ENGINE	1				
27	97095-06020	BOLT	2				



**FIG. 4 CYLINDER & CRANKCASE 2**

REF. NO.	PART NO.	DESCRIPTION	6C52				REMARKS
28	92995-06600	WASHER	2				
29	6G8-15363-00	PLUG, OIL	1				
30	93210-24M79	O-RING	1				
31	6C5-1531A-01	HOSE, BREATHER 1	1				
32	6C5-15378-00	HOLDER	1				
33	97095-06014	BOLT	1				
34	92995-06600	WASHER	1				
35	6C5-15378-11	HOLDER	1				
36	97095-06014	BOLT	1				
37	92995-06600	WASHER	1				
38	62Y-11119-00	HANGER, ENGINE	1				
39	97095-06020	BOLT	2				
40	92995-06600	WASHER	2				
41	62Y-12138-60	MARK, CAUTION	1				
42	94702-00418	PLUG, SPARK (NGK DPR6EB)	4				

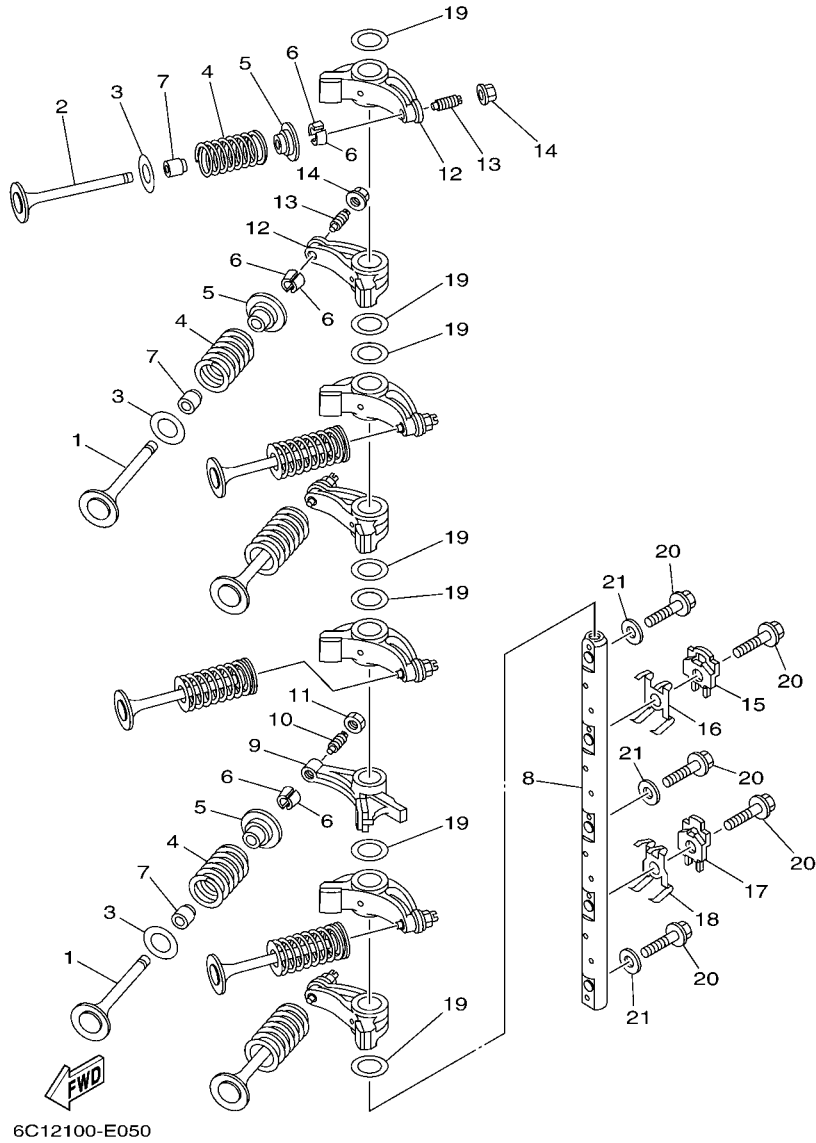


FIG. 5 VALVE

REF. NO.	PART NO.	DESCRIPTION	6C52				REMARKS
1	69W-12111-00	VALVE, INTAKE	4				
2	69W-12121-00	VALVE, EXHAUST	4				
3	62Y-12116-00	SEAT, VALVE SPRING	8				
4	51Y-12114-00	SPRING, VALVE OUTER	8				
5	30X-12117-00	RETAINER, VALVE SPRING	8				
6	30X-12118-00	COTTER, VALVE	16				
7	51Y-12119-00	SEAL, VALVE STEM	8				
8	6C5-12146-00	SHAFT, ROCKER	1				
9	62Y-12151-00	ARM, VALVE ROCKER	1				
10	64J-12159-00	SCREW, VALVE ADJUSTING	1				
11	62Y-12158-00	NUT, LOCK	1				
12	6C5-12151-00	ARM, VALVE ROCKER	7				
13	6C5-12159-00	SCREW, VALVE ADJUSTING	7				
14	6C5-12158-00	NUT, LOCK	7				
15	6C5-12231-00	GUIDE, STOPPER 1	1				
16	6C5-12233-00	PLATE, GUIDE STOPPER 1	1				
17	6C5-12241-00	GUIDE, STOPPER 2	1				
18	6C5-12243-00	PLATE, GUIDE STOPPER 2	1				
19	90201-16014	WASHER, PLATE	7				
20	90105-08060	BOLT, FLANGE	5				
21	92990-08200	WASHER, PLAIN	3				

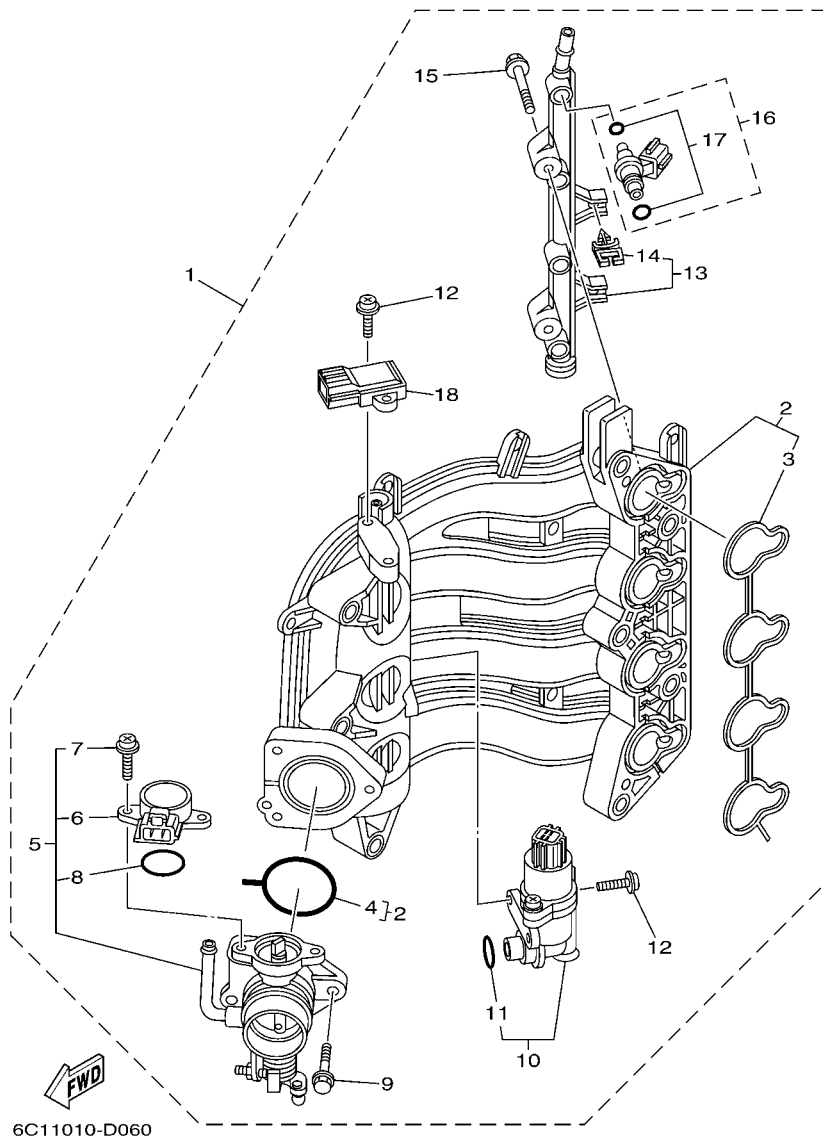
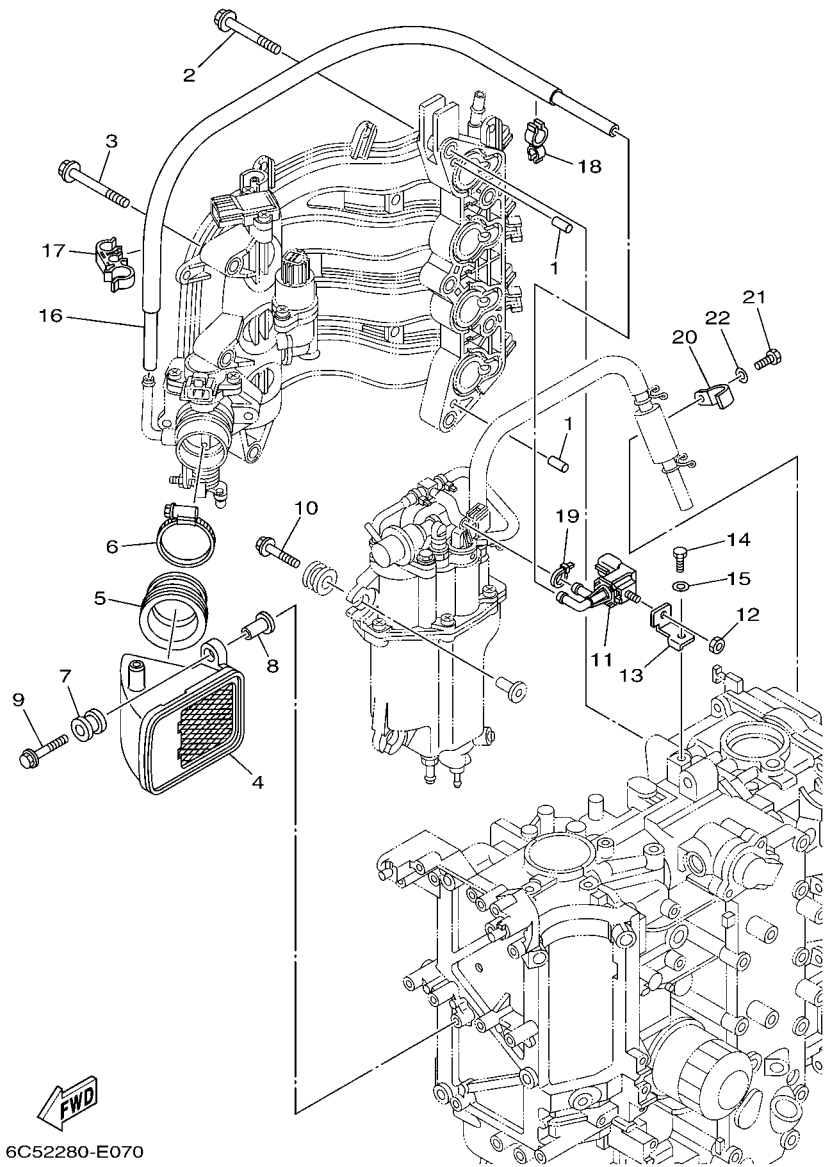


FIG. 6 INTAKE 1

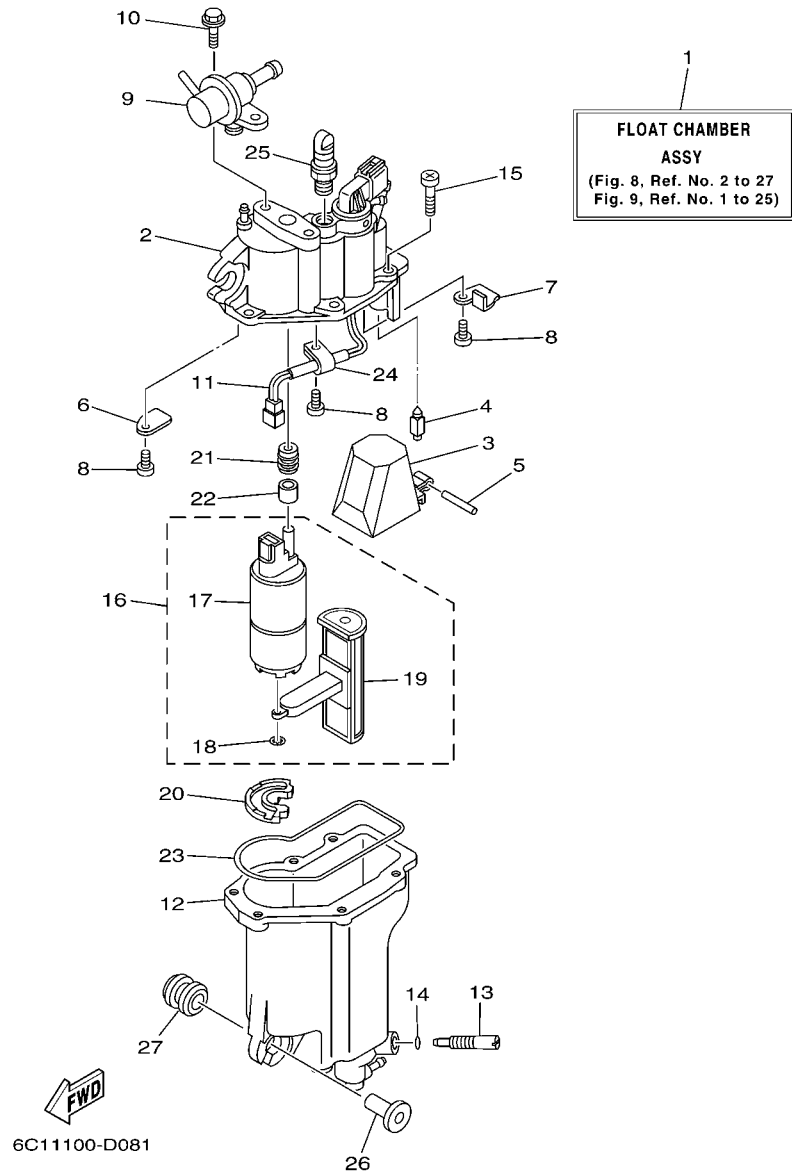
REF. NO.	PART NO.	DESCRIPTION	6C52				REMARKS
1	6C5-14200-00	INTAKE ASSY	1				
2	6C5-13641-00	.MANIFOLD 1	1				
3	6C5-13645-00	..GASKET, MANIFOLD 1	1				
4	6C5-13557-00	..GASKET	1				
5	6C5-13750-00	.THROTTLE BODY ASSY	1				
6	6C5-85885-00	..THROTTLE SENSOR ASSY	1				
7	6C5-81145-00	..SCREW 1	2				
8	6C5-8182L-00	..O-RING 1	1				
9	6C5-14496-00	.BOLT	3				
10	6C5-13105-01	.CONTROL VALVE ASSY	1				
11	6C5-14397-00	..O-RING	1				
12	6C5-81146-00	.SCREW 2	4				
13	6C5-13161-00	.PIPE, DELIVERY 1	1				
14	90464-07M56	..CLAMP	2				
15	6C5-14446-00	.BOLT	2				
16	6C5-13761-00	..INJECTOR ASSY	4				
17	6C5-1410B-00	..PACKING KIT	1				
18	68F-83688-00	.SENSOR ASSY	1				



6C52280-E070

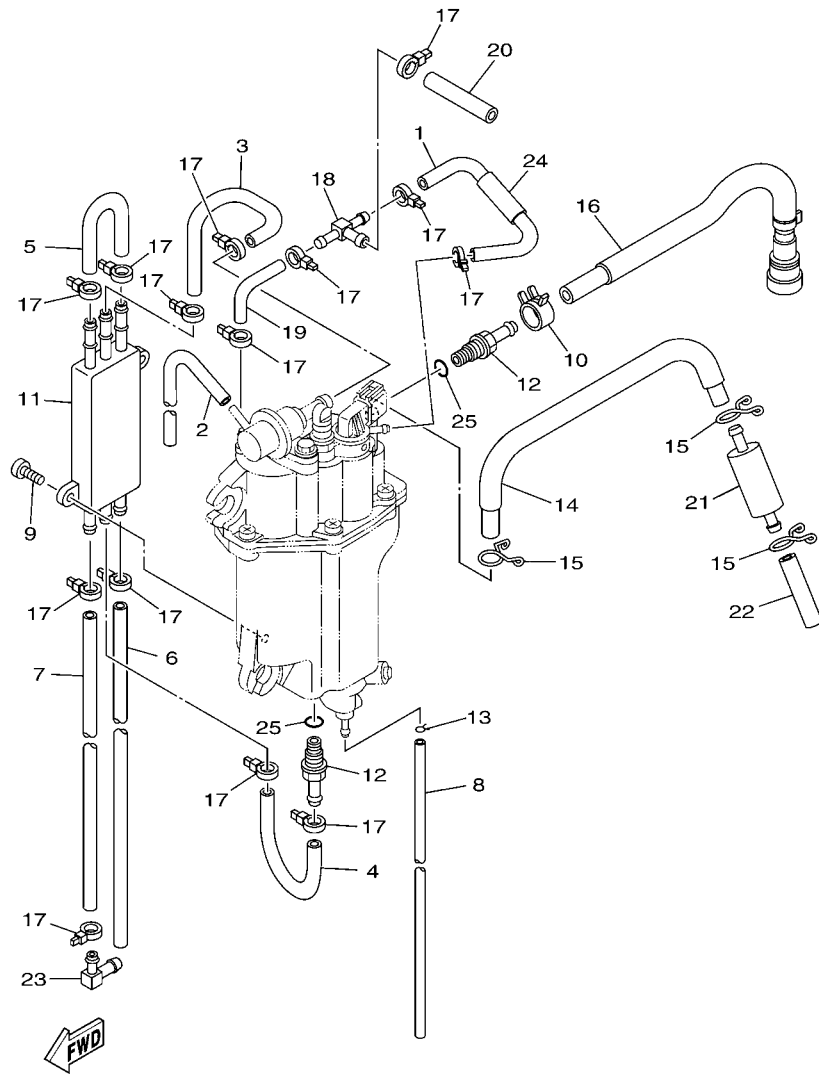
FIG. 7 INTAKE 2

REF. NO.	PART NO.	DESCRIPTION	6C52				REMARKS
1	93608-12M05	PIN, DOWEL	2				
2	90119-08069	BOLT, WITH WASHER	5				
3	90119-06087	BOLT, WITH WASHER	3				
4	6C5-14440-00	SILENCER ASSY, INTAKE	1				
5	6C5-14453-01	JOINT, AIR CLEANER 1	1				
6	90450-50001	HOSE CLAMP ASSY	1				
7	6A0-82317-00	DAMPER, IGNITION COIL	2				
8	90387-06119	COLLAR	2				
9	90119-06106	BOLT, WITH WASHER	2				
10	90119-06M08	BOLT, WITH WASHER	3				
11	6C5-86120-00	SOLENOID VALVE ASSY	1				
12	95380-06600	NUT, HEXAGON	1				
13	6C5-86112-00	STAY, SOLENOID	1				
14	97095-06016	BOLT	1				
15	92995-06600	WASHER	1				
16	6C5-12576-00	HOSE 1	1				
17	90464-15008	CLAMP	1				
18	90464-12006	CLAMP	1				
19	90465-11M10	CLAMP	1				
20	6C5-13428-00	BRACKET, STRAINER 1	1				
21	97095-06016	BOLT	1				
22	92995-06600	WASHER	1				



**FIG. 8 FUEL INJECTION PUMP 1**

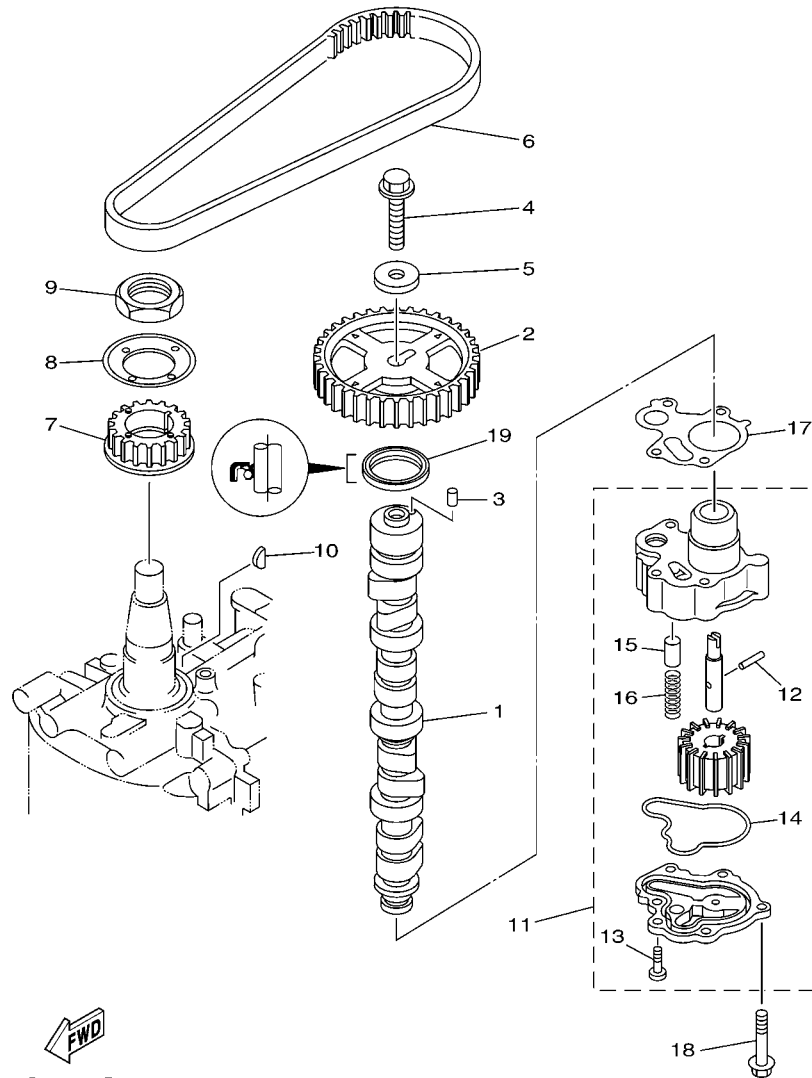
REF. NO.	PART NO.	DESCRIPTION	6C52				REMARKS
1	6C5-14180-10	FLOAT CHAMBER ASSY	1				
2	6C5-14182-10	COVER, FLOAT CHAMBER	1				
3	6C5-14985-00	FLOAT	1				
4	6C5-14546-10	VALVE, NEEDLE	1				
5	6C5-14386-00	PIN, FLOAT	1				
6	6C5-2441R-10	PLATE, BAFFLE 1	1				
7	6C5-2441T-10	PLATE, BAFFLE 2	1				
8	6C5-24453-00	SCREW	3				
9	6C5-13906-10	REGULATOR, PRESSURE	1				
10	6C5-24592-00	BOLT	2				
11	6C5-87226-00	WIRE HARNESS ASSY	1				
12	6C5-14960-10	BODY ASSY	1				
13	6C5-14191-00	PLUG, DRAIN	1				
14	6C5-14397-00	O-RING	1				
15	6C5-14567-00	SCREW	6				
16	6C5-13910-10	FUEL PUMP ASSY	1				
17	6C5-13907-00	.FUEL PUMP COMP.	1				
18	6C5-14127-10	.CLIP	1				
19	6C5-13915-00	.FILTER	1				
20	6C5-13593-00	DAMPER	1				
21	6C5-13781-00	DAMPER, PUMP	1				
22	6C5-13716-00	COLLAR	1				
23	6C5-14984-00	GASKET, FLOAT CHAMBER	1				
24	6C5-21337-10	CLAMP, CABLE	1				
25	6C5-14225-00	CAP	1				
26	90387-06M69	COLLAR	3				
27	90480-09M12	GROMMET	3				



6C11010-D090

FIG. 9 FUEL INJECTION PUMP 2

REF. NO.	PART NO.	DESCRIPTION	6C52				REMARKS
1	6C5-13546-10	HOSE 2	1				
2	6C5-13542-00	HOSE, VACUUM SENSING 1	1				
3	6C5-24321-10	PIPE 10	1				
4	6C5-24322-10	PIPE 11	1				
5	6C5-24323-00	PIPE 12	1				
6	6C5-24324-00	PIPE 13 (L150)	1				
7	6C5-24325-00	PIPE 14 (L110)	1				
8	6C5-14149-00	PIPE (L200)	1				
9	6C5-24444-00	SCREW	2				
10	6C5-13577-00	CLIP	1				
11	6C5-21841-00	COOLER	1				
12	6C5-14251-00	NIPPLE	2				
13	6C5-2411M-00	CLIP	1				
14	6C5-14148-10	PIPE	1				
15	6C5-24387-00	CLIP	3				
16	6C5-13974-00	PIPE, FUEL 4	1				
17	90465-11M10	CLAMP	14				
18	6C5-24379-00	PIPE, JOINT 4	1				
19	6C5-13545-10	HOSE 1	1				
20	6C5-13547-10	HOSE 3	1				
21	6C5-24251-00	STRAINER 1	1				
22	6C5-2451B-10	HOSE, FUEL INLET	1				
23	6C5-1410F-00	CONNECTOR	1				
24	6C5-13548-00	HOSE, AIR 4	1				
25	6C5-13739-00	O-RING	2				



6C11010-D100

FIG. 10 OIL PUMP

REF. NO.	PART NO.	DESCRIPTION	6C52				REMARKS
1	6C5-12171-00	CAMSHAFT 1	1				
2	6C5-11537-00	GEAR, DRIVEN	1				
3	93605-17002	PIN, DOWEL	1				
4	95817-10035	BOLT, FLANGE	1				
5	90201-10144	WASHER, PLATE	1				
6	6C5-46241-00	V-BELT	1				
7	6C5-11536-00	GEAR, DRIVE	1				
8	62Y-11557-00	WASHER 1	1				
9	90170-35008	NUT	1				
10	90280-03M01	KEY, WOODRUFF	1				
11	6C5-13300-00	OIL PUMP ASSY	1				
12	93603-17070	.PIN, DOWEL	1				
13	98580-06016	.SCREW, PAN HEAD	2				
14	6C5-13142-00	.GASKET	1				
15	6G8-11577-00	.PLUNGER, RELIEF	1				
16	90501-6C500	.SPRING, COMPRESSION	1				
17	6C5-13329-00	GASKET, PUMP COVER	1				
18	90119-06025	BOLT, WITH WASHER	4				
19	93102-37M40	OIL SEAL	1				



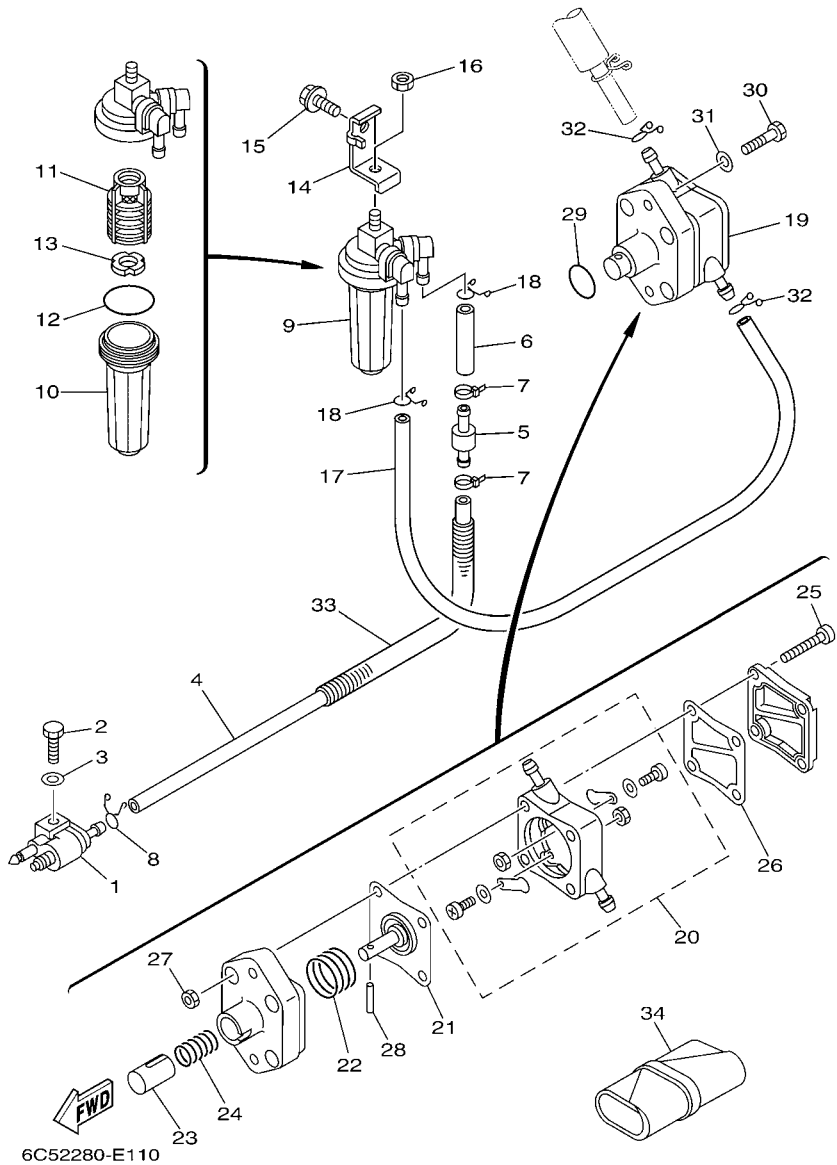


FIG. 11 FUEL 1

REF. NO.	PART NO.	DESCRIPTION	6C52				REMARKS
1	6G1-24304-02	FUEL PIPE JOINT COMP. 1	1				
2	97095-06025	BOLT	1				
3	92995-06600	WASHER	1				
4	6C5-2247A-00	HOSE 1	1				
5	67F-24377-00	PIPE, JOINT 3	1				
6	90445-13M02	HOSE (L40)	1				
7	90465-11M10	CLAMP	2				
8	90467-09M17	CLIP	1				
9	68V-24560-01	FILTER ASSY	1				
10	68V-24521-01	.CUP, FILTER	1				
11	68V-24563-00	.ELEMENT, FILTER	1				
12	93210-32738	.O-RING	1				
13	68V-24469-01	.FLOAT, WATER LEVEL	1				
14	6C5-24566-01	BRACKET, FILTER	1				
15	95895-08016	BOLT, FLANGE	1				
16	95380-08600	NUT	1				
17	90445-13M36	HOSE (L350)	1				
18	90467-10M04	CLIP	2				
19	6C5-24410-00	FUEL PUMP ASSY	1				
20	6C5-24415-00	.BODY 4	1				
21	62Y-24411-02	.DIAPHRAGM	1				
22	62Y-24423-00	.SPRING, DIAPHRAGM	1				
23	62Y-13131-00	.PLUNGER	1				
24	62Y-24454-00	.SPRING	1				
25	62Y-24444-01	.SCREW	4				
26	6C5-24471-00	.DIAPHRAGM	1				
27	95380-05600	.NUT	4				

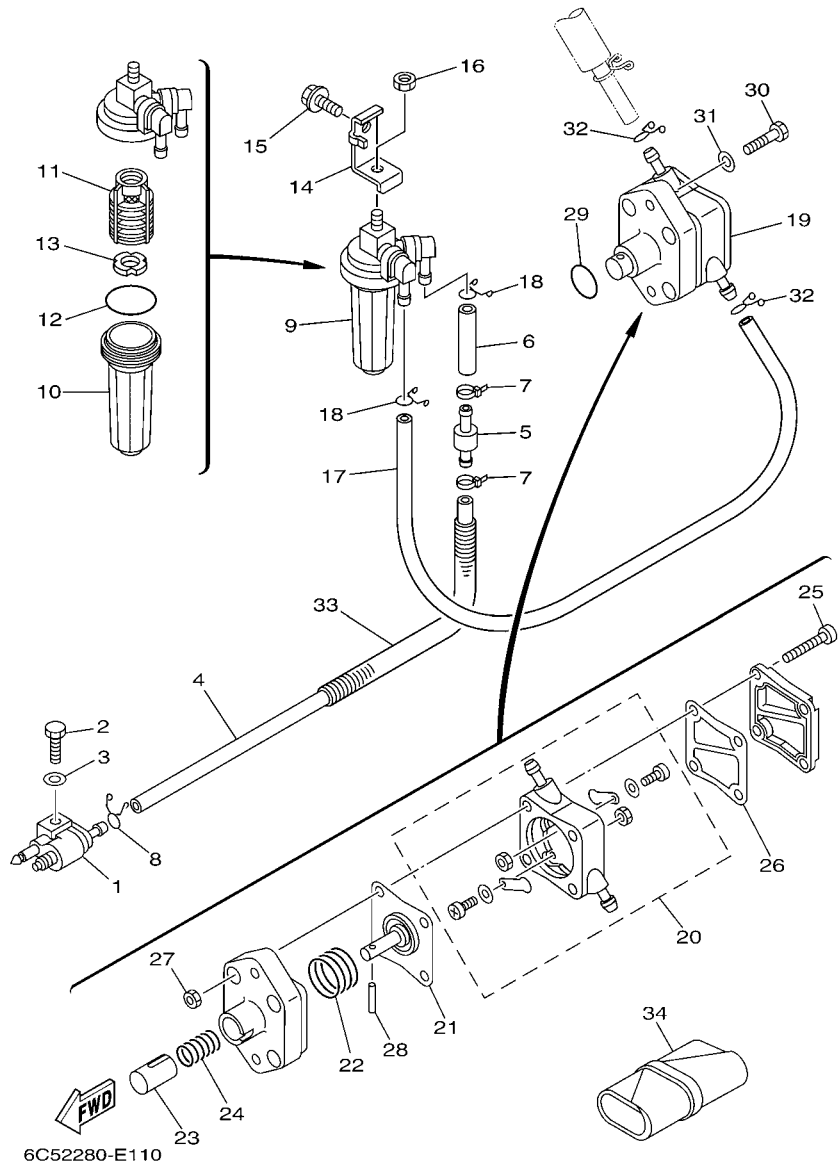
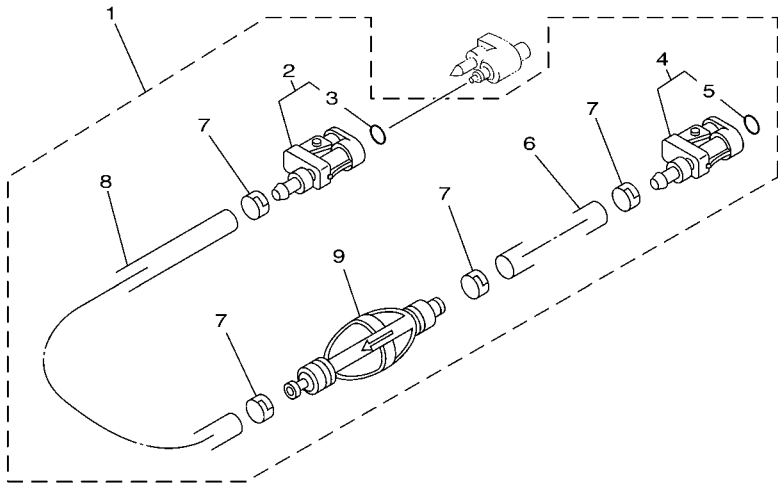


FIG. 11 FUEL 1

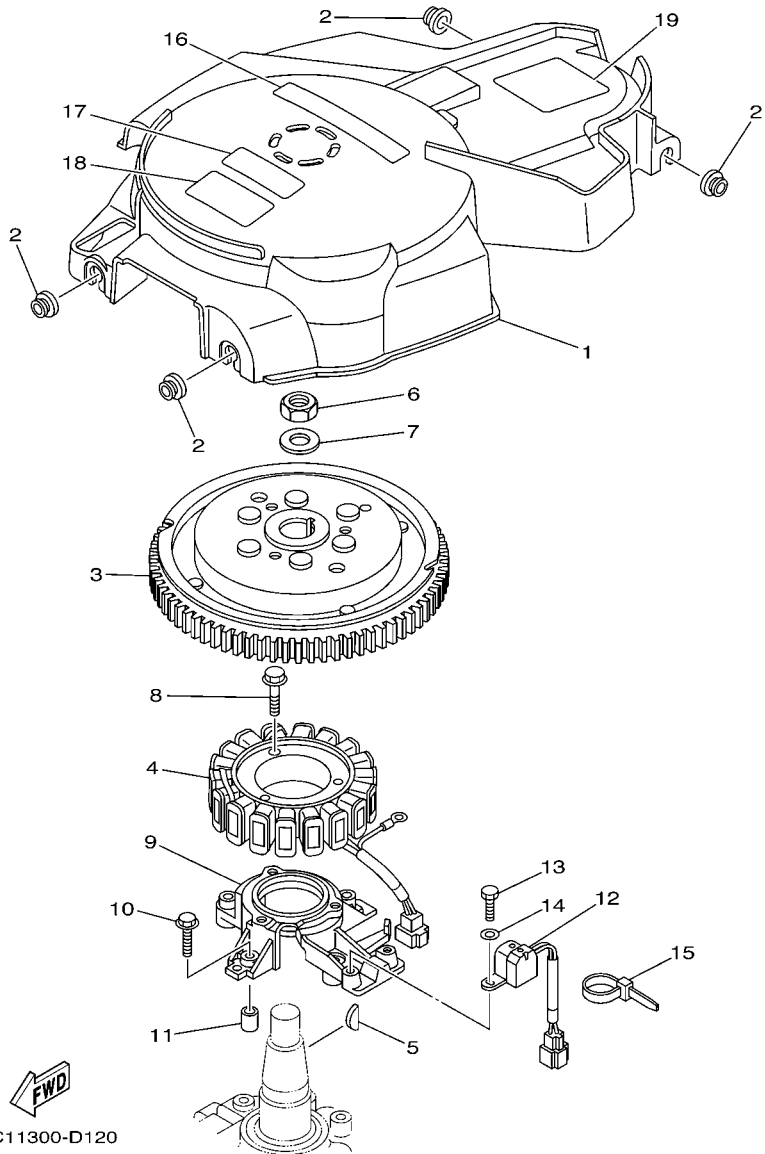
REF. NO.	PART NO.	DESCRIPTION	6C52			REMARKS
28	62Y-24374-01	.PIN	1			
29	93210-24M79	O-RING	1			
30	97095-06030	BOLT	2			
31	92995-06600	WASHER	2			
32	90467-10M04	CLIP	2			
33	90446-14M62	HOSE (L320)	1			
34	6C5-28100-00	TOOL KIT	1			AP

FIG. 12 FUEL 2

REF. NO.	PART NO.	DESCRIPTION	6CS2				REMARKS
1	6Y2-24306-56	FUEL PIPE COMP. 1	1				AP
2	6E5-24305-06	.FUEL PIPE JOINT COMP. 2	1				
3	93210-08287	..O-RING	1				
4	6Y2-24305-06	.FUEL PIPE JOINT COMP. 2	1				
5	93210-08287	..O-RING	1				
6	90445-13M01	.HOSE (L2050)	1				
7	6E5-24351-51	.BAND 1	4				
8	90445-13M00	.HOSE (L850)	1				
9	6Y2-24360-60	.PRIMER PUMP ASSY	1				



68R3100-C100



6C11300-D120

FIG. 13 GENERATOR

REF. NO.	PART NO.	DESCRIPTION	6C52				REMARKS
1	6C5-81337-00	COVER, FLYWHEEL	1				
2	90480-12072	GROMMET	4				
3	6C5-81450-00	ROTOR ASSY	1				
4	6C5-81410-00	STATOR ASSY	1				
5	6H4-11545-00	KEY, WOODRUFF	1				
6	90170-20137	NUT	1				
7	90201-21M18	WASHER, PLATE	1				
8	95023-06030	BOLT	3				
9	6C5-85561-00-94	BASE, MAGNETO	1				
10	95023-06030	BOLT	4				
11	99530-08012	PIN, DOWEL	2				
12	62Y-85580-00	COIL, PULSER	1				
13	97095-05012	BOLT	2				
14	92995-05600	WASHER	2				
15	90465-13M97	CLAMP	1				
16	6C5-13437-61	MARK, CAUTION	1				
17	6A1-83625-41	MARK 5	1				
18	6A1-83625-51	MARK 5	1				
19	62Y-83626-00	MARK 6	1				

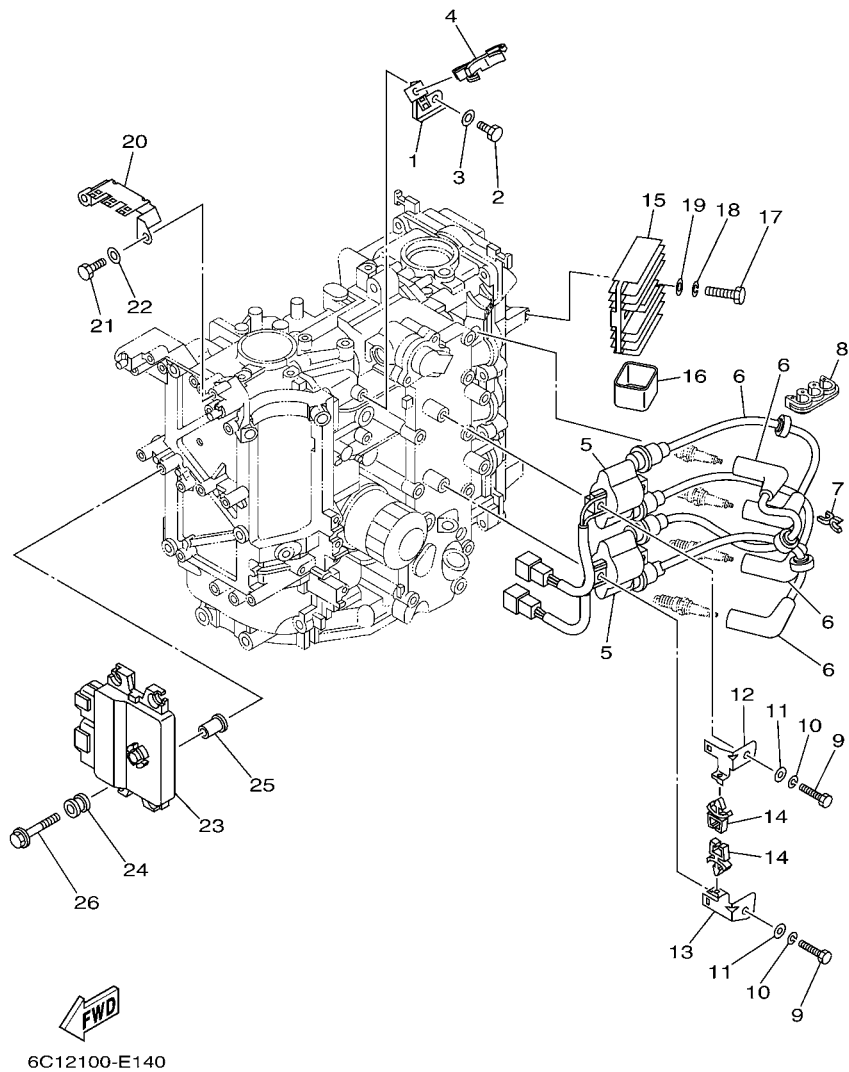


FIG. 14 ELECTRICAL 1

REF. NO.	PART NO.	DESCRIPTION	6C52				REMARKS
1	6C5-85525-00	COVER	1				
2	97095-06014	BOLT	1				
3	92995-06600	WASHER	1				
4	90464-18246	CLAMP	1				
5	63P-82310-01	IGNITION COIL ASSY	2				
6	6C5-82340-01	HIGH TENSION CORD ASSY 1	4				
7	90464-07M41	CLAMP	2				
8	90464-07M05	CLAMP	1				
9	97095-06030	BOLT	4				
10	92995-06100	WASHER, SPRING	4				
11	92995-06600	WASHER	4				
12	6C5-82316-01	BRACKET, IGNITION COIL	1				
13	6C5-82316-11	BRACKET, IGNITION COIL	1				
14	90464-06001	CLAMP	2				
15	68V-81960-00	RECTIFIER & REGULATOR ASSY	1				
16	6C5-81961-00	COVER	1				
17	97095-06025	BOLT	2				
18	92995-06100	WASHER, SPRING	2				
19	92995-06600	WASHER	2				
20	6C5-82171-00	STAY, FUSE BOX	1				
21	97095-06014	BOLT	2				
22	92995-06600	WASHER	2				
23	6C5-8591A-30	ENGINE CONTROL UNIT ASSY	1				
24	6C5-82317-00	DAMPER, IGNITION COIL	4				
25	90387-06119	COLLAR	4				
26	90119-06M59	BOLT, WITH WASHER	4				

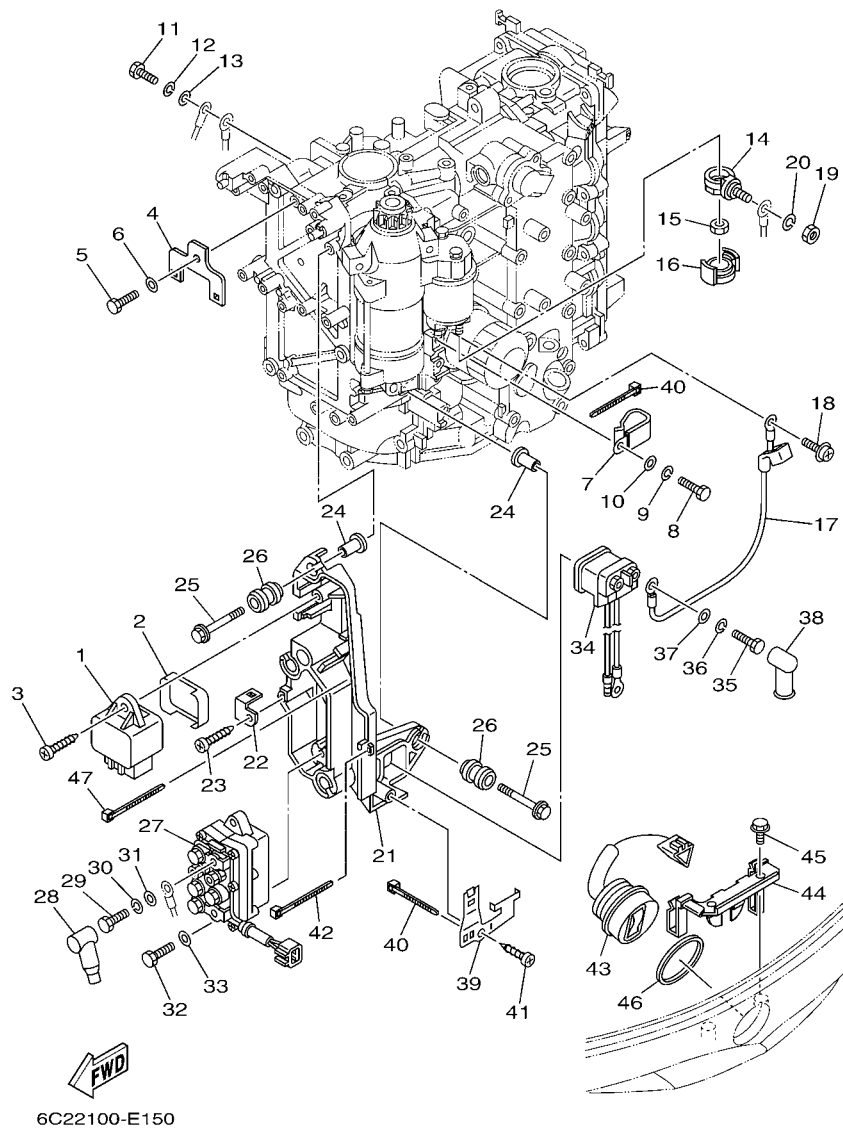
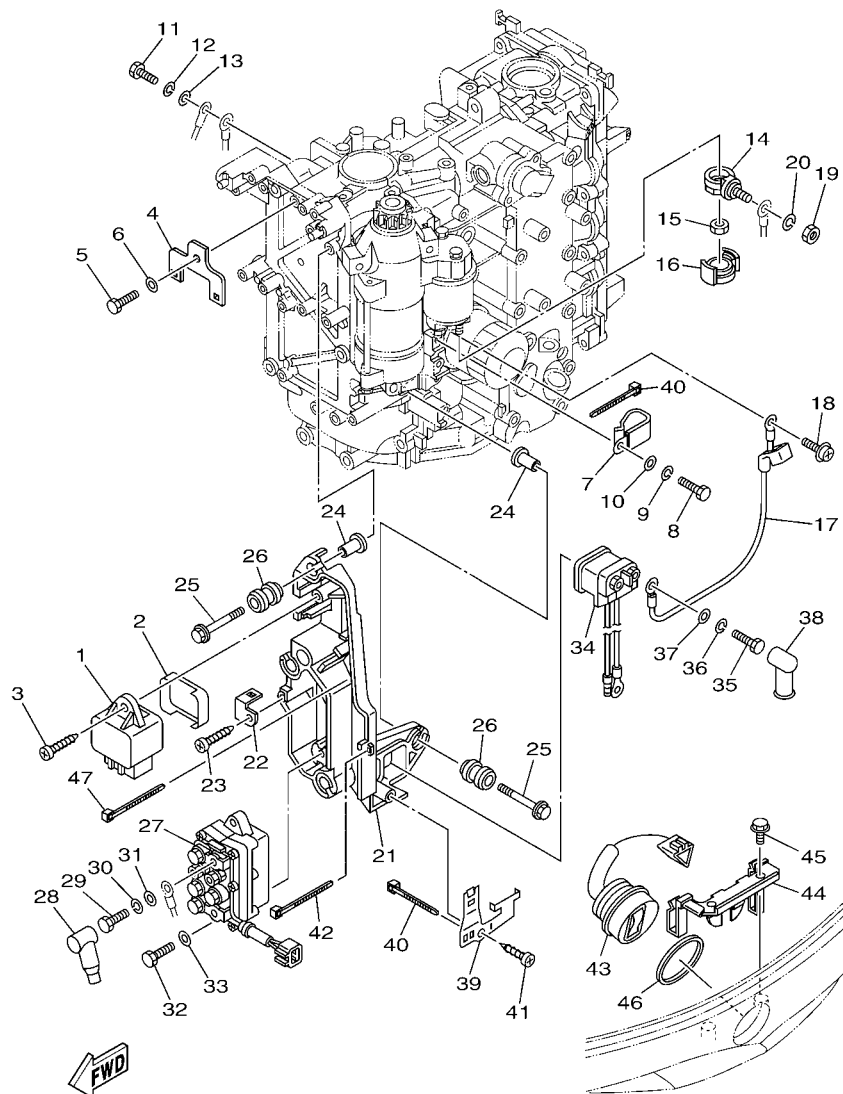


FIG. 15 ELECTRICAL 2

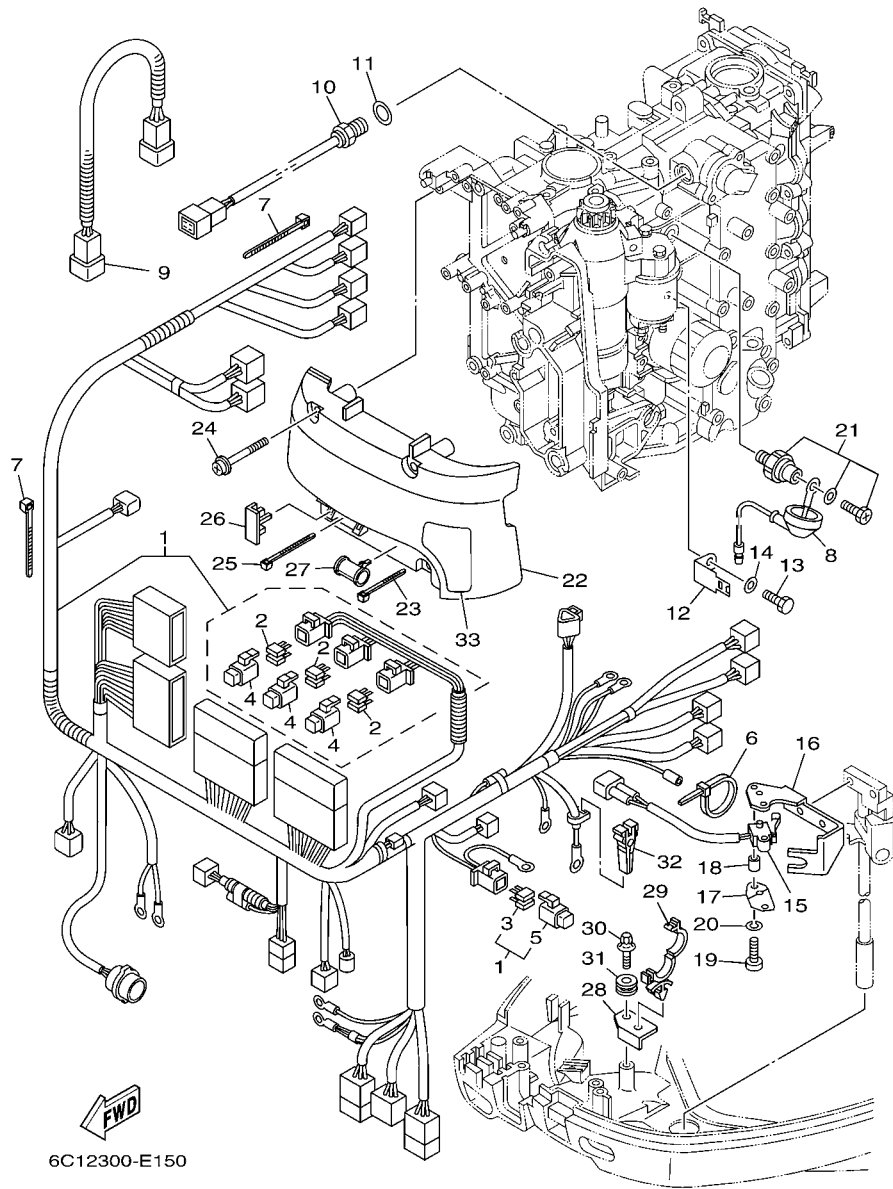
REF. NO.	PART NO.	DESCRIPTION	6C52				REMARKS
1	60E-81950-00	RELAY ASSY	1				
2	6C5-81336-00	GROMMET	1				
3	97780-60620	SCREW, TAPPING	1				
4	6C5-8257V-00	PLATE, CONNECTOR	1				
5	97095-06014	BOLT	1				
6	92995-06600	WASHER	1				
7	90465-05M87	CLAMP	1				
8	97095-06020	BOLT	4				
9	92995-06100	WASHER, SPRING	4				
10	92995-06600	WASHER	4				
11	97095-06020	BOLT	1				
12	92995-06100	WASHER, SPRING	1				
13	92995-06600	WASHER	1				
14	60V-81925-00	TERMINAL	1				
15	90179-08003	NUT	1				
16	68F-82582-00	COVER, WIRE HARNESS	1				
17	6C5-81815-00	CORD, STARTER MOTOR	1				
18	90159-04005	SCREW, WITH WASHER	1				
19	95333-08600	NUT	1				
20	92903-08100	WASHER, SPRING	1				
21	6C5-81948-00	BRACKET	1				
22	6C5-85548-00	HOLDER	1				
23	97780-60620	SCREW, TAPPING	1				
24	90387-06119	COLLAR	4				
25	90119-06M59	BOLT, WITH WASHER	4				
26	6A0-82317-00	DAMPER, IGNITION COIL	4				
27	63P-81950-00	RELAY ASSY	1				



6C22100-E150

FIG. 15 ELECTRICAL 2

REF. NO.	PART NO.	DESCRIPTION	6C52				REMARKS
28	682-82119-01	COVER, LEAD WIRE	2				
29	97095-06010	BOLT	2				
30	92995-06100	WASHER, SPRING	2				
31	92995-06600	WASHER	2				
32	97013-06020	BOLT	2				
33	92903-06600	WASHER, PLATE	2				
34	68V-8194A-00	RELAY	1				
35	97095-06010	BOLT	2				
36	92995-06100	WASHER, SPRING	2				
37	92995-06600	WASHER	2				
38	6G5-82119-00	COVER, LEAD WIRE	2				
39	6C5-81953-00	STAY, RELAY	1				
40	90465-11M10	CLAMP	2				
41	97780-60620	SCREW, TAPPING	1				
42	90465-13M97	CLAMP	1				
43	63D-82563-10	TRIM & TILT SWITCH ASSY	1				
44	6C5-83614-01	BRACKET	1				
45	90109-06M86	BOLT	2				
46	6E5-82587-00	GASKET	1				
47	90465-13M97	CLAMP	1				

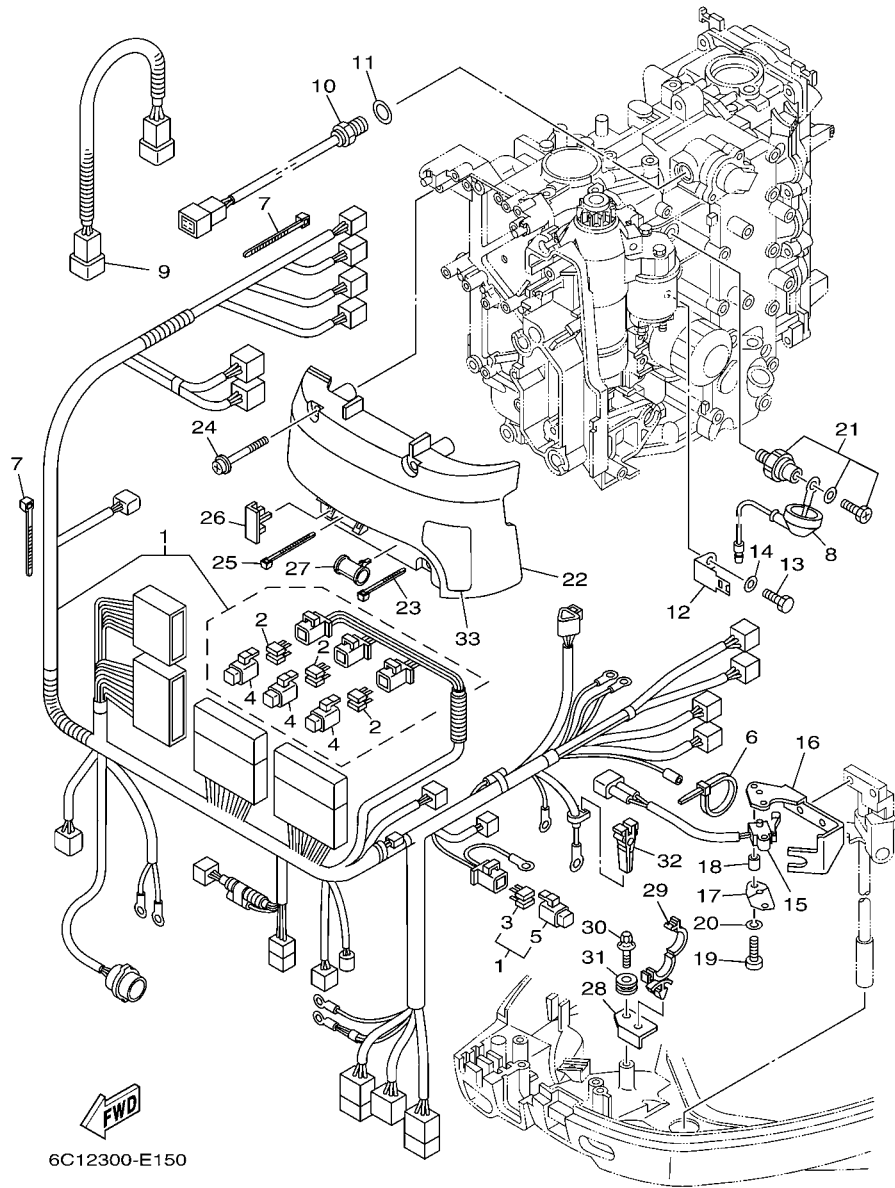


6C12300-E150

FIG. 16 ELECTRICAL 3

REF. NO.	PART NO.	DESCRIPTION	6C52				REMARKS
1	6C5-82590-11	WIRE HARNESS ASSY	1				
2	67F-82151-00	.FUSE (20A)	6				
3	67F-82151-10	.FUSE (30A)	2				
4	67F-8215B-10	.CAP (YELLOW)	3				
5	67F-8215B-20	.CAP (GREEN)	1				
6	90465-13M24	CLAMP	1				
7	90465-13M11	CLAMP	2				
8	68V-81315-00	LEAD WIRE ASSY	1				
9	6C5-82553-00	EXTENSION, WIRE LEAD	1				
10	6C5-85790-00	THERMOSENSOR ASSY	1				
11	90430-14115	GASKET	1				
12	6C5-82388-00	PLATE	1				
13	97095-06014	BOLT	1				
14	92995-06600	WASHER	1				
15	60V-8259F-00	SWITCH ASSY	1				
16	6C5-82554-01	STAY, NEUTRAL SWITCH	1				
17	61A-82588-01	PLATE	1				
18	90387-04001	COLLAR	1				
19	97885-04016	SCREW, PAN HEAD	2				
20	92995-04100	WASHER	2				
21	64J-82504-00	OIL PRESSURE SWITCH ASSY	1				
22	6C5-81942-00	COVER	1				
23	90465-13M39	CLAMP	1				
24	90159-06M14	SCREW, WITH WASHER	4				
25	90465-13M24	CLAMP	1				
26	6C5-82176-00	DAMPER	2				
27	6C5-8252R-00	DAMPER	1				





**FIG. 16 ELECTRICAL 3**

REF. NO.	PART NO.	DESCRIPTION	6C52				REMARKS
28	6C5-42811-00	STAY	1				
29	90464-18007	CLAMP	1				
30	90119-06077	BOLT, WITH WASHER	1				
31	90480-13598	GROMMET	1				
32	67F-2812A-00	PULLER, FUSE	1				
33	6C5-81919-00	GRAPHIC, REGULATOR	1				
-----							
-----							
-----							
-----							
-----							
-----							
-----							
-----							
-----							
-----							
-----							

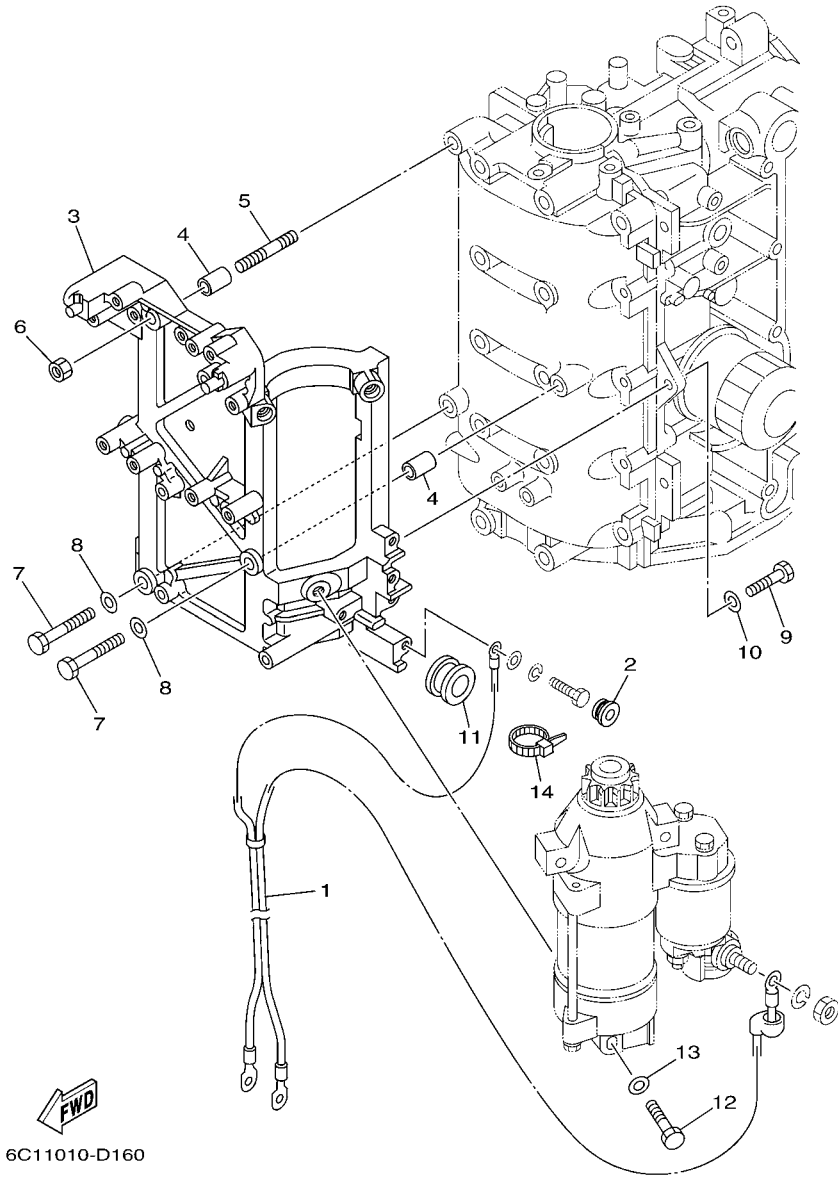
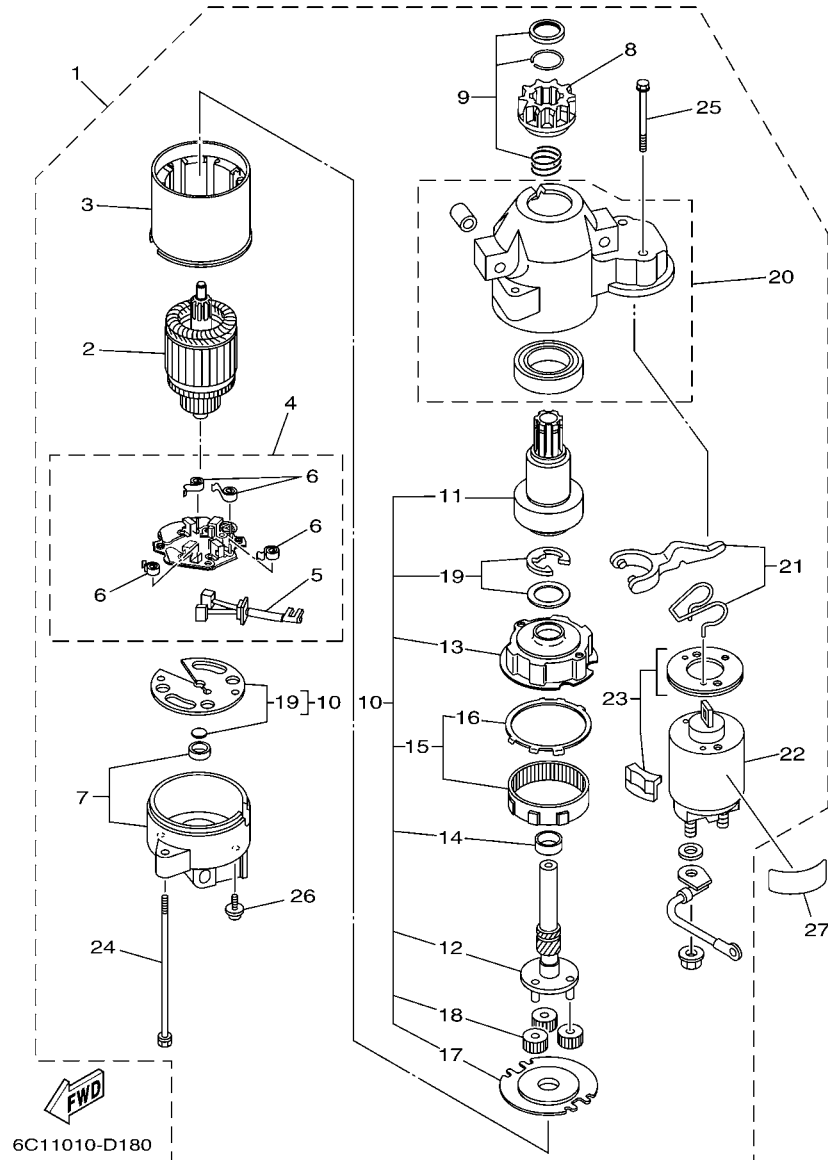


FIG. 17 ELECTRICAL 4

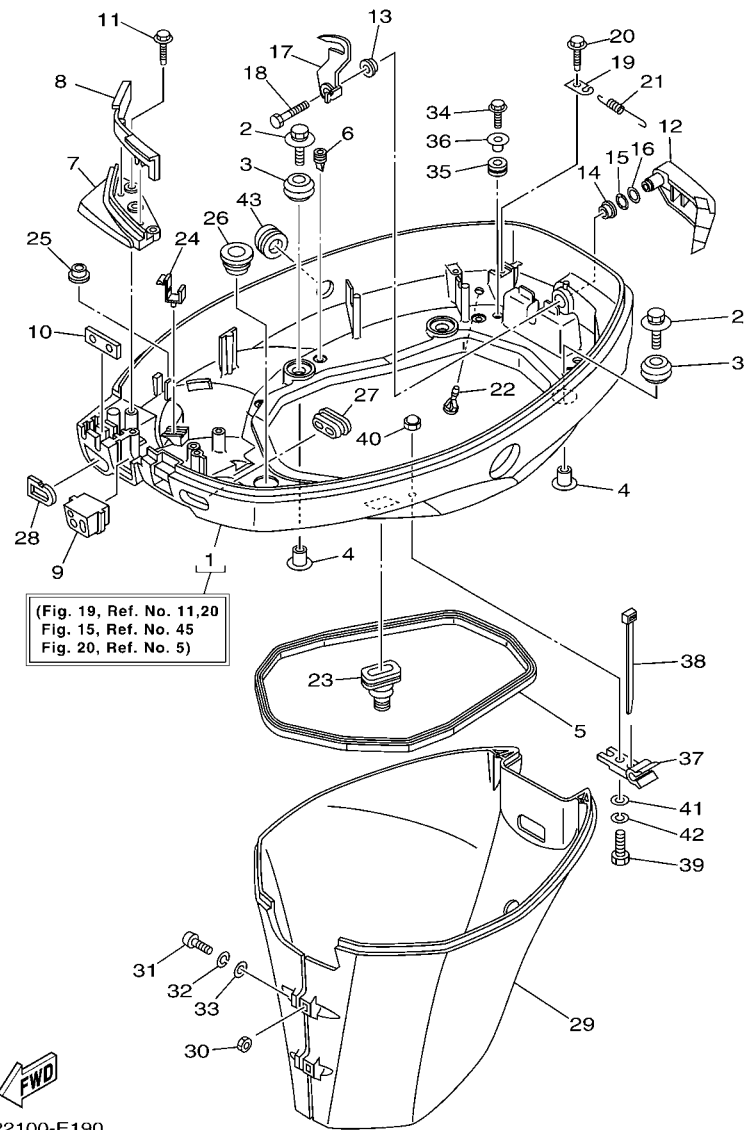
REF. NO.	PART NO.	DESCRIPTION	6C52				REMARKS
1	6C5-82105-U0	WIRE HARNESS	1				
2	90480-12072	GROMMET	1				
3	6C5-81822-00-94	BRACKET, STARTING MOTOR	1				
4	99590-10114	PIN, DOWEL	2				
5	95680-08330	BOLT, STUD	1				
6	95380-08600	NUT	1				
7	97095-08035	BOLT	2				
8	92995-08600	WASHER	2				
9	97095-08025	BOLT	2				
10	92995-08600	WASHER	2				
11	90480-24003	GROMMET	1				
12	97013-08045	BOLT	3				
13	92903-08600	WASHER, PLATE	3				
14	90465-13M18	CLAMP	1				



6C11010-D180

FIG. 18 STARTING MOTOR

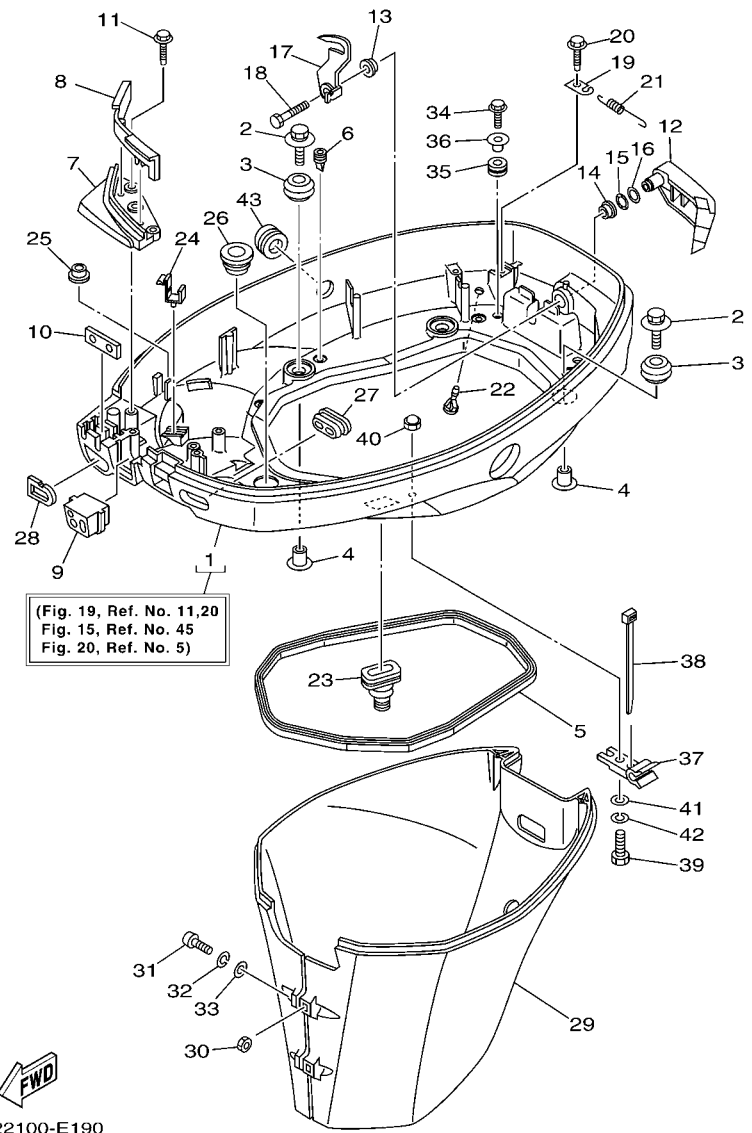
REF. NO.	PART NO.	DESCRIPTION	6C52				REMARKS
1	6C5-81800-00	STARTING MOTOR ASSY	1				
2	67F-81850-00	.ARMATURE ASSY	1				
3	67F-81810-00	.STATOR ASSY	1				
4	69J-81840-00	.BRUSH HOLDER ASSY	1				
5	69J-81801-00	..BRUSH SET	1				
6	67F-81813-00	..SPRING, BRUSH	4				
7	68F-81820-00	.REAR BRACKET ASSY	1				
8	67F-81808-00	.PINION ASSY	1				
9	67F-81857-00	.PINION STOPPER SET	1				
10	67F-81807-00	.GEAR ASSY, STARTING MOTOR	1				
11	67F-81832-00	..CLUTCH, OVER RUN	1				
12	67F-81836-00	..SHAFT, PINION	1				
13	67F-81821-00	..BRACKET, CENTER 1	1				
14	67F-81841-00	..BEARING	1				
15	67F-81891-00	..GEAR, RING	1				
16	67F-8183R-00	...GASKET	1				
17	67F-81830-00	..BRACKET, CENTER 2	1				
18	60V-8183T-00	..GEAR, IDLER	3				
19	67F-81809-00	..WASHER KIT	1				
20	60X-81842-00	.COVER	1				
21	69J-81839-00	.LEVER ASSY	1				
22	6C5-81941-00	.STARTER RELAY ASSY	1				
23	69J-81869-00	.COVER, DUST	1				
24	6K7-81826-10	.BOLT	2				
25	69J-81828-00	.BOLT 2	2				
26	67F-81846-00	.SCREW	2				
27	67F-83627-01	LABEL, CAUTION 7	1				



6C22100-E190

FIG. 19 BOTTOM COWLING 1

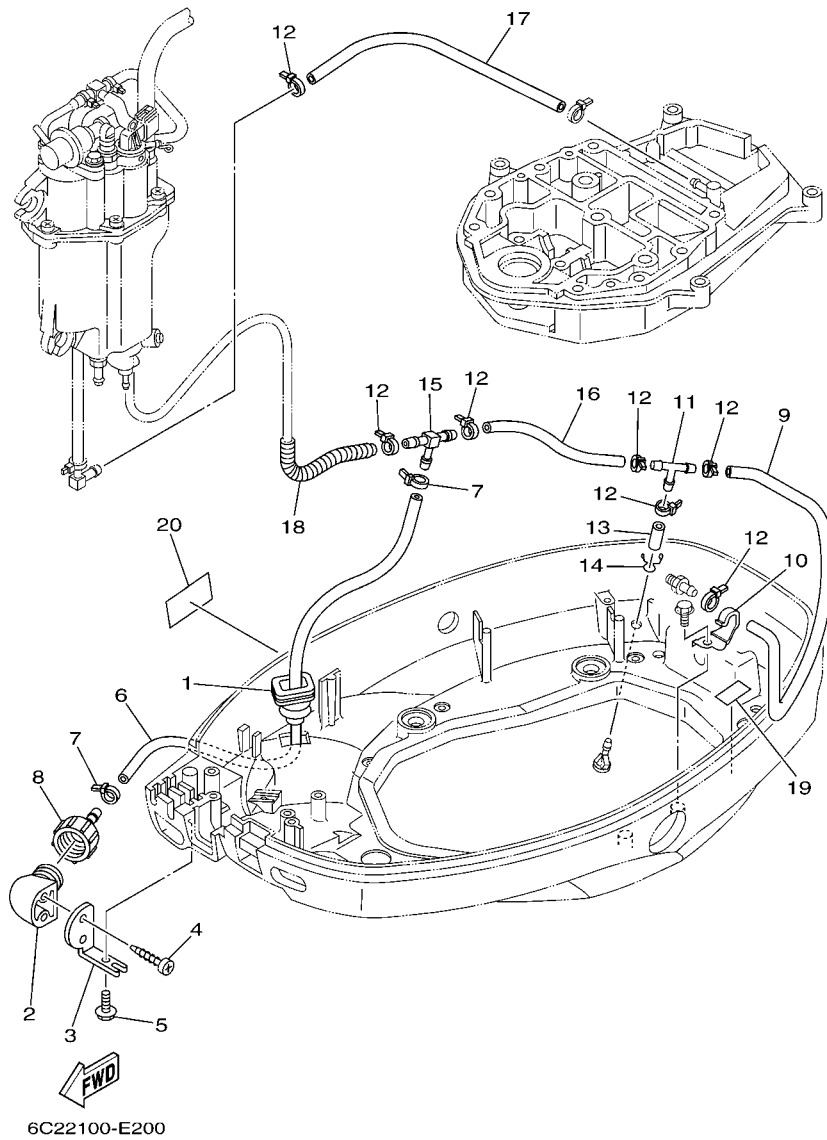
REF. NO.	PART NO.	DESCRIPTION	6C52				REMARKS
1	6C5-42710-10-4D	BOTTOM COWLING ASSY	1				
2	90119-06M08	BOLT, WITH WASHER	4				
3	90480-09M12	GROMMET	4				
4	90387-06060	COLLAR	4				
5	62Y-42716-00	RUBBER, SEAL 1	1				
6	65W-42717-00	RUBBER, SEAL 2	4				
7	6C5-42738-00-4D	PLATE, FITTING	1				
8	6C5-42718-00	RUBBER, SEAL 3	1				
9	6C5-42725-30	GROMMET	1				
10	62Y-42727-00	GROMMET	1				
11	90109-06M81	BOLT	3				
12	67C-42815-00-4D	LEVER, CLAMP	1				
13	90386-12M37	BUSH	1				
14	90386-12MA2	BUSH	1				
15	90206-12052	WASHER, WAVE	1				
16	90201-12M07	WASHER, PLATE	1				
17	67C-42816-01	LEVER, CLAMP	1				
18	97095-06014	BOLT	1				
19	66T-43144-00	HOOK, SPRING	1				
20	90109-06M86	BOLT	1				
21	90506-18M40	SPRING, TENSION	1				
22	6H3-44391-01	NIPPLE, HOSE	1				
23	6C5-42724-00	GROMMET	1				
24	90464-09M13	CLAMP	1				
25	6E7-82317-00	DAMPER, IGNITION COIL	1				
26	68U-42727-00	GROMMET	1				
27	6H3-42727-00	GROMMET	1				



6C22100-E190

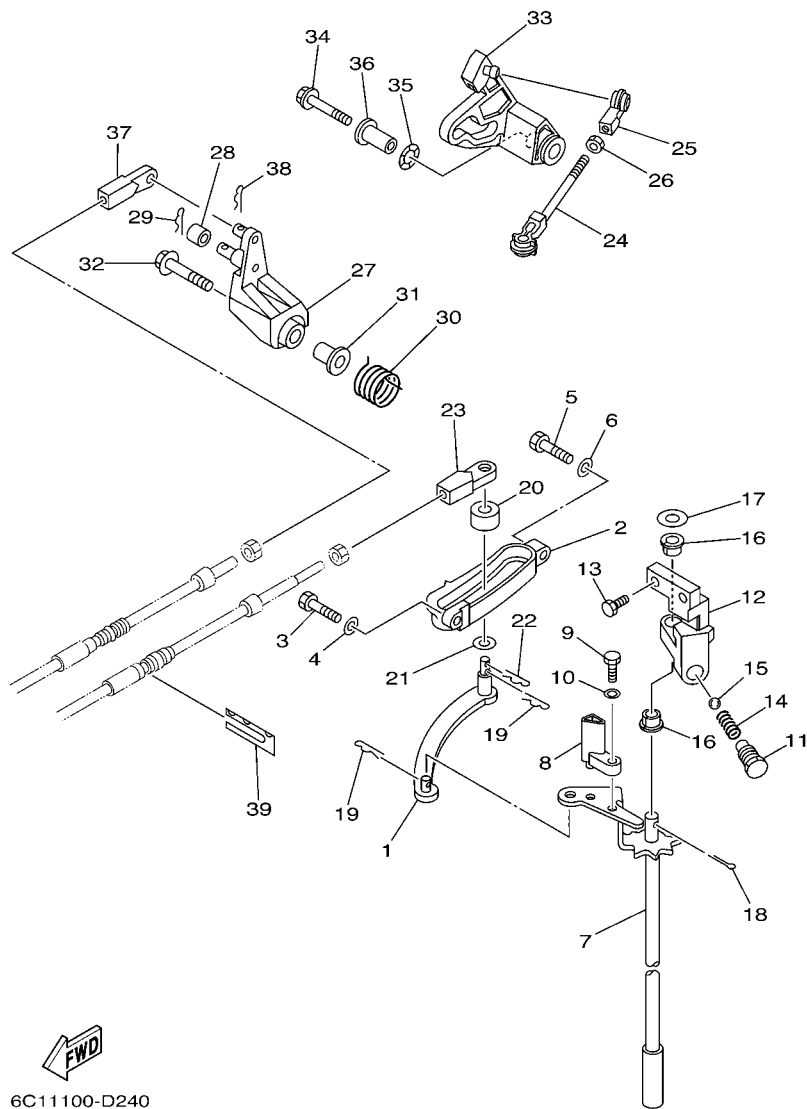
FIG. 19 BOTTOM COWLING 1

REF. NO.	PART NO.	DESCRIPTION	6C52				REMARKS
28	61N-24329-00	SEAL	1				
29	67C-42741-10-4D	APRON	1				
30	95380-06600	NUT, HEXAGON	2				
31	97880-06025	SCREW, PAN HEAD	2				
32	92990-06100	WASHER, SPRING	2				
33	92990-06600	WASHER, PLATE	2				
34	90109-06M80	BOLT	2				
35	90480-13M24	GROMMET	2				
36	90387-06M43	COLLAR	2				
37	90464-09M49	CLAMP	1				
38	90465-11M10	CLAMP	2				
39	97095-06020	BOLT	1				
40	95380-06800	NUT	1				
41	92990-06600	WASHER, PLATE	1				
42	92995-06100	WASHER, SPRING	1				
43	6C5-42726-00	GROMMET	1				



**FIG. 20 BOTTOM COWLING 2**

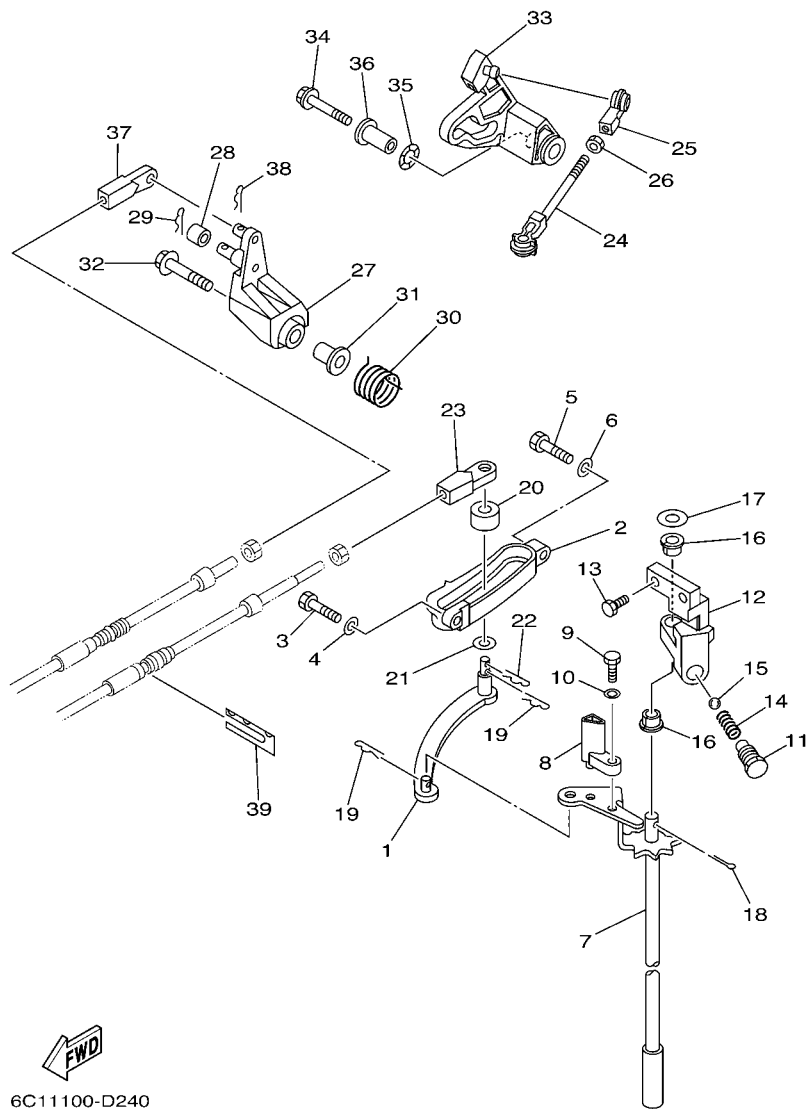
REF. NO.	PART NO.	DESCRIPTION	6C52				REMARKS
1	65W-42724-10	GROMMET	1				
2	68T-12572-00	ADAPTER	1				
3	69W-12535-00	PLATE	1				
4	90167-06002	SCREW, TAPPING	2				
5	90109-06M80	BOLT	1				
6	6C5-24312-00	PIPE 2	1				
7	90465-11M10	CLAMP	2				
8	6R3-12580-00	JOINT ASSY	1				
9	90445-09226	HOSE (L390)	1				
10	90462-08031	CLAMP	1				
11	688-24378-00	PIPE, JOINT 4	1				
12	90465-11M10	CLAMP	7				
13	90445-09220	HOSE (L30)	1				
14	90467-08M18	CLIP	1				
15	6C5-24378-00	PIPE, JOINT 4	1				
16	90445-09091	HOSE (L135)	1				
17	90445-09104	HOSE (L300)	1				
18	90447-10006	HOSE, WITH SPRING	1				
19	6C5-82377-00	LABEL	1				
20	62Y-13444-50	MARK	1				



6C11100-D240

FIG. 21 CONTROL

REF. NO.	PART NO.	DESCRIPTION	6C52				REMARKS
1	69W-44121-00	LEVER, SHIFT ROD	1				
2	62Y-44117-01-4D	BRACKET	1				
3	97095-06020	BOLT	1				
4	92995-06600	WASHER	1				
5	97095-06025	BOLT	1				
6	92995-06600	WASHER	1				
7	6C5-44120-01	HANDLE GEAR SHIFT ASSY	1				L(20.7")
8	6C5-44122-00	BUSHING, SHIFT ROD LEVER	1				
9	97095-05014	BOLT	1				
10	92995-05600	WASHER	1				
11	62Y-42715-01	BUSHING	1				
12	62Y-44118-00	BRACKET	1				
13	97095-06020	BOLT	2				
14	90501-12082	SPRING, COMPRESSION	1				
15	93501-04M02	BALL	1				
16	90386-90M90	BUSH	2				
17	90201-10M20	WASHER, PLATE	1				
18	91490-20015	PIN, COTTER	1				
19	90468-18008	CLIP	2				
20	688-44122-00	BUSHING, SHIFT ROD LEVER	1				
21	90202-07M07	WASHER, PLATE	1				
22	90468-18008	CLIP	1				
23	69W-48344-00	CABLE END, REMOTE CONTROL	1				
24	688-41211-01	LINK, ACCEL.	1				
25	6H4-41237-00	JOINT, LINK	1				
26	95380-05700	NUT	1				
27	62Y-42154-00	LEVER, THROTTLE CONTROL	1				

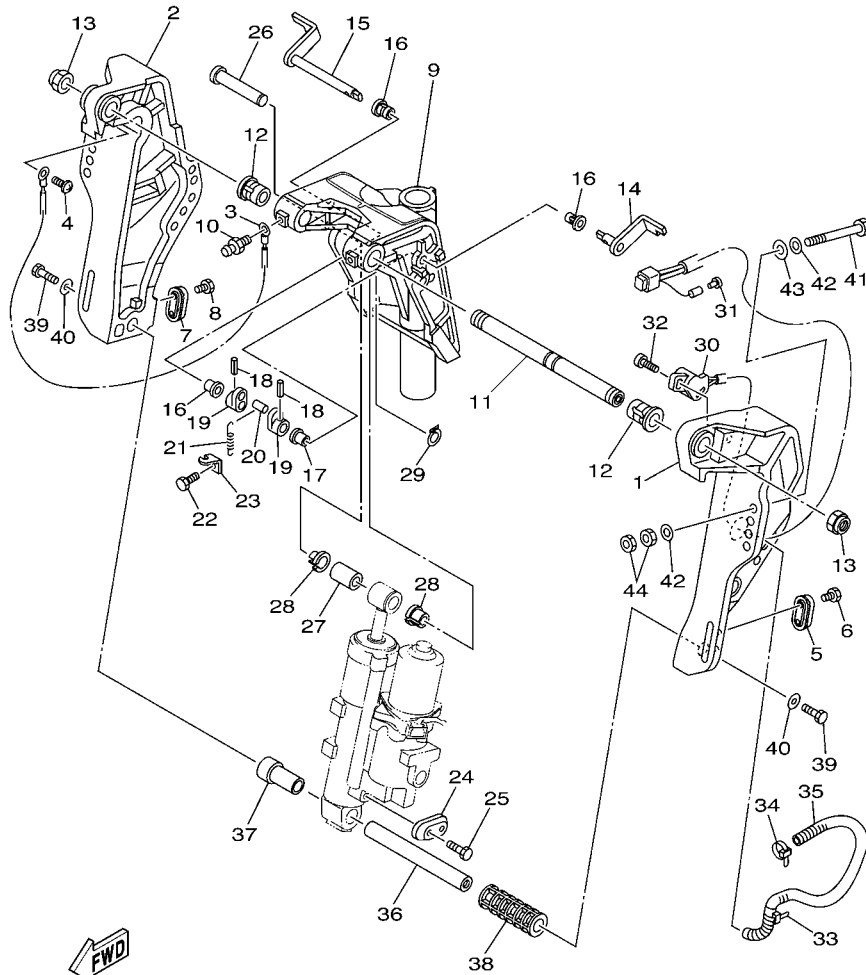


6C11100-D240

FIG. 21 CONTROL

REF. NO.	PART NO.	DESCRIPTION	6C52				REMARKS
28	6C5-42171-00	BUSHING	1				
29	91490-16010	PIN, COTTER	1				
30	62Y-44135-00	SPRING	1				
31	90387-06M45	COLLAR	1				
32	90119-06106	BOLT, WITH WASHER	1				
33	6C5-42335-00	LEVER, ACCEL. CONTROL	1				
34	95895-06035	BOLT, FLANGE	1				
35	90206-10M04	WASHER, WAVE	1				
36	90387-06M82	COLLAR	1				
37	69W-48344-00	CABLE END, REMOTE CONTROL	1				
38	90468-18008	CLIP	1				
39	62Y-48538-00	CLAMP, CABLE 1	1				

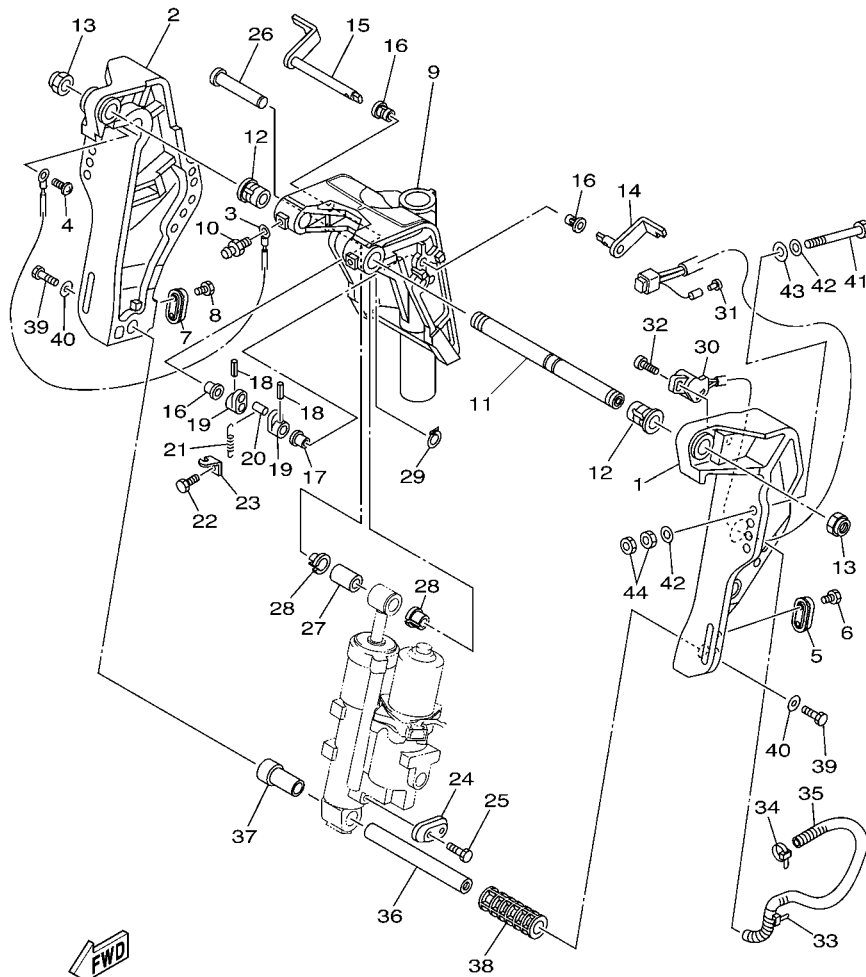




6C11300-D220

FIG. 22 BRACKET 1

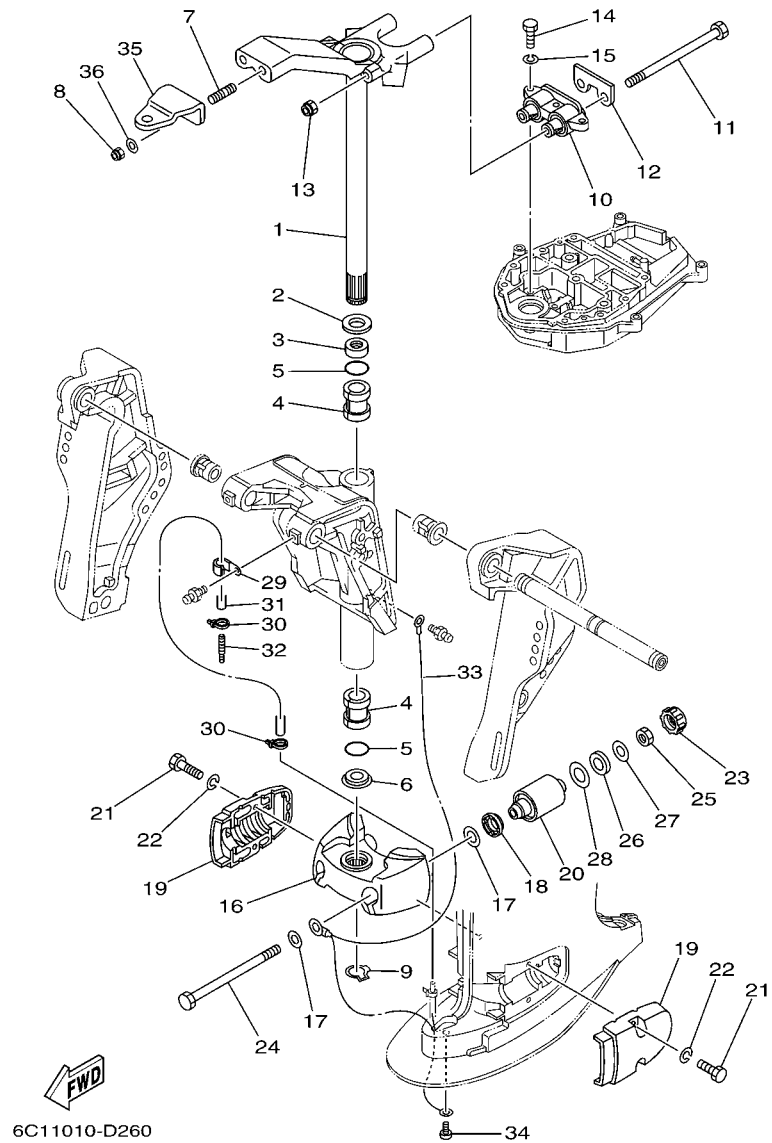
REF. NO.	PART NO.	DESCRIPTION	6C52				REMARKS
1	6C5-43111-00-4D	BRACKET, CLAMP 1	1				
2	6C5-43112-00-4D	BRACKET, CLAMP 2	1				
3	6E5-82148-00	WIRE, LEAD 4	1				
4	97885-06008	SCREW, PAN HEAD	1				
5	65W-45251-00	ANODE	1				
6	90101-06020	BOLT	2				
7	65W-45251-00	ANODE	1				
8	90101-06020	BOLT	2				
9	6C5-43311-00-4D	BRACKET, SWIVEL 1	1				
10	93700-06M03	NIPPLE, GREASE	3				
11	63D-43131-01	BOLT, CLAMP BRACKET	1				
12	90386-22MA4	BUSH	2				
13	90185-22M11	NUT, SELF-LOCKING	2				
14	6C5-43181-00	LEVER, TILT STOP	1				
15	6C5-43185-00	LEVER, TILT STOP	1				
16	90386-10M16	BUSH	3				
17	90386-10025	BUSH	1				
18	91690-30020	PIN, SPRING	2				
19	6G5-43148-00	COLLAR, DISTANCE	2				
20	90249-06M19	PIN	1				
21	90506-14M24	SPRING, TENSION	1				
22	97095-06010	BOLT	1				
23	6G5-43144-00	HOOK, SPRING	1				
24	65W-45251-00	ANODE	1				
25	90101-06020	BOLT	2				
26	6E5-43126-02	PIN, UPPER SHOCK MOUNT	1				
27	90386-18M92	BUSH	1				



6C11300-D220

FIG. 22 BRACKET 1

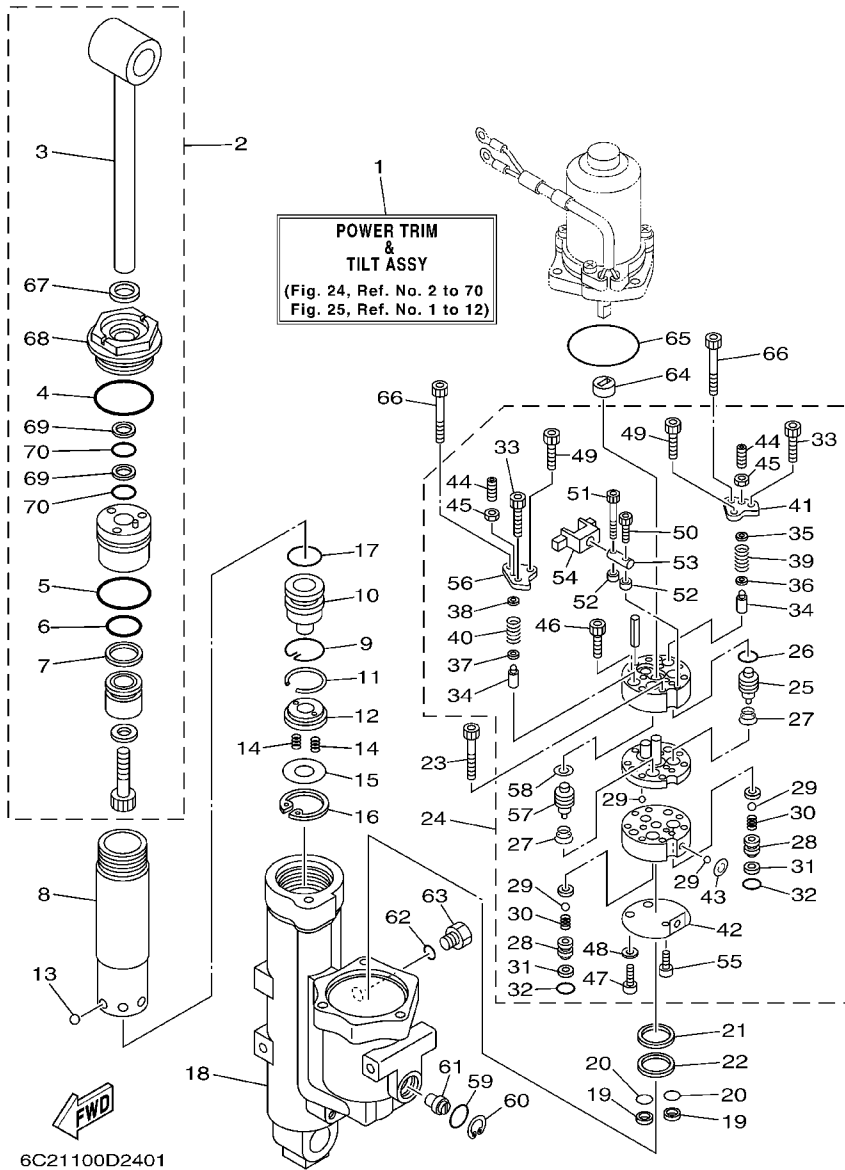
REF. NO.	PART NO.	DESCRIPTION	6C52				REMARKS
28	90386-18M35	BUSH	2				
29	93410-18M02	CIRCLIP	1				
30	63D-83672-01	TRIM SENDER	1				
31	703-82119-00	COVER, LEAD WIRE	1				
32	97885-06016	SCREW, PAN HEAD	2				
33	90464-76001	CLAMP	1				
34	90465-11M10	CLAMP	1				
35	90447-13010	HOSE, WITH SPRING	1				
36	6C5-43818-00	PIN, LOWER SHOCK MOUNT	1				
37	6C5-43833-00	PIPE	1				
38	6C5-43834-00	PIPE	1				
39	97080-08020	BOLT	2				
40	90201-08M14	WASHER, PLATE	2				
41	90101-12M65	BOLT	4				
42	92995-12200	WASHER	8				
43	90201-12426	WASHER, PLATE	4				
44	95380-12600	NUT	8				



**FIG. 23 BRACKET 2**

REF. NO.	PART NO.	DESCRIPTION	6C52				REMARKS
1	69W-42510-01-4D	STEERING BRACKET ASSY	1				
2	90201-30M00	WASHER, PLATE	1				
3	90386-30M78	BUSH	1				
4	90386-30M77	BUSH	2				
5	93210-29M94	O-RING	2				
6	90386-30M60	BUSH	1				
7	90116-10M28	BOLT, STUD	2				
8	90185-10051	NUT, SELF-LOCKING	2				
9	93410-28M06	CIRCLIP	1				
10	69W-44514-00-4D	MOUNT DAMPER, UPPER SIDE	1				L(20.7")
11	90101-08M15	BOLT	2				
12	69W-44526-01	PLATE	1				
13	90185-08045	NUT, SELF-LOCKING	2				
14	97075-08030	BOLT	3				
15	92995-08100	WASHER	3				
16	6C5-44551-00-4D	HOUSING, LOWER MOUNT RUBBER	1				
17	90201-12M16	WASHER, PLATE	4				
18	6C5-43885-00	GROMMET	2				
19	6C5-44552-00-4D	HOUSING, LOWER MOUNT RUBBER	2				
20	69W-44555-00-4D	MOUNT DAMPER, LOWER SIDE	2				
21	97075-08030	BOLT	4				
22	92995-08100	WASHER	4				
23	6C5-44575-00	DAMPER, LOWER MOUNT RUBBER	2				
24	90109-12MA3	BOLT	2				
25	95380-12700	NUT	2				
26	90202-21100	WASHER, PLATE	2				
27	90201-13M19	WASHER, PLATE	2				





**FIG. 24 POWER TRIM & TILT ASSY 1**

REF. NO.	PART NO.	DESCRIPTION	6C52				REMARKS
1	6C5-43800-01-8D	POWER TRIM & TILT ASSY	1				
2	6C5-43810-00	TILT PISTON SUB ASSY	1				
3	6C5-43801-00	.ROD	1				
4	62Y-43863-00	.O-RING	1				
5	6C5-43862-00	.O-RING	1				
6	6C5-43861-00	.O-RING	1				
7	6C5-43871-00	.RING, BACK UP	1				
8	6C5-22471-00	CYLINDER, SHOCK ABSORBER	1				
9	6C5-43875-00	RING, SNAP	1				
10	6C5-4381B-00	FREE PISTON SUB ASSY	1				
11	93450-32116	CIRCLIP	1				
12	6C5-43899-00	PLATE STOPPER	1				
13	93503-16003	BALL	6				
14	62X-4384H-00	SPRING	2				
15	6C5-22435-00	PLATE, VALVE 2	1				
16	99009-32500	CIRCLIP	1				
17	6C5-43861-00	O-RING	1				
18	6C5-4380K-00	CYLINDER, TILT SUB ASSY	1				
19	6C5-43817-10	FILTER 2	2				
20	69J-4389J-00	O-RING	2				
21	6C5-43816-00	FILTER 1	1				
22	6C5-4380G-00	PLATE	1				
23	91312-05045	BOLT	2				
24	6C5-43830-00	GEAR PUMP ASSY	1				
25	6C6-43841-00	.PISTON, SHUTTLE	1				
26	6H1-43883-00	.O-RING	1				
27	6C6-43894-00	.SPRING, SHUTTLE RETURN	2				

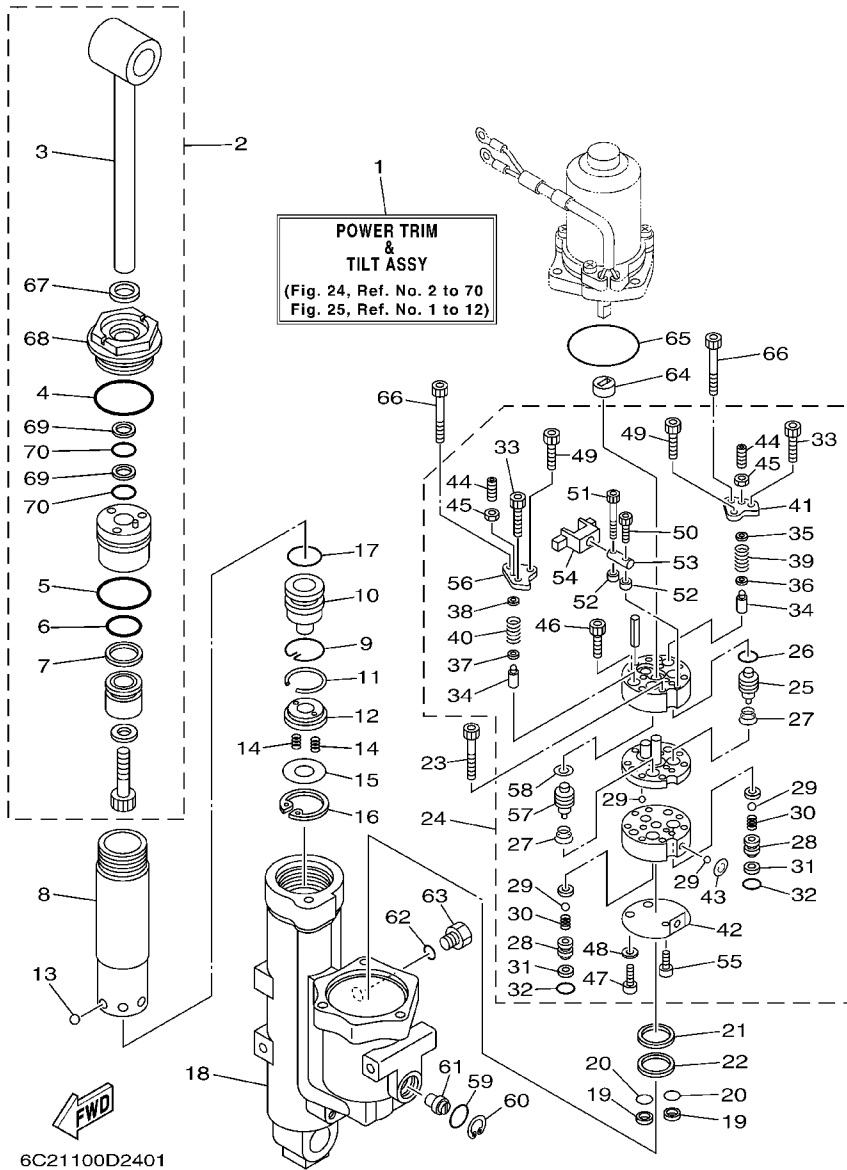


FIG. 24 POWER TRIM & TILT ASSY 1

REF. NO.	PART NO.	DESCRIPTION	6C52				REMARKS
28	6C6-4382E-00	.ADAPTOR 2	2				
29	93505-32038	.BALL	6				
30	6C6-43853-00	.SPRING, MAIN VALVE	2				
31	6C6-4387G-00	.WASHER	2				
32	69J-4389J-00	.O-RING	2				
33	91312-05030	.BOLT	2				
34	6C5-43851-00	.SEAT, RELIEF VALVE	2				
35	6C5-4381K-00	.HOLDER	1				
36	6C5-43893-00	.WASHER	1				
37	6C6-43893-00	.WASHER	1				
38	6C6-4381K-00	.HOLDER	1				
39	6C5-43855-00	.SPRING, UP RELIEF	1				
40	6C5-43856-00	.SPRING, DOWN RELIEF	1				
41	6C5-4382K-00	.CAP, RELIEF VALVE	1				
42	6C5-43895-00	.SEAT, RELIEF VALVE	1				
43	6C5-43854-00	.SPRING, MANUAL RELEASE	1				
44	92A08-03110	.SCREW SET	2				
45	95302-03600	.NUT	2				
46	91312-05025	.BOLT	2				
47	6C6-43878-00	.BOLT, SOCKET	2				
48	62Y-4387G-00	.WASHER	2				
49	91312-04030	.BOLT	2				
50	91312-03016	.BOLT	1				
51	6C6-4388E-00	.PLUG, TAPER SCREW	1				
52	6C6-4388F-00	.SPACER	2				
53	6C6-4386G-00	.PIN, STRAIGHT 2	1				
54	6C6-4386E-00	.LEVER 1	1				

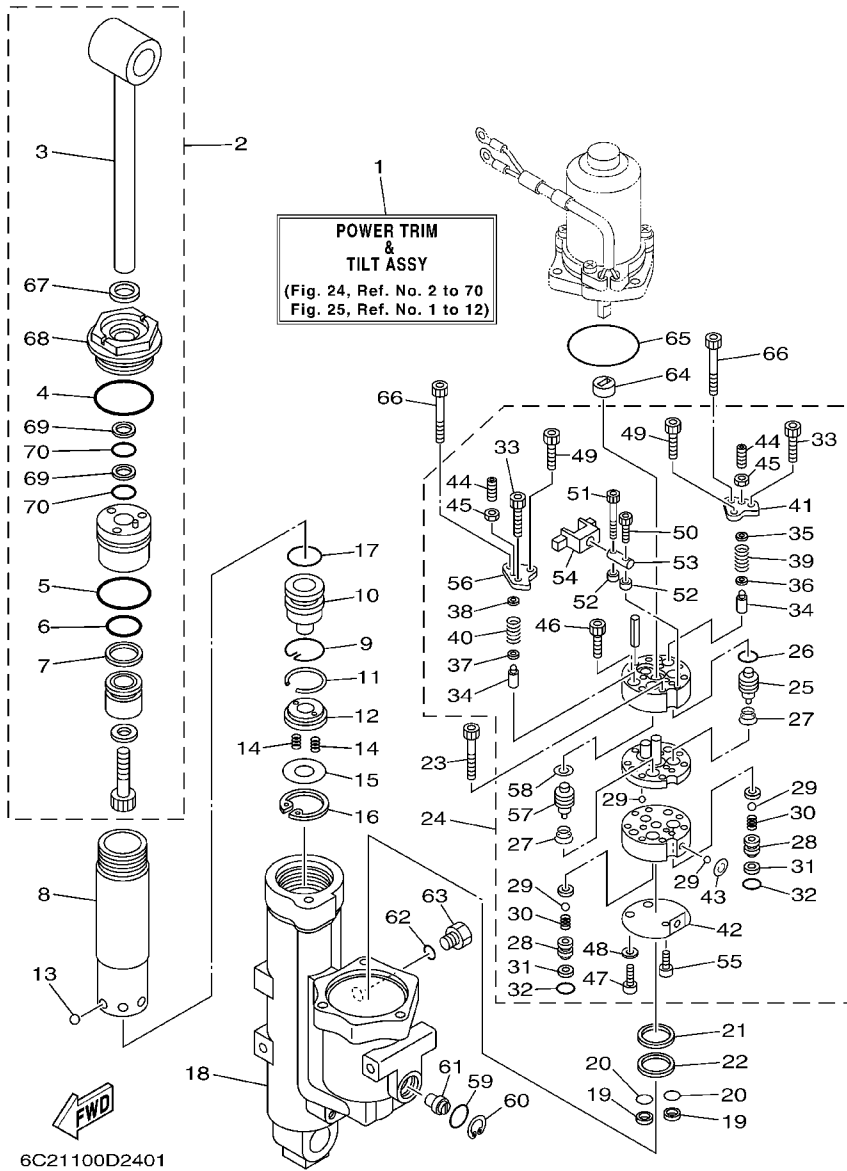
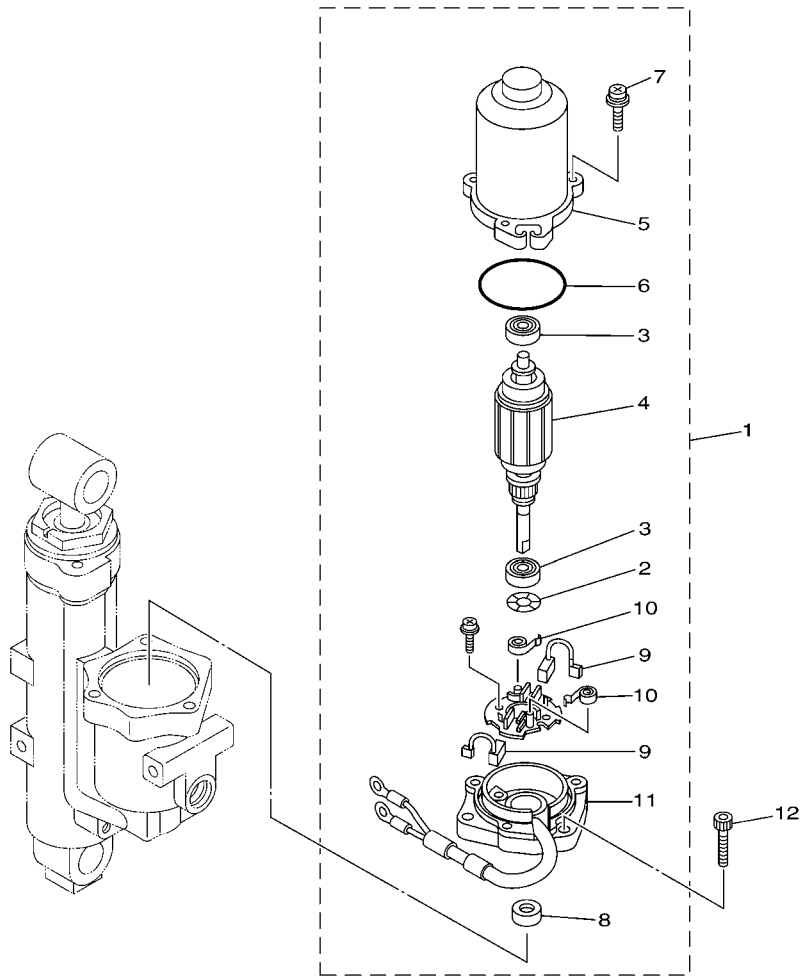


FIG. 24 POWER TRIM & TILT ASSY 1

REF. NO.	PART NO.	DESCRIPTION	6C52				REMARKS
55	91312-03005	.BOLT	1				
56	6C5-4382L-00	.CAP, RELIEF VALVE	1				
57	6C5-43841-00	.PISTON, SHUTTLE	1				
58	6C5-43872-00	.RING, BACK UP	1				
59	93210-18397	O-RING	1				
60	6H1-43875-00	RING, SNAP	1				
61	6C5-43845-00	SCREW, MANUAL RELEASE	1				
62	93210-09165	O-RING	1				
63	6H1-43829-00	PLUG, RESERVOIR	1				
64	6C5-43831-00	CONNECTOR, SHAFT	1				
65	93210-64488	O-RING	1				
66	91312-05050	BOLT	2				
67	62Y-43822-00	.SEAL, TRIM DUST	1				
68	6C5-43821-00	.SCREW, TRIM CYLINDER END	1				
69	62X-43872-00	.RING, BACK UP	2				
70	6C5-43863-00	.O-RING	2				

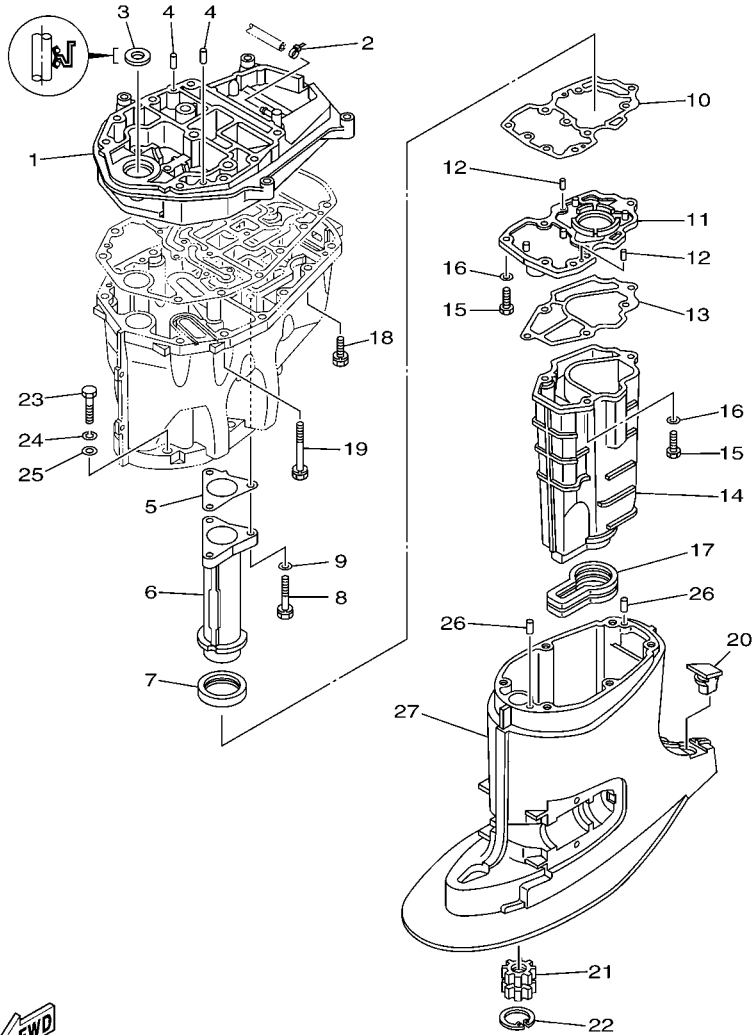
FIG. 25 POWER TRIM & TILT ASSY 2



  
6C11010-D280

REF. NO.	PART NO.	DESCRIPTION	6C52				REMARKS
1	6C5-43880-01	MOTOR ASSY	1				
2	90206-08N51	.WASHER, WAVE	1				
3	93399-999T8	.BEARING	2				
4	6C5-43805-00	.ARMATURE ASSY	1				
5	6C5-43804-01	.STATOR ASSY	1				
6	6C5-43869-00	.O-RING	1				
7	6C5-43879-00	.SCREW, WITH WASHER	3				
8	6C5-43882-00	.OIL SEAL	1				
9	6C5-43891-00	.BRUSH 1	2				
10	6C5-4386K-00	.SPRING, BRUSH	2				
11	6C5-43881-01	.FRAME, END	1				
12	62X-43888-00	BOLT, SOCKET	3				

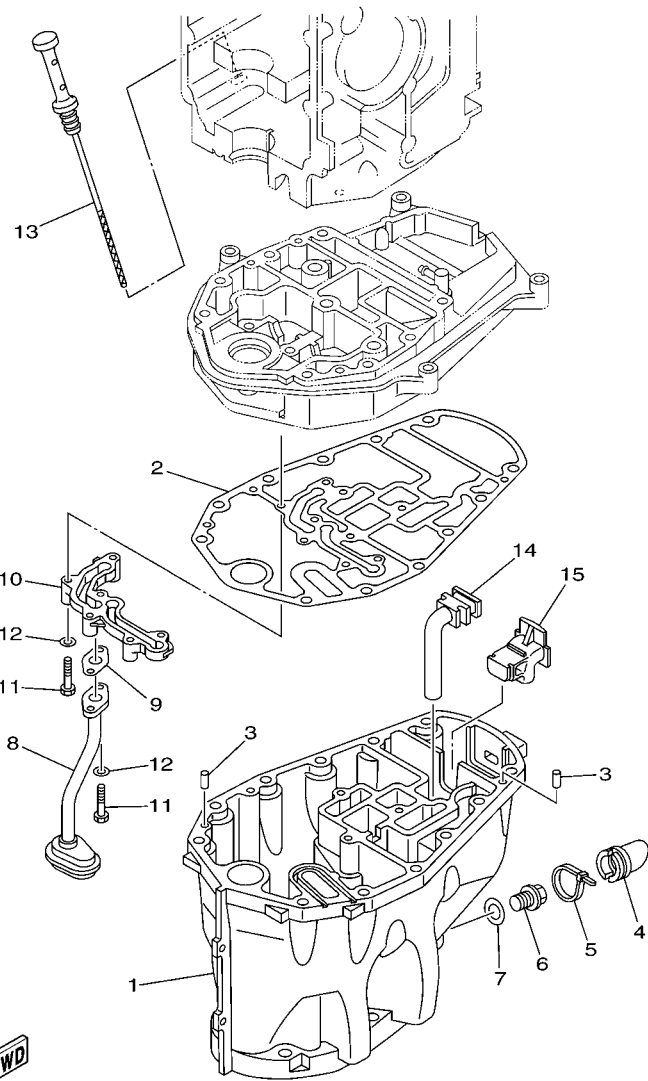




6C11010-D290

FIG. 26 UPPER CASING

REF. NO.	PART NO.	DESCRIPTION	6C52				REMARKS
1	6C5-41137-00-94	GUIDE, EXHAUST	1				
2	90465-11M10	CLAMP	1				
3	93103-18011	OIL SEAL	1				
4	93608-12M05	PIN, DOWEL	2				
5	6C5-41133-00	GASKET, EXHAUST MANIFOLD 1	1				
6	6C5-41131-00-5B	MANIFOLD, EXT. 1	1				
7	6C5-46132-00	GASKET 1	1				
8	90119-06120	BOLT, WITH WASHER	3				
9	90201-06015	WASHER, PLATE	3				
10	6C5-41134-00	GASKET, EXHAUST MANIFOLD	1				
11	6C5-45181-00-5B	PLATE	1				
12	93604-10M03	PIN, DOWEL	2				
13	6C5-41135-00	GASKET, EXHAUST MANIFOLD	1				
14	6C5-14711-00-5B	MUFFLER 1	1				
15	97075-06025	BOLT	6				
16	92995-06600	WASHER	6				
17	6C5-45123-00	GASKET, MUFFLER	1				
18	90119-08M79	BOLT, WITH WASHER	4				
19	90119-08M82	BOLT, WITH WASHER	8				
20	6C5-45155-00	CAP	1				
21	69W-45318-00	BUSHING, DRIVE SHAFT	1				
22	93420-36M01	CIRCLIP	1				
23	97075-10045	BOLT	6				
24	92995-10100	WASHER	6				
25	92995-10600	WASHER	6				
26	93606-12019	PIN, DOWEL	2				
27	6C5-45111-00-4D	CASING, UPPER	1				



6C11010-D300

FIG. 27 OIL PAN

REF. NO.	PART NO.	DESCRIPTION	6C52				REMARKS
1	6C5-15311-00-5B	OIL PAN	1				
2	6C5-15312-00	GASKET, OIL PAN	1				
3	93606-12019	PIN, DOWEL	2				
4	6C5-15316-00	DAMPER, ENGINE MOUNT 1	1				
5	90465-11M59	CLAMP	1				
6	90340-14M06	PLUG, STRAIGHT SCREW	1				
7	90430-14M09	GASKET	1				
8	6C5-13411-00	STRAINER, OIL	1				
9	6C5-13414-00	GASKET, STRAINER COVER	1				
10	6C5-15333-00	COVER	1				
11	97013-06030	BOLT	6				
12	92903-06600	WASHER, PLATE	6				
13	6C5-15362-00	PLUG, OIL LEVEL	1				
14	6C5-45135-01	PIPE	1				
15	6C5-45136-01	PIPE	1				

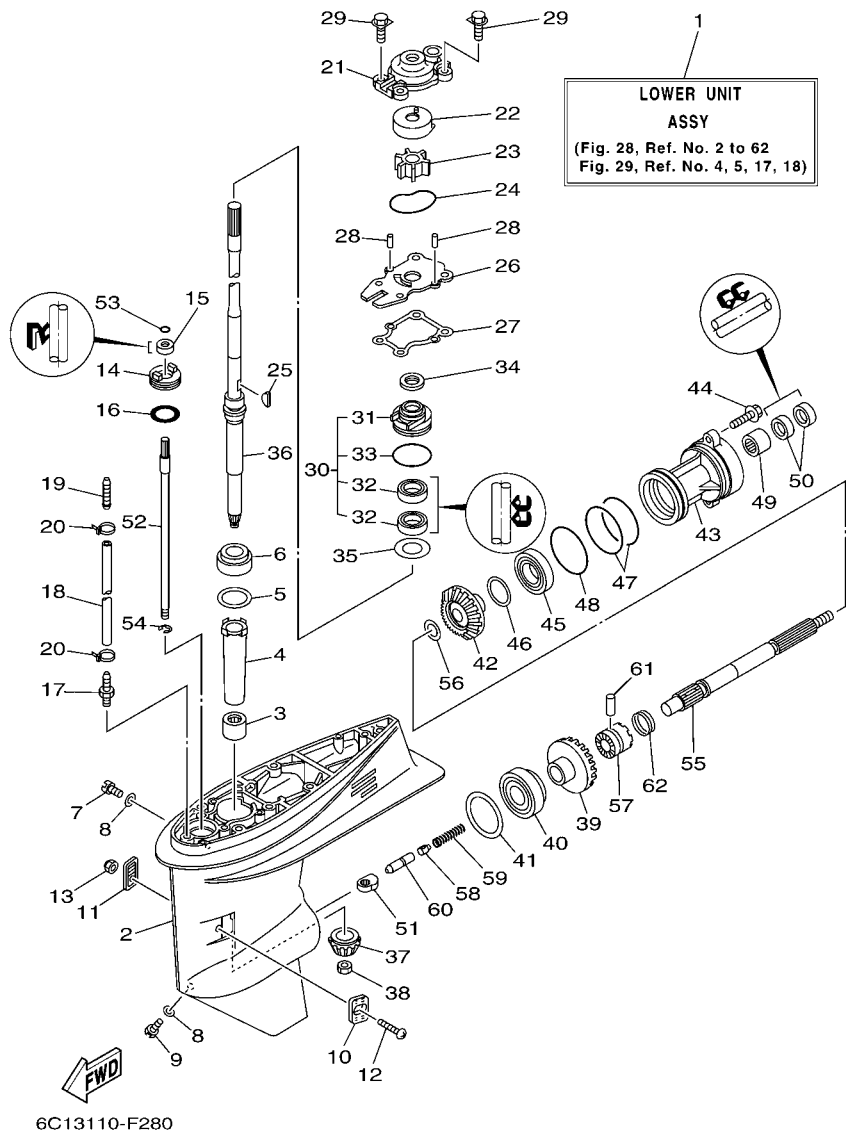
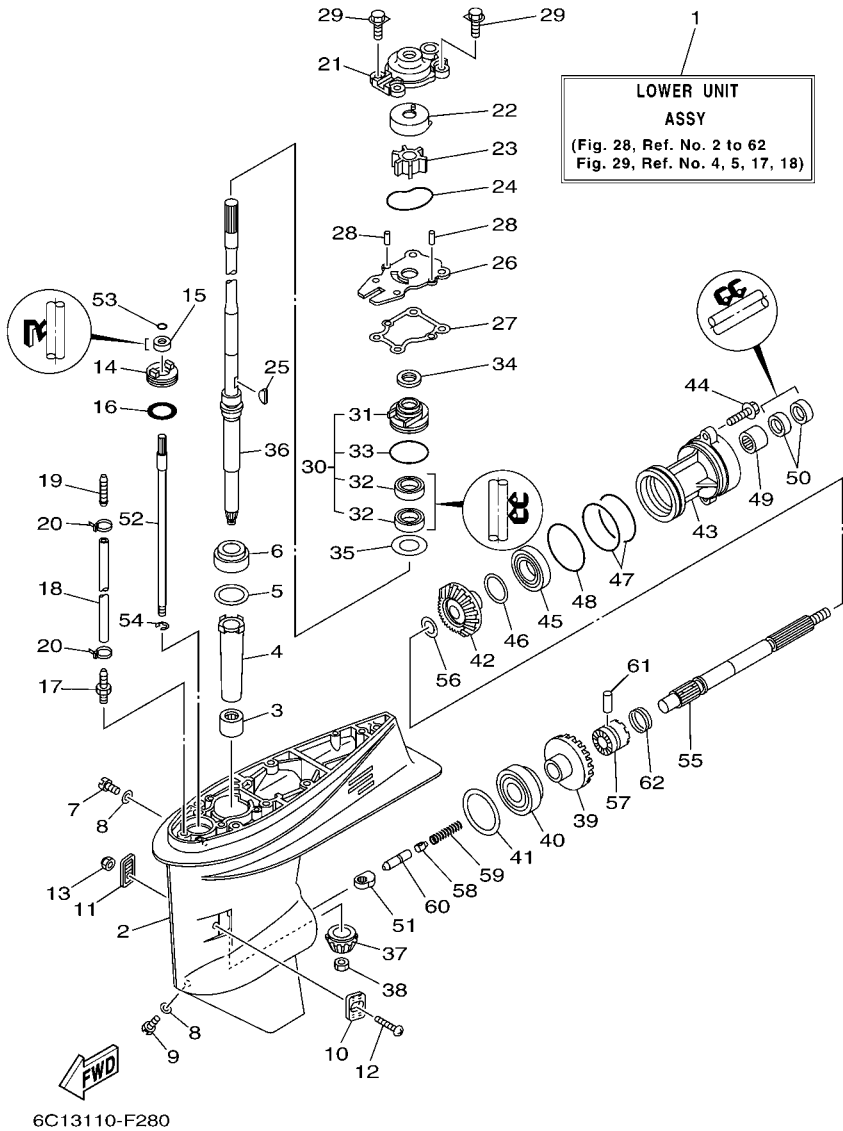


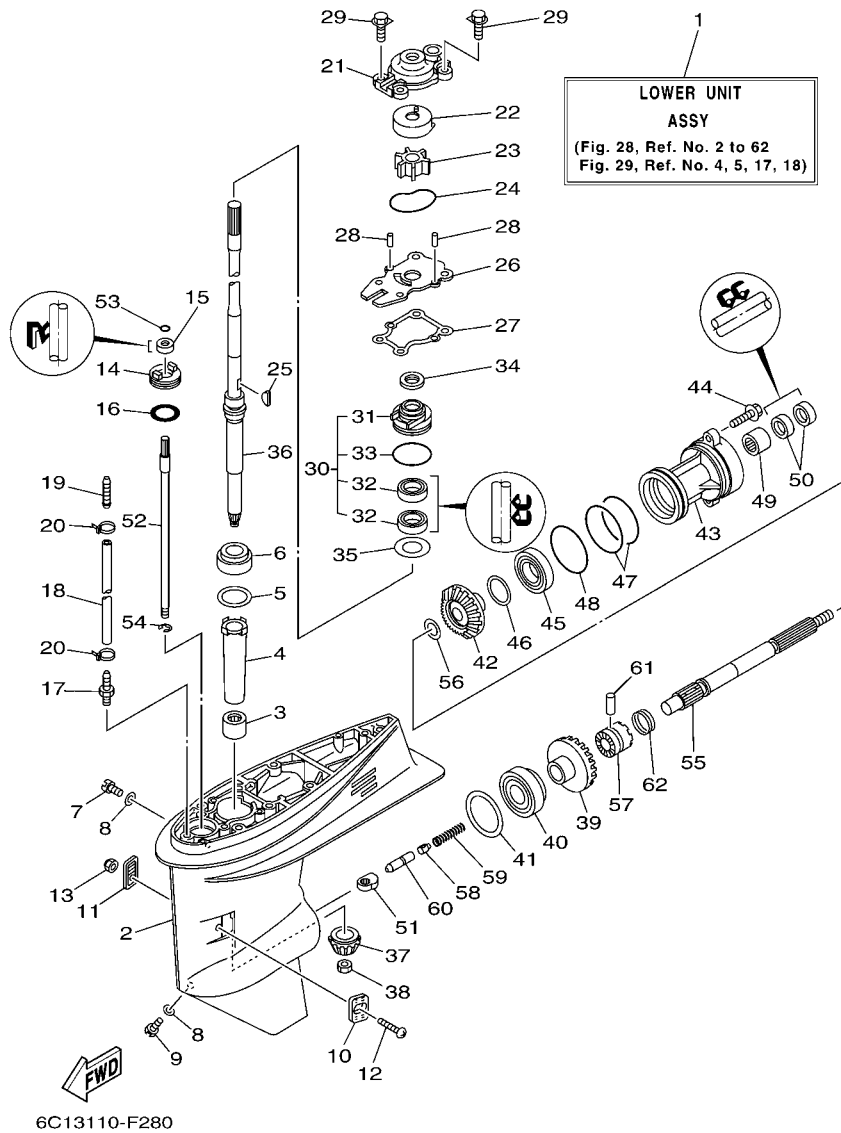
FIG. 28 LOWER CASING & DRIVE 1

REF. NO.	PART NO.	DESCRIPTION	6C52			REMARKS
1	69W-45300-00-4D	LOWER UNIT ASSY	1			L(20.7")
2	69W-45301-00-4D	CASING, LOWER	1			
3	93315-32224	BEARING	1			
4	6H4-45536-00	SLEEVE, DRIVE SHAFT	1			
5	663-45587-01	SHIM (T:0.10MM)	1			UR
6	663-45587-10	SHIM (T:0.12MM)	1			UR
7	663-45587-20	SHIM (T:0.15MM)	1			UR
8	663-45587-30	SHIM (T:0.18MM)	1			UR
9	663-45587-40	SHIM (T:0.30MM)	1			UR
10	663-45587-50	SHIM (T:0.40MM)	1			UR
11	663-45587-60	SHIM (T:0.50MM)	1			UR
12	93332-00001	BEARING	1			
13	90340-08002	PLUG, STRAIGHT SCREW	1			
14	90430-08020	GASKET	2			
15	688-45341-10	PLUG, DRAIN	1			
16	63D-45214-00	COVER, WATER INLET 1	1			
17	63D-45215-00	COVER, WATER INLET 2	1			
18	90142-05M06	SCREW, COUNTERSUNK	1			
19	95380-05600	NUT	1			
20	63D-45321-00	PLATE	1			
21	93106-09014	OIL SEAL	1			
22	93210-33MG4	O-RING	1			
23	6E5-45378-00	NIPPLE, HOSE	1			
24	90445-07ME8	HOSE (L80)	1			L(20.7")
25	6E5-83558-10	END, NIPPLE	1			
26	90465-11M10	CLAMP	2			
27	63D-44311-00	HOUSING, WATER PUMP	1			



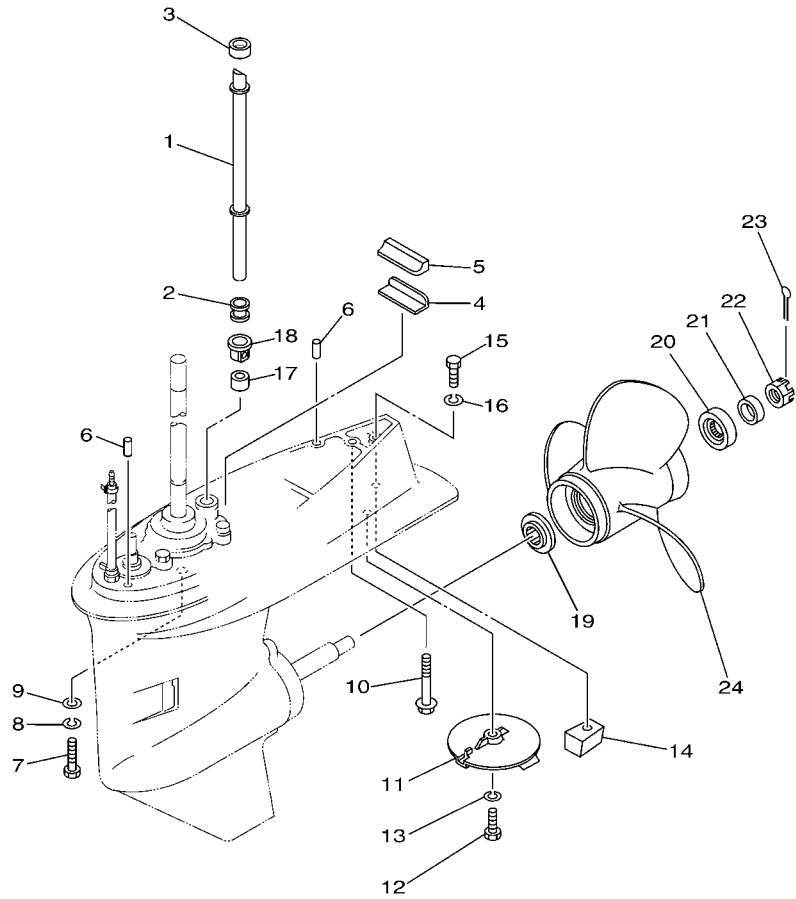
**FIG. 28 LOWER CASING & DRIVE 1**

REF. NO.	PART NO.	DESCRIPTION	6C52				REMARKS
22	63D-44322-00	INSERT, CARTRIDGE	1				
23	6H3-44352-00	IMPELLER	1				
24	93210-59MG7	O-RING	1				
25	90280-03024	KEY, WOODRUFF	1				
26	63D-44323-00	OUTER PLATE, CARTRIDGE	1				
27	63D-44316-00	GASKET, WATER PUMP	1				
28	93604-08062	PIN, DOWEL	2				
29	90119-08M15	BOLT, WITH WASHER	4				
30	63D-W4434-00	WATER PUMP HOUSING ASSY	1				
31	63D-44341-00	.HOUSING, WATER PUMP	1				
32	93101-25M57	.OIL SEAL	2				
33	93210-48MG8	.O-RING	1				
34	63D-45344-00	COVER, OIL SEAL	1				
35	90201-27M00	WASHER, PLATE	1				
36	69W-45501-00	DRIVE SHAFT COMP.	1				L(20.7")
37	69W-45551-00	PINION (13T)	1				
38	90170-12138	NUT	1				
39	69W-45560-00	GEAR 1 (24T)	1				
40	93332-00092	BEARING	1				
41	663-45567-01	SHIM (T:0.10MM)	1				UR
	663-45567-10	SHIM (T:0.12MM)	1				UR
	663-45567-20	SHIM (T:0.15MM)	1				UR
	663-45567-30	SHIM (T:0.18MM)	1				UR
	663-45567-40	SHIM (T:0.30MM)	1				UR
	663-45567-50	SHIM (T:0.40MM)	1				UR
	663-45567-60	SHIM (T:0.50MM)	1				UR
42	62Y-45571-00	GEAR 2 (24T)	1				



**FIG. 28 LOWER CASING & DRIVE 1**

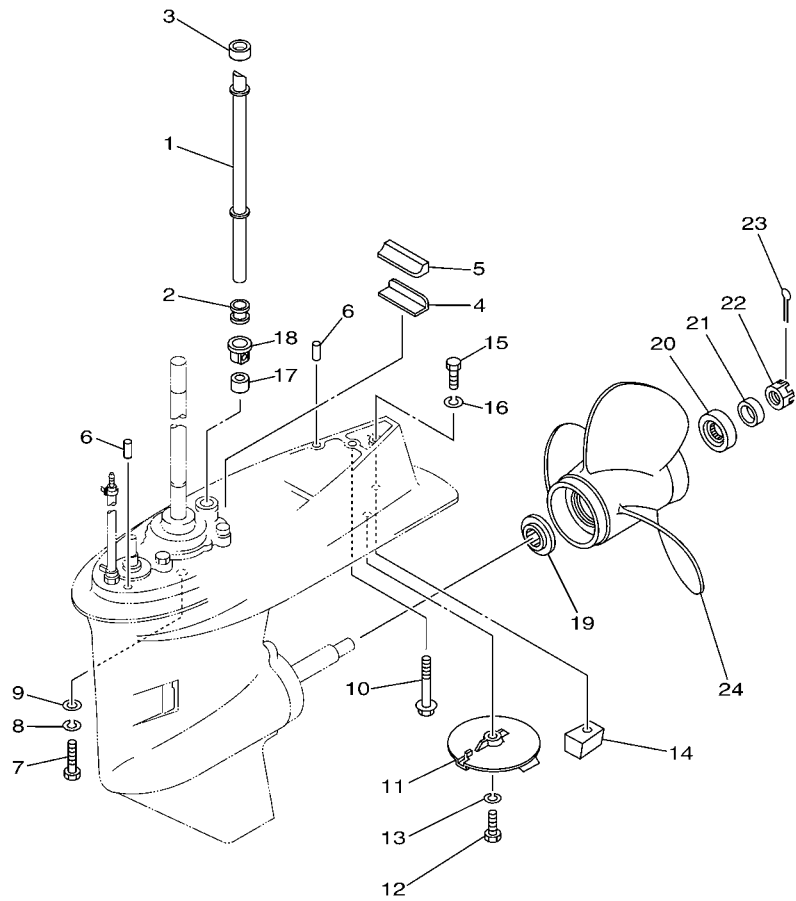
REF. NO.	PART NO.	DESCRIPTION	6C52				REMARKS
43	63D-45361-02-4D	CAP, LOWER CASING	1				
44	90105-08M61	BOLT, FLANGE	2				
45	93306-001U1	BEARING	1				
46	63D-45577-00	SHIM (T:0.10MM)	1				UR
	63D-45577-10	SHIM (T:0.12MM)	1				UR
	63D-45577-20	SHIM (T:0.15MM)	1				UR
	63D-45577-30	SHIM (T:0.18MM)	1				UR
	63D-45577-40	SHIM (T:0.30MM)	1				UR
	63D-45577-50	SHIM (T:0.40MM)	1				UR
	63D-45577-60	SHIM (T:0.50MM)	1				UR
47	93210-74MG5	O-RING	2				
48	93210-69MG6	O-RING	1				
49	93317-22204	BEARING	1				
50	93101-22M00	OIL SEAL	2				
51	62Y-44151-00	CAM, SHIFT	1				
52	63D-44144-00	ROD, SHIFT	1				
53	93210-07003	O-RING	1				
54	99001-08600	CIRCLIP	1				
55	63D-45611-00	SHAFT, PROPELLER	1				
56	90201-22008	WASHER, PLATE	1				
57	62Y-45631-00	CLUTCH, DOG	1				
58	663-45634-00	SLIDE, SHIFT	1				
59	90501-18001	SPRING, COMPRESSION	1				
60	63D-45635-00	PLUNGER, SHIFT	1				
61	90250-06023	PIN, STRAIGHT	1				
62	67C-45633-00	RING, CROSS PIN	1				



6C11010-D320

FIG. 29 LOWER CASING & DRIVE 2

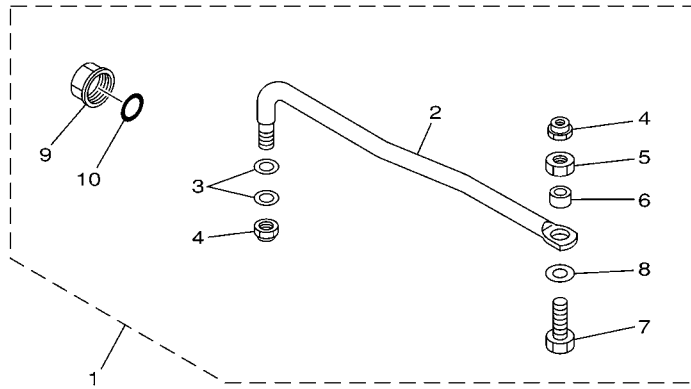
REF. NO.	PART NO.	DESCRIPTION	6C52			REMARKS
1	6C5-44361-00	TUBE, WATER	1			L(20.7")
2	663-44367-00	DAMPER, WATER SEAL	1			
3	663-44366-00	DAMPER, WATER SEAL	1			
4	663-45376-00-94	GUIDE, SEAL DAMPER	1			
5	63D-45375-00	DAMPER, SEAL	1			
6	93606-12019	PIN, DOWEL	2			
7	97075-10040	BOLT	4			L(20.7")
8	92995-10100	WASHER	4			L(20.7")
9	92995-10600	WASHER	4			L(20.7")
10	90119-08M84	BOLT, WITH WASHER	1			L(20.7")
11	67C-45371-00	TAB-TRIM	1			
12	97095-08025	BOLT	1			
13	92995-08100	WASHER	1			
14	67C-45251-00	ANODE	1			
15	97095-08035	BOLT	1			
16	92995-08100	WASHER	1			
17	663-44366-00	DAMPER, WATER SEAL	1			
18	63D-44312-00	COVER, WATER PUMP HOUSING	1			
19	663-45987-02	SPACER	1			
20	66T-45997-00	SPACER	1			
21	90389-22M01	BUSH	1			
22	90171-16011	NUT, CASTLE	1			
23	91490-30025	PIN, COTTER	1			
24	69W-45943-00-EL	PROPELLER (3X11"X15"-G)	1			UR
	69W-45945-00-EL	PROPELLER (3X11-1/8"X13"-G)	1			UR
	69W-45947-00-EL	PROPELLER (3X11-5/8"X11"-G)	1			UR
	69W-45952-00-EL	PROPELLER (3X11-3/8"X12"-G)	1			UR



**FWD**  
6C11010-D320

**FIG. 29 LOWER CASING & DRIVE 2**

REF. NO.	PART NO.	DESCRIPTION	6C52				REMARKS
24	663-45941-01-EL	PROPELLER (3X10-3/4"X17"-G)	1				UR
	663-45949-01-EL	PROPELLER (3X10-3/4"X16"-G)	1				UR
	663-45952-02-EL	PROPELLER (3X11-3/8"X12"-G)	1				UR
	663-45956-01-EL	PROPELLER (3X12-1/4"X9"-G)	1				UR
	663-45958-01-EL	PROPELLER (3X11-1/4"X14"-G)	1				UR
	6H5-45943-00-EL	PROPELLER (3X10"X15"-G)	1				UR WITH LIP CUP
	6H5-45945-00-EL	PROPELLER (3X10-3/8"X13"-G)	1				UR WITH LIP CUP
	6H5-45952-00-EL	PROPELLER (3X10-5/8"X12"-G)	1				UR WITH LIP CUP
	6H5-45958-00-EL	PROPELLER (3X10-1/4"X14"-G)	1				UR WITH LIP CUP
	663-45970-60-98	PROPELLER (3X11-3/4"X12"-G)	1				UR
	663-45972-60-98	PROPELLER (3X12"X11"-G)	1				UR
	663-45974-60-98	PROPELLER (3X11-1/2"X13"-G)	1				UR
	697-45970-00-98	PROPELLER (3X11-1/4"X14"-G)	1				UR
	663-45930-00-98	PROPELLER (3X10-1/4"X14"-G)	1				UR
	663-45974-02-98	PROPELLER (3X10-5/8"X13"-G)	1				UR
	663-45976-00-98	PROPELLER (3X10-1/4"X15"-G)	1				UR
	663-45978-00-98	PROPELLER (3X10-1/4"X16"-G)	1				UR

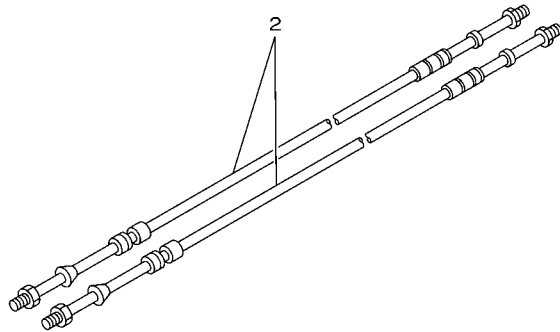
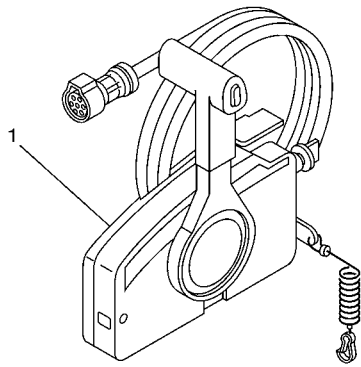


65W0010-8210

**FIG. 30 STEERING GUIDE**

REF. NO.	PART NO.	DESCRIPTION	QTY	REMARKS
1	65W-61350-00	STEERING GUIDE ATTACHMENT KIT	1	AP
2	65W-61351-00	.ROD, STEERING LINK	1	
3	90201-10M20	.WASHER, PLATE	2	
4	90185-09M01	.NUT, SELF-LOCKING	2	
5	90170-09M03	.NUT	1	
6	90387-10M42	.COLLAR	1	
7	90101-09M01	.BOLT	1	
8	90201-10M63	.WASHER, PLATE	1	
9	6E5-43145-01	.CAP, CLAMP BRACKET	1	
10	93210-16275	.O-RING	1	

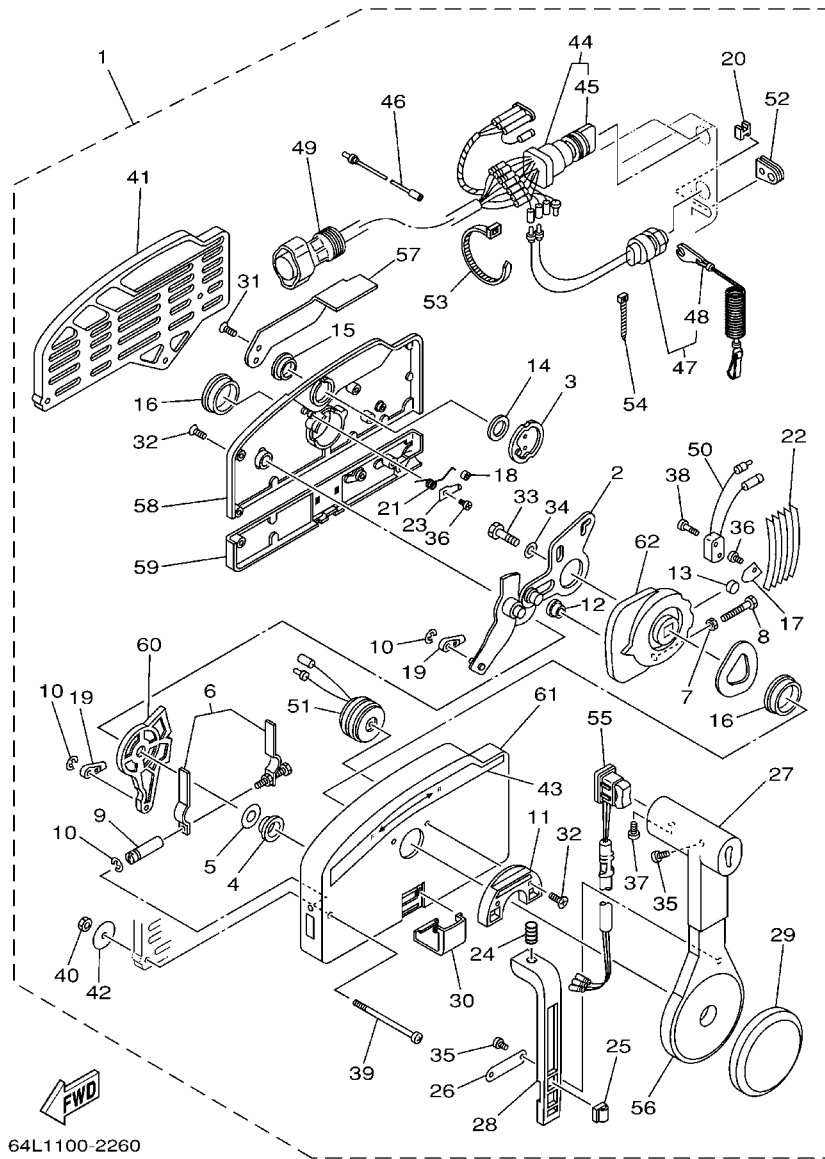




67M0100-8280

**FIG. 31 REMOTE CONTROL BOX**

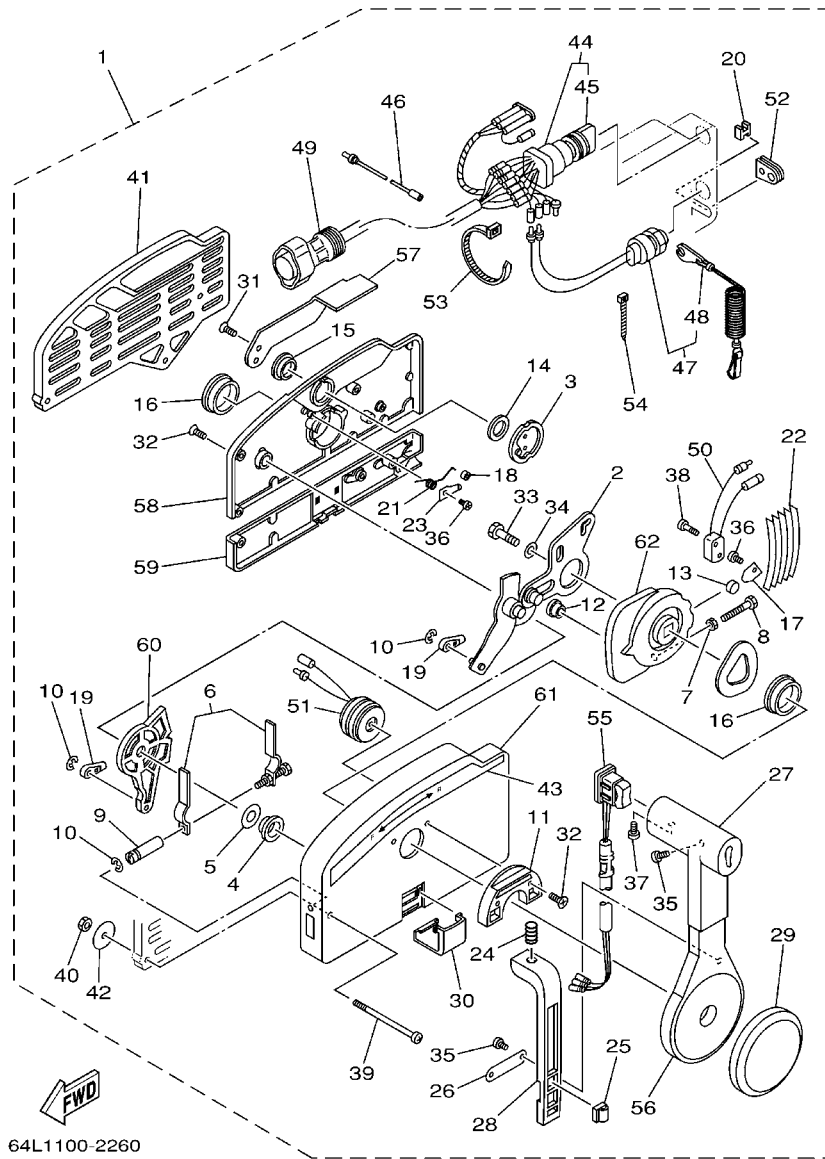
REF. NO.	PART NO.	DESCRIPTION	QTY	REMARKS
1	703-48205-17	REMOTE CONTROL ASSY (10P)	1	AP WITH PT/T SW.
2	701-48310-90	CABLE, REMOTE CONTROL L=11F	2	UR
	701-48320-00	CABLE, REMOTE CONTROL L=12F	2	UR
	701-48320-20	CABLE, REMOTE CONTROL L=13F	2	UR
	701-48320-50	CABLE, REMOTE CONTROL L=15F	2	UR
-----				
-----				
-----				
-----				
-----				
-----				
-----				
-----				
-----				



64L1100-2260

FIG. 32 REMOTE CONTROL ASSY

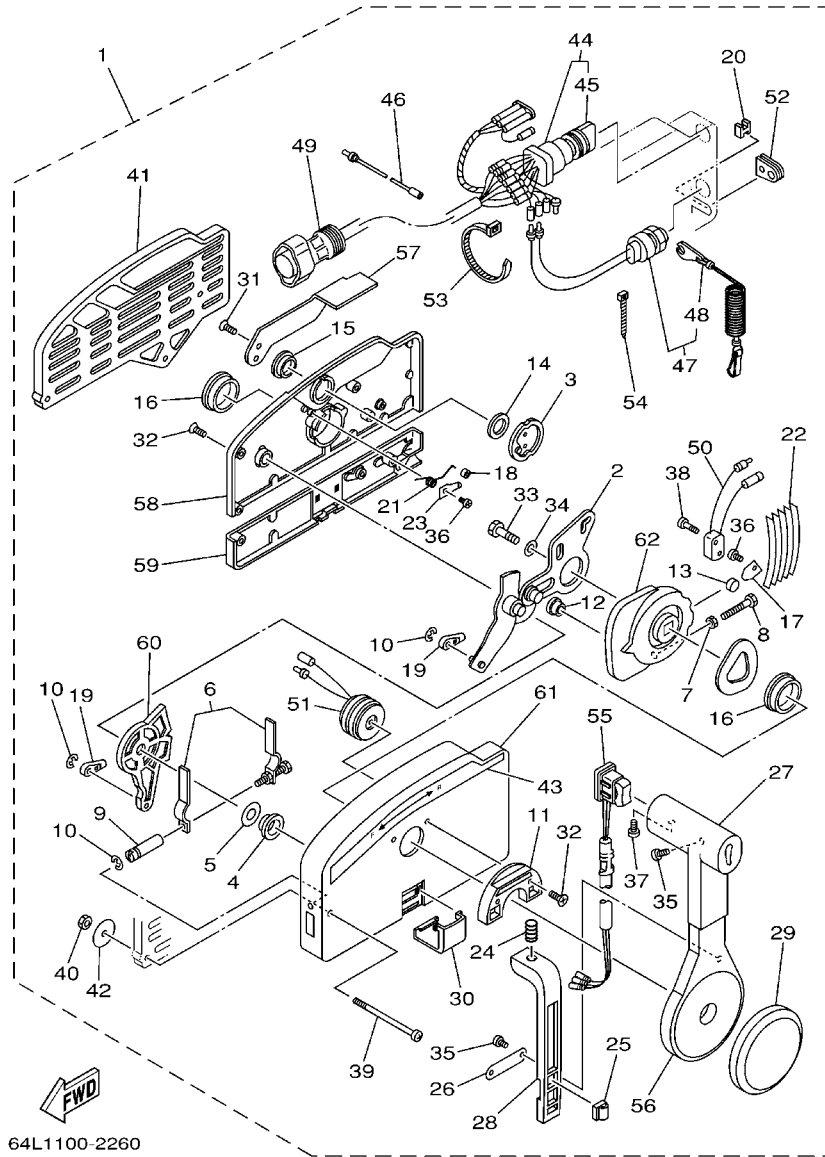
REF. NO.	PART NO.	DESCRIPTION	QTY	REMARKS
1	703-48205-17	REMOTE CONTROL ASSY (10P)	1	AP WITH PT/T SW.
2	703-48261-01	.ARM, THROTTLE	1	
3	703-48153-00	.SHAFT, FREE ACCEL.	1	
4	703-48235-00	.BUSHING	1	
5	703-48268-00	.SPACER	1	
6	703-48264-00	.FRICTION, THROTTLE	1	
7	95380-05600	.NUT	1	
8	97380-05025	.BOLT	1	
9	703-48265-00	.SHAFT, FRICTION	1	
10	93430-06024	.CIRCLIP	3	
11	703-48245-00	.PLATE, LOCK	1	
12	703-48252-00	.ROLLER, CAM	1	
13	701-48248-00	.ROLLER, FREE ACCEL.	1	
14	703-48198-00	.WASHER, WAVE	1	
15	703-48243-00	.BUSHING	1	
16	703-48236-00	.BUSHING 1	2	
17	703-48189-00	.RETAINER	1	
18	703-48234-00	.ROLLER, DETENT	1	
19	703-48345-01	.CABLE END, REMOTE CONTROL 2	2	
20	703-48358-00	.ANCHOR, CABLE	1	
21	703-48244-00	.SPRING, FREE ACCEL.	1	
22	703-48238-00	.SPRING, DETENT	5	
23	703-48246-00	.SPACER	1	
24	703-48227-00	.SPRING, NEUTRAL LOCK	1	
25	703-82594-00	.CLAMP	1	WITH PT/T SW.
26	703-48226-00	.PLATE, STOPPER	1	
27	703-48222-00	.GRIP, CONTROL LEVER	1	SINGLE



64L1100-2260

FIG. 32 REMOTE CONTROL ASSY

REF. NO.	PART NO.	DESCRIPTION	QTY	REMARKS
28	703-48223-00	.LOCK, NEUTRAL	1	
29	703-48225-00	.COVER	1	
30	703-48219-00	.COVER, LEAD	1	
31	703-48281-00	.SCREW	2	
32	703-48282-00	.SCREW	7	
33	97380-08030	.BOLT	1	
34	92990-08600	.WASHER, PLATE	1	
35	98580-04010	.SCREW, PAN HEAD	3	
36	98580-04006	.SCREW, PAN HEAD	2	
37	98580-05010	.SCREW, PAN HEAD	1	
38	98580-03015	.SCREW, PAN HEAD	2	
39	703-48291-10	.SCREW (M6)	3	
40	95380-06600	.NUT, HEXAGON	3	
41	703-48293-10	.SPACER, REMOTE CONTROL	1	SINGLE
42	701-48287-00	.WASHER	3	
43	703-48215-00	.GRAPHIC	1	
44	703-82510-43	.MAIN SWITCH ASSY	1	
45	703-82577-00	..CAP, KEY	1	
46	703-82531-00	.WIRE, LEAD (L70)	1	
47	688-82575-01	.ENGINE STOP SWITCH ASSY	1	
48	682-82556-00	..LANYARD, STOP SWITCH	1	
49	688-8258A-20	.EXTENSION, WIRE HARNESS (4.9M)	1	(10P)
50	703-82540-00	.NEUTRAL SWITCH ASSY	1	
51	703-83383-02	.BUZZER	1	
52	703-48284-00	.GROMMET	1	
53	703-82591-00	.BAND	1	
54	703-82592-00	.BAND	1	

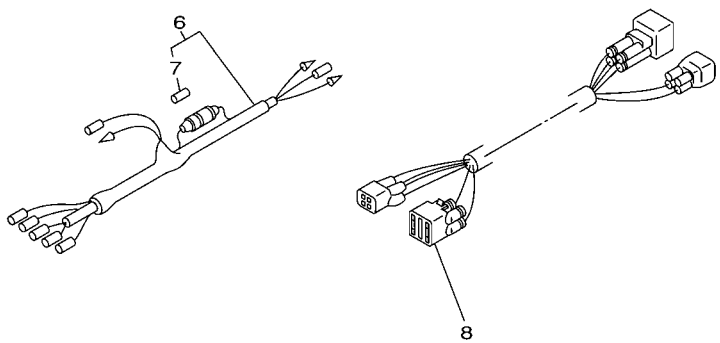
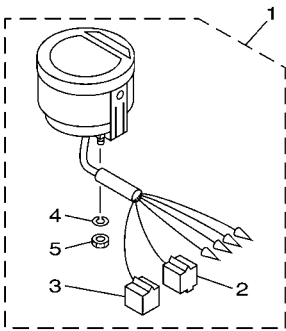


64L1100-2260

FIG. 32 REMOTE CONTROL ASSY

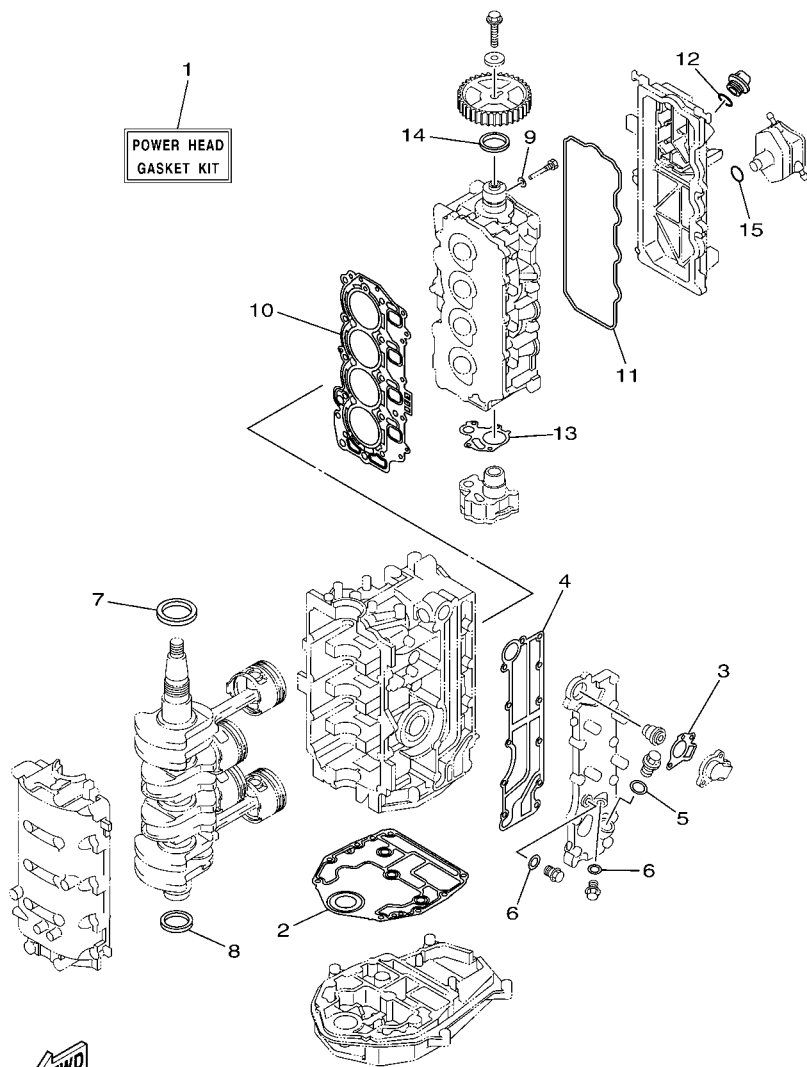
REF. NO.	PART NO.	DESCRIPTION	6CS2				REMARKS
55	703-82563-02	.TRIM & TILT SWITCH ASSY	1				WITH PT/T SW.
56	703-48221-00	.LEVER, CONTROL	1				
57	703-48152-00	.KNOB, FREE ACCEL.	1				
58	703-48212-00	.BACK PLATE 1	1				
59	703-48213-00	.BACK PLATE 2	1				
60	703-48271-00	.ARM, SHIFT	1				
61	703-48211-01	.HOUSING,1	1				
62	703-48232-00	.GEAR	1				

**FIG. 33 METER**



69W1300-2280

REF. NO.	PART NO.	DESCRIPTION	6C52				REMARKS
1	6Y5-8350T-03	DIGITAL TACHOMETER ASSY	1				AP
2	9E450-04433	.CONNECTOR	1				M-4-W
3	9E450-04533	.CONNECTOR	1				F-4-W
4	92990-04100	.WASHER, SPRING	2				
5	95380-04600	.NUT	2				
6	6Y5-83553-00	WIRE, LEAD (L=2.5M)	1				AP
7	1E6-82151-00	.FUSE (10A)	1				
8	68F-82553-70	EXTENSION, WIRE LEAD (L=7.0M)	1				AP



6C11100-D390



FIG. 34 REPAIR KIT 1

REF. NO.	PART NO.	DESCRIPTION	6C52				REMARKS
1	6C5-W0001-00	POWER HEAD GASKET KIT	1				
2	67C-11351-01	.GASKET, CYLINDER	1				
3	62Y-12414-00	.GASKET, COVER	1				
4	6C5-41114-00	.GASKET, EXHAUST OUTER COVER	1				
5	90430-18130	.GASKET	1				
6	90430-14115	.GASKET	2				
7	93102-43M42	.OIL SEAL	1				
8	93101-35002	.OIL SEAL	1				
9	90430-06014	.GASKET	1				
10	6C5-11181-01	.GASKET, CYLINDER HEAD 1	1				
11	62Y-11356-00	.SEAL, CYLINDER 2	1				
12	93210-24M79	.O-RING	1				
13	6C5-13329-00	.GASKET, PUMP COVER	1				
14	93102-37M40	.OIL SEAL	1				
15	93210-24M79	.O-RING	1				

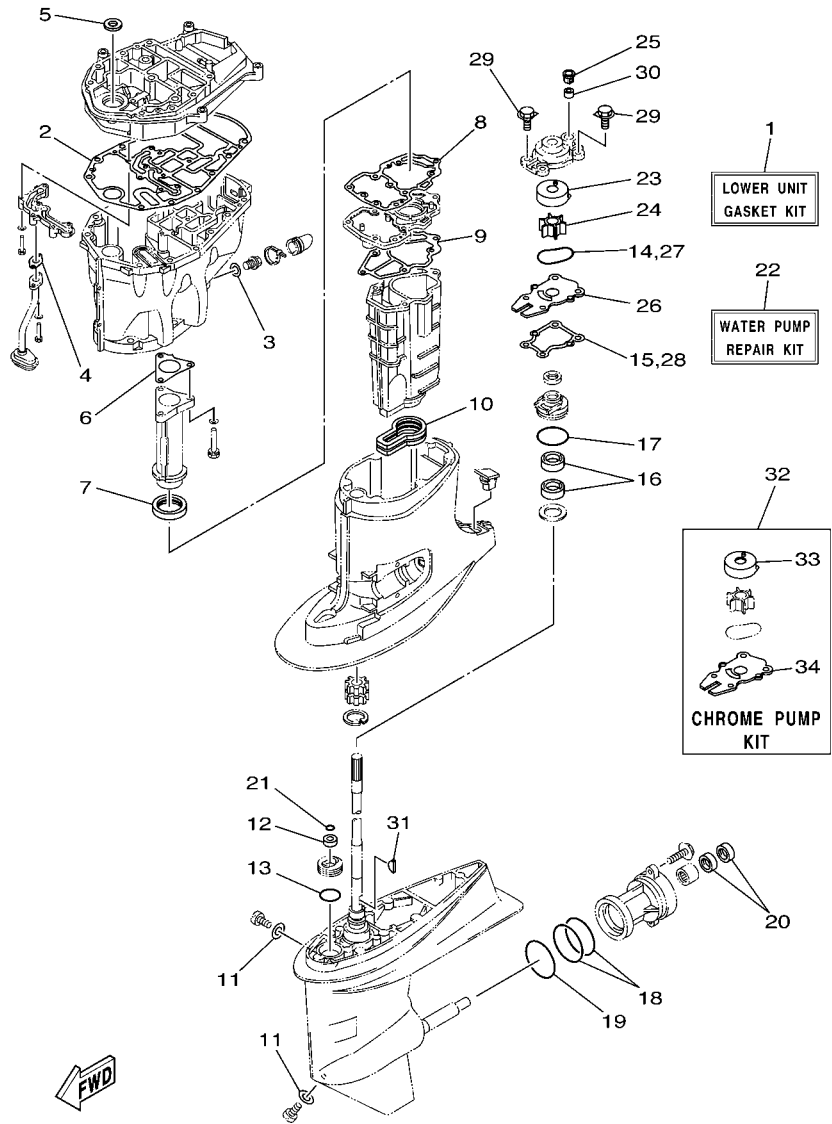
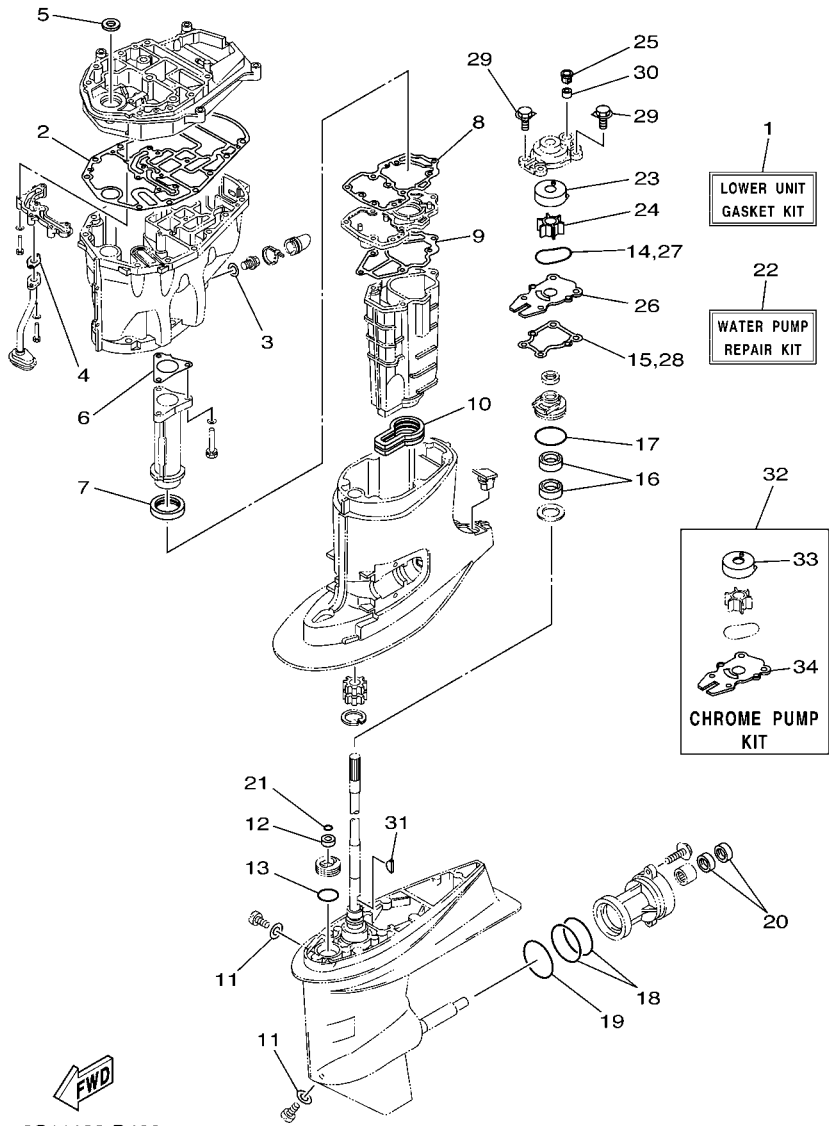


FIG. 35 REPAIR KIT 2

REF. NO.	PART NO.	DESCRIPTION	6C52				REMARKS
1	6C5-W0001-20	LOWER UNIT GASKET KIT	1				
2	6C5-15312-00	.GASKET, OIL PAN	1				
3	90430-14M09	.GASKET	1				
4	6C5-13414-00	.GASKET, STRAINER COVER	1				
5	93103-18011	.OIL SEAL	1				
6	6C5-41133-00	.GASKET, EXHAUST MANIFOLD 1	1				
7	6C5-46132-00	.GASKET 1	1				
8	6C5-41134-00	.GASKET, EXHAUST MANIFOLD	1				
9	6C5-41135-00	.GASKET, EXHAUST MANIFOLD	1				
10	6C5-45123-00	.GASKET, MUFFLER	1				
11	90430-08020	.GASKET	2				
12	93106-09014	.OIL SEAL	1				
13	93210-33MG4	.O-RING	1				
14	93210-59MG7	.O-RING	1				
15	63D-44316-00	.GASKET, WATER PUMP	1				
16	93101-25M57	.OIL SEAL	2				
17	93210-48MG8	.O-RING	1				
18	93210-74MG5	.O-RING	2				
19	93210-69MG6	.O-RING	1				
20	93101-22M00	.OIL SEAL	2				
21	93210-07003	.O-RING	1				
22	63D-W0078-01	WATER PUMP REPAIR KIT	1				
23	63D-44322-00	.INSERT, CARTRIDGE	1				
24	6H3-44352-00	.IMPELLER	1				
25	63D-44312-00	.COVER, WATER PUMP HOUSING	1				
26	63D-44323-00	.OUTER PLATE, CARTRIDGE	1				
27	93210-59MG7	.O-RING	1				



**FIG. 35 REPAIR KIT 2**

REF. NO.	PART NO.	DESCRIPTION	6C52					REMARKS
28	63D-44316-00	.GASKET, WATER PUMP	1					
29	90119-08M15	.BOLT, WITH WASHER	4					
30	663-44366-00	.DAMPER, WATER SEAL	1					
31	90280-03024	.KEY, WOODRUFF	1					
32	63D-W0078-0A	CHROME PUMP KIT	1					
33	63D-44322-40	.INSERT, CARTRIDGE	1					
34	63D-44323-40	.OUTER PLATE, CARTRIDGE	1					
-----								
-----								
-----								
-----								
-----								
-----								
-----								
-----								



NUMERICAL INDEX

PART NO.	REF. NO.	PART NO.	REF. NO.	PART NO.	REF. NO.	PART NO.	REF. NO.	PART NO.	REF. NO.	PART NO.	REF. NO.
6C5-11111-00-1S	4 - 2	62Y-12138-60	4 - 41	6C5-13577-00	9 - 10	6C5-15378-00	4 - 32	6C5-41113-00-1S	2 - 9	6G5-43144-00	22 - 23
62Y-11119-00	4 - 26	6C5-12146-00	5 - 8	6C5-13593-00	8 - 20	6C5-15378-11	4 - 35	6C5-41114-00	2 - 15	6E5-43145-01	30 - 9
	4 - 38	62Y-12151-00	5 - 9	6C5-13641-00	6 - 2	6C5-21337-10	8 - 24		34 - 4	6G5-43148-00	22 - 19
62Y-11133-30	4 - 3	6C5-12151-00	5 - 12	6C5-13645-00	6 - 3	6C5-21841-00	9 - 11	6C5-41131-00-5B	26 - 6	6C5-43181-00	22 - 14
6C5-11168-00	4 - 20	62Y-12158-00	5 - 11	6C5-13716-00	8 - 22	6C5-22435-00	24 - 15	6C5-41133-00	26 - 5	6C5-43185-00	22 - 15
6C5-11181-01	4 - 14	6C5-12158-00	5 - 14	6C5-13739-00	9 - 25	6C5-22471-00	24 - 8		35 - 6	6C5-43311-00-4D	22 - 9
	34 - 10	64J-12159-00	5 - 10	6C5-13750-00	6 - 5	6C5-2247A-00	11 - 4	6C5-41134-00	26 - 10	6C5-43800-01-4D	24 - 1
6C5-11191-01-1S	4 - 18	6C5-12159-00	5 - 13	6C5-13761-00	6 - 16	6C5-2411M-00	9 - 13		35 - 8	6C5-43801-00	24 - 3
62Y-11325-00	2 - 17	6C5-12171-00	10 - 1	6C5-13781-00	8 - 21	6C5-24251-00	9 - 21	6C5-41135-00	26 - 13	6C5-43804-01	25 - 5
	4 - 4	6C5-12231-00	5 - 15	6C5-13906-10	8 - 9	6G1-24304-02	11 - 1		35 - 9	6C5-43805-00	25 - 4
66M-11327-00-94	2 - 19	6C5-12233-00	5 - 16	6C5-13907-00	8 - 17	6E5-24305-06	12 - 2	6C5-41137-00-94	26 - 1	6C5-4380G-00	24 - 22
	4 - 6	6C5-12241-00	5 - 17	6C5-13910-10	8 - 16	6Y2-24305-06	12 - 4	688-41211-01	21 - 24	6C5-4380K-00	24 - 18
66M-11328-00	2 - 18	6C5-12243-00	5 - 18	6C5-13915-00	8 - 19	6Y2-24306-56	12 - 1	6H4-41237-00	21 - 25	6C5-43810-00	24 - 2
	4 - 5	6G8-12411-03	2 - 11	6C5-13974-00	9 - 16	6C5-24312-00	20 - 6	62Y-42154-00	21 - 27	6C5-43816-00	24 - 21
67C-11351-01	2 - 8	688-12412-00	2 - 12	6C5-1410B-00	6 - 17	6C5-24321-10	9 - 3	6C5-42171-00	21 - 28	6C5-43817-10	24 - 19
	34 - 2	6H3-12413-00-1S	2 - 13	6C5-1410F-00	9 - 23	6C5-24322-10	9 - 4	6C5-42335-00	21 - 33	6C5-43818-00	22 - 36
62Y-11356-00	4 - 23	62Y-12414-00	2 - 14	6C5-14127-10	8 - 18	6C5-24323-00	9 - 5	69W-42510-01-4D	23 - 1	6C5-4381B-00	24 - 10
	34 - 11		34 - 3	6C5-14148-10	9 - 14	6C5-24324-00	9 - 6	6C5-42610-00-4D	1 - 1	6C5-4381K-00	24 - 35
6C5-11411-00	3 - 1	62Y-12481-10	2 - 10	6C5-14149-00	9 - 8	6C5-24325-00	9 - 7	67C-42613-00-4D	1 - 2	6C6-4381K-00	24 - 38
6C5-11416-00	3 - 2	66M-12535-00	2 - 20	6C5-14180-10	8 - 1	61N-24329-00	19 - 28	6C5-42615-00	1 - 14	6H1-43829-00	24 - 63
6C5-11416-10	3 - 2		4 - 7	6C5-14182-10	8 - 2	6E5-24351-51	12 - 7	6C5-42651-00	1 - 4	6C6-4382E-00	24 - 28
6C5-11416-20	3 - 2	69W-12535-00	20 - 3	6C5-14191-00	8 - 13	6Y2-24360-60	12 - 9	67C-42652-02	1 - 6	6C5-4382K-00	24 - 41
6C5-11416-30	3 - 2	68T-12572-00	20 - 2	6C5-14200-60	6 - 1	62Y-24374-01	11 - 28	69W-42677-00	1 - 9	6C5-4382L-00	24 - 56
6C5-11536-00	10 - 7	6C5-12576-00	7 - 16	6C5-14225-00	8 - 25	67F-24377-00	11 - 5	6C5-42678-00	1 - 10	6C5-43830-00	24 - 24
6C5-11537-00	10 - 2	6R3-12580-00	20 - 8	6C5-14251-00	9 - 12	688-24378-00	20 - 11	69W-42681-00	1 - 12	6C5-43831-00	24 - 64
6H4-11545-00	13 - 5	6C5-12858-00	2 - 30	6C5-14386-00	8 - 5	6C5-24378-00	20 - 15	69W-42682-00	1 - 13	6C5-43833-00	22 - 37
62Y-11557-00	10 - 8	6C5-13105-01	6 - 10	6C5-14397-00	6 - 11	6C5-24379-00	9 - 18	6C5-42710-10-4D	19 - 1	6C5-43834-00	22 - 38
6G8-11577-00	10 - 15	62Y-13131-00	11 - 23		8 - 14	6C5-24387-00	9 - 15	62Y-42715-01	21 - 11	6C5-43841-00	24 - 57
67C-11603-00	3 - 7	6C5-13142-00	10 - 14	6C5-14440-00	7 - 4	6C5-24410-00	11 - 19	62Y-42716-00	19 - 5	6C6-43841-00	24 - 25
67C-11604-00	3 - 7	6C5-13161-00	6 - 13	6C5-14446-00	6 - 15	62Y-24411-02	11 - 21	65W-42717-00	19 - 6	6C5-43845-00	24 - 61
67C-11605-00	3 - 7	6C5-13300-00	10 - 11	6C5-14453-01	7 - 5	6C5-24415-00	11 - 20	6C5-42718-00	19 - 8	62X-4384H-00	24 - 14
69W-11631-00-97	3 - 6	6C5-13329-00	10 - 17	62Y-14485-00	4 - 19	6C5-2441R-10	8 - 6	6C5-42724-00	19 - 23	6C5-43851-00	24 - 34
62Y-11633-00	3 - 8		34 - 13	6C5-14496-00	6 - 9	6C5-2441T-10	8 - 7	65W-42724-10	20 - 1	6C6-43853-00	24 - 30
69W-11635-00	3 - 6	6C5-13411-00	27 - 8	6C5-14546-10	8 - 4	62Y-24423-00	11 - 22	6C5-42725-30	19 - 9	6C5-43854-00	24 - 43
69W-11636-00	3 - 6	6C5-13414-00	27 - 9	6C5-14567-00	8 - 15	6C5-24444-00	9 - 9	6C5-42726-00	19 - 43	6C5-43855-00	24 - 39
6C5-11650-00	3 - 3		35 - 4	6C5-14711-00-5B	26 - 14	62Y-24444-01	11 - 25	62Y-42727-00	19 - 10	6C5-43856-00	24 - 40
6C5-11654-00	3 - 4	6C5-13428-00	7 - 20	6C5-14960-10	8 - 12	6C5-24453-00	8 - 8	68U-42727-00	19 - 26	6C5-43861-00	24 - 6
6C5-11656-00	3 - 5	67F-13434-03	1 - 16	6C5-14984-00	8 - 23	62Y-24454-00	11 - 24	6H3-42727-00	19 - 27		24 - 17
6C5-11656-10	3 - 5	6C5-13437-61	13 - 16	6C5-14985-00	8 - 3	68V-24469-01	11 - 13	6C5-42738-00-4D	19 - 7	6C5-43862-00	24 - 5
6C5-11656-20	3 - 5	5GH-13440-20	2 - 29	6C5-15100-00-1S	2 - 2	6C5-24471-00	11 - 26	67C-42741-10-4D	19 - 29	62Y-43863-00	24 - 4
6C5-11656-30	3 - 5	62Y-13444-50	20 - 20	6C5-15311-00-5B	27 - 1	6C5-2451B-10	9 - 22	6C5-42811-00	16 - 28	6C5-43869-00	25 - 6
69W-12111-00	5 - 1	69W-13448-00	1 - 15	6C5-15312-00	27 - 2	68V-24521-01	11 - 10	67C-42815-00-4D	19 - 12	6C6-4386E-00	24 - 54
51Y-12114-00	5 - 4	6C5-13542-00	9 - 2		35 - 2	68V-24560-01	11 - 9	67C-42816-01	19 - 17	6C6-4386G-00	24 - 53
62Y-12116-00	5 - 3	6C5-13545-10	9 - 19	6C5-15316-00	27 - 4	68V-24563-00	11 - 11	6C5-43111-00-4D	22 - 1	6C5-4386K-00	25 - 10
30X-12117-00	5 - 5	6C5-13546-10	9 - 1	6C5-1531A-01	4 - 31	6C5-24566-01	11 - 14	6C5-43112-00-4D	22 - 2	6C5-43871-00	24 - 7
30X-12118-00	5 - 6	6C5-13547-10	9 - 20	6C5-15333-00	27 - 10	6C5-24592-00	8 - 10	6E5-43126-02	22 - 26	6C5-43872-00	24 - 58
51Y-12119-00	5 - 7	6C5-13548-00	9 - 24	6C5-15362-00	27 - 13	6C5-28100-00	11 - 34	63D-43131-01	22 - 11	6C5-43875-00	24 - 9
69W-12121-00	5 - 2	6C5-13557-00	6 - 4	6G8-15363-00	4 - 29	67F-2812A-00	16 - 32	66T-43144-00	19 - 19	6H1-43875-00	24 - 60

NUMERICAL INDEX

PART NO.	REF. NO.	PART NO.	REF. NO.	PART NO.	REF. NO.	PART NO.	REF. NO.	PART NO.	REF. NO.	PART NO.	REF. NO.
6C6-43878-00	24 - 47	663-44367-00	29 - 2	63D-45577-40	28 - 46	703-48212-00	32 - 58	6C5-81337-00	13 - 1	1E6-82151-00	33 - 7
6C5-43879-00	25 - 7	6H3-44391-01	19 - 22	63D-45577-50	28 - 46	703-48213-00	32 - 59	6C5-81410-00	13 - 4	67F-82151-00	16 - 2
62Y-4387G-00	24 - 48	69W-44514-00-4D	23 - 10	63D-45577-60	28 - 46	703-48215-00	32 - 43	6C5-81450-00	13 - 3	67F-82151-10	16 - 3
6C6-4387G-00	24 - 31	69W-44526-01	23 - 12	663-45587-01	28 - 5	703-48219-00	32 - 30	6C5-81800-00	18 - 1	67F-8215B-10	16 - 4
6C5-43880-01	25 - 1	6C5-44551-00-4D	23 - 16	663-45587-10	28 - 5	703-48221-00	32 - 56	69J-81801-00	18 - 5	67F-8215B-20	16 - 5
6C5-43881-01	25 - 11	6C5-44552-00-4D	23 - 19	663-45587-20	28 - 5	703-48222-00	32 - 27	67F-81807-00	18 - 10	6C5-82171-00	14 - 20
6C5-43882-00	25 - 8	69W-44555-00-4D	23 - 20	663-45587-30	28 - 5	703-48223-00	32 - 28	67F-81808-00	18 - 8	6C5-82176-00	16 - 26
6H1-43883-00	24 - 26	6C5-44575-00	23 - 23	663-45587-40	28 - 5	703-48225-00	32 - 29	67F-81809-00	18 - 19	63P-82310-01	14 - 5
6C5-43885-00	23 - 18	6C5-45111-00-4D	26 - 27	663-45587-50	28 - 5	703-48226-00	32 - 26	67F-81810-00	18 - 3	6C5-82316-01	14 - 12
62X-43888-00	25 - 12	6C5-45123-00	26 - 17	663-45587-60	28 - 5	703-48227-00	32 - 24	67F-81813-00	18 - 6	6C5-82316-11	14 - 13
6C6-4388E-00	24 - 51		35 - 10	63D-45611-00	28 - 55	703-48232-00	32 - 62	6C5-81815-00	15 - 17	6A0-82317-00	7 - 7
6C6-4388F-00	24 - 52	6C5-45135-01	27 - 14	62Y-45631-00	28 - 57	703-48234-00	32 - 18	68F-81820-00	18 - 7		15 - 26
6C5-43891-00	25 - 9	6C5-45136-01	27 - 15	67C-45633-00	28 - 62	703-48235-00	32 - 4	67F-81821-00	18 - 13	6C5-82317-00	14 - 24
6C5-43893-00	24 - 36	6C5-45155-00	26 - 20	663-45634-00	28 - 58	703-48236-00	32 - 16	6C5-81822-00-94	17 - 3	6E7-82317-00	19 - 25
6C6-43893-00	24 - 37	6C5-45181-00-5B	26 - 11	63D-45635-00	28 - 60	703-48238-00	32 - 22	6K7-81826-10	18 - 24	6C5-82340-01	14 - 6
6C6-43894-00	24 - 27	63D-45214-00	28 - 10	663-45930-00-98	29 - 24	703-48243-00	32 - 15	69J-81828-00	18 - 25	6C5-82377-00	20 - 19
6C5-43895-00	24 - 42	63D-45215-00	28 - 11	663-45941-01-EL	29 - 24	703-48244-00	32 - 21	6C5-8182L-00	6 - 8	6C5-82388-00	16 - 12
6C5-43899-00	24 - 12	65W-45251-00	22 - 5	69W-45943-00-EL	29 - 24	703-48245-00	32 - 11	67F-81830-00	18 - 17	64J-82504-00	16 - 21
69J-4389J-00	24 - 20		22 - 7	6H5-45943-00-EL	29 - 24	703-48246-00	32 - 23	67F-81832-00	18 - 11	703-82510-43	32 - 44
	24 - 32		22 - 24	69W-45945-00-EL	29 - 24	701-48248-00	32 - 13	67F-81836-00	18 - 12	6C5-8252R-00	16 - 27
62Y-44117-01-4D	21 - 2	67C-45251-00	29 - 14	6H5-45945-00-EL	29 - 24	703-48252-00	32 - 12	69J-81839-00	18 - 21	703-82531-00	32 - 46
62Y-44118-00	21 - 12	69W-45300-00-4D	28 - 1	69W-45947-00-EL	29 - 24	703-48261-01	32 - 2	67F-8183R-00	18 - 16	703-82540-00	32 - 50
6C5-44120-01	21 - 7	69W-45301-00-4D	28 - 2	663-45949-01-EL	29 - 24	703-48264-00	32 - 6	60V-8183T-00	18 - 18	6C5-82553-00	16 - 9
69W-44121-00	21 - 1	69W-45318-00	26 - 21	69W-45952-00-EL	29 - 24	703-48265-00	32 - 9	69J-81840-00	18 - 4	68F-82553-70	33 - 8
688-44122-00	21 - 20	63D-45321-00	28 - 14	6H5-45952-00-EL	29 - 24	703-48268-00	32 - 5	67F-81841-00	18 - 14	6C5-82554-01	16 - 16
6C5-44122-00	21 - 8	688-45341-10	28 - 9	663-45952-02-EL	29 - 24	703-48271-00	32 - 60	60X-81842-00	18 - 20	682-82556-00	32 - 48
62Y-44135-00	21 - 30	63D-45344-00	28 - 34	663-45956-01-EL	29 - 24	703-48281-00	32 - 31	67F-81846-00	18 - 26	703-82563-02	32 - 55
63D-44144-00	28 - 52	63D-45361-02-4D	28 - 43	6H5-45958-00-EL	29 - 24	703-48282-00	32 - 32	67F-81850-00	18 - 2	63D-82563-10	15 - 43
62Y-44151-00	28 - 51	67C-45371-00	29 - 11	663-45958-01-EL	29 - 24	703-48284-00	32 - 52	67F-81857-00	18 - 9	688-82575-01	32 - 47
63D-44311-00	28 - 21	63D-45375-00	29 - 5	697-45970-00-98	29 - 24	701-48287-00	32 - 42	69J-81869-00	18 - 23	703-82577-00	32 - 45
63D-44312-00	29 - 18	663-45376-00-94	29 - 4	663-45970-60-98	29 - 24	703-48291-10	32 - 39	67F-81891-00	18 - 15	6C5-8257V-00	15 - 4
	35 - 25	6E5-45378-00	28 - 17	663-45972-60-98	29 - 24	703-48293-10	32 - 41	6C5-81919-00	16 - 33	68F-82582-00	15 - 16
63D-44316-00	28 - 27	69W-45501-00	28 - 36	663-45974-02-98	29 - 24	701-48310-90	31 - 2	60V-81925-00	15 - 14	6E5-82587-00	15 - 46
	35 - 15	6H4-45536-00	28 - 4	663-45974-60-98	29 - 24	701-48320-00	31 - 2	6C5-81941-00	18 - 22	61A-82588-01	16 - 17
	35 - 28	69W-45551-00	28 - 37	663-45976-00-98	29 - 24	701-48320-20	31 - 2	6C5-81942-00	16 - 22	688-8258A-20	32 - 49
63D-44322-00	28 - 22	69W-45560-00	28 - 39	663-45978-00-98	29 - 24	701-48320-50	31 - 2	6C5-81948-00	15 - 21	6C5-82590-11	16 - 1
	35 - 23	663-45567-01	28 - 41	663-45987-02	29 - 19	69W-48344-00	21 - 23	68V-8194A-00	15 - 34	703-82591-00	32 - 53
63D-44322-40	35 - 33	663-45567-10	28 - 41	66T-45997-00	29 - 20		21 - 37	60E-81950-00	15 - 1	703-82592-00	32 - 54
63D-44323-00	28 - 26	663-45567-20	28 - 41	6C5-46132-00	26 - 7	703-48345-01	32 - 19	63P-81950-00	15 - 27	703-82594-00	32 - 25
	35 - 26	663-45567-30	28 - 41		35 - 7	703-48358-00	32 - 20	6C5-81953-00	15 - 39	60V-8259F-00	16 - 15
63D-44323-40	35 - 34	663-45567-40	28 - 41	6C5-46241-00	10 - 6	65W-48511-00	23 - 35	68V-81960-00	14 - 15	703-83383-02	32 - 51
63D-44341-00	28 - 31	663-45567-50	28 - 41	703-48152-00	32 - 57	62Y-48538-00	21 - 39	6C5-81961-00	14 - 16	6Y5-8350T-03	33 - 1
6H3-44352-00	28 - 23	663-45567-60	28 - 41	703-48153-00	32 - 3	65W-61350-00	30 - 1	6C5-82105-U0	17 - 1	6Y5-83553-00	33 - 6
	35 - 24	62Y-45571-00	28 - 42	703-48189-00	32 - 17	65W-61351-00	30 - 2	6G5-82119-00	15 - 38	6E5-83558-00	23 - 32
6C5-44361-00	29 - 1	63D-45577-00	28 - 46	703-48198-00	32 - 14	6C5-81145-00	6 - 7	703-82119-00	22 - 31	6E5-83558-10	28 - 19
663-44366-00	29 - 3	63D-45577-10	28 - 46	703-48205-17	31 - 1	6C5-81146-00	6 - 12	682-82119-01	15 - 28	6C5-83614-01	15 - 44
	29 - 17	63D-45577-20	28 - 46		32 - 1	68V-81315-00	16 - 8	67C-82127-10	23 - 33	6A1-83625-41	13 - 17
	35 - 30	63D-45577-30	28 - 46	703-48211-01	32 - 61	6C5-81336-00	15 - 2	6E5-82148-00	22 - 3	6A1-83625-51	13 - 18

NUMERICAL INDEX

PART NO.	REF. NO.	PART NO.	REF. NO.	PART NO.	REF. NO.	PART NO.	REF. NO.	PART NO.	REF. NO.	PART NO.	REF. NO.
62Y-83626-00	13 - 19	90119-06M59	14 - 26	90206-12052	19 - 15	90445-09104	20 - 17	90467-10M04	11 - 32	92995-06100	15 - 30
67F-83627-01	18 - 27		15 - 25	90249-06M19	22 - 20	90445-09220	20 - 13	90468-18008	21 - 19		15 - 36
63D-83672-01	22 - 30	90119-06MA3	4 - 17	90250-06023	28 - 61	90445-09226	20 - 9		21 - 22		19 - 42
68F-83688-00	6 - 18	90119-06MA5	2 - 16	90266-06M02	1 - 5	90445-13M00	12 - 8		21 - 38	92995-06600	2 - 24
6C5-85525-00	14 - 1	90119-08069	7 - 2	90280-03024	28 - 25	90445-13M01	12 - 6	90480-09M12	8 - 27		4 - 11
6C5-85548-00	15 - 22	90119-08M01	2 - 4		35 - 31	90445-13M02	11 - 6		19 - 3		4 - 25
6C5-85561-00-94	13 - 9	90119-08M15	28 - 29	90280-03M01	10 - 10	90445-13M36	11 - 17	90480-12072	13 - 2		4 - 28
62Y-85580-00	13 - 12		35 - 29	90340-08002	28 - 7	90446-14M62	11 - 33		17 - 2		4 - 34
6C5-85790-00	16 - 10	90119-08M79	26 - 18	90340-14M06	2 - 27	90447-10006	20 - 18	90480-13598	16 - 31		4 - 37
6C5-85885-00	6 - 6	90119-08M82	26 - 19		27 - 6	90447-13010	22 - 35	90480-13M24	19 - 35		4 - 40
6C5-8591A-30	14 - 23	90119-08M84	29 - 10	90340-18M09	2 - 25	90450-50001	7 - 6	90480-24003	17 - 11		7 - 15
6C5-86112-00	7 - 13	90142-05M06	28 - 12	90344-51003	2 - 7	90462-08031	20 - 10	90501-12082	21 - 14		7 - 22
6C5-86120-00	7 - 11	90159-04005	15 - 18	90386-10025	22 - 17	90464-06001	14 - 14	90501-18001	28 - 59		11 - 3
6C5-87226-00	8 - 11	90159-06M14	16 - 24	90386-10M16	22 - 16	90464-07M05	14 - 8	90501-6C500	10 - 16		11 - 31
6C5-W0001-00	34 - 1	90167-06002	20 - 4	90386-12M37	19 - 13	90464-07M41	14 - 7	90506-14M24	22 - 21		14 - 3
6C5-W0001-20	35 - 1	90170-09M03	30 - 5	90386-12MA2	19 - 14	90464-07M56	6 - 14	90506-18M40	19 - 21		14 - 11
69W-W0070-00	1 - 11	90170-12138	28 - 38	90386-18M35	22 - 28	90464-09M13	19 - 24		24 - 55		14 - 19
63D-W0078-01	35 - 22	90170-20137	13 - 6	90386-18M92	22 - 27	90464-09M49	19 - 37	91312-03016	24 - 50		14 - 22
63D-W0078-0A	35 - 32	90170-35008	10 - 9	90386-22MA4	22 - 12	90464-12006	7 - 18	91312-04030	24 - 49		15 - 6
6C5-W009A-01-1S	4 - 1	90171-16011	29 - 22	90386-30M60	23 - 6	90464-15008	7 - 17	91312-05025	24 - 46		15 - 10
6C5-W009B-01-1S	2 - 1	90179-06029	1 - 3	90386-30M77	23 - 4	90464-18007	16 - 29	91312-05030	24 - 33		15 - 13
63D-W4434-00	28 - 30	90179-08003	15 - 15	90386-30M78	23 - 3	90464-18246	14 - 4	91312-05045	24 - 23		15 - 31
90101-06020	22 - 6	90185-06M05	1 - 8	90386-90M90	21 - 16	90464-76001	22 - 33	91312-05050	24 - 66		15 - 37
	22 - 8	90185-08045	23 - 13	90387-04001	16 - 18	90465-05M87	15 - 7	91490-16010	21 - 29		16 - 14
	22 - 25	90185-09M01	30 - 4	90387-06060	19 - 4	90465-06M86	23 - 29	91490-20015	21 - 18		21 - 4
90101-08M15	23 - 11	90185-10051	23 - 8	90387-06119	7 - 8	90465-11M10	7 - 19	91490-30025	29 - 23		21 - 6
90101-09M01	30 - 7	90185-22M11	22 - 13		14 - 25		9 - 17	91690-30020	22 - 18		26 - 16
90101-12M65	22 - 41	90201-06015	26 - 9		15 - 24		11 - 7	92903-06600	2 - 6	92995-08100	23 - 15
90105-08060	5 - 20	90201-08M14	22 - 40	90387-06M43	19 - 36		15 - 40		15 - 33		23 - 22
90105-08M61	28 - 44	90201-10120	23 - 36	90387-06M45	21 - 31		19 - 38		27 - 12		29 - 13
90105-09005	4 - 16	90201-10144	10 - 5	90387-06M69	8 - 26		20 - 7	92903-08100	15 - 20		29 - 16
90109-06047	1 - 7	90201-10M20	21 - 17	90387-06M82	21 - 36		20 - 12	92903-08600	17 - 13	92995-08600	17 - 8
90109-06M65	4 - 12		30 - 3	90387-10M42	30 - 6		22 - 34	92907-04600	4 - 22		17 - 10
90109-06M80	19 - 34	90201-10M63	30 - 8	90389-22M01	29 - 21		23 - 30	92990-04100	33 - 4	92995-10100	26 - 24
	20 - 5	90201-12426	22 - 43	90430-06014	4 - 13		26 - 2	92990-06100	19 - 32		29 - 8
90109-06M81	19 - 11	90201-12M07	19 - 16		34 - 9		28 - 20	92990-06600	19 - 33	92995-10600	26 - 25
90109-06M86	15 - 45	90201-12M16	23 - 17	90430-08020	28 - 8	90465-11M59	27 - 5		19 - 41		29 - 9
	19 - 20	90201-13M19	23 - 27		35 - 11	90465-13M11	16 - 7	92990-08200	5 - 21	92995-12200	22 - 42
90109-12MA3	23 - 24	90201-16014	5 - 19	90430-14115	2 - 28	90465-13M18	17 - 14	92990-08600	32 - 34	92A08-03110	24 - 44
90116-10M28	23 - 7	90201-21M18	13 - 7		16 - 11	90465-13M24	16 - 6	92995-04100	16 - 20	93101-22M00	28 - 50
90119-06025	10 - 18	90201-22008	28 - 56		34 - 6		16 - 25	92995-05600	2 - 22		35 - 20
90119-06077	16 - 30	90201-22M05	23 - 28	90430-14M09	27 - 7	90465-13M39	16 - 23		4 - 9	93101-25M57	28 - 32
90119-06087	7 - 3	90201-27M00	28 - 35		35 - 3	90465-13M97	13 - 15		13 - 14		35 - 16
90119-06106	7 - 9	90201-30M00	23 - 2	90430-18130	2 - 26		15 - 42		21 - 10	93101-35002	3 - 11
	21 - 32	90202-07M07	21 - 21		34 - 5		15 - 47	92995-06100	14 - 10		34 - 8
90119-06120	26 - 8	90202-21100	23 - 26	90445-07M53	23 - 31	90467-08M18	20 - 14		14 - 18	93102-37M40	10 - 19
90119-06M08	7 - 10	90206-08N51	25 - 2	90445-07ME8	28 - 18	90467-09M17	11 - 8		15 - 9		34 - 14
	19 - 2	90206-10M04	21 - 35	90445-09091	20 - 16	90467-10M04	11 - 18		15 - 12	93102-43M42	3 - 10

NUMERICAL INDEX

PART NO.	REF. NO.	PART NO.	REF. NO.	PART NO.	REF. NO.	PART NO.	REF. NO.	PART NO.	REF. NO.	PART NO.	REF. NO.
93102-43M42	34 - 7	93605-17002	10 - 3	97095-06014	4 - 36	9E450-04433	33 - 2				
93103-18011	26 - 3	93606-12019	2 - 3		14 - 2	9E450-04533	33 - 3				
	35 - 5		26 - 26		14 - 21						
93106-09014	28 - 15		27 - 3		15 - 5						
	35 - 12		29 - 6		16 - 13						
93210-07003	28 - 53	93608-12M05	7 - 1		19 - 18						
	35 - 21		26 - 4	97095-06016	7 - 14						
93210-08287	12 - 3	93700-06M03	22 - 10		7 - 21						
	12 - 5	94702-00418	4 - 42	97095-06020	2 - 23						
93210-09165	24 - 62	95023-06030	13 - 8		4 - 10						
93210-16275	30 - 10		13 - 10		4 - 24						
93210-18397	24 - 59	95302-03600	24 - 45		4 - 27						
93210-24M79	4 - 30	95333-08600	15 - 19		4 - 39						
	11 - 29	95380-04600	33 - 5		15 - 8						
	34 - 12	95380-05600	11 - 27		15 - 11						
	34 - 15		28 - 13		19 - 39						
93210-29M94	23 - 5		32 - 7		21 - 3						
93210-32738	11 - 12	95380-05700	21 - 26		21 - 13						
93210-33MG4	28 - 16	95380-06600	7 - 12	97095-06025	11 - 2						
	35 - 13		19 - 30		14 - 17						
93210-48MG8	28 - 33		32 - 40		21 - 5						
	35 - 17	95380-06800	19 - 40	97095-06030	11 - 30						
93210-59MG7	28 - 24	95380-08600	11 - 16		14 - 9						
	35 - 14		17 - 6	97095-08025	17 - 9						
	35 - 27	95380-12600	22 - 44		29 - 12						
93210-64488	24 - 65	95380-12700	23 - 25	97095-08035	17 - 7						
93210-69MG6	28 - 48	95680-08330	17 - 5		29 - 15						
	35 - 19	95817-10035	10 - 4	97380-05025	32 - 8						
93210-74MG5	28 - 47	95895-06035	21 - 34	97380-08030	32 - 33						
	35 - 18	95895-08016	11 - 15	97780-60620	15 - 3						
93306-001U1	28 - 45	97013-06020	15 - 32		15 - 23						
93315-32224	28 - 3	97013-06030	27 - 11		15 - 41						
93317-22204	28 - 49	97013-06035	2 - 5	97880-06025	19 - 31						
93332-00001	28 - 6	97013-08045	17 - 12	97885-04016	16 - 19						
93332-00092	28 - 40	97075-06025	26 - 15	97885-06008	22 - 4						
93399-999T8	25 - 3	97075-08030	23 - 14		23 - 34						
93410-18M02	22 - 29		23 - 21	97885-06016	22 - 32						
93410-28M06	23 - 9	97075-10040	29 - 7	98507-04010	4 - 21						
93420-36M01	26 - 22	97075-10045	26 - 23	98580-03015	32 - 38						
93430-06024	32 - 10	97080-08020	22 - 39	98580-04006	32 - 36						
93450-17129	3 - 9	97095-05012	2 - 21	98580-04010	32 - 35						
93450-32116	24 - 11		4 - 8	98580-05010	32 - 37						
93501-04M02	21 - 15		13 - 13	98580-06016	10 - 13						
93503-16003	24 - 13	97095-05014	21 - 9	99001-08600	28 - 54						
93505-32038	24 - 29	97095-06010	15 - 29	99009-32500	24 - 16						
93603-17070	10 - 12		15 - 35	99530-08012	4 - 15						
93604-08062	28 - 28		22 - 22		13 - 11						
93604-10M03	26 - 12	97095-06014	4 - 33	99590-10114	17 - 4						