

PARTS CATALOGUE

WaveRunner FX Cruiser SVHO

FC1800A-P (F3J7/6ETD/6ET2)

FC1800A-P (F3J8/6ETE/6ET2)

FC1800A-P (F3J9/6ETF/6ET2)

FC1800A-P
PARTS CATALOGUE
©2014 by Yamaha Motor Co., Ltd.
1st edition, August 2014
All rights reserved.
Any reprinting or unauthorized use
without the written permission of
Yamaha Motor Co., Ltd.
is expressly prohibited.
Printed in Japan.

FOREWORD

This Parts Catalogue is related to the parts for the model(s) on the cover page. When you are ordering replacement parts, please refer to this Parts Catalogue and quote both part numbers and part names correctly.

1. Modifications or additions which have been made after the issue of the Parts Catalogue will be announced in the Parts News.

It is advisable that you make the necessary corrections to the Parts Catalogue according to the Parts News.

2. Abbreviations

The following abbreviations are used in this Parts Catalogue.

“UR” Use specified parts number.

“UN” Use as many as needed.

“AP” Alternate Parts

“LM” Locally Made (Parts need to be ordered locally)

“F#” Frame No. (Applicable machine No.)

“O/S” Over Size

3. The number of components for assembly

- Parts, which are to be supplied in an assembly, are listed with a dot (.) in front of the part name as shown below.
- The numeral appearing to the right of each component part indicates the quantity of parts for each assembly unit.

PART NO.	DESCRIPTION	Q'TY	REMARKS
2F5-83310-60	FRONT FLASHER LIGHT ASSY	2	
115-83311-60	.BULB (6V-18W)	1	

4. Applicable colours of graphics are represented in the “REMARKS” as shown below.

PART NO.	DESCRIPTION	Q'TY	REMARKS
2N4-24110-00-X5	FUEL TANK COMP.	2	MXR
3J1-24240-10	.GRAPHIC, FUEL TANK	1	FOR MXR

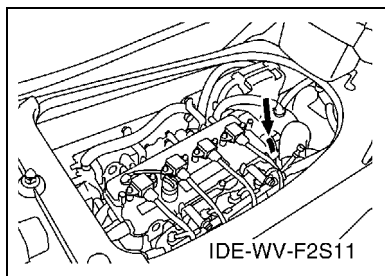
5. Note that the illustrations for reference in finding parts numbers are not to be used for assembling. When assembling, please use the applicable service manual.

6. The asterisk (*) before a reference number indicates modified items after the first edition.

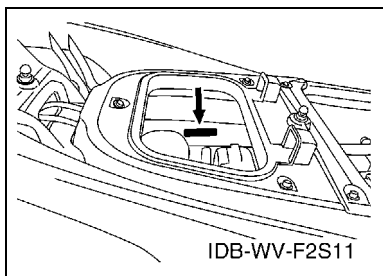
FOREWORD

7. Applicable Serial No.

Engine Serial No.



Primary Identification No.



8. Applicable Colour Code (The (*) mark shows Model colour.)

Abbreviation	Colour Name	Colour Code
PURW(*)	PURE WHITE	0240
RM9(*)	RED METALLIC 9	1485

9. Quantity Column Information

Column No.	Name Of Q'ty Column	Destination
1	CAN	CANADA
2	EUR	EUROPE
3	GENE	EXCEPT CANADA, EUROPE

10. Applicable Starting Serial No.

Engine Serial No.

Serial No.	Name Of Q'ty Column	Model Code
6ET-1005301	CAN	6ETD
6ET-1005301	EUR	6ETF
6ET-1005301	GENE	6ETE

Primary Identification No.

Serial No.	Name Of Q'ty Column	Model Code
F3J-805401	CAN	F3J7
F3J-805401	EUR	F3J9
F3J-805401	GENE	F3J8

CONTENTS

CYLINDER 1	1
CYLINDER 2	2
CRANKCASE	3
CRANKSHAFT & PISTON	5
VALVE	7
INTAKE 1	9
INTAKE 2	11
INTAKE 3	12
OIL PUMP	13
OIL PAN	14
OIL COOLER	15
BREATHING OIL	16
EXHAUST 1	17
EXHAUST 2	18
JET UNIT 1	20
JET UNIT 2	22
JET UNIT 3	23
JET UNIT 4	24
GENERATOR	26
STARTING MOTOR	27
ELECTRICAL 1	28
ELECTRICAL 2	30
ELECTRICAL 3	32
ENGINE MOUNT	34
ENGINE HATCH 1	35
ENGINE HATCH 2	37
HULL & DECK	39
HULL & DECK 2	41
GUNWALE & MAT	42
VENTILATION	43
SEAT & UNDER LOCKER	44
SEAT & UNDER LOCKER 2	45
FUEL TANK	47
BILGE PUMP	49
EXHAUST 3	50
CONTROL CABLE	51
STEERING 1	52
STEERING 2	53
STEERING 3	55
GRAPHICS	56
IMPORTANT LABELS	57

REPAIR KIT 1	58
--------------------	----

INDEX

NUMERICAL INDEX	60
-----------------------	----

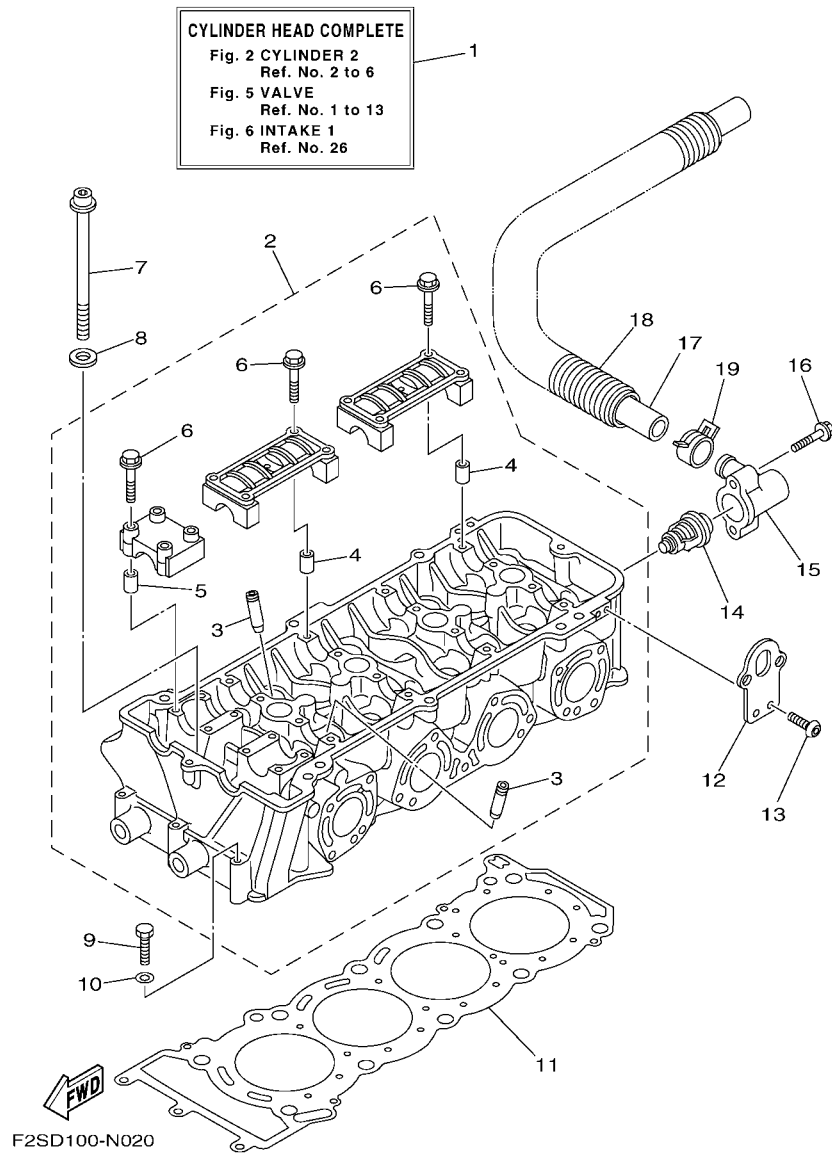
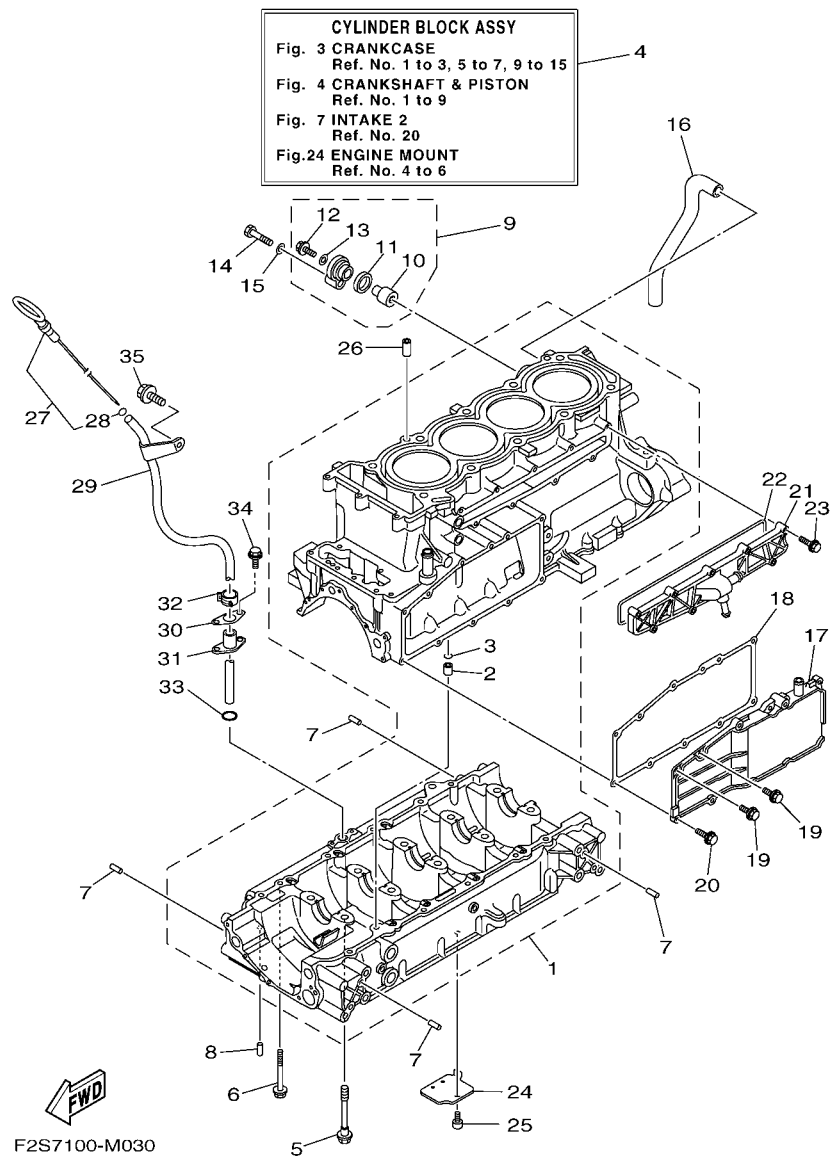


FIG. 2 CYLINDER 2

REF. NO.	PART NO.	DESCRIPTION	CAN	EUR	GENE	REMARKS
1	6ET-W009A-00-94	CYLINDER HEAD COMPLETE	1	1	1	
2	6S5-11102-11	CYLINDER HEAD ASSY	1	1	1	
3	6S5-11133-10	.GUIDE, VALVE 1	16	16	16	
4	91809-16002	.PIN, DOWEL	8	8	8	
5	91809-16002	.PIN, DOWEL	4	4	4	
6	90105-07009	.BOLT, FLANGE	24	24	24	
7	6S5-12228-01	BOLT	10	10	10	
8	90201-12039	WASHER, PLATE	10	10	10	
9	97013-06055	BOLT	3	3	3	
10	92903-06600	WASHER, PLATE	3	3	3	
11	6BH-11181-00	GASKET, CYLINDER HEAD 1	1	1	1	
12	6BH-1111E-00	HANGER, ENGINE 2	2	2	2	
13	90119-06078	BOLT, WITH WASHER	4	4	4	
14	6D3-12411-00	THERMOSTAT	1	1	1	
15	6BH-12413-00	COVER, THERMOSTAT	1	1	1	
16	90105-06035	BOLT, FLANGE	2	2	2	
17	6S5-12578-00	HOSE 3	1	1	1	
18	90447-28008	TUBE (L850)	1	1	1	
19	90467-240A0	CLIP	1	1	1	

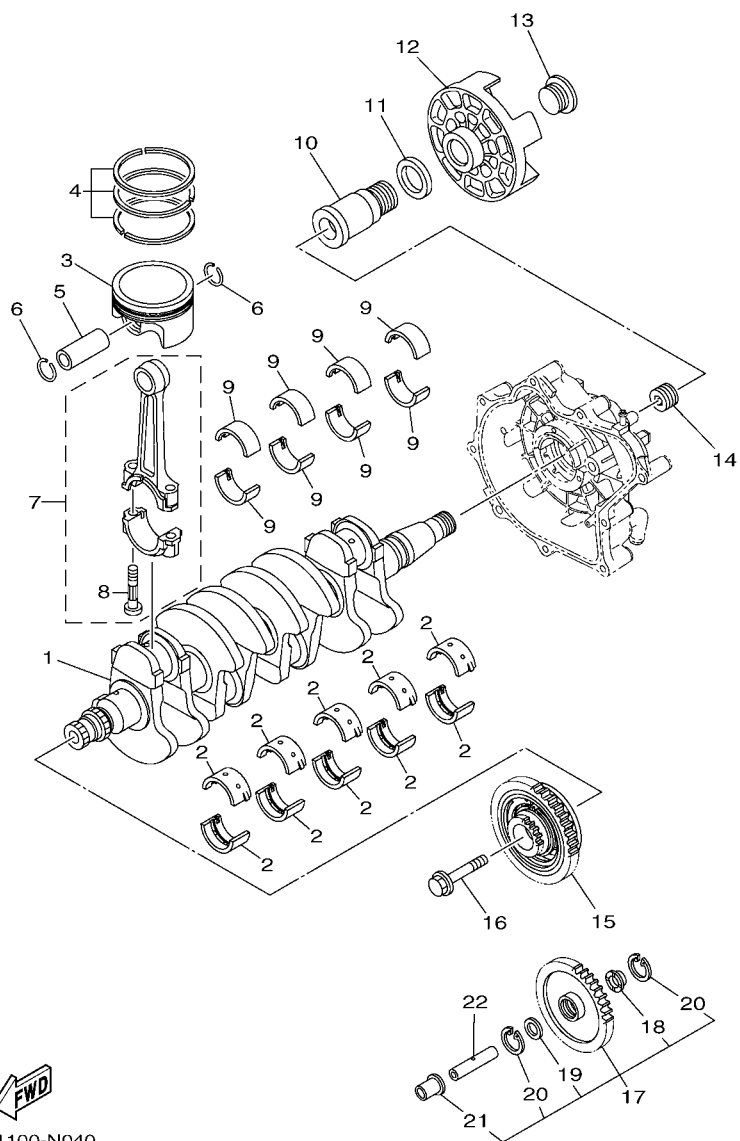


F2S7100-M030

FIG. 3 CRANKCASE

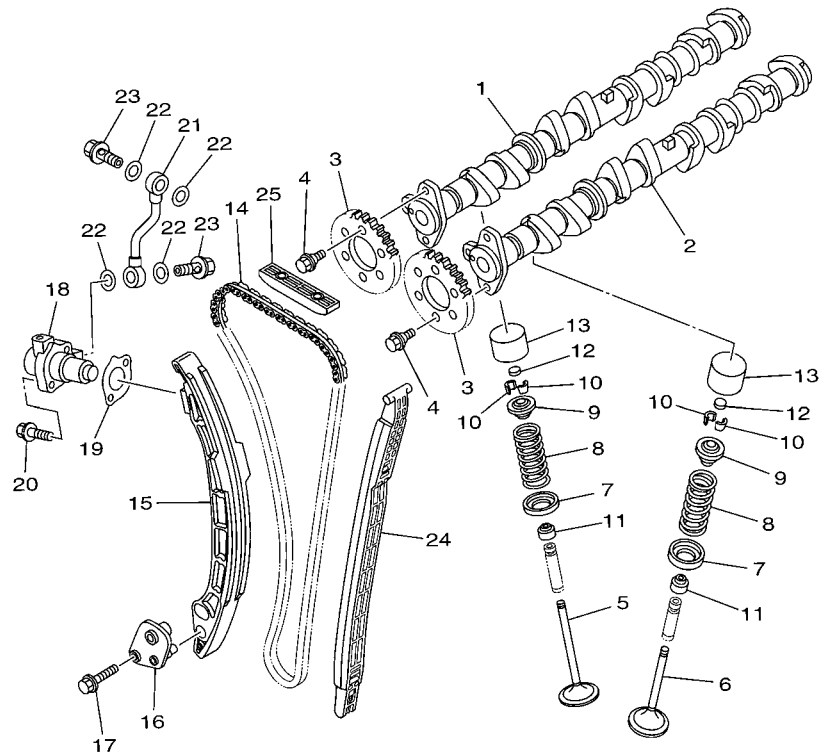
REF. NO.	PART NO.	DESCRIPTION	CAN	EUR	GENE	REMARKS
1	6CS-15100-11	CRANKCASE ASSY	1	1	1	
2	99530-10114	.PIN, DOWEL	1	1	1	
3	93210-11453	.O-RING	1	1	1	
4	6ET-W009B-00-94	CYLINDER BLOCK ASSY	1	1	1	
5	90105-10071	BOLT, FLANGE	10	10	10	
6	95814-06070	BOLT, FLANGE	12	12	12	
7	93606-12019	PIN, DOWEL	8	8	8	
8	93604-10M03	PIN, DOWEL	2	2	2	
9	69J-11301-10	ANODE COVER ASSY	1	1	1	
10	68V-11325-02	.ANODE	1	1	1	
11	67F-11328-00	.GROMMET, ANODE	1	1	1	
12	90105-06M07	.BOLT, FLANGE	1	1	1	
13	90430-06M03	.GASKET	1	1	1	
14	97095-08040	BOLT	1	1	1	
15	92995-08600	WASHER	1	1	1	
16	6S5-11377-00	HOSE	1	1	1	
17	6S5-1131M-10-8P	COVER	1	1	1	
18	6BH-13557-00	GASKET	1	1	1	
19	95024-06014	BOLT, FLG.(SMALL HEAD)	2	2	2	
20	95024-06020	BOLT, FLG.(SMALL HEAD)	9	9	9	
21	6CS-12469-A0	JOINT 1	1	1	1	
22	6CS-12517-00	GASKET, WATER INLET	1	1	1	
23	95814-06035	BOLT, FLANGE	9	9	9	
24	6S5-13337-10	PLATE, BAFFLE LOWER	1	1	1	
25	90110-06182	BOLT, HEXAGON SOCKET HEAD	1	1	1	
26	99530-10114	PIN, DOWEL	2	2	2	
27	6ET-15362-00	PLUG, OIL LEVEL	1	1	1	

FIG. 4 CRANKSHAFT & PISTON



F3J1100-N040

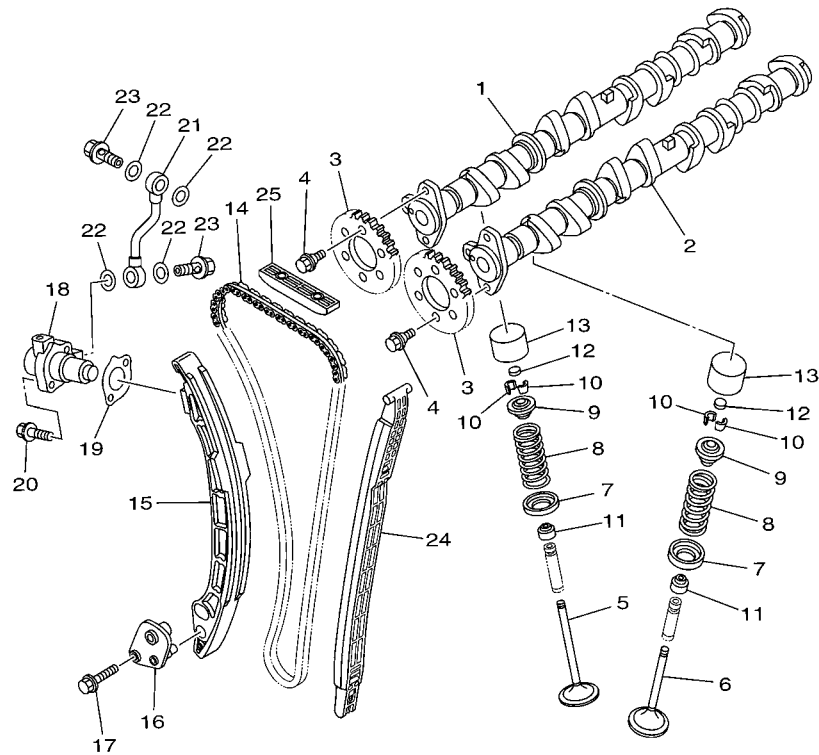
REF. NO.	PART NO.	DESCRIPTION	CAN	EUR	GENE	REMARKS
1	6S5-11411-00	CRANKSHAFT	1	1	1	
2	6S5-11416-00	PLANE BEARING, CRANKSHAFT 1	10	10	10	UR BROWN
	6S5-11416-10	PLANE BEARING, CRANKSHAFT 1	10	10	10	UR BLACK
	6S5-11416-20	PLANE BEARING, CRANKSHAFT 1	10	10	10	UR BLUE
	6S5-11416-30	PLANE BEARING, CRANKSHAFT 1	10	10	10	UR GREEN
	6S5-11416-40	PLANE BEARING, CRANKSHAFT 1	10	10	10	UR YELLOW
3	6ET-11631-00-B0	PISTON (STD)	4	4	4	
4	6S5-11603-00	PISTON RING SET (STD)	4	4	4	
5	6ET-11633-00	PIN, PISTON	4	4	4	
6	93450-24028	CIRCLIP	8	8	8	
7	6S5-11650-10	CONNECTING ROD ASSY	4	4	4	
8	6S5-11654-10	.BOLT, CONNECTING ROD	2	2	2	
9	6S5-11656-40	PLANE BEARING, CONNECTING ROD	8	8	8	UR BLUE
	6S5-11656-50	PLANE BEARING, CONNECTING ROD	8	8	8	UR BLACK
	6S5-11656-60	PLANE BEARING, CONNECTING ROD	8	8	8	UR BROWN
	6S5-11656-70	PLANE BEARING, CONNECTING ROD	8	8	8	UR GREEN
10	6S5-17572-01	SHAFT, TRANSFER	1	1	1	
11	6S5-12289-00	WASHER	1	1	1	
12	6S5-45813-01-94	FLANGE, COUPLING	1	1	1	
13	6S5-17525-01	HOLDER 2	1	1	1	
14	6S5-11459-01	NUT, SPECIAL	1	1	1	
15	6ET-17800-00	GEAR UNIT ASSY	1	1	1	
16	6S5-17031-00	BOLT	1	1	1	
17	6S5-W1783-20	DRIVE GEAR & COLLAR SET (18T)	1	1	1	
18	6S5-17529-00	.WASHER, THRUST	1	1	1	
19	90201-132G5	.WASHER, PLATE	1	1	1	
20	99009-24700	.CIRCLIP	2	2	2	




F2CD100-L050

FIG. 5 VALVE

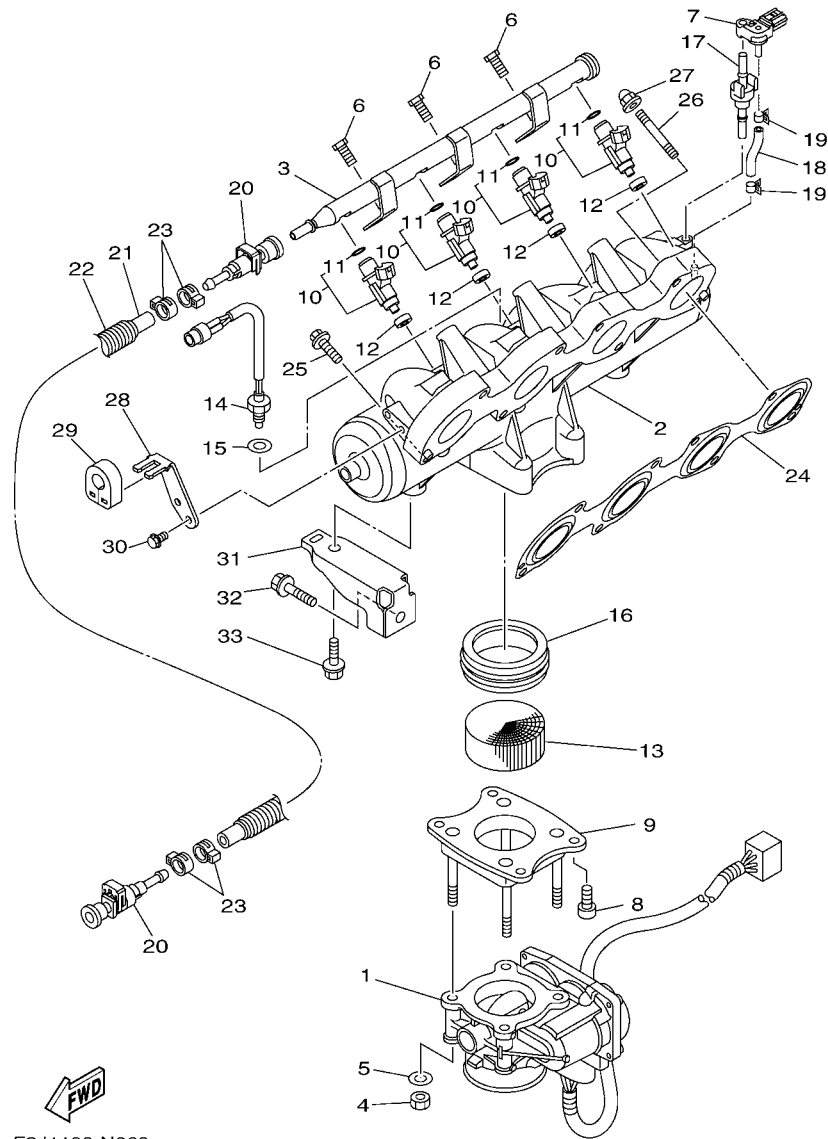
REF. NO.	PART NO.	DESCRIPTION	CAN	EUR	GENE	REMARKS
1	6S5-12171-10	CAMSHAFT 1	1	1	1	
2	6ET-12181-00	CAMSHAFT 2	1	1	1	
3	6D3-12176-10	SPROCKET, CAM CHAIN	2	2	2	
4	90105-07004	BOLT, FLANGE	4	4	4	
5	6S5-12111-00	VALVE, INTAKE	8	8	8	
6	6S5-12121-00	VALVE, EXHAUST	8	8	8	
7	6S5-12116-00	SEAT, VALVE SPRING	16	16	16	
8	6S5-12113-00	SPRING, VALVE INNER	16	16	16	
9	6S5-12117-00	RETAINER, VALVE SPRING	16	16	16	
10	3LD-12118-00	LOCK, VALVE SPRING RETAINER	32	32	32	
11	51Y-12119-00	SEAL, VALVE STEM	16	16	16	
12	3LD-12168-00	PAD, ADJUSTING (1.20)	16	16	16	UR
	3LD-12168-20	PAD, ADJUSTING (1.25)	16	16	16	UR
	3LD-12168-40	PAD, ADJUSTING (1.30)	16	16	16	UR
	3LD-12168-60	PAD, ADJUSTING (1.35)	16	16	16	UR
	3LD-12168-80	PAD, ADJUSTING (1.40)	16	16	16	UR
	3LD-12168-A0	PAD, ADJUSTING (1.45)	16	16	16	UR
	3LD-12168-F0	PAD, ADJUSTING (1.50)	16	16	16	UR
	3LD-12168-H1	PAD, ADJUSTING (1.55)	16	16	16	UR
	3LD-12168-K1	PAD, ADJUSTING (1.60)	16	16	16	UR
	3LD-12168-M1	PAD, ADJUSTING (1.65)	16	16	16	UR
	3LD-12168-R1	PAD, ADJUSTING (1.70)	16	16	16	UR
	3LD-12168-U1	PAD, ADJUSTING (1.75)	16	16	16	UR
	3LD-12168-W1	PAD, ADJUSTING (1.80)	16	16	16	UR
	3LD-12168-Y1	PAD, ADJUSTING (1.85)	16	16	16	UR
	3LD-12169-11	PAD, ADJUSTING (1.90)	16	16	16	UR
	3LD-12169-31	PAD, ADJUSTING (1.95)	16	16	16	UR



FWD
F2CD100-L050

FIG. 5 VALVE

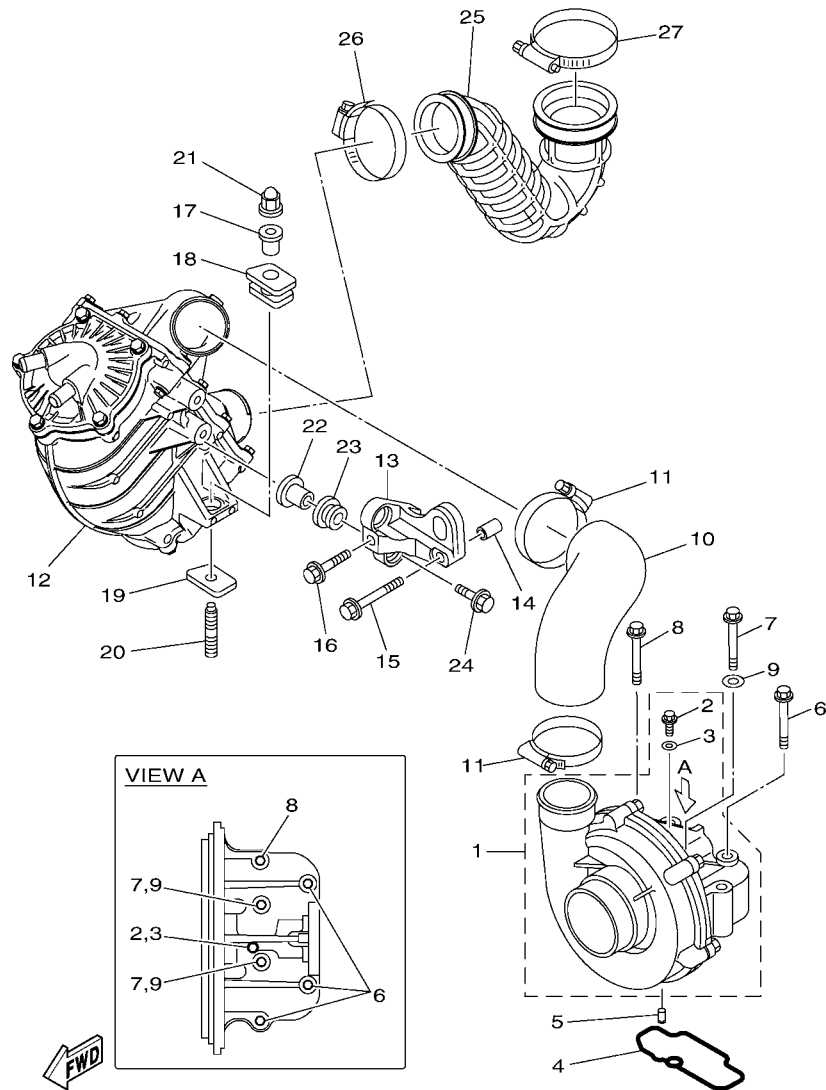
REF. NO.	PART NO.	DESCRIPTION	CAN	EUR	GENE	REMARKS
12	3LD-12169-50	PAD, ADJUSTING (2.00)	16	16	16	UR
	3LD-12169-70	PAD, ADJUSTING (2.05)	16	16	16	UR
	3LD-12169-90	PAD, ADJUSTING (2.10)	16	16	16	UR
	3LD-12169-E0	PAD, ADJUSTING (2.15)	16	16	16	UR
	3LD-12169-G0	PAD, ADJUSTING (2.20)	16	16	16	UR
	3LD-12169-J0	PAD, ADJUSTING (2.25)	16	16	16	UR
	3LD-12169-L0	PAD, ADJUSTING (2.30)	16	16	16	UR
13	6S5-12153-00	LIFTER, VALVE	16	16	16	
14	94591-66152	CHAIN	1	1	1	
15	6BH-12252-00	DAMPER, CHAIN 2	1	1	1	
16	6BH-12279-00	PLATE	1	1	1	
17	95814-06030	BOLT, FLANGE	2	2	2	
18	6S5-12210-00	TENSIONER ASSY, CAM CHAIN	1	1	1	
19	6S5-121E2-00	GASKET	1	1	1	
20	91380-06025	BOLT	2	2	2	
21	6S5-13418-00	PIPE, OIL 2	1	1	1	
22	90430-10007	GASKET	4	4	4	
23	90401-10040	BOLT, UNION	2	2	2	
24	6BH-12251-00	DAMPER, CHAIN 1	1	1	1	
25	6BH-12241-00	GUIDE, STOPPER 2	1	1	1	



F3J1100-N060

FIG. 6 INTAKE 1

REF. NO.	PART NO.	DESCRIPTION	CAN	EUR	GENE	REMARKS
1	6S5-13750-10	THROTTLE BODY ASSY	1	1	1	
2	6S5-13641-A2	MANIFOLD, INTAKE 1	1	1	1	
3	6CS-12880-00	DELIVERY PIPE	1	1	1	
4	6P2-13588-00	NUT	4	4	4	
5	6P2-13578-00	WASHER	4	4	4	
6	6CS-14446-00	BOLT	3	3	3	
7	6BH-82380-00	SENSOR, PRESSURE	1	1	1	
8	6S5-14496-00	BOLT	4	4	4	
9	6S5-14360-11	THROTTLE DAMPER ASSY	1	1	1	
10	6ET-13761-00	INJECTOR	4	4	4	
11	68V-1416A-00	.O-RING	1	1	1	
12	8FP-13556-10	GASKET, MANIFOLD	4	4	4	
13	6D3-1444B-00	RIBBON	1	1	1	
14	6S5-85886-00	SENSOR, AIR TEMPERATURE	1	1	1	
15	6S5-14285-00	WASHER	1	1	1	
16	6S5-14457-00	HOLDER	1	1	1	
17	6BH-14445-00	GROMMET	1	1	1	
18	6S5-13532-00	HOSE, VACUUM SENSING 3	1	1	1	
19	6S5-14159-00	CLIP	2	2	2	
20	6S5-24300-01	FUEL PIPE JOINT	2	2	2	
21	6AN-14294-10	HOSE	1	1	1	
22	90447-19017	TUBE (L495)	1	1	1	
23	90450-17M17	HOSE CLAMP ASSY	4	4	4	
24	6BH-13645-00	GASKET, MANIFOLD 1	1	1	1	
25	97513-08535	BOLT, WITH WASHER	6	6	6	
26	90116-08032	BOLT, STUD	2	2	2	
27	90176-08080	NUT, CROWN	2	2	2	

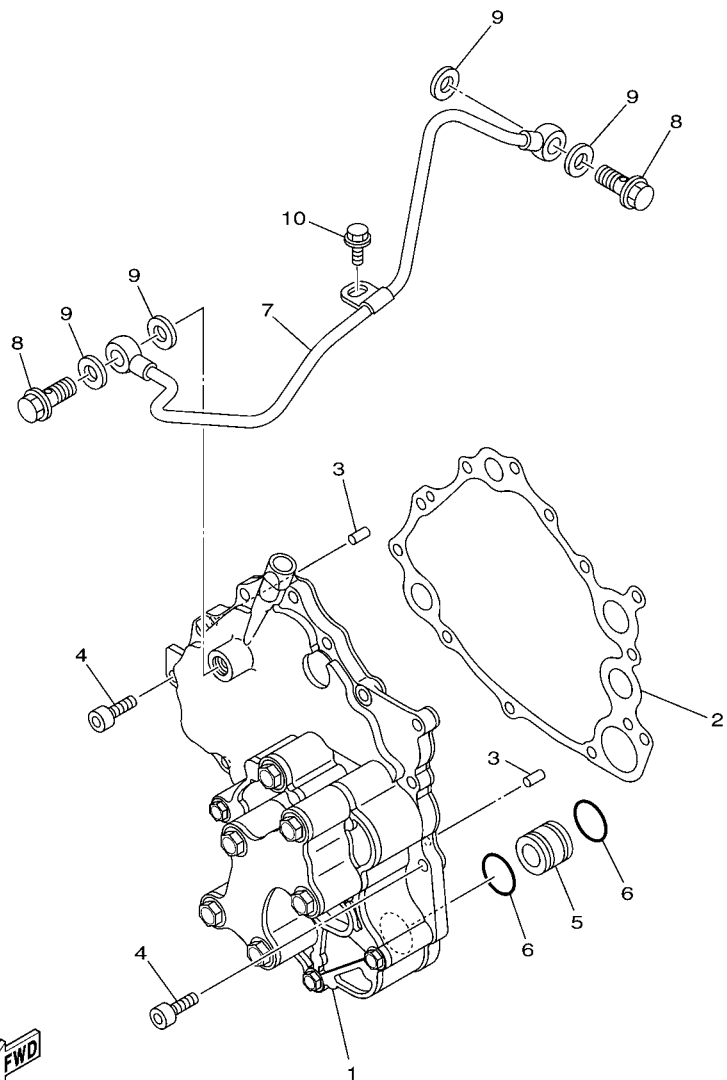


F3J1100-N070

FIG. 7 INTAKE 2

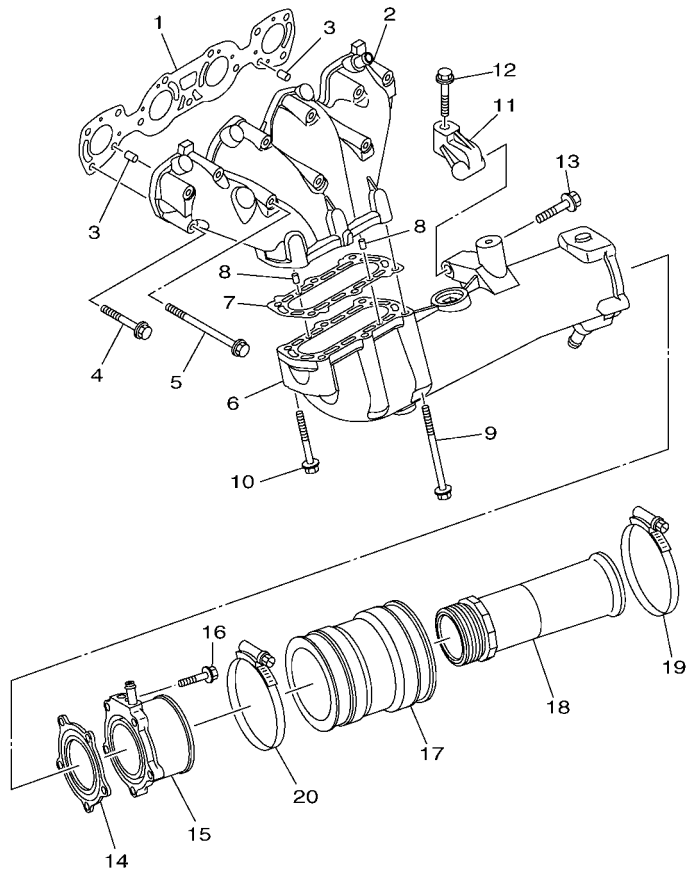
REF. NO.	PART NO.	DESCRIPTION	CAN	EUR	GENE	REMARKS
1	6ET-141A0-01	SUPER CHARGER ASSY	1	1	1	
2	90105-05020	.BOLT, FLANGE	1	1	1	
3	6S5-14199-00	.GASKET	1	1	1	
4	6S5-1416A-00	O-RING	1	1	1	
5	93604-10M03	PIN, DOWEL	2	2	2	
6	95814-08065	BOLT, FLANGE	3	3	3	
7	95814-06065	BOLT, FLANGE	2	2	2	
8	90105-08188	BOLT, FLANGE	1	1	1	
9	90201-06028	WASHER, PLATE	2	2	2	
10	6S5-14349-00	PIPE	1	1	1	
11	90450-75003	HOSE CLAMP ASSY	2	2	2	
12	6ET-13670-00	AIR COOLER ASSY.	1	1	1	
13	6S5-13691-12	BRACKET, AIR COOLER	1	1	1	
14	99590-14016	PIN, DOWEL	2	2	2	
15	90119-10047	BOLT, WITH WASHER	1	1	1	
16	90119-10046	BOLT, WITH WASHER	1	1	1	
17	90387-11007	COLLAR	1	1	1	
18	6S5-14435-00	GROMMET	1	1	1	
19	6S5-14243-01	PLATE	1	1	1	
20	90116-10044	BOLT, STUD	1	1	1	
21	90176-10001	NUT, CROWN	1	1	1	
22	90387-11008	COLLAR	2	2	2	
23	90480-21M63	GROMMET	2	2	2	
24	90119-10011	BOLT, WITH WASHER	2	2	2	
25	6CS-13651-00	PIPE, BOOST	1	1	1	
26	90450-70006	HOSE CLAMP ASSY	1	1	1	
27	90450-90002	HOSE CLAMP ASSY	1	1	1	

FIG. 9 OIL PUMP



F2CD100-L090

REF. NO.	PART NO.	DESCRIPTION	CAN	EUR	GENE	REMARKS
1	6S5-13300-22	OIL PUMP ASSY	1	1	1	
2	6S5-13563-00	GASKET	1	1	1	
3	93606-12019	PIN, DOWEL	2	2	2	
4	91314-06020	BOLT, HEXAGON SOCKET HEAD	12	12	12	
5	6S5-13446-10	CONNECTOR	1	1	1	
6	93210-21631	O-RING	2	2	2	
7	6S5-13416-00	PIPE, OIL 1	1	1	1	
8	90401-10040	BOLT, UNION	2	2	2	
9	90430-10007	GASKET	4	4	4	
10	95023-06012	BOLT	1	1	1	



F3J1100-N130

FIG. 13 EXHAUST 1

REF. NO.	PART NO.	DESCRIPTION	CAN	EUR	GENE	REMARKS
1	6ET-14613-00	GASKET, EXHAUST PIPE	1	1	1	
2	6BH-14711-10	MUFFLER 1	1	1	1	
3	93608-16M16	PIN, DOWEL	2	2	2	
4	90119-08034	BOLT, WITH WASHER	8	8	8	
5	90119-08097	BOLT, WITH WASHER	3	3	3	
6	6BH-14721-10	MUFFLER 2	1	1	1	
7	6S5-14739-00	GASKET, MUFFLER DAMPER 1	1	1	1	
8	93606-12019	PIN, DOWEL	2	2	2	
9	90119-08097	BOLT, WITH WASHER	4	4	4	
10	90119-08034	BOLT, WITH WASHER	2	2	2	
11	6S5-14771-00-94	STAY, MUFFLER 1	1	1	1	
12	90119-08096	BOLT, WITH WASHER	1	1	1	
13	90119-10029	BOLT, WITH WASHER	1	1	1	
14	6BH-14749-00	GASKET, MUFFLER DAMPER 2	1	1	1	
15	6BH-14784-01-94	PIPE, TAIL	1	1	1	
16	95024-08035	BOLT, FLG.(SMALL HEAD)	5	5	5	
17	6S5-E4752-00	PIPE, OUTLET	1	1	1	
18	6CS-1475A-00	PIPE 1	1	1	1	
19	90450-99016	HOSE CLAMP ASSY	1	1	1	
20	90450-99015	HOSE CLAMP ASSY	1	1	1	

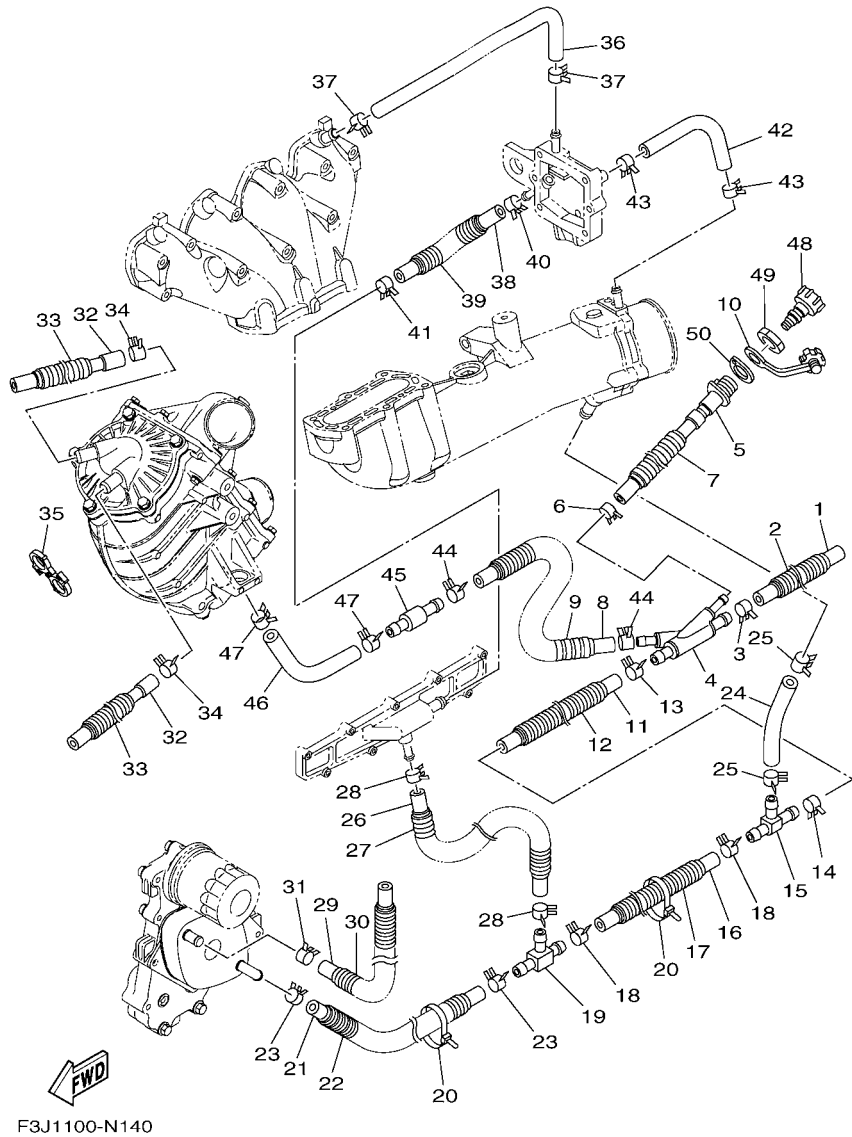


FIG. 14 EXHAUST 2

REF. NO.	PART NO.	DESCRIPTION	CAN	EUR	GENE	REMARKS
1	90445-21806	HOSE (L250)	1	1	1	
2	90447-22801	TUBE (L200)	1	1	1	
3	90467-200A3	CLIP	1	1	1	
4	6ET-12581-10	JOINT, HOSE 1	1	1	1	
5	6CS-12580-00	JOINT ASSY	1	1	1	
6	90467-150A5	CLIP	1	1	1	
7	90447-19801	TUBE (L485)	1	1	1	
8	90445-21807	HOSE (L970)	1	1	1	
9	90447-22802	TUBE (L850)	1	1	1	
10	682-84385-01	CAP,1	1	1	1	
11	6S5-1243E-01	HOSE 2	1	1	1	
12	90447-22011	TUBE (L170)	1	1	1	
13	90467-200A3	CLIP	1	1	1	
14	90467-200A3	CLIP	1	1	1	
15	6BH-12584-00	JOINT, HOSE 3	1	1	1	
16	90445-18017	HOSE (L220)	1	1	1	
17	90447-19004	HOSE, WITH SPRING (L=130)	1	1	1	
18	90467-160A0	CLIP	2	2	2	
19	6ET-12582-00	JOINT, HOSE 2	1	1	1	
20	90464-35132	CLAMP	2	2	2	
21	90445-18017	HOSE (L220)	1	1	1	
22	90447-19004	HOSE, WITH SPRING (L=130)	1	1	1	
23	90467-160A0	CLIP	2	2	2	
24	6S5-12589-01	HOSE 6	1	1	1	
25	90467-200A3	CLIP	2	2	2	
26	6S5-1244H-00	HOSE 5	1	1	1	
27	90447-19011	TUBE (L150)	1	1	1	

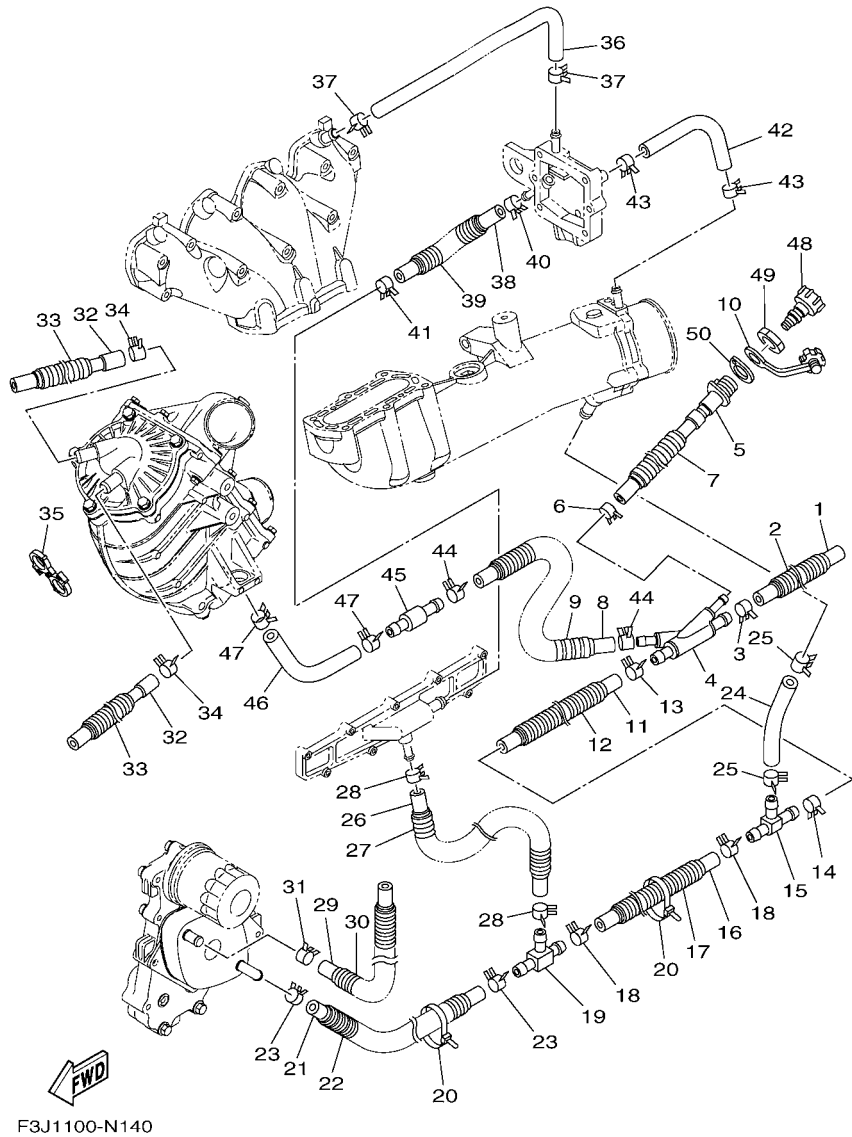
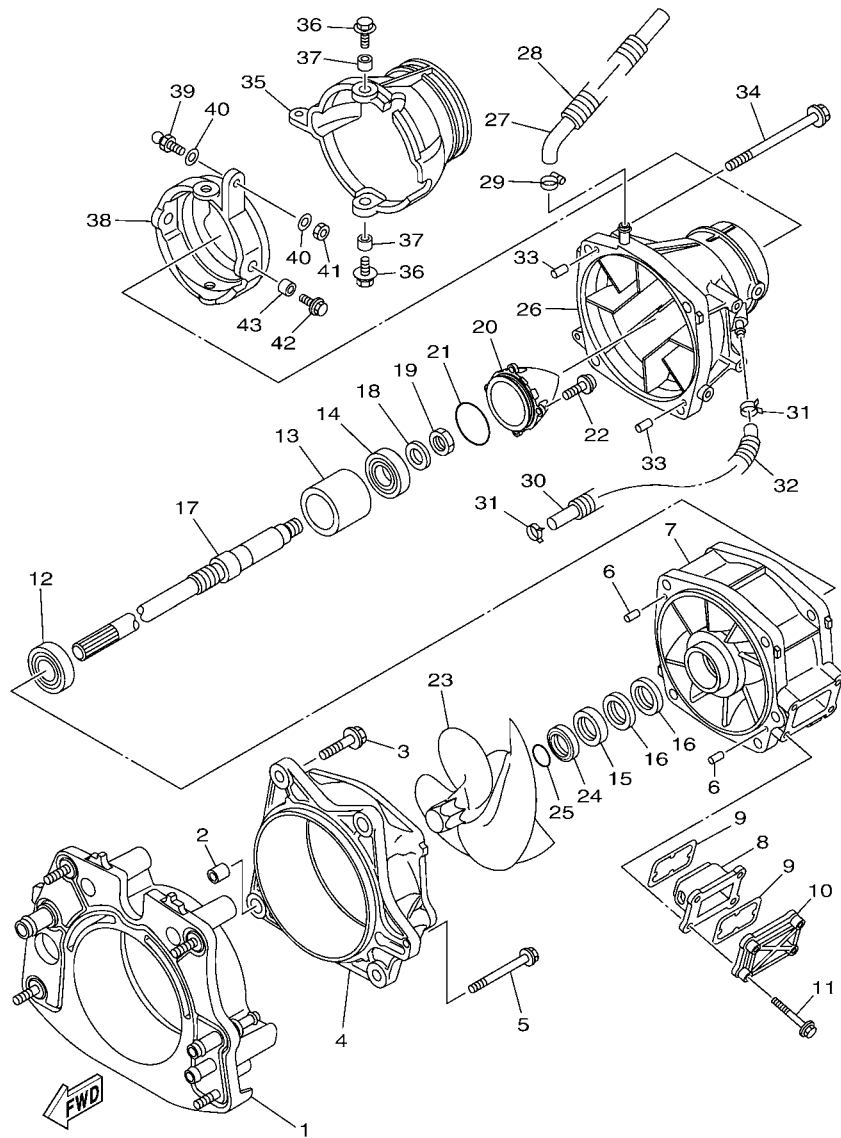


FIG. 14 EXHAUST 2

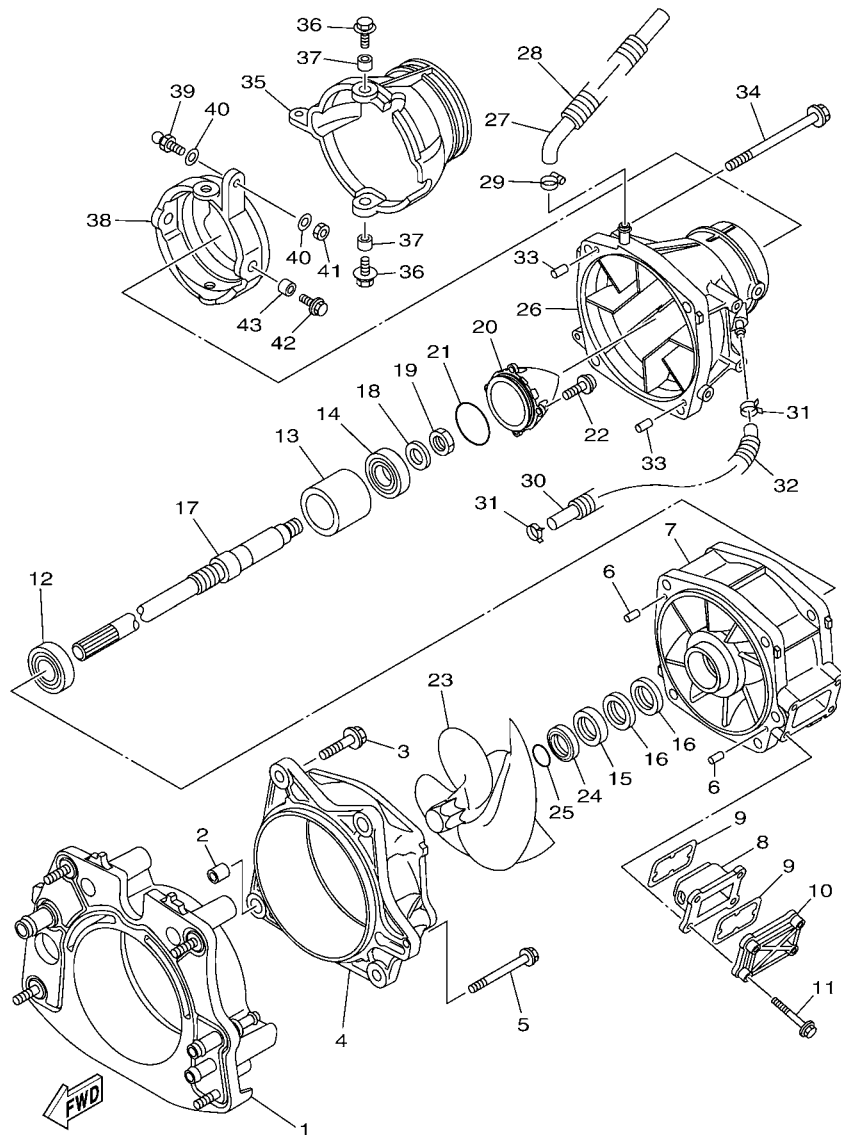
REF. NO.	PART NO.	DESCRIPTION	CAN	EUR	GENE	REMARKS
28	90467-150A1	CLIP	2	2	2	
29	6CS-12588-00	HOSE 5	1	1	1	
30	90447-19018	TUBE (L760)	1	1	1	
31	90467-160A0	CLIP	1	1	1	
32	6CS-12552-00	HOSE 8	2	2	2	
33	90447-19016	TUBE (L480)	2	2	2	
34	90467-170A4	CLIP	2	2	2	
35	90464-24003	CLAMP	1	1	1	
36	6BH-12577-00	HOSE 2	1	1	1	
37	90467-160A0	CLIP	2	2	2	
38	6S5-12579-00	HOSE 4	1	1	1	
39	90447-19011	TUBE (L150)	1	1	1	
40	90467-160A0	CLIP	1	1	1	
41	90467-170A5	CLIP	1	1	1	
42	90445-16013	HOSE (L220)	1	1	1	
43	90467-160A0	CLIP	2	2	2	
44	90467-200A3	CLIP	2	2	2	
45	6S5-12594-00	JOINT, HOSE 4	1	1	1	
46	6S5-12576-01	HOSE 1	1	1	1	
47	90467-200A3	CLIP	2	2	2	
48	67X-E2590-10	CONDUCTION ASSY	1	1	1	
49	EU0-61652-00	NUT	1	1	1	
50	F2S-U7525-00	PACKING	1	1	1	



F3J7100-P150

FIG. 15 JET UNIT 1

REF. NO.	PART NO.	DESCRIPTION	CAN	EUR	GENE	REMARKS
1	6ET-G5831-00	PLATE, TRANSOM	1	1	1	
2	99590-14016	PIN, DOWEL	2	2	2	
3	90119-10810	BOLT, WITH WASHER	4	4	4	
4	6ET-51312-00	HOUSING, IMPELLER	1	1	1	
5	90119-06893	BOLT, WITH WASHER	1	1	1	
6	93606-12019	PIN, DOWEL	2	2	2	
7	6ET-51315-00	DUCT, IMPELLER	1	1	1	
8	6ET-G6882-00	FILTER	1	1	1	
9	66V-42414-00	O-RING	2	2	2	
10	6AN-G5214-00	COVER, WATER INLET 1	1	1	1	
11	90119-06897	BOLT, WITH WASHER	4	4	4	
12	93306-20654	BEARING	1	1	1	
13	6CS-G5538-00	SPACER 1	1	1	1	
14	93306-30537	BEARING	1	1	1	
15	93102-31009	OIL SEAL	1	1	1	
16	93101-31001	OIL SEAL	2	2	2	
17	6ET-45511-00	SHAFT, DRIVE	1	1	1	
18	9290P-20600	WASHER	1	1	1	
19	90170-20802	NUT	1	1	1	
20	6ET-R1326-00	CAP	1	1	1	
21	6S5-5111K-00	O-RING 1	1	1	1	
22	90110-06822	BOLT, HEXAGON SOCKET HEAD	4	4	4	
23	6ET-R1321-00	IMPELLER	1	1	1	
24	6BH-51348-01	SPACER	1	1	1	
25	93210-30611	O-RING	1	1	1	
26	6ET-R1318-00	NOZZLE	1	1	1	
27	6CS-U72M2-00	HOSE 1	1	1	1	



F3J7100-P150

FIG. 15 JET UNIT 1

REF. NO.	PART NO.	DESCRIPTION	CAN	EUR	GENE	REMARKS
28	6CN-U773D-01	TUBE	1	1	1	
29	90601-118UF	BAND, HOSE 18	1	1	1	
30	6ET-U215E-00	HOSE	1	1	1	
31	90467-14803	CLIP	2	2	2	
32	6ET-U773D-00	TUBE	1	1	1	
33	93606-12019	PIN, DOWEL	2	2	2	
34	90119-10806	BOLT, WITH WASHER	4	4	4	
35	6S5-R1313-01	NOZZLE, DEFLECTOR	1	1	1	
36	90119-08851	BOLT, WITH WASHER	2	2	2	
37	90387-08M06	COLLAR	2	2	2	
38	6AN-R1190-00	RING, TRIM	1	1	1	
39	GH3-U146E-00	STUD, JOINT BALL	1	1	1	
40	90201-068M4	WASHER, PLATE	2	2	2	
41	9538R-06700	NUT	1	1	1	
42	90119-08851	BOLT, WITH WASHER	2	2	2	
43	90387-08M06	COLLAR	2	2	2	

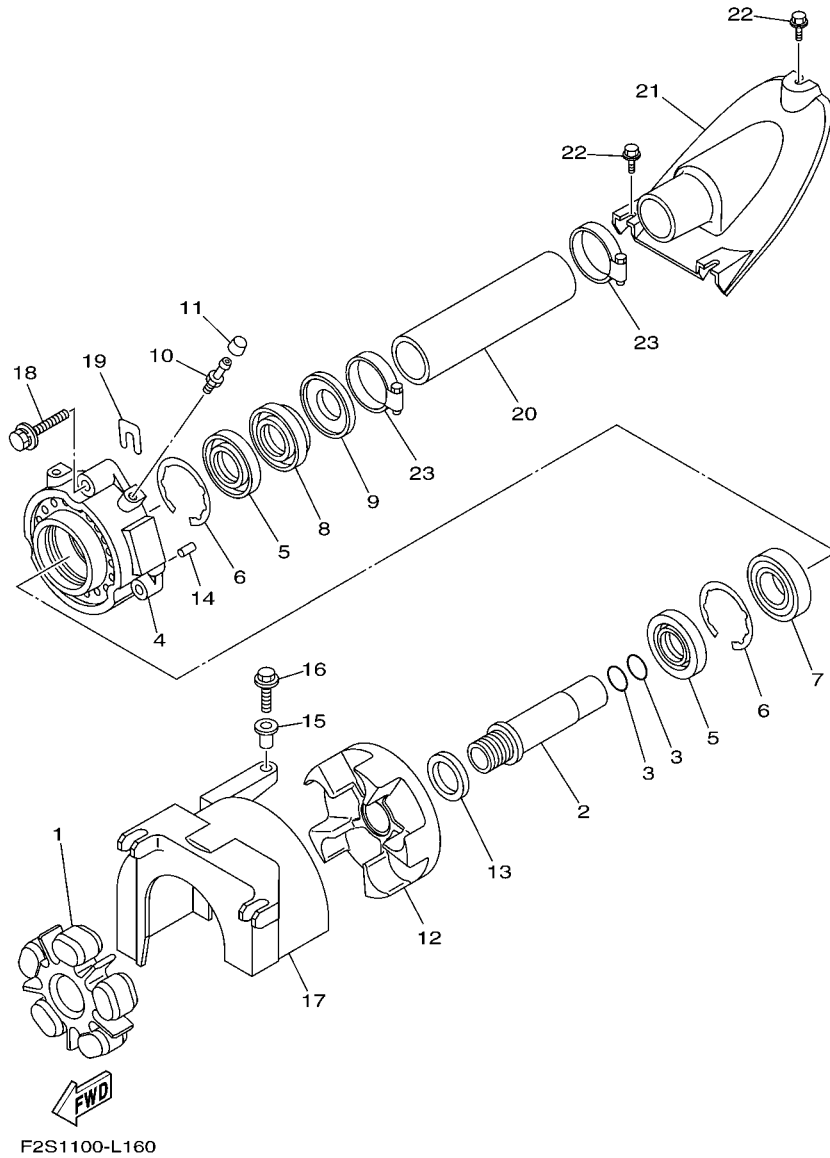
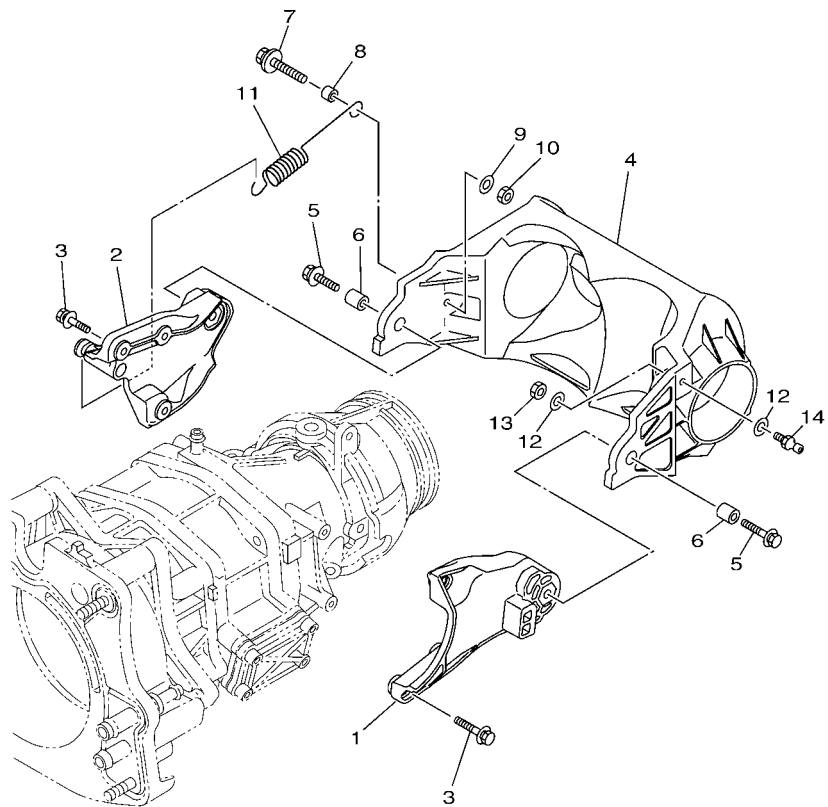


FIG. 16 JET UNIT 2

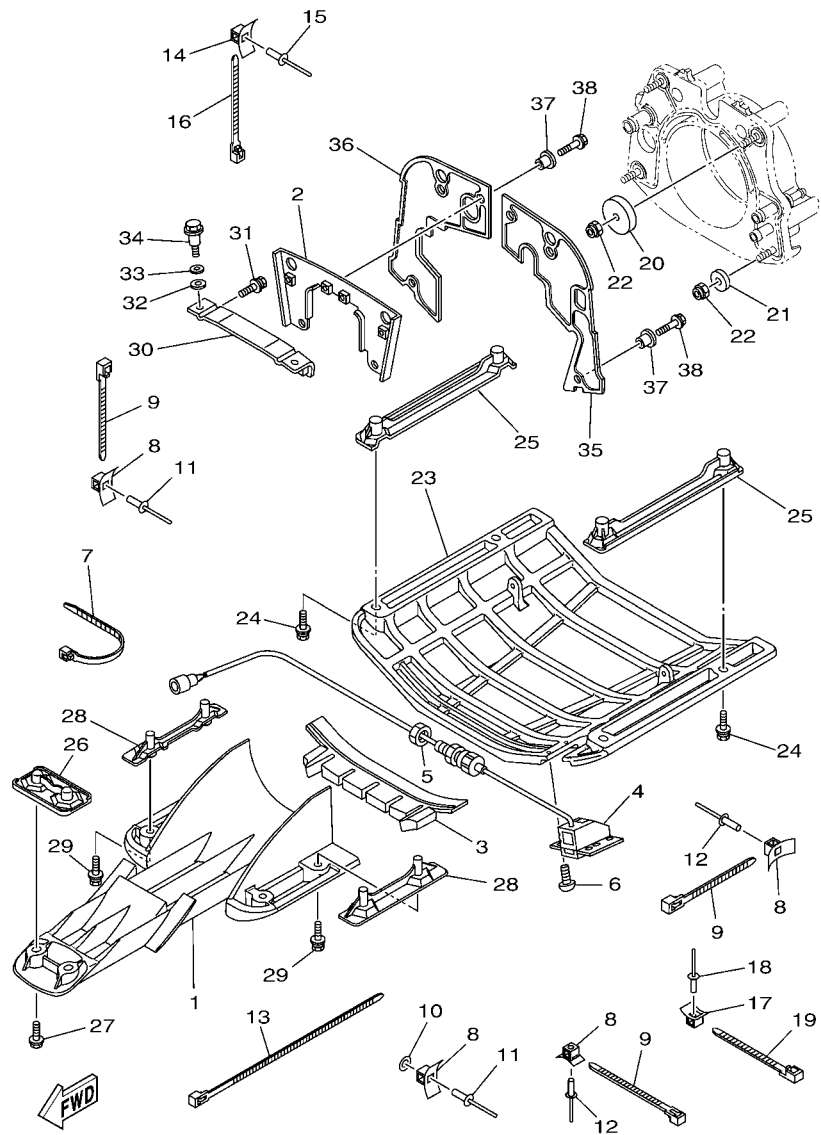
REF. NO.	PART NO.	DESCRIPTION	CAN	EUR	GENE	REMARKS
1	6BH-4581J-00	RUBBER SHAFT COUPLING	1	1	1	
2	6S5-51323-00	SHAFT, COUPLER	1	1	1	
3	93210-22MF1	O-RING	2	2	2	
4	6S5-45332-00-94	HOUSING, BEARING	1	1	1	
5	93102-29008	OIL SEAL	2	2	2	
6	93450-66156	CIRCLIP	2	2	2	
7	93306-20655	BEARING	1	1	1	
8	93102-29009	OIL SEAL	1	1	1	
9	6ET-45613-00	WASHER, THRUST	1	1	1	
10	93700-06M03	NIPPLE, GREASE	1	1	1	
11	663-45119-00	CAP, GREASE NIPPLE	1	1	1	
12	6S5-45593-00-94	FLANGE, COUPLING 1	1	1	1	
13	6ET-E2289-00	WASHER	1	1	1	
14	93606-12019	PIN, DOWEL	2	2	2	
15	90387-06289	COLLAR	1	1	1	
16	90119-06891	BOLT, WITH WASHER	1	1	1	
17	6S5-R1381-01	COVER	1	1	1	
18	90119-089UU	BOLT, WITH WASHER	3	3	3	
19	GD0-U7249-00-05	SHIM (T=0.5)	2	2	2	UN
20	F2S-U883B-00	PIPE, 1	1	1	1	
21	F2S-U883E-00	JOINT, PIPE	1	1	1	
22	90109-06832	BOLT	3	3	3	
23	90601-152U3	BAND, HOSE 52	2	2	2	

FIG. 17 JET UNIT 3



 F3J7100-P170

REF. NO.	PART NO.	DESCRIPTION	CAN	EUR	GENE	REMARKS
1	6ET-R1341-00	BRACKET 1	1	1	1	
2	6ET-R1342-00	BRACKET 2	1	1	1	
3	90119-06891	BOLT, WITH WASHER	6	6	6	
4	6ET-R1314-01	GATE, REVERSE	1	1	1	
5	90119-08840	BOLT, WITH WASHER	2	2	2	
6	90387-08M30	COLLAR	2	2	2	
7	90119-069UX	BOLT, WITH WASHER	1	1	1	
8	90387-06M30	COLLAR	1	1	1	
9	90201-06801	WASHER, PLATE	1	1	1	
10	9538R-06600	NUT	1	1	1	
11	6S5-52358-00	SPRING, RETAINER	1	1	1	
12	90201-06801	WASHER, PLATE	2	2	2	
13	9538R-06600	NUT	1	1	1	
14	EU0-U1461-03	STUD, JOINT BALL	1	1	1	



F3J7100-P180

FIG. 18 JET UNIT 4

REF. NO.	PART NO.	DESCRIPTION	CAN	EUR	GENE	REMARKS
1	6ET-R1333-00	SCREEN, INTAKE	1	1	1	
2	6AN-R1341-01	BRACKET 1	1	1	1	
3	F2S-U72C0-01	SPACER	1	1	1	
4	F1X-U8K31-02	SENSOR SPEED	1	1	1	
5	F2C-U151S-00	NUT	1	1	1	
6	90150-05807	SCREW, ROUND HEAD	4	4	4	
7	90464-32801	CLAMP	1	1	1	
8	F1W-U828M-00	BASE, CLAMP	8	8	8	
9	90464-32801	CLAMP	7	7	7	
10	9299R-05200	WASHER	1	1	1	
11	90267-489U6	RIVET, BLIND	5	5	5	
12	90267-489U6	RIVET, BLIND	3	3	3	
13	90464-99801	CLAMP	1	1	1	
14	F1W-U828M-00	BASE, CLAMP	1	1	1	
15	90267-489U6	RIVET, BLIND	1	1	1	
16	90464-32801	CLAMP	1	1	1	
17	F1W-U828M-00	BASE, CLAMP	1	1	1	
18	90267-489U6	RIVET, BLIND	1	1	1	
19	90464-32801	CLAMP	1	1	1	
20	F1S-U725E-01	WASHER	2	2	2	
21	90201-10801	WASHER, PLATE	2	2	2	
22	9572R-10300	NUT, NYLON	4	4	4	
23	F3J-6273B-00	PLATE 2	1	1	1	
24	90119-08823	BOLT, WITH WASHER	4	4	4	
25	F1B-U8572-01	BRACKET 2	2	2	2	
26	F2S-U8577-00	BRACKET, 3	1	1	1	
27	90119-08823	BOLT, WITH WASHER	2	2	2	

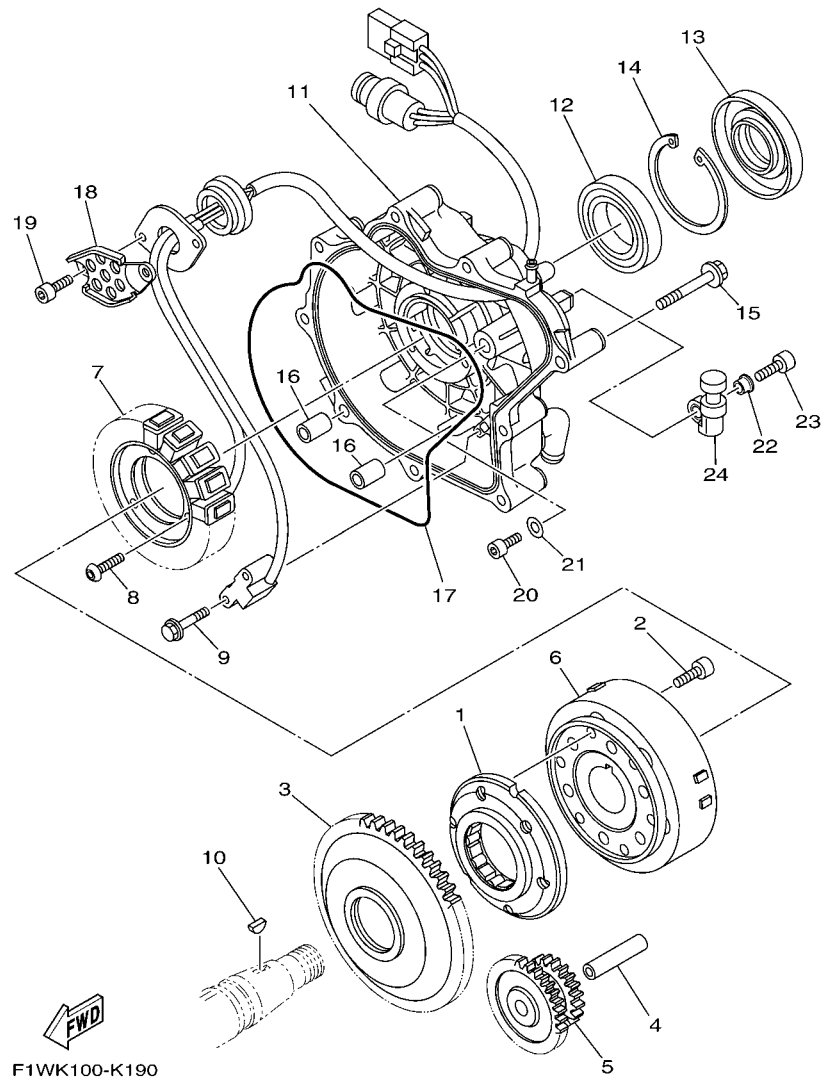
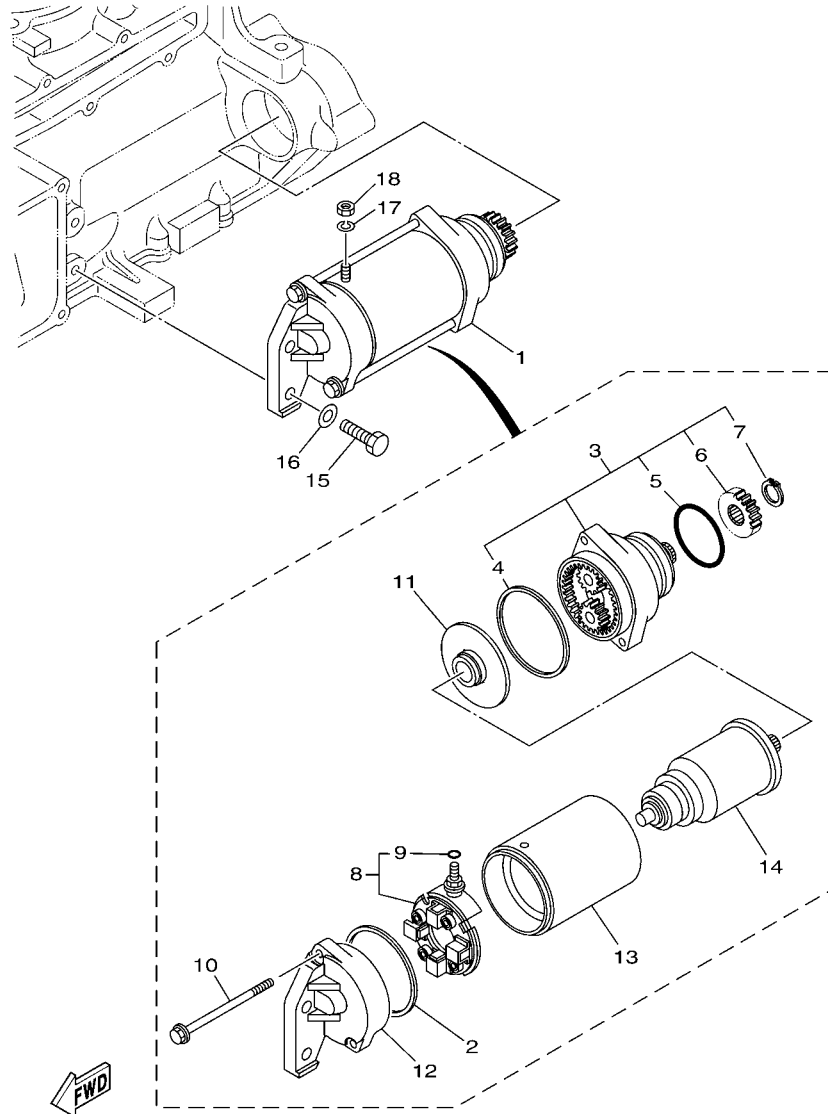


FIG. 19 GENERATOR

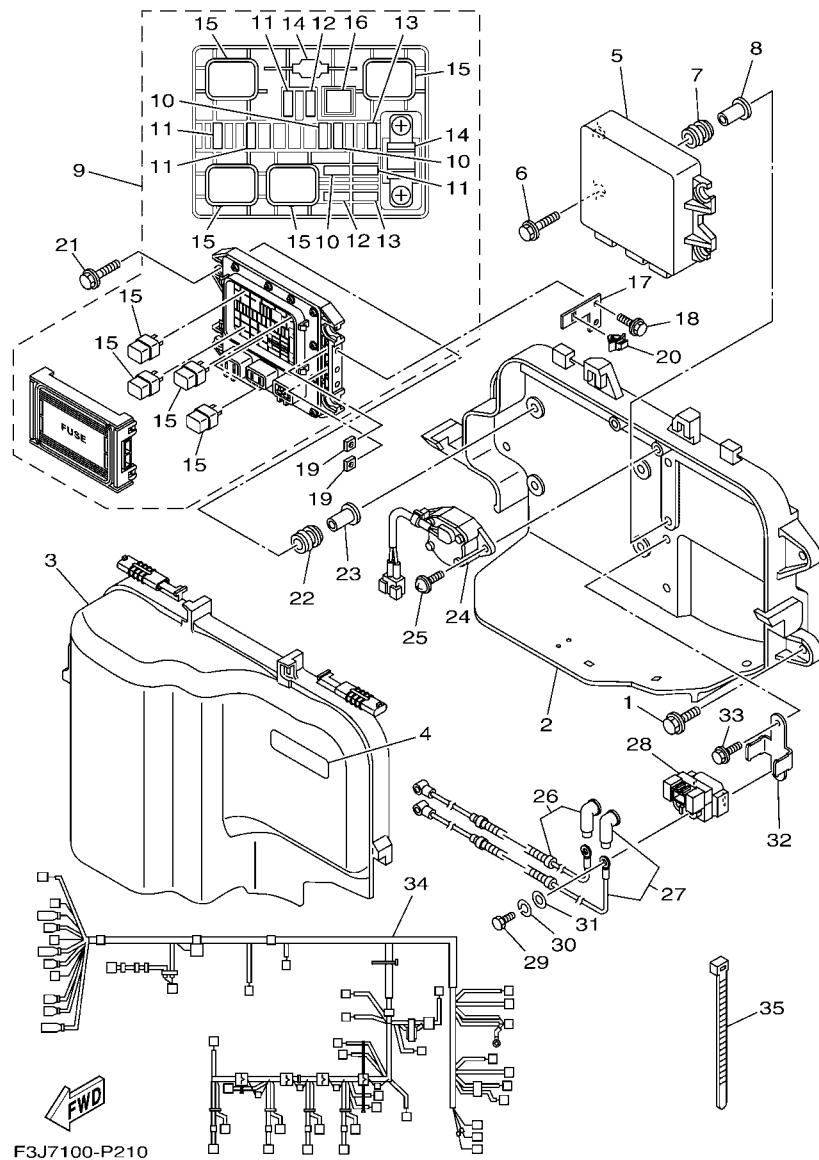
REF. NO.	PART NO.	DESCRIPTION	CAN	EUR	GENE	REMARKS
1	6S5-15590-00	STARTER ONE-WAY ASSY	1	1	1	
2	90110-08212	BOLT, HEXAGON SOCKET HEAD	6	6	6	
3	6S5-15515-00	GEAR 3	1	1	1	
4	6S5-15521-00	SHAFT 1	1	1	1	
5	6S5-15517-00	GEAR, IDLER 2	1	1	1	
6	6S5-81450-01	ROTOR ASSY	1	1	1	
7	6S5-81410-11	STATOR ASSY	1	1	1	
8	90149-06229	SCREW	3	3	3	
9	97513-05514	BOLT, WITH WASHER	2	2	2	
10	90280-03047	KEY, WOODRUFF	1	1	1	
11	6S5-81337-20	COVER, FLYWHEEL	1	1	1	
12	93306-00805	BEARING	1	1	1	
13	6S5-81167-10	OIL SEAL	1	1	1	
14	99009-72500	CIRCLIP	1	1	1	
15	90105-08249	BOLT, FLANGE	9	9	9	
16	99530-10114	PIN, DOWEL	2	2	2	
17	6S5-81168-00	O-RING	1	1	1	
18	6S5-81328-00	CLAMP	1	1	1	
19	91317-06014	BOLT	2	2	2	
20	91317-05010	BOLT	1	1	1	
21	90201-052E8	WASHER, PLATE	1	1	1	
22	90387-06M05	COLLAR	2	2	2	
23	91380-06020	BOLT	2	2	2	
24	6S5-81364-10	GROMMET	2	2	2	



F1W1100-G200

FIG. 20 STARTING MOTOR

REF. NO.	PART NO.	DESCRIPTION	CAN	EUR	GENE	REMARKS
1	6S5-81800-00	STARTING MOTOR ASSY	1	1	1	
2	11H-81844-00	.GASKET	1	1	1	
3	6S5-81830-00	.FRONT BRACKET ASSY	1	1	1	
4	4G0-81844-00	..GASKET	1	1	1	
5	1J7-81847-60	..O-RING	1	1	1	
6	5EL-15511-00	..GEAR, STARTING MOTOR	1	1	1	
7	93410-12003	..CIRCLIP	1	1	1	
8	6S5-81840-00	.BRUSH HOLDER ASSY	1	1	1	
9	3TB-81847-00	..O-RING	1	1	1	
10	6S5-81826-00	.BOLT	2	2	2	
11	5EL-81845-00	.PLATE	1	1	1	
12	6S5-81820-00	.REAR BRACKET ASSY	1	1	1	
13	6S5-81810-00	.STATOR ASSY	1	1	1	
14	5A8-81850-10	.ARMATURE ASSY	1	1	1	
15	97013-08030	BOLT	2	2	2	
16	92903-08600	WASHER, PLATE	2	2	2	
17	92990-06100	WASHER, SPRING	1	1	1	
18	95380-06700	NUT	1	1	1	



F3J7100-P210

FIG. 21 ELECTRICAL 1

REF. NO.	PART NO.	DESCRIPTION	CAN	EUR	GENE	REMARKS
1	90119-089UT	BOLT, WITH WASHER	4	4	4	
2	6CS-81845-00	PLATE	1	1	1	
3	6S5-81942-11	COVER	1	1	1	
4	60E-83627-00	LABEL, CAUTION 7	1	1	1	
5	6ET-8591A-20	ENGINE CONTROL UNIT ASSY	1		1	FOR CAN, GENE
6	6ET-8591A-30	ENGINE CONTROL UNIT ASSY		1		FOR EUR
6	90119-06M35	BOLT, WITH WASHER	4	4	4	
7	6A0-82317-00	DAMPER, IGNITION COIL	4	4	4	
8	90387-06119	COLLAR	4	4	4	
9	6EX-82170-00	FUSE BOX ASSY	1	1	1	
10	67F-82151-30	.FUSE (3A)	3	3	3	
11	67F-82151-40	.FUSE (10A)	4	4	4	
12	67F-82151-00	.FUSE (20A)	2	2	2	
13	67F-82151-10	.FUSE (30A)	2	2	2	
14	6EX-82151-00	.FUSE (50A)	2	2	2	
15	6EX-8195A-00	.RELAY ASSY	4	4	4	
16	6EX-2812A-00	.PULLER, FUSE	1	1	1	
17	6CS-82588-00	PLATE	1	1	1	
18	97595-06514	BOLT, WITH WASHER	2	2	2	
19	90173-06015	NUT, SQUARE	2	2	2	
20	90464-09M47	CLAMP	1	1	1	
21	90119-06M35	BOLT, WITH WASHER	4	4	4	
22	6A0-82317-00	DAMPER, IGNITION COIL	4	4	4	
23	90387-06119	COLLAR	4	4	4	
24	6S5-8259E-00	SWITCH ASSY	1	1	1	
25	97780-60520	SCREW, TAPPING	2	2	2	
26	6CS-82115-00	WIRE, PLUS LEAD	1	1	1	

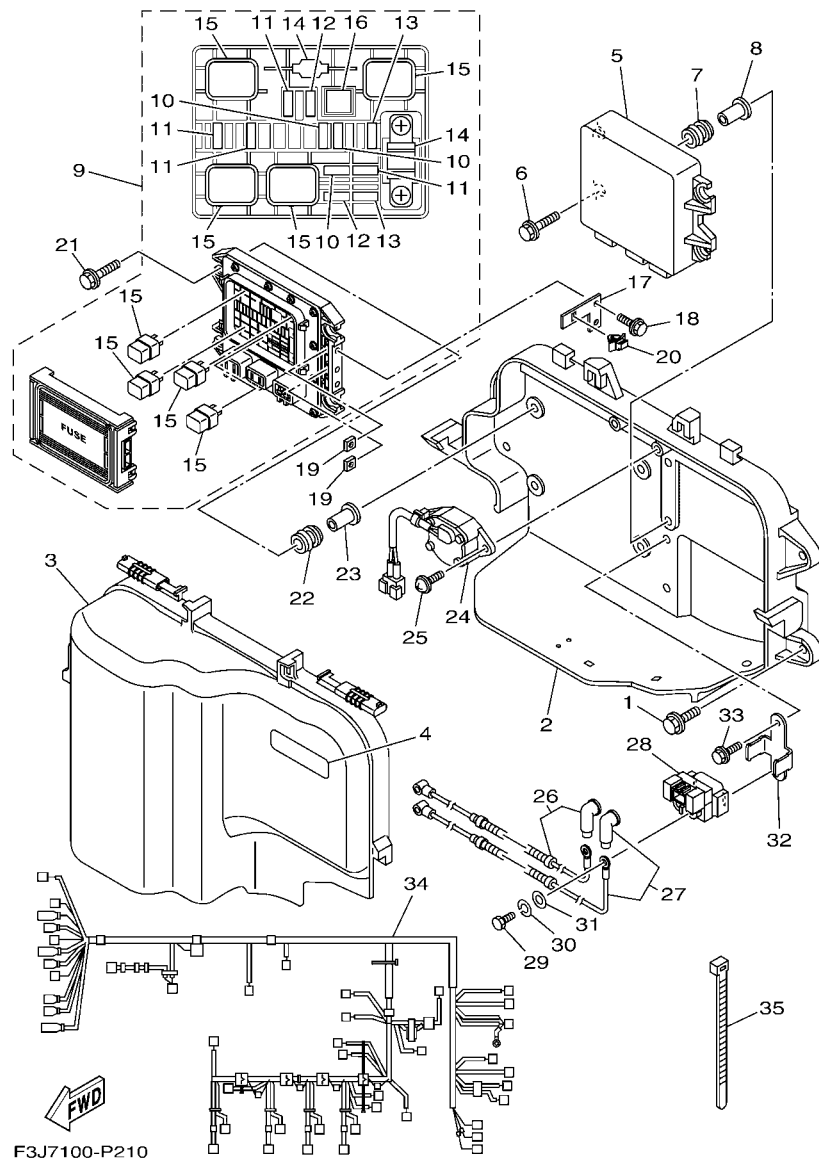
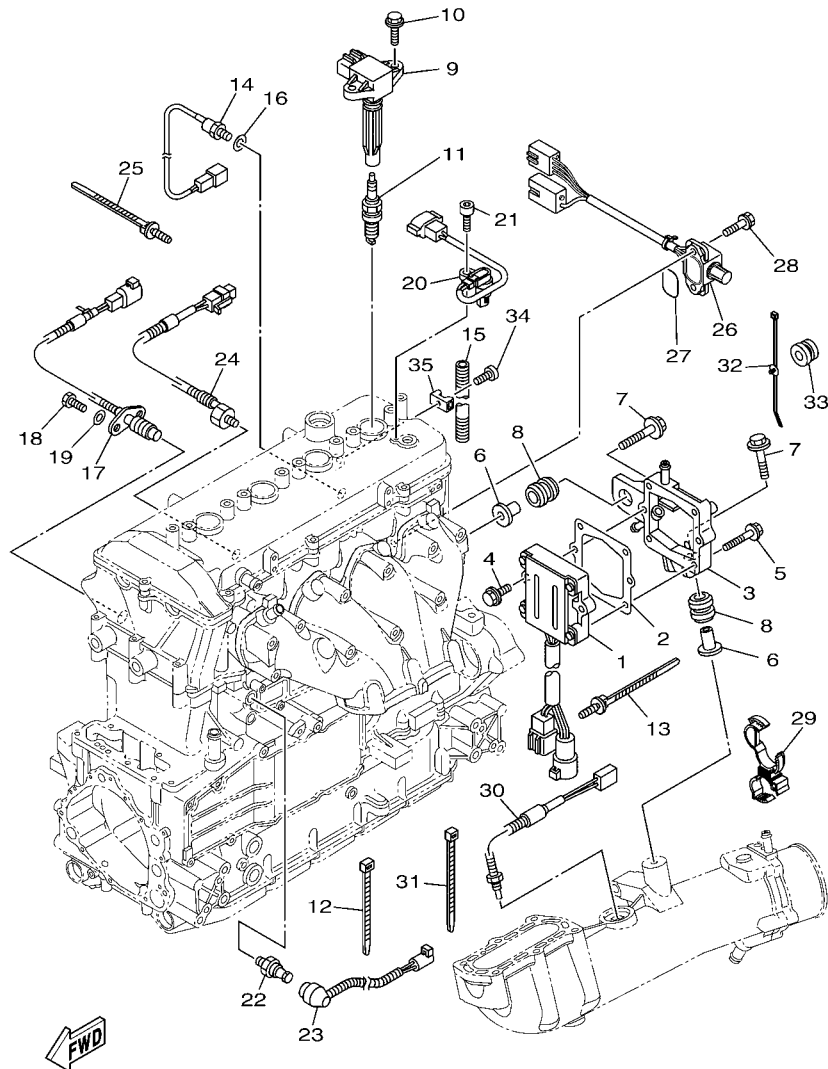


FIG. 21 ELECTRICAL 1

REF. NO.	PART NO.	DESCRIPTION	CAN	EUR	GENE	REMARKS
27	6CS-82117-00	WIRE, LEAD	1	1	1	
28	1B7-81940-00	STARTER RELAY ASSY (2768102-A)	1	1	1	
29	97095-06012	BOLT	2	2	2	
30	92995-06100	WASHER, SPRING	2	2	2	
31	92995-06600	WASHER	2	2	2	
32	6CS-81953-00	STAY, RELAY	1	1	1	
33	95814-06012	BOLT, FLANGE	2	2	2	
34	6CS-8259L-20	WIRE HARNESS ASSY 1	1	1	1	
35	90465-14M66	CLAMP	2	2	2	



F2SD100-N220

FIG. 22 ELECTRICAL 2

REF. NO.	PART NO.	DESCRIPTION	CAN	EUR	GENE	REMARKS
1	6S5-81960-10	RECTIFIER & REGULATOR ASSY	1	1	1	
2	6S5-81975-00	PLATE, RECTIFIER FITTING	1	1	1	
3	6S5-81972-01-94	COVER, RECTIFIER	1	1	1	
4	90119-06MA3	BOLT, WITH WASHER	2	2	2	
5	90119-06048	BOLT, WITH WASHER	4	4	4	
6	90387-08M37	COLLAR	2	2	2	
7	90119-08M22	BOLT, WITH WASHER	2	2	2	
8	90480-22M15	GROMMET	2	2	2	
9	6S5-82310-00	IGNITION COIL ASSY	4	4	4	
10	90105-06903	BOLT, FLANGE	8	8	8	
11	94702-00435	PLUG, SPARK (NGK LFR7A)	4	4	4	
12	90465-13M18	CLAMP	9	9	9	
13	90464-31001	CLAMP	1	1	1	
14	61A-85790-00	THERMOSENSOR ASSY	1	1	1	
15	90446-10MH3	HOSE (L350)	1	1	1	
16	92990-10600	WASHER, PLATE	1	1	1	
17	60E-82560-01	THERMO SWITCH ASSY	1	1	1	
18	97095-06016	BOLT	2	2	2	
19	92995-06600	WASHER	2	2	2	
20	60E-85896-01	SENSOR, CAM POSITION	1	1	1	
21	91380-06016	BOLT	1	1	1	
22	68V-82504-00	OIL PRESSURE SWITCH ASSY	1	1	1	
23	6S5-81315-00	LEAD WIRE ASSY	1	1	1	
24	6AN-85780-00	SENSOR, KNOCK	1	1	1	
25	90464-31001	CLAMP	1	1	1	
26	6CS-8273J-10	EARTH PLATE COMP.	1	1	1	
27	93210-32172	O-RING	1	1	1	

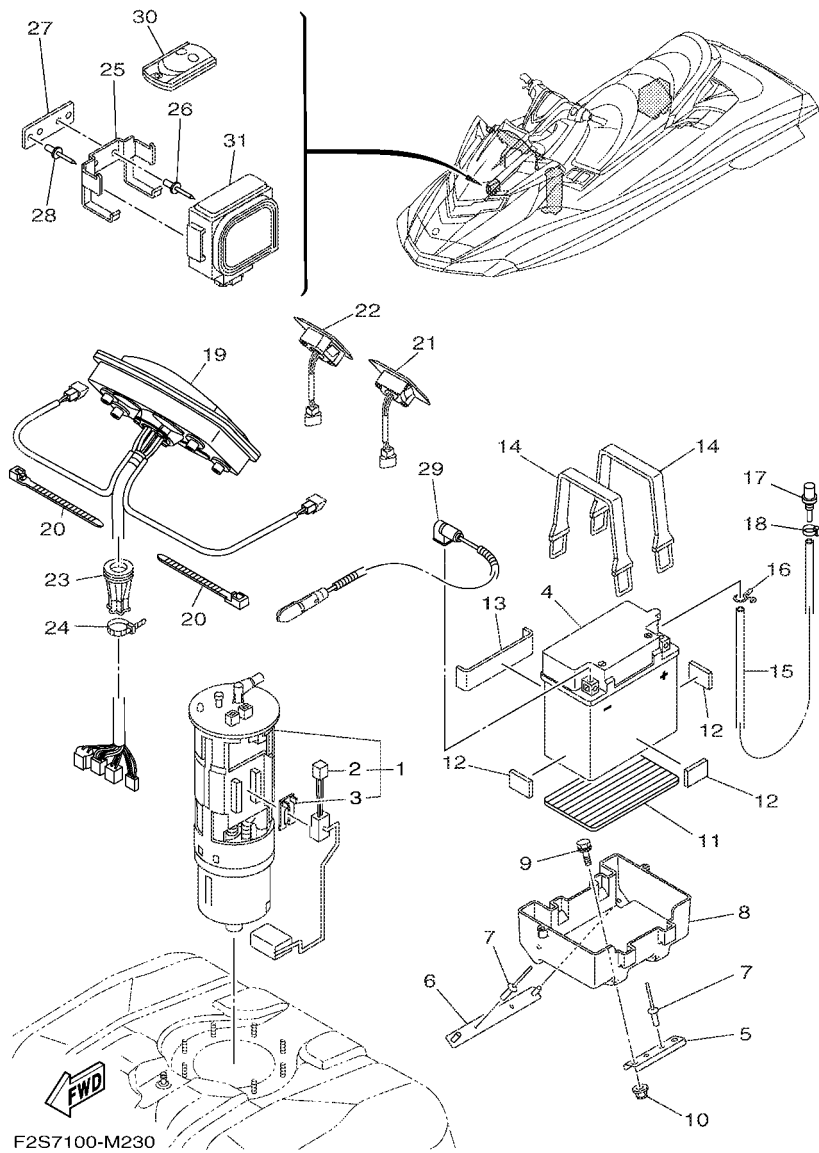


FIG. 23 ELECTRICAL 3

REF. NO.	PART NO.	DESCRIPTION	CAN	EUR	GENE	REMARKS
1	6S5-13907-01	FUEL PUMP COMP.	1	1	1	
2	6S5-682E0-00	.FUEL SENDER ASSY	1	1	1	
3	60E-82556-00	.DAMPER, STOPPER	1	1	1	
4	EU0-U8217-H2	BATTERY (YB16CL-B)	1	1	1	
5	F2S-U8592-00	PLATE, BASE 2	1	1	1	
6	F2S-U8593-00	PLATE, BASE 3	1	1	1	
7	90267-489U1	RIVET,BLIND	4	4	4	
8	F2S-U8211-00	CASE, BATTERY	1	1	1	
9	90119-06832	BOLT, WITH WASHER	2	2	2	
10	F2N-U142L-00	NUT, LOCK	2	2	2	
11	F1S-U8221-00	PAD, BATTERY	1	1	1	
12	EU0-U8221-30	PAD, BATTERY 2	3	3	3	
13	F1K-U8221-00	PAD, BATTERY	1	1	1	
14	EU0-U821D-00	BAND,BATTERY 1	2	2	2	
15	F0D-U785G-10	HOSE, AIR VENT	1	1	1	
16	90467-089U1	CLIP	1	1	1	
17	GJ3-6215F-00	NIPPLE	1	1	1	
18	90465-11829	CLAMP	1	1	1	
19	F3J-6820A-20	METER ASSY	1	1	1	
20	90464-32801	CLAMP	4	4	4	
21	F2S-68090-00	SWITCH ASSY.	1	1	1	
22	F2S-68090-10	SWITCH ASSY.	1	1	1	
23	F1X-U822E-00	GROMMET	1	1	1	
24	90464-32801	CLAMP	1	1	1	
25	F1W-U826C-00	BRACKET	1	1	1	
26	90267-489U1	RIVET,BLIND	2	2	2	
27	F1W-U8376-00	PLATE	1	1	1	

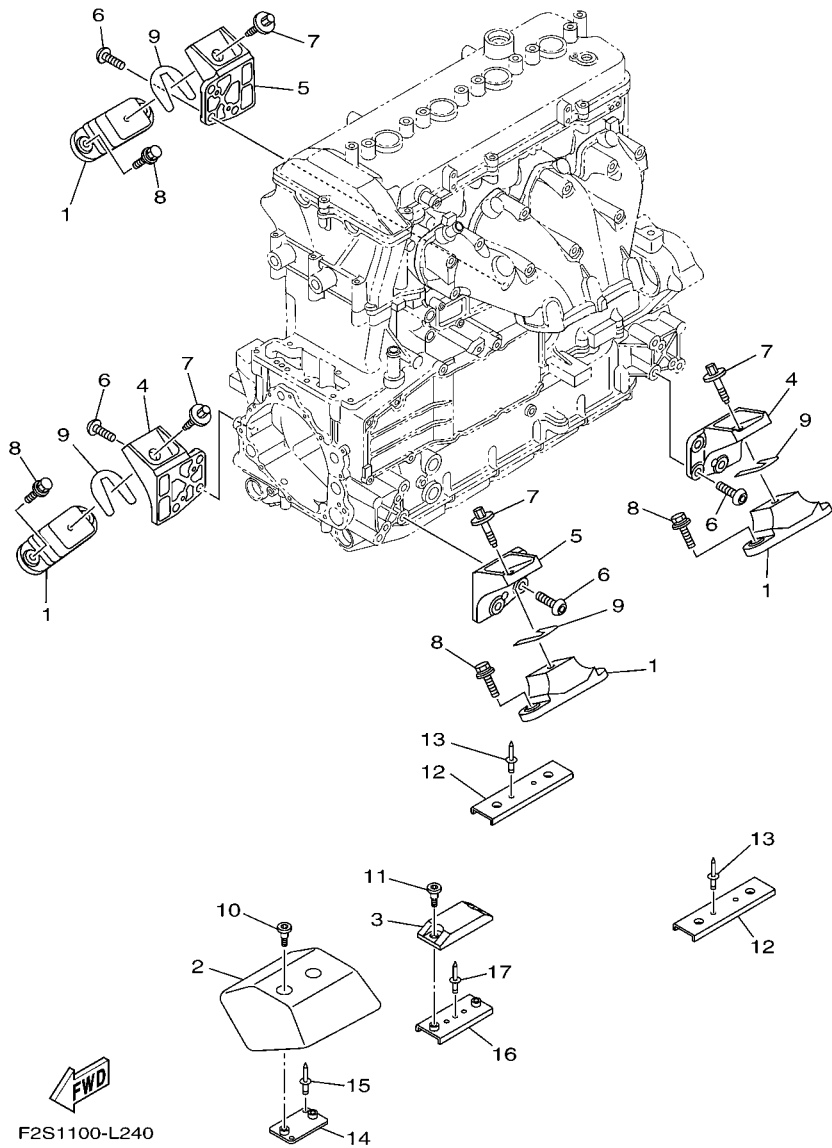
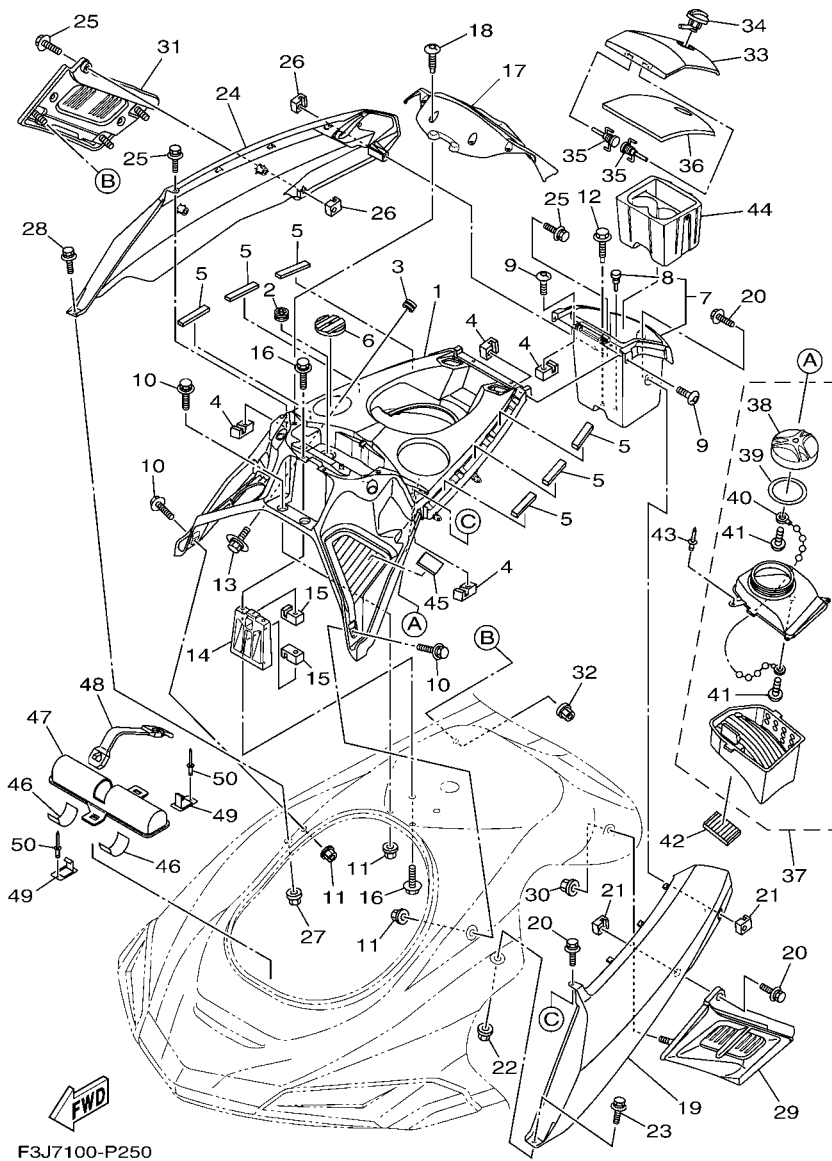


FIG. 24 ENGINE MOUNT

REF. NO.	PART NO.	DESCRIPTION	CAN	EUR	GENE	REMARKS
1	67X-44517-10	MOUNT RUBBER	4	4	4	
2	6BH-G4532-00	STOPPER, UPPER MOUNT	1	1	1	
3	6BH-G4574-00	STOPPER, LOWER MOUNT RUBBER	1	1	1	
4	6BH-41661-00-94	BRACKET 1	2	2	2	
5	6BH-41662-00-94	BRACKET 2	2	2	2	
<hr/>						
6	90149-10052	SCREW	12	12	12	
7	90119-08859	BOLT, WITH WASHER	4	4	4	
8	F2S-U1355-00	BOLT	8	8	8	
9	EU0-U7354-00-01	SHIM (T=0.1)	10	10	10	UN
	EU0-U7354-00-03	SHIM (T=0.3)	10	10	10	UN
<hr/>						
	EU0-U7354-00-05	SHIM (T=0.5)	10	10	10	UN
	EU0-U7354-00-10	SHIM (T=1.0)	10	10	10	UN
	EU0-U7354-00-20	SHIM (T=2.0)	10	10	10	UN
10	90109-06874	BOLT	2	2	2	
11	90109-06875	BOLT	2	2	2	
<hr/>						
12	F2S-U732B-00	PLATE	2	2	2	
13	90267-489U2	RIVET, BLIND	4	4	4	
14	F2S-U732B-10	PLATE	1	1	1	
15	90267-489U2	RIVET, BLIND	2	2	2	
16	F2M-U732B-00	PLATE	1	1	1	
<hr/>						
17	90267-489U2	RIVET, BLIND	1	1	1	
<hr/>						

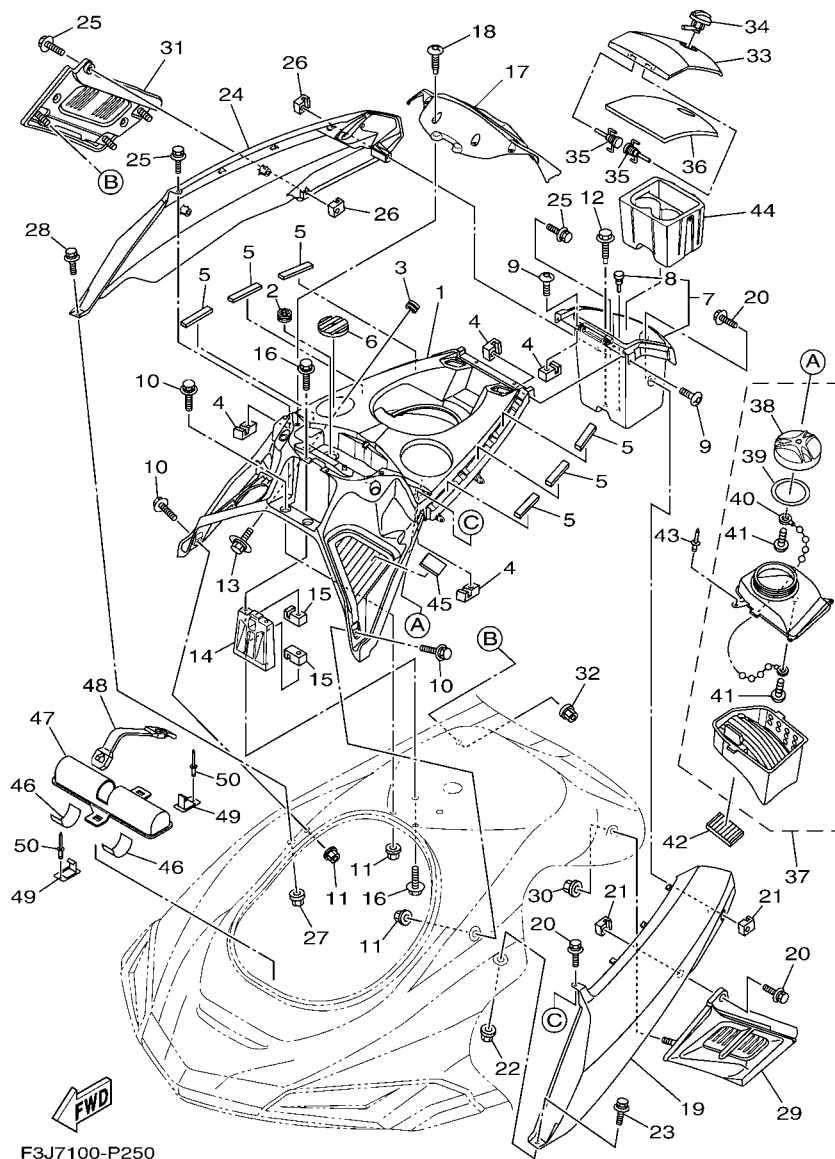


F3J7100-P250

FIG. 25 ENGINE HATCH 1

REF. NO.	PART NO.	DESCRIPTION	CAN	EUR	GENE	REMARKS
1	F2S-U5554-02	COVER, CENTER	1	1	1	
2	F1X-U828E-01	DAMPER 1	2	2	2	
3	90480-19800	GROMMET	4	4	4	
4	F1X-U517E-01	NUT	6	6	6	
5	F0X-U515E-01	DAMPER 2	6	6	6	
6	F2S-U3844-00	MAT	1	1	1	
7	F2S-U1708-02	GLOVE BOX HATCH ASSY.	1	1	1	
8	90605-502U2	.PLUG	1	1	1	
9	F2N-67823-10	SCREW	4	4	4	
10	90119-06880	BOLT, WITH WASHER	4	4	4	
11	F2N-U142L-00	NUT, LOCK	4	4	4	
12	90119-068B8	BOLT, WITH WASHER	1	1	1	
13	90119-05803	BOLT, WITH WASHER	4	4	4	
14	F2S-U517F-00	HOOK,LID LOCK	1	1	1	
15	F1X-U517E-01	NUT	4	4	4	
16	90119-06880	BOLT, WITH WASHER	4	4	4	
17	F2S-U8262-01-P0	COVER METER (BMG)	1	1	1	
18	F2S-U13C1-00	SCREW	4	4	4	
19	F3J-U377B-00-P7	COVER,SIDE 1 (PURW)	1	1	1	FOR WHITE
	F3J-U377B-00-P8	COVER,SIDE 1 (RM9)	1	1	1	FOR RED
20	90119-06880	BOLT, WITH WASHER	3	3	3	
21	F1X-U517E-01	NUT	2	2	2	
22	F2N-U142L-00	NUT, LOCK	1	1	1	
23	90119-06880	BOLT, WITH WASHER	1	1	1	
24	F3J-U377C-00-P7	COVER,SIDE 2 (PURW)	1	1	1	FOR WHITE
	F3J-U377C-00-P8	COVER,SIDE 2 (RM9)	1	1	1	FOR RED
25	90119-06880	BOLT, WITH WASHER	3	3	3	

FIG. 25 ENGINE HATCH 1



F3J7100-P250

REF. NO.	PART NO.	DESCRIPTION	CAN	EUR	GENE	REMARKS
26	F1X-U517E-01	NUT	2	2	2	
27	F2N-U142L-00	NUT, LOCK	1	1	1	
28	90119-06880	BOLT, WITH WASHER	1	1	1	
29	F2S-U370J-00	SIDE ORNAMENT ASSY 1	1	1	1	
30	F2N-U142L-00	NUT, LOCK	3	3	3	
31	F2S-U370K-00	SIDE ORNAMENT ASSY 2	1	1	1	
32	F2N-U142L-00	NUT, LOCK	3	3	3	
33	F2S-U517H-00	LID HATCH	1	1	1	
34	F1X-62875-00	LOCK	1	1	1	
35	F1B-6517R-00	PIN, HINGE	2	2	2	
36	F2S-U519D-00	PACKING CASE	1	1	1	
37	F2S-U591A-00	CASE, ASSY 1	1	1	1	
38	F1W-U591C-01	.CAP, CASE	1	1	1	
39	F1W-U591D-00	.PACKING, CASE	1	1	1	
40	F2S-U7835-01	.CHAIN BALL	1	1	1	
41	F2S-U316C-00	.SCREW (FL66314300)	1	1	1	
42	F1K-U759C-00	MAT 2	1	1	1	
43	90267-48807	RIVET, BLIND	3	3	3	
44	F2S-U5633-00	HOLDER, DRINK	1	1	1	
45	GJ1-U759C-00	MAT 2	1	1	1	
46	F1K-U759C-00	MAT 2	2	2	2	
47	F1K-U5983-01	BOX, FIRE EXTINGUISHER	1	1	1	
48	F2P-U828K-00	BAND 1	1	1	1	
49	F1K-U5772-04	HOOK A	2	2	2	
50	90267-489U1	RIVET, BLIND	2	2	2	

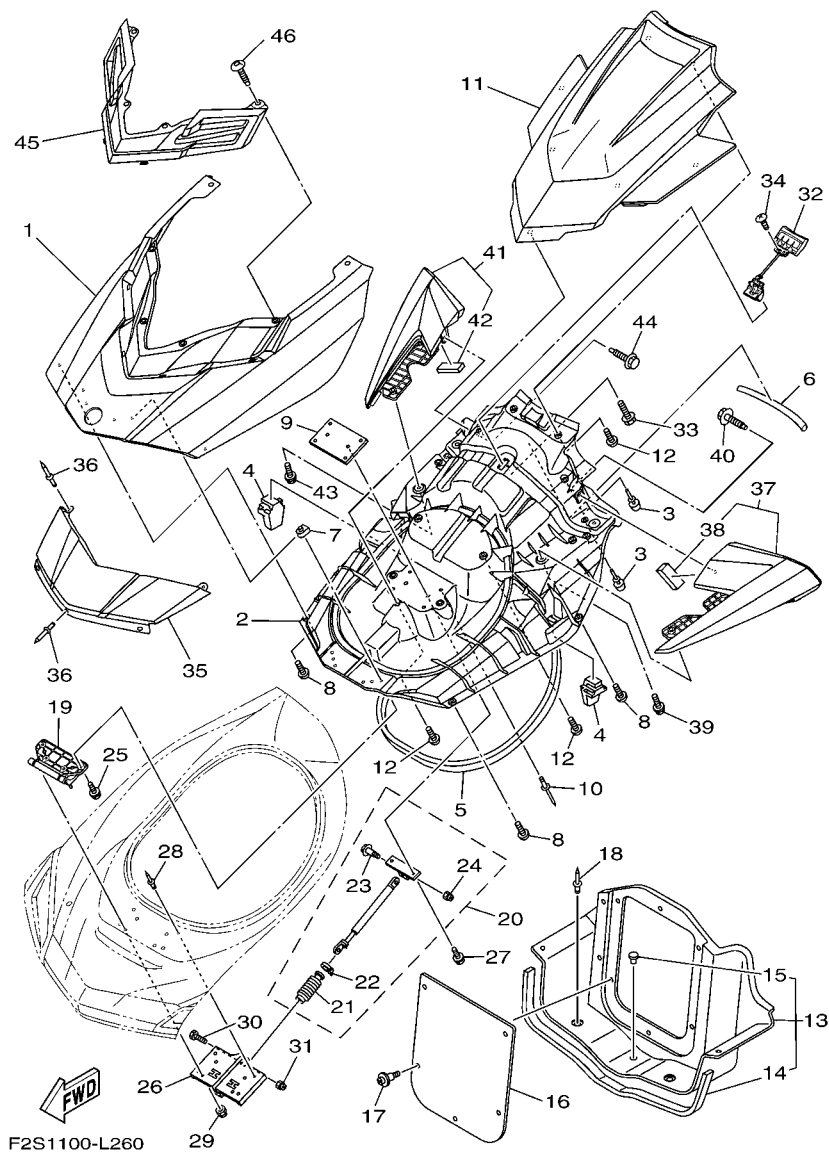


FIG. 26 ENGINE HATCH 2

REF. NO.	PART NO.	DESCRIPTION	CAN	EUR	GENE	REMARKS
1	F2S-U517B-01-P7	LID, ENGINE ROOM (PURW)	1	1	1	FOR WHITE
	F2S-U517B-01-P8	LID, ENGINE ROOM (RM9)	1	1	1	FOR RED
2	F2S-U519G-02	INNER, ENGINE HATCH	1	1	1	
3	F1W-U3768-01	CUSHION, RUBBER	4	4	4	
4	F2S-U5135-00	STOPPER, HATCH 1	2	2	2	
5	F2S-U2663-00	PACKING 1	1	1	1	
6	F2S-U266B-00	PACKING 3	1	1	1	
7	90183-06902	NUT, SPRING	4	4	4	
8	F2S-U13C1-00	SCREW	8	8	8	
9	F1W-U5148-00	PLATE, HATCH	1	1	1	
10	90267-48807	RIVET, BLIND	4	4	4	
11	F2S-U515N-01-P7	VISOR (PURW)	1	1	1	FOR WHITE
	F2S-U515N-01-P8	VISOR (RM9)	1	1	1	FOR RED
12	F2S-U13C1-00	SCREW	7	7	7	
13	F2S-U475B-00	LOCKER, BOW	1	1	1	
14	F2N-U266C-01	.PACKING 4	1	1	1	
15	90605-502U1	.PLUG, BLIND	1	1	1	
16	F2S-U475F-00	PLATE, LOKER BOW	1	1	1	
17	90269-08801	RIVET	5	5	5	
18	90269-08801	RIVET	4	4	4	
19	F2S-U517D-00	HINGE, LID	1	1	1	
20	F2S-6514S-00	DAMPER ASSY	1	1	1	
21	F1W-6514T-00	.COVER, DAMPER	1	1	1	
22	1UA-82591-00	.BAND	1	1	1	
23	90109-06218	.BOLT	1	1	1	
24	95720-06300	.NUT, SELF-LOCKING	1	1	1	
25	90119-06895	BOLT, WITH WASHER	4	4	4	

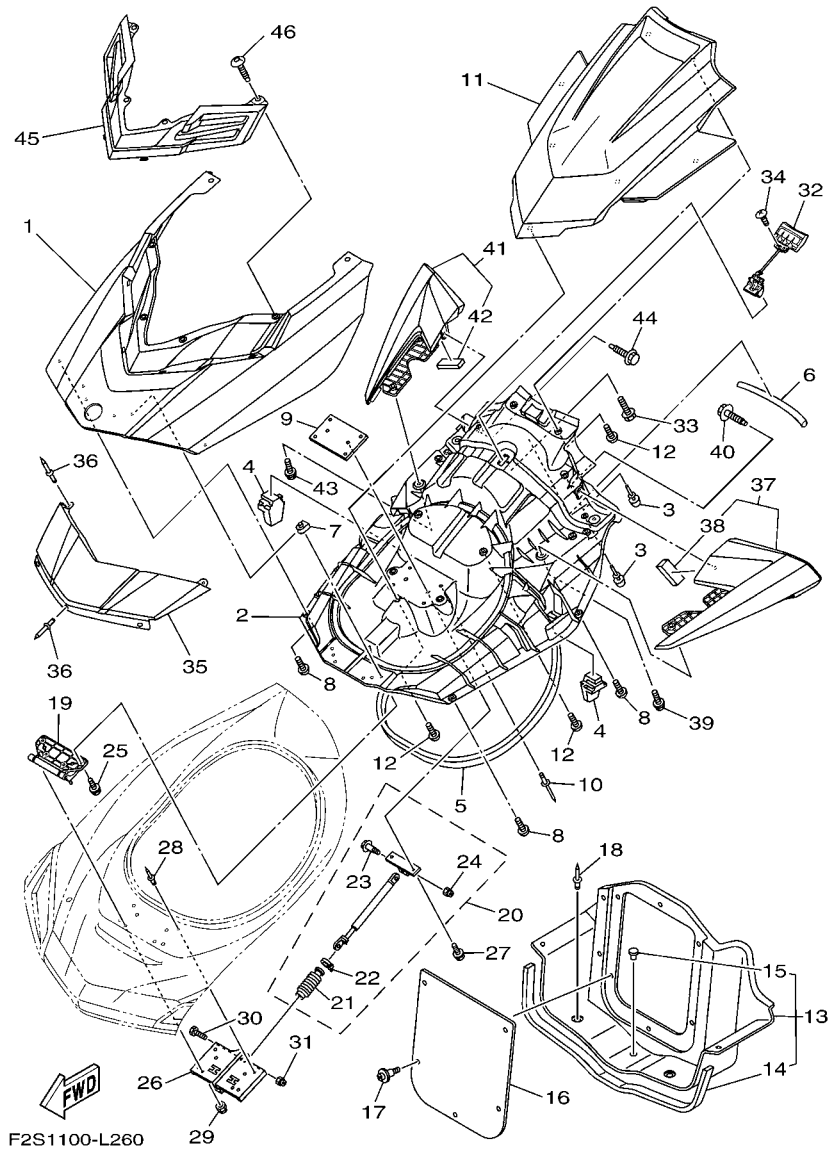
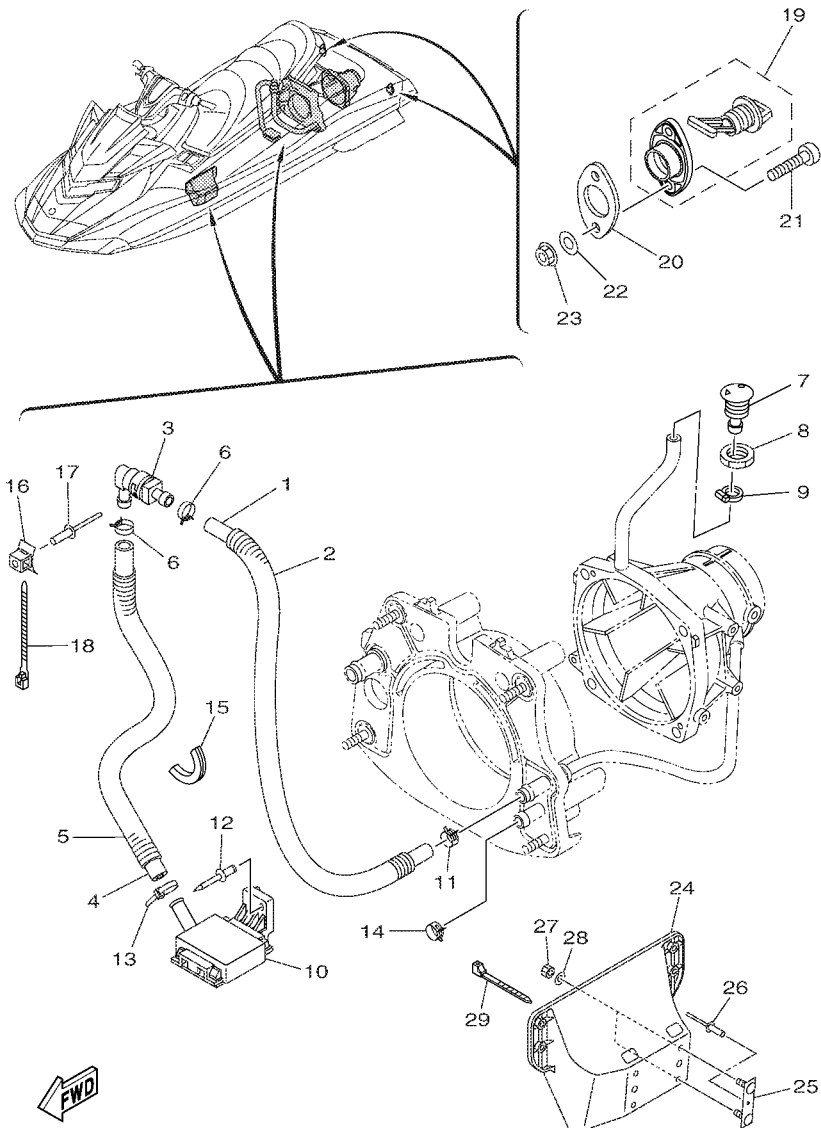


FIG. 26 ENGINE HATCH 2

REF. NO.	PART NO.	DESCRIPTION	CAN	EUR	GENE	REMARKS
26	F2S-U518E-00	PLATE, HINGE LID	1	1	1	
27	90119-069UH	BOLT, WITH WASHER	2	2	2	
28	90267-48020	RIVET, BLIND	2	2	2	
29	9572R-06300	NUT, NYLON	4	4	4	
30	90109-06218	BOLT	1	1	1	
31	9572R-06300	NUT, NYLON	1	1	1	
32	F2S-U517C-01	LOCK, LID	1	1	1	
33	90119-059U4	BOLT, WITH WASHER	2	2	2	
34	9778R-50010	SCREW, TAPPING	2	2	2	
35	F2S-U513M-01-P7	COVER, FRONT (PURW)	1	1	1	FOR WHITE
	F2S-U513M-01-P8	COVER, FRONT (RM9)	1	1	1	FOR RED
36	90267-489U6	RIVET, BLIND	5	5	5	
37	F2S-U590D-71	MIRROR ASSY. 1	1	1	1	FOR WHITE
	F2S-U590D-31	MIRROR ASSY. 1	1	1	1	FOR RED
38	F1K-U266B-00	.PACKING 3	1	1	1	
39	90119-089UL	BOLT, WITH WASHER	2	2	2	
40	90119-06858	BOLT, WITH WASHER	1	1	1	
41	F2S-U590E-71	MIRROR ASSY. 2	1	1	1	FOR WHITE
	F2S-U590E-31	MIRROR ASSY. 2	1	1	1	FOR RED
42	F1K-U266B-00	.PACKING 3	1	1	1	
43	90119-089UL	BOLT, WITH WASHER	2	2	2	
44	90119-06858	BOLT, WITH WASHER	1	1	1	
45	F2S-U510D-01	CENTER ORNAMENT ASSY	1	1	1	
46	F2S-U13C1-00	SCREW	4	4	4	



F2SD100-N270

FIG. 27 HULL & DECK

REF. NO.	PART NO.	DESCRIPTION	CAN	EUR	GENE	REMARKS
1	90445-20804	HOSE (L860)	1	1	1	
2	90446-27M73	HOSE (L700)	1	1	1	
3	68N-5112T-00	JOINT, HOSE	1	1	1	
4	90445-20800	HOSE (L500)	1	1	1	
5	90446-27M55	TUBE (L400)	1	1	1	
6	90467-18804	CLIP	2	2	2	
7	F1W-U269B-00	SPOUT	1	1	1	
8	EU0-61652-00	NUT	1	1	1	
9	90601-118UF	BAND, HOSE 18	1	1	1	
10	F1B-U761D-02	STRAINER, BILGE	1	1	1	
11	90467-21800	CLIP	1	1	1	
12	90267-489U8	RIVET, BLIND	1	1	1	
13	90601-200U1	BAND	1	1	1	
14	90467-200A0	CLIP	1	1	1	
15	F1S-U828H-01	TRIM, 1	1	1	1	
16	F1W-U828M-00	BASE, CLAMP	1	1	1	
17	90267-48802	RIVET, BLIND	1	1	1	
18	90464-32801	CLAMP	1	1	1	
19	F1S-U2280-02	DRAIN PLUG ASSY.	2	2	2	
20	F1S-U2285-00	PACKING, DRAIN	2	2	2	
21	9788R-05025	SCREW, PAN HEAD	4	4	4	
22	9299R-05200	WASHER	4	4	4	
23	9572R-05300	NUT, FLANGE	4	4	4	
24	F1W-U8572-01	BRACKET 2	1	1	1	
25	F1K-U826C-03	BRACKET	2	2	2	
26	90267-489U1	RIVET, BLIND	2	2	2	
27	9572R-08300	NUT, FLANGE	4	4	4	

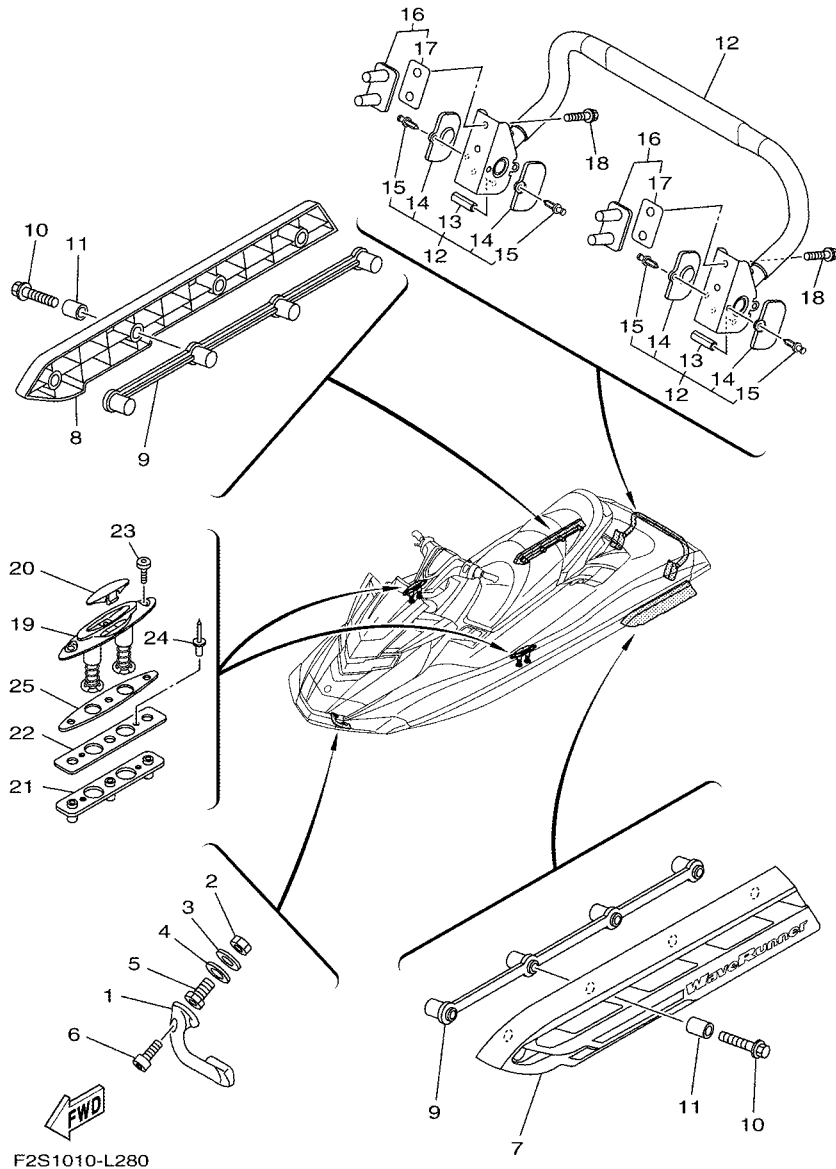
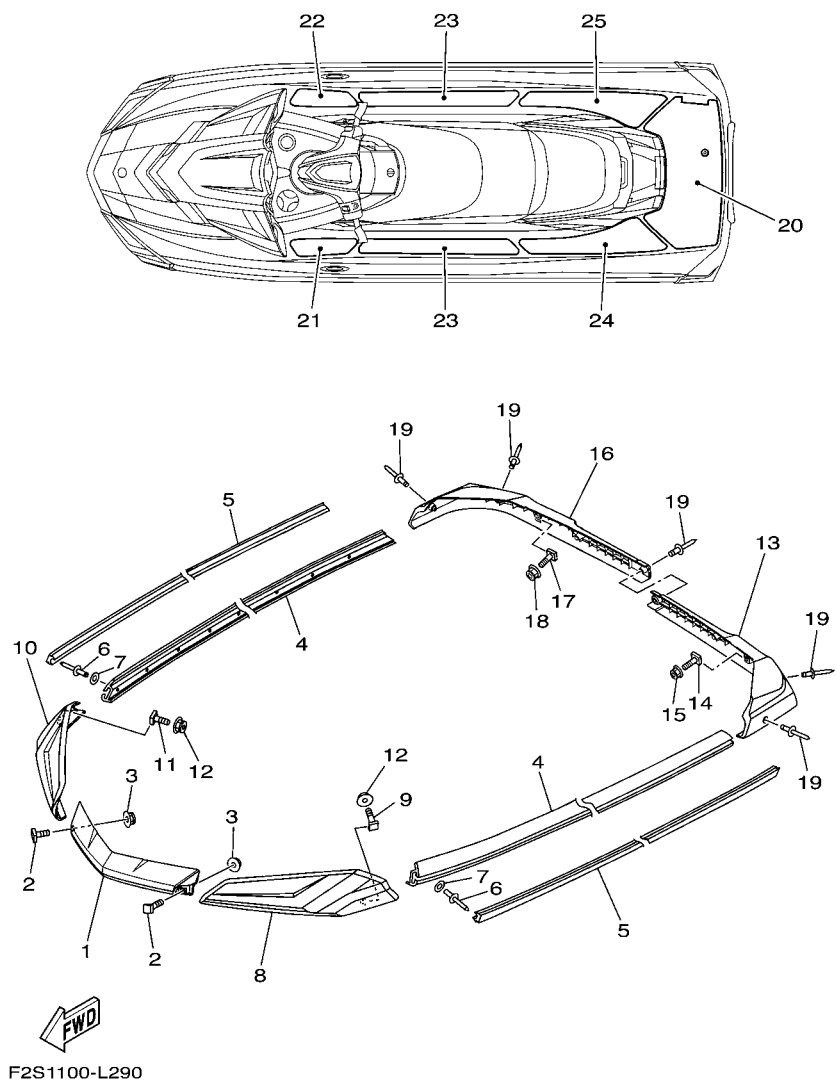


FIG. 28 HULL & DECK 2

REF. NO.	PART NO.	DESCRIPTION	CAN	EUR	GENE	REMARKS
1	F1K-61624-00	BOWEYE 1	1	1	1	
2	99780-12600	NUT.HEX.(COARS)	2	2	2	
3	92990-12200	WASHER, PLAIN	2	2	2	
4	F0X-61637-00	WASHER	2	2	2	
5	F0X-61652-00	NUT (BOLT/NUT)	2	2	2	
6	90110-06040	BOLT, HEXAGON SOCKET HEAD	2	2	2	
7	F2S-U883N-01	STABILIZER LH	1	1	1	
8	F2S-U883P-01	STABILIZER RH	1	1	1	
9	F2S-U883T-00	BRACKET,STABILIZER	2	2	2	
10	90105-08860	BOLT, FLANGE	8	8	8	
11	F2N-U8169-00	SPACER	8	8	8	
12	F2S-U278A-00	LADDER, STEP ASSY	1	1	1	
13	F1W-U771H-00	.SLEEVE 1	2	2	2	
14	F2C-U377H-00	.INNER, COVER SIDE 1	4	4	4	
15	F2C-U1314-00	.PIN	4	4	4	
16	F2S-U278F-00	BRACKET, LADDER LH	2	2	2	
17	F2S-U278H-00	.PACKING, BRKT. 1	2	2	2	
18	90119-08861	BOLT, WITH WASHER	4	4	4	
19	F1X-U163A-02	CLEAT ASSY.	2	2	2	
20	F1X-U826D-00	COVER	2	2	2	
21	F1X-U826C-10	BRACKET	2	2	2	
22	F1X-U2157-00	PACKING	2	2	2	
23	F1W-U2624-00	BOLT	6	6	6	
24	90267-489U6	RIVET, BLIND	4	4	4	
25	F1X-U2284-00	PACKING	2	2	2	

FIG. 29 GUNWALE & MAT



REF. NO.	PART NO.	DESCRIPTION	CAN	EUR	GENE	REMARKS
1	F2S-U2511-10	GUNWALE, BOW	1	1	1	YAMAHA BLACK
2	F1W-U491K-00	BOLT, SPECIAL	4	4	4	
3	F2N-U142L-00	NUT, LOCK	4	4	4	
4	F2S-U2512-10	GUNWALE, SIDE	2	2	2	YAMAHA BLACK
5	F2S-U2519-40	INNER, GUNWALE (LIGHT GRAY)	2	2	2	FOR WHITE
	F2S-U2519-20	INNER, GUNWALE (DRAK GRAY)	2	2	2	FOR RED
6	90267-489U8	RIVET, BLIND	30	30	30	
7	9299R-05200	WASHER	30	30	30	
8	F2S-U252E-11	JOINT, GUNWALE LH	1	1	1	YAMAHA BLACK
9	F1W-U491K-00	BOLT, SPECIAL	3	3	3	
10	F2S-U252F-11	JOINT, GUNWALE RH	1	1	1	YAMAHA BLACK
11	F1W-U491K-00	BOLT, SPECIAL	3	3	3	
12	F2N-U142L-00	NUT, LOCK	6	6	6	
13	F2S-U251D-10	GUNWALE, STERN 1 LH	1	1	1	YAMAHA BLACK
14	F1W-U491K-00	BOLT, SPECIAL	1	1	1	
15	F2N-U142L-00	NUT, LOCK	1	1	1	
16	F2S-U251E-10	GUNWALE, STERN 2 RH	1	1	1	YAMAHA BLACK
17	F1W-U491K-00	BOLT, SPECIAL	1	1	1	
18	F2N-U142L-00	NUT, LOCK	1	1	1	
19	90267-48825	RIVET, BLIND	7	7	7	
20	F2S-U3581-01	MAT, UPPER	1	1	1	DARK GRAY & BLACK
21	F2S-U351H-00	MAT, STEP 1	1	1	1	DARK GRAY & BLACK
22	F2S-U351J-00	MAT, STEP 2	1	1	1	DARK GRAY & BLACK
23	F2S-U351K-00	MAT, STEP 3	2	2	2	DARK GRAY & BLACK
24	F2S-U351M-00	MAT, STEP 4	1	1	1	DARK GRAY & BLACK
25	F2S-U351N-00	MAT, STEP 5	1	1	1	DARK GRAY & BLACK

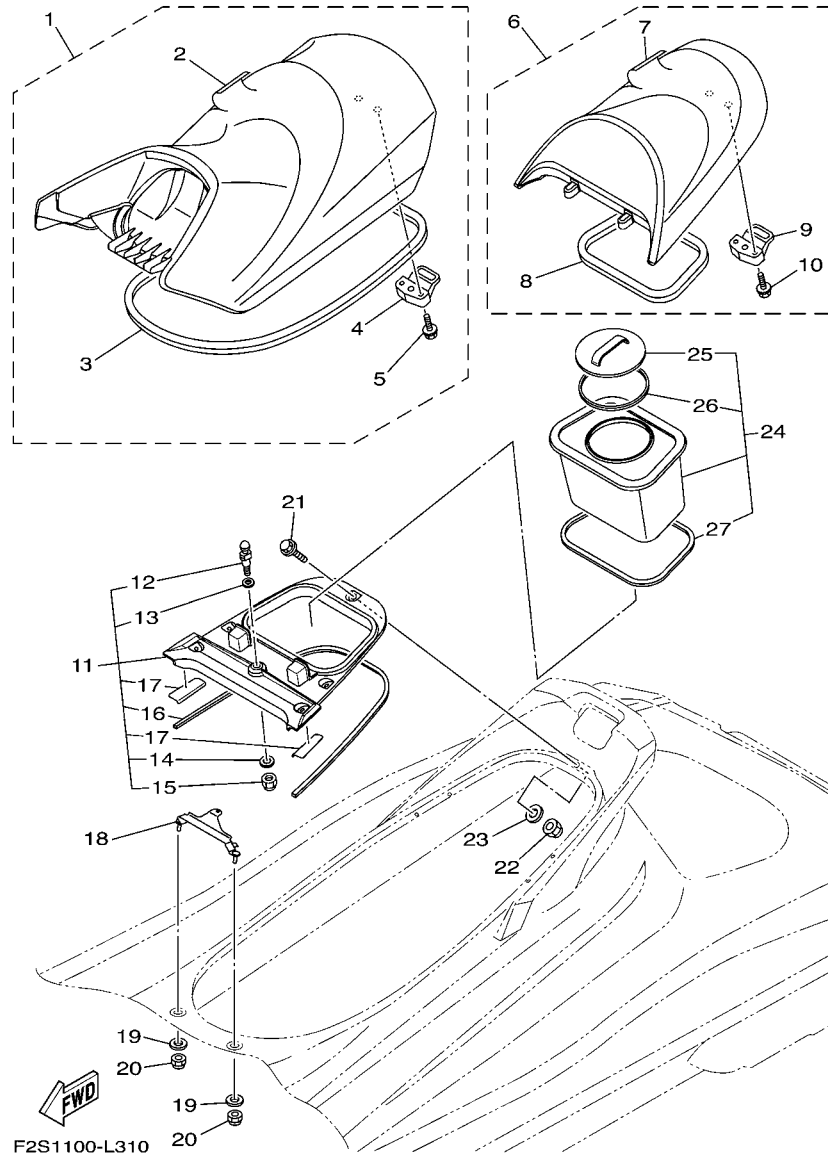
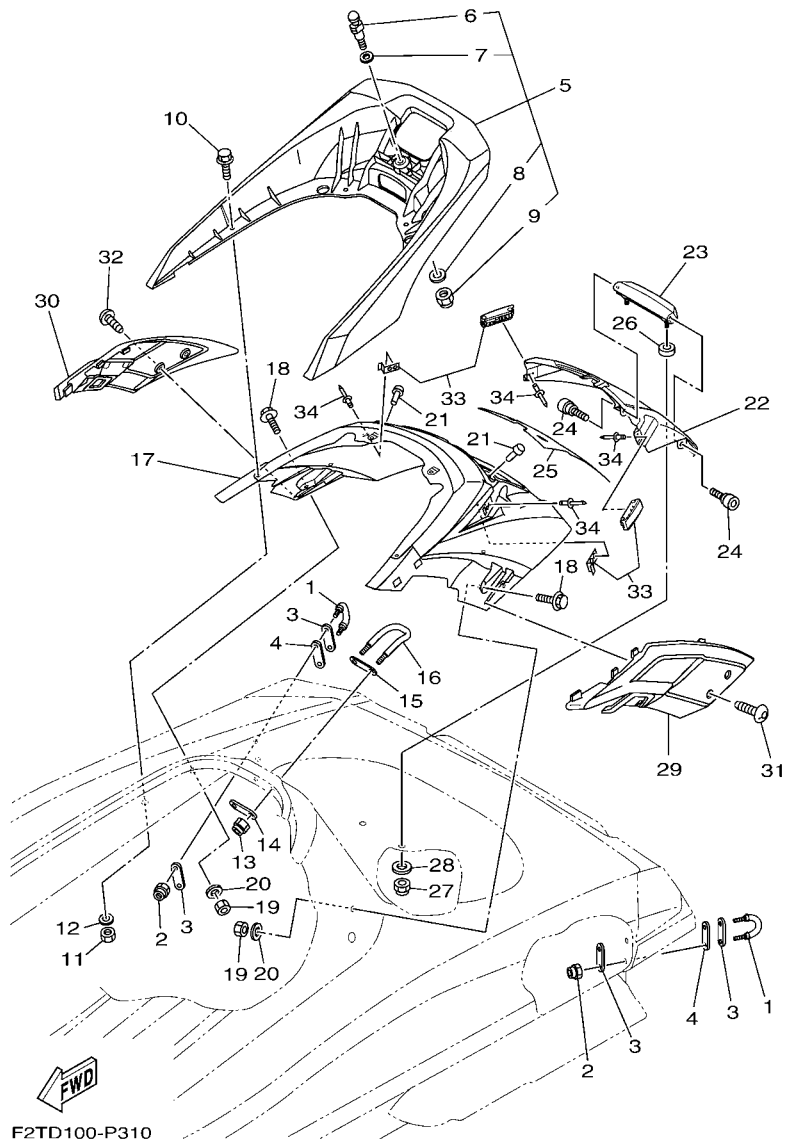


FIG. 31 SEAT & UNDER LOCKER

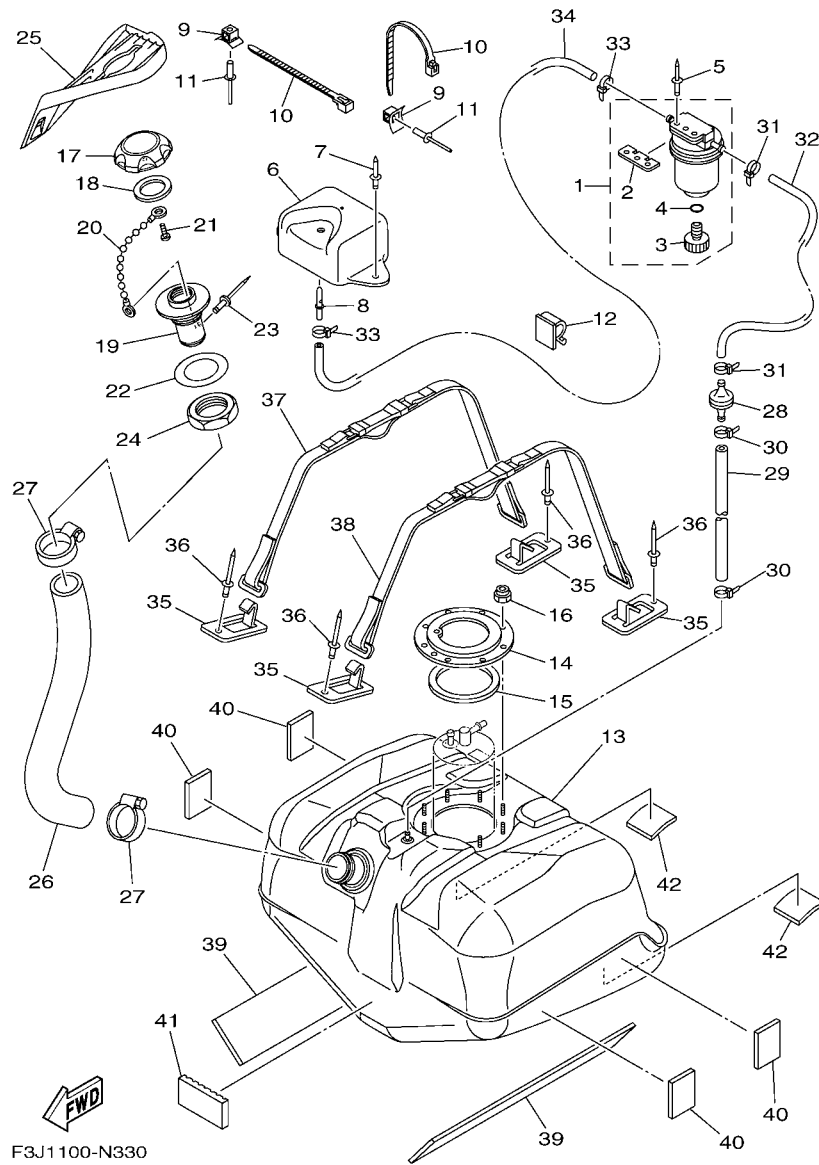
REF. NO.	PART NO.	DESCRIPTION	CAN	EUR	GENE	REMARKS
1	F2S-U371A-30	DOUBLE SEAT ASSY	1	1	1	
2	F2S-U371B-30	.COVER, SEAT 1	1	1	1	
3	F1W-U2664-01	.PACKING	1	1	1	
4	F2C-U3850-00	.SEAT LOCK ASSY	1	1	1	
5	90119-069UP	.BOLT, WITH WASHER	2	2	2	
6	F2S-U372A-30	SINGLE SEAT ASSY	1	1	1	
7	F2S-U372B-30	.COVER, SEAT	1	1	1	
8	F2C-U266D-01	.PACKING 5	1	1	1	
9	F2C-U3850-00	.SEAT LOCK ASSY	1	1	1	
10	90119-069UP	.BOLT, WITH WASHER	2	2	2	
11	F2S-U890L-04	DECK BEAM ASSY	1	1	1	
12	GH1-U3774-00	.PIN	1	1	1	
13	90201-109U6	.WASHER, PLATE	1	1	1	
14	9299R-10200	.WASHER	1	1	1	
15	9572R-10300	.NUT, NYLON	1	1	1	
16	F2S-U375E-00	.PACKING 1	1	1	1	
17	F2S-U8244-00	.PACKING	2	2	2	
18	F2C-U378C-00	STAY, SEAT 1	1	1	1	
19	90201-099U3	WASHER, PLATE	2	2	2	
20	9572R-08300	NUT, FLANGE	2	2	2	
21	90119-08828	BOLT, WITH WASHER	5	5	5	
22	9572R-08300	NUT, FLANGE	5	5	5	
23	9299R-08200	WASHER	5	5	5	
24	F2C-U591A-02	CASE, ASSY 1	1	1	1	
25	F2C-U591C-00	.CAP, CASE	1	1	1	
26	F2C-U591D-01	.PACKING, CASE	1	1	1	
27	F2C-U266E-00	.PACKING, 6	1	1	1	



F2TD100-P310

FIG. 32 SEAT & UNDER LOCKER 2

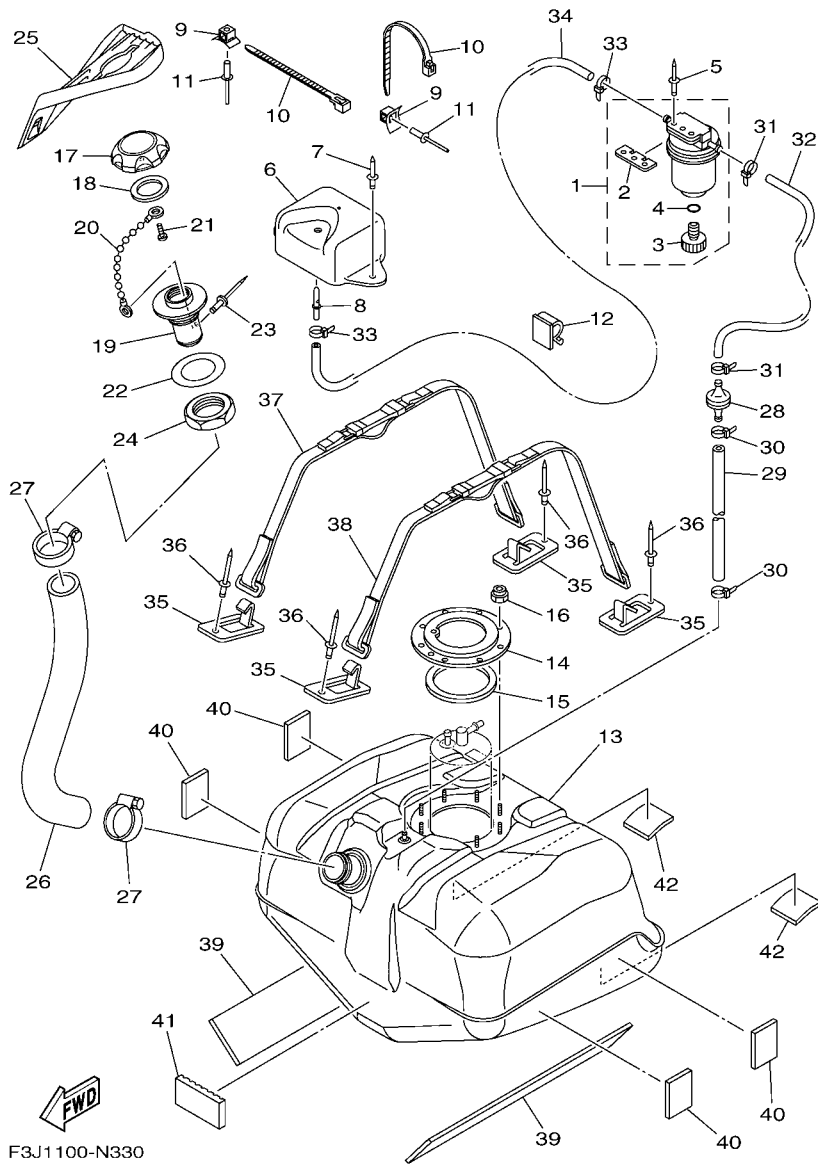
REF. NO.	PART NO.	DESCRIPTION	CAN	EUR	GENE	REMARKS
1	F2N-U1628-02	STERN EYE	2	2	2	
2	9572R-08300	NUT, FLANGE	4	4	4	
3	GP7-U4953-10	PLATE A	4	4	4	
4	F1B-U1653-02	PACKING	2	2	2	
5	F2S-U270B-10	GRIP ASSY	1	1	1	
6	GH1-U3774-00	.PIN	1	1	1	
7	90201-109U6	.WASHER, PLATE	1	1	1	
8	9299R-10200	.WASHER	1	1	1	
9	9572R-10300	.NUT, NYLON	1	1	1	
10	90119-08829	BOLT, WITH WASHER	4	4	4	
11	9572R-08300	NUT, FLANGE	4	4	4	
12	9299R-08200	WASHER	4	4	4	
13	9572R-08300	NUT, FLANGE	2	2	2	
14	GP7-U4953-10	PLATE A	1	1	1	
15	GP7-U4953-10	PLATE A	1	1	1	
16	F1B-U1629-00	SKI TOWS	1	1	1	
17	F2S-U89A1-01-P7	STORAGE, STERN (PURW)	1	1	1	FOR WHITE
	F2S-U89A1-01-P8	STORAGE, STERN (RM9)	1	1	1	FOR RED
18	90119-08832	BOLT, WITH WASHER	2	2	2	
19	9572R-08300	NUT, FLANGE	2	2	2	
20	9299R-08200	WASHER	2	2	2	
21	F1W-U3768-01	CUSHION, RUBBER	2	2	2	
22	F2S-U518M-01-P7	LID LOCKER STERN (PURW)	1	1	1	FOR WHITE
	F2S-U518M-01-P8	LID LOCKER STERN (RM9)	1	1	1	FOR RED
23	F2S-U271F-01	GRIP, LOWER	1	1	1	
24	F2S-U2624-00	BOLT	2	2	2	
25	F2S-U519D-20	PACKING CASE	1	1	1	



F3J1100-N330

FIG. 33 FUEL TANK

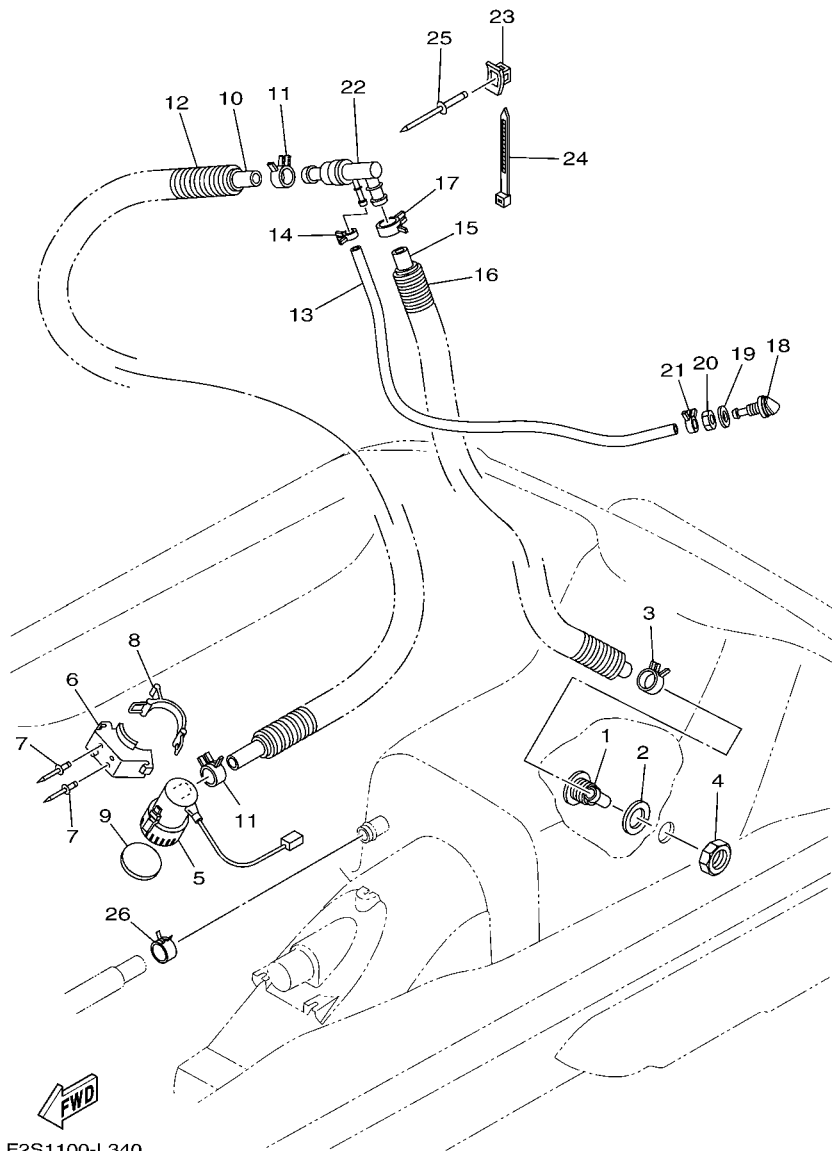
REF. NO.	PART NO.	DESCRIPTION	CAN	EUR	GENE	REMARKS
1	F2F-6214A-00	FILTER, VENT ASSY	1	1	1	
2	EW2-62142-00	.PLATE, FILTER	1	1	1	
3	70R-24543-00	.PLUG, DRAIN	1	1	1	
4	70R-24489-00	.O-RING	1	1	1	
5	90267-489U2	RIVET, BLIND	2	2	2	
6	F1W-U2159-00	SOCKET, VENTILATION	1	1	1	
7	90267-489U6	RIVET, BLIND	2	2	2	
8	F1G-62149-00	PIPE, VENTILATION	1	1	1	
9	F1W-U828M-00	BASE, CLAMP	2	2	2	
10	90464-32801	CLAMP	2	2	2	
11	90267-489U6	RIVET, BLIND	2	2	2	
12	90464-17800	CLAMP	1	1	1	
13	F2S-U7711-02	TANK, FUEL	1	1	1	
14	F1B-U7773-00	RING	1	1	1	
15	F1B-67747-00	PACKING, SEAL	1	1	1	
16	9572R-06300	NUT, NYLON	9	9	9	
17	F2N-U7831-10	CAP, FUEL FILLER	1	1	1	BLACK
18	GP7-U7832-01	PACKING	1	1	1	
19	GP7-U7833-11	SOCKET	1	1	1	BLACK
20	GP7-U7835-00	CHAIN BALL	1	1	1	
21	90169-049U1	TAPPING SCREW	1	1	1	
22	GP7-U7834-10	PACKING FUEL FILLER	1	1	1	
23	90267-329UR	RIVET, BLIND	1	1	1	
24	GP7-U783F-00	NUT, FUEL FILLER	1	1	1	
25	F3J-U895D-00	PROTECTOR	1	1	1	
26	F2S-U7844-00	HOSE	1	1	1	
27	90601-155U4	BAND, HOSE 55	2	2	2	



F3J1100-N330

FIG. 33 FUEL TANK

REF. NO.	PART NO.	DESCRIPTION	CAN	EUR	GENE	REMARKS
28	EU0-67767-31	CHECK VALVE	1	1	1	
29	F2H-U785H-00	HOSE, AIR VENT 3	1	1	1	
30	90465-11829	CLAMP	2	2	2	
31	90465-11829	CLAMP	2	2	2	
32	F0D-U785G-10	HOSE, AIR VENT	1	1	1	
33	90465-11829	CLAMP	2	2	2	
34	F0D-U7856-10	HOSE, AIR VENT 3	1	1	1	
35	F1K-U5772-04	HOOK A	4	4	4	
36	90267-489U1	RIVET,BLIND	4	4	4	
37	F2S-67743-00	BELT, TANK 1	1	1	1	
38	F2S-67743-00	BELT, TANK 1	1	1	1	
39	F2S-U759B-00	MAT 1	2	2	2	
40	F1W-U759C-01	MAT 2	4	4	4	
41	F1K-U759C-00	MAT 2	1	1	1	
42	F1K-U759C-00	MAT 2	2	2	2	



F2S1100-L340

FIG. 34 BILGE PUMP

REF. NO.	PART NO.	DESCRIPTION	CAN	EUR	GENE	REMARKS
1	F1W-U224E-00	BODY, DRAIN 3	1	1	1	
2	F1S-U7525-01	PACKING	1	1	1	
3	90467-26800	CLIP	1	1	1	
4	F1B-62241-00	DRAIN, COCKPIT	1	1	1	
5	F1B-U8360-01	BILGE PUMP ASSY	1	1	1	
6	F1B-U7698-01	BRACKET	1	1	1	
7	F3J-U516R-00	RIVET 1	2	2	2	
8	GA7-68218-00	BAND, BATTERY	1	1	1	
9	F1B-U7656-00	PACKING, BILGE	1	1	1	
10	F1B-U7626-00	HOSE 1	1	1	1	
11	90467-25801	CLIP	2	2	2	
12	90447-28004	HOSE, WITH SPRING (L800)	1	1	1	
13	F3J-U7629-00	HOSE, DRAIN 2	1	1	1	
14	90467-14803	CLIP	1	1	1	
15	F1B-U7628-00	HOSE, DRAIN 3	1	1	1	
16	90447-28004	HOSE, WITH SPRING (L800)	1	1	1	
17	90467-26800	CLIP	1	1	1	
18	GH7-6753B-00	PILOT,WATER	1	1	1	
19	90430-16910	GASKET	1	1	1	
20	GP7-61652-00	NUT	1	1	1	
21	90467-14803	CLIP	1	1	1	
22	F1S-67620-00	HOSE JOINT	1	1	1	
23	F1W-U828M-00	BASE, CLAMP	1	1	1	
24	F2C-U4256-00	CLAMP	1	1	1	
25	90267-489U6	RIVET, BLIND	1	1	1	
26	90467-26800	CLIP	1	1	1	

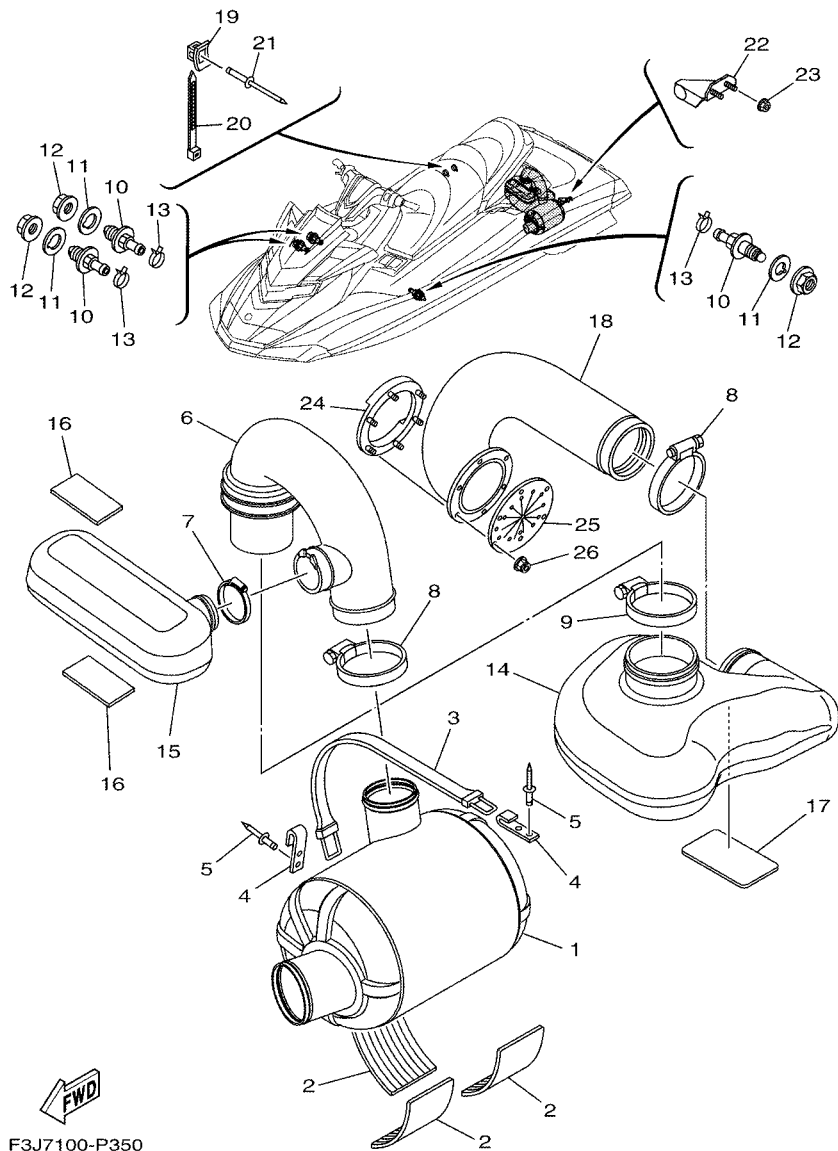


FIG. 35 EXHAUST 3

REF. NO.	PART NO.	DESCRIPTION	CAN	EUR	GENE	REMARKS
1	F1W-U7550-02	WATER LOCK COMP.	1	1	1	
2	F1S-U8221-00	PAD, BATTERY	3	3	3	
3	EW2-67821-00	BAND, FUEL TANK	1	1	1	
4	GA7-65772-00	HOOK A	2	2	2	
5	90267-489U1	RIVET,BLIND	4	4	4	
6	F2S-U7555-01	HOSE, EXHAUST	1	1	1	
7	90601-170UG	BAND, HOSE 70	1	1	1	
8	90450-99801	HOSE CLAMP ASSY	2	2	2	
9	90450-99804	HOSE CLAMP ASSY	1	1	1	
10	F2C-U753B-01	PILOT, WATER	3	3	3	
11	F2C-U7564-00	GASKET	3	3	3	
12	F2C-U2733-00	NUT	3	3	3	
13	90467-17802	CLIP	3	3	3	
14	F2N-U4261-00	TANK, WATER	1	1	1	
15	F2S-U753C-00	RESONATOR 1	1	1	1	
16	F1K-U759C-00	MAT 2	2	2	2	
17	F1S-U8221-00	PAD, BATTERY	1	1	1	
18	F2N-U758D-00	HOSE,EXHAUST 3	1	1	1	
19	F1W-U828M-00	BASE, CLAMP	1	1	1	
20	90464-32801	CLAMP	1	1	1	
21	90267-489U6	RIVET, BLIND	1	1	1	
22	F2C-U755G-00	BRKT., WATER LOCK	1	1	1	
23	F2N-U142L-00	NUT, LOCK	2	2	2	
24	F1S-U757B-01	PLATE	1	1	1	
25	F1B-U751G-00	VALVE, EXHAUST	1	1	1	
26	F2N-U142L-00	NUT, LOCK	6	6	6	

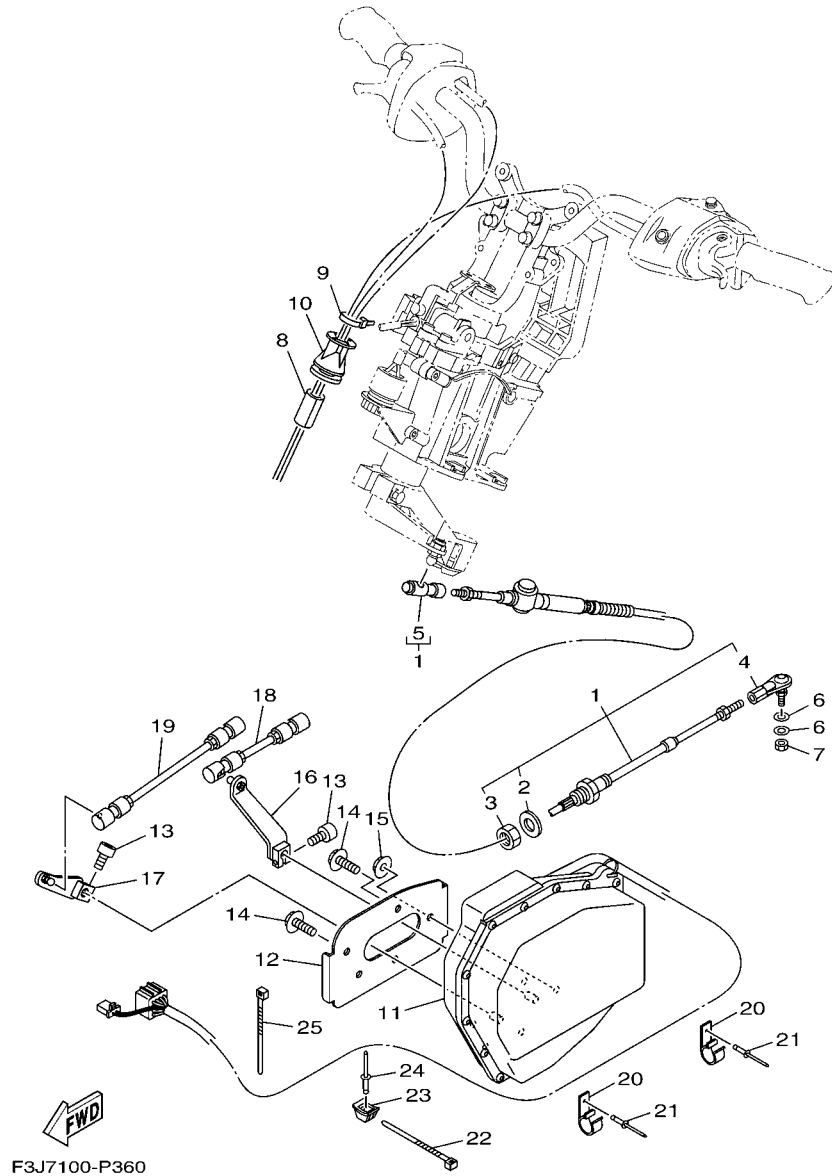
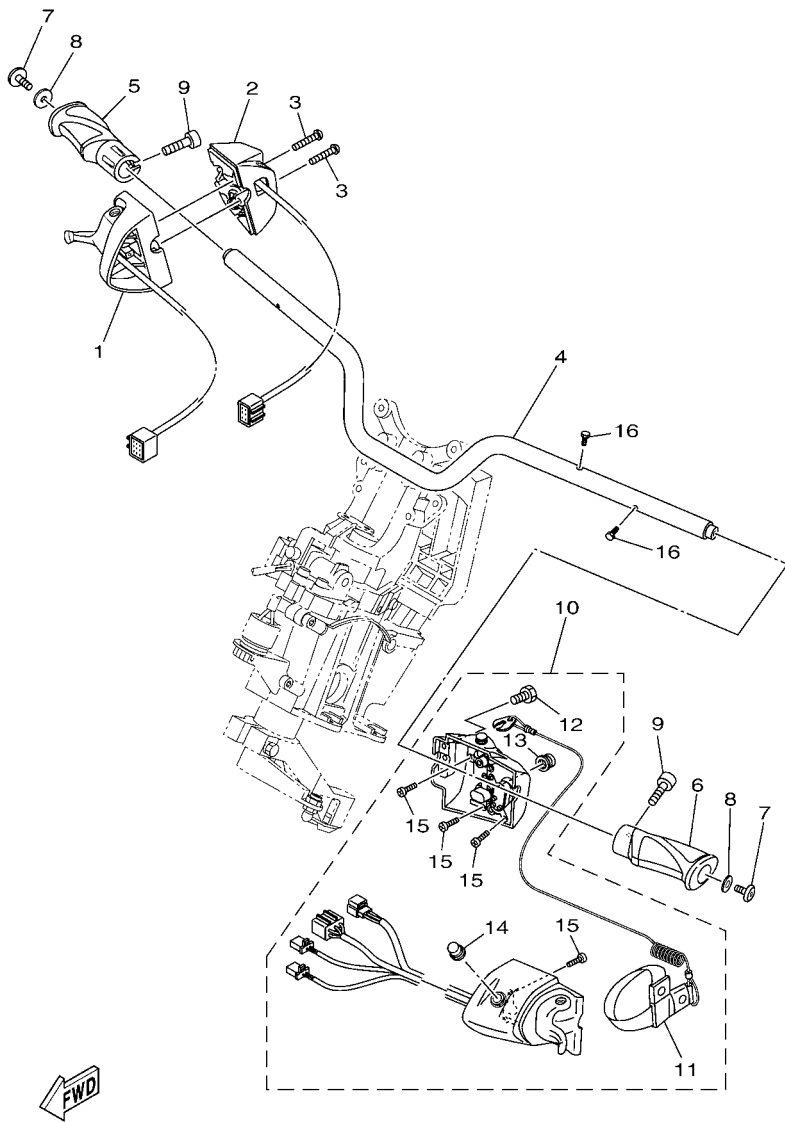


FIG. 36 CONTROL CABLE

REF. NO.	PART NO.	DESCRIPTION	CAN	EUR	GENE	REMARKS
1	F1S-61481-10	CABLE, STEERING	1	1	1	
2	F1B-61438-00	.PACKING C	1	1	1	
3	F1B-6151S-00	.NUT	1	1	1	
4	F1B-61461-02	.STUD, JOINT BALL	1	1	1	
5	F2N-61460-00	.BALL JOINT ASSY	1	1	1	
6	90201-06906	WASHER, PLATE	2	2	2	
7	9538R-06700	NUT	1	1	1	
8	GJ1-U7578-21	PACKING, HOSE 2	1	1	1	
9	90464-32801	CLAMP	1	1	1	
10	F3J-U822E-00	GROMMET	1	1	1	
11	F3J-6140B-00	MOTOR ASSY.	1	1	1	
12	F3J-U8285-00	PLATE	1	1	1	
13	90110-06040	BOLT, HEXAGON SOCKET HEAD	2	2	2	
14	90119-08851	BOLT, WITH WASHER	2	2	2	
15	9572R-08300	NUT, FLANGE	3	3	3	
16	F3J-6150E-00	TRIM ARM ASSY	1	1	1	
17	F3J-6150F-00	SHIFT ARM ASSY	1	1	1	
18	F3J-6150A-00	ROD ASSY	1	1	1	
19	F3J-6150D-00	ROD ASSY 2	1	1	1	
20	F3J-U8368-00	CLAMP	2	2	2	
21	90267-409U5	RIVET, BLIND	2	2	2	
22	90464-32801	CLAMP	1	1	1	
23	F1W-U828M-00	BASE, CLAMP	1	1	1	
24	90267-48802	RIVET, BLIND	1	1	1	
25	90464-32801	CLAMP	1	1	1	



F3J7100-P370

FIG. 37 STEERING 1

REF. NO.	PART NO.	DESCRIPTION	CAN	EUR	GENE	REMARKS
1	6CS-14305-10	THROTTLE LEVER COMP	1	1	1	
2	6CS-81860-00	SWITCH ASSY	1	1	1	
3	6CS-6725F-00	BOLT, THROTTLE	2	2	2	
4	F3J-U1552-00	HANDLE	1	1	1	
5	F2S-U155D-02	GRIP, HANDLE	1	1	1	
6	F2S-U155D-02	GRIP, HANDLE	1	1	1	
7	90110-06382	BOLT, HEXAGON SOCKET HEAD	2	2	2	
8	90201-068G0	WASHER, PLATE	2	2	2	
9	F2S-U1516-00	BOLT	2	2	2	
10	F3J-68310-00	SWITCH BOX ASSY	1	1	1	
11	EW2-68348-00	.LANYARD, STOP SWITCH	1	1	1	
12	6CS-6725F-00	.BOLT, THROTTLE	4	4	4	
13	FK7-68312-02	.STOP BUTTON COMP	1	1	1	
14	FK7-68313-02	.START BUTTON COMP.	1	1	1	
15	97780-30610	.SCREW, TAPPING	8	8	8	
16	91380-04030	BOLT	2	2	2	

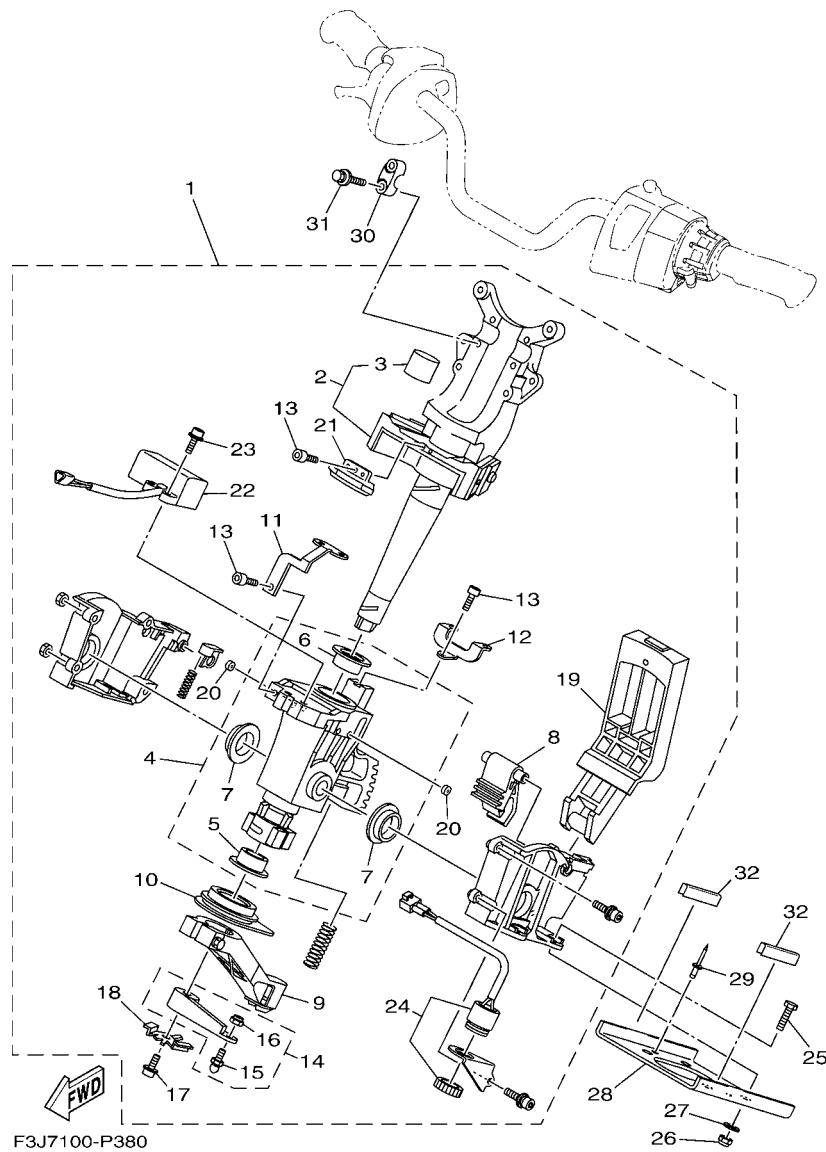
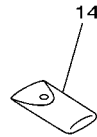
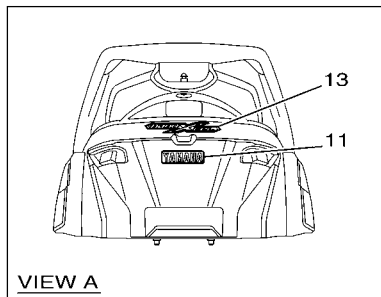
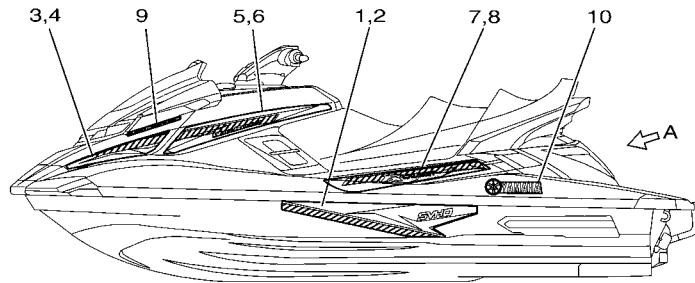
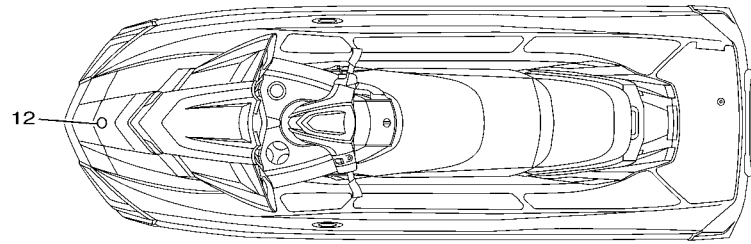


FIG. 38 STEERING 2

REF. NO.	PART NO.	DESCRIPTION	CAN	EUR	GENE	REMARKS
1	F3J-61400-00	STEERING MASTER ASSY	1	1	1	
2	F3J-67410-00	.SHAFT ASSY	1	1	1	
3	F1W-61435-00	..SEAL, PIPE 30	1	1	1	
4	F1W-6773D-00	.TUBE & BUSHING SET	1	1	1	
5	F1S-6134M-00	..BUSH	1	1	1	
6	F2C-6134M-00	..BUSH	1	1	1	
7	F1S-6134M-10	..BUSH	2	2	2	
8	F1S-61782-00	.LOCK 1	1	1	1	
9	F1S-6146A-00	.CABLE STOPPER ASSY.	1	1	1	
10	F1S-6143C-00	.SEAL, RUBBER	1	1	1	
11	F3J-65938-00	.STAY 1	1	1	1	
12	F3J-65939-00	.STAY 2	1	1	1	
13	F1B-613C1-00	.SCREW	3	3	3	
14	F1S-6153R-01	.ARM ASSY.	1	1	1	
15	EU0-61461-02	..STUD, JOINT BALL	1	1	1	
16	95720-06300	..NUT, SELF-LOCKING	1	1	1	
17	F1W-61355-00	.BOLT	1	1	1	
18	F1W-6142B-00	.PLATE, RETAINING	1	1	1	
19	F2S-6151M-00	.LEVER ASSY	1	1	1	
20	F1W-6358B-00	.PLUG	4	4	4	
21	F3J-6838C-00	.MAGNET	1	1	1	
22	F3J-6838B-00	.SENSOR, MAGNET	1	1	1	
23	F1W-61516-00	.BOLT	9	9	9	
24	F1S-68341-00	.BUZZER	1	1	1	
25	97080-08035	BOLT	4	4	4	
26	9572R-08300	NUT, FLANGE	4	4	4	
27	F1W-U725E-00	WASHER	4	4	4	

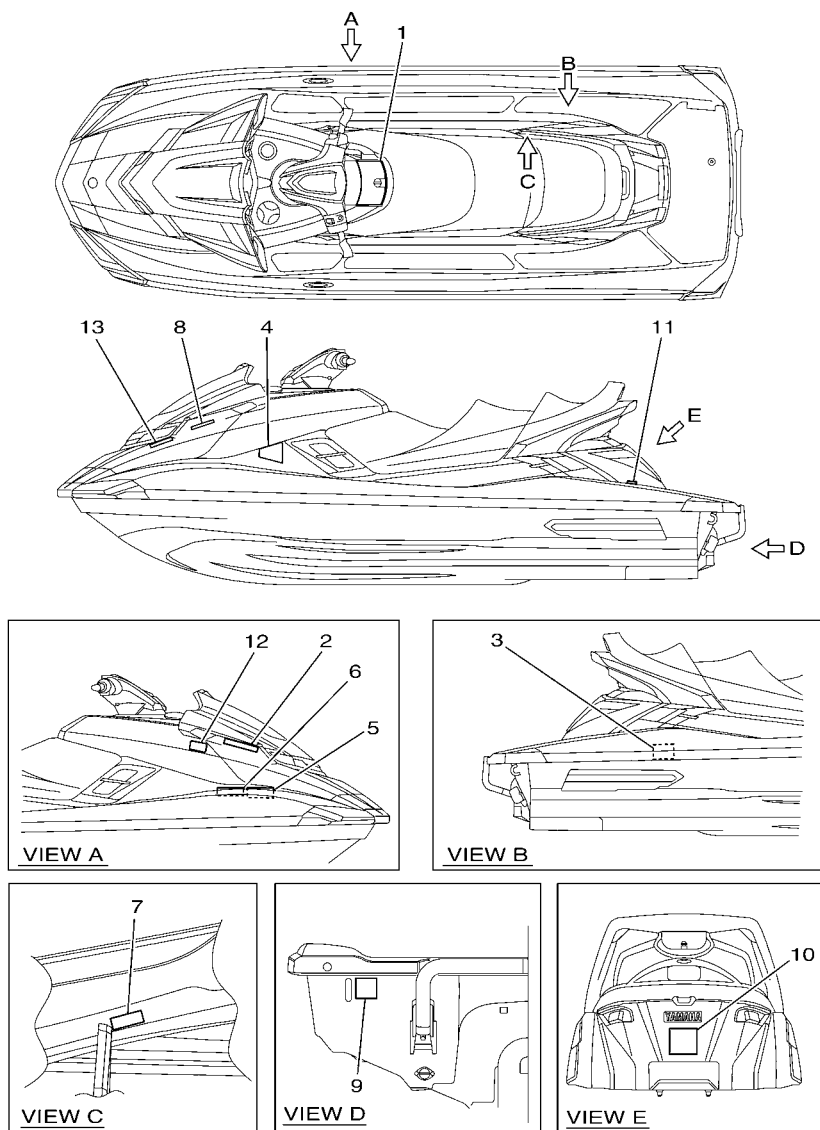


F3J7100-P400

FIG. 40 GRAPHICS

REF. NO.	PART NO.	DESCRIPTION	CAN	EUR	GENE	REMARKS
1	F3J-U417B-60	GRAPHIC 1 (LH)	1	1	1	FOR WHITE
	F3J-U417B-70	GRAPHIC 1 (LH)	1	1	1	FOR RED
2	F3J-U417C-60	GRAPHIC 2 (RH)	1	1	1	FOR WHITE
	F3J-U417C-70	GRAPHIC 2 (RH)	1	1	1	FOR RED
3	F3J-U417D-60	GRAPHIC 3 (LH)	1	1	1	FOR WHITE
	F3J-U417D-70	GRAPHIC 3 (LH)	1	1	1	FOR RED
4	F3J-U417E-60	GRAPHIC 4 (RH)	1	1	1	FOR WHITE
	F3J-U417E-70	GRAPHIC 4 (RH)	1	1	1	FOR RED
5	F3J-U417F-60	GRAPHIC 5 (LH)	1	1	1	FOR WHITE
	F3J-U417F-70	GRAPHIC 5 (LH)	1	1	1	FOR RED
6	F3J-U417G-60	GRAPHIC 6 (RH)	1	1	1	FOR WHITE
	F3J-U417G-70	GRAPHIC 6 (RH)	1	1	1	FOR RED
7	F3J-U417H-60	GRAPHIC 7 (LH)	1	1	1	FOR WHITE
	F3J-U417H-70	GRAPHIC 7 (LH)	1	1	1	FOR RED
8	F3J-U417J-60	GRAPHIC 8 (RH)	1	1	1	FOR WHITE
	F3J-U417J-70	GRAPHIC 8 (RH)	1	1	1	FOR RED
9	F3J-U417M-60	GRAPHIC C	2	2	2	FOR WHITE
	F3L-U417M-10	GRAPHIC C	2	2	2	FOR RED
10	F2S-U4116-00	MARK, YAMAHA 3	2	2	2	
11	F1B-U411C-02	EMBLEM, YAMAHA	1	1	1	FOR WHITE
	F3L-U4114-10	MARK, YAMAHA A	1	1	1	FOR RED
12	F2S-6411H-00	EMBLEM, TUNING FORK	1	1	1	
13	F3J-U4121-00	EMBLEM A	1	1	1	
14	F1B-65986-13	TOOL SET	1	1	1	
15	EU0-65901-02	TOOL BAG	1	1	1	

FIG. 41 IMPORTANT LABELS



F3J7100-P410

REF. NO.	PART NO.	DESCRIPTION	CAN	EUR	GENE	REMARKS
1	F2S-U41B1-10	LABEL, WARNING UNIFORM 1	1	1	1	
2	F2S-U41B1-20	LABEL, WARNING UNIFORM 1	1	1	1	FOR WHITE
	F1B-U41B1-21	LABEL, WARNING UNIFORM 1	1	1	1	FOR RED
3	F2S-U41B1-30	LABEL, WARNING UNIFORM 1	1	1	1	FOR WHITE
	F1B-U41B1-31	LABEL, WARNING UNIFORM 1	1	1	1	FOR RED
4	F0M-U41B2-11	LABEL, WARNING UNIFORM 2	1	1	1	FOR WHITE
	F1B-U41B2-01	LABEL, WARNING UNIFORM 2	1	1	1	FOR RED
5	F3J-U415B-30	LABEL, WARNING(FUEL)	1	1	1	FOR WHITE
	F3J-U415B-10	LABEL, WARNING(FUEL)	1	1	1	FOR RED
6	F3J-U419B-30	LABEL 1	1	1	1	FOR WHITE
	F3J-U419B-10	LABEL 1	1	1	1	FOR RED
7	F0V-U41DB-12	LABEL, WARNING BATTERY	1	1	1	
8	F1B-U41F5-11	LABEL, FIRE EXTINGUISHER 1	1	1	1	FOR WHITE
	F1B-U41F5-21	LABEL, FIRE EXTINGUISHER 1	1	1	1	FOR RED
9	F1G-U418F-00	LABEL, RIGHTING	1	1	1	
10	F2S-U41E1-10	LABEL, SET 1	1	1	1	FOR WHITE
	F1S-U41E1-11	LABEL, SET 1	1	1	1	FOR RED
11	GJ3-U419E-00	LABEL 4	1			FOR WHITE CAN
	F1S-U419E-01	LABEL 4	1			FOR RED CAN
12	F2S-U413P-00	LABEL, BUILDERS PLATE		1		FOR WHITE EUR
	F1X-U413P-02	LABEL, BUILDERS PLATE		1		FOR RED EUR
13	GJ3-U416H-01	LABEL,WARNING(FRANCE)		1		FOR WHITE EUR
	GP8-U416H-01	LABEL,WARNING(FRANCE)		1		FOR RED EUR

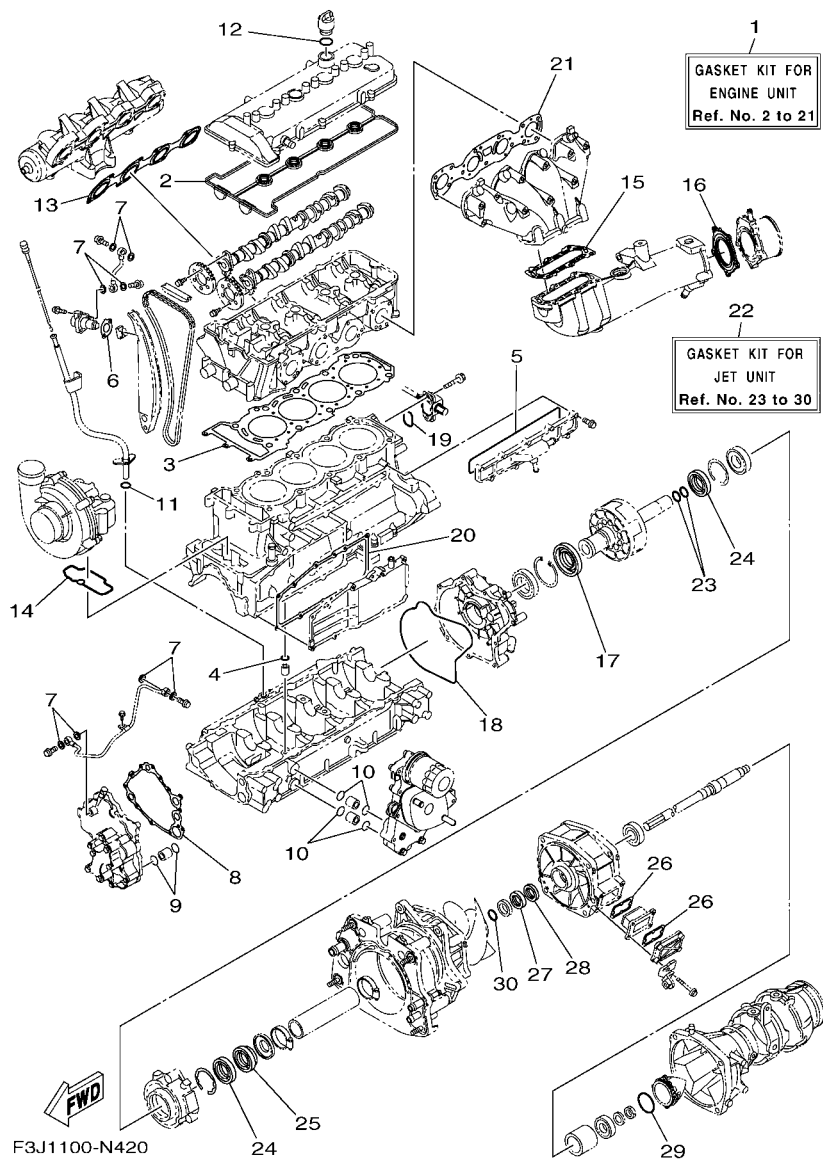


FIG. 42 REPAIR KIT 1

REF. NO.	PART NO.	DESCRIPTION	CAN	EUR	GENE	REMARKS
1	6ET-W0001-00	GASKET KIT FOR ENGINE UNIT	1	1	1	
2	6BH-11193-00	.GASKET, HEAD COVER 1	1	1	1	
3	6BH-11181-00	.GASKET, CYLINDER HEAD 1	1	1	1	
4	93210-11453	.O-RING	1	1	1	
5	6CS-12517-00	.GASKET, WATER INLET	1	1	1	
6	6S5-121E2-00	.GASKET	1	1	1	
7	90430-10007	.GASKET	8	8	8	
8	6S5-13563-00	.GASKET	1	1	1	
9	93210-21631	.O-RING	2	2	2	
10	93210-18322	.O-RING	4	4	4	
11	93210-12016	.O-RING	1	1	1	
12	93210-24M79	.O-RING	1	1	1	
13	6BH-13645-00	.GASKET, MANIFOLD 1	1	1	1	
14	6S5-1416A-00	.O-RING	1	1	1	
15	6S5-14739-00	.GASKET, MUFFLER DAMPER 1	1	1	1	
16	6BH-14749-00	.GASKET, MUFFLER DAMPER 2	1	1	1	
17	6S5-81167-10	.OIL SEAL	1	1	1	
18	6S5-81168-00	.O-RING	1	1	1	
19	93210-32172	.O-RING	1	1	1	
20	6BH-13557-00	.GASKET	1	1	1	
21	6ET-14613-00	.GASKET, EXHAUST PIPE	1	1	1	
22	6S5-W0001-22	GASKET KIT FOR JET UNIT	1	1	1	
23	93210-22MF1	.O-RING	2	2	2	
24	93102-29008	.OIL SEAL	2	2	2	
25	93102-29009	.OIL SEAL	1	1	1	
26	66V-42414-00	.O-RING	2	2	2	
27	93102-31009	.OIL SEAL	1	1	1	

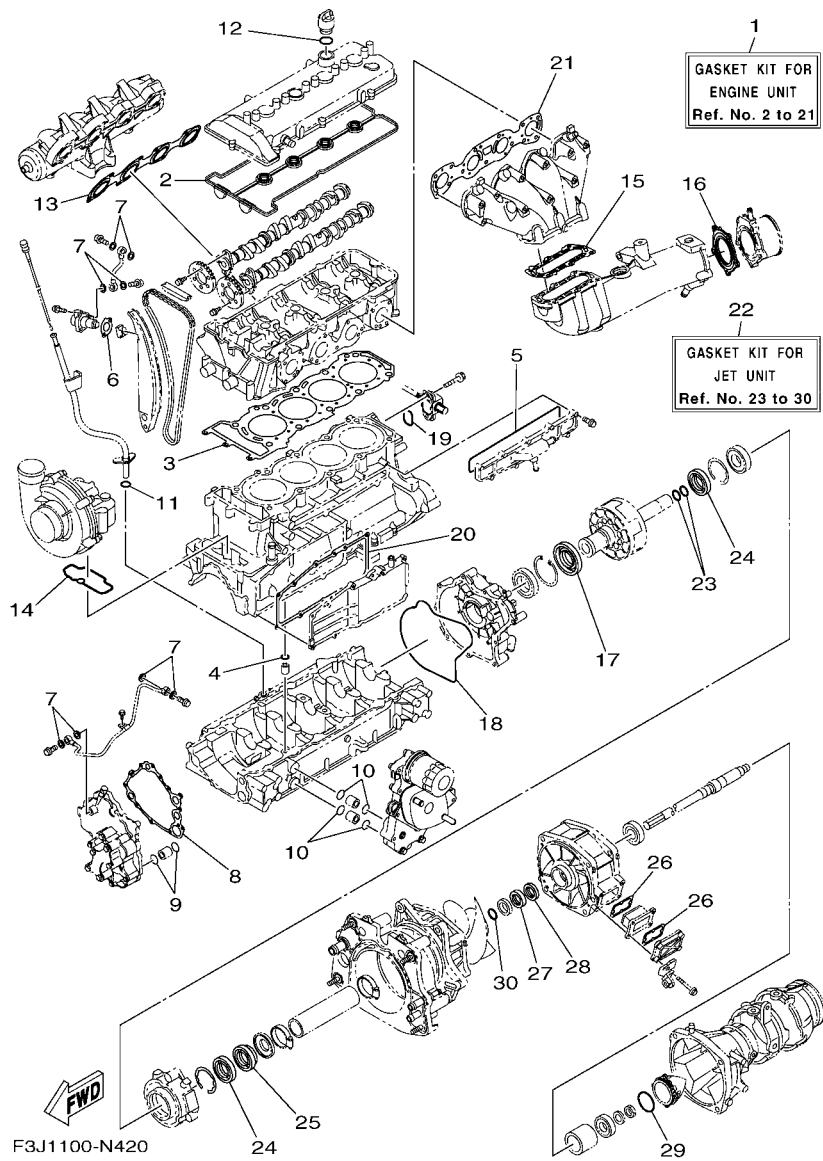


FIG. 42 REPAIR KIT 1

REF. NO.	PART NO.	DESCRIPTION	CAN	EUR	GENE	REMARKS
28	93101-31001	.OIL SEAL	1	1	1	
29	6S5-5111K-00	.O-RING 1	1	1	1	
30	93210-30611	.O-RING	1	1	1	

NUMERICAL INDEX

PART NO.	REF. NO.	PART NO.	REF. NO.	PART NO.	REF. NO.	PART NO.	REF. NO.	PART NO.	REF. NO.	PART NO.	REF. NO.
6S5-11102-11	2 - 2	3LD-12168-K1	5 - 12	6S5-1310A-23	10 - 1	6CS-14446-00	6 - 6	6BH-4581J-00	16 - 1	F2S-6411H-00	40 - 12
6BH-11111E-00	2 - 12	3LD-12168-M1	5 - 12	6BH-1319K-00	3 - 30	6D3-1444B-00	6 - 13	6S5-5111K-00	15 - 21	F2S-6514S-00	26 - 20
6S5-11133-10	2 - 3	3LD-12168-R1	5 - 12	6S5-13300-22	9 - 1	6S5-14457-00	6 - 16		42 - 29	F1W-6514T-00	26 - 21
6S5-11166-10	12 - 1	3LD-12168-U1	5 - 12	6S5-13317-10	10 - 4	6S5-14496-00	6 - 8	68N-5112T-00	27 - 3	F1B-6517R-00	25 - 35
6S5-11167-10	12 - 5	3LD-12168-W1	5 - 12	6S5-13337-10	3 - 24	6CS-14572-00	6 - 28	6ET-51312-00	15 - 4	GA7-65772-00	35 - 4
6BH-11181-00	2 - 11	3LD-12168-Y1	5 - 12	6S5-13405-11	10 - 2	6ET-14613-00	13 - 1	6ET-51315-00	15 - 7	EU0-65901-02	40 - 15
	42 - 3	3LD-12169-11	5 - 12	6S5-13416-00	9 - 7		42 - 21	6S5-51323-00	16 - 2	F3J-65938-00	38 - 11
6S5-11191-20	1 - 1	3LD-12169-31	5 - 12	6S5-13418-00	5 - 21	6BH-14711-10	13 - 2	6BH-51348-01	15 - 24	F3J-65939-00	38 - 12
6BH-11193-00	1 - 3	3LD-12169-50	5 - 12	69J-13440-03	11 - 5	6BH-14721-10	13 - 6	6S5-52358-00	17 - 11	F1B-65986-13	40 - 14
	42 - 2	3LD-12169-70	5 - 12	60E-13446-00	11 - 7	6S5-14739-00	13 - 7	F1S-6134M-00	38 - 5	6CS-6725F-00	37 - 3
69J-11301-10	3 - 9	3LD-12169-90	5 - 12	6S5-13446-10	9 - 5		42 - 15	F2C-6134M-00	38 - 6		37 - 12
6S5-1131M-10-8P	3 - 17	3LD-12169-E0	5 - 12	6ET-13460-00	11 - 1	6BH-14749-00	13 - 14	F1S-6134M-10	38 - 7	F3J-67410-00	38 - 2
68V-11325-02	3 - 10	3LD-12169-G0	5 - 12	6ET-13470-00	11 - 2		42 - 16	F1W-61355-00	38 - 17	GH7-6753B-00	34 - 18
67F-11328-00	3 - 11	3LD-12169-J0	5 - 12	6S5-13477-00	10 - 3	6CS-1475A-00	13 - 18	F1B-613C1-00	38 - 13	F1S-67620-00	34 - 22
6S5-11377-00	3 - 16	3LD-12169-L0	5 - 12	6S5-13532-00	6 - 18	6S5-14771-00-94	13 - 11	F3J-61400-00	38 - 1	F1W-6773D-00	38 - 4
6S5-11411-00	4 - 1	6S5-12171-10	5 - 1	8FP-13556-10	6 - 12	6BH-14784-01-94	13 - 15	F3J-6140B-00	36 - 11	F2S-67743-00	33 - 37
6S5-11416-00	4 - 2	6D3-12176-10	5 - 3	6BH-13557-00	3 - 18	F1W-6142B-00	38 - 18	F1W-6142B-00	38 - 18		33 - 38
6S5-11416-10	4 - 2	6ET-12181-00	5 - 2		42 - 20	6ET-15362-00	3 - 27	F1W-61435-00	38 - 3	F1B-67747-00	33 - 15
6S5-11416-20	4 - 2	6S5-121E2-00	5 - 19	6ET-13557-00	11 - 3	6S5-15363-00	1 - 9	F1B-61438-00	36 - 2	EU0-67767-31	33 - 28
6S5-11416-30	4 - 2		42 - 6	6S5-13563-00	9 - 2	6S5-15486-10	10 - 5	F1S-6143C-00	38 - 10	EW2-67821-00	35 - 3
6S5-11416-40	4 - 2	6S5-12210-00	5 - 18		42 - 8	5EL-15511-00	20 - 6	F2N-61460-00	36 - 5	F2N-67823-10	25 - 9
6S5-11459-01	4 - 14	6S5-12228-01	2 - 7	6P2-13578-00	6 - 5	6S5-15515-00	19 - 3	EU0-61461-02	38 - 15	F2S-68090-00	23 - 21
6S5-11603-00	4 - 4	6BH-12241-00	5 - 25	6P2-13588-00	6 - 4	6S5-15517-00	19 - 5	F1B-61461-02	36 - 4	F2S-68090-10	23 - 22
6ET-11631-00-B0	4 - 3	6BH-12251-00	5 - 24	6S5-15521-00	6 - 2	6S5-15521-00	19 - 4	F1S-6146A-00	38 - 9	F3J-6820A-20	23 - 19
6ET-11633-00	4 - 5	6BH-12252-00	5 - 15	6BH-13645-00	6 - 24	6S5-15590-00	19 - 1	F1S-61481-10	36 - 1	GA7-68218-00	34 - 8
6S5-11650-10	4 - 7	6BH-12279-00	5 - 16		42 - 13	6S5-17031-00	4 - 16	F3J-6150A-00	36 - 18	6S5-682E0-00	23 - 2
6S5-11654-10	4 - 8	6S5-12289-00	4 - 11	6CS-13651-00	7 - 25	6S5-17525-01	4 - 13	F3J-6150D-00	36 - 19	F3J-68310-00	37 - 10
6S5-11656-40	4 - 9	6D3-12411-00	2 - 14	6ET-13670-00	7 - 12	6S5-17529-00	4 - 18	F3J-6150E-00	36 - 16	FK7-68312-02	37 - 13
6S5-11656-50	4 - 9	6BH-12413-00	2 - 15	6S5-13691-12	7 - 13	6S5-17553-00	4 - 22	F3J-6150F-00	36 - 17	FK7-68313-02	37 - 14
6S5-11656-60	4 - 9	6S5-1243E-01	14 - 11	6S5-13750-10	6 - 1	6S5-17572-01	4 - 10	F1W-61516-00	38 - 23	F1S-68341-00	38 - 24
6S5-11656-70	4 - 9	60E-1244E-00	22 - 35	6ET-13761-00	6 - 10	6S5-17585-10	4 - 21	F2S-6151M-00	38 - 19	EW2-68348-00	37 - 11
6S5-11941-10	1 - 8	6S5-1244H-00	14 - 26	6S5-13907-01	23 - 1	6ET-17800-00	4 - 15	F1B-6151S-00	36 - 3	F3J-6838B-00	38 - 22
6S5-12111-00	5 - 5	6CS-12469-A0	3 - 21	6S5-14159-00	6 - 19	EU0-23814-31	38 - 30	F1S-6153R-01	38 - 14	F3J-6838C-00	38 - 21
6S5-12113-00	5 - 8	6CS-12517-00	3 - 22	68V-1416A-00	6 - 11	6S5-24300-01	6 - 20	F1K-61624-00	28 - 1	6S5-81167-10	19 - 13
6S5-12116-00	5 - 7		42 - 5	6S5-1416A-00	7 - 4	70R-24489-00	33 - 4	FOX-61637-00	28 - 4		42 - 17
6S5-12117-00	5 - 9	6CS-12552-00	14 - 32		42 - 14	70R-24543-00	33 - 3	EU0-61652-00	14 - 49	6S5-81168-00	19 - 17
3LD-12118-00	5 - 10	6S5-12552-00	14 - 32	6S5-14199-00	7 - 3	6EX-2812A-00	21 - 16		27 - 8		42 - 18
51Y-12119-00	5 - 11	6S5-12576-01	14 - 46	6ET-141A0-01	7 - 1	6BH-41661-00-94	24 - 4	FOX-61652-00	28 - 5	6S5-81315-00	22 - 23
6S5-12121-00	5 - 6	6BH-12577-00	14 - 36	6S5-14243-01	7 - 19	6BH-41662-00-94	24 - 5	GP7-61652-00	34 - 20	6S5-81328-00	19 - 18
6S5-12153-00	5 - 13	6S5-12578-00	2 - 17	6S5-14285-00	6 - 15	66V-42414-00	15 - 9	F1S-61782-00	38 - 8	6S5-81337-20	19 - 11
3LD-12168-00	5 - 12	6S5-12579-00	14 - 38	6AN-14294-10	6 - 21		42 - 26	EW2-62142-00	33 - 2	6S5-81364-10	19 - 24
3LD-12168-20	5 - 12	6CS-12580-00	14 - 5	6CS-14305-10	37 - 1	67X-44517-10	24 - 1	F1G-62149-00	33 - 8	6S5-81410-11	19 - 7
3LD-12168-40	5 - 12	6ET-12581-10	14 - 4	6S5-14349-00	7 - 10	663-45119-00	16 - 11	F2F-6214A-00	33 - 1	6S5-81450-01	19 - 6
3LD-12168-60	5 - 12	6BH-12584-00	14 - 15	6S5-14360-11	6 - 9	6S5-45332-00-94	16 - 4	GJ3-6215F-00	23 - 17	6S5-81800-00	20 - 1
3LD-12168-80	5 - 12	6CS-12588-00	14 - 29	6CS-14413-00	6 - 31	6ET-45511-00	15 - 17	F1B-62241-00	34 - 4	6S5-81810-00	20 - 13
3LD-12168-A0	5 - 12	6S5-12589-01	14 - 24	6S5-14435-00	7 - 18	6S5-45593-00-94	16 - 12	F3J-6273B-00	18 - 23	6S5-81820-00	20 - 12
3LD-12168-F0	5 - 12	6S5-12594-00	14 - 45	6BH-14445-00	6 - 17	6ET-45613-00	16 - 9	F1X-62875-00	25 - 34	6S5-81826-00	20 - 10
3LD-12168-H1	5 - 12	6CS-12880-00	6 - 3	6CS-14445-00	6 - 29	6S5-45813-01-94	4 - 12	F1W-6358B-00	38 - 20	6S5-81830-00	20 - 3

NUMERICAL INDEX

PART NO.	REF. NO.	PART NO.	REF. NO.	PART NO.	REF. NO.	PART NO.	REF. NO.	PART NO.	REF. NO.	PART NO.	REF. NO.
6S5-81840-00	20 - 8	6B6-86261-00	23 - 30	F2N-U142L-00	25 - 30	F1W-U2664-01	31 - 3	F3J-U415B-30	41 - 5	GP7-U4953-10	32 - 14
11H-81844-00	20 - 2	6B6-86261-10	23 - 30		25 - 32	F1K-U266B-00	26 - 38	GJ3-U416H-01	41 - 13		32 - 15
4G0-81844-00	20 - 4	6B6-86265-00	23 - 31		29 - 3		26 - 42	GP8-U416H-01	41 - 13	F2S-U510D-01	26 - 45
5EL-81845-00	20 - 11	6B6-86265-10	23 - 31		29 - 12	F2S-U266B-00	26 - 6	F3J-U417B-60	40 - 1	F2S-U5135-00	26 - 4
6CS-81845-00	21 - 2	6ET-E110M-00	1 - 4		29 - 15	F2N-U266C-01	26 - 14	F3J-U417B-70	40 - 1	F2S-U513M-01-P7	26 - 35
3TB-81847-00	20 - 9	6S5-E118E-00	1 - 6		29 - 18	F2C-U266D-01	31 - 8	F3J-U417C-60	40 - 2	F2S-U513M-01-P8	26 - 35
1J7-81847-60	20 - 5	6S5-E1328-00	1 - 5		35 - 23	F2C-U266E-00	31 - 27	F3J-U417C-70	40 - 2	F1W-U5148-00	26 - 9
5A8-81850-10	20 - 14	6ET-E2289-00	16 - 13		35 - 26	F1W-U269B-00	27 - 7	F3J-U417D-60	40 - 3	F0X-U515E-01	25 - 5
6CS-81860-00	37 - 2	67X-E2590-10	14 - 48	F2S-U143D-10	39 - 1	F2S-U270B-10	32 - 5	F3J-U417D-70	40 - 3	F2S-U515N-01-P7	26 - 11
1B7-81940-00	21 - 28	6S5-E4410-01	8 - 5	F2S-U143E-10	39 - 3	F2S-U271F-01	32 - 23	F3J-U417E-60	40 - 4	F2S-U515N-01-P8	26 - 11
6S5-81942-11	21 - 3	6S5-E4419-00	8 - 11	F2S-U143L-01	39 - 7	F2C-U2733-00	35 - 12	F3J-U417E-70	40 - 4	F2S-U5162-00	38 - 32
6CS-81953-00	21 - 32	6S5-E4436-00	8 - 7	EU0-U1461-03	17 - 14	F2S-U278A-00	28 - 12	F3J-U417F-60	40 - 5	F3J-U516R-00	34 - 7
6EX-8195A-00	21 - 15	6S5-E4451-00	8 - 6	GH3-U146E-00	15 - 39	F2S-U278F-00	28 - 16	F3J-U417F-70	40 - 5	F2S-U517B-01-P7	26 - 1
6S5-81960-10	22 - 1	6S5-E4752-00	13 - 17	F2S-U1516-00	37 - 9	F2S-U278H-00	28 - 17	F3J-U417G-60	40 - 6	F2S-U517B-01-P8	26 - 1
6S5-81972-01-94	22 - 3	6S5-G2717-00	8 - 8	F2C-U151S-00	18 - 5	F2S-U316C-00	25 - 41	F3J-U417G-70	40 - 6	F2S-U517C-01	26 - 32
6S5-81975-00	22 - 2	6BH-G4532-00	24 - 2	F3J-U1552-00	37 - 4	F2S-U351H-00	29 - 21	F3J-U417H-60	40 - 7	F2S-U517D-00	26 - 19
6CS-82115-00	21 - 26	6BH-G4574-00	24 - 3	F1X-U1554-00	38 - 28	F2S-U351J-00	29 - 22	F3J-U417H-70	40 - 7	F1X-U517E-01	25 - 4
6S5-82116-00	23 - 29	6AN-G5214-00	15 - 10	F2S-U155D-02	37 - 5	F2S-U351K-00	29 - 23	F3J-U417J-60	40 - 8		25 - 15
6CS-82117-00	21 - 27	6CS-G5538-00	15 - 13		37 - 6	F2S-U351M-00	29 - 24	F3J-U417J-70	40 - 8		25 - 21
67F-82151-00	21 - 12	6ET-G5831-00	15 - 1	F2N-U1628-02	32 - 1	F2S-U351N-00	29 - 25	F3L-U417M-10	40 - 9		25 - 26
6EX-82151-00	21 - 14	6ET-G6882-00	15 - 8	F1B-U1629-00	32 - 16	F2S-U3581-01	29 - 20	F3J-U417M-60	40 - 9	F2S-U517F-00	25 - 14
67F-82151-10	21 - 13	6S5-R1142-10	8 - 12	F1X-U163A-02	28 - 19	F2S-U370J-00	25 - 29	F1G-U418F-00	41 - 9	F2S-U517H-00	25 - 33
67F-82151-30	21 - 10	6AN-R1190-00	15 - 38	F1B-U1653-02	32 - 4	F2S-U370K-00	25 - 31	F3J-U419B-10	41 - 6	F2S-U518E-00	26 - 26
67F-82151-40	21 - 11	6S5-R1313-01	15 - 35	F2S-U1708-02	25 - 7	F2S-U371A-30	31 - 1	F3J-U419B-30	41 - 6	F2S-U518M-01-P7	32 - 22
6EX-82170-00	21 - 9	6ET-R1314-01	17 - 4	F2N-U2127-00	30 - 3	F2S-U371B-30	31 - 2	GJ3-U419E-00	41 - 11	F2S-U518M-01-P8	32 - 22
6S5-82310-00	22 - 9	6ET-R1318-00	15 - 26	F2N-U213G-01	30 - 5	F2S-U372A-30	31 - 6	F1S-U419E-01	41 - 11	F2S-U519D-00	25 - 36
6A0-82317-00	21 - 7	6ET-R1321-00	15 - 23	F1X-U2157-00	28 - 22	F2S-U372B-30	31 - 7	F2S-U41B1-10	41 - 1	F2S-U519D-20	32 - 25
	21 - 22	6ET-R1326-00	15 - 20	F1W-U2159-00	33 - 6	F2S-U375E-00	31 - 16	F2S-U41B1-20	41 - 2	F2S-U519G-02	26 - 2
6BH-82380-00	6 - 7	6ET-R1333-00	18 - 1	6ET-U215E-00	15 - 30	F1W-U3768-01	26 - 3	F1B-U41B1-21	41 - 2	F2S-U5554-02	25 - 1
68V-82504-00	22 - 22	6ET-R1341-00	17 - 1	F2S-U2187-00	30 - 1		32 - 21	F2S-U41B1-30	41 - 3	F2S-U5633-00	25 - 44
60E-82556-00	23 - 3	6AN-R1341-01	18 - 2	F2S-U2188-00	30 - 2	GH1-U3774-00	31 - 12	F1B-U41B1-31	41 - 3	F1K-U5772-04	25 - 49
60E-82560-01	22 - 17	6ET-R1342-00	17 - 2	F1W-U224E-00	34 - 1		32 - 6	F1B-U41B2-01	41 - 4		33 - 35
6CS-82588-00	21 - 17	6S5-R1381-01	16 - 17	F1S-U2280-02	27 - 19	F3J-U377B-00-P7	25 - 19	F0M-U41B2-11	41 - 4	F2S-U590D-31	26 - 37
1UA-82591-00	26 - 22	F2C-U1314-00	28 - 15	F1X-U2284-00	28 - 25	F3J-U377B-00-P8	25 - 19	F0V-U41DB-12	41 - 7	F2S-U590D-71	26 - 37
6S5-8259E-00	21 - 24	F2S-U1355-00	24 - 8	F2S-U2284-00	32 - 26	F3J-U377C-00-P7	25 - 24	F2S-U41E1-10	41 - 10	F2S-U590E-31	26 - 41
6CS-8259L-20	21 - 34	F2S-U13C1-00	25 - 18	F1S-U2285-00	27 - 20	F3J-U377C-00-P8	25 - 24	F1S-U41E1-11	41 - 10	F2S-U590E-71	26 - 41
6CS-8273J-10	22 - 26		26 - 8	F2S-U2511-10	29 - 1	F2C-U377H-00	28 - 14	F1B-U41F5-11	41 - 8	F2S-U591A-00	25 - 37
60E-83627-00	21 - 4		26 - 12	F2S-U2512-10	29 - 4	F2C-U378C-00	31 - 18	F1B-U41F5-21	41 - 8	F2C-U591A-02	31 - 24
682-84385-01	14 - 10		26 - 46	F2S-U2519-20	29 - 5	F2S-U3844-00	25 - 6	F2C-U4256-00	34 - 24	F2C-U591C-00	31 - 25
6CS-85516-00	3 - 31		32 - 31	F2S-U2519-40	29 - 5	F2C-U3850-00	31 - 4	F2N-U4261-00	35 - 14	F1W-U591C-01	25 - 38
6CS-8572F-00	3 - 29		32 - 32	F2S-U251D-10	29 - 13		31 - 9	F2S-U475B-00	26 - 13	F1W-U591D-00	25 - 39
6AN-85780-00	22 - 24		39 - 5	F2S-U251E-10	29 - 16	F3L-U4114-10	40 - 11	F2S-U475F-00	26 - 16	F2C-U591D-01	31 - 26
61A-85790-00	22 - 14	F2S-U142D-10	39 - 2	F2S-U252E-11	29 - 8	F2S-U4116-00	40 - 10	F1W-U491K-00	29 - 2	F1K-U5983-01	25 - 47
6AA-85790-00	22 - 30	F2S-U142E-00	39 - 4	F2S-U252F-11	29 - 10	F1B-U411C-02	40 - 11		29 - 9	GD0-U7249-00-05	16 - 19
6S5-85886-00	6 - 14	F2N-U142L-00	23 - 10	F1W-U2624-00	28 - 23	F3J-U4121-00	40 - 13		29 - 11	F1W-U725E-00	38 - 27
60E-85896-01	22 - 20		25 - 11	F2S-U2624-00	32 - 24	F2S-U413P-00	41 - 12		29 - 14	F1S-U725E-01	18 - 20
6ET-8591A-20	21 - 5		25 - 22	F2S-U264L-01	32 - 33	F1X-U413P-02	41 - 12		29 - 17	F2S-U72C0-01	18 - 3
6ET-8591A-30	21 - 5		25 - 27	F2S-U2663-00	26 - 5	F3J-U415B-10	41 - 5	GP7-U4953-10	32 - 3	6CS-U72M2-00	15 - 27

NUMERICAL INDEX

PART NO.	REF. NO.	PART NO.	REF. NO.	PART NO.	REF. NO.	PART NO.	REF. NO.	PART NO.	REF. NO.	PART NO.	REF. NO.
F2M-U732B-00	24 - 16	GP7-U783F-00	33 - 24	F2S-U883P-01	28 - 8	90119-06858	26 - 44	90119-10011	7 - 24	90267-489U2	24 - 13
F2S-U732B-00	24 - 12	F2S-U7844-00	33 - 26	F2S-U883T-00	28 - 9	90119-06880	25 - 10	90119-10029	13 - 13		24 - 15
F2S-U732B-10	24 - 14	F0D-U7856-10	33 - 34	F2S-U890L-04	31 - 11		25 - 16	90119-10046	7 - 16		24 - 17
EU0-U7354-00-01	24 - 9	F0D-U785G-10	23 - 15	F2S-U890M-11	32 - 29		25 - 20	90119-10047	7 - 15		33 - 5
EU0-U7354-00-03	24 - 9		33 - 32	F2S-U890N-11	32 - 30		25 - 23	90119-10806	15 - 34	90267-489U6	18 - 11
EU0-U7354-00-05	24 - 9	F2H-U785H-00	33 - 29	F3J-U895D-00	33 - 25		25 - 25	90119-10810	15 - 3		18 - 12
EU0-U7354-00-10	24 - 9	F2N-U8169-00	28 - 11	F2S-U89A1-01-P7	32 - 17		25 - 28	90149-06229	19 - 8		18 - 15
EU0-U7354-00-20	24 - 9	F2S-U8211-00	23 - 8	F2S-U89A1-01-P8	32 - 17	90119-06891	16 - 16	90149-10052	24 - 6		18 - 18
F1B-U751G-00	35 - 25	EU0-U8217-H2	23 - 4	F1X-U8K31-02	18 - 4		17 - 3	90150-05807	18 - 6		26 - 36
F2S-U7525-00	14 - 50	EU0-U821D-00	23 - 14	6ET-W0001-00	42 - 1	90119-06893	15 - 5	90154-06017	39 - 6		28 - 24
F1S-U7525-01	34 - 2	F1K-U8221-00	23 - 13	6S5-W0001-22	42 - 22	90119-06895	26 - 25	90154-06030	39 - 8		30 - 8
F2C-U753B-01	35 - 10	F1S-U8221-00	23 - 11	6ET-W0009A-00-94	2 - 1	90119-06897	15 - 11	90169-049U1	33 - 21		33 - 7
F2S-U753C-00	35 - 15		35 - 2	6ET-W0009B-00-94	3 - 4	90119-068B8	25 - 12	90170-20802	15 - 19		33 - 11
F1W-U7550-02	35 - 1		35 - 17	6S5-W1783-20	4 - 17	90119-069UH	26 - 27	90173-06015	21 - 19		34 - 25
F2S-U7555-01	35 - 6	EU0-U8221-30	23 - 12	90105-05020	7 - 2	90119-069UP	31 - 5	90176-08080	6 - 27		35 - 21
F2C-U7557-01	18 - 30	F1X-U822E-00	23 - 23	90105-06028	1 - 2		31 - 10	90176-10001	7 - 21		38 - 29
F2C-U755G-00	35 - 22	F3J-U822E-00	36 - 10	90105-06035	2 - 16	90119-069UX	17 - 7	90183-06902	26 - 7	90267-489U8	27 - 12
F2C-U7564-00	35 - 11	F2S-U8244-00	31 - 17	90105-06903	22 - 10	90119-06M35	21 - 6	90201-052E8	19 - 21		29 - 6
GJ1-U7578-21	36 - 8	F2S-U8262-01-P0	25 - 17	90105-06M07	3 - 12		21 - 21	90201-06028	7 - 9	90269-08801	26 - 17
F1S-U757B-01	35 - 24	F1W-U826C-00	23 - 25	90105-07004	5 - 4	90119-06MA3	22 - 4		10 - 8		26 - 18
F3J-U757E-00	18 - 35	F1K-U826C-03	27 - 25	90105-07009	2 - 6		22 - 28	90201-06801	17 - 9	90280-03047	19 - 10
F3J-U757F-00	18 - 36	F1X-U826C-10	28 - 21	90105-08021	3 - 35	90119-08034	13 - 4		17 - 12	90387-06080	18 - 37
F2N-U758D-00	35 - 18	F1X-U826D-00	28 - 20	90105-08188	7 - 8		13 - 10	90201-068G0	37 - 8	90387-06119	21 - 8
F2S-U759B-00	33 - 39	F3J-U8285-00	36 - 12	90105-08249	19 - 15	90119-08074	6 - 33	90201-068M4	15 - 40		21 - 23
F1K-U759C-00	25 - 42	F1X-U828E-01	25 - 2	90105-08860	28 - 10	90119-08096	13 - 12	90201-06906	36 - 6	90387-06289	16 - 15
	25 - 46	F1S-U828H-01	27 - 15	90105-10071	3 - 5	90119-08097	13 - 5	90201-099U3	31 - 19	90387-06M05	19 - 22
	33 - 41	F2P-U828K-00	25 - 48	90109-06218	26 - 23		13 - 9	90201-10801	18 - 21	90387-06M30	17 - 8
	33 - 42	F1W-U828M-00	18 - 8		26 - 30	90119-08099	6 - 32	90201-109U6	31 - 13	90387-08M06	15 - 37
	35 - 16		18 - 14	90109-06268	3 - 34	90119-08823	18 - 24		32 - 7		15 - 43
GJ1-U759C-00	25 - 45		18 - 17	90109-06832	16 - 22		18 - 27	90201-12039	2 - 8	90387-08M30	17 - 6
F1W-U759C-01	33 - 40		27 - 16	90109-06874	24 - 10		18 - 29	90201-132G5	4 - 19	90387-08M37	8 - 2
F1B-U761D-02	27 - 10		30 - 7	90109-06875	24 - 11	90119-08828	31 - 21	90267-329UR	33 - 23		22 - 6
F1B-U7626-00	34 - 10		33 - 9	90109-08041	18 - 34	90119-08829	32 - 10	90267-409U3	32 - 34	90387-11007	7 - 17
F1B-U7628-00	34 - 15		34 - 23	90110-06040	28 - 6	90119-08832	32 - 18	90267-409U5	36 - 21	90387-11008	7 - 22
F3J-U7629-00	34 - 13		35 - 19		36 - 13	90119-08840	17 - 5	90267-48020	26 - 28	90401-10040	5 - 23
F1B-U7656-00	34 - 9		36 - 23	90110-06182	3 - 25	90119-08851	15 - 36	90267-48802	27 - 17		9 - 8
F1B-U7698-01	34 - 6	F1B-U8360-01	34 - 5	90110-06382	37 - 7		15 - 42		36 - 24	90430-06M03	3 - 13
F2S-U7711-02	33 - 13	F3J-U8368-00	36 - 20	90110-06822	15 - 22		36 - 14	90267-48806	30 - 4	90430-08209	10 - 10
F1W-U771H-00	28 - 13	F1W-U8376-00	23 - 27	90110-08212	19 - 2	90119-08859	24 - 7	90267-48807	25 - 43	90430-10007	5 - 22
6ET-U773D-00	15 - 32	F1G-U8571-02	18 - 28	90116-08032	6 - 26	90119-08861	28 - 18		26 - 10		9 - 9
6CN-U773D-01	15 - 28	F1B-U8572-01	18 - 25	90116-10044	7 - 20	90119-089U7	18 - 31	90267-48825	29 - 19		42 - 7
F1B-U7773-00	33 - 14	F1W-U8572-01	27 - 24	90119-05803	25 - 13	90119-089UL	26 - 39	90267-489U1	23 - 7	90430-12002	18 - 32
F2N-U7831-10	33 - 17	F2S-U8577-00	18 - 26	90119-059U4	26 - 33		26 - 43		23 - 26	90430-16910	34 - 19
GP7-U7832-01	33 - 18	F2S-U8592-00	23 - 5	90119-06048	22 - 5	90119-089UT	21 - 1		23 - 28	90445-16013	14 - 42
GP7-U7833-11	33 - 19	F2S-U8593-00	23 - 6	90119-06078	2 - 13	90119-089UU	16 - 18		25 - 50	90445-18017	14 - 16
GP7-U7834-10	33 - 22	F2S-U883B-00	16 - 20	90119-06827	18 - 38		38 - 31		27 - 26		14 - 21
GP7-U7835-00	33 - 20	F2S-U883E-00	16 - 21	90119-06832	23 - 9	90119-08M22	8 - 3		33 - 36	90445-20800	27 - 4
F2S-U7835-01	25 - 40	F2S-U883N-01	28 - 7	90119-06858	26 - 40		22 - 7		35 - 5	90445-20804	27 - 1

NUMERICAL INDEX

PART NO.	REF. NO.	PART NO.	REF. NO.	PART NO.	REF. NO.	PART NO.	REF. NO.	PART NO.	REF. NO.	PART NO.	REF. NO.
90445-21806	14 - 1	90464-32801	36 - 9	90480-21M63	7 - 23	93102-29009	16 - 8	9538R-06600	17 - 10	99009-24700	4 - 20
90445-21807	14 - 8		36 - 22	90480-22801	8 - 10		42 - 25		17 - 13	99009-72500	19 - 14
90446-10MH3	22 - 15		36 - 25	90480-22M15	8 - 1	93102-31009	15 - 15	9538R-06700	15 - 41	99530-10114	3 - 2
90446-27M55	27 - 5	90464-35132	14 - 20		22 - 8		42 - 27		36 - 7		3 - 26
90446-27M73	27 - 2	90464-99801	18 - 13	90601-118UF	15 - 29	93210-06632	3 - 28	95720-06300	26 - 24		19 - 16
90447-19004	14 - 17	90464-99804	30 - 6		27 - 9	93210-11453	3 - 3		38 - 16	99590-14016	7 - 14
	14 - 22	90465-11829	23 - 18	90601-152U3	16 - 23		42 - 4	9572R-05300	27 - 23		15 - 2
90447-19011	14 - 27		33 - 30	90601-155U4	33 - 27	93210-12016	3 - 33	9572R-06300	26 - 29	99780-12600	28 - 2
	14 - 39		33 - 31	90601-170UG	35 - 7		42 - 11		26 - 31		
90447-19016	14 - 33		33 - 33	90601-200U1	27 - 13	93210-18322	11 - 8		33 - 16		
90447-19017	6 - 22	90465-13M18	22 - 12	90605-502U1	26 - 15		42 - 10	9572R-08300	27 - 27		
90447-19018	14 - 30	90465-14M66	21 - 35	90605-502U2	25 - 8	93210-21631	9 - 6		31 - 20		
90447-19801	14 - 7	90467-089U1	23 - 16	91314-06020	9 - 4		42 - 9		31 - 22		
90447-22011	14 - 12	90467-14803	15 - 31	91314-06060	10 - 7	93210-22MF1	16 - 3		32 - 2		
90447-22015	12 - 2		34 - 14	91317-05010	19 - 20		42 - 23		32 - 11		
90447-22016	12 - 6		34 - 21	91317-06014	19 - 19	93210-24M79	1 - 10		32 - 13		
90447-22801	14 - 2	90467-150A1	3 - 32	91380-04030	37 - 16		42 - 12		32 - 19		
90447-22802	14 - 9		14 - 28	91380-06016	22 - 21	93210-30611	15 - 25		32 - 27		
90447-28004	34 - 12	90467-150A5	14 - 6	91380-06020	19 - 23		42 - 30		36 - 15		
	34 - 16	90467-160A0	14 - 18	91380-06025	5 - 20	93210-32172	22 - 27		38 - 26		
90447-28008	2 - 18		14 - 23	91809-16002	2 - 4		42 - 19	9572R-10300	18 - 22		
90450-17M17	6 - 23		14 - 31		2 - 5	93306-00805	19 - 12		31 - 15		
90450-70006	7 - 26		14 - 37	92014-06012	22 - 34	93306-20654	15 - 12		32 - 9		
90450-75003	7 - 11		14 - 40	92903-06600	2 - 10	93306-20655	16 - 7	95814-06012	1 - 7		
90450-90002	7 - 27		14 - 43	92903-08600	20 - 16	93306-30537	15 - 14		21 - 33		
	8 - 4	90467-170A4	14 - 4	9290P-20600	15 - 18	93410-12003	20 - 7	95814-06030	5 - 17		
90450-99015	13 - 20	90467-170A5	14 - 41	92990-06100	20 - 17	93450-24028	4 - 6	95814-06035	3 - 23		
90450-99016	13 - 19	90467-17802	35 - 13	92990-10600	22 - 16	93450-66156	16 - 6	95814-06065	7 - 7		
90450-99801	35 - 8	90467-18804	27 - 6	92990-12200	18 - 33	93604-10M03	3 - 8	95814-06070	3 - 6		
90450-99804	35 - 9	90467-190A0	12 - 3		28 - 3		7 - 5	95814-08020	10 - 9		
90464-09M47	21 - 20		12 - 4	92995-06100	21 - 30	93606-12019	3 - 7	95814-08030	11 - 4		
90464-17800	33 - 12	90467-200A0	27 - 14	92995-06600	21 - 31		9 - 3	95814-08050	11 - 6		
90464-20008	22 - 29	90467-200A3	12 - 8		22 - 19		13 - 8	95814-08065	7 - 6		
90464-24003	14 - 35		14 - 3	92995-08600	3 - 15		15 - 6	95817-06014	10 - 6		
90464-31001	22 - 13		14 - 13	9299R-05200	18 - 10		15 - 33	97013-06055	2 - 9		
	22 - 25		14 - 14		27 - 22		16 - 14	97013-08030	20 - 15		
	22 - 31		14 - 25		29 - 7	93608-16M16	13 - 3	97080-08035	38 - 25		
90464-31002	22 - 32		14 - 44	9299R-08200	27 - 28	93700-06M03	16 - 10	97095-06012	21 - 29		
90464-32801	18 - 7		14 - 47		31 - 23	94591-66152	5 - 14	97095-06016	22 - 18		
	18 - 9	90467-21800	27 - 11		32 - 12	94702-00435	22 - 11	97095-08040	3 - 14		
	18 - 16	90467-240A0	2 - 19		32 - 20	95023-06012	6 - 30	97513-05514	19 - 9		
	18 - 19		12 - 7		32 - 28		9 - 10	97513-08535	6 - 25		
	23 - 20	90467-25801	34 - 11	9299R-10200	31 - 14	95024-06014	3 - 19	97595-06514	21 - 18		
	23 - 24	90467-26800	34 - 3		32 - 8	95024-06020	3 - 20	97780-30610	37 - 15		
	27 - 18		34 - 17	93101-31001	15 - 16		10 - 12	97780-60516	8 - 9		
	27 - 29		34 - 26		42 - 28	95024-06035	10 - 11	97780-60520	21 - 25		
	33 - 10	90480-19800	25 - 3	93102-29008	16 - 5	95024-08035	13 - 16	9778R-50010	26 - 34		
	35 - 20	90480-20132	22 - 33		42 - 24	95380-06700	20 - 18	9788R-05025	27 - 21		