

# **PARTS CATALOGUE**

## **GP760Y (GP7C)**

---



# FOREWORD

This Parts Catalogue is related to the parts for the model(s) in the below frame. When you are ordering replacement parts, please refer to this Parts Catalogue and quote both part numbers and part names correctly.

GP760Y(GP7C)

1. Modifications or additions which have been made after issue of the Parts Catalogue will be announced in the Yamaha Parts News. It is advisable that you make necessary corrections to the Parts Catalogue according to the Yamaha Parts News.

2. Abbreviations

The following abbreviations are used in this Parts Catalogue.

"UR" Use specified parts number.

"UN" Use as many as needed.

"AP" Alternate Parts

"LM" Local Made (Parts need to be ordered locally)

"F#" Frame No. (Applicable machine No.)

3. Parts, which are to be supplied in an assembly, are listed with a dot(.) in front of the part name as shown below.

The numeral appearing to the right of each component part indicates the quantity of parts for each assembly unit.

EXAMPLE

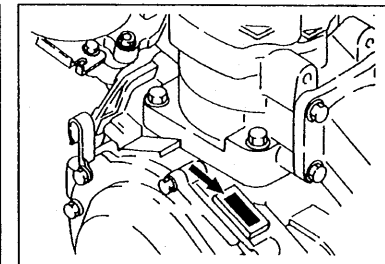
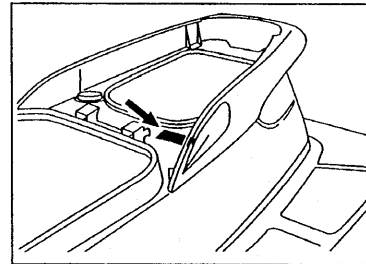
PART NO.	DESCRIPTION	Q'TY	REMARKS
EU0-62280-00	DRAIN PLUG ASSY	2	
EU0-62282-00	.PLUG,DRAIN	1	

4. Quantity Column Information

NAME for Q'TY COLUMN	COUNTRY (destination)
USA	USA
GENE	EXCEPT USA, CANADA
CAN	CANADA

5. Applicable Starting Serial No. and Color Code

Hull Serial No.	GP7-813697
Engine Serial No.	65V-015158



Color Code	Color Name	Abbreviation
0240	PURE WHITE	PURW

6. Note that the illustration for reference in funding parts numbers, not to be used for assembling. When assembling, please use the applicable service manual.

7. A part with "YMUS" in the remarks column can be obtained from YMUS (USA) and not from YAMAHA MOTOR CO.,LTD (JAPAN).

EXAMPLE

PART NO.	DESCRIPTION	Q'TY	REMARKS
EW2-U5160-00	ENGINE HATCH COMP.	2	.. YMUS
90601-168U7	BAND, HOSE	1	.. YMUS

ADDRESS:

YAMAHA MOTOR CORPORATION U.S.A.  
 PARTS & ACCESSORY DIV.  
 6555 KATELLA AVENUE  
 CYPRESS, CALIFORNIA 90630 U.S.A.

# CONTENTS

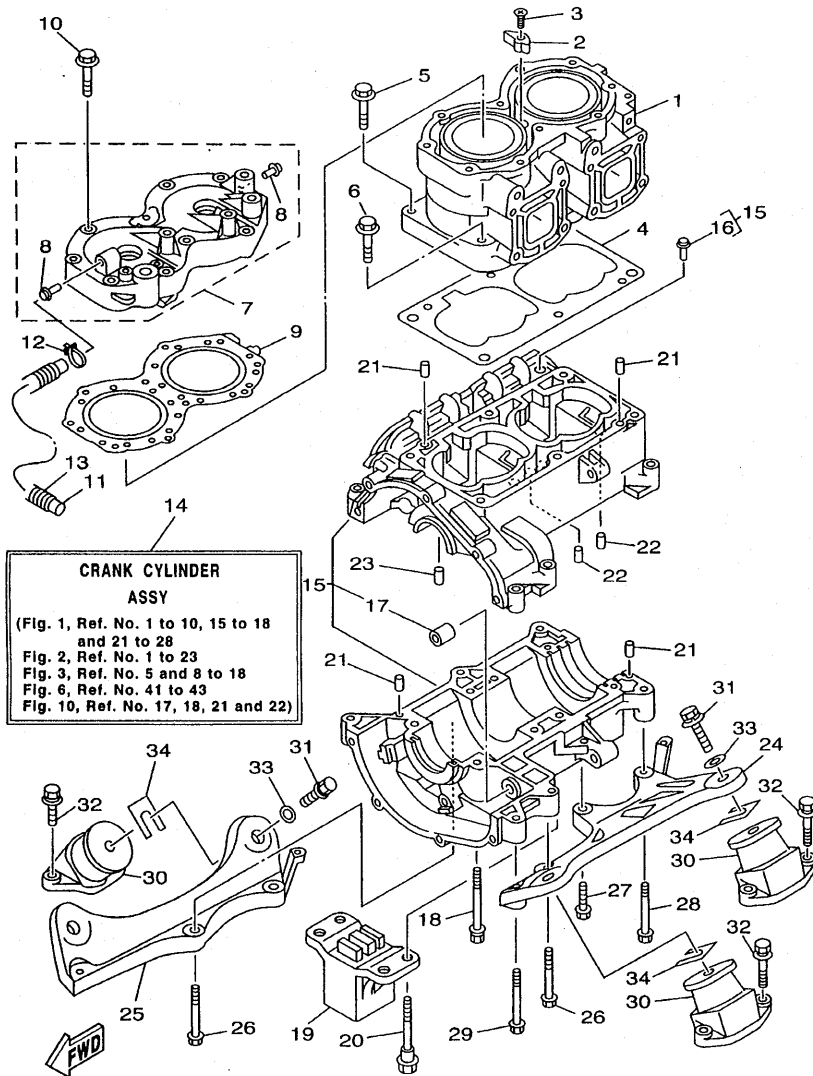
CYLINDER, CRANKCASE .....	B2
CRANKSHAFT, PISTON .....	B4
INTAKE .....	B6
CARBURETOR .....	B8
OIL PUMP .....	B10
EXHAUST 1 .....	B11
FUEL .....	B14
JET UNIT 1 .....	B15
JET UNIT 2 .....	C3
GENERATOR .....	C5
STARTING MOTOR .....	C7
ELECTRICAL 1 .....	C8
ELECTRICAL 2 .....	C10
ENGINE HATCH 1 .....	C11
ENGINE HATCH 2 .....	C13
HULL, DECK .....	C14
GUNWALE, MAT .....	D2
VENTILATION .....	D4
SEAT, UNDER LOCKER .....	D5
OIL TANK .....	D7

FUEL TANK .....	D8
EXHAUST 2 .....	D10
CONTROL CABLE .....	D12
STEERING 1 .....	D14
STEERING 2 .....	E2
GRAPHIC, TOOL .....	E3
IMPORTANT LABELS .....	E4
IMPORTANT LABELS 2 .....	E5
REPAIR KIT 1 .....	E6
REPAIR KIT 2 .....	E8

## INDEX

NUMERICAL INDEX .....	M1
-----------------------	----

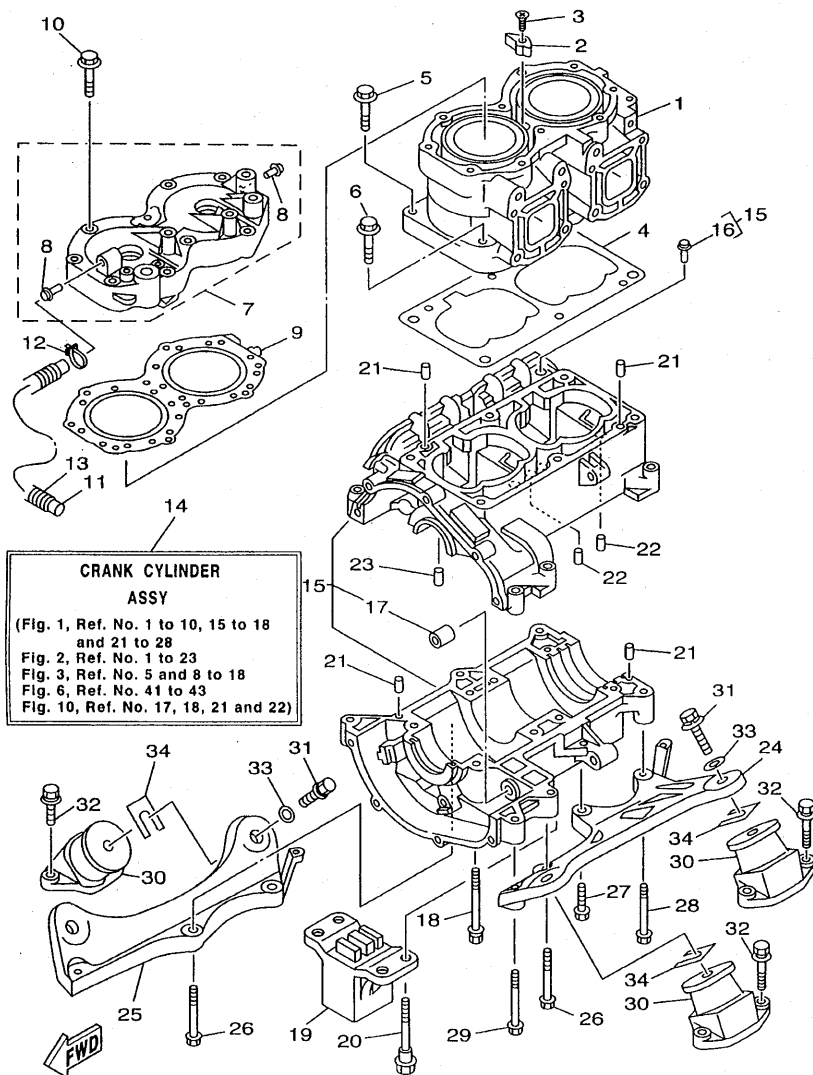
FIG. 1 CYLINDER, CRANKCASE



GP7C100-0010

REF. NO.	PART NO.	DESCRIPTION	USA	GENE	CAN	REMARKS
1	64X-11311-00-94	CYLINDER 1	1	1	1	
2	6E5-11325-00	ANODE	1	1	1	
3	98780-04015	SCREW, FLAT HEAD	1	1	1	
4	6M6-11351-A2	GASKET, CYLINDER	1	1	1	
5	90119-10M56	BOLT, WITH WASHER	4	4	4	
6	90119-10M07	BOLT, WITH WASHER	2	2	2	
7	64X-11111-00-94	HEAD, CYLINDER 1	1	1	1	
8	6K8-51129-00	.NIPPLE	2	2	2	
9	64X-11181-00	GASKET, CYLINDER HEAD 1	1	1	1	
10	90119-08M96	BOLT, WITH WASHER	1	1	1	
11	90445-14M07	HOSE	1	1	1	
12	90450-14M05	HOSE CLAMP ASSY	1	1	1	
13	90446-20M70	HOSE	1	1	1	
14	65V-W0090-01-8P	CRANK CYLINDER ASSY	1	1	1	
15	64X-15100-00-94	CRANKCASE ASSY	1	1	1	
16	62T-14251-10	.NIPPLE	2	2	2	
17	90380-12M29	.BUSH, SOLID	1	1	1	
18	90119-08M55	BOLT, WITH WASHER	4	4	4	
19	65V-44532-00	STOPPER, UPPER MOUNT	1	1	1	
20	90109-08M56	BOLT	4	4	4	
21	93606-12019	PIN, DOWEL	4	4	4	
22	93603-10049	PIN, DOWEL	4	4	4	
23	93604-07141	PIN, DOWEL	1	1	1	
24	6R7-21415-01-94	BRACKET, FRONT UPPER 1	1	1	1	
25	6R7-21425-01-94	BRACKET, REAR UPPER 1	1	1	1	
26	90119-10M02	BOLT, WITH WASHER	4	4	4	
27	90119-10M00	BOLT, WITH WASHER	1	1	1	

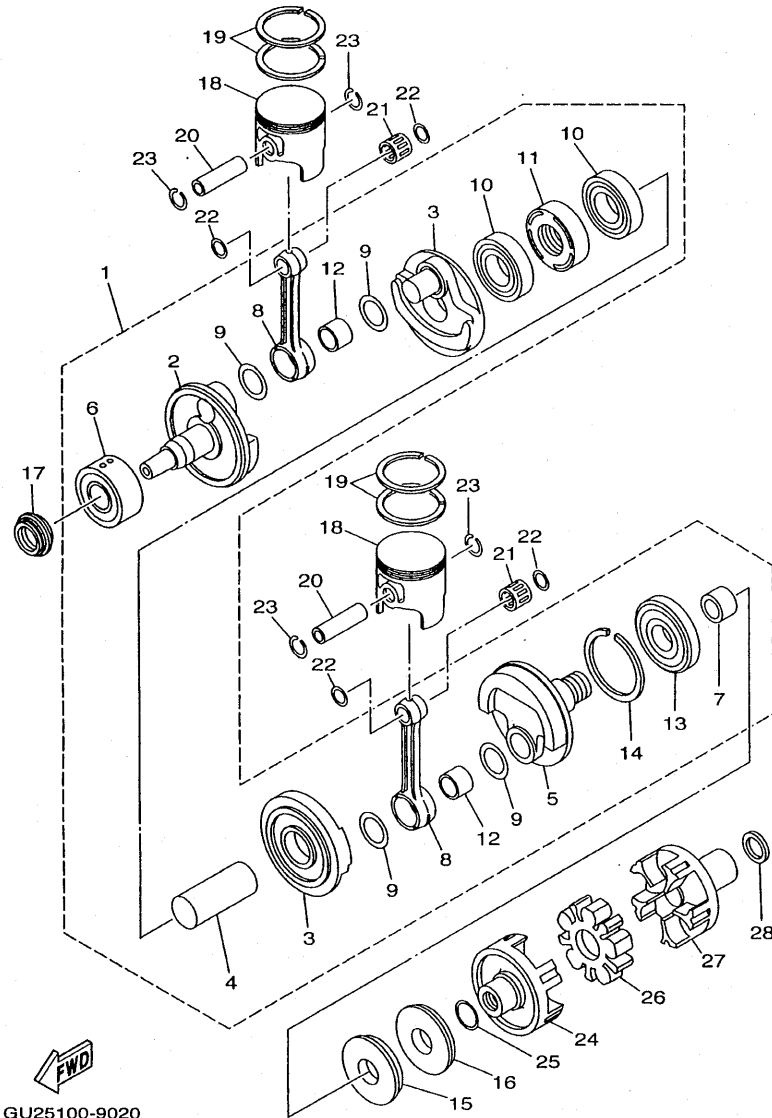
FIG. 1 CYLINDER, CRANKCASE



GP7C100-0010

REF. NO.	PART NO.	DESCRIPTION	USA	GENE	CAN	REMARKS
28	90119-10M03	BOLT, WITH WASHER	1	1	1	
29	90119-10M01	BOLT, WITH WASHER	1	1	1	
30	63M-44517-01-5B	MOUNT RUBBER	4	4	4	
31	90119-089UR	BOLT, WITH WASHER	4	4	4	YMUS
32	90119-089UT	BOLT, WITH WASHER	8	8	8	YMUS
33	90201-099U3	WASHER, PLATE	4	4	4	YMUS
34	EU0-U7354-00-01	SHIM (T=0.1)	10	10	10	UN YMUS
	EU0-U7354-00-03	SHIM (T=0.3)	10	10	10	UN YMUS
	EU0-U7354-00-05	SHIM (T=0.5)	10	10	10	UN YMUS
	EU0-U7354-00-10	SHIM (T=1.0)	10	10	10	UN YMUS
	EU0-U7354-00-20	SHIM (T=2.0)	10	10	10	UN YMUS
	EU0-U7354-00-30	SHIM (T=3.0)	10	10	10	UN YMUS

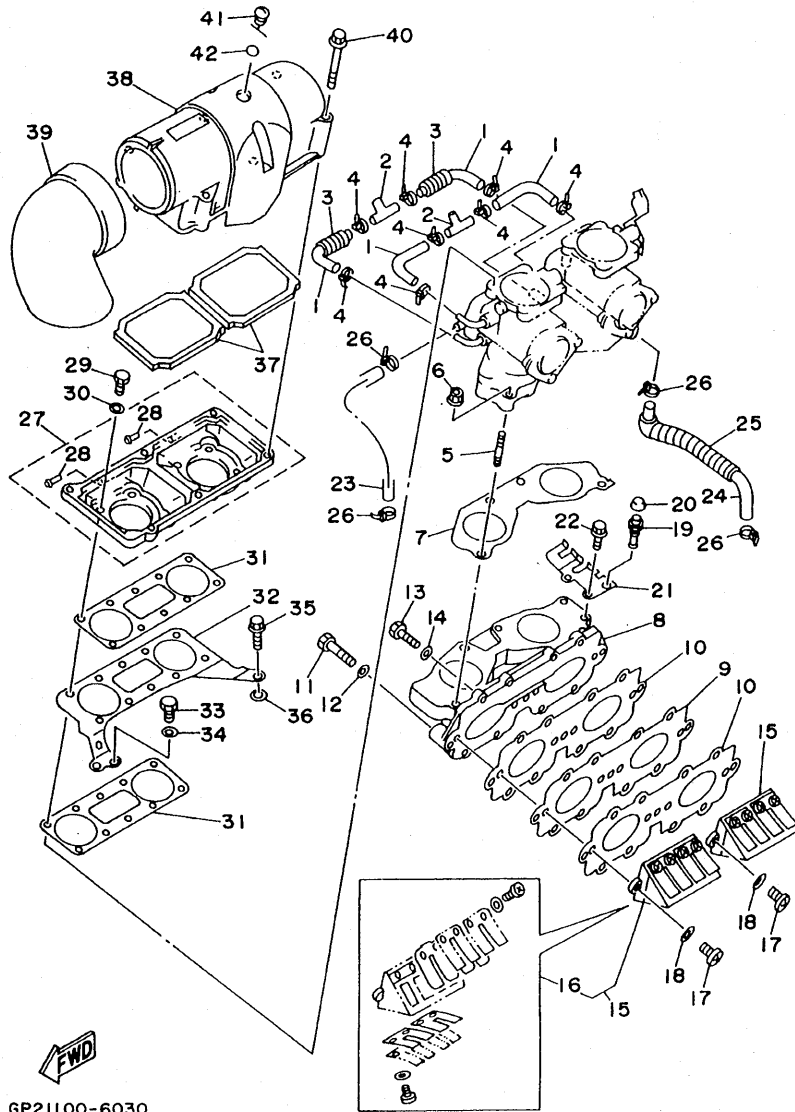
FIG. 2 CRANKSHAFT. PISTON



REF. NO.	PART NO.	DESCRIPTION	USA	GENE	CAN	REMARKS
1	64X-11400-01	CRANKSHAFT ASSY	1	1	1	
2	6M6-11412-00	.CRANK 1	1	1	1	
3	6M6-11422-00	.CRANK 2	2	2	2	
4	6M6-11431-10	.CRANK 3	1	1	1	
5	6M6-11442-01	.CRANK 4	1	1	1	
6	93305-30601	.BEARING	1	1	1	
7	62T-45526-00	.COLLAR, DRIVE SHAFT	1	1	1	
8	64X-11651-01	.ROD, CONNECTING	2	2	2	
9	82M-11685-00	.WASHER, CRANK PIN	4	4	4	
10	93306-207U2	.BEARING	2	2	2	
11	65U-11515-00	.SEAL, LABYRINTH 1	1	1	1	
12	93310-525U4	.BEARING	2	2	2	
13	93306-307U3	.BEARING	1	1	1	
14	93440-80023	.CIRCLIP	1	1	1	
15	93102-36M33	OIL SEAL	1	1	1	
16	93101-36M46	OIL SEAL	1	1	1	
17	93103-32M01	OIL SEAL	1	1	1	
18	64X-11631-00-91	PISTON (STD)	2	2	2	
	64X-11635-00	PISTON (0.25MM O/S)	2	2	2	AP
	64X-11636-00	PISTON (0.50MM O/S)	2	2	2	AP
19	64X-11603-00	PISTON RING SET (STD)	2	2	2	
	64X-11604-00	PISTON RING SET (0.25MM O/S)	2	2	2	AP
	64X-11605-00	PISTON RING SET (0.50MM O/S)	2	2	2	AP
20	62T-11633-00	PIN, PISTON	2	2	2	
21	93310-320U2	BEARING	2	2	2	
22	90201-20M04	WASHER, PLATE	4	4	4	
23	93450-21053	CIRCLIP	4	4	4	







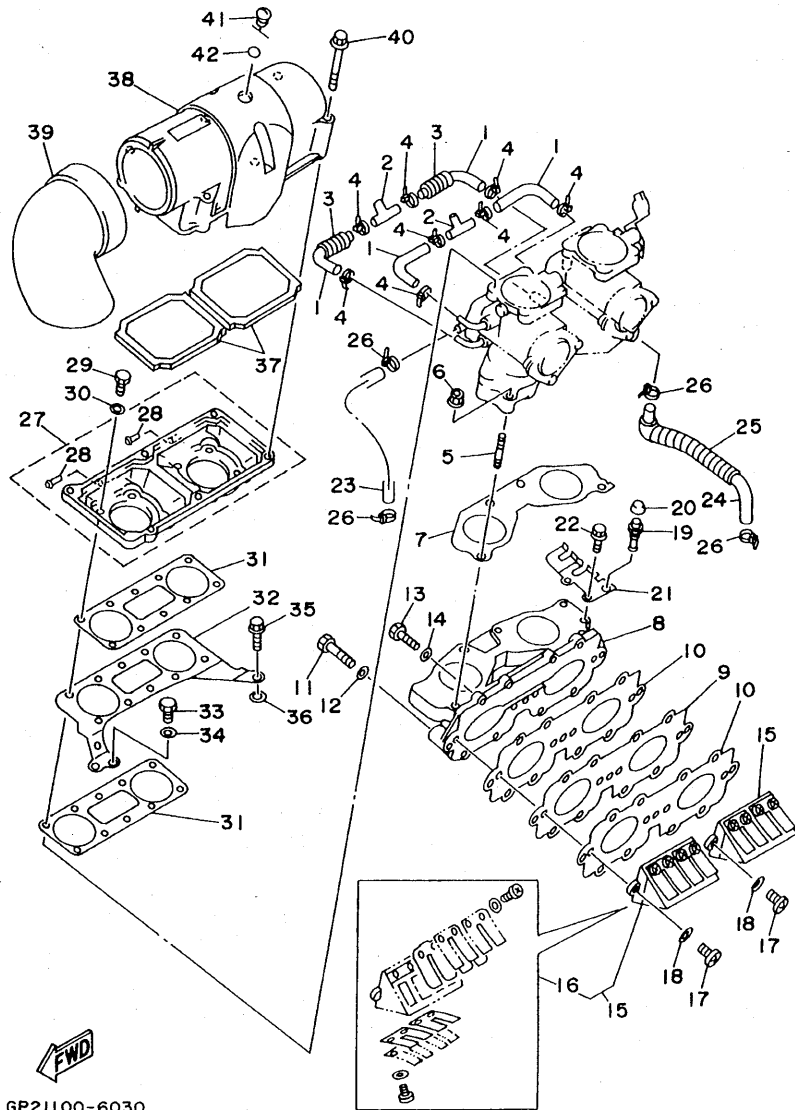
FWD  
GP21100-6030

FIG. 3 INTAKE

REF. NO.	PART NO.	DESCRIPTION	USA	GENE	CAN	REMARKS
1	64X-24313-01	PIPE 3	4	4	4	
2	688-24378-00	PIPE, JOINT 4	2	2	2	
3	90446-14M66	HOSE	2	2	2	
4	90465-11M10	CLAMP	8	8	8	
5	90116-08M60	BOLT, STUD	4	4	4	
6	90179-08M15	NUT	4	4	4	
7	64X-13556-00	GASKET, MANIFOLD	1	1	1	
8	64X-13555-00-8P	MANIFOLD, INTAKE	1	1	1	
9	62T-13624-00	PLATE, REED VALVE	1	1	1	
10	62T-13566-00	GASKET	2	2	2	
11	97013-06035	BOLT	3	3	3	
12	92903-06600	WASHER, PLATE	3	3	3	
13	97013-06025	BOLT	8	8	8	
14	92903-06600	WASHER, PLATE	8	8	8	
15	64X-13610-01	REED VALVE ASSY	2	2	2	
16	64X-W0004-01	.REED SET	1	1	1	
17	97880-05016	SCREW, PAN HEAD	4	4	4	
18	92990-05600	WASHER, PLATE	4	4	4	
19	61L-5169A-00	NIPPLE, GREASE	1	1	1	
20	663-45119-00	CAP, GREASE NIPPLE	1	1	1	
21	64X-14527-00	PLATE	1	1	1	
22	97513-06516	BOLT, WITH WASHER	2	2	2	
23	90445-10MF4	HOSE	1	1	1	
24	64X-24314-01	PIPE 4	1	1	1	
25	90446-14M67	HOSE	1	1	1	
26	90465-11M10	CLAMP	4	4	4	
27	64X-14284-01-8P	COVER, CARBURETOR 2	1	1	1	

B6

FIG. 3 INTAKE

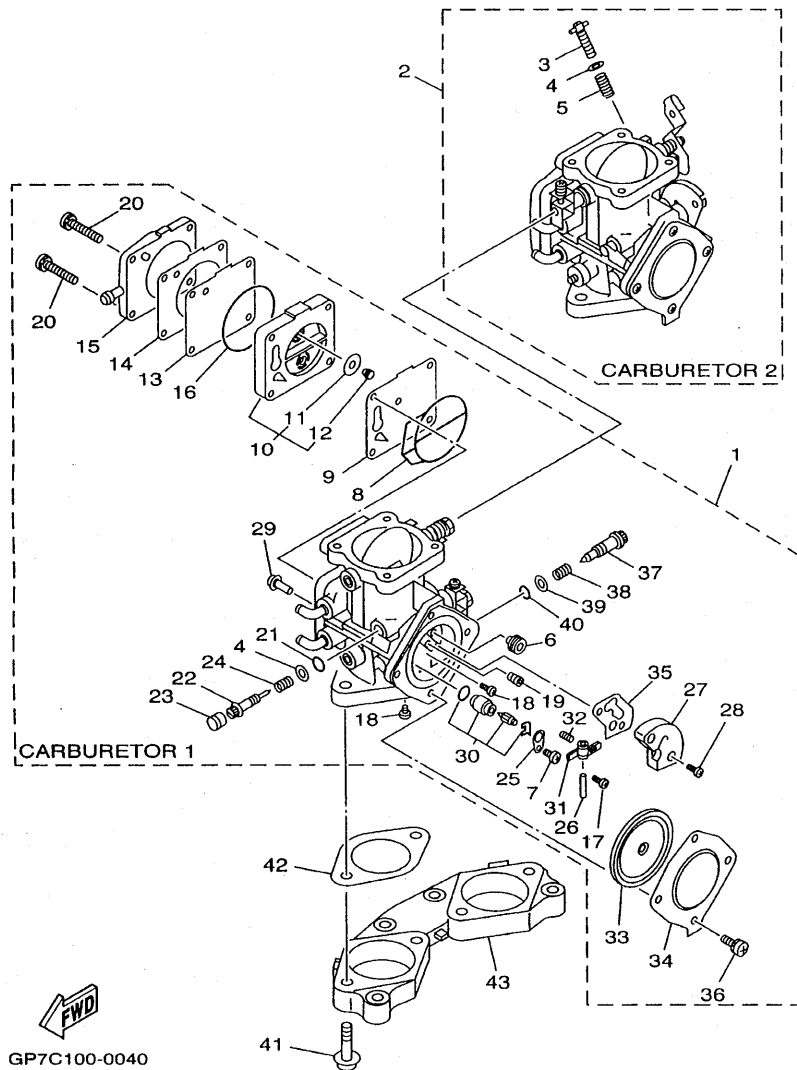


GP21100-6030

REF. NO.	PART NO.	DESCRIPTION	USA	GENE	CAN	REMARKS
28	6E5-13552-00	.NOZZLE	2	2	2	
29	97013-06020	BOLT	8	8	8	
30	92903-06600	WASHER, PLATE	8	8	8	
31	64X-13674-00	GASKET, AIR COOLER COVER 1	2	2	2	
32	64X-14255-00	PLATE	1	1	1	
33	97013-06012	BOLT	1	1	1	
34	92903-06600	WASHER, PLATE	1	1	1	
35	90109-06M66	BOLT	1	1	1	
36	90201-06M31	WASHER, PLATE	1	1	1	
37	62T-14451-00	ELEMENT, AIR CLEANER	2	2	2	
38	64X-14283-00	COVER, CARBURETOR 1	1	1	1	
39	62T-14419-00	PIPE	1	1	1	
40	90119-05M02	BOLT, WITH WASHER	6	6	6	
41	62T-14435-00	GROMMET	1	1	1	
42	93210-13M63	O-RING	1	1	1	

B7

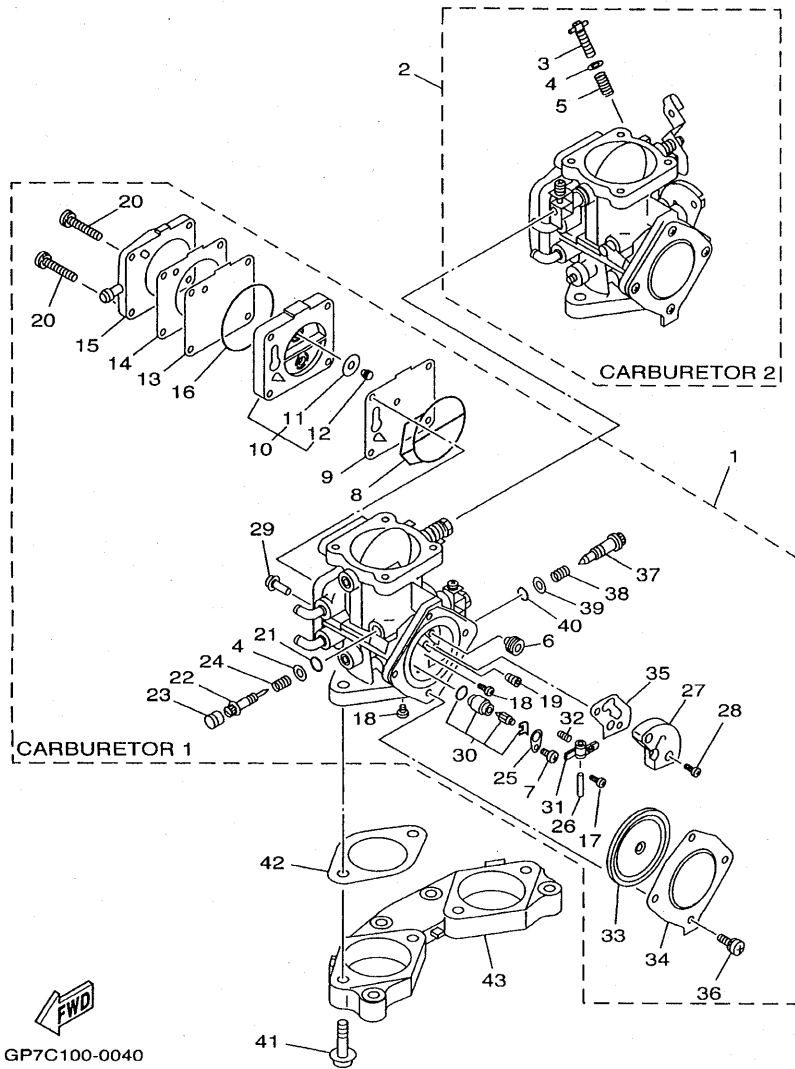
FIG. 4 CARBURETOR



GP7C100-0040

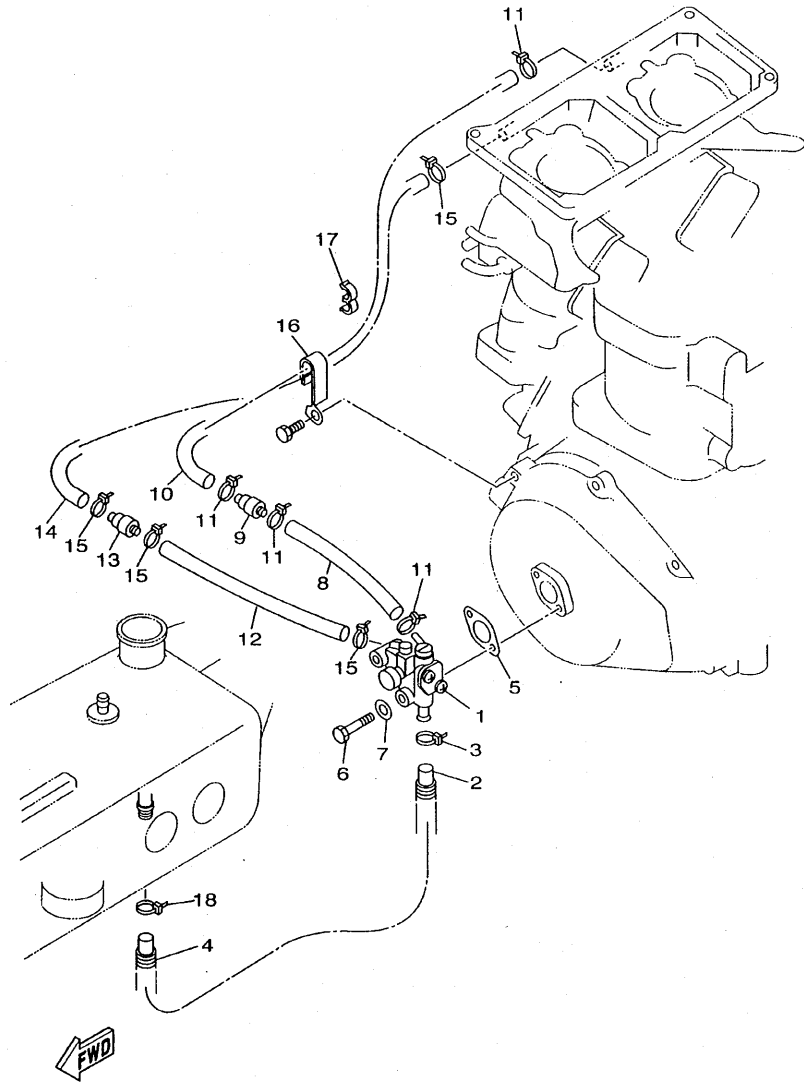
REF. NO.	PART NO.	DESCRIPTION	USA	GENE	CAN	REMARKS
1	65V-14301-02	CARBURETOR ASSY 1	1	1	1	
2	65V-14302-02	CARBURETOR ASSY 2	1	1	1	
3	6M6-14521-01	.SCREW, ADJUST	1	1	1	CARBURETOR 2
4	812-14235-00	.WASHER, NEEDLE	3	3	3	
5	47X-14133-00	.SPRING, THROTTLE STOP	1	1	1	CARBURETOR 2
6	3G2-14231-26	.JET, MAIN (#130)	1	1	1	UR CARBURETOR 1
	3G2-1423A-77	.JET, MAIN (#132.5)	1	1	1	UR CARBURETOR 2
7	6M6-14503-00	.SCREW	2	2	2	
8	6K8-14564-00	.O-RING	2	2	2	
9	6K8-24411-20	.DIAPHRAGM	2	2	2	
10	6M6-24413-01	.BODY 2	2	2	2	
11	65U-24421-00	.VALVE, CHECK	2	2	2	
12	65U-24492-00	.BUSH, FULEL PUMP	2	2	2	
13	6K8-24421-10	.VALVE, CHECK	2	2	2	
14	6K8-24431-20	.GASKET, FUEL PUMP 1	2	2	2	
15	6K8-24452-10	.COVER	1	1	1	CARBURETOR 1
16	6K8-14563-00	.O-RING	2	2	2	
17	6K8-14503-02	.SCREW	2	2	2	
18	6K8-14521-10	.SCREW	4	4	4	
19	830-14231-23	.JET, MAIN (#115)	2	2	2	
20	97980-05330	.SCREW, WITH WASHER	4	4	4	
21	812-14147-00	.O-RING	2	2	2	
22	6K8-14946-10	.METERING NEEDLE	2	2	2	
23	6K8-14471-10	.CAP, CARBURETOR	2	2	2	
24	3KW-14932-00	.SPRING, THROTTLE 2	2	2	2	
25	6K8-14527-11	.PLATE	2	2	2	
26	439-14186-00	.PIN, FLOAT	1	1	1	

FIG. 4 CARBURETOR



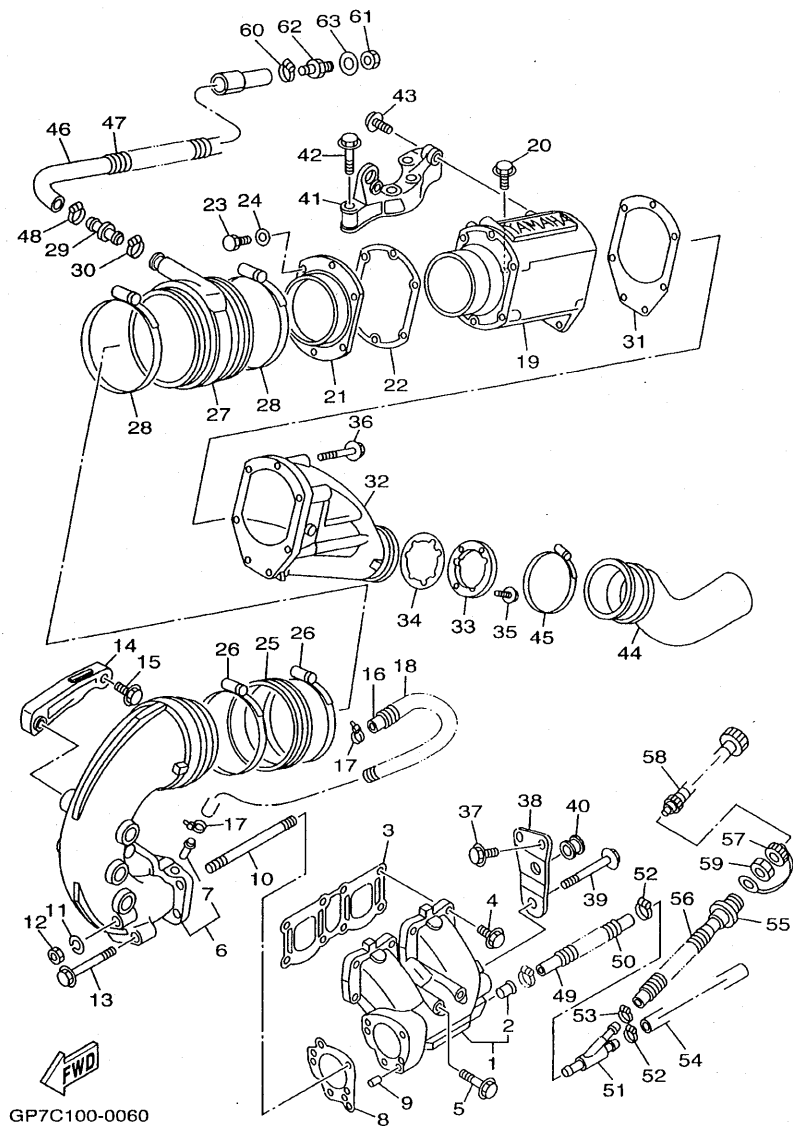
REF. NO.	PART NO.	DESCRIPTION	USA	GENE	CAN	REMARKS
27	6R7-24412-01	.BODY 1	2	2	2	
28	6K8-14523-11	.SCREW, STOP	4	4	4	
29	6R7-14569-00	.STRAINER	2	2	2	
30	61X-14916-15	.NEEDLE	2	2	2	
31	6K8-14547-01	.ARM, FLOAT	2	2	2	
32	63M-14253-00	.SPRING	2	2	2	
33	6R7-14541-00	.DIAPHRAGM, PUMP	2	2	2	
34	6R7-14542-00	.BODY, PUMP 1	2	2	2	
35	6K8-14536-11	.GASKET	2	2	2	
36	6K8-14591-10	.SCREW	4	4	4	
37	64X-14923-10	.SCREW, PILOT	2	2	2	
38	6K8-14589-00	.SPRING	2	2	2	
39	822-14235-00	.WASHER, NEEDLE	4	4	4	
40	583-14561-00	.O-RING	2	2	2	
41	64X-14162-00	BOLT, HOLDING	4	4	4	
42	64X-14398-00	GASKET	2	2	2	
43	64X-14243-00	PLATE	1	1	1	

FIG. 5 OIL PUMP



GP79100-9050

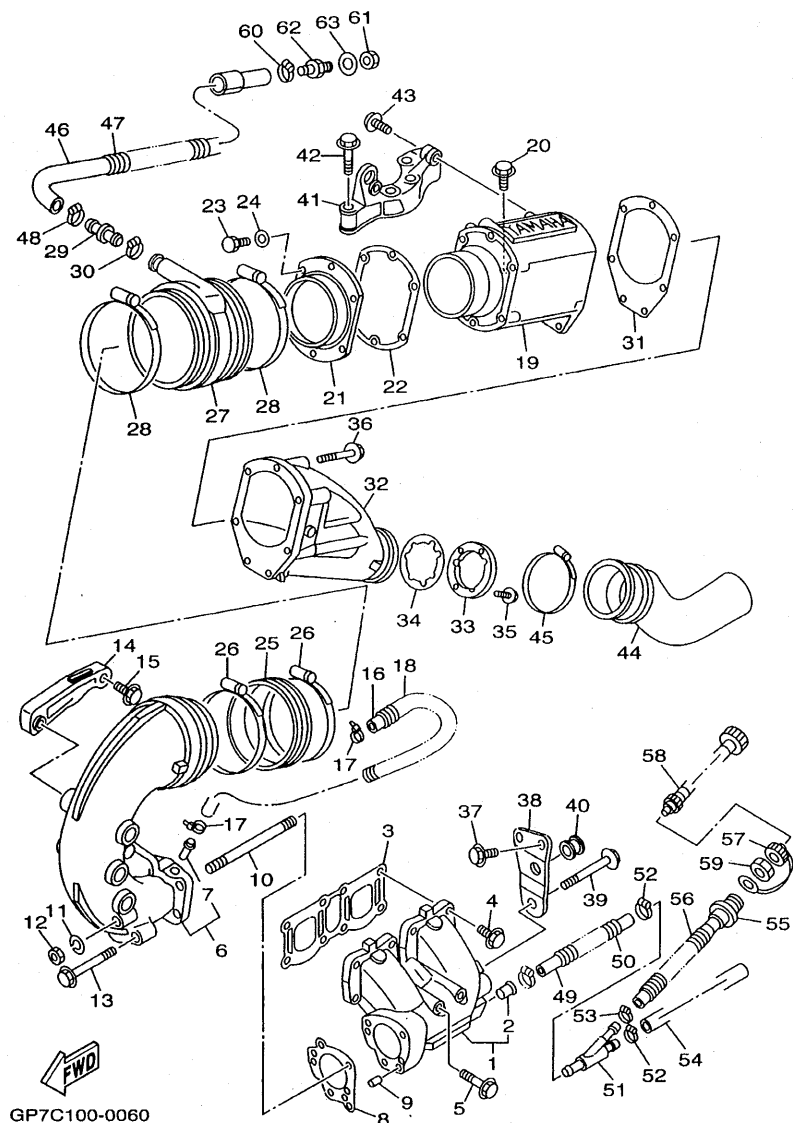
REF. NO.	PART NO.	DESCRIPTION	USA	GENE	CAN	REMARKS
1	62T-13200-13	OIL INJECTION PUMP ASSY	1	1	1	
2	90445-11M35	HOSE	1	1	1	
3	90465-11M10	CLAMP	1	1	1	
4	90446-17M72	HOSE	1	1	1	
5	6R8-13116-A0	GASKET, PUMP CASE	1	1	1	
6	97095-06035	BOLT	2	2	2	
7	92995-06600	WASHER	2	2	2	
8	90446-07M14	HOSE	1	1	1	
9	6R3-13183-00	VALVE, CHECK	1	1	1	
10	90446-07M35	HOSE	1	1	1	
11	90465-11M10	CLAMP	4	4	4	
12	90446-07M17	HOSE	1	1	1	
13	6R3-13183-00	VALVE, CHECK	1	1	1	
14	90446-07M36	HOSE	1	1	1	
15	90465-11M10	CLAMP	4	4	4	
16	90465-08M69	CLAMP	1	1	1	
17	90464-07M20	CLAMP	1	1	1	
18	90465-11829	CLAMP	1	1	1	YMUS



GP7C100-0060

FIG. 6 EXHAUST 1

REF. NO.	PART NO.	DESCRIPTION	USA	GENE	CAN	REMARKS
1	64X-14711-00-9P	MUFFLER 1	1	1	1	
2	6K8-51129-00	.NIPPLE	1	1	1	
3	62T-14613-00	GASKET, EXHAUST PIPE	1	1	1	
4	90105-10M60	BOLT, WASHER BASED	6	6	6	
5	90105-10M72	BOLT, WASHER BASED	2	2	2	
6	64X-14712-00-9P	RING, JOINT	1	1	1	
7	6K8-51129-00	.NIPPLE	1	1	1	
8	64X-14749-00	GASKET, MUFFLER DAMPER 2	1	1	1	
9	93605-12M21	PIN, DOWEL	2	2	2	
10	90116-08M59	BOLT, STUD	2	2	2	
11	92990-08100	WASHER, SPRING	2	2	2	
12	95380-08600	NUT	2	2	2	
13	90119-08M11	BOLT, WITH WASHER	2	2	2	
14	64X-14781-00-94	STAY, MUFFLER 2	1	1	1	
15	90105-10M73	BOLT, WASHER BASED	3	3	3	
16	63M-12577-00	HOSE 2	1	1	1	
17	90450-14M05	HOSE CLAMP ASSY	2	2	2	
18	90446-20M31	HOSE	1	1	1	
19	64X-14721-00-94	MUFFLER 2	1	1	1	
20	90105-10M60	BOLT, WASHER BASED	2	2	2	
21	62T-41113-00-9M	OUTER COVER, EXHAUST	1	1	1	
22	62T-41114-01	GASKET, EXHAUST OUTER COVER	1	1	1	
23	97013-06025	BOLT	6	6	6	
24	92903-06600	WASHER, PLATE	6	6	6	
25	62T-14625-00	JOINT, EXHAUST 2	1	1	1	
26	90450-99M06	HOSE CLAMP ASSY	2	2	2	
27	64X-14615-00	JOINT, EXHAUST 1	1	1	1	



GP7C100-0060

FIG. 6 EXHAUST 1

REF. NO.	PART NO.	DESCRIPTION	USA	GENE	CAN	REMARKS
28	90450-99M16	HOSE CLAMP ASSY	2	2	2	
29	64X-12582-00	JOINT, HOSE 2	1	1	1	
30	90450-22M14	HOSE CLAMP ASSY	1	1	1	
31	64X-41124-00	GASKET, EXHAUST OUTER COVER	1	1	1	
32	64X-41123-00-94	OUTER COVER, EXHAUST	1	1	1	
33	64X-14763-00-94	SPACER	1	1	1	
34	64X-14623-00	GASKET, EXHAUST PIPE	1	1	1	
35	97985-06220	SCREW, WITH WASHER	3	3	3	
36	90105-08M70	BOLT, WASHER BASED	5	5	5	
37	90105-08M71	BOLT, WASHER BASED	2	2	2	
38	64X-14717-01	PLATE, STOPPER	1	1	1	
39	90119-08M37	BOLT, WITH WASHER	1	1	1	
40	90480-20M05	GROMMET	1	1	1	
41	62T-14771-00-94	STAY, MUFFLER 1	1	1	1	
42	90119-10M17	BOLT, WITH WASHER	4	4	4	
43	90105-10M88	BOLT, WASHER BASED	2	2	2	
44	65V-14752-00	PIPE, OUTLET	1	1	1	
45	90450-88M15	HOSE CLAMP ASSY	1	1	1	
46	65V-12578-00	HOSE 3	1	1	1	
47	90446-27M73	HOSE	1	1	1	
48	90450-22M14	HOSE CLAMP ASSY	1	1	1	
49	90445-14M06	HOSE	1	1	1	
50	90446-20M31	HOSE	1	1	1	
51	64X-12581-00	JOINT, HOSE 1	1	1	1	
52	90450-14M05	HOSE CLAMP ASSY	2	2	2	
53	90450-18M09	HOSE CLAMP ASSY	1	1	1	
54	90445-14M10	HOSE	1	1	1	

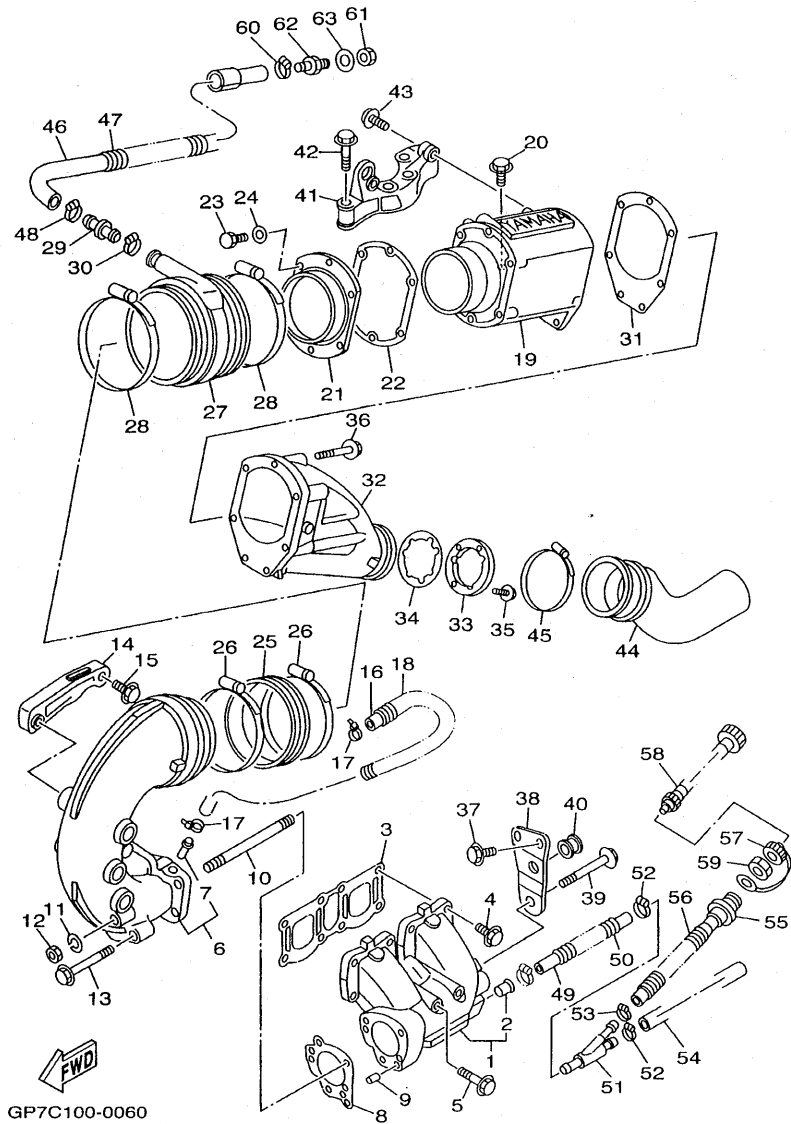
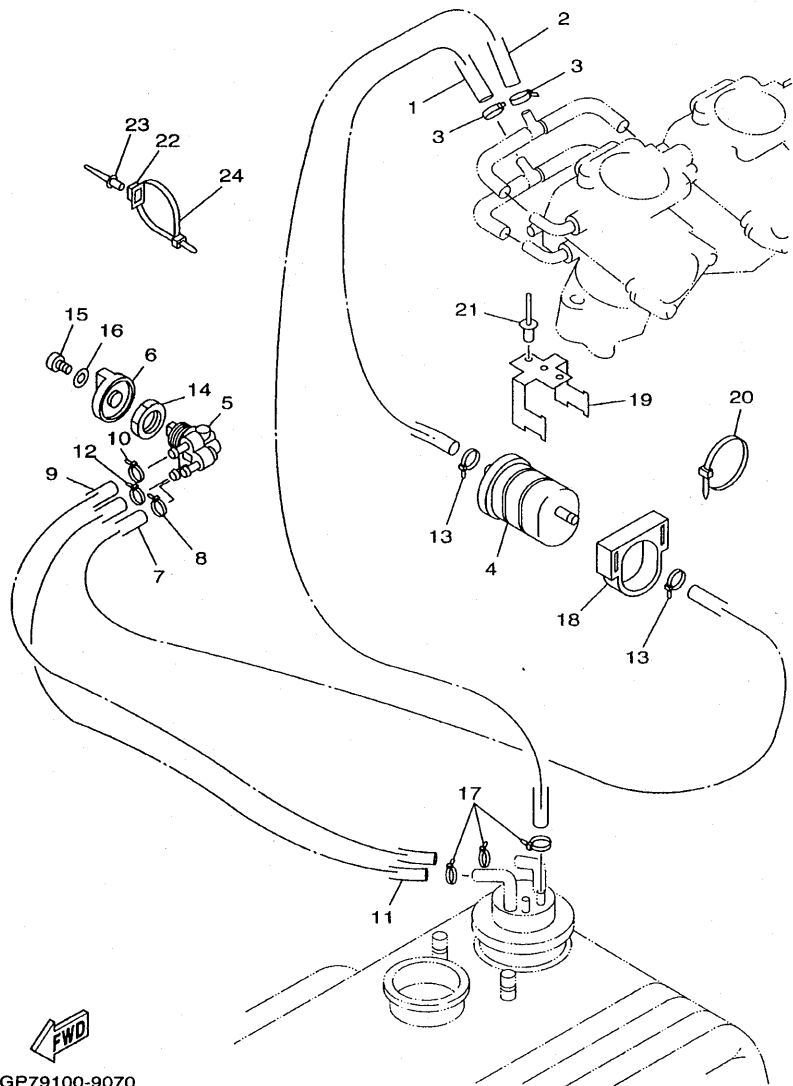


FIG. 6 EXHAUST 1

REF. NO.	PART NO.	DESCRIPTION	USA	GENE	CAN	REMARKS
55	63M-12580-00	JOINT ASSY	1	1	1	
56	90446-24M89	HOSE	1	1	1	
57	682-84385-01	CAP,1	1	1	1	
58	63M-12590-00	CONDUCTION ASSY	1			
	63M-12590-20	CONDUCTION ASSY		1	1	
59	EU0-61652-00	NUT	1	1	1	
60	90601-118UF	BAND, HOSE 18	1	1	1	YMUS
61	GP7-672A4-00	NUT,THRUHULL	1	1	1	
62	90604-80797	THROUGH HULL CONNECTION 3/8-12	1	1	1	
63	90430-16910	GASKET	1	1	1	



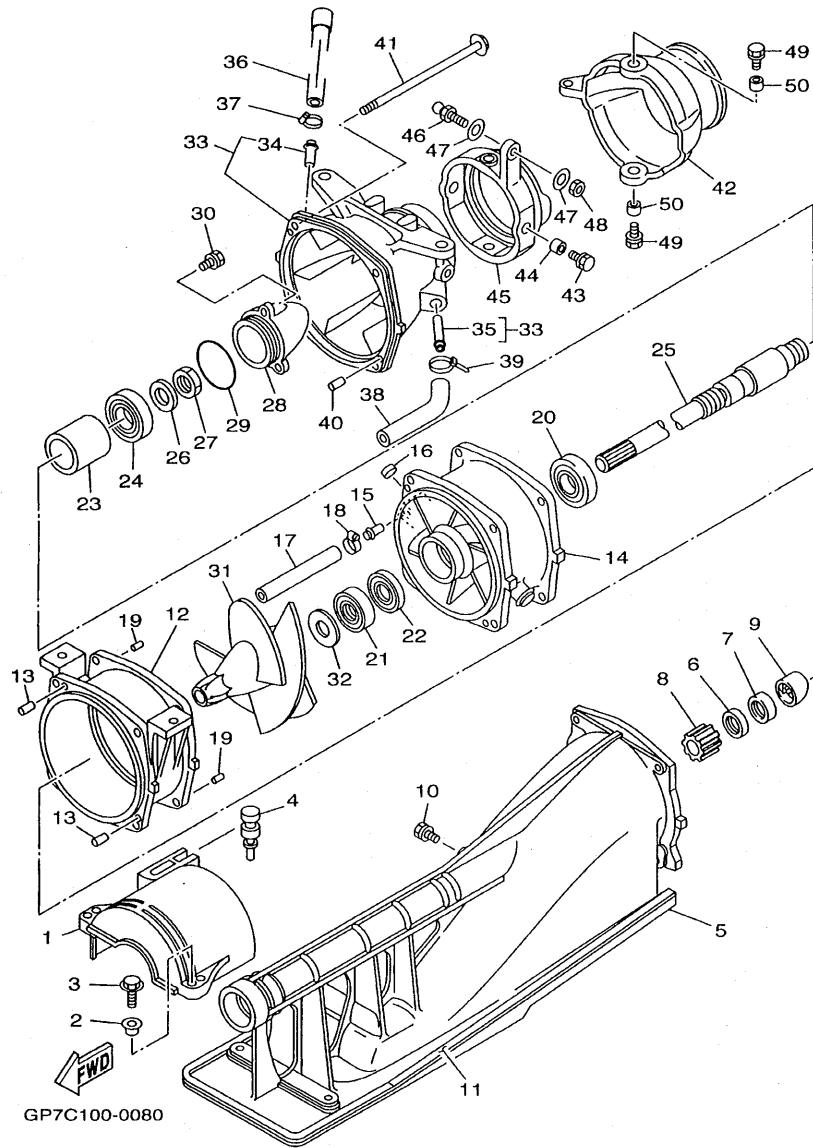


**FWD**  
GP79100-9070

**FIG. 7 FUEL**

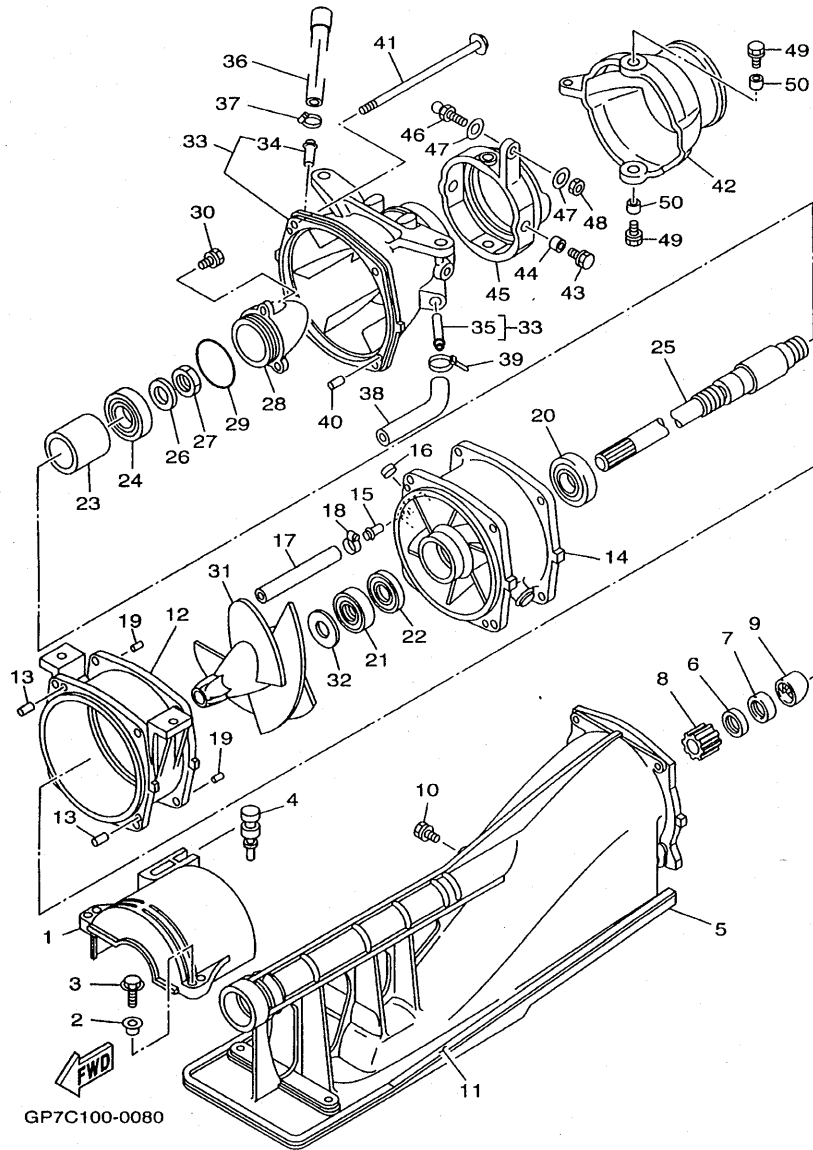
REF. NO.	PART NO.	DESCRIPTION	USA	GENE	CAN	REMARKS
1	90445-10MF9	HOSE	1	1	1	
2	90445-10M99	HOSE	1	1	1	
3	90465-11M10	CLAMP	2	2	2	
4	6K8-24560-10	FILTER ASSY	1	1	1	
5	6K8-24500-02	FUEL COCK ASSY 1	1	1	1	
6	6K8-24524-10	LEVER, COCK	1	1	1	
7	90445-10MF8	HOSE	1	1	1	
8	90465-11M10	CLAMP	1	1	1	
9	90445-10MF6	HOSE	1	1	1	
10	90465-11M10	CLAMP	1	1	1	
11	90445-10MF7	HOSE	1	1	1	
12	90465-11M10	CLAMP	1	1	1	
13	90465-11829	CLAMP	2	2	2	YMUS
14	90170-22M11	NUT	1	1	1	
15	97880-04010	SCREW, PAN HEAD	1	1	1	
16	92990-04600	WASHER, PLATE	1	1	1	
17	90465-11829	CLAMP	3	3	3	YMUS
18	EU0-U7817-00	HOLDER, FILTER	1	1	1	YMUS
19	FN8-67816-00	BRACKET, FUEL FILTER	1	1	1	
20	90601-200U1	BAND	1	1	1	YMUS
21	90267-489U1	RIVET, BLIND	2	2	2	YMUS
22	90600-917U4	CLAMP COMP.	2	2	2	YMUS
23	90267-48802	RIVET, BLIND	2	2	2	YMUS
24	90464-32801	CLAMP	2	2	2	YMUS

FIG. 8 JET UNIT 1



REF. NO.	PART NO.	DESCRIPTION	USA	GENE	CAN	REMARKS
1	65A-R1381-00	COVER	1	1	1	YMUS
2	90387-06M60	COLLAR	2	2	2	
3	90119-069UD	BOLT, WITH WASHER	2	2	2	YMUS
4	90480-06M46	GROMMET	1	1	1	
5	65V-51311-01-94	DUCT, INTAKE	1	1	1	
6	93102-17M49	OIL SEAL	1	1	1	
7	93102-17M50	OIL SEAL	1	1	1	
8	65V-45318-00	BUSHING, DRIVE SHAFT	1	1	1	
9	65U-R1348-01	SPACER	1	1	1	YMUS
10	90119-069UD	BOLT, WITH WASHER	1	1	1	YMUS
11	6R8-51367-01	FELT, PACKING	2	2	2	
12	6R8-51312-03-94	HOUSING, IMPELLER	1	1	1	
13	93606-12019	PIN, DOWEL	2	2	2	
14	62T-51315-10-94	DUCT, IMPELLER	1	1	1	
15	65A-R1129-00	NIPPLE	1	1	1	YMUS
16	90331-12M05	PLUG	1	1	1	
17	90445-14M17	HOSE	1	1	1	
18	90601-118UF	BAND, HOSE 18	1	1	1	YMUS
19	93606-12019	PIN, DOWEL	2	2	2	
20	93306-205U0	BEARING	1	1	1	
21	93102-25M34	OIL SEAL	1	1	1	
22	93101-25M50	OIL SEAL	1	1	1	
23	65V-45538-00	SPACER 1	1	1	1	
24	93306-304U1	BEARING	1	1	1	
25	65V-45511-00	SHAFT, DRIVE	1	1	1	
26	92990-16600	WASHER	1	1	1	
27	95317-16700	NUT	1	1	1	

FIG. 8 JET UNIT 1



REF. NO.	PART NO.	DESCRIPTION	USA	GENE	CAN	REMARKS
28	65A-R1326-00	CAP	1	1	1	YMUS
29	93210-46M16	O-RING	1	1	1	
30	90119-069UB	BOLT, WITH WASHER	3	3	3	YMUS
31	65V-51321-00	IMPELLER	1	1	1	
32	62T-51348-00	SPACER	1	1	1	
<hr/>						
33	65V-51318-00-94	NOZZLE	1	1	1	
34	6K8-51129-00	.NIPPLE	1	1	1	
35	62T-51129-00	.NIPPLE	1	1	1	
36	61X-51673-00	PIPE 1	1	1	1	
37	90601-118UF	BAND, HOSE 18	1	1	1	YMUS
<hr/>						
38	90445-14898	HOSE	1	1	1	YMUS
39	90465-11829	CLAMP	1	1	1	YMUS
40	93606-12019	PIN, DOWEL	2	2	2	
41	90119-06829	BOLT, WITH WASHER	4	4	4	YMUS
42	65V-51313-00	NOZZLE, DEFLECTOR	1	1	1	
<hr/>						
43	90119-089UE	BOLT, WITH WASHER	2	2	2	YMUS
44	90387-08M08	COLLAR	2	2	2	
45	64Y-51190-00-94	RING, TRIM	1	1	1	
46	GH3-U146E-00	STUD, JOINT BALL	1	1	1	YMUS
47	90201-06M31	WASHER, PLATE	2	2	2	
<hr/>						
48	95380-06700	NUT	1	1	1	
49	90119-089UE	BOLT, WITH WASHER	2	2	2	YMUS
50	90387-08M06	COLLAR	2	2	2	
<hr/>						

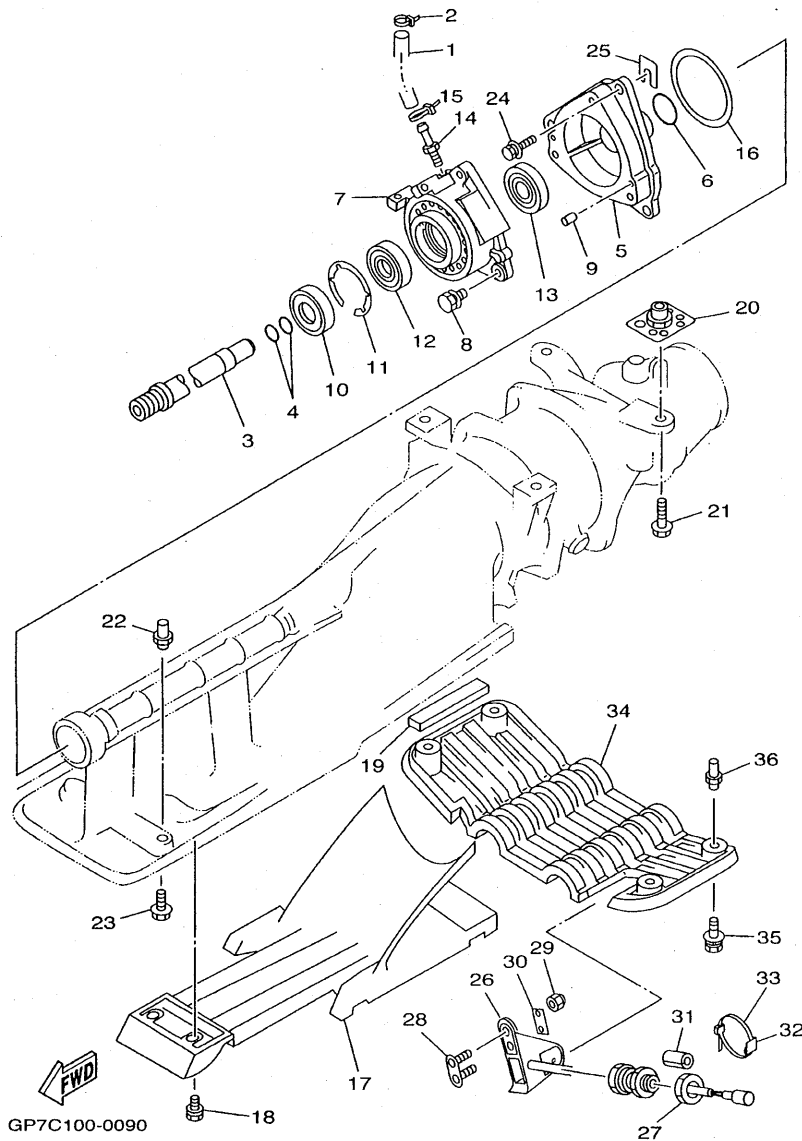
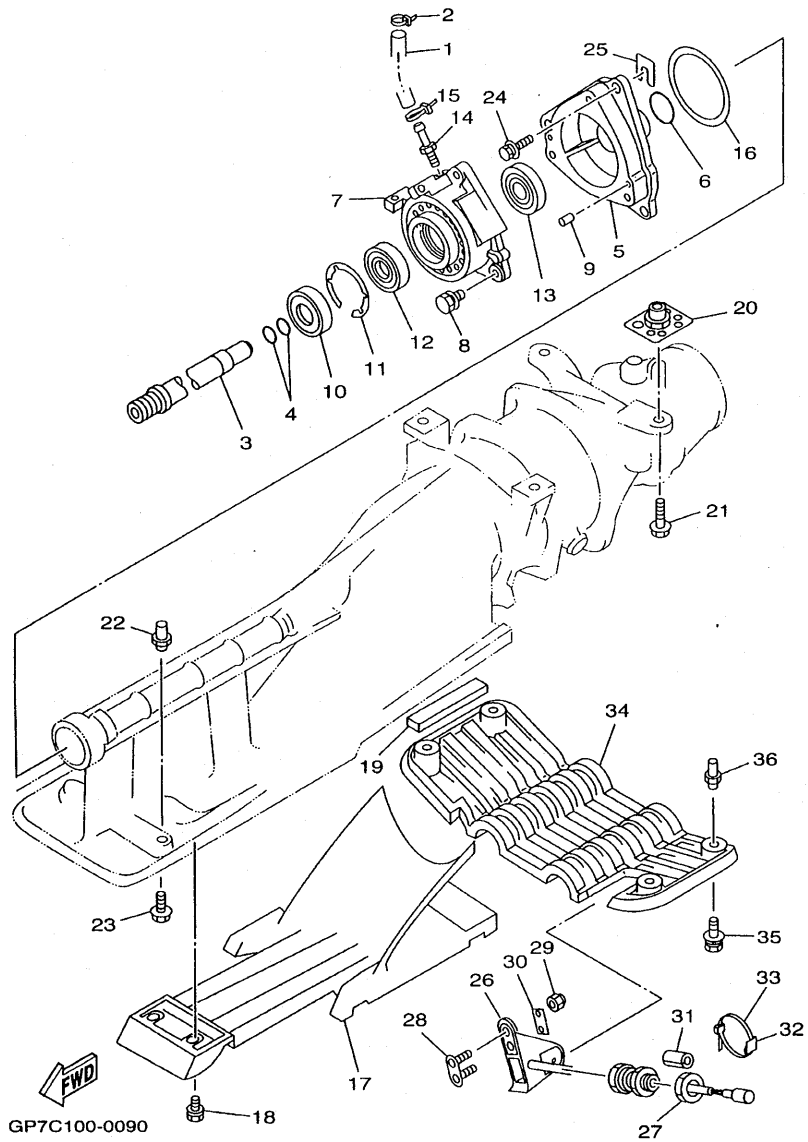


FIG. 9 JET UNIT 2

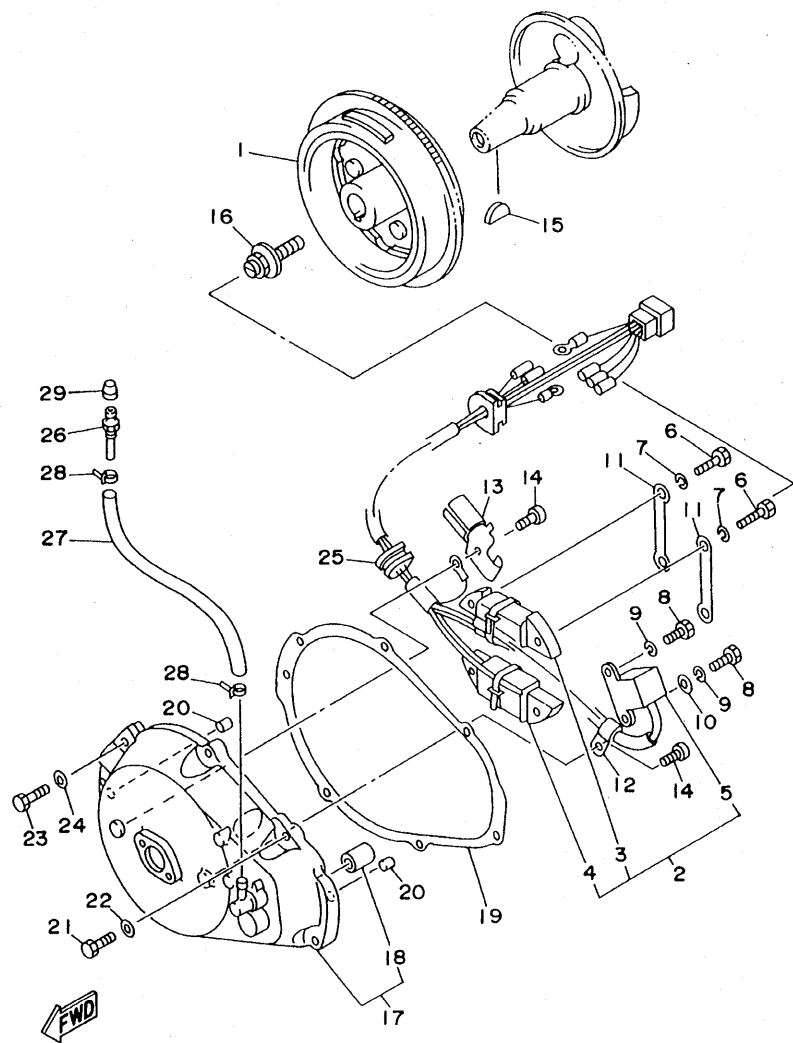
REF. NO.	PART NO.	DESCRIPTION	USA	GENE	CAN	REMARKS
1	90445-09M17	HOSE	1	1	1	
2	90465-11M10	CLAMP	1	1	1	
3	65V-51323-00	SHAFT, COUPLOR	1	1	1	
4	93210-17MA4	O-RING	2	2	2	
5	65A-G5331-00	HOUSING, BEARING	1	1	1	YMUS
6	93210-35M72	O-RING	1	1	1	
7	65U-45332-02-94	HOUSING, BEARING	1	1	1	
8	90119-089UF	BOLT, WITH WASHER	3	3	3	YMUS
9	93606-12019	PIN, DOWEL	2	2	2	
10	93101-25M55	OIL SEAL	1	1	1	
11	93430-47M04	CIRCLIP	1	1	1	
12	93306-205U6	BEARING	1	1	1	
13	93101-25M56	OIL SEAL	1	1	1	
14	61L-45378-00	NIPPLE, HOSE	1	1	1	
15	90465-11829	CLAMP	1	1	1	YMUS
16	6K8-45127-00	SEAL	1	1	1	
17	63N-51333-02-94	SCREEN, INTAKE	1	1	1	
18	90119-069UC	BOLT, WITH WASHER	6	6	6	YMUS
19	63N-51368-00	FELT, PACKING	2	2	2	
20	90179-10800	NUT	4	4	4	YMUS
21	90119-109U8	BOLT, WITH WASHER	4	4	4	YMUS
22	90179-06800	NUT	2	2	2	YMUS
23	90119-069UK	BOLT, WITH WASHER	2	2	2	YMUS
24	90119-089UL	BOLT, WITH WASHER	3	3	3	YMUS
25	GD0-U7249-00-05	SHIM (T=0.5)	2	2	2	UN YMUS
	GD0-U7249-00-10	SHIM (T=1.0)	2	2	2	UN YMUS
26	GP7-U8K31-02	SENSOR SPEED	1	1	1	YMUS

FIG. 9 JET UNIT 2



REF. NO.	PART NO.	DESCRIPTION	USA	GENE	CAN	REMARKS
27	EU0-62241-30	NUT, DRAIN 1	1	1	1	
28	GP7-U8K33-00	BRACKET SPEED SENSOR	1	1	1	YMUS
29	9572R-06300	NUT, FLANGE	2	2	2	YMUS
30	GP7-U8K35-00	PLATE, SPEED SENSOR	1	1	1	YMUS
31	GJ1-U7578-11	PACKING, HOSE 2	1	1	1	YMUS
32	90600-900U6	BASE, CLAMP	5	5	5	YMUS
33	90464-40825	CLAMP	5	5	5	YMUS
34	GU0-U273B-00	PLATE 2	1	1	1	YMUS
35	90119-089U6	BOLT, WITH WASHER	4	4	4	YMUS
36	90179-089U7	NUT	4	4	4	YMUS

FIG. 10 GENERATOR

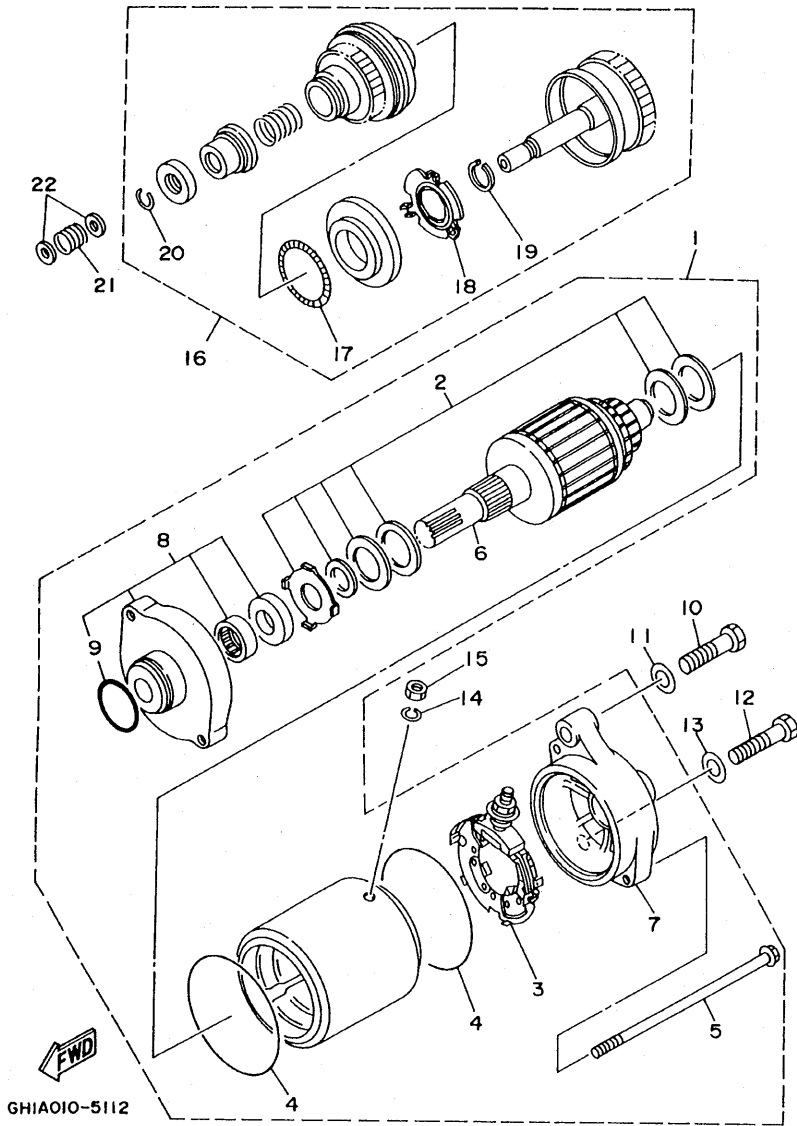


GP21100-6100

REF. NO.	PART NO.	DESCRIPTION	USA	GENE	CAN	REMARKS
1	64X-85550-00	ROTOR ASSY	1	1	1	
2	64X-85521-01	COIL ASSY	1	1	1	
3	64X-85520-00	.COIL, CHARGE	1	1	1	
4	62T-85533-00	.COIL, LIGHTING	1	1	1	
5	64X-85580-00	.COIL, PULSER	1	1	1	
6	97013-05020	BOLT	4	4	4	
7	92903-05100	WASHER, SPRING	4	4	4	
8	97013-05012	BOLT	2	2	2	
9	92903-05100	WASHER, SPRING	2	2	2	
10	90201-05M09	WASHER, PLATE	1	1	1	
11	64X-85525-00	COVER	2	2	2	
12	90465-06M90	CLAMP	1	1	1	
13	90465-06M65	CLAMP	1	1	1	
14	97880-06010	SCREW, PAN HEAD	2	2	2	
15	90280-05013	KEY, WOODRUFF	1	1	1	
16	90109-10M72	BOLT	1	1	1	
17	64X-81337-00-8P	COVER, FLYWHEEL	1	1	1	
18	90380-12M29	.BUSH, SOLID	1	1	1	
19	6M6-81365-A0	GASKET, HOLE COVER	1	1	1	
20	93606-12019	PIN, DOWEL	2	2	2	
21	97095-06025	BOLT	5	5	5	
22	92995-06600	WASHER	5	5	5	
23	97095-06030	BOLT	2	2	2	
24	92995-06600	WASHER	2	2	2	
25	90480-23M69	GROMMET	1	1	1	
26	61L-5169A-00	NIPPLE, GREASE	1	1	1	
27	90445-09M24	HOSE	1	1	1	



FIG. 11 STARTING MOTOR

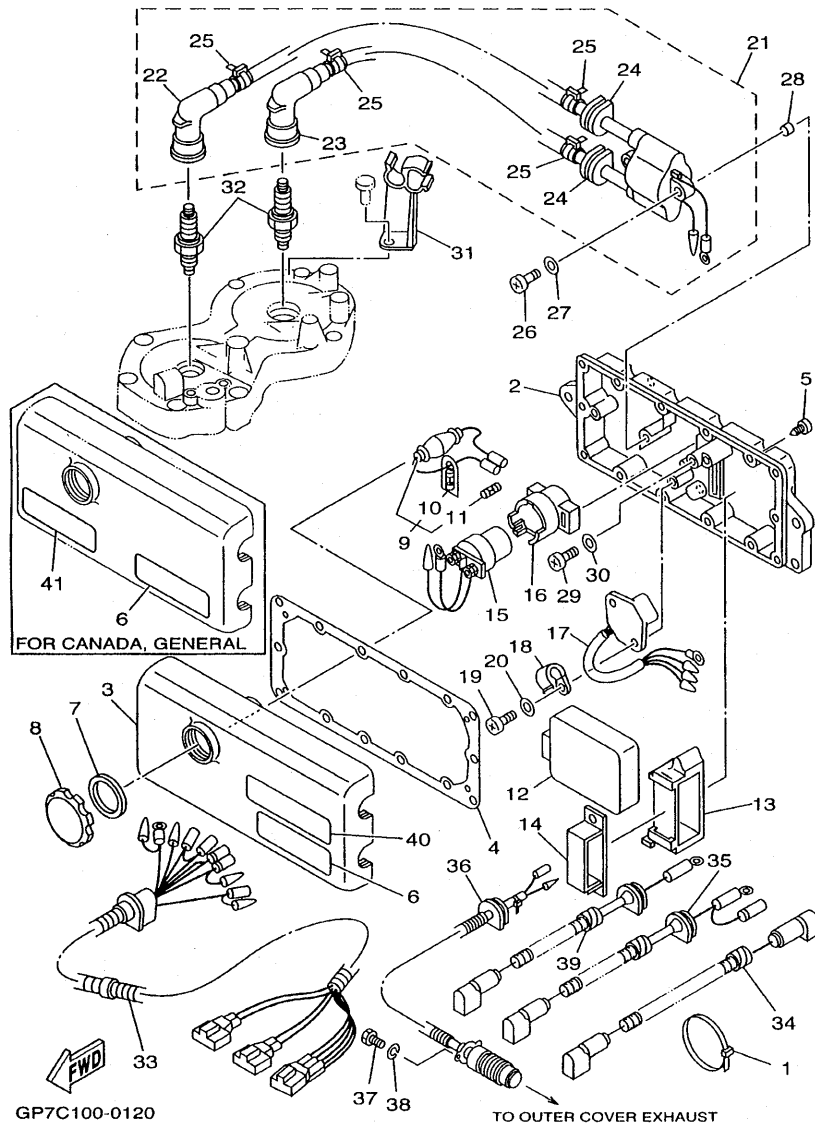


GH1A010-5112

REF. NO.	PART NO.	DESCRIPTION	USA	GENE	CAN	REMARKS
1	64X-81800-00	STARTING MOTOR ASSY	1	1	1	
2	3AJ-81809-00	.WASHER KIT	1	1	1	
3	6M6-81840-10	.BRUSH HOLDER ASSY	1	1	1	
4	11H-81844-00	.GASKET	2	2	2	
5	6M6-81826-00	.BOLT	2	2	2	
6	6M6-81850-00	.ARMATURE ASSY	1	1	1	
7	64X-81820-00	.REAR BRACKET ASSY	1	1	1	
8	6M6-81830-00	.FRONT BRACKET ASSY	1	1	1	
9	1FK-81847-00	.O-RING	1	1	1	
10	97013-08040	BOLT	1	1	1	
11	92903-08600	WASHER, PLATE	1	1	1	
12	97013-08035	BOLT	1	1	1	
13	92903-08600	WASHER, PLATE	1	1	1	
14	92990-06100	WASHER, SPRING	1	1	1	
15	95380-06700	NUT	1	1	1	
16	6M6-8183E-00	IDLE GEAR COMP	1	1	1	
17	6M6-81866-00	.WEIGHT SPRING	1	1	1	
18	6M6-81865-00	.WEIGHT HOLDER	1	1	1	
19	93440-25M08	.CIRCLIP	1	1	1	
20	93450-18M06	.CIRCLIP	1	1	1	
21	90501-14M73	SPRING, COMPRESSION	1	1	1	
22	92903-06600	WASHER, PLATE	2	2	2	

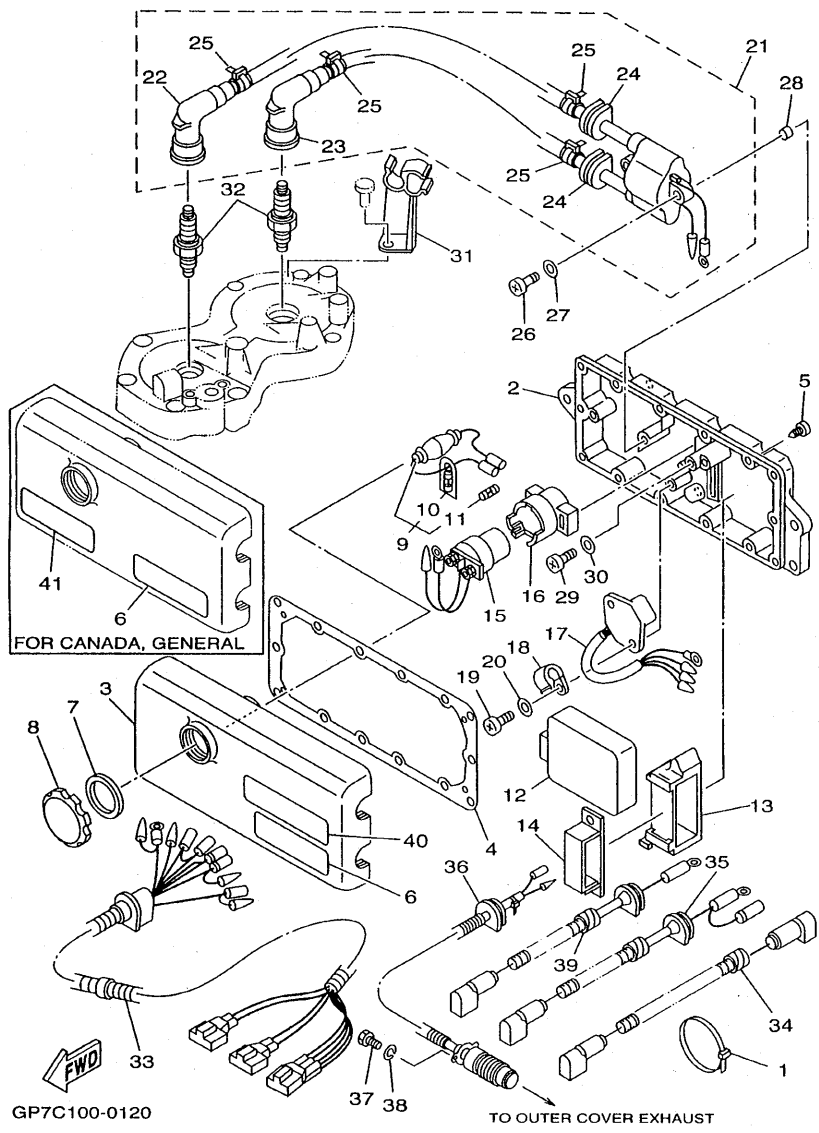


FIG. 12 ELECTRICAL 1



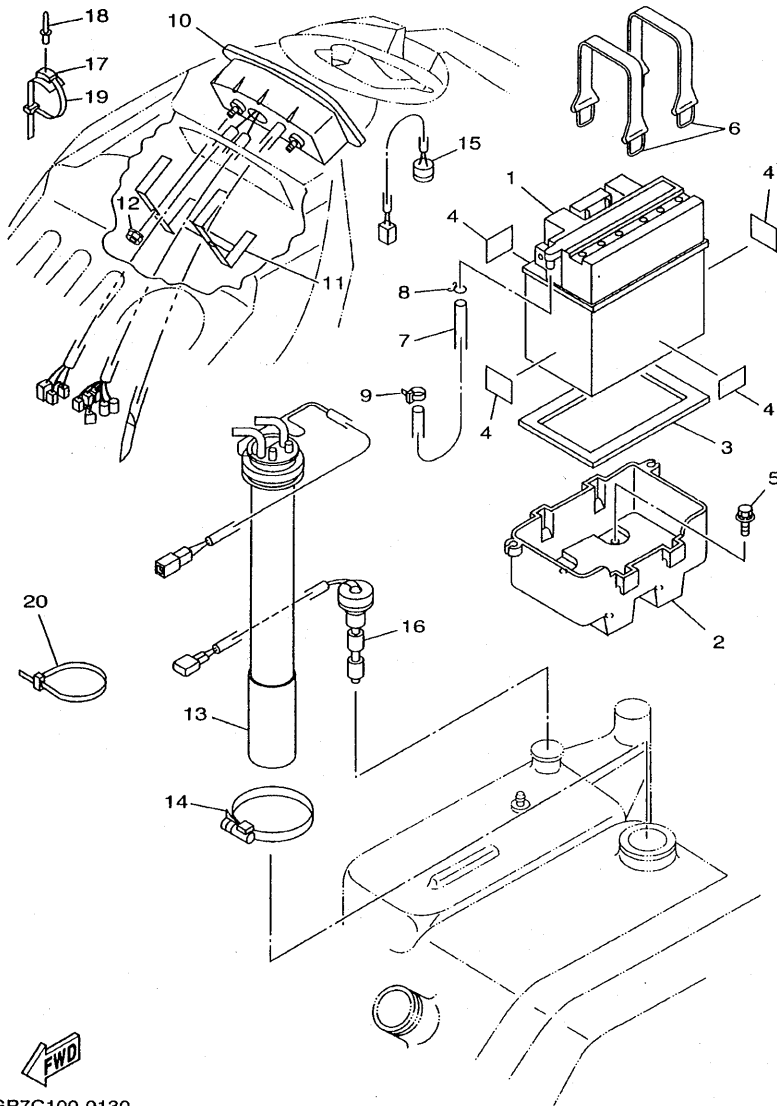
REF. NO.	PART NO.	DESCRIPTION	USA	GENE	CAN	REMARKS
1	90464-65800	CLAMP	1	1	1	YMUS
2	64X-8552A-01-8P	HOUSING	1	1	1	
3	6M6-8552E-01	COVER, CASE	1	1	1	
4	6M6-81921-00	GASKET, TERMINAL	1	1	1	
5	97780-60525	SCREW, TAPPING	14	14	14	
6	6R7-83623-40	MARK 3	1	1	1	
7	6M6-81844-00	GASKET	1	1	1	
8	6M6-8132W-00	CAP	1	1	1	
9	6K8-82150-01	FUSE HOLDER ASSY	1	1	1	
10	6G1-82151-00	.FUSE	1	1	1	
11	6K8-82159-00	.FUSE SPEAR	1	1	1	
12	64X-85540-01	C.D.I. UNIT ASSY	1	1	1	
13	64X-85546-00	BAND	1	1	1	
14	90464-06M29	CLAMP	1	1	1	
15	6G1-81941-10	STARTER RELAY ASSY	1	1	1	
16	6M6-81952-01	HOLDER, RELAY	1	1	1	
17	6M6-81960-A0	RECTIFIER & REGULATOR ASSY	1	1	1	
18	90465-06M86	CLAMP	1	1	1	
19	97880-06016	SCREW, PAN HEAD	1	1	1	
20	92990-06600	WASHER, PLATE	1	1	1	
21	64X-85570-01	IGNITION COIL ASSY	1	1	1	
22	62E-82371-11	.CAP, PLUG	1	1	1	
23	62E-82371-11	.CAP, PLUG	1	1	1	
24	90480-06M43	.GROMMET	2	2	2	
25	90465-11M10	.CLAMP	4	4	4	
26	97880-06030	SCREW, PAN HEAD	2	2	2	
27	92990-06600	WASHER, PLATE	2	2	2	

FIG. 12 ELECTRICAL 1



REF. NO.	PART NO.	DESCRIPTION	USA	GENE	CAN	REMARKS
28	90387-06M30	COLLAR	1	1	1	
29	97880-06016	SCREW, PAN HEAD	2	2	2	
30	92990-06600	WASHER, PLATE	2	2	2	
31	62T-82361-00	CLAMP, CORD	1	1	1	
32	94702-00195	PLUG, SPARK (NGK BR8HS)	2	2	2	
33	65V-82553-00	EXTENSION, WIRE LEAD	1	1	1	
34	62T-82117-01	WIRE, LEAD	1	1	1	
35	63N-82117-10	WIRE, LEAD	1	1	1	
36	64X-82560-00	THERMO SWITCH ASSY	1	1	1	
37	97095-06016	BOLT	2	2	2	
38	92995-06100	WASHER, SPRING	2	2	2	
39	6M6-82117-21	WIRE, LEAD	1	1	1	
40	66D-2179X-01	PLATE, EPA	1			
41	6R7-83623-50	MARK 3		1	1	

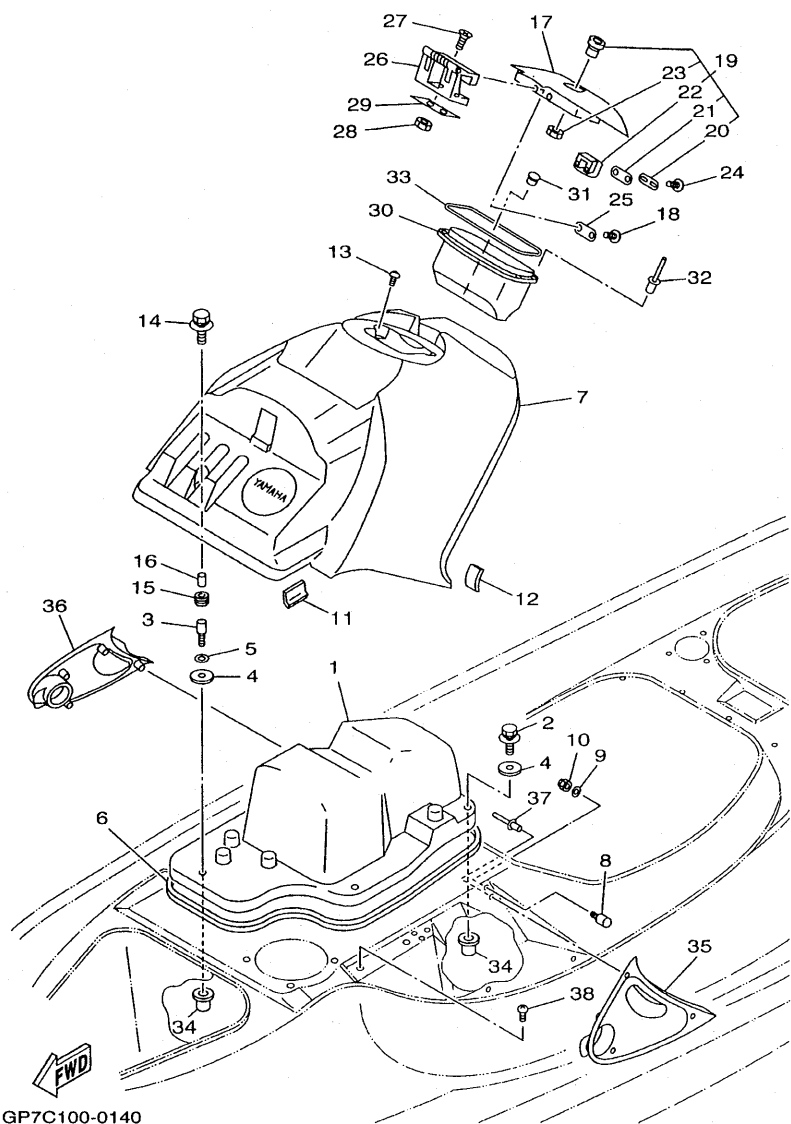
FIG. 13 ELECTRICAL 2



  
GP7C100-0130

REF. NO.	PART NO.	DESCRIPTION	USA	GENE	CAN	REMARKS
1	EU0-82110-09	BATTERY ASSY	1	1	1	
2	GP7-U8211-00	CASE, BATTERY	1	1	1	YMUS
3	EU0-U8221-00	PAD, BATTERY 1	1	1	1	YMUS
4	EU0-U8221-30	PAD, BATTERY 2	4	4	4	YMUS
5	90119-069US	BOLT, WITH WASHER	4	4	4	YMUS
6	EU0-U821D-00	BAND, BATTERY 2	2	2	2	YMUS
7	GP7-U785J-00	HOSE AIR VENT	1	1	1	YMUS
8	90467-089U1	CLIP	1	1	1	YMUS
9	90465-11829	CLAMP	1	1	1	YMUS
10	GP7-6820A-05	METER ASSY	1			
	GP7-6820A-15	METER ASSY		1	1	
11	GP7-68238-01	BRACKET, METER	1	1	1	
12	9572R-05300	NUT, FLANGE	2	2	2	YMUS
13	F0D-U824B-00	SENDER, FUEL	1	1	1	YMUS
14	90601-162U5	BAND, HOSE 62	1	1	1	YMUS
15	GP7-U8341-00	BUZZER	1	1	1	YMUS
16	GP7-U824C-02	SENDER, OIL	1	1	1	YMUS
17	90600-917U4	CLAMP COMP.	4	4	4	YMUS
18	90267-48802	RIVET, BLIND	6	6	6	YMUS
19	90464-32801	CLAMP	4	4	4	YMUS
20	90601-200U1	BAND	2	2	2	YMUS

FIG. 14 ENGINE HATCH 1

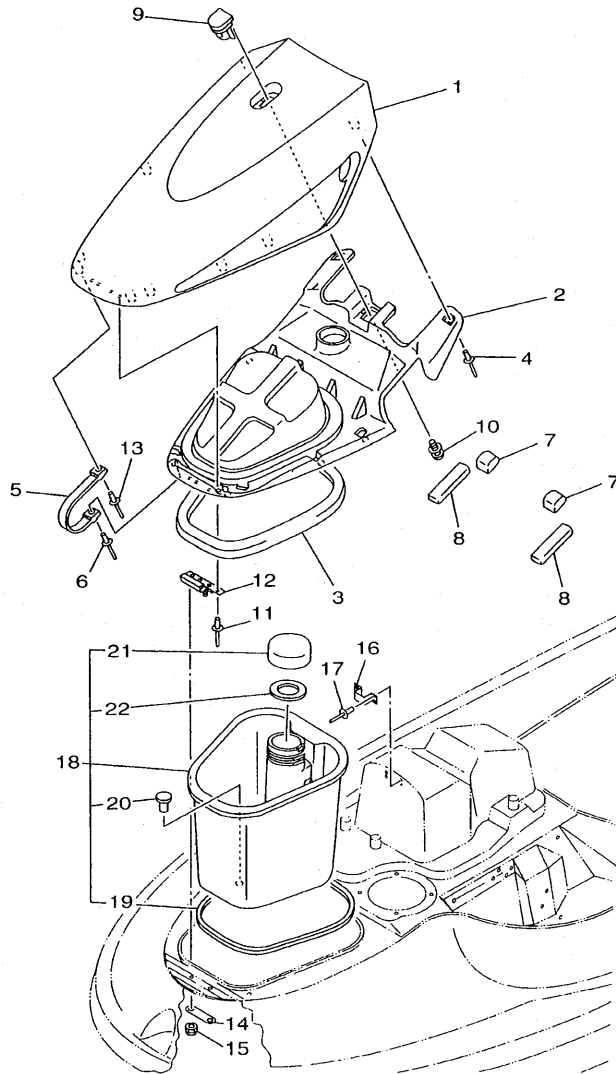


GP7C100-0140

REF. NO.	PART NO.	DESCRIPTION	USA	GENE	CAN	REMARKS
1	GP7-U516A-00	ENGINE HATCH COMP.	1	1	1	YMUS
2	90119-089U5	BOLT, WITH WASHER	4	4	4	YMUS
3	90109-08913	BOLT	1	1	1	
4	90201-099U1	WASHER, PLATE	5	5	5	YMUS
5	92990-08100	WASHER, SPRING	1	1	1	
6	GP7-U266F-00	PACKING 7	1	1	1	YMUS
7	GP7-U516N-10-P0	COVER, ENGINE HATCH	1	1	1	YMUS
8	GP7-6515G-01	DAMPER 3	2	2	2	
9	9299R-06200	WASHER	2	2	2	YMUS
10	9572R-06300	NUT, FLANGE	2	2	2	YMUS
11	GP7-U5114-00	RUBBER, WATER PROOF	2	2	2	YMUS
12	GP7-U517M-01	PAD, HATCH 1	2	2	2	YMUS
13	90160-05804	SCREW, ROUND TAPPING	2	2	2	YMUS
14	90119-06959	BOLT, WITH WASHER	1	1	1	
15	90480-13907	GROMMET	1	1	1	
16	90387-06920	COLLAR	1	1	1	
17	GP7-U517H-30-P0	LID HATCH	1	1	1	YMUS
18	98580-05520	SCREW, PAN HEAD	2	2	2	
19	GP7-6287A-00	LOCK ASSY	1	1	1	
20	GP7-62848-00	.PLATE, HOOK	1	1	1	
21	EW2-62846-00	.PLATE, HATCH LOCK	1	1	1	
22	GP7-6284J-00	.HOOK, LOCK	1	1	1	
23	GP7-62873-00	.NUT, SPECIAL	1	1	1	
24	98580-05510	SCREW, PAN HEAD	2	2	2	
25	GP7-U5148-00	PLATE, HOOD	1	1	1	YMUS
26	GP7-6517G-01	HINGE, HATCH	1	1	1	
27	98780-05020	SCREW, FLAT HEAD	2	2	2	



FIG. 15 ENGINE HATCH 2

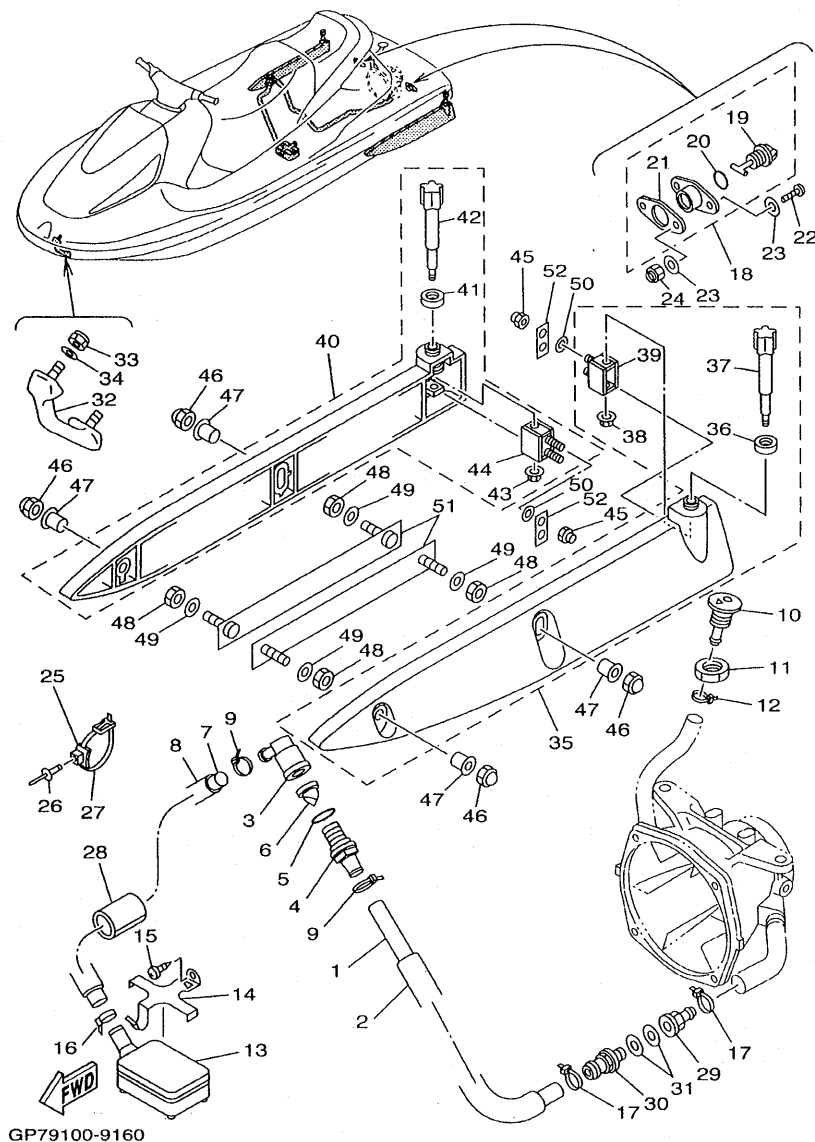


REF. NO.	PART NO.	DESCRIPTION	USA	GENE	CAN	REMARKS
1	GP7-U517B-30-P0	LID, ENGINE ROOM	1	1	1	YMUS
2	GP7-U2103-00	VENTILATOR COVER COMP., 2	1	1	1	YMUS
3	GP7-U266C-00	PACKING 4	1	1	1	YMUS
4	90267-489UN	RIVET, BLIND	8	8	8	YMUS
5	GP7-6517P-01	SUPPORT, LID	2	2	2	
6	90267-489UN	RIVET, BLIND	2	2	2	YMUS
7	GP7-U515D-02	DAMPER 1	2	2	2	YMUS
8	GP7-U515E-00	DAMPER 2	2	2	2	YMUS
9	GP7-6517C-00	LOCK, LID	1	1	1	
10	90159-059U2	SCREW, WITH WASHER	2	2	2	YMUS
11	90267-489U9	RIVET, BLIND	4	4	4	YMUS
12	GP7-6517D-10	HINGE, LID	1	1	1	
13	90267-489UP	RIVET, BLIND	2	2	2	YMUS
14	GP7-U518E-00	PRATE, HINGE LID	1	1	1	YMUS
15	9572R-06300	NUT, FLANGE	2	2	2	YMUS
16	GP7-6517F-10	HOOK, LID LOCK	1	1	1	
17	90267-489U1	RIVET, BLIND	4	4	4	YMUS
18	GP7-U475A-00	BOWLOCKER ASSY	1	1	1	YMUS
19	GP7-U266E-03	.PACKING, 6	1	1	1	YMUS
20	90605-502U1	.PLUG, BLIND	1	1	1	YMUS
21	EW2-U5912-01	.CAP, CASE	1	1	1	YMUS
22	EW2-U5913-01	.PACKING, CASE	1	1	1	YMUS



GU04100-9160

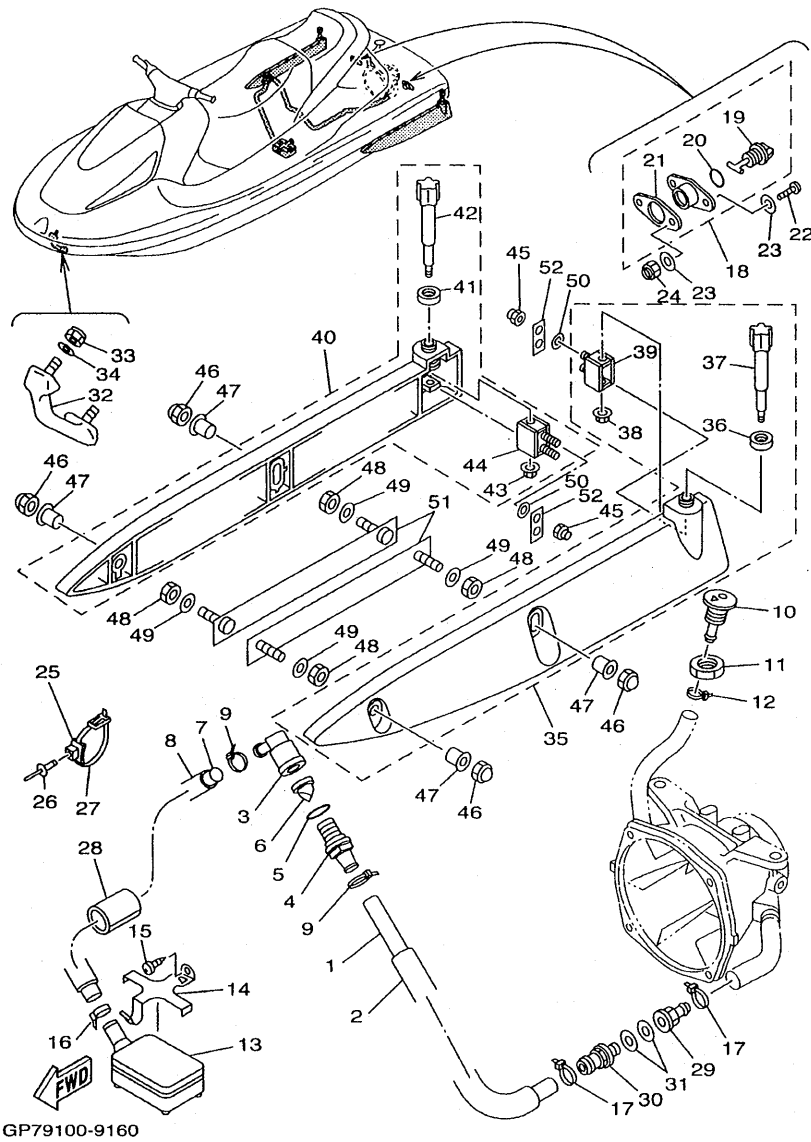
FIG. 16 HULL. DECK



GP79100-9160

REF. NO.	PART NO.	DESCRIPTION	USA	GENE	CAN	REMARKS
1	90445-19M10	HOSE	1	1	1	
2	90446-27M73	HOSE	1	1	1	
3	63M-51162-00	JOINT, HOSE	1	1	1	
4	63M-51165-00	JOINT HOSE 2	1	1	1	
5	93210-22ME5	O-RING	1	1	1	
6	63M-5316M-00	VALVE 1	1	1	1	
7	90445-19M09	HOSE	1	1	1	
8	90446-27M55	HOSE	1	1	1	
9	90465-13M11	CLAMP	2	2	2	
10	FN8-6269B-00	SPOUT	1	1	1	
11	EU0-61652-00	NUT	1	1	1	
12	90600-91755	CLIP	1	1	1	
13	GD0-U761D-00	STRAINER, BILGE	1	1	1	YMUS
14	EW2-67618-00	BASE, STRAINER BLIGE	1	1	1	
15	9778R-50112	SCREW, TAPPING	1	1	1	YMUS
16	90601-200U1	BAND	1	1	1	YMUS
17	90601-200U1	BAND	2	2	2	YMUS
18	EU0-62280-00	DRAIN PLUG ASSY	2	2	2	
19	EU0-62282-00	PLUG, DRAIN	1	1	1	
20	EU0-62283-00	O-RING	1	1	1	
21	EU0-62285-01	PACKING DRAIN (EU0)	1	1	1	
22	97880-05025	SCREW, PAN HEAD	4	4	4	
23	9299R-05200	WASHER	8	8	8	YMUS
24	9572R-05300	NUT, FLANGE	4	4	4	YMUS
25	90600-917U4	CLAMP COMP.	1	1	1	YMUS
26	90267-48802	RIVET, BLIND	1	1	1	YMUS
27	90464-32801	CLAMP	1	1	1	YMUS

FIG. 16 HULL. DECK

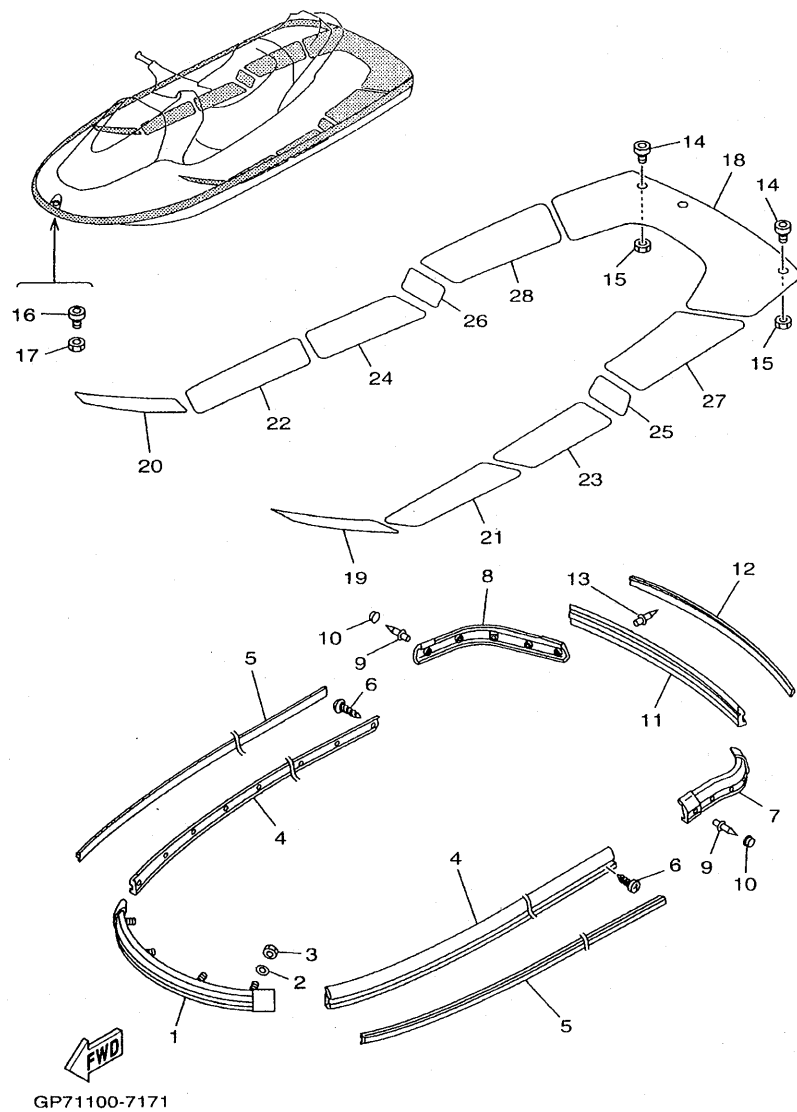


GP79100-9160

REF. NO.	PART NO.	DESCRIPTION	USA	GENE	CAN	REMARKS
28	GJ1-U7578-21	PACKING, HOSE 2	1	1	1	YMUS
29	90604-80759	CONNECTION, THRU-HULL 1/4	1	1	1	
30	90604-80775	THROUGH, HULL CONNECTION	1	1	1	
31	90430-13909	GASKET	2	2	2	
32	GP7-61624-00	BOWEYE 1 (S)	1	1	1	
33	9572R-08300	NUT, FLANGE	2	2	2	YMUS
34	9299R-08200	WASHER	2	2	2	YMUS
35	GP7-U883N-10	STABILIZER LH	1	1	1	YMUS
36	GP7-U883X-01	.NUT, LOCK 2	1	1	1	YMUS
37	GP7-U8354-05	.KNOB	1	1	1	YMUS
38	95720-05300	.NUT, FLANGE	1	1	1	
39	GP7-U8572-02	.BRACKET 2	1	1	1	YMUS
40	GP7-U883P-10	STABILIZER RH	1	1	1	YMUS
41	GP7-U883X-01	.NUT, LOCK 2	1	1	1	YMUS
42	GP7-U8354-05	.KNOB	1	1	1	YMUS
43	95720-05300	.NUT, FLANGE	1	1	1	
44	GP7-U8572-02	.BRACKET 2	1	1	1	YMUS
45	9572R-06300	NUT, FLANGE	4	4	4	YMUS
46	90179-08978	NUT	4	4	4	
47	90387-08801	COLLAR	4	4	4	YMUS
48	90170-089U1	NUT	4	4	4	YMUS
49	9299R-08200	WASHER	4	4	4	YMUS
50	9299R-06200	WASHER	2	2	2	YMUS
51	GP7-U883T-01	BRACKET,STABILIZER	2	2	2	YMUS
52	GP7-U883U-01	PACKING,STABILIZER	2	2	2	YMUS



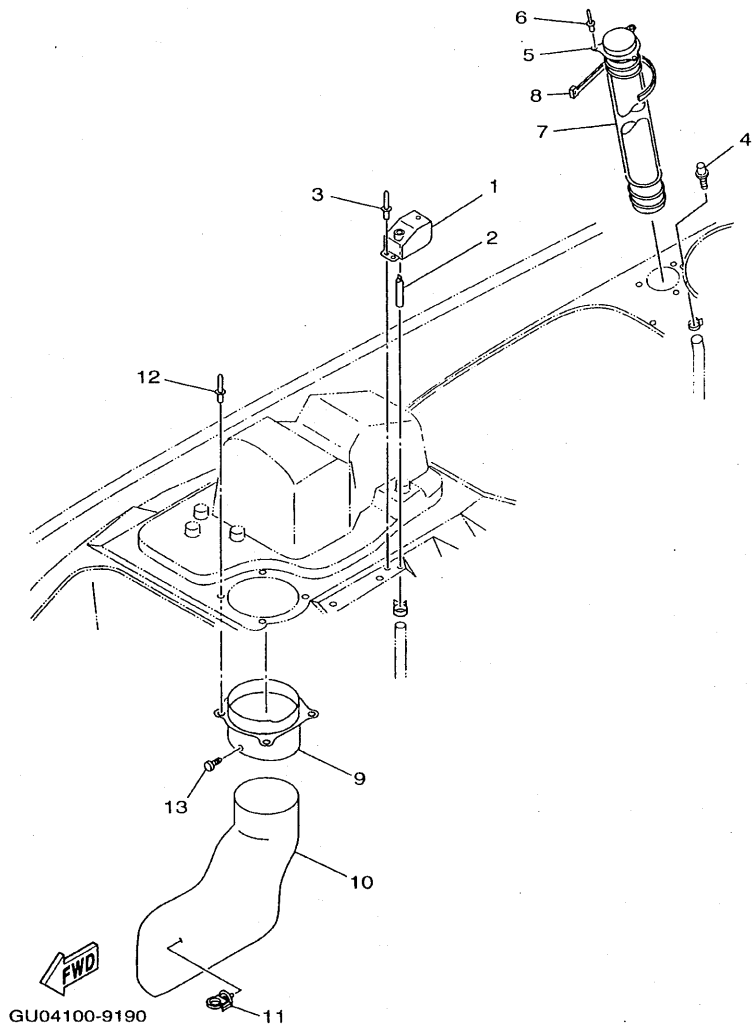
FIG. 17 GUNWALE. MAT



REF. NO.	PART NO.	DESCRIPTION	USA	GENE	CAN	REMARKS
1	GP7-U2501-20	BOW GUNWALE COMP.	1	1	1	YMUS
2	9299R-06200	WASHER	4	4	4	YMUS
3	9572R-06300	NUT, FLANGE	4	4	4	YMUS
4	GP7-U2512-10	GUNWALE, SIDE	2	2	2	YMUS
5	GP7-U2519-31	INNER, GUNWALE	2	2	2	YMUS
6	90169-059U1	SCREW, TAPPING	24	24	24	YMUS
7	GP7-U251D-20	GUNWALE, STERN 1	1	1	1	YMUS
8	GP7-U251E-20	GUNWALE, STERN 2	1	1	1	YMUS
9	90267-489US	RIVET, BLIND	10	10	10	YMUS
10	GJ3-U352E-50	MAT, BOW	10	10	10	YMUS
11	GP7-U252C-10	COVER, GUNWALE 1	1	1	1	YMUS
12	GP7-U252D-31	COVER, GUNWALE 2	1	1	1	YMUS
13	90267-489US	RIVET, BLIND	6	6	6	YMUS
14	FN8-61651-00	ROPE HOLE	2	2	2	
15	EU0-61652-00	NUT	2	2	2	
16	GH1-61651-00	ROPE HOLE	1	1	1	
17	EU0-61652-00	NUT	1	1	1	
18	GP7-U3581-11	MAT, UPPER	1	1	1	YMUS
19	GP7-U351H-10	MAT, STEP 1	1	1	1	YMUS
20	GP7-U351J-10	MAT, STEP 2	1	1	1	YMUS
21	GP7-U351K-11	MAT, STEP 3	1	1	1	YMUS
22	GP7-U351M-11	MAT, STEP 4	1	1	1	YMUS
23	GP7-U351N-11	MAT, STEP 5	1	1	1	YMUS
24	GP7-U351P-11	MAT, STEP 6	1	1	1	YMUS
25	GP7-U351R-10	MAT, STEP 7	1	1	1	YMUS
26	GP7-U351S-10	MAT, STEP 8	1	1	1	YMUS
27	GP7-U351T-11	MAT STEP 9	1	1	1	YMUS

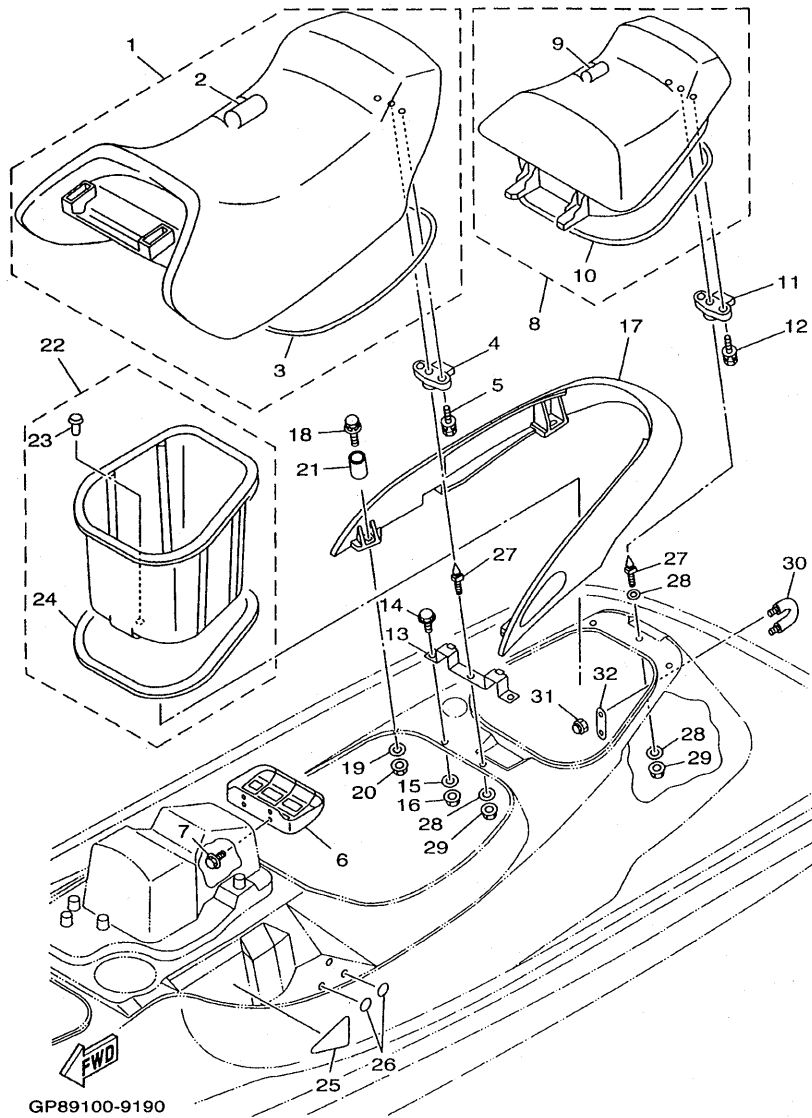


FIG. 18 VENTILATION



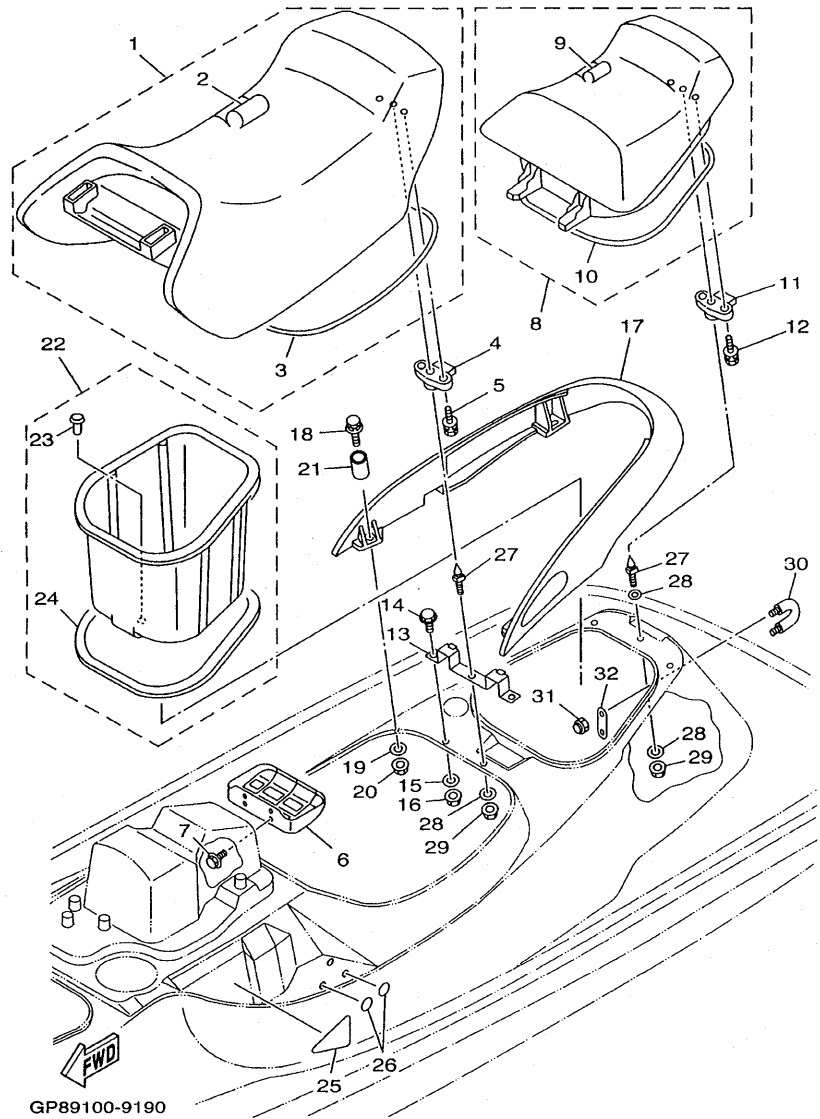
REF. NO.	PART NO.	DESCRIPTION	USA	GENE	CAN	REMARKS
1	GP7-62159-01	SOCKET, VENTILATION	1	1	1	
2	EW2-62149-00	PIPE, VENTILATION 1	1	1	1	
3	90267-48802	RIVET, BLIND	2	2	2	YMUS
4	GJ3-6215F-00	NIPPLE	1	1	1	
5	GP7-U2139-00	VENTILATOR, OUTLET	1	1	1	YMUS
6	90267-48802	RIVET, BLIND	3	3	3	YMUS
7	GP7-U213G-01	HOSE, VENTILATOR 2	1	1	1	YMUS
8	90601-200U5	BAND	1	1	1	YMUS
9	GP7-U2127-00	BASE, AIR INTAKE	1	1	1	YMUS
10	GP7-U213F-00	HOSE, VENTILATOR 1	1	1	1	YMUS
11	90464-12830	CLAMP	1	1	1	YMUS
12	90267-489UP	RIVET, BLIND	4	4	4	YMUS
13	90269-07809	RIVET	3	3	3	YMUS
-----						
-----						
-----						
-----						
-----						

FIG. 19 SEAT, UNDER LOCKER



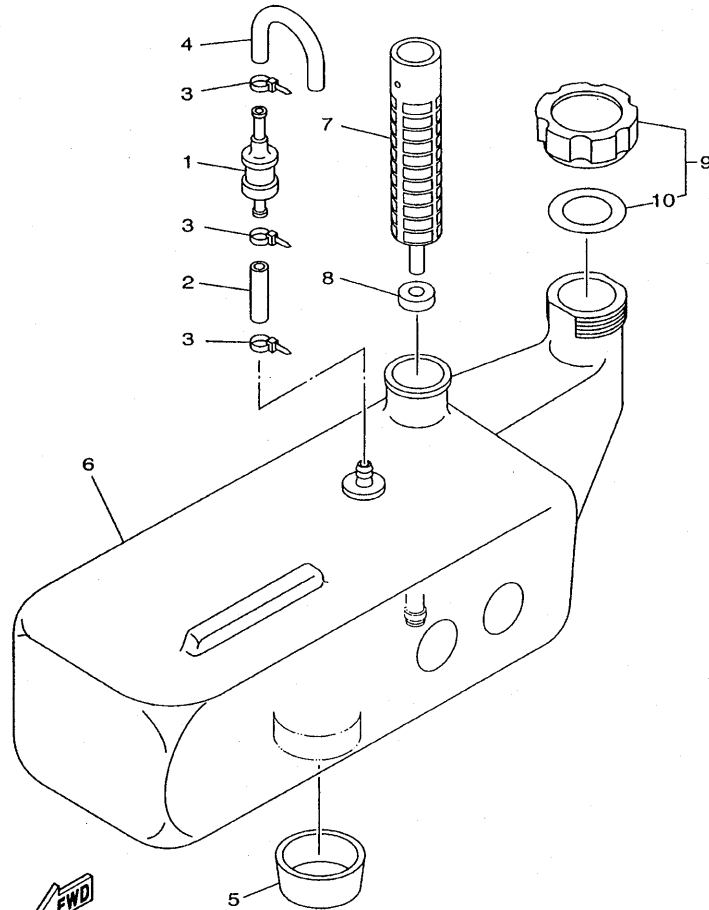
REF. NO.	PART NO.	DESCRIPTION	USA	GENE	CAN	REMARKS
1	GP7-U3710-10	DRIVER SEAT ASSY.1	1	1	1	YMUS
2	GP7-U371B-10	.COVER, SEAT 1	1	1	1	YMUS
3	GP7-U2664-00	.PACKING	1	1	1	YMUS
4	GJ3-63850-03	SEAT LOCK ASSY	1	1	1	
5	90119-069UP	BOLT, WITH WASHER	2	2	2	YMUS
6	GP7-U378C-00	STAY, SEAT 1	1	1	1	YMUS
7	90119-089U7	BOLT, WITH WASHER	4	4	4	YMUS
8	GP7-U3760-10	REAR SEAT ASSY	1	1	1	YMUS
9	GP7-U372B-10	.COVER, SEAT	1	1	1	YMUS
10	GP7-U266B-00	.PACKING 3	1	1	1	YMUS
11	GJ3-63850-03	SEAT LOCK ASSY	1	1	1	
12	90119-069UP	BOLT, WITH WASHER	2	2	2	YMUS
13	GP7-6378D-00	STAY, SEAT 2	1	1	1	
14	97080-10025	BOLT	2	2	2	
15	9299R-10200	WASHER	2	2	2	YMUS
16	9572R-10300	NUT, FLANGE	2	2	2	YMUS
17	GP7-6271B-20	GRIP, HAND	1	1	1	
18	90119-08807	BOLT, WITH WASHER	4	4	4	YMUS
19	9299R-08200	WASHER	4	4	4	YMUS
20	9572R-08300	NUT, FLANGE	4	4	4	YMUS
21	90387-08924	COLLAR	4	4	4	
22	GP7-U474A-00	UNDER LOCKER ASSY	1	1	1	YMUS
23	90605-502U1	.PLUG, BLIND	1	1	1	YMUS
24	GP7-U266D-03	.PACKING 5	1	1	1	YMUS
25	GP7-U517N-01	PAD, HATCH 2	2	2	2	YMUS
26	GU0-U884B-00	SEAL 1	3	3	3	YMUS
27	GH1-U3774-00	PIN	2	2	2	YMUS

FIG. 19 SEAT. UNDER LOCKER



REF. NO.	PART NO.	DESCRIPTION	USA	GENE	CAN	REMARKS
28	9299R-10200	WASHER	3	3	3	YMUS
29	9572R-10300	NUT, FLANGE	2	2	2	YMUS
30	GP7-61628-00	STERN EYE	1	1	1	
31	9572R-08300	NUT, FLANGE	2	2	2	YMUS
32	GP7-U4953-00	PLATE A	1	1	1	YMUS

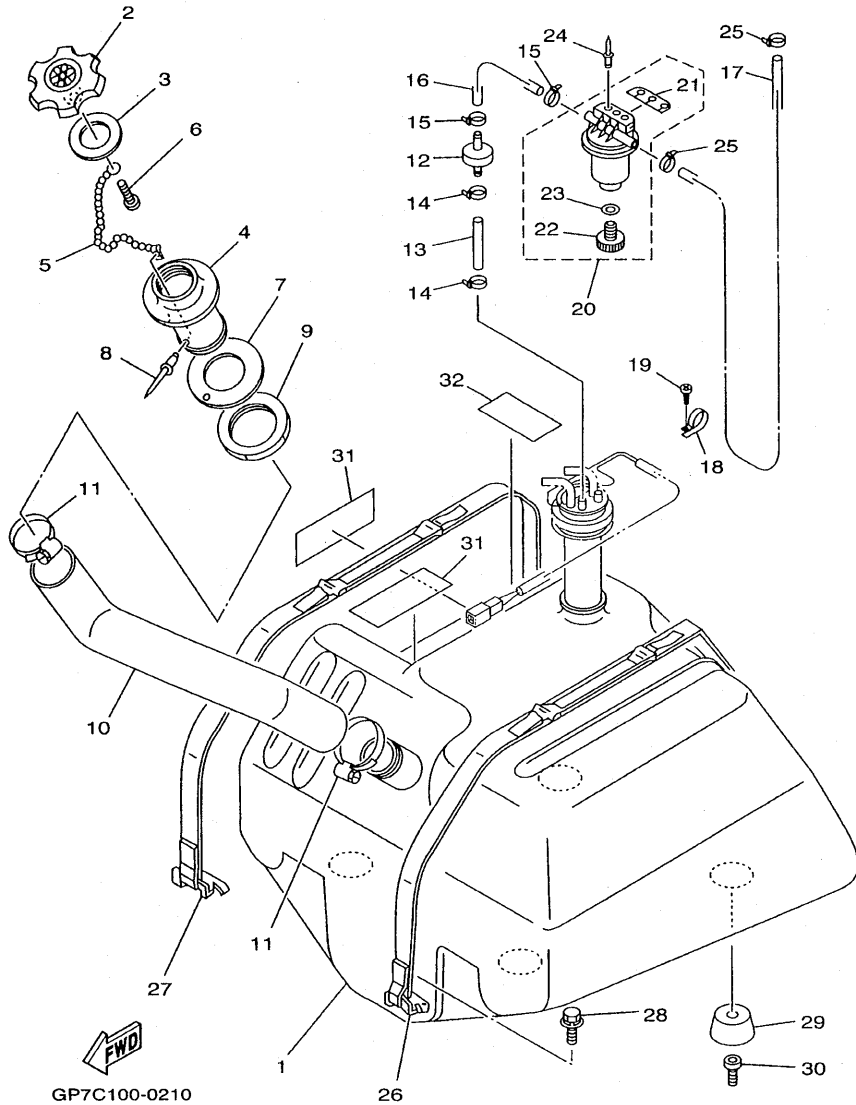
FIG. 20 OIL TANK



GP79100-9200

REF. NO.	PART NO.	DESCRIPTION	USA	GENE	CAN	REMARKS
1	FJ0-67766-00	ROLL OVER VALVE	1	1	1	
2	FJ0-U2158-00	HOSE	1	1	1	YMUS
3	90465-11829	CLAMP	3	3	3	YMUS
4	GA7-U785G-00	HOSE, AIR VENT	1	1	1	YMUS
5	GH1-U759D-00	MAT 3	1	1	1	YMUS
6	GP7-U775B-00	TANK, OIL	1	1	1	YMUS
7	6J8-13411-00	STRAINER, OIL	1	1	1	
8	6J8-13414-00	GASKET, STRAINER COVER	1	1	1	
9	GE2-6784A-00	OIL TANK CAP ASSY.	1	1	1	
10	FJ0-67841-01	.PACKING, OIL CAP	1	1	1	

FIG. 21 FUEL TANK



REF. NO.	PART NO.	DESCRIPTION	USA	GENE	CAN	REMARKS
1	GU2-U7711-00	TANK, FUEL	1	1	1	YMUS
2	GP7-U7831-00	CAP, FUEL FILLER	1	1	1	YMUS
3	GP7-U7832-00	PACKING	1	1	1	YMUS
4	GP7-U7833-00	SOCKET	1	1	1	YMUS
5	GP7-U7835-00	CHAIN BALL	1	1	1	YMUS
6	90169-049U1	TAPPING SCREW	1	1	1	YMUS
7	GP7-U7834-00	PACKING FUEL FILLER	1	1	1	YMUS
8	90267-329UR	RIVET, BLIND	1	1	1	YMUS
9	GP7-U783F-00	NUT, FUEL FILLER	1	1	1	YMUS
10	GP8-U7844-00	HOSE	1	1	1	YMUS
11	90601-155U4	BAND, HOSE 55	2	2	2	YMUS
12	EU0-67767-31	CHECK VALVE	1	1	1	
13	GP7-U785H-00	HOSE, AIR VENT 3	1	1	1	YMUS
14	90465-11829	CLAMP	2	2	2	YMUS
15	90465-11829	CLAMP	2	2	2	YMUS
16	GP7-U7856-00	HOSE, AIR VENT 3	1	1	1	YMUS
17	GP7-U785G-00	HOSE, AIR VENT	1	1	1	YMUS
18	90600-918U3	CLIP, NYLON 18	1	1	1	YMUS
19	9778R-60116	SCREW, TAPPING	1	1	1	YMUS
20	EW2-62140-00	FILTER, VENT ASSY	1	1	1	
21	EW2-62142-00	.PLATE, FILTER	1	1	1	
22	70R-24543-00	.PLUG, DRAIN	1	1	1	
23	70R-24489-00	.O-RING	1	1	1	
24	90267-489U1	RIVET, BLIND	2	2	2	YMUS
25	90465-11829	CLAMP	2	2	2	YMUS
26	GJ1-67743-01	BELT, TANK 1	1	1	1	
27	GJ8-67743-01	BELT, TANK 1	1	1	1	

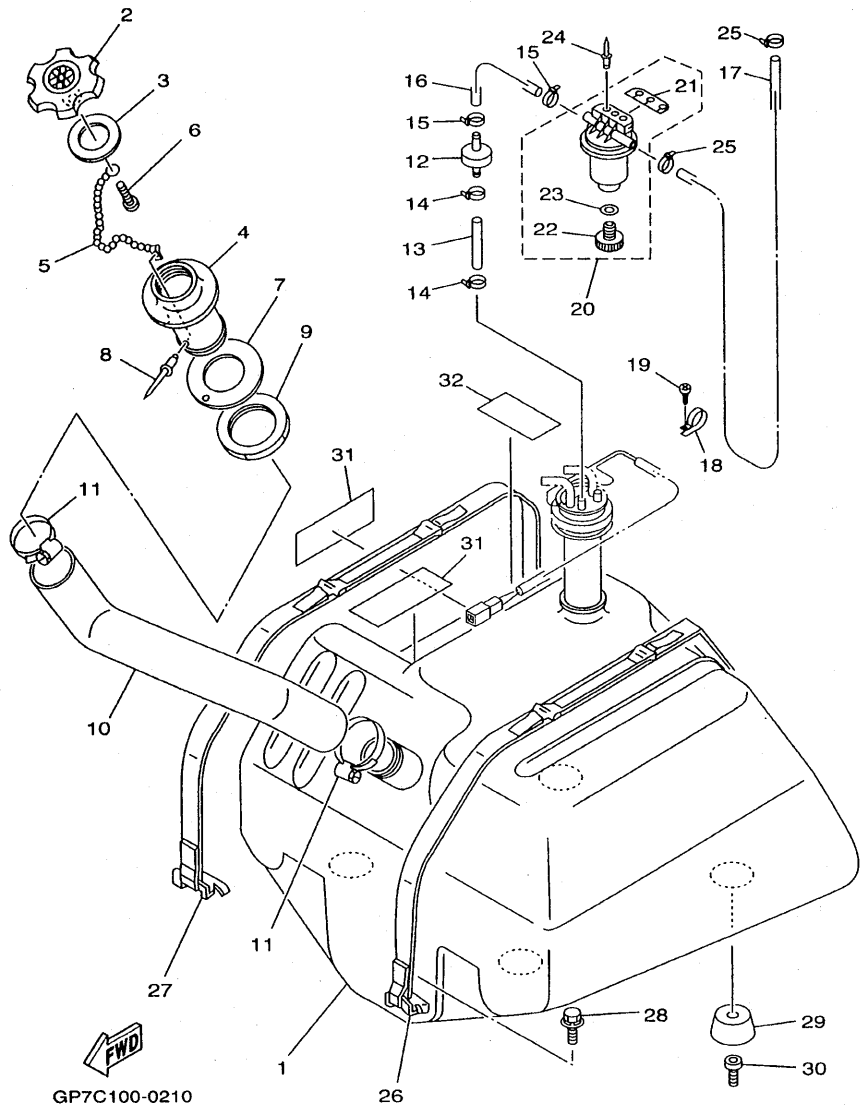
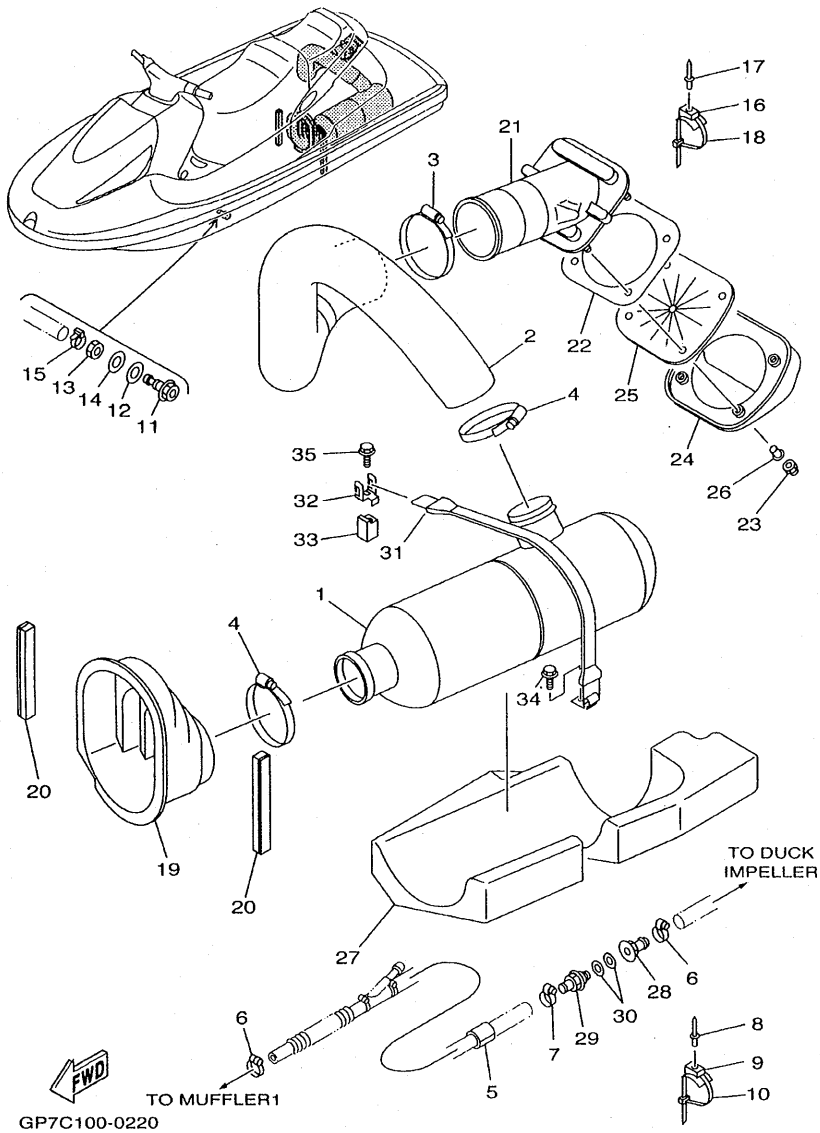


FIG. 21 FUEL TANK

REF. NO.	PART NO.	DESCRIPTION	USA	GENE	CAN	REMARKS
28	90119-089U7	BOLT, WITH WASHER	4	4	4	YMUS
29	GH1-U782B-00	DAMPER, FUEL TANK	4	4	4	YMUS
30	90110-089U1	BOLT, HEXAGON SOCKET HEAD	4	4	4	YMUS
31	GJ1-U759B-00	MAT 1	2	2	2	YMUS
32	GJ1-U759C-00	MAT 2	1	1	1	YMUS
-----						
-----						
-----						
-----						
-----						
-----						
-----						
-----						
-----						

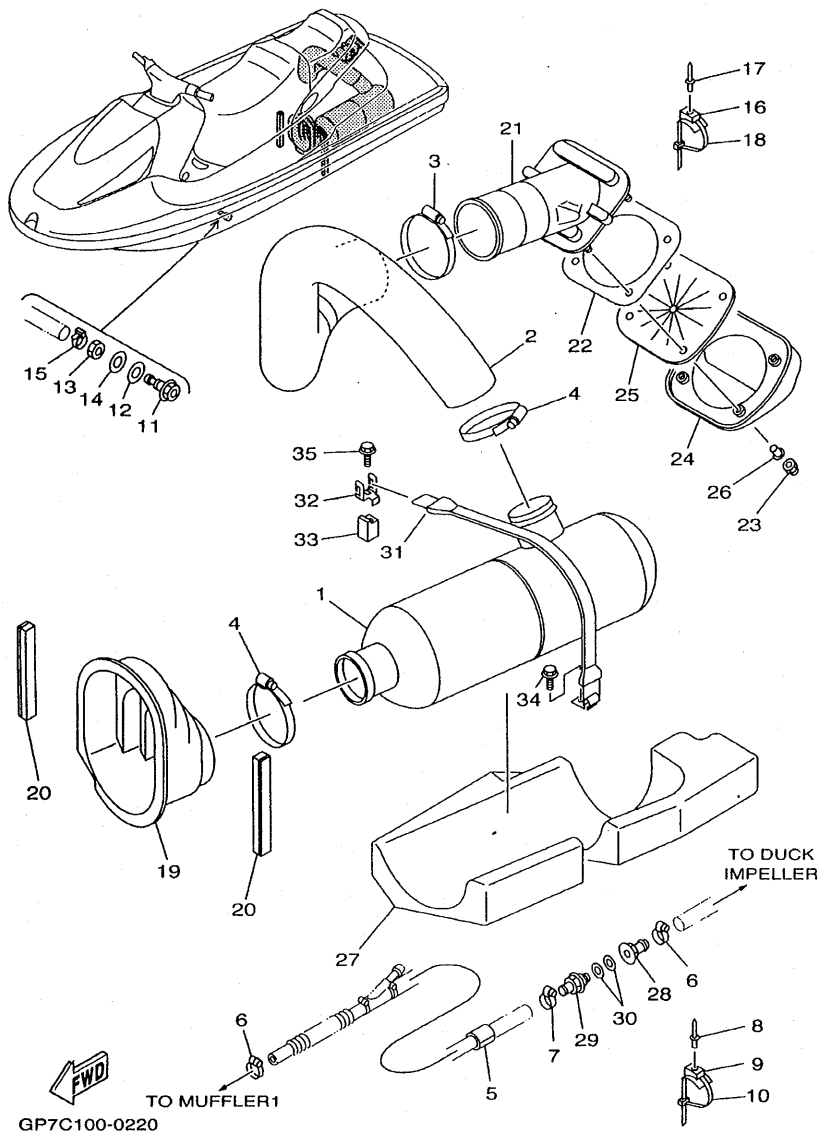


FIG. 22 EXHAUST 2



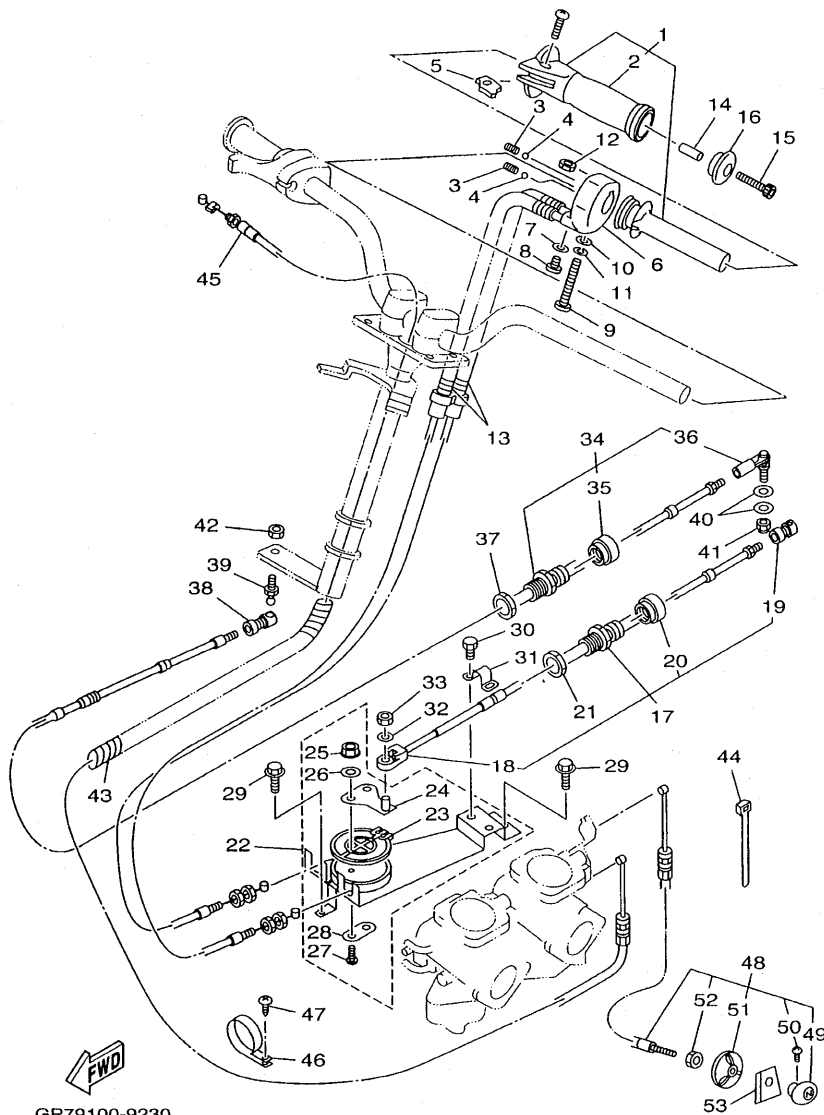
REF. NO.	PART NO.	DESCRIPTION	USA	GENE	CAN	REMARKS
1	GP7-U7550-00	WATER LOCK COMP.	1	1	1	YMUS
2	GP7-U7555-00	HOSE, EXHAUST	1	1	1	YMUS
3	90601-195UD	BAND, HOSE 95	1	1	1	YMUS
4	90601-170UG	BAND, HOSE 70	2	2	2	YMUS
5	GJ1-U7578-21	PACKING, HOSE 2	1	1	1	YMUS
6	90601-118UF	BAND, HOSE 18	2	2	2	YMUS
7	90601-110UC	BAND, HOSE 11	1	1	1	YMUS
8	90267-48802	RIVET, BLIND	1	1	1	YMUS
9	90600-917U4	CLAMP COMP.	1	1	1	YMUS
10	90464-32801	CLAMP	1	1	1	YMUS
11	GJ1-6753B-02	PILOT, WATER	1	1	1	
12	GP3-U1438-00	PACKING	1	1	1	YMUS
13	GP7-61652-00	NUT	1	1	1	
14	9299R-14200	WASHER	1	1	1	YMUS
15	90465-11829	CLAMP	2	2	2	YMUS
16	90600-917U4	CLAMP COMP.	1	1	1	YMUS
17	90267-489U7	RIVET, BLIND	1	1	1	YMUS
18	90464-32801	CLAMP	1	1	1	YMUS
19	GP7-64536-00	SEAL, BULKHEAD 1	1	1	1	
20	GP7-U4537-00	SEAL, BULKHEAD 2	2	2	2	YMUS
21	GP7-U7560-00	EXHAUST, THRU-HALL COMP.	1	1	1	YMUS
22	GP8-U7525-00	PACKING	1	1	1	YMUS
23	90179-08978	NUT	4	4	4	
24	GP7-6751F-00	COVER, EXHAUST	1	1	1	
25	GP8-6751G-00	VALVE, EXHAUST	1	1	1	
26	90387-08802	COLLAR	4	4	4	YMUS
27	GP7-U8921-00	BASE FLOATATION 1	1	1	1	YMUS

FIG. 22 EXHAUST 2



REF. NO.	PART NO.	DESCRIPTION	USA	GENE	CAN	REMARKS
28	90604-80795	THROUGH HULL CONNECTION 3/8-12	1	1	1	
29	90604-80796	THROUGH HULL CONNECTION 3/8-12	1	1	1	
30	90430-16910	GASKET	2	2	2	
31	GJ3-U7570-00	C HOOK COMP.	1	1	1	YMUS
32	EW2-U5772-00	HOOK A	1	1	1	YMUS
33	GP7-U755C-00	SPACER 2	1	1	1	YMUS
34	90119-069UJ	BOLT, WITH WASHER	1	1	1	YMUS
35	90119-069UP	BOLT, WITH WASHER	1	1	1	YMUS
-----						
-----						
-----						
-----						
-----						
-----						
-----						
-----						
-----						
-----						

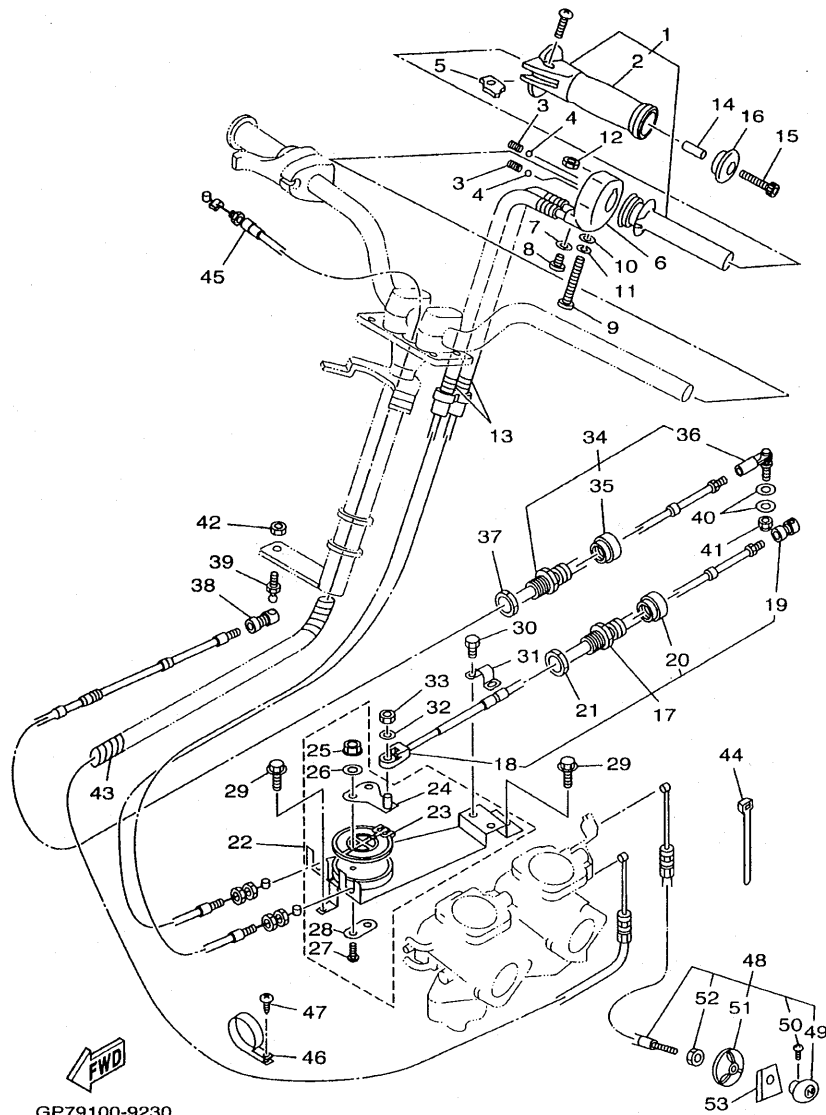
FIG. 23 CONTROL CABLE



GP79100-9230

REF. NO.	PART NO.	DESCRIPTION	USA	GENE	CAN	REMARKS
1	GP7-U157A-00	GRIP HANDLE ASSY.	1	1	1	YMUS
2	GP7-U155C-00	.GRIP,HANDLE	1	1	1	YMUS
3	GP7-U152P-00	SPRING	1	1	1	YMUS
4	GP7-U152R-00	BALL	1	1	1	YMUS
5	GP7-U151M-00	LEVER ASSY	1	1	1	YMUS
6	GP7-U152M-00	HOUSING ASSY	1	1	1	YMUS
7	92990-04600	WASHER, PLATE	1	1	1	
8	98980-04010	SCREW, BIND	1	1	1	
9	97880-06065	SCREW, PAN HEAD	1	1	1	
10	92990-06600	WASHER, PLATE	1	1	1	
11	92990-06100	WASHER, SPRING	1	1	1	
12	GH1-U143B-00	NUT,SPECIAL	1	1	1	YMUS
13	GP7-U153D-00	CABLE,NOZZLE CONTROL 2	2	2	2	YMUS
14	90387-05800	COLLAR	1	1	1	YMUS
15	90110-05908	BOLT, HEXAGON SOCKET HEAD	1	1	1	
16	GP7-U155F-00	GRIP, END	1	1	1	YMUS
17	GP7-U153E-00	CABLE,NOZZLE CONTROL 3	1	1	1	YMUS
18	GH1-U046C-00	.END,CABLE	1	1	1	YMUS
19	EU0-U1461-30	.SHAFT, JOINT BALL	1	1	1	YMUS
20	EU0-67267-10	.CONNECTOR, CABLE	1	1	1	
21	EU0-62241-30	NUT, DRAIN 1	1	1	1	
22	GP7-U153J-00	REMOCON,NOZZLE 2	1	1	1	YMUS
23	GP7-U153N-00	.WHEEL	1	1	1	YMUS
24	GP7-U153R-00	.ARM ASSY.	1	1	1	YMUS
25	95720-05300	.NUT, FLANGE	2	2	2	
26	92990-05300	.WASHER, INTERNAL TOOTH	2	2	2	
27	97880-05020	.SCREW, PAN HEAD	2	2	2	

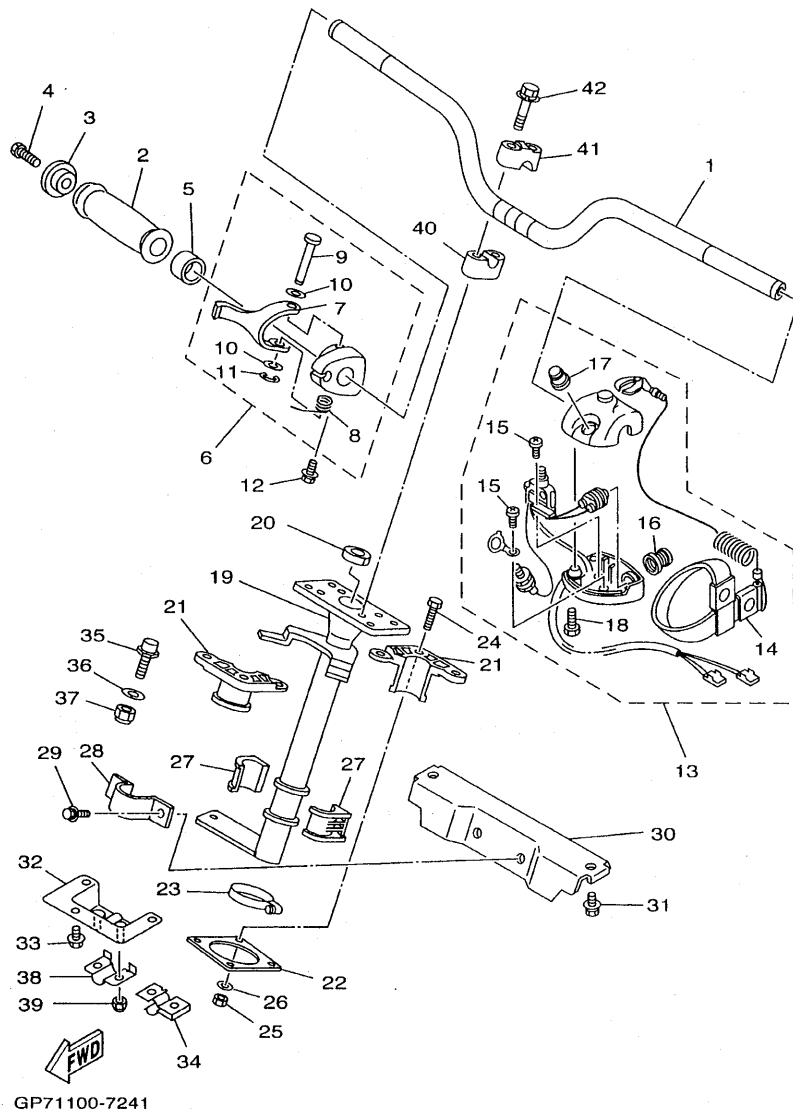
FIG. 23 CONTROL CABLE



GP79100-9230

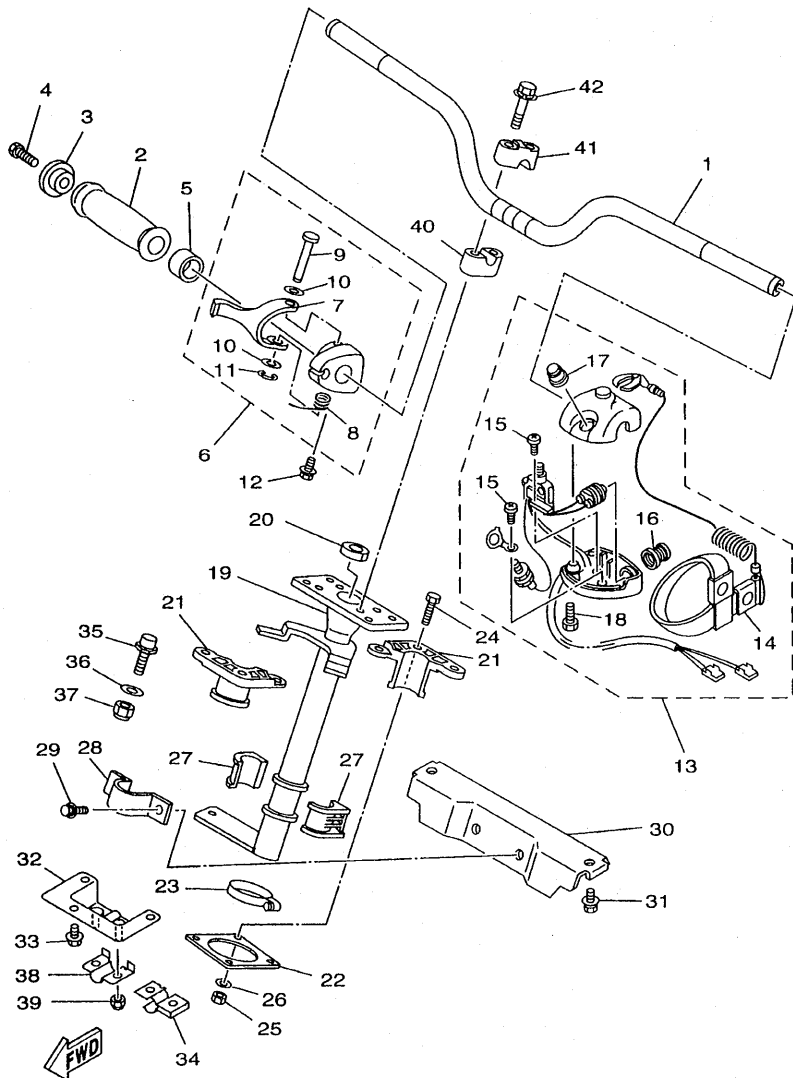
REF. NO.	PART NO.	DESCRIPTION	USA	GENE	CAN	REMARKS
28	GP7-U153P-00	.WASHER	1	1	1	YMUS
29	90119-069UJ	BOLT, WITH WASHER	2	2	2	YMUS
30	9708R-06012	BOLT	2	2	2	
31	GH1-U043H-00	CLAMP, CABLE	1	1	1	YMUS
32	9299R-06200	WASHER	1	1	1	YMUS
33	9578R-06300	NUT, FLANGE	1	1	1	YMUS
34	GP7-U1481-00	CABLE, STEERING	1	1	1	YMUS
35	GK5-67267-10	.CONNECTOR, CABLE	1	1	1	
36	GP8-U1461-T0	.STUD, JOINT BALL	1	1	1	YMUS
37	EU0-62241-30	NUT, DRAIN 1	1	1	1	
38	GK5-U146F-00	SHAFT, JOINT BALL	1	1	1	YMUS
39	EU0-U1461-01	STOOD, JOINT BALL	1	1	1	YMUS
40	90201-06906	WASHER, PLATE	2	2	2	
41	95380-06700	NUT	1	1	1	
42	9572R-06300	NUT, FLANGE	1	1	1	YMUS
43	90699-38U03	SPI-WRAP 25	1	1	1	YMUS
44	90601-200U1	BAND	1	1	1	YMUS
45	GP7-U7252-00	CABLE, THROTTLE	1	1	1	YMUS
46	90600-918U3	CLIP, NYLON 18	1	1	1	YMUS
47	9778R-60116	SCREW, TAPPING	1	1	1	YMUS
48	GP7-U7242-01	CABLE, CHOKE	1	1	1	YMUS
49	GP7-U724C-00	.KNOB, CHOKE	1	1	1	YMUS
50	GP7-U724D-00	.SCREW, KNOB	1	1	1	YMUS
51	GP7-U724E-00	.NUT, COMPRESSION	1	1	1	YMUS
52	GA9-U724F-01	.NUT	1	1	1	YMUS
53	GJ1-6824D-01	PLATE, CHOKE	1	1	1	

FIG. 24 STEERING 1



REF. NO.	PART NO.	DESCRIPTION	USA	GENE	CAN	REMARKS
1	GJ1-U1552-03	HANDLE	1	1	1	YMUS
2	GP7-U155D-00	GRIP, HANDLE	1	1	1	YMUS
3	GP7-U155F-00	GRIP, END	1	1	1	YMUS
4	90110-05908	BOLT, HEXAGON SOCKET HEAD	1	1	1	
5	90560-22281	SPACER	1	1	1	
6	GJ1-67250-01	THROTTLE LEVER ASSY	1	1	1	
7	GJ1-67255-00	.LEVER, THROTTLE	1	1	1	
8	EW2-67256-00	.SPRING	1	1	1	
9	EW2-67257-01	.SHAFT	1	1	1	
10	EW2-67258-01	.WASHER	2	2	2	
11	EW2-67259-01	.E RING	1	1	1	
12	90159-059U2	SCREW, WITH WASHER	1	1	1	YMUS
13	GP7-68310-00	SWITCH BOX ASSY	1	1	1	
14	EW2-68348-00	.LANYARD, STOP SWITCH	1	1	1	
15	97880-03008	.SCREW, PAN HEAD	2	2	2	
16	FK7-68312-02	.STOP BUTTON COMP	1	1	1	
17	FK7-68313-01	.START BUTTON COMP	1	1	1	
18	97880-05025	.SCREW, PAN HEAD	2	2	2	
19	GP7-61541-00	COLUMN, STEERING	1	1	1	
20	GH1-U1469-00	PACKING, STEERING COLUMN	1	1	1	YMUS
21	GH1-6141B-00	BEARING,COLUMN	2	2	2	
22	GH1-U143C-30	SEAL, RUBBER	1	1	1	YMUS
23	90601-142U6	BAND, HOSE 42	1	1	1	YMUS
24	9708R-06030	BOLT	4	4	4	YMUS
25	9572R-06300	NUT, FLANGE	4	4	4	YMUS
26	9299R-06200	WASHER	4	4	4	YMUS
27	GH1-6141D-01	BEARING,STEERING	2	2	2	

FIG. 24 STEERING 1

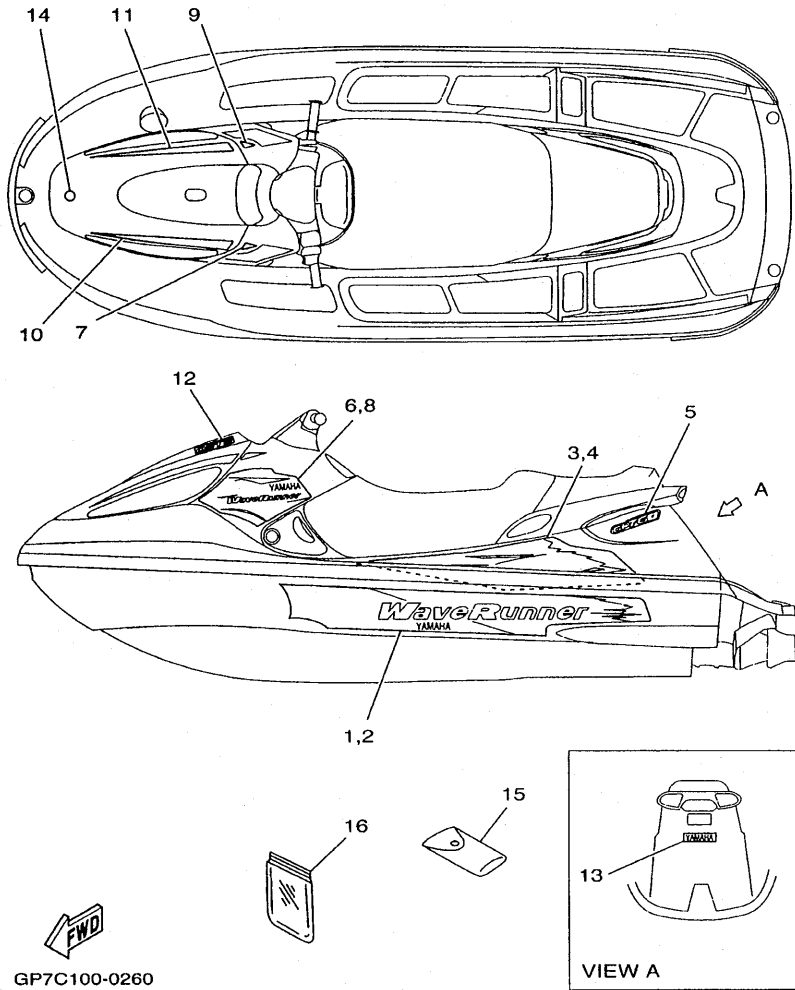


GP71100-7241

REF. NO.	PART NO.	DESCRIPTION	USA	GENE	CAN	REMARKS
28	EU0-61588-00	JOINT, BEARING	1	1	1	
29	90119-089U7	BOLT, WITH WASHER	2	2	2	YMUS
30	GP7-61433-00	BRACKET, BEARING	1	1	1	
31	90119-089U7	BOLT, WITH WASHER	2	2	2	YMUS
32	GP7-61467-00	BRACKET, STOPPER CABLE	1	1	1	
33	90119-069UH	BOLT, WITH WASHER	3	3	3	YMUS
34	GP7-6146K-01	HOLDER, STOPPER	1	1	1	
35	FN8-6131B-00	PIN, STOPPER	1	1	1	
36	9299R-10200	WASHER	1	1	1	YMUS
37	9572R-10300	NUT, FLANGE	1	1	1	YMUS
38	GP7-61468-00	STOPPER, CABLE	1	1	1	
39	9572R-06300	NUT, FLANGE	2	2	2	YMUS
40	EU0-23814-01	HOLDER, HANDLE LOWER	2	2	2	
41	EU0-23814-30	HOLDER, HANDLE UPPER	2	2	2	
42	90119-089UM	BOLT, WITH WASHER	4	4	4	YMUS



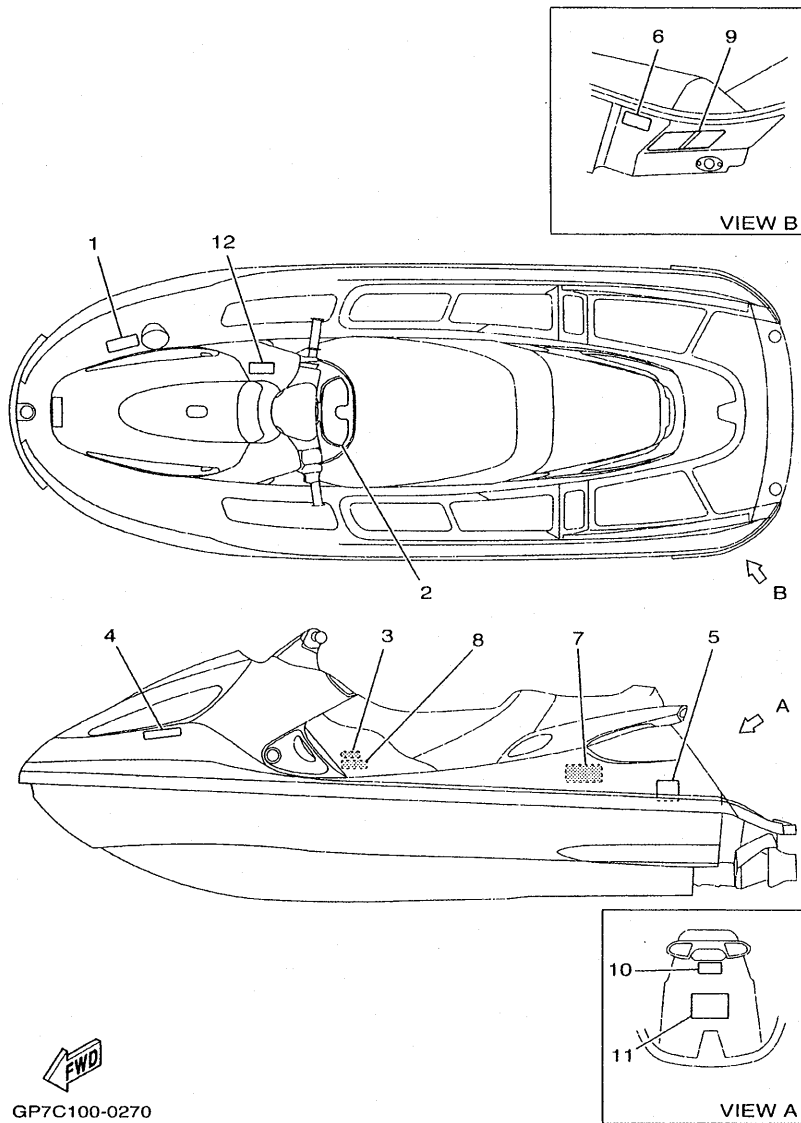
FIG. 26 GRAPHIC TOOL



REF. NO.	PART NO.	DESCRIPTION	USA	GENE	CAN	REMARKS
1	GP7-U417B-20	GRAPHIC 1	1	1	1	YMUS (LH)
2	GP7-U417C-20	GRAPHIC 2	1	1	1	YMUS (RH)
3	GP7-U417D-20	GRAPHIC 3	1	1	1	YMUS (LH)
4	GP7-U417E-20	GRAPHIC 4	1	1	1	YMUS (RH)
5	GP7-U417F-20	GRAPHIC 5	2	2	2	YMUS
6	GP7-U417H-20	GRAPHIC 7	1	1	1	YMUS (LH)
7	GP7-U417H-30	GRAPHIC 7	1	1	1	YMUS (LH)
8	GP7-U417J-20	GRAPHIC 8	1	1	1	YMUS (RH)
9	GP7-U417J-30	GRAPHIC 8	1	1	1	YMUS (RH)
10	GP7-U417K-20	GRAPHIC 9	1	1	1	YMUS (LH)
11	GP7-U417L-20	GRAPHIC B	1	1	1	YMUS (RH)
12	GP7-U417M-10	GRAPHIC C	1	1	1	YMUS (LH)
13	GP7-U4122-01	EMBLEM 2	1	1	1	YMUS
14	GU2-U411H-00	EMBLEM, TUNING FORK	1	1	1	YMUS
15	EU0-65986-00	TOOL SET	1	1	1	
16	EU0-65901-01	TOOL BAG	1	1	1	

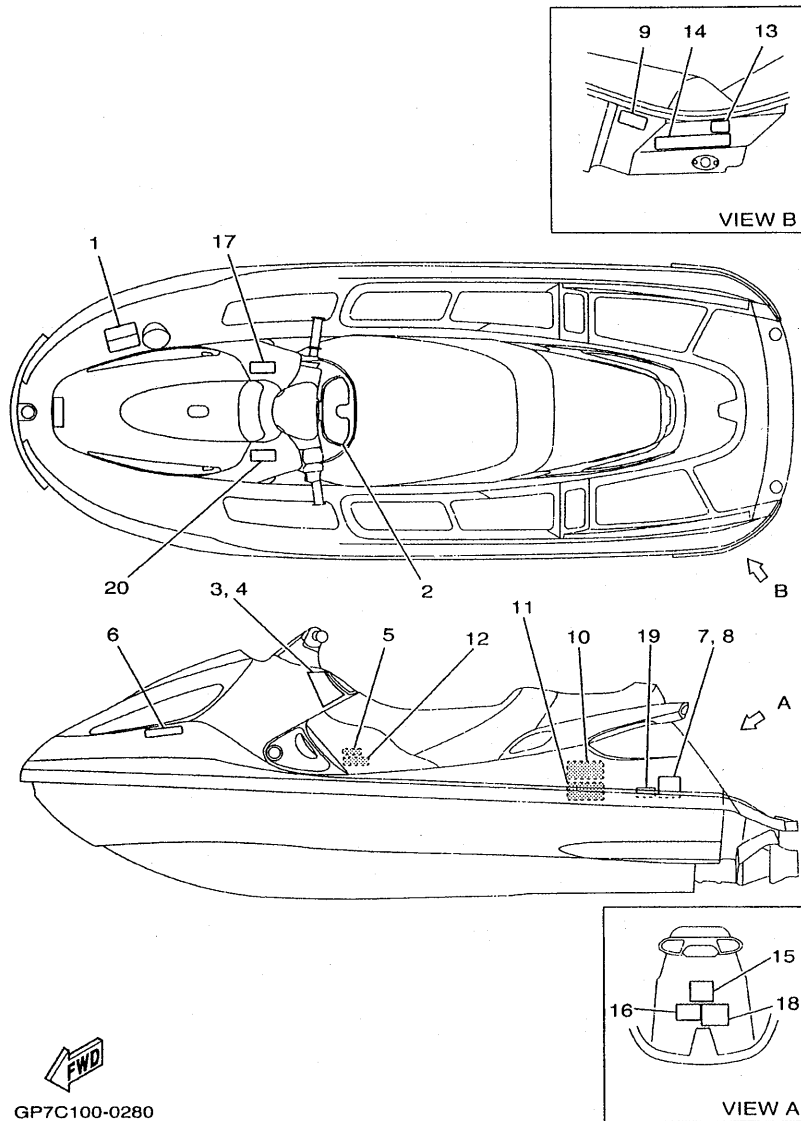


FIG. 27 IMPORTANT LABELS



REF. NO.	PART NO.	DESCRIPTION	USA	GENE	CAN	REMARKS
1	F0D-U416B-00	LABEL, WARNING	1			YMUS
2	GP8-U416C-00	LABEL, WARNING 1	1			YMUS
3	GA9-U416F-00	LABEL, WARNING 4	1			(RH) YMUS
4	GJ1-U418C-30	LABEL, CAUTION	1			YMUS
5	GA9-U418C-00	LABEL, CAUTION	1			YMUS
6	GA9-U418G-00	LABEL, CAUTION	1			YMUS
7	EU0-U418B-00	LABEL, CAUTION	1			(RH) YMUS
8	GU0-U418J-00	LABEL, CAUTION	1			(RH) YMUS
9	GH3-U411A-10	LABEL, CAUTION	1			YMUS
10	GJ1-U418C-00	LABEL, CAUTION	1			YMUS
11	GP7-U411A-10	LABEL, CAUTION	1			YMUS
12	GJ3-U415E-12	LABEL, WARNING	1			YMUS

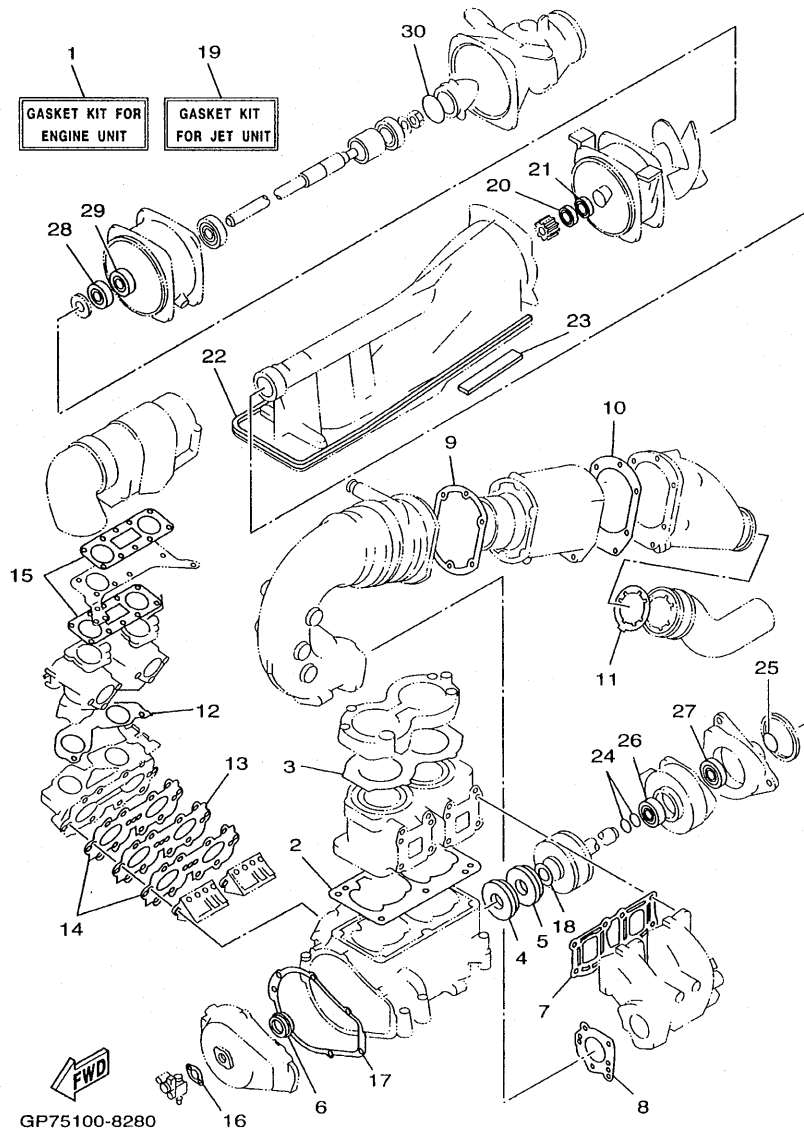
FIG. 28 IMPORTANT LABELS 2



REF. NO.	PART NO.	DESCRIPTION	USA	GENE	CAN	REMARKS
1	F0D-U416B-10	LABEL, WARNING		1	1	YMUS
2	GP8-U416C-10	LABEL, WARNING 1		1	1	YMUS
3	GP8-U416C-20	LABEL, WARNING 1		1	1	(LH) YMUS
4	GP8-U416C-30	LABEL, WARNING 1		1	1	(RH) YMUS
5	GA9-U416F-10	LABEL, WARNING 4		1	1	(RH) YMUS
6	GJ1-U418C-40	LABEL, CAUTION		1	1	YMUS
7	GJ3-U416H-00	LABEL,WARNING(FRANCE)		1		(RH) YMUS
8	GA9-U418C-10	LABEL, CAUTION		1	1	(LH) YMUS
9	GA9-U418G-10	LABEL, CAUTION		1	1	YMUS
10	EU0-U418B-00	LABEL,CAUTION		1	1	(RH) YMUS
11	EU0-U418B-10	LABEL, CAUTION		1	1	(RH) YMUS
12	GU0-U418J-10	LABEL,CAUTION		1	1	(RH) YMUS
13	GA9-U418F-00	LABEL, RIGHTING		1	1	YMUS
14	GA9-U416G-10	LABEL, WARNING		1	1	YMUS
15	GJ1-U418C-10	LABEL, CAUTION		1	1	YMUS
16	GP7-U418H-11	LABEL,CAUTION(CLEAT)		1	1	YMUS
17	GJ3-U415E-12	LABEL, WARNING		1	1	YMUS
18	GJ1-U415F-10	LABEL, WARNING		1	1	YMUS
19	GJ3-U419E-00	LABEL 4			1	YMUS
20	GJ3-U415E-20	LABEL, WARNING		1	1	YMUS

GP7C100-0280

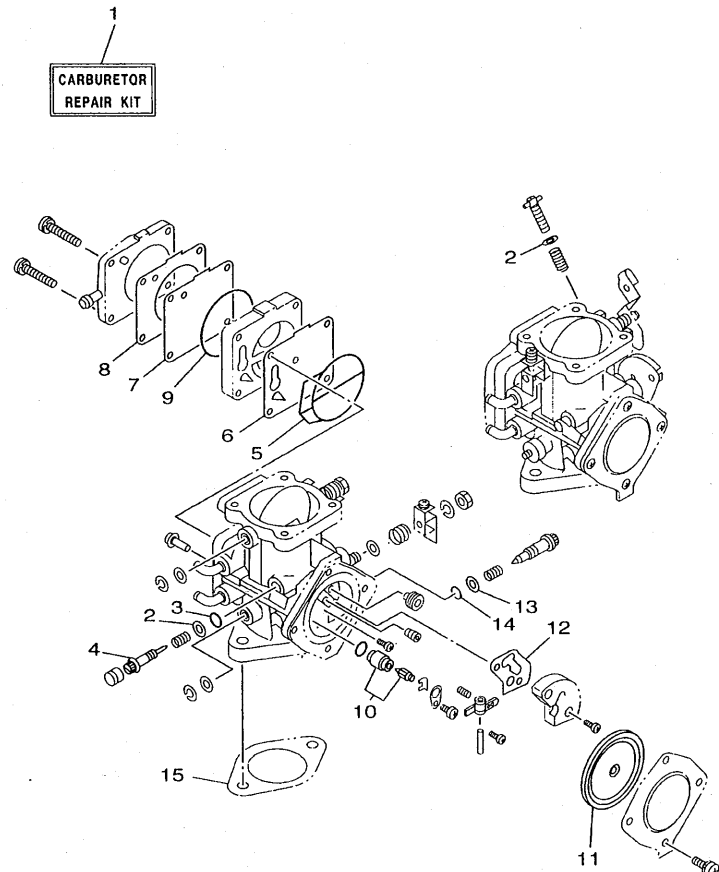
FIG. 29 REPAIR KIT 1



REF. NO.	PART NO.	DESCRIPTION	USA	GENE	CAN	REMARKS
1	65V-W0001-00	GASKET KIT FOR ENGINE UNIT	1	1	1	
2	6M6-11351-A2	.GASKET, CYLINDER	1	1	1	
3	64X-11181-00	.GASKET, CYLINDER HEAD 1	1	1	1	
4	93102-36M33	.OIL SEAL	1	1	1	
5	93101-36M46	.OIL SEAL	1	1	1	
6	93103-32M01	.OIL SEAL	1	1	1	
7	62T-14613-00	.GASKET, EXHAUST PIPE	1	1	1	
8	64X-14749-00	.GASKET, MUFFLER DAMPER 2	1	1	1	
9	62T-41114-01	.GASKET, EXHAUST OUTER COVER	1	1	1	
10	64X-41124-00	.GASKET, EXHAUST OUTER COVER	1	1	1	
11	64X-14623-00	.GASKET, EXHAUST PIPE	1	1	1	
12	64X-13556-00	.GASKET, MANIFOLD	1	1	1	
13	62T-13624-00	.PLATE, REED VALVE	1	1	1	
14	62T-13566-00	.GASKET	2	2	2	
15	64X-13674-00	.GASKET, AIR COOLER COVER 1	2	2	2	
16	6R8-13116-A0	.GASKET, PUMP CASE	1	1	1	
17	6M6-81365-A0	.GASKET, HOLE COVER	1	1	1	
18	62T-45127-00	.SEAL	1	1	1	
19	65V-W0001-20	GASKET KIT FOR JET UNIT	1	1	1	
20	93102-17M49	.OIL SEAL	1	1	1	
21	93102-17M50	.OIL SEAL	1	1	1	
22	6R8-51367-01	.FELT, PACKING	2	2	2	
23	63N-51368-00	.FELT, PACKING	2	2	2	
24	93210-17MA4	.O-RING	2	2	2	
25	93210-35M72	.O-RING	1	1	1	
26	93101-25M55	.OIL SEAL	1	1	1	
27	93101-25M56	.OIL SEAL	1	1	1	



FIG. 30 REPAIR KIT 2



GK5C100-9280

REF. NO.	PART NO.	DESCRIPTION	USA	GENE	CAN	REMARKS
1	65V-W0093-00	CARBURETOR REPAIR KIT	1	1	1	
2	812-14235-00	.WASHER, NEEDLE	3	3	3	
3	812-14147-00	.O-RING	2	2	2	
4	6K8-14946-10	.METERING NEEDLE	2	2	2	
5	6K8-14564-00	.O-RING	2	2	2	
6	6K8-24411-20	.DIAPHRAGM	2	2	2	
7	6K8-24421-10	.VALVE, CHECK	2	2	2	
8	6K8-24431-20	.GASKET, FUEL PUMP 1	2	2	2	
9	6K8-14563-00	.O-RING	2	2	2	
10	61X-14916-15	.NEEDLE	2	2	2	
11	6R7-14541-00	.DIAPHRAGM, PUMP	2	2	2	
12	6K8-14536-11	.GASKET	2	2	2	
13	822-14235-00	.WASHER, NEEDLE	2	2	2	
14	583-14561-00	.O-RING	2	2	2	
15	64X-14398-00	.GASKET	2	2	2	

NUMERICAL INDEX

PARTNO.	GRID NO.	PARTNO.	GRID NO.	PARTNO.	GRID NO.	PARTNO.	GRID NO.	PARTNO.	GRID NO.	PARTNO.	GRID NO.
65A-G5331-00	C-3	GP7-U266B-00	D-5	GP7-U417E-20	E-3	GP7-U724E-00	D-13	F0D-U824B-00	C-10	6R3-13183-00	B-10
65A-R1129-00	B-15	GP7-U266C-00	C-13	GP7-U417F-20	E-3	GA9-U724F-01	D-13	GP7-U824C-02	C-10	62T-13200-13	B-10
65A-R1326-00	C-2	GP7-U266D-03	D-5	GP7-U417H-20	E-3	GP7-U7242-01	D-13	GP7-U8341-00	C-10	6J8-13411-00	D-7
65U-R1348-01	B-15	GP7-U266E-03	C-13	GP7-U417H-30	E-3	GD0-U7249-00-05	C-3	GP7-U8354-05	C-15	6J8-13414-00	D-7
65A-R1381-00	B-15	GP7-U266F-00	C-11	GP7-U417J-20	E-3	GD0-U7249-00-10	C-3	GP7-U8572-02	C-15	6E5-13552-00	B-7
GH1-U043H-00	D-13	GP7-U2664-00	D-5	GP7-U417J-30	E-3	GP7-U7252-00	D-13	GP7-U883N-10	C-15	64X-13555-00-8P	B-6
GH1-U046C-00	D-12	GU0-U273B-00	C-4	GP7-U417K-20	E-3	EU0-U7354-00-01	B-3	GP7-U883P-10	C-15	64X-13556-00	B-6
GP7-U142A-11	E-2	GP7-U351H-10	D-2	GP7-U417L-20	E-3	EU0-U7354-00-03	B-3	GP7-U883T-01	C-15		
GP7-U142K-00	E-2	GP7-U351J-10	D-2	GP7-U417M-10	E-3	EU0-U7354-00-05	B-3	GP7-U883U-01	C-15	62T-13566-00	B-6
GH1-U143B-00	D-12	GP7-U351K-11	D-2	EU0-U418B-00	E-4	EU0-U7354-00-10	B-3	GP7-U883X-01	C-15		
GH1-U143C-30	D-14	GP7-U351M-11	D-2		E-5	EU0-U7354-00-20	B-3	GU0-U884B-00	D-5	64X-13610-01	B-6
GP3-U1438-00	D-10	GP7-U351N-11	D-2	EU0-U418B-10	E-5	EU0-U7354-00-30	B-3	GP7-U8921-00	D-10	62T-13624-00	B-6
GH3-U146E-00	C-2	GP7-U351P-11	D-2	GA9-U418C-00	E-4	GP8-U7525-00	D-10	65V-W0001-00	E-6		
GK5-U146F-00	D-13	GP7-U351R-10	D-2	GA9-U418C-10	E-5	GP7-U755C-00	D-11	65V-W0001-20	E-6	64X-13674-00	B-7
EU0-U1461-01	D-13	GP7-U351S-10	D-2	GJ1-U418C-00	E-4	GP7-U7550-00	D-10	64X-W0004-01	B-6		
EU0-U1461-30	D-12	GP7-U351T-11	D-2	GJ1-U418C-10	E-5	GP7-U7555-00	D-10	65V-W0090-01-8P	B-2	47X-14133-00	B-8
GP8-U1461-T0	D-13	GP7-U351U-11	D-3	GJ1-U418C-30	E-4	GP7-U7560-00	D-10	65V-W0093-00	E-8	812-14147-00	B-8
GH1-U1469-00	D-14	GJ3-U352E-50	D-2	GJ1-U418C-40	E-5	GJ3-U7570-00	D-11	64X-11111-00-94	B-2		
GP7-U1481-00	D-13	GP7-U3581-11	D-2	GA9-U418F-00	E-5	GJ1-U7578-11	C-4	64X-11181-00	B-2	64X-14162-00	B-9
GP7-U151M-00	D-12	GP7-U371B-10	D-5	GA9-U418G-00	E-4	GJ1-U7578-21	C-15		E-6	439-14186-00	B-8
GP7-U152M-00	D-12	GP7-U3710-10	D-5	GA9-U418G-10	E-5		D-10	64X-11311-00-94	B-2	3G2-1423A-77	B-8
GP7-U152P-00	D-12	GP7-U372B-10	D-5	GP7-U418H-11	E-5	GJ1-U759B-00	D-9	6E5-11325-00	B-2	3G2-14231-26	B-8
GP7-U152R-00	D-12	GP7-U3760-10	D-5	GU0-U418J-00	E-4	GJ1-U759C-00	D-9	6M6-11351-A2	B-2	830-14231-23	B-8
GP7-U153D-00	D-12	GP7-U377B-20	C-12	GU0-U418J-10	E-5	GH1-U759D-00	D-7		E-6	812-14235-00	B-8
GP7-U153E-00	D-12	GP7-U377C-20	C-12	GJ3-U419E-00	E-5	GD0-U761D-00	C-14	64X-11400-01	B-4		E-8
GP7-U153J-00	D-12	GH1-U3774-00	D-5	GP7-U4537-00	D-10	GU2-U7711-00	D-8	6M6-11412-00	B-4	822-14235-00	B-9
GP7-U153N-00	D-12	GP7-U378C-00	D-5	GP7-U474A-00	D-5	GP7-U775B-00	D-7	6M6-11422-00	B-4		E-8
GP7-U153P-00	D-13	GH3-U411A-10	E-4	GP7-U475A-00	C-13	EU0-U7817-00	B-14	6M6-11431-10	B-4	64X-14243-00	B-9
GP7-U153R-00	D-12	GP7-U411A-10	E-4	GP7-U4953-00	D-6	GH1-U782B-00	D-9	6M6-11442-01	B-4	62T-14251-10	B-2
GP7-U155C-00	D-12	GU2-U411H-00	E-3	GP7-U5114-00	C-11	GP7-U783F-00	D-8	65U-11515-00	B-4	63M-14253-00	B-9
GP7-U155D-00	D-14	GP7-U4122-01	E-3	GP7-U5148-00	C-11	GP7-U7831-00	D-8	64X-11603-00	B-4	64X-14255-00	B-7
GP7-U155F-00	D-12	GJ3-U415E-12	E-4	GP7-U515D-02	C-13	GP7-U7832-00	D-8	64X-11604-00	B-4	64X-14283-00	B-7
	D-14		E-5	GP7-U515E-00	C-13	GP7-U7833-00	D-8	64X-11605-00	B-4	64X-14284-01-8P	B-6
GJ1-U1552-03	D-14	GJ3-U415E-20	E-5	GP7-U516A-00	C-11	GP7-U7834-00	D-8	64X-11631-00-91	B-4	65V-14301-02	B-8
GP7-U157A-00	D-12	GJ1-U415F-10	E-5	GP7-U516N-10-P0	C-11	GP7-U7835-00	D-8	62T-11633-00	B-4	65V-14302-02	B-8
GP7-U2103-00	C-13	F0D-U416B-00	E-4	GP7-U516P-00	C-12	GP8-U7844-00	D-8	64X-11635-00	B-4	64X-14398-00	B-9
GP7-U2127-00	D-4	F0D-U416B-10	E-5	GP7-U517B-30-P0	C-13	GA7-U785G-00	D-7	64X-11636-00	B-4		E-8
GP7-U213F-00	D-4	GP8-U416C-00	E-4	GP7-U517H-30-P0	C-11	GP7-U785G-00	D-8	64X-11651-01	B-4	62T-14419-00	B-7
GP7-U213G-01	D-4	GP8-U416C-10	E-5	GP7-U517M-01	C-11	GP7-U785H-00	D-8	82M-11685-00	B-4	62T-14435-00	B-7
GP7-U2139-00	D-4	GP8-U416C-20	E-5	GP7-U517N-01	D-5	GP7-U785J-00	C-10	63M-12577-00	B-11	62T-14451-00	B-7
FJ0-U2158-00	D-7	GP8-U416C-30	E-5	GP7-U517S-00	C-12	GP7-U7856-00	D-8	65V-12578-00	B-12	6K8-14471-10	B-8
GP7-U2501-20	D-2	GA9-U416F-00	E-4	GP7-U518E-00	C-13	GP7-U8K31-02	C-3	63M-12580-00	B-13	6K8-14503-02	B-8
GP7-U251D-20	D-2	GA9-U416F-10	E-5	GP7-U519D-02	C-12	GP7-U8K33-00	C-4	64X-12581-00	B-12	6M6-14503-00	B-8
GP7-U251E-20	D-2	GA9-U416G-10	E-5	EW2-U5772-00	D-11	GP7-U8K35-00	C-4	64X-12582-00	B-12	6K8-14521-10	B-8
GP7-U2512-10	D-2	GJ3-U416H-00	E-5	EW2-U5912-01	C-13	EU0-U821D-00	C-10	63M-12590-00	B-13	6M6-14521-01	B-8
GP7-U2519-31	D-2	GP7-U417B-20	E-3	EW2-U5913-01	C-13	GP7-U8211-00	C-10	63M-12590-20	B-13	6K8-14523-11	B-9
GP7-U252C-10	D-2	GP7-U417C-20	E-3	GP7-U724C-00	D-13	EU0-U8221-00	C-10	6R8-13116-A0	B-10	6K8-14527-11	B-8
GP7-U252D-31	D-2	GP7-U417D-20	E-3	GP7-U724D-00	D-13	EU0-U8221-30	C-10		E-6	64X-14527-00	B-6

NUMERICAL INDEX

PARTNO.	GRID NO.	PARTNO.	GRID NO.	PARTNO.	GRID NO.	PARTNO.	GRID NO.	PARTNO.	GRID NO.	PARTNO.	GRID NO.
6K8-14536-11	B-9	6R7-24412-01	B-9	65V-51321-00	C-2	GP7-6378D-00	D-5	6M6-81830-00	C-7	90110-05908	D-14
	E-8	6M6-24413-01	B-8	65V-51323-00	C-3	GJ3-63850-03	D-5	6M6-81840-10	C-7	90110-089U8	D-9
6R7-14541-00	B-9	6K8-24421-10	B-8	63N-51333-02-94	C-3	GP7-64536-00	D-10	11H-81844-00	C-7	90116-08M59	B-11
	E-8		E-8	62T-51348-00	C-2	GP7-6515G-01	C-11	6M6-81844-00	C-8	90116-08M60	B-6
6R7-14542-00	B-9	65U-24421-00	B-8	6R8-51367-01	B-15	GP7-6517C-00	C-13	1FK-81847-00	C-7	90119-05M02	B-7
6K8-14547-01	B-9	6K8-24431-20	B-8		E-6	GP7-6517D-10	C-13	6M6-81850-00	C-7	90119-06829	C-2
583-14561-00	B-9		E-8	63N-51368-00	C-3	GP7-6517F-10	C-13	6M6-81865-00	C-7	90119-069UB	C-2
	E-8	6K8-24452-10	B-8		E-6	GP7-6517G-01	C-11	6M6-81866-00	C-7	90119-069UC	C-3
6K8-14563-00	B-8	70R-24489-00	D-8	61X-51673-00	C-2	GP7-6517P-01	C-13	6M6-81921-00	C-8	90119-069UD	B-15
	E-8	65U-24492-00	B-8	61L-5169A-00	B-6	EU0-65901-01	E-3	6G1-81941-10	C-8	90119-069UH	D-15
6K8-14564-00	B-8	6K8-24500-02	B-14		C-5	EU0-65986-00	E-3	6M6-81952-01	C-8	90119-069UJ	D-11
	E-8	6K8-24524-10	B-14	63M-5316M-00	C-14	GP7-672A4-00	B-13	6M6-81960-A0	C-8		D-13
6R7-14569-00	B-9	70R-24543-00	D-8	FN8-6131B-00	D-15	GJ1-67250-01	D-14	EU0-82110-09	C-10	90119-069UK	C-3
6K8-14589-00	B-9	6K8-24560-10	B-14	GH1-6141B-00	D-14	GJ1-67255-00	D-14	6M6-82117-21	C-9	90119-069UP	D-11
6K8-14591-10	B-9	62T-41113-00-9M	B-11	GH1-6141D-01	D-14	EW2-67256-00	D-14	62T-82117-01	C-9		D-5
62T-14613-00	B-11	62T-41114-01	B-11	GP7-61433-00	D-15	EW2-67257-01	D-14	63N-82117-10	C-9	90119-069US	C-10
	E-6		E-6	GP7-6146K-01	D-15	EW2-67258-01	D-14	6K8-82150-01	C-8	90119-06959	C-11
64X-14615-00	B-11	64X-41123-00-94	B-12	GP7-61467-00	D-15	EW2-67259-01	D-14	6G1-82151-00	C-8	90119-08M11	B-11
64X-14623-00	B-12	64X-41124-00	B-12	GP7-61468-00	D-15	EU0-67267-10	D-12	6K8-82159-00	C-8	90119-08M37	B-12
	E-6		E-6	GP7-61541-00	D-14	GK5-67267-10	D-13	62T-82361-00	C-9	90119-08M55	B-2
62T-14625-00	B-11	63M-44517-01-5B	B-3	EU0-61588-00	D-15	GP7-6751F-00	D-10	62E-82371-11	C-8	90119-08M96	B-2
64X-14711-00-9P	B-11	65V-44532-00	B-2	GP7-61624-00	C-15	GP8-6751G-00	D-10	65V-82553-00	C-9	90119-08807	D-5
64X-14712-00-9P	B-11	663-45119-00	B-6	GP7-61628-00	D-6	GJ1-6753B-02	D-10	64X-82560-00	C-9	90119-089UE	C-2
64X-14717-01	B-12		C-6	FN8-61651-00	D-2	EW2-67618-00	C-14	6R7-83623-40	C-8	90119-089UF	C-3
64X-14721-00-94	B-11	6K8-45127-00	C-3	GH1-61651-00	D-2	GJ1-67743-01	D-8	6R7-83623-50	C-9	90119-089UL	C-3
64X-14749-00	B-11	62T-45127-00	B-5	EU0-61652-00	B-13	GJ8-67743-01	D-8	682-84385-01	B-13	90119-089UM	D-15
	E-6		E-6		C-14	FJ0-67766-00	D-7	64X-8552A-01-8P	C-8	90119-089UR	B-3
65V-14752-00	B-12	65V-45318-00	B-15		D-2	EU0-67767-31	D-8	6M6-8552E-01	C-8	90119-089UT	B-3
64X-14763-00-94	B-12	65U-45332-02-94	C-3	GP7-61652-00	D-10	FN8-67816-00	B-14	64X-85520-00	C-5	90119-089U5	C-11
62T-14771-00-94	B-12	61L-45378-00	C-3	EW2-62140-00	D-8	GE2-6784A-00	D-7	64X-85521-01	C-5	90119-089U6	C-4
64X-14781-00-94	B-11	65V-45511-00	B-15	EW2-62142-00	D-8	FJ0-67841-01	D-7	64X-85525-00	C-5	90119-089U7	D-15
61X-14916-15	B-9	62T-45526-00	B-4	EW2-62149-00	D-4	GP7-6820A-05	C-10	62T-85533-00	C-5		D-5
	E-8	65V-45538-00	B-15	GJ3-6215F-00	D-4	GP7-6820A-15	C-10	64X-85540-01	C-8		D-9
64X-14923-10	B-9	63M-4581J-00	B-5	GP7-62159-01	D-4	GP7-68238-01	C-10	64X-85546-00	C-8	90119-10M00	B-2
3KW-14932-00	B-8	63M-45813-01-8P	B-5	EU0-62241-30	C-4	GJ1-6824D-01	D-13	64X-85550-00	C-5	90119-10M01	B-3
6K8-14946-10	B-8	64X-45813-00-8P	B-5		D-12	GP7-68310-00	D-14	64X-85570-01	C-8	90119-10M02	B-2
	E-8	6K8-51129-00	B-11		D-13	FK7-68312-02	D-14	64X-85580-00	C-5	90119-10M03	B-3
64X-15100-00-94	B-2		B-2	EU0-62280-00	C-14	FK7-68313-01	D-14	90105-08M70	B-12	90119-10M07	B-2
6R7-21415-01-94	B-2		C-2	EU0-62282-00	C-14	EW2-68348-00	D-14	90105-08M71	B-12	90119-10M17	B-12
6R7-21425-01-94	B-2	62T-51129-00	C-2	EU0-62283-00	C-14	6M6-8132W-00	C-8	90105-10M60	B-11	90119-10M56	B-2
66D-2179X-01	C-9	63M-51162-00	C-14	EU0-62285-01	C-14	64X-81337-00-8P	C-5	90105-10M72	B-11	90119-109U8	C-3
EU0-23814-01	D-15	63M-51165-00	C-14	FN8-6269B-00	C-14	6M6-81365-A0	C-5	90105-10M73	B-11	90149-069U9	E-2
EU0-23814-30	D-15	64Y-51190-00-94	C-2	GP7-6271B-20	D-5		E-6	90105-10M88	B-12	90159-059U2	C-13
64X-24313-01	B-6	65V-51311-01-94	B-15	GP7-6284J-00	C-11	64X-81800-00	C-7	90109-06M66	B-7		D-14
64X-24314-01	B-6	6R8-51312-03-94	B-15	EW2-62846-00	C-11	3AJ-81809-00	C-7	90109-08M56	B-2	90159-069U1	E-2
688-24378-00	B-6	65V-51313-00	C-2	GP7-62848-00	C-11	64X-81820-00	C-7	90109-08913	C-11	90160-05804	C-11
6K8-24411-20	B-8	62T-51315-10-94	B-15	GP7-6287A-00	C-11	6M6-81826-00	C-7	90109-10M72	C-5	90169-049U1	D-8
	E-8	65V-51318-00-94	C-2	GP7-62873-00	C-11	6M6-8183E-00	C-7	90110-05908	D-12	90169-059U1	D-2

NUMERICAL INDEX

PARTNO.	GRID NO.	PARTNO.	GRID NO.	PARTNO.	GRID NO.	PARTNO.	GRID NO.	PARTNO.	GRID NO.	PARTNO.	GRID NO.
90170-089U1	C - 15	90387-08924	D - 5	90464-32801	D - 10	90601-200U1	B - 14	93101-25M50	E - 7	95380-06700	C - 2
90170-22M11	B - 14	90430-13909	C - 15	90464-40825	C - 4		C - 10	93101-25M55	C - 3		C - 7
90179-06800	C - 3	90430-16910	B - 13	90464-65800	C - 8		C - 14		E - 6		D - 13
90179-08M15	B - 6		D - 11	90465-06M65	C - 5		D - 13	93101-25M56	C - 3	95380-08600	B - 11
90179-089U7	C - 4	90445-09M17	C - 3	90465-06M86	C - 8	90601-200U5	D - 4		E - 6	9572R-05300	C - 10
90179-08967	C - 12	90445-09M24	C - 5	90465-06M90	C - 5	90604-80759	C - 15	93101-36M46	B - 4		C - 12
90179-08978	C - 15	90445-10MF4	B - 6	90465-08M69	B - 10	90604-80775	C - 15		E - 6		C - 14
	D - 10	90445-10MF6	B - 14	90465-11M10	B - 10	90604-80795	D - 11	93102-17M49	B - 15	9572R-06300	C - 11
90179-10800	C - 3	90445-10MF7	B - 14		B - 14	90604-80796	D - 11		E - 6		C - 13
90201-05M09	C - 5	90445-10MF8	B - 14		B - 6	90604-80797	B - 13	93102-17M50	B - 15		C - 15
90201-06M31	B - 7	90445-10MF9	B - 14		C - 3	90605-502U1	C - 13		E - 6		C - 4
	C - 2	90445-10M99	B - 14		C - 6		D - 5	93102-25M34	B - 15		D - 13
90201-06906	D - 13	90445-11M35	B - 10		C - 8	90605-502U2	C - 12		E - 7		D - 14
90201-099U1	C - 11	90445-14M06	B - 12	90465-11829	B - 10	90699-38U03	D - 13	93102-36M33	B - 4		D - 15
90201-099U3	B - 3	90445-14M07	B - 2		B - 14	92903-05100	C - 5		E - 6		D - 2
90201-20M04	B - 4	90445-14M10	B - 12		C - 10	92903-06600	B - 11	93103-32M01	B - 4	9572R-08300	C - 15
90201-248M5	B - 5	90445-14M17	B - 15		C - 2		B - 6		E - 6		D - 5
90267-329UR	D - 8	90445-14898	C - 2		C - 3		B - 7	93210-13M63	B - 7		D - 6
90267-48802	B - 14	90445-19M09	C - 14		D - 10		C - 7	93210-17MA4	C - 3	9572R-10300	D - 15
	C - 10	90445-19M10	C - 14		D - 7	92903-08600	C - 7		E - 6		D - 5
	C - 14	90446-07M14	B - 10		D - 8	9299R-05200	C - 14	93210-22ME5	C - 14		D - 6
	D - 10	90446-07M17	B - 10	90465-13M11	C - 14	9299R-06200	C - 11	93210-35M72	C - 3	95720-05300	C - 15
	D - 4	90446-07M35	B - 10	90467-089U1	C - 10		C - 15		E - 6		D - 12
90267-489UK	C - 12	90446-07M36	B - 10	90480-06M43	C - 8		D - 13	93210-46M16	C - 2	9578R-06300	D - 13
90267-489UN	C - 12	90446-14M66	B - 6	90480-06M46	B - 15		D - 14		E - 7	97013-05012	C - 5
	C - 13	90446-14M67	B - 6	90480-13907	C - 11		D - 2	93305-30601	B - 4	97013-05020	C - 5
90267-489UP	C - 13	90446-17M72	B - 10	90480-20M05	B - 12	9299R-08200	C - 15	93306-205U0	B - 15	97013-06012	B - 7
	D - 4	90446-20M31	B - 11	90480-23M69	C - 5		D - 5	93306-205U6	C - 3	97013-06020	B - 7
90267-489US	D - 2		B - 12	90501-14M73	C - 7	9299R-10200	D - 15	93306-207U2	B - 4	97013-06025	B - 11
90267-489U1	B - 14	90446-20M70	B - 2	90560-22281	D - 14		D - 5	93306-304U1	B - 15		B - 6
	C - 13	90446-24M89	B - 13	90600-900U6	C - 4		D - 6	93306-307U3	B - 4	97013-06035	B - 6
	D - 8	90446-27M55	C - 14	90600-917U4	B - 14	9299R-14200	D - 10	93310-320U2	B - 4	97013-08035	C - 7
90267-489U7	D - 10	90446-27M73	B - 12		C - 10	92990-04600	B - 14	93310-525U4	B - 4	97013-08040	C - 7
90267-489U9	C - 13		C - 14		C - 14		D - 12	93430-47M04	C - 3	9708R-06012	D - 13
90269-07809	D - 4	90450-14M05	B - 11		D - 10	92990-05300	D - 12	93440-25M08	C - 7	9708R-06030	D - 14
90280-05013	C - 5		B - 12	90600-91755	C - 14	92990-05600	B - 6	93440-80023	B - 4	97080-10025	D - 5
90331-12M05	B - 15		B - 2	90600-918U3	D - 13	92990-06100	C - 7	93450-18M06	C - 7	97095-06016	C - 9
90338-09828	C - 12	90450-18M09	B - 12		D - 8		D - 12	93450-21053	B - 4	97095-06025	C - 5
90380-12M29	B - 2	90450-22M14	B - 12	90601-110UC	D - 10	92990-06600	C - 8	93603-10049	B - 2	97095-06030	C - 5
	C - 5	90450-88M15	B - 12	90601-118UF	B - 13		C - 9	93604-07141	B - 2	97095-06035	B - 10
90387-05600	D - 12	90450-99M06	B - 11		B - 15		D - 12	93605-12M21	B - 11	97513-06516	B - 6
90387-06M30	C - 9	90450-99M16	B - 12		C - 2	92990-08100	B - 11	93606-12019	B - 15	9778R-50112	C - 14
90387-06M60	B - 15	90464-06M29	C - 8		D - 10		C - 11		B - 2	9778R-60116	D - 13
90387-06920	C - 11	90464-07M20	B - 10	90601-142U6	D - 14	92990-16600	B - 15		C - 2		D - 8
90387-08M06	C - 2	90464-12830	D - 4	90601-155U4	D - 8	92995-06100	C - 9		C - 3	97780-60525	C - 8
90387-08M08	C - 2	90464-32801	B - 14	90601-162U5	C - 10	92995-06600	B - 10		C - 5	97880-03008	D - 14
90387-08801	C - 15		C - 10	90601-170UG	D - 10		C - 5	94702-00195	C - 9	97880-04010	B - 14
90387-08802	D - 10		C - 14	90601-195UD	D - 10	93101-25M50	B - 15	95317-16700	B - 15	97880-05016	B - 6



NUMERICAL INDEX

PARTNO.	GRID NO.	PARTNO.	GRID NO.	PARTNO.	GRID NO.	PARTNO.	GRID NO.	PARTNO.	GRID NO.
97880-05020	D - 12								
97880-05025	C - 14								
	D - 14								
97880-06010	C - 5								
97880-06016	C - 8								
	C - 9								
97880-06030	C - 8								
97880-06065	D - 12								
97980-05330	B - 8								
97985-06220	B - 12								
98580-05510	C - 11								
98580-05520	C - 11								
98780-04015	B - 2								
98780-05020	C - 11								
98980-04010	D - 12								





*COPYRIGHT : All rights reserved. No part of this publication  
may be reproduced without permission.*



YAMAHA MOTOR CO., LTD.  
2500 SHINGAI IWATA SHIZUOKA JAPAN  
SERVICE INFORMATION DIV.

PRINTED ON RECYCLED PAPER

---

Printed in Japan  
First edition OCT., 1999

**TG**