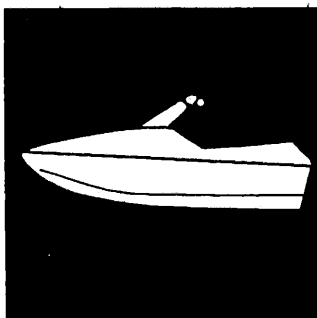


YAMAHA



PARTS CATALOGUE

GP760V (GP71, GP74)

GP760 (GP72)

YAMAHA
GENUINE
Parts & Accessories

17GP7-100E1

FOREWORD

This Parts Catalogue is related to the parts for the model(s) in the below frame. When you are ordering replacement parts, please refer to this Parts Catalogue and quote both part numbers and part names correctly.

GP760V (GP71, GP74), GP760(GP72)

1. Modifications or additions which have been made after issue of the Parts Catalogue will be announced in the Yamaha Parts News. It is advisable that you make necessary corrections to the Parts Catalogue according to the Yamaha Parts News.

2. Abbreviations

The following abbreviations are used in this Parts Catalogue.

- "UR" Use specified parts number.
- "UN" Use as many as needed.
- "AP" Alternate Parts
- "LM" Local Made (Parts need to be ordered locally)
- "F#" Frame No. (Applicable machine No.)

3. Parts, which are to be supplied in an assembly, are listed with a dot (.) in front of the part name as shown below.

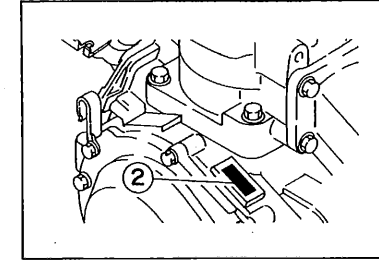
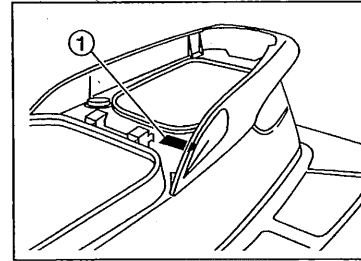
The numeral appearing to the right of each component part indicates the quantity of parts for each assembly unit.

EXAMPLE

PART NO.	DESCRIPTION	Q'TY	REMARKS
EU0-62280-00	DRAIN PLUG ASSY	2	
EU0-62282-00	. PLUG, DRAIN	1	

4. Applicable Serial No. and Color Code

① Hull Serial No.	(GP71,GP74) GP7-800101 ~	
	(GP72) GP7-600101 ~	
② Engine Serial No.	65V-000101 ~	



Color Code	Color Name	Abbreviation
0240	PURE WHITE	PURW

5. Note that the illustrations are for reference in finding parts numbers, not to be used for assembling. When assembling, please use the applicable service manual.

6. A part with "YMUS" in the remarks column can be obtained from YMUS(USA) and not from YAMAHA MOTOR CO.,LTD (JAPAN).

EXAMPLE

PART NO.	DESCRIPTION	QTY	REMARKS
EW2-U5160-00	ENGINE HATCH COMP.	1	YMUS
90601-168U7	BAND, HOSE	1	YMUS

ADDRESS:

YAMAHA MOTOR CORPORATION U.S.A.
 PARTS & ACCESSORY DIV.
 6555 KATELLA AVENUE
 CYPRESS, CALIFORNIA 90630, U.S.A.

CONTENTS

Cylinder, Crankcase	B2~B3
Crankshaft, Piston	B4
Intake	B5~B6
Carburetor	B7~B8
Oil Pump	B9
Exhaust 1	B10~B12
Fuel	B13
Jet Unit 1	B14~B15
Jet Unit 2	C2~C3
Generator	C4~C5
Starting Motor	C6
Electrical 1	C7~C8
Electrical 2	C9
Engine Hatch 1	C10~C11
Engine Hatch 2	C12
Hull, Deck	C13~C14
Gunwale, Mat	C15~D2
Ventilation	D3
Seat - Under Locker	D4
Oil Tank	D5

Fuel Tank	D6~D7
Exhaust 2	D8~D9
Control Cable	D10~D11
Steering 1	D12~D13
Steering 2	D14
Graphic, Tool	D15
Important Labels	E2~E3

INDEX

Numerical Index	M1~M3
-----------------------	-------

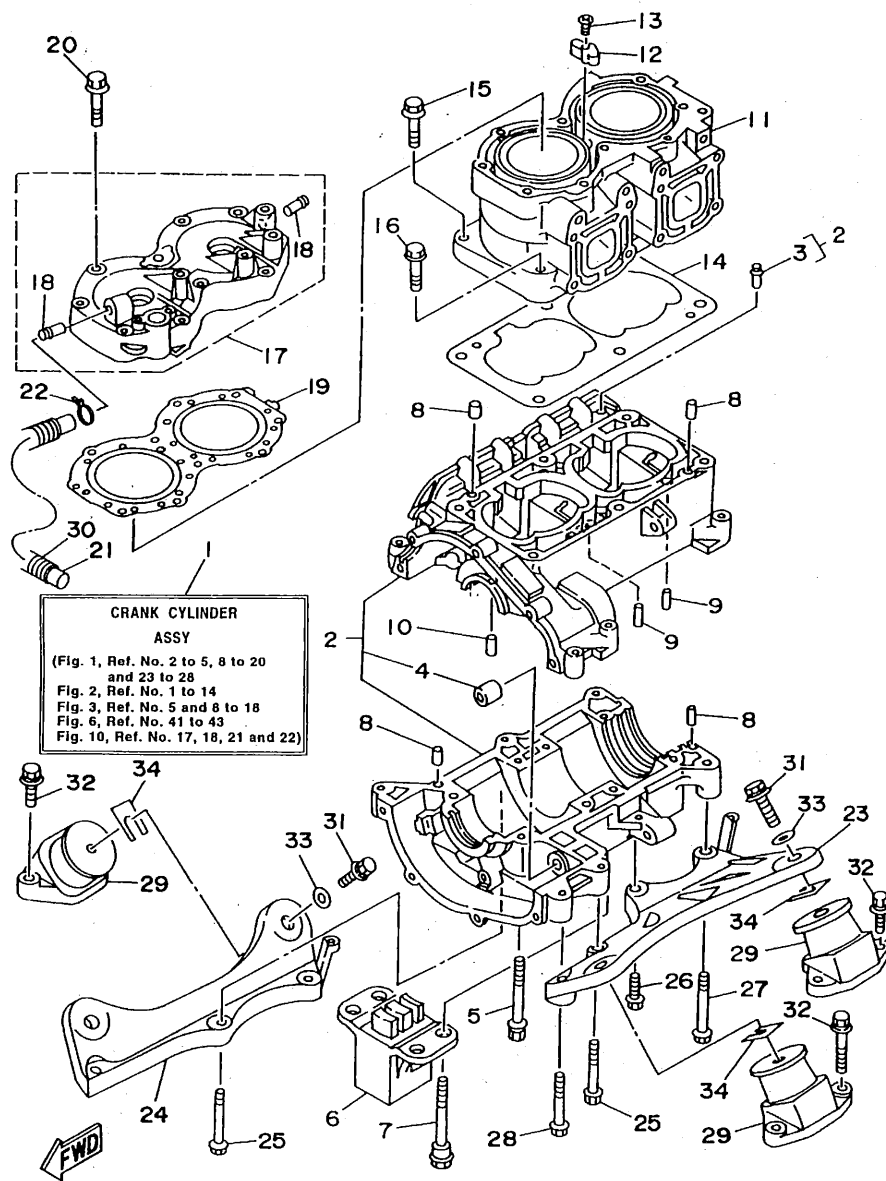
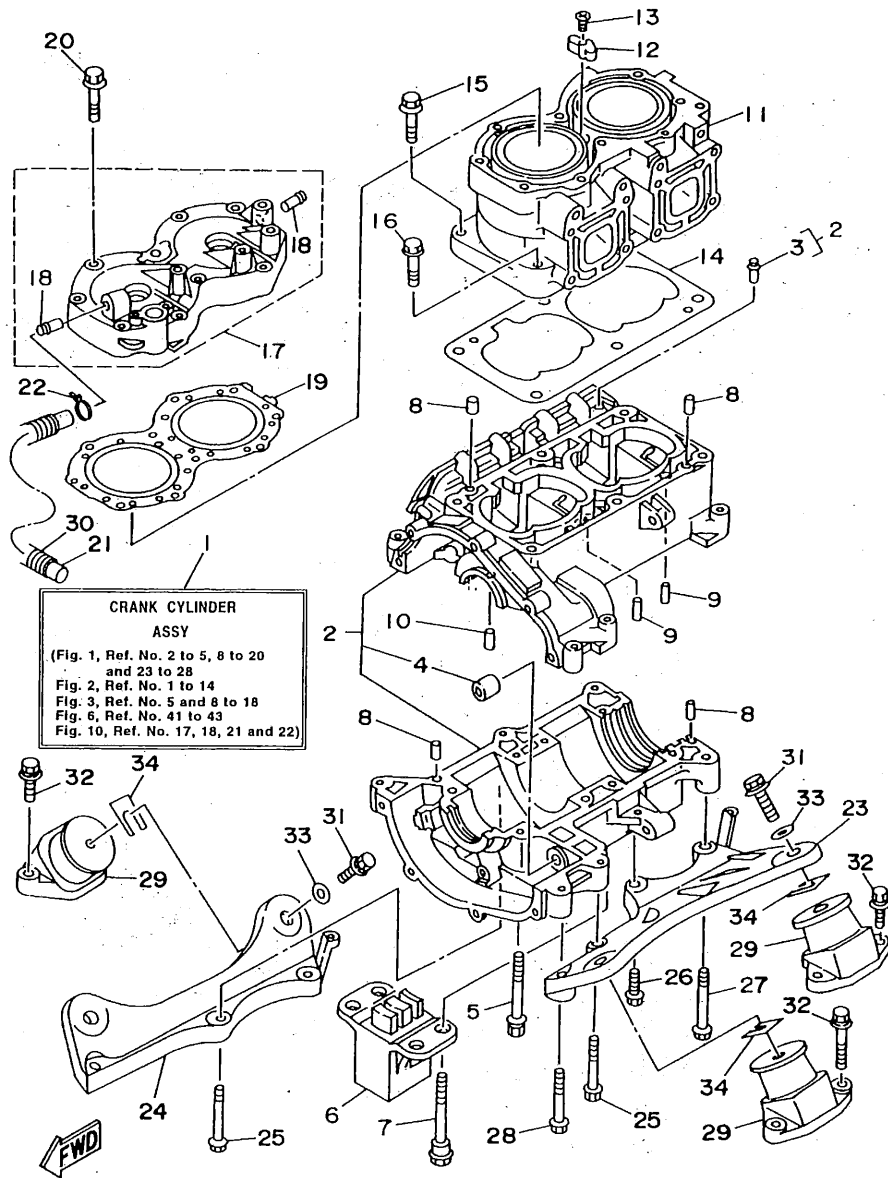


FIG. 1 CYLINDER. CRANKCASE

REF. NO.	PART NO.	DESCRIPTION	GP7*	REMARKS
1	65V-W0090-00-4D	CRANK CYLINDER ASSY	1	
2	64X-15100-00-94	CRANKCASE ASSY	1	
3	62T-14251-00	.NIPPLE	2	
4	90380-12M29	.BUSH, SOLID	1	
5	90119-08M55	BOLT, WITH WASHER	4	
6	65V-44532-00	STOPPER, UPPER MOUNT	1	
7	90109-08M56	BOLT	4	
8	93606-12019	PIN, DOWEL	4	
9	93603-10049	PIN, DOWEL	4	
10	93604-07141	PIN, DOWEL	1	
11	64X-11311-00-94	CYLINDER 1	1	
12	6E5-11325-00	ANODE	1	
13	98780-04015	SCREW, FLAT HEAD	1	
14	6M6-11351-A2	GASKET, CYLINDER	1	
15	90119-10M56	BOLT, WITH WASHER	4	
16	90119-10M07	BOLT, WITH WASHER	2	
17	64X-11111-00-94	HEAD, CYLINDER 1	1	
18	6K8-51129-00	.NIPPLE	2	
19	64X-11181-00	GASKET, CYLINDER HEAD 1	1	
20	90119-08M19	BOLT, WITH WASHER	10	
21	90445-14M07	HOSE	1	
22	90465-11M10	CLAMP	1	
23	6R7-21415-00-94	BRACKET, FRONT UPPER 1	1	
24	6R7-21425-00-94	BRACKET, REAR UPPER 1	1	
25	90119-10M02	BOLT, WITH WASHER	4	
26	90119-10M00	BOLT, WITH WASHER	1	
27	90119-10M03	BOLT, WITH WASHER	1	

GP71100-7011

B2



CRANK CYLINDER ASSY
 (Fig. 1, Ref. No. 2 to 5, 8 to 20 and 23 to 28
 Fig. 2, Ref. No. 1 to 14
 Fig. 3, Ref. No. 5 and 8 to 18
 Fig. 6, Ref. No. 41 to 43
 Fig. 10, Ref. No. 17, 18, 21 and 22)

GP71100-7011

FIG. 1 CYLINDER. CRANKCASE

REF. NO.	PART NO.	DESCRIPTION	GP7*	REMARKS
28	90119-10M01	BOLT, WITH WASHER	1	
29	63M-44517-01-5B	MOUNT RUBBER	4	
30	90446-20M70	HOSE	1	
31	90119-08904	BOLT, WITH WASHER	4	
32	90119-089UN	BOLT, WITH WASHER	8	
33	90201-099U3	WASHER, PLATE	4	
34	EU0-U7354-00-01	SHIM (T=0.1)	10	UR YMUS
	EU0-U7354-00-03	SHIM (T=0.3)	10	UR YMUS
	EU0-U7354-00-05	SHIM (T=0.5)	10	UR YMUS
	EU0-U7354-00-10	SHIM (T=1.0)	10	UR YMUS
	EU0-U7354-00-20	SHIM (T=2.0)	10	UR YMUS

B3

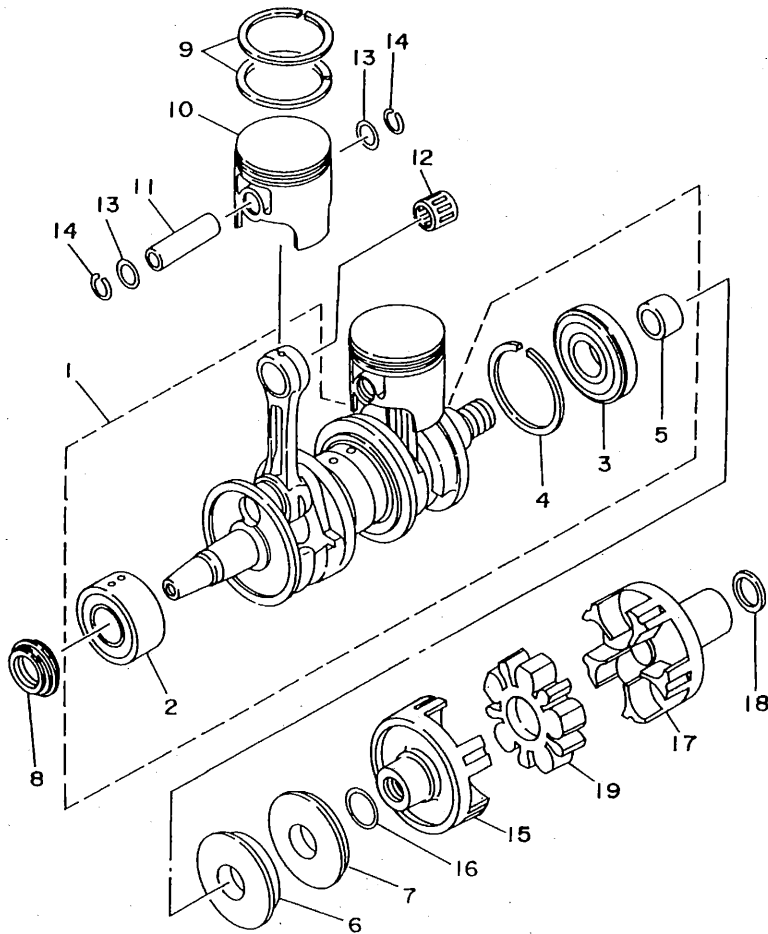


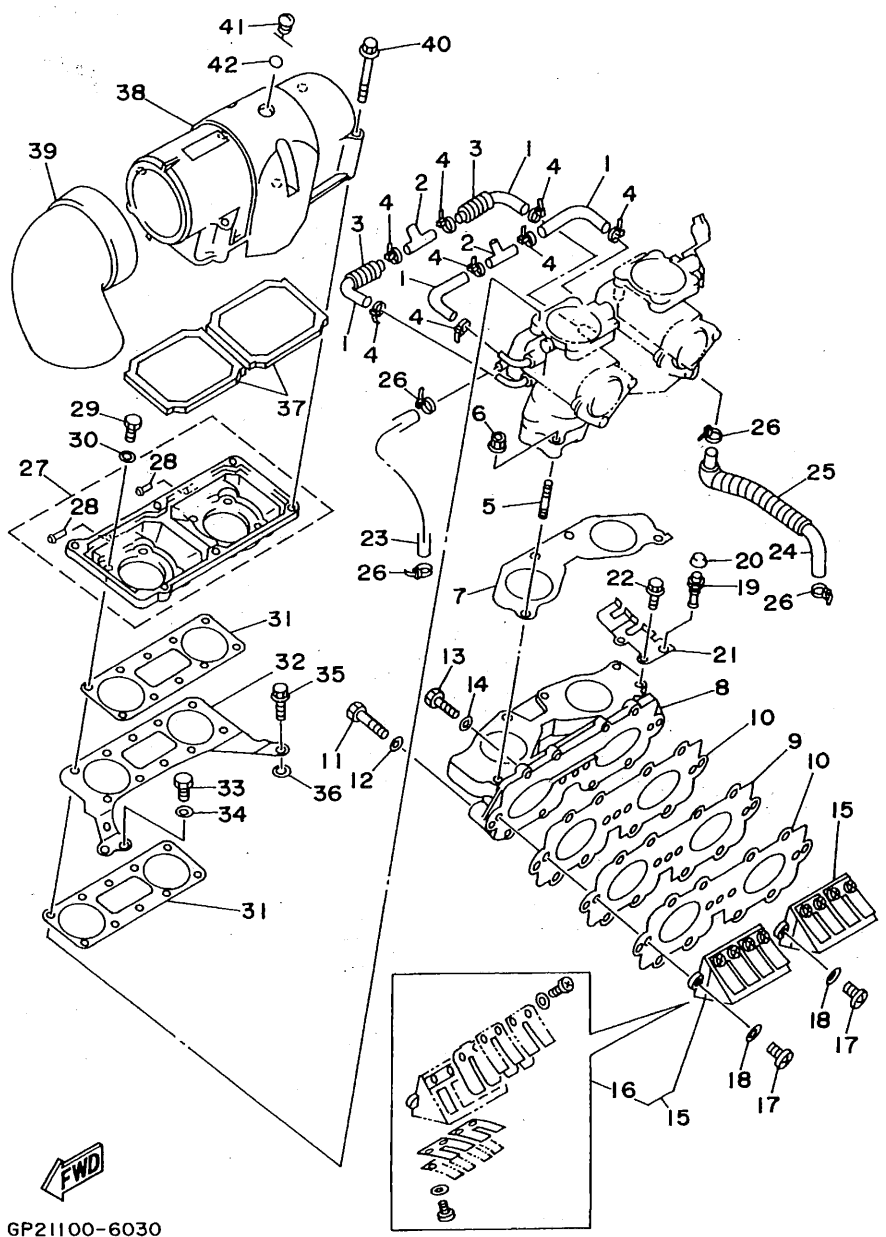
FIG. 2 CRANKSHAFT. PISTON

REF. NO.	PART NO.	DESCRIPTION	GP7*	REMARKS
1	64X-11400-01	CRANKSHAFT ASSY	1	
2	93305-30601	.BEARING	1	
3	93306-307U3	.BEARING	1	
4	93440-80023	.CIRCLIP	1	
5	62T-45526-00	.COLLAR, DRIVE SHAFT	1	
6	93102-36M33	OIL SEAL	1	
7	93101-36M46	OIL SEAL	1	
8	93103-32M01	OIL SEAL	1	
9	64X-11603-00	PISTON RING SET (STD)	2	
	64X-11604-00	PISTON RING SET (0.25MM O/S)	2	AP
	64X-11605-00	PISTON RING SET (0.50MM O/S)	2	AP
10	64X-11631-00-91	PISTON (STD)	2	
	64X-11635-00	PISTON (0.25MM O/S)	2	AP
	64X-11636-00	PISTON (0.50MM O/S)	2	AP
11	62T-11633-00	PIN, PISTON	2	
12	93310-320U2	BEARING	2	
13	90201-20M04	WASHER, PLATE	4	
14	93450-21053	CIRCLIP	4	
15	63M-45813-01-5B	FLANGE, COUPLING	1	
16	62T-45127-00	SEAL	1	
17	64X-45813-00-5B	FLANGE, COUPLING	1	
18	90201-24M02	WASHER, PLATE	1	
19	63M-4581J-00	RUBBER SHAFT COUPLING	1	



GP71100-7020

B4

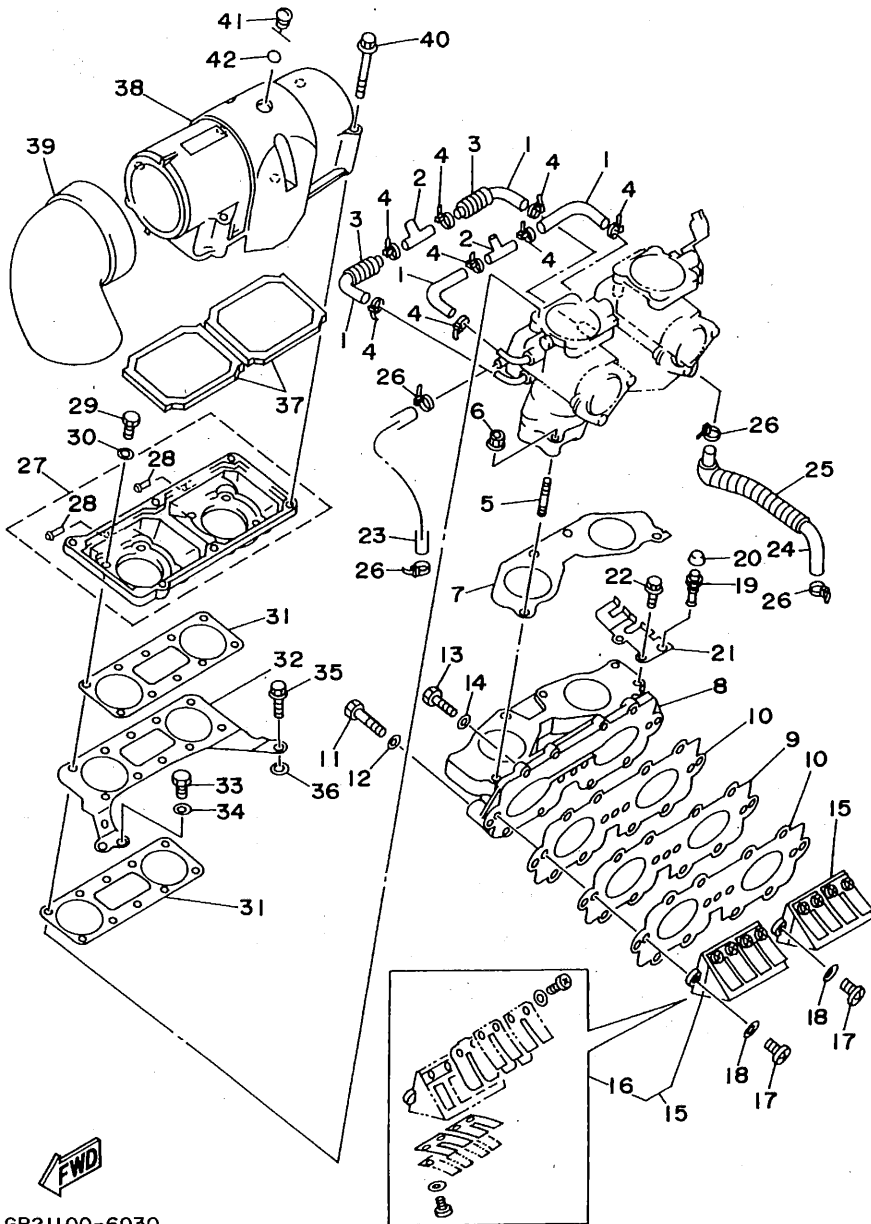


GP21100-6030

FIG. 3 INTAKE

REF. NO.	PART NO.	DESCRIPTION	GP7*	REMARKS
1	64X-24313-00	PIPE 3	4	
2	688-24378-00	PIPE, JOINT 4	2	
3	90446-14M66	HOSE	2	
4	90465-11M10	CLAMP	8	
5	90116-08M55	BOLT, STUD	4	
6	90179-08M15	NUT	4	
7	64X-13556-00	GASKET, MANIFOLD	1	
8	64X-13555-00-94	MANIFOLD, INTAKE	1	
9	62T-13624-00	PLATE, REED VALVE	1	
10	62T-13566-00	GASKET	2	
11	97013-06035	BOLT	3	
12	92903-06600	WASHER, PLATE	3	
13	97013-06025	BOLT	8	
14	92903-06600	WASHER, PLATE	8	
15	64X-13610-01	REED VALVE ASSY	1	
16	64X-W0004-01	.REED SET	1	
17	97880-05016	SCREW, PAN HEAD	4	
18	92990-05600	WASHER, PLATE	4	
19	61L-5169A-00	NIPPLE, GREASE	1	
20	663-45119-00	CAP, GREASE NIPPLE	1	
21	64X-14527-00	PLATE	1	
22	97513-06516	BOLT, WITH WASHER	2	
23	90445-10M88	HOSE	1	
24	64X-24314-00	PIPE 4	1	
25	90446-14M67	HOSE	1	
26	90465-11M10	CLAMP	4	
27	64X-14284-00-4D	COVER, CARBURETOR 2	1	

B5



GP21100-6030

FIG. 3 INTAKE

REF. NO.	PART NO.	DESCRIPTION	GP7*	REMARKS
28	6E5-11372-00	.NIPPLE, HOSE	2	
29	97013-06020	BOLT	8	
30	92903-06600	WASHER, PLATE	8	
31	64X-13674-00	GASKET, AIR COOLER COVER 1	2	
32	64X-14255-00	PLATE	1	
33	97013-06012	BOLT	1	
34	92903-06600	WASHER, PLATE	1	
35	90109-06M66	BOLT	1	
36	90201-06M31	WASHER, PLATE	1	
37	62T-14451-00	ELEMENT, AIR CLEANER	2	
38	64X-14283-00	COVER, CARBURETOR 1	1	
39	62T-14419-00	PIPE	1	
40	90105-05M46	BOLT, WASHER BASED	6	
41	62T-14435-00	GROMMET	1	
42	93210-13M63	O-RING	1	

B6

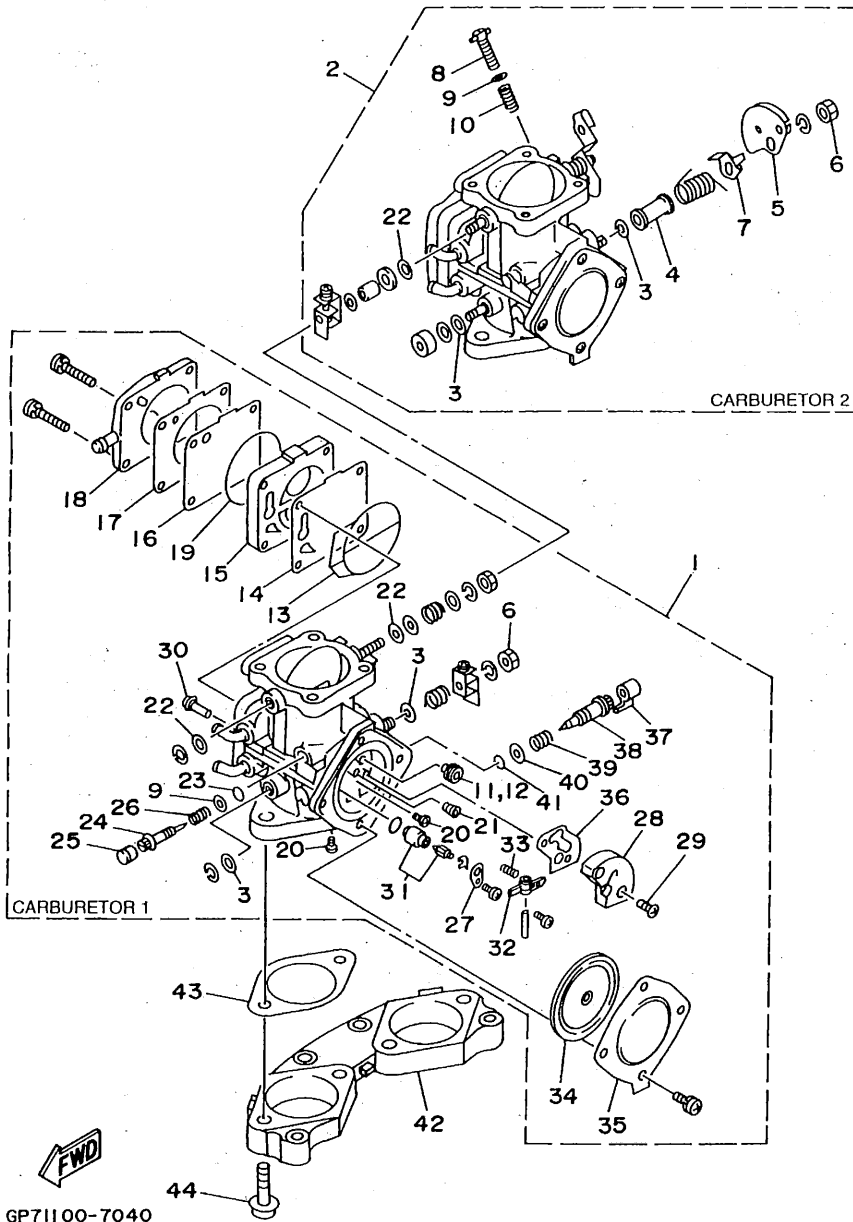


FIG. 4 CARBURETOR

REF. NO.	PART NO.	DESCRIPTION	GP7*	REMARKS
1	65V-14301-00	CARBURETOR ASSY 1	1	
2	65V-14302-00	CARBURETOR ASSY 2	1	
3	6R7-14596-01	.WASHER	4	
4	6K8-14534-10	.COLLAR	1	CARBURETOR 2
5	6K8-14930-00	.THROTTLE SHAFT ASSY	1	CARBURETOR 2
6	95380-08700	.NUT	2	
7	6K8-14926-10	.BRACKET, THROTTLE 1	1	CARBURETOR 2
8	6M6-14521-00	.SCREW, ADJUST	1	CARBURETOR 2
9	812-14235-00	.WASHER, NEEDLE	3	
10	47X-14133-00	.SPRING, THROTTLE STOP	1	CARBURETOR 2
11	3G2-14231-26	.JET, MAIN (#130)	1	CARBURETOR 1
12	3G2-1423A-77	.JET, MAIN (#132.5)	1	CARBURETOR 2
13	6K8-14564-00	.O-RING	2	
14	6K8-24411-20	.DIAPHRAGM	2	
15	6M6-24413-00	.BODY 2	2	
16	6K8-24421-10	.VALVE, CHECK	2	
17	6K8-24431-20	.GASKET, FUEL PUMP 1	2	
18	6K8-24452-10	.COVER	1	CARBURETOR 1*
19	6K8-14563-00	.O-RING	2	
20	6K8-14521-10	.SCREW	4	
21	830-14231-23	.JET, MAIN (#115)	2	
22	6K8-14597-11	.WASHER	4	
23	812-14147-00	.O-RING	2	
24	6K8-14946-10	.METERING NEEDLE	2	
25	6K8-14471-10	.CAP, CARBURETOR	2	
26	3KW-14932-00	.SPRING, THROTTLE 2	2	
27	6K8-14527-11	.PLATE	2	

B7

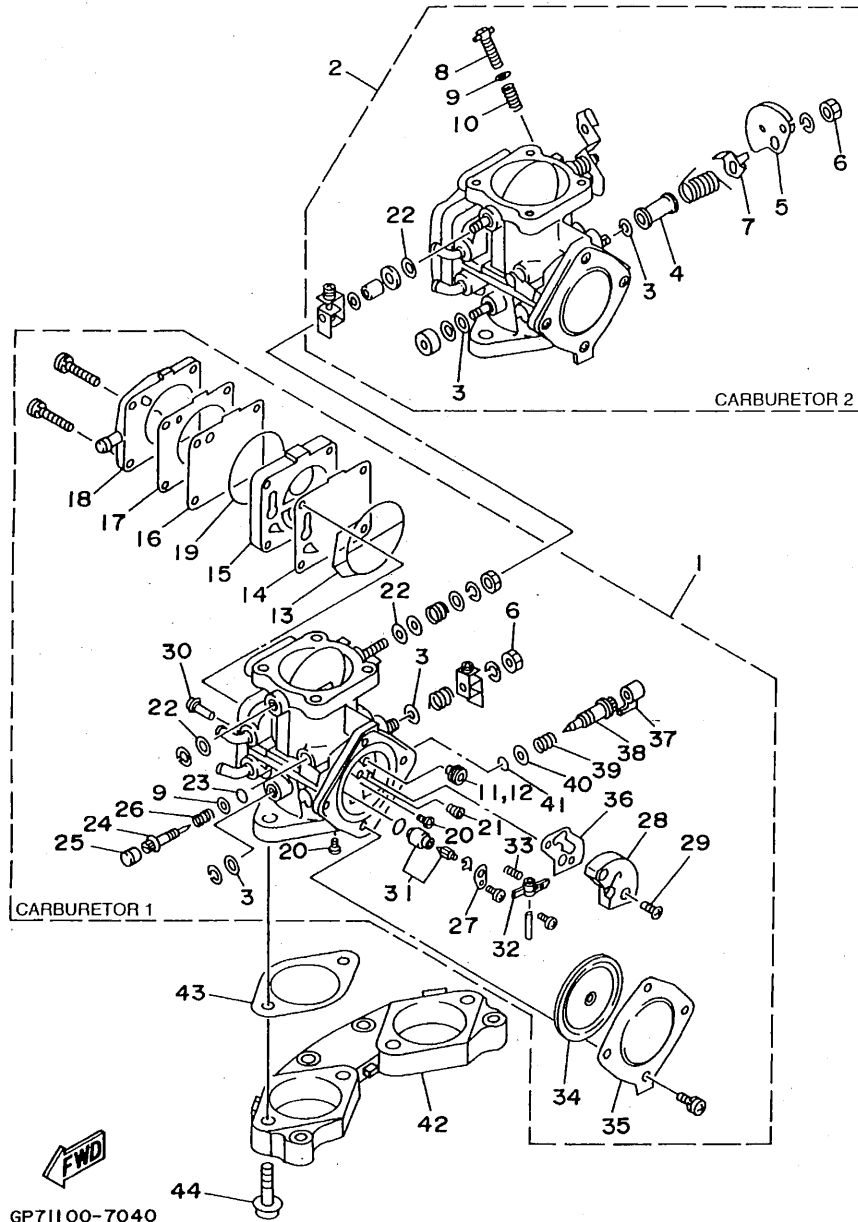
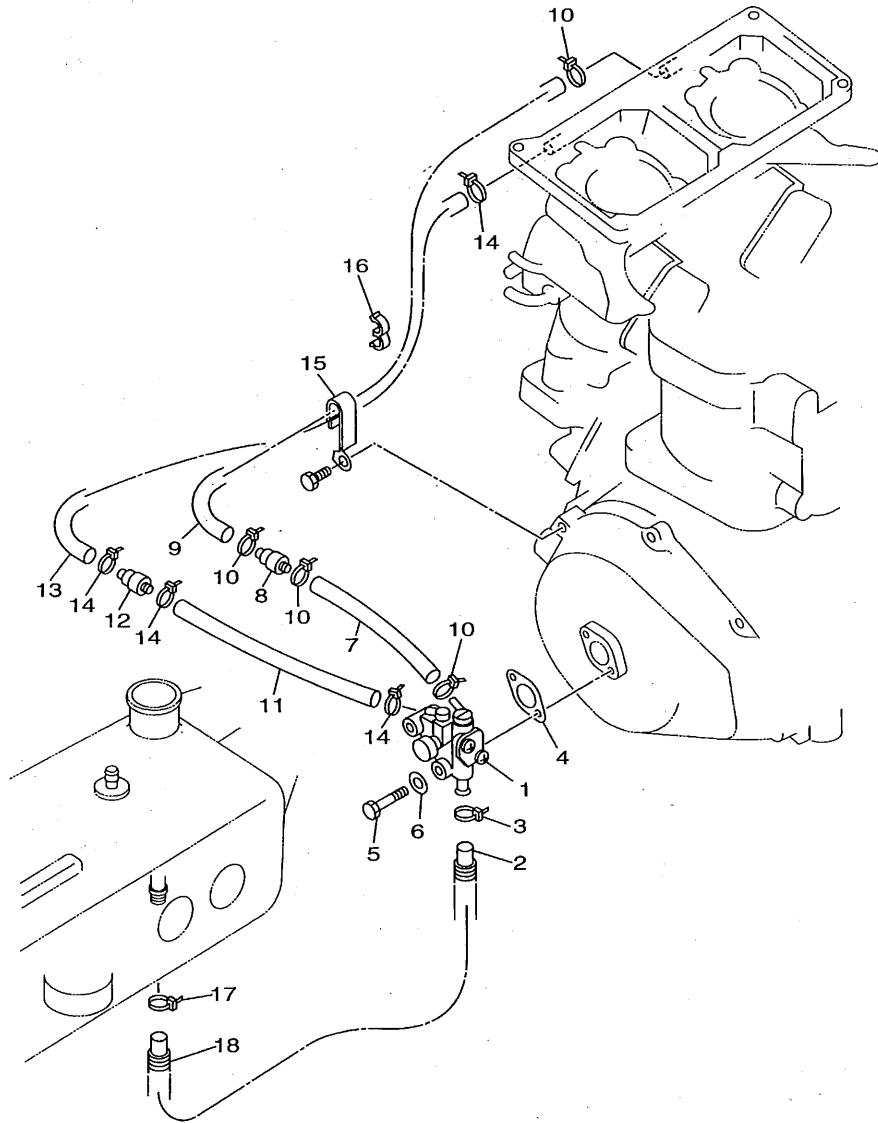


FIG. 4 CARBURETOR

REF. NO.	PART NO.	DESCRIPTION	GP7*	REMARKS
28	6R7-24412-01	.BODY 1	2	
29	6K8-14523-11	.SCREW, STOP	4	
30	6R7-14569-00	.STRAINER	2	
31	61X-14916-15	.NEEDLE	2	
32	6K8-14547-01	.ARM, FLOAT	2	
33	6R7-14253-00	.SPRING	2	
34	6R7-14541-00	.DIAPHRAGM, PUMP	2	
35	6R7-14542-00	.BODY, PUMP 1	2	
36	6K8-14536-11	.GASKET	2	
37	6K8-14481-10	.CAP, CARBURETOR	2	
38	6M6-14923-10	.SCREW, PILOT	2	
39	6K8-14589-00	.SPRING	2	
40	822-14235-00	.WASHER, NEEDLE	2	
41	583-14561-00	.O-RING	2	
42	64X-14243-00	PLATE	1	
43	64X-14398-00	GASKET	2	
44	64X-14162-00	BOLT, HOLDING	4	

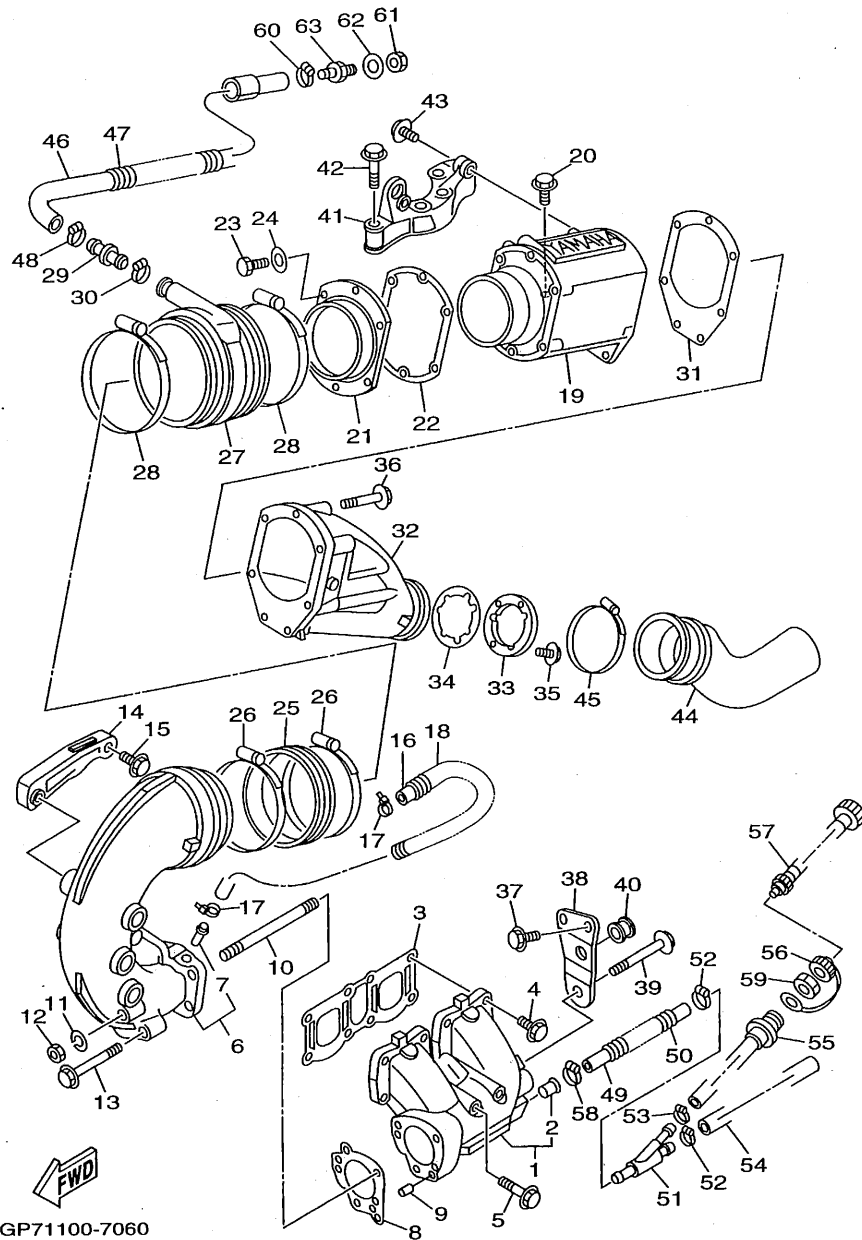


GP71100-7050

FIG. 5 OIL PUMP

REF. NO.	PART NO.	DESCRIPTION	GP7*				REMARKS
1	62T-13200-11	OIL INJECTION PUMP ASSY	1				
2	90445-11M35	HOSE	1				
3	90465-11M10	CLAMP	1				
4	6R8-13116-A0	GASKET, PUMP CASE	1				
5	97095-06035	BOLT	2				
6	92995-06600	WASHER	2				
7	90446-07M14	HOSE	1				
8	6R3-13183-00	VALVE, CHECK	1				
9	90446-07M35	HOSE	1				
10	90465-11M10	CLAMP	4				
11	90446-07M17	HOSE	1				
12	6R3-13183-00	VALVE, CHECK	1				
13	90446-07M36	HOSE	1				
14	90465-11M10	CLAMP	4				
15	90465-08M37	CLAMP	1				
16	90464-07M20	CLAMP	1				
17	90465-11829	CLAMP	1				
18	90446-17M72	HOSE	1				

B9

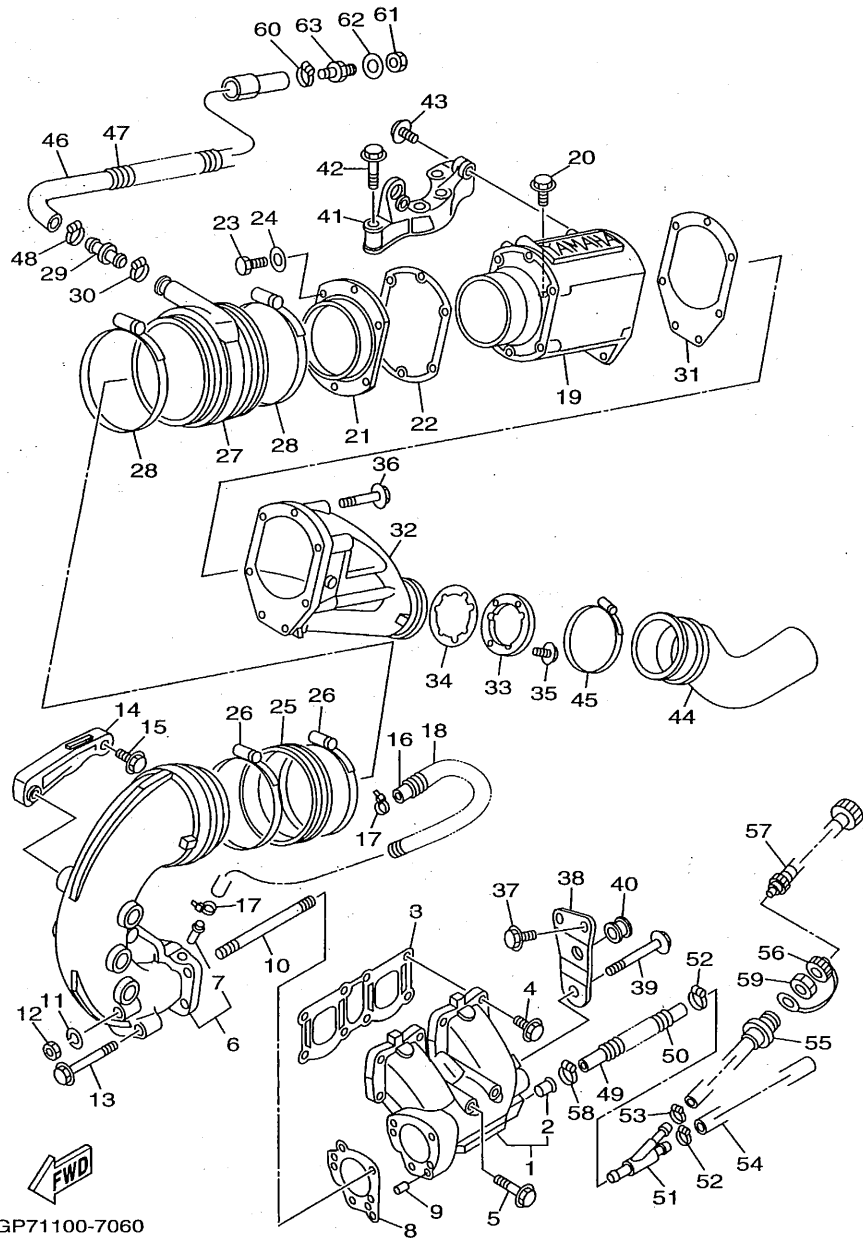


GP71100-7060

FIG. 6 EXHAUST 1

REF. NO.	PART NO.	DESCRIPTION	GP7*	REMARKS
1	64X-14711-00-9M	MUFFLER 1	1	
2	6K8-51129-00	.NIPPLE	1	
3	62T-14613-00	GASKET, EXHAUST PIPE	1	
4	90105-10M60	BOLT, WASHER BASED	6	
5	90105-10M72	BOLT, WASHER BASED	2	
6	64X-14712-00-9M	RING, JOINT	1	
7	6K8-51129-00	.NIPPLE	1	
8	64X-14749-00	GASKET, MUFFLER DAMPER 2	1	
9	93605-12M21	PIN, DOWEL	2	
10	90116-08M59	BOLT, STUD	2	
11	92990-08100	WASHER, SPRING	2	
12	95380-08600	NUT	2	
13	90119-08M11	BOLT, WITH WASHER	2	
14	64X-14781-00-94	STAY, MUFFLER 2	1	
15	90105-10M73	BOLT, WASHER BASED	3	
16	63M-12577-00	HOSE 2	1	
17	90465-11M10	CLAMP	2	
18	90446-20M31	HOSE	1	
19	64X-14721-00-94	MUFFLER 2	1	
20	90105-10M60	BOLT, WASHER BASED	2	
21	62T-41113-00-9M	OUTER COVER, EXHAUST	1	
22	62T-41114-01	GASKET, EXHAUST OUTER COVER	1	
23	97013-06025	BOLT	6	
24	92903-06600	WASHER, PLATE	6	
25	62T-14625-00	JOINT, EXHAUST 2	1	
26	90450-99M06	HOSE CLAMP ASSY	2	
27	64X-14615-00	JOINT, EXHAUST 1	1	

B10

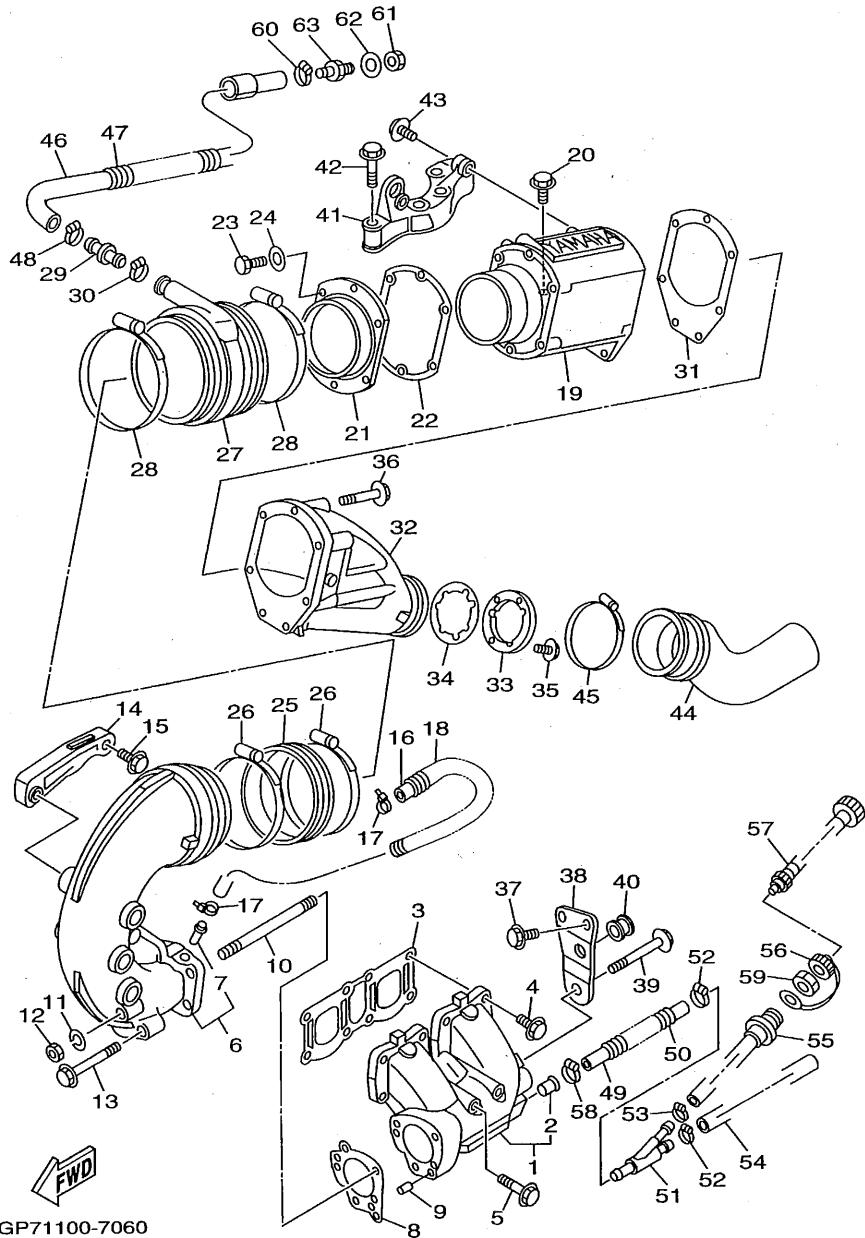


GP71100-7060

FIG. 6 EXHAUST 1

REF. NO.	PART NO.	DESCRIPTION	GP7*	REMARKS
28	90450-99M16	HOSE CLAMP ASSY	2	
29	64X-12582-00	JOINT, HOSE 2	1	
30	90450-22M14	HOSE CLAMP ASSY	1	
31	64X-41124-00	GASKET, EXHAUST OUTER COVER	1	
32	64X-41123-00-9M	OUTER COVER, EXHAUST	1	
33	64X-14763-00-94	SPACER	1	
34	64X-14623-00	GASKET, EXHAUST PIPE	1	
35	97985-06220	SCREW, WITH WASHER	3	
36	90105-08M70	BOLT, WASHER BASED	5	
37	90105-08M71	BOLT, WASHER BASED	2	
38	64X-14717-00	PLATE, STOPPER	1	
39	90119-08M37	BOLT, WITH WASHER	1	
40	90480-20M05	GROMMET	1	
41	62T-14771-00-94	STAY, MUFFLER 1	1	
42	90119-10M72	BOLT, WITH WASHER	4	
43	90105-10M45	BOLT, WASHER BASED	2	
44	65V-14752-00	PIPE, OUTLET	1	
45	90450-88M15	HOSE CLAMP ASSY	1	
46	65V-12578-00	HOSE 3	1	
47	90446-27M73	HOSE	1	
48	90450-22M14	HOSE CLAMP ASSY	1	
49	90445-14M06	HOSE	1	
50	90446-20M31	HOSE	1	
51	64X-12581-00	JOINT, HOSE 1	1	
52	90450-14M05	HOSE CLAMP ASSY	2	
53	90450-18M09	HOSE CLAMP ASSY	1	
54	90445-14M10	HOSE	1	

B11

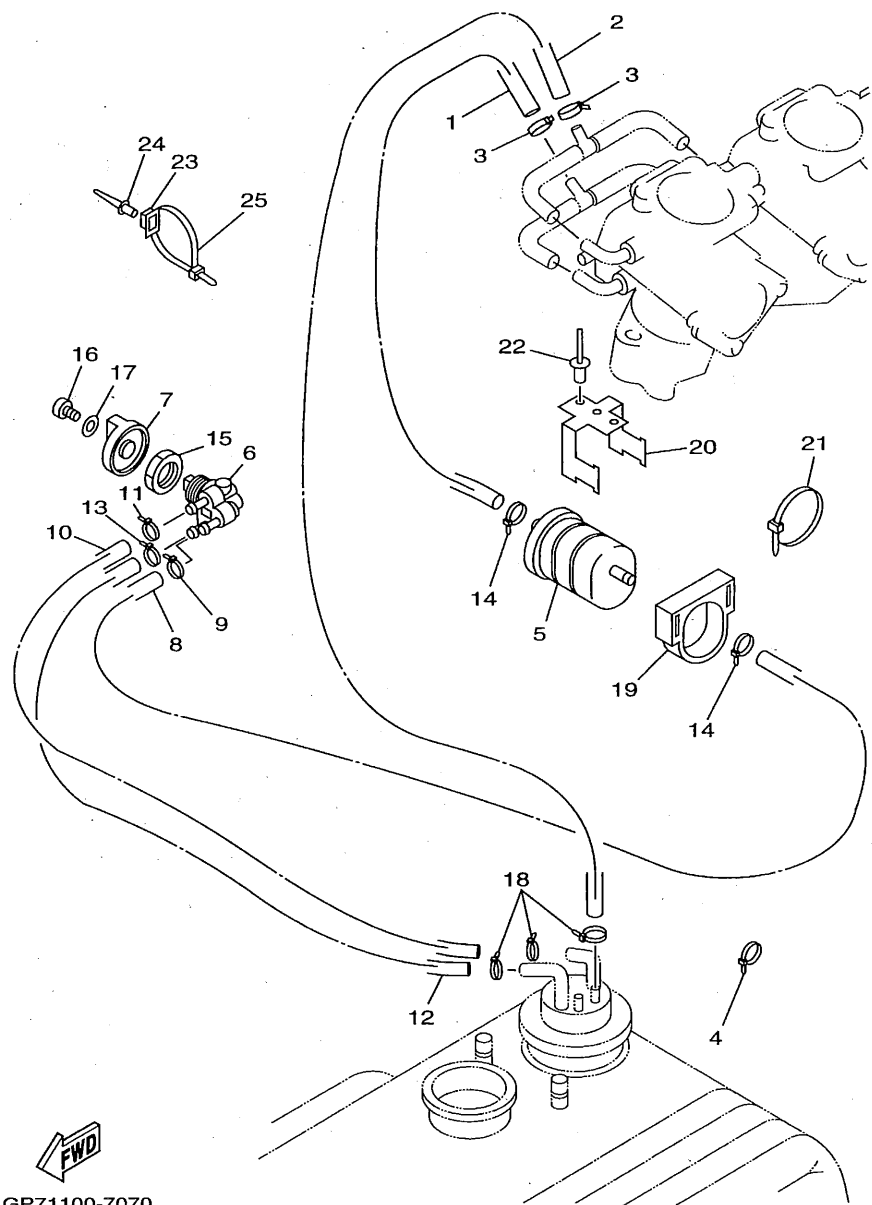


GP71100-7060

FIG. 6 EXHAUST 1

REF. NO.	PART NO.	DESCRIPTION	GP7*	REMARKS
55	63M-12580-00	JOINT ASSY	1	
56	682-84385-01	CAP,1	1	
57	63M-12590-00	CONDUCTION ASSY	1	UR EXCEPT JPN
	63M-12590-10	CONDUCTION ASSY	1	UR FOR JPN
58	90450-14M05	HOSE CLAMP ASSY	1	
59	EU0-61652-00	NUT	1	
60	90601-118UF	NYLON CLIP 1	1	YMUS
61	GP7-672A4-00	NUT,THRUHULL	1	
62	90430-16910	GASKET	1	
63	90604-80797	THROUGH HULL	1	

B12

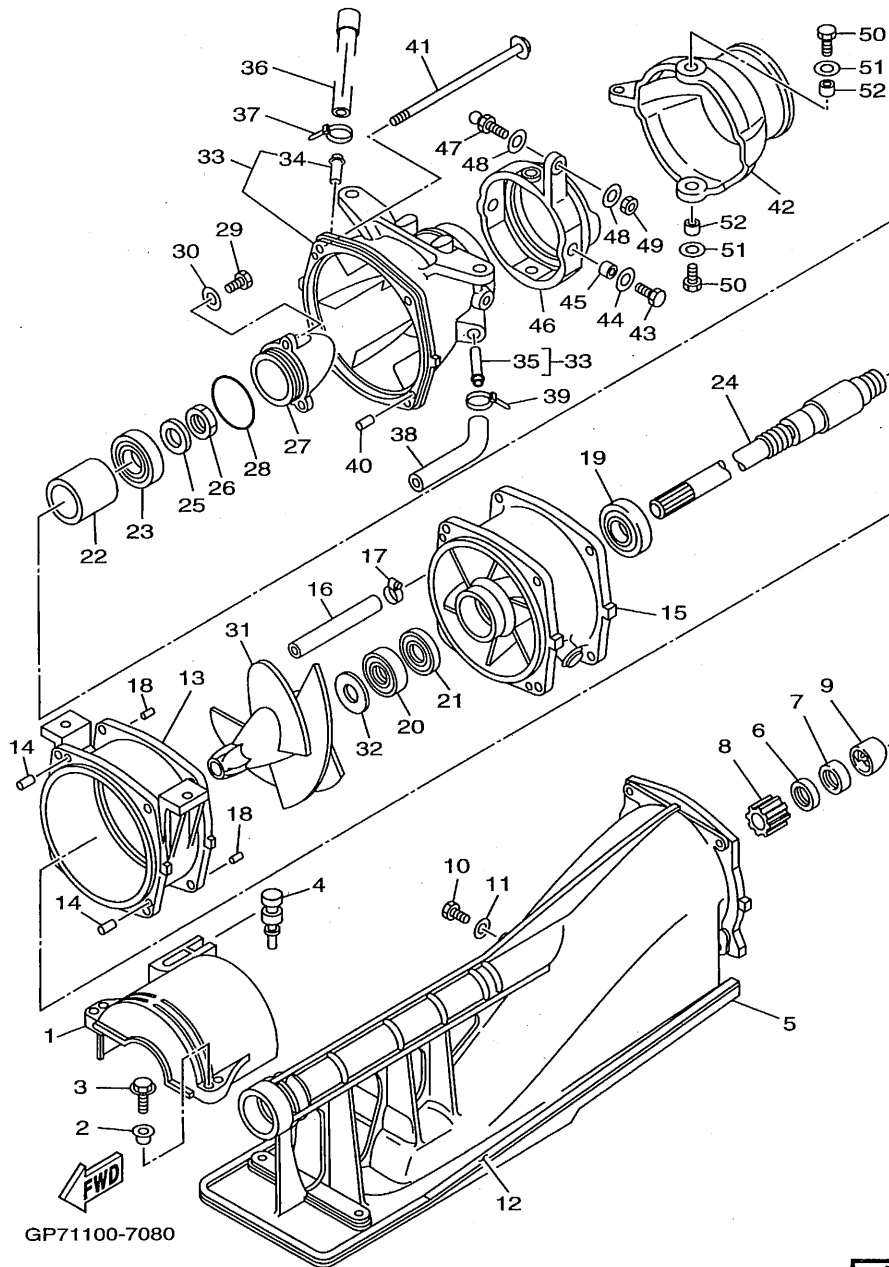


GP71100-7070

FIG. 7 FUEL

REF. NO.	PART NO.	DESCRIPTION	GP7*	REMARKS
1	90445-10M97	HOSE	1	
2	90445-10M06	HOSE	1	
3	90465-11M10	CLAMP	2	
4	90465-11M10	CLAMP	1	
5	6K8-24560-10	FILTER ASSY	1	
6	6K8-24500-02	FUEL COCK ASSY 1	1	
7	6K8-24524-10	LEVER, COCK	1	
8	90445-10M96	HOSE	1	
9	90465-11M10	CLAMP	1	
10	90445-10M94	HOSE	1	
11	90465-11M10	CLAMP	1	
12	90445-10M95	HOSE	1	
13	90465-11M10	CLAMP	1	
14	90465-11M10	CLAMP	2	
15	90170-22M11	NUT	1	
16	97880-04010	SCREW, PAN HEAD	1	
17	92990-04600	WASHER, PLATE	1	
18	90465-11829	CLAMP	3	
19	EU0-U7817-00	HOLDER, FILTER	1	YMUS
20	FN8-67816-00	BRACKET, FUEL FILTER	1	
21	90601-200U1	NYLON CLIP 1	1	YMUS
22	90267-489U1	RIVET, BLIND	2	YMUS
23	90600-917U4	BASE, CLAMP	2	YMUS
24	90267-48925	RIVET, BLIND	2	
25	90601-20006	NYLON CLIP 1	2	

B13

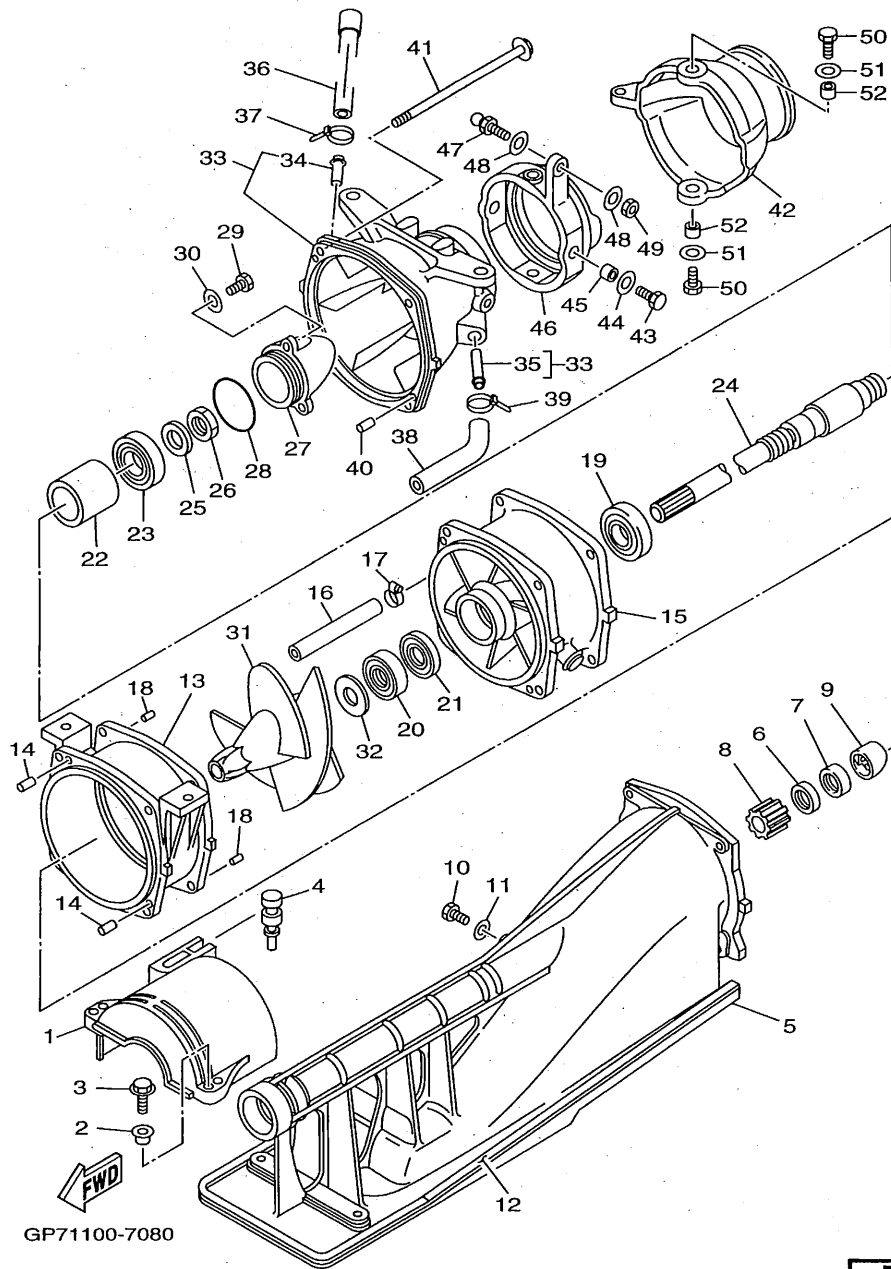


GP71100-7080

FIG. 8 JET UNIT 1

REF. NO.	PART NO.	DESCRIPTION	GP7*	REMARKS
1	65A-R1381-00	COVER	1	YMUS
2	90387-06M60	COLLAR	2	
3	97595-06525	BOLT, WITH WASHER	2	
4	90480-06M46	GROMMET	1	
5	65V-51311-00-94	DUCT, INTAKE	1	
6	93102-17M49	OIL SEAL	1	
7	93102-17M50	OIL SEAL	1	
8	65V-45318-00	BUSHING, DRIVE SHAFT	1	
9	65V-51348-01-94	SPACER	1	
10	97095-06025	BOLT	1	
11	92995-06600	WASHER	1	
12	6R8-51367-01	FELT, PACKING	2	
13	6R8-51312-02-94	HOUSING, IMPELLER	1	
14	93606-12019	PIN, DOWEL	2	
15	62T-51315-01-94	DUCT, IMPELLER	1	
16	90445-14M17	HOSE	1	
17	90450-14M05	HOSE CLAMP ASSY	1	
18	93606-12019	PIN, DOWEL	2	
19	93306-205U0	BEARING	1	
20	93102-25M34	OIL SEAL	1	
21	93101-25M50	OIL SEAL	1	
22	65V-45538-00	SPACER 1	1	
23	93306-304U1	BEARING	1	
24	65V-45511-00	SHAFT, DRIVE	1	
25	92990-16600	WASHER	1	
26	95317-16700	NUT	1	
27	62T-51326-00	CAP	1	

B14



GP71100-7080

FIG. 8 JET UNIT 1

REF. NO.	PART NO.	DESCRIPTION	GP7*	REMARKS
28	93210-46M16	O-RING	1	
29	97095-06016	BOLT	3	
30	92995-06600	WASHER	3	
31	65V-51321-00	IMPELLER	1	
32	62T-51348-00	SPACER	1	
33	65V-51318-00-94	NOZZLE	1	
34	6K8-51129-00	.NIPPLE	1	
35	62T-51129-00	.NIPPLE	1	
36	61X-51673-00	PIPE 1	1	
37	90465-11M10	CLAMP	1	
38	90445-14M24	HOSE	1	
39	90465-11M10	CLAMP	1	
40	93606-12019	PIN, DOWEL	2	
41	90101-06M04	BOLT	4	
42	65V-51313-00	NOZZLE, DEFLECTOR	1	
43	97095-08018	BOLT	2	
44	92995-08600	WASHER	2	
45	90387-08M08	COLLAR	2	
46	64Y-51190-00-94	RING, TRIM	1	
47	6R7-42316-00	BOLT, JOINT	1	
48	90201-06M31	WASHER, PLATE	2	
49	95380-06700	NUT	1	
50	97095-08020	BOLT	2	
51	92995-08600	WASHER	2	
52	90387-08M06	COLLAR	2	

B15

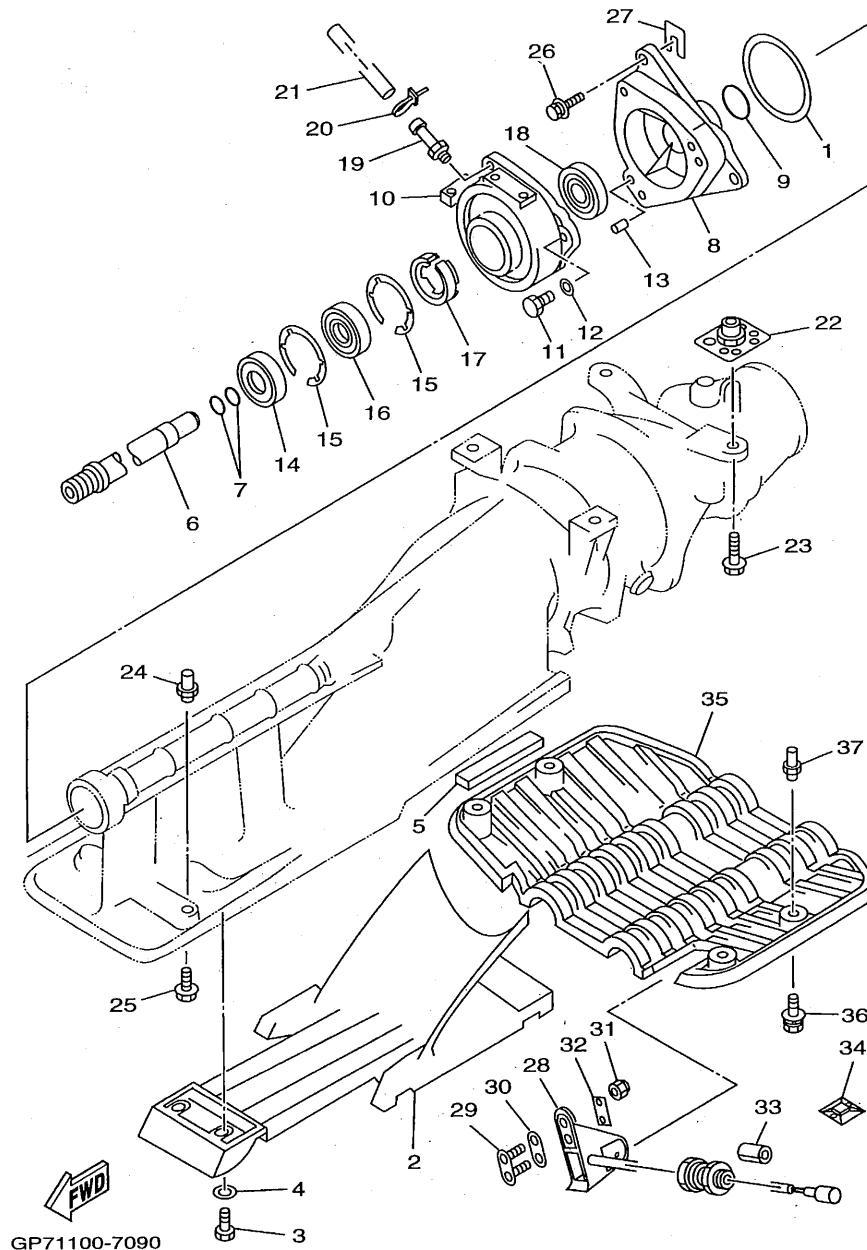
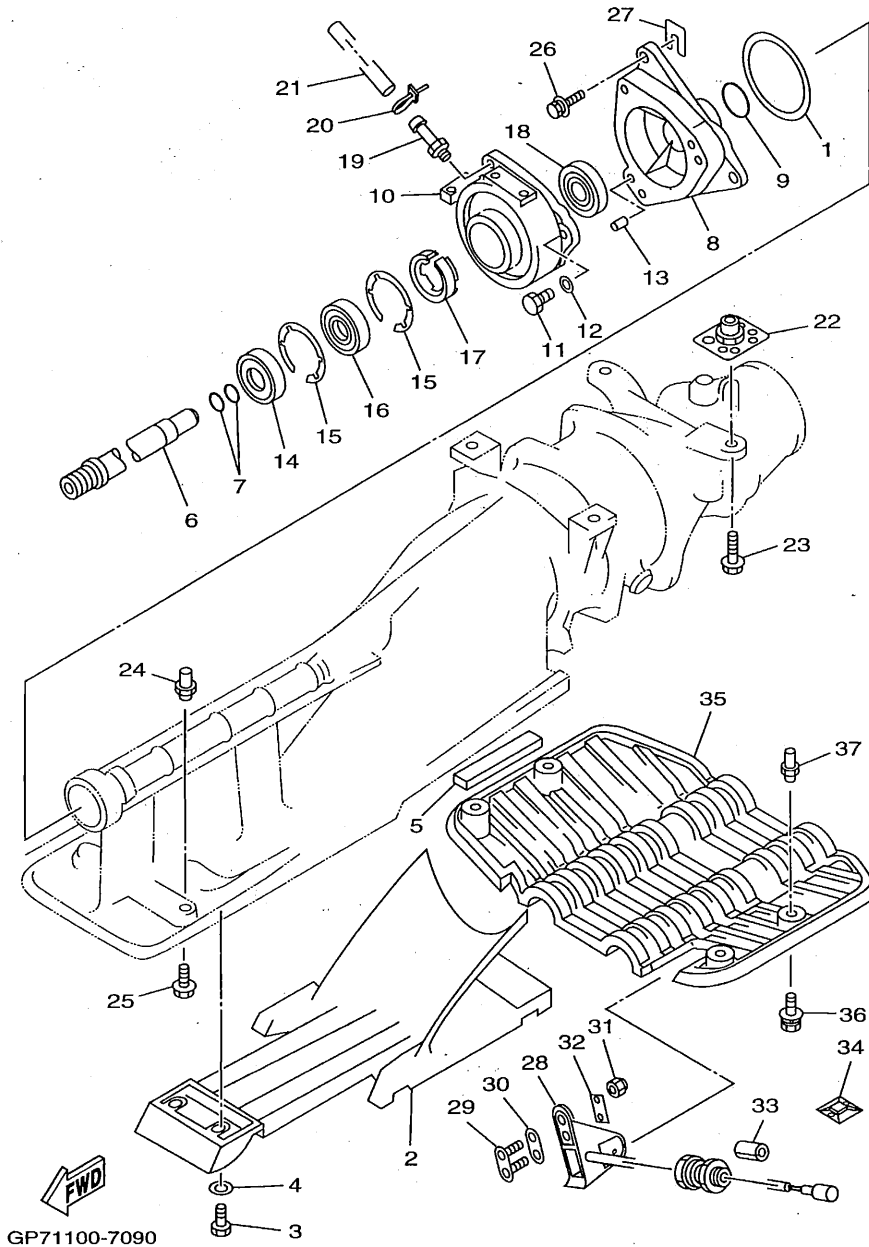


FIG. 9 JET UNIT 2

REF. NO.	PART NO.	DESCRIPTION	GP7*	REMARKS
1	6K8-45127-00	SEAL	1	
2	63N-51333-02-94	SCREEN, INTAKE	1	
3	97095-06018	BOLT	6	
4	92995-06600	WASHER	6	
5	63N-51368-00	FELT, PACKING	2	
6	65V-51323-00	SHAFT, COUPLOR	1	
7	93210-17MA4	O-RING	2	
8	62G-45331-01-94	HOUSING, BEARING	1	
9	93210-35M72	O-RING	1	
10	61X-45332-02-94	HOUSING, BEARING	1	
11	97095-08025	BOLT	3	
12	92995-08600	WASHER	3	
13	93606-12019	PIN, DOWEL	2	
14	93101-25M55	OIL SEAL	1	
15	93430-47M04	CIRCLIP	2	
16	93306-205U6	BEARING	1	
17	63M-51348-00	SPACER	1	
18	93101-25M56	OIL SEAL	1	
19	61L-45378-00	NIPPLE, HOSE	1	
20	90465-11M10	CLAMP	1	
21	90445-09M17	HOSE	1	
22	90179-10925	NUT	4	
23	90119-109U8	BOLT, WITH WASHER	4	YMUS
24	90179-06947	NUT	2	
25	90119-069UK	BOLT, WITH WASHER	2	YMUS
26	90119-089UL	BOLT, WITH WASHER	3	YMUS
27	GD0-U7249-00-05	SHIM	2	UR YMUS

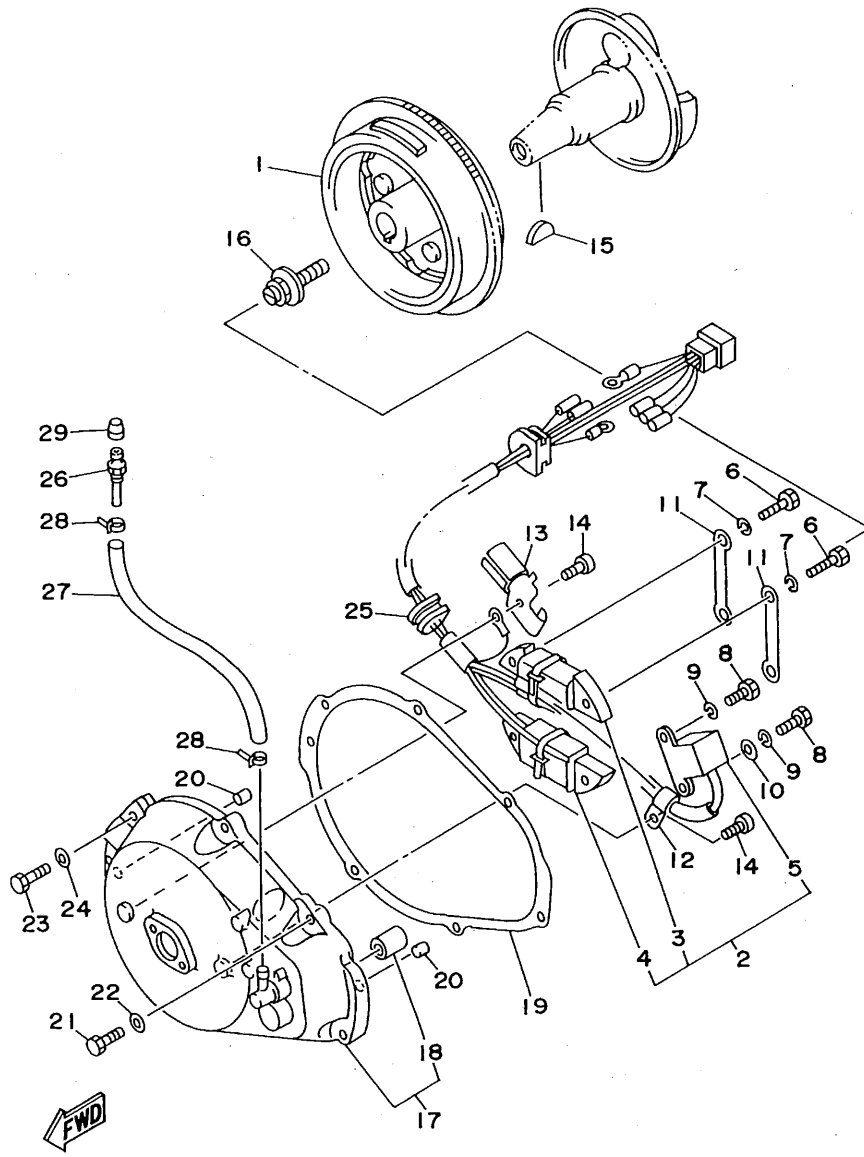


GP71100-7090

FIG. 9 JET UNIT 2

REF. NO.	PART NO.	DESCRIPTION	GP7*	REMARKS
27	GD0-U7249-00-10	SHIM	2	UR YMUS
28	GP7-U8K31-00	SENSOR SPEED	1	YMUS
29	GP7-U8K33-00	BRACKET SPEED SENSOR	1	YMUS
30	GP7-U8K34-00	PACKING	1	YMUS
31	95720-06300	NUT, SELF-LOCKING	2	
32	GP7-U8K35-00	PLATE, SPEED SENSOR	1	YMUS
33	GJ1-U7578-10	PACKING, HOSE 2	1	YMUS
34	90600-900U6	BASE, CLAMP	8	YMUS
35	GP7-U273B-00	PLATE 2	1	YMUS
36	90119-089U5	BOLT, WITH WASHER	4	YMUS
37	90179-08965	NUT	4	

C3



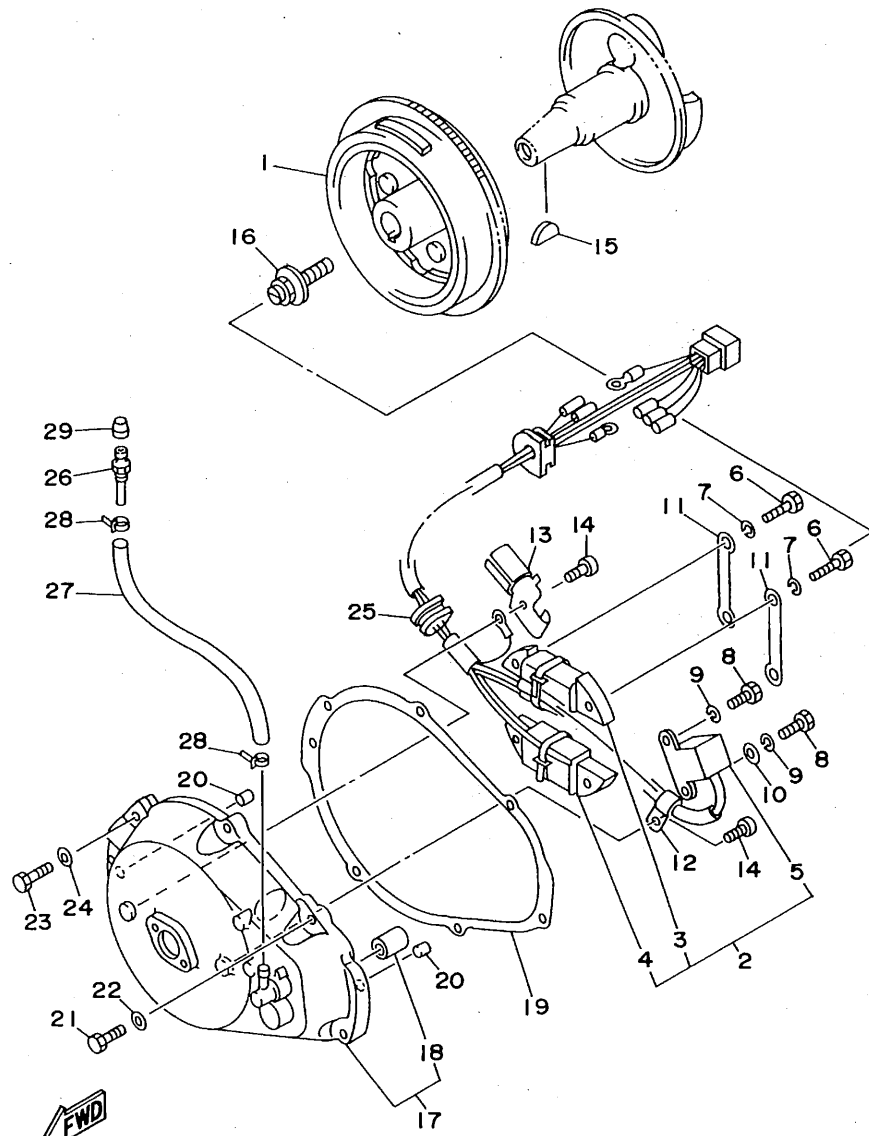
GP21100-6100

FIG. 10 GENERATOR

REF. NO.	PART NO.	DESCRIPTION	GP7*	REMARKS
1	64X-85550-00	ROTOR ASSY	1	
2	64X-85521-01	COIL ASSY	1	
3	64X-85520-00	.COIL, CHARGE	1	
4	62T-85533-00	.COIL, LIGHTING	1	
5	64X-85580-00	.COIL, PULSER	1	
6	97013-05020	BOLT	4	
7	92903-05100	WASHER, SPRING	4	
8	97013-05012	BOLT	2	
9	92903-05100	WASHER, SPRING	2	
10	90201-05M09	WASHER, PLATE	1	
11	64X-85525-00	COVER	2	
12	90465-06M28	CLAMP	1	
13	90465-06M65	CLAMP	1	
14	97880-06010	SCREW, PAN HEAD	2	
15	90280-05013	KEY, WOODRUFF	1	
16	90109-10M72	BOLT	1	
17	64X-81337-00-4D	COVER, FLYWHEEL	1	
18	90380-12M29	.BUSH, SOLID	1	
19	6M6-81365-A0	GASKET, HOLE COVER	1	
20	93606-12019	PIN, DOWEL	2	
21	97095-06025	BOLT	5	
22	92995-06600	WASHER	5	
23	97095-06030	BOLT	2	
24	92995-06600	WASHER	2	
25	90480-23M69	GROMMET	1	
26	61L-5169A-00	NIPPLE, GREASE	1	
27	90445-09M24	HOSE	1	

C4

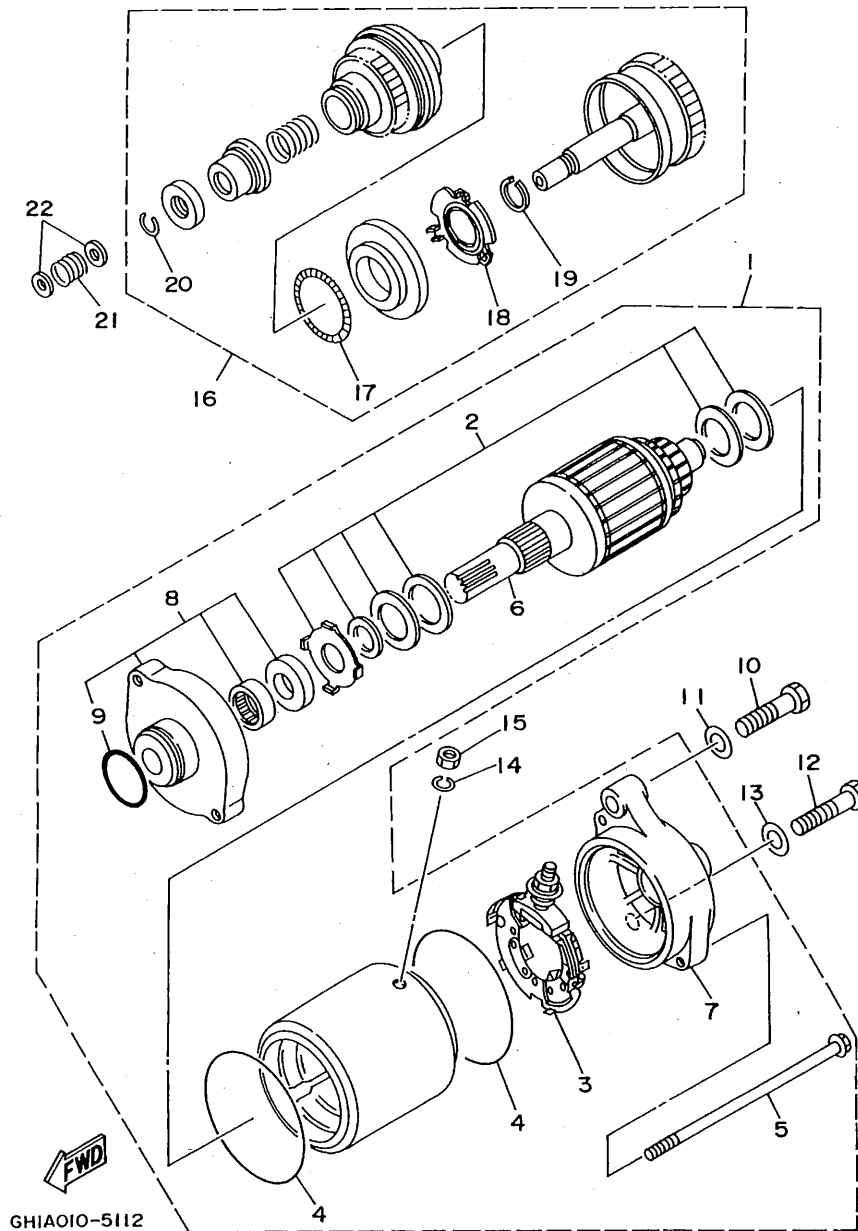
FIG. 10 GENERATOR



GP21100-6100

REF. NO.	PART NO.	DESCRIPTION	GP7*	REMARKS
28	90465-11M10	CLAMP	2	
29	663-45119-00	CAP, GREASE NIPPLE	1	

C5



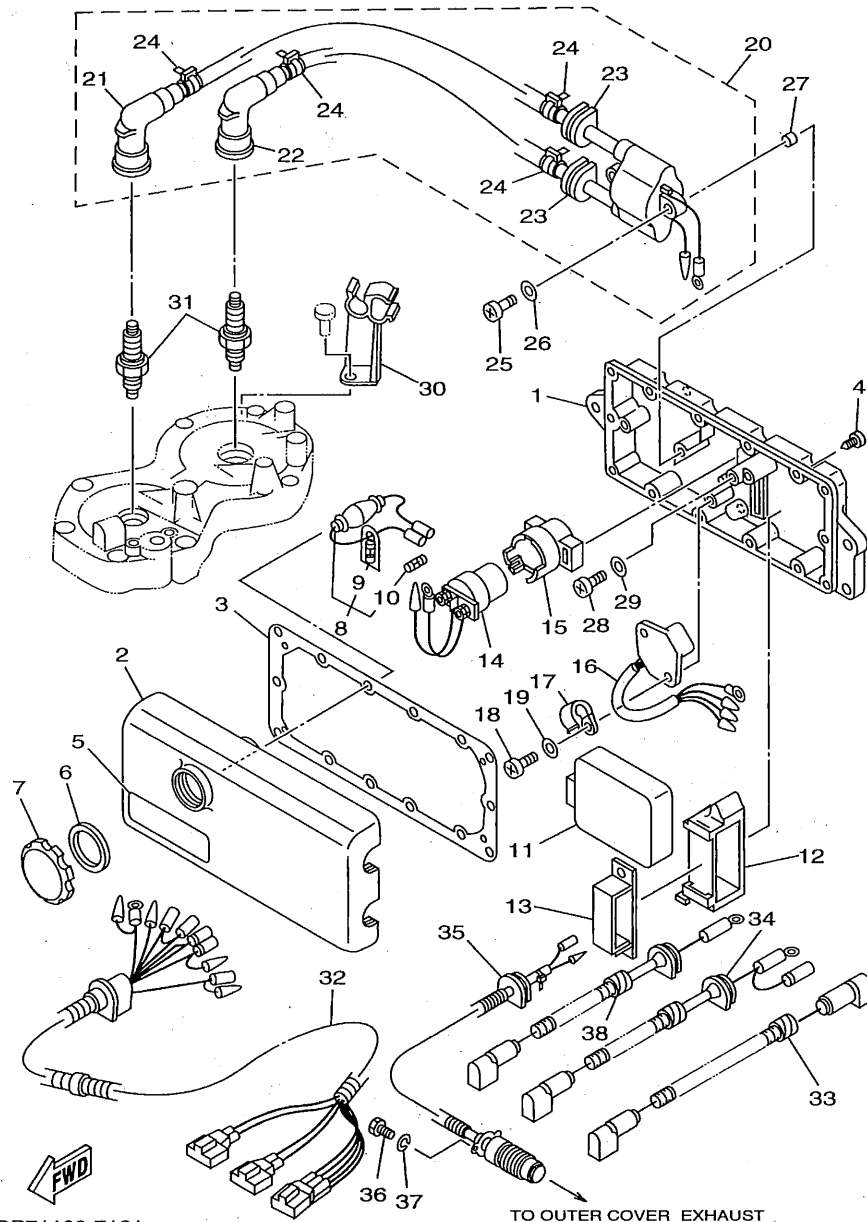
GHIAOIO-5112

FIG. 11 STARTING MOTOR

REF. NO.	PART NO.	DESCRIPTION	GP7*	REMARKS
1	64X-81800-00	STARTING MOTOR ASSY	1	
2	3AJ-81809-00	.WASHER KIT	1	
3	6M6-81840-10	.BRUSH HOLDER ASSY	1	
4	11H-81844-00	.GASKET	2	
5	6M6-81826-00	.BOLT	2	
6	6M6-81850-00	.ARMATURE ASSY	1	
7	64X-81820-00	.REAR BRACKET ASSY	1	
8	6M6-81830-00	.FRONT BRACKET ASSY	1	
9	1FK-81847-00	..O-RING	1	
10	97013-08040	BOLT	1	
11	92903-08600	WASHER, PLATE	1	
12	97013-08035	BOLT	1	
13	92903-08600	WASHER, PLATE	1	
14	92990-06100	WASHER, SPRING	1	
15	95380-06700	NUT	1	
16	6M6-8183E-00	IDLE GEAR COMP	1	
17	6M6-81866-00	.WEIGHT SPRING	1	
18	6M6-81865-00	.WEIGHT HOLDER	1	
19	93440-25M08	.CIRCLIP	1	
20	93450-18M06	.CIRCLIP	1	
21	90501-14M73	SPRING, COMPRESSION	1	
22	92903-06600	WASHER, PLATE	2	

C6

FIG. 12 ELECTRICAL 1



GP71100-7121

TO OUTER COVER EXHAUST

REF. NO.	PART NO.	DESCRIPTION	GP7*	REMARKS
1	64X-8552A-01-5B	HOUSING	1	
2	6M6-8552E-01	COVER, CASE	1	
3	6M6-81921-00	GASKET, TERMINAL	1	
4	97780-60525	SCREW, TAPPING	14	
5	63N-83623-00	MARK 3	1	UR FOR JPN
	6R7-83623-40	MARK 3	1	UR EXCEPT JPN
6	6M6-81844-00	GASKET	1	
7	6M6-8132W-00	CAP	1	
8	6K8-82150-01	FUSE HOLDER ASSY	1	
9	6G1-82151-00	.FUSE	1	
10	6K8-82159-00	.FUSE SPEAR	1	
11	64X-85540-00	C.D.I. UNIT ASSY	1	
12	64X-85546-00	BAND	1	
13	90464-06M29	CLAMP	1	
14	6G1-81941-10	STARTER RELAY ASSY	1	
15	6M6-81952-01	HOLDER, RELAY	1	
16	6M6-81960-A0	RECTIFIER & REGULATOR ASSY	1	
17	90465-08M07	CLAMP	1	
18	97880-06016	SCREW, PAN HEAD	1	
19	92990-06600	WASHER, PLATE	1	
20	64X-85570-00	IGNITION COIL ASSY	1	
21	62E-82371-10	.CAP, PLUG	1	
22	62E-82371-10	.CAP, PLUG	1	
23	90480-06M43	.GROMMET	2	
24	90465-11M10	.CLAMP	4	
25	97880-06030	SCREW, PAN HEAD	2	
26	92990-06600	WASHER, PLATE	2	

C7

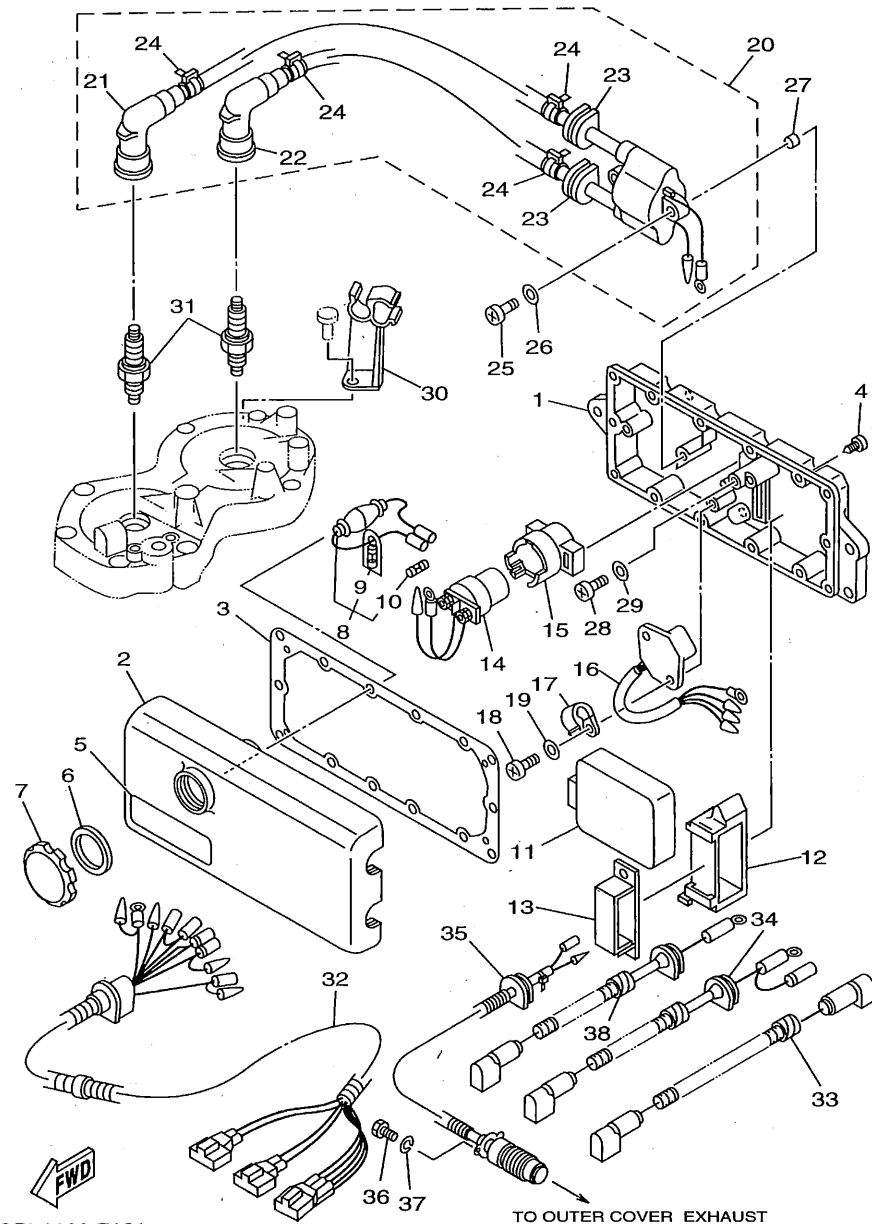
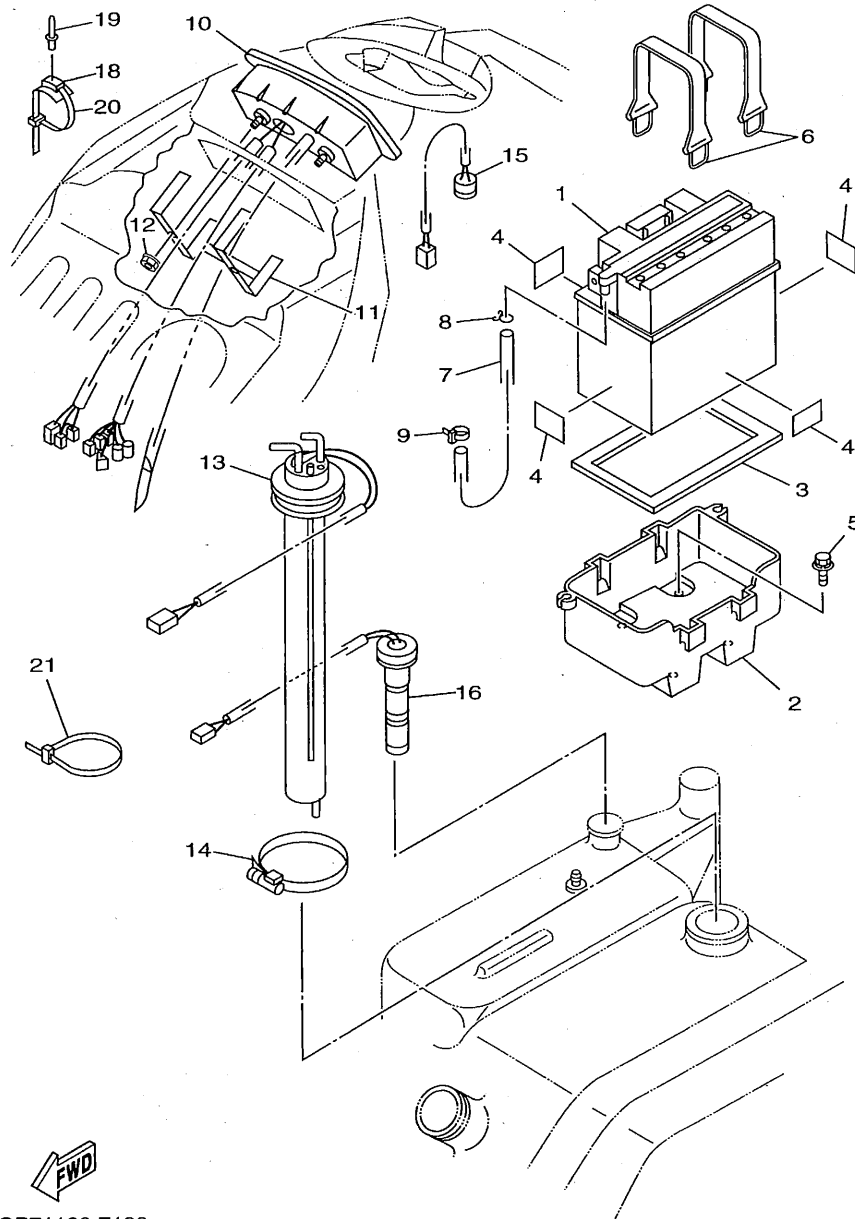


FIG. 12 ELECTRICAL 1

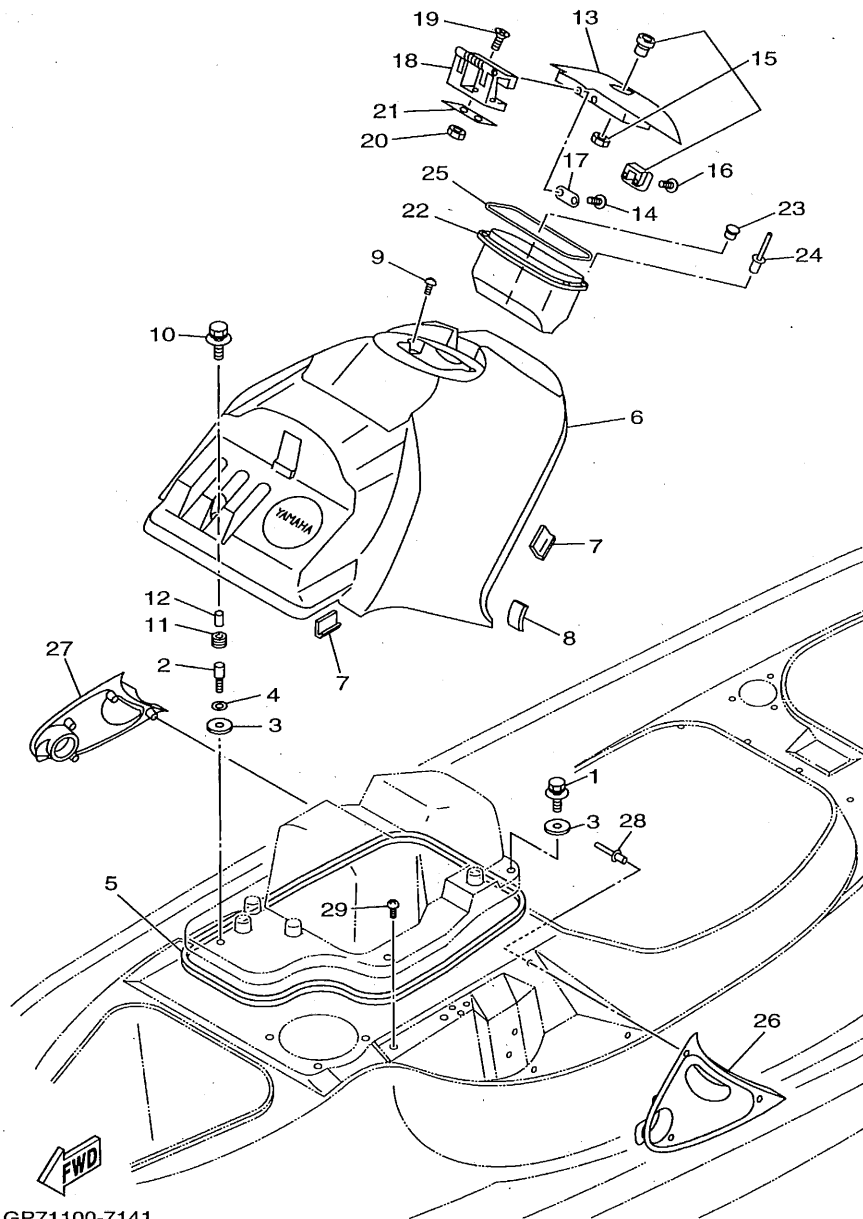
REF. NO.	PART NO.	DESCRIPTION	GP7*	REMARKS
27	90387-06M30	COLLAR	1	
28	97880-06016	SCREW, PAN HEAD	2	
29	92990-06600	WASHER, PLATE	2	
30	62T-82361-00	CLAMP, CORD	1	
31	94702-00195	PLUG, SPARK (NGK BR8HS)	2	
32	65V-82553-00	EXTENSION, WIRE LEAD	1	
33	62T-82117-01	WIRE, LEAD	1	
34	63N-82117-10	WIRE, LEAD	1	
35	64X-82560-00	THERMO SWITCH ASSY	1	
36	97095-06016	BOLT	2	
37	92995-06100	WASHER, SPRING	2	
38	6M6-82117-21	WIRE, LEAD	1	



GP71100-7130

FIG. 13 ELECTRICAL 2

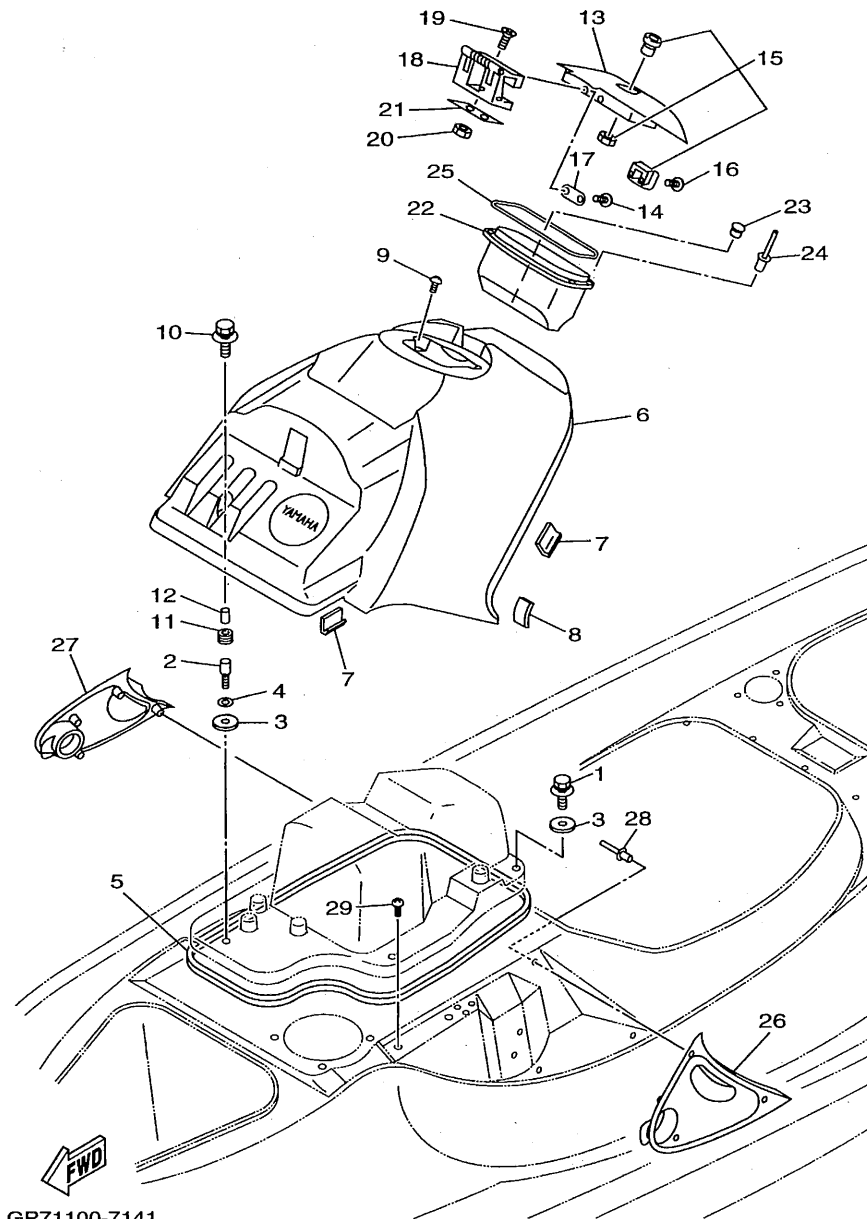
REF. NO.	PART NO.	DESCRIPTION	GP7*	REMARKS
1	EU0-82110-09	BATTERY ASSY	1	
2	GP7-U8211-00	CASE, BATTERY	1	YMUS
3	EU0-U8221-00	PAD, BATTERY 1	1	YMUS
4	EU0-U8221-30	PAD, BATTERY 2	4	YMUS
5	90119-06920	BOLT, WITH WASHER	4	
6	EU0-U821D-00	BAND, BATTERY 2	2	YMUS
7	GP7-U785J-00	HOSE AIR VENT	1	YMUS
8	90467-089U1	CLIP	1	YMUS
9	90465-11829	CLAMP	1	
10	GP7-6820A-00	METER ASSY	1	UR FOR USA
	GP7-6820A-10	METER ASSY	1	UR EXCEPT USA
11	GP7-68238-00	BRACKET, METER	1	
12	95720-05300	NUT, FLANGE	2	
13	GP7-U824B-00	SENDER, FUEL	1	
14	90601-162U5	BAND, HOSE 62	1	YMUS
15	GP7-U8341-00	BUZZER	1	YMUS
16	GP7-U824C-00	SENDER, OIL	1	YMUS
17	90464-40825	CLAMP	7	
18	90600-917U4	BASE, CLAMP	1	YMUS
19	90267-48925	RIVET, BLIND	1	
20	90601-20006	NYLON CLIP 1	1	
21	90601-200U1	NYLON CLIP 1	2	YMUS



GP71100-7141

FIG. 14 ENGINE HATCH 1

REF. NO.	PART NO.	DESCRIPTION	GP7*	REMARKS
1	90119-089U5	BOLT, WITH WASHER	4	YMUS
2	90109-08913	BOLT	1	
3	90201-099U1	WASHER, PLATE	5	YMUS
4	92990-08100	WASHER, SPRING	1	
5	GP7-U266F-00	PACKING 7	1	YMUS
6	GP7-U516N-00	COVER, ENGINE HATCH	1	YMUS
7	GP7-U5116-00	TRIM,HATCH 2	4	YMUS
8	GP7-U517M-01	PAD,HATCH 1	2	YMUS
9	90149-05984	SCREW	2	
10	90119-06959	BOLT, WITH WASHER	1	
11	90480-13907	GROMMET	1	
12	90387-06920	COLLAR	1	
13	GP7-U517H-00	LID HATCH	1	YMUS
14	98580-05520	SCREW, PAN HEAD	2	
15	GP7-6287A-00	LOCK ASSY	1	
16	98580-05510	SCREW, PAN HEAD	2	
17	GP7-U5148-00	PLATE, HOOD	1	YMUS
18	GP7-6517G-00	HINGE, HATCH	1	
19	98780-05020	SCREW, FLAT HEAD	2	
20	95720-05300	NUT, FLANGE	2	
21	GP7-U517S-00	PLATE, HATCH 2	1	YMUS
22	GP7-U516P-00	BOX GLOVE	1	YMUS
23	90605-502U2	HOSE JOINT	1	YMUS
24	90267-489UK	RIVET, BLIND	4	YMUS
25	GP7-U519D-02	PACKING CASE	1	YMUS
26	GP7-U377B-00	COVER,SIDE 1	1	YMUS
27	GP7-U377C-00	COVER,SIDE 2	1	YMUS

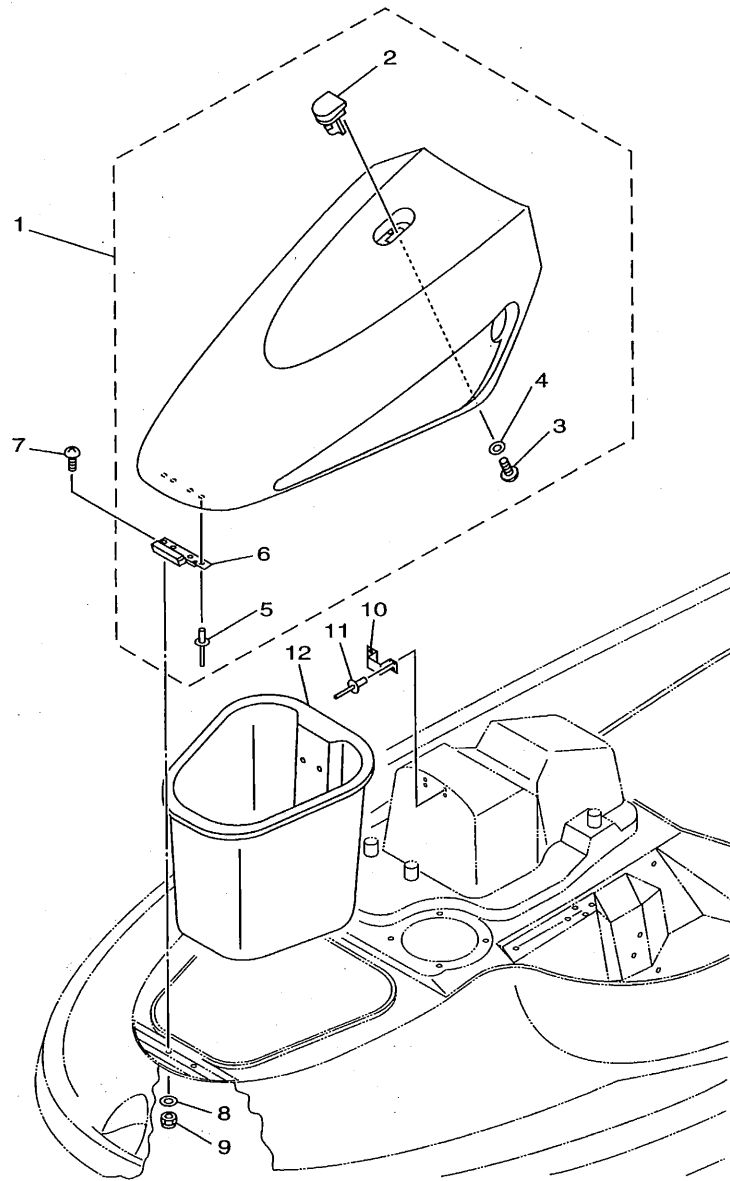


GP71100-7141

FIG. 14 ENGINE HATCH 1

REF. NO.	PART NO.	DESCRIPTION	GP7*	REMARKS
28	90267-489UE	RIVET, BLIND	8	YMUS
29	90338-09828	PLUG	4	

C11



GP71100-7150

FIG. 15 ENGINE HATCH 2

REF. NO.	PART NO.	DESCRIPTION	GP7*				REMARKS
1	GP7-U517L-00	LID COMP.	1				YMUS
2	GP7-6517C-00	.LOCK, LID	1				
3	90149-059U7	.SCREW	2				YMUS
4	92990-05200	.WASHER, PLAIN	2				
5	90267-489U9	.RIVET, BLIND	4				YMUS
6	GP7-6517D-01	.HINGE, LID	1				
7	90149-06902	SCREW	2				
8	92990-06200	WASHER, PLAIN	2				
9	95720-06300	NUT, SELF-LOCKING	2				
10	GP7-6517F-00	HOOK, LID LOCK	1				
11	90267-489U1	RIVET, BLIND	4				YMUS
12	GP7-U475A-00	BOWLOCKER ASSY	1				YMUS

C12

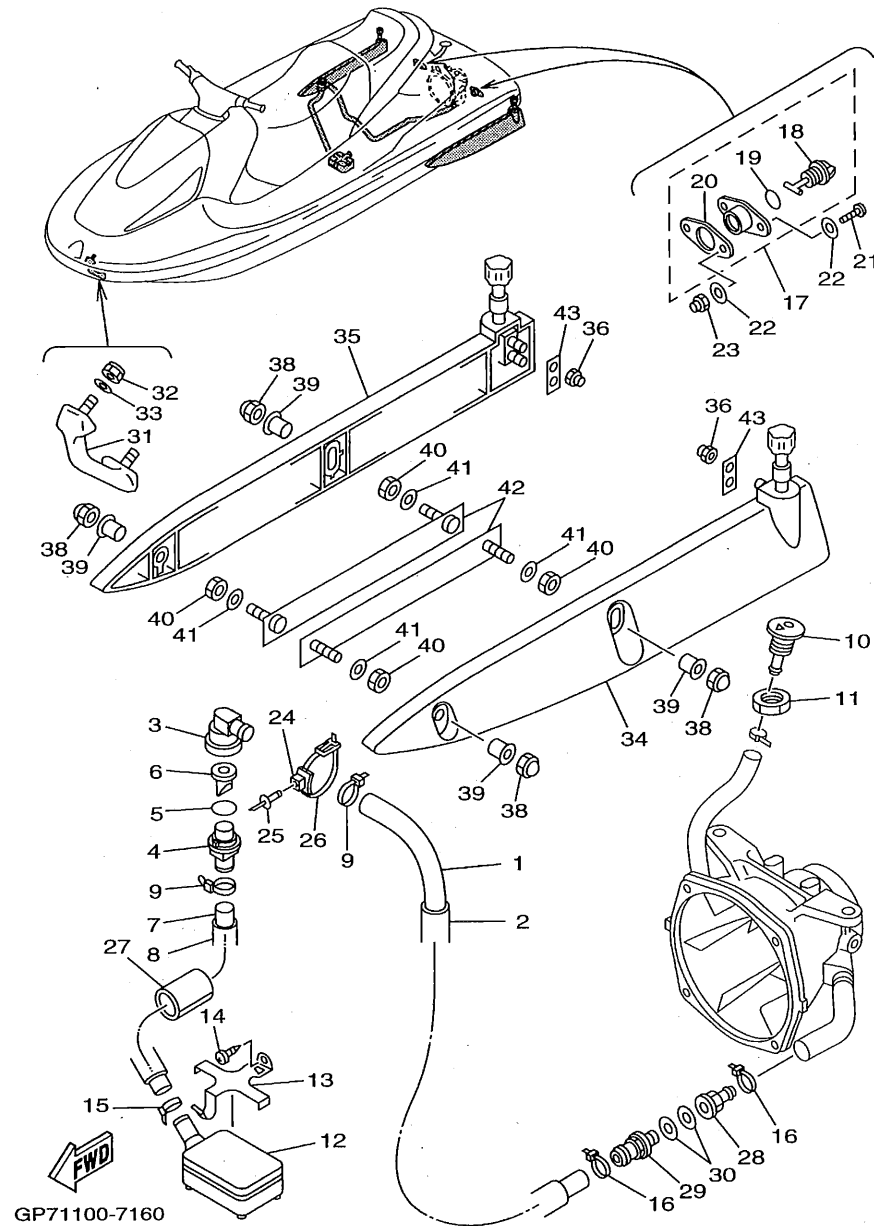
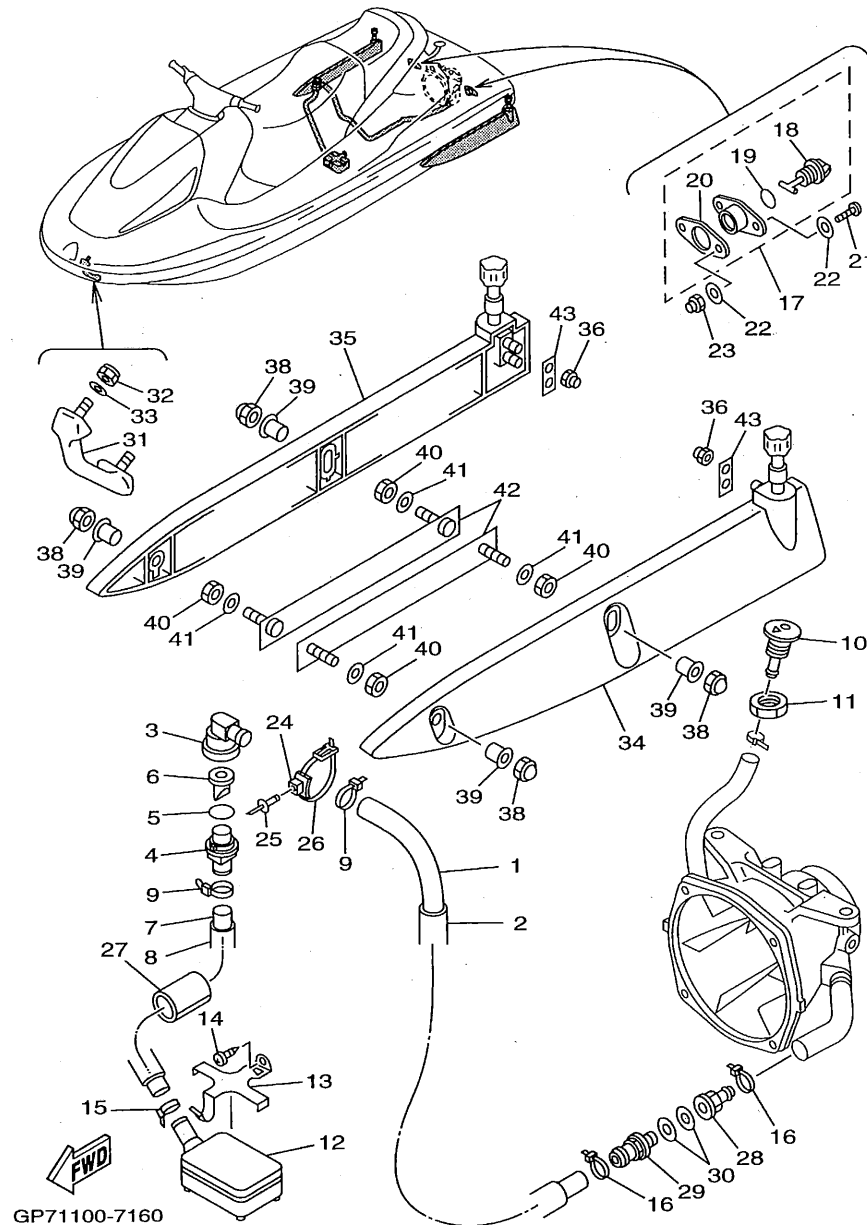


FIG. 16 HULL. DECK

REF. NO.	PART NO.	DESCRIPTION	GP7*	REMARKS
1	90445-19M10	HOSE	1	
2	90446-27M73	HOSE	1	
3	63M-51162-00	JOINT, HOSE	1	
4	63M-51165-00	JOINT HOSE 2	1	
5	93210-22ME5	O-RING	1	
6	63M-5316M-00	VALVE 1	1	
7	90445-19M09	HOSE	1	
8	90446-24M80	HOSE	1	
9	90465-13M11	CLAMP	2	
10	FN8-6269B-00	SPOUT	1	
11	EU0-61652-00	NUT	1	
12	GD0-U761D-00	STRAINER, BILGE	1	YMUS
13	EW2-67618-00	BASE, STRAINER BLIGE	1	
14	97780-50112	SCREW, TAPPING	1	
15	90601-200U1	NYLON CLIP 1	1	YMUS
16	90601-200U1	NYLON CLIP 1	2	YMUS
17	EU0-62280-00	DRAIN PLUG ASSY	2	
18	EU0-62282-00	.PLUG, DRAIN	1	
19	EU0-62283-00	.O-RING	1	
20	EU0-62285-01	.PACKING DRAIN (EU0)	1	
21	97880-05025	SCREW, PAN HEAD	4	
22	92990-05200	WASHER, PLAIN	8	
23	95720-05300	NUT, FLANGE	4	
24	90600-917U4	BASE, CLAMP	1	YMUS
25	90267-48925	RIVET, BLIND	1	
26	90601-20006	NYLON CLIP 1	1	
27	GJ1-U7578-20	PACKING, HOSE 2	1	YMUS

C13

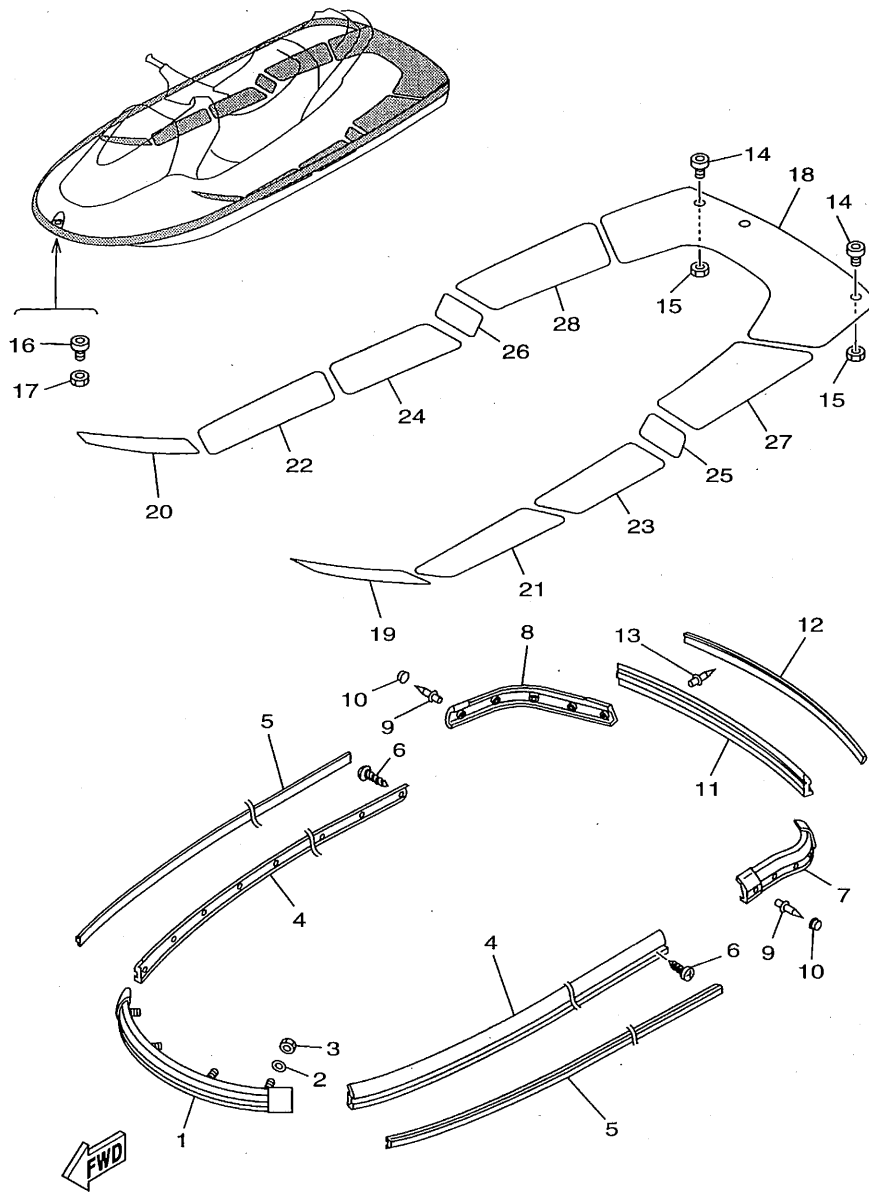


GP71100-7160

FIG. 16 HULL DECK

REF. NO.	PART NO.	DESCRIPTION	GP7*				REMARKS
28	90604-80759	CONNECTION, THRU-HULL 1/4	1				
29	90604-80775	THROUGH, HULL CONNECTION	1				
30	90430-13909	GASKET	2				
31	GP7-61624-00	BOWEYE 1 (S)	1				
32	95720-08300	NUT, SELF-LOCKING	2				
33	92990-08200	WASHER, PLAIN	2				
34	GP7-U883N-00	STABILIZER LH	1				
35	GP7-U883P-00	STABILIZER RH	1				
36	95720-06300	NUT, SELF-LOCKING	4				
37	93430-069U1	CIRCLIP	2				
38	90176-089U1	NUT, CROWN	4				YMUS
39	90387-08915	COLLAR	4				
40	90170-089U1	NUT	4				YMUS
41	92990-08200	WASHER, PLAIN	4				
42	GP7-U883T-00	BRACKET,STABILIZER	2				YMUS
43	GP7-U883U-00	PACKING,STABILIZER	2				YMUS

C14

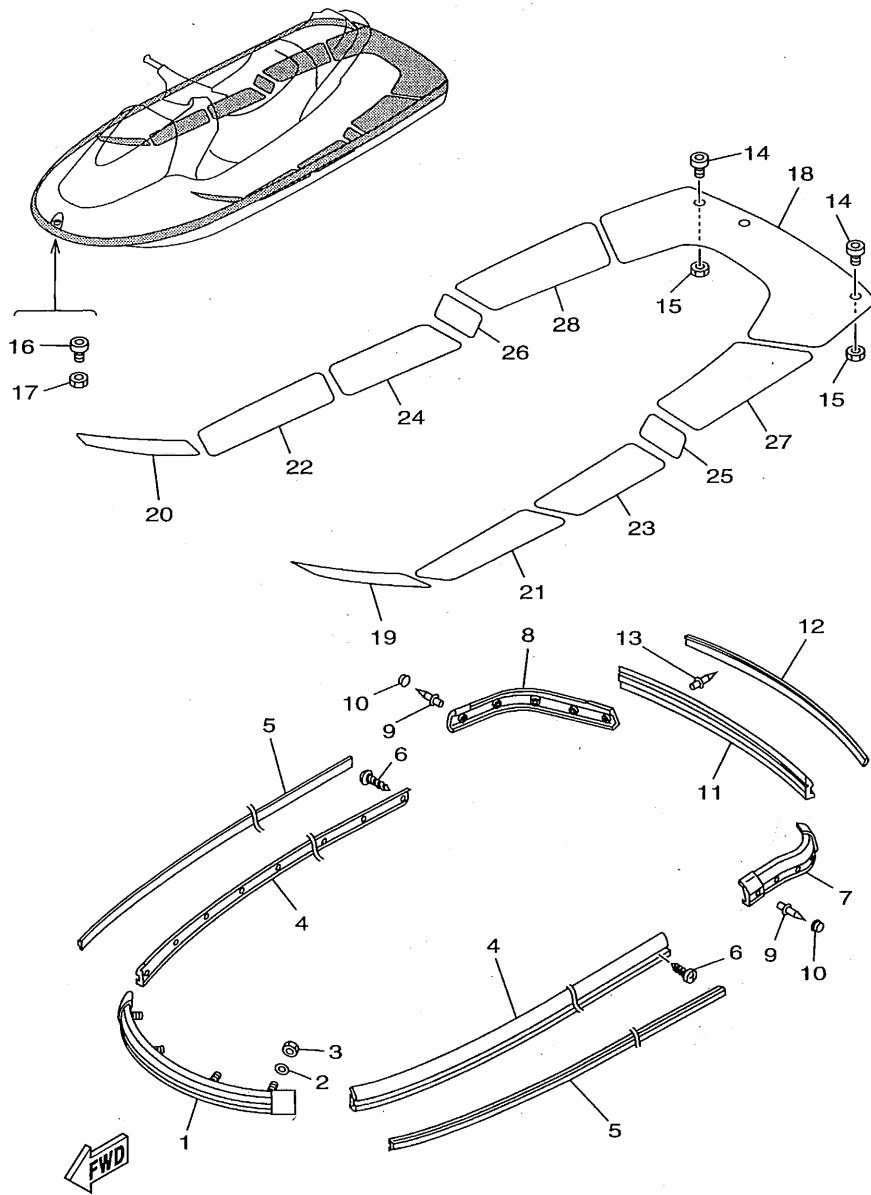


GP71100-7171

FIG. 17 GUNWALE. MAT

REF. NO.	PART NO.	DESCRIPTION	GP7*			REMARKS
1	GP7-U2501-00	BOW GUNWALE COMP.	1			YMUS
2	92990-06200	WASHER, PLAIN	4			
3	95720-06300	NUT, SELF-LOCKING	4			
4	GP7-U2512-00	GUNWALE, SIDE	2			YMUS
5	GP7-U2519-00	INNER,GUNWALE	2			YMUS
6	90169-059U1	SCREW,TAPPING	36			YMUS
7	GP7-U251D-00	GUNWALE, STERN 1	1			YMUS
8	GP7-U251E-00	GUNWALE, STERN 2	1			YMUS
9	90267-489UM	RIVET, BLIND	6			
10	GJ3-U352E-40	MAT, BOW	10			YMUS
11	GP7-U252C-00	COVER, GUNWALE 1	1			YMUS
12	GP7-U252D-00	COVER, GUNWALE 2	1			YMUS
13	90267-489UM	RIVET, BLIND	6			
14	FN8-61651-00	ROPE HOLE	2			
15	EU0-61652-00	NUT	2			
16	GH1-61651-00	ROPE HOLE	1			
17	EU0-61652-00	NUT	1			
18	GP7-U3581-00	MAT, UPPER	1			YMUS
19	GP7-U351H-00	MAT, STEP 1	1			YMUS
20	GP7-U351J-00	MAT, STEP 2	1			YMUS
21	GP7-U351K-00	MAT, STEP 3	1			YMUS
22	GP7-U351M-00	MAT, STEP 4	1			YMUS
23	GP7-U351N-00	MAT, STEP 5	1			YMUS
24	GP7-U351P-00	MAT, STEP 6	1			YMUS
25	GP7-U351R-00	MAT, STEP 7	1			YMUS
26	GP7-U351S-00	MAT, STEP 8	1			YMUS
27	GP7-U351T-00	MAT STEP 9	1			YMUS

C15



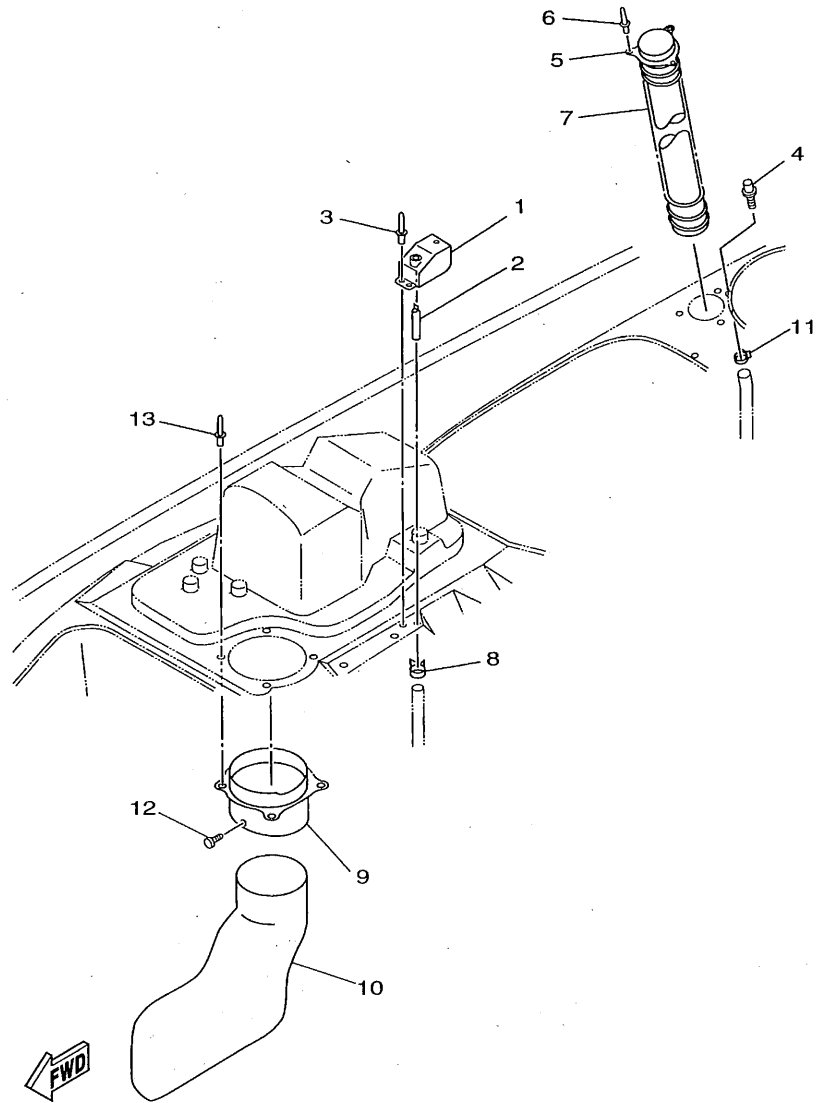
GP71100-7171

FIG. 17 GUNWALE. MAT

REF. NO.	PART NO.	DESCRIPTION	GP7*	REMARKS
28	GP7-U351U-00	MAT STEP 10	1	

D2

FIG. 18 VENTILATION



GP71100-7180

REF. NO.	PART NO.	DESCRIPTION	GP7*				REMARKS
1	GP7-62159-00	SOCKET VENTILATION	1				
2	EW2-62149-00	PIPE, VENTILATION 1	1				
3	90267-48925	RIVET, BLIND	2				
4	GJ3-6215F-00	NIPPLE	1				
5	GP7-U2139-00	VENTILATOR, OUTLET	1				YMUS
6	90267-48925	RIVET, BLIND	3				
7	GP7-U213G-00	HOSE, VENTILATOR 2	1				YMUS
8	90601-200U5	BAND	1				YMUS
9	GP7-U2127-00	BASE, AIR INTAKE	1				YMUS
10	GP7-U213F-00	HOSE, VENTILATOR 1	1				YMUS
11	90464-12830	CLAMP	1				
12	90267-07809	RIVET, BLIND	3				
13	90267-489UL	RIVET, BLIND	4				

D3

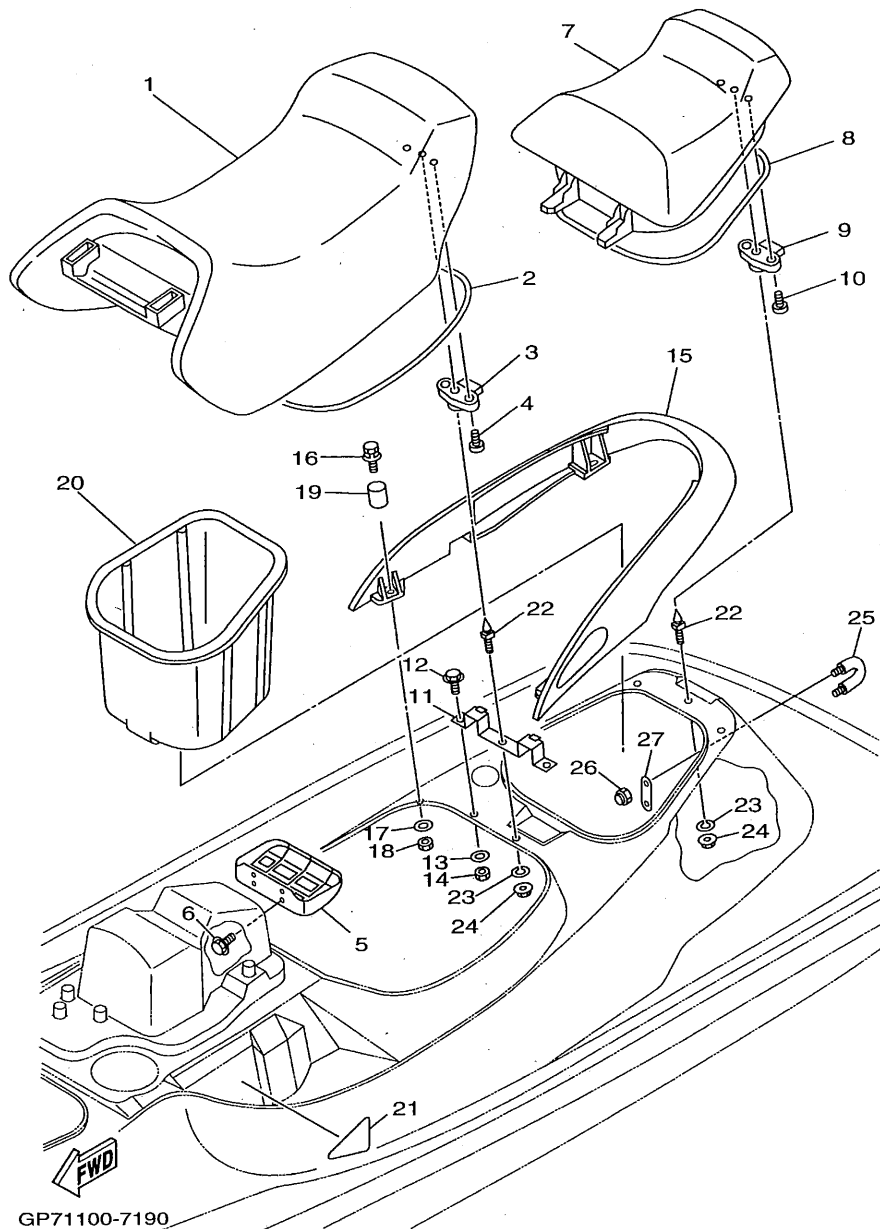


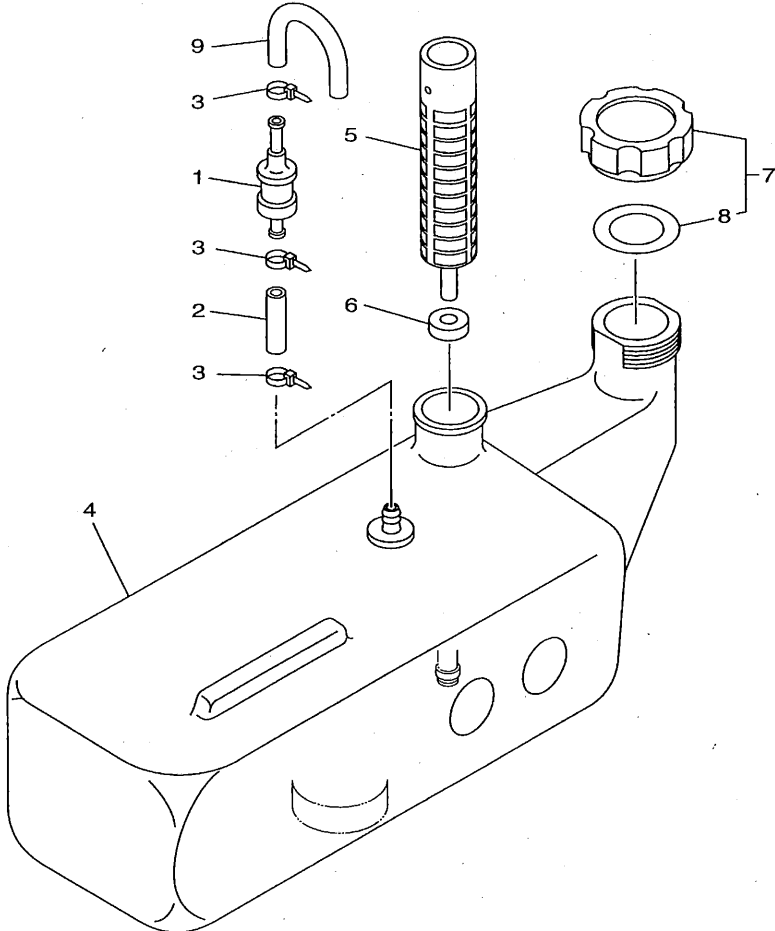
FIG. 19 SEAT · UNDER LOCKER

REF. NO.	PART NO.	DESCRIPTION	GP7*		REMARKS
1	GP7-U3710-00	SINGLE SEAT ASSY	1		YMUS
2	GP7-U2664-00	PACKING	1		YMUS
3	GJ3-63850-02	SEAT LOCK ASSY	1		
4	98980-06040	SCREW, BIND	2		
5	GP7-U378C-00	STAY, SEAT 1	1		YMUS
6	90119-089U7	BOLT, WITH WASHER	4		YMUS
7	GP7-U3760-00	DAMPER, SEAT ASSY	1		YMUS
8	GP7-U266B-00	PACKING 3	1		YMUS
9	GJ3-63850-02	SEAT LOCK ASSY	1		
10	98980-06040	SCREW, BIND	2		
11	GP7-6378D-00	STAY, SEAT 2	1		
12	97080-10025	BOLT	2		
13	92990-10200	WASHER, PLAIN	2		
14	95720-10300	NUT	2		
15	GP7-6271B-00	GRIP, HAND	1		
16	90119-08932	BOLT, WITH WASHER	4		
17	92990-08200	WASHER, PLAIN	4		
18	95720-08300	NUT, SELF-LOCKING	4		
19	90387-08924	COLLAR	4		
20	GP7-U474A-00	UNDER LOCKER ASSY	1		YMUS
21	GP7-U517N-01	PAD, HATCH 2	2		YMUS
22	GH1-U3774-00	PIN	2		YMUS
23	92990-10200	WASHER, PLAIN	3		
24	95720-10300	NUT	2		
25	GP7-61628-00	STERN EYE	1		
26	95720-08300	NUT, SELF-LOCKING	2		
27	GP7-U4953-00	PLATE A	1		YMUS

GP71100-7190

D4

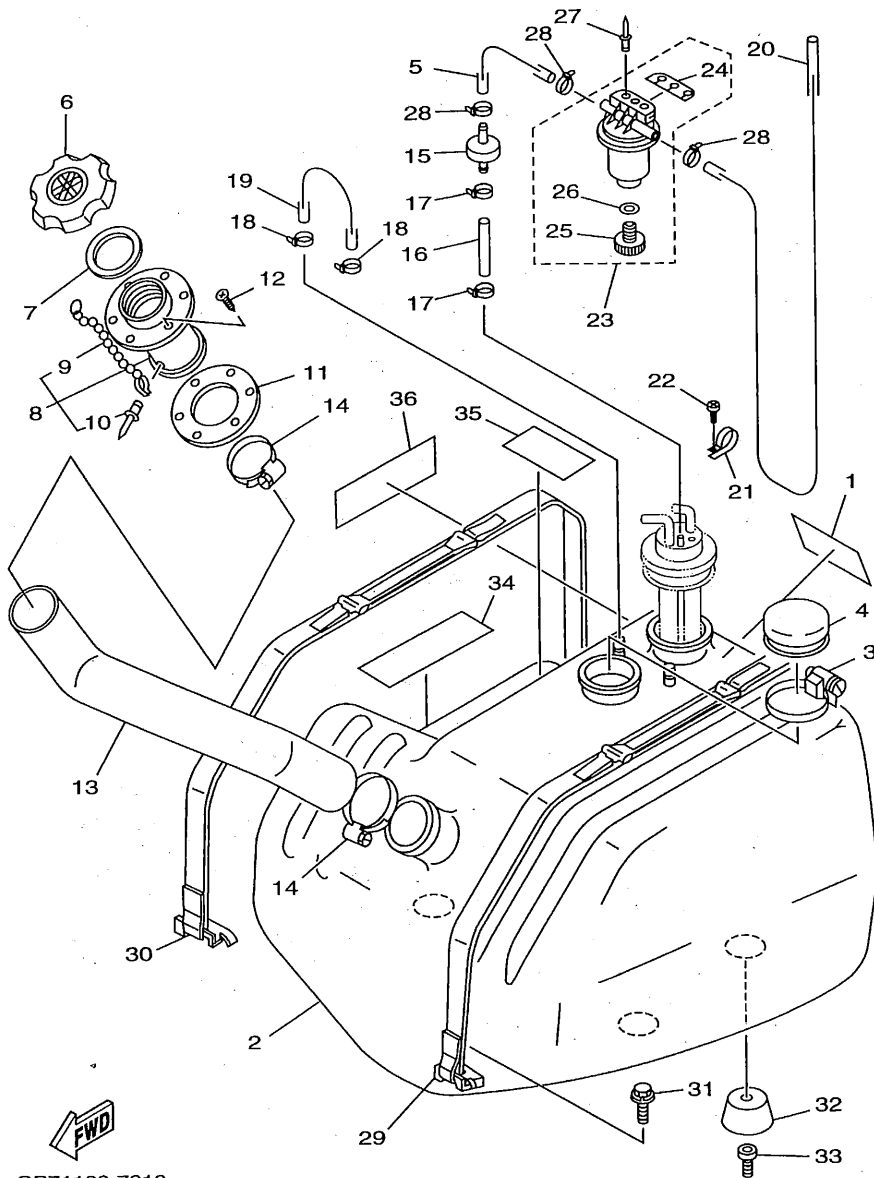
FIG. 20 OIL TANK



FWD
GP71100-7200

REF. NO.	PART NO.	DESCRIPTION	QTY*				REMARKS
1	FJ0-67766-00	ROLL OVER VALVE	1				
2	FJ0-U2158-00	HOSE	1				YMUS
3	90465-11829	CLAMP	3				
4	GP7-U775B-00	TANK, OIL	1				YMUS
5	6J8-13411-00	STRAINER, OIL	1				
6	6J8-13414-00	GASKET, STRAINER COVER	1				
7	GE2-6784A-00	OIL TANK CAP ASSY.	1				
8	FJ0-67841-01	.PACKING, OIL CAP	1				
9	GA7-U785G-00	HOSE, AIR VENT	1				YMUS

D5

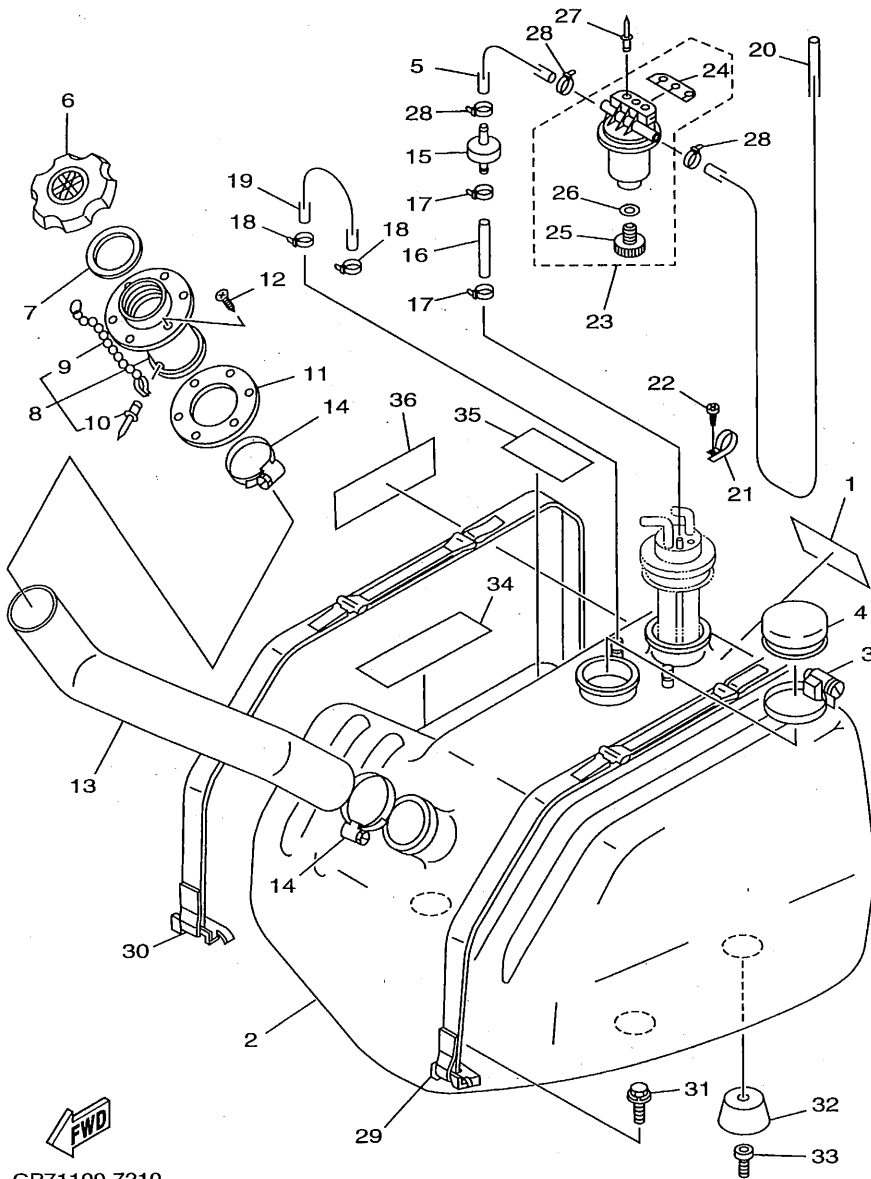


GP71100-7210

FIG. 21 FUEL TANK

REF. NO.	PART NO.	DESCRIPTION	GP7*	REMARKS
1	GH3-6418D-00	LABEL, FUEL TANK	1	
2	GH3-U7711-00	TANK, FUEL	1	YMUS
3	90601-162U5	BAND, HOSE 62	1	YMUS
4	FN8-6771K-00	COVER	1	
5	GP7-U7856-00	HOSE, AIR VENT 3	1	YMUS
6	EU0-67831-32	CAP, FUEL FILLER	1	
7	EU0-67832-00	PACKING 1	1	
8	EU0-W6783-30	SOCKET COMP.	1	
9	EU0-67835-00	.CHAIN BALL	1	
10	90267-40935	.RIVET, BLIND	1	
11	EU0-67834-00	PACKING, FUEL FILLER	1	
12	EU0-U7869-00	SCREW, FLAT HEAD TAPPING	6	YMUS
13	GP7-U7844-00	HOSE	1	YMUS
14	90601-155U4	BAND, HOSE 55	2	YMUS
15	EU0-67767-31	CHECK VALVE	1	
16	GP7-U785H-00	HOSE, AIR VENT 3	1	YMUS
17	90465-11829	CLAMP	2	
18	90465-11829	CLAMP	2	
19	GP7-U7856-00	HOSE, AIR VENT 3	1	YMUS
20	GP7-U785G-00	HOSE, AIR VENT	1	YMUS
21	90600-918U3	CLIP, NYLON 16	1	YMUS
22	97780-60116	SCREW, TAPPING	1	
23	EW2-62140-00	FILTER, VENT ASSY	1	
24	EW2-62142-00	.PLATE, FILTER	1	
25	70R-24543-00	.PLUG, DRAIN	1	
26	70R-24489-00	.O-RING, SEPARATER 2	1	
27	90267-489U1	RIVET, BLIND	2	YMUS

D6



GP71100-7210

FIG. 21 FUEL TANK

REF. NO.	PART NO.	DESCRIPTION	GP7*	REMARKS
28	90465-11829	CLAMP	2	
29	GJ1-67743-00	BELT, TANK 1	1	
30	GJ8-67743-00	BELT, TANK 1	1	
31	90119-089U7	BOLT, WITH WASHER	4	YMUS
32	GH1-U782B-00	DAMPER, FUEL TANK	4	YMUS
33	90110-089U1	BOLT, HEXAGON SOCKET HEAD	4	YMUS
34	GJ1-U759B-00	MAT 1	2	YMUS
35	GJ1-U759C-00	MAT 2	1	YMUS
36	GH1-U759D-00	MAT 3	1	YMUS

D7

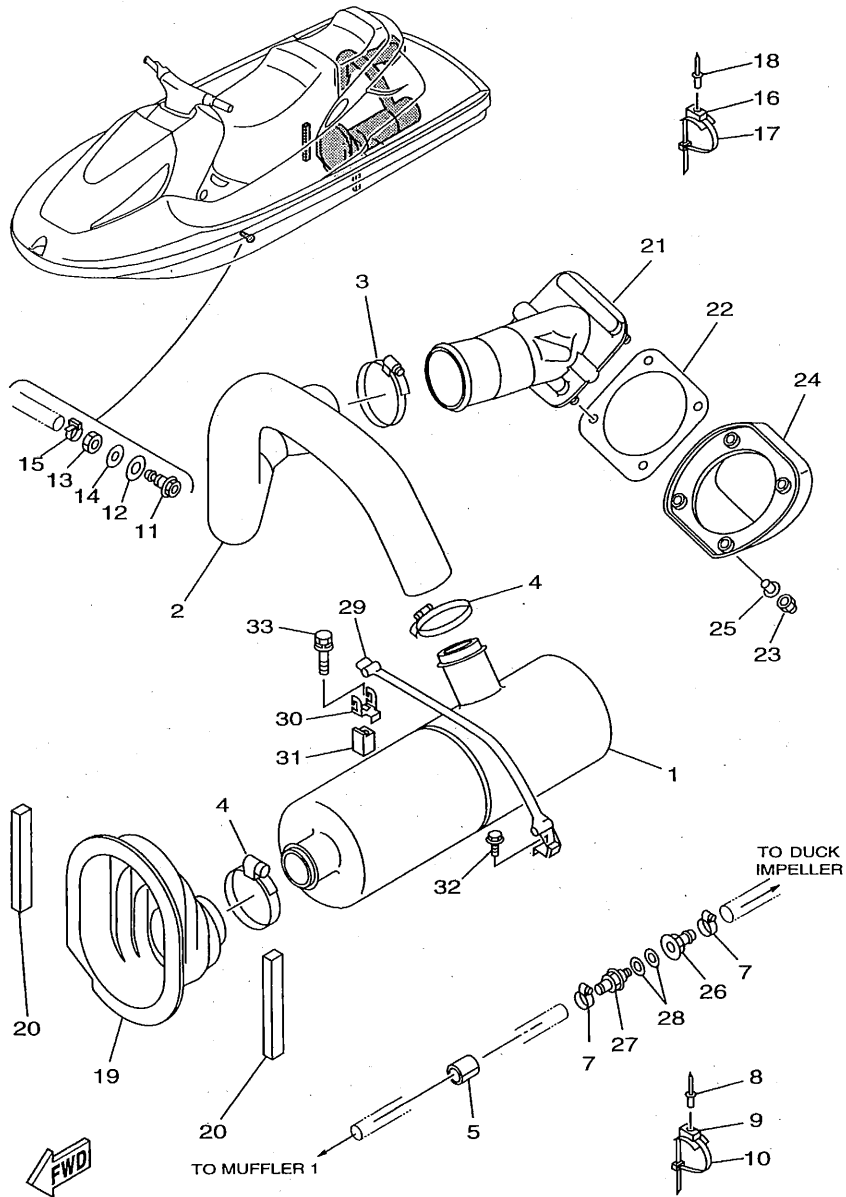


FIG. 22 EXHAUST 2

REF. NO.	PART NO.	DESCRIPTION	GP7*				REMARKS
1	GP7-U7550-00	WATER LOCK COMP.	1				YMUS
2	GP7-U7555-00	HOSE	1				YMUS
3	90601-195UD	NYLON CLIP 1	1				YMUS
4	90601-170UG	NYLON CLIP 1	2				YMUS
5	GJ1-U7578-20	PACKING, HOSE 2	1				YMUS
6	90446-24M54	HOSE	1				
7	90601-118UF	NYLON CLIP 1	2				YMUS
8	90267-48925	RIVET, BLIND	1				
9	90600-917U4	BASE, CLAMP	1				YMUS
10	90601-20006	NYLON CLIP 1	1				
11	GJ1-6753B-02	PILOT, WATER	1				
12	GP3-U1438-00	PACKING	1				YMUS
13	GP7-61652-00	NUT	1				
14	92990-14200	WASHER, PLAIN	1				
15	90465-11829	CLAMP	2				
16	90600-917U4	BASE, CLAMP	1				YMUS
17	90267-489U7	RIVET, BLIND	1				YMUS
18	90601-20006	NYLON CLIP 1	1				
19	GP7-64536-00	SEAL, BULKHEAD 1	1				
20	GP7-U4537-00	SEAL, BULKHEAD 2	2				YMUS
21	GP7-U7560-00	EXHAUST, THRU-HALL COMP.	1				YMUS
22	GP8-U7525-00	PACKING	1				YMUS
23	90176-089U1	NUT, CROWN	4				YMUS
24	GP7-6751F-00	COVER, EXHAUST	1				
25	90387-08923	COLLAR	4				
26	90604-80795	THROUGH HULL CONNECTION 3/8-12	1				
27	90604-80796	THROUGH HULL CONNECTION 3/8-12	1				

GP71100-7221

D8

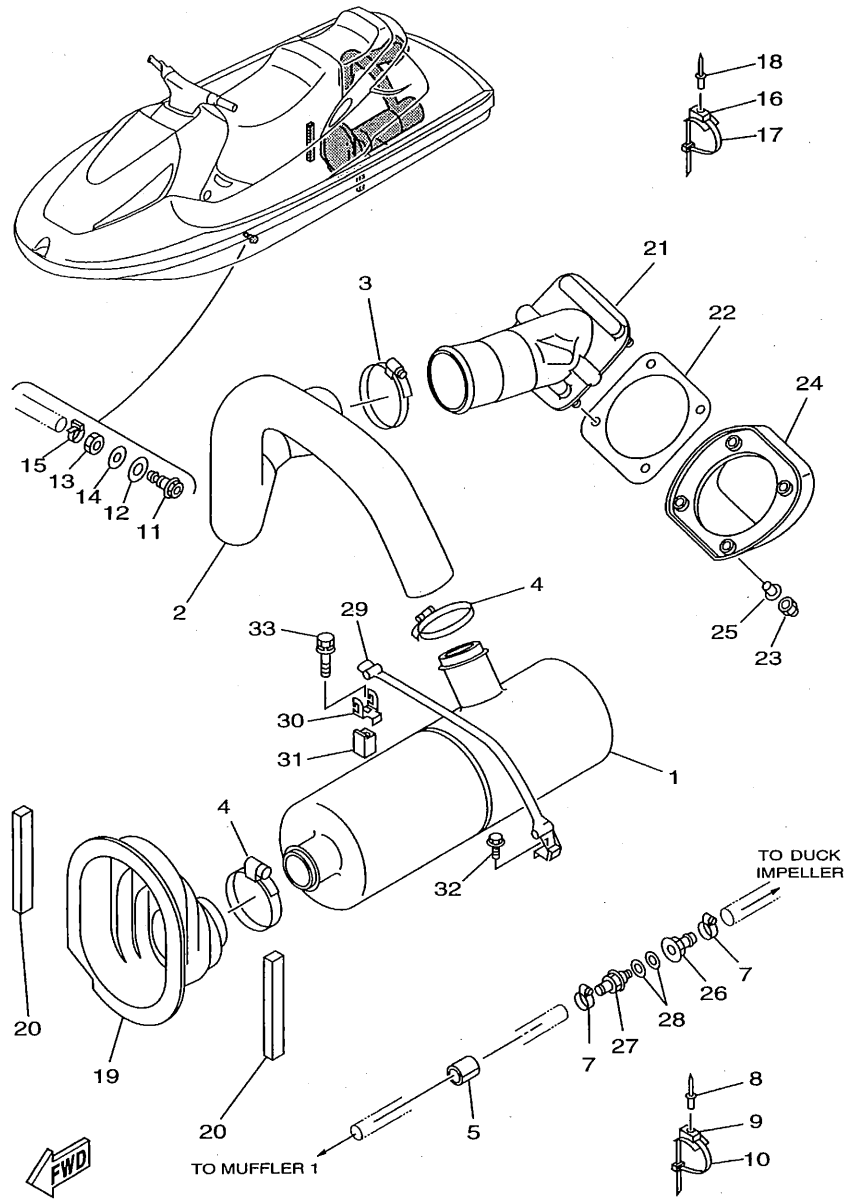


FIG. 22 EXHAUST 2

REF. NO.	PART NO.	DESCRIPTION	GP7*	REMARKS
28	90430-16910	GASKET	2	
29	GJ3-U7570-00	C HOOK COMP.	1	YMUS
30	EW2-U5772-00	HOOK A	1	YMUS
31	GP7-U755C-00	SPACER 2	1	YMUS
32	90105-069U2	BOLT, WASHER BASED	1	YMUS
33	90119-069UP	BOLT, WITH WASHER	1	

GP71100-7221

D9

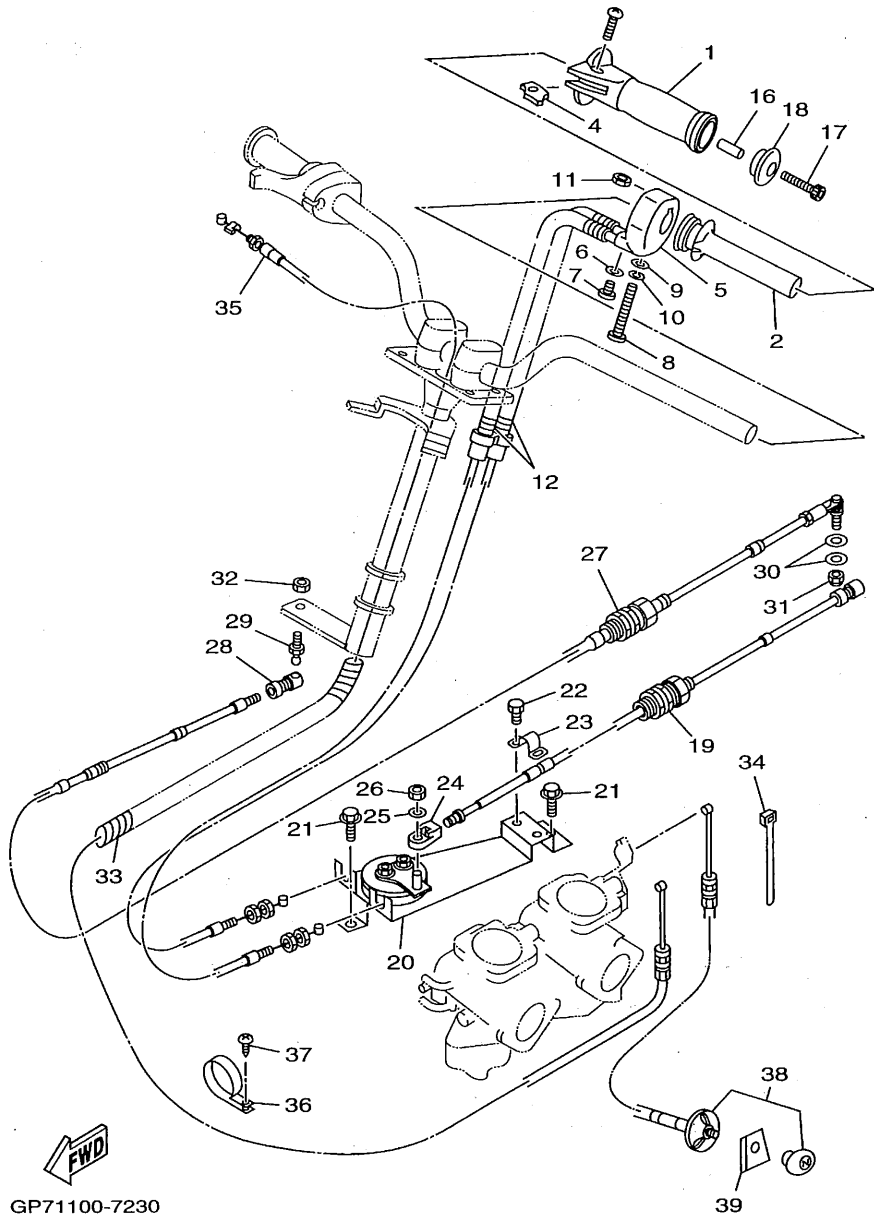
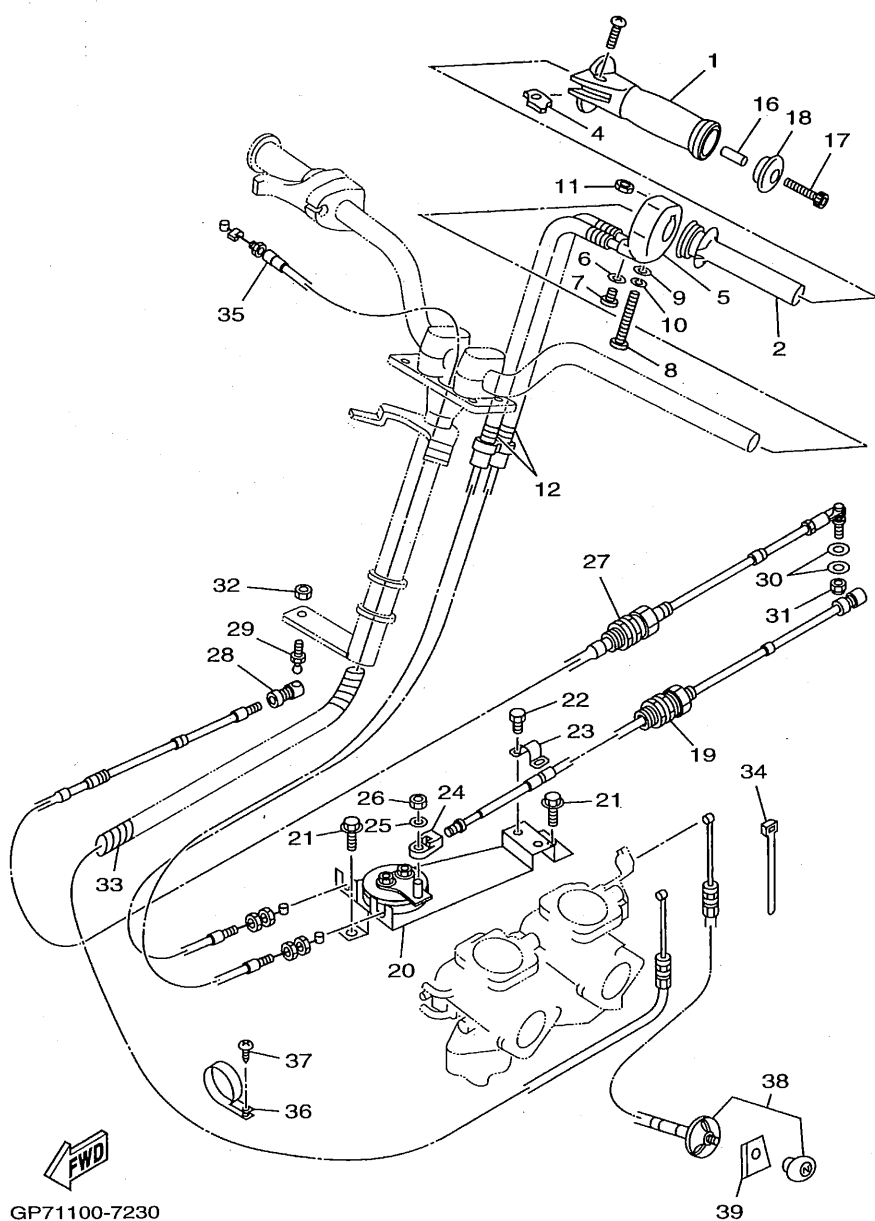


FIG. 23 CONTROL CABLE

REF. NO.	PART NO.	DESCRIPTION	GP7*	REMARKS
1	GP7-U155C-00	GRIP,HANDLE	1	YMUS
2	GH1-U155B-00	GRIP,INNER	1	YMUS
3	GP7-U152N-00	DETENT PLATE	1	YMUS
4	GP7-U151M-00	LEVER ASSY	1	YMUS
5	GP7-U152M-00	HOUSING ASSY	1	YMUS
6	92990-04600	WASHER, PLATE	1	
7	98980-04510	SCREW, BIND	1	
8	97880-06065	SCREW, PAN HEAD	1	
9	92990-06600	WASHER, PLATE	1	
10	92990-06100	WASHER, SPRING	1	
11	GH1-U143B-00	NUT,SPECIAL	1	YMUS
12	GP7-U153D-00	CABLE,NOZZLE CONTROL 2	2	YMUS
13	90387-05916	COLLAR	1	
14	90149-05960	SCREW	1	
15	90201-05928	WASHER, PLATE	1	
16	90387-05922	COLLAR	1	
17	91380-05035	BOLT	1	
18	GP7-U155F-00	GRIP, HAND	1	YMUS
19	GP7-U153E-00	CABLE,NOZZLE CONTROL 3	1	YMUS
20	GP7-U153J-00	REMOCON,NOZZLE 2	1	YMUS
21	90119-069UJ	BOLT, WITH WASHER	2	YMUS
22	97080-06012	BOLT	2	
23	GH1-U043H-00	CLAMP,CABLE	1	YMUS
24	GH1-U046C-00	END,CABLE	1	
25	92990-06200	WASHER, PLAIN	1	
26	95780-06300	NUT, FLANGE	1	
27	GP7-U1481-00	CABLE, STEERING	1	YMUS

D10

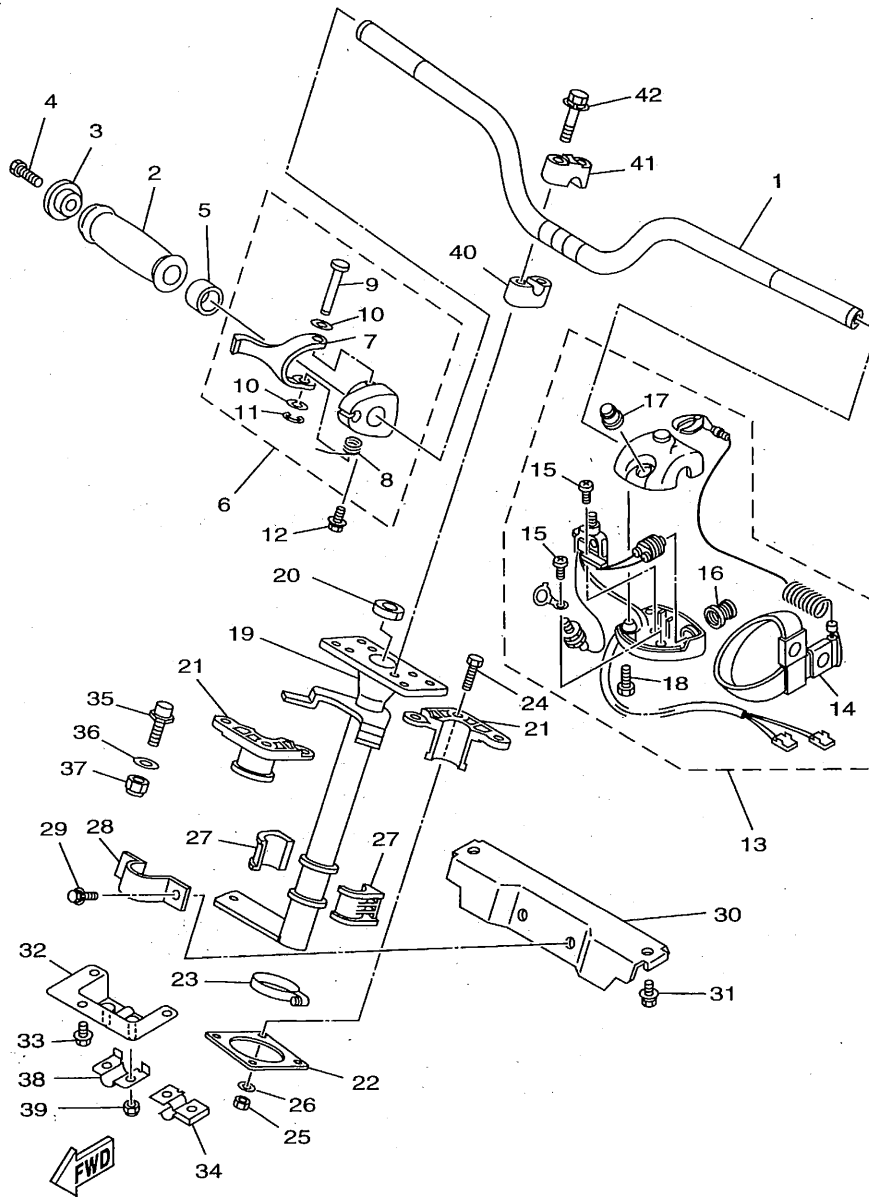


GP71100-7230

FIG. 23 CONTROL CABLE

REF. NO.	PART NO.	DESCRIPTION	GP7*	REMARKS
28	GK5-U146F-00	SHAFT,JOINT BALL	1	YMUS
29	EU0-U1461-01	STOOD, JOINT BALL	1	YMUS
30	90201-06906	WASHER, PLATE	2	
31	95720-06300	NUT, SELF-LOCKING	1	
32	95720-06300	NUT, SELF-LOCKING	1	
33	90699-36U01	SPIRAP,11	1	YMUS
34	90601-200U1	NYLON CLIP 1	1	YMUS
35	GP7-U7252-00	CABLE, THROTTLE	1	YMUS
36	90600-918U3	CLIP,NYLON 16	1	YMUS
37	97780-60116	SCREW, TAPPING	1	
38	GP7-U7242-00	CABLE, CHOKE	1	YMUS
39	GJ1-6824D-00	PLATE,CHOKE	1	

D11



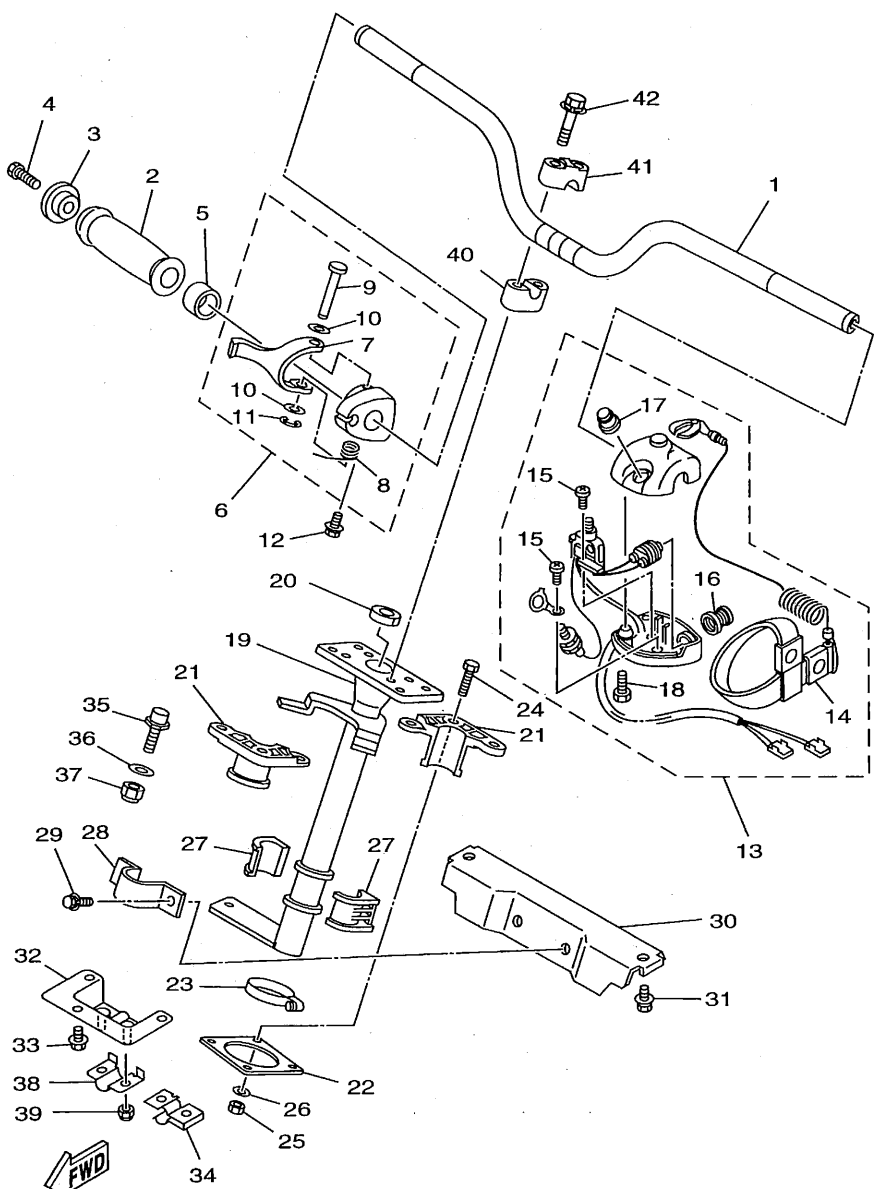
GP71100-7241

FIG. 24 STEERING 1

REF. NO.	PART NO.	DESCRIPTION	GP7*	REMARKS
1	GJ1-U1552-02	HANDLE	1	YMUS
2	GP7-U155D-00	GRIP, HANDLE	1	YMUS
3	GP7-U155F-00	GRIP, HAND	1	YMUS
4	91380-05035	BOLT	1	
5	90560-22281	SPACER	1	
6	GJ1-67250-01	THROTTLE LEVER ASSY	1	
7	GJ1-67255-00	.LEVER, THROTTLE	1	
8	EW2-67256-00	.SPRING	1	
9	EW2-67257-01	.SHAFT	1	
10	EW2-67258-01	.WASHER	2	
11	EW2-67259-01	.E-RING	1	
12	90159-059U2	SCREW, WITH WASHER	1	YMUS
13	GP7-68310-00	SWITCH BOX ASSY	1	
14	EW2-68348-00	.LANYARD, STOP SWITCH	1	
15	97880-03008	.SCREW, PAN HEAD	2	
16	FK7-68312-02	.STOP BUTTON COMP	1	
17	FK7-68313-01	.START BUTTON COMP	1	
18	97880-05025	.SCREW, PAN HEAD	2	
19	GP7-61541-00	COLUMN, STEERING	1	
20	GH1-U1469-00	PACKING, STEERING COLUMN	1	YMUS
21	GH1-6141B-00	BEARING,COLUMN	2	
22	GH1-U143C-30	SEAL, RUBBER	1	YMUS
23	90601-142U6	NYLON CLIP 1	1	YMUS
24	97080-06030	BOLT	4	
25	95720-06300	NUT, SELF-LOCKING	4	
26	92990-06200	WASHER, PLAIN	4	
27	GH1-6141D-01	BEARING,STEERING	2	

D12

FIG. 24 STEERING 1



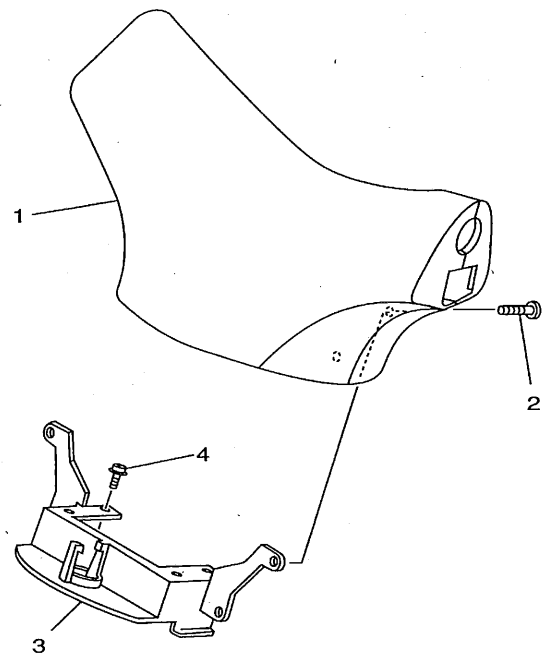
GP71100-7241

REF. NO.	PART NO.	DESCRIPTION	GP7*	REMARKS
28	EU0-61588-00	JOINT, BEARING	1	
29	90119-089U7	BOLT, WITH WASHER	2	YMUS
30	GP7-61433-00	BRACKET, BEARING	1	
31	90119-089U7	BOLT, WITH WASHER	2	YMUS
32	GP7-61467-00	BRACKET, STOPPER CABLE	1	
33	90119-069UH	BOLT, WITH WASHER	3	YMUS
34	GP7-6146K-00	HOLDER, STOPPER	1	
35	FN8-6131B-00	PIN, STOPPER	1	
36	92990-10200	WASHER, PLAIN	1	
37	95720-10300	NUT	1	
38	GP7-61468-00	STOPPER, CABLE	1	
39	95720-06300	NUT, SELF-LOCKING	2	
40	EU0-23814-01	HOLDER, HANDLE LOWER	2	
41	EU0-23814-30	HOLDER, HANDLE UPPER	2	
42	90119-089UM	BOLT, WITH WASHER	4	YMUS

D13

FIG. 25 STEERING 2

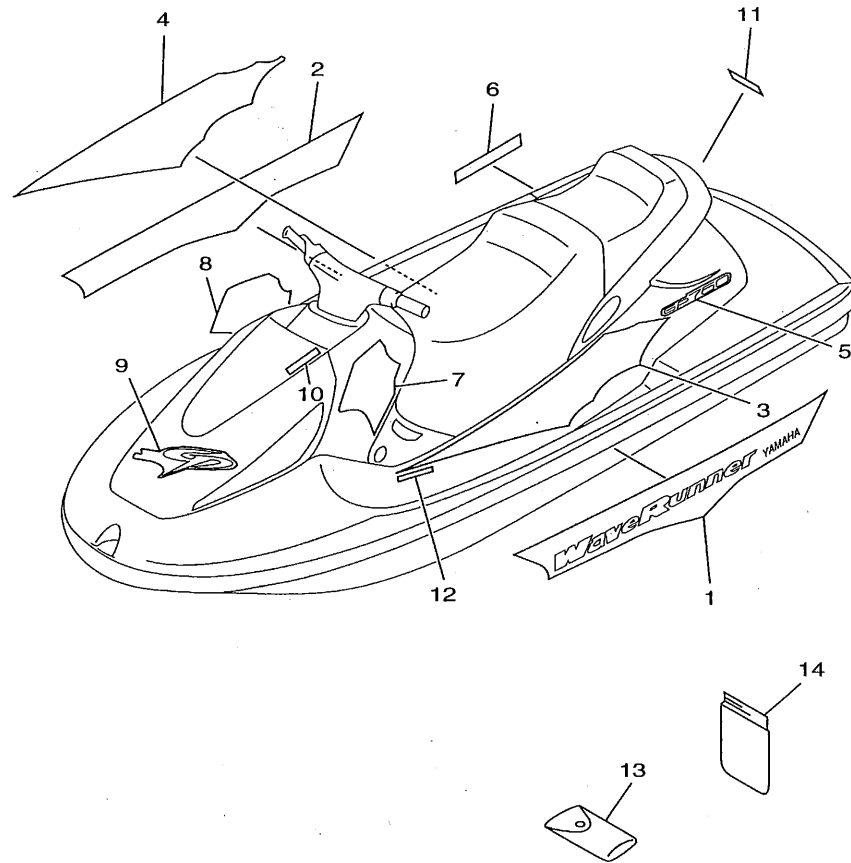
REF. NO.	PART NO.	DESCRIPTION	GP7*				REMARKS
1	GP7-U142A-00	STEERING PAD COMP	1				YMUS
2	90149-069U8	SCREW	4				YMUS
3	GP7-U142K-00	FIX, STEERING PAD	1				YMUS
4	90159-069U1	SCREW, WITH WASHER	4				YMUS



GP71100-7250

D14

FIG. 26 GRAPHIC TOOL

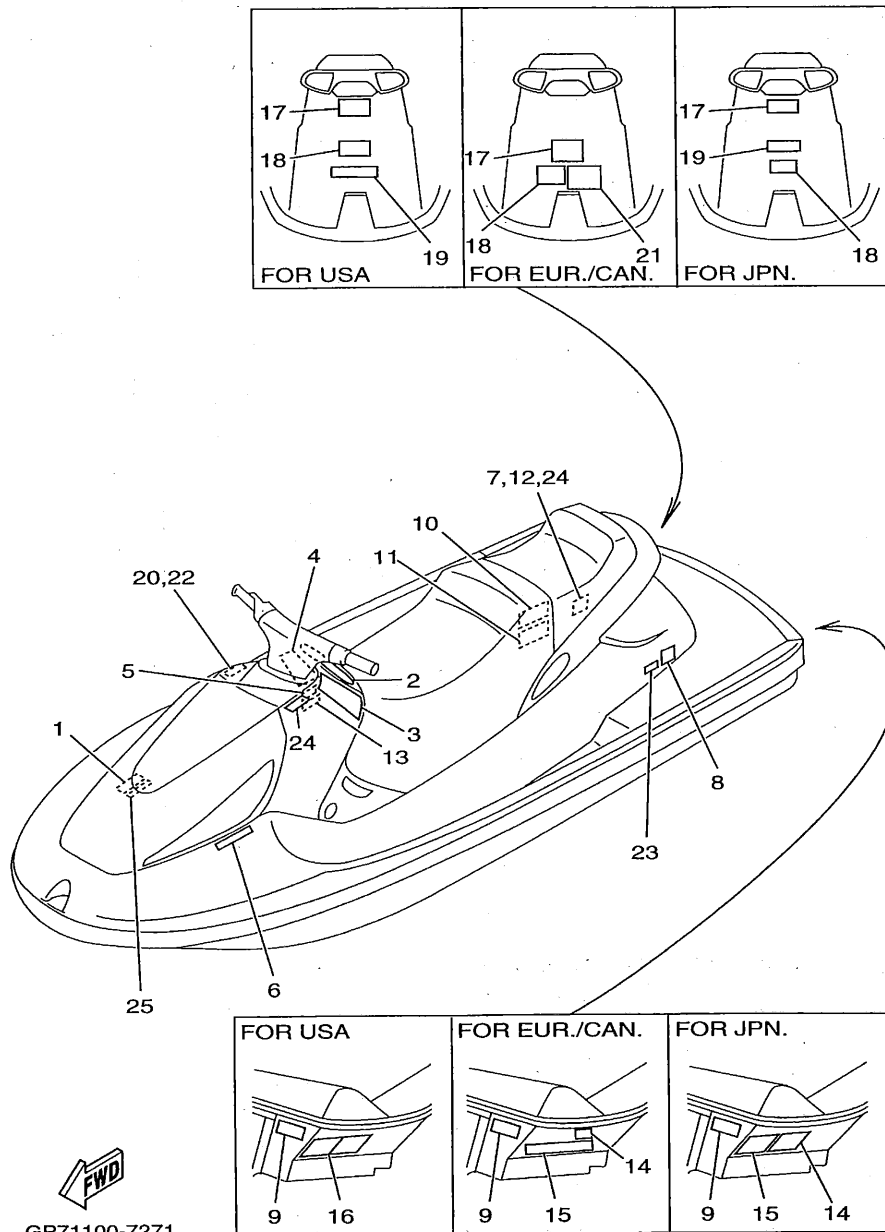


REF. NO.	PART NO.	DESCRIPTION	GP7*				REMARKS
1	GP7-U417B-00	GRAPHIC 1	1				YMUS
2	GP7-U417C-00	GRAPHIC 2	1				YMUS
3	GP7-U417D-00	GRAPHIC 3	1				YMUS
4	GP7-U417E-00	GRAPHIC 4	1				YMUS
5	GP7-U417F-00	GRAPHIC 5	1				YMUS
6	GP7-U417G-00	GRAPHIC 6	1				YMUS
7	GP7-U417H-00	GRAPHIC 7	1				YMUS
8	GP7-U417J-00	GRAPHIC 8	1				YMUS
9	GP7-U417K-00	GRAPHIC 9	1				YMUS
10	GP7-U417L-00	GRAPHIC B	1				YMUS
11	GP7-U4122-01	EMBLEM 2	1				YMUS
12	GP7-U4125-00	EMBLEM	1				FOR JPN YMUS
13	EU0-65986-00	TOOL SET	1				
14	EU0-65901-01	TOOL BAG	1				


GP71100-7260

D15

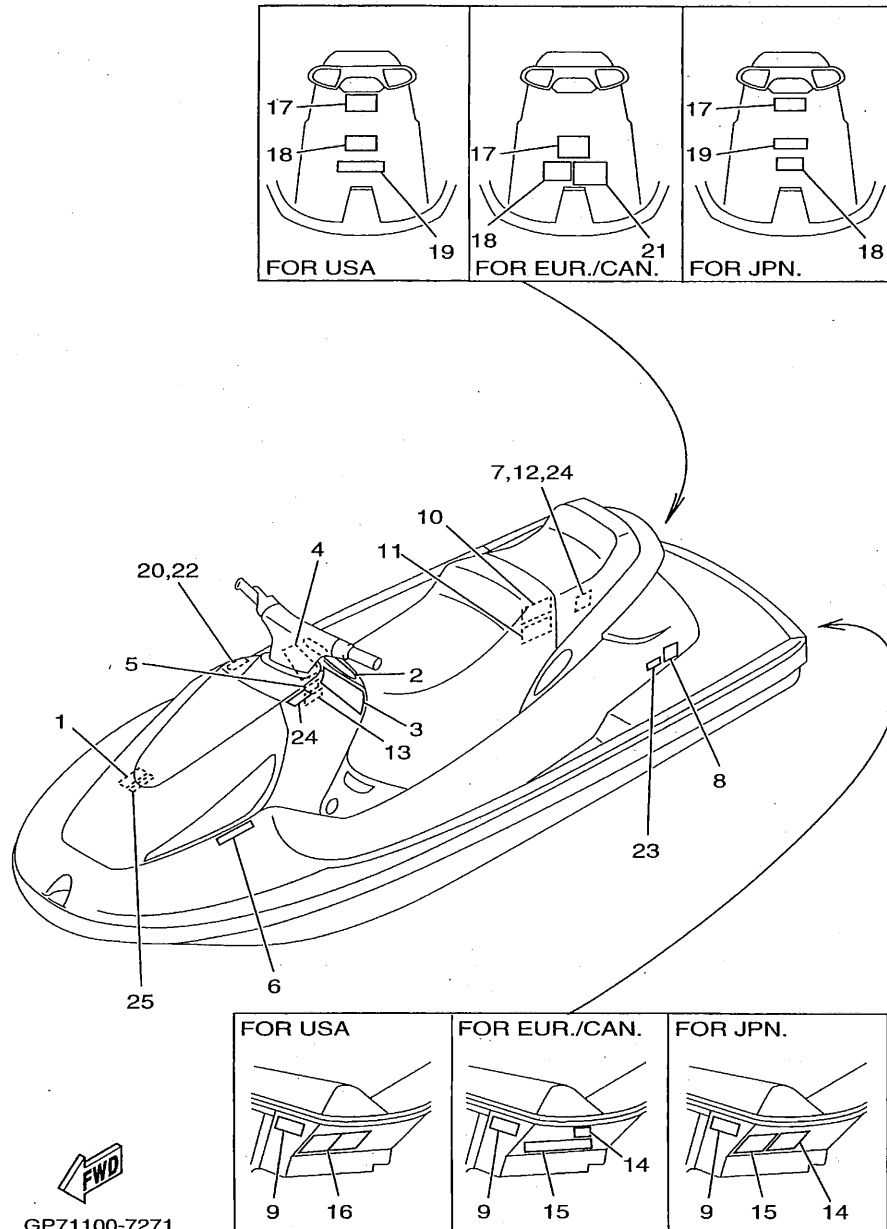
FIG. 27 IMPORTANT LABELS



REF. NO.	PART NO.	DESCRIPTION	GP7*	REMARKS
1	GA9-U416B-00	LABEL, WARNING	1	UR FOR USA YMUS
	GA9-U416B-10	LABEL, WARNING	1	UR FOR EUR/CAN
	GL3-6415B-00	LABEL, WARNING(FUEL)	1	UR FOR JPN
2	GP7-6415C-00	LABEL, WARNING 1	1	UR FOR JPN
	GP7-U416C-00	LABEL, WARNING 1	1	UR FOR USA YMUS
	GP7-U416C-30	LABEL, WARNING 1	1	UR FOR EUR/CAN
3	GP7-U416C-10	LABEL, WARNING 1	1	FOR EUR/CAN YMUS
4	GP7-U416C-20	LABEL, WARNING 1	1	FOR EUR/CAN YMUS
5	GA9-U416F-00	LABEL, WARNING 4	1	UR FOR USA YMUS
	GA9-U416F-10	LABEL, WARNING 4	1	UR FOR EUR/CAN
	GJ1-6416F-00	LABEL, WARNING 4	1	UR FOR JPN
6	GJ1-U418C-30	LABEL, CAUTION	1	UR FOR USA YMUS
	GJ1-U418C-40	LABEL, CAUTION	1	UR FOR EUR/CAN
7	GJ3-U416H-00	LABEL, WARNING(FRANCE)	1	FOR EUR/CAN YMUS
8	FT4-64178-00	LABEL, CAUTION 1	1	UR FOR JPN
	GA9-U418C-00	LABEL, CAUTION	1	UR FOR USA YMUS
	GA9-U418C-10	LABEL, CAUTION	1	UR FOR EUR/CAN
9	GA9-U418G-00	LABEL, CAUTION	1	UR FOR USA YMUS
	GA9-U418G-10	LABEL, CAUTION	1	UR FOR EUR/CAN
	GL3-6418G-00	LABEL, CAUTION	1	UR FOR JPN
10	EU0-U418B-00	LABEL, CAUTION	1	UR EXCEPT JPN YMUS
	GL3-6418B-00	LABEL, CAUTION	1	UR FOR JPN
11	EU0-U418B-10	LABEL, CAUTION	1	FOR EUR/CAN
12	GA9-U418E-00	LABEL, CAUTION	1	FOR USA YMUS
13	FJ0-64178-30	LABEL CAUTION 2	1	UR FOR JPN
	GA9-U418C-41	LABEL, CAUTION	1	UR FOR USA YMUS
	GA9-U418C-50	LABEL, CAUTION	1	UR FOR EUR/CAN

E2

FIG. 27 IMPORTANT LABELS



REF. NO.	PART NO.	DESCRIPTION	GP7*	REMARKS
14	GA9-U418F-00	LABEL, UP RIGHTING	1	EXCEPT USA YMUS
15	GA9-U416G-10	LABEL, WARNING	1	UR FOR EUR/CAN
	GL3-6415G-00	LABEL, WARNING 5	1	UR FOR JPN
16	GH3-U411A-10	LABEL, CAUTION	1	FOR USA YMUS
17	GJ1-U418C-00	LABEL, CAUTION	1	UR FOR USA YMUS
	GJ1-U418C-10	LABEL, CAUTION	1	UR FOR EUR/CAN
	GL3-6418C-00	LABEL, CAUTION	1	UR FOR JPN
18	GA9-6418H-00	LABEL, CAUTION(CLEAT)	1	UR FOR JPN
	GP7-U418H-00	LABEL, CAUTION(CLEAT)	1	UR FOR USA YMUS
	GP7-U418H-10	LABEL, CAUTION(CLEAT)	1	UR FOR EUR/CAN
19	GJ1-U415F-01	LABEL, WARNING	1	UR FOR USA YMUS
	GR7-6415F-10	LABEL, WARNING	1	UR FOR JPN
20	GJ1-U415E-01	LABEL, WARNING	1	EXCEPT JPN YMUS
21	GJ1-U415F-10	LABEL, WARNING	1	FOR EUR/CAN YMUS
22	GR7-6415E-20	LABEL, WARNING	1	FOR JPN
23	GJ3-U419E-00	LABEL 4	1	FOR EUR/CAN YMUS
24	EU0-64197-00	PLATE CAPACITY	1	UR FOR JPN
	GJ1-U415E-10	LABEL, WARNING	1	UR FOR EUR/CAN
25	FN8-U411B-00	PLATE, ASSY	1	FOR JPN YMUS

FWD
GP71100-7271

E3

NUMERICAL INDEX

PART NO.	GRID NO.	PART NO.	GRID NO.	PART NO.	GRID NO.	PART NO.	GRID NO.	PART NO.	GRID NO.	PART NO.	GRID NO.
65A-R1381-00	B- 14	GP7-U351T-00	C- 15	GA9-U418E-00	E- 2	GP7-U7844-00	D- 6	6R3-13183-00	B- 9	6R7-14596-01	B- 7
GH1-U043H-00	D- 10	GP7-U351U-00	D- 2	GA9-U418F-00	E- 3	GA7-U785G-00	D- 5		B- 9	6K8-14597-11	B- 7
GH1-U046C-00	D- 10	GJ3-U352E-40	C- 15	GA9-U418G-00	E- 2	GP7-U785G-00	D- 6	62T-13200-11	B- 9	62T-14613-00	B- 10
GP7-U142A-00	D- 14	GP7-U3581-00	C- 15	GA9-U418G-10	E- 2	GP7-U785H-00	D- 6	6J8-13411-00	D- 5	64X-14615-00	B- 10
GP7-U142K-00	D- 14	GP7-U3710-00	D- 4	GP7-U418H-00	E- 3	GP7-U785J-00	C- 9	6J8-13414-00	D- 5	64X-14623-00	B- 11
GH1-U143B-00	D- 10	GP7-U3760-00	D- 4	GP7-U418H-10	E- 3	GP7-U7856-00	D- 6	64X-13555-00-94	B- 5	62T-14625-00	B- 10
GH1-U143C-30	D- 12	GP7-U377B-00	C- 10	GJ3-U419E-00	E- 3		D- 6	64X-13556-00	B- 5	64X-14711-00-9M	B- 10
GP3-U1438-00	D- 8	GP7-U377C-00	C- 10	GP7-U4537-00	D- 8	EU0-U7869-00	D- 6	62T-13566-00	B- 5	64X-14712-00-9M	B- 10
UK5-U146F-00	D- 11	GH1-U3774-00	D- 4	GP7-U474A-00	D- 4	GP7-U8K31-00	C- 3	64X-13610-01	B- 5	64X-14717-00	B- 11
EU0-U1461-01	D- 11	GP7-U378C-00	D- 4	GP7-U475A-00	C- 12	GP7-U8K33-00	C- 3	62T-13624-00	B- 5	64X-14721-00-94	B- 10
GH1-U1469-00	D- 12	GH3-U411A-10	E- 3	GP7-U4953-00	D- 4	GP7-U8K34-00	C- 3	64X-13674-00	B- 6	64X-14749-00	B- 10
GP7-U1481-00	D- 10	FN8-U411B-00	E- 3	GP7-U5116-00	C- 10	GP7-U8K35-00	C- 3	47X-14133-00	B- 7	65V-14752-00	B- 11
GP7-U151M-00	D- 10	GP7-U4122-01	D- 15	GP7-U5148-00	C- 10	EU0-U821D-00	C- 9	812-14147-00	B- 7	64X-14763-00-94	B- 11
GP7-U152M-00	D- 10	GP7-U4125-00	D- 15	GP7-U516N-00	C- 10	GP7-U8211-00	C- 9	64X-14162-00	B- 8	62T-14771-00-94	B- 11
GP7-U152N-00	D- 10	GJ1-U415E-01	E- 3	GP7-U516P-00	C- 10	EU0-U8221-00	C- 9	3G2-1423A-77	B- 7	64X-14781-00-94	B- 10
GP7-U153D-00	D- 10	GJ1-U415E-10	E- 3	GP7-U517H-00	C- 10	EU0-U8221-30	C- 9	3G2-14231-26	B- 7	61X-14916-15	B- 8
GP7-U153E-00	D- 10	GJ1-U415F-01	E- 3	GP7-U517L-00	C- 12	GP7-U824B-00	C- 9	830-14231-23	B- 7	6M6-14923-10	B- 8
GP7-U153J-00	D- 10	GJ1-U415F-10	E- 3	GP7-U517M-01	C- 10	GP7-U824C-00	C- 9	812-14235-00	B- 7	6K8-14926-10	B- 7
GH1-U155B-00	D- 10	GA9-U416B-00	E- 2	GP7-U517N-01	D- 4	GP7-U8341-00	C- 9	822-14235-00	B- 8	6K8-14930-00	B- 7
GP7-U155C-00	D- 10	GA9-U416B-10	E- 2	GP7-U517S-00	C- 10	GP7-U883N-00	C- 14	64X-14243-00	B- 8	3KW-14932-00	B- 7
GP7-U155D-00	D- 12	GP7-U416C-00	E- 2	GP7-U519D-02	C- 10	GP7-U883P-00	C- 14	62T-14251-00	B- 2	6K8-14946-10	B- 7
GP7-U155F-00	D- 10	GP7-U416C-10	E- 2	EW2-U5772-00	D- 9	GP7-U883T-00	C- 14	6R7-14253-00	B- 8	64X-15100-00-94	B- 2
	D- 12	GP7-U416C-20	E- 2	GP7-U7242-00	D- 11	GP7-U883U-00	C- 14	64X-14255-00	B- 6	6R7-21415-00-94	B- 2
GJ1-U1552-02	D- 12	GP7-U416C-30	E- 2	GDO-U7249-00-05	C- 2	64X-W0004-01	B- 5	64X-14283-00	B- 6	6R7-21425-00-94	B- 2
GP7-U2127-00	D- 3	GA9-U416F-00	E- 2	GDO-U7249-00-10	C- 3	65V-W0090-00-4D	B- 2	64X-14284-00-4D	B- 5	EU0-23814-01	D- 13
GP7-U213F-00	D- 3	GA9-U416F-10	E- 2	GP7-U7252-00	D- 11	EU0-W6783-30	D- 6	65V-14301-00	B- 7	EU0-23814-30	D- 13
GP7-U213G-00	D- 3	GA9-U416G-10	E- 3	EU0-U7354-00-01	B- 3	64X-11111-00-94	B- 2	65V-14302-00	B- 7	64X-24313-00	B- 5
GP7-U2139-00	D- 3	GJ3-U416H-00	E- 2	EU0-U7354-00-03	B- 3	64X-11181-00	B- 2	64X-14398-00	B- 8	64X-24314-00	B- 5
FJ0-U2158-00	D- 5	GP7-U417B-00	D- 15	EU0-U7354-00-05	B- 3	64X-11311-00-94	B- 2	62T-14419-00	B- 6	688-24378-00	B- 5
GP7-U2501-00	C- 15	GP7-U417C-00	D- 15	EU0-U7354-00-10	B- 3	6E5-11325-00	B- 2	62T-14435-00	B- 6	6K8-24411-20	B- 7
GP7-U251D-00	C- 15	GP7-U417D-00	D- 15	EU0-U7354-00-20	B- 3	6M6-11351-A2	B- 2	62T-14451-00	B- 6	6R7-24412-01	B- 8
GP7-U251E-00	C- 15	GP7-U417E-00	D- 15	GP8-U7525-00	D- 8	6E5-11372-00	B- 6	6K8-14471-10	B- 7	6M6-24413-00	B- 7
GP7-U2512-00	C- 15	GP7-U417F-00	D- 15	GP7-U755C-00	D- 9	64X-11400-01	B- 4	6K8-14481-10	B- 8	6K8-24421-10	B- 7
GP7-U2519-00	C- 15	GP7-U417G-00	D- 15	GP7-U7550-00	D- 8	64X-11603-00	B- 4	6K8-14521-10	B- 7	6K8-24431-20	B- 7
GP7-U252C-00	C- 15	GP7-U417H-00	D- 15	GP7-U7555-00	D- 8	64X-11604-00	B- 4	6M6-14521-00	B- 7	6K8-24452-10	B- 7
GP7-U252D-00	C- 15	GP7-U417J-00	D- 15	GP7-U7560-00	D- 8	64X-11605-00	B- 4	6K8-14523-11	B- 8	70R-24489-00	D- 6
GP7-U266B-00	D- 4	GP7-U417K-00	D- 15	GJ3-U7570-00	D- 9	64X-11631-00-91	B- 4	6K8-14527-11	B- 7	6K8-24500-02	B- 13
GP7-U266F-00	C- 10	GP7-U417L-00	D- 15	GJ1-U7578-10	C- 3	62T-11633-00	B- 4	64X-14527-00	B- 5	6K8-24524-10	B- 13
GP7-U2664-00	D- 4	EU0-U418B-00	E- 2	GJ1-U7578-20	C- 13	64X-11635-00	B- 4	6K8-14534-10	B- 7	70R-24543-00	D- 6
GP7-U273B-00	C- 3	EU0-U418B-10	E- 2		D- 8	64X-11636-00	B- 4	6K8-14536-11	B- 8	6K8-24560-10	B- 13
GP7-U351H-00	C- 15	GA9-U418C-00	E- 2	GJ1-U759B-00	D- 7	63M-12577-00	B- 10	6R7-14541-00	B- 8	62T-41113-00-9M	B- 10
GP7-U351J-00	C- 15	GA9-U418C-10	E- 2	GJ1-U759C-00	D- 7	65V-12578-00	B- 11	6R7-14542-00	B- 8	62T-41114-01	B- 10
GP7-U351K-00	C- 15	GA9-U418C-41	E- 2	GH1-U759D-00	D- 7	63M-12580-00	B- 12	6K8-14547-01	B- 8	64X-41123-00-9M	B- 11
GP7-U351M-00	C- 15	GA9-U418C-50	E- 2	GDO-U761D-00	C- 13	64X-12581-00	B- 11	583-14561-00	B- 8	64X-41124-00	B- 11
GP7-U351N-00	C- 15	GJ1-U418C-00	E- 3	GH3-U7711-00	D- 6	64X-12582-00	B- 11	6K8-14563-00	B- 7	6R7-42316-00	B- 15
GP7-U351P-00	C- 15	GJ1-U418C-10	E- 3	GP7-U775B-00	D- 5	63M-12590-00	B- 12	6K8-14564-00	B- 7	63M-44517-01-5B	B- 3
GP7-U351R-00	C- 15	GJ1-U418C-30	E- 2	EU0-U7817-00	B- 13	63M-12590-10	B- 12	6R7-14569-00	B- 8	65V-44532-00	B- 2
GP7-U351S-00	C- 15	GJ1-U418C-40	E- 2	GH1-U782B-00	D- 7	6R8-13116-A0	B- 9	6K8-14589-00	B- 8	663-45119-00	B- 5

NUMERICAL INDEX

PART NO.	GRID NO.	PART NO.	GRID NO.	PART NO.	GRID NO.	PART NO.	GRID NO.	PART NO.	GRID NO.	PART NO.	GRID NO.
663-45119-00	C- 5	GP7-61624-00	C- 14	EW2-67256-00	D- 12	6M6-82117-21	C- 8	90119-08M11	B- 10	90267-07809	D- 3
6K8-45127-00	C- 2	GP7-61628-00	D- 4	EW2-67257-01	D- 12	62T-82117-01	C- 8	90119-08M19	B- 2	90267-40935	D- 6
62T-45127-00	B- 4	FN8-61651-00	C- 15	EW2-67258-01	D- 12	63N-82117-10	C- 8	90119-08M37	B- 11	90267-489UE	C- 11
65V-45318-00	B- 14	GH1-61651-00	C- 15	EW2-67259-01	D- 12	6K8-82150-01	C- 7	90119-08M55	B- 2	90267-489UK	C- 10
62G-45331-01-94	C- 2	EU0-61652-00	B- 12	GP7-6751F-00	D- 8	6G1-82151-00	C- 7	90119-089UL	C- 2	90267-489UL	D- 3
61X-45332-02-94	C- 2		C- 13	GJ1-6753B-02	D- 8	6K8-82159-00	C- 7	90119-089UM	D- 13	90267-489UM	C- 15
61L-45378-00	C- 2		C- 15	EW2-67618-00	C- 13	62T-82361-00	C- 8	90119-089UN	B- 3		C- 15
65V-45511-00	B- 14		C- 15	FN8-6771K-00	D- 6	62E-82371-10	C- 7	90119-089U5	C- 3	90267-489U1	B- 13
62T-45526-00	B- 4	GP7-61652-00	D- 8	GJ1-67743-00	D- 7		C- 7		C- 10		C- 12
65V-45538-00	B- 14	EW2-62140-00	D- 6	GJ8-67743-00	D- 7	65V-82553-00	C- 8	90119-089U7	D- 4		D- 6
63M-4581J-00	B- 4	EW2-62142-00	D- 6	FJ0-67766-00	D- 5	64X-82560-00	C- 8		D- 7	90267-489U7	D- 8
63M-45813-01-5B	B- 4	EW2-62149-00	D- 3	EU0-67767-31	D- 6	6R7-83623-40	C- 7		D- 13	90267-489U9	C- 12
64X-45813-00-5B	B- 4	GJ3-6215F-00	D- 3	FN8-67816-00	B- 13	63N-83623-00	C- 7		D- 13	90267-48925	B- 13
6K8-51129-00	B- 2	GP7-62159-00	D- 3	EU0-67831-32	D- 6	682-84385-01	B- 12	90119-08904	B- 3		C- 9
	B- 10	EU0-62280-00	C- 13	EU0-67832-00	D- 6	64X-8552A-01-5B	C- 7	90119-08932	D- 4		C- 13
	B- 10	EU0-62282-00	C- 13	EU0-67834-00	D- 6	6M6-8552E-01	C- 7	90119-10M00	B- 2		D- 3
	B- 15	EU0-62283-00	C- 13	EU0-67835-00	D- 6	64X-85520-00	C- 4	90119-10M01	B- 3		D- 3
62T-51129-00	B- 15	EU0-62285-01	C- 13	GE2-6784A-00	D- 5	64X-85521-01	C- 4	90119-10M02	B- 2		D- 8
63M-51162-00	C- 13	FN8-6269B-00	C- 13	FJ0-67841-01	D- 5	64X-85525-00	C- 4	90119-10M03	B- 2	90280-05013	C- 4
63M-51165-00	C- 13	GP7-6271B-00	D- 4	GP7-6820A-00	C- 9	62T-85533-00	C- 4	90119-10M07	B- 2	90338-09828	C- 11
64Y-51190-00-94	B- 15	GP7-6287A-00	C- 10	GP7-6820A-10	C- 9	64X-85540-00	C- 7	90119-10M56	B- 2	90380-12M29	B- 2
65V-51311-00-94	B- 14	GP7-6378D-00	D- 4	GP7-68238-00	C- 9	64X-85546-00	C- 7	90119-10M72	B- 11		C- 4
6R8-51312-02-94	B- 14	GJ3-63850-02	D- 4	GJ1-6824D-00	D- 11	64X-85550-00	C- 4	90119-109U8	C- 2	90387-05916	D- 10
65V-51313-00	B- 15		D- 4	GP7-68310-00	D- 12	64X-85570-00	C- 7	90149-059U7	C- 12	90387-05922	D- 10
62T-51315-01-94	B- 14	GL3-6415B-00	E- 2	FK7-68312-02	D- 12	64X-85580-00	C- 4	90149-05960	D- 10	90387-06M30	C- 8
65V-51318-00-94	B- 15	GP7-6415C-00	E- 2	FK7-68313-01	D- 12	90101-06M04	B- 15	90149-05984	C- 10	90387-06M60	B- 14
65V-51321-00	B- 15	GR7-6415E-20	E- 3	EW2-68348-00	D- 12	90105-05M46	B- 6	90149-069U8	D- 14	90387-06920	C- 10
65V-51323-00	C- 2	GR7-6415F-10	E- 3	6M6-8132W-00	C- 7	90105-069U2	D- 9	90149-06902	C- 12	90387-08M06	B- 15
62T-51326-00	B- 14	GL3-6415G-00	E- 3	64X-81337-00-4D	C- 4	90105-08M70	B- 11	90159-059U2	D- 12	90387-08M08	B- 15
63N-51333-02-94	C- 2	GJ1-6416F-00	E- 2	6M6-81365-A0	C- 4	90105-08M71	B- 11	90159-069U1	D- 14	90387-08915	C- 14
62T-51348-00	B- 15	FJ0-64178-30	E- 2	64X-81800-00	C- 6	90105-10M45	B- 11	90169-059U1	C- 15	90387-08923	D- 8
63M-51348-00	C- 2	FT4-64178-00	E- 2	3AJ-81809-00	C- 6	90105-10M60	B- 10	90170-089U1	C- 14	90387-08924	D- 4
65V-51348-01-94	B- 14	GL3-6418B-00	E- 2	64X-81820-00	C- 6		B- 10	90170-22M11	B- 13	90430-13909	C- 14
6R8-51367-01	B- 14	GL3-6418C-00	E- 3	6M6-81826-00	C- 6	90105-10M72	B- 10	90176-089U1	C- 14	90430-16910	B- 12
63N-51368-00	C- 2	GH3-6418D-00	D- 6	6M6-8183E-00	C- 6	90105-10M73	B- 10		D- 8		D- 9
61X-51673-00	B- 15	GL3-6418G-00	E- 2	6M6-81830-00	C- 6	90109-06M66	B- 6	90179-06947	C- 2	90445-09M17	C- 2
61L-5169A-00	B- 5	GA9-6418H-00	E- 3	6M6-81840-10	C- 6	90109-08M56	B- 2	90179-08M15	B- 5	90445-09M24	C- 4
	C- 4	EU0-64197-00	E- 3	11H-81844-00	C- 6	90109-08913	C- 10	90179-08965	C- 3	90445-10M06	B- 13
63M-5316M-00	C- 13	GP7-64536-00	D- 8	6M6-81844-00	C- 7	90109-10M72	C- 4	90179-10925	C- 2	90445-10M88	B- 5
FN8-6131B-00	D- 13	GP7-6517C-00	C- 12	1FK-81847-00	C- 6	90110-089U1	D- 7	90201-05M09	C- 4	90445-10M94	B- 13
GH1-6141B-00	D- 12	GP7-6517D-01	C- 12	6M6-81850-00	C- 6	90116-08M55	B- 5	90201-05928	D- 10	90445-10M95	B- 13
GH1-6141D-01	D- 12	GP7-6517F-00	C- 12	6M6-81865-00	C- 6	90116-08M59	B- 10	90201-06M31	B- 6	90445-10M96	B- 13
GP7-61433-00	D- 13	GP7-6517G-00	C- 10	6M6-81866-00	C- 6	90119-069UH	D- 13		B- 15	90445-10M97	B- 13
GP7-6146K-00	D- 13	EU0-65901-01	D- 15	6M6-81921-00	C- 7	90119-069UJ	D- 10	90201-06906	D- 11	90445-11M35	B- 9
GP7-61467-00	D- 13	EU0-65986-00	D- 15	6G1-81941-10	C- 7	90119-069UK	C- 2	90201-099U1	C- 10	90445-14M06	B- 11
GP7-61468-00	D- 13	GP7-672A4-00	B- 12	6M6-81952-01	C- 7	90119-069UP	D- 9	90201-099U3	B- 3	90445-14M07	B- 2
GP7-61541-00	D- 12	GJ1-67250-01	D- 12	6M6-81960-A0	C- 7	90119-06920	C- 9	90201-20M04	B- 4	90445-14M10	B- 11
EU0-61588-00	D- 13	GJ1-67255-00	D- 12	EU0-82110-09	C- 9	90119-06959	C- 10	90201-24M02	B- 4	90445-14M17	B- 14

NUMERICAL INDEX

PART NO.	GRID NO.	PART NO.	GRID NO.	PART NO.	GRID NO.	PART NO.	GRID NO.	PART NO.	GRID NO.	PART NO.	GRID NO.
90445-14M24	B- 15	90465-11M10	B- 15	90604-80759	C- 14	92995-06600	C- 2	95720-05300	C- 10	97880-05025	C- 13
90445-19M09	C- 13		C- 2	90604-80775	C- 14		C- 4		C- 13		D- 12
90445-19M10	C- 13		C- 5	90604-80795	D- 8		C- 4	95720-06300	C- 3	97880-06010	C- 4
90446-07M14	B- 9		C- 7	90604-80796	D- 8	92995-08600	B- 15		C- 12	97880-06016	C- 7
90446-07M17	B- 9	90465-11829	B- 9	90604-80797	B- 12		B- 15		C- 14		C- 8
90446-07M35	B- 9		B- 13	90605-502U2	C- 10		C- 2		C- 15	97880-06030	C- 7
90446-07M36	B- 9		C- 9	90699-36U01	D- 11	93101-25M50	B- 14		D- 11	97880-06065	D- 10
90446-14M66	B- 5		D- 5	91380-05035	D- 10	93101-25M55	C- 2		D- 11	97985-06220	B- 11
90446-14M67	B- 5		D- 6		D- 12	93101-25M56	C- 2		D- 12	98580-05510	C- 10
90446-17M72	B- 9		D- 6	92903-05100	C- 4	93101-36M46	B- 4		D- 13	98580-05520	C- 10
90446-20M31	B- 10		D- 7		C- 4	93102-17M49	B- 14	95720-08300	C- 14	98780-04015	B- 2
	B- 11		D- 8	92903-06600	B- 5	93102-17M50	B- 14		D- 4	98780-05020	C- 10
90446-20M70	B- 3	90465-13M11	C- 13		B- 5	93102-25M34	B- 14		D- 4	98980-04510	D- 10
90446-24M54	D- 8	90467-089U1	C- 9		B- 6	93102-36M33	B- 4	95720-10300	D- 4	98980-06040	D- 4
90446-24M80	C- 13	90480-06M43	C- 7		B- 6	93103-32M01	B- 4		D- 4		D- 4
90446-27M73	B- 11	90480-06M46	B- 14		B- 10	93210-13M63	B- 6		D- 13		D- 13
	C- 13	90480-13907	C- 10		C- 6	93210-17MA4	C- 2	95780-06300	D- 10		D- 10
90450-14M05	B- 11	90480-20M05	B- 11	92903-08600	C- 6	93210-22ME5	C- 13		C- 4	97013-05012	C- 4
	B- 12	90480-23M69	C- 4		C- 6	93210-35M72	C- 2		C- 4	97013-05020	C- 4
	B- 14	90501-14M73	C- 6	92990-04600	B- 13	93210-46M16	B- 15		B- 6	97013-06012	B- 6
90450-18M09	B- 11	90560-22281	D- 12		D- 10	93305-30601	B- 4		B- 6	97013-06020	B- 6
90450-22M14	B- 11	90600-900U6	C- 3	92990-05200	C- 12	93306-205U0	B- 14		B- 5	97013-06025	B- 5
	B- 11	90600-917U4	B- 13		C- 13	93306-205U6	C- 2		B- 10		B- 10
90450-88M15	B- 11		C- 9	92990-05600	B- 5	93306-304U1	B- 14	97013-06035	B- 5		B- 5
90450-99M06	B- 10		C- 13	92990-06100	C- 6	93306-307U3	B- 4	97013-08035	C- 6		C- 6
90450-99M16	B- 11		D- 8		D- 10	93310-320U2	B- 4	97013-08040	C- 6		C- 6
90464-06M29	C- 7		D- 8	92990-06200	C- 12	93430-069U1	C- 14	97080-06012	D- 10		D- 10
90464-07M20	B- 9	90600-918U3	D- 6		C- 15	93430-47M04	C- 2	97080-06030	D- 12		D- 12
90464-12830	D- 3		D- 11		D- 10	93440-25M08	C- 6	97080-10025	D- 4		D- 4
90464-40825	C- 9	90601-118UF	B- 12		D- 12	93440-80023	B- 4	97095-06016	B- 15		B- 15
90465-06M28	C- 4		D- 8	92990-06600	C- 7	93450-18M06	C- 6		C- 8		C- 8
90465-06M65	C- 4	90601-142U6	D- 12		C- 7	93450-21053	B- 4	97095-06018	C- 2		C- 2
90465-08M07	C- 7	90601-155U4	D- 6		C- 8	93603-10049	B- 2	97095-06025	B- 14		B- 14
90465-08M37	B- 9	90601-162U5	C- 9		D- 10	93604-07141	B- 2		C- 4		C- 4
90465-11M10	B- 2		D- 6	92990-08100	B- 10	93605-12M21	B- 10	97095-06030	C- 4		C- 4
	B- 5	90601-170UG	D- 8		C- 10	93606-12019	B- 2	97095-06035	B- 9		B- 9
	B- 5	90601-195UD	D- 8	92990-08200	C- 14		B- 14	97095-08018	B- 15		B- 15
	B- 9	90601-200U1	B- 13		C- 14		B- 14	97095-08020	B- 15		B- 15
	B- 9		C- 9		D- 4		B- 15	97095-08025	C- 2		C- 2
	B- 9		C- 13	92990-10200	D- 4		C- 2	97513-06516	B- 5		B- 5
	B- 10		C- 13		D- 4		C- 4	97595-06525	B- 14		B- 14
	B- 13		D- 11		D- 13	94702-00195	C- 8	97780-50112	C- 13		C- 13
	B- 13	90601-200U5	D- 3	92990-14200	D- 8	95317-16700	B- 14	97780-60116	D- 6		D- 6
	B- 13	90601-20006	B- 13	92990-16600	B- 14	95380-06700	B- 15		D- 11		D- 11
	B- 13		C- 9	92995-06100	C- 8		C- 6	97780-60525	C- 7		C- 7
	B- 13		C- 13	92995-06600	B- 9	95380-08600	B- 10	97880-03008	D- 12		D- 12
	B- 13		D- 8		B- 14	95380-08700	B- 7	97880-04010	B- 13		B- 13
	B- 15		D- 8		B- 15	95720-05300	C- 9	97880-05016	B- 5		B- 5

—MEMO—

A series of horizontal dotted lines for writing, consisting of 20 lines spaced evenly across the page.

—MEMO—

A series of horizontal dotted lines for writing.

—MEMO—

A series of horizontal dotted lines for writing.

*COPYRIGHT: All rights reserved. No part of this publication
may be reproduced without permission.*

YAMAHA

YAMAHA MOTOR CO., LTD.
2500 SHINGA I IWATA SHIZUOKA JAPAN
SERVICE INFORMATION DIV.

PRINTED ON RECYCLED PAPER

Printed in Japan
First edition MAR., 1997