



PARTS CATALOGUE

WaveRunner GP1300R

GP1300-E (F1GA/60TH/60T3)

GP1300-E (F1GB/60TH/60T3)

MJ-GP1300R '06 (F1GC/60TH/60T3)

GP1300-E/MJ-GP1300R'06
PARTS CATALOGUE
©2005 by Yamaha Motor Co., Ltd.
1st edition, September 2005
All rights reserved.
Any reprinting or unauthorized use
without the written permission of
Yamaha Motor Co., Ltd.
is expressly prohibited.

A3



A4

FOREWORD

This Parts Catalogue is related to the parts for the model(s) on the cover page. When you are ordering replacement parts, please refer to this Parts Catalogue and quote both part numbers and part names correctly.

1. Modifications or additions which have been made after the issue of the Parts Catalogue will be announced in the Parts News.

It is advisable that you make the necessary corrections to the Parts Catalogue according to the Parts News.

2. Abbreviations

The following abbreviations are used in this Parts Catalogue.

“UR” Use specified parts number.

“UN” Use as many as needed.

“AP” Alternate Parts

“LM” Locally Made (Parts need to be ordered locally)

“F#” Frame No. (Applicable machine No.)

“O/S” Over Size

3. The number of components for assembly

- Parts, which are to be supplied in an assembly, are listed with a dot (.) in front of the part name as shown below.
- The numeral appearing to the right of each component part indicates the quantity of parts for each assembly unit.

PART NO.	DESCRIPTION	Q'TY	REMARKS
2F5-83310-60	FRONT FLASHER LIGHT ASSY	2	
115-83311-60	.BULB (6V-18W)	1	

4. Applicable colours of graphics are represented in the “REMARKS” as shown below.

PART NO.	DESCRIPTION	Q'TY	REMARKS
2N4-24110-00-X5	FUEL TANK COMP.	2	MXR
3J1-24240-10	.GRAPHIC, FUEL TANK	1	FOR MXR

5. Note that the illustrations for reference in finding parts numbers are not to be used for assembling. When assembling, please use the applicable service manual.

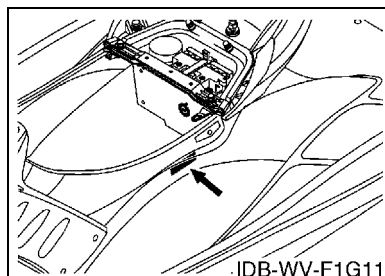
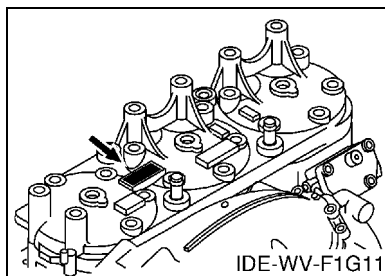
6. The asterisk (*) before a reference number indicates modified items after the first edition.

FOREWORD

7. Applicable Serial No.

Engine Serial No.

Hull Serial No.



8. Applicable Colour Code (The (*) mark shows Model colour.)

Abbreviation	Colour Name	Colour Code
NMC(*)	GRAY METALLIC C	008S
SS4(*)	BLACK SOLID 4	008P
SSA(*)	BLACK SOLID A	1000
YB	YAMAHA BLACK	0033

9. Quantity Column Information

Column No.	Name Of Q'ty Column	Destination
1	USA	U.S.A.
2	CAN	CANADA
3	GENE	EXCEPT USA, CANADA, JAPAN
4	JPN	JAPAN

10. Applicable Starting Serial No.

Engine Serial No.

Serial No.	Name Of Q'ty Column	Model Code
60T-1012501	USA	60TH
60T-1012501	CAN	60TH
60T-1012501	GENE	60TH
60T-1012501	JPN	60TH

Hull Serial No.

Serial No.	Name Of Q'ty Column	Model Code
F1G-812301	USA	F1GA
F1G-812301	CAN	F1GA
F1G-812501	GENE	F1GB
F1G-812301	JPN	F1GC

CONTENTS

CYLINDER & CRANKCASE 1	B2
CRANKSHAFT & PISTON	B4
INTAKE	B6
INJECTION PUMP	B8
OIL PUMP	B9
EXHAUST 1	B11
EXHAUST 2	B14
JET UNIT 1	C2
JET UNIT 2	C5
GENERATOR	C6
STARTING MOTOR	C7
ELECTRICAL 1	C8
ELECTRICAL 2	C11
ENGINE HATCH 1	C14
ENGINE HATCH 2	C15
HULL & DECK	D3
GUNWALE & MAT	D5
VENTILATION	D6
SEAT & UNDER LOCKER	D7
OIL TANK	D8
FUEL TANK	D9
BILGE PUMP	D11
EXHAUST 3	D12
CONTROL CABLE	D13
STEERING 1	D15
STEERING 2	E3
GRAPHICS	E4
IMPORTANT LABELS	E5
IMPORTANT LABELS 2	E6
IMPORTANT LABELS 3	E7
REPAIR KIT 1	E8

INDEX

NUMERICAL INDEX	M1
-----------------------	----

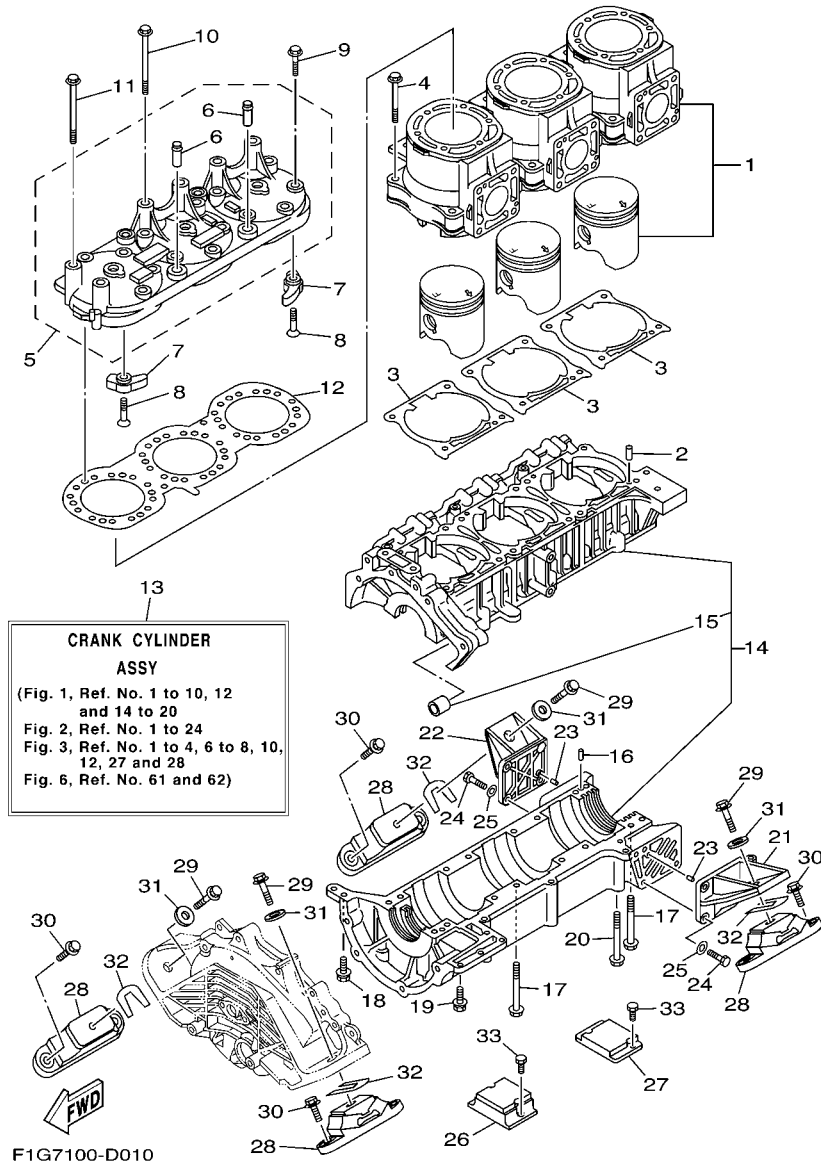


FIG. 1 CYLINDER & CRANKCASE 1

REF. NO.	PART NO.	DESCRIPTION	USA	CAN	GENE	JPN	REMARKS
1	60T-W1130-10-8S	CYLINDER & PISTON SET	3	3	3	3	
2	93606-12019	PIN, DOWEL	6	6	6	6	
3	66E-11351-02	GASKET, CYLINDER	3	3	3	3	
4	90119-10M07	BOLT, WITH WASHER	12	12	12	12	
5	60T-11111-10-8S	HEAD, CYLINDER 1	1	1	1	1	
6	66E-51129-00	.NIPPLE	2	2	2	2	
7	66E-11325-00	ANODE	2	2	2	2	
8	98780-05020	SCREW, FLAT HEAD	2	2	2	2	
9	90119-08MA1	BOLT, WITH WASHER	12	12	12	12	
10	90119-08064	BOLT, WITH WASHER	4	4	4	4	
11	90119-08M67	BOLT, WITH WASHER	2	2	2	2	
12	60T-11181-10	GASKET, CYLINDER HEAD 1	1	1	1	1	
13	60T-W0090-04-8S	CRANK CYLINDER ASSY	1	1	1	1	
14	60T-15100-00-8S	CRANKCASE ASSY	1	1	1	1	
15	90380-12M29	.BUSH, SOLID	1	1	1	1	
16	93606-12019	PIN, DOWEL	2	2	2	2	
17	90119-08M63	BOLT, WITH WASHER	16	16	16	16	
18	90119-08M18	BOLT, WITH WASHER	1	1	1	1	
19	90119-06M13	BOLT, WITH WASHER	4	4	4	4	
20	90119-06M84	BOLT, WITH WASHER	6	6	6	6	
21	68N-21425-00-94	BRACKET, REAR UPPER 1	1	1	1	1	
22	68N-21426-00-94	BRACKET, REAR UPPER 2	1	1	1	1	
23	93606-12019	PIN, DOWEL	4	4	4	4	
24	97013-08025	BOLT	6	6	6	6	
25	92903-08600	WASHER, PLATE	6	6	6	6	
26	66V-44532-00-94	STOPPER, UPPER MOUNT	1	1	1	1	
27	66V-44574-00-94	STOPPER LWR MOUNT RUBBER	1	1	1	1	

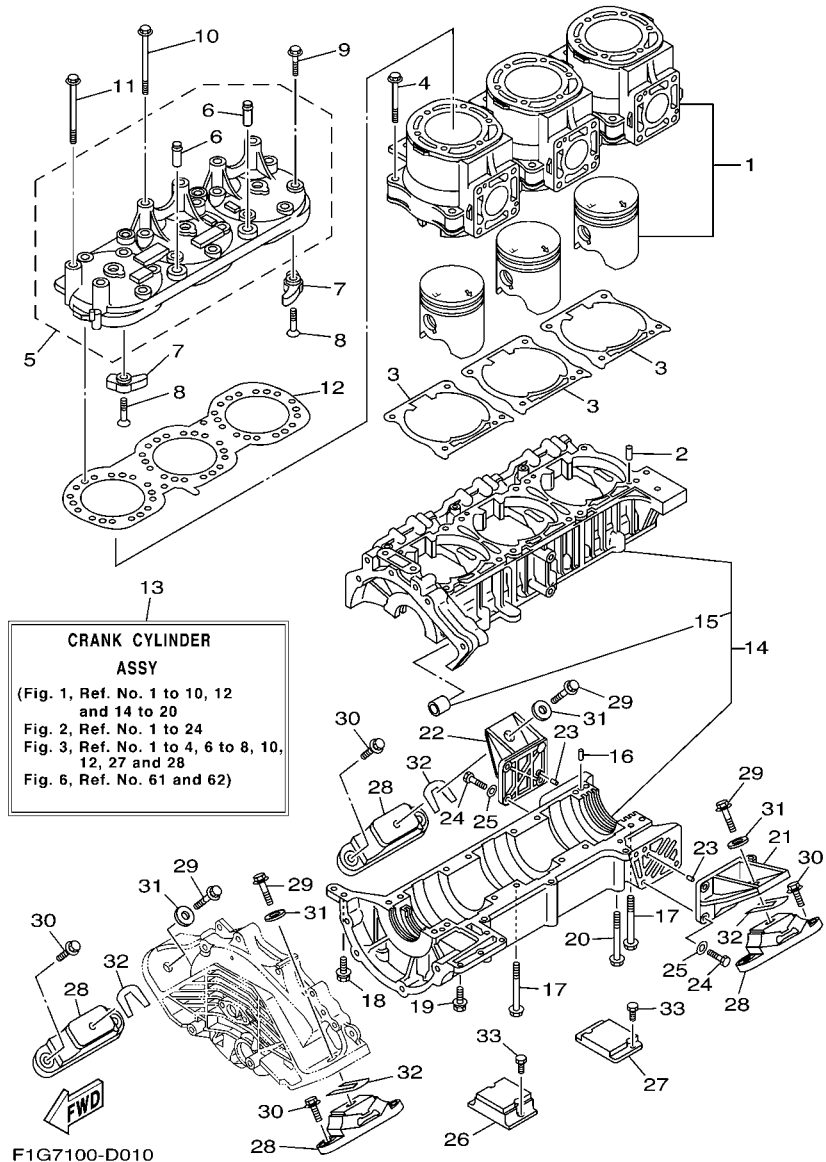
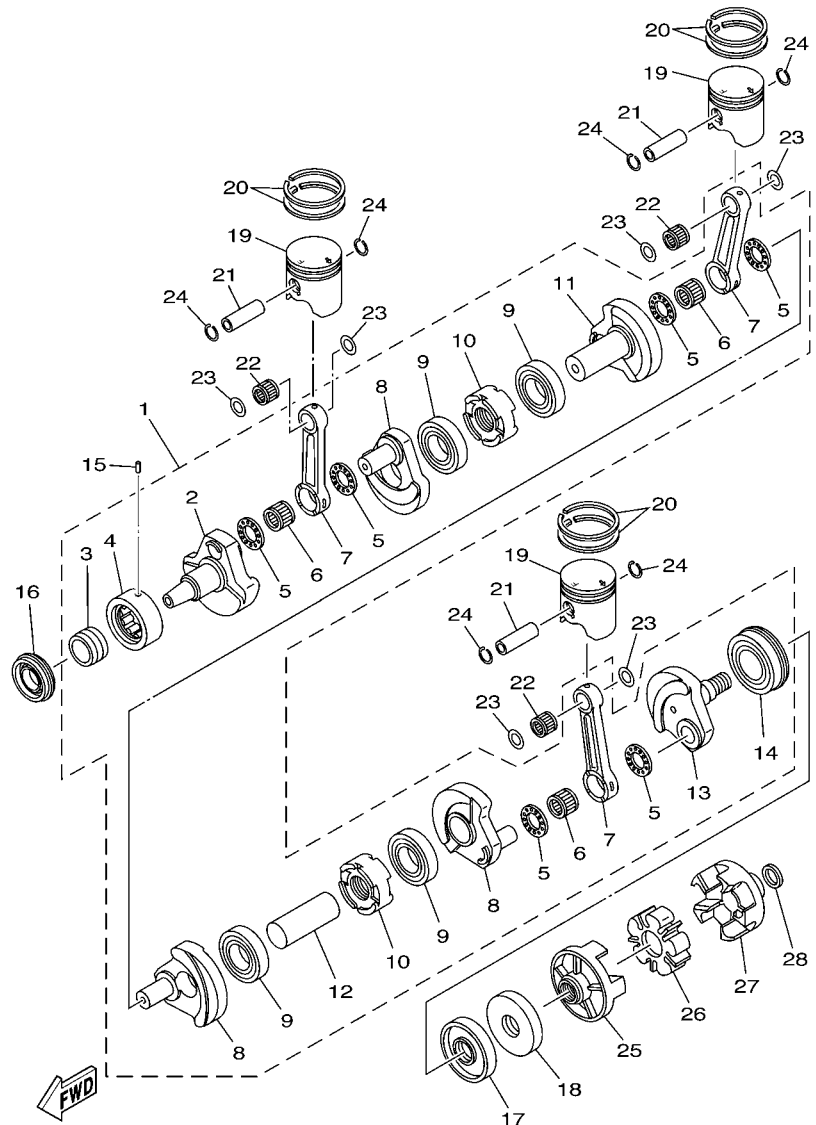


FIG. 1 CYLINDER & CRANKCASE 1

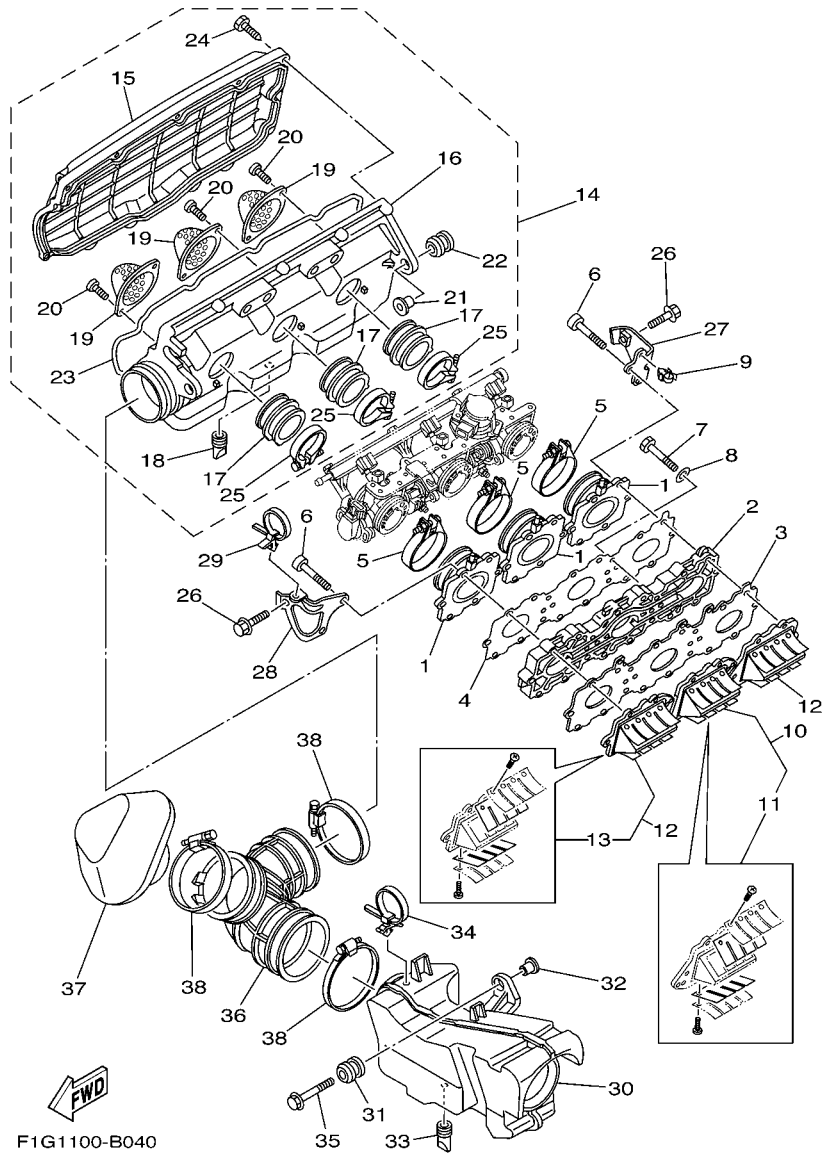
REF. NO.	PART NO.	DESCRIPTION	USA	CAN	GENE	JPN	REMARKS
28	67X-44517-10-94	MOUNT RUBBER	4	4	4	4	
29	90119-089UR	BOLT, WITH WASHER	4	4	4	4	
30	90119-08823	BOLT, WITH WASHER	8	8	8	8	
31	90201-099U3	WASHER, PLATE	4	4	4	4	
32	EU0-U7354-00-01	SHIM (T=0.1)	10	10	10	10	UR
	EU0-U7354-00-03	SHIM (T=0.3)	10	10	10	10	UR
	EU0-U7354-00-05	SHIM (T=0.5)	10	10	10	10	UR
	EU0-U7354-00-10	SHIM (T=1.0)	10	10	10	10	UR
	EU0-U7354-00-20	SHIM (T=2.0)	10	10	10	10	UR
33	90101-06917	BOLT	4	4	4	4	



F0D5110-0030

FIG. 2 CRANKSHAFT & PISTON

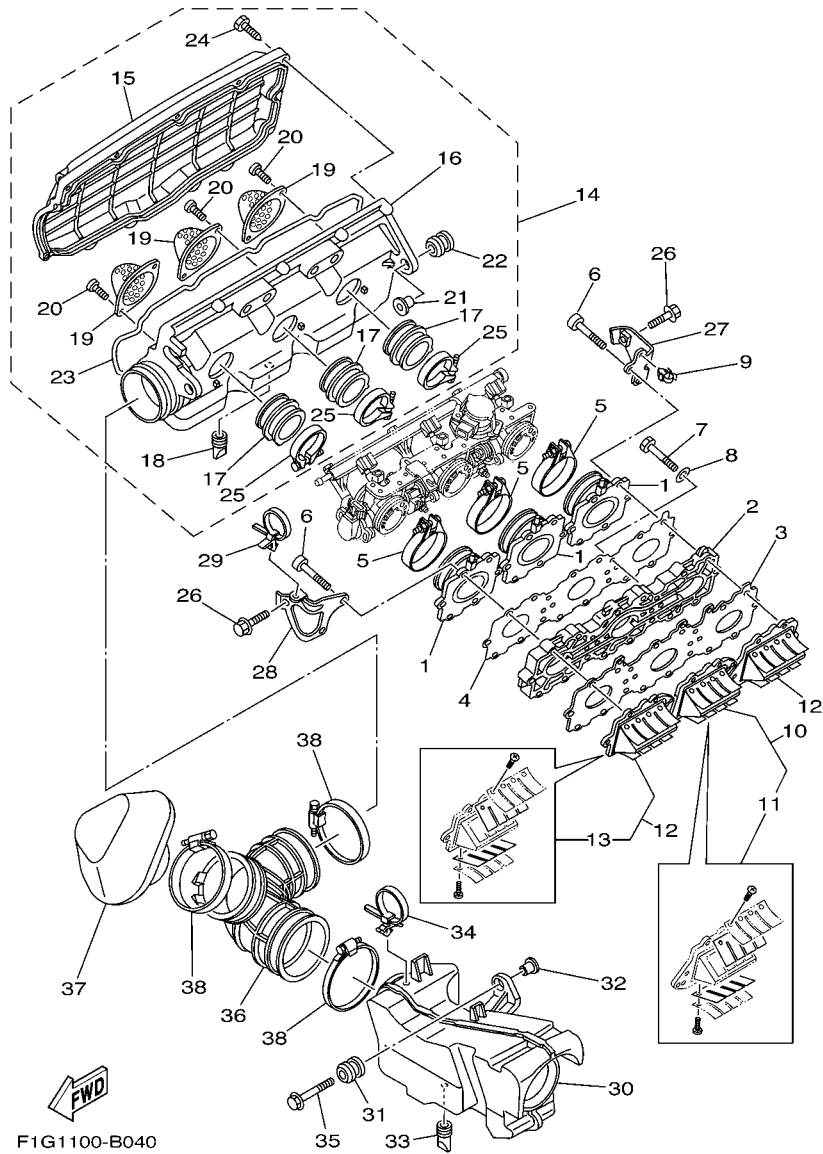
REF. NO.	PART NO.	DESCRIPTION	USA	CAN	GENE	JPN	REMARKS
1	66V-11400-00	CRANKSHAFT ASSY	1	1	1	1	
2	66E-11412-00	.CRANK 1	1	1	1	1	
3	90387-35M01	.COLLAR	1	1	1	1	
4	93390-000U6	.BEARING	1	1	1	1	
5	66E-11685-00	.WASHER, CRANK PIN	6	6	6	6	
6	93310-627U6	.BEARING	3	3	3	3	
7	66E-11651-00	.ROD, CONNECTING	3	3	3	3	
8	66E-11422-00	.CRANK 2	3	3	3	3	
9	93306-208U1	.BEARING	4	4	4	4	
10	66E-11515-00	.SEAL, LABYRINTH 1	2	2	2	2	
11	66V-11452-00	.CRANK 5	1	1	1	1	
12	66E-11431-00	.CRANK 3	1	1	1	1	
13	66E-11442-00	.CRANK 4	1	1	1	1	
14	93306-308U1	.BEARING	1	1	1	1	
15	93603-10049	PIN, DOWEL	1	1	1	1	
16	93103-35011	OIL SEAL	1	1	1	1	
17	93101-34001	OIL SEAL	1	1	1	1	
18	93101-34002	OIL SEAL	1	1	1	1	
19	60T-11631-10-A0	PISTON (STD)	3	3	3	3	UR RED
	60T-11631-10-B0	PISTON (STD)	3	3	3	3	UR ORANGE
	60T-11631-10-C0	PISTON (STD)	3	3	3	3	UR GREEN
	60T-11631-10-D0	PISTON (STD)	3	3	3	3	UR PURPLE
20	60T-11603-00	PISTON RING SET (STD)	3	3	3	3	
21	60T-11633-00	PIN, PISTON	3	3	3	3	
22	93310-422U2	BEARING	3	3	3	3	
23	90201-22M04	WASHER, PLATE	6	6	6	6	
24	66E-11634-00	CLIP, PISTON PIN	6	6	6	6	



F1G1100-B040

FIG. 3 INTAKE

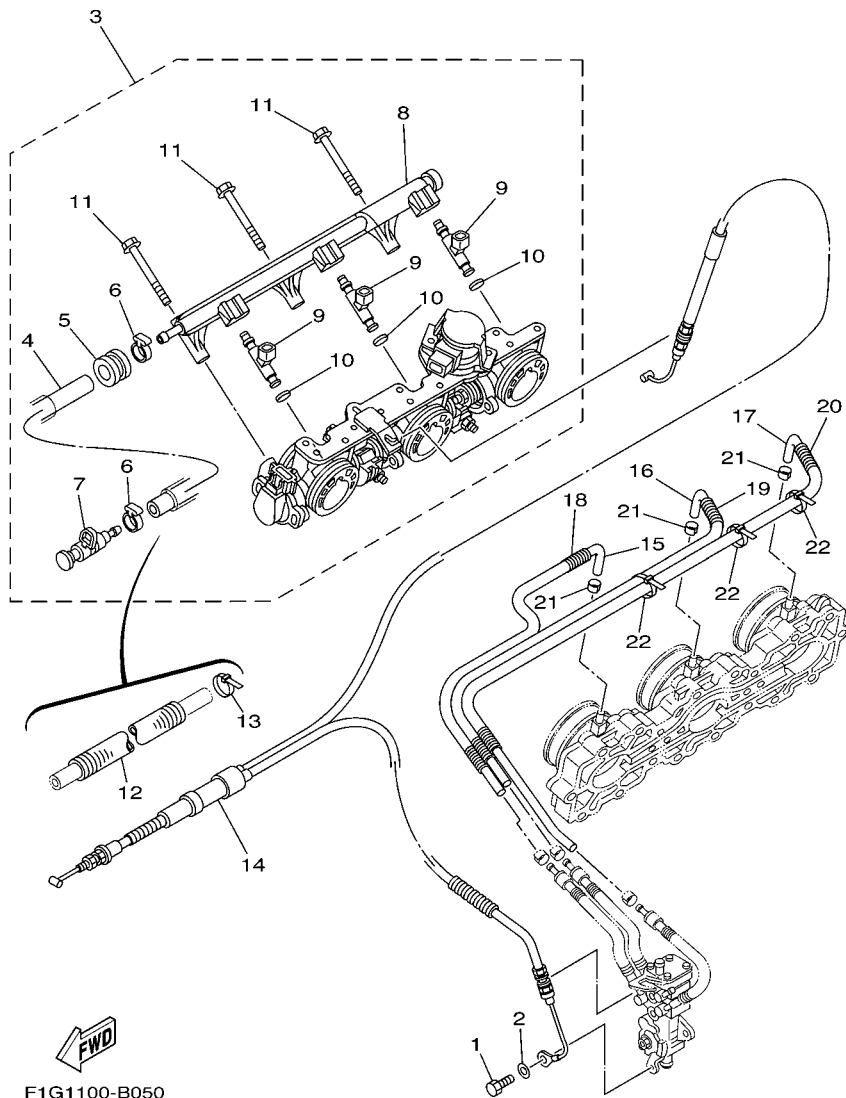
REF. NO.	PART NO.	DESCRIPTION	USA	CAN	GENE	JPN	REMARKS
1	60T-13555-00	MANIFOLD, INTAKE	3	3	3	3	
2	60T-14263-00-94	PLATE, BALANCE	1	1	1	1	
3	60T-13624-00-94	PLATE, REED VALVE	1	1	1	1	
4	60T-13556-00	GASKET, MANIFOLD	1	1	1	1	
5	90450-73001	HOSE CLAMP ASSY	3	3	3	3	
6	90110-06081	BOLT, HEXAGON SOCKET HEAD	18	18	18	18	
7	97013-06040	BOLT	4	4	4	4	
8	92903-06600	WASHER, PLATE	4	4	4	4	
9	90464-14M55	CLAMP	1	1	1	1	
10	60T-13610-00	REED VALVE ASSY	1	1	1	1	
11	60T-W0004-00	.REED SET	1	1	1	1	
12	60T-13620-00	REED VALVE ASSY	2	2	2	2	
13	60T-W0004-00	.REED SET	1	1	1	1	
14	60T-14480-10	COVER SUB ASSY	1	1	1	1	
15	60T-14287-10	.COVER, THROTTLE BODY 1	1	1	1	1	
16	60T-14288-00	.COVER, THROTTLE BODY 2	1	1	1	1	
17	60T-14453-00	.JOINT, AIR CLEANER 1	3	3	3	3	
18	67X-42717-00	.RUBBER, SEAL 2	1	1	1	1	
19	60T-14451-00	.ELEMENT, AIR CLEANER	3	3	3	3	
20	97780-50612	.SCREW, TAPPING	6	6	6	6	
21	90387-08M37	.COLLAR	2	2	2	2	
22	90480-22M15	.GROMMET	2	2	2	2	
23	60T-14457-00	.SEAL	1	1	1	1	
24	97780-60430	.SCREW, TAPPING	13	13	13	13	
25	90450-57003	.HOSE CLAMP ASSY	3	3	3	3	
26	90119-08063	BOLT, WITH WASHER	2	2	2	2	
27	60T-14413-00	STAY	1	1	1	1	



F1G1100-B040

FIG. 3 INTAKE

REF. NO.	PART NO.	DESCRIPTION	USA	CAN	GENE	JPN	REMARKS
28	60T-14414-00	STAY 2	1	1	1	1	
29	90464-50001	CLAMP	1	1	1	1	
30	60T-14440-00	SILENCER ASSY, INTAKE	1	1	1	1	
31	90480-22M15	GROMMET	3	3	3	3	
32	90387-08M37	COLLAR	3	3	3	3	
33	67X-42717-00	RUBBER, SEAL 2	1	1	1	1	
34	90464-50001	CLAMP	1	1	1	1	
35	90119-08M22	BOLT, WITH WASHER	3	3	3	3	
36	60T-14419-00	PIPE	1	1	1	1	
37	60T-1441J-00	PIPE, SILENCER	1	1	1	1	
38	90460-99M23	CLAMP, HOSE	3	3	3	3	

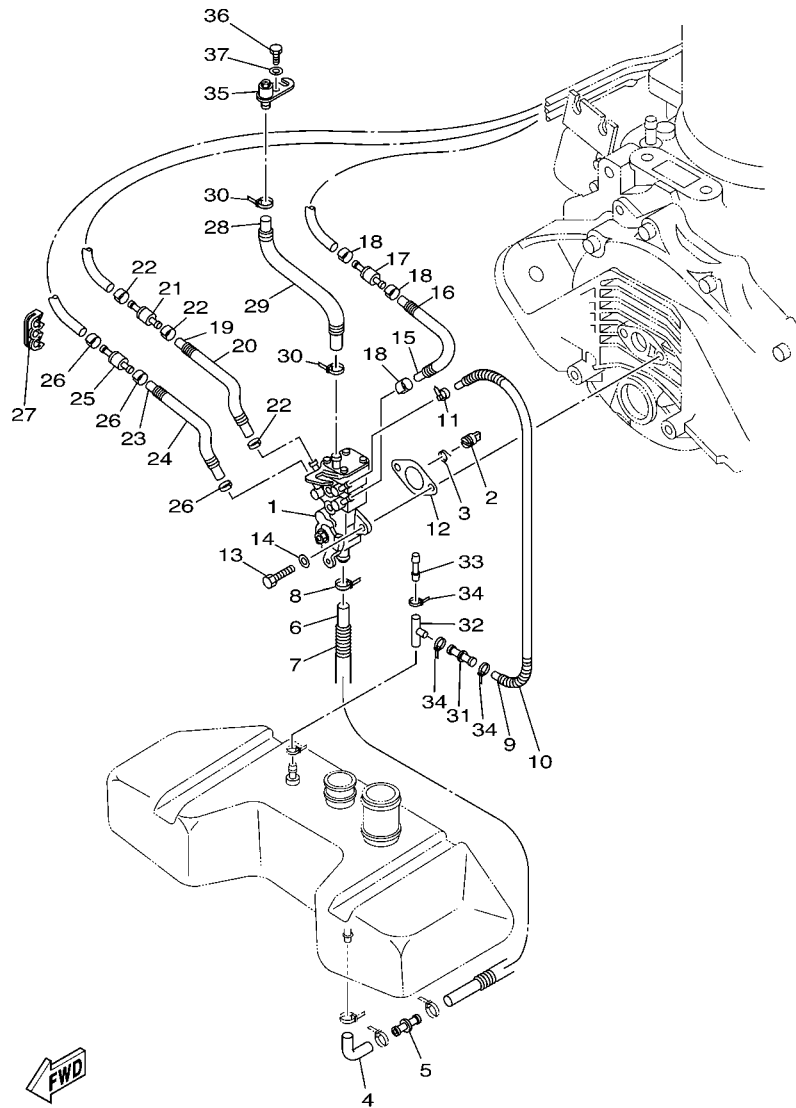


F1G1100-B050

FIG. 4 INJECTION PUMP

REF. NO.	PART NO.	DESCRIPTION	USA	CAN	GENE	JPN	REMARKS
1	97095-05010	BOLT	1	1	1	1	
2	92995-05600	WASHER	1	1	1	1	
3	60T-13750-00	THROTTLE BODY ASSY	1	1	1	1	
4	60T-14294-00	.HOSE	1	1	1	1	
5	90480-24003	.GROMMET	1	1	1	1	
6	90450-17M17	.HOSE CLAMP ASSY	2	2	2	2	
7	60E-24300-01	.FUEL PIPE JOINT	1	1	1	1	
8	60T-14295-00	.PIPE, FUEL	1	1	1	1	
9	60T-13761-00	.INJECTOR ASSY	3	3	3	3	
10	60T-13766-00	.RUBBER, INJECTOR	3	3	3	3	
11	60T-14428-00	.BOLT	3	3	3	3	
12	90446-24M54	HOSE (L260)	1	1	1	1	
13	90465-13M36	CLAMP	4	4	4	4	
14	60T-67252-00	CABLE, THROTTLE	1	1	1	1	
15	90446-07001	HOSE (L230)	1	1	1	1	
16	90446-07002	HOSE (L360)	1	1	1	1	
17	90446-07003	HOSE (L600)	1	1	1	1	
18	90447-07008	HOSE, WITH SPRING (L200)	1	1	1	1	
19	90447-07009	HOSE, WITH SPRING (L320)	1	1	1	1	
20	90447-07010	HOSE, WITH SPRING (L520)	1	1	1	1	
21	90468-02001	CLIP	3	3	3	3	
22	90465-13M36	CLAMP	3	3	3	3	

FIG. 5 OIL PUMP



F1G1100-B060

REF. NO.	PART NO.	DESCRIPTION	USA	CAN	GENE	JPN	REMARKS
1	60T-13200-00	OIL INJECTION PUMP ASSY	1	1	1	1	
2	65U-13132-00	JOINT	1	1	1	1	
3	66E-13469-00	SPRING	1	1	1	1	
4	90445-14M00	HOSE (L118)	1	1	1	1	
5	66V-51142-00	CONNECTION	1	1	1	1	
6	90445-11M33	HOSE (L440)	1	1	1	1	
7	90446-17ME2	HOSE (L350)	1	1	1	1	
8	90465-11M10	CLAMP	1	1	1	1	
9	90445-07M10	HOSE (L510)	1	1	1	1	
10	90447-07001	HOSE, WITH SPRING (L400)	1	1	1	1	
11	90468-02001	CLIP	1	1	1	1	
12	63M-13116-00	GASKET, PUMP CASE	1	1	1	1	
13	97095-06020	BOLT	2	2	2	2	
14	92995-06600	WASHER	2	2	2	2	
15	90445-07007	HOSE (L110)	1	1	1	1	
16	90446-10M82	HOSE (L90)	1	1	1	1	
17	67X-13183-00	VALVE, CHECK	1	1	1	1	
18	90468-02001	CLIP	3	3	3	3	
19	90445-07007	HOSE (L110)	1	1	1	1	
20	90446-10M82	HOSE (L90)	1	1	1	1	
21	67X-13183-00	VALVE, CHECK	1	1	1	1	
22	90468-02001	CLIP	3	3	3	3	
23	90445-07007	HOSE (L110)	1	1	1	1	
24	90446-10M82	HOSE (L90)	1	1	1	1	
25	67X-13183-00	VALVE, CHECK	1	1	1	1	
26	90468-02001	CLIP	3	3	3	3	
27	90464-07M05	CLAMP	1	1	1	1	

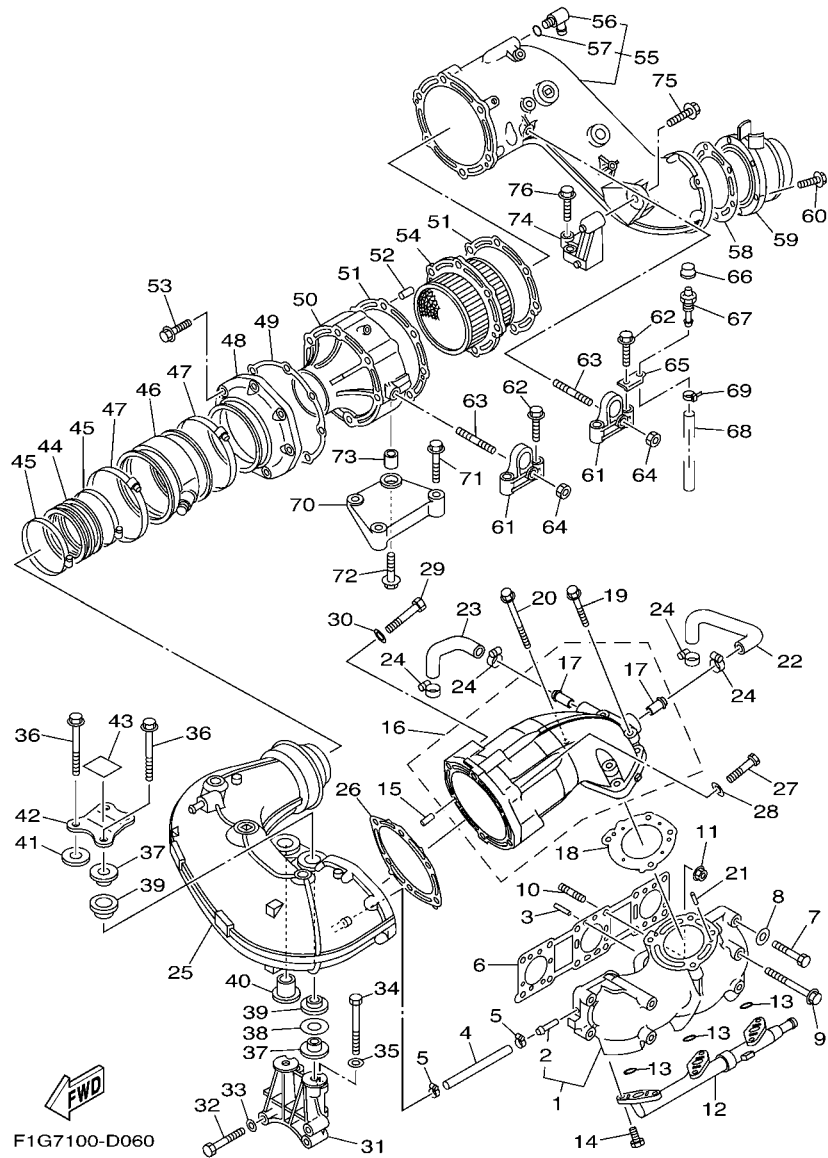
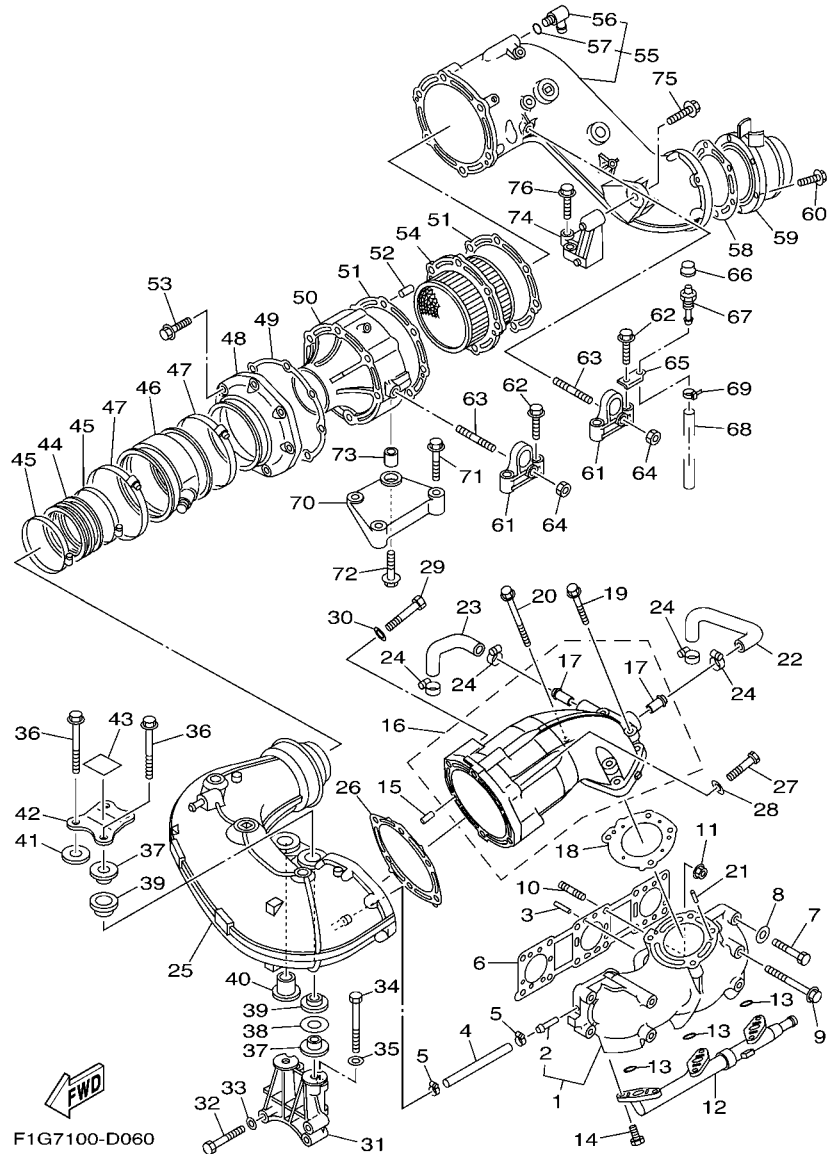


FIG. 6 EXHAUST 1

REF. NO.	PART NO.	DESCRIPTION	USA	CAN	GENE	JPN	REMARKS
1	66V-14711-00-94	MUFFLER 1	1	1	1	1	
2	65U-14251-00	.NIPPLE	1	1	1	1	
3	93606-12019	PIN, DOWEL	2	2	2	2	
4	90445-12M10	HOSE (L125)	1	1	1	1	
5	90460-11M17	CLAMP, HOSE	2	2	2	2	
6	66V-14613-01	GASKET, EXHAUST PIPE	1	1	1	1	
7	97013-10055	BOLT	6	6	6	6	
8	92903-10600	WASHER, PLATE	6	6	6	6	
9	90119-10M11	BOLT, WITH WASHER	4	4	4	4	
10	90116-10M68	BOLT, STUD	2	2	2	2	
11	90179-10M36	NUT	2	2	2	2	
12	66V-24377-00	PIPE, JOINT 3	1	1	1	1	
13	93210-17MA4	O-RING	3	3	3	3	
14	90109-06M99	BOLT	6	6	6	6	
15	93606-12019	PIN, DOWEL	2	2	2	2	
16	60T-14712-10-94	RING, JOINT	1	1	1	1	
17	66E-51129-00	.NIPPLE	2	2	2	2	
18	66V-14739-01	GASKET, MUFFLER DAMPER 1	1	1	1	1	
19	90119-10M20	BOLT, WITH WASHER	3	3	3	3	
20	90119-10M19	BOLT, WITH WASHER	1	1	1	1	
21	93606-12019	PIN, DOWEL	2	2	2	2	
22	60T-12576-00	HOSE 1	1	1	1	1	
23	60T-12577-00	HOSE 2	1	1	1	1	
24	90450-22M14	HOSE CLAMP ASSY	4	4	4	4	
25	66V-14721-A0-94	MUFFLER 2	1	1	1	1	
26	66V-14749-01	GASKET, MUFFLER DAMPER 2	1	1	1	1	
27	97013-10065	BOLT	1	1	1	1	



F1G7100-D060

FIG. 6 EXHAUST 1

REF. NO.	PART NO.	DESCRIPTION	USA	CAN	GENE	JPN	REMARKS
28	92903-10600	WASHER, PLATE	1	1	1	1	
29	97013-10085	BOLT	5	5	5	5	
30	92903-10600	WASHER, PLATE	5	5	5	5	
31	66V-14771-01-94	STAY, MUFFLER 1	1	1	1	1	
32	97013-10060	BOLT	2	2	2	2	
33	92903-10600	WASHER, PLATE	2	2	2	2	
34	97013-10090	BOLT	2	2	2	2	
35	92903-10600	WASHER, PLATE	2	2	2	2	
36	90119-10M23	BOLT, WITH WASHER	2	2	2	2	
37	90387-12M05	COLLAR	2	2	2	2	
38	90201-28008	WASHER, PLATE	1	1	1	1	
39	90480-30M78	GROMMET	2	2	2	2	
40	66V-14779-00	COLLAR	1	1	1	1	
41	66V-1477L-00	PLATE 2	1	1	1	1	
42	66V-11152-00	BRACKET, CYLINDER HEAD COVER	1	1	1	1	
43	66V-14488-00	LABEL, CAUTION	1	1	1	1	
44	66V-14625-00	JOINT, EXHAUST 2	1	1	1	1	
45	90460-90M19	CLAMP, HOSE	2	2	2	2	
46	66V-14615-02	JOINT, EXHAUST 1	1	1	1	1	
47	90460-99M20	CLAMP, HOSE	2	2	2	2	
48	68N-41113-00-94	OUTER COVER, EXHAUST	1	1	1	1	
49	66V-41114-01	GASKET, EXHAUST OUTER COVER	1	1	1	1	
50	68N-41111-00-94	INNER COVER, EXHAUST	1	1	1	1	
51	66V-41124-01	GASKET, EXHAUST OUTER COVER	2	2	2	2	
52	93606-14081	PIN, DOWEL	2	2	2	2	
53	90119-08M63	BOLT, WITH WASHER	6	6	6	6	
54	60T-14740-01	CATALYST ASSY.	1	1	1	1	

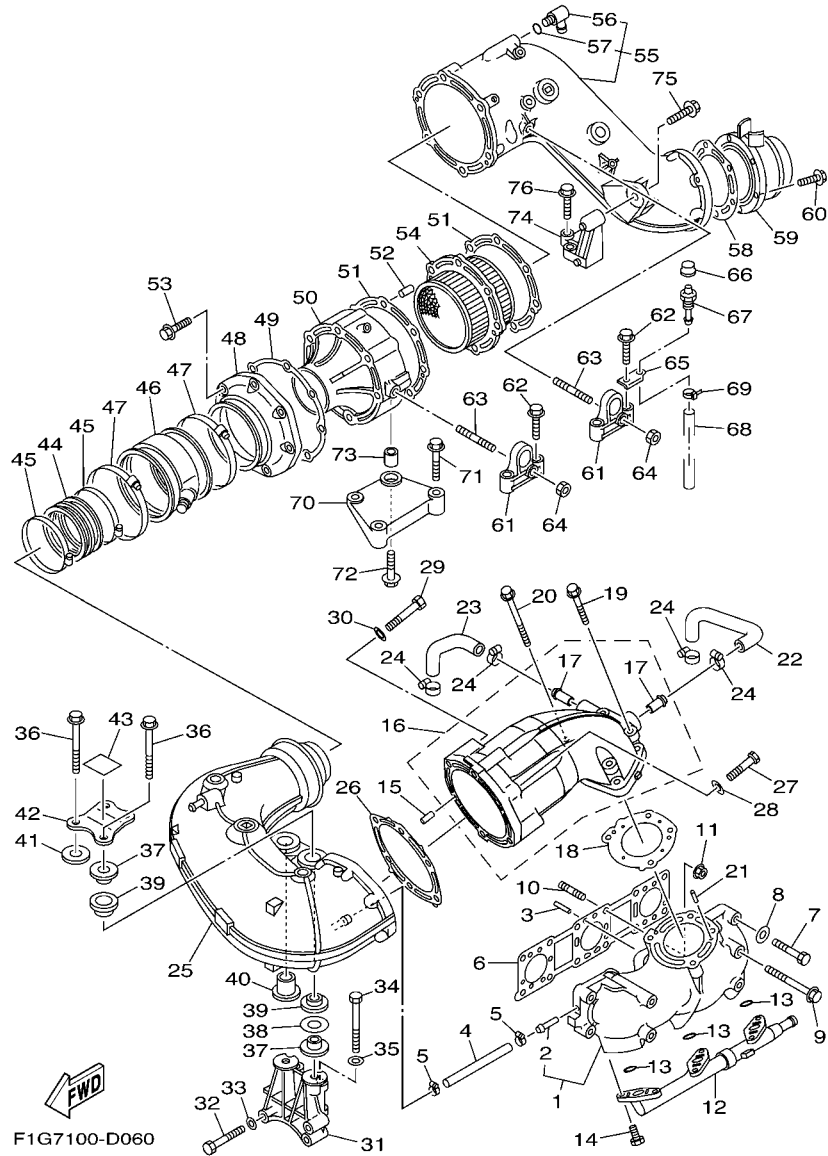


FIG. 6 EXHAUST 1

REF. NO.	PART NO.	DESCRIPTION	USA	CAN	GENE	JPN	REMARKS
55	68N-41123-00-94	OUTER COVER, EXHAUST	1	1	1	1	
56	67X-12481-00	.PIPE 1	1	1	1	1	
57	93210-17001	.O-RING	1	1	1	1	
58	68N-14623-00	GASKET, EXHAUST PIPE	1	1	1	1	
59	68N-14784-00-94	PIPE, TAIL	1	1	1	1	
60	90105-08M22	BOLT, FLANGE	6	6	6	6	
61	66E-14771-01-94	STAY, MUFFLER 1	2	2	2	2	
62	90119-10M18	BOLT, WITH WASHER	4	4	4	4	
63	90116-10M66	BOLT, STUD	2	2	2	2	
64	90179-10M35	NUT	2	2	2	2	
65	66V-1477K-00	PLATE 1	1	1	1	1	
66	663-45119-00	CAP, GREASE NIPPLE	1	1	1	1	
67	61L-5169A-00	NIPPLE, GREASE	1	1	1	1	
68	90445-09M33	HOSE (L580)	1	1	1	1	
69	90465-11M10	CLAMP	1	1	1	1	
70	66V-14782-00-94	STAY 5	1	1	1	1	
71	90105-10M87	BOLT, FLANGE	2	2	2	2	
72	97513-10545	BOLT, WITH WASHER	2	2	2	2	
73	99590-14016	PIN, DOWEL	1	1	1	1	
74	68N-14791-00-94	STAY, MUFFLER	1	1	1	1	
75	90119-10M00	BOLT, WITH WASHER	2	2	2	2	
76	90119-10M13	BOLT, WITH WASHER	1	1	1	1	

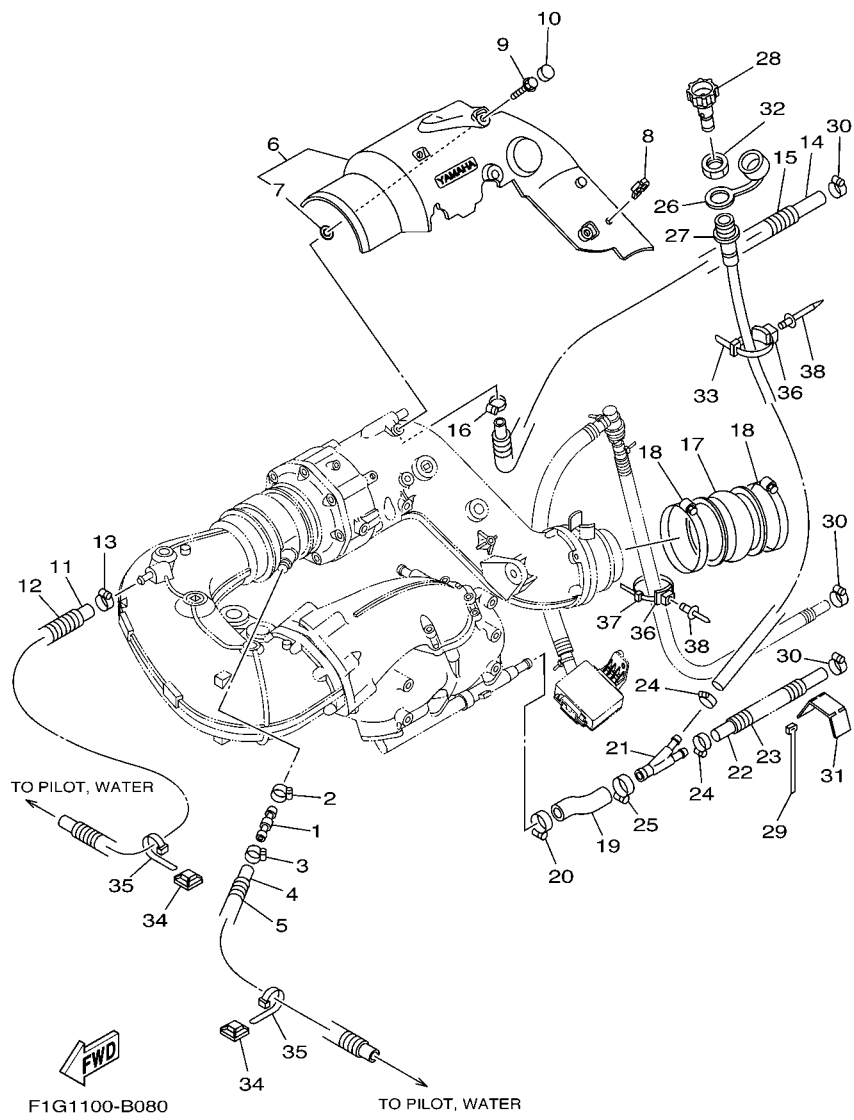


FIG. 7 EXHAUST 2

REF. NO.	PART NO.	DESCRIPTION	USA	CAN	GENE	JPN	REMARKS
1	60E-12594-00	JOINT, HOSE 4	1	1	1	1	
2	90450-18M09	HOSE CLAMP ASSY	1	1	1	1	
3	90450-14M05	HOSE CLAMP ASSY	1	1	1	1	
4	90445-14M09	HOSE (L1020)	1	1	1	1	
5	90446-20M70	HOSE (L800)	1	1	1	1	
6	60T-14718-00	PROTECTOR, MUFFLER 1	1	1	1	1	
7	90430-09004	.GASKET	3	3	3	3	
8	90464-07M56	CLAMP	1	1	1	1	
9	90109-06M99	BOLT	3	3	3	3	
10	60T-15779-00	COVER	3	3	3	3	
11	90445-14M18	HOSE (L560)	1	1	1	1	
12	90446-20M65	HOSE (L445)	1	1	1	1	
13	90450-18M09	HOSE CLAMP ASSY	1	1	1	1	
14	90445-21002	HOSE (L900)	1	1	1	1	
15	90446-27M95	HOSE (L800)	1	1	1	1	
16	90450-22M14	HOSE CLAMP ASSY	1	1	1	1	
17	66V-14752-00	PIPE, OUTLET	1	1	1	1	
18	90450-99M02	HOSE CLAMP ASSY	2	2	2	2	
19	66V-12579-00	HOSE 4	1	1	1	1	
20	90450-22M14	HOSE CLAMP ASSY	1	1	1	1	
21	66V-12581-00	JOINT, HOSE 1	1	1	1	1	
22	90445-18006	HOSE (L660)	1	1	1	1	
23	90446-24M52	HOSE (L540)	1	1	1	1	
24	90450-18M09	HOSE CLAMP ASSY	2	2	2	2	
25	90450-22M14	HOSE CLAMP ASSY	1	1	1	1	
26	682-84385-01	CAP,1	1	1	1	1	
27	64T-12580-00	JOINT ASSY	1	1	1	1	

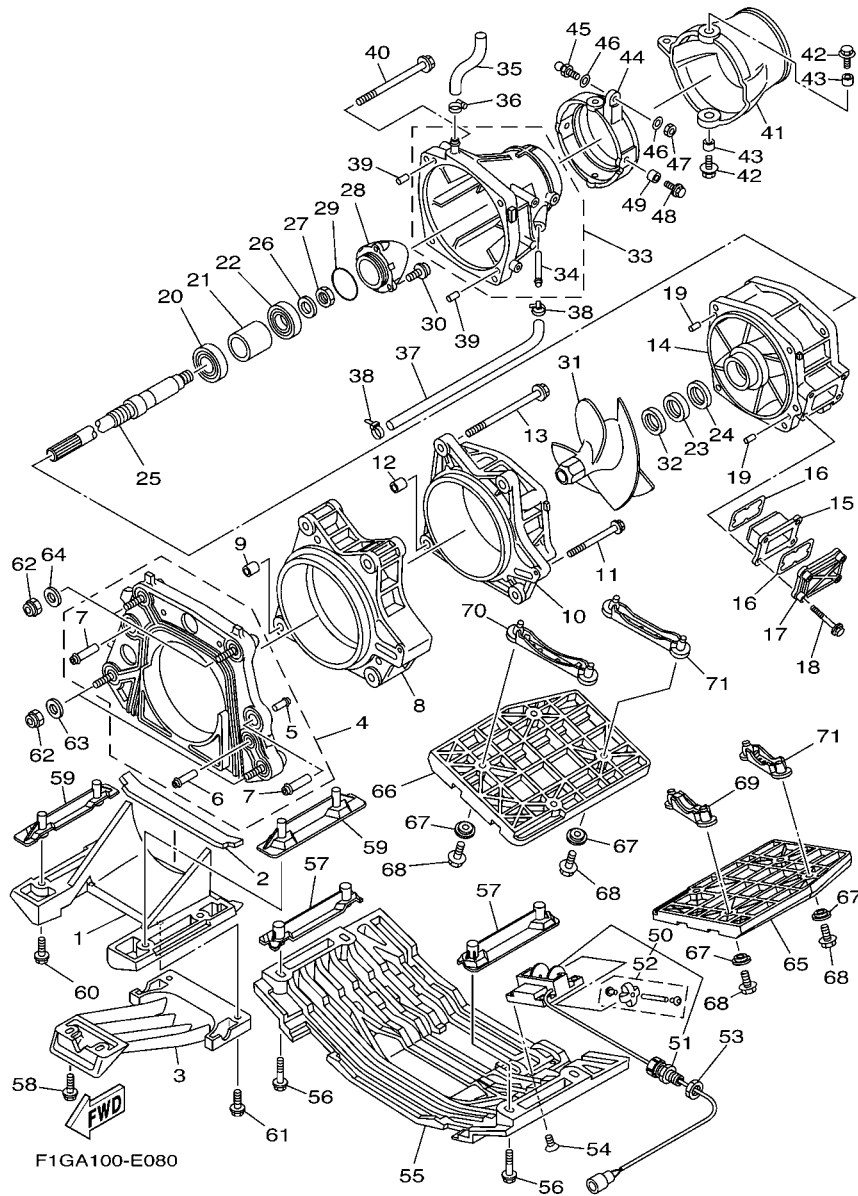
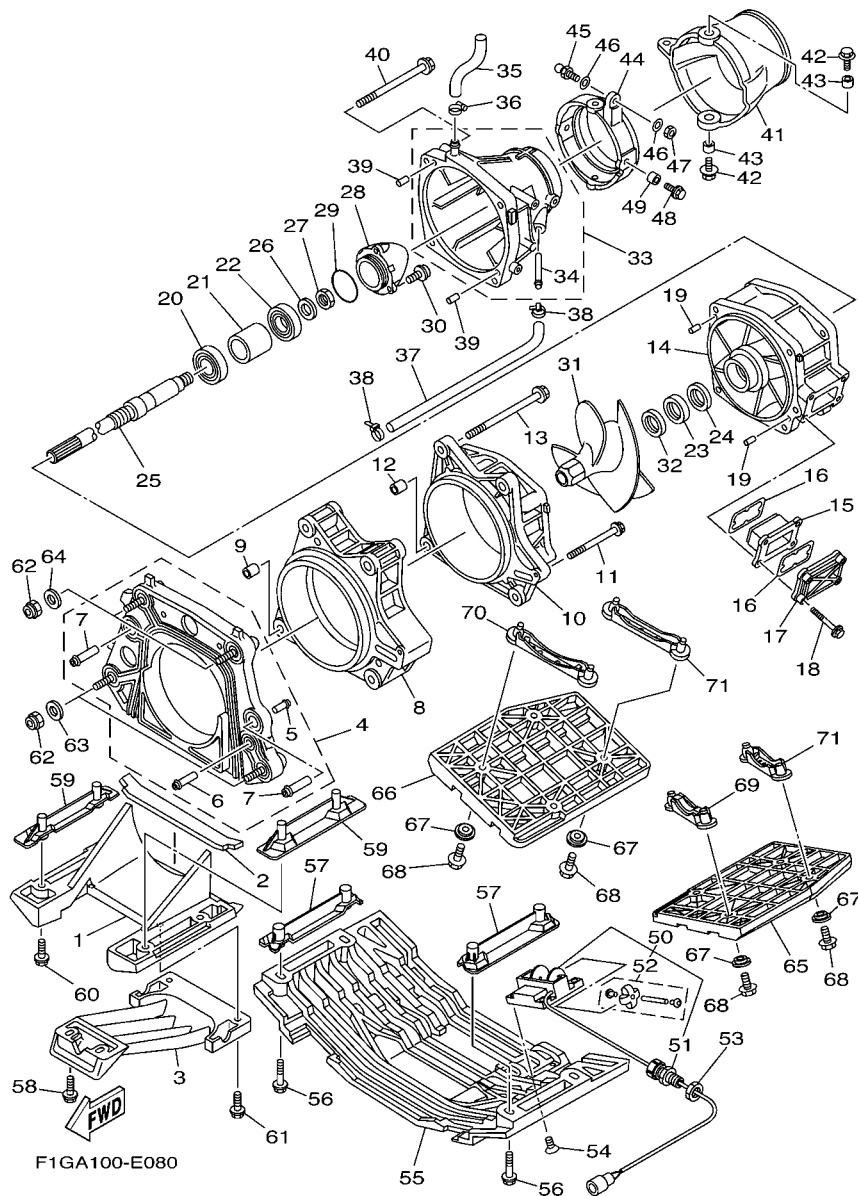


FIG. 8 JET UNIT 1

REF. NO.	PART NO.	DESCRIPTION	USA	CAN	GENE	JPN	REMARKS
1	67X-51311-00-94	DUCT, INTAKE	1	1	1	1	
2	67X-R1367-00	FELT, PACKING	1	1	1	1	
3	67X-51333-00-94	SCREEN, INTAKE	1	1	1	1	
4	60T-G5831-00	PLATE, TRANSOM	1	1	1	1	
5	65A-R1129-00	.NIPPLE	1	1	1	1	
6	66V-51129-01	.NIPPLE	1	1	1	1	
7	66V-51129-10	.NIPPLE	2	2	2	2	
8	60E-51317-00-94	HOUSING, IMPELLER 2	1	1	1	1	
9	99590-14016	PIN, DOWEL	2	2	2	2	
10	66V-51312-01-94	HOUSING, IMPELLER	1	1	1	1	
11	90119-06859	BOLT, WITH WASHER	1	1	1	1	
12	99590-14016	PIN, DOWEL	2	2	2	2	
13	90119-10803	BOLT, WITH WASHER	4	4	4	4	
14	6B6-51315-01-94	DUCT, IMPELLER	1	1	1	1	
15	66V-46882-00	FILTER	1	1	1	1	
16	66V-42414-00	O-RING	2	2	2	2	
17	66V-45214-00-94	COVER, WATER INLET 1	1	1	1	1	
18	90119-06800	BOLT, WITH WASHER	4	4	4	4	
19	93606-12019	PIN, DOWEL	2	2	2	2	
20	93306-205U0	BEARING	1	1	1	1	
21	65V-45538-00	SPACER 1	1	1	1	1	
22	93306-304U1	BEARING	1	1	1	1	
23	93101-28M66	OIL SEAL	1	1	1	1	
24	93101-28002	OIL SEAL	1	1	1	1	
25	66V-45511-00	SHAFT, DRIVE	1	1	1	1	
26	9299R-16600	WASHER	1	1	1	1	
27	9531P-16700	NUT	1	1	1	1	

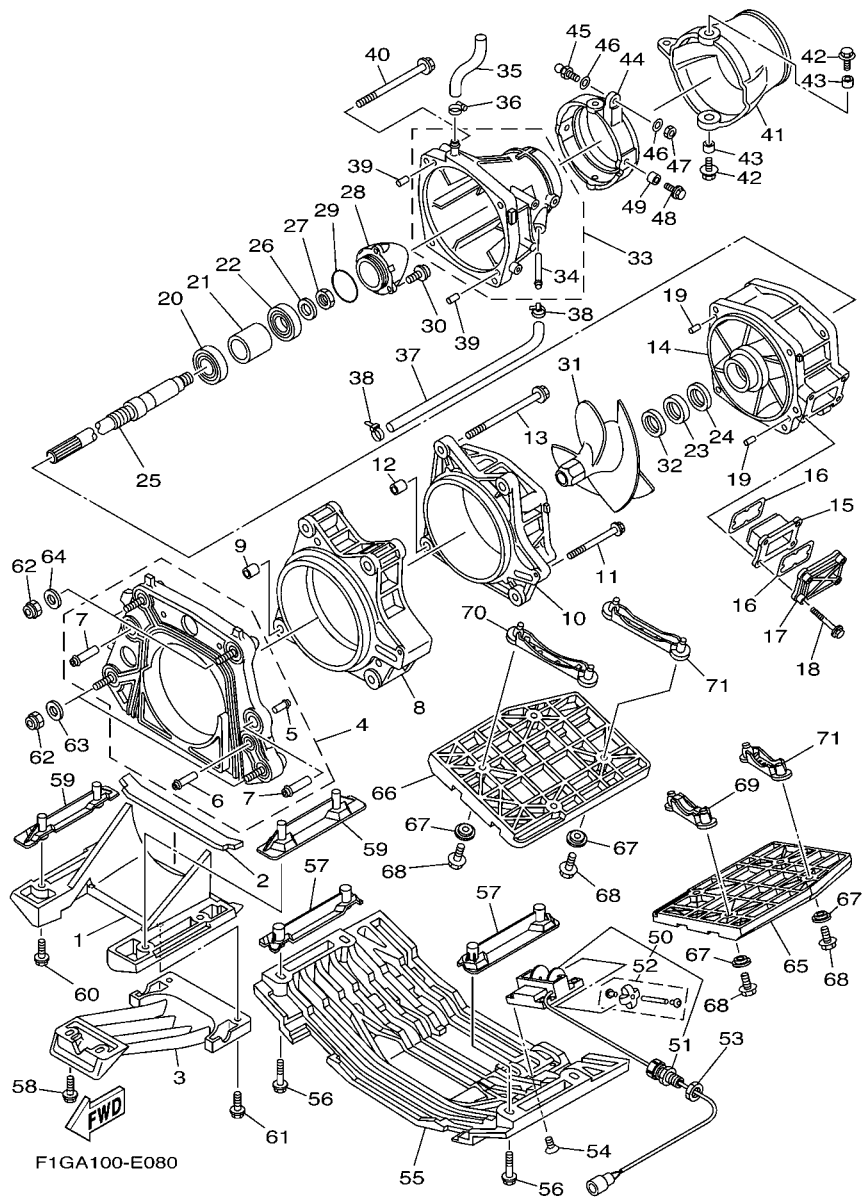
FIG. 8 JET UNIT 1



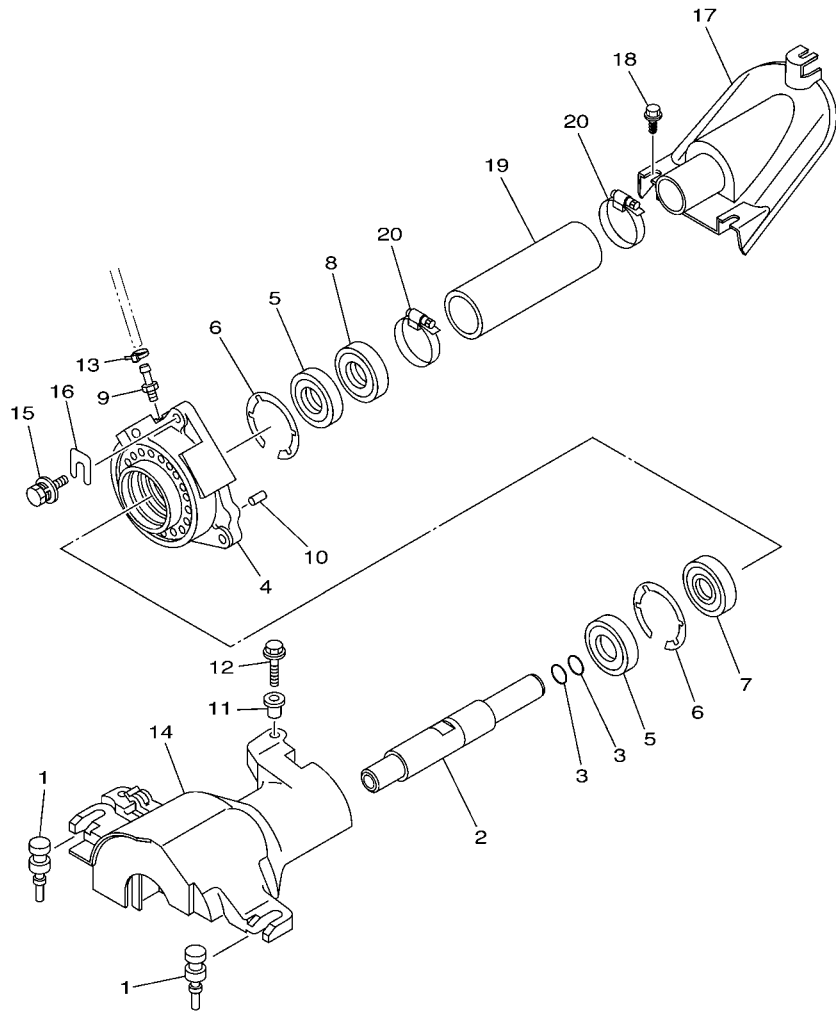
F1GA100-E080

REF. NO.	PART NO.	DESCRIPTION	USA	CAN	GENE	JPN	REMARKS
28	6B6-51326-10	CAP	1	1	1	1	
29	93210-464A3	O-RING	1	1	1	1	
30	90110-06822	BOLT, HEXAGON SOCKET HEAD	3	3	3	3	
31	60T-R1321-10	IMPELLER	1	1	1	1	
32	66V-R1348-10	SPACER	1	1	1	1	
33	60T-51318-00-94	NOZZLE	1	1	1	1	
34	63M-51334-00	.NIPPLE,HOSE	1	1	1	1	
35	60T-51673-00	PIPE 1	1	1	1	1	
36	90601-118UF	BAND, HOSE 18	1	1	1	1	
37	90445-14804	HOSE (L330)	1	1	1	1	
38	90465-11829	CLAMP	2	2	2	2	
39	93606-12019	PIN, DOWEL	2	2	2	2	
40	90119-10837	BOLT, WITH WASHER	4	4	4	4	
41	66V-R1313-01	NOZZLE, DEFLECTOR	1	1	1	1	
42	90119-089UE	BOLT, WITH WASHER	2	2	2	2	
43	90387-08M06	COLLAR	2	2	2	2	
44	60T-51190-00-94	RING,TRIM	1	1	1	1	
45	GH3-U146E-00	STUD, JOINT BALL	1	1	1	1	
46	90201-068M4	WASHER, PLATE	2	2	2	2	
47	9538R-06700	NUT	1	1	1	1	
48	90119-089UE	BOLT, WITH WASHER	2	2	2	2	
49	90387-08M06	COLLAR	2	2	2	2	
50	GJ1-U8K31-03	SENSOR SPEED	1	1	1	1	
51	F0V-U7267-10	.CONNECTOR, CABLE	1	1	1	1	
52	GJ1-U835D-00	.SERVICE KIT (SPEED SENSOR)	1	1	1	1	
53	EU0-62241-30	NUT, DRAIN 1	1	1	1	1	
54	9878R-05512	SCREW, FLAT HEAD	4	4	4	4	

FIG. 8 JET UNIT 1



REF. NO.	PART NO.	DESCRIPTION	USA	CAN	GENE	JPN	REMARKS
55	F1G-U273B-00	PLATE 2	1	1	1	1	
56	90119-08823	BOLT, WITH WASHER	4	4	4	4	
57	F1G-U8572-00	BRACKET 2	2	2	2	2	
58	90119-069UK	BOLT, WITH WASHER	2	2	2	2	
59	F1G-U8571-00	BRACKET 1	2	2	2	2	
60	90119-08823	BOLT, WITH WASHER	4	4	4	4	
61	90119-069UB	BOLT, WITH WASHER	2	2	2	2	
62	9572R-10300	NUT, FLANGE	4	4	4	4	
63	90201-10801	WASHER, PLATE	2	2	2	2	
64	F1S-U725E-00	WASHER	2	2	2	2	
65	F1G-U884R-01	PLATE, STEP 1	1	1	1	1	
66	F1G-U884S-01	PLATE, STEP 2	1	1	1	1	
67	90387-07803	COLLAR	8	8	8	8	
68	90119-069UD	BOLT, WITH WASHER	8	8	8	8	
69	F1G-6880A-00	BED, WATER LOCK COMP. 1	1	1	1	1	
70	FOX-6885R-00	PLATE, STEP 1	1	1	1	1	
71	FOX-6885S-00	PLATE, STEP 2	2	2	2	2	

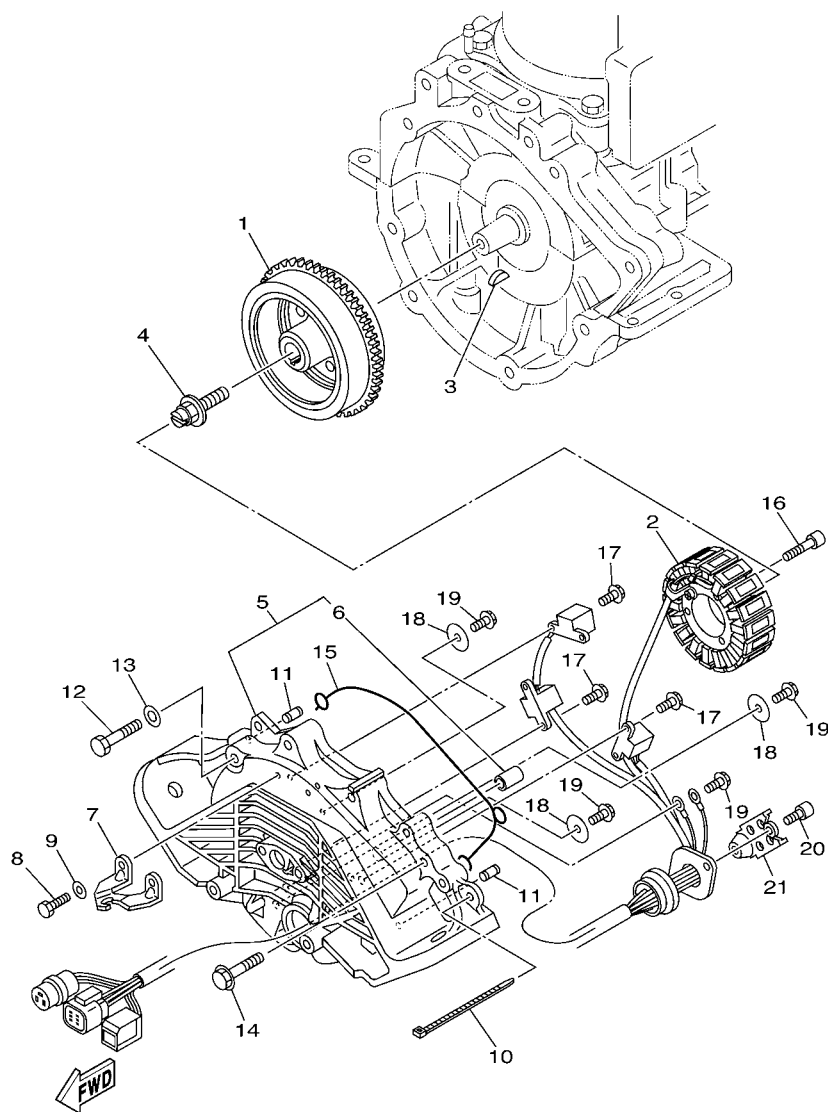


F1G4100-C100

FIG. 9 JET UNIT 2

REF. NO.	PART NO.	DESCRIPTION	USA	CAN	GENE	JPN	REMARKS
1	90480-06M46	GROMMET	2	2	2	2	
2	68N-51323-00	SHAFT, COUPLOR	1	1	1	1	
3	93210-19001	O-RING	2	2	2	2	
4	61X-45332-03-94	HOUSING, BEARING	1	1	1	1	
5	93101-25M55	OIL SEAL	2	2	2	2	
6	93430-47M04	CIRCLIP	2	2	2	2	
7	93306-205U6	BEARING	1	1	1	1	
8	93101-25M56	OIL SEAL	1	1	1	1	
9	61L-45378-00	NIPPLE, HOSE	1	1	1	1	
10	93606-12019	PIN, DOWEL	2	2	2	2	
11	90387-06M60	COLLAR	1	1	1	1	
12	90119-069UD	BOLT, WITH WASHER	1	1	1	1	
13	90465-11829	CLAMP	1	1	1	1	
14	66V-R1381-01	COVER	1	1	1	1	
15	90119-089UL	BOLT, WITH WASHER	3	3	3	3	
16	GD0-U7249-00-05	SHIM (T=0.5)	1	1	1	1	
17	F0X-U883E-00	JOINT, PIPE	1	1	1	1	
18	90149-069UA	SCREW	2	2	2	2	
19	F0X-U883B-01	PIPE, 1	1	1	1	1	
20	90601-152U3	BAND, HOSE 52	2	2	2	2	

FIG. 10 GENERATOR



F1G4100-C110

REF. NO.	PART NO.	DESCRIPTION	USA	CAN	GENE	JPN	REMARKS
1	60T-81450-00	ROTOR ASSY	1	1	1	1	
2	60T-81410-00	STATOR ASSY	1	1	1	1	
3	90280-05013	KEY, WOODRUFF	1	1	1	1	
4	90109-10M72	BOLT	1	1	1	1	
5	60T-81337-00-94	COVER, FLYWHEEL	1	1	1	1	
6	90380-12M29	.BUSH, SOLID	1	1	1	1	
7	60T-26292-00	STAY	1	1	1	1	
8	97095-06016	BOLT	2	2	2	2	
9	92995-06600	WASHER	2	2	2	2	
10	90465-11M52	CLAMP	2	2	2	2	
11	93608-16M16	PIN, DOWEL	2	2	2	2	
12	97013-10055	BOLT	7	7	7	7	
13	92903-10600	WASHER, PLATE	7	7	7	7	
14	97513-10545	BOLT, WITH WASHER	1	1	1	1	
15	66V-81168-10	O-RING	1	1	1	1	
16	91317-06035	BOLT	3	3	3	3	
17	97513-05514	BOLT, WITH WASHER	6	6	6	6	
18	90201-05014	WASHER, PLATE	3	3	3	3	
19	97513-05514	BOLT, WITH WASHER	4	4	4	4	
20	91318-06014	BOLT	2	2	2	2	
21	60E-81328-00	CLAMP	1	1	1	1	

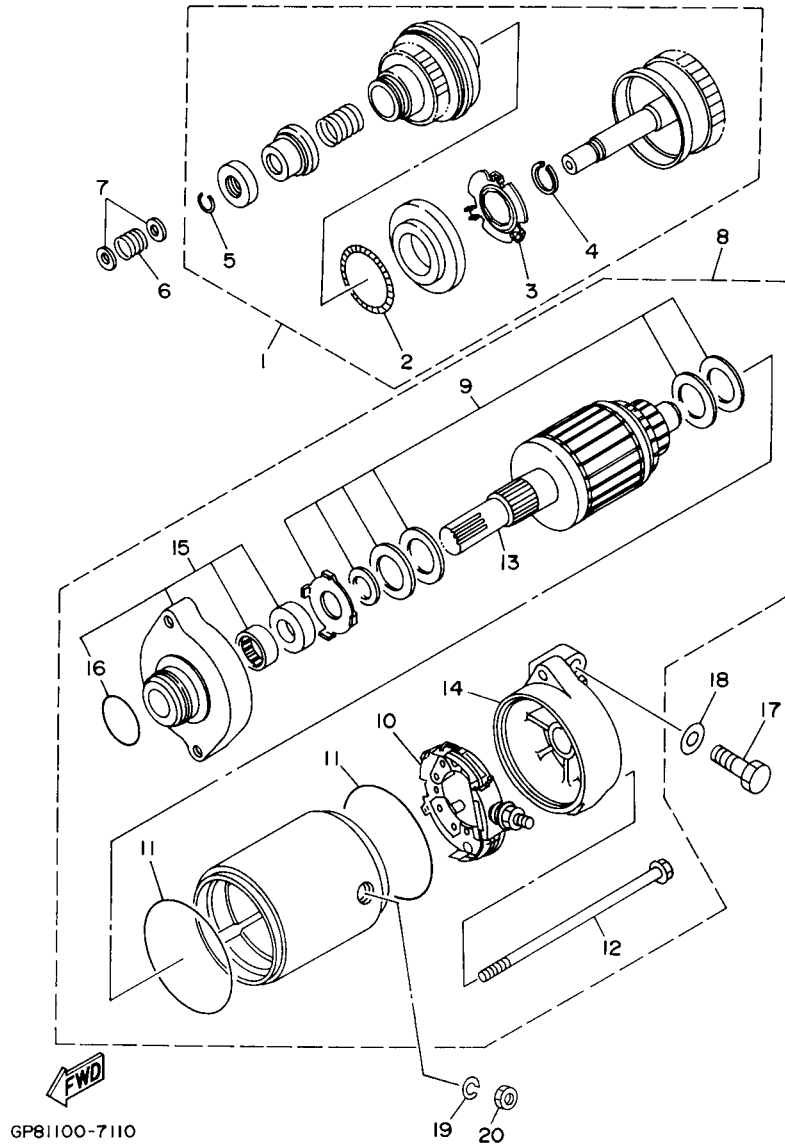
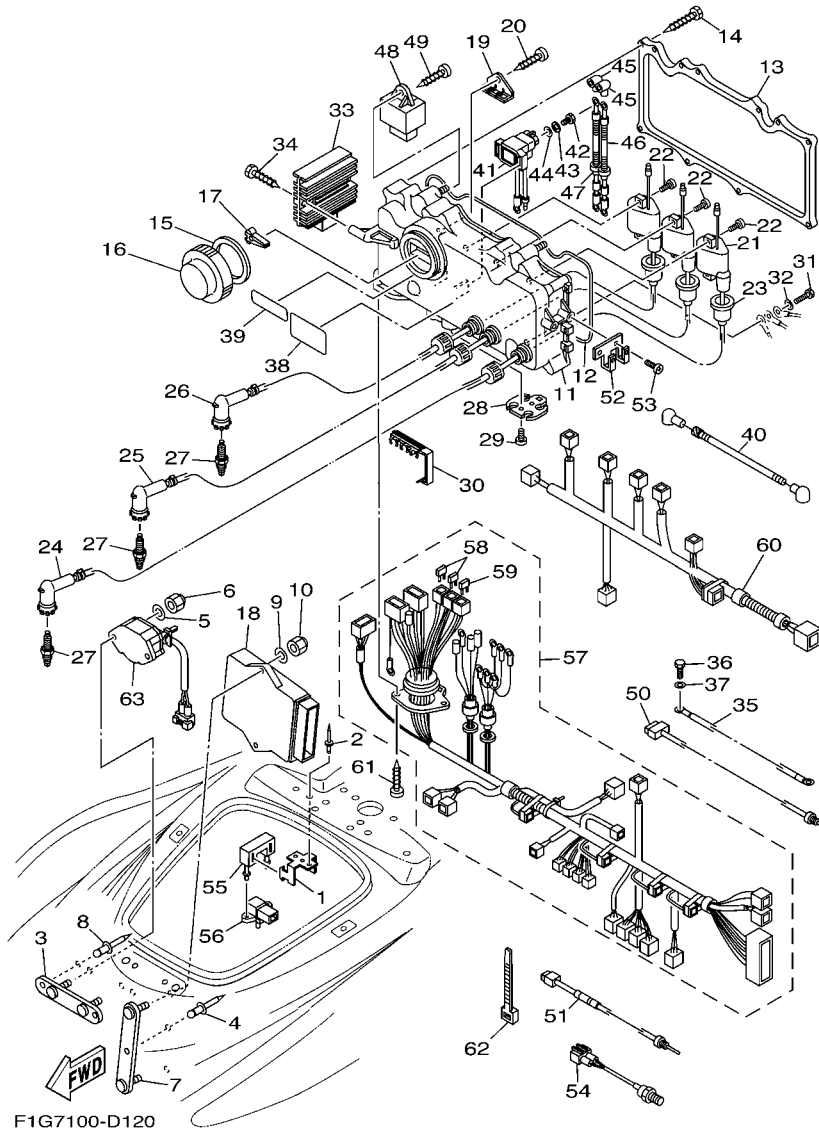


FIG. 11 STARTING MOTOR

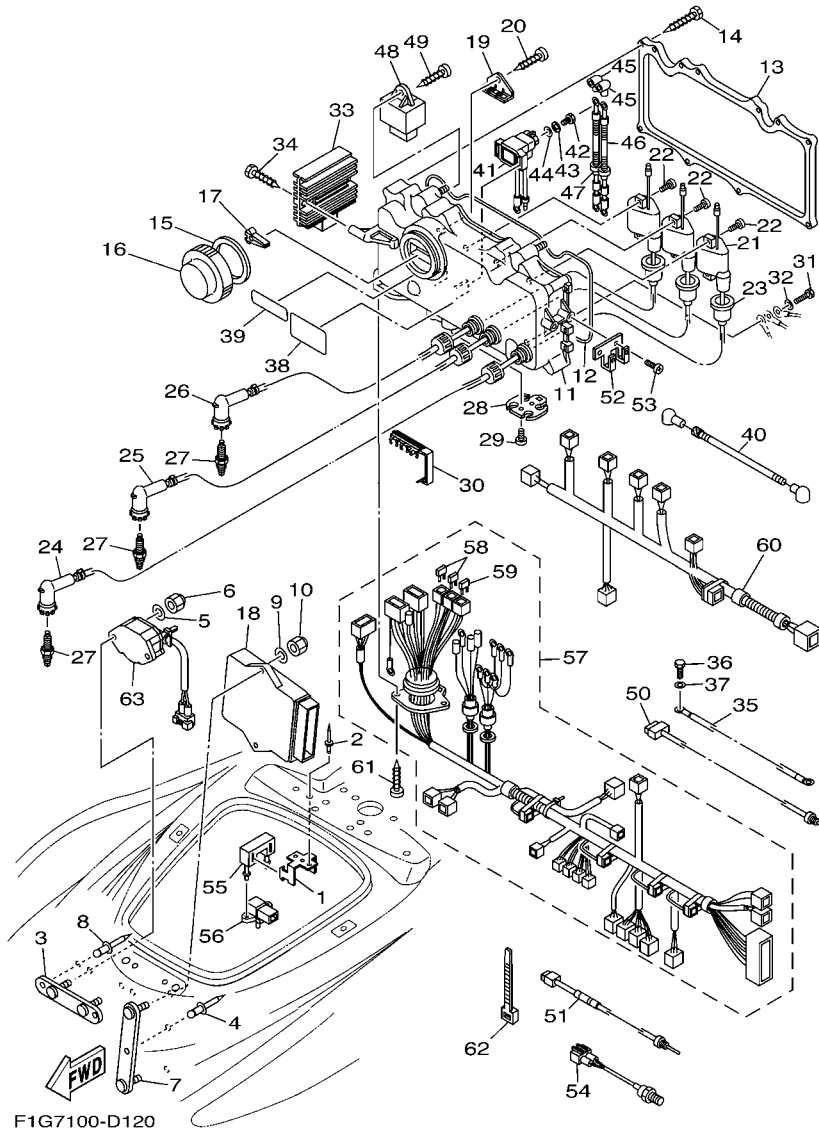
REF. NO.	PART NO.	DESCRIPTION	USA	CAN	GENE	JPN	REMARKS
1	6M6-8183E-01	IDLE GEAR COMP.	1	1	1	1	
2	6M6-81866-00	.WEIGHT SPRING	1	1	1	1	
3	6M6-81865-00	.WEIGHT HOLDER	1	1	1	1	
4	93440-25M08	.CIRCLIP	1	1	1	1	
5	93450-18M06	.CIRCLIP	1	1	1	1	
6	90501-14M73	SPRING, COMPRESSION	1	1	1	1	
7	92903-06600	WASHER, PLATE	2	2	2	2	
8	63M-81800-00	STARTING MOTOR ASSY	1	1	1	1	
9	3AJ-81809-00	.WASHER KIT	1	1	1	1	
10	6M6-81840-10	.BRUSH HOLDER ASSY	1	1	1	1	
11	11H-81844-00	.GASKET	2	2	2	2	
12	6M6-81826-00	.BOLT	2	2	2	2	
13	6M6-81850-00	.ARMATURE ASSY	1	1	1	1	
14	63M-81830-00	.REAR BRACKET ASSY	1	1	1	1	
15	6M6-81830-00	.FRONT BRACKET ASSY	1	1	1	1	
16	1FK-81847-00	.O-RING	1	1	1	1	
17	97013-08025	BOLT	2	2	2	2	
18	92903-08600	WASHER, PLATE	2	2	2	2	
19	92990-06100	WASHER, SPRING	1	1	1	1	
20	95380-06700	NUT	1	1	1	1	



F1G7100-D120

FIG. 12 ELECTRICAL 1

REF. NO.	PART NO.	DESCRIPTION	USA	CAN	GENE	JPN	REMARKS
1	FN8-67816-00	BRACKET, FUEL FILTER	1	1	1	1	
2	90267-489U1	RIVET,BLIND	2	2	2	2	
3	F1G-U824F-00	BRACKET, SENSOR	1	1	1	1	
4	90267-489U6	RIVET, BLIND	1	1	1	1	
5	9299R-06200	WASHER	2	2	2	2	
6	9572R-06300	NUT, NYLON	2	2	2	2	
7	F1G-U826C-00	BRACKET	1	1	1	1	
8	90267-489U6	RIVET, BLIND	2	2	2	2	
9	9299R-06200	WASHER	2	2	2	2	
10	9572R-06300	NUT, NYLON	2	2	2	2	
11	60T-8552A-00	HOUSING	1	1	1	1	
12	60T-81921-00	GASKET, TERMINAL	1	1	1	1	
13	60T-8552E-00	COVER, CASE	1	1	1	1	
14	97780-60430	SCREW, TAPPING	11	11	11	11	
15	66V-81844-00	GASKET	1	1	1	1	
16	66V-8132W-00	CAP	1	1	1	1	
17	67F-2812A-00	PULLER, FUSE	1	1	1	1	
18	60T-8591A-20	ENGINE CONTROL UNIT ASSY	1	1	1	1	
19	60E-82153-00	STAY, FUSE HOLDER	1	1	1	1	
20	97780-60516	SCREW, TAPPING	1	1	1	1	
21	66V-85570-00	IGNITION COIL ASSY	3	3	3	3	
22	97780-60525	SCREW, TAPPING	6	6	6	6	
23	66V-82355-00	GROMMET	3	3	3	3	
24	66V-82340-01	HIGH TENSION CORD ASSY 1	1	1	1	1	
25	66V-82340-11	HIGH TENSION CORD ASSY 1	1	1	1	1	
26	67X-82340-21	HIGH TENSION CORD ASSY 1	1	1	1	1	
27	94702-00396	PLUG, SPARK (NGK BR8ES-11)	3	3	3		EXCEPT JPN

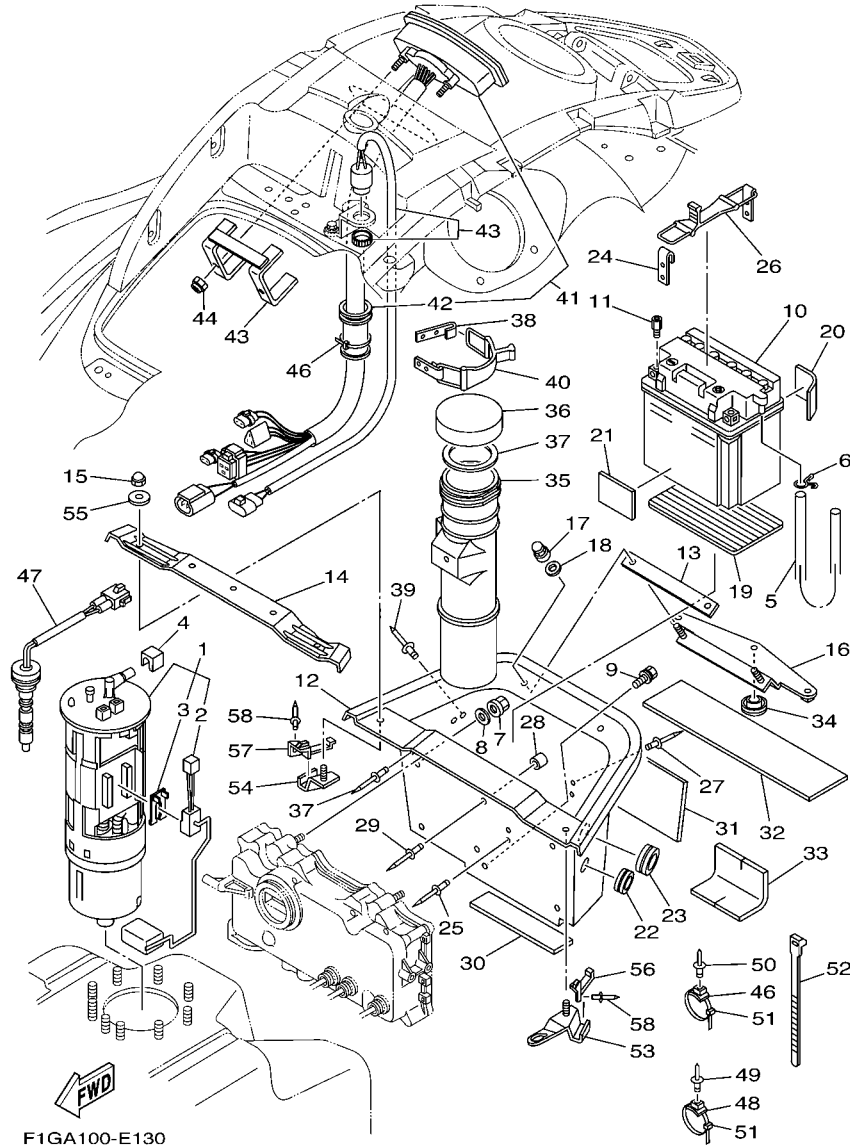


F1G7100-D120

FIG. 12 ELECTRICAL 1

REF. NO.	PART NO.	DESCRIPTION	USA	CAN	GENE	JPN	REMARKS
27	94709-00396	PLUG, SPARK (NGK BR8ES-11)				3	FOR JPN
28	60T-85525-00	COVER	1	1	1	1	
29	97780-60425	SCREW, TAPPING	2	2	2	2	
30	65U-81317-10	CLAMP, CORD	2	2	2	2	
31	97095-06016	BOLT	2	2	2	2	
32	92995-06600	WASHER	2	2	2	2	
33	68V-81960-00	RECTIFIER & REGULATOR ASSY	1	1	1	1	
34	97780-60430	SCREW, TAPPING	2	2	2	2	
35	66V-82127-00	WIRE, LEAD 2	1	1	1	1	
36	97013-06016	BOLT	1	1	1	1	
37	92903-06600	WASHER, PLATE	1	1	1	1	
38	6B6-83623-00	MARK 3	1	1	1	1	
39	60E-83627-00	LABEL, CAUTION 7	1	1	1	1	
40	66V-82117-00	WIRE, LEAD	1	1	1	1	
41	68N-81940-00	STARTER RELAY ASSY	1	1	1	1	
42	97095-06010	BOLT	2	2	2	2	
43	92995-06100	WASHER, SPRING	2	2	2	2	
44	92995-06600	WASHER	2	2	2	2	
45	66V-82119-00	COVER, LEAD WIRE	2	2	2	2	
46	60T-82117-10	WIRE, LEAD	1	1	1	1	
47	60T-82117-20	WIRE, LEAD	1	1	1	1	
48	60E-81950-00	RELAY ASSY	1	1	1	1	
49	97780-60525	SCREW, TAPPING	1	1	1	1	
50	66V-85790-10	THERMOSENSOR ASSY	1	1	1	1	
51	66V-85881-00	SENSOR, EXT, TEMP.	1	1	1	1	
52	60T-85542-00	BRACKET	1	1	1	1	
53	97780-60516	SCREW, TAPPING	2	2	2	2	

FIG. 13 ELECTRICAL 2



F1GA100-E130

REF. NO.	PART NO.	DESCRIPTION	USA	CAN	GENE	JPN	REMARKS
1	60E-13907-01	FUEL PUMP COMP.	1	1	1	1	
2	60E-682E0-00	.FUEL SENDER ASSY	1	1	1	1	
3	60E-82556-00	.DAMPER, STOPPER	1	1	1	1	
4	60E-24474-00	COVER	1	1	1	1	
5	EU0-U7856-50	HOSE, AIR VENT 3	1	1	1	1	
6	90467-089U1	CLIP	1	1	1	1	
7	90179-08978	NUT	2	2	2	2	
8	9299R-08200	WASHER	2	2	2	2	
9	90119-08826	BOLT, WITH WASHER	1	1	1	1	
10	EU0-82110-09	BATTERY ASSY (YB16CL-B)	1	1	1	1	YUASA
11	F0W-68239-01	NUT	1	1	1	1	
12	F1G-U8211-01	CASE, BATTERY	1	1	1	1	
13	F0X-U266D-00	PACKING 5	1	1	1	1	
14	F1G-68952-00	BEAM, DECK 1	1	1	1	1	
15	90176-06005	NUT, CROWN	2	2	2	2	
16	F0X-6821H-00	BRKT., BASE BATTERY	1	1	1	1	
17	90179-08978	NUT	2	2	2	2	
18	9299R-08200	WASHER	2	2	2	2	
19	F1S-U8221-00	PAD, BATTERY	1	1	1	1	
20	F0W-U822D-00	PAD, BATTERY 3	1	1	1	1	
21	F0W-U822C-00	PAD, BATTERY 2	1	1	1	1	
22	90480-279U1	GROMMET	1	1	1	1	
23	90480-38800	GROMMET	1	1	1	1	
24	GA7-65772-00	HOOK A	1	1	1	1	
25	90267-489U9	RIVET, BLIND	2	2	2	2	
26	GJ1-66607-00	HOOK COMP	1	1	1	1	
27	90267-489U9	RIVET, BLIND	2	2	2	2	

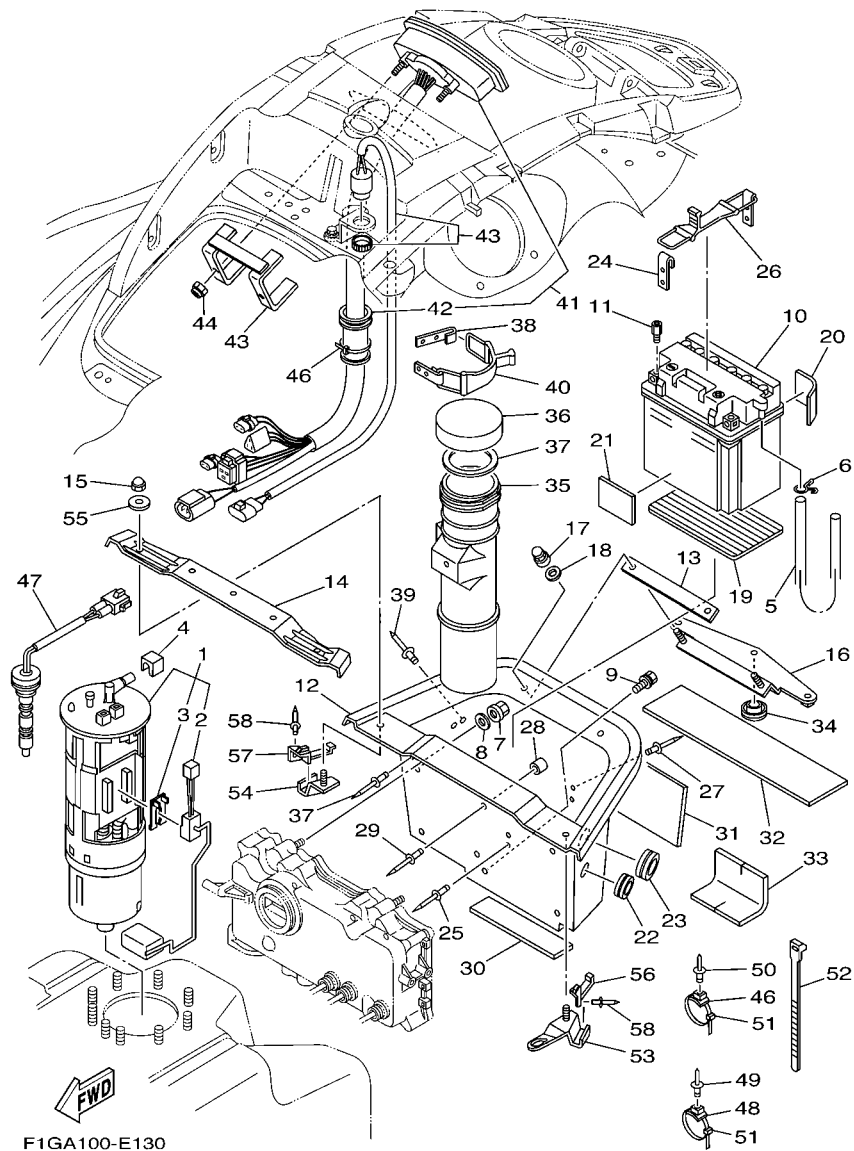
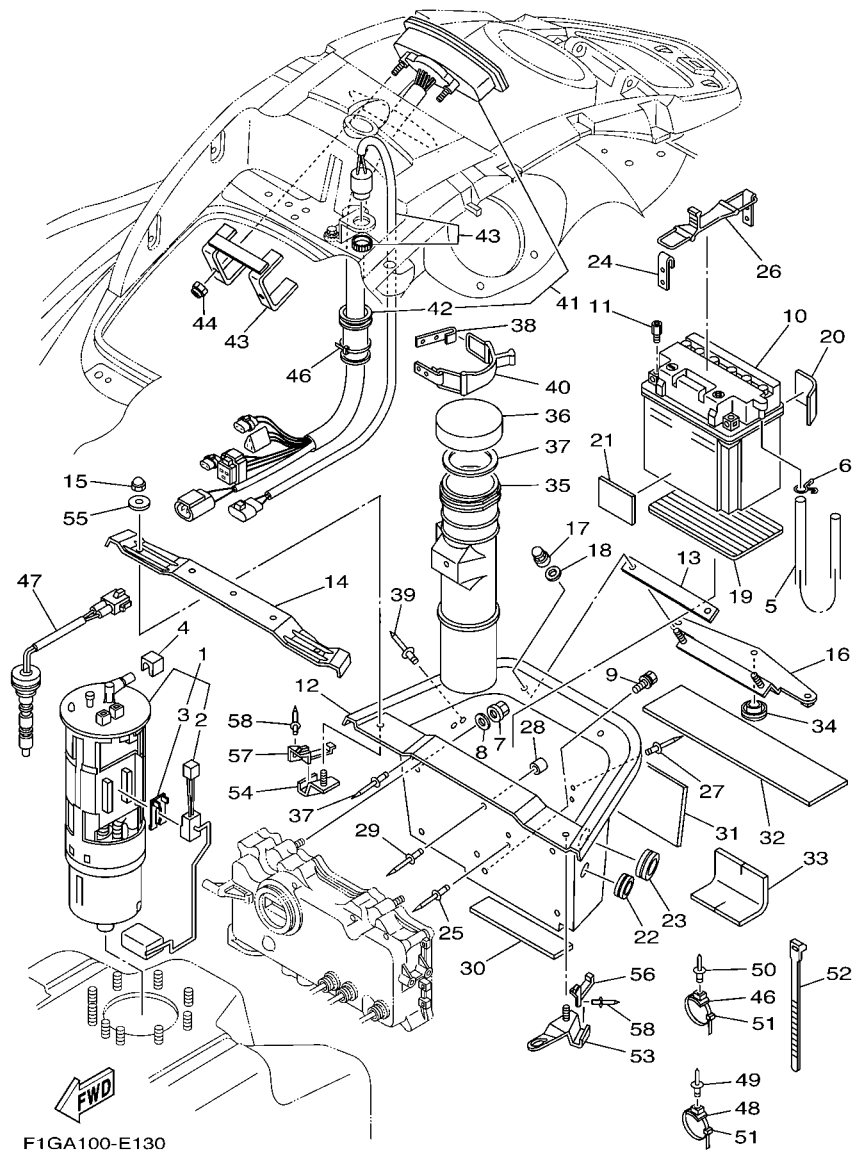


FIG. 13 ELECTRICAL 2

REF. NO.	PART NO.	DESCRIPTION	USA	CAN	GENE	JPN	REMARKS
28	GK5-63768-00	CUSHION,RUBBER	2	2	2	2	
29	90267-489U1	RIVET,BLIND	2	2	2	2	
30	F0X-6352C-00	TRIM, MAT	1	1	1	1	
31	GP8-67593-00	MAT	1	1	1	1	
32	F0X-6351B-00	MAT,LOWER	1	1	1	1	
33	GP8-6755J-00	MAT,WATER LOCK	1	1	1	1	
34	F0X-65568-00	CAP	1	1	1	1	
35	F0X-U5983-01	BOX, FIRE EXTINGUISHER	1	1	1	1	
36	EW2-U5912-01	CAP, CASE	1	1	1	1	
37	EW2-U5913-01	PACKING, CASE	1	1	1	1	
38	GA7-65772-00	HOOK A	1	1	1	1	
39	90267-489U9	RIVET, BLIND	4	4	4	4	
40	GJ1-66607-00	HOOK COMP	1	1	1	1	
41	F1G-6820A-10	METER ASSY	1	1	1	1	
42	GU2-6822E-01	.GROMMET	1	1	1	1	
43	GP7-68238-10	BRACKET, METER	1	1	1	1	
44	9572R-05300	NUT, FLANGE	2	2	2	2	
45	F1S-68341-00	BUZZER	1	1	1	1	
46	90464-32801	CLAMP	1	1	1	1	
47	F0D-U824C-20	SENDER, OIL	1	1	1	1	
48	90600-917U4	CLAMP COMP.	7	7	7	7	
49	90267-489U6	RIVET, BLIND	2	2	2	2	
50	90267-48802	RIVET, BLIND	5	5	5	5	
51	90464-32801	CLAMP	7	7	7	7	
52	90601-200U2	BAND	1	1	1	1	
53	F0X-65938-01	STAY 1	1	1	1	1	
54	F0X-65939-01	STAY 2	1	1	1	1	

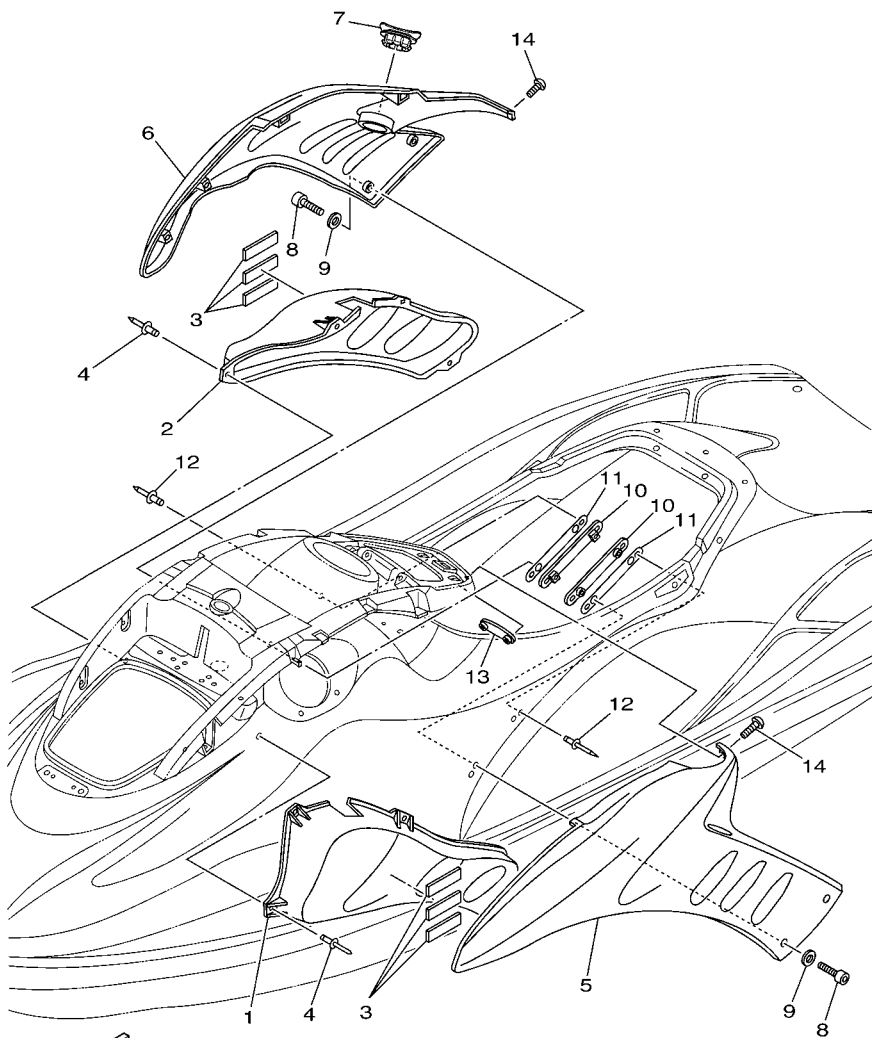
FIG. 13 ELECTRICAL 2



F1GA100-E130

REF. NO.	PART NO.	DESCRIPTION	USA	CAN	GENE	JPN	REMARKS
55	90201-06014	WASHER, PLATE	2	2	2	2	
56	F0X-63225-00	PACKING, SEAL 2	1	1	1	1	
57	F0X-63226-00	PACKING,SEAL	1	1	1	1	
58	90267-489U6	RIVET, BLIND	2	2	2	2	

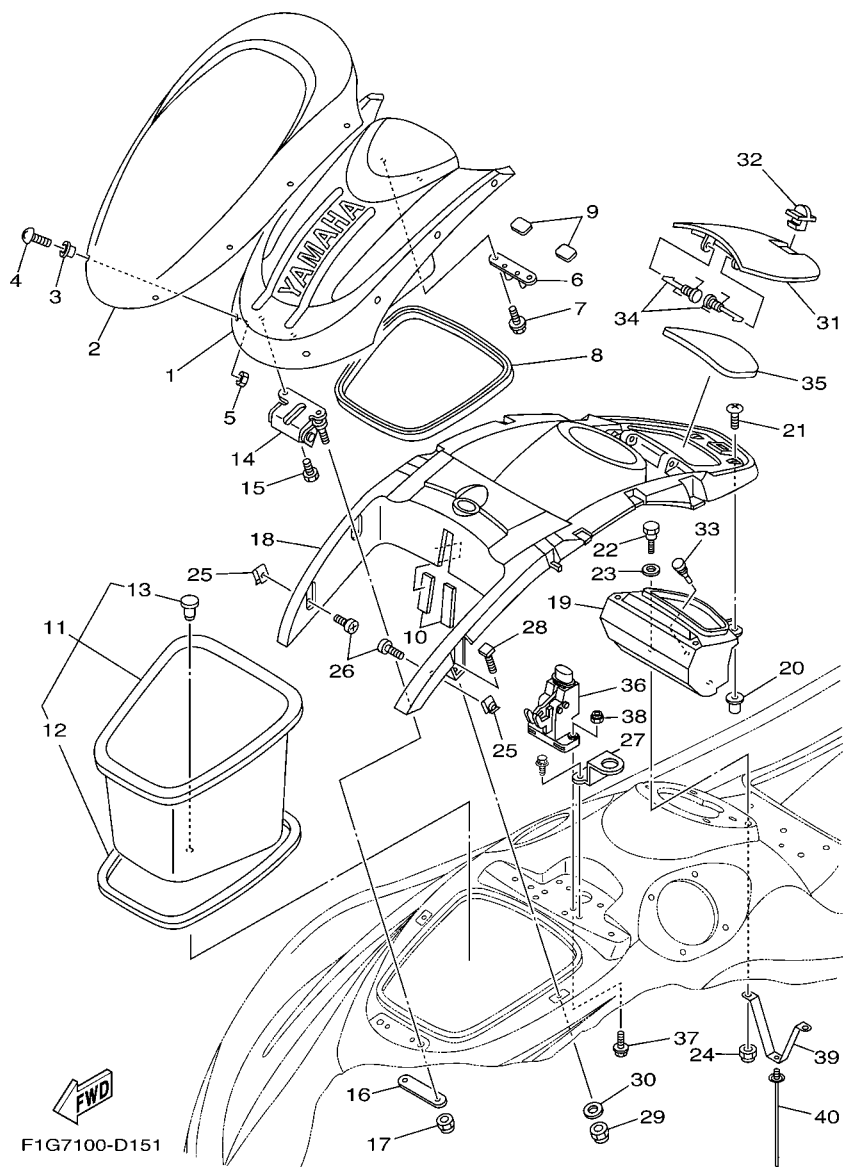
FIG. 14 ENGINE HATCH 1



F1G1100-B150

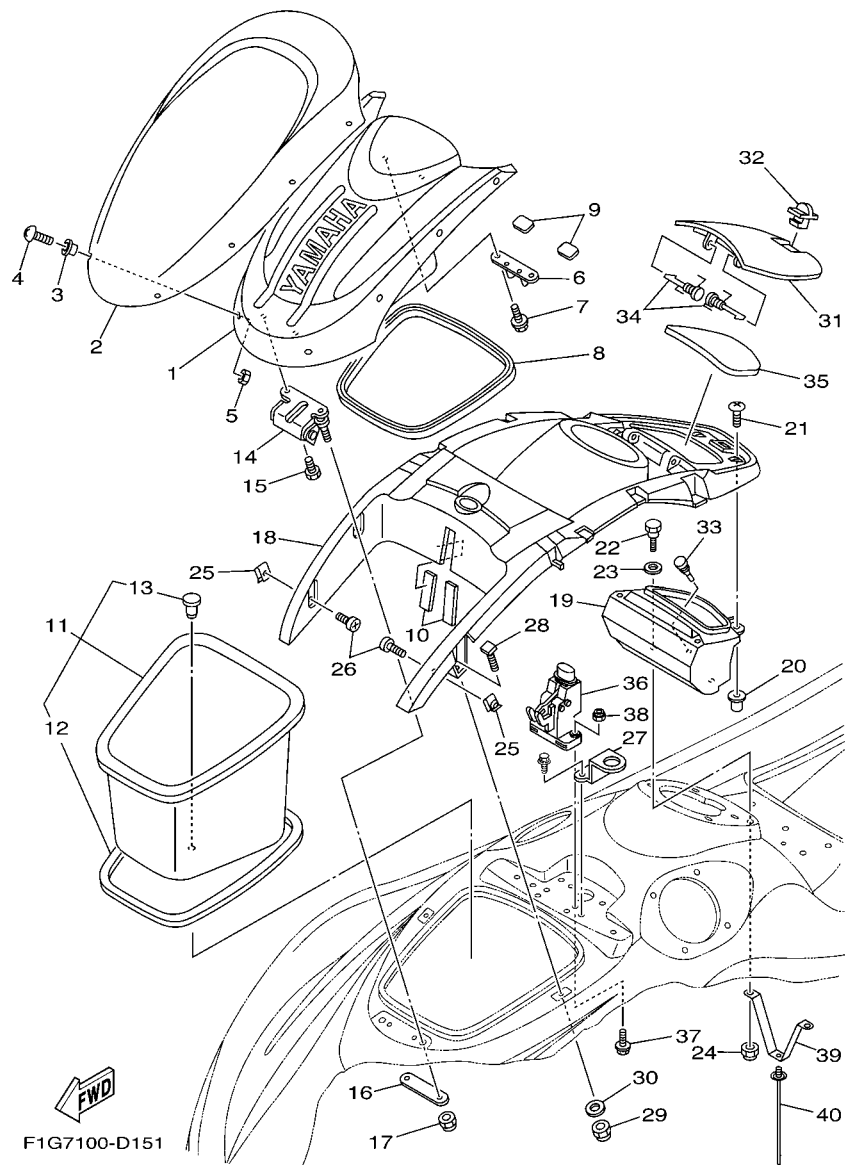
REF. NO.	PART NO.	DESCRIPTION	USA	CAN	GENE	JPN	REMARKS
1	F0X-62187-00	BOX, INDUCTION 1	1	1	1	1	
2	F0X-62188-00	BOX, INDUCTION 2	1	1	1	1	
3	F0X-6351C-00	MAT, SIDE 1	6	6	6	6	
4	90267-48806	RIVET, BLIND	8	8	8	8	
5	F0X-U377B-60-P0	COVER, SIDE 1	1	1	1	1	YS1
6	F0X-U377C-60-P0	COVER, SIDE 2	1	1	1	1	YS1
7	F1G-U2723-02	SEAL	1	1	1	1	
8	90110-06008	BOLT, HEXAGON SOCKET HEAD	4	4	4	4	
9	9299R-06200	WASHER	4	4	4	4	
10	F0X-6377M-00	BRKT., COVER SIDE 1	2	2	2	2	
11	F0X-U3635-01	TAPE, FITTING	2	2	2	2	
12	90267-48806	RIVET, BLIND	4	4	4	4	
13	F0X-6377P-00	BRKT., COVER SIDE 3	1	1	1	1	
14	90111-05001	BOLT, HEX. SOCKET BUTTON	2	2	2	2	

FIG. 15 ENGINE HATCH 2



F1G7100-D151

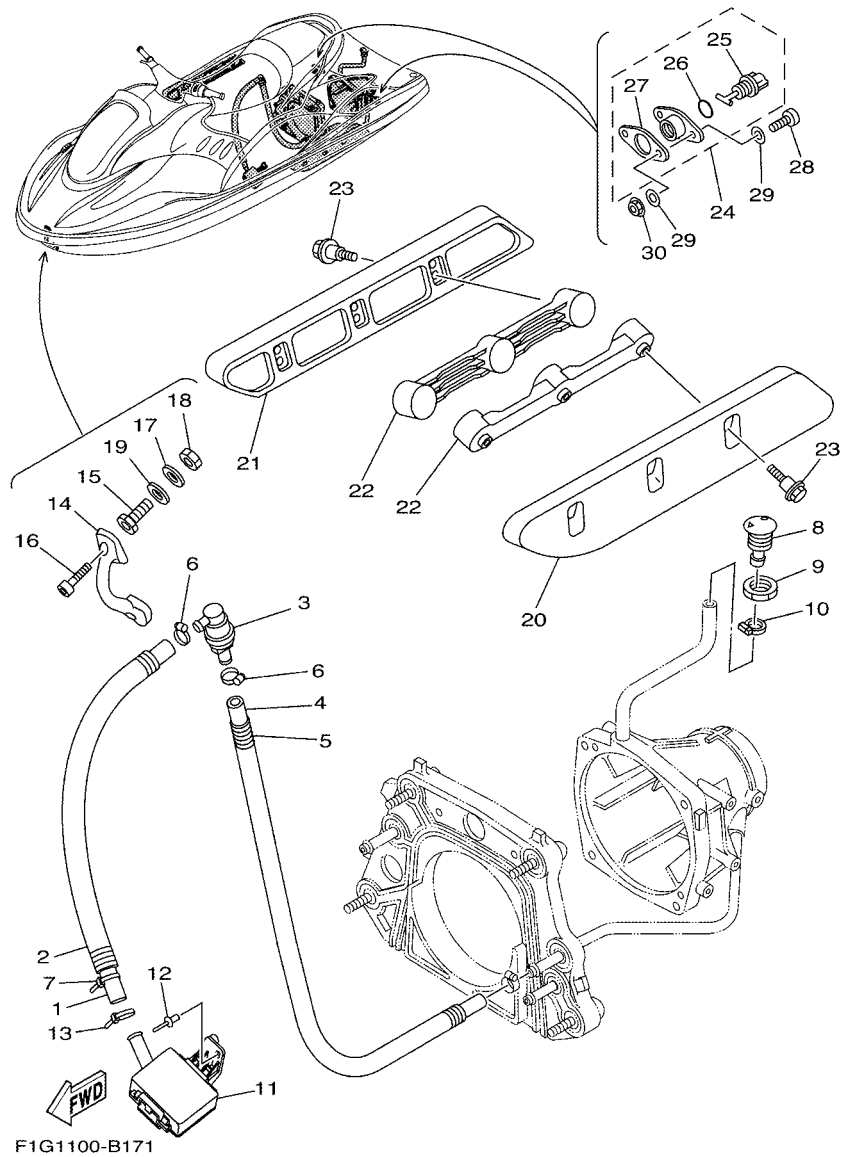
REF. NO.	PART NO.	DESCRIPTION	USA	CAN	GENE	JPN	REMARKS
1	F0X-U517B-00	LID, ENGINE ROOM	1	1	1	1	
2	F0X-U515N-00	VISOR	1	1	1	1	
3	90381-05041	BUSH, SOLID	8	8	8	8	
4	90111-05001	BOLT,HEX. SOCKET BUTTON	8	8	8	8	
5	90179-05800	NUT	8	8	8	8	
6	F0X-6517F-01	HOOK,LID LOCK	1	1	1	1	
7	90119-069UJ	BOLT, WITH WASHER	2	2	2	2	
8	F0X-U266B-00	PACKING 3	1	1	1	1	
9	F0X-U515D-00	DAMPER 1	2	2	2	2	
10	F0X-U515E-01	DAMPER 2	2	2	2	2	
11	F0X-U475A-00	BOWLOCKER ASSY	1	1	1	1	
12	F0X-U266E-01	.PACKING,6	1	1	1	1	
13	90605-502U1	.PLUG, BLIND	1	1	1	1	
14	F0X-6517D-00	HINGE, LID	1	1	1	1	
15	90101-06026	BOLT	2	2	2	2	
16	F0X-6518E-00	PRATE, HINGE LID	1	1	1	1	
17	9572R-08300	NUT, FLANGE	2	2	2	2	
18	F0X-U5554-00	COVER, CENTER	1	1	1	1	
19	F0X-U516P-00	BOX GLOVE	1	1	1	1	
20	90179-05801	NUT	4	4	4	4	
21	90111-05001	BOLT,HEX. SOCKET BUTTON	4	4	4	4	
22	90109-08902	BOLT	2	2	2	2	
23	90202-10922	WASHER, PLATE	2	2	2	2	
24	9572R-08300	NUT, FLANGE	2	2	2	2	
25	90183-06902	NUT, SPRING	4	4	4	4	
26	90111-06049	BOLT,HEX. SOCKET BUTTON	4	4	4	4	
27	F0X-6555D-00	BRKT., COVER CENTER 1	1	1	1	1	



F1G7100-D151

FIG. 15 ENGINE HATCH 2

REF. NO.	PART NO.	DESCRIPTION	USA	CAN	GENE	JPN	REMARKS
28	F0X-6555E-00	BRKT., COVER CENTER 2	2	2	2	2	
29	9572R-06300	NUT, NYLON	2	2	2	2	
30	9299R-06200	WASHER	2	2	2	2	
31	F0X-U517H-31	LID HATCH	1	1	1	1	YB
32	GU2-62875-01	LOCK	1	1	1	1	
33	90605-502U2	PLUG	1	1	1	1	
34	F0X-6517R-01	PIN, HINGE	2	2	2	2	
35	F0X-U519D-02	PACKING CASE	1	1	1	1	
36	F0X-6517C-01	LOCK, LID	1	1	1	1	
37	90119-06824	BOLT, WITH WASHER	2	2	2	2	
38	9572R-06300	NUT, NYLON	2	2	2	2	
39	60T-67254-10	BRACKET, THROTTLE	1	1	1	1	
40	90464-31001	CLAMP	1	1	1	1	



F1G1100-B171

FIG. 16 HULL & DECK

REF. NO.	PART NO.	DESCRIPTION	USA	CAN	GENE	JPN	REMARKS
1	90445-198C0	HOSE (L1000)	1	1	1	1	
2	90446-27M95	HOSE (L800)	1	1	1	1	
3	68N-5112T-00	JOINT, HOSE	1	1	1	1	
4	90445-198B6	HOSE (L860)	1	1	1	1	
5	90446-27M95	HOSE (L800)	1	1	1	1	
6	90601-118UF	BAND, HOSE 18	2	2	2	2	
7	90601-200U1	BAND	1	1	1	1	
8	FN8-6269B-00	SPOUT	1	1	1	1	
9	EU0-61652-00	NUT	1	1	1	1	
10	90601-118UF	BAND, HOSE 18	1	1	1	1	
11	F1B-U761D-02	STRAINER, BILGE	1	1	1	1	
12	90267-489U8	RIVET, BLIND	1	1	1	1	
13	90601-200U1	BAND	1	1	1	1	
14	F1K-61624-00	BOWEYE 1	1	1	1	1	
15	F0X-61652-00	NUT (BOLT/NUT)	2	2	2	2	
16	90110-06040	BOLT, HEXAGON SOCKET HEAD	2	2	2	2	
17	F0X-61637-00	WASHER	2	2	2	2	
18	99780-12600	NUT.HEX.(COARS)	2	2	2	2	
19	92990-12200	WASHER, PLAIN	2	2	2	2	
20	F0X-U883N-00	STABILIZER LH	1	1	1	1	BL
21	F0X-U883P-00	STABILIZER RH	1	1	1	1	BL
22	F1B-U883T-02	BRACKET,STABILIZER	2	2	2	2	
23	F1G-U2624-10	BOLT	6	6	6	6	
24	EU0-62280-00	DRAIN PLUG ASSY	2	2	2	2	
25	EU0-62282-00	.PLUG, DRAIN	1	1	1	1	
26	EU0-62283-00	.O-RING	1	1	1	1	
27	EU0-62285-01	.PACKING DRAIN (EU0)	1	1	1	1	

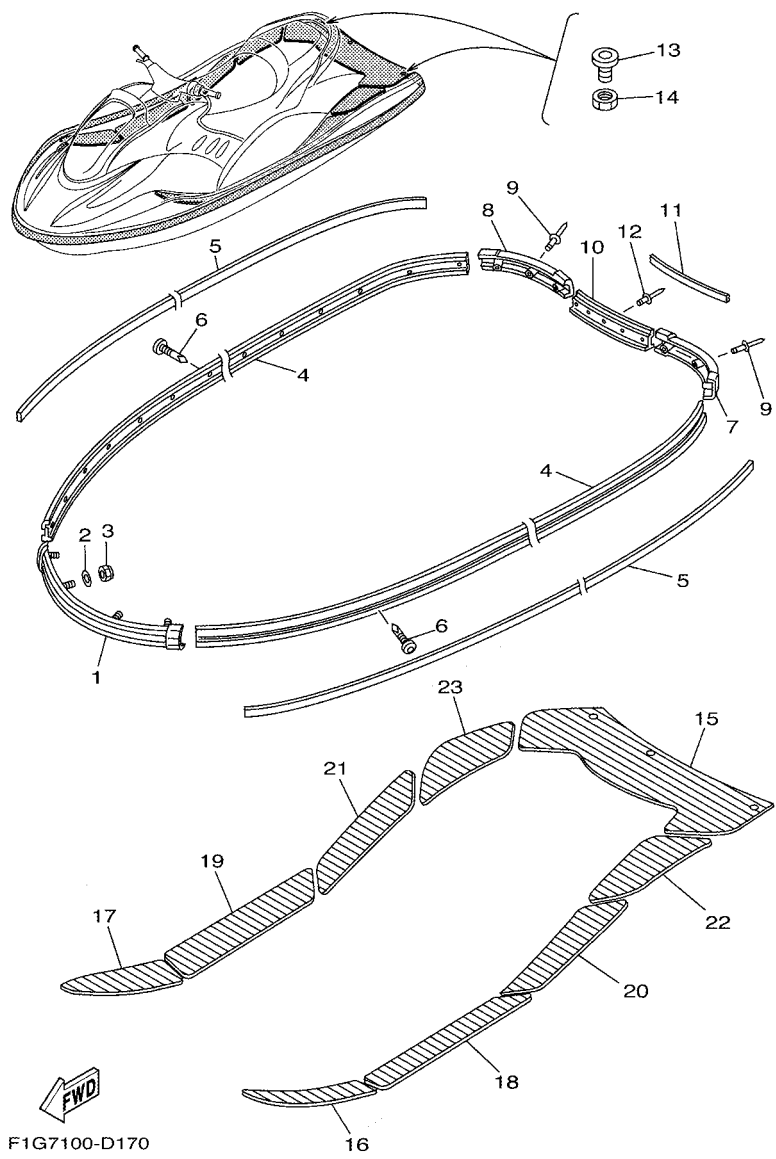
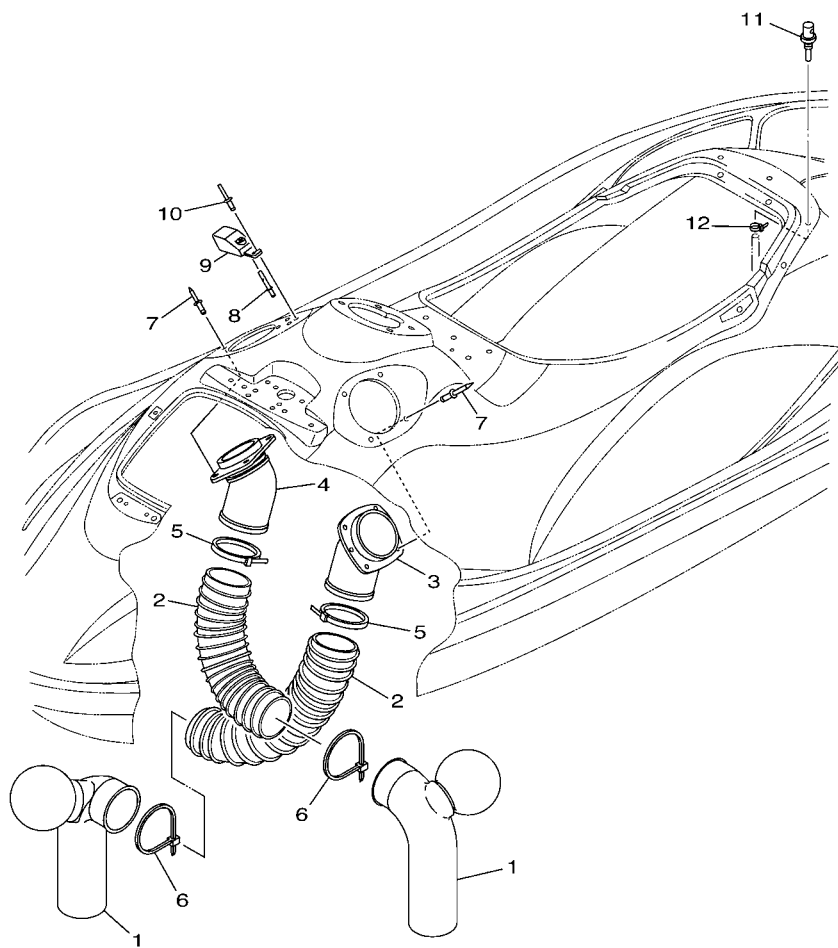


FIG. 17 GUNWALE & MAT

REF. NO.	PART NO.	DESCRIPTION	USA	CAN	GENE	JPN	REMARKS
1	GP7-U2501-20	BOW GUNWALE COMP.	1	1	1	1	YB
2	9299R-06200	WASHER	4	4	4	4	
3	9572R-06300	NUT, NYLON	4	4	4	4	
4	F0X-U2512-00	GUNWALE, SIDE	2	2	2	2	YB
5	F0X-U2519-02	INNER, GUNWALE	2	2	2	2	YB
6	90169-059U1	SCREW, TAPPING	24	24	24	24	
7	F0X-U251D-00	GUNWALE, STERN 1	1	1	1	1	YB
8	F0X-U251E-00	GUNWALE, STERN 2	1	1	1	1	YB
9	90267-47801	RIVET, BLIND	6	6	6	6	
10	F0X-U252C-00	COVER, GUNWALE 1	1	1	1	1	YB
11	F0X-U252D-01	COVER, GUNWALE 2	1	1	1	1	YB
12	90267-489US	RIVET, BLIND	6	6	6	6	
13	FN8-61651-01	ROPE HOLE	2	2	2	2	
14	EU0-61652-00	NUT	2	2	2	2	
15	F1G-U3581-00	MAT, UPPER	1	1	1	1	
16	F1G-U351H-00	MAT, STEP 1	1	1	1	1	BL
17	F1G-U351J-00	MAT, STEP 2	1	1	1	1	BL
18	F1G-U351K-00	MAT, STEP 3	1	1	1	1	BL
19	F1G-U351M-00	MAT, STEP 4	1	1	1	1	BL
20	F1G-U351N-00	MAT, STEP 5	1	1	1	1	BL
21	F1G-U351P-00	MAT, STEP 6	1	1	1	1	BL
22	F1G-U351R-00	MAT, STEP 7	1	1	1	1	BL
23	F1G-U351S-00	MAT, STEP 8	1	1	1	1	BL

FIG. 18 VENTILATION



F1GA100-E180

REF. NO.	PART NO.	DESCRIPTION	USA	CAN	GENE	JPN	REMARKS
1	F1G-U213K-01	HOSE, VENTILATOR3	2	2	2	2	
2	F1G-U213G-02	HOSE, VENTILATOR 2	2	2	2	2	
3	F0X-6213D-00	BASE, AIR INTAKE 1	1	1	1	1	
4	F0X-6213E-00	BASE, AIR INTAKE 2	1	1	1	1	
5	90601-200U7	BAND	2	2	2	2	
6	90464-99804	CLAMP	2	2	2	2	
7	90267-48806	RIVET, BLIND	8	8	8	8	
8	F1G-62149-00	PIPE, VENTILATION	1	1	1	1	
9	GP7-62159-02	SOCKET, VENTILATION	1	1	1	1	
10	90267-489U6	RIVET, BLIND	2	2	2	2	
11	GJ3-6215F-00	NIPPLE	1	1	1	1	
12	90465-11829	CLAMP	1	1	1	1	

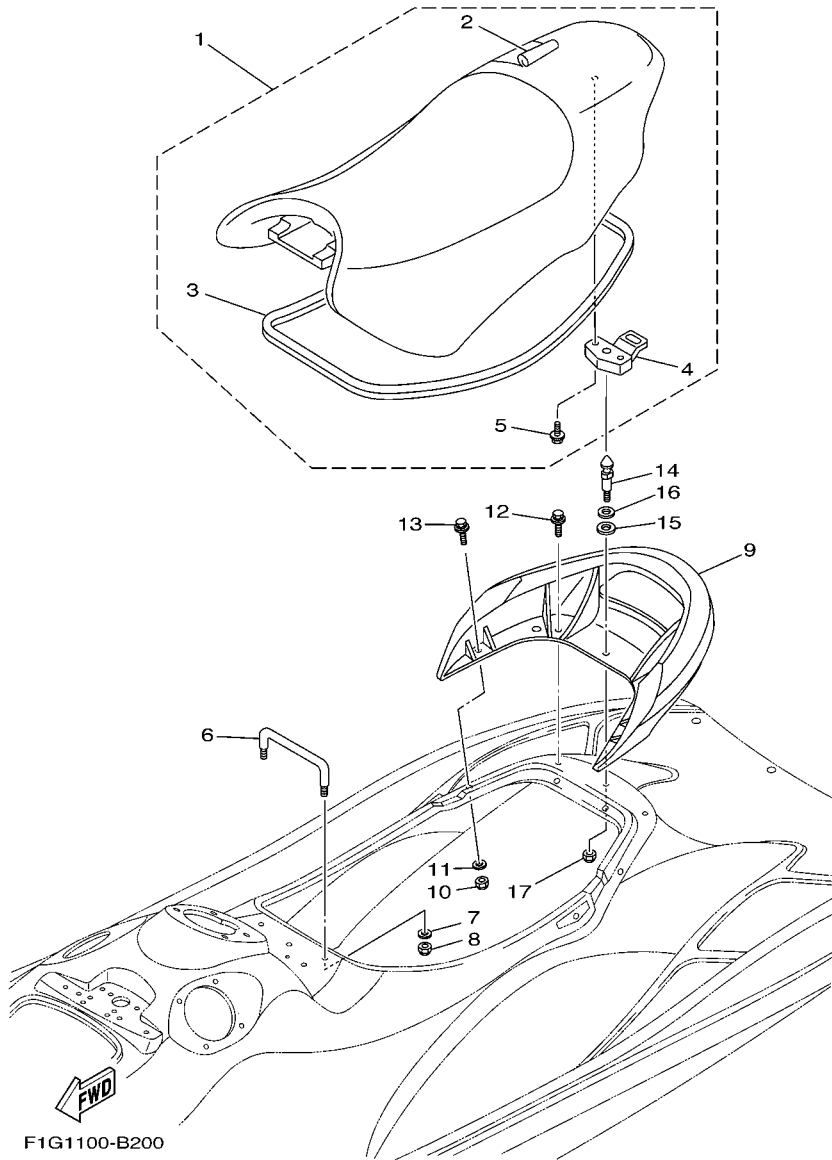
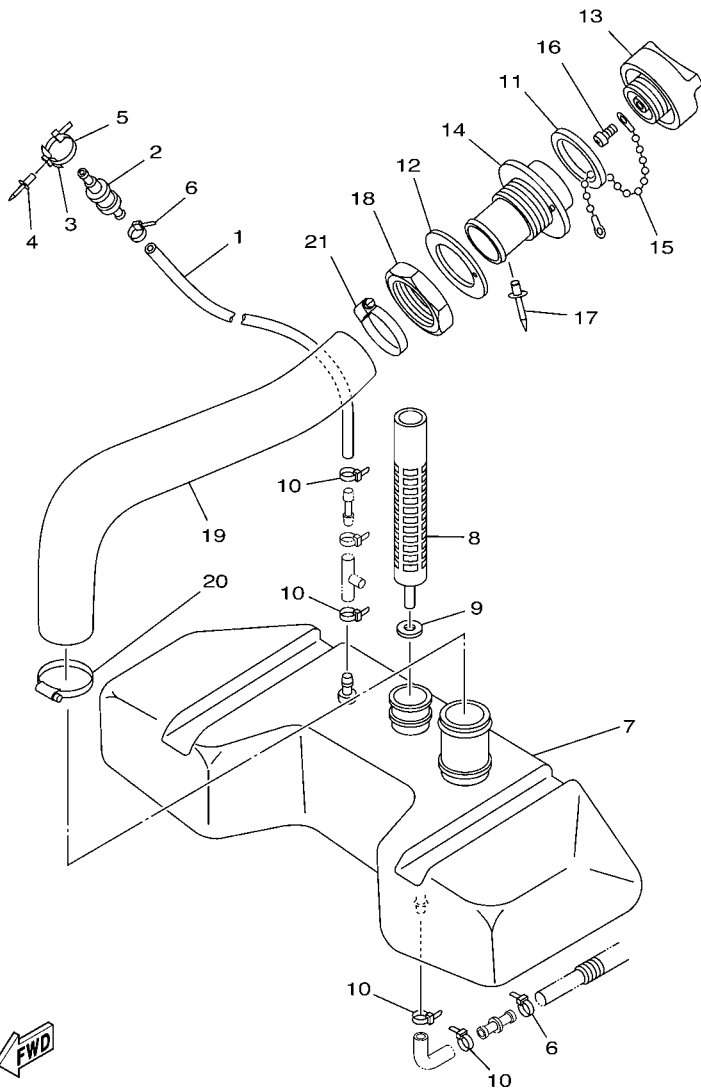


FIG. 19 SEAT & UNDER LOCKER

REF. NO.	PART NO.	DESCRIPTION	USA	CAN	GENE	JPN	REMARKS
1	F1G-U371A-10	DOUBLE SEAT ASSY	1	1	1	1	
2	F1G-U371B-10	.COVER, SEAT 1	1	1	1	1	
3	F0X-U2664-00	.PACKING	1	1	1	1	
4	F1B-U3850-01	.SEAT LOCK ASSY	1	1	1	1	
5	90119-069UP	.BOLT, WITH WASHER	2	2	2	2	
6	F0X-6378C-00	STAY, SEAT 1	1	1	1	1	
7	90201-099U3	WASHER, PLATE	2	2	2	2	
8	9572R-08300	NUT, FLANGE	2	2	2	2	
9	F0X-U271B-00	GRIP, HAND	1	1	1	1	YB
10	9572R-08300	NUT, FLANGE	2	2	2	2	
11	9299R-08600	WASHER	2	2	2	2	
12	90119-08822	BOLT, WITH WASHER	2	2	2	2	
13	90119-08829	BOLT, WITH WASHER	2	2	2	2	
14	F0X-U3774-00	PIN	1	1	1	1	
15	F0X-6375E-00	PACKING 1	1	1	1	1	
16	92990-12200	WASHER, PLAIN	1	1	1	1	
17	9572R-10300	NUT, FLANGE	1	1	1	1	



F1G1100-B210

FIG. 20 OIL TANK

REF. NO.	PART NO.	DESCRIPTION	USA	CAN	GENE	JPN	REMARKS
1	F0X-U7856-00	HOSE, AIR VENT 3	1	1	1	1	
2	FJ0-67766-00	ROLL OVER VALVE	1	1	1	1	
3	90600-917U4	CLAMP COMP.	1	1	1	1	
4	90267-489U6	RIVET, BLIND	1	1	1	1	
5	90464-32801	CLAMP	1	1	1	1	
6	90465-11829	CLAMP	2	2	2	2	
7	F0D-U775B-02	TANK, OIL	1	1	1	1	
8	F0D-6775C-01	FILTER	1	1	1	1	
9	F0D-6775E-01	PACKING	1	1	1	1	
10	90465-11829	CLAMP	4	4	4	4	
11	GJ3-U778C-00	PACKING,OIL CAP	1	1	1	1	
12	F0X-U778E-00	PACKING,OIL FILLER	1	1	1	1	
13	F0X-U778B-00	CAP,OIL FILLER	1	1	1	1	
14	F0X-U778D-00	SOCKET,OIL FILLER	1	1	1	1	
15	EU0-U7835-00	CHAIN BALL	1	1	1	1	
16	97780-04110	SCREW, TAPPING	1	1	1	1	
17	90267-40935	RIVET, BLIND	1	1	1	1	
18	F0X-U778H-00	NUT, OIL FILLER	1	1	1	1	
19	F0X-U776C-10	HOSE,OIL FILLER	1	1	1	1	
20	90601-152U3	BAND, HOSE 52	1	1	1	1	
21	90464-99803	CLAMP	1	1	1	1	

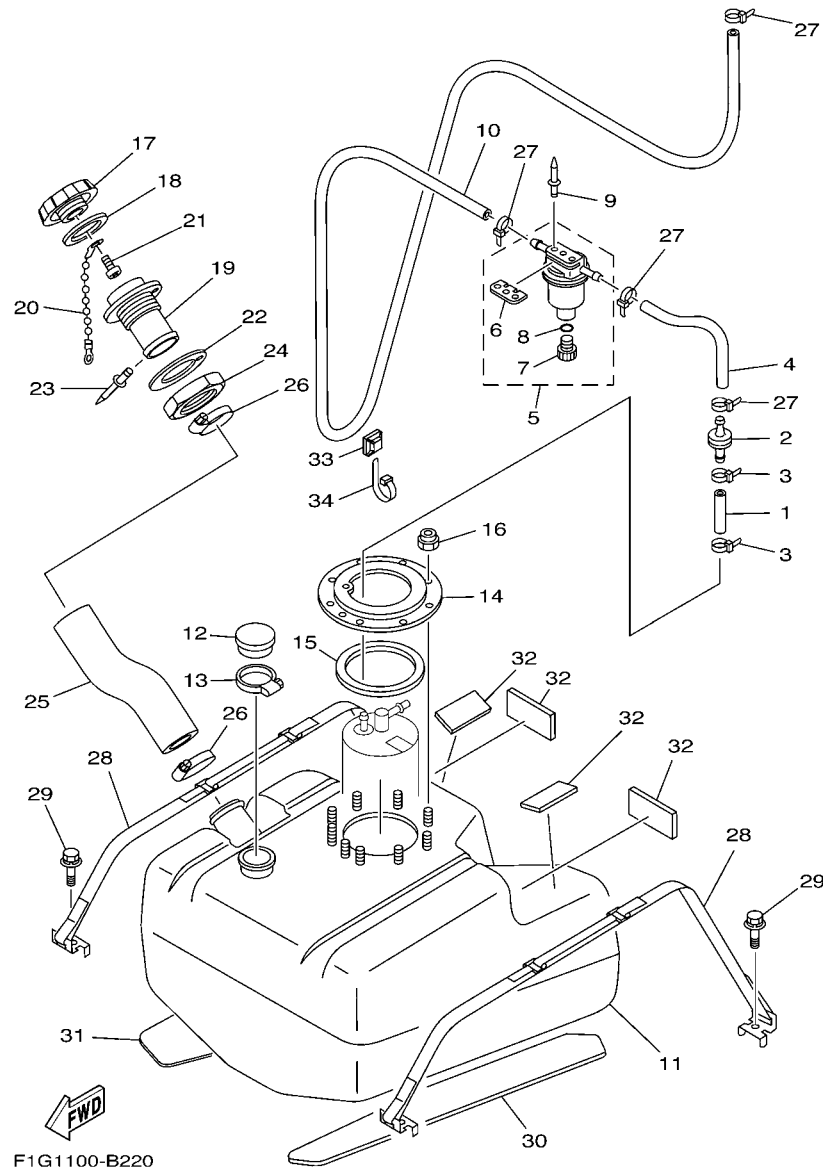
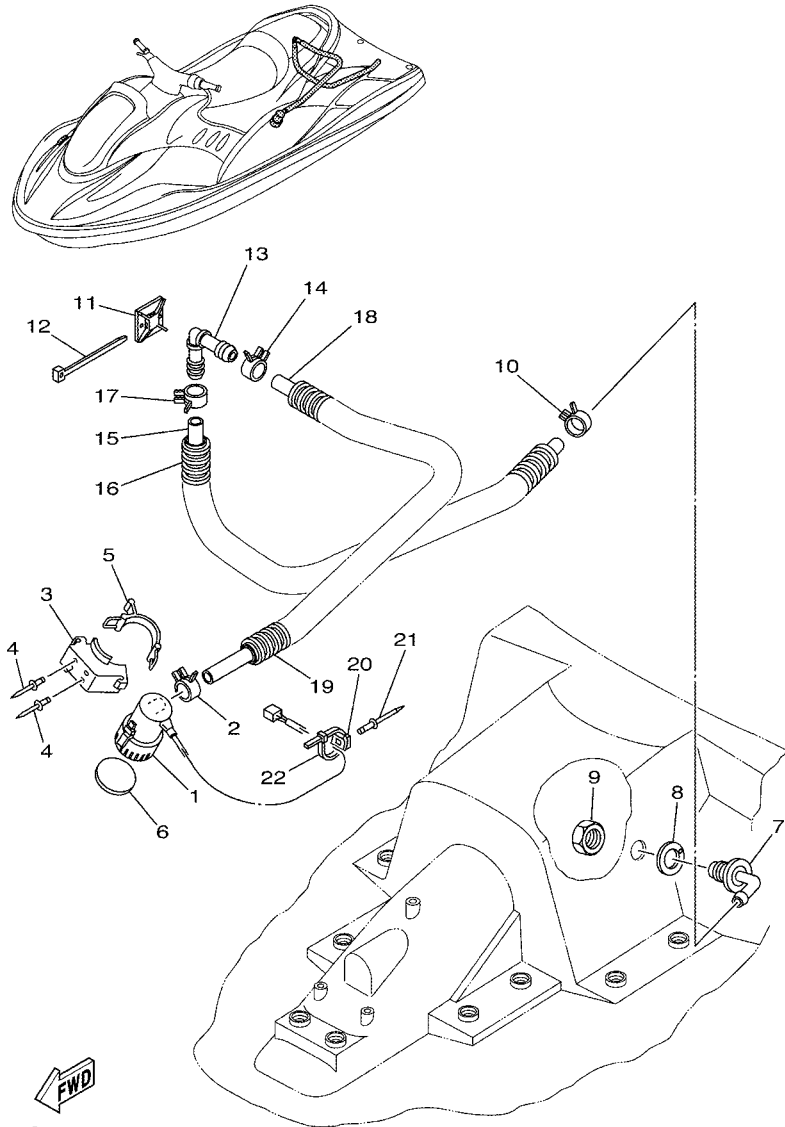


FIG. 21 FUEL TANK

REF. NO.	PART NO.	DESCRIPTION	USA	CAN	GENE	JPN	REMARKS
1	GP7-U785H-00	HOSE, AIR VENT 3	1	1	1	1	
2	EU0-67767-31	CHECK VALVE	1	1	1	1	
3	90465-11829	CLAMP	2	2	2	2	
4	GJ3-U7856-10	HOSE, AIR VENT 3	1	1	1	1	
5	EW2-62140-00	FILTER, VENT ASSY	1	1	1	1	
6	EW2-62142-00	.PLATE, FILTER	1	1	1	1	
7	70R-24543-00	.PLUG, DRAIN	1	1	1	1	
8	70R-24489-00	.O-RING	1	1	1	1	
9	90267-489U2	RIVET, BLIND	2	2	2	2	
10	GP7-U785G-10	HOSE, AIR VENT	1	1	1	1	
11	F1G-U7711-00	TANK, FUEL	1	1	1	1	
12	FN8-6771K-00	COVER	1	1	1	1	
13	90601-162U5	BAND, HOSE 62	1	1	1	1	
14	F1B-U7773-00	RING	1	1	1	1	
15	F1B-67747-00	PACKING, SEAL	1	1	1	1	
16	9572R-06300	NUT, NYLON	9	9	9	9	
17	GP7-U7831-11	CAP, FUEL FILLER	1	1	1	1	BL
18	GP7-U7832-01	PACKING	1	1	1	1	
19	GP7-U7833-10	SOCKET	1	1	1	1	
20	GP7-U7835-00	CHAIN BALL	1	1	1	1	
21	90169-049U1	TAPPING SCREW	1	1	1	1	
22	GP7-U7834-00	PACKING FUEL FILLER	1	1	1	1	
23	90267-329UR	RIVET, BLIND	1	1	1	1	
24	GP7-U783F-00	NUT, FUEL FILLER	1	1	1	1	
25	F0X-U7844-10	HOSE	1	1	1	1	
26	90601-155U4	BAND, HOSE 55	2	2	2	2	
27	90465-11829	CLAMP	8	8	8	8	

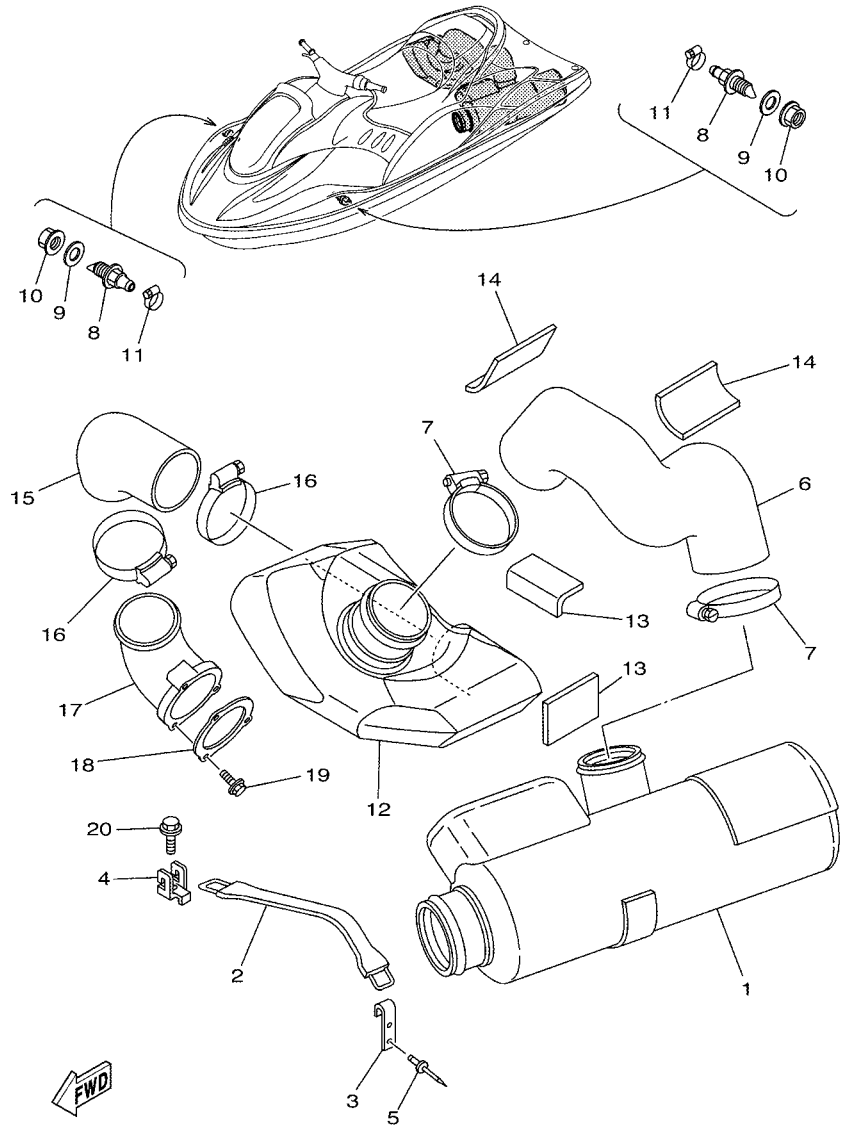


F1G1100-B230

FIG. 22 BILGE PUMP

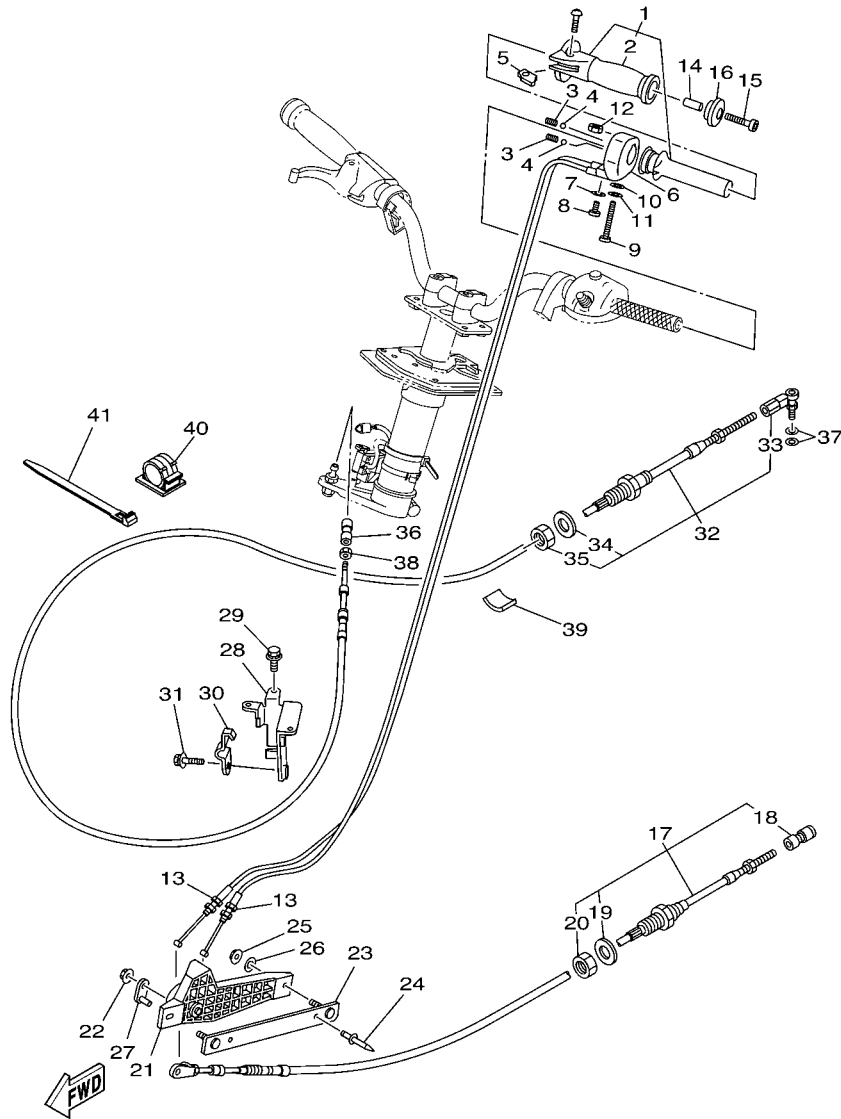
REF. NO.	PART NO.	DESCRIPTION	USA	CAN	GENE	JPN	REMARKS
1	F1B-U8360-01	BILGE PUMP ASSY	1	1	1	1	
2	90467-210A0	CLIP	1	1	1	1	
3	F1B-U7698-01	BRACKET	1	1	1	1	
4	90267-489UP	RIVET, BLIND	2	2	2	2	
5	GA7-68218-00	BAND, BATTERY	1	1	1	1	
6	F1B-U7656-00	PACKING, BILGE	1	1	1	1	
7	F1B-6224E-00	BODY, DRAIN 3	1	1	1	1	
8	F1S-U7525-01	PACKING	1	1	1	1	
9	F1B-62241-00	DRAIN, COCKPIT	1	1	1	1	
10	90467-250A0	CLIP	1	1	1	1	
11	F1B-U828M-00	BASE, CLAMP	1	1	1	1	
12	90464-40825	CLAMP	1	1	1	1	
13	F1G-U7817-00	HOLDER, FILTER	1	1	1	1	
14	90467-250A0	CLIP	1	1	1	1	
15	F1B-U7626-00	HOSE 1	1	1	1	1	
16	90447-28004	HOSE, WITH SPRING (L800)	1	1	1	1	
17	90467-250A0	CLIP	1	1	1	1	
18	F1B-U7628-00	HOSE, DRAIN 3	1	1	1	1	
19	90447-28004	HOSE, WITH SPRING (L800)	1	1	1	1	
20	90600-917U4	CLAMP COMP.	1	1	1	1	
21	90267-489U8	RIVET, BLIND	1	1	1	1	
22	90464-32801	CLAMP	1	1	1	1	

FIG. 23 EXHAUST 3



F1G4100-C240

REF. NO.	PART NO.	DESCRIPTION	USA	CAN	GENE	JPN	REMARKS
1	F1G-67550-10	WATER LOCK COMP.	1	1	1	1	
2	EU0-U821D-00	BAND,BATTERY 1	1	1	1	1	
3	GA7-65772-00	HOOK A	1	1	1	1	
4	EW2-U5772-00	HOOK A	1	1	1	1	
5	90267-489U9	RIVET, BLIND	2	2	2	2	
6	F0X-U7555-00	HOSE, EXHAUST	1	1	1	1	
7	90450-99801	HOSE CLAMP ASSY	2	2	2	2	
8	F1G-6753B-00	PILOT, WATER	2	2	2	2	
9	F1B-67564-00	GASKET	2	2	2	2	
10	F0X-62733-00	NUT	2	2	2	2	
11	90601-118UF	BAND, HOSE 18	2	2	2	2	
12	F0X-U4261-13	TANK, WATER	1	1	1	1	
13	GP8-6755J-00	MAT,WATER LOCK	2	2	2	2	
14	GU0-67593-00	MAT	2	2	2	2	
15	F0X-U758C-00	HOSE,EXHAUST2	1	1	1	1	
16	90601-195UD	BAND, HOSE 95	2	2	2	2	
17	F0D-67565-01	THRU-HULL,EXHAUST	1	1	1	1	
18	F0D-U7525-01	PACKING	1	1	1	1	
19	90119-069UK	BOLT, WITH WASHER	3	3	3	3	
20	90119-069UH	BOLT, WITH WASHER	1	1	1	1	



F1GA100-E240

FIG. 24 CONTROL CABLE

REF. NO.	PART NO.	DESCRIPTION	USA	CAN	GENE	JPN	REMARKS
1	GP7-U157A-00	GRIP HANDLE ASSY.	1	1	1	1	
2	GP7-U155C-00	.GRIP,HANDLE	1	1	1	1	
3	GP7-U152P-00	SPRING	2	2	2	2	
4	GP7-U152R-00	BALL	2	2	2	2	
5	GP7-U151M-00	LEVER ASSY	1	1	1	1	
6	GP7-U152M-00	HOUSING ASSY	1	1	1	1	
7	92990-04600	WASHER, PLATE	1	1	1	1	
8	98980-04010	SCREW, BIND	1	1	1	1	
9	97880-06065	SCREW, PAN HEAD	1	1	1	1	
10	92990-06600	WASHER, PLATE	1	1	1	1	
11	9299R-06100	WASHER	1	1	1	1	
12	GH1-U143B-00	NUT,SPECIAL	1	1	1	1	
13	F0D-U153D-01	CABLE,NOZZLE CONTROL 2	2	2	2	2	
14	90387-05800	COLLAR	1	1	1	1	
15	90110-05908	BOLT, HEXAGON SOCKET HEAD	1	1	1	1	
16	GP7-U155F-00	GRIP, END	1	1	1	1	
17	F1G-6153E-02	CABLE,NOZZLE CONTROL 3	1	1	1	1	
18	F1B-61460-00	.BALL JOINT ASSY	1	1	1	1	
19	F1B-61438-00	.PACKING	1	1	1	1	
20	F1B-6151S-00	.NUT	1	1	1	1	
21	F0D-U153J-10	REMOCON,NOZZLE 2	1	1	1	1	
22	9572R-06300	NUT, NYLON	1	1	1	1	
23	F0X-U4958-00	BASE, REMOCON.	1	1	1	1	
24	90267-489U6	RIVET, BLIND	2	2	2	2	
25	9572R-06300	NUT, NYLON	2	2	2	2	
26	9299R-06200	WASHER	2	2	2	2	
27	F0D-U152C-10	PIN	1	1	1	1	

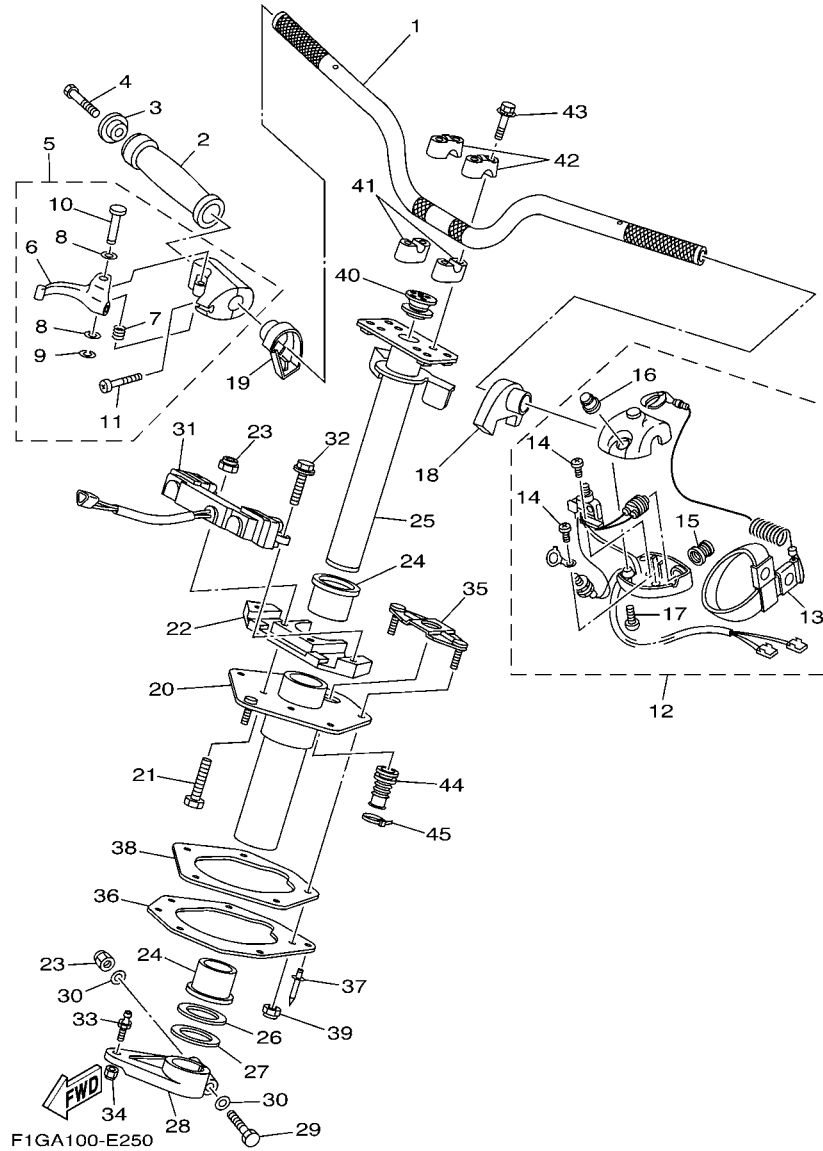


FIG. 25 STEERING 1

REF. NO.	PART NO.	DESCRIPTION	USA	CAN	GENE	JPN	REMARKS
1	F0X-61552-00	HANDLE	1	1	1	1	
2	GP7-U155D-00	GRIP, HANDLE	1	1	1	1	
3	GP7-U155F-00	GRIP, END	1	1	1	1	
4	90110-05908	BOLT, HEXAGON SOCKET HEAD	1	1	1	1	
5	F0D-67250-03	THROTTLE LEVER ASSY	1	1	1	1	
6	F0D-67255-01	.LEVER, THROTTLE	1	1	1	1	
7	EW2-67256-00	.SPRING	1	1	1	1	
8	EW2-67258-01	.WASHER	2	2	2	2	
9	EW2-67259-01	.E-RING	1	1	1	1	
10	F0D-67257-00	.SHAFT	1	1	1	1	
11	98580-05025	.SCREW, PAN HEAD	2	2	2	2	
12	FK7-68310-07	SWITCH BOX ASSY	1	1	1	1	
13	EW2-68348-00	.LANYARD, STOP SWITCH	1	1	1	1	
14	97880-03008	.SCREW, PAN HEAD	2	2	2	2	
15	FK7-68312-02	.STOP BUTTON COMP	1	1	1	1	
16	FK7-68313-02	.START BUTTON COMP.	1	1	1	1	
17	97880-05025	.SCREW, PAN HEAD	2	2	2	2	
18	F1G-U143G-00	SPACER	1	1	1	1	
19	F1G-U143H-00	SPACER 2	1	1	1	1	
20	F1G-6152M-11	HOUSING ASSY	1	1	1	1	
21	90101-08011	BOLT	2	2	2	2	
22	F1G-6146H-01	SPACER, BRKT.	1	1	1	1	
23	95720-08300	NUT, SELF-LOCKING	3	3	3	3	
24	F0X-6141B-00	BEARING, COLUMN	2	2	2	2	
25	F1G-61541-00	COLUMN, STEERING	1	1	1	1	
26	F0X-6153P-00	WASHER	1	1	1	1	
27	F0X-6153P-10	WASHER	1	1	1	1	

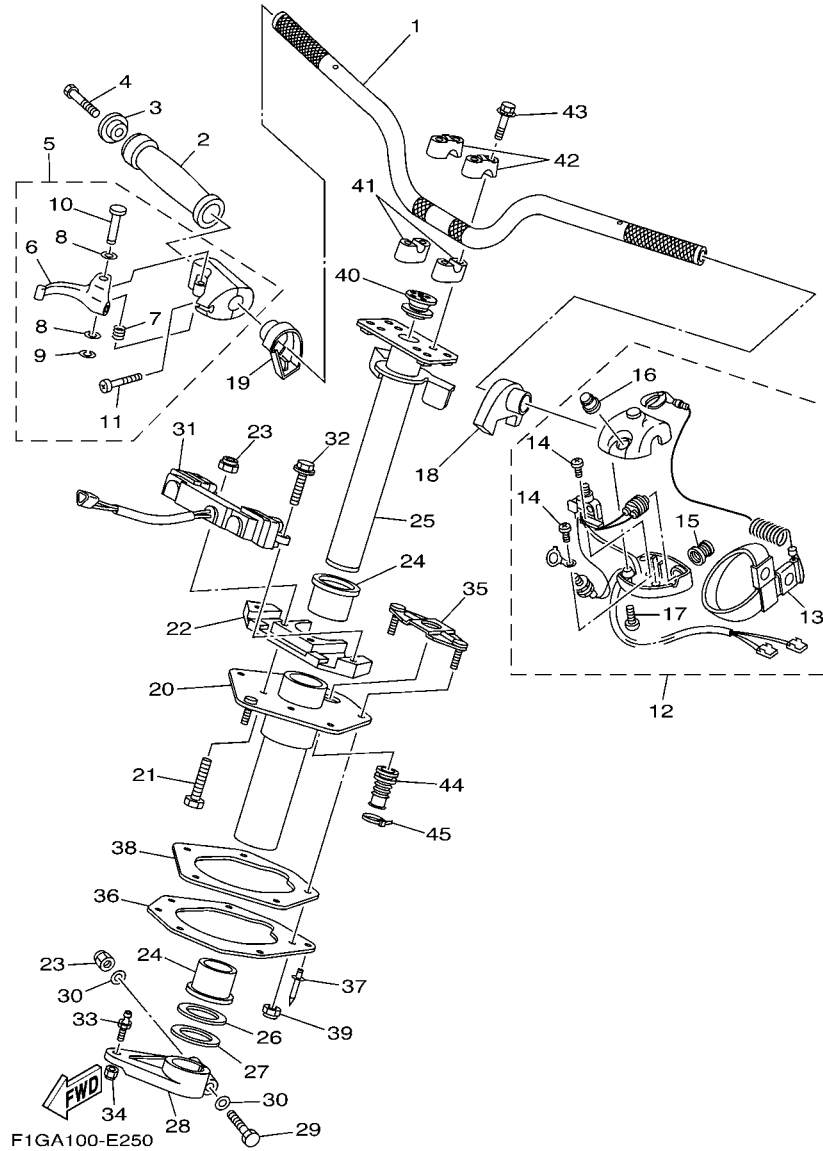
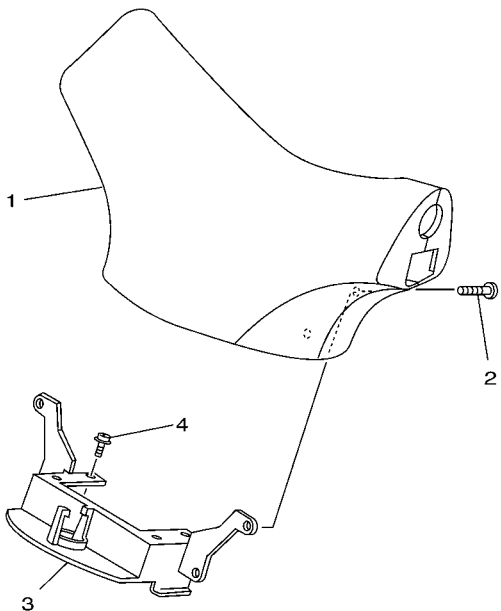


FIG. 25 STEERING 1

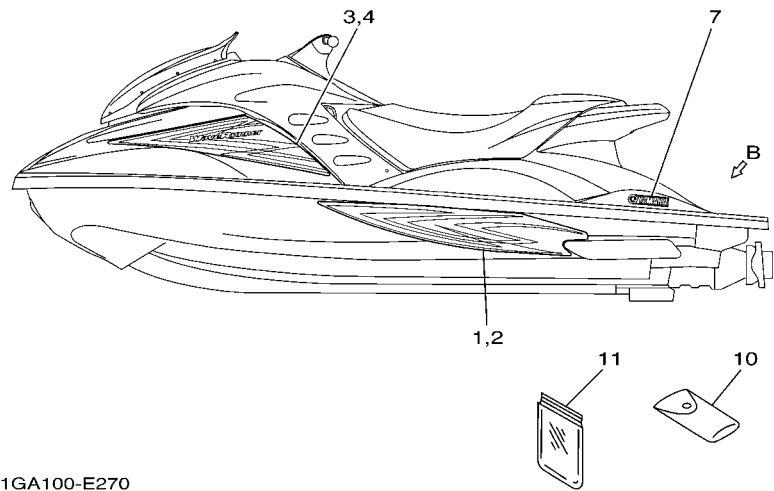
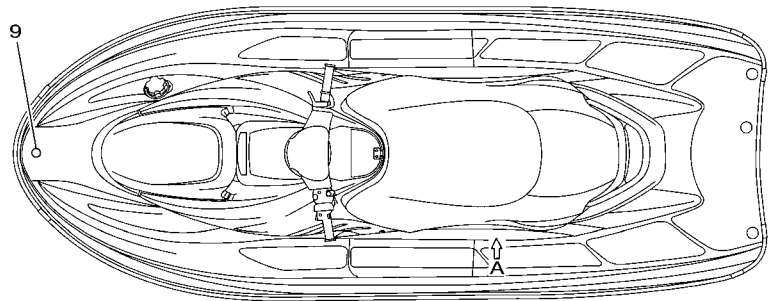
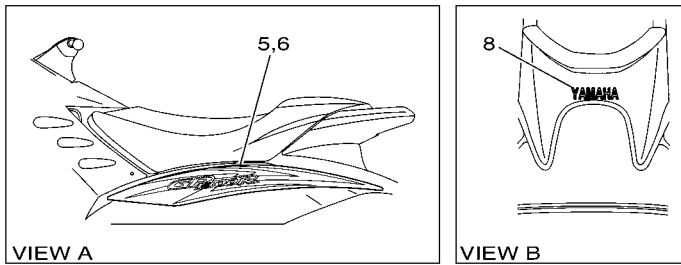
REF. NO.	PART NO.	DESCRIPTION	USA	CAN	GENE	JPN	REMARKS
28	F0X-6151B-00	ARM, STEERING	1	1	1	1	
29	90101-08003	BOLT	1	1	1	1	
30	92990-08600	WASHER, PLATE	1	1	1	1	
31	F1B-68303-10	SENSOR ASSY	1	1	1	1	
32	90119-08925	BOLT, WITH WASHER	2	2	2	2	
33	EU0-61461-02	STUD, JOINT BALL	1	1	1	1	
34	95720-06300	NUT, SELF-LOCKING	1	1	1	1	
35	F1G-61596-00	PLATE	1	1	1	1	
36	F1G-6133B-01	PLATE, BRACKET	1	1	1	1	
37	90267-489U6	RIVET, BLIND	2	2	2	2	
38	F1G-6143C-00	SEAL, RUBBER	1	1	1	1	
39	9572R-08300	NUT, FLANGE	5	5	5	5	
40	F1G-61469-00	PACKING, STEERING COLUMN	1	1	1	1	
41	EU0-23814-01	HOLDER, HANDLE LOWER	2	2	2	2	
42	EU0-23814-30	HOLDER, HANDLE UPPER	2	2	2	2	
43	90119-08824	BOLT, WITH WASHER	4	4	4	4	
44	F0D-6822E-00	GROMMET	1	1	1	1	
45	90464-32801	CLAMP	1	1	1	1	

FIG. 26 STEERING 2



GP71100-7250

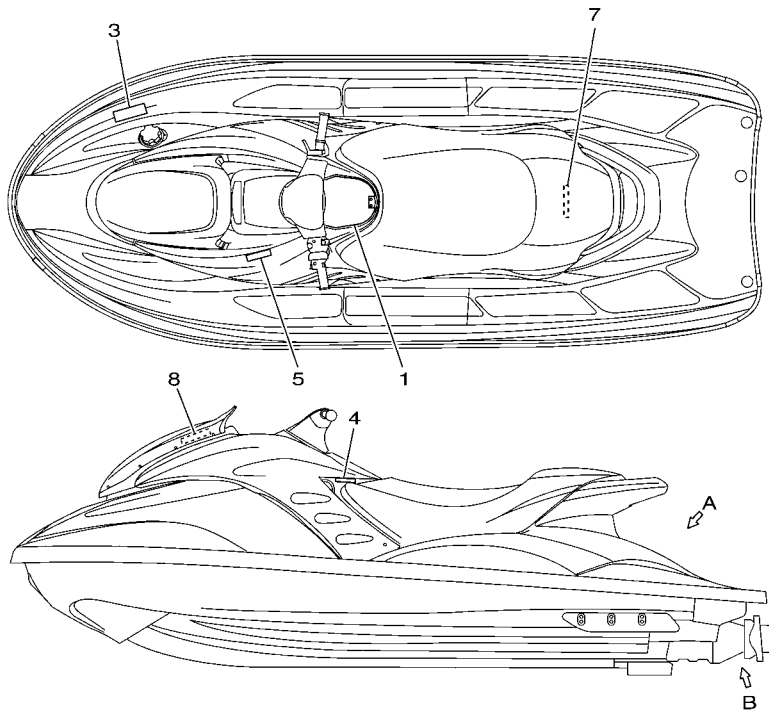
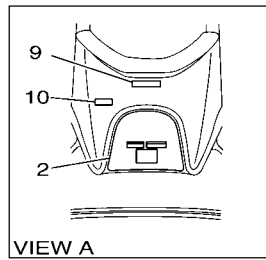
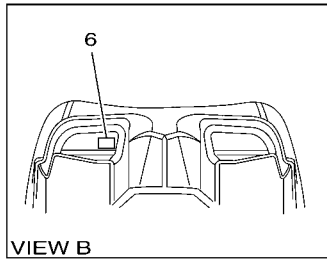
REF. NO.	PART NO.	DESCRIPTION	USA	CAN	GENE	JPN	REMARKS
1	GP7-U142A-11	STEERING PAD COMP	1	1	1	1	YB
2	90149-069U9	SCREW	4	4	4	4	
3	GP7-U142K-00	FIX, STEERING PAD	1	1	1	1	
4	90159-069U1	SCREW, WITH WASHER	4	4	4	4	



F1GA100-E270

FIG. 27 GRAPHICS

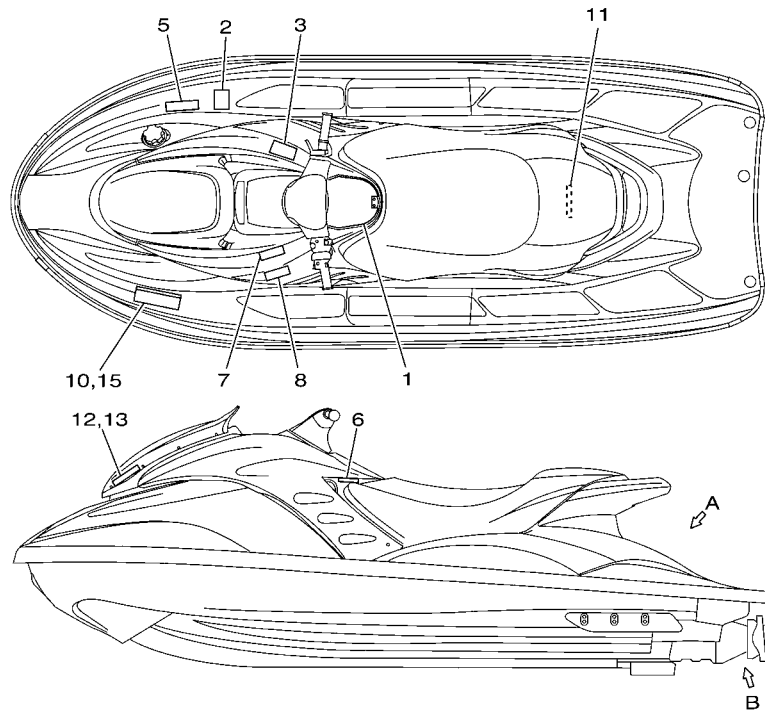
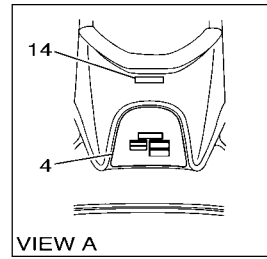
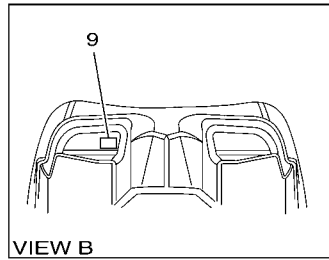
REF. NO.	PART NO.	DESCRIPTION	USA	CAN	GENE	JPN	REMARKS
1	F1G-U417B-30	GRAPHIC, 1 (LH)	1	1	1	1	
2	F1G-U417C-30	GRAPHIC, 2 (RH)	1	1	1	1	
3	F1G-U417D-30	GRAPHIC, 3 (LH)	1	1	1	1	
4	F1G-U417E-30	GRAPHIC, 4 (RH)	1	1	1	1	
5	F1G-U417F-30	GRAPHIC, 5 (LH)	1	1	1	1	
6	F1G-U417G-30	GRAPHIC, 6 (RH)	1	1	1	1	
7	F1G-U411C-30	EMBLEM, YAMAHA	2	2	2	2	
8	F1G-U4114-30	MARK, YAMAHA A	1	1	1	1	
9	F1K-U411H-00	EMBLEM, TUNING FORK	1	1	1	1	
10	EU0-65986-00	TOOL SET	1	1	1	1	
11	EU0-65901-01	TOOL BAG	1	1	1	1	



F1G7100-D280

FIG. 28 IMPORTANT LABELS

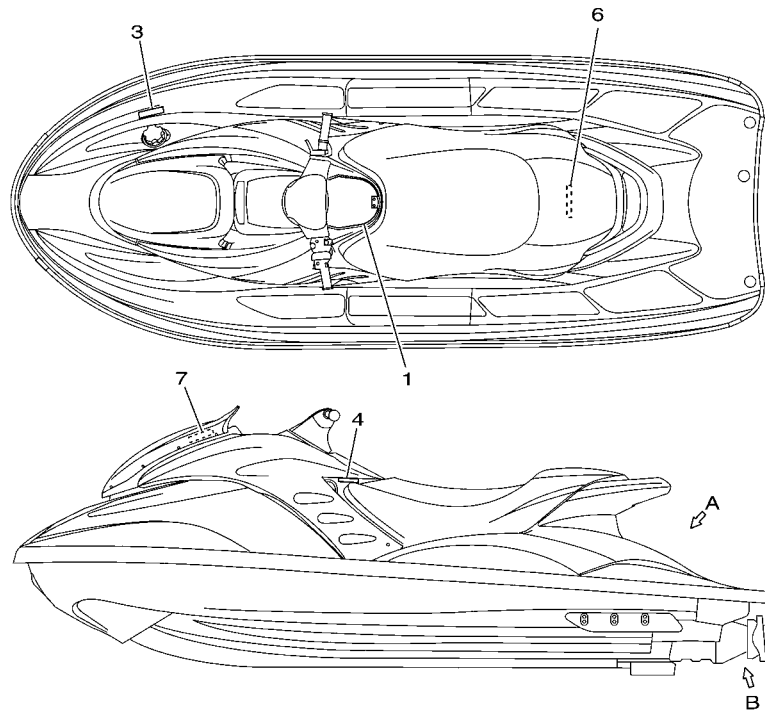
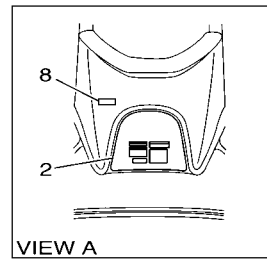
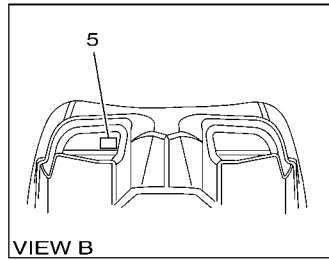
REF. NO.	PART NO.	DESCRIPTION	USA	CAN	GENE	JPN	REMARKS
1	F0X-U41B1-21	LABEL, WARNING JDC 1	1				
2	F1G-U41E2-01	LABEL, SET 2	1				
3	F1G-U415B-00	LABEL, WARNING(FUEL)	1				
4	F0V-U41FB-01	LABEL, OIL	1				
5	F0V-U418W-01	LABEL, WARNING OVERHEAT	1				
6	F1G-U418F-00	LABEL, RIGHTING	1				
7	F0V-U41DB-02	LABEL, WARNING BATTERY	1				
8	F0X-U41FD-01	LABEL, VISOR	1				RH
9	F0V-U41F5-01	LABEL, FIRE EXTINGUISHER 1	1				
10	F1G-U41G1-00	LABEL, CAPACITY	1				



F1GA100-E290

FIG. 29 IMPORTANT LABELS 2

REF. NO.	PART NO.	DESCRIPTION	USA	CAN	GENE	JPN	REMARKS
1	F0X-U41B1-13	LABEL, WARNING JDC 1		1	1		
2	F0P-U41B2-01	LABEL, WARNING JDC 2		1	1		
3	F0X-U41B2-11	LABEL, WARNING JDC 2		1	1		
4	F0W-U41E2-51	LABEL, SET 2		1	1		
5	F1G-U415B-10	LABEL, WARNING(FUEL)		1	1		
6	F0V-U41FB-11	LABEL, OIL		1	1		
7	F0V-U418W-01	LABEL, WARNING OVERHEAT		1	1		
8	F0V-U418W-11	LABEL, WARNING OVERHEAT		1	1		
9	F1G-U418F-00	LABEL, RIGHTING		1	1		
10	GP8-U416H-01	LABEL,WARNING(FRANCE)				1	
11	F0V-U41DB-12	LABEL, WARNING BATTERY		1	1		
12	F0X-U41FD-01	LABEL, VISOR		1	1		LH
13	F0X-U41FD-11	LABEL, VISOR		1	1		RH
14	F1B-U41F5-21	LABEL, FIRE EXTINGUISHER 1		1	1		
15	F1S-U419E-01	LABEL 4		1			



F1G7100-D300

FIG. 30 IMPORTANT LABELS 3

REF. NO.	PART NO.	DESCRIPTION	USA	CAN	GENE	JPN	REMARKS
1	F0X-641B1-20	LABEL, WARNING JDC 1				1	
2	F1G-641E2-00	LABEL, SET 2				1	
3	F0V-6415B-30	LABEL, WARNING(FUEL)				1	
4	F0V-641FB-20	LABEL, OIL				1	
5	F1G-U418F-00	LABEL, RIGHTING				1	
6	F0V-641DB-20	LABEL, WARNING BATTERY				1	
7	F1G-641FD-00	LABEL, VISOR				1	RH
8	F1G-U41G1-00	LABEL, CAPACITY				1	

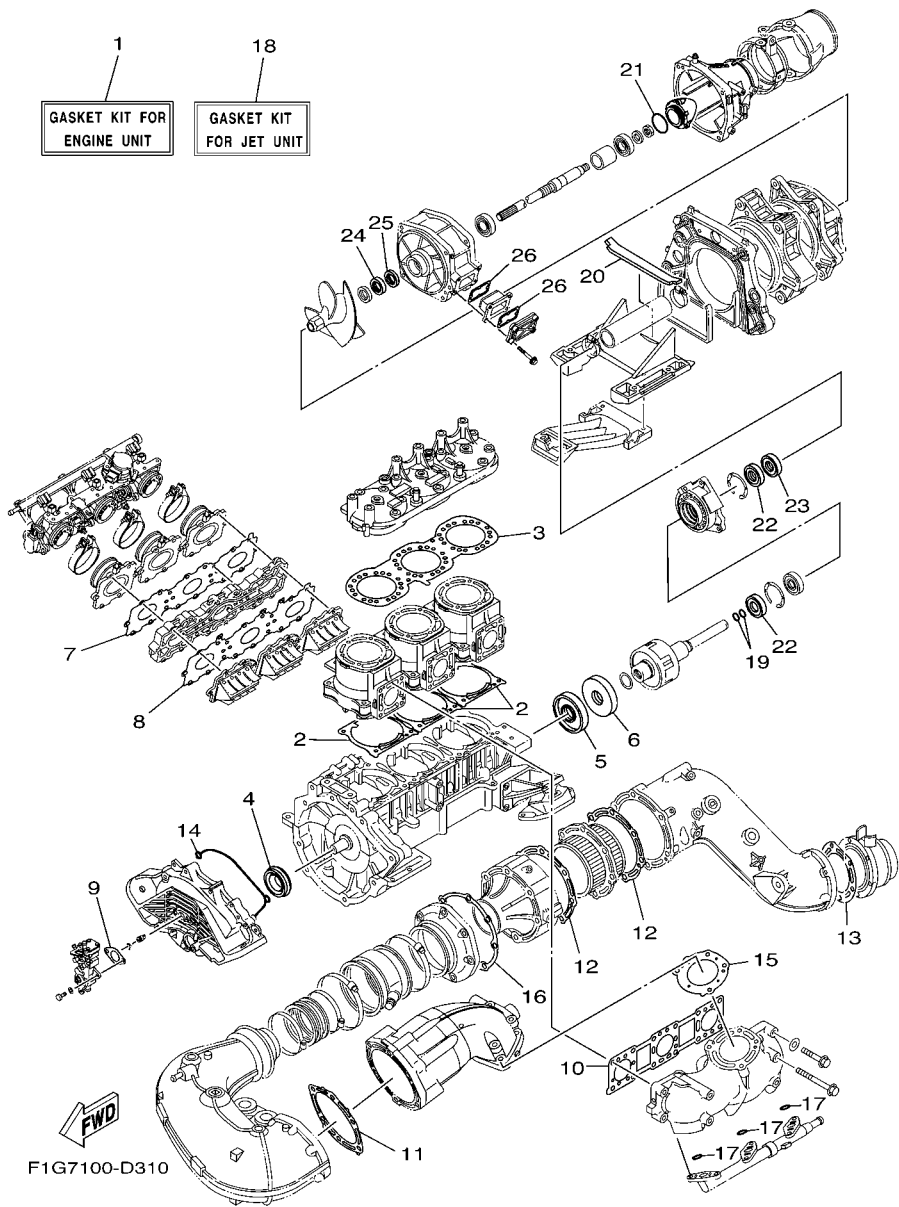


FIG. 31 REPAIR KIT 1

REF. NO.	PART NO.	DESCRIPTION	USA	CAN	GENE	JPN	REMARKS
1	60T-W0001-02	GASKET KIT FOR ENGINE UNIT	1	1	1	1	
2	66E-11351-02	.GASKET, CYLINDER	3	3	3	3	
3	60T-11181-10	.GASKET, CYLINDER HEAD 1	1	1	1	1	
4	93103-35011	.OIL SEAL	1	1	1	1	
5	93101-34001	.OIL SEAL	1	1	1	1	
6	93101-34002	.OIL SEAL	1	1	1	1	
7	60T-13556-00	.GASKET, MANIFOLD	1	1	1	1	
8	60T-13624-00	.PLATE, REED VALVE	1	1	1	1	
9	63M-13116-00	.GASKET, PUMP CASE	1	1	1	1	
10	66V-14613-01	.GASKET, EXHAUST PIPE	1	1	1	1	
11	66V-14749-01	.GASKET, MUFFLER DAMPER 2	1	1	1	1	
12	66V-41124-01	.GASKET, EXHAUST OUTER COVER	2	2	2	2	
13	68N-14623-00	.GASKET, EXHAUST PIPE	1	1	1	1	
14	66V-81168-10	.O-RING	1	1	1	1	
15	66V-14739-01	.GASKET, MUFFLER DAMPER 1	1	1	1	1	
16	66V-41114-01	.GASKET, EXHAUST OUTER COVER	1	1	1	1	
17	93210-17MA4	.O-RING	3	3	3	3	
18	60T-W0001-20	GASKET KIT FOR JET UNIT	1	1	1	1	
19	93210-19MJ4	.O-RING	2	2	2	2	
20	67X-51367-00	.FELT, PACKING	1	1	1	1	
21	93210-46M16	.O-RING	1	1	1	1	
22	93101-25M55	.OIL SEAL	2	2	2	2	
23	93101-25M56	.OIL SEAL	1	1	1	1	
24	93101-28M66	.OIL SEAL	1	1	1	1	
25	93101-28M65	.OIL SEAL	1	1	1	1	
26	66V-42414-00	.O-RING	2	2	2	2	

NUMERICAL INDEX

PART NO.	GRID NO.	PART NO.	GRID NO.	PART NO.	GRID NO.	PART NO.	GRID NO.	PART NO.	GRID NO.	PART NO.	GRID NO.
60T-11111-10-8S	B - 2	60E-13907-01	C - 11	60E-24300-01	B - 8	63M-51334-00	C - 3	FN8-6269B-00	D - 3	GP8-67593-00	C - 12
66V-11152-00	B - 12	65U-14251-00	B - 11	66V-24314-00	B - 10	67X-51367-00	E - 8	F0X-62733-00	D - 12	GU0-67593-00	D - 12
60T-11181-10	B - 2	60T-14263-00-94	B - 6	6G8-24376-00	B - 10	60T-51673-00	C - 3	GU2-62875-01	D - 2	FN8-6771K-00	D - 9
	E - 8	60T-14287-10	B - 6	66V-24377-00	B - 11	61L-5169A-00	B - 13	F0X-63225-00	C - 13	F0X-67743-00	D - 10
66E-11325-00	B - 2	60T-14288-00	B - 6	63M-24378-00	B - 10	F1G-6133B-01	E - 2	F0X-63226-00	C - 13	F1B-67747-00	D - 9
66E-11351-02	B - 2	60T-14294-00	B - 8	60E-24474-00	C - 11	F0X-6141B-00	D - 15	F0X-6351B-00	C - 12	F0D-6775C-01	D - 8
	E - 8	60T-14295-00	B - 8	70R-24489-00	D - 9	F1B-61438-00	D - 13	F0X-6351C-00	C - 14	F0D-6775E-01	D - 8
66V-11400-00	B - 4	60T-14413-00	B - 6	70R-24543-00	D - 9	F1G-6143C-00	E - 2	F0X-6352C-00	C - 12	FJ0-67766-00	D - 8
66E-11412-00	B - 4	60T-14414-00	B - 7	60T-26292-00	C - 6	F1B-61460-00	D - 13	F0X-6375E-00	D - 7	EU0-67767-31	D - 9
66E-11422-00	B - 4	60T-14419-00	B - 7	67F-2812A-00	C - 8	F1B-61461-01	D - 14	GK5-63768-00	C - 12	FN8-67816-00	C - 8
66E-11431-00	B - 4	60T-1441J-00	B - 7	68N-41111-00-94	B - 12	EU0-61461-02	E - 2	F0X-6377M-00	C - 14	F1G-6820A-10	C - 12
66E-11442-00	B - 4	60T-14428-00	B - 8	68N-41113-00-94	B - 12	F0X-61467-00	D - 14	F0X-6377P-00	C - 14	GA7-68218-00	D - 11
66V-11452-00	B - 4	60T-14440-00	B - 7	66V-41114-01	B - 12	F0X-61468-00	D - 14	F0X-6378C-00	D - 7	F0X-6821H-00	C - 11
66E-11515-00	B - 4	60T-14451-00	B - 6		E - 8	F1G-61469-00	E - 2	F0V-6415B-30	E - 7	F0D-6822E-00	E - 2
60T-11603-00	B - 4	60T-14453-00	B - 6	68N-41123-00-94	B - 13	F1G-6146H-01	D - 15	F0X-641B1-20	E - 7	GU2-6822E-01	C - 12
60T-11631-10-A0	B - 4	60T-14457-00	B - 6	66V-41124-01	B - 12	F1G-61481-02	D - 14	F0V-641DB-20	E - 7	GP7-68238-10	C - 12
60T-11631-10-B0	B - 4	60T-14480-10	B - 6		E - 8	F0X-6151B-00	E - 2	F1G-641E2-00	E - 7	F0W-68239-01	C - 11
60T-11631-10-C0	B - 4	66V-14488-00	B - 12	66V-42414-00	C - 2	F1B-6151S-00	D - 13	F0V-641FB-20	E - 7	60E-682E0-00	C - 11
60T-11631-10-D0	B - 4	66V-14613-01	B - 11		E - 8	F1G-6152M-11	D - 15	F1G-641FD-00	E - 7	F1B-68303-10	E - 2
60T-11633-00	B - 4		E - 8	67X-42717-00	B - 6	F1G-6153E-02	D - 13	F0X-6517C-01	D - 2	FK7-68310-07	D - 15
66E-11634-00	B - 4	66V-14615-02	B - 12	67X-44517-10-94	B - 3	F0X-6153P-00	D - 15	F0X-6517D-00	C - 15	FK7-68312-02	D - 15
66E-11651-00	B - 4	68N-14623-00	B - 13	66V-44532-00-94	B - 2	F0X-6153P-10	D - 15	F0X-6517F-01	C - 15	FK7-68313-02	D - 15
66E-11685-00	B - 4		E - 8	66V-44574-00-94	B - 2	F1G-61541-00	D - 15	F0X-6517R-01	D - 2	F1S-68341-00	C - 12
67X-12481-00	B - 13	66V-14625-00	B - 12	663-45119-00	B - 13	F0X-61552-00	D - 15	F0X-6518E-00	C - 15	EW2-68348-00	D - 15
60T-12576-00	B - 11	66V-14711-00-94	B - 11	66V-45214-00-94	C - 2	F1G-61596-00	E - 2	F0X-6555D-00	C - 15	F1G-6880A-00	C - 4
60T-12577-00	B - 11	60T-14712-10-94	B - 11	61X-45332-03-94	C - 5	F1K-61624-00	D - 3	F0X-6555E-00	D - 2	F0X-6885R-00	C - 4
66V-12579-00	B - 14	60T-14718-00	B - 14	61L-45378-00	C - 5	F0X-61637-00	D - 3	F0X-65568-00	C - 12	F0X-6885S-00	C - 4
64T-12580-00	B - 14	66V-14721-A0-94	B - 11	66V-45511-00	C - 2	FN8-61651-01	D - 5	GA7-65772-00	C - 11	F1G-68952-00	C - 11
66V-12581-00	B - 14	66V-14739-01	B - 11	65V-45538-00	C - 2	EU0-61652-00	B - 15		D - 12	66V-81168-10	C - 6
60E-12594-00	B - 14		E - 8	68N-45593-00-94	B - 5		D - 3	EU0-65901-01	E - 4		E - 8
63M-13116-00	B - 9	60T-14740-01	B - 12	66E-45813-10-94	B - 5		D - 5	F0X-65938-01	C - 12	65U-81317-10	C - 9
	E - 8	66V-14749-01	B - 11	66E-4581J-00	B - 5	F0X-61652-00	D - 3	F0X-65939-01	C - 12	60E-81328-00	C - 6
	B - 10		E - 8	66V-46882-00	C - 2	F0X-6213D-00	D - 6	EU0-65986-00	E - 4	66V-8132W-00	C - 8
63M-13132-00	B - 10		E - 8	66E-51129-00	B - 2	F0X-6213E-00	D - 6	GJ1-66607-00	C - 11	60T-81337-00-94	C - 6
65U-13132-00	B - 9	66V-14752-00	B - 14		B - 11	EW2-62140-00	D - 9	F0D-67250-03	D - 15	60T-81410-00	C - 6
67X-13183-00	B - 9	66E-14771-01-94	B - 13	66V-51129-01	C - 2	EW2-62142-00	D - 9	60T-67252-00	B - 8	60T-81450-00	C - 6
66V-13185-00	B - 10	66V-14771-01-94	B - 12	66V-51129-10	C - 2	F1G-62149-00	D - 6	60T-67254-10	D - 2	63M-81800-00	C - 7
60T-13200-00	B - 9	66V-14779-00	B - 12	68N-5112T-00	D - 3	GP7-62159-02	D - 6	F0D-67255-01	D - 15	3AJ-81809-00	C - 7
66E-13469-00	B - 9	66V-1477K-00	B - 13	66V-51142-00	B - 9	GJ3-6215F-00	D - 6	EW2-67256-00	D - 15	6M6-81826-00	C - 7
60T-13555-00	B - 6	66V-1477L-00	B - 12	60T-51190-00-94	C - 3	F0X-62187-00	C - 14	F0D-67257-00	D - 15	63M-81830-00	C - 7
60T-13556-00	B - 6	66V-14782-00-94	B - 13	67X-51311-00-94	C - 2	F0X-62188-00	C - 14	EW2-67258-01	D - 15	6M6-81830-00	C - 7
	E - 8	68N-14784-00-94	B - 13	66V-51312-01-94	C - 2	F1B-62241-00	D - 11	EW2-67259-01	D - 15	6M6-8183E-01	C - 7
60T-13610-00	B - 6	68N-14791-00-94	B - 13	6B6-51315-01-94	C - 2	EU0-62241-30	C - 3	F1G-6753B-00	D - 12	6M6-81840-10	C - 7
60T-13620-00	B - 6	60T-15100-00-8S	B - 2	60E-51317-00-94	C - 2	F1B-6224E-00	D - 11	F1G-67550-10	D - 12	11H-81844-00	C - 7
60T-13624-00	E - 8	60T-15779-00	B - 14	60T-51318-00-94	C - 3	EU0-62280-00	D - 3	GP8-6755J-00	C - 12	66V-81844-00	C - 8
60T-13624-00-94	B - 6	68N-21425-00-94	B - 2	68N-51323-00	C - 5	EU0-62282-00	D - 3		D - 12	1FK-81847-00	C - 7
60T-13750-00	B - 8	60T-21426-00-94	B - 2	6B6-51326-10	C - 3	EU0-62283-00	D - 3	F1B-67564-00	D - 12	6M6-81850-00	C - 7
60T-13761-00	B - 8	EU0-23814-01	E - 2	67X-51333-00-94	C - 2	EU0-62285-01	D - 3	F0D-67565-01	D - 12	6M6-81865-00	C - 7
60T-13766-00	B - 8	EU0-23814-30	E - 2								

NUMERICAL INDEX

PART NO.	GRID NO.	PART NO.	GRID NO.	PART NO.	GRID NO.	PART NO.	GRID NO.	PART NO.	GRID NO.	PART NO.	GRID NO.
6M6-81866-00	C - 7	F1G-U143G-00	D - 15	F1B-U3850-01	D - 7	EW2-U5772-00	D - 12	GP7-U785H-00	D - 9	90119-06800	C - 2
60T-81921-00	C - 8	F1G-U143H-00	D - 15	F1G-U4114-30	E - 4	EW2-U5912-01	C - 12	F1G-U8211-01	C - 11	90119-06824	D - 2
68N-81940-00	C - 9	GH3-U146E-00	C - 3	F1G-U411C-30	E - 4	EW2-U5913-01	C - 12	EU0-U821D-00	D - 12	90119-06827	D - 14
60E-81950-00	C - 9	GK5-U146F-00	D - 14	F1K-U411H-00	E - 4	F0X-U5983-01	C - 12	F1S-U8221-00	C - 11	90119-06859	C - 2
68V-81960-00	C - 9	GP7-U151M-00	D - 13	F1G-U415B-00	E - 5	GD0-U7249-00-05	C - 5	F0W-U822C-00	C - 11	90119-069UB	C - 4
EU0-82110-09	C - 11	F0D-U152C-10	D - 13	F1G-U415B-10	E - 6	F1S-U725E-00	C - 4	F0W-U822D-00	C - 11	90119-069UD	C - 4
66V-82117-00	C - 9	GP7-U152M-00	D - 13	GP8-U416H-01	E - 6	F0V-U7267-10	C - 3	F0D-U824C-20	C - 12		C - 5
60T-82117-10	C - 9	GP7-U152P-00	D - 13	F1G-U417B-30	E - 4	EU0-U7354-00-01	B - 3	F1G-U824F-00	C - 8	90119-069UH	D - 12
60T-82117-20	C - 9	GP7-U152R-00	D - 13	F1G-U417C-30	E - 4	EU0-U7354-00-03	B - 3	F1G-U826C-00	C - 8		D - 14
66V-82119-00	C - 9	F0D-U153D-01	D - 13	F1G-U417D-30	E - 4	EU0-U7354-00-05	B - 3	F1B-U828M-00	D - 11	90119-069UJ	C - 15
66V-82127-00	C - 9	F0D-U153J-10	D - 13	F1G-U417E-30	E - 4	EU0-U7354-00-10	B - 3	GJ1-U835D-00	C - 3	90119-069UK	C - 4
67F-82151-00	C - 10	GP7-U155C-00	D - 13	F1G-U417F-30	E - 4	EU0-U7354-00-20	B - 3	F1B-U8360-01	D - 11		D - 12
67F-82151-30	C - 10	GP7-U155D-00	D - 15	F1G-U417G-30	E - 4	F0D-U7525-01	D - 12	F1G-U8571-00	C - 4	90119-069UP	D - 7
60E-82153-00	C - 8	GP7-U155F-00	D - 13	F1G-U418F-00	E - 5	F1S-U7525-01	D - 11	F1G-U8572-00	C - 4	90119-06M13	B - 2
66V-82340-01	C - 8		D - 15		E - 6	F0X-U7555-00	D - 12	F0X-U883B-01	C - 5	90119-06M84	B - 2
66V-82340-11	C - 8		D - 13		E - 7	GJ1-U7578-01	D - 14	F0X-U883E-00	C - 5	90119-08063	B - 6
67X-82340-21	C - 8	GP7-U157A-00	D - 6	F0V-U418W-01	E - 5	GJ1-U7578-21	B - 15	F0X-U883N-00	D - 3	90119-08064	B - 2
66V-82355-00	C - 8	F1G-U213G-02	D - 6		E - 6	F0X-U758C-00	D - 12	F0X-U883P-00	D - 3	90119-08822	D - 7
60T-82355-10	C - 10	F1G-U213K-01	D - 6		E - 6	F0X-U759B-00	D - 10	F1B-U883T-02	D - 3	90119-08823	B - 3
60T-82355-10	C - 10	GP7-U2501-20	D - 5	F0V-U418W-11	E - 6	F0X-U759C-00	D - 10	F1G-U884R-01	C - 4		C - 4
60E-82556-00	C - 11	F0X-U2512-00	D - 5	F1S-U419E-01	E - 6	GJ1-U759C-00	D - 10	F1G-U884S-01	C - 4	90119-08824	E - 2
60E-8259E-00	C - 10	F0X-U2519-02	D - 5	F0X-U41B1-13	E - 6	F1B-U761D-02	D - 3	GJ1-U8K31-03	C - 3	90119-08826	C - 11
60T-8259L-20	C - 10	F0X-U251D-00	D - 5	F0X-U41B1-21	E - 5	F1B-U7626-00	D - 11	60T-W0001-02	E - 8	90119-08829	D - 7
60T-8259M-20	C - 10	F0X-U251E-00	D - 5	F0P-U41B2-01	E - 6	F1B-U7628-00	D - 11	60T-W0001-20	E - 8	90119-08925	E - 2
6B6-83623-00	C - 9	F0X-U252C-00	D - 5	F0X-U41B2-11	E - 6	F1B-U7656-00	D - 11	60T-W0004-00	B - 6	90119-089U7	D - 10
60E-83627-00	C - 9	F0X-U252D-01	D - 5	F0V-U41DB-02	E - 5	F1B-U7698-01	D - 11	60T-W0009-04-8S	B - 2	90119-089UE	C - 3
68F-83688-00	C - 10	F1G-U2624-10	D - 3	F0V-U41DB-12	E - 6	F1G-U7711-00	D - 9	60T-W1130-10-8S	B - 2	90119-089UL	C - 5
682-84385-01	B - 14	F0X-U2664-00	D - 7	F1G-U41E2-01	E - 5	F0D-U775B-02	D - 8	90101-06026	C - 15	90119-089UR	B - 3
60T-85525-00	C - 9	F0X-U266B-00	C - 15	F0W-U41E2-51	E - 6	F0X-U776C-10	D - 8	90101-06917	B - 3	90119-08M18	B - 2
60T-8552A-00	C - 8	F0X-U266D-00	C - 11	F0V-U41F5-01	E - 5	F1B-U7773-00	D - 9	90101-08003	E - 2	90119-08M22	B - 7
60T-8552E-00	C - 8	F0X-U266E-01	C - 15	F1B-U41F5-21	E - 6	F0X-U778B-00	D - 8	90101-08011	D - 15	90119-08M63	B - 2
60T-85542-00	C - 9	F0X-U271B-00	D - 7	F0V-U41FB-01	E - 5	GJ3-U778C-00	D - 8	90105-08M22	B - 13		B - 12
66V-85570-00	C - 8	F1G-U2723-02	C - 14	F0V-U41FB-11	E - 6	F0X-U778D-00	D - 8	90105-10M87	B - 13	90119-08M67	B - 2
61A-85790-00	C - 10	F1G-U273B-00	C - 4	F0X-U41FD-01	E - 5	F0X-U778E-00	D - 8	90109-06M99	B - 11	90119-08MA1	B - 2
66V-85790-10	C - 9	F1G-U351H-00	D - 5		E - 6	F0X-U778H-00	D - 8		B - 14	90119-10803	C - 2
66V-85881-00	C - 9	F1G-U351J-00	D - 5	F0X-U41FD-11	E - 6	F1G-U7817-00	D - 11	90109-08902	C - 15	90119-10837	C - 3
60T-8591A-20	C - 8	F1G-U351K-00	D - 5	F1G-U41G1-00	E - 5	GP7-U7831-11	D - 9	90109-10M72	C - 6	90119-10M00	B - 13
67X-E2590-00	B - 15	F1G-U351M-00	D - 5		E - 7	GP7-U7832-01	D - 9	90110-05908	D - 13	90119-10M07	B - 2
67X-E2590-10	B - 15	F1G-U351N-00	D - 5	F0X-U4261-13	D - 12	GP7-U7833-10	D - 9		D - 15	90119-10M11	B - 11
60T-G5831-00	C - 2	F1G-U351P-00	D - 5	F0X-U475A-00	C - 15	GP7-U7834-00	D - 9	90110-06008	C - 14	90119-10M13	B - 13
65A-R1129-00	C - 2	F1G-U351R-00	D - 5	F0X-U4958-00	D - 13	EU0-U7835-00	D - 8	90110-06040	D - 3	90119-10M18	B - 13
66V-R1313-01	C - 3	F1G-U351S-00	D - 5	F0X-U515D-00	C - 15	GP7-U7835-00	D - 9	90110-06081	B - 6	90119-10M19	B - 11
60T-R1321-10	C - 3	F1G-U3581-00	D - 5	F0X-U515E-01	C - 15	GP7-U783F-00	D - 9	90110-06822	C - 3	90119-10M20	B - 11
66V-R1348-10	C - 3	F0X-U3635-01	C - 14	F0X-U515N-00	C - 15	F0X-U7844-10	D - 9	90111-05001	C - 14	90119-10M23	B - 12
67X-R1367-00	C - 2	F1G-U371A-10	D - 7	F0X-U516P-00	C - 15	F0X-U7856-00	D - 8		C - 15	90149-069U9	E - 3
66V-R1381-01	C - 5	F1G-U371B-10	D - 7	F0X-U517B-00	C - 15	GJ3-U7856-10	D - 9	90111-06049	C - 15	90149-069UA	C - 5
GP7-U142A-11	E - 3	F0X-U3774-00	D - 7	F0X-U517H-31	D - 2	EU0-U7856-50	C - 11	90116-10M66	B - 13	90159-069U1	E - 3
GP7-U142K-00	E - 3	F0X-U377B-60-P0	C - 14	F0X-U519D-02	D - 2	GP7-U785G-10	D - 9	90116-10M68	B - 11	90169-049U1	D - 9
GH1-U143B-00	D - 13	F0X-U377C-60-P0	C - 14	F0X-U5554-00	C - 15						

NUMERICAL INDEX

PART NO.	GRID NO.	PART NO.	GRID NO.	PART NO.	GRID NO.	PART NO.	GRID NO.	PART NO.	GRID NO.	PART NO.	GRID NO.
90169-059U1	D - 5	90387-08M06	C - 3	90464-07M05	B - 9	90601-152U3	C - 5	93101-28M66	C - 2	9572R-08300	C - 15
90176-06005	C - 11	90387-08M37	B - 6	90464-07M56	B - 14		D - 8		E - 8		D - 7
90179-05800	C - 15	90387-12M05	B - 12	90464-14M55	B - 6	90601-155U4	D - 9	93101-34001	B - 4		E - 2
90179-05801	C - 15	90387-35M01	B - 4	90464-31001	D - 2	90601-162U5	D - 9		E - 8	9572R-10300	C - 4
90179-08978	C - 11	90430-09004	B - 14	90464-32801	C - 12	90601-195UD	D - 12	93101-34002	B - 4		D - 7
90179-10M35	B - 13	90445-07007	B - 9		D - 8	90601-200U1	D - 3		E - 8	97013-06016	C - 9
90179-10M36	B - 11	90445-07M10	B - 9		D - 11	90601-200U2	B - 15	93103-35011	B - 4	97013-06040	B - 6
90183-06902	C - 15	90445-09M33	B - 13		E - 2		C - 12		E - 8	97013-08025	B - 2
90201-05014	C - 6	90445-11M33	B - 9	90464-40825	B - 15		D - 14	93210-17001	B - 13		C - 7
90201-06014	C - 13	90445-12M10	B - 11		D - 10	90601-200U7	D - 6	93210-17MA4	B - 11	97013-10055	B - 11
90201-068M4	C - 3	90445-14804	C - 3		D - 11	90605-502U1	C - 15		E - 8		C - 6
90201-06906	D - 14	90445-14M00	B - 9	90464-50001	B - 7	90605-502U2	D - 2	93210-19001	C - 5	97013-10060	B - 12
90201-099U3	B - 3	90445-14M09	B - 14	90464-99803	D - 8	91317-06035	C - 6	93210-19MJ4	E - 8	97013-10065	B - 11
	D - 7	90445-14M18	B - 14	90464-99804	D - 6	91318-06014	C - 6	93210-464A3	C - 3	97013-10085	B - 12
90201-10801	C - 4	90445-18006	B - 14	90465-11829	B - 10	92903-06600	B - 6	93210-46M16	E - 8	97013-10090	B - 12
90201-22M04	B - 4	90445-198B6	D - 3		C - 3		C - 7	93306-205U0	C - 2	97095-05010	B - 8
90201-248M5	B - 5	90445-198C0	D - 3		C - 5		C - 9	93306-205U6	C - 5	97095-06010	C - 9
90201-28008	B - 12	90445-21002	B - 14		D - 6	92903-08600	B - 2	93306-208U1	B - 4	97095-06012	B - 10
90202-10922	C - 15	90446-07001	B - 8		D - 8		C - 7	93306-304U1	C - 2	97095-06016	C - 6
90267-329UR	D - 9	90446-07002	B - 8		D - 9	92903-10600	B - 11	93306-308U1	B - 4		C - 9
90267-40935	D - 8	90446-07003	B - 8	90465-11M10	B - 9		C - 6	93310-422U2	B - 4	97095-06020	B - 9
90267-47801	D - 5	90446-10M82	B - 9		B - 13	92990-04600	D - 13	93310-627U6	B - 4	97513-05514	C - 6
90267-48802	B - 15	90446-17ME2	B - 9	90465-11M52	C - 6	92990-06100	C - 7	93390-000U6	B - 4	97513-10545	B - 13
	C - 12	90446-17ME8	B - 10		C - 10	92990-06600	D - 13	93430-47M04	C - 5		C - 6
90267-48806	C - 14	90446-20M65	B - 14	90465-13M36	B - 8	92990-08600	E - 2	93440-25M08	C - 7	97780-04110	D - 8
	D - 6	90446-20M70	B - 14	90467-089U1	C - 11	92990-12200	D - 3	93450-18M06	C - 7	97780-50612	B - 6
90267-489U1	C - 8	90446-24M52	B - 14	90467-210A0	D - 11		D - 7	93603-10049	B - 4	97780-60425	C - 9
	C - 12	90446-24M54	B - 8	90467-250A0	D - 11	92995-05600	B - 8	93606-12019	B - 2	97780-60430	B - 6
90267-489U2	D - 9	90446-27M95	B - 14	90468-02001	B - 8	92995-06100	C - 9		B - 11		C - 8
90267-489U6	C - 8		D - 3		B - 9	92995-06600	B - 9		C - 2	97780-60516	C - 8
	C - 12	90447-07001	B - 9	90480-06M46	C - 5		C - 6	93606-14081	C - 5	97780-60525	C - 8
	D - 6	90447-07008	B - 8	90480-22M15	B - 6		C - 9	93608-16M16	B - 12	97880-03008	D - 15
	D - 8	90447-07009	B - 8	90480-24003	B - 8	9299R-05200	D - 4		C - 6	97880-05025	D - 15
	D - 13	90447-07010	B - 8	90480-279U1	C - 11	9299R-06100	D - 13	94702-00396	C - 8	97880-06065	D - 13
	E - 2	90447-28004	D - 11	90480-30M78	B - 12	9299R-06200	C - 8	94709-00396	C - 9	9788R-05025	D - 4
90267-489U8	D - 3	90450-14M05	B - 14	90480-38800	C - 11		C - 14	9531P-16700	C - 2	98580-05025	D - 15
	D - 11	90450-17M17	B - 8	90501-14M73	C - 7		D - 2	95380-06700	C - 7	98780-05020	B - 2
90267-489U9	C - 11	90450-18M09	B - 14	90600-900U6	B - 15		D - 5	9538R-06700	C - 3	9878R-05512	C - 3
	D - 12	90450-22M14	B - 11		D - 10		D - 13		D - 14	98980-04010	D - 13
90267-489UP	D - 11		B - 14	90600-917U4	B - 15	9299R-08200	C - 11	95720-06300	E - 2	99590-14016	B - 13
90267-489US	D - 5	90450-57003	B - 6		C - 12	9299R-08600	D - 7	95720-08300	D - 15		C - 2
90280-05013	C - 6	90450-73001	B - 6		D - 8	9299R-16600	C - 2	9572R-05300	C - 12	99780-12600	D - 3
90380-12M29	B - 2	90450-99801	D - 12		D - 11	93101-25M55	C - 5		D - 4		
	C - 6	90450-99M02	B - 14	90600-925U9	D - 14		E - 8	9572R-06300	C - 8		
90381-05041	C - 15	90460-11M17	B - 11	90601-118UF	B - 15	93101-25M56	C - 5		D - 2		
90387-05800	D - 13	90460-90M19	B - 12		C - 3		E - 8		D - 5		
90387-06M60	C - 5	90460-99M20	B - 12		D - 3	93101-28002	C - 2		D - 9		
90387-07803	C - 4	90460-99M23	B - 7		D - 12	93101-28M65	E - 8		D - 13		