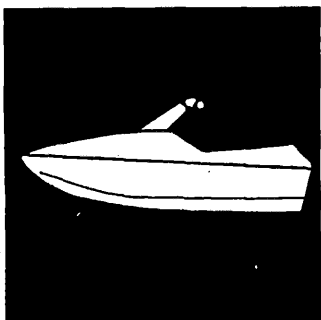


YAMAHA



PARTS CATALOGUE

WaveRaider 760

RA760U (GP21, GP22)

RA760 (GP23)

96.3.15 Fig 2-10
96.3.16 Fig 12-11
12-38
Fig 6-60

YAMAHA
GENUINE
Parts & Accessories

16GP2-100E1

FOREWORD

This Parts Catalogue is related to the parts for the model(s) in the below frame. When you are ordering replacement parts, please refer to this Parts Catalogue and quote both part numbers and part names correctly.

RA760U (GP21, GP22) RA760 (GP23)

1. Modifications or additions which have been made after issue of the Parts Catalogue will be announced in the Yamaha Parts News.
It is advisable that you make necessary corrections to the Parts Catalogue according to the Yamaha Parts News.

2. Abbreviations

The following abbreviations are used in this Parts Catalogue.

- "UR" Use specified parts number.
- "UN" Use as many as needed.
- "AP" Alternate Parts
- "LM" Local Made (Parts need to be ordered locally)
- "F#" Frame No. (Applicable machine No.)

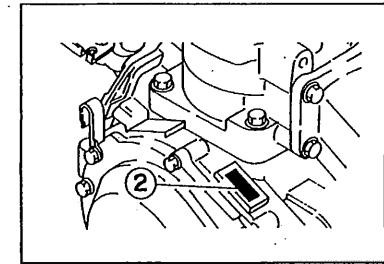
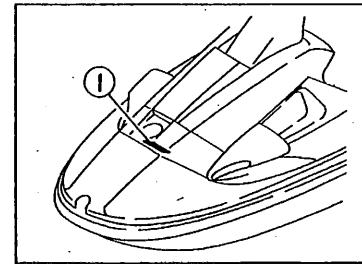
3. Parts, which are to be supplied in an assembly, are listed with a dot (.) in front of the part name as shown below.
The numeral appearing to the right of each component part indicates the quantity of parts for each assembly unit.

EXAMPLE

PART NO.	DESCRIPTION	Q'TY	REMARKS
EU0-62280-00	DRAIN PLUG ASSY	2	
EU0-62282-00	PLUG, DRAIN	1	

4. Applicable Serial No. and Color Code

① Hull Serial No.	GP21,GP22	GP2-800101	~
	GP23	GP2-600101	~
② Engine Serial No.	64X-000101 ~		



Color Code	Color Name	Abbreviation
4D	DARK BLUISH GRAY METALLIC 2	DBNM2

5. Note that the illustrations are for reference in finding parts numbers, not to be used for assembling. When assembling, please use the applicable service manual.
6. A part with "YMUS" in the remarks column can be obtained from YMUS(USA) and not from YAMAHA MOTOR CO.,LTD (JAPAN).

EXAMPLE

PART NO.	DESCRIPTION	QTY	REMARKS
EW2-U5160-00	ENGINE HATCH COMP.	1	YMUS
90601-168U7	BAND, HOSE	1	YMUS

ADDRESS:

YAMAHA MOTOR CORPORATION U.S.A.
PARTS & ACCESSORY DIV.
6555 KATELLA AVENUE
CYPRESS, CALIFORNIA 90630, U.S.A.

CONTENTS

Cylinder, Crankcase	B2~B3
Crankshaft, Piston	B4
Intake	B5~B6
Carburetor	B7~B8
Oil Pump	B9
Exhaust 1	B10~B12
Fuel	B13
Jet Unit 1	B14~B15
Jet Unit 2	C2~C3
Generator	C4~C5
Starting Motor	C6
Electrical 1	C7~C8
Electrical 2	C9~C10
Engine Hatch	C11~C12
Hull, Deck	C13~C14
Gunwale, Mat	C15
Seat · Under Locker 1	D2~D3
Seat · Under Locker 2	D4
Oil Tank	D5
Fuel Tank	D6~D7

Exhaust 2	D8
Control Cable	D9~D10
Steering 1	D11~D12
Steering 2	D13
Graphic 1. Tool (For USA)	D14
Graphic 2. Tool (For CAN, GUM, AUS, FRA)	D15~E2
Repair Kit 1	E3~E4
Repair Kit 2	E5

INDEX

Numerical Index	M1~M4
-----------------------	-------

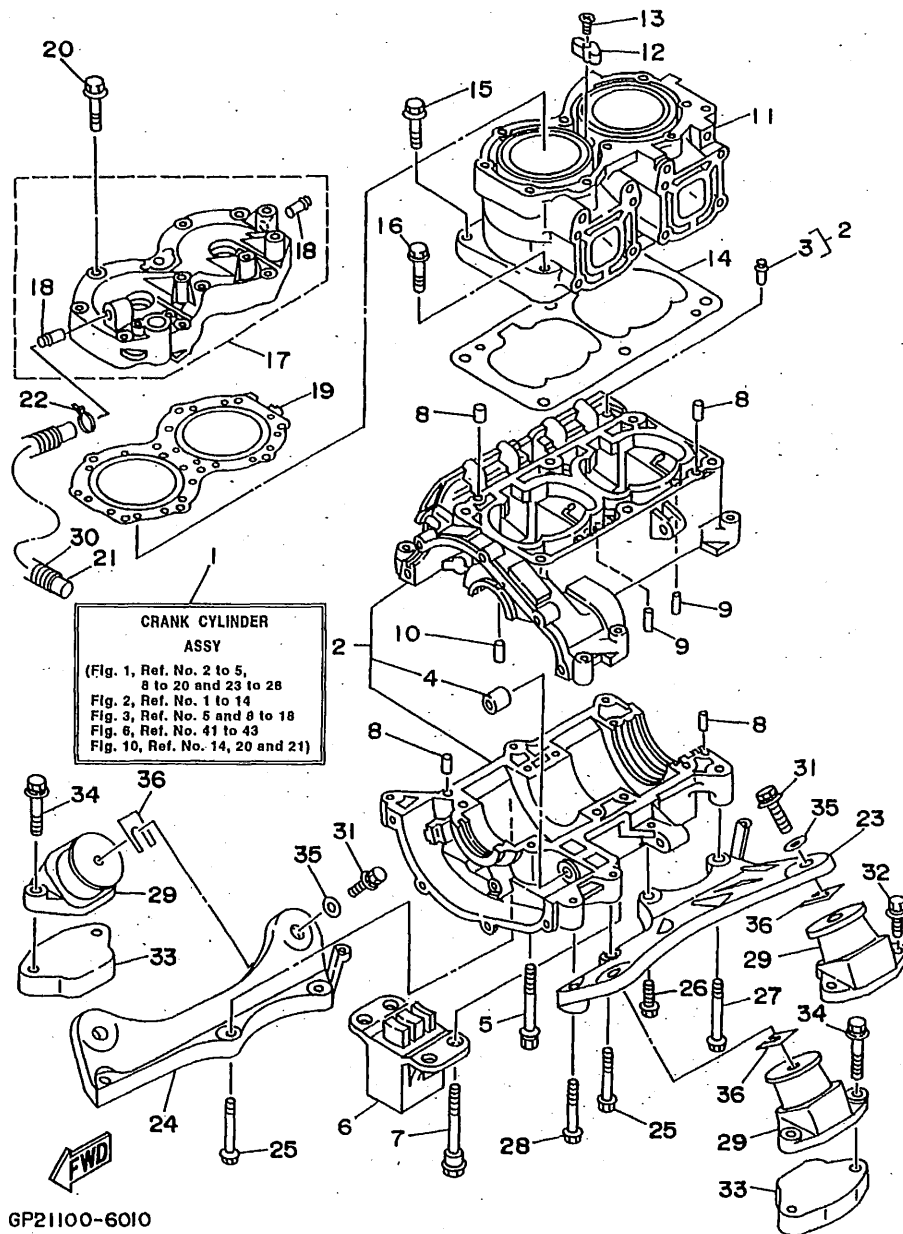
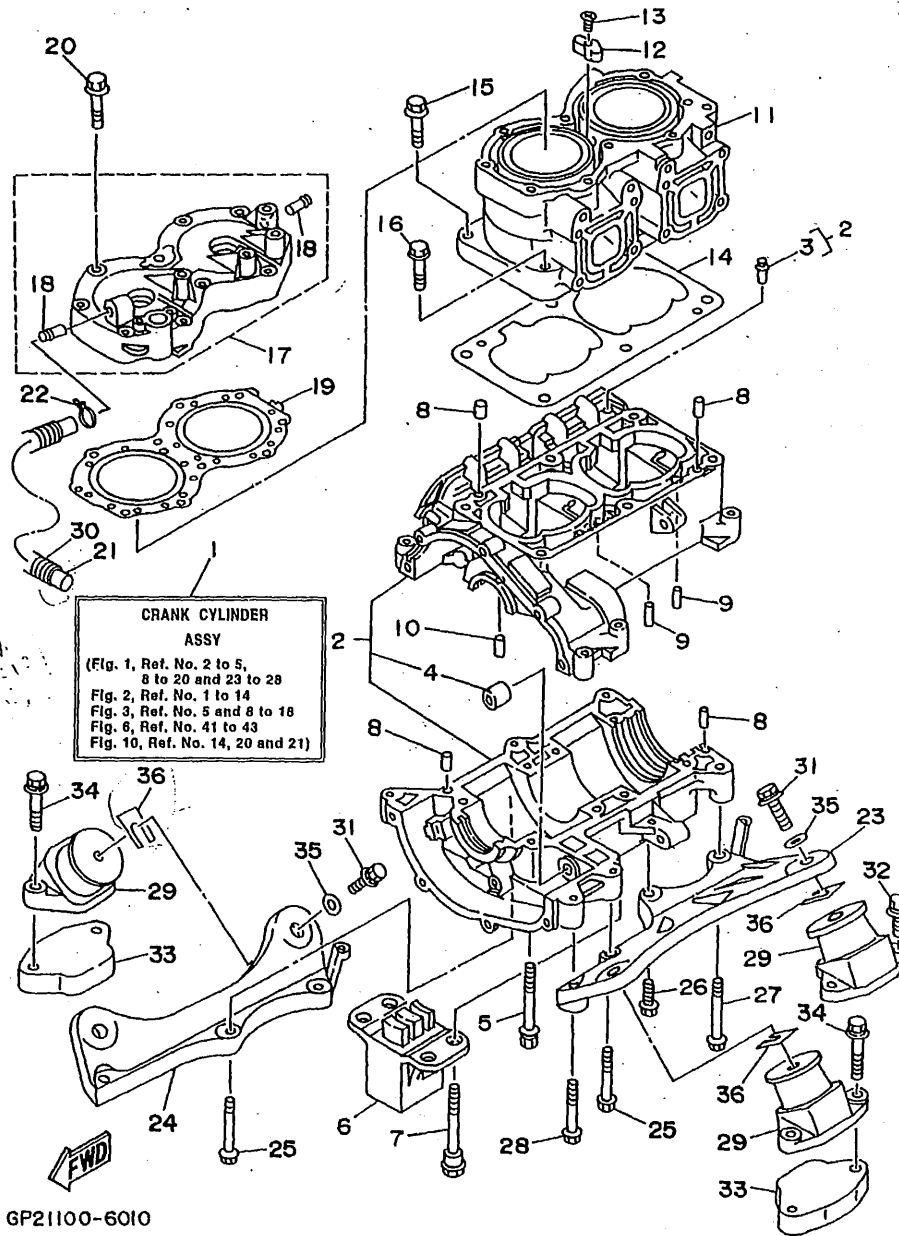


FIG. 1 CYLINDER. CRANKCASE

REF. NO.	PART NO.	DESCRIPTION	Q'TY	REMARKS
1	64X-W0090-00-4D	CRANK CYLINDER ASSY	1	OIL INJECTION
2	64X-15100-00-94	CRANKCASE ASSY	1	
3	62T-14251-00	.NIPPLE	2	
4	90380-12M29	.BUSH, SOLID	1	
5	90119-08M55	BOLT, WITH WASHER	4	
6	62T-44532-10	STOPPER, UPPER MOUNT	1	
7	90109-08M56	BOLT	4	
8	93606-12019	PIN, DOWEL	4	
9	93603-10049	PIN, DOWEL	4	
10	93604-07141	PIN, DOWEL	1	
11	64X-11311-00-94	CYLINDER 1	1	
12	6E5-11325-00	ANODE	1	
13	98780-04015	SCREW, FLAT HEAD	1	
14	6M6-11351-A2	GASKET, CYLINDER	1	
15	90119-10M56	BOLT, WITH WASHER	4	
16	90119-10M07	BOLT, WITH WASHER	2	
17	64X-11111-00-94	HEAD, CYLINDER 1	1	
18	6K8-51129-00	.NIPPLE	2	
19	64X-11181-00	GASKET, CYLINDER HEAD 1	1	
20	90119-08M19	BOLT, WITH WASHER	10	
21	90445-14M21	HOSE	1	
22	90465-11M10	CLAMP	1	
23	6R7-21415-00-94	BRACKET, FRONT UPPER 1	1	
24	6R7-21425-00-94	BRACKET, REAR UPPER 1	1	
25	90119-10M02	BOLT, WITH WASHER	4	
26	90119-10M00	BOLT, WITH WASHER	1	
27	90119-10M03	BOLT, WITH WASHER	1	
28	90119-10M01	BOLT, WITH WASHER	1	

FIG. 1 CYLINDER. CRANKCASE



CRANK CYLINDER ASSY
 (Fig. 1, Ref. No. 2 to 5, 8 to 20 and 23 to 28
 Fig. 2, Ref. No. 1 to 14
 Fig. 3, Ref. No. 5 and 8 to 18
 Fig. 6, Ref. No. 41 to 43
 Fig. 10, Ref. No. 14, 20 and 21)

REF. NO.	PART NO.	DESCRIPTION	Q'TY	REMARKS
29	63M-44517-01-5B	MOUNT RUBBER	4	
30	90446-20M53	HOSE	1	
31	90119-08904	BOLT, WITH WASHER	4	
32	90119-08038	BOLT, WITH WASHER	2	
33	GJ1-6721B-00	SPACER, ENGINE MOUNT	3	
34	90119-08901	BOLT, WITH WASHER	6	YMUS
35	EU0-67324-00	PLATE	4	
36	EU0-67354-00-01	SHIM (T=0.1)	10	UR
	EU0-U7354-00-01	SHIM (T=0.1)	10	UR YMUS
	EU0-67354-00-03	SHIM (T=0.3)	10	UR
	EU0-U7354-00-03	SHIM (T=0.3)	10	UR YMUS
	EU0-67354-00-05	SHIM (T=0.5)	10	UR
	EU0-U7354-00-05	SHIM (T=0.5)	10	UR YMUS
	EU0-67354-00-10	SHIM (T=1.0)	10	UR
	EU0-U7354-00-10	SHIM (T=1.0)	10	UR YMUS
	EU0-67354-00-20	SHIM (T=2.0)	10	UR
	EU0-U7354-00-20	SHIM (T=2.0)	10	UR YMUS

GP21100-6010

B3

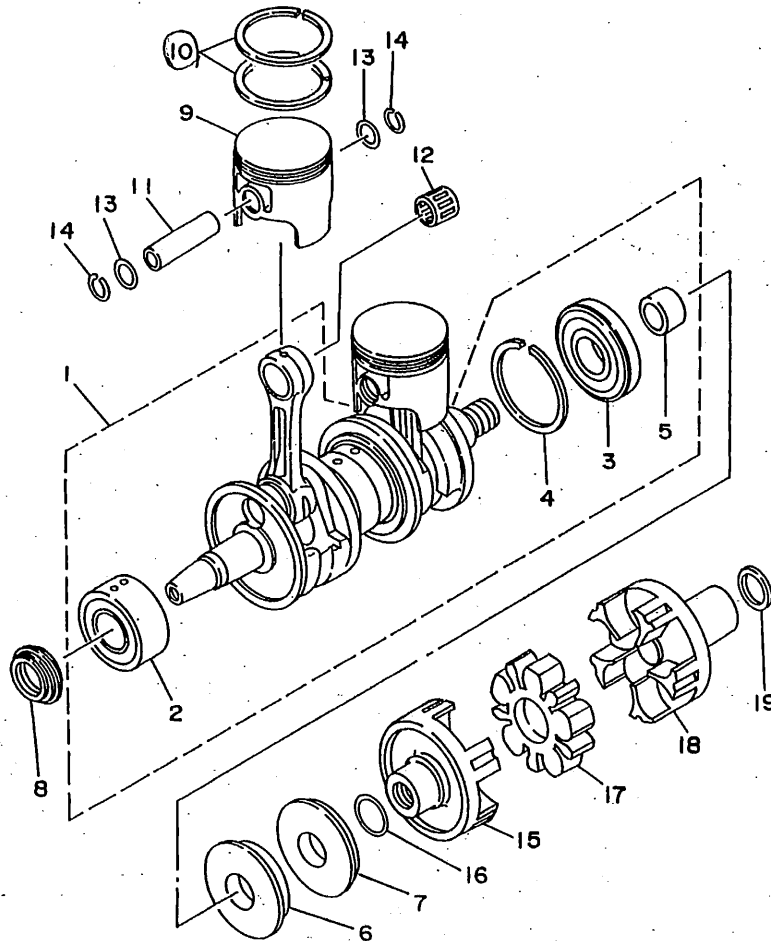


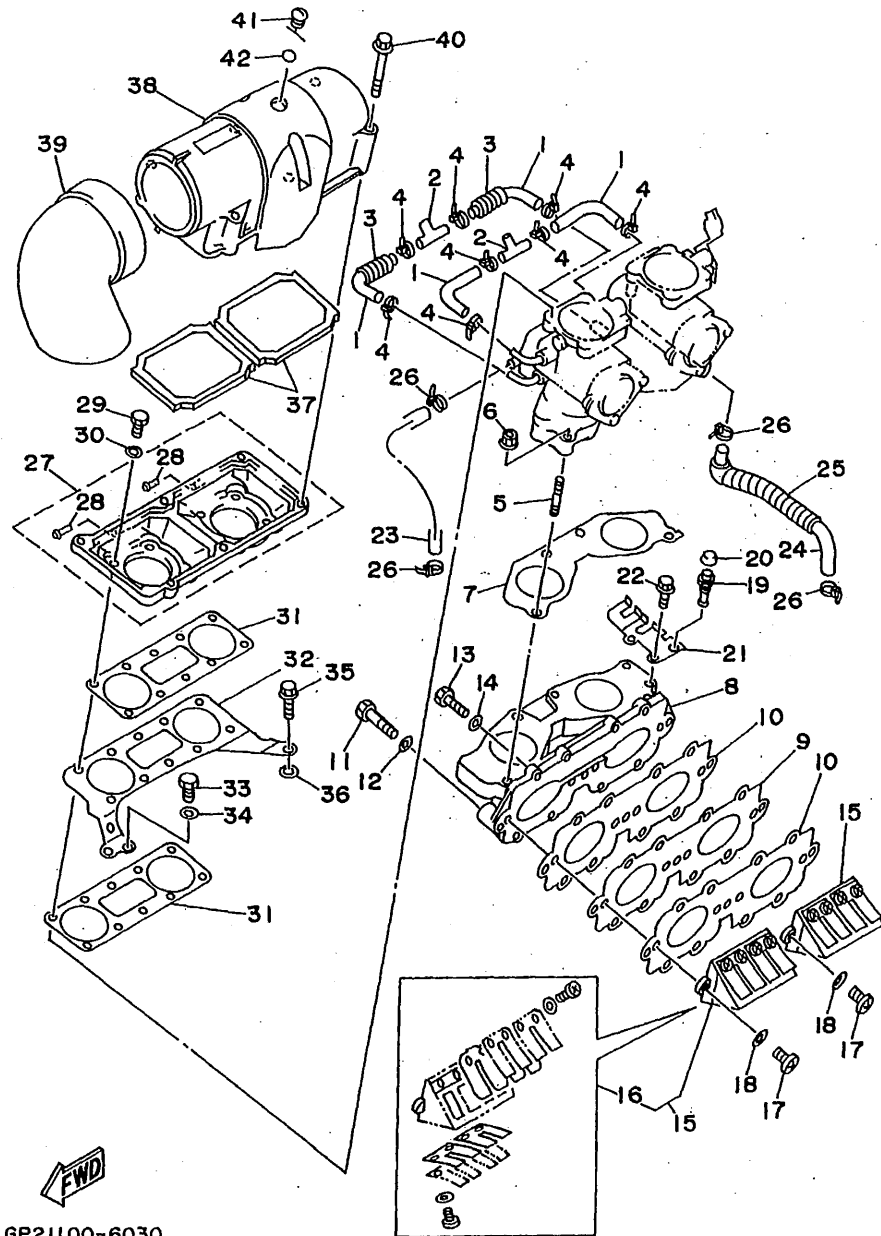
FIG. 2 CRANKSHAFT. PISTON

REF. NO.	PART NO.	DESCRIPTION	Q'TY	REMARKS
1	64X-11400-00	CRANKSHAFT ASSY	1	
2	93305-30601	.BEARING	1	
3	93306-307U3	.BEARING	1	
4	93440-80023	.CIRCLIP	1	
5	62T-45526-00	.COLLAR, DRIVE SHAFT	1	
6	93J02-36M33	OIL SEAL	1	
7	93101-36M46	OIL SEAL	1	
8	93103-32M01	OIL SEAL	1	
9	64X-11631-00-91	PISTON (STD)	2	
	64X-11635-00	PISTON (0.25MM O/S)	2	AP
	64X-11636-00	PISTON (0.50MM O/S)	2	AP
10	64X-11603-00	PISTON RING SET (STD)	2	AP 96.3.5
	64X-11604-00	PISTON RING SET (0.25MM O/S)	2	AP
	64X-11605-00	PISTON RING SET (0.50MM O/S)	2	AP
11	62T-11633-00	PIN, PISTON	2	
12	93310-320U2	BEARING, CYLINDRICAL	2	
13	90201-20M04	WASHER, PLATE	4	
14	93450-21053	CIRCLIP	4	
15	63M-45813-01-5B	FLANGE, COUPLING	1	
16	62T-45127-00	SEAL	1	
17	63M-4581J-00	RUBBER SHAFT COUPLING	1	
18	64X-45813-00-5B	FLANGE, COUPLING	1	
19	90201-24M02	WASHER, PLATE	1	



GP21100-6020

B4

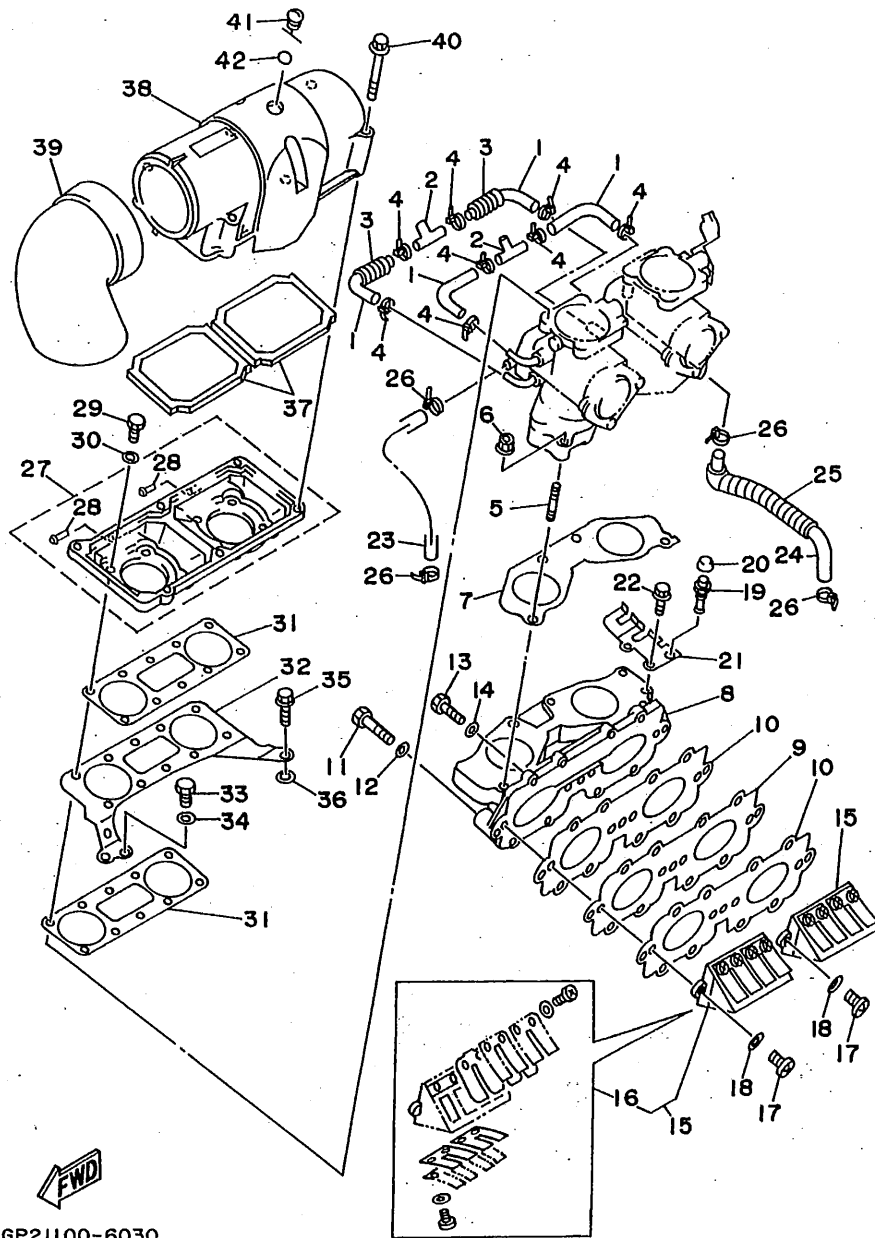


GP21100-6030

FIG. 3 INTAKE

REF. NO.	PART NO.	DESCRIPTION	Q'TY	REMARKS
1	64X-24313-00	PIPE 3	4	
2	688-24378-00	PIPE, JOINT 4	2	
3	90446-14M66	HOSE	2	
4	90465-11M10	CLAMP	8	
5	90116-06M55	BOLT, STUD	4	
6	90179-08M15	NUT	4	
7	64X-13556-00	GASKET, MANIFOLD	1	
8	64X-13555-00-94	MANIFOLD, INTAKE	1	
9	62T-13624-00	PLATE, REED VALVE	1	
10	62T-13566-00	GASKET	2	
11	97014-06035	BOLT	3	
12	92990-06600	WASHER, PLATE	3	
13	97013-06025	BOLT	8	
14	92990-06600	WASHER, PLATE	8	
15	64X-13610-00	REED VALVE ASSY	2	
16	64X-W0004-00	.REED SET	1	
17	98580-05016	SCREW, PAN HEAD	4	
18	92990-05600	WASHER, PLATE	4	
19	61L-5169A-00	NIPPLE, GREASE	1	
20	663-45119-00	CAP, GREASE NIPPLE	1	
21	64X-14527-00	PLATE	1	
22	97513-06516	BOLT, WITH WASHER	2	
23	90445-10M88	HOSE	1	
24	64X-24314-00	PIPE 4	1	
25	90446-14M67	HOSE	1	
26	90465-11M10	CLAMP	4	
27	64X-14284-00-4D	COVER, CARBURETOR 2	1	
28	6E5-11372-00	.NIPPLE, HOSE	2	

B5



GP21100-6030

FIG. 3 INTAKE

REF. NO.	PART NO.	DESCRIPTION	Q'TY	REMARKS
29	97013-06020	BOLT	8	
30	92990-06600	WASHER, PLATE	8	
31	64X-13674-00	GASKET, AIR COOLER COVER 1	2	
32	64X-14255-00	PLATE	1	
33	97013-06012	BOLT	1	
34	92990-06600	WASHER, PLATE	1	
35	90109-06M66	BOLT	1	
36	90201-06M31	WASHER, PLATE	1	
37	62T-14451-00	ELEMENT, AIR CLEANER	2	
38	64X-14283-00	COVER, CARBURETOR 1	1	
39	62T-14419-00	PIPE	1	
40	90105-05M46	BOLT, WASHER BASED	6	
41	62T-14435-00	GROMMET	1	
42	93210-13M63	O-RING	1	

B6

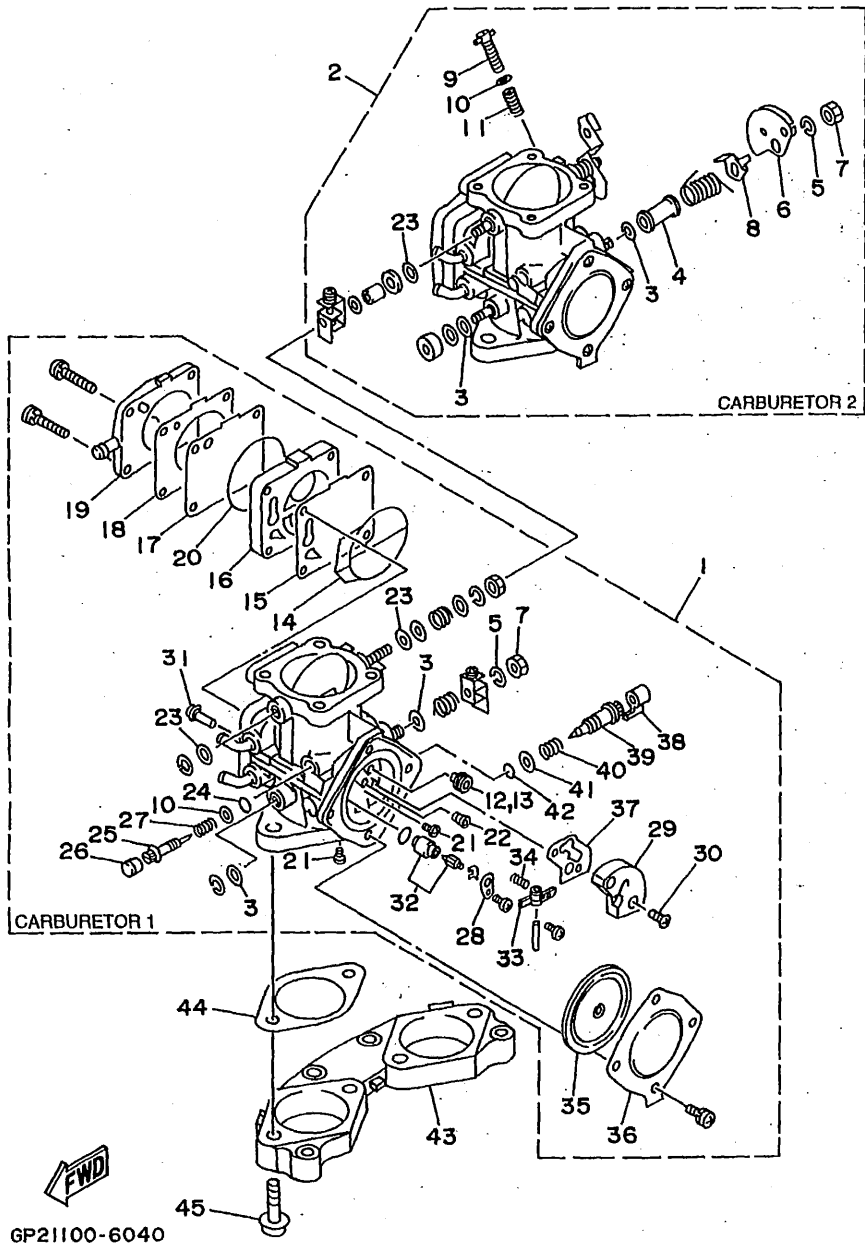


FIG. 4 CARBURETOR

REF. NO.	PART NO.	DESCRIPTION	Q'TY	REMARKS
1	64X-14301-00	CARBURETOR ASSY 1	1	
2	64X-14302-00	CARBURETOR ASSY 2	1	
3	6R7-14596-01	.WASHER	4	
4	6K8-14534-10	.COLLAR	1	CARBURETOR 2
5	92990-08100	.WASHER, SPRING	2	
6	6K8-14930-00	.THROTTLE SHAFT ASSY	1	CARBURETOR 2
7	95380-08700	.NUT	2	
8	6K8-14926-10	.BRACKET, THROTTLE 1	1	CARBURETOR 2
9	6M6-14521-00	.SCREW, ADJUST	1	CARBURETOR 2
10	812-14235-00	.WASHER, NEEDLE	3	
11	47X-14133-00	.SPRING, THROTTLE STOP	1	CARBURETOR 2
12	3G2-14231-27	.JET, MAIN (#135)	1	CARBURETOR 1
13	3G2-1423A-78	.JET, MAIN (#137.5)	1	CARBURETOR 2
14	6K8-14564-00	.O-RING	2	
15	6K8-24411-20	.DIAPHRAGM	2	
16	6M6-24413-00	.BODY 2	2	
17	6K8-24421-10	.VALVE, CHECK	2	
18	6K8-24431-20	.GASKET, FUEL PUMP 1	2	
19	6K8-24452-10	.COVER	1	CARBURETOR 1
20	6K8-14563-00	.O-RING	2	
21	6K8-14521-10	.SCREW	4	
22	830-14231-23	.JET, MAIN (#115)	2	
23	6K8-14597-11	.WASHER	4	
24	812-14147-00	.O-RING	2	
25	6K8-14946-10	.METERING NEEDLE	2	
26	6K8-14471-10	.CAP, CARBURETOR	2	
27	3KW-14932-00	.SPRING, THROTTLE 2	2	
28	6K8-14527-11	.PLATE	2	

B7

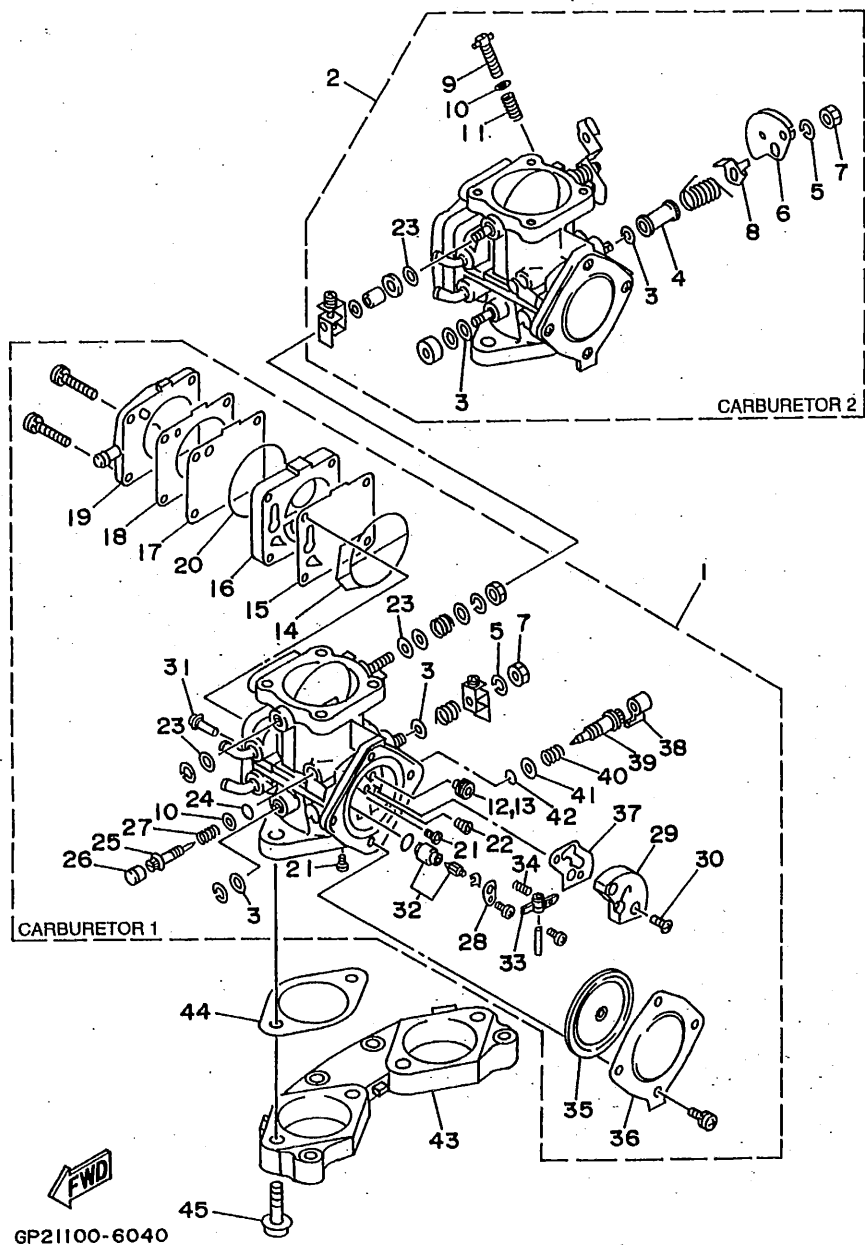
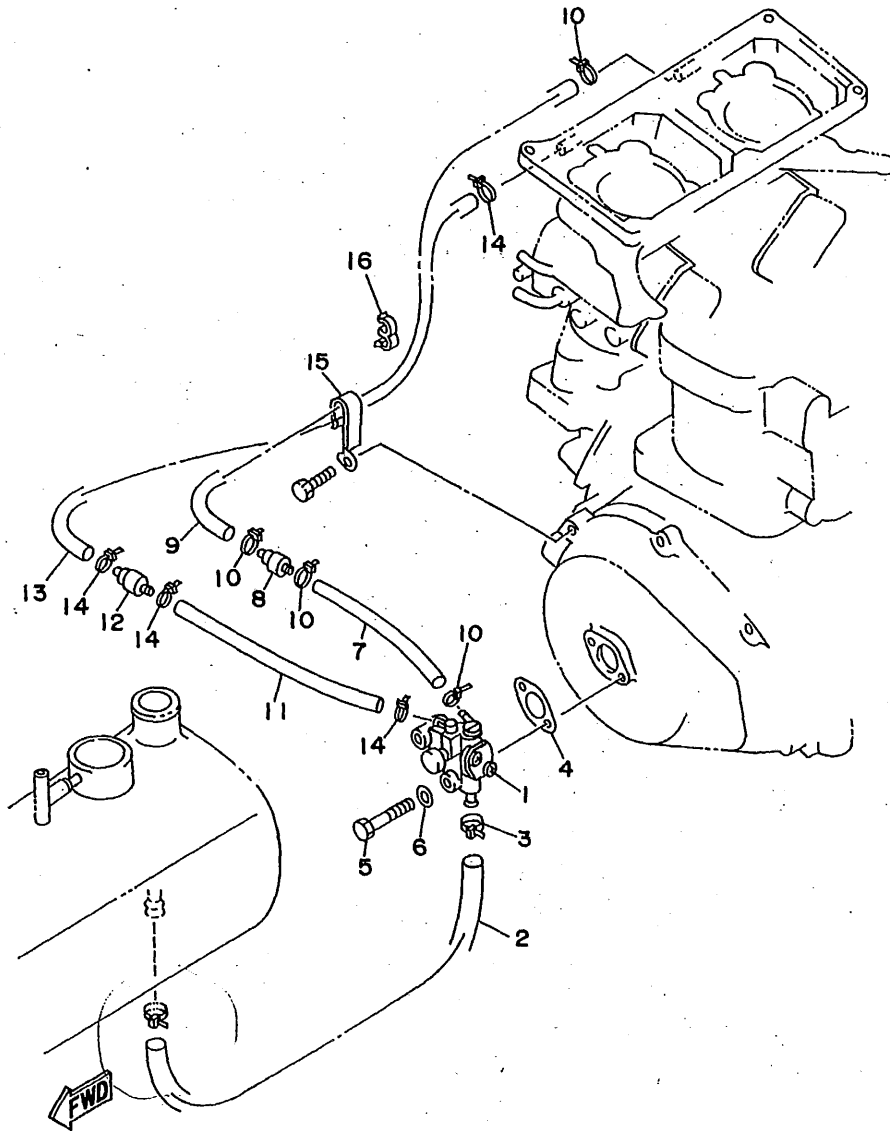


FIG. 4 CARBURETOR

REF. NO.	PART NO.	DESCRIPTION	Q'TY	REMARKS
29	6R7-24412-01	.BODY 1	2	
30	6K8-14523-11	.SCREW, STOP	4	
31	6R7-14569-00	.STRAINER	2	
32	61X-14916-15	.NEEDLE	2	
33	6K8-14547-01	.ARM, FLOAT	2	
34	6R7-14253-00	.SPRING	2	
35	6R7-14541-00	.DIAPHRAGM, PUMP	2	
36	6R7-14542-00	.BODY, PUMP 1	2	
37	6K8-14536-11	.GASKET	2	
38	6K8-14481-10	.CAP, CARBURETOR	2	
39	6M6-14923-10	.SCREW, PILOT	2	
40	6K8-14589-00	.SPRING	2	
41	822-14235-00	.WASHER, NEEDLE	2	
42	583-14561-00	.O-RING	2	
43	64X-14243-00	PLATE	1	
44	64X-14398-00	GASKET	2	
45	64X-14162-00	BOLT, HOLDING	4	

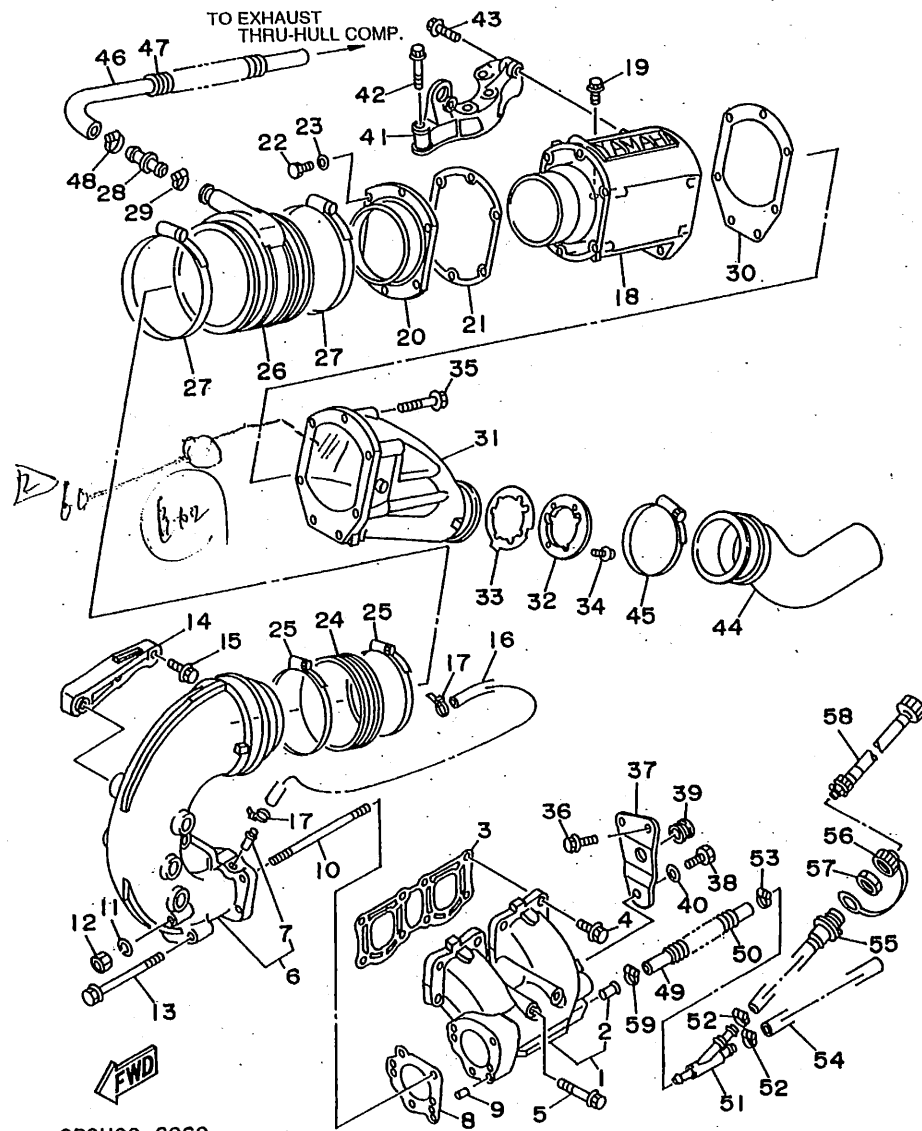
FIG. 5 OIL PUMP



GP21100-6050

REF. NO.	PART NO.	DESCRIPTION	Q'TY	REMARKS
1	62T-13200-11	OIL INJECTION PUMP ASSY	1	
2	90445-11M33	HOSE	1	
3	90465-11M10	CLAMP	1	
4	6R8-13116-A0	GASKET, PUMP CASE	1	
5	97095-06035	BOLT	2	
6	92990-06600	WASHER, PLATE	2	
7	90445-07M87	HOSE	1	
8	6R3-13183-00	VALVE, CHECK	1	
9	90446-07M35	HOSE	1	
10	90465-11M10	CLAMP	4	
11	90445-07M87	HOSE	1	
12	6R3-13183-00	VALVE, CHECK	1	
13	90446-07M48	HOSE	1	
14	90465-11M10	CLAMP	4	
15	90465-08M37	CLAMP	1	
16	90464-07M20	CLAMP	1	

B9

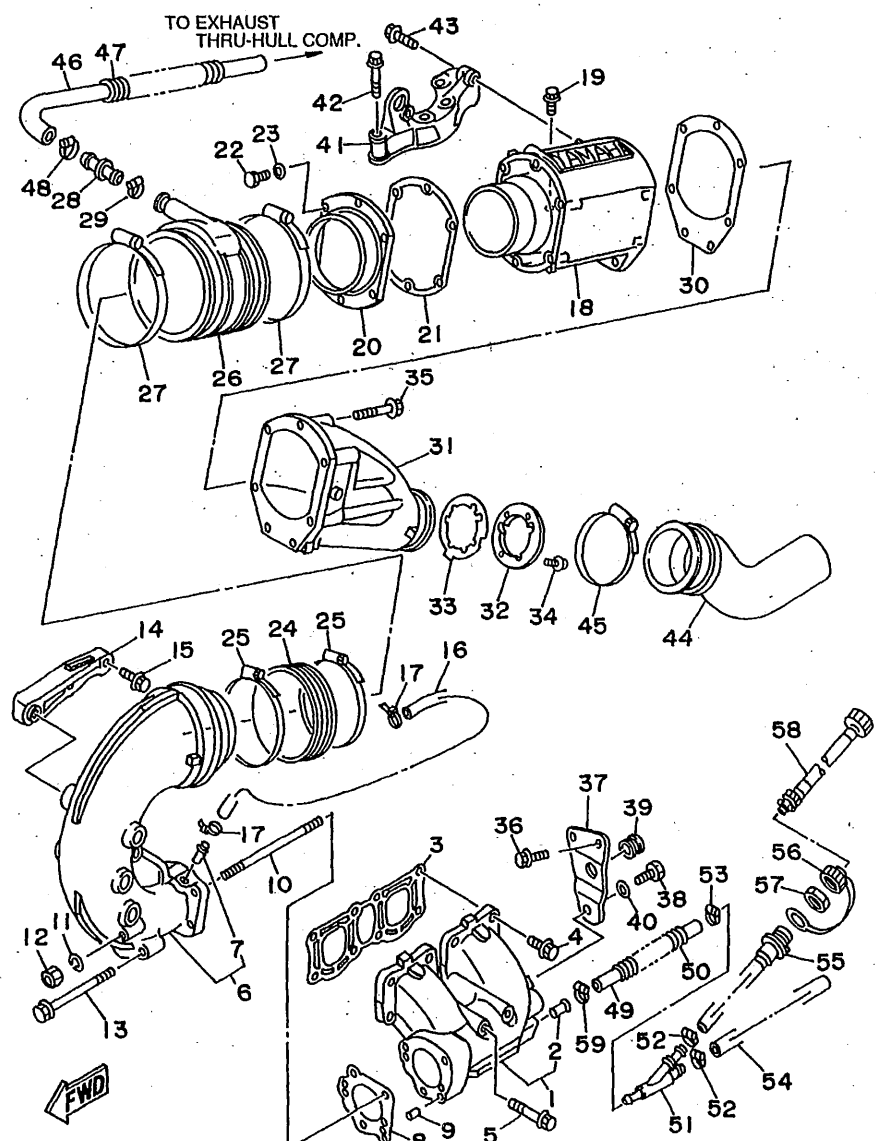


GP21100-6060

FIG. 6 EXHAUST 1

REF. NO.	PART NO.	DESCRIPTION	Q'TY	REMARKS
1	64X-14711-00-9M	MUFFLER 1	1	
2	6K8-51129-00	.NIPPLE	1	
3	62T-14613-00	GASKET, EXHAUST PIPE	1	
4	90105-10M60	BOLT, WASHER BASED	6	
5	90105-10M72	BOLT, WASHER BASED	2	
6	64X-14712-00-9M	RING, JOINT	1	
7	6K8-51129-00	.NIPPLE	1	
8	64X-14749-00	GASKET, MUFFLER DAMPER 2	1	
9	93605-12M21	PIN, DOWEL	2	
10	90116-08M59	BOLT, STUD	2	
11	92990-08100	WASHER, SPRING	2	
12	95380-08600	NUT	2	
13	90119-08M11	BOLT, WITH WASHER	2	
14	64X-14781-00-94	STAY, MUFFLER 2	1	
15	90105-10M73	BOLT, WASHER BASED	3	
16	63M-12577-00	HOSE 2	1	
17	90465-11M10	CLAMP	2	
18	64X-14721-00-94	MUFFLER 2	1	
19	90105-10M60	BOLT, WASHER BASED	2	
20	62T-41113-00-9M	OUTER COVER, EXHAUST	1	
21	62T-41114-01	GASKET, EXHAUST OUTER COVER	1	
22	97013-06025	BOLT	6	
23	92990-06600	WASHER, PLATE	6	
24	62T-14625-00	JOINT, EXHAUST 2	1	
25	90450-99M06	HOSE CLAMP ASSY	2	
26	64X-14615-00	JOINT, EXHAUST 1	1	
27	90450-99M16	HOSE CLAMP ASSY	2	
28	64X-12582-00	JOINT, HOSE 2	1	

B10

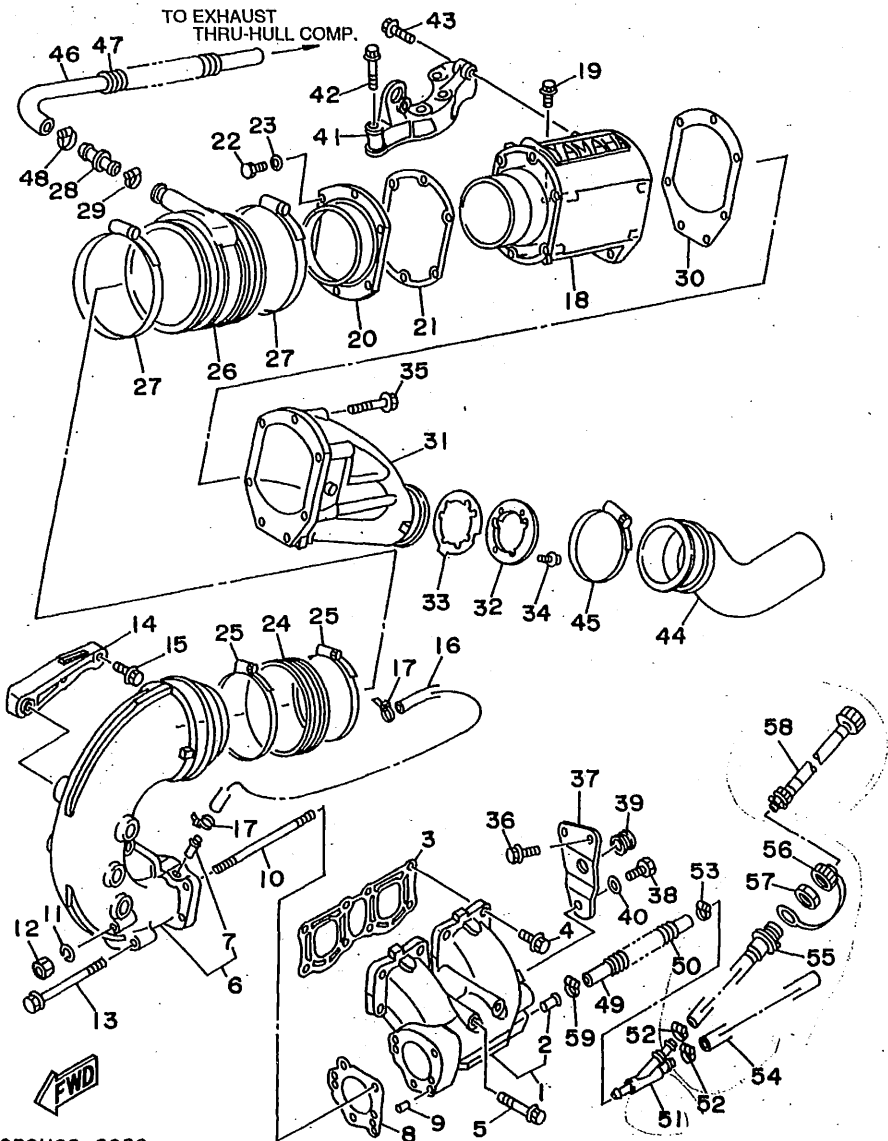


GP21100-6060

FIG. 6 EXHAUST 1

REF. NO.	PART NO.	DESCRIPTION	Q'TY	REMARKS
29	90450-22M14	HOSE CLAMP ASSY	1	
30	64X-41124-00	GASKET, EXHAUST OUTER COVER	1	
31	64X-41123-00-9M	OUTER COVER, EXHAUST	1	
32	64X-14763-00-94	SPACER	1	
33	64X-14623-00	GASKET, EXHAUST PIPE	1	
34	97985-06220	SCREW, WITH WASHER	3	
35	90105-08M70	BOLT, WASHER BASED	5	
36	90105-08M71	BOLT, WASHER BASED	2	
37	64X-14717-00	PLATE, STOPPER	1	
38	97013-08016	BOLT	1	
39	90480-20M05	GROMMET	1	
40	92995-08200	WASHER	1	
41	62T-14771-00-94	STAY, MUFFLER 1	1	
42	90119-10M72	BOLT, WITH WASHER	4	
43	90105-10M45	BOLT, WASHER BASED	2	
44	64X-14752-00	PIPE, OUTLET	1	
45	90450-88M15	HOSE CLAMP ASSY	1	
46	64X-12578-00	HOSE 3	1	
47	90446-27M55	HOSE	1	
48	90450-22M14	HOSE CLAMP ASSY	1	
49	90445-14M06	HOSE	1	
50	90446-20M53	HOSE	1	
51	64X-12581-00	JOINT, HOSE 1	1	
52	90450-14M05	HOSE CLAMP ASSY	2	
53	90450-18M09	HOSE CLAMP ASSY	1	
54	90445-14M26	HOSE	1	
55	63M-12580-00	JOINT ASSY	1	
56	682-84385-01	CAP 1	1	

B11

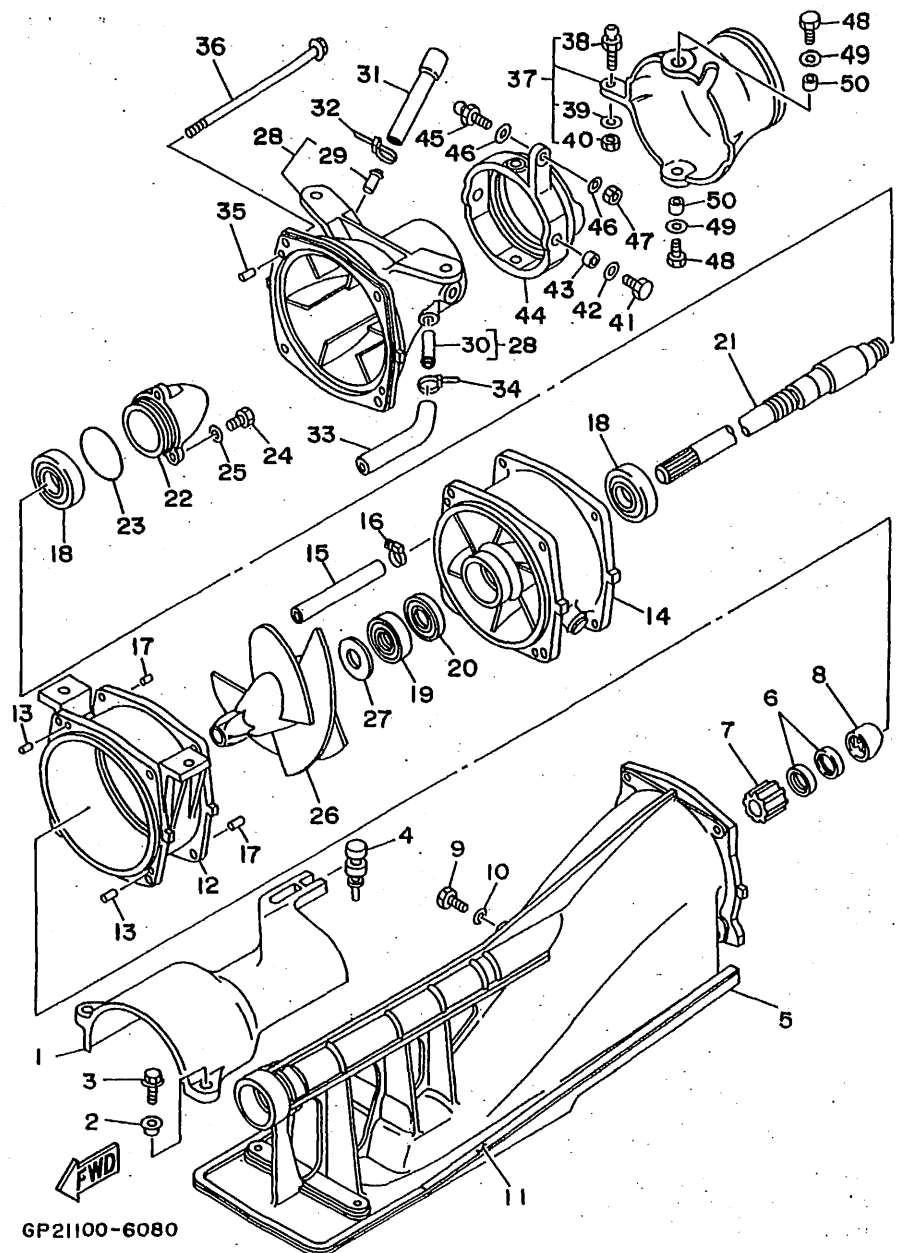


GP21100-6060

FIG. 6 EXHAUST 1

REF. NO.	PART NO.	DESCRIPTION	Q'TY	REMARKS
57	EU0-61652-00	NUT	1	
58	63M-12590-00	CONDUCTION ASSY	1	UR USA ONLY
	63M-12590-10	CONDUCTION ASSY	1	UR JAPAN ONLY
	63M-12590-20	CONDUCTION ASSY	1	UR EXCEPT USA
59	90601-118UF	BAND, HOSE 18	1	
△ 60	64X-82560-00	THERMO SWITCH ASSY	1	

B12



GP21100-6080

FIG. 8 JET UNIT 1

REF. NO.	PART NO.	DESCRIPTION	Q'TY	REMARKS
1	62T-51381-00	COVER	1	
2	90387-06M60	COLLAR	2	
3	97595-06525	BOLT, WITH WASHER	2	
4	90480-06M46	GROMMET	1	
5	62T-51311-00-94	DUCT, INTAKE	1	
6	93102-18M35	OIL SEAL	2	
7	6R8-45318-00	BUSHING, DRIVE SHAFT	1	
8	6R8-51348-00-5B	SPACER	1	
9	97095-06025	BOLT	1	
10	92990-06600	WASHER, PLATE	1	
11	6R8-51367-01	FELT, PACKING	2	
12	6R8-51312-00-94	HOUSING, IMPELLER	1	
13	93606-12019	PIN, DOWEL	2	
14	62T-51315-00-94	DUCT, IMPELLER	1	
15	90445-14M17	HOSE	1	
16	90450-14M05	HOSE CLAMP ASSY	1	
17	93606-12019	PIN, DOWEL	2	
18	93306-205U0	BEARING	2	
19	93102-25M34	OIL SEAL	1	
20	93101-25M50	OIL SEAL	1	
21	6R8-45511-00	SHAFT, DRIVE	1	
22	62T-51326-00	CAP	1	
23	93210-46M16	O-RING	1	
24	97095-06016	BOLT	3	
25	92990-06600	WASHER, PLATE	3	
26	62T-51321-B0	IMPELLER	1	
27	62T-51348-00	SPACER	1	
28	62T-51318-00-5B	NOZZLE	1	

B14

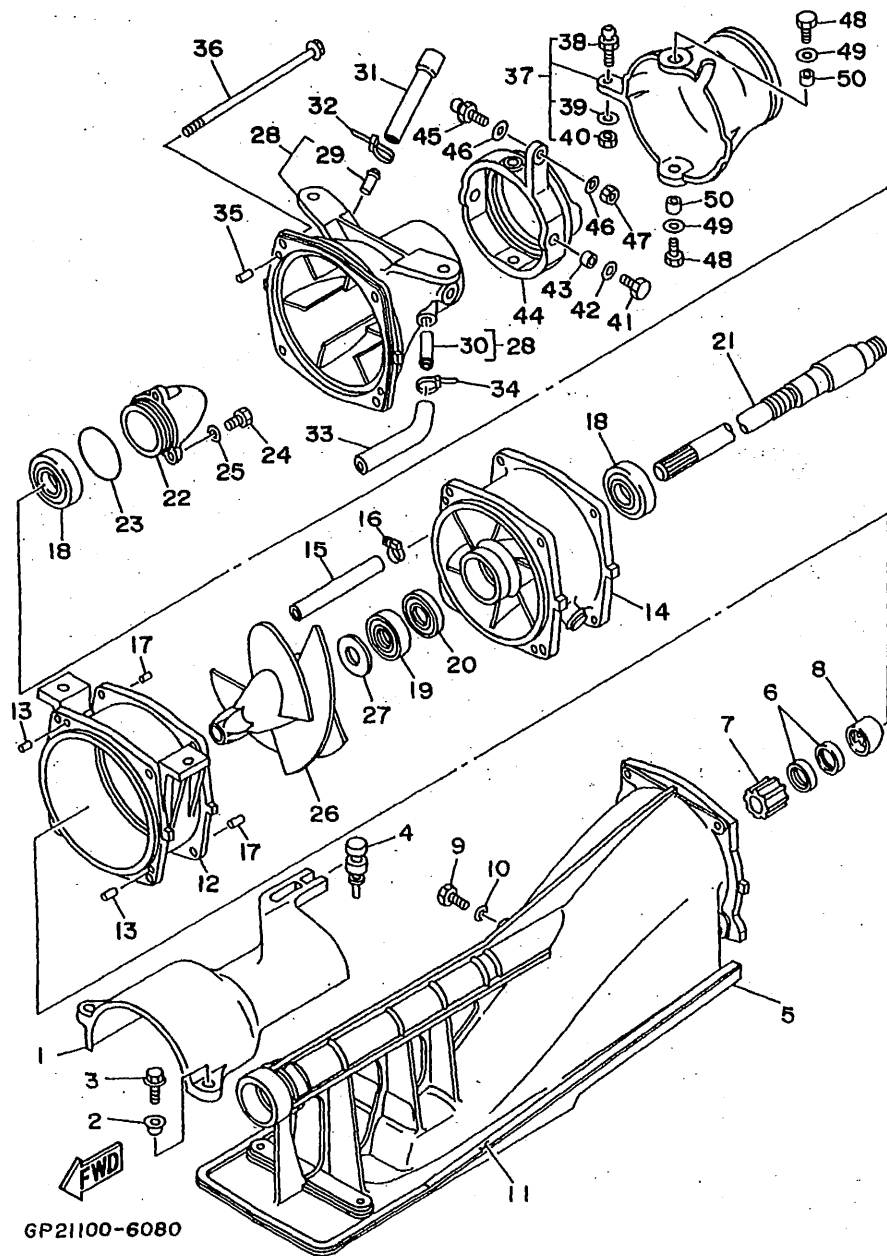


FIG. 8 JET UNIT 1

REF. NO.	PART NO.	DESCRIPTION	Q'TY	REMARKS
29	6K8-51129-00	.NIPPLE	1	
30	62T-51129-00	.NIPPLE	1	
31	62T-51673-00	PIPE 1	1	
32	90465-11M10	CLAMP	1	
33	90445-14M24	HOSE	1	
34	90465-11M10	CLAMP	1	
35	93606-12019	PIN, DOWEL	2	
36	90101-06M04	BOLT	4	
37	62T-51313-01	NOZZLE, DEFLECTOR	1	
38	63M-42316-00	.BOLT, JOINT	1	
39	90201-08M04	.WASHER, PLATE	1	
40	95380-08700	.NUT	1	
41	97095-08018	BOLT	2	
42	92995-08600	WASHER	2	
43	90387-08M08	COLLAR	2	
44	64X-51190-00-5B	RING, TRIM	1	
45	6R7-42316-00	BOLT, JOINT	1	
46	90201-06M31	WASHER, PLATE	2	
47	95380-06700	NUT	1	
48	97095-08020	BOLT	2	
49	92995-08600	WASHER	2	
50	90387-08M06	COLLAR	2	

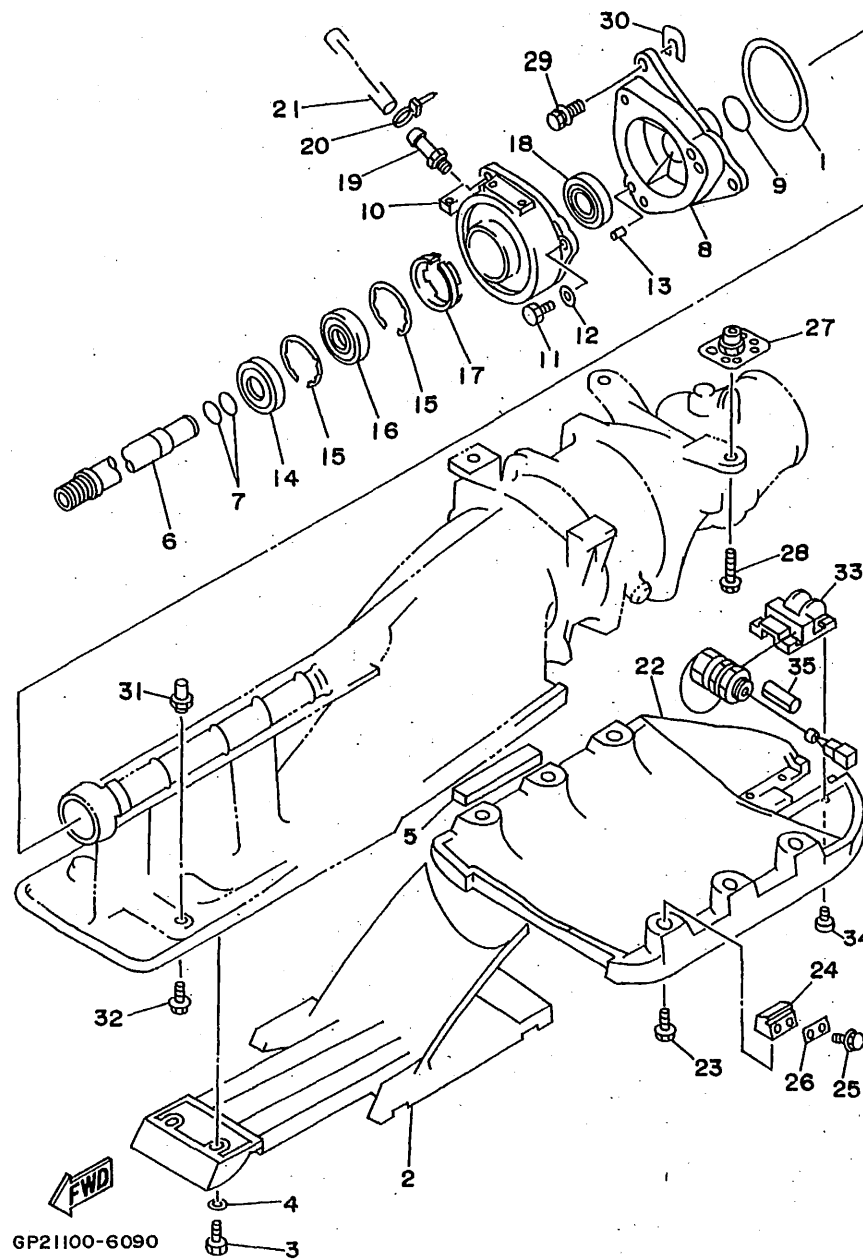


FIG. 9 JET UNIT 2

REF. NO.	PART NO.	DESCRIPTION	QTY	REMARKS
1	6K8-45127-00	SEAL	1	
2	63N-51333-00-5B	SCREEN, INTAKE	1	
3	97095-06018	BOLT	6	
4	92990-06600	WASHER, PLATE	6	
5	63N-51368-00	FELT, PACKING	2	
6	6R8-51323-10	SHAFT, COUPLOR	1	
7	93210-17MA4	O-RING	2	
8	62G-45331-00-94	HOUSING, BEARING	1	
9	93210-35M72	O-RING	1	
10	61X-45332-01-9M	HOUSING, BEARING	1	
11	97095-08025	BOLT	3	
12	92995-08600	WASHER	3	
13	93606-12019	PIN, DOWEL	2	
14	93101-25M55	OIL SEAL	1	
15	93430-47M04	CIRCLIP	2	
16	93306-205U6	BEARING	1	
17	63M-51348-00	SPACER	1	
18	93101-25M56	OIL SEAL	1	
19	61L-45378-00	NIPPLE, HOSE	1	
20	90465-11M10	CLAMP	1	
21	90445-09M21	HOSE	1	
22	GJ1-U273B-00	PLATE 2	1	
23	90119-089U6	BOLT, WITH WASHER	6	YMUS
24	GJ1-62733-00	PACKING	6	
25	90119-089U5	BOLT, WITH WASHER	12	YMUS
26	GJ1-62663-00	PACKING 1	6	
27	90179-10925	NUT	4	
28	90119-109U8	BOLT, WITH WASHER	4	YMUS

C2

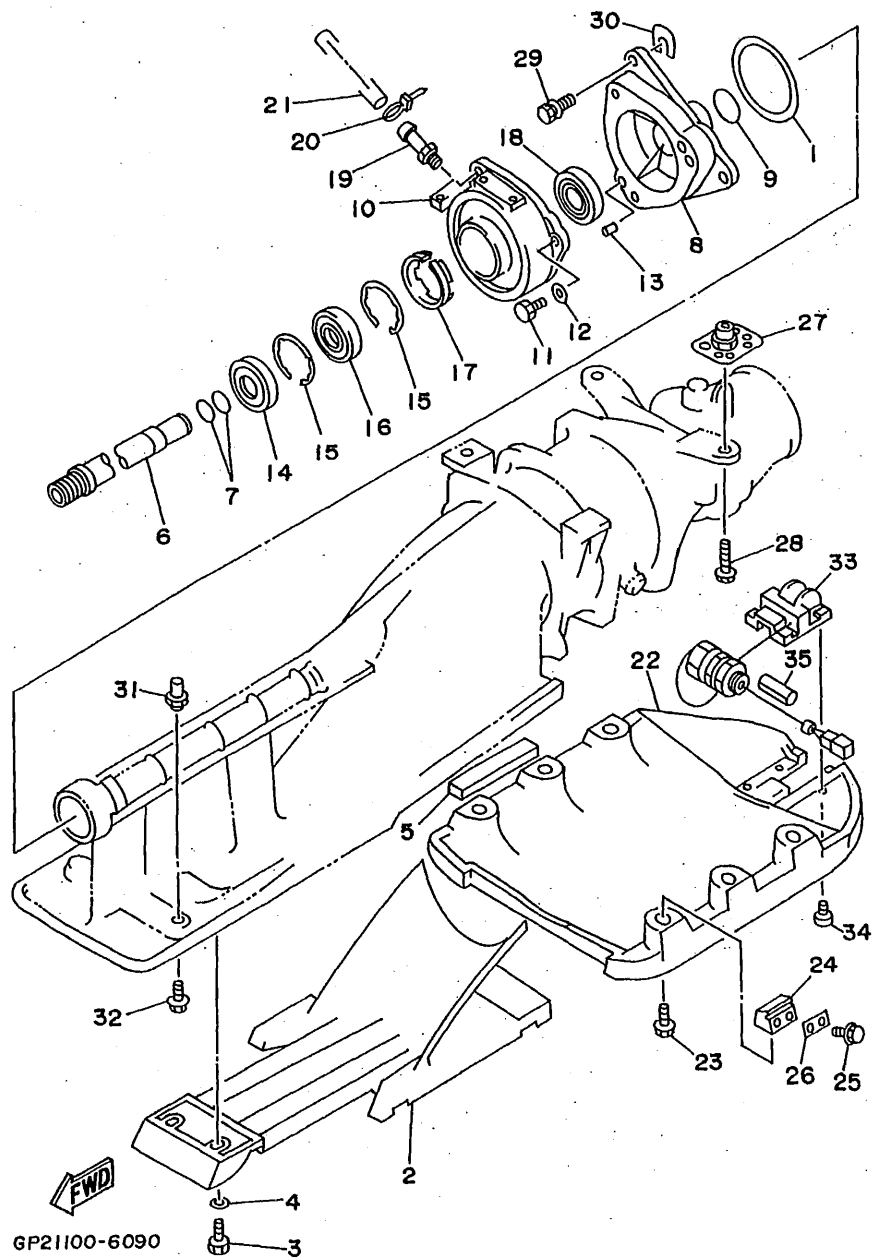
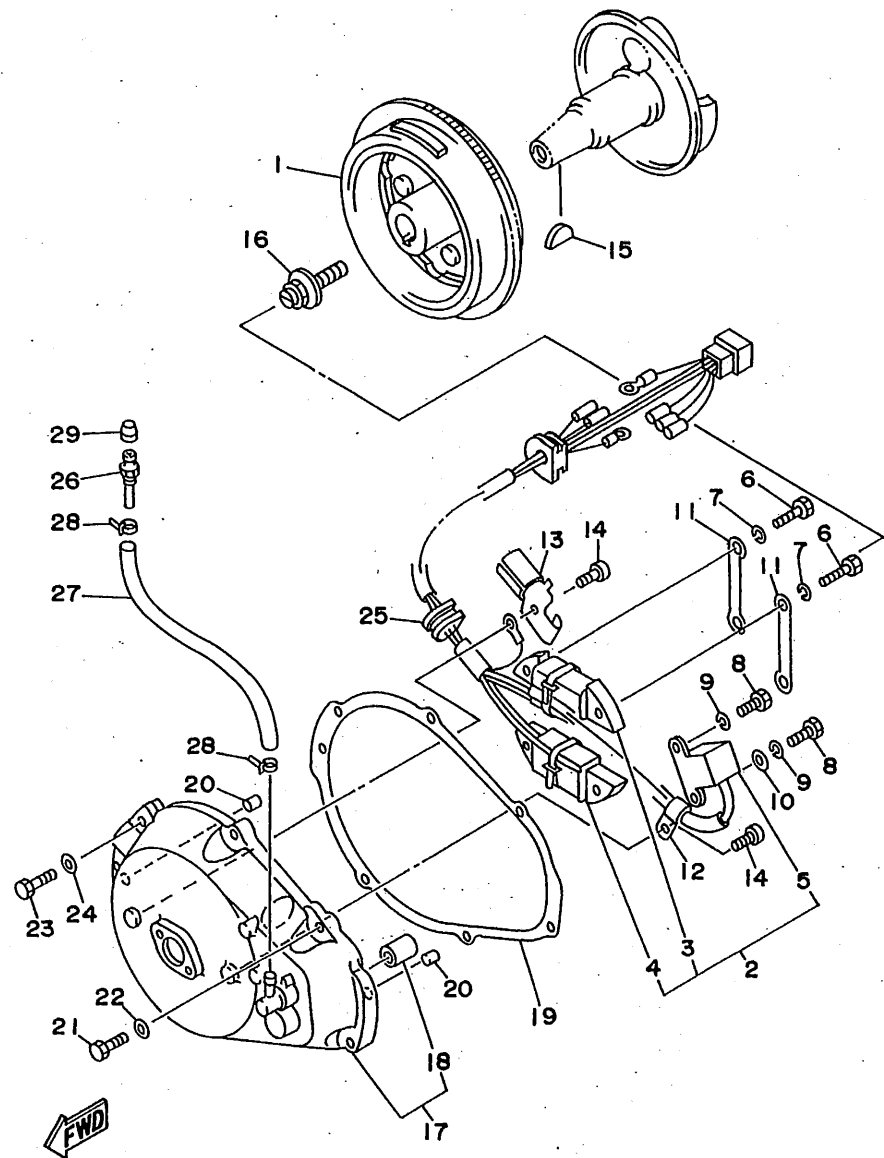


FIG. 9 JET UNIT 2

REF. NO.	PART NO.	DESCRIPTION	Q'TY	REMARKS
29	90119-08907	BOLT, WITH WASHER	3	
30	GDO-U7249-00-05	SHIM (T=0.5)	2	YMUS
	GDO-67249-00-05	SHIM (T=0.5)	2	
	GDO-U7249-00-10	SHIM (T=1.0)	2	YMUS
	GDO-67249-00-10	SHIM (T=1.0)	2	
31	90179-06947	NUT	2	
32	90119-06929	BOLT, WITH WASHER	2	
33	GJ1-U8K31-01	SENDER, SPEED	1	YMUS
34	98780-05512	SCREW, FLAT HEAD	4	
35	GJ1-6822E-00	GROMMET	1	

C3



GP21100-6100

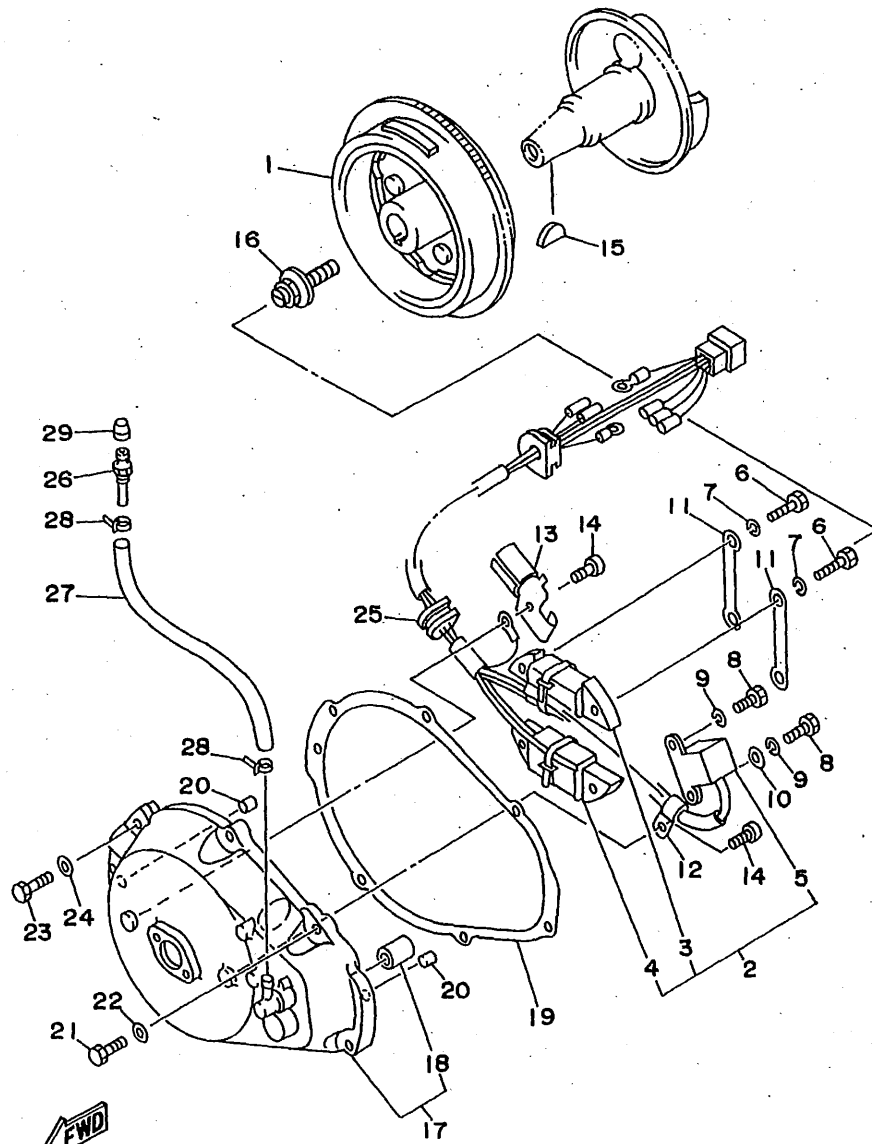
FIG. 10 GENERATOR

REF. NO.	PART NO.	DESCRIPTION	Q'TY	REMARKS
1	64X-85550-00	ROTOR ASSY	1	
2	64X-85521-01	COIL ASSY	1	
3	64X-85520-00	.COIL, CHARGE	1	
4	62T-85533-00	.COIL, LIGHTING	1	
5	64X-85580-00	.COIL, PULSER	1	
6	97013-05020	BOLT	4	
7	92990-05100	WASHER, SPRING	4	
8	97013-05012	BOLT	2	
9	92990-05100	WASHER, SPRING	2	
10	90201-05M09	WASHER, PLATE	1	
11	64X-85525-00	COVER	2	
12	90465-06M28	CLAMP	1	
13	90465-06M00	CLAMP	1	
14	98580-06010	SCREW, PAN HEAD	2	
15	90280-16053	KEY, WOODRUFF	1	
16	90109-10M72	BOLT	1	
17	64X-81337-00-4D	COVER, FLYWHEEL	1	
18	90380-12M29	.BUSH, SOLID	1	
19	6M6-81365-A0	GASKET, HOLE COVER	1	
20	93606-12019	PIN, DOWEL	2	
21	97095-06025	BOLT	5	
22	92990-06600	WASHER, PLATE	5	
23	97095-06030	BOLT	2	
24	92990-06600	WASHER, PLATE	2	
25	90480-23M69	GROMMET	1	
26	61L-5169A-00	NIPPLE, GREASE	1	
27	90445-09M24	HOSE	1	
28	90465-11M10	CLAMP	2	

C4

FIG. 10 GENERATOR

REF. NO.	PART NO.	DESCRIPTION	Q'TY	REMARKS
29	663-45119-00	CAP, GREASE NIPPLE	1	



GP21100-6100

C5

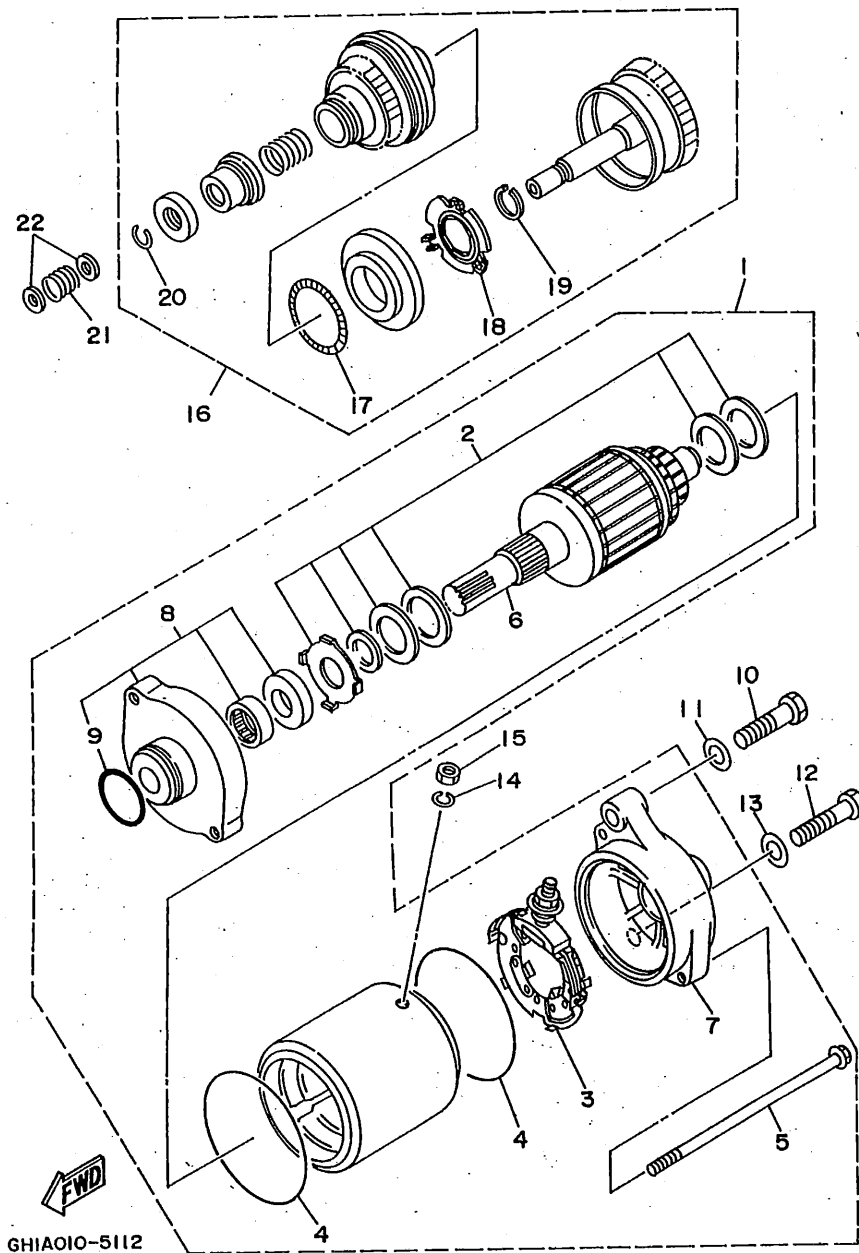
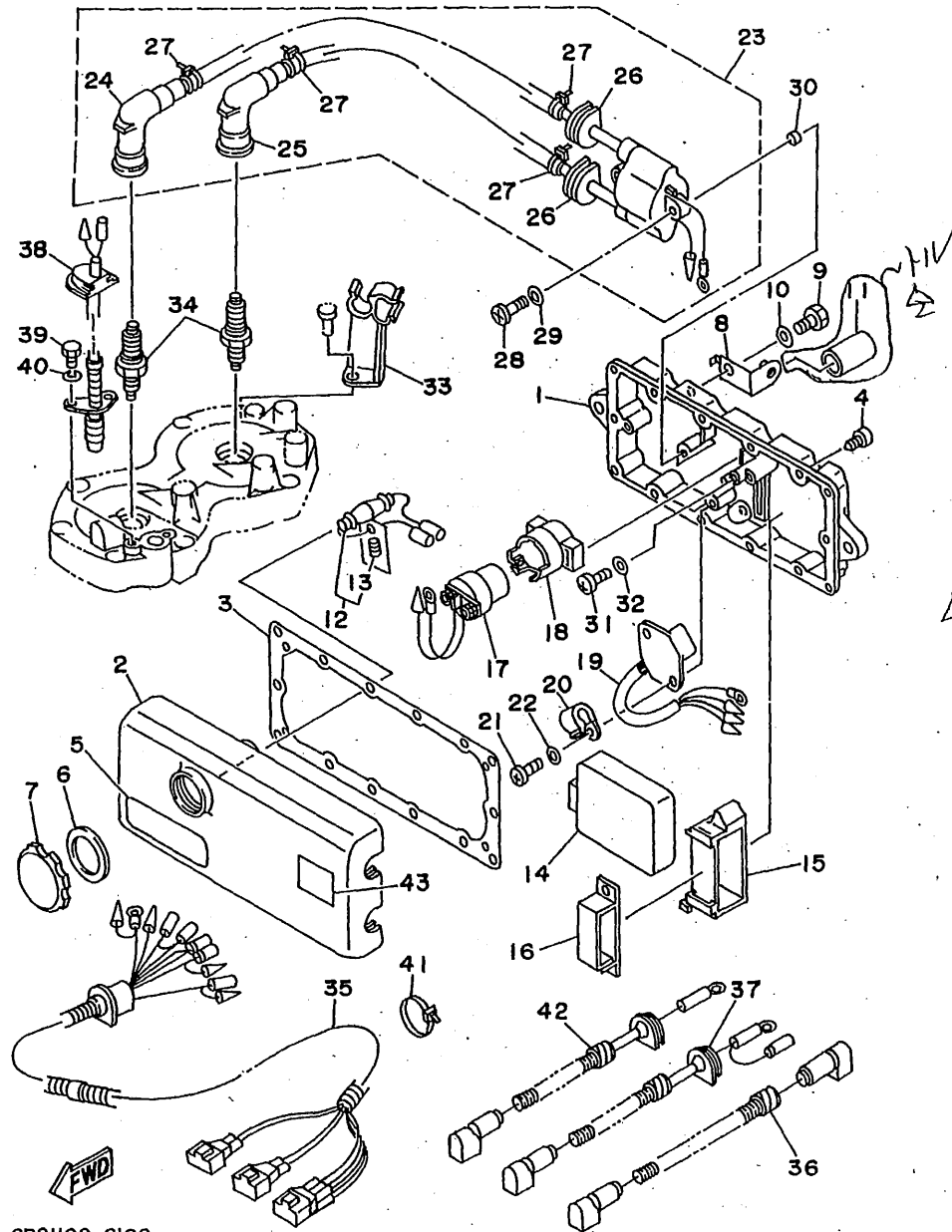


FIG. 11 STARTING MOTOR

REF. NO.	PART NO.	DESCRIPTION	Q'TY	REMARKS
1	64X-81800-00	STARTING MOTOR ASSY	1	
2	3AJ-81809-00	.WASHER KIT	1	
3	6M6-81840-10	.BRUSH HOLDER ASSY	1	
4	11H-81844-00	.GASKET	2	
5	6M6-81826-00	.BOLT	2	
6	6M6-81850-00	.ARMATURE ASSY	1	
7	64X-81820-00	.REAR BRACKET ASSY	1	
8	6M6-81830-00	.FRONT BRACKET ASSY	1	
9	26H-81847-00	..O-RING	1	
10	97013-08040	BOLT	1	
11	92990-08600	WASHER, PLATE	1	
12	97013-08035	BOLT	1	
13	92990-08600	WASHER, PLATE	1	
14	92995-06100	WASHER, SPRING	1	
15	95380-06700	NUT	1	
16	6M6-8183E-00	IDLE GEAR COMP.	1	
17	6M6-81866-00	.WEIGHT SPRING	1	
18	6M6-81865-00	.WEIGHT HOLDER	1	
19	93440-25M08	.CIRCLIP	1	
20	93450-18M06	.CIRCLIP	1	
21	90501-14M73	SPRING, COMPRESSION	1	
22	92990-06600	WASHER, PLATE	2	

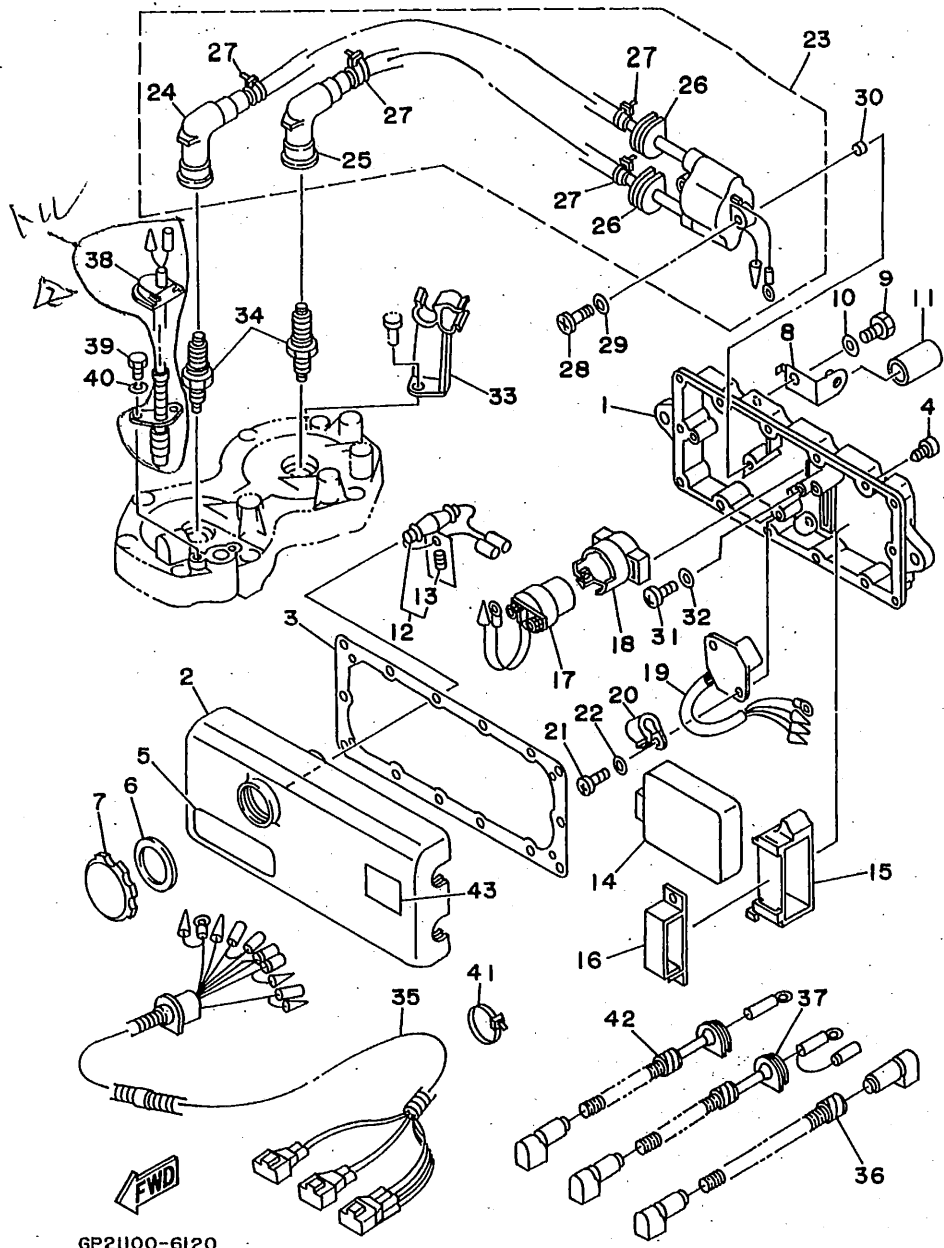


GP21100-6120

FIG. 12 ELECTRICAL 1

REF. NO.	PART NO.	DESCRIPTION	Q'TY	REMARKS
1	64X-8552A-00-5B	HOUSING	1	
2	6M6-8552E-01	COVER, CASE	1	
3	6M6-81921-00	GASKET, TERMINAL	1	
4	97780-60525	SCREW, TAPPING	14	
5	6R7-83623-40	MARK 3	1	UR ENGLISH
	6R7-83623-50	MARK 3	1	UR FRENCH
	63N-83623-00	MARK 3	1	UR JAPAN
6	6M6-81844-00	GASKET	1	
7	6M6-8132W-00	CAP	1	
8	64X-85542-00	BRACKET	1	
9	97095-08016	BOLT	1	
10	92995-08600	WASHER	1	
11	64X-82366-00	HOSE 4	1	
12	6K8-82150-01	FUSE HOLDER ASSY	1	
13	6G1-82151-00	.FUSE	1	
14	64X-85540-00	C.D.I. UNIT ASSY	1	
15	64X-85546-00	BAND	1	
16	90464-06M29	CLAMP	1	
17	6G1-81941-10	STARTER RELAY ASSY	1	
18	6M6-81952-01	HOLDER, RELAY	1	
19	6M6-81960-A0	RECTIFIER & REGULATOR ASSY	1	
20	90465-08028	CLAMP	1	
21	98580-06016	SCREW, PAN HEAD	1	
22	92990-06600	WASHER, PLATE	1	
23	64X-85570-00	IGNITION COIL ASSY	1	
24	62E-82371-10	.CAP, PLUG	1	
25	62E-82371-10	.CAP, PLUG	1	
26	90480-06M43	.GROMMET	2	

C7

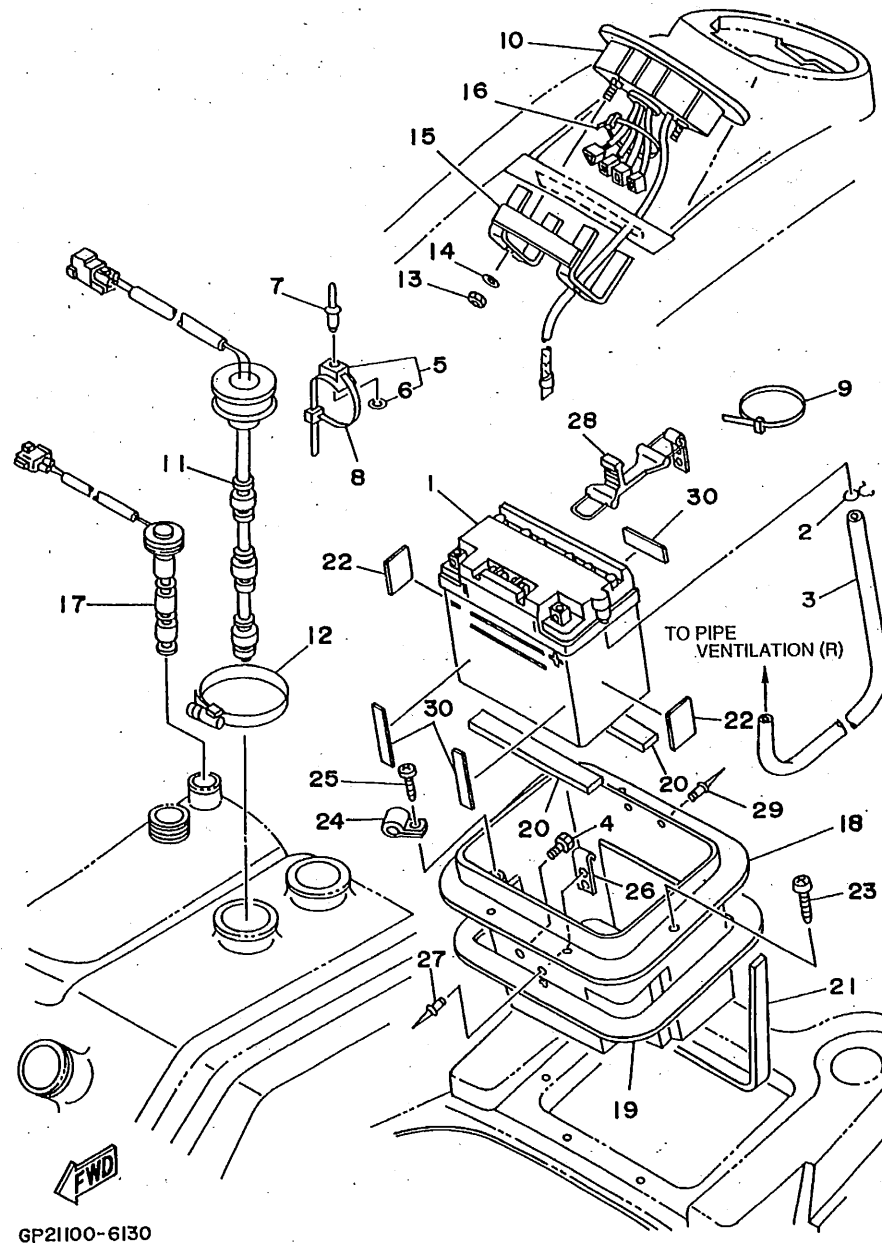


GP21100-6120

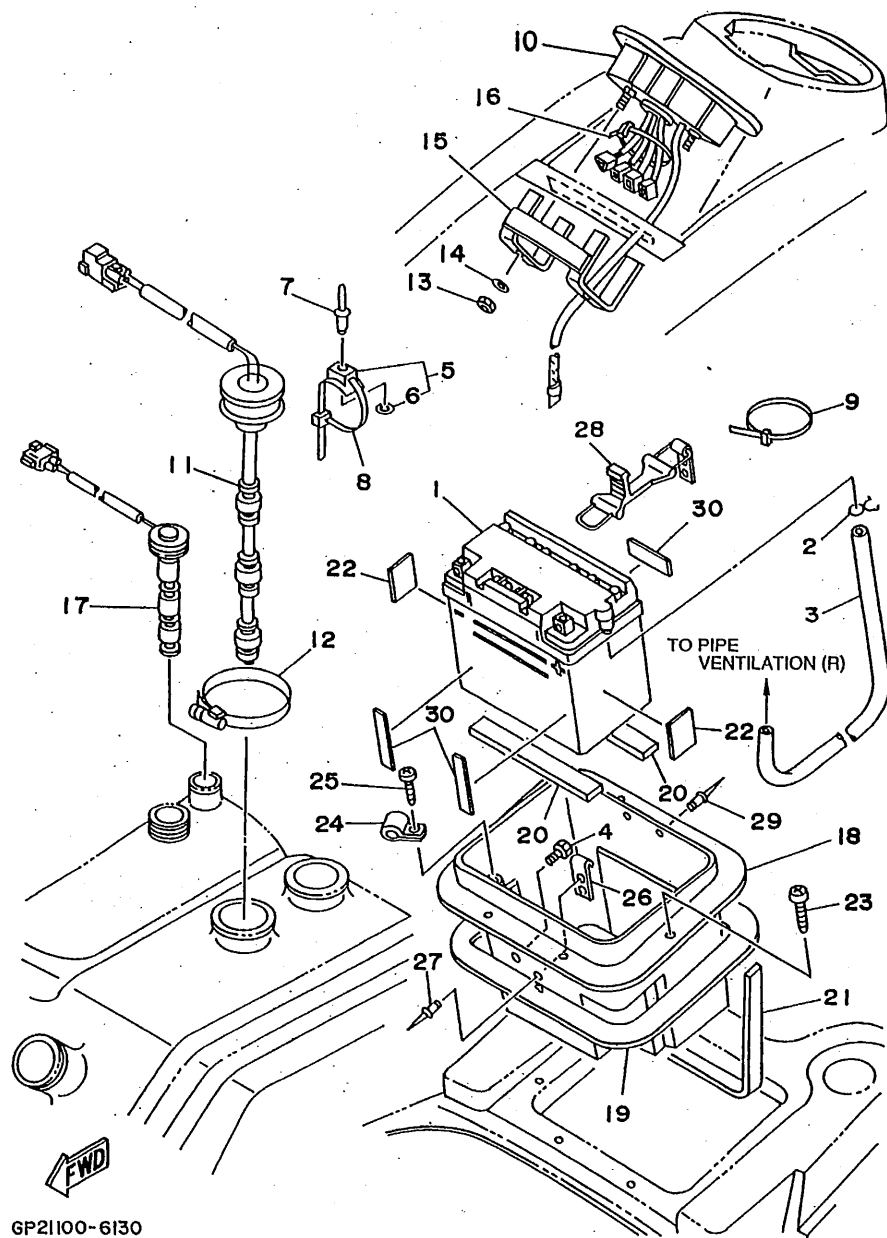
FIG. 12 ELECTRICAL 1

REF. NO.	PART NO.	DESCRIPTION	Q'TY	REMARKS
27	90465-11M10	.CLAMP	4	
28	97880-06030	SCREW, PAN HEAD	2	
29	92990-06600	WASHER, PLATE	2	
30	90387-06M30	COLLAR	1	
31	98580-06016	SCREW, PAN HEAD	2	
32	92990-06600	WASHER, PLATE	2	
33	62T-82361-00	CLAMP, CORD	1	
34	94702-00195	PLUG, SPARK (NGK BR8HS)	2	
35	62T-82553-01	EXTENSION, WIRE LEAD	1	
36	62T-82117-01	WIRE, LEAD	1	
37	62T-82117-11	WIRE, LEAD	1	
38	64X-82560-00	THERMO SWITCH ASSY.	1	
39	97095-06016	BOLT	2	
40	92995-06100	WASHER, SPRING	2	
41	90465-13M11	CLAMP	1	
42	6M6-82117-21	WIRE, LEAD	1	
43	4GB-2155A-00	MARK, EC	1	EUROPE ONLY

FIG. 13 ELECTRICAL 2



REF. NO.	PART NO.	DESCRIPTION	Q'TY	REMARKS
1	EU0-82110-09	BATTERY ASSY	1	
2	90467-08M10	CLIP	1	
3	GE1-U7856-30	HOSE, AIR VENT 3	1	YMUS
4	90119-089U7	BOLT, WITH WASHER	4	YMUS
5	90600-91736	CLAMP	4	
6	90201-05925	WASHER, PLATE	1	
7	90267-48925	RIVET, BLIND	4	
8	90601-20006	NYLON CLIP 1	4	
9	90465-13M11	CLAMP	1	
10	GH3-6820A-20	METER ASSY	1	UR USA ONLY
	GH3-6820A-30	METER ASSY	1	UR EXCEPT USA
11	GJ1-6824B-00	SENDER, FUEL	1	
12	90601-162U5	BAND, HOSE 62	1	YMUS
13	95720-05300	NUT, FLANGE	2	
14	92990-05200	WASHER, PLAIN	2	
15	GJ1-68238-00	BRACKET, METER	1	
16	90601-20006	NYLON CLIP 1	1	
17	GJ1-6824C-01	SENDER, OIL	1	
18	GP2-U8211-00	BATTERY CASE COMP.	1	YMUS
19	GJ1-6266B-00	PACKING 3	1	
20	FJ0-68221-00	PAD, BATTERY 1	2	
21	FJ0-68221-30	PAD, BATTERY 2	1	
22	GJ1-U8221-00	PAD, BATTERY	2	YMUS
23	90149-05984	SCREW	6	
24	90600-913U2	CLIP, NYLON 13	1	YMUS
25	97780-40116	SCREW, TAPPING	1	
26	GA7-65772-00	HOOK A	1	
27	90267-489U9	RIVET, BLIND	2	YMUS



GP21100-6130

FIG. 13 ELECTRICAL 2

REF. NO.	PART NO.	DESCRIPTION	Q'TY	REMARKS
28	GJ1-66607-00	HOOK COMP.	1	
29	90267-48909	RIVET, BLIND	2	YMUS
30	EU0-67593-40	MAT 3	3	

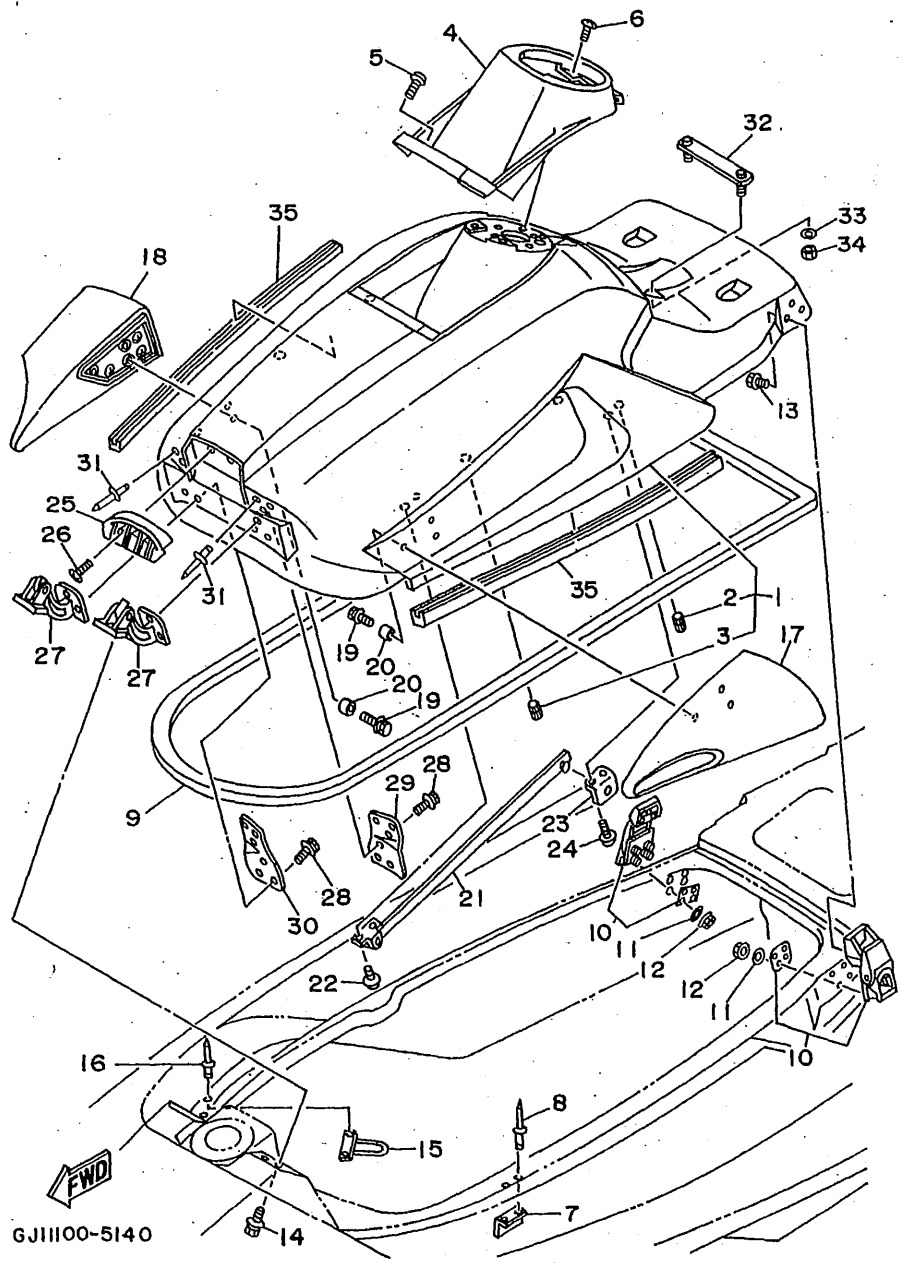


FIG. 14 ENGINE HATCH

REF. NO.	PART NO.	DESCRIPTION	Q'TY	REMARKS
1	GJ1-U516A-00-PO	ENGINE HATCH COMP.	1	YMUS PURE WHITE
2	90179-06926	.NUT	4	
3	90179-08927	.NUT	4	
4	GH1-6516N-30	COVER, ENGINE HATCH	1	
5	90149-05903	SCREW	2	
6	90149-05984	SCREW	4	
7	FN8-62884-00	BRACKET, HATCH SUPPORT	1	
8	90267-489U2	RIVET, BLIND	2	YMUS
9	GJ1-U2664-00	PACKING	1	YMUS
10	GJ1-62840-01	HATCH LOCK ASSY	2	
11	92990-05600	WASHER, PLATE	8	
12	95720-05300	NUT, FLANGE	8	
13	90119-05935	BOLT, WITH WASHER	6	
14	90119-06940	BOLT, WITH WASHER	4	
15	GH1-61557-00	GUIDE, CABLE	1	
16	90267-489U2	RIVET, BLIND	2	YMUS
17	GH1-6596B-10	MIRROR (LH)	1	
18	GH1-6596C-10	MIRROR (RH)	1	
19	90119-06924	BOLT, WITH WASHER	6	
20	90387-06915	COLLAR	6	
21	GH1-62891-01	SUPPORT, HATCH	1	
22	90159-06901	SCREW, WITH WASHER	2	
23	FN8-62892-00	FIX, PLATE	1	
24	90159-06901	SCREW, WITH WASHER	2	
25	GH1-62128-30	UNIVERSAL, AIR INTAKE	1	
26	90149-04902	SCREW	2	
27	GH1-6517G-04	HINGE, HATCH	2	
28	90119-06940	BOLT, WITH WASHER	6	

C11

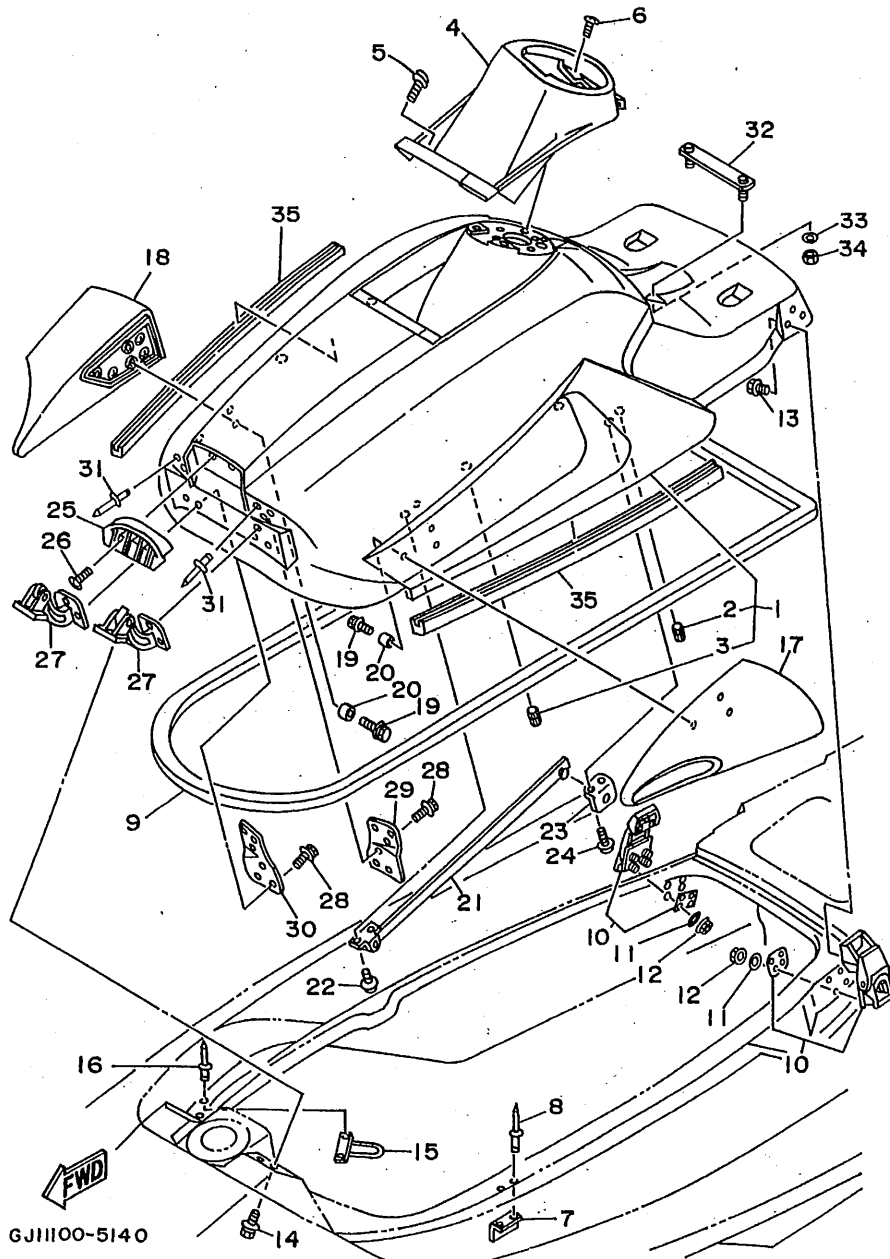


FIG. 14 ENGINE HATCH

REF. NO.	PART NO.	DESCRIPTION	Q'TY	REMARKS
29	GHT-6517J-01	PLATE, HATCH HINGE (LH)	1	
30	GHT-6517K-01	PLATE, HATCH HINGE (RH)	1	
31	90267-489U1	RIVET, BLIND	6	YMUS
32	GHT-6378C-00	STAY, SEAT 1	1	
33	92990-06200	WASHER, PLAIN	2	
34	95720-06300	NUT, SELF-LOCKING	2	
35	GHT-65162-01	TRIM	2	

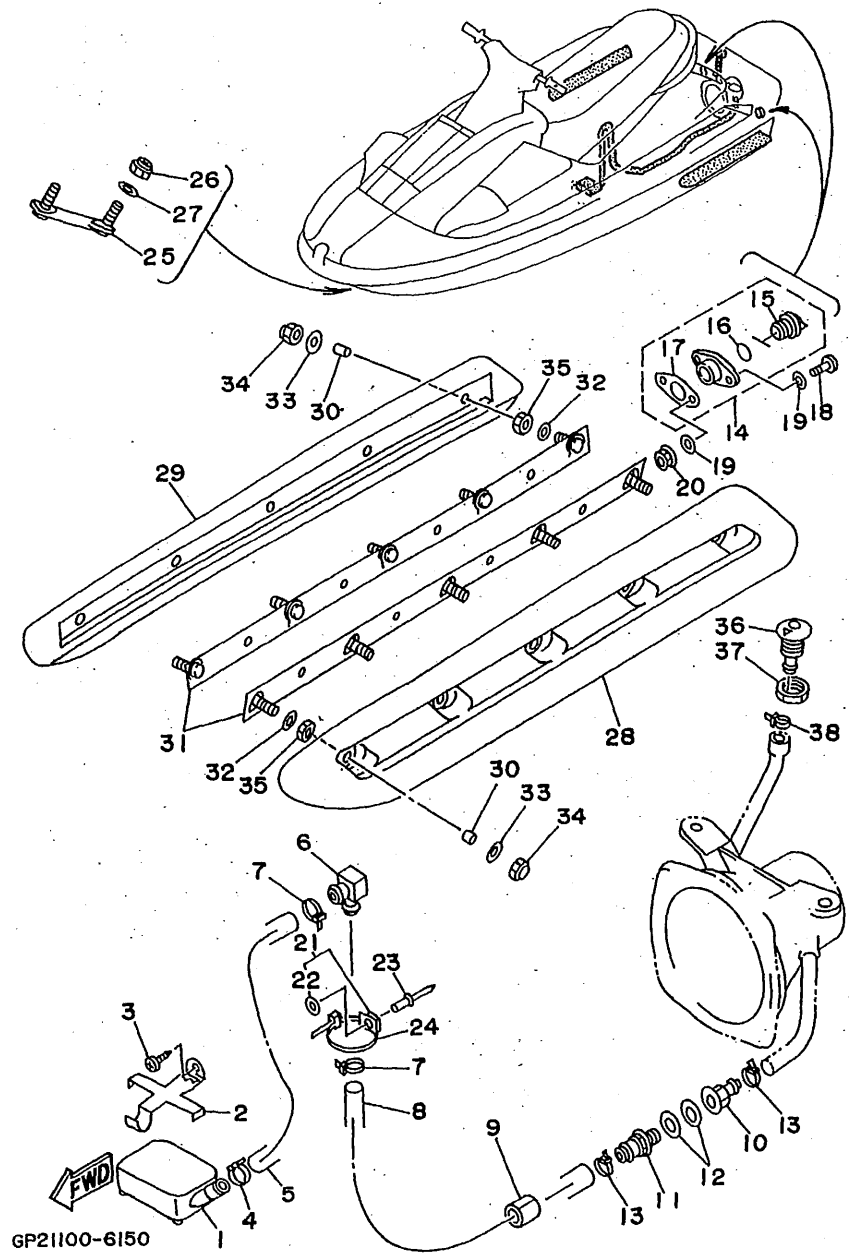


FIG. 15 HULL. DECK

REF. NO.	PART NO.	DESCRIPTION	Q'TY	REMARKS
1	G00-6761D-00	STRAINER, BILGE	1	
2	EW2-67618-00	BASE, STRAINER BLIGE	1	
3	97780-50612	SCREW, TAPPING	1	
4	90601-200U1	NYLON CLIP 1	1	YMUS
5	90445-19M07	HOSE	1	
6	61X-51162-00	JOINT, HOSE	1	
7	90465-13M11	CLAMP	2	
8	90445-19M09	HOSE	1	
9	GJ1-67578-10	PACKING, HOSE 2	1	
10	90604-80759	CONNECTION, THRU-HULL 1/4	1	
11	90604-80775	THROUGH, HULL CONNECTION	1	
12	90430-13909	GASKET	2	
13	90601-200U1	NYLON CLIP 1	2	YMUS
14	EU0-62280-00	DRAIN PLUG ASSY	2	
15	EU0-62282-00	.PLUG, DRAIN	1	
16	EU0-62283-00	.O-RING	1	
17	EU0-62285-01	.PACKING, DRAIN	1	
18	97880-05020	SCREW, PAN HEAD	4	
19	92990-05200	WASHER, PLAIN	8	
20	95720-05300	NUT, FLANGE	4	
21	90600-91736	CLAMP	1	
22	90201-05925	.WASHER, PLATE	1	
23	90267-48925	RIVET, BLIND	1	
24	90601-20006	NYLON CLIP 1	1	
25	FN8-U1624-00	BOWEYE 1 (S)	1	YMUS
26	95720-08300	NUT, SELF-LOCKING	2	
27	92990-08200	WASHER, PLAIN	2	
28	GH1-6883N-50	STABILIZER LH	1	

C13

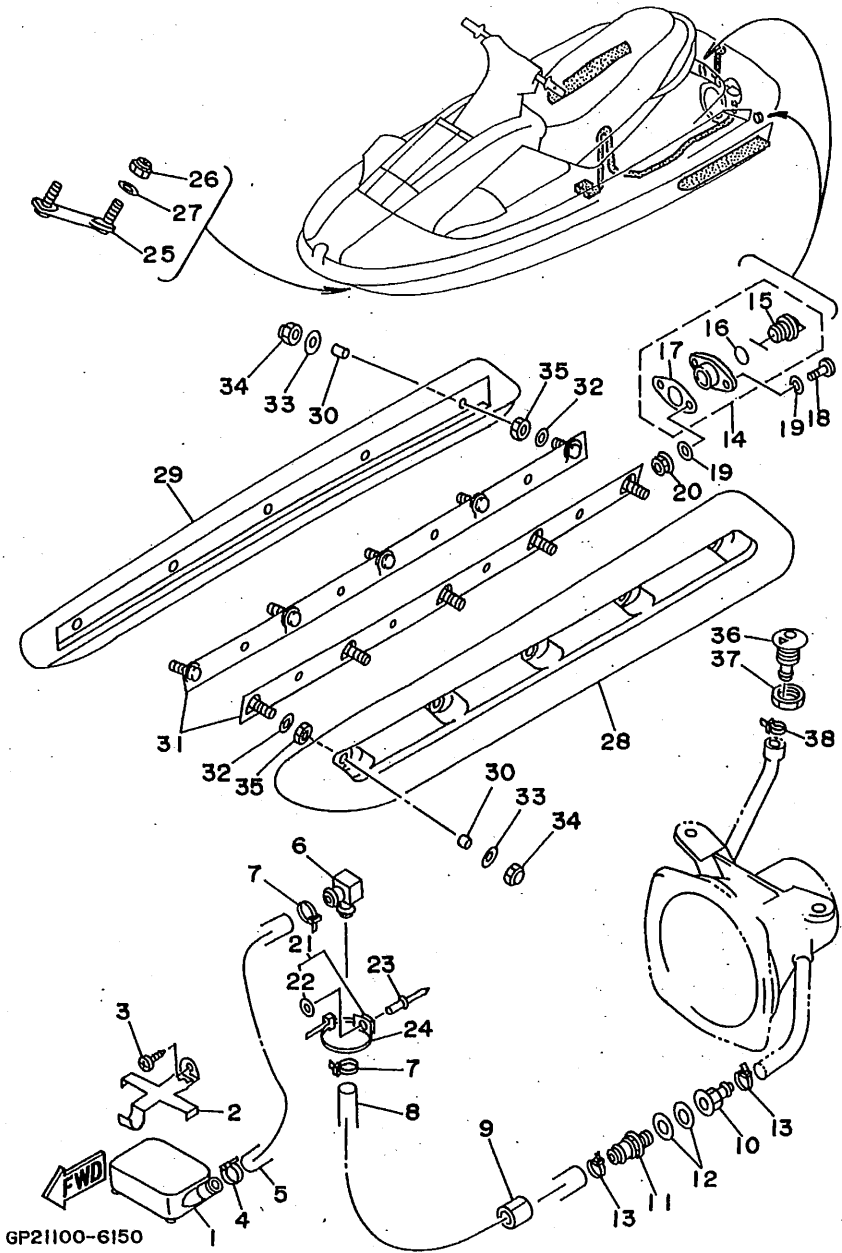


FIG. 15 HULL. DECK

REF. NO.	PART NO.	DESCRIPTION	Q'TY	REMARKS
29	GH1-6883P-50	STABILIZER RH	1	
30	90387-06916	COLLAR	10	
31	GH1-6883T-00	BRACKET, STABILIZER	2	
32	92990-06200	WASHER, PLAIN	10	
33	90201-065F3	WASHER, PLATE	10	
34	90179-06959	NUT	10	
35	95380-06700	NUT	10	
36	FN8-6269B-00	SPOUT	1	
37	EU0-61652-00	NUT	1	
38	90465-11M10	CLAMP	1	

C14

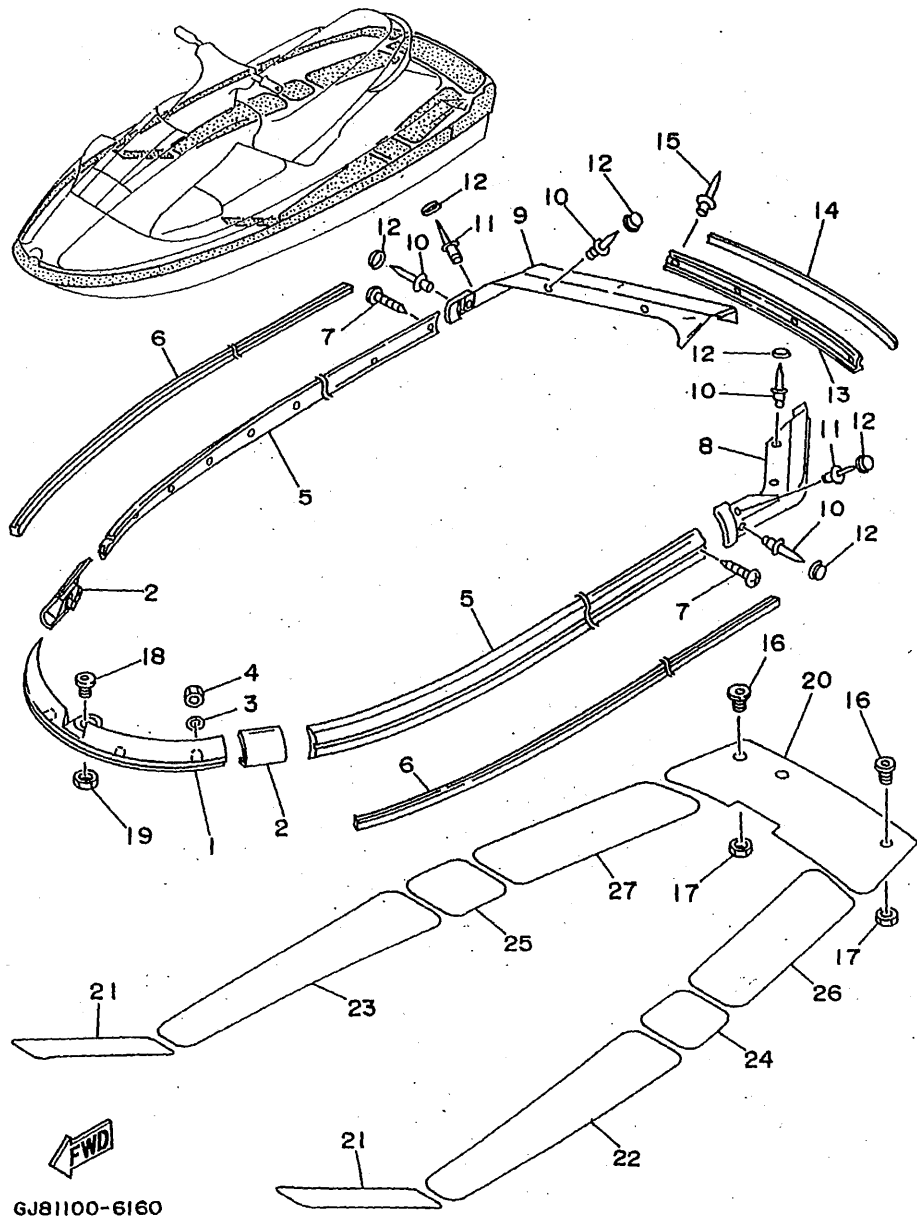


FIG. 16 GUNWALE. MA

REF. NO.	PART NO.	DESCRIPTION	Q'TY	REMARKS
1	GJ1-U2501-20	BOW GUNWALE COMP.	1	YMUS
2	GJ1-6252A-10	JOINT, GUNWALE	2	
3	92990-06200	WASHER, PLAIN	6	
4	95720-06300	NUT, SELF-LOCKING	6	
5	GJ1-U2552-20	GUNWALE, SIDE 1	2	YMUS
6	GJ1-U2519-10	INNER GUNWALE	2	YMUS
7	90169-059U1	SCREW, TAPPING	22	YMUS
8	GH1-6251D-30	GUNWALE, STERN 1	1	
9	GH1-6251E-30	GUNWALE, STERN 2	1	
10	90267-489U8	RIVET, BLIND	10	YMUR
11	90267-48835	RIVET, BLIND	2	
12	GJ3-U354D-00	CAP, HEAD	12	YMUS
13	GJ1-U252C-20	COVER, GUNWALE 1	1	YMUS
14	GJ1-U252D-10	COVER, GUNWALE 2	1	YMUS
15	90267-489U8	RIVET, BLIND	4	YMUS
16	FN8-61651-00	ROPE HOLE	2	
17	EU0-61652-00	NUT	2	
18	GH1-61651-00	ROPE HOLE	1	
19	EU0-61652-00	NUT	1	
20	GJ1-63581-30	MAT, UPPER	1	
21	GJ1-U351H-20	MAT, STEP 1	2	YMUS
22	GJ1-U351K-20	MAT, STEP 3	1	YMUS
23	GJ1-U351M-20	MAT, STEP 4	1	YMUS
24	GJ1-U351N-20	MAT, STEP 5	1	YMUS
25	GJ1-U351P-20	MAT, STEP 6	1	YMUS
26	GH1-6351R-40	MAT, STEP 7	1	
27	GH1-6351S-40	MAT, STEP 8	1	

C15

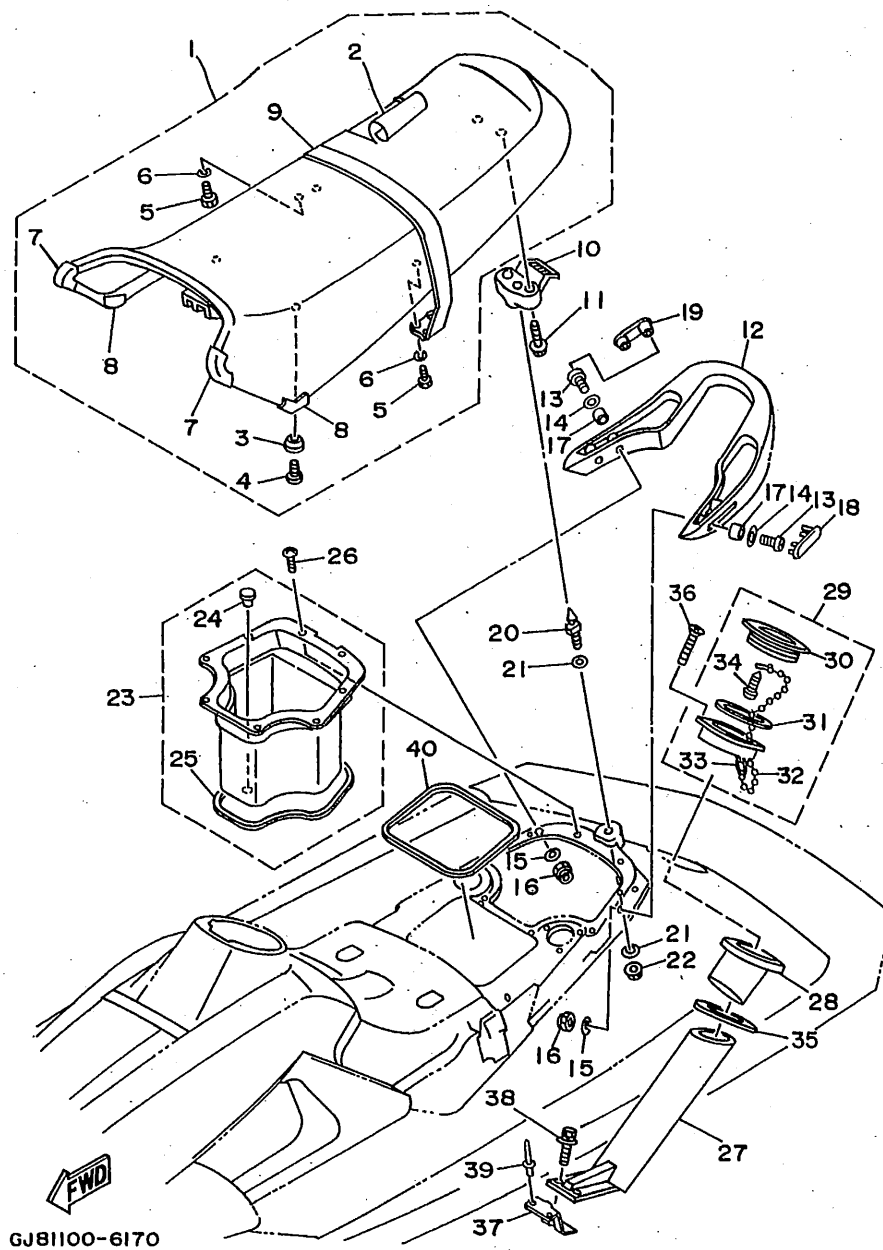
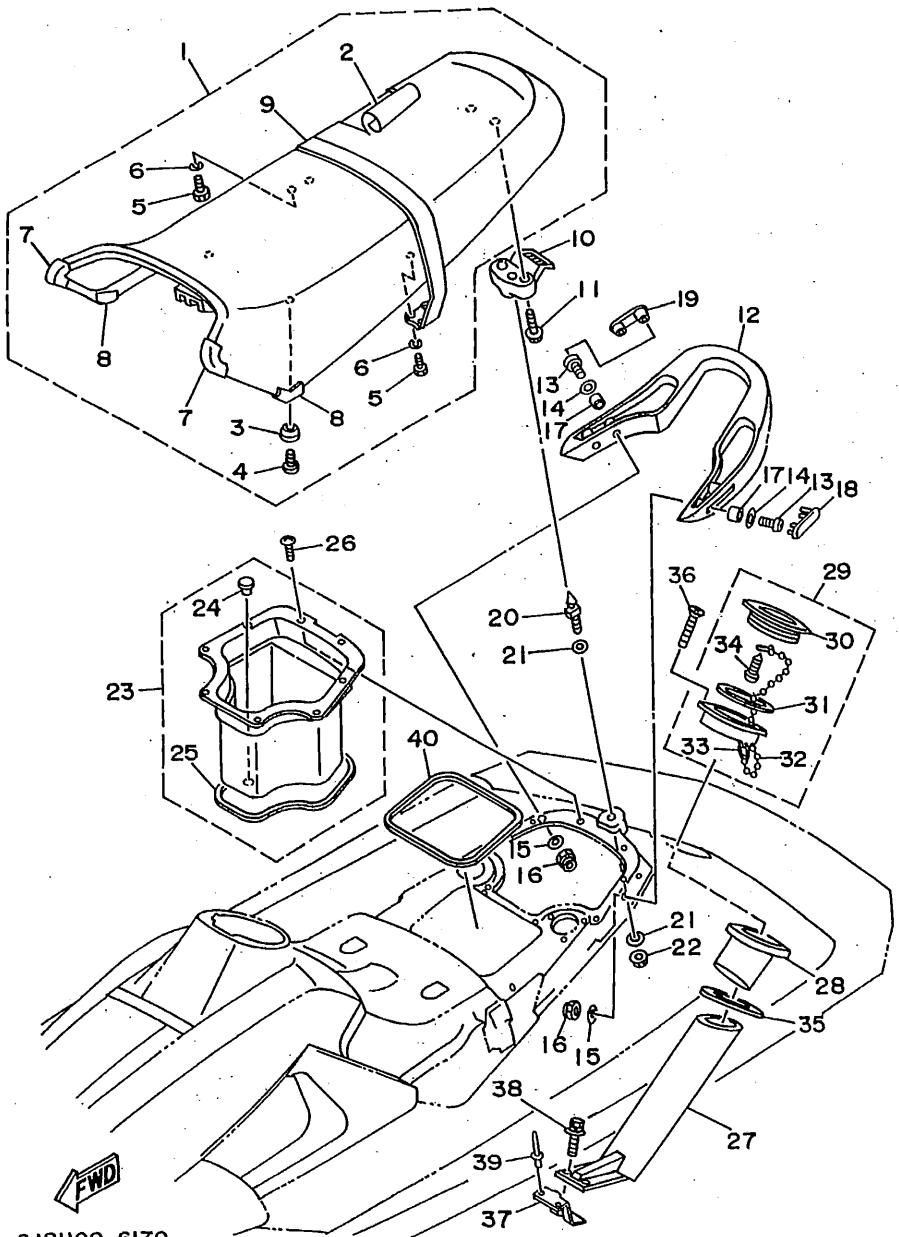


FIG. 17 SEAT - UNDER LOCKER 1

REF. NO.	PART NO.	DESCRIPTION	Q'TY	REMARKS
1	GJ1-U371A-20	DOUBLE SEAT ASSY	1	YMUS
2	GJ1-U371B-20	.COVER, SEAT 1	1	YMUS
3	GH1-63729-00	.STOPPER, SEAT	2	
4	97980-06116	.SCREW, WITH WASHER	2	
5	97095-06016	.BOLT	4	
6	92995-06100	.WASHER, SPRING	4	
7	GJ1-U375A-20	.PAD, SEAT 1	2	YMUS
8	GJ1-U375B-30	.PAD, SEAT 2	2	YMUS
9	GJ1-U373D-20	.BAND, SEAT COMP.	1	YMUS
10	GH1-63850-01	SEAT LOCK ASSY	1	
11	90119-06914	BOLT, WITH WASHER	2	
12	GH1-6271B-30	GRIP, HAND	1	
13	98980-06025	SCREW, BIND	4	
14	92990-06200	WASHER, PLAIN	4	
15	90201-065F3	WASHER, PLATE	4	
16	95720-06300	NUT, SELF-LOCKING	4	
17	90387-06914	COLLAR	4	
18	GH1-6271C-30	CAP, GRIP HAND (LH)	1	
19	GH1-6271D-30	CAP, GRIP HAND (RH)	1	
20	GH1-63774-01	PIN	1	
21	92990-10200	WASHER, PLAIN	2	
22	95720-10300	NUT	1	
23	GJ1-U474A-00	UNDER LOCKER ASSY	1	YMUS
24	90338-12081	.PLUG	1	
25	GH1-6266B-00	.PACKING 3	1	
26	90149-04943	SCREW	8	
27	GA7-65983-00	BOX, FIRE EXTINGUISHER	1	
28	GA7-65984-00	GROMMET	1	

D2



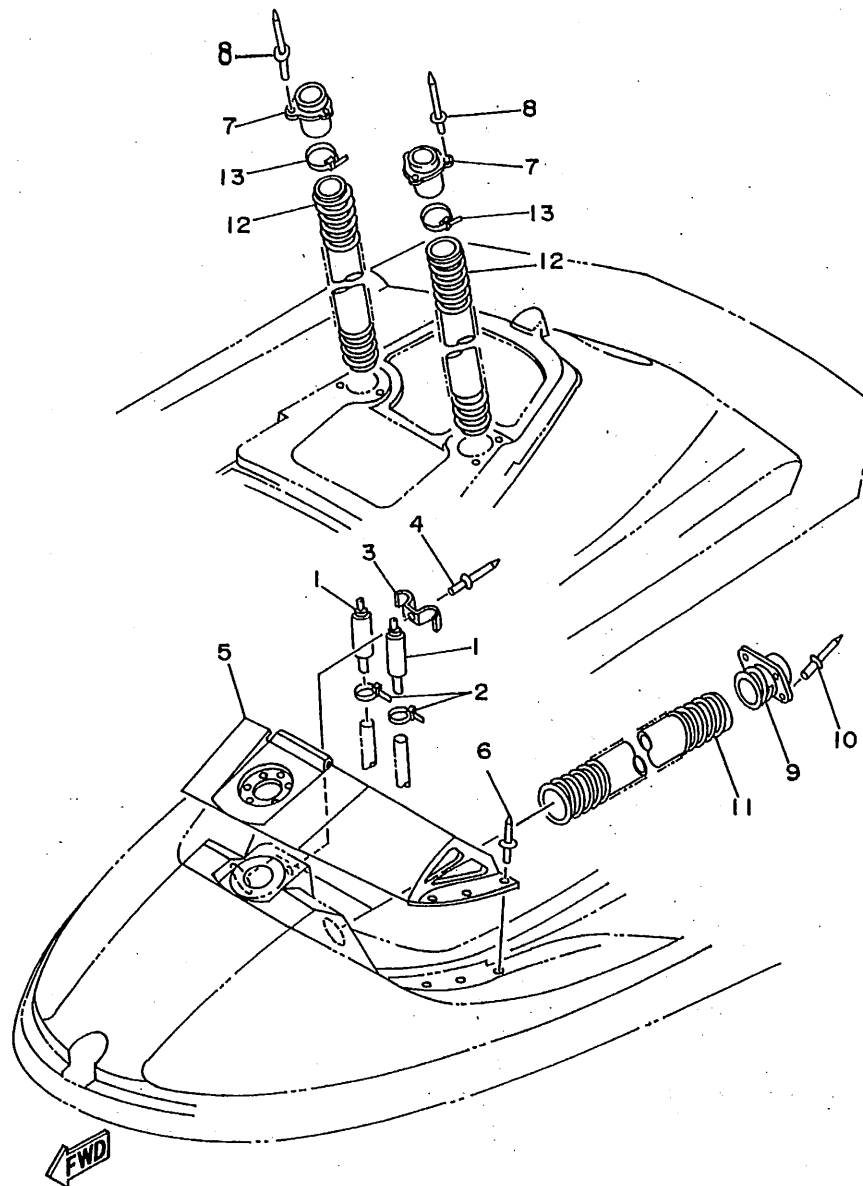
GJ81100-6170

FIG. 17 SEAT - UNDER LOCKER 1

REF. NO.	PART NO.	DESCRIPTION	Q'TY	REMARKS
29	EU0-62720-31	INSPECTION COVER ASSY	1	
30	EU0-62721-31	.COVER, INSPECTION	1	
31	93211-03902	.RING	1	
32	EU0-67835-30	.CHAIN BALL	1	
33	EU0-67839-00	.COUPLING	1	
34	97780-04110	.SCREW, TAPPING	1	
35	GA7-6593J-00	PLATE, FIRE EXTINGUISHER	1	
36	98780-04535	SCREW, FLAT HEAD	6	
37	GJ1-6593H-00	BRKT. FIRE EXTINGUISHER	1	
38	90119-06908	BOLT, WITH WASHER	2	
39	90267-489U1	RIVET, BLIND	2	YMUS
40	GJ1-U266D-01	PACKING 5	1	YMUS

D3

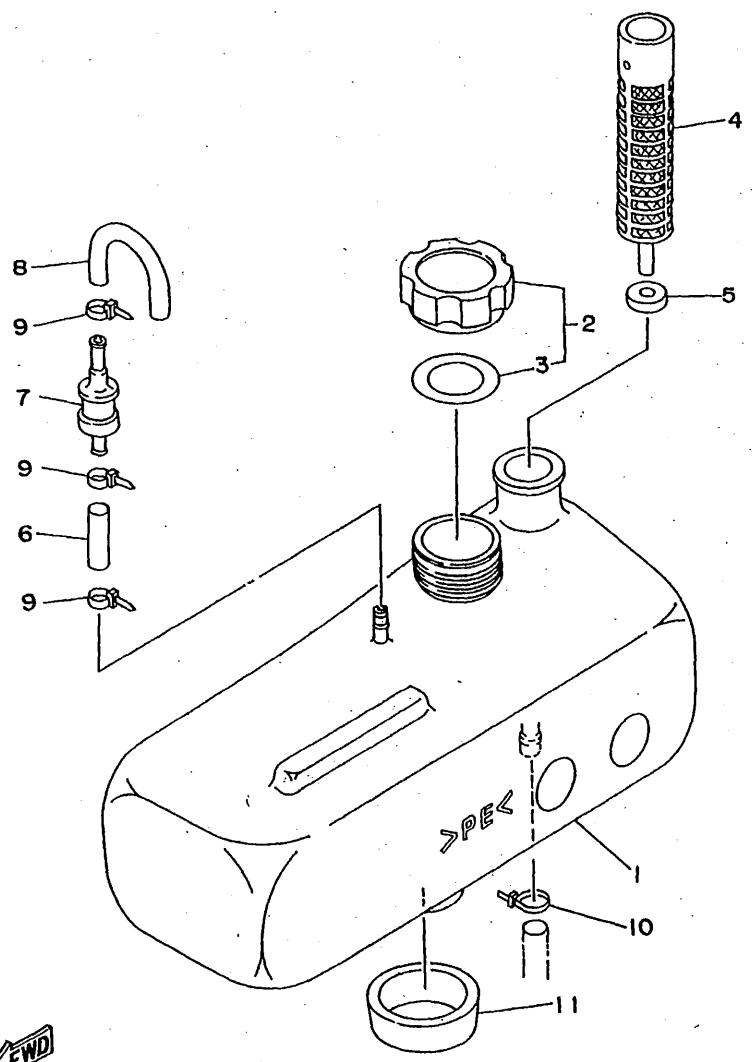
FIG. 18 SEAT - UNDER LOCKER 2



GJ11100-5180

REF. NO.	PART NO.	DESCRIPTION	Q'TY	REMARKS
1	EW2-62150-00	PIPE, VENTILATION 3	2	
2	90465-11M10	CLAMP	2	
3	GH1-6215G-00	PLATE, GUIDE	1	
4	90267-489U1	RIVET, BLIND	1	YMUS
5	GH1-6521B-30	COVER, BOW	1	
6	90267-48951	RIVET, BLIND	6	
7	GH1-62139-00	VENTILATOR, OUTLET	2	
8	90267-409U5	RIVET, BLIND	6	YMUS
9	GH1-62127-00	BASE, AIR INTAKE	2	
10	90267-48925	RIVET, BLIND	8	
11	GJ1-U213F-00	HOSE, VENTILATOR 1	2	YMUS
12	GJ1-U213G-00	HOSE, VENTILATOR 2	2	YMUS
13	90601-20007	NYLON CLIP 1	2	

D4



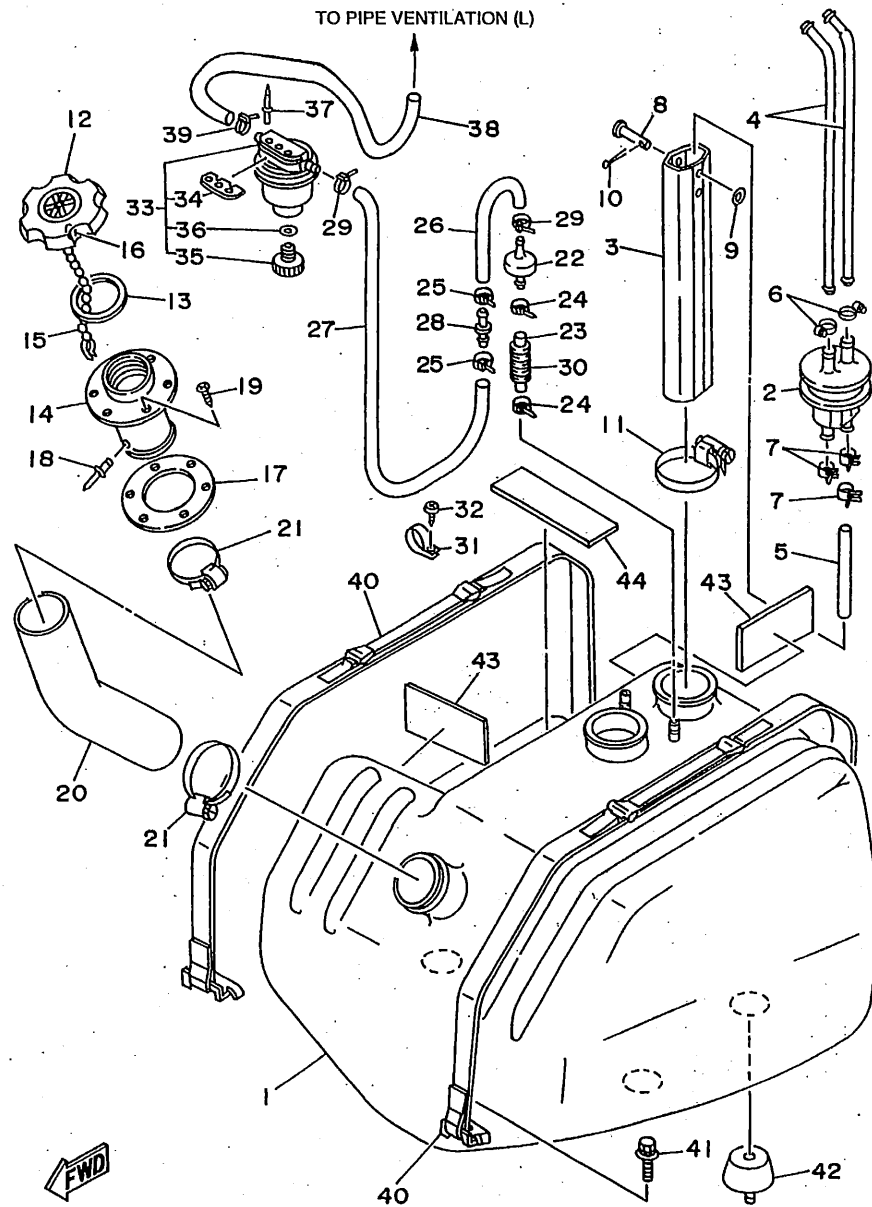
GP21100-6190

FIG. 19 OIL TANK

REF. NO.	PART NO.	DESCRIPTION	Q'TY	REMARKS
1	GJ1-U775B-00	TANK, OIL	1	YMUS
2	FJ0-67840-00	OIL TANK CAP ASSY	1	
3	FJ0-67841-01	.PACKING, OIL CAP	1	
4	6J8-13411-00	STRAINER, OIL	1	
5	6J8-13414-00	GASKET, STRAINER COVER	1	
6	90445-09901	HOSE	1	
7	FJ0-67766-00	ROLL OVER VALVE	1	
8	FJ0-62158-00	HOSE	1	
9	90465-11M10	CLAMP	3	
10	90465-11M10	CLAMP	1	
11	GH1-6759D-00	MAT 3	1	

D5

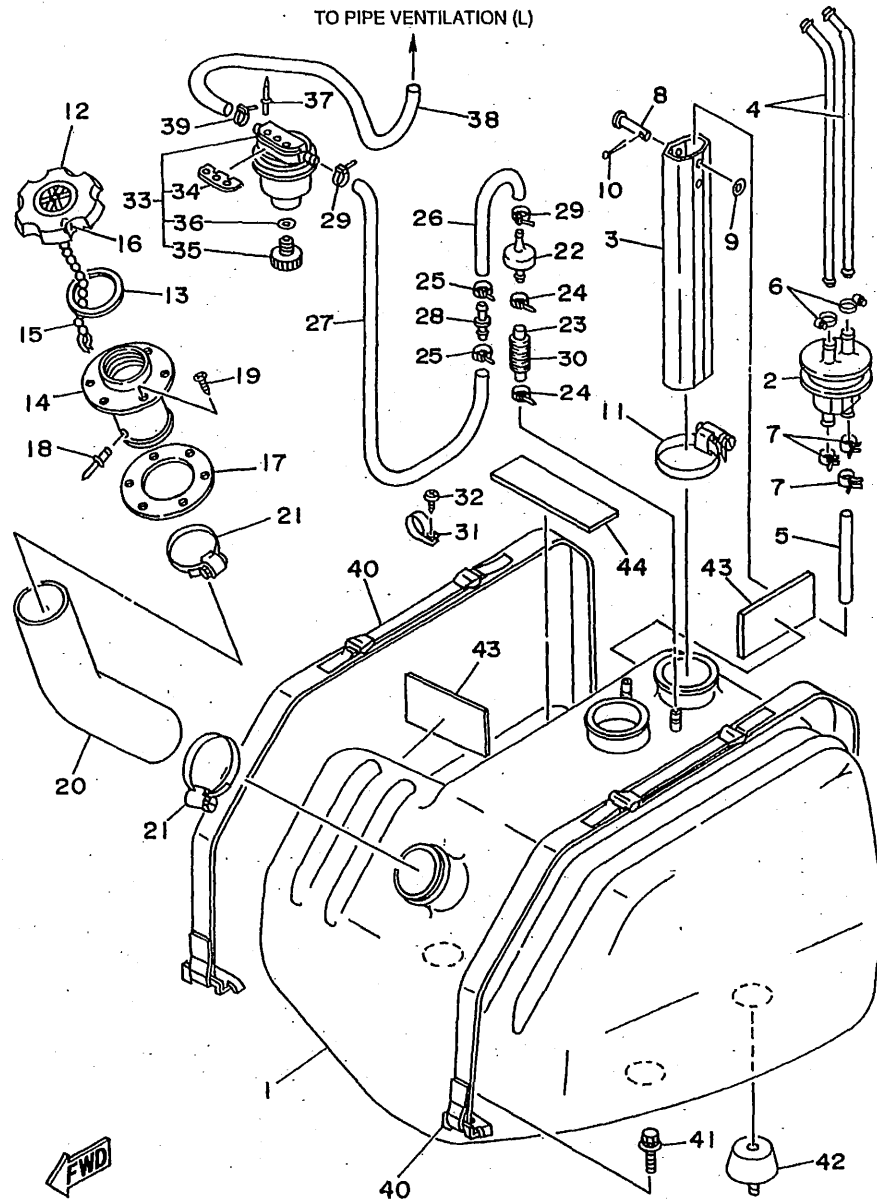
FIG. 20 FUEL TANK



GJ11100-5200

REF. NO.	PART NO.	DESCRIPTION	Q'TY	REMARKS
1	GJ1-U7711-00	TANK, FUEL	1	YMUS
2	FJ0-67713-00	PIPE, JOINT	1	
3	FJ0-67716-00	SLEEVE 1	1	
4	FJ0-67714-01	PIPE, SUCTION 3	2	
5	90445-11903	HOSE	1	
6	90601-11062	BAND, HOSE 11	2	
7	90467-11044	CLIP	3	
8	91790-05040	PIN, CLEVIS	1	
9	92990-05600	WASHER, PLATE	1	
10	91490-16010	PIN, COTTER	1	
11	90601-162U5	BAND, HOSE 62	1	YMUS
12	GP2-67831-00	CAP, FUEL FILLER	1	
13	EU0-67832-00	PACKING 1	1	
14	GP2-67833-00	SOCKET	1	
15	EU0-67835-00	CHAIN BALL	1	
16	EU0-67839-00	COUPLING	1	
17	EU0-67834-00	PACKING, FUEL FILLER	1	
18	90267-40935	RIVET, BLIND	1	
19	EU0-67869-00	SCREW, FLAT HEAD	6	
20	GJ1-U7844-00	HOSE	1	YMUS
21	90601-155U4	BAND, HOSE 55	2	YMUS
22	EU0-67767-31	CHECK VALVE	1	
23	GA7-6785G-00	HOSE, AIR VENT	1	
24	90465-11M10	CLAMP	2	
25	90465-11M10	CLAMP	2	
26	EU0-67856-50	HOSE, AIR VENT 3	1	
27	GJ1-67856-00	HOSE, AIR VENT 3	1	
28	6G8-24376-00	PIPE, JOINT 1	1	

D6



GJ11100-5200

FIG. 20 FUEL TANK

REF. NO.	PART NO.	DESCRIPTION	Q'TY	REMARKS
29	90465-11M10	CLAMP	2	
30	GJ1-6773D-00	TUBE	1	
31	90600-918U3	CLIP, NYLON 16	1	YMUS
32	97780-60116	SCREW, TAPPING	1	
33	EW2-62140-00	FILTER, VENT ASSY	1	
34	EW2-62142-00	.PLATE, FILTER	1	
35	70R-24543-00	.PLUG, DRAIN	1	
36	70R-24489-00	.O-RING, SEPARATER 2	1	
37	90267-489U2	RIVET, BLIND	2	YMUS
38	90445-09905	HOSE	1	
39	90465-11M10	CLAMP	2	
40	GJ1-67743-00	BELT, TANK 1	2	
41	90119-089U7	BOLT, WITH WASHER	4	YMUS
42	GH1-6782B-01	DAMPER, FUEL TANK	4	
43	GJ1-6759B-00	MAT 1	2	
44	GJ1-6759C-00	MAT 2	1	

D7

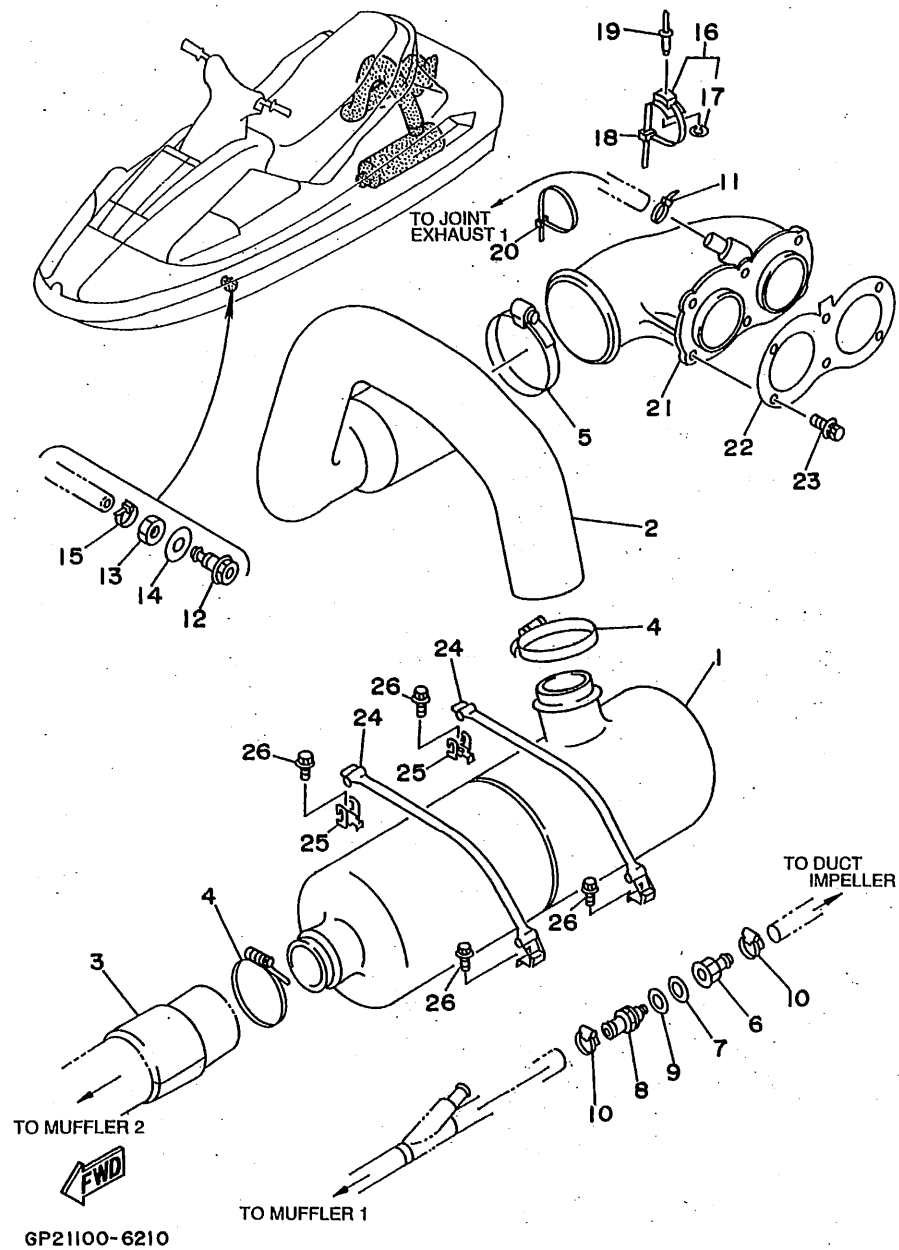
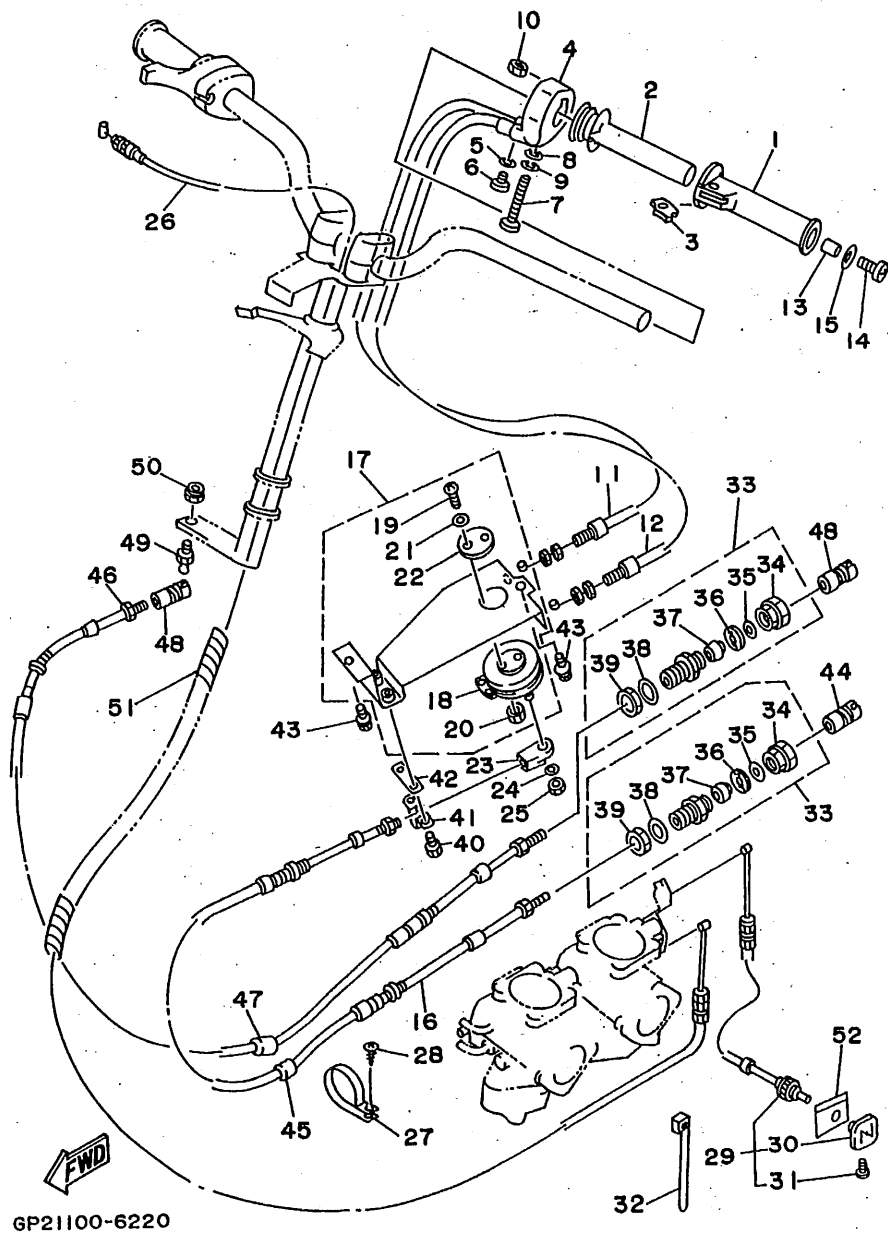


FIG. 21 EXHAUST 2

REF. NO.	PART NO.	DESCRIPTION	Q'TY	REMARKS
1	GH1-U7550-00	WATER LOCK	1	YMUS
2	GP2-U7555-00	HOSE	1	YMUS
3	GH6-67577-01	PACKING, HOSE 1	1	
4	90601-168U7	BAND, HOSE 68	2	YMUS
5	90601-195UD	NYLON CLIP 1	1	YMUS
6	90604-80795	THROUGH HULL CONNECTION 3/8-12	1	
7	90430-16910	GASKET	1	
8	90604-80796	THROUGH HULL CONNECTION 3/8-12	1	
9	90430-16910	GASKET	1	
10	90601-118UF	NYLON CLIP 1	2	YMUS
11	90601-200U1	NYLON CLIP 1	2	YMUS
12	GJ1-6753B-02	PILOT, WATER	1	
13	95380-14700	NUT	1	
14	92990-14200	WASHER, PLAIN	1	
15	90465-11M10	CLAMP	1	
16	90600-91736	CLAMP	1	
17	90201-05925	WASHER, PLATE	1	
18	90601-200U2	NYLON CLIP 1	1	YMUS
19	90267-48925	RIVET, BLIND	1	
20	90601-20008	NYLON CLIP 1	1	
21	GJ1-U7560-00	EXHAUST, THRU-HALL COMP.	1	YMUS
22	GJ1-U7525-00	PACKING	1	YMUS
23	90119-059U4	BOLT, WITH WASHER	6	YMUS
24	GJ1-U7570-00	HOOK C	2	YMUS
25	EW2-65772-00	HOOK A	2	
26	90105-06900	BOLT, WASHER BASED	4	



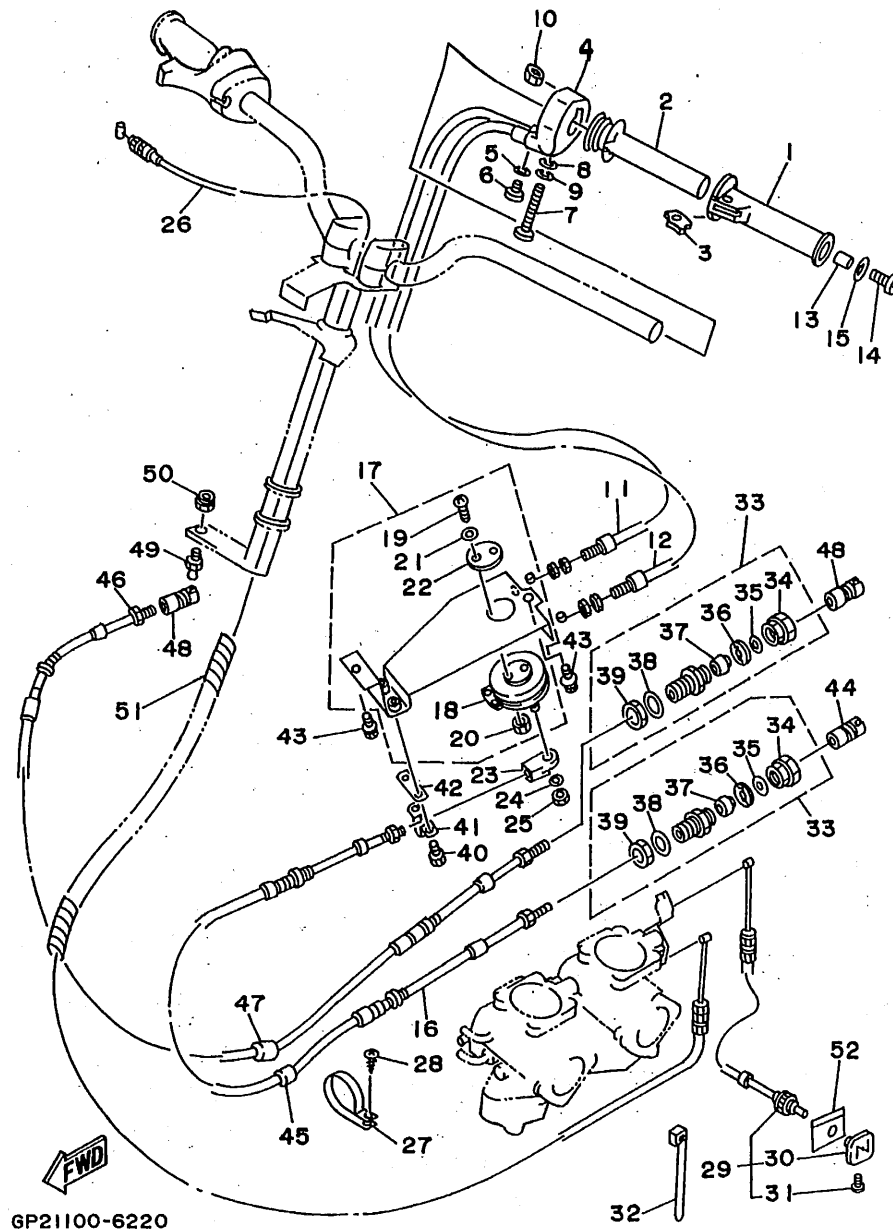
GP21100-6220

FIG. 22 CONTROL CABLE

REF. NO.	PART NO.	DESCRIPTION	Q'TY	REMARKS
1	GHT-6155C-00	GRIP, HANDLE	1	
2	GHT-6155B-00	GRIP, INNER	1	
3	GHT-6151M-00	LEVER ASSY	1	
4	GHT-6152M-01	HOUSING ASSY	1	
5	92990-04600	WASHER, PLATE	1	
6	98980-04010	SCREW, BIND	1	
7	98580-06565	SCREW, PAN HEAD	1	
8	92990-06600	WASHER, PLATE	1	
9	92995-06100	WASHER, SPRING	1	
10	GHT-6143B-00	NUT, SPECIAL	1	
11	GHT-6153D-00	CABLE, NOZZLE CONTROL 2	1	
12	GHT-6153D-10	CABLE, NOZZLE CONTROL 2	1	
13	90387-05916	COLLAR	1	
14	90149-05960	SCREW	1	
15	90201-05928	WASHER, PLATE	1	
16	GHT-6153E-01	CABLE, NOZZLE CONTROL 3	1	
17	GHT-6153J-01	REMOCON, NOZZLE 2	1	
18	GHT-6153M-01	WHEEL ASSY	1	
19	97880-05020	SCREW, PAN HEAD	2	
20	95380-05600	NUT	2	
21	92990-05300	WASHER, INTERNAL TOOTH	2	
22	EL8-48193-00	WASHER 3	1	
23	GHT-6046C-00	END, CABLE	1	
24	92990-06200	WASHER, PLAIN	1	
25	95780-06300	NUT, FLANGE	1	
26	GP2-U7252-00	CABLE, THROTTLE	1	YMUS
27	90600-918U3	CLIP, NYLON 16	1	YMUS
28	97780-60116	SCREW, TAPPING	1	

D9

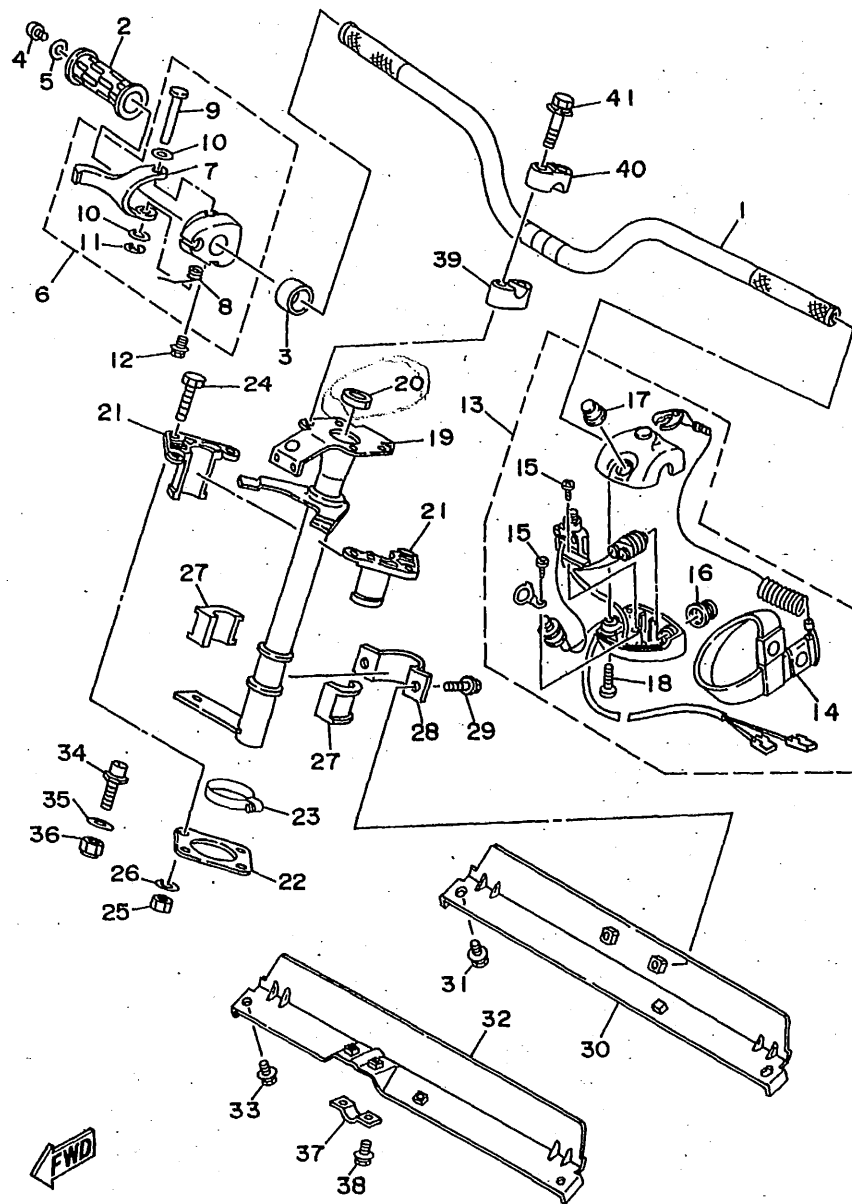
FIG. 22 CONTROL CABLE



GP21100-6220

REF. NO.	PART NO.	DESCRIPTION	Q'TY.	REMARKS
29	GP2-U7242-01	CABLE, CHOKE	1	YMUS
30	GA9-U724C-00	.KNOB	1	YMUS
31	GA9-U724D-00	.SCREW	1	YMUS
32	90601-20006	NYLON CLIP 1	4	
33	EU0-67267-00	CONNECTOR, CABLE	2	
34	EU0-62694-00	.CAP	1	
35	EU0-61446-00	.WASHER 30	1	
36	EU0-61486-00	.STOPPER	1	
37	EU0-61435-00	.SEAL, PIPE 30	1	
38	EU0-61438-00	.PACKING (C)	1	
39	EU0-62241-30	.NUT, DRAIN 1	1	
40	97080-06012	BOLT	2	
41	GH1-6043H-00	CLAMP, CABLE	1	
42	GH1-6043J-00	SHIM, CABLE	1	
43	90119-06908	BOLT, WITH WASHER	2	
44	EU0-U1461-30	SHAFT, JOINT BALL	1	YMUS
45	GJ1-67578-20	PACKING, HOSE 2	1	
46	GH6-U1481-00	CABLE, STEERING	1	YMUS
47	GJ1-67578-20	PACKING, HOSE 2	1	
48	EU0-U1461-30	SHAFT, JOINT BALL	2	YMUS
49	EU0-U1461-01	STUD, JOINT BALL	1	YMUS
50	95720-06300	NUT, SELF-LOCKING	1	
51	90699-36U01	SPIRAP 11	1	YMUS
52	GJ1-6824D-00	PLATE, CHOKE	1	

D10



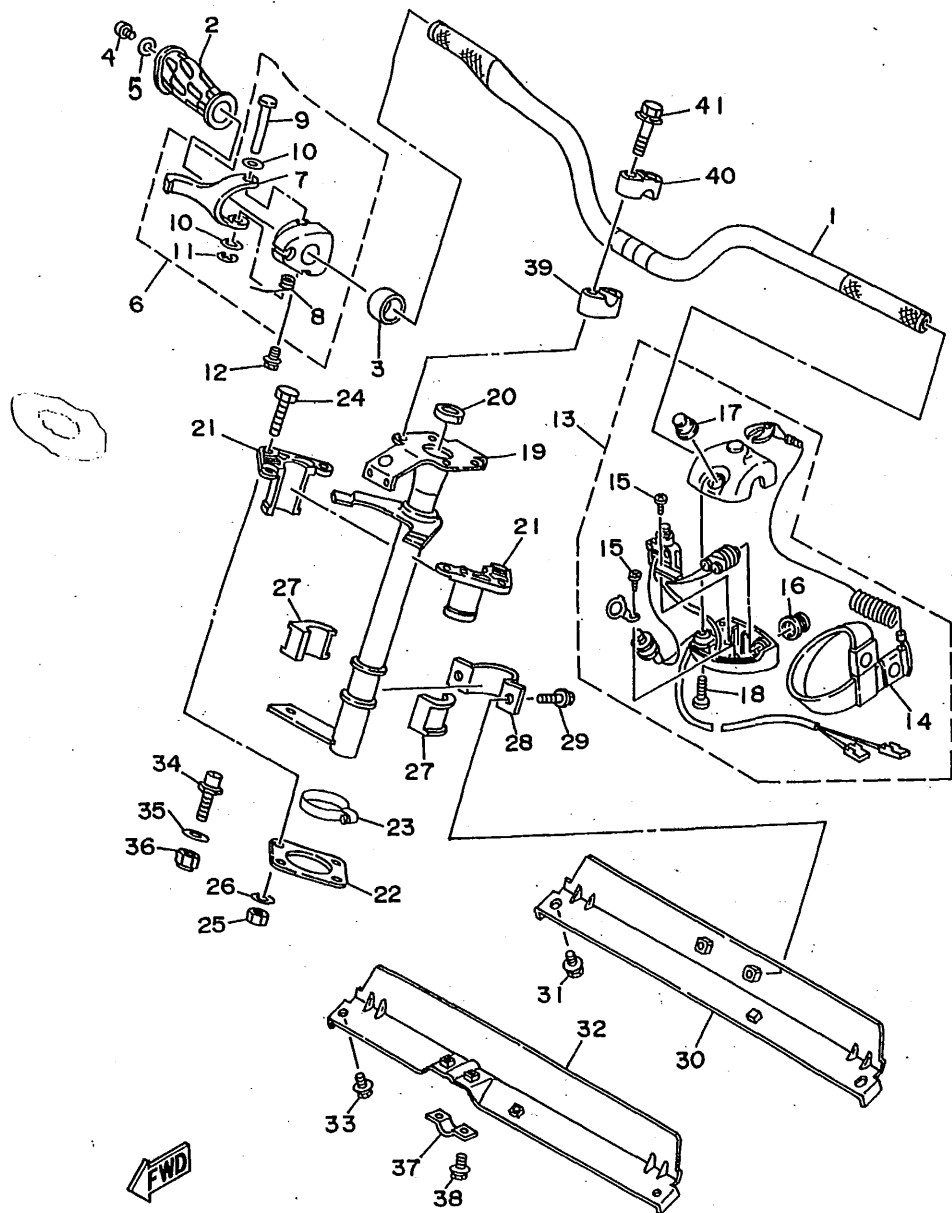
GH14010-4230

FIG. 23 STEERING 1

REF. NO.	PART NO.	DESCRIPTION	Q'TY	REMARKS
1	GJ1-U1552-02	HANDLE	1	YMUS
2	EW2-61553-00	GRIP, HANDLE 1	1	
3	90560-22281	SPACER	1	
4	90149-05959	SCREW	1	
5	90201-05928	WASHER, PLATE	1	
6	EW2-67250-02	THROTTLE LEVER ASSY	1	
7	EW2-67255-00	.LEVER, THROTTLE	1	
8	EW2-67256-00	.SPRING	1	
9	EW2-67257-01	.SHAFT	1	
10	EW2-67258-01	.WASHER	2	
11	EW2-67259-01	.E-RING	1	
12	90159-05900	SCREW, WITH WASHER	1	
13	GJ1-68310-00	SWITCH BOX ASSY	1	
14	EW2-68348-00	.LANYARD, STOP SWITCH	1	
15	98580-03008	.SCREW, PAN HEAD	2	
16	FK7-68312-02	.STOP BUTTON COMP.	1	
17	FK7-68313-01	.START BUTTON COMP.	1	
18	98580-05525	.SCREW, PAN HEAD	2	
19	GP2-61541-00	COLUMN, STEERING	1	
20	GH1-61469-00	PACKING, STEERING COLUMN	1	
21	GH1-6141B-00	BEARING, COLUMN	2	
22	GH1-6143C-30	SEAL, RUBBER	1	
23	90601-142U6	NYLON CLIP 1	1	
24	97080-06030	BOLT	4	
25	95720-06300	NUT, SELF-LOCKING	4	
26	92990-06200	WASHER, PLAIN	4	
27	GH1-6141D-01	BEARING, STEERING	2	
28	EU0-61588-00	JOINT, BEARING	1	

① 12/11
② 1/11

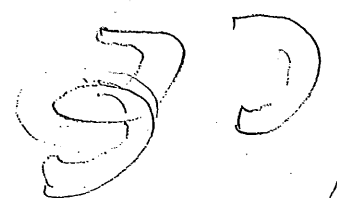
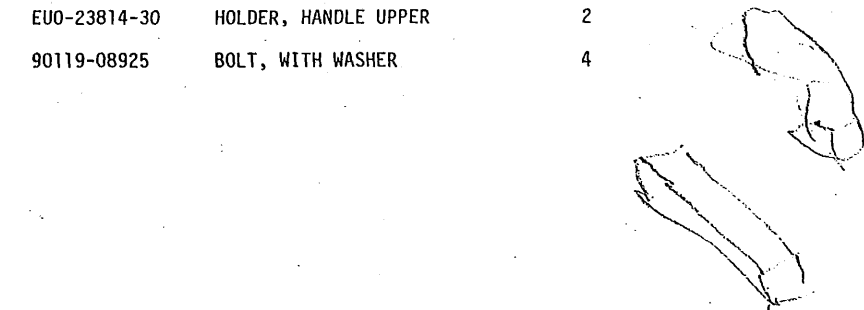
D11



GHI4010-4230

FIG. 23 STEERING 1

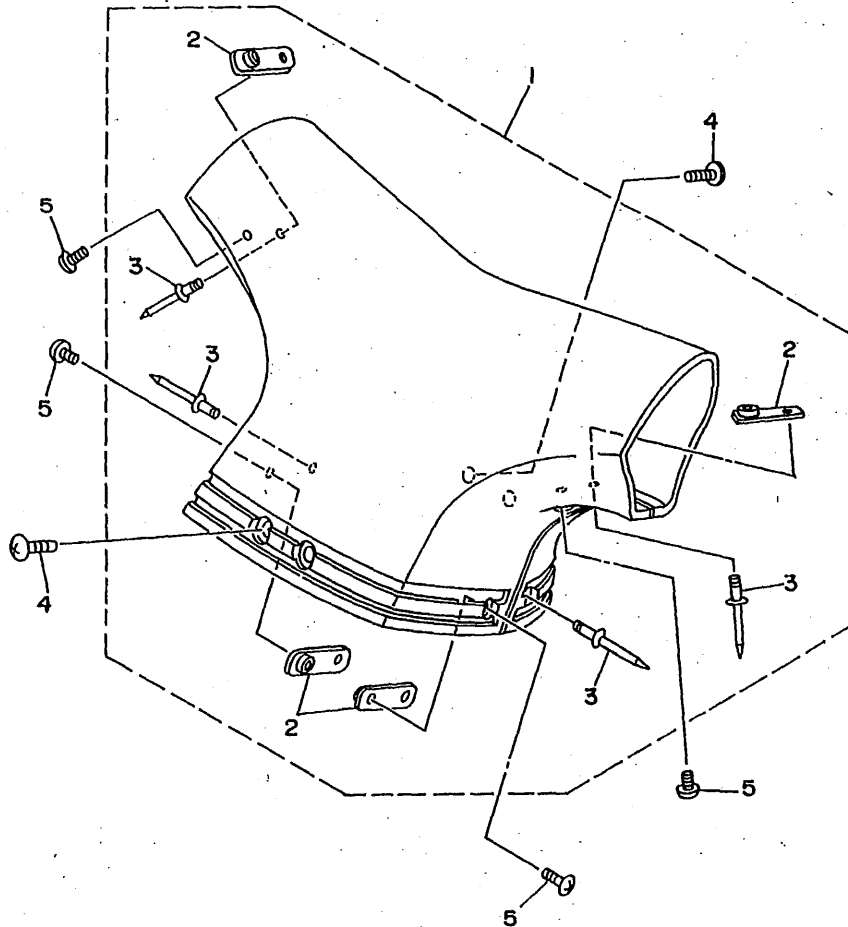
REF. NO.	PART NO.	DESCRIPTION	Q'TY	REMARKS
29	90119-08903	BOLT, WITH WASHER	2	
30	GHI-61433-00	BRACKET, BEARING	1	
31	90119-08903	BOLT, WITH WASHER	2	
32	GHI-61467-01	BRACKET, STOPPER CABLE	1	
33	90119-08903	BOLT, WITH WASHER	2	
34	FN8-6131B-00	PIN, STOPPER	1	
35	92990-10200	WASHER, PLAIN	1	
36	95720-10300	NUT	1	
37	GHI-61468-01	STOPPER, CABLE	1	
38	90119-06908	BOLT, WITH WASHER	2	
39	EU0-23814-01	HOLDER, HANDLE LOWER	2	
40	EU0-23814-30	HOLDER, HANDLE UPPER	2	
41	90119-08925	BOLT, WITH WASHER	4	



D12

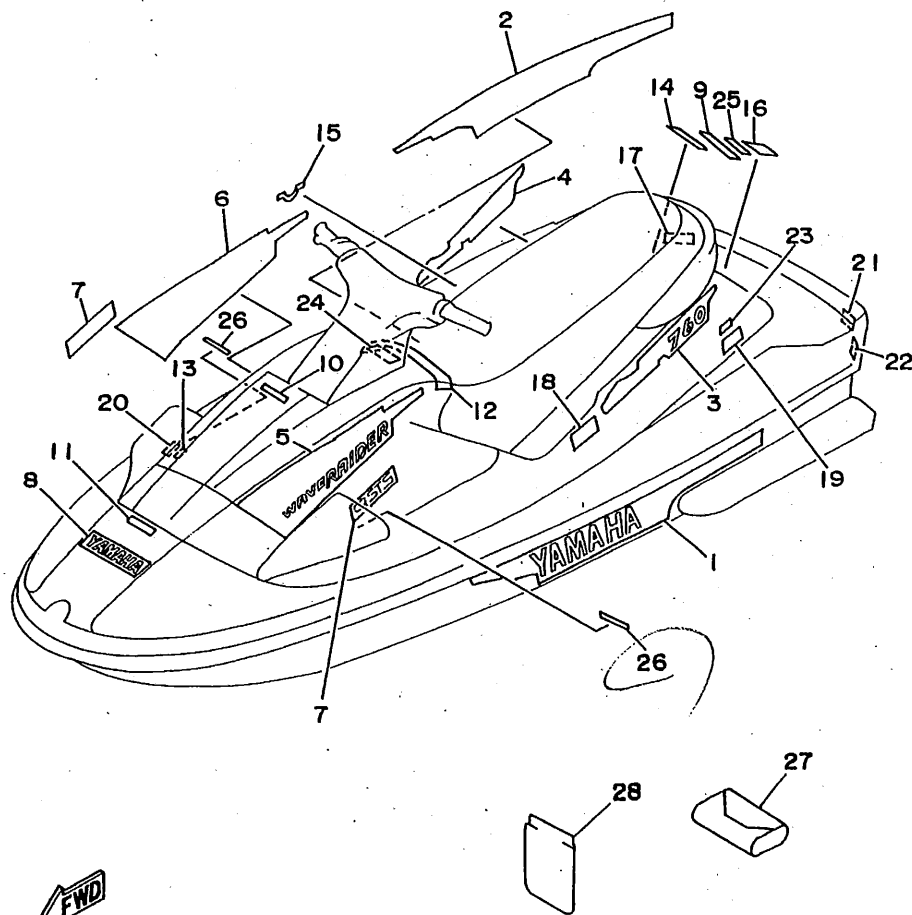
FIG. 24 STEERING 2

REF. NO.	PART NO.	DESCRIPTION	Q'TY	REMARKS
1	GJ3-U142A-40	STEERING PAD COMP.	1	
2	GA7-6144D-00	.PLATE	4	
3	90267-48951	.RIVET, BLIND	4	
4	90149-05959	SCREW	4	
5	90149-04903	SCREW	4	



FWD
GHI4010-4240

D13



GP21100-6250

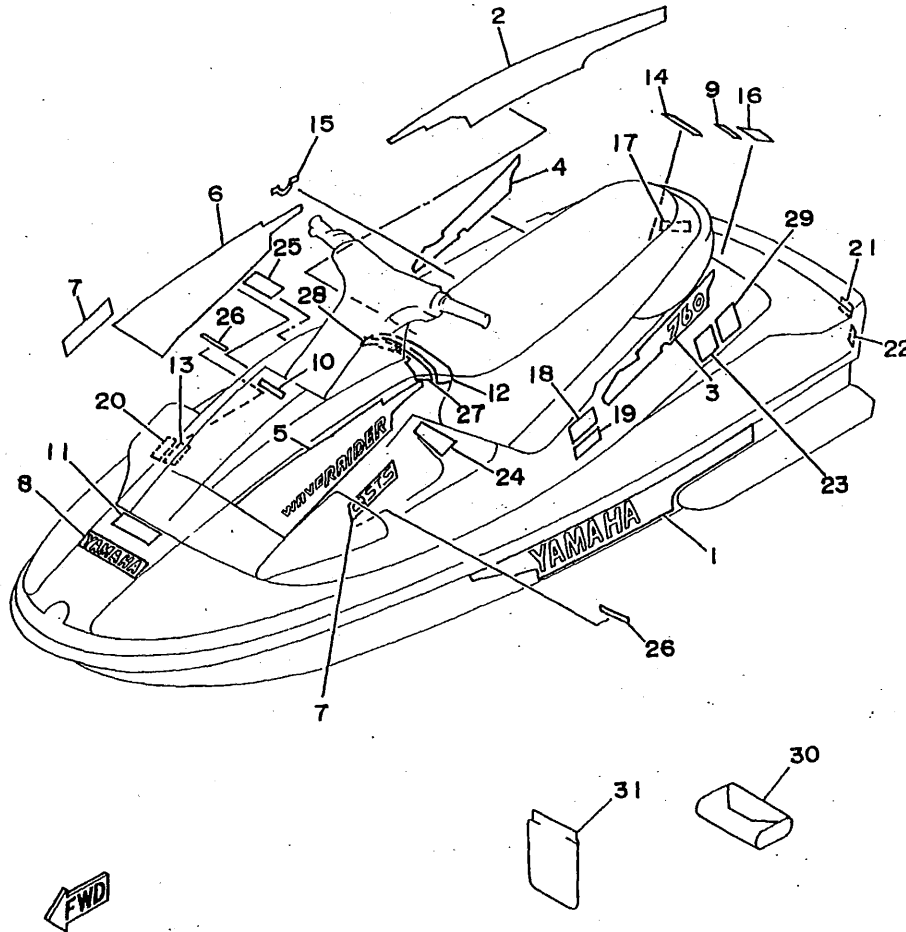


FIG. 25 GRAPHIC 1. TOOL (FOR USA)

REF. NO.	PART NO.	DESCRIPTION	Q'TY	REMARKS
1	GP2-U417B-00	GRAPHIC 1	1	YMUS
2	GP2-U417C-00	GRAPHIC 2	1	YMUS
3	GP2-U417D-00	GRAPHIC 3	1	YMUS
4	GP2-U417E-00	GRAPHIC 4	1	YMUS
5	GP2-U417F-00	GRAPHIC 5	1	YMUS
6	GP2-U417G-00	GRAPHIC 6	1	YMUS
7	GP2-U417H-00	GRAPHIC 7	2	YMUS
8	GJ3-U4114-00	MARK, YAMAHA A	1	YMUS
9	GJ1-U4122-20	EMBLEM 2	1	YMUS
10	GE1-U4125-00	EMBLEM	1	YMUS
11	GA9-U416B-00	LABEL, WARNING	1	YMUS
12	GJ1-U416C-01	LABEL, WARNING 1	1	YMUS
13	GA9-U416F-00	LABEL, WARNING 4	1	YMUS
14	GJ1-U418C-30	LABEL, CAUTION	1	YMUS
15	GJ1-U419C-00	LABEL 2	1	YMUS
16	GA9-U418C-00	LABEL, CAUTION	1	YMUS
17	GA9-U418G-00	LABEL, CAUTION	1	YMUS
18	EU0-U418B-00	LABEL, CAUTION	1	YMUS
19	GA9-U418E-00	LABEL, USCG.	1	YMUS
20	GA9-U418C-41	LABEL, CAUTION	1	YMUS
21	GA9-U418F-00	LABEL, UP RIGHTING	1	YMUS
22	GA9-U416G-00	LABEL, WARNING	1	YMUS
23	GJ1-U418C-00	LABEL, CAUTION	1	YMUS
24	GJ1-U415E-00	LABEL, WARNING	1	YMUS
25	GJ1-U415F-00	LABEL, WARNING	1	YMUS
26	GJ1-U419F-00	LABEL 5	2	YMUS
27	EU0-28100-03	TOOL KIT	1	
28	EU0-65901-01	BAG, VINYL	1	

D14

FIG. 26 GRAPHIC 2. TOOL (FOR CAN, GUM, AUS, FRA)



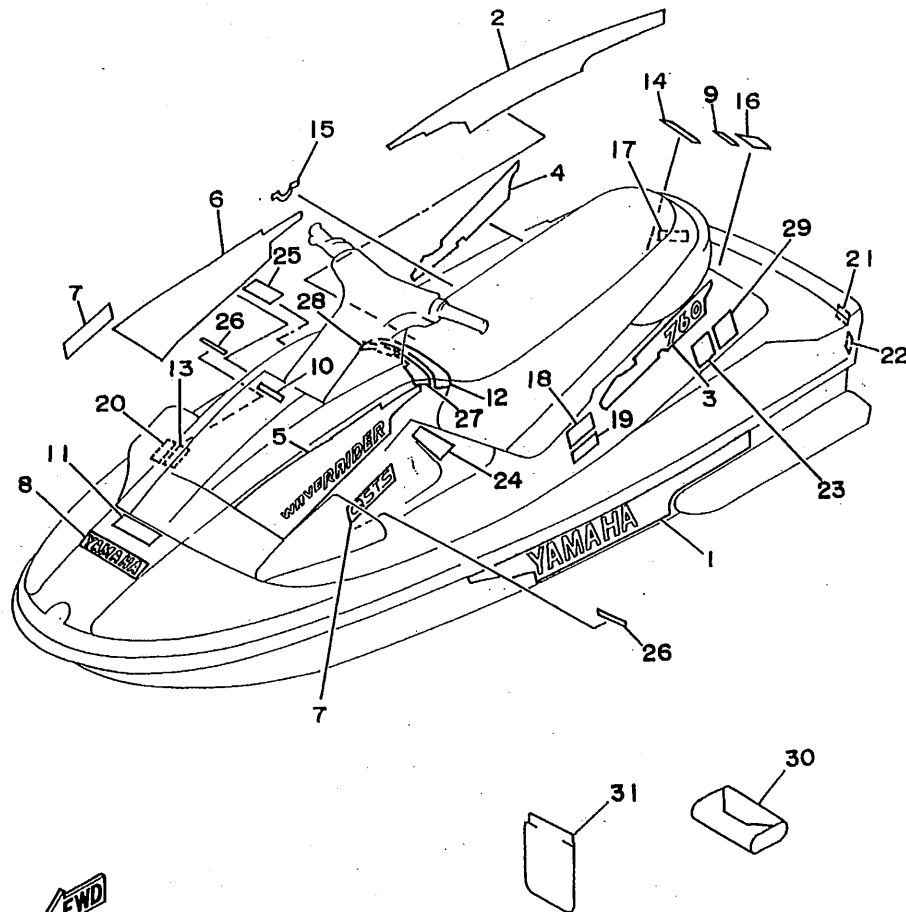
GP21100-6260

REF. NO.	PART NO.	DESCRIPTION	Q'TY	REMARKS
1	GP2-U417B-00	GRAPHIC 1	1	YMUS
2	GP2-U417C-00	GRAPHIC 2	1	YMUS
3	GP2-U417D-00	GRAPHIC 3	1	YMUS
4	GP2-U417E-00	GRAPHIC 4	1	YMUS
5	GP2-U417F-00	GRAPHIC 5	1	YMUS
6	GP2-U417G-00	GRAPHIC 6	1	YMUS
7	GP2-U417H-00	GRAPHIC 7	2	YMUS
8	GJ3-U4114-00	MARK, YAMAHA A	1	YMUS
9	GJ1-U4122-20	EMBLEM 2	1	YMUS
10	GE1-U4125-00	EMBLEM	1	YMUS CANADA ONLY
11	GA9-U416B-10	LABEL, WARNING (FUEL)	1	YMUS
12	GJ1-U416C-20	LABEL, WARNING 1	1	YMUS
13	GA9-U416F-10	LABEL, WARNING 4	1	YMUS
14	GJ1-U418C-40	LABEL, CAUTION	1	YMUS
15	GJ1-U419C-00	LABEL 2	1	YMUS
16	GA9-U418C-10	LABEL, CAUTION	1	YMUS
17	GA9-U418G-10	LABEL, CAUTION (DRAIN)	1	YMUS
18	EU0-U418B-00	LABEL, CAUTION (BATTERY)	1	YMUS
19	EU0-U418B-10	LABEL, CAUTION (BATTERY)	1	YMUS
20	GA9-U418C-50	LABEL, CAUTION	1	YMUS
21	GA9-U418F-00	LABEL, UP RIGHTING	1	YMUS
22	GA9-U416G-10	LABEL, WARNING 5	1	YMUS
23	GJ1-U418C-10	LABEL, CAUTION	1	YMUS
24	GJ1-U416C-10	LABEL, WARNING 1	1	YMUS
25	GJ1-U416D-11	LABEL, WARNING 2	1	YMUS
26	GJ1-U419F-10	LABEL 5	2	YMUS
27	GJ1-U416H-10	LABEL, WARNING (FRANCE)	1	YMUS FRA ONLY
28	GJ1-U416H-20	LABEL, WARNING (FRANCE)	1	YMUS FRA ONLY

D15

FIG. 26 GRAPHIC 2. TOOL (FOR CAN, GUM, AUS, FRA)

REF. NO.	PART NO.	DESCRIPTION	Q'TY	REMARKS
29	GA9-U418E-00	LABEL, USCG.	1	YMUS GUAM ONLY
30	EU0-28100-03	TOOL KIT	1	
31	EU0-65901-01	BAG, VINYL	1	



GP21100-6260

E2

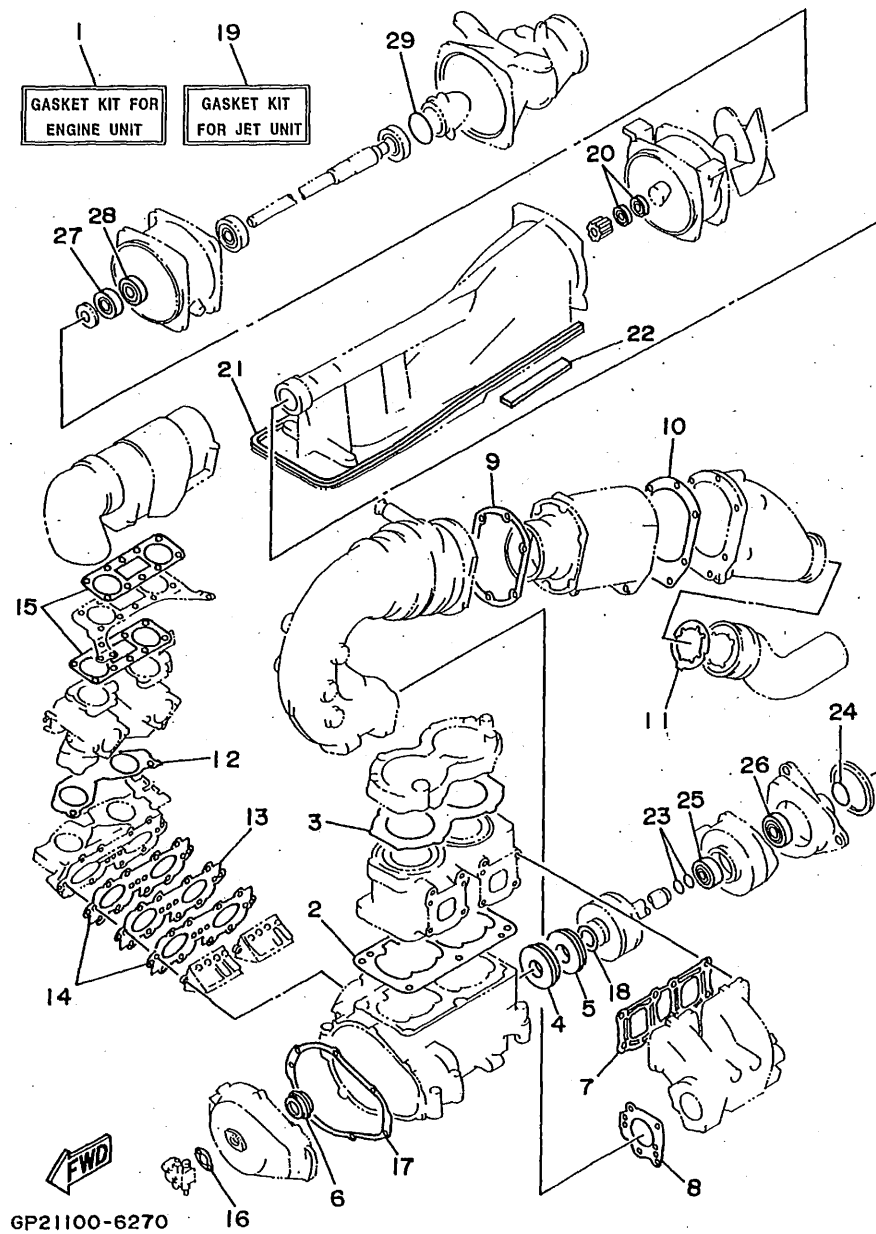


FIG. 27 REPAIR KIT 1

REF. NO.	PART NO.	DESCRIPTION	Q'TY	REMARKS
1	64X-W0001-00	GASKET KIT FOR ENGINE UNIT	1	
2	6M6-11351-A2	.GASKET, CYLINDER	1	
3	64X-11181-00	.GASKET, CYLINDER HEAD 1	1	
4	93102-36M33	.OIL SEAL	1	
5	93101-36M46	.OIL SEAL	1	
6	93103-32M01	.OIL SEAL	1	
7	62T-14613-00	.GASKET, EXHAUST PIPE	1	
8	64X-14749-00	.GASKET, MUFFLER DAMPER 2	1	
9	62T-41114-01	.GASKET, EXHAUST OUTER COVER	1	
10	64X-41124-00	.GASKET, EXHAUST OUTER COVER	1	
11	64X-14623-00	.GASKET, EXHAUST PIPE	1	
12	64X-13556-00	.GASKET, MANIFOLD	1	
13	62T-13624-00	.PLATE, REED VALVE	1	
14	62T-13566-00	.GASKET	2	
15	64X-13674-00	.GASKET, AIR COOLER COVER 1	2	
16	6R8-13116-A0	.GASKET, PUMP CASE	1	
17	6M6-81365-A0	.GASKET, HOLE COVER	1	
18	62T-45127-00	.SEAL	1	
19	63N-W0001-20	GASKET KIT FOR JET UNIT	1	
20	93102-18M35	.OIL SEAL	2	
21	6R8-51367-01	.FELT, PACKING	2	
22	63N-51368-00	.FELT, PACKING	2	
23	93210-17MA4	.O-RING	2	
24	93210-35M72	.O-RING	1	
25	93101-25M55	.OIL SEAL	1	
26	93101-25M56	.OIL SEAL	1	
27	93102-25M34	.OIL SEAL	1	
28	93101-25M50	.OIL SEAL	1	

E3

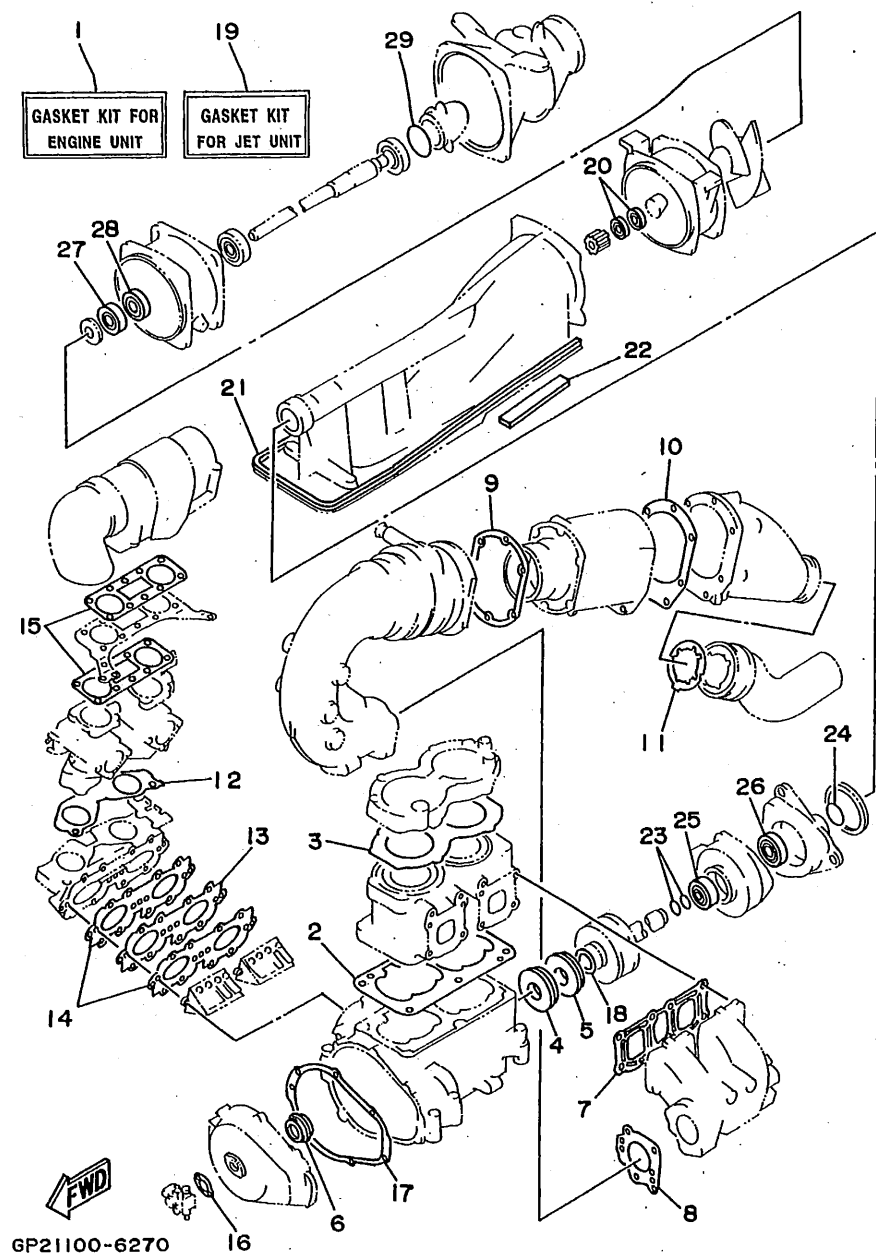


FIG. 27 REPAIR KIT 1

REF. NO.	PART NO.	DESCRIPTION	Q'TY	REMARKS
29	93210-46M16	.0-RING	1	

E4

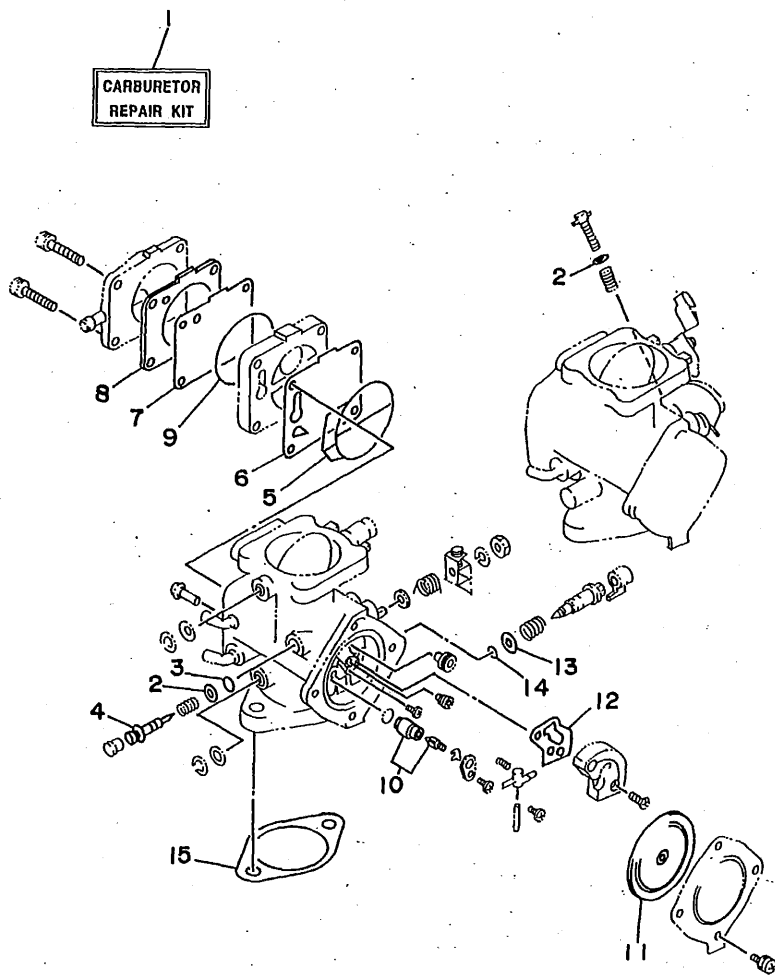


FIG. 28 REPAIR KIT 2

REF. NO.	PART NO.	DESCRIPTION	Q'TY	REMARKS
1	64X-W0093-00	CARBURETOR REPAIR KIT	1	
2	812-14235-00	.WASHER, NEEDLE	3	
3	812-14147-00	.O-RING	2	
4	6K8-14946-10	.METERING NEEDLE	2	
5	6K8-14564-00	.O-RING	2	
6	6K8-24411-20	.DIAPHRAGM	2	
7	6K8-24421-10	.VALVE, CHECK	2	
8	6K8-24431-20	.GASKET, FUEL PUMP 1	2	
9	6K8-14563-00	.O-RING	2	
10	61X-14916-15	.NEEDLE	2	
11	6R7-14541-00	.DIAPHRAGM, PUMP	2	
12	6K8-14536-11	.GASKET	2	
13	822-14235-00	.WASHER, NEEDLE	2	
14	583-14561-00	.O-RING	2	
15	64X-14398-00	.GASKET	2	



GP21100-6280

E5

NUMERICAL INDEX

PART NO.	GRID NO.	PART NO.	GRID NO.	PART NO.	GRID NO.	PART NO.	GRID NO.	PART NO.	GRID NO.	PART NO.	GRID NO.
GJ3-U142A-40	D-13	GP2-U417B-00	D-14	GJ1-U7525-00	D- 8	6J8-13414-00	D- 5	6K8-14547-01	B- 8	6M6-24413-00	B- 7
EU0-U1461-01	D-10		D-15	GH1-U7550-00	D- 8	64X-13555-00-94	B- 5	583-14561-00	B- 8	6K8-24421-10	B- 7
EU0-U1461-30	D-10	GP2-U417C-00	D-10	GP2-U7555-00	D- 8	64X-13556-00	B- 5		E- 5		E- 5
	D-10		D-15	GJ1-U7560-00	D- 8		E- 3	6K8-14563-00	B- 7	6K8-24431-20	B- 7
GH6-U1481-00	D-10	GP2-U417D-00	D-14	GJ1-U7570-00	D- 8	62T-13566-00	B- 5		E- 5		E- 5
GJ1-U1552-02	D-11		D-15	GJ1-U7711-00	D- 6		E- 3	6K8-14564-00	B- 7	6K8-24452-10	B- 7
FN8-U1624-00	C-13	GP2-U417E-00	D-14	GJ1-U773J-00	B-13	64X-13610-00	B- 5		E- 5	70R-24489-00	D- 7
GJ1-U213F-00	D- 4		D-15	GJ1-U775B-00	D- 5	62T-13624-00	B- 5	6R7-14569-00	B- 8	6K8-24500-02	B-13
GJ1-U213G-00	D- 4	GP2-U417F-00	D-14	GJ1-U7844-00	D- 6		E- 3	6K8-14589-00	B- 8	6K8-24524-10	B-13
GJ1-U2501-20	C-15		D-15	GE1-U7856-30	C- 9	64X-13674-00	B- 6	6R7-14596-01	B- 7	70R-24543-00	D- 7
GJ1-U2519-10	C-15	GP2-U417G-00	D-14	GJ1-U8K31-01	C- 3		E- 3	6K8-14597-11	B- 7	6K8-24560-10	B-13
GJ1-U252C-20	C-15		D-15	GP2-U8211-00	C- 9	47X-14133-00	B- 7	62T-14613-00	B-10	EU0-28100-03	D-14
GJ1-U252D-10	C-15	GP2-U417H-00	D-14	GJ1-U8221-00	C- 9	812-14147-00	B- 7		E- 3		E- 2
GJ1-U2552-20	C-15		D-15	63N-W0001-20	E- 3		E- 5	64X-14615-00	B-10	62T-41113-00-9M	B-10
GJ1-U2660-01	D- 3	EU0-U418B-00	D-14	64X-W0001-00	E- 3	64X-14162-00	B- 8	64X-14623-00	B-11	62T-41114-01	B-10
GJ1-U2664-00	C-11		D-15	64X-W0004-00	B- 5	3G2-1423A-78	B- 7		E- 3		E- 3
GJ1-U273B-00	C- 2	EU0-U418B-10	D-15	64X-W0090-00-4D	B- 2	3G2-14231-27	B- 7	62T-14625-00	B-10	64X-41123-00-9M	B-11
GJ1-U351H-20	C-15	GA9-U418C-00	D-14	64X-W0093-00	E- 5	830-14231-23	B- 7	64X-14711-00-9M	B-10	64X-41124-00	B-11
GJ1-U351K-20	C-15	GA9-U418C-10	D-15	64X-11111-00-94	B- 2	812-14235-00	B- 7	64X-14712-00-9M	B-10		E- 3
GJ1-U351M-20	C-15	GA9-U418C-41	D-14	64X-11181-00	B- 2		E- 5	64X-14717-00	B-11	6R7-42316-00	B-15
GJ1-U351N-20	C-15	GA9-U418C-50	D-15		E- 3	822-14235-00	B- 8	64X-14721-00-94	B-10	63M-42316-00	B-15
GJ1-U351P-20	C-15	GJ1-U418C-00	D-14	64X-11311-00-94	B- 2		E- 5	64X-14749-00	B-10	63M-44517-01-5B	B- 3
GJ3-U354D-00	C-15	GJ1-U418C-10	D-15	6E5-11325-00	B- 2	64X-14243-00	B- 8		E- 3	62T-44532-10	B- 2
GJ1-U371A-20	D- 2	GJ1-U418C-30	D-14	6M6-11351-A2	B- 2	62T-14251-00	B- 2	64X-14752-00	B-11	663-45119-00	B- 5
GJ1-U371B-20	D- 2	GJ1-U418C-40	D-15		E- 3	6R7-14253-00	B- 8	64X-14763-00-94	B-11		C- 5
GJ1-U373D-20	D- 2	GA9-U418E-00	D-14	6E5-11372-00	B- 5	64X-14255-00	B- 6	62T-14771-00-94	B-11	6K8-45127-00	C- 2
GJ1-U375A-20	D- 2		E- 2	64X-11400-00	B- 4	64X-14283-00	B- 6	64X-14781-00-94	B-10	62T-45127-00	B- 4
GJ1-U375B-30	D- 2	GA9-U418F-00	D-14	64X-11603-00	B- 4	64X-14284-00-4D	B- 5	61X-14916-15	B- 8		E- 3
GJ3-U4114-00	D-14		D-15	64X-11604-00	B- 4	64X-14301-00	B- 7		E- 5	6R8-45318-00	B-14
	D-15	GA9-U418G-00	D-14	64X-11605-00	B- 4	64X-14302-00	B- 7	6M6-14923-10	B- 8	62G-45331-00-94	C- 2
GJ1-U4122-20	D-14	GA9-U418G-10	D-15	64X-11631-00-91	B- 4	64X-14398-00	B- 8	6K8-14926-10	B- 7	61X-45332-01-9M	C- 2
	D-15	GJ1-U419C-00	D-14	62T-11633-00	B- 4		E- 5	6K8-14930-00	B- 7	61L-45378-00	C- 2
GE1-U4125-00	D-14		D-15	64X-11635-00	B- 4	62T-14419-00	B- 6	3KW-14932-00	B- 7	6R8-45511-00	B-14
	D-15	GJ1-U419F-00	D-14	64X-11636-00	B- 4	62T-14435-00	B- 6	6K8-14946-10	B- 7	62T-45526-00	B- 4
GJ1-U415E-00	D-14	GJ1-U419F-10	D-15	63M-12577-00	B-10	62T-14451-00	B- 6		E- 5	63M-4581J-00	B- 4
GJ1-U415F-00	D-14	GJ1-U474A-00	D- 2	64X-12578-00	B-11	6K8-14471-10	B- 7	64X-15100-00-94	B- 2	63M-45813-01-5B	B- 4
GA9-U416B-00	D-14	GJ1-U516A-00-PO	C-11	63M-12580-00	B-11	6K8-14481-10	B- 8	6R7-21415-00-94	B- 2	64X-45813-00-5B	B- 4
GA9-U416B-10	D-15	GA9-U724C-00	D-10	64X-12581-00	B-11	6K8-14521-10	B- 7	6R7-21425-00-94	B- 2	EL8-48193-00	D- 9
GJ1-U416C-01	D-14	GA9-U724D-00	D-10	64X-12582-00	B-10	6M6-14521-00	B- 7	4GB-2155A-00	C- 8	6K8-51129-00	B- 2
GJ1-U416C-10	D-15	GP2-U7242-01	D-10	63M-12590-00	B-12	6K8-14523-11	B- 8	EU0-23814-01	D-12		B-10
GJ1-U416C-20	D-15	GDO-U7249-00-05	C- 3	63M-12590-10	B-12	6K8-14527-11	B- 7	EU0-23814-30	D-12		B-10
GJ1-U416D-11	D-15	GDO-U7249-00-10	C- 3	63M-12590-20	B-12	64X-14527-00	B- 5	64X-24313-00	B- 5		B-15
GA9-U416F-00	D-14	GP2-U7252-00	D- 9	6R8-13116-A0	B- 9	6K8-14534-10	B- 7	64X-24314-00	B- 5	62T-51129-00	B-15
GA9-U416F-10	D-15	EU0-U7354-00-01	B- 3		E- 3	6K8-14536-11	B- 8	668-24376-00	D- 6	61X-51162-00	C-13
GA9-U416G-00	D-14	EU0-U7354-00-03	B- 3	6R3-13183-00	B- 9		E- 5	688-24378-00	B- 5	64X-51190-00-5B	B-15
GA9-U416G-10	D-15	EU0-U7354-00-05	B- 3		B- 9	6R7-14541-00	B- 8	6K8-24411-20	B- 8	62T-51311-00-94	B-14
GJ1-U416H-10	D-15	EU0-U7354-00-10	B- 3	62T-13200-11	B- 9		E- 5		E- 5	6R8-51312-00-94	B-14
GJ1-U416H-20	D-15	EU0-U7354-00-20	B- 3	6J8-13411-00	D- 5	6R7-14542-00	B- 8	6R7-24412-01	B- 8	62T-51313-01	B-15

NUMERICAL INDEX

PART NO.	GRID NO.	PART NO.	GRID NO.	PART NO.	GRID NO.	PART NO.	GRID NO.	PART NO.	GRID NO.	PART NO.	GRID NO.
62T-51315-00-94	B-14	GH1-61651-00	C-15	GH1-6521B-30	D- 4	GH1-6782B-01	D- 7	6M6-81921-00	C- 7	90119-05935	C-11
62T-51318-00-5B	B-14	EU0-61652-00	B-12	EW2-65772-00	D- 8	GP2-67831-00	D- 6	6G1-81941-10	C- 7	90119-06908	D- 3
62T-51321-80	B-14		C-14	GA7-65772-00	C- 9	EU0-67832-00	D- 6	6M6-81952-01	C- 7		D-10
6R8-51323-10	C- 2		C-15	EU0-65901-01	D-14	GP2-67833-00	D- 6	6M6-81960-A0	C- 7		D-12
62T-51326-00	B-14		C-15		E- 2	EU0-67834-00	D- 6	EU0-82110-09	C- 9	90119-06914	D- 2
63N-51333-00-5B	C- 2	GH1-62127-00	D- 4	GJ1-6593H-00	D- 3	EU0-67835-00	D- 6	6M6-82117-21	C- 8	90119-06924	C-11
6R8-51348-00-5B	B-14	GH1-62128-30	C-11	GA7-6593J-00	D- 3	EU0-67835-30	D- 3	62T-82117-01	C- 8	90119-06929	C- 3
62T-51348-00	B-14	GH1-62139-00	D- 4	GH1-6596B-10	C-11	EU0-67839-00	D- 3	62T-82117-11	C- 8	90119-06940	C-11
63M-51348-00	C- 2	EW2-62140-00	D- 7	GH1-6596C-10	C-11		D- 6	6K8-82150-01	C- 7		C-11
6R8-51367-01	B-14	EW2-62142-00	D- 7	GA7-65983-00	D- 2	FJ0-67840-00	D- 5	6G1-82151-00	C- 7	90119-08M11	B-10
	E- 3	GH1-62156-00	D- 4	GA7-65984-00	D- 2	FJ0-67841-01	D- 5	62T-82361-00	C- 8	90119-08M19	B- 2
	E- 3	FJ0-62158-00	D- 5	GJ1-6721B-00	B- 3	EU0-67856-00	D- 6	64X-82366-00	C- 7	90119-08M55	B- 2
63N-51368-00	C- 2	EU0-62241-30	D-10	GJ1-66607-00	C-10	EU0-67856-50	D- 6	62E-82371-10	C- 7	90119-08038	B- 3
	E- 3	EU0-62280-00	C-13	GDO-67249-00-05	C- 3	GJ1-67856-00	D- 6		C- 7	90119-089U1	B- 3
62T-51381-00	B-14	EU0-62282-00	C-13	GDO-67249-00-10	C- 3	EU0-67869-00	D- 6	62T-82553-01	C- 8	90119-089U5	C- 2
62T-51673-00	B-15	EU0-62282-00	C-13	EW2-67250-02	D-11	GH3-6820A-20	C- 9	64X-82560-00	C- 8	90119-089U6	C- 2
61L-5169A-00	B- 5	EU0-62283-00	C-13	EW2-67255-00	D-11	GH3-6820A-30	C- 9	6R7-83623-40	C- 7	90119-089U7	C- 9
	C- 4	EU0-62285-01	C-13	EW2-67256-00	D-11	GJ1-6822E-00	C- 3	6R7-83623-50	C- 7		D- 7
GH1-6043H-00	D-10	GH1-6251D-30	C-15	EW2-67257-01	D-11	FJ0-68221-00	C- 9	63N-83623-00	C- 7	90119-08903	D-12
GH1-6043J-00	D-10	GH1-6251E-30	C-15	EW2-67258-01	D-11	FJ0-68221-30	C- 9	682-84385-01	B-11		D-12
GH1-6046C-00	D- 9	GJ1-6252A-10	C-15	EW2-67259-01	D-11	GJ1-68238-00	C- 9	64X-8552A-00-5B	C- 7		D-12
FN8-6131B-00	D-12	GH1-6266B-00	D- 2	EU0-67267-00	D-10	GJ1-6824B-00	C- 9	6M6-8552E-01	C- 7	90119-08904	B- 3
GH1-6141B-00	D-11	GJ1-6266B-00	C- 9	EU0-67324-00	B- 3	GJ1-6824C-01	C- 9	64X-85520-00	C- 4	90119-08907	C- 3
GH1-6141D-01	D-11	GJ1-62663-00	C- 2	EU0-67354-00-01	B- 3	GJ1-6824D-00	D-10	64X-85521-01	C- 4	90119-08925	D-12
GH1-6143B-00	D- 9	FN8-6269B-00	C-14	EU0-67354-00-03	B- 3	GJ1-68310-00	D-11	64X-85525-00	C- 4	90119-10M00	B- 2
GH1-6143C-30	D-11	EU0-62694-00	D-10	EU0-67354-00-05	B- 3	FK7-68312-02	D-11	62T-85533-00	C- 4	90119-10M01	B- 2
GH1-61433-00	D-12	GH1-6271B-30	D- 2	EU0-67354-00-10	B- 3	FK7-68313-01	D-11	64X-85540-00	C- 7	90119-10M02	B- 2
EU0-61435-00	D-10	GH1-6271C-30	D- 2	EU0-67354-00-20	B- 3	EW2-68348-00	D-11	64X-85542-00	C- 7	90119-10M03	B- 2
EU0-61438-00	D-10	GH1-6271D-30	D- 2	GJ1-6753B-02	D- 8	GH1-6883N-50	C-13	64X-85546-00	C- 7	90119-10M07	B- 2
GA7-6144D-00	D-13	EU0-62720-31	D- 3	GH6-67577-01	D- 8	GH1-6883P-50	C-14	64X-85550-00	C- 4	90119-10M56	B- 2
EU0-61446-00	D-10	EU0-62721-31	D- 3	GJ1-67578-10	C-13	GH1-6883T-00	C-14	64X-85570-00	C- 7	90119-10M72	B-11
GH1-61467-01	D-12	GJ1-62733-00	C- 2	GJ1-67578-20	D-10	6M6-8132W-00	C- 7	90119-109U8	C- 4	90119-109U8	C- 2
GH1-61468-01	D-12	GJ1-62840-01	C-11		D-10	64X-81337-00-4D	C- 4	90149-04902	B-15	90149-04902	C-11
GH1-61469-00	D-11	FN8-62884-00	C-11	GJ1-6759B-00	D- 7	6M6-81365-A0	C- 4	90101-06M04	B- 6	90149-04903	D-13
EU0-61486-00	D-10	GH1-62891-01	C-11	GJ1-6759C-00	D- 7		E- 3	90105-05M46	D- 8	90149-04943	D- 2
GH1-6151M-00	D- 9	FN8-62892-00	C-11	GH1-6759D-00	D- 5	64X-81800-00	C- 6	90105-06900	B- 6	90149-04943	C-11
GH1-6152M-01	D- 9	GH1-6351R-40	C-15	EU0-67593-40	C-10	3AJ-81809-00	C- 6	90105-08M70	B-11	90149-05903	C-11
GH1-6153D-00	D- 9	GH1-6351S-40	C-15	GDO-6761D-00	C-13	64X-81820-00	C- 6	90105-08M71	B-11	90149-05959	D-11
GH1-6153D-10	D- 9	GJ1-63581-30	C-15	EW2-67618-00	C-13	6M6-81826-00	C- 6	90105-10M45	B-11		D-13
GH1-6153E-01	D- 9	GH1-63729-00	D- 2	FJ0-67713-00	D- 6	6M6-8183E-00	C- 6	90105-10M60	B-10	90149-05960	D- 9
GH1-6153J-01	D- 9	GH1-63774-01	D- 2	FJ0-67714-01	D- 6	6M6-81830-00	C- 6		B-10	90149-05984	C- 9
GH1-6153M-01	D- 9	GH1-6378C-00	C-12	FJ0-67716-00	D- 6	6M6-81840-10	C- 6	90105-10M72	B-10		C-11
GP2-61541-00	D-11	GH1-63850-01	D- 2	GJ1-67743-00	D- 7	11H-81844-00	C- 6	90105-10M73	B-10	90159-05900	D-11
GH1-6155B-00	D- 9	GH1-6516N-30	C-11	FJ0-67773-00	D- 7	6M6-81847-00	C- 6	90109-06M66	B- 6	90159-06901	C-11
GH1-6155C-00	D- 9	GH1-65162-01	C-12	FJ0-67776-00	D- 5	6M6-81847-00	C- 6	90109-08M56	B- 2		C-11
EW2-61553-00	D-11	GH1-6517G-04	C-11	EU0-67767-31	D- 6	6M6-81850-00	C- 6	90109-10M72	C- 4	90169-059U1	C-15
GH1-61557-00	C-11	GH1-6517J-01	C-12	FN8-67816-00	B-13	6M6-81865-00	C- 6	90116-06M55	B- 5	90170-22M11	B-13
EU0-61588-00	D-11	GH1-6517K-01	C-12	EU0-67817-00	B-13	6M6-81866-00	C- 6	90116-08M59	B-10	90179-06926	C-11
FN8-61651-00	C-15							90119-059U4	D- 8	90179-06947	C- 3

NUMERICAL INDEX

PART NO.	GRID NO.	PART NO.	GRID NO.	PART NO.	GRID NO.	PART NO.	GRID NO.	PART NO.	GRID NO.	PART NO.	GRID NO.
90179-06959	C-14	90387-06916	C-14	90465-11M10	B- 2	90601-118UF	D- 8	92990-06600	B-10	93210-35M72	E- 3
90179-08M15	B- 5	90387-08M06	B-15		B- 5	90601-142U6	D-11		B-14	93210-46M16	B-14
90179-08927	C-11	90387-08M08	B-15		B- 5	90601-155U4	D- 6		B-14		E- 4
90179-10925	C- 2	90430-13909	C-13		B- 9	90601-162U5	C- 9		C- 2	93211-03902	D- 3
90201-05M09	C- 4	90430-16910	D- 8		B- 9		D- 6		C- 4	93305-30601	B- 4
90201-05925	B-13		D- 8		B- 9	90601-168U7	D- 8		C- 4	93306-205U0	B-14
	C- 9	90445-07M87	B- 9		B-10	90601-195UD	D- 8		C- 6	93306-205U6	C- 2
	C-13		B- 9		B-13	90601-200U1	B-13		C- 7	93306-307U3	B- 4
	D- 8	90445-09M21	C- 2		B-13		C-13		C- 8	93310-320U2	B- 4
90201-05928	D- 9	90445-09M24	C- 4		B-13		C-13		C- 8	93430-47M04	C- 2
	D-11	90445-09901	D- 5		B-13		D- 8		D- 9	93440-25M08	C- 6
90201-06M31	B- 6	90445-09905	D- 7		B-13	90601-200U2	D- 8	92990-08100	B- 7	93440-80023	B- 4
	B-15	90445-10M23	B-13		B-13	90601-20006	B-13		B-10	93450-18M06	C- 6
90201-065F3	C-14	90445-10M27	B-13		B-13		C- 9	92990-08200	C-13	93450-21053	B- 4
	D- 2	90445-10M70	B-13		B-15		C- 9	92990-08600	C- 6	93603-10049	B- 2
90201-08M04	B-15	90445-10M71	B-13		B-15		C-13		C- 6	93604-07141	B- 2
90201-20M04	B- 4	90445-10M72	B-13		C- 2		D-10	92990-10200	D- 2	93605-12M21	B-10
90201-24M02	B- 4	90445-10M88	B- 5		C- 4	90601-20007	D- 4		D-12	93606-12019	B- 2
90267-409U5	D- 4	90445-11M33	B- 9		C- 8	90601-20008	D- 8	92990-14200	D- 8		B-14
90267-40935	D- 6	90445-11903	D- 6		C-14	90601-20015	B-13	92995-06100	C- 6		B-14
90267-48835	C-15	90445-14M06	B-11		D- 4	90604-80759	C-13		C- 8		B-15
90267-489U1	B-13	90445-14M17	B-14		D- 5	90604-80775	C-13		D- 2		C- 2
	C-12	90445-14M21	B- 2		D- 5	90604-80795	D- 8		D- 9		C- 4
	D- 3	90445-14M24	B-15		D- 6	90604-80796	D- 8	92995-08200	B-11	94702-00195	C- 8
	D- 4	90445-14M26	B-11		D- 6	90699-36U01	D-10	92995-08600	B-15	95380-05600	D- 9
90267-489U2	C-11	90445-19M07	C-13		D- 7	91490-16010	D- 6		B-15	95380-06700	B-15
	C-11	90445-19M09	C-13		D- 7	91790-05040	D- 6		C- 2		C- 6
	D- 7	90446-07M35	B- 9		D- 8	92990-04600	B-13		C- 7		C-14
90267-489U8	C-15	90446-07M48	B- 9	90465-13M11	C- 8		D- 9	93101-25M50	B-14	95380-08600	B-10
	C-15	90446-14M66	B- 5		C- 9	92990-05100	C- 4		E- 3	95380-08700	B- 7
90267-489U9	C- 9	90446-14M67	B- 5		C-13		C- 4	93101-25M55	C- 2		B-15
	C-10	90446-20M53	B- 3	90467-08M10	C- 9	92990-05200	C- 9		E- 3	95380-14700	D- 8
90267-48925	B-13		B-11	90467-11044	D- 6		C-13	93101-25M56	C- 2	95720-05300	C- 9
	C- 9	90446-27M55	B-11	90480-06M43	C- 7	92990-05300	D- 9		E- 3		C-11
	C-13	90450-14M05	B-11	90480-06M46	B-14	92990-05600	B- 5	93101-36M46	B- 4		C-13
	D- 4		B-14	90480-20M05	B-11		C-11		E- 3	95720-06300	C-12
	D- 8	90450-18M09	B-11	90480-23M69	C- 4		D- 6	93102-18M35	B-14		C-15
90267-48951	D- 4	90450-22M14	B-11	90501-14M73	C- 6	92990-06200	C-12		E- 3		D- 2
	D-13		B-11	90560-22281	D-11		C-14	93102-25M34	B-14		D-10
90280-16053	C- 4	90450-88M15	B-11	90600-913U2	C- 9		C-15		E- 3		D-11
90338-12081	D- 2	90450-99M06	B-10	90600-91736	B-13		D- 2	93102-36M33	B- 4	95720-08300	C-13
90380-12M29	B- 2	90450-99M16	B-10		C- 9		D- 9		E- 3	95720-10300	D- 2
	C- 4	90464-06M29	C- 7		C-13		D-11	93103-32M01	B- 4		D-12
90387-05916	D- 9	90464-07M20	B- 9		D- 8	92990-06600	B- 5		E- 3	95780-06300	D- 9
90387-06M30	C- 8	90465-06M00	C- 4	90600-918U3	D- 7		B- 5	93210-13M63	B- 6	97013-05012	C- 4
90387-06M60	B-14	90465-06M28	C- 4		D- 9		B- 6	93210-17MA4	C- 2	97013-05020	C- 4
90387-06914	D- 2	90465-08M37	B- 9	90601-11062	D- 6		B- 6		E- 3	97013-06012	B- 6
90387-06915	C-11	90465-08028	C- 7	90601-118UF	B-12		B- 9	93210-35M72	C- 2	97013-06020	B- 6

NUMERICAL INDEX

PART NO.	GRID NO.	PART NO.	GRID NO.	PART NO.	GRID NO.	PART NO.	GRID NO.	PART NO.	GRID NO.
97013-06025	B- 5								
	B-10								
97013-08016	B-11								
97013-08035	C- 6								
97013-08040	C- 6								
97014-06035	B- 5								
97080-06012	D-10								
97080-06030	D-11								
97095-06016	B-14								
	C- 8								
	D- 2								
97095-06018	C- 2								
97095-06025	B-14								
	C- 4								
97095-06030	C- 4								
97095-06035	B- 9								
97095-08016	C- 7								
97095-08018	B-15								
97095-08020	B-15								
97095-08025	C- 2								
97513-06516	B- 5								
97595-06525	B-14								
97780-04110	D- 3								
97780-40116	C- 9								
97780-50612	C-13								
97780-60116	D- 7								
	D- 9								
97780-60525	C- 7								
97880-05020	C-13								
	D- 9								
97880-06030	C- 8								
97980-06116	D- 2								
97985-06220	B-11								
98580-03008	D-11								
98580-04010	B-13								
98580-05016	B- 5								
98580-05525	D-11								
98580-06010	C- 4								
98580-06016	C- 7								
	C- 8								
98580-06565	D- 9								
98780-04015	B- 2								
98780-04535	D- 3								
98780-05512	C- 3								
98980-04010	D- 9								
98980-06025	D- 2								

*COPYRIGHT: All rights reserved. No part of this publication
may be reproduced without permission.*

YAMAHA

YAMAHA MOTOR CO., LTD.
2500 SHINGA I IWATA SHIZUOKA JAPAN
SERVICE INFORMATION DIV.

PRINTED ON RECYCLED PAPER

Printed in Japan
First edition DEC., 1995