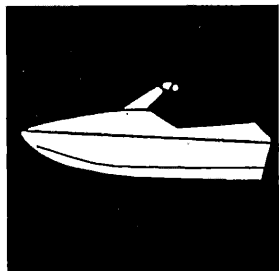


YAMAHA



PARTS CATALOGUE

WAVE RAIDER

RA1100U (GJ15,GJ16)

RA1100 (GJ16,GJ17)

△ 96.10.1. Fig 9

YAMAHA
GENUINE
Parts & Accessories

16GJ1-100E1

FOREWORD

This Parts Catalogue is related to the parts for the model(s) in the below frame. When you are ordering replacement parts, please refer to this Parts Catalogue and quote both part numbers and part names correctly.

RA1100U (GJ15,GJ16) RA1100(GJ16,GJ17)

1. Modifications or additions which have been made after issue of the Parts Catalogue will be announced in the Yamaha Parts News. It is advisable that you make necessary corrections to the Parts Catalogue according to the Yamaha Parts News.

2. Abbreviations

The following abbreviations are used in this Parts Catalogue.

- "UR" Use specified parts number.
- "UN" Use as many as needed.
- "AP" Alternate Parts
- "LM" Local Made (Parts need to be ordered locally)
- "F#" Frame No. (Applicable machine No.)

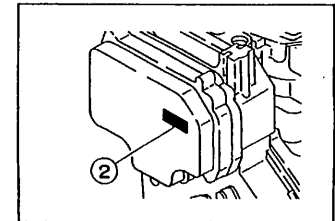
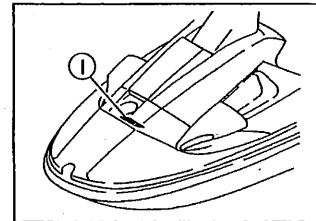
3. Parts, which are to be supplied in an assembly, are listed with a dot (.) in front of the part name as shown below.
The numeral appearing to the right of each component part indicates the quantity of parts for each assembly unit.

EXAMPLE

PART NO.	DESCRIPTION	Q'TY	REMARKS
EU0-62280-00	DRAIN PLUG ASSY	2	
EU0-62282-00	. PLUG, DRAIN	1	

4. Applicable Serial No. and Color Code

① Hull Serial No.	(GJ15,GJ16) GJ1-809001 ~ (GJ17) GJ1-600401 ~	
② Engine Serial No.	63M-006201 ~	



Color Code	Color Name 1	Abbreviation
4D	DARK BLUISH GRAY METALLIC 2	DBNM2

5. Note that the illustrations are for reference in finding parts numbers, not to be used for assembling. When assembling, please use the applicable service manual.
6. A part with "YMUS" in the remarks column can be obtained from YMUS(USA) and not from YAMAHA MOTOR CO.,LTD (JAPAN).

EXAMPLE

PART NO.	DESCRIPTION	QTY	REMARKS
EW2-US160-00	ENGINE HATCH COMP.	1	YMUS
90601-168U7	BAND, HOSE	1	YMUS

ADDRESS:

YAMAHA MOTOR CORPORATION U.S.A.
PARTS & ACCESSORY DIV.
6555 KATELLA AVENUE
CYPRESS, CALIFORNIA 90630, U.S.A.

CONTENTS

Cylinder, Crankcase	B2~B3
Crankshaft, Piston	B4
Intake	B5~B6
Carburetor	B7~B8
Oil Pump	B9
Exhaust 1	B10~B12
Fuel	B13~B14
Jet Unit 1	B15~C2
Jet Unit 2	C3~C4
Generator	C5
Starting Motor	C6
Electrical 1	C7~C9
Electrical 2	C10~C11
Engine Hatch	C12~C13
Hull, Deck	C14~C15
Gunwale, Mat	D2
Seat - Under Locker 1	D3~D4
Seat - Under Locker 2	D5
Oil Tank	D6
Fuel Tank	D7~D8

Exhaust 2	D9~D10
Control Cable	D11~D12
Steering 1	D13~D14
Steering 2	D15
Graphic 1. Tool (For USA)	E2
Graphic 2. Tool (For CAN, GUM, AUS, FRA)	E3~E4
Repair Kit 1	E5~E6
Repair Kit 2	E7

INDEX

Numerical Index	M1~M4
-----------------------	-------

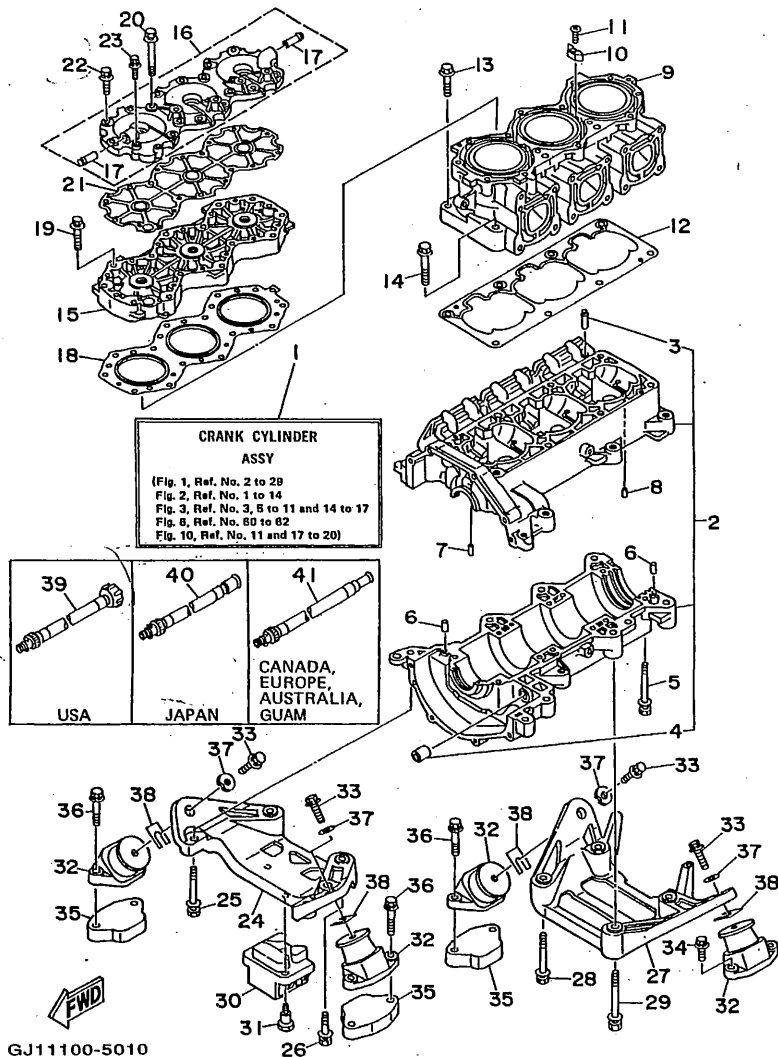


FIG. 1 CYLINDER, CRANKCASE

REF. NO.	PART NO.	DESCRIPTION	Q'TY	REMARKS
1	63M-W0090-01-4D	CRANK CYLINDER ASSY	1	
2	63M-15100-00-94	CRANKCASE ASSY	1	
3	62T-14251-00	.NIPPLE	1	
4	90380-12M29	.BUSH, SOLID	1	
5	90119-08M55	BOLT, WITH WASHER	12	
6	93606-12019	PIN, DOWEL	4	
7	93603-10049	PIN, DOWEL	7	
8	93604-07141	PIN, DOWEL	1	
9	63M-11311-00-94	CYLINDER 1	1	
10	6E5-11325-00	ANODE	2	
11	98780-04015	SCREW, FLAT HEAD	2	
12	63M-11351-00	GASKET, CYLINDER	1	
13	90105-10M63	BOLT, WASHER BASED	6	
14	90105-10M64	BOLT, WASHER BASED	2	
15	63M-11111-00-94	HEAD, CYLINDER 1	1	
16	63M-11191-00-9M	COVER, CYLINDER HEAD 1	1	
17	6K8-51129-00	.NIPPLE	2	
18	63M-11181-00	GASKET, CYLINDER HEAD 1	1	
19	90119-08M19	BOLT, WITH WASHER	10	
20	90119-08M29	BOLT, WITH WASHER	4	
21	63M-11193-00	GASKET, HEAD COVER 1	1	
22	97513-08630	BOLT, WITH WASHER	13	
23	97513-06630	BOLT, WITH WASHER	2	
24	63M-21415-00-94	BRACKET, FRONT UPPER 1	1	
25	90119-10M02	BOLT, WITH WASHER	4	
26	90119-10M72	BOLT, WITH WASHER	1	
27	63M-21425-00-94	BRACKET, REAR UPPER 1	1	
28	90119-10M02	BOLT, WITH WASHER	2	

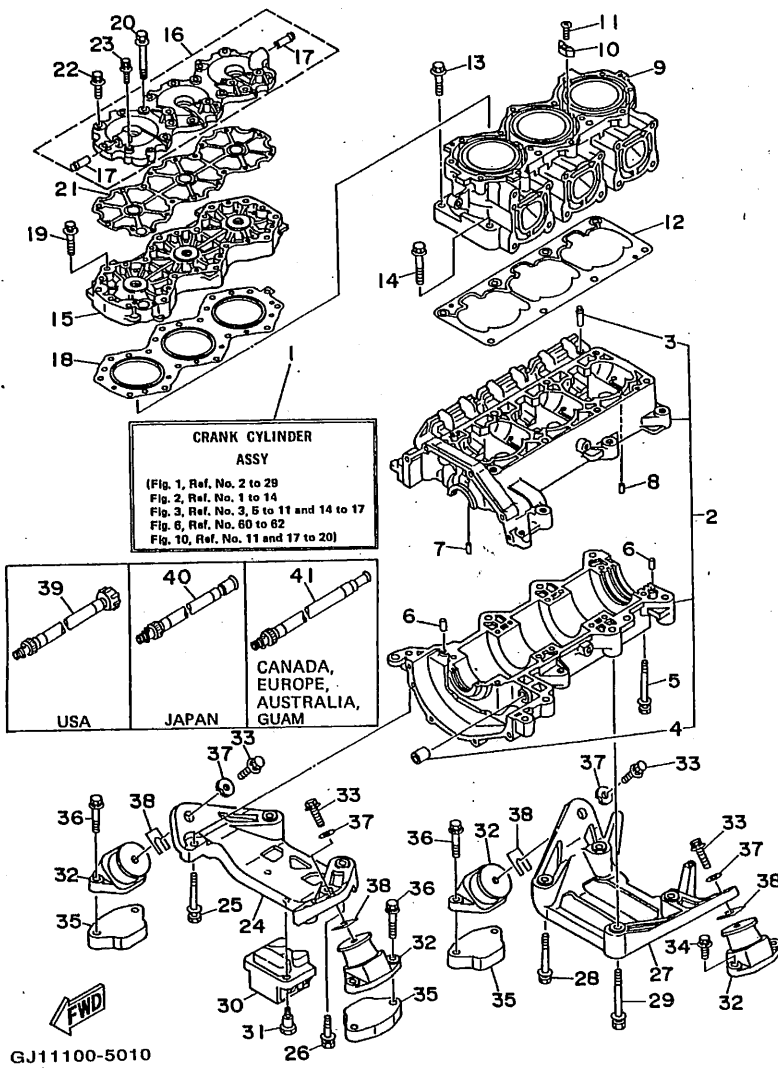


FIG. 1 CYLINDER. CRANKCASE

REF. NO.	PART NO.	DESCRIPTION	Q'TY	REMARKS
29	90119-10M03	BOLT, WITH WASHER	2	
30	63M-44532-00	STOPPER, UPPER MOUNT	1	
31	90109-06M70	BOLT	2	
32	63M-44517-01-58	MOUNT RUBBER	4	
33	90119-08904	BOLT, WITH WASHER	4	
34	90119-08038	BOLT, WITH WASHER	2	
35	GJ1-6721B-00	SPACER, ENGINE MOUNT	3	
36	90119-089U1	BOLT, WITH WASHER	6	YMUS
37	EU0-67324-00	PLATE	4	
38	EU0-U7354-00-01	SHIM (T=0.1)	10	UR YMUS
	EU0-67354-00-01	SHIM (T=0.1)	10	UR
	EU0-U7354-00-03	SHIM (T=0.3)	10	UR YMUS
	EU0-67354-00-03	SHIM (T=0.3)	10	UR
	EU0-U7354-00-05	SHIM (T=0.5)	10	UR YMUS
	EU0-67354-00-05	SHIM (T=0.5)	10	UR
	EU0-U7354-00-10	SHIM (T=1.0)	10	UR YMUS
	EU0-67354-00-10	SHIM (T=1.0)	10	UR
	EU0-U7354-00-20	SHIM (T=2.0)	10	UR YMUS
	EU0-67354-00-20	SHIM (T=2.0)	10	UR
39	63M-12590-00	CONDUCTION ASSY	1	UR USA
40	63M-12590-10	CONDUCTION ASSY	1	UR JAPAN
41	63M-12590-20	CONDUCTION ASSY	1	UR CANADA, EUROPE, AUSTRALIA, GUAM

B3

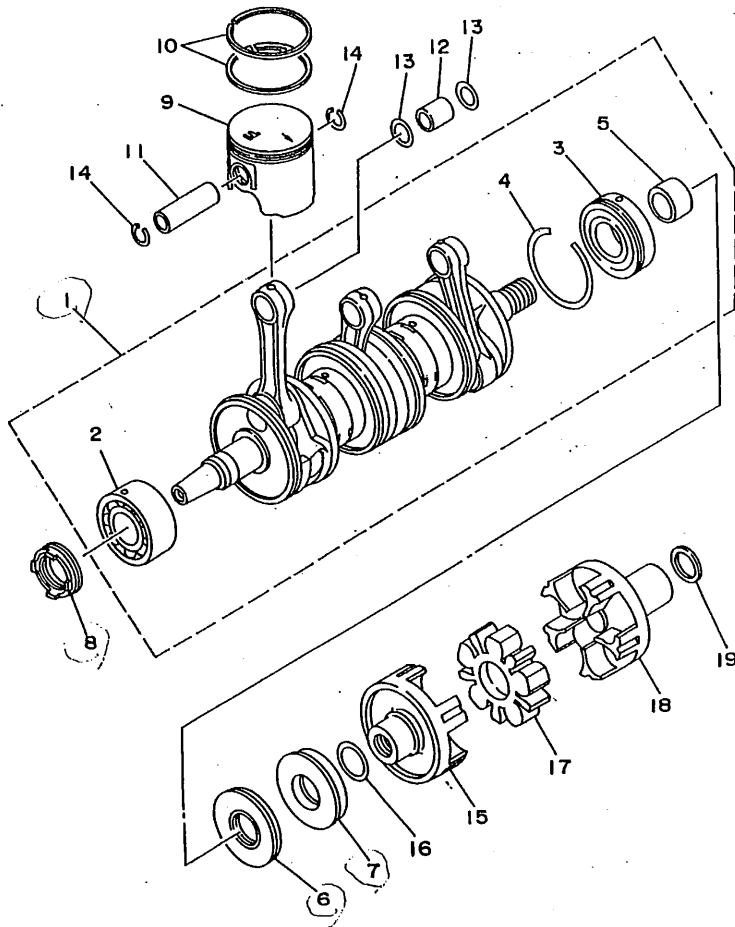


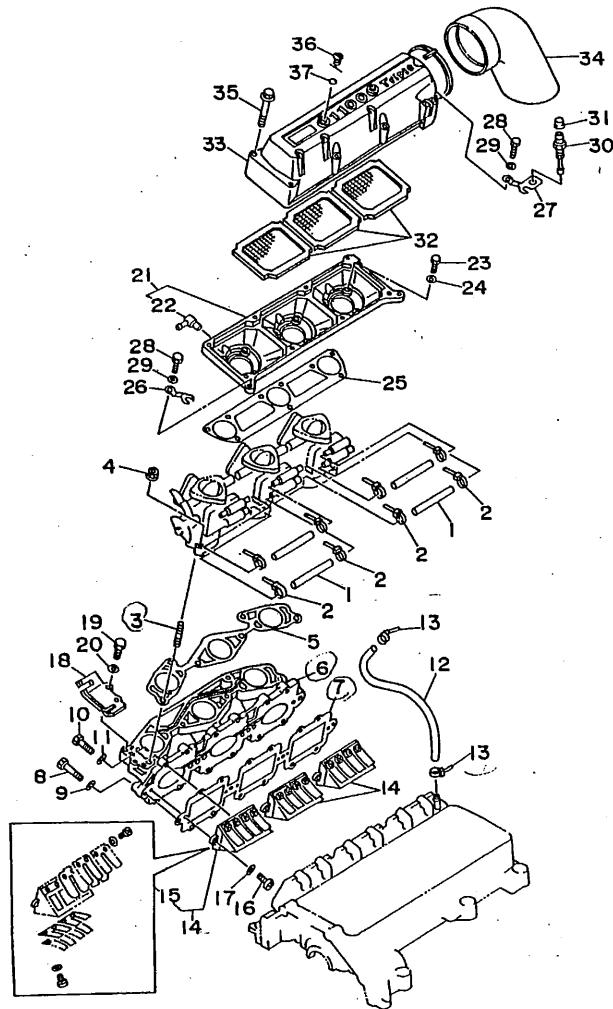
FIG. 2 CRANKSHAFT. PISTON

REF. NO.	PART NO.	DESCRIPTION	Q'TY	REMARKS
1	63M-11400-01	CRANKSHAFT ASSY	1	
2	93305-30601	.BEARING	1	
3	93306-307U3	.BEARING	1	
4	93440-80023	.CIRCLIP	1	
5	62T-45526-00	.COLLAR, DRIVE SHAFT	1	
6	93102-36M33	OIL SEAL	1	
7	93101-36M46	OIL SEAL	1	
8	93103-32M01	OIL SEAL	1	
9	63M-11631-00-89	PISTON (STD)	3	
	63M-11635-00	PISTON (0.25MM O/S)	3	AP
	63M-11636-00	PISTON (0.50MM O/S)	3	AP
10	61X-11603-00	PISTON RING SET (STD)	3	
	61X-11604-00	PISTON RING SET (0.25MM O/S)	3	AP
	61X-11605-00	PISTON RING SET (0.50MM O/S)	3	AP
11	62T-11633-00	PIN, PISTON	3	
12	93310-320U2	BEARING, CYLINDRICAL	3	
13	90201-20M04	WASHER, PLATE	6	
14	93450-21053	CIRCLIP	6	
15	63M-45813-01-5B	FLANGE, COUPLING	1	
16	62T-45127-00	SEAL	1	
17	63M-4581J-00	RUBBER SHAFT COUPLING	1	
18	63M-45813-10-5B	FLANGE, COUPLING	1	
19	90201-24M02	WASHER, PLATE	1	



GJ15100-6020

B4



GJ11100-5030

FIG. 3 INTAKE

REF. NO.	PART NO.	DESCRIPTION	Q'TY	REMARKS
1	90445-10M01	HOSE	4	
2	90465-11M10	CLAMP	8	
3	90116-06M55	BOLT, STUD	6	
4	90179-08M15	NUT	6	
5	63M-13556-00	GASKET, MANIFOLD	1	
6	63M-13555-00-94	MANIFOLD, INTAKE	1	
7	63M-13566-00	GASKET	1	
8	97013-06035	BOLT	4	
9	92990-06600	WASHER, PLATE	4	
10	97095-06025	BOLT	12	
11	92990-06600	WASHER, PLATE	12	
12	63M-24314-00	PIPE 4	1	
13	90465-11M10	CLAMP	2	
14	63M-13610-00	REED VALVE ASSY	3	
15	63M-W0004-00	REED SET	1	
16	98580-05016	SCREW, PAN HEAD	6	
17	92990-05600	WASHER, PLATE	6	
18	62T-14527-01	PLATE	1	
19	97095-06016	BOLT	2	
20	92990-06600	WASHER, PLATE	2	
21	63M-14284-00-98	COVER, CARBURETOR 2	1	
22	6E5-11372-00	NIPPLE, HOSE	3	
23	97095-06020	BOLT	9	
24	92990-06600	WASHER, PLATE	9	
25	63M-13674-00	GASKET, AIR COOLER COVER 1	1	
26	63M-14255-00	PLATE	1	
27	63M-14255-10	PLATE	1	
28	97013-06012	BOLT	2	

B5

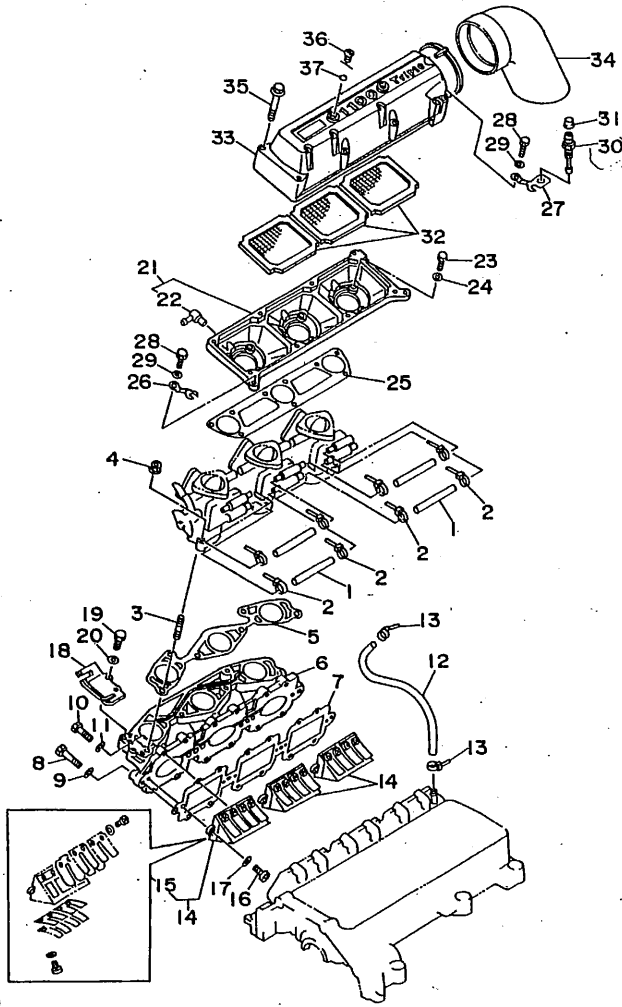


FIG. 3 INTAKE

REF. NO.	PART NO.	DESCRIPTION	Q'TY	REMARKS
29	92990-06600	WASHER, PLATE	2	
30	61L-5169A-00	NIPPLE, GREASE	1	
31	663-45119-00	CAP, GREASE NIPPLE	1	
32	62T-14451-00	ELEMENT, AIR CLEANER	3	
33	63M-14283-00	COVER, CARBURETOR 1	1	
34	63M-14419-00	PIPE	1	
35	90105-05M46	BOLT, WASHER BASED	8	
36	62T-14435-00	GROMMET	2	
37	93210-13M63	O-RING	2	

GJ11100-5030

B6

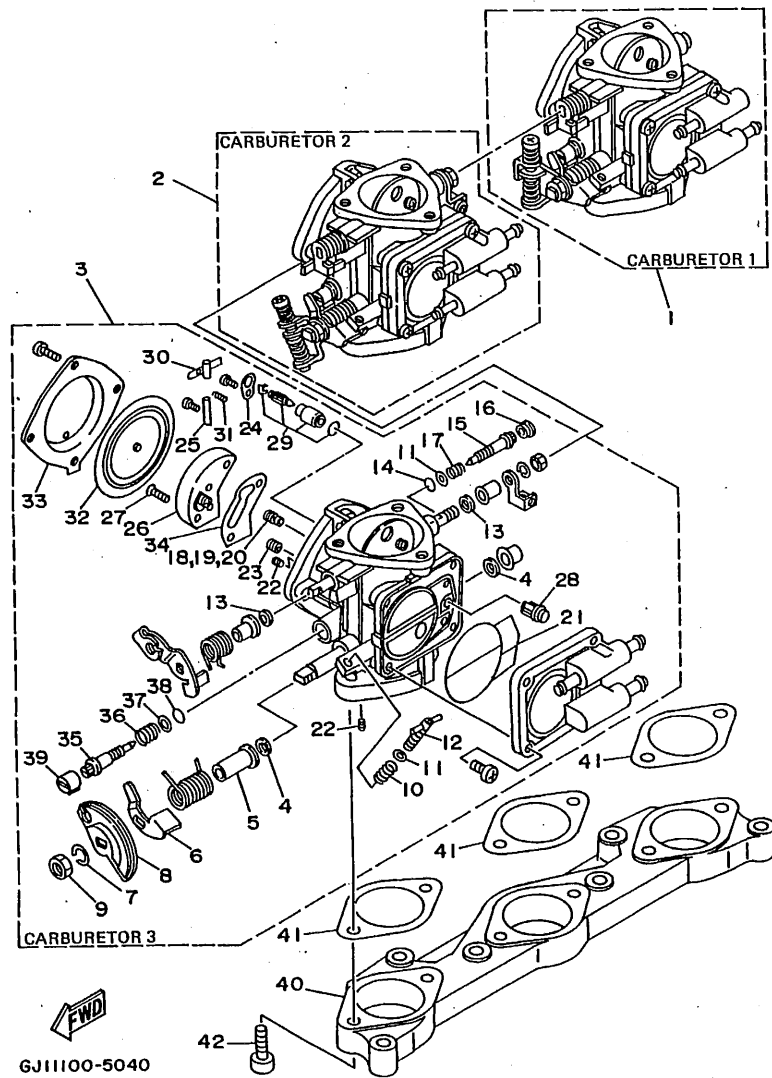


FIG. 4 CARBURETOR

REF. NO.	PART NO.	DESCRIPTION	Q'TY	REMARKS
1	63M-14301-00	CARBURETOR ASSY 1	1	
2	63M-14302-00	CARBURETOR ASSY 2	1	
3	63M-14303-00	CARBURETOR ASSY 3	1	
4	6R7-14596-01	.WASHER	6	
5	6K8-14534-10	.COLLAR	3	
6	6K8-14926-10	.BRACKET, THROTTLE 1	1	CARBURETOR 3
7	92990-08100	.WASHER, SPRING	3	
8	6K8-14930-00	.THROTTLE SHAFT ASSY	1	CARBURETOR 3
9	95380-08700	.NUT	3	
10	6K8-14531-00	.SPRING, ADJUST SCREW	1	CARBURETOR 3
11	6K8-14559-00	.WASHER	4	
12	6M6-14521-00	.SCREW, ADJUST	1	CARBURETOR 3
13	6K8-14597-11	.WASHER	6	
14	6K8-14562-00	.O-RING	3	
15	63M-14946-00	.METERING NEEDLE	3	
16	6K8-14471-10	.CAP, CARBURETOR	3	
17	6K8-14533-00	.SPRING, ADJUST SCREW	3	
18	3G2-1423A-72	.JET, MAIN (#107.5)	1	CARBURETOR 1
19	3G2-14231-19	.JET, MAIN (# 95)	1	CARBURETOR 2
20	3G2-1423A-72	.JET, MAIN (#107.5)	1	CARBURETOR 3
21	6K8-14564-00	.O-RING	3	
22	6K8-14521-10	.SCREW	6	
23	830-14231-15	.JET, PILOT (# 75)	3	
24	6K8-14527-11	.PLATE	3	
25	6K8-14579-00	.PIN, FLOAT	3	
26	63M-24412-00	.BODY 1	3	
27	6K8-14523-11	.SCREW, STOP	6	
28	6R7-14569-00	.STRAINER	3	

B7

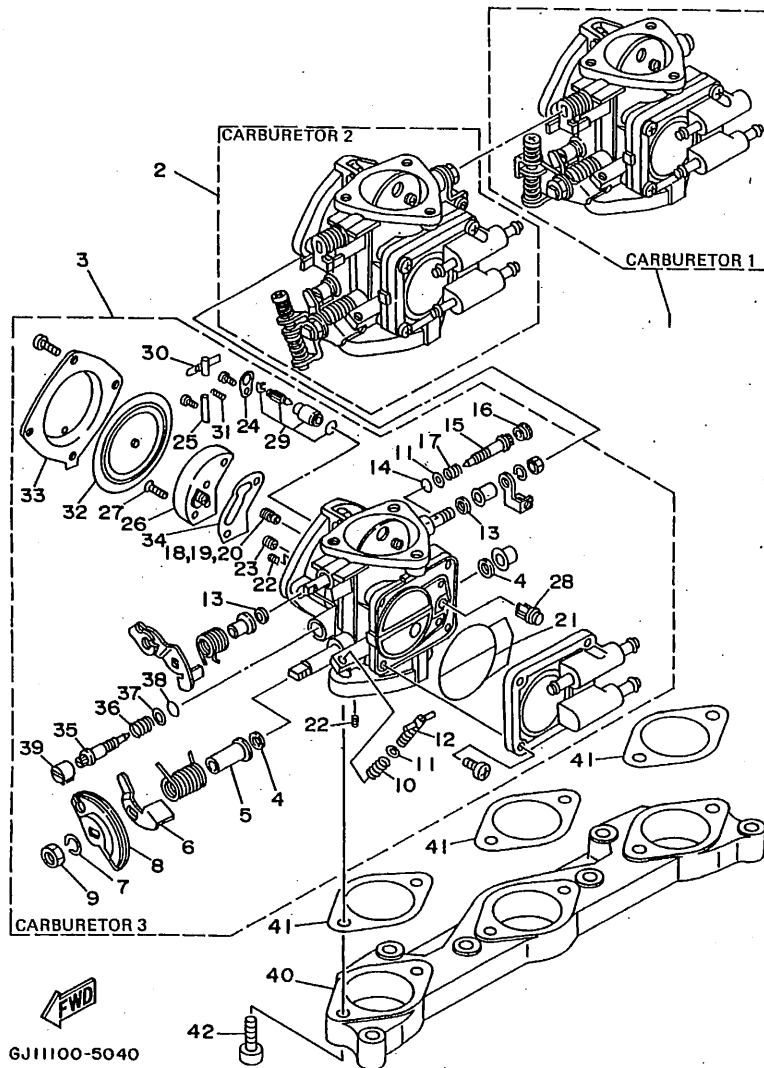


FIG. 4 CARBURETOR

REF. NO.	PART NO.	DESCRIPTION	Q'TY	REMARKS
29	61X-14916-15	.NEEDLE	3	
30	6K8-14547-01	.ARM, FLOAT	3	
31	6R7-14253-00	.SPRING	3	
32	6R7-14541-00	.DIAPHRAGM, PUMP	3	
33	6R7-14542-00	.BODY, PUMP 1	3	
34	6K8-14536-11	.GASKET	3	
35	63M-14923-00	.SCREW, PILOT	3	
36	6K8-14589-00	.SPRING	3	
37	6K8-14537-00	.GASKET	3	
38	583-14561-00	.O-RING	3	
39	6K8-14481-10	.CAP, CARBURETOR	3	
40	63M-14243-00	PLATE	1	
41	63M-14398-00	GASKET	3	
42	63M-14162-00	BOLT, HOLDING	6	

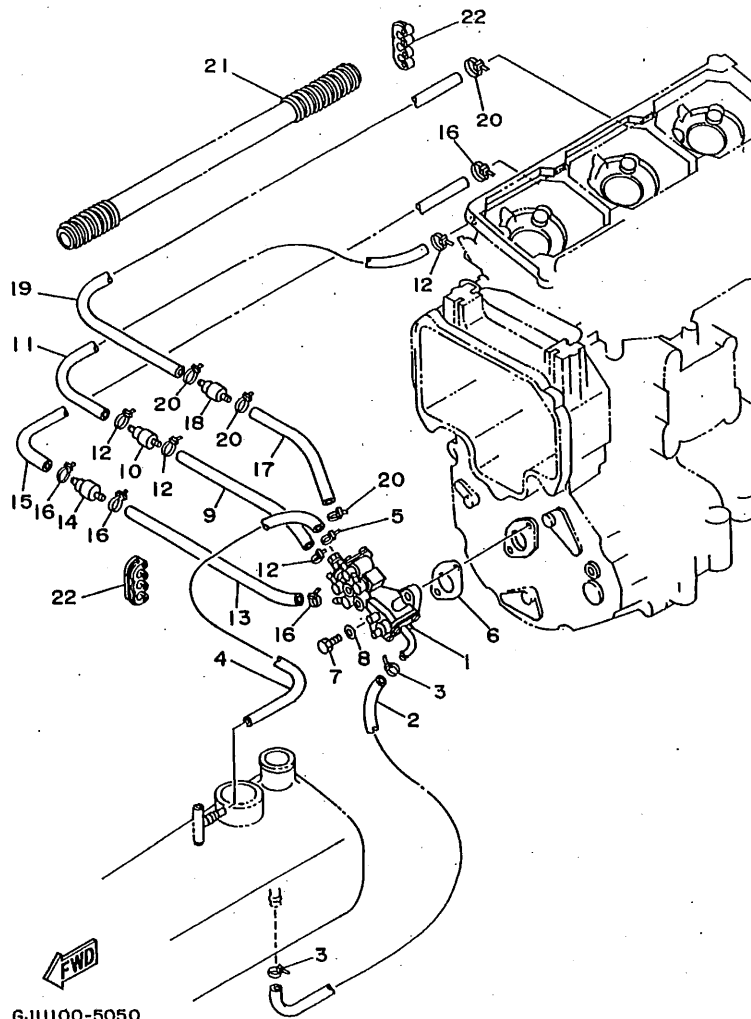
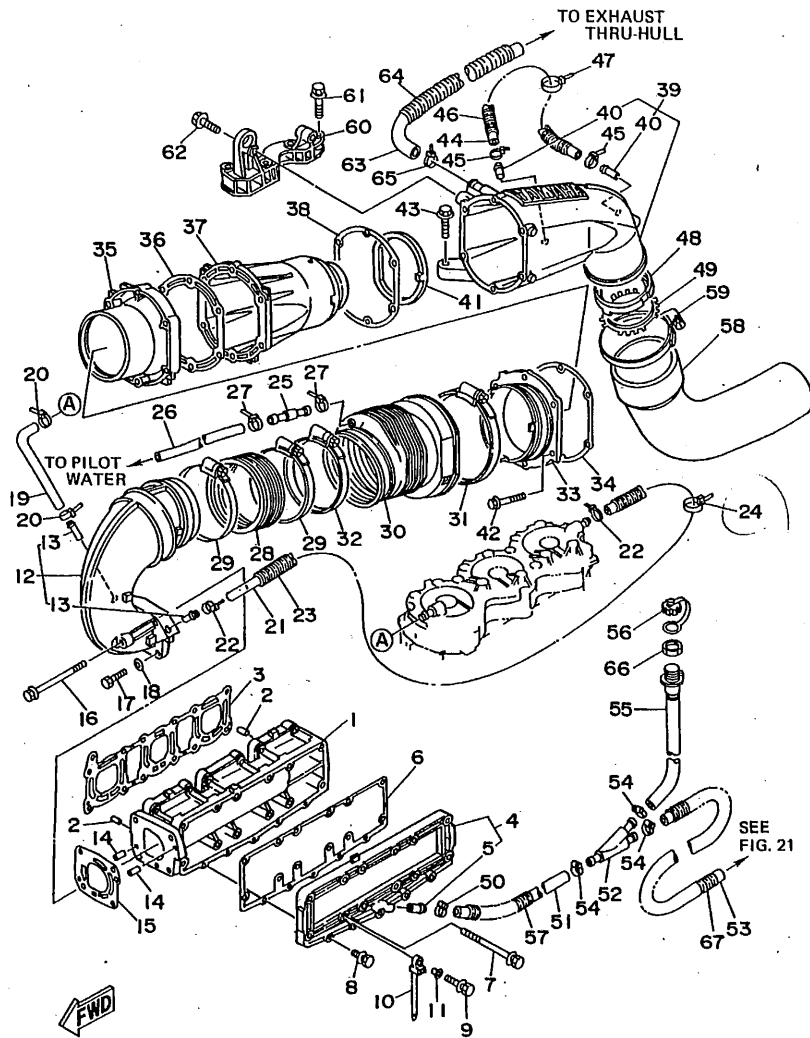


FIG. 5 OIL PUMP

REF. NO.	PART NO.	DESCRIPTION	Q'TY	REMARKS
1	63M-13200-01	OIL INJECTION PUMP ASSY	1	
2	90445-11M33	HOSE	1	
3	90465-11M10	CLAMP	2	
4	90445-07M10	HOSE	1	
5	90465-11M10	CLAMP	1	
6	63M-13116-00	GASKET, PUMP CASE	1	
7	97095-06020	BOLT	2	
8	92990-06600	WASHER, PLATE	2	
9	90445-07M87	HOSE	1	
10	6R3-13183-00	VALVE, CHECK	1	
11	90446-07M35	HOSE	1	
12	90465-11M10	CLAMP	4	
13	90446-07M17	HOSE	1	
14	6R3-13183-00	VALVE, CHECK	1	
15	90446-07M36	HOSE	1	
16	90465-11M10	CLAMP	4	
17	90446-07M18	HOSE	1	
18	6R3-13183-00	VALVE, CHECK	1	
19	90446-07M36	HOSE	1	
20	90465-11M10	CLAMP	4	
21	90446-24M54	HOSE	1	
22	90464-07M05	CLAMP	2	

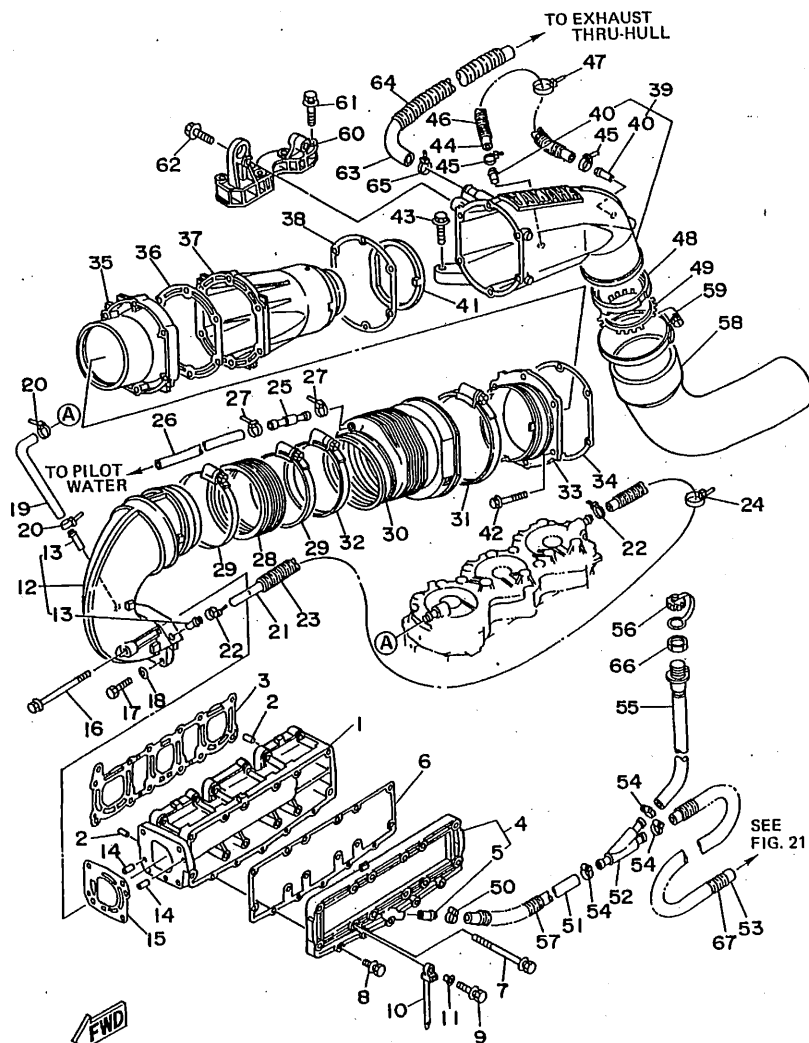


GJ11100-5060

FIG. 6 EXHAUST 1

REF. NO.	PART NO.	DESCRIPTION	Q'TY	REMARKS
1	63M-14711-00-9M	MUFFLER 1	1	
2	93605-12M21	PIN, DOWEL	2	
3	63M-14613-00	GASKET, EXHAUST PIPE	1	
4	63M-14718-00-9M	PROTECTOR, MUFFLER 1	1	
5	63M-51129-00	NIPPLE	1	
6	63M-14739-00	GASKET, MUFFLER DAMPER 1	1	
7	90119-08M36	BOLT, WITH WASHER	12	
8	97513-06530	BOLT, WITH WASHER	4	
9	97513-06540	BOLT, WITH WASHER	1	
10	90465-12M53	CLAMP	1	
11	90387-06M05	COLLAR	1	
12	63M-14712-00-9M	RING, JOINT	1	
13	6K8-51129-00	NIPPLE	2	
14	93605-12M21	PIN, DOWEL	2	
15	63M-14749-00	GASKET, MUFFLER DAMPER 2	1	
16	90119-08M02	BOLT, WITH WASHER	2	
17	97313-08030	BOLT	2	
18	92990-08600	WASHER, PLATE	2	
19	63M-12576-00	HOSE 1	1	
20	90465-11M10	CLAMP	2	
21	63M-12577-00	HOSE 2	1	
22	90465-11M10	CLAMP	2	
23	90446-20M53	HOSE	1	
24	90465-13M24	CLAMP	1	
25	6R3-24377-00	PIPE, JOINT 3	1	
26	90445-14M06	HOSE	1	
27	90465-11M10	CLAMP	2	
28	62T-14625-00	JOINT, EXHAUST 2	1	

B10



GJ11100-5060

FIG. 6 EXHAUST 1

REF. NO.	PART NO.	DESCRIPTION	Q'TY	REMARKS
29	90450-99M06	HOSE CLAMP ASSY	2	
30	63M-14615-00	JOINT, EXHAUST 1	1	
31	90450-99M01	HOSE CLAMP ASSY	1	
32	90450-99M02	HOSE CLAMP ASSY	1	
33	63M-41113-00-9M	OUTER COVER, EXHAUST	1	
34	63M-41114-00	GASKET, EXHAUST OUTER COVER	1	
35	63M-14721-00-9M	MUFFLER 2	1	
36	63M-41122-00	GASKET, EXHAUST INNER COVER	1	
37	63M-41121-00-9M	INNER COVER, EXHAUST	1	
38	63M-41114-00	GASKET, EXHAUST OUTER COVER	1	
39	63M-41123-00-94	OUTER COVER, EXHAUST	1	
40	6K8-51129-00	.NIPPLE	2	
41	63M-15761-00	SEAL, RUBBER 1	1	
42	90105-08M66	BOLT, WASHER BASED	6	
43	90105-10M60	BOLT, WASHER BASED 1	2	
44	90445-14M05	HOSE	1	
45	90465-11M10	CLAMP	2	
46	90446-20M39	HOSE	1	
47	90465-13M24	CLAMP	1	
48	63M-41138-00	SEAL, EXT. 1	1	
49	63M-14680-00	STOPPER	1	
50	90450-18M09	HOSE CLAMP ASSY	1	
51	90445-18M02	HOSE	1	
52	63M-12581-00	JOINT, HOSE 1	1	
53	90445-18M00	HOSE	1	
54	90450-18M09	HOSE CLAMP ASSY	3	
55	63M-12580-00	JOINT ASSY	1	
56	682-84385-01	CAP 1	1	

B11

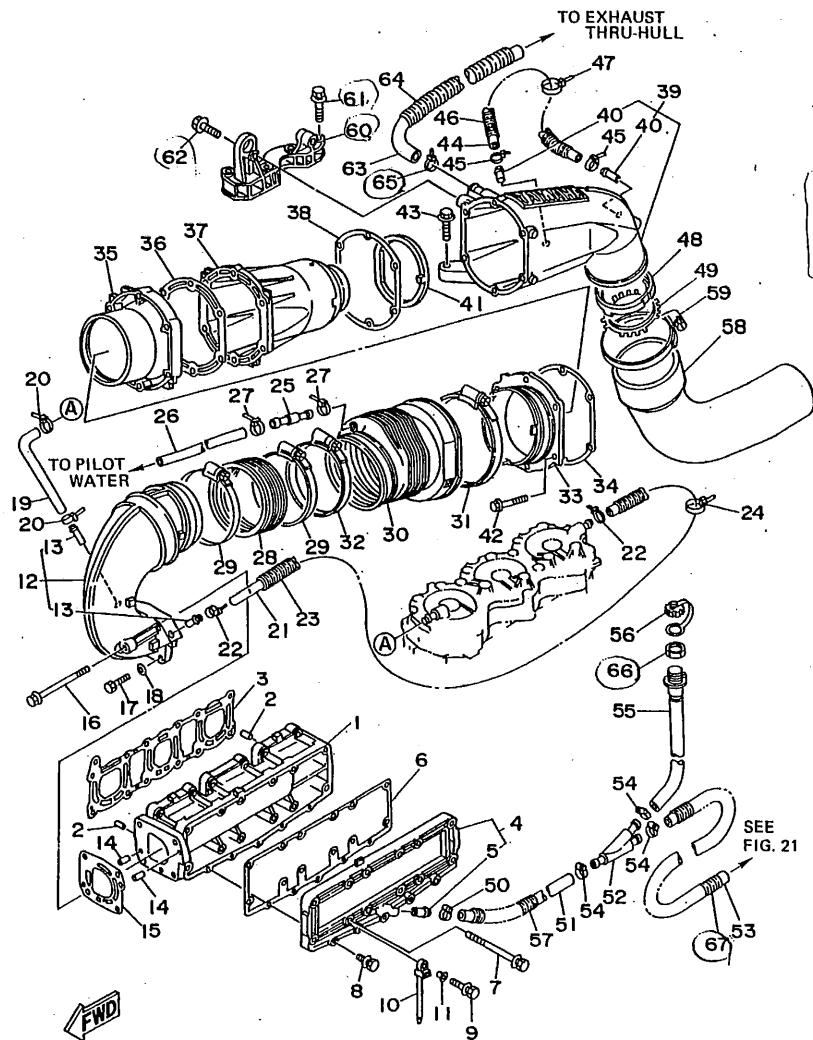
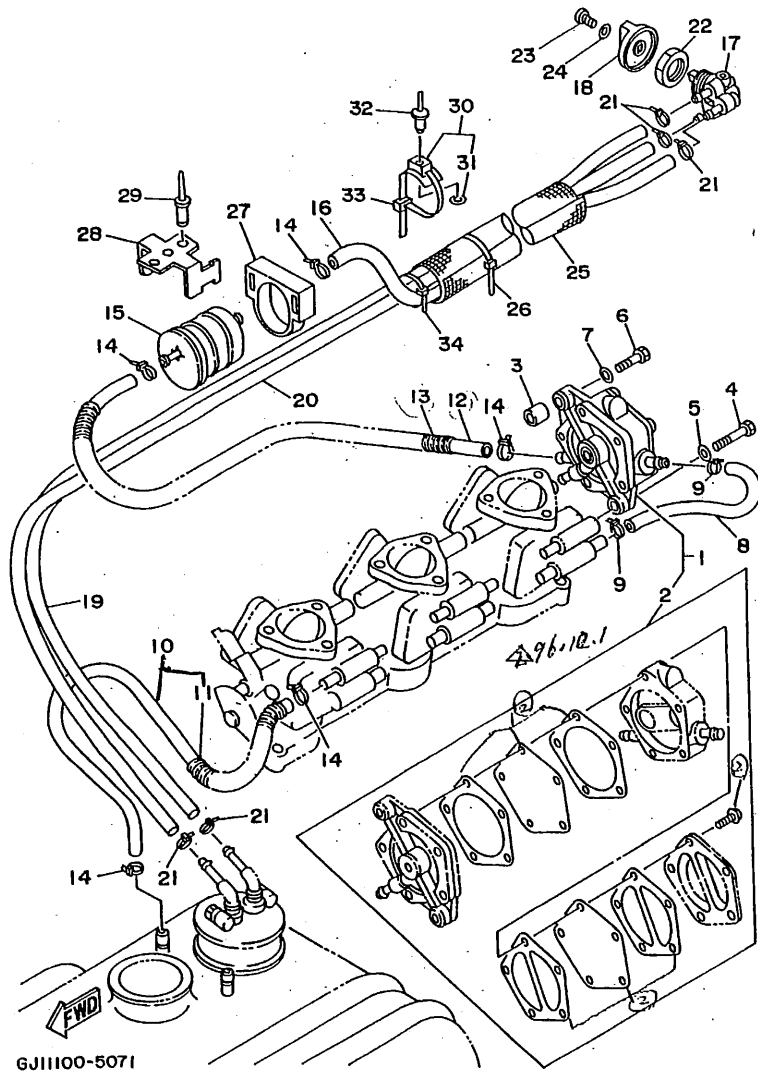


FIG. 6 EXHAUST 1

REF. NO.	PART NO.	DESCRIPTION	Q'TY	REMARKS
57	90446-24M52	HOSE	1	
58	63M-14752-00	PIPE, OUTLET	1	
59	90450-99M02	HOSE CLAMP ASSY	1	
60	63M-14771-00-9M	STAY, MUFFLER 1	1	
61	90119-10M72	BOLT, WITH WASHER	4	
62	90105-10M45	BOLT, WASHER BASED	2	
63	63M-12578-00	HOSE 3	1	
64	90446-27M55	HOSE	1	
65	90601-200U1	CLAMP	1	YMUS
66	EU0-61652-00	NUT	1	
67	90446-24M60	HOSE	1	

GJ11100-5060

B12

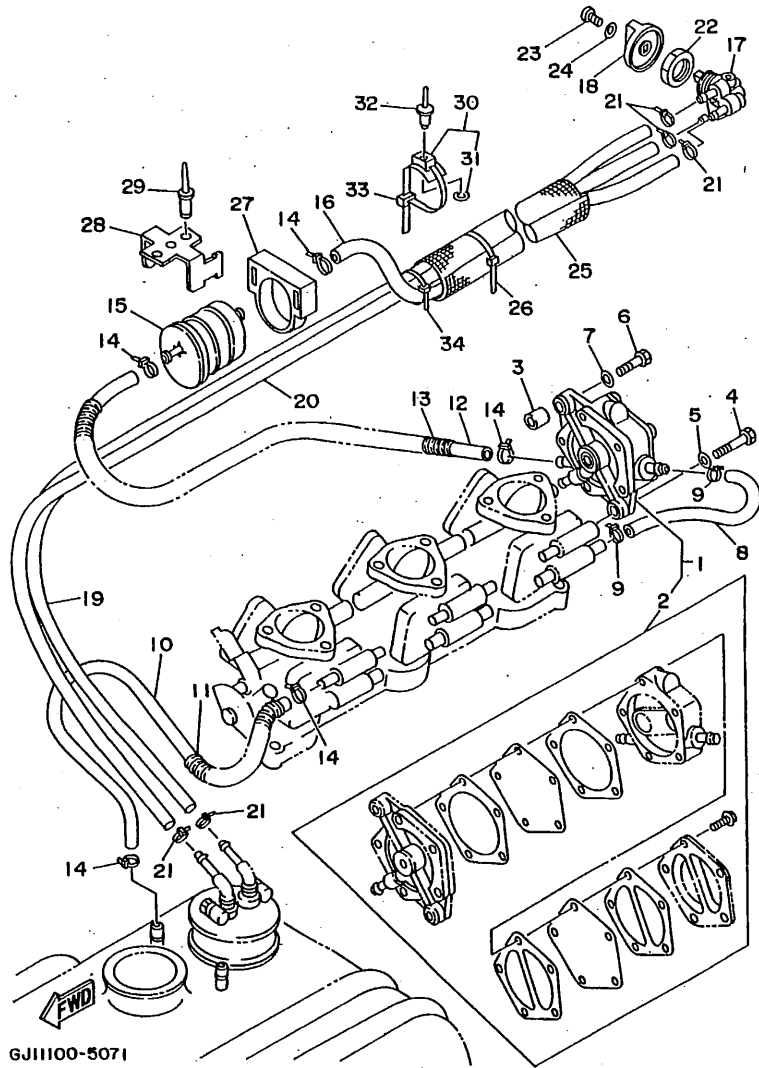


GJ11100-5071

FIG. 7 FUEL

REF. NO.	PART NO.	DESCRIPTION	Q'TY	REMARKS
1	63M-24410-00	FUEL PUMP ASSY	1	
2	63M-W2442-00	.FUEL PUMP REPAIR KIT	1	
3	90387-06M44	COLLAR	1	
4	97095-06035	BOLT	1	
5	92990-06600	WASHER, PLATE	1	
6	97095-06022	BOLT	1	
7	92990-06600	WASHER, PLATE	1	
8	63M-24313-00	PIPE 3	1	
9	90465-11M10	CLAMP	2	
10	90445-10M66 63M-14298-00	HOSE FUEL	1	▲ 95. 9. 17
11	90446-14M67	HOSE	1	
12	90445-10M35	HOSE	1	
13	90446-14M28	HOSE	1	
14	90465-11M10	CLAMP	5	
15	6K8-24560-10	FILTER ASSY	1	
16	90445-10M72	HOSE	1	
17	6K8-24500-02	FUEL COCK ASSY 1	1	
18	6K8-24524-10	LEVER, COCK	1	
19	90445-10M70	HOSE	1	
20	90445-10M71	HOSE	1	
21	90465-11M10	CLAMP	5	
22	90170-22M11	NUT	1	
23	98580-04010	SCREW, PAN HEAD	1	
24	92990-04600	WASHER, PLATE	1	
25	GJ1-U773J-00	PROTECTOR, HOSE	1	YMUS
26	90610-20015	NYLON CLIP 1	1	
27	EU0-67817-00	HOLDER	1	
28	FN8-67816-00	BRACKET, FUEL FILTER	1	

B13



GJ11100-5071

FIG. 7 FUEL

REF. NO.	PART NO.	DESCRIPTION	Q'TY	REMARKS
29	90267-489U1	RIVET, BLIND	2	YMUS
30	90600-91736	CLAMP	2	
31	90201-05925	WASHER, PLATE	1	
32	90267-48925	RIVET, BLIND	2	
33	90601-20006	NYLON CLIP	2	
34	90600-200U1	BAND	1	YMUS

B14

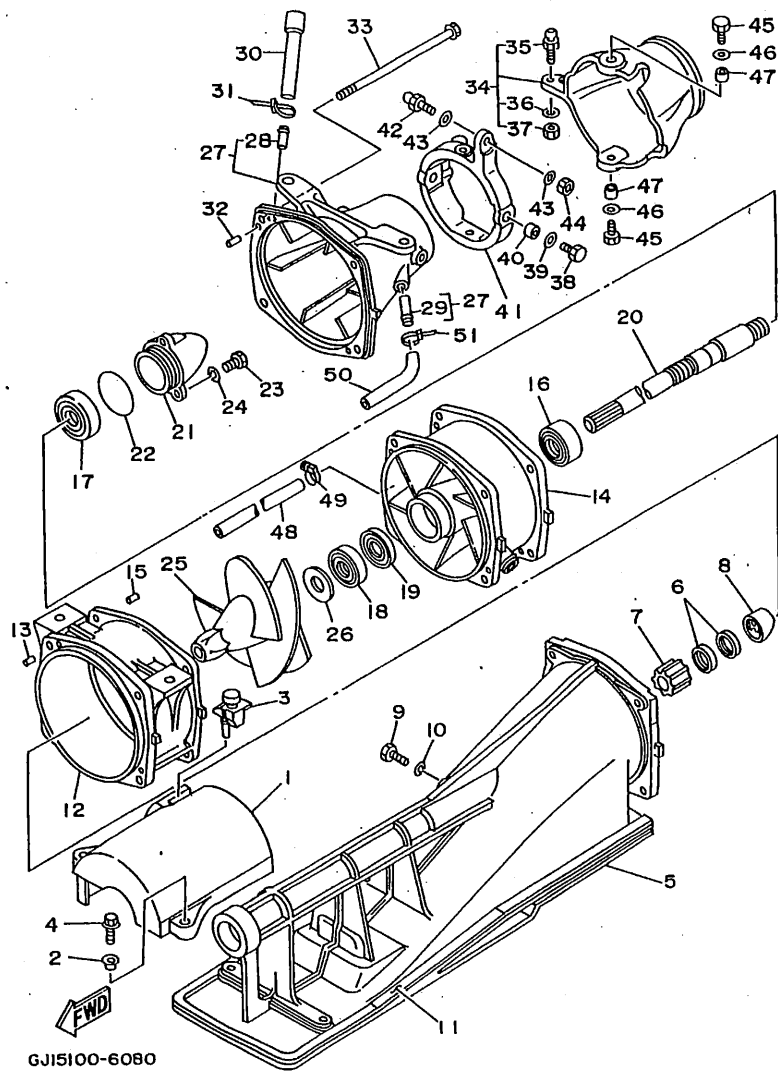
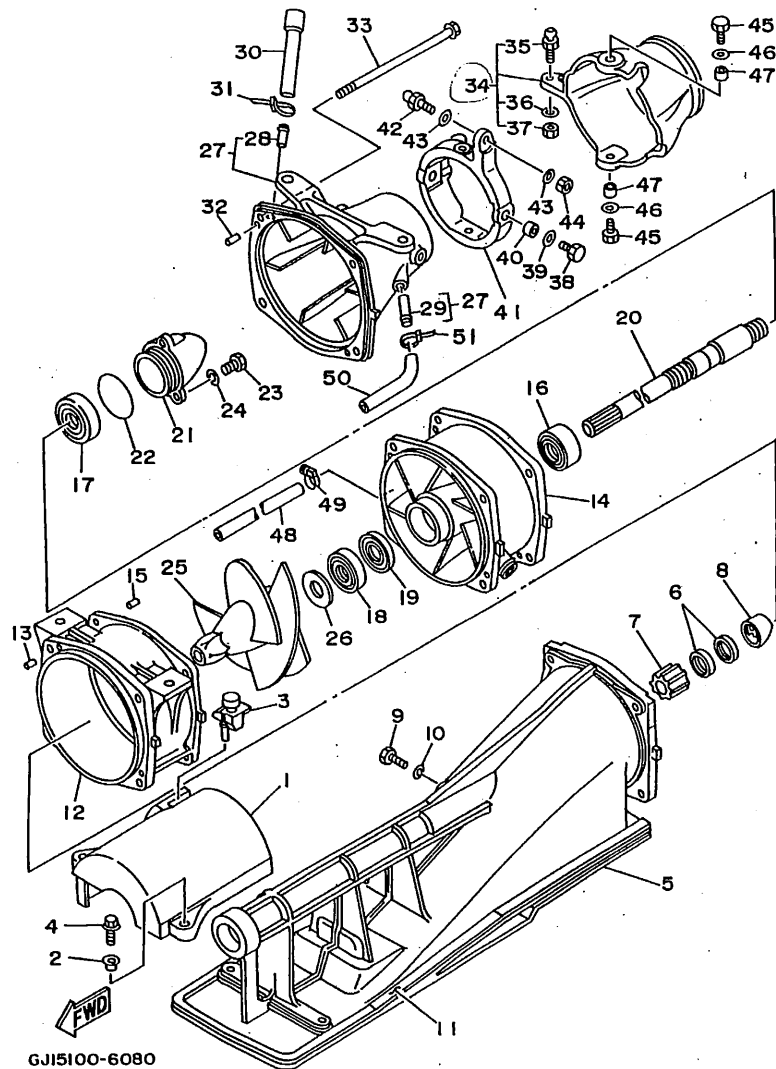


FIG. 8 JET UNIT 1

REF. NO.	PART NO.	DESCRIPTION	Q'TY	REMARKS
1	63M-51381-00	COVER	1	
2	90387-06M60	COLLAR	2	
3	90480-06M69	GROMMET	1	
4	97595-06525	BOLT, WITH WASHER	2	
5	63M-51311-00-94	DUCT, INTAKE	1	
6	93102-18M35	OIL SEAL	2	
7	6R8-45318-00	BUSHING, DRIVE SHAFT	1	
8	6R8-51348-00-5B	SPACER	1	
9	97095-06025	BOLT	1	
10	92990-06600	WASHER, PLATE	1	
11	6R8-51367-01	FELT, PACKING	2	
12	63M-51312-01-94	HOUSING, IMPELLER	1	
13	93606-12019	PIN, DOWEL	2	
14	63M-51315-00-94	DUCT, IMPELLER	1	
15	93606-12019	PIN, DOWEL	2	
16	93305-205U1	BEARING	1	
17	93306-205U0	BEARING	1	
18	93102-25M34	OIL SEAL	1	
19	93101-25M50	OIL SEAL	1	
20	63M-45511-00	SHAFT, DRIVE	1	
21	62T-51326-00	CAP	1	
22	93210-46M16	O-RING	1	
23	97095-06016	BOLT	3	
24	92990-06600	WASHER, PLATE	3	
25	63M-51321-A0	IMPELLER	1	
26	62T-51348-00	SPACER	1	
27	63M-51318-00-5B	NOZZLE	1	
28	6K8-51129-00	.NIPPLE	1	

B15



GJI5100-6080

FIG. 8 JET UNIT 1

REF. NO.	PART NO.	DESCRIPTION	Q'TY	REMARKS
29	63M-51334-00	.NIPPLE, HOSE	1	
30	63M-51673-00	PIPE 1	1	
31	90465-11M10	CLAMP	1	
32	93606-12019	PIN, DOWEL	2	
33	90105-08M65	BOLT, WASHER BASED	4	
34	63M-51313-00	NOZZLE, DEFLECTOR	1	
35	63M-42316-00	.BOLT, JOINT	1	
36	90201-06M03	.WASHER, PLATE	1	
37	95380-06700	.NUT	1	D81704
38	97395-08020	BOLT	2	D81700
39	92995-08600	WASHER	2	
40	90387-08M08	COLLAR	2	
41	63M-51190-00-5B	RING, TRIM	1	
42	6R7-42316-00	BOLT, JOINT	1	
43	90201-06M31	WASHER, PLATE	2	
44	95380-06700	NUT	1	
45	97395-08020	BOLT	2	
46	92995-08600	WASHER	2	
47	90387-08M06	COLLAR	2	
48	90445-18M01	HOSE	1	
49	90450-18M09	HOSE CLAMP ASSY	1	
50	90445-14M30	HOSE	1	
51	90465-13M11	CLAMP	1	

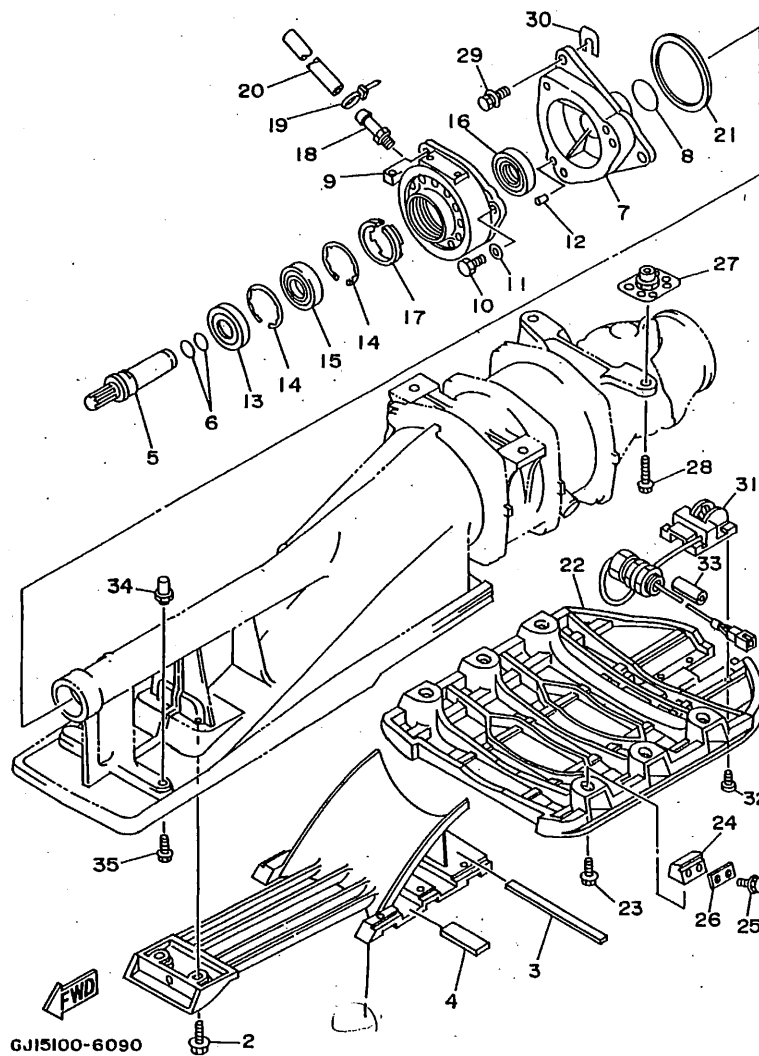


FIG. 9 JET UNIT 2

REF. NO.	PART NO.	DESCRIPTION	Q'TY	REMARKS
1	63M-51333-00-5B	SCREEN, INTAKE	1	
2	90119-06M03	BOLT, WITH WASHER	8	
3	63M-51367-00.	FELT, PACKING	1	
4	63M-51368-00	FELT, PACKING	2	
5	63M-51323-00	SHAFT, COUPLOR	1	
6	93210-17MA4	O-RING	2	
7	62G-45331-00-94	HOUSING, BEARING	1	
8	93210-35M72	O-RING	1	
9	61X-45332-01-9M	HOUSING, BEARING	1	
10	97395-08025	BOLT	3	
11	92995-08600	WASHER	3	
12	93606-12019	PIN, DOWEL	2	
13	93101-25M55	OIL SEAL	1	
14	93430-47M04	CIRCLIP	2	
15	93306-205U6	BEARING	1	
16	93101-25M56	OIL SEAL	1	
17	63M-51348-00	SPACER	1	
18	61L-45378-00	NIPPLE, HOSE	1	
19	90465-11M10	CLAMP	1	
20	90445-09M21	HOSE	1	
21	6K8-45127-00	SEAL	1	
22	GJ1-U273B-00	PLATE 2	1	YMUS
23	90119-089U6	BOLT, WITH WASHER	6	YMUS
24	GJ1-62733-00	PACKING	6	
25	90119-089U5	BOLT, WITH WASHER	12	YMUS
26	GM1-62663-01	PACKING 1	6	
27	90179-10925	NUT	4	
28	90119-109U8	BOLT, WITH WASHER	4	YMUS

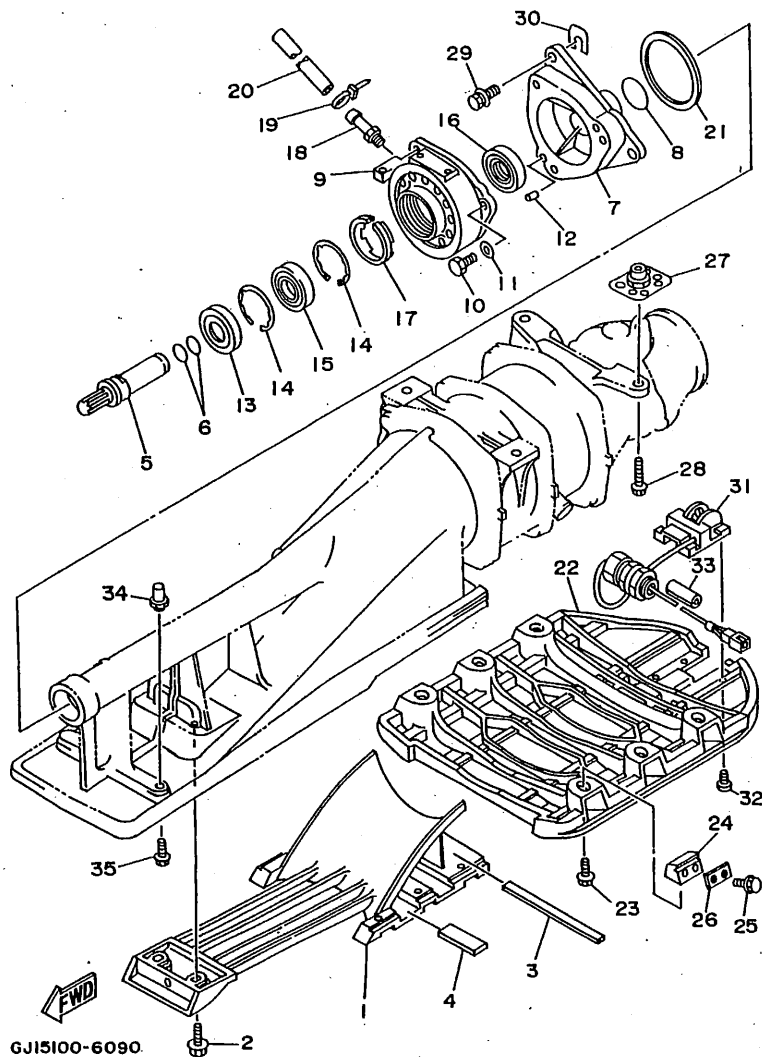


FIG. 9 JET UNIT 2

REF. NO.	PART NO.	DESCRIPTION	Q'TY	REMARKS
29	90119-08907	BOLT, WITH WASHER	3	
30	GDO-U7249-00-05	SHIM (T=0.5)	2	UR YMUS
	GDO-67249-00-05	SHIM (T=0.5)	2	UR
	GDO-U7249-00-10	SHIM (T=1.0)	2	UR YMUS
	GDO-67249-00-10	SHIM (T=1.0)	2	UR
31	GJ1-U8K31-01	SENSOR, SPEED	1	YMUS
32	98780-05512	SCREW, FLAT HEAD	4	
33	GJ1-6822E-00	PACKING, HOSE 2	1	
34	90179-06947	NUT	2	
35	90119-06929	BOLT, WITH WASHER	2	

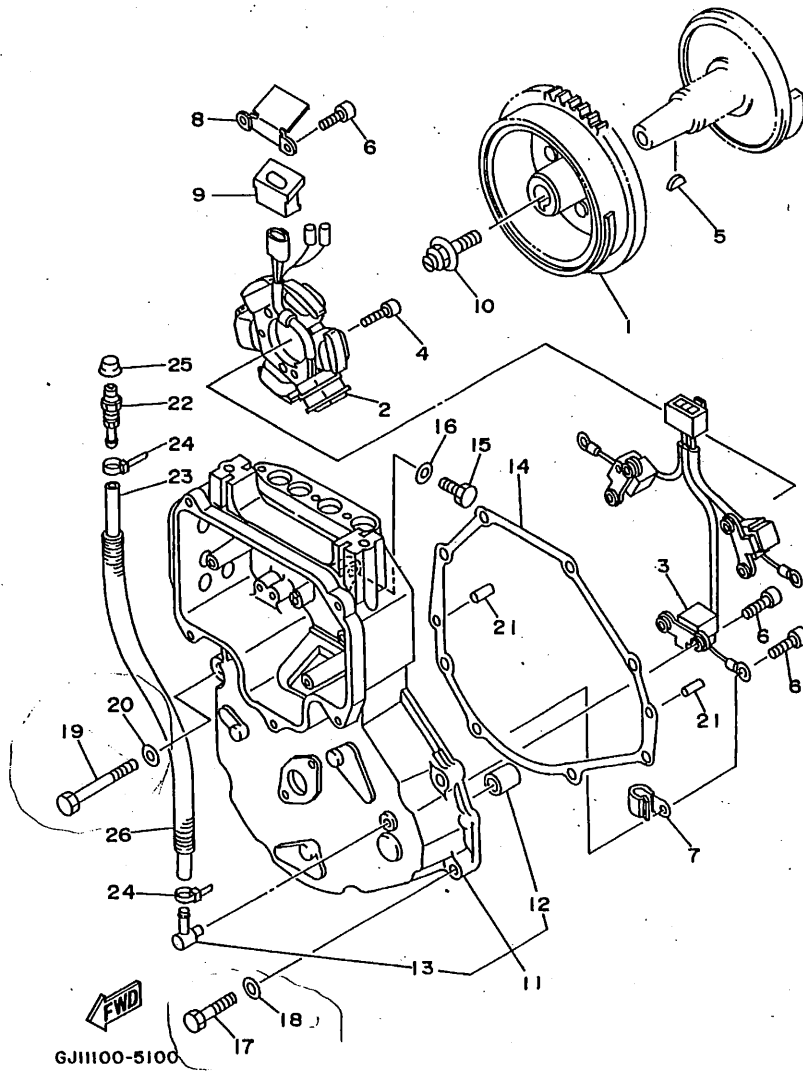


FIG. 10 GENERATOR

REF. NO.	PART NO.	DESCRIPTION	Q'TY	REMARKS
1	63M-85550-00	ROTOR ASSY	1	
2	63M-85510-00	STATOR ASSY	1	
3	63M-85580-00	COIL, PULSER	1	
4	91317-06025	BOLT	3	
5	90280-16053	KEY, WOODRUFF	1	
6	91318-06014	BOLT	11	
7	90465-06M28	CLAMP	3	
8	63M-81328-00	CLAMP	1	
9	63M-85564-00	GROMMET	1	
10	90109-10M72	BOLT	1	
11	63M-81337-00-4D	COVER, FLYWHEEL	1	
12	90380-12M29	.BUSH, SOLID	1	
13	676-11372-00	.NIPPLE, HOSE	1	
14	63M-81365-00	GASKET, HOLE COVER	1	
15	97395-08025	BOLT	1	
16	92995-08600	WASHER	1	
17	97395-08030	BOLT	7	
18	92995-08600	WASHER	7	
19	97395-08055	BOLT	1	
20	92995-08600	WASHER	1	
21	93606-12019	PIN, DOWEL	2	
22	61L-5169A-00	NIPPLE, GREASE	1	
23	90445-09M24	HOSE	1	
24	90465-11M10	CLAMP	2	
25	663-45119-00	CAP, GREASE NIPPLE	1	
26	90446-14M58	HOSE	1	

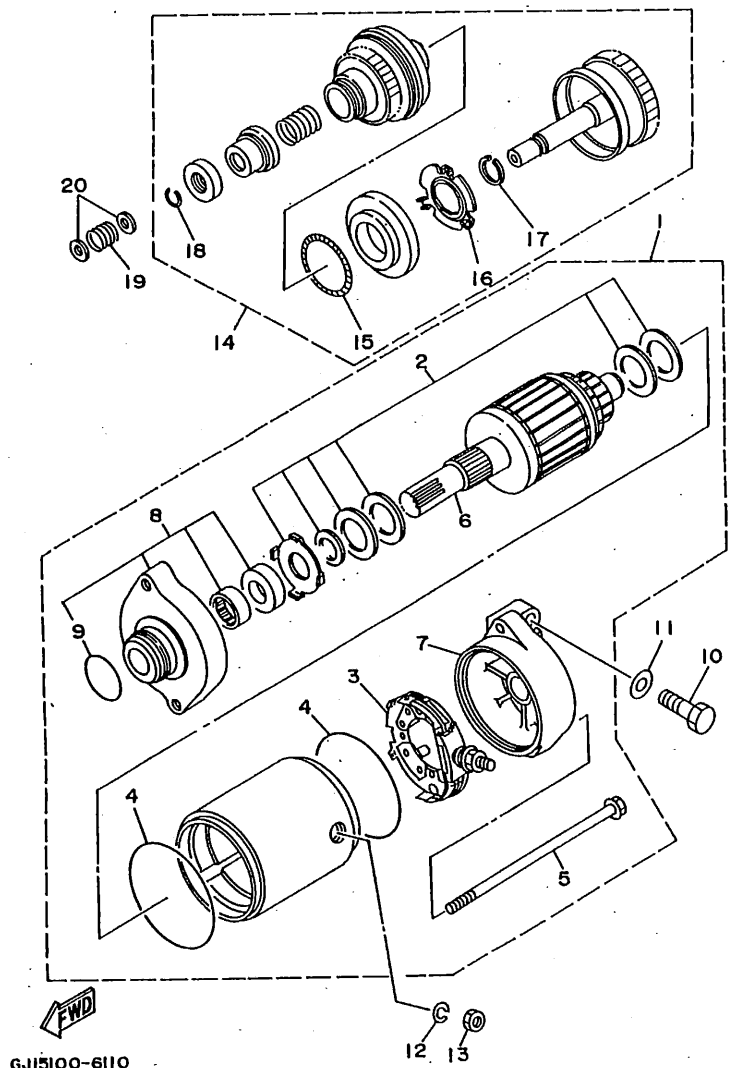
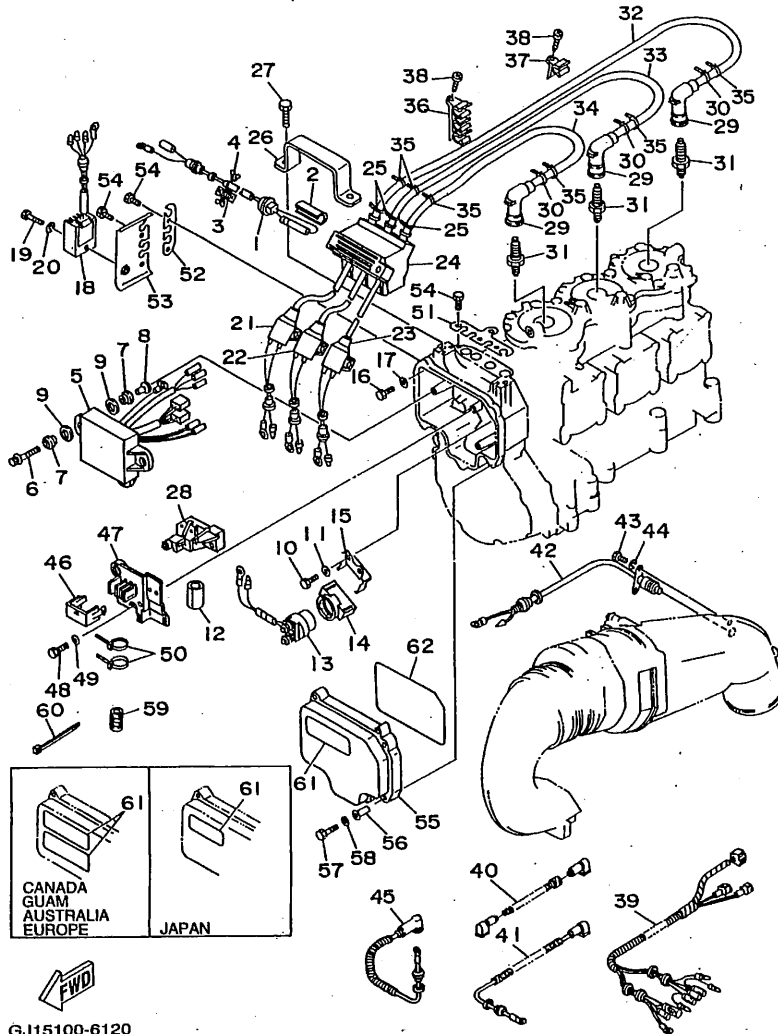


FIG. 11 STARTING MOTOR

REF. NO.	PART NO.	DESCRIPTION	Q'TY	REMARKS
1	63M-81800-00	STARTING MOTOR ASSY	1	
2	3AJ-81809-00	.WASHER KIT	1	
3	6M6-81840-10	.BRUSH HOLDER ASSY	1	
4	11H-81844-00	.GASKET	2	
5	6M6-81826-00	.BOLT	2	
6	6M6-81850-00	.ARMATURE ASSY	1	
7	63M-81820-00	.REAR BRACKET ASSY	1	
8	6M6-81830-00	.FRONT BRACKET ASSY	1	
9	26H-81847-00	.O-RING	1	
10	97013-08025	BOLT	2	
11	92990-08600	WASHER, PLATE	2	
12	92995-06100	WASHER, SPRING	1	
13	95380-06700	NUT	1	
14	6M6-8183E-00	IDLE GEAR COMP.	1	
15	6M6-81866-00	.WEIGHT SPRING	1	
16	6M6-81865-00	.WEIGHT HOLDER	1	
17	93440-25M08	.CIRCLIP	1	
18	93450-18M06	.CIRCLIP	1	
19	90501-14M73	SPRING, COMPRESSION	1	
20	92990-06600	WASHER, PLATE	2	

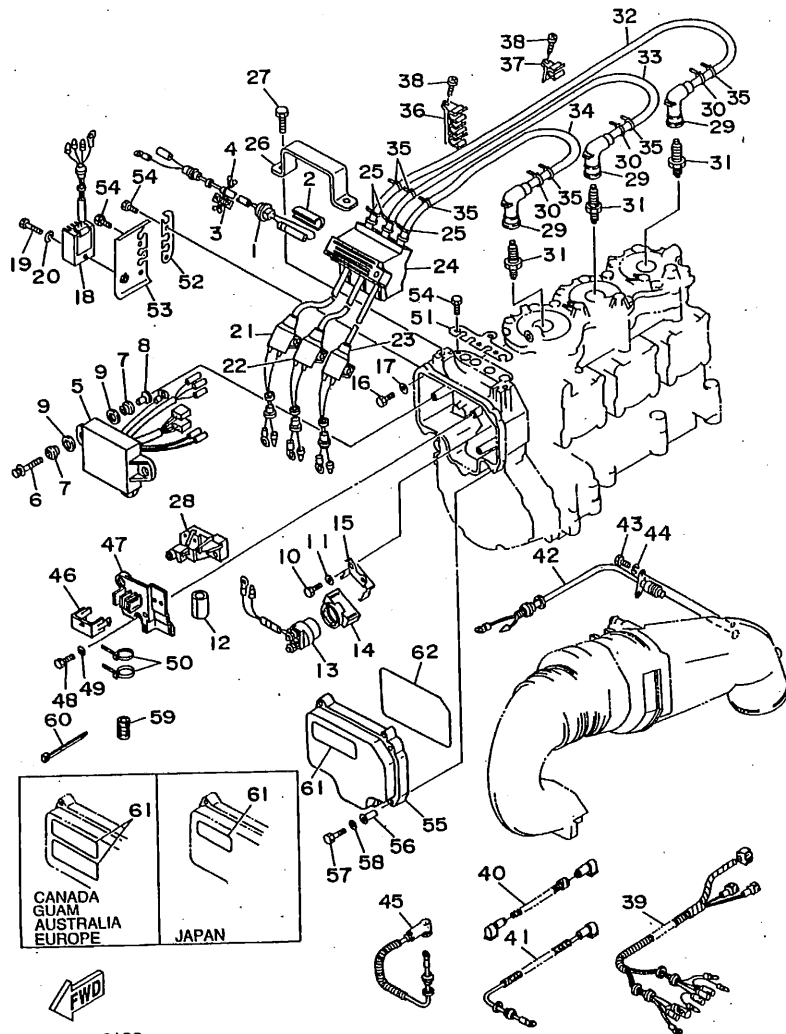


GJ15100-6120

FIG. 12 ELECTRICAL 1

REF. NO.	PART NO.	DESCRIPTION	Q'TY	REMARKS
1	63M-82150-00	FUSE HOLDER ASSY	1	
2	63M-82176-00	DAMPER	1	
3	63M-82159-00	FUSE SPEAR	1	
4	90464-07M44	CLAMP	1	
5	63M-85540-00	C.D.I. UNIT ASSY	1	
6	90119-06M75	BOLT, WITH WASHER	3	
7	90480-09M25	GROMMET	6	
8	90387-06M03	COLLAR	3	
9	90201-16M00	WASHER, PLATE	6	
10	97095-06016	BOLT	2	
11	92990-06600	WASHER, PLATE	2	
12	63M-82589-00	PROTECTOR, WIRE HARNESS	2	
13	661-81941-10	STARTER RELAY ASSY	1	
14	6H4-81952-00	HOLDER, RELAY	1	
15	63M-81945-00	PLATE, SWITCH FITTING	1	
16	97095-06016	BOLT	2	
17	92990-06600	WASHER, PLATE	2	
18	63M-81960-00	RECTIFIER & REGULATOR ASSY	1	
19	97095-06012	BOLT	1	
20	92990-06600	WASHER, PLATE	1	
21	63M-85570-00	IGNITION COIL ASSY	1	
22	63M-85570-10	IGNITION COIL ASSY	1	
23	63M-85570-20	IGNITION COIL ASSY	1	
24	63M-85547-00	DAMPER	1	
25	90465-11M10	CLAMP	3	
26	63M-85542-00	BRACKET	1	
27	97095-06012	BOLT	2	
28	63M-85516-00	GROMMET	1	

C7



GJ15100-6120

FIG. 12 ELECTRICAL 1

REF. NO.	PART NO.	DESCRIPTION	Q'TY	REMARKS
29	63M-82370-00	PLUG CAP ASSY	3	
30	90465-11M10	CLAMP	3	
31	94709-00195	PLUG, SPARK (51X) NGK BR8HS	3	
32	63M-82351-00	TUBE, CORD	1	
33	63M-82351-10	TUBE, CORD	1	
34	63M-82351-20	TUBE, CORD	1	
35	90465-11M10	CLAMP	6	
36	63M-81317-00	CLAMP, CORD	3	
37	63M-81317-10	CLAMP, CORD	1	
38	97780-50116	SCREW, TAPPING	4	
39	63M-82553-00	EXTENSION, WIRE LEAD	1	
40	61L-82117-00	WIRE, LEAD	1	
41	63M-82117-10	WIRE, LEAD	1	
42	63M-82560-00	THERMO SWITCH ASSY	1	
43	97095-06016	BOLT	2	
44	92995-06100	WASHER, SPRING	2	
45	63M-82117-20	WIRE, LEAD	1	
46	63M-85546-00	BAND	1	
47	63M-85548-00	HOLDER	1	
48	97395-06014	BOLT	2	
49	92990-06600	WASHER, PLATE	2	
50	90465-13M60	CLAMP	2	
51	63M-85599-01	COVER	1	
52	63M-85525-00	COVER	1	
53	63M-85644-00	PLATE	1	
54	97095-06012	BOLT	7	
55	63M-82314-00	COVER, IGNITION COIL	1	
56	90387-06M56	COLLAR	5	

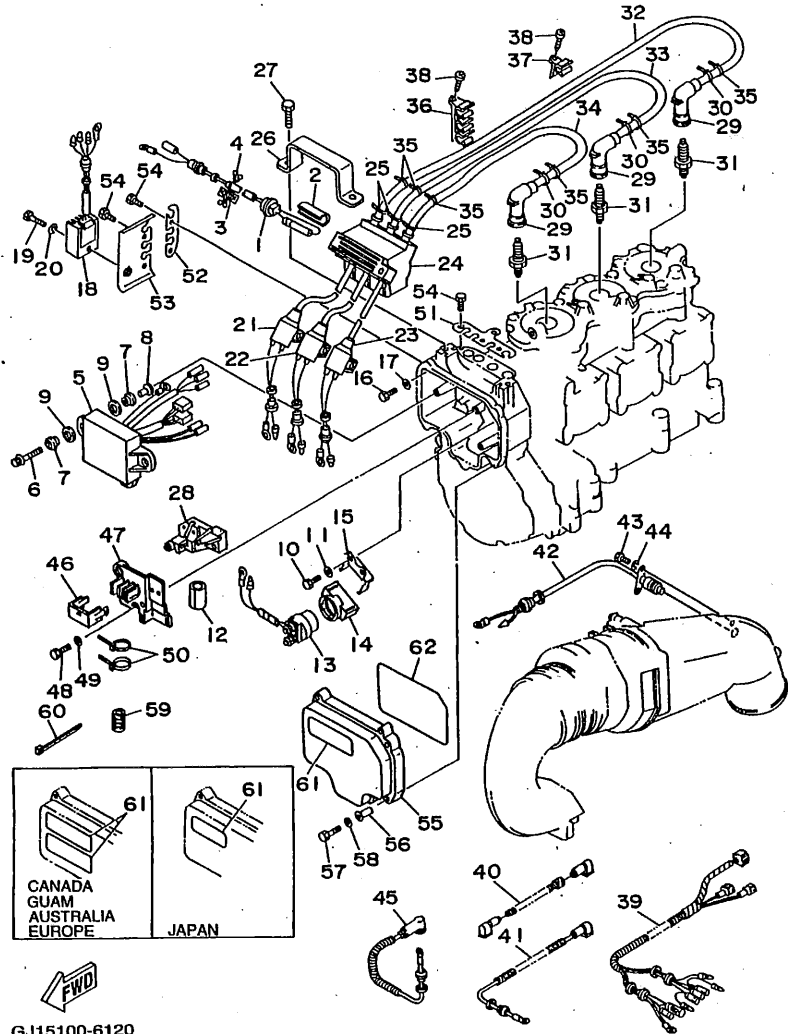
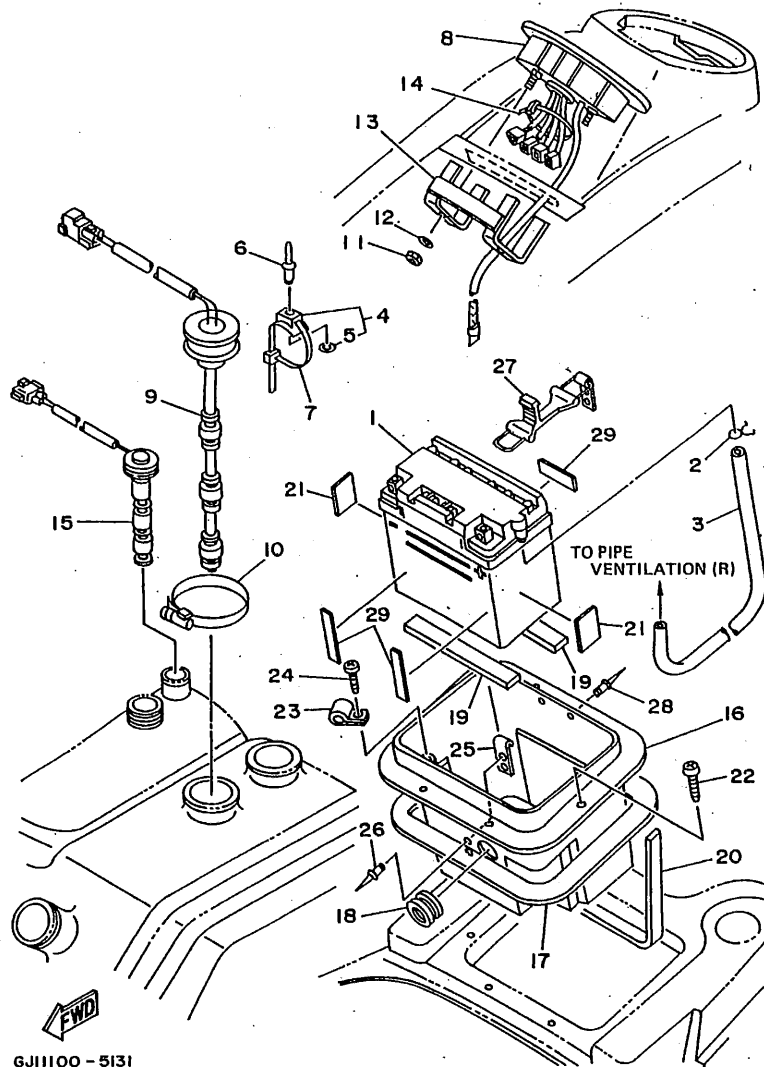


FIG. 12 ELECTRICAL 1

REF. NO.	PART NO.	DESCRIPTION	Q'TY	REMARKS
57	97313-05020	BOLT	5	
58	92990-05600	WASHER, PLATE	5	
59	90446-14M56	HOSE	1	
60	90465-11M59	CLAMP	7	
61	6R7-83623-40	MARK 3	1	UR USA
	6R7-83623-50	MARK 3	1	UR FRANCE
	63N-83623-00	MARK 3	1	UR JAPAN
62	63M-83623-00	MARK 3	1	



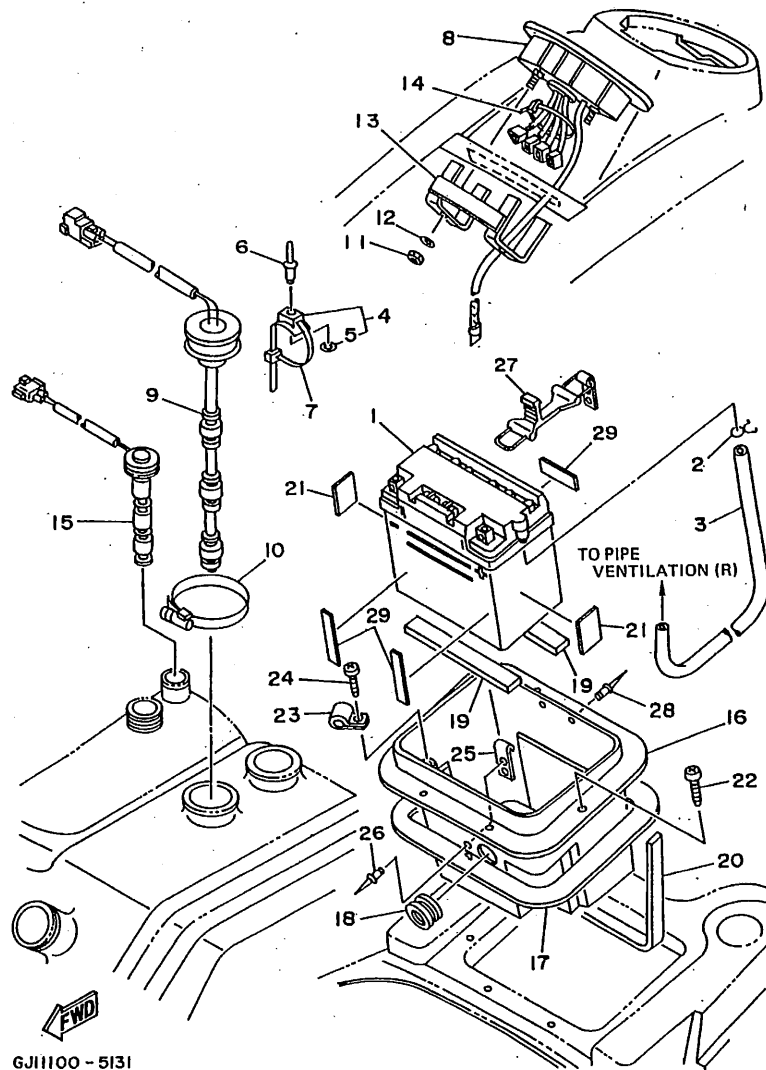
GJ1100-5131

FIG. 13 ELECTRICAL 2

REF. NO.	PART NO.	DESCRIPTION	Q'TY	REMARKS
1	EU0-82110-77	BATTERY (FB16CL-B)	1	
2	90467-08M10	CLIP	1	
3	GE1-U7856-30	HOSE, AIR VENT 3	1	YMUS
4	90600-91736	CLAMP	3	
5	90201-05925	WASHER, PLATE	1	
6	90267-48925	RIVET, BLIND	3	
7	90601-20006	NYLON CLIP 1	3	
8	GJ1-6820A-00-00 G4H3	METER ASSY	1	UR USA
	GJ1-6820A-10-30 G4H3	METER ASSY	1	UR CANADA, FRANCE, JAPAN
9	GJ1-6824B-00	SENDER, FUEL	1	
10	90601-162U5	BAND, HOSE 62	1	YMUS
11	95720-05300	NUT, FLANGE	2	
12	92990-05200	WASHER, PLAIN	2	
13	GJ1-68238-00	BRACKET, METER	1	
14	90601-20006	NYLON CLIP 1	1	
15	GJ1-6824C-00	SENDER, OIL	1	
16	GJ1-U8211-00	BATTERY CASE COMP.	1	YMUS
17	GJ1-62668-00	PACKING 3	1	
18	FJ0-68222-01	GROMMET	1	
19	FJ0-68221-00	PAD, BATTERY 1	2	
20	FJ0-68221-30	PAD, BATTERY 2	1	
21	GJ1-U8221-00	PAD, BATTERY	2	YMUS
22	90149-05984	SCREW	6	
23	90600-913U2	CLIP 14	1	YMUS
24	97780-40116	SCREW, TAPPING	1	
25	GA7-65772-00	HOOK	1	
26	90267-489U7	RIVET, BLIND	2	YMUS
27	GJ1-66607-00	HOOK COMP.	1	

C10

FIG. 13 ELECTRICAL 2



REF. NO.	PART NO.	DESCRIPTION	Q'TY	REMARKS
28	90267-489U7	RIVET, BLIND	2	YMUS
29	EU0-67593-40	MAT 3	3	

GJI1100 - 5131

C11

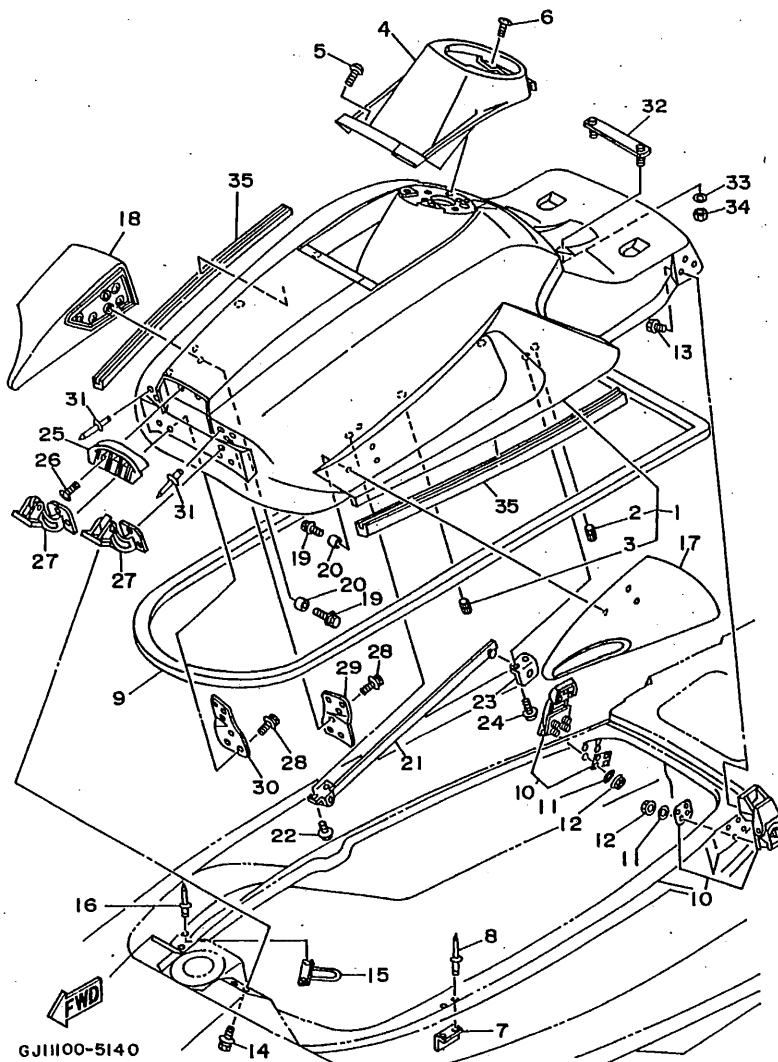
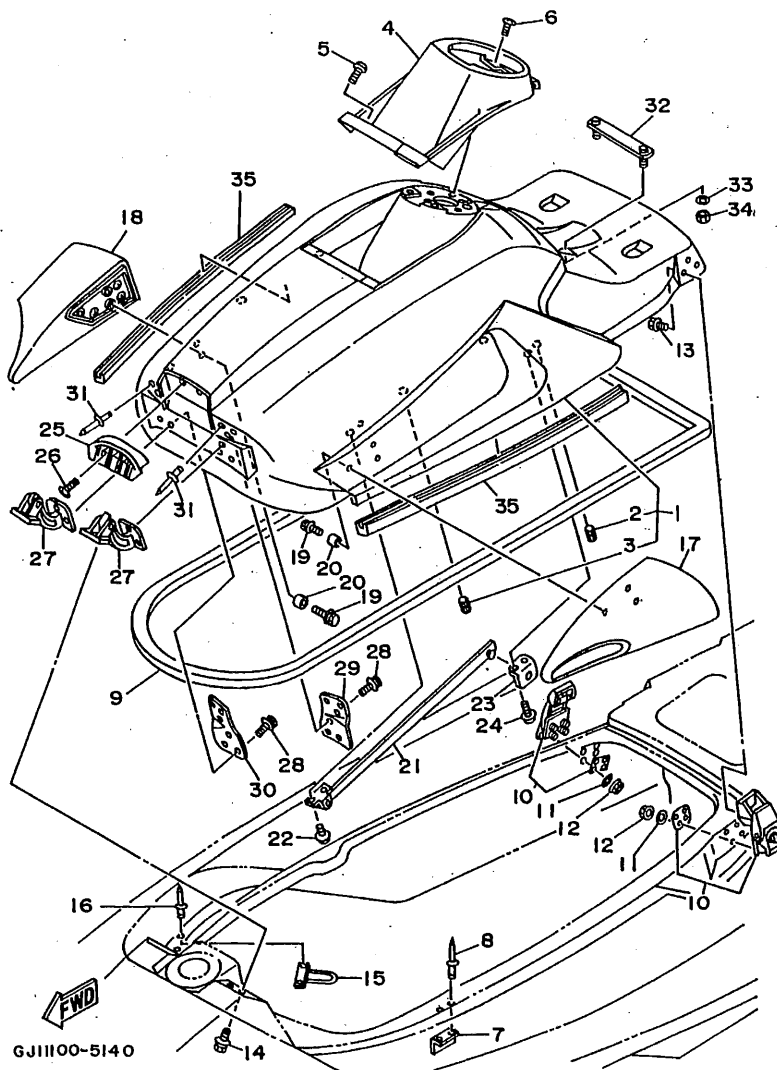


FIG. 14 ENGINE HATCH

REF. NO.	PART NO.	DESCRIPTION	Q'TY	REMARKS
1	GJ1-U516A-00-PO	ENGINE HATCH COMP.	1	YMUS PURE WHITE
2	90179-06926	.NUT	4	
3	90179-08927	.NUT	4	
4	GH1-6516N-20	COVER, ENGINE HATCH	1	
5	90149-05903	SCREW	2	
6	90149-05984	SCREW	4	
7	FN8-62884-00	BRACKET, HATCH SUPPORT	1	
8	90267-489U2	RIVET, BLIND	2	YMUS
9	GJ1-U2664-00	PACKING	1	YMUS
10	GJ1-62840-00	HATCH LOCK ASSY	2	
11	92990-05600	WASHER, PLATE	8	
12	95720-05300	NUT, FLANGE	8	
13	90119-05935	BOLT, WITH WASHER	6	
14	90119-06940	BOLT, WITH WASHER	4	
15	GH1-61557-00	GUIDE, CABLE	1	
16	90267-489U2	RIVET, BLIND	2	YMUS
17	GH1-6596B-20	MIRROR (LH)	1	VIVID RED SOLID D
18	GH1-6596C-20	MIRROR (RH)	1	VIVID RED SOLID D
19	90119-06924	BOLT, WITH WASHER	6	
20	90387-06915	COLLAR	6	
21	GH1-62891-01	SUPPORT, HATCH	1	
22	90159-06901	SCREW, WITH WASHER	2	
23	FN8-62892-00	FIX, PLATE	1	
24	90159-06901	SCREW, WITH WASHER	2	
25	GH1-62128-20	UNIVERSAL, AIR INTAKE	1	
26	90149-04902	SCREW	2	
27	GH1-6517G-04	HINGE, HATCH	2	
28	90119-06940	BOLT, WITH WASHER	6	

C12



GJ11100-5140

FIG. 14 ENGINE HATCH

REF. NO.	PART NO.	DESCRIPTION	Q'TY	REMARKS
29	GH1-6517J-01	PLATE, HATCH HINGE (LH)	1	
30	GH1-6517K-01	PLATE, HATCH HINGE (RH)	1	
31	90267-489U1	RIVET, BLIND	6	YMUS
32	GH1-6378C-00	STAY, SEAT 1	1	
33	92990-06200	WASHER, PLAIN	2	
34	95720-06300	NUT, SELF-LOCKING	2	
35	GH1-65162-01	TRIM	2	

C13

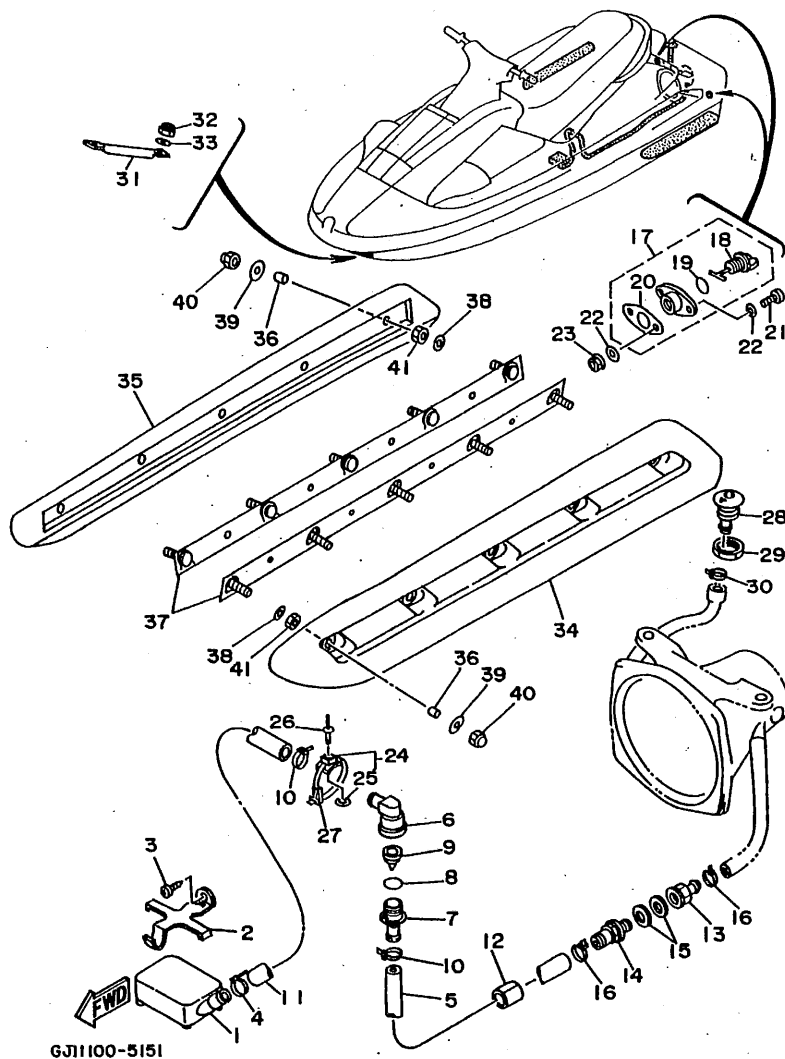


FIG. 15 HULL. DECK

REF. NO.	PART NO.	DESCRIPTION	Q'TY	REMARKS
1	GD0-6761D-00	STRAINER, BILGE	1	
2	EW2-67618-00	BASE, STRAINER BLIGE	1	
3	97780-50612	SCREW, TAPPING	1	
4	90601-200U1	NYLON CLIP 1	1	YMUS
5	90445-19M07	HOSE	1	
6	63M-51162-00	JOINT, HOSE	1	
7	63M-51165-00	JOINT, HOSE 2	1	
8	93210-22ME5	O-RING	1	
9	63M-5316M-00	VALVE 1	1	
10	90465-13M11	CLAMP	2	
11	90445-19M06	HOSE	1	
12	GJ1-67578-10	PACKING, HOSE 2	1	
13	90604-80759	CONNECTION, THRU-HULL 1/4	1	
14	90604-80775	THROUGH, HULL CONNECTION	1	
15	90430-13909	GASKET	2	
16	90601-200U1	NYLON CLIP 1	2	YMUS
17	EU0-62280-00	DRAIN PLUG ASSY	2	
18	EU0-62282-00	.PLUG, DRAIN	1	
19	EU0-62283-00	.O-RING	1	
20	EU0-62285-01	.PACKING, DRAIN	1	
21	97880-05020	SCREW, PAN HEAD	4	
22	92990-05200	WASHER, PLAIN	8	
23	95720-05300	NUT, FLANGE	4	
24	90600-91736	CLAMP	1	
25	90201-05925	.WASHER, PLATE	1	
26	90267-48925	RIVET, BLIND	1	
27	90601-20006	NYLON CLIP 1	1	
28	FN8-62698-00	SPOUT	1	

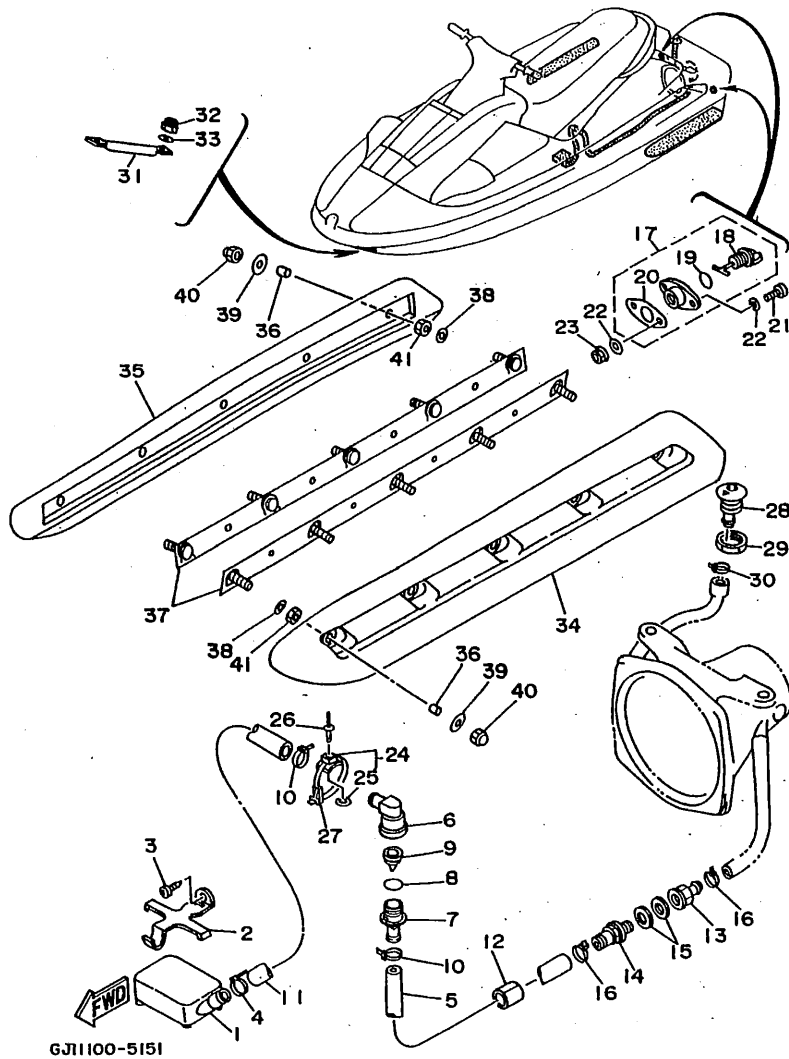
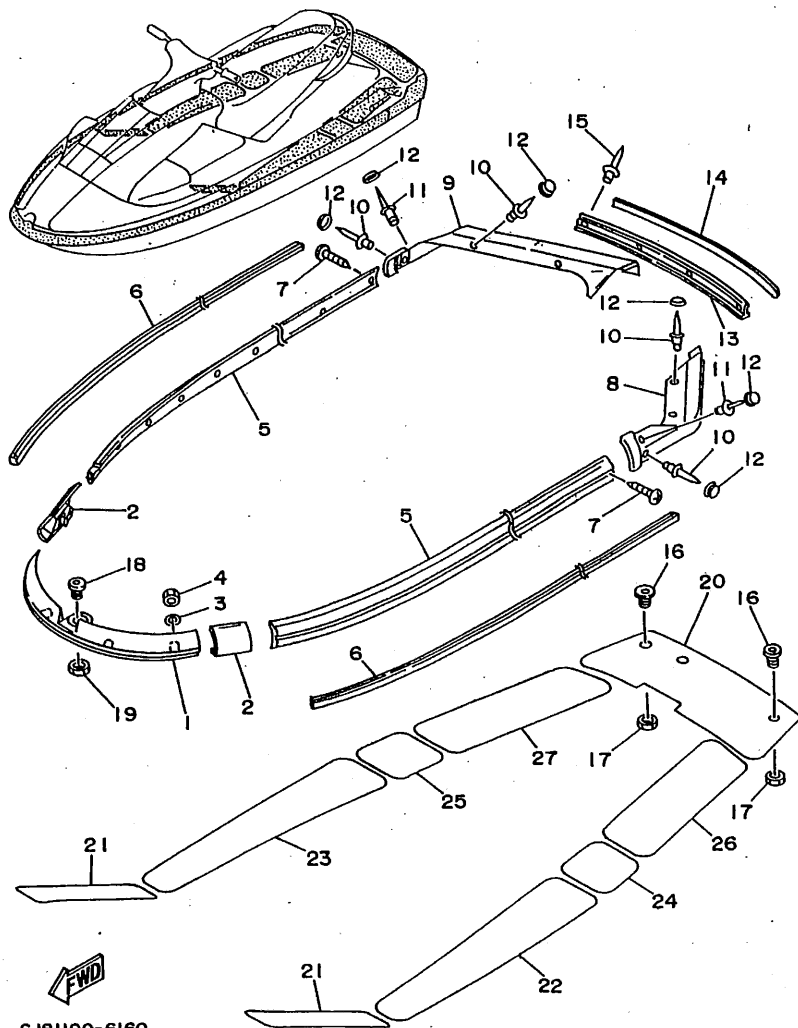


FIG. 15. HULL. DECK

REF. NO.	PART NO.	DESCRIPTION	Q'TY	REMARKS
29	EU0-61652-00	NUT	1	
30	90465-11M10	CLAMP	1	
31	FN8-U1624-00	BOWEYE 1 (S)	1	YMUS
32	95720-08300	NUT, SELF-LOCKING	2	
33	92990-08200	WASHER, PLAIN	2	
34	GH1-6883N-40	STABILIZER (LH)	1	VIVID RED SOLID D
35	GH1-6883P-40	STABILIZER (RH)	1	VIVID RED SOLID D
36	90387-06916	COLLAR	10	
37	GH1-6883T-00	BRACKET, STABILIZER	2	
38	92990-06200	WASHER, PLAIN	10	
39	90201-065F3	WASHER, PLATE	10	
40	90179-06959	NUT	10	
41	95380-06700	NUT	10	



GJB1100-6160

FIG. 16 GUNWALE. MAT

REF. NO.	PART NO.	DESCRIPTION	Q'TY	REMARKS
1	GJ1-U2501-10	BOW GUNWALE COMP.	1	YMUS VIOLET SOLID 6
2	GJ1-6252A-20	JOINT, GUNWALE	2	
3	92990-06200	WASHER, PLAIN	6	
4	95720-06300	NUT, SELF-LOCKING	6	
5	GJ1-U2552-10	GUNWALE, SIDE 1	2	YMUS VIOLET SOLID 6
6	GJ1-U2519-00	INNER GUNWALE	2	YMUS VIVID RED SOLID D
7	90169-059U1	SELF, DRILLING T/P SCREW	22	YMUS
8	GH1-6251D-20	GUNWALE, STERN 1	1	VIOLET SOLID 6
9	GH1-6251E-20	GUNWALE, STERN 2	1	VIOLET SOLID 6
10	90267-489U8	RIVET, BLIND	10	YMUS
11	90267-48835	RIVET, BLIND	2	
12	GH1-6354D-30	CAP, HEAD	12	
13	GJ1-U252C-10	COVER, GUNWALE 1	1	YMUS VIOLET SOLID 6
14	GJ1-U252D-00	COVER, GUNWALE 2	1	YMUS VIVID RED SOLID D
15	90267-489U8	RIVET, BLIND	4	YMUS
16	FN8-61651-00	ROPE HOLE	2	
17	EU0-61652-00	NUT	2	
18	GH1-61651-00	ROPE HOLE	1	
19	EU0-61652-00	NUT	1	
20	GJ1-63581-10	MAT, UPPER	1	
21	GJ1-U351H-10	MAT, STEP 1	2	YMUS
22	GJ1-U351K-10	MAT, STEP 3	1	YMUS
23	GJ1-U351M-10	MAT, STEP 4	1	YMUS
24	GJ1-U351N-10	MAT, STEP 5	1	YMUS
25	GJ1-U351P-10	MAT, STEP 6	1	YMUS
26	GH1-6351R-20	MAT, STEP 7	1	
27	GH1-6351S-20	MAT, STEP 8	1	

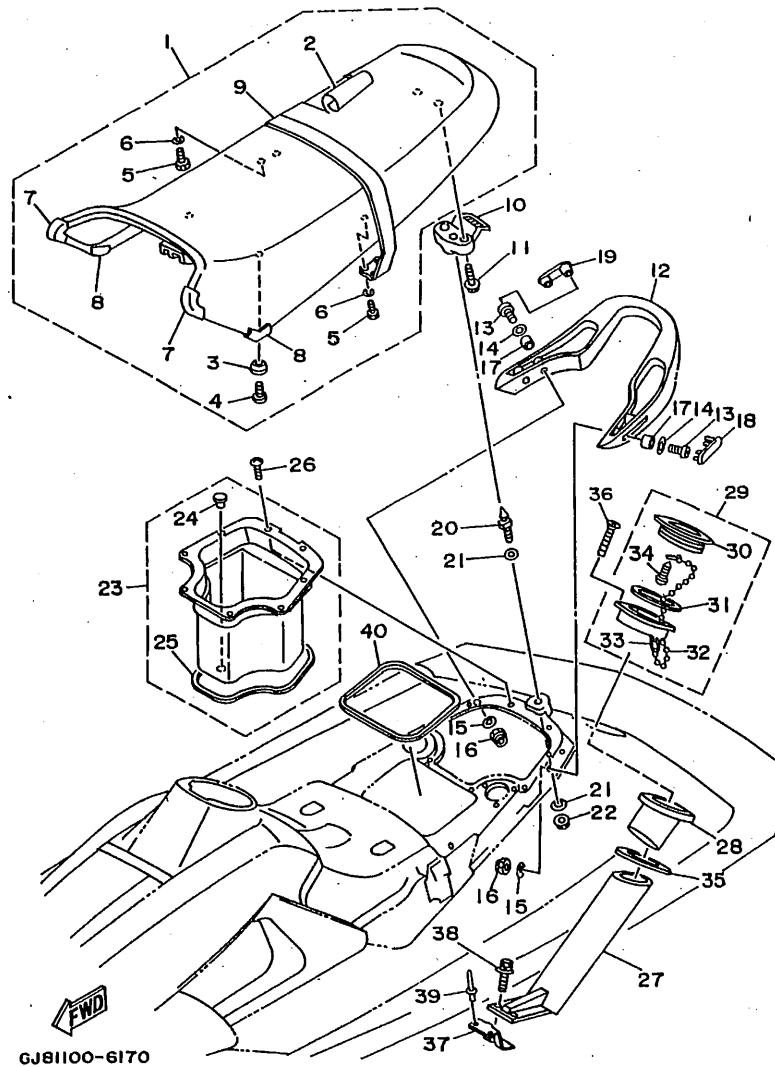


FIG. 17 SEAT - UNDER LOCKER 1

REF. NO.	PART NO.	DESCRIPTION	Q'TY	REMARKS
1	GJ1-U371A-30	DOUBLE SEAT ASSY	1	YMUS VIOLET/VIVID RED
2	GJ1-U370B-00	.COVER, SEAT 1	1	YMUS
3	GH1-63729-00	.STOPPER, SEAT	2	
4	97980-06116	.SCREW, WITH WASHER	2	
5	97090-06016	.BOLT	4	
6	92995-06100	.WASHER, SPRING	4	
7	GJ1-U375A-30	.PAD, SEAT 1	2	YMUS
8	GJ1-U375B-40	.PAD, SEAT 2	2	YMUS
9	GJ1-U373D-00	.BAND, SEAT COMP.	1	YMUS
10	GH1-63850-00	SEAT LOCK ASSY	1	
11	90119-06914	BOLT, WITH WASHER	2	
12	GH1-6271B-20	GRIP, HAND	1	VIOLET SOLID 6
13	98980-06025	SCREW, BIND	4	
14	92990-06200	WASHER, PLAIN	4	
15	90201-065F3	WASHER, PLATE	4	
16	95720-06300	NUT, SELF-LOCKING	4	
17	90387-06914	COLLAR	4	
18	GH1-6271C-20	CAP, GRIP HAND (LH)	1	
19	GH1-6271D-20	CAP, GRIP HAND (RH)	1	
20	GH1-63774-01	PIN	1	
21	92990-10200	WASHER, PLAIN	2	
22	95720-10300	NUT, FLANGE	1	
23	GJ1-U474A-00	UNDER LOCKER ASSY	1	YMUS
24	90338-12081	.PLUG	1	
25	GH1-6266B-00	.PACKING 3	1	
26	90149-04943	SCREW	8	
27	GA7-65983-00	BOX, FIRE EXTINGUISHER	1	
28	GA7-65984-00	GROMMET	1	

D3

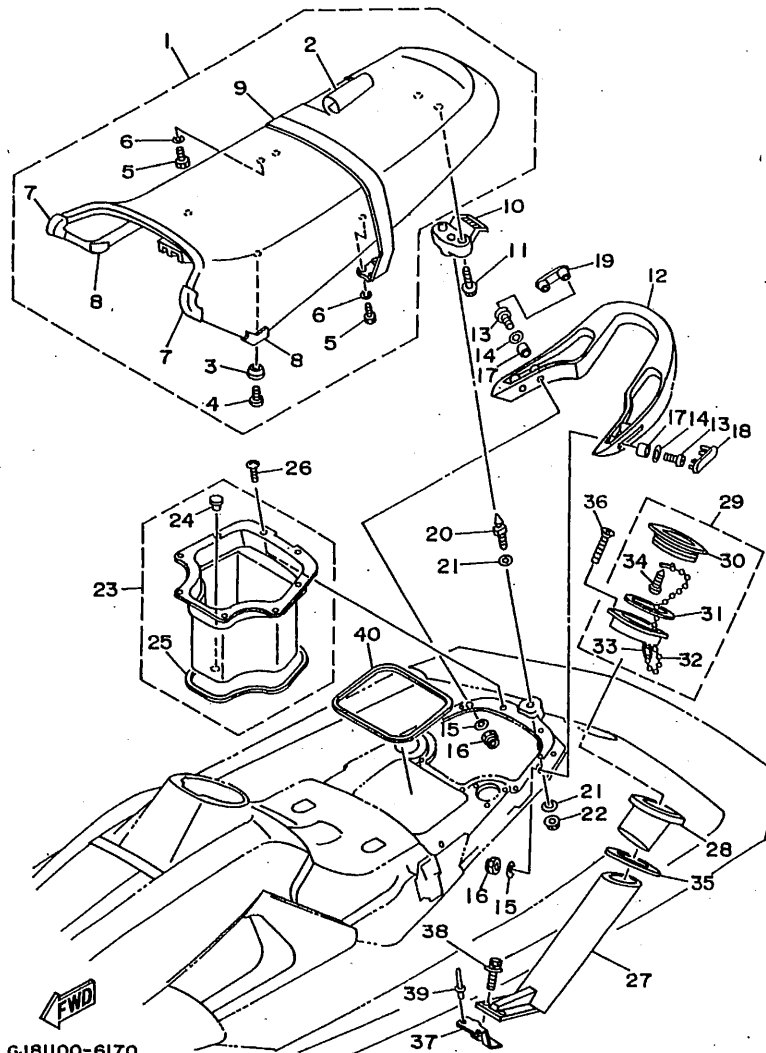
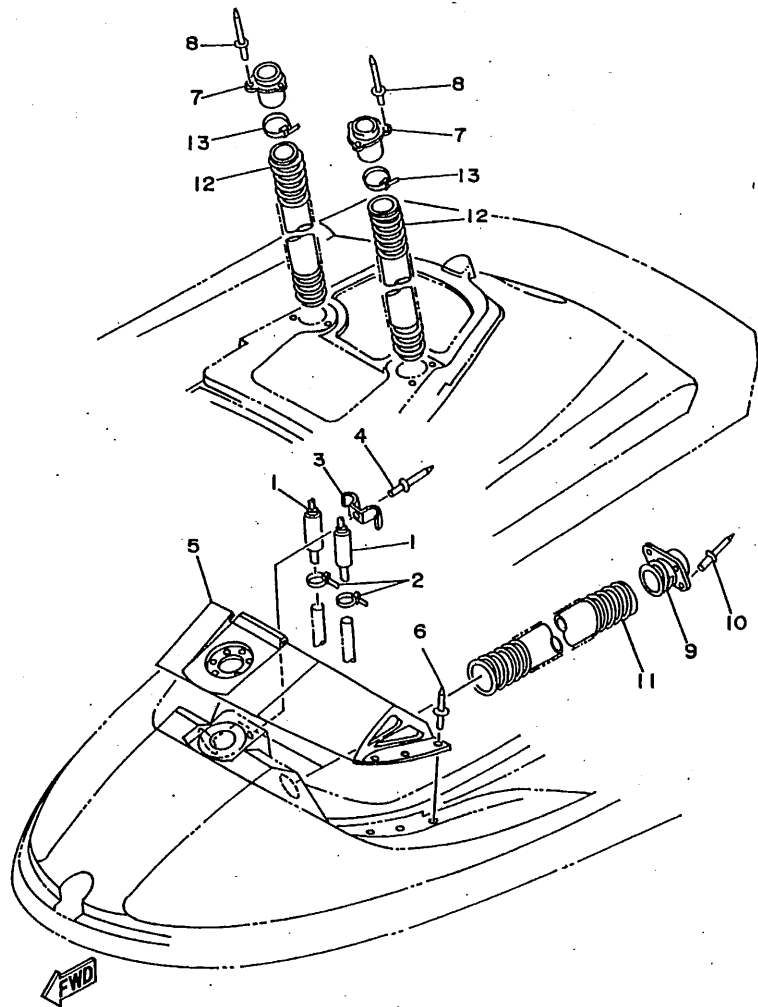


FIG. 17 SEAT - UNDER LOCKER 1

REF. NO.	PART NO.	DESCRIPTION	Q'TY	REMARKS
29	EU0-62720-31	INSPECTION COVER ASSY	1	
30	EU0-62721-31	.COVER, INSPECTION	1	
31	93211-03902	.RING	1	
32	EU0-67835-30	.CHAIN BALL	1	
33	EU0-67839-00	.COUPLING	1	
34	97780-04110	.SCREW, TAPPING	1	
35	GA7-6593J-00	PLATE, FIRE EXTINGUISHER	1	
36	98780-04035	SCREW, FLAT HEAD	6	
37	GJ1-6593H-00	BRKT. FIRE EXTINGUISHER	1	
38	90119-06908	BOLT, WITH WASHER	2	
39	90267-489U1	RIVET, BLIND	2	YMUS
40	GJ1-U266D-00	PACKING 5	1	YMUS

GJ81100-6170



GJ11100-5180

FIG. 18 SEAT - UNDER LOCKER 2

REF. NO.	PART NO.	DESCRIPTION	Q'TY	REMARKS
1	EW2-62150-00	PIPE, VENTILATION 3	2	
2	90465-11M10	CLAMP	2	
3	GH1-6215G-00	PLATE, GUIDE	1	
4	90267-489U1	RIVET, BLIND	1	YMUS
5	GH1-6521B-20	COVER, BOW	1	
6	90267-48951	RIVET, BLIND	6	
7	GH1-62139-00	VENTILATOR, OUTLET	2	
8	90267-409U5	RIVET, BLIND	6	YMUS
9	GH1-62127-00	BASE, AIR INTAKE	2	
10	90267-48925	RIVET, BLIND	8	
11	GH1-6213F-01	HOSE, VENTILATOR 1	2	
12	GH1-6213G-00	HOSE, VENTILATOR 2	2	
13	90601-20007	NYLON CLIP 1	2	

D5

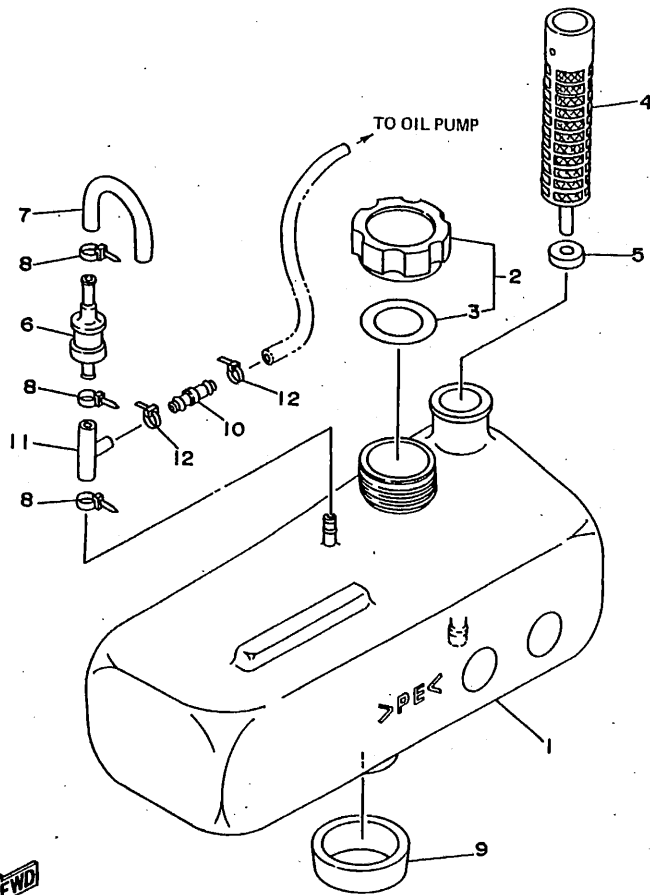
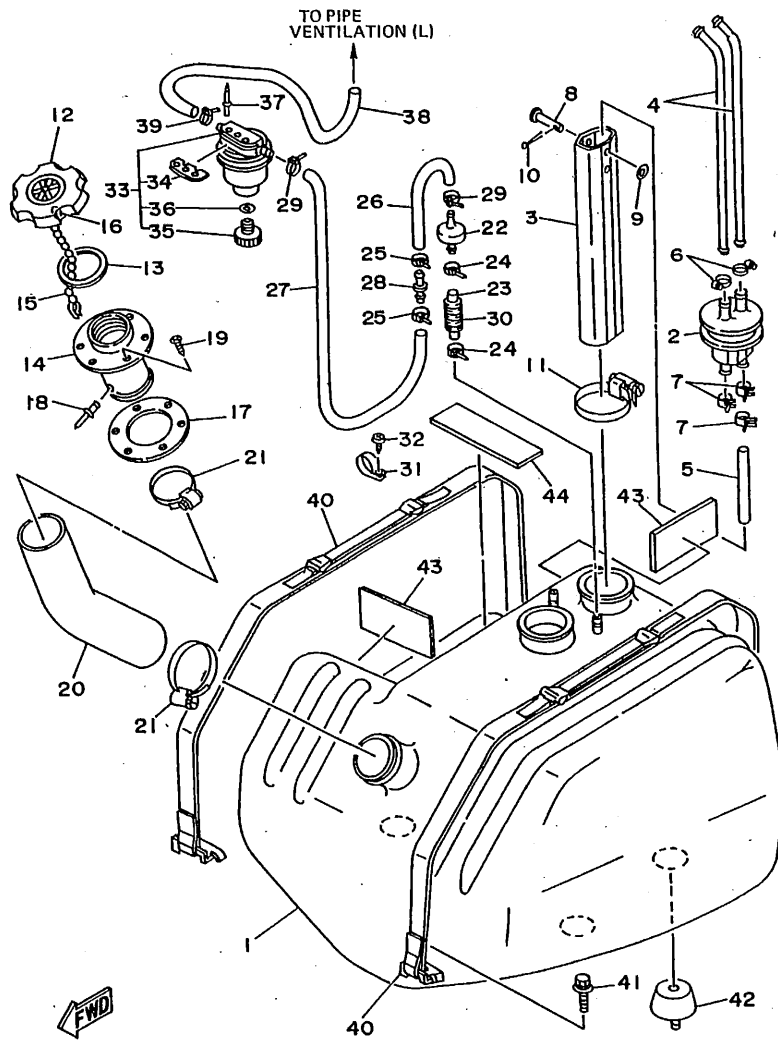


FIG. 19 OIL TANK

REF. NO.	PART NO.	DESCRIPTION	Q'TY	REMARKS
1	GJ1-U775B-00	TANK, OIL	1	YMUS
2	FJ0-67840-00	OIL TANK CAP ASSY	1	
3	FJ0-67841-01	.PACKING, OIL CAP	1	
4	6J8-13411-00	STRAINER, OIL	1	
5	6J8-13414-00	GASKET, STRAINER COVER	1	
6	FJ0-67766-00	ROLL OVER VALVE	1	
7	FJ0-62158-00	HOSE	1	
8	90465-11M10	CLAMP	3	
9	GH1-6759D-00	MAT 3	1	
10	63M-13132-00	JOINT	1	
11	63M-24378-00	PIPE, JOINT 4	1	
12	90465-11M10	CLAMP	2	


GJ11100-5190

D6

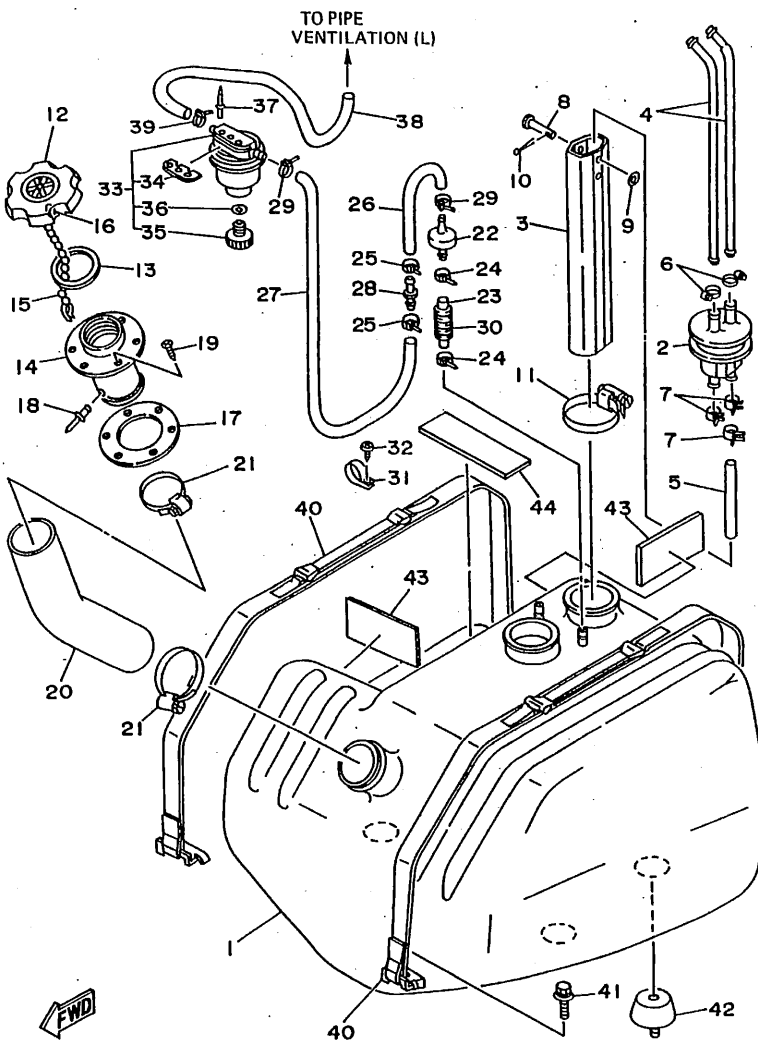


GJ1100-5200

FIG. 20 FUEL TANK

REF. NO.	PART NO.	DESCRIPTION	Q'TY	REMARKS
1	GJ1-U7711-00	TANK, FUEL	1	YMUS
2	FJ0-67713-00	PIPE, JOINT	1	
3	FJ0-67716-00	SLEEVE 1	1	
4	FJ0-67714-00	PIPE, SUCTION 3	2	
5	90445-11903	HOSE	1	
6	90601-11062	BAND, HOSE 11	2	
7	90467-11044	CLIP	3	
8	91790-05040	PIN, CLEVIS	1	
9	92990-05600	WASHER, PLATE	1	
10	91490-16010	PIN, COTTER	1	
11	90601-162U5	BAND, HOSE 62	1	YMUS
12	GA7-67831-01	CAP, FUEL FILLER	1	
13	EU0-67832-00	PACKING 1	1	
14	GA7-67833-00	SOCKET	1	
15	EU0-67835-00	CHAIN BALL	1	
16	EU0-67839-00	COUPLING	1	
17	EU0-67834-00	PACKING, FUEL FILLER	1	
18	90267-40935	RIVET, BLIND	1	
19	EU0-67869-00	SCREW, FLAT HEAD	6	
20	GJ1-U7844-00	HOSE	1	YMUS
21	90601-155U4	BAND, HOSE 55	2	YMUS
22	EU0-67767-31	CHECK VALVE	1	
23	GA7-67856-00	HOSE, AIR VENT	1	
24	90465-11M10	CLAMP	2	
25	90465-11M10	CLAMP	2	
26	EU0-67856-50	HOSE, AIR VENT 3	1	
27	GJ1-67856-00	HOSE, AIR VENT 3	1	
28	668-24376-00	PIPE, JOINT 1	1	

D7

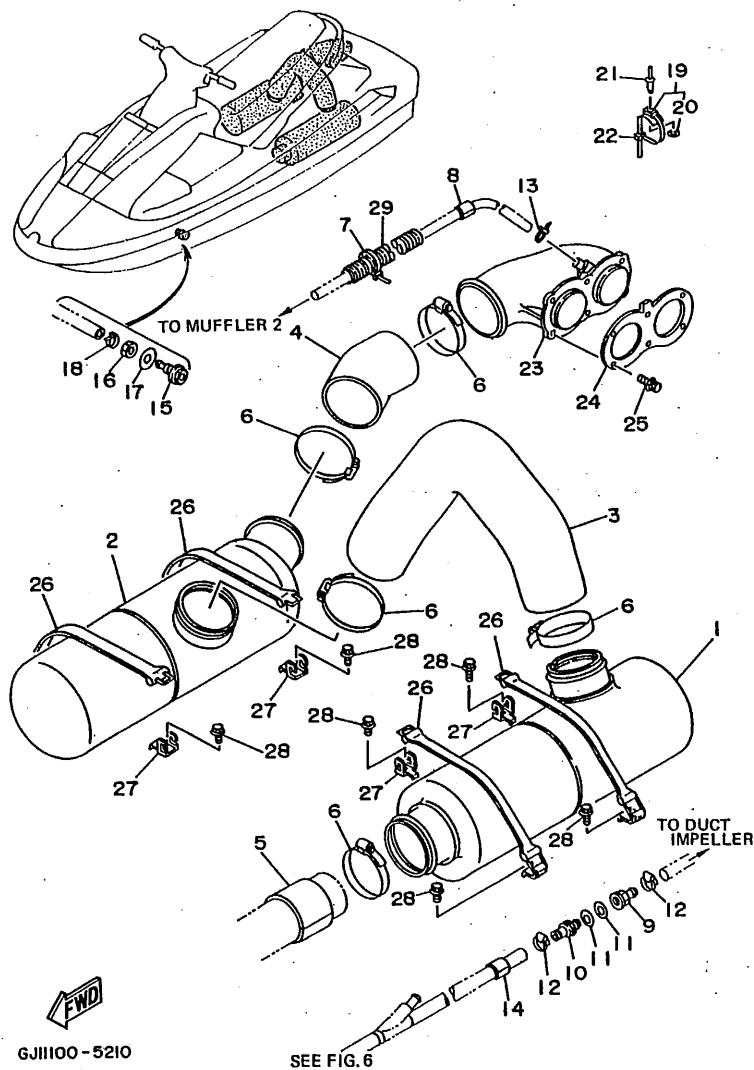


GJ1100-5200

FIG. 20 FUEL TANK

REF. NO.	PART NO.	DESCRIPTION	Q'TY	REMARKS
29	90465-11M10	CLAMP	2	
30	GJ1-6773D-00	TUBE	1	
31	90600-918U3	CLIP, NYLON 17	1	YMUS
32	97780-60116	SCREW, TAPPING	1	
33	EW2-62140-00	FILTER, VENT ASSY	1	
34	EW2-62142-00	.PLATE, FILTER	1	
35	70R-24543-00	.PLUG, DRAIN	1	
36	70R-24489-00	.O-RING, SEPARATER 2	1	
37	90267-489U2	RIVET, BLIND	2	YMUS
38	90445-09905	HOSE	1	
39	90465-11M10	CLAMP	1	
40	GJ1-67743-00	BELT, TANK 1	2	
41	90119-089U7	BOLT, WITH WASHER	4	YMUS
42	GH1-6782B-01	DAMPER, FUEL TANK	4	
43	GJ1-6759B-00	MAT 1	2	
44	GJ1-6759C-00	MAT 2	1	

D8



GJ1100-5210

FIG. 21 EXHAUST 2

REF. NO.	PART NO.	DESCRIPTION	Q'TY	REMARKS
1	GJ1-U7550-00	WATER LOCK	1	YMUS
2	GJ1-U7518-00	MUFFLER	1	YMUS
3	GJ1-U7555-00	HOSE	1	YMUS
4	GJ1-U758C-00	HOSE, EXHAUST 2	1	YMUS
5	GJ1-67577-00	PACKING, HOSE 1	1	
6	90601-195UD	NYLON CLIP 1	5	YMUS
7	90601-20008	NYLON CLIP 1	1	
8	GJ1-67578-10	PACKING, HOSE 2	1	
9	90604-80793	THROGUH-HULL CONNECTION 3/8	1	
10	90604-80794	THROGUH-HULL CONNECTION 3/8	1	
11	90430-16910	GASKET	2	
12	90601-118UF	NYLON CLIP 1	2	YMUS
13	90601-200U1	CLAMP	1	YMUS
14	GJ1-67578-10	PACKING, HOSE 2	1	
15	GJ1-67538-02	PILOT, WATER	1	
16	95380-14700	NUT	1	
17	92990-14200	WASHER, PLAIN	1	
18	90465-11M10	CLAMP	2	
19	90600-91736	CLAMP	2	
20	90201-05925	WASHER, PLATE	1	
21	90267-48925	RIVET, BLIND	2	
22	90601-200U2	NYLON CLIP 1	2	YMUS
23	GJ1-67560-00	EXHAUST, THRU-HALL COMP.	1	
24	GJ1-U7525-00	PACKING	1	YMUS
25	90119-059U4	BOLT, WITH WASHER	6	YMUS
26	GJ1-U7570-00	HOOK C	4	YMUS
27	EW2-65772-00	HOOK A	4	
28	90105-06900	BOLT, WASHER BASED	8	

D9

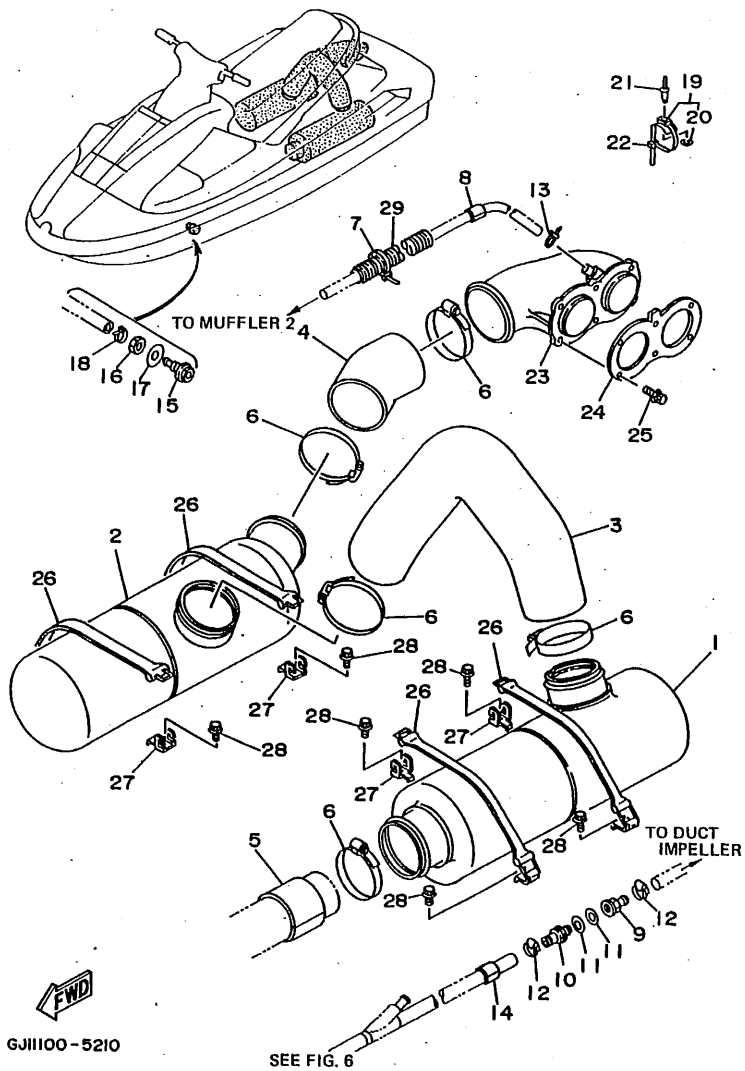
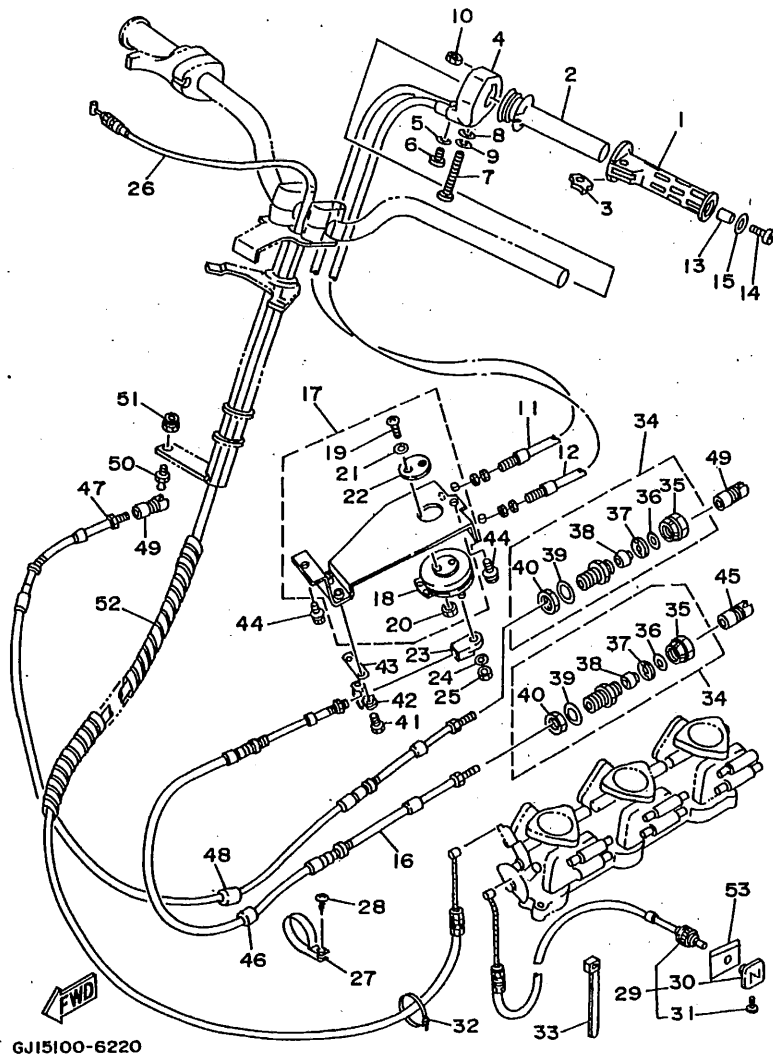


FIG. 21 EXHAUST 2

REF. NO.	PART NO.	DESCRIPTION	Q'TY	REMARKS
29	90446-27M55	TUBE	1	

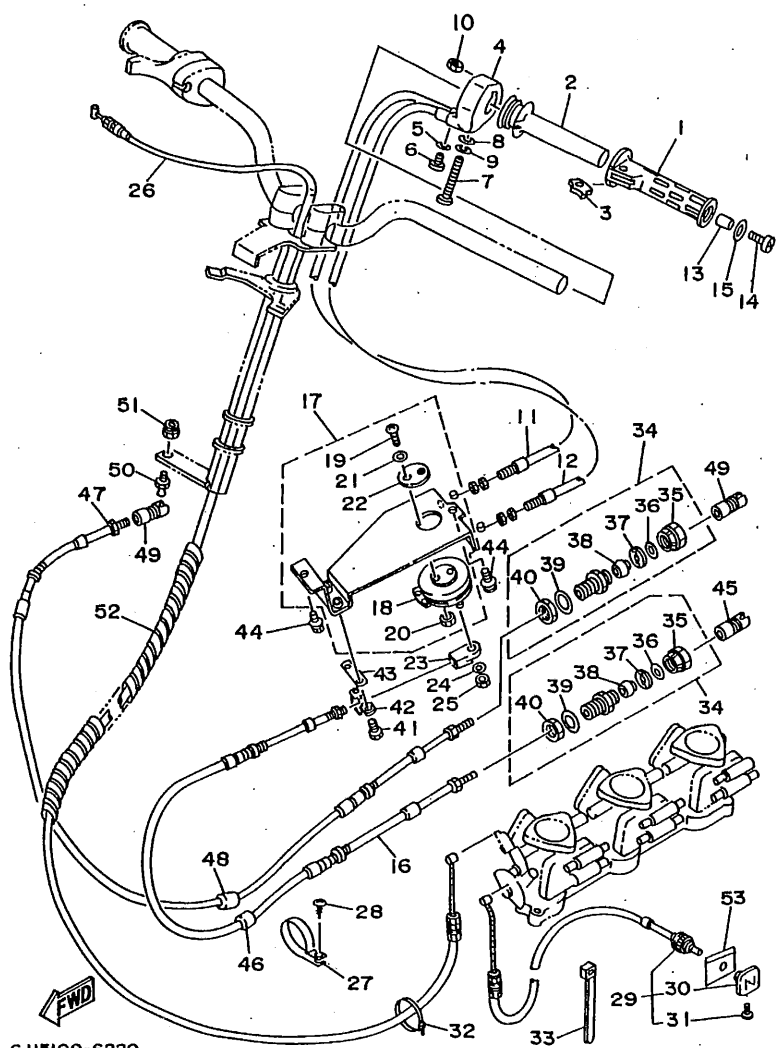


GJ15100-6220

FIG. 22 CONTROL CABLE

REF. NO.	PART NO.	DESCRIPTION	Q'TY	REMARKS
1	GH1-6155C-00	GRIP HANDLE	1	
2	GH1-6155B-00	GRIP INNER	1	
3	GH1-6151M-00	LEVER ASSY	1	
4	GH1-6152M-01	HOUSING ASSY	1	
5	92990-04600	WASHER, PLATE	1	
6	98980-04010	SCREW, BIND	1	
7	98580-06565	SCREW, PAN HEAD	1	
8	92990-06600	WASHER, PLATE	1	
9	92995-06100	WASHER, SPRING	1	
10	GH1-6143B-00	NUT, SPECIAL	1	
11	GH1-6153D-00	CABLE, NOZZLE CONTROL 2	1	
12	GH1-6153D-10	CABLE, NOZZLE CONTROL 2	1	
13	90387-05916	COLLAR	1	
14	90149-05960	SCREW	1	
15	90201-05928	WASHER, PLATE	1	
16	GJ1-6153E-01	CABLE, NOZZLE CONTROL 3	1	
17	GH1-6153J-01	REMOCON, NOZZLE 2	1	
18	GH1-6153M-01	.WHEEL ASSY	1	
19	97880-05020	.SCREW, PAN HEAD	2	
20	95380-05600	.NUT	2	
21	92990-05300	.WASHER, INTERNAL TOOTH	2	
22	EL8-48193-00	.WASHER 3	1	
23	GH1-6046C-00	END, CABLE	1	
24	92990-06200	WASHER, PLAIN	1	
25	95780-06300	NUT, FLANGE	1	
26	GJ1-U7252-00	CABLE, THROTTLE	1	YMUS
27	90600-918U3	CLIP, NYLON 16	1	YMUS
28	97780-60116	SCREW, TAPPING	1	

D11

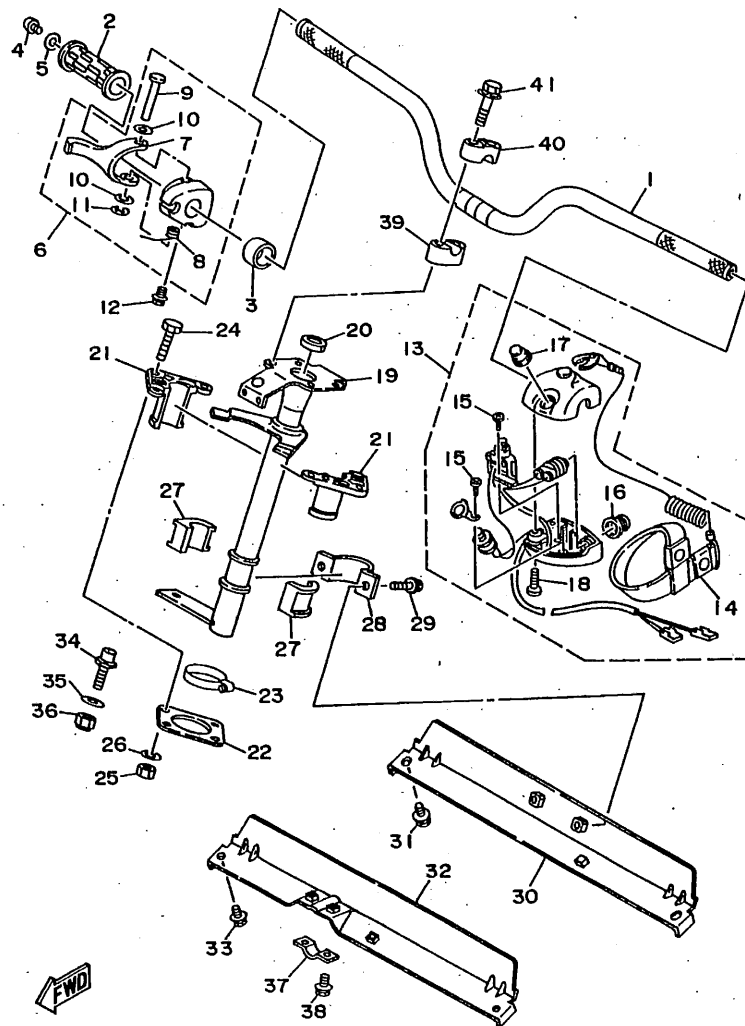


GJ15100-6220

FIG. 22 CONTROL CABLE

REF. NO.	PART NO.	DESCRIPTION	Q'TY	REMARKS
29	GJ1-U7242-00	CABLE, CHOKE	1	YMUS
30	GA9-U724C-00	.KNOB	1	YMUS
31	GA9-U724D-00	.SCREW	1	YMUS
32	90601-200U1	NYLON CLIP 1	1	YMUS
33	90601-20006	NYLON CLIP 1	4	
34	EU0-67267-00	CONNECTOR, CABLE	2	
35	EU0-62694-00	.CAP	1	
36	EU0-61446-00	.WASHER 30	1	
37	EU0-61486-00	.STOPPER	1	
38	EU0-61435-00	.SEAL, PIPE 30	1	
39	EU0-61438-00	.PACKING (C)	1	
40	EU0-62241-30	.NUT, DRAIN 1	1	
41	97080-06012	BOLT	2	
42	GHI-6043H-00	CLAMP, CABLE	1	
43	GHI-6043J-00	SHIM, CABLE	1	
44	90119-06908	BOLT, WITH WASHER	2	
45	EU0-U1461-30	SHAFT, JOINT BALL	1	YMUS
46	GJ1-67578-20	PACKING, HOSE 2	1	
47	GJ1-U1481-00	CABLE, STEERING	1	YMUS
48	GJ1-67578-20	PACKING, HOSE 2	1	
49	EU0-U1461-30	SHAFT, JOINT BALL	2	YMUS
50	EU0-U1461-01	STUD, JOINT BALL	1	YMUS
51	95720-06300	NUT, SELF-LOCKING	1	
52	90699-36U01	SPIRAP 11	1	YMUS
53	GJ1-6824D-00	PLATE, CHOKE	1	

D12

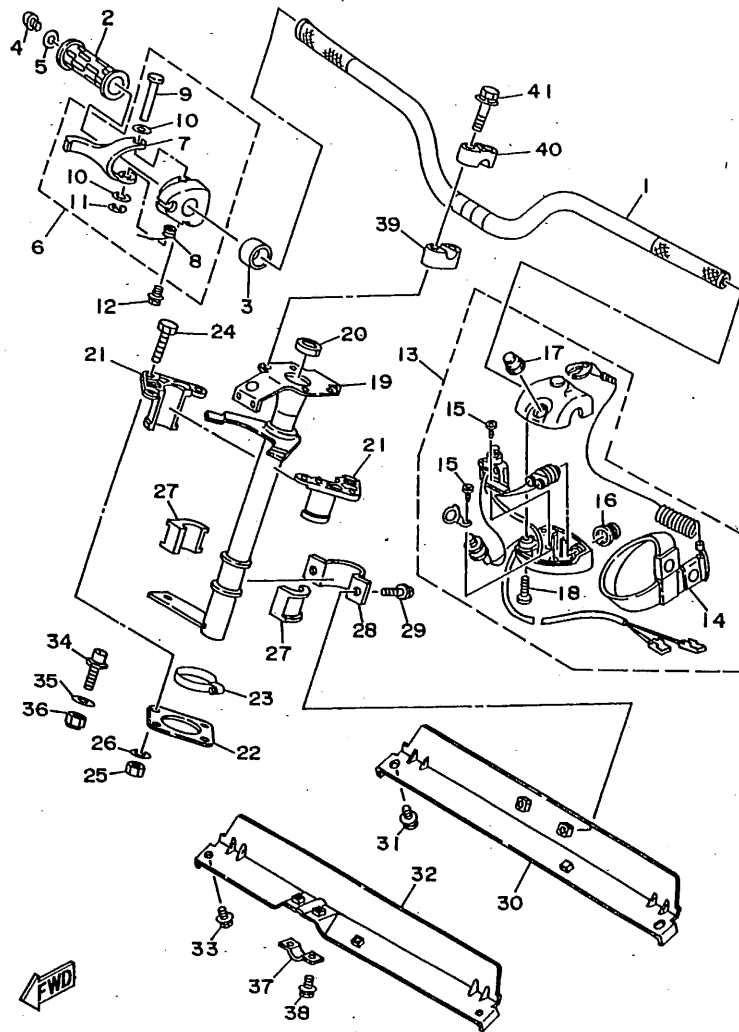


GHI4010-4230

FIG. 23 STEERING 1

REF. NO.	PART NO.	DESCRIPTION	Q'TY	REMARKS
1	GJ1-U1552-02	HANDLE	1	YMUS
2	EW2-61553-00	GRIP, HANDLE 1	1	
3	90560-22281	SPACER	1	
4	90149-05959	SCREW	1	
5	90201-05928	WASHER, PLATE	1	
6	GJ1-67250-00	THROTTLE LEVER ASSY	1	
7	GJ1-67255-00	.LEVER, THROTTLE	1	
8	EW2-67256-00	.SPRING	1	
9	EW2-67257-00	.SHAFT	1	
10	EW2-67258-01	.WASHER	2	
11	EW2-67259-01	.E-RING	1	
12	90159-05900	SCREW, WITH WASHER	1	
13	FK7-68310-06	SWITCH BOX ASSY	1	
14	EW2-68348-00	.LANYARD, STOP SWITCH	1	
15	98580-03008	.SCREW, PAN HEAD	2	
16	FK7-68312-02	.STOP BUTTON COMP.	1	
17	FK7-68313-01	.START BUTTON COMP.	1	
18	98580-05525	.SCREW, PAN HEAD	2	
19	GH1-61541-02	COLUMN, STEERING	1	
20	GH1-61469-00	PACKING, STEERING COLUMN	1	
21	GH1-6141B-00	BEARING, COLUMN	2	
22	GH1-6143C-30	SEAL, RUBBER	1	
23	90601-142U6	NYLON CLIP 1	1	YMUS
24	97080-06030	BOLT	4	
25	95720-06300	NUT, SELF-LOCKING	4	
26	92990-06200	WASHER, PLAIN	4	
27	GH1-6141D-01	BEARING, STEERING	2	
28	EU0-61588-00	JOINT, BEARING	1	

D13



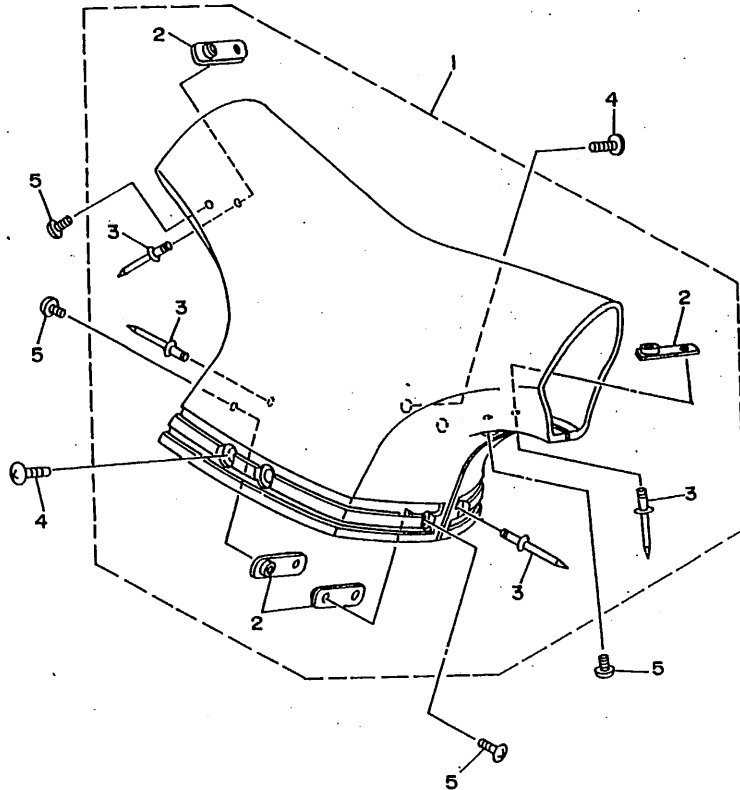
GHI4010-4230

FIG. 23 STEERING 1

REF. NO.	PART NO.	DESCRIPTION	Q'TY	REMARKS
29	90119-08903	BOLT, WITH WASHER	2	
30	GH1-61433-00	BRACKET, BEARING	1	
31	90119-08903	BOLT, WITH WASHER	2	
32	GH1-61467-01	BRACKET, STOPPER CABLE	1	
33	90119-08903	BOLT, WITH WASHER	2	
34	FN8-6131B-00	PIN, STOPPER	1	
35	92990-10200	WASHER, PLAIN	1	
36	95720-10300	NUT	1	
37	GH1-61468-01	STOPPER, CABLE	1	
38	90119-06908	BOLT, WITH WASHER	2	
39	EU0-23814-01	HOLDER, HANDLE LOWER	2	
40	EU0-23814-30	HOLDER, HANDLE UPPER	2	
41	90119-08925	BOLT, WITH WASHER	4	

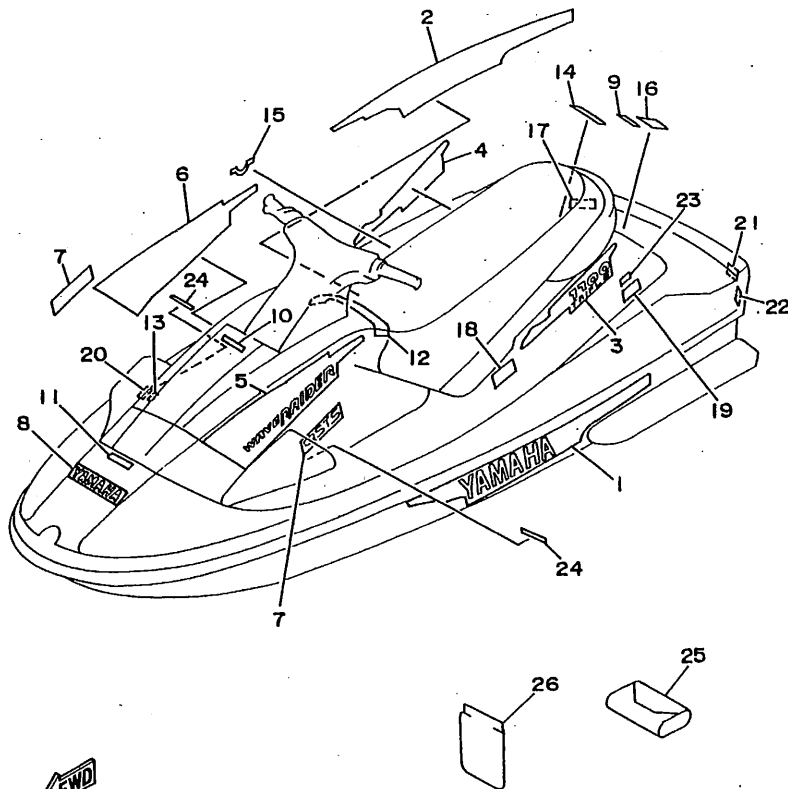
FIG. 24 STEERING 2

REF. NO.	PART NO.	DESCRIPTION	Q'TY	REMARKS
1	GH1-6142A-30	STEERING PAD COMP.	1	VIOLET SOLID 6
2	GA7-61440-00	.PLATE	4	
3	90267-48951	.RIVET, BLIND	4	
4	90149-05959	SCREW	4	
5	90149-04903	SCREW	4	



GH14010-4240

D15

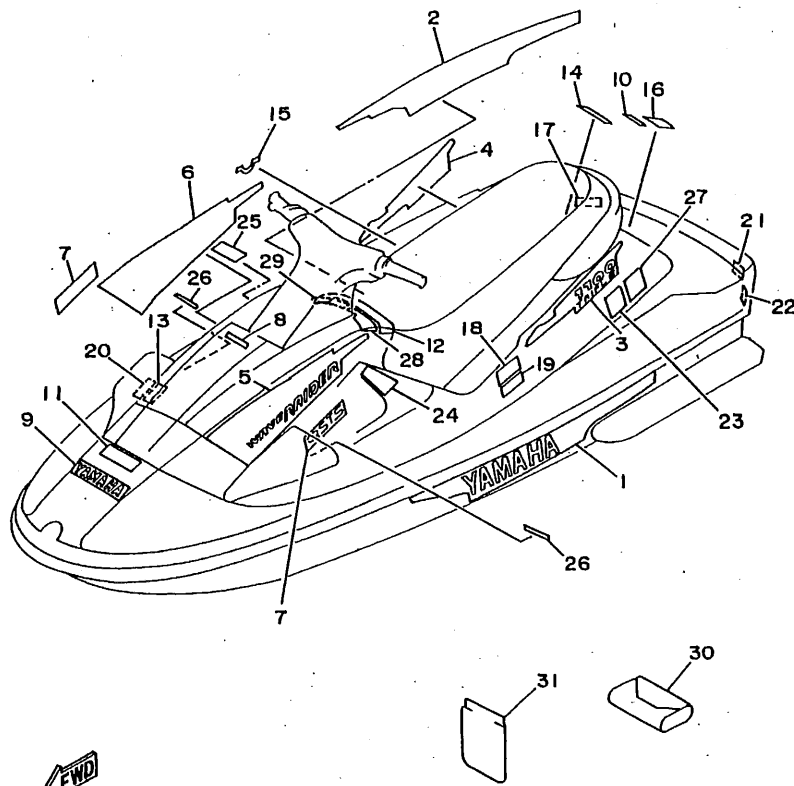


GJ15100-6250

FIG. 25 GRAPHIC 1. TOOL (FOR USA)

REF. NO.	PART NO.	DESCRIPTION	Q'TY	REMARKS
1	GJ1-U417B-10	GRAPHIC 1	1	YMUS
2	GJ1-U417C-10	GRAPHIC 2	1	YMUS
3	GJ1-U417D-10	GRAPHIC 3	1	YMUS
4	GJ1-U417E-10	GRAPHIC 4	1	YMUS
5	GJ1-U417F-10	GRAPHIC 5	1	YMUS
6	GJ1-U417G-10	GRAPHIC 6	1	YMUS
7	GJ1-U417H-10	GRAPHIC 7	2	YMUS
8	GJ3-U4114-10	MARK, YAMAHA A	1	YMUS
9	GJ1-U4122-10	EMBLEM 2 (YAMAHA)	1	YMUS
10	GE1-U4125-00	EMBLEM (WAVE RUNNER)	1	YMUS
11	GA9-U416B-00	LABEL, WARNING	1	YMUS
12	GJ1-U416C-01	LABEL, WARNING 1	1	YMUS
13	GA9-U416F-00	LABEL, WARNING 4	1	YMUS
14	GJ1-U418C-30	LABEL, CAUTION	1	YMUS
15	GJ1-U419C-00	LABEL 2	1	YMUS
16	GA9-U418C-10	LABEL, CAUTION	1	YMUS
17	GA9-U418G-10	LABEL, CAUTION	1	YMUS
18	EU0-U418B-00	LABEL, CAUTION	1	YMUS
19	EU9-U418E-00	LABEL, USCG.	1	YMUS
20	GA9-U418C-41	LABEL, CAUTION	1	YMUS
21	GA9-U418F-00	LABEL, UP RIGHTING	1	YMUS
22	GA9-U416G-00	LABEL, WARNING	1	YMUS
23	GJ1-U418C-00	LABEL, CAUTION	1	YMUS
24	GJ1-U419F-00	LABEL 5	2	YMUS
25	EU0-28100-03	TOOL KIT	1	
26	EU0-65901-01	BAG, VINYL	1	

FIG. 26 GRAPHIC 2. TOOL (FOR CAN, GUM, AUS, FRA)



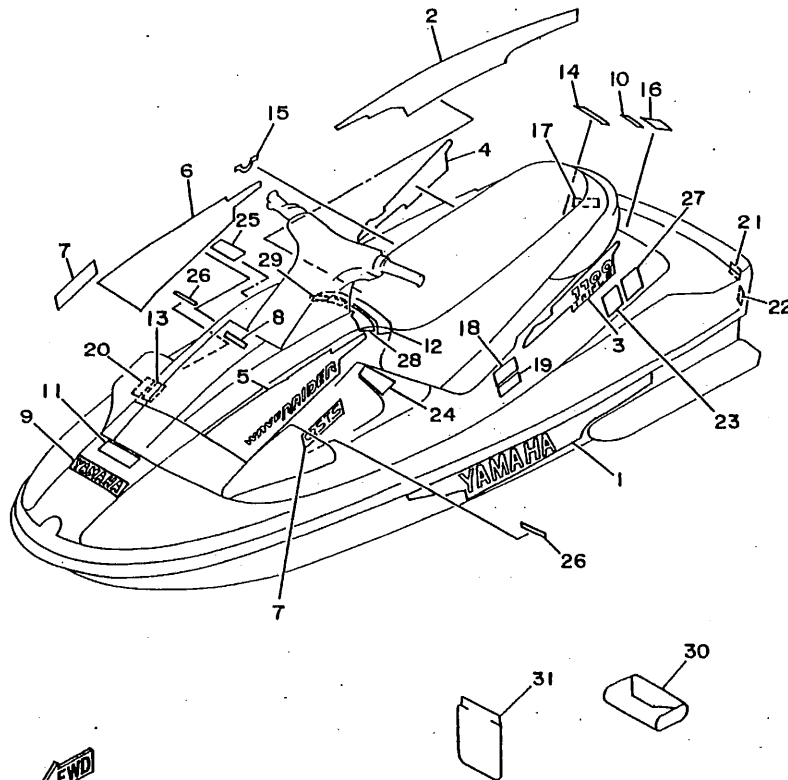
GJ15100-6260

REF. NO.	PART NO.	DESCRIPTION	Q'TY	REMARKS
1	GJ1-U417B-10	GRAPHIC	1	YMUS
2	GJ1-U417C-10	GRAPHIC 2	1	YMUS
3	GJ1-U4170-10	GRAPHIC 3	1	YMUS
4	GJ1-U417E-10	GRAPHIC 4	1	YMUS
5	GJ1-U417F-10	GRAPHIC 5	1	YMUS
6	GJ1-U417G-10	GRAPHIC 6	1	YMUS
7	GJ1-U417H-10	GRAPHIC 7	2	YMUS
8	GE1-U4125-00	EMBLEM (WAVE RUNNER)	1	YMUS USA/CAN ONLY
9	GJ3-U4114-10	MARK, YAMAHA A	1	YMUS
10	GJ1-U4122-10	EMBLEM 2 (YAMAHA)	1	YMUS
11	GA9-U416B-10	LABEL, WARNING (FUEL)	1	YMUS
12	GJ1-U416C-20	LABEL, WARNING 1	1	YMUS
13	GA9-U416F-10	LABEL, WARNING 4	1	YMUS
14	GJ1-U418C-40	LABEL, CAUTION	1	YMUS
15	GJ1-U419C-00	LABEL 2	1	YMUS
16	GA9-U418C-10	LABEL, CAUTION	1	YMUS
17	GA9-U418G-10	LABEL, CAUTION (DRAIN)	1	YMUS
18	EU0-U418B-00	LABEL, CAUTION (BATTERY)	1	YMUS
19	EU0-U418B-10	LABEL, CAUTION (BATTERY)	1	YMUS
20	GA9-U418C-50	LABEL, CAUTION	1	YMUS
21	GA9-U418F-00	LABEL, UP RIGHTING	1	YMUS
22	GA9-U416G-10	LABEL, WARNING 5	1	YMUS
23	GJ1-U418C-10	LABEL, CAUTION	1	YMUS
24	GJ1-U416C-10	LABEL, WARNING 2	2	YMUS
25	GJ1-U4160-11	LABEL, WARNING 2	1	YMUS
26	GJ1-U419F-10	LABEL 5	2	YMUS
27	GA9-U418E-00	LABEL, USCG.	1	YMUS GUAM ONLY
28	GJ1-U416H-10	LABEL, WARNING (FRANCE)	1	YMUS FRANCE ONLY

E3

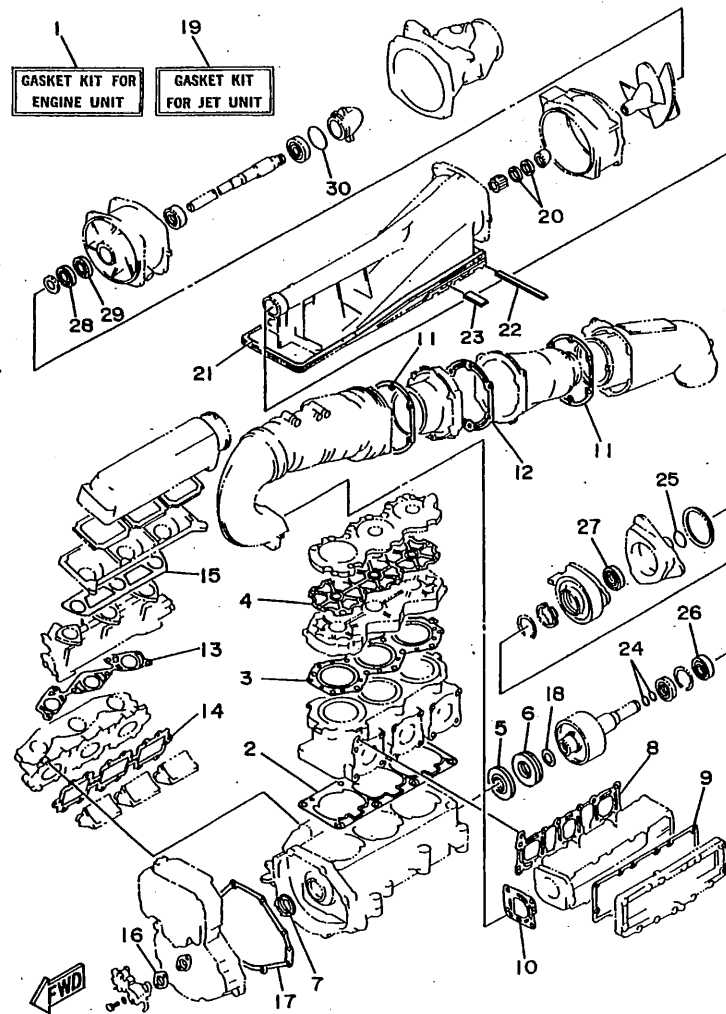
FIG. 26 GRAPHIC 2. TOOL (FOR CAN, GUM, AUS, FRA)

REF. NO.	PART NO.	DESCRIPTION	Q'TY	REMARKS
29	GJ1-U416H-20	LABEL, WARNING (FRANCE)	1	YMUS FRANCE ONLY
30	EU0-28100-03	TOOL KIT	1	
31	EU0-65901-01	BAG, VINYL	1	



GJ15100-6260

E4

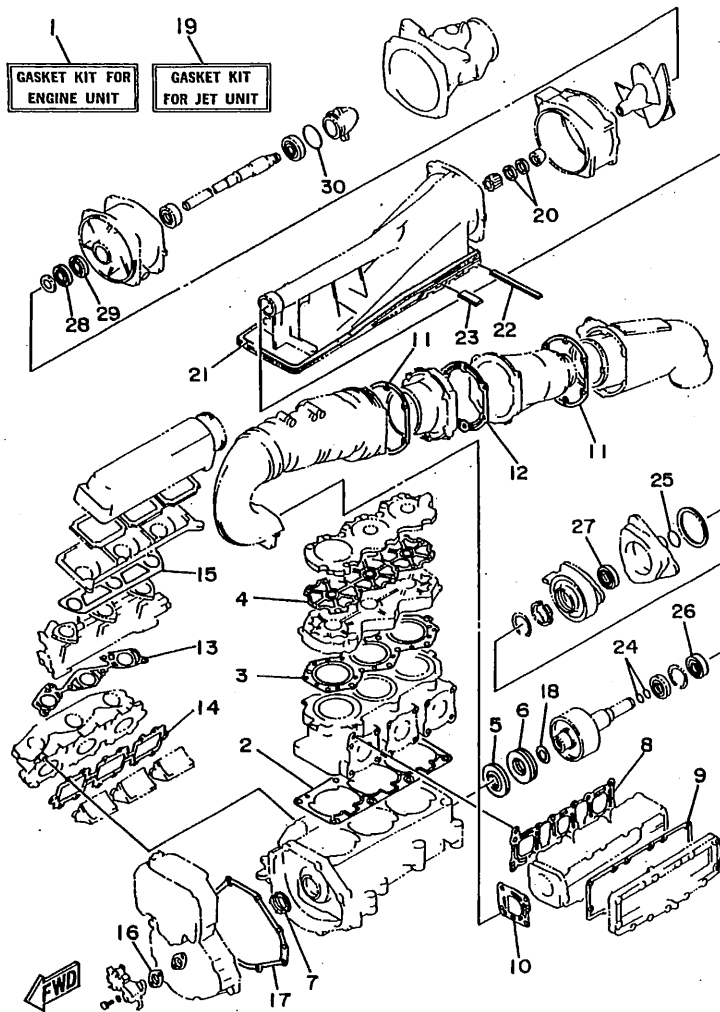


GJ15100-6270

FIG. 27 REPAIR KIT 1

REF. NO.	PART NO.	DESCRIPTION	Q'TY	REMARKS
1	63M-W0001-01	GASKET KIT FOR ENGINE UNIT	1	
2	63M-11351-00	.GASKET, CYLINDER	1	
3	63M-11181-00	.GASKET, CYLINDER HEAD 1	1	
4	63M-11193-00	.GASKET, HEAD COVER 1	1	
5	93102-36M33	.OIL SEAL	1	
6	93101-36M46	.OIL SEAL	1	
7	93103-32M01	.OIL SEAL	1	
8	63M-14613-00	.GASKET, EXHAUST PIPE	1	
9	63M-14739-00	.GASKET, MUFFLER DAMPER 1	1	
10	63M-14749-00	.GASKET, MUFFLER DAMPER 2	1	
11	63M-41114-00	.GASKET, EXHAUST OUTER COVER	2	
12	63M-41122-00	.GASKET, EXHAUST INNER COVER	1	
13	63M-13556-00	.GASKET, MANIFOLD	1	
14	63M-13566-00	.GASKET	1	
15	63M-13674-00	.GASKET, AIR COOLER, COVER 1	1	
16	63M-13116-00	.GASKET, PUMP CASE	1	
17	63M-81365-00	.GASKET, HOLE COVER	1	
18	62T-45127-00	.SEAL	1	'96 MODEL
19	63M-W0001-20	GASKET KIT FOR JET UNIT	1	
20	93102-18M35	.OIL SEAL	2	
21	6R8-51367-01	.FELT, PACKING	2	
22	63M-51367-00	.FELT, PACKING	1	
23	63M-51368-00	.FELT, PACKING	2	
24	93210-17MA4	.O-RING	2	
25	93210-35M72	.O-RING	1	
26	93101-25M55	.OIL SEAL	1	
27	93101-25M56	.OIL SEAL	1	
28	93102-25M34	.OIL SEAL	1	

E5



GJ15100-6270

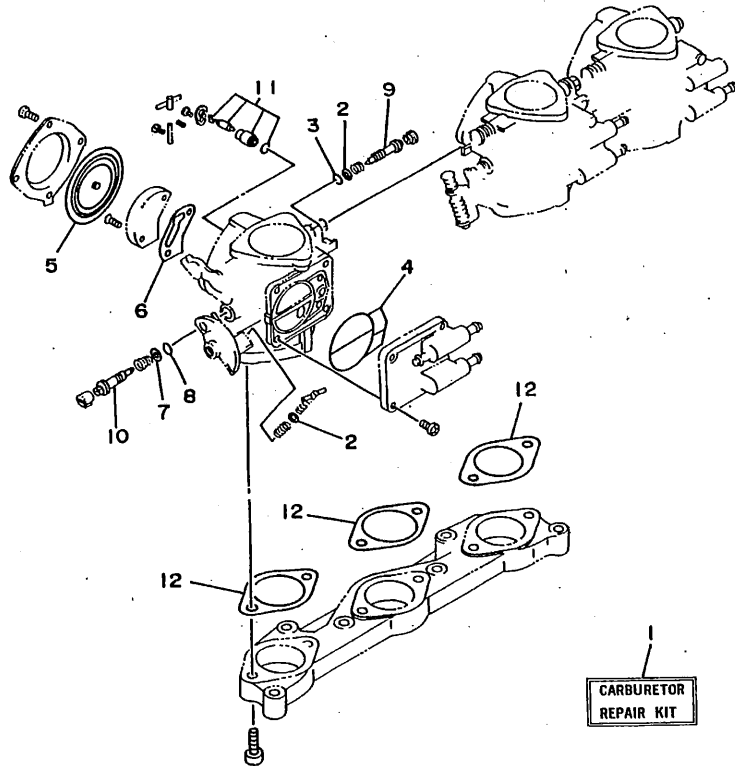
FIG. 27 REPAIR KIT 1

REF. NO.	PART NO.	DESCRIPTION	Q'TY	REMARKS
29	93101-25M50	.OIL SEAL	1	
30	93210-46M16	.O-RING	1	

E6

FIG. 28 REPAIR KIT 2

REF. NO.	PART NO.	DESCRIPTION	Q'TY	REMARKS
1	63M-W0093-00	CARBURETOR REPAIR KIT	1	
2	6K8-14559-00	.WASHER	4	
3	6K8-14562-00	.O-RING	3	
4	6K8-14564-00	.O-RING	3	
5	6R7-14541-00	.DIAPHRAGM, PUMP	3	
6	6K8-14536-11	.GASKET	3	
7	6K8-14537-00	.GASKET	3	
8	583-14561-00	.O-RING	3	
9	63M-14946-00	.PLATE, NEEDLE FITTING	3	
10	63M-14923-00	.SCREW, PILOT	3	
11	61X-14916-15	.NEEDLE	3	
12	63M-14398-00	.GASKET	3	



GJ11100-5280

E7

NUMERICAL INDEX

PART NO.	REF. NO.	PART NO.	REF. NO.	PART NO.	REF. NO.	PART NO.	REF. NO.	PART NO.	REF. NO.	PART NO.	REF. NO.
EUD-U1461-01	22-50	GJ1-U417E-10	26- 4	GJ1-U7711-00	20- 1	63M-13200-01	5- 1	6K8-14547-01	4-30	63M-24410-00	7- 1
EUD-U1461-30	22-45	GJ1-U417F-10	25- 5	GJ1-U773J-00	7-25	6J8-13411-00	19- 4	6K8-14559-00	4-11	63M-24412-00	4-26
	22-49			GJ1-U775B-00	19- 1	6J8-13414-00	19- 5		28- 2	70R-24489-00	20-36
GJ1-U1481-00	22-47	GJ1-U417G-10	25- 6	GJ1-U7844-00	20-20	63M-13555-00-94	3- 6	583-14561-00	4-38	6K8-24500-02	7-17
GJ1-U1552-02	23- 1			GE1-U7856-30	13- 3	63M-13556-00	3- 5		28- 8	6K8-24524-10	7-18
FN8-U1624-00	15-31	GJ1-U417H-10	25- 7	GJ1-U8K31-01	9-31			6K8-14562-00	4-14	70R-24543-00	20-35
GJ1-U2501-10	16- 1			GJ1-U8211-00	13-16	63M-13566-00	3- 7		28- 3	6K8-24560-10	7-15
GJ1-U2519-00	16- 6	GJ1-U4170-10	26- 3	GJ1-U8221-00	13-21			6K8-14564-00	4-21	EUD-28100-03	25-25
GJ1-U252C-10	16-13	EUD-U418B-00	25-18	63M-W0001-01	27- 1	63M-13610-00	3-14		28- 4		26-30
GJ1-U252D-00	16-14			63M-W0001-20	27-19	63M-13674-00	3-25	6R7-14569-00	4-28	63M-41113-00-9M	6-33
GJ1-U2552-10	16- 5	EUD-U418B-10	26-19	63M-W0004-00	3-15			6K8-14579-00	4-25	63M-41114-00	6-34
GJ1-U266D-00	17-40	GA9-U418C-10	25-16	63M-W0090-01-4D	1- 1	63M-14162-00	4-42	6K8-14589-00	4-36		6-38
GJ1-U2664-00	14- 9			63M-W0093-00	28- 1	3G2-1423A-72	4-18	6R7-14596-01	4- 4		27-11
GJ1-U273B-00	9-22	GA9-U418C-41	25-20	63M-W2442-00	7- 2			6K8-14597-11	4-13	63M-41121-00-9M	6-37
GJ1-U351H-10	16-21	GA9-U418C-50	26-20	63M-11111-00-94	1-15	3G2-14231-19	4-19	63M-14613-00	6- 3	63M-41122-00	6-36
GJ1-U351K-10	16-22	GJ1-U418C-00	25-23	63M-11181-00	1-18	830-14231-15	4-23		27- 8		27-12
GJ1-U351M-10	16-23	GJ1-U418C-10	26-23			63M-14243-00	4-40	63M-14615-00	6-30	63M-41123-00-94	6-39
GJ1-U351N-10	16-24	GJ1-U418C-30	25-14	63M-11191-00-9M	1-16	62T-14251-00	1- 3	62T-14625-00	6-28	63M-41138-00	6-48
GJ1-U351P-10	16-25	GJ1-U418C-40	26-14	63M-11193-00	1-21	6R7-14253-00	4-31	63M-14680-00	6-49	6R7-42316-00	8-42
GJ1-U370B-00	17- 2	EUD-U418E-00	25-19			63M-14255-00	3-26	63M-14711-00-9M	6- 1	63M-42316-00	8-35
GJ1-U371A-30	17- 1	GA9-U418E-00	26-27	63M-11311-00-94	1- 9	63M-14255-10	3-27	63M-14712-00-9M	6-12	63M-44517-01-5B	1-32
GJ1-U373D-00	17- 9	GA9-U418F-00	25-21	6E5-11325-00	1-10	63M-14283-00	3-33	63M-14718-00-9M	6- 4	63M-44532-00	1-30
GJ1-U375A-30	17- 7			63M-11351-00	1-12	63M-14284-00-98	3-21	63M-14721-00-9M	6-35	663-45119-00	3-31
GJ1-U375B-40	17- 8	GA9-U418G-10	25-17			63M-14301-00	4- 1	63M-14739-00	6- 6		10-25
GJ3-U4114-10	25- 8			6E5-11372-00	3-22	63M-14302-00	4- 2		27- 9	6K8-45127-00	9-21
	26- 9	GJ1-U419C-00	25-15	676-11372-00	10-13	63M-14303-00	4- 3	63M-14749-00	6-15	62T-45127-00	2-16
GJ1-U4122-10	25- 9			63M-11400-01	2- 1	63M-14398-00	4-41		27-10		27-18
	26-10	GJ1-U419F-10	26-26	61X-11603-00	2-10			63M-14752-00	6-58	6R8-45318-00	8- 7
GE1-U4125-00	25-10	GJ1-U419F-00	25-24	61X-11604-00	2-10	63M-14419-00	3-34	63M-14771-00-9M	6-60	62G-45331-00-94	9- 7
	26- 8	GJ1-U474A-00	17-23	61X-11605-00	2-10	62T-14435-00	3-36	61X-14916-15	4-29	61X-45332-01-9M	9- 9
GA9-U416B-00	25-11	GJ1-U516A-00-PO	14- 1	63M-11631-00-89	2- 9	62T-14451-00	3-32		28-11	61L-45378-00	9-18
GA9-U416B-10	26-11	GA9-U724C-00	22-30	62T-11633-00	2-11	6K8-14471-10	4-16	63M-14923-00	4-35	63M-45511-00	8-20
GJ1-U416C-01	25-12	GA9-U724D-00	22-31	63M-11635-00	2- 9	6K8-14481-10	4-39		28-10	62T-45526-00	2- 5
GJ1-U416C-10	26-24	GJ1-U7242-00	22-29	63M-11636-00	2- 9	6K8-14521-10	4-22	6K8-14926-10	4- 6	63M-4581J-00	2-17
GJ1-U416C-20	26-12	GDO-U7249-00-05	9-30	63M-12576-00	6-19	6M6-14521-00	4-12	6K8-14930-00	4- 8	63M-45813-01-5B	2-15
GA9-U416F-00	25-13	GDO-U7249-00-10	9-30	63M-12577-00	6-21	6K8-14523-11	4-27	63M-14946-00	4-15	63M-45813-10-5B	2-18
GA9-U416F-10	26-13	GJ1-U7252-00	22-26	63M-12578-00	6-63	6K8-14527-11	4-24		28- 9	EL8-48193-00	22-22
GA9-U416G-00	25-22	EUD-U7354-00-01	1-38	63M-12580-00	6-55	62T-14527-01	3-18	63M-15100-00-94	1- 2	6K8-51129-00	1-17
GA9-U416G-10	26-22	EUD-U7354-00-03	1-38	63M-12581-00	6-52	6K8-14531-00	4-10	63M-15761-00	6-41		6-13
GJ1-U416H-10	26-28	EUD-U7354-00-05	1-38	63M-12590-00	1-39	6K8-14533-00	4-17	63M-21415-00-94	1-24		6-40
GJ1-U416H-20	26-29	EUD-U7354-00-10	1-38	63M-12590-10	1-40	6K8-14534-10	4- 5	63M-21425-00-94	1-27		8-28
GJ1-U416D-11	26-25	EUD-U7354-00-20	1-38	63M-12590-20	1-41	6K8-14536-11	4-34	EUD-23814-01	23-39	63M-51129-00	6- 5
GJ1-U417B-10	25- 1	GJ1-U7518-00	21- 2	63M-13116-00	5- 6		28- 6	EUD-23814-30	23-40	63M-51162-00	15- 6
	26- 1	GJ1-U7525-00	21-24			6K8-14537-00	4-37	63M-24313-00	7- 8	63M-51165-00	15- 7
GJ1-U417C-10	25- 2	GJ1-U7550-00	21- 1	63M-13132-00	19-10		28- 7	63M-24314-00	3-12	63M-51190-00-5B	8-41
	26- 2	GJ1-U7555-00	21- 3	6R3-13183-00	5-10	6R7-14541-00	4-32	668-24376-00	20-28	63M-51311-00-94	8- 5
GJ1-U417D-10	25- 3	GJ1-U7570-00	21-26		5-14		28- 5	6R3-24377-00	6-25	63M-51312-01-94	8-12
GJ1-U417E-10	25- 4	GJ1-U758C-00	21- 4		5-18	6R7-14542-00	4-33	63M-24378-00	19-11	63M-51313-00	8-34

NUMERICAL INDEX

PART NO.	REF. NO.	PART NO.	REF. NO.	PART NO.	REF. NO.	PART NO.	REF. NO.	PART NO.	REF. NO.	PART NO.	REF. NO.
90119-10M72	6-61	90267-489U8	16-15	90446-07M35	5-11	90465-11M10	20-24	90604-80793	21- 9	92995-06100	17- 6
90119-109U8	9-28	90267-48925	7-32	90446-07M36	5-15		20-25	90604-80794	21-10		22- 9
90149-04902	14-26		13- 6		5-19		20-29	90610-20015	7-26	92995-08600	8-39
90149-04903	24- 5		15-26	90446-14M28	7-13		20-39	90699-36U01	22-52		8-46
90149-04943	17-26		18-10	90446-14M56	12-59		21-18	91317-06025	10- 4		9-11
90149-05903	14- 5		21-21	90446-14M58	10-26	90465-11M59	12-60	91318-06014	10- 6		10-16
90149-05959	23- 4	90267-48951	18- 6	90446-14M61	7-17	90465-12M53	6-10	91490-16010	20-10		10-18
	24- 4		24- 3	90446-20M39	6-46	90465-13M11	8-51	91790-05040	20- 8		10-20
90149-05960	22-14	90280-16053	10- 5	90446-20M53	6-23		15-10	92990-04600	7-24	93101-25M50	8-19
90149-05984	13-22	90338-12081	17-24	90446-24M52	6-57	90465-13M24	6-24		22- 5		27-29
	14- 6	90380-12M29	11- 4	90446-24M54	5-21		6-47	92990-05200	13-12	93101-25M55	9-13
90159-05900	23-12		10-12	90446-24M60	6-67	90465-13M60	12-50		15-22		27-26
90159-06901	14-22	90387-05916	22-13	90446-27M55	6-64	90467-08M10	13- 2	92990-05300	22-21	93101-25M56	9-16
	14-24	90387-06M03	12- 8		21-29	90467-11044	20- 7	92990-05600	3-17		27-27
90169-059U1	16- 7	90387-06M05	6-11	90450-18M09	6-50	90480-06M69	8- 3		12-58	93101-36M46	2- 7
90170-22M11	7-22	90387-06M44	7- 3		6-54	90480-09M25	12- 7		14-11		27- 6
90179-06926	14- 2	90387-06M56	12-56		8-49	90501-14M73	11-19		20- 9	93102-18M35	8- 6
90179-06947	9-34	90387-06M60	8- 2	90450-99M01	6-31	90560-22281	23- 3	92990-06200	14-33		27-20
90179-06959	15-40	90387-06914	17-17	90450-99M02	6-32	90600-200U1	7-34		15-38	93102-25M34	8-18
90179-08M15	3- 4	90387-06915	14-20		6-59	90600-913U2	13-23		16- 3		27-28
90179-08927	14- 3	90387-06916	15-36	90450-99M06	6-29	90600-91736	7-30		17-14	93102-36M33	2- 6
90179-10925	9-27	90387-08M06	8-47	90464-07M05	5-22		13- 4		22-24		27- 5
90201-05925	7-31	90387-08M08	8-40	90464-07M44	12- 4		15-24		23-26	93103-32M01	2- 8
	13- 5	90430-13909	15-15	90465-06M28	10- 7		21-19	92990-06600	3- 9		27- 7
	15-25	90430-16910	21-11	90465-11M10	3- 2	90600-918U3	20-31		3-11	93210-13M63	3-37
	21-20	90445-07M10	5- 4		3-13		22-27		3-20	93210-17MA4	9- 6
90201-05928	22-15	90445-07M87	5- 9		5- 3	90601-11062	20- 6		3-24		27-24
	23- 5	90445-09M21	9-20		5- 5	90601-118Uf	21-12		3-29	93210-22ME5	15- 8
90201-06M02	8-36	90445-09M24	10-23		5-12	90601-142U6	23-23		5- 8	93210-35M72	9- 8
90201-06M31	8-43	90445-09905	20-38		5-16	90601-155U4	20-21		7- 5		27-25
90201-065F3	15-39	90445-10M01	3- 1		5-20	90601-162U5	13-10		7- 7	93210-46M16	8-22
	17-15	90445-10M06	7-10		6-20		20-11		8-10		27-30
90201-16M00	12- 9	90445-10M35	7-12		6-22	90601-195U0	21- 6		8-24	93211-03902	17-31
90201-20M04	2-13	90445-10M70	7-19		6-27	90601-200U1	6-65		11-20	93305-205U1	8-16
90201-24M02	2-19	90445-10M71	7-20		6-45		15- 4		12-11	93305-30601	2- 2
90267-409U5	18- 8	90445-10M72	7-16		7- 9		15-16		12-17	93306-205U0	8-17
90267-40935	20-18	90445-11M33	5- 2		7-14		21-13		12-20	93306-205U6	9-15
90267-48835	16-11	90445-11903	20- 5		7-21		22-32		12-49	93306-307U3	2- 3
90267-489U1	7-29	90445-14M05	6-44		8-31	90601-200U2	21-22		22- 8	93310-320U2	2-12
	14-31	90445-14M06	6-26		9-19	90601-20006	7-33	92990-08100	4- 7	93430-47M04	9-14
	17-39	90445-14M30	8-50		10-24		13- 7	92990-08200	15-33	93440-25M08	11-17
	18- 4	90445-18M00	6-53		12-25		13-14	92990-08600	6-18	93440-80023	2- 4
90267-489U2	14- 8	90445-18M01	8-48		12-30		15-27		11-11	93450-18M06	11-18
	14-16	90445-18M02	6-51		12-35		22-33	92990-10200	17-21	93450-21053	2-14
	20-37	90445-19M06	15-11		15-30	90601-20007	18-13		23-35	93603-10049	1- 7
90267-489U7	13-26	90445-19M07	15- 5		18- 2	90601-20008	21- 7	92990-14200	21-17	93604-07141	1- 8
	13-28	90446-07M17	5-13		19- 8	90604-80759	15-13	92995-06100	11-12	93605-12M21	6- 2
90267-489U8	16-10	90446-07M18	5-17		19-12	90604-80775	15-14		12-44		6-14

NUMERICAL INDEX

PART NO.	REF. NO.	PART NO.	REF. NO.	PART NO.	REF. NO.	PART NO.	REF. NO.	PART NO.	REF. NO.
93606-12019	1- 6	97395-06014	12-48						
	8-13	97395-08020	8-38						
	8-15		8-45						
	8-32	97395-08025	9-10						
	9-12		10-15						
	10-21	97395-08030	10-17						
94709-00195	12-31	97395-08055	10-19						
95380-05600	22-20	97513-06530	6- 8						
95380-06700	8-37	97513-06540	6- 9						
	8-44	97513-06630	1-23						
	11-13	97513-08630	1-22						
	15-41	97595-06525	8- 4						
95380-08700	4- 9	97780-04110	17-34						
95380-14700	21-16	97780-40116	13-24						
95720-05300	13-11	97780-50116	12-38						
	14-12	97780-50612	15- 3						
	15-23	97780-60116	20-32						
95720-06300	14-34		22-28						
	16- 4	97880-05020	15-21						
	17-16		22-19						
	22-51	97980-06116	17- 4						
	23-25	98580-03008	23-15						
95720-08300	15-32	98580-04010	7-23						
95720-10300	17-22	98580-05016	3-16						
	23-36	98580-05525	23-18						
95780-06300	22-25	98580-06565	22- 7						
97013-06012	3-28	98780-04015	1-11						
97013-06035	3- 8	98780-04035	17-36						
97013-08025	11-10	98780-05512	9-32						
97080-06012	22-41	98980-04010	22- 6						
97080-06030	23-24	98980-06025	17-13						
97090-06016	17- 5								
97095-06012	12-19								
	12-27								
	12-54								
97095-06016	3-19								
	8-23								
	12-10								
	12-16								
	12-43								
97095-06020	3-23								
	5- 7								
97095-06022	7- 6								
97095-06025	3-10								
	8- 9								
97095-06035	7- 4								
97313-05020	12-57								
97313-08030	6-17								

— MEMO —

A series of horizontal dotted lines for writing.

—MEMO—

A series of horizontal dotted lines for writing.



*COPYRIGHT: All rights reserved. No part of this publication
may be reproduced without permission.*

YAMAHA

YAMAHA MOTOR CO., LTD.
2500 SHINGA I IWATA SHIZUOKA JAPAN
SERVICE INFORMATION DIV.

PRINTED ON RECYCLED PAPER

Printed in Japan
First edition AUG., 1995