

# YAMAHA

Marine

## Water Vehicles

**SJ650Q (EW26)**  
**(EW27)**  
**(EW2A)**



### PARTS CATALOGUE

**YAMAHA MOTOR CO., LTD.**

12EW2-100E1 ●

**A2**

# FOREWORD

This Parts Catalogue is related to the parts in use for the Yamaha SJ650Q(EW2). When you are ordering replacement parts for the SJ650Q(EW2), refer to this Parts Catalogue and quote both part numbers and part names correctly.

1. Modifications or additions which have been made after issue of the Parts Catalogue will be announced in the Yamaha Parts News.

It is advisable that according to the Yamaha Parts News you make necessary corrections to the Parts Catalogue on hand to keep it up-to-date.

2. Abbreviations

The following abbreviations are used in this Parts Catalogue.

- U.R. Use size (thickness) and/or number as required.
- U.N. Use as many as you need.
- A.P. Alternate Parts
- L.M. Local Made
- F# Frame No. (Applicable machine No.)

3. The parts marked with (\*) in the parts number column of this Catalogue are not supplied with by Yamaha, those have to be found locally.

4. Parts, which are to be supplied in the form of assemblies, are listed with an indentation of one letter's space, and a dot ( . ) is put against the name of each part.

**EXAMPLE** CARBURETOR ASS'Y  
 . JET, pilot  
 . NOZZLE, main

5. Indication of No. of constituent parts for assembly

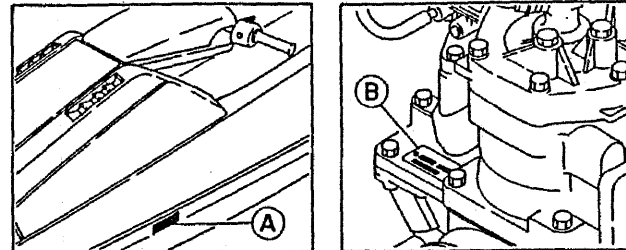
The numeral appearing to the right of each constituent part under the description indicates the quantity of such parts for each individual assembly unit.

**EXAMPLE**

Part No.	Description	Q'ty	Remarks
2F5-83310-60	FRONT FLASHER LIGHT ASS'Y	2	
115-83311-60	. BULB (6V-18W)	1	
1M1-83309-60	. REFLECTOR	1	

6. Initial Serial No. and Color Code

(A) Hull Serial No.	
(B) Engine Serial No.	6R7-016911 and following



Color Code	Color Name	Abbreviate
EK	METALLIC MARINE SILVER	MMS

7. Applicable colors of graphics are represented in the "Remarks" column by the letter(s) appropriately picked out of the full word(s) showing such colors.

**EXAMPLE**

Part No.	Description	Q'ty	Remarks
2N4-24110-00-X5	FUEL TANK COMP.	1	MAXIM RED
3J1-24240-10	. GRAPHIC, fuel tank set	1	for MXR

8. A part with "YMUS" in the remarks column can be obtained from YMUS, USA and not from YMC, JAPAN.

Address: YAMAHA MOTOR CORPORATION U.S.A.  
 6555 KATELLA AVENUE  
 CYPRESS, CALIFORNIA 90630, U.S.A.  
 PARTS & ACCESSORY DIV.

**EXAMPLE**

Part No.	Description	Q'ty	Remarks
EW2-U5160-00	ENGINE HATCH COMP.	1	YMUS
90601-168U7	BAND, hose	2	YMUS

# CONTENTS

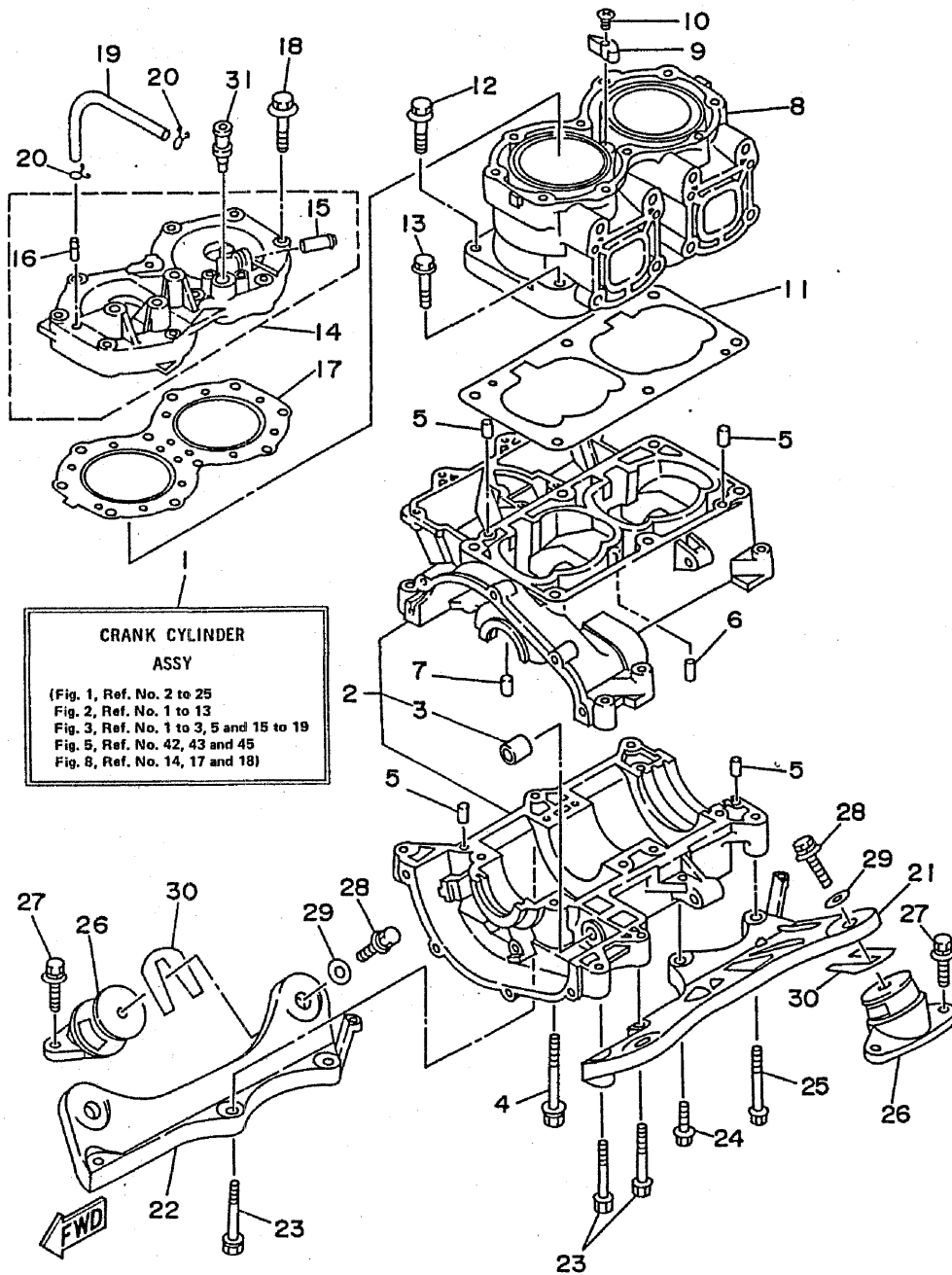
Cylinder, Crankcase .....	B2 ~ B3
Crankshaft, Piston .....	B4
Intake .....	B5 ~ B6
Carburetor .....	B7 ~ B8
Exhaust 1 .....	B9 ~ B10
Fuel .....	B11
Jet Unit .....	B12 ~ B14
Generator .....	B15
Starting Motor .....	C2
Electrical 1 .....	C3 ~ C4
Electrical 2 .....	C5
Hull, Deck 1 .....	C6 ~ C7
Hull, Deck 2 .....	C8
Hull, Deck 3 .....	C9
Gunwale, Mat .....	C10
Fuel Tank .....	C11 ~ C12
Exhaust 2 .....	C13
Control Cable .....	C14
Pole Pivot .....	C15
Steering Pole .....	D2
Steering .....	D3 ~ D4
Graphic, Tool .....	D5 ~ D6
Gasket Kit .....	D7 ~ D8

## INDEX

Numerical index .....	M1 ~ M3
-----------------------	---------

FIG. 1 CYLINDER. CRANKCASE

REF. NO.	PART NO.	DESCRIPTION	Q'TY	REMARKS
1	6R7-W0090-01-EK	CRANK CYLINDER ASSY	1	
2	6M6-15100-00-94	CRANKCASE ASSY	1	
3	90380-12M29	.BUSH, solid	1	
4	90119-08M55	BOLT, with washer	8	
5	93606-12019	PIN, dowel	4	
6	93603-10049	PIN, dowel	4	
7	93604-07141	PIN, dowel	1	
8	6R7-11311-00-94	CYLINDER 1	1	
9	6E5-11325-00	ANODE	1	
10	98680-04016	SCREW, oval head	1	
11	6M6-11351-A1	GASKET, cylinder	1	
12	90119-10M56	BOLT, with washer	4	
13	90119-10M07	BOLT, with washer	2	
14	6R7-11111-00-94	HEAD, cylinder 1	1	
15	6K8-51129-00	.NIPPLE	1	
16	6R7-14485-00	.PIPE, joint	1	
17	6R7-11181-A0	GASKET, cylinder head 1	1	
18	90119-08M19	BOLT, with washer	10	
19	90445-07M19	HOSE	1	
20	90467-06016	CLIP	2	
21	6R7-21415-00-94	BRACKET, front upper 1	1	
22	6R7-21425-00-94	BRACKET, rear upper 1	1	
23	97513-10570	BOLT, with washer	5	
24	97513-10535	BOLT, with washer	1	
25	97513-10580	BOLT, with washer	1	
26	6R7-44517-00-9M	MOUNT RUBBER	4	
27	90119-08038	BOLT, wiith washer	8	
28	90119-08904	BOLT	4	

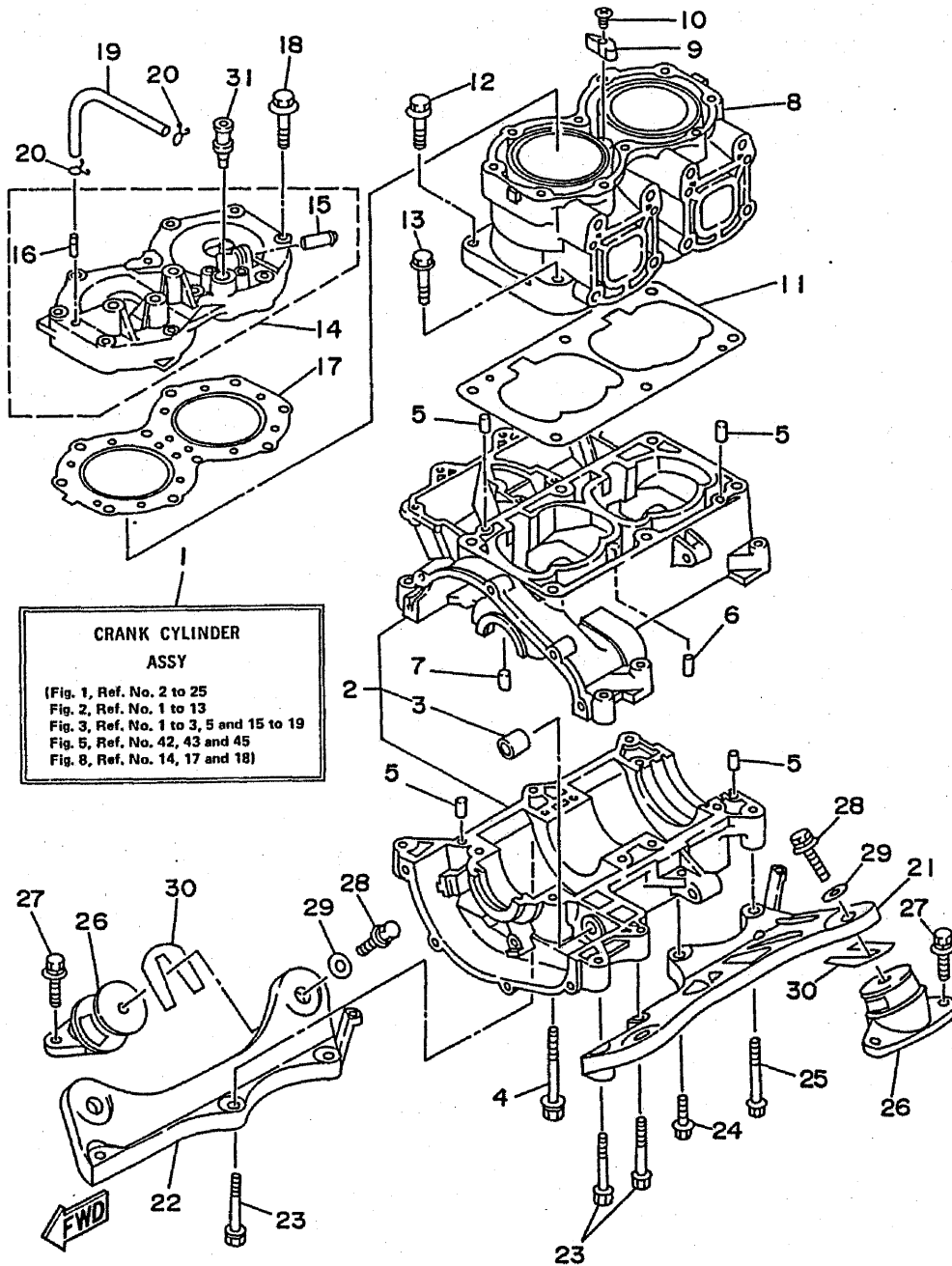


EW2100-2010

**B2**

FIG. 1 CYLINDER. CRANKCASE

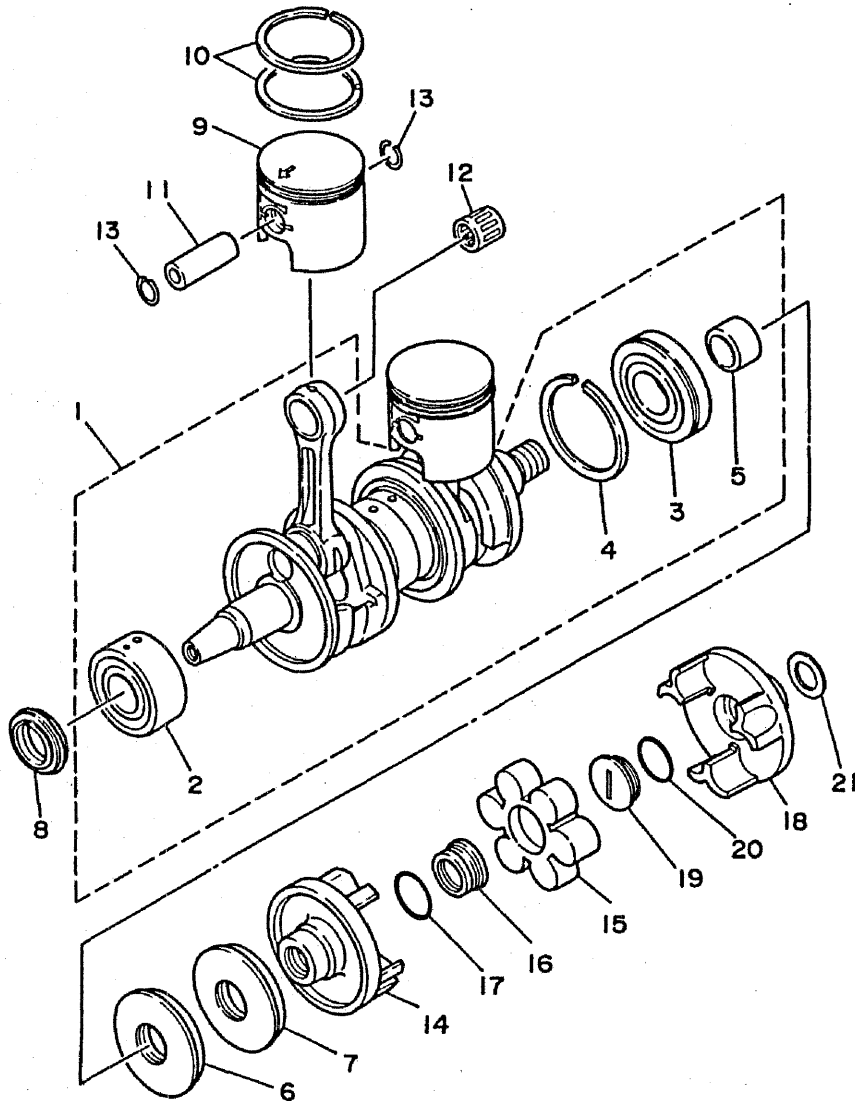
REF. NO.	PART NO.	DESCRIPTION	Q'TY	REMARKS
29	EU0-67324-00	PLATE	4	
30	EU0-67354-00-01	SHIM (T=0.1)	1 UR	
	EU0-67354-00-03	SHIM (T=0.3)	1 UR	
	EU0-67354-00-05	SHIM (T=0.5)	1 UR	
	EU0-67354-00-10	SHIM (T=1.0)	1 UR	
	EU0-67354-00-20	SHIM (T=2.0)	1 UR	
31	6E0-28193-00-94	PLUG, water check	1	OCEANIA/AFRICA



EW2100-2010

B3

FIG. 2 CRANKSHAFT. PISTON



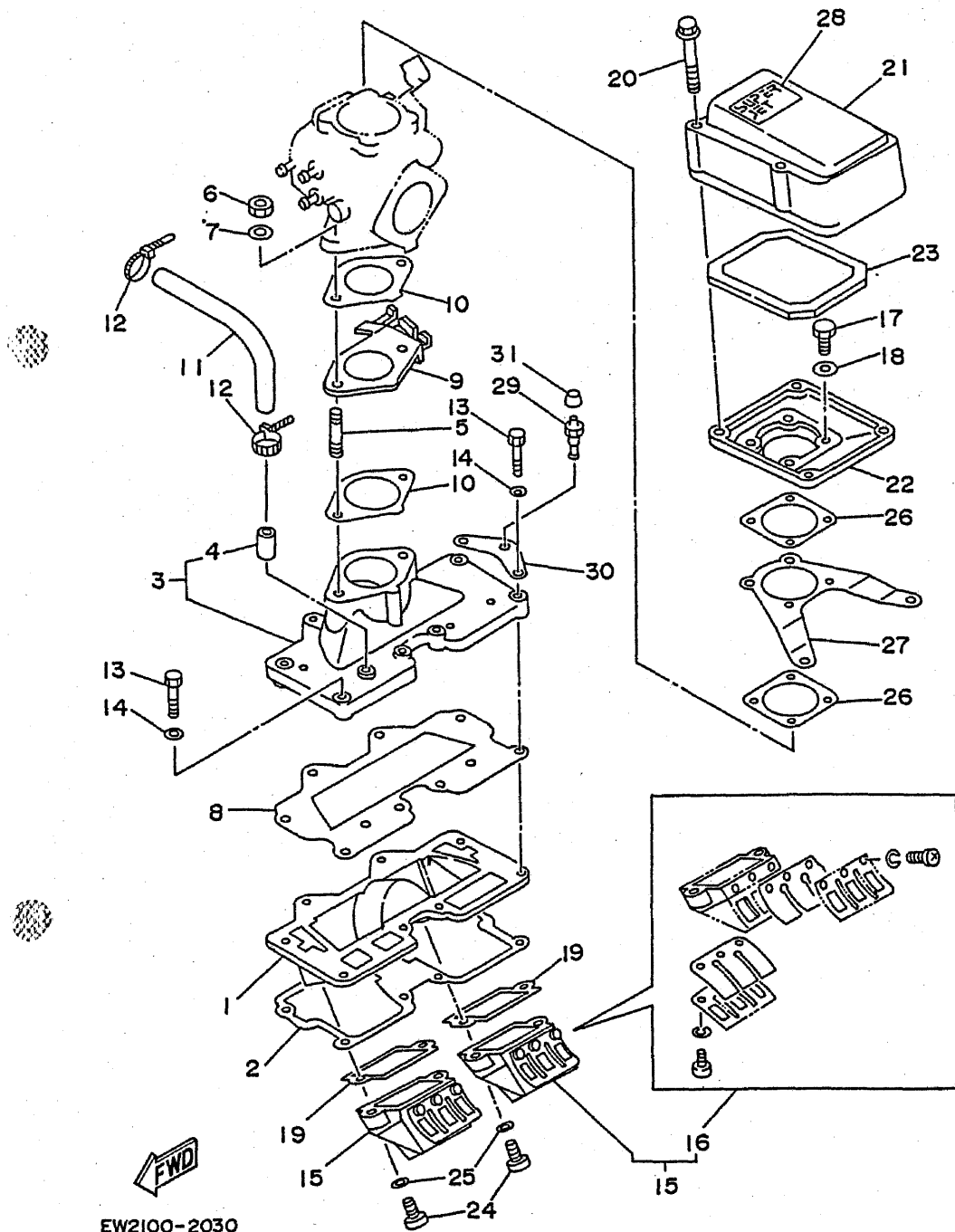
REF. NO.	PART NO.	DESCRIPTION	Q'TY	REMARKS
1	6R7-11400-00	CRANKSHAFT ASSY	1	
2	93303-30601	.BEARING	1	
3	93306-307U1	.BEARING	1	
4	93440-80023	.CIRCLIP	1	
5	6M6-45526-00	.COLLAR, drive shaft	1	
6	93102-36M33	OIL SEAL	1	
7	93101-36M46	OIL SEAL	1	
8	93103-32M01	OIL SEAL	1	
9	6M6-11631-01-93	PISTON (STD)	2	
	6M6-11635-00	PISTON (0.25MM O/S)	2	AP
	6M6-11636-00	PISTON (0.50MM O/S)	2	AP
10	6M6-11601-00	PISTON RING SET (STD)	2	
	6M6-11601-10	PISTON RING SET (0.25MM O/S)	2	AP
	6M6-11601-20	PISTON RING SET (0.50MM O/S)	2	AP
11	8H8-11633-00	PIN, piston	2	
12	93310-320U3	BEARING, cylindrical	2	
13	93450-21053	CIRCLIP	4	
14	6R7-45813-00-5B	FLANGE, coupling	1	
15	6M6-4581J-00	RUBBER SHAFT COUPLING	1	
16	6M6-5114E-00	NUT, ring	1	
17	93210-30M31	O-RING	1	
18	6R7-45813-11-9M	FLANGE, coupling	1	
19	6R7-5114E-01	NUT, ring	1	
20	93210-30M31	O-RING	1	
21	90201-24M01	WASHER, plate	1	



FJ0110-0020

**B4**

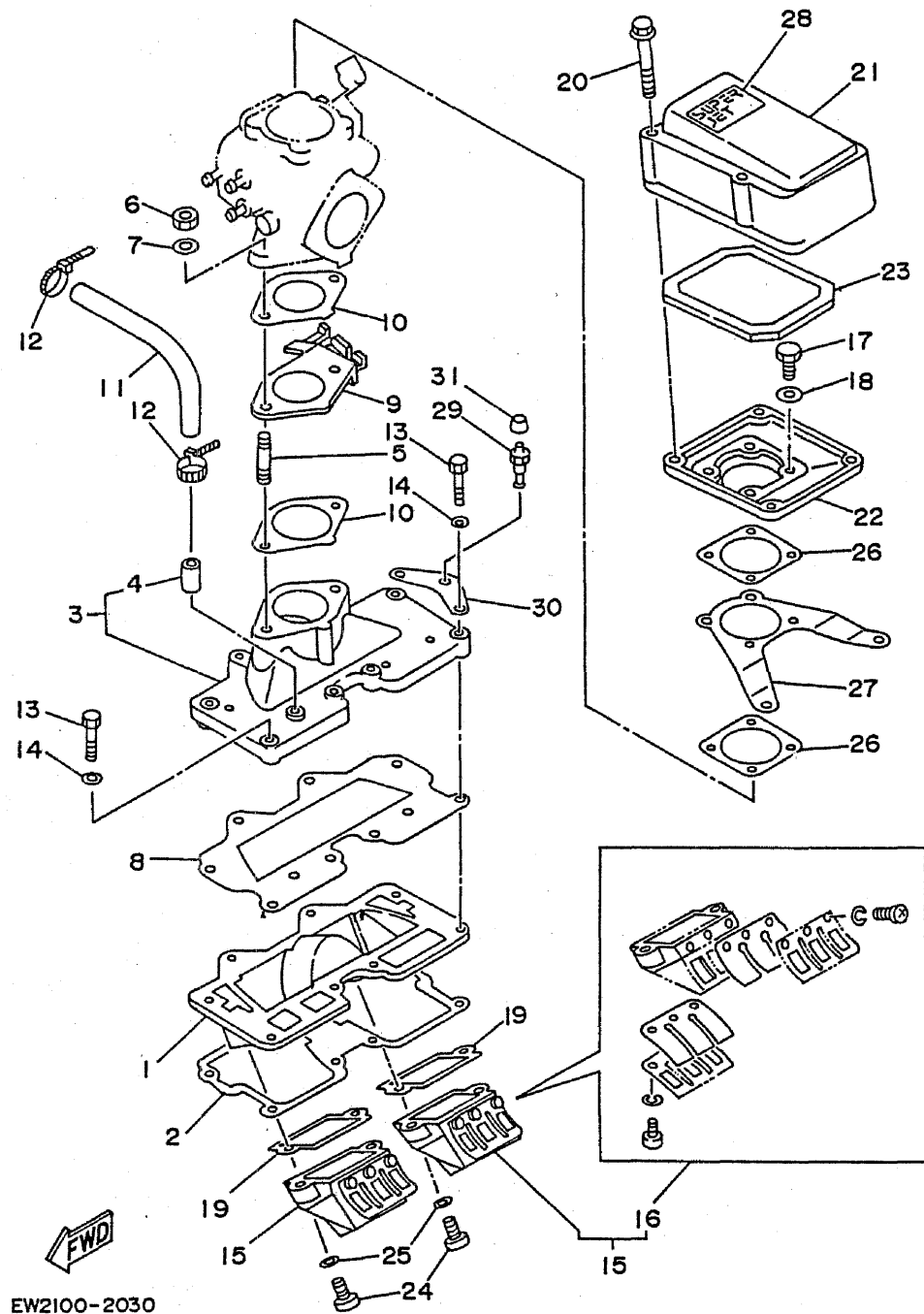
FIG. 3 INTAKE



REF. NO.	PART NO.	DESCRIPTION	Q'TY	REMARKS
1	6M6-13641-00-94	MANIFOLD 1	1	
2	6M6-13566-A1	GASKET	1	
3	6M6-13555-00-94	MANIFOLD, intake	1	
4	650-24378-00	.PIPE, joint 4	1	
5	90116-08M14	BOLT, stud	2	
6	95380-08600	NUT	2	
7	92990-08600	WASHER, plate	2	
8	6M6-13563-A1	GASKET	1	
9	6M6-14527-02-EK	PLATE	1	
10	6M6-13556-A1	GASKET, manifold	2	
11	90445-10M48	HOSE	1	
12	90465-11M10	CLAMP	2	
13	97013-06035	BOLT	8	
14	92990-06600	WASHER, plate	8	
15	6R7-13610-00	REED VALVE ASSY	2	
16	6R7-W0004-00	.REED SET	2	
17	97313-06020	BOLT	4	
18	92990-06600	WASHER, plate	4	
19	6M6-13621-A1	GASKET, valve seat	2	
20	90105-05M46	BOLT, washer based	4	
21	6R7-14283-00	COVER, carburetor 1	1	
22	6M6-14284-00-98	COVER, carburetor 2	1	LOW GLOSS BLACK
23	6M6-14451-00	ELEMENT, air cleaner	1	
24	98580-05016	SCREW, pan head	4	
25	92990-05600	WASHER, plate	4	
26	6M6-13674-A1	GASKET, air cooler cover 1	2	
27	6R7-14255-00	PLATE	1	
28	6R7-1441K-00	EMBLEM	1	

EW2100-2030

**B5**



EW2100-2030

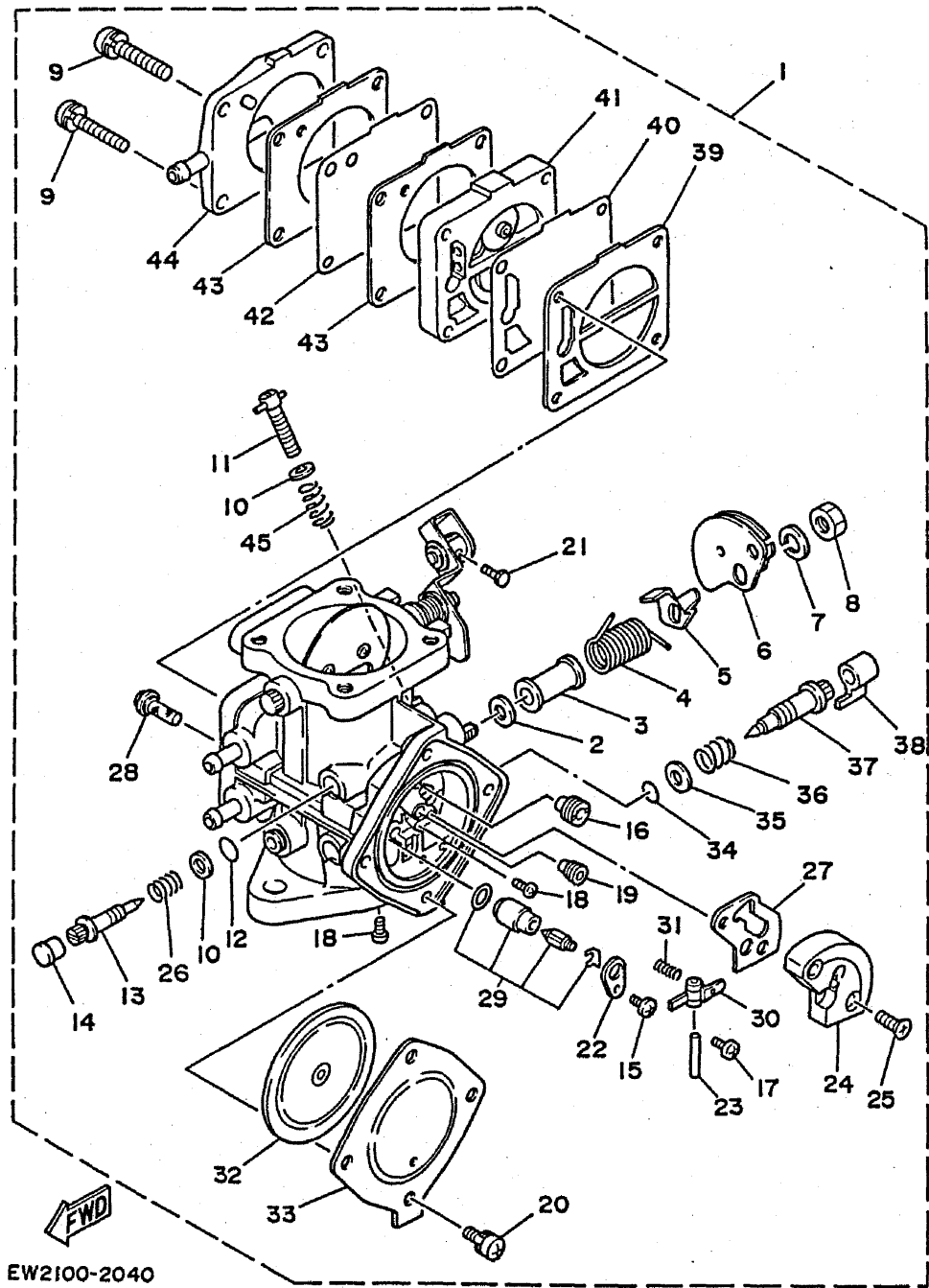
FIG. 3 INTAKE

REF. NO.	PART NO.	DESCRIPTION	Q'TY	REMARKS
29	61L-5169A-00	GREASE, nipple	1	
30	61L-14243-00	PLATE	1	
31	663-45119-00	CAP, grease nipple	1	

**B6**

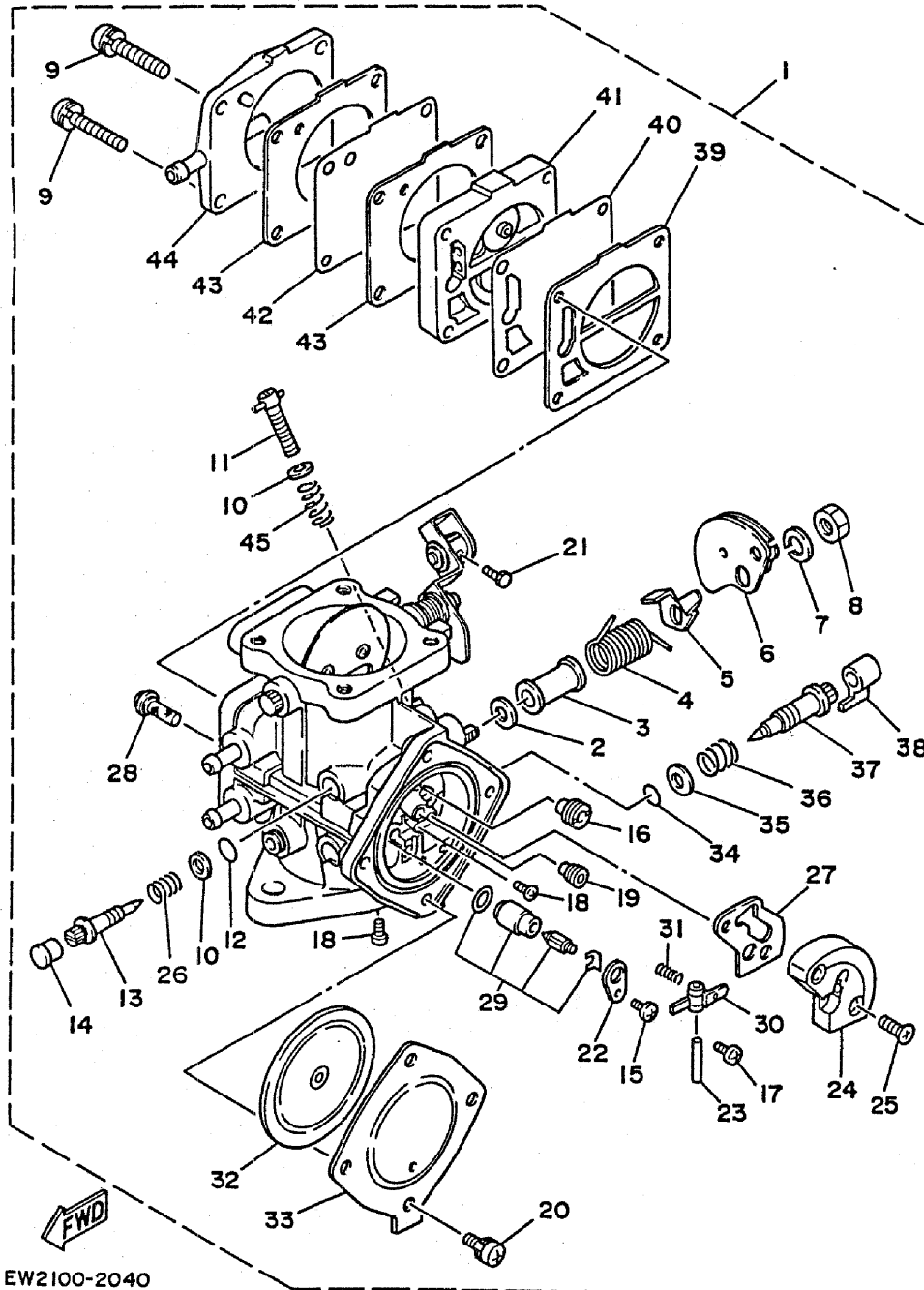


FIG. 4 CARBURETOR



REF. NO.	PART NO.	DESCRIPTION	Q'TY	REMARKS
1	6R7-14301-01	CARBURETOR ASSY 1	1	
2	6R7-14596-00	.WASHER	2	
3	6K8-14534-10	.COLLAR	1	
4	6K8-14556-10	.SPRING	1	
5	6K8-14926-10	.BRACKET, throttle 1	1	
6	6K8-14930-10	.THROTTLE SHAFT ASSY	1	
7	92990-08100	.WASHER, spring	1	
8	95380-08700	.NUT	1	
9	97980-05330	.SCREW, with washer	4	
10	6K8-14559-00	.WASHER	2	
11	6K8-14521-00	.SCREW, adjust	1	
12	6K8-14562-00	.O-RING	1	
13	6K8-14946-10	.PLATE, needle fitting	1	
14	6K8-14471-00	.CAP	1	
15	6M6-14503-00	.SCREW, pan head with washer	3	
16	3G2-14231-23-A0	.JET, main (#115)	1	
17	6K8-14503-02	.SCREW, oval head	3	
18	6K8-14521-10	.SCREW, adjust	2	
19	830-14231-24	.JET, main (#120)	1	
20	6K8-14591-10	.SCREW	4	
21	6K8-14592-00	.SCREW	1	
22	6K8-14527-11	.PLATE	1	
23	6K8-14579-00	.PIN, float	1	
24	6R7-24412-01	.BODY 1	1	
25	6K8-14523-11	.SCREW, flat head	2	
26	6K8-14533-00	.SPRING, adjust screw	1	
27	6K8-14536-11	.GASKET	1	
28	6R7-14569-00	.STRAINER	1	

B7



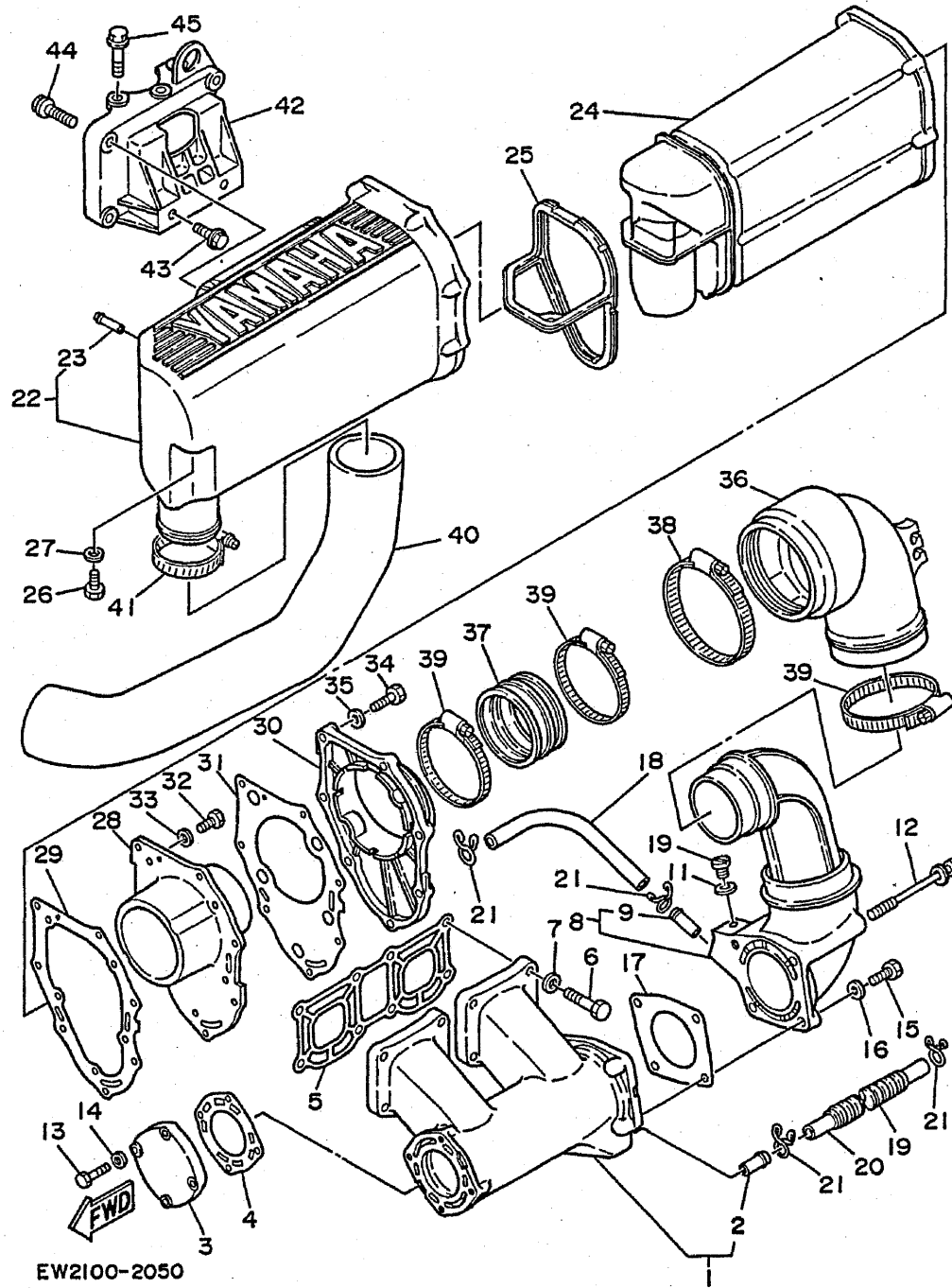
EW2100-2040

FIG. 4 CARBURETOR

REF. NO.	PART NO.	DESCRIPTION	Q'TY	REMARKS
29	61L-14916-15	.NEEDLE	1	
30	6K8-14547-01	.ARM, diaphragm	1	
31	6R7-14253-00	.SPRING	1	
32	6R7-14541-00	.DIAPHRAGM, pump	1	
33	6R7-14542-10	.BODY, pump 1	1	
34	583-14561-00	.O-RING	1	
35	6K8-14537-00	.GASKET	1	
36	6K8-14589-00	.SPRING	1	
37	6K8-14923-10	.SCREW, pilot	1	
38	6K8-14481-10	.CAP, carburetor	1	
39	6K8-24435-10	.GASKET, body 2	1	
40	6K8-24411-10	.DIAPHRAGM	1	
41	6K8-24413-10	.BODY 2	1	
42	6K8-24421-10	.VALVE, check	1	
43	6K8-24431-10	.GASKET, fuel pump 1	2	
44	6K8-24452-10	.COVER	1	
45	6K8-14531-00	.SPRING, adjust screw	1	

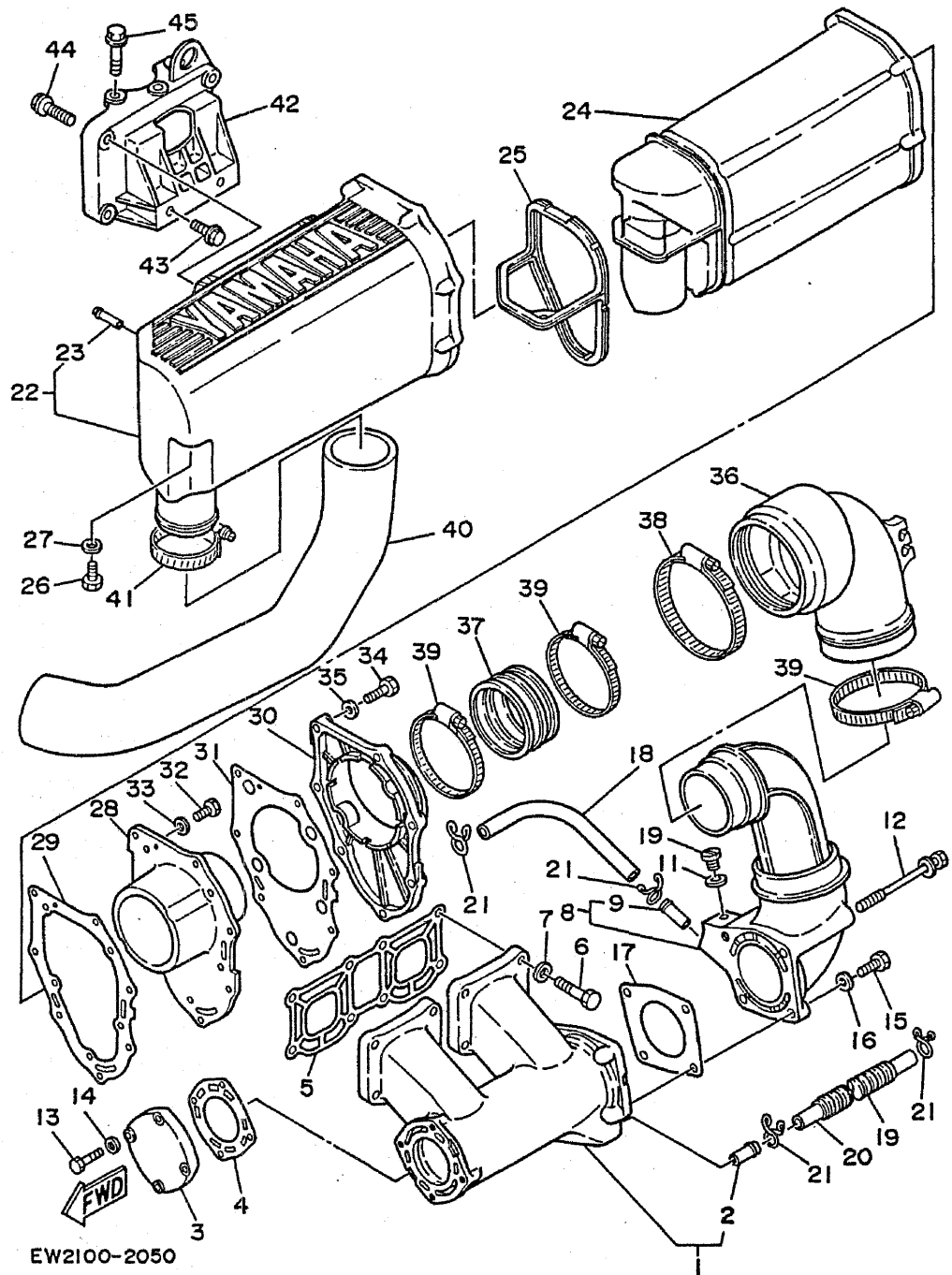
**B8**

FIG. 5 EXHAUST 1



REF. NO.	PART NO.	DESCRIPTION	Q'TY	REMARKS
1	6R7-14711-00-9M	MUFFLER 1	1	
2	6K8-51129-00	.NIPPLE	1	
3	6M6-14718-01-9M	PROTECTOR, muffler 1	1	
4	6M6-14739-A1	GASKET, muffler damper 1	1	
5	6M6-14613-A0	GASKET, exhaust pipe	1	
6	97313-08035	BOLT	8	
7	92990-08600	WASHER, plate	8	
8	6R7-14712-00-9M	RING, joint	1	
9	6K8-51129-00	.NIPPLE	1	
10	90340-08M04	PLUG, straight screw	1	
11	90430-08020	GASKET	1	
12	90119-08M38	BOLT, with washer	2	
13	97313-06025	BOLT	4	
14	92990-06600	WASHER, plate	4	
15	97013-08025	BOLT	2	
16	92990-08600	WASHER, plate	2	
17	6R7-14749-A0	GASKET, muffler damper 2	1	
18	90445-14M24	HOSE	1	
19	90446-20M24	HOSE	1	
20	90445-14M06	HOSE	1	
21	90467-13M13	CLIP	4	
22	6R7-14721-00-9M	MUFFLER 2	1	
23	6R7-14485-00	.PIPE, joint	1	
24	6R7-14753-00-9M	SILENCER, exhaust	1	
25	6R7-15761-00	SEAL, rubber 1	1	
26	97313-06016	BOLT	1	
27	92990-06600	WASHER, plate	1	
28	6R7-14758-00-9M	DIFFUSER	1	

**B9**

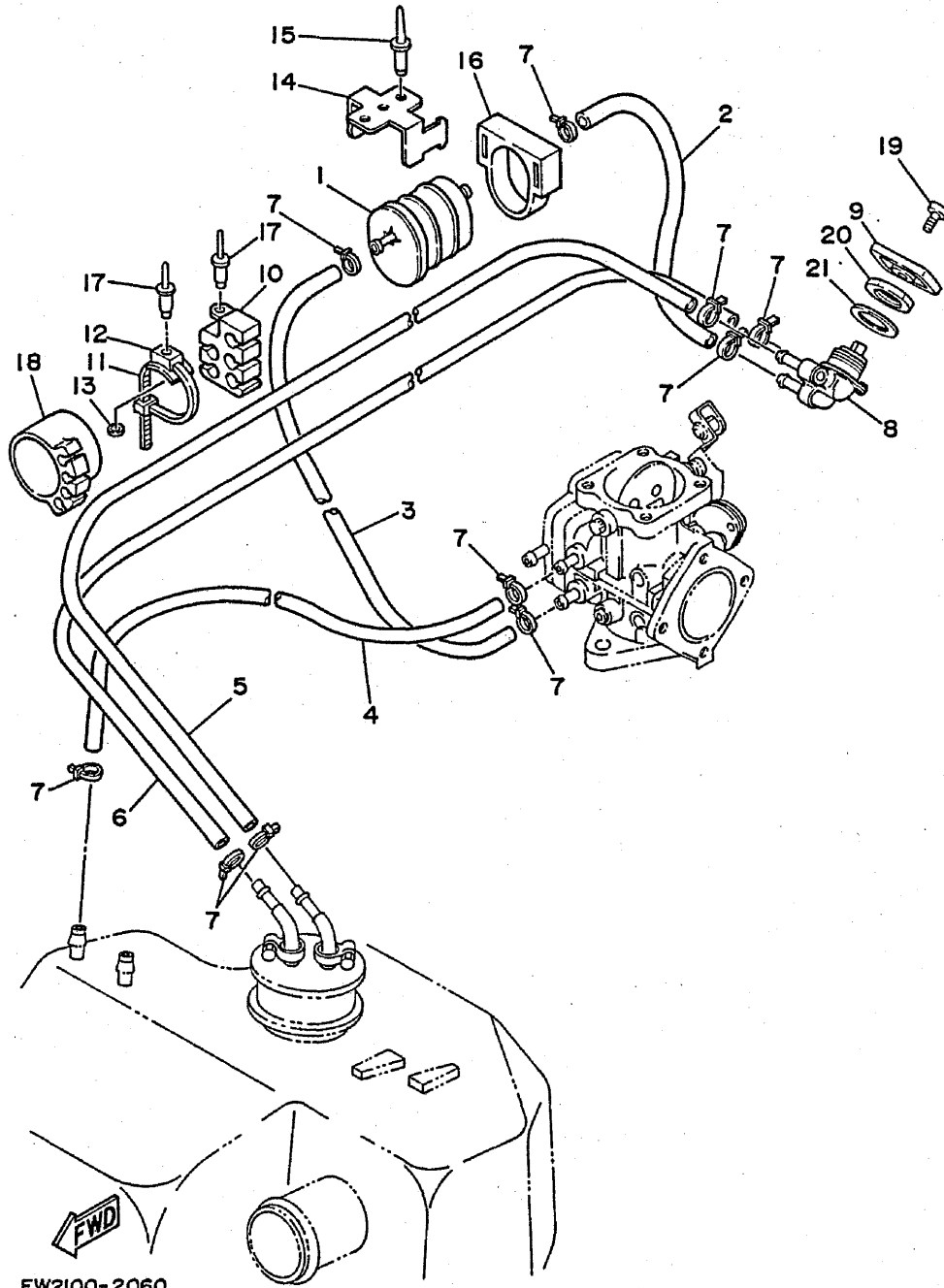


EW2100-2050

FIG. 5 EXHAUST 1

REF. NO.	PART NO.	DESCRIPTION	Q'TY	REMARKS
29	6R7-14755-A0	GASKET, silencer	1	
30	6R7-41113-00-9M	OUTER COVER, exhaust	1	
31	6R7-41114-A0	GASKET, exhaust outer cover	1	
32	97395-06016	BOLT	6	
33	92990-06600	WASHER, plate	6	
34	97313-06030	BOLT	7	
35	92990-06600	WASHER, plate	7	
36	61L-14615-00	JOINT, exhaust 1	1	
37	61L-14625-00	JOINT, exhaust 2	1	
38	90460-90M11	CLAMP, hose	2	
39	90460-70M16	CLAMP, hose	2	
40	6R7-14752-00	PIPE, outlet	1	
41	90460-64M15	CLAMP, hose	1	
42	6M6-14771-00-94	STAY, muffler 1	1	
43	90105-10M49	BOLT, washer based	2	
44	90105-10M45	BOLT, washer based	3	
45	90119-10M72	BOLT, with washer	3	

FIG. 6 FUEL



REF. NO.	PART NO.	DESCRIPTION	Q'TY	REMARKS
1	6K8-24560-10	FILTER ASSY	1	
2	90445-10M32	HOSE	1	
3	90445-10M33	HOSE	1	
4	90445-10M34	HOSE	1	
5	90445-10M35	HOSE	1	
6	90445-10M51	HOSE	1	
7	90465-11M10	CLAMP	10	
8	6K8-24500-02	FUEL COCK ASSY 1	1	
9	6R7-24524-00	LEVER, cock	1	
10	EW2-67812-00	HOLDER, pipe 2	1	
11	90601-20010	BAND	1	
12	90600-91729	CLAMP	1	
13	90201-05925	WASHER, plain	1	
14	EU0-67816-30	BRACKET, fuel filter	1	
15	90267-48940	RIVET, blind	3	
16	EU0-67817-00	HOLDER, filter	1	
17	90267-48007	RIVET, blind	2	
18	EW2-67811-00	HOLDER, pipe 1	1	
19	98980-04008	SCREW	1	
20	90170-22187	NUT	1	
21	90202-229U1	WASHER, plate	1	

EW2100-2060

**B11**

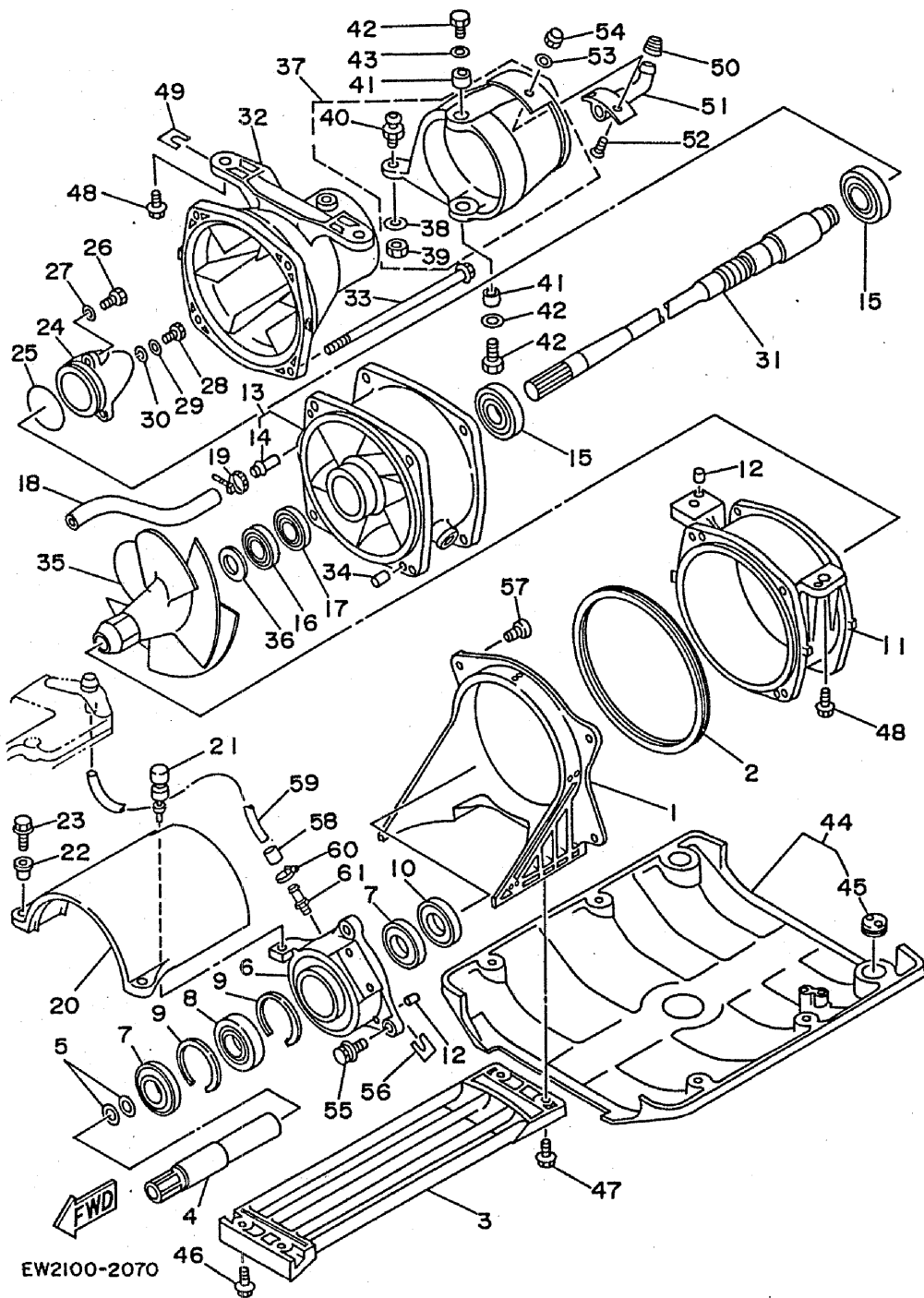
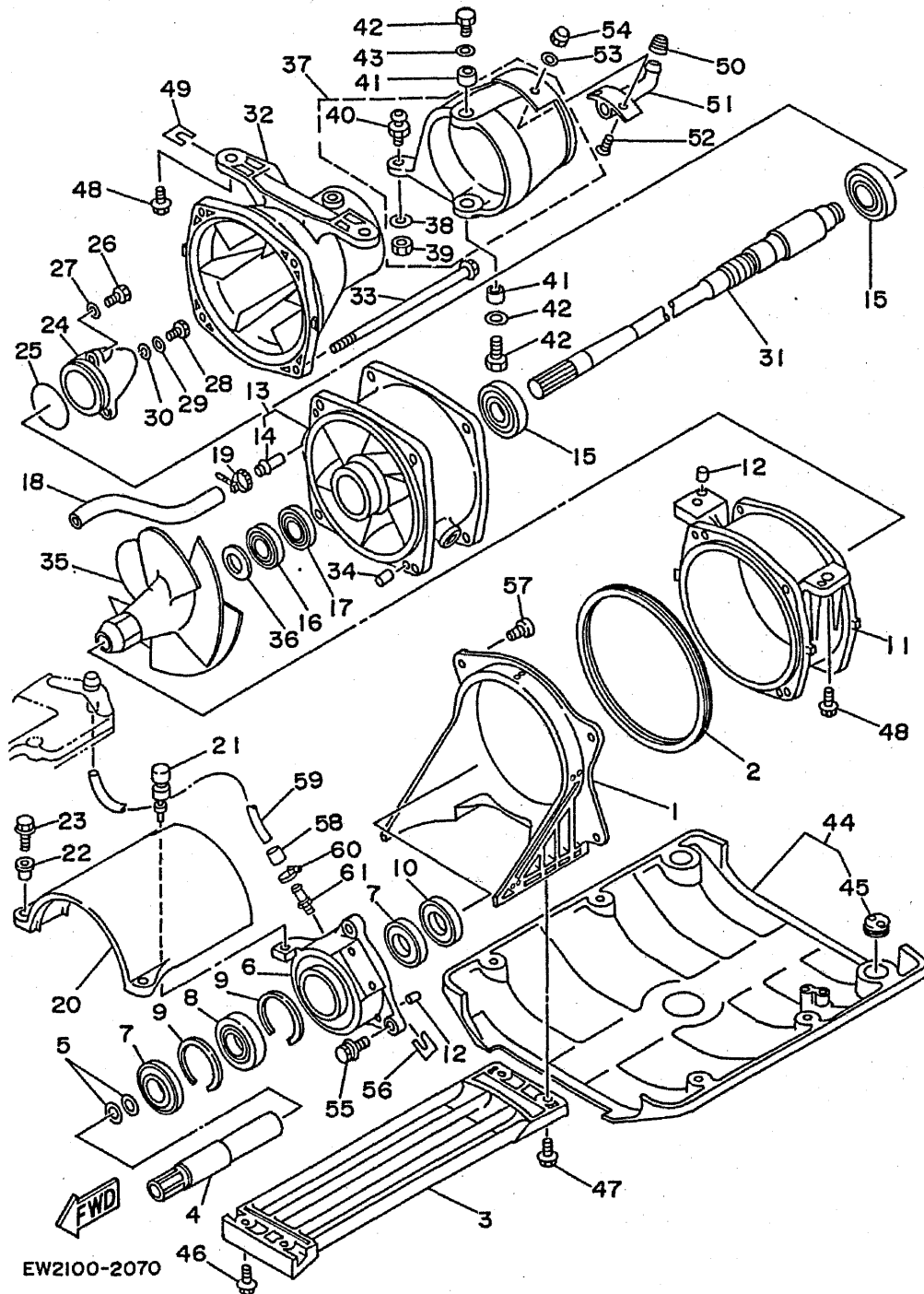


FIG. 7 JET UNIT

REF. NO.	PART NO.	DESCRIPTION	Q'TY	REMARKS
1	6R7-51311-00	DUCT, intake	1	
2	6R7-51117-00	PACKING	1	
3	6R7-51333-00	SCREEN, intake	1	
4	6R7-51323-01	SHAFT, couplor	1	
5	93210-17MA4	O-RING	2	
6	6R7-45332-01-9M	HOUSING, bearing	1	
7	93101-25M52	OIL SEAL	2	
8	93306-205U5	BEARING	1	
9	93430-47M04	CIRCLIP	2	
10	93101-25M53	OIL SEAL	1	
11	6R7-51312-00-94	HOUSING, impeller	1	
12	93606-07M17	PIN, dowl	4	
13	6R7-51315-00-94	DUCT, impeller	1	
14	6K8-51129-00	.NIPPLE	1	
15	93306-205U0	BEARING	2	
16	93102-25M34	OIL SEAL	1	
17	93101-25M50	OIL SEAL	1	
18	90445-14M12	HOSE	1	
19	90465-13M11	CLAMP	1	
20	6R7-51381-00	COVER	1	
21	90480-06M46	GROMMET	1	
22	90387-06M60	COLLAR	2	
23	90119-06900	BOLT, with washer	2	
24	6R7-51326-00-94	CAP	1	
25	93210-46M16	O-RING	1	
26	97395-06016	BOLT	3	
27	92990-06600	WASHER, plate	3	
28	97395-06012	BOLT	1	

FIG. 7 JET UNIT



REF. NO.	PART NO.	DESCRIPTION	Q'TY	REMARKS
29	92990-06600	WASHER, plate	1	
30	90430-06M03	GASKET	1	
31	6R7-45511-00	SHAFT, drive	1	
32	6R7-51318-00	NOZZLE	1	
33	90119-06M70	BOLT, with washer	4	
34	93606-12019	PIN, dowel	2	
35	61L-51321-10-94	IMPELLER	1	
36	90209-20M20	WASHER	1	
37	6R7-51313-00	NOZZLE, deflector	1	
38	90201-06M02	.WASHER, plate	1	
39	95380-06700	.NUT	1	
40	6R7-42316-00	.BOLT, joint	1	
41	90387-08M06	COLLAR	2	
42	97395-08018	BOLT	2	
43	92995-08600	WASHER	2	
44	EW2-62730-00	PLATE 2 ASSY	1	
45	FK7-62732-00	.BOLT, jack	2	
46	90119-06915	BOLT, with washer	2	
47	90119-06908	BOLT, with washer	2	
48	90119-10917	BOLT, with washer	4	
49	EW2-67354-00-01	SHIM (T=0.1)	1	UR
	EW2-67354-00-03	SHIM (T=0.3)	1	UR
	EW2-67354-00-05	SHIM (T=0.5)	1	UR
	EW2-67354-00-10	SHIM (T=1.0)	1	UR
50	EU0-62695-00	CAP, spout	1	
51	EU0-62693-02	SPOUT	1	
52	98780-05016	SCREW, flat head	2	
53	92990-05200	WASHER, plain	2	

EW2100-2070

**B13**

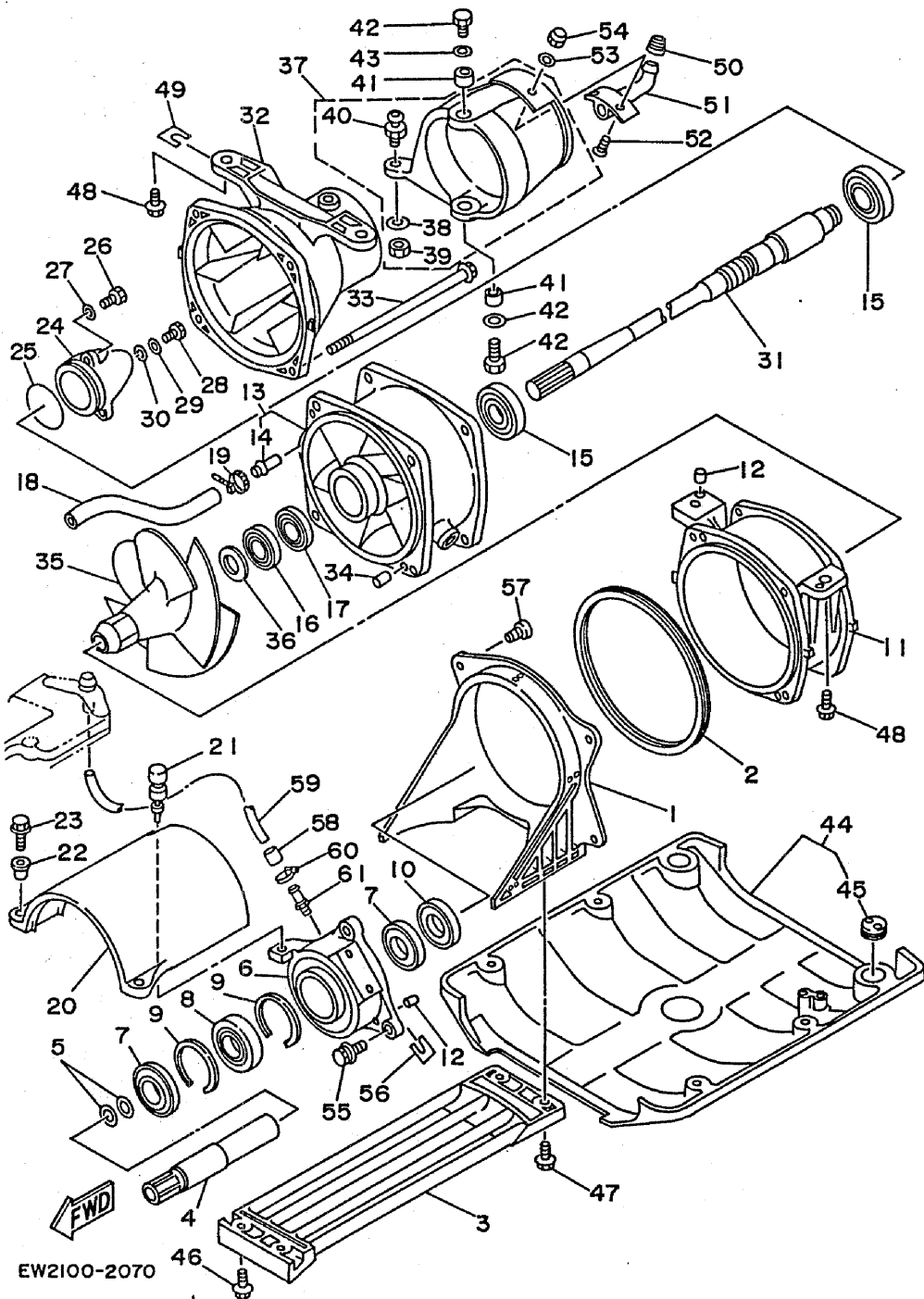
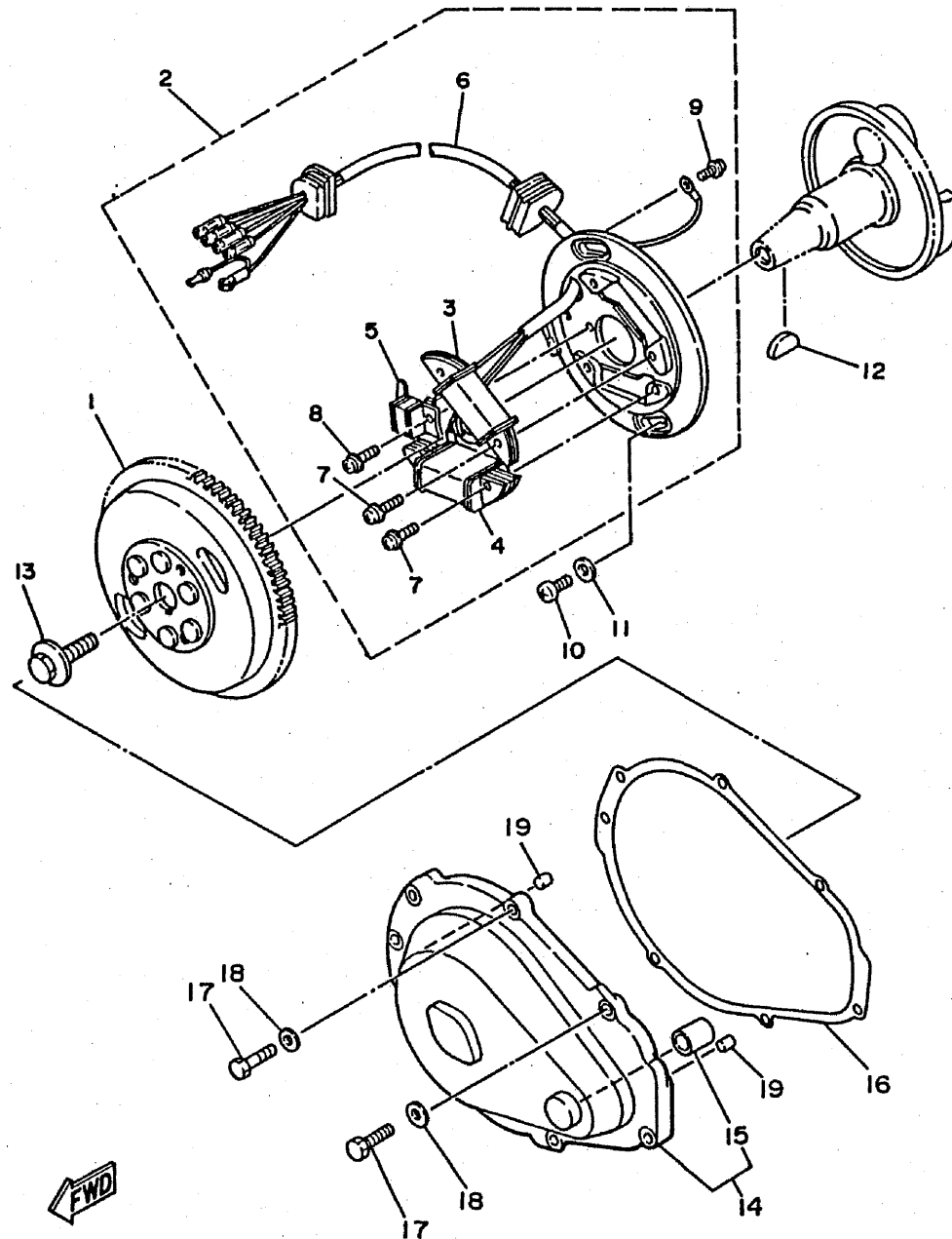


FIG. 7 JET UNIT

REF. NO.	PART NO.	DESCRIPTION	Q'TY	REMARKS
54	95780-05300	NUT	2	
55	90119-08907	BOLT, with washer	3	
56	EU0-67354-30-03	SHIM (T=0.3)	1	UR
	EU0-67354-30-05	SHIM (T=0.5)	1	UR
	EU0-67354-30-10	SHIM (T=1.0)	1	UR
57	97780-60120	SCREW, tapping	4	
58	90386-08006	BUSH	1	
59	90445-09M17	HOSE	1	
60	90460-11M17	CLAMP, hose	1	
61	61L-45378-00	NIPPLE, hose	1	



FIG. 8 GENERATOR



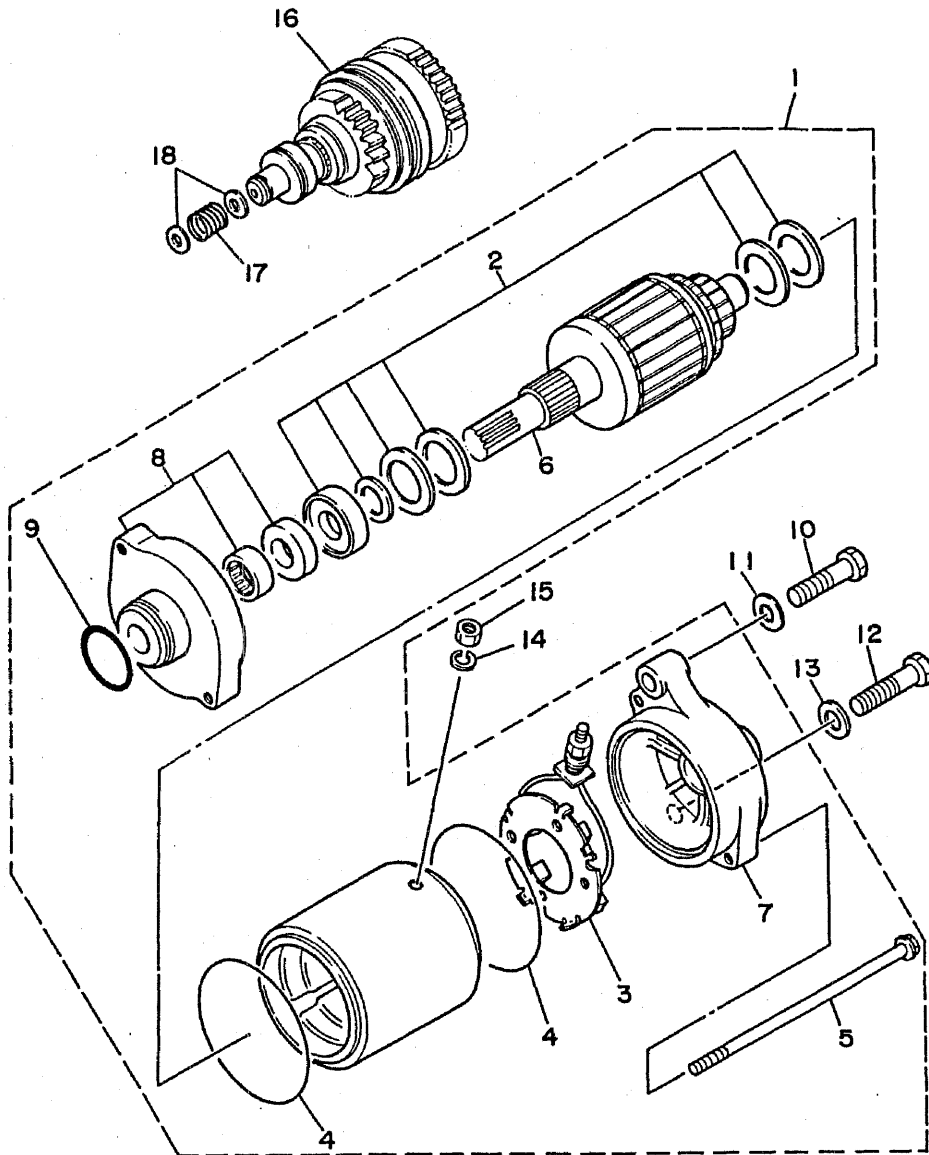
REF. NO.	PART NO.	DESCRIPTION	Q'TY	REMARKS
1	6R7-85550-00	ROTOR ASSY	1	
2	6R7-85560-00	BASE ASSY	1	
3	6M6-85520-00	.COIL, charge	1	
4	6M6-85533-00	.COIL, lighting	1	
5	6M6-85580-00	.COIL, pulser	1	
6	6R7-85515-00	.LEAD WIRE ASSY	1	
7	97902-05125	.SCREW, with washer	4	
8	97902-04122	.SCREW, with washer	2	
9	98580-04008	.SCREW, pan head	1	
10	98580-06016	SCREW, pan head	2	
11	92990-06600	WASHER, plate	2	
12	90280-05013	KEY, woodruff	1	
13	90109-10M44	BOLT	1	
14	6M6-81337-00-EK	COVER, flywheel	1	
15	90380-12M29	.BUSH, solid	1	
16	6M6-81365-A0	GASKET, hole cover	1	
17	97395-06025	BOLT	7	
18	92990-06600	WASHER, plate	7	
19	93606-12019	PIN, dowel	2	

EW2110-0080



FIG. 9 STARTING MOTOR

REF. NO.	PART NO.	DESCRIPTION	Q'TY	REMARKS
1	6M6-81800-00	STARTING MOTOR ASSY	1	
2	3AJ-81809-00	.WASHER KIT	1	
3	6M6-81840-00	.BRUSH HOLDER ASSY	1	
4	11H-81844-00	.GASKET	2	
5	6M6-81826-00	.BOLT	2	
6	6M6-81850-00	.ARMATURE ASSY	1	
7	6M6-81820-00	.REAR BRACKET ASSY	1	
8	6M6-81830-00	.FRONT BRACKET ASSY	1	
9	26H-81847-00	.O-RING	1	
10	97313-08040	BOLT	1	
11	92990-08600	WASHER, plate	1	
12	97313-08035	BOLT	1	
13	92990-08600	WASHER, plate	1	
14	92990-06100	WASHER, spring	1	
15	95380-06700	NUT	1	
16	6M6-8183E-00	IDLE GEAR COMP.	1	
17	90501-14M73	SPRING, compression	1	
18	92990-06600	WASHER, plate	2	

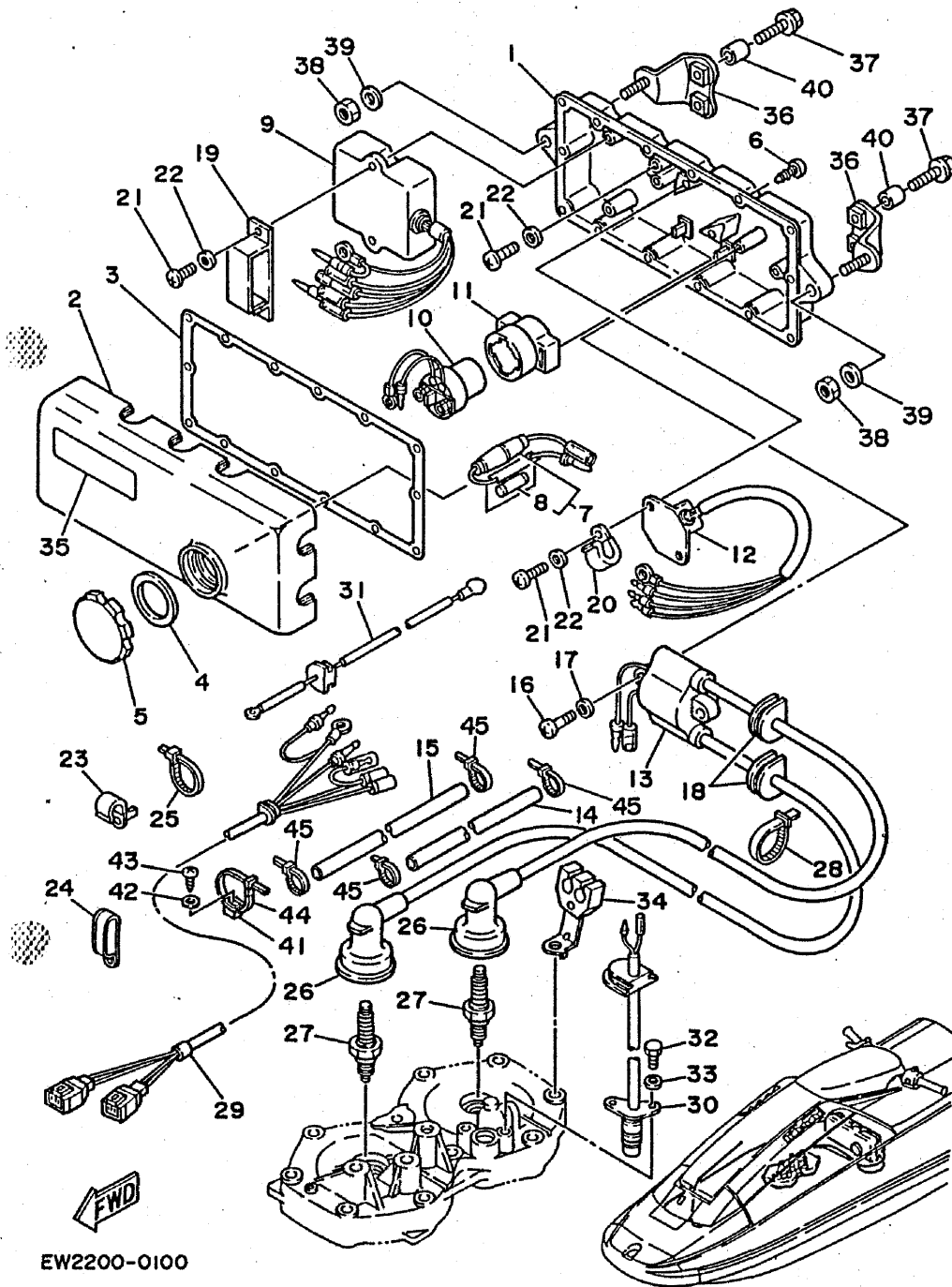


FWD

FK7110-0080

C2

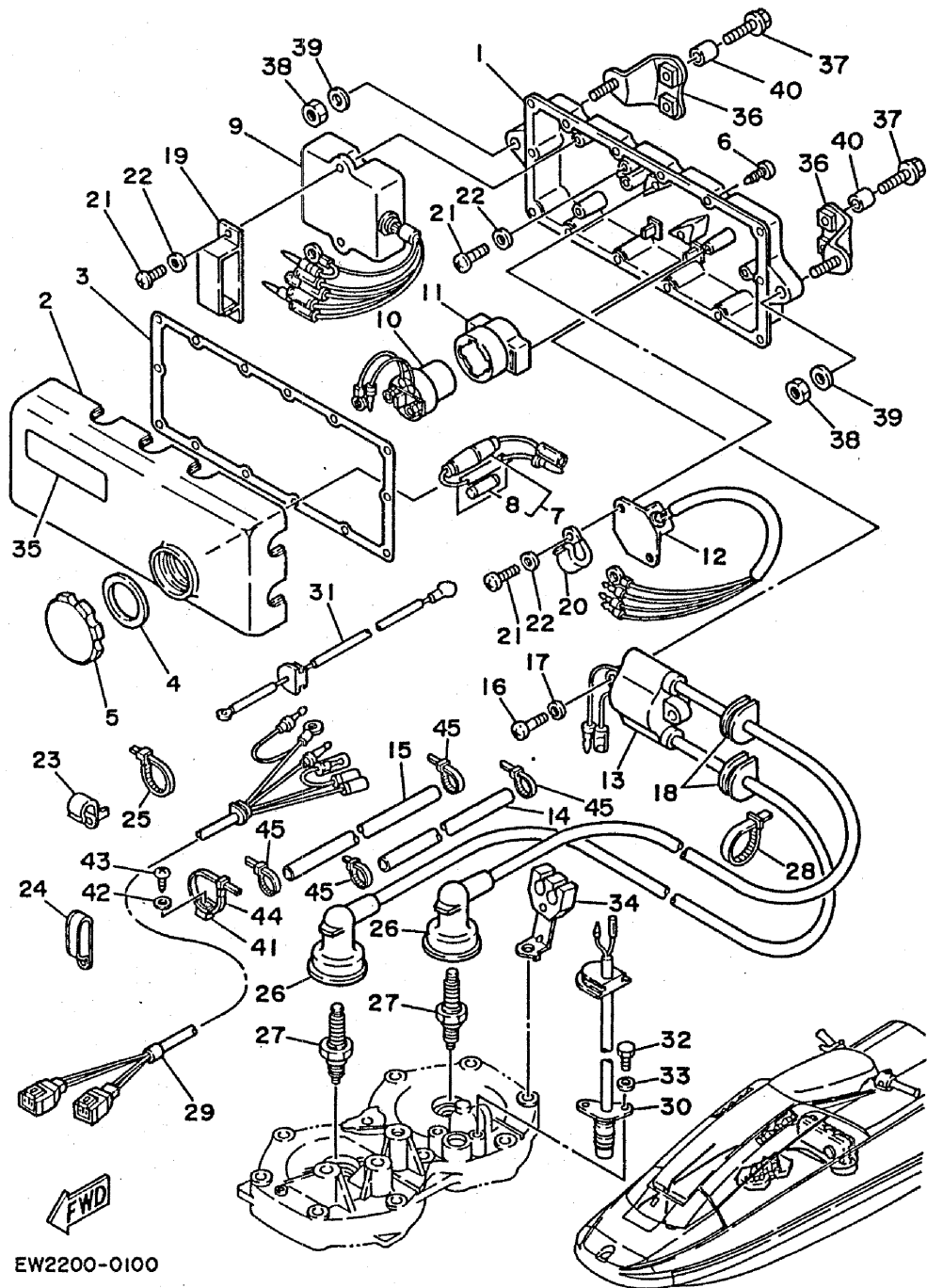
FIG. 10 ELECTRICAL 1



EW2200-0100

REF. NO.	PART NO.	DESCRIPTION	Q'TY	REMARKS
1	6M6-8552A-00-98	HOUSING	1	LOW GLOSS BLACK
2	6M6-8552E-00	COVER, case	1	
3	6M6-81921-00	GASKET, terminal	1	
4	6M6-81844-00	GASKET	1	
5	6M6-8132W-00	CAP	1	
6	97780-60525	SCREW, tapping	14	
7	6K8-82150-01	FUSE HOLDER ASSY	1	
8	6G1-82151-00	.FUSE	1	
9	6M6-85540-01	C.D.I. UNIT ASSY	1	
10	6G1-81941-10	STARTER RELAY ASSY	1	
11	6M6-81952-01	HOLDER, relay	1	
12	6M6-81960-A0	RECTIFIER & REGULATOR ASSY	1	
13	61L-85570-00	IGNITION COIL ASSY	1	
14	6R7-82351-00	TUBE, cord	1	
15	6R7-82352-00	TUBE, cord 2	1	
16	98580-06030	SCREW, pan head	2	
17	92990-06600	WASHER, plate	2	
18	90480-06M43	GROMMET	2	
19	90464-06M29	CLAMP	1	
20	90465-08M07	CLAMP	2	
21	92503-06015	SCREW, pan head	6	
22	92990-06600	WASHER, plate	6	
23	90465-08M38	CLAMP	2	
24	90461-06M01	CLAMP	2	
25	90465-13M11	CLAMP	1	
26	6R7-82370-00	PLUG CAP ASSY	2	UR OCEANIA
	6R7-82370-10	PLUG CAP ASSY	2	UR USA/AFRICA
27	94702-00195	PLUG, spark (NGK BR8HS)	2	UR OCEANIA

C3



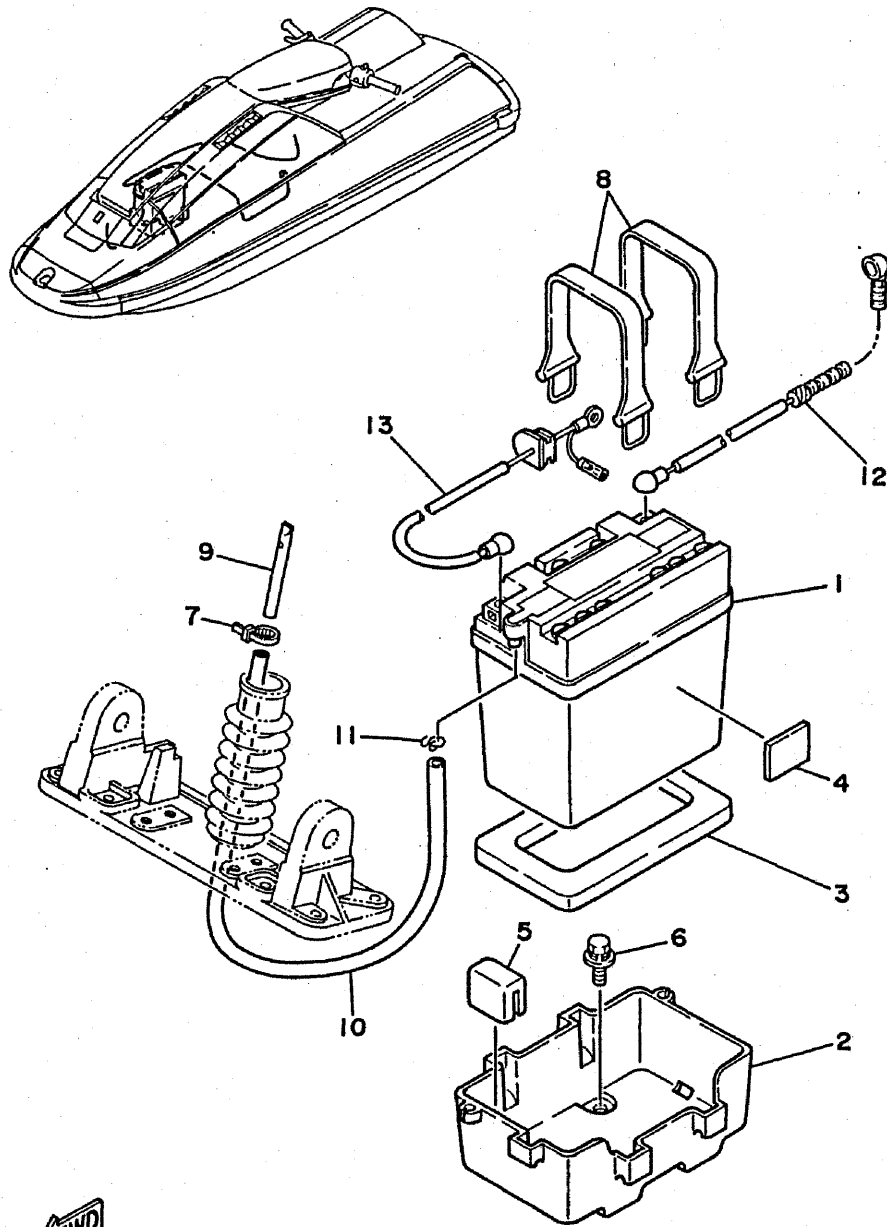
EW2200-0100

FIG. 10 ELECTRICAL 1

REF. NO.	PART NO.	DESCRIPTION	Q'TY	REMARKS
27	94701-00041	PLUG, spark (NGK B8HS)	2	UR USA/AFRICA
28	90465-11M10	CLAMP	2	
29	6R7-82553-01	EXTENSION, wire lead	1	
30	6R7-82560-00	THERMO SWITCH ASSY	1	
31	6R7-82117-21	WIRE, lead	1	
32	97395-06016	BOLT	2	
33	92995-06100	WASHER	2	
34	6R7-82361-00	CLAMP, cord	1	
35	6R7-83623-40	MARK 3	1	
36	EW2-68156-00	BRACKET, electric box	2	
37	90105-06901	BOLT, flange	4	
38	95380-08700	NUT, hexagon	2	
39	92990-08200	WASHER, plain	2	
40	90387-07908	COLLAR	4	
41	90600-91729	CLAMP	1	
42	90201-05925	WASHER, plain	1	
43	97780-50114	SCREW, pan head tapping	1	
44	90601-20006	BAND	1	
45	90465-11M10	CLAMP	4	

C4

FIG. 11 ELECTRICAL 2



REF. NO.	PART NO.	DESCRIPTION	Q'TY	REMARKS
1	EU0-82110-78	BATTERY	1	
2	EW2-68211-00	CASE, battery	1	
3	EU0-68221-00	PAD, battery 1	1	
4	EU0-68221-30	PAD, battery 2	3	
5	EW2-68221-00	PAD, battery	1	
6	90119-06920	BOLT, H/H W/W	4	
7	90465-11M10	CLAMP	1	
8	EU0-68218-04	BAND, battery	2	
9	EW2-62149-00	PIPE, ventilation 1	1	
10	EU0-67856-40	HOSE, airvent 3	1	
11	90467-08M10	CLIP	1	
12	6R7-82117-01	WIRE, lead	1	
13	6R7-82117-11	WIRE, lead	1	



EW2110-0110

C5

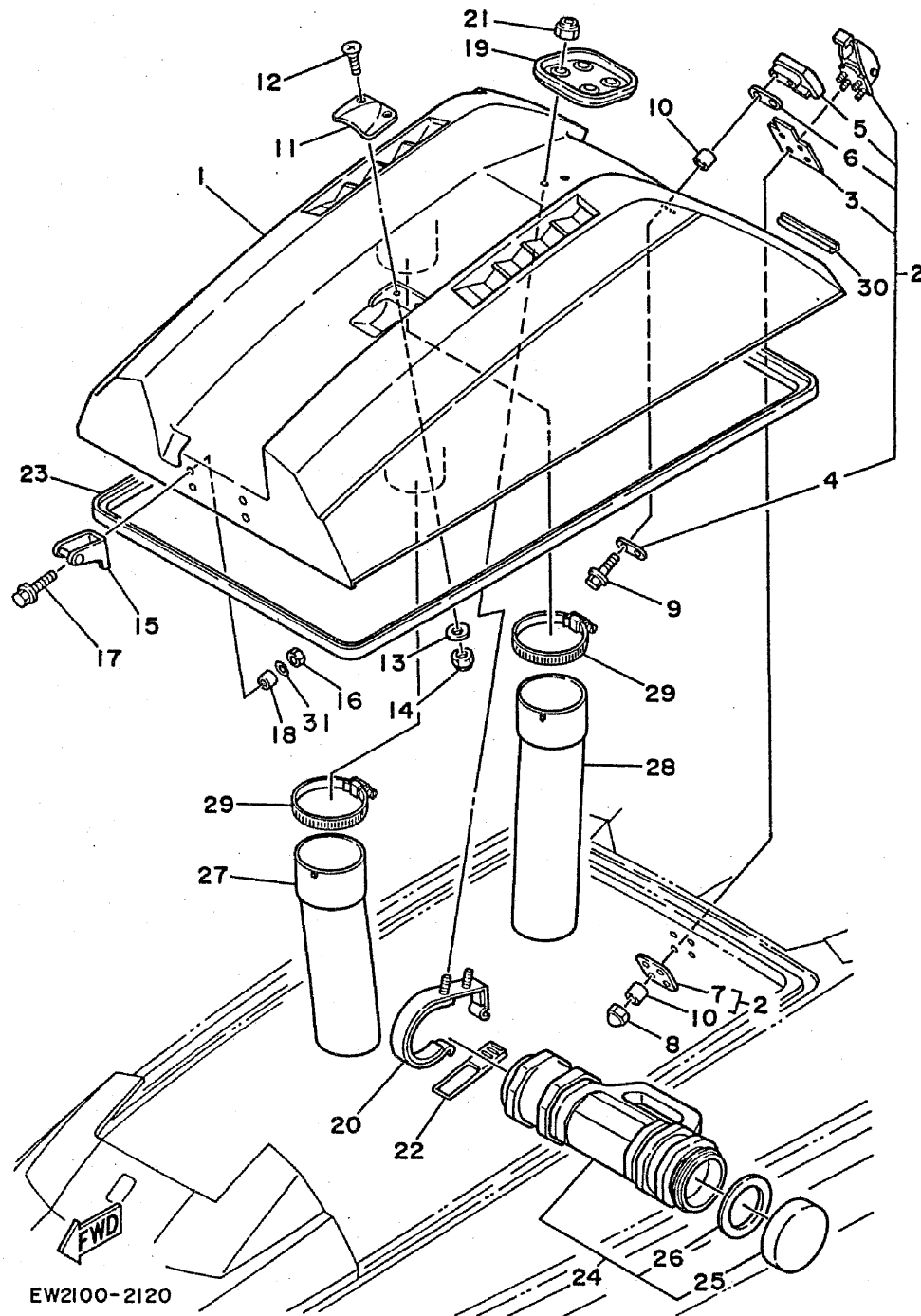


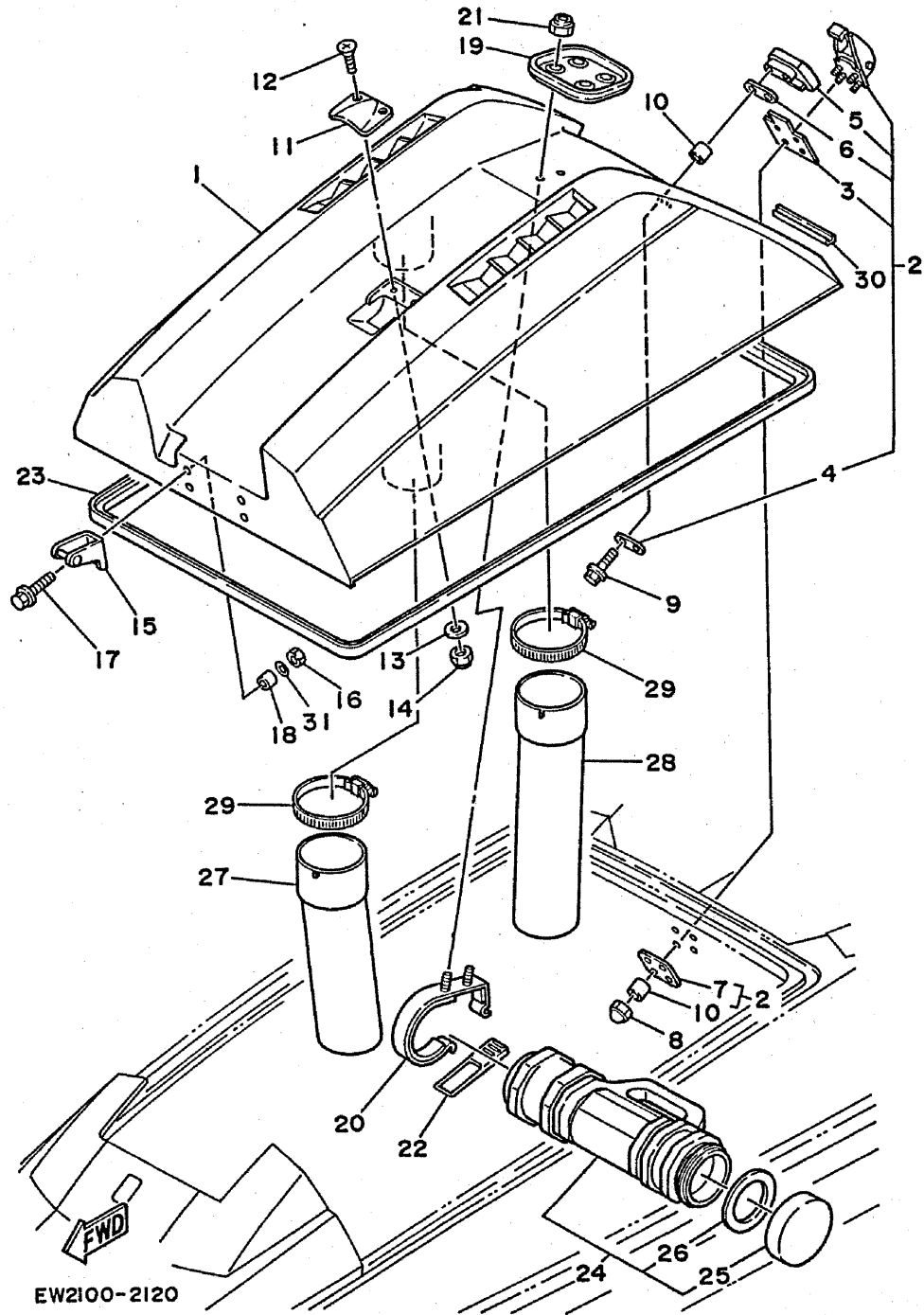
FIG. 12 HULL. DECK 1

REF. NO.	PART NO.	DESCRIPTION	Q'TY	REMARKS
1	EW2-U5160-00	ENGINE HATCH COMP.	1	YMUS
2	EW2-62840-00	HATCH LOCK ASSY	1	
3	EW2-62845-00	.PACKING, hatch lock	1	
4	EW2-62846-00	.PLATE, hatch lock	1	
5	EW2-62843-00	.HOOK, hatch lock	1	
6	EW2-62847-00	.PACKING, hook	1	
7	EW2-62848-00	.PLATE, hook	1	
8	95380-05800	NUT, cap	4	
9	90119-05923	BOLT, H/H W/W	2	
10	90387-05907	COLLAR	4	
11	A00-62858-01	PLATE, hatch	1	
12	98780-05014	SCREW, F/H	2	
13	92990-05200	WASHER, plain	2	
14	95780-05300	NUT, nylon	2	
15	EW2-65136-00	STOPPER, hatch 2	2	
16	95380-06600	NUT	4	
17	90105-06903	BOLT, flange	4	
18	90387-07909	COLLAR	4	
19	EW2-6514B-00	DAMPER, pole	1	
20	EW2-65143-00	BASE, damper pole	2	
21	95780-05300	NUT, nylon	4	
22	EW2-65145-00	BAND, case 2	2	
23	EW2-62664-00	PACKING 2	1	
24	EW2-65920-00	CASE 2 ASSY	1	
25	EW2-65912-30	.CAP, case	1	
26	EW2-65913-00	.PACKING, case	1	
27	EW2-62136-01	HOSE, ventilator 1	1	
28	EW2-62137-00	HOSE, ventilator 2	1	

C6

FIG. 12 HULL. DECK 1

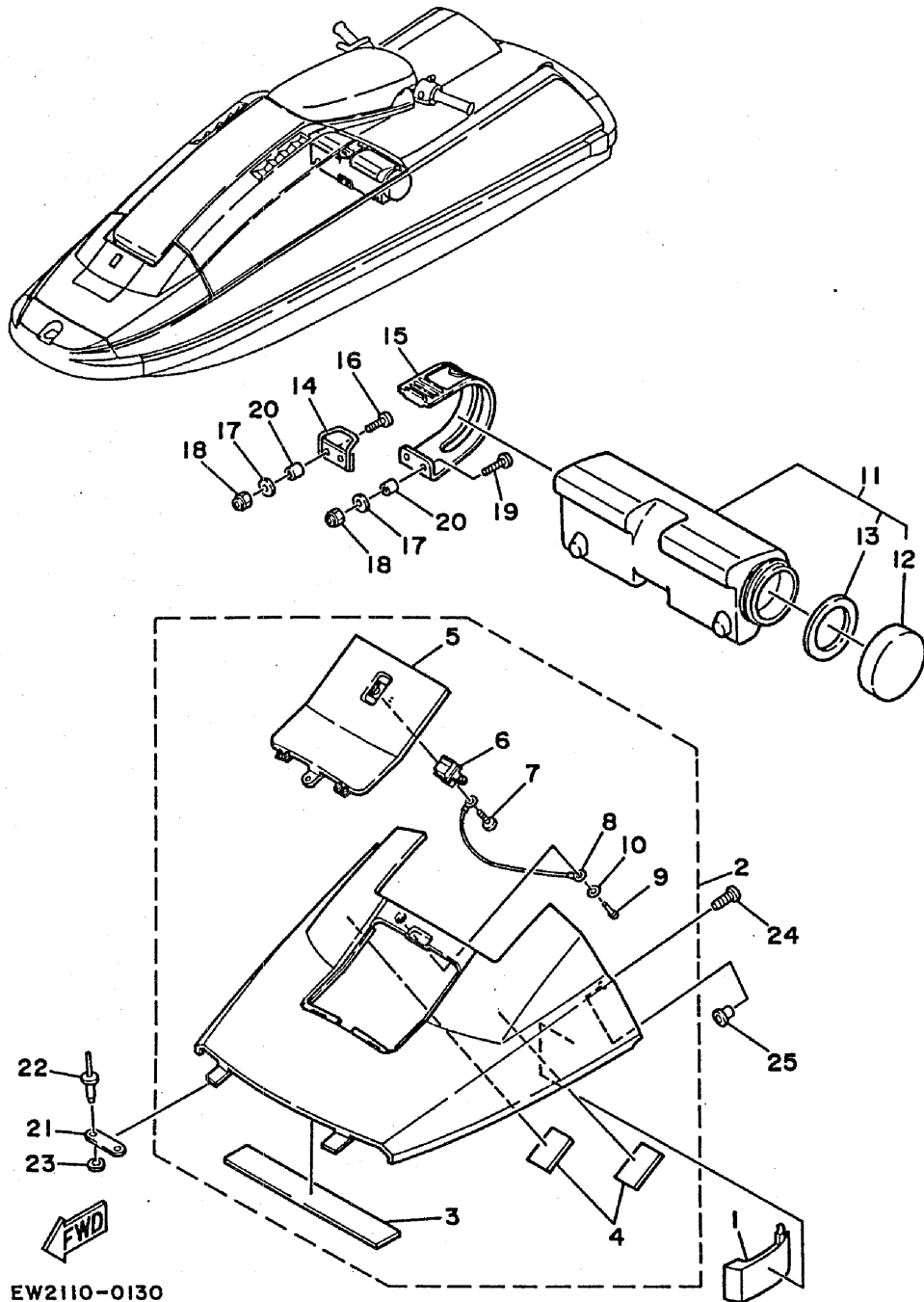
REF. NO.	PART NO.	DESCRIPTION	Q'TY	REMARKS
29	90601-168U7	BAND, hose 68	2	YMUS
30	EW2-65165-00	TRIM	1	
31	92990-06200	WASHER, plain	4	



EW2100-2120

C7

FIG. 13 HULL. DECK 2

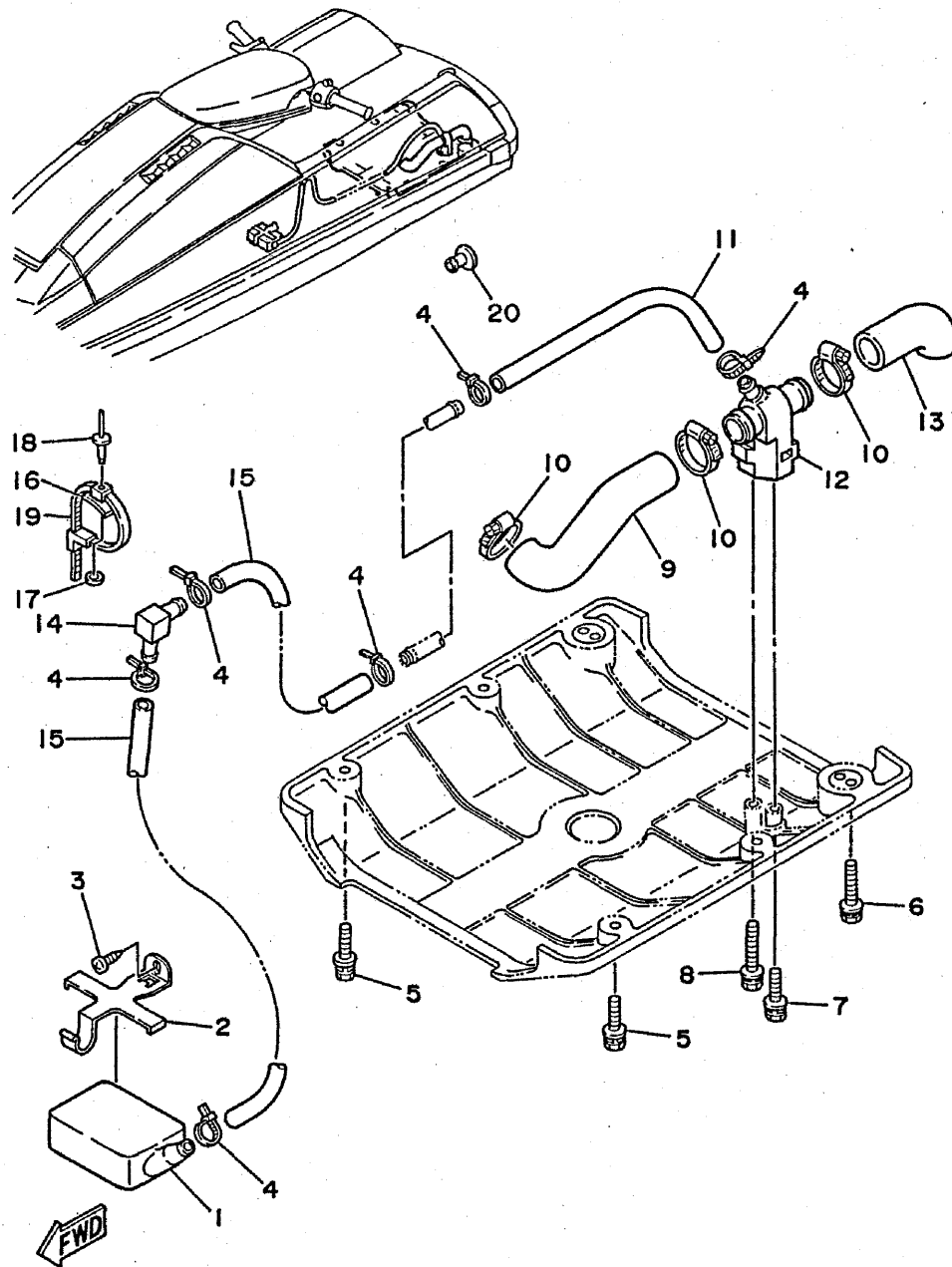


EW2110-0130

REF. NO.	PART NO.	DESCRIPTION	Q'TY	REMARKS
1	EW2-68953-00	PROTECTOR	1	
2	EW2-65210-00	BOW COVER ASSY	1	
3	EW2-65212-00	.PAD 1 (FR)	1	
4	EW2-65213-00	.PAD 2	2	
5	EW2-65221-00	.COVER, tank cap	1	
6	1HX-21780-00	.LOCK ASSY	1	
7	90164-04025	.SCREW, binding tapping	2	
8	EW2-65226-00	.STRING, lid	1	
9	90267-40939	.RIVET, blind	1	
10	92990-04200	.WASHER, plain	1	
11	EW2-65910-00	CASE 1 ASSY	1	
12	EW2-65912-00	.CAP, case	1	
13	EW2-65913-00	.PACKING, case	1	
14	EW2-65915-00	BRACKET, case	1	
15	EW2-65919-00	BAND, case	1	
16	97680-05216	SCREW, P/H W/W	2	
17	92990-05200	WASHER, plain	4	
18	95780-05300	NUT, nylon	4	
19	98980-05020	SCREW, binding head (+)	2	
20	90387-05907	COLLAR	4	
21	EW2-65219-00	PLATE	2	
22	90267-40936	RIVET, blind	4	
23	92990-04200	WASHER, plain	4	
24	90149-05963	SCREW, T/H tapping	2	
25	90387-06906	COLLAR	2	



FIG. 14 HULL. DECK 3



REF. NO.	PART NO.	DESCRIPTION	Q'TY	REMARKS
1	EU0-67613-00	STRAINER, bilge	1	
2	EW2-67618-00	BASE, strainer bilge	1	
3	97780-50114	SCREW, P/H tapping	1	
4	90465-13M11	CLAMP	6	
5	90119-06915	BOLT, with washer	4	
6	90119-06914	BOLT, with washer	2	
7	90119-06915	BOLT, with washer	1	
8	90119-06919	BOLT, with washer	1	
9	6R7-51161-00	HOSE, plasher	1	
10	90460-18M08	CLAMP, hose	3	
11	90445-14M02	HOSE	1	
12	6K8-7610K-00	BODY, valve	1	
13	6K8-51141-00	HOSE SUCTION	1	
14	6K8-51162-00	JOINT, hose	1	
15	90445-14M04	HOSE	2	
16	90600-91729	CLAMP	1	
17	90201-05925	WASHER, plain	1	
18	90267-48007	RIVET, blind	1	
19	90601-20006	BAND	1	
20	90338-09900	PLUG	1	

EW2100-2140

C9

FIG. 15 GUNWALE. MAT

REF. NO.	PART NO.	DESCRIPTION	Q'TY	REMARKS
1	EW2-62501-00	BOW GUNWALE COMP.	1	
2	98980-06025	SCREW, binding head (+)	2	
3	92990-06200	WASHER, plain	2	
4	92990-06100	WASHER, spring	2	
5	95380-06800	NUT, cap	2	
6	EW2-62512-10	GUNWALE, side LH	1	
7	90149-05962	SCREW, O/H tapping	26	
8	EW2-62512-20	GUNWALE, side RH	1	
9	EU0-61651-30	ROPE, hole	2	
10	EU0-61652-00	NUT	2	
11	EW2-63511-01	MAT, lower	1	
12	EW2-63512-10	MAT, side (L/H)	1	
13	EW2-63512-20	MAT, side (R/H)	1	
14	EW2-62503-00	STERN GUNWALE COMP.	1	
15	EW2-62523-10	COVER, gunwale LH	1	
16	EW2-62523-20	COVER, gunwale RH	1	
17	92990-06200	WASHER, plain	10	
18	90149-06965	SCREW, flat head (+)	2	
19	95380-06800	NUT, cap	10	
20	90149-05964	SCREW, oval head	2	
21	92990-05200	WASHER, plain	2	
22	95380-05800	NUT, cap	2	

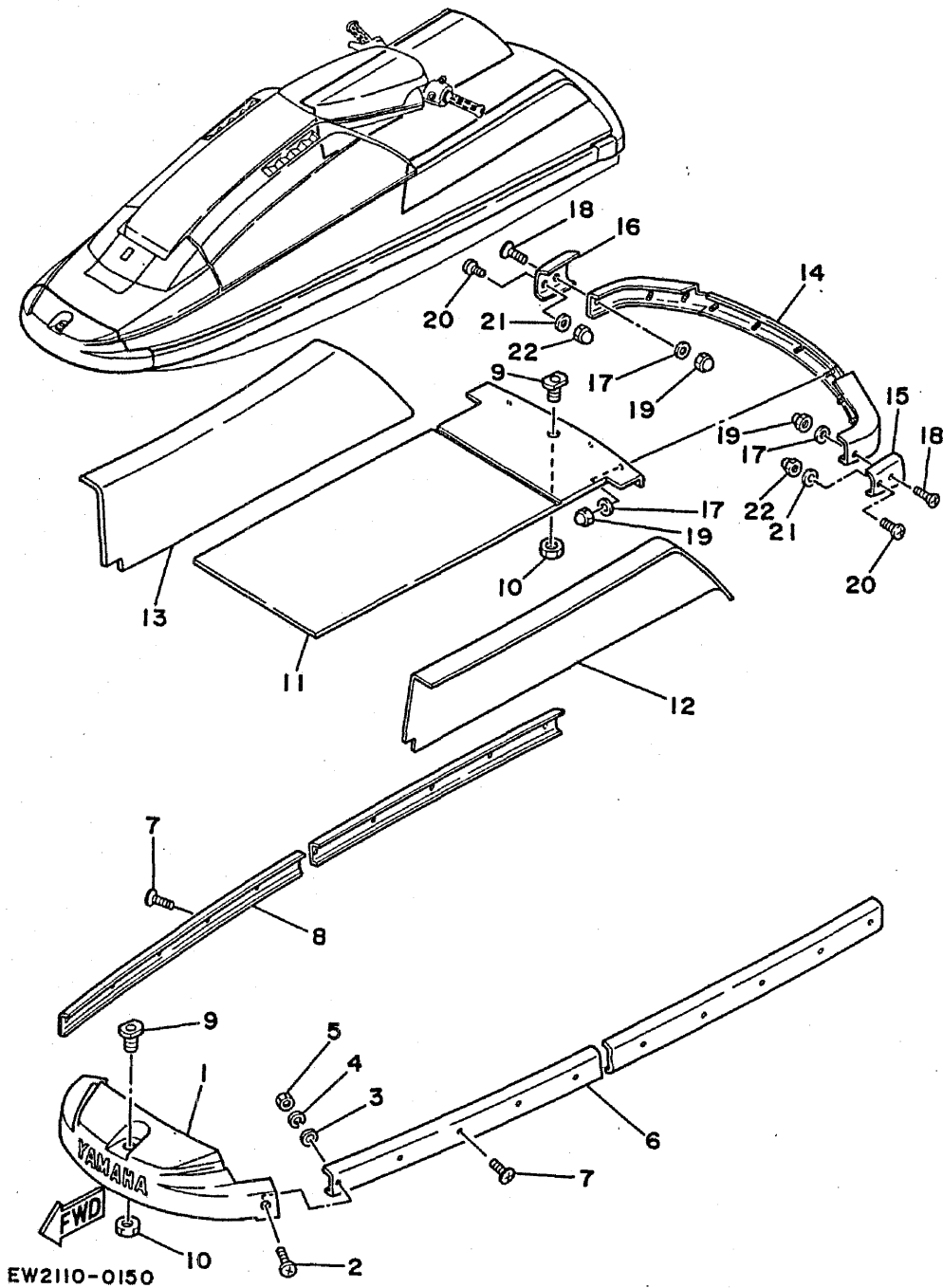
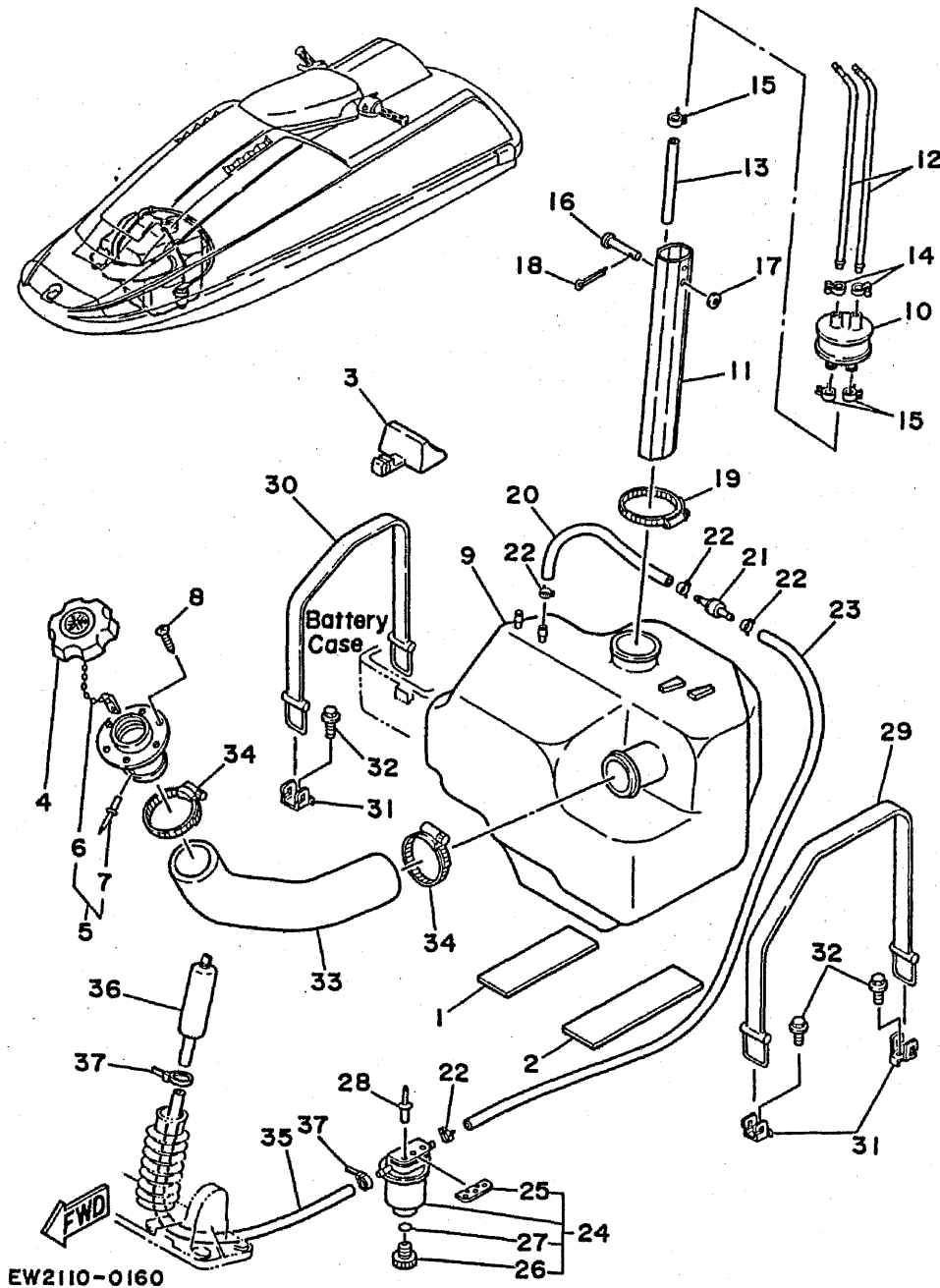


FIG. 16 FUEL TANK



REF. NO.	PART NO.	DESCRIPTION	Q'TY	REMARKS
1	EW2-67593-00	MAT 1	2	
2	EW2-67593-40	MAT 3	2	
3	EW2-67822-00	DAMPER FUEL TANK	1	
4	EU0-67831-30	CAP, fuel filler	1	
5	EU0-W6783-01	SOCKET COMP.	1	
6	EU0-67835-00	.CHAIN BALL	1	
7	90267-40935	.RIVET	1	
8	EU0-67869-00	SCREW, F/H tapping	6	
9	EW2-67711-00	TANK, fuel	1	
10	FJ0-67713-00	PIPE, joint	1	
11	EW2-67716-00	SLEEVE 1	1	
12	EW2-67714-00	PIPE, suction 3	2	
13	90445-11903	HOSE	1	
14	90601-11062	BAND, hose 11	2	
15	90467-11032	CLIP	3	
16	91790-05040	PIN, cylinder head	1	
17	92990-05600	WASHER, plain	1	
18	91490-16010	PIN, split	1	
19	90601-162U5	BAND, hose 62	1	YMUS
20	EU0-67856-00	HOSE, airvent 1	1	
21	EU0-67767-30	CHECK, valve	1	
22	90465-11M10	CLAMP	2	
23	EW2-67856-00	HOSE, airvent 1	1	
24	EW2-62140-00	FILTER, vent assy	1	
25	EW2-62142-00	.PLATE, filter	1	
26	70R-24543-00	.SCREW, drain	1	
27	70R-24489-00	.O-RING, separater 2	1	
28	90267-48940	RIVET, blind	3	

FIG. 16 FUEL TANK

REF. NO.	PART NO.	DESCRIPTION	Q'TY	REMARKS
29	EW2-67821-00	BAND, fuel tank	1	
30	EW2-67821-30	BAND, fuel tank	1	
31	EW2-65772-00	HOOK A	3	
32	90105-06900	BOLT, flange	3	
33	EW2-67844-00	HOSE, filler	1	
34	90601-155U4	BAND, hose 55	2	YMUS
35	EW2-67856-30	HOSE, airvent 2	1	
36	EW2-62150-00	AIR, vent assy	1	
37	90465-11M10	CLAMP	4	

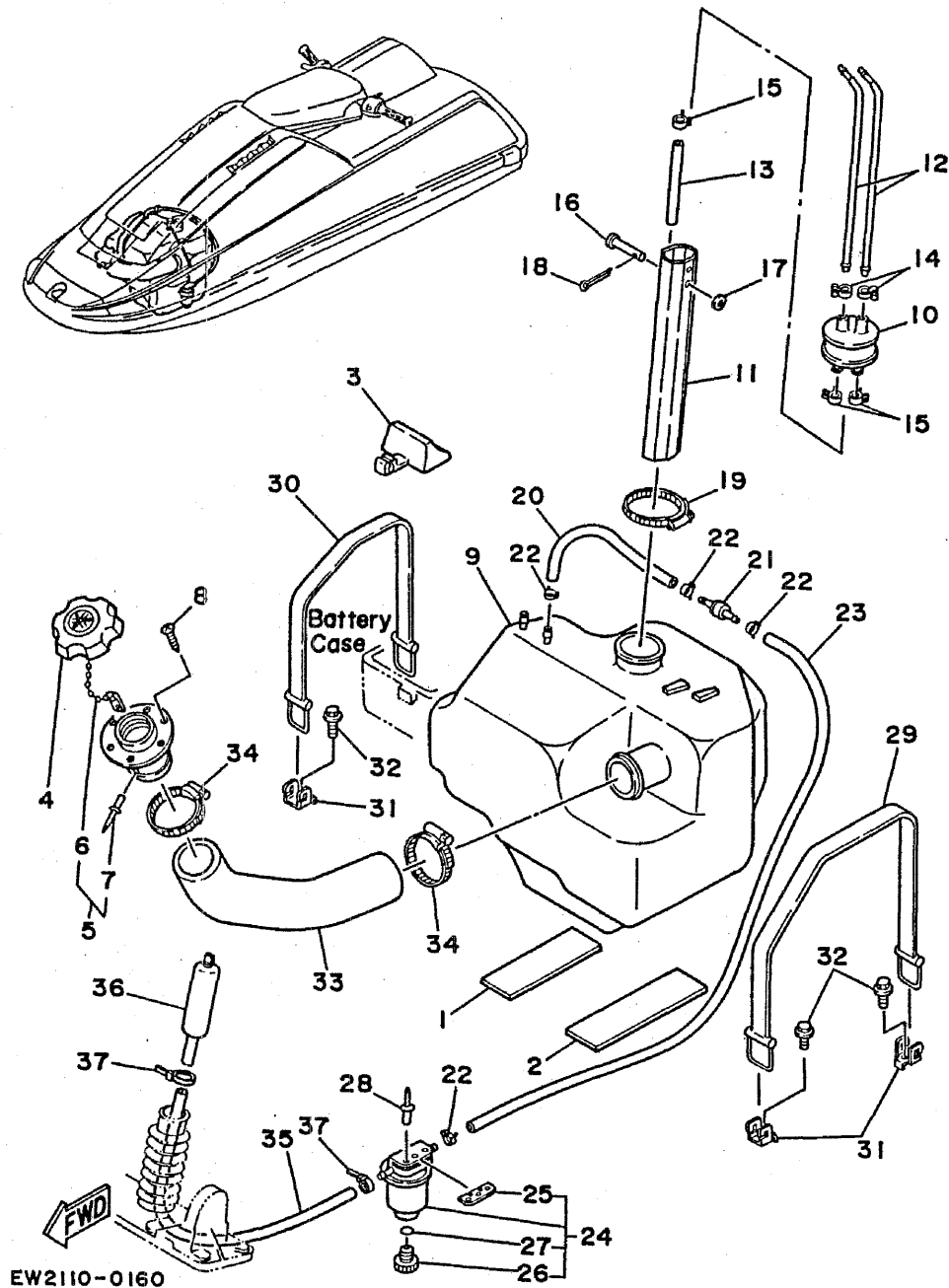
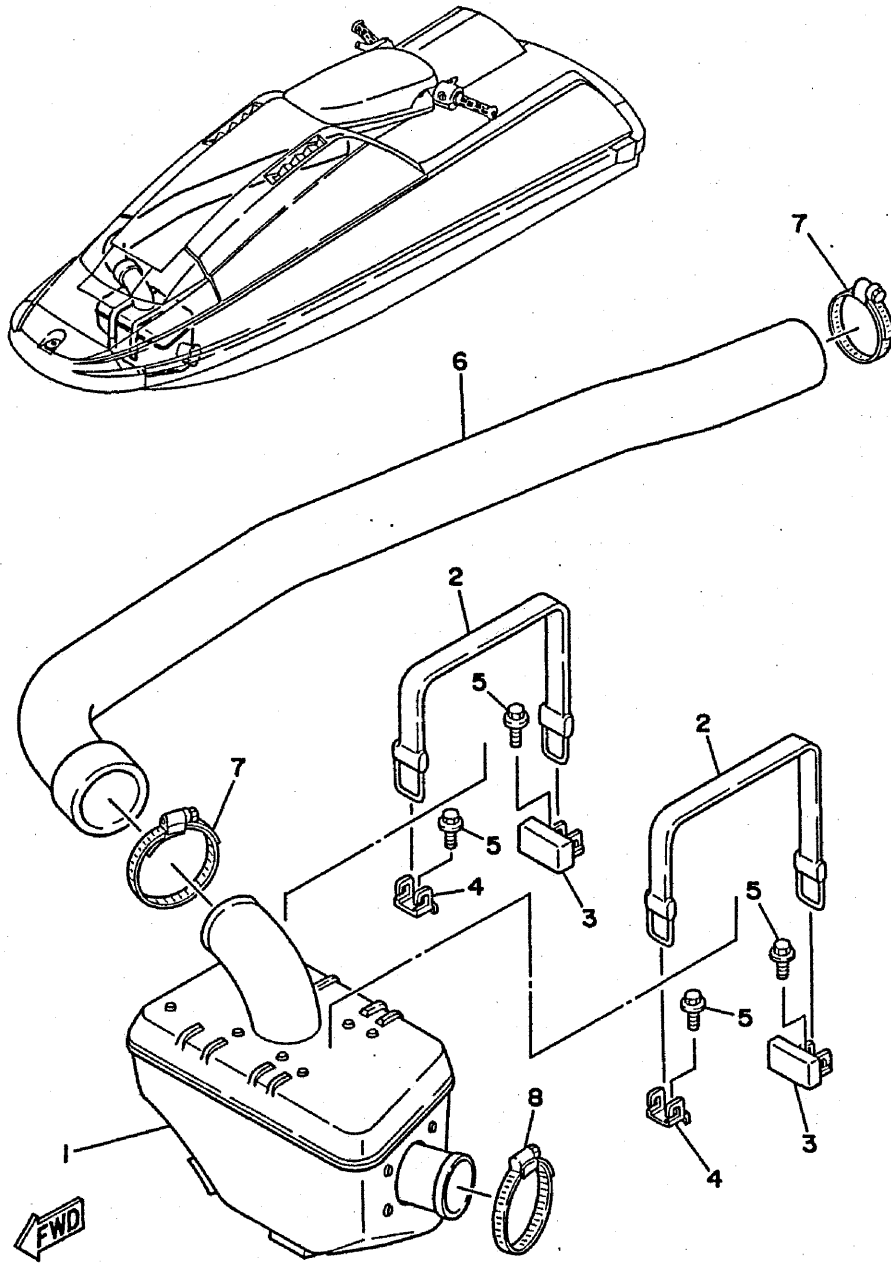


FIG. 17 EXHAUST 2

REF. NO.	PART NO.	DESCRIPTION	Q'TY	REMARKS
1	EW2-U7550-00	WATER LOCK COMP.	1	YMUS
2	EU0-68218-04	BAND, battery	2	
3	EW2-65760-00	HOOK B ASSY	2	
4	EW2-65772-00	HOOK A	2	
5	90105-06900	BOLT, flange	4	
6	EW2-67555-00	HOSE, exhaust	1	
7	90601-162U5	BAND, hose 62	2	YMUS
8	90601-168U7	BAND, hose 68	1	YMUS



EW2110-0170

C13

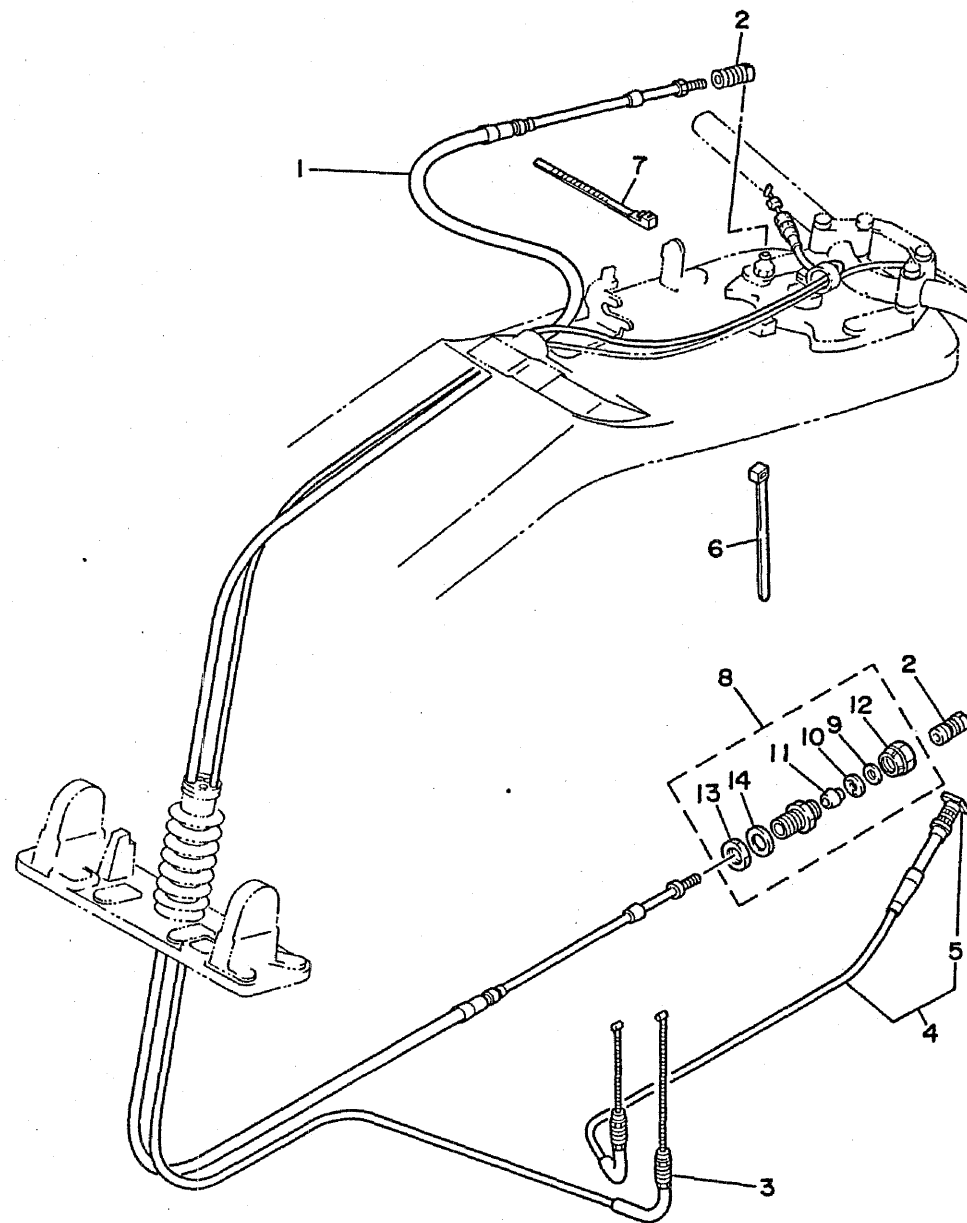


FIG. 18 CONTROL CABLE

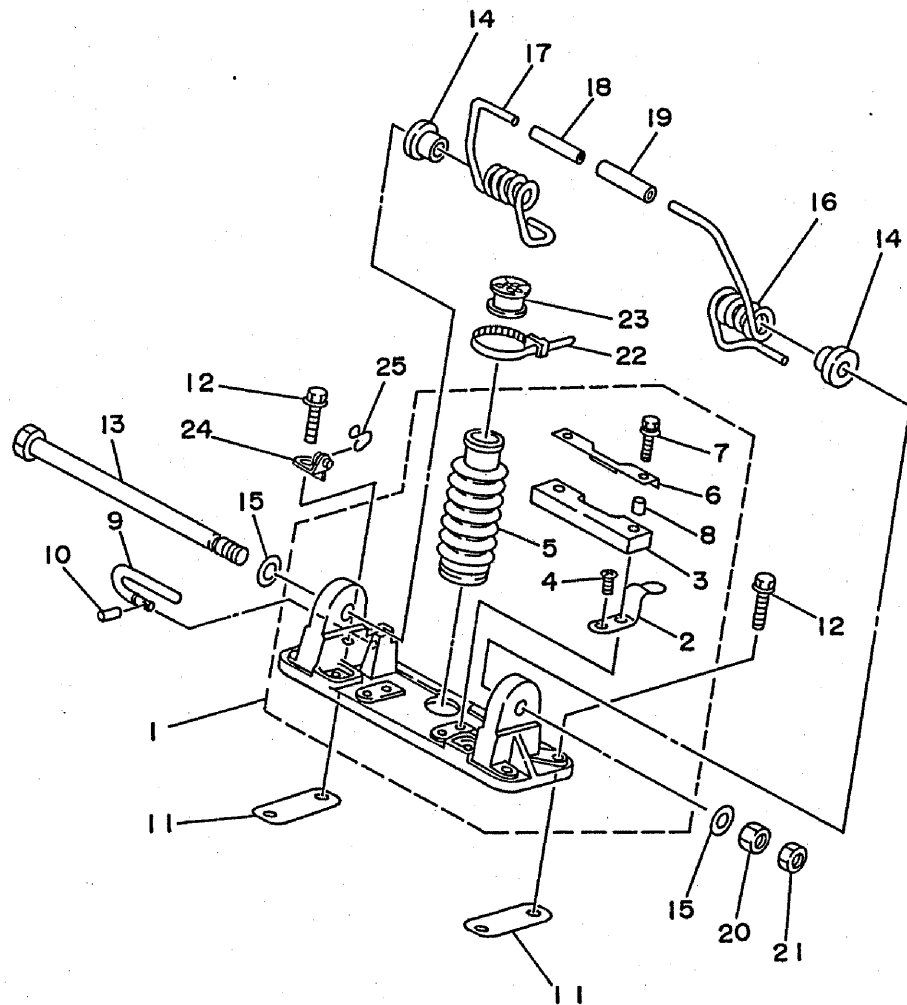
REF. NO.	PART NO.	DESCRIPTION	Q'TY	REMARKS
1	EW2-61481-00	CABLE, steering	1	
2	EU0-61461-30	SHAFT, joint ball	2	
3	EW2-67252-02	CABLE, throttle	1	
4	EW2-U7242-00	CABLE, choke	1	YMUS
5	EW2-67243-00	.KNOB	1	
6	90601-20005	BAND	2	
7	90601-20006	CLAMP	1	
8	EU0-67267-00	CONNCTOR CABLE	1	
9	EU0-61446-00	.WASHER 30	1	
10	EU0-61486-00	.STOPPER	1	
11	EU0-61435-00	.PIPE SEAL 30	1	
12	EU0-62694-00	.CAP	1	
13	EU0-62241-30	.NUT, drain	1	
14	EU0-61438-00	.PACKING C	1	



EW2110-1181

C14

FIG. 19 POLE PIVOT



REF. NO.	PART NO.	DESCRIPTION	Q'TY	REMARKS
1	EW2-U1330-30	POLE PIVOT ASSY	1	YMUS
2	EW2-65135-00	.STOPPER, hatch 1	2	
3	EW2-61337-30	.STOPPER, pole	2	
4	98780-06010	.SCREW, flat head	2	
5	EW2-U1338-00	.GROMMET	1	YMUS
6	EW2-6133E-00	.PLATE, pole stopper	1	
7	90119-06918	.BOLT, hexagon	2	
8	90387-07910	.COLLAR	2	
9	EW2-61335-00	PIN, stopper	1	
10	91690-30010	PIN, spring	1	
11	EW2-61338-00	PLATE, bracket	2	
12	90105-08902	BOLT, flange	4	
13	EW2-U1343-01	SHAFT, pivot	1	YMUS
14	EW2-61344-01	BUSH	2	
15	92990-14600	WASHER, plain	2	
16	EW2-61391-11	SPRING, pivot (LH)	1	
17	EW2-61391-21	SPRING, pivot (RH)	1	
18	EW2-61392-30	SPRING, connector	1	
19	EW2-61393-30	BUFFER, tube	1	
20	99780-14100	NUT, hexagon	1	
21	98880-14300	NUT, hexagon	1	
22	90601-20006	BAND	1	
23	EW2-61465-00	PACKING, cable	1	
24	EW2-6133D-00	HOLDER, spring	1	
25	EW2-61395-30	SPRING, torsion	1	

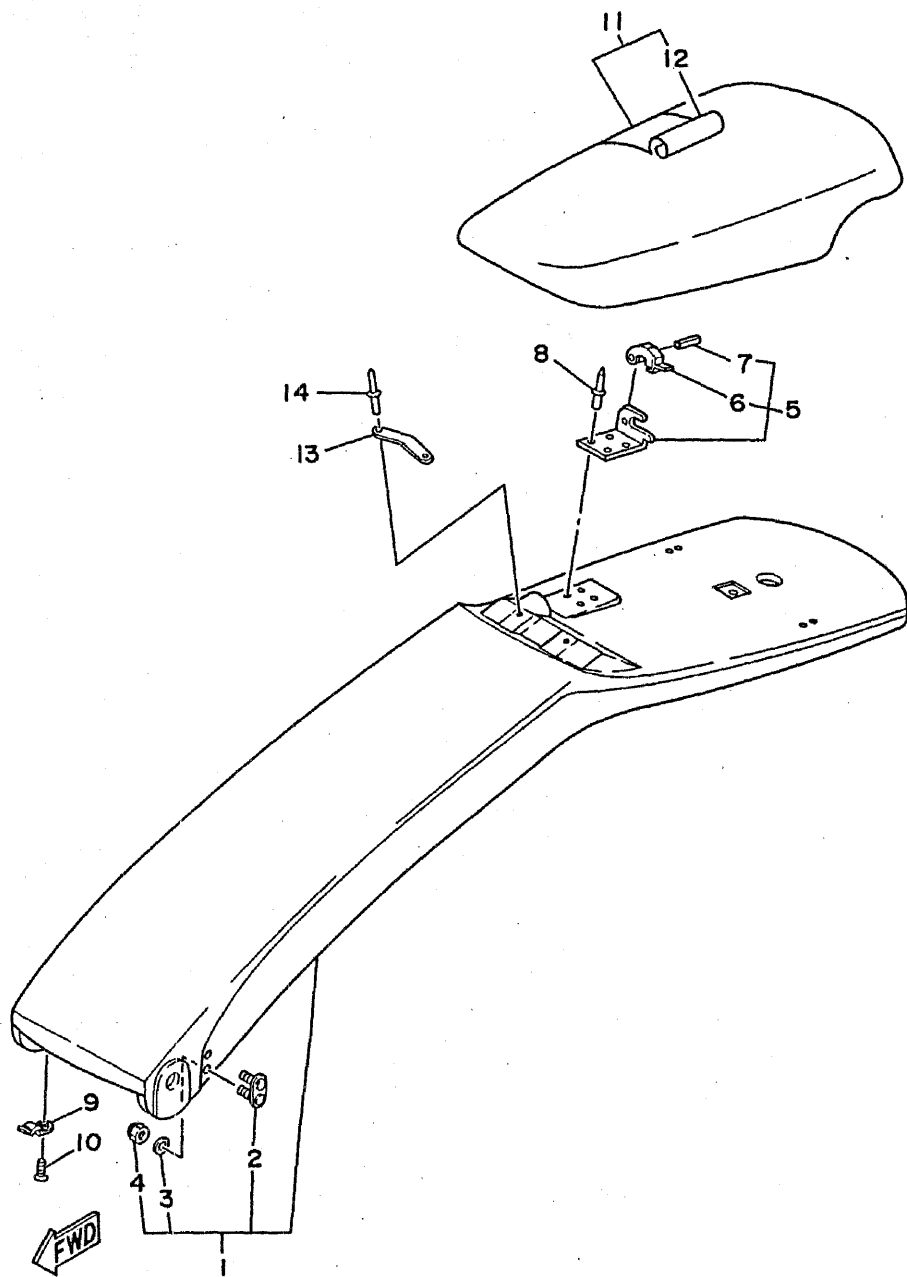


EW2100-2190

C15

FIG. 20 STEERING POLE

REF. NO.	PART NO.	DESCRIPTION	Q'TY	REMARKS
1	EW2-U491A-00	STEERING POLE COMP.	1	YMUS
2	EW2-6491K-00	.BOLT, special	2	
3	92990-05200	.WASHER, plain	4	
4	95780-05300	.NUT, flange	4	
5	EW2-61460-00	CABLE STOPPER ASSY	1	
6	6E5-48538-00	.CLAMP, cable	1	
7	91690-30012	.PIN, spring	1	
8	90267-48938	RIVET, blind	4	
9	EW2-61316-00	PLATE, stopper	1	
10	97780-30312	SCREW, tapping	1	
11	EW2-6142A-00	PAD, steering comp.	1	
12	EW2-6142D-00	.COVER, pad	1	
13	EW2-64953-00	PLATE A	1	
14	90267-48938	RIVET, blind	2	

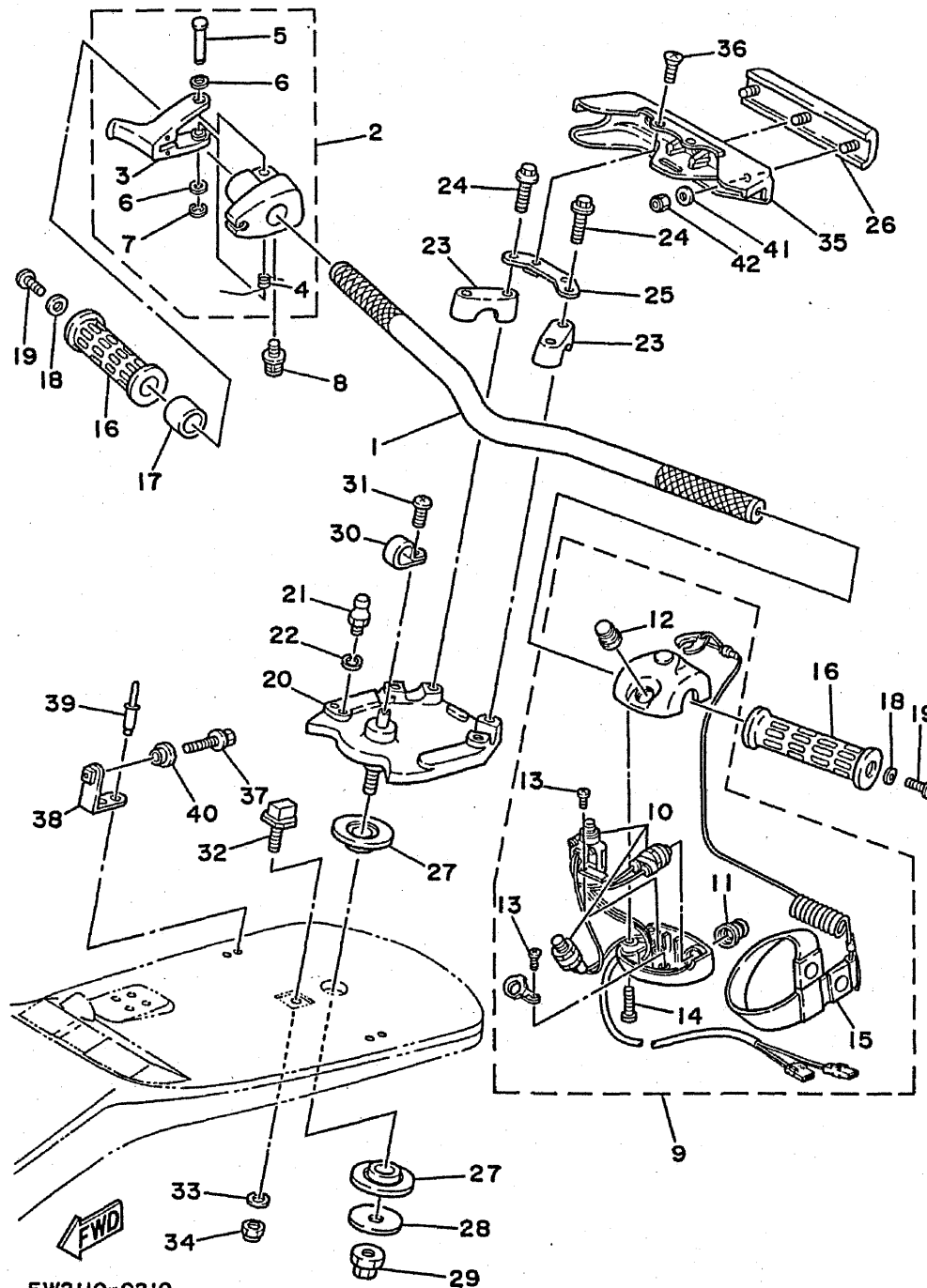


EW2110-1201

D2



FIG. 21 STEERING



EW2110-0210

REF. NO.	PART NO.	DESCRIPTION	Q'TY	REMARKS
1	EW2-61552-00	HANDLE	1	
2	EW2-67250-00	THROTTLE LEVER ASSY	1	
3	EW2-67255-00	.LEVER, throttle	1	
4	EW2-67256-00	.SPRING	1	
5	EW2-67257-00	.SHAFT	1	
6	EW2-67258-00	.WASHER	2	
7	EW2-67259-00	.E RING	1	
8	90159-05900	SCREW, P/H W/W	1	
9	EW2-68310-03	SWITCH BOX ASSY	1	
10	EW2-68311-01	.SWITCH SUB ASSY	1	
11	FK7-68312-02	.STOP BUTTON COMP.	1	
12	FK7-68313-01	.START BUTTON COMP.	1	
13	98580-03008	.SCREW	2	
14	98580-05525	.SCREW	2	
15	EW2-68348-00	.LANYARD SWITCH	1	
16	EW2-61553-00	GRIP, handle 1	2	
17	90560-22281	SPACER	1	
18	90201-05928	WASHER, plain	2	
19	90149-05959	SCREW, P/H	2	
20	EW2-61540-00	COLUMN, steering	1	
21	EU0-61461-00	STUD, joint ball	1	
22	92990-06100	WASHER, spring	1	
23	EU0-23814-01	HOLDER, handle	2	
24	90105-08902	BOLT, flange	4	
25	EW2-61559-00	PLATE, cover	1	
26	EW2-61565-00	PAD 1	1	
27	EW2-61417-00	BEARING, column	2	
28	EW2-61419-00	WASHER, steering	1	

D3

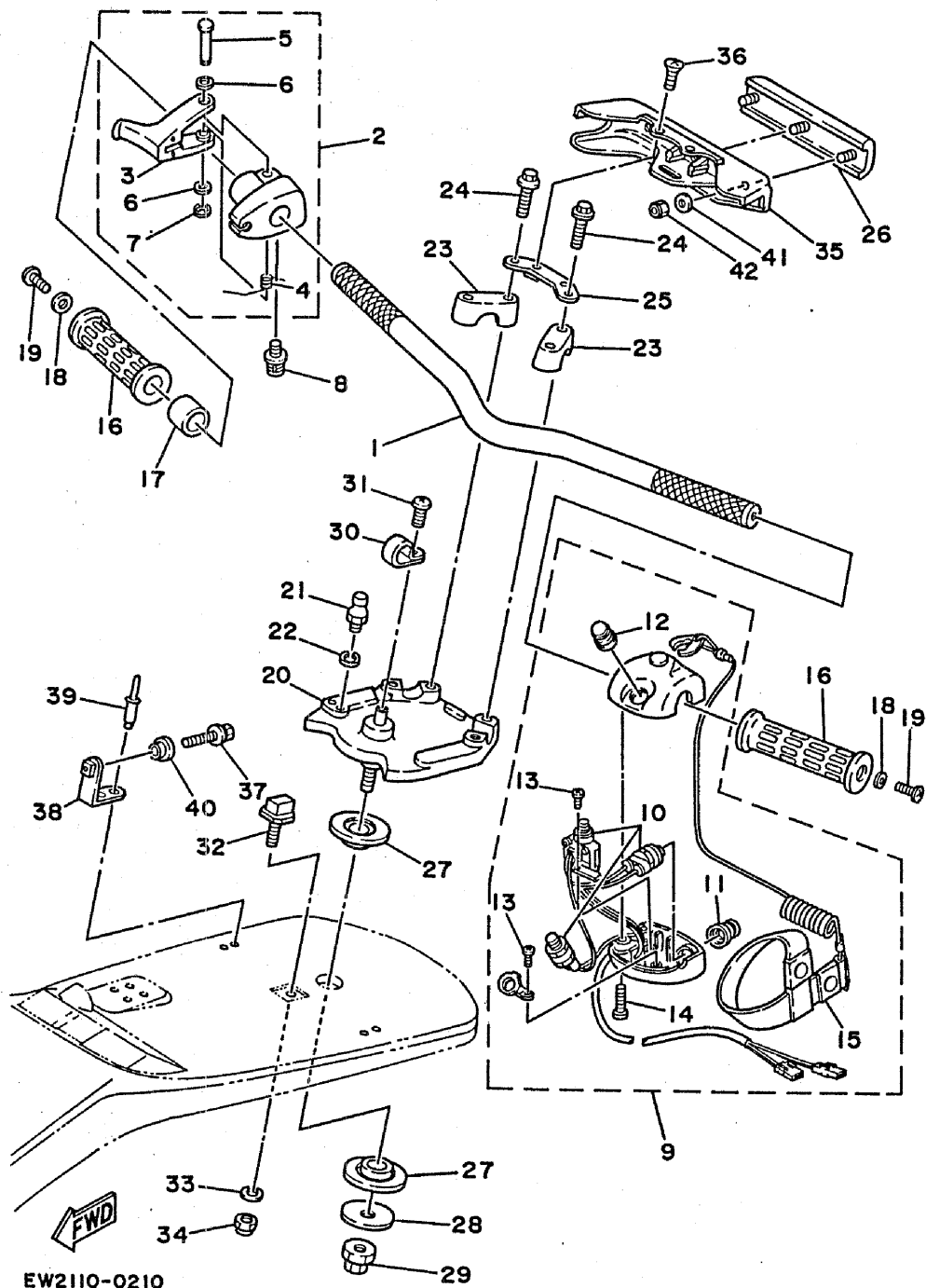
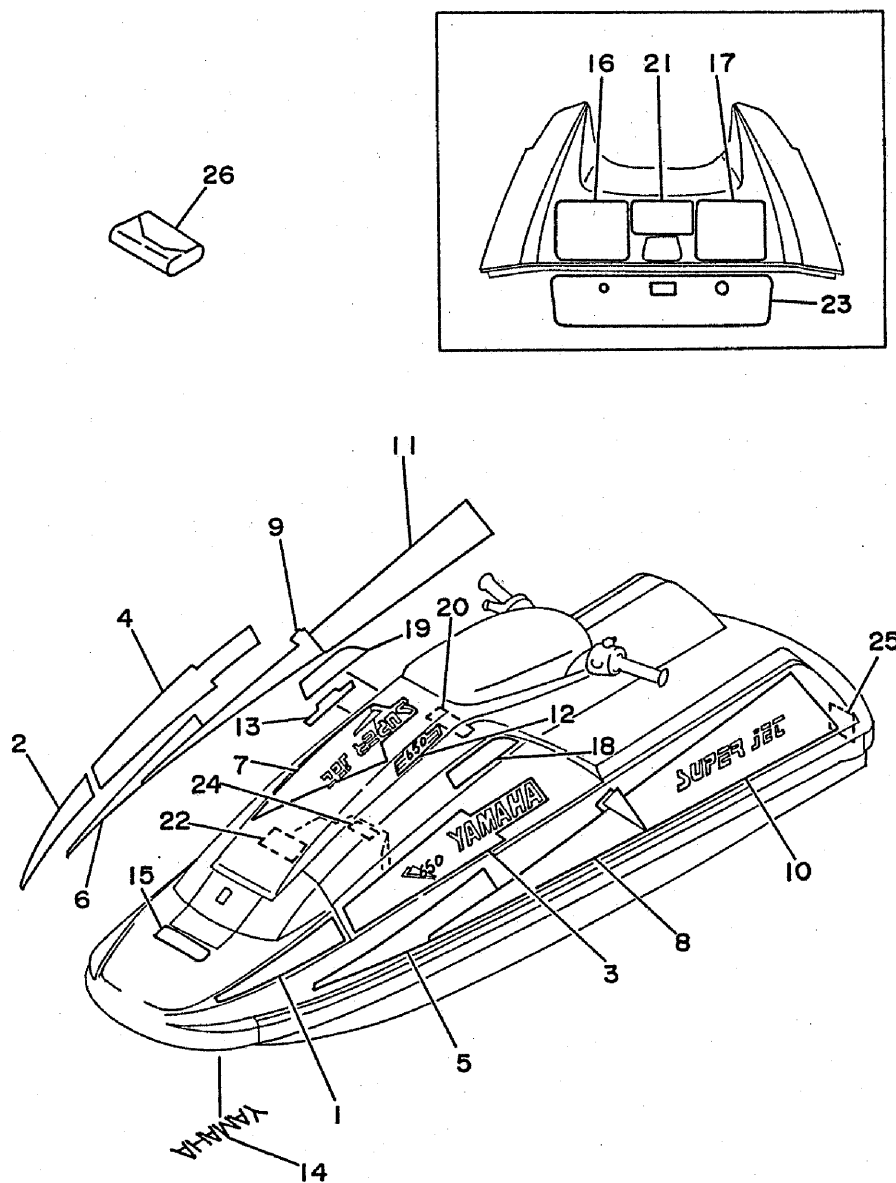


FIG. 21 STEERING

REF. NO.	PART NO.	DESCRIPTION	Q'TY	REMARKS
29	90179-12933	NUT	1	
30	90600-91728	CLIP, nylon 17	1	
31	98980-04010	SCREW, binding head (+)	1	
32	EW2-61314-00	PIN, stopper 1	1	
33	92990-10200	WASHER, plain	1	
34	95780-10300	NUT, nylon	1	
35	EW2-61555-00	COVER, handle	1	
36	98980-06010	SCREW, binding head (+)	2	
37	90119-05912	BOLT, H/H W/W	2	
38	EW2-61422-00	FIX, steering pad	2	
39	90267-48938	RIVET, blind	4	
40	90387-06906	COLLAR	2	
41	92990-06200	WASHER, plain	3	
42	95720-06300	NUT, nylon	3	

FIG. 22 GRAPHIC. TOOL



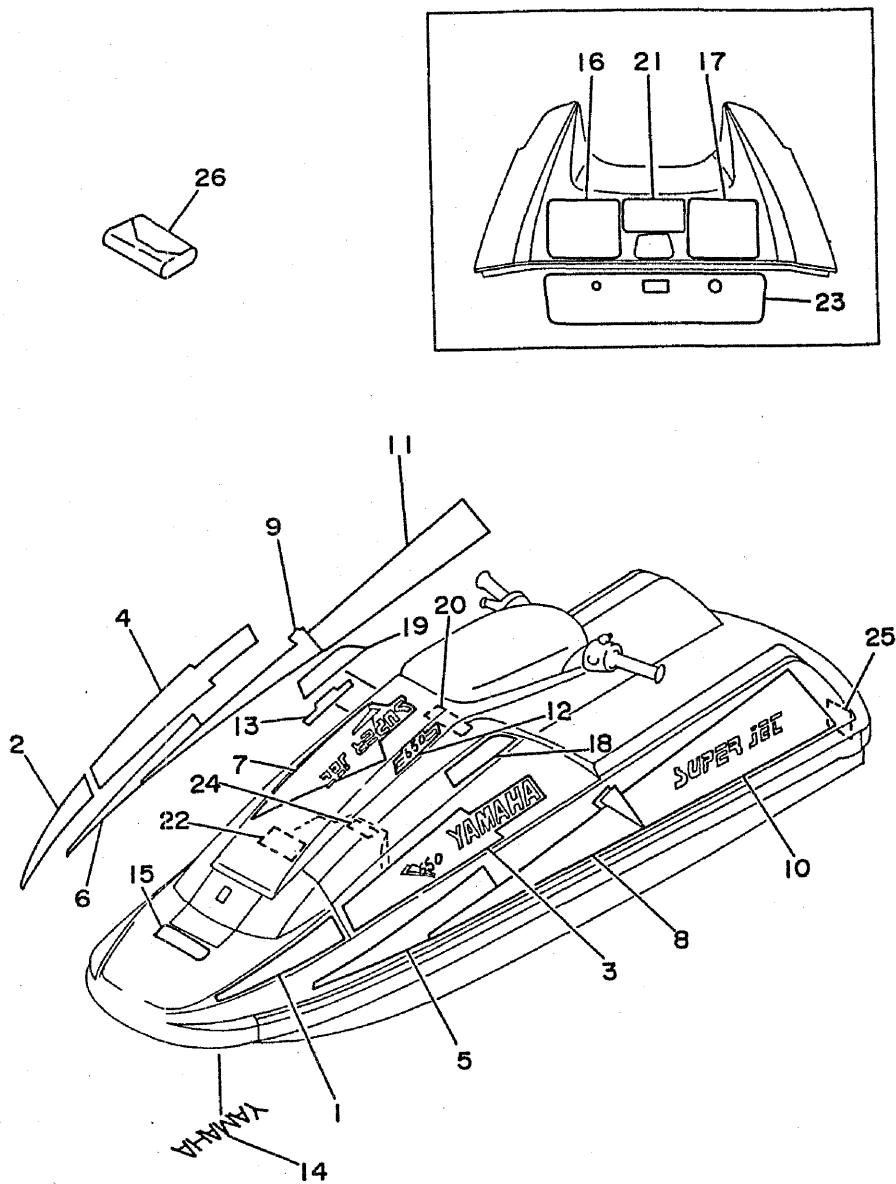
EW2100-2220

REF. NO.	PART NO.	DESCRIPTION	Q'TY	REMARKS
1	EW2-6417B-30	GRAPHIC 1 (LH)	1	
2	EW2-6417B-40	GRAPHIC 1 (RH)	1	
3	EW2-6417C-30	GRAPHIC 2 (LH)	1	
4	EW2-6417C-40	GRAPHIC 2 (RH)	1	
5	EW2-6417D-30	GRAPHIC 3 (LH)	1	
6	EW2-6417D-40	GRAPHIC 3 (RH)	1	
7	EW2-6417E-30	GRAPHIC 4	1	
8	EW2-6417E-30	GRAPHIC 5 (LH)	1	
9	EW2-6417F-40	GRAPHIC 5 (RH)	1	
10	EW2-6417G-30	GRAPHIC 6 (LH)	1	
11	EW2-6417G-40	GRAPHIC 6 (RH)	1	
12	EW2-6417H-30	GRAPHIC 7 (LH)	1	
13	EW2-6417H-40	GRAPHIC 7 (RH)	1	
14	EW2-64114-00	MARK, yamaha 1	1	
15	EW2-64161-A0	LABEL, warning 1	1	UR FOR AFRICA
	EW2-64161-00	LABEL, warning	1	UR FOR OCEANIA/USA
16	EW2-64161-E0	LABEL, warning	1	UR FOR OCEANIA/AFRICA
	EW2-64161-10	LABEL, warning	1	UR FOR USA
17	EW2-64161-F0	LABEL, warning	1	UR FOR OCEANIA/AFRICA
	EW2-64161-20	LABEL, warning	1	UR FOR USA
18	EW2-64161-G0	LABEL, warning	1	FOR AFRICA
19	EW2-64161-H0	LABEL, warning	1	FOR AFRICA
20	EW2-64183-30	LABEL, caution 3	1	
21	EW2-64183-A0	LABEL, caution 2	1	UR FOR AFRICA
	EW2-64183-60	LABEL, caution 5	1	UR FOR USA
22	EW2-64183-E0	LABEL, caution 8	1	UR FOR AFRICA
	EW2-64183-90	LABEL, caution 8	1	UR FOR OCEANIA/USA
23	EW2-64183-50	LABEL, caution	1	UR FOR OCEANIA/USA

D5

FIG. 22 GRAPHIC. TOOL

REF. NO.	PART NO.	DESCRIPTION	Q'TY	REMARKS
23	EW2-64183-70	LABEL, caution	1	UR FOR AFRICA
24	EW2-64183-N0	LABEL, caution 9	1	
25	EW2-64188-00	LABEL, riding	1	
26	EU0-28100-00	TOOL ASSY	1	

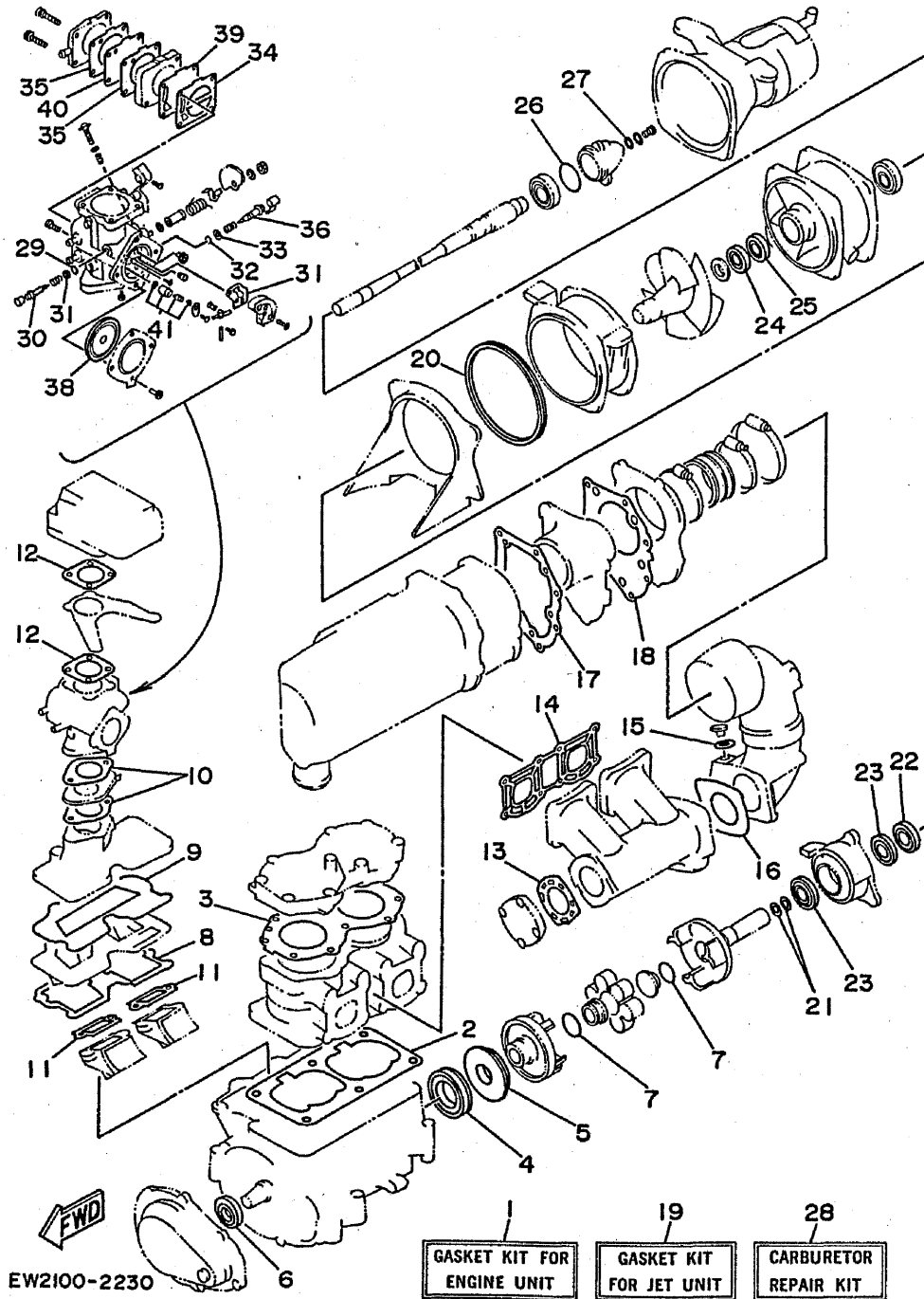


EW2100-2220

D6

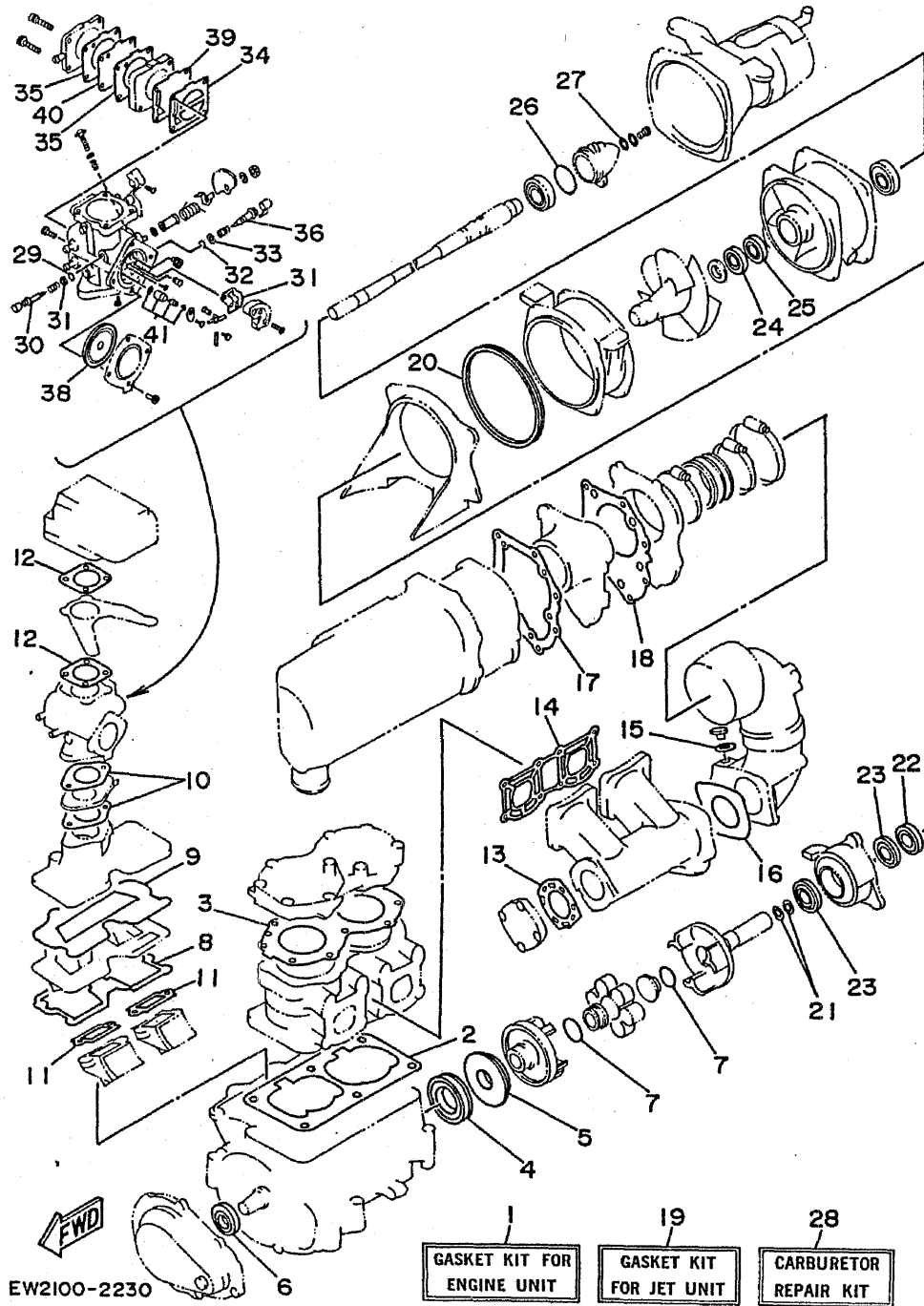
FIG. 23 GASKET KIT

REF. NO.	PART NO.	DESCRIPTION	Q'TY	REMARKS
1	6R7-W0001-01	GASKET KIT FOR ENGINE UNIT	1	
2	6M6-11351-A1	.GASKET, cylinder	1	
3	6R7-11181-A0	.GASKET, cylinder head 1	1	
4	93102-36M33	.OIL SEAL	1	
5	93101-36M46	.OIL SEAL	1	
6	93103-32M01	.OIL SEAL	1	
7	93210-30M31	.O-RING	2	
8	6M6-13566-A1	.GASKET	1	
9	6M6-13563-A1	.GASKET	1	
10	6M6-13556-A1	.GASKET, manifold	2	
11	6M6-13621-A1	.GASKET, valve seat	2	
12	6M6-13674-A1	.GASKET, air cooler cover 1	2	
13	6M6-14739-A1	.GASKET, muffler damper 1	1	
14	6M6-14613-A0	.GASKET, exhaust pipe	1	
15	90430-08020	.GASKET	1	
16	6R7-14749-A0	.GASKET, muffler damper 2	1	
17	6R7-14755-A0	.GASKET, silencer	1	
18	6R7-41114-A0	.GASKET, exhaust outer cover	1	
19	6R7-W0001-21	GASKET KIT FOR JET UNIT	1	
20	6R7-51117-00	.PACKING	1	
21	93210-17MA4	.O-RING	2	
22	93101-25M53	.OIL SEAL	1	
23	93101-25M52	.OIL SEAL	2	
24	93102-25M34	.OIL SEAL	1	
25	93101-25M50	.OIL SEAL	1	
26	93210-46M16	.O-RING	1	
27	90430-06M03	.GASKET	1	
28	6R8-W0093-00	CARBURETOR REPAIR KIT	1	



D7

FIG. 23 GASKET KIT



REF. NO.	PART NO.	DESCRIPTION	Q'TY	REMARKS
29	6K8-14562-00	.O-RING	1	
30	6K8-14946-10	.PLATE, needle fitting	1	
31	6K8-14536-11	.GASKET	1	
32	583-14561-00	.O-RING	1	
33	6K8-14537-00	.GASKET	1	
34	6K8-24435-10	.GASKET, body 2	1	
35	6K8-24431-10	.GASKET, fuel pump 1	2	
36	6K8-14923-10	.SCREW, pilot	1	
37	6K8-14559-00	.WASHER	2	
38	6R7-14541-00	.DIAPHRAGM, pump	1	
39	6K8-24411-10	.DIAPHRAGM	1	
40	6K8-24421-10	.VALVE, check	1	
41	6K8-14916-15	.NEEDLE	1	

NUMERICAL INDEX

PART NO.	GRID NO.	PART NO.	GRID NO.	PART NO.	GRID NO.	PART NO.	GRID NO.	PART NO.	GRID NO.	PART NO.	GRID NO.
EW2-U1330-30	C-15	6R7-14301-01	B- 7	6R7-14749-A0	B- 9	61L-45378-00	B-14	EVO-61438-00	C-14	EW2-64161-F0	D- 5
EW2-U1338-00	C-15	6R7-1441K-00	B- 5		D- 7	6R7-45511-00	B-13	EVO-61446-00	C-14	EW2-64161-G0	D- 5
EW2-U1343-01	C-15	6M6-14451-00	B- 5	6R7-14752-00	B-10	6M6-45526-00	B- 4	EW2-61460-00	D- 2	EW2-64161-H0	D- 5
EW2-U491A-00	D- 2	6K8-14471-00	B- 7	6R7-14753-00-9M	B- 9	6M6-4581J-00	B- 4	EVO-61461-00	D- 3	EW2-64161-00	D- 5
EW2-U5160-00	C- 6	6K8-14481-10	B- 8	6R7-14755-A0	B-10	6R7-45813-00-5B	B- 4	EVO-61461-30	C-14	EW2-64161-10	D- 5
EW2-U7242-00	C-14	6R7-14485-00	B- 2		D- 7	6R7-45813-11-9M	B- 4	EW2-61465-00	C-15	EW2-64161-20	D- 5
EW2-U7550-00	C-13		B- 9	6R7-14758-00-9M	B- 9	6E5-48538-00	D- 2	EW2-61481-00	C-14	EW2-6417B-30	D- 5
6R7-W0001-01	D- 7	6K8-14503-02	B- 7	6M6-14771-00-94	B-10	6R7-51117-00	B-12	EVO-61486-00	C-14	EW2-6417B-40	D- 5
6R7-W0001-21	D- 7	6M6-14503-00	B- 7	6K8-14916-15	D- 8		D- 7	EW2-61540-00	D- 3	EW2-6417C-30	D- 5
6R7-W0004-00	B- 5	6K8-14521-00	B- 7	61L-14916-15	B- 8	6K8-51129-00	B- 2	EW2-61552-00	D- 3	EW2-6417C-40	D- 5
6R7-W0090-01-EK	B- 2	6K8-14521-10	B- 7	6K8-14923-10	B- 8		B- 9	EW2-61553-00	D- 3	EW2-6417D-30	D- 5
6R8-W0093-00	D- 7	6K8-14523-11	B- 7		D- 8		B- 9	EW2-61555-00	D- 4	EW2-6417D-40	D- 5
EVO-W6783-01	C-11	6K8-14527-11	B- 7	6K8-14926-10	B- 7		B-12	EW2-61559-00	D- 3	EW2-6417E-30	D- 5
6R7-11111-00-94	B- 2	6M6-14527-02-EK	B- 5	6K8-14930-10	B- 7	6M6-5114E-00	B- 4	EW2-61565-00	D- 3		D- 5
6R7-11181-A0	B- 2	6K8-14531-00	B- 8	6K8-14946-10	B- 7	6R7-5114E-01	B- 4	EVO-61651-30	C-10	EW2-6417F-40	D- 5
	D- 7	6K8-14533-00	B- 7		D- 8	6R7-5114I-00	C- 9	EVO-61652-00	C-10	EW2-6417G-30	D- 5
6R7-11311-00-94	B- 2	6K8-14534-10	B- 7	6M6-15100-00-94	B- 2	6R7-51161-00	C- 9	EW2-62136-01	C- 6	EW2-6417G-40	D- 5
6E5-11325-00	B- 2	6K8-14536-11	B- 7	6R7-15761-00	B- 9	6K8-51162-00	C- 9	EW2-62137-00	C- 6	EW2-6417H-30	D- 5
6M6-11351-A1	B- 2		D- 8	6R7-21415-00-94	B- 2	6R7-51311-00	B-12	EW2-62140-00	C-11	EW2-6417H-40	D- 5
	D- 7	6K8-14537-00	B- 8	6R7-21425-00-94	B- 2	6R7-51312-00-94	B-12	EW2-62142-00	C-11	EW2-64183-A0	D- 5
6R7-11400-00	B- 4		D- 8	1HX-21780-00	C- 8	6R7-51313-00	B-13	EW2-62149-00	C- 5	EW2-64183-E0	D- 5
6M6-11601-00	B- 4	6R7-14541-00	B- 8	EVO-23814-01	D- 3	6R7-51315-00-94	B-12	EW2-62150-00	C-12	EW2-64183-N0	D- 6
6M6-11601-10	B- 4		D- 8	650-24378-00	B- 5	6R7-51318-00	B-13	EVO-62241-30	C-14	EW2-64183-30	D- 5
6M6-11601-20	B- 4	6R7-14542-10	B- 8	6K8-24411-10	B- 8	61L-51321-10-94	B-13	EW2-62501-00	C-10	EW2-64183-50	D- 5
6M6-11631-01-93	B- 4	6K8-14547-01	B- 8		D- 8	6R7-51323-01	B-12	EW2-62503-00	C-10	EW2-64183-60	D- 5
8H8-11633-00	B- 4	6K8-14556-10	B- 7	6R7-24412-01	B- 7	6R7-51326-00-94	B-12	EW2-62512-10	C-10	EW2-64183-70	D- 6
6M6-11635-00	B- 4	6K8-14559-00	B- 7	6K8-24413-10	B- 8	6R7-51333-00	B-12	EW2-62512-20	C-10	EW2-64183-90	D- 5
6M6-11636-00	B- 4		D- 8	6K8-24421-10	B- 8	6R7-51381-00	B-12	EW2-62523-10	C-10	EW2-64188-00	D- 6
6M6-13555-00-94	B- 5	583-14561-00	B- 8		D- 8	61L-5169A-00	B- 6	EW2-62523-20	C-10	EW2-6491K-00	D- 2
6M6-13556-A1	B- 5		D- 8	6K8-24431-10	B- 8	EW2-61314-00	D- 4	EW2-62664-00	C- 6	EW2-64953-00	D- 2
	D- 7	6K8-14562-00	B- 7		D- 8	EW2-61316-00	D- 2	EVO-62693-02	B-13	EW2-65135-00	C-15
6M6-13563-A1	B- 5		D- 8	6K8-24435-10	B- 8	EW2-6133B-00	C-15	EVO-62694-00	C-14	EW2-65136-00	C- 6
	D- 7	6R7-14569-00	B- 7		D- 8	EW2-6133D-00	C-15	EVO-62695-00	B-13	EW2-6514B-00	C- 6
6M6-13566-A1	B- 5	6K8-14579-00	B- 7	6K8-24452-10	B- 8	EW2-6133E-00	C-15	EW2-62730-00	B-13	EW2-65143-00	C- 6
	D- 7	6K8-14589-00	B- 8	70R-24489-00	C-11	EW2-61335-00	C-15	FK7-62732-00	B-13	EW2-65145-00	C- 6
6R7-13610-00	B- 5	6K8-14591-10	B- 7	6K8-24500-02	B-11	EW2-61337-30	C-15	EW2-62840-00	C- 6	EW2-65165-00	C- 7
6M6-13621-A1	B- 5	6K8-14592-00	B- 7	6R7-24524-00	B-11	EW2-61344-01	C-15	EW2-62843-00	C- 6	EW2-65210-00	C- 8
	D- 7	6R7-14596-00	B- 7	70R-24543-00	C-11	EW2-61391-11	C-15	EW2-62845-00	C- 6	EW2-65212-00	C- 8
6M6-13641-00-94	B- 5	6M6-14613-A0	B- 9	6K8-24560-10	B-11	EW2-61391-21	C-15	EW2-62846-00	C- 6	EW2-65213-00	C- 8
6M6-13674-A1	B- 5		D- 7	EVO-28100-00	D- 6	EW2-61392-30	C-15	EW2-62847-00	C- 6	EW2-65219-00	C- 8
	D- 7	61L-14615-00	B-10	6E0-28193-00-94	B- 3	EW2-61393-30	C-15	EW2-62848-00	C- 6	EW2-65221-00	C- 8
3G2-14231-23-A0	B- 7	61L-14625-00	B-10	6R7-41113-00-9M	B-10	EW2-61395-30	C-15	A00-62858-01	C- 6	EW2-65226-00	C- 8
830-14231-24	B- 7	6R7-14711-00-9M	B- 9	6R7-41114-A0	B-10	EW2-61417-00	D- 3	EW2-63511-01	C-10	EW2-65760-00	C-13
61L-14243-00	B- 6	6R7-14712-00-9M	B- 9		D- 7	EW2-61419-00	D- 3	EW2-63512-10	C-10	EW2-65772-00	C-12
6R7-14253-00	B- 8	6M6-14718-01-9M	B- 9	6R7-42316-00	B-13	EW2-6142A-00	D- 2	EW2-63512-20	C-10		C-13
6R7-14255-00	B- 5	6R7-14721-00-9M	B- 9	6R7-44517-00-9M	B- 2	EW2-6142D-00	D- 2	EW2-64114-00	D- 5	EW2-65910-00	C- 8
6R7-14283-00	B- 5	6M6-14739-A1	B- 9	663-45119-00	B- 6	EW2-61422-00	D- 4	EW2-64161-A0	D- 5	EW2-65912-00	C- 8
6M6-14284-00-98	B- 5		D- 7	6R7-45332-01-9M	B-12	EVO-61435-00	C-14	EW2-64161-E0	D- 5	EW2-65912-30	C- 6

NUMERICAL INDEX

PART NO.	GRID NO.	PART NO.	GRID NO.	PART NO.	GRID NO.	PART NO.	GRID NO.	PART NO.	GRID NO.	PART NO.	GRID NO.
EW2-65913-00	C- 6	EU0-67856-40	C- 5	6R7-82560-00	C- 4	90149-05964	C-10	90445-10M35	B-11	90601-20006	C- 4
	C- 8	EW2-67856-00	C-11	6R7-83623-40	C- 4	90149-06965	C-10	90445-10M48	B- 5		C- 9
EW2-65915-00	C- 8	EW2-67856-30	C-12	6R7-85515-00	B-15	90159-05900	D- 3	90445-10M51	B-11		C-14
EW2-65919-00	C- 8	EU0-67869-00	C-11	6M6-8552A-00-98	C- 3	90164-04025	C- 8	90445-11903	C-11		C-15
EW2-65920-00	C- 6	EW2-68156-00	C- 4	6M6-8552E-00	C- 3	90170-22187	B-11	90445-14M02	C- 9	90601-20010	B-11
EW2-67243-00	C-14	EW2-68211-00	C- 5	6M6-85520-00	B-15	90179-12933	D- 4	90445-14M04	C- 9	91490-16010	C-11
EW2-67250-00	D- 3	EU0-68218-04	C- 5	6M6-85533-00	B-15	90201-05925	B-11	90445-14M06	B- 9	91690-30010	C-15
EW2-67252-02	C-14		C-13	6M6-85540-01	C- 3		C- 4	90445-14M12	B-12	91690-30012	D- 2
EW2-67255-00	D- 3	EU0-68221-00	C- 5	6R7-85550-00	B-15		C- 9	90445-14M24	B- 9	91790-05040	C-11
EW2-67256-00	D- 3	EU0-68221-30	C- 5	6R7-85560-00	B-15	90201-05928	D- 3	90446-20M24	B- 9	92503-06015	C- 3
EW2-67257-00	D- 3	EW2-68221-00	C- 5	61L-85570-00	C- 3	90201-06M02	B-13	90460-11M17	B-14	92990-04200	C- 8
EW2-67258-00	D- 3	EW2-68310-03	D- 3	6M6-85580-00	B-15	90201-24M01	B- 4	90460-18M08	C- 9		C- 8
EW2-67259-00	D- 3	EW2-68311-01	D- 3	90105-05M46	B- 5	90202-229U1	B-11	90460-64M15	B-10	92990-05200	B-13
EU0-67267-00	C-14	FK7-68312-02	D- 3	90105-06900	C-12	90209-20M20	B-13	90460-70M16	B-10		C- 6
EU0-67324-00	B- 3	FK7-68313-01	D- 3		C-13	90267-40935	C-11	90460-90M11	B-10		C- 8
EU0-67354-00-01	B- 3	EW2-68348-00	D- 3	90105-06901	C- 4	90267-40936	C- 8	90461-06M01	C- 3		C-10
EU0-67354-00-03	B- 3	EW2-68953-00	C- 8	90105-06903	C- 6	90267-40939	C- 8	90464-06M29	C- 3		D- 2
EU0-67354-00-05	B- 3	6K8-7610K-00	C- 9	90105-08902	C-15	90267-48007	B-11	90465-08M07	C- 3	92990-05600	B- 5
EU0-67354-00-10	B- 3	6M6-8132W-00	C- 3		D- 3		C- 9	90465-08M38	C- 3		C-11
EU0-67354-00-20	B- 3	6M6-81337-00-EK	B-15	90105-10M45	B-10	90267-48938	D- 2	90465-11M10	B- 5	92990-06100	C- 2
EU0-67354-30-03	B-14	6M6-81365-A0	B-15	90105-10M49	B-10		D- 2		B-11		C-10
EU0-67354-30-05	B-14	6M6-81800-00	C- 2	90109-10M44	B-15		D- 4		C- 4		D- 3
EU0-67354-30-10	B-14	3AJ-81809-00	C- 2	90116-08M14	B- 5	90267-48940	B-11		C- 4	92990-06200	C- 7
EW2-67354-00-01	B-13	6M6-81820-00	C- 2	90119-05912	D- 4		C-11		C- 5		C-10
EW2-67354-00-03	B-13	6M6-81826-00	C- 2	90119-05923	C- 6	90280-05013	B-15		C-11		C-10
EW2-67354-00-05	B-13	6M6-8183E-00	C- 2	90119-06M70	B-13	90338-09900	C- 9		C-12		D- 4
EW2-67354-00-10	B-13	6M6-81830-00	C- 2	90119-06900	B-12	90340-08M04	B- 9	90465-13M11	B-12	92990-06600	B- 5
EW2-67555-00	C-13	6M6-81840-00	C- 2	90119-06908	B-13	90380-12M29	B- 2		C- 3		B- 5
EW2-67593-00	C-11	11H-81844-00	C- 2	90119-06914	C- 9		B-15		C- 9		B- 9
EW2-67593-40	C-11	6M6-81844-00	C- 3	90119-06915	B-13	90386-08006	B-14	90467-06016	B- 2		B- 9
EU0-67613-00	C- 9	26H-81847-00	C- 2		C- 9	90387-05907	C- 6	90467-08M10	C- 5		B-10
EW2-67618-00	C- 9	6M6-81850-00	C- 2		C- 9		C- 8	90467-11032	C-11		B-10
EW2-67711-00	C-11	6M6-81921-00	C- 3	90119-06918	C-15	90387-06M60	B-12	90467-13M13	B- 9		B-12
FJ0-67713-00	C-11	6G1-81941-10	C- 3	90119-06919	C- 9	90387-06906	C- 8	90480-06M43	C- 3		B-13
EW2-67714-00	C-11	6M6-81952-01	C- 3	90119-06920	C- 5		D- 4	90480-06M46	B-12		B-15
EW2-67716-00	C-11	6M6-81960-A0	C- 3	90119-08M19	B- 2	90387-07908	C- 4	90501-14M73	C- 2		B-15
EU0-67767-30	C-11	EU0-82110-78	C- 5	90119-08M38	B- 9	90387-07909	C- 6	90560-22281	D- 3		C- 2
EW2-67811-00	B-11	6R7-82117-01	C- 5	90119-08M55	B- 2	90387-07910	C-15	90600-91728	D- 4		C- 3
EW2-67812-00	B-11	6R7-82117-11	C- 5	90119-08038	B- 2	90387-08M06	B-13	90600-91729	B-11		C- 3
EU0-67816-30	B-11	6R7-82117-21	C- 4	90119-08904	B- 2	90430-06M03	B-13		C- 4	92990-08100	B- 7
EU0-67817-00	B-11	6K8-82150-01	C- 3	90119-08907	B-14		D- 7		C- 9	92990-08200	C- 4
EW2-67821-00	C-12	6G1-82151-00	C- 3	90119-10M07	B- 2	90430-08020	B- 9	90601-11062	C-11	92990-08600	B- 5
EW2-67821-30	C-12	6R7-82351-00	C- 3	90119-10M56	B- 2		D- 7	90601-155U4	C-12		B- 9
EW2-67822-00	C-11	6R7-82352-00	C- 3	90119-10M72	B-10	90445-07M19	B- 2	90601-162U5	C-11		B- 9
EU0-67831-30	C-11	6R7-82361-00	C- 4	90119-10917	B-13	90445-09M17	B-14		C-13		C- 2
EU0-67835-00	C-11	6R7-82370-00	C- 3	90149-05959	D- 3	90445-10M32	B-11	90601-168U7	C- 7		C- 2
EW2-67844-00	C-12	6R7-82370-10	C- 3	90149-05962	C-10	90445-10M33	B-11		C-13	92990-10200	D- 4
EU0-67856-00	C-11	6R7-82553-01	C- 4	90149-05963	C- 8	90445-10M34	B-11	90601-20005	C-14	92990-14600	C-15



NUMERICAL INDEX

PART NO.	GRID NO.	PART NO.	GRID NO.	PART NO.	GRID NO.	PART NO.	GRID NO.	PART NO.	GRID NO.
92995-06100	C- 4	95380-08700	C- 4	98980-05020	C- 8				
92995-08600	B-13	95720-06300	D- 4	98980-06010	D- 4				
93101-25M50	B-12	95780-05300	B-14	98980-06025	C-10				
	D- 7		C- 6	99780-14100	C-15				
93101-25M52	B-12		C- 6						
	D- 7		C- 8						
93101-25M53	B-12		D- 2						
	D- 7	95780-10300	D- 4						
93101-36M46	B- 4	97013-06035	B- 5						
	D- 7	97013-08025	B- 9						
93102-25M34	B-12	97313-06016	B- 9						
	D- 7	97313-06020	B- 5						
93102-36M33	B- 4	97313-06025	B- 9						
	D- 7	97313-06030	B-10						
93103-32M01	B- 4	97313-08035	B- 9						
	D- 7		C- 2						
93210-17MA4	B-12	97313-08040	C- 2						
	D- 7	97395-06012	B-12						
93210-30M31	B- 4	97395-06016	B-10						
	B- 4		B-12						
	D- 7		C- 4						
93210-46M16	B-12	97395-06025	B-15						
	D- 7	97395-08018	B-13						
93303-30601	B- 4	97513-10535	B- 2						
93306-205U0	B-12	97513-10570	B- 2						
93306-205U5	B-12	97513-10580	B- 2						
93306-307U1	B- 4	97680-05216	C- 8						
93310-320U3	B- 4	97780-30312	D- 2						
93430-47M04	B-12	97780-50114	C- 4						
93440-80023	B- 4		C- 9						
93450-21053	B- 4	97780-60120	B-14						
93603-10049	B- 2	97780-60525	C- 3						
93604-07141	B- 2	97902-04122	B-15						
93606-07M17	B-12	97902-05125	B-15						
93606-12019	B- 2	97980-05330	B- 7						
	B-13	98580-03008	D- 3						
	B-15	98580-04008	B-15						
94701-00041	C- 4	98580-05016	B- 5						
94702-00195	C- 3	98580-05525	D- 3						
95380-05800	C- 6	98580-06016	B-15						
	C-10	98580-06030	C- 3						
95380-06600	C- 6	98680-04016	B- 2						
95380-06700	B-13	98780-05014	C- 6						
	C- 2	98780-05016	B-13						
95380-06800	C-10	98780-06010	C-15						
	C-10	98880-14300	C-15						
95380-08600	B- 5	98980-04008	B-11						
95380-08700	B- 7	98980-04010	D- 4						