

YAMAHA

Marine

Water Vehicles

SUPER JET (EW2)

PARTS CATALOGUE



YAMAHA MOTOR CO.,LTD.

10EW2-300E1 ●



FOREWORD

This Parts Catalogue is related to the parts in use for the Yamaha SUPER JET (EW2). When you are ordering replacement parts for the SUPER JET (EW2), refer to this Parts Catalogue and quote both part numbers and part names correctly.

1. Modifications or additions which have been made after issue of the Parts Catalogue will be announced in the Yamaha Parts News.

It is advisable that according to the Yamaha Parts News you make necessary corrections to the Parts Catalogue on hand to keep it up-to-date.

2. Abbreviations

The following abbreviations are used in this Parts Catalogue.

U.R.	Use size (thickness) and/or number as required.
U.N.	Use as many as you need.
A.P.	Alternate Parts
L.M.	Local Made
F#	Frame No. (Applicable machine No.)

3. The parts marked with (*) in the parts number column of this Catalogue are not supplied with by Yamaha, those have to be found locally.
4. Parts, which are to be supplied in the form of assemblies, are listed with an indentation of one letter's space, and a dot (.) is put against the name of each part.

EXAMPLE CARBURETOR ASS'Y
 . JET, pilot
 . NOZZLE, main

5. Indication of No. of constituent parts for assembly

The numeral appearing to the right of each constituent part under the description indicates the quantity of such parts for each individual assembly unit.

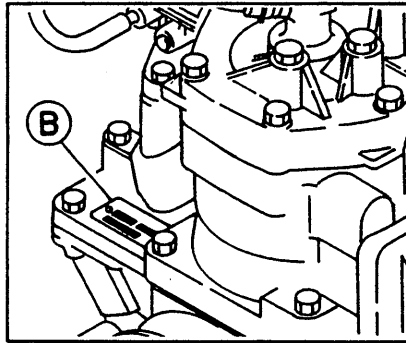
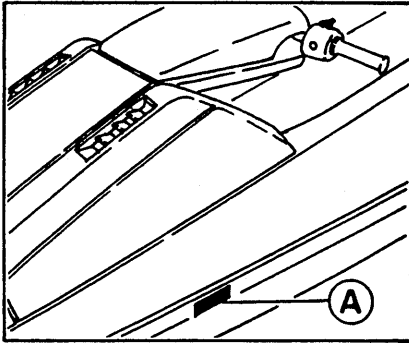
EXAMPLE

Part No.	Description	Q'ty	Remarks
2F5-83310-60	FRONT FLASHER LIGHT ASS'Y	2	
115-83311-60	. BULB (6V-18W)	1	
1M1-83309-60	. REFLECTOR	1	

FOREWORD

6. Initial Serial No. and Color Code

(A) Hull Serial No.	EW2-800101 and following
(B) Engine Serial No.	6R7-000101 and following



Color Code	Color Name	Abbreviate
EK	METALLIC MARINE SILVER	MMS

7. Applicable colors of graphics are represented in the "Remarks" column by the letter(s) appropriately picked out of the full word(s) showing such colors.

EXAMPLE

Part No.	Description	Q'ty	Remarks
2N4-24110-00-X5	FUEL TANK COMP.	1	MAXIM RED
3J1-24240-10	. GRAPHIC, fuel tank set	1	for MXR

8. A part with "YMUS" in the remarks column can be obtained from YMUS, USA and not from YMC, JAPAN.

Address: YAMAHA MOTOR CORPORATION U.S.A.
 6555 KATELLA AVENUE
 CYPRESS, CALIFORNIA 90630, U.S.A.
 PARTS & ACCESSORY DIV.

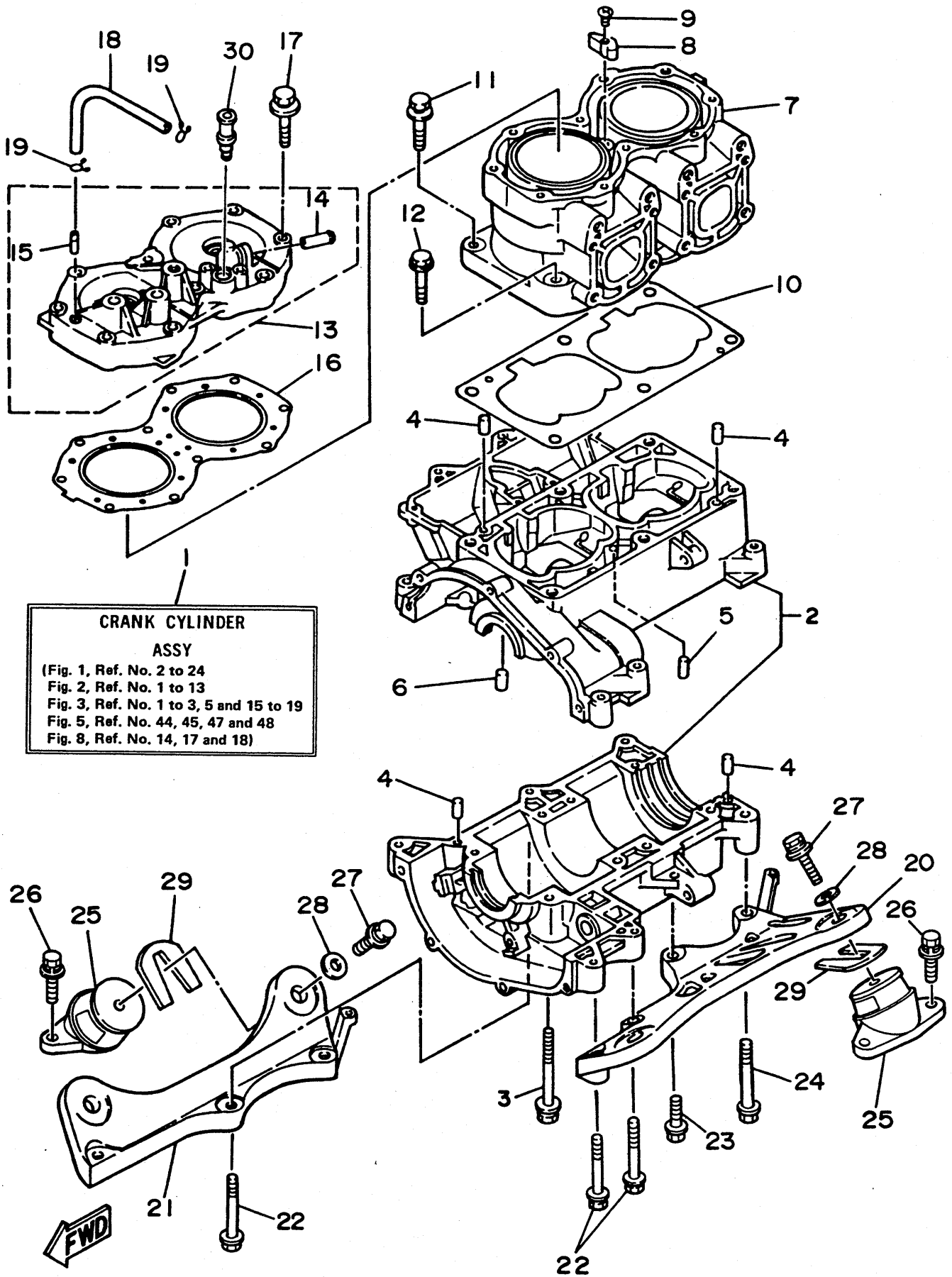
EXAMPLE

Part No.	Description	Q'ty	Remarks
EW2-U5160-00	ENGINE HATCH COMP.	1	YMUS
90601-168U7	BAND, hose	2	YMUS

CONTENTS

Fig. 1	CYLINDER. CRANKCASE	1
Fig. 2	CRANKSHAFT. PISTON	3
Fig. 3	INTAKE	5
Fig. 4	CARBURETOR	7
Fig. 5	EXHAUST 1	9
Fig. 6	FUEL	11
Fig. 7	JET UNIT	13
Fig. 8	GENERATOR	15
Fig. 9	STARTING MOTOR	17
Fig. 10	ELECTRICAL 1	19
Fig. 11	ELECTRICAL 2	21
Fig. 12	HULL. DECK 1	23
Fig. 13	HULL. DECK 2	25
Fig. 14	HULL. DECK 3	27
Fig. 15	GUNWALE. MAT	29
Fig. 16	FUEL TANK	31
Fig. 17	EXHAUST 2	33
Fig. 18	CONTROL CABLE	35
Fig. 19	POLE PIVOT	37
Fig. 20	STEERING POLE	39
Fig. 21	STEERING	41
Fig. 22	GRAPHIC. TOOL	43
Fig. 23	GASKET KIT	45
	NUMERICAL INDEX	

Fig. 1 CYLINDER. CRANKCASE



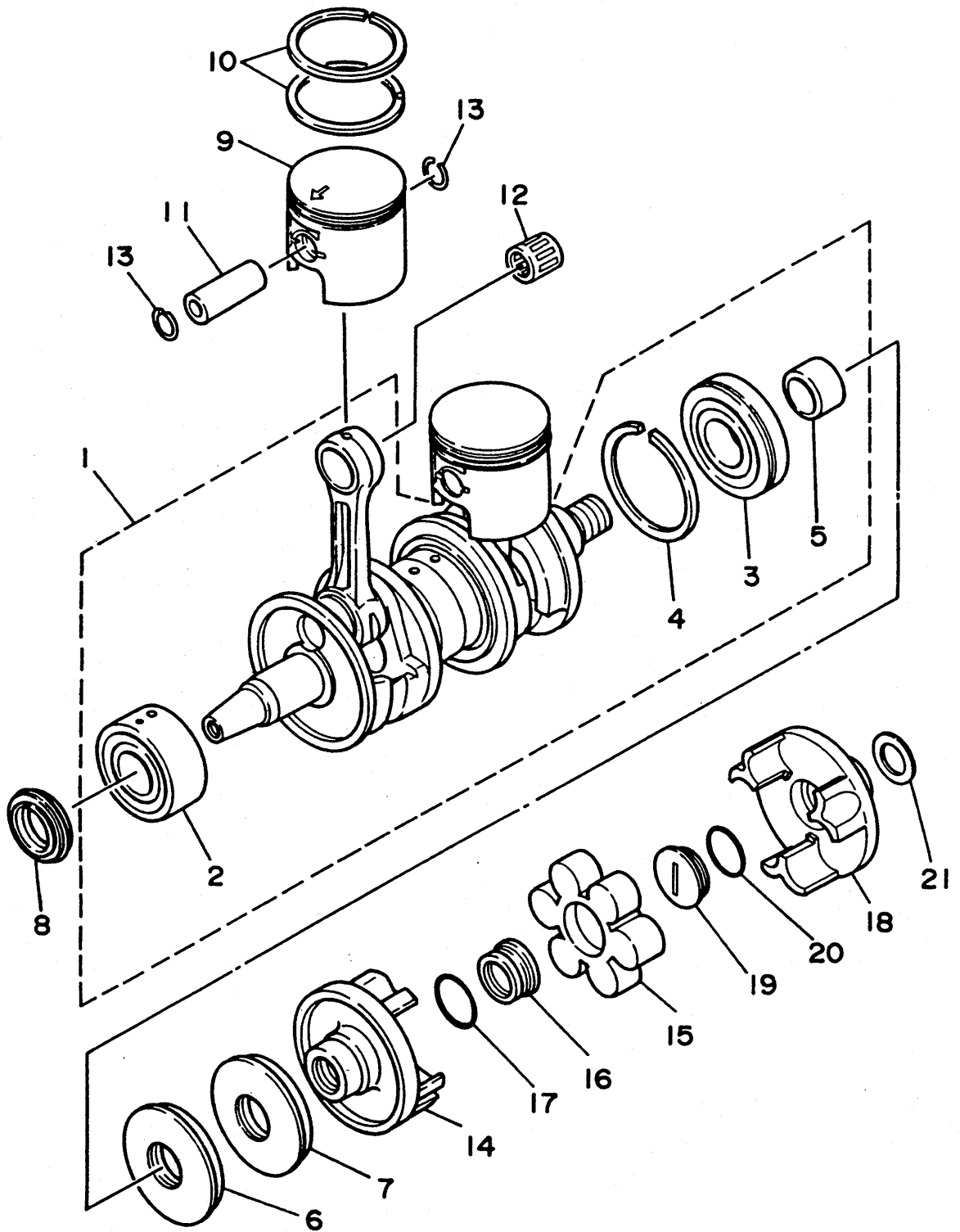
**CRANK CYLINDER
ASSY**
 (Fig. 1, Ref. No. 2 to 24
 Fig. 2, Ref. No. 1 to 13
 Fig. 3, Ref. No. 1 to 3, 5 and 15 to 19
 Fig. 5, Ref. No. 44, 45, 47 and 48
 Fig. 8, Ref. No. 14, 17 and 18)

EW2171-0010

Fig. 1 CYLINDER. CRANKCASE

Ref.No.	Parts No.	Description	Q'ty	Ref.No.	Parts No.	Description	Q'ty
1	6R7-W0090-00-EK	CRANK CYLINDER ASSY	1	18	90445-07M19	HOSE	1
2	6M6-15100-00-94	CRANKCASE ASSY	1	19	90467-06016	CLIP	2
3	90119-08M55	BOLT, with washer	8	20	6R7-21415-00-94	BRACKET, front upper 1	1
4	93606-12019	PIN, dowel	4	21	6R7-21425-00-94	BRACKET, rear upper 1	1
5	93603-10049	PIN, dowel	4	22	97513-10570	BOLT, with washer	5
6	93604-07141	PIN, dowel	1	23	97513-10535	BOLT, with washer	1
7	6R7-11311-00-94	CYLINDER 1	1	24	97513-10580	BOLT, with washer	1
8	6E5-11325-00	ANODE	1	25	6R7-44517-00-9M	MOUNT RUBBER	4
9	98680-04016	SCREW, oval head	1	26	90119-08038	BOLT, wiith washer	8
10	6M6-11351-00	GASKET, cylinder	1	27	90119-08904	BOLT	4
11	90119-10M56	BOLT, with washer	4	28	EU0-67324-00	PLATE	4
12	90119-10M07	BOLT, with washer	2	29	EU0-67354-00-01	SHIM (T=0.1)	1 UR
13	6R7-11111-00-94	HEAD, cylinder 1	1		EU0-67354-00-03	SHIM (T=0.3)	1 UR
14	6K8-51129-00	.NIPPLE	1		EU0-67354-00-05	SHIM (T=0.5)	1 UR
15	6R7-14485-00	.PIPE, joint	1		EU0-67354-00-10	SHIM (T=1.0)	1 UR
16	6R7-11181-00	GASKET, cylinder head 1	1		EU0-67354-00-20	SHIM (T=2.0)	1 UR
17	90119-08M19	BOLT, with washer	10	30	6E0-28193-00-94	PLUG, water check	1

Fig. 2 CRANKSHAFT. PISTON

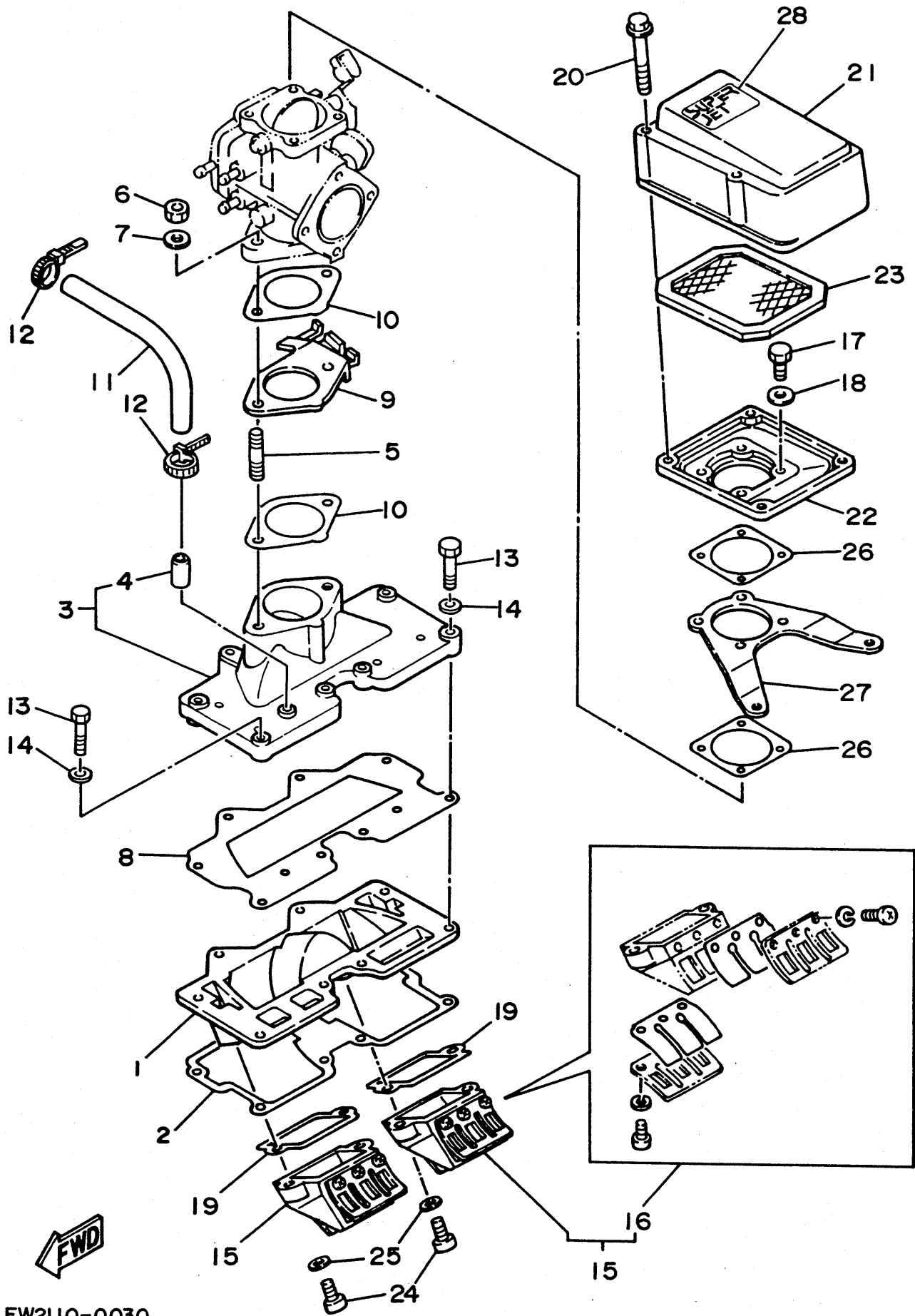


FJ0110-0020

Fig. 2 CRANKSHAFT. PISTON

Ref.No.	Parts No.	Description	Q'ty	Ref.No.	Parts No.	Description	Q'ty
1	6R7-11400-00	CRANKSHAFT ASSY	1	11	8H8-11633-00	PIN, piston	2
2	93303-30601	.BEARING	1	12	93310-320U3	BEARING, cylindrical	2
3	93306-307U1	.BEARING	1	13	93450-21053	CIRCLIP	4
4	93440-80023	.CIRCLIP	1	14	6R7-45813-00-5B	FLANGE, coupling	1
5	6M6-45526-00	.COLLAR, drive shaft	1	15	6M6-4581J-00	RUBBER SHAFT COUPLING	1
6	93102-36M33	OIL SEAL	1	16	6M6-5114E-00	NUT, ring	1
7	93101-36M46	OIL SEAL	1	17	93210-30M31	O-RING	1
8	93103-32M01	OIL SEAL	1	18	6R7-45813-10-9M	FLANGE, coupling	1
9	6M6-11631-01-93	PISTON (STD)	2	19	6R7-5114E-00	NUT, ring	1
	6M6-11635-00	PISTON (0.25MM O/S)	2 AP	20	93210-30M31	O-RING	1
	6M6-11636-00	PISTON (0.50MM O/S)	2 AP	21	90201-22M00	WASHER, plate	1
10	6M6-11601-00	PISTON RING SET (STD)	2				
	6M6-11601-10	PISTON RING SET (0.25MM O/S)	2 AP				
	6M6-11601-20	PISTON RING SET (0.50MM O/S)	2 AP				

Fig. 3 INTAKE



EW2110-0030

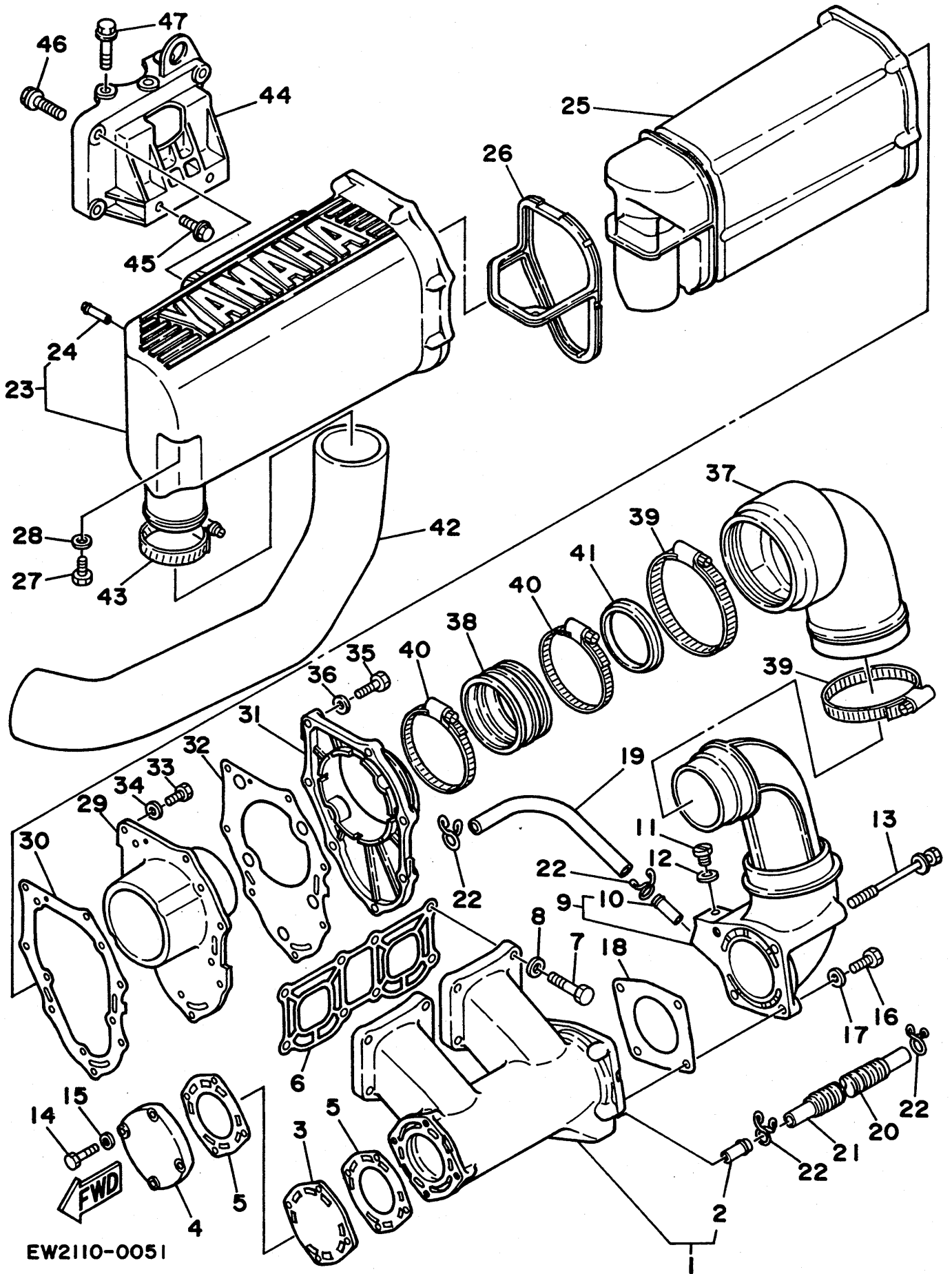
Fig. 3 INTAKE

Ref.No.	Parts No.	Description	Q'ty	Ref.No.	Parts No.	Description	Q'ty
1	6M6-13641-00-94	MANIFOLD 1	1	16	6R7-W0004-00	.REED SET	2
2	6M6-13566-00	GASKET	1	17	97313-06020	BOLT	4
3	6M6-13555-00-94	MANIFOLD, intake	1	18	92990-06600	WASHER, plate	4
4	650-24378-00	.PIPE, joint 4	1	19	6M6-13621-00	GASKET, valve seat	2
5	90116-08M14	BOLT, stud	2	20	90105-05M46	BOLT, washer based	4
6	95380-08600	NUT	2	21	6R7-14283-00	COVER, carburetor 1	1
7	92990-08600	WASHER, plate	2	22	6M6-14284-00-98	COVER, carburetor 2 (LOW GLOSS BLACK)	1
8	6M6-13563-00	GASKET	1	23	6M6-14451-00	ELEMENT, air cleaner	1
9	6M6-14527-01-EK	PLATE	1	24	98580-05016	SCREW, pan head	4
10	6M6-13556-00	GASKET, manifold	2	25	92990-05600	WASHER, plate	4
11	90445-10M48	HOSE	1	26	6M6-13674-00	GASKET, air cooler cover 1	2
12	90465-11M10	CLAMP	2	27	6R7-14255-00	PLATE	1
13	97013-06035	BOLT	8	28	6R7-1441K-00	EMBLEM	1
14	92990-06600	WASHER, plate	8				
15	6R7-13610-00	REED VALVE ASSY	2				

Fig. 4 CARBURETOR

Ref.No.	Parts No.	Description	Q'ty	Ref.No.	Parts No.	Description	Q'ty
1	6R7-14301-00	CARBURETOR ASSY 1	1	24	6R7-24412-00	.BODY 1	1
2	6R7-14596-00	.WASHER	2	25	98702-04014	.SCREW, flat head	2
3	6K8-14534-10	.COLLAR	1	26	92990-05600	.WASHER, plate	4
4	6K8-14556-10	.SPRING	1	27	6K8-14536-10	.GASKET	1
5	6K8-14926-10	.BRACKET, throttle 1	1	28	6R7-14569-00	.STRAINER	1
6	6K8-14930-10	.THROTTLE SHAFT ASSY	1	29	6K8-14916-15	.NEEDLE	1
7	92990-08100	.WASHER, spring	1	30	812-14387-00	.ARM, diaphragm	1
8	95380-08700	.NUT	1	31	6R7-14253-00	.SPRING	1
9	97980-05330	.SCREW, with washer	4	32	6R7-14541-00	.DIAPHRAGM, pump	1
10	6K8-14559-00	.WASHER	2	33	6K8-14542-10	.BODY, pump 1	1
11	6K8-14521-00	.SCREW, adjust	1	34	822-14147-00	.O-RING	1
12	812-14147-00	.O-RING	1	35	6K8-14537-00	.GASKET	1
13	6K8-14946-10	.PLATE, needle fitting	1	36	6K8-14589-00	.SPRING	1
14	85G-14118-00	.CAP	1	37	6K8-14923-10	.SCREW, pilot	1
15	97602-03107	.SCREW, pan head with washer	3	38	6K8-14481-10	.CAP, carburetor	1
16	3G2-14231-23-A0	.JET, main (#115)	1	39	6K8-24435-10	.GASKET, body 2	1
17	98602-03007	.SCREW, oval head	3	40	6K8-24411-10	.DIAPHRAGM	1
18	6K8-14521-10	.SCREW, adjust	2	41	6K8-24413-10	.BODY 2	1
19	830-14231-24	.JET, main (#120)	1	42	6K8-24421-10	.VALVE, check	1
20	6K8-14591-10	.SCREW	4	43	6K8-24431-10	.GASKET, fuel pump 1	2
21	6K8-14592-00	.SCREW	1	44	6K8-24452-10	.COVER	1
22	6K8-14527-10	.PLATE	1	45	6K8-14531-00	.SPRING, adjust screw	2
23	439-14186-00	.PIN, float	1				

Fig. 5 EXHAUST 1



EW2110-0051

Fig. 5 EXHAUST 1

Ref.No.	Parts No.	Description	Q'ty	Ref.No.	Parts No.	Description	Q'ty
1	6R7-14711-00-9M	MUFFLER 1	1	25	6R7-14753-00-9M	SILENCER, exhaust	1
2	6K8-51129-00	.NIPPLE	1	26	6R7-15761-00	SEAL, rubber 1	1
3	6M6-41111-00	INNER COVER, exhaust	1	27	97313-06016	BOLT	1
4	6M6-14718-00-9M	PROTECTOR, muffler 1	1	28	92990-06600	WASHER, plate	1
5	6M6-14739-00	GASKET, muffler damper 1	2	29	6R7-14785-00-9M	DIFFUSER	1
6	6M6-14613-00	GASKET, exhaust pipe	1	30	6R7-14755-00	GASKET, silencer	1
7	97313-08035	BOLT	8	31	6R7-41113-00-9M	OUTER COVER, exhaust	1
8	92990-08600	WASHER, plate	8	32	6R7-41114-00	GASKET, exhaust outer cover	1
9	6R7-14712-00-9M	RING, joint	1	33	97395-06016	BOLT	6
10	6K8-51129-00	.NIPPLE	1	34	92990-06600	WASHER, plate	6
11	90340-08M04	PLUG, straight screw	1	35	97313-06025	BOLT	7
12	90430-08020	GASKET	1	36	92990-06600	WASHER, plate	7
13	90119-08M38	BOLT, with washer	2	37	6R7-14615-00	JOINT, exhaust 1	1
14	97313-06025	BOLT	4	38	6R7-14625-00	JOINT, exhaust 2	1
15	92990-06600	WASHER, plate	4	39	90460-90M11	CLAMP, hose	2
16	97013-08025	BOLT	2	40	90460-70M09	CLAMP, hose	2
17	92990-08600	WASHER, plate	2	41	6R7-14635-00	JOINT, exhaust 3	1
18	6R7-14749-00	GASKET, muffler damper 2	1	42	6R7-14752-00	PIPE, outlet	1
19	90445-14M24	HOSE	1	43	90460-64M15	CLAMP, hose	1
20	90446-20M24	HOSE	1	44	6M6-14771-00-94	STAY, muffler 1	1
21	90445-14M06	HOSE	1	45	90105-10M43	BOLT, washer based	2
22	90467-13M13	CLIP	4	46	90105-10M45	BOLT, washer based	3
23	6R7-14721-00-9M	MUFFLER 2	1	47	90119-10M72	BOLT, with washer	3
24	6R7-14485-00	.PIPE, joint	1				

Fig. 6 FUEL

Ref.No.	Parts No.	Description	Q'ty	Ref.No.	Parts No.	Description	Q'ty
1	6K8-24560-10	FILTER ASSY	1	11	90601-20010	BAND	1
2	90445-10M32	HOSE	1	12	90600-91729	CLAMP	1
3	90445-10M33	HOSE	1	13	90201-05925	WASHER, plain	1
4	90445-10M34	HOSE	1	14	EU0-67816-30	BRACKET, fuel filter	1
5	90445-10M35	HOSE	1	15	90267-48940	RIVET, blind	3
6	90445-10M51	HOSE	1	16	EU0-67817-00	HOLDER, filter	1
7	90465-11M10	CLAMP	10	17	90267-48007	RIVET, blind	2
8	6K8-24500-02	FUEL COCK ASSY 1	1	18	EW2-67811-00	HOLDER, pipe 1	1
9	6R7-24524-00	LEVER, cock	1	19	98980-04008	SCREW	1
10	EW2-67812-00	HOLDER, pipe 2	2	20	90170-22187	NUT	1

Fig. 7 JET UNIT

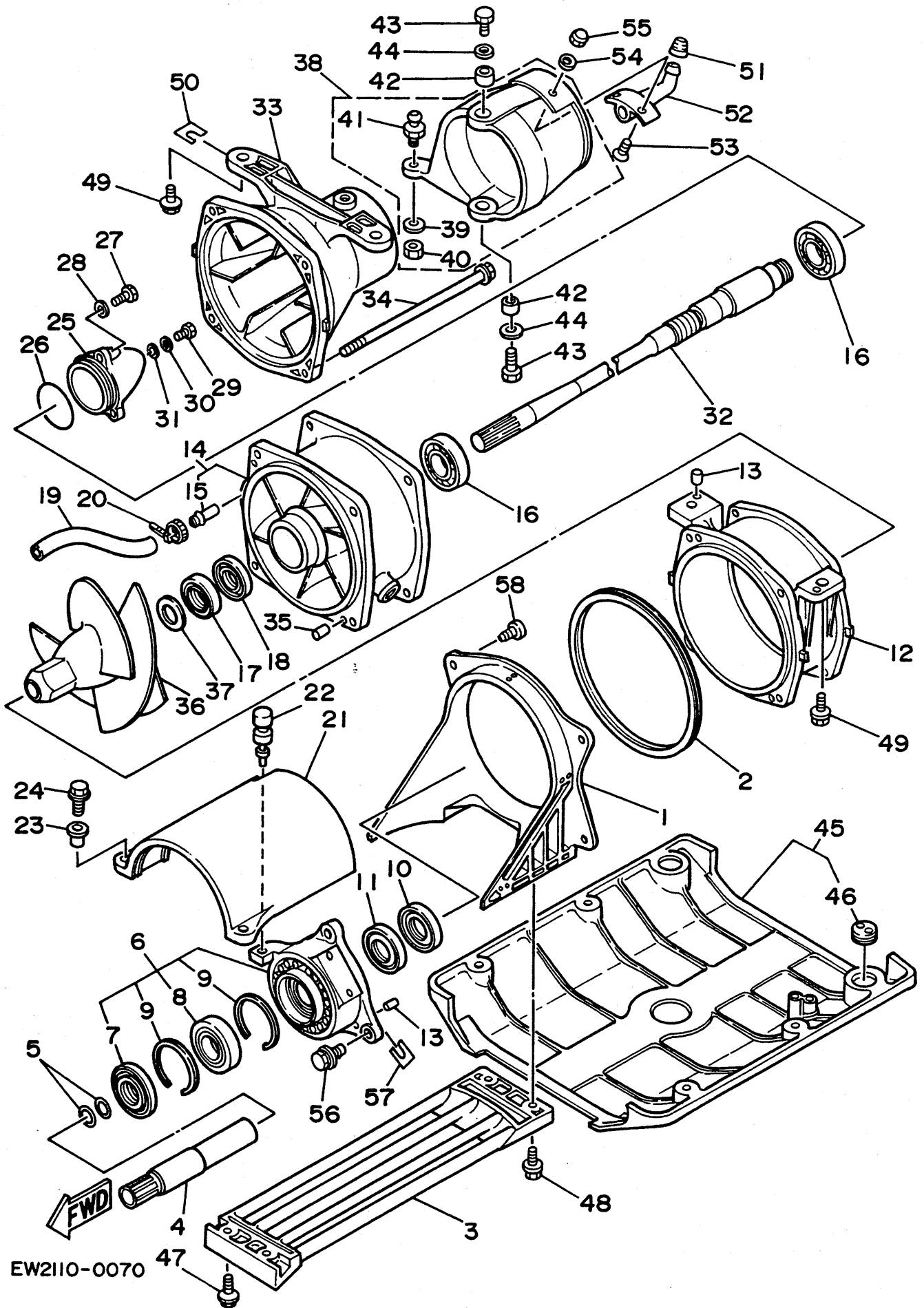
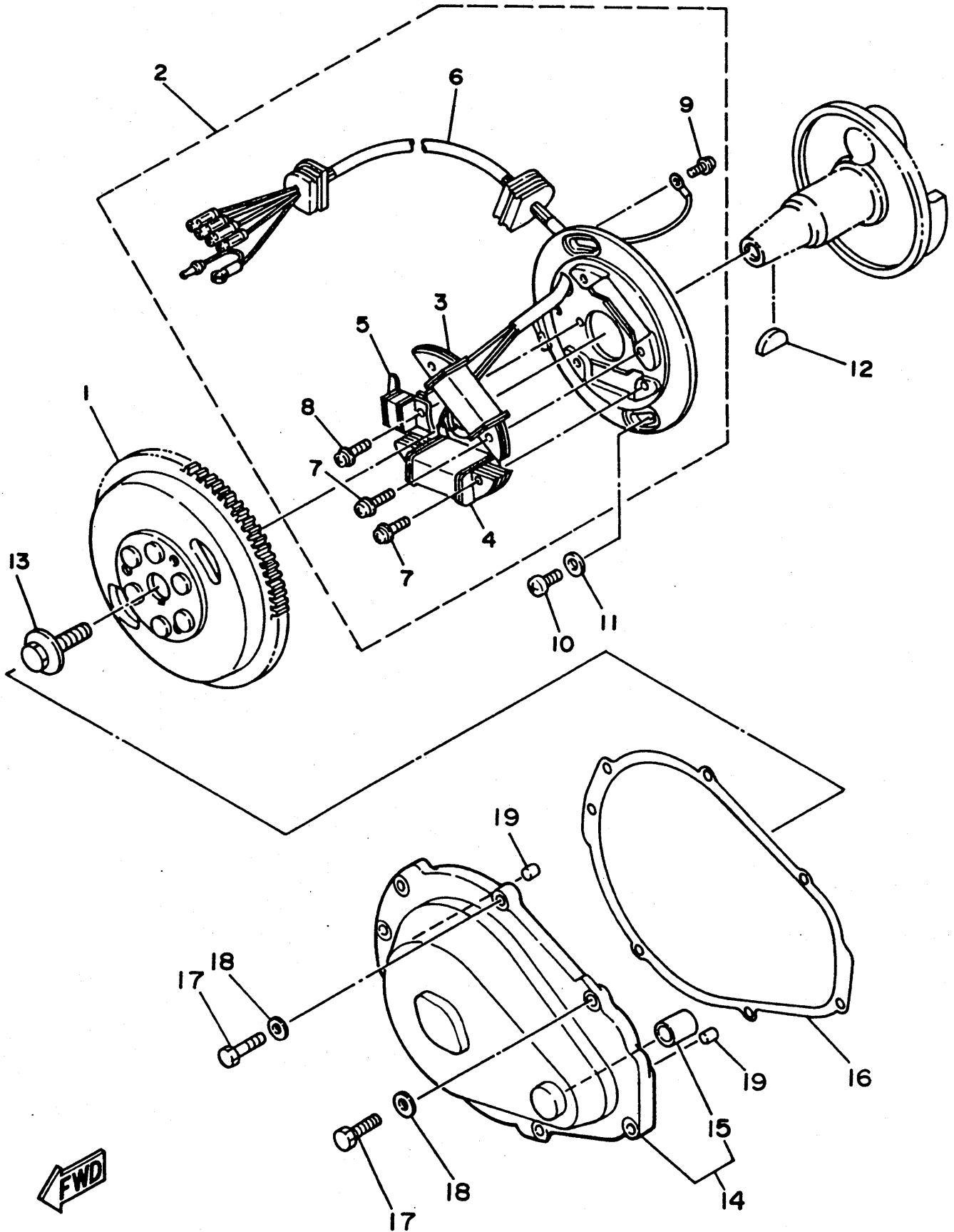


Fig. 7 JET UNIT

Ref.No.	Parts No.	Description	Q'ty	Ref.No.	Parts No.	Description	Q'ty
1	6R7-51311-00	DUCT, intake	1	33	6R7-51318-00	NOZZULE	1
2	6R7-51117-00	PACKING	1	34	90119-06M70	BOLT, with washer	4
3	6R7-51333-00	SCREEN, intake	1	35	93606-12019	PIN, dowel	2
4	6R7-51323-00	SHAFT, couplor	1	36	6R7-51321-00-94	IMPELLER	1
5	93210-17MA4	O-RING	2	37	90209-20M20	WASHER	1
6	6R7-45331-00-9M	HOUSING, bearing	1	38	6R7-51313-00	ADJUSTER	1
7	93103-25M02	.OIL SEAL	1	39	90201-06M02	.WASHER, plate	1
8	93306-205U4	.BEARING	1	40	95380-06700	.NUT	1
9	93430-47M04	.CIRCLIP	2	41	6R7-42316-00	.BOLT, joint	1
10	93103-25M02	OIL SEAL	1	42	90387-08M06	COLLAR	2
11	93102-25M37	OIL SEAL	1	43	97395-08018	BOLT	2
12	6R7-51312-00-94	HOUSING, impeller	1	44	92995-08600	WASHER	2
13	93606-07M17	PIN, dowel	4	45	EW2-62730-00	PLATE 2 ASSY	1
14	6R7-51315-00-94	DUCT, impeller	1	46	FK7-62732-01	.BOLT, jack	2
15	6K8-51129-00	.NIPPLE	1	47	90119-06915	BOLT, with washer	2
16	93306-205U0	BEARING	2	48	90119-06908	BOLT, with washer	2
17	93102-25M34	OIL SEAL	1	49	90119-10917	BOLT, with washer	4
18	93101-25M50	OIL SEAL	1	50	EW2-67354-00-01	SHIM (T=0.1)	1 UR
19	90445-14M02	HOSE	1		EW2-67354-00-03	SHIM (T=0.3)	1 UR
20	90465-13M11	CLAMP	1		EW2-67354-00-05	SHIM (T=0.5)	1 UR
21	6R7-51381-00	COVER	1		EW2-67354-00-10	SHIM (T=1.0)	1 UR
22	90480-06M46	GROMMET	1	51	EU0-62695-00	CAP, spout	1
23	90387-06M60	COLLAR	2	52	EU0-62693-01	SPOUT	1
24	90119-06900	BOLT, with washer	2	53	98780-05012	SCREW, flat head	2
25	6R7-51326-00-94	CAP	1	54	92990-05200	WASHER, plain	2
26	93210-46M16	O-RING	1	55	95380-05800	NUT	2
27	97395-06016	BOLT	3	56	90119-08907	BOLT, with washer	3
28	92990-06600	WASHER, plate	3	57	EU0-67354-30-03	SHIM (T=0.3)	1 UR
29	97395-06012	BOLT	1		EU0-67354-30-05	SHIM (T=0.5)	1 UR
30	92990-06600	WASHER, plate	1		EU0-67354-30-10	SHIM (T=1.0)	1 UR
31	90430-06M03	GASKET	1	58	97780-60520	SCREW, tapping	4
32	6R7-45511-00	SHAFT, drive	1				

Fig. 8 GENERATOR

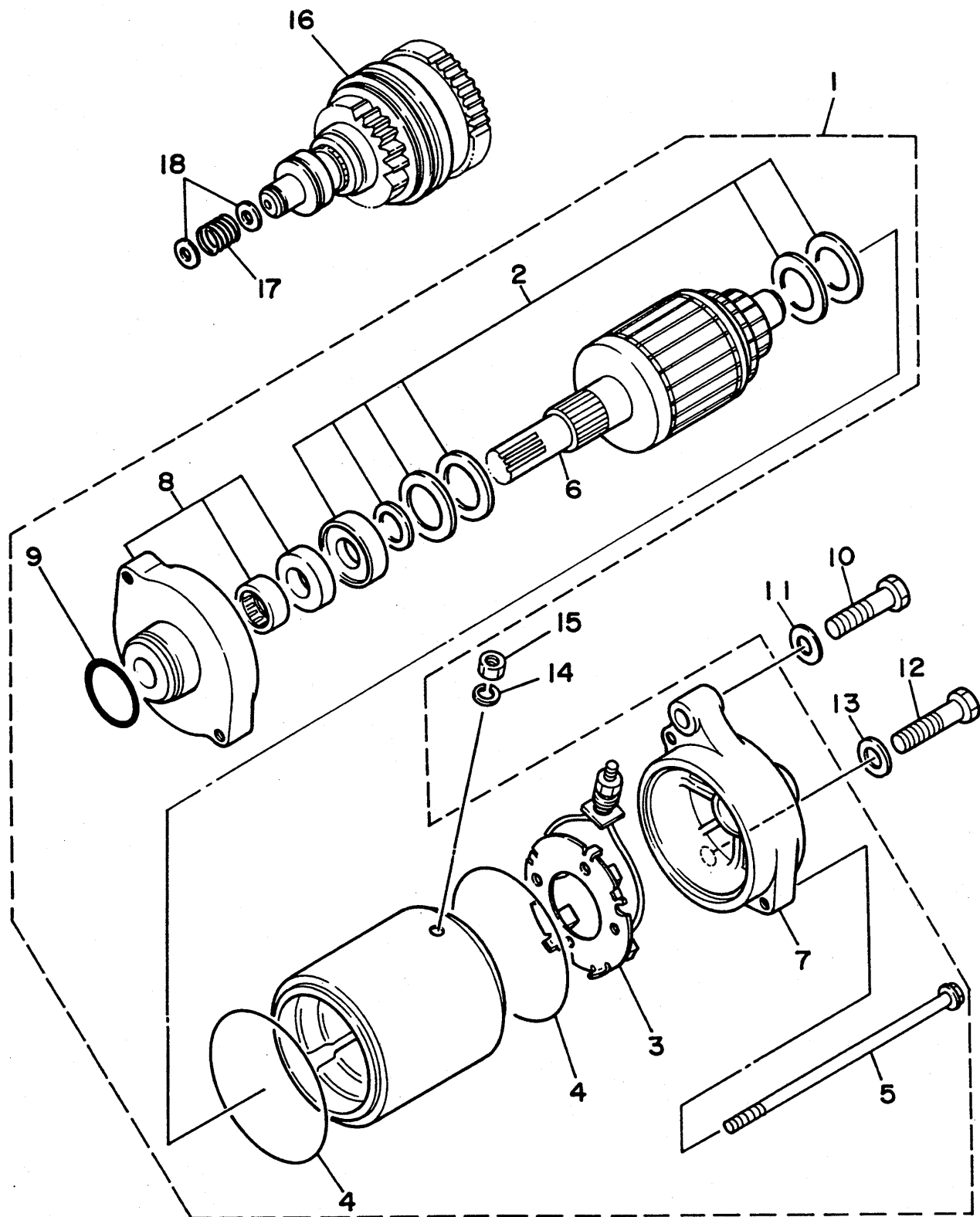


EW2110-0080

Fig. 8 GENERATOR

Ref.No.	Parts No.	Description	Q'ty	Ref.No.	Parts No.	Description	Q'ty
1	6R7-85550-00	ROTOR ASSY.	1	11	92990-06600	WASHER, plate	2
2	6R7-85560-00	BASE ASSY	1	12	90280-05013	KEY, woodruff	1
3	6M6-85520-00	.COIL, charge	1	13	90109-10M44	BOLT	1
4	6M6-85533-00	.COIL, lighting	1	14	6M6-81337-00-EK	COVER, flywheel	1
5	6M6-85580-00	.COIL, pulser	1	15	90380-12M29	.BUSH, solid	1
6	6R7-85515-00	.LEAD WIRE ASSY	1	16	6M6-81365-00	GASKET, hole cover	1
7	97902-05125	.SCREW, with washer	4	17	97395-06025	BOLT	7
8	97902-04122	.SCREW, with washer	2	18	92990-06600	WASHER, plate	7
9	98580-04008	.SCREW, pan head	1	19	93606-12019	PIN, dowel	2
10	98580-06016	SCREW, pan head	2				

Fig. 9 STARTING MOTOR

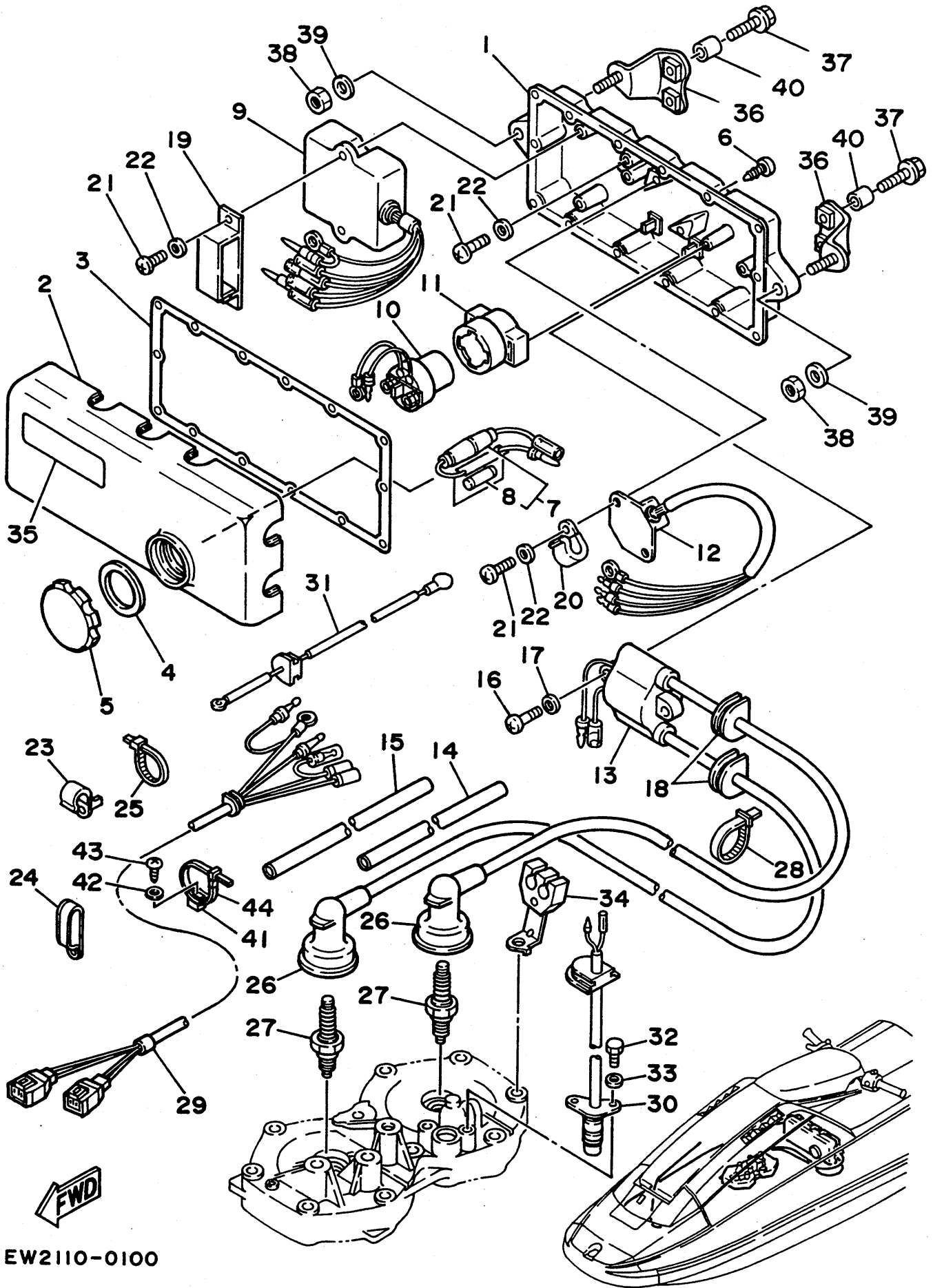


FK7110-0080

Fig. 9 STARTING MOTOR

Ref.No.	Parts No.	Description	Q'ty	Ref.No.	Parts No.	Description	Q'ty
1	6M6-81800-00	STARTING MOTOR ASSY	1	10	97313-08040	BOLT	1
2	3AJ-81809-00	.WASHER KIT	1	11	92990-08600	WASHER, plate	1
3	6M6-81840-00	.BRUSH HOLDER ASSY	1	12	97313-08035	BOLT	1
4	11H-81844-00	.GASKET	2	13	92990-08600	WASHER, plate	1
5	6M6-81826-00	.BOLT	2	14	92990-06100	WASHER, spring	1
6	6M6-81850-00	.ARMATURE ASSY	1	15	95380-06700	NUT	1
7	6M6-81820-00	.REAR BRACKET ASSY	1	16	6M6-8183E-00	IDLE GEAR COMP.	1
8	6M6-81830-00	.FRONT BRACKET ASSY	1	17	90501-14M73	SPRING, compression	1
9	26H-81847-00	.O-RING	1	18	92990-06600	WASHER, plate	2

Fig. 10 ELECTRICAL 1

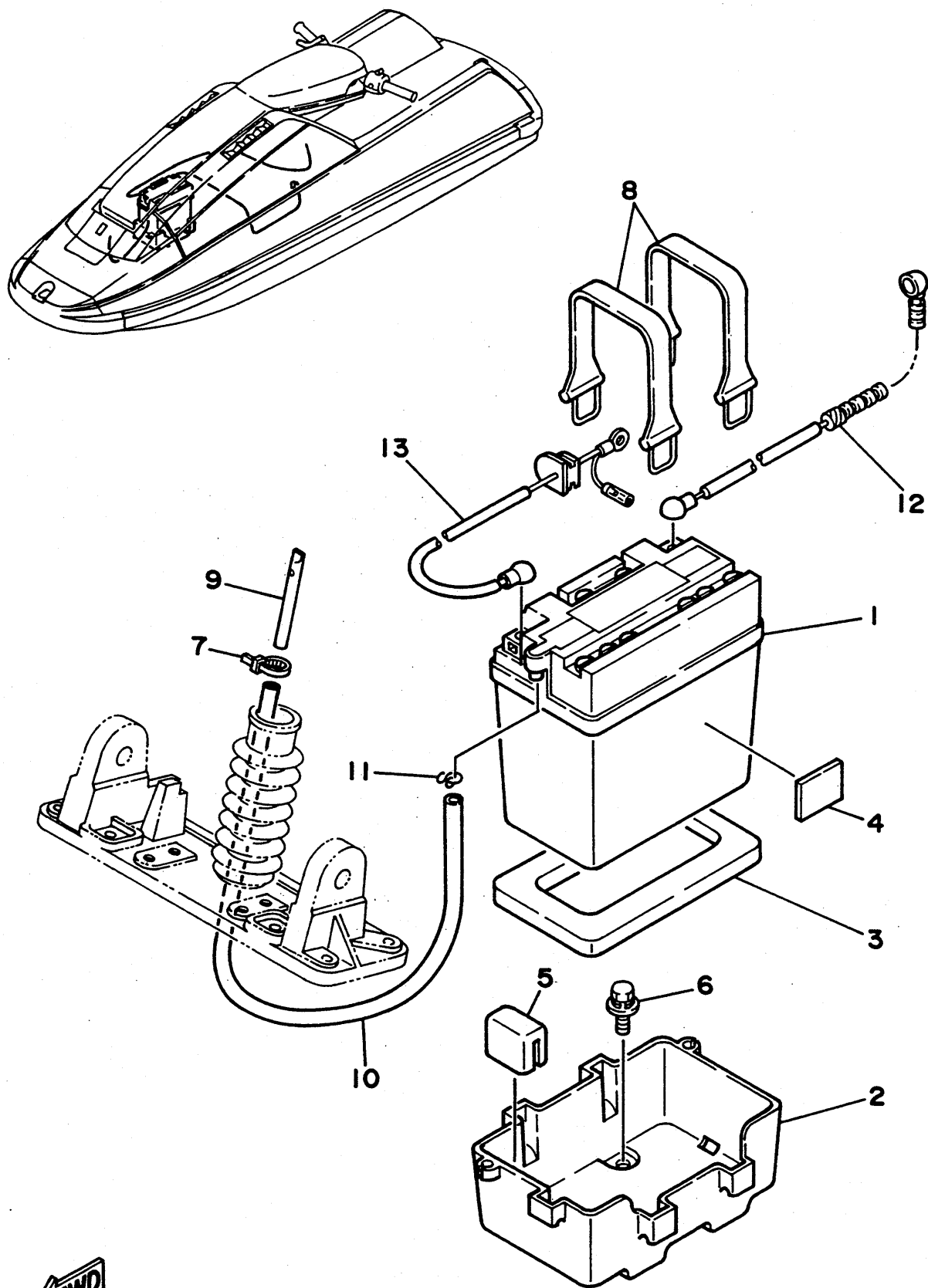


EW2110-0100

Fig. 10 ELECTRICAL 1

Ref.No.	Parts No.	Description	Q'ty	Ref.No.	Parts No.	Description	Q'ty
1	6M6-8552A-00-98	HOUSING (LOW GLOSS BLACK)	1	23	90465-08M38	CLAMP	2
2	6M6-8552E-00	COVER, case	1	24	90461-06M01	CLAMP	2
3	6M6-81921-00	GASKET, terminal	1	25	90465-13M11	CLAMP	1
4	6M6-81844-00	GASKET	1	26	6R7-82370-00	PLUG CAP ASSY	2
5	6M6-8132W-00	CAP	1	27	94702-00195	PLUG, spark (NGK BR8HS)	2
6	97780-60525	SCREW, tapping	14	28	90465-11M10	CLAMP	2
7	6K8-82150-00	FUSE HOLDER ASSY	1	29	6R7-82553-00	EXTENSION, wire lead	1
8	6G1-82151-00	.FUSE	1	30	6R7-82560-00	THERMO SWITCH ASSY	1
9	6R7-85540-00	C.D.I. UNIT ASSY	1	31	6R7-82117-20	WIRE, lead	1
10	6G1-81941-10	STARTER RELAY ASSY	1	32	97395-06010	BOLT	2
11	6M6-81952-00	HOLDER, relay	1	33	92995-06100	WASHER	2
12	6M6-81960-A0	RECTIFIER & REGULATOR ASSY	1	34	6R7-82361-00	CLAMP, cord	1
13	6R7-85570-00	IGNITION COIL ASSY	1	35	6R7-83623-40	MARK 3	1
14	6R7-82351-00	TUBE, cord	1	36	EW2-68156-00	BRACKET, electric box	2
15	6R7-82352-00	TUBE, cord 2	1	37	90105-06901	BOLT, flange	4
16	98580-06030	SCREW, pan head	2	38	95380-08700	NUT, hexagon	2
17	92990-06600	WASHER, plate	2	39	92990-08200	WASHER, plain	2
18	90480-06M43	GROMMET	2	40	90387-07908	COLLAR	4
19	90464-06M29	CLAMP	1	41	90600-91729	CLAMP	1
20	90465-08028	CLAMP	2	42	90201-05925	WASHER, plain	1
21	92503-06015	SCREW, pan head	6	43	97780-50110	SCREW, pan head tapping	1
22	92990-06600	WASHER, plate	6	44	90601-20006	BAND	1

Fig. 1 | ELECTRICAL 2

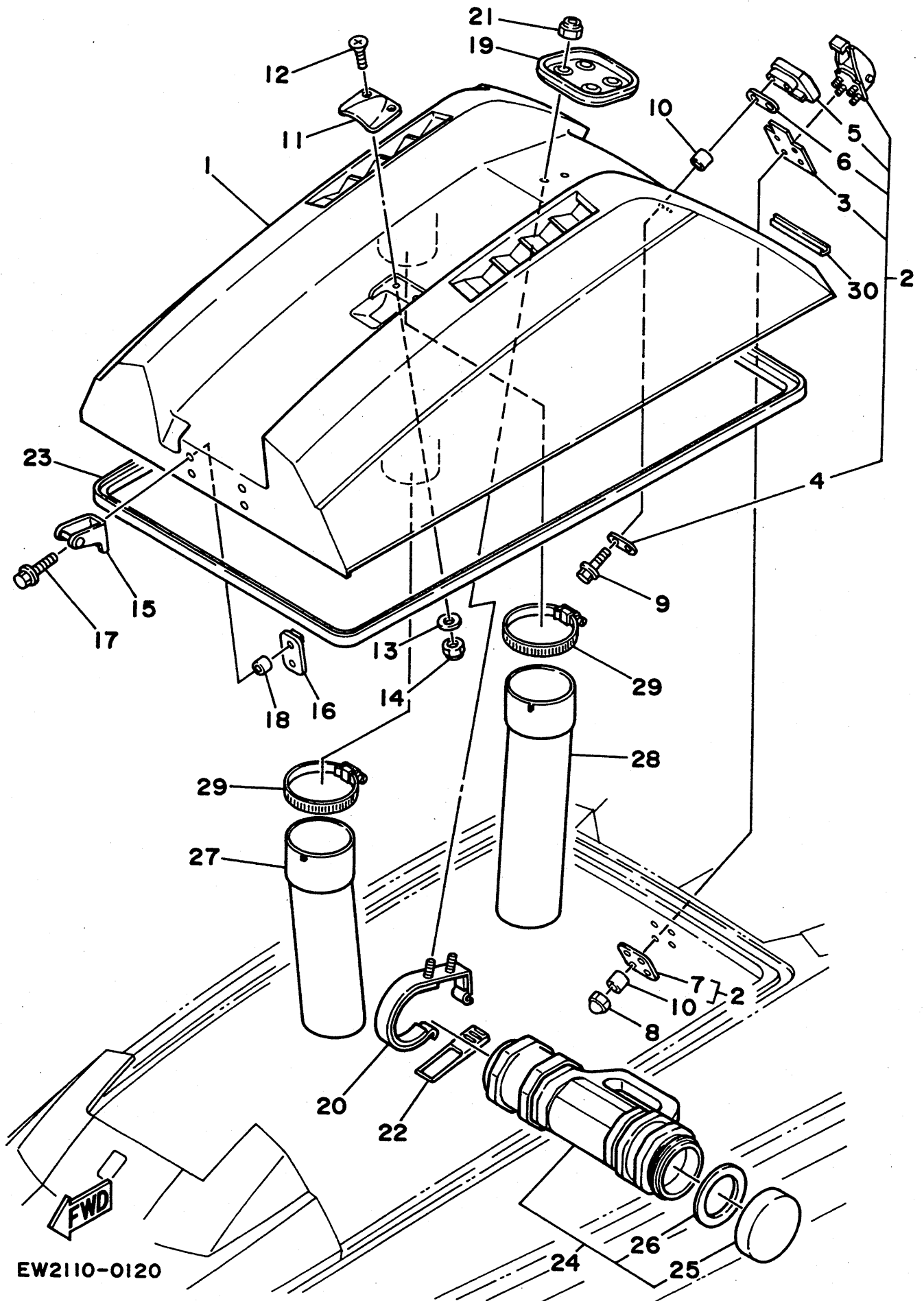


EW2110-0110

Fig. 11 ELECTRICAL 2

Ref.No.	Parts No.	Description	Q'ty	Ref.No.	Parts No.	Description	Q'ty
1	EU0-82110-78	BATTERY	1	8	EU0-68218-04	BAND, battery	2
2	EW2-68211-00	CASE, battery	1	9	EW2-62149-00	PIPE, ventilation 1	1
3	EU0-68221-00	PAD, battery 1	1	10	EU0-67856-40	HOSE, airvent 3	1
4	EU0-68221-30	PAD, battery 2	3	11	90467-08M10	CLIP	1
5	EW2-68221-00	PAD, battery	1	12	6R7-82117-00	WIRE, lead	1
6	90119-06920	BOLT, H/H W/W	4	13	6R7-82117-10	WIRE, lead	1
7	90465-11M10	CLAMP	1				

Fig. 12 HULL. DECK 1



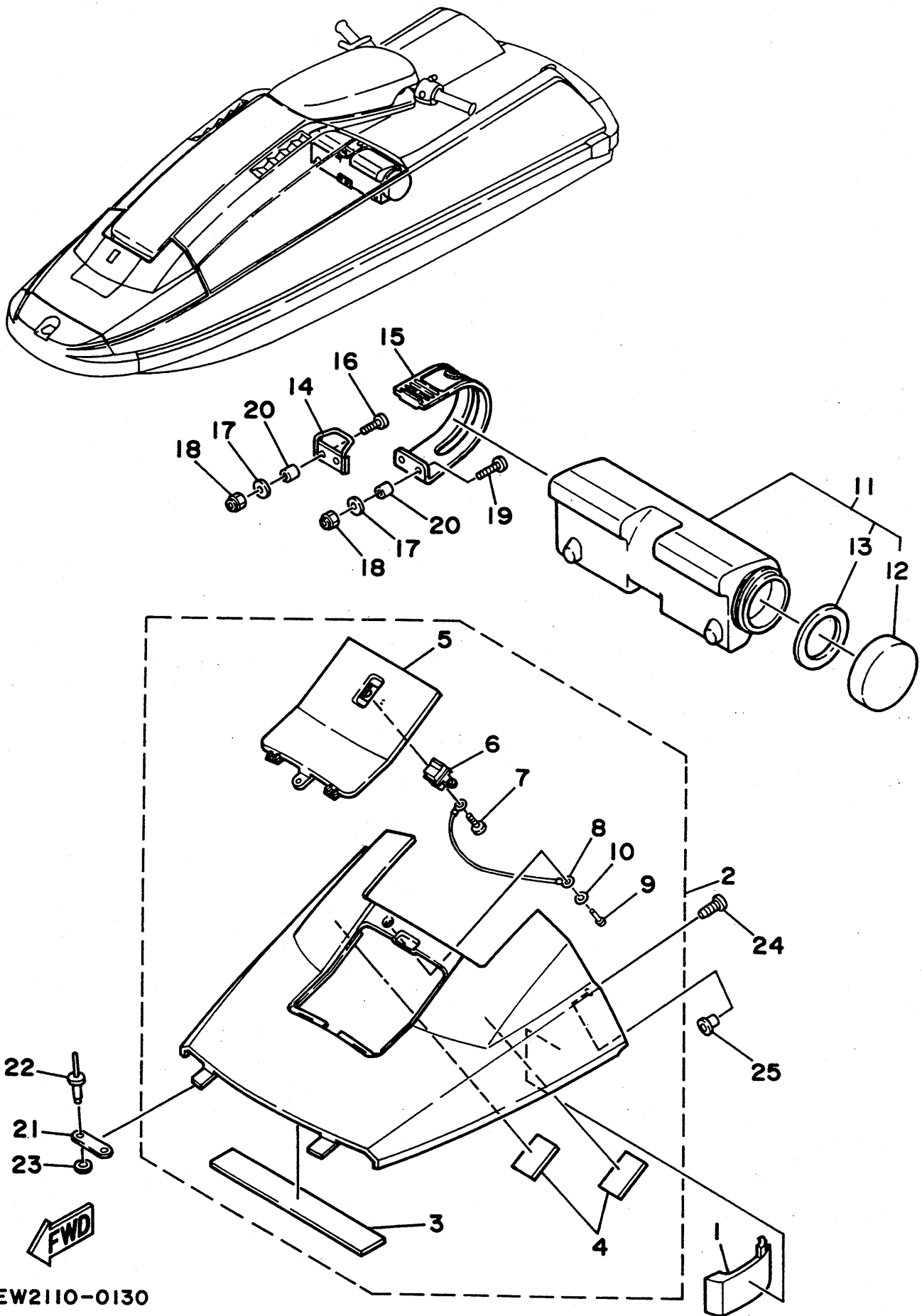
EW2110-0120

Fig. 12 HULL. DECK 1

Ref.No.	Parts No.	Description	Q'ty	Ref.No.	Parts No.	Description	Q'ty
* 1	EW2-U5160-00	ENGINE HATCH COMP.	1	16	EW2-65137-00	PLATE, stopper hatch 2	2
2	EW2-62840-00	HATCH LOCK ASSY	1	17	90105-06903	BOLT, flange	4
3	EW2-62845-00	.PACKING, hatch lock	1	18	90387-07909	COLLAR	4
4	EW2-62846-00	.PLATE, hatch lock	1	19	EW2-65141-00	DAMPER, pole	1
5	EW2-62843-00	.HOOK, hatch lock	1	20	EW2-65143-00	BASE, damper pole	2
6	EW2-62847-00	.PACKING, hook	1	21	95780-05300	NUT, nylon	4
7	EW2-62848-00	.PLATE, hook	1	22	EW2-65145-00	BAND, case 2	2
8	95380-05800	NUT, cap	4	23	EW2-62664-00	PACKING 2	1
9	90119-05923	BOLT, H/H W/W	2	24	EW2-65920-00	CASE 2 ASSY	1
10	90387-05907	COLLAR	4	25	EW2-65912-30	.CAP, case	1
11	A00-62858-01	PLATE, hatch	1	26	EW2-65913-00	.PACKING, case	1
12	98780-05014	SCREW, F/H	2	27	EW2-62136-01	HOSE, ventilator 1	1
13	92990-05200	WASHER, plain	2	28	EW2-62137-00	HOSE, ventilator 2	1
14	95780-05300	NUT, nylon	2	*29	90601-168U7	BAND, hose 68	2
15	EW2-65136-00	STOPPER, hatch 2	2	30	EW2-65165-00	TRIM	1

REMARKS:*...YMUS

Fig. 13 HULL. DECK 2



EW2110-0130

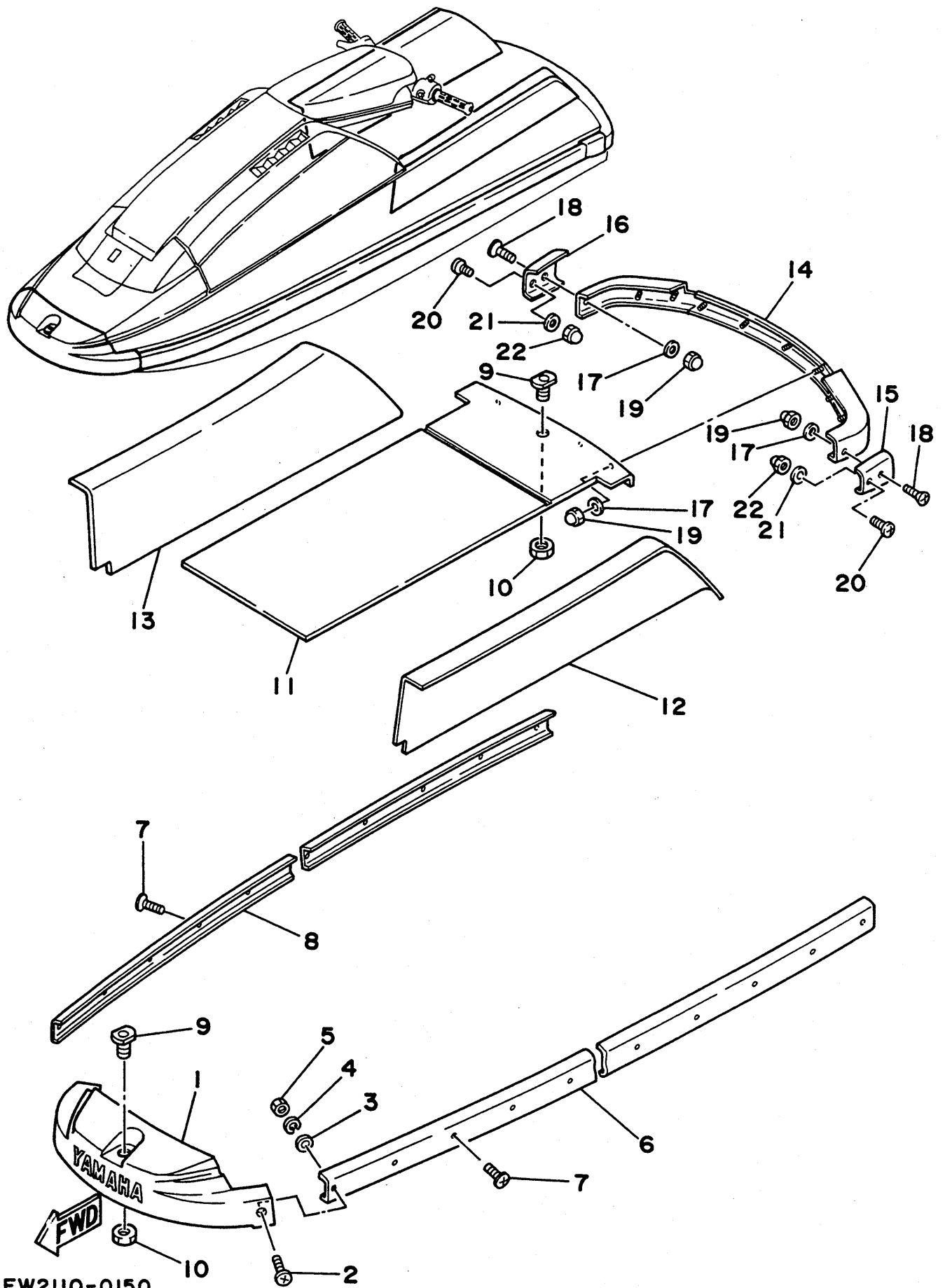
Fig. 13 HULL. DECK 2

Ref.No.	Parts No.	Description	Q'ty	Ref.No.	Parts No.	Description	Q'ty
1	EW2-68953-00	PROTECTOR	1	14	EW2-65915-00	BRACKET, case	1
2	EW2-65210-00	BOW COVER ASSY	1	15	EW2-65919-00	BAND, case	1
3	EW2-65212-00	.PAD 1 (FR)	1	16	97680-05216	SCREW, P/H W/W	2
4	EW2-65213-00	.PAD 2	2	17	92990-05200	WASHER, plain	4
5	EW2-65221-00	.COVER, tank cap	1	18	95780-05300	NUT, nylon	4
6	1HX-24705-00	.LOCK ASSY	1	19	98980-05020	SCREW, binding head (+)	2
7	90164-04025	.SCREW, binding tapping	2	20	90387-05907	COLLAR	4
8	EW2-65226-00	.STRING, lid	1	21	EW2-65219-00	PLATE	2
9	90267-40939	.RIVET, blind	1	22	90267-40936	RIVET, blind	4
10	92990-04200	.WASHER, plain	1	23	92990-04200	WASHER, plain	4
11	EW2-65910-00	CASE 1 ASSY	1	24	90149-05963	SCREW, T/H tapping	2
12	EW2-65912-00	.CAP, case	1	25	90387-06906	COLLAR	2
13	EW2-65913-00	.PACKING, case	1				

Fig. 14 HULL. DECK 3

Ref.No.	Parts No.	Description	Q'ty	Ref.No.	Parts No.	Description	Q'ty
1	EU0-67613-00	STRAINER, bilge	1	12	6K8-7610K-00	BODY, valve	1
2	EW2-67618-00	BASE, strainer blige	1	13	6K8-51141-00	HOSE SUCTION	1
3	97780-50114	SCREW, P/H tapping	1	14	6K8-51162-00	JOINT, hose	1
4	90465-13M11	CLAMP	5	15	90445-14M03	HOSE	1
5	90119-06915	BOLT, with washer	4	16	90445-14M04	HOSE	1
6	90119-06914	BOLT, with washer	2	17	90600-91729	CLAMP	1
7	90119-06915	BOLT, with washer	1	18	90201-05925	WASHER, plain	1
8	90119-06919	BOLT, with washer	1	19	90267-48007	RIVET, blind	1
9	6R7-51161-00	HOSE, plasher	1	20	90601-20006	BAND	1
10	90460-18M08	CLAMP, hose	3	21	90467-13M13	CLIP	1
11	90445-14M02	HOSE	1				

Fig. 15 GUNWALE. MAT

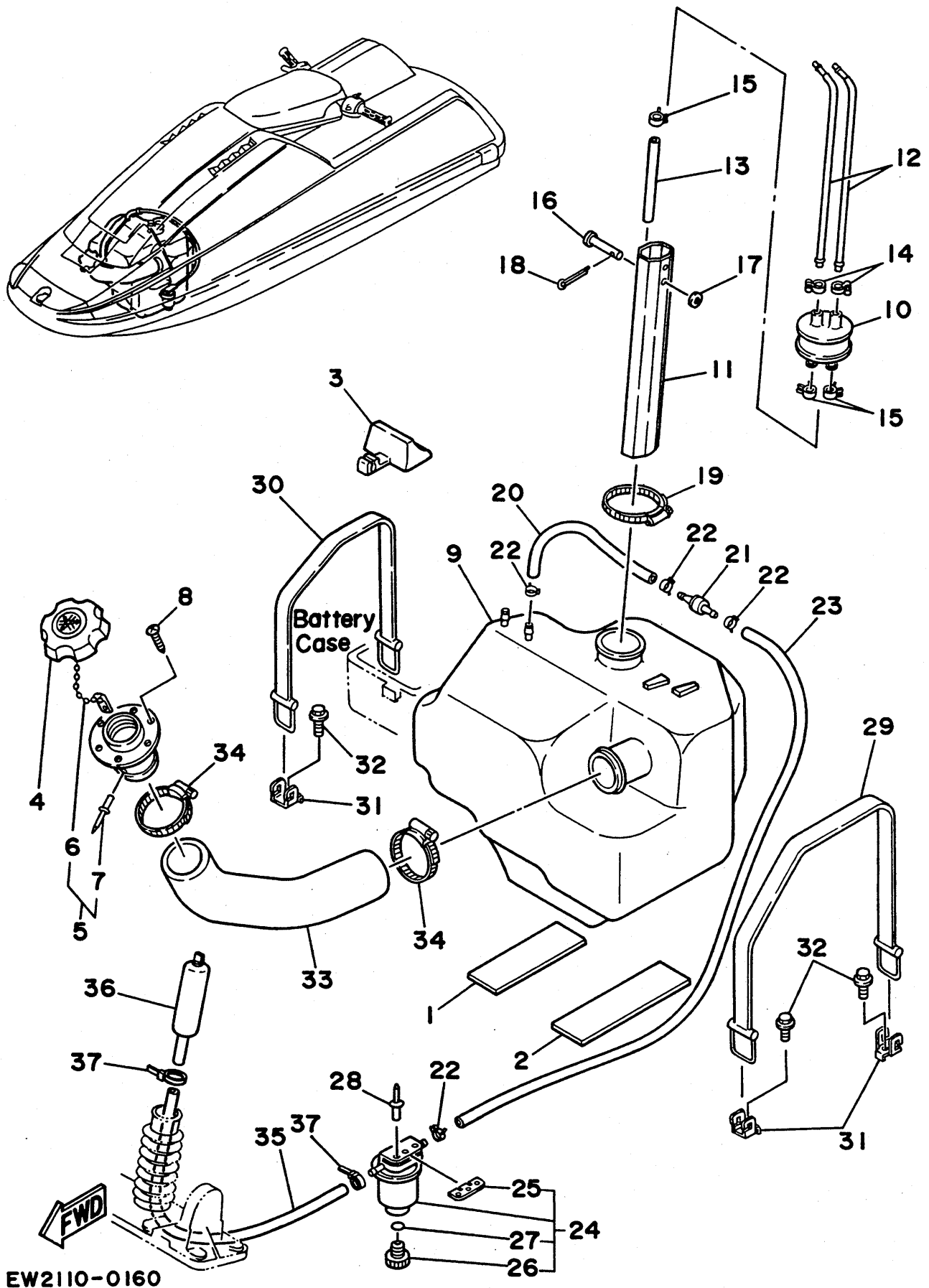


EW2110-0150

Fig. 15 GUNWALE. MAT

Ref.No.	Parts No.	Description	Q'ty	Ref.No.	Parts No.	Description	Q'ty
1	EW2-62501-00	BOW GUNWALE COMP.	1	12	EW2-63512-10	MAT, side (L/H)	1
2	98980-06025	SCREW, binding head (+)	2	13	EW2-63512-20	MAT, side (R/H)	1
3	92990-06200	WASHER, plain	2	14	EW2-62503-00	STERN GUNWALE COMP.	1
4	92990-06100	WASHER, spring	2	15	EW2-62523-10	COVER, gunwale LH	1
5	95380-06800	NUT, cap	2	16	EW2-62523-20	COVER, gunwale RH	1
6	EW2-62512-10	GUNWALE, side LH	1	17	92990-06200	WASHER, plain	10
7	90149-05962	SCREW, O/H tapping	26	18	90149-06965	SCREW, flat head (+)	2
8	EW2-62512-20	GUNWALE, side RH	1	19	95380-06800	NUT, cap	10
9	EU0-61651-30	ROPE, hole	2	20	90149-05964	SCREW, oval head	2
10	EU0-61652-00	NUT	2	21	92990-05200	WASHER, plain	2
11	EW2-63511-01	MAT, lower	1	22	95380-05800	NUT, cap	2

Fig. 16 FUEL TANK



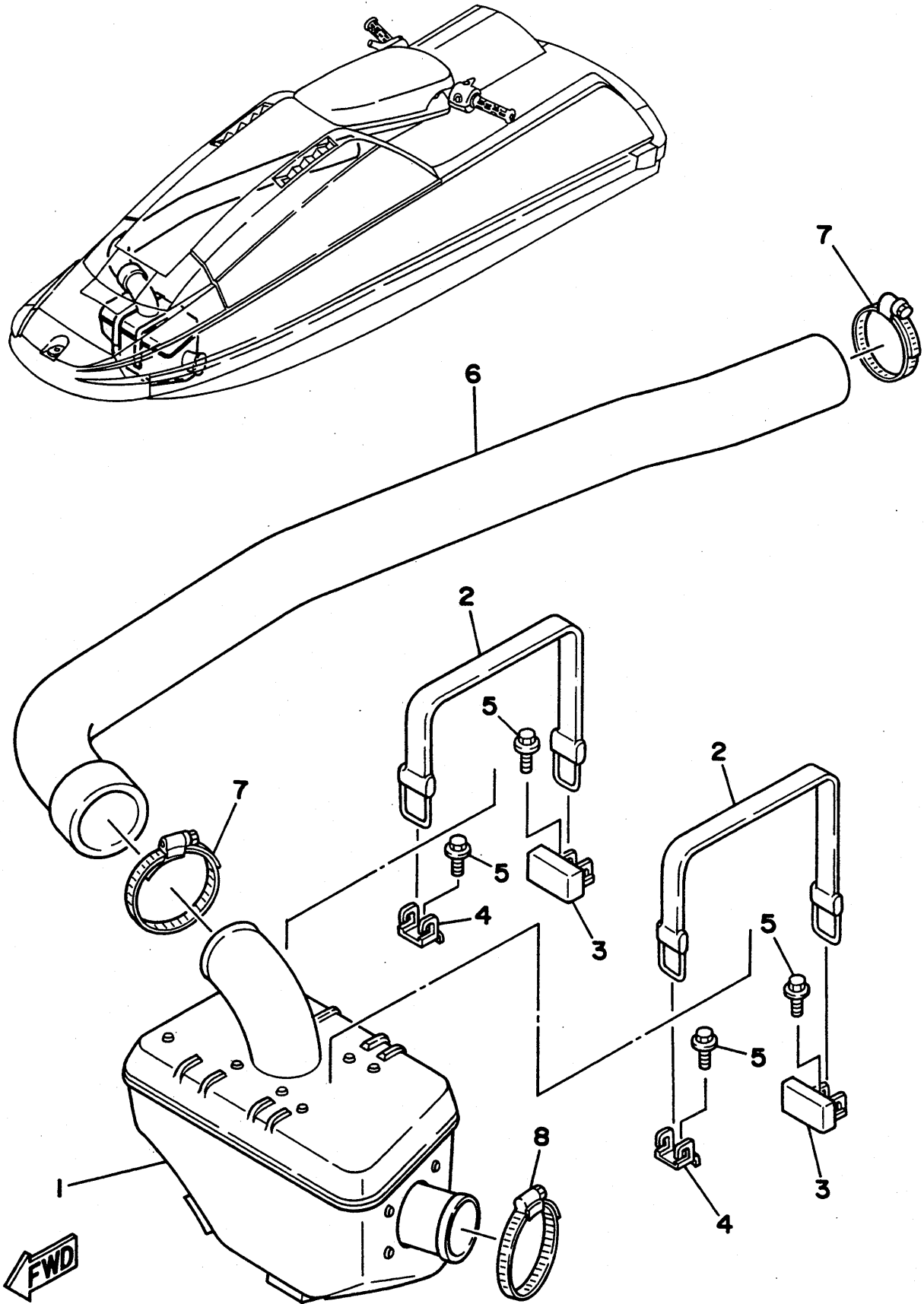
EW2110-0160

Fig. 16 FUEL TANK

Ref.No.	Parts No.	Description	Q'ty	Ref.No.	Parts No.	Description	Q'ty
1	EW2-67593-00	MAT 1	2	20	EU0-67856-00	HOSE, airvent 1	1
2	EW2-67593-40	MAT 3	2	21	EU0-67767-30	CHECK, valve	1
3	EW2-67822-00	DAMPER FUEL TANK	1	22	90465-11M10	CLAMP	2
4	EU0-67831-01	CAP, fuel filler	1	23	EW2-67856-00	HOSE, airvent 1	1
5	EU0-W6783-01	SOCKET COMP.	1	24	EW2-62140-00	FILTER, vent assy	1
6	EU0-67835-00	.CHAIN BALL	1	25	EW2-62142-00	.PLATE, filter	1
7	90267-40935	.RIVET	1	26	70R-24543-00	.SCREW, drain	1
8	EU0-67869-00	SCREW, F/H tapping	6	27	70R-24489-00	.O-RING, separater 2	1
9	EW2-67711-00	TANK, fuel	1	28	90267-48940	RIVET, blind	3
10	FJO-67713-00	PIPE, joint	1	29	EW2-67821-00	BAND, fuel tank	1
11	EW2-67716-00	SLEEVE 1	1	30	EW2-67821-30	BAND, fuel tank	1
12	EW2-67714-00	PIPE, suction 3	2	31	EW2-65772-00	HOOK A	3
13	90445-11903	HOSE	1	32	90105-06900	BOLT, flange	3
14	90601-11062	BAND, hose 11	2	33	EW2-67844-00	HOSE, filler	1
15	90467-11032	CLIP	3	* 34	90601-155U4	BAND, hose 55	2
16	91790-05040	PIN, cylinder head	1	35	EW2-67856-30	HOSE, airvent 2	1
17	92990-05600	WASHER, plain	1	36	EW2-62150-00	AIR, vent assy	1
18	91490-16010	PIN, split	1	37	90465-11M10	CLAMP	4
*19	90601-162U5	BAND, hose 62	1				

REMARKS:*...YMUS

Fig. 17 EXHAUST 2



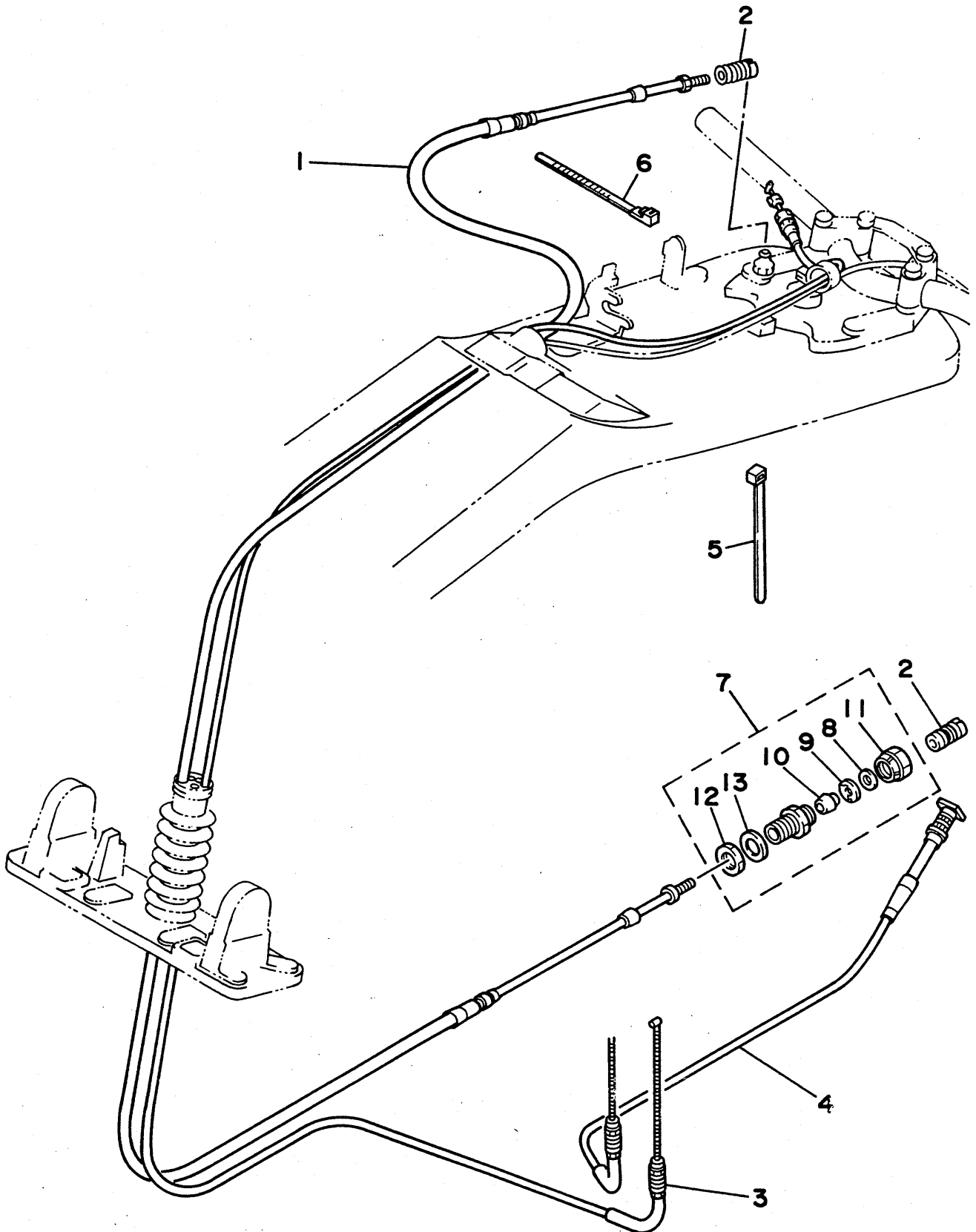
EW2110-0170

Fig. 17 EXHAUST 2

Ref.No.	Parts No.	Description	Q'ty	Ref.No.	Parts No.	Description	Q'ty
* 1	EW2-U7550-00	WATER LOCK COMP.	1	5	90105-06900	BOLT, flange	4
2	EU0-68218-04	BAND, battery	2	6	EW2-67555-00	HOSE, exhaust	1
3	EW2-65760-00	HOOK B ASSY	2	7	90601-162U5	BAND, hose 62	2
4	EW2-65772-00	HOOK A	2	8	90601-168U7	BAND, hose 68	1

REMARKS: *...YMUS

Fig. 18 CONTROL CABLE



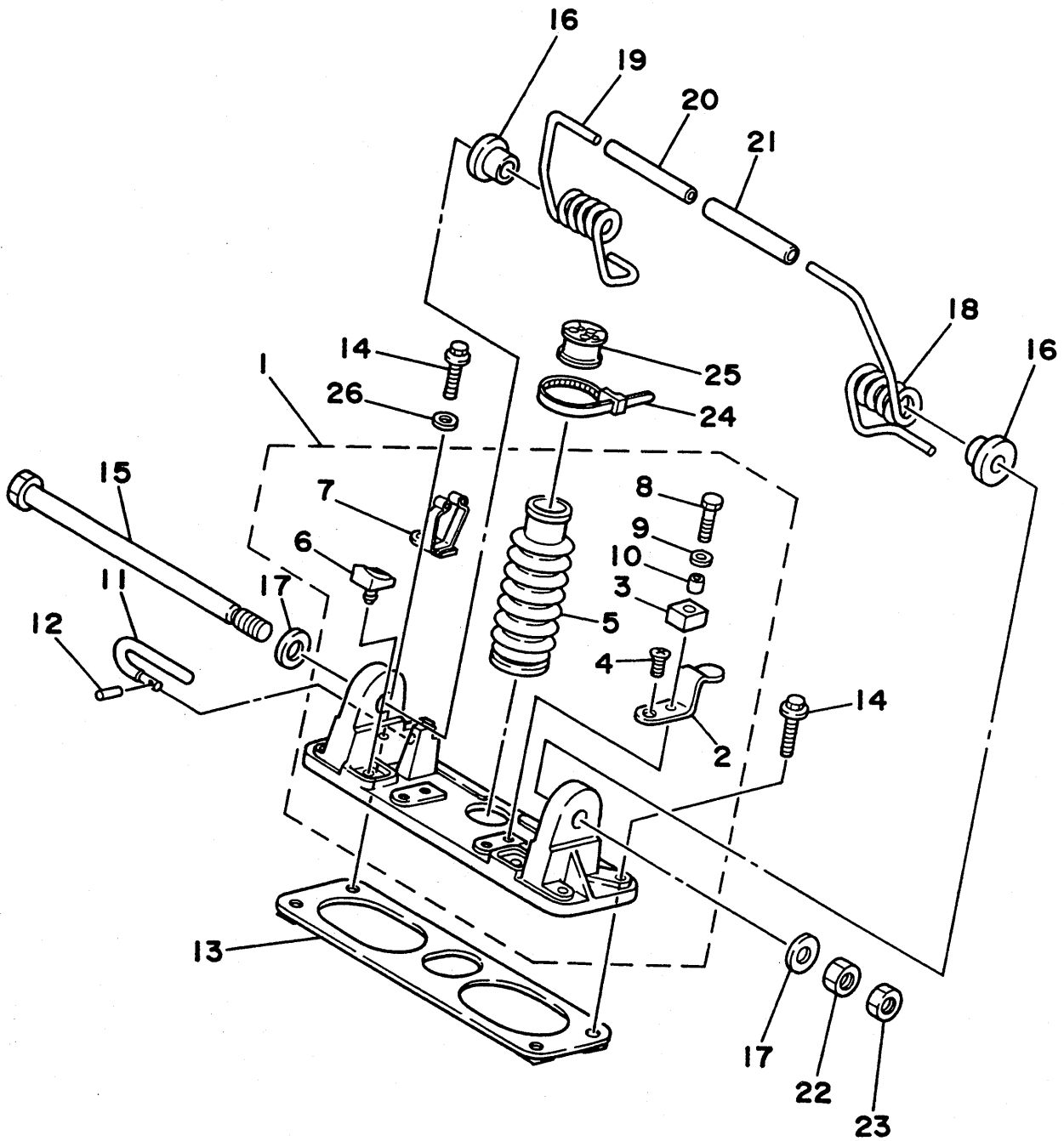
EW2110-0180

Fig. 18 CONTROL CABLE

Ref.No.	Parts No.	Description	Q'ty	Ref.No.	Parts No.	Description	Q'ty
1	EW2-61481-00	CABLE, steering	1	8	EU0-61446-00	.WASHER 30	1
* 2	EU0-61461-30	SHAFT, joint ball	2	9	EU0-61486-00	.STOPPER	1
* 3	EW2-U7252-00	CABLE, throttle	1	10	EU0-61435-00	.PIPE SEAL 30	1
4	EW2-U7242-00	CABLE, choke	1	11	EU0-62694-00	.CAP	1
5	90601-20005	BAND	2	12	EU0-62241-30	.NUT, drain	1
6	90601-20006	CLAMP	1	13	EU0-61438-00	.PACKING C	1
7	EU0-67267-00	CONNCTOR CABLE	1				

REMARKS:*. . . YMUS

Fig. 19 POLE PIVOT



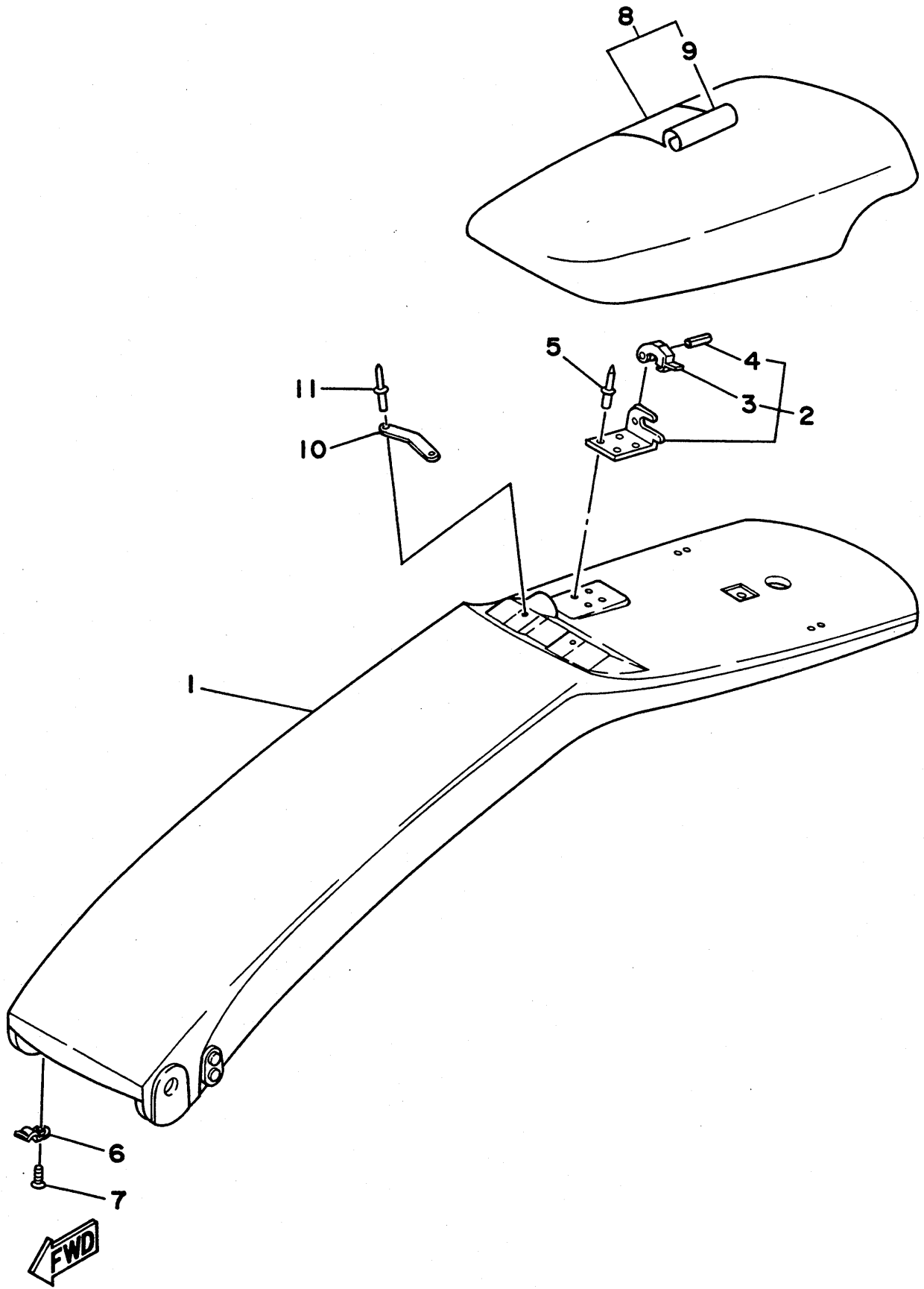
EW2110-0190

Fig. 19 POLE PIVOT

Ref.No.	Parts No.	Description	Q'ty	Ref.No.	Parts No.	Description	Q'ty
* 1	EW2-U1330-00	POLE PIVOT ASSY	1	14	90105-08902	BOLT, flange	4
2	EW2-65135-00	.STOPPER, hatch 1	2	*15	EW2-U1343-01	SHAFT, pivot	1
3	EW2-61337-00	.STOPPER, pole	2	16	EW2-61344-00	BUSH	2
4	92680-06010	.SCREW, O/H	2	17	92990-14600	WASHER, plain	2
* 5	EW2-U1338-00	.GROMMET	1	18	EW2-61391-10	SPRING, pivot (LH)	1
* 6	EW2-U1336-00	.DAMPER, stopper	2	19	EW2-61391-20	SPRING, pivot (RH)	1
7	EW2-61339-00	.HOLDER, stopper	1	20	EW2-61392-00	SPRING, connector	1
8	97380-06025	BOLT, hexagon	2	21	EW2-61393-00	BUFFER, tube	1
9	90201-06931	WASHER, plain	2	22	98880-14100	NUT, hexagon	1
10	90387-07910	COLLAR	2	23	98880-14300	NUT, hexagon	1
11	EW2-61335-00	PIN, stopper	1	24	90601-20006	BAND	1
12	91690-30010	PIN, spring	1	25	EW2-61465-00	PACKING, cable	1
13	EW2-61333-00	PLATE, bracket	1	26	92990-08200	WASHER, plain	1

REMARKS:***YMUS

Fig. 20 STEERING POLE



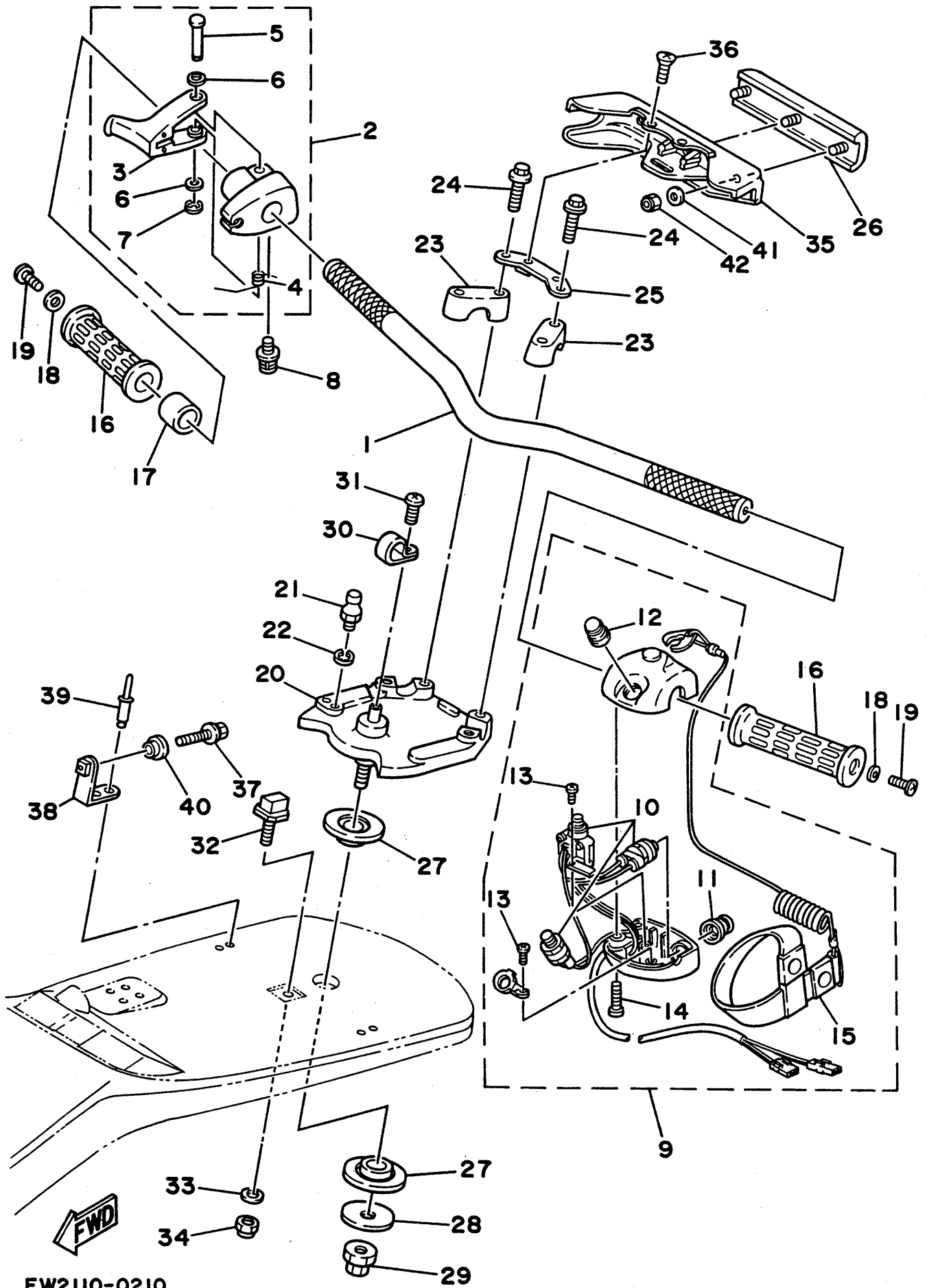
EW2110-0200

Fig. 20 STEERING POLE

Ref.No.	Parts No.	Description	Q'ty	Ref.No.	Parts No.	Description	Q'ty
* 1	EW2-U4901-00	STEERING POLE COMP.	1	7	97780-30312	SCREW, 0/H tapping	1
2	EW2-61460-00	CABLE STOPPER ASSY	1	8	EW2-61402-00	PAD, steering comp.	1
3	6E5-48538-00	.CLAMP, cable	1	9	EW2-61427-00	.COVER, pad	1
4	91690-30012	.PIN, spring	1	10	EW2-64953-00	PLATE A	1
5	90267-48938	RIVET, blind	4	11	90267-48938	RIVET, blind	2
6	EW2-61316-00	PLATE, stopper	1				

REMARKS:*...YMUS

Fig. 21 STEERING

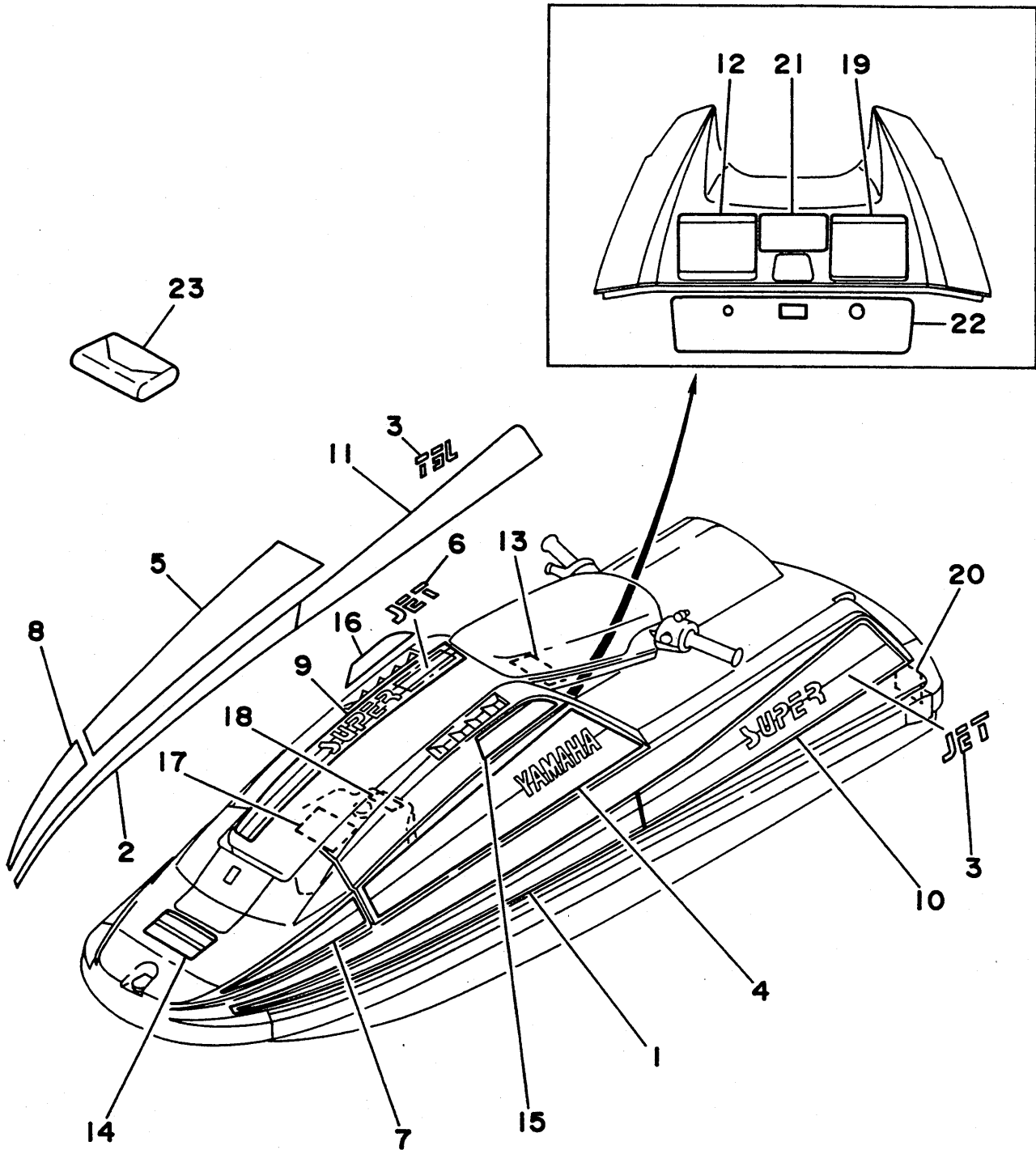


EW2110-0210

Fig. 21 STEERING

Ref.No.	Parts No.	Description	Q'ty	Ref.No.	Parts No.	Description	Q'ty
1	EW2-61552-00	HANDLE	1	22	92990-06100	WASHER, spring	1
2	EW2-67250-00	THROTTLE LEVER ASSY	1	23	EU0-23814-00	HOLDER, handle	2
3	EW2-67255-00	.LEVER, throttle	1	24	90105-08902	BOLT, flange	4
4	EW2-67256-00	.SPRING	1	25	EW2-61559-00	PLATE, cover	1
5	EW2-67257-00	.SHAFT	1	26	EW2-61565-00	PAD 1	1
6	EW2-67258-00	.WASHER	2	27	EW2-61417-00	BEARING, column	2
7	EW2-67259-00	.E RING	1	28	EW2-61419-00	WASHER, steering	1
8	90159-05900	SCREW, P/H W/W	1	29	90179-12933	NUT	1
9	EW2-68310-01	SWITCH BOX ASSY	1	30	90600-91728	CLIP, nylon 17	1
10	EW2-68311-01	.SWITCH SUB ASSY	1	31	98980-04010	SCREW, binding head (+)	1
11	FK7-68312-01	.STOP BUTTON COMP.	1	32	EW2-61314-00	PIN, stopper 1	1
12	FK7-68313-00	.START BUTTON COMP.	1	33	92990-10200	WASHER, plain	1
13	98580-03008	.SCREW	3	34	95780-10300	NUT, nylon	1
14	98580-05025	.SCREW	2	35	EW2-61555-00	COVER, handle	1
15	EW2-68348-00	.LANYARD SWITCH	1	36	98980-06010	SCREW, binding head (+)	2
16	EW2-61553-00	GRIP, handle 1	2	37	90119-05912	BOLT, H/H W/W	2
17	90560-22281	SPACER	1	38	EW2-61422-00	FIX, steering pad	2
18	90201-05912	WASHER, plain	2	39	90267-48938	RIVET, blind	4
19	98580-05020	SCREW, P/H	2	40	90387-06906	COLLAR	2
20	EW2-61540-00	COLUMN, steering	1	41	92990-06200	WASHER, plain	3
21	EU0-61461-00	STUD, joint ball	1	42	95720-06300	NUT, nylon	3

Fig. 22 GRAPHIC. TOOL



EW2171-0220

Fig. 22 GRAPHIC. TOOL

Ref.No.	Parts No.	Description	Q'ty	Ref.No.	Parts No.	Description	Q'ty
1	EW2-64173-10	GRAPHIC A (LH)	1	13	EW2-64183-30	LABEL, caution 2	1
2	EW2-64173-20	GRAPHIC A (RH)	1	14	EW2-64161-A0	LABEL, warning 1	1
3	EW2-64196-00	GRAPHIC F	2	15	EW2-64161-G0	LABEL, warning LH	1
4	EW2-64174-10	GRAPHIC B (LH)	1	16	EW2-64161-H0	LABEL, warning RH	1
5	EW2-64174-20	GRAPHIC B (RH)	1	17	EW2-64183-E0	LABEL, caution 8	1
6	EW2-64196-30	GRAPHIC F	1	18	EW2-64183-N0	LABEL, caution 9	1
7	EW2-64175-10	GRAPHIC C (LH)	1	19	EW2-64161-F0	LABEL, warning RH	1
8	EW2-64175-20	GRAPHIC C (RH)	1	20	EU0-64188-00	LABEL, riding	1
9	EW2-64176-00	GRAPHIC D	1	21	EW2-64183-A0	LABEL, caution 2	1
10	EW2-64195-10	GRAPHIC E (LH)	1	22	EW2-64183-70	LABEL, caution	1
11	EW2-64195-20	GRAPHIC E (RH)	1	23	EU0-28100-00	TOOL KIT	1
12	EW2-64161-E0	LABEL, warning LH	1				

Fig. 23 GASKET KIT

Ref.No.	Parts No.	Description	Q'ty	Ref.No.	Parts No.	Description	Q'ty
1	6R7-W0001-00	GASKET KIT FOR ENGINE UNIT	1	22	93102-25M37	.OIL SEAL	1
2	6M6-11351-00	.GASKET, CYLINDER	1	23	93103-25M02	.OIL SEAL	1
3	6R7-11181-00	.GASKET, CYLINDER HEAD 1	1	24	93102-25M34	.OIL SEAL	1
4	93102-36M33	.OIL SEAL	1	25	93101-25M50	.OIL SEAL	1
5	93101-36M46	.OIL SEAL	1	26	93210-46M16	.O-RING	1
6	93103-32M01	.OIL SEAL	1	27	90430-06M03	.GASKET	1
7	93210-30M31	.O-RING	2	28	6R8-W0093-00	CARBURETOR REPAIR KIT	1
8	6M6-13566-00	.GASKET	1	29	812-14147-00	.O-RING	1
9	6M6-13563-00	.GASKET	1	30	6K8-14946-10	.PLATE, needle fitting	1
10	6M6-13556-00	.GASKET, MANIFOLD	2	31	6K8-14536-11	.GASKET	1
11	6M6-13621-00	.GASKET, VALVE SEAT	2	32	822-14147-00	.O-RING	1
12	6M6-13674-00	.GASKET, AIR COOLER COVER 1	2	33	6K8-14537-00	.GASKET	1
13	6M6-14739-00	.GASKET, MUFFLER DAMPER 1	2	34	6K8-24435-10	.GASKET, body 2	1
14	6M6-14613-00	.GASKET, EXHAUST PIPE	1	35	6K8-24431-10	.GASKET, fuel pump 1	2
15	90430-08020	.GASKET	1	36	6K8-14923-10	.SCREW, pilot	1
16	6R7-14749-00	.GASKET, MUFFLER DAMPER 2	1	37	6K8-14559-00	.WASHER	2
17	6R7-14755-00	.GASKET, SILENCER	1	38	6R7-14541-00	.DIAPHRAGM, pump	1
18	6R7-41114-00	.GASKET, EXHAUST OUTER COVER	1	39	6K8-24411-10	.DIAPHRAGM	1
19	6R7-W0001-20	GASKET KIT FOR JET UNIT	1	40	6K8-24421-10	.VALVE, check	1
20	6R7-51117-00	.PACKING	1	41	6K8-14916-15	.NEEDLE	1
21	93210-17MA4	.O-RING	2				

NUMERICAL INDEX

Parts No.	Ref. No.	Parts No.	Ref. No.	Parts No.	Ref. No.	Parts No.	Ref. No.	Parts No.	Ref. No.
A00-62858-01	12-11	EW2-61335-00	19-11	EW2-64174-20	22- 5	EW2-67714-00	16-12	6K8-14926-10	4- 5
EU0-W6783-01	16- 5	EW2-61337-00	19- 3	EW2-64175-10	22- 7	EW2-67716-00	16-11	6K8-14930-10	4- 6
EU0-23814-00	21-23	EW2-61339-00	19- 7	EW2-64175-20	22- 8	EW2-67811-00	6-18	6K8-14946-10	4-13
EU0-28100-00	22-23	EW2-61344-00	19-16	EW2-64176-00	22- 9	EW2-67812-00	6-10		23-30
EU0-61435-00	18-10	EW2-61391-10	19-18	EW2-64183-A0	22-21	EW2-67821-00	16-29	6K8-24411-10	4-40
EU0-61438-00	18-13	EW2-61391-20	19-19	EW2-64183-E0	22-17	EW2-67821-30	16-30		23-39
EU0-61446-00	18- 8	EW2-61392-00	19-20	EW2-64183-N0	22-18	EW2-67822-00	16- 3	6K8-24413-10	4-41
EU0-61461-00	21-21	EW2-61393-00	19-21	EW2-64183-30	22-13	EW2-67844-00	16-33	6K8-24421-10	4-42
EU0-61461-30	18- 2	EW2-61402-00	20- 8	EW2-64183-70	22-22	EW2-67856-00	16-23		23-40
EU0-61486-00	18- 9	EW2-61417-00	21-27	EW2-64195-10	22-10	EW2-67856-30	16-35	6K8-24431-10	4-43
EU0-61651-30	15- 9	EW2-61419-00	21-28	EW2-64195-20	22-11	EW2-68156-00	10-36		23-35
EU0-61652-00	15-10	EW2-61422-00	21-38	EW2-64196-00	22- 3	EW2-68211-00	11- 2	6K8-24435-10	4-39
EU0-62241-30	18-12	EW2-61427-00	20- 9	EW2-64196-30	22- 6	EW2-68221-00	11- 5		23-34
EU0-62693-01	7-52	EW2-61460-00	20- 2	EW2-64953-00	20-10	EW2-68310-01	21- 9	6K8-24452-10	4-44
EU0-62694-00	18-11	EW2-61465-00	19-25	EW2-65135-00	19- 2	EW2-68311-01	21-10	6K8-24500-02	6- 8
EU0-62695-00	7-51	EW2-61481-00	18- 1	EW2-65136-00	12-15	EW2-68348-00	21-15	6K8-24560-10	6- 1
EU0-64188-00	22-20	EW2-61540-00	21-20	EW2-65137-00	12-16	EW2-68953-00	13- 1	6K8-51129-00	1-14
EU0-67267-00	18- 7	EW2-61552-00	21- 1	EW2-65141-00	12-19	FJ0-67713-00	16-10		5- 2
EU0-67324-00	1-28	EW2-61553-00	21-16	EW2-65143-00	12-20	FK7-62732-01	7-46		5-10
EU0-67354-00-01	1-29	EW2-61555-00	21-35	EW2-65145-00	12-22	FK7-68312-01	21-11		7-15
EU0-67354-00-03	1-29	EW2-61559-00	21-25	EW2-65165-00	12-30	FK7-68313-00	21-12	6K8-51141-00	14-13
EU0-67354-00-05	1-29	EW2-61565-00	21-26	EW2-65210-00	13- 2	1HX-24705-00	13- 6	6K8-51162-00	14-14
EU0-67354-00-10	1-29	EW2-62136-01	12-27	EW2-65212-00	13- 3	11H-81844-00	9- 4	6K8-7610K-00	14-12
EU0-67354-00-20	1-29	EW2-62137-00	12-28	EW2-65213-00	13- 4	26H-81847-00	9- 9	6K8-82150-00	10- 7
EU0-67354-30-03	7-57	EW2-62140-00	16-24	EW2-65219-00	13-21	3AJ-81809-00	9- 2	6M6-11351-00	1-10
EU0-67354-30-05	7-57	EW2-62142-00	16-25	EW2-65221-00	13- 5	3G2-14231-23-A0	4-16		23- 2
EU0-67354-30-10	7-57	EW2-62149-00	11- 9	EW2-65226-00	13- 8	439-14186-00	4-23	6M6-11601-00	2-10
EU0-67613-00	14- 1	EW2-62150-00	16-36	EW2-65760-00	17- 3	6E0-28193-00-94	1-30	6M6-11601-10	2-10
EU0-67767-30	16-21	EW2-62501-00	15- 1	EW2-65772-00	16-31	6E5-11325-00	1- 8	6M6-11601-20	2-10
EU0-67816-30	6-14	EW2-62503-00	15-14		17- 4	6E5-48538-00	20- 3	6M6-11631-01-93	2- 9
EU0-67817-00	6-16	EW2-62512-10	15- 6	EW2-65910-00	13-11	6G1-81941-10	10-10	6M6-11635-00	2- 9
EU0-67831-01	16- 4	EW2-62512-20	15- 8	EW2-65912-00	13-12	6G1-82151-00	10- 8	6M6-11636-00	2- 9
EU0-67835-00	16- 6	EW2-62523-10	15-15	EW2-65912-30	12-25	6K8-14481-10	4-38	6M6-13555-00-94	3- 3
EU0-67856-00	16-20	EW2-62523-20	15-16	EW2-65913-00	12-26	6K8-14521-00	4-11	6M6-13556-00	3-10
EU0-67856-40	11-10	EW2-62664-00	12-23		13-13	6K8-14521-10	4-18		23-10
EU0-67869-00	16- 8	EW2-62730-00	7-45	EW2-65915-00	13-14	6K8-14527-10	4-22	6M6-13563-00	3- 8
EU0-68218-04	11- 8	EW2-62840-00	12- 2	EW2-65919-00	13-15	6K8-14531-00	4-45		23- 9
	17- 2	EW2-62843-00	12- 5	EW2-65920-00	12-24	6K8-14534-10	4- 3	6M6-13566-00	3- 2
EU0-68221-00	11- 3	EW2-62845-00	12- 3	EW2-67250-00	21- 2	6K8-14536-10	4-27		23- 8
EU0-68221-30	11- 4	EW2-62846-00	12- 4	EW2-67255-00	21- 3	6K8-14536-11	23-31	6M6-13621-00	3-19
EU0-82110-78	11- 1	EW2-62847-00	12- 6	EW2-67256-00	21- 4	6K8-14537-00	4-35		23-11
EW2-U1330-00	19- 1	EW2-62848-00	12- 7	EW2-67257-00	21- 5		23-33	6M6-13641-00-94	3- 1
EW2-U1336-00	19- 6	EW2-63511-01	15-11	EW2-67258-00	21- 6	6K8-14542-10	4-33	6M6-13674-00	3-26
EW2-U1338-00	19- 5	EW2-63512-10	15-12	EW2-67259-00	21- 7	6K8-14556-10	4- 4		23-12
EW2-U1343-01	19-15	EW2-63512-20	15-13	EW2-67354-00-01	7-50	6K8-14559-00	4-10	6M6-14284-00-98	3-22
EW2-U4901-00	20- 1	EW2-64161-A0	22-14	EW2-67354-00-03	7-50		23-37	6M6-14451-00	3-23
EW2-U5160-00	12- 1	EW2-64161-E0	22-12	EW2-67354-00-05	7-50	6K8-14589-00	4-36	6M6-14527-01-EK	3- 9
EW2-U7242-00	18- 4	EW2-64161-F0	22-19	EW2-67354-00-10	7-50	6K8-14591-10	4-20	6M6-14613-00	5- 6
EW2-U7252-00	18- 3	EW2-64161-G0	22-15	EW2-67555-00	17- 6	6K8-14592-00	4-21		23-14
EW2-U7550-00	17- 1	EW2-64161-H0	22-16	EW2-67593-00	16- 1	6K8-14916-15	4-29	6M6-14718-00-9M	5- 4
EW2-61314-00	21-32	EW2-64173-10	22- 1	EW2-67593-40	16- 2		23-41	6M6-14739-00	5- 5
EW2-61316-00	20- 6	EW2-64173-20	22- 2	EW2-67618-00	14- 2	6K8-14923-10	4-37		23-13
EW2-61333-00	19-13	EW2-64174-10	22- 4	EW2-67711-00	16- 9		23-36	6M6-14771-00-94	5-44

NUMERICAL INDEX

Parts No.	Ref. No.	Parts No.	Ref. No.	Parts No.	Ref. No.	Parts No.	Ref. No.	Parts No.	Ref. No.
6M6-15100-00-94	1- 2	6R7-14752-00	5-42	812-14147-00	4-12	90201-22M00	2-21	90465-11M10	10-28
6M6-41111-00	5- 3	6R7-14753-00-9M	5-25		23-29	90209-20M20	7-37		11- 7
6M6-45526-00	2- 5	6R7-14755-00	5-30	812-14387-00	4-30	90267-40935	16- 7		16-22
6M6-4581J-00	2-15		23-17	822-14147-00	4-34	90267-40936	13-22		16-37
6M6-5114E-00	2-16	6R7-14785-00-9M	5-29		23-32	90267-40939	13- 9	90465-13M11	7-20
6M6-8132W-00	10- 5	6R7-15761-00	5-26	830-14231-24	4-19	90267-48007	6-17		10-25
6M6-81337-00-EK	8-14	6R7-21415-00-94	1-20	856-14118-00	4-14		14-19		14- 4
6M6-81365-00	8-16	6R7-21425-00-94	1-21	90105-05M46	3-20	90267-48938	20- 5	90467-06016	1-19
6M6-81800-00	9- 1	6R7-24412-00	4-24	90105-06900	16-32		20-11	90467-08M10	11-11
6M6-81820-00	9- 7	6R7-24524-00	6- 9		17- 5		21-39	90467-11032	16-15
6M6-81826-00	9- 5	6R7-41113-00-9M	5-31	90105-06901	10-37	90267-48940	6-15	90467-13M13	5-22
6M6-8183E-00	9-16	6R7-41114-00	5-32	90105-06903	12-17		16-28		14-21
6M6-81830-00	9- 8		23-18	90105-08902	19-14	90280-05013	8-12	90480-06M43	10-18
6M6-81840-00	9- 3	6R7-42316-00	7-41		21-24	90340-08M04	5-11	90480-06M46	7-22
6M6-81844-00	10- 4	6R7-44517-00-9M	1-25	90105-10M43	5-45	90380-12M29	8-15	90501-14M73	9-17
6M6-81850-00	9- 6	6R7-45331-00-9M	7- 6	90105-10M45	5-46	90387-05907	12-10	90560-22281	21-17
6M6-81921-00	10- 3	6R7-45511-00	7-32	90109-10M44	8-13		13-20	90600-91728	21-30
6M6-81952-00	10-11	6R7-45813-00-5B	2-14	90116-08M14	3- 5	90387-06M60	7-23	90600-91729	6-12
6M6-81960-A0	10-12	6R7-45813-10-9M	2-18	90119-05912	21-37	90387-06906	13-25		10-41
6M6-8552A-00-98	10- 1	6R7-51117-00	7- 2	90119-05923	12- 9		21-40		14-17
6M6-8552E-00	10- 2		23-20	90119-06M70	7-34	90387-07908	10-40	90601-11062	16-14
6M6-85520-00	8- 3	6R7-5114E-00	2-19	90119-06900	7-24	90387-07909	12-18	90601-155U4	16-34
6M6-85533-00	8- 4	6R7-51161-00	14- 9	90119-06908	7-48	90387-07910	19-10	90601-162U5	16-19
6M6-85580-00	8- 5	6R7-51311-00	7- 1	90119-06914	14- 6	90387-08M06	7-42		17- 7
6R7-W0001-00	23- 1	6R7-51312-00-94	7-12	90119-06915	7-47	90430-06M03	7-31	90601-168U7	12-29
6R7-W0001-20	23-19	6R7-51313-00	7-38		14- 5		23-27		17- 8
6R7-W0004-00	3-16	6R7-51315-00-94	7-14		14- 7	90430-08020	5-12	90601-20005	18- 5
6R7-W0090-00-EK	1- 1	6R7-51318-00	7-33	90119-06919	14- 8		23-15	90601-20006	10-44
6R7-11111-00-94	1-13	6R7-51321-00-94	7-36	90119-06920	11- 6	90445-07M19	1-18		14-20
6R7-11181-00	1-16	6R7-51323-00	7- 4	90119-08M19	1-17	90445-10M32	6- 2		18- 6
	23- 3	6R7-51326-00-94	7-25	90119-08M38	5-13	90445-10M33	6- 3		19-24
6R7-11311-00-94	1- 7	6R7-51333-00	7- 3	90119-08M55	1- 3	90445-10M34	6- 4	90601-20010	6-11
6R7-11400-00	2- 1	6R7-51381-00	7-21	90119-08038	1-26	90445-10M35	6- 5	91490-16010	16-18
6R7-13610-00	3-15	6R7-82117-00	11-12	90119-08904	1-27	90445-10M48	3-11	91690-30010	19-12
6R7-14253-00	4-31	6R7-82117-10	11-13	90119-08907	7-56	90445-10M51	6- 6	91690-30012	20- 4
6R7-14255-00	3-27	6R7-82117-20	10-31	90119-10M07	1-12	90445-11903	16-13	91790-05040	16-16
6R7-14283-00	3-21	6R7-82351-00	10-14	90119-10M56	1-11	90445-14M02	7-19	92503-06015	10-21
6R7-14301-00	4- 1	6R7-82352-00	10-15	90119-10M72	5-47		14-11	92680-06010	19- 4
6R7-1441K-00	3-28	6R7-82361-00	10-34	90119-10917	7-49	90445-14M03	14-15	92990-04200	13-10
6R7-14485-00	1-15	6R7-82370-00	10-26	90149-05962	15- 7	90445-14M04	14-16		13-23
	5-24	6R7-82553-00	10-29	90149-05963	13-24	90445-14M06	5-21	92990-05200	7-54
6R7-14541-00	4-32	6R7-82560-00	10-30	90149-05964	15-20	90445-14M24	5-19		12-13
	23-38	6R7-83623-40	10-35	90149-06965	15-18	90446-20M24	5-20		13-17
6R7-14569-00	4-28	6R7-85515-00	8- 6	90159-05900	21- 8	90460-18M08	14-10		15-21
6R7-14596-00	4- 2	6R7-85540-00	10- 9	90164-04025	13- 7	90460-64M15	5-43	92990-05600	3-25
6R7-14615-00	5-37	6R7-85550-00	8- 1	90170-22187	6-20	90460-70M09	5-40		4-26
6R7-14625-00	5-38	6R7-85560-00	8- 2	90179-12933	21-29	90460-90M11	5-39		16-17
6R7-14635-00	5-41	6R7-85570-00	10-13	90201-05912	21-18	90461-06M01	10-24	92990-06100	9-14
6R7-14711-00-9M	5- 1	6R8-W0093-00	23-28	90201-05925	6-13	90464-06M29	10-19		15- 4
6R7-14712-00-9M	5- 9	650-24378-00	3- 4		10-42	90465-08M38	10-23		21-22
6R7-14721-00-9M	5-23	70R-24489-00	16-27		14-18	90465-08028	10-20	92990-06200	15- 3
6R7-14749-00	5-18	70R-24543-00	16-26	90201-06M02	7-39	90465-11M10	3-12		15-17
	23-16	8H8-11633-00	2-11	90201-06931	19- 9		6- 7		21-41

NUMERICAL INDEX

Parts No.	Ref. No.	Parts No.	Ref. No.	Parts No.	Ref. No.	Parts No.	Ref. No.	Parts No.	Ref. No.
92990-06600	3-14	93440-80023	2- 4	98580-03008	21-13				
	3-18	93450-21053	2-13	98580-04008	8- 9				
	5-15	93603-10049	1- 5	98580-05016	3-24				
	5-28	93604-07141	1- 6	98580-05020	21-19				
	5-34	93606-07M17	7-13	98580-05025	21-14				
	5-36	93606-12019	1- 4	98580-06016	8-10				
	7-28		7-35	98580-06030	10-16				
	7-30		8-19	98602-03007	4-17				
	8-11	94702-00195	10-27	98680-04016	1- 9				
	8-18	95380-05800	7-55	98702-04014	4-25				
	9-18		12- 8	98780-05012	7-53				
	10-17		15-22	98780-05014	12-12				
	10-22	95380-06700	7-40	98880-14100	19-22				
92990-08100	4- 7		9-15	98880-14300	19-23				
92990-08200	10-39	95380-06800	15- 5	98980-04008	6-19				
	19-26		15-19	98980-04010	21-31				
92990-08600	3- 7	95380-08600	3- 6	98980-05020	13-19				
	5- 8	95380-08700	4- 8	98980-06010	21-36				
	5-17		10-38	98980-06025	15- 2				
	9-11	95720-06300	21-42						
	9-13	95780-05300	12-14						
92990-10200	21-33		12-21						
92990-14600	19-17		13-18						
92995-06100	10-33	95780-10300	21-34						
92995-08600	7-44	97013-06035	3-13						
93101-25M50	7-18	97013-08025	5-16						
	23-25	97313-06016	5-27						
93101-36M46	2- 7	97313-06020	3-17						
	23- 5	97313-06025	5-14						
93102-25M34	7-17		5-35						
	23-24	97313-08035	5- 7						
93102-25M37	7-11		9-12						
	23-22	97313-08040	9-10						
93102-36M33	2- 6	97380-06025	19- 8						
	23- 4	97395-06010	10-32						
93103-25M02	7- 7	97395-06012	7-29						
	7-10	97395-06016	5-33						
	23-23		7-27						
93103-32M01	2- 8	97395-06025	8-17						
	23- 6	97395-08018	7-43						
93210-17MA4	7- 5	97513-10535	1-23						
	23-21	97513-10570	1-22						
93210-30M31	2-17	97513-10580	1-24						
	2-20	97602-03107	4-15						
	23- 7	97680-05216	13-16						
93210-46M16	7-26	97780-30312	20- 7						
	23-26	97780-50110	10-43						
93303-30601	2- 2	97780-50114	14- 3						
93306-205U0	7-16	97780-60520	7-58						
93306-205U4	7- 8	97780-60525	10- 6						
93306-307U1	2- 3	97902-04122	8- 8						
93310-320U3	2-12	97902-05125	8- 7						
93430-47M04	7- 9	97980-05330	4- 9						

— MEMO —

A series of horizontal dotted lines for writing.

— MEMO —

A series of horizontal dotted lines for writing, spanning the width of the page.

0

0

— MEMO —

A series of horizontal dotted lines for writing.



YAMAHA MOTOR CO., LTD.
2500 SHINGAI IWATA-SHI SHIZUOKA-KEN JAPAN

Copyright

All rights reserved.

No part of this publication may be
reproduced without permission.

Printed in Japan

Feb. 1990

10EW2-300E1 (英語)