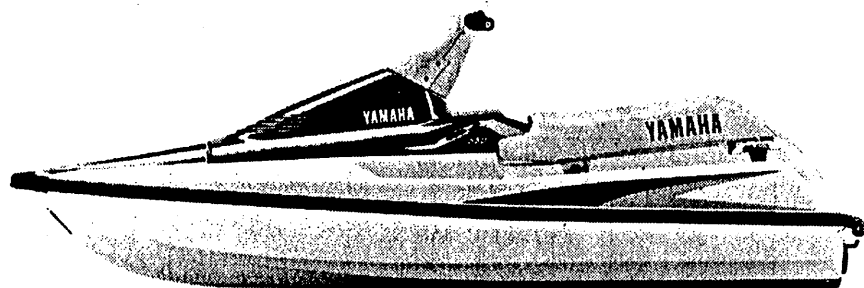


YAMAHA

Marine



Water Vehicles

Wave Runner **VXR** 650Q
(FN85)
(FN86)
(FN87)
(FN88)



PARTS CATALOGUE

YAMAHA MOTOR CO.,LTD.

12FN8-100E1 ●

A2

FOREWORD

This Parts Catalogue is related to the parts in use for the Yamaha Wave Runner VXR650Q (FN8). When you are ordering replacement parts for the Wave Runner VXR650Q(FN8), refer to this Parts Catalogue and quote both part numbers and part names correctly.

1. Modifications or additions which have been made after issue of the Parts Catalogue will be announced in the Yamaha Parts News.

It is advisable that according to the Yamaha Parts News you make necessary corrections to the Parts Catalogue on hand to keep it up-to-date.

2. Abbreviations

The following abbreviations are used in this Parts Catalogue.

- U.R. Use size (thickness) and/or number as required.
- U.N. Use as many as you need.
- A.P. Alternate Parts
- L.M. Local Made
- F# Frame No. (Applicable machine No.)

3. The parts marked with (*) in the parts number column of this Catalogue are not supplied with by Yamaha, those have to be found locally.

4. Parts, which are to be supplied in the form of assemblies, are listed with an indentation of one letter's space, and a dot (.) is put against the name of each part.

EXAMPLE CARBURETOR ASS'Y
 . JET, pilot
 . NOZZLE, main

5. Indication of No. of constituent parts for assembly

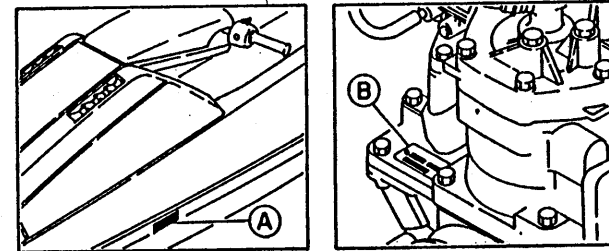
The numeral appearing to the right of each constituent part under the description indicates the quantity of such parts for each individual assembly unit.

EXAMPLE

Part No.	Description	Q'ty	Remarks
2F5-83310-60	FRONT FLASHER LIGHT ASS'Y	2	
115-83311-60	. BULB (6V-18W)	1	
1M1-83309-60	. REFLECTOR	1	

6. Initial Serial No. and Color Code

(A) Hull Serial No.	FN8-807001 and following
(B) Engine Serial No.	61L-008601 and following



Color Code	Color Name	Abbreviate
EK	METALLIC MARINE SILVER	MMS

7. Applicable colors of graphics are represented in the "Remarks" column by the letter(s) appropriately picked out of the full word(s) showing such colors.

EXAMPLE

Part No.	Description	Q'ty	Remarks
2N4-24110-00-X5	FUEL TANK COMP.	1	MAXIM RED
3J1-24240-10	. GRAPHIC, fuel tank set	1	for MXR

8. A part with "YMUS" in the remarks column can be obtained from YMUS, USA and not from YMC, JAPAN.

Address: YAMAHA MOTOR CORPORATION U.S.A.
 6555 KATELLA AVENUE
 CYPRESS, CALIFORNIA 90630, U.S.A.
 PARTS & ACCESSORY DIV.

EXAMPLE

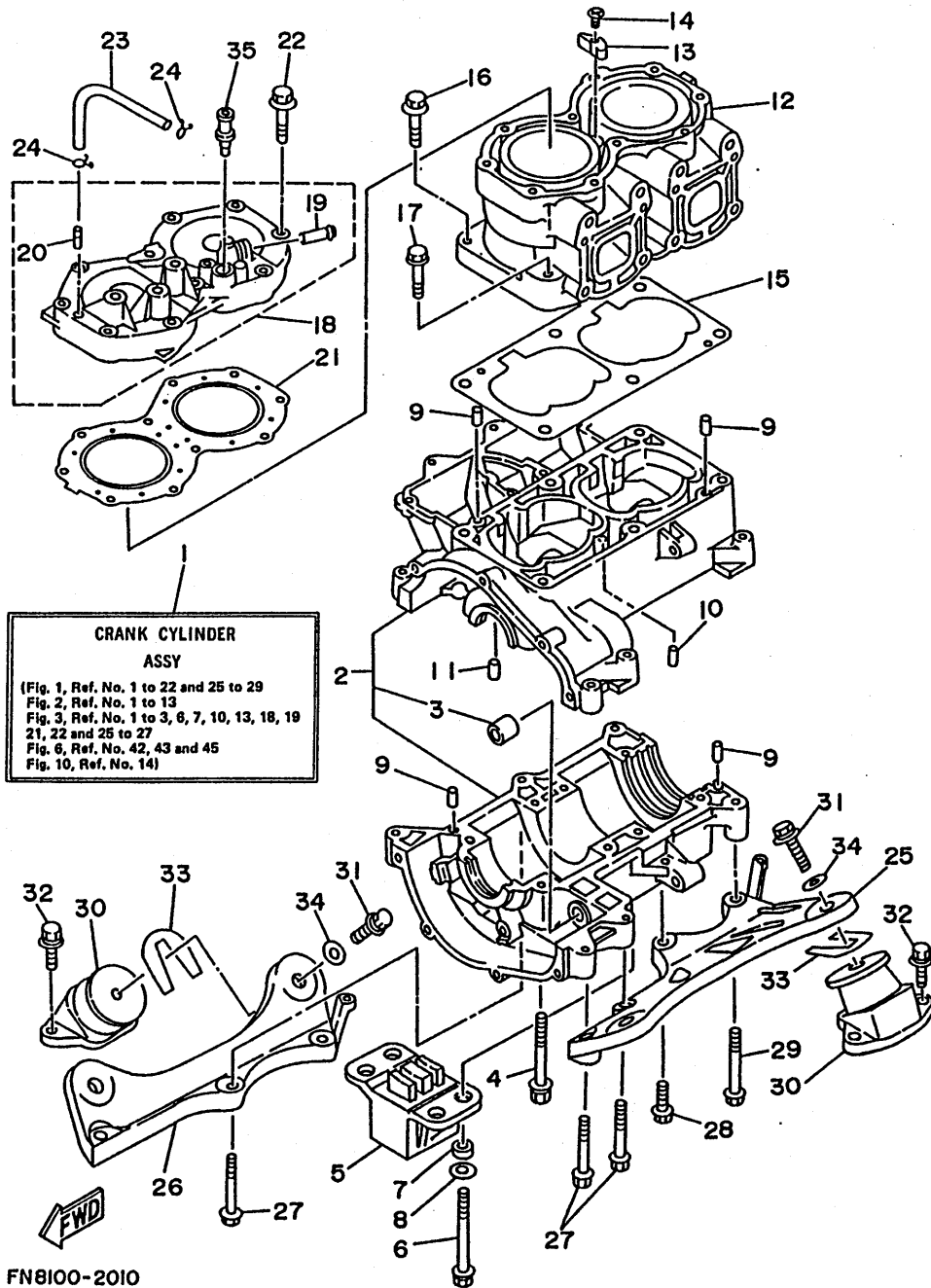
Part No.	Description	Q'ty	Remarks
EW2-U5160-00	ENGINE HATCH COMP.	1	YMUS
90601-168U7	BAND, hose	2	YMUS

CONTENTS

Cylinder, Crankcase	B2 ~ B3
Crankshaft, Piston	B4
Intake	B5 ~ B6
Carburetor	B7 ~ B8
Oil Pump	B9
Exhaust 1	B10 ~ B11
Fuel	B13
Jet Unit 1	B13 ~ B14
Jet Unit 2	B15
Generator	C2
Starting Motor	C3
Electrical 1	C4 ~ C5
Electrical 2	C6
Engine Hatch	C7
Hull, Deck	C8 ~ C9
Gunwale, Mat	C10
Ventilation	C11
Seat Under Locker	C12 ~ C13
Oil Tank	C14
Fuel Tank	C15 ~ D2
Exhaust 2	D3
Control Cable	D4
Steering 1	D5 ~ D6
Steering 2	D7
Graphic, Tool	D8 ~ D9
Gasket Kit	D10 ~ D11

INDEX

Numerical index	M1 ~ M3
-----------------------	---------

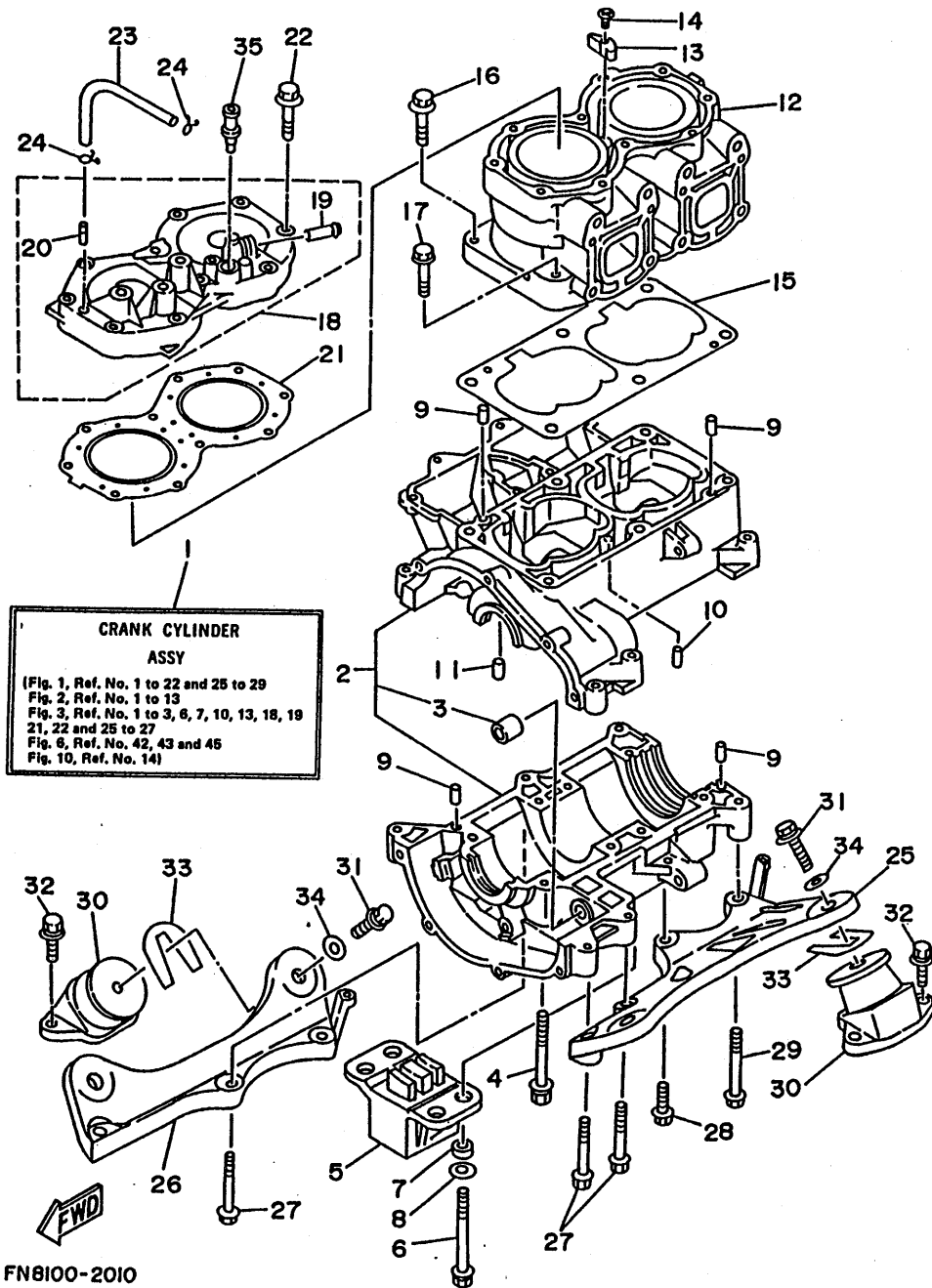


FN8100-2010

FIG. 1 CYLINDER, CRANKCASE

REF. NO.	PART NO.	DESCRIPTION	Q'TY	REMARKS
1	61L-W0090-00-EK 61L-W0090-10-EK	CRANK CYLINDER ASSY CRANK CYLINDER ASSY	1	1UR FOR OIL INJECTION 1UR FOR NON OIL INJECTION
2	6M6-15100-00-94	CRANKCASE ASSY	1	
3	90380-12M29	.BUSH, solid	1	
4	90119-08M55	BOLT, with washer	4	
5	61L-44532-00	STOPPER, upper mount	1	
6	90119-08M69	BOLT, with washer	4	
7	90387-08M10	COLLAR	4	
8	90201-08M04	WASHER, plate	4	
9	93606-12019	PIN, dowel	4	
10	93603-10049	PIN, dowel	4	
11	93604-07141	PIN, dowel	1	
12	6M6-11311-00-94	CYLINDER 1	1	
13	6E5-11325-00	ANODE	1	
14	98680-04016	SCREW, oval head	1	
15	6M6-11351-A1	GASKET, cylinder	1	
16	90119-10M56	BOLT, with washer	4	
17	90119-10M07	BOLT, with washer	2	
18	6R7-11111-00-94	HEAD, cylinder 1	1	
19	6K8-51129-00	.NIPPLE	1	
20	6R7-14485-00	.PIPE, joint	1	
21	6R7-11181-A0	GASKET, cylinder head 1	1	
22	90119-08M19	BOLT, with washer	10	
23	90445-07M19	HOSE	1	
24	90467-06016	CLIP	2	
25	6R7-21415-00-94	BRACKET, front upper 1	1	
26	6R7-21425-00-94	BRACKET, rear upper 1	1	
27	97513-10570	BOLT, with washer	5	
28	97513-10535	BOLT, with washer	1	

FIG. 1 CYLINDER. CRANKCASE

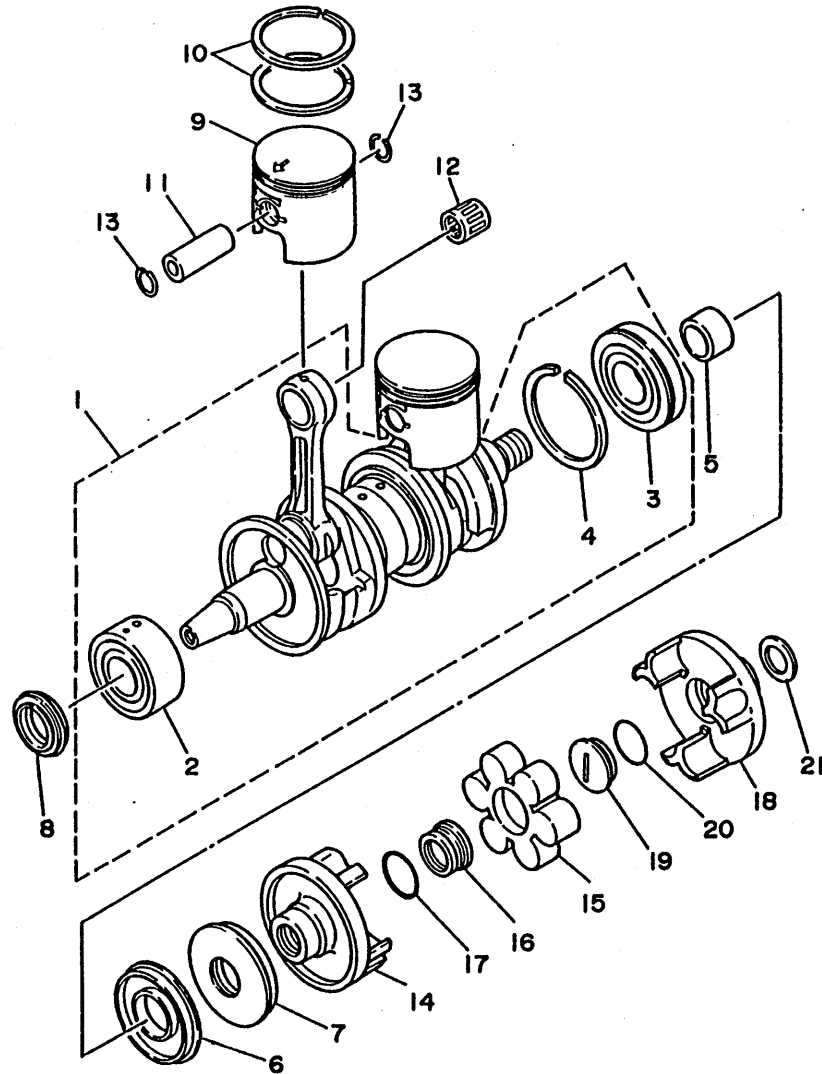


REF. NO.	PART NO.	DESCRIPTION	Q'TY	REMARKS
29	97513-10580	BOLT, with washer	1	
30	6M6-44517-00-5B	MOUNT RUBBER	4	
31	90119-08904	BOLT, with washer	4	
32	90119-08038	BOLT, with washer	8	
33	EU0-67324-00	PLATE	4	
34	EU0-67354-00-01	SHIM (T=0.1)	10	UR
	EU0-67354-00-03	SHIM (T=0.3)	10	UR
	EU0-67354-00-05	SHIM (T=0.5)	10	UR
	EU0-67354-00-10	SHIM (T=1.0)	10	UR
	EU0-67354-00-20	SHIM (T=2.0)	10	UR
35	6E0-28193-00-94	PLUG, water check	1	FOR EXCEPT USA

FN8100-2010

B3

FIG. 2 CRANKSHAFT. PISTON

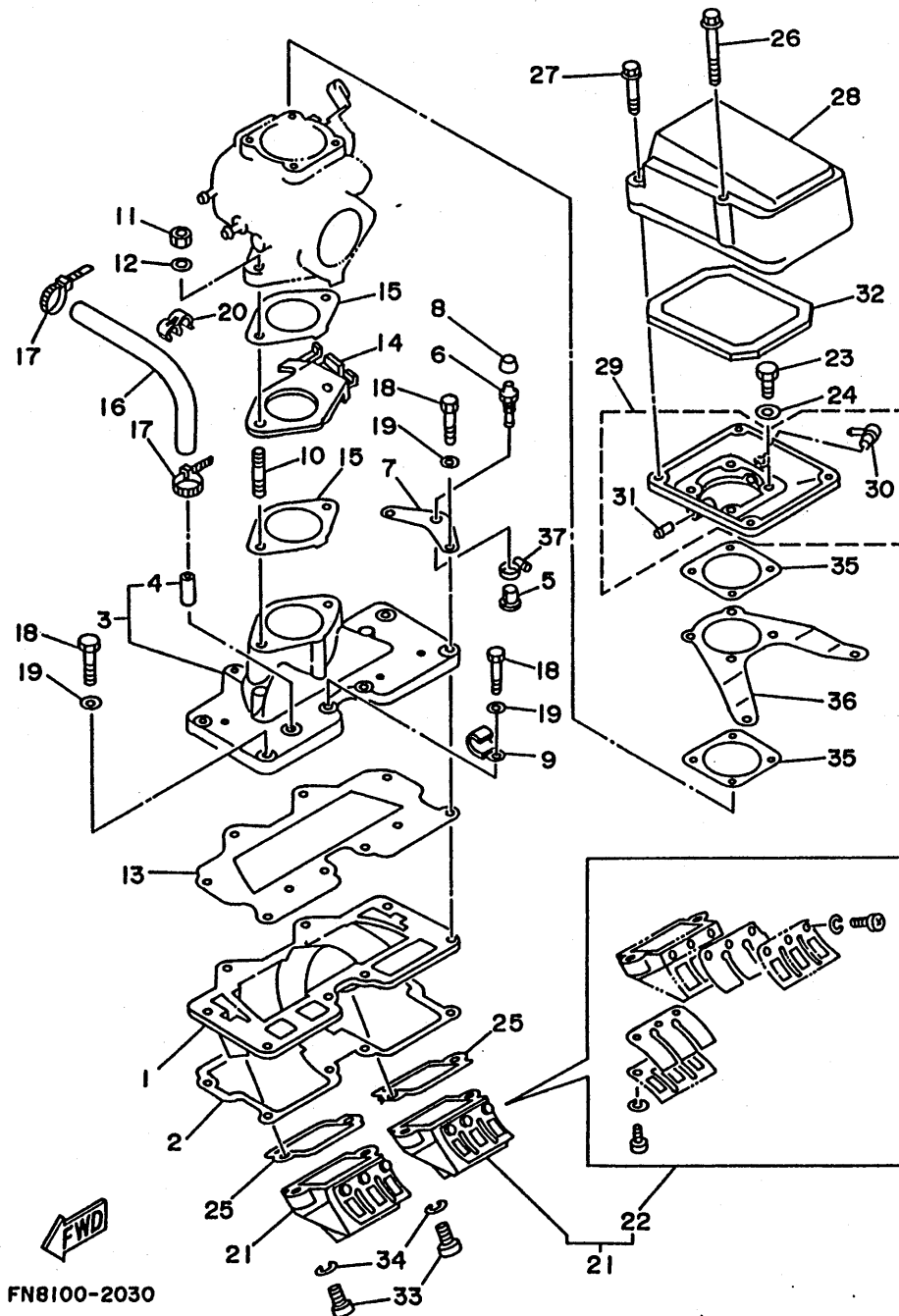


REF. NO.	PART NO.	DESCRIPTION	Q'TY	REMARKS
1	6M6-11400-00	CRANKSHAFT ASSY	1	
2	93303-30601	.BEARING	1	
3	93306-307U1	.BEARING	1	
4	93440-80023	.CIRCLIP	1	
5	6M6-45526-00	COLLAR, drive shaft	1	
6	93102-36M33	OIL SEAL	1	
7	93101-36M46	OIL SEAL	1	
8	93103-32M01	OIL SEAL	1	
9	6M6-11631-01-93	PISTON (STD)	2	
	6M6-11635-01	PISTON (0.25MM O/S)	2	AP
	6M6-11636-01	PISTON (0.50MM O/S)	2	AP
10	6M6-11601-00	PISTON RING SET (STD)	2	
	6M6-11601-10	PISTON RING SET (0.25MM O/S)	2	AP
	6M6-11601-20	PISTON RING SET (0.50MM O/S)	2	AP
11	8H8-11633-00	PIN, piston	2	
12	93310-320U3	BEARING, cylindrical	2	
13	93450-21053	CIRCLIP	4	
14	6M6-45813-10-9M	FLANGE, coupling	1	
15	6M6-4581J-00	RUBBER SHAFT COUPLING	1	
16	6M6-5114E-00	NUT, ring	1	
17	93210-30M31	O-RING	1	
18	6R7-45813-11-9M	FLANGE, coupling	1	
19	6R7-5114E-01	NUT, ring	1	
20	93210-30M31	O-RING	1	
21	90201-24M01	WASHER, plate	1	



FN81110-1020

B4



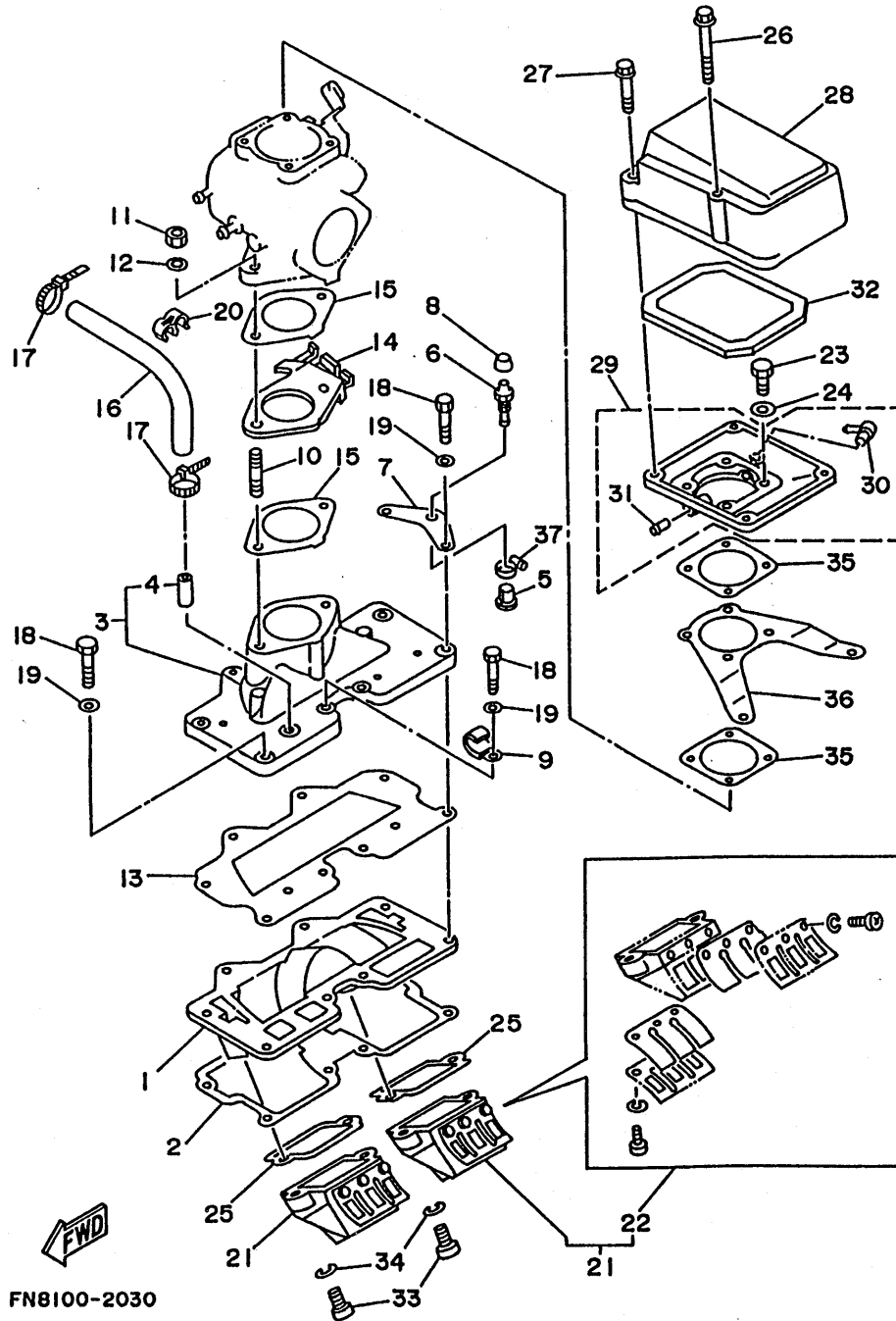
FN8100-2030

FIG. 3 INTAKE

REF. NO.	PART NO.	DESCRIPTION	Q'TY	REMARKS
1	6M6-13641-00-94	MANIFOLD 1	1	
2	6M6-13566-A1	GASKET	1	
3	6M6-13555-00-94	MANIFOLD, intake	1	
4	650-24378-00	.PIPE, joint 4	1	
5	90386-08006	BUSH	1	
6	61L-5169A-00	GREASE, nipple	1	
7	61L-14243-00	PLATE	1	
8	663-45119-00	CAP, grease nipple	1	
9	90465-08028	CLAMP	1	
10	90116-08M14	BOLT, stud	2	
11	95380-08600	NUT	2	
12	92990-08600	WASHER, plate	2	
13	6M6-13563-A1	GASKET	1	
14	6M6-14527-02-EK	PLATE	1	
15	6M6-13556-A1	GASKET, manifold	2	
16	90445-10M48	HOSE	1	
17	90465-11M10	CLAMP	2	
18	97013-06035	BOLT	8	
19	92990-06600	WASHER, plate	8	
20	90464-10M38	CLAMP	1	
21	6R7-13610-00	REED VALVE ASSY	2	
22	6R7-W0004-00	.REED SET	1	
23	97313-06020	BOLT	4	
24	92990-06600	WASHER, plate	4	
25	6M6-13621-A1	GASKET, valve seat	2	
26	90105-05M46	BOLT, washer based	2	
27	90105-05M53	BOLT, washer based	2	
28	61L-14283-00	COVER, carburetor 1	1	

B5

FIG. 3 INTAKE

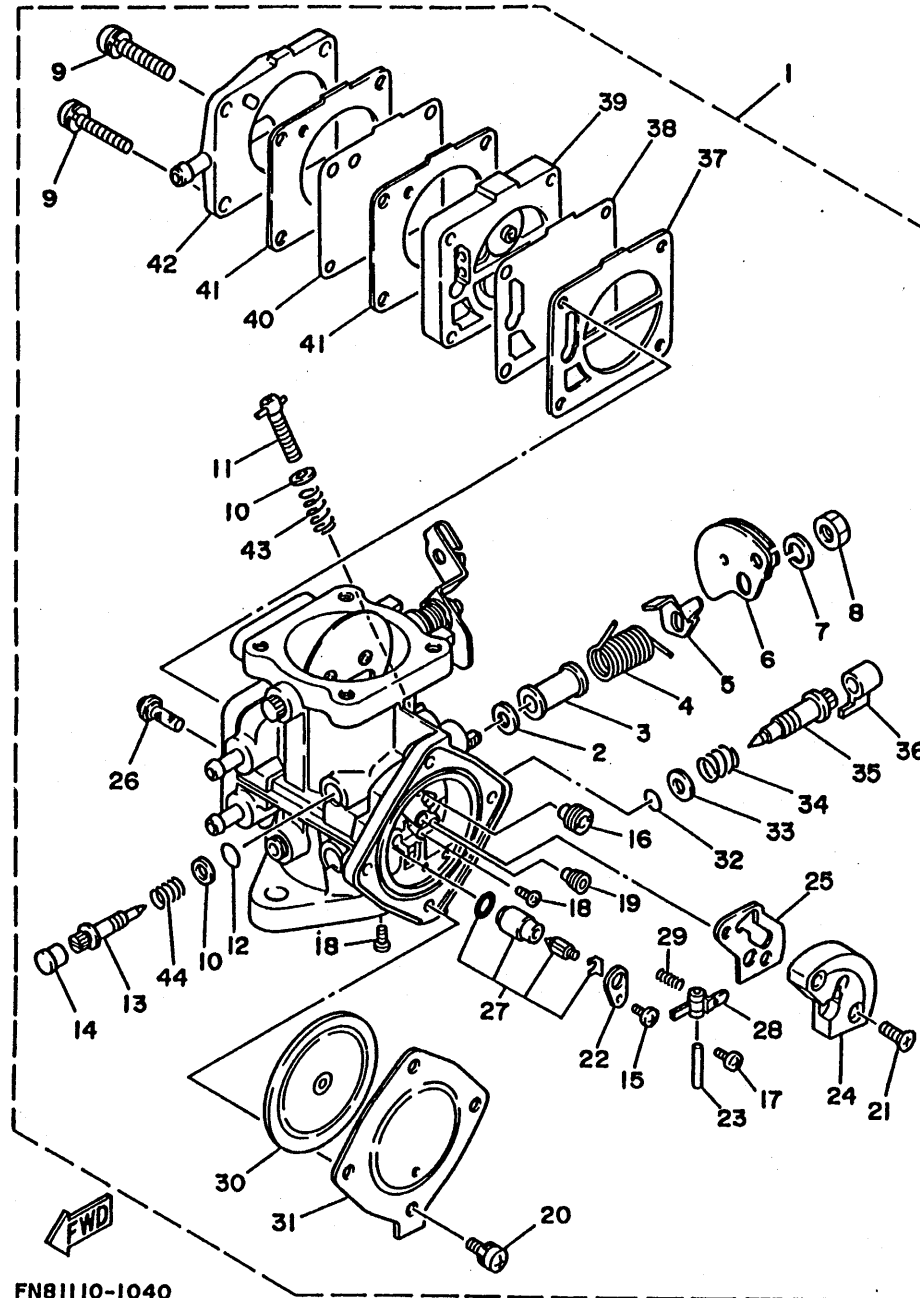


REF. NO.	PART NO.	DESCRIPTION	Q'TY	REMARKS
29	6R8-14284-00-98	COVER, carburetor 2	1	4R FOR OIL INJECTION
	6M6-14284-00-98	COVER, carburetor 2	1	4R FOR NON OIL INJECTION
30	6E5-11372-00	.NIPPLE, hose	1	FOR OIL INJECTION
31	6H1-14485-00	.PIPE, joint	1	FOR OIL INJECTION
32	6M6-14451-00	ELEMENT, air cleaner	1	
33	98580-05016	SCREW, pan head	4	
34	92990-05600	WASHER, plate	4	
35	6M6-13674-A1	GASKET, air cooler cover 1	2	
36	6R7-14255-00	PLATE	1	
37	90460-11M17	CLAMP, hose	1	

FN8100-2030

B6

FIG. 4 CARBURETOR

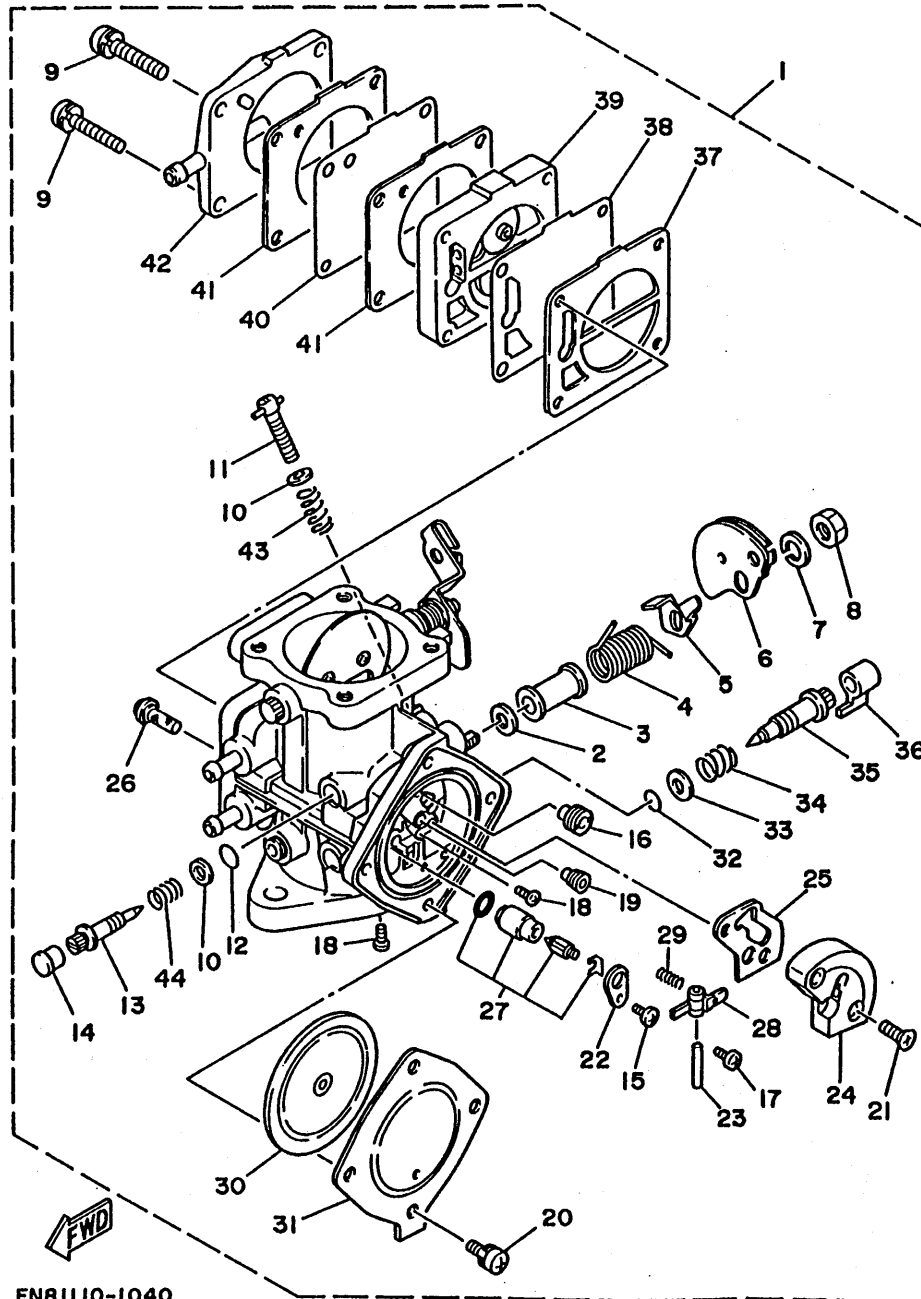


FN81110-1040

REF. NO.	PART NO.	DESCRIPTION	Q'TY	REMARKS
1	61L-14301-00	CARBURETOR ASSY 1	1	
2	6R7-14596-00	.WASHER	2	
3	6K8-14534-10	.COLLAR	1	
4	6K8-14556-10	.SPRING	1	
5	6K8-14926-10	.BRACKET, throttle 1	1	
6	6K8-14930-00	.THROTTLE SHAFT ASSY	1	
7	92990-08100	.WASHER, spring	1	
8	95380-08700	.NUT	1	
9	97980-05330	.SCREW, with washer	4	
10	6K8-14559-00	.WASHER	2	
11	6M6-14521-00	.SCREW, adjust	1	
12	6K8-14562-00	.O-RING	1	
13	6K8-14946-10	.PLATE, needle fitting	1	
14	6K8-14471-10	.CAP, carburetor	1	
15	6M6-14503-00	.ADJUST SCREW SET	1	
16	3G2-14231-25	.JET, main (#125)	1	
17	6K8-14503-02	.ADJUST SCREW SET	2	
18	6K8-14521-10	.SCREW, adjust	2	
19	830-14231-24	.JET, main (#120)	1	
20	6K8-14591-10	.SCREW	4	
21	6K8-14523-11	.SCREW, stop	1	
22	6K8-14527-11	.PLATE	1	
23	6K8-14579-00	.PIN, float	1	
24	6R7-24412-01	.BODY 1	1	
25	6K8-14536-11	.GASKET	1	
26	6R7-14569-00	.STRAINER	1	
27	61L-14916-15	.NEEDLE	1	
28	6K8-14547-01	.ARM, float	1	

B7

FIG. 4 CARBURETOR

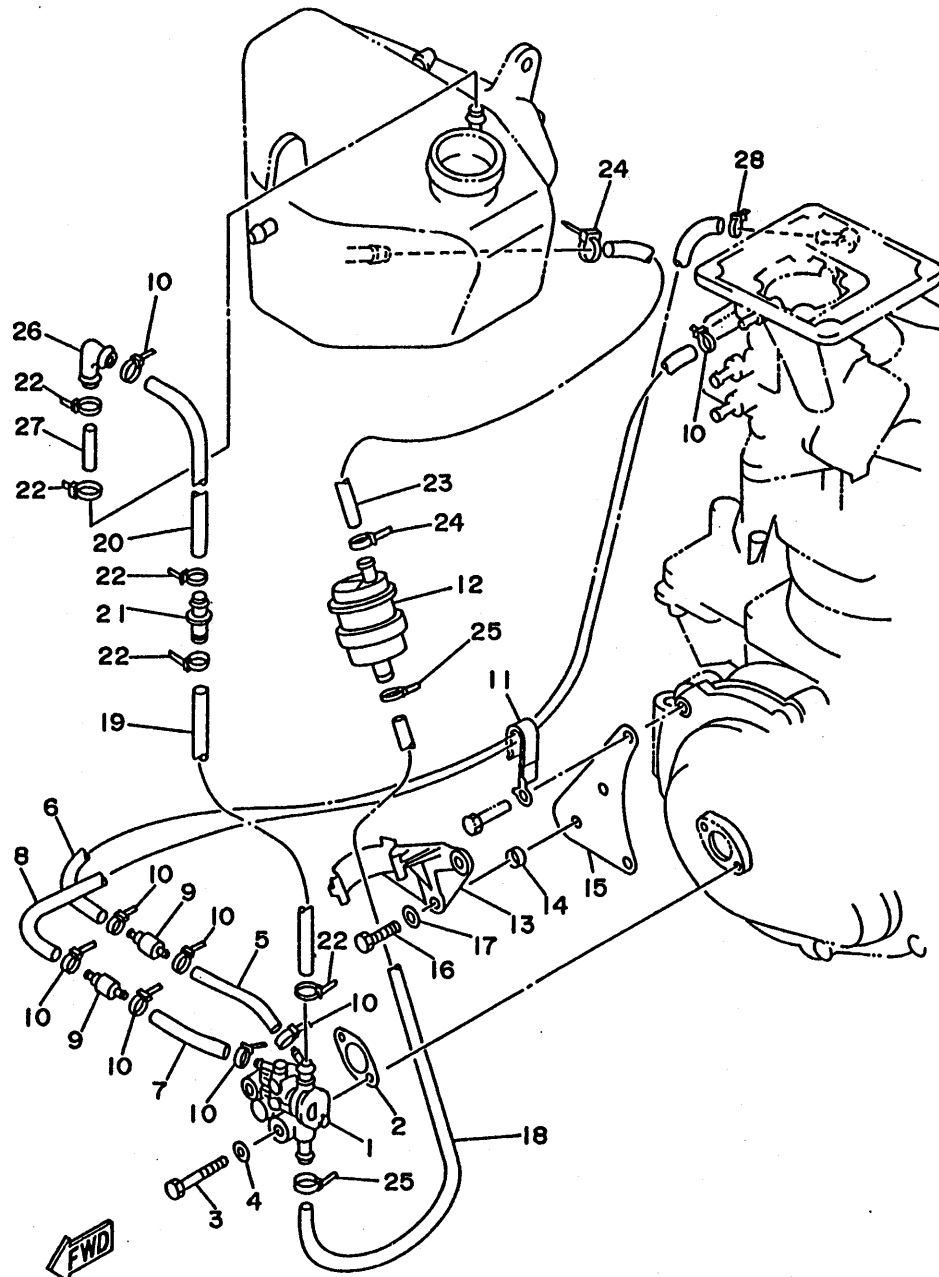


REF. NO.	PART NO.	DESCRIPTION	Q'TY	REMARKS
29	6R7-14253-00	.SPRING	1	
30	6R7-14541-00	.DIAPHRAGM, pump	1	
31	6R7-14542-10	.BODY, pump 1	1	
32	583-14561-00	.O-RING	1	
33	6K8-14537-00	.GASKET	1	
34	6K8-14589-00	.SPRING	1	
35	6K8-14923-10	.SCREW, pilot	1	
36	6K8-14481-10	.CAP, carburetor	1	
37	6K8-24435-10	.GASKET, body 2	1	
38	6K8-24411-10	.DIAPHRAGM	1	
39	6K8-24413-10	.BODY 2	1	
40	6K8-24421-10	.VALVE, check	1	
41	6K8-24431-10	.GASKET, fuel pump 1	2	
42	6K8-24452-10	.COVER	1	
43	6K8-14531-00	.SPRING, adjust screw	1	
44	6K8-14533-00	.SPRING, adjust screw	1	

FN81110-1040

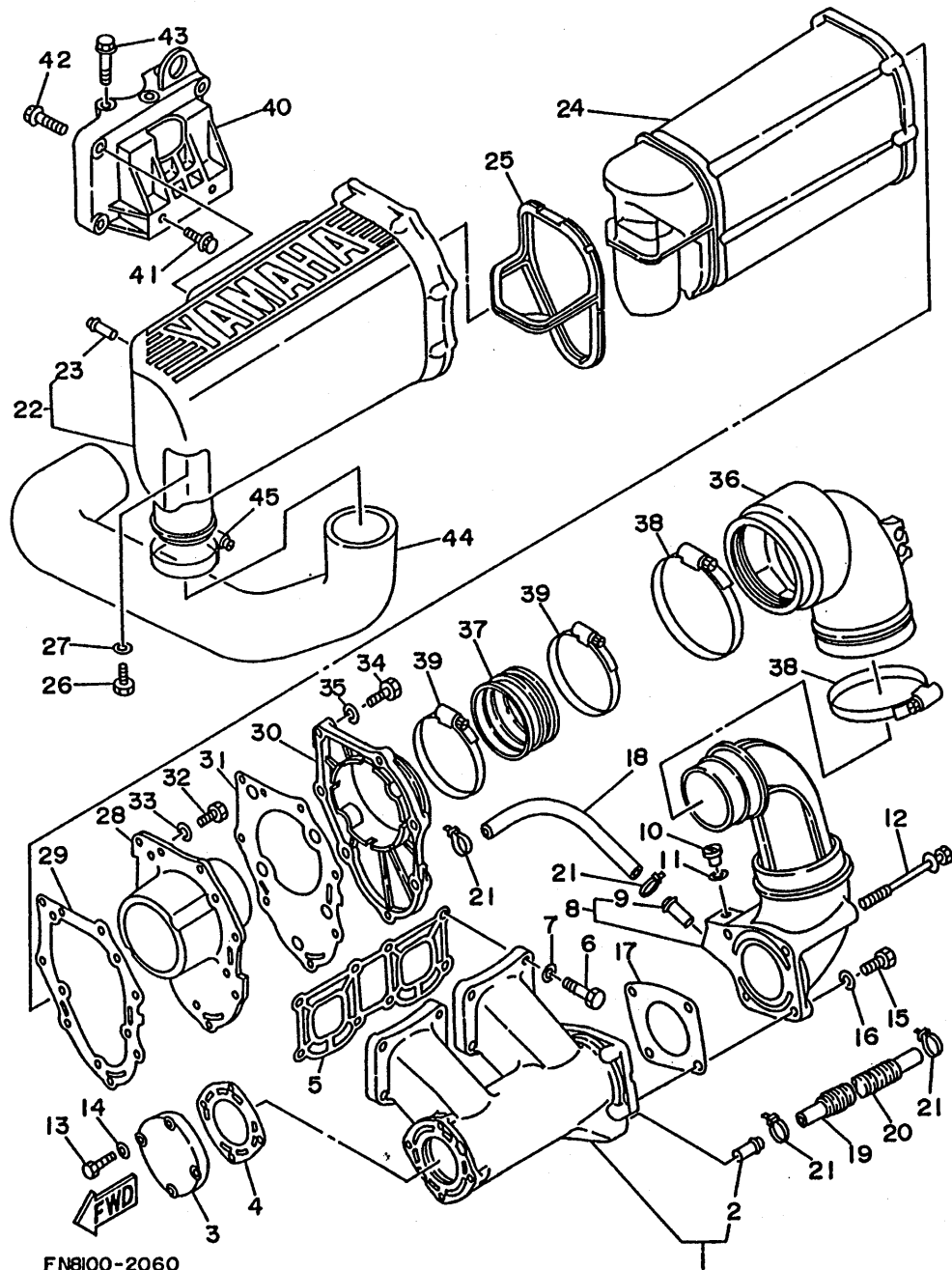
B8

FIG. 5 OIL PUMP (FOR OIL INJECTION)



REF. NO.	PART NO.	DESCRIPTION	Q'TY	REMARKS
1	61L-13200-00	OIL INJECTION PUMP ASSY	1	
2	6R8-13116-A0	GASKET, pump case	1	
3	97395-06035	BOLT	2	
4	92990-06600	WASHER, plate	2	
5	90446-07M14	HOSE	1	
6	90446-07M35	HOSE	1	
7	90446-07M17	HOSE	1	
8	90446-07M36	HOSE	1	
9	6R3-13183-00	VALVE, check	2	
10	90465-11M10	CLAMP	8	
11	90465-08M37	CLAMP	1	
12	6R8-21733-00	SUB TANK, oil	1	
13	6R8-21734-00	HOLDER, oil sub tank	1	
14	90387-06M72	COLLAR	2	
15	61L-14255-00	PLATE	1	
16	97395-06012	BOLT	2	
17	92990-06600	WASHER, plate	2	
18	90445-11M24	HOSE	1	
19	90446-12M32	HOSE	1	
20	90446-11M33	HOSE	1	
21	6R8-24377-00	PIPE, joint 2	1	
22	90465-11M10	CLAMP	5	
23	90445-11M27	HOSE	1	
24	90465-11M10	CLAMP	2	
25	90465-11M10	CLAMP	2	
26	61L-24378-00	PIPE, joint 4	1	
27	90445-09M28	HOSE	1	
28	90465-11M10	CLAMP	1	

FWD
FN8100-2050



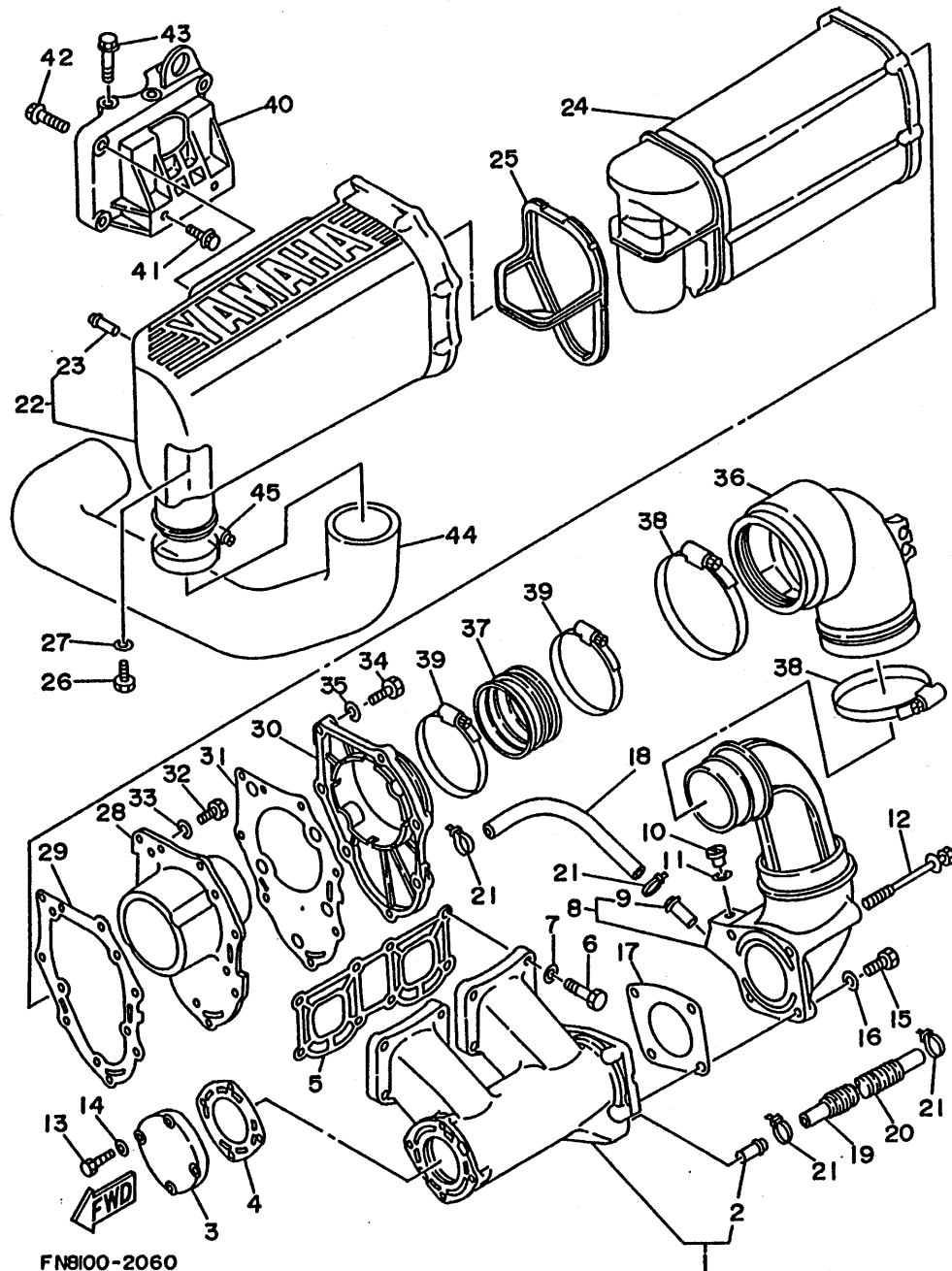
FN8100-2060

FIG. 6 EXHAUST 1

REF. NO.	PART NO.	DESCRIPTION	Q'TY	REMARKS
1	6R7-14711-00-9M	MUFFLER 1	1	
2	6K8-51129-00	.NIPPLE	1	
3	6M6-14718-01-9M	PROTECTOR, muffler 1	1	
4	6M6-14739-A1	GASKET, muffler damper 1	1	
5	6M6-14613-A0	GASKET, exhaust pipe	1	
6	97313-08035	BOLT	8	
7	92990-08600	WASHER, plate	8	
8	61L-14712-00-9M	RING, joint	1	
9	6K8-51129-00	.NIPPLE	1	
10	90340-08M04	PLUG, straight screw	1	
11	90430-08020	GASKET	1	
12	90119-08M73	BOLT, with washer	2	
13	97313-06025	BOLT	4	
14	92990-06600	WASHER, plate	4	
15	97013-08025	BOLT	2	
16	92990-08600	WASHER, plate	2	
17	6R7-14749-A0	GASKET, muffler damper 2	1	
18	90446-14M34	HOSE	1	
19	90445-14M06	HOSE	1	
20	90446-20M31	HOSE	1	
21	90465-13M11	CLAMP	4	
22	6R7-14721-00-9M	MUFFLER 2	1	
23	6R7-14485-00	.PIPE, joint	1	
24	6R7-14753-00-9M	SILENCER, exhaust	1	
25	6R7-15761-00	SEAL, rubber 1	1	
26	97313-06016	BOLT	1	
27	92990-06600	WASHER, plate	1	
28	6R7-14785-00-9M	DIFFUSER	1	

B10

FIG. 6 EXHAUST 1

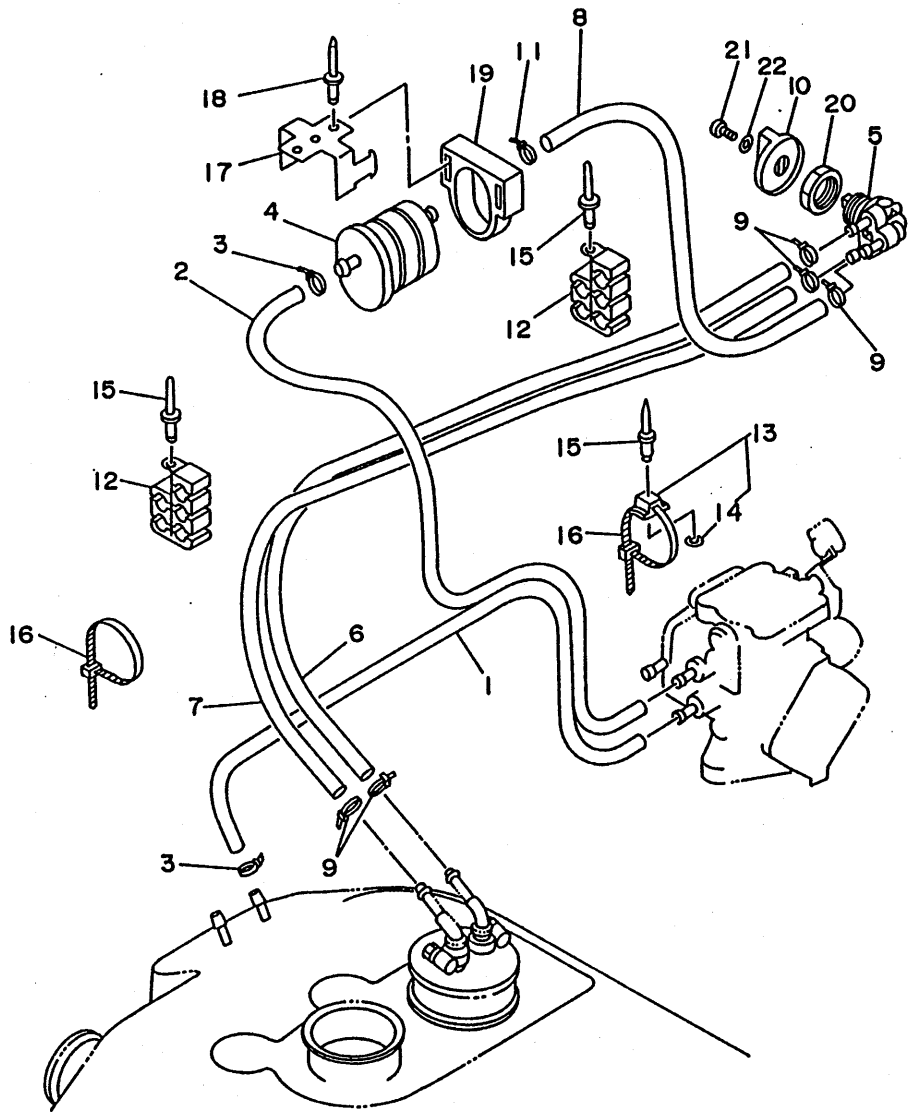


FN8100-2060

REF. NO.	PART NO.	DESCRIPTION	Q'TY	REMARKS
29	6R7-14755-A0	GASKET, silencer	1	
30	6R7-41113-00-9M	OUTER COVER, exhaust	1	
31	6R7-41114-A0	GASKET, exhaust outer cover	1	
32	97395-06016	BOLT	5	
33	92990-06600	WASHER, plate	5	
34	97313-06030	BOLT	7	
35	92990-06600	WASHER, plate	7	
36	61L-14615-00	JOINT, exhaust 1	1	
37	61L-14625-A0	JOINT, exhaust 2	1	
38	90460-90M11	CLAMP, hose	2	
39	90460-70M16	CLAMP, hose	2	
40	6M6-14771-00-94	STAY, muffler 1	1	
41	90105-10M49	BOLT, washer based	2	
42	90105-10M45	BOLT, washer based	3	
43	90119-10M72	BOLT, with washer	3	
44	61L-14752-00	PIPE, outlet	1	
45	90460-64M15	CLAMP, hose	1	

FIG. 7 FUEL

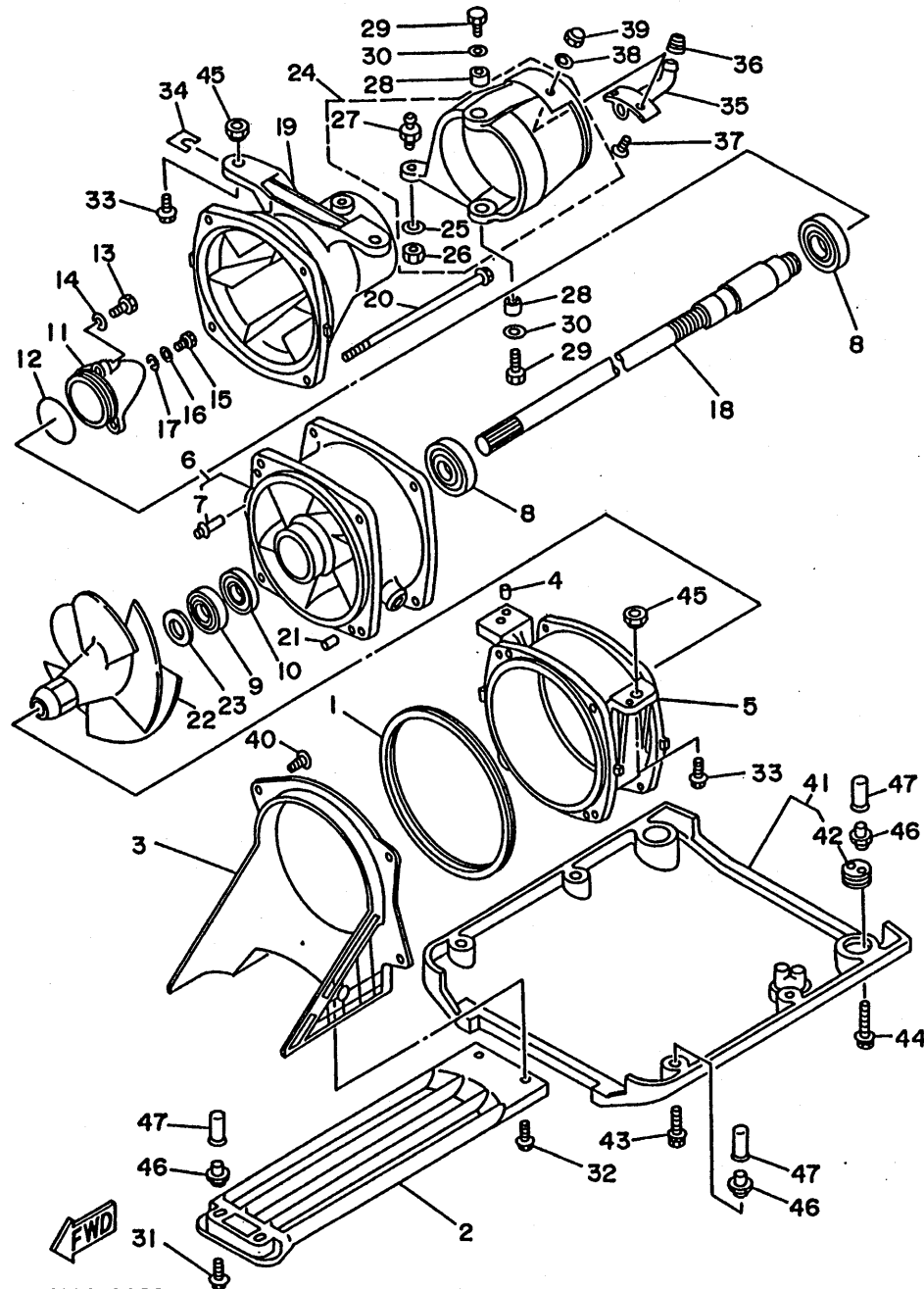
REF. NO.	PART NO.	DESCRIPTION	Q'TY	REMARKS
1	90445-10M62	HOSE	1	
2	90445-10M33	HOSE	1	
3	90465-11M10	CLAMP	2	
4	6K8-24560-10	FILTER ASSY	1	
5	6K8-24500-02	FUEL COCK ASSY 1	1	
6	90445-10M59	HOSE	1	
7	90445-10M61	HOSE	1	
8	90445-10M60	HOSE	1	
9	90465-11M10	CLAMP	5	
10	6K8-24524-10	LEVER, cock	1	
11	90465-11M10	CLAMP	1	
12	EW2-67812-00	HOLDER, pipe 2	2	
13	90600-91736	CLAMP	2	
14	90201-05925	.WASHER, plate	1	
15	90267-48007	RIVET, blind	4	
16	90601-20006	NYLON CLIP 1	3	
17	EU0-67816-30	BRACKET, fuel filter	1	
18	90267-48934	RIVET, blind	3	
19	EU0-67817-00	HOLDER	1	
20	90170-22M11	NUT	1	
21	98580-04010	SCREW, pan head	1	
22	92990-04600	WASHER, plate	1	



FN81110-1070

B12

FIG. 8 JET UNIT 1

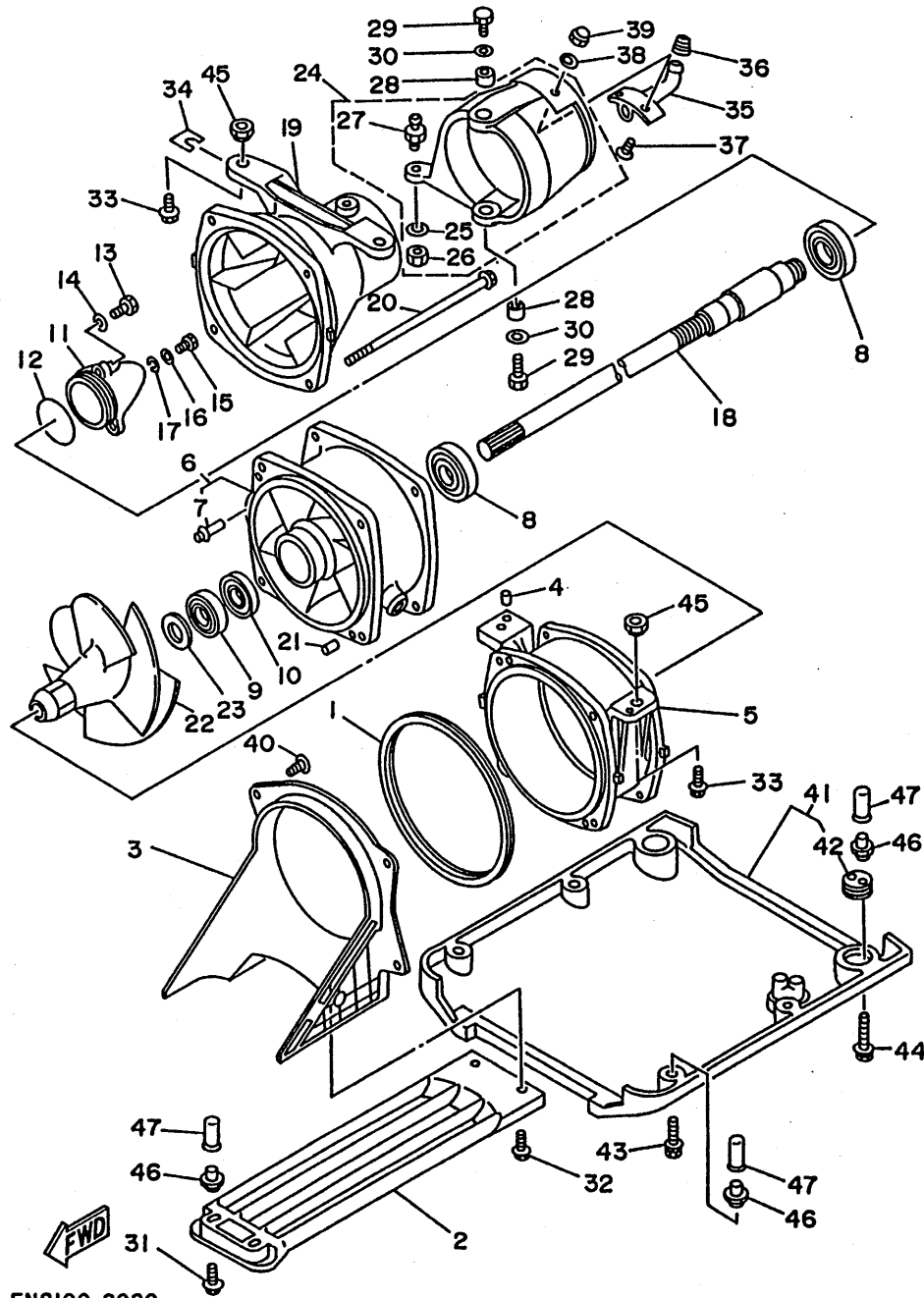


FN8100-2080

REF. NO.	PART NO.	DESCRIPTION	Q'TY	REMARKS
1	6R7-51117-01	PACKING	1	
2	61L-51333-00-5B	SCREEN, intake	1	
3	61L-51311-00	DUCT, intake	1	
4	93606-09M19	PIN, dowel	2	
5	6R7-51312-00-94	HOUSING, impeller	1	
6	6R7-51315-00-94	DUCT, impeller	1	
7	6K8-51129-00	.NIPPLE	1	
8	93306-205U0	BEARING	2	
9	93102-25M34	OIL SEAL	1	
10	93101-25M50	OIL SEAL	1	
11	6R7-51326-00-94	CAP	1	
12	93210-46M16	O-RING	1	
13	97395-06016	BOLT	3	
14	92990-06600	WASHER, plate	3	
15	97395-06012	BOLT	1	
16	92990-06600	WASHER, plate	1	
17	90430-06M03	GASKET	1	
18	61L-45511-00	SHAFT, drive	1	
19	6R7-51318-00	NOZZULE	1	
20	90119-06M70	BOLT, with washer	4	
21	93606-12019	PIN, dowel	2	
22	61L-51321-10-94	IMPELLER	1	
23	90209-20M20	WASHER	1	
24	6R7-51313-00	ADJUSTER	1	
25	90201-06M02	.WASHER, plate	1	
26	95380-06700	.NUT	1	
27	6R7-42316-00	.BOLT, joint	1	
28	90387-08M06	COLLAR	2	

B13

FIG. 8 JET UNIT 1

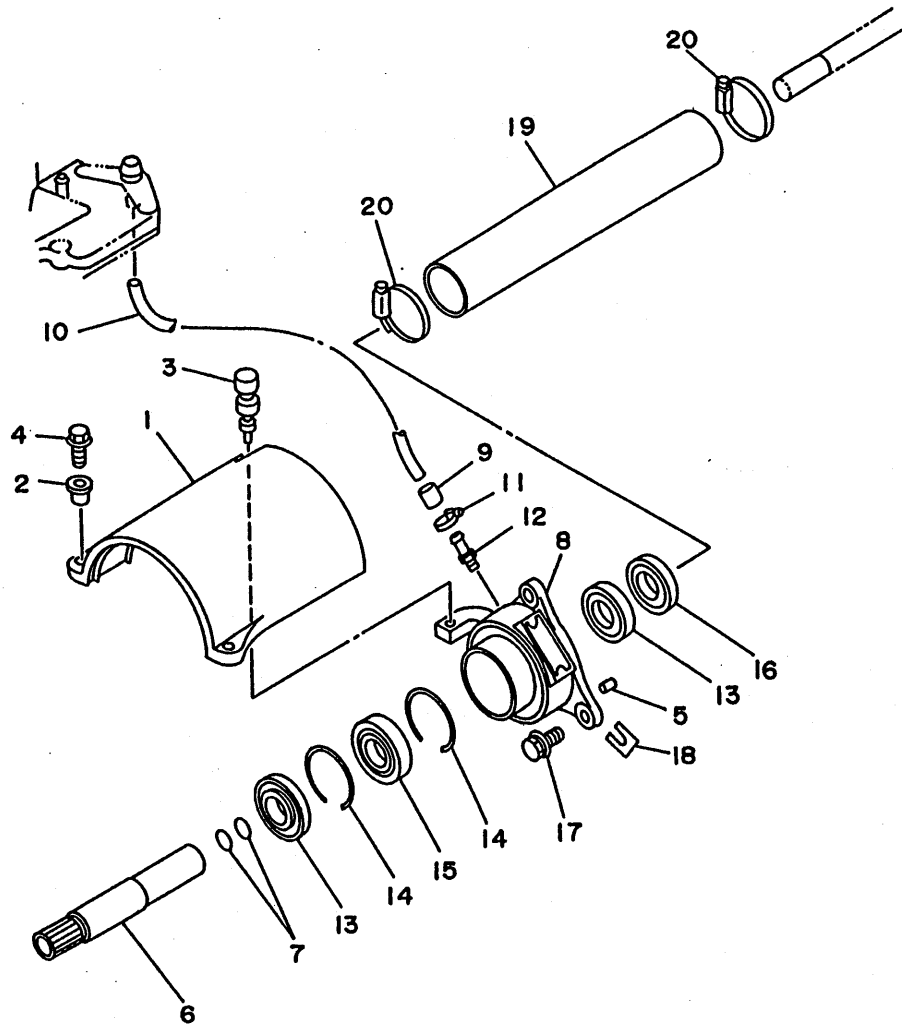


FN8100-2080

REF. NO.	PART NO.	DESCRIPTION	Q'TY	REMARKS
29	97395-08018	BOLT	2	
30	92995-08600	WASHER	2	
31	90119-06915	BOLT, with washer	2	
32	90119-06908	BOLT, with washer	2	
33	90119-10906	BOLT, with washer	4	
34	EW2-67354-00-01	SHIM (T=0.1)	4	UR
	EW2-67354-00-03	SHIM (T=0.3)	4	UR
	EW2-67354-00-05	SHIM (T=0.5)	4	UR
	EW2-67354-00-10	SHIM (T=1.0)	4	UR
35	EU0-62693-02	SPOUT	1	
36	EU0-62695-00	CAP, spout	1	
37	98780-05016	SCREW, flat head	2	
38	92990-05200	WASHER, plain	2	
39	95780-05300	NUT, flange	2	
40	97780-60520	SCREW, tapping	4	
41	FN8-62730-00	PLATE 2 ASSY	1	
42	FK7-62732-00	.BOLT, jack	2	
43	90119-06915	BOLT, with washer	4	
44	90119-06914	BOLT, with washer	2	
45	90179-10925	NUT	4	
46	90179-06931	NUT	8	
47	90190-06014	CLING	8	

B14

FIG. 9 JET UNIT 2



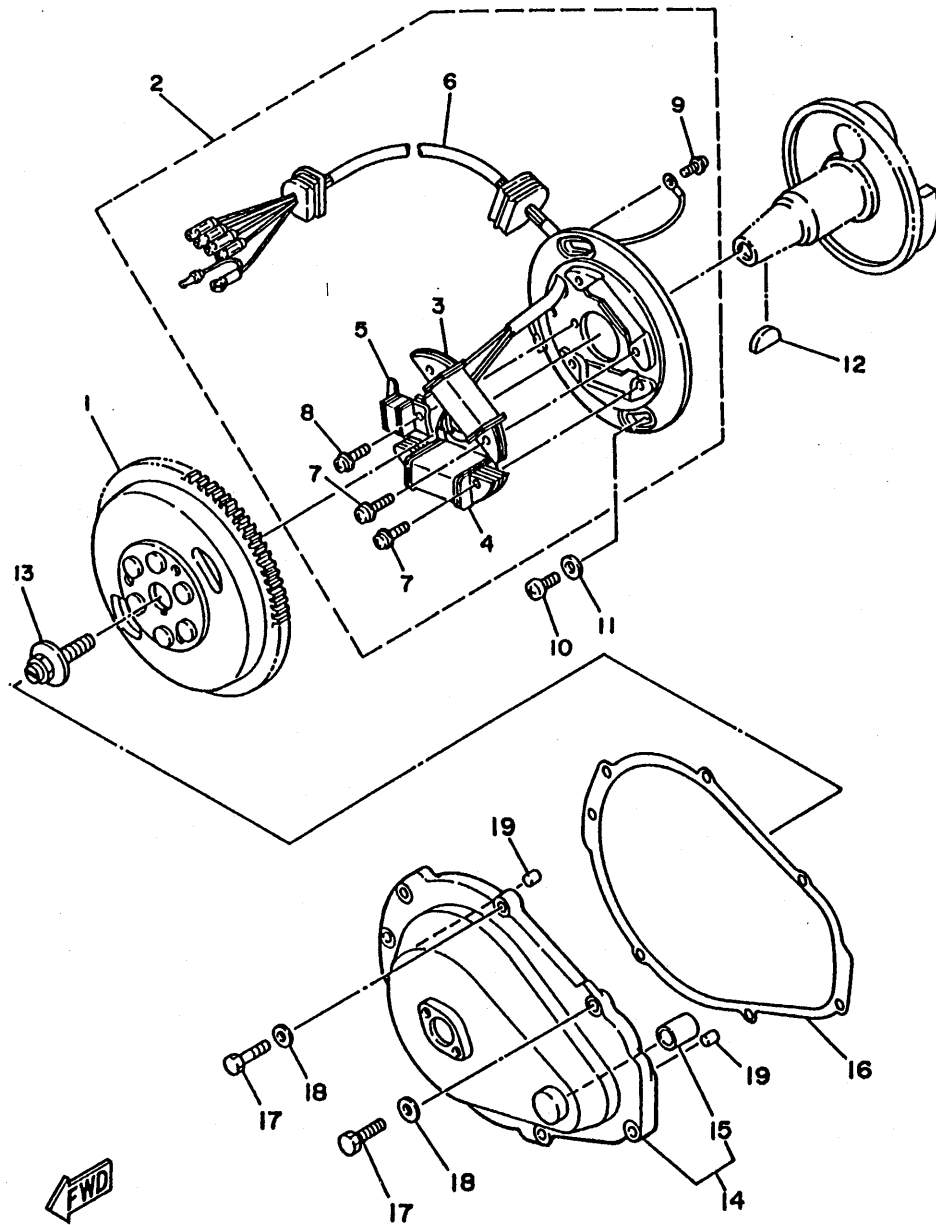
REF. NO.	PART NO.	DESCRIPTION	Q'TY	REMARKS
1	6R7-51381-00	COVER	1	
2	90387-06M60	COLLAR	2	
3	90480-06M46	GROMMET	1	
4	97595-06225	BOLT, with washer	2	
5	93606-07M17	PIN, dowel	2	
6	61L-51323-01	SHAFT, couplor	1	
7	93210-17MA4	O-RING	2	
8	61L-45332-00-9M	HOUSING, bearing	1	
9	90386-08006	BUSH	1	
10	90445-09M17	HOSE	1	
11	90460-11M17	CLAMP, hose	1	
12	61L-45378-00	NIPPLE, hose	1	
13	93101-25M52	OIL SEAL	2	
14	93430-47M04	CIRCLIP	2	
15	93305-205U0	BEARING	1	
16	93101-25M53	OIL SEAL	1	
17	90119-08907	BOLT, withwasher	3	
18	EU0-67354-30-03	SHIM (T=0.3)	2	UR
	EU0-67354-30-05	SHIM (T=0.5)	2	UR
	EU0-67354-30-10	SHIM (T=1.0)	2	UR
19	FN8-6883B-00	PIPE 1	1	
20	90601-152U3	CLAMP	2	



FN8110-1090

B15

FIG. 10 GENERATOR

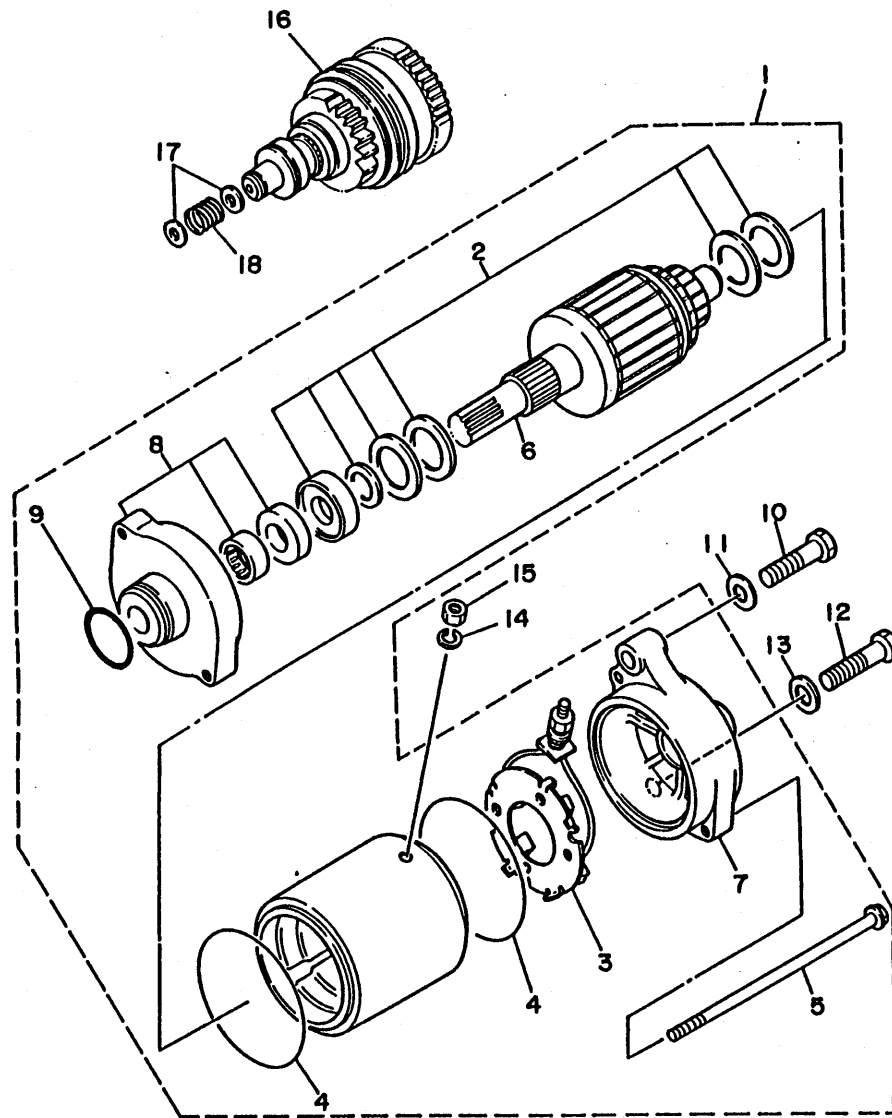


REF. NO.	PART NO.	DESCRIPTION	Q'TY	REMARKS
1	6R7-85550-00	ROTOR ASSY	1	
2	6R7-85560-00	BASE ASSY	1	
3	6M6-85520-00	.COIL, charge	1	
4	6M6-85533-00	.COIL, lighting	1	
5	6M6-85580-00	.COIL, pulser	1	
6	6R7-85515-00	.LEAD WIRE ASSY	1	
7	97902-05125	.SCREW, with washer	4	
8	97902-04122	.SCREW, with washer	2	
9	98580-04008	.SCREW, pan head	1	
10	98580-06016	SCREW, pan head	2	
11	92990-06600	WASHER, plate	2	
12	90280-05013	KEY, woodruff	1	
13	90109-10M47 90109-10M44	BOLT BOLT	1	1 WR FOR OIL INJECTION
14	6R8-81337-00-9M 6M6-81337-00-Ek	COVER, flywheel COVER, flywheel	1	1 WR FOR NON OIL INJECTION 4 WR FOR OIL INJECTION
15	90380-12M29	.BUSH, solid	1	1 WR FOR NON OIL INJECTION
16	6M6-81365-A0	GASKET, hole cover	1	
17	97395-06025	BOLT	7	
18	92990-06600	WASHER, plate	7	
19	93606-12019	PIN, dowel	2	

FN81110-1100

C2

FIG. 11 STARTING MOTOR



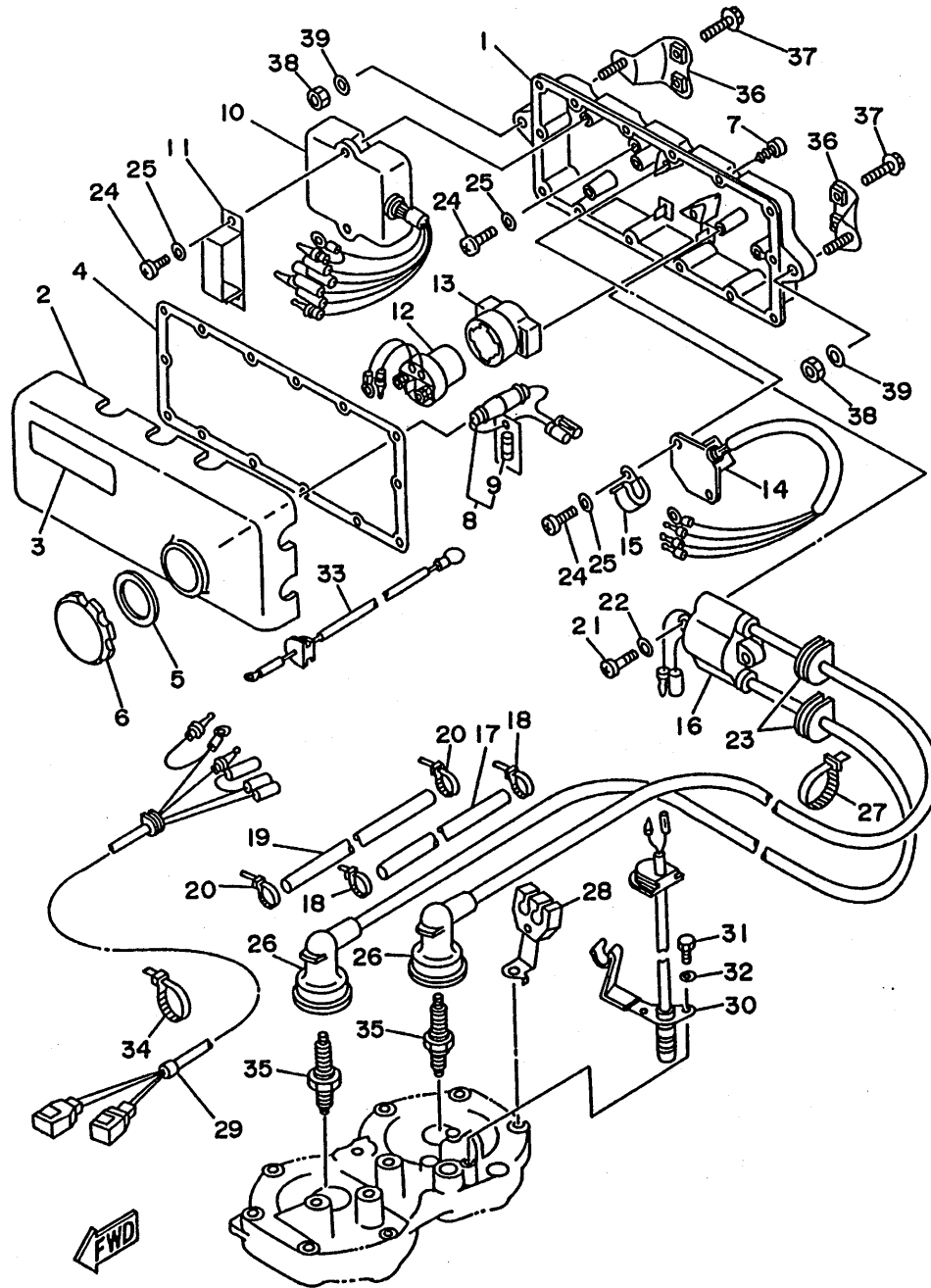
REF. NO.	PART NO.	DESCRIPTION	Q'TY	REMARKS
1	6M6-81800-10	STARTING MOTOR ASSY	1	
2	3AJ-81809-00	.WASHER KIT	1	
3	6M6-81840-10	.BRUSH HOLDER ASSY	1	
4	11H-81844-00	.GASKET	2	
5	6M6-81826-00	.BOLT	2	
6	6M6-81850-00	.ARMATURE ASSY	1	
7	6M6-81820-00	.REAR BRACKET ASSY	1	
8	6M6-81830-00	.FRONT BRACKET ASSY	1	
9	26H-81847-00	.O-RING	1	
10	97313-08040	BOLT	1	
11	92990-08600	WASHER, plate	1	
12	97313-08035	BOLT	1	
13	92990-08600	WASHER, plate	1	
14	92990-06100	WASHER, spring	1	
15	95380-06700	NUT	1	
16	6M6-8183E-00	IDLE GEAR COMP.	1	
17	92990-06600	WASHER, plate	2	
18	90501-14M73	SPRING, compression	1	

FWD

FN81110-1110

C3

FIG. 12 ELECTRICAL 1

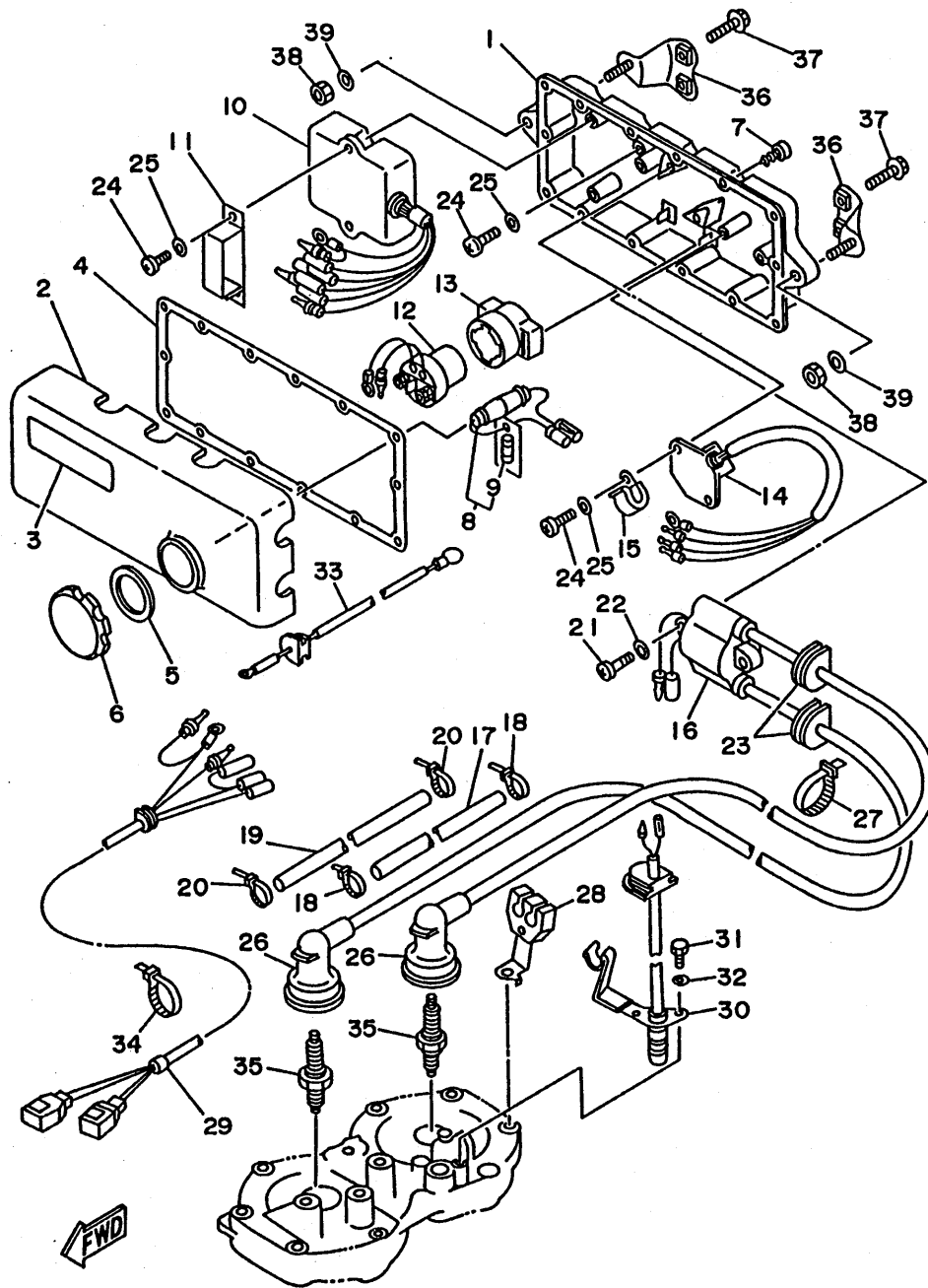


FN81110-1120

REF. NO.	PART NO.	DESCRIPTION	Q'TY	REMARKS
1	6M6-8552A-00-98	HOUSING	1	LOW GLOSS BLACK
2	6M6-8552E-00	COVER, case	1	
3	6R7-83623-40	MARK 3	1	
4	6M6-81921-00	GASKET, terminal	1	
5	6M6-81844-00	GASKET	1	
6	6M6-8132W-00	CAP	1	
7	97780-60525	SCREW, tapping	14	
8	6K8-82150-01	FUSE HOLDER ASSY	1	
9	6G1-82151-00	.FUSE	1	
10	6M6-85540-01	C.D.I. UNIT ASSY	1	
11	90464-06M29	CLAMP	1	
12	6G1-81941-10	STARTER RELAY ASSY	1	
13	6M6-81952-01	HOLDER, relay	1	
14	6M6-81960-A0	RECTIFIER & REGULATOR ASSY	1	
15	90465-08028	CLAMP	1	
16	61L-85570-00	IGNITION COIL ASSY	1	
17	61L-82351-00	TUBE, cord	1	
18	90465-11M10	CLAMP	2	
19	61L-82352-00	TUBE, cord 2	1	
20	90465-11M10	CLAMP	2	
21	98580-06030	SCREW, pan head	2	
22	92990-06600	WASHER, plate	2	
23	90480-06M43	GROMMET	2	
24	98503-06016	SCREW, pan head	6	
25	92990-06600	WASHER, plate	6	
26	6K8-82370-00	PLUG CAP ASSY	2	UR FOR USA/AFRICA
	6K8-82370-11	PLUG CAP ASSY	2	UR FOR CANADA/OCEANIA
27	90465-11M10	CLAMP	2	

C4

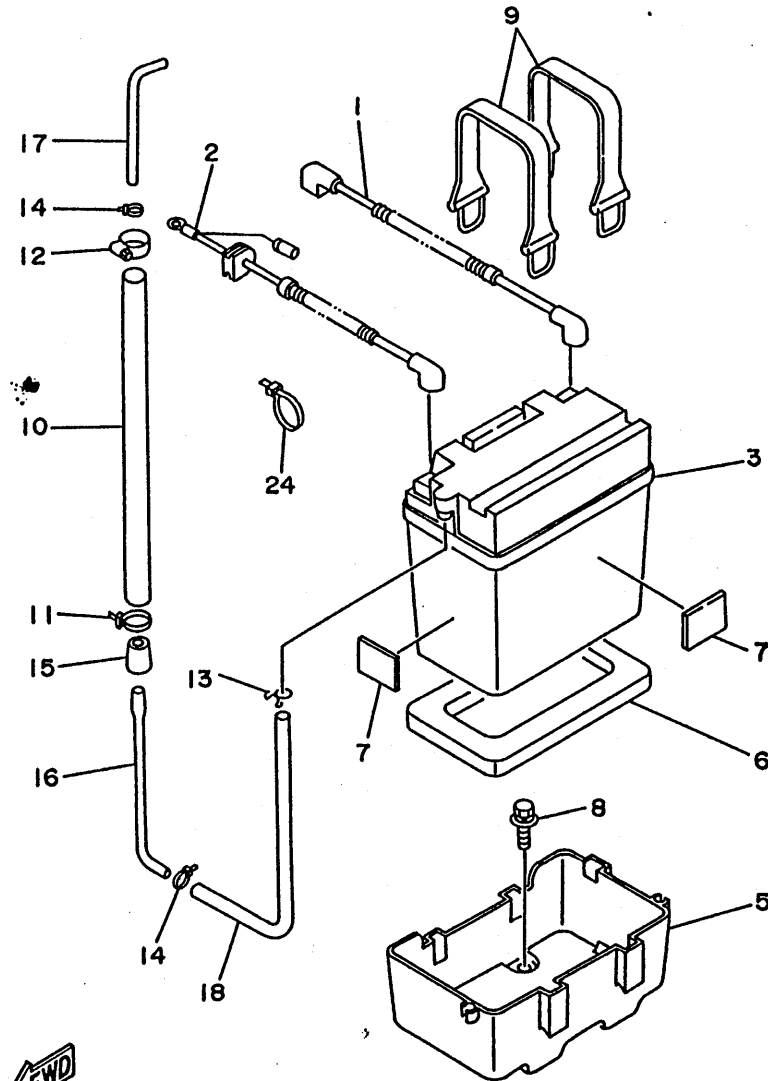
FIG. 12 ELECTRICAL 1



FN81110-1120

REF. NO.	PART NO.	DESCRIPTION	Q'TY	REMARKS
28	6R7-82361-00	CLAMP, cord	1	
29	61L-82553-00	EXTENSION, wire lead	1	
30	6R7-82560-00	THERMO SWITCH ASSY	1	
31	97395-06016	BOLT	2	
32	92995-06100	WASHER	2	
33	6R7-82117-21	WIRE, lead	1	
34	90465-13M11	CLAMP	1	
35	94701-00041	PLUG, spark (NGK B8HS)	2	UR FOR USA/AFRICA
	94702-00195	PLUG, spark (NGK BR8HS)	2	UR FOR CANADA/OCEANIA
36	EW2-68156-00	BRACKET, electric box	2	
37	90105-06903	BOLT, washer based	4	
38	95380-08700	NUT	2	
39	92990-08200	WASHER, plain	2	

FIG. 13 ELECTRICAL 2

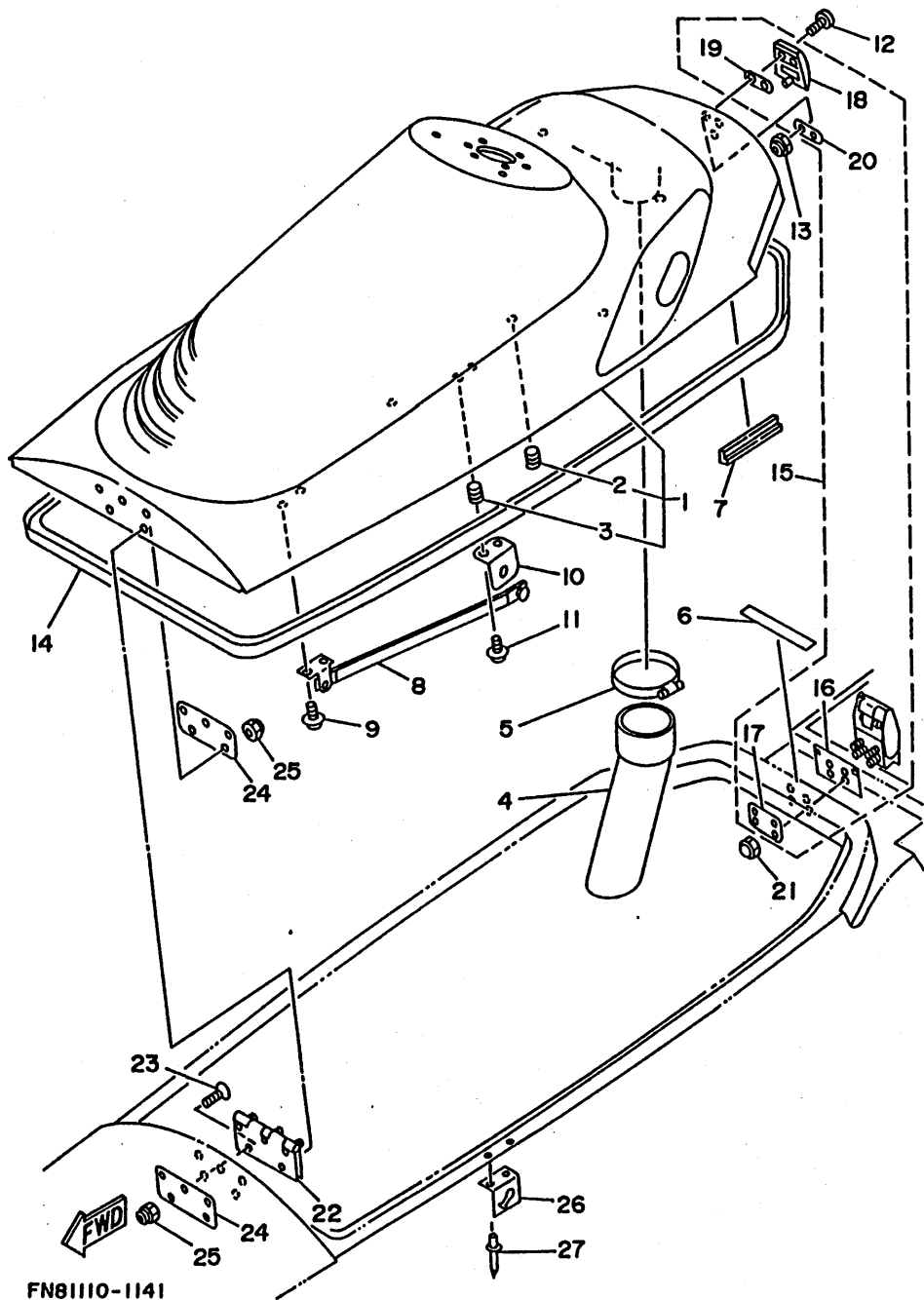


REF. NO.	PART NO.	DESCRIPTION	Q'TY	REMARKS
1	61L-82117-00	WIRE, lead	1	
2	61L-82117-10	WIRE, lead	1	
3	EU0-82110-78	BATTERY (FB16CL-B)	1	
4	90601-20006	NYLON CLIP 1	3	
5	EW2-68211-00	CASE, battery	1	
6	EU0-U8221-00	PAD, battery 1	1	YMUS
7	EU0-68221-30	PAD, battery 2	4	
8	90119-06920	BOLT, with washer	4	
9	EU0-68218-04	BAND, battery	2	
10	90669-03003	HOSE 1	1	
11	90601-200U1	NYLON CLIP 1	1	YMUS
12	90460-25M09	CLAMP, hose	1	
13	90467-08M10	CLIP	1	
14	90465-11M10	CLAMP	2	
15	EU0-62155-00	CAP	1	
16	EU0-62156-32	ELBOW, ventilator 12	1	
17	FN8-62156-50	ELBOW, ventilater 14	1	
18	FJ0-67856-40	HOSE, air vent 5	1	

 FN81110-1130

C6

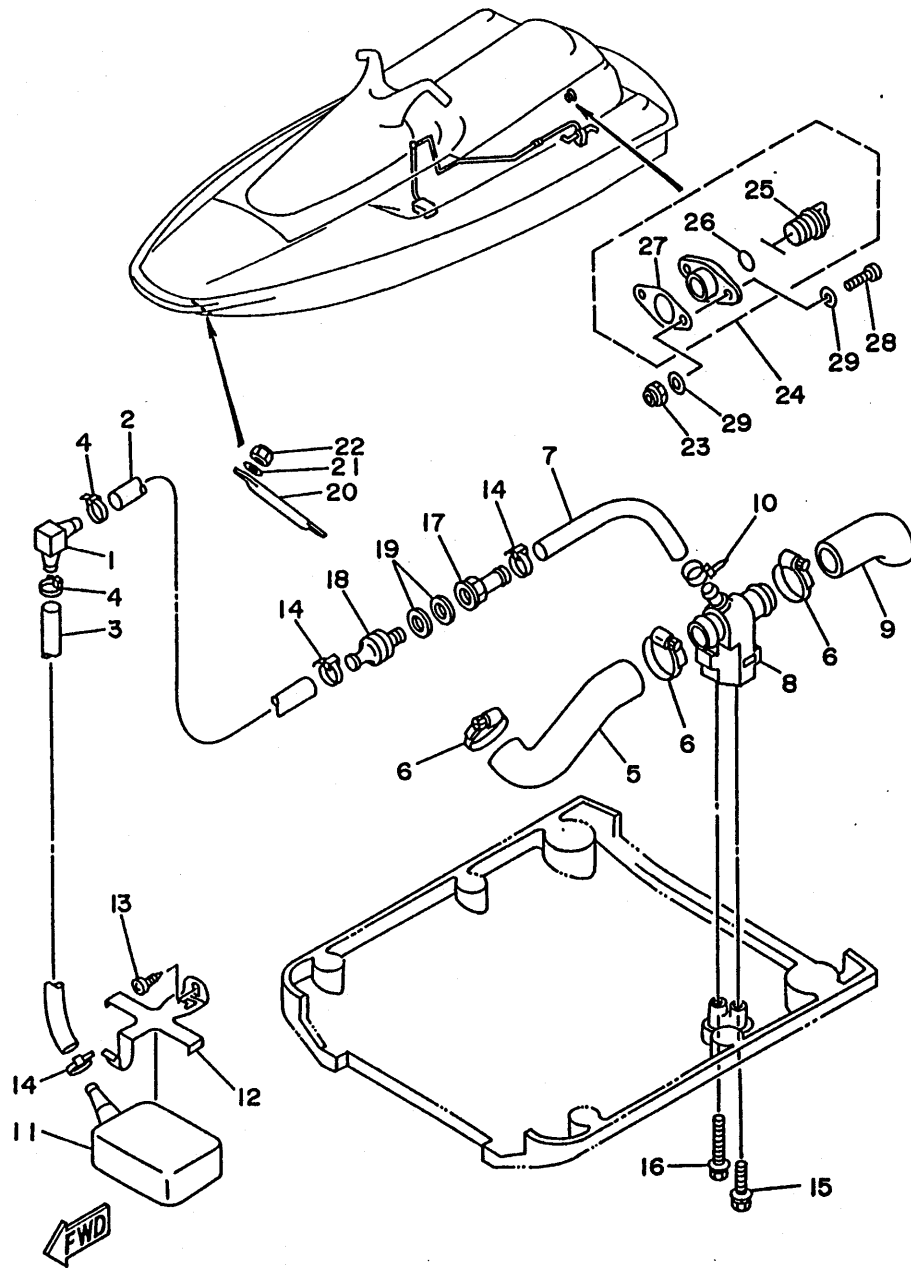
FIG. 14 ENGINE HATCH



FN81110-1141

REF. NO.	PART NO.	DESCRIPTION	Q'TY	REMARKS
1	FN8-U516D-00	ENGINE HATCH COMP	1	YMUS
2	90179-08927	.NUT	4	
3	90179-06926	.NUT	4	
4	EW2-62136-01	HOSE, ventilator 1	1	
5	90601-168U7	BAND, hose 68	1	YMUS
6	FN8-U5162-00	TRIM	1	
7	FN8-6516C-00	TRIM 1	2	
8	FN8-62891-00	SUPPORT, hatch	1	
9	90159-06901	SCREW, with washer	2	
10	FN8-62892-00	FIX, plate	1	
11	90159-06901	SCREW, with washer	2	
12	90149-05970	SCREW	2	
13	95720-05300	NUT, flange	2	
14	FN8-U2664-00	PACKING	1	YMUS
15	FN8-62840-00	HATCH LOCK ASSY	1	
16	EW2-62845-00	.PACKING, hatch lock	1	
17	EW2-62846-00	.PLATE, hatch lock	1	
18	FN8-62843-00	.HOOK, hatch lock	1	
19	EW2-62847-00	.PACKING, hook	1	
20	EW2-62848-00	.PLATE, hook	1	
21	95380-05800	NUT	4	
22	90600-70069	HINGE	1	
23	98780-05020	SCREW, flat head	5	
24	FN8-U5193-00	PLATE	2	YMUS
25	95720-05300	NUT, flange	10	
26	FN8-62884-00	BRACKET, hatch support	1	
27	90267-48940	RIVET, blind	2	

FIG. 15 HULL. DECK



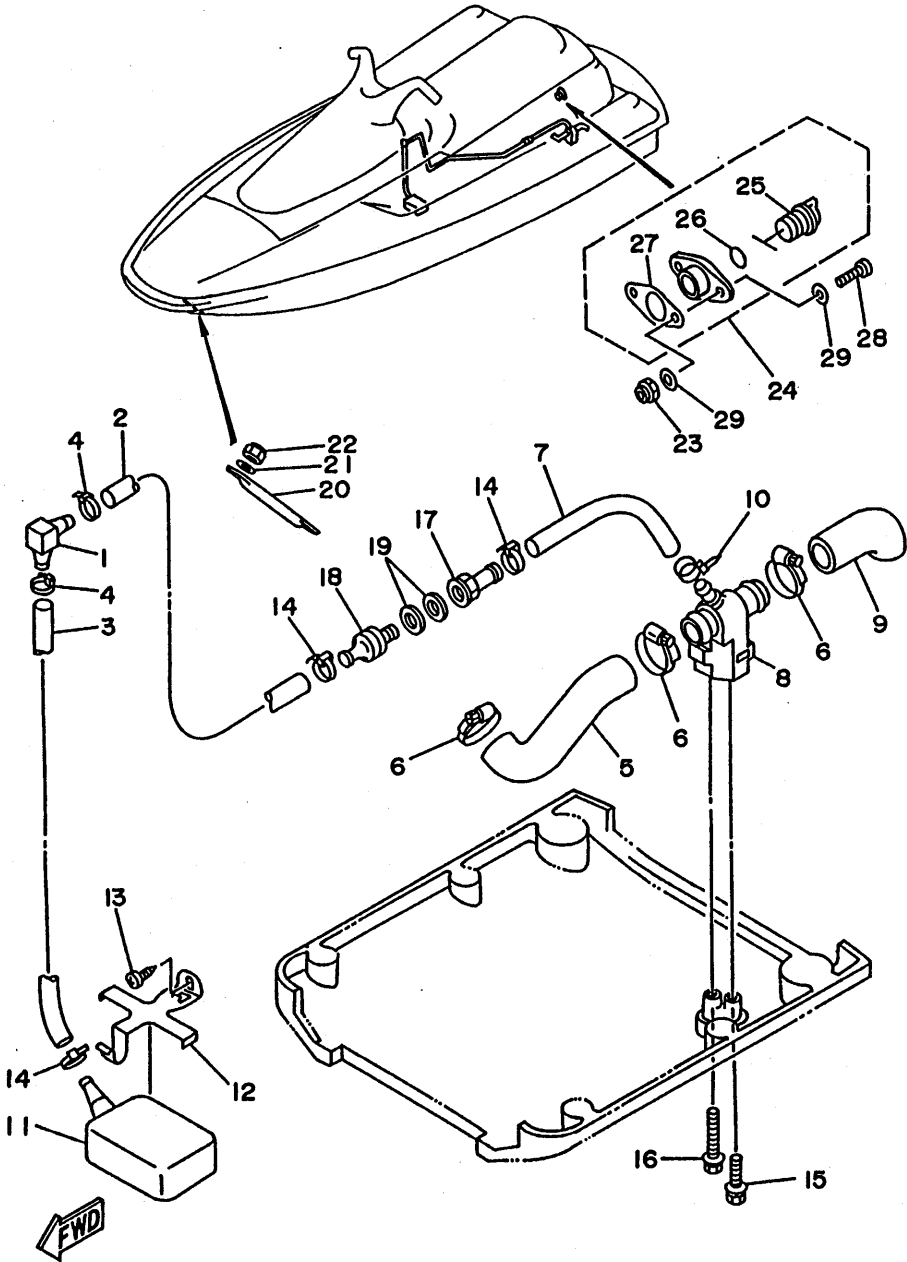
FN81110-1150

REF. NO.	PART NO.	DESCRIPTION	Q'TY	REMARKS
1	6K8-51162-00	JOINT, hose	1	
2	90445-14M16	HOSE	1	
3	90445-14M14	HOSE	1	
4	90465-13M11	CLAMP	2	
5	61L-51161-00	HOSE, plasher	1	
6	90460-25M09	CLAMP, hose	3	
7	90445-14M24	HOSE	1	
8	6K8-7610K-00	BODY, valve	1	
9	6K8-51141-00	HOSE SUCTION	1	
10	90465-13M11	CLAMP	1	
11	EU0-67613-00	STRAINER	1	
12	EW2-67618-00	BASE, strainer blige	1	
13	97780-50114	SCREW, pan head tapping	1	
14	90465-13M11	CLAMP	3	
15	90119-06915	BOLT, with washer	1	
16	90119-06919	BOLT, with washer	1	
17	90604-80759	CONNECTION, thru-hull 1/4	1	
18	90604-80760	CONNECTION, thru-hull 1/4	1	
19	90430-13909	GASKET	2	
20	FN8-61624-00	BOWEYE 1 (S)	1	
21	92990-08200	WASHER, plain	2	
22	95720-08300	NUT, self-locking	2	
23	95720-05300	NUT, flange	2	
24	EU0-62280-00	DRAIN PLUG ASSY	1	
25	EU0-62282-00	.PLUG, drain	1	
26	EU0-62283-00	.O-RING	1	
27	EU0-62285-01	.PACKING, drain	1	
28	98580-05020	SCREW, pan head	2	

C8

FIG. 15 HULL. DECK

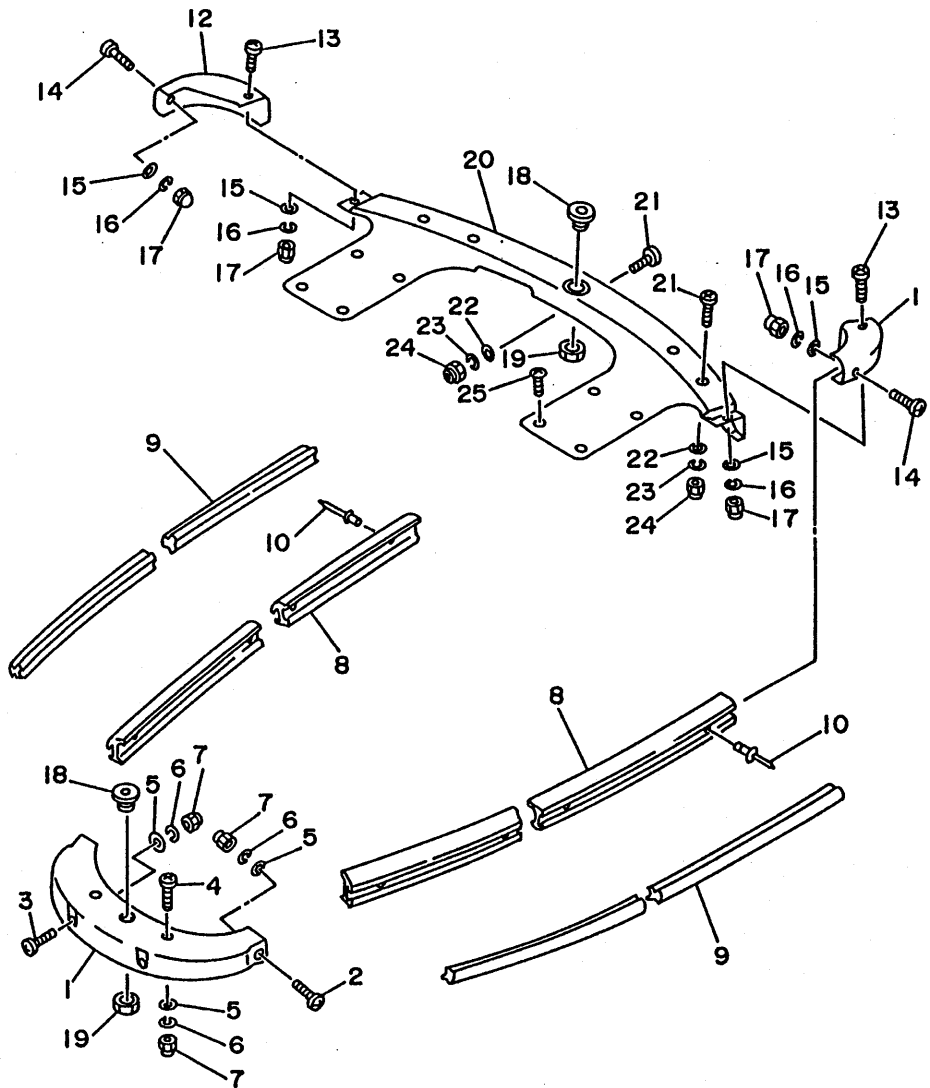
REF. NO.	PART NO.	DESCRIPTION	Q'TY	REMARKS
29	92990-05200	WASHER, plain	4	



FN81110-1150

C9

FIG. 16 GUNWALE. MAT



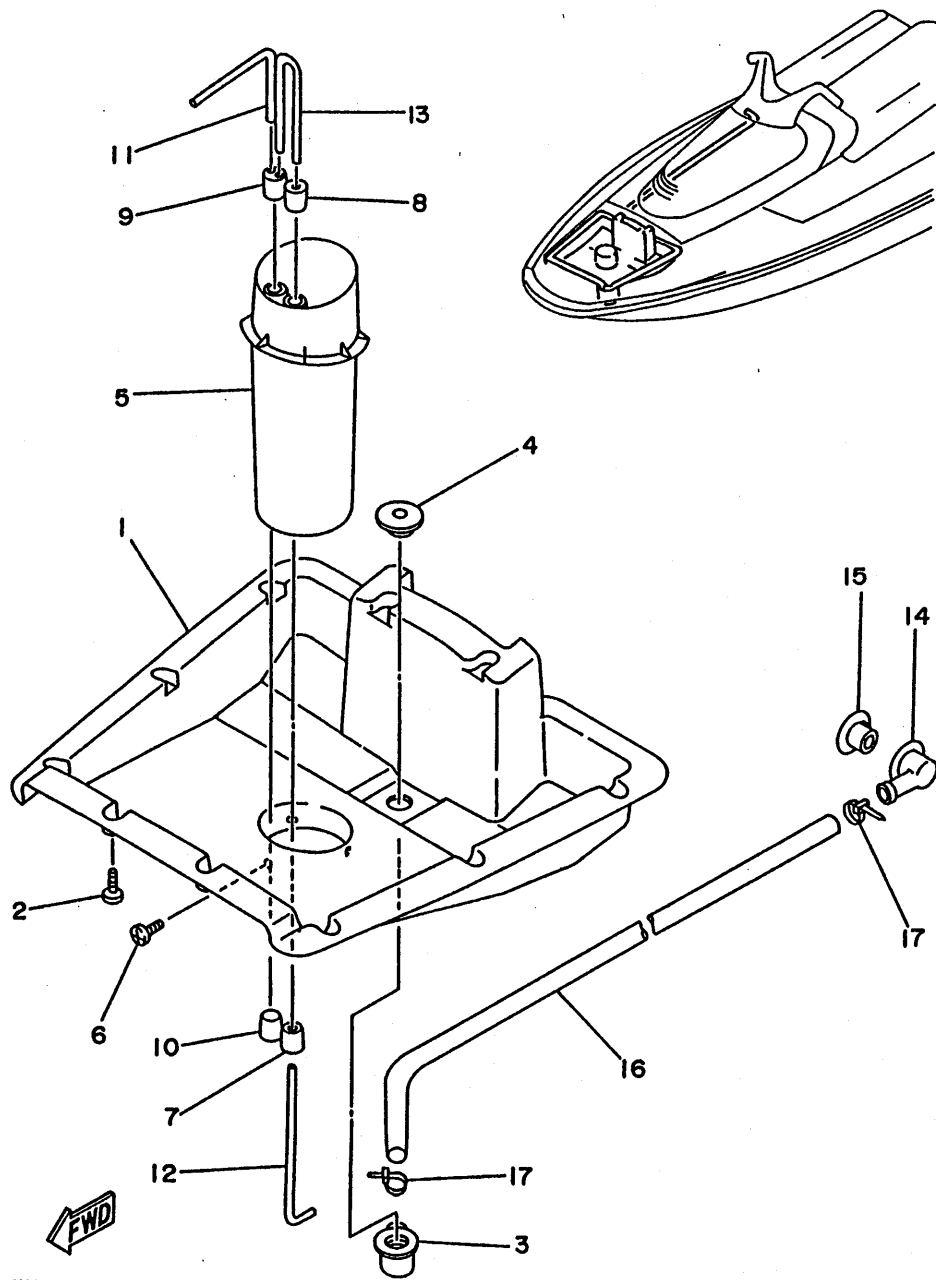
REF. NO.	PART NO.	DESCRIPTION	Q'TY	REMARKS
1	FN8-U2501-00	BOW GUNWALE COMP.	1	YMUS
2	90149-06976	SCREW	2	
3	90149-06975	SCREW	2	
4	90149-06968	SCREW	2	
5	92990-06200	WASHER, plain	6	
6	92990-06100	WASHER, spring	6	
7	95380-06800	NUT	6	
8	90697-47025	GUNWALE 41	2	
9	90697-48025	GUNWALE 42	2	
10	90267-48932	RIVET, blind	40	
11	FN8-62513-10	GUNWALE, stern (L.H)	1	
12	FN8-62513-20	GUNWALE, stern (R.H)	1	
13	90149-06973	SCREW	4	
14	90149-06971	SCREW	2	
15	92990-06200	WASHER, plain	6	
16	92990-06100	WASHER, spring	6	
17	95380-06800	NUT	6	
18	FN8-61651-00	ROPE HOLE	2	
19	EU0-61652-00	NUT	2	
20	FN8-U3580-00	MAT UPPER COMP.	1	YMUS
21	90149-06968	SCREW	9	
22	92990-06200	WASHER, plain	9	
23	92990-06100	WASHER, spring	9	
24	95380-06800	NUT	9	
25	90149-06967	SCREW	8	



FN8110 - 1160

C10

FIG. 17 VENTILATION

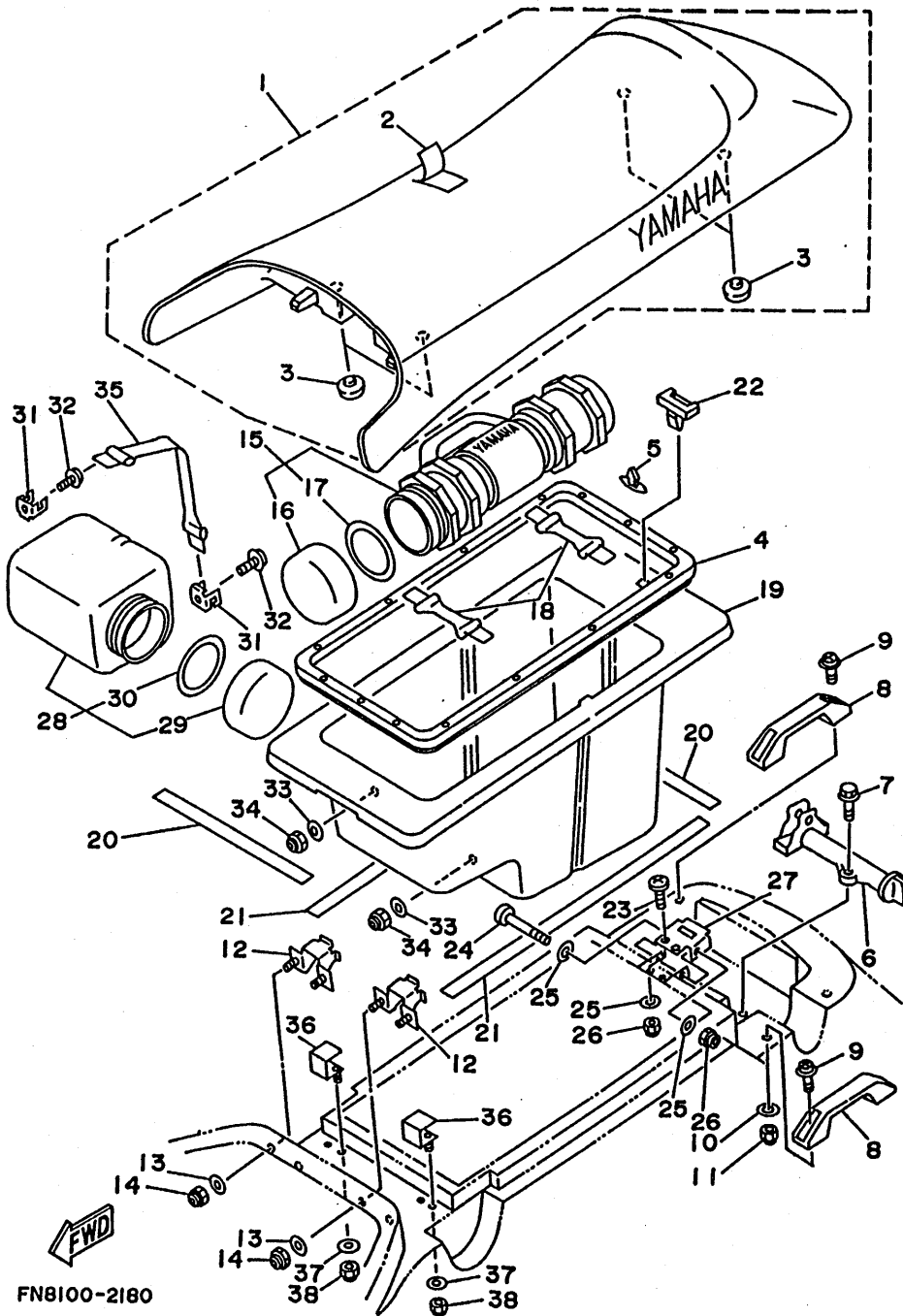


FN81110-1170

REF. NO.	PART NO.	DESCRIPTION	Q'TY	REMARKS
1	FN8-U2131-00	COVER VENTILATOR 1	1	YMUS
2	97780-50116	SCREW, tapping	10	
3	FN8-6224E-00	BODY, drain 3	1	
4	FN8-6224F-00	BODY, drain 4	1	
5	EU0-U2149-40	PIPE, ventilation	1	YMUS
6	97780-40112	SCREW, tapping	3	
7	EU0-62155-00	CAP	1	
8	FN8-62155-00	CAP	1	
9	FN8-62155-30	CAP	1	
10	FN8-62155-40	CAP	1	
11	FN8-62156-00	ELBOW, ventilator 11	1	
12	EU0-62156-32	ELBOW, ventilator 12	1	
13	FN8-62156-40	ELBOW, ventilator 13	1	
14	FN8-6224E-00	BODY, drain 3	1	
15	FN8-6224F-01	BODY, drain 4	1	
16	90669-03010	HOSE 1	1	
17	90601-200U1	NYLON CLIP 1	2	YMUS

C11

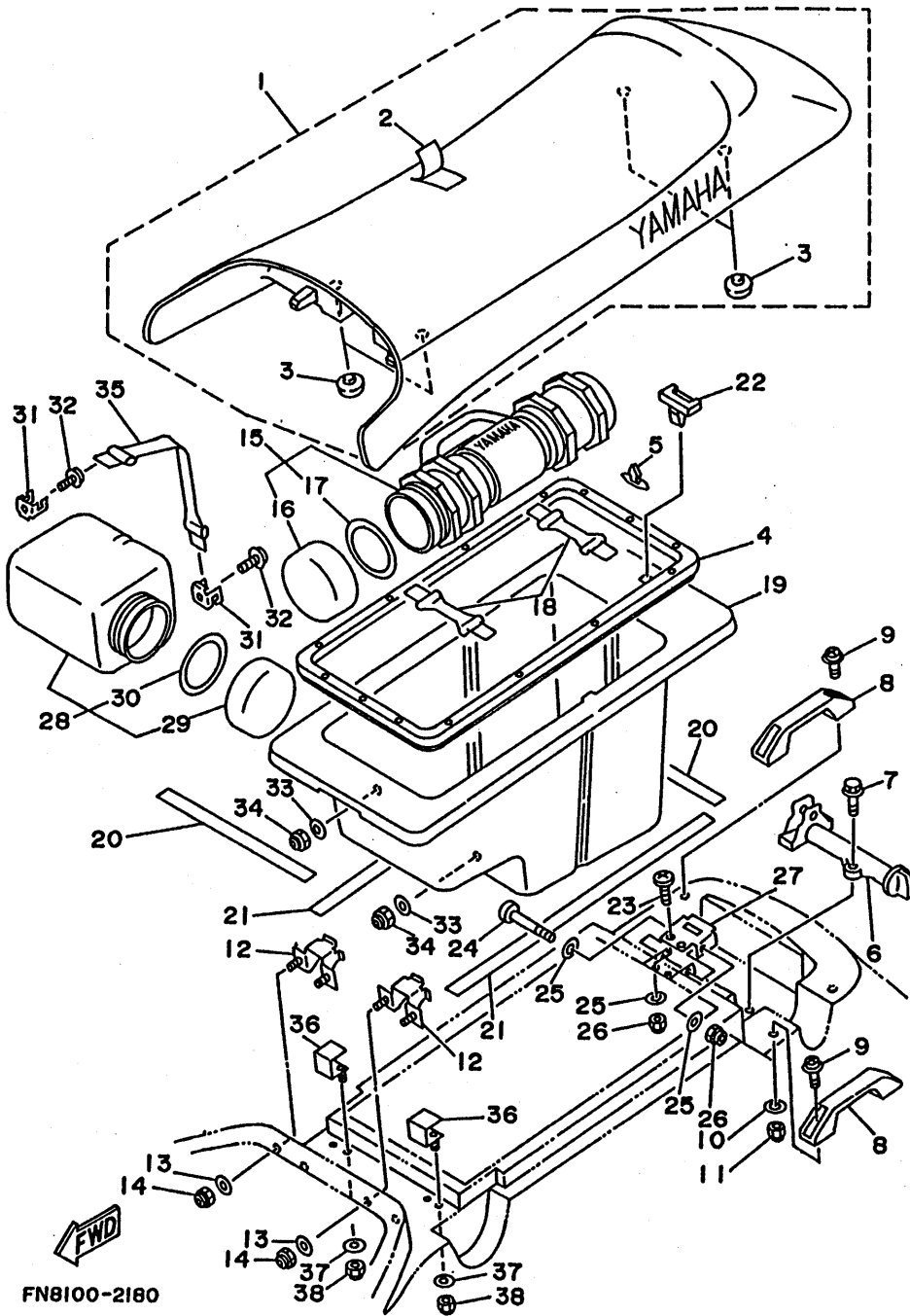
FIG. 18 SEAT-UNDER LOCKER



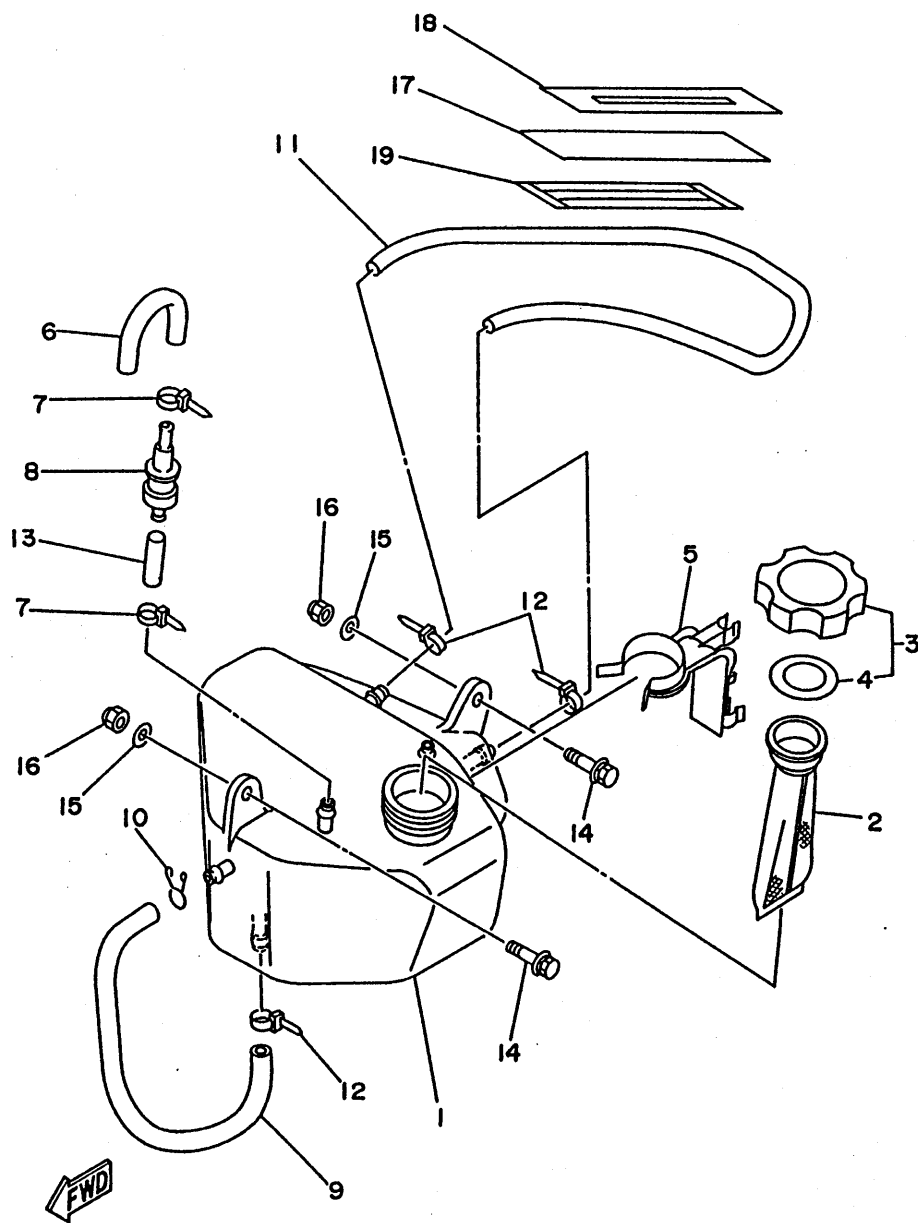
FN8100-2180

REF. NO.	PART NO.	DESCRIPTION	Q'TY	REMARKS
1	FN8-U3710-01	SINGLE SEAT ASSY	1	YMUS
2	FN8-U3711-00	.COVER, seat	1	YMUS
3	1L9-24741-00	.PAD, seat	4	
4	FN8-U2663-00	PACKING 1	1	YMUS
5	90269-06916	RIVET	13	
6	FJ0-63850-01	SEAT LOCK ASSY	1	
7	90119-06900	BOLT, with washer	3	
8	EU0-6271B-00	GRIP, hand	2	
9	90159-06904	SCREW, with washer	4	
10	92990-06200	WASHER, plain	4	
11	95720-06300	NUT, self-locking	4	
12	FN8-6378C-00	STAY, seat 1	2	
13	92990-06200	WASHER, plain	4	
14	95720-06300	NUT, self-locking	4	
15	EW2-65920-00	CASE 2 ASSY	1	
16	EW2-65912-30	.CAP, case	1	
17	EW2-65913-00	.PACKING, case	1	
18	EU0-67569-02	BAND, water lock	2	
19	FN8-U4742-01	LOCKER, under 2	1	YMUS
20	FN8-6266B-00	PACKING 3	2	
21	FN8-6266C-00	PACKING 4	2	
22	FN8-65172-00	LOCK, lid	1	
23	98780-05016	SCREW, flat head	2	
24	90149-05977	SCREW, pan head	1	
25	92990-05200	WASHER, plain	4	
26	95720-05300	NUT, flange	3	
27	FN8-U5174-00	HOOK, lid lock	1	YMUS
28	FN8-65910-00	CASE 1 ASSY	1	

FIG. 18 SEAT-UNDER LOCKER



REF. NO.	PART NO.	DESCRIPTION	Q'TY	REMARKS
29	EW2-65912-00	.CAP, case	1	
30	EW2-65913-00	.PACKING, case	1	
31	EU0-65772-30	HOOK A	2	
32	90159-06901	SCREW, with washer	2	
33	90201-06931	WASHER, plain	2	
34	95720-06300	NUT, self-locking	2	
35	FJ0-67569-00	BAND	1	
36	FN8-64744-00	GUIDE	2	
37	92990-05200	WASHER, plain	4	
38	95720-05300	NUT, flange	4	

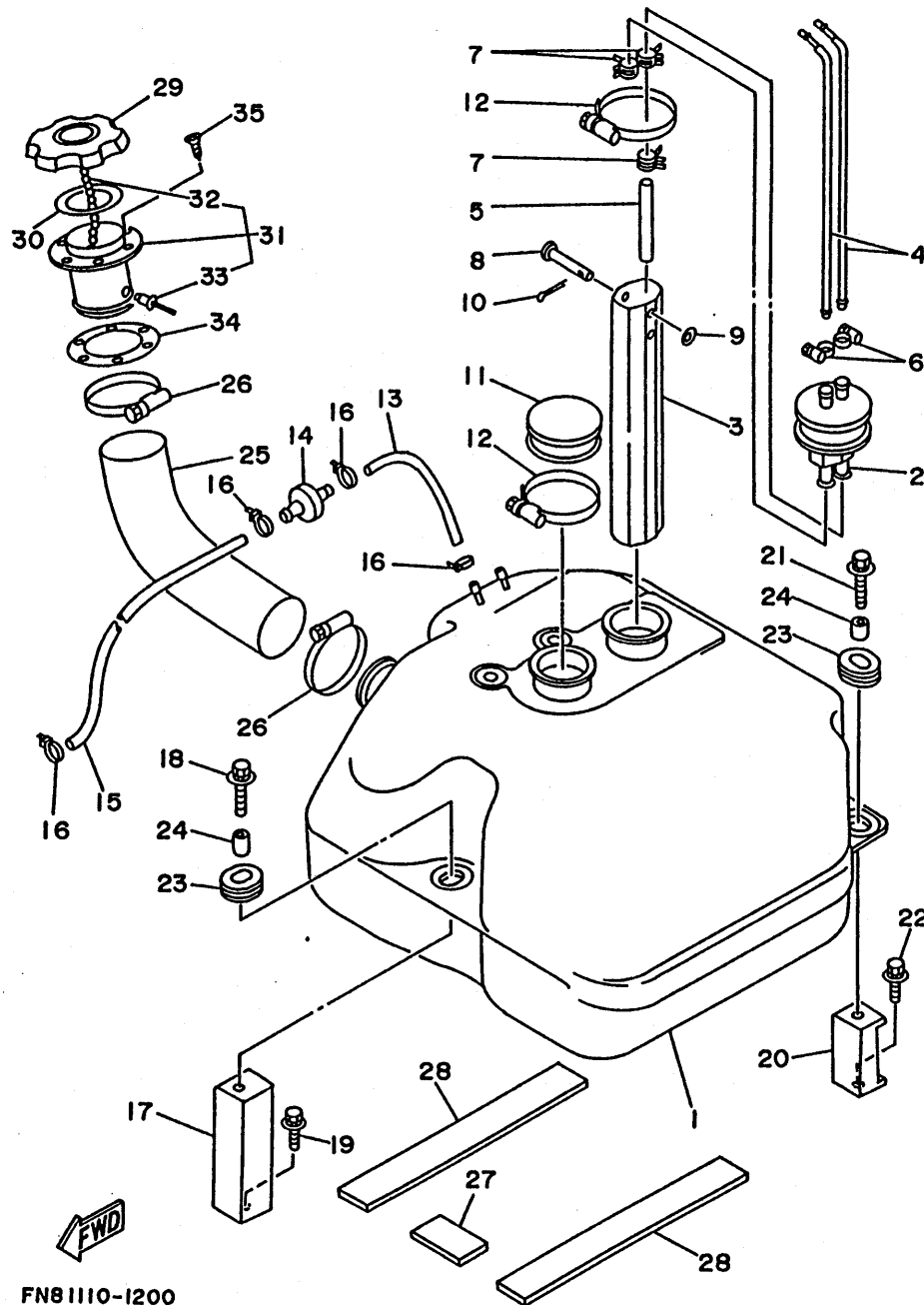


FN81110-1190

FIG. 19 OIL TANK

REF. NO.	PART NO.	DESCRIPTION	Q'TY	REMARKS
1	FN8-67751-00	TANK, oil	1	
2	FJ0-67752-00	FILTER	1	
3	FJ0-67840-00	OIL TANK CAP ASSY	1	
4	FJ0-67841-00	.PACKING, oil cap	1	
5	FN8-13173-00	HOLDER, oil pipe 2	1	
6	FJ0-62158-00	HOSE	1	
7	90465-11M10	CLAMP	2	
8	FJ0-67766-00	ROLL OVER VALVE	1	
9	90446-11905	HOSE	1	
10	90467-11019	CLIP	1	
11	90446-09904	HOSE	1	
12	90465-11M10	CLAMP	3	
13	90445-09901	HOSE	1	
14	90119-06924	BOLT, with washer	2	
15	90201-065F3	WASHER, plate	2	
16	95720-06300	NUT, self-locking	2	
17	FN8-67753-00	LEVEL GAUGE 1	1	
18	FN8-64189-00	LABEL, oil gauge	1	
19	90654-91004	TAPE	1	

FIG. 20 FUEL TANK

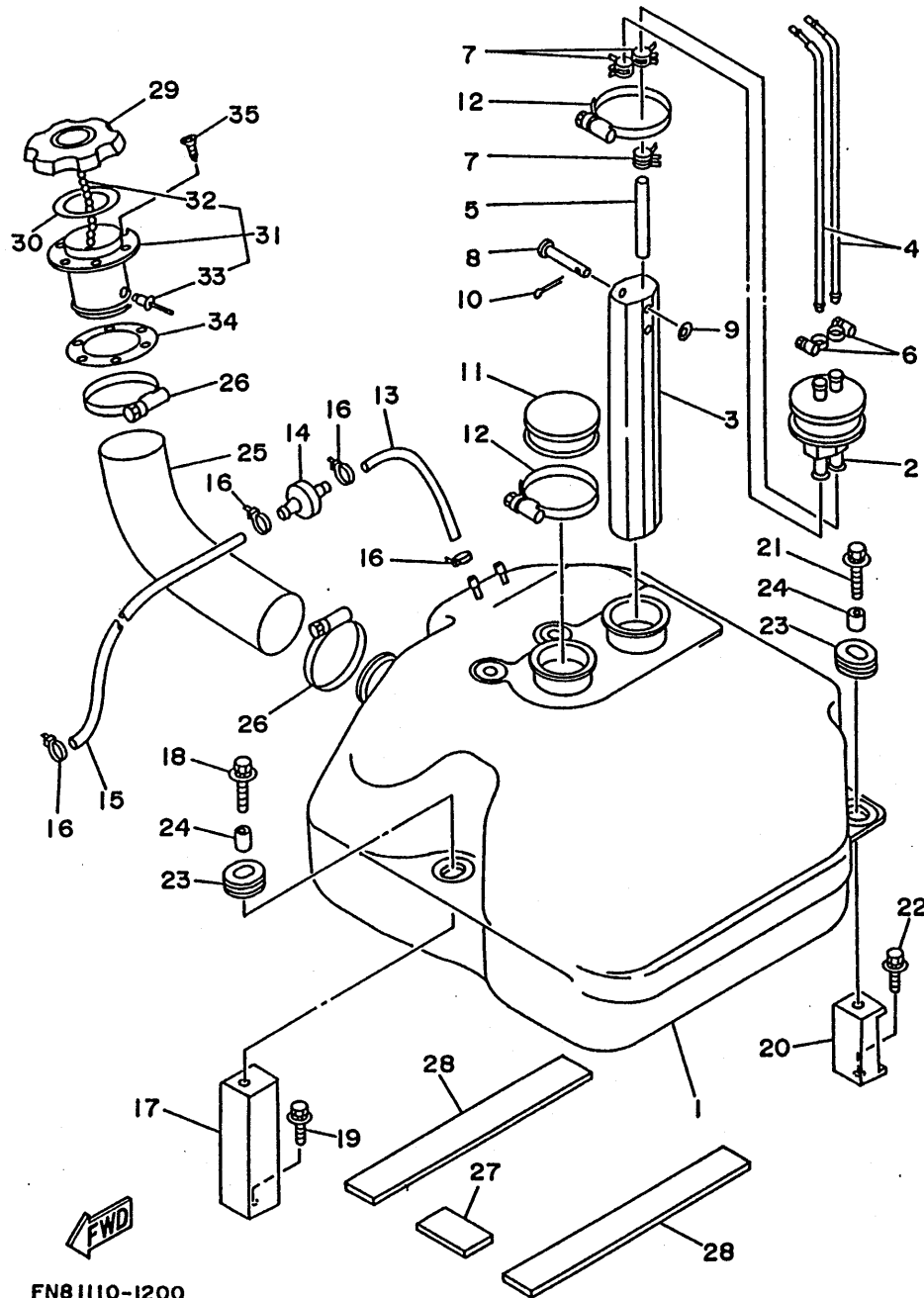


FN81110-1200

REF. NO.	PART NO.	DESCRIPTION	Q'TY	REMARKS
1	FN8-67711-00	TANK, fuel	1	
2	FJ0-67713-00	PIPE, joint	1	
3	FN8-67716-00	SLEEVE 1	1	
4	FN8-67714-00	PIPE, suction 3	2	
5	90445-11900	HOSE	1	
6	90601-11062	BAND, hose 11	2	
7	90467-11044	CLIP	3	
8	91790-05040	PIN, clevis	1	
9	92990-05600	WASHER, plate	1	
10	91490-16010	PIN, cotter	1	
11	FN8-6771K-00	COVER	1	
12	90601-162U5	BAND, hose 62	2	YMUS
13	EU0-67856-00	HOSE, air vent 1	1	
14	EU0-67767-30	CHECK, valve	1	
15	EU0-67856-30	HOSE, airvent 1	1	
16	90465-11M10	CLAMP	4	
17	FN8-67777-00	FIX, fuel tank	1	
18	90119-08916	BOLT, with washer	1	
19	90119-08903	BOLT, with washer	1	
20	FN8-67777-31	FIX, fuel tank	2	
21	90119-08916	BOLT, with washer	2	
22	90119-08903	BOLT, with washer	2	
23	90480-19906	GROMMET	3	
24	90387-08904	COLLAR	3	
25	FN8-U7844-00	HOSE	1	YMUS
26	90601-155U4	BAND, hose 55	2	YMUS
27	FN8-67593-00	MAT	1	
28	FN8-67593-30	MAT	2	

C15

FIG. 20 FUEL TANK

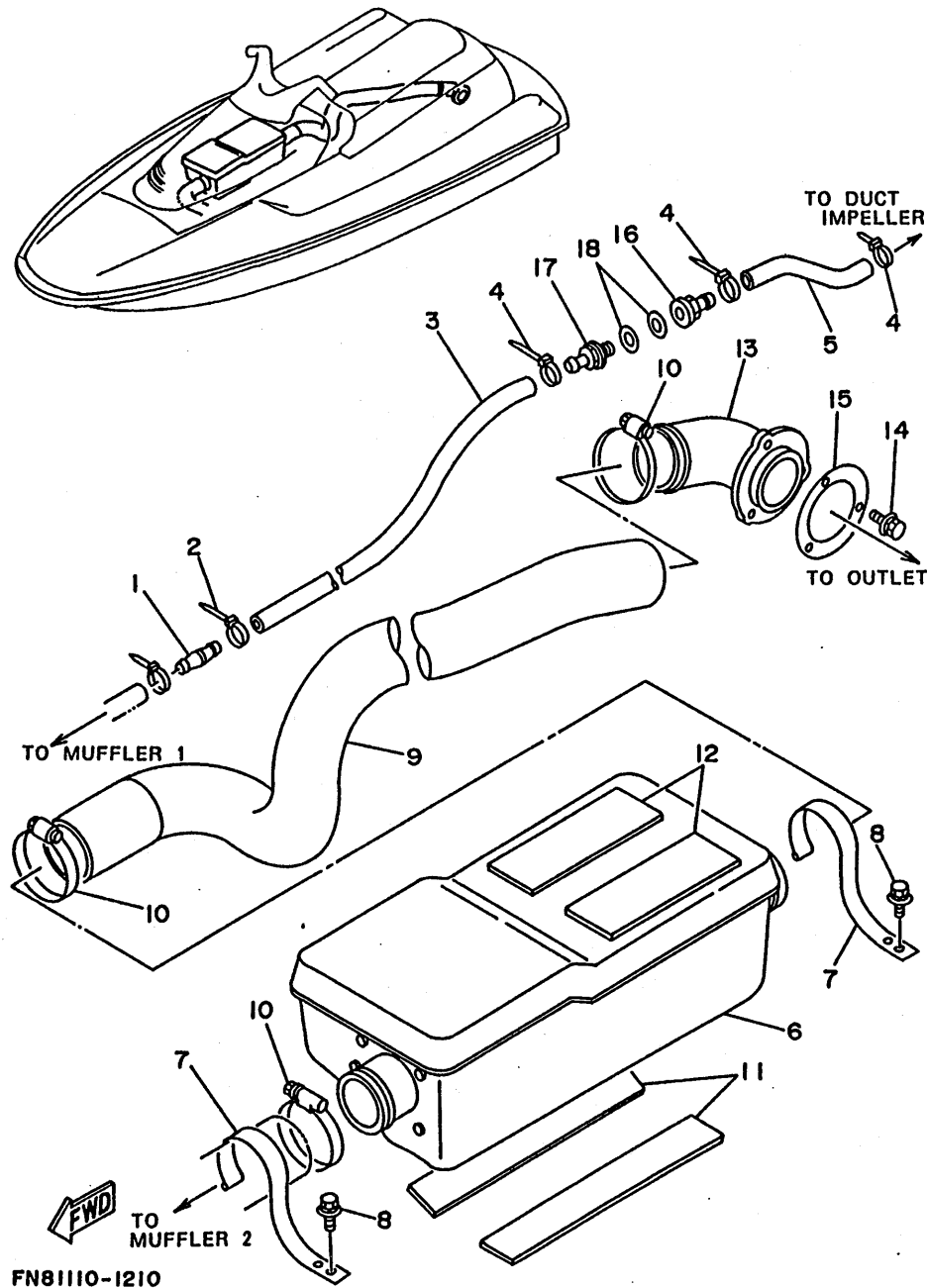


REF. NO.	PART NO.	DESCRIPTION	Q'TY	REMARKS
29	EU0-67831-30	CAP, fuel filler	1	
30	EU0-67832-00	PACKING 1	1	
31	EU0-W6783-01	SOCKET	1	
32	EU0-67835-00	.CHAIN BALL	1	
33	90267-40935	.RIVET, blind	1	
34	EU0-67834-00	PACKING, fuel filler	1	
35	EU0-U7869-00	SCREW, flat head	6	YMUS

FN81110-1200

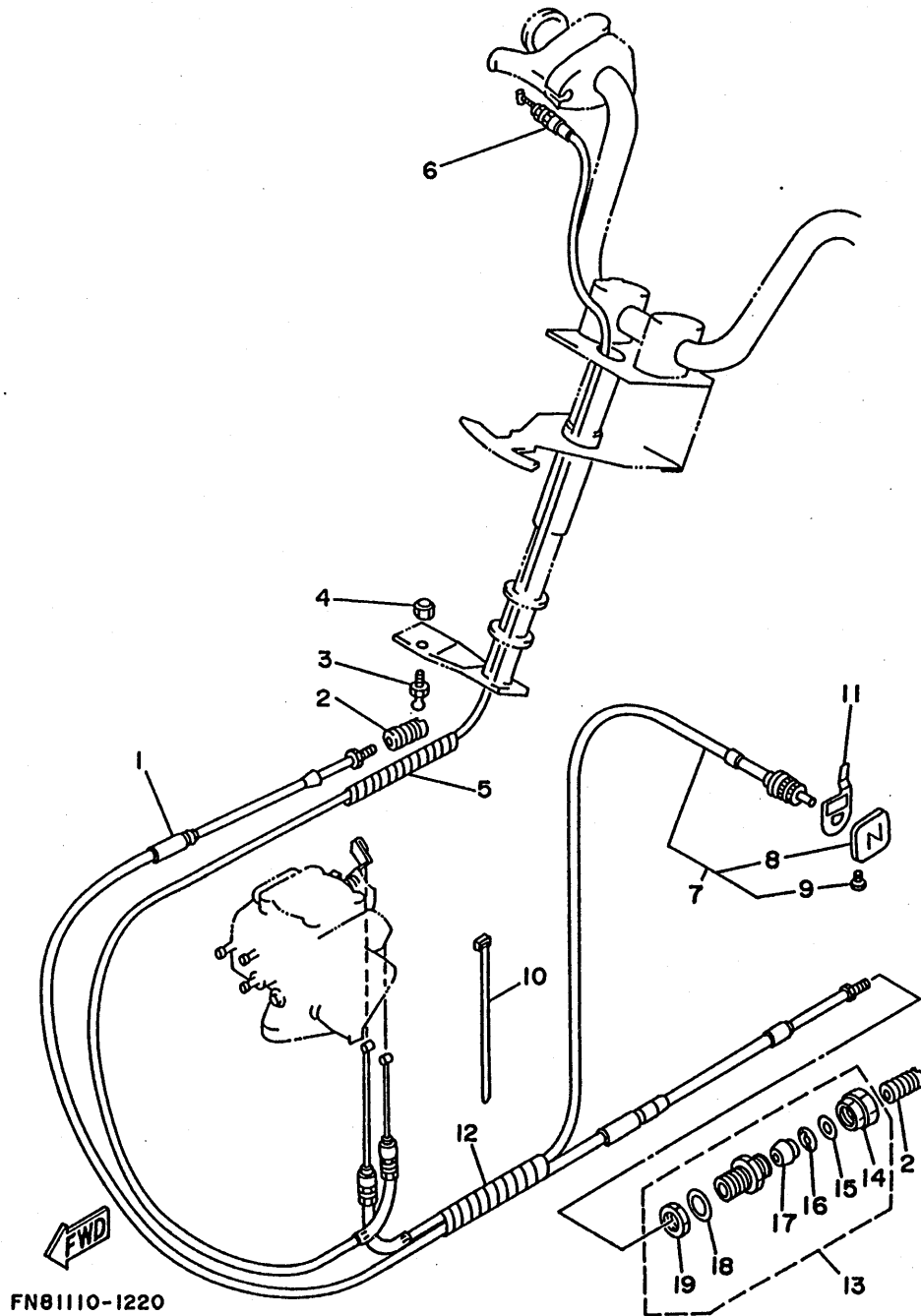
D2

FIG. 21 EXHAUST 2



REF. NO.	PART NO.	DESCRIPTION	Q'TY	REMARKS
1	6M6-51142-00	CONNECTION	1	
2	90465-13M11	CLAMP	1	
3	90445-14M15	HOSE	1	
4	90465-13M11	CLAMP	3	
5	90445-14M17	HOSE	1	
6	FN8-U7550-00	WATER LOCK	1	YMUS
7	FN8-67559-00	CLIP, hose exhaust	2	
8	90119-06913	BOLT, with washer	4	
9	FN8-U7555-00	HOSE	1	YMUS
10	90601-168U7	BAND, hose 68	3	YMUS
11	EU0-U7593-30	MAT 2	2	YMUS
12	EU0-U7593-50	MAT	2	YMUS
13	FN8-67565-00	THRU-HULL	1	
14	90119-05912	BOLT, with washer	3	
15	FN8-U7525-00	PACKING	1	YMUS
16	90604-80757	CONNECTION, thru-hull 1/4	1	
17	90604-80758	CONNECTION, thru-hull 1/4	1	
18	90430-13909	GASKET	2	

FIG. 22 CONTROL CABLE

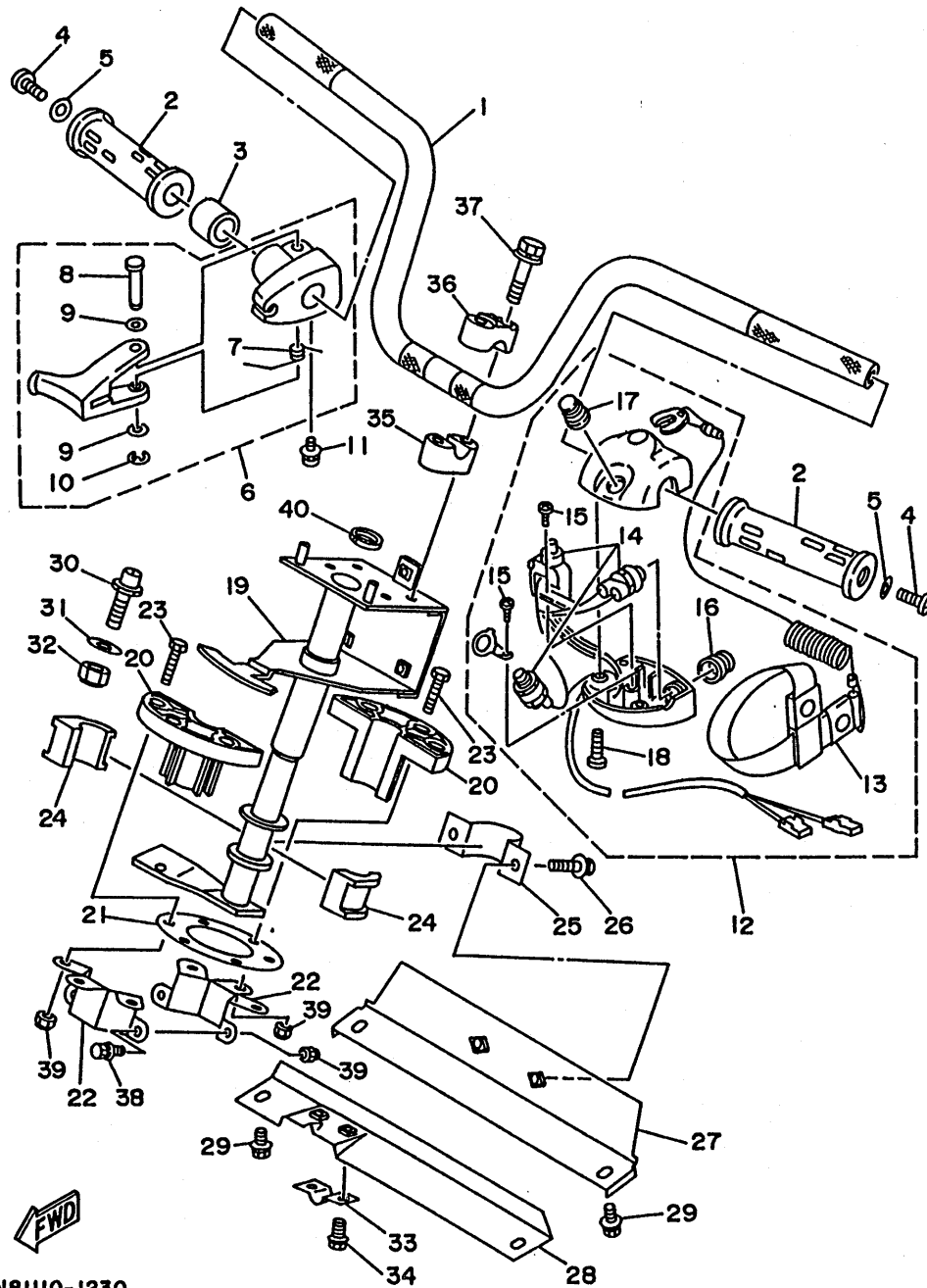


FN81110-1220

REF. NO.	PART NO.	DESCRIPTION	Q'TY	REMARKS
1	FN8-U1481-00	CABLE, steering	1	YMUS
2	EU0-61461-30	SHAFT, joint ball	2	
3	EU0-61461-00	STUD, joint ball	1	
4	95720-06300	NUT, self-locking	1	
5	90699-U1100	SPIRAP 11	1	YMUS
6	EU0-67252-02	CABLE, throttle 1	1	
7	FN8-U7242-00	CABLE, choke	1	YMUS
8	EW2-67243-00	.KNOB	1	
9	90149-03930	.SCREW	1	
10	90601-200U1	NYLON CLIP 1	1	YMUS
11	FN8-67243-00	PLATE, choke	1	
12	90699-36020	SPIRAL TUBE 11	1	
13	EU0-67267-00	CONNECTOR, cable	1	
14	EU0-62694-00	.CAP	1	
15	EU0-61446-00	.WASHER 30	1	
16	EU0-61486-00	.STOPPER	1	
17	EU0-61435-00	.SEAL, pipe 30	1	
18	EU0-61438-00	.PACKING (C)	1	
19	EU0-62241-30	.NUT, drain 1	1	

D4

FIG. 23 STEERING 1

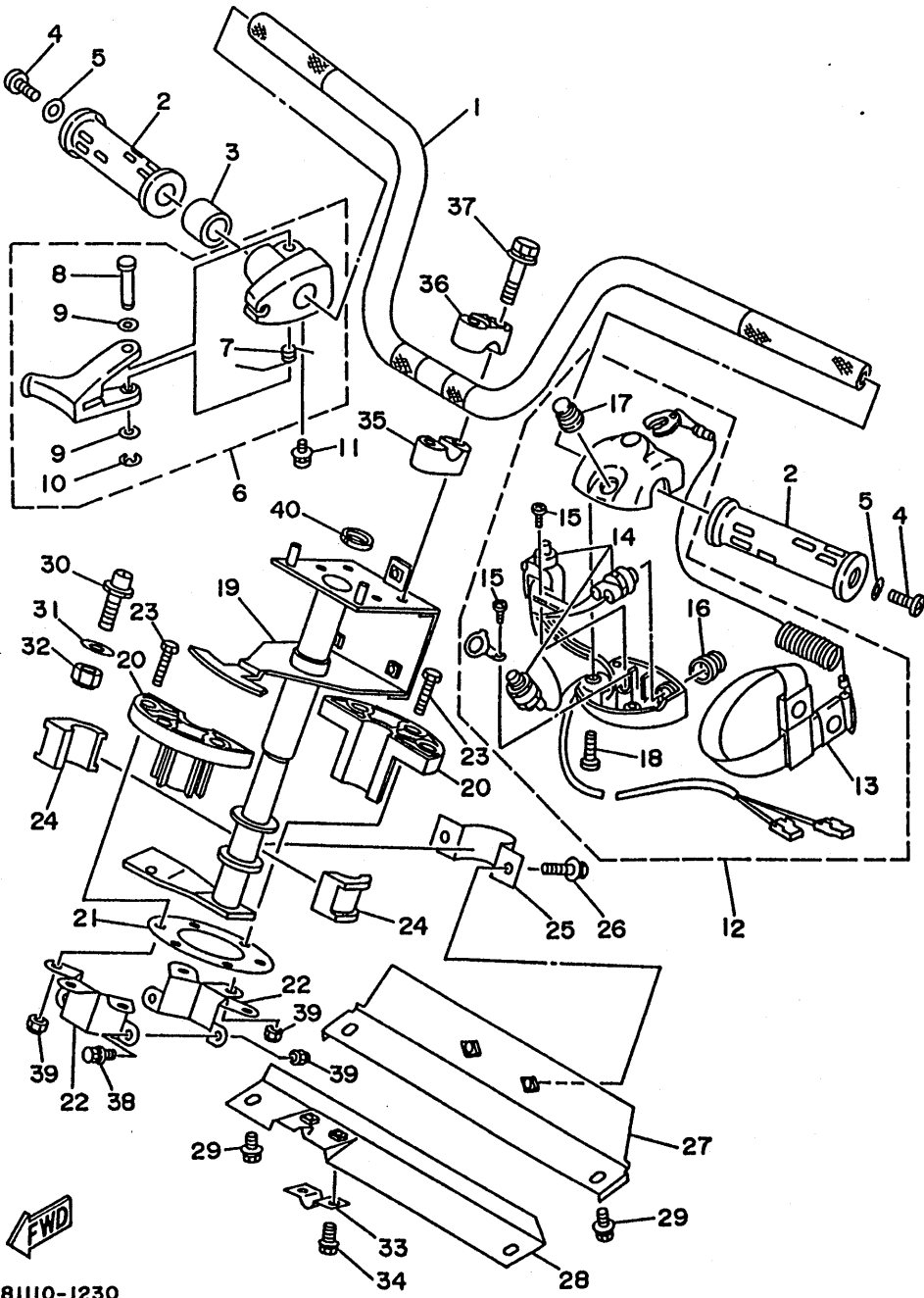


FN81110-1230

REF. NO.	PART NO.	DESCRIPTION	Q'TY	REMARKS
1	FN8-U1552-00	HANDLE	1	YMUS
2	EW2-61553-00	GRIP, handle 1	2	
3	90560-22281	SPACER	1	
4	90149-05959	SCREW, pan head	2	
5	90201-05928	WASHER, plate	2	
6	EW2-67250-00	THROTTLE LEVER ASSY	1	
7	EW2-67256-00	.SPRING	1	
8	EW2-67257-00	.SHAFT	1	
9	EW2-67258-00	.WASHER	2	
10	EW2-67259-00	.E-RING	1	
11	90159-05900	SCREW, with washer	1	
12	FK7-68310-06	SWITCH BOX ASSY	1	
13	EW2-68348-00	.LANYARD, stop switch	1	
14	FK7-68311-02	.SWITCH SUB ASSY	1	
15	98580-03008	.SCREW, pan head	2	
16	FK7-68312-02	.STOP BUTTON COMP.	1	
17	FK7-68313-01	.START BUTTON COMP.	1	
18	98580-05525	.SCREW, pan head	2	
19	FN8-61541-01	COLUMN, steering	1	
20	EU0-61417-00	BEARING, column	2	
21	EU0-61439-30	SEAL, rubber	1	
22	FN8-6158B-01	JOINT, bearing 1	2	
23	97395-06030	BOLT	6	
24	8F3-23812-00	PLANE BEARING, steering	2	
25	EU0-61588-00	JOINT, bearing	1	
26	90119-08903	BOLT, with washer	2	
27	FN8-61433-00	BRACKET, bearing	1	
28	FN8-61467-00	BRACKET, stopper cable	1	

D5

FIG. 23 STEERING 1



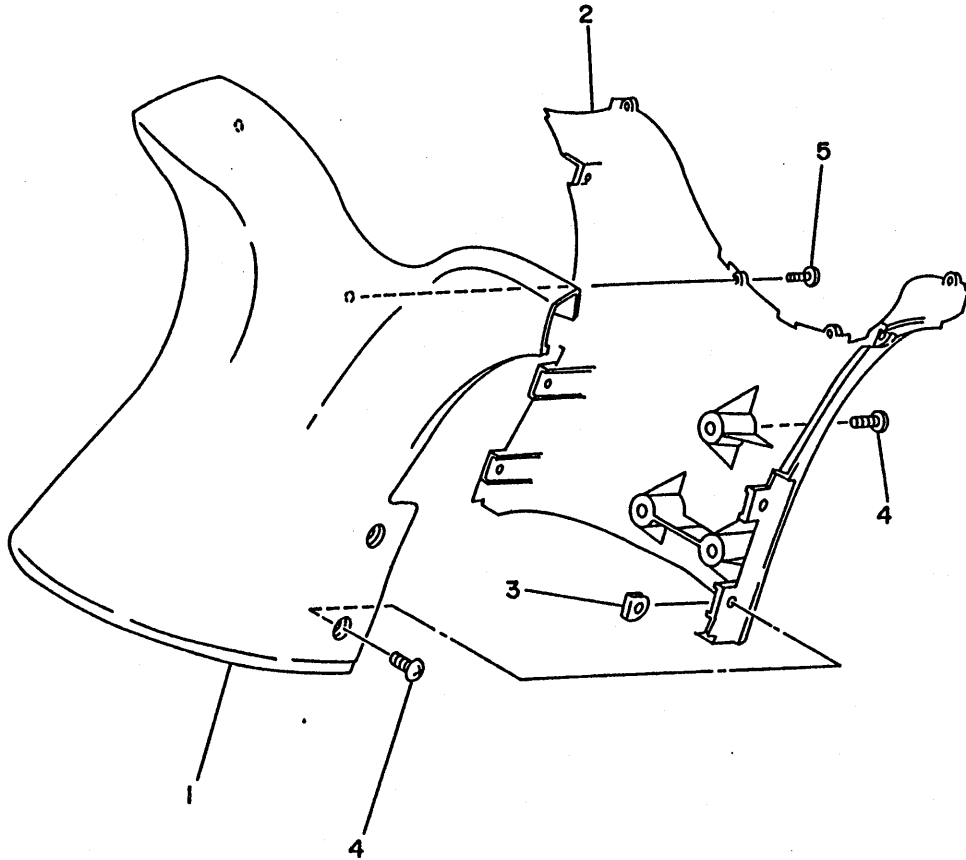
REF. NO.	PART NO.	DESCRIPTION	Q'TY	REMARKS
29	90119-08903	BOLT, with washer	4	
30	EU0-61314-30	PIN, stopper	2	
31	92990-10200	WASHER, plain	2	
32	95720-10300	NUT	2	
33	EU0-61468-00	STOPPER CABLE	1	
34	90119-06926	BOLT, with washer	2	
35	EU0-23814-01	HOLDER, handle lower	2	
36	EU0-23814-30	HOLDER, handle upper	2	
37	90119-08925	BOLT, with washer	4	
38	90119-06913	BOLT, with washer	2	
39	95720-06300	NUT, self-locking	8	
40	EU0-61469-00	PACKING, steering column	1	

FN81110-1230

D6

FIG. 24 STEERING 2

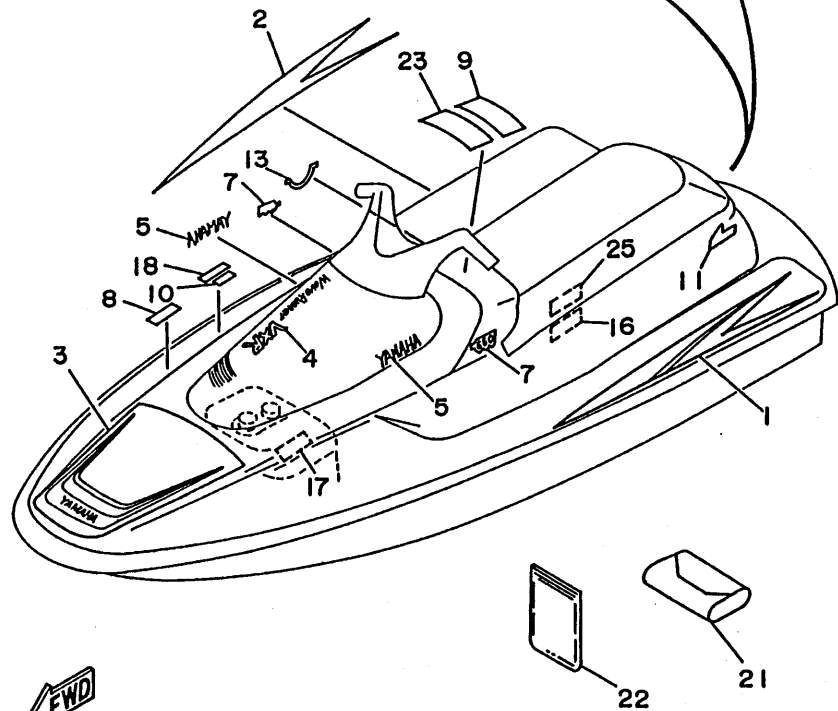
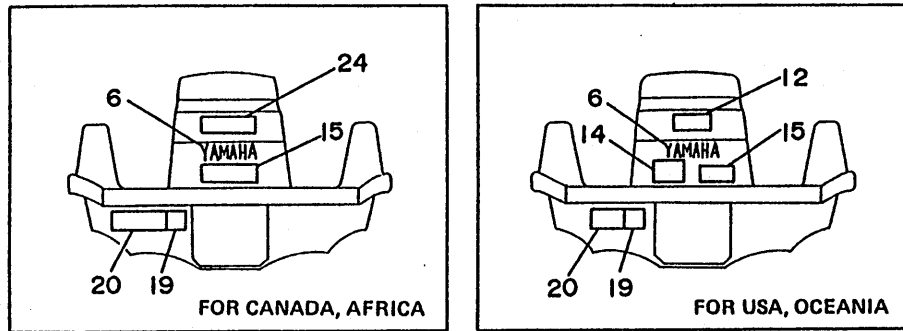
REF. NO.	PART NO.	DESCRIPTION	Q'TY	REMARKS
1	FN8-6143D-00	PAD, steering 1	1	
2	FN8-6143E-00	PAD, steering 2	1	
3	FJ0-61432-00	NUT	4	
4	90149-05969	SCREW	7	
5	90149-03972	SCREW	6	YMUS



FN81110-1240

D7

FIG. 25 GRAPHIC TOOL



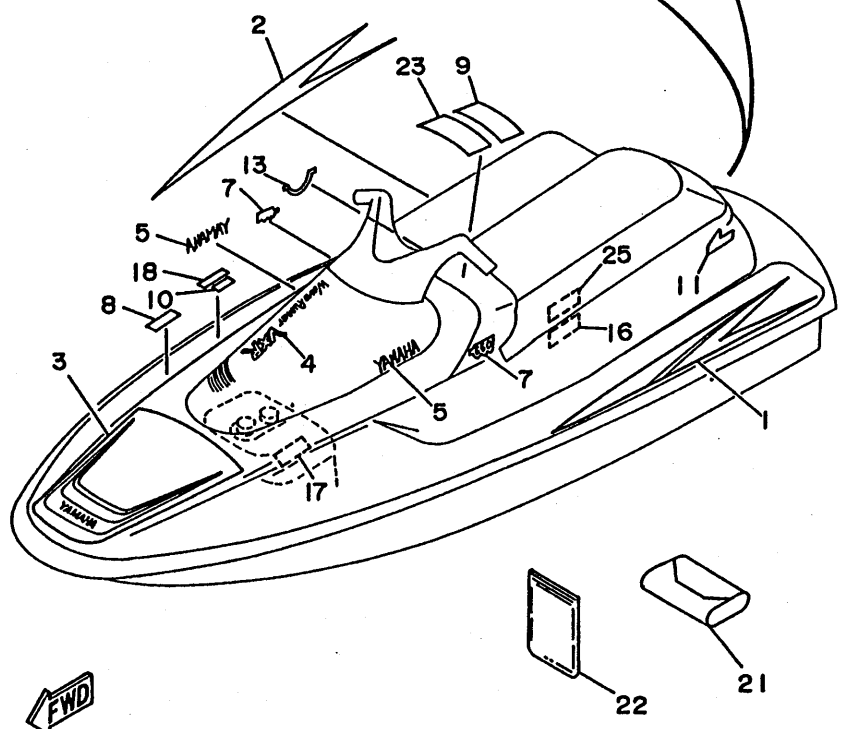
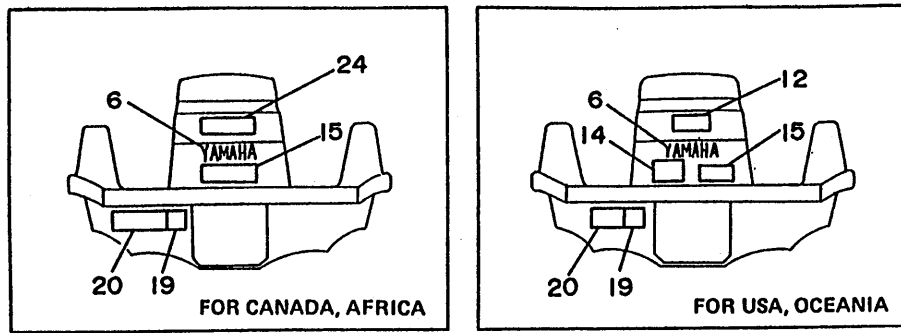
REF. NO.	PART NO.	DESCRIPTION	Q'TY	REMARKS
1	FN8-64173-10	GRAPHIC A	1	
2	FN8-64173-20	GRAPHIC A	1	
3	FN8-64174-00	GRAPHIC B	1	
4	FN8-64121-00	EMBLEM A	1	
5	99231-00040	EMBLEM, yamaha	2	
6	EU0-64114-00	MARK, yamaha A	1	
7	FN8-64122-00	EMBLEM 2	2	
8	FJ0-64161-F0	LABEL, warning 3	1	UR FOR AFRICA
	FJ0-64161-40	LABEL, warning 3	1	UR FOR USA/OCEANIA
	FJ0-64161-90	LABEL, warning 3	1	UR FOR CANADA
9	FN8-64161-01	LABEL, warning	1	UR FOR USA
	FN8-6416C-30	LABEL, warning 1	1	UR FOR CANADA/OCEANIA /AFRICA
10	FJ0-64161-50	LABEL, warning 4	1	UR FOR USA/OCEANIA
	FJ0-64161-A0	LABEL, warning 4	1	UR FOR CANADA
11	FJ0-64183-50	LABEL, caution 4	1	UR FOR USA/OCEANIA
	FJ0-64183-G0	LABEL, caution 4	1	UR FOR CANADA/AFRICA
12	FJ0-64183-60	LABEL, caution 5	1	FOR USA
13	FN8-64183-70	LABEL, caution	1	
14	FJ0-64183-80	LABEL, caution 7	1	FOR USA/OCEANIA
15	FJ0-64183-90	LABEL, caution 8	1	UR FOR USA/OCEANIA
	FJ0-64183-J0	LABEL, caution 8	1	UR FOR CANADA/AFRICA
16	EW2-64183-90	LABEL, caution	1	
17	FN8-64183-A0	LABEL, caution	1	
18	FJ0-64183-C0	LABEL, caution 10	1	UR
	FJ0-64183-K0	LABEL, caution 10	1	UR FOR CANADA
	FJ0-64183-E0	LABEL, caution 1	1	UR FOR OCEANIA
19	FJ0-64188-00	LABEL, riding	1	
20	FJ0-64161-C0	LABEL, warning 5	1	UR FOR USA/OCEANIA

FN8100-2250

D8

FIG. 25 GRAPHIC. TOOL

REF. NO.	PART NO.	DESCRIPTION	Q'TY	REMARKS
20	FJ0-64161-E0	LABEL, warning 5	1	UR FOR CANADA/AFRICA
21	EU0-28100-00	TOOL ASSY	1	
22	EU0-65901-00	BAG, vinyl	1	
23	FN8-6416C-40	LABEL, warning 1	1	FOR CANADA/AFRICA
24	FJ0-64183-H1	LABEL, caution 7	1	FOR CANADA/AFRICA
25	FJ0-64183-M0	LABEL, caution 1	1	FOR CANADA/AFRICA



FN8100-2250

D9

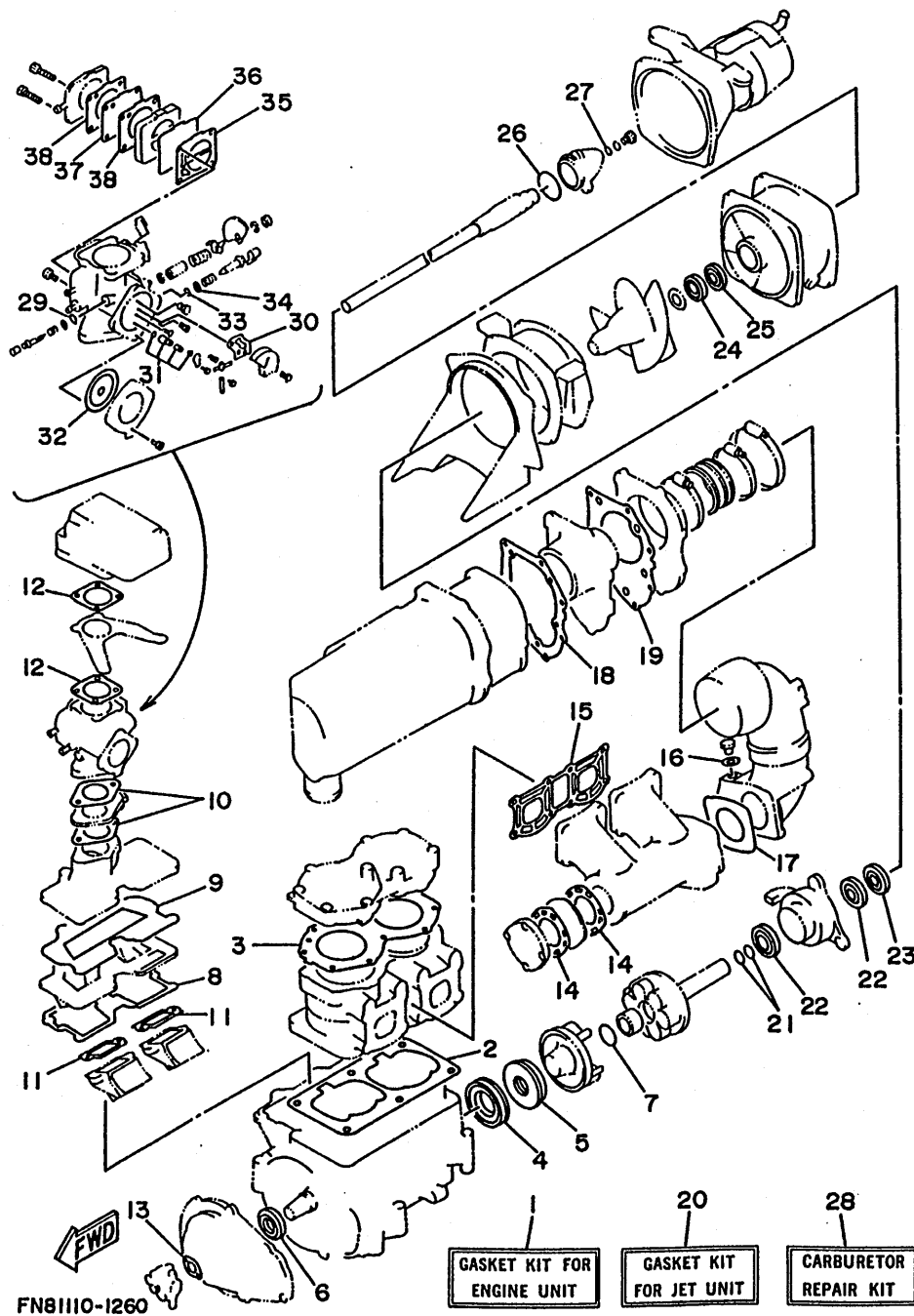


FIG. 26 GASKET KIT

REF. NO.	PART NO.	DESCRIPTION	Q'TY	REMARKS
1	6R8-W0001-01	GASKET KIT	1	FOR ENGINE
2	6M6-11351-A1	.GASKET, cylinder	1	
3	6R7-11181-A0	.GASKET, cylinder head 1	1	
4	93102-36M33	.OIL SEAL	1	
5	93101-36M46	.OIL SEAL	1	
6	93103-32M01	.OIL SEAL	1	
7	93210-30M31	.O-RING	2	
8	6M6-13566-A1	.GASKET	1	
9	6M6-13563-A1	.GASKET	1	
10	6M6-13556-A1	.GASKET, manifold	2	
11	6M6-13621-A1	.GASKET, valve seat	2	
12	6M6-13674-A1	.GASKET, air cooler cover 1	2	
13	6R8-13116-A0	.GASKET, pump case	1	
14	6M6-14739-A1	.GASKET, muffler damper 1	1	
15	6M6-14613-A0	.GASKET, exhaust pipe	1	
16	90430-08020	.GASKET	1	
17	6R7-14749-A0	.GASKET, muffler damper 2	1	
18	6R7-14755-A0	.GASKET, silencer	1	
19	6R7-41114-A0	.GASKET, exhaust outer cover	1	
20	61L-W0001-20	GASKET KIT	1	FOR JET UNIT
21	93210-17MA4	.O-RING	2	
22	93101-25M52	.OIL SEAL	2	
23	93101-25M53	.OIL SEAL	1	
24	93102-25M34	.OIL SEAL	1	
25	93101-25M50	.OIL SEAL	1	
26	93210-46M16	.O-RING	1	
27	90430-06M03	.GASKET	1	
28	61L-W0093-00	CARBURETOR REPAIR KIT	1	

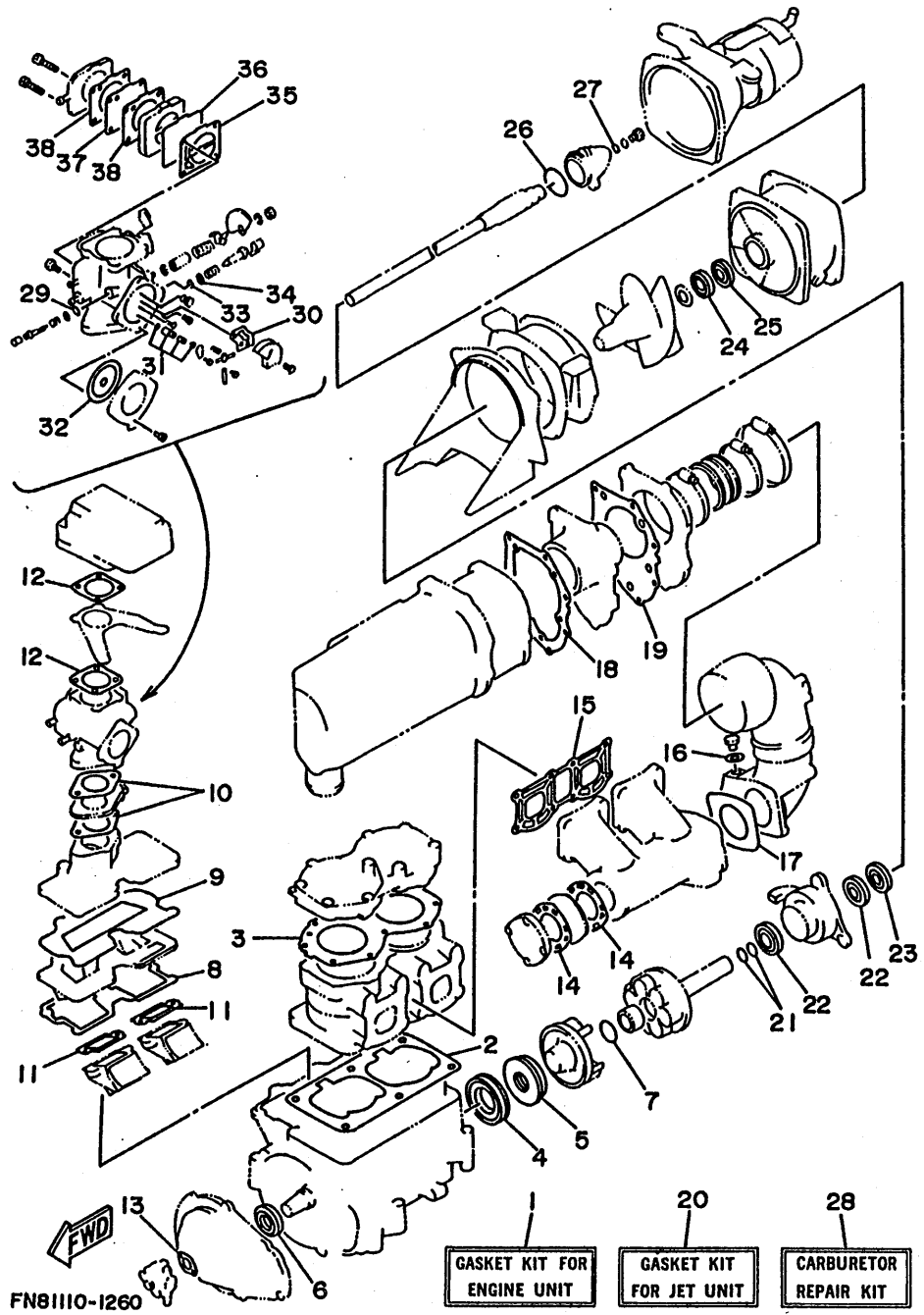


FIG. 26 GASKET KIT

REF. NO.	PART NO.	DESCRIPTION	Q'TY	REMARKS
29	6K8-14562-00	.O-RING	1	
30	6K8-14536-11	.GASKET	1	
31	6K8-14916-15	.NEEDLE	1	
32	6R7-14541-00	.DIAPHRAGM, pump	1	
33	583-14561-00	.O-RING	1	
34	6K8-14537-00	.GASKET	1	
35	6K8-24435-10	.GASKET, body 2	1	
36	6K8-24411-10	.DIAPHRAGM	1	
37	6K8-24421-10	.VALVE, check	1	
38	6K8-24431-10	.GASKET, fuel pump 1	2	

NUMERICAL INDEX

PART NO.	GRID NO.	PART NO.	GRID NO.	PART NO.	GRID NO.	PART NO.	GRID NO.	PART NO.	GRID NO.	PART NO.	GRID NO.
FN8-U1481-00	D-4	FN8-13173-00	C-14	6K8-14547-01	B-7	6K8-24411-10	B-8	61L-51323-01	B-15	EU0-62285-01	C-8
FN8-U1552-00	D-5	6R3-13183-00	B-9	6K8-14556-10	B-7		D-11	6R7-51326-00-94	B-13	FN8-62513-10	C-10
FN8-U2131-00	C-11	61L-13200-00	B-9	6K8-14559-00	B-7	6R7-24412-01	B-7	61L-51333-00-5B	B-13	FN8-62513-20	C-10
EU0-U2149-40	C-11	6M6-13555-00-94	B-5	583-14561-00	B-8	6K8-24413-10	B-8	6R7-51381-00	B-15	FN8-62668-00	C-12
FN8-U2501-00	C-10	6M6-13556-A1	B-5		D-11	6K8-24421-10	B-8	61L-5169A-00	B-5	FN8-6266C-00	C-12
FN8-U2663-00	C-12		D-10	6K8-14562-00	B-7		D-11	EU0-61314-30	D-6	EU0-62693-02	B-14
FN8-U2664-00	C-7	6M6-13563-A1	B-5		D-11	6K8-24431-10	B-8	EU0-61417-00	D-5	EU0-62694-00	D-4
FN8-U3580-00	C-10		D-10	6R7-14569-00	B-7		D-11	FN8-6143D-00	D-7	EU0-62695-00	B-14
FN8-U3710-01	C-12	6M6-13566-A1	B-5	6K8-14579-00	B-7	6K8-24435-10	B-8	FN8-6143E-00	D-7	EU0-6271B-00	C-12
FN8-U3711-00	C-12		D-10	6K8-14589-00	B-8		D-11	FJO-61432-00	D-7	FN8-62730-00	B-14
FN8-U4742-01	C-12	6R7-13610-00	B-5	6K8-14591-10	B-7	6K8-24452-10	B-8	FN8-61433-00	D-5	FK7-62732-00	B-14
FN8-U516D-00	C-7	6M6-13621-A1	B-5	6R7-14596-00	B-7	6K8-24500-02	B-12	EU0-61435-00	D-4	FN8-62840-00	C-7
FN8-U5162-00	C-7		D-10	6M6-14613-A0	B-10	6K8-24524-10	B-12	EU0-61438-00	D-4	FN8-62843-00	C-7
FN8-U5174-00	C-12	6M6-13641-00-94	B-5		D-10	6K8-24560-10	B-12	EU0-61439-30	D-5	EW2-62845-00	C-7
FN8-U5193-00	C-7	6M6-13674-A1	B-6	61L-14615-00	B-11	119-24741-00	C-12	EU0-61446-00	D-4	EW2-62846-00	C-7
FN8-U7242-00	D-4		D-10	61L-14625-A0	B-11	EU0-28100-00	D-9	EU0-61461-00	D-4	EW2-62847-00	C-7
FN8-U7525-00	D-3	3G2-14231-25	B-7	6R7-14711-00-9M	B-10	6E0-28193-00-94	B-3	EU0-61461-30	D-4	EW2-62848-00	C-7
FN8-U7550-00	D-3	830-14231-24	B-7	61L-14712-00-9M	B-10	6R7-41113-00-9M	B-11	FN8-61467-00	D-5	FN8-62884-00	C-7
FN8-U7555-00	D-3	61L-14243-00	B-5	6M6-14718-01-9M	B-10	6R7-41114-A0	B-11	EU0-61468-00	D-6	FN8-62891-00	C-7
EU0-U7593-30	D-3	6R7-14253-00	B-8	6R7-14721-00-9M	B-10		D-10	EU0-61469-00	D-6	FN8-62892-00	C-7
EU0-U7593-50	D-3	6R7-14255-00	B-6	6M6-14739-A1	B-10	6R7-42316-00	B-13	EU0-61486-00	D-4	FN8-6378C-00	C-12
FN8-U7844-00	C-15	61L-14255-00	B-9		D-10	6M6-44517-00-5B	B-3	FN8-61541-01	D-5	FJO-63850-01	C-12
EU0-U7869-00	D-2	61L-14283-00	B-5	6R7-14749-A0	B-10	61L-44532-00	B-2	EW2-61553-00	D-5	EU0-64114-00	D-8
EU0-U8221-00	C-6	6R8-14284-00-98	B-6		D-10	663-45119-00	B-5	FN8-61588-01	D-5	FN8-64121-00	D-8
6R8-W0001-01	D-10	61L-14301-00	B-7	61L-14752-00	B-11	61L-45332-00-9M	B-15	EU0-61588-00	D-5	FN8-64122-00	D-8
61L-W0001-20	D-10	6M6-14451-00	B-6	6R7-14753-00-9M	B-10	61L-45378-00	B-15	FN8-61624-00	C-8	FN8-6416C-30	D-8
6R7-W0004-00	B-5	6K8-14471-10	B-7	6R7-14755-A0	B-11	61L-45511-00	B-13	FN8-61651-00	C-10	FN8-6416C-40	D-9
61L-W0090-00-EK	B-2	6K8-14481-10	B-8		D-10	6M6-45526-00	B-4	EU0-61652-00	C-10	FJO-64161-A0	D-8
61L-W0093-00	D-10	6H1-14485-00	B-6	6M6-14771-00-94	B-11	6M6-4581J-00	B-4	EW2-62136-01	C-7	FJO-64161-C0	D-8
EU0-W6783-01	D-2	6R7-14485-00	B-2	6R7-14785-00-9M	B-10	6M6-45813-10-9M	B-4	EU0-62155-00	C-6	FJO-64161-E0	D-9
6R7-11111-00-94	B-2		B-10	6K8-14916-15	D-11	6R7-45813-11-9M	B-4		C-11	FJO-64161-F0	D-8
6R7-11181-A0	B-2	6K8-14503-02	B-7	61L-14916-15	B-7	6R7-51117-01	B-13	FN8-62155-00	C-11	FJO-64161-40	D-8
	D-10	6M6-14503-00	B-7	6K8-14923-10	B-8	6K8-51129-00	B-2	FN8-62155-30	C-11	FJO-64161-50	D-8
6M6-11311-00-94	B-2	6K8-14521-10	B-7	6K8-14926-10	B-7		B-10	FN8-62155-40	C-11	FJO-64161-90	D-8
6E5-11325-00	B-2	6M6-14521-00	B-7	6K8-14930-00	B-7		B-10	EU0-62156-32	C-6	FN8-64161-01	D-8
6M6-11351-A1	B-2	6K8-14523-11	B-7	6K8-14946-10	B-7		B-13		C-11	FN8-64173-10	D-8
	D-10	6K8-14527-11	B-7	6M6-15100-00-94	B-2	6M6-5114E-00	B-4	FN8-62156-00	C-11	FN8-64173-20	D-8
6E5-11372-00	B-6	6M6-14527-02-EK	B-5	6R7-15761-00	B-10	6R7-5114E-01	B-4	FN8-62156-40	C-11	FN8-64174-00	D-8
6M6-11400-00	B-4	6K8-14531-00	B-8	6R7-21415-00-94	B-2	6K8-51141-00	C-8	FN8-62156-50	C-6	EW2-64183-90	D-8
6M6-11601-00	B-4	6K8-14533-00	B-8	6R7-21425-00-94	B-2	6M6-51142-00	D-3	FJO-62158-00	C-14	FJO-64183-C0	D-8
6M6-11601-10	B-4	6K8-14534-10	B-7	6R8-21733-00	B-9	61L-51161-00	C-8	FN8-6224E-00	C-8	FJO-64183-E0	D-8
6M6-11601-20	B-4	6K8-14536-11	B-7	6R8-21734-00	B-9	6K8-51162-00	C-8		C-11	FJO-64183-G0	D-8
6M6-11631-01-93	B-4		D-11	8F3-23812-00	D-5	61L-51311-00	B-13	FN8-6224F-00	C-11	FJO-64183-H1	D-9
8H8-11633-00	B-4	6K8-14537-00	B-8	EU0-23814-01	D-6	6R7-51312-00-94	B-13	FN8-6224F-01	C-11	FJO-64183-J0	D-8
6M6-11635-01	B-4		D-11	EU0-23814-30	D-6	6R7-51313-00	B-13	EU0-62241-30	D-4	FJO-64183-K0	D-8
6M6-11636-01	B-4	6R7-14541-00	B-8	6R8-24377-00	B-9	6R7-51315-00-94	B-13	EU0-62280-00	C-8	FJO-64183-M0	D-9
6R8-13116-A0	B-9		D-11	61L-24378-00	B-9	6R7-51318-00	B-13	EU0-62282-00	C-8	FJO-64183-50	D-8
	D-10	6R7-14542-10	B-8	650-24378-00	B-5	61L-51321-10-94	B-13	EU0-62283-00	C-8	FJO-64183-60	D-8

NUMERICAL INDEX

PART NO.	GRID NO.	PART NO.	GRID NO.	PART NO.	GRID NO.	PART NO.	GRID NO.	PART NO.	GRID NO.	PART NO.	GRID NO.
FJO-64183-80	D- 8	FN8-67711-00	C-15	6M6-81921-00	C- 4	90119-06926	D- 6	90201-08M04	B- 2	90446-07M36	B- 9
FJO-64183-90	D- 8	FJO-67713-00	C-15	6G1-81941-10	C- 4	90119-08M19	B- 2	90201-24M01	B- 4	90446-09904	C-14
FN8-64183-A0	D- 8	FN8-67714-00	C-15	6M6-81952-01	C- 4	90119-08M55	B- 2	90209-20M20	B-13	90446-11M33	B- 9
FN8-64183-70	D- 8	FN8-67716-00	C-15	6M6-81960-A0	C- 4	90119-08M69	B- 2	90267-40935	D- 2	90446-11905	C-14
FJO-64188-00	D- 8	FN8-67751-00	C-14	EU0-82110-78	C- 6	90119-08M73	B-10	90267-48007	B-12	90446-12M32	B- 9
FN8-64189-00	C-14	FJO-67752-00	C-14	6R7-82117-21	C- 5	90119-08038	B- 3	90267-48932	C-10	90446-14M34	B-10
FN8-64744-00	C-13	FN8-67753-00	C-14	61L-82117-00	C- 6	90119-08903	C-15	90267-48934	B-12	90446-20M31	B-10
FN8-6516C-00	C- 7	FJO-67766-00	C-14	61L-82117-10	C- 6		C-15	90267-48940	C- 7	90460-11M17	B- 6
FN8-65172-00	C-12	EU0-67767-30	C-15	6K8-82150-01	C- 4		D- 5	90269-06916	C-12		B-15
EU0-65772-30	C-13	FN8-67777-00	C-15	6G1-82151-00	C- 4		D- 6	90280-05013	C- 2	90460-25M09	C- 6
EU0-65901-00	D- 9	FN8-67777-31	C-15	61L-82351-00	C- 4	90119-08904	B- 3	90340-08M04	B-10		C- 8
FN8-65910-00	C-12	EW2-67812-00	B-12	61L-82352-00	C- 4	90119-08907	B-15	90380-12M29	B- 2	90460-64M15	B-11
EW2-65912-00	C-13	EU0-67816-30	B-12	6R7-82361-00	C- 5	90119-08916	C-15		C- 2	90460-70M16	B-11
EW2-65912-30	C-12	EU0-67817-00	B-12	6K8-82370-00	C- 4		C-15	90386-08006	B- 5	90460-90M11	B-11
EW2-65913-00	C-12	EU0-67831-30	D- 2	6K8-82370-11	C- 4	90119-08925	D- 6		B-15	90464-06M29	C- 4
	C-13	EU0-67832-00	D- 2	61L-82553-00	C- 5	90119-10M07	B- 2	90387-06M60	B-15	90464-10M38	B- 5
EW2-65920-00	C-12	EU0-67834-00	D- 2	6R7-82560-00	C- 5	90119-10M56	B- 2	90387-06M72	B- 9	90465-08M37	B- 9
EW2-67243-00	D- 4	EU0-67835-00	D- 2	6R7-83623-40	C- 4	90119-10M72	B-11	90387-08M06	B-13	90465-08028	B- 5
FN8-67243-00	D- 4	FJO-67840-00	C-14	6R7-85515-00	C- 2	90119-10906	B-14	90387-08M10	B- 2		C- 4
EW2-67250-00	D- 5	FJO-67841-00	C-14	6M6-8552A-00-98	C- 4	90149-03930	D- 4	90387-08904	C-15	90465-11M10	B- 5
EU0-67252-02	D- 4	EU0-67856-00	C-15	6M6-8552E-00	C- 4	90149-03972	D- 7	90430-06M03	B-13		B- 9
EW2-67256-00	D- 5	EU0-67856-30	C-15	6M6-85520-00	C- 2	90149-05959	D- 5		D-10		B- 9
EW2-67257-00	D- 5	FJO-67856-40	C- 6	6M6-85533-00	C- 2	90149-05969	D- 7	90430-08020	B-10		B- 9
EW2-67258-00	D- 5	EW2-68156-00	C- 5	6M6-85540-01	C- 4	90149-05970	C- 7		D-10		B- 9
EW2-67259-00	D- 5	EW2-68211-00	C- 6	6R7-85550-00	C- 2	90149-05977	C-12	90430-13909	C- 8		B- 9
EU0-67267-00	D- 4	EU0-68218-04	C- 6	6R7-85560-00	C- 2	90149-06967	C-10		D- 3		B-12
EU0-67324-00	B- 3	EU0-68221-30	C- 6	61L-85570-00	C- 4	90149-06968	C-10	90445-07M19	B- 2		B-12
EU0-67354-00-01	B- 3	FK7-68310-06	D- 5	6M6-85580-00	C- 2		C-10	90445-09M17	B-15		B-12
EU0-67354-00-03	B- 3	FK7-68311-02	D- 5	90105-05M46	B- 5	90149-06971	C-10	90445-09M28	B- 9		C- 4
EU0-67354-00-05	B- 3	FK7-68312-02	D- 5	90105-05M53	B- 5	90149-06973	C-10	90445-09901	C-14		C- 4
EU0-67354-00-10	B- 3	FK7-68313-01	D- 5	90105-06903	C- 5	90149-06975	C-10	90445-10M33	B-12		C- 4
EU0-67354-00-20	B- 3	EW2-68348-00	D- 5	90105-10M45	B-11	90149-06976	C-10	90445-10M48	B- 5		C- 6
EU0-67354-30-03	B-15	FN8-6883B-00	B-15	90105-10M49	B-11	90159-05900	D- 5	90445-10M59	B-12		C-14
EU0-67354-30-05	B-15	6K8-7610K-00	C- 8	90109-10M47	C- 2	90159-06901	C- 7	90445-10M60	B-12		C-14
EU0-67354-30-10	B-15	6M6-8132W-00	C- 4	90116-08M14	B- 5		C- 7	90445-10M61	B-12		C-15
EW2-67354-00-01	B-14	6R8-81337-00-9M	C- 2	90119-05912	D- 3		C-13	90445-10M62	B-12	90465-13M11	B-10
EW2-67354-00-03	B-14	6M6-81365-A0	C- 2	90119-06M70	B-13	90159-06904	C-12	90445-11M24	B- 9		C- 5
EW2-67354-00-05	B-14	6M6-81800-10	C- 3	90119-06900	C-12	90170-22M11	B-12	90445-11M27	B- 9		C- 8
EW2-67354-00-10	B-14	3AJ-81809-00	C- 3	90119-06908	B-14	90179-06926	C- 7	90445-11900	C-15		C- 8
FN8-67559-00	D- 3	6M6-81820-00	C- 3	90119-06913	D- 3	90179-06931	B-14	90445-14M06	B-10		C- 8
FN8-67565-00	D- 3	6M6-81826-00	C- 3		D- 6	90179-08927	C- 7	90445-14M14	C- 8		D- 3
EU0-67569-02	C-12	6M6-8183E-00	C- 3	90119-06914	B-14	90179-10925	B-14	90445-14M15	D- 3		D- 3
FJO-67569-00	C-13	6M6-81830-00	C- 3	90119-06915	B-14	90190-06014	B-14	90445-14M16	C- 8	90467-06016	B- 2
FN8-67593-00	C-15	6M6-81840-10	C- 3		B-14	90201-05925	B-12	90445-14M17	D- 3	90467-08M10	C- 6
FN8-67593-30	C-15	11H-81844-00	C- 3		C- 8	90201-05928	D- 5	90445-14M24	C- 8	90467-11019	C-14
EU0-67613-00	C- 8	6M6-81844-00	C- 4	90119-06919	C- 8	90201-06M02	B-13	90446-07M14	B- 9	90467-11044	C-15
EW2-67618-00	C- 8	26H-81847-00	C- 3	90119-06920	C- 6	90201-065F3	C-14	90446-07M17	B- 9	90480-06M43	C- 4
FN8-6771K-00	C-15	6M6-81850-00	C- 3	90119-06924	C-14	90201-06931	C-13	90446-07M35	B- 9	90480-06M46	B-15

NUMERICAL INDEX

PART NO.	GRID NO.	PART NO.	GRID NO.	PART NO.	GRID NO.	PART NO.	GRID NO.	PART NO.	GRID NO.	PART NO.	GRID NO.
90480-19906	C-15	92990-06600	B- 9	93310-320U3	B- 4	97395-06016	B-13				
90501-14M73	C- 3		B-10	93430-47M04	B-15		C- 5				
90560-22281	D- 5		B-10	93440-80023	B- 4	97395-06025	C- 2				
90600-70069	C- 7		B-11	93450-21053	B- 4	97395-06030	D- 5				
90600-91736	B-12		B-11	93603-10049	B- 2	97395-06035	B- 9				
90601-11062	C-15		B-13	93604-07141	B- 2	97395-08018	B-14				
90601-152U3	B-15		B-13	93606-07M17	B-15	97513-10535	B- 2				
90601-155U4	C-15		C- 2	93606-09M19	B-13	97513-10570	B- 2				
90601-162U5	C-15		C- 2	93606-12019	B- 2	97513-10580	B- 3				
90601-168U7	C- 7		C- 3		B-13	97595-06225	B-15				
	D- 3		C- 4		C- 2	97780-40112	C-11				
90601-200U1	C- 6		C- 4	94701-00041	C- 5	97780-50114	C- 8				
	C-11	92990-08100	B- 7	94702-00195	C- 5	97780-50116	C-11				
	D- 4	92990-08200	C- 5	95380-05800	C- 7	97780-60520	B-14				
90601-20006	B-12		C- 8	95380-06700	B-13	97780-60525	C- 4				
	C- 6	92990-08600	B- 5		C- 3	97902-04122	C- 2				
90604-80757	D- 3		B-10	95380-06800	C-10	97902-05125	C- 2				
90604-80758	D- 3		B-10		C-10	97980-05330	B- 7				
90604-80759	C- 8		C- 3		C-10	98503-06016	C- 4				
90604-80760	C- 8		C- 3	95380-08600	B- 5	98580-03008	D- 5				
90654-91004	C-14	92990-10200	D- 6	95380-08700	B- 7	98580-04008	C- 2				
90669-03003	C- 6	92995-06100	C- 5		C- 5	98580-04010	B-12				
90669-03010	C-11	92995-08600	B-14	95720-05300	C- 7	98580-05016	B- 6				
90697-47025	C-10	93101-25M50	B-13		C- 7	98580-05020	C- 8				
90697-48025	C-10		D-10		C- 8	98580-05525	D- 5				
90699-U1100	D- 4	93101-25M52	B-15		C-12	98580-06016	C- 2				
90699-36020	D- 4		D-10		C-13	98580-06030	C- 4				
91490-16010	C-15	93101-25M53	B-15	95720-06300	B-15	98680-04016	B- 2				
91790-05040	C-15		D-10		C-12	98780-05016	B-14				
92990-04600	B-12	93101-36M46	B- 4		C-13		C-12				
92990-05200	B-14		D-10		C-14	98780-05020	C- 7				
	C- 9	93102-25M34	B-13		D- 4	99231-00040	D- 8				
	C-12		D-10		D- 6						
	C-13	93102-36M33	B- 4	95720-08300	C- 8						
92990-05600	B- 6		D-10	95720-10300	D- 6						
	C-15	93103-32M01	B- 4	95780-05300	B-14						
92990-06100	C- 3		D-10	97013-06035	B- 5						
	C-10	93210-17MA4	B-15	97013-08025	B-10						
	C-10		D-10	97313-06016	B-10						
	C-10	93210-30M31	B- 4	97313-06020	B- 5						
92990-06200	C-10		B- 4	97313-06025	B-10						
	C-10	93210-46M16	D-10	97313-06030	B-11						
	C-10		B-13	97313-08035	B-10						
	C-12		D-10		C- 3						
	C-12	93303-30601	B- 4	97313-08040	C- 3						
92990-06600	B- 5	93305-205U0	B-15	97395-06012	B- 9						
	B- 5	93306-205U0	B-13		B-13						
	B- 9	93306-307U1	B- 4	97395-06016	B-11						

