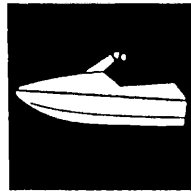


YAMAHA



**PARTS
CATALOGUE**

Wave Runner **YXR**
WRB650S (FN8G)(FN8J)

YAMAHA
GENUINE
Parts & Accessories

14FN8-100E1

FOREWORD

This Parts Catalogue is related to the parts in use for the Yamaha Wave Runner VXR650S (FNB). When you are ordering replacement parts for the Wave Runner VXR650S(FNB), refer to this Parts Catalogue and quote both part numbers and part names correctly.

1. Modifications or additions which have been made after issue of the Parts Catalogue will be announced in the Yamaha Parts News.
It is advisable that according to the Yamaha Parts News you make necessary corrections to the Parts Catalogue on hand to keep it up-to-date.

2. Abbreviations

The following abbreviations are used in this Parts Catalogue.

- U.R. Use size (thickness) and/or number as required.
- U.N. Use as many as you need.
- A.P. Alternate Parts
- L.M. Local Made
- F# Frame No. (Applicable machine No.)

3. The parts marked with (*) in the parts number column of this Catalogue are not supplied with by Yamaha, those have to be found locally.
4. Parts, which are to be supplied in the form of assemblies, are listed with an indentation of one letter's space, and a dot (.) is put against the name of each part.

EXAMPLE
 CARBURETOR ASS'Y
 . JET, pilot
 . NOZZLE, main

5. Indication of No. of constituent parts for assembly

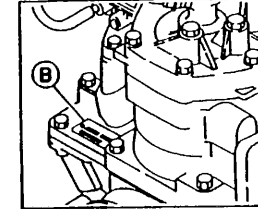
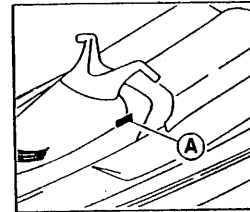
The numeral appearing to the right of each constituent part under the description indicates the quantity of such parts for each individual assembly unit.

EXAMPLE

Part No.	Description	Q'ty	Remarks
2F5-83310-60	FRONT FLASHER LIGHT ASS'Y	2	
115-83311-60	. BULB (6V-18W)	1	
1M1-83309-60	. REFLECTOR	1	

6. Initial Serial No. and Color Code

(A) Hull Serial No.	FN8-822901 and following
(B) Engine Serial No.	61L-026801 and following



Color Code	Color Name	Abbreviate
4D	DARK BLUISH GRAY METALLIC 2	DBNM2

7. Applicable colors of graphics are represented in the "Remarks" column by the letter(s) appropriately picked out of the full word(s) showing such colors.

EXAMPLE

Part No.	Description	Q'ty	Remarks
2N4-24110-00-X5	FUEL TANK COMP.	1	MAXIM RED
3J1-24240-10	. GRAPHIC, fuel tank set	1	for MXR

8. A part with "YMUS" in the remarks column can be obtained from YMUS, USA and not from YMC, JAPAN.

Address: YAMAHA MOTOR CORPORATION U.S.A.
 6555 KATELLA AVENUE
 CYPRESS, CALIFORNIA 90630, U.S.A.
 PARTS & ACCESSORY DIV.

EXAMPLE

Part No.	Description	Q'ty	Remarks
EW2-U5160-00	ENGINE HATCH COMP.	1	YMUS
90601-168U7	BAND, hose	2	YMUS

CONTENTS

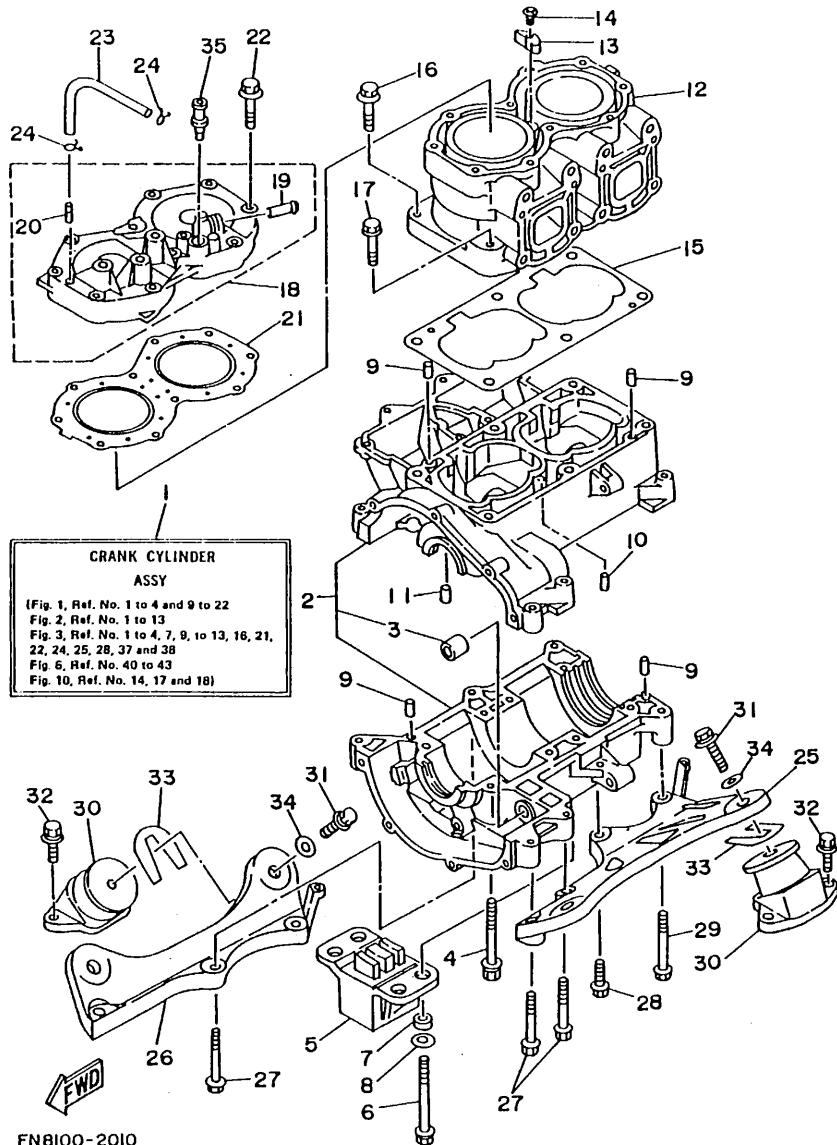
Cylinder, Crankcase	B2~B3
Crankshaft, Piston	B4
Intake	B5~B6
Carburetor	B7~B8
Oil Pump (For Oil Injection)	B9
Exhaust 1	B10~B11
Fuel	B12
Jet Unit 1	B13~B14
Jet Unit 2	B15
Generator	C2
Starting Motor	C3
Electrical 1	C4~C5
Electrical 2	C6
Engine Hatch	C7
Hull, Deck	C8
Gunwale, Mat	C9~C10
Ventilation	C11
Seat Under Locker	C12~C13
Oil Tank (For Oil Injection)	C14
Fuel Tank	C15~D2
Exhaust 2	D3
Control Cable	D4
Steering 1	D5~D6
Steering 2	D7
Graphic 1. Tool (For USA)	D8
Graphic 2. Tool (For CANADA, AUSTRALIA, GUAM)	D9

Gasket Kit	D10~D11
------------------	---------

INDEX

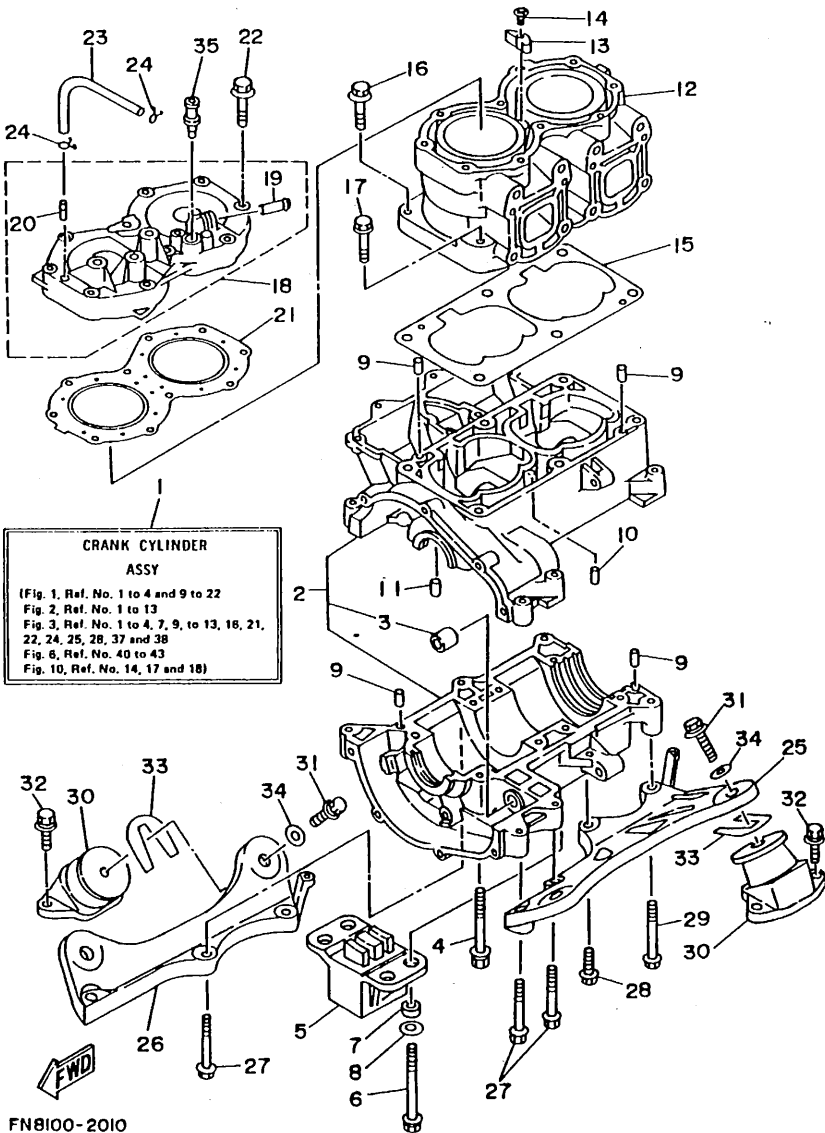
Numerical Index	M1~M3
-----------------------	-------

FIG. 1 CYLINDER. CRANKCASE



FN8100-2010

REF. NO.	PART NO.	DESCRIPTION	Q'TY	REMARKS
1	61L-W0090-03-4D	CRANK CYLINDER ASSY	1	UR FOR OIL INJECTION
	61L-W0090-12-4D	CRANK CYLINDER ASSY	1	UR FOR NON OIL INJECTION
2	6M6-15100-00-94	CRANKCASE ASSY	1	
3	90380-12M29	.BUSH, solid	1	
4	90119-08M55	BOLT, with washer	4	
5	61L-44532-00	STOPPER, upper mount	1	
6	90119-08M69	BOLT, with washer	4	
7	90387-08M10	COLLAR	4	
8	90201-08M04	WASHER, plate	4	
9	93606-12019	PIN, dowel	4	
10	93603-10049	PIN, dowel	4	
11	93604-07141	PIN, dowel	1	
12	61L-11311-01-94	CYLINDER 1	1	
13	6E5-11325-00	ANODE	1	
14	98680-04016	SCREW, oval head	1	
15	6M6-11351-A1	GASKET, cylinder	1	
16	90119-10M56	BOLT, with washer	4	
17	90119-10M07	BOLT, with washer	2	
18	6R7-11111-00-94	HEAD, cylinder 1	1	
19	6K8-51129-00	.NIPPLE	1	
20	6R7-14485-00	.PIPE, joint	1	
21	6R7-11181-A0	GASKET, cylinder head 1	1	
22	90119-08M19	BOLT, with washer	10	
23	90445-07M19	HOSE	1	
24	90467-06016	CLIP	2	
25	6R7-21415-00-94	BRACKET, front upper 1	1	
26	6R7-21425-00-94	BRACKET, rear upper 1	1	
27	97513-10570	BOLT, with washer	5	



FN8100-2010

FIG. 1 CYLINDER. CRANKCASE

REF. NO.	PART NO.	DESCRIPTION	Q'TY	REMARKS
28	97513-10535	BOLT, with washer	1	
29	97513-10580	BOLT, with washer	1	
30	6M6-44517-00-5B	MOUNT RUBBER	4	
31	90119-08904	BOLT, with washer	4	
32	90119-08038	BOLT, with washer	8	
33	EU0-67324-00	PLATE	4	
34	EU0-67354-00-01	SHIM (T=0.1)	10	UR
	EU0-67354-00-03	SHIM (T=0.3)	10	UR
	EU0-67354-00-05	SHIM (T=0.5)	10	UR
	EU0-67354-00-10	SHIM (T=1.0)	10	UR
	EU0-67354-00-20	SHIM (T=2.0)	10	UR
35	6E0-28193-00-94	PLUG, water check	1	UR EXCLUSIVE EXCEPT USA
	626-28193-01-94	PLUG, water check	1	UR EXCLUSIVE JAPAN

B3

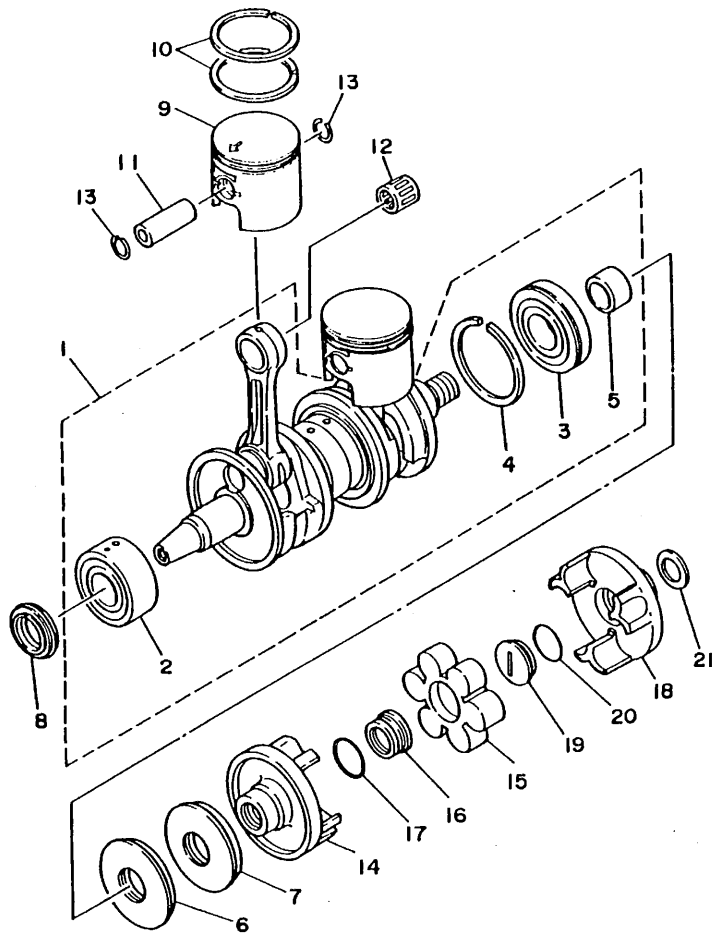


FIG. 2 CRANKSHAFT. PISTON

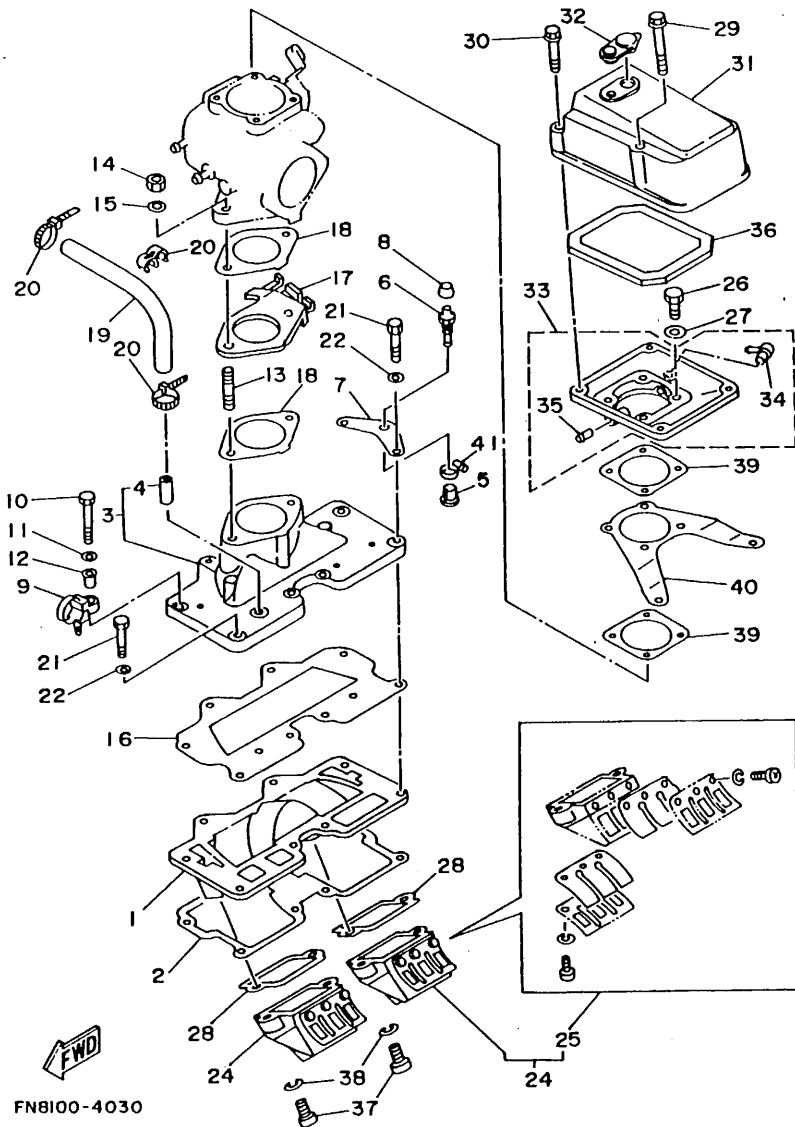
REF. NO.	PART NO.	DESCRIPTION	Q'TY	REMARKS
1	6M6-11400-01	CRANKSHAFT ASSY	1	
2	93303-30601	.BEARING	1	
3	93306-307U1	.BEARING	1	
4	93440-80023	.CIRCLIP	1	
5	6M6-45526-00	.COLLAR, drive shaft	1	
6	93102-36M33	OIL SEAL	1	
7	93101-36M46	OIL SEAL	1	
8	93103-32M01	OIL SEAL	1	
9	6M6-11631-01-93	PISTON (STD)	2	
	6M6-11635-01	PISTON (0.25MM O/S)	2	AP
	6M6-11636-01	PISTON (0.50MM O/S)	2	AP
10	6M6-11601-00	PISTON RING SET (STD)	2	
	6M6-11601-10	PISTON RING SET (0.25MM O/S)	2	AP
	6M6-11601-20	PISTON RING SET (0.50MM O/S)	2	AP
11	8H8-11633-00	PIN, piston	2	
12	93310-320U3	BEARING, cylindrical	2	
13	93450-21053	CIRCLIP	4	
14	6M6-45813-10-9H	FLANGE, coupling	1	
15	61X-4581J-00	RUBBER SHAFT COUPLING	1	
16	6M6-5114E-00	NUT, ring	1	
17	93210-30M31	O-RING	1	
18	6R7-45813-11-9M	FLANGE, coupling	1	
19	6R7-5114E-01	NUT, ring	1	
20	93210-30M31	O-RING	1	
21	90201-24M02	WASHER, plate	1	



FN8100-3020

B4

FIG. 3 INTAKE



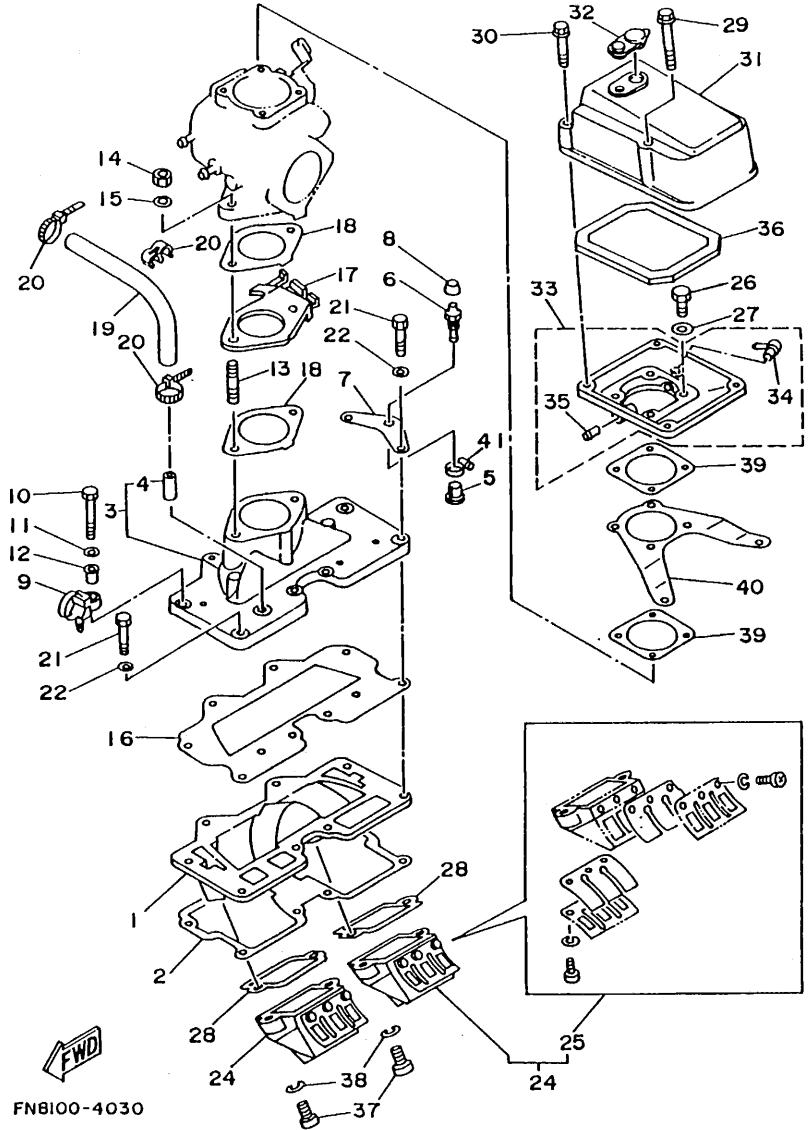
REF. NO.	PART NO.	DESCRIPTION	Q'TY	REMARKS
1	6M6-13641-00-94	MANIFOLD 1	1	
2	6M6-13566-A2	GASKET	1	
3	6M6-13555-00-94	MANIFOLD, intake	1	
4	650-24378-00	.PIPE, joint 4	1	
5	90386-08006	BUSH	1	
6	61L-5169A-00	GREASE, nipple	1	
7	61L-14243-00	PLATE	1	
8	663-45119-00	CAP, grease nipple	1	
9	90465-12M53	CLAMP	1	
10	97395-06045	BOLT	1	
11	92990-06600	WASHER	1	
12	90387-06M05	COLLER	1	
13	90116-08M14	BOLT, stud	2	
14	95380-08600	NUT	2	
15	92990-08600	WASHER, plate	2	
16	6M6-13563-A1	GASKET	1	
17	6M6-14527-02-EK	PLATE	1	
18	6M6-13556-A1	GASKET, manifold	2	
19	90445-10M48	HOSE	1	
20	90465-11M10	CLAMP	2	
21	97013-06035	BOLT	7	
22	92990-06600	WASHER, plate	7	
23	90464-10M38	CLAMP	2	
24	6R7-13610-01	REED VALVE ASSY	2	
25	6R7-W0004-00	.REED SET	1	
26	97313-06020	BOLT	4	
27	92990-06600	WASHER, plate	4	
28	6M6-13621-A1	GASKET, valve seat	2	

FN8100-4030

B5

FIG. 3 INTAKE

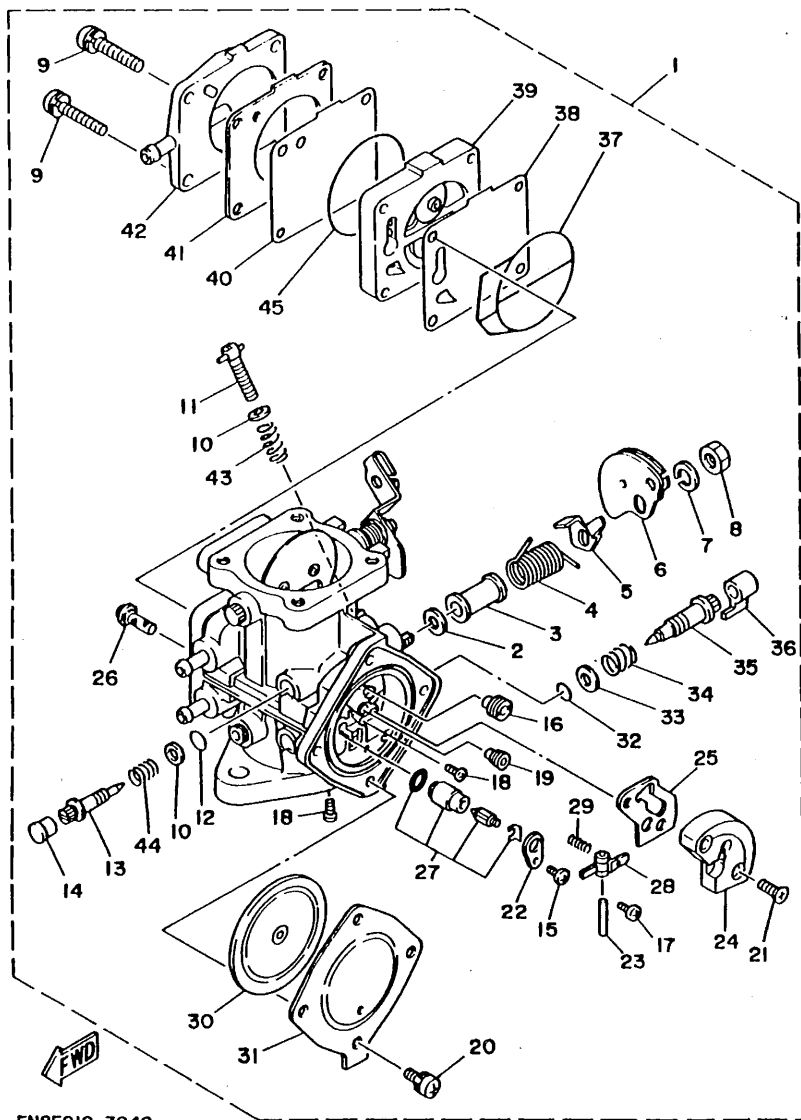
REF. NO.	PART NO.	DESCRIPTION	Q'TY	REMARKS
29	90105-05M46	BOLT, washer based	2	
30	90105-05M53	BOLT, washer based	2	
31	61L-14283-01	COVER, carburetor 1	1	
32	6K8-14435-00	GROMMET	1	
33	6R8-14284-00-98	COVER, carburetor 2	1	UR FOR OIL INJECTION
	6M6-14284-00-98	COVER, carburetor 2	1	UR FOR NON OIL INJECTION
34	6E5-11372-00	.HIPPLE, hose	1	FOR OIL INJECTION
35	6H1-14485-00	.PIPE, joint	1	FOR OIL INJECTION
36	6M6-14451-00	ELEMENT, air cleaner	1	
37	98580-05016	SCREW, pan head	4	
38	92990-05600	WASHER, plate	4	
39	6M6-13674-A1	GASKET, air cooler cover 1	2	
40	6R7-14255-00	PLATE	1	
41	90460-11M17	CLAMP, hose	1	



FN8100-4030

B6

FIG. 4 CARBURETOR

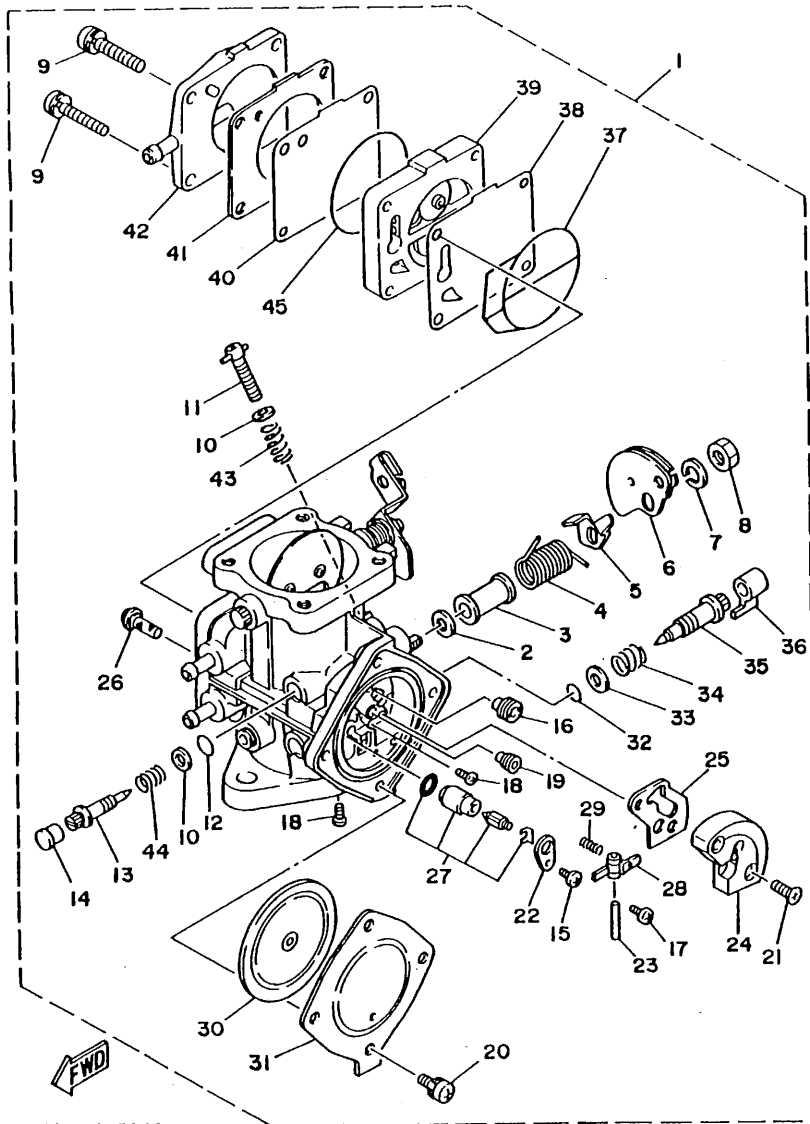


FN8FO10-3040

REF. NO.	PART NO.	DESCRIPTION	Q'TY	REMARKS
1	61L-14301-02	CARBURETOR ASSY 1	1	
2	6R7-14596-00	.WASHER	2	
3	6K8-14534-10	.COLLAR	1	
4	6K8-14556-10	.SPRING	1	
5	6K8-14926-10	.BRACKET, throttle 1	1	
6	6K8-14930-00	.THROTTLE SHAFT ASSY	1	
7	92990-08100	.WASHER, spring	1	
8	95380-08700	.NUT	1	
9	97980-05330	.SCREW, with washer	4	
10	6K8-14559-00	.WASHER	2	
11	6M6-14521-00	.SCREW, adjust	1	
12	6K8-14562-00	.O-RING	1	
13	6K8-14946-10	.PLATE, needle fitting	1	
14	6K8-14471-00	.CAP, carburetor	1	
15	6M6-14503-00	.SCREW	3	
16	3G2-14231-25	.JET, main (#125)	1	
17	6K8-14503-02	.SCREW	3	
18	6K8-14521-10	.SCREW	2	
19	830-14231-24	.JET, main (#120)	1	
20	6K8-14591-10	.SCREW	4	
21	6K8-14523-11	.SCREW, stop	1	
22	6K8-14527-11	.PLATE	1	
23	6K8-14579-00	.PIN, float	1	
24	6R7-24412-01	.BODY 1	1	
25	6K8-14536-11	.GASKET	1	
26	6R7-14569-00	.STRAINER	1	
27	61X-14916-15	.NEEDLE	1	
28	6K8-14547-01	.ARM, float	1	

B7

FIG. 4 CARBURETOR



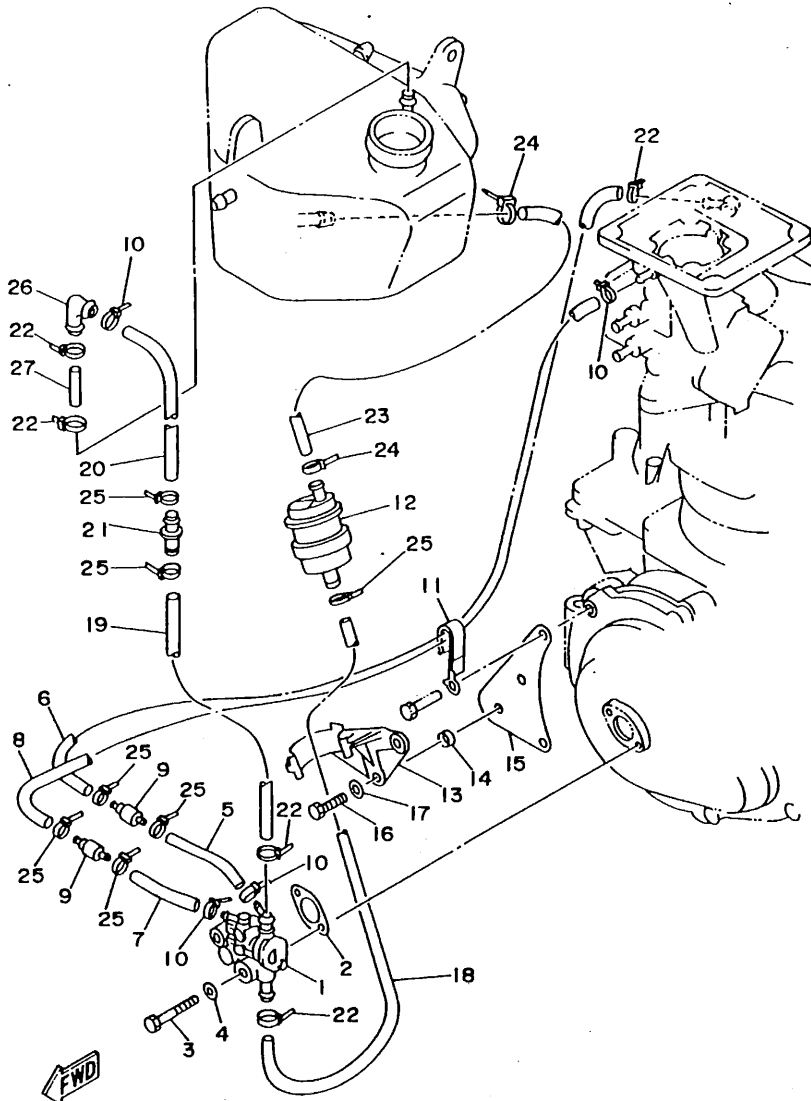
FN8FO10-3040

REF. NO.	PART NO.	DESCRIPTION	Q'TY	REMARKS
29	6R7-14253-00	.SPRING	1	
30	6R7-14541-00	.DIAPHRAGM, pump	1	
31	6R7-14542-00	.BODY, pump 1	1	
32	583-14561-00	.O-RING	1	
33	6K8-14537-00	.GASKET	1	
34	6K8-14589-00	.SPRING	1	
35	6K8-14923-10	.SCREW, pilot	1	
36	6K8-14481-10	.CAP, carburetor	1	
37	6K8-14564-00	.O-RING	1	
38	6K8-24411-20	.DIAPHRAGM	1	
39	6M6-24413-00	.BODY 2	1	
40	6K8-24421-10	.VALVE, check	1	
41	6K8-24431-20	.GASKET, fuel pump 1	1	
42	6K8-24452-10	.COVER	1	
43	6K8-14531-00	.SPRING, adjust screw	1	
44	6K8-14533-00	.SPRING, adjust screw	1	
45	6K8-14563-00	.O-RING	1	

B8

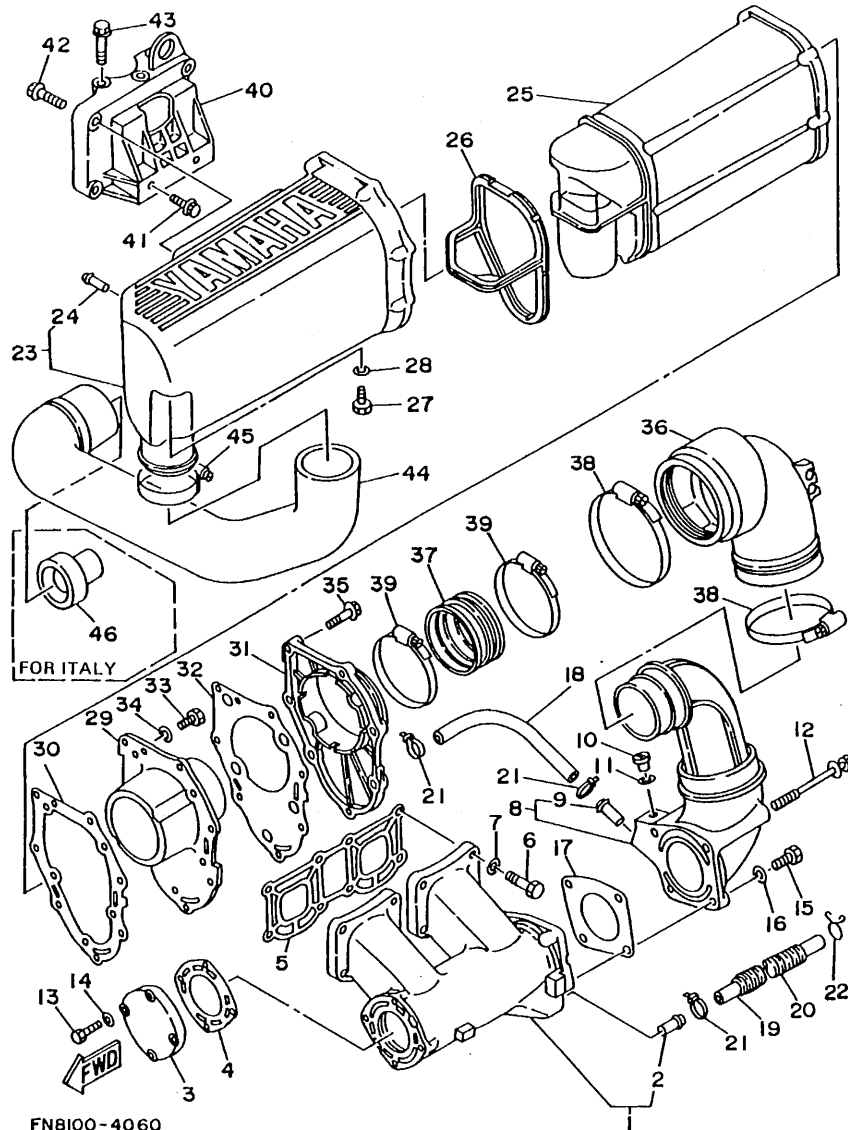
FIG. 5 OIL PUMP (FOR OIL INJECTION)

REF. NO.	PART NO.	DESCRIPTION	Q'TY	REMARKS
1	61L-13200-00	OIL INJECTION PUMP ASSY	1	
2	6R8-13116-A0	GASKET, pump case	1	
3	97395-06035	BOLT	2	
4	92990-06600	WASHER, plate	2	
5	90446-07M14	HOSE	1	
6	90446-07M35	HOSE	1	
7	90446-07M17	HOSE	1	
8	90446-07M36	HOSE	1	
9	6R3-13183-00	VALVE, check	2	
10	90465-11M10	CLAMP	4	
11	90465-08M37	CLAMP	1	
12	6R8-21733-00	SUB TANK, oil	1	
13	6R8-21734-00	HOLDER, oil sub tank	1	
14	90387-06M72	COLLAR	2	
15	61L-14255-00	PLATE	1	
16	97395-06012	BOLT	2	
17	92990-06600	WASHER, plate	2	
18	90445-11M24	HOSE	1	
19	90446-12M32	HOSE	1	
20	90446-11M33	HOSE	1	
21	6R8-24377-00	PIPE, joint 2	1	
22	90465-11M10	CLAMP	5	
23	90445-11M27	HOSE	1	
24	90465-11M10	CLAMP	2	
25	90465-11M47	CLAMP	7	
26	61L-24378-00	PIPE, joint 4	1	
27	90445-09M28	HOSE	1	



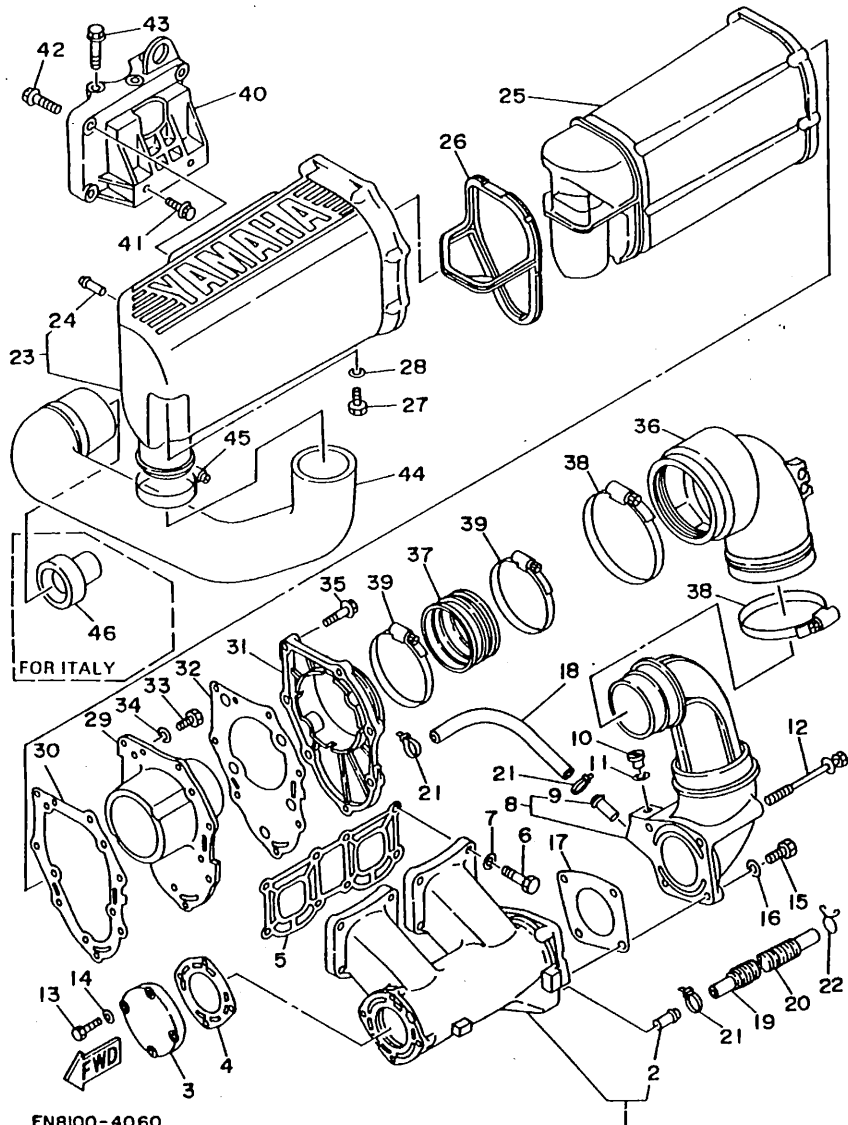
FN8100-4050

FIG. 6 EXHAUST 1



REF. NO.	PART NO.	DESCRIPTION	Q'TY	REMARKS
1	6R7-14711-01-9M	MUFFLER 1	1	
2	6K8-51129-00	.NIPPLE	1	
3	6M6-14718-01-9M	PROTECTOR, muffler 1	1	
4	6M6-14739-A1	GASKET, muffler damper 1	1	
5	6M6-14613-A0	GASKET, exhaust pipe	1	
6	97313-08035	BOLT	8	
7	92990-08600	WASHER, plate	8	
8	61L-14712-00-9M	RING, joint	1	
9	6K8-51129-00	.NIPPLE	1	
10	90340-08M04	PLUG, straight screw	1	
11	90430-08020	GASKET	1	
12	90119-08M73	BOLT, with washer	2	
13	97313-06025	BOLT	4	
14	92990-06600	WASHER, plate	4	
15	97013-08025	BOLT	2	
16	92990-08600	WASHER, plate	2	
17	6R7-14749-A0	GASKET, muffler damper 2	1	
18	90446-14M34	HOSE	1	
19	90445-14M06	HOSE	1	
20	90446-20M31	HOSE	1	
21	90465-13M11	CLAMP	3	
22	90467-13M13	CLIP	1	
23	6R7-14721-00-9M	MUFFLER 2	1	
24	6R7-14485-00	.PIPE, joint	1	
25	6R7-14753-00-9M	SILENCER, exhaust	1	
26	6R7-15761-00	SEAL, rubber 1	1	
27	97313-06016	BOLT	1	
28	92990-06600	WASHER, plate	1	

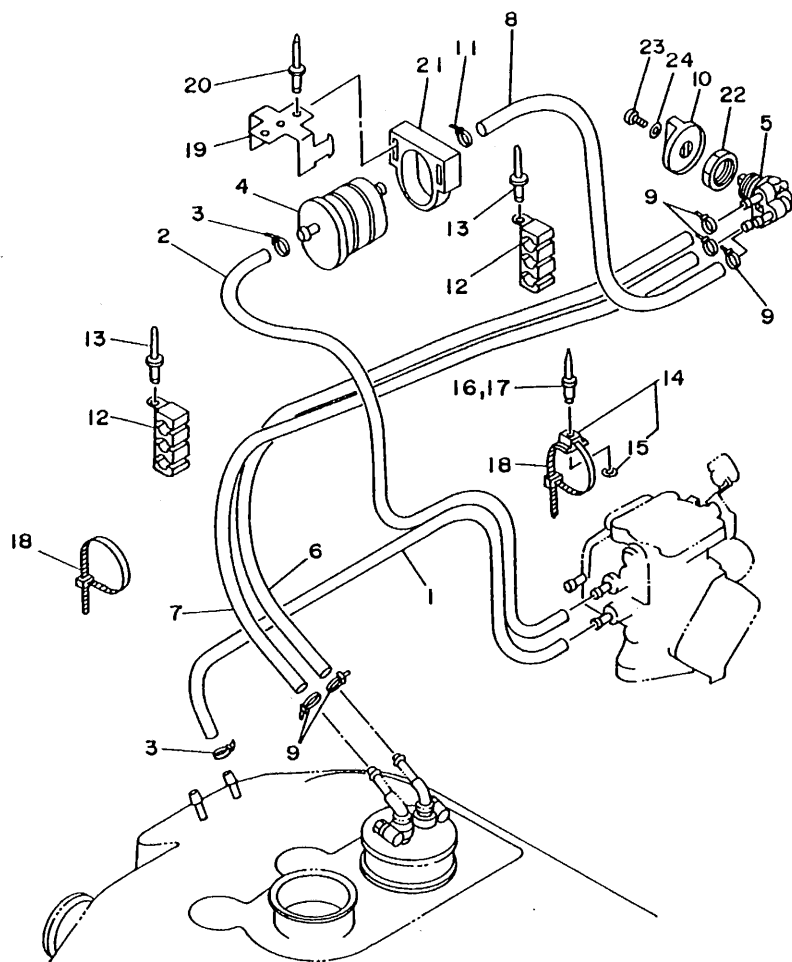
FIG. 6 EXHAUST 1



REF. NO.	PART NO.	DESCRIPTION	Q'TY	REMARKS
29	6R7-14785-00-9M	DIFFUSER	1	
30	6R7-14755-A0	GASKET, silencer	1	
31	6R7-41113-00-9M	OUTER COVER, exhaust	1	
32	6R7-41114-A0	GASKET, exhaust outer cover	1	
33	97395-06016	BOLT	5	
34	92990-06600	WASHER, plate	5	
35	90119-06MA1	BOLT	7	
36	61L-14615-00	JOINT, exhaust 1	1	
37	61L-14625-00	JOINT, exhaust 2	1	
38	90460-90M11	CLAMP, hose	2	
39	90460-70M16	CLAMP, hose	2	
40	6M6-14771-00-94	STAY, muffler 1	1	
41	90105-10M49	BOLT, washer based	2	
42	90105-10M45	BOLT, washer based	3	
43	90119-10M72	BOLT, with washer	3	
44	FN8-E4752-00	PIPE, outlet	1	YMUS
45	90460-64M15	CLAMP, hose	1	
46	FN8-E4779-00	COLLAR (FOR ITALY)	1	YMUS

FN8100-4060

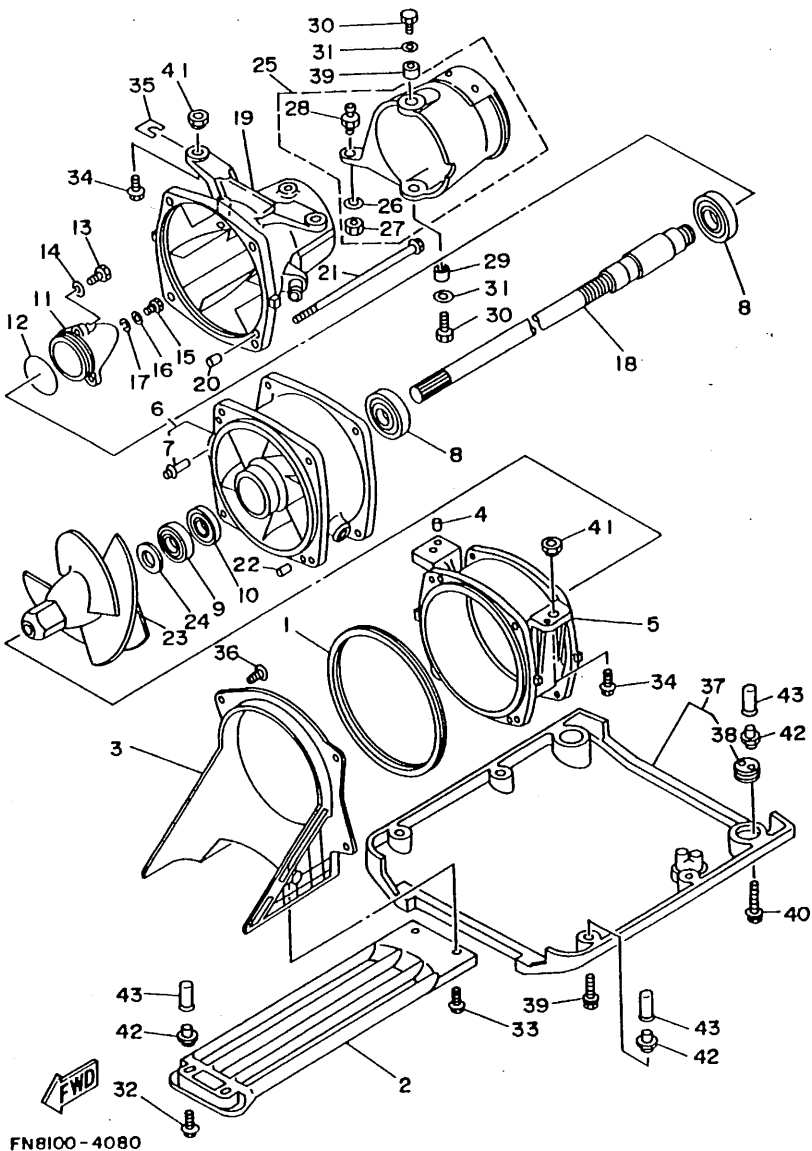
B11



FN8100-4070

FIG. 7 FUEL

REF. NO.	PART NO.	DESCRIPTION	Q'TY	REMARKS
1	90445-10M62	HOSE	1	
2	90445-10M33	HOSE	1	
3	90465-11M10	CLAMP	2	
4	6K8-24560-10	FILTER ASSY	1	
5	6K8-24500-02	FUEL COCK ASSY 1	1	
6	90445-10M59	HOSE	1	
7	90445-10M61	HOSE	1	
8	90445-10M60	HOSE	1	
9	90465-11M10	CLAMP	5	
10	6K8-24524-10	LEVER, cock	1	
11	90465-11M10	CLAMP	1	
12	EW2-U7812-00	HOLDER, pipe 2	2	
13	90267-489U7	RIVET, blind	2	
14	90600-91736	CLAMP	2	
15	90201-05925	.WASHER, plate	1	
16	90267-489U6	RIVET, blind	1	
17	90267-489UE	RIVET, blind	1	
18	90601-20006	NYLON CLIP 1	3	
19	FN8-67816-00	BRACKET, fuel filter	1	
20	90267-489U9	RIVET, blind	3	YMUS
21	EU0-67817-00	HOLDER	1	
22	90170-22M11	NUT	1	
23	98580-04010	SCREW, pan head	1	
24	92990-04600	WASHER, plate	1	



FN8100-4080

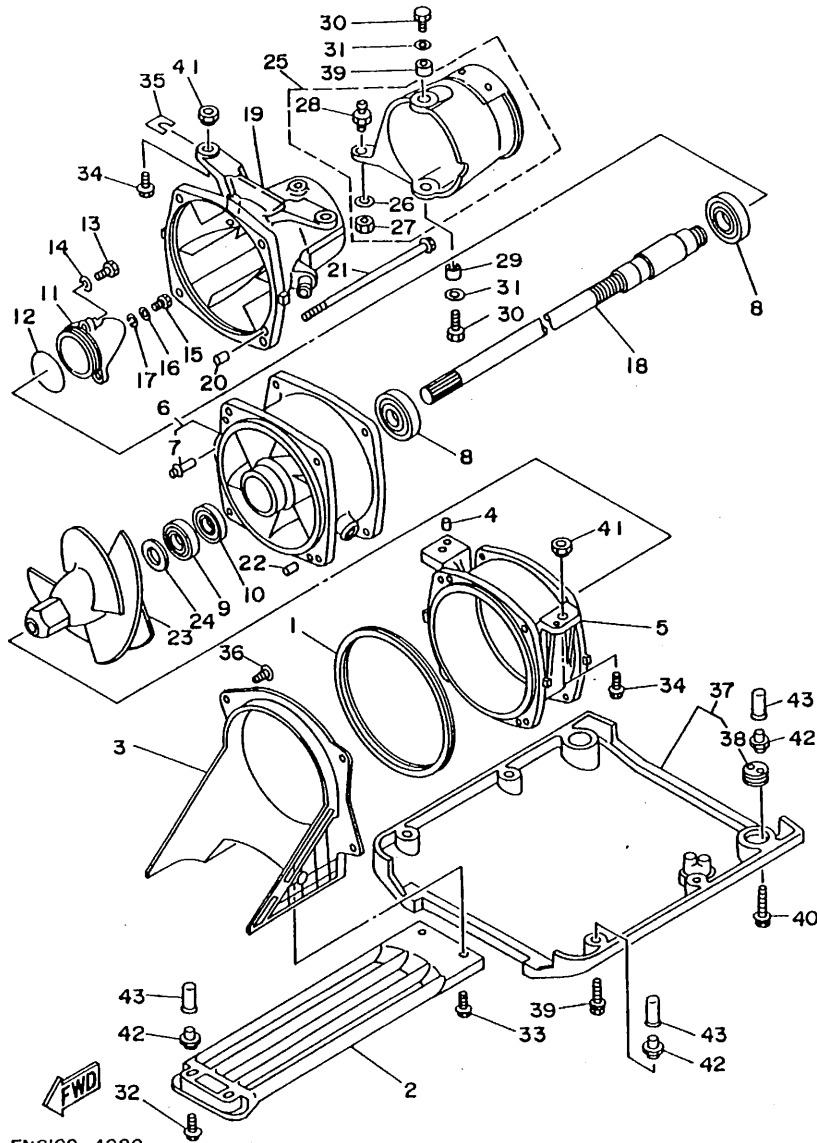
FIG. 8 JET UNIT 1

REF. NO.	PART NO.	DESCRIPTION	Q'TY	REMARKS
1	6R7-51117-01	PACKING	1	
2	61L-51333-00-5B	SCREEN, intake	1	
3	61L-51311-01	DUCT, intake	1	
4	93606-09M19	PIN, dowel	2	
5	6R7-51312-00-94	HOUSING, impeller	1	
6	61L-51315-00-94	DUCT, impeller	1	
7	6K8-51129-00	.NIPPLE	1	
8	93306-205U0	BEARING	2	
9	93102-25M34	OIL SEAL	1	
10	93101-25M50	OIL SEAL	1	
11	6R7-51326-00-94	CAP	1	
12	93210-46M16	O-RING	1	
13	97395-06016	BOLT	3	
14	92990-06600	WASHER, plate	3	
15	97395-06012	BOLT	1	
16	92990-06600	WASHER, plate	1	
17	90430-06M03	GASKET	1	
18	61L-45511-00	SHAFT, drive	1	
19	61X-51318-00	NOZZLE	1	
20	93606-12019	PIN, dowel	1	
21	90119-06M70	BOLT, with washer	4	
22	93606-12019	PIN, dowel	2	
23	61L-51321-00-94	IMPELLER (3 BLADES)	1	
24	90209-20M20	WASHER	1	
25	61L-51313-00	ADJUSTER	1	
26	90201-06M02	.WASHER, plate	1	
27	95380-06700	.NUT	1	
28	6R7-42316-00	.BOLT, joint	1	

B13

FIG. 8 JET UNIT 1

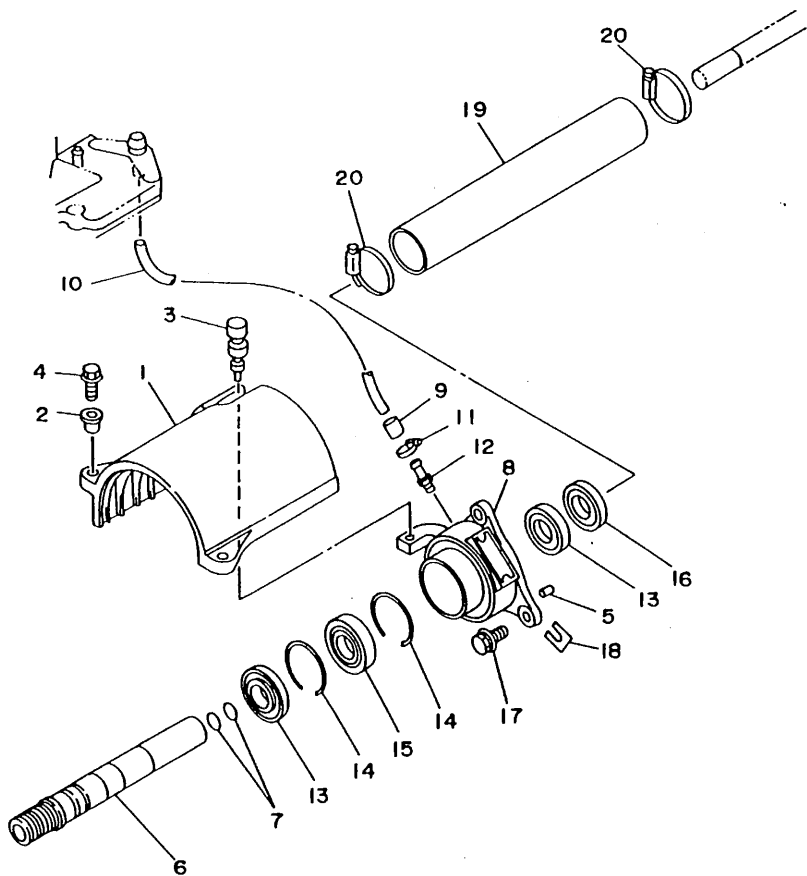
REF. NO.	PART NO.	DESCRIPTION	Q'TY	REMARKS
29	90387-08M06	COLLAR	2	
30	97395-08018	BOLT	2	
31	92995-08600	WASHER	2	
32	90119-06915	BOLT, with washer	2	
33	90119-06908	BOLT, with washer	2	
34	90119-10906	BOLT, with washer	4	
35	EW2-67354-00-01	SHIM (T=0.1)	4	UR
	EW2-67354-00-03	SHIM (T=0.3)	4	UR
	EW2-67354-00-05	SHIM (T=0.5)	4	UR
	EW2-67354-00-10	SHIM (T=1.0)	4	UR
36	97780-60520	SCREW, tapping	4	
37	FN8-62730-00	PLATE 2 ASSY	1	
38	FK7-62732-00	.BOLT, jack	2	
39	90119-06915	BOLT, with washer	4	
40	90119-06914	BOLT, with washer	2	
41	90179-10925	NUT	4	
42	90179-06931	NUT	8	
43	90190-06014	CLING	8	



FN8100-4080

FIG. 9 JET UNIT 2

REF. NO.	PART NO.	DESCRIPTION	Q'TY	REMARKS
1	61X-51381-00	COVER	1	
2	90387-06M60	COLLAR	2	
3	90480-06M46	GROMMET	1	
4	97595-06225	BOLT, with washer	2	
5	93606-07M17	PIN, dowel	2	
6	62E-51323-00	SHAFT, couplor	1	
7	93210-17MA4	O-RING	2	
8	61L-45332-00-9M	HOUSING, bearing	1	
9	90386-08006	BUSH	1	
10	90445-09M17	HOSE	1	
11	90460-11M17	CLAMP, hose	1	
12	61L-45378-00	NIPPLE, hose	1	
13	93101-25M52	OIL SEAL	2	
14	93430-47M04	CIRCLIP	2	
15	93305-205U0	BEARING	1	
16	93101-25M53	OIL SEAL	1	
17	90119-08907	BOLT, with washer	3	
18	GDO-67249-00-05	SHIM (T=0.5)	2	UR
	GDO-67249-00-10	SHIM (T=1.0)	2	UR
19	FN8-6883B-00	PIPE 1	1	
20	90601-152U3	CLAMP	2	

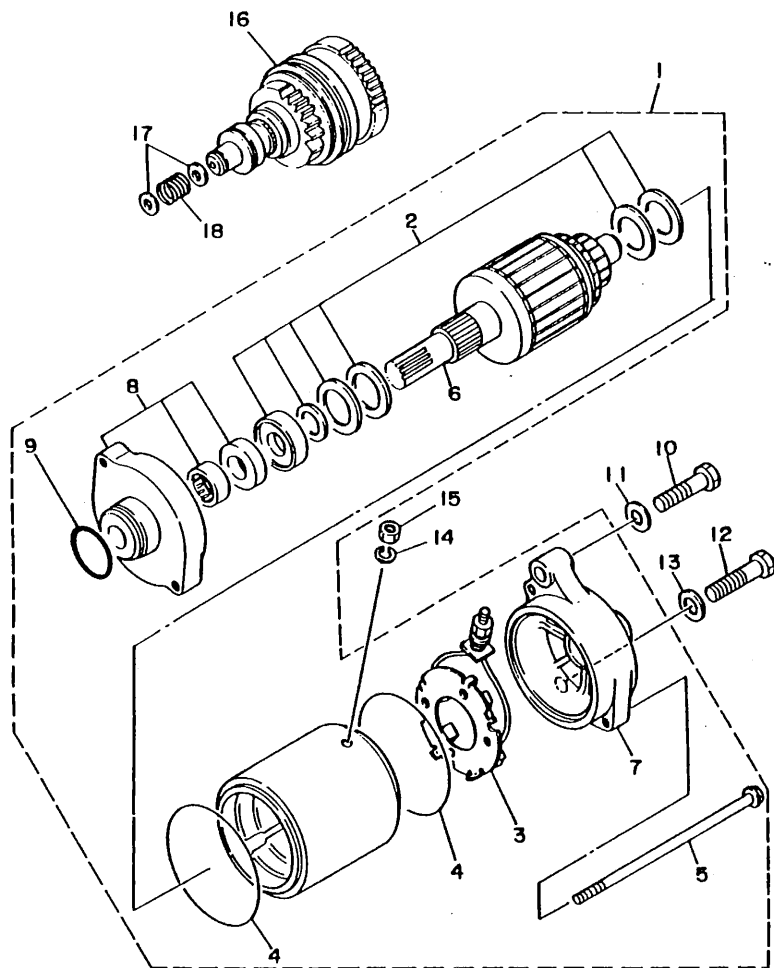


FN8100-4090

B15

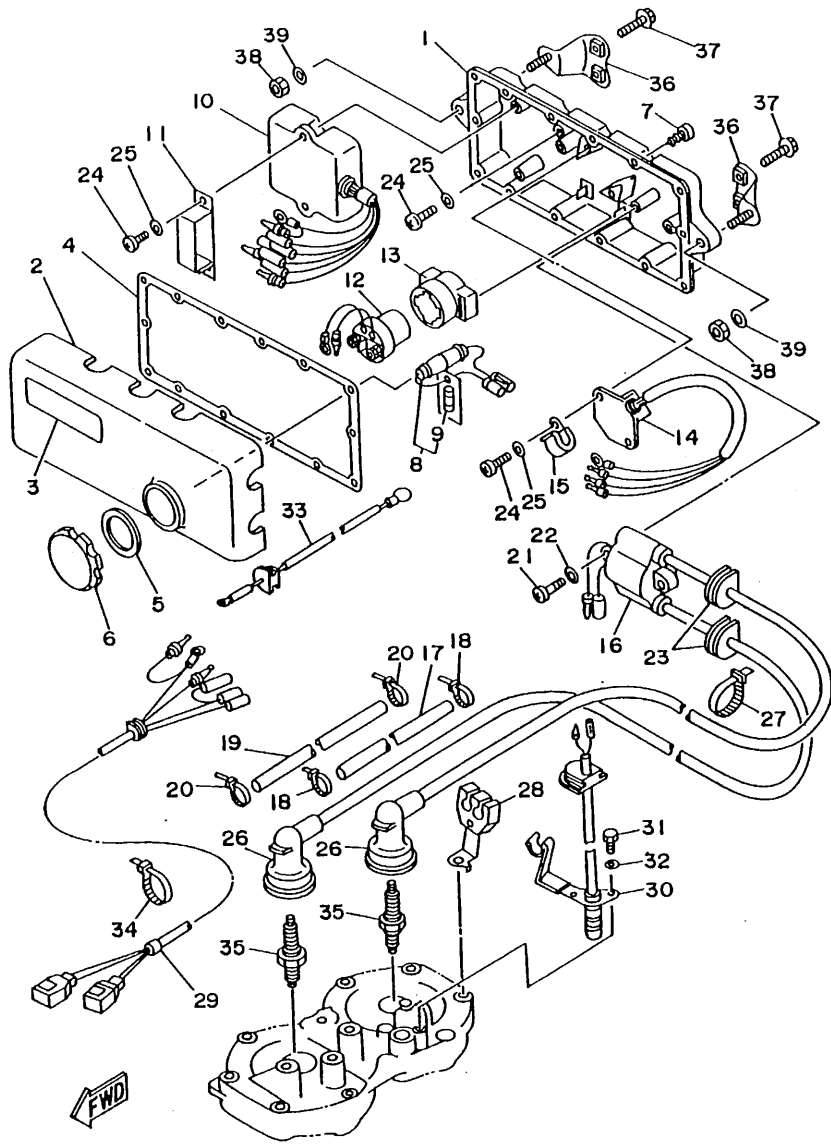
FIG. 11 STARTING MOTOR

REF. NO.	PART NO.	DESCRIPTION	Q'TY	REMARKS
1	6M6-81800-10	STARTING MOTOR ASSY	1	
2	3AJ-81809-00	.WASHER KIT	1	
3	6M6-81840-10	.BRUSH HOLDER ASSY	1	
4	11H-81844-00	.GASKET	2	
5	6M6-81826-00	.BOLT	2	
6	6M6-81850-00	.ARMATURE ASSY	1	
7	6M6-81820-00	.REAR BRACKET ASSY	1	
8	6M6-81830-00	.FRONT BRACKET ASSY	1	
9	26H-81847-00	.O-RING	1	
10	97313-08040	BOLT	1	
11	92990-08600	WASHER, plate	1	
12	97313-08035	BOLT	1	
13	92990-08600	WASHER, plate	1	
14	92990-06100	WASHER, spring	1	
15	95380-06700	NUT	1	
16	6M6-8183E-00	IDLE GEAR COMP.	1	
17	92990-06600	WASHER, plate	2	
18	90501-14M73	SPRING, compression	1	



FN81110-1110

C3



FN61110-1120

FIG. 12 ELECTRICAL 1

REF. NO.	PART NO.	DESCRIPTION	Q'TY	REMARKS
1	6M6-8552A-00-98	HOUSING	1	LOW GLOSS BLACK
2	6M6-8552E-00	COVER, case	1	
3	6R7-83623-40	MARK 3	1	
4	6M6-81921-00	GASKET, terminal	1	
5	6M6-81844-00	GASKET	1	
6	6M6-8132W-00	CAP	1	
7	97780-60525	SCREW, tapping	14	
8	6K8-82150-01	FUSE HOLDER ASSY	1	
9	6G1-82151-00	.FUSE	1	
10	6M6-85540-01	C.D.I. UNIT ASSY	1	
11	90464-06M29	CLAMP	1	
12	6G1-81941-10	STARTER RELAY ASSY	1	
13	6M6-81952-01	HOLDER, relay	1	
14	6M6-81960-A0	RECTIFIER & REGULATOR ASSY	1	
15	90465-08028	CLAMP	1	
16	61L-85570-00	IGNITION COIL ASSY	1	
17	61L-82351-00	TUBE, cord	1	
18	90465-11M10	CLAMP	2	
19	61L-82352-00	TUBE, cord 2	1	
20	90465-11M10	CLAMP	2	
21	98580-06030	SCREW, pan head	2	
22	92990-06600	WASHER, plate	2	
23	90480-06M43	GROMMET	2	
24	98503-06016	SCREW, pan head	6	
25	92990-06600	WASHER, plate	6	
26	6K8-82370-00	PLUG CAP ASSY	2	UR EXCLUSIVE USA/AFRICA /JAPAN
	6K8-82370-11	PLUG CAP ASSY	2	UR EXCLUSIVE CANADA /OCEANIA/EUROPE
27	90465-11M10	CLAMP	2	

C4

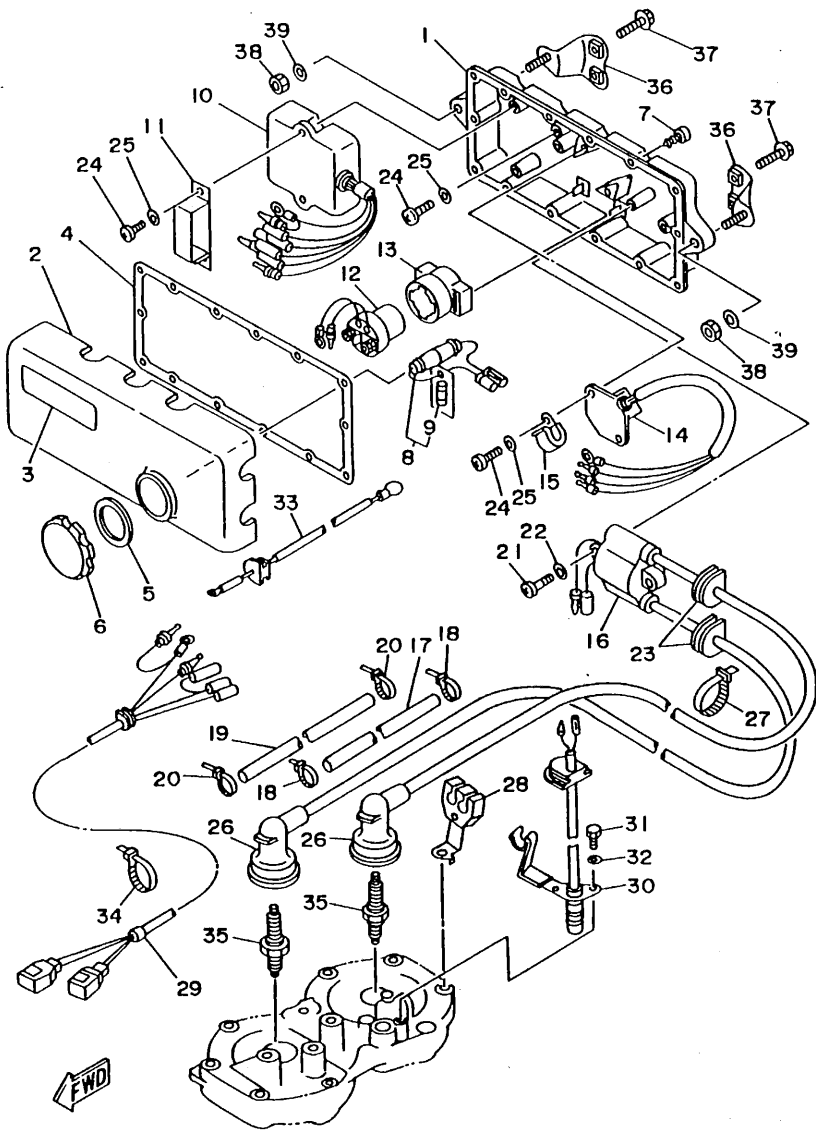
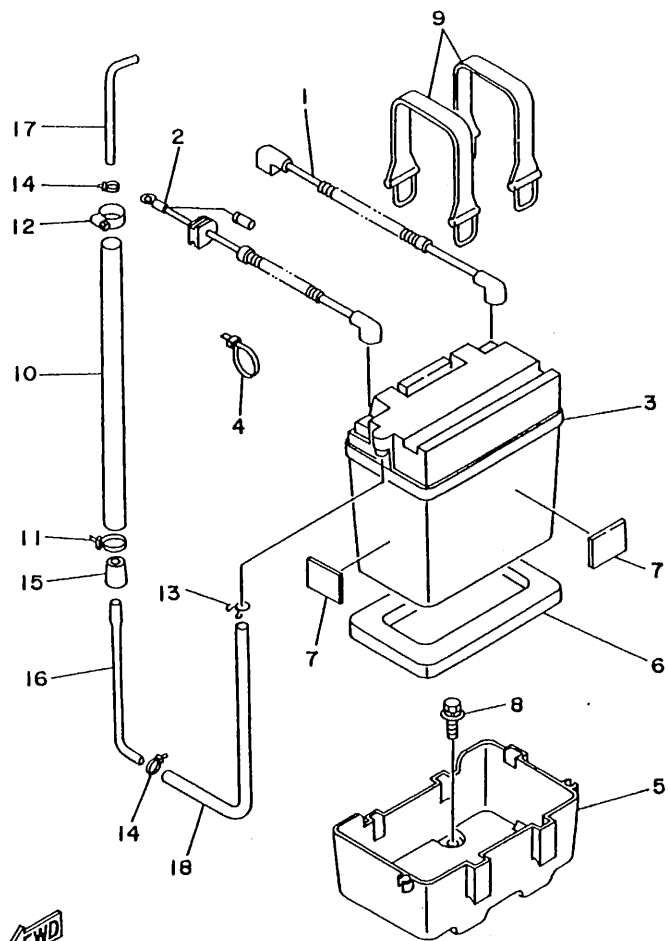


FIG. 12 ELECTRICAL 1

REF. NO.	PART NO.	DESCRIPTION	Q'TY	REMARKS
28	6R7-82361-00	CLAMP, cord	1	
29	61L-82553-00	EXTENSION, wire lead	1	
30	6R7-82560-00	THERMO SWITCH ASSY	1	
31	97395-06016	BOLT	2	
32	92995-06100	WASHER	2	
33	6R7-82117-21	WIRE, lead	1	
34	90465-13M11	CLAMP	1	
35	94701-00041	PLUG, spark (NGK B8HS)	2	UR EXCLUSIVE USA/AFRICA /JAPAN
	94702-00195	PLUG, spark (NGK BR8HS)	2	UR EXCLUSIVE CANADA /OCEANIA/EUROPE
36	EW2-68156-00	BRACKET, electric box	2	
37	90105-06903	BOLT, washer based	4	
38	95380-08700	NUT	2	
39	92990-08200	WASHER, plain	2	

FN81110-1120

FIG. 13 ELECTRICAL 2



REF. NO.	PART NO.	DESCRIPTION	Q'TY	REMARKS
1	61L-82117-00	WIRE, lead	1	
2	61L-82117-10	WIRE, lead	1	
3	EU0-82110-77	BATTERY (FB16CL-B)	1	
4	90601-20006	NYLON CLIP 1		
5	EW2-68211-00	CASE, battery	1	
6	EU0-U8221-00	PAD, battery 1	1	YMUS
7	EU0-68221-30	PAD, battery 2	4	
8	90119-06920	BOLT, with washer	4	
9	EU0-68218-04	BAND, battery	2	
10	90669-03003	HOSE 1	1	
11	90601-200U1	NYLON CLIP 1	1	YMUS
12	90460-25M09	CLAMP, hose	1	
13	90467-08M10	CLIP	1	
14	90465-11H10	CLAMP	2	
15	EU0-62155-00	CAP	1	
16	EU0-62156-32	ELBOW, ventilator 12	1	
17	FN8-62156-50	ELBOW, ventilater 14	1	
18	FJ0-67856-40	HOSE, air vent 5	1	



FN81110-1130

C6

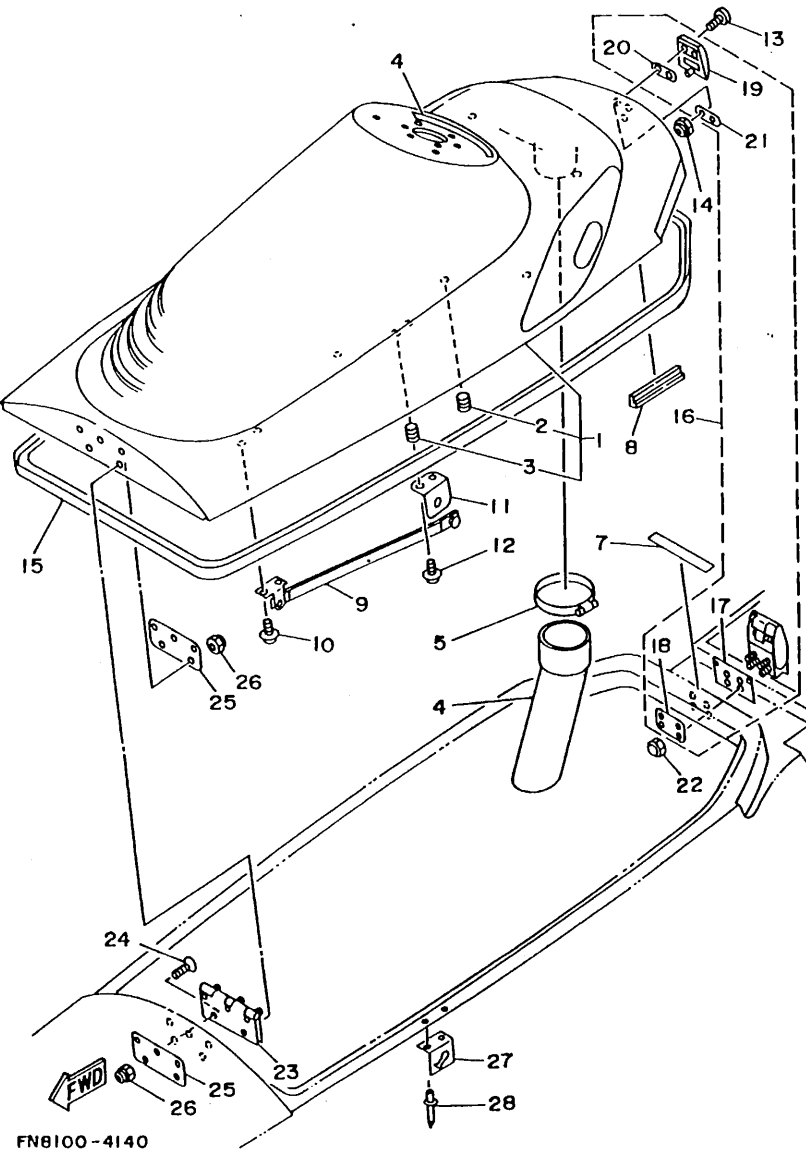
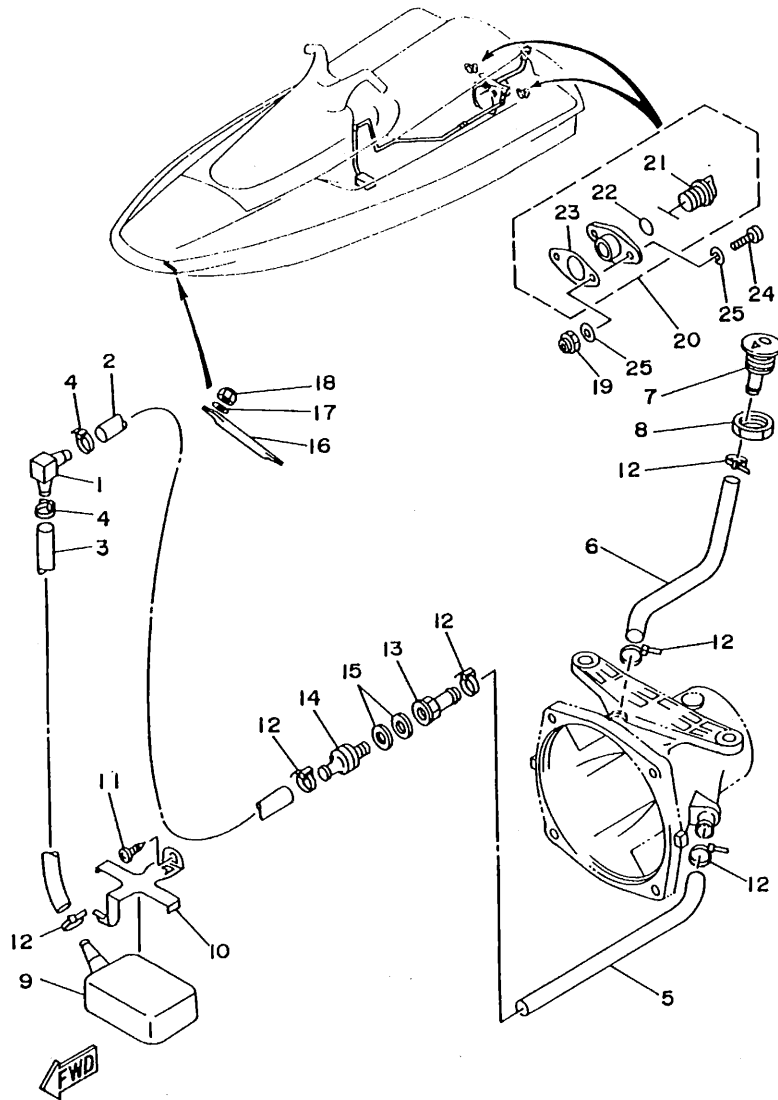


FIG. 14 ENGINE HATCH

REF. NO.	PART NO.	DESCRIPTION	Q'TY	REMARKS
1	FN8-U516D-00-P1	ENGINE HATCH COMP.	1	YMUS
2	90179-08927	.NUT	4	YMUS
3	90179-06926	.NUT	4	YMUS
4	FN8-65578-00	TAPE	1	
5	EW2-62136-01	HOSE, ventilator 1	1	
6	90601-168U7	BAND, hose 68	1	YMUS
7	FN8-U5162-00	TRIM	1	
8	FN8-6516C-00	TRIM 1	2	
9	FN8-62891-00	SUPPORT, hatch	1	
10	90159-06901	SCREW, with washer	2	
11	FN8-62892-00	FIX, plate	1	
12	90159-06901	SCREW, with washer	2	
13	90149-05970	SCREW	2	YMUS
14	95720-05300	NUT, flange	2	
15	FN8-U2664-00	PACKING	1	YMUS
16	FN8-62840-00	HATCH LOCK ASSY	1	
17	EW2-62845-00	.PACKING, hatch lock	1	
18	EW2-62846-00	.PLATE, hatch lock	1	
19	FN8-62843-00	.HOOK, hatch lock	1	
20	EW2-62847-00	.PACKING, hook	1	
21	EW2-62848-00	.PLATE, hook	1	
22	95380-05800	NUT	4	
23	90600-70069	HINGE	1	
24	98780-05020	SCREW, flat head	5	
25	FN8-U5193-00	PLATE	2	YMUS
26	95720-05300	NUT, flange	10	
27	FN8-62884-00	BRACKET, hatch support	1	
28	90267-48940	RIVET, blind	2	

C7

FIG. 15 HULL. DECK

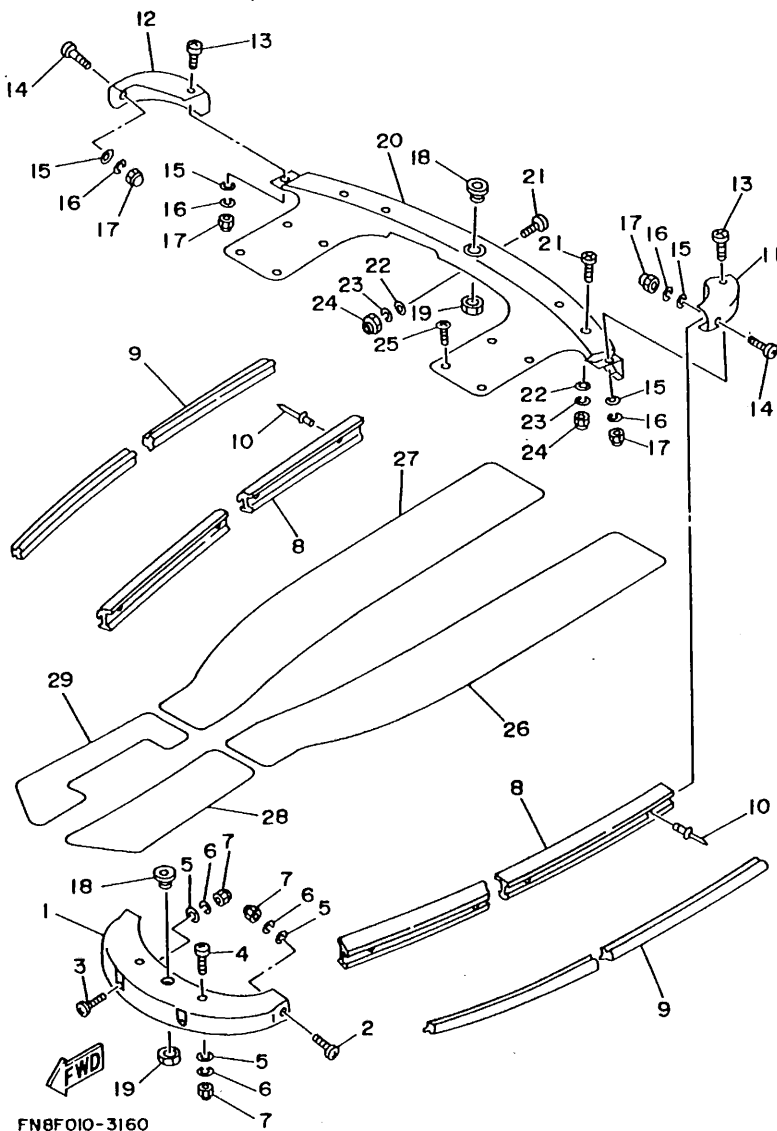


FN8FO10-3150

REF. NO.	PART NO.	DESCRIPTION	Q'TY	REMARKS
1	6K8-51162-00	JOINT, hose	1	
2	90445-14M16	HOSE	1	
3	90445-14M14	HOSE	1	
4	90465-13M11	CLAMP	2	
5	90445-14M19	HOSE	1	
6	61X-51673-00	PIPE	1	
7	FN8-62698-00	SPOUT	1	
8	EU0-61652-00	NUT	1	
9	EU0-67613-00	STRAINER	1	
10	EW2-67618-00	BASE, strainer blige	1	
11	97780-50114	SCREW, pan head tapping	1	
12	90465-13M11	CLAMP	6	
13	90604-80759	CONNECTION, thru-hull 1/4	1	
14	90604-80760	CONNECTION, thru-hull 1/4	1	
15	90430-13909	GASKET	2	
16	FN8-61624-00	BOWEYE 1 (S)	1	
17	92990-08200	WASHER, plain	2	
18	95720-08300	NUT, self-locking	2	
19	95720-05300	NUT, flange	4	
20	EU0-62280-00	DRAIN PLUG ASSY	2	
21	EU0-62282-00	.PLUG, drain	1	
22	EU0-62283-00	.O-RING	1	
23	EU0-62285-01	.PACKING, drain	1	
24	98580-05020	SCREW, pan head	4	
25	92990-05200	WASHER, plain	8	

C8

FIG. 16 GUNWALE. MAT



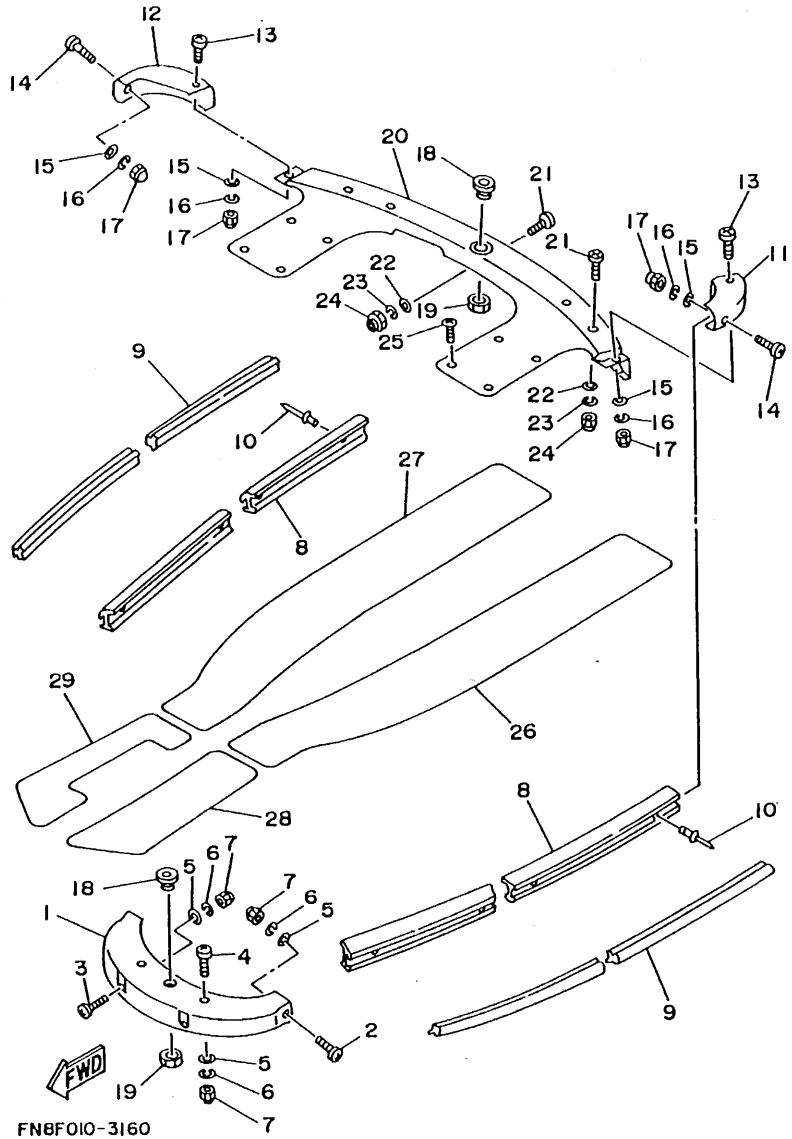
FN8FO10-3160

REF. NO.	PART NO.	DESCRIPTION	Q'TY	REMARKS
1	FN8-U2501-00	BOW GUNWALE COMP.	1	YMUS
2	90149-06976	SCREW	2	YMUS
3	90149-06975	SCREW	2	YMUS
4	90149-06968	SCREW	2	YMUS
5	92990-06200	WASHER, plain	6	
6	92995-06100	WASHER, spring	6	
7	95380-06800	NUT	6	
8	FN8-U2512-10	GUNWALE SIDE	2	YMUS
9	FN8-U2519-10	GUNWALE RUBBER	2	YMUS
10	90267-489U8	RIVET, blind	32	YMUS
11	FN8-62513-11	GUNWALE, stern (L.H)	1	
12	FN8-62513-21	GUNWALE, stern (R.H)	1	
13	90149-06973	SCREW	4	YMUS
14	90149-06971	SCREW	2	YMUS
15	92990-06200	WASHER, plain	6	
16	92990-06100	WASHER, spring	6	
17	95380-06800	NUT	6	
18	FN8-61651-00	ROPE HOLE	2	
19	EU0-61652-00	NUT	2	
20	FN8-U3580-01	MAT UPPER COMP.	1	YMUS
21	90149-06968	SCREW	9	
22	92990-06200	WASHER, plain	9	
23	92990-06100	WASHER, spring	9	
24	95380-06800	NUT	9	
25	90149-06967	SCREW	8	YMUS
26	FN8-6759B-11	MAT 1	1	
27	FN8-6759B-21	MAT 1	1	
28	FN8-6759C-11	MAT 2	1	

C9

FIG. 16 GUNWALE. MAT

REF. NO.	PART NO.	DESCRIPTION	Q'TY	REMARKS
29	FN8-6759C-21	MAT 2	1	

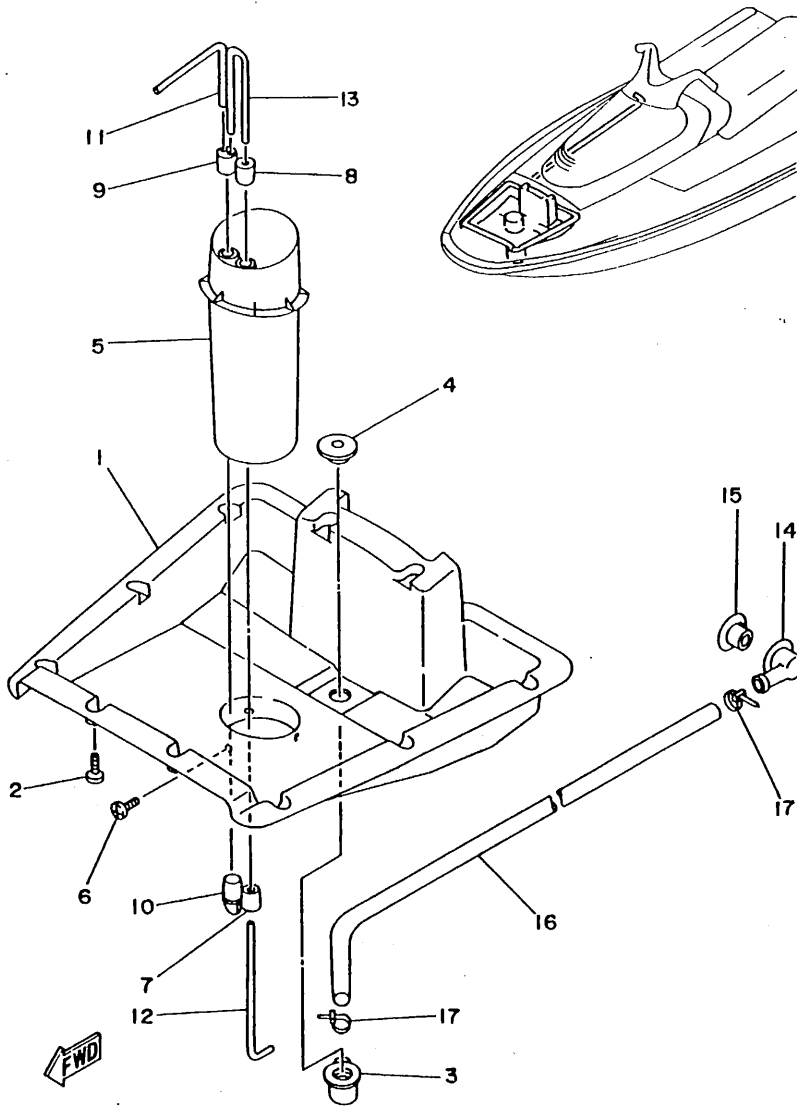


FN8FO10-3160

C10

FIG. 17 VENTILATION

REF. NO.	PART NO.	DESCRIPTION	Q'TY	REMARKS
1	FN8-U2131-00	COVER VENTILATOR 1	1	YMUS
2	97780-50116	SCREW, tapping	10	
3	FN8-6224E-00	BODY, drain 3	1	
4	FN8-6224F-01	BODY, drain 4	1	
5	EU0-U2149-40	PIPE, ventilation	1	YMUS
6	97780-40112	SCREW, tapping	3	
7	EU0-62155-00	CAP	1	
8	FN8-62155-00	CAP	1	
9	FN8-62155-30	CAP	1	
10	FN8-62155-50	CAP	1	
11	FN8-62156-00	ELBOW, ventilator 11	1	
12	EU0-62156-32	ELBOW, ventilator 12	1	
13	FN8-62156-40	ELBOW, ventilator 13	1	
14	FN8-6224E-00	BODY, drain 3	1	
15	FN8-6224F-01	BODY, drain 4	1	
16	FN8-62249-00	HOSE 1	1	
17	90601-200U1	NYLON CLIP 1	2	YMUS



FN8FO10-3170

C11

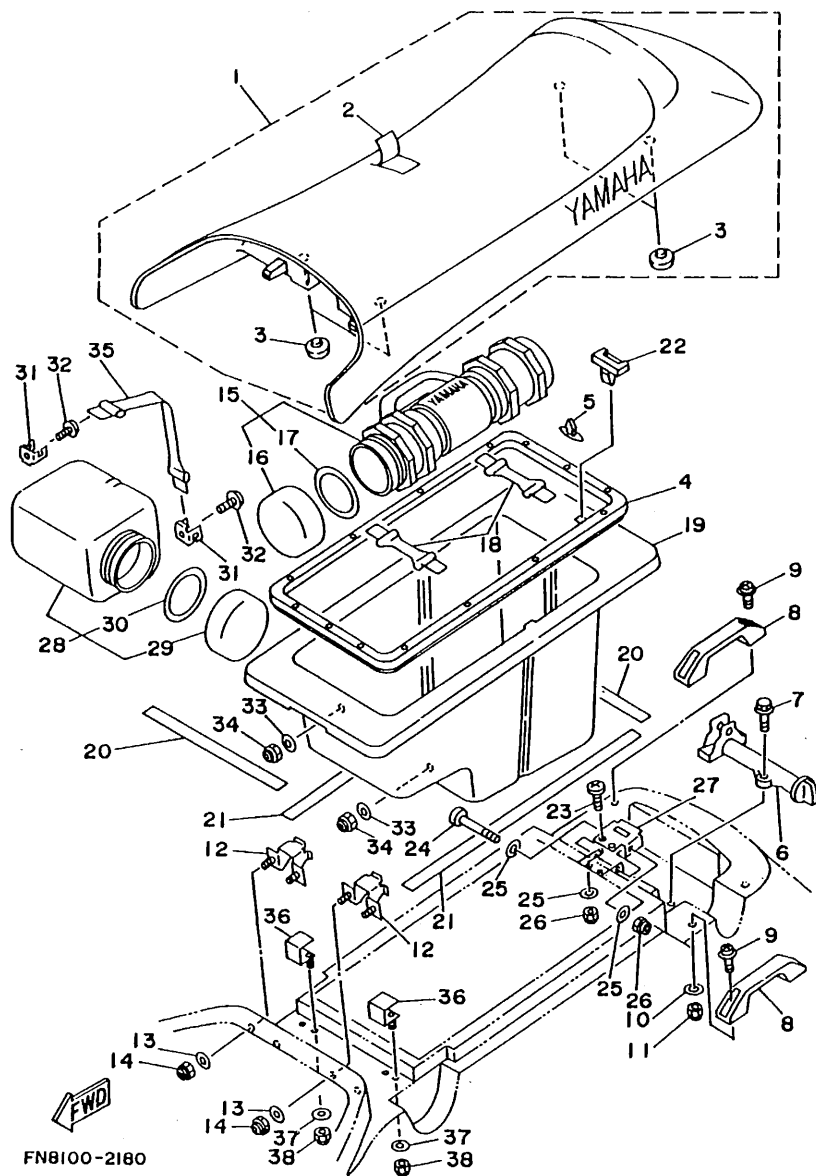
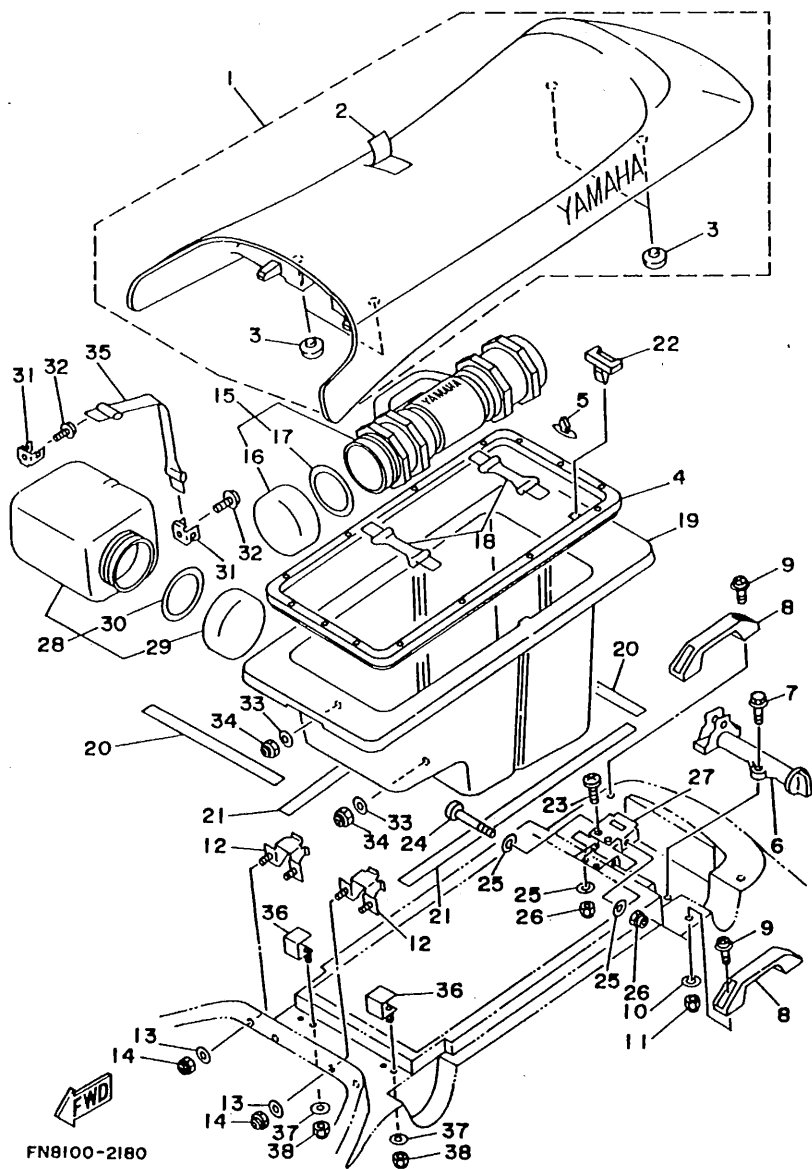


FIG. 18 SEAT UNDER LOCKER

REF. NO.	PART NO.	DESCRIPTION	Q'TY	REMARKS
1	G00-U371A-10	DOUBLE SEAT ASSY	1	YMUS
2	G00-U371B-10	.COVER, seat	1	YMUS
3	1L9-24741-00	.PAD, seat	4	
4	FN8-U2663-00	PACKING 1	1	YMUS
5	90269-06916	RIVET	13	
6	FJ0-63850-30	SEAT LOCK ASSY	1	
7	90119-06900	BOLT, with washer	3	
8	G00-62718-00	GRIP, hand	2	
9	90159-06904	SCREW, with washer	4	
10	92990-06200	WASHER, plain	4	
11	95720-06300	NUT, self-locking	4	
12	FN8-6378C-00	STAY, seat 1	2	
13	92990-06200	WASHER, plain	4	
14	95720-06300	NUT, self-locking	4	
15	EW2-65920-00	CASE 2 ASSY	1	
16	EW2-65912-30	.CAP, case	1	
17	EW2-65913-00	.PACKING, case	1	
18	EU0-67569-02	BAND, water lock	2	
19	FN8-U4742-01	LOCKER, under 2	1	YMUS
20	FN8-6266B-00	PACKING 3	2	
21	FN8-6266C-00	PACKING 4	2	
22	FN8-65172-00	LOCK, lid	1	
23	98780-05020	SCREW, flat head	2	
24	90149-05977	SCREW, pan head	1	YMUS
25	92990-05200	WASHER, plain	4	
26	95720-05300	NUT, flange	3	
27	FN8-U5174-00	HOOK, lid lock	1	YMUS
28	FN8-65910-00	CASE 1 ASSY	1	

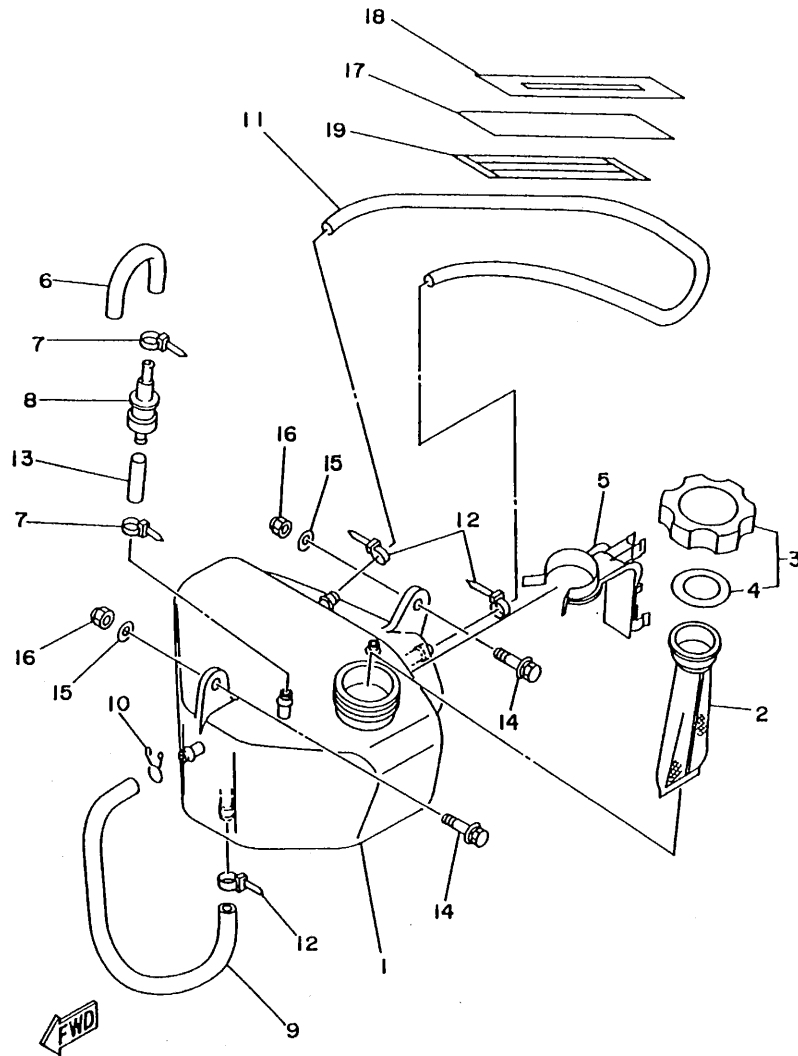
FIG. 18 SEAT · UNDER LOCKER



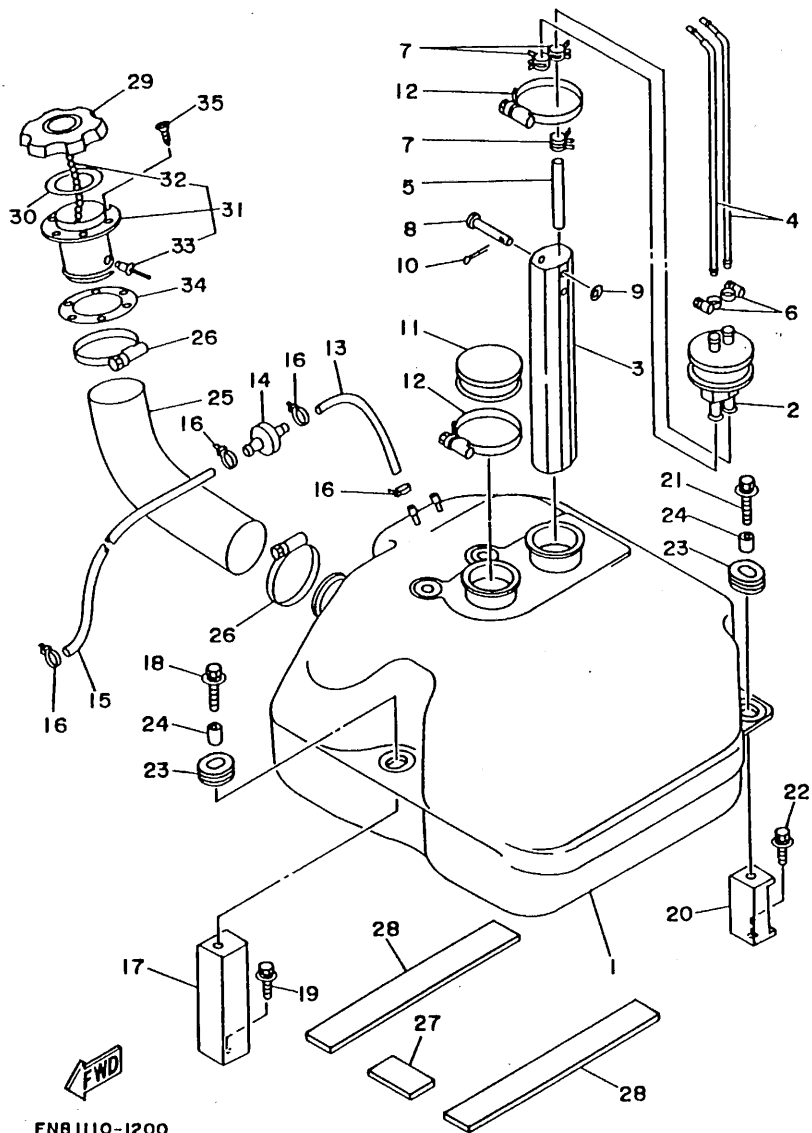
REF. NO.	PART NO.	DESCRIPTION	Q'TY	REMARKS
29	EW2-65912-00	.CAP, case	1	
30	EW2-65913-00	.PACKING, case	1	
31	EU0-65772-30	HOOK A	2	
32	90159-06901	SCREW, with washer	2	
33	90201-06931	WASHER, plain	2	
34	95720-06300	NUT, self-locking	2	
35	FJ0-67569-00	BAND	1	
36	FN8-64744-00	GUIDE	2	
37	92990-05200	WASHER, plain	4	
38	95720-05300	NUT, flange	4	

FIG. 19 OIL TANK (FOR OIL INJECTION)

REF. NO.	PART NO.	DESCRIPTION	Q'TY	REMARKS
1	FN8-67751-00	TANK, oil	1	
2	FJ0-67752-00	FILTER	1	
3	FJ0-67840-00	OIL TANK CAP ASSY	1	
4	FJ0-67841-00	.PACKING, oil cap	1	
5	FN8-13173-00	HOLDER, oil pipe 2	1	
6	FJ0-62158-00	HOSE	1	
7	90465-11M10	CLAMP	2	
8	FJ0-67766-00	ROLL OVER VALVE	1	
9	90446-11905	HOSE	1	
10	90467-11019	CLIP	1	
11	90446-09904	HOSE	1	
12	90465-11M10	CLAMP	3	
13	90445-09901	HOSE	1	
14	90119-06924	BOLT, with washer	2	
15	90201-065F3	WASHER, plate	2	
16	95720-06300	NUT, self-locking	2	
17	FN8-67753-00	LEVEL GAUGE 1	1	
18	FN8-64189-00	LABEL, oil gauge	1	UR FOR OIL INJECTION
	FN8-64128-30	LABEL, oil gauge	1	UR FOR NON OIL INJECTION
19	90654-91004	TAPE	1	



FN81110-1190



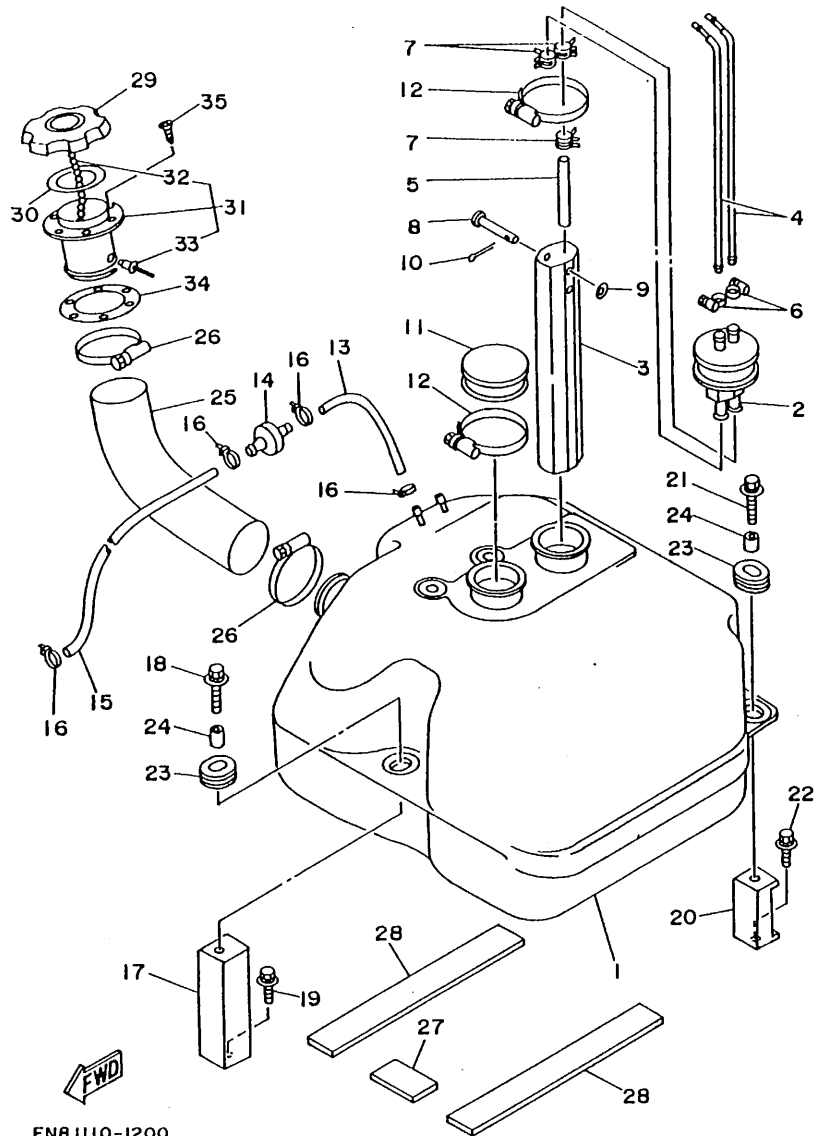
FN81110-1200

FIG. 20 FUEL TANK

REF. NO.	PART NO.	DESCRIPTION	Q'TY	REMARKS
1	FN8-67711-01	TANK, fuel	1	
2	FJ0-67713-00	PIPE, joint	1	
3	FN8-67716-00	SLEEVE 1	1	
4	FN8-67714-00	PIPE, suction 3	2	
5	90445-11900	HOSE	1	
6	90601-11062	BAND, hose 11	2	
7	90467-11044	CLIP	3	
8	91790-05040	PIN, clevis	1	
9	92990-05600	WASHER, plate	1	
10	91490-16010	PIN, cotter	1	
11	FN8-6771K-00	COVER	1	
12	90601-162U5	BAND, hose 62	2	YMUS
13	EU0-67856-00	HOSE, air vent 1	1	
14	EU0-67767-30	CHECK, valve	1	
15	EU0-67856-30	HOSE, airvent 1	1	
16	90465-11M10	CLAMP	4	
17	FN8-67777-00	FIX, fuel tank	1	
18	90119-08916	BOLT, with washer	1	
19	90119-08903	BOLT, with washer	1	
20	FN8-67777-31	FIX, fuel tank	2	
21	90119-08916	BOLT, with washer	2	
22	90119-08903	BOLT, with washer	2	
23	90480-19906	GROMMET	3	
24	90387-08904	COLLAR	3	
25	FN8-U7844-00	HOSE	1	YMUS
26	90601-155U4	BAND, hose 55	2	YMUS
27	FN8-67593-00	MAT	1	UR EXCLUSIVE JAPAN
	FN8-U7593-00	MAT	1	UR YMUS

C15

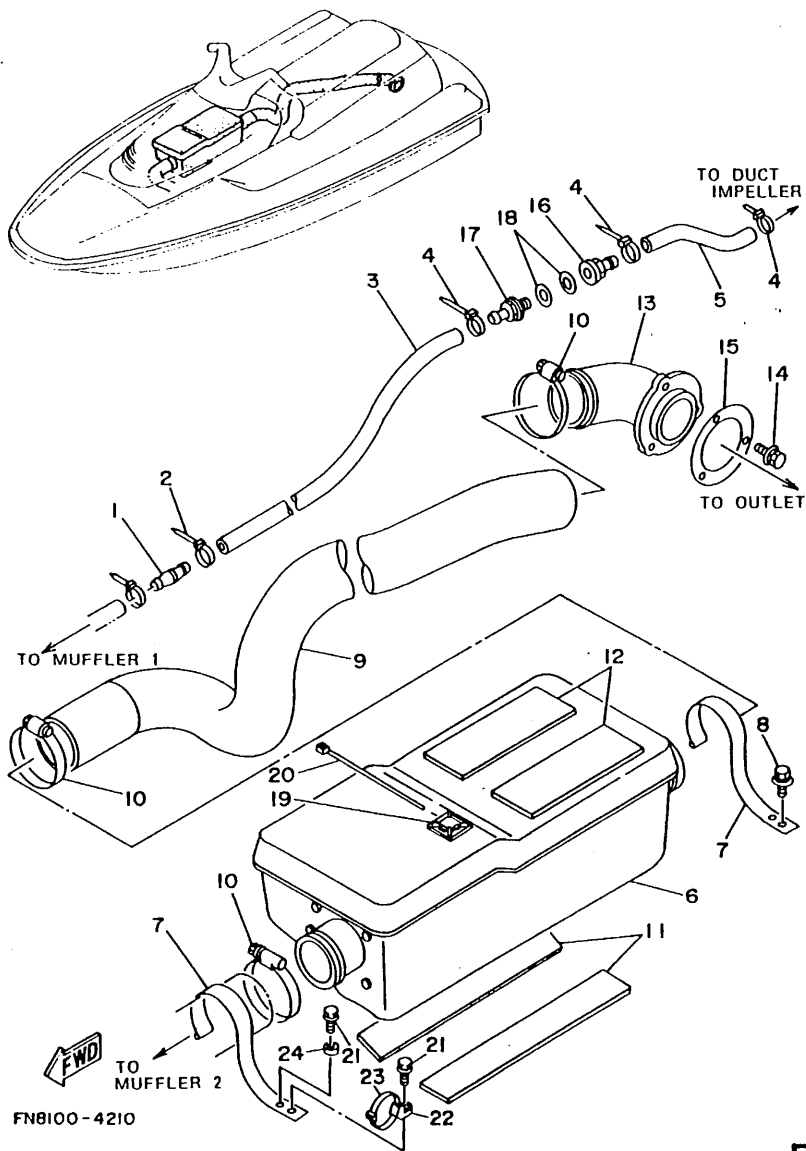
FIG. 20 FUEL TANK



REF. NO.	PART NO.	DESCRIPTION	Q'TY	REMARKS
28	FN8-67593-30	MAT	2	UR FOR JAPAN
	FN8-U7593-30	MAT	1	UR YMUS
29	FN8-67831-00	CAP, fuel filler	1	
30	EU0-67832-00	PACKING 1	1	
31	FN8-W6783-00	SOCKET COMP.	1	
32	EU0-67835-00	.CHAIN BALL	1	
33	90267-40935	.RIVET, blind	1	
34	EU0-67834-00	PACKING, fuel filler	1	
35	FN8-U7869-00	SCREW, flat head	6	YMUS

FN8 1110-1200

D2



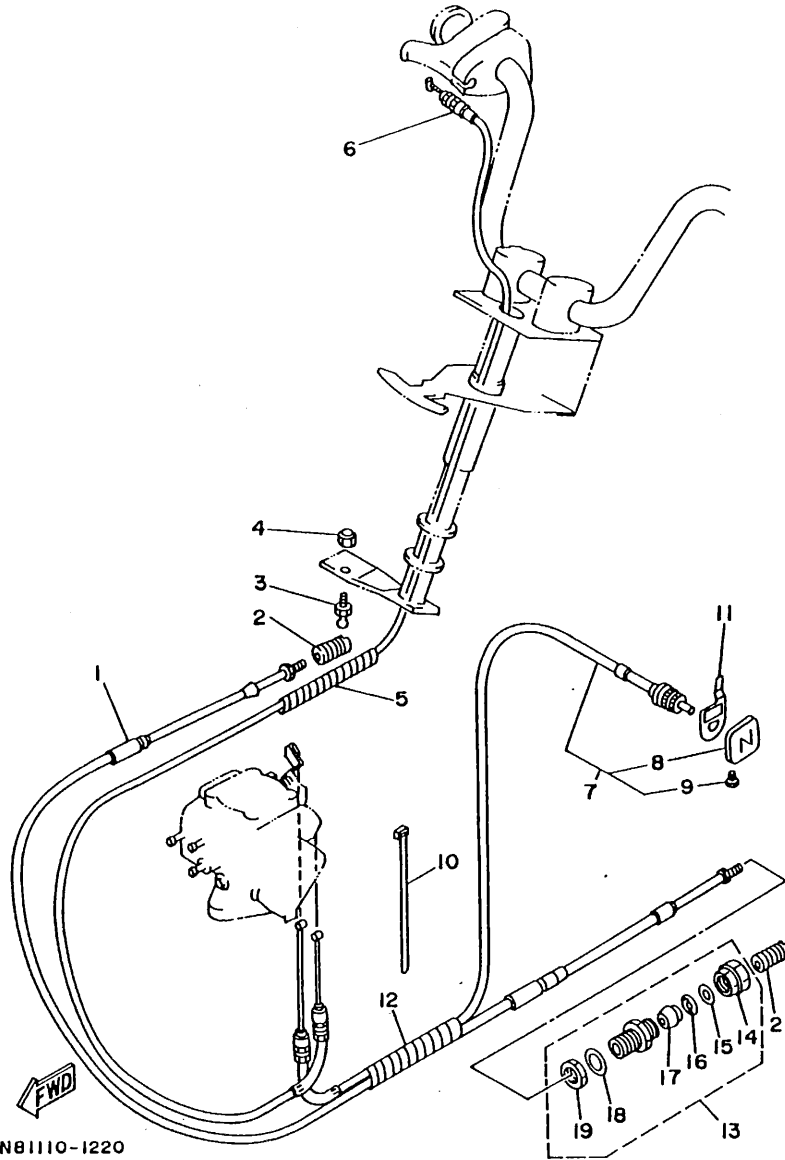
FN8100-4210

FIG. 21 EXHAUST 2

REF. NO.	PART NO.	DESCRIPTION	Q'TY	REMARKS
1	6M6-51142-00	CONNECTION	1	
2	90465-13M11	CLAMP	1	
3	90445-14M15	HOSE	1	
4	90465-13M11	CLAMP	3	
5	90445-14M17	HOSE	1	
6	FN8-U7550-30	WATER LOCK	1	YMUS
7	FN8-67559-00	CLIP, hose exhaust	2	
8	90119-06913	BOLT, with washer	2	
9	GD0-U7555-00	HOSE	1	YMUS
10	90601-168U7	BAND, hose 68	3	YMUS
11	EU0-U7593-30	MAT 2	2	YMUS
12	EU0-U7593-50	MAT	2	YMUS
13	FN8-67565-00	THRU-HULL	1	
14	90119-05912	BOLT, with washer	3	
15	FN8-U7525-00	PACKING	1	YMUS
16	90604-80757	CONNECTION, thru-hull 1/4	1	
17	90604-80758	CONNECTION, thru-hull 1/4	1	
18	90430-13909	GASKET	2	
19	90600-90004	BASE, clamp	1	
20	90601-20015	BAND	1	
21	90119-06908	BOLT, with washer	2	
22	90600-90005	BASE CLAMP	1	
23	90465-13M11	CLAMP	1	
24	90387-06912	COLLAR	1	

D3

FIG. 22 CONTROL CABLE



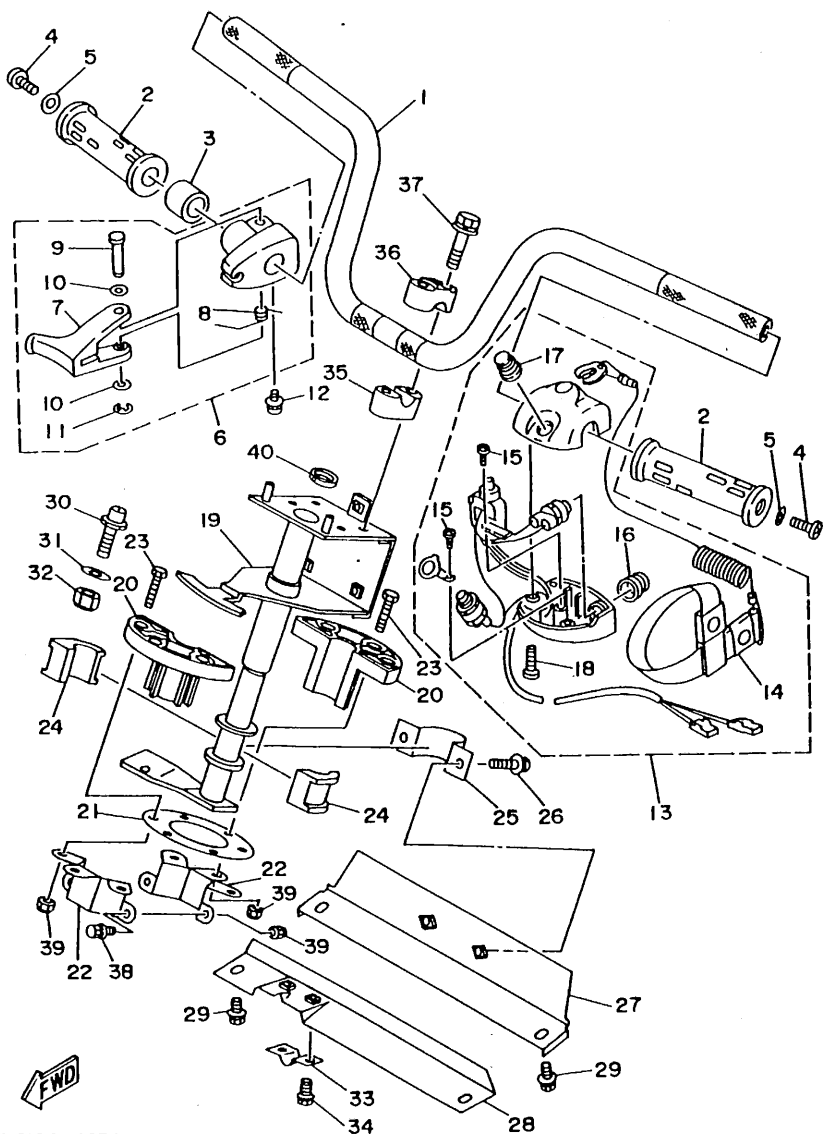
FN81110-1220

REF. NO.	PART NO.	DESCRIPTION	Q'TY	REMARKS
1	FN8-U1481-00	CABLE, steering	1	YMUS
2	EU0-61461-30	SHAFT, joint ball	2	UR EXCLUSIVE JAPAN
	EU0-U1461-30	SHAFT, joint ball	2	UR YMUS
3	EU0-61461-01	STUD, joint ball	1	UR EXCLUSIVE JAPAN
	EU0-U1461-01	STUD, joint ball	1	UR YMUS
4	95720-06300	NUT, self-locking	1	
5	90699-U1100	SPIRAP 11	1	YMUS
6	EU0-67252-02	CABLE, throttle 1	1	
7	FN8-U7242-00	CABLE, choke	1	YMUS
8	EW2-67243-00	.KNOB	1	
9	90149-03930	.SCREW	1	
10	90601-200U1	NYLON CLIP 1	1	YMUS
11	FN8-67243-00	PLATE, choke	1	
12	90699-36U02	SPIRAL TUBE 11	1	YMUS
13	EU0-67267-00	CONNECTOR, cable	1	
14	EU0-62694-00	.CAP	1	
15	EU0-61446-00	.WASHER 30	1	
16	EU0-61486-00	.STOPPER	1	
17	EU0-61435-00	.SEAL, pipe 30	1	
18	EU0-61438-00	.PACKING (C)	1	
19	EU0-62241-30	.NUT, drain 1	1	

D4

FIG. 23 STEERING 1

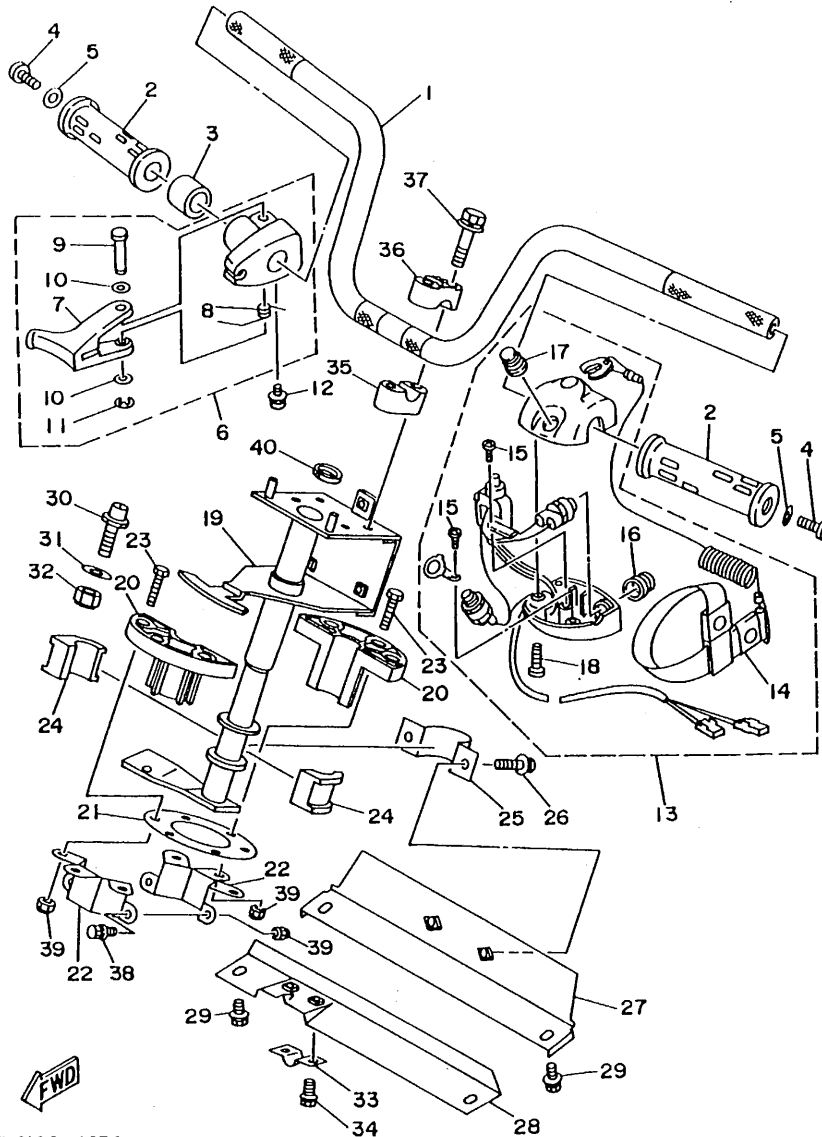
REF. NO.	PART NO.	DESCRIPTION	Q'TY	REMARKS
1	FN8-U1552-00	HANDLE	1	YMUS
2	EW2-61553-00	GRIP, handle 1	2	
3	90560-22281	SPACER	1	
4	90149-05959	SCREW, pan head	2	
5	90201-05928	WASHER, plate	2	
6	EW2-67250-00	THROTTLE LEVER ASSY	1	
7	EW2-67255-00	.LEVER, throttle	1	
8	EW2-67256-00	.SPRING	1	
9	EW2-67257-00	.SHAFT	1	
10	EW2-67258-00	.WASHER	2	
11	EW2-67259-00	.E-RING	1	
12	90159-05900	SCREW, with washer	1	
13	FK7-68310-06	SWITCH BOX ASSY	1	
14	EW2-68348-00	.LANYARD, stop switch	1	
15	98580-03008	.SCREW, pan head	2	
16	FK7-68312-02	.STOP BUTTON COMP.	1	
17	FK7-68313-01	.START BUTTON COMP.	1	
18	98580-05525	.SCREW, pan head	2	
19	FN8-61541-01	COLUMN, steering	1	
20	EU0-61417-00	BEARING, column	2	
21	EU0-61439-30	SEAL, rubber	1	
22	FN8-61588-01	JOINT, bearing 1	2	
23	97395-06030	BOLT	6	
24	8F3-23812-00	PLANE BEARING, steering	2	
25	EU0-61588-00	JOINT, bearing	1	
26	90119-08903	BOLT, with washer	2	
27	FN8-61433-00	BRACKET, bearing	1	
28	FN8-61467-00	BRACKET, stopper cable	1	



FN8100-4230

D5

FIG. 23 STEERING 1



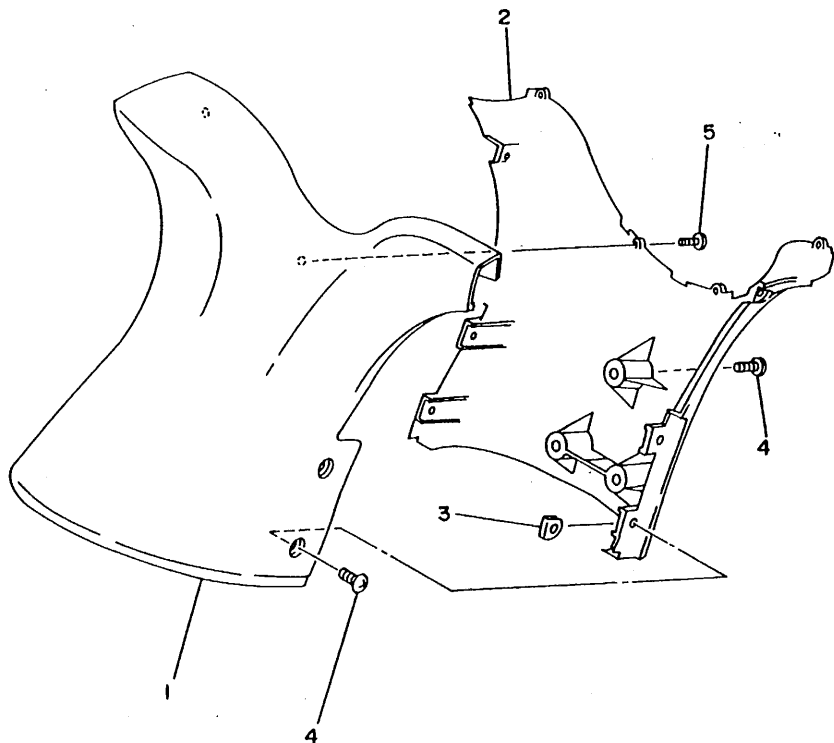
REF. NO.	PART NO.	DESCRIPTION	Q'TY	REMARKS
29	90119-08903	BOLT, with washer	4	
30	FN8-6131B-00	PIN, stopper	2	
31	92990-10200	WASHER, plain	2	
32	95720-10300	NUT	2	
33	EU0-61468-00	STOPPER CABLE	1	UR EXCLUSIVE JAPAN
	EU0-U1468-00	STOPPRE CABLE	1	UR YMUS
34	90119-06926	BOLT, with washer	2	
35	EU0-23814-01	HOLDER, handle lower	2	
36	EU0-23814-30	HOLDER, handle upper	2	
37	90119-08925	BOLT, with washer	4	
38	90119-06913	BOLT, with washer	2	
39	95720-06300	NUT, self-locking	8	
40	EU0-61469-00	PACKING, steering column	1	

FN8100-4230

D6

FIG. 24 STEERING 2

REF. NO.	PART NO.	DESCRIPTION	Q'TY	REMARKS
1	FN8-6143D-40	PAD, steering 1	1	
2	FN8-6143E-40	PAD, steering 2	1	
3	FJ0-61432-00	NUT	4	
4	90149-05990	SCREW	7	
5	90149-03989	SCREW	6	

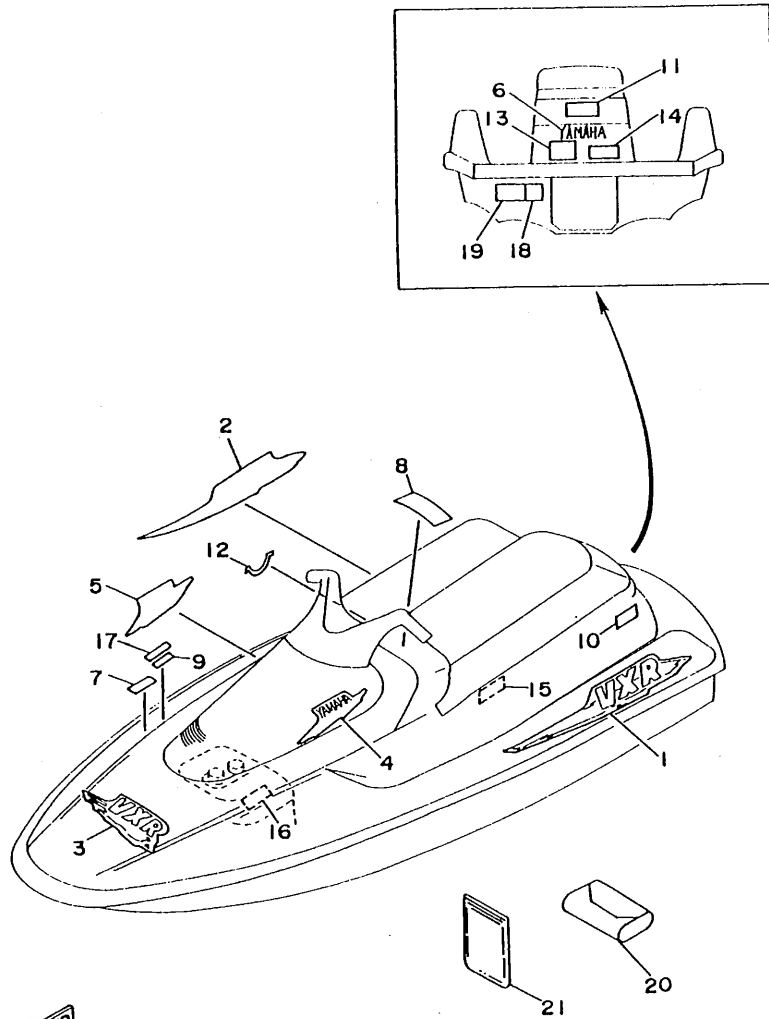


FN81110-1240

D7

FIG. 25 GRAPHIC 1. TOOL (FOR USA)

REF. NO.	PART NO.	DESCRIPTION	Q'TY	REMARKS
1	FN8-64173-50	GRAPHIC A	1	
2	FN8-64173-60	GRAPHIC A	1	
3	FN8-6417L-10	GRAPHIC B	1	
4	FN8-64121-40	EMBLEM 1	1	
5	FN8-64121-50	EMBLEM 1	1	
6	99231-00160	EMBLEM, yamaha	2	
7	GDO-U416B-00	LABEL, warning (FUEL)	1	
8	GDO-6416C-00	LABEL, warning 1	1	
9	GDO-U416F-00	LABEL, warning 4	1	
10	GDO-U419B-00	LABEL 1	1	
11	GDO-U418E-00	LABEL, uscg.	1	
12	GDO-6419C-00	LABEL 2	1	
13	GDO-U419D-00	LABEL 3	1	
14	GDO-U418G-00	LABEL, caution (DRAIN)	1	
15	EU0-U418B-00	LABEL, caution (BATTERY)	1	
16	FN8-64183-A0	LABEL, caution	1	
17	GDO-U418J-00	LABEL, caution (OIL)	1	
18	GDO-U418F-00	LABEL, righting	1	
19	GDO-U416G-00	LABEL, warning 5	1	
20	EU0-28100-01	TOOL ASSY	1	
21	EU0-65901-01	BAG, vinyl	1	

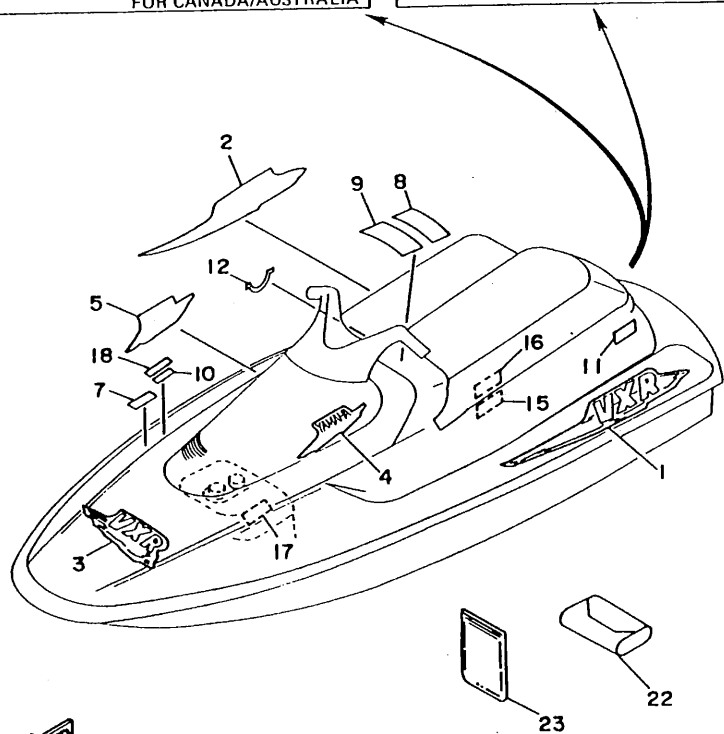
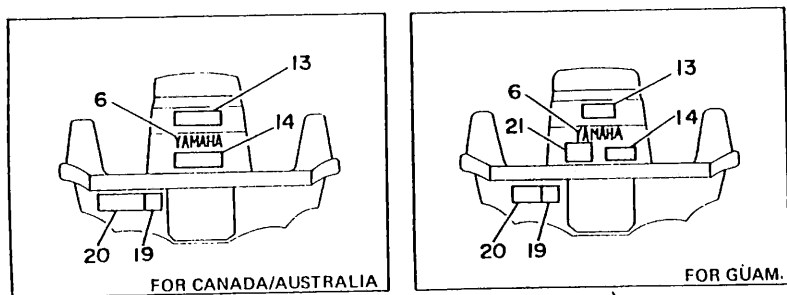


FN8100-4250

D8

FIG. 26 GRAPHIC 2. TOOL (FOR CANADA, AUSTRALIA, GUAM)

REF. NO.	PART NO.	DESCRIPTION	Q'TY	REMARKS
1	FN8-64173-50	GRAPHIC A	1	
2	FN8-64173-60	GRAPHIC A	1	
3	FN8-6417L-40	GRAPHIC B	1	
4	FN8-64121-40	EMBLEM 1	1	
5	FN8-64121-50	EMBLEM 1	1	
6	99231-00160	EMBLEM, yamaha	1	
7	GA7-6416B-20	LABEL, warning (FUEL)	1	
8	GDO-6416C-10	LABEL, warning 1	1	
9	GDO-6416C-20	LABEL, warning 1	1	
10	GA7-6416F-20	LABEL, warning 4	1	
11	GDO-6419B-10	LABEL 1	1	
12	GDO-6419C-00	LABEL 2	1	
13	GA7-6419D-20	LABEL 3	1	
14	GDO-6418G-10	LABEL, caution (DRAIN)	1	
15	EU0-U418B-00	LABEL, caution (BATTERY)	1	
16	FJ0-64183-M0	LABEL, caution 11	1	
17	FN8-64183-A0	LABEL, caution 9	1	
18	GA7-6418J-20	LABEL, caution (OIL)	1	
19	GDO-U418F-00	LABEL, righting	1	
20	GDO-6416G-10	LABEL, warning 5	1	
21	GDO-U418E-00	LABEL, uscg	1	FOR GUAM
22	EU0-28100-01	TOOL ASSY	1	
23	EU0-65901-01	BAG, vinyl	1	



FN8100-4260

D9

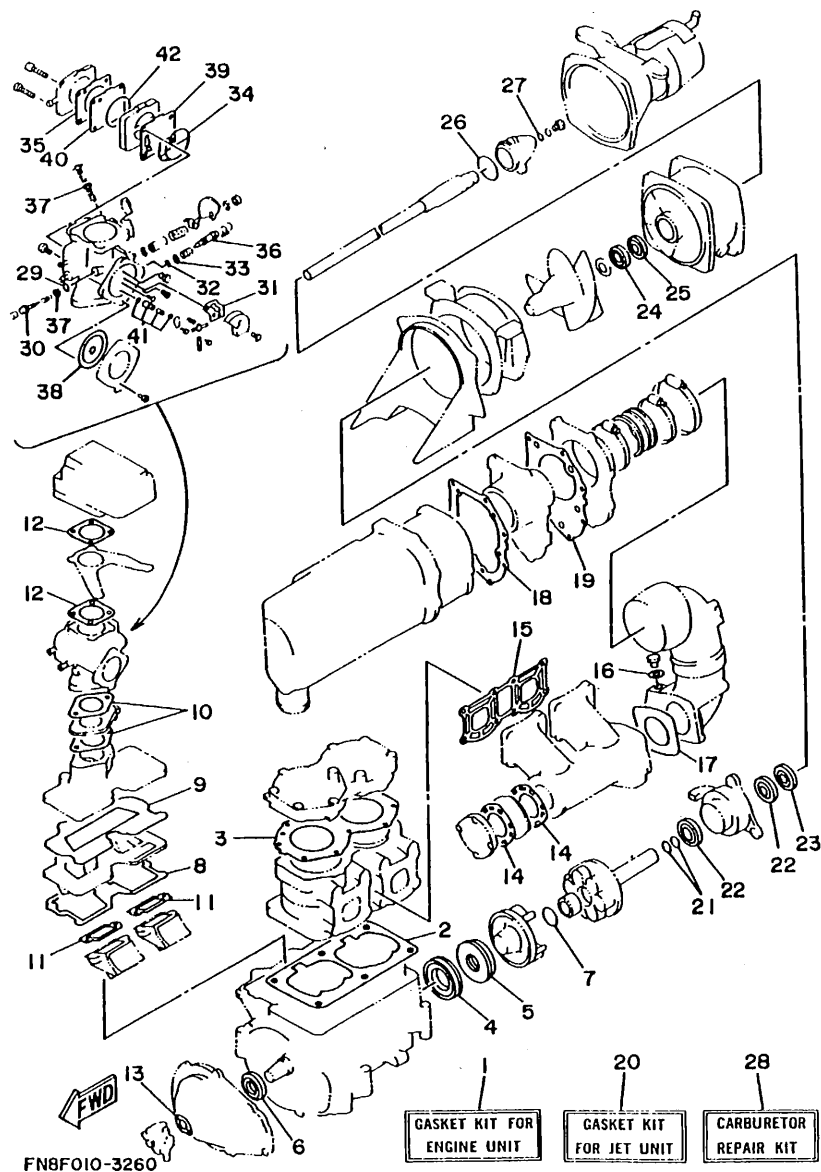
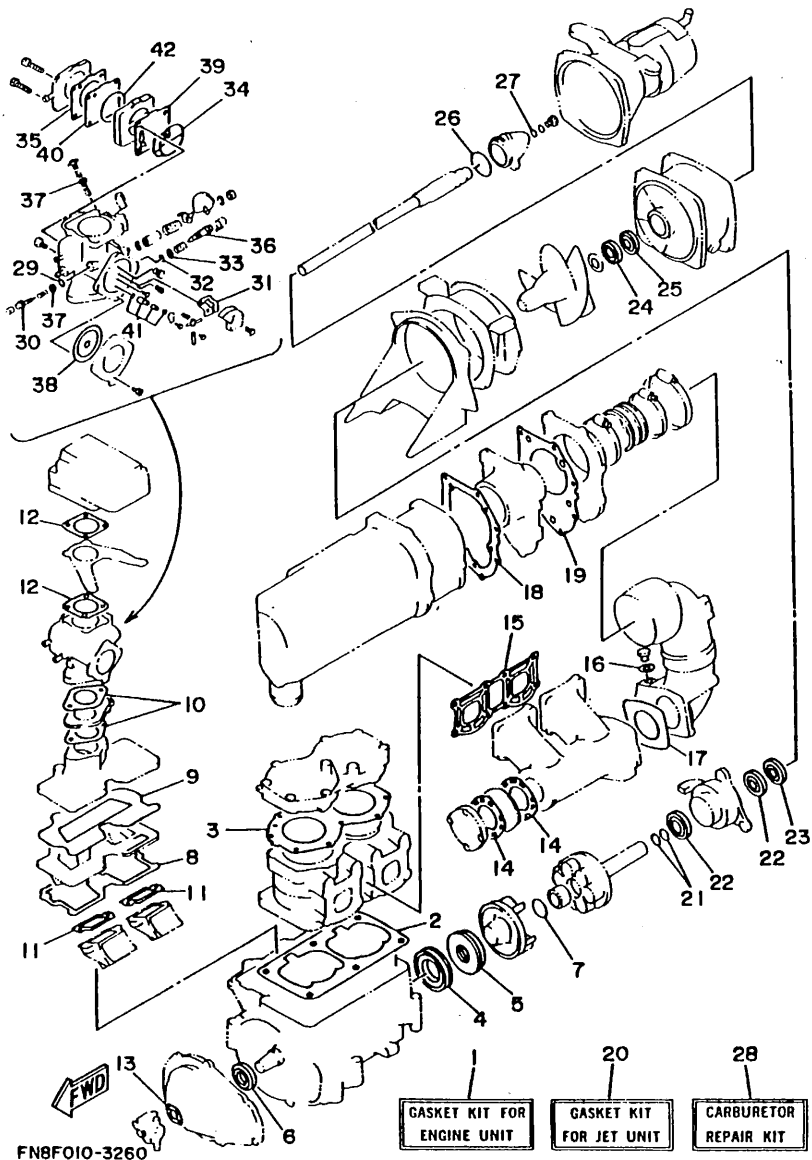


FIG. 27 GASKET KIT

REF. NO.	PART NO.	DESCRIPTION	Q'TY	REMARKS
1	6R8-W0001-02	GASKET KIT	1	FOR ENGINE UNIT
2	6M6-11351-A1	.GASKET, cylinder	1	
3	6R7-11181-A0	.GASKET, cylinder head 1	1	
4	93102-36M33	.OIL SEAL	1	
5	93101-36M46	.OIL SEAL	1	
6	93103-32M01	.OIL SEAL	1	
7	93210-30M31	.O-RING	2	
8	6M6-13566-A2	.GASKET	1	
9	6M6-13563-A1	.GASKET	1	
10	6M6-13556-A1	.GASKET, manifold	2	
11	6M6-13621-A1	.GASKET, valve seat	2	
12	6M6-13674-A1	.GASKET, air cooler cover 1	2	
13	6R8-13116-A0	.GASKET, pump case	1	FOR OIL INJECTION
14	6M6-14739-A1	.GASKET, muffler damper 1	1	
15	6M6-14613-A0	.GASKET, exhaust pipe	1	
16	90430-08020	.GASKET	1	
17	6R7-14749-A0	.GASKET, muffler damper 2	1	
18	6R7-14755-A0	.GASKET, silencer	1	
19	6R7-41114-A0	.GASKET, exhaust outer cover	1	
20	61L-W0001-20	GASKET KIT	1	FOR JET UNIT
21	93210-17MA4	.O-RING	2	
22	93101-25M52	.OIL SEAL	2	
23	93101-25M53	.OIL SEAL	1	
24	93102-25M34	.OIL SEAL	1	
25	93101-25M50	.OIL SEAL	1	
26	93210-46M16	.O-RING	1	
27	90430-06M03	.GASKET	1	
28	6M6-W0093-12	CARBURETOR REPAIR KIT	1	



FN8FO10-3260

FIG. 27 GASKET KIT

REF. NO.	PART NO.	DESCRIPTION	Q'TY	REMARKS
29	6K8-14562-00	.O-RING	1	
30	6K8-14946-10	.PLATE, needle fitting	1	
31	6K8-14536-11	.GASKET	1	
32	583-14561-00	.O-RING	1	
33	6K8-14537-00	.GASKET	1	
34	6K8-14564-00	.O-RING	1	
35	6K8-24431-20	.GASKET, fuel pump 1	1	
36	6K8-14923-10	.SCREW, pilot	1	
37	6K8-14559-00	.WASHER	2	
38	6R7-14541-00	.DIAPHRAGM, pump	1	
39	6K8-24411-20	.DIAPHRAGM	1	
40	6K8-24421-10	.VALVE, check	1	
41	6K8-14916-15	.NEEDLE	1	
42	6K8-14563-00	.O-RING	1	

NUMERICAL INDEX

PART NO.	GRID NO.	PART NO.	GRID NO.	PART NO.	GRID NO.	PART NO.	GRID NO.	PART NO.	GRID NO.	PART NO.	GRID NO.
FN8-E4752-00	B-11	61L-W0001-20	D-10	6R8-14284-00-98	B- 6	61L-14712-00-9M	B-10	626-28193-01-94	B- 3	FN8-61467-00	D- 5
FN8-E4779-00	B-11	6R7-W0004-00	B- 5	61L-14301-02	B- 7	6M6-14718-01-9M	B-10	6R7-41113-00-9M	B-11	EVO-61468-00	D- 6
EVO-U1461-01	D- 4	61L-W0090-03-4D	B- 2	6K8-14435-00	B- 6	6R7-14721-00-9M	B-10	6R7-41114-A0	B-11	EVO-61469-00	D- 6
EVO-U1461-30	D- 4	61L-W0090-12-4D	B- 2	6M6-14451-00	B- 6	6M6-14739-A1	B-10		D-10	EVO-61486-00	D- 4
EVO-U1468-00	D- 6	6M6-W0093-12	D-10	6K8-14471-00	B- 7		D-10	6R7-42316-00	B-13	FN8-61541-01	D- 5
FN8-U1481-00	D- 4	FN8-W6783-00	D- 2	6K8-14481-10	B- 8	6R7-14749-A0	B-10	6M6-44517-00-5B	B- 3	EW2-61553-00	D- 5
FN8-U1552-00	D- 5	6R7-11111-00-94	B- 2	6H1-14485-00	B- 6		D-10	61L-44532-00	B- 2	FN8-61588-01	D- 5
FN8-U2131-00	C-11	6R7-11181-A0	B- 2	6R7-14485-00	B- 2	6R7-14753-00-9M	B-10	663-45119-00	B- 5	EVO-61588-00	D- 5
EVO-U2149-40	C-11		D-10		B-10	6R7-14755-A0	B-11	61L-45332-00-9M	B-15	FN8-61624-00	C- 8
FN8-U2501-00	C- 9	61L-11311-01-94	B- 2	6K8-14503-02	B- 7		D-10	61L-45378-00	B-15	FN8-61651-00	C- 9
FN8-U2512-10	C- 9	6E5-11325-00	B- 2	6M6-14503-00	B- 7	6M6-14771-00-94	B-11	61L-45511-00	B-13	EVO-61652-00	C- 8
FN8-U2519-10	C- 9	6M6-11351-A1	B- 2	6K8-14521-10	B- 7	6R7-14785-00-9M	B-11	6M6-45526-00	B- 4		C- 9
FN8-U2663-00	C-12		D-10	6M6-14521-00	B- 7	6K8-14916-15	D-11	61X-4581J-00	B- 4	EW2-62136-01	C- 7
FN8-U2664-00	C- 7	6E5-11372-00	B- 6	6K8-14523-11	B- 7	61X-14916-15	B- 7	6M6-45813-10-9M	B- 4	EVO-62155-00	C- 6
FN8-U3580-01	C- 9	6M6-11400-01	B- 4	6K8-14527-11	B- 7	6K8-14923-10	B- 8	6R7-45813-11-9M	B- 4		C-11
GDO-U371A-10	C-12	6M6-11601-00	B- 4	6M6-14527-02-EK	B- 5		D-11	6R7-51117-01	B-13	FN8-62155-00	C-11
GDO-U371B-10	C-12	6M6-11601-10	B- 4	6K8-14531-00	B- 8	6K8-14926-10	B- 7	6K8-51129-00	B- 2	FN8-62155-30	C-11
GDO-U416B-00	D- 8	6M6-11601-20	B- 4	6K8-14533-00	B- 8	6K8-14930-00	B- 7		B-10	FN8-62155-50	C-11
GDO-U416F-00	D- 8	6M6-11631-01-93	B- 4	6K8-14534-10	B- 7	6K8-14946-10	B- 7		B-10	EVO-62156-32	C- 6
GDO-U416G-00	D- 8	8H8-11633-00	B- 4	6K8-14536-11	B- 7		D-11		B-13		C-11
EVO-U418B-00	D- 8	6M6-11635-01	B- 4		D-11	6M6-15100-00-94	B- 2	6M6-5114E-00	B- 4	FN8-62156-00	C-11
	D- 9	6M6-11636-01	B- 4	6K8-14537-00	B- 8	6R7-15761-00	B-10	6R7-5114E-01	B- 4	FN8-62156-40	C-11
GDO-U418E-00	D- 8	6R8-13116-A0	B- 9		D-11	6R7-21415-00-94	B- 2	6M6-51142-00	D- 3	FN8-62156-50	C- 6
	D- 9		D-10	6R7-14541-00	B- 8	6R7-21425-00-94	B- 2	6K8-51162-00	C- 8	FJO-62158-00	C-14
GDO-U418F-00	D- 8	FN8-13173-00	C-14		D-11	6R8-21733-00	B- 9	61L-51311-01	B-13	FN8-6224E-00	C-11
	D- 9	6R3-13183-00	B- 9	6R7-14542-00	B- 8	6R8-21734-00	B- 9	6R7-51312-00-94	B-13		C-11
GDO-U418G-00	D- 8	61L-13200-00	B- 9	6K8-14547-01	B- 7	8F3-23812-00	D- 5	61L-51313-00	B-13	FN8-6224F-01	C-11
GDO-U418J-00	D- 8	6M6-13555-00-94	B- 5	6K8-14547-01	B- 7	EVO-23814-01	D- 6	61L-51315-00-94	B-13		C-11
GDO-U419B-00	D- 8	6M6-13556-A1	B- 5	6K8-14556-10	B- 7	EVO-23814-30	D- 6	61X-51318-00	B-13	EVO-62241-30	D- 4
GDO-U419D-00	D- 8		D-10	6K8-14559-00	B- 7	6R8-24377-00	B- 9	61L-51321-00-94	B-13	FN8-62249-00	C-11
FN8-U4742-01	C-12	6M6-13563-A1	B- 5	583-14561-00	B- 8	61L-24378-00	B- 9	62E-51323-00	B-15	EVO-62280-00	C- 8
FN8-U516D-00-P1	C- 7		D-10		D-11	650-24378-00	B- 5	6R7-51326-00-94	B-13	EVO-62282-00	C- 8
FN8-U5162-00	C- 7	6M6-13566-A2	B- 5	6K8-14562-00	B- 7	6K8-24411-20	B- 8	61L-51333-00-5B	B-13	EVO-62283-00	C- 8
FN8-U5174-00	C-12		D-10		D-11		D-11	61X-51381-00	B-15	EVO-62285-01	C- 8
FN8-U5193-00	C- 7	6R7-13610-01	B- 5	6K8-14563-00	B- 8	6R7-24412-01	B- 7	61X-51673-00	C- 8	FN8-62513-11	C- 9
FN8-U7242-00	D- 4	6M6-13621-A1	B- 5		D-11	6M6-24413-00	B- 8	61L-5169A-00	B- 5	FN8-62513-21	C- 9
FN8-U7525-00	D- 3		D-10	6K8-14564-00	B- 8	6K8-24421-10	B- 8	FN8-61318-00	D- 6	FN8-6266B-00	C-12
FN8-U7550-30	D- 3	6M6-13641-00-94	B- 5		D-11		D-11	EVO-61417-00	D- 5	FN8-6266C-00	C-12
GDO-U7555-00	D- 3	6M6-13674-A1	B- 6	6R7-14569-00	B- 7	6K8-24431-20	B- 8	FN8-6143D-40	D- 7	FN8-6269B-00	C- 8
EVO-U7593-30	D- 3		D-10	6K8-14579-00	B- 7		D-11	FN8-6143E-40	D- 7	EVO-62694-00	D- 4
EVO-U7593-50	D- 3	3G2-14231-25	B- 7	6K8-14589-00	B- 8	6K8-24452-10	B- 8	FJO-61432-00	D- 7	GDO-62718-00	C-12
FN8-U7593-00	C-15	830-14231-24	B- 7	6K8-14591-10	B- 7	6K8-24500-02	B-12	FN8-61433-00	D- 5	FN8-62730-00	B-14
FN8-U7593-30	D- 2	61L-14243-00	B- 5	6R7-14596-00	B- 7	6K8-24524-10	B-12	EVO-61435-00	D- 4	FK7-62732-00	B-14
EW2-U7812-00	B-12	6R7-14253-00	B- 8	6M6-14613-A0	B-10	6K8-24560-10	B-12	EVO-61438-00	D- 4	FN8-62840-00	C- 7
FN8-U7844-00	C-15	6R7-14255-00	B- 6		D-10	1L9-24741-00	C-12	EVO-61439-30	D- 5	FN8-62843-00	C- 7
FN8-U7869-00	D- 2	61L-14255-00	B- 9	61L-14615-00	B-11	EVO-28100-01	D- 8	EVO-61446-00	D- 4	EW2-62845-00	C- 7
EVO-U8221-00	C- 6	61L-14283-01	B- 6	61L-14625-00	B-11		D- 9	EVO-61461-01	D- 4	EW2-62846-00	C- 7
6R8-W0001-02	D-10	6M6-14284-00-98	B- 6	6R7-14711-01-9M	B-10	6E0-28193-00-94	B- 3	EVO-61461-30	D- 4	EW2-62847-00	C- 7

NUMERICAL INDEX

PART NO.	GRID NO.	PART NO.	GRID NO.	PART NO.	GRID NO.	PART NO.	GRID NO.	PART NO.	GRID NO.	PART NO.	GRID NO.
EW2-62848-00	C- 7	GDO-67249-00-05	B-15	EVO-67834-00	D- 2	6R7-83623-40	C- 4	90119-10M56	B- 2	90386-08006	B-15
FN8-62884-00	C- 7	GDO-67249-00-10	B-15	EVO-67835-00	D- 2	6R7-85515-00	C- 2	90119-10M72	B-11	90387-06M05	B- 5
FN8-62891-00	C- 7	EW2-67250-00	D- 5	FJO-67840-00	C-14	6M6-8552A-00-98	C- 4	90119-10906	B-14	90387-06M60	B-15
FN8-62892-00	C- 7	EVO-67252-02	D- 4	FJO-67841-00	C-14	6M6-8552E-00	C- 4	90149-03930	D- 4	90387-06M72	B- 9
FN8-6378C-00	C-12	EW2-67255-00	D- 5	EVO-67856-00	C-15	6M6-85520-00	C- 2	90149-03989	D- 7	90387-06912	D- 3
FJO-63850-30	C-12	EW2-67256-00	D- 5	EVO-67856-30	C-15	6M6-85533-00	C- 2	90149-05959	D- 5	90387-08M06	B-14
FN8-6412B-30	C-14	EW2-67257-00	D- 5	FJO-67856-40	C- 6	6M6-85540-01	C- 4	90149-05970	C- 7	90387-08M10	B- 2
FN8-64121-40	D- 8	EW2-67258-00	D- 5	EW2-68156-00	C- 5	6R7-85550-00	C- 2	90149-05977	C-12	90387-08904	C-15
	D- 9	EW2-67259-00	D- 5	EW2-68211-00	C- 6	6R7-85560-00	C- 2	90149-05990	D- 7	90430-06M03	B-13
FN8-64121-50	D- 8	EVO-67267-00	D- 4	EVO-68218-04	C- 6	6TL-85570-00	C- 4	90149-06967	C- 9		D-10
	D- 9	EVO-67324-00	B- 3	EVO-68221-30	C- 6	6M6-85580-00	C- 2	90149-06968	C- 9	90430-08020	B-10
GA7-6416B-20	D- 9	EVO-67354-00-01	B- 3	FK7-68310-06	D- 5	90105-05M46	B- 6		C- 9		D-10
GDO-6416C-00	D- 8	EVO-67354-00-03	B- 3	FK7-68312-02	D- 5	90105-05M53	B- 6	90149-06971	C- 9	90430-13909	C- 8
GDO-6416C-10	D- 9	EVO-67354-00-05	B- 3	FK7-68313-01	D- 5	90105-06903	C- 5	90149-06973	C- 9		D- 3
GDO-6416C-20	D- 9	EVO-67354-00-10	B- 3	EW2-68348-00	D- 5	90105-10M45	B-11	90149-06975	C- 9	90445-07M19	B- 2
GA7-6416F-20	D- 9	EVO-67354-00-20	B- 3	FN8-68838-00	B-15	90105-10M49	B-11	90149-06976	C- 9	90445-09M17	B-15
GDO-6416G-10	D- 9	EW2-67354-00-01	B-14	6M6-8132W-00	C- 4	90109-10M44	C- 2	90159-05900	D- 5	90445-09M28	B- 9
FN8-6417L-10	D- 8	EW2-67354-00-03	B-14	6M6-81337-00-EK	C- 2	90109-10M47	C- 2	90159-06901	C- 7	90445-09901	C-14
FN8-6417L-40	D- 9	EW2-67354-00-05	B-14	6R8-81337-00-9M	C- 2	90116-08M14	B- 5		C- 7	90445-10M33	B-12
FN8-64173-50	D- 8	EW2-67354-00-10	B-14	6M6-81365-A0	C- 2	90119-05912	D- 3		C-13	90445-10M48	B- 5
	D- 9	FN8-67559-00	D- 3	6M6-81800-10	C- 3	90119-06M41	B-11	90159-06904	C-12	90445-10M59	B-12
FN8-64173-60	D- 8	FN8-67565-00	D- 3	3A7-81809-00	C- 3	90119-06M70	B-13	90170-22M11	B-12	90445-10M60	B-12
	D- 9	EVO-67569-02	C-12	6M6-81820-00	C- 3	90119-06900	C-12	90179-06926	C- 7	90445-10M61	B-12
GDO-6418G-10	D- 9	FJO-67569-00	C-13	6M6-81826-00	C- 3	90119-06908	B-14	90179-06931	B-14	90445-10M62	B-12
GA7-6418J-20	D- 9	FN8-6759B-11	C- 9	6M6-8183E-00	C- 3		D- 3	90179-08927	C- 7	90445-11M24	B- 9
FJO-64183-M0	D- 9	FN8-6759B-21	C- 9	6M6-81830-00	C- 3	90119-06913	D- 3	90179-10925	B-14	90445-11M27	B- 9
FN8-64183-A0	D- 8	FN8-6759C-11	C- 9	6M6-81840-10	C- 3		D- 6	90190-06014	B-14	90445-11900	C-15
	D- 9	FN8-6759C-21	C-10	11H-81844-00	C- 3	90119-06914	B-14	90201-05925	B-12	90445-14M06	B-10
FN8-64189-00	C-14	FN8-67593-00	C-15	6M6-81844-00	C- 4	90119-06915	B-14	90201-05928	D- 5	90445-14M14	C- 8
GDO-6419B-10	D- 9	FN8-67593-30	D- 2	26H-81847-00	C- 3		B-14	90201-06M02	B-13	90445-14M15	D- 3
GDO-6419C-00	D- 8	EVO-67613-00	C- 8	6M6-81850-00	C- 3	90119-06920	C- 6	90201-065F3	C-14	90445-14M16	C- 8
	D- 9	EW2-67618-00	C- 8	6M6-81921-00	C- 4	90119-06924	C-14	90201-06931	C-13	90445-14M17	D- 3
GA7-6419D-20	D- 9	FN8-6771K-00	C-15	6G1-81941-10	C- 4	90119-06926	D- 6	90201-08M04	B- 2	90445-14M19	C- 8
FN8-64744-00	C-13	FN8-67711-01	C-15	6M6-81952-01	C- 4	90119-08M19	B- 2	90201-24M02	B- 4	90446-07M14	B- 9
FN8-6516C-00	C- 7	FJO-67713-00	C-15	6M6-81960-A0	C- 4	90119-08M55	B- 2	90209-20M20	B-13	90446-07M17	B- 9
FN8-65172-00	C-12	FN8-67714-00	C-15	EVO-82110-77	C- 6	90119-08M69	B- 2	90267-40935	D- 2	90446-07M35	B- 9
FN8-65578-00	C- 7	FN8-67716-00	C-15	6R7-82117-21	C- 5	90119-08M73	B-10	90267-489UE	B-12	90446-07M36	B- 9
EVO-65772-30	C-13	FN8-67751-00	C-14	6TL-82117-00	C- 6	90119-08038	B- 3	90267-489U6	B-12	90446-09904	C-14
EVO-65901-01	D- 8	FJO-67752-00	C-14	6TL-82117-10	C- 6	90119-08903	C-15	90267-489U7	B-12	90446-11M33	B- 9
	D- 9	FN8-67753-00	C-14	6K8-82150-01	C- 4		C-15	90267-489U8	C- 9	90446-11905	C-14
FN8-65910-00	C-12	FJO-67766-00	C-14	6G1-82151-00	C- 4		D- 5	90267-489U9	B-12	90446-12M32	B- 9
EW2-65912-00	C-13	EVO-67767-30	C-15	6TL-82351-00	C- 4		D- 6	90267-489A0	C- 7	90446-14M34	B-10
EW2-65912-30	C-12	FN8-6777-00	C-15	6TL-82352-00	C- 4	90119-08904	B- 3	90269-06916	C-12	90446-20M31	B-10
EW2-65913-00	C-12	FN8-6777-31	C-15	6R7-82361-00	C- 5	90119-08907	B-15	90280-05013	C- 2	90460-11M17	B- 6
	C-13	FN8-67816-00	B-12	6K8-82370-00	C- 4	90119-08916	C-15	90340-08M04	B-10		B-15
EW2-65920-00	C-12	EVO-67817-00	B-12	6K8-82370-11	C- 4		C-15	90380-12M29	B- 2	90460-25M09	C- 6
EW2-67243-00	D- 4	FN8-67831-00	D- 2	6TL-82553-00	C- 5	90119-08925	D- 6		C- 2	90460-64M15	B-11
FN8-67243-00	D- 4	EVO-67832-00	D- 2	6R7-82560-00	C- 5	90119-10M07	B- 2	90386-08006	B- 5	90460-70M16	B-11

NUMERICAL INDEX

PART NO.	GRID NO.	PART NO.	GRID NO.	PART NO.	GRID NO.	PART NO.	GRID NO.	PART NO.	GRID NO.	PART NO.	GRID NO.
90460-90M11	B-11	90601-200U1	C- 6	92990-08600	B- 5	95380-05800	C- 7	97780-60525	C- 4		
90464-06M29	C- 4		C-11		B-10	95380-06700	B-13	97902-04122	C- 2		
90464-10M38	B- 5		D- 4		B-10		C- 3	97902-05125	C- 2		
90465-08M37	B- 9	90601-20006	B-12		C- 3	95380-06800	C- 9	97980-05330	B- 7		
90465-08028	C- 4		C- 6		C- 3		C- 9	98503-06016	C- 4		
90465-11M10	B- 5	90601-20015	D- 3	92990-10200	D- 6		C- 9	98580-03008	D- 5		
	B- 9	90604-80757	D- 3	92995-06100	C- 5	95380-08600	B- 5	98580-04008	C- 2		
	B- 9	90604-80758	D- 3		C- 9	95380-08700	B- 7	98580-04010	B-12		
	B- 9	90604-80759	C- 8	92995-08600	B-14		C- 5	98580-05016	B- 6		
	B-12	90604-80760	C- 8	93101-25M50	B-13	95720-05300	C- 7	98580-05020	C- 8		
	B-12	90654-91004	C-14		D-10		C- 7	98580-05525	D- 5		
	B-12	90669-03003	C- 6	93101-25M52	B-15		C- 8	98580-06016	C- 2		
	C- 4	90699-U1100	D- 4		D-10		C-12	98580-06030	C- 4		
	C- 4	90699-36U02	D- 4	93101-25M53	B-15		C-13	98680-04016	B- 2		
	C- 4	91490-16010	C-15		D-10	95720-06300	C-12	98780-05020	C- 7		
	C- 6	91790-05040	C-15	93101-36M46	B- 4		C-12		C-12		
	C-14	92990-04600	B-12		D-10		C-13	99231-00160	D- 8		
	C-14	92990-05200	C- 8	93102-25M34	B-13		C-14		D- 9		
	C-15		C-12		D-10		D- 4				
	B- 9		C-13	93102-36M33	B- 4		D- 6				
90465-11M47	B- 5	92990-05600	B- 6		D-10	95720-08300	C- 8				
90465-12M53	B-10		C-15	93103-32M01	B- 4	95720-10300	D- 6				
90465-13M11	C- 5	92990-06100	C- 3		D-10	97013-06035	B- 5				
	C- 8		C- 9	93210-17MA4	B-15	97013-08025	B-10				
	C- 8		C- 9		D-10	97313-06016	B-10				
	D- 3	92990-06200	C- 9	93210-30M31	B- 4	97313-06020	B- 5				
	D- 3		C- 9		B- 4	97313-06025	B-10				
	D- 3		C- 9		D-10	97313-08035	B-10				
90467-06016	B- 2		C-12	93210-46M16	B-13		C- 3				
90467-08M10	C- 6		C-12		D-10	97313-08040	C- 3				
90467-11019	C-14	92990-06600	B- 5	93303-30601	B- 4	97395-06012	B- 9				
90467-11044	C-15		B- 5	93305-20500	B-15		B-13				
90467-13M13	B-10		B- 5	93306-20500	B-13	97395-06016	B-11				
90480-06M43	C- 4		B- 9	93306-307U1	B- 4		B-13				
90480-06M46	B-15		B- 9	93310-320U3	B- 4		C- 5				
90480-19906	C-15		B-10	93430-47M04	B-15	97395-06025	C- 2				
90501-14M73	C- 3		B-10	93440-80023	B- 4	97395-06030	D- 5				
90560-22281	D- 5		B-11	93450-21053	B- 4	97395-06035	B- 9				
90600-70069	C- 7		B-13	93603-10049	B- 2	97395-06045	B- 5				
90600-90004	D- 3		B-13	93604-07141	B- 2	97395-08018	B-14				
90600-90005	D- 3		C- 2	93606-07M17	B-15	97513-10535	B- 3				
90600-91736	B-12		C- 2	93606-09M19	B-13	97513-10570	B- 2				
90601-11062	C-15		C- 3	93606-12019	B- 2	97513-10580	B- 3				
90601-152U3	B-15		C- 4		B-13	97595-06225	B-15				
90601-155U4	C-15		C- 4		B-13	97780-40112	C-11				
90601-162U5	C-15	92990-08100	B- 7		C- 2	97780-50114	C- 8				
90601-168U7	C- 7	92990-08200	C- 5	94701-00041	C- 5	97780-50116	C-11				
	D- 3		C- 8	94702-00195	C- 5	97780-60520	B-14				

