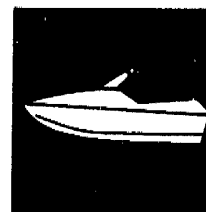


YAMAHA



PARTS CATALOGUE

WaveBlaster **WB700** (GR76)

YAMAHA
GENUINE
Parts & Accessories

27GR7-300E1

A1

FOREWORD

This Parts Catalogue is related to the parts for the model(s) in the below frame. When you are ordering replacement parts, please refer to this Parts Catalogue and quote both part numbers and part names correctly.

WB700 (GR76)

1. Modifications or additions which have been made after issue of the Parts Catalogue will be announced in the Yamaha Parts News. It is advisable that you make necessary corrections to the Parts Catalogue according to the Yamaha Parts News.

2. Abbreviations

The following abbreviations are used in this Parts Catalogue.

- "UR" Use specified parts number.
- "UN" Use as many as needed.
- "AP" Alternate Parts
- "LM" Local Made (Parts need to be ordered locally)
- "F#" Frame No. (Applicable machine No.)

3. Parts, which are to be supplied in an assembly, are listed with a dot (.) in front of the part name as shown below.

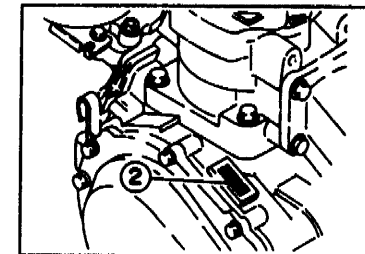
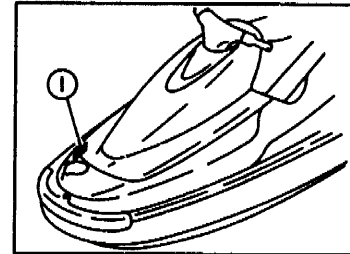
The numeral appearing to the right of each component part indicates the quantity of parts for each assembly unit.

EXAMPLE

PART NO.	DESCRIPTION	Q'TY	REMARKS
EU0-62280-00	DRAIN PLUG ASSY	2	
EU0-62282-00	. PLUG, DRAIN	1	

4. Applicable Serial No. and Color Code

① Hull Serial No.	GR7-910306	~
② Engine Serial No.	64U-002597	~



Color Code	Color Name	Abbreviation
GA3C	WHITE COAT 2	WC2

5. Note that the illustrations are for reference in finding parts numbers, not to be used for assembling. When assembling, please use the applicable service manual.

6. A part with "YMUS" in the remarks column can be obtained from YMUS(USA) and not from YAMAHA MOTOR CO.,LTD (JAPAN).

EXAMPLE

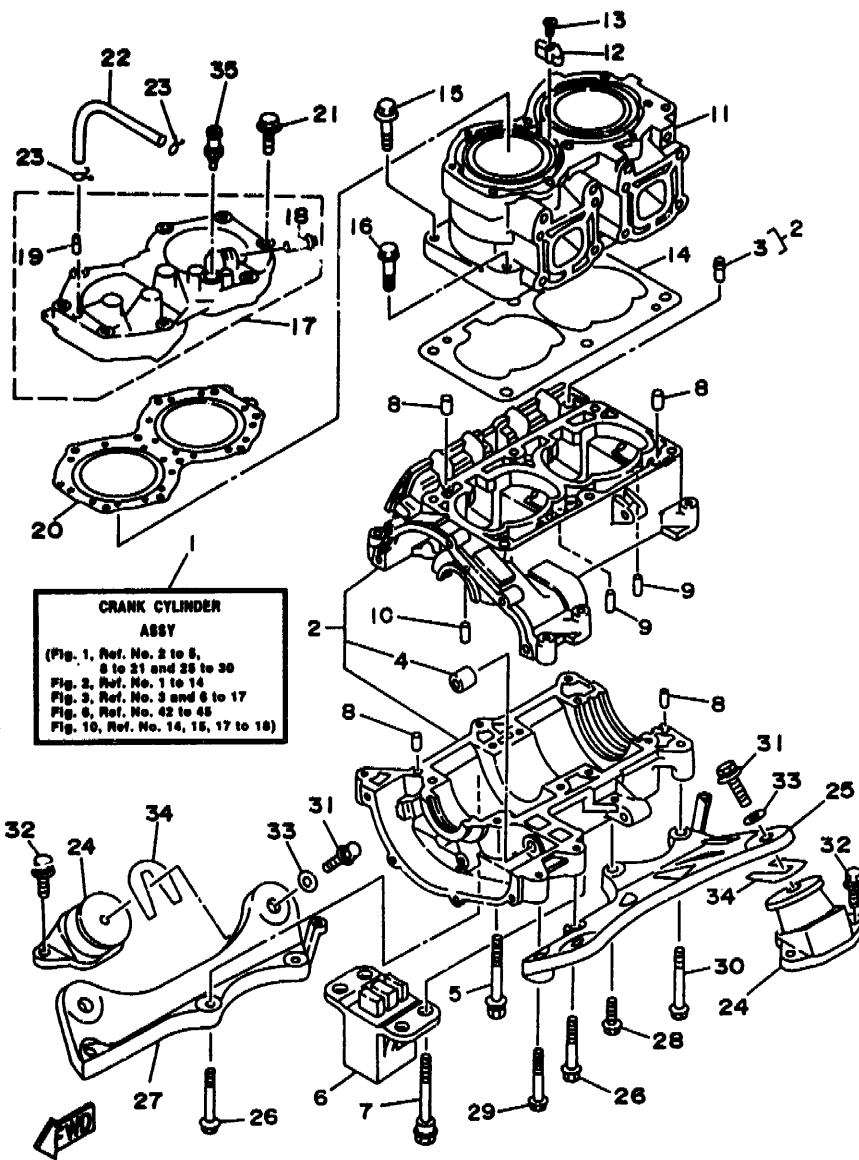
PART NO.	DESCRIPTION	QTY	REMARKS
EW2-U5160-00	ENGINE HATCH COMP.	1	YMUS
90601-168U7	BAND, HOSE	1	YMUS

ADDRESS:

YAMAHA MOTOR CORPORATION U.S.A.
PARTS & ACCESSORY DIV.
6555 KATELLA AVENUE
CYPRESS, CALIFORNIA 90630, U.S.A.

CONTENTS

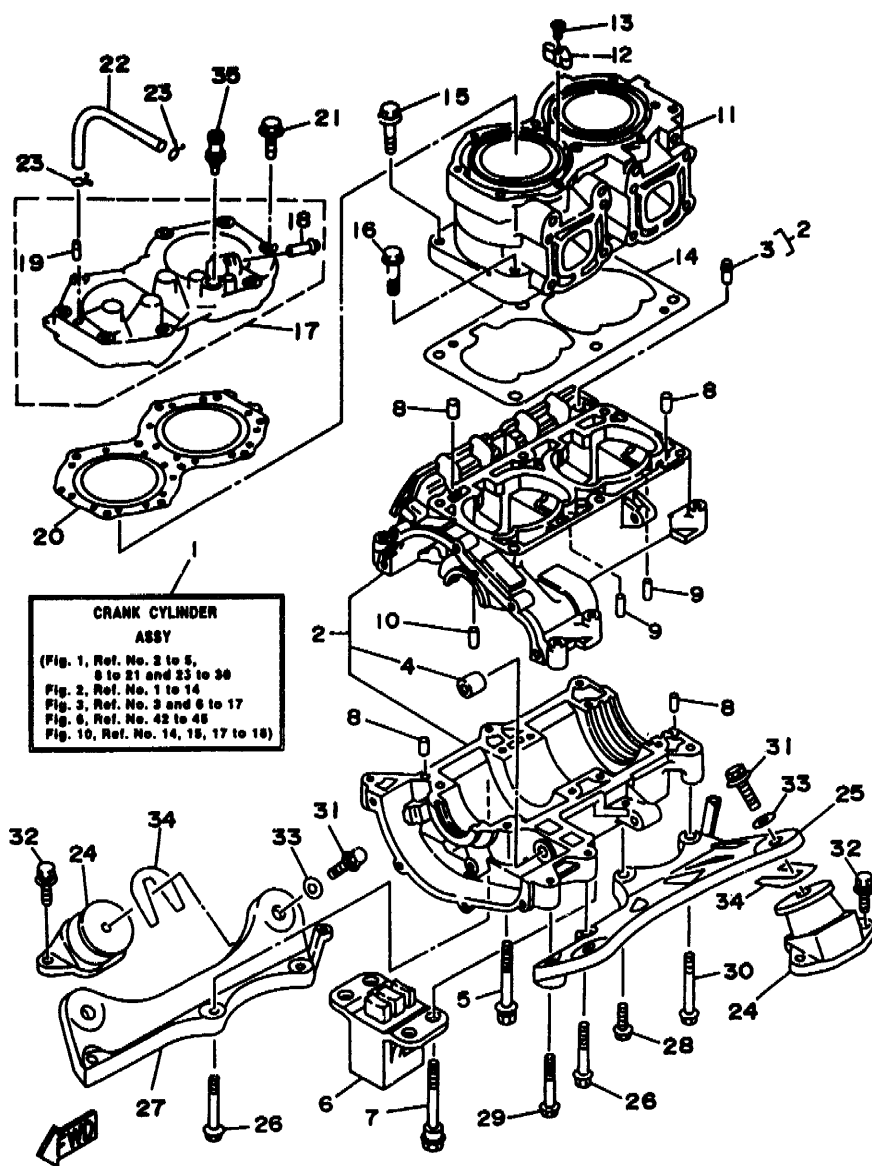
FIG. 1	CYLINDER. CRANKCASE	A4, A5	FIG. 21	CONTROL CABLE	E7
FIG. 2	CRANKSHAFT. PISTON	A6	FIG. 22	STEERING 1	F1, F2
FIG. 3	INTAKE	A7, B1	FIG. 23	STEERING 2	F3
FIG. 4	CARBURETOR	B2, B3	FIG. 24	GRAPHIC. TOOL	F4
FIG. 5	OIL PUMP	B4	FIG. 25	IMPORTANT LABELS	F5, F6
FIG. 6	EXHAUST 1	B5, B6	FIG. 26	REPAIR KIT 1	F7
FIG. 7	FUEL	B7	FIG. 27	REPAIR KIT 2	G1
FIG. 8	JET UNIT 1	C1, C2	FIG. 28	NUMERICAL INDEX	
FIG. 9	JET UNIT 2	C3			
FIG. 10	GENERATOR	C4			
FIG. 11	STARTING MOTOR	C5			
FIG. 12	ELECTRICAL 1	C6, C7			
FIG. 13	ELECTRICAL 2	D1			
FIG. 14	ENGINE HATCH	D2, D3			
FIG. 15	HULL. DECK	D4, D5			
FIG. 16	GUNWALE. MAT	D6, D7			
FIG. 17	SEAT. UNDER LOCKER	E1, E2			
FIG. 18	OIL TANK	E3			
FIG. 19	FUEL TANK	E4, E5			
FIG. 20	EXHAUST 2	E6			



GR71100-6010

FIG. 1 CYLINDER. CRANKCASE

REF. NO.	PART NO.	DESCRIPTION	Q'TY	REMARKS
1	64U-W0090-00-4D	CRANK CYLINDER ASSY	1	OIL INJECTION
2	62T-15100-00-94	CRANKCASE ASSY	1	
3	62T-14251-0C	.NIPPLE	1	
4	90380-12M29	.BUSH, SOLID	1	
5	90119-08M55	BOLT, WITH WASHER	4	
6	62E-44532-00	STOPPER, UPPER MOUNT	1	
7	90109-08M56	BOLT	4	
8	93606-12019	PIN, DOWEL	4	
9	93603-10049	PIN, DOWEL	4	
10	93604-07141	PIN, DOWEL	1	
11	61X-11311-01-94	CYLINDER 1	1	
12	6E5-1132E-00	ANODE	1	
13	98780-04015	SCREW, FLAT HEAD	1	
14	6M6-11351-A2	GASKET, CYLINDER	1	
15	90119-10M56	BOLT, WITH WASHER	4	
16	90119-10M07	BOLT, WITH WASHER	2	
17	64U-11111-00-94	HEAD, CYLINDER 1	1	
18	6K8-51129-00	.NIPPLE	1	
19	6R7-14485-00	.PIPE, JOINT	1	
20	62T-11181-00	GASKET, CYLINDER HEAD 1	1	
21	90119-08M19	BOLT, WITH WASHER	10	
22	90445-07M19	HOSE	1	
23	90467-06016	CLIP	2	
24	62E-44517-A0-5B	MOUNT RUBBER	4	
25	6R7-21415-01-94	BRACKET, FRONT UPPER 1	1	
26	90119-10M02	BOLT, WITH WASHER	4	
27	6R7-21425-00-94	BRACKET, REAR UPPER 1	1	
28	90119-10M00	BOLT, WITH WASHER	1	



GR71100-6010

FIG. 1 CYLINDER. CRANKCASE

REF. NO.	PART NO.	DESCRIPTION	Q'TY	REMARKS
29	90119-10M01	BOLT, WITH WASHER	1	
30	90119-10M03	BOLT, WITH WASHER	1	
31	90119-08904	BOLT, WITH WASHER	4	
32	90119-08038	BOLT, WITH WASHER	8	
33	EU0-67324-00	PLATE	4	
34	EU0-67354-00-01	SHIM (T=0.1)	10	UR
	EU0-67354-00-02	SHIM	10	UR
	EU0-67354-00-03	SHIM (T=0.3)	10	UR
	EU0-67354-00-05	SHIM (T=0.5)	10	UR
	EU0-67354-00-10	SHIM (T=1.0)	10	UR
	EU0-67354-00-20	SHIM (T=2.0)	10	UR
35	6E0-28193-00-94	PLUG, WATER CHECK	1	UR EXCEPT JAPAN
	626-28193-01-94	PLUG, WATER CHECK	1	UR JAPAN

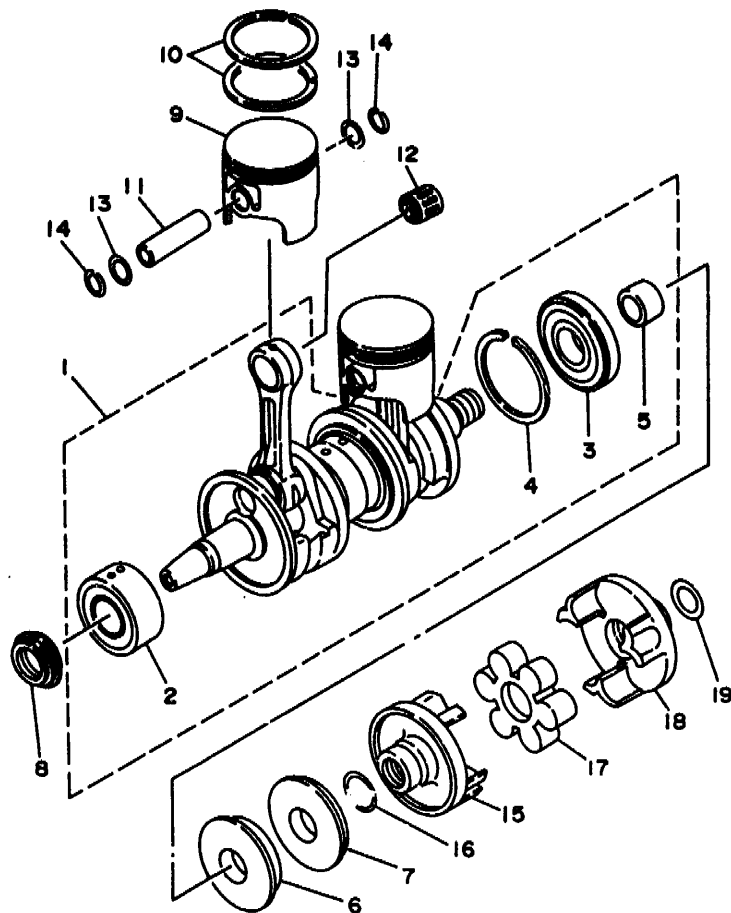


FIG. 2 CRANKSHAFT. PISTON

REF. NO.	PART NO.	DESCRIPTION	Q'TY	REMARKS
1	61X-11400-03	CRANKSHAFT ASSY	1	
2	93305-30601	.BEARING	1	
3	93306-307U3	.BEARING	1	
4	93440-80023	.CIRCLIP	1	
5	62T-45526-00	.COLLAR, DRIVE SHAFT	1	
6	93102-36M33	OIL SEAL	1	
7	93101-36M46	OIL SEAL	1	
8	93103-32M01	OIL SEAL	1	
9	61X-11631-00-93	PISTON (STD)	2	
	61X-11635-00	PISTON (0.25MM O/S)	2	AP
	61X-11636-00	PISTON (0.50MM O/S)	2	AP
10	61X-11603-00	PISTON RING SET (STD)	4	
	61X-11604-00	PISTON RING SET (0.25MM O/S)	2	AP
	61X-11605-00	PISTON RING SET (0.50MM O/S)	2	AP
11	61X-11633-00	PIN, PISTON	2	
12	93310-320U2	BEARING, CYLINDRICAL	2	
13	90201-20M04	WASHER, PLATE	4	
14	93450-21053	CIRCLIP	4	
15	6M6-45813-31-9M	FLANGE, COUPLING	1	
16	62T-45127-00	SEAL	1	
17	61X-4581J-00	RUBBER SHAFT COUPLING	1	
18	6M6-45813-21-9M	FLANGE, COUPLING	1	
19	90201-24M02	WASHER, PLATE	1	



GH1D200-6020

A6

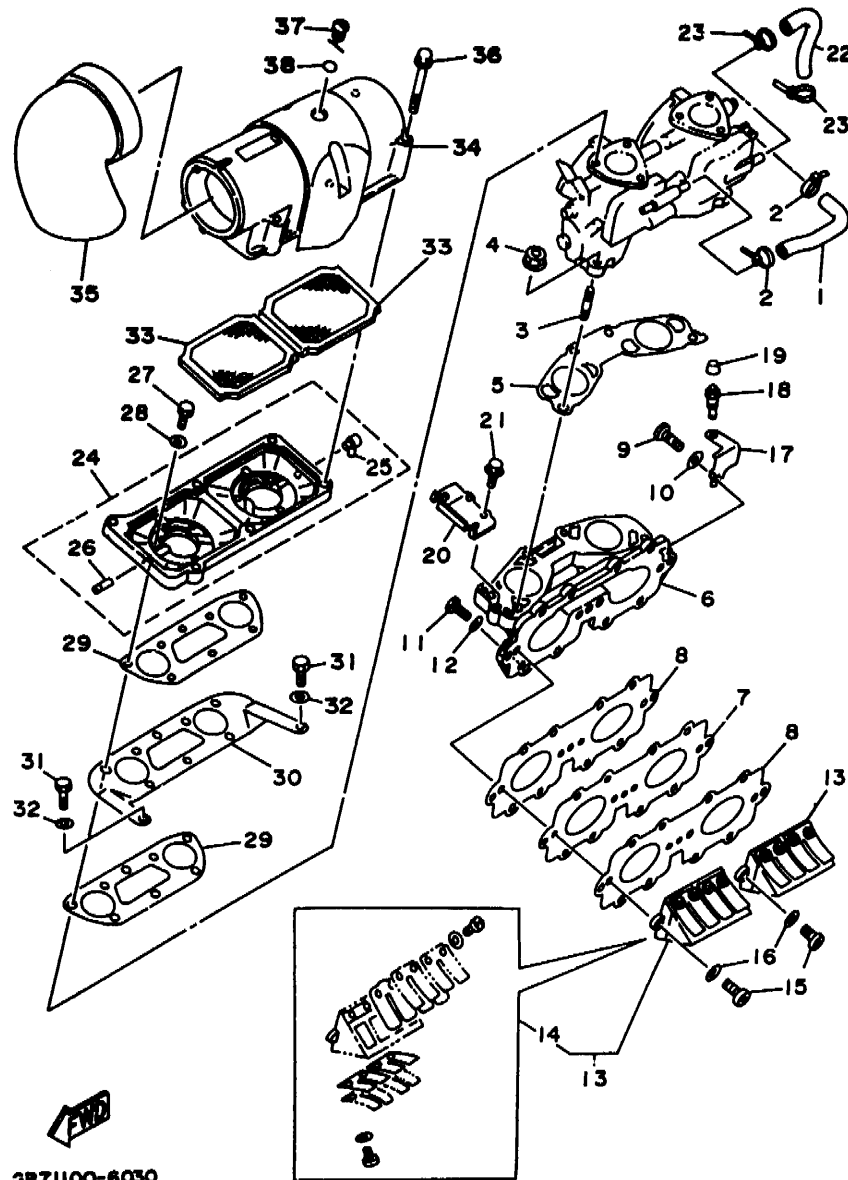
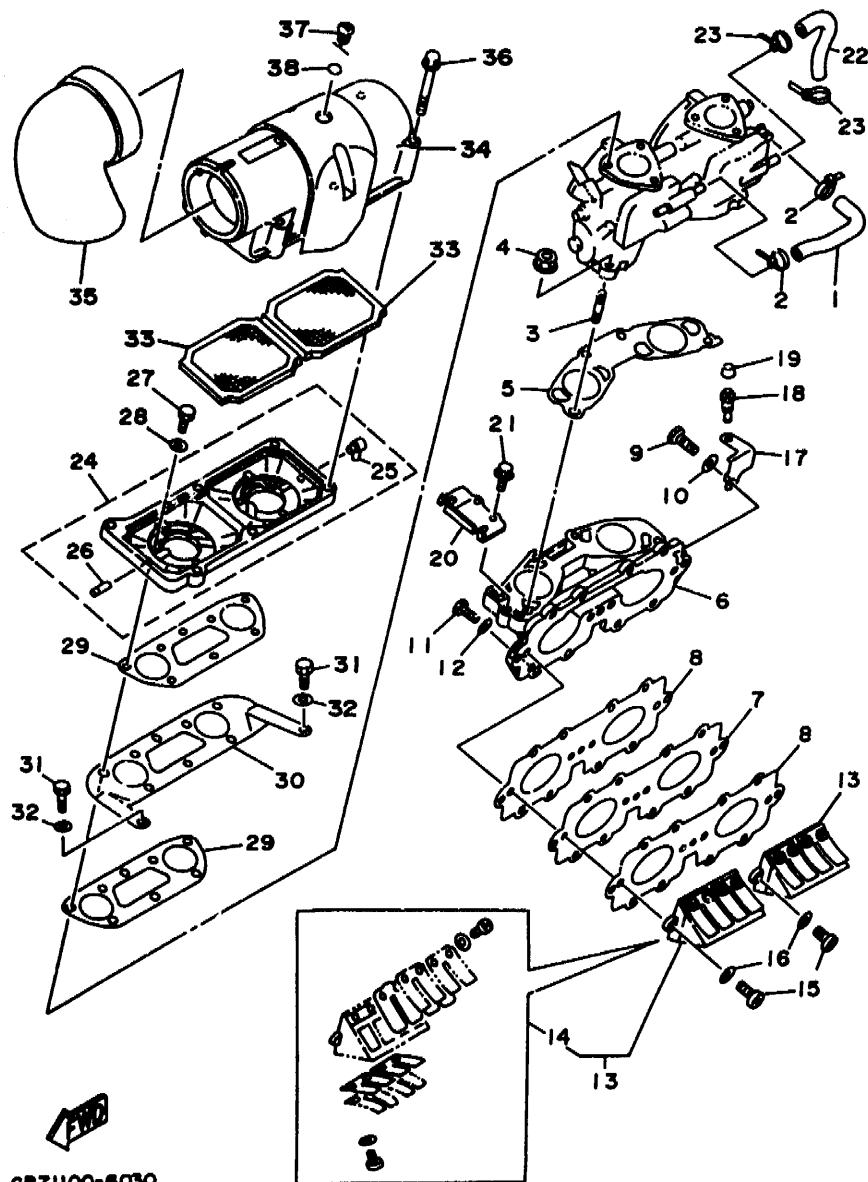


FIG. 3 INTAKE

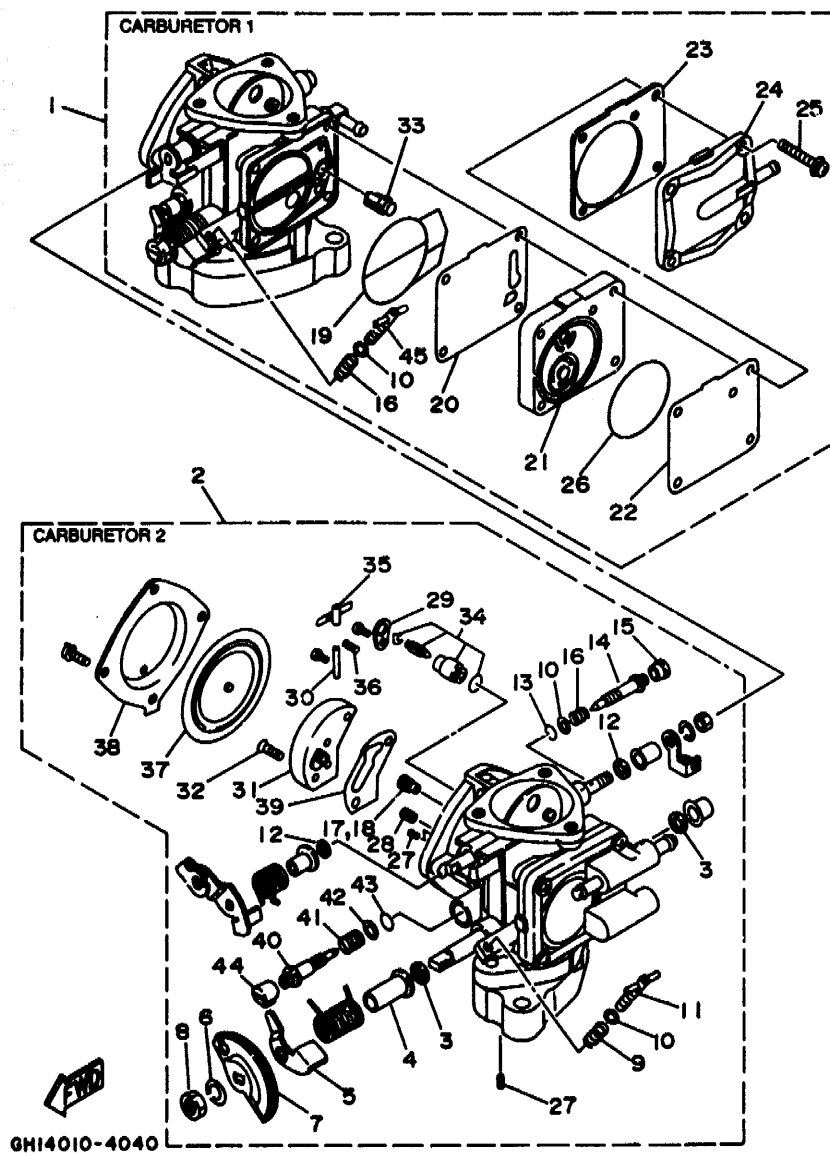
REF. NO.	PART NO.	DESCRIPTION	Q'TY	REMARKS
1	62T-24313-00	PIPE 3	1	
2	90465-11M10	CLAMP	2	
3	90116-08M55	BOLT, STUD	4	
4	90179-08M15	NUT	4	
5	62T-13556-00	GASKET, MANIFOLD	1	
6	62T-13555-00-94	MANIFOLD, INTAKE	1	
7	62T-13624-00	PLATE, REED VALVE	1	
8	62T-13566-00	GASKET	2	
9	97013-06035	BOLT	3	
10	92903-06600	WASHER, PLATE	3	
11	97013-06025	BOLT	8	
12	92903-06600	WASHER, PLATE	8	
13	62T-13610-00	REED VALVE ASSY	2	
14	62T-W0004-00	.REED SET	1	
15	97880-05016	SCREW, PAN HEAD	4	
16	92990-05600	WASHER, PLATE	4	
17	62T-14243-00	PLATE	1	
18	61L-5169A-00	NIPPLE, GREASE	1	
19	663-45119-00	CAP, GREASE NIPPLE	1	
20	62T-14527-01	PLATE	1	
21	97513-06216	BOLT, WITH WASHER	2	
22	62T-24314-00	PIPE 4	1	
23	90465-11M10	CLAMP	2	
24	62T-14284-01-98	COVER, CARBURETOR 2	1	
25	6E5-11372-00	.NIPPLE, HOSE	1	
26	6H1-14485-00	.PIPE, JOINT	1	
27	97013-06020	BOLT	6	
28	92903-06600	WASHER, PLATE	6	



GR71100-6030

FIG. 3 INTAKE

REF. NO.	PART NO.	DESCRIPTION	Q'TY	REMARKS
29	62T-13674-00	GASKET, AIR COOLER COVER 1	2	
30	62T-14255-00	PLATE	1	
31	97013-06012	BOLT	2	
32	92903-06600	WASHER, PLATE	2	
33	62T-14451-00	ELEMENT, AIR CLEANER	2	
34	62T-14283-00	COVER, CARBURETOR 1	1	
35	62T-14419-00	PIPE	1	
36	90119-05M02	BOLT, WITH WASHER	6	
37	62T-14435-00	GROMMET	1	
38	93210-13M63	O-RING	1	



GH14010-4040

FIG. 4 CARBURETOR

REF. NO.	PART NO.	DESCRIPTION	Q'TY	REMARKS
1	64U-14301-00	CARBURETOR ASSY 1	1	
2	64U-14302-00	CARBURETOR ASSY 2	1	
3	6R7-14596-01	.WASHER	4	
4	6K8-14534-10	.COLLAR	2	
5	6K8-14926-10	.BRACKET, THROTTLE 1	1	CARBURETOR 2
6	92990-08100	.WASHER, SPRING	2	
7	6K8-14930-00	.THROTTLE SHAFT ASSY	1	CARBURETOR 2
8	95380-08700	.NUT	2	
9	6K8-14531-00	.SPRING, ADJUST SCREW	1	CARBURETOR 2
10	6K8-14559-00	.WASHER	4	
11	6M6-14521-00	.SCREW, ADJUST	1	CARBURETOR 2
12	6K8-14597-11	.WASHER	4	
13	6K8-14562-00	.O-RING	2	
14	63M-14946-00	.METERING NEEDLE	2	
15	6K8-14471-10	.CAP, CARBURETOR	2	
16	6K8-14531-00	.SPRING, ADJUST SCREW	3	
17	3G2-14231-26	.JET, MAIN (#130)	1	CARBURETOR 1
18	3G2-14231-26	.JET, MAIN (#130)	1	CARBURETOR 2
19	6K8-14564-00	.O-RING	2	CARBURETOR 1
20	6K8-24411-20	.DIAPHRAGM	1	CARBURETOR 1
21	6M6-24413-00	.BODY 2	1	CARBURETOR 1
22	6K8-24421-10	.VALVE, CHECK	1	CARBURETOR 1
23	6K8-24431-20	.GASKET, FUEL PUMP 1	1	CARBURETOR 1
24	6K8-24452-10	.COVER	1	CARBURETOR 1
25	97980-05330	.SCREW, WITH WASHER	4	CARBURETOR 1
26	6K8-14563-00	.O-RING	1	CARBURETOR 1
27	6K8-14521-10	.SCREW	4	
28	830-14231-14	.JET, MAIN (#70)	2	

B2

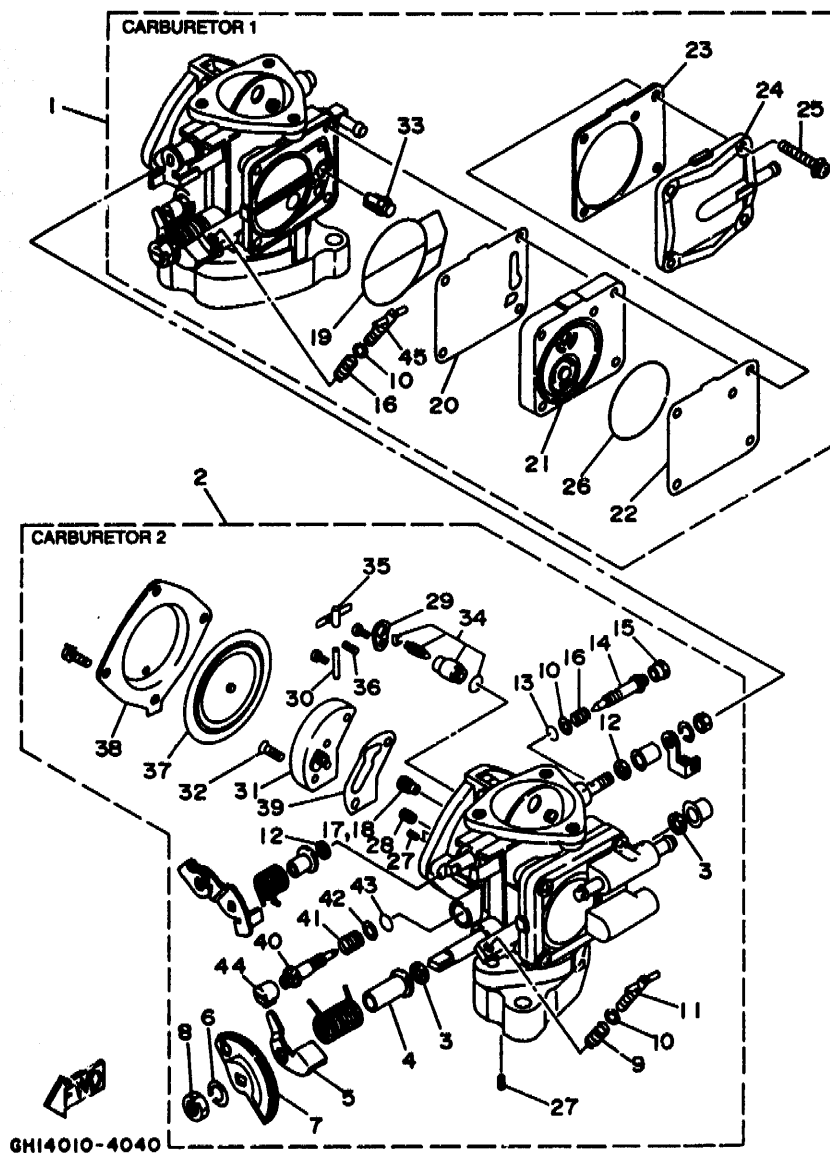
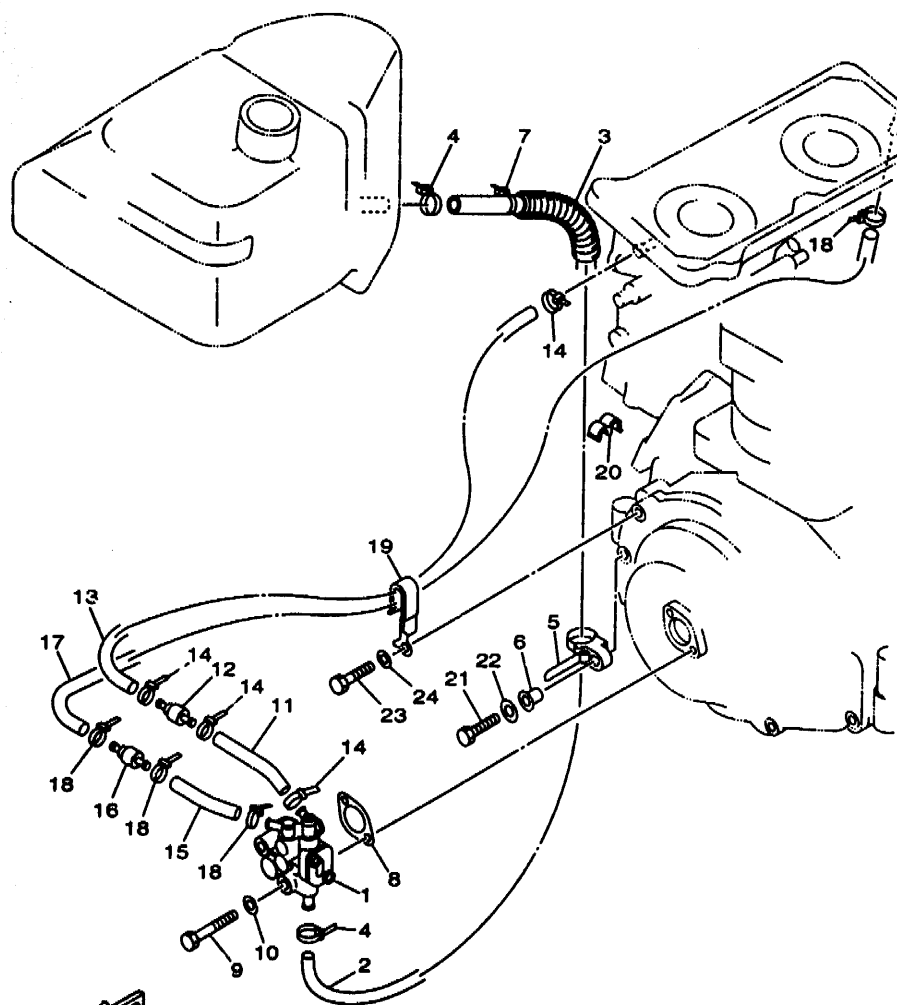


FIG. 4 CARBURETOR

REF. NO.	PART NO.	DESCRIPTION	Q'TY	REMARKS
29	6K8-14527-11	.PLATE	2	
30	6K8-14579-00	.PIN, FLOAT	2	
31	6R7-24412-01	.BODY 1	2	
32	6K8-14523-11	.SCREW, STOP	4	
33	6R7-14569-00	.STRAINER	2	
34	61X-14916-15	.NEEDLE	2	
35	6K8-14547-01	.ARM, FLOAT	2	
36	6R7-14253-00	.SPRING	2	
37	6R7-14541-00	.DIAPHRAGM, PUMP	2	
38	6R7-14542-00	.BODY, PUMP 1	2	
39	6K8-14536-11	.GASKET	2	
40	63M-14923-00	.SCREW, PILOT	2	
41	6K8-14589-00	.SPRING	2	
42	6K8-14537-00	.GASKET	2	
43	583-14561-00	.O-RING	2	
44	6K8-14481-10	.CAP, CARBURETOR	2	
45	6K8-14521-00	.SCREW, ADJUST	1	CARBURETOR 1



GR76100-7050

FIG. 5 OIL PUMP

REF. NO.	PART NO.	DESCRIPTION	Q'TY	REMARKS
1	61X-13200-10	OIL INJECTION PUMP ASSY	1	
2	90445-11M37	HOSE	1	
3	90446-17M11	HOSE	1	
4	90465-11M10	CLAMP	2	
5	90465-12M53	CLAMP	1	
6	90387-06M05	COLLAR	1	
7	96465-13M11	CLAMP	1	
8	6R8-13116-A0	GASKET, PUMP CASE	1	
9	97095-06035	BOLT	2	
10	92995-06600	WASHER	2	
11	90446-07M14	HOSE	1	
12	6R3-13183-00	VALVE, CHECK	1	
13	90446-07M18	HOSE	1	
14	90465-11M10	CLAMP	4	
15	90445-07M17	HOSE	1	
16	6R3-13183-00	VALVE, CHECK	1	
17	90446-07M48	HOSE	1	
18	90465-11M10	CLAMP	4	
19	90465-08M37	CLAMP	1	
20	90464-10M38	CLAMP	2	
21	97095-06035	BOLT	1	
22	92990-06600	WASHER, PLATE	1	
23	97095-06025	BOLT	1	
24	92990-06600	WASHER, PLATE	1	

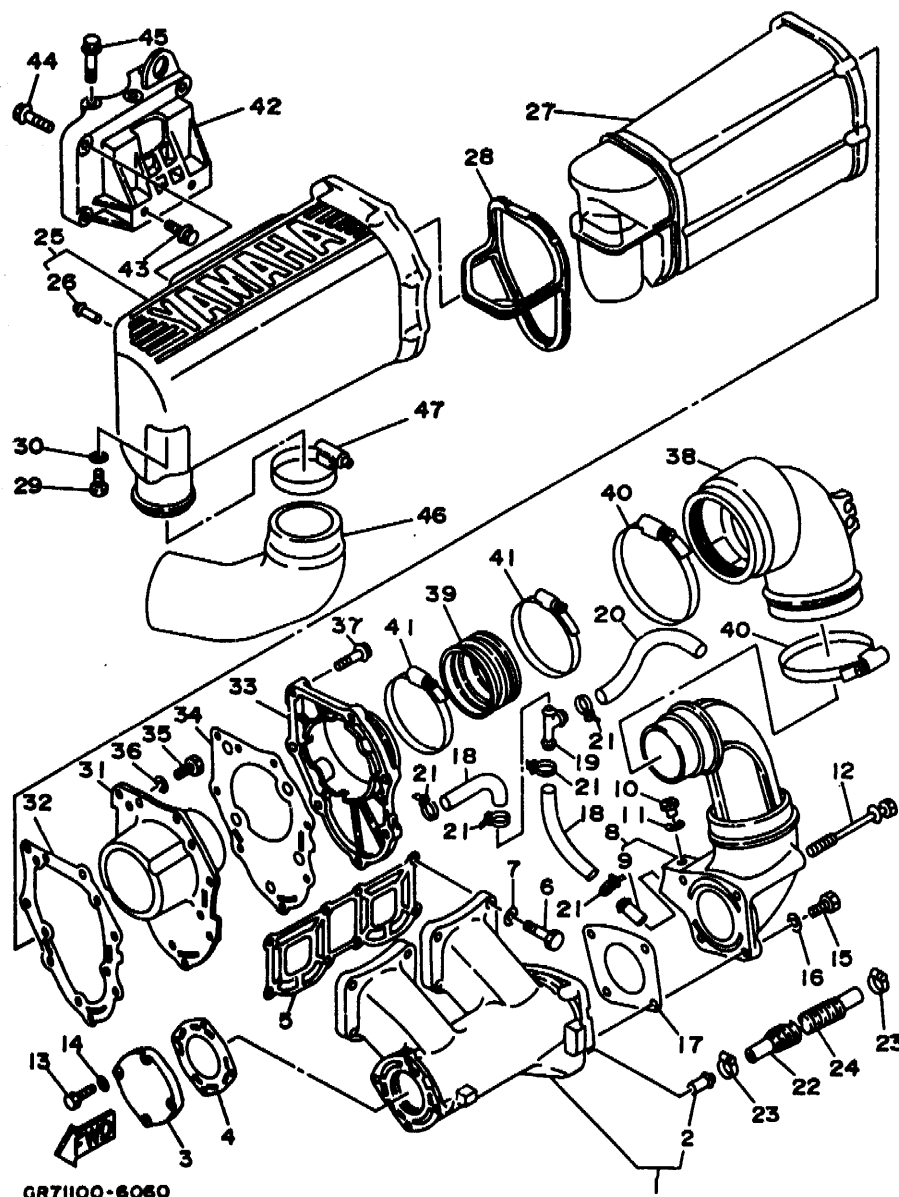


FIG. 6 EXHAUST 1

REF. NO.	PART NO.	DESCRIPTION	Q'TY	REMARKS
1	61X-14711-01-9M	MUFFLER 1	1	
2	6K8-51129-00	.NIPPLE	1	
3	6M6-14718-01-9M	PROTECTOR, MUFFLER 1	1	
4	6M6-14739-A1	GASKET, MUFFLER DAMPER 1	1	
5	61X-14613-A0	GASKET, EXHAUST PIPE	1	
6	97013-08035	BOLT	8	
7	92903-08600	WASHER, PLATE	8	
8	61L-14712-00-9M	RING, JOINT	1	
9	6K8-51129-00	.NIPPLE	1	
10	90340-08M04	PLUG, STRAIGHT SCREW	1	
11	90430-08020	GASKET	1	
12	90119-08M73	BOLT, WITH WASHER	2	
13	97013-06025	BOLT	4	
14	92903-06600	WASHER, PLATE	4	
15	97013-08025	BOLT	2	
16	92903-08600	WASHER, PLATE	2	
17	6R7-14749-A0	GASKET, MUFFLER DAMPER 2	1	
18	90445-14M29	HOSE	2	
19	6E5-24378-00	PIPE, JOINT 4	1	
20	90445-14M22	HOSE	1	
21	90465-11M10	CLAMP	5	
22	90445-14M23	HOSE	1	
23	90450-14M05	HOSE CLAMP ASSY	2	
24	90446-20M13	HOSE	1	
25	6R7-14721-00-9M	MUFFLER 2	1	
26	6R7-14485-00	.PIPE, JOINT	1	
27	6R7-14753-00-9M	SILENCER, EXHAUST	1	
28	6R7-15761-00	SEAL, RUBBER 1	1	

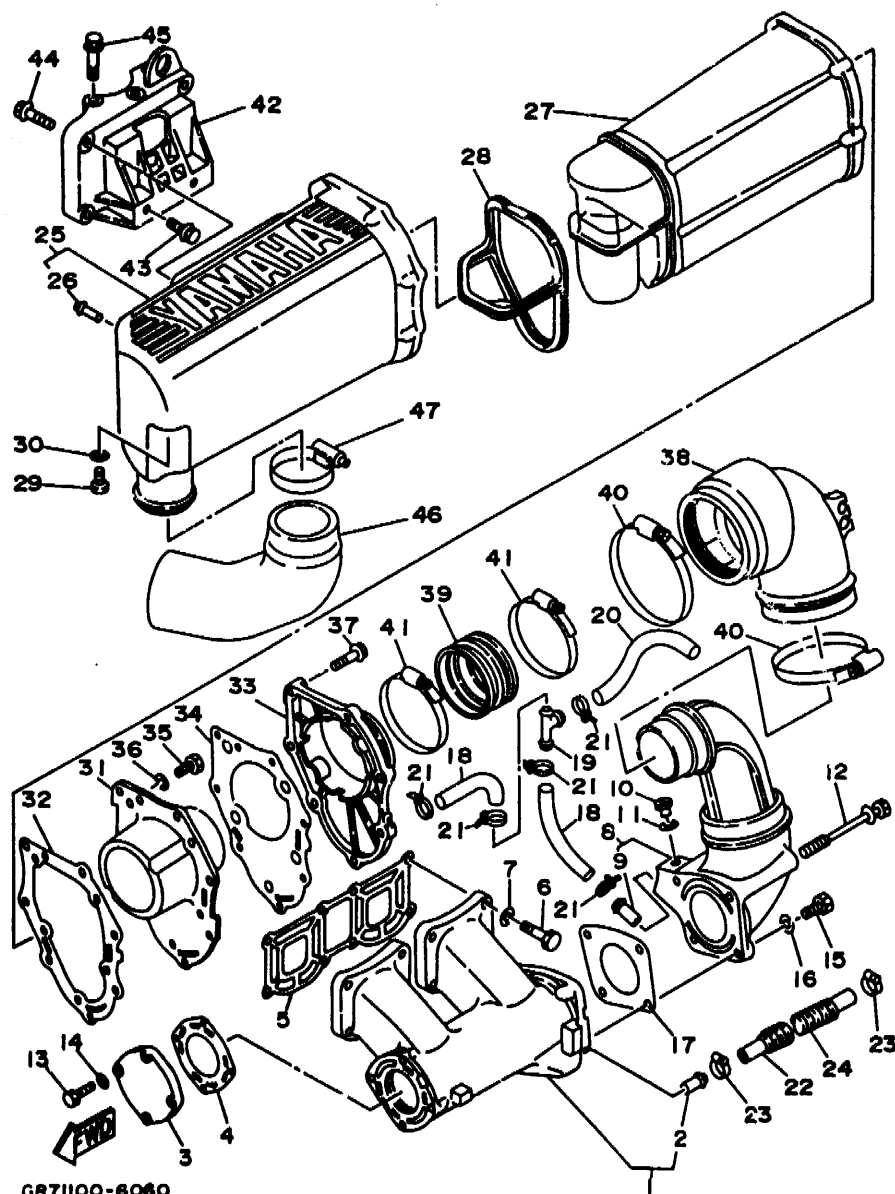
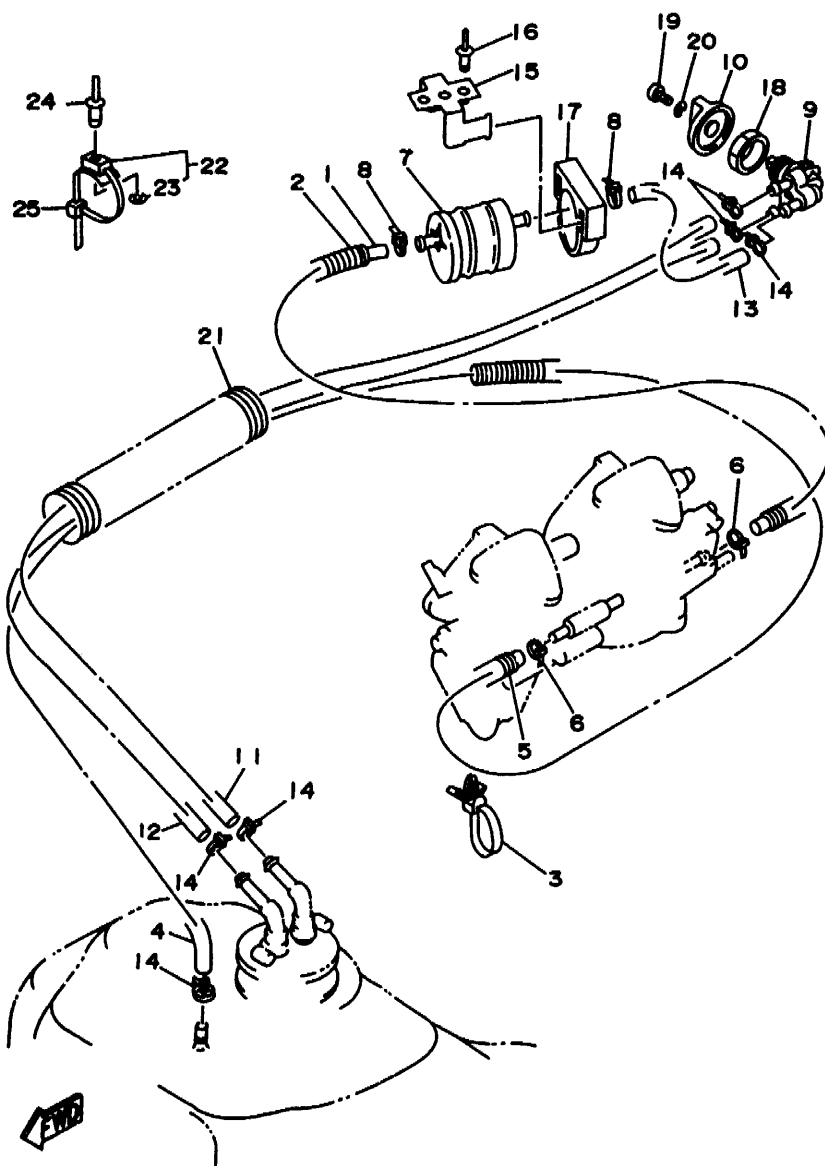


FIG. 6 EXHAUST 1

REF. NO.	PART NO.	DESCRIPTION	Q'TY	REMARKS
29	97013-06020	BOLT	1	
30	92903-06600	WASHER, PLATE	1	
31	6R7-14785-00-9M	DIFFUSER	1	
32	6R7-14755-A0	GASKET, SILENCER	1	
33	6R7-41113-00-9M	OUTER COVER, EXHAUST	1	
34	6R7-41114-A0	GASKET, EXHAUST OUTER COVER	1	
35	97095-06016	BOLT	5	
36	92995-06600	WASHER	5	
37	90119-06MA1	BOLT, WITH WASHER	7	
38	61L-14615-A0	JOINT, EXHAUST 1	1	
39	61L-14625-A0	JOINT, EXHAUST 2	1	
40	90460-90M11	CLAMP, HOSE	2	
41	90460-70M16	CLAMP, HOSE	2	
42	6M6-14771-00-94	STAY, MUFFLER 1	1	
43	90105-10M49	BOLT, WASHER BASED	2	
44	90105-10M45	BOLT, WASHER BASED	3	
45	90119-10M72	BOLT, WITH WASHER	3	
46	62E-14752-00	PIPE, OUTLET	1	
47	90460-64M15	CLAMP, HOSE	1	



GR71100-6070

FIG. 7 FUEL

REF. NO.	PART NO.	DESCRIPTION	Q'TY	REMARKS
1	90445-10M27	HOSE	1	
2	90446-14M64	HOSE	1	
3	90464-08M07	CLAMP	1	
4	90445-10M87	HOSE	1	
5	90446-14M64	HOSE	1	
6	90465-11M10	CLAMP	2	
7	6K8-24560-10	FILTER ASSY	1	
8	90465-11M10	CLAMP	2	
9	6K8-24500-02	FUEL COCK ASSY 1	1	
10	6K8-24524-10	LEVER, COCK	1	
11	90445-10M64	HOSE	1	
12	90445-10M05	HOSE	1	
13	90445-10M86	HOSE	1	
14	90465-11M10	CLAMP	6	
15	EU0-67816-30	BRACKET, FUEL FILTER	1	
16	90267-48940	RIVET, BLIND	2	
17	EU0-67817-00	HOLDER	1	
18	90170-22M11	NUT	1	
19	97880-04010	SCREW, PAN HEAD	1	
20	92990-04600	WASHER, PLATE	1	
21	GH1-6773D-00	TUBE	1	
22	90600-91736	CLAMP	2	
23	90201-05925	WASHER, PLATE	1	
24	90267-48925	RIVET, BLIND	2	
25	90601-20006	NYLON CLIP 1	3	

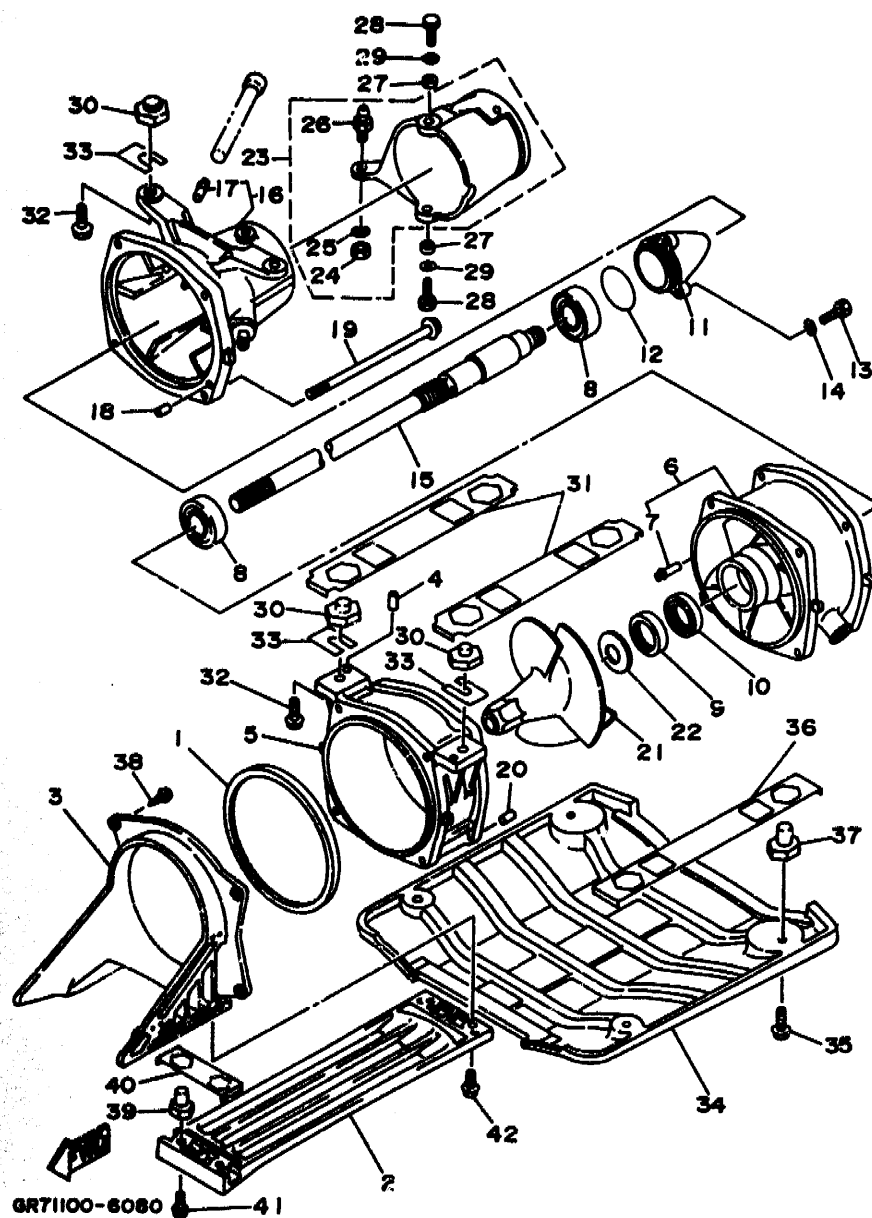


FIG. 8 JET UNIT 1

REF. NO.	PART NO.	DESCRIPTION	Q'TY	REMARKS
1	6R7-51117-01	PACKING	1	
2	6R7-51333-00	SCREEN, INTAKE	1	
3	62E-51311-00	DUCT, INTAKE	1	
4	93606-09M19	PIN, DOWEL	2	
5	6R7-51312-02-94	HOUSING, IMPELLER	1	
6	62T-51315-01-94	DUCT, IMPELLER	1	
7	6K8-51129-00	.NIPPLE	1	
8	93306-205U0	BEARING	2	
9	93102-25M34	OIL SEAL	1	
10	93101-25M50	OIL SEAL	1	
11	62T-51326-00	CAP	1	
12	93210-46M16	O-RING	1	
13	97095-06020	BOLT	3	
14	92990-06600	WASHER, PLATE	3	
15	62E-45511-00	SHAFT, DRIVE	1	
16	61X-51318-01-94	NOZZLE	1	
17	6K8-51129-00	.NIPPLE	2	
18	93606-12019	PIN, DOWEL	1	
19	90119-06M70	BOLT, WITH WASHER	4	
20	93606-12019	PIN, DOWEL	2	
21	62E-51321-00	IMPELLER	1	
22	62T-51348-00	SPACER	1	
23	61L-51313-00	NOZZLE, DEFLECTOR	1	
24	95380-06700	.NUT	1	
25	90201-06M02	.WASHER, PLATE	1	
26	6R7-42316-00	.BOLT, JOINT	1	
27	90387-08M06	COLLAR	2	
28	97095-08018	BOLT	2	

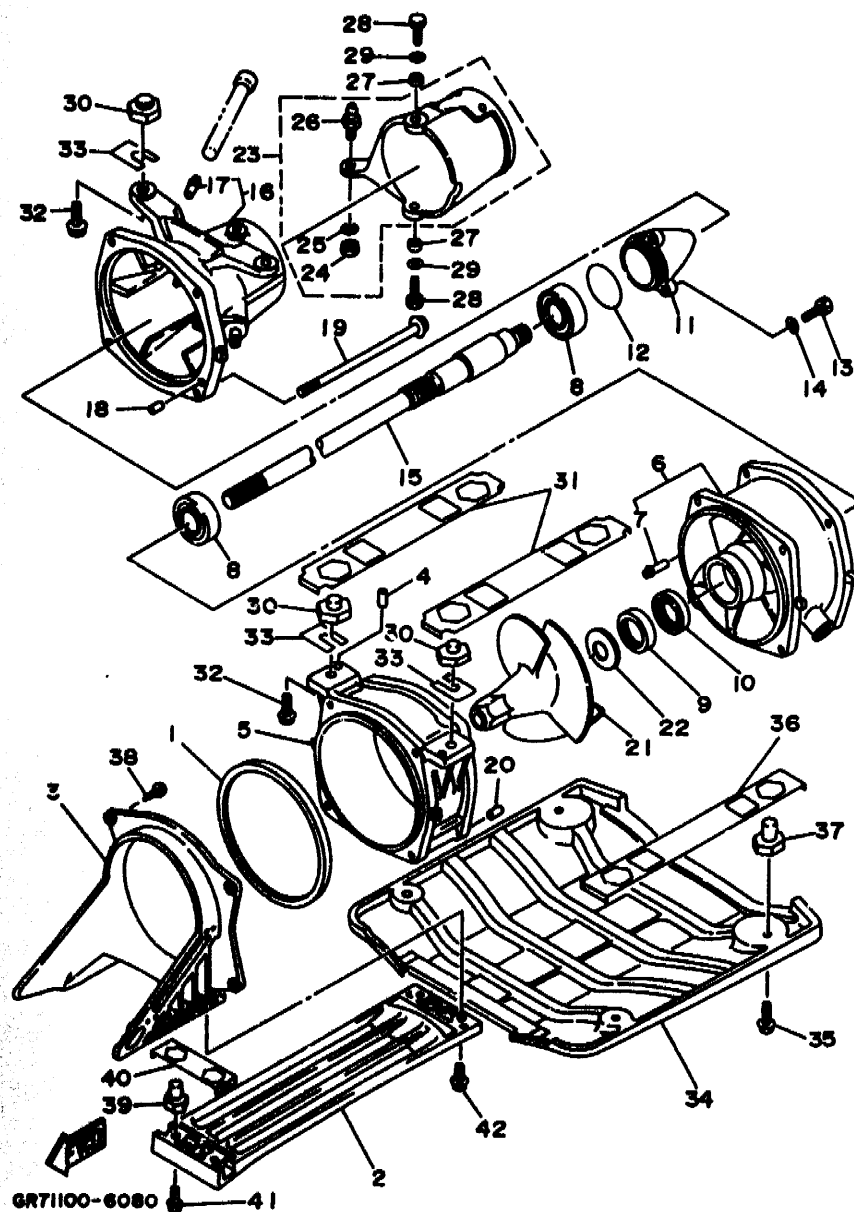
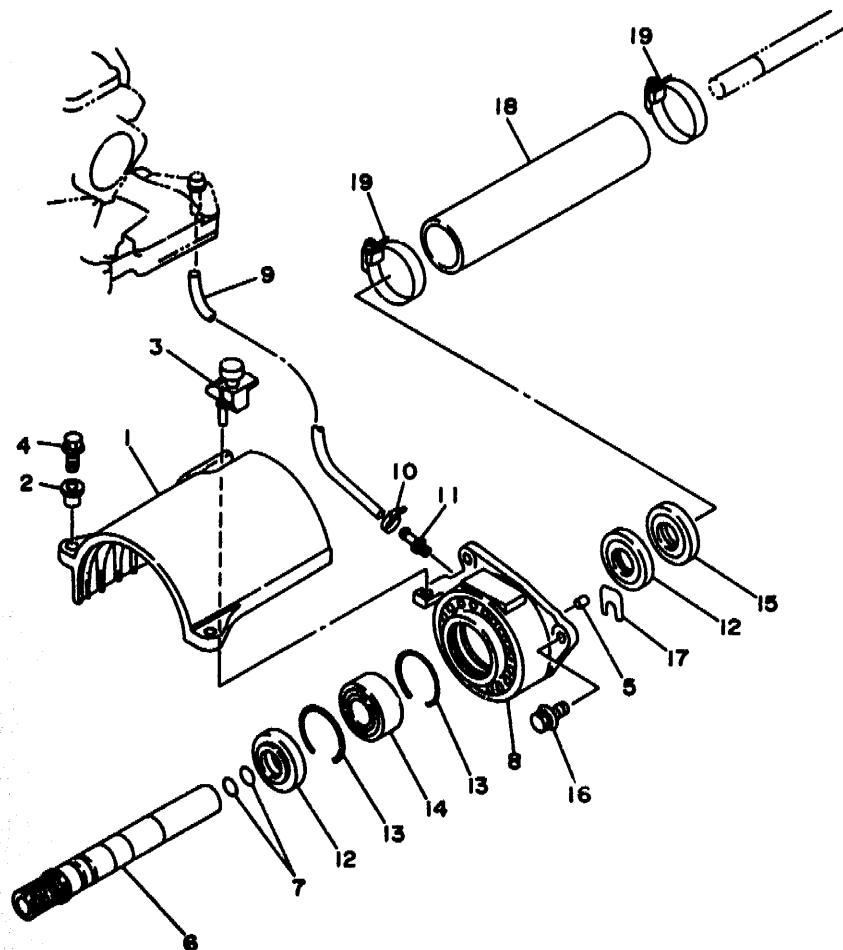


FIG. 8 JET UNIT 1

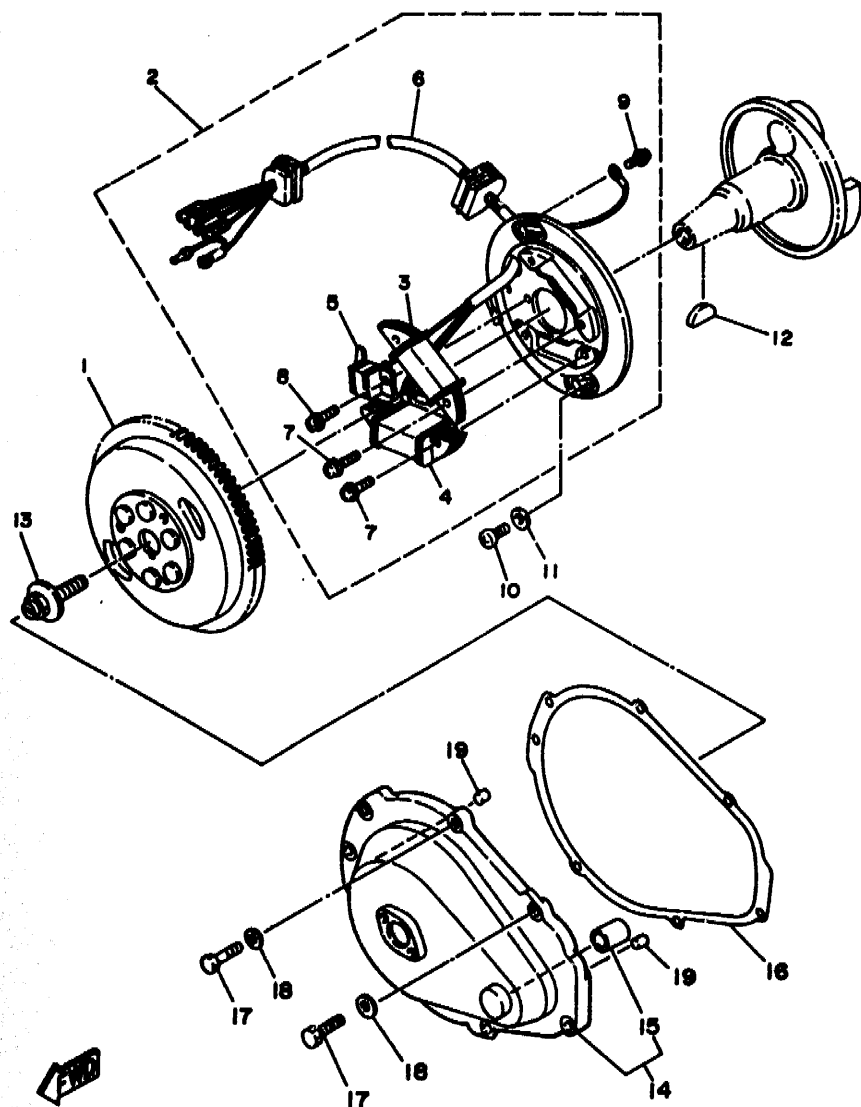
REF. NO.	PART NO.	DESCRIPTION	Q'TY	REMARKS
29	92995-08600	WASHER	2	
30	90179-10954	NUT	4	
31	GA7-6881N-00	HOLDER PLATE 1	2	
32	90119-10906	BOLT, WITH WASHER	4	
33	EW2-67354-00-01	SHIM (T=0.1)	8	UR
	EW2-67354-00-03	SHIM (T=0.3)	8	UR
	EW2-67354-00-05	SHIM (T=0.5)	8	UR
	EW2-67354-00-10	SHIM (T=1.0)	8	UR
34	GA7-62738-00	PLATE 2	1	
35	90119-08932	BOLT, WITH WASHER	4	
36	GA7-6881P-00	HOLDER PLATE 2	2	
37	90179-08953	NUT	4	
38	97780-60520	SCREW, TAPPING	4	
39	90179-06952	NUT	2	
40	GA7-6881R-00	HOLDER PLATE 3	1	
41	90119-06915	BOLT, WITH WASHER	2	
42	90119-06908	BOLT, WITH WASHER	2	



GA76010-5090

FIG. 9 JET UNIT 2

REF. NO.	PART NO.	DESCRIPTION	Q'TY	REMARKS
1	61X-51381-00	COVER	1	
2	90387-06M60	COLLAR	2	
3	90480-06M69	GROMMET	1	
4	97595-06525	BOLT, WITH WASHER	2	
5	93606-12019	PIN, DOWEL	2	
6	62E-51323-00	SHAFT, COUPLOR	1	
7	93210-17MA4	O-RING	2	
8	61X-45332-02-94	HOUSING, BEARING	1	
9	90445-09M17	HOSE	1	
10	90465-11M10	CLAMP	1	
11	61L-45378-00	NIPPLE, HOSE	1	
12	93101-25M55	OIL SEAL	2	
13	93430-47M04	CIRCLIP	2	
14	93305-205U0	BEARING	1	
15	93101-25M56	OIL SEAL	1	
16	90119-08907	BOLT, WITH WASHER	3	
17	GDO-67249-00-05	SHIM (T=0.5)	2	UR
	GDO-67249-00-10	SHIM (T=1.0)	2	UR
18	GA7-6883B-00	PIPE 1	1	
19	90601-15272	NYLON CLIP 1	2	



FN81110-1100

FIG. 10 GENERATOR

REF. NO.	PART NO.	DESCRIPTION	Q'TY	REMARKS
1	62T-85550-00	ROTOR ASSY	1	
2	6R7-85560-10	BASE ASSY	1	
3	62T-85520-00	.COIL, CHARGE	1	
4	62T-85533-00	.COIL, LIGHTING	1	
5	6M6-85580-00	.COIL, PULSER	1	
6	6R7-85515-10	.LEAD WIRE ASSY	1	
7	97902-05125	.SCREW, WITH WASHER	4	
8	97902-04122	.SCREW, WITH WASHER	2	
9	97802-04008	.SCREW, PAN HEAD	1	
10	97880-06016	SCREW, PAN HEAD	2	
11	92990-06600	WASHER, PLATE	2	
12	90280-05013	KEY, WOODRUFF	1	
13	90109-10M47	BOLT	1	
14	6R8-81337-00-9M	COVER, FLYWHEEL	1	
15	90380-12M29	.BUSH, SOLID	1	
16	6M6-81365-A0	GASKET, HOLE COVER	1	
17	97095-06025	BOLT	5	
18	92995-06600	WASHER	5	
19	93606-12019	PIN, DOWEL	2	

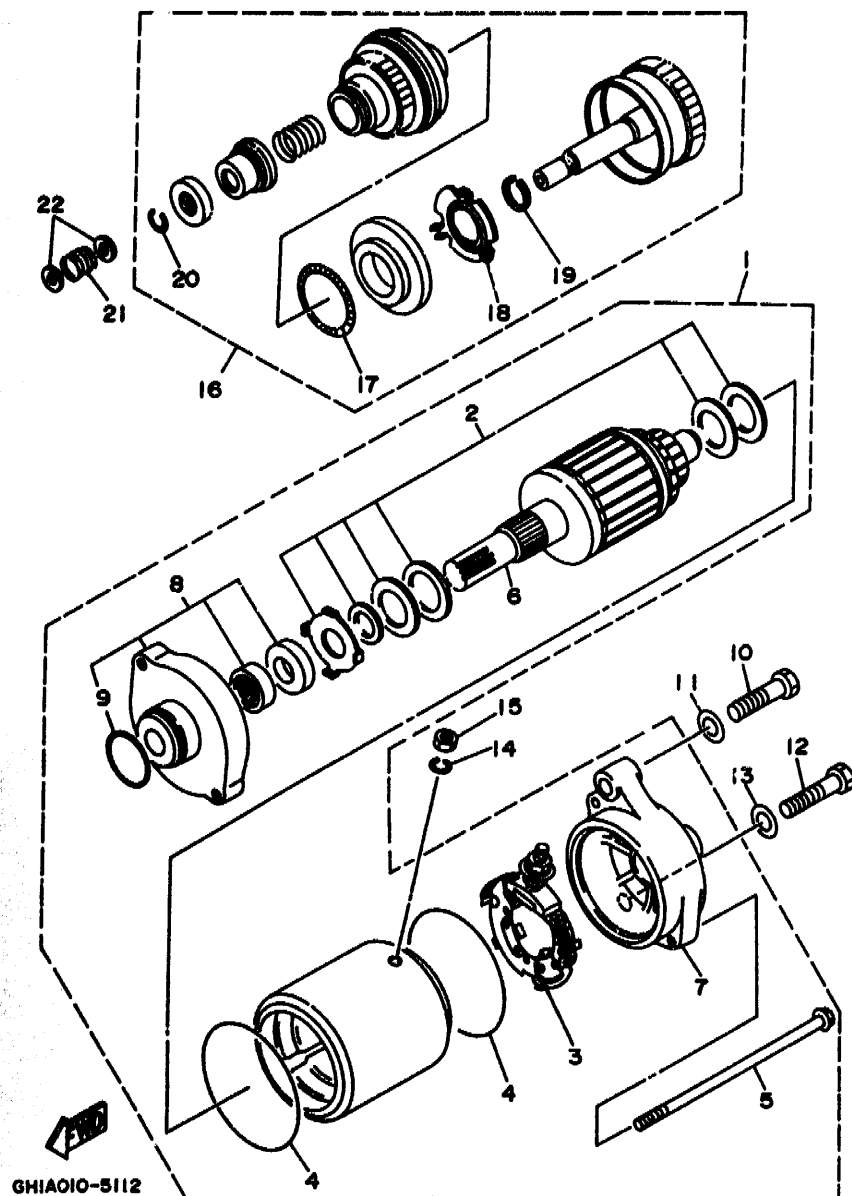
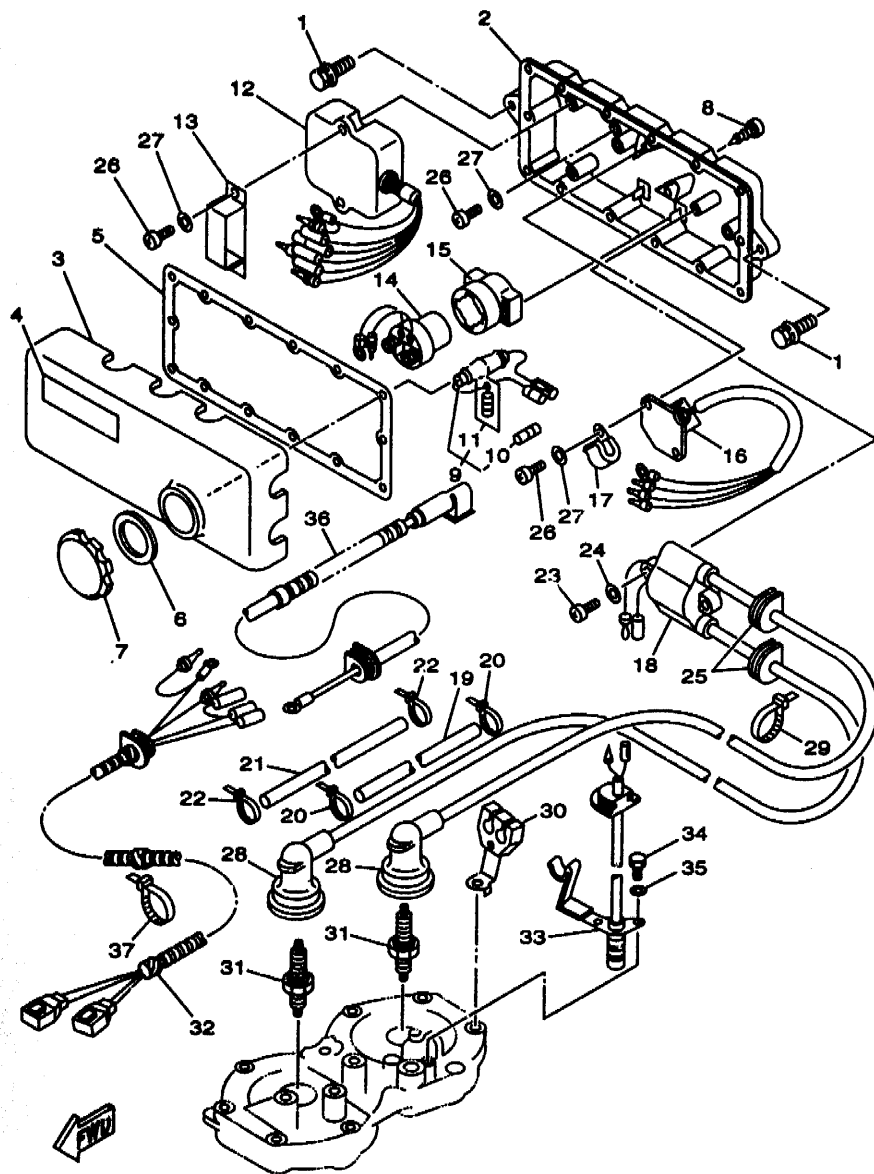


FIG. 11 STARTING MOTOR

REF. NO.	PART NO.	DESCRIPTION	Q'TY	REMARKS
1	6M6-81800-10	STARTING MOTOR ASSY	1	
2	3AJ-81809-00	.WASHER KIT	1	
3	6M6-81840-10	.BRUSH HOLDER ASSY	1	
4	11H-81844-00	.GASKET	2	
5	6M6-81826-00	.BOLT	2	
6	6M6-81850-00	.ARMATURE ASSY	1	
7	6M6-81820-00	.REAR BRACKET ASSY	1	
8	6M6-81830-00	.FRONT BRACKET ASSY	1	
9	26H-81847-00	..O-RING	1	
10	97013-08040	BOLT	1	
11	92903-08600	WASHER, PLATE	1	
12	97013-08035	BOLT	1	
13	92903-08600	WASHER, PLATE	1	
14	92990-06100	WASHER, SPRING	1	
15	95380-06700	NUT	1	
16	6M6-8183E-00	IDLE GEAR COMP.	1	
17	6M6-81866-00	.WEIGHT SPRING	1	
18	6M6-81865-00	.WEIGHT HOLDER	1	
19	93440-25M08	.CIRCLIP	1	
20	93450-18M06	.CIRCLIP	1	
21	90501-14M73	SPRING, COMPRESSION	1	
22	92903-06600	WASHER, PLATE	2	



GR78100-7120

FIG. 12 ELECTRICAL 1

REF. NO.	PART NO.	DESCRIPTION	Q'TY	REMARKS
1	90119-08038	BOLT, WITH WASHER	2	
2	6M6-8552A-01-98	HOUSING	1	
3	6M6-8552E-01	COVER, CASE	1	
4	6R7-83623-40	MARK 3	1	UR ENGLISH
	6R7-83623-50	MARK 3	1	UR FRENCH
	63N-83623-00	MARK 3	1	UR JAPAN
5	6M6-81921-00	GASKET, TERMINAL	1	
6	6M6-81844-00	GASKET	1	
7	6M6-8132W-00	CAP	1	
8	97780-60525	SCREW, TAPPING	14	
9	6K8-82150-01	FUSE HOLDER ASSY	1	
10	6G1-82151-00	.FUSE	1	
11	6K8-82159-00	.FUSE SPEAR	1	
12	62T-85540-01	C.D.I. UNIT ASSY	1	
13	90464-06M29	CLAMP	1	
14	6G1-81941-10	STARTER RELAY ASSY	1	
15	6M6-81952-01	HOLDER, RELAY	1	
16	6M6-81960-A0	RECTIFIER & REGULATOR ASSY	1	
17	90465-08M07	CLAMP	1	
18	62E-85570-00	IGNITION COIL ASSY	1	
19	62E-82351-00	TUBE, CORD	1	
20	90465-11M10	CLAMP	2	
21	62E-82352-00	TUBE, CORD 2	1	
22	90465-11M10	CLAMP	2	
23	97880-06030	SCREW, PAN HEAD	2	
24	92990-06600	WASHER, PLATE	2	
25	90480-06M43	GROMMET	2	
26	98580-06016	SCREW, PAN HEAD	6	

C6

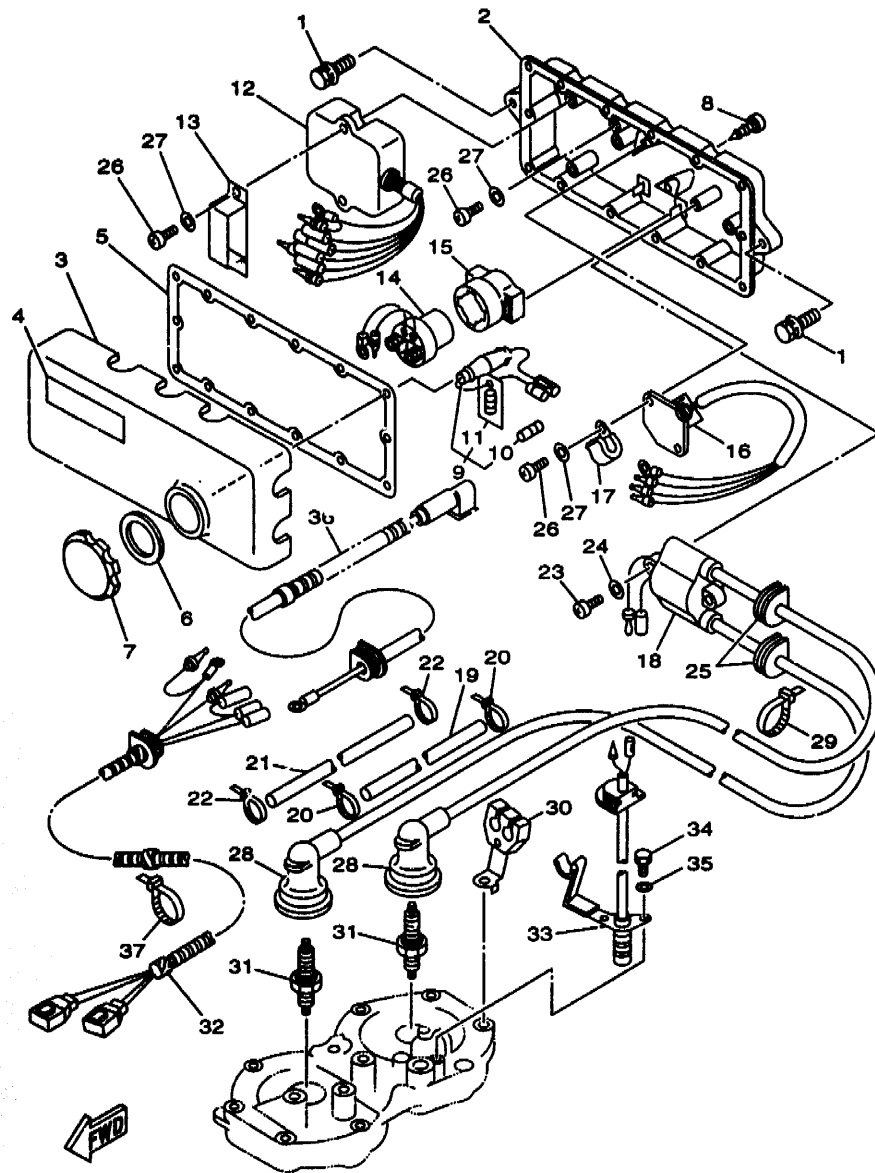
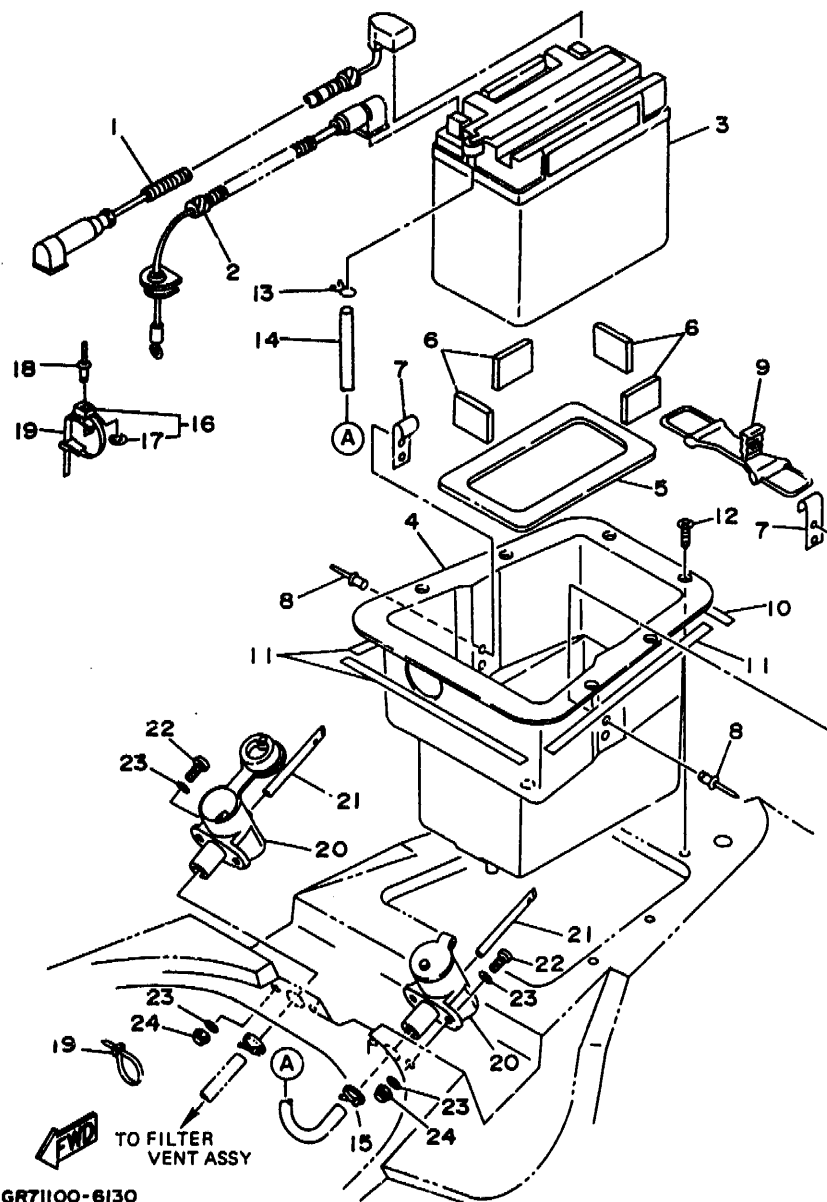


FIG. 12 ELECTRICAL 1

REF. NO.	PART NO.	DESCRIPTION	Q'TY	REMARKS
27	92990-06600	WASHER, PLATE	6	
28	6K8-82370-00	PLUG CAP ASSY	2	
29	90465-11M10	CLAMP	2	
30	6R7-82361-00	CLAMP, CORD	1	
31	94702-00040	PLUG, SPARK	2	UR JAPAN
	94702-00272	PLUG, SPARK (NGK BR7HS)	2	UR EXCEPT JAPAN
32	62E-82553-00	EXTENSION, WIRE LEAD	1	
33	6R7-82560-00	THERMO SWITCH ASSY	1	
34	97095-06016	BOLT	2	
35	92995-06100	WASHER, SPRING	2	
36	62E-82117-20	WIRE, LEAD	1	
37	90465-13M11	CLAMP	1	



FTC. 13 ELECTRICAL 2

REF. NO.	PART NO.	DESCRIPTION	Q'TY	REMARKS
1	62E-82117-00	WIRE, LEAD	1	
2	62E-82117-10	WIRE, LEAD	1	
3	EUG-82110-09	BATTERY ASSY	1	
4	GA7-68211-00	BATTERY CASE COMP.	1	
5	EU0-68221-00	PAD, BATTERY 1	1	
6	EU0-68221-30	PAD, BATTERY 2	4	
7	GA7-65772-00	HOOK A	2	
8	90267-48934	RIVET, BLIND	4	
9	GA7-68218-00	BAND, BATTERY	1	
10	90656-67015	PACKING 48	1	
11	90656-67021	PACKING 48	3	
12	97780-50220	SCREW, TAPPING	6	
13	90467-08M10	CLIP	1	
14	GA7-67856-00	HOSE, AIR VENT 3	1	
15	90601-20005	BAND	1	
16	90600-91736	CLAMP	5	
17	90201-05925	WASHER, PLATE	1	
18	90267-48925	RIVET, BLIND	5	
19	90601-20005	NYLON CLIP 1	6	
20	GA7-62159-00	SOCKET, VENTILATION	2	
21	GA7-62149-00	PIPE, VENTILATION	2	
22	97880-05020	SCREW, PAN HEAD	4	
23	92990-05200	WASHER, PLAIN	8	
24	95720-05300	NUT, FLANGE	4	

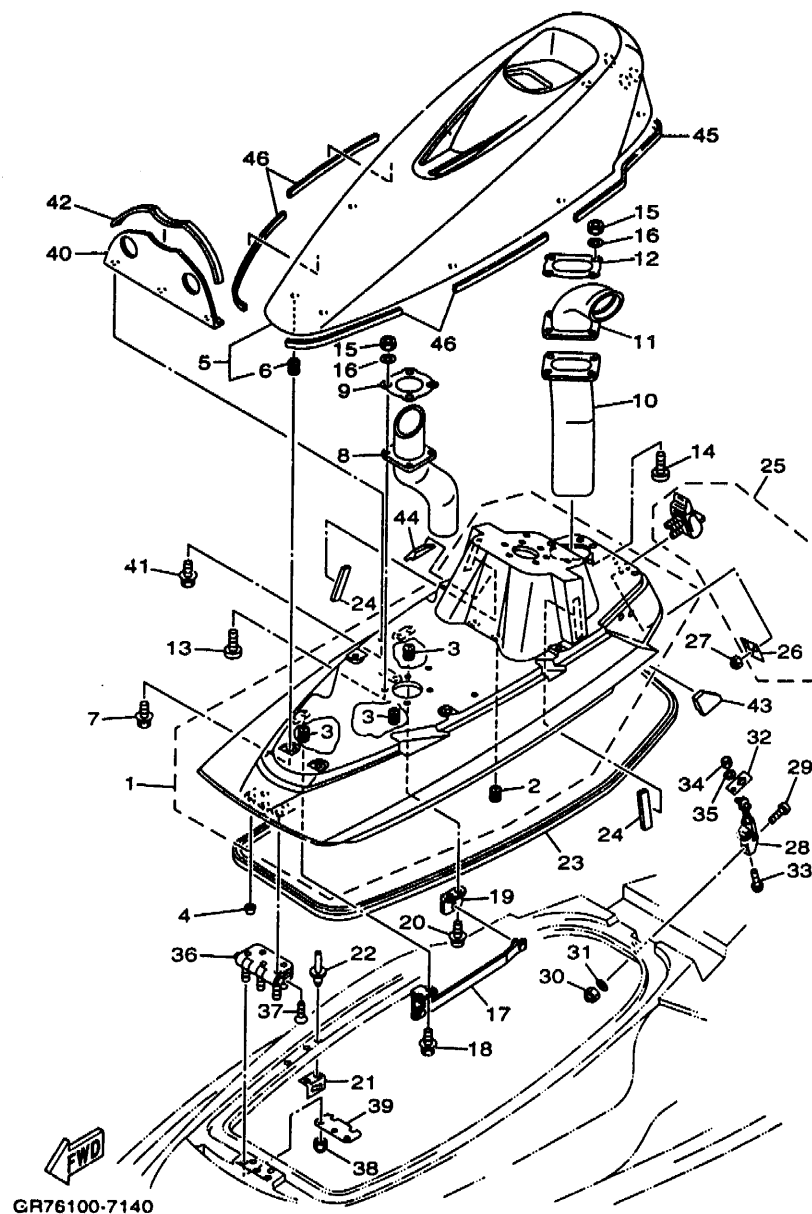
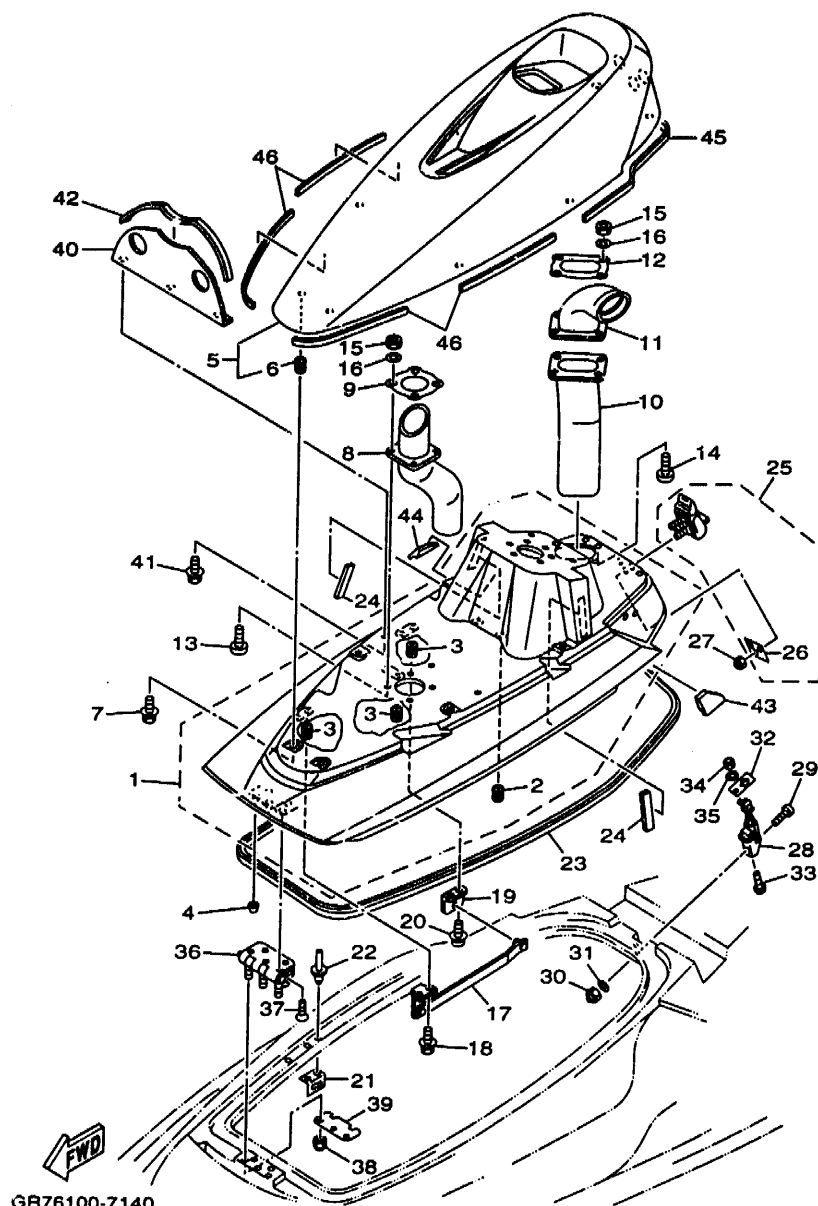


FIG. 14 ENGINE HATCH

REF. NO.	PART NO.	DESCRIPTION	Q'TY	REMARKS
1	GA7-6516A-00-P4	ENGINE HATCH COMP.	1	
2	90179-06927	.NUT	2	
3	90179-06926	.NUT	6	
4	GA7-63768-00	CUSHION, RUBBER	2	
5	GA7-6516N-00-P1	COVER, ENGINE HATCH	1	
6	90179-06926	.NUT	8	
7	90119-06913	BOLT, WITH WASHER	8	
8	GR7-6213F-00	HOSE, VENTILATOR 1	1	
9	GA7-6213H-00	PLATE, HOSE 1	1	
10	GR7-6213G-01	HOSE, VENTILATOR 2	1	
11	GA7-6213K-00	HOSE, VENTILATOR 3	1	
12	GA7-6213J-00	PLATE, HOSE 2	1	
13	97880-05025	SCREW, PAN HEAD	4	
14	97880-05030	SCREW, PAN HEAD	4	
15	95720-05300	NUT, FLANGE	8	
16	92950-05200	WASHER, PLAIN	8	
17	GA7-62891-01	SUPPORT, HATCH	1	
18	90159-06901	SCREW, WITH WASHER	2	
19	FN8-62992-00	FIX, PLATE	1	
20	90159-06901	SCREW, WITH WASHER	2	
21	FN8-62884-00	BRACKET, HATCH SUPPORT	1	
22	90267-48940	RIVET, BLIND	2	
23	GA7-62664-00	PACKING	1	
24	GA7-6266B-00	PACKING 3	2	
25	FJ0-62840-02	HATCH LOCK ASSY	1	
26	FJ0-6284F-00	.PLATE, HATCH LOCK	1	
27	95720-05300	NUT, FLANGE	3	
28	EU0-62843-02	HOOK, HATCH LOCK	1	



GR76100-7140

FIG. 14 ENGINE HATCH

REF. NO.	PART NO.	DESCRIPTION	Q'TY	REMARKS
29	97880-05020	SCREW, PAN HEAD	2	
30	95720-05300	NUT, FLANGE	2	
31	92990-05200	WASHER, PLAIN	2	
32	GA7-6519B-00	STOPPER, HATCH HOOK	1	
33	97880-05010	SCREW, PAN HEAD	1	
34	95380-05800	NUT	1	
35	92990-05200	WASHER, PLAIN	1	
36	90600-70069	HINGE	1	
37	98780-05012	SCREW, FLAT HEAD	5	
38	95720-05300	NUT, FLANGE	5	
39	GA7-65193-00	PLATE	1	
40	GA7-6213N-00	PARTITION	1	
41	90119-06920	BOLT, WITH WASHER	3	
42	GA7-6266G-00	PACKING 8	1	
43	GA7-6517M-00	PAD, HATCH 1	1	
44	GA7-6517N-00	PAD, HATCH 2	1	
45	90656-67096	PACKING 48	1 L=0.96M	
46	90656-67025	PACKING 48	4 L=0.25M	

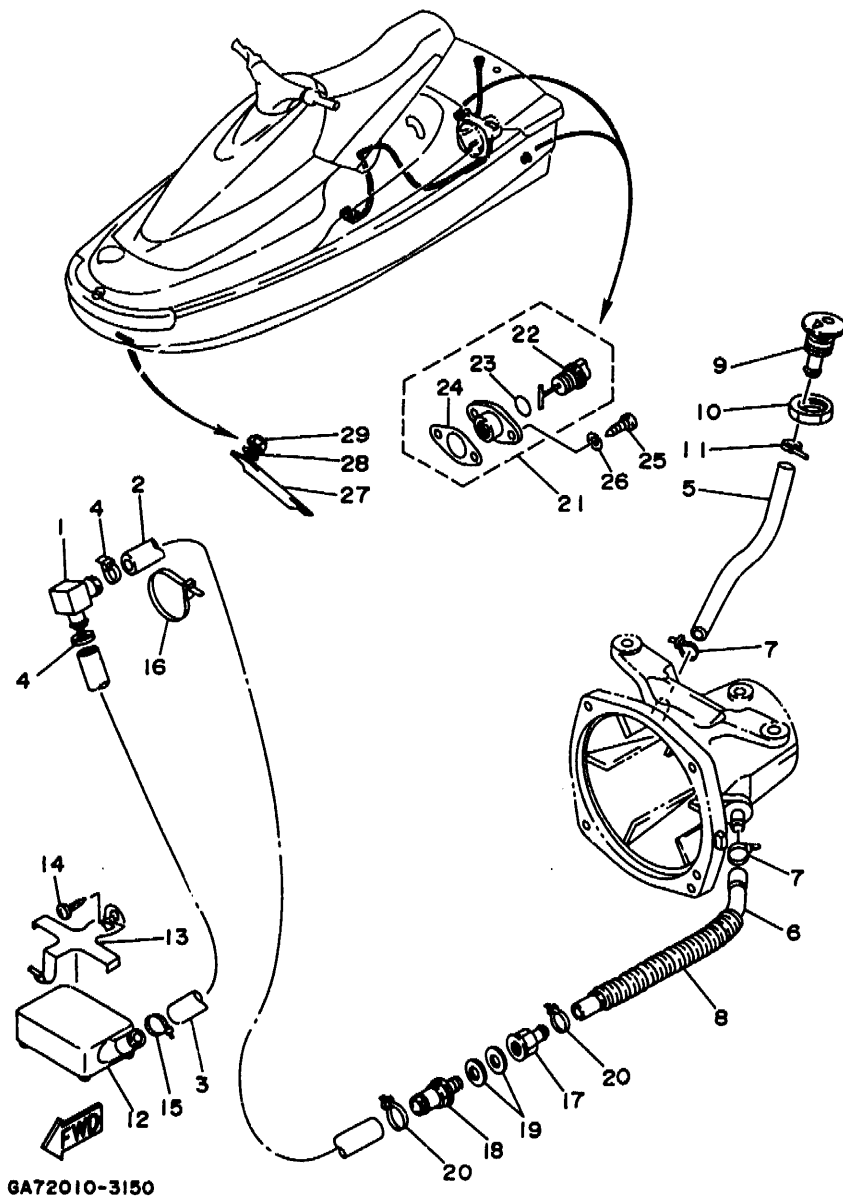
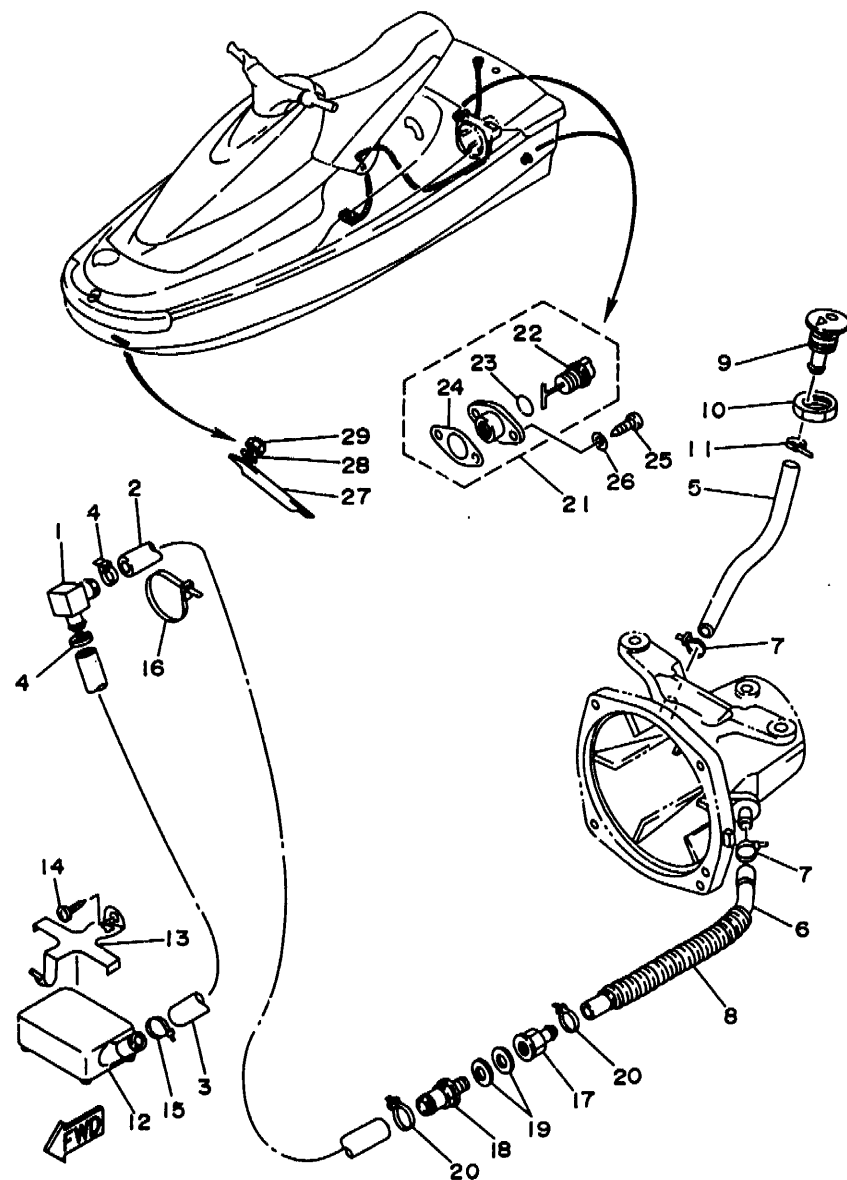


FIG. 15 HULL. DECK

REF. NO.	PART NO.	DESCRIPTION	Q'TY	REMARKS
1	61X-51162-00	JOINT, HOSE	1	
2	90445-19M01	HOSE	1	
3	90445-19M02	HOSE	1	
4	90465-13M11	CLAMP	2	
5	62E-51673-00	PIPE 1	1	
6	90445-14M19	HOSE	1	
7	90465-11M10	CLAMP	2	
8	90446-20M39	HOSE	1	
9	FN8-62698-00	SPOUT	1	
10	EU0-61652-00	NUT	1	
11	90465-13M11	CLAMP	1	
12	G00-6761D-00	STRAINER, BILGE	1	
13	EW2-67618-00	BASE, STRAINER BLIGE	1	
14	97780-50114	SCREW, PAN HEAD TAPPING	1	
15	90465-13M11	CLAMP	1	
16	90601-20006	NYLON CLIP 1	1	
17	90604-80759	CONNECTION, THRU-HULL 1/4	1	
18	90604-80775	THROUGH, HULL CONNECTION	1	
19	90430-13909	GASKET	2	
20	90465-13M11	CLAMP	2	
21	EU0-62280-00	DRAIN PLUG ASSY	2	
22	EU0-62282-00	.PLUG, DRAIN	1	
23	EU0-62283-00	.O-RING	1	
24	EU0-62285-01	.PACKING, DRAIN	1	
25	97780-50520	SCREW, TAPPING	4	
26	92990-05200	WASHER, PLAIN	4	
27	FN8-61624-01	BOWEYE 1 (S)	1	
28	92990-08200	WASHER, PLAIN	2	

D4



GA72010-3150

FIG. 15 HULL. DECK

REF. NO.	PART NO.	DESCRIPTION	Q'TY	REMARKS
29	95720-08300	NUT, SELF-LOCKING	2	

D5

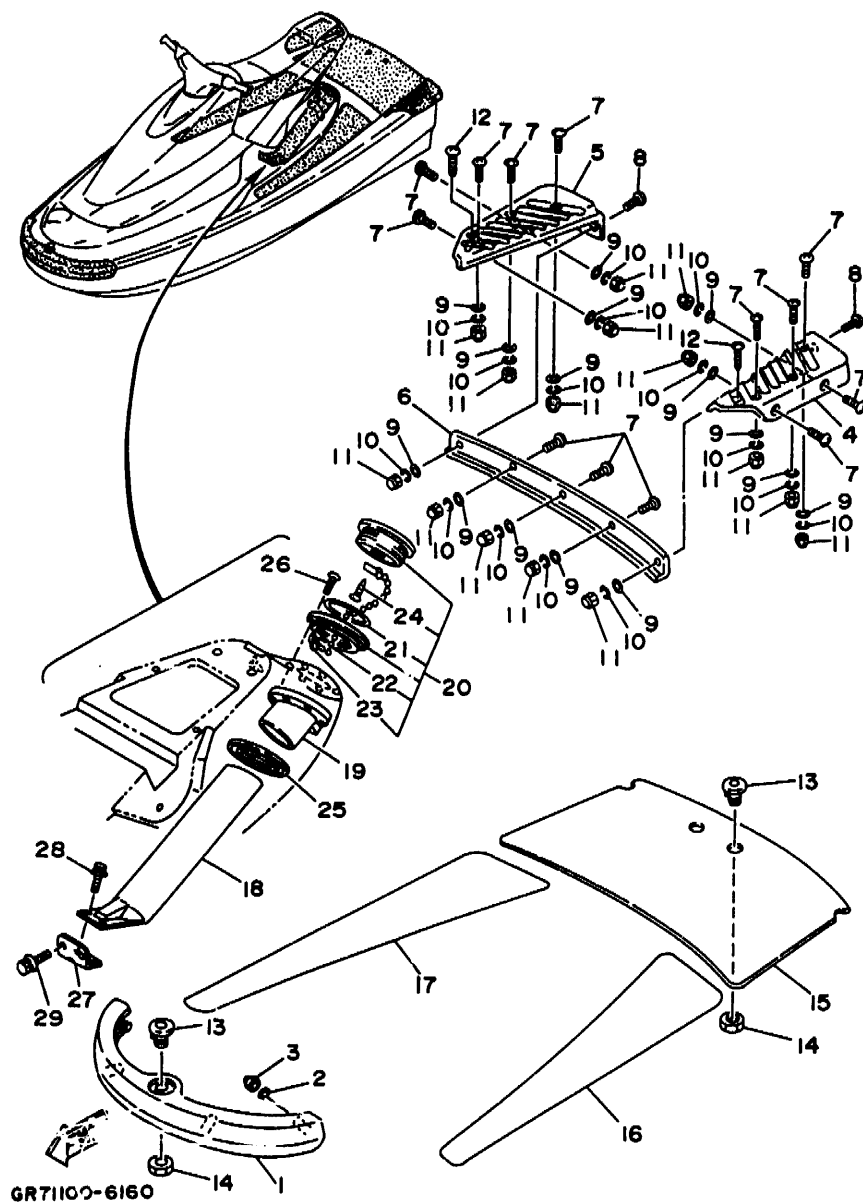


FIG. 16 GUNWALE. MAT

REF. NO.	PART NO.	DESCRIPTION	Q'TY	REMARKS
1	GA7-62501-00	BOW GUNWALE COMP.	1	
2	92990-06200	WASHER, PLAIN	4	
3	95380-06800	NUT	4	
4	GA7-6251D-00	GUNWALE, STERN 1	1	
5	GA7-6251E-00	GUNWALE, STERN 2	1	
6	GA7-6252C-00	COVER, GUNWALE 1	1	
7	90149-06975	SCREW	13	
8	90149-06971	SCREW	2	
9	92990-06200	WASHER, PLAIN	15	
10	92990-06100	WASHER, SPRING	15	
11	95380-06800	NUT	15	
12	90149-05937	SCREW	2	
13	FN8-61651-00	ROPE HOLE	2	
14	EU0-61652-00	NUT	2	
15	GA7-63581-00	MAT, UPPER	1	
16	GA7-6351H-01	MAT, STEP 1	1	
17	GA7-6351J-01	MAT, STEP 2	1	
18	GA7-65983-00	BOX, FIRE EXTINGUISHER	1	
19	GA7-65984-00	GROMMET	1	
20	GA7-62720-11	INSPECTION COVER ASSY	1	
21	93211-03902	.RING	1	
22	EU0-67835-30	.CHAIN BALL	1	
23	EU0-67839-00	.COUPLING	1	
24	97780-04110	.SCREW, TAPPING	1	
25	GA7-6593J-00	PLATE, FIRE EXTINGUISHER	1	
26	98780-04535	SCREW, FLAT HEAD	6	
27	GA7-6593H-00	BRKT. FIRE EXTINGUISHER	1	
28	90119-06902	BOLT, WITH WASHER	2	

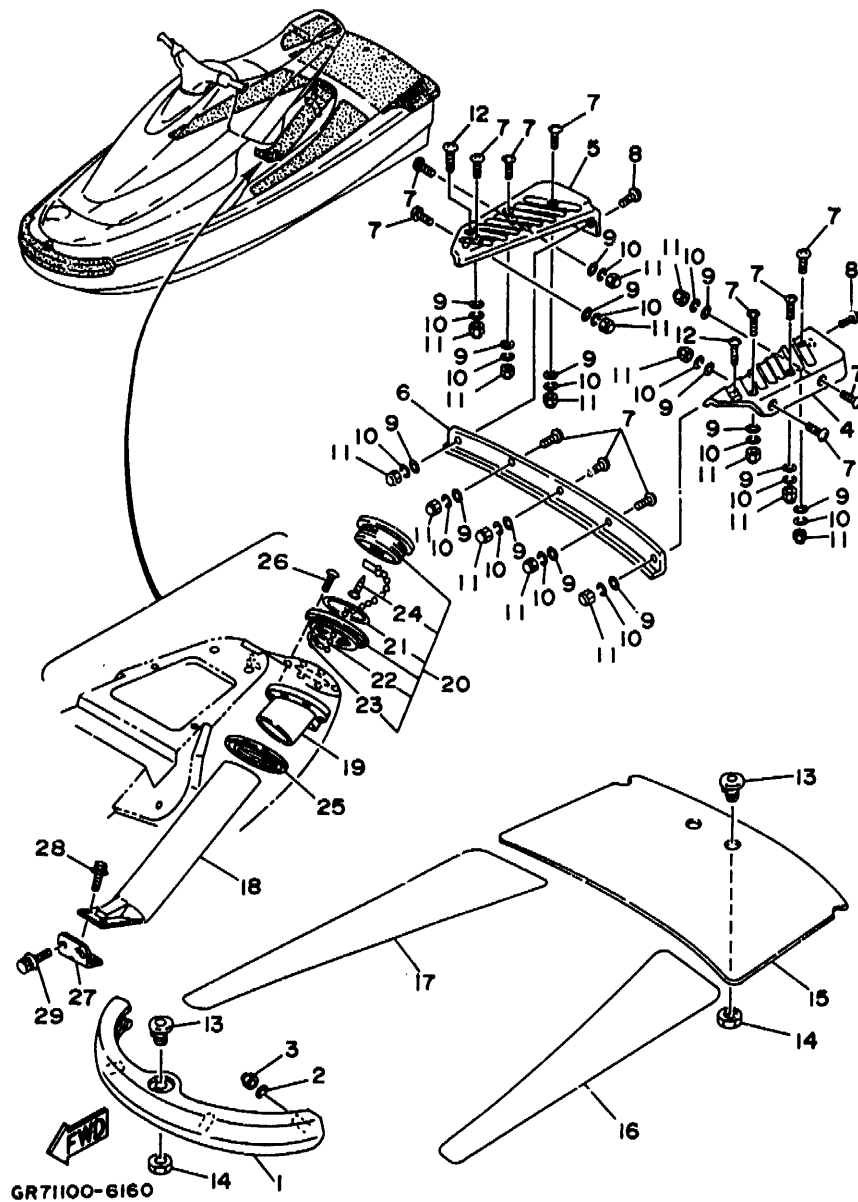


FIG. 16 GUNWALE. MAT

REF. NO.	PART NO.	DESCRIPTION	Q'TY	REMARKS
29	90119-06901	BOLT, WITH WASHER	2	

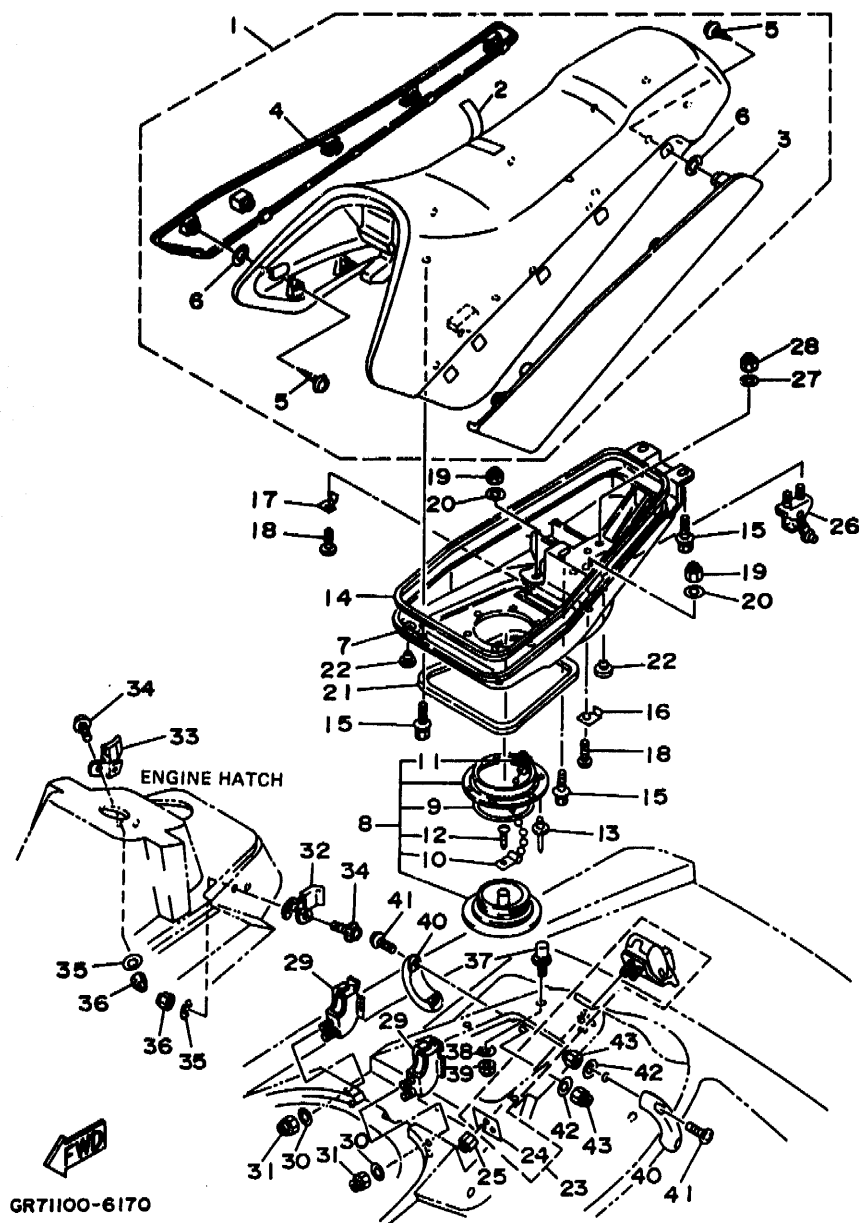


FIG. 17 SEAT - UNDER LOCKER

REF. NO.	PART NO.	DESCRIPTION	Q'TY	REMARKS
1	GR7-6371A-00	DOUBLE SEAT ASSY	1	VIVID GREENISH YELLOW
2	GR7-6371B-00	.COVER, SEAT 1	1	
3	GA7-6377B-00	.COVER, SIDE 1	1	
4	GA7-6377C-00	.COVER, SIDE 2	1	
5	90149-05984	.SCREW	10	
6	GA7-6371L-00	.SEAL 2	10	
7	GA7-63742-00-P5	BASE, SEAT 1	1	
8	GA7-62720-11	INSPECTION COVER ASSY	1	VIVID RED SOLID E
9	93211-03902	.RING	1	
10	EU0-67835-30	.CHAIN BALL	1	
11	EU0-67839-00	.COUPLING	1	
12	97780-04110	.SCREW, TAPPING	1	
13	90267-40937	RIVET, BLIND	6	
14	GA7-6266D-00	PACKING 5	1	
15	90119-06902	BOLT, WITH WASHER	6	
16	GA7-6377K-00	PLATE, SEAT STOPPER 1	1	
17	GA7-6377L-00	PLATE, SEAT STOPPER 2	1	
18	97880-05016	SCREW, PAN HEAD	2	
19	95720-05300	NUT, FLANGE	2	
20	92990-05200	WASHER, PLAIN	2	
21	GA7-6266C-00	PACKING 4	1	
22	22W-24741-00	PAD, SEAT	4	
23	FJ0-62840-02	HATCH LOCK ASSY	1	
24	FJ0-6284F-00	.PLATE, HATCH LOCK	1	
25	95720-05300	NUT, FLANGE	3	
26	GA7-6371G-00	HOOK	1	
27	92990-06200	WASHER, PLAIN	2	
28	95720-06300	NUT, SELF-LOCKING	2	

E1

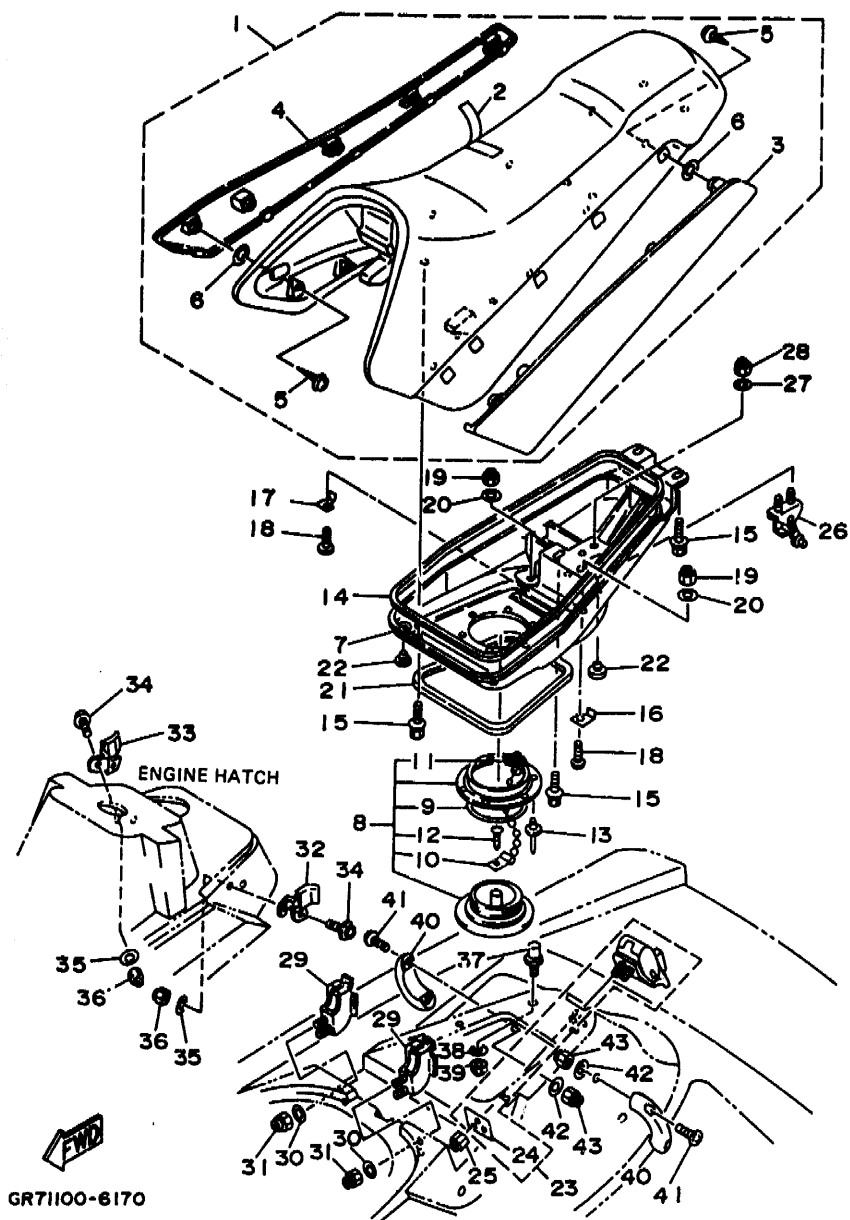
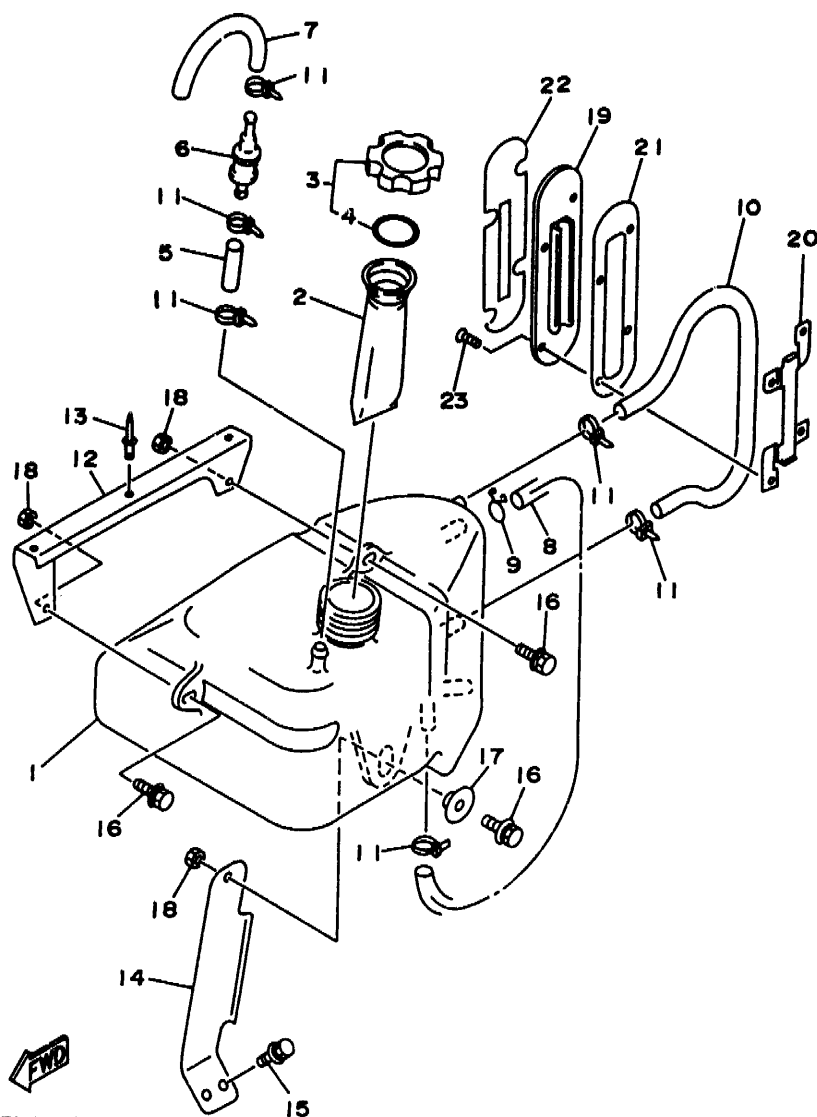


FIG. 17 SEAT - UNDER LOCKER

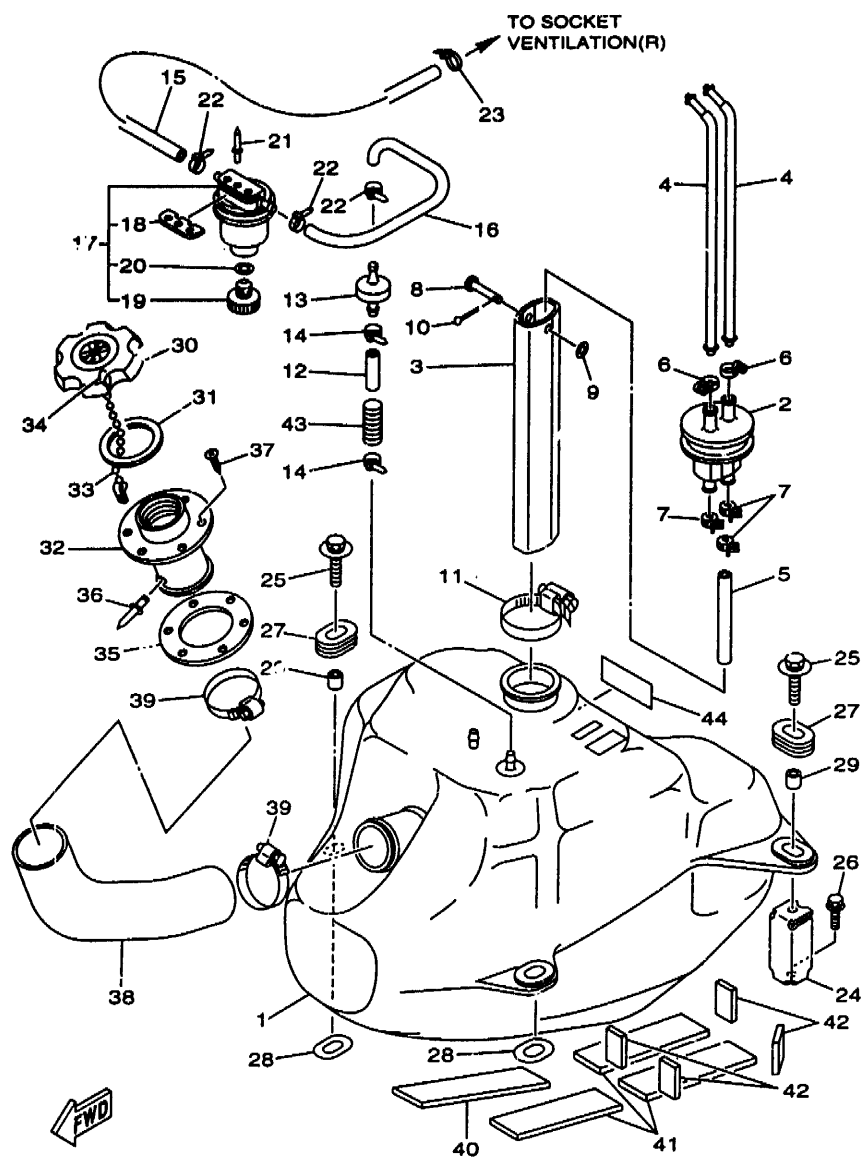
REF. NO.	PART NO.	DESCRIPTION	Q'TY	REMARKS
29	GA7-6378C-00	STAY, SEAT 1	2	
30	92990-06200	WASHER, PLAIN	4	
31	95720-06300	NUT, SELF-LOCKING	4	
32	GA7-6378F-00	STAY, SEAT 4	1	
33	GA7-6378G-00	STAY, SEAT 5	1	
34	90159-06902	SCREW, WITH WASHER	4	
35	92990-06200	WASHER, PLAIN	4	
36	95720-06300	NUT, SELF-LOCKING	4	
37	GA7-6131B-00	PIN, STOPPER	2	
38	92990-10200	WASHER, PLAIN	2	
39	95720-10300	NUT	2	
40	GA7-6271B-10	GRIP, HAND	2	
41	90149-06973	SCREW	4	
42	90201-065F3	WASHER, PLATE	4	
43	95720-06300	NUT, SELF-LOCKING	4	



GR71100-6180

FIG. 18 OIL TANK

REF. NO.	PART NO.	DESCRIPTION	Q'TY	REMARKS
1	GR7-6775B-00	TANK, OIL	1	
2	FJ0-67752-00	FILTER	1	
3	GE2-6784A-00	OIL TANK CAP ASSY	1	
4	FJ0-67841-01	.PACKING, OIL CAP	1	
5	90445-09901	HOSE	1	
6	FJ0-67766-00	ROLL OVER VALVE	1	
7	FJ0-62158-00	HOSE	1	
8	90446-11905	HOSE	1	
9	90467-11019	CLIP	1	
10	90446-09908	HOSE	1	
11	90465-11M10	CLAMP	6	
12	GA7-6775F-01	BRACKET, OIL TANK	1	
13	90267-48938	RIVET, BLIND	3	
14	GA7-6775L-02	BRACKET, OIL TANK 2	1	
15	90119-06913	BOLT, WITH WASHER	2	
16	90119-06902	BOLT, WITH WASHER	3	
17	90387-08919	COLLAR	1	
18	95720-06300	NUT, SELF-LOCKING	3	
19	GA7-6775D-00	GAGE, LEVEL	1	
20	GA7-6775H-00	BASE, LEVEL GAUGE	1	
21	GA7-6775E-00	PACKING	1	
22	GA7-6412B-00	LABEL, OIL GAUGE	1	
23	90149-05985	SCREW	4	

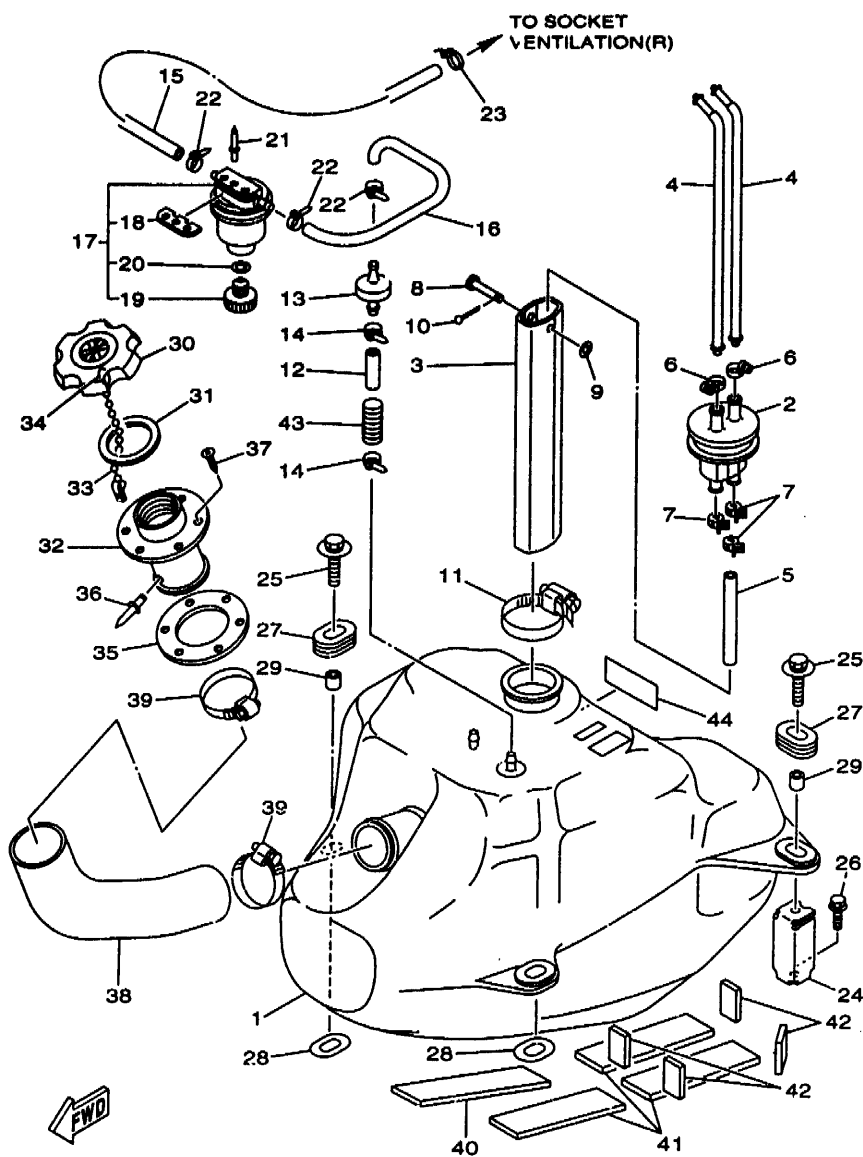


GR76100-7190

FIG. 19 FUEL TANK

REF. NO.	PART NO.	DESCRIPTION	Q'TY	REMARKS
1	GA7-67711-01	TANK, FUEL	1	
2	FJ0-67713-00	PIPE, JOINT	1	
3	EW2-67716-01	SLEEVE 1	1	
4	FN8-67714-02	PIPE, SUCTION 3	2	
5	90445-11903	HOSE	1	
6	90601-11062	BAND, HOSE 11	2	
7	90467-11032	CLIP	3	
8	91790-05040	PIN, CLEVIS	1	
9	92990-05600	WASHER, PLATE	1	
10	91490-16010	PIN, COTTER	1	
11	90601-16274	BAND, HOSE	1	
12	GA7-6785G-00	HOSE, AIR VENT	1	
13	EU0-67767-31	CHECK VALVE	1	
14	90465-11M10	CLAMP	2	
15	GA7-6785H-00	HOSE, AIR VENT 3	1	
16	FJ0-67856-40	HOSE, AIR VENT 5	1	
17	EW2-62140-00	FILTER, VENT ASSY	1	
18	EW2-62142-00	.PLATE, FILTER	1	
19	70R-24543-00	.PLUG, DRAIN	1	
20	70R-24489-00	.O-RING, SEPARATER 2	1	
21	90267-48940	RIVET, BLIND	2	
22	90465-11M10	CLAMP	3	
23	90601-20005	BAND	1	
24	FN8-67777-31	FIX, FUEL TANK	2	
25	90119-08916	BOLT, WITH WASHER	4	
26	90119-08903	BOLT, WITH WASHER	2	
27	90480-19906	GROMMET	4	
28	GA7-67748-00	PLATE, GROMMET	2	

E4



GR7C100-7190

FIG. 19 FUEL TANK

REF. NO.	PART NO.	DESCRIPTION	Q'TY	REMARKS
29	90387-08906	COLLAR	4	
30	FN8-67831-01	CAP, FUEL FILLER	1	
31	EU0-67832-00	PACKING 1	1	
32	FN8-67833-00	SOCKET	1	
33	EU0-67835-00	CHAIN BALL	1	
34	EU0-67839-00	COUPLING	1	
35	EU0-67834-00	PACKING, FUEL FILLER	1	
36	90267-40935	RIVET, BLIND	1	
37	EU0-67869-00	SCREW, FLAT HEAD	6	
38	GA7-67844-00	HOSE	1	
39	90601-15573	BAND, HOSE	2	
40	GA7-67598-00	MAT 1	1	
41	GA7-6759C-00	MAT 2	3	
42	GA7-6759D-00	MAT 3	4	
43	GJ1-6773D-00	TUBE	1	
44	GA7-6418D-01	LABEL, FUEL TANK	1	

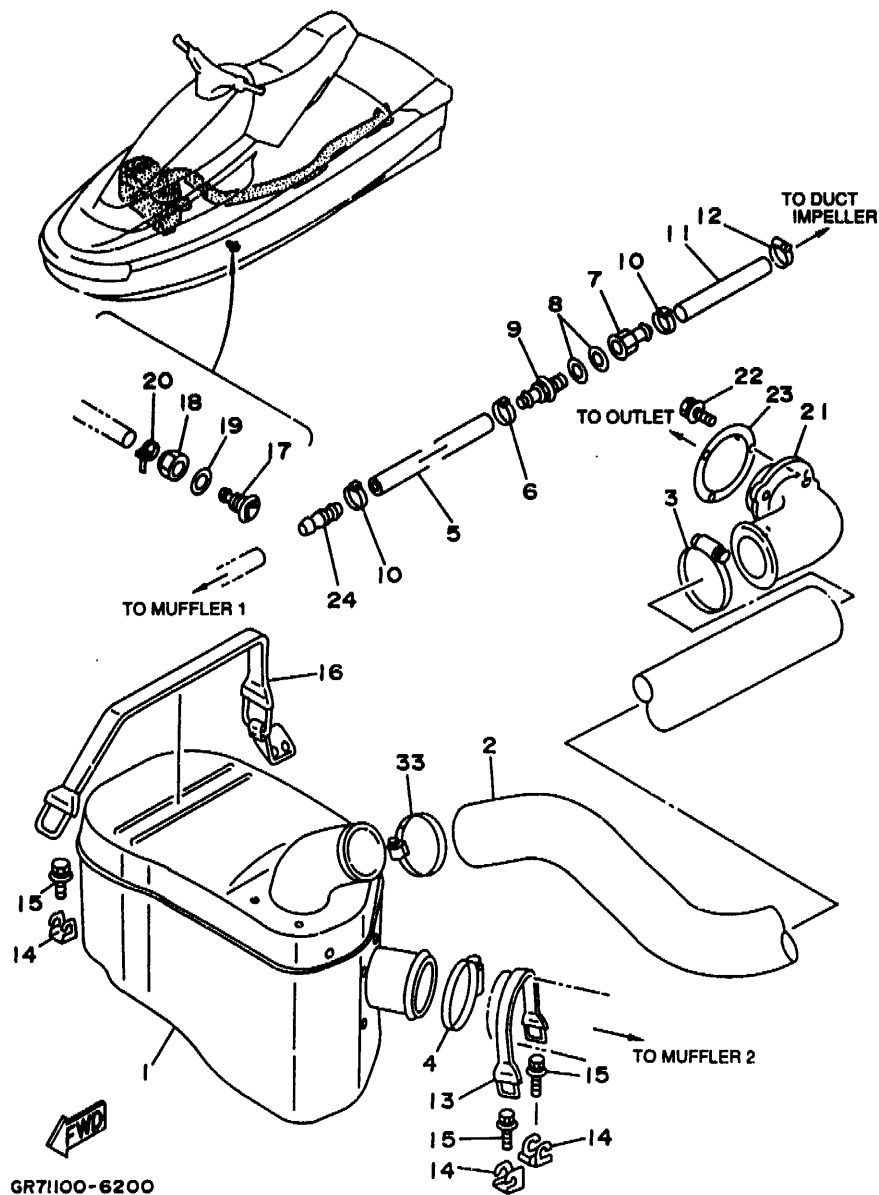


FIG. 20 EXHAUST 2

REF. NO.	PART NO.	DESCRIPTION	Q'TY	REMARKS
1	GA7-67550-02	WATER LOCK	1	
2	GA7-67555-00	HOSE	1	
3	90601-16875	BAND, HOSE	2	
4	90601-17586	BAND, HOSE 75	1	
5	90445-14M18	HOSE	1	
6	90601-11583	EAR CLAMP	1	
7	90604-80757	CONNECTION, THRU-HULL 1/4	1	
8	90430-13909	GASKET	2	
9	90604-80758	CONNECTION, THRU-HULL 1/4	1	
10	90601-11583	EAR CLAMP	2	
11	90445-14M20	HOSE	1	
12	90601-11062	BAND, HOSE 11	1	
13	GA7-6756E-00	BAND, WATER LOCK	1	
14	EU0-65772-30	HOOK A	3	
15	90119-06913	BOLT, WITH WASHER	3	
16	GA7-67570-00	HOOK C	1	
17	GH7-6753B-00	PILOT, WATER	1	
18	GP7-61652-00	NUT	1	
19	92990-14200	WASHER, PLAIN	1	
20	90465-11M10	CLAMP	1	
21	FN8-67565-01	THRU-HULL	1	
22	90119-05912	BOLT, WITH WASHER	3	
23	GA7-67525-00	PACKING	1	
24	6M6-51142-00	CONNECTION	1	

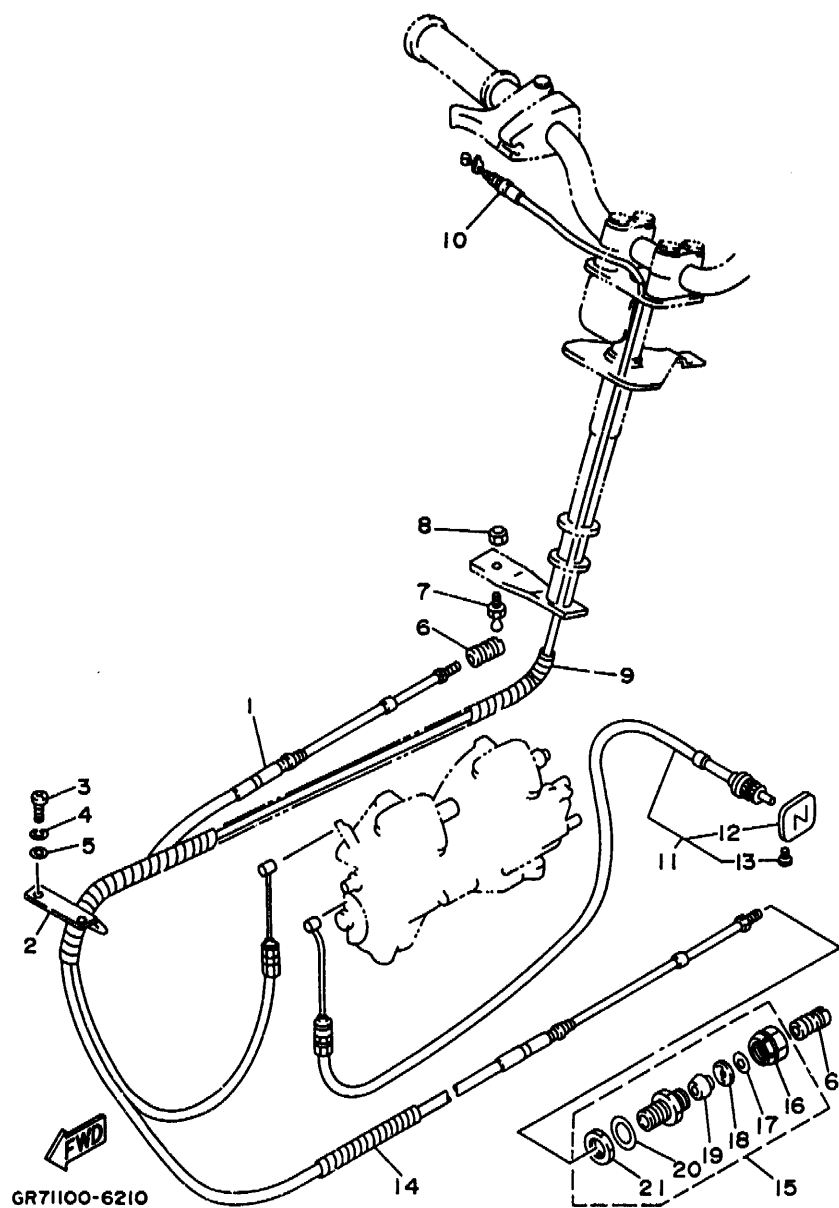


FIG. 21 CONTROL CABLE

REF. NO.	PART NO.	DESCRIPTION	Q'TY	REMARKS
1	GA7-61481-00	CABLE, STEERING	1	
2	EU0-61557-01	GUIDE, CABLE	1	
3	97880-04116	SCREW, WITH WASHER	2	
4	92990-04100	WASHER, SPRING	2	
5	92990-04600	WASHER, PLATE	2	
6	EU0-61461-30	SHAFT, JOINT BALL	2	
7	EU0-61461-01	STUD, JOINT BALL	1	
8	95720-06300	NUT, SELF-LOCKING	1	
9	90699-36085	SPIRAP 11	1	
10	GH1-67252-01	CABLE, THROTTLE	1	
11	GH1-67242-00	CABLE, CHOKE	1	
12	EW2-67243-00	.KNOB	1	
13	90149-03930	.SCREW	1	
14	90699-36020	SPIRAL TUBE 11	1	
15	EU0-67267-00	CONNECTOR, CABLE	1	
16	EU0-62694-00	.CAP	1	
17	EU0-61446-00	.WASHER 30	1	
18	EU0-61486-00	.STOPPER	1	
19	EU0-61435-00	.SEAL, PIPE 30	1	
20	EU0-61438-00	.PACKING (C)	1	
21	EU0-62241-30	.NUT, DRAIN 1	1	

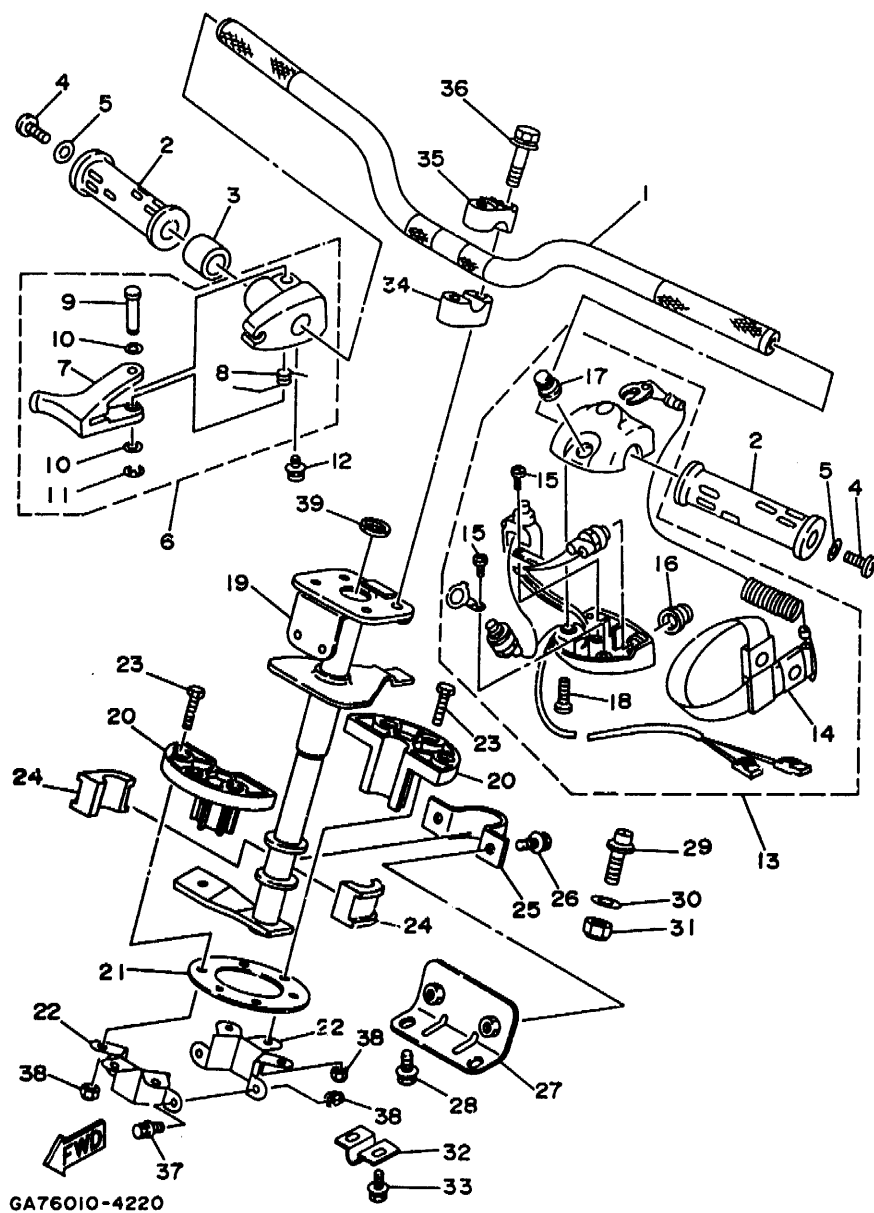
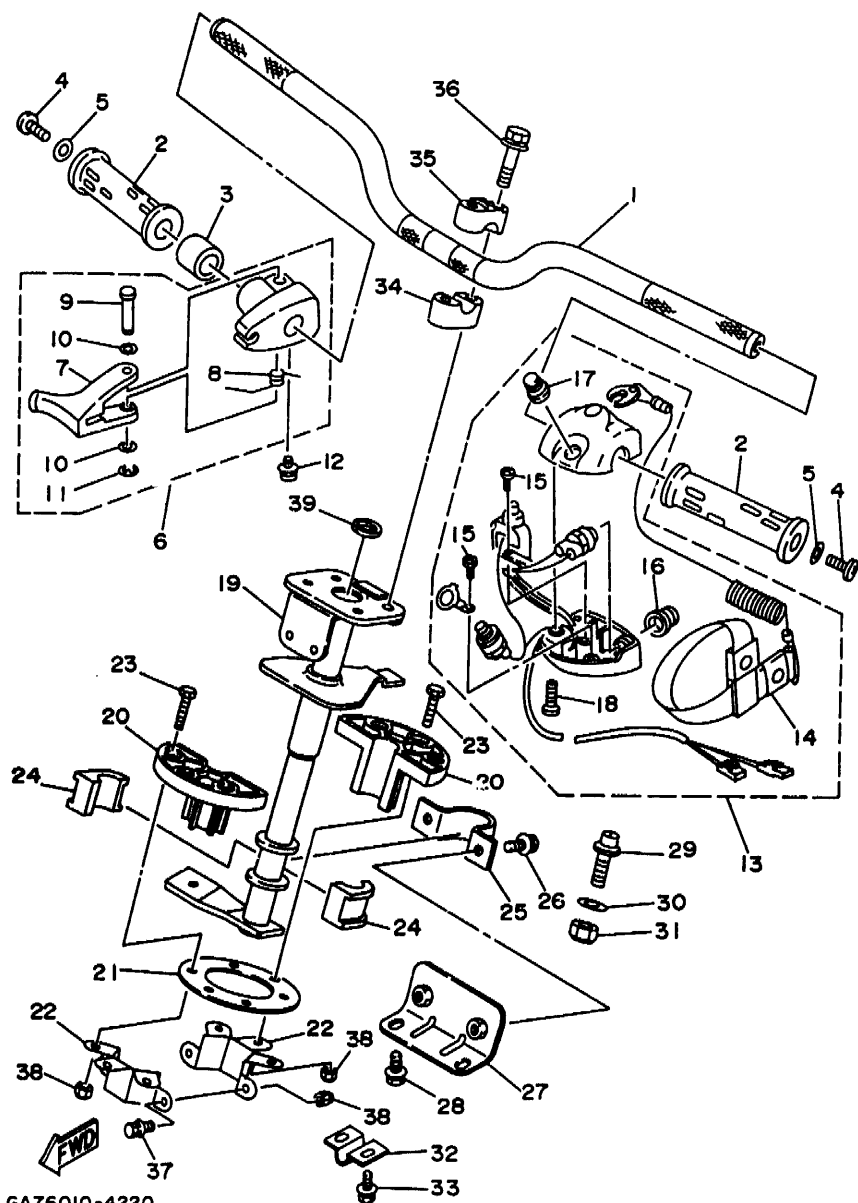


FIG. 22 STEERING 1

REF. NO.	PART NO.	DESCRIPTION	Q'TY	REMARKS
1	GA7-61552-00	HANDLE	1	
2	EW2-61553-00	GRIP, HANDLE 1	2	
3	90560-22281	SPACER	1	
4	90149-05959	SCREW	2	
5	90201-05928	WASHER, PLATE	2	
6	EW2-67250-02	THROTTLE LEVER ASSY	1	
7	EW2-67255-00	.LEVER, THROTTLE	1	
8	EW2-67256-00	.SPRING	1	
9	EW2-67257-01	.SHAFT	1	
10	EW2-67258-01	.WASHER	2	
11	EW2-67259-01	.E-RING	1	
12	90159-05900	SCREW, WITH WASHER	1	
13	GA7-68310-00	SWITCH BOX ASSY	1	
14	GA7-6834C-00	.LANYARD, STOP SWITCH	1	
15	97880-03008	.SCREW, PAN HEAD	2	
16	FK7-68312-02	.STOP BUTTON COMP.	1	
17	FK7-68313-01	.START BUTTON COMP.	1	
18	97880-05025	.SCREW, PAN HEAD	2	
19	GA7-61541-00	COLUMN, STEERING	1	
20	EU0-61417-00	COLUMN, STEERING	2	
21	EU0-61439-30	SEAL, RUBBER	1	
22	FN8-6158B-01	JOINT, BEARING 1	2	
23	97380-06030	BOLT	6	
24	8F3-23812-00	PLANE BEARING, STEERING	2	
25	EU0-61588-00	JOINT, BEARING	1	
26	90119-08903	BOLT, WITH WASHER	2	
27	GA7-61433-00	BRACKET, BEARING	1	
28	90119-08903	BOLT, WITH WASHER	2	



GA76010-4220

FIG. 22 STEERING 1

REF. NO.	PART NO.	DESCRIPTION	Q'TY	REMARKS
29	FN8-6131B-00	PIN, STOPPER	2	
30	92990-10200	WASHER, PLAIN	2	
31	95720-10300	NUT	2	
32	EU0-61468-01	STOPPER, CABLE	1	
33	90119-06926	BOLT, WITH WASHER	2	
34	EU0-23814-01	HOLDER, HANDLE LOWER	2	
35	EU0-23814-30	HOLDER, HANDLE UPPER	2	
36	90119-08925	BOLT, WITH WASHER	4	
37	90119-06913	BOLT, WITH WASHER	2	
38	95720-06300	NUT, SELF-LOCKING	8	
39	EU0-61469-00	PACKING, STEERING COLUMN	1	

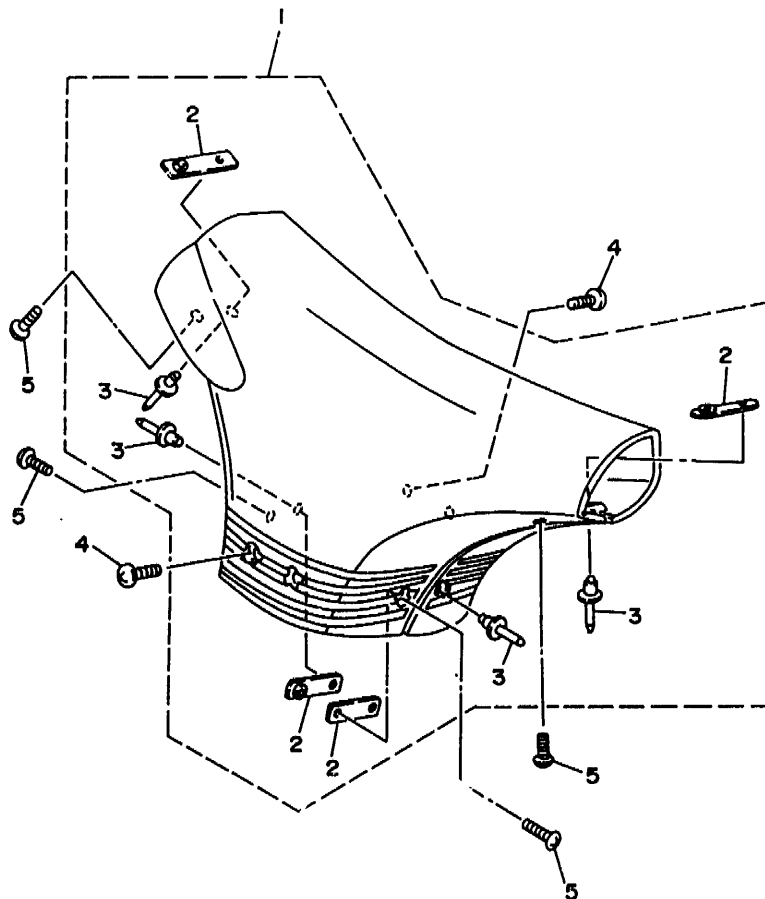


FIG. 23 STEERING 2

REF. NO.	PART NO.	DESCRIPTION	Q'TY	REMARKS
1	GA7-6142A-10	STEERING PAD COMP.	1	VIVID GREENISH YELLOW
2	GA7-6144D-10	.PLATE	4	
3	90267-48934	.RIVET, BLIND	4	
4	90149-05959	SCREW	1	UR FOR EXCEPT JAPAN
	90149-05988	SCREW	4	UR FOR JAPAN
5	90149-04951	SCREW	4	



GA72010-3230

F3

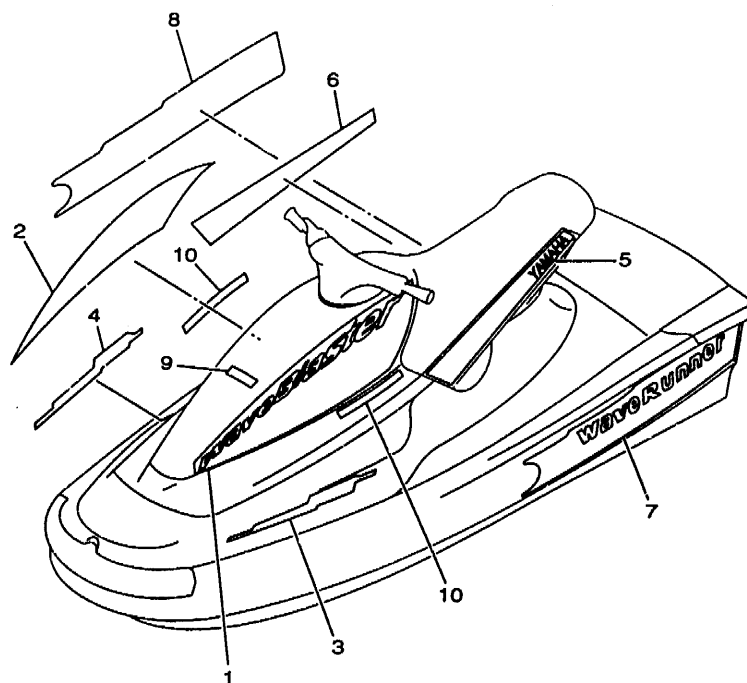


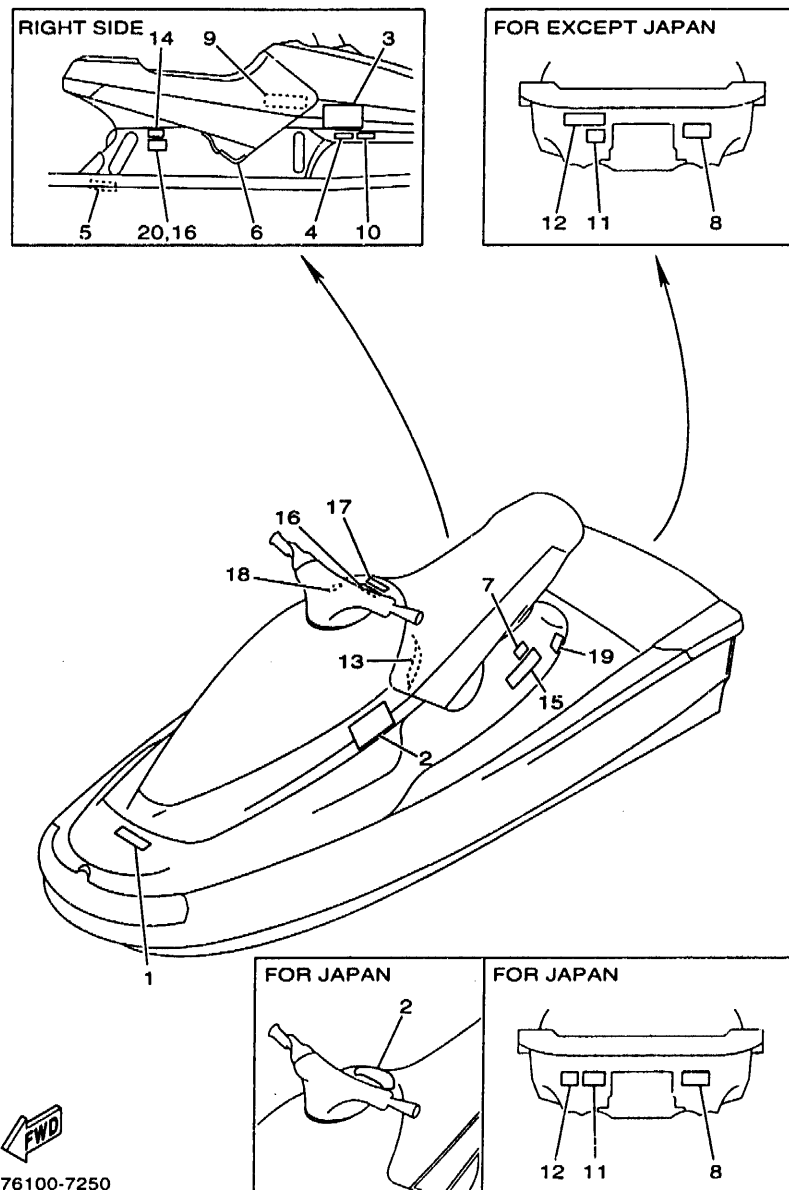
FIG. 24 GRAPHIC. TOOL

REF. NO.	PART NO.	DESCRIPTION	Q'TY	REMARKS
1	GR7-6417B-10	GRAPHIC 1	1	
2	GR7-6417C-10	GRAPHIC 2	1	
3	GR7-6417D-10	GRAPHIC 3	1	
4	GR7-6417E-10	GRAPHIC 4	1	
5	GR7-6417F-10	GRAPHIC 5	1	
6	GR7-6417G-10	GRAPHIC 6	1	
7	GR7-6417H-10	GRAPHIC 7	1	
8	GR7-6417J-10	GRAPHIC 8	1	
9	GR7-64114-10	MARK, YAMAHA A	1	
10	GR7-64123-00	EMBLEM 3	2	FOR JAPAN
11	EU0-65986-00	TOOL SET	1	UR
	EU0-65986-10	TOOL SET	1	UR JAPAN ONLY
12	EU0-65901-01	TOOL BAG	1	



C.R76100-7240

F4



GR76100-7250

FIG. 25 IMPORTANT LABELS

REF. NO.	PART NO.	DESCRIPTION	Q'TY	REMARKS
1	GA7-6416B-11	LABEL, WARNING	1	UR FOR JAPAN
	GA7-6416B-20	LABEL, WARNING	1	UR FOR EXCEPT JAPAN
2	GR7-6416C-10	LABEL, WARNING 1	1	UR FOR JAPAN
	GR7-6416C-30	LABEL, WARNING 1	1	UR FOR EXCEPT JAPAN
3	GR7-6416C-20	LABEL, WARNING 1	1	FOR EXCEPT JAPAN
4	GA7-6416F-20	LABEL, WARNING 4	1	UR FOR EXCEPT JAPAN
	GL3-6416F-00	LABEL, WARNING 4	1	UR FOR JAPAN
5	GA7-6419B-20	LABEL 1	1	FOR EXCEPT JAPAN
6	GA7-6419C-00	LABEL 2	1	
7	GA7-6419D-10	LABEL 3	1	UR FOR JAPAN
	GA7-6419D-20	LABEL 3	1	UR FOR EXCEPT JAPAN
8	FJ0-6418G-A0	LABEL, CAUTION	1	UR FOR EXCEPT JAPAN
	GL3-6418G-00	LABEL, CAUTION	1	UR FOR JAPAN
9	GA7-6418B-00	LABEL, CAUTION	1	UR FOR EXCEPT JAPAN
	GL3-6418B-00	LABEL, CAUTION	1	UR FOR JAPAN
10	GA7-6418J-10	LABEL, CAUTION	1	UR FOR JAPAN
	GA7-6418J-21	LABEL, CAUTION	1	UR FOR EXCEPT JAPAN
11	FJ0-6418B-00	LABEL, UP RIGHTING	1	
12	FJ0-64161-E0	LABEL, WARNING 5	1	UR FOR EXCEPT JAPAN
	GL3-6415G-00	LABEL, WARNING 5	1	UR FOR JAPAN
13	GA7-6418B-20	LABEL, CAUTION	1	FOR EXCEPT JAPAN
14	GA7-6418C-11	LABEL, CAUTION	1	UR FOR JAPAN
	GA7-6418C-20	LABEL, CAUTION	1	UR FOR EXCEPT JAPAN
15	GA7-6416H-20	LABEL, WARNING (FRANCE)	1	FOR EXCEPT JAPAN
16	EU0-64197-00	PLATE CAPACITY	1	UR FOR JAPAN
	GR7-6415E-10	LABEL, WARNING	1	UR FOR EXCEPT JAPAN
17	GR7-6415E-30	LABEL, WARNING	1	FOR EXCEPT JAPAN
18	GR7-6415E-20	LABEL, WARNING	1	FOR JAPAN

F5

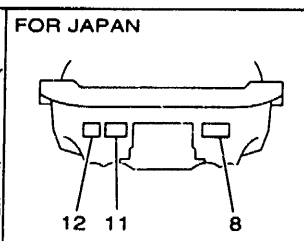
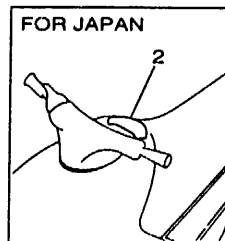
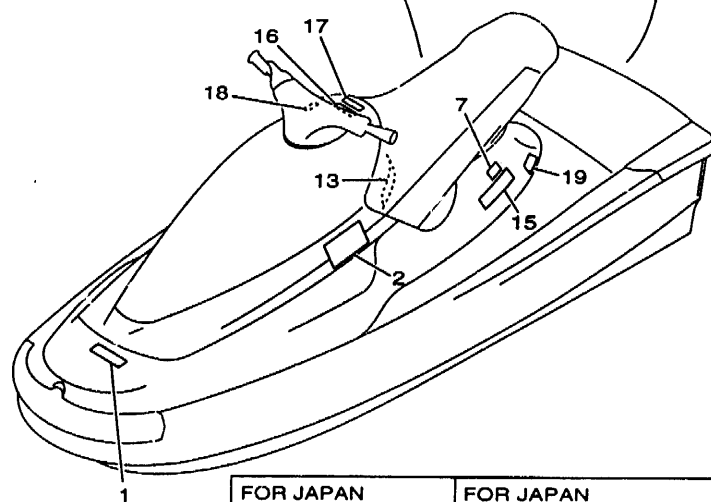
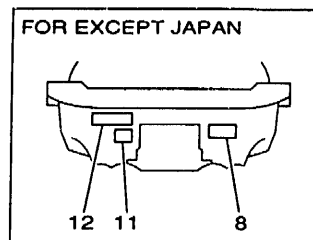
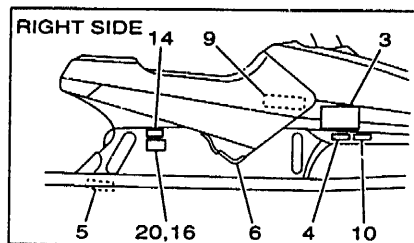


FIG. 25 IMPORTANT LABELS

REF. NO.	PART NO.	DESCRIPTION	Q'TY	REMARKS
19	GR7-6415F-10	LABEL, WARNING	1	UR FOR JAPAN
	GR7-6415F-20	LABEL, WARNING	1	UR FOR EXCEPT JAPAN
20	GR7-6419E-00	LABEL 4	1	FOR EXCEPT JAPAN



GR76100-7250

F6

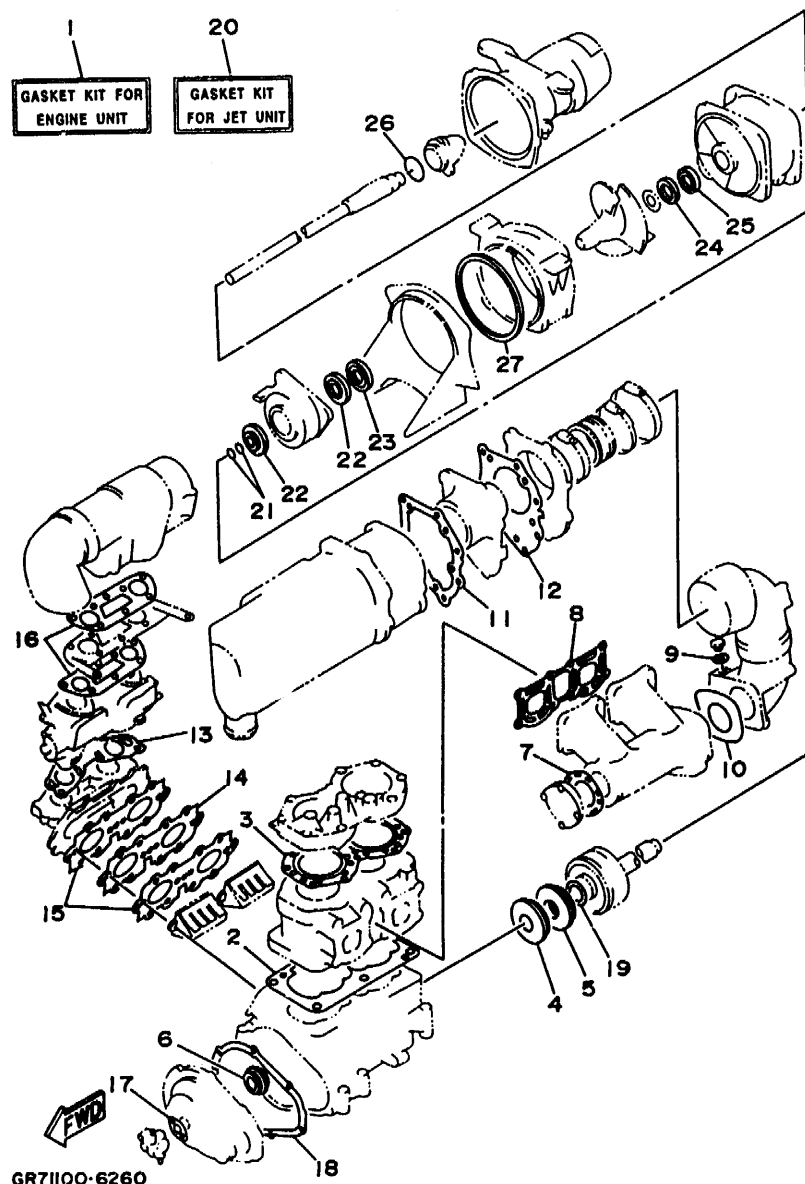


FIG. 26 REPAIR KIT 1

REF. NO.	PART NO.	DESCRIPTION	Q'TY	REMARKS
1	64U-W0001-00	GASKET KIT FOR ENGINE UNIT	1	
2	6M6-11351-A2	.GASKET, CYLINDER	1	
3	62T-11181-00	.GASKET, CYLINDER HEAD 1	1	
4	93102-36M33	.OIL SEAL	1	
5	93101-36M46	.OIL SEAL	1	
6	93103-32M01	.OIL SEAL	1	
7	6M6-14739-A1	.GASKET, MUFFLER DAMPER 1	1	
8	61X-14613-A0	.GASKET, EXHAUST PIPE	1	
9	90430-08020	.GASKET	1	
10	6R7-14749-A0	.GASKET, MUFFLER DAMPER 2	1	
11	6R7-14755-A0	.GASKET, SILENCER	1	
12	6R7-41114-A0	.GASKET, EXHAUST OUTER COVER	1	
13	62T-13556-00	.GASKET, MANIFOLD	1	
14	62T-13624-00	.PLATE, REED VALVE	1	
15	62T-13566-00	.GASKET	2	
16	62T-13674-00	.GASKET, AIR COOLER COVER 1	2	
17	6R8-13116-A0	.GASKET, PUMP CASE	1	
18	6M6-81365-A0	.GASKET, HOLE COVER	1	
19	62T-45127-00	.SEAL	1	
20	61X-W0001-22	GASKET KIT FOR JET UNIT	1	
21	93210-17MA4	.O-RING	2	
22	93101-25M55	.OIL SEAL	2	
23	93101-25M56	.OIL SEAL	1	
24	93102-25M34	.OIL SEAL	1	
25	93101-25M50	.OIL SEAL	1	
26	93210-46M16	.O-RING	1	
27	6R7-51117-01	.PACKING	1	

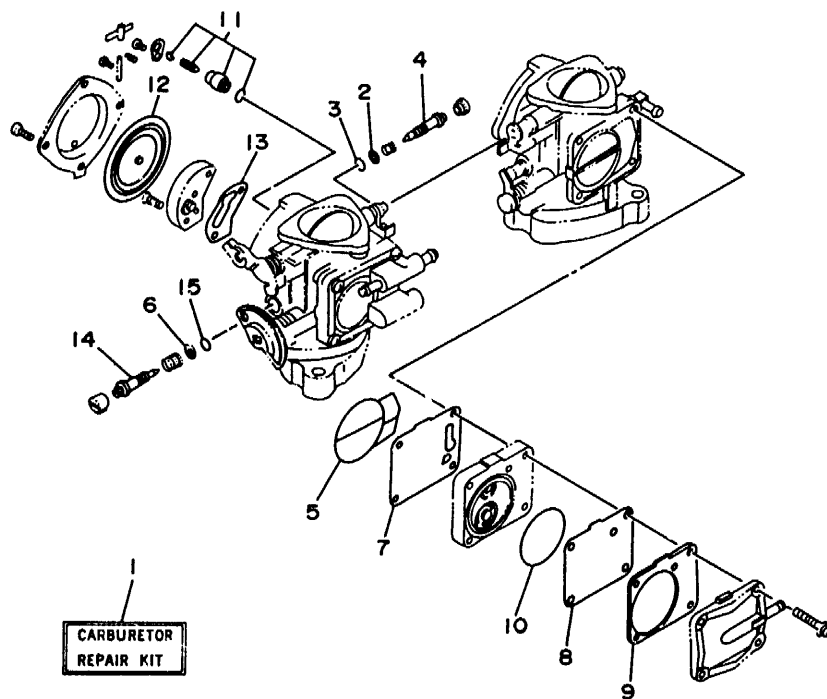


FIG. 27 REPAIR KIT 2

REF. NO.	PART NO.	DESCRIPTION	Q'TY	REMARKS
1	64U-W0093-00	CARBURETOR REPAIR KIT	1	
2	6K8-14559-00	.WASHER	4	
3	6K8-14562-00	.O-RING	2	
4	63M-14946-00	.METERING NEEDLE	2	
5	6K8-14564-00	.O-RING	2	
6	6K8-14537-00	.GASKET	2	
7	6K8-24411-20	.DIAPHRAGM	1	
8	6K8-24421-10	.VALVE, CHECK	1	
9	6K8-24431-20	.GASKET, FUEL PUMP 1	1	
10	6K8-14563-00	.O-RING	1	
11	61X-14916-15	.NEEDLE	2	
12	6R7-14541-00	.DIAPHRAGM, PUMP	2	
13	6K8-14536-11	.GASKET	2	
14	63M-14923-00	.SCREW, PILOT	2	
15	583-14561-00	.O-RING	2	



GHI4010-4271

G1

NUMERICAL INDEX

PART NO.	REF. NO.	PART NO.	REF. NO.	PART NO.	REF. NO.	PART NO.	REF. NO.	PART NO.	REF. NO.	PART NO.	REF. NO.
61X-W0001-22	26-20	62T-14435-00	3-37	6M6-14739-A1	26-7	62E-44517-A0-5B	1-24	GA7-61481-00	21-1	EU0-62843-02	14-28
64U-W0001-00	26-1	62T-14451-00	3-33	6R7-14749-A0	6-17	62E-44532-00	1-6	EU0-61486-00	21-18	FN8-62884-00	14-21
62T-W0004-00	3-14	6K8-14471-10	4-15		26-10	663-45119-00	3-19	GA7-61541-00	22-19	GA7-62891-01	14-17
64U-W0090-00-4D	1-1	6K8-14481-10	4-44	62E-14752-00	6-46	62T-45127-00	2-16	GA7-61552-00	22-1	FN8-62892-00	14-19
64U-W0093-00	27-1	6H1-14485-00	3-26	6R7-14753-00-9M	6-27		26-19	EW2-61553-00	22-2	GA7-6351H-01	16-16
64U-11111-00-94	1-17	6R7-14485-00	1-19	6R7-14755-A0	6-32	61X-45332-02-94	9-8	EU0-61557-01	21-2	GA7-6351J-01	16-17
62T-11181-00	1-20		6-26		26-11	61L-45378-00	9-11	FN8-61588-01	22-22	GA7-63581-00	16-15
	26-3	6K8-14521-00	4-45	6M6-14771-00-94	6-42	62E-45511-00	8-15	EU0-61588-00	22-25	GR7-6371A-00	17-1
61X-11311-01-94	1-11	6K8-14521-10	4-27	6R7-14785-00-9M	6-31	62T-45526-00	2-5	FN8-61624-01	15-27	GR7-6371B-00	17-2
6E5-11325-00	1-12	6M6-14521-00	4-11	61X-14916-15	4-34	61X-4581J-00	2-17	FN8-61651-00	16-13	GA7-6371G-00	17-26
6M6-11351-A2	1-14	6K8-14523-11	4-32		27-11	6M6-45813-21-9M	2-18	EU0-61652-00	15-10	GA7-6371L-00	17-6
	26-2	6K8-14527-11	4-29	63M-14923-00	4-40	6M6-45813-31-9M	2-15		16-14	GA7-63742-00-P5	17-7
6E5-11372-00	3-25	62T-14527-01	3-20		27-14	6R7-51117-01	8-1	GP7-61652-00	20-18	GA7-63768-00	14-4
61X-11400-03	2-1	6K8-14531-00	4-9	6K8-14926-10	4-5		26-27	GR7-6213F-00	14-8	GA7-6377B-00	17-3
61X-11603-00	2-10	6K8-14533-00	4-16	6K8-14930-00	4-7	6K8-51129-00	1-18	GR7-6213G-01	14-10	GA7-6377C-00	17-4
61X-11604-00	2-10	6K8-14534-10	4-4	63M-14946-00	4-14		6-2	GA7-6213H-00	14-9	GA7-6377K-00	17-16
61X-11605-00	2-10	6K8-14536-11	4-39		27-4		6-9	GA7-6213J-00	14-12	GA7-6377L-00	17-17
61X-11631-00-93	2-9		27-13	62T-15100-00-94	1-2		8-7	GA7-6213K-00	14-11	GA7-6378C-00	17-29
61X-11633-00	2-11	6K8-14537-00	4-42	6R7-15761-00	6-28		8-17	GA7-6213N-00	14-40	GA7-6378F-00	17-32
61X-11635-00	2-9		27-6	6R7-21415-01-94	1-25	6M6-51142-00	20-24	EW2-62140-00	19-17	GA7-6378G-00	17-33
61X-11636-00	2-9	6R7-14541-00	4-37	6R7-21425-00-94	1-27	61X-51162-00	15-1	EW2-62142-00	19-18	GR7-64114-10	24-9
6R8-13116-A0	5-8		27-12	8F3-23812-00	22-24	62E-51311-00	8-3	GA7-62149-00	13-21	GA7-6412B-00	18-22
	26-17	6R7-14542-00	4-38	EU0-23814-01	22-34	6R7-51312-02-94	8-5	FJ0-62158-00	18-7	GR7-64123-00	24-10
6R3-13183-00	5-12	6K8-14547-01	4-35	EU0-23814-30	22-35	61L-51313-00	8-23	GA7-62159-00	13-20	GR7-6415E-10	25-16
	5-16	6K8-14559-00	4-10	62T-24313-00	3-1	62T-51315-01-94	8-6	EU0-62241-30	21-21	GR7-6415E-20	25-18
61X-13200-10	5-1		27-2	62T-24314-00	3-22	61X-51318-01-94	8-16	EU0-62280-00	15-21	GR7-6415E-30	25-17
62T-13555-00-94	3-6	5B3-14561-00	4-43	6E5-24378-00	6-19	62E-51321-00	8-21	EU0-62282-00	15-22	GR7-6415F-10	25-19
62T-13556-00	3-5		27-15	6K8-24411-20	4-20	62E-51323-00	9-6	EU0-62283-00	15-23	GR7-6415F-20	25-19
	26-13	6K8-14562-00	4-13		27-7	62T-51326-00	8-11	EU0-62285-01	15-24	GL3-6415G-00	25-12
62T-13566-00	3-8		27-3	6R7-24412-01	4-31	6R7-51333-00	8-2	GA7-62501-00	16-1	GA7-6416B-11	25-1
	26-15	6K8-14563-00	4-26	6M6-24413-00	4-21	62T-51348-00	8-22	GA7-6251D-00	16-4	GA7-6416B-20	25-1
62T-13610-00	3-13		27-10	6K8-24421-10	4-22	61X-51381-00	9-1	GA7-6251E-00	16-5	GR7-6416C-10	25-2
62T-13624-00	3-7	6K8-14564-00	4-19		27-8	62E-51673-00	15-5	GA7-6252C-00	16-6	GR7-6416C-20	25-3
	26-14		27-5	6K8-24431-20	4-23	61L-5169A-00	3-18	GA7-6266B-00	14-24	GR7-6416C-30	25-2
62T-13674-00	3-29	6R7-14569-00	4-33		27-9	FN8-6131B-00	22-29	GA7-6266C-00	17-21	GA7-6416F-20	25-4
	26-16	6K8-14579-00	4-30	6K8-24452-10	4-24	GA7-6131B-00	17-37	GA7-6266D-00	17-14	GL3-6416F-00	25-4
3G2-14231-26	4-17	6K8-14589-00	4-41	70R-24489-00	19-20	EU0-61417-00	22-20	GA7-6266G-00	14-42	GA7-6416H-20	25-15
	4-18	6R7-14596-01	4-3	6K8-24500-02	7-9	GA7-6142A-10	23-1	GA7-6266A-00	14-23	FJ0-64161-E0	25-12
830-14231-14	4-28	6K8-14597-11	12	6K8-24524-10	7-10	GA7-61433-00	22-27	FN8-6269B-00	15-9	GR7-6417B-10	24-1
62T-14243-00	3-17	61X-14613-A0	5	70R-24543-00	19-19	EU0-61435-00	21-19	EU0-62694-00	21-16	GR7-6417C-10	24-2
62T-14251-00	1-3		2-5	6K8-24560-10	7-7	EU0-61438-00	21-20	GA7-6271B-10	17-40	GR7-6417D-10	24-3
6R7-14253-00	4-36	61L-14615-A0	6-38	22W-24741-00	17-22	EU0-61439-30	22-21	GA7-62720-11	16-20	GR7-6417E-10	24-4
62T-14255-00	3-30	61L-14625-A0	6-39	6E0-28193-00-94	1-35	GA7-6144D-10	23-2		17-8	GR7-6417F-10	24-5
62T-14283-00	3-34	61X-14711-01-9M	6-1	626-28193-01-94	1-35	EU0-61446-00	21-17	GA7-6273B-00	8-34	GR7-6417G-10	24-6
62T-14284-01-98	3-24	61L-14712-00-9M	6-8	6R7-41113-00-9M	6-33	EU0-61461-01	21-7	FJ0-6284F-00	14-26	GR7-6417H-10	24-7
64U-14301-00	4-1	6M6-14718-01-9M	6-3	6R7-41114-A0	6-34	EU0-61461-30	21-6		17-24	GR7-6417J-10	24-8
64U-14302-00	4-2	6R7-14721-00-9M	6-25		26-12	EU0-61468-01	22-32	FJ0-62840-02	14-25	GA7-6418B-00	25-9
62T-14419-00	3-35	6M6-14739-A1	6-4	6R7-42316-00	8-26	EU0-61469-00	22-39		17-23	GA7-6418B-20	25-13

NUMERICAL INDEX

PART NO.	REF. NO.	PART NO.	REF. NO.	PART NO.	REF. NO.	PART NO.	REF. NO.	PART NO.	REF. NO.	PART NO.	REF. NO.
GL3-64188-00	25- 9	EU0-67354-00-20	1-34	GA7-67844-00	19-38	6R7-82361-00	12-30	90119-08916	19-25	90267-48940	7-16
GA7-6418C-11	25-14	EW2-67354-00-01	8-33	GA7-67856-00	19-12	6K8-82370-00	12-28	90119-08925	22-36		14-22
GA7-6418C-20	25-14	EW2-67354-00-03	8-33	GA7-6785H-00	19-15	62E-82553-00	12-32	90119-08932	8-35		19-21
GA7-6418D-01	19-44	EW2-67354-00-05	8-33	FJ0-67856-40	19-16	6R7-82560-00	12-33	90119-10M00	1-28	90280-05013	10-12
FJ0-6418G-A0	25- 8	EW2-67354-00-10	8-33	GA7-67856-00	13-14	6R7-83623-40	12- 4	90119-10M01	1-29	90340-08M04	6-10
GL3-6418G-00	25- 8	GA7-67525-00	20-23	EU0-67869-00	19-37	6R7-83623-50	12- 4	90119-10M02	1-26	90380-12M29	1- 4
GA7-6418J-10	25-10	GH7-67538-00	20-17	GA7-68211-00	13- 4	63N-83623-00	12- 4	90119-10M03	1-30		10-15
GA7-6418J-21	25-10	GA7-67550-02	20- 1	GA7-68218-00	13- 9	6R7-85515-10	10- 6	90119-10M07	1-16	90387-06M05	5- 6
FJ0-64188-00	25-11	GA7-67555-00	20- 2	EU0-68221-00	13- 5	6M6-8552A-01-98	12- 2	90119-10M56	1-15	90387-06M60	9- 2
GA7-6419B-20	25- 5	GA7-6756E-00	20-13	EU0-68221-30	13- 6	6M6-8552E-01	12- 3	90119-10M72	6-45	90387-08M06	8-27
GA7-6419C-00	25- 6	FN8-67565-01	20-21	GA7-68310-00	22-13	62T-85520-00	10- 3	90119-10906	8-32	90387-08906	19-29
GA7-6419D-10	25- 7	GA7-67570-00	20-16	FK7-68312-02	22-16	62T-85533-00	10- 4	90149-03930	21-13	90387-08919	18-17
GA7-6419D-20	25- 7	GA7-6759B-00	19-40	FK7-68313-01	22-17	62T-85540-01	12-12	90149-04951	23- 5	90430-08020	6-11
GR7-6419E-00	25-20	GA7-6759C-00	19-41	GA7-6834C-00	22-14	62T-85550-00	10- 1	90149-05937	16-12		26- 9
EU0-64197-00	25-16	GA7-6759D-00	19-42	GA7-6881N-00	8-31	6R7-85560-10	10- 2	90149-05959	22- 4	90430-13909	15-19
GA7-6516A-00-P4	14- 1	GDO-6761D-00	15-12	GA7-6881P-00	8-36	62E-85570-00	12-18		23- 4		20- 8
GA7-6516N-00-P1	14- 5	EW2-67618-00	15-13	GA7-6881R-00	8-40	6M6-85580-00	10- 5	90149-05984	17- 5	90445-07M17	5-15
GA7-6517M-00	14-43	GA7-67711-01	19- 1	GA7-6883B-00	9-18	90105-10M45	6-44	90149-05985	18-23	90445-07M19	1-22
GA7-6517N-00	14-44	FJ0-67713-00	19- 2	6M6-8132W-00	12- 7	90105-10M49	6-43	90149-05988	23- 4	90445-09M17	9- 9
GA7-6519B-00	14-32	FN8-67714-02	19- 4	6R8-81337-00-9M	10-14	90109-08M56	1- 7	90149-06971	16- 8	90445-09901	18- 5
GA7-65193-00	14-39	EW2-67716-01	19- 3	6M6-81365-A0	10-16	90109-10M47	10-13	90149-06973	17-41	90445-10M05	7-12
EU0-65772-30	20-14	GH1-6773D-00	7-21		26-18	90116-08M55	3- 3	90149-05975	16- 7	90445-10M27	7- 1
GA7-65772-00	13- 7	GJ1-6773D-00	19-43	6M6-81800-10	11- 1	90119-05M02	3-36	90159-05900	22-12	90445-10M64	7-11
EU0-65901-01	24-12	GA7-6774B-00	19-28	3AJ-81809-00	11- 2	90119-05912	20-22	90159-06901	14-18	90445-10M86	7-13
GA7-6593H-00	16-27	GR7-6775B-00	18- 1	6M6-81820-00	11- 7	90119-06MA1	6-37		14-20	90445-10M87	7- 4
GA7-6593J-00	16-25	GA7-6775D-00	18-19	6M6-81826-00	11- 5	90119-06M70	8-19	90159-06902	17-34	90445-11M37	5- 2
GA7-65983-00	16-18	GA7-6775E-00	18-21	6M6-8183E-00	11-16	90119-06901	16-29	90170-22M11	7-18	90445-11903	19- 5
GA7-65984-00	16-19	GA7-6775F-01	18-12	6M6-81830-00	11- 8	90119-06902	16-28	90179-06926	14- 3	90445-14M18	20- 5
EU0-65986-00	24-11	GA7-6775H-00	18-20	6M6-81840-10	11- 3		17-15		14- 6	90445-14M19	15- 6
EU0-65986-10	24-11	GA7-6775L-02	18-14	11H-81844-00	11- 4		18-16	90179-06952	8-39	90445-14M20	20-11
GH1-67242-00	21-11	FJ0-67752-00	18- 2	6M6-81844-00	12- 6	90119-06908	8-42	90179-08M15	3- 4	90445-14M22	6-20
EW2-67243-00	21-12	FJ0-67766-00	18- 6	26H-81847-00	11- 9	90119-06913	14- 7	90179-08927	14- 2	90445-14M23	6-22
GDO-67249-00-05	9-17	EU0-67767-31	19-13	6M6-81850-00	11- 6		18-15	90179-08953	8-37	90445-14M29	6-18
GDO-67249-00-10	9-17	FN8-67777-31	19-24	6M6-81865-00	11-18		20-15	90179-10954	8-30	90445-19M01	15- 2
EW2-67250-02	22- 6	EU0-67816-30	7-15	6M6-81866-00	11-17		22-37	90201-05925	7-23	90445-19M02	15- 3
GH1-67252-01	21-10	EU0-67817-00	7-17	6M6-81921-00	12- 5	90119-06915	8-41		13-17	90446-07M14	5-11
EW2-67255-00	22- 7	FN8-67831-01	19-30	6G1-81941-10	12-14	90119-06920	14-41	90201-05928	22- 5	90446-07M18	5-13
EW2-67256-00	22- 8	EU0-67832-00	19-31	6M6-81952-01	12-15	90119-06926	22-33	90201-06M02	8-25	90446-07M48	5-17
EW2-67257-01	22- 9	FN8-67833-00	19-32	6M6-81960-A0	12-16	90119-08M19	1-21	90201-065F3	17-42	90446-09908	18-10
EW2-67258-01	22-10	EU0-67834-00	19-35	EU0-82110-09	13- 3	90119-08M55	1- 5	90201-20M04	2-13	90446-11905	18- 8
EW2-67259-01	22-11	EU0-67835-00	19-33	62E-82117-00	13- 1	90119-08M73	6-12	90201-24M02	2-19	90446-14M64	7- 2
EU0-67267-00	21-15	EU0-67835-30	16-22	62E-82117-10	13- 2	90119-08038	1-32	90267-40935	19-36		7- 5
EU0-67324-00	1-33		17-10	62E-82117-20	12-36		12- 1	90267-40937	17-13	90446-17M11	5- 3
EU0-67354-00-03	1-34	EU0-67839-00	16-23	6K8-82150-01	12- 9	90119-08903	19-26	90267-48925	7-24	90446-20M13	6-24
EU0-67354-00-01	1-34		17-11	6G1-82151-00	12-10		22-26		13-18	90446-20M39	15- 8
EU0-67354-00-02	1-34		19-34	6K8-82159-00	12-11		22-28	90267-48934	13- 8	90450-14M05	6-23
EU0-67354-00-05	1-34	GE2-6784A-00	18- 3	62E-82351-00	12-19	90119-08904	1-31		23- 3	90460-64M15	6-47
EU0-67354-00-10	1-34	FJ0-67841-01	18- 4	62E-82352-00	12-21	90119-08907	9-16	90267-48938	18-13	90460-70M16	6-41

NUMERICAL INDEX

PART NO.	REF. NO.	PART NO.	REF. NO.	PART NO.	REF. NO.	PART NO.	REF. NO.	PART NO.	REF. NO.	PART NO.	REF. NO.
90460-90M11	6-40	90601-16274	19-11	92990-06200	17-35	93603-10049	1- 9	97095-06025	10-17		
90464-06M29	12-13	90601-16875	20- 3	92990-06600	5-22	93604-07141	1-10	97095-06035	5- 9		
90464-08M07	7- 3	90601-17586	20- 4		5-24	93606-09M19	8- 4		5-21		
90464-10M38	5-20	90601-20005	13-15		8-14	93606-12019	1- 8	97095-08018	8-28		
90465-08M07	12-17		19-23		10-11		8-18	97380-06030	22-23		
90465-08M37	5-19	90601-20006	7-25		12-24		8-20	97513-06216	3-21		
90465-11M10	3- 2		13-19		12-27		9- 5	97595-06525	9- 4		
	3-23		15-16	92990-08100	4- 6		10-19	97780-04110	16-24		
	5- 4	90604-80757	20- 7	92990-08200	15-28	94702-00040	12-31		17-12		
	5-14	90604-80758	20- 9	92990-10200	17-38	94702-00272	12-31	97780-50114	15-14		
	5-18	90604-80759	15-17		22-30	95380-05800	14-34	97780-50220	13-12		
	6-21	90604-80775	15-18	92990-14200	20-19	95380-06700	8-24	97780-50520	15-25		
	7- 6	90656-67015	13-10	92995-06100	12-35		11-15	97780-60520	8-38		
	7- 8	90656-67021	13-11	92995-06600	5-10	95380-06800	16- 3	97780-60525	12- 8		
	7-14	90656-67025	14-46		6-36		16-11	97802-04008	10- 9		
	9-10	90656-67096	14-45		10-18	95380-08700	4- 8	97880-03008	22-15		
	12-20	90699-36020	21-14	92995-08600	8-29	95720-05300	13-24	97880-04010	7-19		
	12-22	90699-36085	21- 9	93101-25M50	8-10		14-15	97880-04116	21- 3		
	12-29	91490-16010	19-10		26-25		14-27	97880-05010	14-33		
	15- 7	91790-05040	19- 8	93101-25M55	9-12		14-30	97880-05016	3-15		
	18-11	92903-06600	3-10		26-22		14-38		17-18		
	19-14		3-12	93101-25M56	9-15		17-19	97880-05020	13-22		
	19-22		3-28		26-23		17-25		14-29		
	20-20		3-32	93101-36M46	2- 7	95720-06300	17-28	97880-05025	14-13		
90465-12M53	5- 5		6-14		26- 5		17-31		22-18		
90465-13M11	12-37		6-30	93102-25M34	8- 9		17-36	97880-05030	14-14		
	15- 4		11-22		26-24		17-43	97880-06016	10-10		
	15-11	92903-08600	6- 7	93102-36M33	2- 6		18-18	97880-06030	12-23		
	15-15		6-16		26- 4		21- 8	97902-04122	10- 8		
	15-20		11-11	93103-32M01	2- 8		22-38	97902-05125	10- 7		
90467-06016	1-23		11-13		26- 6	95720-08300	15-29	97980-05330	4-25		
90467-08M10	13-13	92990-04100	21- 4	93210-13M63	3-38	95720-10300	17-39	98580-06016	12-26		
90467-11019	18- 9	92990-04600	7-20	93210-17MA4	9- 7		22-31	98780-04015	1-13		
90467-11032	19- 7		21- 5		26-21	96465-13M11	5- 7	98780-04535	16-26		
90480-06M43	12-25	92990-05200	13-23	93210-46M16	8-12	97013-06012	3-31	98780-05012	14-37		
90480-06M69	9- 3		14-16		26-26	97013-06020	3-27				
90480-19906	19-27		14-31	93211-03902	16-21		6-29				
90501-14M73	11-21		14-35		17- 9	97013-06025	3-11				
90560-22281	22- 3		15-26	93305-205U0	9-14		6-13				
90600-70069	14-36		17-20	93305-30601	2- 2	97013-06035	3- 9				
90600-91736	7-22	92990-05600	3-16	93306-205U0	8- 8	97013-08025	6-15				
	13-16		19- 9	93306-307U3	2- 3	97013-08035	6- 6				
90601-11062	19- 6	92990-06100	11-14	93310-320U2	2-12		11-12				
	20-12		16-10	93430-47M04	9-13	97013-08040	11-10				
90601-11583	20- 6	92990-06200	16- 2	93440-25M08	11-19	97095-06016	6-35				
	20-10		16- 9	93440-80023	2- 4		12-34				
90601-15272	9-19		17-27	93450-18M06	11-20	97095-06020	8-13				
90601-15573	19-39		17-30	93450-21053	2-14	97095-06025	5-23				