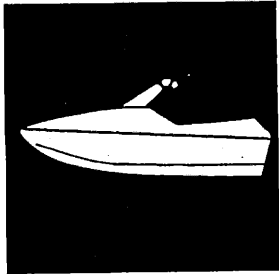


YAMAHA



PARTS CATALOGUE

WaveBlaster II

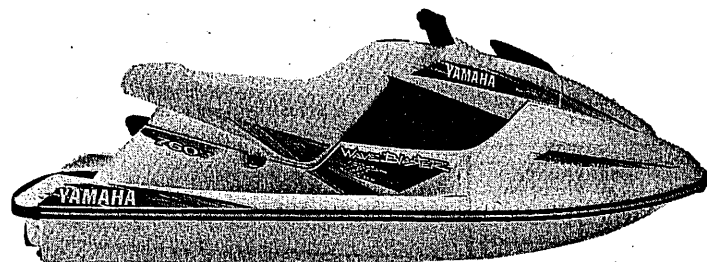
WB760U (GK51,GK52)

WB760 (GK52)

WB760 (GK53)

16GK5-100E1

YAMAHA
GENUINE
Parts & Accessories



A3

FOREWORD

This Parts Catalogue is related to the parts for the model(s) in the below frame. When you are ordering replacement parts, please refer to this Parts Catalogue and quote both part numbers and part names correctly.

WB760U (GK51, GK52), WB760 (GK52), WB760(GK53)

1. Modifications or additions which have been made after issue of the Parts Catalogue will be announced in the Yamaha Parts News. It is advisable that you make necessary corrections to the Parts Catalogue according to the Yamaha Parts News.

2. Abbreviations

The following abbreviations are used in this Parts Catalogue.

- "UR" Use specified parts number.
- "UN" Use as many as needed.
- "AP" Alternate Parts
- "LM" Local Made (Parts need to be ordered locally)
- "F#" Frame No. (Applicable machine No.)

3. Parts, which are to be supplied in an assembly, are listed with a dot (.) in front of the part name as shown below.

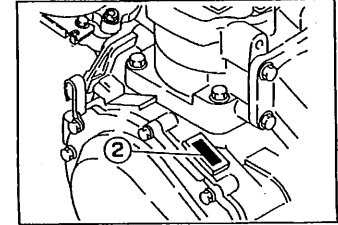
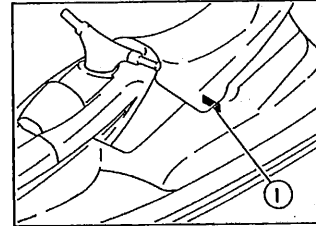
The numeral appearing to the right of each component part indicates the quantity of parts for each assembly unit.

EXAMPLE

PART NO.	DESCRIPTION	Q'TY	REMARKS
EU0-62280-00	DRAIN PLUG ASSY	2	
EU0-62282-00	. PLUG, DRAIN	1	

4. Applicable Serial No. and Color Code

① Hull Serial No.	GK51, GK52	GK5-900101	~
	GK53	GK5-910101	~
② Engine Serial No.	64Y-000101		~



Color Code	Color Name	Abbreviation
4D	DARK BLUISH-GRAY METALLIC 2	DBNM2
GA3C	WHITE COAT 2	WC2

5. Note that the illustrations are for reference in finding parts numbers, not to be used for assembling. When assembling, please use the applicable service manual.

6. A part with "YMUS" in the remarks column can be obtained from YMUS(USA) and not from YAMAHA MOTOR CO.,LTD (JAPAN).

EXAMPLE

PART NO.	DESCRIPTION	QTY	REMARKS
EW2-U5160-00	ENGINE HATCH COMP.	1	YMUS
90601-168U7	BAND, HOSE	1	YMUS

ADDRESS:

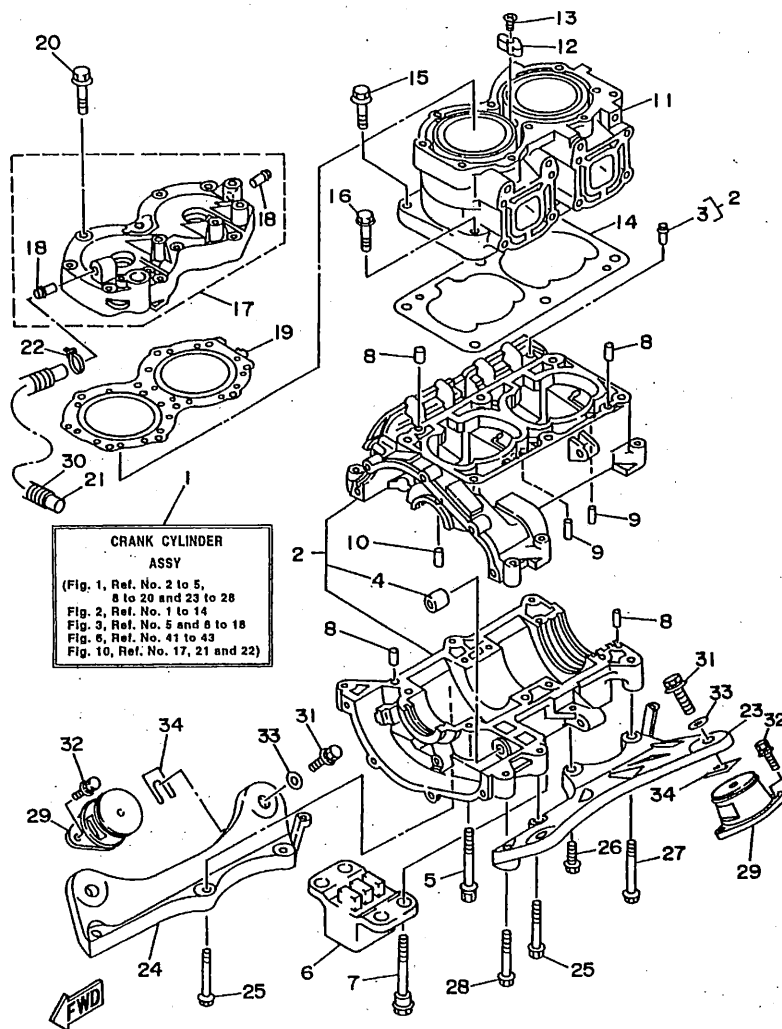
YAMAHA MOTOR CORPORATION U.S.A.
PARTS & ACCESSORY DIV.
6555 KATELLA AVENUE
CYPRESS, CALIFORNIA 90630, U.S.A.

CONTENTS

Cylinder, Crankcase	B2~B3	Fuel Tank	D6~D7
Crankshaft, Piston	B4	Exhaust 2	D8
Intake	B5~B6	Control Cable	D9
Carburetor	B7~B8	Steering 1	D10~D11
Oil Pump	B9	Steering 2	D12
Exhaust 1	B10~B12	Graphic 1. Tool (For USA).....	D13~D14
Fuel	B13	Graphic 2. Tool (For CAN, GUM, AUS, FRA)	D15~E2
Jet Unit 1	B14~B15	Repair Kit 1	E3
Jet Unit 2	C2	Repair Kit 2.....	E4
Generator	C3~C4		
Starting Motor.....	C5		
Electrical 1	C6~C7		
Electrical 2	C8~C9		
Engine Hatch 1	C10~C11		
Engine Hatch 2	C12		
Hull, Deck.....	C13~C14		
Gunwale, Mat	C15~D2		
Ventilation	D3		
Seat - Under Locker	D4		
Oil Tank.....	D5		

INDEX

Numerical Index	M1~M3
-----------------------	-------



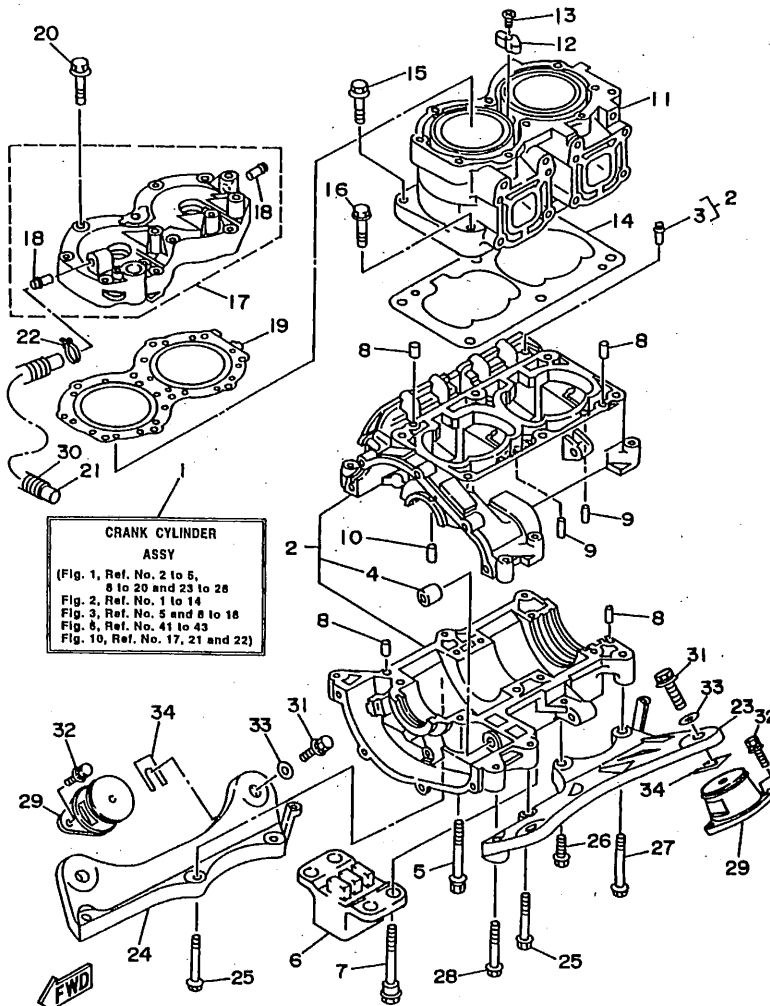
GK51100-6010

FIG. 1 CYLINDER. CRANKCASE

REF. NO.	PART NO.	DESCRIPTION	Q'TY	REMARKS
1	64X-W0090-00-4D	CRANK CYLINDER ASSY	1	
2	64X-15100-00-94	CRANKCASE ASSY	1	
3	62T-14251-00	.NIPPLE	2	
4	90380-12M29	.BUSH, SOLID	1	
5	90119-08M55	BOLT, WITH WASHER	4	
6	64Y-44532-00	STOPPER, UPPER MOUNT	1	
7	90109-08M56	BOLT	4	
8	93606-12019	PIN, DOWEL	4	
9	93603-10049	PIN, DOWEL	4	
10	93604-07141	PIN, DOWEL	1	
11	64X-11311-00-94	CYLINDER 1	1	
12	6E5-11325-00	ANODE	1	
13	98780-04015	SCREW, FLAT HEAD	1	
14	6M6-11351-A2	GASKET, CYLINDER	1	
15	90119-10M56	BOLT, WITH WASHER	4	
16	90119-10M07	BOLT, WITH WASHER	2	
17	64X-11111-00-94	HEAD, CYLINDER 1	1	
18	6K8-51129-00	.NIPPLE	2	
19	64X-11181-00	GASKET, CYLINDER HEAD 1	1	
20	90119-08M19	BOLT, WITH WASHER	10	
21	90445-14M03	HOSE	1	
22	90465-11M10	CLAMP	1	
23	6R7-21415-00-94	BRACKET, FRONT UPPER 1	1	
24	6R7-21425-00-94	BRACKET, REAR UPPER 1	1	
25	90119-10M02	BOLT, WITH WASHER	4	
26	90119-10M00	BOLT, WITH WASHER	1	
27	90119-10M03	BOLT, WITH WASHER	1	
28	90119-10M01	BOLT, WITH WASHER	1	

B2

FIG. 1 CYLINDER. CRANKCASE



REF. NO.	PART NO.	DESCRIPTION	Q'TY	REMARKS
29	62E-44517-00-5B	MOUNT RUBBER	4	
30	90446-20M53	HOSE	1	
31	90119-08904	BOLT, WITH WASHER	4	
32	90119-08038	BOLT, WITH WASHER	8	
33	EU0-67324-00	PLATE	4	
34	EU0-67354-00-01	SHIM (T=0.1)	10	UR
	EU0-67354-00-03	SHIM (T=0.3)	10	UR
	EU0-67354-00-05	SHIM (T=0.5)	10	UR
	EU0-67354-00-10	SHIM (T=1.0)	10	UR
	EU0-67354-00-20	SHIM (T=2.0)	10	UR

GK51100-6010

B3

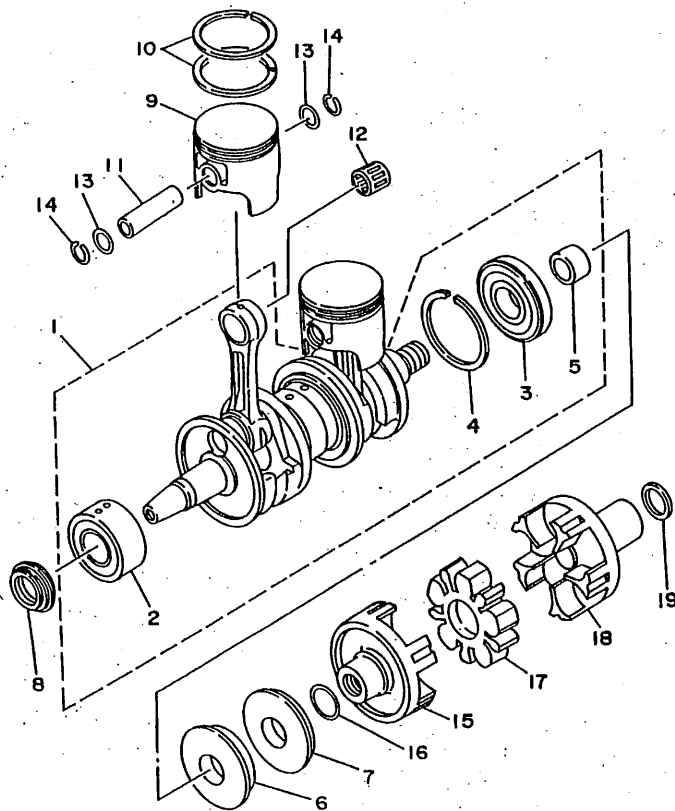


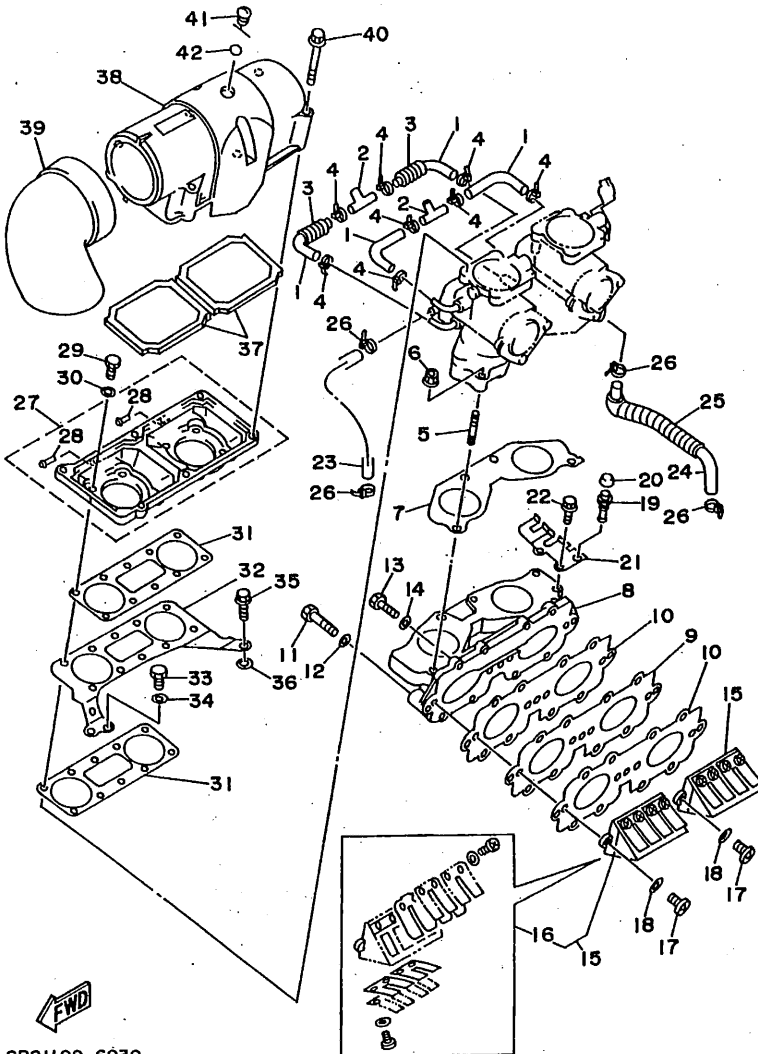
FIG. 2 CRANKSHAFT. PISTON

REF. NO.	PART NO.	DESCRIPTION	Q'TY	REMARKS
1	64X-11400-00	CRANKSHAFT ASSY	1	
2	93305-30601	.BEARING	1	
3	93306-307U3	.BEARING	1	
4	93440-80023	.CIRCLIP	1	
5	62T-45526-00	.COLLAR, DRIVE SHAFT	1	
6	93102-36M33	OIL SEAL	1	
7	93101-36M46	OIL SEAL	1	
8	93103-32M01	OIL SEAL	1	
9	64X-11631-00-91	PISTON (STD)	2	
	64X-11635-00	PISTON (0.25MM O/S)	2	AP
	64X-11636-00	PISTON (0.50MM O/S)	2	AP
10	64X-11603-00	PISTON RING SET (STD)	2	
	64X-11604-00	PISTON RING SET (0.25MM O/S)	2	AP
	64X-11605-00	PISTON RING SET (0.50MM O/S)	2	AP
11	62T-11633-00	PIN, PISTON	2	
12	93310-320U2	BEARING, CYLINDRICAL	2	
13	90201-20M04	WASHER, PLATE	4	
14	93450-21053	CIRCLIP	4	
15	63M-45813-01-5B	FLANGE, COUPLING	1	
16	62T-45127-00	SEAL	1	
17	63M-4581J-00	RUBBER SHAFT COUPLING	1	
18	64T-45813-00-5B	FLANGE, COUPLING	1	
19	90201-24M02	WASHER, PLATE	1	



GP21100-6020

B4

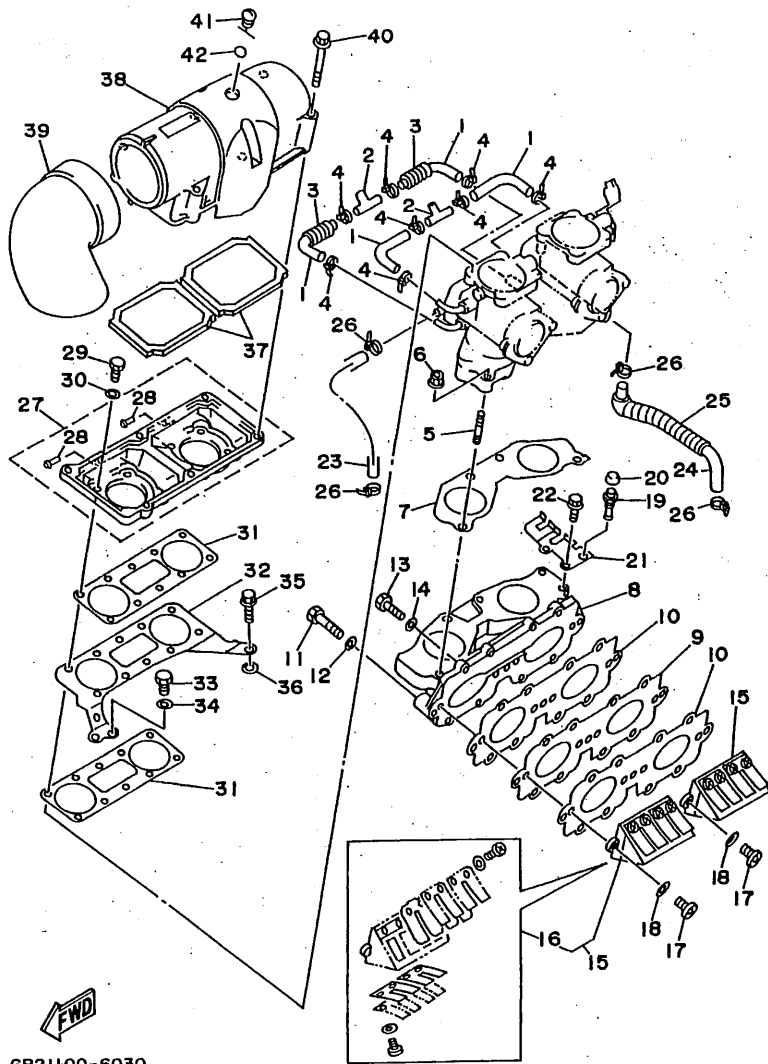


FWD
GP21100-6030

FIG. 3 INTAKE

REF. NO.	PART NO.	DESCRIPTION	Q'TY	REMARKS
1	64X-24313-00	PIPE 3	4	
2	688-24378-00	PIPE, JOINT 4	2	
3	90446-14M66	HOSE	2	
4	90465-11M10	CLAMP	8	
5	90116-08M55	BOLT, STUD	4	
6	90179-08M15	NUT	4	
7	64X-13556-00	GASKET, MANIFOLD	1	
8	64X-13555-00-94	MANIFOLD, INTAKE	1	
9	62T-13624-00	PLATE, REED VALVE	1	
10	62T-13566-00	GASKET	2	
11	97014-06035	BOLT	3	
12	92990-06600	WASHER, PLATE	3	
13	97013-06025	BOLT	8	
14	92990-06600	WASHER, PLATE	8	
15	64X-13610-00	REED VALVE ASSY	2	
16	64X-W0004-00	.REED SET	1	
17	98580-05016	SCREW, PAN HEAD	4	
18	92990-05600	WASHER, PLATE	4	
19	61L-5169A-00	NIPPLE, GREASE	1	
20	663-45119-00	CAP, GREASE NIPPLE	1	
21	64X-14527-00	PLATE	1	
22	97513-06516	BOLT, WITH WASHER	2	
23	90445-10M88	HOSE	1	
24	64X-24314-00	PIPE 4	1	
25	90446-14M67	HOSE	1	
26	90465-11M10	CLAMP	4	
27	64X-14284-00-4D	COVER, CARBURETOR 2	1	
28	6E5-11372-00	.NIPPLE, HOSE	2	

B5



GP21100-6030

FIG. 3 INTAKE

REF. NO.	PART NO.	DESCRIPTION	Q'TY	REMARKS
29	97013-06020	BOLT	8	
30	92990-06600	WASHER, PLATE	8	
31	64X-13674-00	GASKET, AIR COOLER COVER 1	2	
32	64X-14255-00	PLATE	1	
33	97013-06012	BOLT	1	
34	92990-06600	WASHER, PLATE	1	
35	90109-06M66	BOLT	1	
36	90201-06M31	WASHER, PLATE	1	
37	62T-14451-00	ELEMENT, AIR CLEANER	2	
38	64X-14283-00	COVER, CARBURETOR 1	1	
39	62T-14419-00	PIPE	1	
40	90105-05M46	BOLT, WASHER BASED	6	
41	62T-14435-00	GROMMET	1	
42	93210-13M63	O-RING	1	

B6

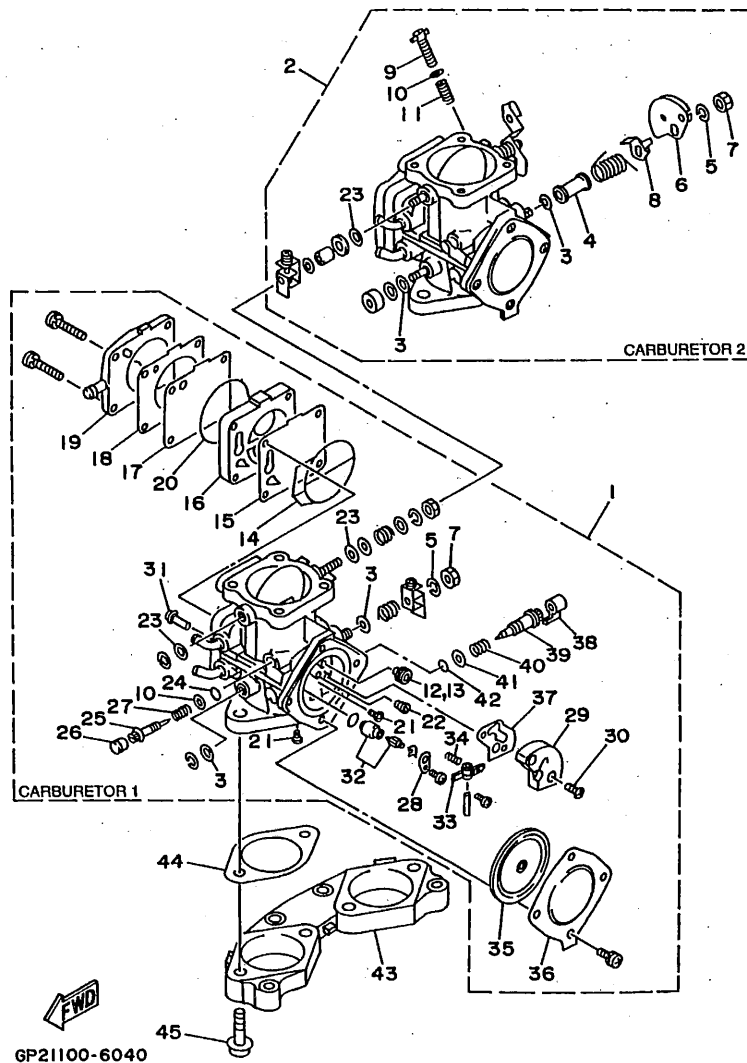


FIG. 4 CARBURETOR

REF. NO.	PART NO.	DESCRIPTION	Q'TY	REMARKS
1	64Y-14301-00	CARBURETOR ASSY 1	1	
2	64Y-14302-00	CARBURETOR ASSY 2	1	
3	6R7-14596-01	.WASHER	4	
4	6K8-14534-10	.COLLAR	1	CARBURETOR 2
5	92990-08100	.WASHER, SPRING	2	
6	6K8-14930-00	.THROTTLE SHAFT ASSY	1	CARBURETOR 2
7	95380-08700	.NUT	2	
8	6K8-14926-10	.BRACKET, THROTTLE 1	1	CARBURETOR 2
9	6M6-14521-00	.SCREW, ADJUST	1	CARBURETOR 2
10	812-14235-00	.WASHER, NEEDLE	3	
11	47X-14133-00	.SPRING, THROTTLE STOP	1	CARBURETOR 2
12	3G2-14231-27	.JET, MAIN (#135)	1	CARBURETOR 1
13	3G2-14231-30-A0	.JET, MAIN (#150)	1	CARBURETOR 2
14	6K8-14564-00	.O-RING	2	
15	6K8-24411-20	.DIAPHRAGM	2	
16	6M6-24413-00	.BODY 2	2	
17	6K8-24421-10	.VALVE, CHECK	2	
18	6K8-24431-20	.GASKET, FUEL PUMP 1	2	
19	6K8-24452-10	.COVER	1	CARBURETOR 1
20	6K8-14563-00	.O-RING	2	
21	6K8-14521-10	.SCREW	4	
22	830-14231-23	.JET, MAIN (#115)	2	
23	6K8-14597-11	.WASHER	4	
24	812-14147-00	.O-RING	2	
25	6K8-14946-10	.METERING NEEDLE	2	
26	6K8-14471-10	.CAP, CARBURETOR	2	
27	3KW-14932-00	.SPRING, THROTTLE 2	2	
28	6K8-14527-11	.PLATE	2	

B7

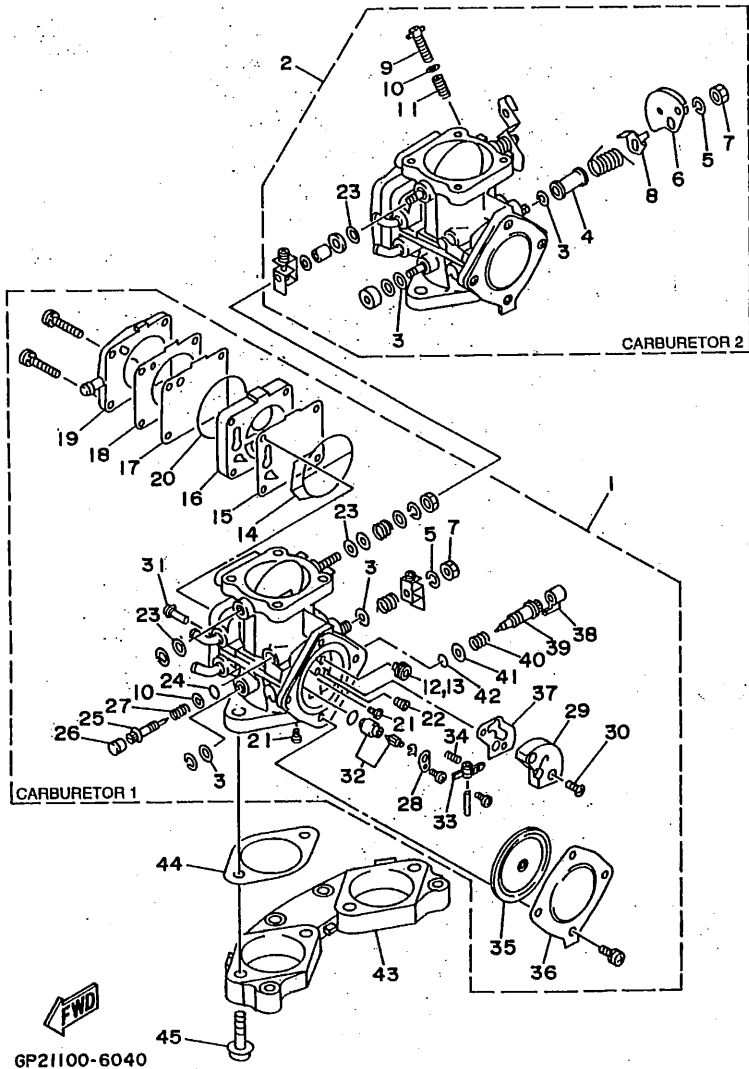
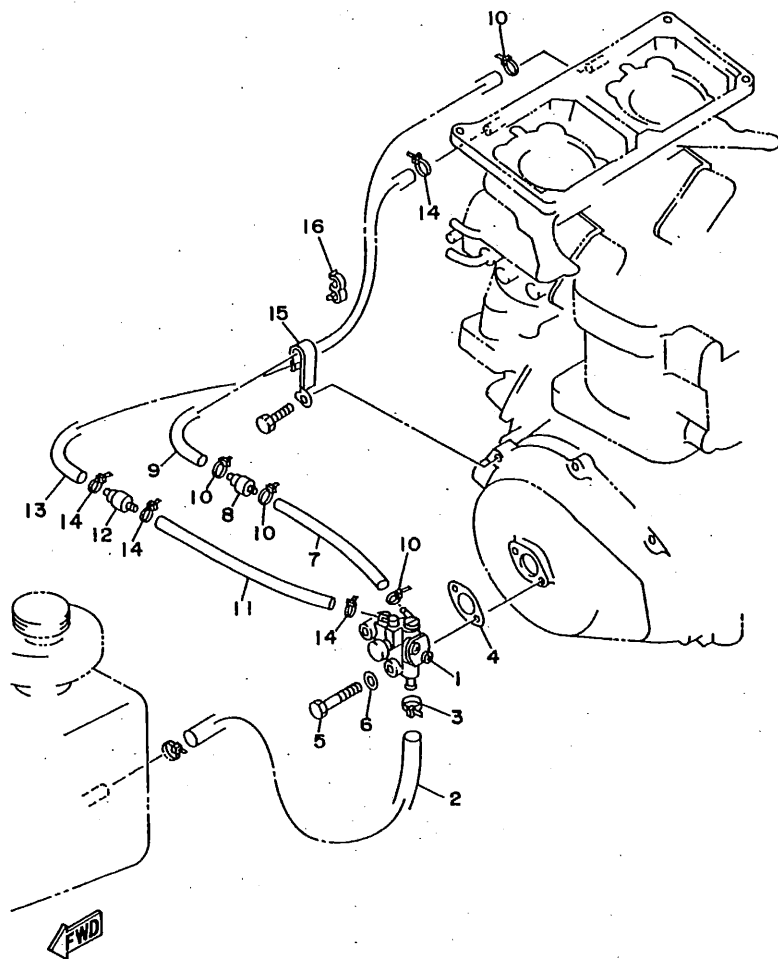


FIG. 4 CARBURETOR

REF. NO.	PART NO.	DESCRIPTION	Q'TY	REMARKS
29	6R7-24412-01	.BODY 1	2	
30	6K8-14523-11	.SCREW, STOP	4	
31	6R7-14569-00	.STRAINER	2	
32	61X-14916-15	.NEEDLE	2	
33	6K8-14547-01	.ARM, FLOAT	2	
34	6R7-14253-00	.SPRING	2	
35	6R7-14541-00	.DIAPHRAGM, PUMP	2	
36	6R7-14542-00	.BODY, PUMP 1	2	
37	6K8-14536-11	.GASKET	2	
38	6K8-14481-10	.CAP, CARBURETOR	2	
39	6M6-14923-10	.SCREW, PILOT	2	
40	6K8-14589-00	.SPRING	2	
41	822-14235-00	.WASHER, NEEDLE	2	
42	583-14561-00	.O-RING	2	
43	64X-14243-00	PLATE	1	
44	64X-14398-00	GASKET	2	
45	64X-14162-00	BOLT, HOLDER	4	

B8



GK51100-6050

FIG. 5 OIL PUMP

REF. NO.	PART NO.	DESCRIPTION	Q'TY	REMARKS
1	62T-13200-11	OIL INJECTION PUMP ASSY	1	
2	90445-11M33	HOSE	1	
3	90465-11M10	CLAMP	1	
4	6R8-13116-A0	GASKET, PUMP CASE	1	
5	97095-06035	BOLT	2	
6	92990-06600	WASHER, PLATE	2	
7	90445-07M87	HOSE	1	
8	6R3-13183-00	VALVE, CHECK	1	
9	90446-07M35	HOSE	1	
10	90465-11M10	CLAMP	4	
11	90445-07M87	HOSE	1	
12	6R3-13183-00	VALVE, CHECK	1	
13	90446-07M48	HOSE	1	
14	90465-11M10	CLAMP	4	
15	90465-08M37	CLAMP	1	
16	90464-07M20	CLAMP	1	

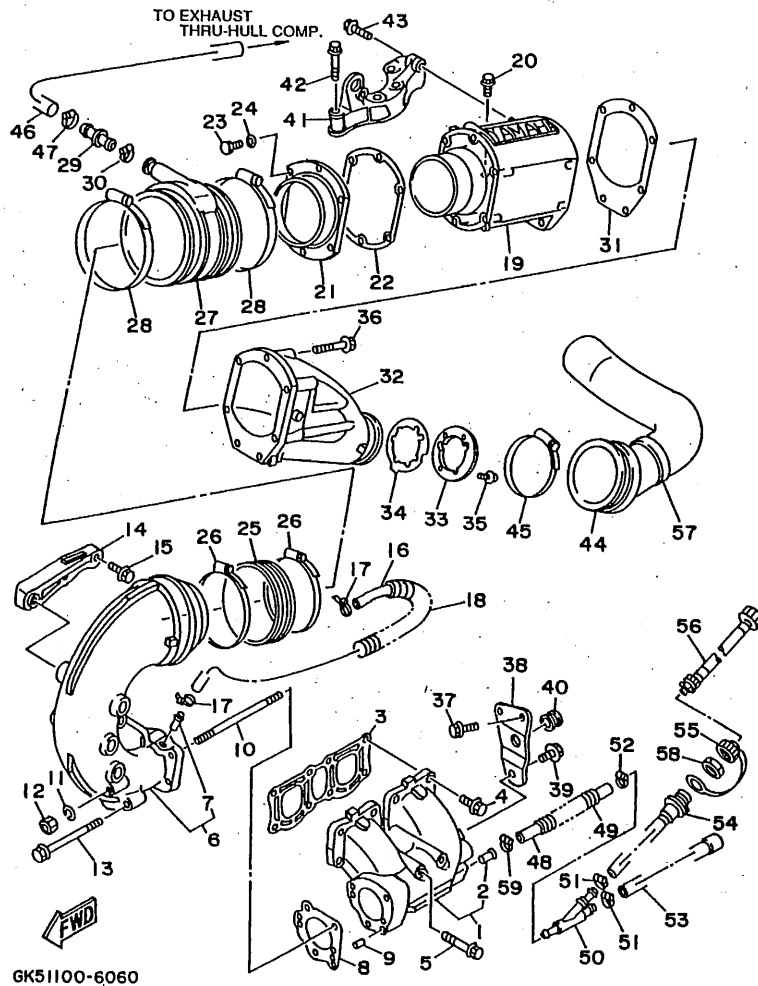
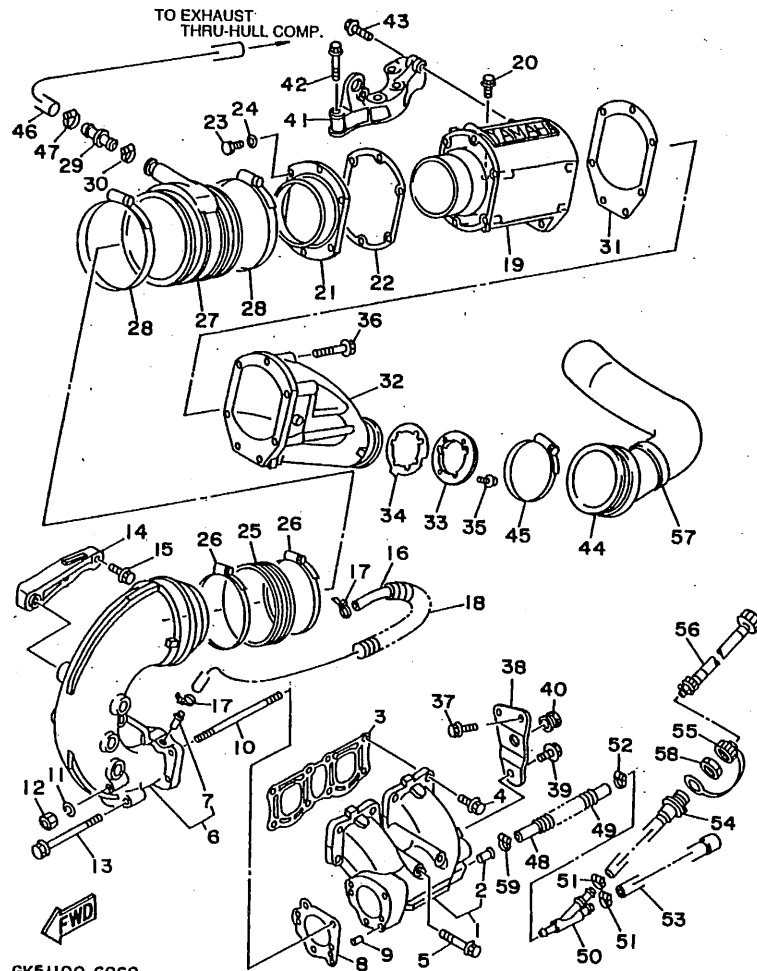


FIG. 6 EXHAUST 1

REF. NO.	PART NO.	DESCRIPTION	Q'TY	REMARKS
1	64X-14711-00-9M	MUFFLER 1	1	
2	6K8-51129-00	.NIPPLE	1	
3	62T-14613-00	GASKET, EXHAUST PIPE	1	
4	90105-10M60	BOLT, WASHER BASED	6	
5	90105-10M72	BOLT, WASHER BASED	2	
6	64X-14712-00-9M	RING, JOINT	1	
7	6K8-51129-00	.NIPPLE	1	
8	64X-14749-00	GASKET, MUFFLER DAMPER 2	1	
9	93605-12M21	PIN, DOWEL	2	
10	90116-08M59	BOLT, STUD	2	
11	92990-08100	WASHER, SPRING	2	
12	95380-08600	NUT	2	
13	90119-08M11	BOLT, WITH WASHER	2	
14	64X-14781-00-94	STAY, MUFFLER 2	1	
15	90105-10M73	BOLT, WASHER BASED	3	
16	63M-12577-00	HOSE 2	1	
17	90465-11M10	CLAMP	2	
18	90446-20M31	HOSE	1	
19	64X-14721-00-94	MUFFLER 2	1	
20	90105-10M60	BOLT, WASHER BASED	2	
21	62T-41113-00-9M	OUTER COVER, EXHAUST	1	
22	62T-41114-01	GASKET, EXHAUST OUTER COVER	1	
23	97013-06025	BOLT	6	
24	92990-06600	WASHER, PLATE	6	
25	62T-14625-00	JOINT, EXHAUST 2	1	
26	90450-99M06	HOSE CLAMP ASSY	2	
27	64X-14615-00	JOINT, EXHAUST 1	1	
28	90450-99M16	HOSE CLAMP ASSY	2	

B10

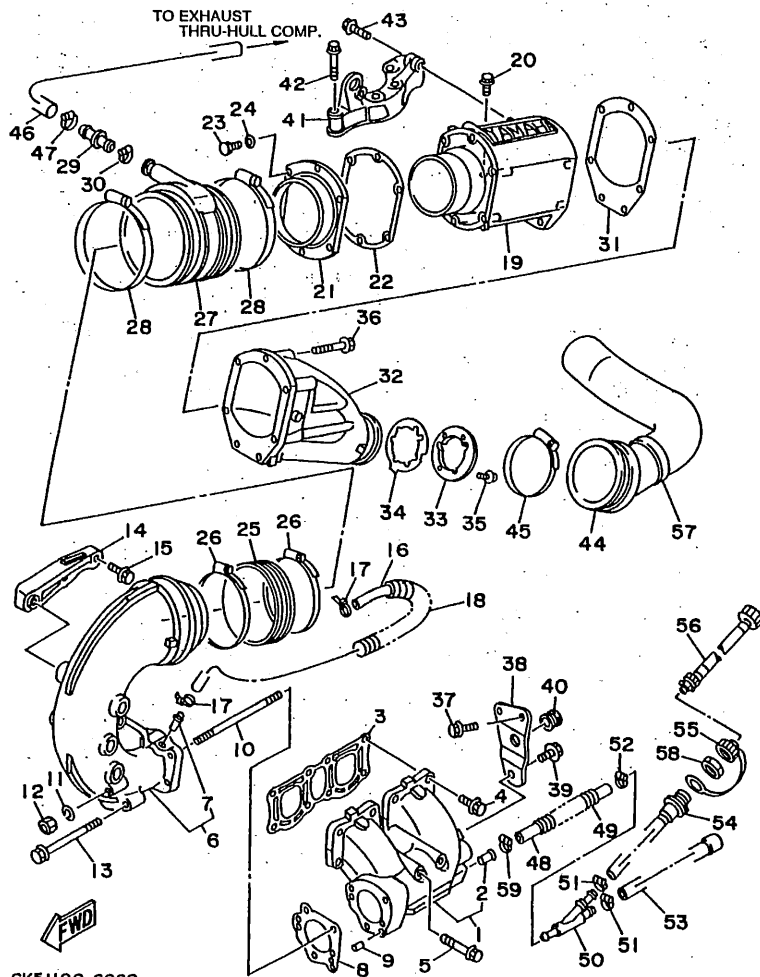


GK51100-6060

FIG. 6 EXHAUST 1

REF. NO.	PART NO.	DESCRIPTION	Q'TY	REMARKS
29	64X-12582-00	JOINT, HOSE 2	1	
30	90450-22M14	HOSE CLAMP ASSY	1	
31	64X-41124-00	GASKET, EXHAUST OUTER COVER	1	
32	64X-41123-00-9M	OUTER COVER, EXHAUST	1	
33	64X-14763-00-94	SPACER	1	
34	64X-14623-00	GASKET, EXHAUST PIPE	1	
35	97985-06220	SCREW, WITH WASHER	3	
36	90105-08M70	BOLT, WASHER BASED	5	
37	90105-08M71	BOLT, WASHER BASED	2	
38	64X-14717-00	PLATE, STOPPER	1	
39	90119-08M37	BOLT, WITH WASHER	1	
40	90480-20M05	GROMMET	1	
41	62T-14771-00-94	STAY, MUFFLER 1	1	
42	90119-10M72	BOLT, WITH WASHER	4	
43	90105-10M45	BOLT, WASHER BASED	2	
44	64Y-14752-00	PIPE, OUTLET	1	
45	90450-88M15	HOSE CLAMP ASSY	1	
46	64Y-12578-00	HOSE 3	1	
47	90450-22M14	HOSE CLAMP ASSY	1	
48	90445-14M10	HOSE	1	
49	90446-20M65	HOSE	1	
50	64X-12581-00	JOINT, HOSE 1	1	
51	90450-14M05	HOSE CLAMP ASSY	2	
52	90450-18M09	HOSE CLAMP ASSY	1	
53	64Y-12564-00	PIPE, WATER	1	
54	63M-12580-00	JOINT ASSY	1	
55	682-84385-01	CAP 1	1	
56	63M-12590-00	CONDUCTION ASSY	1	UR USA

B11

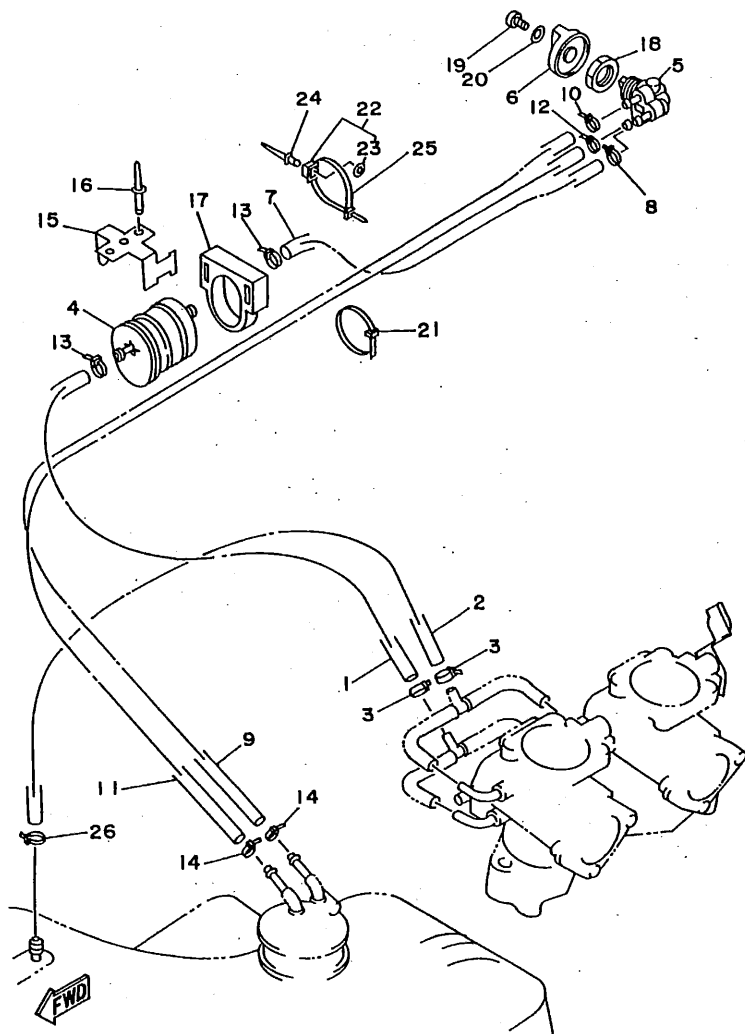


GK51100-6060

FIG. 6 EXHAUST 1

REF. NO.	PART NO.	DESCRIPTION	Q'TY	REMARKS
56	63M-12590-10	CONDUCTION ASSY	1	UR JAPAN
	63M-12590-20	CONDUCTION ASSY	1	UR CANADA, GUAM, AUSTRALIA, FRANCE
57	GK5-67577-00	PACKING, HOSE 1	1	
58	EU0-61652-00	NUT	1	
59	90450-14M05	HOSE CLAMP ASSY	1	

B12



GK51100-6070

FIG. 7 FUEL

REF. NO.	PART NO.	DESCRIPTION	Q'TY	REMARKS
1	90445-10M43	HOSE	1	
2	90445-10M23	HOSE	1	
3	90465-11M10	CLAMP	2	
4	6K8-24560-10	FILTER ASSY	1	
5	6K8-24500-02	FUEL COCK ASSY 1	1	
6	6K8-24524-10	LEVER, COCK	1	
7	90445-10M32	HOSE	1	
8	90465-11M10	CLAMP	1	
9	90445-10M70	HOSE	1	
10	90465-11M10	CLAMP	1	
11	90445-10M71	HOSE	1	
12	90465-11M10	CLAMP	1	
13	90465-11M10	CLAMP	2	
14	90465-11M10	CLAMP	2	
15	FN8-67816-00	BRACKET, FUEL FILTER	1	
16	90267-48940	RIVET, BLIND	2	
17	EU0-67817-00	HOLDER	1	
18	90170-22M11	NUT	1	
19	98580-04010	SCREW, PAN HEAD	1	
20	92990-04600	WASHER, PLATE	1	
21	90465-13M11	CLAMP	3	
22	90600-91736	CLAMP	3	
23	90201-05925	WASHER, PLATE	1	
24	90267-48925	RIVET, BLIND	3	
25	90601-20006	NYLON CLIP 1	3	
26	90465-11M10	CLAMP	1	

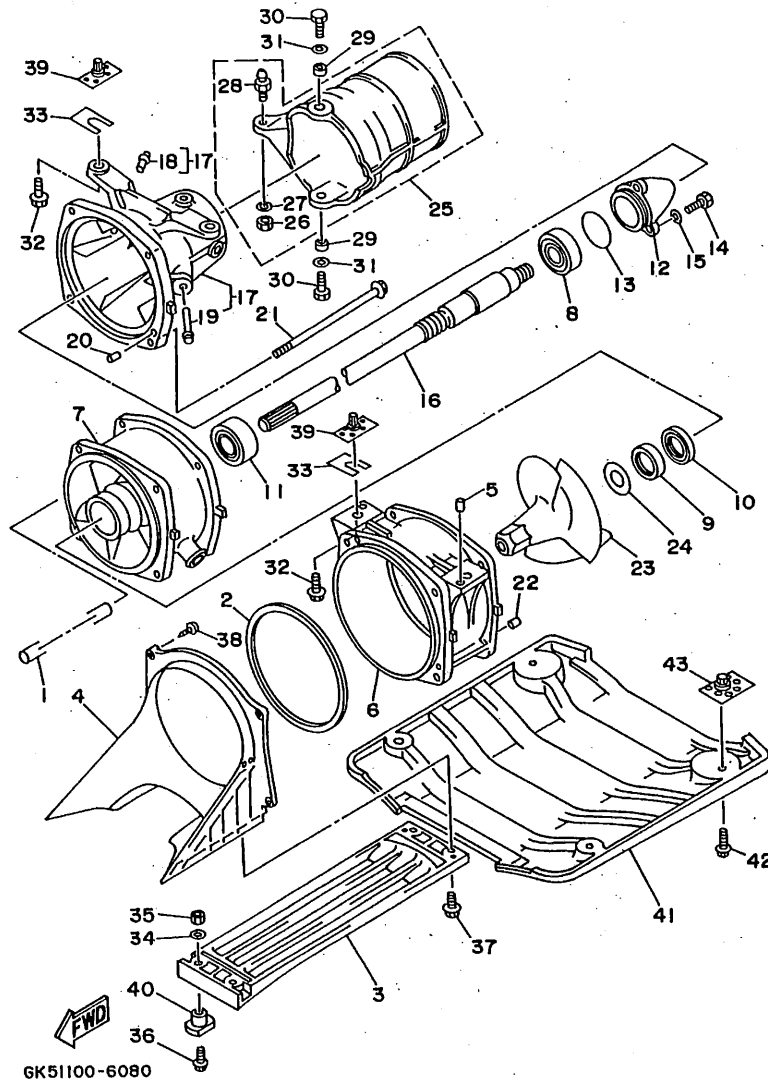


FIG. 8 JET UNIT 1

REF. NO.	PART NO.	DESCRIPTION	Q'TY	REMARKS
1	90445-18M01	HOSE	1	
2	64Y-51117-00	PACKING	1	
3	6R7-51333-00	SCREEN, INTAKE	1	
4	64Y-51311-00	DUCT, INTAKE	1	
5	93606-09M19	PIN, DOWEL	2	
6	64Y-51312-00-94	HOUSING, IMPELLER	1	
7	63M-51315-00-94	DUCT, IMPELLER	1	
8	93306-205U0	BEARING	1	
9	93102-25M34	OIL SEAL	1	
10	93101-25M50	OIL SEAL	1	
11	93305-205U1	BEARING	1	
12	62T-51326-00	CAP	1	
13	93210-46M16	O-RING	1	
14	97095-06016	BOLT	3	
15	92990-06600	WASHER, PLATE	3	
16	64Y-45511-00	SHAFT, DRIVE	1	
17	64T-51318-00-5B	NOZZLE	1	
18	6K8-51129-00	.NIPPLE	1	
19	63M-51334-00	.NIPPLE, HOSE	1	
20	93606-12019	PIN, DOWEL	2	
21	90105-08M74	BOLT, WASHER BASED	4	
22	93606-12019	PIN, DOWEL	2	
23	64Y-51321-A0	IMPELLER	1	
24	62T-51348-00	SPACER	1	
25	64Y-51313-00	NOZZLE, DEFLECTOR	1	
26	95380-08700	.NUT	1	
27	90201-08M04	.WASHER, PLATE	1	
28	63M-42316-00	.BOLT, JOINT	1	

B14

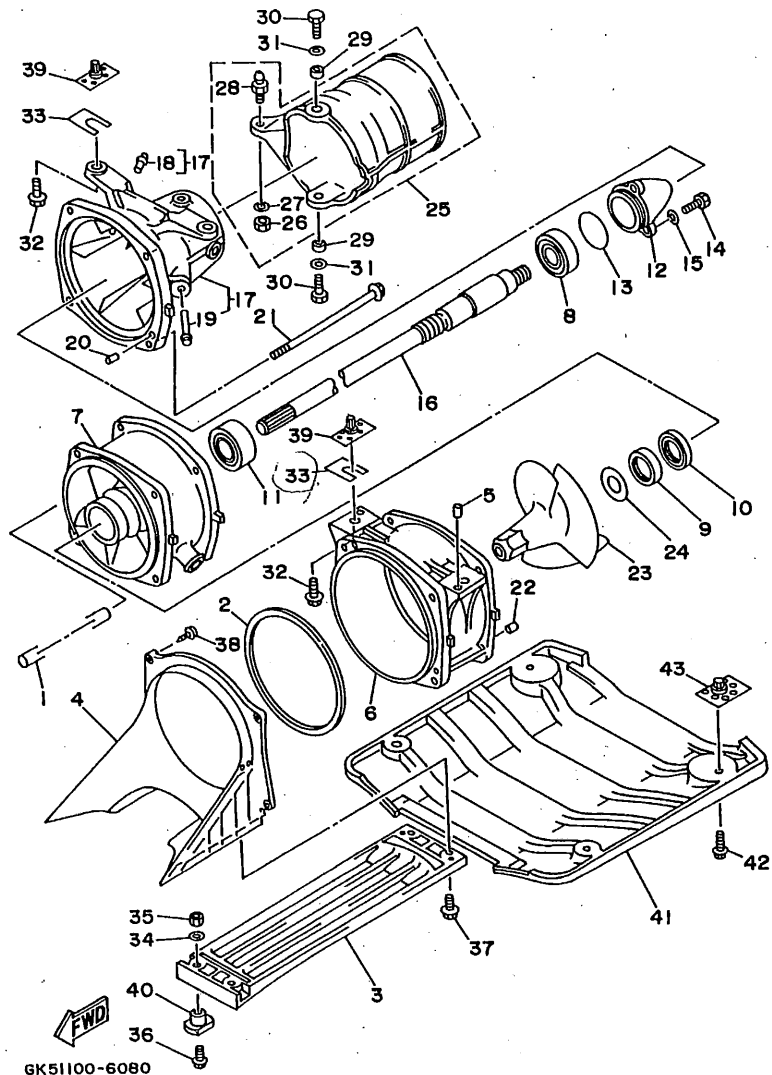
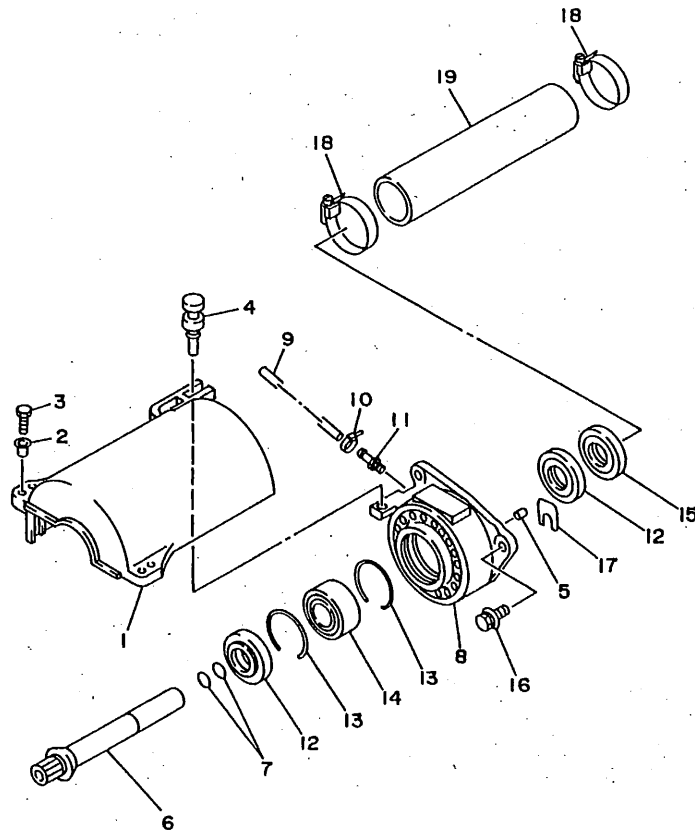


FIG. 8 JET UNIT 1

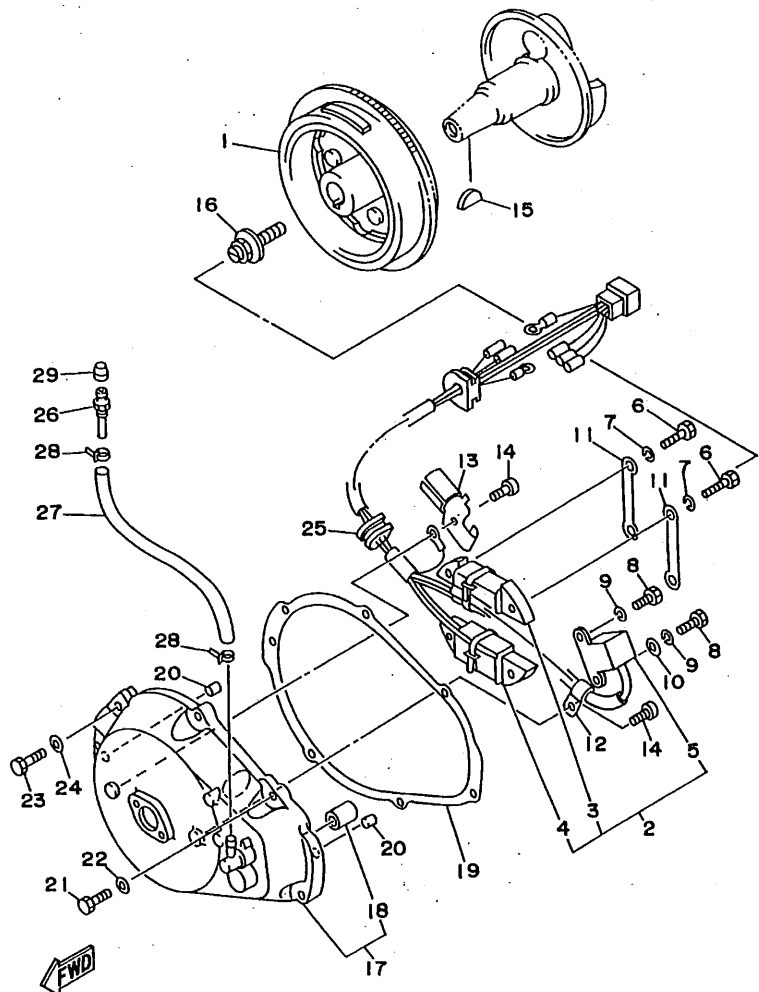
REF. NO.	PART NO.	DESCRIPTION	Q'TY	REMARKS
29	90387-08M06	COLLAR	2	
30	97095-08020	BOLT	2	
31	92995-08600	WASHER	2	
32	90119-10949	BOLT, WITH WASHER	4	
33	EW2-67354-00-01	SHIM (T=0.1)	8	UR
	EW2-67354-00-03	SHIM (T=0.3)	8	UR
	EW2-67354-00-05	SHIM (T=0.5)	8	UR
	EW2-67354-00-10	SHIM (T=1.0)	8	UR
34	92990-10600	WASHER, PLATE	2	
35	95380-10600	NUT	2	
36	90119-06915	BOLT, WITH WASHER	2	
37	90119-06908	BOLT, WITH WASHER	2	
38	97780-60520	SCREW, TAPPING	4	
39	90179-10957	NUT	4	
40	90180-06900	NUT, T	2	
41	GA7-6273B-00	PLATE 2	1	
42	90119-08933	BOLT, WITH WASHER	4	
43	90179-08961	NUT	4	



GK51100-6090

FIG. 9 JET UNIT 2

REF. NO.	PART NO.	DESCRIPTION	Q'TY	REMARKS
1	64Y-51381-00	COVER	1	
2	90387-06M60	COLLAR	2	
3	97595-06525	BOLT, WITH WASHER	2	
4	90480-06M46	GROMMET	1	
5	93606-12019	PIN, DOWEL	2	
6	64Y-51323-00	SHAFT, COUPLOR	1	
7	93210-17MA4	O-RING	2	
8	61X-45332-01-9M	HOUSING, BEARING	1	
9	90445-09M17	HOSE	1	
10	90465-11M10	CLAMP	1	
11	61L-45378-00	NIPPLE, HOSE	1	
12	93101-25M55	OIL SEAL	2	
13	93430-47M04	CIRCLIP	2	
14	93305-205U0	BEARING	1	
15	93101-25M56	OIL SEAL	1	
16	90119-08907	BOLT, WITH WASHER	3	
17	GDO-67249-00-05	SHIM (T=0.5)	2	UR
	GDO-67249-00-10	SHIM (T=1.0)	2	UR
18	90601-15272	NYLON CLIP 1	2	
19	GK5-68838-00	PIPE 1	1	



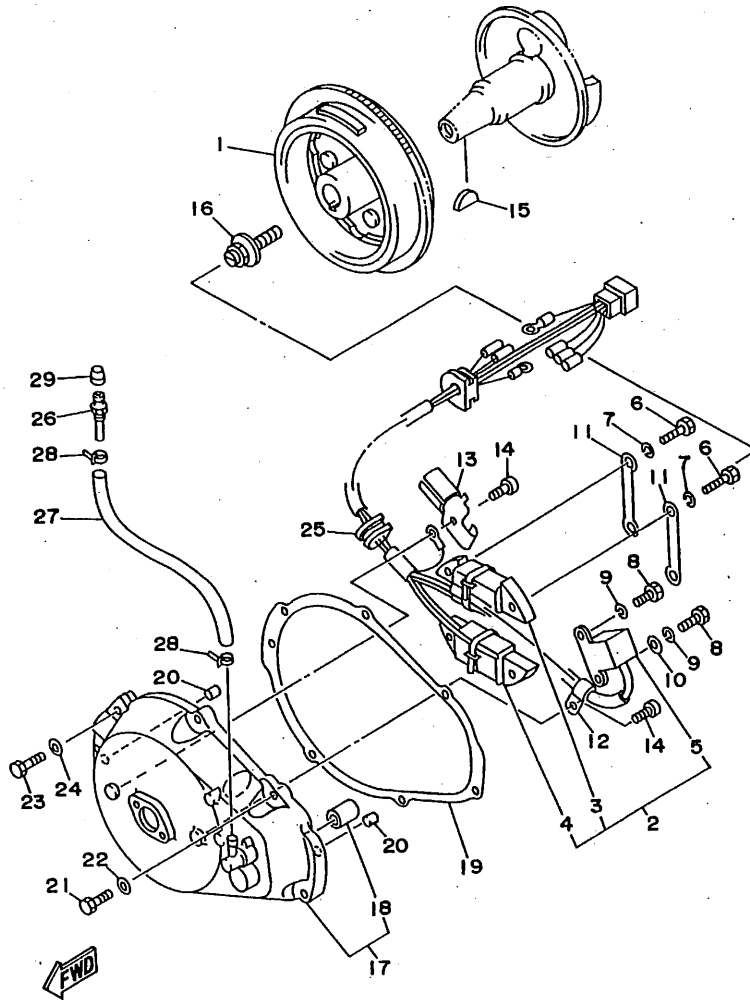
GP21100-6100

FIG. 10 GENERATOR

REF. NO.	PART NO.	DESCRIPTION	Q'TY	REMARKS
1	64X-85550-00	ROTOR ASSY	1	
2	64X-85521-01	COIL ASSY	1	
3	64X-85520-00	.COIL, CHARGE	1	
4	62T-85533-00	.COIL, LIGHTING	1	
5	64X-85580-00	.COIL, PULSER	1	
6	97013-05020	BOLT	4	
7	92990-05100	WASHER, SPRING	4	
8	97013-05012	BOLT	2	
9	92990-05100	WASHER, SPRING	2	
10	90201-05M09	WASHER, PLATE	1	
11	64X-85525-00	COVER	2	
12	90465-06M28	CLAMP	1	
13	90465-06M65	CLAMP	1	
14	98580-06010	SCREW, PAN HEAD	2	
15	90280-16053	KEY, WOODRUFF	1	
16	90109-10M72	BOLT	1	
17	64X-81337-00-4D	COVER, FLYWHEEL	1	
18	90380-12M29	.BUSH, SOLID	1	
19	6M6-81365-A0	GASKET, HOLE COVER	1	
20	93606-12019	PIN, DOWEL	2	
21	97095-06025	BOLT	5	
22	92990-06600	WASHER, PLATE	5	
23	97095-06030	BOLT	2	
24	92990-06600	WASHER, PLATE	2	
25	90480-23M69	GROMMET	1	
26	61L-5169A-00	NIPPLE, GREASE	1	
27	90445-09M24	HOSE	1	
28	90465-11M10	CLAMP	2	

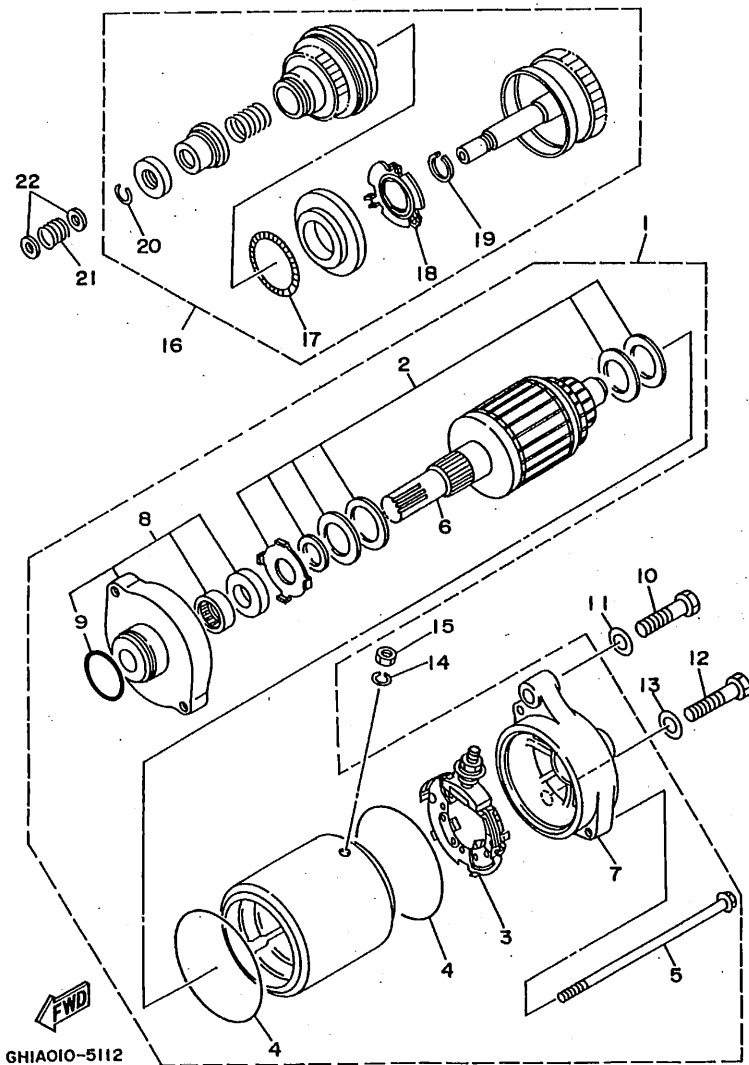
FIG. 10 GENERATOR

REF. NO.	PART NO.	DESCRIPTION	Q'TY	REMARKS
29	663-45119-00	CAP, GREASE NIPPLE	1	



GP21100-6100

C4

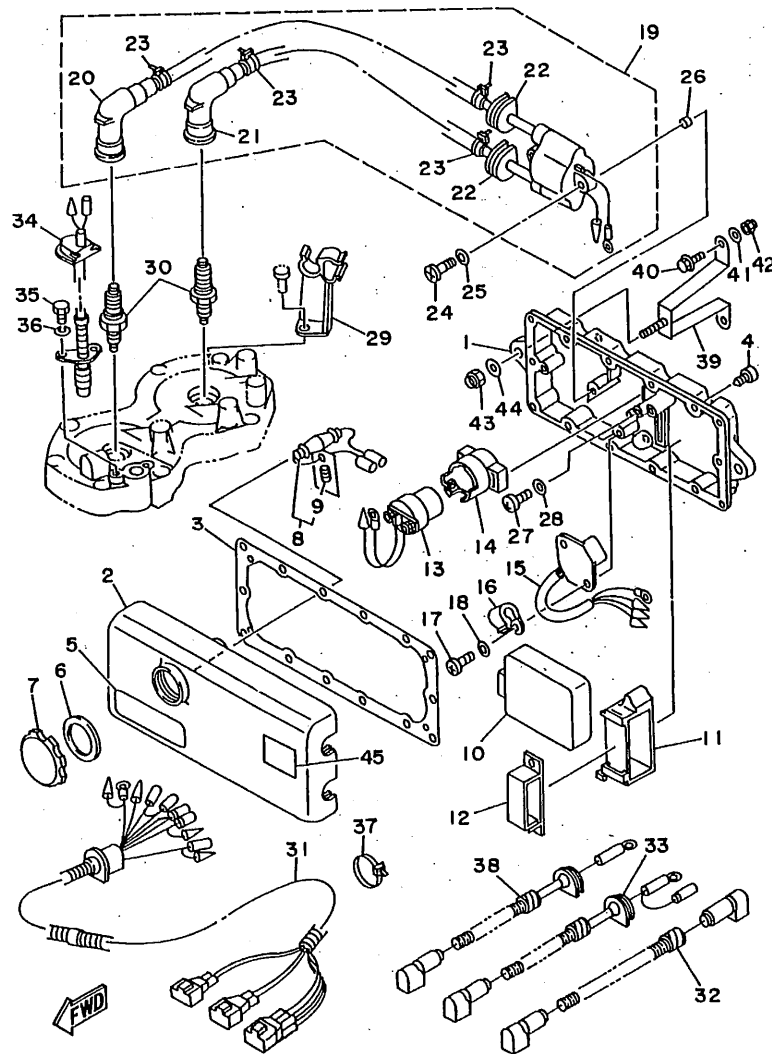


GHIAOIO-5112

FIG. 11 STARTING MOTOR

REF. NO.	PART NO.	DESCRIPTION	Q'TY	REMARKS
1	64X-81800-00	STARTING MOTOR ASSY	1	
2	3AJ-81809-00	.WASHER KIT	1	
3	6M6-81840-10	.BRUSH HOLDER ASSY	1	
4	11H-81844-00	.GASKET	2	
5	6M6-81826-00	.BOLT	2	
6	6M6-81850-00	.ARMATURE ASSY	1	
7	64X-81820-00	.REAR BRACKET ASSY	1	
8	6M6-81830-00	.FRONT BRACKET ASSY	1	
9	26H-81847-00	..O-RING	1	
10	97013-08040	BOLT	1	
11	92990-08600	WASHER, PLATE	1	
12	97013-08035	BOLT	1	
13	92990-08600	WASHER, PLATE	1	
14	92995-06100	WASHER, SPRING	1	
15	95380-06700	NUT	1	
16	6M6-8183E-00	IDLE GEAR COMP	1	
17	6M6-81866-00	.WEIGHT SPRING	1	
18	6M6-81865-00	.WEIGHT HOLDER	1	
19	93440-25M08	.CIRCLIP	1	
20	93450-18M06	.CIRCLIP	1	
21	90501-14M73	SPRING, COMPRESSION	1	
22	92990-06600	WASHER, PLATE	2	

C5

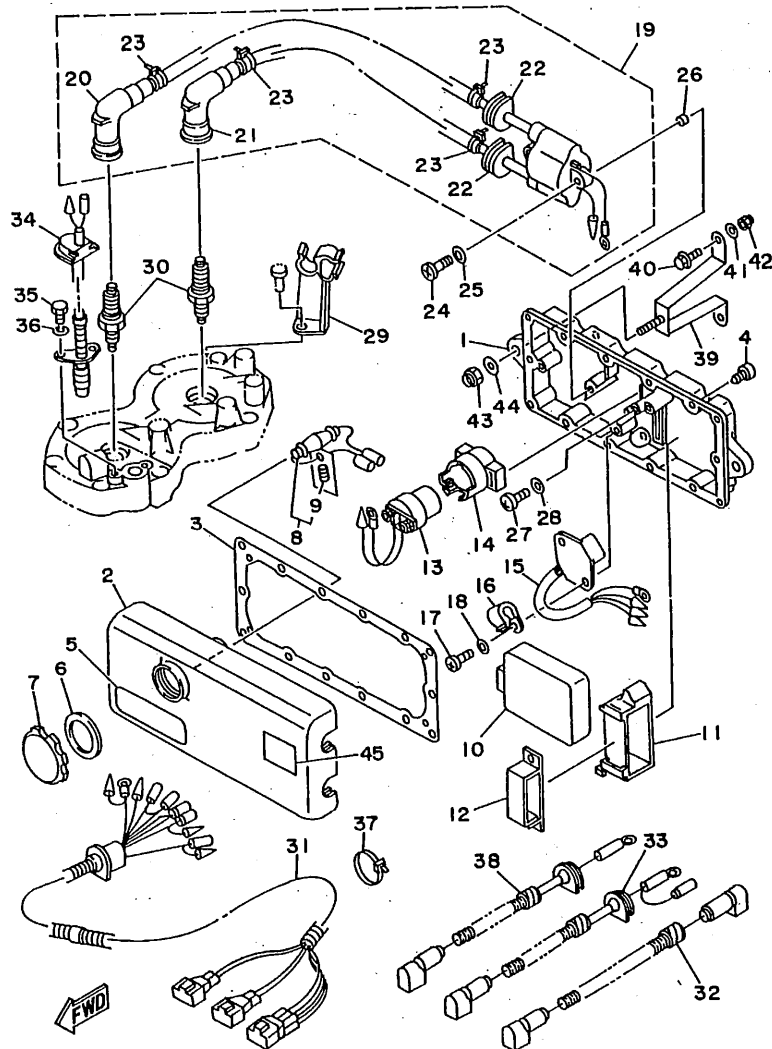


GK51100-6120

FIG. 12 ELECTRICAL 1

REF. NO.	PART NO.	DESCRIPTION	Q'TY	REMARKS
1	64X-8552A-00-5B	HOUSING	1	
2	6M6-8552E-01	COVER, CASE	1	
3	6M6-81921-00	GASKET, TERMINAL	1	
4	97780-60525	SCREW, TAPPING	14	
5	6R7-83623-40	MARK 3	1	UR ENGLISH
	6R7-83623-50	MARK 3	1	UR FRANCH
	63N-83623-00	MARK 3	1	UR JAPAN
6	6M6-81844-00	GASKET	1	
7	6M6-8132W-00	CAP	1	
8	6K8-82150-01	FUSE HOLDER ASSY	1	
9	6G1-82151-00	.FUSE	1	
10	64X-85540-00	C.D.I. UNIT ASSY	1	
11	64X-85546-00	BAND	1	
12	90464-06M29	CLAMP	1	
13	6G1-81941-10	STARTER RELAY ASSY	1	
14	6M6-81952-01	HOLDER, RELAY	1	
15	6M6-81960-A0	RECTIFIER & REGULATOR ASSY	1	
16	90465-08028	CLAMP	1	
17	98580-06016	SCREW, PAN HEAD	1	
18	92990-06600	WASHER, PLATE	1	
19	64X-85570-00	IGNITION COIL ASSY	1	
20	62E-82371-10	.CAP, PLUG	1	
21	62E-82371-10	.CAP, PLUG	1	
22	90480-06M43	.GROMMET	2	
23	90465-11M10	.CLAMP	4	
24	97880-06030	SCREW, PAN HEAD	2	
25	92990-06600	WASHER, PLATE	2	
26	90387-06M30	COLLAR	1	

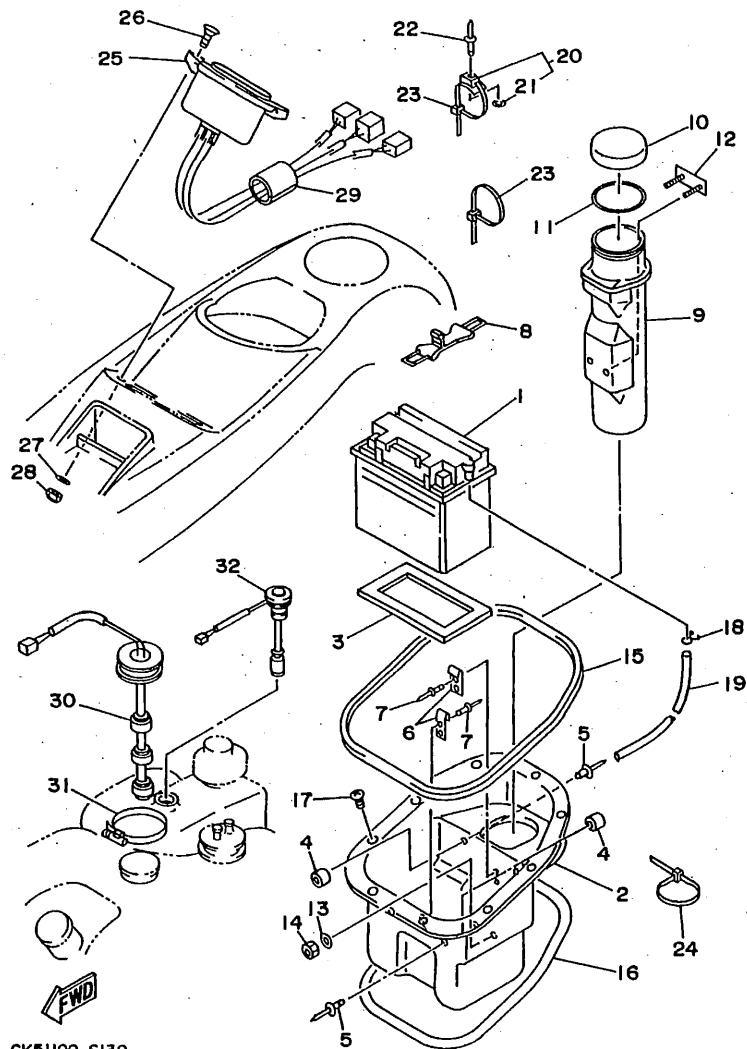
C6



GK51100-6120

FIG. 12 ELECTRICAL 1

REF. NO.	PART NO.	DESCRIPTION	Q'TY	REMARKS
27	98580-06016	SCREW, PAN HEAD	2	
28	92990-06600	WASHER, PLATE	2	
29	62T-82361-00	CLAMP, CORD	1	
30	94702-00195	PLUG, SPARK (NGK BR8HS)	2	
31	63N-82553-00	EXTENSION, WIRE LEAD	1	
32	62T-82117-01	WIRE, LEAD	1	
33	62T-82117-11	WIRE, LEAD	1	
34	64X-82560-00	THERMO SWITCH ASSY	1	
35	97095-06016	BOLT	2	
36	92995-06100	WASHER, SPRING	2	
37	90465-13M11	CLAMP	1	
38	6M6-82117-21	WIRE, LEAD	1	
39	GK5-6815D-00	BRACKET, ELECTRIC BOX	2	
40	90105-06903	BOLT, WASHER BASED	4	
41	92990-06200	WASHER, PLAIN	4	
42	95720-06300	NUT, SELF-LOCKING	4	
43	95720-08300	NUT, SELF-LOCKING	2	
44	92990-08200	WASHER, PLAIN	2	
45	4GB-2155A-00	MARK, EC	1	FOR FRANCE

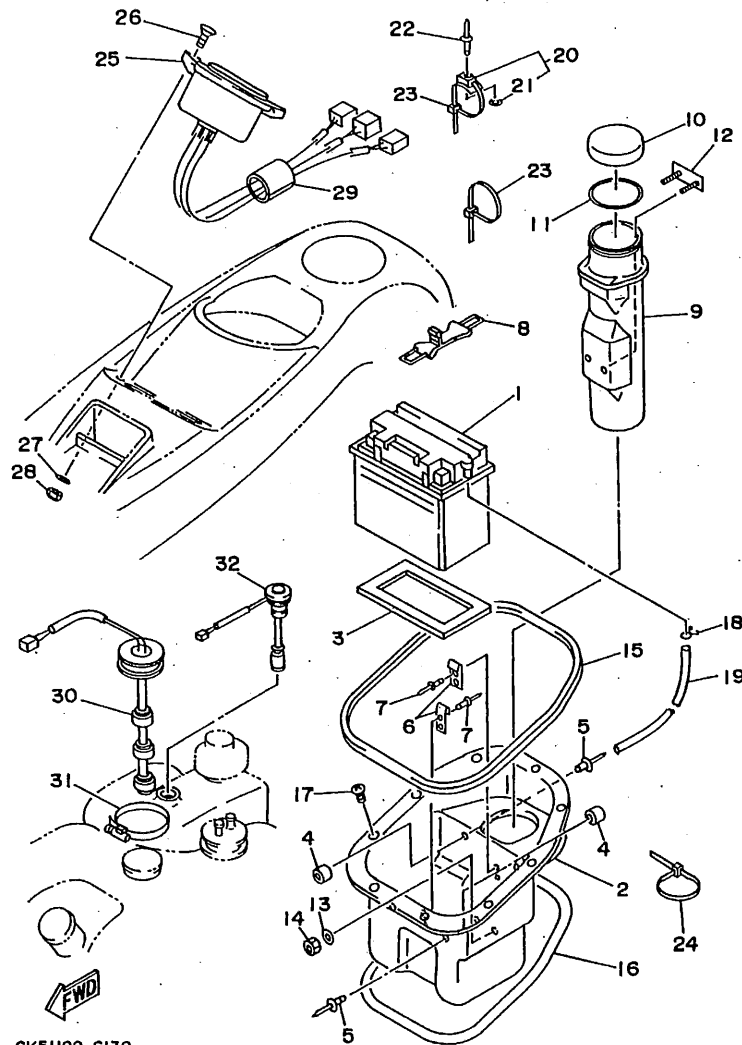


GK51100-6130

FIG. 13 ELECTRICAL 2

REF. NO.	PART NO.	DESCRIPTION	Q'TY	REMARKS
1	EU0-82110-09	BATTERY ASSY	1	
2	GK5-68211-00	BATTERY CASE COMP.	1	
3	EU0-68221-00	PAD, BATTERY 1	1	
4	GK5-63768-00	CUSHION, RUBBER	4	
5	90267-48925	RIVET, BLIND	4	
6	GA7-65772-00	HOOK A	2	
7	90267-48934	RIVET, BLIND	4	
8	GA7-68218-00	BAND, BATTERY	1	
9	GK5-65983-00	BOX, FIRE EXTINGUISHER	1	
10	EW2-65912-00	CAP, CASE	1	
11	EW2-65913-00	PACKING, CASE	1	
12	GK5-6593H-00	BRKT. FIRE EXTINGUISHER	1	
13	92990-05200	WASHER, PLAIN	2	
14	95720-05300	NUT, FLANGE	2	
15	GK5-6266C-00	PACKING 4	1	
16	90656-67096	PACKING	1	
17	97780-50612	SCREW, TAPPING	9	
18	90467-08M10	CLIP	1	
19	GA7-67856-00	HOSE, AIR VENT 3	1	
20	90600-91736	CLAMP	4	
21	90201-05925	WASHER, PLATE	1	
22	90267-48925	RIVET, BLIND	4	
23	90601-20006	NYLON CLIP 1	7	
24	90465-13M11	CLAMP	1	
25	GK5-6820A-00	METER ASSY	1	
26	90149-06904	SCREW	2	
27	92990-06200	WASHER, PLAIN	2	
28	95720-06300	NUT, SELF-LOCKING	2	

C8



GK51100-6130

FIG. 13 ELECTRICAL 2

REF. NO.	PART NO.	DESCRIPTION	Q'TY	REMARKS
29	GK5-68244-00	PACKING	1	
30	GH1-6824B-00	SENDER, FUEL	1	
31	90601-16274	BAND, HOSE	1	
32	GH1-6824C-00	SENDER, OIL	1	

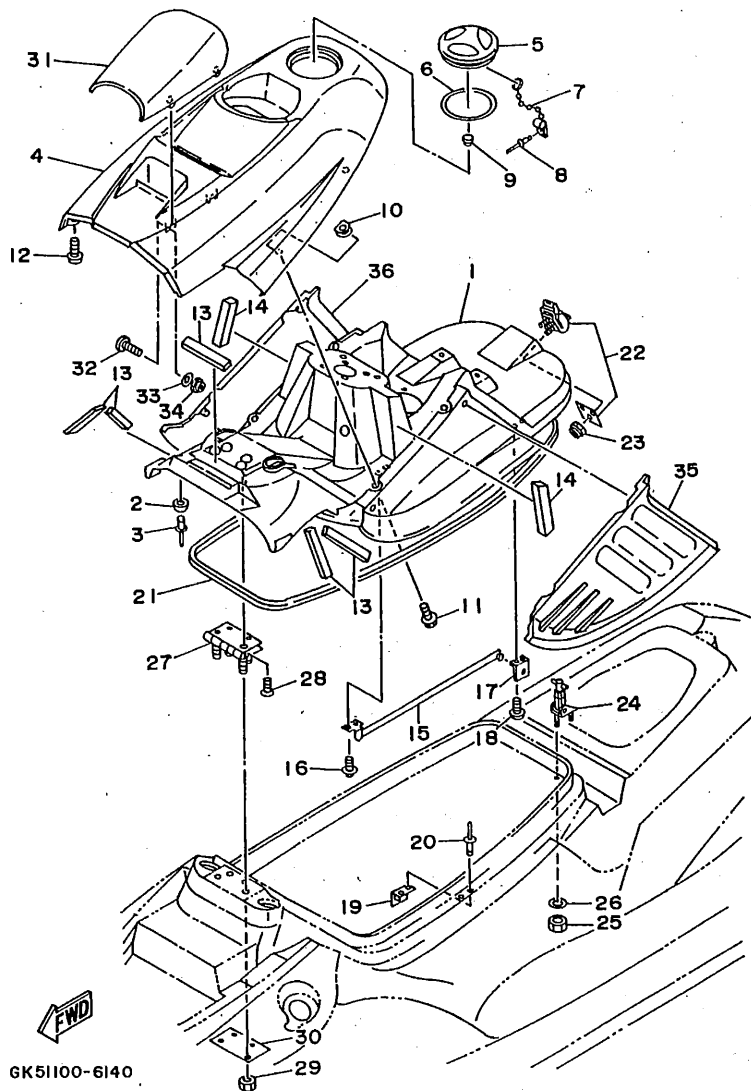


FIG. 14 ENGINE HATCH 1

REF. NO.	PART NO.	DESCRIPTION	Q'TY	REMARKS
1	GK5-6516A-00	ENGINE HATCH COMP.	1	
2	GA7-63768-00	CUSHION, RUBBER	2	
3	90267-48931	RIVET, BLIND	2	
4	GK5-6516N-00	COVER, ENGINE HATCH	1	
5	GK5-6591C-00	CAP, CASE	1	
6	GK5-6591D-00	PACKING, CASE	1	
7	GK5-64735-00	BALL, CHAIN	1	
8	90267-40936	RIVET, BLIND	1	
9	90338-12081	PLUG	1	
10	90183-06902	NUT, SPRING	4	
11	90119-06947	BOLT, WITH WASHER	4	
12	90149-06906	SCREW	2	
13	GK5-6266E-00	PACKING 6	5	
14	GK5-6266G-00	PACKING 8	2	
15	GH1-62891-01	SUPPORT, HATCH	1	
16	90159-06901	SCREW, WITH WASHER	2	
17	GK5-62892-00	FIX, PLATE	1	
18	90159-06901	SCREW, WITH WASHER	2	
19	FN8-62884-00	BRACKET, HATCH SUPPORT	1	
20	90267-48940	RIVET, BLIND	2	
21	GK5-62664-00	PACKING	1	
22	FJ0-62840-02	HATCH LOCK ASSY	1	
23	95720-05300	NUT, FLANGE	3	
24	GK5-62843-00	HOOK, HATCH LOCK	1	
25	95720-06300	NUT, SELF-LOCKING	2	
26	92990-06200	WASHER, PLAIN	2	
27	GK5-6517G-00	HINGE, HATCH	1	
28	98780-06014	SCREW, FLAT HEAD	4	

C10

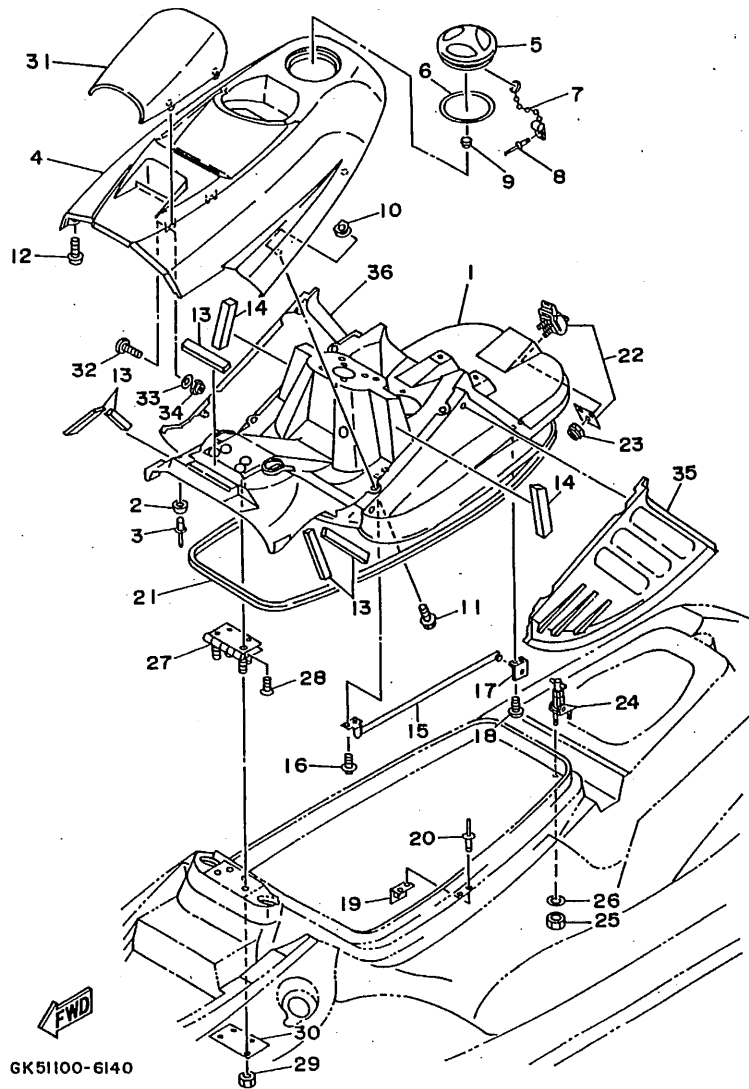


FIG. 14 ENGINE HATCH 1

REF. NO.	PART NO.	DESCRIPTION	Q'TY	REMARKS
29	95720-06300	NUT, SELF-LOCKING	4	
30	GK5-65193-00	PLATE	1	
31	GK5-6515N-00	VISOR	1	
32	90149-05945	SCREW	4	
33	92990-05200	WASHER, PLAIN	4	
34	95720-05300	NUT, FLANGE	4	
35	GK5-6353C-00	PAD, KNEE 1	1	
36	GK5-6353D-00	PAD, KNEE 2	1	

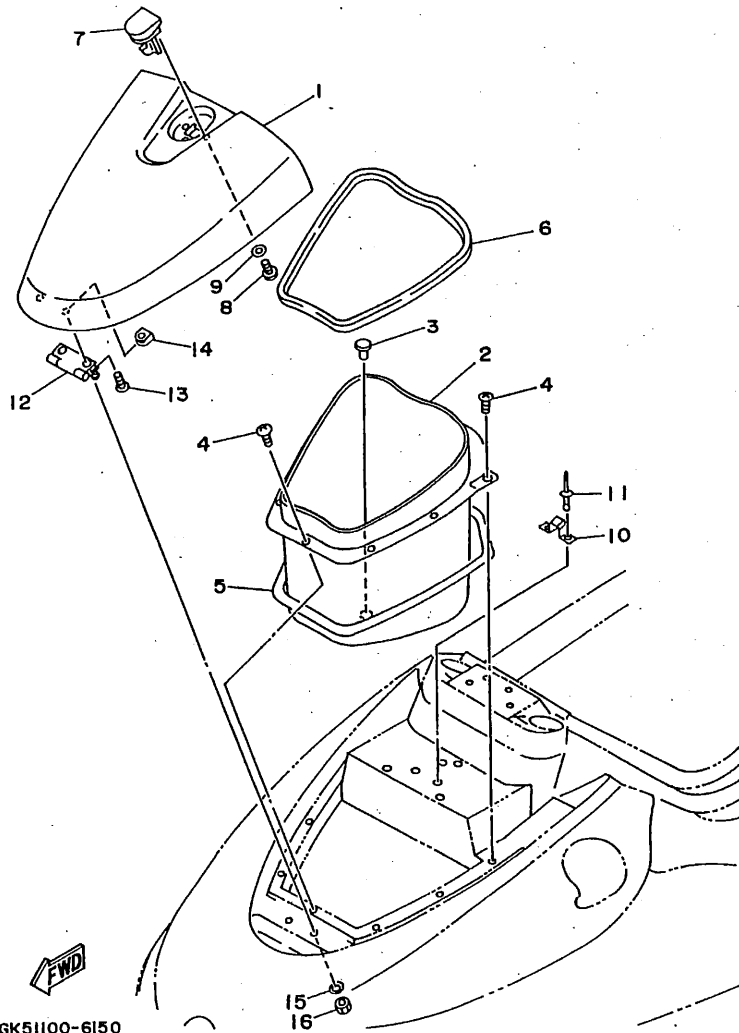
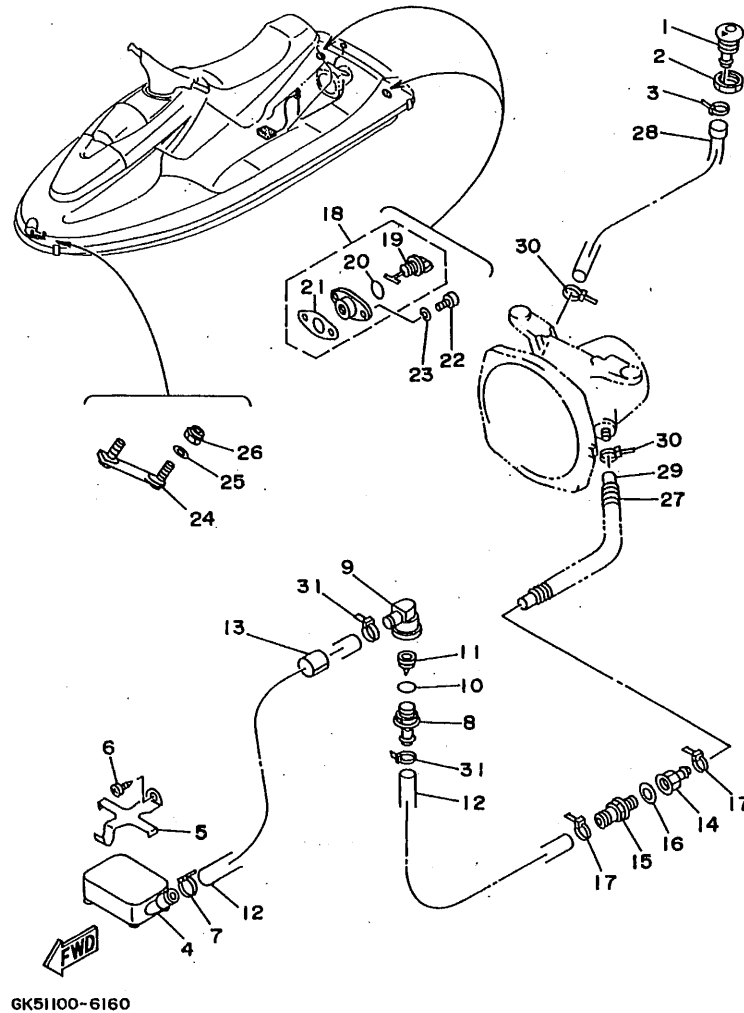


FIG. 15 ENGINE HATCH 2

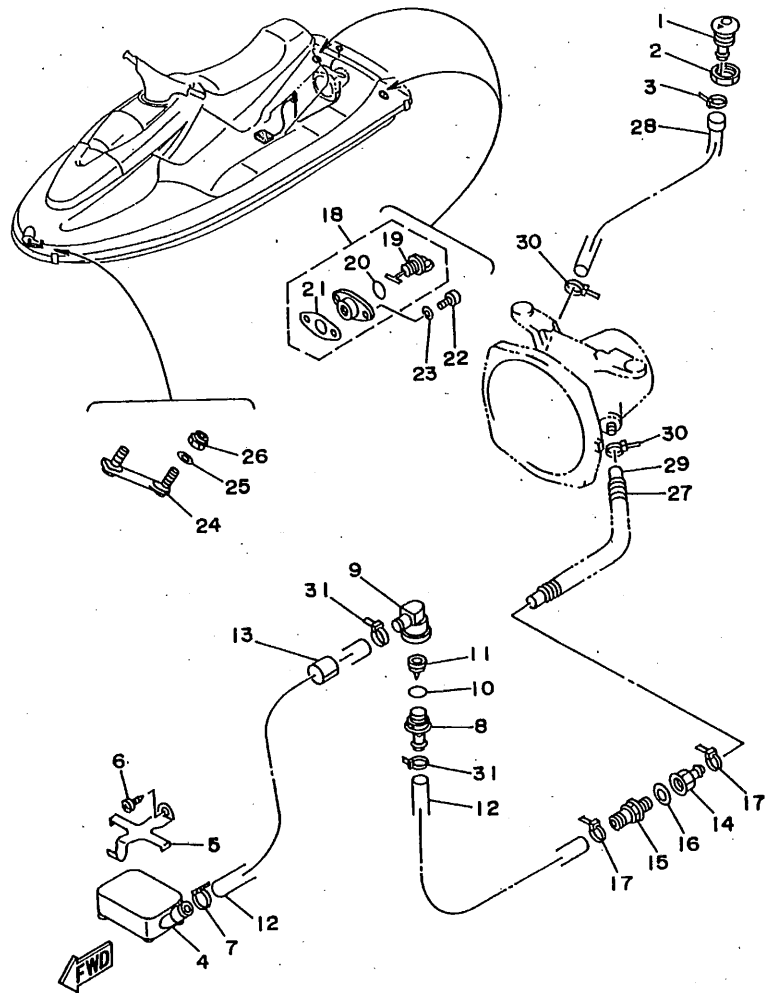
REF. NO.	PART NO.	DESCRIPTION	Q'TY	REMARKS
1	GK5-6476A-00	LID, LOCKER BOW	1	
2	GK5-6475B-00	LOCKER, BOW	1	
3	90338-12081	PLUG	1	
4	97780-50612	SCREW, TAPPING	9	
5	GK5-6266D-00	PACKING 5	1	
6	90656-67105	PACKING 4B	1	
7	GJ3-6517C-01	LOCK, LID	1	
8	90149-05907	SCREW	2	
9	92990-05200	WASHER, PLAIN	2	
10	GK5-6517F-00	HOOK, LID LOCK	1	
11	90267-48934	RIVET, BLIND	2	
12	GK5-6517D-00	HINGE, LID	1	
13	90149-05908	SCREW	2	
14	FJ0-61432-00	NUT	2	
15	92990-05200	WASHER, PLAIN	2	
16	95720-05300	NUT, FLANGE	2	

FIG. 16 HULL. DECK



REF. NO.	PART NO.	DESCRIPTION	Q'TY	REMARKS
1	FN8-6269B-00	SPOUT	1	
2	EU0-61652-00	NUT	1	
3	90465-13M11	CLAMP	1	
4	G00-6761D-00	STRAINER, BILGE	1	
5	EW2-67618-00	BASE, STRAINER BLIGE	1	
6	97780-50114	SCREW, PAN HEAD TAPPING	1	
7	90465-13M11	CLAMP	1	
8	63M-51162-00	JOINT, HOSE	1	
9	63M-51165-00	JOINT, HOSE 2	1	
10	93210-22ME5	O-RING	1	
11	63M-5316M-00	VALVE 1	1	
12	90445-19M02	HOSE	2	
13	GJ1-67578-10	PACKING, HOSE 2	1	
14	90604-80759	CONNECTION, THRU-HULL 1/4	1	
15	90604-80775	THROUGH, HULL CONNECTION	1	
16	90430-13909	GASKET	1	
17	90465-13M11	CLAMP	2	
18	EU0-62280-00	DRAIN PLUG ASSY	2	
19	EU0-62282-00	.PLUG, DRAIN	1	
20	EU0-62283-00	.O-RING	1	
21	EU0-62285-01	.PACKING, DRAIN	1	
22	97780-50520	SCREW, TAPPING	4	
23	92990-05200	WASHER, PLAIN	4	
24	FN8-61624-01	BOWEYE 1 (S)	1	
25	92990-08200	WASHER, PLAIN	2	
26	95720-08300	NUT, SELF-LOCKING	2	
27	90446-20M39	HOSE	1	
28	63N-51673-00	PIPE 1	1	

C13

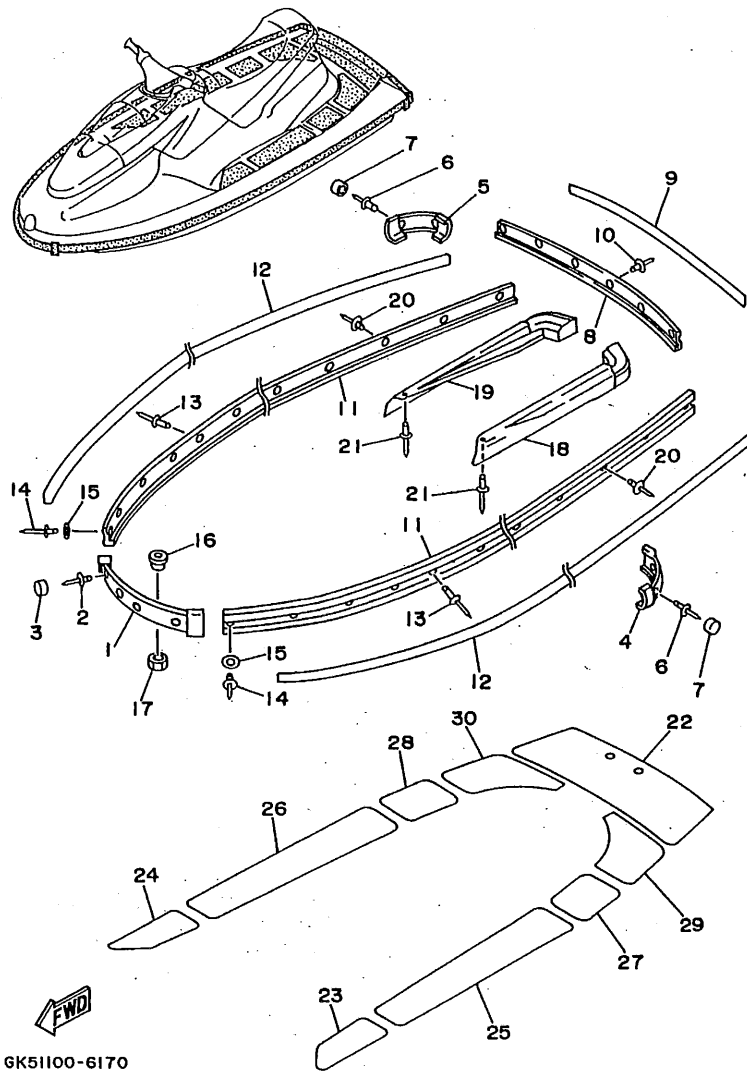


GK51100-6160

FIG. 16 HULL DECK

REF. NO.	PART NO.	DESCRIPTION	Q'TY	REMARKS
29	90445-14M30	HOSE	1	
30	90465-11M10	CLAMP	2	
31	90465-13M11	CLAMP	2	

C14

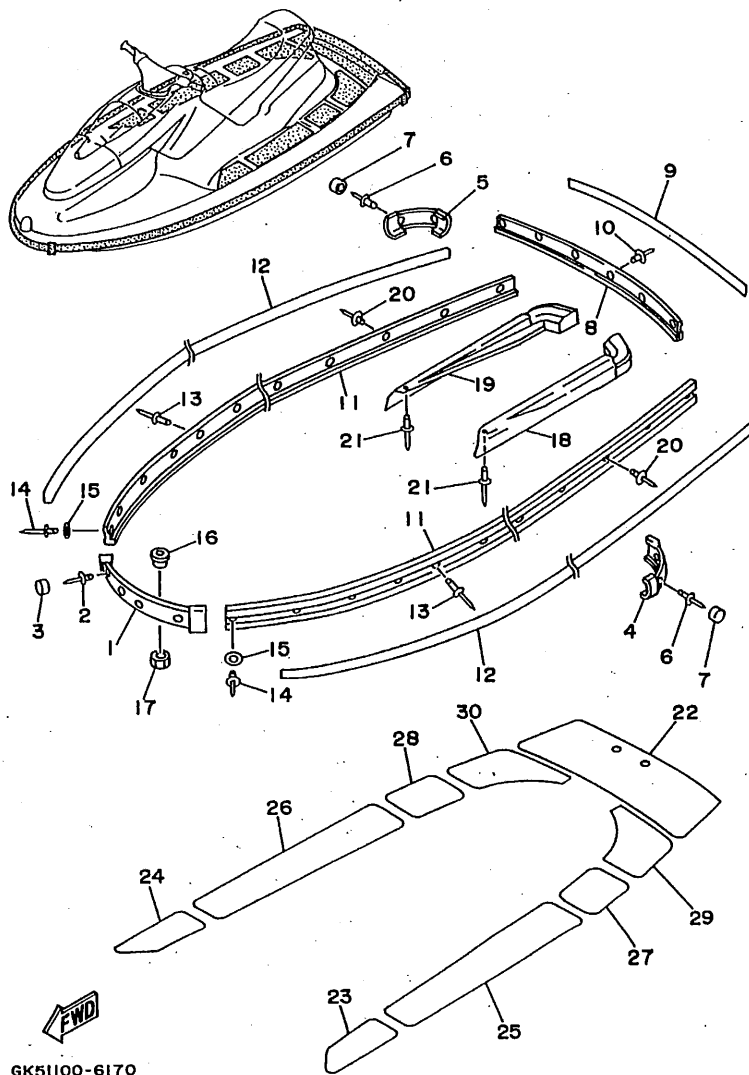


GK51100-6170

FIG. 17 GUNWALE. MAT

REF. NO.	PART NO.	DESCRIPTION	Q'TY	REMARKS
1	GK5-62501-00	BOW GUNWALE COMP.	1	
2	90267-48932	RIVET, BLIND	4	
3	GK5-62576-00	CAP, GANWALE BOW	4	
4	GK5-6251D-00	GUNWALE, STERN 1	1	
5	GK5-6251E-00	GUNWALE, STERN 2	1	
6	90267-48909	RIVET, BLIND	4	
7	GH1-6354D-40	CAP, HEAD	4	
8	GK5-6252C-00	COVER, GUNWALE 1	1	
9	GK5-6252D-00	COVER, GUNWALE 2	1	
10	90267-48932	RIVET, BLIND	6	
11	GK5-62552-00	GUNWALE, SIDE 1	2	
12	GK5-62553-00	GUNWALE, SIDE 2	2	
13	90267-48932	RIVET, BLIND	26	
14	90267-48909	RIVET, BLIND	6	
15	92990-05200	WASHER, PLAIN	4	
16	FN8-61651-00	ROPE HOLE	2	
17	EU0-61652-00	NUT	2	
18	GK5-62535-00	CORE, GUNWALE	1	
19	GK5-62536-00	CORE, GUNWALE	1	
20	90267-48932	RIVET, BLIND	4	
21	90267-48956	RIVET, BLIND	2	
22	GK5-63581-00	MAT, UPPER	1	
23	GK5-6351H-00	MAT, STEP 1	1	
24	GK5-6351J-00	MAT, STEP 2	1	
25	GK5-6351K-00	MAT, STEP 3	1	
26	GK5-6351M-00	MAT, STEP 4	1	
27	GK5-6351N-00	MAT, STEP 5	1	
28	GK5-6351P-00	MAT, STEP 6	1	

C15

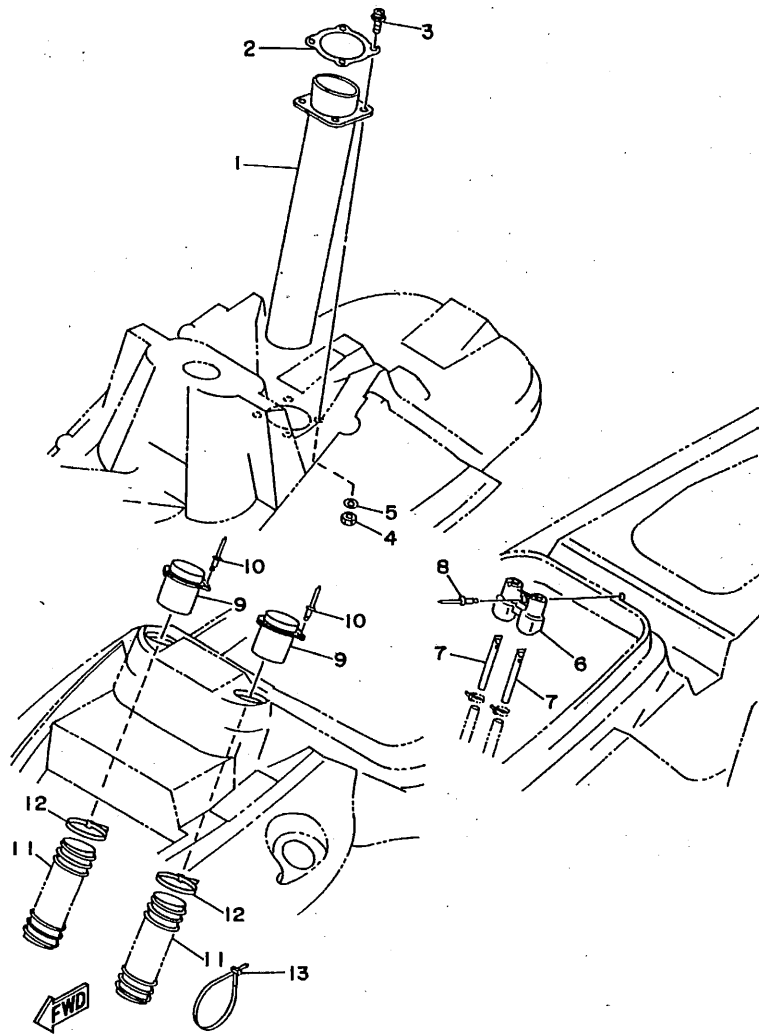


GK51100-6170

FIG. 17 GUNWALE. MAT

REF. NO.	PART NO.	DESCRIPTION	Q'TY	REMARKS
29	GK5-6351R-00	MAT, STEP 7	1	
30	GK5-6351S-00	MAT, STEP 8	1	

D2



GK51100-6180

FIG. 18 VENTILATION

REF. NO.	PART NO.	DESCRIPTION	Q'TY	REMARKS
1	GK5-6213G-00	HOSE, VENTILATOR 2	1	
2	GA7-6213H-00	PLATE, HOSE 1	1	
3	98580-05525	SCREW, PAN HEAD	4	
4	95720-05300	NUT, FLANGE	4	
5	92990-05200	WASHER, PLAIN	4	
6	GK5-62159-00	NIPPLE	1	
7	GK5-62149-00	PIPE, VENTILATION	2	
8	90267-48925	RIVET, BLIND	1	
9	GH1-62139-00	VENTILATOR, OUTLET	2	
10	90267-48932	RIVET, BLIND	6	
11	GK5-6213F-00	HOSE, VENTILATOR 1	2	
12	90601-20007	NYLON CLIP 1	2	
13	90601-20008	NYLON CLIP 1	1	

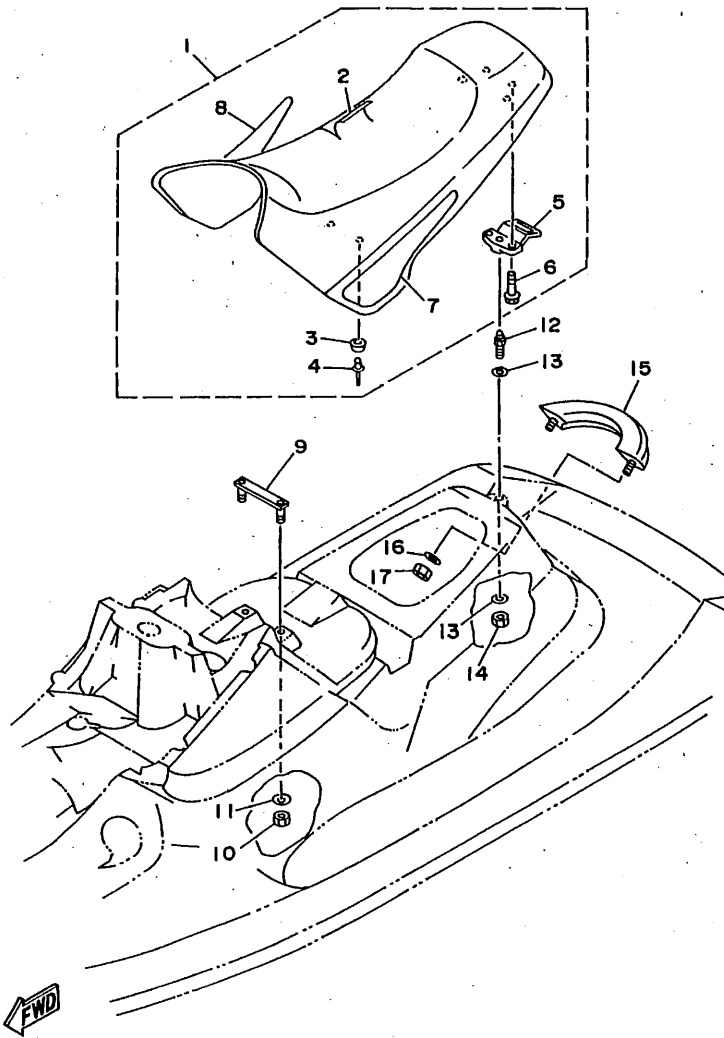


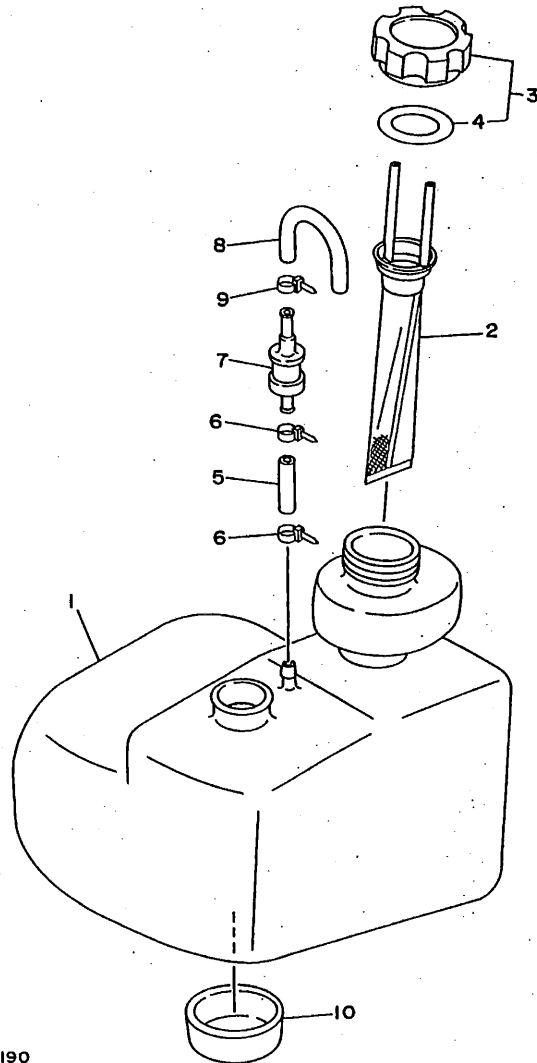
FIG. 19 SEAT - UNDER LOCKER

REF. NO.	PART NO.	DESCRIPTION	Q'TY	REMARKS
1	GK5-6371A-00	DOUBLE SEAT ASSY	1	
2	GK5-6371B-00	.COVER, SEAT 1	1	
3	GK5-63729-00	.STOPPER, SEAT	6	
4	90267-48953	.RIVET, BLIND	6	
5	GH1-63850-01	.SEAT LOCK ASSY	1	
6	90119-06914	.BOLT, WITH WASHER	2	
7	GK5-64173-10	.GRAPHIC A	1	
8	GK5-64173-20	.GRAPHIC A	1	
9	GH1-6378C-00	STAY, SEAT 1	1	
10	95720-06300	NUT, SELF-LOCKING	2	
11	92990-06200	WASHER, PLAIN	2	
12	GH1-63774-01	PIN	1	
13	92990-10200	WASHER, PLAIN	2	
14	95720-10300	NUT	1	
15	GK5-6271B-00	GRIP, HAND	1	
16	90201-08929	WASHER, PLATE	2	
17	95720-08300	NUT, SELF-LOCKING	2	

GK51100-6190

D4

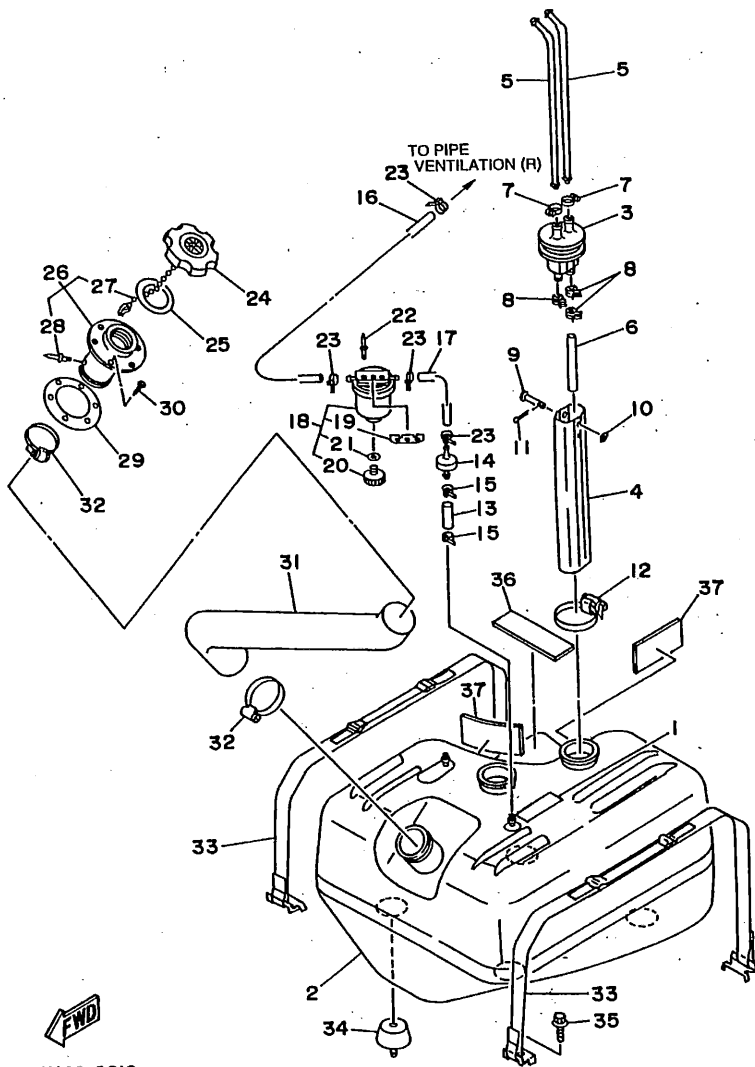
FIG. 20 OIL TANK



REF. NO.	PART NO.	DESCRIPTION	Q'TY	REMARKS
1	GH1-6775B-00	TANK, OIL	1	
2	GH1-6775C-00	FILTER	1	
3	FJ0-67840-00	OIL TANK CAP ASSY	1	
4	FJ0-67841-01	.PACKING, OIL CAP	1	
5	90445-09901	HOSE	1	
6	90465-11M10	CLAMP	2	
7	FJ0-67766-00	ROLL OVER VALVE	1	
8	FJ0-62158-00	HOSE	1	
9	90465-11M10	CLAMP	1	
10	GH1-6759D-00	MAT 3	1	


GHI4010-4190

D5

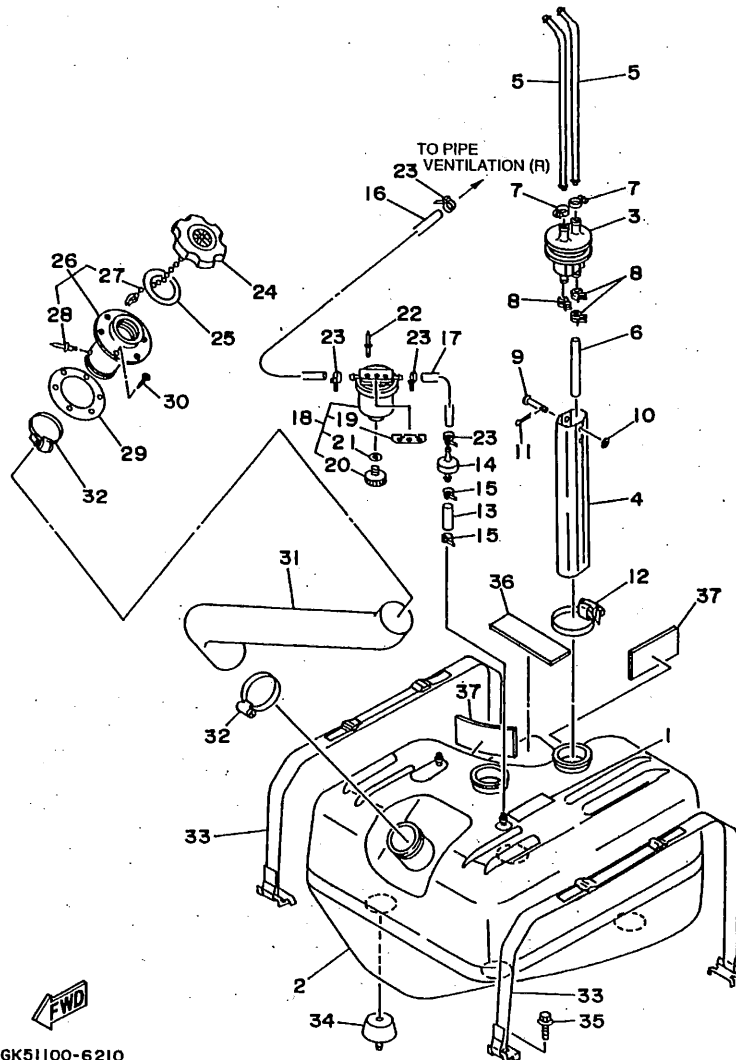


FWD
GK51100-6210

FIG. 21 FUEL TANK

REF. NO.	PART NO.	DESCRIPTION	Q'TY	REMARKS
1	GHI-64180-01	LABEL, FUEL TANK	1	
2	GHI-67711-01	TANK, FUEL	1	
3	FJO-67713-00	PIPE, JOINT	1	
4	EW2-67716-00	SLEEVE 1	1	
5	FN8-67714-01	PIPE, SUCTION 3	2	
6	90445-11903	HOSE	1	
7	90601-11062	BAND, HOSE 11	2	
8	90467-11044	CLIP	3	
9	91790-05040	PIN, CLEVIS	1	
10	92990-05600	WASHER, PLATE	1	
11	91490-16010	PIN, COTTER	1	
12	90601-16274	BAND, HOSE	1	
13	GA7-67856-00	HOSE, AIR VENT	1	
14	EU0-67767-31	CHECK VALVE	1	
15	90465-11M10	CLAMP	2	
16	GA7-6785H-00	HOSE, AIR VENT 3	1	
17	GK5-67856-00	HOSE, AIR VENT 3	1	
18	EW2-62140-00	FILTER, VENT ASSY	1	
19	EW2-62142-00	.PLATE, FILTER	1	
20	70R-24543-00	.PLUG, DRAIN	1	
21	70R-24489-00	.O-RING, SEPARATER 2	1	
22	90267-48940	RIVET, BLIND	2	
23	90465-11M10	CLAMP	4	
24	EU0-67831-32	CAP, FUEL FILLER	1	
25	EU0-67832-00	PACKING 1	1	
26	EU0-W6783-30	SOCKET COMP.	1	
27	EU0-67835-00	.CHAIN BALL	1	
28	90267-40935	.RIVET, BLIND	1	

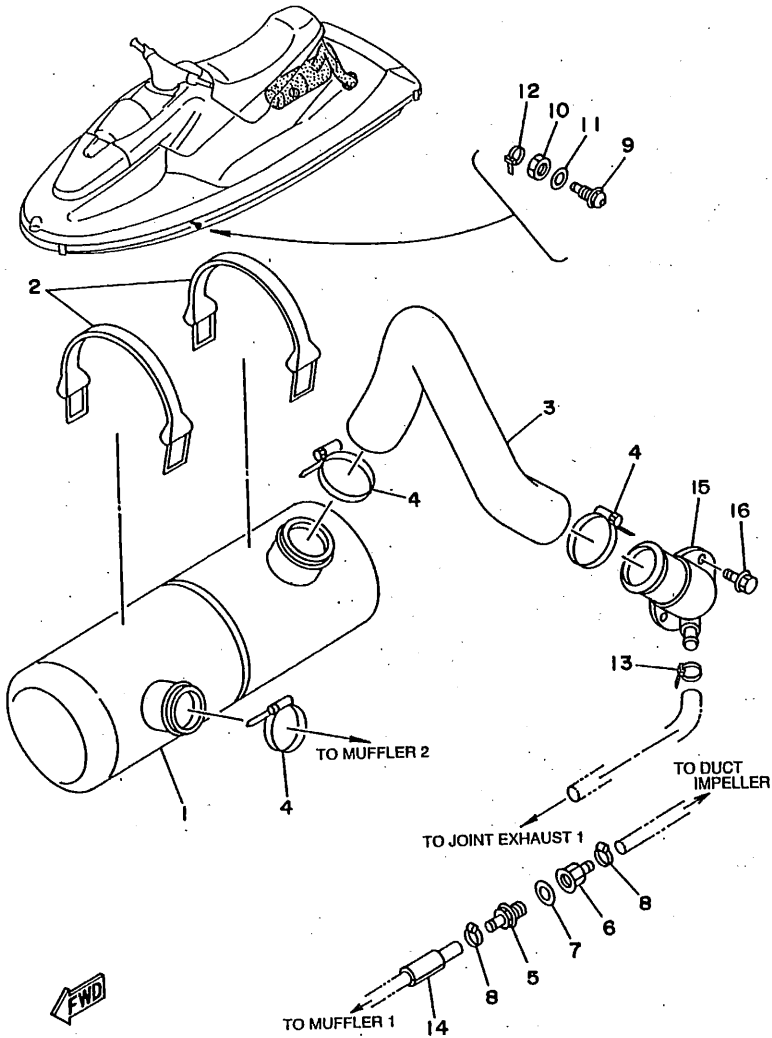
D6



GK51100-6210

FIG. 21 FUEL TANK

REF. NO.	PART NO.	DESCRIPTION	Q'TY	REMARKS
29	EU0-67834-00	PACKING, FUEL FILLER	1	
30	EU0-67869-00	SCREW, FLAT HEAD	6	
31	GK5-67844-00	HOSE	1	
32	90601-15573	BAND, HOSE	2	
33	GH1-67743-01	BELT, TANK 1	2	
34	GH1-6782B-01	DAMPER, FUEL TANK	4	
35	90119-08903	BOLT, WITH WASHER	4	
36	GH1-6759B-00	MAT 1	1	
37	GH1-6759C-00	MAT 2	2	

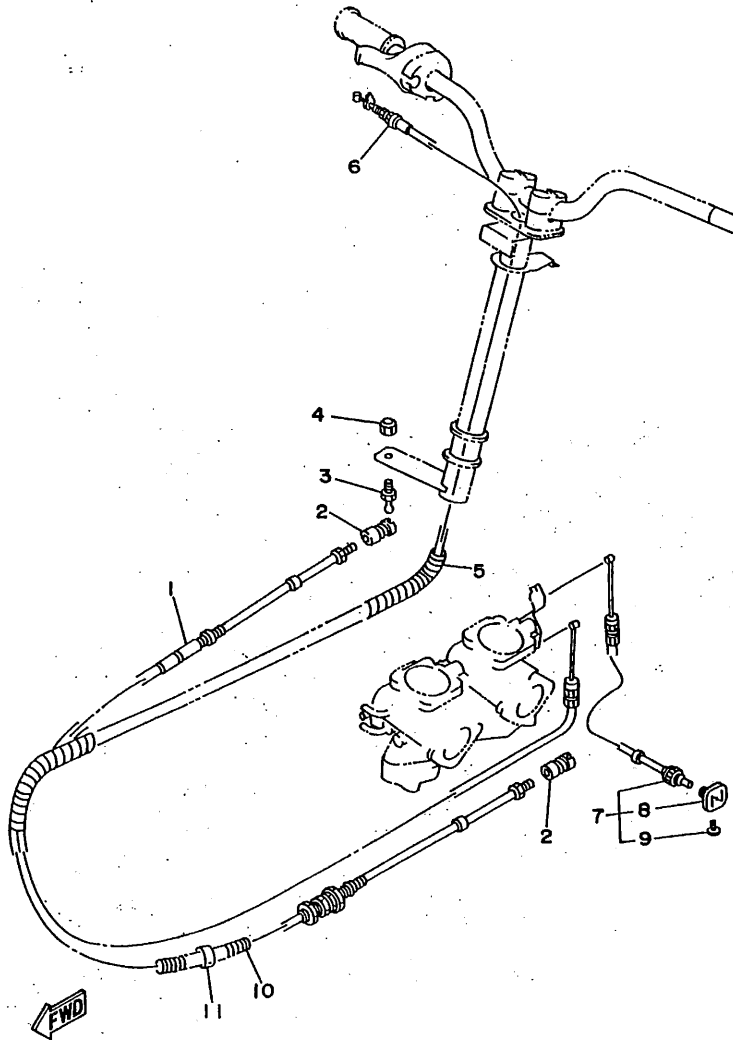


GK51100-6220

FIG. 22 EXHAUST 2

REF. NO.	PART NO.	DESCRIPTION	Q'TY	REMARKS
1	GK5-67550-00	WATER LOCK	1	
2	FJ0-67569-00	BAND	2	
3	GK5-67555-00	HOSE	1	
4	90601-16875	BAND, HOSE	3	
5	90604-80794	THROGUH-HULL CONNECTION 3/8	1	
6	90604-80793	THROGUH-HULL CONNECTION 3/8	1	
7	90430-16910	GASKET	1	
8	90450-18M09	HOSE CLAMP ASSY	2	
9	GJ1-6753B-02	PILOT, WATER	1	
10	95380-14700	NUT	1	
11	92990-14200	WASHER, PLAIN	1	
12	90465-11M10	CLAMP	1	
13	90465-11M10	CLAMP	1	
14	GJ1-67578-10	PACKING, HOSE 2	1	
15	GK5-67560-00	EXHAUST, THRU-HALL COMP.	1	
16	90119-05912	BOLT, WITH WASHER	3	

D8

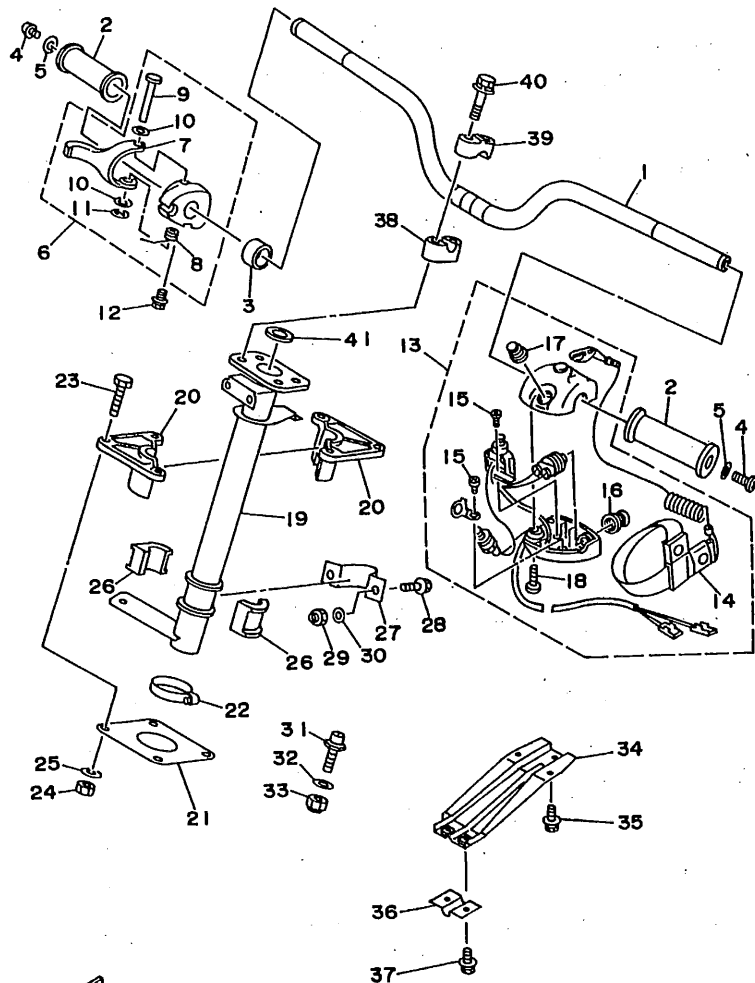


GK51100-6230

FIG. 23 CONTROL CABLE

REF. NO.	PART NO.	DESCRIPTION	Q'TY	REMARKS
1	GK5-61480-00	STEERING CABLE ASSY	1	
2	GK5-6146F-00	SHAFT; JOINT BALL	2	
3	EU0-61461-01	STUD, JOINT BALL	1	
4	95720-06300	NUT, SELF-LOCKING	1	
5	90699-36100	SPIRAP 11	1	
6	GK5-67252-00	CABLE, THROTTLE	1	
7	GK5-67242-00	CABLE, CHOKE	1	
8	EW2-67243-00	.KNOB	1	
9	90149-03930	.SCREW	1	
10	90699-36020	SPIRAL TUBE 11	1	
11	GK5-67578-00	PACKING, HOSE 2	1	

D9



GK51100-6240

FIG. 24 STEERING I

REF. NO.	PART NO.	DESCRIPTION	Q'TY	REMARKS
1	GA7-61552-00	HANDLE	1	
2	EW2-61553-00	GRIP, HANDLE 1	2	
3	90560-22281	SPACER	1	
4	90149-05959	SCREW	2	
5	90201-05928	WASHER, PLATE	2	
6	EW2-67250-02	THROTTLE LEVER ASSY	1	
7	EW2-67255-00	.LEVER, THROTTLE	1	
8	EW2-67256-00	.SPRING	1	
9	EW2-67257-01	.SHAFT	1	
10	EW2-67258-01	.WASHER	2	
11	EW2-67259-01	.E-RING	1	
12	90159-05900	SCREW, WITH WASHER	1	
13	GJ1-68310-00	SWITCH BOX ASSY	1	
14	EW2-68348-00	.LANYARD, STOP SWITCH	1	
15	98580-03008	.SCREW, PAN HEAD	2	
16	FK7-68312-02	.STOP BUTTON COMP.	1	
17	FK7-68313-01	.START BUTTON COMP.	1	
18	98580-05525	.SCREW, PAN HEAD	2	
19	GK5-61541-00	COLUMN, STEERING	1	
20	GHI-6141B-00	BEARING, COLUMN	2	
21	GHI-6143C-30	SEAL, RUBBER	1	
22	90601-14271	NYLON CLIP 1	1	
23	97080-06030	BOLT	4	
24	95720-06300	NUT, SELF-LOCKING	4	
25	92990-06200	WASHER, PLAIN	4	
26	GHI-6141D-01	BEARING, STEERING	2	
27	EU0-61588-00	JOINT, BEARING	1	
28	90119-08038	BOLT, WITH WASHER	2	

D10

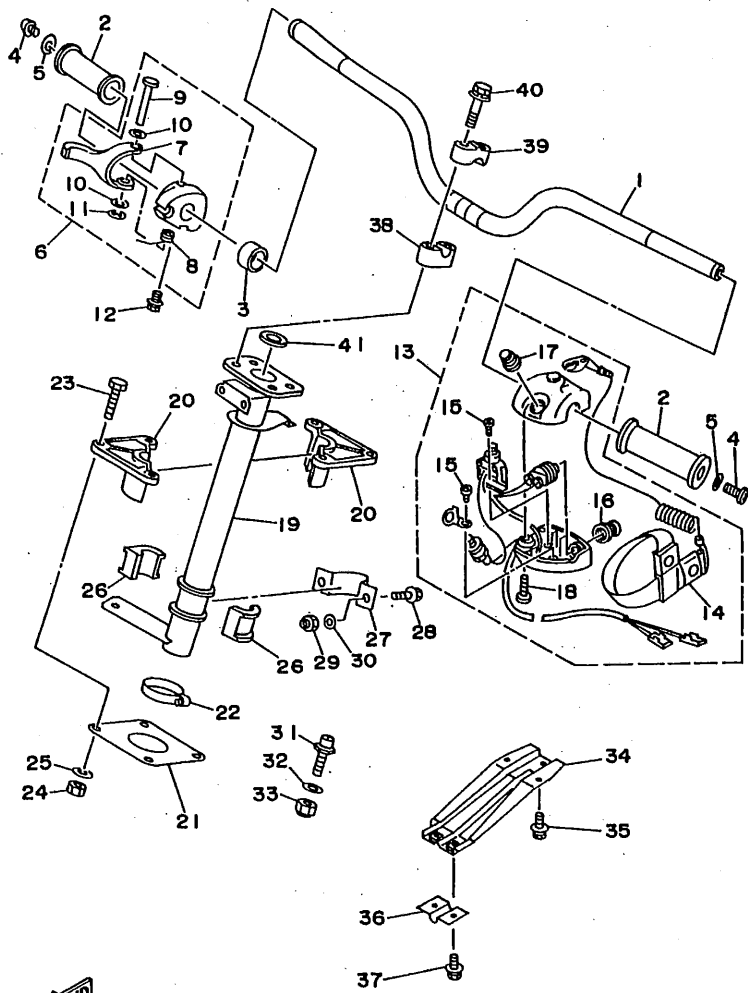


FIG. 24 STEERING 1

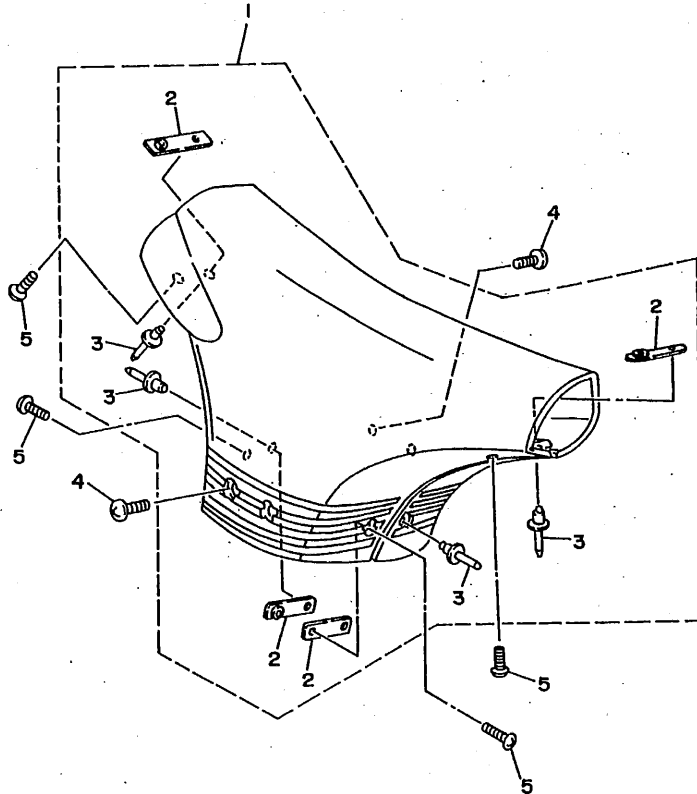
REF. NO.	PART NO.	DESCRIPTION	Q'TY	REMARKS
29	95720-08300	NUT, SELF-LOCKING	2	
30	92990-08200	WASHER, PLAIN	2	
31	FN8-61318-00	PIN, STOPPER	2	
32	92990-10200	WASHER, PLAIN	2	
33	95720-10300	NUT	2	
34	GK5-61467-00	BRACKET, STOPPER CABLE	1	
35	90119-06926	BOLT, WITH WASHER	3	
36	GK5-61468-00	STOPPER, CABLE	1	
37	90119-06926	BOLT, WITH WASHER	2	
38	EU0-23814-01	HOLDER, HANDLE LOWER	2	
39	EU0-23814-30	HOLDER, HANDLE UPPER	2	
40	90119-08925	BOLT, WITH WASHER	4	
41	GH1-61469-00	PACKING, STEERING COLUMN	1	

GK51100-6240

D11

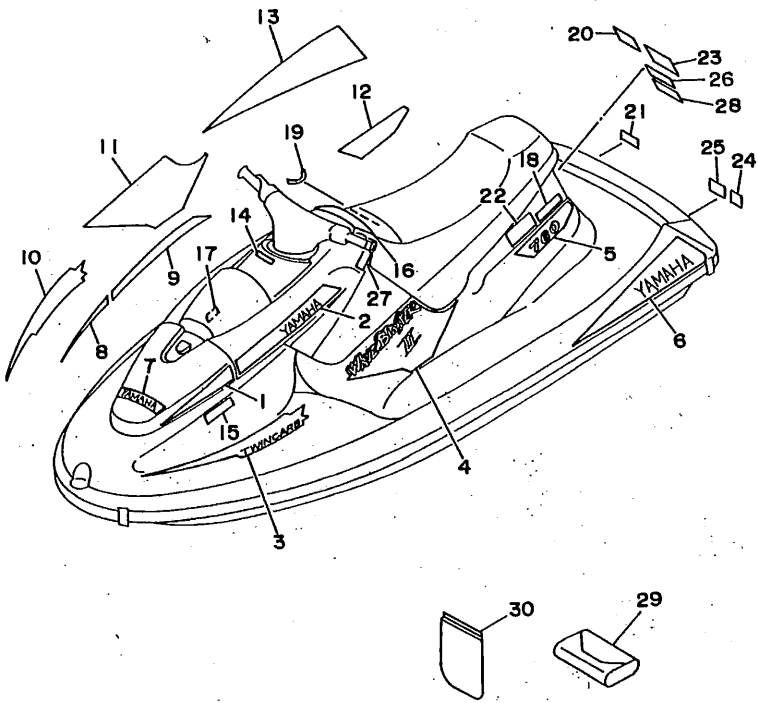
FIG. 25 STEERING 2

REF. NO.	PART NO.	DESCRIPTION	Q'TY	REMARKS
1	GA7-6142A-40	STEERING PAD COMP.	1	
2	GA7-6144D-00	.PLATE	4	
3	90267-48934	.RIVET, BLIND	4	
4	90149-05916	SCREW	4	
5	90149-04904	SCREW	4	



GA72010-3230

D12



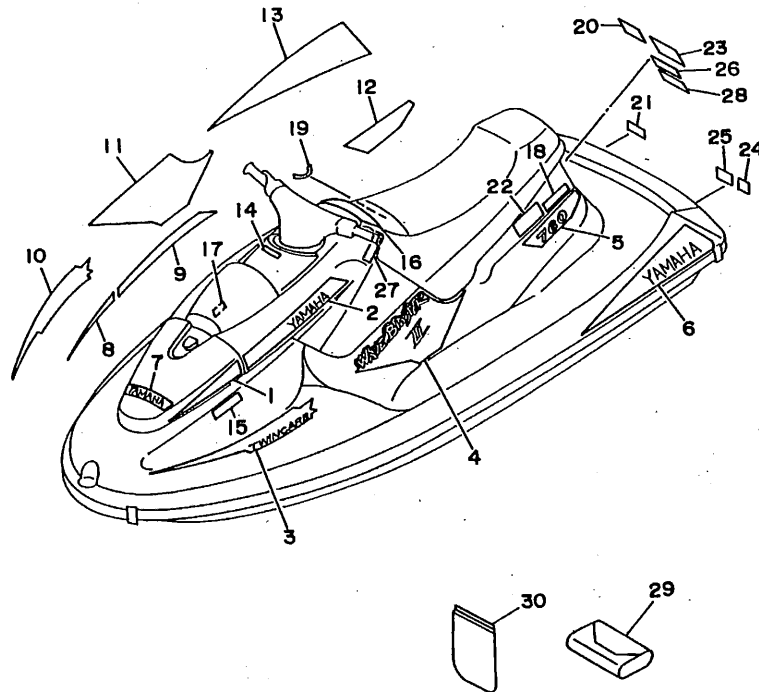
FWD
GK51100-6260

FIG. 26 GRAPHIC 1. TOOL (FOR USA)

REF. NO.	PART NO.	DESCRIPTION	Q'TY	REMARKS
1	GK5-6417B-10	GRAPHIC 1	1	
2	GK5-6417C-10	GRAPHIC 2	1	
3	GK5-6417D-10	GRAPHIC 3	1	
4	GK5-6417E-10	GRAPHIC 4	1	
5	GK5-6417F-10	GRAPHIC 5	1	
6	GK5-6417G-10	GRAPHIC 6	1	
7	GK5-6417H-00	GRAPHIC 7	1	
8	GK5-6417B-20	GRAPHIC 1	1	
9	GK5-6417C-20	GRAPHIC 2	1	
10	GK5-6417D-20	GRAPHIC 3	1	
11	GK5-6417E-20	GRAPHIC 4	1	
12	GK5-6417F-20	GRAPHIC 5	1	
13	GK5-6417G-20	GRAPHIC 6	1	
14	GH1-64125-00	EMBLEM	1	
15	GK5-6416B-00	LABEL, WARNING	1	
16	GK5-6416C-00	LABEL, WARNING 1	1	
17	GK5-6416F-00	LABEL, WARNING 4	1	
18	GK5-6419B-00	LABEL 1	1	
19	GK5-6419C-00	LABEL 2	1	
20	GK5-6419D-00	LABEL 3	1	
21	GK5-6418G-00	LABEL, CAUTION	1	
22	GA7-6418B-00	LABEL, CAUTION	1	
23	GK5-6418E-00	LABEL, USCG.	1	
24	GK5-6418F-00	LABEL, UP RIGHTING	1	
25	GK5-6416G-00	LABEL, WARNING	1	
26	GH1-6418C-00	LABEL, CAUTION	1	
27	GK5-6415E-00	LABEL, WARNING	1	
28	GK5-6415F-00	LABEL, WARNING	1	

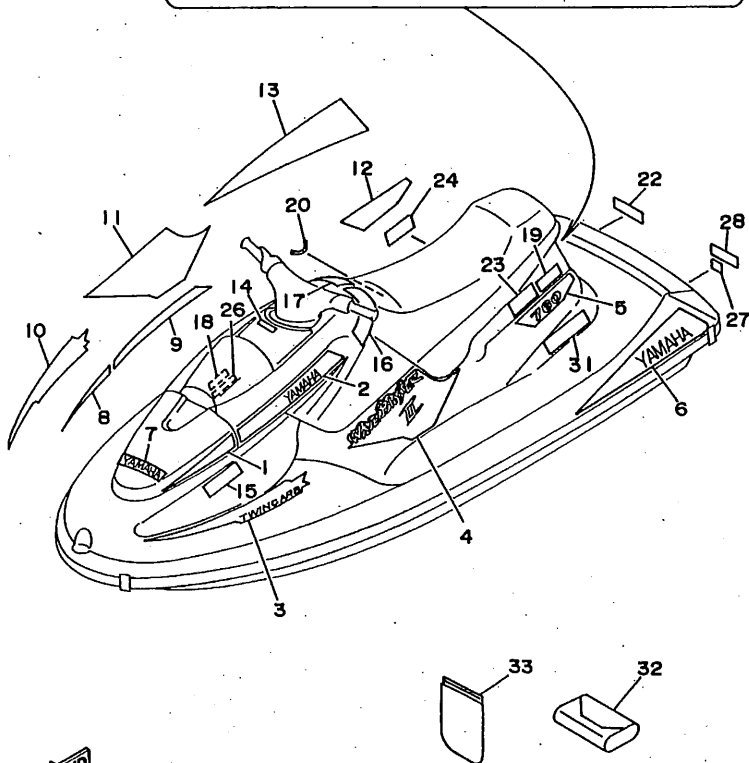
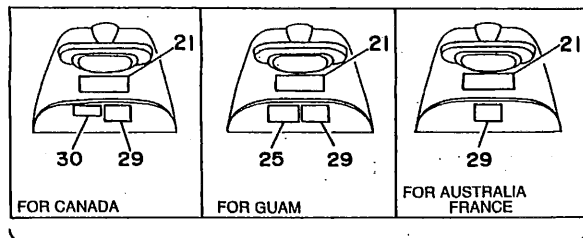
FIG. 26 GRAPHIC 1. TOOL (FOR USA)

REF. NO.	PART NO.	DESCRIPTION	Q'TY	REMARKS
29	EU0-28100-03	TOOL KIT	1	
30	EU0-65901-01	BAG, VINYL	1	



GK51100-6260

D14

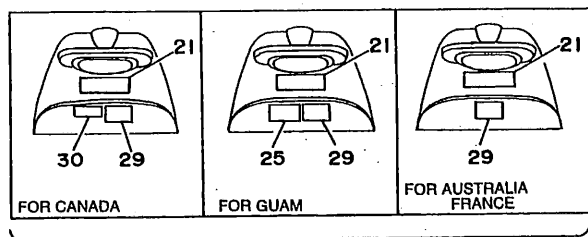


GK51100-6270

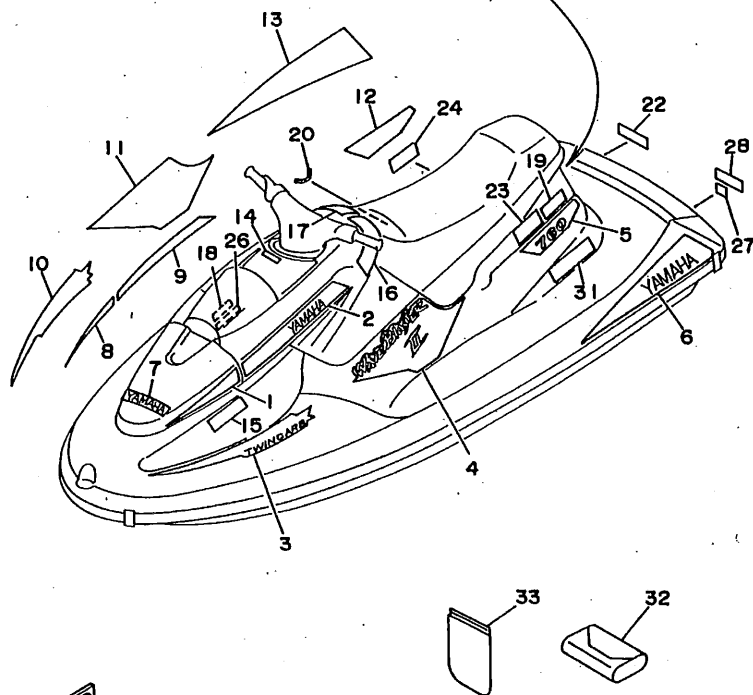
FIG. 27 GRAPHIC 2. TOOL (FOR CAN, GUM, AUS, FRA)

REF. NO.	PART NO.	DESCRIPTION	Q'TY	REMARKS
1	GK5-6417B-10	GRAPHIC 1	1	
2	GK5-6417C-10	GRAPHIC 2	1	
3	GK5-6417D-10	GRAPHIC 3	1	
4	GK5-6417E-10	GRAPHIC 4	1	
5	GK5-6417F-10	GRAPHIC 5	1	
6	GK5-6417G-10	GRAPHIC 6	1	
7	GK5-6417H-00	GRAPHIC 7	1	
8	GK5-6417B-20	GRAPHIC 1	1	
9	GK5-6417C-20	GRAPHIC 2	1	
10	GK5-6417D-20	GRAPHIC 3	1	
11	GK5-6417E-20	GRAPHIC 4	1	
12	GK5-6417F-20	GRAPHIC 5	1	
13	GK5-6417G-20	GRAPHIC 6	1	
14	GH1-64125-00	EMBLEM	1	FOR CAN
15	GK5-6416B-20	LABEL, WARNING	1	
16	GK5-6416C-20	LABEL, WARNING 1	1	
17	GK5-6416C-30	LABEL, WARNING 1	1	
18	GK5-6416F-20	LABEL, WARNING 4	1	
19	GK5-6419B-20	LABEL 1	1	
20	GK5-6419C-00	LABEL 2	1	
21	GK5-6419D-20	LABEL 3	1	
22	GK5-6418G-20	LABEL, CAUTION	1	
23	GA7-6418B-00	LABEL, CAUTION	1	
24	GA7-6418B-20	LABEL, CAUTION	1	
25	GK5-6418E-00	LABEL, USCG.	1	FOR GUM
26	FJ0-6418J-A1	LABEL, CAUTION	1	
27	GK5-6418F-00	LABEL, UP RIGHTING	1	
28	GK5-6416G-20	LABEL, WARNING	1	

FIG. 27 GRAPHIC 2. TOOL (FOR CAN, GUM, AUS, FRA)

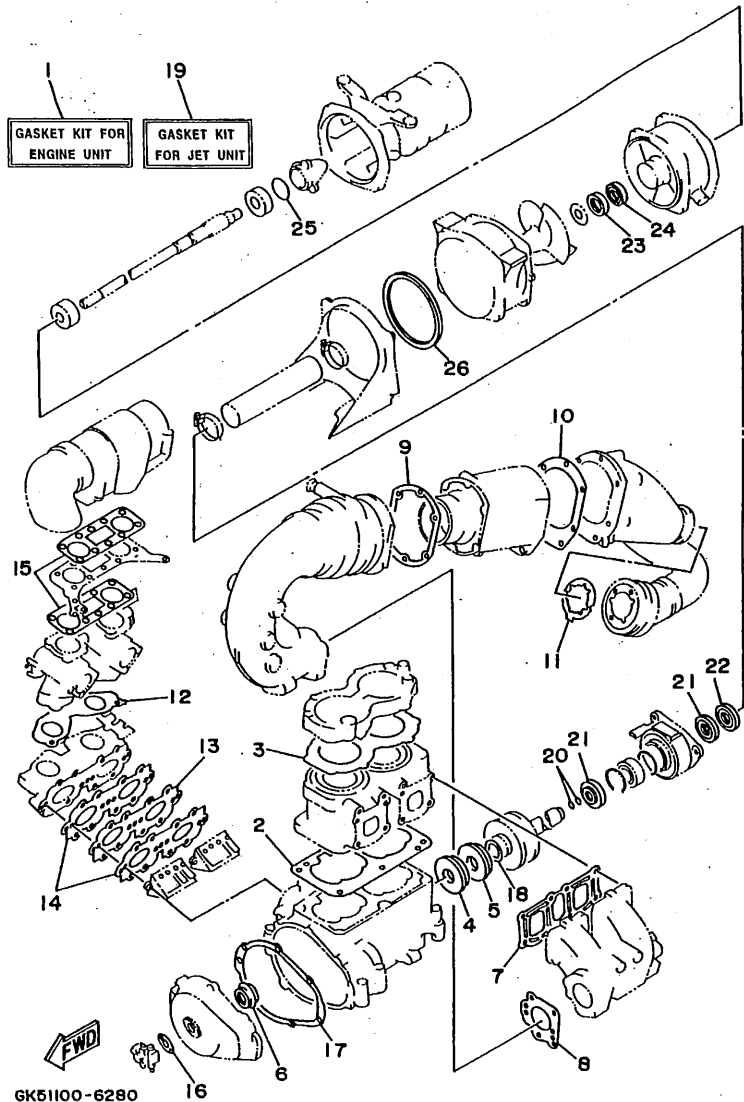


REF. NO.	PART NO.	DESCRIPTION	Q'TY	REMARKS
29	GK5-6418C-20	LABEL, CAUTION	1	
30	GR7-6419E-00	LABEL 4	1	FOR CAN
31	GK5-6418H-20	LABEL, CAUTION (CLEAT)	1	FOR FRA
32	EU0-28100-03	TOOL KIT	1	
33	EU0-65901-01	BAG, VINYL	1	



GK51100-6270

E2



GK51100-6280

FIG. 28 REPAIR KIT 1

REF. NO.	PART NO.	DESCRIPTION	Q'TY	REMARKS
1	64X-W0001-00	GASKET KIT FOR ENGINE UNIT	1	
2	6M6-11351-A2	.GASKET, CYLINDER	1	
3	64X-11181-00	.GASKET, CYLINDER HEAD 1	1	
4	93102-36M33	.OIL SEAL	1	
5	93101-36M46	.OIL SEAL	1	
6	93103-32M01	.OIL SEAL	1	
7	62T-14613-00	.GASKET, EXHAUST PIPE	1	
8	64X-14749-00	.GASKET, MUFFLER DAMPER 2	1	
9	62T-41114-01	.GASKET, EXHAUST OUTER COVER	1	
10	64X-41124-00	.GASKET, EXHAUST OUTER COVER	1	
11	64X-14623-00	.GASKET, EXHAUST PIPE	1	
12	64X-13556-00	.GASKET, MANIFOLD	1	
13	62T-13624-00	.PLATE, REED VALVE	1	
14	62T-13566-00	.GASKET	2	
15	64X-13674-00	.GASKET, AIR COOLER COVER 1	2	
16	6R8-13116-A0	.GASKET, PUMP CASE	1	
17	6M6-81365-A0	.GASKET, HOLE COVER	1	
18	62T-45127-00	.SEAL	1	
19	64Y-W0001-20	GASKET KIT FOR JET UNIT	1	
20	93210-17MA4	.O-RING	2	
21	93101-25M55	.OIL SEAL	2	
22	93101-25M56	.OIL SEAL	1	
23	93102-25M34	.OIL SEAL	1	
24	93101-25M50	.OIL SEAL	1	
25	93210-46M16	.O-RING	1	
26	64Y-51117-00	.PACKING	1	

E3

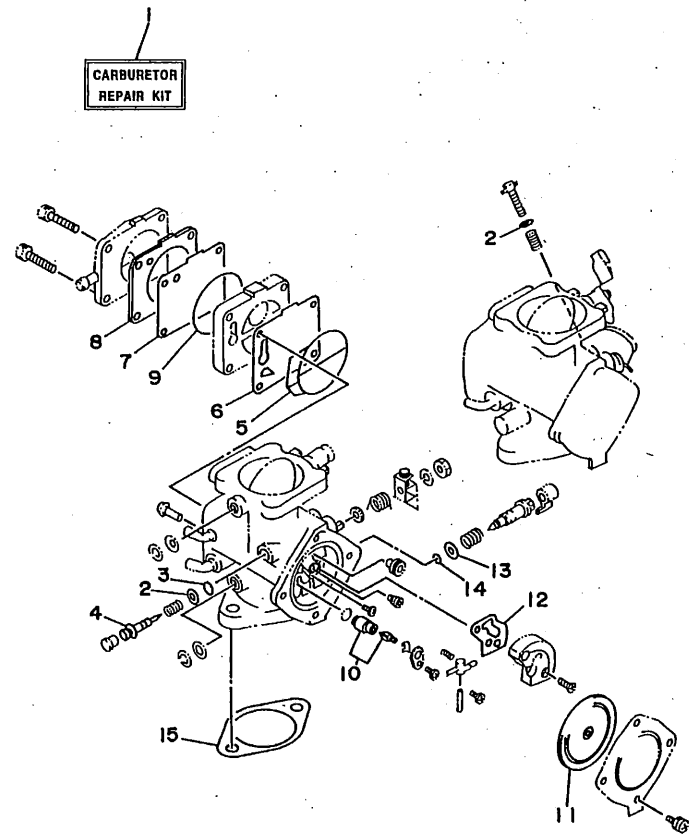


FIG. 29 REPAIR KIT 2

REF. NO.	PART NO.	DESCRIPTION	Q'TY	REMARKS
1	64X-W0093-00	CARBURETOR REPAIR KIT	1	
2	812-14235-00	.WASHER, NEEDLE	3	
3	812-14147-00	.O-RING	2	
4	6K8-14946-10	.METERING NEEDLE	2	
5	6K8-14564-00	.O-RING	2	
6	6K8-24411-20	.DIAPHRAGM	2	
7	6K8-24421-10	.VALVE, CHECK	2	
8	6K8-24431-20	.GASKET, FUEL PUMP 1	2	
9	6K8-14563-00	.O-RING	2	
10	61X-14916-15	.NEEDLE	2	
11	6R7-14541-00	.DIAPHRAGM, PUMP	2	
12	6K8-14536-11	.GASKET	2	
13	822-14235-00	.WASHER, NEEDLE	2	
14	583-14561-00	.O-RING	2	
15	64X-14398-00	.GASKET	2	

GP21100-6280

E4

NUMERICAL INDEX

PART NO.	GRID NO.	PART NO.	GRID NO.	PART NO.	GRID NO.	PART NO.	GRID NO.	PART NO.	GRID NO.	PART NO.	GRID NO.	
64X-W0001-00	E- 3	812-14147-00	E- 4	64X-14615-00	B-10	62T-41114-01	B-10	FJ0-61432-00	C-12	FJ0-62840-02	C-10	
64Y-W0001-20	E- 3	64X-14162-00	B- 8	64X-14623-00	B-11			GA7-61440-00	D-12	GK5-62843-00	C-10	
64X-W0004-00	B- 5	3G2-14231-27	B- 7			E- 3	64X-41123-00-9M	B-11	GK5-6146F-00	D- 9	FN8-62884-00	C-10
64X-W0090-00-4D	B- 2	3G2-14231-30-A0	B- 7	62T-14625-00	B-10	64X-41124-00	B-11	EU0-61461-01	D- 9	GH1-62891-01	C-10	
64X-W0093-00	E- 4	830-14231-23	B- 7	64X-14711-00-9M	B-10			GK5-61467-00	D-11	GK5-62892-00	C-10	
EU0-W6783-30	D- 6	812-14235-00	B- 7	64X-14712-00-9M	B-10	63M-42316-00	B-14	GK5-61468-00	D-11	GK5-6351H-00	C-15	
64X-11111-00-94	B- 2		E- 4	64X-14717-00	B-11	62E-44517-00-5B	B- 3	GH1-61469-00	D-11	GK5-6351J-00	C-15	
64X-11181-00	B- 2	822-14235-00	B- 8	64X-14721-00-94	B-10	64Y-44532-00	B- 2	GK5-61480-00	D- 9	GK5-6351K-00	C-15	
	E- 3		E- 4	64X-14749-00	B-10	663-45119-00	B- 5	GK5-61541-00	D-10	GK5-6351M-00	C-15	
64X-11311-00-94	B- 2	64X-14243-00	B- 8			E- 3		GA7-61552-00	D-10	GK5-6351N-00	C-15	
6E5-11325-00	B- 2	62T-14251-00	B- 2	64Y-14752-00	B-11	62T-45127-00	B- 4	EW2-61553-00	D-10	GK5-6351P-00	C-15	
6M6-11351-A2	B- 2	6R7-14253-00	B- 8	64X-14763-00-94	B-11			EU0-61588-00	D-10	GK5-6351R-00	D- 2	
	E- 3	64X-14255-00	B- 6	62T-14771-00-94	B-11	61X-45332-01-9M	C- 2	FN8-61624-01	C-13	GK5-6351S-00	D- 2	
6E5-11372-00	B- 5	64X-14283-00	B- 6	64X-14781-00-94	B-10	61L-45378-00	C- 2	FN8-61651-00	C-15	GK5-6353C-00	C-11	
64X-11400-00	B- 4	64X-14284-00-4D	B- 5	61X-14916-15	B- 8	64Y-45511-00	B-14		B-12	GK5-63530-00	C-11	
64X-11603-00	B- 4	64Y-14301-00	B- 7			E- 4	62T-45526-00	B- 4	C-13	GH1-63540-40	C-15	
64X-11604-00	B- 4	64Y-14302-00	B- 7	6M6-14923-10	B- 8	63M-4581J-00	B- 4		C-15	GK5-63581-00	C-15	
64X-11605-00	B- 4	64X-14398-00	B- 8	6K8-14926-10	B- 7	63M-45813-01-5B	B- 4	GK5-6213F-00	D- 3	GK5-6371A-00	D- 4	
64X-11631-00-91	B- 4		E- 4	6K8-14930-00	B- 7	64T-45813-00-5B	B- 4	GK5-6213G-00	D- 3	GK5-6371B-00	D- 4	
62T-11633-00	B- 4	62T-14419-00	B- 6	3KW-14932-00	B- 7	64Y-51117-00	B-14	GA7-6213H-00	D- 3	GK5-63729-00	D- 4	
64X-11635-00	B- 4	62T-14435-00	B- 6	6K8-14946-10	B- 7			GH1-62139-00	D- 3	GA7-63768-00	C-10	
64X-11636-00	B- 4	62T-14451-00	B- 6			E- 4	6K8-51129-00	B- 2	EW2-62140-00	D- 6	GK5-63768-00	C- 8
64Y-12564-00	B-11	6K8-14471-10	B- 7	64X-15100-00-94	B- 2			EW2-62142-00	D- 6	GH1-63774-01	D- 4	
63M-12577-00	B-10	6K8-14481-10	B- 8	6R7-21415-00-94	B- 2			GK5-62149-00	D- 3	GH1-6378C-00	D- 4	
64Y-12578-00	B-11	6K8-14521-10	B- 7	6R7-21425-00-94	B- 2			FJ0-62158-00	D- 5	GH1-63850-01	D- 4	
63M-12580-00	B-11	6M6-14521-00	B- 7	4GB-2155A-00	C- 7	63M-51162-00	C-13	GK5-62159-00	D- 3	GH1-64125-00	D-13	
64X-12581-00	B-11	6K8-14523-11	B- 8	EU0-23814-01	D-11	63M-51165-00	C-13	EU0-62280-00	C-13		D-15	
64X-12582-00	B-11	6K8-14527-11	B- 7	EU0-23814-30	D-11	64Y-51311-00	B-14	EU0-62282-00	C-13	GK5-6415E-00	D-13	
63M-12590-00	B-11	64X-14527-00	B- 5	64X-24313-00	B- 5	64Y-51312-00-94	B-14	EU0-62283-00	C-13	GK5-6415F-00	D-13	
63M-12590-10	B-12	6K8-14534-10	B- 7	64X-24314-00	B- 5	64Y-51313-00	B-14	EU0-62285-01	C-13	GK5-6416B-00	D-13	
63M-12590-20	B-12	6K8-14536-11	B- 8	688-24378-00	B- 5	63M-51315-00-94	B-14	GK5-62501-00	C-15	GK5-6416B-20	D-15	
6R8-13116-A0	B- 9		E- 4	6K8-24411-20	B- 7	64T-51318-00-5B	B-14	GK5-6251D-00	C-15	GK5-6416C-00	D-13	
	E- 3	6R7-14541-00	B- 8			E- 4	64Y-51321-A0	B-14	GK5-6251E-00	C-15	GK5-6416C-20	D-15
6R3-13183-00	B- 9		E- 4	6R7-24412-01	B- 8	64Y-51323-00	C- 2	GK5-6252C-00	C-15	GK5-6416C-30	D-15	
	B- 9	6R7-14542-00	B- 8	6M6-24413-00	B- 7	62T-51326-00	B-14	GK5-6252D-00	C-15	GK5-6416F-00	D-15	
62T-13200-11	B- 9	6K8-14547-01	B- 8	6K8-24421-10	B- 7	6R7-51333-00	B-14	GK5-62535-00	C-15	GK5-6416F-20	D-15	
64X-13555-00-94	B- 5	583-14561-00	B- 8			E- 4	63M-51334-00	B-14	GK5-62536-00	C-15	GK5-6416G-00	D-13
64X-13556-00	B- 5		E- 4	6K8-24431-20	B- 7	62T-51348-00	B-14	GK5-62552-00	C-15	GK5-6416G-20	D-15	
	E- 3	6K8-14563-00	B- 7			E- 4	64Y-51381-00	C- 2	GK5-62553-00	C-15	GK5-6417B-10	D-13
62T-13566-00	B- 5		E- 4	6K8-24452-10	B- 7	63N-51673-00	C-13	GK5-62576-00	C-15		D-15	
	E- 3	6K8-14564-00	B- 7	70R-24489-00	D- 6	61L-5169A-00	B- 5	GK5-6266C-00	C- 8	GK5-6417B-20	D-13	
64X-13610-00	B- 5		E- 4	6K8-24500-02	B-13		C- 3	GK5-6266D-00	C-12		D-15	
62T-13624-00	B- 5	6R7-14569-00	B- 8	6K8-24524-10	B-13	63M-5316M-00	C-13	GK5-6266E-00	C-10	GK5-6417C-10	D-13	
	E- 3	6K8-14589-00	B- 8	70R-24543-00	D- 6	FN8-6131B-00	D-11	GK5-6266G-00	C-10		D-15	
64X-13674-00	B- 6	6R7-14596-01	B- 7	6K8-24560-10	B-13	GH1-6141B-00	D-10	GK5-6266A-00	C-10	GK5-6417C-20	D-13	
	E- 3	6K8-14597-11	B- 7	EU0-28100-03	D-14	GH1-6141D-01	D-10	FN8-6269B-00	C-13		D-15	
47X-14133-00	B- 7	62T-14613-00	B-10			E- 2	GA7-6142A-40	D-12	GK5-6271B-00	D- 4	GK5-6417D-10	D-13
812-14147-00	B- 7		E- 3	62T-41113-00-9M	B-10	GH1-6143C-30	D-10	GA7-6273B-00	B-15		D-15	

NUMERICAL INDEX

PART NO.	GRID NO.	PART NO.	GRID NO.	PART NO.	GRID NO.	PART NO.	GRID NO.	PART NO.	GRID NO.	PART NO.	GRID NO.
GK5-6417D-20	D-13	GK5-6517G-00	C-10	FN8-67714-01	D-6	26H-81847-00	C-5	90116-08M59	B-10	90201-05928	D-10
	D-15	GK5-65193-00	C-11	EW2-67716-00	D-6	6M6-81850-00	C-5	90119-05912	D-8	90201-06M31	B-6
GK5-6417E-10	D-13	GA7-65772-00	C-8	GH1-67743-01	D-7	6M6-81865-00	C-5	90119-06908	B-15	90201-08M04	B-14
	D-15	EU0-65901-01	D-14	GH1-67758-00	D-5	6M6-81866-00	C-5	90119-06914	D-4	90201-08929	D-4
GK5-6417E-20	D-13		E-2	GH1-6775C-00	D-5	6M6-81921-00	C-6	90119-06915	B-15	90201-20M04	B-4
	D-15	GK5-6591C-00	C-10	FJ0-67766-00	D-5	6G1-81941-10	C-6	90119-06926	D-11	90201-24M02	B-4
GK5-6417F-10	D-13	GK5-6591D-00	C-10	EU0-67767-31	D-6	6M6-81952-01	C-6		D-11	90267-40935	D-6
	D-15	EW2-65912-00	C-8	FN8-67816-00	B-13	6M6-81960-A0	C-6	90119-06947	C-10	90267-40936	C-10
GK5-6417F-20	D-13	EW2-65913-00	C-8	EU0-67817-00	B-13	EU0-82110-09	C-8	90119-08M11	B-10	90267-48909	C-15
	D-15	GK5-6593H-00	C-8	GH1-6782B-01	D-7	6M6-82117-21	C-7	90119-08M19	B-2		C-15
GK5-6417G-10	D-13	GK5-65983-00	C-8	EU0-67831-32	D-6	62T-82117-01	C-7	90119-08M37	B-11	90267-48925	B-13
	D-15	GK5-67242-00	D-9	EU0-67832-00	D-6	62T-82117-11	C-7	90119-08M55	B-2		C-8
GK5-6417G-20	D-13	EW2-67243-00	D-9	EU0-67834-00	D-7	6K8-82150-01	C-6	90119-08038	B-3		C-8
	D-15	G00-67249-00-05	C-2	EU0-67835-00	D-6	6G1-82151-00	C-6		D-10		D-10
GK5-6417H-00	D-13	G00-67249-00-10	C-2	FJ0-67840-00	D-5	62T-82361-00	C-7	90119-08903	D-7	90267-48931	C-3
	D-15	EW2-67250-02	D-10	FJ0-67841-01	D-5	62E-82371-10	C-6	90119-08904	B-3	90267-48932	C-15
GK5-64173-10	D-4	GK5-67252-00	D-9	GK5-67844-00	D-7		C-6	90119-08907	C-2		C-15
GK5-64173-20	D-4	EW2-67255-00	D-10	GA7-6785G-00	D-6	63N-82553-00	C-7	90119-08925	D-11		C-15
GA7-6418B-00	D-13	EW2-67256-00	D-10	GA7-6785H-00	D-6	64X-82560-00	C-7	90119-08933	B-15		D-3
	D-15	EW2-67257-01	D-10	GA7-67856-00	C-8	6R7-83623-40	C-6	90119-10M00	B-2		C-8
GA7-6418B-20	D-15	EW2-67258-01	D-10	GK5-67856-00	D-6	6R7-83623-50	C-6	90119-10M01	B-2	90267-48934	C-12
GH1-6418C-00	D-13	EW2-67259-01	D-10	EU0-67869-00	D-7	63N-83623-00	C-6	90119-10M02	B-2		D-12
GK5-6418C-20	E-2	EU0-67324-00	B-3	GK5-6815D-00	C-7	682-84385-01	B-11	90119-10M03	B-2	90267-48940	B-13
GH1-6418D-01	D-6	EU0-67354-00-01	B-3	GK5-6820A-00	C-8	64X-8552A-00-5B	C-6	90119-10M07	B-2		C-10
GK5-6418E-00	D-13	EU0-67354-00-03	B-3	GK5-68211-00	C-8	6M6-8552E-01	C-6	90119-10M56	B-2		D-6
	D-15	EU0-67354-00-05	B-3	GA7-68218-00	C-8	64X-85520-00	C-3	90119-10M72	B-11		D-4
GK5-6418F-00	D-13	EU0-67354-00-10	B-3	EU0-68221-00	C-8	64X-85521-01	C-3	90119-10949	B-15	90267-48953	C-15
	D-15	EU0-67354-00-20	B-3	GH1-6824B-00	C-9	64X-85525-00	C-3	90149-03930	D-9	90267-48956	C-3
GK5-6418G-00	D-13	EW2-67354-00-01	B-15	GH1-6824C-00	C-9	62T-85533-00	C-6	90149-04904	D-12	90280-16053	C-10
GK5-6418G-20	D-15	EW2-67354-00-03	B-15	GK5-68244-00	C-9	64X-85540-00	C-6	90149-05907	C-12	90338-12081	C-12
GK5-6418H-20	E-2	EW2-67354-00-05	B-15	GJ1-68310-00	D-10	64X-85546-00	C-6	90149-05908	C-12		B-2
FJ0-6418J-A1	D-15	EW2-67354-00-10	B-15	FK7-68312-02	D-10	64X-85550-00	C-3	90149-05916	D-12	90380-12M29	C-3
GK5-6419B-00	D-13	GJ1-6753B-02	D-8	FK7-68313-01	D-10	64X-85570-00	C-6	90149-05945	C-11		C-6
GK5-6419B-20	D-15	GK5-67550-00	D-8	EW2-68348-00	D-10	64X-85580-00	C-3	90149-05959	D-10	90387-06M30	C-6
GK5-6419C-00	D-13	GK5-67555-00	D-8	GK5-6883B-00	C-2	90105-05M46	B-6	90149-06904	C-8	90387-06M60	C-2
	D-15	GK5-67560-00	D-8	6M6-8132W-00	C-6	90105-06903	C-7	90149-06906	C-10	90387-08M06	B-15
GK5-6419D-00	D-13	FJ0-67569-00	D-8	64X-81337-00-40	C-3	90105-08M70	B-11	90159-05900	D-10	90430-13909	C-13
GK5-6419E-00	E-2	GJ1-67578-10	B-12	6M6-81365-A0	C-3	90105-08M71	B-11	90159-06901	C-10	90430-16910	D-8
GK5-64735-00	C-10		C-13		E-3	90105-08M74	B-14		C-10	90445-07M87	B-9
GK5-6475B-00	C-12	GK5-67578-00	D-8	64X-81800-00	C-5	90105-10M45	B-11	90170-22M11	B-13		B-9
GK5-6476A-00	C-12	GH1-6759B-00	D-9	3AJ-81809-00	C-5	90105-10M60	B-10	90179-08M15	B-5	90445-09M17	C-2
GK5-6515N-00	C-11	GH1-6759C-00	D-7	64X-81820-00	C-5		B-10	90179-08961	B-15	90445-09M24	C-3
GK5-6516A-00	C-10	GH1-6759D-00	D-7	6M6-81826-00	C-5	90105-10M72	B-10	90179-10957	B-15	90445-09901	D-5
GK5-6516N-00	C-10	GH1-6759D-00	D-5	6M6-8183E-00	C-5	90105-10M73	B-10	90180-06900	B-15	90445-10M23	B-13
GJ3-6517C-01	C-12	G00-6761D-00	C-13	6M6-81830-00	C-5	90109-06M66	B-6	90183-06902	C-10	90445-10M32	B-13
GK5-6517D-00	C-12	EW2-67618-00	C-13	6M6-81840-10	C-5	90109-08M56	B-2	90201-05M09	C-3	90445-10M43	B-13
GK5-6517F-00	C-12	GH1-67711-01	D-6	11H-81844-00	C-5	90109-10M72	C-3	90201-05925	B-13	90445-10M70	B-13
	C-12	FJ0-67713-00	D-6	6M6-81844-00	C-6	90116-08M55	B-5		C-8	90445-10M71	B-13

NUMERICAL INDEX

PART NO.	GRID NO.	PART NO.	GRID NO.	PART NO.	GRID NO.	PART NO.	GRID NO.	PART NO.	GRID NO.	PART NO.	GRID NO.
90445-10M88	B- 5	90465-11M10	C-14	92990-05200	C- 8	93101-36M46	E- 3	95720-06300	C-11		
90445-11M33	B- 9		D- 5		C-11	93102-25M34	B-14		D- 4		
90445-11903	D- 6		D- 5		C-12		E- 3		D- 9		
90445-14M03	B- 2		D- 6		C-12	93102-36M33	B- 4		D-10		
90445-14M10	B-11		D- 6		C-13		E- 3	95720-08300	C- 7		
90445-14M30	C-14		D- 8		C-15	93103-32M01	B- 4		C-13		
90445-18M01	B-14		D- 8		D- 3		E- 3		D- 4		
90445-19M02	C-13	90465-13M11	B-13	92990-05600	B- 5	93210-13M63	B- 6		D-11		
90446-07M35	B- 9		C- 7		D- 6	93210-17MA4	C- 2	95720-10300	D- 4		
90446-07M48	B- 9		C- 8	92990-06200	C- 7		E- 3		D-11		
90446-14M66	B- 5		C-13		C- 8	93210-22ME5	C-13	97013-05012	C- 3		
90446-14M67	B- 5		C-13		C-10	93210-46M16	B-14	97013-05020	C- 3		
90446-20M31	B-10		C-13		D- 4		E- 3	97013-06012	B- 6		
90446-20M39	C-13		C-14		D-10	93305-205U0	C- 2	97013-06020	B- 6		
90446-20M53	B- 3	90467-08M10	C- 8	92990-06600	B- 5	93305-205U1	B-14	97013-06025	B- 5		
90446-20M65	B-11	90467-11044	D- 6		B- 5	93305-30601	B- 4		B-10		
90450-14M05	B-11	90480-06M43	C- 6		B- 6	93306-205U0	B-14	97013-08035	C- 5		
		90480-06M46	C- 2		B- 6	93306-307U3	B- 4	97013-08040	C- 5		
90450-18M09	B-11	90480-20M05	B-11		B- 9	93310-320U2	B- 4	97014-06035	B- 5		
		90480-23M69	C- 3		B-10	93430-47M04	C- 2	97080-06030	D-10		
90450-22M14	B-11	90501-14M73	C- 5		B-14	93440-25M08	C- 5	97095-06016	B-14		
		90560-22281	D-10		C- 3	93440-80023	B- 4		C- 7		
90450-88M15	B-11	90600-91736	B-13		C- 3	93450-18M06	C- 5	97095-06025	C- 3		
90450-99M06	B-10		C- 8		C- 5	93450-21053	B- 4	97095-06030	C- 3		
90450-99M16	B-10	90601-11062	D- 6		C- 6	93603-10049	B- 2	97095-06035	B- 9		
90464-06M29	C- 6	90601-14271	D-10		C- 6	93604-07141	B- 2	97095-08020	B-15		
90464-07M20	B- 9	90601-15272	C- 2		C- 7	93605-12M21	B-10	97513-06516	B- 5		
90465-06M28	C- 3	90601-15573	D- 7	92990-08100	B- 7	93606-09M19	B-14	97595-06525	C- 2		
90465-06M65	C- 3	90601-16274	C- 9		B-10	93606-12019	B- 2	97780-50114	C-13		
90465-08M37	B- 9		D- 6	92990-08200	C- 7		B-14	97780-50520	C-13		
90465-08028	C- 6	90601-16875	D- 8		C-13		B-14	97780-50612	C- 8		
90465-11M10	B- 2	90601-20006	B-13		D-11		C- 2		C-12		
	B- 5		C- 8	92990-08600	C- 5		C- 3	97780-60520	B-15		
	B- 5	90601-20007	D- 3		C- 5	94702-00195	C- 7	97780-60525	C- 6		
	B- 9	90601-20008	D- 3	92990-10200	D- 4	95380-06700	C- 5	97880-06030	C- 6		
	B- 9	90604-80759	C-13		D-11	95380-08600	B-10	97985-06220	B-11		
	B- 9	90604-80775	C-13	92990-10600	B-15	95380-08700	B-15	98580-03008	D-10		
	B-10	90604-80793	D- 8	92990-14200	D- 8		B-14	98580-04010	B-13		
	B-13	90604-80794	D- 8	92995-06100	C- 5	95380-10600	B-15	98580-05016	B- 5		
	B-13	90656-67096	C- 8		C- 7	95380-14700	D- 8	98580-05525	D- 3		
	B-13	90656-67105	C-12	92995-08600	B-15	95720-05300	C- 8		D-10		
	B-13	90699-36020	D- 9	93101-25M50	B-14		C-10	98580-06010	C- 3		
	B-13	90699-36100	D- 9		E- 3		C-11	98580-06016	C- 6		
	B-13	91490-16010	D- 6	93101-25M55	C- 2		C-12		C- 7		
	B-13	91790-05040	D- 6		E- 3		D- 3	98780-04015	B- 2		
	C- 2	92990-04600	B-13	93101-25M56	C- 2	95720-06300	C- 7	98780-06014	C-10		
	C- 3	92990-05100	C- 3		E- 3		C- 8				
	C- 6		C- 3	93101-36M46	B- 4		C-10				

—MEMO—

A series of horizontal dotted lines for writing.

*COPYRIGHT: All rights reserved. No part of this publication
may be reproduced without permission.*

YAMAHA

YAMAHA MOTOR CO., LTD.
2500 SHINGA I IWATA SHIZUOKA JAPAN
SERVICE INFORMATION DIV.

PRINTED ON RECYCLED PAPER

Printed in Japan
First edition FEB., 1996