

PARTS CATALOGUE

MJ-800TZ'00 (F0N3)

WB800Y (F0N4)

FOREWORD

This Parts Catalogue is related to the parts for the model(s) in the below frame. When you are ordering replacement parts, please refer to this Parts Catalogue and quote both part numbers and part names correctly.

MJ 800TZ'00(F0N3), WB800Y(F0N4)

1. Modifications or additions which have been made after issue of the Parts Catalogue will be announced in the Yamaha Parts News.
It is advisable that you make necessary corrections to the Parts Catalogue according to the Yamaha Parts News.

2. Abbreviations
The following abbreviations are used in this Parts Catalogue.

"UR" Use specified parts number.

"UN" Use as many as needed.

"AP" Alternate Parts

"LM" Local Made (Parts need to be ordered locally)

"F#" Frame No. (Applicable machine No.)

3. Parts, which are to be supplied in an assembly, are listed with a dot(.) in front of the part name as shown below.
The numeral appearing to the right of each component part indicates the quantity of parts for each assembly unit.

EXAMPLE

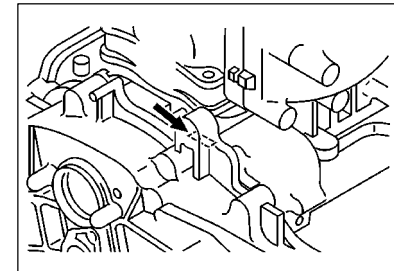
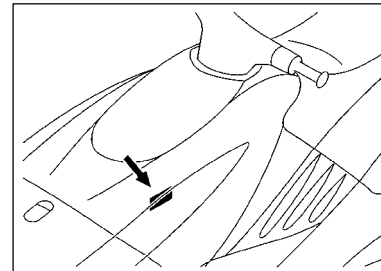
PART NO.	DESCRIPTION	Q'TY	REMARKS
EU0-62280-00	DRAIN PLUG ASSY	2	
EU0-62282-00	.PLUG,DRAIN	1	

4. Quantity Column Information

NAME for Q'TY COLUMN	COUNTRY (destination)
JPN	JAPAN
GENE	EXCEPT JAPAN

5. Applicable Starting Serial No. and Color Code

Hull Serial No.	(F0N3)	F0N-0301201
	(F0N4)	F0N-910921
Engine Serial No.	(67UA)	67U-002298
	(67UB)	67U-002046



Color Code	Color Name	Abbreviation
GA3C	WHITE COAT 2	WC2

6. Note that the illustration for reference in funding parts numbers, not to be used for assembling. When assembling, please use the applicable service manual.
7. A part with "YMUS" in the remarks column can be obtained from YMUS (USA) and not from YAMAHA MOTOR CO.,LTD (JAPAN).

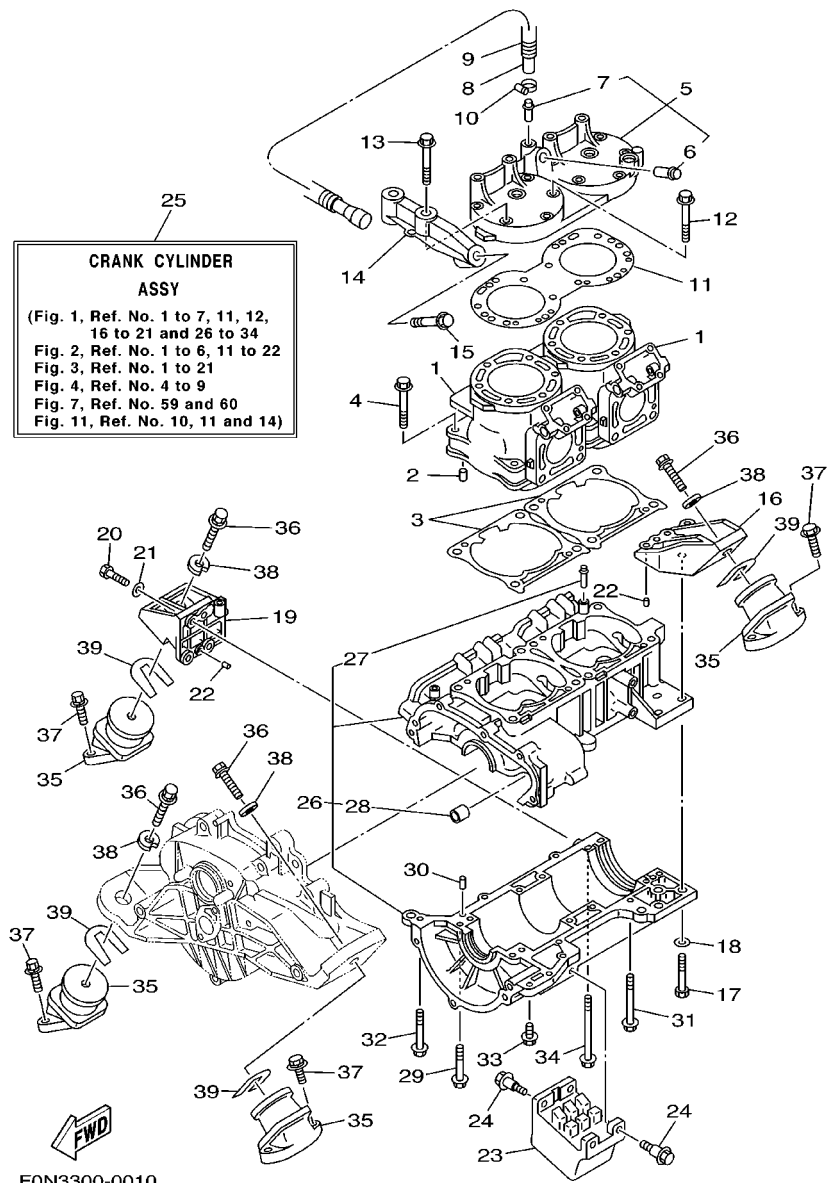
EXAMPLE

PART NO.	DESCRIPTION	Q'TY	REMARKS
EW2-U5160-00	ENGINE HATCH COMP.	2	.. YMUS
90601-168U7	BAND, HOSE	1	.. YMUS

ADDRESS:

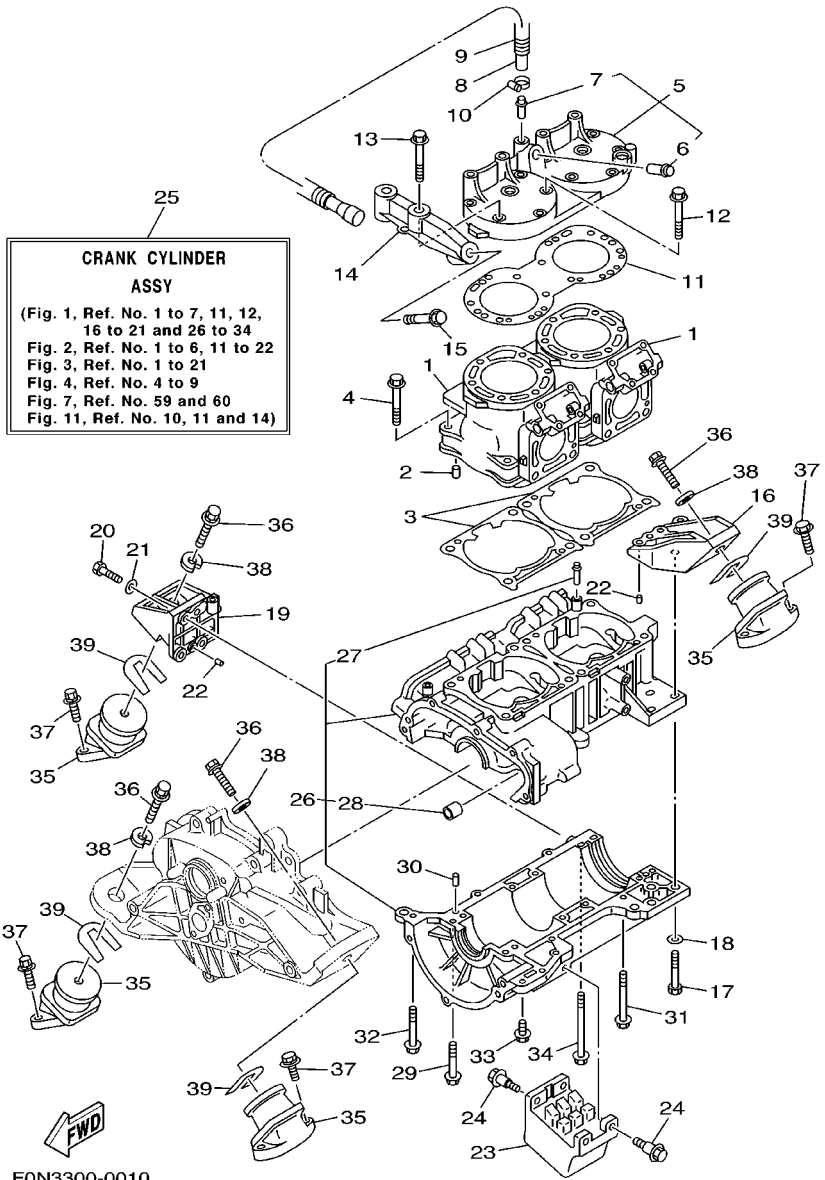
YAMAHA MOTOR CORPORATION U.S.A.
PARTS & ACCESSORY DIV.
6555 KATELLA AVENUE
CYPRESS, CALIFORNIA 90630 U.S.A.

FIG. 1 CYLINDER, CRANKCASE 1



FON3300-0010

REF. NO.	PART NO.	DESCRIPTION	JPN	GENE	REMARKS
1	66E-11311-00-94	CYLINDER 1	2	2	
2	93606-12019	PIN, DOWEL	4	4	
3	66E-11351-01	GASKET, CYLINDER	2	2	
4	90119-10M07	BOLT, WITH WASHER	8	8	
5	66E-11111-00-94	HEAD, CYLINDER 1	1	1	
6	66E-51129-00	.NIPPLE	1	1	
7	6K8-51129-00	.NIPPLE	1	1	
8	67U-12588-00	HOSE 5	1	1	
9	90446-24ME7	HOSE	1	1	
10	90450-14M05	HOSE CLAMP ASSY	1	1	
11	66E-11181-00	GASKET, CYLINDER HEAD 1	1	1	
12	90119-08MA1	BOLT, WITH WASHER	10	10	
13	90119-08MA2	BOLT, WITH WASHER	2	2	
14	66E-14781-10-94	STAY, MUFFLER 2	1	1	
15	90119-10M00	BOLT, WITH WASHER	1	1	
16	66E-21425-10-8P	BRACKET, REAR UPPER 1	1	1	
17	97013-08045	BOLT	3	3	
18	92903-08600	WASHER, PLATE	3	3	
19	66E-21426-10-8P	BRACKET, REAR UPPER 2	1	1	
20	97013-08030	BOLT	3	3	
21	92903-08600	WASHER, PLATE	3	3	
22	93606-12019	PIN, DOWEL	4	4	
23	66E-44532-00	STOPPER, UPPER MOUNT	1	1	
24	90109-06M92	BOLT	4	4	
25	66E-W0090-11-8P	CRANK CYLINDER ASSY	1	1	
26	66E-15100-10-8P	CRANKCASE ASSY	1	1	
27	62T-14251-10	.NIPPLE	2	2	

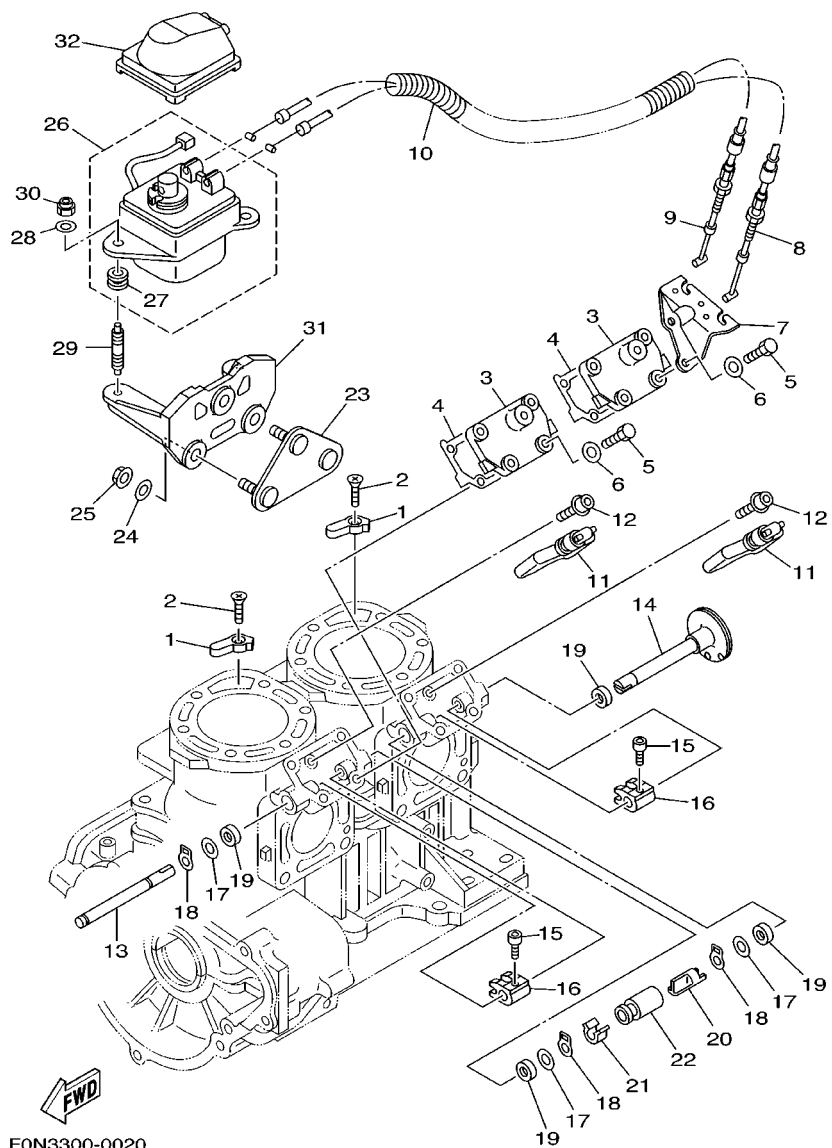


FON3300-0010

FIG. 1 CYLINDER. CRANKCASE 1

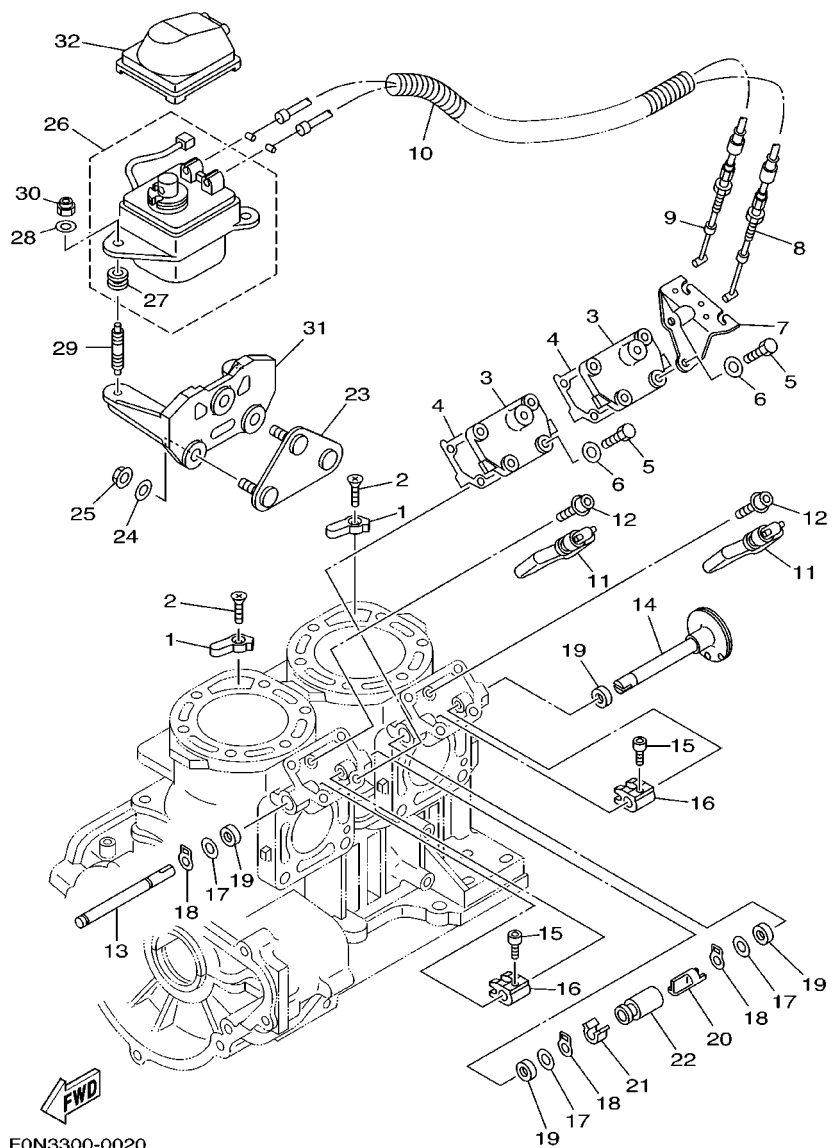
REF. NO.	PART NO.	DESCRIPTION	JPN	GENE	REMARKS
28	90380-12M29	.BUSH, SOLID	1	1	
29	90119-08M55	BOLT, WITH WASHER	10	10	
30	93606-12019	PIN, DOWEL	2	2	
31	90119-06M78	BOLT, WITH WASHER	3	3	
32	90119-08M61	BOLT, WITH WASHER	1	1	
33	90119-06M13	BOLT, WITH WASHER	4	4	
34	90119-08M56	BOLT, WITH WASHER	2	2	
35	6M6-44517-A1-5B	MOUNT RUBBER	4	4	
36	90119-08904	BOLT, WITH WASHER	4	4	
37	90119-08960	BOLT, WITH WASHER	8	8	
38	EU0-67324-00	PLATE	4	4	
39	EU0-67354-00-01	SHIM (T=0.1)	10	10	UN
	EU0-67354-00-03	SHIM (T=0.3)	10	10	UN
	EU0-67354-00-05	SHIM (T=0.5)	10	10	UN
	EU0-67354-00-10	SHIM (T=1.0)	10	10	UN
	EU0-67354-00-20	SHIM (T=2.0)	10	10	UN

FIG. 2 CYLINDER, CRANKCASE 2



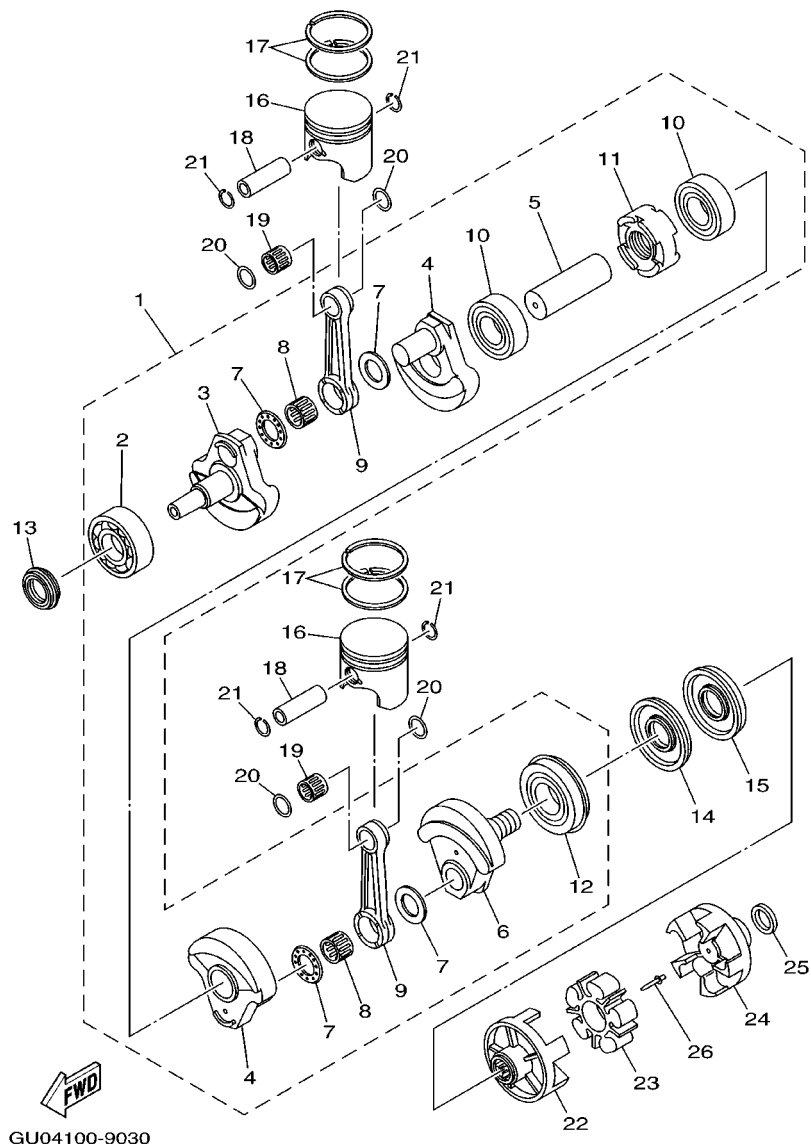
REF. NO.	PART NO.	DESCRIPTION	JPN	GENE	REMARKS
1	66E-11325-00	ANODE	2	2	
2	98780-05020	SCREW, FLAT HEAD	2	2	
3	66E-1131M-01-8P	COVER	2	2	
4	66E-1131B-00	GASKET, COVER	2	2	
5	97013-06025	BOLT	8	8	
6	92903-06600	WASHER, PLATE	8	8	
7	66E-11998-10	BRACKET 1	1	1	
8	66E-1133E-10	CABLE, PULLEY 1	1	1	
9	66E-1133F-10	CABLE, PULLEY 2	1	1	
10	90446-24M79	HOSE	1	1	
11	66E-1131S-02	VALVE ASSY.	2	2	
12	90109-05M95	BOLT	2	2	
13	66E-1131V-00	SHAFT 1	1	1	
14	66E-1132C-00	PULLEY, SHAFT	1	1	
15	90110-04M03	BOLT, HEXAGON SOCKET HEAD	2	2	
16	66E-11832-01	LEVER, LINK	2	2	
17	90201-08M09	WASHER, PLATE	3	3	
18	93410-08M12	CIRCLIP	3	3	
19	93109-08M07	OIL SEAL	4	4	
20	66E-1131H-00	JOINT 1	1	1	
21	66E-1131J-10	JOINT 2	1	1	
22	66E-1131C-10	COVER, JOINT	1	1	
23	GU0-6824E-00	BRACKET, YPVS	1	1	
24	92990-08200	WASHER, PLAIN	3	3	
25	95720-08300	NUT, SELF-LOCKING	3	3	
26	66E-85820-11	SERVO MOTOR ASSY	1	1	
27	90480-14023	.GROMMET	2	2	

FIG. 2 CYLINDER. CRANKCASE 2



REF. NO.	PART NO.	DESCRIPTION	JPN	GENE				REMARKS
28	90201-065F3	WASHER, PLATE	2	2				
29	90116-06M67	BOLT, STUD	2	2				
30	95780-06300	NUT, FLANGE	2	2				
31	66E-85112-00-94	BRACKET, REFLECTOR 1	1	1				
32	66E-85825-00	COVER, WIRE	1	1				
<hr/>								
<hr/>								
<hr/>								
<hr/>								
<hr/>								
<hr/>								
<hr/>								
<hr/>								
<hr/>								

FIG. 3 CRANKSHAFT, PISTON



GU04100-9030

REF. NO.	PART NO.	DESCRIPTION	JPN	GENE	REMARKS
1	66E-11400-00	CRANKSHAFT ASSY	1	1	
2	93305-307U0	.BEARING	1	1	
3	66E-11412-00	.CRANK 1	1	1	
4	66E-11422-00	.CRANK 2	2	2	
5	66E-11431-00	.CRANK 3	1	1	
6	66E-11442-00	.CRANK 4	1	1	
7	66E-11685-00	.WASHER, CRANK PIN	4	4	
8	93310-627U6	.BEARING	2	2	
9	66E-11651-00	.ROD, CONNECTING	2	2	
10	93306-208U1	.BEARING	2	2	
11	66E-11515-00	.SEAL, LABYRINTH 1	1	1	
12	93306-308U1	.BEARING	1	1	
13	93103-35M03	OIL SEAL	1	1	
14	93101-36M62	OIL SEAL	1	1	
15	93101-36M61	OIL SEAL	1	1	
16	66E-11631-00-A0	PISTON (STD)	2	2	UR RED
	66E-11631-00-B0	PISTON (STD)	2	2	UR ORANGE
	66E-11631-00-C0	PISTON (STD)	2	2	UR GREEN
	66E-11631-00-D0	PISTON (STD)	2	2	UR PURPLE
17	66E-11603-01	PISTON RING SET (STD)	2	2	
18	66E-11633-00	PIN, PISTON	2	2	
19	93310-422U2	BEARING	2	2	
20	90201-22M04	WASHER, PLATE	4	4	
21	66E-11634-00	CLIP, PISTON PIN	4	4	
22	66E-45813-10-94	FLANGE, COUPLING	1	1	
23	66E-4581J-00	RUBBER SHAFT COUPLING	1	1	
24	66E-45593-10-94	FLANGE, COUPLING 1	1	1	

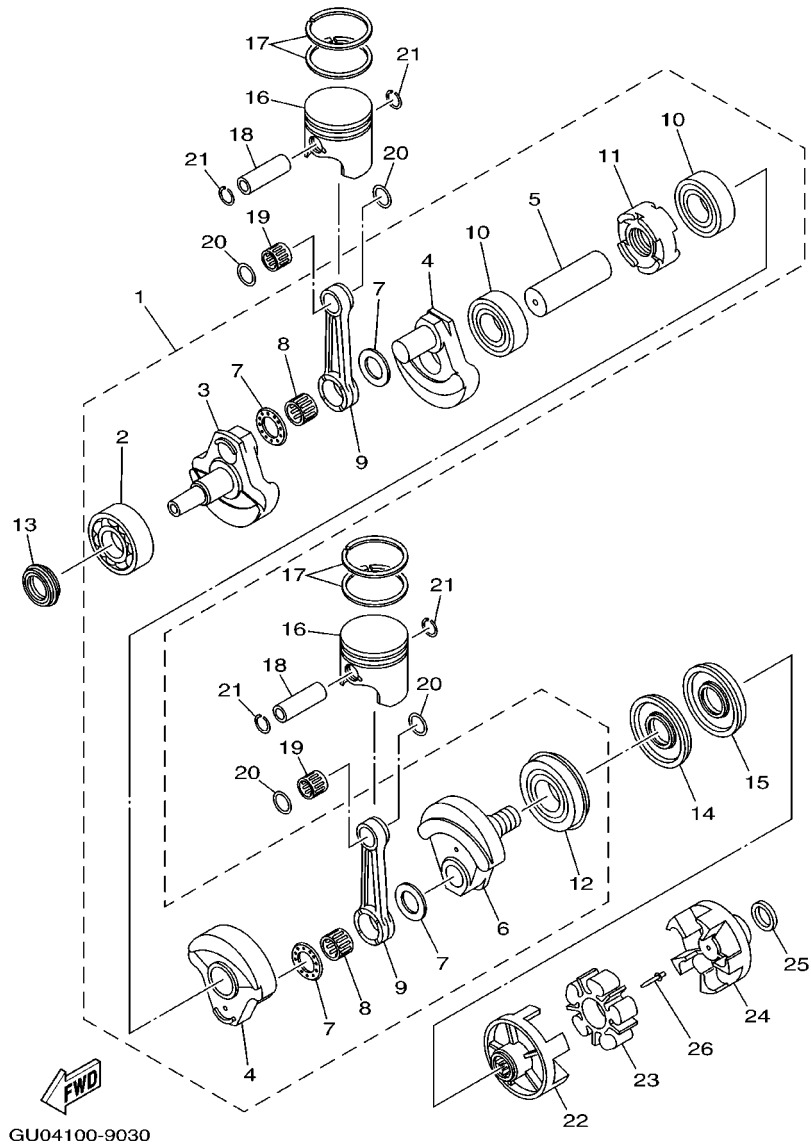
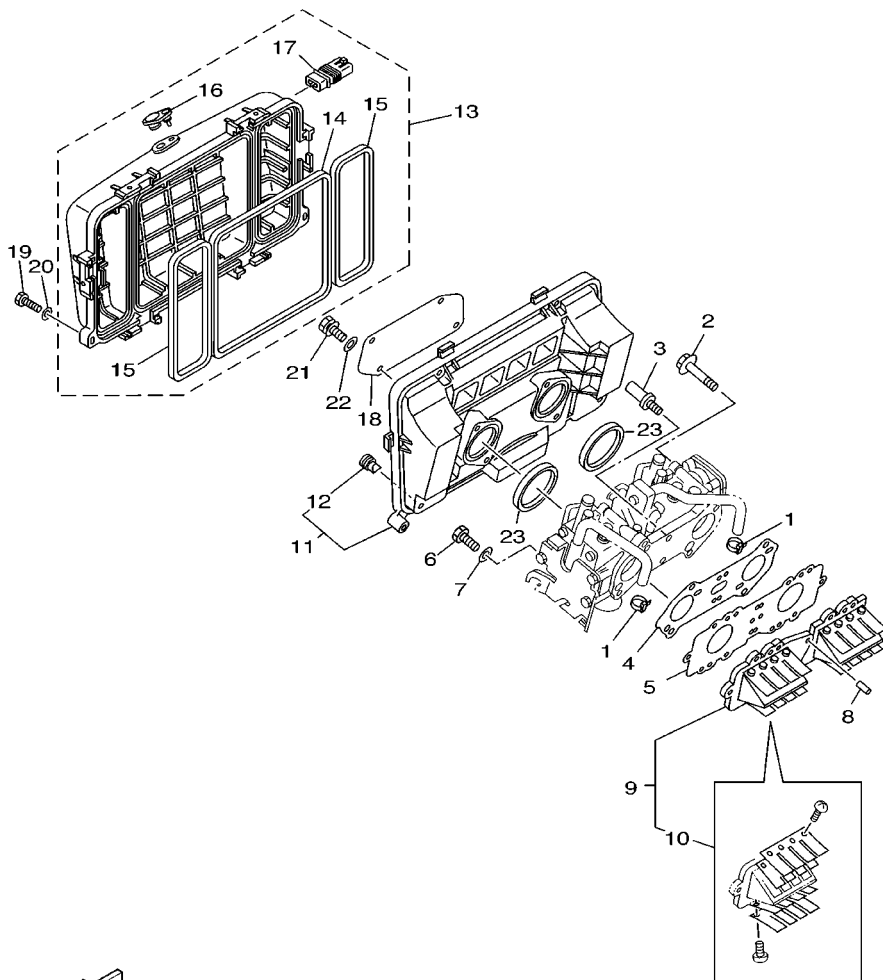


FIG. 3 CRANKSHAFT. PISTON

REF. NO.	PART NO.	DESCRIPTION	JPN	GENE	REMARKS
25	90201-24M02	WASHER, PLATE	1	1	
26	90267-48957	RIVET, BLIND	1	1	

FIG. 4 INTAKE

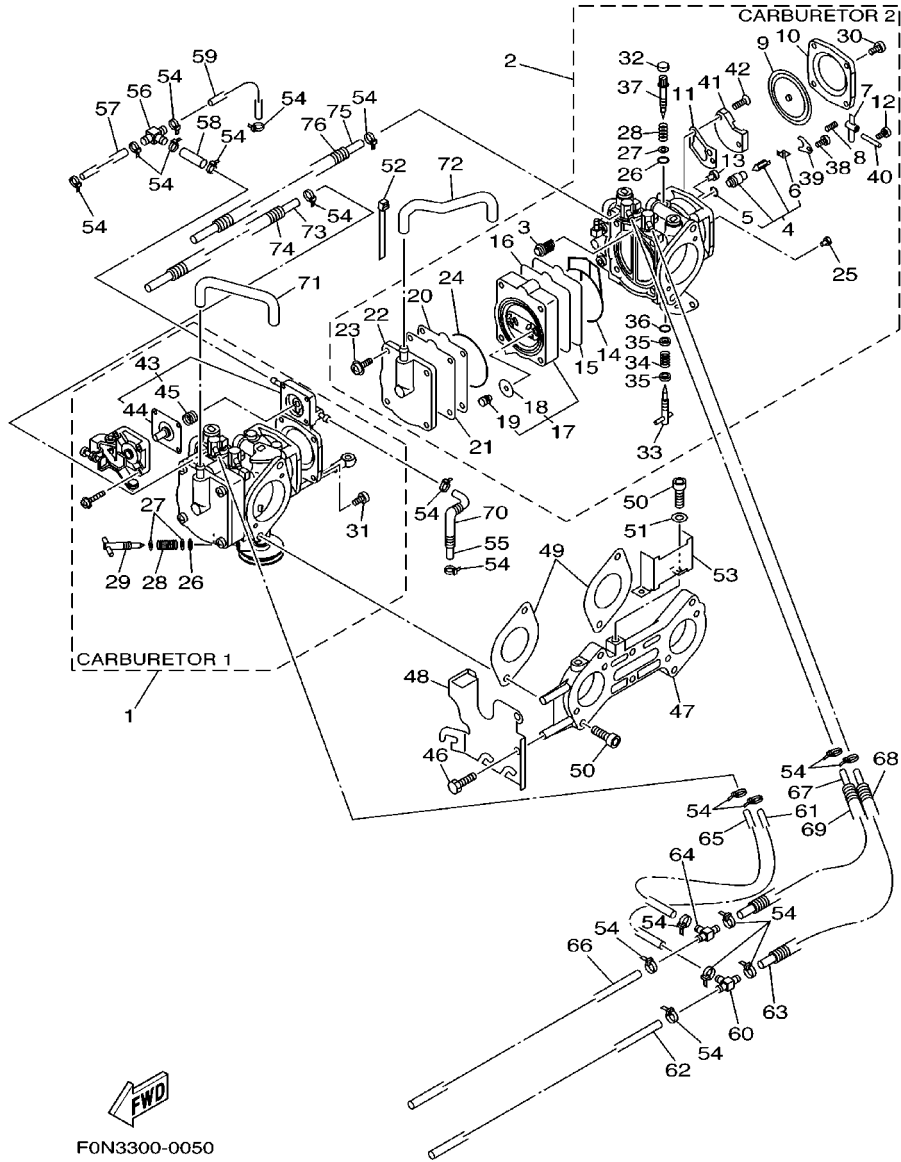


REF. NO.	PART NO.	DESCRIPTION	JPN	GENE	REMARKS
1	90465-11M10	CLAMP	2	2	
2	90105-08M86	BOLT, WASHER BASED	4	4	
3	90109-06M00	BOLT	2	2	
4	66E-13556-00	GASKET, MANIFOLD	1	1	
5	66E-13624-10	PLATE, REED VALVE	1	1	
6	97013-06025	BOLT	12	12	
7	92903-06600	WASHER, PLATE	12	12	
8	93606-19M23	PIN, DOWEL	2	2	
9	66E-13610-00	REED VALVE ASSY	2	2	
10	66E-W0004-00	.REED SET	1	1	
11	66E-1441E-00	COVER, CLEANER CASE 2	1	1	
12	66E-42717-00	.RUBBER, SEAL 2	2	2	
13	66E-14480-11	COVER SUB ASSY	1	1	
14	66E-14457-10	.SEAL	1	1	
15	66E-14452-00	.SEAL	2	2	
16	66E-14435-00	.GROMMET	1	1	
17	66E-13898-11	.HOLDER	6	6	
18	66E-14451-00	ELEMENT, AIR CLEANER	1	1	
19	97095-06035	BOLT	3	3	
20	92995-06600	WASHER	3	3	
21	97013-06045	BOLT	4	4	
22	92903-06600	WASHER, PLATE	4	4	
23	66E-13473-00	O-RING	2	2	



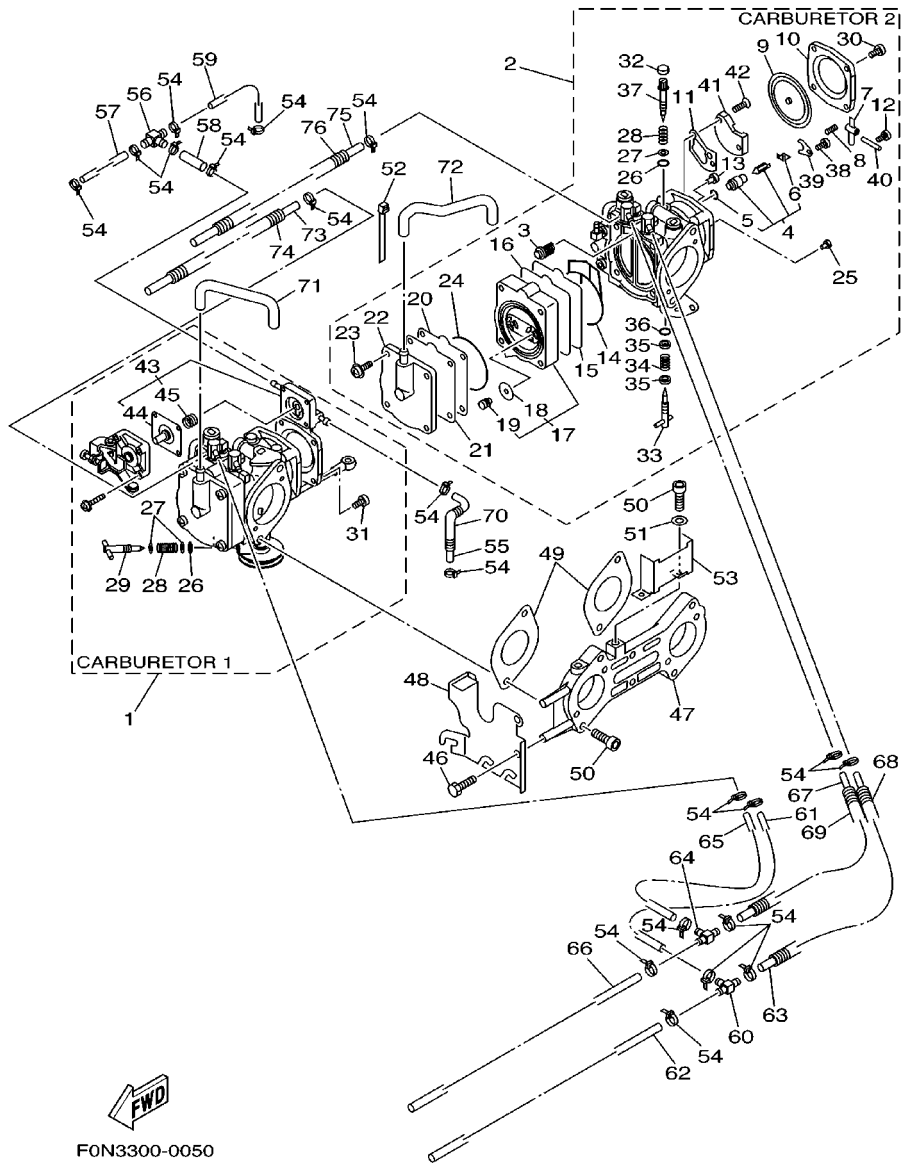
F0N3300-0040

FIG. 5 CARBURETOR



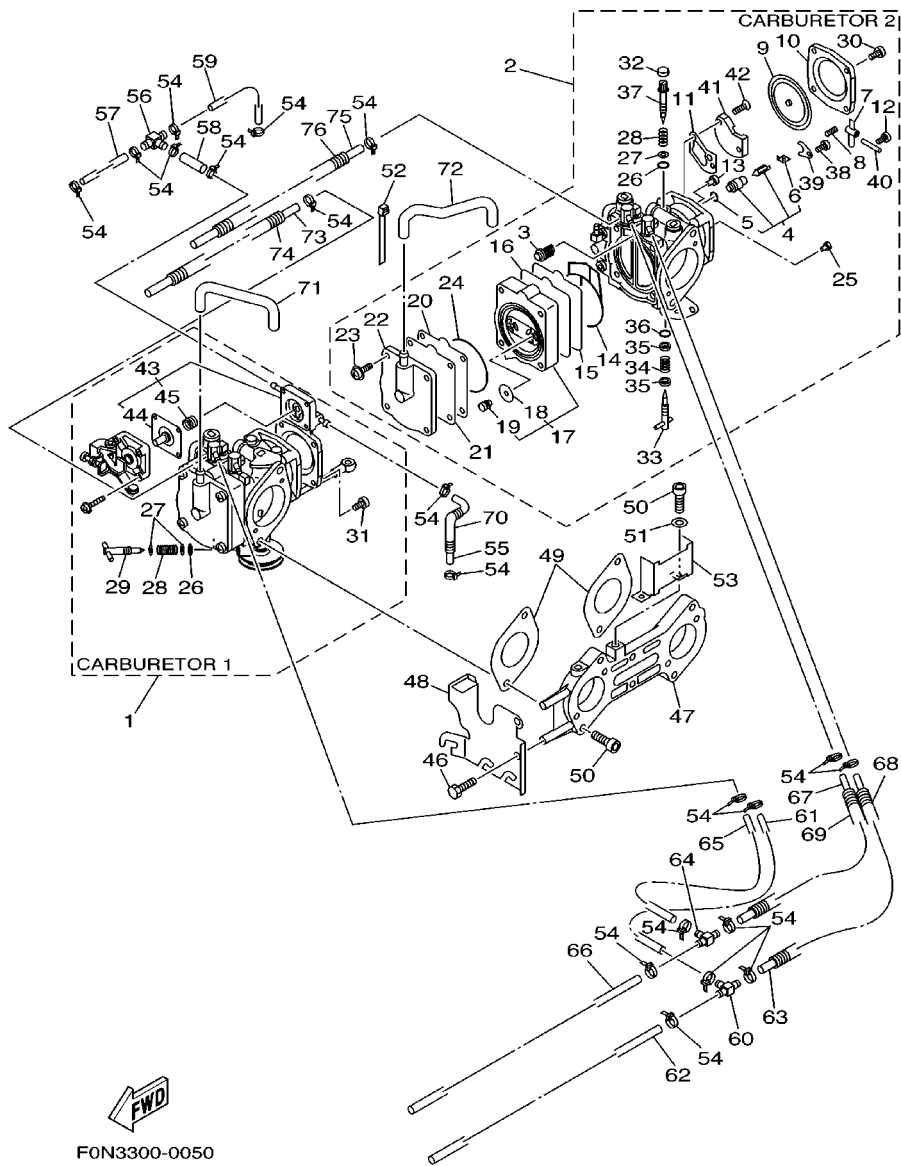
REF. NO.	PART NO.	DESCRIPTION	JPN	GENE	REMARKS
1	67U-14301-01	CARBURETOR ASSY 1	1	1	
2	67U-14302-01	CARBURETOR ASSY 2	1	1	
3	6R7-14569-00	.STRAINER	2	2	
4	64T-14916-00	.NEEDLE	2	2	
5	8F2-14147-00	..O-RING	1	1	
6	7EG-14159-00	..CLIP	1	1	
7	6K8-14547-01	.ARM, FLOAT	2	2	
8	6R7-14253-00	.SPRING	2	2	
9	6R7-14541-00	.DIAPHRAGM, PUMP	2	2	
10	6R7-14542-00	.BODY, PUMP 1	1	1	CARBURETOR 2
11	6K8-14536-11	.GASKET	2	2	
12	6K8-14503-02	.SCREW	2	2	
13	3G2-14231-30	.JET, MAIN (#150)	1	1	UR CARBURETOR 1
	3G2-14231-30	.JET, MAIN (#150)	1	1	UR CARBURETOR 2
14	66E-14563-01	.O-RING	2	2	
15	66E-24471-00	.DIAPHRAGM	2	2	
16	66E-24411-00	.DIAPHRAGM	2	2	
17	66E-24413-01	.BODY 2	2	2	
18	66E-24362-00	..VALVE, CHECK 1	2	2	
19	65U-24492-00	..BUSH, FULEL PUMP	2	2	
20	66E-24421-00	.VALVE, CHECK	2	2	
21	66E-24431-00	.GASKET, FUEL PUMP 1	2	2	
22	66E-24452-00	.COVER	2	2	
23	90157-05M17	.SCREW, PAN HEAD	8	8	
24	66E-14564-01	.O-RING	2	2	
25	830-14231-18	.JET, MAIN (#90)	2	2	
26	812-14147-00	.O-RING	3	3	

FIG. 5 CARBURETOR



REF. NO.	PART NO.	DESCRIPTION	JPN	GENE	REMARKS
27	812-14235-00	.WASHER, NEEDLE	4	4	
28	3KW-14932-00	.SPRING, THROTTLE 2	3	3	
29	66E-14521-00	.SCREW, ADJUST	1	1	CARBURETOR 1
30	97880-05010	.SCREW, PAN HEAD	4	4	CARBURETOR 2
31	97890-05014	.SCREW, PAN HEAD	4	4	CARBURETOR 1
32	6K8-14471-10	.CAP, CARBURETOR	2	2	
33	66E-14211-00	.SCREW, PILOT ADJUSTING	2	2	
34	6K8-14589-00	.SPRING	2	2	
35	822-14235-00	.WASHER, NEEDLE	4	4	
36	583-14561-00	.O-RING	2	2	
37	6K8-14946-10	.METERING NEEDLE	2	2	
38	6M6-14503-00	.SCREW	2	2	
39	6K8-14527-11	.PLATE	2	2	
40	439-14186-00	.PIN, FLOAT	2	2	
41	66E-24412-00	.BODY 1	2	2	
42	6K8-14523-11	.SCREW, STOP	4	4	
43	66E-14280-00	.COVER, CARBURETOR	1	1	
44	66E-14170-00	..DIAPHRAGM ASS'Y	1	1	
45	66E-14286-00	..SPRING	1	1	
46	90101-06M25	BOLT	3	3	
47	66E-14243-00	PLATE	1	1	
48	66E-14291-00	BRACKET 1	1	1	
49	66E-14398-00	GASKET	2	2	
50	66E-14162-00	BOLT, HOLDING	6	6	
51	92990-06600	WASHER, PLATE	2	2	
52	4KM-14137-00	CLIP	1	1	
53	66E-14146-00	PLATE	1	1	

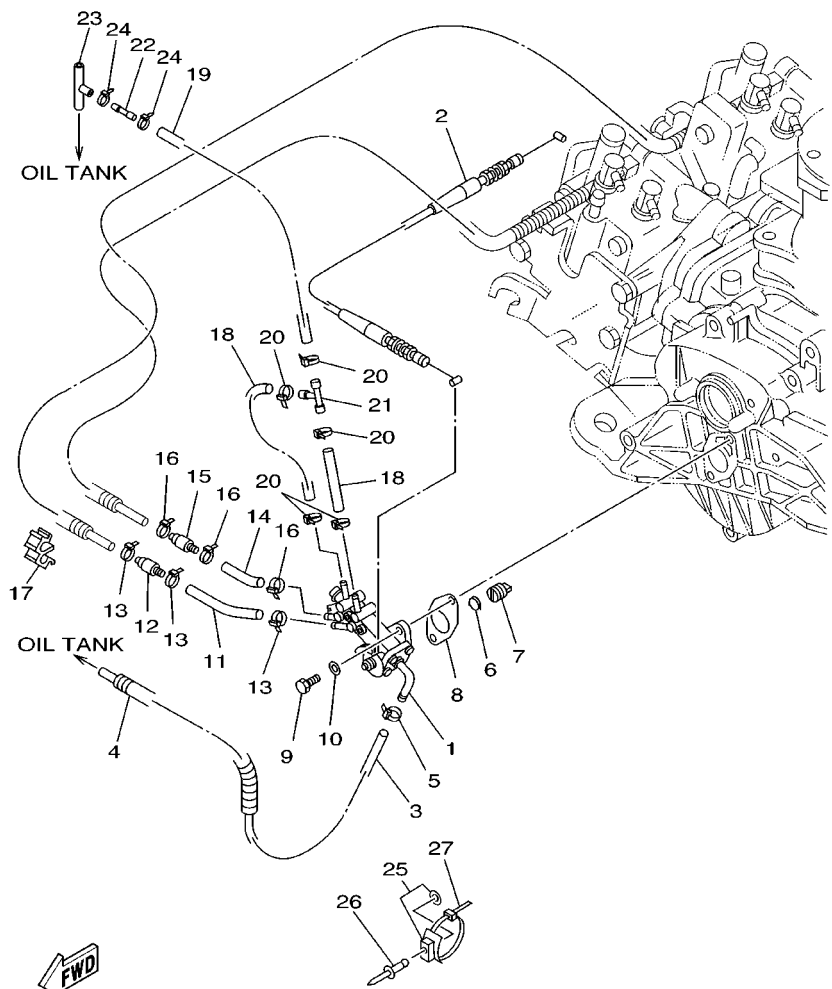
FIG. 5 CARBURETOR



F0N3300-0050

REF. NO.	PART NO.	DESCRIPTION	JPN	GENE	REMARKS
54	35H-14139-00	CLIP, PIPE	20	20	
55	3XP-14294-00	HOSE	1	1	
56	4N0-14251-00	NIPPLE	1	1	
57	90445-07M78	HOSE	1	1	
58	90445-07M42	HOSE	1	1	
59	90445-07M79	HOSE	1	1	
60	66E-14251-00	NIPPLE	1	1	
61	90445-10MH0	HOSE	1	1	
62	90445-10MH7	HOSE	1	1	
63	90445-10MH2	HOSE	1	1	
64	66E-14251-00	NIPPLE	1	1	
65	90445-10MH3	HOSE	1	1	
66	90445-10MH4	HOSE	1	1	
67	90445-10MH5	HOSE	1	1	
68	90446-14M98	HOSE	1	1	
69	90446-14M99	HOSE	1	1	
70	90446-10MA2	HOSE	1	1	
71	66E-24314-00	PIPE 4	1	1	
72	66E-24315-00	PIPE 5	1	1	
73	90446-07M96	HOSE	1	1	
74	90446-10MA0	HOSE	1	1	
75	90446-07M97	HOSE	1	1	
76	90446-10MA1	HOSE	1	1	

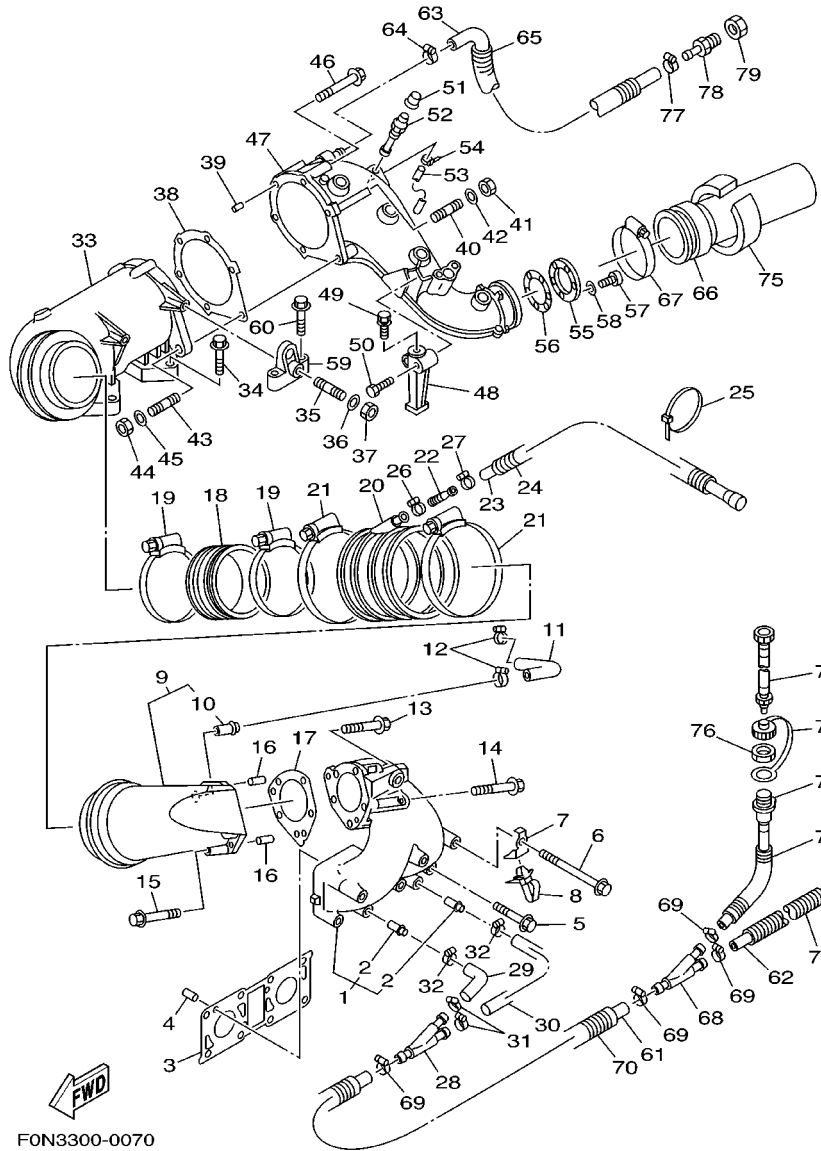
FIG. 6 OIL PUMP



F0N2300-9060

REF. NO.	PART NO.	DESCRIPTION	JPN	GENE	REMARKS
1	66E-13200-02	OIL INJECTION PUMP ASSY	1	1	
2	66E-26320-00	PUMP CABLE ASSY	1	1	
3	90445-11M72	HOSE	1	1	
4	90446-17ME5	HOSE	1	1	
5	90465-11M10	CLAMP	1	1	
6	66E-13469-00	SPRING	1	1	
7	65U-13132-00	JOINT	1	1	
8	63M-13116-00	GASKET, PUMP CASE	1	1	
9	97095-06020	BOLT	2	2	
10	92995-06600	WASHER	2	2	
11	90446-07M14	HOSE	1	1	
12	6R3-13183-00	VALVE, CHECK	1	1	
13	90465-11M10	CLAMP	3	3	
14	90446-07M14	HOSE	1	1	
15	6R3-13183-00	VALVE, CHECK	1	1	
16	90465-11M10	CLAMP	3	3	
17	90464-07M20	CLAMP	1	1	
18	90445-07M25	HOSE	2	2	
19	90445-07M82	HOSE	1	1	
20	90465-11M10	CLAMP	5	5	
21	6E0-24378-00	PIPE, JOINT 4	1	1	
22	63M-13132-00	JOINT	1	1	
23	63M-24378-00	PIPE, JOINT 4	1	1	
24	90465-11M10	CLAMP	2	2	
25	90600-91736	CLAMP COMP.	1	1	
26	90267-48007	RIVET, BLIND	1	1	
27	90601-20006	BAND	1	1	

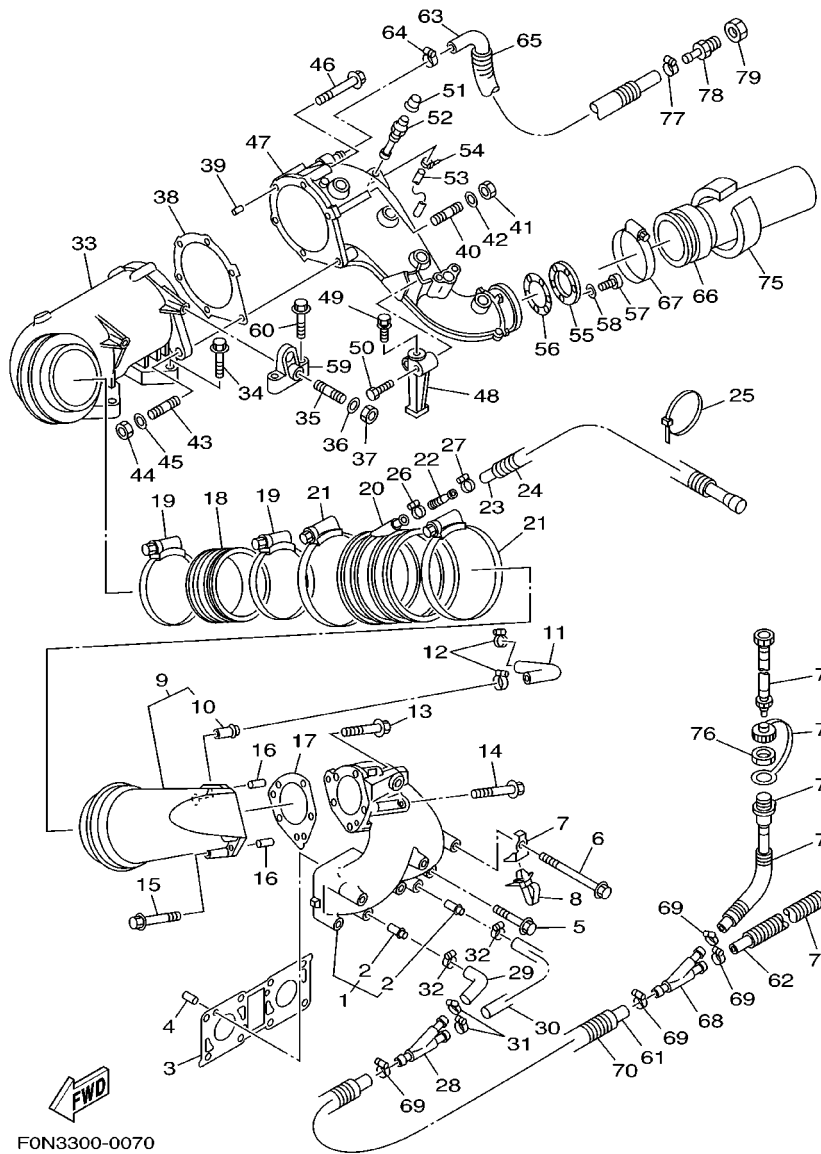
FIG. 7 EXHAUST 1



FON3300-0070

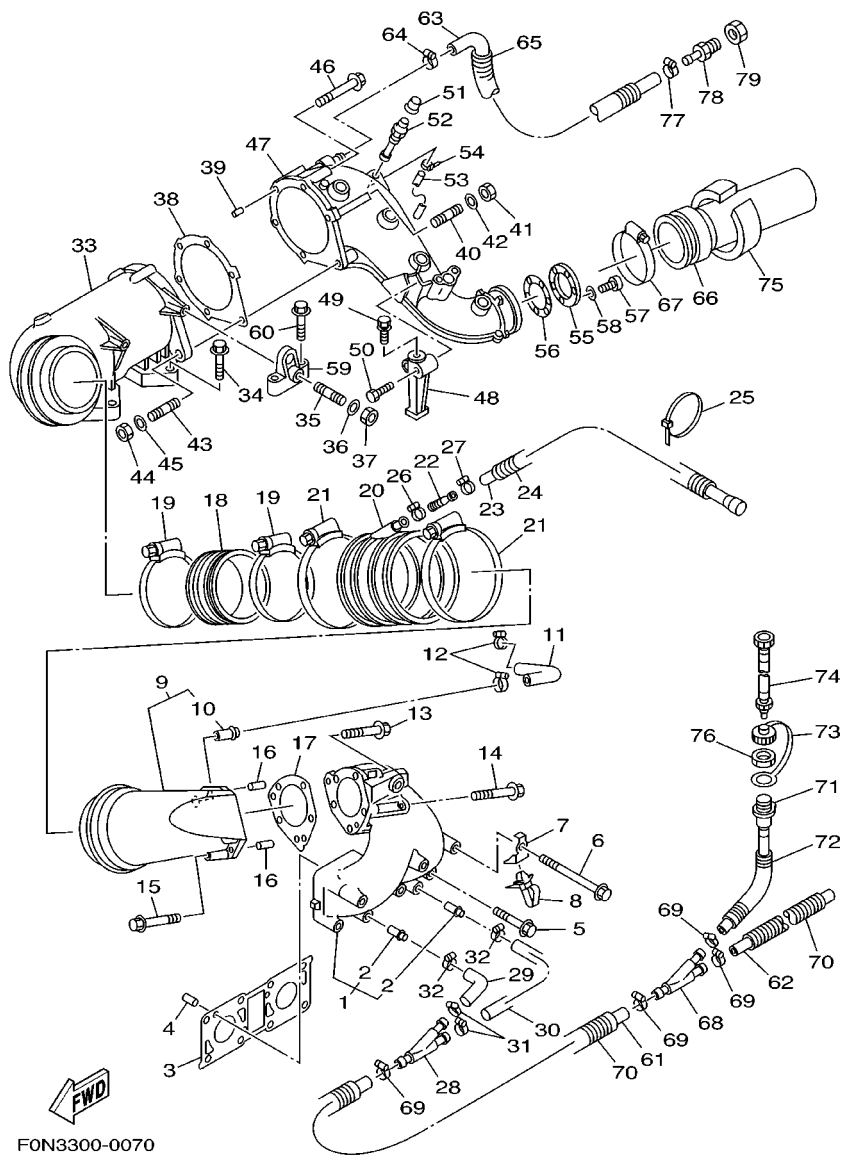
REF. NO.	PART NO.	DESCRIPTION	JPN	GENE	REMARKS
1	66E-14711-10-8P	MUFFLER 1	1	1	
2	6K8-51129-00	.NIPPLE	2	2	
3	66E-14613-00	GASKET, EXHAUST PIPE	1	1	
4	93606-12019	PIN, DOWEL	2	2	
5	90105-10M85	BOLT, WASHER BASED	4	4	
6	90105-10M86	BOLT, WASHER BASED	4	4	
7	90465-20M78	CLAMP	2	2	
8	90465-12M56	CLAMP	2	2	
9	66E-14712-10-8P	RING, JOINT	1	1	
10	66E-51129-00	.NIPPLE	1	1	
11	66E-12576-00	HOSE 1	1	1	
12	90450-22M14	HOSE CLAMP ASSY	2	2	
13	90105-08M83	BOLT, WASHER BASED	2	2	
14	90105-08M84	BOLT, WASHER BASED	2	2	
15	90105-08M66	BOLT, WASHER BASED	1	1	
16	93606-12019	PIN, DOWEL	2	2	
17	66E-14749-00	GASKET, MUFFLER DAMPER 2	1	1	
18	66E-14625-00	JOINT, EXHAUST 2	1	1	
19	90450-99M02	HOSE CLAMP ASSY	2	2	
20	66E-14615-00	JOINT, EXHAUST 1	1	1	
21	90450-99M18	HOSE CLAMP ASSY	2	2	
22	66E-51142-00	CONNECTION	1	1	
23	67U-12589-00	HOSE 6	1	1	
24	90446-20M65	HOSE	1	1	
25	90465-13M60	CLAMP	1	1	
26	90450-18M09	HOSE CLAMP ASSY	1	1	
27	90450-14M05	HOSE CLAMP ASSY	1	1	

FIG. 7 EXHAUST 1



FON3300-0070

REF. NO.	PART NO.	DESCRIPTION	JPN	GENE	REMARKS
28	63M-12581-00	JOINT, HOSE 1	1	1	
29	66E-12577-00	HOSE 2	1	1	
30	66E-12579-00	HOSE 4	1	1	
31	90450-18M09	HOSE CLAMP ASSY	2	2	
32	90450-14M05	HOSE CLAMP ASSY	2	2	
33	66E-14721-10-94	MUFFLER 2	1	1	
34	90105-10M82	BOLT, WASHER BASED	2	2	
35	90116-10M66	BOLT, STUD	2	2	
36	92990-10600	WASHER, PLATE	2	2	
37	95380-10600	NUT	2	2	
38	66E-41124-10	GASKET, EXHAUST OUTER COVER	1	1	
39	93606-12019	PIN, DOWEL	2	2	
40	90116-08M64	BOLT, STUD	2	2	
41	95333-08600	NUT	2	2	
42	92990-08600	WASHER, PLATE	2	2	
43	90116-10M65	BOLT, STUD	1	1	
44	95380-10600	NUT	1	1	
45	92990-10600	WASHER, PLATE	1	1	
46	90105-08M83	BOLT, WASHER BASED	3	3	
47	66E-41123-10-94	OUTER COVER, EXHAUST	1	1	
48	66E-14791-00-94	STAY, MUFFLER	1	1	
49	90119-10M10	BOLT, WITH WASHER	1	1	
50	90119-10M00	BOLT, WITH WASHER	1	1	
51	663-45119-00	CAP, GREASE NIPPLE	1	1	
52	61L-5169A-00	NIPPLE, GREASE	1	1	
53	90445-09M17	HOSE	1	1	
54	90465-11M10	CLAMP	1	1	

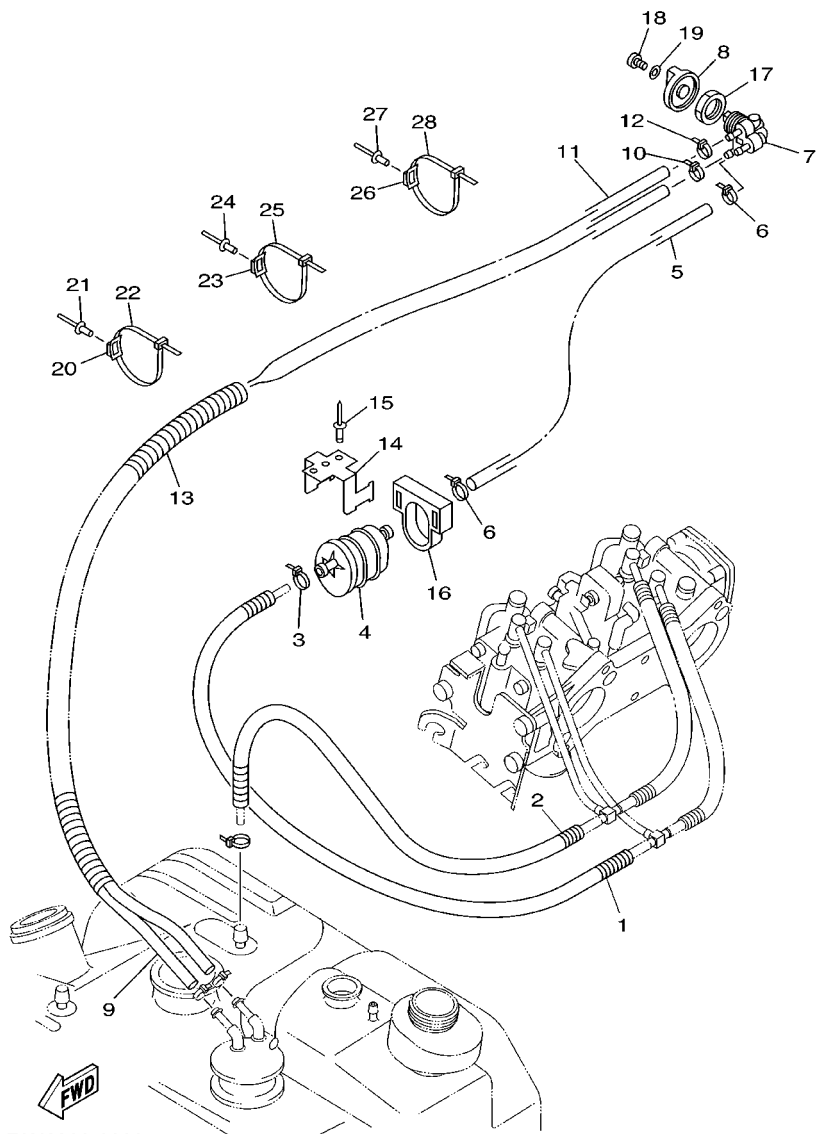


FON3300-0070

FIG. 7 EXHAUST 1

REF. NO.	PART NO.	DESCRIPTION	JPN	GENE	REMARKS
55	66E-14763-10-94	SPACER	1	1	
56	66E-14623-00	GASKET, EXHAUST PIPE	1	1	
57	97885-06016	SCREW, PAN HEAD	3	3	
58	92995-06600	WASHER	3	3	
59	66E-14771-01-94	STAY, MUFFLER 1	2	2	
60	90119-10M18	BOLT, WITH WASHER	4	4	
61	90445-18M02	HOSE	1	1	
62	90445-18M02	HOSE	1	1	
63	66E-12578-00	HOSE 3	1	1	
64	90450-22M14	HOSE CLAMP ASSY	1	1	
65	90446-27M95	HOSE	1	1	
66	66E-14752-10	PIPE, OUTLET	1	1	
67	90460-90M11	CLAMP, HOSE	1	1	
68	63M-12581-00	JOINT, HOSE 1	1	1	
69	90450-18M09	HOSE CLAMP ASSY	4	4	
70	90446-24M52	HOSE	2	2	
71	63M-12580-00	JOINT ASSY	1	1	
72	90446-24M89	HOSE	1	1	
73	682-84385-01	CAP,1	1	1	
74	63M-12590-10	CONDUCTION ASSY	1		
	63M-12590-20	CONDUCTION ASSY		1	
75	GK5-67577-00	PACKING, HOSE 1	1	1	
76	EU0-61652-00	NUT	1	1	
77	90450-22M14	HOSE CLAMP ASSY	1	1	
78	90604-80798	THROUGH HULL	1	1	
79	EU0-62241-30	NUT, DRAIN 1	1	1	

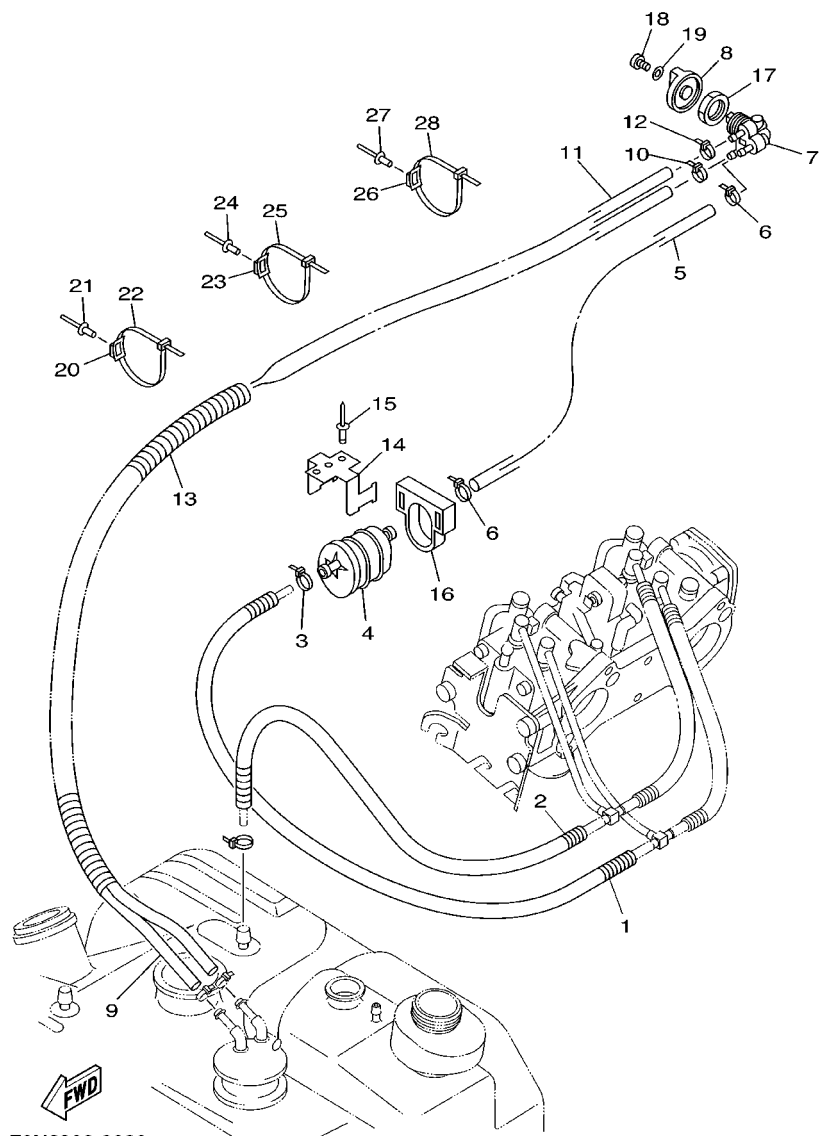
FIG. 8 FUEL



REF. NO.	PART NO.	DESCRIPTION	JPN	GENE	REMARKS
1	90446-17MF9	HOSE	1	1	
2	90446-17ME5	HOSE	1	1	
3	90465-11M10	CLAMP	1	1	
4	6K8-24560-10	FILTER ASSY	1	1	
5	90445-10MH6	HOSE	1	1	
6	90465-11M10	CLAMP	2	2	
7	65U-24500-01	FUEL COCK ASSY 1	1	1	
8	6K8-24524-10	LEVER, COCK	1	1	
9	90445-10MG8	HOSE	1	1	
10	90465-11M10	CLAMP	1	1	
11	90445-10MG9	HOSE	1	1	
	90445-10NG9	HOSE		1	
12	90465-11M10	CLAMP	1	1	
13	90446-27MF2	HOSE	1	1	
14	FN8-67816-00	BRACKET, FUEL FILTER	1	1	
15	90267-48940	RIVET, BLIND	2	2	
16	EU0-67817-00	HOLDER	1	1	
17	90170-22M11	NUT	1	1	
18	97880-04010	SCREW, PAN HEAD	1	1	
19	92990-04600	WASHER, PLATE	1	1	
20	90600-91736	CLAMP COMP.	1	1	
21	90267-48932	RIVET, BLIND	1	1	
22	90601-20006	BAND	1	1	
23	90600-91736	CLAMP COMP.	2	2	
24	90267-48007	RIVET, BLIND	2	2	
25	90601-20009	BAND	2	2	
26	90600-91736	CLAMP COMP.	2	2	

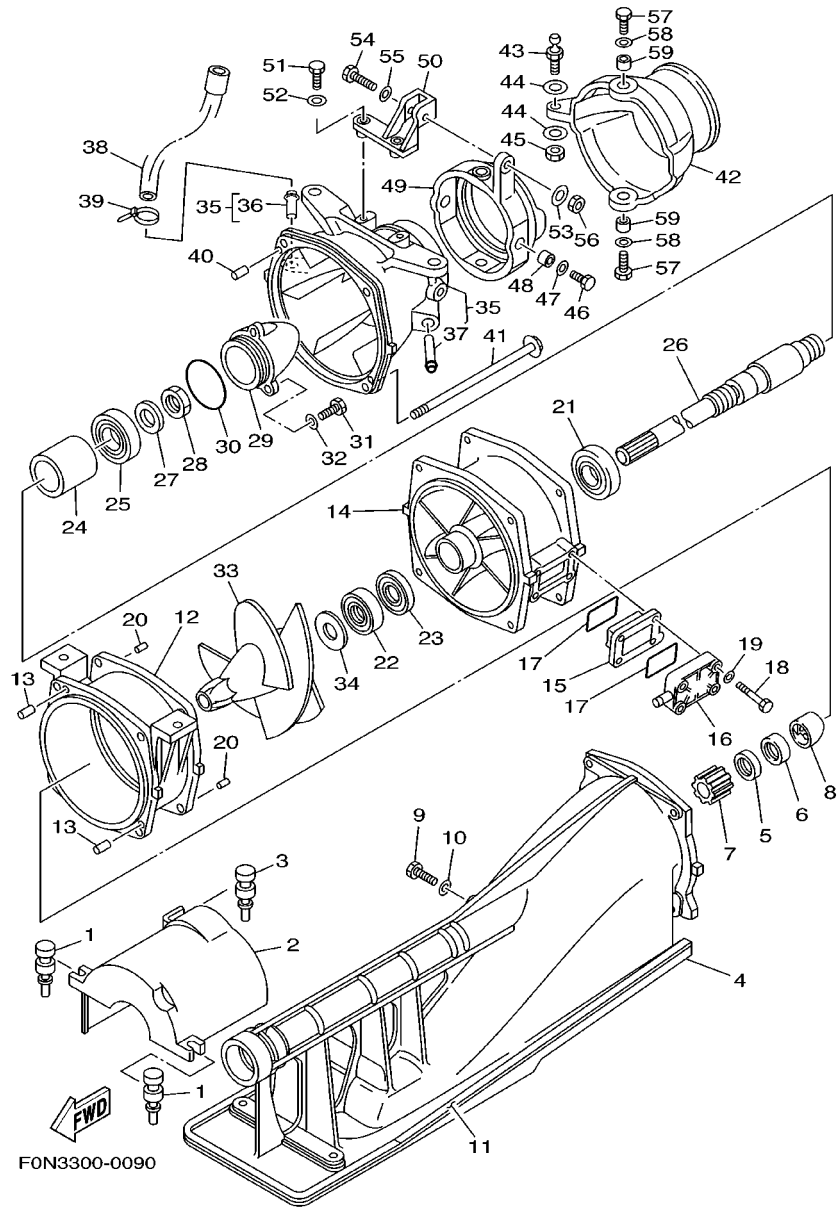
FIG. 8 FUEL

REF. NO.	PART NO.	DESCRIPTION	JPN	GENE	REMARKS
27	90267-48007	RIVET, BLIND	2	2	
28	90601-20006	BAND	2	2	



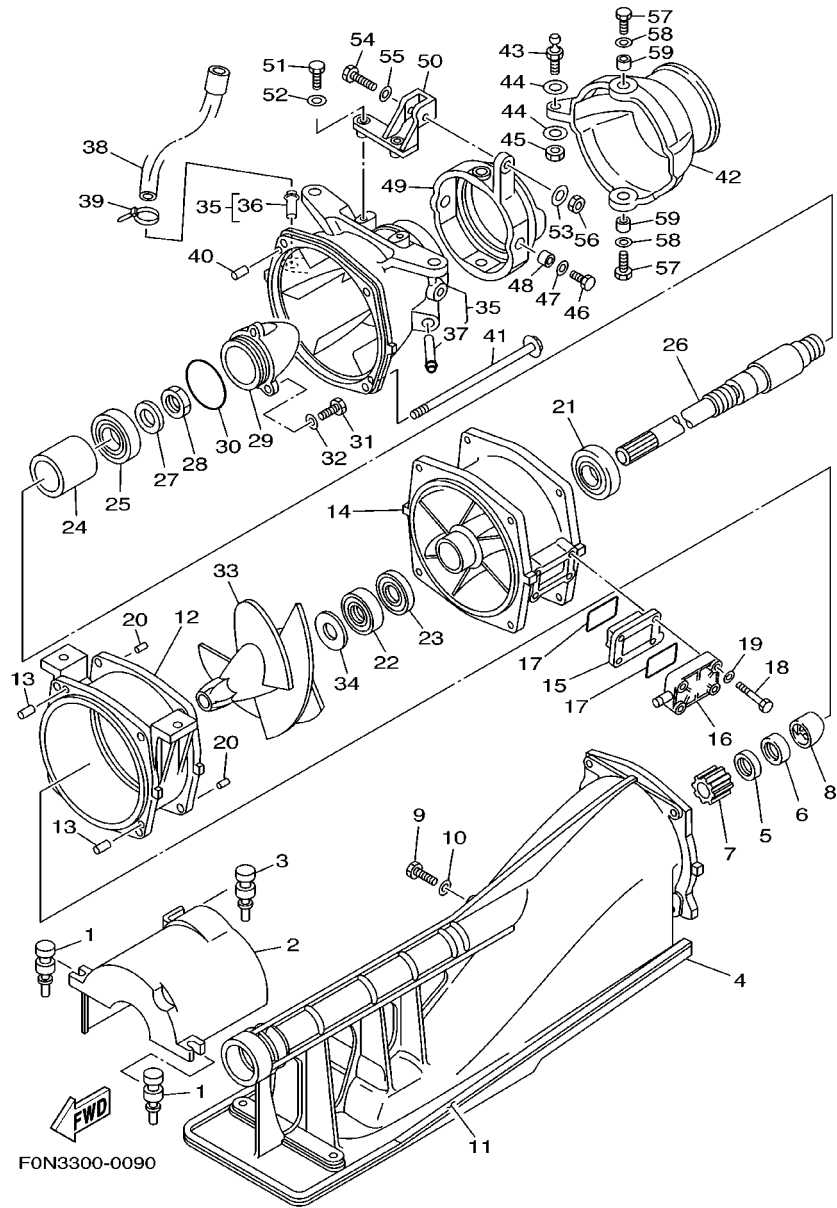
FWD
F0N2300-9080

FIG. 9 JET UNIT 1



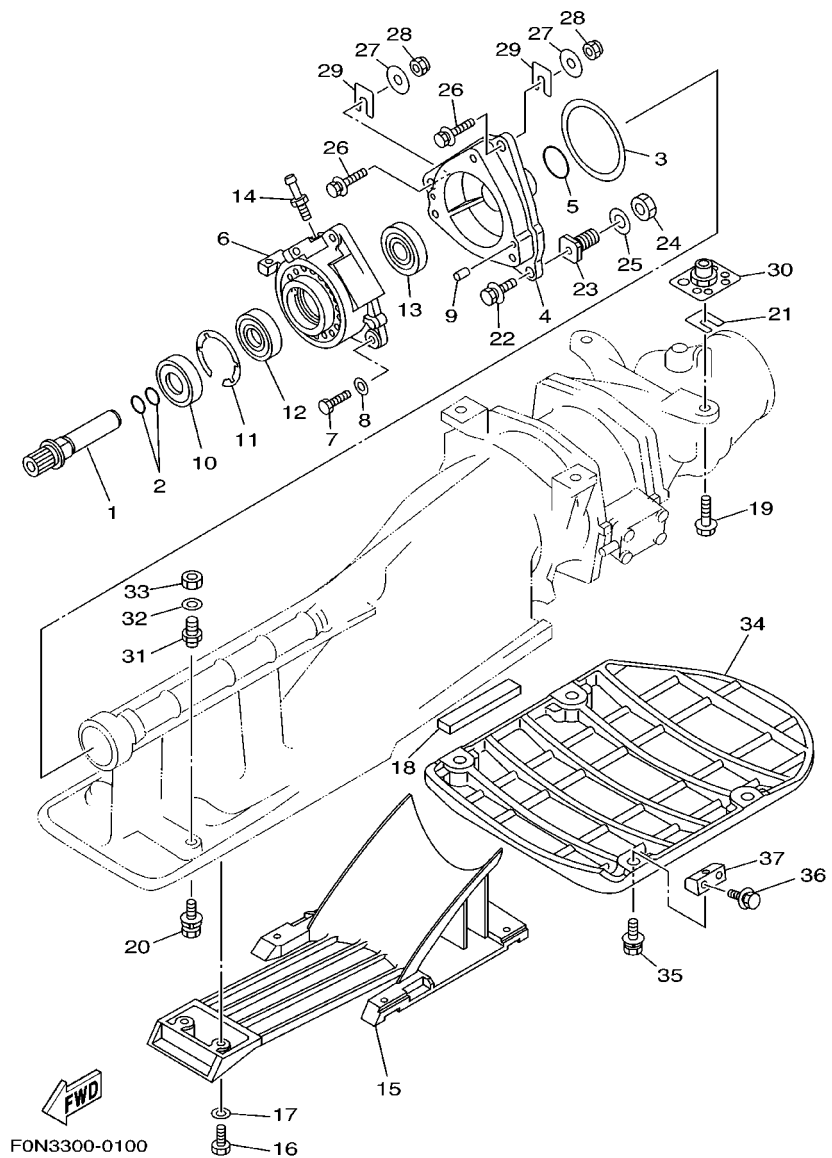
REF. NO.	PART NO.	DESCRIPTION	JPN	GENE	REMARKS
1	90480-06M46	GROMMET	2	2	
2	66E-51381-01	COVER	1	1	
3	90480-06M46	GROMMET	1	1	
4	65V-51311-01-94	DUCT, INTAKE	1	1	
5	93102-17M49	OIL SEAL	1	1	
6	93102-17M50	OIL SEAL	1	1	
7	65V-45318-00	BUSHING, DRIVE SHAFT	1	1	
8	65V-51348-01-94	SPACER	1	1	
9	97095-06025	BOLT	1	1	
10	92995-06600	WASHER	1	1	
11	6R8-51367-01	FELT, PACKING	2	2	
12	6R8-51312-03-94	HOUSING, IMPELLER	1	1	
13	93606-12019	PIN, DOWEL	2	2	
14	66E-51315-00-94	DUCT, IMPELLER	1	1	
15	66E-46882-00	FILTER	1	1	
16	66E-45214-00-94	COVER, WATER INLET	1	1	
17	66E-42414-00	O-RING	2	2	
18	97095-06045	BOLT	4	4	
19	92995-06600	WASHER	4	4	
20	93606-12019	PIN, DOWEL	2	2	
21	93306-205U0	BEARING	1	1	
22	93102-25M34	OIL SEAL	1	1	
23	93101-25M50	OIL SEAL	1	1	
24	65V-45538-00	SPACER 1	1	1	
25	93306-304U1	BEARING	1	1	
26	66E-45511-10	SHAFT, DRIVE	1	1	
27	92990-16600	WASHER	1	1	

FIG. 9 JET UNIT 1



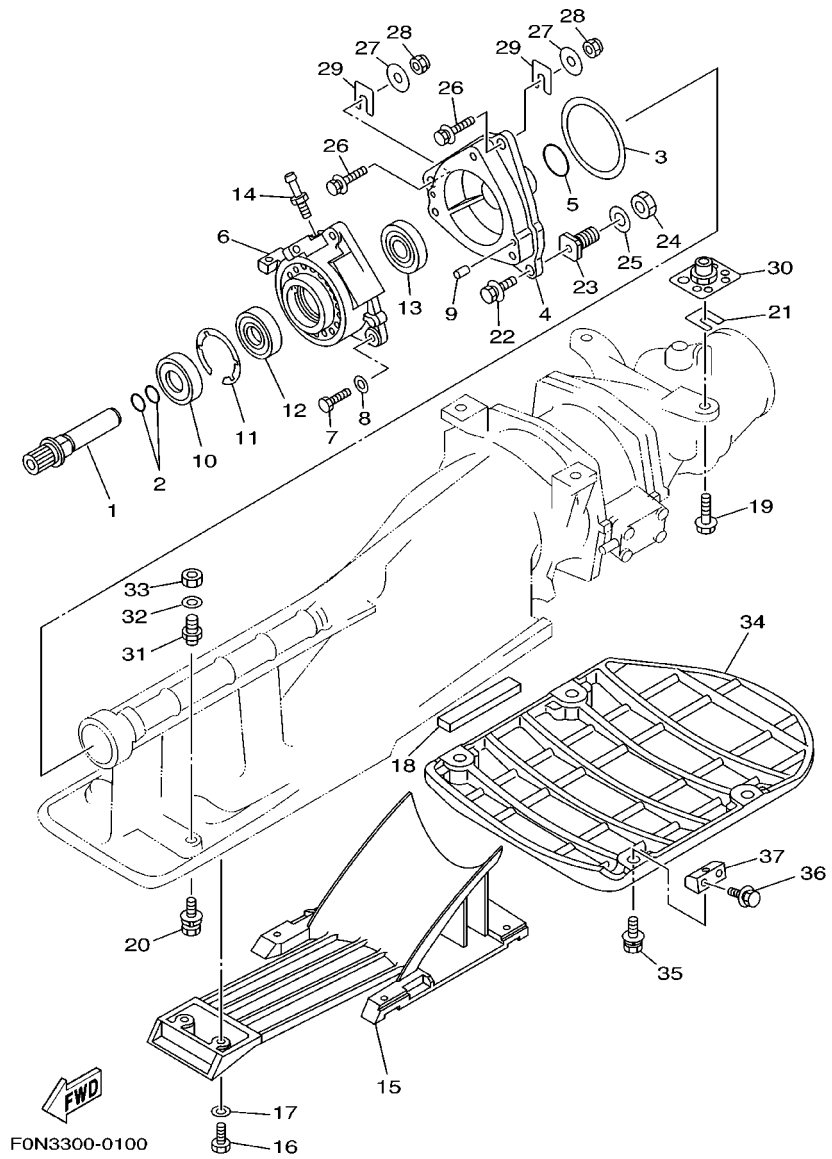
REF. NO.	PART NO.	DESCRIPTION	JPN	GENE	REMARKS
28	95317-16700	NUT	1	1	
29	62T-51326-00	CAP	1	1	
30	93210-46M16	O-RING	1	1	
31	97095-06020	BOLT	3	3	
32	92995-06600	WASHER	3	3	
<hr/>					
33	66E-51321-B0	IMPELLER	1	1	
34	62T-51348-00-5B	SPACER	1	1	
35	67U-51318-00-94	NOZZLE	1	1	
36	6K8-51129-00	.NIPPLE	1	1	
37	62T-51129-00	.NIPPLE	1	1	
<hr/>					
38	62E-51673-00	PIPE 1	1	1	
39	90450-14M05	HOSE CLAMP ASSY	1	1	
40	93606-12019	PIN, DOWEL	2	2	
41	90101-06M04	BOLT	4	4	
42	65V-51313-00	NOZZLE, DEFLECTOR	1	1	
<hr/>					
43	6R7-42316-00	BOLT, JOINT	1	1	
44	90201-06M31	WASHER, PLATE	2	2	
45	95380-06700	NUT	1	1	
46	97095-08018	BOLT	2	2	
47	92995-08600	WASHER	2	2	
<hr/>					
48	90387-08M08	COLLAR	2	2	
49	64Y-51190-00-94	RING, TRIM	1	1	
50	67U-51387-00-94	STAY	1	1	
51	97095-06020	BOLT	2	2	
52	92995-06600	WASHER	2	2	
<hr/>					
53	90201-06M31	WASHER, PLATE	1	1	
<hr/>					
54	97095-06035	BOLT	1	1	

FIG. 10 JET UNIT 2



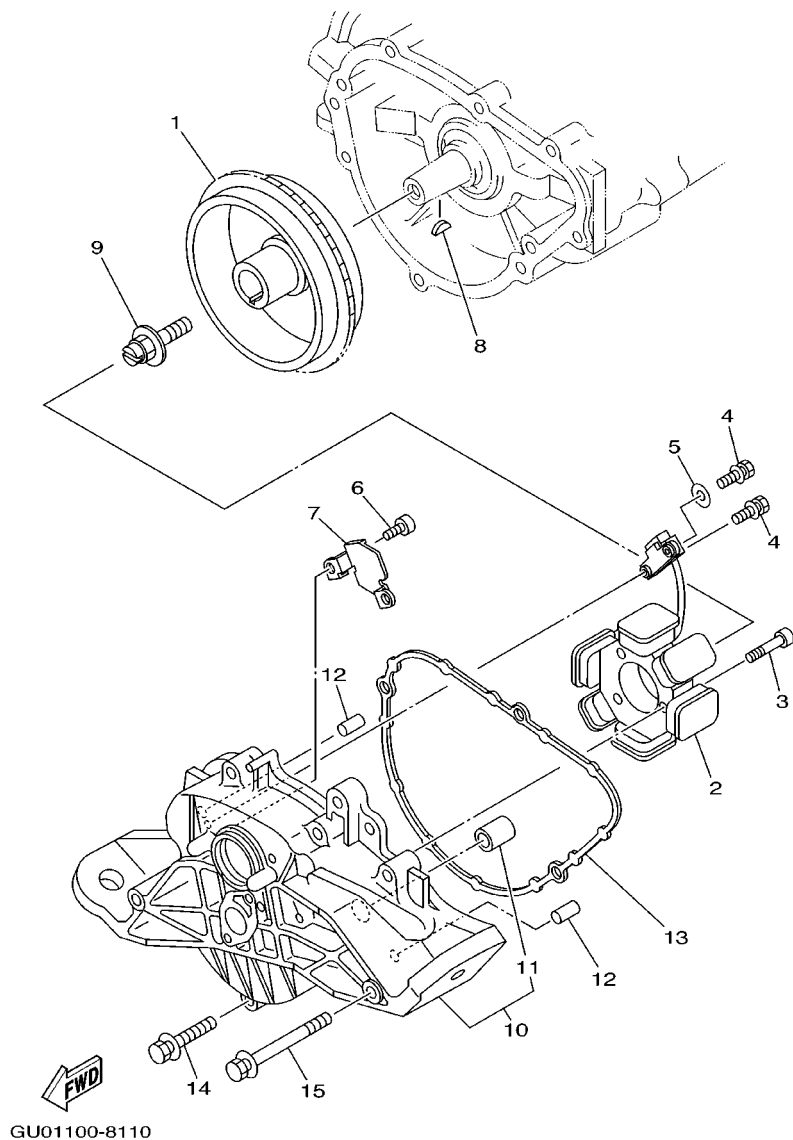
REF. NO.	PART NO.	DESCRIPTION	JPN	GENE	REMARKS
1	66E-51323-01	SHAFT, COUPLOR	1	1	
2	93210-17MA4	O-RING	2	2	
3	6K8-45127-00	SEAL	1	1	
4	62G-45331-01-94	HOUSING, BEARING	1	1	
5	93210-35M72	O-RING	1	1	
6	65U-45332-02-94	HOUSING, BEARING	1	1	
7	97095-08025	BOLT	3	3	
8	92995-08600	WASHER	3	3	
9	93606-12019	PIN, DOWEL	2	2	
10	93101-25M55	OIL SEAL	1	1	
11	93430-47M04	CIRCLIP	1	1	
12	93306-205U6	BEARING	1	1	
13	93101-25M56	OIL SEAL	1	1	
14	61L-45378-00	NIPPLE, HOSE	1	1	
15	63N-51333-02-94	SCREEN, INTAKE	1	1	
16	97095-06018	BOLT	6	6	
17	92995-06600	WASHER	6	6	
18	63N-51368-00	FELT, PACKING	2	2	
19	90119-10958	BOLT, WITH WASHER	4	4	
20	90119-06947	BOLT, WITH WASHER	2	2	
21	EW2-67354-00-01	SHIM (T=0.1)	8	8	UN
	EW2-67354-00-03	SHIM (T=0.3)	8	8	UN
	EW2-67354-00-05	SHIM (T=0.5)	8	8	UN
	EW2-67354-00-10	SHIM (T=1.0)	8	8	UN
22	90119-08955	BOLT, WITH WASHER	1	1	
23	90180-08912	NUT, T	1	1	
24	95380-14700	NUT	1	1	

FIG. 10 JET UNIT 2



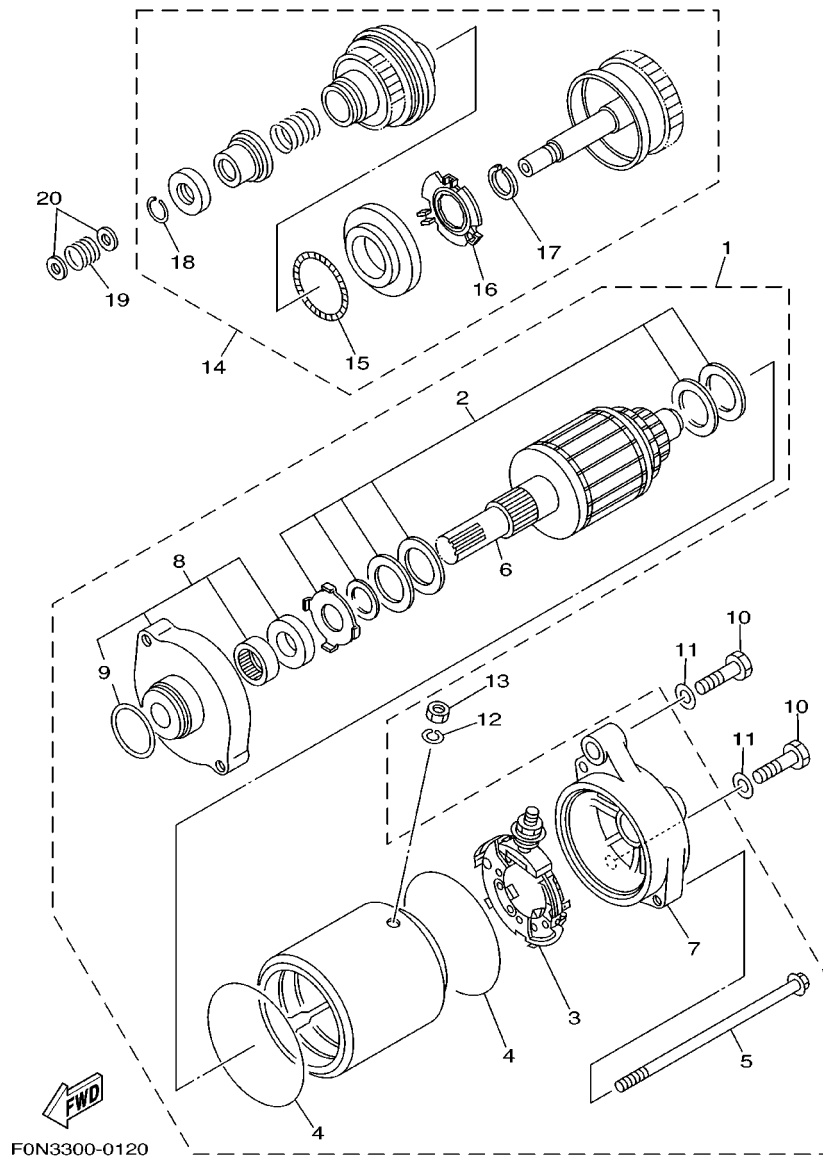
REF. NO.	PART NO.	DESCRIPTION	JPN	GENE	REMARKS
25	92990-14600	WASHER	1	1	
26	90119-08904	BOLT, WITH WASHER	2	2	
27	90201-08929	WASHER, PLATE	2	2	
28	95720-08300	NUT, SELF-LOCKING	2	2	
29	GD0-67249-00-05	SHIM (T=0.5)	2	2	UN
	GD0-67249-00-10	SHIM (T=1.0)	2	2	UN
30	90179-10972	NUT	4	4	
31	90180-06900	NUT, T	2	2	
32	92990-10600	WASHER, PLATE	2	2	
33	95380-10600	NUT	2	2	
34	GH1-6273B-01	PLATE 2	1	1	
35	90119-08953	BOLT, WITH WASHER	4	4	
36	90119-08957	BOLT, WITH WASHER	8	8	
37	FX1-62733-00	PACKING	4	4	

FIG. 11 GENERATOR



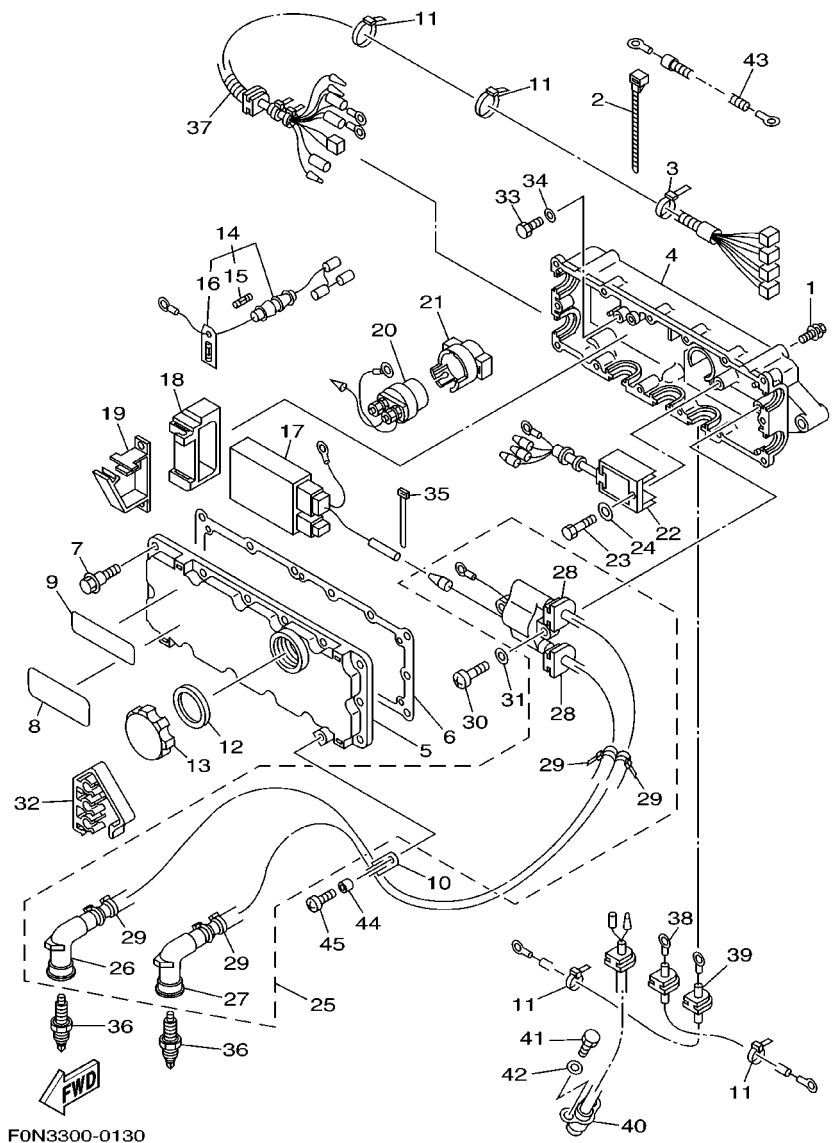
REF. NO.	PART NO.	DESCRIPTION	JPN	GENE	REMARKS
1	66E-85550-00	ROTOR ASSY	1	1	
2	66E-85510-00	STATOR ASSY	1	1	
3	91318-06030	BOLT	3	3	
4	97513-05514	BOLT, WITH WASHER	2	2	
5	90201-05M09	WASHER, PLATE	1	1	
6	91318-06014	BOLT	2	2	
7	66E-81328-00	CLAMP	1	1	
8	90280-05013	KEY, WOODRUFF	1	1	
9	90109-10M72	BOLT	1	1	
10	66E-81337-10-8P	COVER, FLYWHEEL	1	1	
11	90380-12M29	.BUSH, SOLID	1	1	
12	93608-16M16	PIN, DOWEL	2	2	
13	66E-81168-00	O-RING	1	1	
14	90119-08M18	BOLT, WITH WASHER	6	6	
15	90119-08M55	BOLT, WITH WASHER	2	2	

FIG. 12 STARTING MOTOR



REF. NO.	PART NO.	DESCRIPTION	JPN	GENE	REMARKS
1	63M-81800-00	STARTING MOTOR ASSY	1	1	
2	3AJ-81809-00	.WASHER KIT	1	1	
3	6M6-81840-10	.BRUSH HOLDER ASSY	1	1	
4	11H-81844-00	.GASKET	2	2	
5	6M6-81826-00	.BOLT	2	2	
6	6M6-81850-00	.ARMATURE ASSY	1	1	
7	63M-81830-00	.REAR BRACKET ASSY	1	1	
8	6M6-81830-00	.FRONT BRACKET ASSY	1	1	
9	1FK-81847-00	.O-RING	1	1	
10	97013-08025	BOLT	2	2	
11	92903-08600	WASHER, PLATE	2	2	
12	92990-06100	WASHER, SPRING	1	1	
13	95380-06700	NUT	1	1	
14	6M6-8183E-00	IDLE GEAR COMP	1	1	
15	6M6-81866-00	.WEIGHT SPRING	1	1	
16	6M6-81865-00	.WEIGHT HOLDER	1	1	
17	93440-25M08	.CIRCLIP	1	1	
18	93450-18M06	.CIRCLIP	1	1	
19	90501-14M73	SPRING, COMPRESSION	1	1	
20	92903-06600	WASHER, PLATE	2	2	

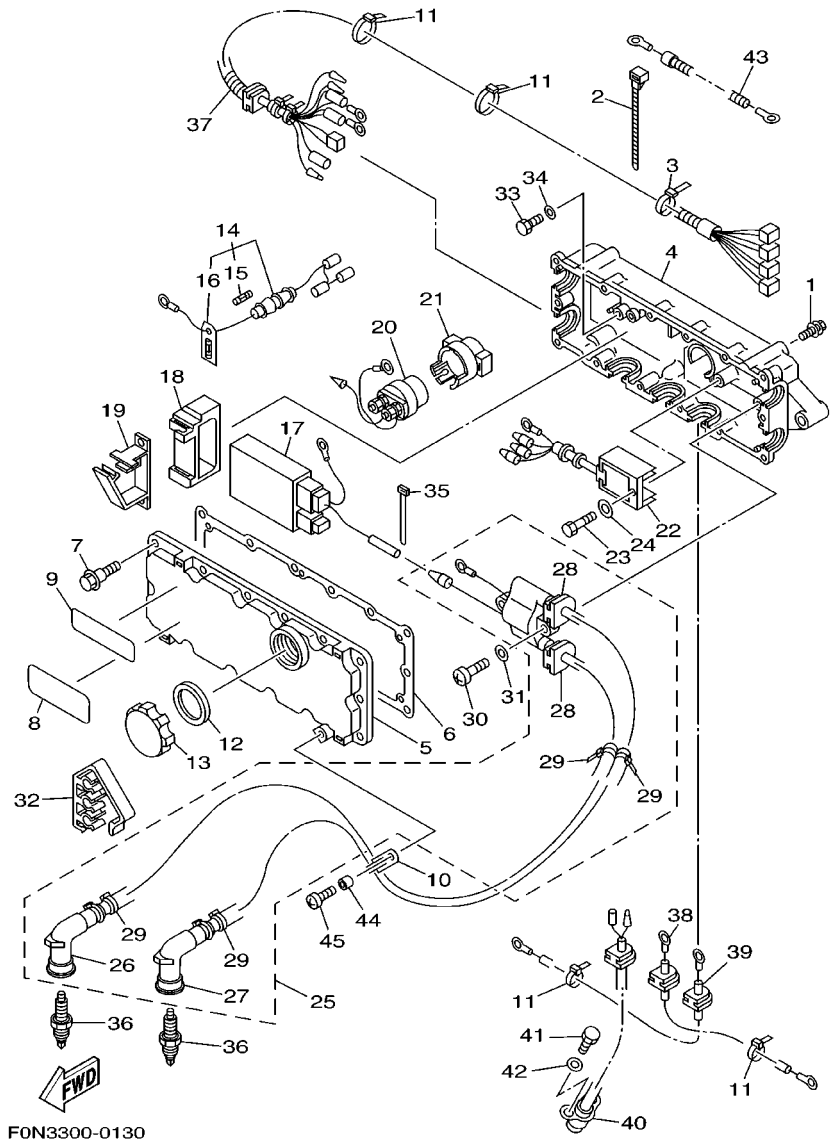
FIG. 13 ELECTRICAL 1



F0N3300-0130

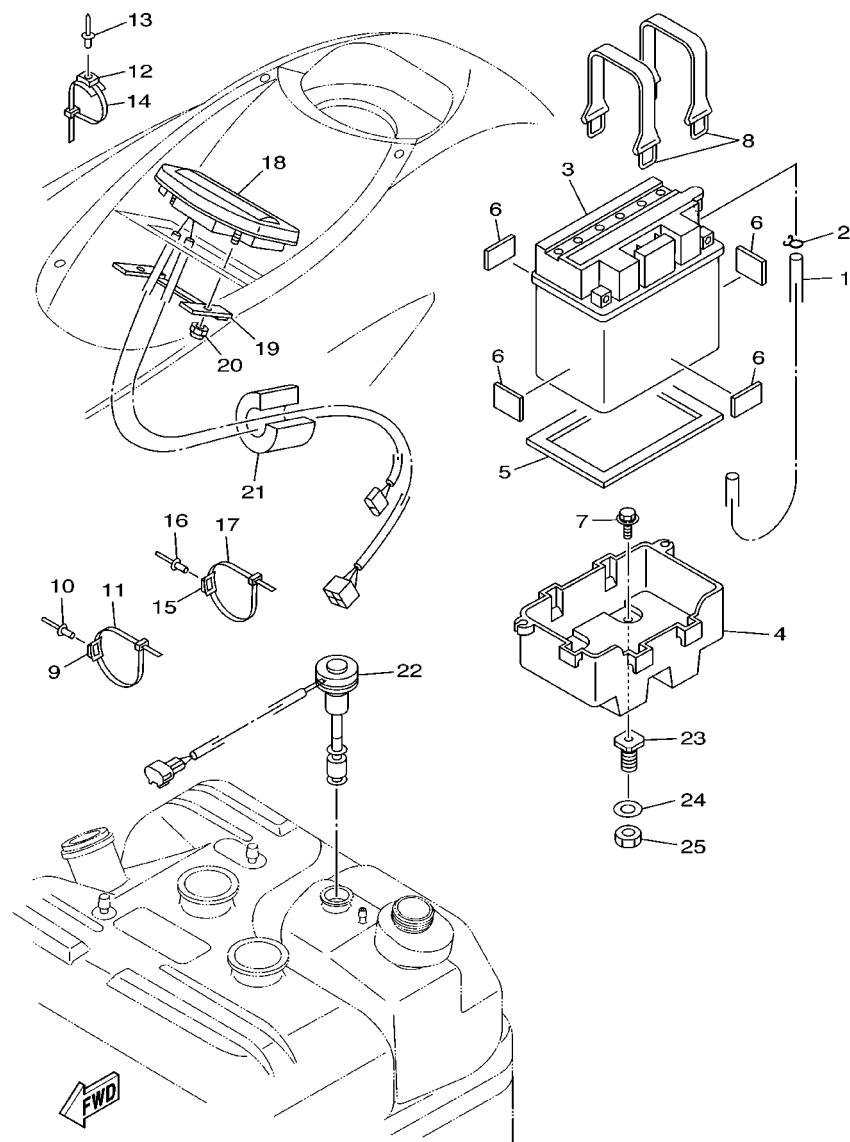
REF. NO.	PART NO.	DESCRIPTION	JPN	GENE	REMARKS
1	90119-08957	BOLT, WITH WASHER	3	3	
2	90601-20006	BAND	1	1	
3	90465-12M56	CLAMP	1	1	
4	66E-8552A-00-94	HOUSING	1	1	
5	66E-8552E-00	COVER, CASE	1	1	
6	66E-81921-00	GASKET, TERMINAL	1	1	
7	90109-05MA0	BOLT	14	14	
8	6R7-83623-50	MARK 3	1	1	
9	63N-83623-00	MARK 3	1	1	
	6R7-83623-40	MARK 3	1	1	
10	90465-12M53	CLAMP	1	1	
11	90465-13M36	CLAMP	4	4	
12	6M6-81844-00	GASKET	1	1	
13	6M6-8132W-00	CAP	1	1	
14	66E-82150-00	FUSE HOLDER ASSY	1	1	
15	6G1-82151-00	.FUSE	1	1	
16	6K8-82159-00	.FUSE SPEAR	1	1	
17	66E-85540-00	C.D.I. UNIT ASSY	1	1	
18	64X-85546-00	BAND	1	1	
19	90464-06M29	CLAMP	1	1	
20	6G1-81941-10	STARTER RELAY ASSY	1	1	
21	6M6-81952-01	HOLDER, RELAY	1	1	
22	63M-81960-00	RECTIFIER & REGULATOR ASSY	1	1	
23	97095-06012	BOLT	1	1	
24	92995-06600	WASHER	1	1	
25	64X-85570-01	IGNITION COIL ASSY	1	1	
26	62E-82371-11	.CAP, PLUG	1	1	

FIG. 13 ELECTRICAL 1



F0N3300-0130

REF. NO.	PART NO.	DESCRIPTION	JPN	GENE	REMARKS
27	62E-82371-11	.CAP, PLUG	1	1	
28	90480-06M43	.GROMMET	2	2	
29	90465-11M10	.CLAMP	4	4	
30	97880-06030	SCREW, PAN HEAD	2	2	
31	92990-06600	WASHER, PLATE	2	2	
32	65U-81317-10	CLAMP, CORD	1	1	
33	97880-06016	SCREW, PAN HEAD	2	2	
34	92990-06600	WASHER, PLATE	2	2	
35	90465-11M10	CLAMP	1	1	
36	94702-00204	PLUG, SPARK (NGK BR8ES)	2		
	94709-00204	PULG, SPARK (NGK BR8ES)	2		
37	66E-82553-00	EXTENSION, WIRE LEAD	1	1	
38	6M6-82117-21	WIRE, LEAD	1	1	
39	66E-82117-10	WIRE, LEAD	1	1	
40	67U-82560-00	THERMO SWITCH ASSY	1	1	
41	97095-06016	BOLT	2	2	
42	92995-06100	WASHER, SPRING	2	2	
43	61L-82117-00	WIRE, LEAD	1	1	
44	90387-06M05	COLLAR	1	1	
45	97780-60425	SCREW, TAPPING	1	1	

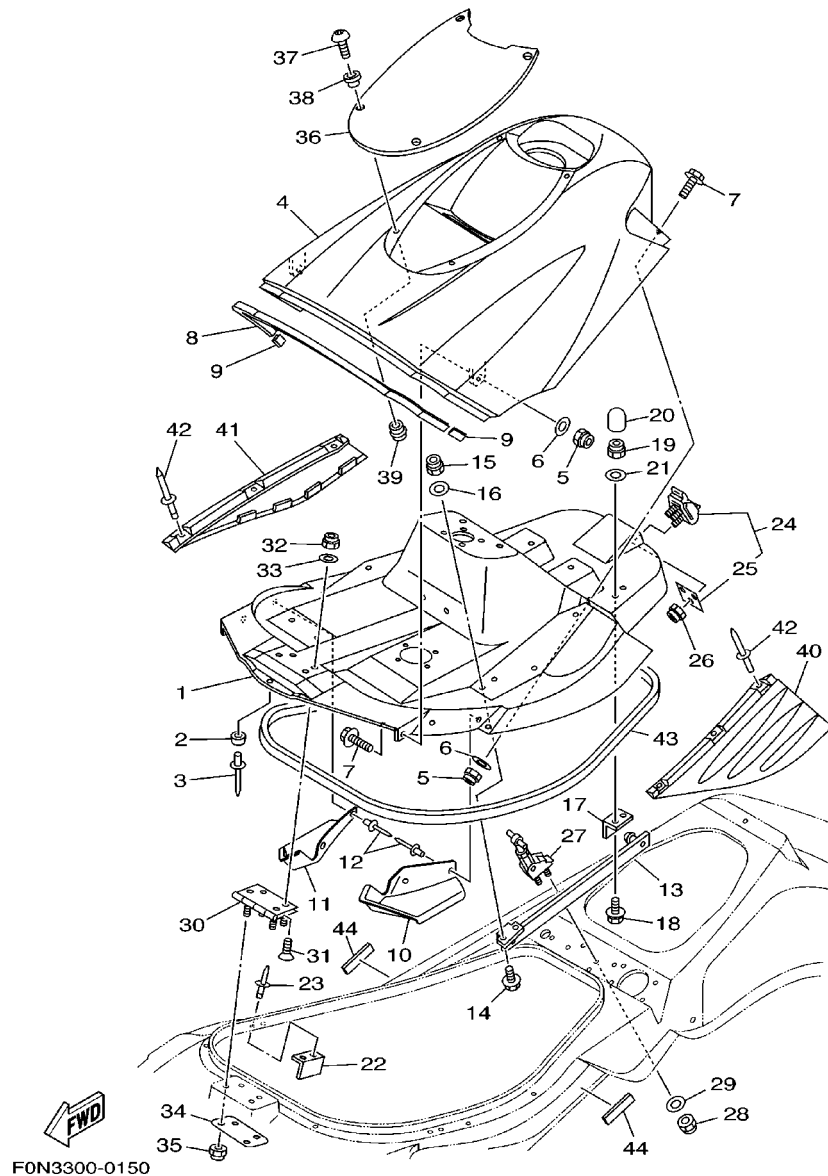


F0N2300-9140

FIG. 14 ELECTRICAL 2

REF. NO.	PART NO.	DESCRIPTION	JPN	GENE	REMARKS
1	90699-50090	HOSE	1	1	
2	90467-08M10	CLIP	1	1	
3	EU0-82110-09	BATTERY ASSY	1	1	
4	EW2-68211-00	CASE, BATTERY	1	1	
5	EU0-68221-00	PAD, BATTERY 1	1	1	
6	EU0-68221-30	PAD, BATTERY 2	4	4	
7	90119-06920	BOLT, WITH WASHER	4	4	
8	EU0-68218-04	BAND, BATTERY	2	2	
9	90600-91736	CLAMP COMP.	1	1	
10	90267-48932	RIVET, BLIND	1	1	
11	90601-20006	BAND	1	1	
12	90600-91736	CLAMP COMP.	3	3	
13	90267-48007	RIVET, BLIND	3	3	
14	90601-20006	BAND	3	3	
15	90600-91736	CLAMP COMP.	1	1	
16	90267-48007	RIVET, BLIND	1	1	
17	90601-20009	BAND	1	1	
18	F0M-6820A-10	METER ASSY	1	1	
19	F0M-68238-00	BRACKET, METER	1	1	
20	95720-05300	NUT, FLANGE	2	2	
21	GK5-68244-00	PACKING	1	1	
22	GH1-6824C-00	SENDER,OIL	1	1	
23	90180-06900	NUT, T	4	4	
24	92990-10600	WASHER, PLATE	4	4	
25	95380-10600	NUT	4	4	

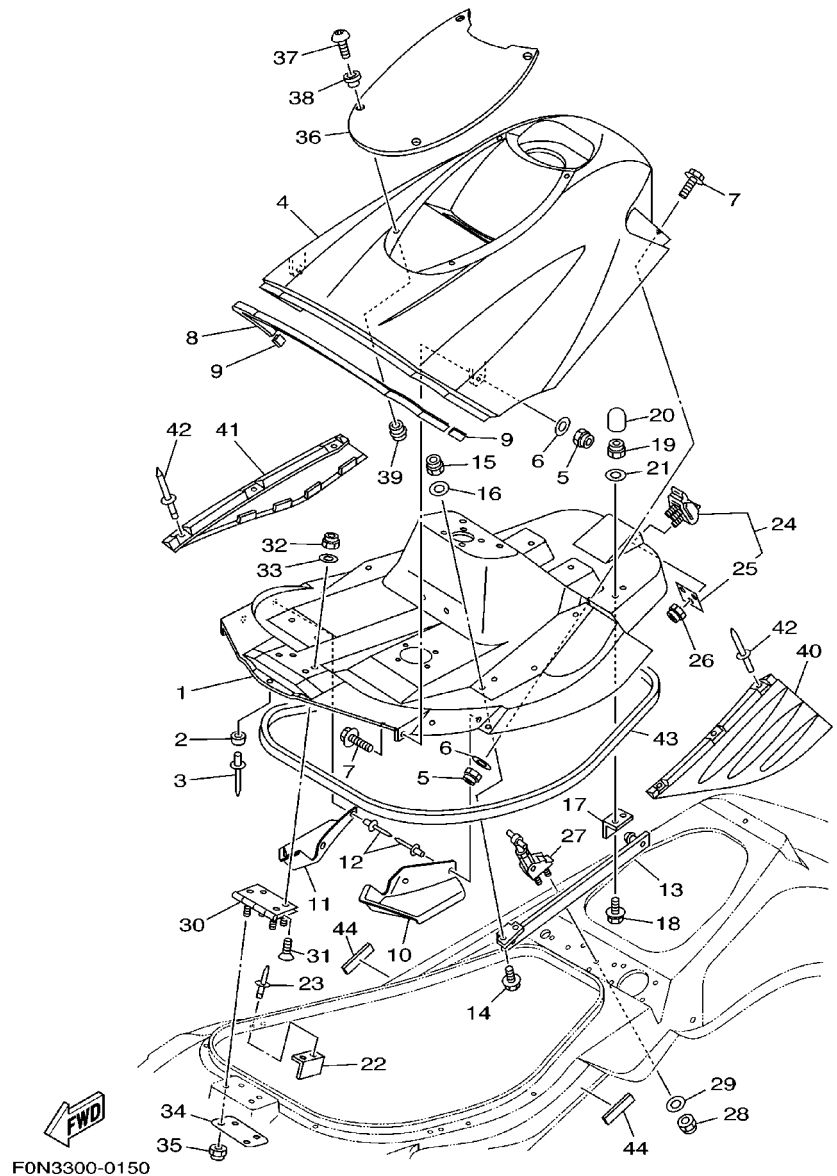
FIG. 15 ENGINE HATCH 1



F0N3300-0150

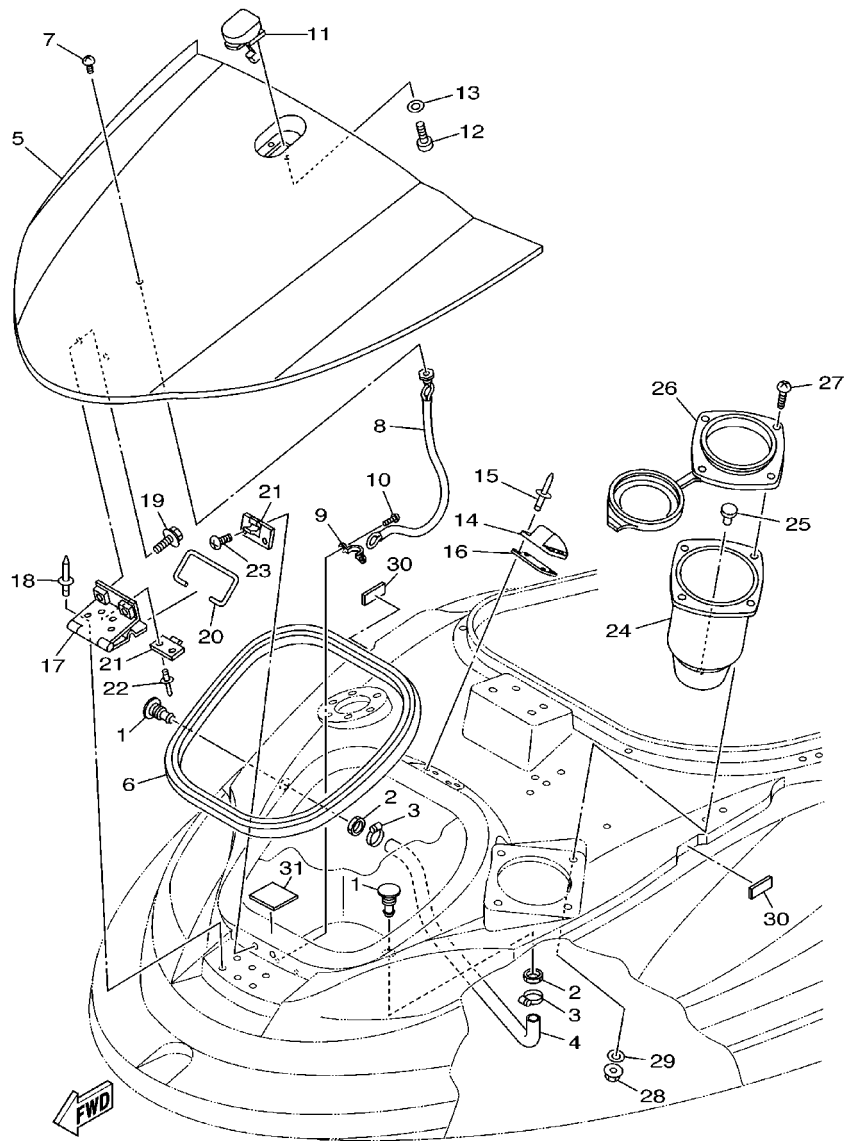
REF. NO.	PART NO.	DESCRIPTION	JPN	GENE	REMARKS
1	F0N-6516B-01	HATCH, ENGINE	1	1	
2	GA7-63768-00	CUSHION,RUBBER	1	1	
3	90267-48931	RIVET, BLIND	1	1	
4	F0N-6516N-00-P0	COVER, ENGINE HATCH	1	1	
5	95720-06300	NUT, SELF-LOCKING	4	4	
6	92990-06200	WASHER, PLAIN	4	4	
7	90119-06900	BOLT, WITH WASHER	4	4	
8	F0N-6516C-10	TRIM 1	1	1	
9	F0N-62713-00	TRIM	2	2	
10	F0N-6514M-00	PROTECTOR 1	1	1	
11	F0N-6514N-00	PROTECTOR 2	1	1	
12	90269-05001	RIVET	4	4	
13	GH1-62891-01	SUPPORT, HATCH	1	1	
14	90119-06900	BOLT, WITH WASHER	2	2	
15	95720-06300	NUT, SELF-LOCKING	2	2	
16	92990-06200	WASHER, PLAIN	2	2	
17	GK5-62892-00	FIX, PLATE	1	1	
18	90119-06901	BOLT, WITH WASHER	2	2	
19	95720-06300	NUT, SELF-LOCKING	2	2	
20	90190-06006	CLING	2	2	
21	92990-06200	WASHER, PLAIN	2	2	
22	FN8-62884-00	BRACKET, HATCH SUPPORT	1	1	
23	90267-48940	RIVET, BLIND	2	2	
24	FJ0-62840-02	HATCH LOCK ASSY	1	1	
25	FJ0-6284F-00	.PLATE,HATCH LOCK	1	1	
26	95720-05300	NUT, FLANGE	3	3	
27	F0N-62843-00	HOOK, HATCH LOCK	1	1	

FIG. 15 ENGINE HATCH 1



REF. NO.	PART NO.	DESCRIPTION	JPN	GENE	REMARKS
28	95720-06300	NUT, SELF-LOCKING	2	2	
29	92990-06200	WASHER, PLAIN	2	2	
30	GK5-6517G-01	HINGE, HATCH	1	1	
31	98780-06025	SCREW, FLAT HEAD	4	4	
32	95720-06300	NUT, SELF-LOCKING	4	4	
33	92990-06200	WASHER, PLAIN	4	4	
34	GK5-65193-00	PLATE	1	1	
35	95720-06300	NUT, SELF-LOCKING	4	4	
36	F0N-6515N-10	VISOR	1	1	
37	90149-05919	SCREW	4	4	
38	90381-05041	BUSH, SOLID	4	4	
39	90179-05633	NUT	4	4	
40	F0N-6377B-00	COVER, SIDE 1	1	1	
41	F0N-6377C-00	COVER, SIDE 2	1	1	
42	90267-48931	RIVET, BLIND	4	4	
43	F0N-62664-00	PACKING	1	1	
44	F0N-65578-00	TAPE	2	2	

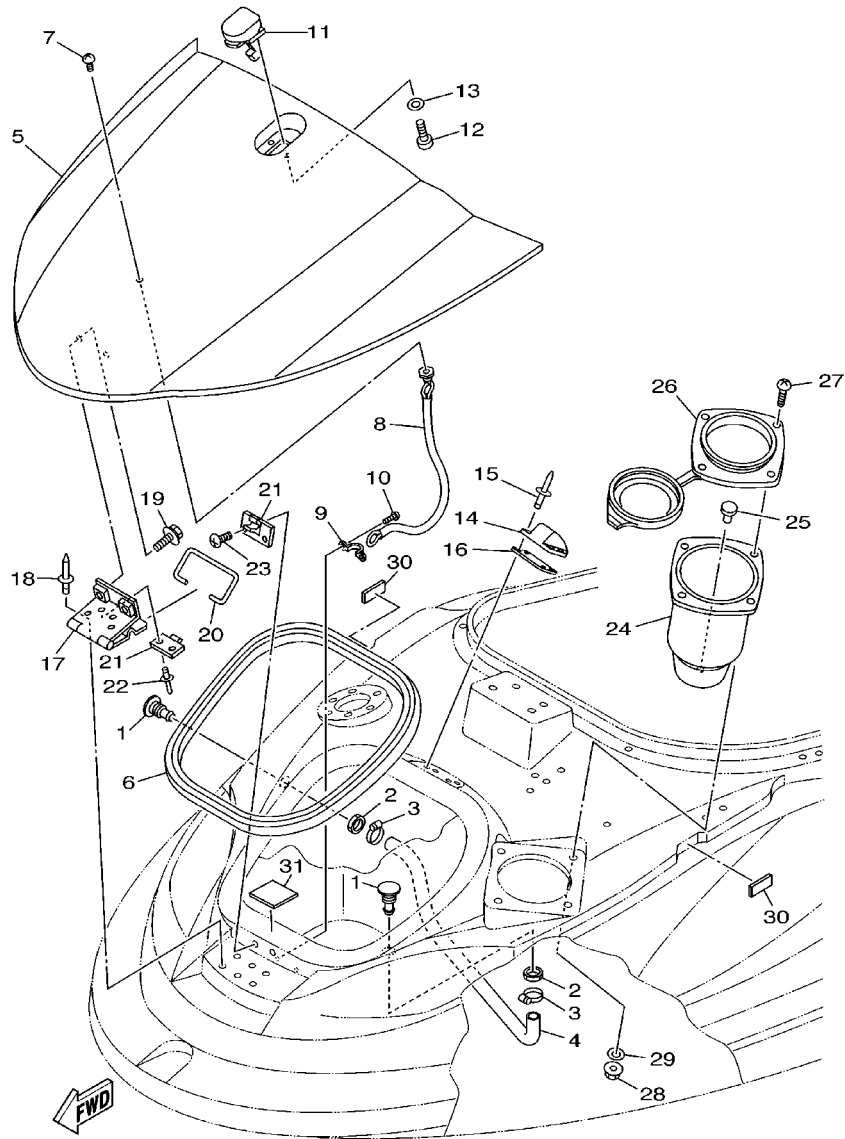
FIG. 16 ENGINE HATCH 2



F0N3300-0160

REF. NO.	PART NO.	DESCRIPTION	JPN	GENE	REMARKS
1	EU0-62241-00	BODY, DRAIN 1	2	2	
2	EU0-62241-30	NUT, DRAIN 1	2	2	
3	90450-18M09	HOSE CLAMP ASSY	2	2	
4	90446-21001	HOSE	1	1	
5	F0N-6476A-10-P0	LID, LOCKER BOW	1	1	
6	F0N-6266D-00	PACKING 5	1	1	
7	90111-06021	BOLT	1	1	
8	F0N-65540-01	LOCK ASSY.	1	1	
9	F0N-65192-00	H00K	1	1	
10	97780-50120	SCREW, TAPPING	2	2	
11	GP7-6517C-00	LOCK, LID	1	1	
12	90149-05918	SCREW	2	2	
13	92990-05200	WASHER, PLAIN	2	2	
14	GP7-6517F-10	H00K, LID LOCK	1	1	
15	90267-48909	RIVET, BLIND	4	4	
16	F0N-65193-00	PLATE	1	1	
17	F0N-6517D-01	HINGE, LID	1	1	
18	90267-48940	RIVET, BLIND	6	6	
19	90119-06908	BOLT, WITH WASHER	2	2	
20	F0N-6517P-00	SUPPORT, LID	1	1	
21	F0N-6517U-00	HOLDER, LID SUPPORT	2	2	
22	90267-48934	RIVET, BLIND	2	2	
23	97780-50114	SCREW, PAN HEAD TAPPING	2	2	
24	FJ0-65911-01	CASE 1	1	1	
25	90605-50201	PLUG	1	1	
26	F0N-6591C-00	CAP, CASE	1	1	
27	90149-05960	SCREW	4	4	

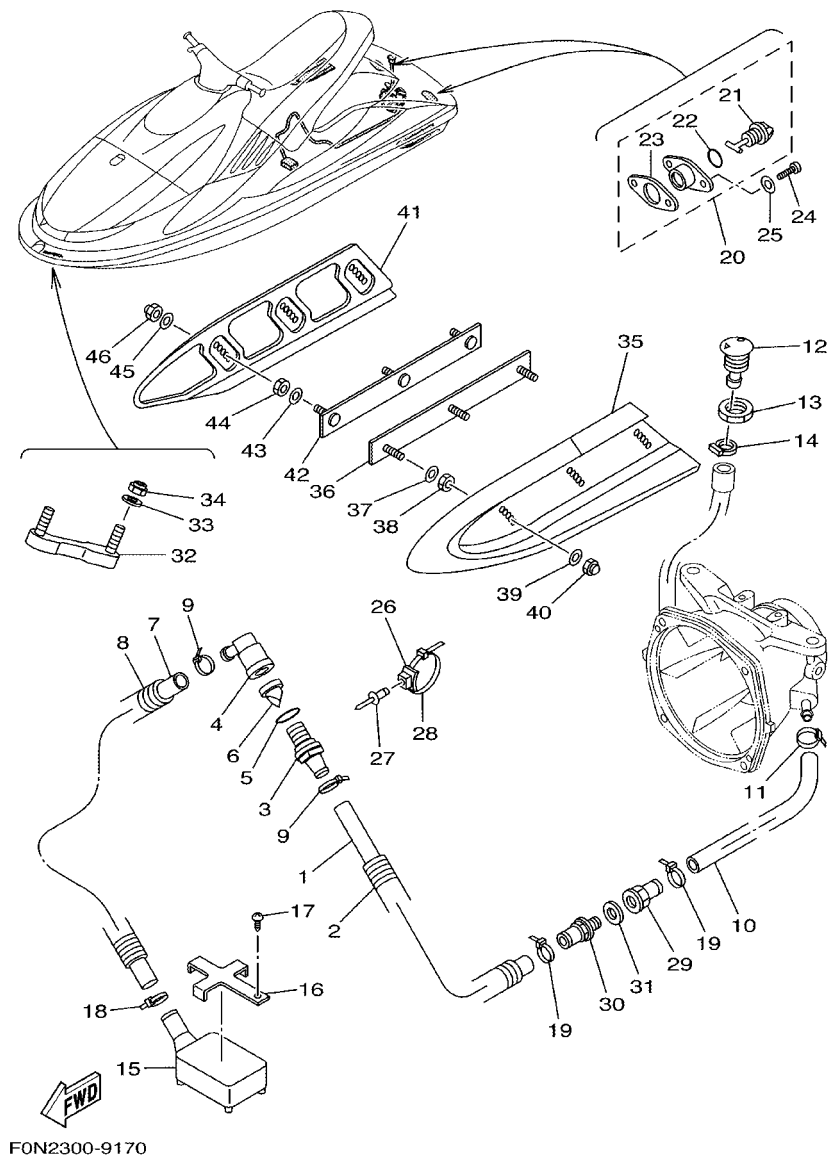
FIG. 16 ENGINE HATCH 2



F0N3300-0160

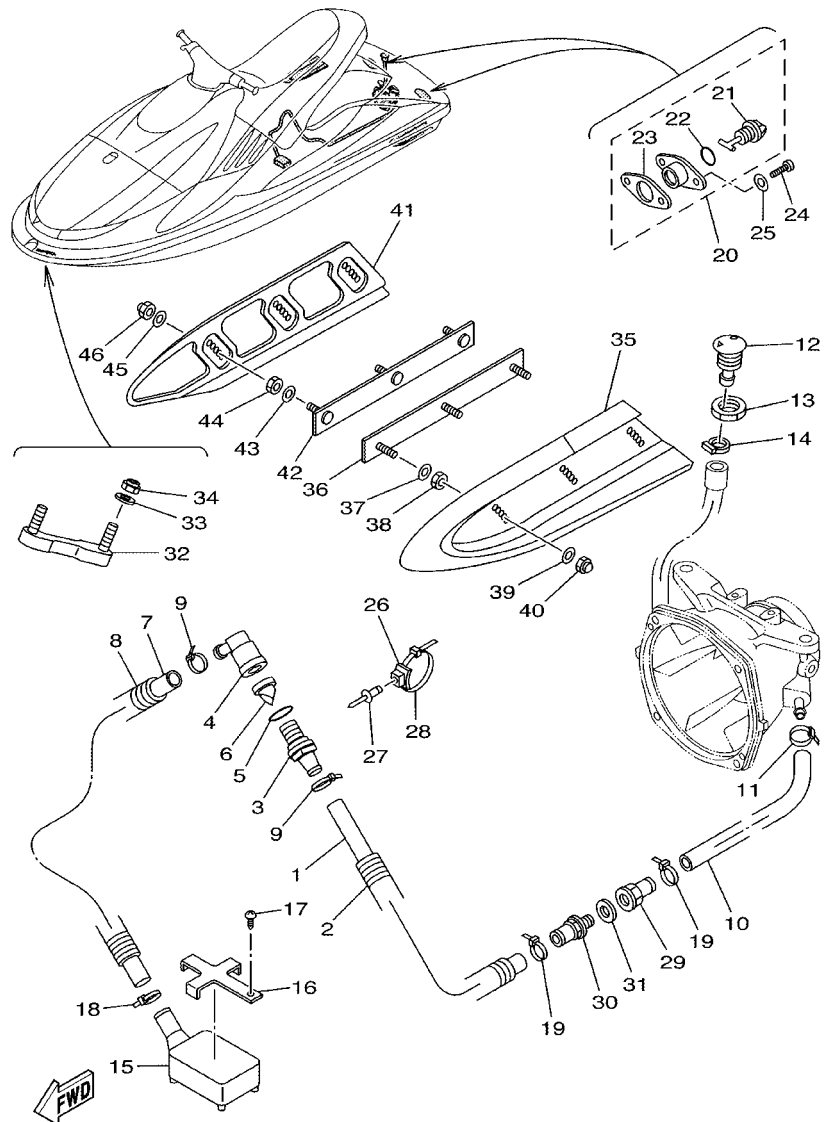
REF. NO.	PART NO.	DESCRIPTION	JPN	GENE	REMARKS
28	95720-05300	NUT, FLANGE	4	4	
29	92990-05200	WASHER, PLAIN	4	4	
30	F0N-65578-10	TAPE	2	2	
31	F0N-65578-20	TAPE	1	1	

FIG. 17 HULL DECK



REF. NO.	PART NO.	DESCRIPTION	JPN	GENE	REMARKS
1	90445-19M10	HOSE	1	1	
2	90446-27M73	HOSE	1	1	
3	63M-51162-00	JOINT, HOSE	1	1	
4	63M-51165-00	JOINT HOSE 2	1	1	
5	93210-22ME5	O-RING	1	1	
6	63M-5316M-00	VALVE 1	1	1	
7	90445-19M09	HOSE	1	1	
8	90446-27M55	HOSE	1	1	
9	90465-13M11	CLAMP	2	2	
10	90445-14M40	HOSE	1	1	
11	90465-11M10	CLAMP	1	1	
12	FN8-6269B-00	SPOUT	1	1	
13	EU0-61652-00	NUT	1	1	
14	90600-91755	CLIP	1	1	
15	GD0-6761D-00	STRAINER, BILGE	1	1	
16	FJ0-67618-00	BASE	1	1	
17	97780-50114	SCREW, PAN HEAD TAPPING	1	1	
18	90601-20005	BAND	1	1	
19	90601-20005	BAND	2	2	
20	EU0-62280-00	DRAIN PLUG ASSY	2	2	
21	EU0-62282-00	.PLUG, DRAIN	1	1	
22	EU0-62283-00	.O-RING	1	1	
23	EU0-62285-01	.PACKING DRAIN (EU0)	1	1	
24	97780-50520	SCREW, TAPPING	4	4	
25	92990-05200	WASHER, PLAIN	4	4	
26	90600-91736	CLAMP COMP.	1	1	
27	90267-48925	RIVET, BLIND	1	1	

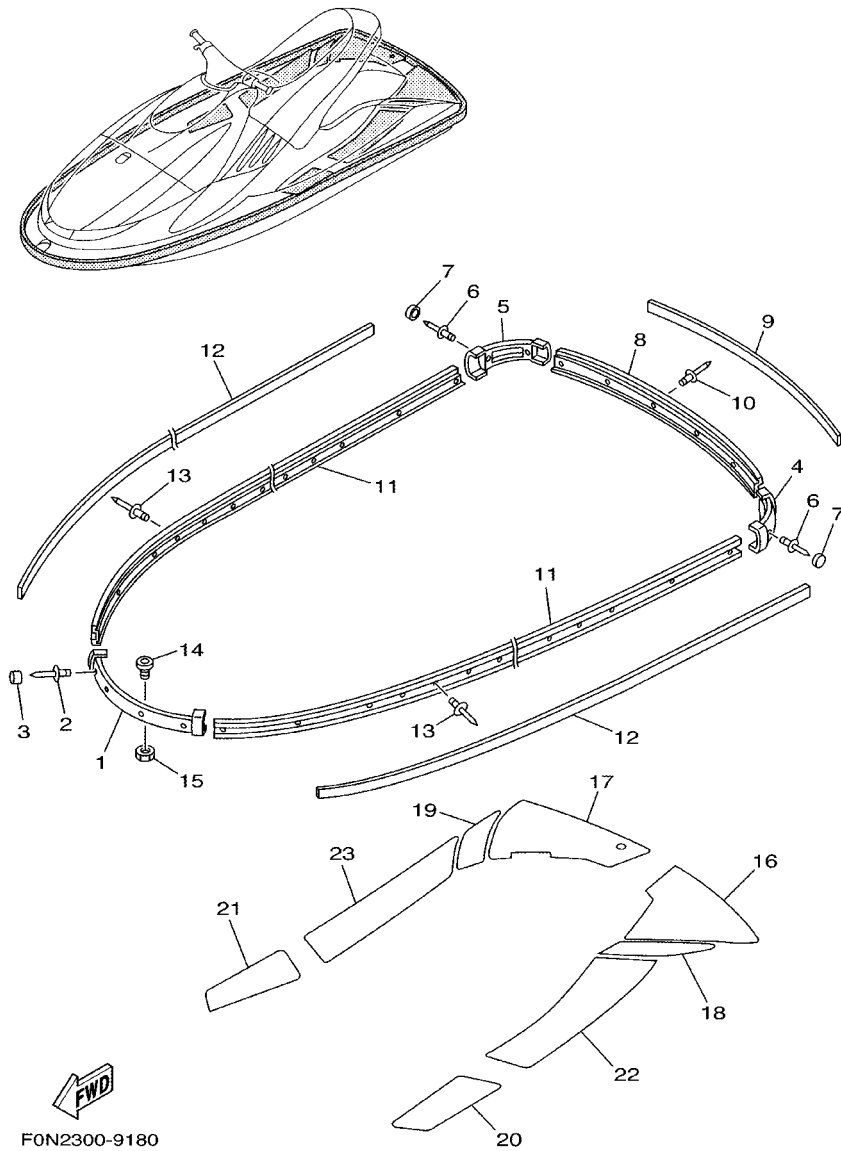
FIG. 17 HULL DECK



FON2300-9170

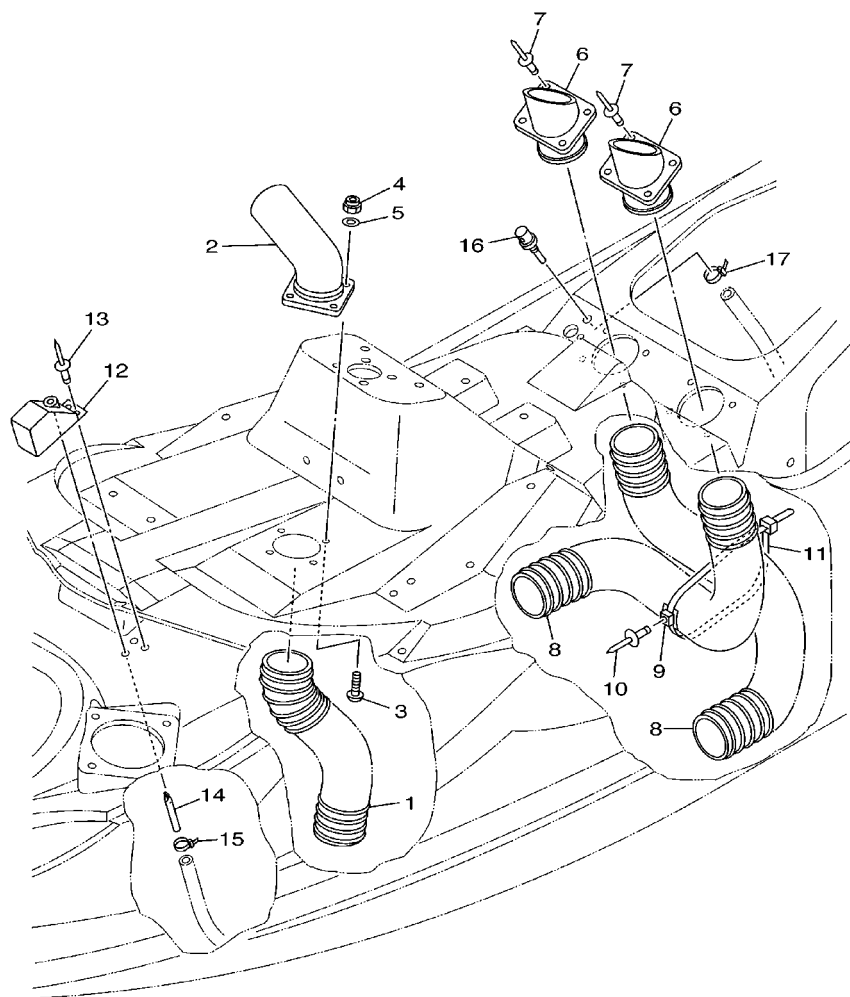
REF. NO.	PART NO.	DESCRIPTION	JPN	GENE	REMARKS
28	90601-20006	BAND	1	1	
29	90604-80759	CONNECTION, THRU-HULL 1/4	1	1	
30	90604-80775	THROUGH, HULL CONNECTION	1	1	
31	90430-13909	GASKET	1	1	
32	F0D-61624-01	BOWEYE 1 (S)	1	1	
33	92990-08200	WASHER, PLAIN	2	2	
34	95720-08300	NUT, SELF-LOCKING	2	2	
35	F0N-6883N-00	STABILIZER LH	1	1	
36	F0N-6883T-00	BRACKET,STABILIZER	1	1	
37	92990-06200	WASHER, PLAIN	3	3	
38	95380-06700	NUT	3	3	
39	90201-065F3	WASHER, PLATE	3	3	
40	90179-06959	NUT	3	3	
41	F0N-6883P-00	STABILIZER RH	1	1	
42	F0N-6883T-00	BRACKET,STABILIZER	1	1	
43	92990-06200	WASHER, PLAIN	3	3	
44	95380-06700	NUT	3	3	
45	90201-065F3	WASHER, PLATE	3	3	
46	90179-06959	NUT	3	3	

FIG. 18 GUNWALE. MAT



REF. NO.	PART NO.	DESCRIPTION	JPN	GENE				REMARKS
1	GK5-62501-20	BOW GUNWALE COMP.	1	1				
2	90267-48932	RIVET, BLIND	4	4				
3	GK5-62576-20	CAP, GUNWALE BOW	4	4				
4	GK5-6251D-20	GUNWALE, STERN 1	1	1				
5	GK5-6251E-20	GUNWALE, STERN 2	1	1				
6	90267-48932	RIVET, BLIND	4	4				
7	GH1-6354D-60	CAP, HEAD	4	4				
8	F0N-6252C-00	COVER, GUNWALE 1	1	1				
9	F0N-6252D-00	COVER, GUNWALE 2	1	1				
10	90267-48932	RIVET, BLIND	6	6				
11	F0N-62552-00	GUNWALE, SIDE 1	2	2				
12	F0N-62553-00	GUNWALE, SIDE 2	2	2				
13	90267-48932	RIVET, BLIND	34	34				
14	FN8-61651-00	ROPE HOLE	2	2				
15	EU0-61652-00	NUT	2	2				
16	F0N-6358F-00	MAT, UPPER LH	1	1				
17	F0N-6358G-00	MAT, UPPER RH	1	1				
18	F0N-6358H-00	MAT, UPPER 1	1	1				
19	F0N-6358J-00	MAT, UPPER 2	1	1				
20	F0N-6351H-00	MAT, STEP 1	1	1				
21	F0N-6351J-00	MAT, STEP 2	1	1				
22	F0N-6351K-00	MAT, STEP 3	1	1				
23	F0N-6351M-00	MAT, STEP 4	1	1				

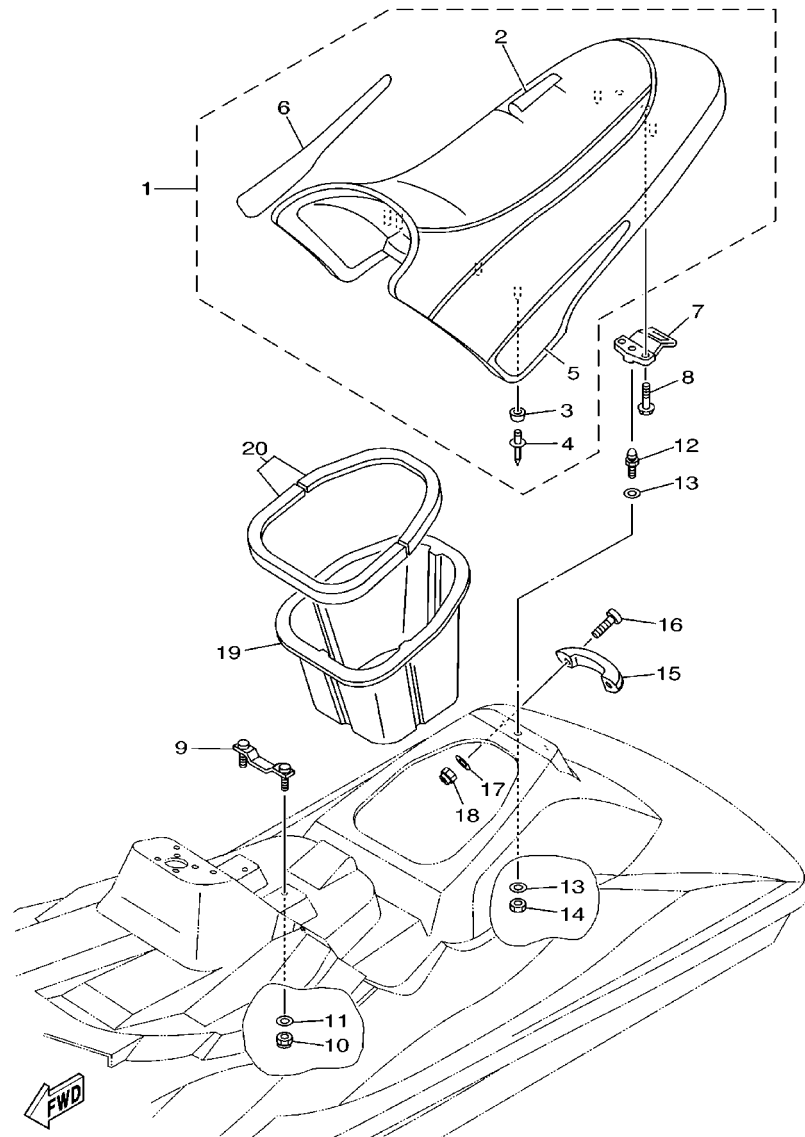
FIG. 19 VENTILATION




F0N3300-0190

REF. NO.	PART NO.	DESCRIPTION	JPN	GENE	REMARKS
1	F0N-6213F-11	HOSE, VENTILATOR 1	1	1	
2	F0N-6213K-00	HOSE, VENTILATOR3	1	1	
3	90149-05946	SCREW	4	4	
4	95720-05300	NUT, FLANGE	4	4	
5	92990-05200	WASHER, PLAIN	4	4	
6	F0N-62127-00	BASE, AIR INTAKE	2	2	
7	90267-48007	RIVET, BLIND	8	8	
8	F0N-6213G-00	HOSE, VENTILATOR 2	2	2	
9	90600-91736	CLAMP COMP.	1	1	
10	90267-48925	RIVET, BLIND	1	1	
11	90601-20027	BAND	1	1	
12	GP7-62159-01	SOCKET, VENTILATION	1	1	
13	90267-48007	RIVET, BLIND	2	2	
14	GK5-62149-00	PIPE, VENTILATION	1	1	
15	90465-11M10	CLAMP	1	1	
16	GJ3-6215F-00	NIPPLE	1	1	
17	90465-11M10	CLAMP	1	1	

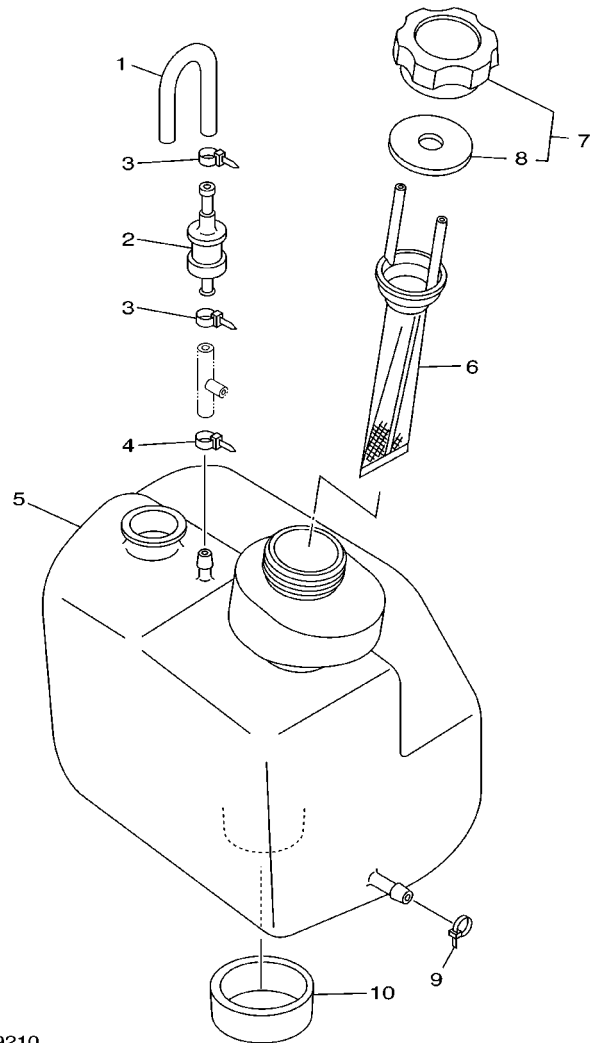
FIG. 20 SEAT. UNDER LOCKER



F0N3300-0200

REF. NO.	PART NO.	DESCRIPTION	JPN	GENE	REMARKS
1	F0N-6371A-10	DOUBLE SEAT ASSY	1	1	
2	F0N-6371B-10	.COVER, SEAT 1	1	1	
3	GK5-63729-00	.STOPPER,SEAT	6	6	
4	90267-48953	.RIVET, BLIND	6	6	
5	F0N-64194-10	.GRAPHIC B	1	1	
6	F0N-64195-10	.GRAPHIC C	1	1	
7	GJ3-63850-03	SEAT LOCK ASSY	1	1	
8	90119-06961	BOLT, WITH WASHER	2	2	
9	F0N-6378C-00	STAY, SEAT 1	1	1	
10	95720-06300	NUT, SELF-LOCKING	2	2	
11	92990-06200	WASHER, PLAIN	2	2	
12	GU3-63774-00	PIN	1	1	
13	92990-10200	WASHER, PLAIN	2	2	
14	95720-10300	NUT	1	1	
15	GA7-6271B-10	GRIP, HAND	1	1	
16	90149-06973	SCREW	2	2	
17	90201-065F3	WASHER, PLATE	2	2	
18	95720-06300	NUT, SELF-LOCKING	2	2	
19	F0N-64742-00	LOCKER, UNDER 2	1	1	
20	F0N-6266B-10	PACKING 3	1	1	

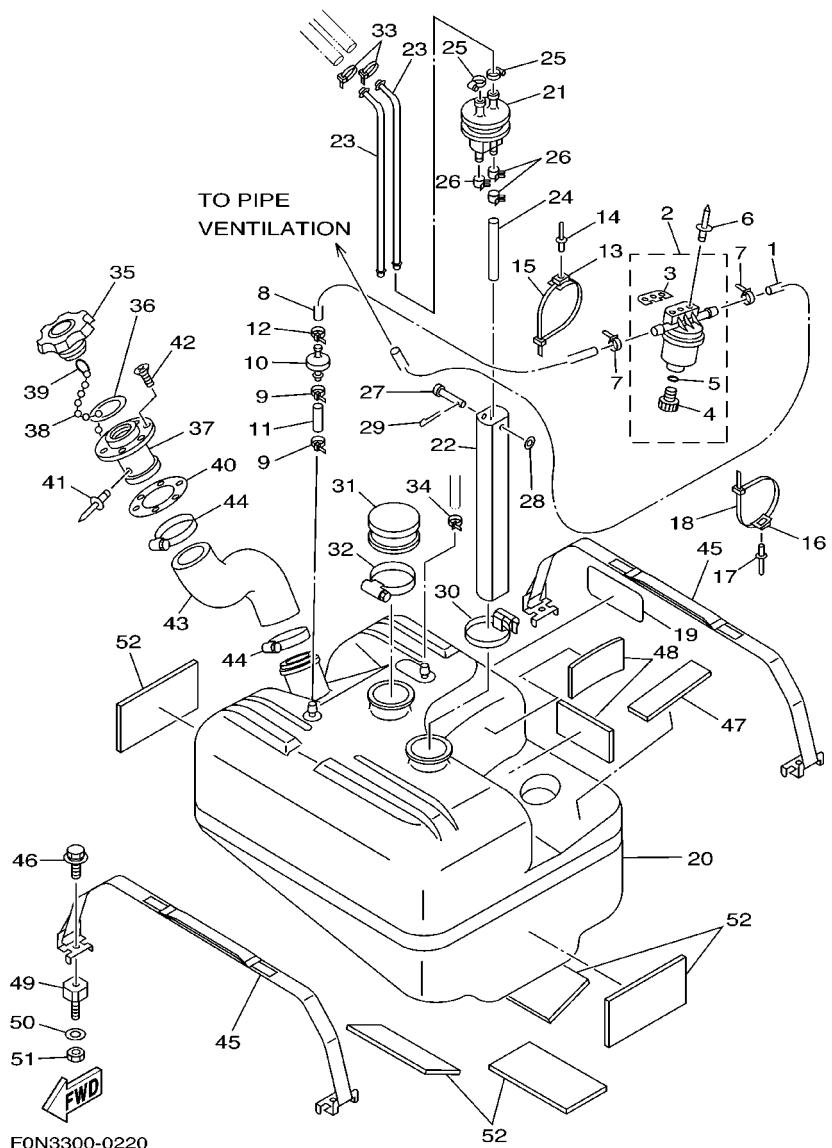
FIG. 21 OIL TANK



F0N2300-9210

REF. NO.	PART NO.	DESCRIPTION	JPN	GENE	REMARKS
1	GK5-6215E-00	HOSE	1	1	
2	FJ0-67766-00	ROLL OVER VALVE	1	1	
3	90465-11M10	CLAMP	2	2	
4	90465-11M10	CLAMP	1	1	
5	GH1-6775B-00	TANK,OIL	1	1	
6	GH1-6775C-00	FILTER	1	1	
7	GE2-6784A-00	OIL TANK CAP ASSY.	1	1	
8	FJ0-67841-01	.PACKING, OIL CAP	1	1	
9	90465-11M10	CLAMP	1	1	
10	GH1-6759D-00	MAT,3	1	1	

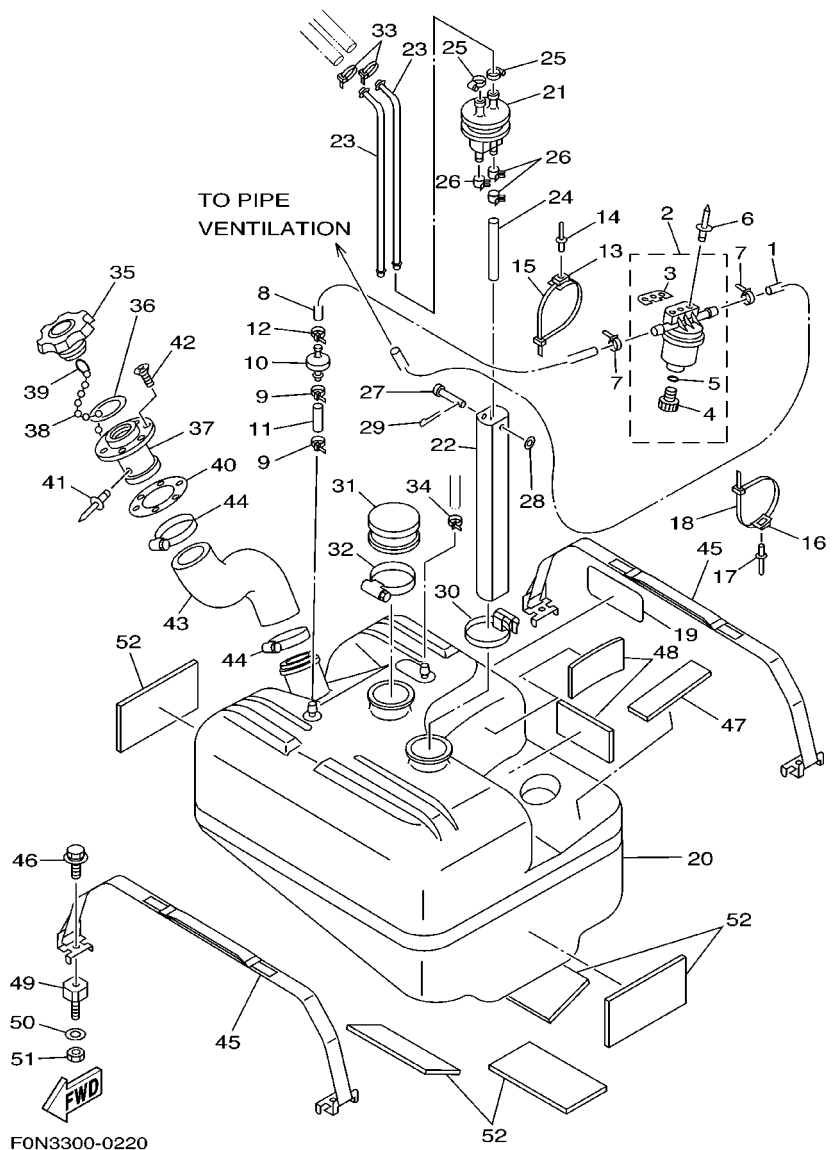
FIG. 22 FUEL TANK



F0N3300-0220

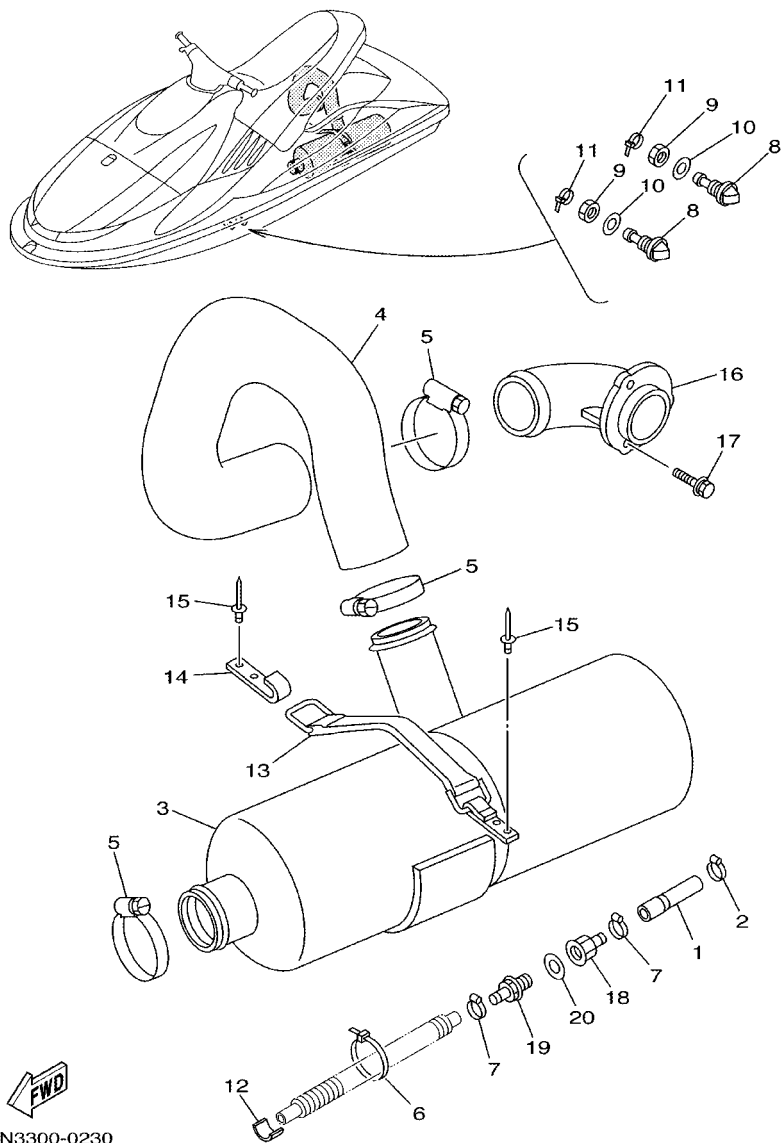
REF. NO.	PART NO.	DESCRIPTION	JPN	GENE	REMARKS
1	90699-50100	HOSE	1	1	
2	EW2-62140-00	FILTER, VENT ASSY	1	1	
3	EW2-62142-00	.PLATE, FILTER	1	1	
4	70R-24543-00	.PLUG, DRAIN	1	1	
5	70R-24489-00	.O-RING	1	1	
6	90267-48940	RIVET, BLIND	2	2	
7	90465-11M10	CLAMP	2	2	
8	90699-50050	HOSE	1	1	
9	90465-11M10	CLAMP	2	2	
10	EU0-67767-31	CHECK VALVE	1	1	
11	90699-50004	HOSE	1	1	
12	90465-11M10	CLAMP	1	1	
13	90600-91736	CLAMP COMP.	1	1	
14	90267-48932	RIVET, BLIND	1	1	
15	90601-20006	BAND	1	1	
16	90600-91736	CLAMP COMP.	1	1	
17	90267-48007	RIVET, BLIND	1	1	
18	90601-20006	BAND	1	1	
19	GH1-6418D-01	LABEL, FUEL TANK	1	1	
20	GH1-67711-01	TANK, FUEL	1	1	
21	FJ0-67713-00	PIPE, JOINT	1	1	
22	F0E-677H0-00	SLEEVE ASSY.	1	1	
23	FN8-67714-02	PIPE, SUCTION 3	2	2	
24	90445-11900	HOSE	1	1	
25	90601-11062	BAND, HOSE 11	2	2	
26	90467-11032	CLIP	3	3	
27	91790-05040	PIN, CLEVIS	1	1	

FIG. 22 FUEL TANK



REF. NO.	PART NO.	DESCRIPTION	JPN	GENE	REMARKS
28	92990-05600	WASHER, PLATE	1	1	
29	91490-16010	PIN, COTTER	1	1	
30	90601-16274	BAND, HOSE 62	1	1	
31	FN8-6771K-00	COVER	1	1	
32	90601-16274	BAND, HOSE 62	1	1	
33	90465-11M10	CLAMP	2	2	
34	90465-11M10	CLAMP	1	1	
35	FN8-67831-01	CAP, FUEL FILLER	1	1	
36	EU0-67832-00	PACKING 1	1	1	
37	FN8-67833-00	SOCKET	1	1	
38	EU0-67835-00	CHAIN BALL	1	1	
39	EU0-67839-00	COUPLING	1	1	
40	EU0-67834-00	PACKING, FUEL FILLER	1	1	
41	90267-40935	RIVET, BLIND	1	1	
42	EU0-67869-00	SCREW, FLAT HEAD	6	6	
43	F0N-67844-00	HOSE	1	1	
44	90601-15573	BAND, HOSE 55	2	2	
45	F0N-67743-00	BELT, TANK 1	2	2	
46	90119-08954	BOLT, WITH WASHER	4	4	
47	GH1-6759B-00	MAT 1	1	1	
48	GH1-6759C-00	MAT 2	2	2	
49	90180-08907	NUT, T	4	4	
50	92990-14600	WASHER	4	4	
51	95380-14700	NUT	4	4	
52	F0N-6759B-00	MAT 1	5	5	

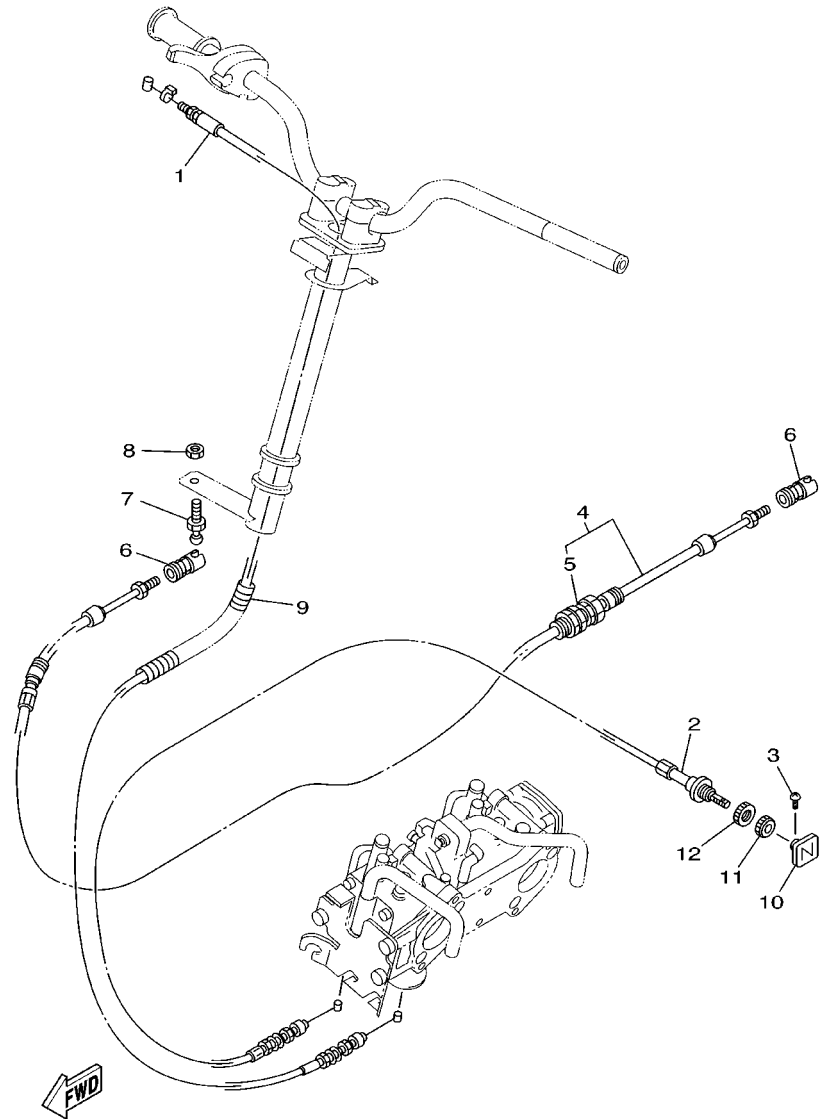
FIG. 23 EXHAUST 2



F0N3300-0230

REF. NO.	PART NO.	DESCRIPTION	JPN	GENE	REMARKS
1	67U-4383A-00	HOSE	1	1	
2	90450-18M09	HOSE CLAMP ASSY	1	1	
3	F0N-67550-00	WATER LOCK COMP.	1	1	
4	F0N-67555-00	HOSE, EXHAUST	1	1	
5	90601-17586	BAND, HOSE 75	3	3	
6	90601-20009	BAND	1	1	
7	90450-18M09	HOSE CLAMP ASSY	2	2	
8	GU0-6753B-00	PILOT, WATER	2	2	
9	GU0-61652-00	NUT	2	2	
10	92990-16200	WASHER, PLAIN	2	2	
11	90450-18M09	HOSE CLAMP ASSY	2	2	
12	GJ1-67578-20	PACKING, HOSE 2	4	4	
13	F0E-67570-00	C HOOK COMP.	1	1	
14	GA7-65772-00	HOOK A	1	1	
15	90267-48938	RIVET, BLIND	4	4	
16	FJ0-67565-01	THRU-HULL, EXHAUST	1	1	
17	90119-05912	BOLT, WITH WASHER	3	3	
18	90604-80793	THROGUH-HULL CONNECTION 3/8	1	1	
19	90604-80794	THROGUH-HULL CONNECTION 3/8	1	1	
20	90430-16910	GASKET	1	1	

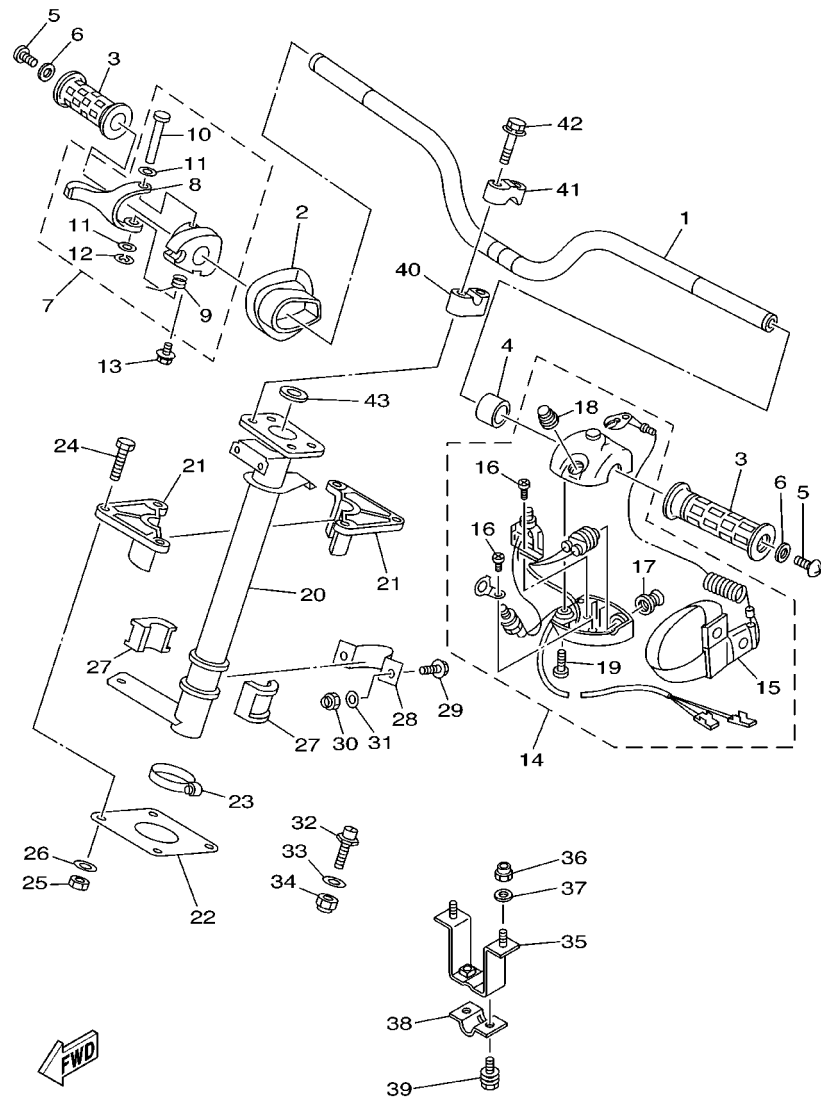
FIG. 24 CONTROL CABLE



F0N2300-9240

REF. NO.	PART NO.	DESCRIPTION	JPN	GENE				REMARKS
1	67U-67252-00	CABLE, THROTTLE	1	1				
2	67U-67242-00	CABLE, CHOKE	1	1				
3	90149-03M15	SCREW	1	1				
4	F0N-61480-00	STEERING CABLE ASSY	1	1				
5	GK5-67267-00	.CONNECTOR, CABLE	1	1				
6	GK5-6146F-00	SHAFT, JOINT BALL	2	2				
7	EU0-61461-01	STOOD, JOINT BALL	1	1				
8	95720-06300	NUT, SELF-LOCKING	1	1				
9	90699-36085	SPIRAP 11	1	1				
10	EW2-67243-00	KNOB	1	1				
11	F0N-6724E-00	NUT, COMPRESSION	1	1				
12	F0N-6724F-00	NUT	1	1				

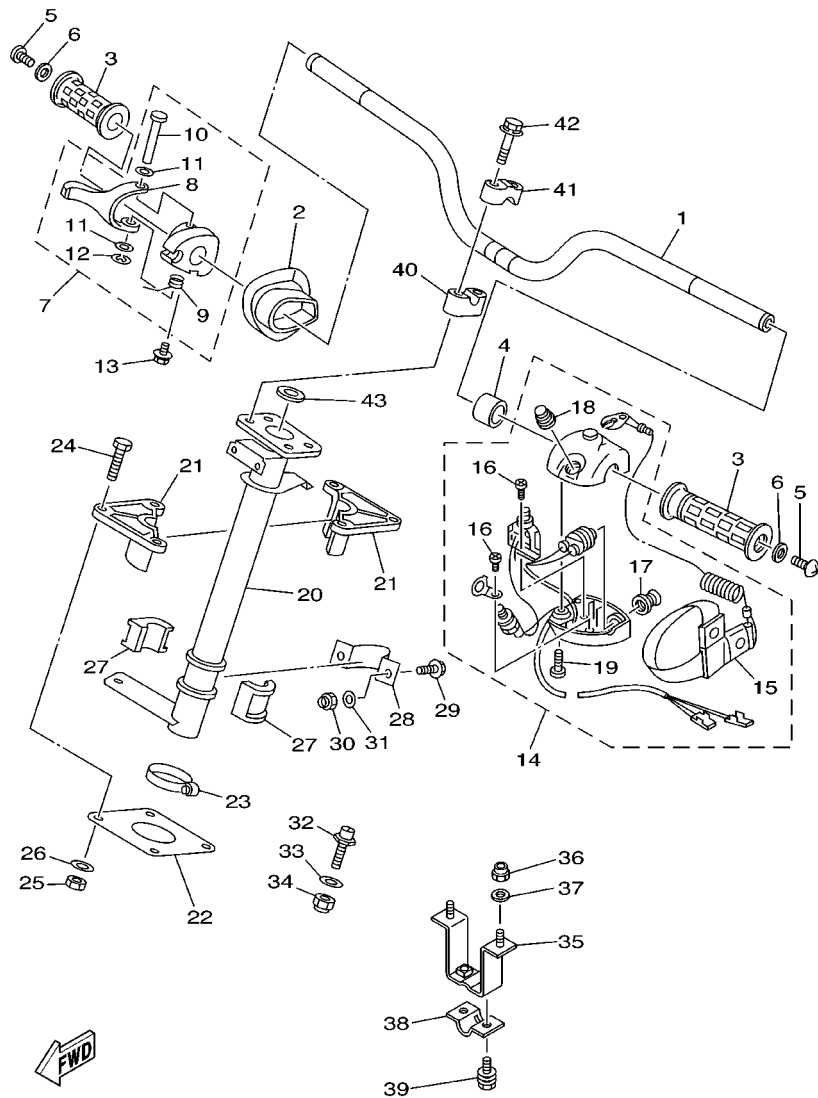
FIG. 25 STEERING 1



F0N2300-9250

REF. NO.	PART NO.	DESCRIPTION	JPN	GENE	REMARKS
1	GK5-61552-02	HANDLE	1	1	
2	F0N-6143G-00	SPACER	1	1	
3	EW2-61553-00	GRIP, HANDLE 1	2	2	
4	90560-22281	SPACER	1	1	
5	90149-05959	SCREW	2	2	
6	90201-05928	WASHER, PLATE	2	2	
7	GJ1-67250-01	THROTTLE LEVER ASSY	1	1	
8	GJ1-67255-00	.LEVER, THROTTLE	1	1	
9	EW2-67256-00	.SPRING	1	1	
10	EW2-67257-01	.SHAFT	1	1	
11	EW2-67258-01	.WASHER	2	2	
12	EW2-67259-01	.E RING	1	1	
13	90159-05900	SCREW, WITH WASHER	1	1	
14	F0N-68310-00	SWITCH BOX ASSY	1	1	
15	GA7-6834C-00	.LANYARD, STOP SWITCH	1	1	
16	97880-03008	.SCREW, PAN HEAD	2	2	
17	FK7-68312-02	.STOP BUTTON COMP	1	1	
18	FK7-68313-01	.START BUTTON COMP	1	1	
19	97880-05025	.SCREW, PAN HEAD	2	2	
20	GK5-61541-01	COLUMN, STEERING	1	1	
21	GH1-6141B-00	BEARING, COLUMN	2	2	
22	GH1-6143C-30	SEAL, RUBBER	1	1	
23	90601-14271	BAND, HOSE	1	1	
24	97080-06030	BOLT	4	4	
25	95720-06300	NUT, SELF-LOCKING	4	4	
26	92990-06200	WASHER, PLAIN	4	4	
27	GH1-6141D-01	BEARING, STEERING	2	2	

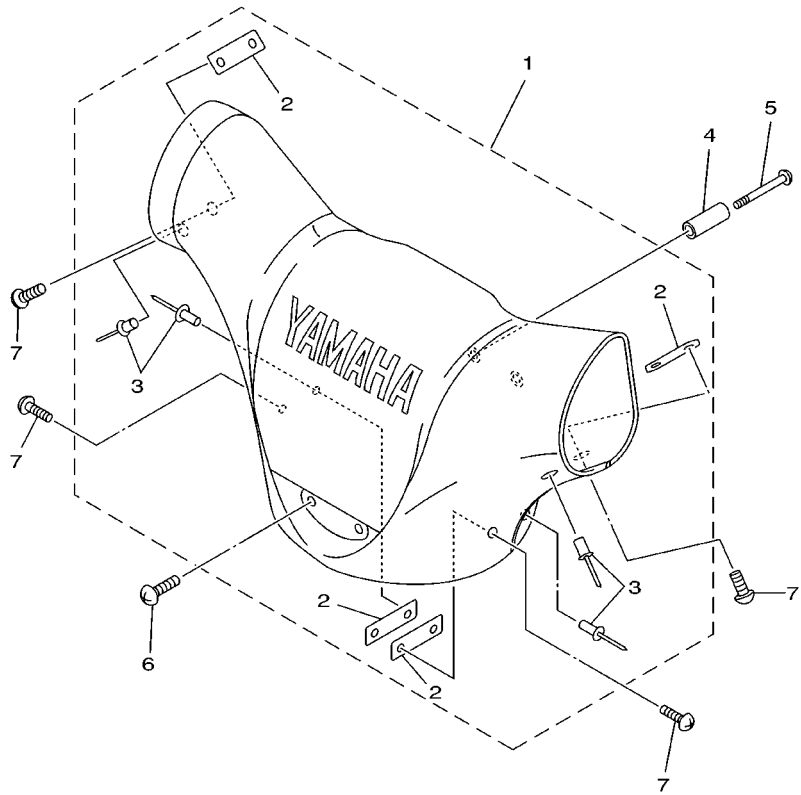
FIG. 25 STEERING 1



F0N2300-9250

REF. NO.	PART NO.	DESCRIPTION	JPN	GENE	REMARKS
28	EU0-61588-00	JOINT, BEARING	1	1	
29	90119-08038	BOLT, WITH WASHER	2	2	
30	95720-08300	NUT, SELF-LOCKING	2	2	
31	92990-08200	WASHER, PLAIN	2	2	
32	FN8-6131B-00	PIN, STOPPER	2	2	
33	92990-10200	WASHER, PLAIN	2	2	
34	95720-10300	NUT	2	2	
35	F0N-61467-00	BRACKET, STOPPER CABLE	1	1	
36	95720-06300	NUT, SELF-LOCKING	2	2	
37	92990-06200	WASHER, PLAIN	2	2	
38	GK5-61468-00	STOPPER, CABLE	1	1	
39	90119-06950	BOLT, WITH WASHER	2	2	
40	EU0-23814-01	HOLDER, HANDLE LOWER	2	2	
41	EU0-23814-30	HOLDER, HANDLE UPPER	2	2	
42	90119-08925	BOLT, WITH WASHER	4	4	
43	GH1-61469-00	PACKING, STEERING COLUMN	1	1	

FIG. 26 STEERING 2

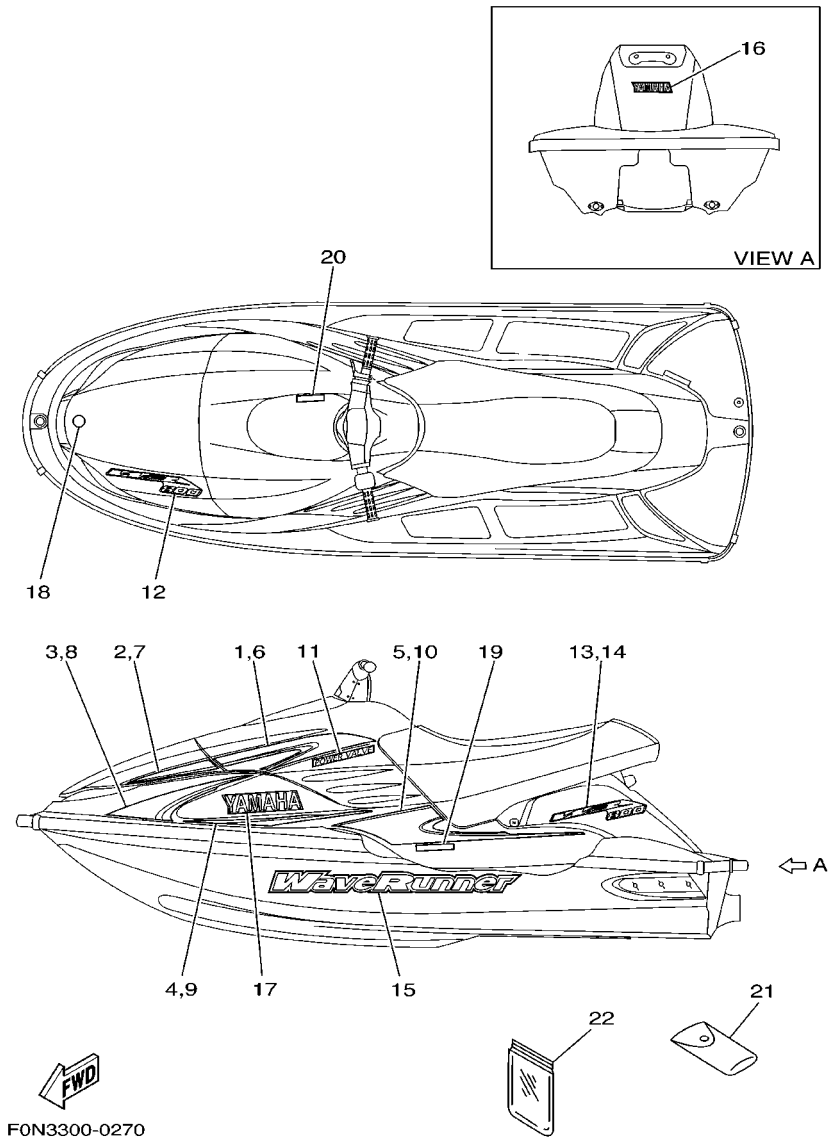


REF. NO.	PART NO.	DESCRIPTION	JPN	GENE				REMARKS
1	GK5-6142A-10	STEERING PAD COMP	1	1				
2	GA7-6144D-00	.PLATE	4	4				
3	90267-48934	.RIVET, BLIND	4	4				
4	90387-06921	COLLAR	2	2				
5	90149-05938	SCREW	2	2				
6	90149-05981	SCREW	2	2				
7	90149-04904	SCREW	4	4				

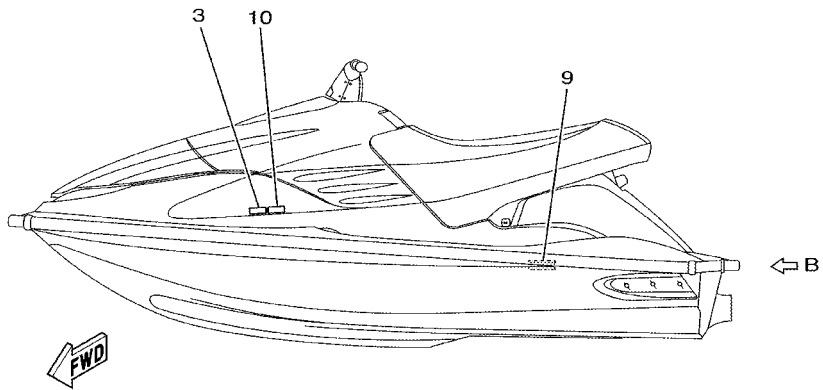
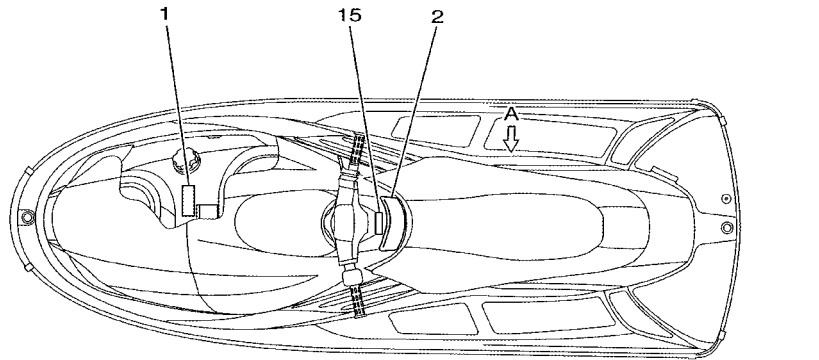
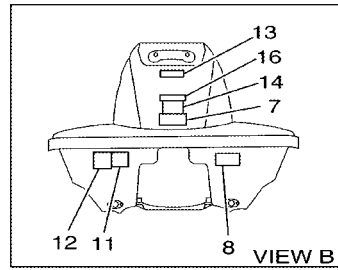
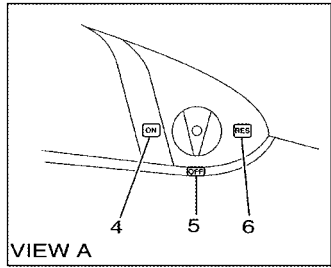


GK59100-8250

FIG. 27 GRAPHIC TOOL



REF. NO.	PART NO.	DESCRIPTION	JPN	GENE	REMARKS
1	F0N-6417B-10	GRAPHIC 1	1	1	(LH)
2	F0N-6417C-10	GRAPHIC 2	1	1	(LH)
3	F0N-6417D-10	GRAPHIC 3	1	1	(LH)
4	F0N-6417E-10	GRAPHIC 4	1	1	(LH)
5	F0N-6417F-10	GRAPHIC 5	1	1	(LH)
6	F0N-6417G-10	GRAPHIC 6	1	1	(RH)
7	F0N-6417H-10	GRAPHIC 7	1	1	(RH)
8	F0N-6417J-10	GRAPHIC 8	1	1	(RH)
9	F0N-6417K-10	GRAPHIC 9	1	1	(RH)
10	F0N-6417L-10	GRAPHIC B	1	1	(RH)
11	F0N-6417M-10	GRAPHIC C	2	2	
12	F0N-6417N-10	GRAPHIC D	1	1	
13	F0N-6417P-10	GRAPHIC E	1	1	(LH)
14	F0N-6417R-10	GRAPHIC F	1	1	(RH)
15	F0N-6417S-10	GRAPHIC G	2	2	
16	F0N-6417T-10	GRAPHIC H	1	1	
17	F0N-64122-00	EMBLEM 2	2	2	
18	GM6-6411H-00	EMBLEM, TUNING FORK	1	1	
19	F0N-64123-00	EMBLEM,3	2		
20	F0N-64174-00	GRAPHIC B	1	1	
21	EU0-65986-00	TOOL SET	1	1	
22	EU0-65901-01	TOOL BAG	1	1	

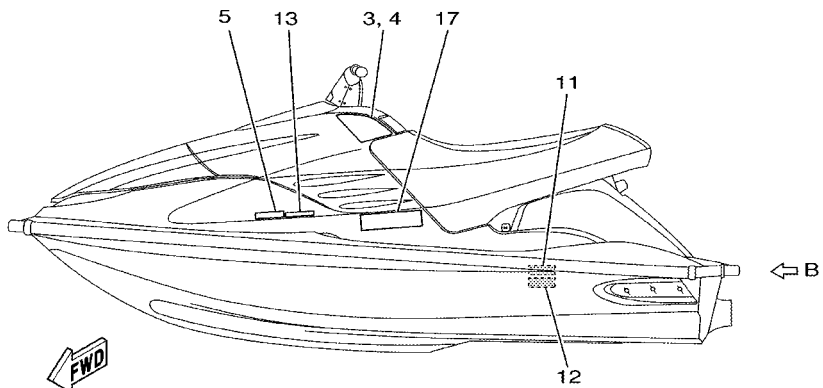
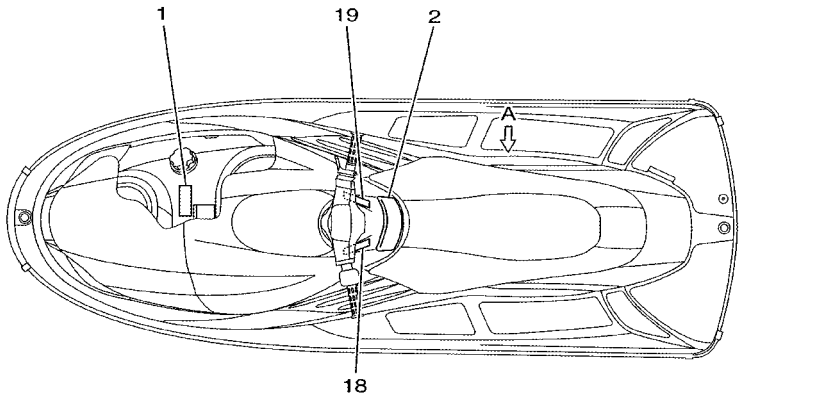
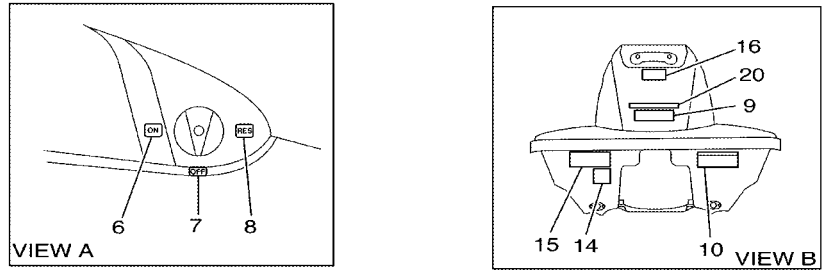


F0N3300-0280

FIG. 28 IMPORTANT LABELS

REF. NO.	PART NO.	DESCRIPTION	JPN	GENE	REMARKS
1	F0D-6415B-00	LABEL, WARNING(FUEL)	1		
2	F0N-6416C-40	LABEL, WARNING 1	1		
3	GJ1-6416F-00	LABEL, WARNING 4	1		
4	F0N-6419C-00	LABEL 2	1		
5	F0N-6419C-10	LABEL 2	1		
6	F0N-6419C-20	LABEL 2	1		
7	GK5-6419D-10	LABEL,3	1		
8	GL3-6418G-00	LABEL, CAUTION	1		
9	GL3-6418B-00	LABEL,CAUTION	1		(RH)
10	F0N-6418J-00	LABEL,CAUTION	1		
11	GK5-6418F-00	LABEL,RIGHTING	1		
12	GL3-6415G-01	LABEL,WARNING 5	1		
13	GL3-6418C-00	LABEL, CAUTION	1		
14	EU0-64197-00	PLATE CAPACITY	1		
15	GR7-6415E-20	LABEL, WARNING	1		
16	GK5-6415F-20	LABEL, WARNING	1		

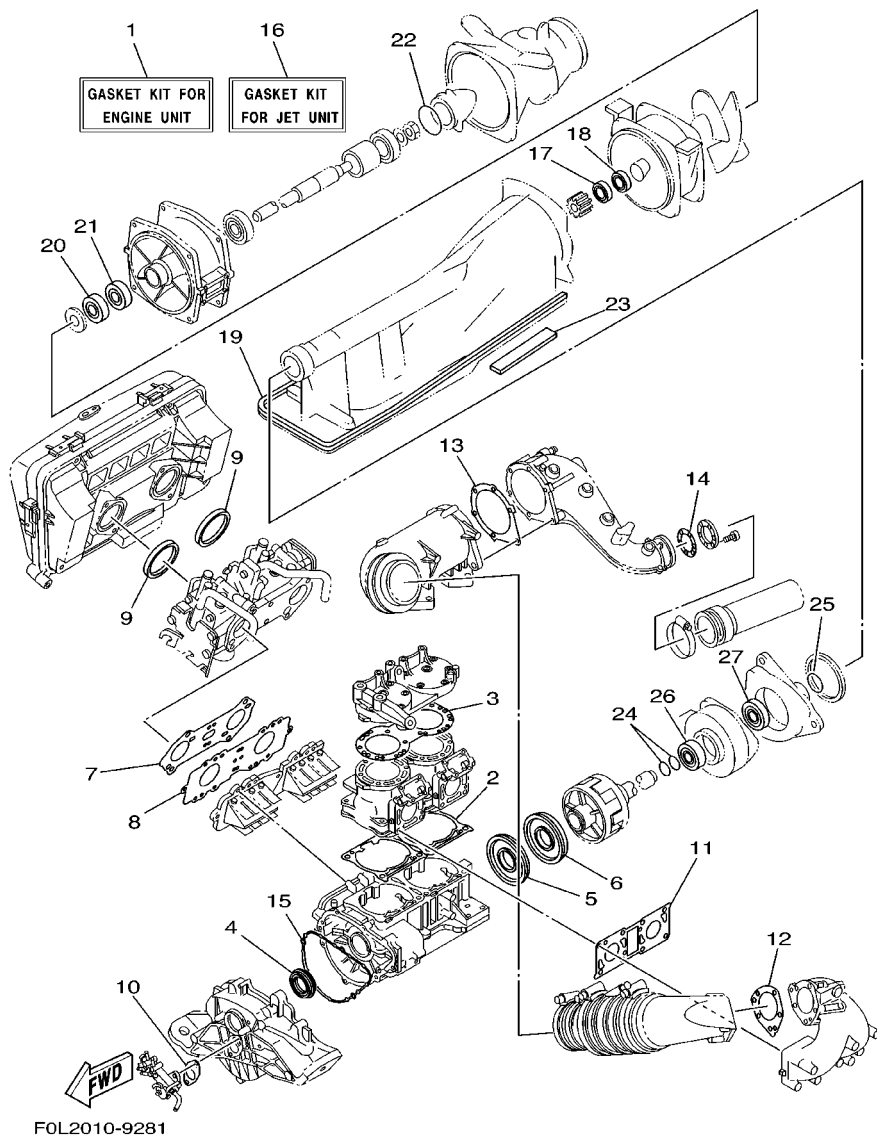
FIG. 29 IMPORTANT LABELS 2



F0N3300-0290

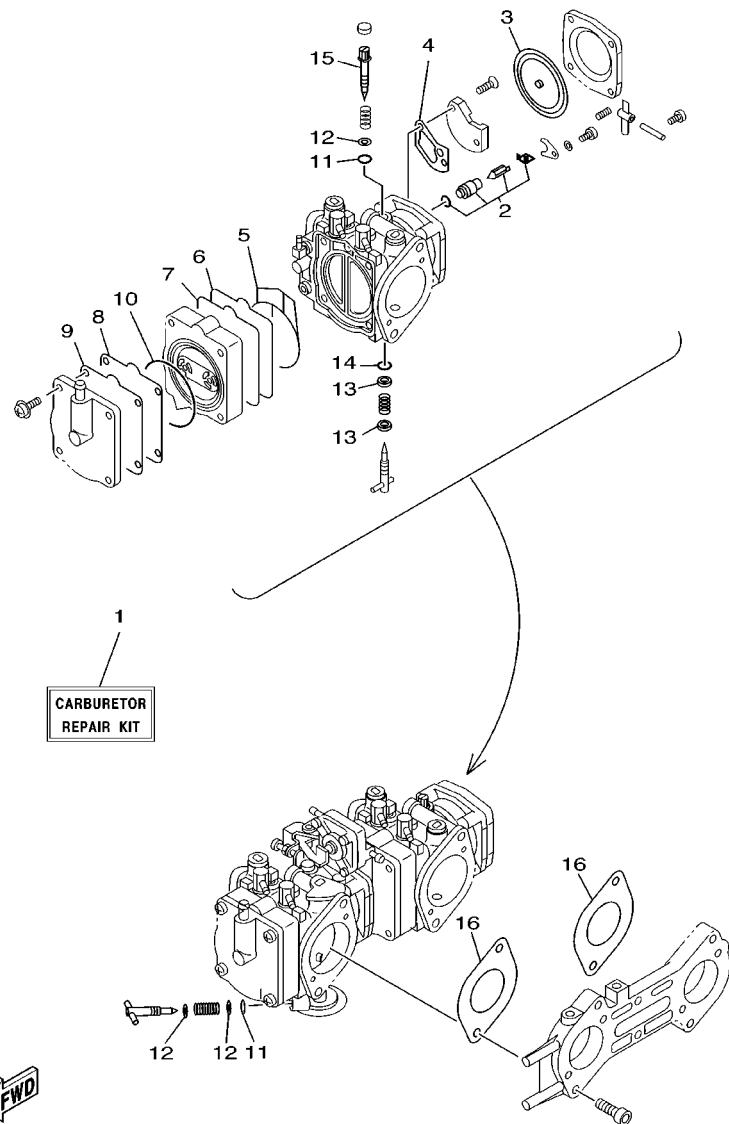
REF. NO.	PART NO.	DESCRIPTION	JPN	GENE	REMARKS
1	F0N-6416B-00	LABEL, WARNING		1	
2	F0N-6416C-50	LABEL, WARNING 1		1	
3	F0N-6416C-60	LABEL, WARNING 1		1	
4	F0N-6416C-70	LABEL, WARNING 1		1	
5	GK5-6416F-20	LABEL, WARNING 4		1	
6	F0N-6419C-00	LABEL 2		1	
7	F0N-6419C-10	LABEL 2		1	
8	F0N-6419C-20	LABEL 2		1	
9	GK5-6419D-20	LABEL,3		1	
10	GK5-6418G-20	LABEL, CAUTION		1	
11	GA7-6418B-00	LABEL,CAUTION		1	(RH)
12	GA7-6418B-20	LABEL,CAUTION		1	(RH)
13	F0N-6418J-10	LABEL,CAUTION		1	
14	GK5-6418F-00	LABEL,RIGHTING		1	
15	GK5-6416G-20	LABEL,WARNING		1	
16	GK5-6418C-20	LABEL, CAUTION		1	
17	GK5-6416H-20	LABEL,WARNING(FRANCE)		1	
18	GR7-6415E-10	LABEL, WARNING		1	
19	GR7-6415E-30	LABEL, WARNING		1	
20	GK5-6415F-30	LABEL, WARNING		1	

FIG. 30 REPAIR KIT 1



REF. NO.	PART NO.	DESCRIPTION	JPN	GENE	REMARKS
1	66E-W0001-01	GASKET KIT FOR ENGINE UNIT	1	1	
2	66E-11351-01	.GASKET, CYLINDER	2	2	
3	66E-11181-00	.GASKET, CYLINDER HEAD 1	1	1	
4	93103-35M03	.OIL SEAL	1	1	
5	93101-36M62	.OIL SEAL	1	1	
6	93101-36M61	.OIL SEAL	1	1	
7	66E-13556-00	.GASKET, MANIFOLD	1	1	
8	66E-13624-10	.PLATE, REED VALVE	1	1	
9	66E-13473-00	.O-RING	2	2	
10	63M-13116-00	.GASKET, PUMP CASE	1	1	
11	66E-14613-00	.GASKET, EXHAUST PIPE	1	1	
12	66E-14749-00	.GASKET, MUFFLER DAMPER 2	1	1	
13	66E-41124-10	.GASKET, EXHAUST OUTER COVER	1	1	
14	66E-14623-00	.GASKET, EXHAUST PIPE	1	1	
15	66E-81168-00	.O-RING	1	1	
16	66E-W0001-20	GASKET KIT FOR JET UNIT	1	1	
17	93102-17M49	.OIL SEAL	1	1	
18	93102-17M50	.OIL SEAL	1	1	
19	6R8-51367-01	.FELT, PACKING	2	2	
20	93102-25M34	.OIL SEAL	1	1	
21	93101-25M50	.OIL SEAL	1	1	
22	93210-46M16	.O-RING	1	1	
23	63N-51368-00	.FELT, PACKING	2	2	
24	93210-17MA4	.O-RING	2	2	
25	93210-35M72	.O-RING	1	1	
26	93101-25M55	.OIL SEAL	1	1	
27	93101-25M56	.OIL SEAL	1	1	

FIG. 31 REPAIR KIT 2



GU04100-9300

REF. NO.	PART NO.	DESCRIPTION	JPN	GENE	REMARKS
1	66E-W0093-01	CARBURETOR REPAIR KIT	1	1	
2	64T-14916-00	.NEEDLE	2	2	
3	6R7-14541-00	.DIAPHRAGM, PUMP	2	2	
4	6K8-14536-11	.GASKET	2	2	
5	66E-14563-01	.O-RING	2	2	
6	66E-24471-00	.DIAPHRAGM	2	2	
7	66E-24411-00	.DIAPHRAGM	2	2	
8	66E-24421-00	.VALVE, CHECK	2	2	
9	66E-24431-00	.GASKET, FUEL PUMP 1	2	2	
10	66E-14564-01	.O-RING	2	2	
11	812-14147-00	.O-RING	3	3	
12	812-14235-00	.WASHER, NEEDLE	4	4	
13	822-14235-00	.WASHER, NEEDLE	4	4	
14	583-14561-00	.O-RING	2	2	
15	6K8-14946-10	.METERING NEEDLE	2	2	
16	66E-14398-00	.GASKET	2	2	

NUMERICAL INDEX

PART NO.	GRID NO.	PART NO.	GRID NO.	PART NO.	GRID NO.	PART NO.	GRID NO.	PART NO.	GRID NO.	PART NO.	GRID NO.
66E-W0001-01	E - 6	63M-12590-10	B - 15	66E-14435-00	B - 8	66E-21426-10-8P	B - 2	6K8-51129-00	B - 13	FN8-61651-00	D - 6
66E-W0001-20	E - 6	63M-12590-20	B - 15	66E-14451-00	B - 8	EU0-23814-01	D - 15	B - 2	B - 2	EU0-61652-00	B - 15
66E-W0004-00	B - 8	63M-13116-00	B - 12	66E-14452-00	B - 8	EU0-23814-30	D - 15	C - 5	C - 5	D - 4	D - 4
66E-W0090-11-8P	B - 2		E - 6	66E-14457-10	B - 8	66E-24314-00	B - 11	62T-51129-00	C - 5	D - 6	D - 6
66E-W0093-01	E - 7	63M-13132-00	B - 12	6K8-14471-10	B - 10	66E-24315-00	B - 11	66E-51129-00	B - 13	GU0-61652-00	D - 12
66E-11111-00-94	B - 2	65U-13132-00	B - 12	66E-14480-11	B - 8	66E-24362-00	B - 9	B - 2	B - 2	FON-62127-00	D - 7
66E-11181-00	B - 2	6R3-13183-00	B - 12	6K8-14503-02	B - 9	6E0-24378-00	B - 12	66E-51142-00	B - 13	FON-6213F-11	D - 7
	E - 6	66E-13200-02	B - 12	6M6-14503-00	B - 10	63M-24378-00	B - 12	63M-51162-00	D - 4	FON-6213G-00	D - 7
66E-1131B-00	B - 4	66E-13469-00	B - 12	66E-14521-00	B - 10	66E-24411-00	B - 9	63M-51165-00	D - 4	FON-6213K-00	D - 7
66E-1131C-10	B - 4	66E-13473-00	B - 8	6K8-14523-11	B - 10		E - 7	64Y-51190-00-94	C - 5	EW2-62140-00	D - 10
66E-1131H-00	B - 4		E - 6	6K8-14527-11	B - 10	66E-24412-00	B - 10	65V-51311-01-94	C - 4	EW2-62142-00	D - 10
66E-1131J-10	B - 4	66E-13556-00	B - 8	6K8-14536-11	B - 9	66E-24413-01	B - 9	6R8-51312-03-94	C - 4	GK5-62149-00	D - 7
66E-1131M-01-8P	B - 4		E - 6		E - 7	66E-24421-00	B - 9	65V-51313-00	C - 5	GK5-6215E-00	D - 9
66E-1131S-02	B - 4	66E-13610-00	B - 8	6R7-14541-00	B - 9		E - 7	66E-51315-00-94	C - 4	GJ3-6215F-00	D - 7
66E-1131V-00	B - 4	66E-13624-10	B - 8		E - 7	66E-24431-00	B - 9	67U-51318-00-94	C - 5	GP7-62159-01	D - 7
66E-11311-00-94	B - 2		E - 6	6R7-14542-00	B - 9		E - 7	66E-51321-B0	C - 5	EU0-62241-00	D - 2
66E-1132C-00	B - 4	66E-13898-11	B - 8	6K8-14547-01	B - 9	66E-24452-00	B - 9	66E-51323-01	C - 7	EU0-62241-30	B - 15
66E-11325-00	B - 4	4KM-14137-00	B - 10	583-14561-00	B - 10	66E-24471-00	B - 9	62T-51326-00	C - 5	D - 2	D - 2
66E-1133E-10	B - 4	35H-14139-00	B - 11		E - 7		E - 7	63N-51333-02-94	C - 7	EU0-62280-00	D - 4
66E-1133F-10	B - 4	66E-14146-00	B - 10	66E-14563-01	B - 9	70R-24489-00	D - 10	62T-51348-00-5B	C - 5	EU0-62282-00	D - 4
66E-11351-01	B - 2	8F2-14147-00	B - 9		E - 7	65U-24492-00	B - 9	65V-51348-01-94	C - 4	EU0-62283-00	D - 4
	E - 6	812-14147-00	B - 9	66E-14564-01	B - 9	65U-24500-01	C - 2	6R8-51367-01	C - 4	EU0-62285-01	D - 4
66E-11400-00	B - 6		E - 7		E - 7	6K8-24524-10	C - 2		E - 6	GK5-62501-20	D - 6
66E-11412-00	B - 6	7EG-14159-00	B - 9	6R7-14569-00	B - 9	70R-24543-00	D - 10	63N-51368-00	C - 7	GK5-6251D-20	D - 6
66E-11422-00	B - 6	66E-14162-00	B - 10	6K8-14589-00	B - 10	6K8-24560-10	C - 2		E - 6	GK5-6251E-20	D - 6
66E-11431-00	B - 6	66E-14170-00	B - 10	66E-14613-00	B - 13	66E-26320-00	B - 12	66E-51381-01	C - 4	FON-6252C-00	D - 6
66E-11442-00	B - 6	439-14186-00	B - 10		E - 6	66E-41123-10-94	B - 14	67U-51387-00-94	C - 5	FON-6252D-00	D - 6
66E-11515-00	B - 6	66E-14211-00	B - 10	66E-14615-00	B - 13	66E-41124-10	B - 14	62E-51673-00	C - 5	FON-62552-00	D - 6
66E-11603-01	B - 6	3G2-14231-30	B - 9	66E-14623-00	B - 15		E - 6	61L-5169A-00	B - 14	FON-62553-00	D - 6
66E-11631-00-A0	B - 6	830-14231-18	B - 9		E - 6	6R7-42316-00	C - 5	63M-5316M-00	D - 4	GK5-62576-20	D - 6
66E-11631-00-B0	B - 6	812-14235-00	B - 10	66E-14625-00	B - 13	66E-42414-00	C - 4	FN8-6131B-00	D - 15	FON-6266B-10	D - 8
66E-11631-00-C0	B - 6		E - 7	66E-14711-10-8P	B - 13	66E-42717-00	B - 8	GH1-6141B-00	D - 14	FON-6266D-00	D - 2
66E-11631-00-D0	B - 6	822-14235-00	B - 10	66E-14712-10-8P	B - 13	67U-4383A-00	D - 12	GH1-6141D-01	D - 14	FON-62664-00	C - 15
66E-11633-00	B - 6		E - 7	66E-14721-10-94	B - 14	6M6-44517-A1-5B	B - 3	GK5-6142A-10	E - 2	FN8-6269B-00	D - 4
66E-11634-00	B - 6	66E-14243-00	B - 10	66E-14749-00	B - 13	66E-44532-00	B - 2	GH1-6143C-30	D - 14	GA7-6271B-10	D - 8
66E-11651-00	B - 6	4N0-14251-00	B - 11		E - 6	663-45119-00	B - 14	FON-61443G-00	D - 14	FON-62713-00	C - 14
66E-11685-00	B - 6	62T-14251-10	B - 2	66E-14752-10	B - 15	6K8-45127-00	C - 7	GA7-6144D-00	E - 2	GH1-6273B-01	C - 8
66E-11832-01	B - 4	66E-14251-00	B - 11	66E-14763-10-94	B - 15	66E-45214-00-94	C - 4	GK5-6146F-00	D - 13	FX1-62733-00	C - 8
66E-11998-10	B - 4	6R7-14253-00	B - 9	66E-14771-01-94	B - 15	65V-45318-00	C - 4	EU0-61461-01	D - 13	FJ0-6284F-00	C - 14
66E-12576-00	B - 13	66E-14280-00	B - 10	66E-14781-10-94	B - 2	62G-45331-01-94	C - 7	F0N-61467-00	D - 15	FJ0-62840-02	C - 14
66E-12577-00	B - 14	66E-14286-00	B - 10	66E-14791-00-94	B - 14	65U-45332-02-94	C - 7	GK5-61468-00	D - 15	FON-62843-00	C - 14
66E-12578-00	B - 15	66E-14291-00	B - 10	64T-14916-00	B - 9	61L-45378-00	C - 7	GH1-61469-00	D - 15	FN8-62884-00	C - 14
66E-12579-00	B - 14	3XP-14294-00	B - 11		E - 7	66E-45511-10	C - 4	FON-61480-00	D - 13	GH1-62891-01	C - 14
63M-12580-00	B - 15	67U-14301-01	B - 9	3KW-14932-00	B - 10	65V-45538-00	C - 4	GK5-61541-01	D - 14	GK5-62892-00	C - 14
63M-12581-00	B - 14	67U-14302-01	B - 9	6K8-14946-10	B - 10	66E-45593-10-94	B - 6	GK5-61552-02	D - 14	FON-6351H-00	D - 6
	B - 15	66E-14398-00	B - 10		E - 7	66E-4581J-00	B - 6	EW2-61553-00	D - 14	FON-6351J-00	D - 6
67U-12588-00	B - 2		E - 7	66E-15100-10-8P	B - 2	66E-45813-10-94	B - 6	EU0-61588-00	D - 15	FON-6351K-00	D - 6
67U-12589-00	B - 13	66E-1441E-00	B - 8	66E-21425-10-8P	B - 2	66E-46882-00	C - 4	F0D-61624-01	D - 5	FON-6351M-00	D - 6

NUMERICAL INDEX

PART NO.	GRID NO.	PART NO.	GRID NO.	PART NO.	GRID NO.	PART NO.	GRID NO.	PART NO.	GRID NO.	PART NO.	GRID NO.
GH1-6354D-60	D - 6	FON-6417T-10	E - 3	FON-6591C-00	D - 2	FJ0-67766-00	D - 9	6M6-81866-00	C - 10	90116-08M64	B - 14
FON-6358F-00	D - 6	FON-6417A-00	E - 3	FJ0-65911-01	D - 2	EU0-67767-31	D - 10	66E-81921-00	C - 11	90116-10M65	B - 14
FON-6358G-00	D - 6	GA7-6418B-00	E - 5	EU0-65986-00	E - 3	FN8-67816-00	C - 2	6G1-81941-10	C - 11	90116-10M66	B - 14
FON-6358H-00	D - 6	GA7-6418B-20	E - 5	FON-6724E-00	D - 13	EU0-67817-00	C - 2	6M6-81952-01	C - 11	90119-05912	D - 12
FON-6358J-00	D - 6	GL3-6418B-00	E - 4	FON-6724F-00	D - 13	FN8-67831-01	D - 11	63M-81960-00	C - 11	90119-06M13	B - 3
FON-6371A-10	D - 8	GK5-6418C-20	E - 5	67U-67242-00	D - 13	EU0-67832-00	D - 11	EU0-82110-09	C - 13	90119-06M78	B - 3
FON-6371B-10	D - 8	GL3-6418C-00	E - 4	EW2-67243-00	D - 13	FN8-67833-00	D - 11	6M6-82117-21	C - 12	90119-06900	C - 14
GK5-63729-00	D - 8	GH1-6418D-01	D - 10	GD0-67249-00-05	C - 8	EU0-67834-00	D - 11	61L-82117-00	C - 12	90119-06901	C - 14
GA7-63768-00	C - 14	GK5-6418F-00	E - 4	GD0-67249-00-10	C - 8	EU0-67835-00	D - 11	66E-82117-10	C - 12	90119-06908	D - 2
FON-6377B-00	C - 15		E - 5	GJ1-67250-01	D - 14	EU0-67839-00	D - 11	66E-82150-00	C - 11	90119-06920	C - 13
FON-6377C-00	C - 15	GK5-6418G-20	E - 5	67U-67252-00	D - 13	GE2-6784A-00	D - 9	6G1-82151-00	C - 11	90119-06947	C - 7
GU3-63774-00	D - 8	GL3-6418G-00	E - 4	GJ1-67255-00	D - 14	FJ0-67841-01	D - 9	6K8-82159-00	C - 11	90119-06950	D - 15
FON-6378C-00	D - 8	FON-6418J-00	E - 4	EW2-67256-00	D - 14	FON-67844-00	D - 11	62E-82371-11	C - 11	90119-06961	D - 8
GJ3-63850-03	D - 8	FON-6418J-10	E - 5	EW2-67257-01	D - 14	EU0-67869-00	D - 11		C - 12	90119-08MA1	B - 2
GM6-6411H-00	E - 3	FON-6419C-00	E - 4	EW2-67258-01	D - 14	FOM-6820A-10	C - 13	66E-82553-00	C - 12	90119-08MA2	B - 2
FON-64122-00	E - 3		E - 5	EW2-67259-01	D - 14	EW2-68211-00	C - 13	67U-82560-00	C - 12	90119-08M18	C - 9
FON-64123-00	E - 3	FON-6419C-10	E - 4	GK5-67267-00	D - 13	EU0-68218-04	C - 13	6R7-83623-40	C - 11	90119-08M55	B - 3
FOD-6415B-00	E - 4		E - 5	EU0-67324-00	B - 3	EU0-68221-00	C - 13	6R7-83623-50	C - 11	C - 9	C - 9
GR7-6415E-10	E - 5	FON-6419C-20	E - 4	EU0-67354-00-01	B - 3	EU0-68221-30	C - 13	63N-83623-00	C - 11	90119-08M56	B - 3
GR7-6415E-20	E - 4		E - 5	EU0-67354-00-03	B - 3	FOM-68238-00	C - 13	682-84385-01	B - 15	90119-08M61	B - 3
GR7-6415E-30	E - 5	GK5-6419D-10	E - 4	EU0-67354-00-05	B - 3	GH1-6824C-00	C - 13	66E-85112-00-94	B - 5	90119-08038	D - 15
GK5-6415F-20	E - 4	GK5-6419D-20	E - 5	EU0-67354-00-10	B - 3	GU0-6824E-00	B - 4	66E-85510-00	C - 9	90119-08904	B - 3
GK5-6415F-30	E - 5	FON-6419A-10	D - 8	EU0-67354-00-20	B - 3	GK5-68244-00	C - 13	66E-8552A-00-94	C - 11	C - 8	C - 8
GL3-6415G-01	E - 4	FON-64195-10	D - 8	EW2-67354-00-01	C - 7	FON-68310-00	D - 14	66E-8552E-00	C - 11	90119-08925	D - 15
FON-6416B-00	E - 5	EU0-64197-00	E - 4	EW2-67354-00-03	C - 7	FK7-68312-02	D - 14	66E-85540-00	C - 11	90119-08953	C - 8
FON-6416C-40	E - 4	FON-64742-00	D - 8	EW2-67354-00-05	C - 7	FK7-68313-01	D - 14	64X-85546-00	C - 11	90119-08954	D - 11
FON-6416C-50	E - 5	FON-6476A-10-P0	D - 2	EW2-67354-00-10	C - 7	GA7-6834C-00	D - 14	66E-85550-00	C - 9	90119-08955	C - 7
FON-6416C-60	E - 5	FON-6514M-00	C - 14	GU0-6753B-00	D - 12	FON-6883N-00	D - 5	64X-85570-01	C - 11	90119-08957	C - 11
FON-6416C-70	E - 5	FON-6514N-00	C - 14	FON-67550-00	D - 12	FON-6883P-00	D - 5	66E-85820-11	B - 4	C - 8	C - 8
GJ1-6416F-00	E - 4	FON-6515N-10	C - 15	FON-67555-00	D - 12	FON-6883T-00	D - 5	66E-85825-00	B - 5	90119-08960	B - 3
GK5-6416F-20	E - 5	FON-6516B-01	C - 14	FJ0-67565-01	D - 12	66E-81168-00	C - 9	90101-06M04	C - 5	90119-10M00	B - 14
GK5-6416G-20	E - 5	FON-6516C-10	C - 14	F0E-67570-00	D - 12		E - 6	90101-06M25	B - 10	B - 2	B - 2
GK5-6416H-20	E - 5	FON-6516N-00-P0	C - 14	GK5-67577-00	B - 15	65U-81317-10	C - 12	90105-08M66	B - 13	90119-10M07	B - 2
FON-6417B-10	E - 3	GP7-6517C-00	D - 2	GJ1-67578-20	D - 12	6M6-8132W-00	C - 11	90105-08M83	B - 13	90119-10M10	B - 14
FON-6417C-10	E - 3	FON-6517D-01	D - 2	FON-6759B-00	D - 11	66E-81328-00	C - 9		B - 14	90119-10M18	B - 15
FON-6417D-10	E - 3	GP7-6517F-10	D - 2	GH1-6759B-00	D - 11	66E-81337-10-8P	C - 9	90105-08M84	B - 13	90119-10958	C - 7
FON-6417E-10	E - 3	GK5-6517G-01	C - 15	GH1-6759C-00	D - 11	63M-81800-00	C - 10	90105-08M86	B - 8	90149-03M15	D - 13
FON-6417F-10	E - 3	FON-6517P-00	D - 2	GH1-6759D-00	D - 9	3AJ-81809-00	C - 10	90105-10M82	B - 14	90149-04904	E - 2
FON-6417G-10	E - 3	FON-6517U-00	D - 2	GD0-6761D-00	D - 4	6M6-81826-00	C - 10	90105-10M85	B - 13	90149-05918	D - 2
FON-6417H-10	E - 3	FON-65192-00	D - 2	FJ0-67618-00	D - 4	6M6-8183E-00	C - 10	90105-10M86	B - 13	90149-05919	C - 15
FON-6417J-10	E - 3	FON-65193-00	D - 2	F0E-677H0-00	D - 10	6M6-81830-00	C - 10	90109-05MA0	C - 11	90149-05938	E - 2
FON-6417K-10	E - 3	GK5-65193-00	C - 15	FN8-6771K-00	D - 11	63M-81830-00	C - 10	90109-05M95	B - 4	90149-05946	D - 7
FON-6417L-10	E - 3	FON-65540-01	D - 2	GH1-67711-01	D - 10	6M6-81840-10	C - 10	90109-06M00	B - 8	90149-05959	D - 14
FON-6417M-10	E - 3	FON-65578-00	C - 15	FJ0-67713-00	D - 10	11H-81844-00	C - 10	90109-06M92	B - 2	90149-05960	D - 2
FON-6417N-10	E - 3	FON-65578-10	D - 3	FN8-67714-02	D - 10	6M6-81844-00	C - 11	90109-10M72	C - 9	90149-05981	E - 2
FON-6417P-10	E - 3	FON-65578-20	D - 3	FON-67743-00	D - 11	1FK-81847-00	C - 10	90110-04M03	B - 4	90149-06973	D - 8
FON-6417R-10	E - 3	GA7-65772-00	D - 12	GH1-6775B-00	D - 9	6M6-81850-00	C - 10	90111-06021	D - 2	90157-05M17	B - 9
FON-6417S-10	E - 3	EU0-65901-01	E - 3	GH1-6775C-00	D - 9	6M6-81865-00	C - 10	90116-06M67	B - 5	90159-05900	D - 14

NUMERICAL INDEX

PART NO.	GRID NO.	PART NO.	GRID NO.	PART NO.	GRID NO.	PART NO.	GRID NO.	PART NO.	GRID NO.	PART NO.	GRID NO.
90170-22M11	C - 2	90381-05041	C - 15	90446-27M73	D - 4	90600-91755	D - 4	92990-06200	D - 15	93109-08M07	B - 4
90179-05633	C - 15	90387-06M05	C - 12	90446-27M95	B - 15	90601-11062	D - 10		D - 5	93210-17MA4	C - 7
90179-06959	D - 5	90387-06921	E - 2	90450-14M05	B - 13	90601-14271	D - 14		D - 8		E - 6
90179-10972	C - 8	90387-08M06	C - 6		B - 14	90601-15573	D - 11	92990-06600	B - 10	93210-22ME5	D - 4
90180-06900	C - 13	90387-08M08	C - 5		B - 2	90601-16274	D - 11		C - 12	93210-35M72	C - 7
	C - 8	90430-13909	D - 5		C - 5	90601-17586	D - 12	92990-08200	B - 4		E - 6
90180-08907	D - 11	90430-16910	D - 12	90450-18M09	B - 13	90601-20005	D - 4		D - 15	93210-46M16	C - 5
90180-08912	C - 7	90445-07M25	B - 12		B - 14	90601-20006	B - 12		D - 5		E - 6
90190-06006	C - 14	90445-07M42	B - 11		B - 15		C - 11	92990-08600	B - 14	93305-307U0	B - 6
90201-05M09	C - 9	90445-07M78	B - 11		D - 12		C - 13	92990-10200	D - 15	93306-205U0	C - 4
90201-05928	D - 14	90445-07M79	B - 11		D - 2		C - 2		D - 8	93306-205U6	C - 7
90201-06M31	C - 5	90445-07M82	B - 12	90450-22M14	B - 13		C - 3	92990-10600	B - 14	93306-208U1	B - 6
90201-065F3	B - 5	90445-09M17	B - 14		B - 15		D - 10		C - 13	93306-304U1	C - 4
	D - 5	90445-10MG8	C - 2	90450-99M02	B - 13		D - 5		C - 8	93306-308U1	B - 6
	D - 8	90445-10MG9	C - 2	90450-99M18	B - 13	90601-20009	C - 13	92990-14600	C - 8	93310-422U2	B - 6
90201-08M09	B - 4	90445-10MH0	B - 11	90460-90M11	B - 15		C - 2		D - 11	93310-627U6	B - 6
90201-08929	C - 8	90445-10MH2	B - 11	90464-06M29	C - 11		D - 12	92990-16200	D - 12	93410-08M12	B - 4
90201-22M04	B - 6	90445-10MH3	B - 11	90464-07M20	B - 12	90601-20027	D - 7	92990-16600	C - 4	93430-47M04	C - 7
90201-24M02	B - 7	90445-10MH4	B - 11	90465-11M10	B - 12	90604-80759	D - 5	92995-06100	C - 12	93440-25M08	C - 10
90267-40935	D - 11	90445-10MH5	B - 11		B - 14	90604-80775	D - 5	92995-06600	B - 12	93450-18M06	C - 10
90267-48007	B - 12	90445-10MH6	C - 2		B - 8	90604-80793	D - 12		B - 15	93606-12019	B - 13
	C - 13	90445-10MH7	B - 11		C - 12	90604-80794	D - 12		B - 8		B - 14
	C - 2	90445-10NG9	C - 2		C - 2	90604-80798	B - 15		C - 11		B - 2
	C - 3	90445-11M72	B - 12		D - 10	90605-50201	D - 2		C - 4		B - 3
	D - 10	90445-11900	D - 10		D - 11	90699-36085	D - 13		C - 5		C - 4
	D - 7	90445-14M40	D - 4		D - 4	90699-50004	D - 10		C - 6		C - 5
90267-48909	D - 2	90445-18M02	B - 15		D - 7	90699-50050	D - 10		C - 7		C - 7
90267-48925	D - 4	90445-19M09	D - 4		D - 9	90699-50090	C - 13	92995-08600	C - 5	93606-19M23	B - 8
	D - 7	90445-19M10	D - 4	90465-12M53	C - 11	90699-50100	D - 10		C - 6	93608-16M16	C - 9
90267-48931	C - 14	90446-07M14	B - 12	90465-12M56	B - 13	91318-06014	C - 9		C - 7	94702-00204	C - 12
	C - 15	90446-07M96	B - 11		C - 11	91318-06030	C - 9	93101-25M50	C - 4	94709-00204	C - 12
90267-48932	C - 13	90446-07M97	B - 11	90465-13M11	D - 4	91490-16010	D - 11		E - 6	95317-16700	C - 5
	C - 2	90446-10MA0	B - 11	90465-13M36	C - 11	91790-05040	D - 10	93101-25M55	C - 7	95333-08600	B - 14
	D - 10	90446-10MA1	B - 11	90465-13M60	B - 13	92903-06600	B - 4		E - 6	95380-06700	C - 10
	D - 6	90446-10MA2	B - 11	90465-20M78	B - 13		B - 8	93101-25M56	C - 7		C - 5
90267-48934	D - 2	90446-14M98	B - 11	90467-08M10	C - 13		C - 10		E - 6		C - 6
	E - 2	90446-14M99	B - 11	90467-11032	D - 10	92903-08600	B - 2	93101-36M61	B - 6		D - 5
90267-48938	D - 12	90446-17ME5	B - 12	90480-06M43	C - 12		C - 10		E - 6	95380-10600	B - 14
90267-48940	C - 14		C - 2	90480-06M46	C - 4	92990-04600	C - 2	93101-36M62	B - 6		C - 13
	C - 2	90446-17MF9	C - 2	90480-14023	B - 4	92990-05200	D - 2		E - 6		C - 8
	D - 10	90446-20M65	B - 13	90501-14M73	C - 10		D - 3	93102-17M49	C - 4	95380-14700	C - 7
	D - 2	90446-21001	D - 2	90560-22281	D - 14		D - 4		E - 6		D - 11
90267-48953	D - 8	90446-24ME7	B - 2	90600-91736	B - 12		D - 7	93102-17M50	C - 4	95720-05300	C - 13
90267-48957	B - 7	90446-24M52	B - 15		C - 13	92990-05600	D - 11		E - 6		C - 14
90269-05001	C - 14	90446-24M79	B - 4		C - 2	92990-06100	C - 10	93102-25M34	C - 4		D - 3
90280-05013	C - 9	90446-24M89	B - 15		D - 10	92990-06200	C - 14		E - 6		D - 7
90380-12M29	B - 3	90446-27MF2	C - 2		D - 4		C - 15	93103-35M03	B - 6	95720-06300	C - 14
	C - 9	90446-27M55	D - 4		D - 7		D - 14		E - 6		C - 15

NUMERICAL INDEX

PART NO.	GRID NO.	PART NO.	GRID NO.	PART NO.	GRID NO.	PART NO.	GRID NO.	PART NO.	GRID NO.
95720-06300	D - 13								
	D - 14								
	D - 15								
	D - 8								
95720-08300	B - 4								
	C - 8								
	D - 15								
	D - 5								
95720-10300	D - 15								
	D - 8								
95780-06300	B - 5								
97013-06025	B - 4								
	B - 8								
97013-06045	B - 8								
97013-08025	C - 10								
97013-08030	B - 2								
97013-08045	B - 2								
97080-06030	D - 14								
97095-06012	C - 11								
97095-06016	C - 12								
97095-06018	C - 7								
97095-06020	B - 12								
	C - 5								
97095-06025	C - 4								
97095-06035	B - 8								
	C - 5								
97095-06045	C - 4								
97095-08018	C - 5								
97095-08020	C - 6								
97095-08025	C - 7								
97513-05514	C - 9								
97780-50114	D - 2								
	D - 4								
97780-50120	D - 2								
97780-50520	D - 4								
97780-60425	C - 12								
97880-03008	D - 14								
97880-04010	C - 2								
97880-05010	B - 10								
97880-05025	D - 14								
97880-06016	C - 12								
97880-06030	C - 12								
97885-06016	B - 15								
97890-05014	B - 10								
98780-05020	B - 4								
98780-06025	C - 15								

CONTENTS

CYLINDER. CRANKCASE 1	B2
CYLINDER. CRANKCASE 2	B4
CRANKSHAFT. PISTON	B6
INTAKE	B8
CARBURETOR	B9
OIL PUMP	B12
EXHAUST 1	B13
FUEL	C2
JET UNIT 1	C4
JET UNIT 2	C7
GENERATOR	C9
STARTING MOTOR	C10
ELECTRICAL 1	C11
ELECTRICAL 2	C13
ENGINE HATCH 1	C14
ENGINE HATCH 2	D2
HULL. DECK	D4
GUNWALE. MAT	D6
VENTILATION	D7
SEAT. UNDER LOCKER	D8

OIL TANK	D9
FUEL TANK	D10
EXHAUST 2	D12
CONTROL CABLE	D13
STEERING 1	D14
STEERING 2	E2
GRAPHIC. TOOL	E3
IMPORTANT LABELS	E4
IMPORTANT LABELS 2	E5
REPAIR KIT 1	E6
REPAIR KIT 2	E7

INDEX

NUMERICAL INDEX	M1
-----------------------	----