

YAMAHA

Marine

Water Vehicles

**WR500Q(EU0C)
(EU0D)
(EU07)
(EU08)**



PARTS CATALOGUE

YAMAHA MOTOR CO.,LTD.

12EU0-100E1 ●

FOREWORD

This Parts Catalogue is related to the parts in use for the Yamaha WR500Q(EU0). When you are ordering replacement parts for the WR500Q(EU0), refer to this Parts Catalogue and quote both part numbers and part names correctly.

1. Modifications or additions which have been made after issue of the Parts Catalogue will be announced in the Yamaha Parts News.

It is advisable that according to the Yamaha Parts News you make necessary corrections to the Parts Catalogue on hand to keep it up-to-date.

2. Abbreviations

The following abbreviations are used in this Parts Catalogue.

- U.R. Use size (thickness) and/or number as required.
- U.N. Use as many as you need.
- A.P. Alternate Parts
- L.M. Local Made
- F# Frame No. (Applicable machine No.)

3. The parts marked with (+) in the parts number column of this Catalogue are not supplied with by Yamaha, those have to be found locally.

4. Parts, which are to be supplied in the form of assemblies, are listed with an indention of one letter's space, and a dot (.) is put against the name of each part.

EXAMPLE CARBURETOR ASS'Y
 . JET, pilot
 . NOZZLE, main

5. Indication of No. of constituent parts for assembly

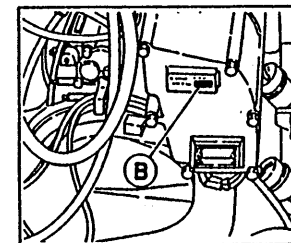
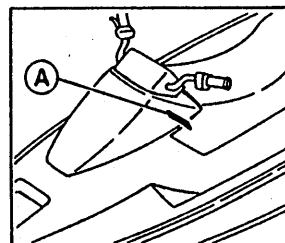
The numeral appearing to the right of each constituent part under the description indicates the quantity of such parts for each individual assembly unit.

EXAMPLE

Part No.	Description	Q'ty	Remarks
2F5-83310-60	FRONT FLASHER LIGHT ASS'Y	2	
115-83311-60	. BULB (6V-18W)	1	
1M1-83309-60	. REFLECTOR	1	

6. Initial Serial No. and Color Code

Ⓐ Hull Serial No.	EU0-902713 and following EU0-231001 and following	(EXCEPT USA)
Ⓑ Engine Serial No.	6K8-070745 and following	



Color Code	Color Name	Abbreviate
EK	METALLIC MARINE SILVER	MMS

7. Applicable colors of graphics are represented in the "Remarks" column by the letter(s) appropriately picked out of the full word(s) showing such colors.

EXAMPLE

Part No.	Description	Q'ty	Remarks
2N4-24110-00-X5	FUEL TANK COMP.	1	MAXIM RED
3J1-24240-10	. GRAPHIC, fuel tank set	1	for MXR

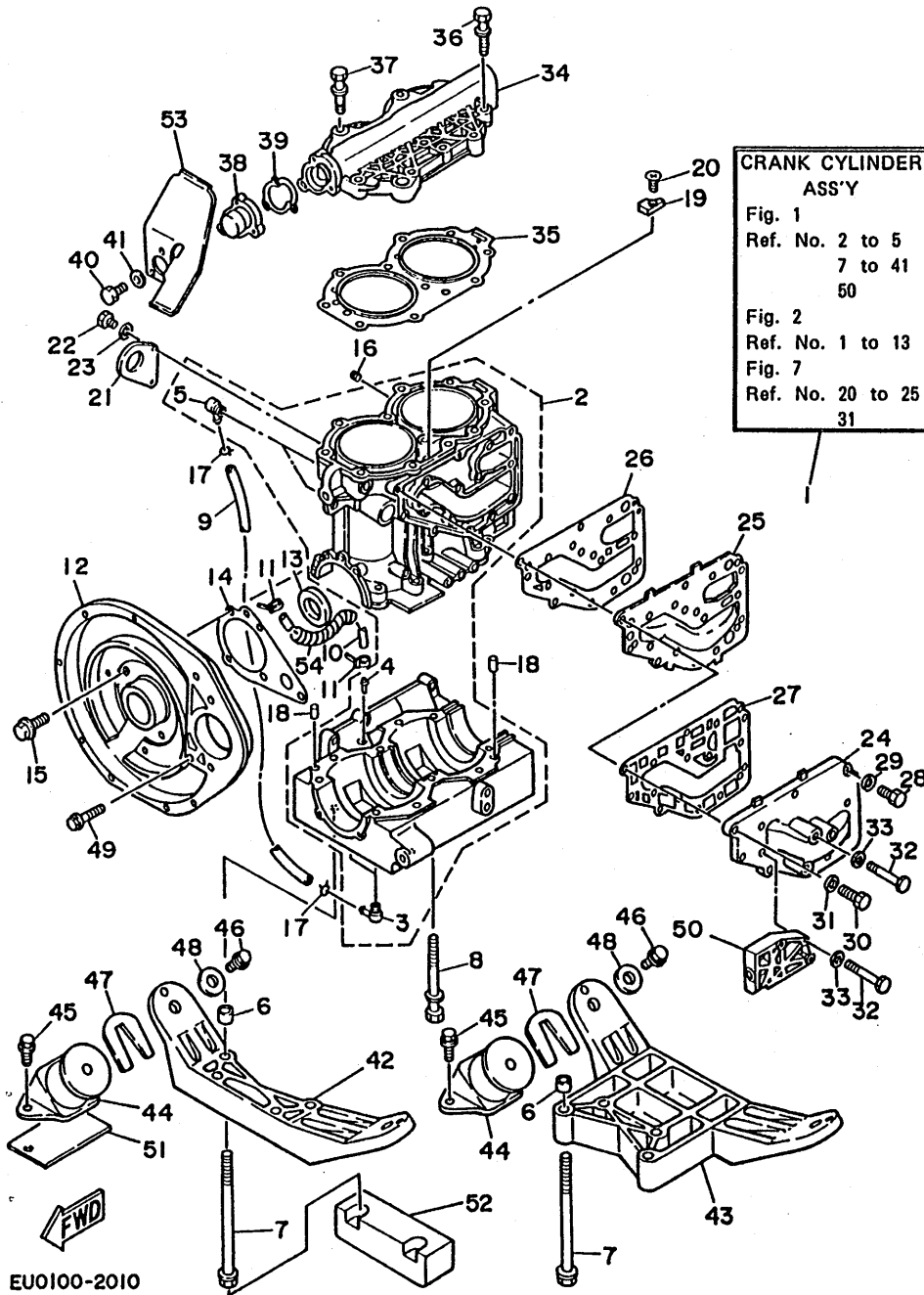
CONTENTS

Cylinder, Crankcase	B2 ~ B4
Crankshaft, Piston	B5 ~ B6
Intake	B7
Carburetor	B8 ~ B9
Exhaust 1	B10
Jet Unit	B11 ~ B13
Generator	B14 ~ B15
Starting Motor	C2
Electrical 1	C3 ~ C4
Hull, Deck 1	C5 ~ C7
Hull, Deck 2	C8 ~ C9
Gunwale, Mat	C10
Ventilation	C11
Seat	C12 ~ C13
Fuel Tank	C14 ~ C15
Exhaust 2	D2 ~ D3
Control Cable	D4
Steering	D5 ~ D6
Graphic, Tool	D7 ~ D8
Gasket Kit	D9

INDEX

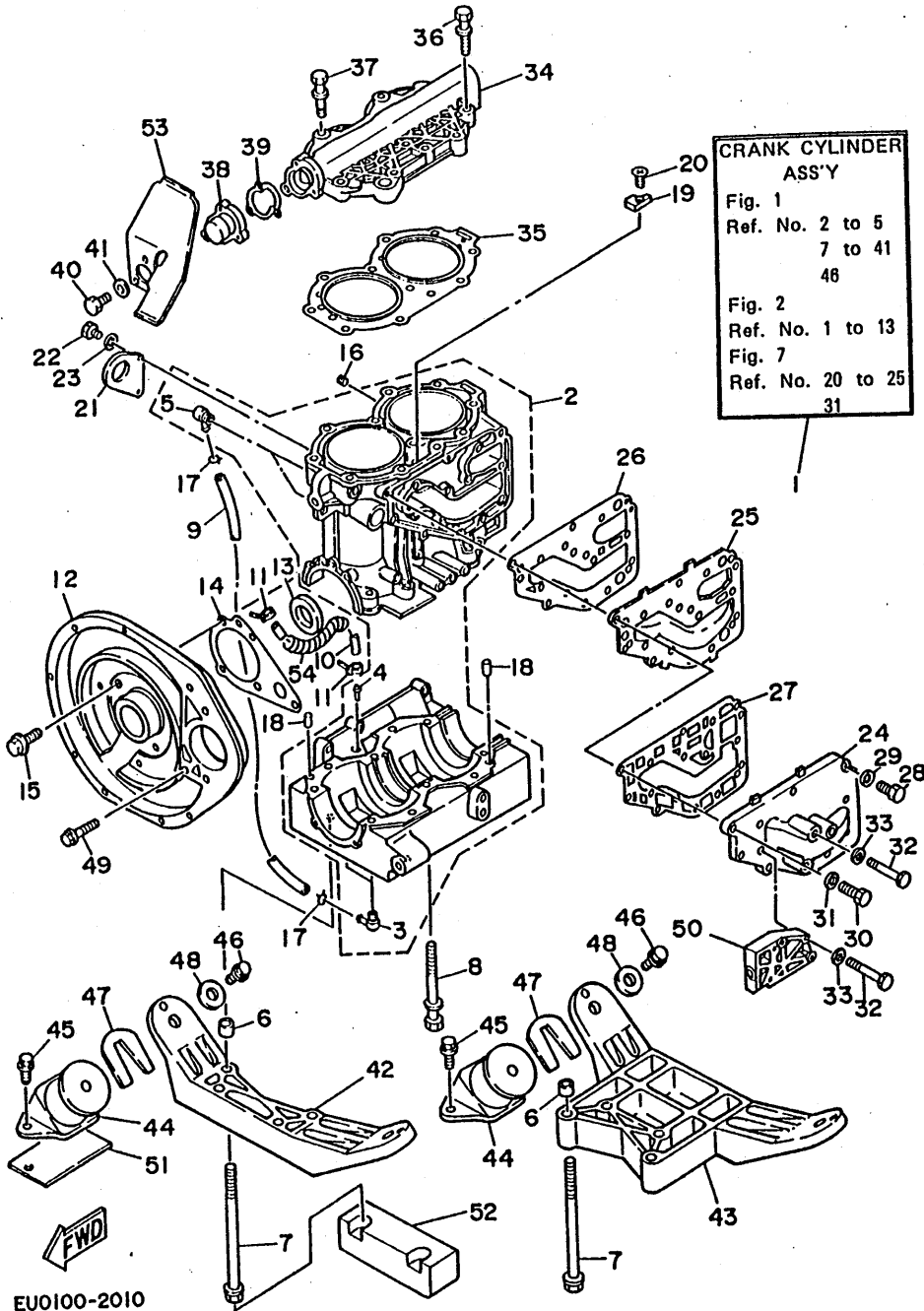
Numerical Index	M1 ~ M3
-----------------------	---------

FIG. 1 CYLINDER. CRANKCASE



REF. NO.	PART NO.	DESCRIPTION	Q'TY	REMARKS
1	6K8-W0090-04-EK	CRANK CYLINDER ASSY	1	
2	6K8-15100-01-94	CRANKCASE ASSY	1	
3	650-11372-00	.NIPPLE, hose	2	
4	650-24378-00	.PIPE, joint 4	1	
5	646-11370-00	.CHECK VALVE ASSY	2	
6	90387-08044	COLLAR	4	
7	90119-08M36	BOLT, with washer	8	
8	90119-08M35	BOLT, with washer	2	
9	90445-07M12	HOSE	2	
10	90445-09222	HOSE	1	
11	90465-11M10	CLAMP	2	
12	6K8-15359-01-94	HOUSING, oil seal	1	
13	93102-25M11	OIL SEAL	1	
14	6K8-15369-A1	GASKET, oil seal housing	1	
15	90105-06M09	BOLT, washer based	4	
16	90336-10003	PLUG, taper	1	
17	90467-06016	CLIP	4	
18	93606-12019	PIN, dowel	2	
19	689-11325-00	ANODE	1	
20	92780-06020	SCREW, flat head	1	
21	6K8-11119-00	HANGER, engine	1	
22	97313-06012	BOLT	2	
23	92990-06600	WASHER, plate	2	
24	6K8-41123-00-9M	OUTER COVER, exhaust	1	
25	6K8-41121-00-9M	INNER COVER, exhaust	1	
26	6K8-41124-A1	GASKET, exhaust cover 1	1	
27	6K8-41122-A1	GASKET, exhaust cover 2	1	
28	97313-06025	BOLT	1	

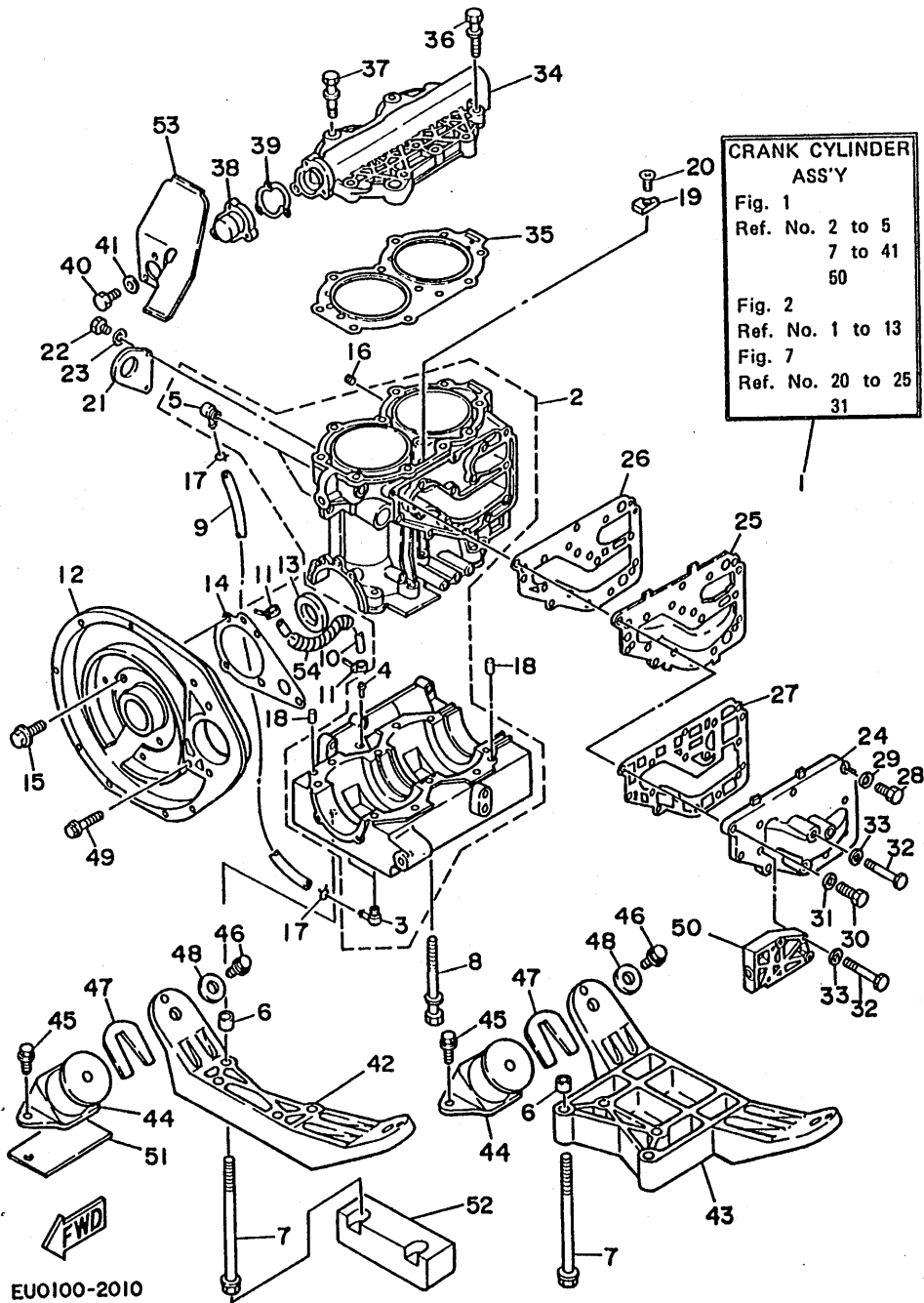
FIG. 1 CYLINDER. CRANKCASE



REF. NO.	PART NO.	DESCRIPTION	Q'TY	REMARKS
29	92990-06600	WASHER, plate	1	
30	97313-06030	BOLT	8	
31	92990-06600	WASHER, plate	9	
32	97313-06050	BOLT	6	
33	92990-06600	WASHER, plate	4	
34	689-11111-01-94	HEAD, cylinder 1	1	
35	6K8-11181-A1	GASKET, cylinder head 1	1	
36	90119-08M18	BOLT, with washer	9	
37	90119-08M21	BOLT, with washer	2	
38	655-12413-01-9M	COVER, thermostat	1	
39	655-12414-A1	GASKET, cover	1	
40	97313-06020	BOLT	3	
41	92990-06600	WASHER, plate	3	
42	6K8-44518-00-94	BRACKET COMP.	1	
43	6K8-44519-00-94	BRACKET	1	
44	6K8-44517-00-9M	MOUNTRUBBER	4	
45	90119-08038	BOLT, with washer	8	
46	90119-08904	BOLT, with washer	4	
47	EU0-67354-00-01	SHIM (T=0.1)	1	UR
	EU0-67354-00-03	SHIM (T=0.3)	1	UR
	EU0-67354-00-05	SHIM (T=0.5)	1	UR
	EU0-67354-00-10	SHIM (T=1.0)	1	UR
	EU0-67354-00-20	SHIM (T=2.0)	1	UR
48	EU0-67324-00	PLATE	4	
49	90105-08M38	BOLT, washer based	1	
50	6K8-81822-00-94	BRACKET, starting motor	1	
51	EU0-67323-00	LINER	1	UN
52	EU0-67361-01	DAMPER	1	

FIG. 1 CYLINDER. CRANKCASE

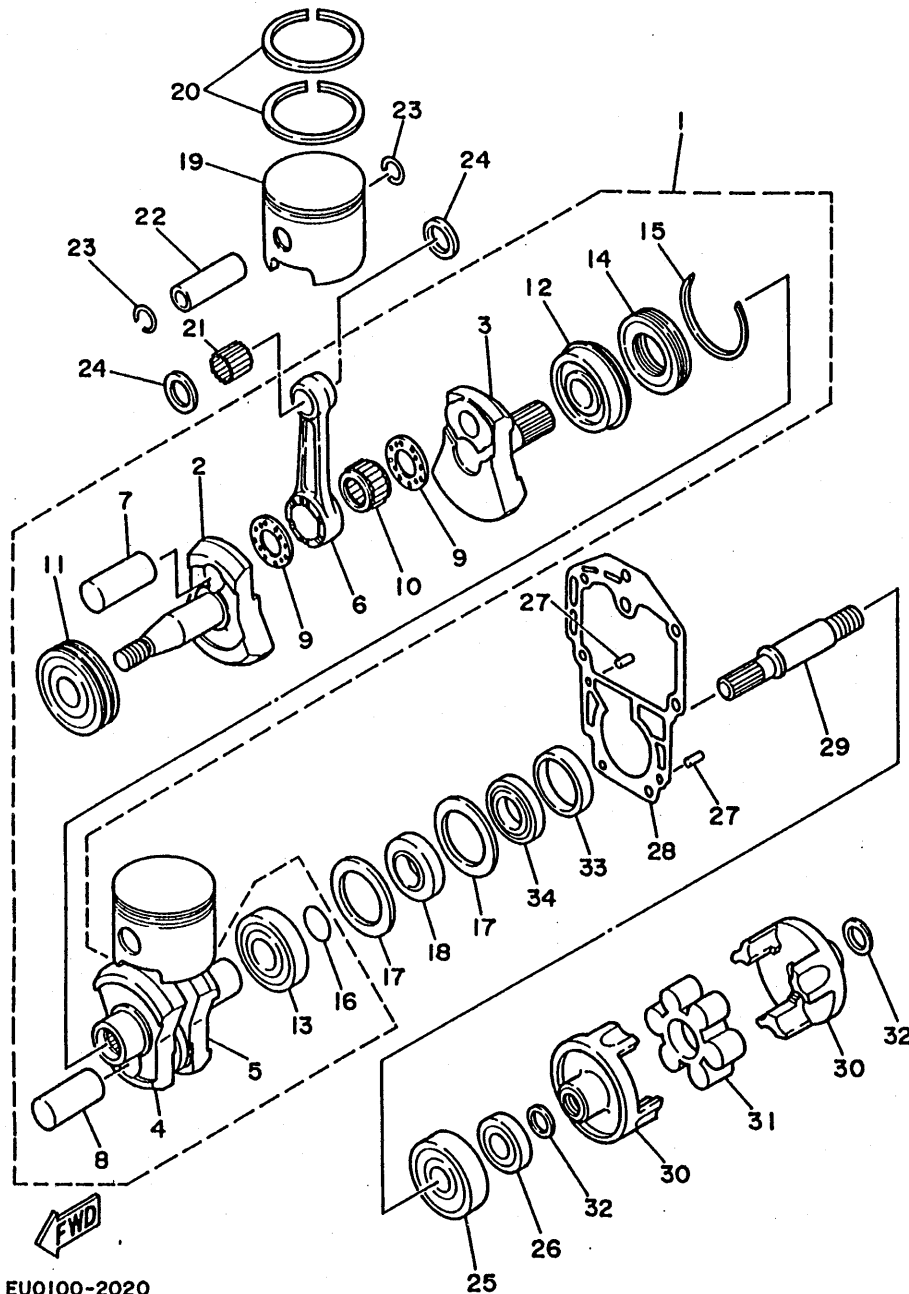
REF. NO.	PART NO.	DESCRIPTION	Q'TY	REMARKS
53	6K8-85644-00	PLATE	1	FOR CANADA
54	90446-14M23	TUBE	1	



EU0100-2010

B4

FIG. 2 CRANKSHAFT. PISTON



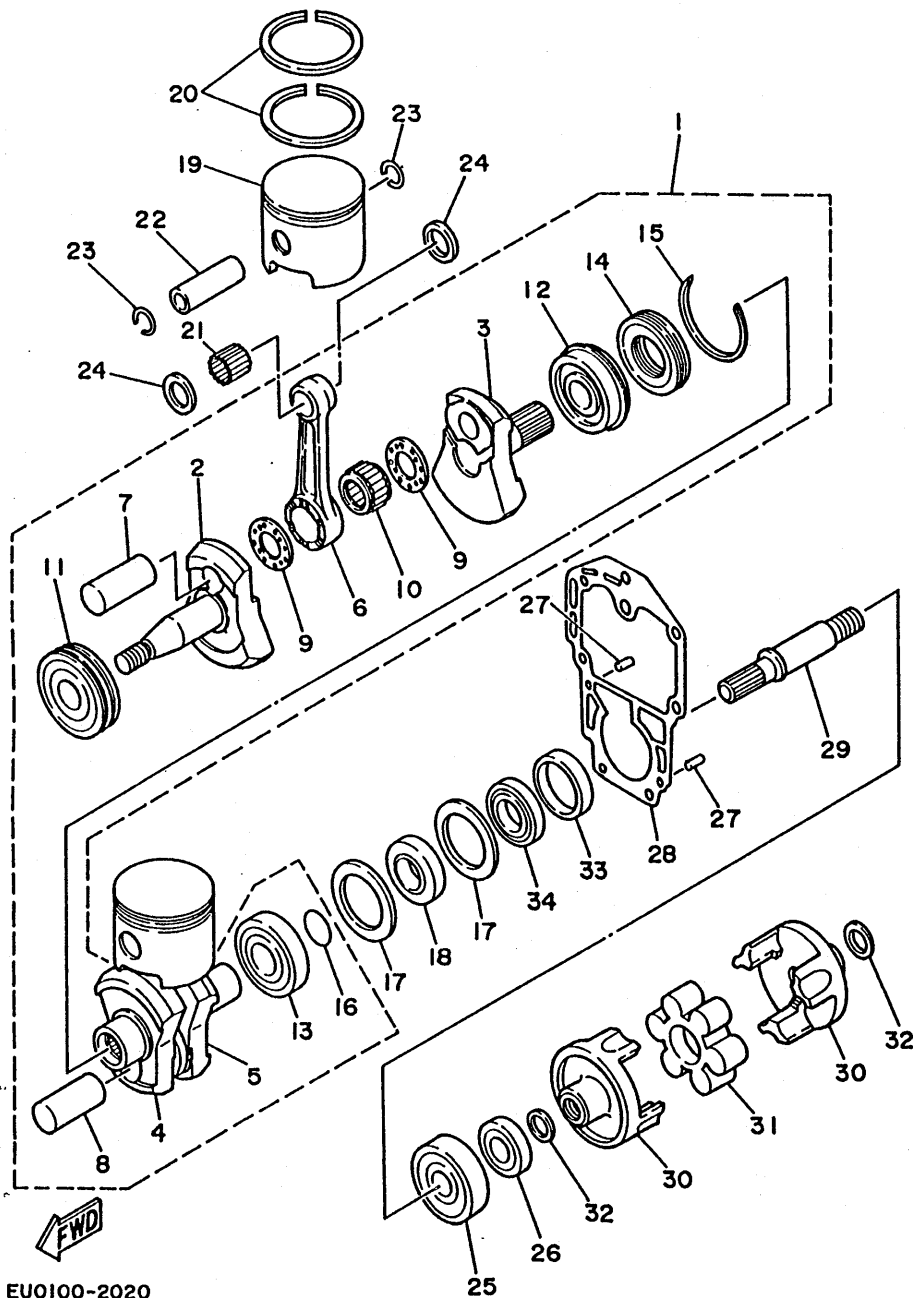
EU0100-2020

REF. NO.	PART NO.	DESCRIPTION	Q'TY	REMARKS
1	6K8-11400-00	CRANKSHAFT ASSY	1	
2	6K8-11412-00	.CRANK 1	1	
3	689-11422-02	.CRANK 2	1	
4	689-11432-02	.CRANK 3	1	
5	689-11442-02	.CRANK 4	1	
6	689-11651-00	.ROD, connecting	2	
7	6K8-11681-00	.PIN, crank 1	1	
8	689-11681-01	.PIN, crank	1	
9	90209-24M03	.WASHER	4	
10	93310-624U5	.BEARING, con-rod big end	2	
11	93306-306U3	.BEARING (B6306)	1	
12	93390-00009	.BEARING, taper roller	1	
13	93306-305U3	.BEARING	1	
14	689-11515-00	.SEAL, labyrinth	1	
15	93440-62021	.CIRCLIP	1	
16	93210-16275	.O-RING	1	
17	90201-50306	WASHER, plate	2	
18	93101-25M38	OIL SEAL	1	
19	6K8-11631-00-95	PISTON (STD)	2	
	6K8-11635-00	PISTON (0.25MM O/S)	2	AP
	6K8-11636-00	PISTON (0.50MM O/S)	2	AP
20	6K8-11610-01	PISTON RING SET (STD)	2	
	6K8-11610-11	PISTON RING SET (1ST O/S)	2	AP
	6K8-11610-21	PISTON RING SET (2ND O/S)	2	AP
21	93602-20M02	PIN, dowel	68	
22	689-11633-00	PIN, piston	2	
23	688-11634-00	CLIP, piston pin	4	
24	90201-20M27	WASHER, plate	4	

B5

FIG. 2 CRANKSHAFT. PISTON

REF. NO.	PART NO.	DESCRIPTION	Q'TY	REMARKS
25	93306-305U6	BEARING	1	
26	93102-25M28	OIL SEAL	1	
27	93606-12019	PIN, dowel	2	
28	689-45113-01	GASKET, upper casing	1	UR 6K8-066207 and up ward
	6K8-45113-A0	GASKET, upper casing	1	UR 6K8-066208 and following
29	6K8-45514-00	SHAFT, drive 4	1	
30	6K8-45813-00-9M	FLANGE, coupling	2	
31	6K8-4581J-00	RUBBER SHAFT COUPLING	1	
32	90201-20M21	WASHER, plate	2	
33	6K8-11478-00	COLLAR	1	6K8-066208 and following
34	93101-25M38	OIL SEAL	1	6K8-066208 and following

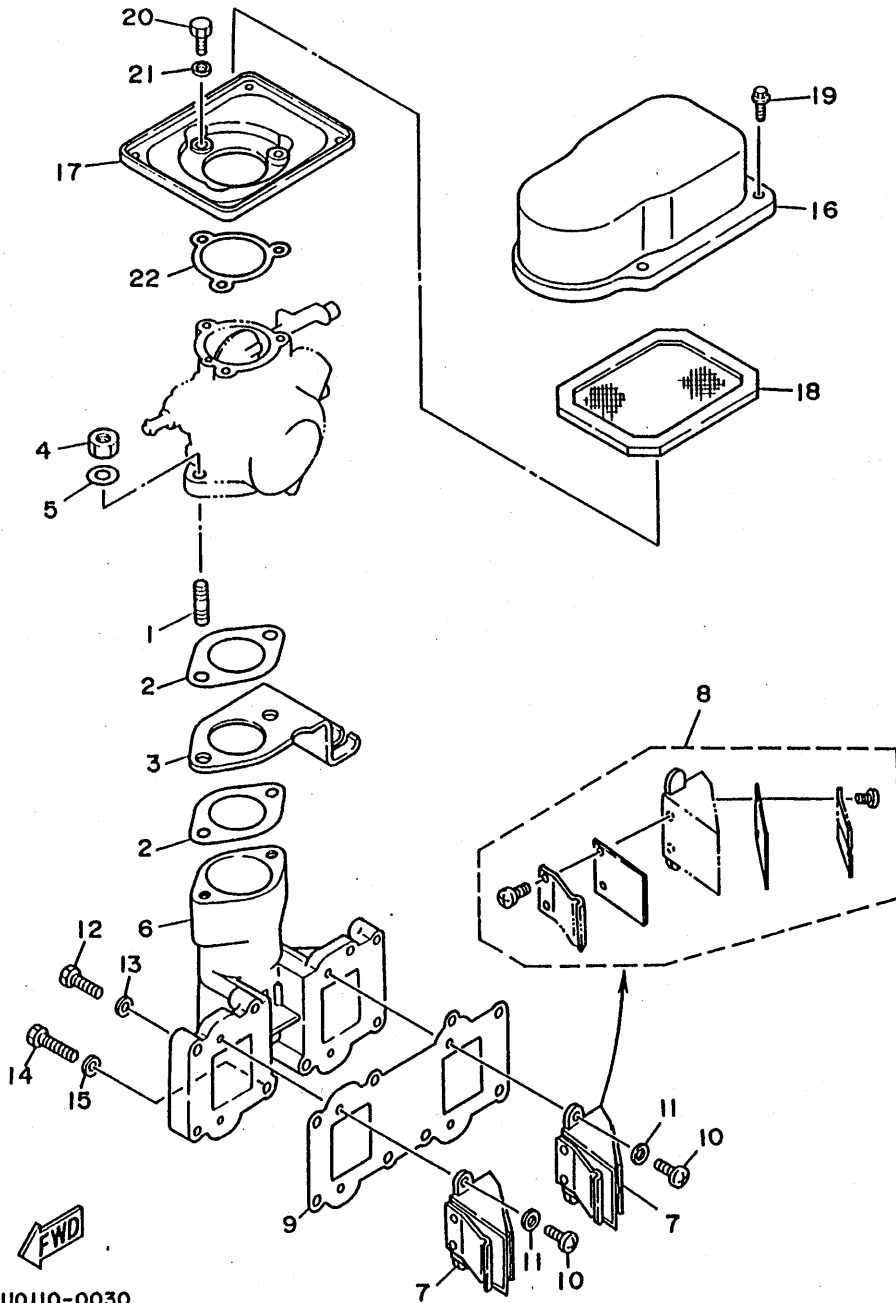


EU0100-2020

B6

FIG. 3 INTAKE

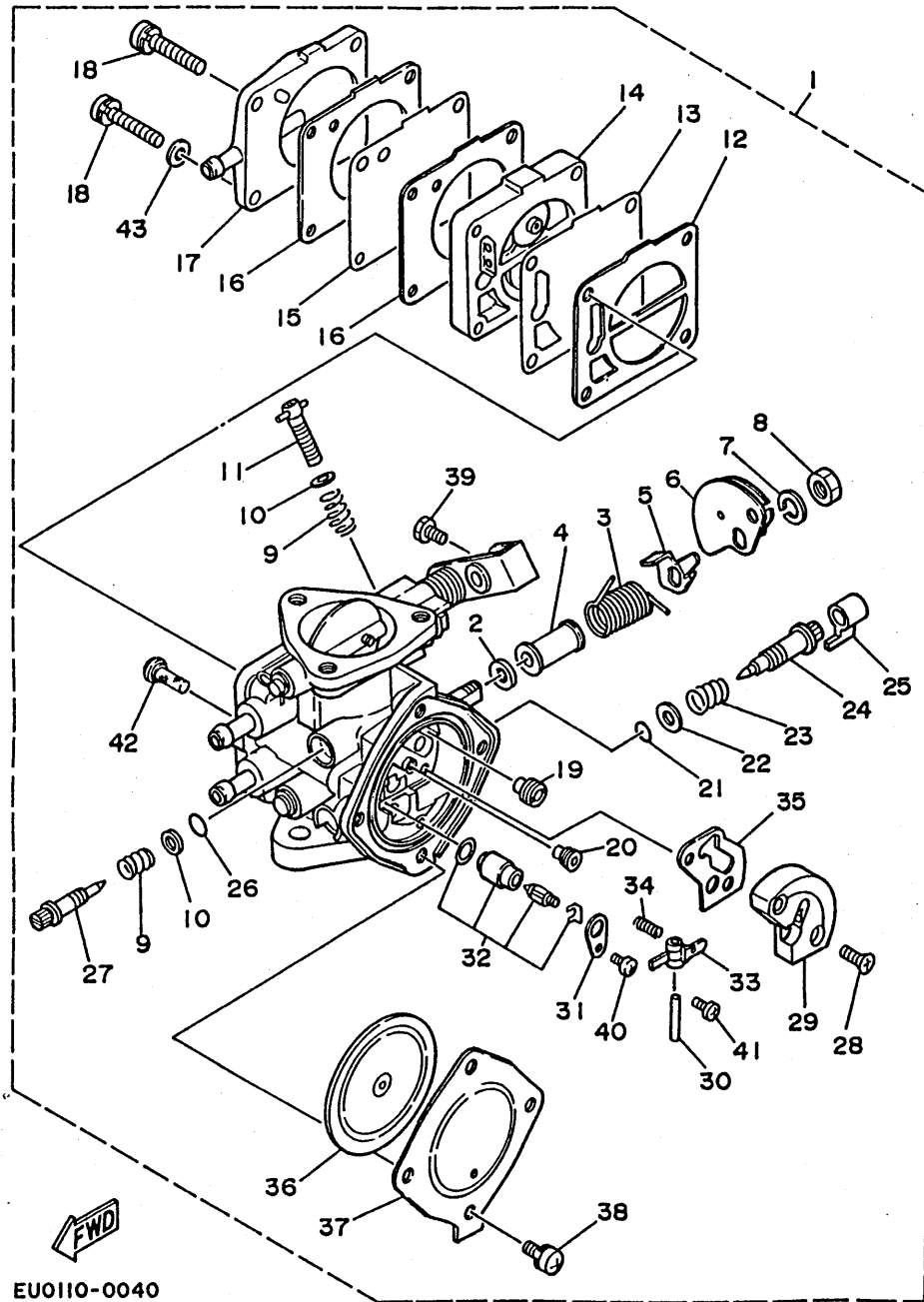
REF. NO.	PART NO.	DESCRIPTION	Q'TY	REMARKS
1	90116-08M14	BOLT, stud	2	
2	6K8-13556-A1	GASKET, manifold	2	
3	6K8-14527-00	PLATE	1	
4	95380-08600	NUT	2	
5	92990-08600	WASHER, plate	2	
6	6K8-13641-00-94	MANIFOLD 1	1	
7	6H5-13610-00	REED VALVE ASSY	2	
8	6H4-W0004-00	.REED SET	1	
9	6K8-13621-A1	GASKET, valve seat	1	
10	97803-05014	SCREW, pan head	4	
11	92990-05600	WASHER, plate	4	
12	97313-06030	BOLT	6	
13	92990-06600	WASHER, plate	6	
14	97313-06055	BOLT	2	
15	92990-06600	WASHER, plate	2	
16	6K8-14283-01	COVER, carburetor 1	1	
17	6K8-14284-00-98	COVER, carburetor 2	1	LOW GLOSS BLACK
18	6K8-14451-00	ELEMENT, air cleaner	1	
19	90105-05M52	BOLT, washer based head	4	
20	97395-06018	BOLT	3	
21	92990-06600	WASHER, plate	3	
22	6K8-13674-A1	GASKET, air cooler cover 1	1	



EU0110-0030

B7

FIG. 4 CARBURETOR

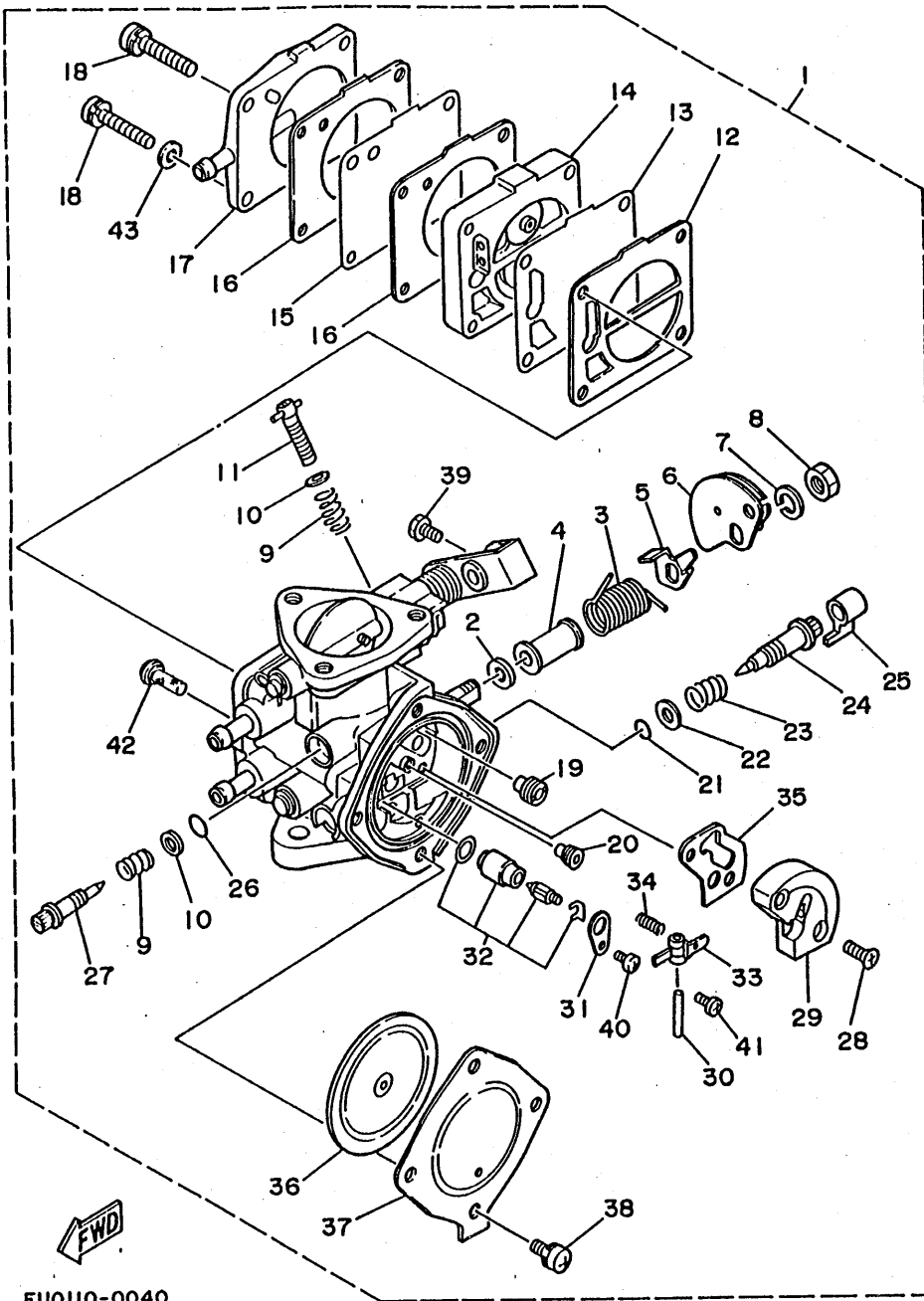


EU0110-0040

REF. NO.	PART NO.	DESCRIPTION	Q'TY	REMARKS
1	6K8-14301-11	CARBURETOR ASSY 1	1	
2	6K8-14596-10	.WASHER	1	
3	6K8-14556-10	.SPRING	1	
4	6K8-14534-10	.COLLAR	1	
5	6K8-14926-10	.BRACKET, throttle 1	1	
6	6K8-14930-10	.THROTTLE SHAFT ASSY	1	
7	92990-08100	.WASHER	1	
8	95380-08700	.NUT	1	
9	6K8-14533-00	.SPRING, adjust screw	2	
10	6K8-14559-00	.WASHER	2	
11	6K8-14521-00	.SCREW, adjust	1	
12	6K8-24435-10	.GASKET, body 2	1	
13	6K8-24411-10	.DIAPHRAGM	1	
14	6K8-24413-10	.BODY 2	1	
15	6K8-24421-10	.VALVE, check	1	
16	6K8-24431-10	.GASKET, fuel pump 1	2	
17	6K8-24452-10	.COVER	1	
18	97980-05330	.SCREW, with washer	4	
19	3G2-14231-16	.JET, main (#80)	1	
20	830-1423E-66	.JET, pilot (#77.5)	1	
21	6K8-14561-00	.O-RING	1	
22	6K8-14537-00	.GASKET	1	
23	6K8-14589-00	.SPRING	1	
24	6K8-14923-10	.SCREW, pilot	1	
25	6K8-14481-10	.CAP, carburetor	1	
26	6K8-14562-00	.O-RING	1	
27	6K8-14946-10	.PLATE, needle fitting	1	
28	6K8-14523-10	.SCREW, stop	1	

B8

FIG. 4 CARBURETOR



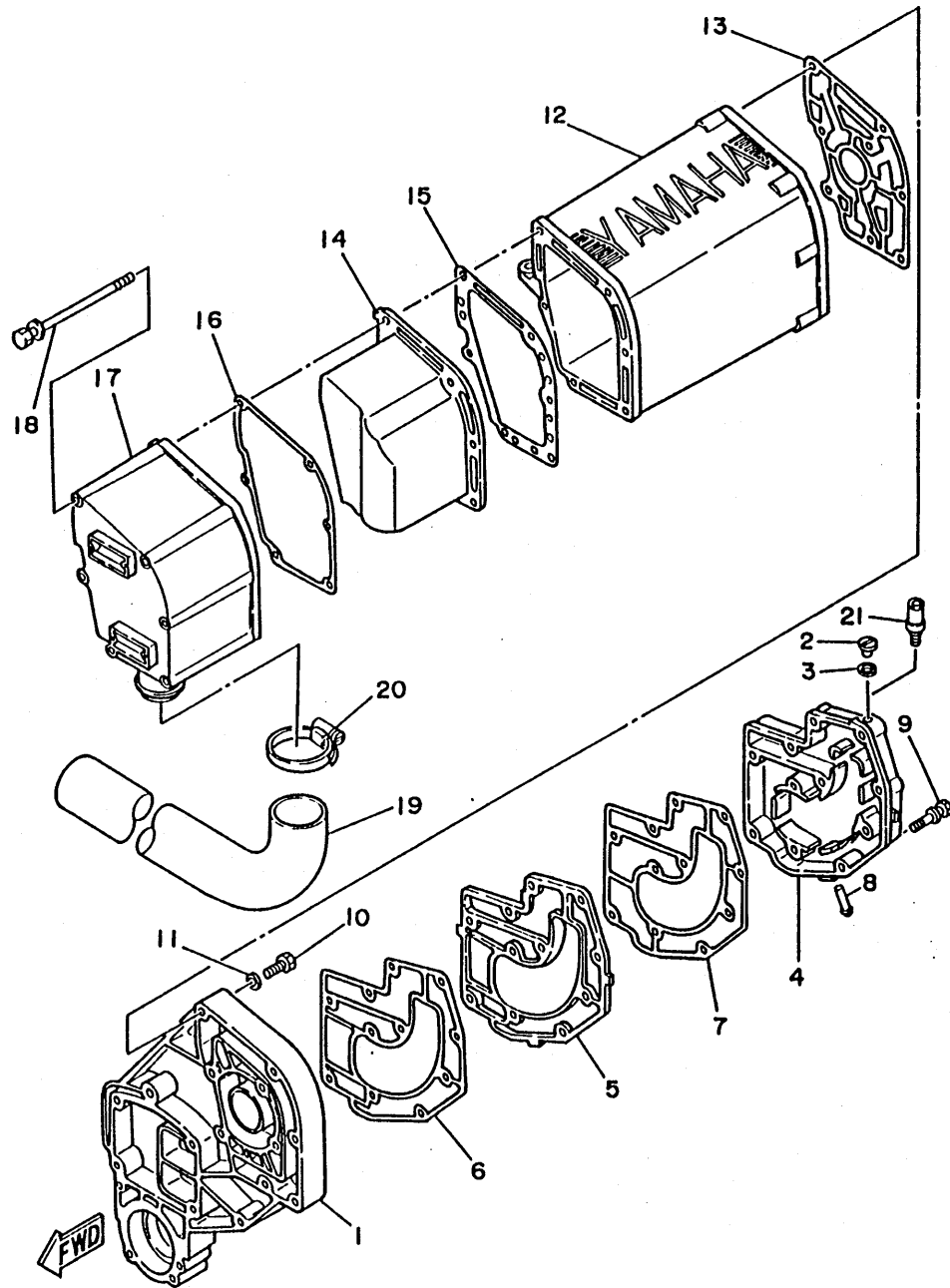
REF. NO.	PART NO.	DESCRIPTION	Q'TY	REMARKS
29	6K8-24412-10	.BODY 1	1	
30	6K8-14579-00	.PIN, float arm	1	
31	6K8-14527-10	.PLATE	1	
32	61L-14916-15	.NEEDLE	1	
33	6K8-14547-00	.ARM, float	1	
34	6K8-14253-10	.SPRING	1	
35	6K8-14536-11	.GASKET	1	
36	6K8-14541-10	.DIAPHRAGM, pump	1	
37	6K8-14542-10	.BODY, pump 1	1	
38	6K8-14591-10	.SCREW	4	
39	6K8-14592-00	.SCREW, stop	1	
40	6K8-14522-00	.SCREW, adjust	3	
41	98602-03007	.SCREW, oval head	3	
42	6K8-14569-11	.STRAINER	1	
43	92990-05600	.WASHER	1	

EU0110-0040

B9

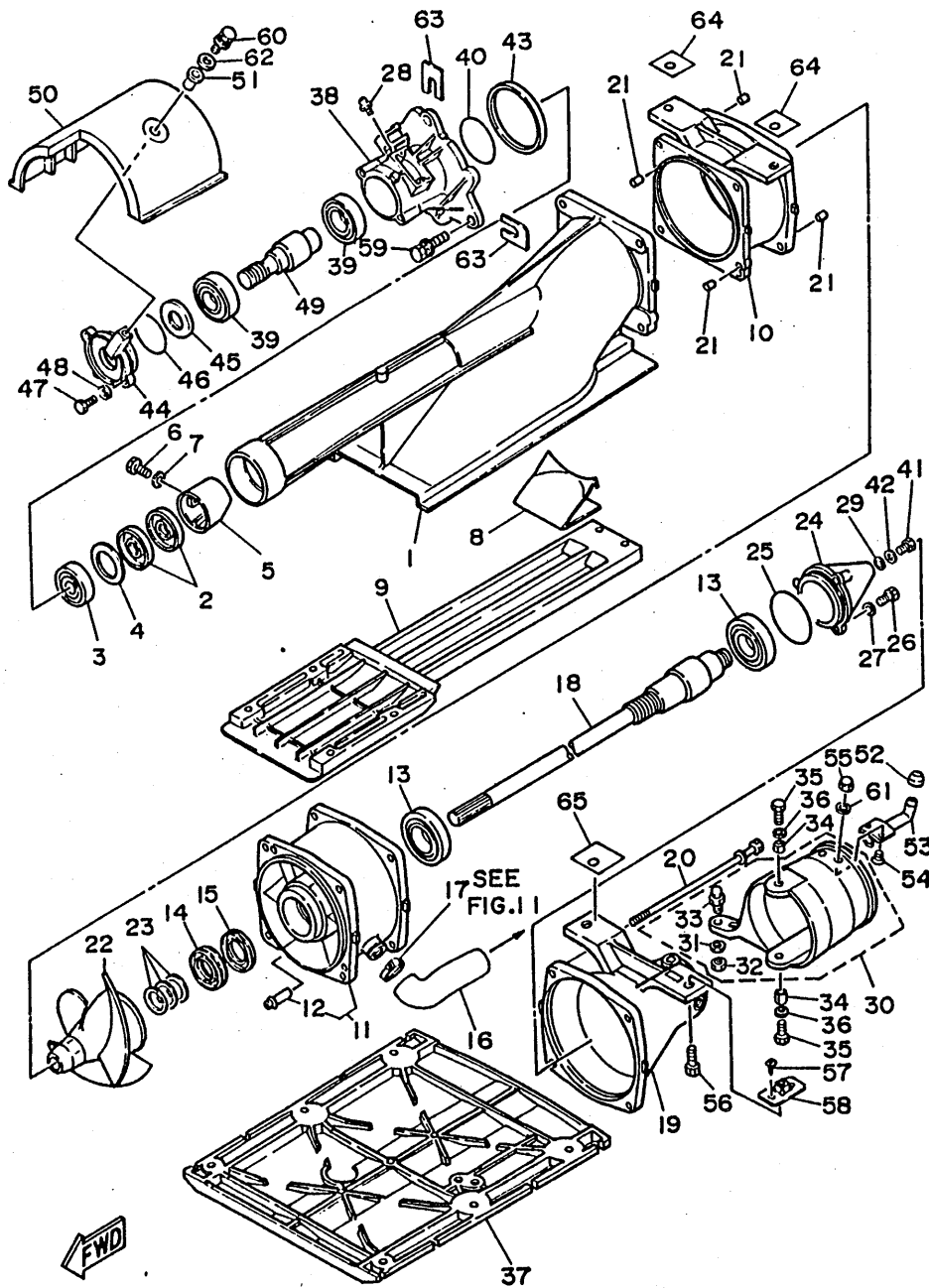
FIG. 5 EXHAUST 1

REF. NO.	PART NO.	DESCRIPTION	Q'TY	REMARKS
1	6K8-41137-00-94	GUIDE, exhaust	1	
2	90340-08M04	PLUG, straight screw	1	
3	90430-08020	GASKET	1	
4	6K8-41113-00-9M	OUTER COVER, exhaust	1	
5	6K8-41111-00-9M	INNER COVER, exhaust	1	
6	6K8-41114-A1	GASKET, exhaust outer cover	1	
7	6K8-41112-A1	GASKET, exhaust inner cover	1	
8	6K8-51385-00	PIPE	1	
9	90119-08M38	BOLT, with washer	7	
10	97313-08050	BOLT	12	
11	92990-08600	WASHER, plate	12	
12	6K8-14711-00-9M	MUFFLER 1	1	
13	6K8-14755-A1	GASKET, silencer	1	
14	6K8-14721-00-9M	MUFFLER 2	1	
15	6K8-14739-A1	GASKET, muffler damper 1	1	
16	6K8-14749-A1	GASKET, muffler damper 2	1	
17	6K8-14718-00-9M	PROTECTOR, muffler 1	1	
18	90119-06M37	BOLT, with washer	6	
19	6K8-14752-00	PIPE, outlet	1	
20	90601-15253	BAND, hose 52	1	
21	6E0-28193-00-94	PLUG, water check	1	FOR EXCEPT USA



EU0200-9050

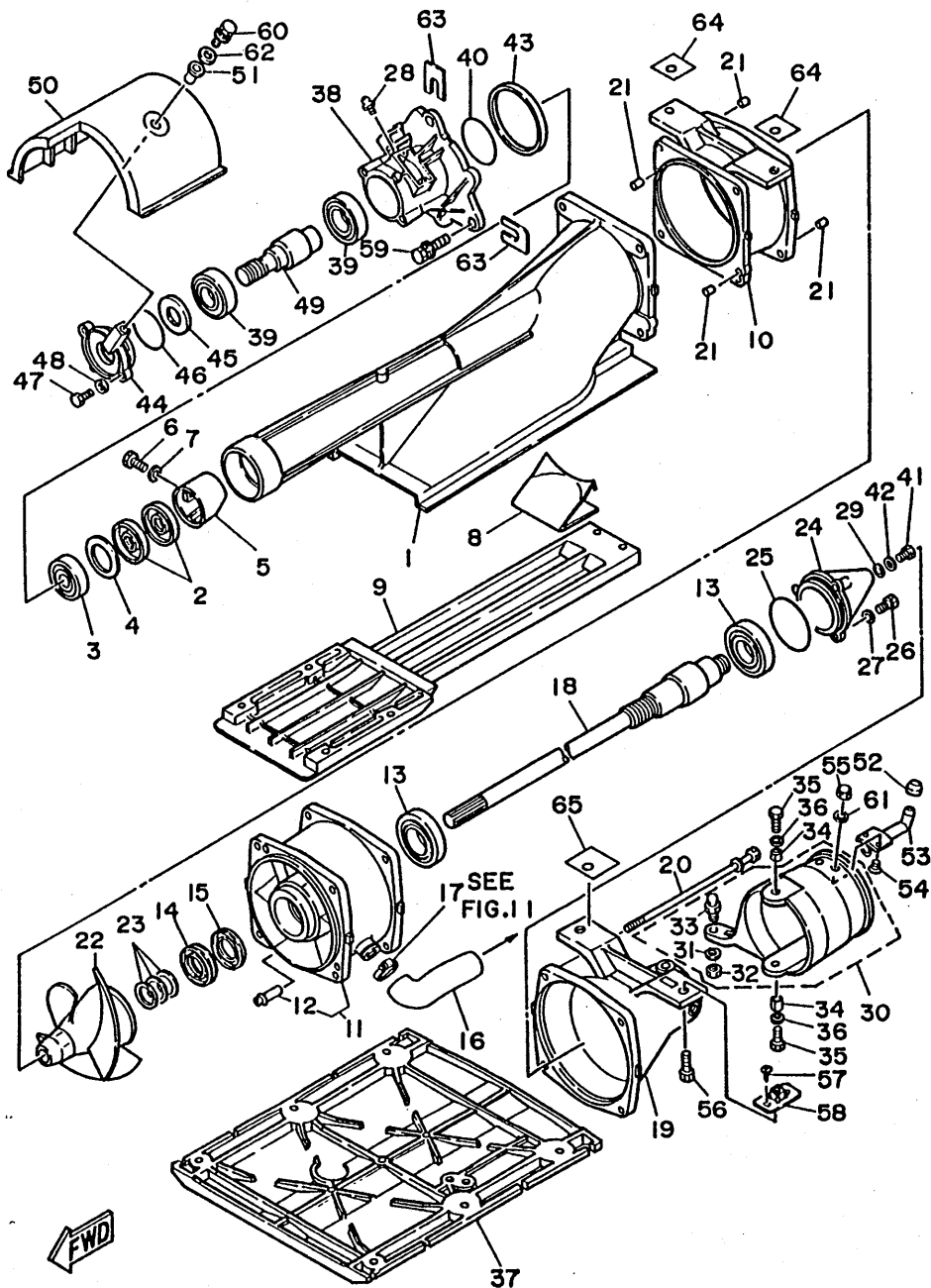
FIG. 6 JET UNIT



REF. NO.	PART NO.	DESCRIPTION	Q'TY	REMARKS
1	6K8-51311-00-94	DUCT, intake	1	
2	93101-17M31	OIL SEAL	2	
3	93306-30301	BEARING (B6303)	1	
4	90201-32M48	WASHER, plate	1	
5	6K8-51348-00-9M	SPACER	1	
6	97395-06020	BOLT	1	
7	92990-06600	WASHER, plate	1	
8	6K8-51347-00-9M	PLATE 3	1	
9	6K8-51333-00-94	GRILLE, intake	1	
10	6K8-51312-00-94	HOUSING, impeller	1	
11	6K8-51315-00-94	DUCT, impeller	1	
12	6K8-51385-00	.PIPE	1	
13	93306-206U6	BEARING	2	
14	93103-30M00	OIL SEAL	1	
15	93101-30M32	OIL SEAL	1	
16	6K8-51161-10	HOSE, plasher	1	
17	90460-18M08	CLAMP, hose	1	
18	6K8-45511-01	SHAFT, drive	1	
19	6K8-51318-00-9M	NOZZLE	1	
20	90119-06M33	BOLT, with washer	4	
21	93606-12019	PIN, dowel	5	
22	6K8-51321-00-94	IMPELLER	1	
23	6K8-45567-00-01	SHIM (T=0.1)	1	UR
	6K8-45567-00-03	SHIM (T=0.3)	1	UR
	6K8-45567-00-05	SHIM (T=0.5)	1	UR
	6K8-45567-00-10	SHIM (T=1.0)	1	UR
24	6K8-51326-00-94	CAP	1	
25	93210-57M09	O-RING	1	

EU0110-0060

B11

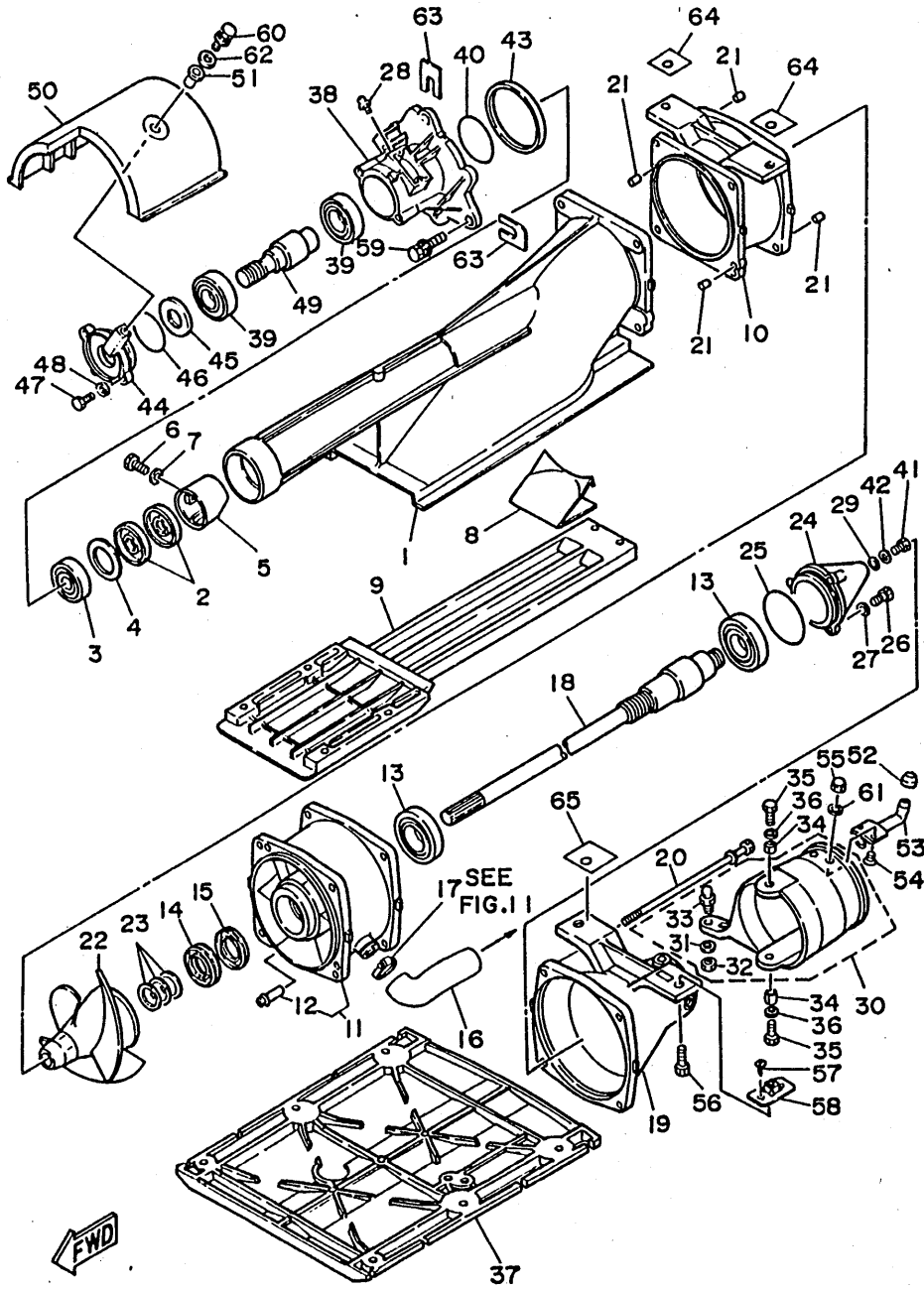


EU0110-0060

FIG. 6 JET UNIT

REF. NO.	PART NO.	DESCRIPTION	Q'TY	REMARKS
26	97395-06016	BOLT	3	
27	92990-06600	WASHER, plate	3	
28	93700-06004	NIPPLE, grease	1	
29	90430-06M03	GASKET	1	
30	6K8-51313-00	JET OUTPUT NOZZLE	1	
31	90201-06M02	.WASHER, plate	1	
32	95380-06700	.NUT	1	
33	6K8-42316-00	.BOLT, joint	1	
34	90387-06M12	COLLAR	2	
35	97395-06020	BOLT	2	
36	92990-06600	WASHER, plate	2	
37	EU0-62731-00	PLATE 2	1	
38	6K8-45331-01-94	HOUSING, bearing	1	
39	93306-205U1	BEARING	2	
40	93210-52454	O-RING	1	
41	97395-06012	BOLT	1	
42	92990-06600	WASHER, plate	1	
43	6K8-45127-00	SEAL	1	
44	6K8-51332-00-94	PLATE	1	
45	93101-25M45	OIL SEAL	1	
46	93210-46M16	O-RING	1	
47	97395-06020	BOLT	2	
48	92990-06600	WASHER, plate	2	
49	6K8-51323-02	SHAFT, couplor	1	
50	6K8-51381-01	COVER	1	
51	90387-06M60	COLLAR	2	
52	EU0-62695-00	CAP, spout	1	
53	EU0-62693-02	SPOUT	1	

FIG. 6 JET UNIT



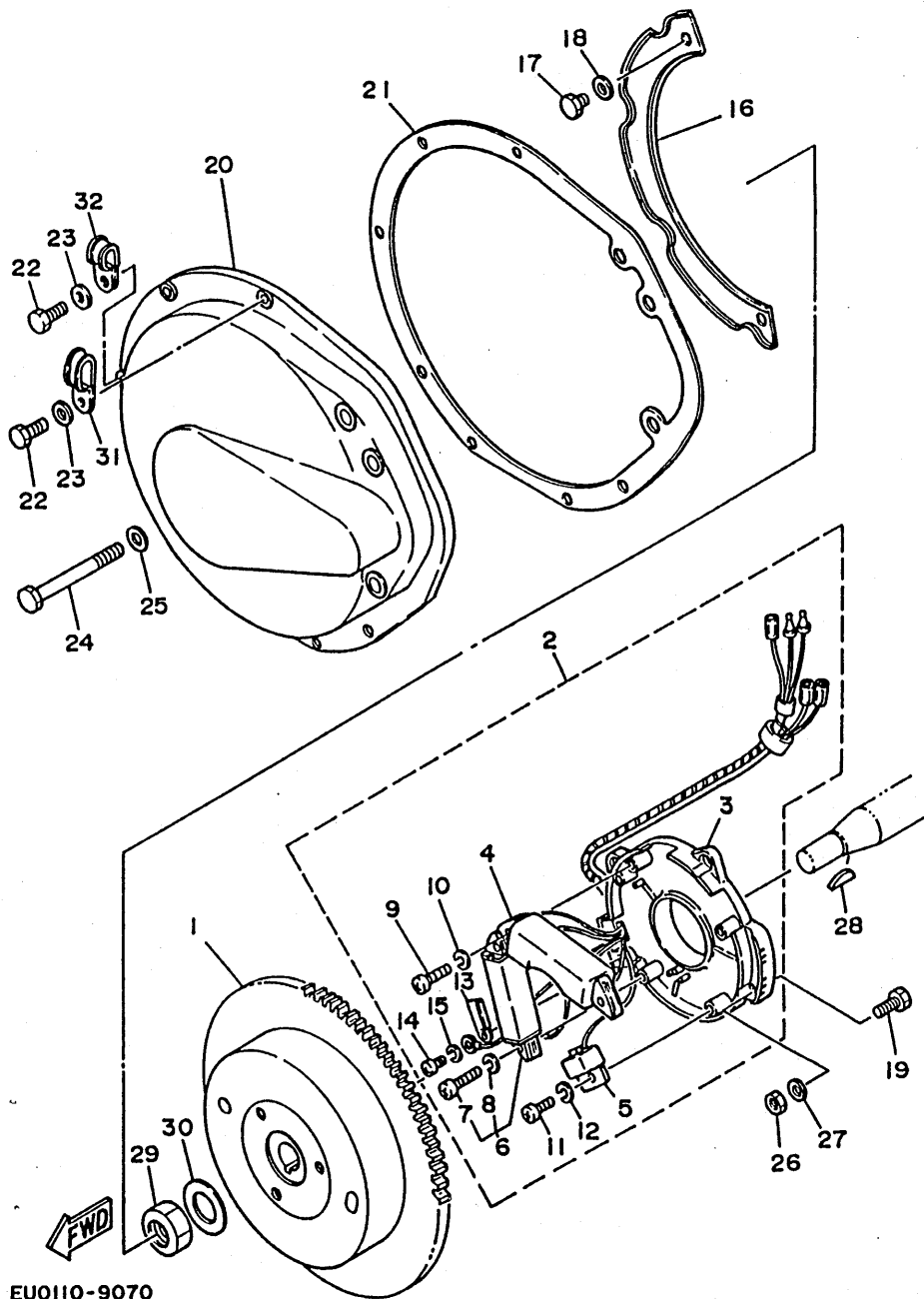
REF. NO.	PART NO.	DESCRIPTION	Q'TY	REMARKS
54	98780-05016	SCREW, flat head	2	
55	95780-05300	NUT	2	
56	90119-10906	BOLT, with washer	4	
57	97780-40108	SCREW, tapping	8	
58	90179-10919	NUT	4	
59	90119-08907	BOLT, with washer	3	
60	90119-06900	BOLT, with washer	2	
61	92990-05200	WASHER, plain	2	
62	90202-10024	WASHER	1	UN
63	EU0-67354-30-03	SHIM (T=0.3)	1	UN
	EU0-67354-30-05	SHIM (T=0.5)	1	UN
	EU0-67354-30-10	SHIM (T=1.0)	1	UN
64	EU0-67354-40	SHIM (T=1.5)	2	UN
65	EU0-67354-50	SHIM (T=2.0)	2	UN

EU0110-0060

B13

FIG. 7 GENERATOR

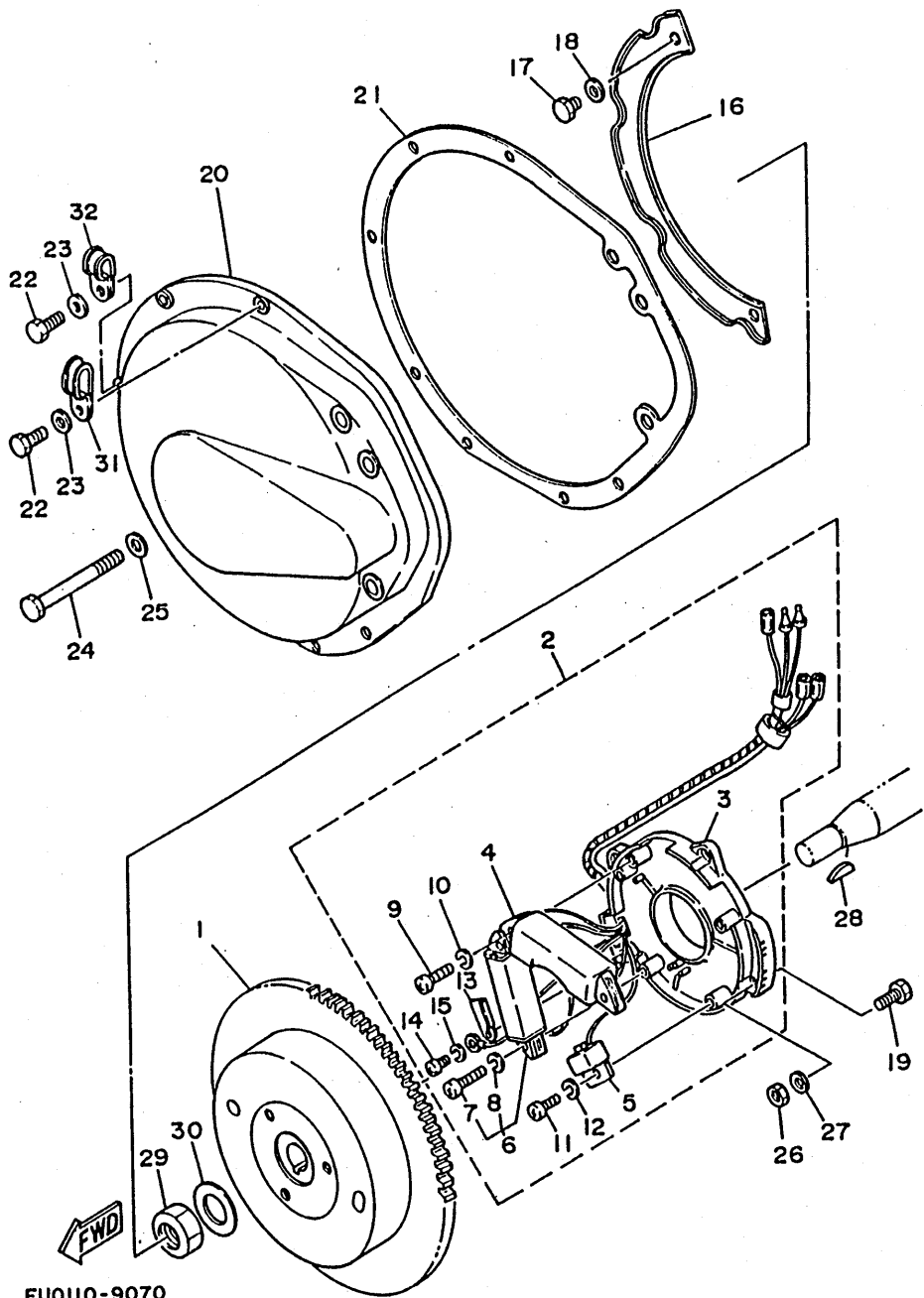
REF. NO.	PART NO.	DESCRIPTION	Q'TY	REMARKS
1	6K8-85550-A1	ROTOR ASSY	1	
2	6K8-85560-41	BASE ASSY	1	
3	6G0-85509-70	.BASE, magneto	1	
4	6G0-85520-70	.COIL, charge	1	
5	6K8-85580-00	.COIL, pulser	1	
6	6K8-81303-40	.LIGHTING COIL ASSY	1	
7	98501-05020	..SCREW, pan head	2	
8	92990-05100	..WASHER, spring	2	
9	98501-05020	.SCREW, pan head	2	
10	92990-05100	.WASHER, spring	2	
11	98580-05016	.SCREW, pan head	1	
12	92990-05100	.WASHER, spring	1	
13	6E7-81328-70	.CLAMP	1	
14	97802-04008	.SCREW, pan head	1	
15	92902-04100	.WASHER, spring	1	
16	6K8-82361-00	CLAMP, cord	1	
17	97313-06010	BOLT	2	
18	92990-06600	WASHER, plate	2	
19	97313-05016	BOLT	4	
20	6K8-81337-01-94	COVER, flywheel	1	
21	6K8-81365-A1	GASKET, hole cover	1	
22	97395-06020	BOLT	7	
23	92990-06600	WASHER, plate	6	
24	97313-08075	BOLT	1	
25	92990-08600	WASHER, plate	1	
26	95380-05700	NUT	1	
27	92990-05600	WASHER, plate	4	
28	90280-05049	KEY, woodruff	1	



EU0110-9070

B14

FIG. 7 GENERATOR



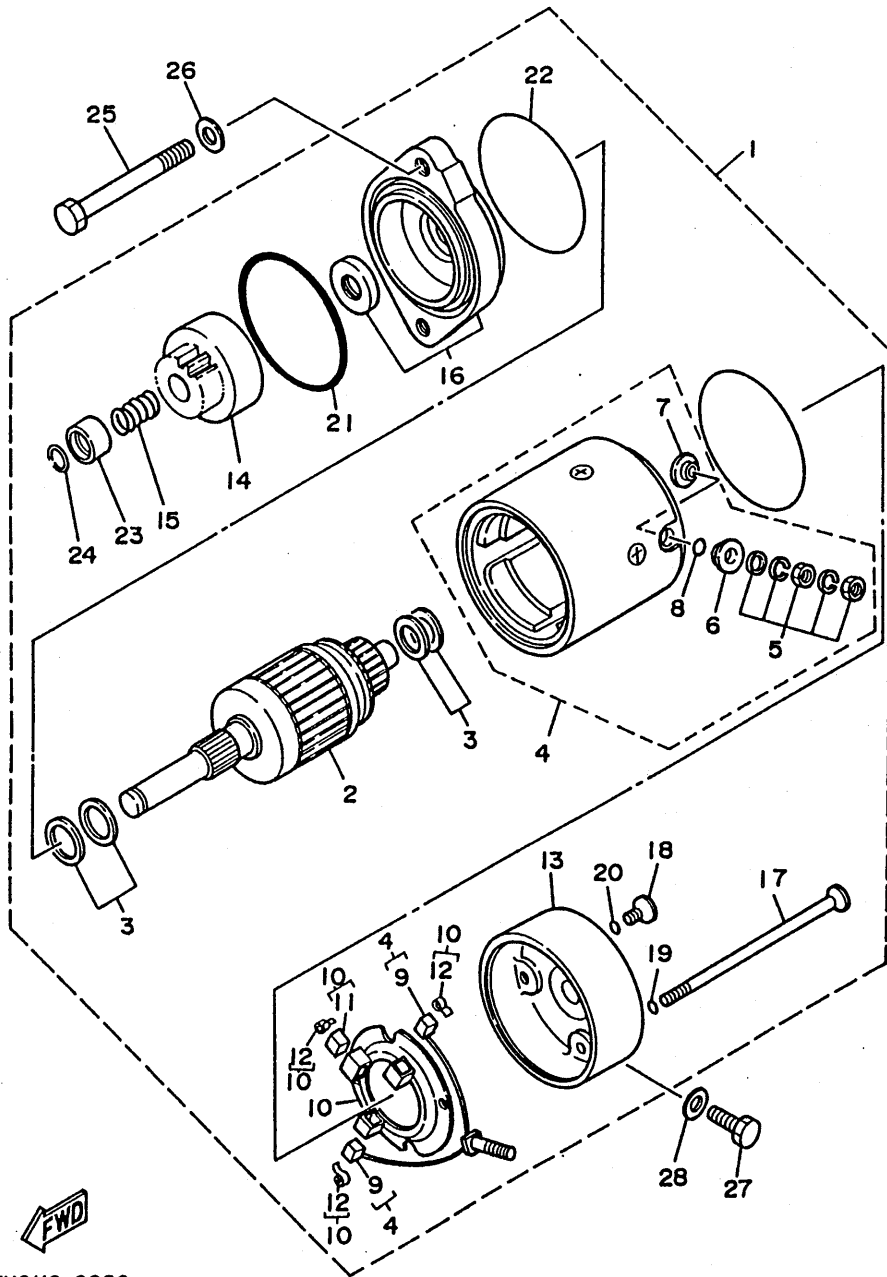
REF. NO.	PART NO.	DESCRIPTION	Q'TY	REMARKS
29	90179-16M05	NUT	1	
30	90201-16M44	WASHER, plate	1	
31	90465-08M41	CLAMP	1	
32	90461-06M00	CLAMP	1	FOR CANADA

EU0110-9070

B15

FIG. 8 STARTING MOTOR

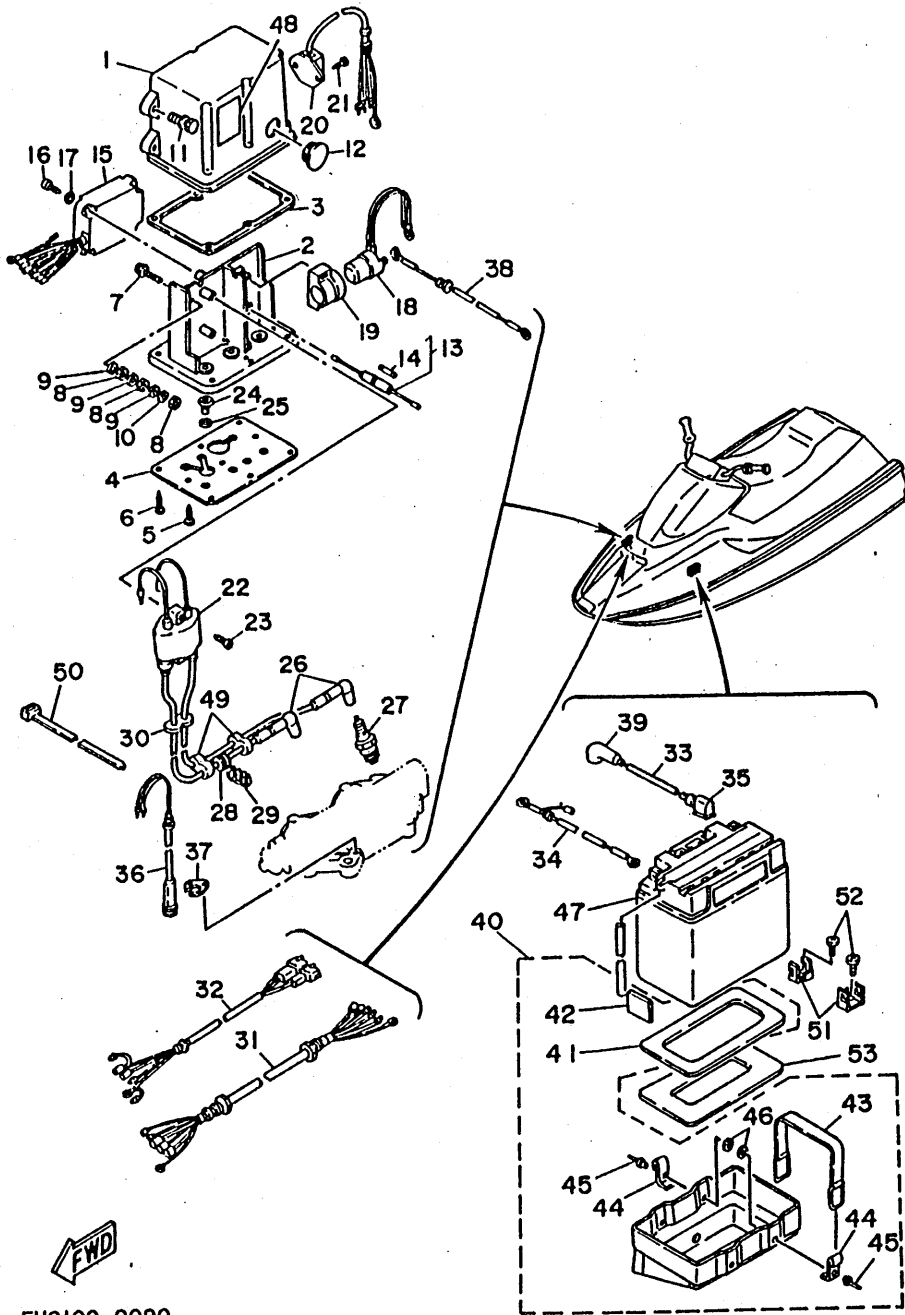
REF. NO.	PART NO.	DESCRIPTION	Q'TY	REMARKS
1	6K8-81800-12	STARTING MOTOR ASSY	1	
2	6K8-81850-12	.ARMATURE ASSY	1	
3	6K8-81809-10	.WASHER KIT	1	
4	6K8-81810-10	.STATOR ASSY	1	
5	6K8-8182V-10	..NUT WASHER KIT	1	
6	6K8-8182G-10	..TERMINAL BUSH (1)	1	
7	6K8-8182H-10	..TERMINAL BUSH (2)	1	
8	6K8-81847-10	..O-RING	1	
9	6K8-81811-10	..BRUSH 1	2	
10	6K8-81840-10	.BRUSH HOLDER ASSY	1	
11	6K8-81812-10	..BRUSH 2	1	
12	6K8-81813-10	..SPRING, brush	3	
13	6K8-81820-10	.REAR BRACKET ASSY	1	
14	6K8-81807-10	.GEAR ASSY, starting motor	1	
15	676-81858-10	.SPRING, return	1	
16	6K8-81830-10	.FRONT BRACKET ASSY	1	
17	6K8-81826-10	.BOLT	2	
18	6K8-81846-10	.SCREW	2	
19	6K8-8182M-10	.O-RING (2)	2	
20	6K8-8182L-10	.O-RING (1)	2	
21	6K8-8182N-10	.O-RING (3)	1	
22	6K8-8182R-10	.O-RING (4)	2	
23	676-81859-10	.PINION STOPPER	1	
24	663-81834-10	.PINION STOPPER CLIP	1	
25	97313-08075	BOLT	2	
26	92990-08600	WASHER, plate	2	
27	97395-06020	BOLT	2	
28	92990-06600	WASHER, plate	2	



EU0110-9080

C2

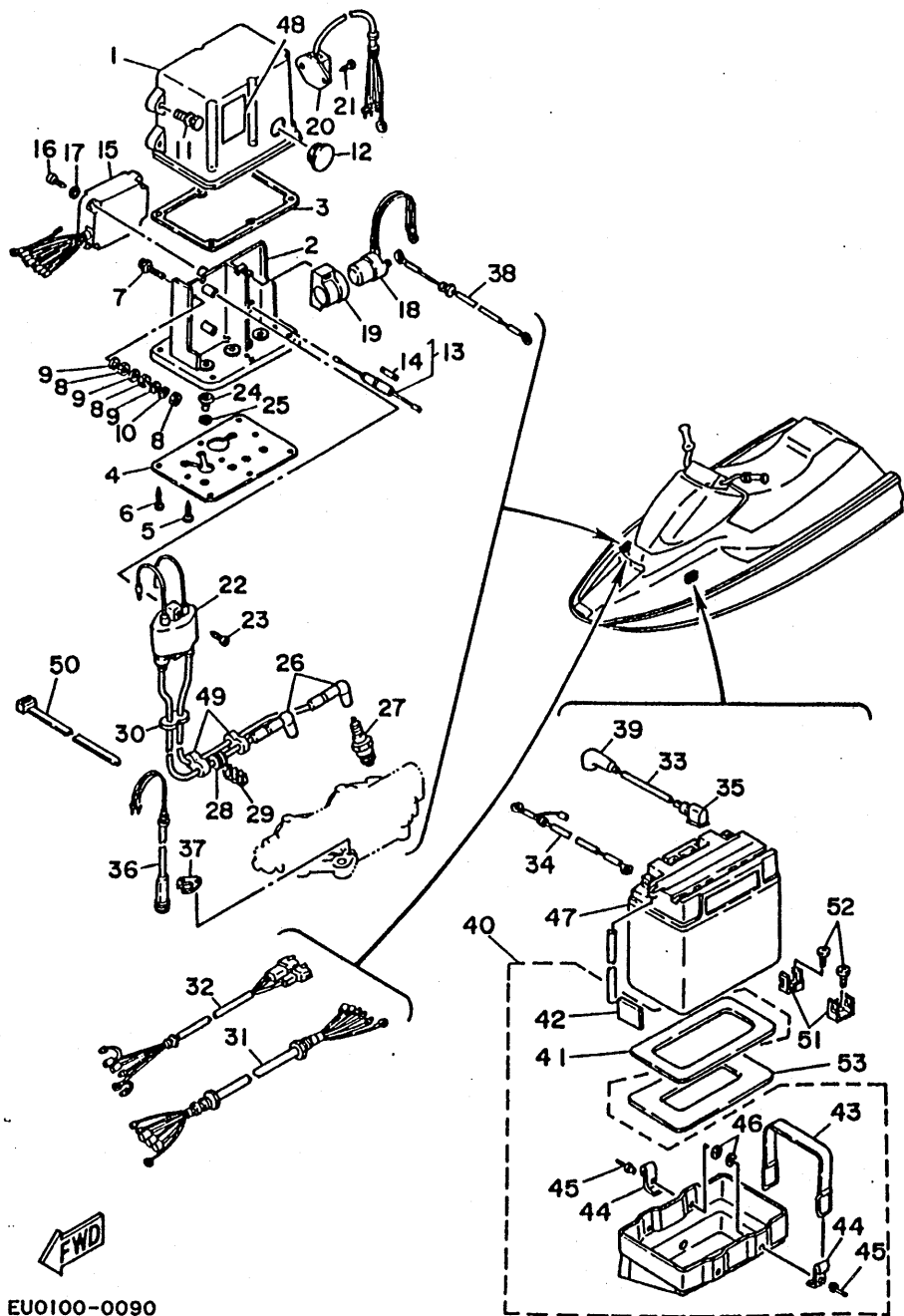
FIG. 9 ELECTRICAL 1



REF. NO.	PART NO.	DESCRIPTION	Q'TY	REMARKS
1	6K8-8552A-00	HOUSING	1	
2	6K8-8552E-00	COVER, case	1	
3	6K8-81921-00	GASKET, terminal	1	
4	6K8-85599-00	COVER	1	
5	97780-60535	SCREW, tapping	6	
6	97780-60520	SCREW, tapping	3	
7	90119-06M34	BOLT, with washer	1	
8	95313-06700	NUT	3	
9	92990-06200	WASHER, plain	3	
10	92990-06100	WASHER, spring	1	
11	90119-06902	BOLT, with washer	3	
12	647-45151-01	COVER, upper casing	1	
13	6K8-82150-00	FUSE HOLDER ASSY	1	
14	6G1-82151-00	.FUSE	1	
15	6K8-85540-11	C.D.I. UNIT ASSY	1	
16	97780-60525	SCREW, tapping	2	
17	92990-06600	WASHER, plate	2	
18	6G1-81941-10	STARTER RELAY ASSY	1	
19	6G1-81952-00	HOLDER, relay	1	
20	6K8-81960-A0	RECTIFIER & REGULATOR ASSY	1	
21	97780-60512	SCREW, tapping	2	
22	6K8-85570-10	IGNITION COIL ASSY	1	
23	97780-60525	SCREW, tapping	2	
24	90480-18M21	GROMMET	2	
25	90387-18M00	COLLAR	2	
26	6K8-82370-11	PLUG CAP ASSY	2	UR FOR CANADA/OCEANIA
	6K8-82370-00	PLUG CAP ASSY	2	UR FOR USA/AFRICA
27	94702-00271	PLUG, spark (NGK BR7HS-10)	2	UR FOR CANADA/OCEANIA

EU0100-0090

C3

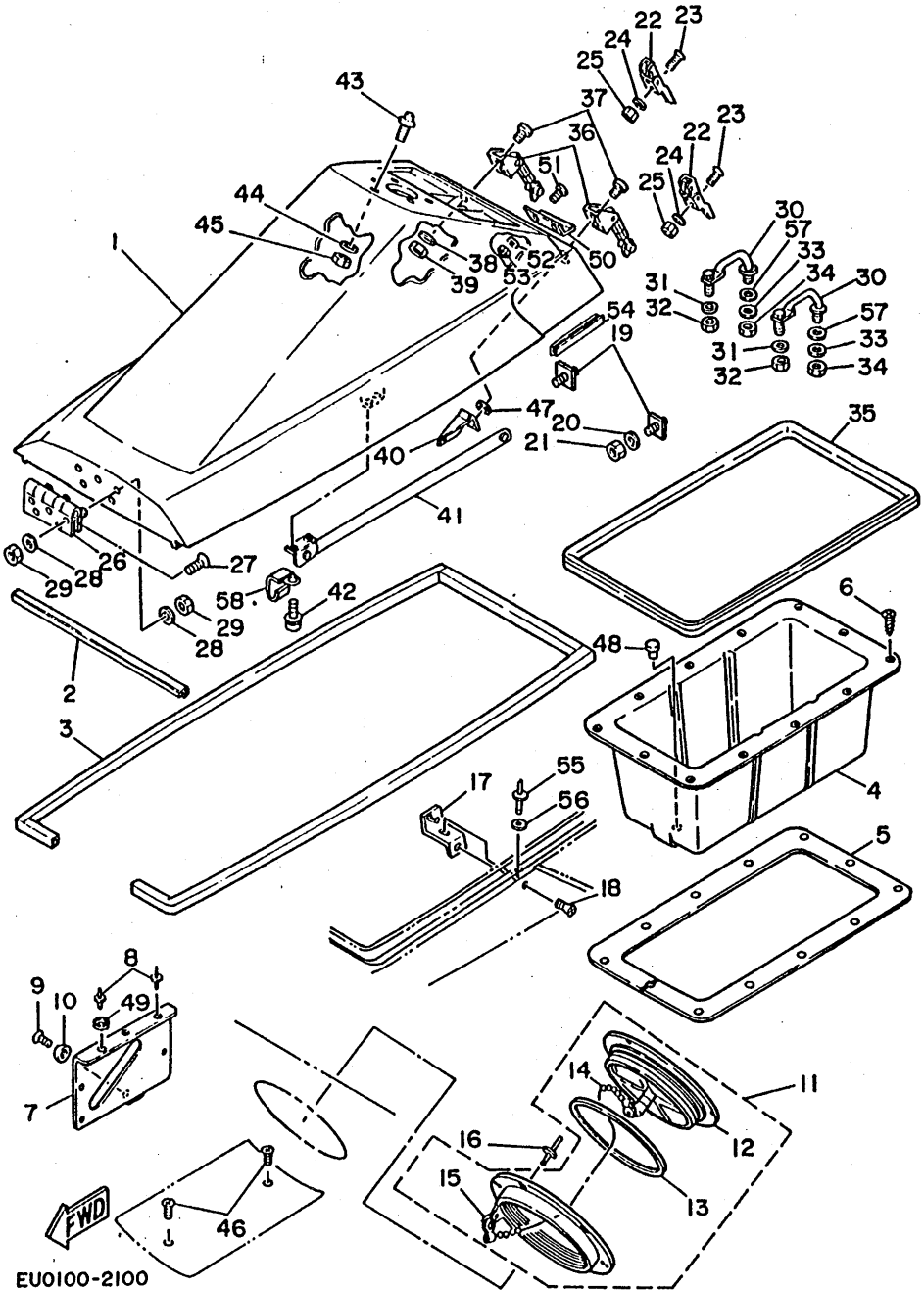


EU0100-0090

FIG. 9 ELECTRICAL 1

REF. NO.	PART NO.	DESCRIPTION	Q'TY	REMARKS
27	94701-00040	PLUG, spark (NGK B7HS)	2	UR FOR USA/AFRICA
28	90480-25M18	GROMMET	1	
29	90464-07M05	CLAMP	1	UR
	90465-11M10	CLAMP	1	UR FOR CANADA
30	90480-25M18	GROMMET	1	
31	6K8-8258A-01	EXTENSION, wire harness	1	
32	6K8-82553-02	EXTENSION, wire lead	1	
33	6K8-82117-01	WIRE, lead	1	
34	6K8-82117-11	WIRE, lead	1	
35	6K8-82119-11	COVER, lead wire	1	
36	6K8-82560-00	THERMO SWITCH ASSY.	1	
37	6K8-82588-00	PLATE	1	
38	6K8-82117-21	WIRE, lead	1	
39	6K8-82119-01	COVER, lead wire	1	
40	EU0-68211-09	BATTERY CASE COMP.	1	
41	EU0-68221-00	.PAD, battery 1	1	
42	EU0-68221-30	.PAD, battery 2	4	
43	EU0-68218-04	.BAND, battery	2	
44	EU0-65772-00	.HOOK A	4	
45	90267-48931	.RIVET, blind	4	
46	90201-05926	.WASHER, plain	4	
47	EU0-82110-78	BATTERY (FB16CL-B)	1	
48	6K8-83621-00	MARK 1	1	
49	90480-25M18	GROMMET	2	FOR CANADA
50	90465-13M24	CLAMP	1	FOR CANADA
51	EU0-65772-30	HOOK A	4	
52	90159-06901	SCREW	4	
53	EU0-68219-00	PLATE, battery	1	

FIG. 10 HULL. DECK 1



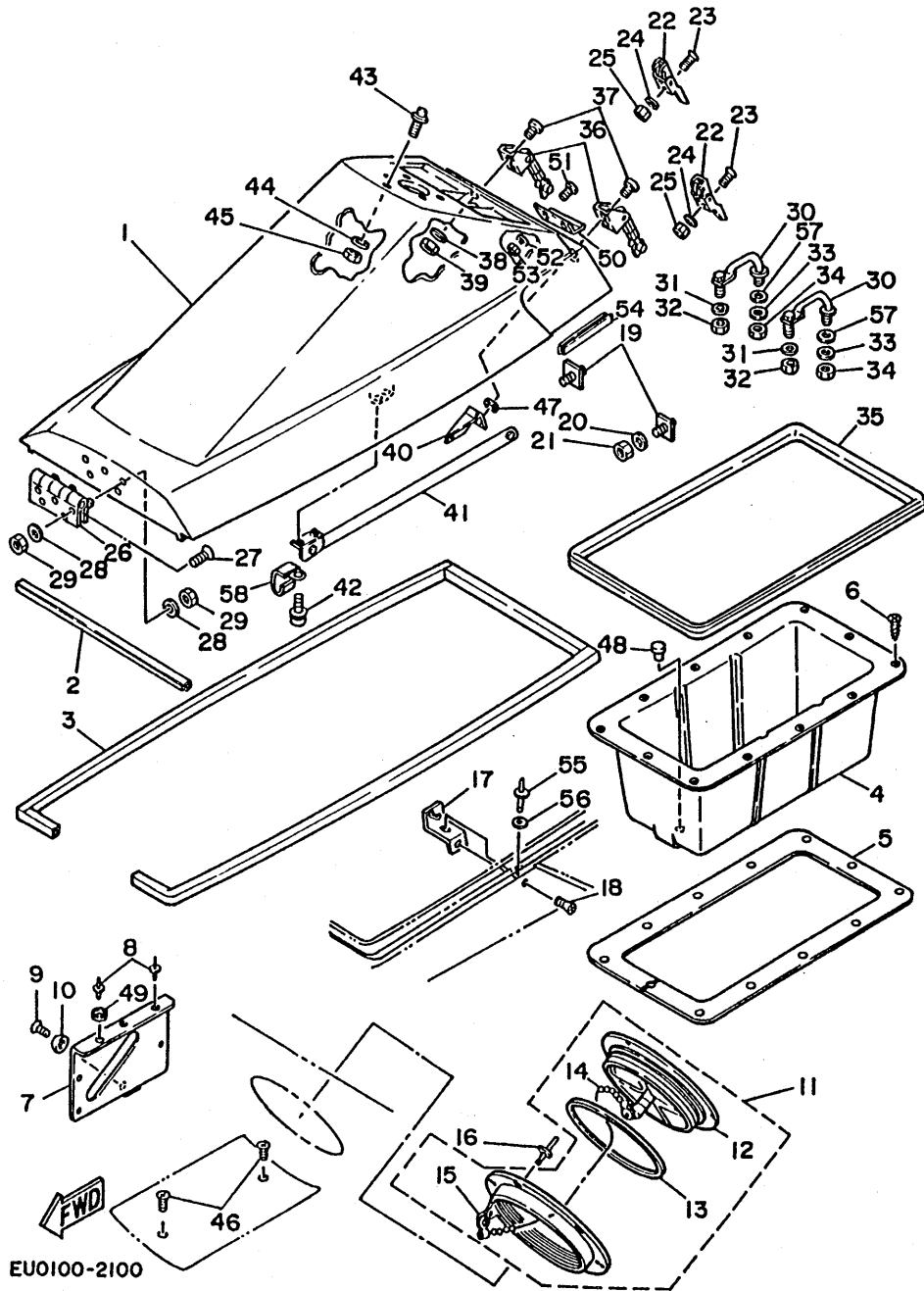
REF. NO.	PART NO.	DESCRIPTION	Q'TY	REMARKS
1	EU0-6516A-00	ENGINE HOOD COMP.	1	
2	EU0-62688-00	PACKING 8	1	
3	EU0-62664-01	PACKING 2	1	
4	EU0-64742-00	LOCKER, under 2	1	UR ○
	EU0-64742-01	LOCKER, under 2	1	UR ○
5	90656-31160	PACKING 34	1	
6	97780-50220	SCREW	12	UR ○
	97780-50020	SCREW	12	UR ○
7	EU0-68156-02	BRACKET	1	
8	90267-48934	RIVET	5	
9	92680-06016	SCREW	2	
10	A84-62635-00	ROSETTE	2	
11	EU0-62720-30	INSPECTION COVER ASSY	1	
12	EU0-62721-30	.COVER, inspection	1	
13	93211-03902	.RING	1	
14	EU0-67835-30	.CHAIN BALL	1	
15	EU0-67839-00	.COUPLING	2	
16	90267-40937	RIVET, brind flat head	6	
17	EU0-62884-02	BRACKET, hatch support	1	
18	92780-06016	SCREW	1	
19	EU0-63729-03	STOPPER, seat 1	2	
20	92990-08200	WASHER, plain	2	
21	95780-08300	NUT, self-locking	2	
22	EU0-62841-01	BRACKET, hatch lock	2	
23	98780-05020	SCREW	4	

○—○ Interchangeable with a set.

C5

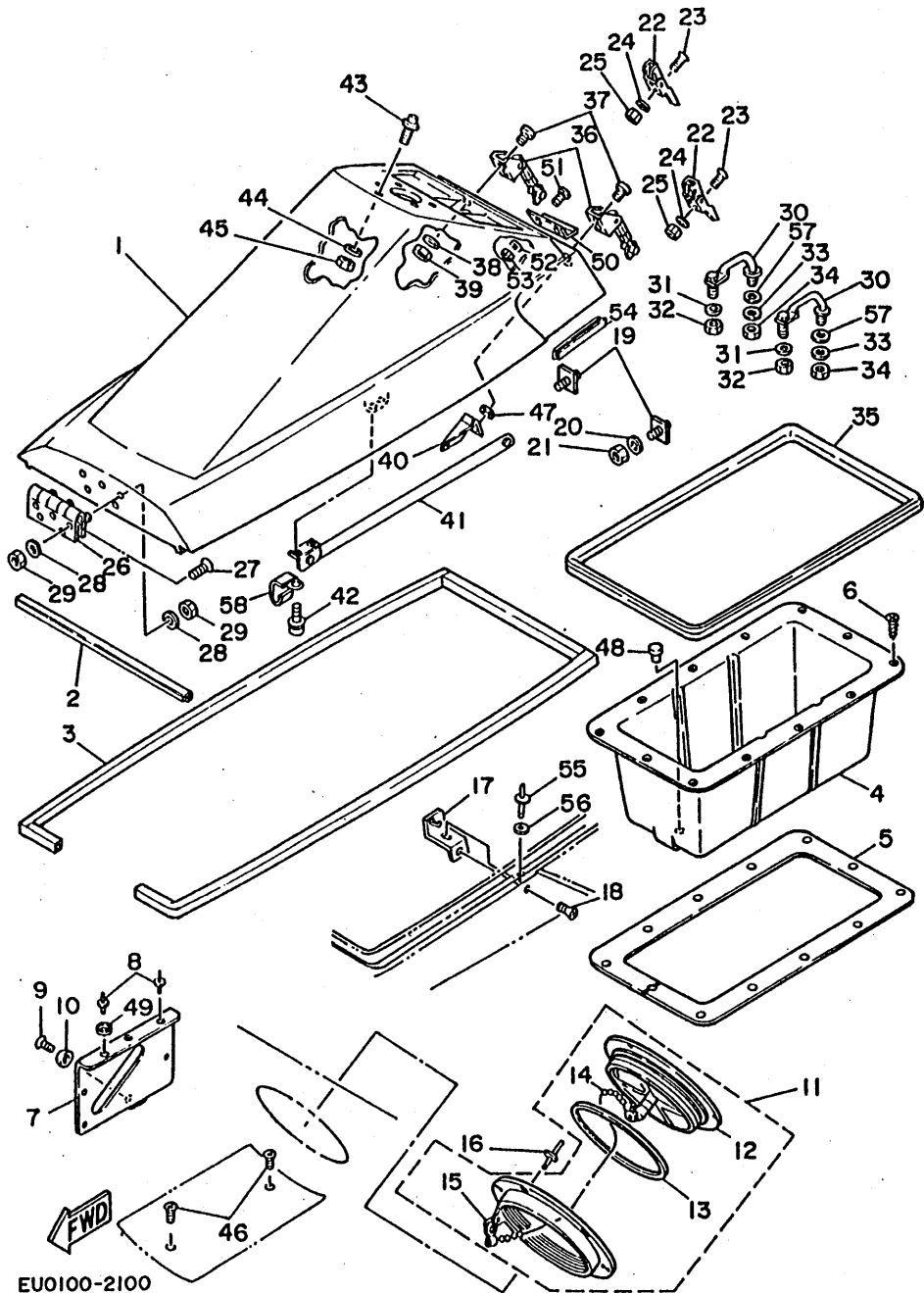
FIG. 10 HULL. DECK 1

REF. NO.	PART NO.	DESCRIPTION	Q'TY	REMARKS
24	92990-05200	WASHER, plain	4	
25	95720-05300	NUT, self-locking	4	
26	90600-70069	HINGE	1	
27	98780-05020	SCREW, flat head	5	
28	92990-05200	WASHER, plain	10	
29	95720-05300	NUT, self-locking	10	
30	EU0-61638-01	CLEAT	2	
31	92990-06200	WASHER, plain	2	
32	95720-06300	NUT, self-locking	2	
33	92990-08200	WASHER, plain	2	
34	95720-08300	NUT, self-locking	2	
35	EU0-62663-01	PACKING 1	1	
36	EU0-62843-01	HOOK, hatch lock	2	
37	98580-05020	SCREW, flat head	4	
38	92990-05200	WASHER, plain	2	
39	95720-05300	NUT, self-locking	2	
40	EU0-62892-02	FIX PLATE	1	
41	FJO-62891-00	SUPPORT, hatch	1	
42	90159-06901	SCREW, flat head with washer	2	
43	EU0-61314-30	PIN, stopper	1	
44	92990-10200	WASHER, plain	1	
45	95720-10300	NUT, self-locking	1	
46	98780-04016	SCREW, flat head	2	
47	92990-05200	WASHER, plain	2	
48	90338-12081	PLUG	1	
49	90209-07919	WASHER, special	1 UN	
50	EU0-63783-00	GUIDE, seat	1	
51	98580-05016	SCREW	2	



C6

FIG. 10 HULL. DECK 1



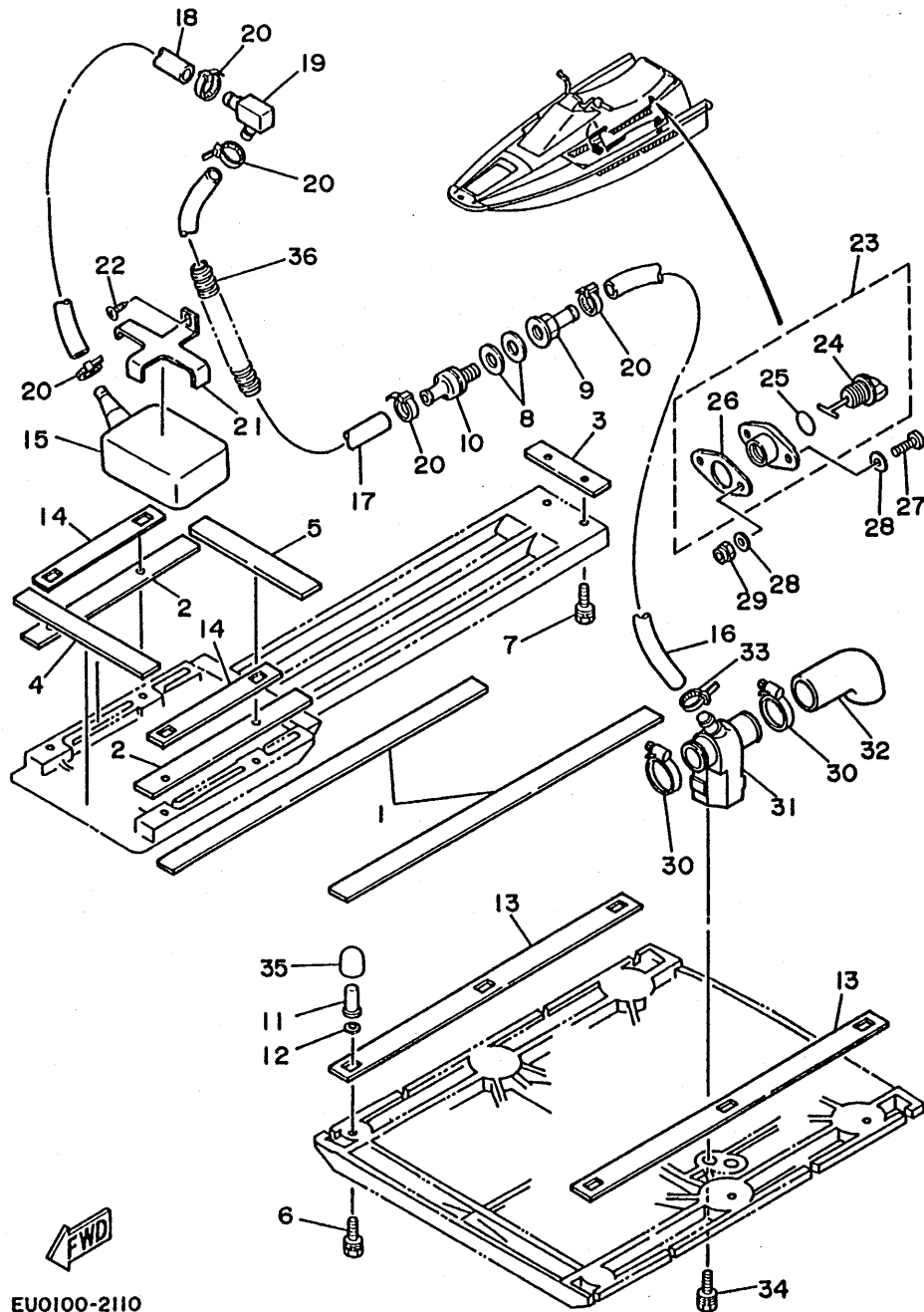
REF. NO.	PART NO.	DESCRIPTION	Q'TY	REMARKS
52	92990-05200	WASHER, plain	2	
53	95720-05300	NUT, self-locking	2	
54	EU0-65162-00	TRIM	2	
55	90267-48938	RIVET	1	
56	92990-05200	WASHER, plain	1	
57	90202-08920	WASHER, plain	2	
58	90465-08M08	CLAMP	1	FOR CANADA

EU0100-2100

C7

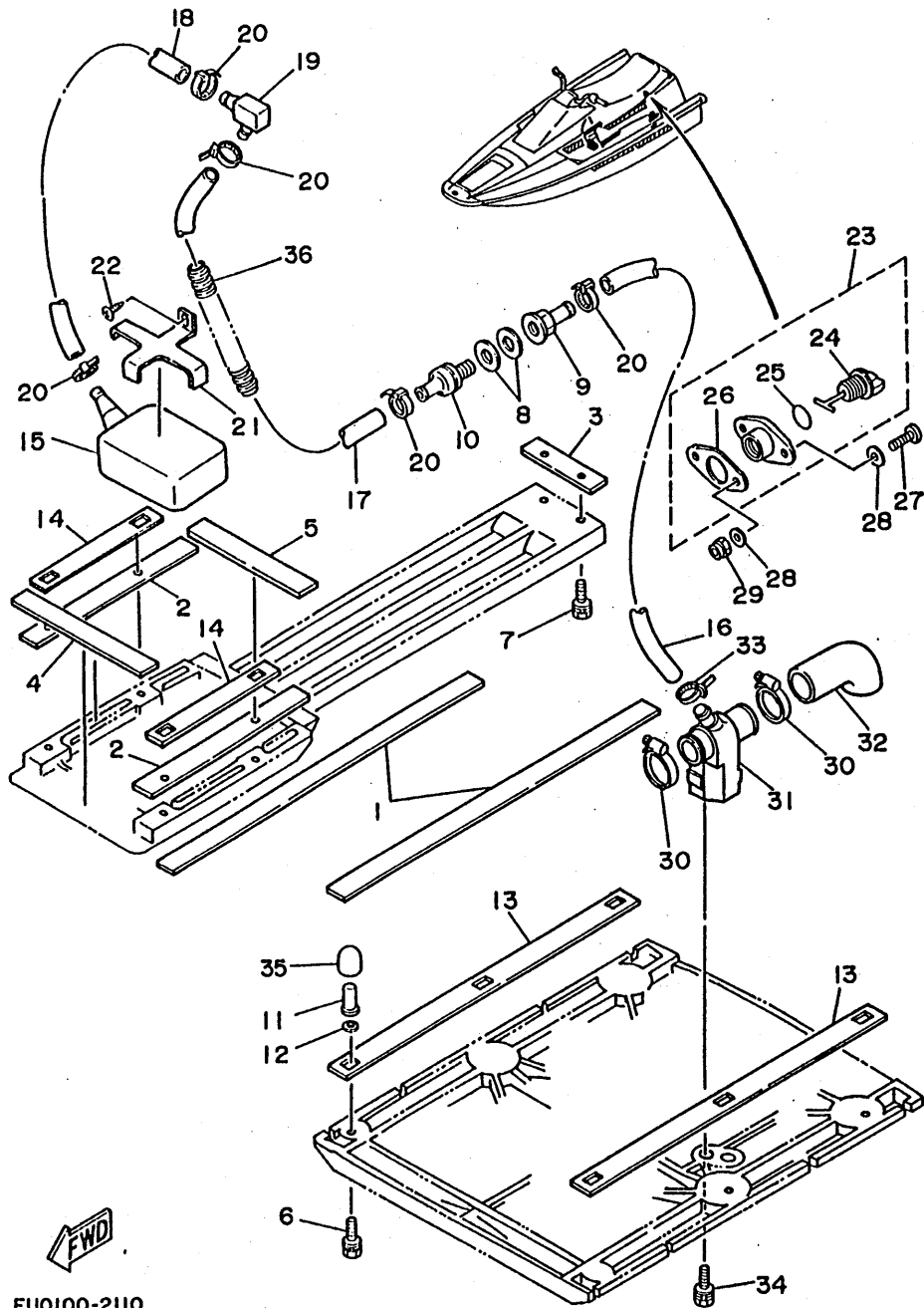
FIG. 11 HULL. DECK 2

REF. NO.	PART NO.	DESCRIPTION	Q'TY	REMARKS
1	EU0-62284-01	PACKING 3	2	
2	EU0-62284-31	PACKING 4	2	
3	EU0-62284-41	PACKING 5	1	
4	EU0-62284-51	PACKING 6	1	
5	EU0-62284-61	PACKING 7	1	
6	90119-06915	BOLT, with washer	10	
7	90119-06900	BOLT, with washer	2	
8	90430-13909	PACKING	2	
9	90604-80759	CONNECTION, thru-hull 1/4	1	
10	90604-80760	CONNECTION, thru-hull 1/4	1	
11	90179-06935	NUT, pop	10	
12	90201-09924	WASHER, plate	10	
13	EU0-67367-00	PLATE, stopper (A)	2	
14	EU0-67367-30	PLATE, stopper (B)	2	
15	EU0-67613-00	STRAINER	1	
16	90445-14M05	HOSE	1	
17	90445-14M03	HOSE	1	
18	90445-14M04	HOSE	1	
19	6K8-51162-00	JOINT, hose	1	
20	90465-13M11	CLAMP	5	
21	EU0-67618-00	BASE	1	
22	97780-50116	SCREW, tapping	1	
23	EU0-62280-00	DRAIN PLUG ASSY	1	
24	EU0-62282-00	.PLUG, drain	1	
25	EU0-62283-00	.O-RING	1	
26	EU0-62285-01	.PACKING, drain	1	
27	98580-05020	SCREW, pan head	2	
28	92990-05200	WASHER, plain	4	



EU0100-2110

FIG. 11 HULL. DECK 2



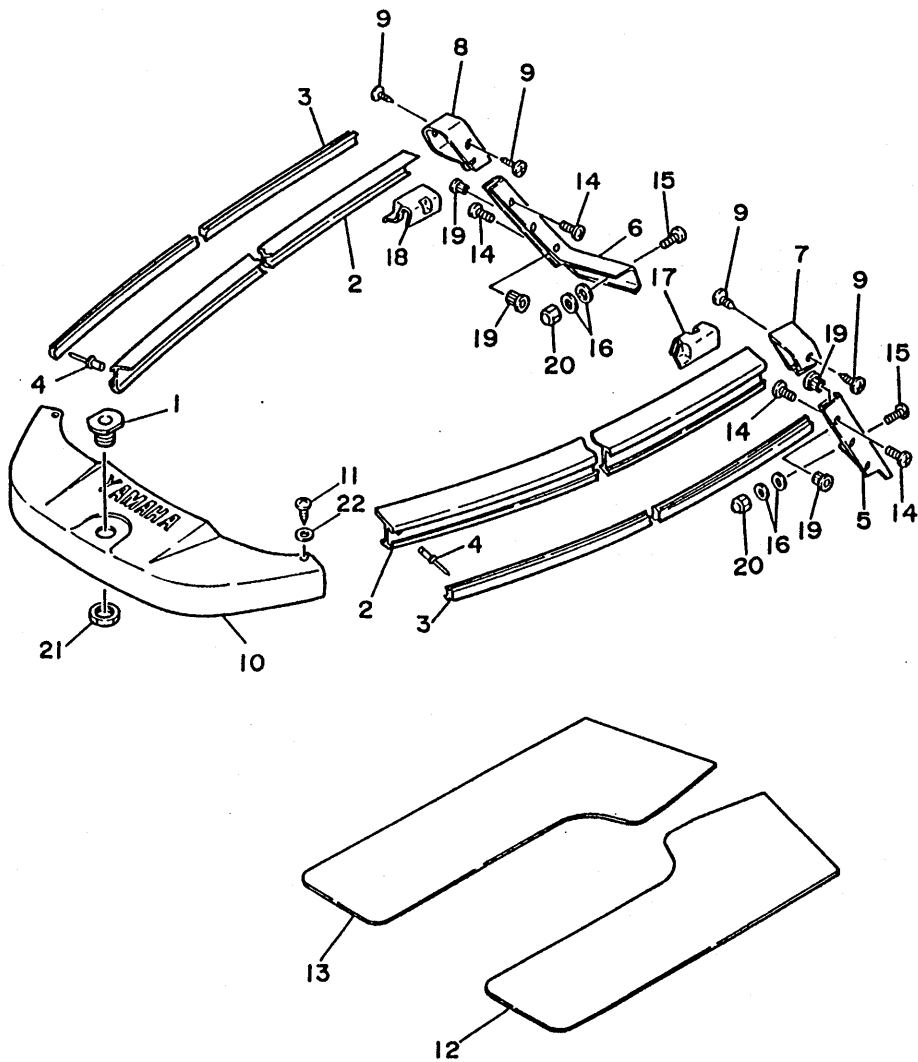
REF. NO.	PART NO.	DESCRIPTION	Q'TY	REMARKS
29	95780-05300	NUT, self-locking	2	
30	90460-25M09	CLAMP, hose	2	
31	6K8-7610K-00	BODY, valve	1	
32	6K8-51141-00	HOSE, section	1	
33	90465-13M11	CLAMP	1	
34	90119-06901	BOLT, with washer	2	
35	90190-06013	CLING	10	
36	90446-14M23	TUBE	2	

EU0100-2110

C9

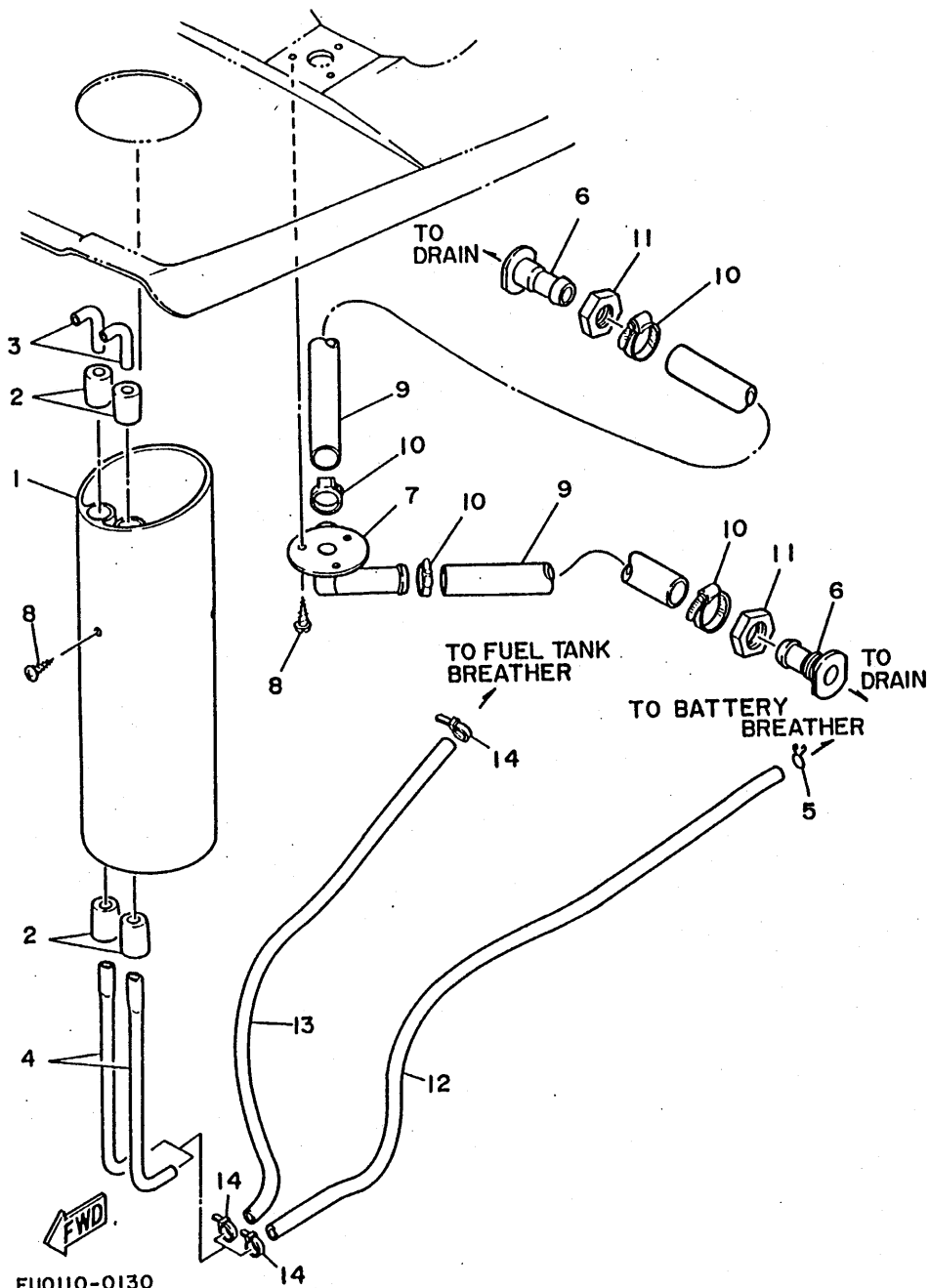
FIG. 12 GUNWALE. MAT

REF. NO.	PART NO.	DESCRIPTION	Q'TY	REMARKS
1	EU0-61651-30	ROPE HOLE	1	
2	EU0-62512-40	GUNWALE, side	2	
3	90697-37024	GUNWALE 36	2	
4	90267-48932	RIVET, blind	42	
5	EU0-62513-V0	GUNWALE, stern (LH)	1	
6	EU0-62513-W0	GUNWALE, stern (RH)	1	
7	EU0-62574-V0	CAP, gunwale stern (LH)	1	
8	EU0-62574-W0	CAP, gunwale stern (RH)	1	
9	90149-05935	SCREW, tapping	4	
10	EU0-62511-30	GUNWALE, bow	1	
11	90149-05937	SCREW, tapping	4	
12	EU0-63581-V1	MAT, upper (LH)	1	
13	EU0-63581-W1	MAT, upper (RH)	1	
14	90149-05933	SCREW, oval head	8	
15	90149-05934	SCREW, oval head	4	
16	92990-05200	WASHER, plain	8	
17	EU0-62519-V0	INNER GUNWALE (LH)	1	
18	EU0-62519-W0	INNER GUNWALE (RH)	1	
19	90179-05924	NUT	8	
20	95380-05800	NUT, cap	4	
21	EU0-61652-00	NUT	1	
22	90201-05928	WASHER, plate	4	



EU0110-9120

FIG. 13 VENTILATION



REF. NO.	PART NO.	DESCRIPTION	Q'TY	REMARKS
1	EU0-62149-40	PIPE, ventilation	1	
2	EU0-62155-00	CAP	4	
3	EU0-62156-01	ELBOW, ventilater 11	2	
4	EU0-62156-32	ELBOW, ventilater 12	2	
5	90467-08M10	CLIP	1	
6	EU0-62241-00	BODY, drain 1	2	
7	EU0-62242-00	DRAIN 2	1	
8	97780-40112	SCREW, pan head	6	
9	90669-03005	HOSE 1	2	
10	90601-20005	BAND, hose	4	
11	EU0-62241-30	NUT, drain 1	2	
12	EU0-67856-40	HOSE, air vent 3	1	
13	EU0-67856-30	HOSE, air vent 2	1	
14	90465-11M10	CLAMP	3	

EU0110-0130

C11

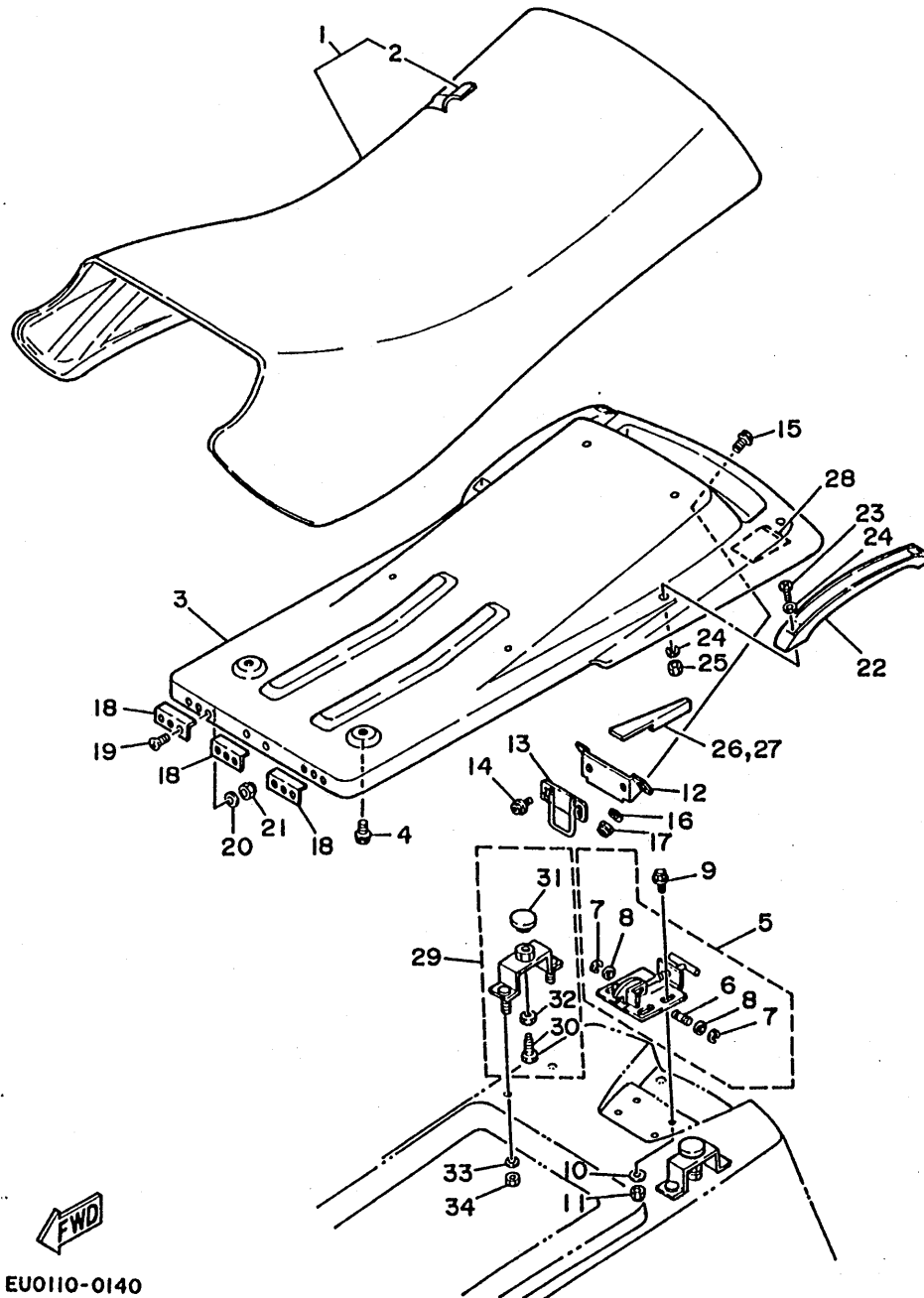


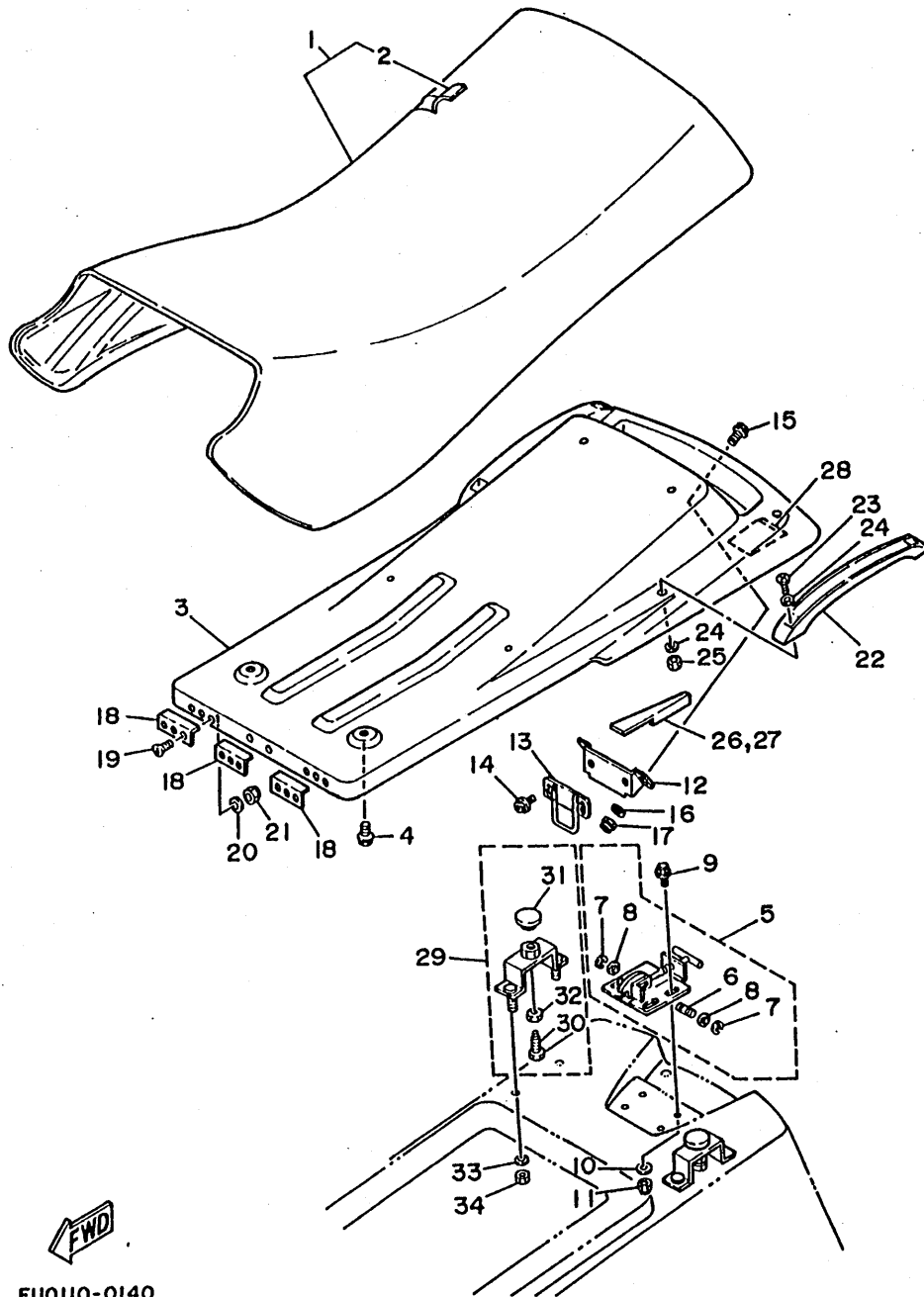
FIG. 14 SEAT

REF. NO.	PART NO.	DESCRIPTION	Q'TY	REMARKS
1	EU0-6371A-00	SEAT, tandem assy	1	
2	EU0-6371B-00	.COVER, seat	1	
3	EU0-63702-30	BASE SEAT COMP.	1	
4	90119-06034	BOLT, with washer	6	
5	EU0-63850-00	SEAT LOCK ASSY	1	
6	EU0-63774-00	.PIN	1	
7	93430-05900	.CLIP	2	
8	92990-06200	.WASHER, plain	2	
9	90119-06901	BOLT, with washer	4	
10	92990-06200	WASHER, plain	4	
11	95720-06300	NUT, self-locking	4	
12	EU0-63778-00	BASE, hook end	1	
13	EU0-63779-00	HOOK END	1	
14	90119-06926	BOLT, with washer	2	
15	90159-06902	SCREW, with washer	4	
16	92990-06200	WASHER, plain	4	
17	95720-06300	NUT, self-locking	4	
18	EU0-63789-01	STOPPER, seat 2	3	
19	98780-05016	SCREW	6	
20	92990-05200	WASHER, plain	6	
21	95720-05300	NUT, self-locking	6	
22	EU0-6271B-00	GRIP, hand	2	
23	90159-06902	SCREW	4	
24	92990-06200	WASHE, plain	4	
25	95780-06300	NUT, self-locking	4	
26	EU0-67593-10	MAT 3 (LH)	1	
27	EU0-67593-20	MAT 3 (RH)	1	
28	EU0-63765-00	LINER, damper	2	



EU0110-0140

FIG. 14 SEAT

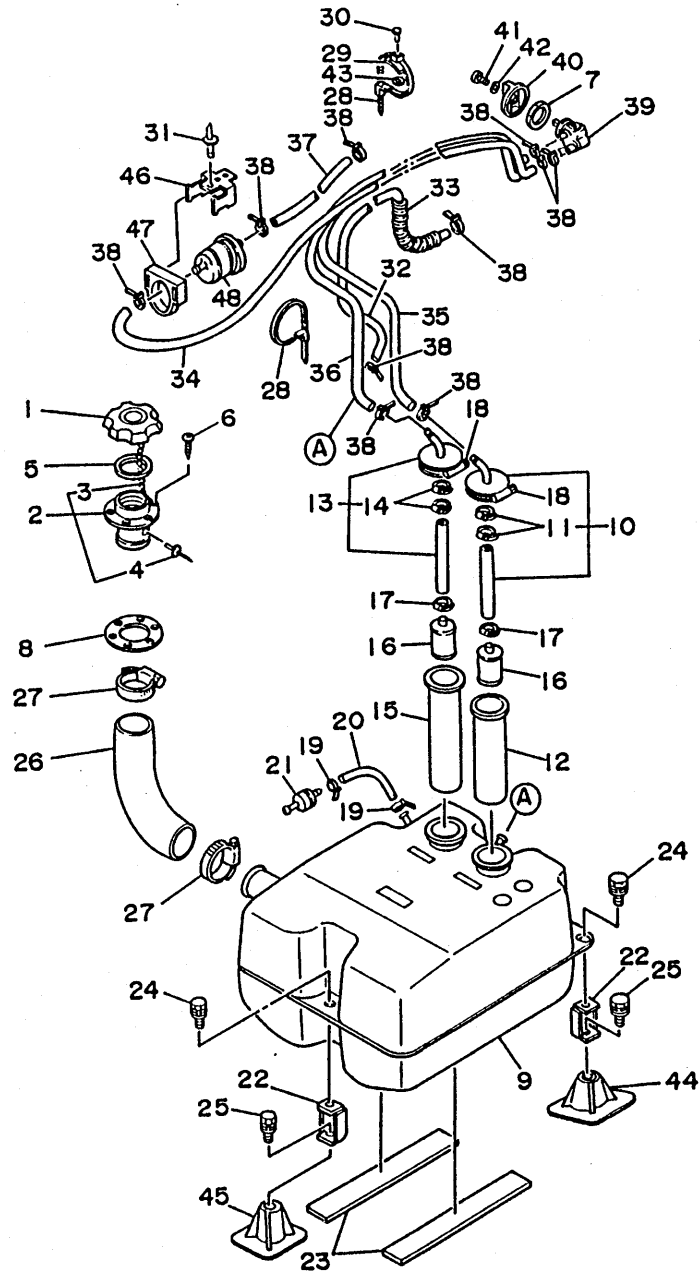


REF. NO.	PART NO.	DESCRIPTION	Q'TY	REMARKS
29	EU0-63760-02	DAMPER, seat assy	2	
30	EU0-63762-00	.BOLT	2	
31	EU0-63763-01	.PLATE	2	
32	EU0-63766-00	.NUT	2	
33	92990-06200	WASHER	4	
34	95720-06300	NUT, self-locking	4	

EU0110-0140

C13

FIG. 15 FUEL TANK

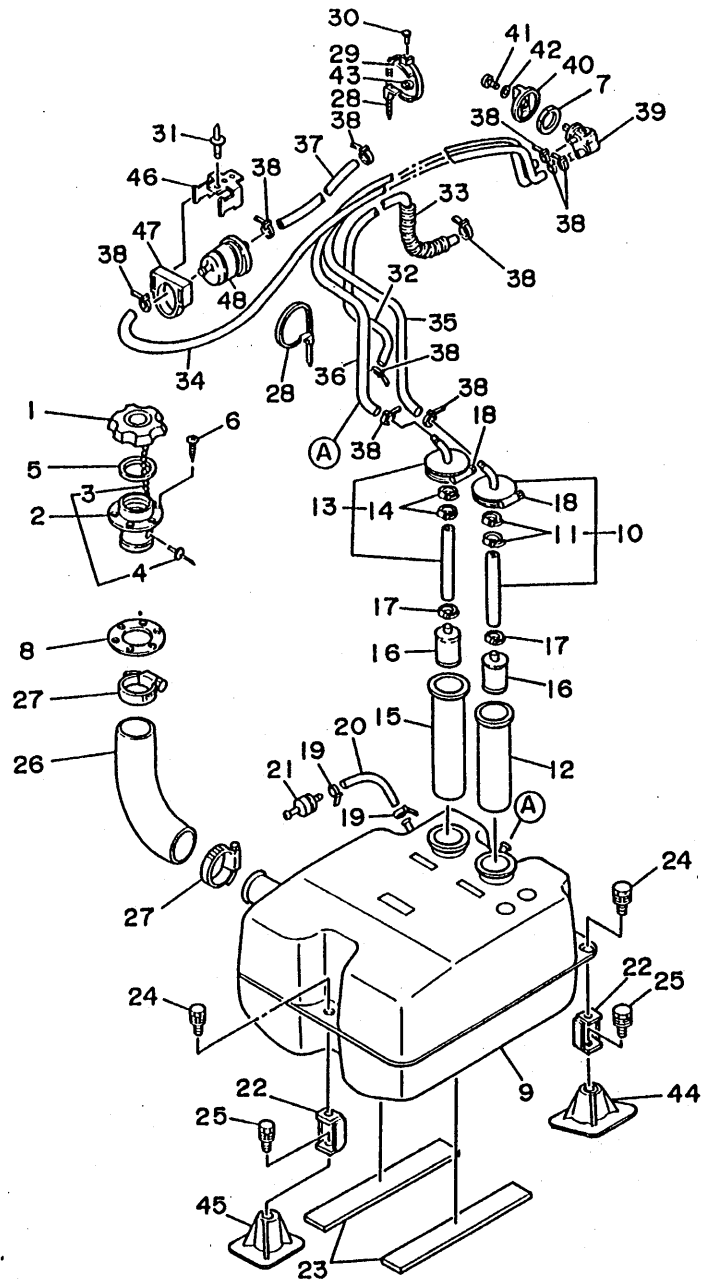


REF. NO.	PART NO.	DESCRIPTION	Q'TY	REMARKS
1	EU0-67831-01	CAP, fuel filler	1	
2	EU0-W6783-01	SOCKET	1	
3	EU0-67835-00	.CHAIN BALL	1	
4	90267-40935	.RIVET	1	
5	EU0-67832-00	PACKING 1	1	
6	EU0-67869-00	SCREW, tapping	6	
7	90170-22M11	NUT	1	
8	EU0-67834-00	PACKING, fuel filler	1	
9	EU0-67711-00	TANK, fuel	1	
10	EU0-24335-31	PIPE 1	1	
11	90601-11052	.BAND, hose	2	
12	8V0-24336-00	PIPE 2	1	
13	EU0-24335-01	PIPE 11	1	
14	90601-11052	.BAND, hose	2	
15	813-24336-00	PIPE 2	1	
16	8H5-24560-00	FILTER	2	
17	90601-11052	BAND, hose 10	2	
18	90601-16255	BAND, hose 62	2	
19	90465-11M10	CLAMP	2	
20	EU0-67856-00	HOSE, air vent 1	1	
21	EU0-67767-30	CHECK VALVE	1	
22	EU0-67777-03	FIX FUEL TANK	3	
23	EU0-67593-31	MAT 2	2	
24	90119-08907	BOLT, with washer	3	
25	90119-08903	BOLT, with washer	3	
26	EU0-67844-00	HOSE, filter	1	
27	90601-15554	BAND, hose 55	2	
28	90601-20006	BAND	6	

EU0110-0150

C14

FIG. 15 FUEL TANK



REF. NO.	PART NO.	DESCRIPTION	Q'TY	REMARKS
29	90600-91729	CLAMP	5	
30	90267-48931	RIVET, blind	5	
31	90267-48934	RIVET	3	
32	90445-10M06	HOSE	1	
33	EU0-67731-00	TUBE	1	
34	90445-10M26	HOSE	1	
35	90445-10M05	HOSE	1	
36	90445-10M04	HOSE	2	
37	90445-10M27	HOSE	1	
38	90465-11M10	CLAMP	10	
39	6K8-24500-02	FUEL COCK ASSY	1	
40	6K8-24524-10	LEVER, cock	1	
41	97880-04010	SCREW, pan head	1	
42	92990-04600	WASHER, plate	1	
43	90201-05925	WASHER, plain	5	
44	EU0-67745-31	BASE, fuel tank 2	2	
45	EU0-67745-01	BASE, fuel tank 1	1	
46	EU0-67816-30	BRACKET, fuel filter	1	
47	EU0-67817-00	HOLDER, filter	1	
48	6K8-24560-10	FILTER ASSY	1	



EU0110-0150

C15

FIG. 16 EXHAUST 2

REF. NO.	PART NO.	DESCRIPTION	Q' TY	REMARKS
1	EU0-67550-03	WATER LOCK COMP.	1	
2	EU0-67567-00	.HOOK B	4	
3	98580-05525	.SCREW	2	
4	92990-05200	.WASHER	2	
5	95720-05300	.NUT	2	
6	EU0-67555-00	HOSE	1	
7	EU0-67565-00	THRU-HULL	1	
8	EU0-67525-01	PACKING	1	
9	90119-05912	SCREW, with washer	3	
10	90601-15253	BAND, hose 52	3	
11	90601-20009	BAND	1	
12	EU0-67593-70	MAT 6	1	UR FOR USA/CANADA
	EU0-67593-61	MAT 5	1	UR FOR OCEANIA/AFRICA
13	EU0-67576-00	HOSE, protector	1	
14	90445-13M04	HOSE	1	
15	90445-13M05	HOSE	1	
16	90467-12M11	CLIP	2	
17	90600-91728	CLIP, nylon 17	4	
18	97780-50116	SCREW	2	
19	90465-13M11	CLAMP	2	
20	90604-80757	CONNECTION, thru-hull 1/4	1	
21	90604-80758	CONNECTION, thru-hull 1/4	1	
22	90430-13909	PACKING	2	
23	EU0-67574-00	LINER	1 UN	
24	90119-06913	BOLT, with washer	4	
25	EU0-67568-00	HOOK D	1	
26	EU0-67570-00	HOOK C	1	
27	EU0-67569-02	.BAND	1	

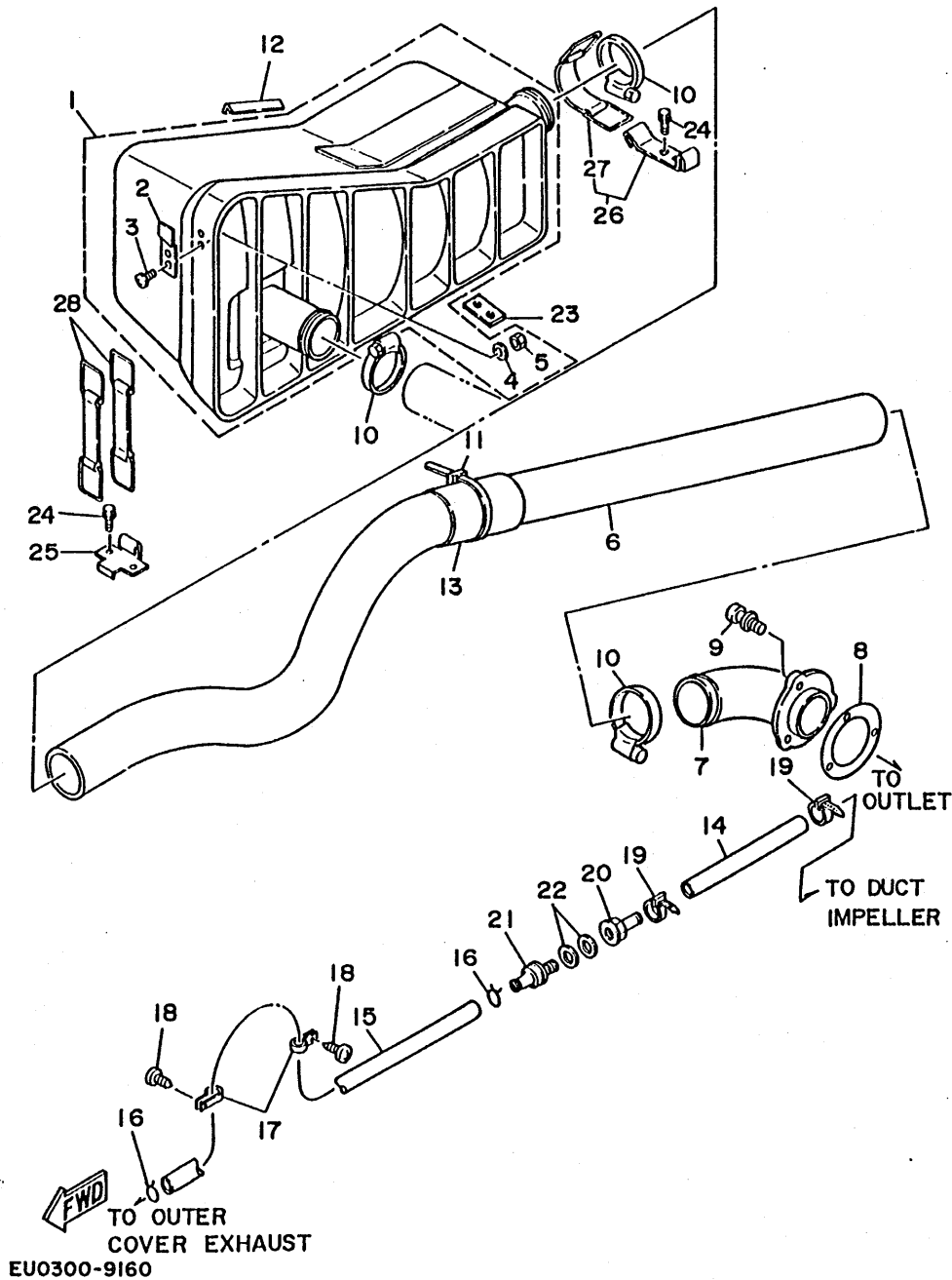
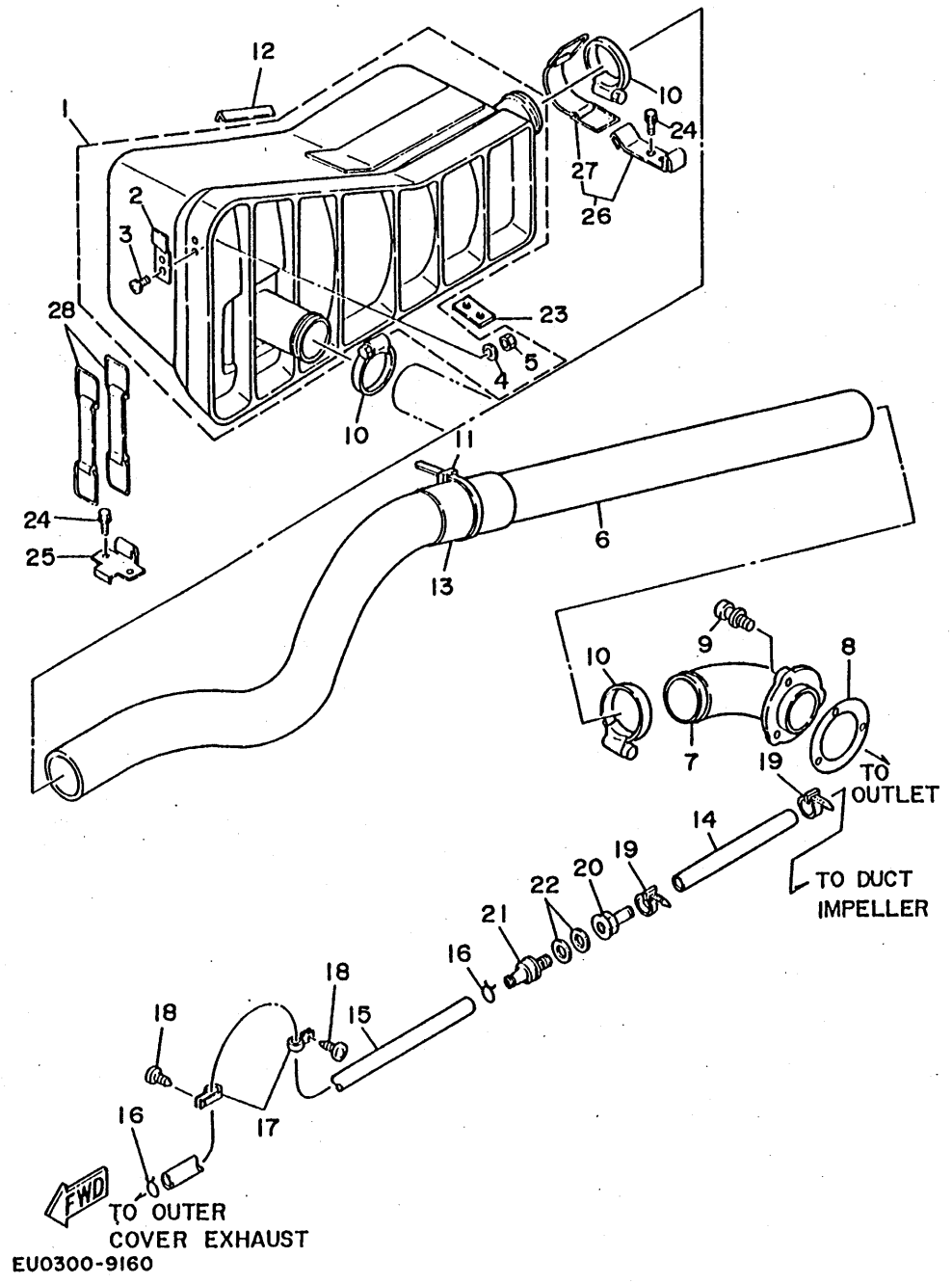


FIG. 16 EXHAUST 2

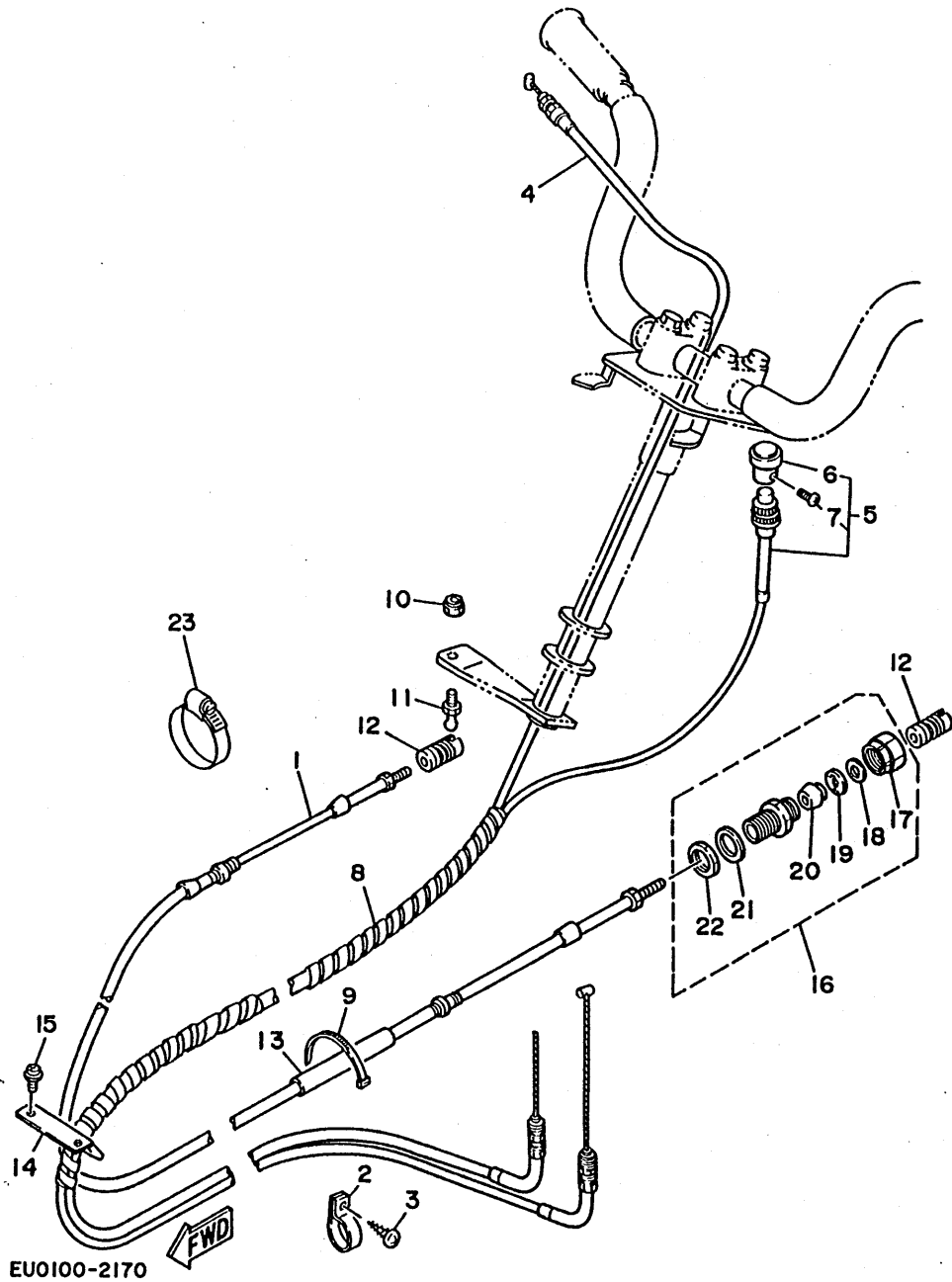
REF. NO.	PART NO.	DESCRIPTION	Q'TY	REMARKS
28	EU0-67569-02	BAND	2	



D3

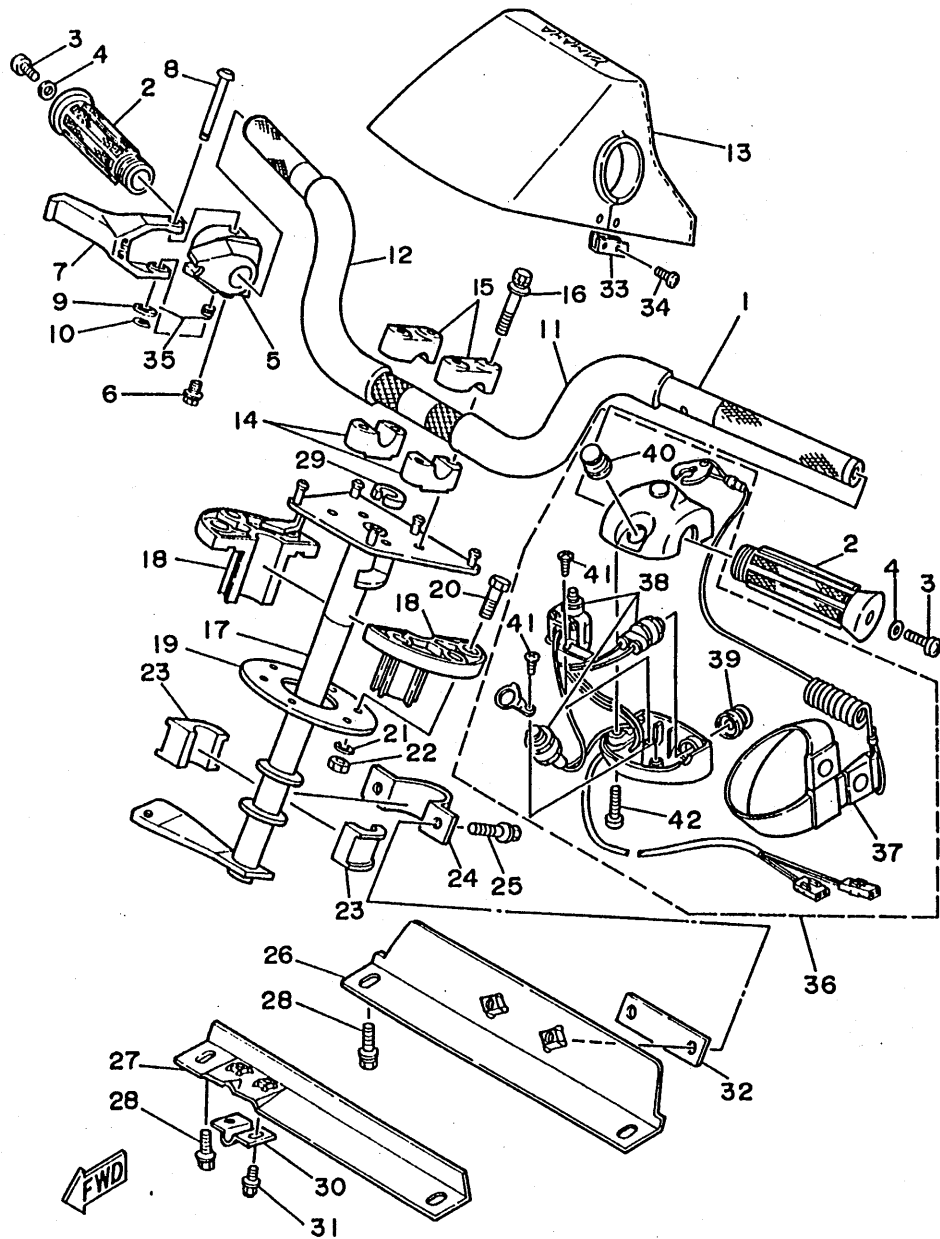
FIG. 17 CONTROL CABLE

REF. NO.	PART NO.	DESCRIPTION	Q'TY	REMARKS
1	EU0-61481-03	CABLE, steering	1	
2	90600-91728	CLIP, nylon 17	2	
3	97780-50116	SCREW	2	
4	EU0-67252-02	CABLE, throttle 1	1	
5	EU0-67242-03	CABLE, choke	1	
6	EU0-67243-00	.KNOB, choke	1	
7	90149-03930	.SCREW, pan head	1	
8	90699-36100	SPIRAL TUBE	1	
9	90601-20005	BAND	4	
10	95780-06300	NUT, nylon	1	
11	EU0-61461-00	STUD, joint ball	1	
12	EU0-61461-30	SHAFT, joint ball	2	
13	EU0-61474-00	PIPE	1	
14	EU0-61557-01	GUIDE, cable	1	
15	97680-04316	SCREW, with washer	2	
16	EU0-67267-00	CONNECTOR, cable	1	
17	EU0-62694-00	.CAP	1	
18	EU0-61446-00	.WASHER 30	1	
19	EU0-61486-00	.STOPPER	1	
20	EU0-61435-00	.SEAL, pipe 30	1	
21	EU0-61438-00	.PACKING (C)	1	
22	EU0-62241-30	.NUT, drian 1	1	
23	90601-14271	BAND	1	



EU0100-2170

FIG. 18 STEERING



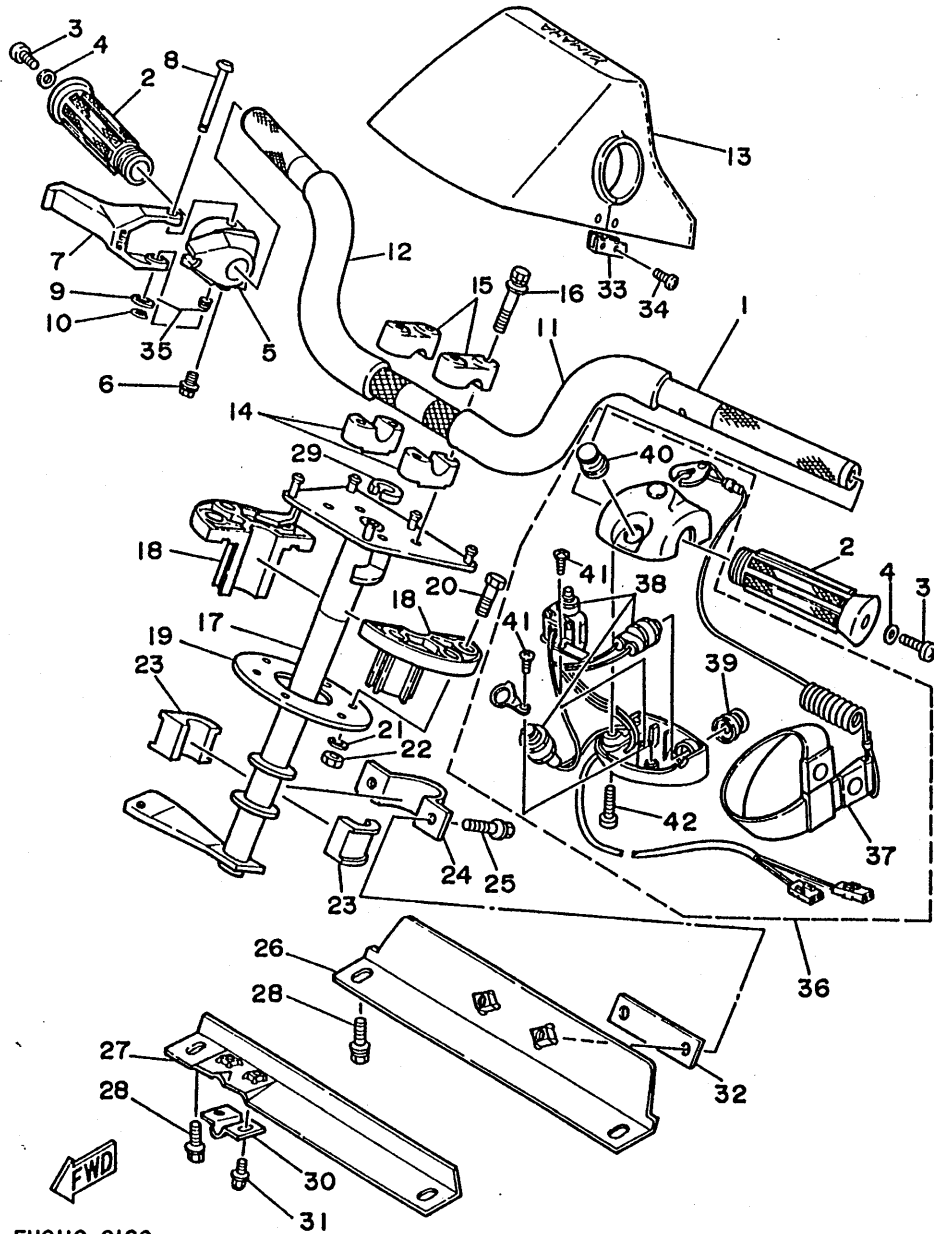
EU0110-0180

REF. NO.	PART NO.	DESCRIPTION	Q'TY	REMARKS
1	EU0-61552-02	HANDLE	1	
2	EU0-26241-01	GRIP, handle	2	
3	90149-05959	SCREW	2	
4	90201-05928	WASHER, plain	2	
5	EU0-67254-01	BRACKET	1	
6	90159-05900	SCREW	1	
7	81E-42138-00	LEVER, throttle	1	
8	EU0-61522-01	PIN	1	
9	92990-06200	WASHER, plain	1	
10	99080-04600	CLIP	1	
11	EU0-61489-11	TUBE (LH)	1	
12	EU0-61489-21	TUBE (RH)	1	
13	EU0-61421-50	PAD, steering (GRAY)	1	UR FOR CANADA
	EU0-61421-40	PAD, steering	1	UR FOR OCEANIA
14	EU0-23814-01	HOLDER, handle lower	2	
15	EU0-23814-30	HOLDER, handle upper	2	
16	90119-08925	BOLT, with washer	4	
17	EU0-61541-01	COLUMN, steering	1	
18	EU0-61417-00	BEARING, column	2	
19	EU0-61439-30	SEAL, rubber	1	
20	97395-06030	BOLT	6	
21	92990-06200	WASHER, plain	6	
22	95780-06300	NUT, self-locking	6	
23	8F3-23812-00	BEARING	2	
24	EU0-61588-00	JOINT, bearing	1	
25	90119-08903	BOLT, with washer	2	
26	EU0-61433-01	BRACKET, bearing	1	
27	EU0-61467-01	STOPPER, cable	1	

D5

FIG. 18 STEERING

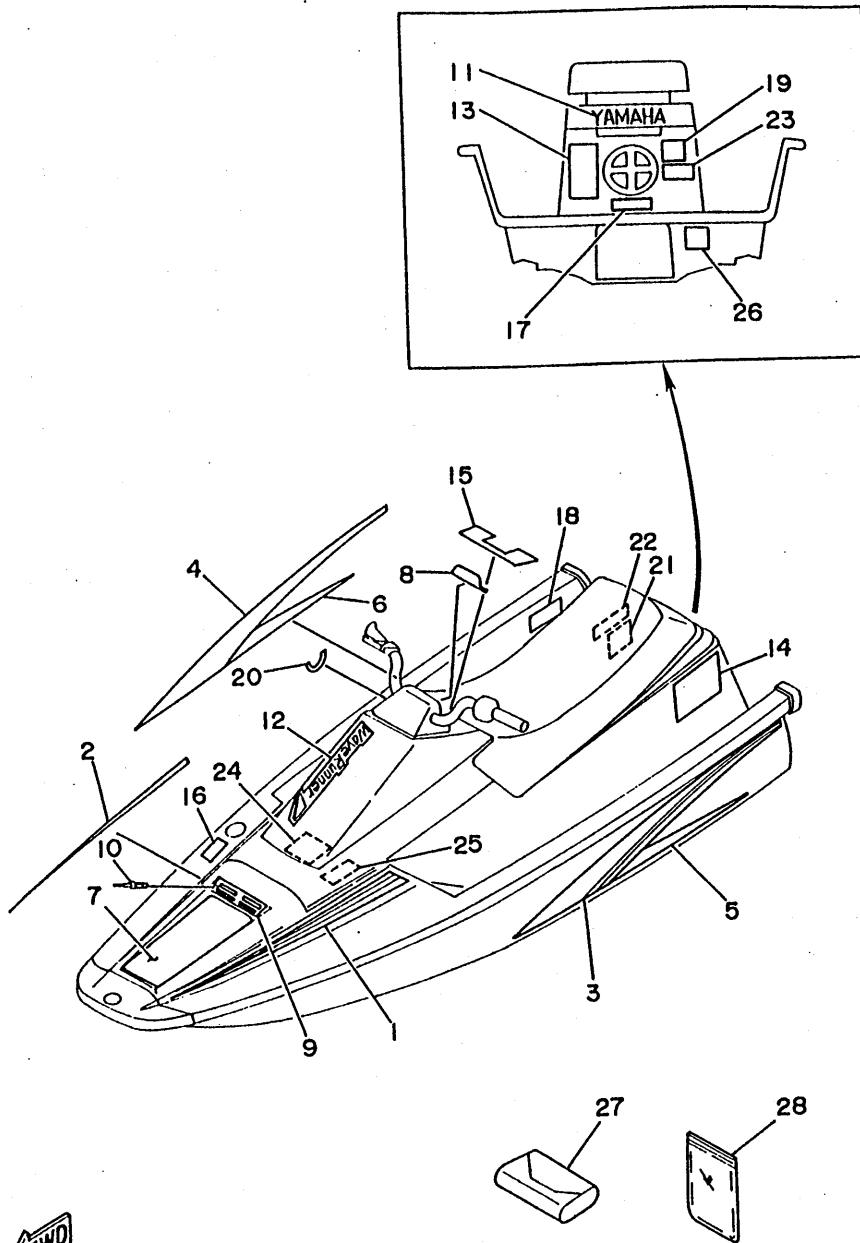
REF. NO.	PART NO.	DESCRIPTION	Q'TY	REMARKS
28	90119-08903	BOLT, with washer	4	
29	EU0-61469-00	PACKING	1	
30	EU0-61468-00	STOPPER CABLE	1	
31	90119-06926	BOLT, with washer	2	
32	EU0-61525-00	LINER	1	UN
33	EU0-61422-30	FIX, steering pad	2	
34	90149-04978	SCREW	4	
35	EU0-67256-00	SPRING	1	
36	FK7-68310-06	SWITCH BOX ASSY	1	
37	EW2-68348-00	.LANYARD, stop switch	1	
38	FK7-68311-02	.SWITCH SUB ASSY	1	
39	FK7-68312-02	.STOP BUTTON COMP.	1	
40	FK7-68313-01	.START BUTTON COMP.	1	
41	98580-03008	.SCREW	3	
42	98580-05525	.SCREW	2	



EU0110-0180

D6

FIG. 19 GRAPHIC. TOOL



REF. NO.	PART NO.	DESCRIPTION	Q'TY	REMARKS
1	EU0-64173-30	GRAPHIC A (LH)	1	
2	EU0-64173-40	GRAPHIC A (RH)	1	
3	EU0-6417L-10	GRAPHIC B (LH)	1	
4	EU0-6417L-20	GRAPHIC B (RH)	1	
5	EU0-6417L-30	GRAPHIC B (LH)	1	
6	EU0-6417L-40	GRAPHIC B (RH)	1	
7	EU0-64194-40	GRAPHIC D	1	
8	EU0-64953-60	PLATE A	1	
9	EU0-6495C-00	PLATE C	1	
10	90269-04921	RIVET	2	
11	EU0-64114-00	MARK, yamaha A	1	
12	EU0-64121-40	EMBLEM 1	1	
13	EU0-64161-00	LABEL, warning 1	1	UR FOR USA
	EU0-64161-60	LABEL, warning 1	1	UR FOR OCEANIA
14	EU0-64161-40	LABEL, warning 1	1	UR FOR CANADA/AFRICA
15	EU0-64161-30	LABEL, warning 2	1	UR FOR USA/OCEANIA
	EU0-64161-50	LABEL, warning 2	1	UR FOR CANADA/AFRICA
16	EW2-64161-00	LABEL, warning	1	UR FOR USA/OCEANIA
	FJ0-64161-F0	LABEL, warning 3	1	UR FOR CANADA/AFRICA
17	EU0-64183-H0	LABEL, caution 4	1	UR FOR CANADA/AFRICA
	EU0-64183-50	LABEL, caution 4	1	UR FOR USA/OCEANIA
18	FJ0-64183-H1	LABEL, caution 7	1	UR FOR CANADA/AFRICA
19	FJ0-64183-80	LABEL, caution 7	1	UR FOR USA/OCEANIA
20	EU0-64183-70	LABEL, caution 6	1	
21	FJ0-64183-60	LABEL, caution 5	1	FOR USA
22	FJ0-64183-J0	LABEL, caution 8	1	UR FOR CANADA/AFRICA
23	FJ0-64183-90	LABEL, caution 8	1	UR FOR USA/OCEANIA
24	EW2-64183-E0	LABEL, caution 8	1	UR FOR CANADA/AFRICA

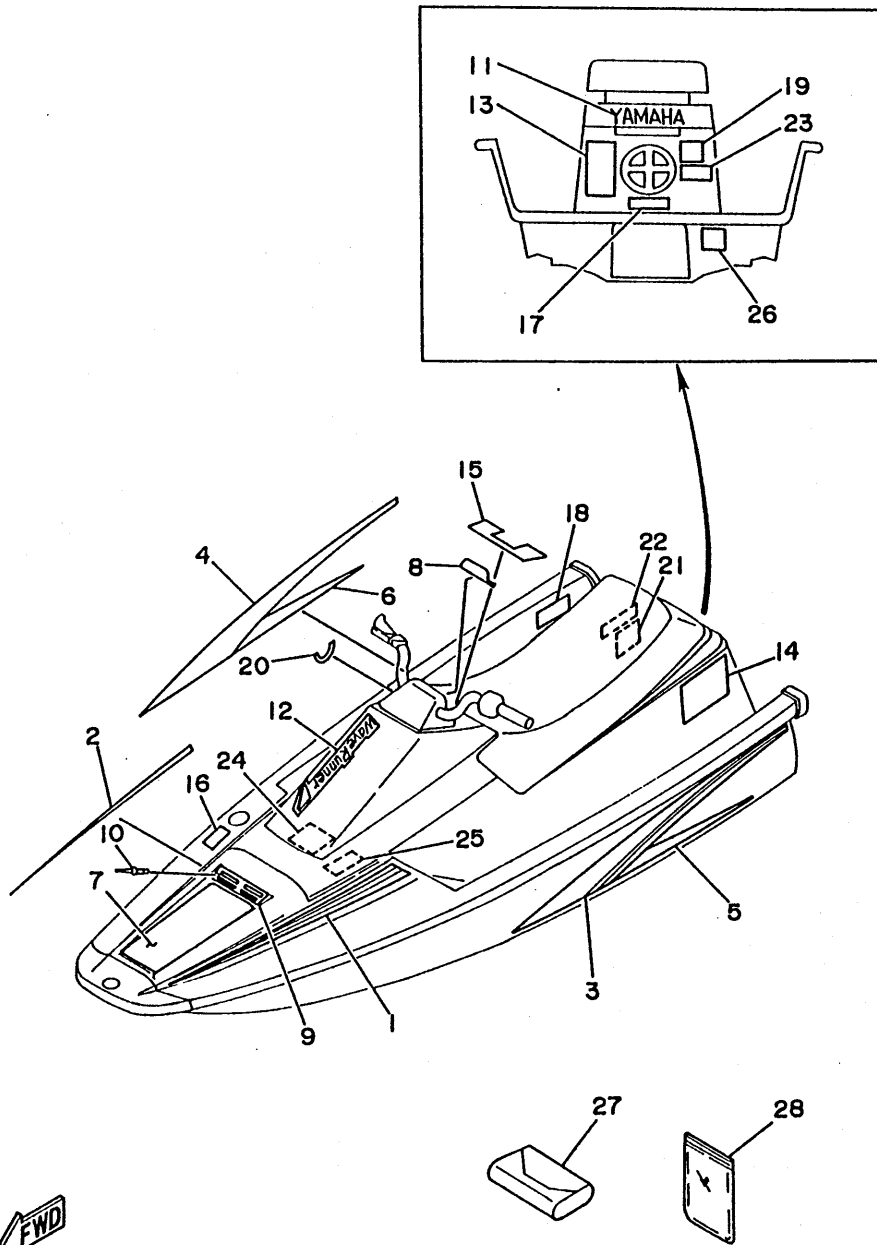


EU0100-2190

D7

FIG. 19 GRAPHIC. TOOL

REF. NO.	PART NO.	DESCRIPTION	Q'TY	REMARKS
24	EW2-64183-90	LABEL, caution 8	1	UR FOR USA/OCEANIA
25	EU0-64183-K1	LABEL, caution 9	1	UR FOR OCEANIA/AFRICA
	EU0-64183-N0	LABEL, caution 9	1	UR FOR USA/CANADA
26	EU0-64188-00	LABEL, riding	1	
27	EU0-28100-00	TOOL ASSY	1	
28	EU0-65901-01	BAG, vinyl	1	



EU0100-2190

D8

FIG. 20 GASKET KIT

REF. NO.	PART NO.	DESCRIPTION	Q'TY	REMARKS
1	6K8-W0001-01	GASKET KIT FOR ENGINE UNIT	1	UR 6K8-066207 and up ward
	6K8-W0001-04	GASKET KIT FOR ENGINE UNIT	1	UR 6K8-066208 and following
2	93102-25M45	.OIL SEAL	1	
3	6K8-15369-A1	.GASKET, oil seal housing	1	
4	6K8-41124-A1	.GASKET, exhaust cover 1	1	
5	6K8-41122-A1	.GASKET, exhaust cover 2	1	
6	6K8-11181-A1	.GASKET, cylinder head	1	
7	655-12414-A1	.GASKET, cover	1	
8	93210-16275	.O-RING	1	
9	93101-25M38	.OIL SEAL	2	
10	93102-25M28	.OIL SEAL	1	
11	689-45113-01	.GASKET, upper casing	1	UR 6K8-066207 and up ward
	6K8-45113-A0	.GASKET, upper casing	1	UR 6K8-066208 and following
12	6K8-13556-A1	.GASKET, manifold	2	
13	6K8-13621-A1	.GASKET, valve seat	1	
14	6K8-13674-A1	.GASKET, air cooler cover	1	
15	90430-08020	.GASKET	1	
16	6K8-41114-A1	.GASKET, exhaust outer cover	1	
17	6K8-41112-A1	.GASKET, exhaust inner cover	1	
18	6K8-14755-A1	.GASKET, silencer	1	
19	6K8-14739-A1	.GASKET, muffler damper 1	1	
20	6K8-14749-A1	.GASKET, muffler damper 2	1	
21	6K8-W0001-20	GASKET KIT FOR JET UNIT	1	
22	93101-17M31	.OIL SEAL	2	
23	93103-30M00	.OIL SEAL	1	
24	93101-30M32	.OIL SEAL	1	
25	93210-57M09	.O-RING	1	
26	90430-06M03	.GASKET	1	
27	93210-52454	.O-RING	1	
28	93102-25M11	.OIL SEAL	1	
29	93210-46M16	.O-RING	1	
30	6K8-W0093-10	CARBURETOR REPAIR KIT	1	
31	6K8-14559-00	.WASHER	2	
32	6K8-24435-10	.GASKET, body 2	1	
33	6K8-24411-10	.DIAPHRAGM	1	
34	6K8-24421-10	.VALVE, check	1	
35	6K8-24431-10	.GASKET, fuel pump 1	2	
36	6K8-14561-00	.O-RING	1	
37	6K8-14537-00	.GASKET	1	
38	6K8-14923-10	.SCREW, pilot	1	
39	6K8-14562-00	.O-RING	1	
40	6K8-14946-10	.PLATE, needle fitting	1	
41	61L-14916-15	.NEEDLE	1	
42	6K8-14536-11	.GASKET	1	
43	6K8-14541-10	.DIAPHRAGM, pump	1	

NUMERICAL INDEX

PART NO.	GRID NO.	PART NO.	GRID NO.	PART NO.	GRID NO.	PART NO.	GRID NO.	PART NO.	GRID NO.	PART NO.	GRID NO.
6K8-W0001-01	D- 9	6K8-14301-11	B- 8	6K8-14946-10	D-10	6K8-44519-00-94	B- 3	EUO-61469-00	D- 6	EUO-62720-30	C- 5
6K8-W0001-04	D- 9	6K8-14451-00	B- 7	6K8-15100-01-94	B- 2	6K8-45113-A0	B- 6	EUO-61474-00	D- 4	EUO-62721-30	C- 5
6K8-W0001-20	D- 9	6K8-14481-10	B- 8	6K8-15359-01-94	B- 2		D- 9	EUO-61481-03	D- 4	EUO-62731-00	B-12
6H4-W0004-00	B- 7	6K8-14521-00	B- 8	6K8-15369-A1	B- 2	689-45113-01	B- 6	EUO-61486-00	D- 4	EUO-62841-01	C- 5
6K8-W0090-04-EK	B- 2	6K8-14522-00	B- 9		D- 9		D- 9	EUO-61489-11	D- 5	EUO-62843-01	C- 6
6K8-W0093-10	D-10	6K8-14523-10	B- 8	8F3-23812-00	D- 5	6K8-45127-00	B-12	EUO-61489-21	D- 5	EUO-62884-02	C- 5
EUO-W6783-01	C-14	6K8-14527-00	B- 7	EUO-23814-01	D- 5	647-45151-01	C- 3	EUO-61522-01	D- 5	FJO-62891-00	C- 6
689-11111-01-94	B- 3	6K8-14527-10	B- 9	EUO-23814-30	D- 5	6K8-45331-01-94	B-12	EUO-61525-00	D- 6	EUO-62892-02	C- 6
6K8-11119-00	B- 2	6K8-14533-00	B- 8	EUO-24335-01	C-14	6K8-45511-01	C-14	EUO-61541-01	D- 5	EUO-63581-V1	C-10
6K8-11181-A1	B- 3	6K8-14534-10	B- 8	EUO-24335-31	C-14	6K8-45514-00	B- 6	EUO-61552-02	D- 5	EUO-63581-W1	C-10
	D- 9	6K8-14536-11	B- 9	8V0-24336-00	C-14	6K8-45567-00-01	B-11	EUO-61557-01	D- 4	EUO-63702-30	C-12
689-11325-00	B- 2		D-10	813-24336-00	C-14	6K8-45567-00-03	B-11	EUO-61588-00	D- 5	EUO-6371A-00	C-12
646-11370-00	B- 2	6K8-14537-00	B- 8	650-24378-00	B- 2	6K8-45567-00-05	B-11	EUO-61638-01	C- 6	EUO-6371B-00	C-12
650-11372-00	B- 2		D-10	6K8-24411-10	B- 8	6K8-45567-00-10	B-11	EUO-61651-30	C-10	EUO-63729-03	C- 5
6K8-11400-00	B- 5	6K8-14541-10	B- 9		D-10	6K8-4581J-00	B- 6	EUO-61652-00	C-10	EUO-63760-02	C-13
6K8-11412-00	B- 5		D-10	6K8-24412-10	B- 9	6K8-45813-00-9M	B- 6	EUO-62149-40	C-11	EUO-63762-00	C-13
689-11422-02	B- 5	6K8-14542-10	B- 9	6K8-24413-10	B- 8	6K8-51141-00	C- 9	EUO-62155-00	C-11	EUO-63763-01	C-13
689-11432-02	B- 5	6K8-14547-00	B- 9	6K8-24421-10	B- 8	6K8-51161-10	B-11	EUO-62156-01	C-11	EUO-63765-00	C-12
689-11442-02	B- 5	6K8-14556-10	B- 8		D-10	6K8-51162-00	C- 8	EUO-62156-32	C-11	EUO-63766-00	C-13
6K8-11478-00	B- 6	6K8-14559-00	B- 8	6K8-24431-10	B- 8	6K8-51311-00-94	B-11	EUO-62241-00	C-11	EUO-63774-00	C-12
689-11515-00	B- 5		D-10		D-10	6K8-51312-00-94	B-11	EUO-62241-30	C-11	EUO-63778-00	C-12
6K8-11610-01	B- 5	6K8-14561-00	B- 8	6K8-24435-10	B- 8	6K8-51313-00	B-12		D- 4	EUO-63779-00	C-12
6K8-11610-11	B- 5		D-10		D-10	6K8-51315-00-94	B-11	EUO-62242-00	C-11	EUO-63783-00	C- 6
6K8-11610-21	B- 5	6K8-14562-00	B- 8	6K8-24452-10	B- 8	6K8-51318-00-9M	B-11	EUO-62280-00	C- 8	EUO-63789-01	C-12
6K8-11631-00-95	B- 5		D-10	6K8-24500-02	C-15	6K8-51321-00-94	B-11	EUO-62282-00	C- 8	EUO-63850-00	C-12
689-11633-00	B- 5	6K8-14569-11	B- 9	6K8-24524-10	C-15	6K8-51323-02	B-12	EUO-62283-00	C- 8	EUO-64114-00	D- 7
688-11634-00	B- 5	6K8-14579-00	B- 9	6K8-24560-10	C-15	6K8-51326-00-94	B-11	EUO-62284-01	C- 8	EUO-64121-40	D- 7
6K8-11635-00	B- 5	6K8-14589-00	B- 8	8H5-24560-00	C-14	6K8-51332-00-94	B-12	EUO-62284-31	C- 8	EUO-64161-00	D- 7
6K8-11636-00	B- 5	6K8-14591-10	B- 9	EUO-26241-01	D- 5	6K8-51333-00-94	B-11	EUO-62284-41	C- 8	EUO-64161-30	D- 7
689-11651-00	B- 5	6K8-14592-00	B- 9	EUO-28100-00	D- 8	6K8-51347-00-9M	B-11	EUO-62284-51	C- 8	EUO-64161-40	D- 7
6K8-11681-00	B- 5	6K8-14596-10	B- 8	6E0-28193-00-94	B-10	6K8-51348-00-9M	B-11	EUO-62284-61	C- 8	EUO-64161-50	D- 7
689-11681-01	B- 5	6K8-14711-00-9M	B-10	6K8-41111-00-9M	B-10	6K8-51381-01	B-12	EUO-62285-01	C- 8	EUO-64161-60	D- 7
655-12413-01-9M	B- 3	6K8-14718-00-9M	B-10	6K8-41112-A1	B-10	6K8-51385-00	B-10	EUO-62511-30	C-10	EW2-64161-00	D- 7
655-12414-A1	B- 3	6K8-14721-00-9M	B-10		D- 9		B-11	EUO-62512-40	C-10	FJO-64161-F0	D- 7
	D- 9	6K8-14739-A1	B-10	6K8-41113-00-9M	B-10	EUO-61314-30	C- 6	EUO-62513-V0	C-10	EUO-6417L-10	D- 7
6K8-13556-A1	B- 7		D- 9	6K8-41114-A1	B-10	EUO-61417-00	D- 5	EUO-62513-W0	C-10	EUO-6417L-20	D- 7
	D- 9	6K8-14749-A1	B-10		D- 9	EUO-61421-40	D- 5	EUO-62519-V0	C-10	EUO-6417L-30	D- 7
6H5-13610-00	B- 7		D- 9	6K8-41121-00-9M	B- 2	EUO-61421-50	D- 5	EUO-62519-W0	C-10	EUO-6417L-40	D- 7
6K8-13621-A1	B- 7	6K8-14752-00	B-10	6K8-41122-A1	B- 2	EUO-61422-30	D- 6	EUO-62574-V0	C-10	EUO-64173-30	D- 7
	D- 9	6K8-14755-A1	B-10		D- 9	EUO-61433-01	D- 5	EUO-62574-W0	C-10	EUO-64173-40	D- 7
6K8-13641-00-94	B- 7		D- 9	6K8-41123-00-9M	B- 2	EUO-61435-00	D- 4	A84-62635-00	C- 5	EUO-64183-H0	D- 7
6K8-13674-A1	B- 7	61L-14916-15	B- 9	6K8-41124-A1	B- 2	EUO-61438-00	D- 4	EUO-62663-01	C- 6	EUO-64183-K1	D- 8
	D- 9		D-10		D- 9	EUO-61439-30	D- 5	EUO-62664-01	C- 5	EUO-64183-NO	D- 8
830-1423E-66	B- 8	6K8-14923-10	B- 8	6K8-41137-00-94	B-10	EUO-61446-00	D- 4	EUO-62688-00	C- 5	EUO-64183-50	D- 7
3G2-14231-16	B- 8		D-10	81E-42138-00	D- 5	EUO-61461-00	D- 4	EUO-62693-02	B-12	EUO-64183-70	D- 7
6K8-14253-10	B- 9	6K8-14926-10	B- 8	6K8-42316-00	B-12	EUO-61461-30	D- 4	EUO-62694-00	D- 4	EW2-64183-E0	D- 7
6K8-14283-01	B- 7	6K8-14930-10	B- 8	6K8-44517-00-9M	B- 3	EUO-61467-01	D- 5	EUO-62695-00	B-12	EUO-64183-90	D- 8
6K8-14284-00-98	B- 7	6K8-14946-10	B- 8	6K8-44518-00-94	B- 3	EUO-61468-00	D- 6	EUO-6271B-00	C-12	FJO-64183-H1	D- 7

NUMERICAL INDEX

PART NO.	GRID NO.	PART NO.	GRID NO.	PART NO.	GRID NO.	PART NO.	GRID NO.	PART NO.	GRID NO.	PART NO.	GRID NO.
FJO-64183-JO	D- 7	EUO-67593-20	C-12	6K8-8182G-10	C- 2	6K8-85644-00	B- 4	90179-10919	B-13	90445-13M04	D- 2
FJO-64183-60	D- 7	EUO-67593-31	C-14	6K8-8182H-10	C- 2	90105-05M52	B- 7	90179-16M05	B-15	90445-13M05	D- 2
FJO-64183-80	D- 7	EUO-67593-61	D- 2	6K8-8182L-10	C- 2	90105-06M09	B- 2	90190-06013	C- 9	90445-14M03	C- 8
FJO-64183-90	D- 7	EUO-67593-70	D- 2	6K8-8182M-10	C- 2	90105-08M38	B- 3	90201-05925	C-15	90445-14M04	C- 8
EUO-64188-00	D- 8	EUO-67613-00	C- 8	6K8-8182N-10	C- 2	90116-08M14	B- 7	90201-05926	C- 4	90445-14M05	C- 8
EUO-64194-40	D- 7	EUO-67618-00	C- 8	6K8-8182R-10	C- 2	90119-05912	D- 2	90201-05928	C-10	90446-14M23	B- 4
EUO-64742-00	C- 5	EUO-67711-00	C-14	6K8-8182V-10	C- 2	90119-06M33	B-11		D- 5		C- 9
EUO-64742-01	C- 5	EUO-67731-00	C-15	6K8-81820-10	C- 2	90119-06M34	C- 3	90201-06M02	B-12	90460-18M08	B-11
EUO-6495C-00	D- 7	EUO-67745-01	C-15	6K8-81822-00-94	B- 3	90119-06M37	B-10	90201-09924	C- 8	90460-25M09	C- 9
EUO-64953-60	D- 7	EUO-67745-31	C-15	6K8-81826-10	C- 2	90119-06M34	B-10	90201-16M44	B-15	90461-06M00	B-15
EUO-6516A-00	C- 5	EUO-67767-30	C-14	6K8-81830-10	C- 2	90119-06034	C-12	90201-20M21	B- 6	90464-07M05	C- 4
EUO-65162-00	C- 7	EUO-67777-03	C-14	663-81834-10	C- 2	90119-06900	B-13	90201-20M27	B- 5	90465-08M08	C- 7
EUO-65772-00	C- 4	EUO-67816-30	C-15	6K8-81840-10	C- 2	90119-06901	C- 8	90201-32M48	B-11	90465-08M41	B-15
EUO-65772-30	C- 4	EUO-67817-00	C-15	6K8-81846-10	C- 2		C- 9	90201-50306	B- 5	90465-11M10	B- 2
EUO-65901-01	D- 8	EUO-67831-01	C-14	6K8-81847-10	C- 2	90119-06902	C-12	90202-08920	C- 7		C- 4
EUO-67242-03	D- 4	EUO-67832-00	C-14	6K8-81850-12	C- 2	90119-06903	D- 2	90202-10024	B-13		C-11
EUO-67243-00	D- 4	EUO-67834-00	C-14	676-81858-10	C- 2	90119-06915	C- 8	90209-07919	C- 6		C-14
EUO-67252-02	D- 4	EUO-67835-00	C-14	676-81859-10	C- 2	90119-06926	C- 8	90209-24M03	B- 5		C-15
EUO-67254-01	D- 5	EUO-67835-30	C- 5	6K8-81921-00	C- 3		D- 6	90267-40935	C-14	90465-13M11	C- 8
EUO-67256-00	D- 6	EUO-67839-00	C- 5	6G1-81941-10	C- 3	90119-08M18	B- 3	90267-40937	C- 5		C- 9
EUO-67267-00	D- 4	EUO-67844-00	C-14	6G1-81952-00	C- 3	90119-08M21	B- 3	90267-48931	C- 4		D- 2
EUO-67323-00	B- 3	EUO-67856-00	C-14	6K8-81960-A0	C- 3	90119-08M35	B- 2		C-15	90465-13M24	C- 4
EUO-67324-00	B- 3	EUO-67856-30	C-11	EUO-82110-78	C- 4	90119-08M36	B- 2	90267-48932	C-10	90467-06016	B- 2
EUO-67354-00-01	B- 3	EUO-67856-40	C-11	6K8-82117-01	C- 4	90119-08M38	B-10	90267-48934	C- 5	90467-08M10	C-11
EUO-67354-00-03	B- 3	EUO-67869-00	C-14	6K8-82117-11	C- 4	90119-08038	B- 3		C-15	90467-12M11	D- 2
EUO-67354-00-05	B- 3	EUO-68156-02	C- 5	6K8-82117-21	C- 4	90119-08903	C-14	90267-48938	C- 7	90480-18M21	C- 3
EUO-67354-00-10	B- 3	EUO-68211-09	C- 4	6K8-82119-01	C- 4		D- 5	90269-04921	D- 7	90480-25M18	C- 4
EUO-67354-00-20	B- 3	EUO-68218-04	C- 4	6K8-82119-11	C- 4		D- 6	90280-05049	B-14		C- 4
EUO-67354-30-03	B-13	EUO-68219-00	C- 4	6K8-82119-11	C- 4	90119-08904	B- 3	90336-10003	B- 2		C- 4
EUO-67354-30-05	B-13	EUO-68221-00	C- 4	6K8-82150-00	C- 3	90119-08907	B-13	90338-12081	C- 6	90600-70069	C- 6
EUO-67354-30-10	B-13	EUO-68221-30	C- 4	6G1-82151-00	C- 3		C-14	90340-08M04	B-10	90600-91728	D- 2
EUO-67354-40	B-13	FK7-68310-06	D- 6	6K8-82361-00	B-14		C-14	90387-06M12	B-12		D- 4
EUO-67354-50	B-13	FK7-68311-02	D- 6	6K8-82370-00	C- 3	90119-08925	C- 3	90387-06M60	B-12	90600-91729	C-15
EUO-67361-01	B- 3	FK7-68312-02	D- 6	6K8-82370-11	C- 3	90119-10906	C- 3	90387-08044	B- 2	90601-11052	C-14
EUO-67367-00	C- 8	FK7-68313-01	D- 6	6K8-82553-02	C- 4	90149-03930	D- 4	90387-18M00	C- 3		C-14
EUO-67367-30	C- 8	EW2-68348-00	D- 6	6K8-82560-00	C- 4	90149-04978	D- 6	90430-06M03	B-12		C-14
EUO-67525-01	D- 2	6K8-7610K-00	D- 6	6K8-8258A-01	C- 4	90149-05933	C-10		D- 9	90601-14271	D- 4
EUO-67550-03	D- 2	6K8-81303-40	C- 9	6K8-82588-00	C- 4	90149-05934	C-10		B-10	90601-15253	B-10
EUO-67555-00	D- 2	6E7-81328-70	B-14	6K8-83621-00	C- 4	90149-05935	C-10	90430-08020	D- 9		D- 2
EUO-67565-00	D- 2	6K8-81337-01-94	B-14	6G0-85509-70	B-14	90149-05937	C-10		D- 9		D- 2
EUO-67567-00	D- 2	6K8-81365-A1	B-14	6K8-8552A-00	C- 3	90149-05939	D- 5	90430-13909	C- 8	90601-15554	C-14
EUO-67568-00	D- 2	6K8-81800-12	B-14	6K8-8552E-00	C- 3	90159-05900	D- 5		D- 2	90601-16255	C-14
EUO-67569-02	D- 2	6K8-81807-10	C- 2	6G0-85520-70	B-14	90159-06901	C- 4	90445-07M12	B- 2	90601-20005	C-11
	D- 3	6K8-81809-10	C- 2	6K8-85540-11	C- 3		C- 6	90445-09222	B- 2		D- 4
EUO-67570-00	D- 2	6K8-81810-10	C- 2	6K8-85550-A1	B-14	90159-06902	C-12	90445-10M04	C-15	90601-20006	C-14
EUO-67574-00	D- 2	6K8-81811-10	C- 2	6K8-85560-41	B-14		C-12	90445-10M05	C-15	90601-20009	D- 2
EUO-67576-00	D- 2	6K8-81812-10	C- 2	6K8-85570-10	C- 3	90170-22M11	C-12	90445-10M06	C-15	90604-80757	D- 2
EUO-67593-10	C-12	6K8-81813-10	C- 2	6K8-85580-00	B-14	90179-05924	C-10	90445-10M26	C-15	90604-80758	D- 2
				6K8-85599-00	C- 3	90179-06935	C- 8	90445-10M27	C-15	90604-80759	C- 8

NUMERICAL INDEX

PART NO.	GRID NO.	PART NO.	GRID NO.	PART NO.	GRID NO.	PART NO.	GRID NO.	PART NO.	GRID NO.	PART NO.	GRID NO.
90604-80760	C- 8	92990-06600	B-12	93602-20M02	B- 5	97395-06020	B-12				
90656-31160	C- 5		B-12	93606-12019	B- 2		B-14				
90669-03005	C-11		B-14		B- 6		C- 2				
90697-37024	C-10		B-14		B-11	97395-06030	D- 5				
90699-36100	D- 4		C- 2	93700-06004	B-12	97680-04316	D- 4				
92680-06016	C- 5		C- 3	94701-00040	C- 4	97780-40108	B-13				
92780-06016	C- 5	92990-08100	B- 8	94702-00271	C- 3	97780-40112	C-11				
92780-06020	B- 2	92990-08200	C- 5	95313-06700	C- 3	97780-50020	C- 5				
92902-04100	B-14		C- 6	95380-05700	B-14	97780-50116	C- 8				
92990-04600	C-15	92990-08600	B- 7	95380-05800	C-10		D- 2				
92990-05100	B-14		B-10	95380-06700	B-12		D- 4				
	B-14		B-14	95380-08600	B- 7	97780-50220	C- 5				
	B-14		C- 2	95380-08700	B- 8	97780-60512	C- 3				
92990-05200	B-13	92990-10200	C- 6	95720-05300	C- 6	97780-60520	C- 3				
	C- 6	93101-17M31	B-11		C- 6	97780-60525	C- 3				
	C- 6		D- 9		C- 6		C- 3				
	C- 6	93101-25M38	B- 5		C- 7	97780-60535	C- 3				
	C- 6		B- 6		C-12	97802-04008	B-14				
	C- 7		D- 9		D- 2	97803-05014	B- 7				
	C- 7	93101-25M45	B-12	95720-06300	C- 6	97880-04010	C-15				
	C- 8	93101-30M32	B-11		C-12	97980-05330	B- 8				
	C-10		D- 9		C-12	98501-05020	B-14				
	C-12	93102-25M11	B- 2		C-13		B-14				
	D- 2		D-10	95720-08300	C- 6	98580-03008	D- 6				
92990-05600	B- 7	93102-25M28	B- 6	95720-10300	C- 6	98580-05016	B-14				
	B- 9		D- 9	95780-05300	B-13		C- 6				
	B-14	93102-25M45	D- 9		C- 9	98580-05020	C- 6				
92990-06100	C- 3	93103-30M00	B-11	95780-06300	C-12		C- 8				
92990-06200	C- 3		D- 9		D- 4	98580-05525	D- 2				
	C- 6	93210-16275	B- 5		D- 5		D- 6				
	C-12		D- 9	95780-08300	C- 5	98602-03007	B- 9				
	C-12	93210-46M16	B-12	97313-05016	B-14	98780-04016	C- 6				
	C-12		D-10	97313-06010	B-14	98780-05016	B-13				
	C-12	93210-52454	B-12	97313-06012	B- 2		C-12				
	C-13		D-10	97313-06020	B- 3	98780-05020	C- 5				
	D- 5	93210-57M09	B-11	97313-06025	B- 2		C- 6				
	D- 5		D- 9	97313-06030	B- 3	99080-04600	D- 5				
92990-06600	B- 2	93211-03902	C- 5		B- 7						
	B- 3	93306-205U1	B-12	97313-06050	B- 3						
	B- 3	93306-206U6	B-11	97313-06055	B- 7						
	B- 3	93306-30301	B-11	97313-08050	B-10						
	B- 3	93306-305U3	B- 5	97313-08075	B-14						
	B- 7	93306-305U6	B- 6		C- 2						
	B- 7	93306-306U3	B- 5	97395-06012	B-12						
	B- 7	93310-624U5	B- 5	97395-06016	B-12						
	B-11	93390-00009	B- 5	97395-06018	B- 7						
	B-12	93430-05900	C-12	97395-06020	B-11						
	B-12	93440-62021	B- 5		B-12						

