

YAMAHA

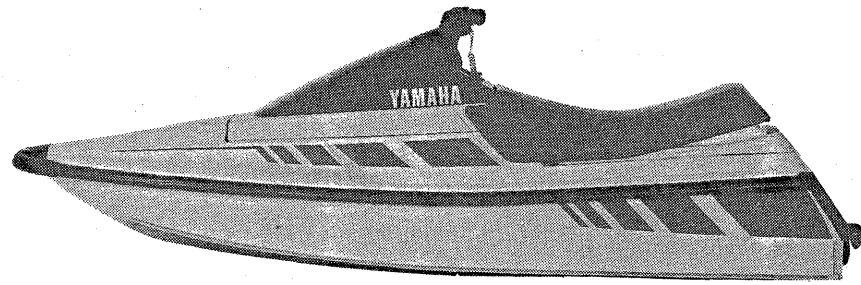
PARTS CATALOGUE

WaveRunner

WR500G (EU0)

(7EU0-100E3

A2



A3

FOREWORD

This Parts Catalogue is related to the parts in use for the Yamaha WR500G (EU0). When you are ordering replacement parts for the WR500G (EU0), refer to this Parts Catalogue and quote both part numbers and part names correctly.

1. Modifications or additions which have been made after issue of the Parts Catalogue will be announced in the Yamaha Parts News.

It is advisable that according to the Yamaha Parts News you make necessary corrections to the Parts Catalogue on hand to keep it up-to-date.

2. Abbreviations

The following abbreviations are used in this Parts Catalogue.

U.R. Use size (thickness) and/or number as required.

U.N. Use as many as you need.

A.P. Alternate Parts

L.M. Local Made

F# Frame No. (Applicable machine No.)

3. The parts marked with (*) in the parts number column of this Catalogue are not supplied with by Yamaha, those have to be found locally.

4. Parts, which are to be supplied in the form of assemblies, are listed with an indention of one letter's space, and a dot (.) is put against the name of each part.

EXAMPLE CARBURETOR ASS'Y
 . JET, pilot
 . NOZZLE, main

5. Indication of No. of constituent parts for assembly

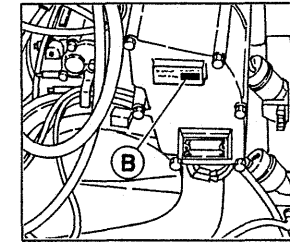
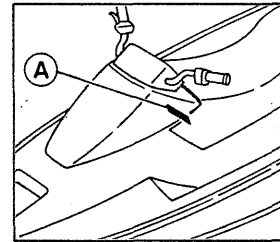
The numeral appearing to the right of each constituent part under the description indicates the quantity of such parts for each individual assembly unit.

EXAMPLE

Part No.	Description	Q'ty	Remarks
2F5-83310-60	FRONT FLASHER LIGHT ASS'Y	2	
115-83311-60	. BULB (6V-18W)	1	
1M1-83309-60	. REFLECTOR	1	

6. Initial Serial No. and Color Code

(A) Hull Serial No.	EU0-100101 and following
(B) Engine Serial No.	6K8-000101 and following



Color Code	Color Name	Abbreviate
EK	METALLIC MARINE SILVER	MMS

7. Applicable colors of graphics are represented in the "Remarks" column by the letter(s) appropriately picked out of the full word(s) showing such colors.

EXAMPLE

Part No.	Description	Q'ty	Remarks
2N4-24110-00-X5	FUEL TANK COMP.	1	MAXIM RED
3J1-24240-10	. GRAPHIC, fuel tank set	1	for MXR

CONTENTS

Cylinder. Crankcase	B2 ~ B4
Crankshaft. Piston	B5 ~ B6
Intake	B7
Carburetor	B8 ~ B9
Exhaust 1	B10
Jet Unit	B11 ~ B13
Generator	B14 ~ B15
Starting Motor	C2
Electrical 1	C3 ~ C5
Hull. Deck 1	C6 ~ C8
Hull. Deck 2	C9
Gunwale. Mat	C10
Ventilation	C11
Seat	C12 ~ C13
Fuel Tank	C14 ~ C15
Exhaust 2	D2 ~ D3
Control Cable	D4
Steering	D5 ~ D6
Graphic. Tool	D7 ~ D8
Gasket Kit	D9
Numerical Index	M1 ~ M3

FIG. 1 CYLINDER. CRANKCASE

REF. NO.	PART NO.	DESCRIPTION	Q'TY	REMARKS
1	6K8-W0090-01-EK	CRANK CYLINDER ASSY	1	UR
	6K8-W0090-02-EK	CRANK CYLINDER ASSY	1	UR 6K8-017814 and following
2	6K8-15100-00-94	CRANKCASE ASSY	1	UR
	6K8-15100-01-94	CRANKCASE ASSY	1	UR 6K8-017814 and following
3	650-11372-00	.NIPPLE, hose	2	
4	650-24378-00	.PIPE, joint 4	1	
5	646-11370-00	.CHECK VALVE ASSY	2	
6	90387-08044	COLLAR	4	
7	90119-08M36	BOLT, with washer	8	
8	90119-08M35	BOLT, with washer	2	
9	90445-07M12	HOSE	2	
10	90445-09080	HOSE	1	
11	90465-11M10	CLAMP	2	
12	6K8-15359-00-94	HOUSING, oil seal	1	UR
	6K8-15359-01-94	HOUSING, oil seal	1	UR 6K8-000982 and following
13	93012-25M11	OIL SEAL	1	
14	6K8-15369-00	GASKET, oil seal housing	1	
15	90105-06M09	BOLT, washer based	4	
16	90336-10003	PLUG, taper	1	
17	90467-06016	CLIP	4	
18	93606-12019	PIN, dowel	2	
19	689-11325-00	ANODE	1	
20	92780-06020	SCREW, flat head	1	
21	6K8-11119-00	HANGER, engine	1	
22	97313-06012	BOLT	2	
23	92990-06600	WASHER, plate	2	
24	689-41113-00-9M	OUTER COVER, exhaust	1	UR
	6K8-41123-00-9M	OUTER COVER, exhaust	1	UR 6K8-017814 and following

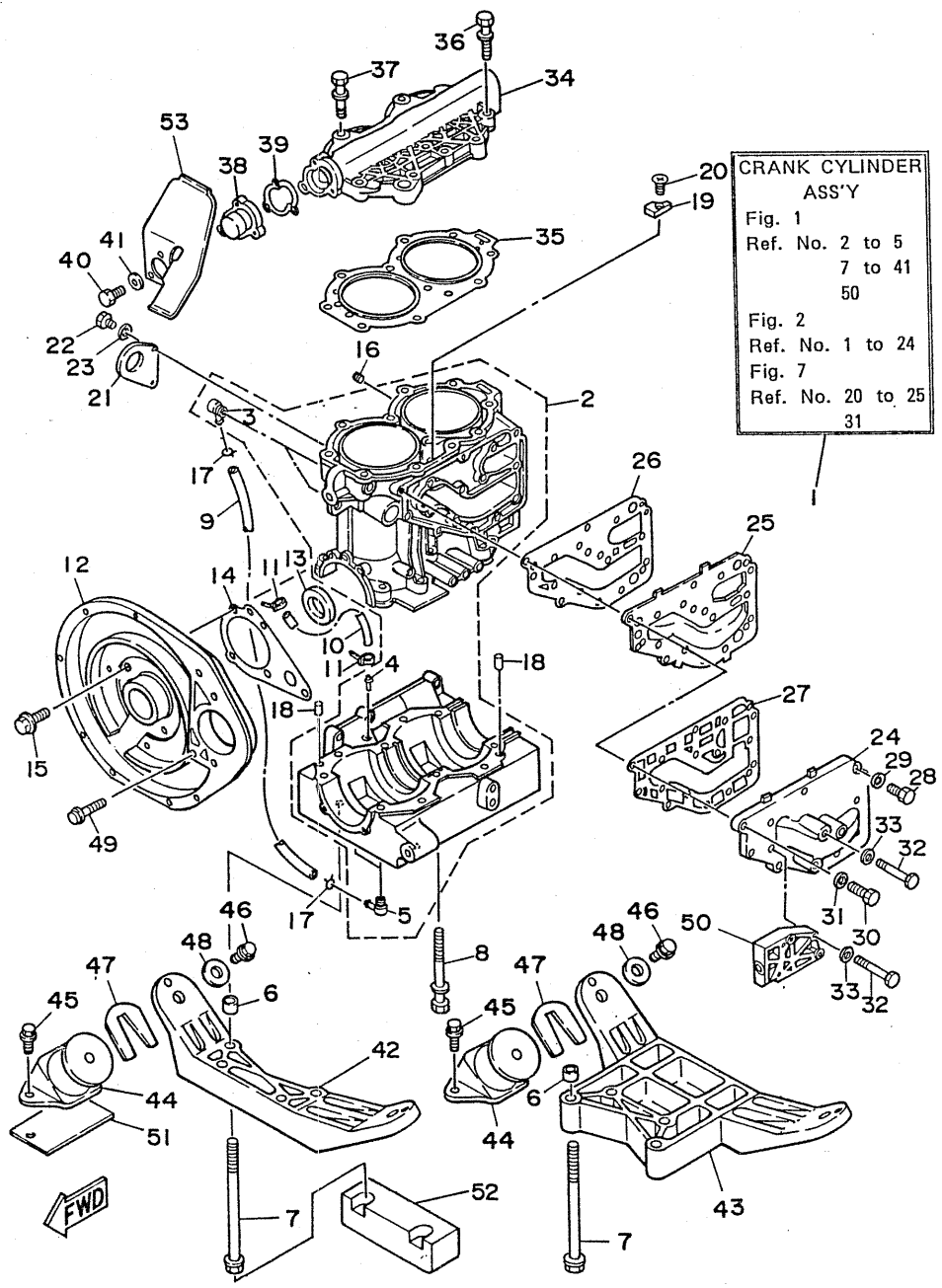


FIG. 1 CYLINDER. CRANKCASE

REF. NO.	PART NO.	DESCRIPTION	Q'TY	REMARKS
25	689-41111-00-9M	INNER COVER, exhaust	1	UR
	6K8-41121-00-9M	INNER COVER, exhaust	1	UR 6K8-017814 and following
26	689-41114-00	GASKET, exhaust cover 1	1	UR
	6K8-41124-00	GASKET, exhaust cover 1	1	UR 6K8-017814 and following
27	689-41112-00	GASKET, exhaust cover 2	1	UR
	6K8-41122-00	GASKET, exhaust cover 2	1	UR 6K8-017814 and following
28	97313-06025	BOLT	1	
29	92990-06600	WASHER, plate	1	
30	97313-06030	BOLT	9	UR
	97313-06030	BOLT	8	UR 6K8-017814 and following
31	92990-06600	WASHER, plate	9	
32	97313-06050	BOLT	5	UR
	97313-06050	BOLT	6	UR 6K8-017814 and following
33	92990-06600	WASHER, plate	4	
34	689-11111-01-94	HEAD, cylinder 1	1	
35	6K8-11181-00	GASKET, cylinder head 1	1	
36	90119-08M18	BOLT, with washer	9	
37	90119-08M21	BOLT, with washer	2	
38	655-12413-01-9M	COVER, thermostat	1	
39	655-12414-00	GASKET, cover	1	
40	97313-06020	BOLT	3	
41	92990-06600	WASHER, plate	3	
42	6K8-44518-00-94	BRACKET COMP.	1	
43	6K8-44519-00-94	BRACKET	1	
44	6K8-44517-00-9M	MOUNT RUBBER	4	
45	90119-08038	BOLT, with washer	8	
46	90119-08904	BOLT, with washer	4	
47	EU0-67354-00-01	SHIM (T=0.1)	1	UR

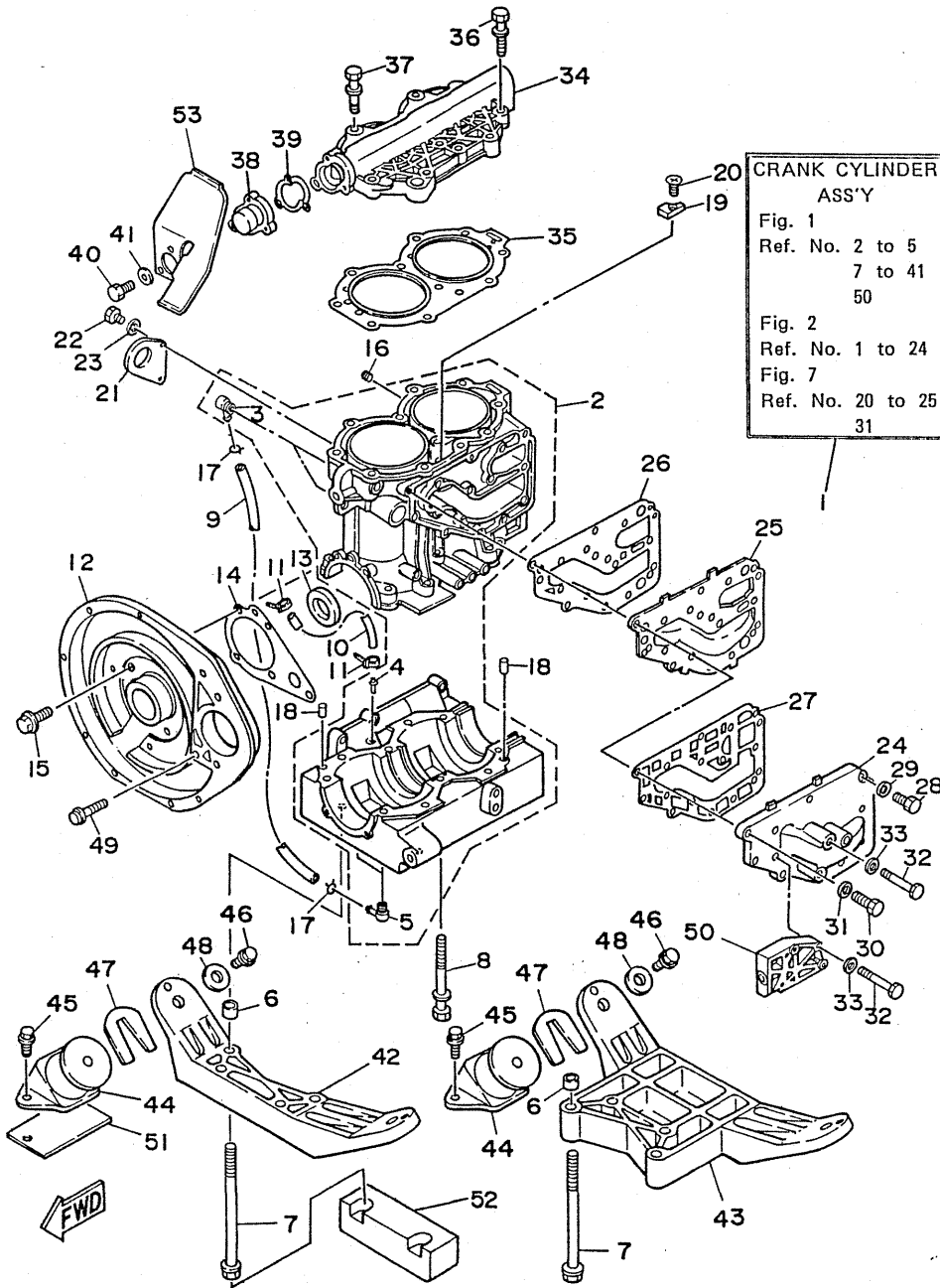


FIG. 1 CYLINDER. CRANKCASE

REF. NO.	PART NO.	DESCRIPTION	Q'TY	REMARKS
47	EU0-67354-00-03	SHIM (T=0.3)	1	UR
	EU0-67354-00-05	SHIM (T=0.5)	1	UR
	EU0-67354-00-10	SHIM (T=1.0)	1	UR
	EU0-67354-00-20	SHIM (T=2.0)	1	UR
48	EU0-67324-00	PLATE	4	
49	90105-08M38	BOLT, washer based	1	
50	6K8-81822-00-94	BRACKET, starting motor	1	
51	EU0-67323-00	LINER	1	UN
52	EU0-67361-00	DAMPER	1	UR
	EU0-67361-01	DAMPER	1	UR 6K8-000982 and following
53	6K8-85644-00	PLATE	1	FOR CANADA

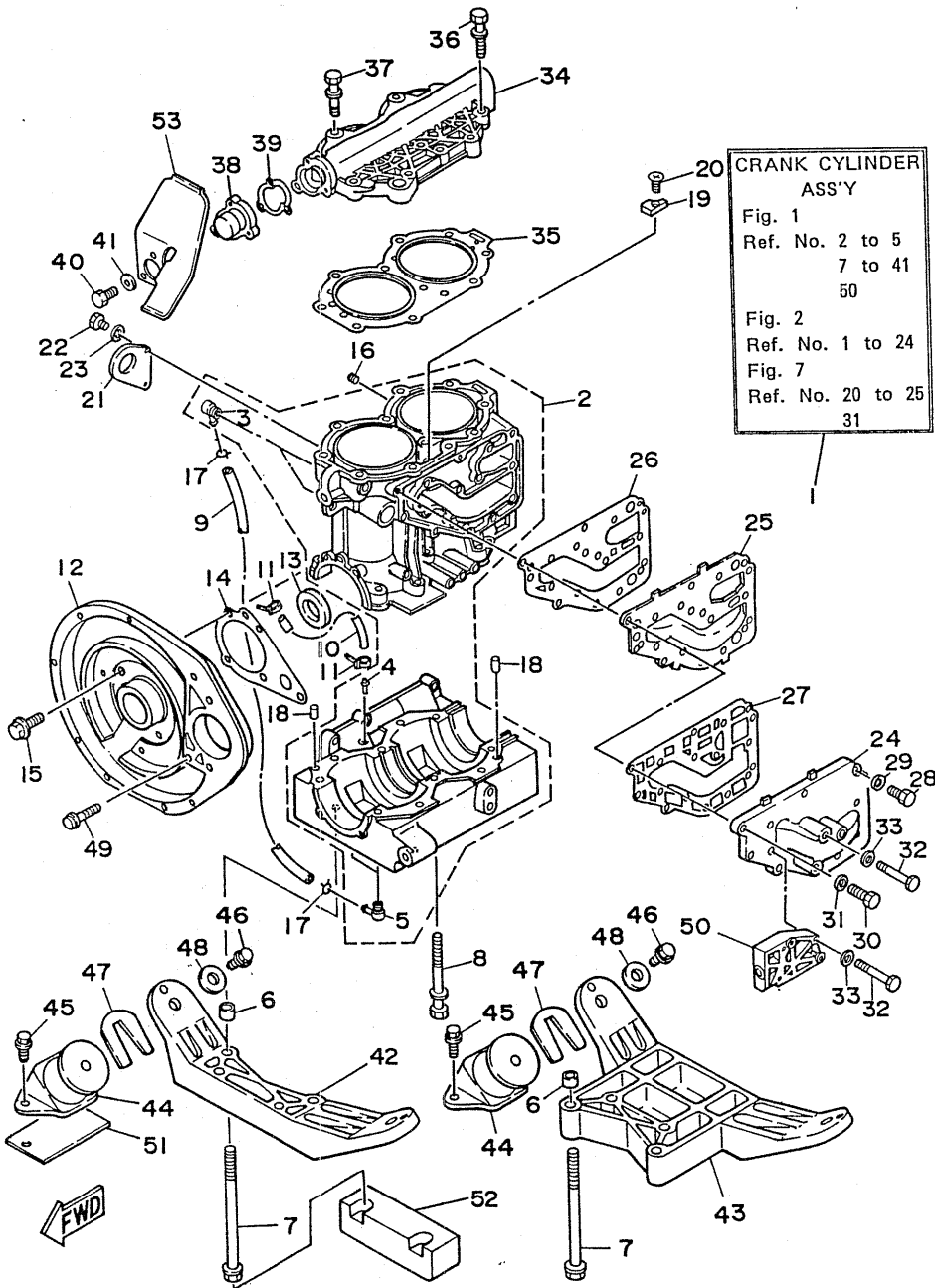
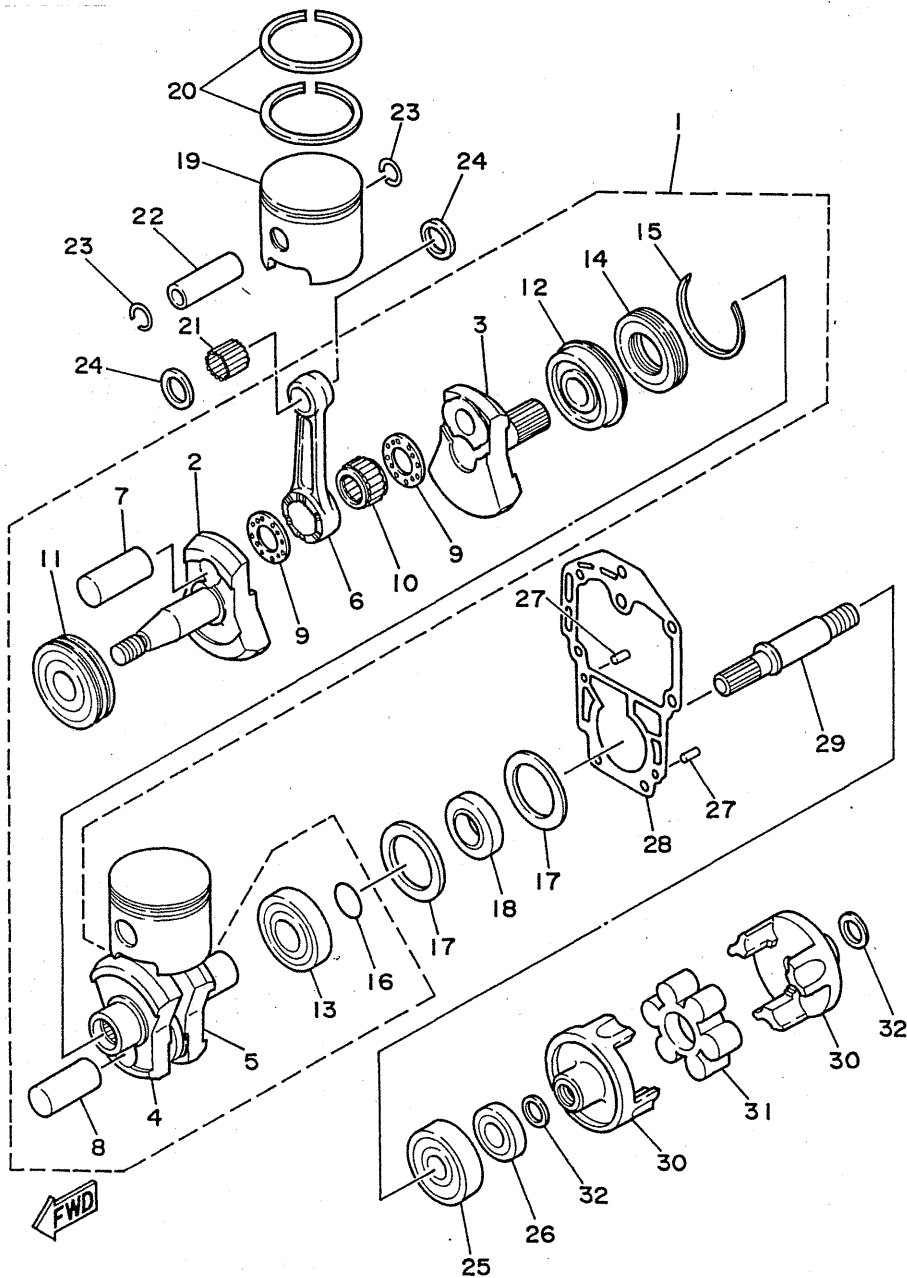


FIG. 2 CRANKSHAFT. PISTON

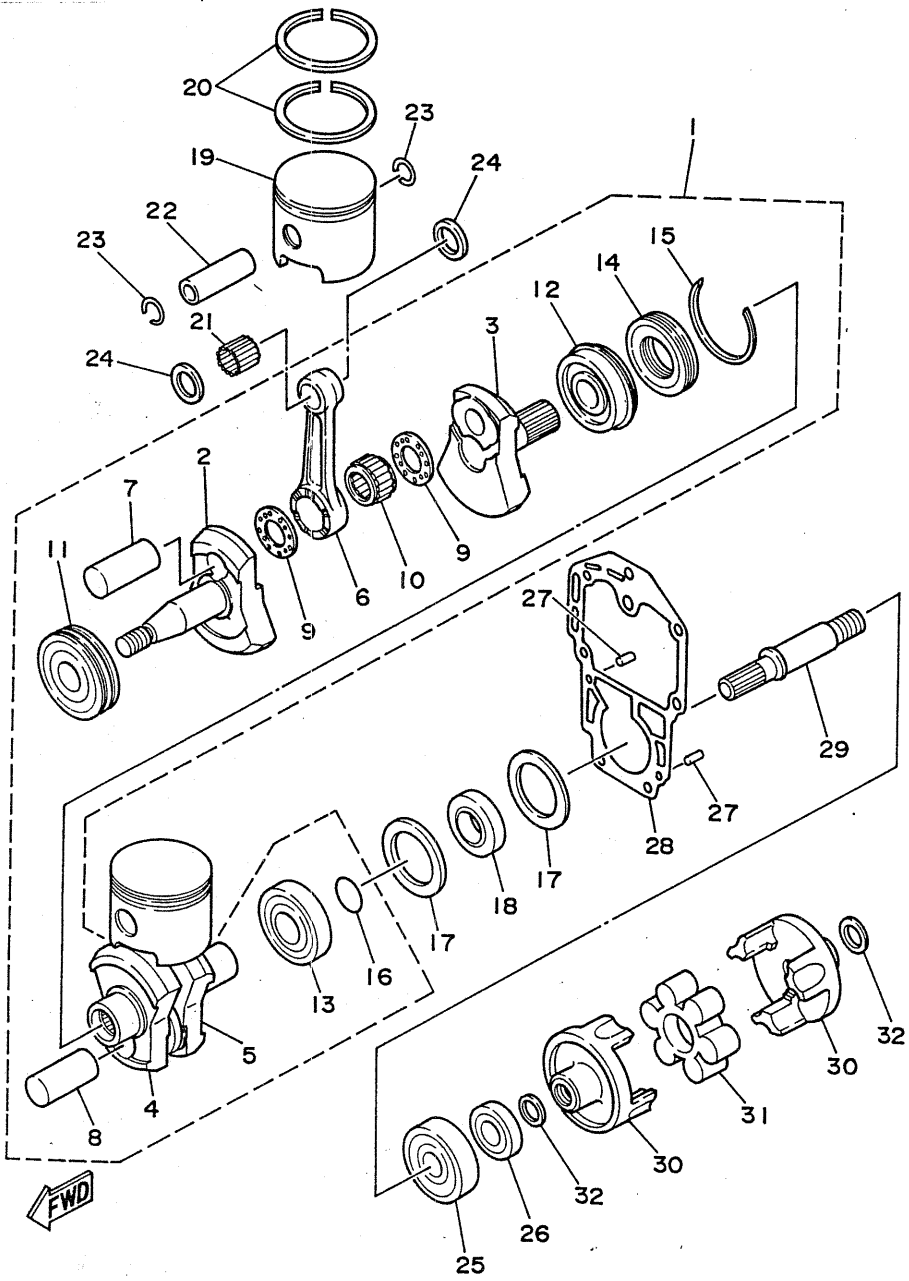
REF. NO.	PART NO.	DESCRIPTION	Q'TY	REMARKS
1	6K8-11400-00	CRANKSHAFT ASSY	1	
2	6K8-11412-00	.CRANK 1	1	
3	689-11422-02	.CRANK 2	1	
4	689-11432-02	.CRANK 3	1	
5	689-11442-02	.CRANK 4	1	
6	689-11651-00	.ROD, connecting	2	
7	6K8-11681-00	.PIN, crank 1	1	
8	689-11681-01	.PIN, crank	1	
9	90209-24M03	.WASHER	4	
10	93310-624U5	.BEARING, con-rod big end	2	
11	93306-306U3	.BEARING (B6306)	1	
12	93390-00009	.BEARING, taper roller	1	
13	93306-30510	.BEARING (B6305)	1	
14	689-11515-00	.SEAL, labyrinth	1	
15	93440-62021	.CIRCLIP	1	
16	93210-16275	.O-RING	1	
17	90201-50306	WASHER, plate	2	
18	93101-25M38	OIL SEAL	1	
19	689-11631-00-95	PISTON (STD)	2	
	6K8-11631-00-95	PISTON (STD)	2	UR 6K8-017814 and following
	689-11635-00	PISTON (0.25MM O/S)	2	AP UR
	6K8-11635-00	PISTON (0.25MM O/S)	2	AP UR 6K8-017814 and following
	689-11636-00	PISTON (0.50MM O/S)	2	AP UR
	6K8-11636-00	PISTON (0.50MM O/S)	2	AP UR 6K8-017814 and following
20	6K8-11610-01	PISTON RING SET (STD)	2	
	6K8-11610-11	PISTON RING SET (1ST O/S)	2	AP
	6K8-11610-21	PISTON RING SET (2ND O/S)	2	AP
21	93602-20M02	PIN, dowel	68	



B5

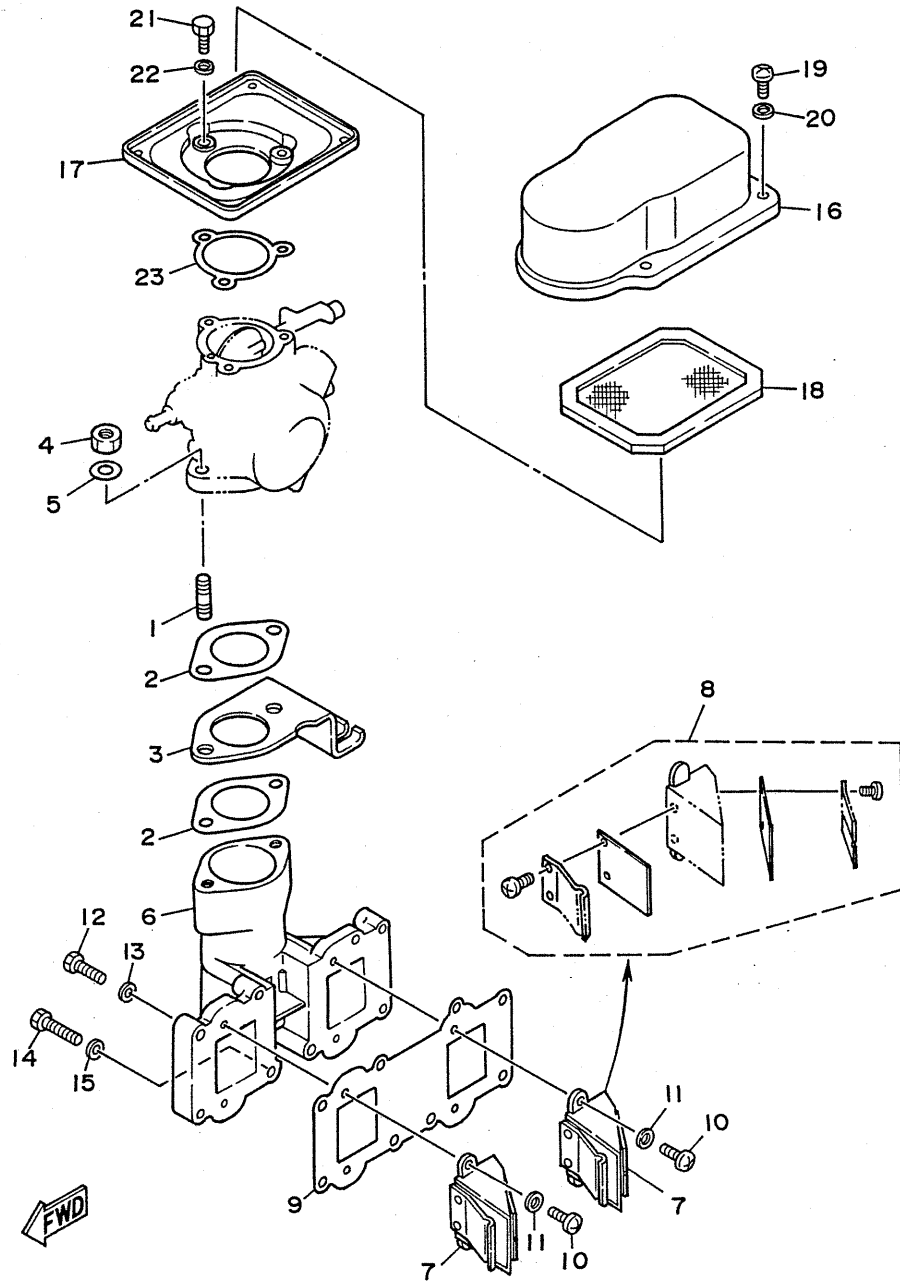
FIG. 2 CRANKSHAFT. PISTON

REF. NO.	PART NO.	DESCRIPTION	Q'TY	REMARKS
22	689-11633-00	PIN, piston	2	
23	688-11634-00	CLIP, piston pin	4	
24	90201-20M27	WASHER, plate	4	
25	93306-305U6	BEARING	1	
26	93101-25M35	OIL SEAL	1	
27	93606-12019	PIN, dowel	2	
28	689-45113-01	GASKET, upper casing	1	
29	6K8-45514-00	SHAFT, drive 4	1	
30	6K8-45813-00-9M	FLANGE, coupling	2	
31	6K8-4581J-00	RUBBER SHAFT COUPLING	1	
32	90201-20M21	WASHER, plate	2	



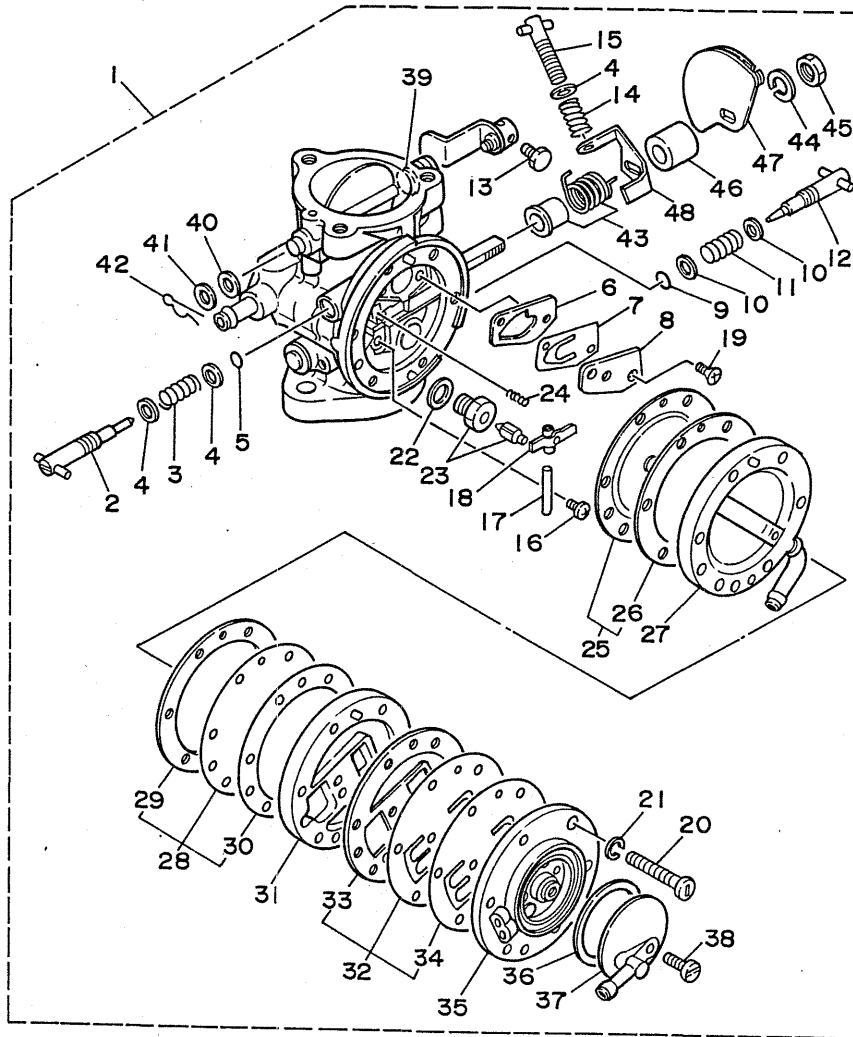
B6

FIG. 3 INTAKE



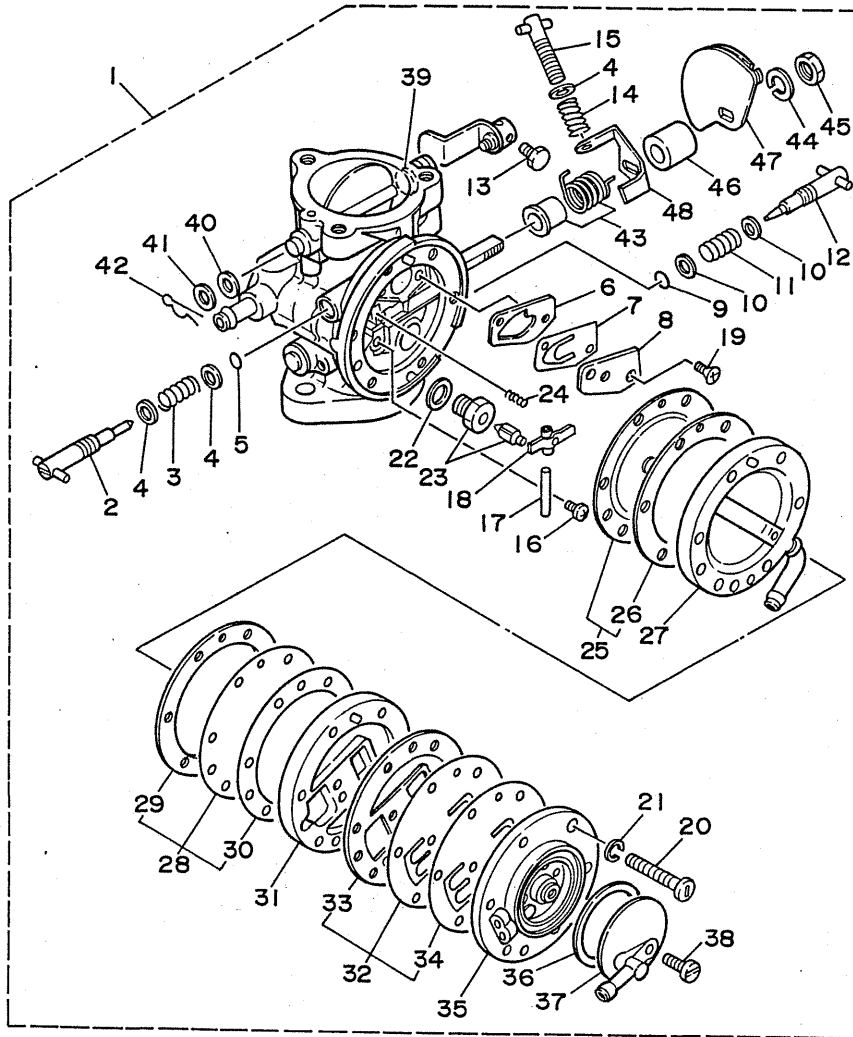
REF. NO.	PART NO.	DESCRIPTION	Q'TY	REMARKS
1	90116-08M14	BOLT, stud	2	
2	6K8-13556-00	GASKET, manifold	2	
3	6K8-14527-00	PLATE	1	
4	95303-08600	NUT	2	
5	92990-08600	WASHER, plate	2	
6	6K8-13641-00-94	MANIFOLD 1	1	
7	6H5-13610-00	REED VALVE ASSY	2	
8	6H4-W0004-00	.REED SET	1	
9	6K8-13621-00	GASKET, valve seat	1	
10	97803-05014	SCREW, pan head	4	
11	92990-05600	WASHER, plate	4	
12	97313-06030	BOLT	6	
13	92990-06600	WASHER, plate	6	
14	97313-06055	BOLT	2	
15	92990-06600	WASHER, plate	2	
16	6K8-14283-00-98	COVER, carburetor 1	1	LOW GLOSS BLACK
17	6K8-14284-00-98	COVER, carburetor 2	1	LOW GLOSS BLACK
18	6K8-14451-00	ELEMENT, air cleaner	1	
19	97886-05016	SCREW, pan head	4	
20	92990-05600	WASHER, plate	4	
21	97395-06018	BOLT	3	
22	92990-06600	WASHER, plate	3	
23	6K8-13674-00	GASKET, air cooler cover 1	1	

FIG. 4 CARBURETOR

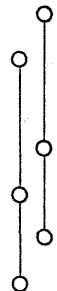


REF. NO.	PART NO.	DESCRIPTION	Q'TY	REMARKS
1	6K8-14301-00	CARBURETOR ASSY 1	1	UR
	6K8-14301-01	CARBURETOR ASSY 1	1	UR 6K8-028281 and following
2	6K8-14946-00	.MIXTURE SCREW, high	1	
3	6K8-14533-00	.SPRING, adjust screw	1	
4	6K8-14559-00	.WASHER	3	
5	6K8-14562-00	.O-RING	1	
6	6K8-14536-00	.GASKET	1	
7	6K8-14545-00	.DIAPHRAGM	1	
8	6K8-14527-00	.PLATE	1	
9	6K8-14561-00	.O-RING	1	
10	6K8-14537-00	.WASHER	2	
11	6K8-14589-00	.SPRING, adjust screw	1	
12	6K8-14923-00	.MIXTURE SCREW, low	1	
13	6K8-14523-00	.SCREW, stop	1	
14	6K8-14531-00	.SPRING, adjust screw	1	
15	6K8-14521-00	.SCREW, adjust	1	
16	98602-03007	.SCREW, oval head	1	
17	6K8-41579-00	.PIN, float arm	1	
18	6K8-14547-00	.ARM, float	1	
19	98602-03007	.SCREW, oval head	2	
20	98502-04030	.SCREW, pan head	6	
21	92990-04100	.WASHER, spring	6	
22	6K8-14597-00	.WASHER	1	
23	6K8-14916-20	.NEEDLE	1	UR
	6K8-14916-21	.NEEDLE	1	UR 6K8-028281 and following
24	6K8-14253-00	.SPRING	1	
25	6K8-14541-00	.DIAPHRAGM	1	
26	6K8-24436-00	.GASKET, body 3	1	

FIG. 4 CARBURETOR



REF. NO.	PART NO.	DESCRIPTION	Q'TY	REMARKS
27	6K8-24412-00	.BODY 1	1	
28	6K8-24411-00	.DIAPHRAGM	1	
29	6K8-24436-00	..GASKET, body 3	1	
30	6K8-24435-00	..GASKET, body 2	1	
31	6K8-24413-00	.BODY 2	1	
32	6K8-24421-00	.DIAPHRAGM ASSY	1	
33	6K8-24434-00	..GASKET, body	1	
34	6K8-24431-00	..GASKET, fuel pump	1	
35	6K8-24414-00	.BODY 3	1	
	6K8-24414-01	.BODY 3	1	6K8-028589 and following
36	6K8-24432-00	.GASKET, fuel pump 2	1	
37	6K8-24452-00	.COVER	1	
	6K8-24452-01	.COVER	1	6K8-028589 and following
38	98580-04012	.SCREW, pan head	1	
	6K8-14125-00	.SCREW	1	6K8-028589 and following
39	6K8-14596-00	.COLLAR	1	
40	6K8-14557-00	.WASHER	1	
41	6K8-14558-00	.WASHER	1	
42	6K8-14548-00	.PIN, float arm	1	
43	6K8-W1455-00	.SPRING, throttle set	1	
44	92990-08100	.WASHER, spring	1	
45	95380-08700	.NUT	1	
46	6K8-14918-00	.RING	1	
47	6K8-14930-00	.THROTTLE SHAFT ASSY	1	
48	6K8-14582-00	.LEVER	1	



○—○ Interchangeable with a set

B9

FIG. 5 EXHAUST 1

REF. NO.	PART NO.	DESCRIPTION	Q'TY	REMARKS
1	6K8-41137-00-94	GUIDE, exhaust	1	
2	90340-08014	PLUG, straight screw	1	
3	90430-08020	GASKET	1	
4	6K8-41113-00-9M	OUTER COVER, exhaust	1	
5	6K8-41111-00-9M	INNER COVER, exhaust	1	
6	6K8-41114-00	GASKET, exhaust outer cover	1	
7	6K8-41112-00	GASKET, exhaust inner cover	1	
8	6K8-51385-00	PIPE	1	
9	90119-08M38	BOLT, with washer	7	
10	97313-08050	BOLT	12	
11	92990-08600	WASHER, plate	12	
12	6K8-14711-00-9M	MUFFLER 1	1	
13	6K8-14755-00	GASKET, silencer	1	
14	6K8-14721-00-9M	MUFFLER 2	1	
15	6K8-14739-00	GASKET, muffler damper 1	1	
16	6K8-14749-00	GASKET, muffler damper 2	1	
17	6K8-14718-00-9M	PROTECTOR, muffler 1	1	
18	90119-06M37	BOLT, with washer	6	
19	6K8-14752-00	PIPE, outlet	1	
20	90601-15253	BAND, hose 52	1	
21	6E0-28193-00-94	PLUG, water check	1	FOR CANADA/OCEANIA

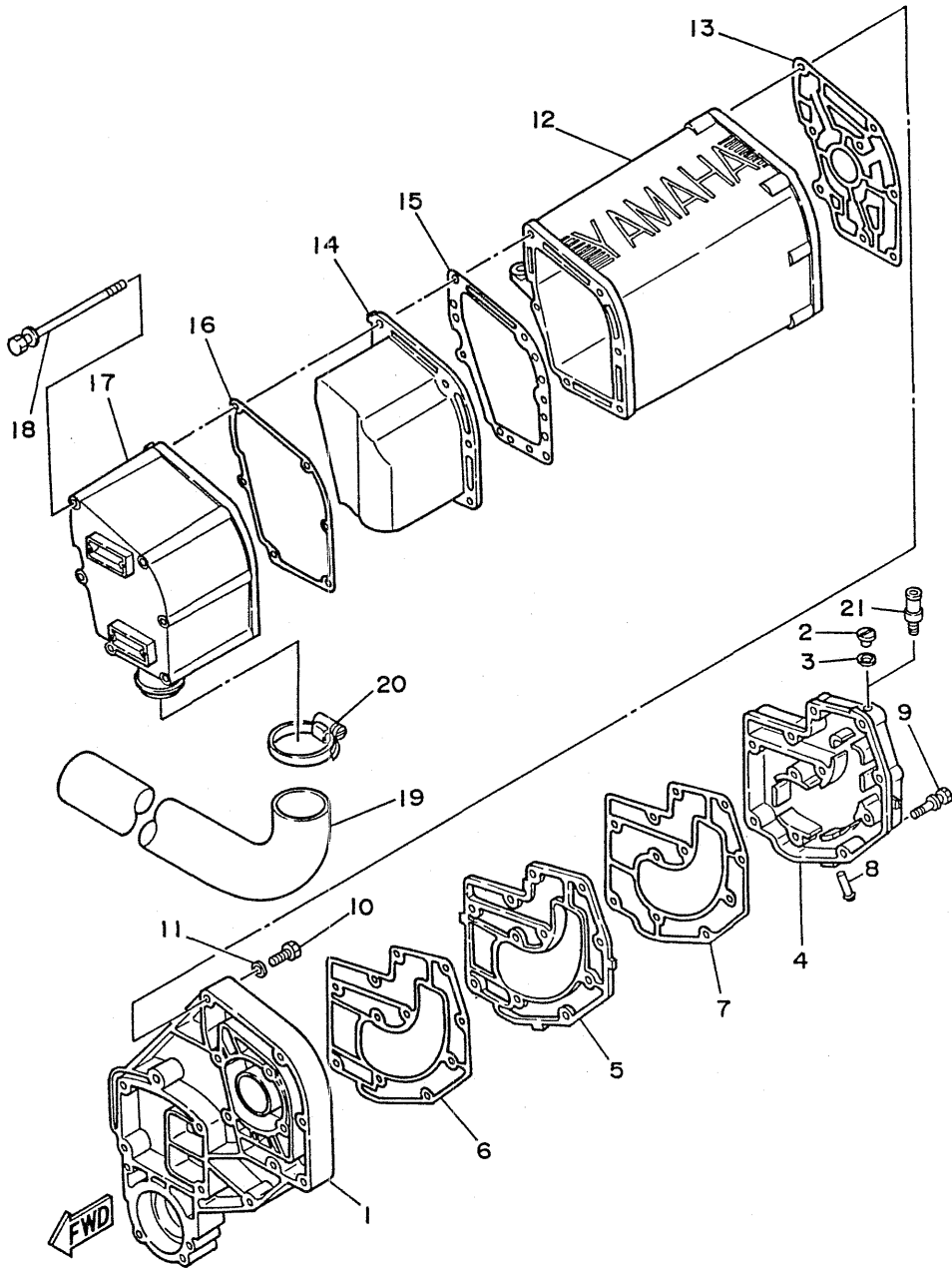
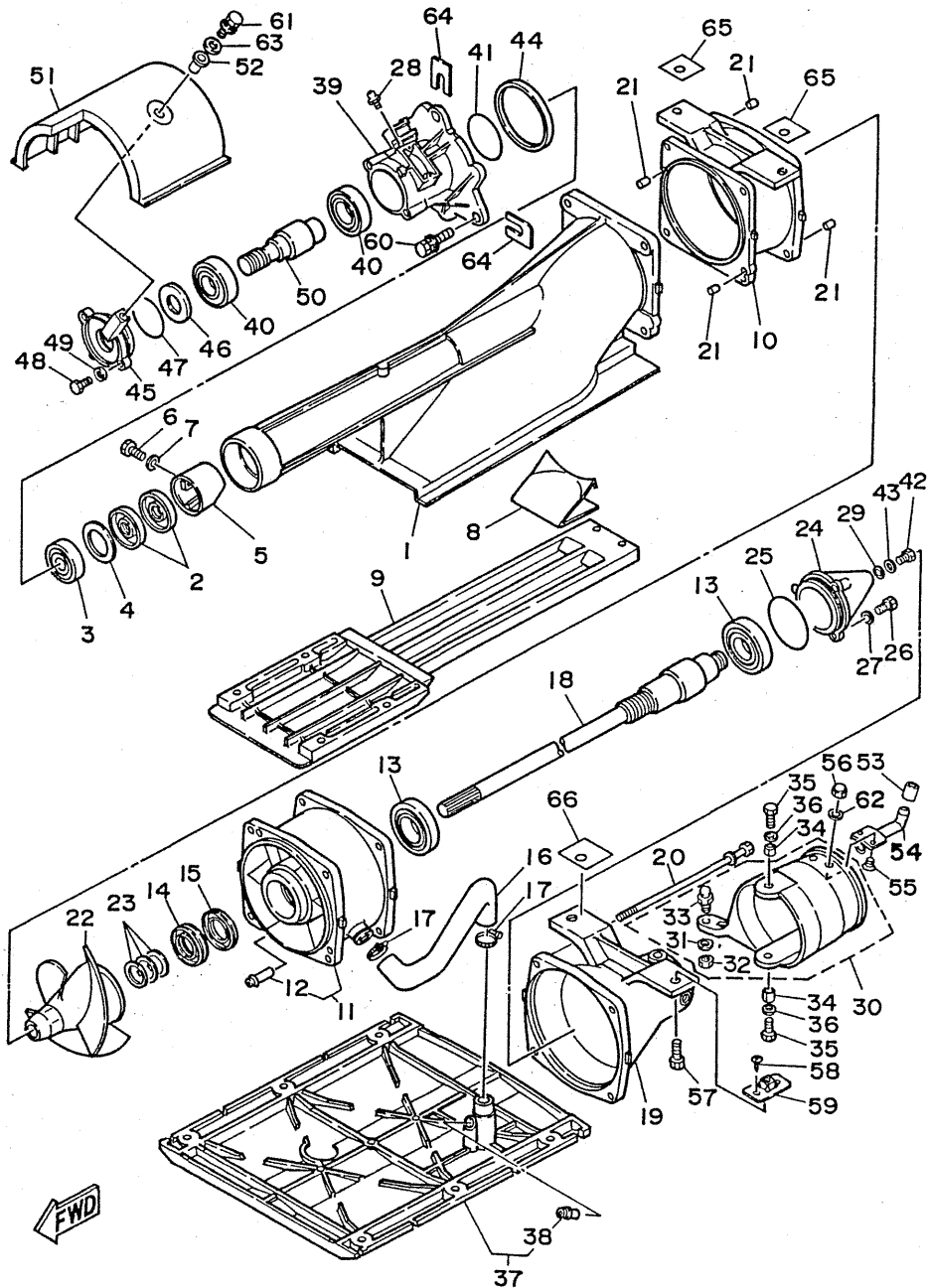


FIG. 6 JET UNIT

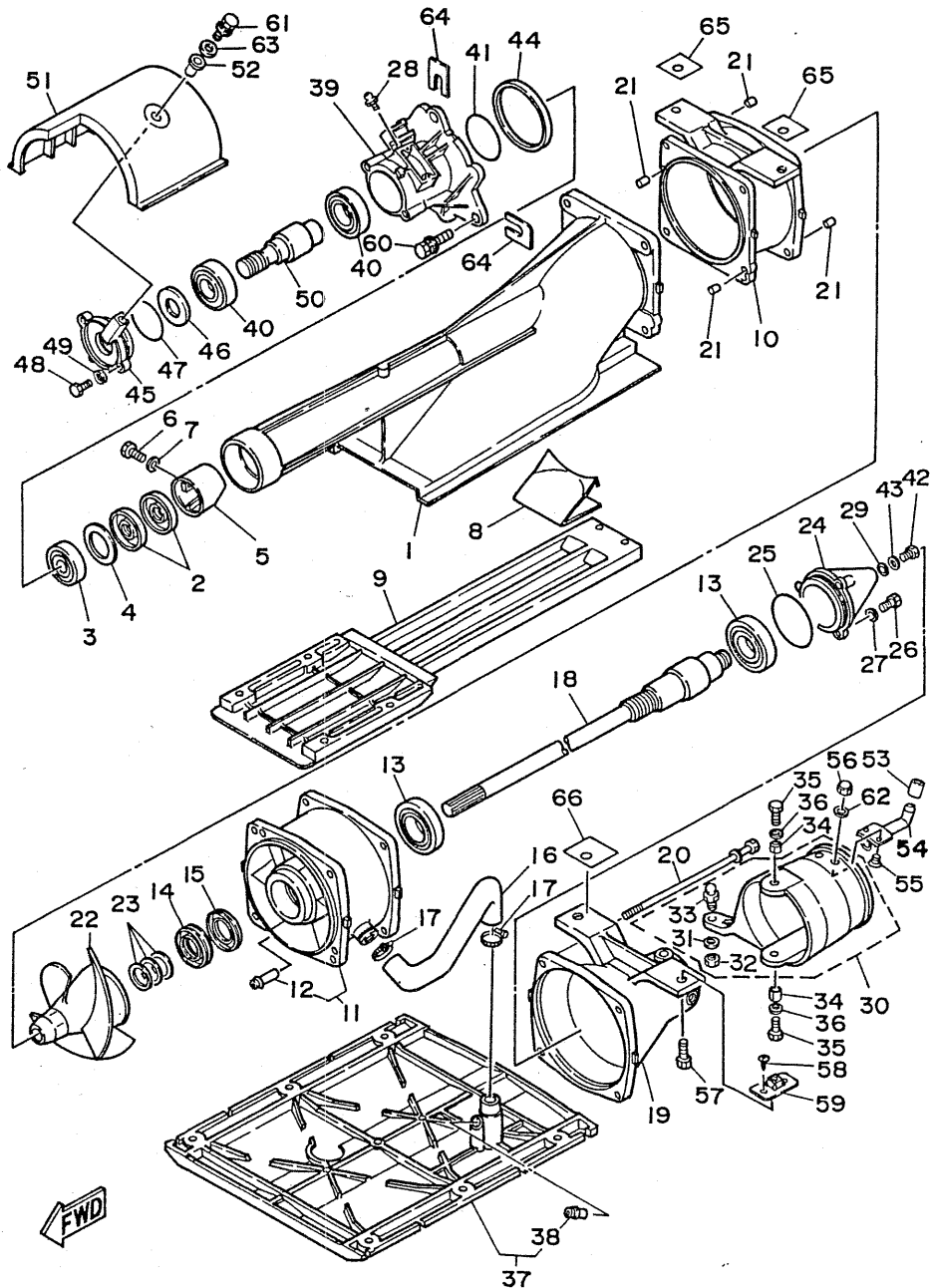


REF. NO.	PART NO.	DESCRIPTION	Q'TY	REMARKS
1	6K8-51311-00-94	DUCT, intake	1	
2	93101-17M31	OIL SEAL	2	
3	93306-30301	BEARING (B6303)	1	
4	90201-32M48	WASHER, plate	1	
5	6K8-51348-00-9M	SPACER	1	
6	97395-06020	BOLT	1	
7	92990-06600	WASHER, plate	1	
8	6K8-51347-00-9M	PLATE 3	1	
9	6K8-51333-00-94	GRILLE, intake	1	
10	6K8-51312-00-94	HOUSING, impeller	1	
11	6K8-51315-00-94	DUCT, impeller	1	
12	6K8-51385-00	.PIPE	1	
13	93306-206U6	BEARING	2	
14	93103-30M00	OIL SEAL	1	
15	93101-30M32	OIL SEAL	1	
16	6K8-51161-00	HOSE, plasher	1	
17	90460-18M07	CLAMP, hose	2	
18	6K8-45511-01	SHAFT, drive	1	
19	6K8-51318-00-9M	NOZZLE	1	
20	90119-06M33	BOLT, with washer	4	
21	93606-12019	PIN, dowel	5	
22	6K8-51321-00-94	IMPELLER	1	
23	6K8-45567-00-01	SHIM (T=0.1)	1	UR
	6K8-45567-00-03	SHIM (T=0.3)	1	UR
	6K8-45567-00-05	SHIM (T=0.5)	1	UR
	6K8-45567-00-10	SHIM (T=1.0)	1	UR
24	6K8-51326-00-94	CAP	1	
25	93210-57M09	O-RING	1	

B11

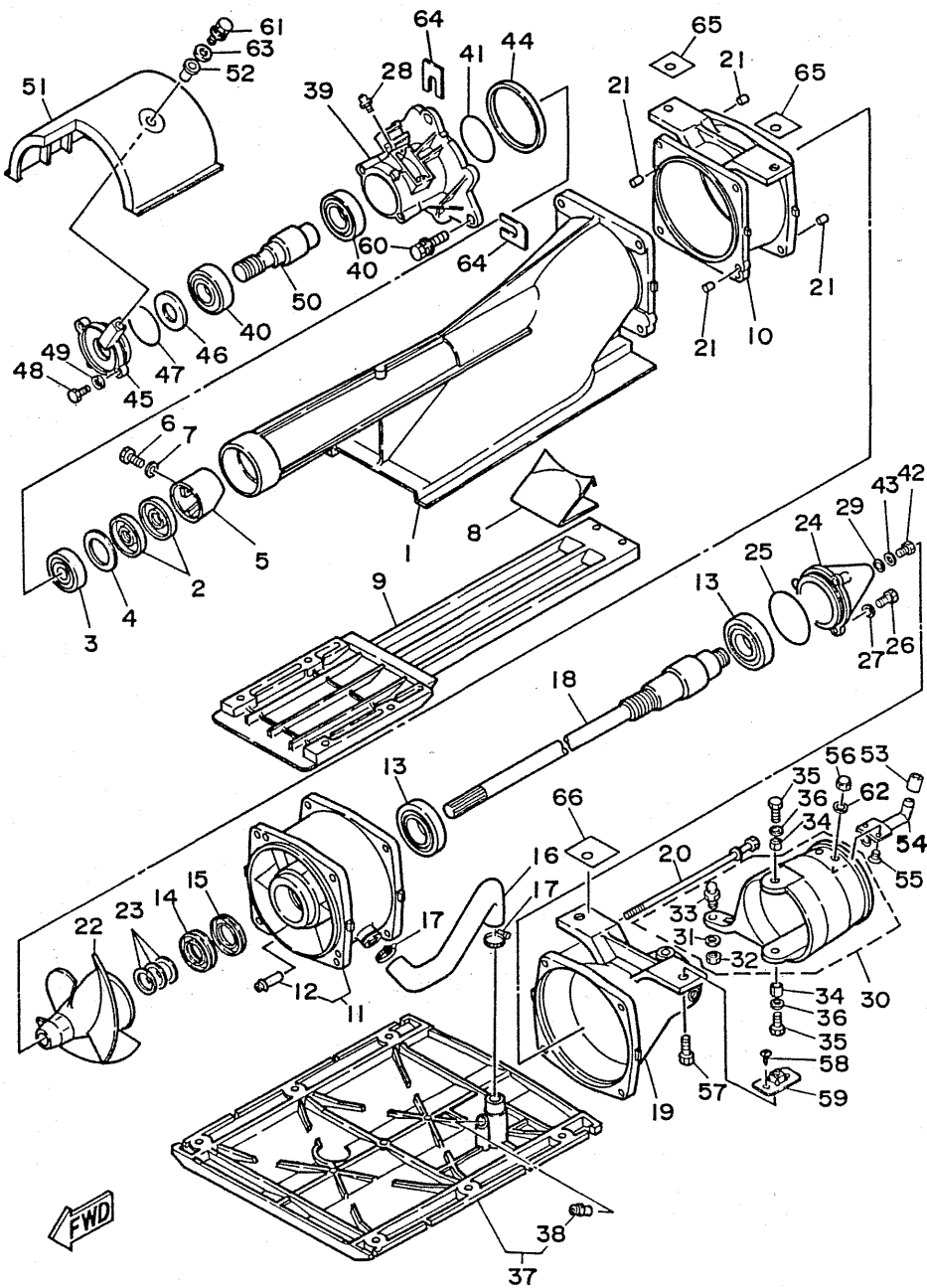
FIG. 6 JET UNIT

REF. NO.	PART NO.	DESCRIPTION	Q'TY	REMARKS
26	97395-06016	BOLT	3	
27	92990-06600	WASHER, plate	3	
28	93700-06004	NIPPLE, grease	1	
29	90430-06M03	GASKET	1	
30	6K8-51313-00	JET OUTPUT NOZZULE	1	
31	90201-06M02	.WASHER, plate	1	
32	95380-06700	.NUT	1	
33	6K8-42316-00	.BOLT, joint	1	
34	90387-06M12	COLLAR	2	
35	97395-06020	BOLT	2	
36	92990-06600	WASHER, plate	2	
37	6K8-51346-00-94	PLATE 2	1	
38	6K8-51129-00	.NIPPLE	1	
39	6K8-45331-00-94	HOUSING, bearing	1	
40	93306-205U1	BEARING	2	
41	93210-52454	O-RING	1	
42	97395-06012	BOLT	1	
43	92990-06600	WASHER, plate	1	
44	6K8-45127-00	SEAL	1	
45	6K8-51332-00-94	PLATE	1	
46	93101-25M45	OIL SEAL	1	
47	93210-46M16	O-RING	1	
48	97395-06020	BOLT	2	
49	92990-06600	WASHER, plate	2	
50	6K8-51323-02	SHAFT, couplior	1	
51	6K8-51381-00	COVER	1	
52	90387-06M60	COLLAR	2	
53	EU0-62693-30	HOSE	1	



B12

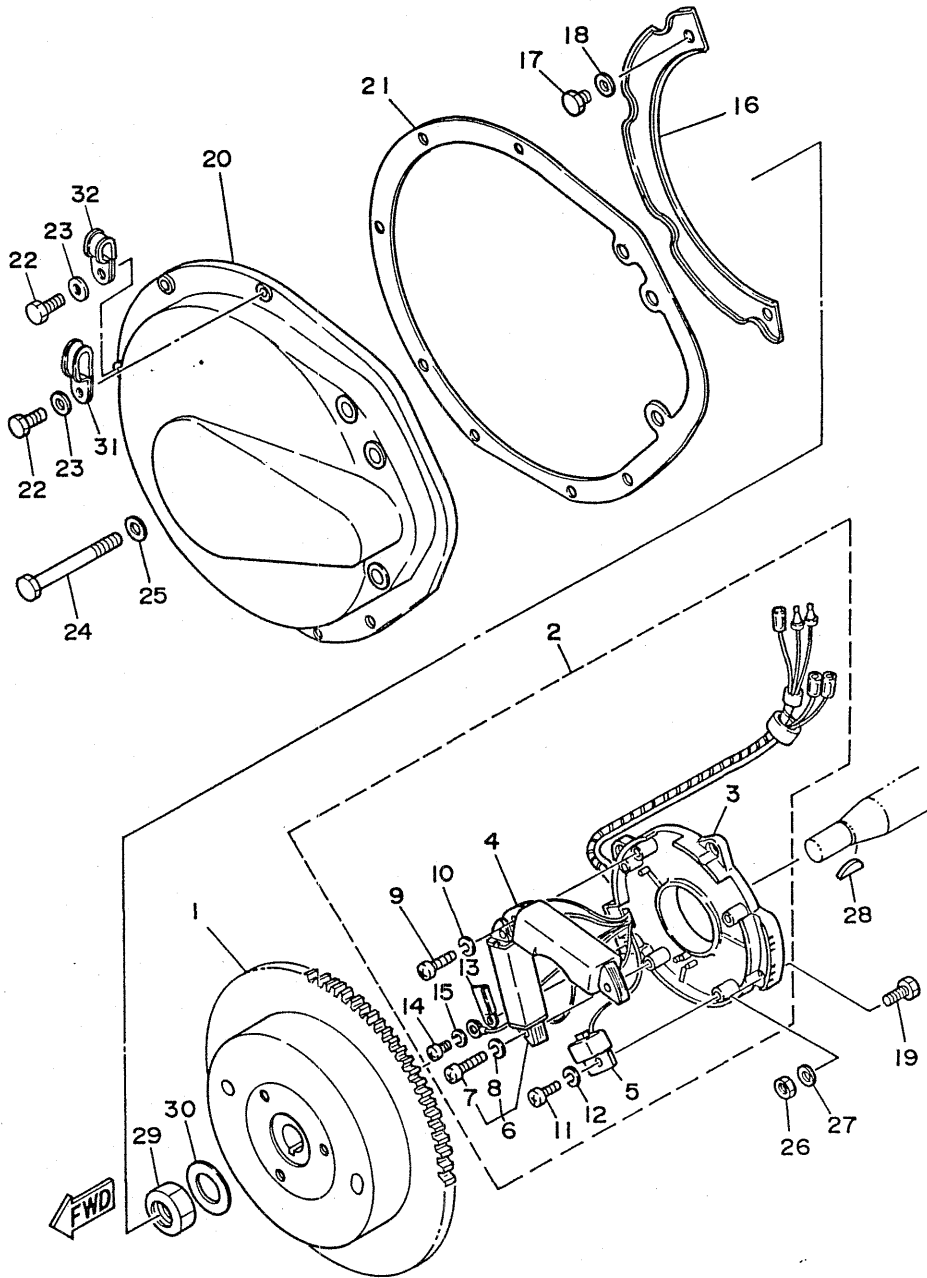
FIG. 6 JET UNIT



REF. NO.	PART NO.	DESCRIPTION	Q'TY	REMARKS
54	EU0-62693-01	SPOUT	1	
55	98780-05012	SCREW, flat head	2	
56	95380-05800	NUT	2	
57	90119-10906	BOLT, with washer	4	
58	97780-40108	SCREW, tapping	8	
59	90179-10919	NUT	4	
60	90119-08907	BOLT, with washer	3	
61	90119-06900	BOLT, with washer	2	
62	92990-05200	WASHER, plain	2	
63	90202-10024	WASHER	1 UN	
64	EU0-67354-30-03	SHIM (T=0.3)	1 UN	
	EU0-67354-30-05	SHIM (T=0.5)	1 UN	
	EU0-67354-30-10	SHIM (T=1.0)	1 UN	
65	EU0-67354-40	SHIM (T=1.5)	2 UN	
66	EU0-67354-50	SHIM (T=2.0)	2 UN	

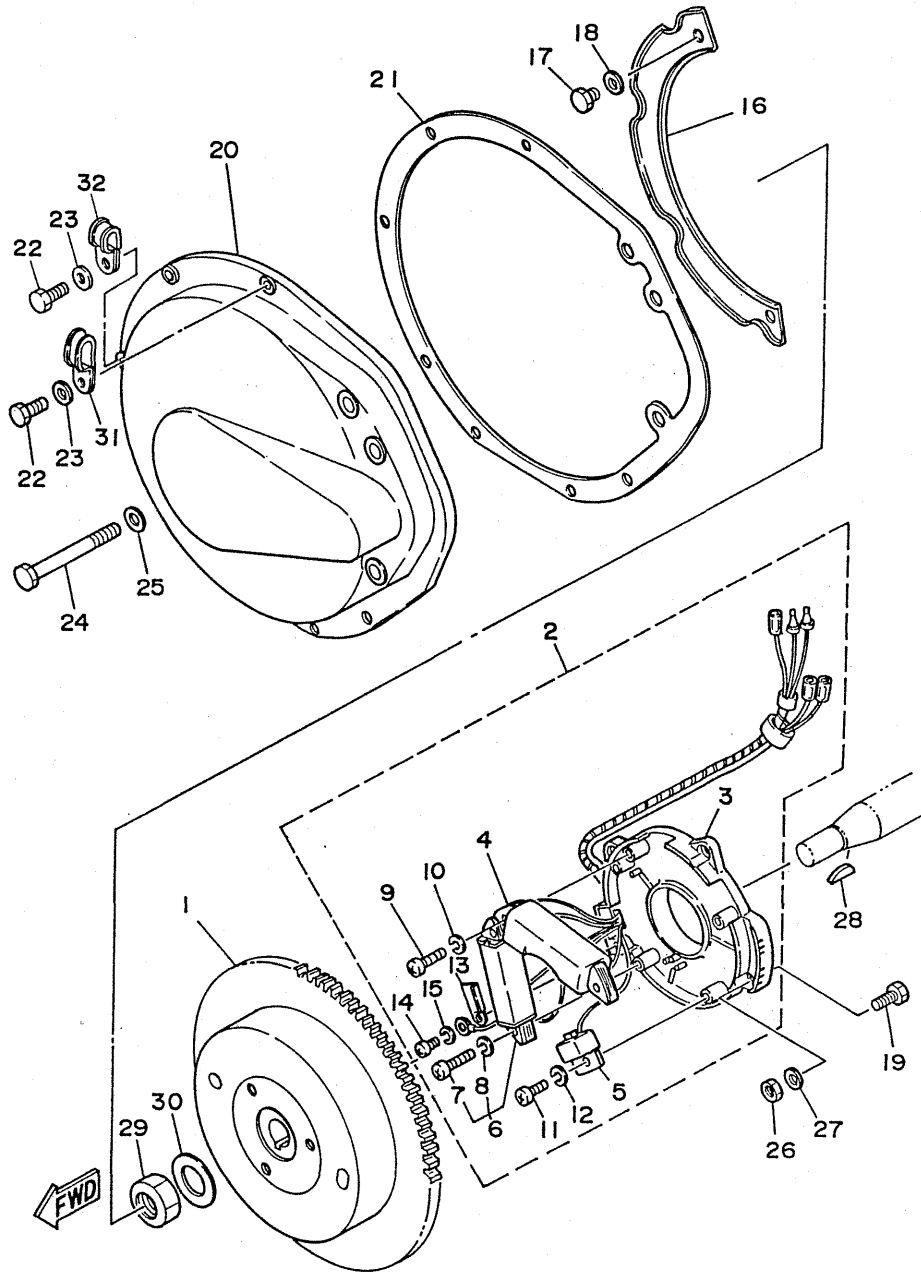
FIG. 7 GENERATOR

REF. NO.	PART NO.	DESCRIPTION	Q'TY	REMARKS
1	6K8-85550-A0	ROTOR ASSY	1	UR
	6K8-85550-A1	ROTOR ASSY	1	UR 6K8-028281 and following
2	6K8-85560-40	BASE ASSY	1	UR
	6K8-85560-41	BASE ASSY	1	UR 6K8-028281 and following
3	6G0-85509-70	.BASE, magneto	1	
4	6G0-85520-70	.COIL, charge	1	
5	6G0-85580-70	.COIL, pulser	1	UR
	6K8-85580-00	.COIL, pulser	1	UR 6K8-028281 and following
6	6K8-81303-40	.LIGHTING COIL ASSY	1	
7	98501-05020	..SCREW, pan head	2	
8	92990-05100	..WASHER, spring	2	
9	98501-05020	.SCREW, pan head	2	
10	92990-05100	.WASHER, spring	2	
11	98580-05016	.SCREW, pan head	1	
12	92990-05100	.WASHER, spring	1	
13	6E7-81328-70	.CLAMP	1	
14	97802-04008	.SCREW, pan head	1	
15	92902-04100	.WASHER, spring	1	
16	6K8-82361-00	CLAMP, cord	1	
17	97313-06010	BOLT	2	
18	92990-06600	WASHER, plate	2	
19	97313-05016	BOLT	4	
20	6K8-81337-00-94	COVER, flywheel	1	UR
	6K8-81337-01-94	COVER, flywheel	1	UR 6K8-000982 and following
21	6K8-81365-00	GASKET, hole cover	1	UR
	6K8-81365-01	GASKET, hole cover	1	UR 6K8-000982 and following
22	97313-06020	BOLT	7	
23	92990-06600	WASHER, plate	6	



B14

FIG. 7 GENERATOR



REF. NO.	PART NO.	DESCRIPTION	Q'TY	REMARKS
24	97313-08075	BOLT	1	
25	92990-08600	WASHER, plate	1	
26	95380-05700	NUT	1	
27	92990-05600	WASHER, plate	4	
28	90280-05015	KEY, woodruff	1	
29	90179-16M05	NUT	1	
30	90201-16M44	WASHER, plate	1	
31	90461-06M01	CLAMP	1	
32	90461-06M00	CLAMP	1	FOR CANADA/OCEANIA

B15

FIG. 8 STARING MOTOR

REF. NO.	PART NO.	DESCRIPTION	Q'TY	REMARKS
1	6K8-81800-10	STARTING MOTOR ASSY	1	
2	6K8-81850-10	.ARMATURE ASSY	1	
3	6K8-81809-10	.WASHER KIT	1	
4	6K8-81810-10	.STATOR ASSY	1	
5	6K8-8182V-10	..NUT WASHER KIT	1	
6	6K8-8182G-10	..TERMINAL BUSH (1)	1	
7	6K8-8182H-10	..TERMINAL BUSH (2)	1	
8	6K8-81847-10	..O-RING	1	
9	6K8-81811-10	..BRUSH 1	2	
10	6K8-81840-10	.BRUSH HOLDER ASSY	1	
11	6K8-81812-10	..BRUSH 2	1	
12	6K8-81813-10	..SPRING, brush	3	
13	6K8-81820-10	.REAR BRACKET ASSY	1	
14	6K8-81807-10	.GEAR ASSY, starting motor	1	
15	676-81858-10	.SPRING, return	1	
16	6K8-81830-10	.FRONT BRACKET ASSY	1	
17	6K8-81826-10	.BOLT	2	
18	6K8-81846-10	.SCREW	2	
19	6K8-8182M-10	.O-RING (2)	2	
20	6K8-8182L-10	.O-RING (1)	2	
21	6K8-8182N-10	.O-RING (3)	1	
22	6K8-8182R-10	.O-RING (4)	2	
23	676-81859-10	.PINION STOPPER	1	
24	663-81834-10	.PINION STOPPER CLIP	1	
25	97313-08075	BOLT	2	
26	92990-08600	WASHER, plate	2	
27	97313-06020	BOLT	2	
28	92990-06600	WASHER, plate	2	

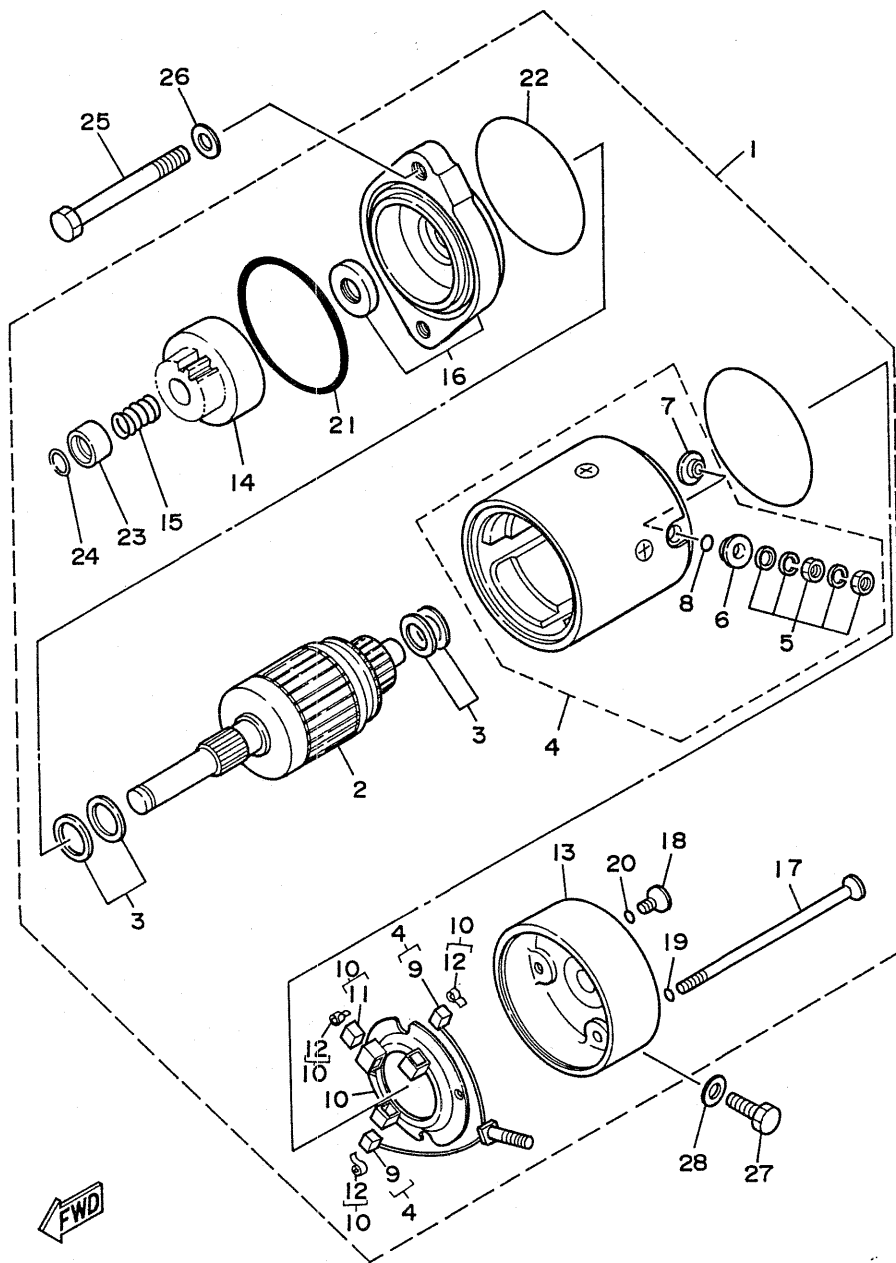
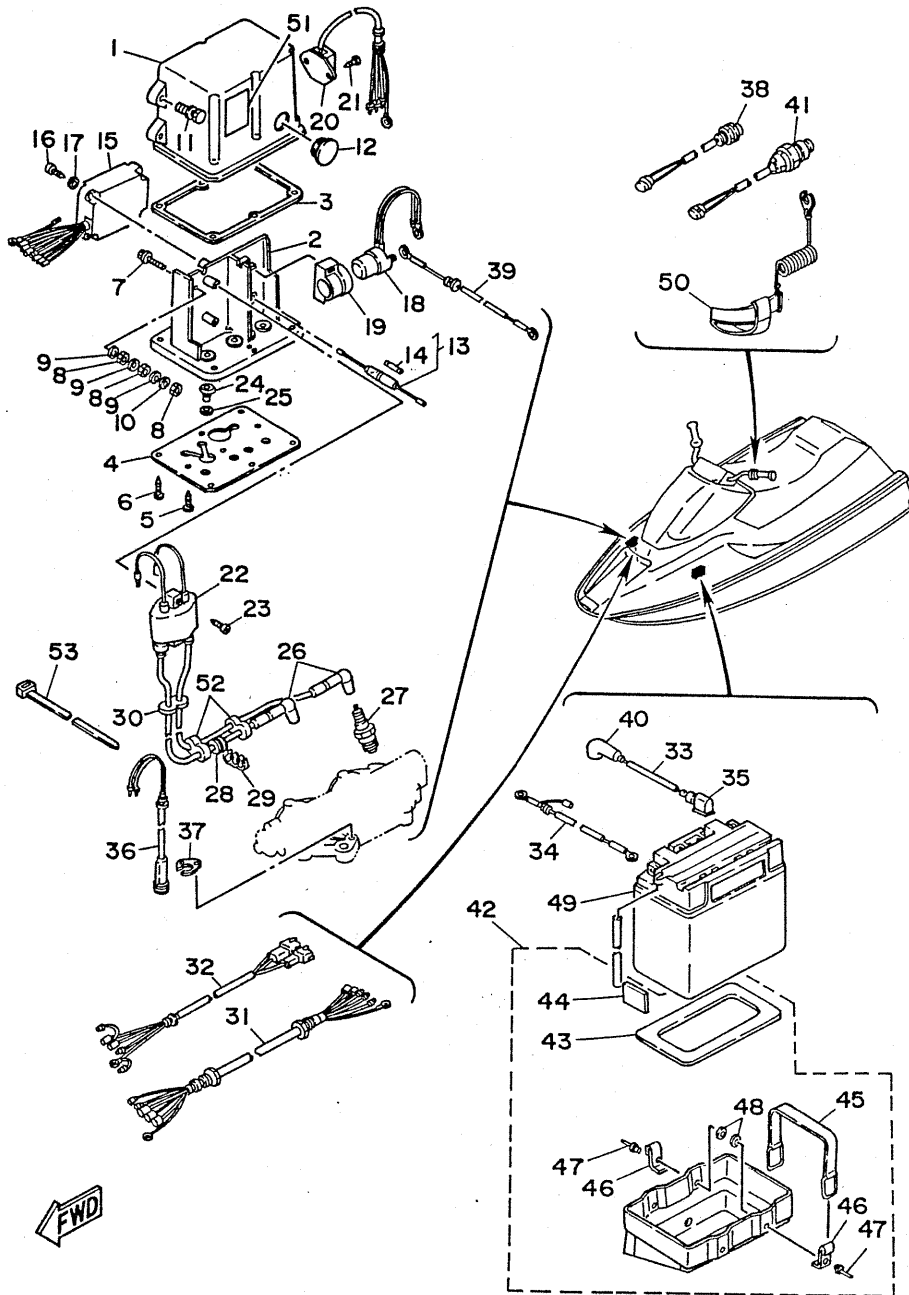


FIG. 9 ELECTRICAL 1

REF. NO.	PART NO.	DESCRIPTION	Q'TY	REMARKS
1	6K8-8552A-00	HOUSING	1	
2	6K8-8552E-00	COVER, case	1	
3	6K8-81921-00	GASKET, terminal	1	
4	6K8-85599-00	COVER	1	
5	97780-60535	SCREW, tapping	6	
6	97780-60520	SCREW, tapping	3	
7	90119-06M34	BOLT, with washer	1	
8	95313-06700	NUT	3	
9	92990-06200	WASHER, plain	3	
10	92990-06100	WASHER, spring	1	
11	90119-06902	BOLT, with washer	3	
12	647-45151-01	COVER, upper casing	1	
13	6K8-82150-00	FUSE HOLDER ASSY	1	
14	6G1-82151-00	.FUSE	1	
15	6K8-85540-10	C.D.I. UNIT ASSY	1	UR
	6K8-85540-11	C.D.I. UNIT ASSY	1	UR 6K8-028281 and following
16	97780-60525	SCREW, tapping	2	
17	92990-06600	WASHER, plate	2	
18	6G1-81941-10	STARTER RELAY ASSY	1	
19	6G1-81952-00	HOLDER, relay	1	
20	6K8-81960-A0	RECTIFIER & REGULATOR ASSY	1	
21	97780-60512	SCREW, tapping	2	
22	6K8-85570-10	IGNITION COIL ASSY	1	
23	97780-60525	SCREW, tapping	2	
24	90480-18M21	GROMMET	2	
25	90387-18M00	COLLAR	2	
26	6K8-82370-00	PLUG CAP ASSY	2	UR
	6K8-82370-10	PLUG CAP ASSY	2	UR FOR CANADA



FWD

C3

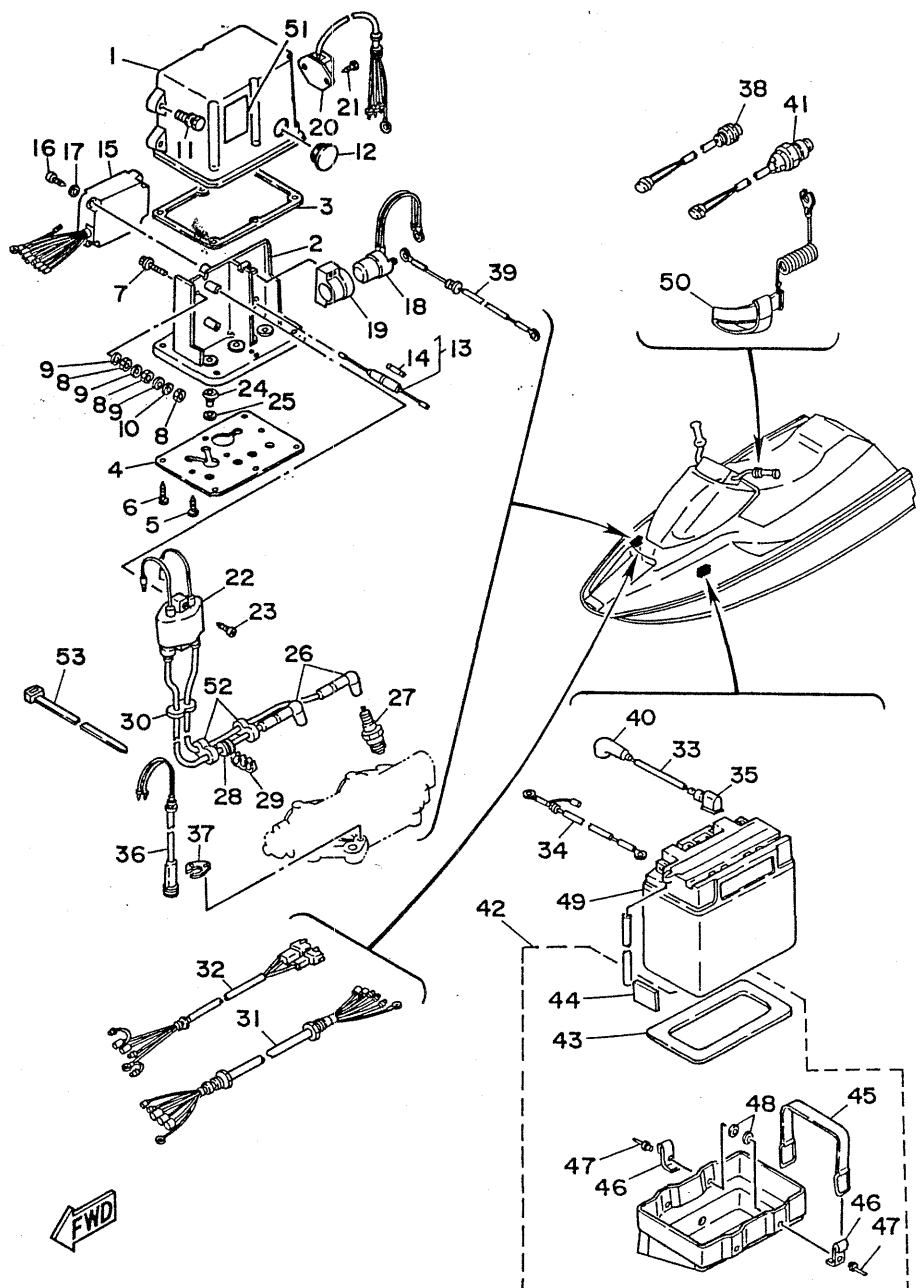
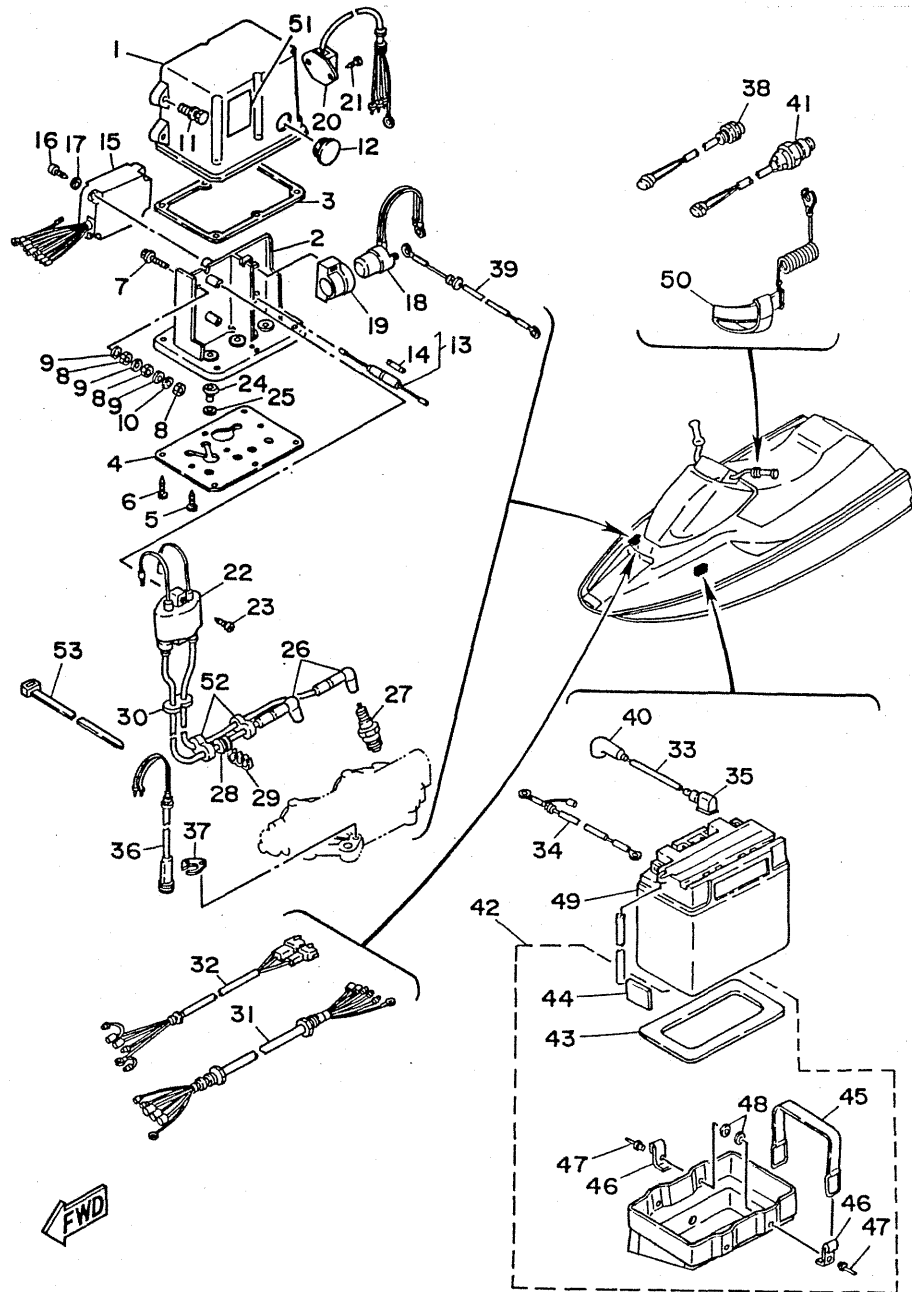


FIG. 9 ELECTRICAL 1

REF. NO.	PART NO.	DESCRIPTION	Q'TY	REMARKS
27	94701-00040	PLUG, spark (NGK BR7HS)	2	UR
	94702-00271	PLUG, spark (NGK BR7HS-10)	2	UR FOR CANADA/OCEANIA
28	90480-25M18	GROMMET	1	
29	90464-07M05	CLAMP	1	UR
	90465-11M10	CLAMP	1	UR FOR CANADA
30	90480-25M18	GROMMET	1	
31	6K8-8258A-00	EXTENSION, wire harness	1	UR
	6K8-8258A-01	EXTENSION, wire harness	1	UR 6K8-028281 and following
32	6K8-82553-00	EXTENSION, wire lead	1	
33	6K8-82117-00	WIRE, lead	1	
34	6K8-82117-10	WIRE, lead	1	
35	6K8-82119-10	COVER, lead wire	1	
36	6K8-82560-00	THERMO SWITCH ASSY	1	
37	6K8-82588-00	PLATE	1	
38	6K8-81870-00	STARTER SWITCH ASSY	1	
39	6K8-82117-20	WIRE, lead	1	
40	6K8-82119-00	COVER, lead wire	1	
41	EU0-68347-00	ENGINE STOP SWITCH ASSY	1	
42	EU0-68211-09	BATTERY CASE COMP.	1	
43	EU0-68221-00	.PAD, battery 1	1	
44	EU0-68221-30	.PAD, battery 2	4	
45	EU0-68218-03	.BAND, battery	2	
46	EU0-65772-00	.HOOK A	4	
47	90267-48931	.RIVET, blind	4	
48	90201-05926	.WASHER, plain	4	
49	EU0-82110-78	BATTERY (FB16CL-B)	1	
50	EU0-68961-00	ENGINE STOP SWITCH LANYARD	1	
51	6K8-83621-00	MARK 1	1	

FIG. 9 ELECTRICAL 1



REF. NO.	PART NO.	DESCRIPTION	Q'TY	REMARKS
52	90480-25M18	GROMMET	2	FOR CANADA
53	90465-13M24	CLAMP	1	FOR CANADA

C5

FIG. 10 HULL. DECK 1

REF. NO.	PART NO.	DESCRIPTION	Q'TY	REMARKS
1	EU0-65160-00	ENGINE HOOD COMP.	1	
2	EU0-62688-00	PACKING 8	1	
3	EU0-62664-01	PACKING 2	1	
4	EU0-64742-00	LOCKER, under 2	1	
5	90656-31160	PACKING 34	1	
6	97780-50220	SCREW	12	
7	EU0-68156-00	BRACKET	1	UR
	EU0-68156-01	BRACKET	1	UR EU0-100701 and following
	EU0-68156-02	BRACKET	1	UR EU0-203135 and following
8	92780-06010	SCREW	2	UR
	90267-48934	RIVET	3	UR EU0-100701 and following
	90267-48934	RIVET	5	UR EU0-203135 and following
9	92680-06016	SCREW	1	UR
	92680-06016	SCREW	2	UR EU0-203135 and following
10	A84-62635-00	ROSETTE	1	UR
	A84-62635-00	ROSETTE	2	UR EU0-203135 and following
11	EU0-62720-00	INSPECTION COVER ASSY	1	
12	EU0-62721-00	.COVER, inspection	1	
13	93211-03902	.RING	1	
14	EU0-67835-30	.CHAIN BALL	1	
15	EU0-67839-00	.COUPLING	2	
16	90267-40937	RIVET, brind flat head	6	
17	EU0-62884-02	BRACKET, hatch support	1	
18	92780-06016	SCREW	1	
19	EU0-63729-01	STOPPER, seat 1	2	
20	92990-08200	WASHER, plain	2	
21	95720-08300	NUT, self-locking	2	
22	EU0-62841-01	BRACKET, hatch lock	2	

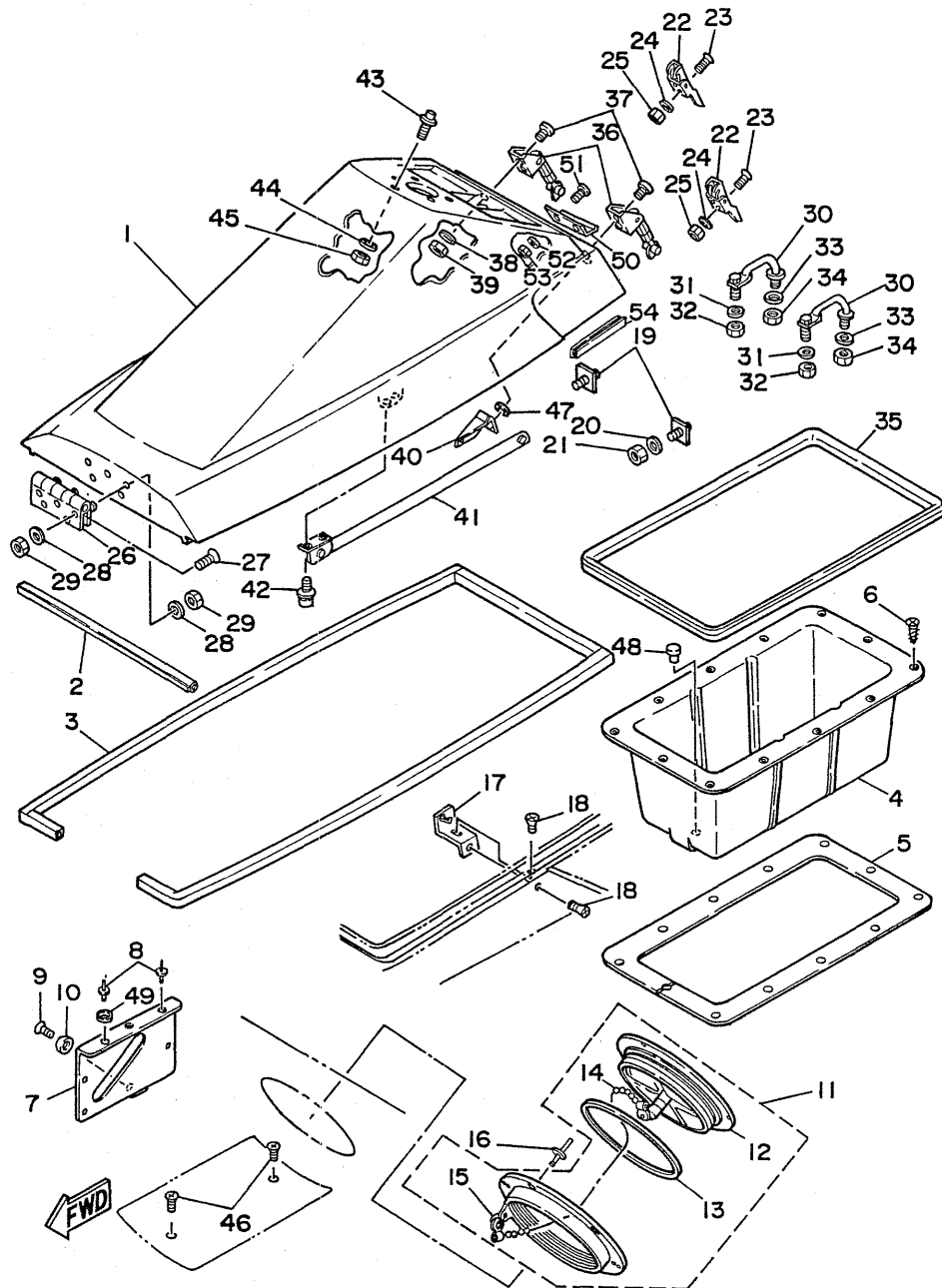
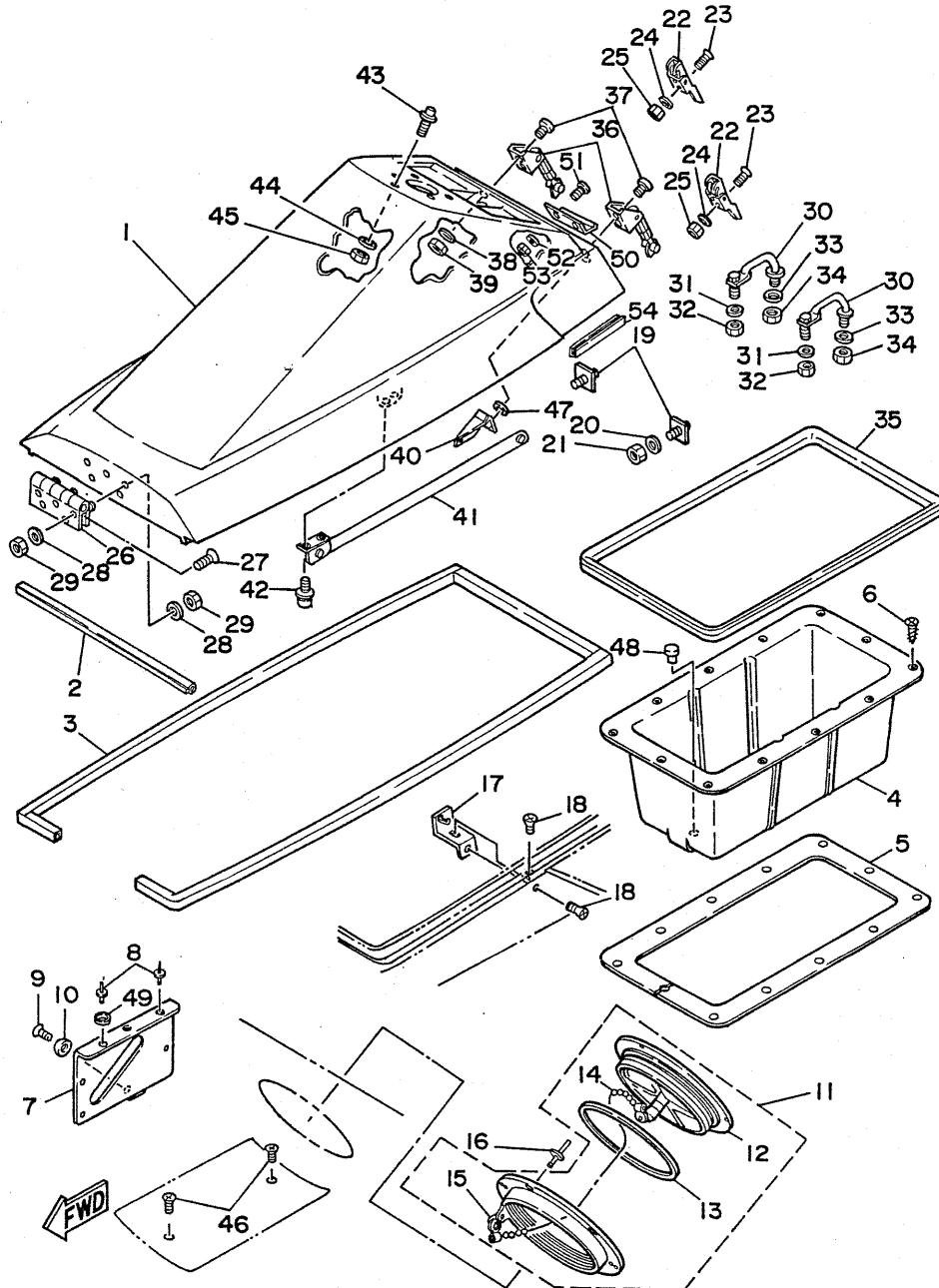


FIG. 10 HULL. DECK 1

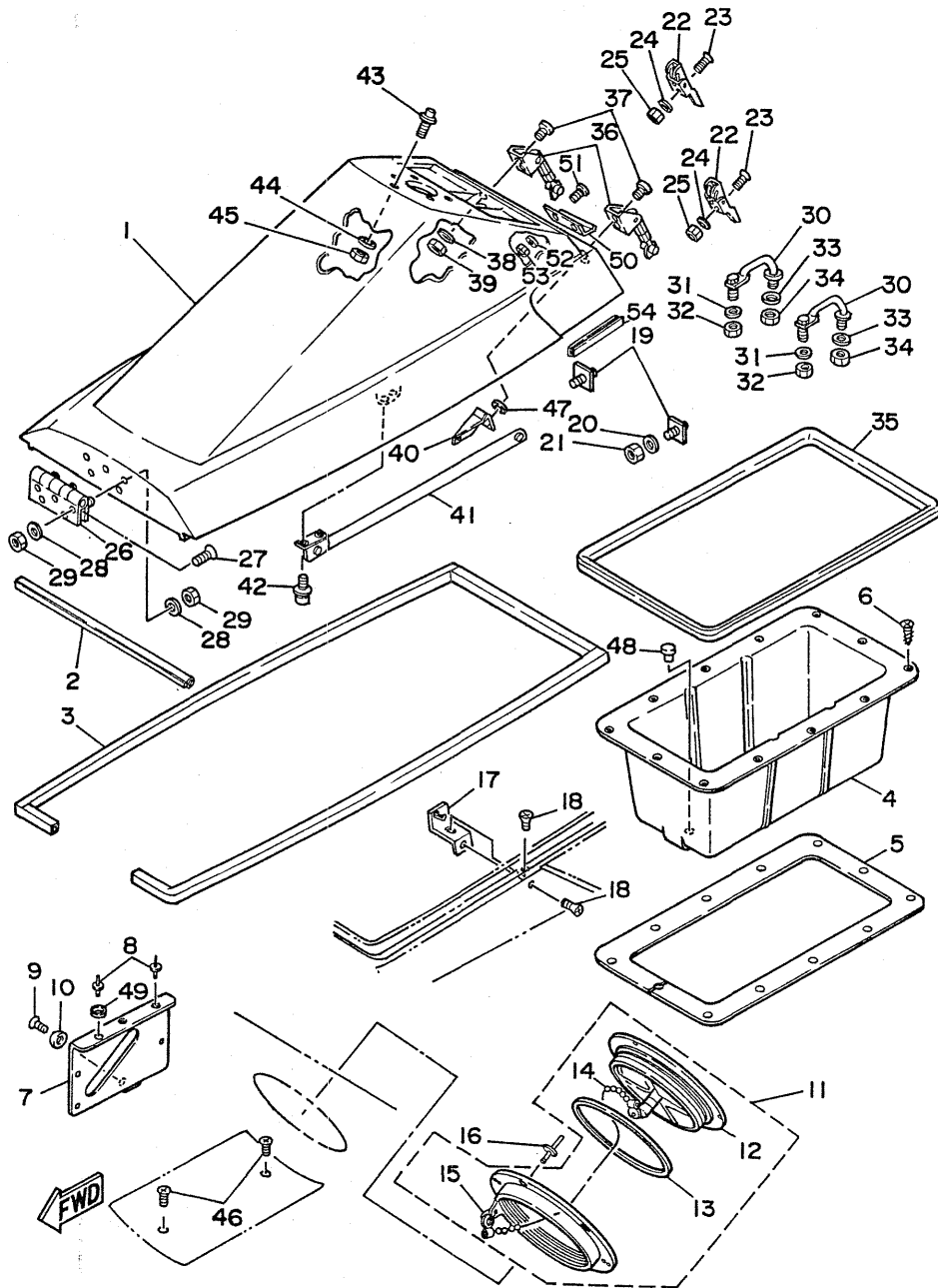


REF. NO.	PART NO.	DESCRIPTION	Q'TY	REMARKS
23	98780-05020	SCREW	4	
24	92990-05200	WASHER, plain	4	
25	95720-05300	NUT, self-locking	4	
26	90600-70069	HINGE	1	
27	98780-05020	SCREW, flat head	5	
28	92990-05200	WASHER, plain	10	
29	95720-05300	NUT, self-locking	10	
30	EU0-61638-00	CLEAT	2	
31	92990-06200	WASHER, plain	2	
32	95720-06300	NUT, self-locking	2	
33	92990-08200	WASHER, plain	2	
34	95720-08300	NUT, self-locking	2	
35	EU0-62663-01	PACKING 1	1	
36	EU0-62843-01	HOOK, hatch lock	2	
37	98580-05020	SCREW, flat head	4	
38	92990-05200	WASHER, plain	2	
39	95720-05300	NUT, self-locking	2	
40	EU0-62892-01	FIX PLATE	1	
41	EU0-62891-00	SUPPORT, hatch	1	
42	90159-06901	SCREW, flat head with washer	2	
43	EU0-61314-30	PIN, stopper	1	
44	92990-10200	WASHER, plain	1	
45	95780-10300	NUT, self-locking	1	
46	98780-04016	SCREW, flat head	2	
47	92990-05200	WASHER, plain	2	
48	90338-12081	PLUG	1	
49	90209-07919	WASHER, special	1 UN	
50	EU0-63783-00	GUIDE, seat	1	EU0-206373 and following

C7

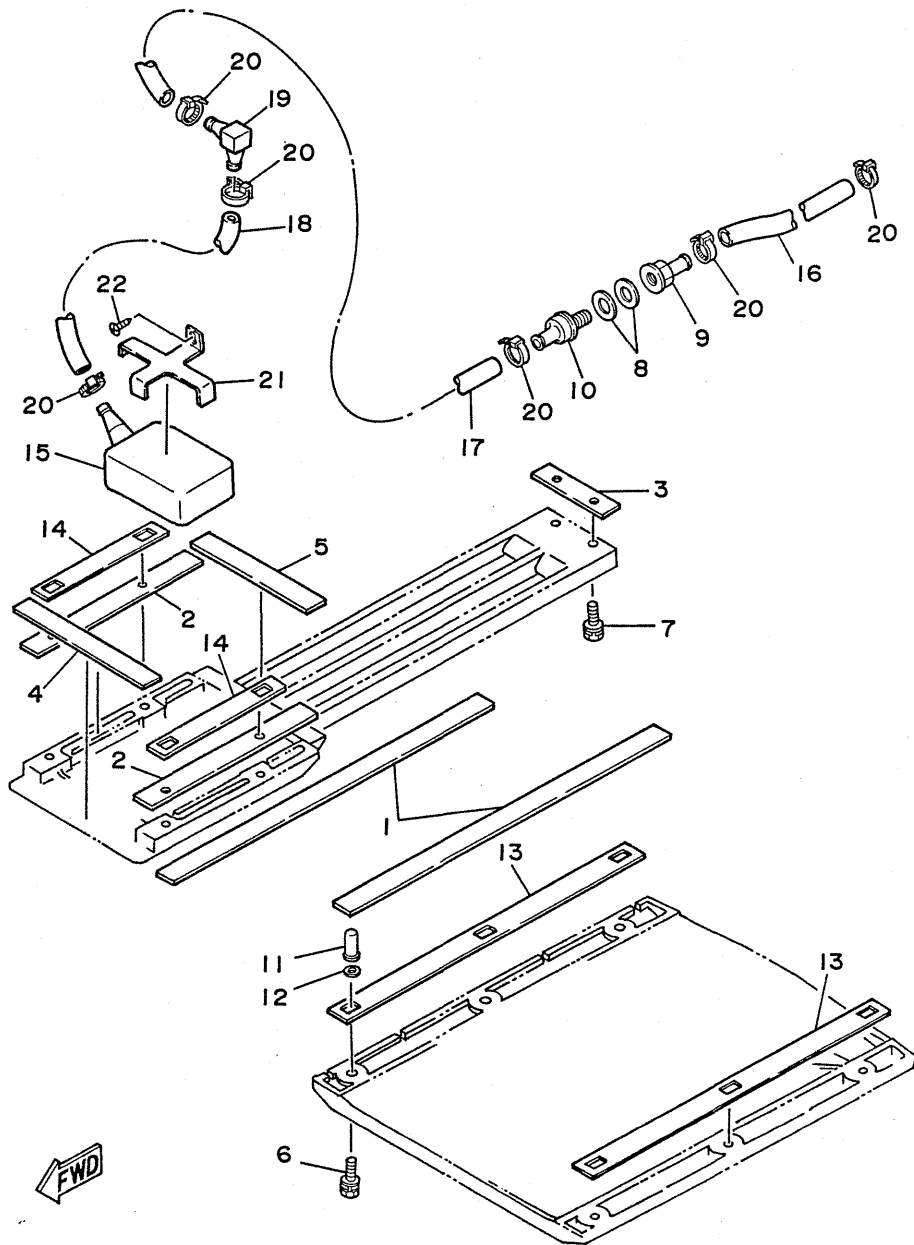
FIG. 10 HULL. DECK 1

REF. NO.	PART NO.	DESCRIPTION	Q'TY	REMARKS
51	97890-05016	SCREW	2	EU0-206373 and following
52	92990-05600	WASHER, plain	2	EU0-206373 and following
53	95720-05300	NUT, self-locking	2	EU0-206373 and following
54	EU0-65162-00	TRIM	2	EU0-206373 and following



C8

FIG. 11 HULL. DECK 2



REF. NO.	PART NO.	DESCRIPTION	Q'TY	REMARKS
1	EU0-62284-00	PACKING 3	2	
2	EU0-62284-30	PACKING 4	2	
3	EU0-62284-40	PACKING 5	1	
4	EU0-62284-50	PACKING 6	1	
5	EU0-62284-60	PACKING 7	1	
6	90119-06901	BOLT, with washer	10	
7	90119-06900	BOLT, with washer	2	
8	90430-13909	PACKING	2	
9	90604-80759	CONNECTION, thru-hull 1/4	1	
10	90604-80760	CONNECTION, thru-hull 1/4	1	
11	90179-06917	NUT, pop	10	
12	90201-09924	WASHER, plate	10	
13	EU0-67367-00	PLATE, stopper (A)	2	
14	EU0-67367-30	PLATE, stopper (B)	2	
15	EU0-67613-00	STRAINER	1	
16	90445-14M02	HOSE	1	
17	90445-14M03	HOSE	1	
18	90445-14M04	HOSE	1	
19	6K8-51162-00	JOINT, hose	1	
20	90465-13M11	CLAMP	6	
21	EU0-67618-00	BASE	1	
22	97780-50116	SCREW, tapping	2	

C9

FIG. 12 GUNWALE. MAT

REF. NO.	PART NO.	DESCRIPTION	Q'TY	REMARKS
1	EU0-61651-30	ROPE HOLE	1	
2	EU0-62512-00	GUNWALE, side	2	
3	90697-25025	GUNWALE 36	2	
4	90267-48932	RIVET, blind	42	
5	EU0-62513-12	GUNWALE, stern (LH)	1	
6	EU0-62513-22	GUNWALE, stern (RH)	1	
7	EU0-62574-12	CAP, gunwale stern (LH)	1	
8	EU0-62574-22	CAP, gunwale stern (RH)	1	
9	90149-05935	SCREW, tapping	4	
10	EU0-62511-00	GUNWALE, bow	1	
11	90149-05937	SCREW, tapping	4	
12	EU0-63581-11	MAT, upper (LH)	1	
13	EU0-63581-21	MAT, upper (RH)	1	
14	90149-05933	SCREW, oval head	10	
15	90149-05934	SCREW, oval head	4	
16	92990-05200	WASHER, plain	8	
17	EU0-62519-V0	INNER GUNWALE (LH)	1	
18	EU0-62519-W0	INNER GUNWALE (RH)	1	
19	90179-05924	NUT	10	
20	95380-05800	NUT, cap	4	
21	EU0-61652-00	NUT	1	
22	90201-05928	WASHER, plate	4	

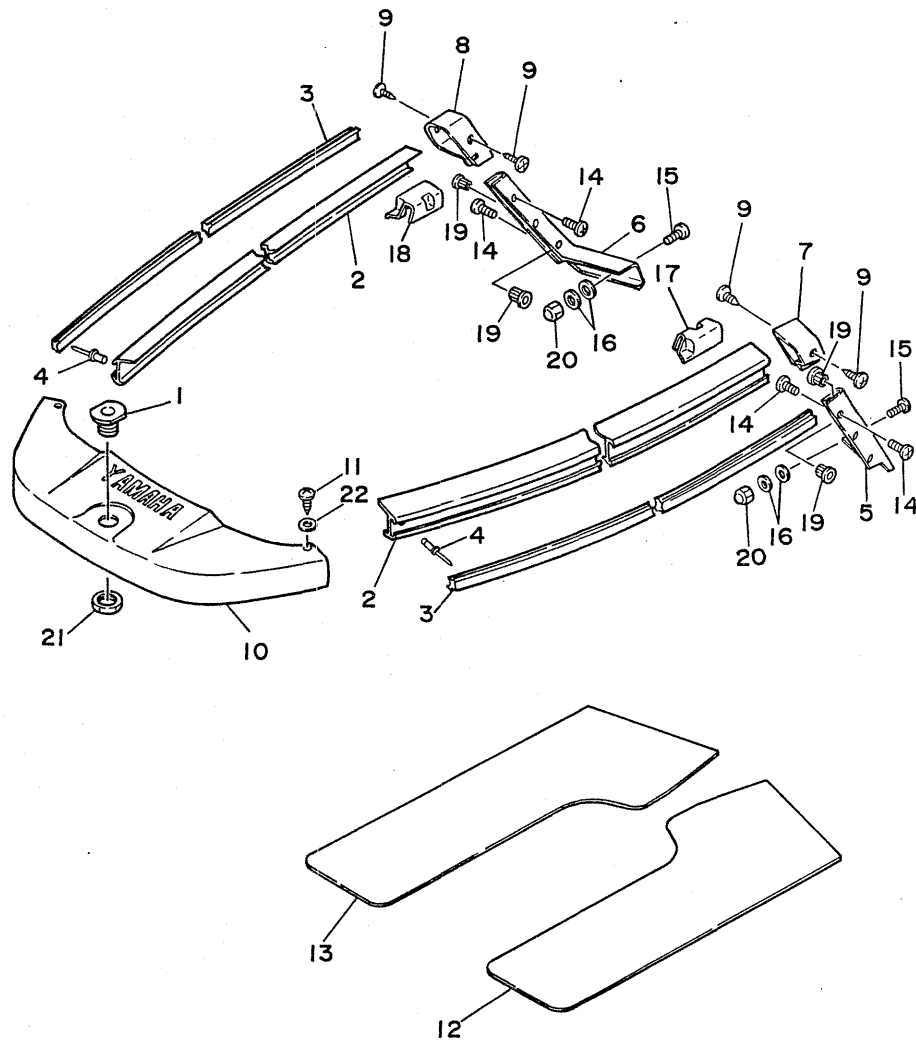
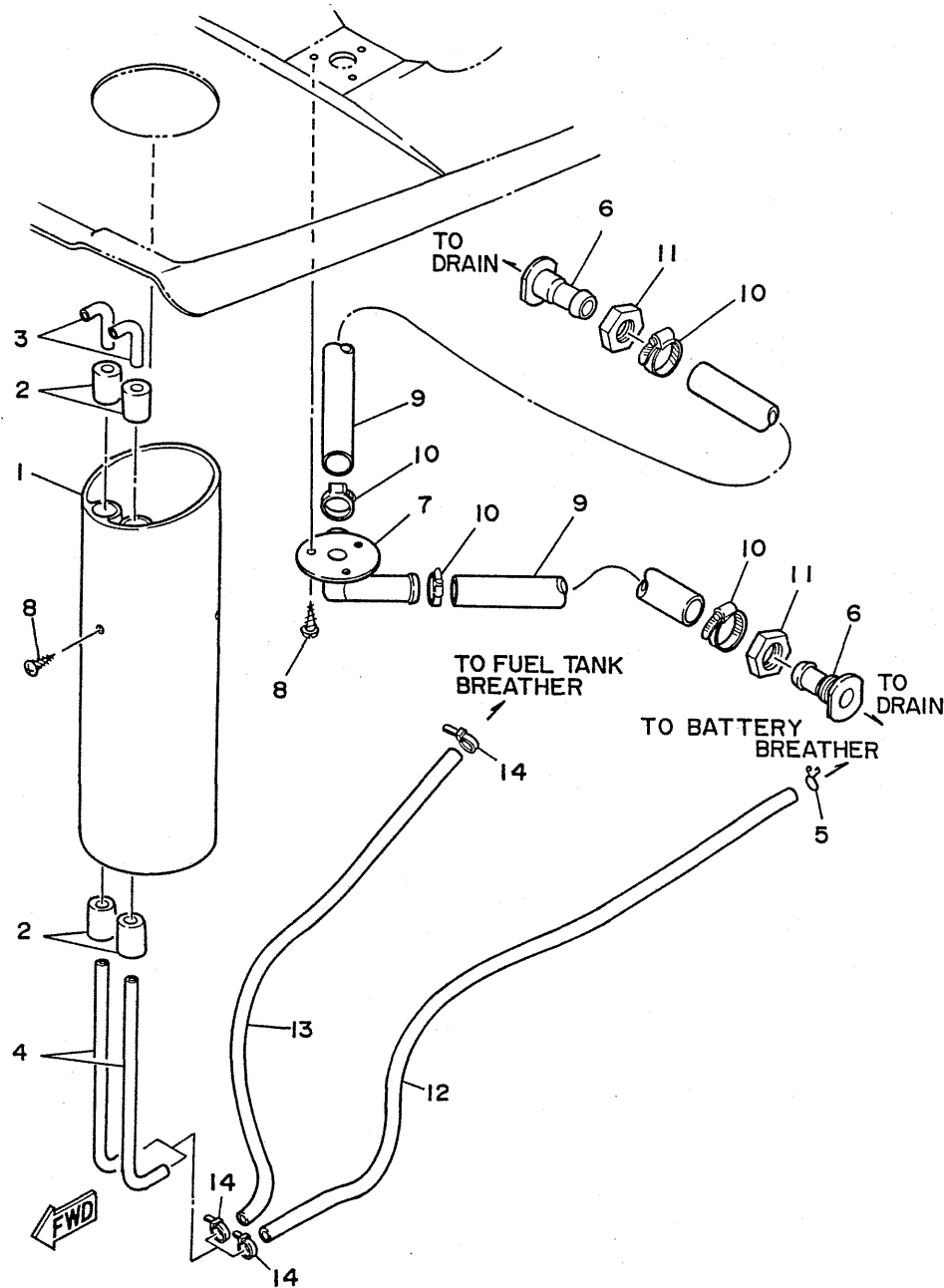


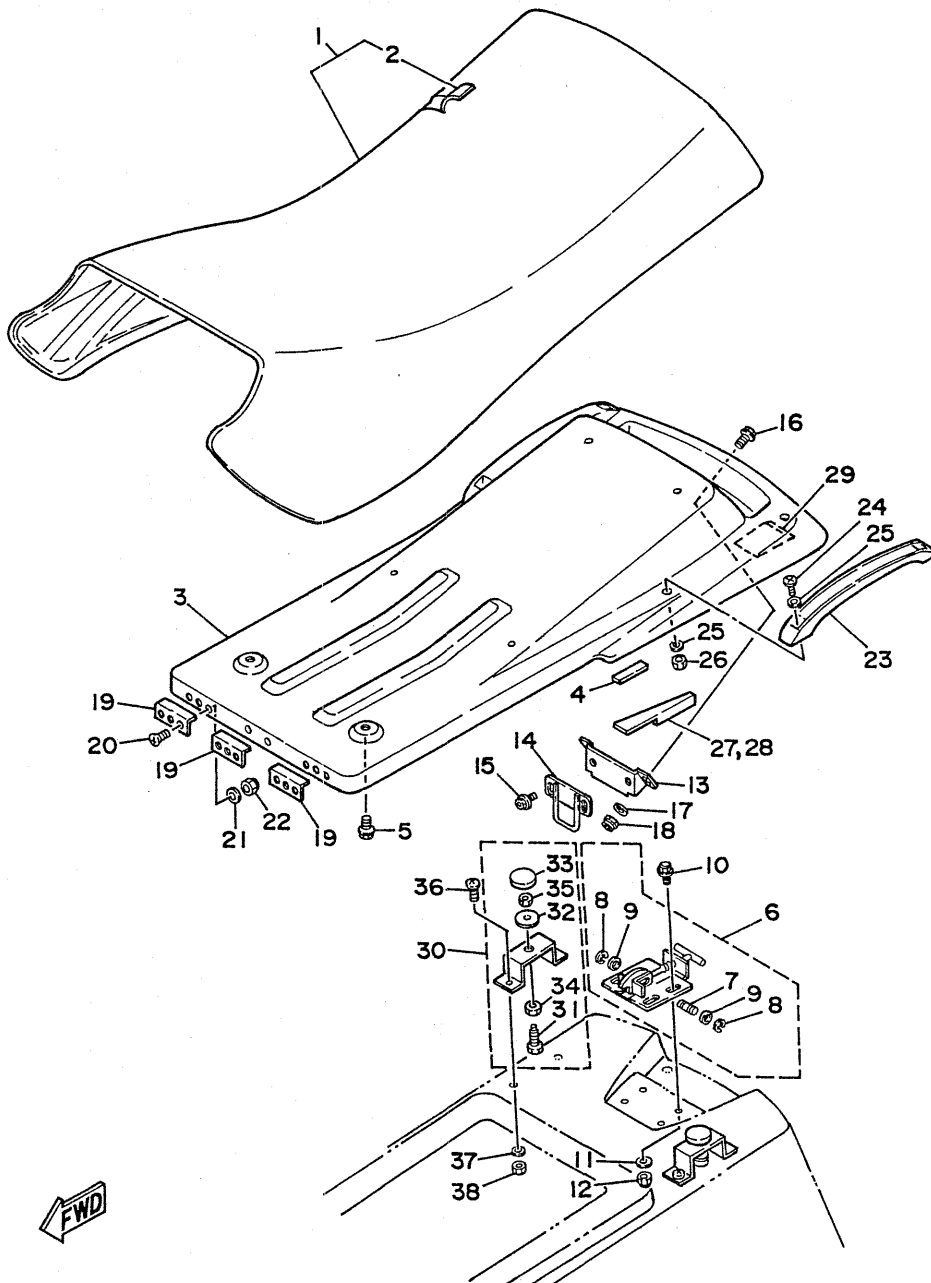
FIG. 13 VENTILATION



REF. NO.	PART NO.	DESCRIPTION	Q'TY	REMARKS
1	EU0-62149-40	PIPE, ventilation	1	
2	EU0-62155-00	CAP	4	
3	EU0-62156-00	ELBOW, ventilater 11	2	
4	EU0-62156-30	ELBOW, ventilater 12	2	
5	90467-08M10	CLIP	1	
6	EU0-62241-00	BODY, drain 1	2	
7	EU0-62242-00	DRAIN 2	1	
8	97780-40112	SCREW, pan head	6	
9	90669-03005	HOSE 1	2	
10	90601-12538	BAND, hose 25	4	
11	EU0-62241-30	NUT, drain 1	2	
12	EU0-67856-40	HOSE, air vent 3	1	
13	EU0-67856-30	HOSE, air vent 2	1	
14	90465-11M10	CLAMP	3	

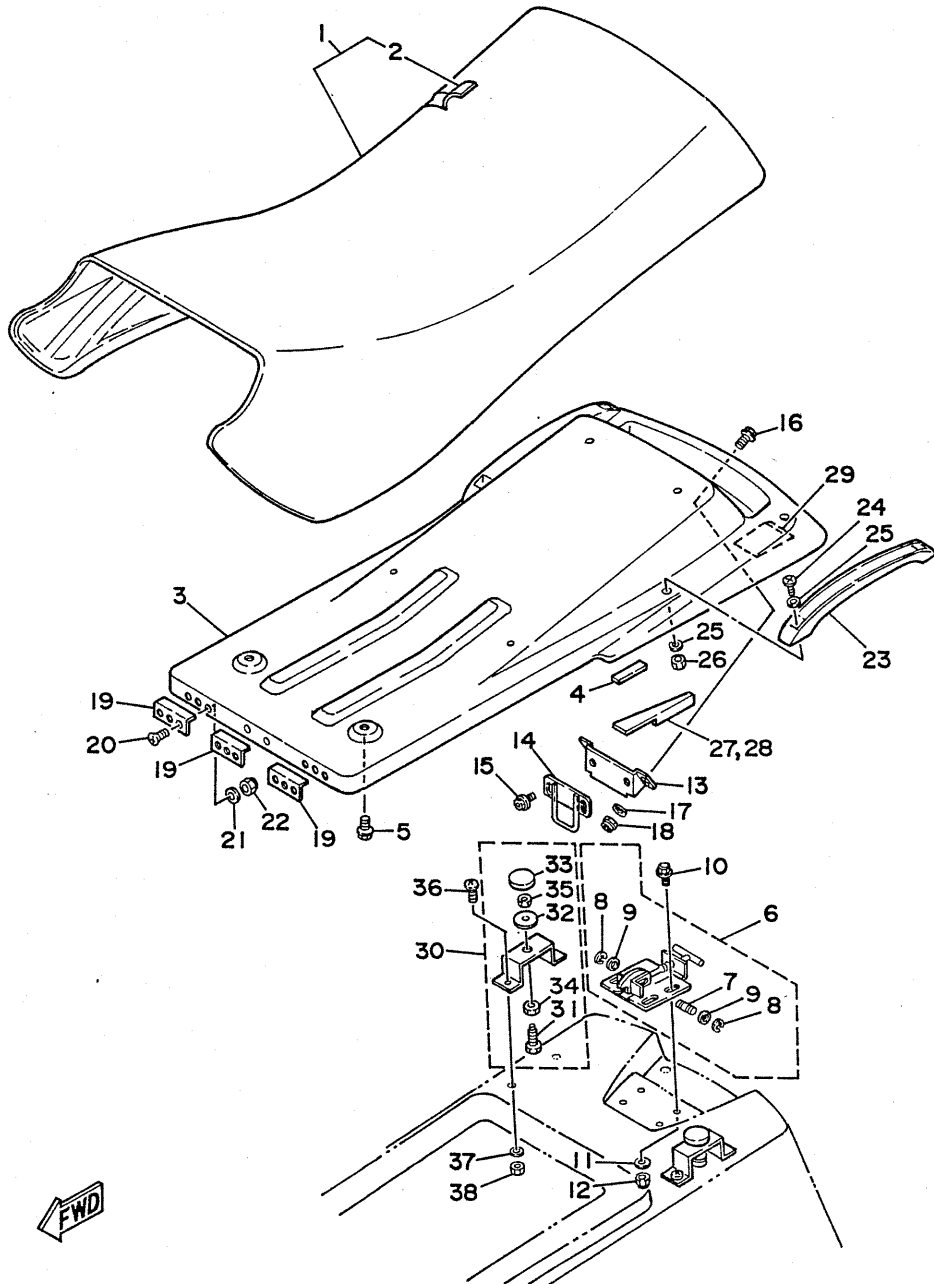
FIG. 14 SEAT

REF. NO.	PART NO.	DESCRIPTION	Q'TY	REMARKS
1	EU0-63710-00	SEAT, tandem assy	1	
2	EU0-63711-00	.COVER, seat	1	
3	EU0-63702-02	BASE SEAT COMP.	1	
4	EU0-67593-40	MAT 3	2	
5	90119-06034	BOLT, with washer	6	
6	EU0-63850-00	SEAT LOCK ASSY	1	
7	EU0-63774-00	.PIN	1	
8	93430-05900	.CLIP	2	
9	92990-06200	.WASHER, plain	2	
10	90119-06901	BOLT, with washer	4	
11	92990-06200	WASHER, plain	4	
12	95720-06300	NUT, self-locking	4	
13	EU0-63778-00	BASE, hook end	1	
14	EU0-63779-00	HOOK END	1	
15	90119-06066	BOLT, with washer	2	
16	90159-06902	SCREW, with washer	4	
17	92990-06200	WASHER, plain	4	
18	95720-06300	NUT, self-locking	4	
19	EU0-63789-01	STOPPER, seat 2	2	UR
	EU0-63789-01	STOPPER, seat 2	3	UR EU0-206373 and following
20	98780-05016	SCREW	4	UR
	98780-05016	SCREW	6	UR EU0-206373 and following
21	92990-05200	WASHER, plain	4	UR
	92990-05200	WASHER, plain	6	UR EU0-206373 and following
22	95720-05300	NUT, self-locking	4	UR
	95720-05300	NUT, self-locking	6	UR EU0-206373 and following
23	EU0-62714-01	GRIP, hand	2	
24	92580-06025	SCREW	4	



C12

FIG. 14 SEAT



REF. NO.	PART NO.	DESCRIPTION	Q'TY	REMARKS
25	92990-06200	WASHE, plain	4	
26	95780-06300	NUT, self-locking	4	
27	EU0-67593-10	MAT 3 (LH)	1	
28	EU0-67593-20	MAT 3 (RH)	1	
29	EU0-63765-00	LINER, damper	2	
30	EU0-63760-01	DAMPER, seat assy	2	
31	EU0-63762-00	.BOLT	2	
32	EU0-63763-00	.PLATE	2	
33	EU0-63764-00	.MAT	2	
34	EU0-63766-00	.NUT	2	
35	95380-08700	.NUT	2	
36	92580-06020	SCREW	4	
37	92990-06200	WASHER	4	
38	95720-06300	NUT, self-locking	4	

C13

FIG. 15 FUEL TANK

REF. NO.	PART NO.	DESCRIPTION	Q'TY	REMARKS
1	EU0-67831-01	CAP, fuel filler	1	
2	EU0-W6783-01	SOCKET	1	
3	EU0-67835-00	.CHAIN BALL	1	
4	90267-40935	.RIVET	1	
5	EU0-67832-00	PACKING 1	1	
6	EU0-67869-00	SCREW, tapping	6	
7	90170-22M11	NUT	1	
8	EU0-67834-00	PACKING, fuel filler	1	
9	EU0-67711-00	TANK, fuel	1	
10	EU0-24335-31	PIPE 1	1	
11	90601-11052	.BAND, hose	2	
12	8V0-24336-00	PIPE 2	1	
13	EU0-24335-01	PIPE 11	1	
14	90601-11052	.BAND, hose	2	
15	813-24336-00	PIPE 2	1	
16	8H5-24560-00	FILTER	2	
17	90601-11052	BAND, hose 10	2	
18	90601-16255	BAND, hose 62	2	
19	90465-11M10	CLAMP	2	
20	EU0-67856-00	HOSE, air vent 1	1	
21	EU0-67767-01	CHECK VALVE	1	
22	EU0-67777-02	FIX FUEL TANK	3	
23	EU0-67593-30	MAT 2	2	
24	90119-08907	BOLT, with washer	3	
25	90119-08903	BOLT, with washer	3	
26	EU0-67844-00	HOSE, filter	1	
27	90601-15554	BAND, hose 55	2	
28	90601-20006	BAND	6	

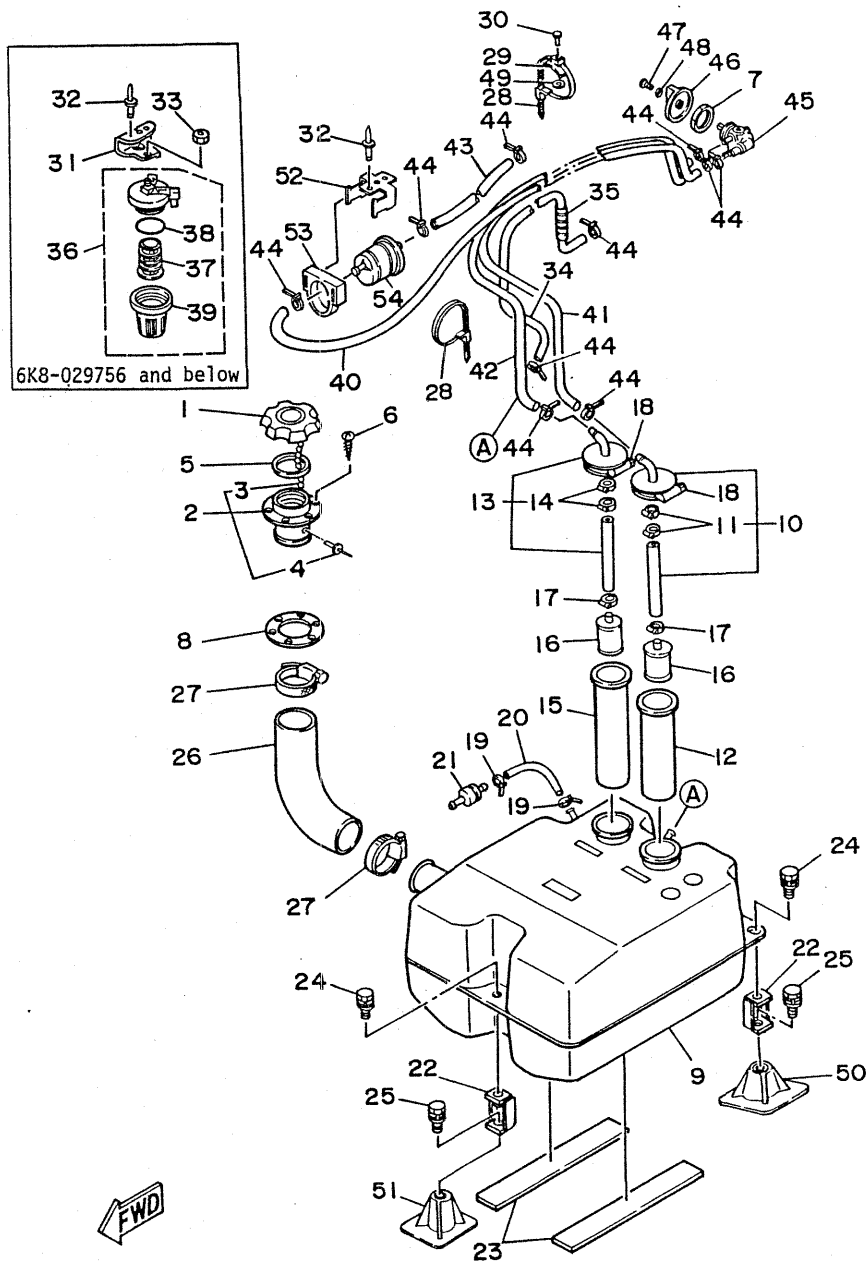


FIG. 15 FUEL TANK

REF. NO.	PART NO.	DESCRIPTION	Q'TY	REMARKS
29	90600-91729	CLAMP	5	
30	90267-48931	RIVET, blind	5	
31	EU0-67816-02	BRACKET, fuel filter	1	6K8-029756 and below
32	90267-48934	RIVET	3	
33	95720-08300	NUT	1	6K8-029756 and below
34	90445-10M06	HOSE	1	
35	90699-34100	SPIRAL TUBE	1	
36	655-24560-01	FILTER ASSY	1	6K8-029756 and below
37	6F5-24563-00	.ELEMENT, filter	1	6K8-029756 and below
38	93210-37M25	.O-RING	1	6K8-029756 and below
39	655-24521-01	.CUP, filter	1	6K8-029756 and below
40	90445-10M07	HOSE	1	
41	90445-10M05	HOSE	1	
42	90445-10M04	HOSE	2	
43	90445-10M08	HOSE	1	UR 6K8-029756 and below
	90445-10M02	HOSE	1	UR 6K8-029757 and following
44	90465-11M10	CLAMP	10	
45	6K8-24500-00	FUEL COCK ASSY	1	
46	6K8-24524-00	LEVER, cock	1	
47	97880-04010	SCREW, pan head	1	
48	92990-04600	WASHER, plate	1	
49	90201-05925	WASHER, plain	5	
50	EU0-67745-31	BASE, fuel tank 2	2	
51	EU0-67745-01	BASE, fuel tank 1	1	
52	EU0-67816-30	BRACKET, fuel filter	1	6K8-029757 and following
53	EU0-67817-00	HOLDER, filter	1	6K8-029757 and following
54	6K8-24560-00	FILTER ASSY	1	6K8-029757 and following

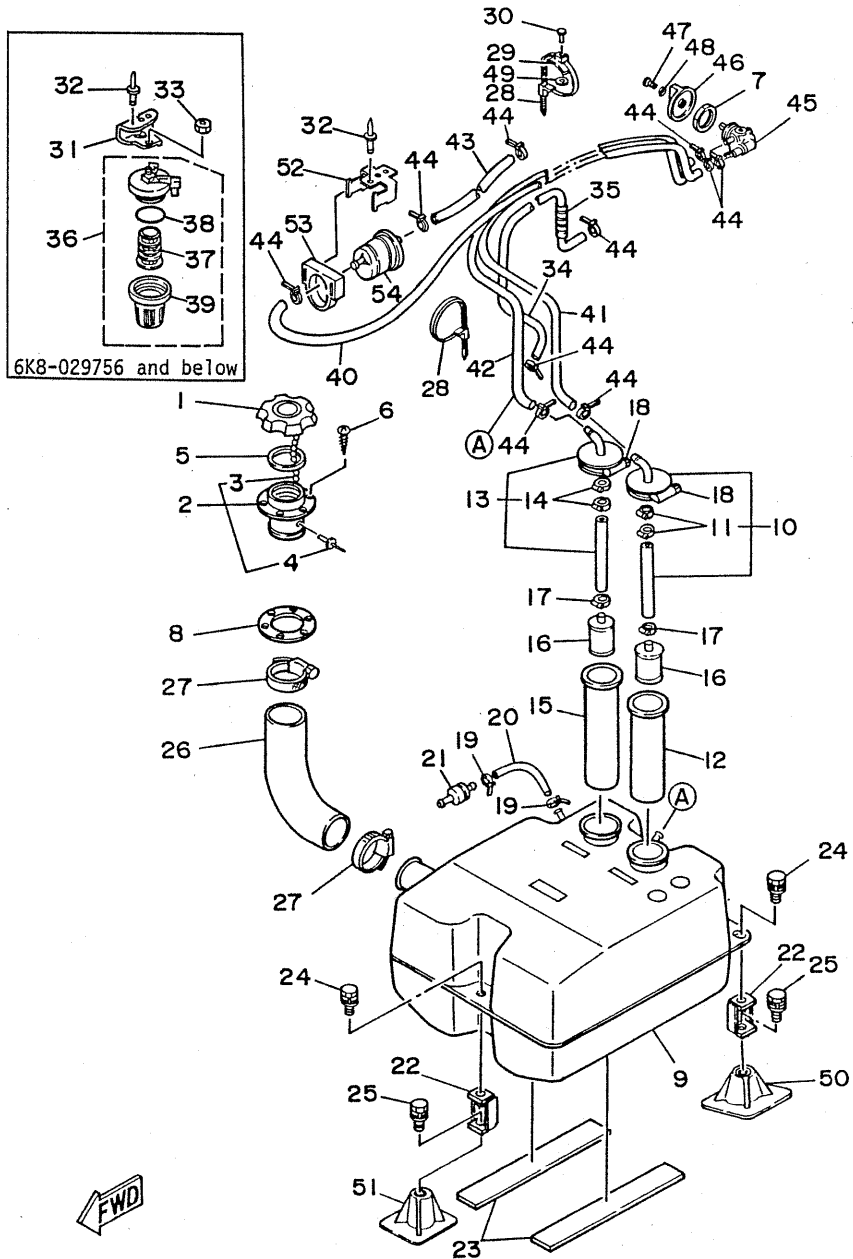
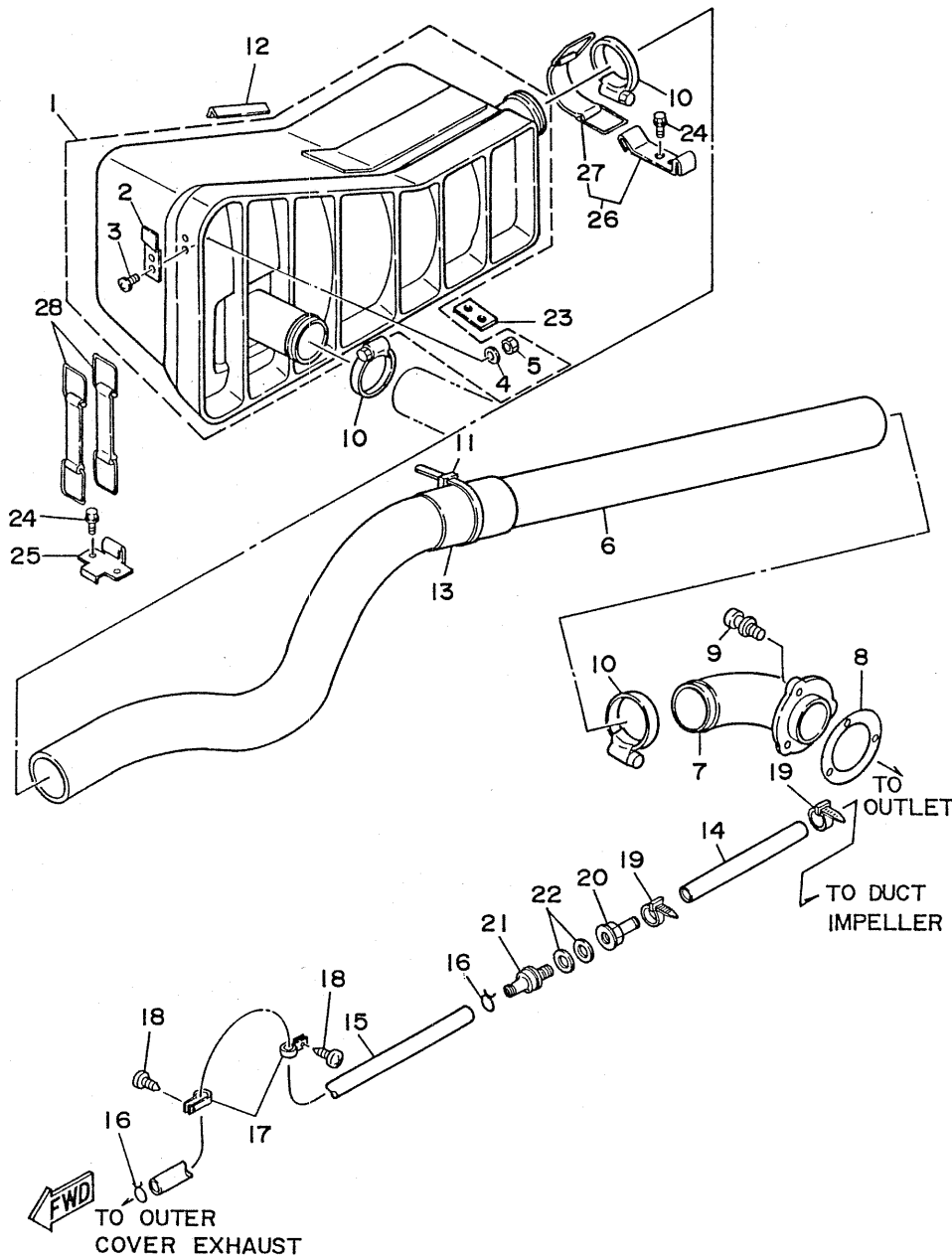


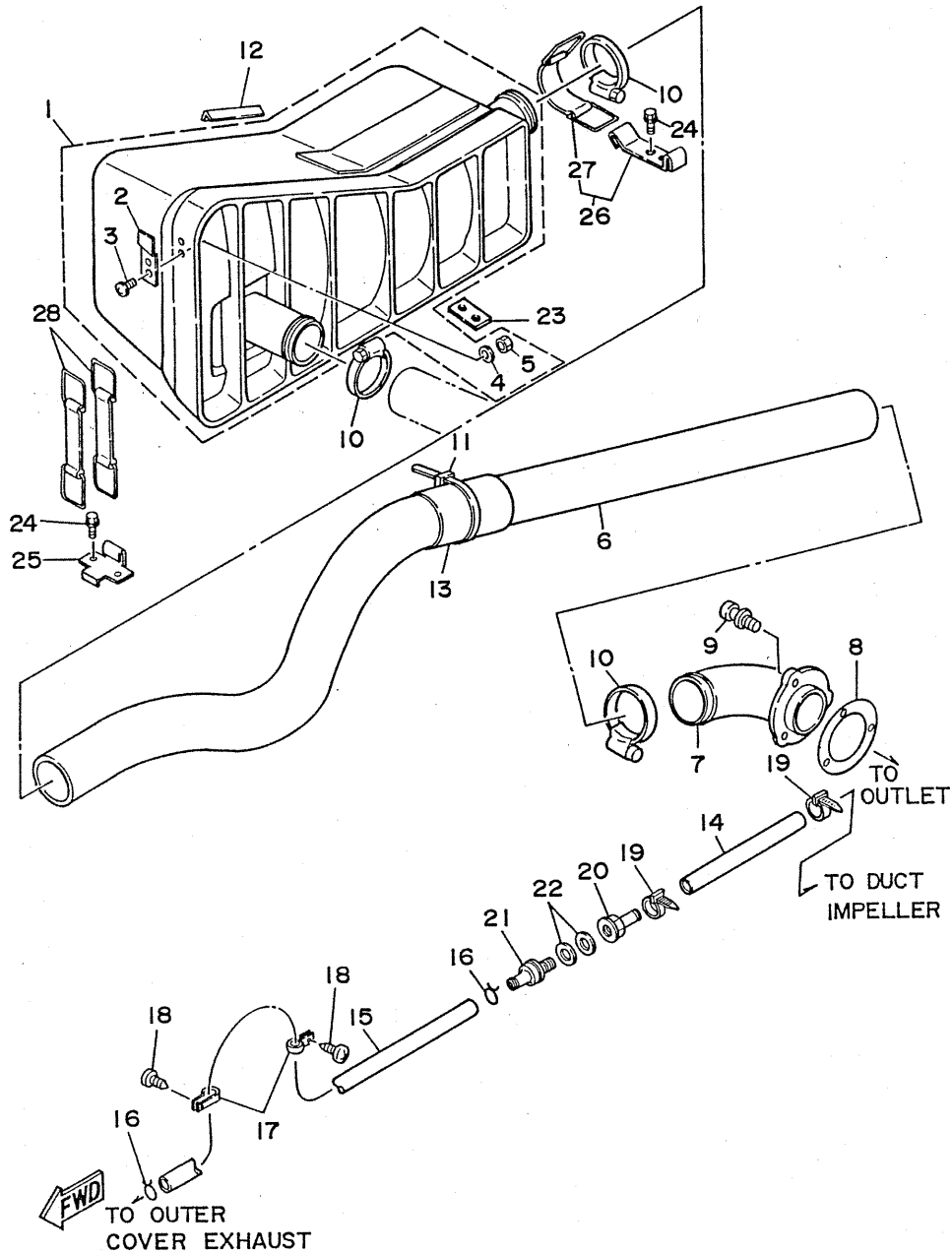
FIG. 16 EXHAUST 2



REF. NO.	PART NO.	DESCRIPTION	Q'TY	REMARKS
1	EU0-67550-02	WATER LOCK COMP.	1	
	EU0-67550-03	WATER LOCK COMP.	1	EU0-207210 and following
2	EU0-67567-00	.HOOK B	4	EU0-207210 and following
3	98580-05025	.SCREW	2	EU0-207210 and following
4	92990-05200	.WASHER	2	EU0-207210 and following
5	95720-05300	.NUT	2	EU0-207210 and following
6	EU0-67555-00	HOSE	1	
7	EU0-67565-00	THRU-HULL	1	
8	EU0-67525-00	PACKING	1	
9	90159-05900	SCREW, with washer	3	
10	90601-15253	BAND, hose 52	3	
11	90601-20009	BAND	1	
12	EU0-67593-70	MAT 6	1	EU0-207210 and following
13	EU0-67576-00	HOSE, protector	1	
14	90445-13M04	HOSE	1	
15	90445-13M05	HOSE	1	
16	90467-12M11	CLIP	2	
17	90600-91728	CLIP, nylon 17	4	
18	97780-50116	SCREW	2	
19	90465-13M11	CLAMP	2	
20	90604-80757	CONNECTION, thru-hull 1/4	1	
21	90604-80758	CONNECTION, thru-hull 1/4	1	
22	90430-13909	PACKING	2	
23	EU0-67574-00	LINER	1	UN
24	90119-06913	BOLT, with washer	4	EU0-207210 and following
25	EU0-67568-00	HOOK D	1	EU0-207210 and following
26	EU0-67570-00	HOOK C	1	EU0-207210 and following
27	EU0-67569-01	.BAND	1	EU0-207210 and following

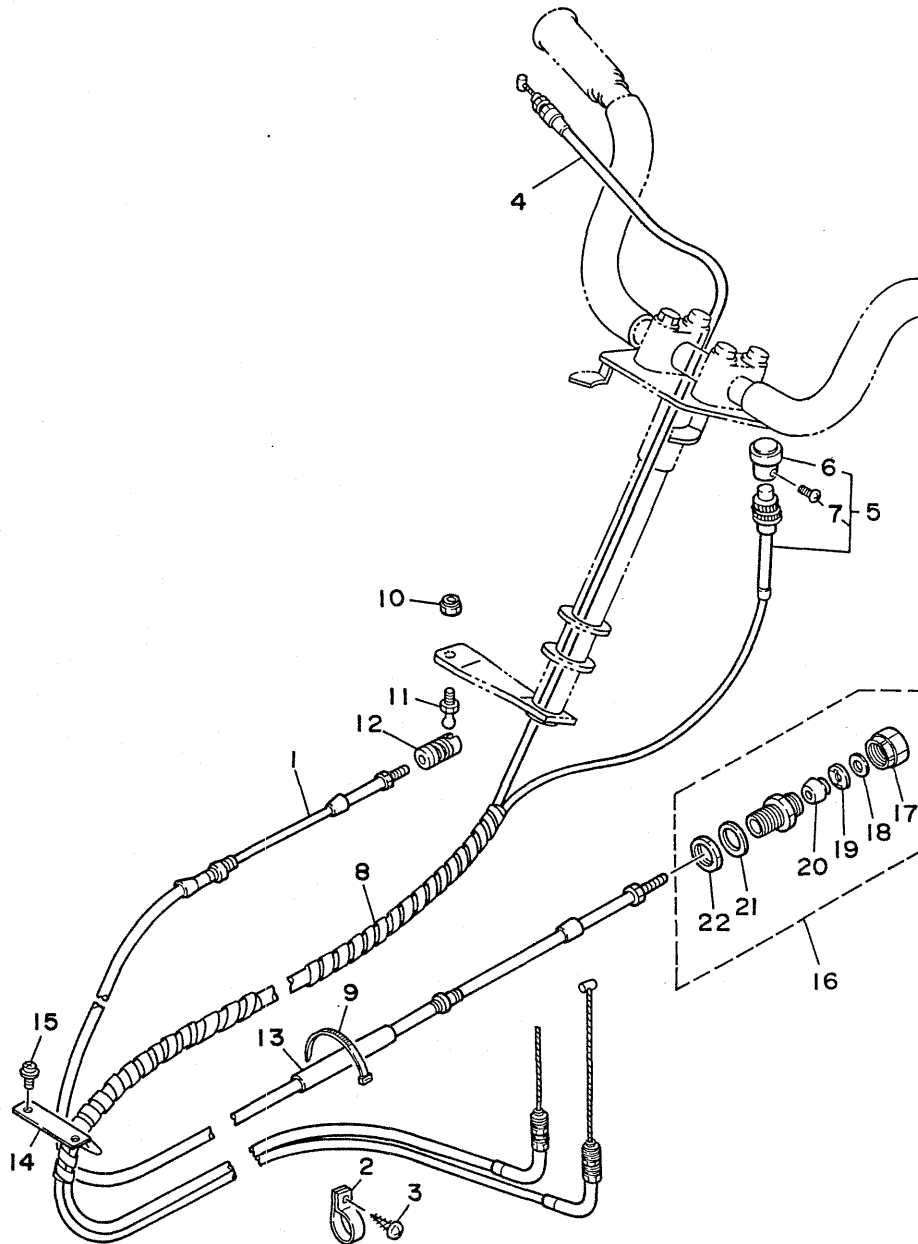
FIG. 16 EXHAUST 2

REF. NO.	PART NO.	DESCRIPTION	Q'TY	REMARKS
28	EU0-67569-01	BAND	2	EU0-207210 and following



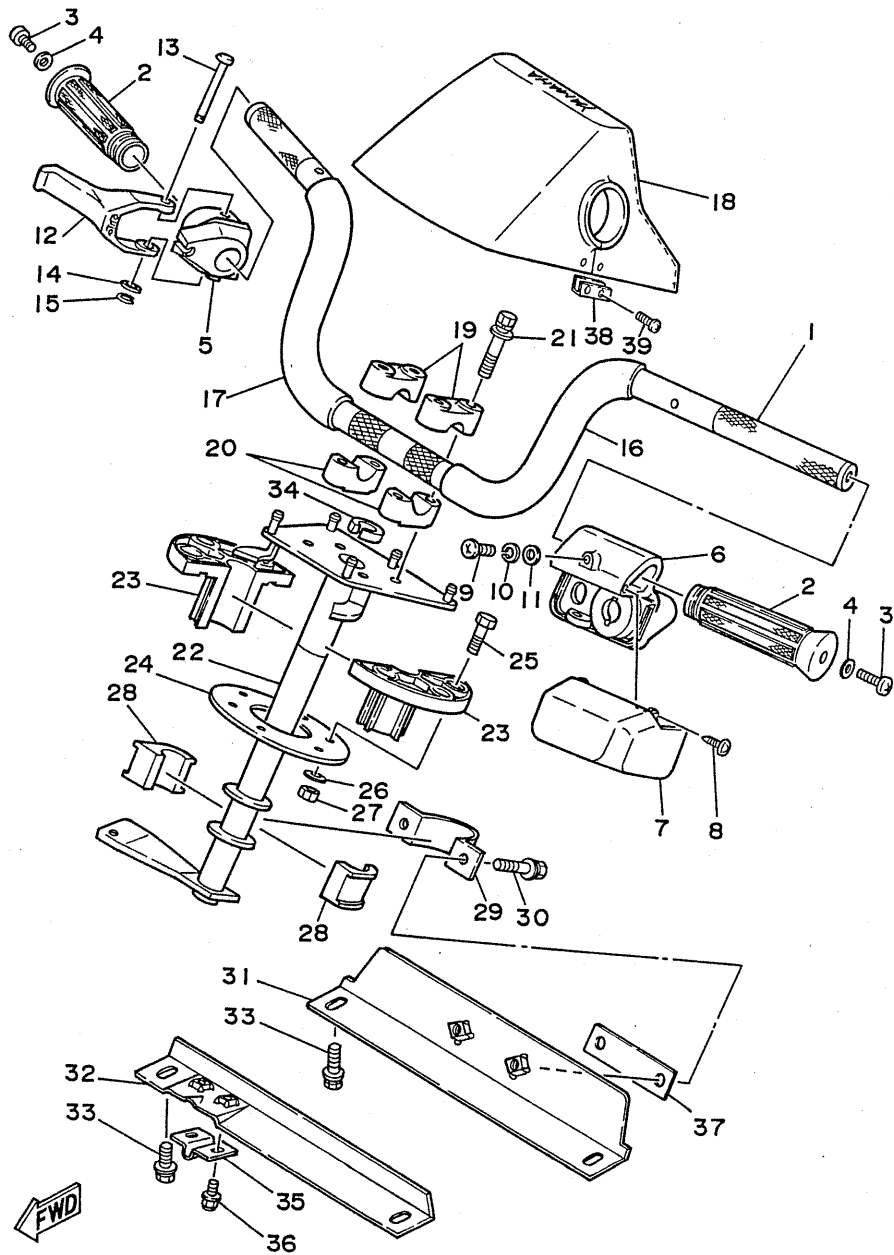
D3

FIG. 17 CONTROL CABLE



REF. NO.	PART NO.	DESCRIPTION	Q'TY	REMARKS
1	EU0-61481-03	CABLE, steering	1	
2	90600-91728	CLIP, nylon 17	2	
3	97780-50116	SCREW	2	
4	EU0-67252-01	CABLE, throttle 1	1	
5	EU0-67242-02	CABLE, choke	1	
6	EU0-67243-00	.KNOB, choke	1	
7	90149-03930	.SCREW, pan head	1	
8	90699-36100	SPIRAL TUBE	1	
9	90601-20005	BAND	4	
10	95780-06300	NUT, nylon	1	
11	EU0-61461-00	STUD, joint ball	1	
12	EU0-61461-30	SHAFT, joint ball	2	
13	EU0-61474-00	PIPE	1	
14	EU0-61557-01	GUIDE, cable	1	
15	97680-04316	SCREW, with washer	2	
16	EU0-67267-00	CONNECTOR, cable	1	
17	EU0-62694-00	.CAP	1	
18	EU0-61446-00	.WASHER 30	1	
19	EU0-61486-00	.STOPPER	1	
20	EU0-61435-00	.SEAL, pipe 30	1	
21	EU0-61438-00	.PACKING (C)	1	
22	EU0-62241-30	.NUT, drian 1	1	

FIG. 18 STEERING



REF. NO.	PART NO.	DESCRIPTION	Q'TY	REMARKS
1	EU0-61552-01	HANDLE	1	
2	EU0-26241-01	GRIP, handle	2	
3	98580-05020	SCREW	2	
4	90201-05912	WASHER, plain	2	
5	EU0-67254-00	BRACKET	1	
6	EU0-68196-00	BRACKET	1	
7	EU0-68196-30	BRACKET	1	
8	97780-40508	SCREW	3	
9	98580-05020	SCREW	2	
10	92990-05100	WASHER, spring	2	
11	92990-05200	WASHER, plate	2	
12	81E-42138-00	LEVER, throttle	1	
13	EU0-61522-00	PIN	1	UR ○
	EU0-61522-01	PIN	1	UR ○
14	92990-06200	WASHER, plain	1	○
15	99080-05600	CLIP	1	UR ○
	99080-04600	CLIP	1	UR ○
16	EU0-61489-11	TUBE (LH)	1	
17	EU0-61489-21	TUBE (RH)	1	
18	EU0-61421-02	PAD, steering	1	
19	EU0-23814-00	HOLDER, handle lower	2	
20	EU0-23814-30	HOLDER, handle upper	2	
21	90119-08905	BOLT, with washer	4	
22	EU0-61541-01	COLUMN, steering	1	
23	EU0-61417-00	BEARING, column	2	

○—○ Interchangeable with a set

D5

FIG. 18 STEERING

REF. NO.	PART NO.	DESCRIPTION	Q'TY	REMARKS
24	EU0-61439-01	SEAL, rubber	1	
25	97380-06030	BOLT	6	
26	92990-06200	WASHER, plain	6	
27	95780-06300	NUT, self-locking	6	
28	8F3-23812-00	BEARING	2	
29	EU0-61588-00	JOINT, bearing	1	
30	90119-08903	BOLT, with washer	2	
31	EU0-61433-01	BRACKET, bearing	1	
32	EU0-61467-01	STOPPER, cable	1	
33	90119-08903	BOLT, with washer	4	
34	EU0-61469-00	PACKING	1	
35	EU0-61468-00	STOPPER CABLE	1	
36	90119-06066	BOLT, with washer	2	
37	EU0-61525-00	LINER	1 UN	
38	EU0-61422-00	FIX, steering pad	2	
39	98586-04016	SCREW	4	

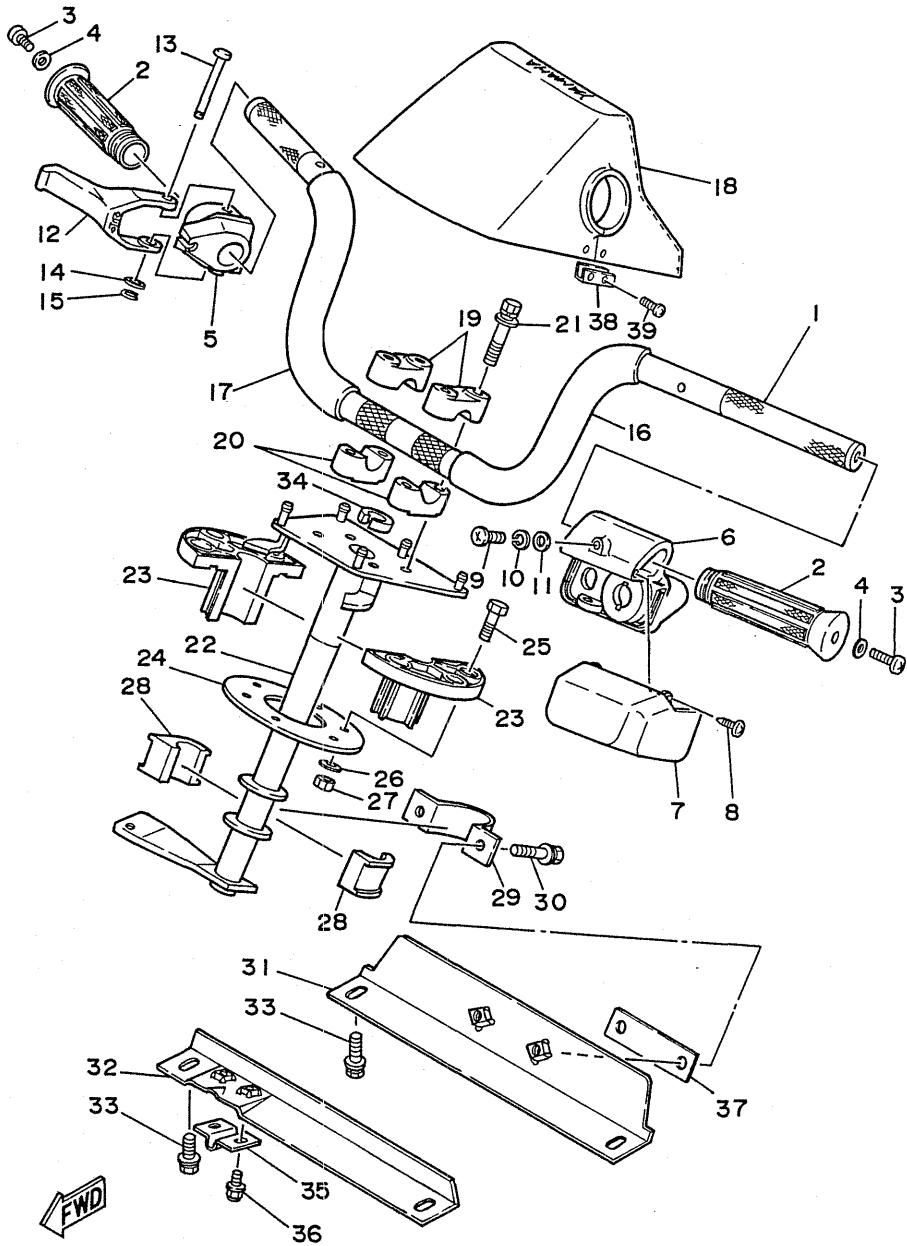
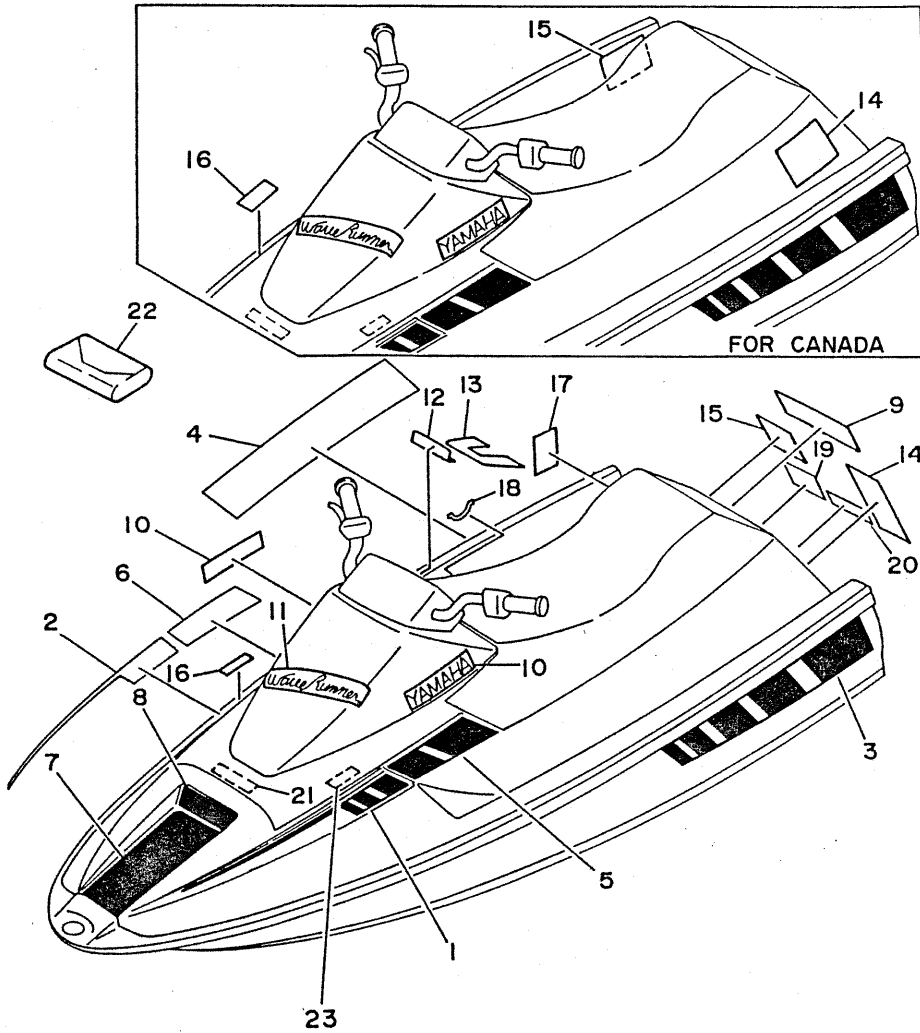


FIG. 19 GRAPHIC TOOL

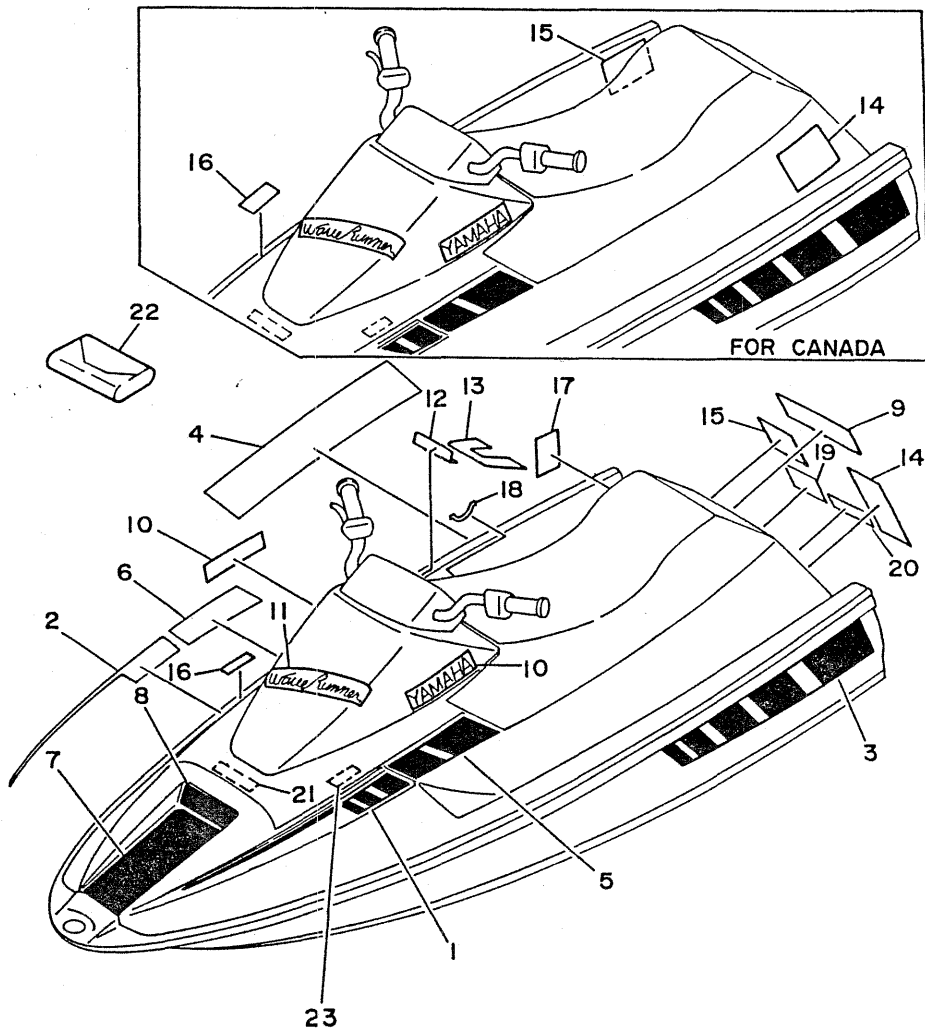
REF. NO.	PART NO.	DESCRIPTION	Q'TY	REMARKS
1	EU0-64173-10	GRAPHIC A (LH)	1	
2	EU0-64173-20	GRAPHIC A (RH)	1	
3	EU0-64174-10	GRAPHIC B (LH)	1	
4	EU0-64174-20	GRAPHIC B (RH)	1	
5	EU0-64175-10	GRAPHIC C (LH)	1	
6	EU0-64175-20	GRAPHIC C (RH)	1	
7	EU0-64194-00	GRAPHIC D	1	
8	EU0-64958-00	PLATE C	1	
9	EU0-64114-00	MARK, yamaha A	1	
10	EU0-64115-00	MARK, yamaha B	2	
11	EU0-64121-00	EMBLEM A	1	
12	EU0-64953-00	PLATE A	1	
13	EU0-64954-02	PLATE B	1	UR
	EU0-64954-40	PLATE B	1	UR FOR CANADA
	EU0-64954-50	PLATE B	1	UR FOR OCEANIA
14	EU0-64183-00	LABEL, caution 1	1	UR
	EU0-64183-E0	LABEL, caution 1	1	UR FOR CANADA
	EU0-64183-L0	LABEL, caution 1	1	UR FOR OCEANIA
15	EU0-64183-30	LABEL, caution 2	1	UR
	EU0-64183-F0	LABEL, caution 2	1	UR FOR CANADA
16	EU0-64183-40	LABEL, caution 3	1	UR
	EU0-64183-60	LABEL, caution 3	1	UR FOR CANADA
17	EU0-64183-60	LABEL, caution 5	1	
18	EU0-64183-70	LABEL, caution 6	1	
19	EU0-64183-80	LABEL, caution 7	1	
20	EU0-64183-50	LABEL, caution 4	1	UR
	EU0-64183-H0	LABEL, caution 4	1	UR FOR CANADA
21	EU0-64183-90	LABEL, caution 8	1	UR



D7

FIG. 19 GRAPHIC. TOOL

REF. NO.	PART NO.	DESCRIPTION	Q'TY	REMARKS
21	EU0-64183-J0	LABEL, caution 8	1	UR FOR CANADA
22	EU0-28100-00	TOOL ASSY	1	
23	EU0-64183-A0	LABEL, caution 9	1	UR
	EU0-64183-K0	LABEL, caution 9	1	UR FOR CANADA
	EU0-64183-K0	LABEL, caution 9	1	UR FOR OCEANIA



REF. NO.	PART NO.	DESCRIPTION	Q'TY	REMARKS
1	6K8-W0001-00	GASKET KIT FOR ENGINE UNIT	1	UR
	6K8-W0001-01	GASKET KIT FOR ENGINE UNIT	1	UR 6K8-017814 and following
2	93102-25M11	.OIL SEAL	1	
3	6K8-15369-00	.GASKET, oil seal housing	1	
4	689-41114-00	.GASKET, exhaust cover 1	1	UR
	6K8-41124-00	.GASKET, exhaust cover 1	1	UR 6K8-017814 and following
5	689-41112-00	.GASKET, exhaust cover 2	1	UR
	6K8-41122-00	.GASKET, exhaust cover 2	1	UR 6K8-017814 and following
6	6K8-11181-00	.GASKET, cylinder head	1	
7	655-12414-00	.GASKET, cover	1	
8	93210-16275	.O-RING	1	
9	93101-25M38	.OIL SEAL	1	
10	93101-25M35	.OIL SEAL	1	
11	689-45113-01	.GASKET, upper casing	1	
12	6K8-13556-00	.GASKET, manifold	2	
13	6K8-13621-00	.GASKET, valve seat	1	
14	6K8-13674-00	.GASKET, air cooler cover	1	
15	90430-08020	.GASKET	1	
16	6K8-41114-00	.GASKET, exhaust outer cover	1	
17	6K8-41112-00	.GASKET, exhaust inner cover	1	
18	6K8-14755-00	.GASKET, silencer	1	
19	6K8-14739-00	.GASKET, muffler damper 1	1	
20	6K8-14749-00	.GASKET, muffler damper 2	1	
21	6K8-W0001-20	GASKET KIT FOR JET UNIT	1	
22	93101-17M31	.OIL SEAL	2	
23	93103-30M00	.OIL SEAL	1	
24	93101-30M32	.OIL SEAL	1	
25	93210-57M09	.O-RING	1	

FIG. 20 GASKET KIT

REF. NO.	PART NO.	DESCRIPTION	Q'TY	REMARKS
26	90430-06M03	.GASKET	1	
27	93210-52454	.O-RING	1	
28	93102-25M11	.OIL SEAL	1	
29	93210-46M16	.O-RING	1	
30	6K88-W0093-00	CARBURETOR REPAIR KIT	1	
31	6K8-14946-00	.MIXTURE SCREW, high	1	
32	6K8-14562-00	.O-RING	1	
33	6K8-14536-00	.GASKET	1	
34	6K8-14545-00	.DIAPHRAGM	1	
35	6K8-14561-00	.O-RING	1	
36	6K8-14923-00	.MIXTURE SCREW, low	1	
37	6K8-14916-20	.NEEDLE	1	
38	6K8-14541-00	.DIAPHRAGM	1	
39	6K8-24436-00	.GASKET, body 3	1	
40	6K8-24435-00	.GASKET, body 2	1	
41	6K8-24411-00	.DIAPHRAGM	1	
42	6K8-24434-00	.GASKET, body	1	
43	6K8-24421-00	.DIAPHRAGM ASSY	1	
44	6K8-24432-00	.GASKET, fuel pump 2	1	
45	6K8-24431-00	.GASKET, fuel pump 1	1	

NUMERICAL INDEX

PART NO.	GRID NO.	PART NO.	GRID NO.	PART NO.	GRID NO.	PART NO.	GRID NO.	PART NO.	GRID NO.	PART NO.	GRID NO.
6K8-W0001-00	D- 9	6K8-14253-00	B- 8	6K8-14930-00	B- 9	6K8-41111-00-9M	B-10	6K8-51326-00-94	B-11	EUO-62284-40	C- 9
6K8-W0001-01	D- 9	6K8-14283-00-98	B- 7	6K8-14946-00	B- 8	689-41111-00-9M	B- 3	6K8-51332-00-94	B-12	EUO-62284-50	C- 9
6K8-W0001-20	D- 9	6K8-14284-00-98	B- 7		D-10	6K8-41112-00	B-10	6K8-51333-00-94	B-11	EUO-62284-60	C- 9
6H4-W0004-00	B- 7	6K8-14301-00	B- 8	6K8-15100-00-94	B- 2		D- 9	6K8-51346-00-94	B-12	EUO-62511-00	C-10
6K8-W0090-01-EK	B- 2	6K8-14301-01	B- 8	6K8-15100-01-94	B- 2	689-41112-00	B- 3	6K8-51347-00-9M	B-11	EUO-62512-00	C-10
6K8-W0090-02-EK	B- 2	6K8-14451-00	B- 7	6K8-15359-00-94	B- 2		D- 9	6K8-51348-00-9M	B-11	EUO-62513-12	C-10
6K8-W0093-00	D-10	6K8-14521-00	B- 8	6K8-15359-01-94	B- 2	6K8-41113-00-9M	B-10	6K8-51381-00	B-12	EUO-62513-22	C-10
6K8-W1455-00	B- 9	6K8-14523-00	B- 8	6K8-15369-00	B- 2	689-41113-00-9M	B- 2	6K8-51385-00	B-10	EUO-62519-V0	C-10
EUO-W6783-01	C-14	6K8-14527-00	B- 7		D- 9	6K8-41114-00	B-10		B-11	EUO-62519-W0	C-10
689-11111-01-94	B- 3		B- 8	8F3-23812-00	D- 6		D- 9	EUO-61314-30	C- 7	EUO-62574-12	C-10
6K8-11119-00	B- 2	6K8-14531-00	B- 8	EUO-23814-00	D- 5	689-41114-00	B- 3	EUO-61417-00	D- 5	EUO-62574-22	C-10
6K8-11181-00	B- 3	6K8-14533-00	B- 8	EUO-23814-30	D- 5		D- 9	EUO-61421-02	D- 5	A84-62635-00	C- 6
	D- 9	6K8-14536-00	B- 8	EUO-24335-01	C-14	6K8-41121-00-9M	B- 3	EUO-61422-00	D- 6		C- 6
689-11325-00	B- 2		D-10	EUO-24335-31	C-14	6K8-41122-00	B- 3	EUO-61433-01	D- 6	EUO-62663-01	C- 7
646-11370-00	B- 2	6K8-14537-00	B- 8	8V0-24336-00	C-14		D- 9	EUO-61435-00	D- 4	EUO-62664-01	C- 6
650-11372-00	B- 2	6K8-14541-00	B- 8	813-24336-00	C-14	6K8-41123-00-9M	B- 2	EUO-61438-00	D- 4	EUO-62688-00	C- 6
6K8-11400-00	B- 5		D-10	650-24378-00	B- 2	6K8-41124-00	B- 3	EUO-61439-01	D- 6	EUO-62693-01	B-13
6K8-11412-00	B- 5	6K8-14545-00	B- 8	6K8-24411-00	B- 9		D- 9	EUO-61446-00	D- 4	EUO-62693-30	B-12
689-11422-02	B- 5		D-10		D-10	6K8-41137-00-94	B-10	EUO-61461-00	D- 4	EUO-62694-00	D- 4
689-11432-02	B- 5	6K8-14547-00	B- 8	6K8-24412-00	B- 9	6K8-41579-00	B- 8	EUO-61461-30	D- 4	EUO-62714-01	C-12
689-11442-02	B- 5	6K8-14548-00	B- 9	6K8-24413-00	B- 9	81E-42138-00	D- 5	EUO-61467-01	D- 6	EUO-62720-00	C- 6
689-11515-00	B- 5	6K8-14557-00	B- 9	6K8-24414-00	B- 9	6K8-42316-00	B-12	EUO-61468-00	D- 6	EUO-62721-00	C- 6
6K8-11610-01	B- 5	6K8-14558-00	B- 9	6K8-24414-01	B- 9	6K8-44517-00-9M	B- 3	EUO-61469-00	D- 6	EUO-62841-01	C- 6
6K8-11610-11	B- 5	6K8-14559-00	B- 8	6K8-24421-00	B- 9	6K8-44518-00-94	B- 3	EUO-61474-00	D- 4	EUO-62843-01	C- 7
6K8-11610-21	B- 5	6K8-14561-00	B- 8		D-10	6K8-44519-00-94	B- 3	EUO-61481-03	D- 4	EUO-62884-02	C- 6
6K8-11631-00-95	B- 5		D-10	6K8-24431-00	B- 9	689-45113-01	B- 6	EUO-61486-00	D- 4	EUO-62891-00	C- 7
689-11631-00-95	B- 5	6K8-14562-00	B- 8		D-10		D- 9	EUO-61489-11	D- 5	EUO-62892-01	C- 7
689-11633-00	B- 6		D-10	6K8-24432-00	B- 9	6K8-45127-00	B-12	EUO-61489-21	D- 5	EUO-63581-11	C-10
688-11634-00	B- 6	6K8-14582-00	B- 9		D-10	647-45151-01	C- 3	EUO-61522-00	D- 5	EUO-63581-21	C-10
6K8-11635-00	B- 5	6K8-14589-00	B- 8	6K8-24434-00	B- 9	6K8-45331-00-94	B-12	EUO-61522-01	D- 5	EUO-63702-02	C-12
689-11635-00	B- 5	6K8-14596-00	B- 9		D-10	6K8-45511-01	B-11	EUO-61525-00	D- 6	EUO-63710-00	C-12
6K8-11636-00	B- 5	6K8-14597-00	B- 8	6K8-24435-00	B- 9	6K8-45514-00	B- 6	EUO-61541-01	D- 5	EUO-63711-00	C-12
689-11636-00	B- 5	6K8-14711-00-9M	B-10		D-10	6K8-45567-00-01	B-11	EUO-61552-01	D- 5	EUO-63729-01	C- 6
689-11651-00	B- 5	6K8-14718-00-9M	B-10	6K8-24436-00	B- 8	6K8-45567-00-03	B-11	EUO-61557-01	D- 4	EUO-63760-01	C-13
6K8-11681-00	B- 5	6K8-14721-00-9M	B-10		B- 9	6K8-45567-00-05	B-11	EUO-61588-00	D- 6	EUO-63762-00	C-13
689-11681-01	B- 5	6K8-14739-00	B-10		D-10	6K8-45567-00-10	B-11	EUO-61638-00	C- 7	EUO-63763-00	C-13
655-12413-01-9M	B- 3		D- 9	6K8-24452-00	B- 9	6K8-4581J-00	B- 6	EUO-61651-30	C-10	EUO-63764-00	C-13
655-12414-00	B- 3	6K8-14749-00	B-10	6K8-24452-01	B- 9	6K8-45813-00-9M	B- 6	EUO-61652-00	C-10	EUO-63765-00	C-13
	D- 9		D- 9	6K8-24500-00	C-15	6K8-51129-00	B-12	EUO-62149-40	C-11	EUO-63766-00	C-13
6K8-13556-00	B- 7	6K8-14752-00	B-10	655-24521-01	C-15	6K8-51161-00	B-11	EUO-62155-00	C-11	EUO-63774-00	C-12
	D- 9	6K8-14755-00	B-10	6K8-24524-00	C-15	6K8-51162-00	C- 9	EUO-62156-00	C-11	EUO-63778-00	C-12
6H5-13610-00	B- 7		D- 9	6K8-24560-00	C-15	6K8-51311-00-94	B-11	EUO-62156-30	C-11	EUO-63779-00	C-12
6K8-13621-00	B- 7	6K8-14916-20	B- 8	655-24560-01	C-15	6K8-51312-00-94	B-11	EUO-62241-00	C-11	EUO-63783-00	C- 7
	D- 9		D-10	8H5-24560-00	C-14	6K8-51313-00	B-12	EUO-62241-30	C-11	EUO-63789-01	C-12
6K8-13641-00-94	B- 7	6K8-14916-21	B- 8	6F5-24563-00	C-15	6K8-51315-00-94	B-11		D- 4		C-12
6K8-13674-00	B- 7	6K8-14918-00	B- 9	EUO-26241-01	D- 5	6K8-51318-00-9M	B-11	EUO-62242-00	C-11	EUO-63850-00	C-12
	D- 9	6K8-14923-00	B- 8	EUO-28100-00	D- 8	6K8-51321-00-94	B-11	EUO-62284-00	C- 9	EUO-64114-00	D- 7
6K8-14125-00	B- 9		D-10	6E0-28193-00-94	B-10	6K8-51323-02	B-12	EUO-62284-30	C- 9	EUO-64115-00	D- 7

NUMERICAL INDEX

PART NO.	GRID NO.	PART NO.	GRID NO.	PART NO.	GRID NO.	PART NO.	GRID NO.	PART NO.	GRID NO.	PART NO.	GRID NO.
EUO-64121-00	D- 7	EUO-67354-30-10	B-13	EUO-68196-00	D- 5	6K8-82119-00	C- 4	90119-08038	B- 3	90387-06M12	B-12
EUO-64173-10	D- 7	EUO-67354-40	B-13	EUO-68196-30	D- 5	6K8-82119-10	C- 4	90119-08903	C-14	90387-06M60	B-12
EUO-64173-20	D- 7	EUO-67354-50	B-13	EUO-68211-09	C- 4	6K8-82150-00	C- 3		D- 6	90387-08044	B- 2
EUO-64174-10	D- 7	EUO-67361-00	B- 4	EUO-68218-03	C- 4	6G1-82151-00	C- 3		D- 6	90387-18M00	C- 3
EUO-64174-20	D- 7	EUO-67361-01	B- 4	EUO-68221-00	C- 4	6K8-82361-00	B-14	90119-08904	B- 3	90430-06M03	B-12
EUO-64175-10	D- 7	EUO-67367-00	C- 9	EUO-68221-30	C- 4	6K8-82370-00	C- 3	90119-08905	D- 5		D-10
EUO-64175-20	D- 7	EUO-67367-30	C- 9	EUO-68347-00	C- 4	6K8-82370-10	C- 3	90119-08907	B-13	90430-08020	B-10
EUO-64183-A0	D- 8	EUO-67525-00	D- 2	EUO-68961-00	C- 4	6K8-82553-00	C- 4		C-14		D- 9
EUO-64183-E0	D- 7	EUO-67550-02	D- 2	6K8-81303-40	B-14	6K8-82560-00	C- 4	90119-10906	B-13	90430-13909	C- 9
EUO-64183-F0	D- 7	EUO-67550-03	D- 2	6E7-81328-70	B-14	6K8-8258A-00	C- 4	90149-03930	D- 4		D- 2
EUO-64183-G0	D- 7	EUO-67555-00	D- 2	6K8-81337-00-94	B-14	6K8-8258A-01	C- 4	90149-05933	C-10	90445-07M12	B- 2
EUO-64183-H0	D- 7	EUO-67565-00	D- 2	6K8-81337-01-94	B-14	6K8-82588-00	C- 4	90149-05934	C-10	90445-09080	B- 2
EUO-64183-J0	D- 8	EUO-67567-00	D- 2	6K8-81365-00	B-14	6K8-83621-00	C- 4	90149-05935	C-10	90445-10M02	C-15
EUO-64183-K0	D- 8	EUO-67568-00	D- 2	6K8-81365-01	B-14	6G0-85509-70	B-14	90149-05937	C-10	90445-10M04	C-15
	D- 8	EUO-67569-01	D- 2	6K8-81800-10	C- 2	6K8-8552A-00	C- 3	90159-05900	D- 2	90445-10M05	C-15
EUO-64183-L0	D- 7		D- 3	6K8-81807-10	C- 2	6K8-8552E-00	C- 3	90159-06901	C- 7	90445-10M06	C-15
EUO-64183-00	D- 7	EUO-67570-00	D- 2	6K8-81809-10	C- 2	6G0-85520-70	B-14	90159-06902	C-12	90445-10M07	C-15
EUO-64183-30	D- 7	EUO-67574-00	D- 2	6K8-81810-10	C- 2	6K8-85540-10	C- 3	90170-22M11	C-14	90445-10M08	C-15
EUO-64183-40	D- 7	EUO-67576-00	D- 2	6K8-81811-10	C- 2	6K8-85540-11	C- 3	90179-05924	C-10	90445-13M04	D- 2
EUO-64183-50	D- 7	EUO-67593-10	C-13	6K8-81812-10	C- 2	6K8-85550-A0	B-14	90179-06917	C- 9	90445-13M05	D- 2
EUO-64183-60	D- 7	EUO-67593-20	C-13	6K8-81813-10	C- 2	6K8-85550-A1	B-14	90179-10919	B-13	90445-14M02	C- 9
EUO-64183-70	D- 7	EUO-67593-30	C-14	6K8-8182G-10	C- 2	6K8-85560-40	B-14	90179-16M05	B-15	90445-14M03	C- 9
EUO-64183-80	D- 7	EUO-67593-40	C-12	6K8-8182H-10	C- 2	6K8-85560-41	B-14	90201-05912	D- 5	90445-14M04	C- 9
EUO-64183-90	D- 7	EUO-67593-70	D- 2	6K8-8182L-10	C- 2	6K8-85570-10	C- 3	90201-05925	C-15	90460-18M07	B-11
EUO-64194-00	D- 7	EUO-67613-00	C- 9	6K8-8182M-10	C- 2	6G0-85580-70	B-14	90201-05926	C- 4	90461-06M00	B-15
EUO-64742-00	C- 6	EUO-67618-00	C- 9	6K8-8182N-10	C- 2	6K8-85580-00	B-14	90201-05928	C-10	90461-06M01	B-15
EUO-64953-00	D- 7	EUO-67711-00	C-14	6K8-8182R-10	C- 2	6K8-85599-00	C- 3	90201-06M02	B-12	90464-07M05	C- 4
EUO-64954-02	D- 7	EUO-67745-01	C-15	6K8-8182V-10	C- 2	6K8-85644-00	B- 4	90201-09924	C- 9	90465-11M10	B- 2
EUO-64954-40	D- 7	EUO-67745-31	C-15	6K8-81820-10	C- 2	90105-06M09	B- 2	90201-16M44	B-15		C- 4
EUO-64954-50	D- 7	EUO-67767-01	C-14	6K8-81822-00-94	B- 4	90105-08M38	B- 4	90201-20M21	B- 6		C-11
EUO-64958-00	D- 7	EUO-67777-02	C-14	6K8-81826-10	C- 2	90116-08M14	B- 7	90201-20M27	B- 6		C-14
EUO-65160-00	C- 6	EUO-67816-02	C-15	6K8-81830-10	C- 2	90119-06M33	B-11	90201-32M48	B-11		C-15
EUO-65162-00	C- 8	EUO-67816-30	C-15	663-81834-10	C- 2	90119-06M34	C- 3	90201-50306	B- 5	90465-13M11	C- 9
EUO-65772-00	C- 4	EUO-67817-00	C-15	6K8-81840-10	C- 2	90119-06M37	B-10	90202-10024	B-13		D- 2
EUO-67242-02	D- 4	EUO-67831-01	C-14	6K8-81846-10	C- 2	90119-06034	C-12	90209-07919	C- 7	90465-13M24	C- 5
EUO-67243-00	D- 4	EUO-67832-00	C-14	6K8-81847-10	C- 2	90119-06066	C-12	90209-24M03	B- 5	90467-06016	B- 2
EUO-67252-01	D- 4	EUO-67834-00	C-14	6K8-81850-10	C- 2		D- 6	90267-40935	C-14	90467-08M10	C-11
EUO-67254-00	D- 5	EUO-67835-00	C-14	676-81858-10	C- 2	90119-06900	B-13	90267-40937	C- 6	90467-12M11	D- 2
EUO-67267-00	D- 4	EUO-67835-30	C- 6	676-81859-10	C- 2		C- 9	90267-48931	C- 4	90480-18M21	C- 3
EUO-67323-00	B- 4	EUO-67839-00	C- 6	6K8-81870-00	C- 4	90119-06901	C- 9		C-15	90480-25M18	C- 4
EUO-67324-00	B- 4	EUO-67844-00	C-14	6K8-81921-00	C- 3		C-12	90267-48932	C-10		C- 4
EUO-67354-00-01	B- 3	EUO-67856-00	C-14	6G1-81941-10	C- 3	90119-06902	C- 3	90267-48934	C- 6		C- 5
EUO-67354-00-03	B- 4	EUO-67856-30	C-11	6G1-81952-00	C- 3	90119-06913	D- 2		C- 6	90600-70069	C- 7
EUO-67354-00-05	B- 4	EUO-67856-40	C-11	6K8-81960-A0	C- 3	90119-08M18	B- 3		C-15	90600-91728	D- 2
EUO-67354-00-10	B- 4	EUO-67869-00	C-14	EUO-82110-78	C- 4	90119-08M21	B- 3	90280-05015	B-15		D- 4
EUO-67354-00-20	B- 4	EUO-68156-00	C- 6	6K8-82117-00	C- 4	90119-08M35	B- 2	90336-10003	B- 2	90600-91729	C-15
EUO-67354-30-03	B-13	EUO-68156-01	C- 6	6K8-82117-10	C- 4	90119-08M36	B- 2	90338-12081	C- 7	90601-11052	C-14
EUO-67354-30-05	B-13	EUO-68156-02	C- 6	6K8-82117-20	C- 4	90119-08M38	B-10	90340-08014	B-10		C-14

NUMERICAL INDEX

PART NO.	GRID NO.	PART NO.	GRID NO.	PART NO.	GRID NO.	PART NO.	GRID NO.	PART NO.	GRID NO.	PART NO.	GRID NO.
90601-11052	C-14	92990-06200	C- 7	93210-16275	D- 9	95780-06300	C-13	98580-04012	B- 9		
90601-12538	C-11		C-12	93210-37M25	C-15		D- 4	98580-05016	B-14		
90601-15253	B-10		C-12	93210-46M16	B-12		D- 6	98580-05020	C- 7		
	D- 2		C-12		D-10	95780-10300	C- 7		D- 5		
90601-15554	C-14		C-13	93210-52454	B-12	97313-05016	B-14		D- 5		
90601-16255	C-14		C-13		D-10	97313-06010	B-14	98580-05025	D- 2		
90601-20005	D- 4		D- 5	93210-57M09	B-11	97313-06012	B- 2	98586-04016	D- 6		
90601-20006	C-14		D- 6		D- 9	97313-06020	B- 3	98602-03007	B- 8		
90601-20009	D- 2	92990-06600	B- 2	93211-03902	C- 6		B-14		B- 8		
90604-80757	D- 2		B- 3	93306-205U1	B-12		C- 2	98780-04016	C- 7		
90604-80758	D- 2		B- 3	93306-206U6	B-11	97313-06025	B- 3	98780-05012	B-13		
90604-80759	C- 9		B- 3	93306-30301	B-11	97313-06030	B- 3	98780-05016	C-12		
90604-80760	C- 9		B- 3	93306-305U6	B- 6		B- 3		C-12		
90656-31160	C- 6		B- 7	93306-305I0	B- 5		B- 7	98780-05020	C- 7		
90669-03005	C-11		B- 7	93306-306U3	B- 5	97313-06050	B- 3		C- 7		
90697-25025	C-10		B- 7	93310-624U5	B- 5		B- 3	99080-04600	D- 5		
90699-34100	C-15		B-11	93390-00009	B- 5	97313-06055	B- 7	99080-05600	D- 5		
90699-36100	D- 4		B-12	93430-05900	C-12	97313-08050	B-10				
92580-06020	C-13		B-12	93440-62021	B- 5	97313-08075	B-15				
92580-06025	C-12		B-12	93602-20M02	B- 5		C- 2				
92680-06016	C- 6		B-12	93606-12019	B- 2	97380-06030	D- 6				
	C- 6		B-14		B- 6	97395-06012	B-12				
92780-06010	C- 6		B-14		B-11	97395-06016	B-12				
92780-06016	C- 6		C- 2	93700-06004	B-12	97395-06018	B- 7				
92780-06020	B- 2		C- 3	94701-00040	C- 4	97395-06020	B-11				
92902-04100	B-14	92990-08100	B- 9	94702-00271	C- 4		B-12				
92990-04100	B- 8	92990-08200	C- 6	95303-08600	B- 7		B-12				
92990-04600	C-15		C- 7	95313-06700	C- 3	97680-04316	D- 4				
92990-05100	B-14	92990-08600	B- 7	95380-05700	B-15	97780-40108	B-13				
	B-14		B-10	95380-05800	B-13	97780-40112	C-11				
	B-14		B-15		C-10	97780-40508	D- 5				
	D- 5		C- 2	95380-06700	B-12	97780-50116	C- 9				
92990-05200	B-13	92990-10200	C- 7	95380-08700	B- 9		D- 2				
	C- 7	93012-25M11	B- 2		C-13		D- 4				
	C- 7	93101-17M31	B-11	95720-05300	C- 7	97780-50220	C- 6				
	C- 7		D- 9		C- 7	97780-60512	C- 3				
	C- 7	93101-25M35	B- 6		C- 7	97780-60520	C- 3				
	C-10		D- 9		C- 8	97780-60525	C- 3				
	C-12	93101-25M38	B- 5		C-12		C- 3				
	C-12		D- 9		C-12	97780-60535	C- 3				
	D- 2	93101-25M45	B-12		D- 2	97802-04008	B-14				
	D- 5	93101-30M32	B-11	95720-06300	C- 7	97803-05014	B- 7				
92990-05600	B- 7		D- 9		C-12	97880-04010	C-15				
	B- 7	93102-25M11	D- 9		C-12	97886-05016	B- 7				
	B-15		D-10		C-13	97890-05016	C- 8				
	C- 8	93103-30M00	B-11	95720-08300	C- 6	98501-05020	B-14				
92990-06100	C- 3		D- 9		C- 7		B-14				
92990-06200	C- 3	93210-16275	B- 5		C-15	98502-04030	B- 8				