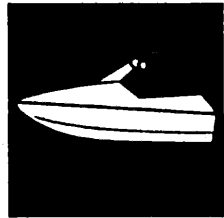


YAMAHA



**PARTS
CATALOGUE**

PRO VXR
WRB700S (GD05)(GD06)

YAMAHA
GENUINE
Parts & Accessories

J4GD0-100E1

FOREWORD

This Parts Catalogue is related to the parts in use for the Yamaha PRO VXR(GD05/GD06). When you are ordering replacement parts for the PRO VXR(GD05/GD06), refer to this Parts Catalogue and quote both part numbers and part names correctly.

1. Modifications or additions which have been made after issue of the Parts Catalogue will be announced in the Yamaha Parts News.

It is advisable that according to the Yamaha Parts News you make necessary corrections to the Parts Catalogue on hand to keep it up-to-date.

2. Abbreviations

The following abbreviations are used in this Parts Catalogue.

- U.R. Use size (thickness) and/or number as required.
- U.N. Use as many as you need.
- A.P. Alternate Parts
- L.M. Local Made
- F# Frame No. (Applicable machine No.)

3. The parts marked with (*) in the parts number column of this Catalogue are not supplied with by Yamaha, those have to be found locally.

4. Parts, which are to be supplied in the form of assemblies, are listed with an indentation of one letter's space, and a dot (.) is put against the name of each part.

EXAMPLE CARBURETOR ASS'Y
 . JET, pilot
 . NOZZLE, main

5. Indication of No. of constituent parts for assembly

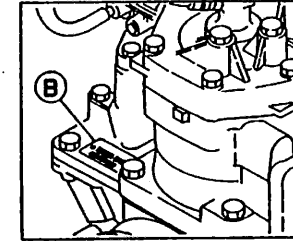
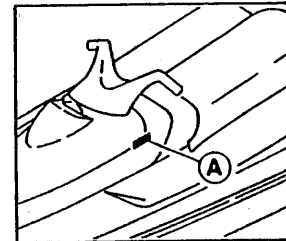
The numeral appearing to the right of each constituent part under the description indicates the quantity of such parts for each individual assembly unit.

EXAMPLE

Part No.	Description	Q'ty	Remarks
2F5-83310-60	FRONT FLASHER LIGHT ASS'Y	2	
115-83311-60	. BULB (6V-18W)	1	
1M1-83309-60	. REFLECTOR	1	

6. Initial Serial No. and Color Code

(A) Hull Serial No.	GD0-808001 and following
(B) Engine Serial No.	61X-009001 and following



Color Code	Color Name	Abbreviate
4D	DARK BLUISH GRAY METALLIC 2	DBNM2

7. Applicable colors of graphics are represented in the "Remarks" column by the letter(s) appropriately picked out of the full word(s) showing such colors.

EXAMPLE

Part No.	Description	Q'ty	Remarks
2N4-24110-00-X5	FUEL TANK COMP.	1	MAXIM RED
3J1-24240-10	. GRAPHIC, fuel tank set	1	for MXR

8. A part with "YMUS" in the remarks column can be obtained from YMUS, USA and not from YMC, JAPAN.

Address: YAMAHA MOTOR CORPORATION U.S.A.
 6555 KATELLA AVENUE
 CYPRESS, CALIFORNIA 90630, U.S.A.
 PARTS & ACCESSORY DIV.

EXAMPLE

Part No.	Description	Q'ty	Remarks
EW2-U5160-00	ENGINE HATCH COMP.	1	YMUS
90601-168U7	BAND, hose	2	YMUS

CONTENTS

Cylinder, Crankcase	B2~B3
Crankshaft, Piston	B4
Intake	B5~B6
Carburetor	B7~B8
Oil Pump	B9
Exhaust 1	B10~B11
Fuel	B12
Jet Unit 1	B13~B14
Jet Unit 2	B15
Generator	C2
Starting Motor	C3
Electrical 1	C4~C5
Electrical 2	C6
Engine Hatch	C7
Hull, Deck	C8~C9
Gunwale, Mat	C10~C11
Ventilation	C12
Seat, Under Locker	C13~C14
Oil Tank	C15
Fuel Tank	D2~D3
Exhaust 2	D4
Control Cable	D5
Steering 1	D6~D7
Steering 2	D8
Graphic 1. Tool (For USA)	D9
Graphic 2. Tool (FOR CANADA, AUSTRALIA, GUAM)	D10

Gasket Kit	D11~D12
------------------	---------

INDEX

Numerical Index	M1~M3
-----------------------	-------

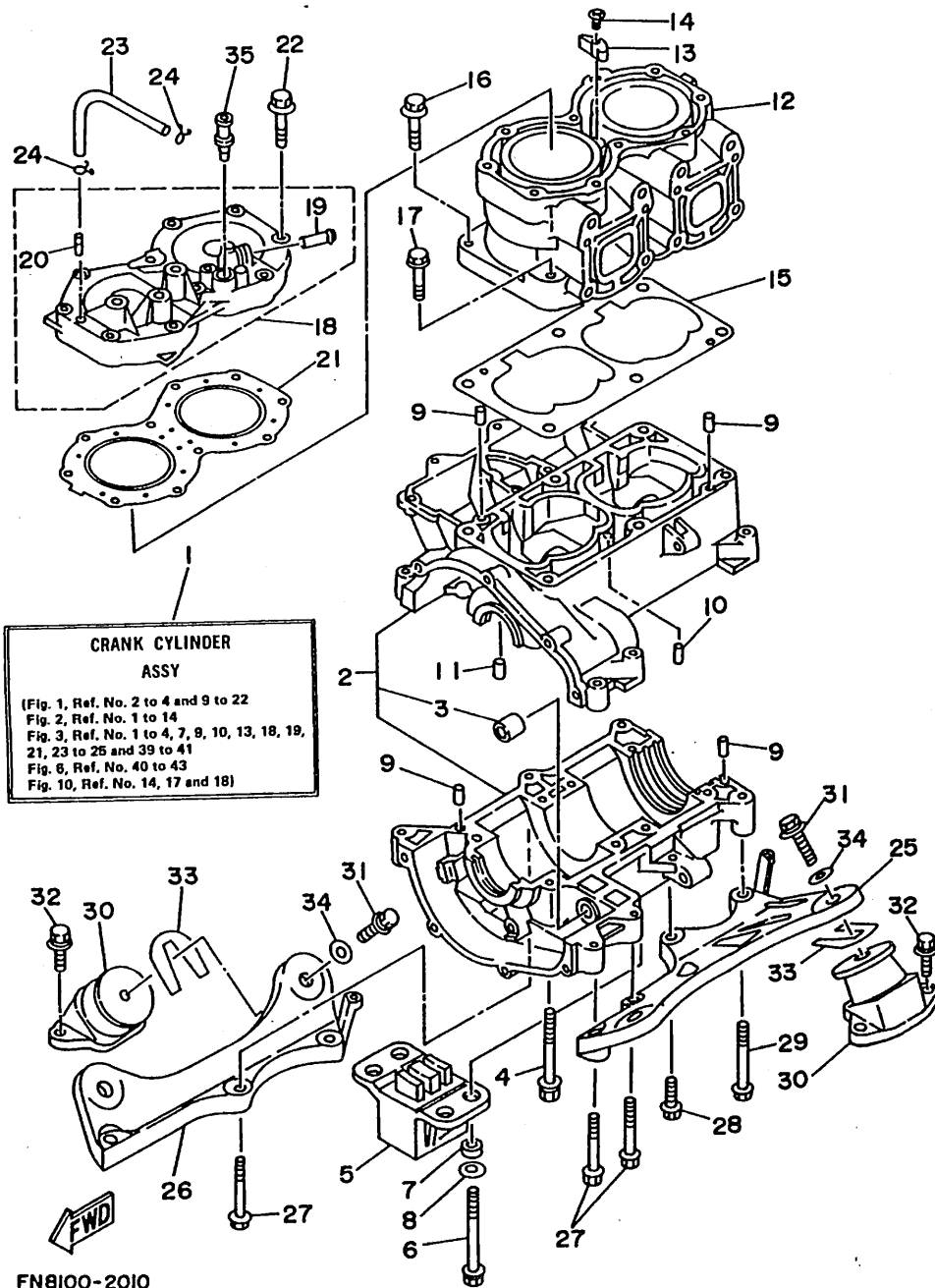
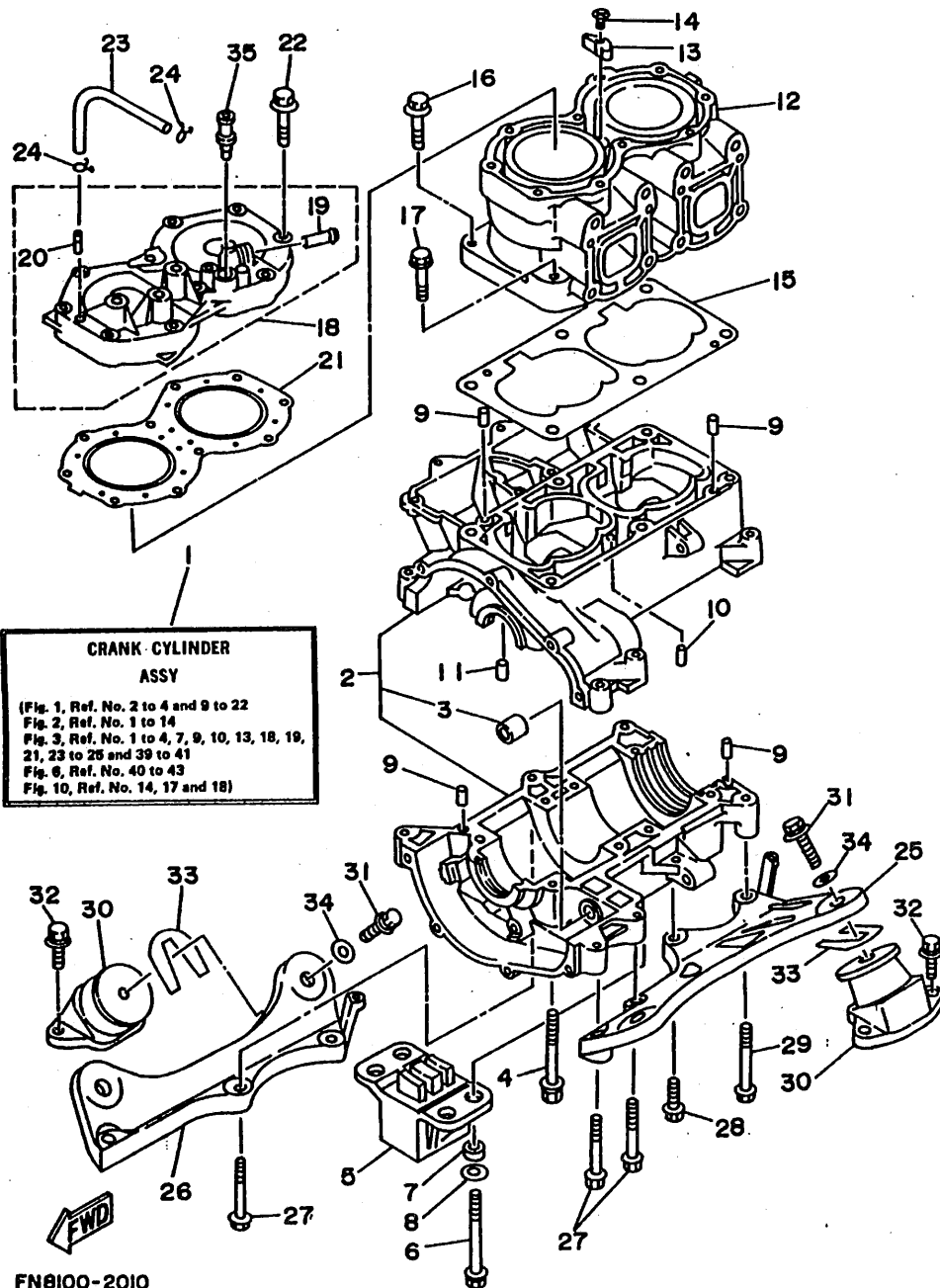


FIG. 1 CYLINDER. CRANKCASE

REF. NO.	PART NO.	DESCRIPTION	Q'TY	REMARKS
1	61X-W0090-01-4D	CRANK CYLINDER ASSY	1	
2	61X-15100-00-94	CRANKCASE ASSY	1	
3	90380-12M29	.BUSH, SOLID	1	
4	90119-08M55	BOLT, WITH WASHER	4	
5	61L-44532-00	STOPPER, UPPER MOUNT	1	
6	90119-08M69	BOLT, WITH WASHER	4	
7	90387-08M10	COLLAR	4	
8	90201-08M04	WASHER, PLATE	4	
9	93606-12019	PIN, DOWEL	4	
10	93603-10049	PIN, DOWEL	4	
11	93604-07141	PIN, DOWEL	1	
12	61X-11311-00-94	CYLINDER 1	1	
13	6E5-11325-00	ANODE	1	
14	98680-04016	SCREW, OVAL HEAD	1	
15	6M6-11351-A1	GASKET, CYLINDER	1	
16	90119-10M56	BOLT, WITH WASHER	4	
17	90119-10M07	BOLT, WITH WASHER	2	
18	61X-11111-00-94	HEAD, CYLINDER 1	1	
19	6K8-51129-00	.NIPPLE	1	
20	6R7-14485-00	.PIPE, JOINT	1	
21	61X-11181-A0	GASKET, CYLINDER HEAD 1	1	
22	90119-08M19	BOLT, WITH WASHER	10	
23	90445-07M19	HOSE	1	
24	90467-06016	CLIP	2	
25	6R7-21415-00-94	BRACKET, FRONT UPPER 1	1	
26	6R7-21425-00-94	BRACKET, REAR UPPER 1	1	
27	97513-10570	BOLT, WITH WASHER	5	
28	97513-10535	BOLT, WITH WASHER	1	

FN8100-2010

FIG. 1 CYLINDER. CRANKCASE



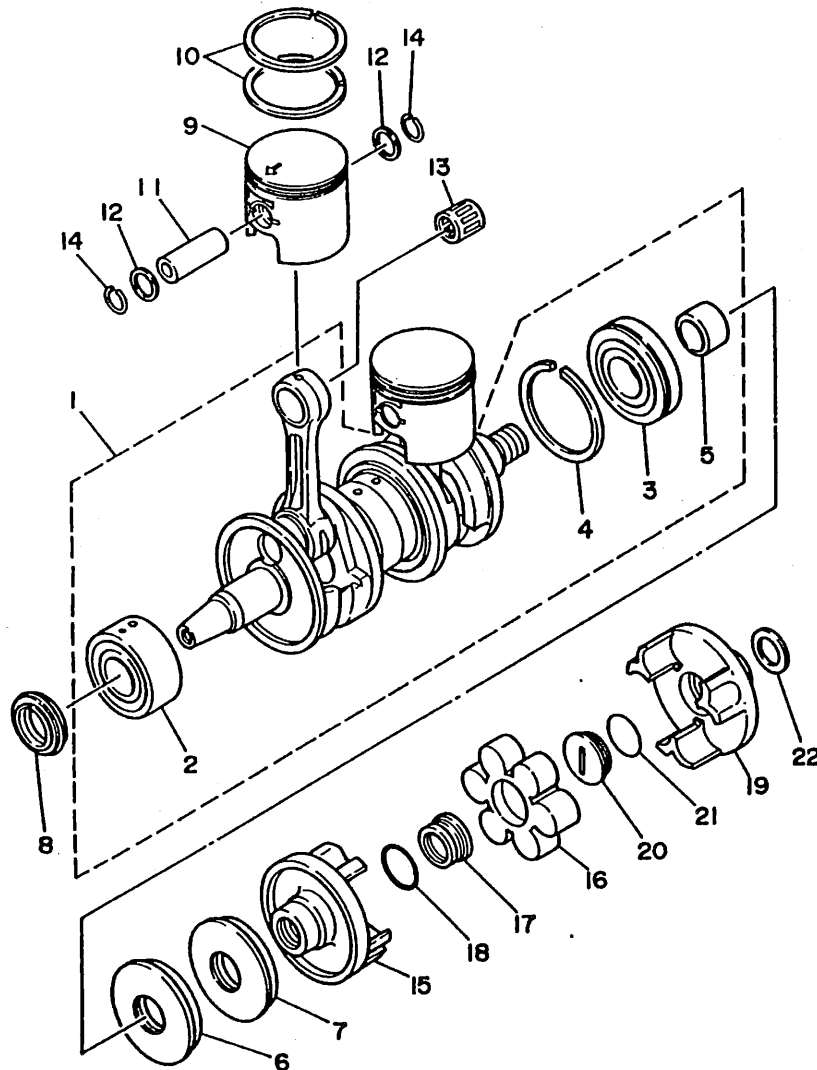
CRANK-CYLINDER ASSY
 (Fig. 1, Ref. No. 2 to 4 and 9 to 22
 Fig. 2, Ref. No. 1 to 14
 Fig. 3, Ref. No. 1 to 4, 7, 9, 10, 13, 18, 19, 21, 23 to 25 and 39 to 41
 Fig. 6, Ref. No. 40 to 43
 Fig. 10, Ref. No. 14, 17 and 18)

REF. NO.	PART NO.	DESCRIPTION	Q'TY	REMARKS
29	97513-10580	BOLT, WITH WASHER	1	
30	6M6-44517-00-5B	MOUNT RUBBER	4	
31	90119-08904	BOLT, WITH WASHER	4	
32	90119-08038	BOLT, WITH WASHER	8	
33	EU0-67324-00	PLATE	4	
34	EU0-U7354-00-01	SHIM (T=0.1)	10	UR
	EU0-U7354-00-03	SHIM (T=0.3)	10	UR
	EU0-U7354-00-05	SHIM (T=0.5)	10	UR
	EU0-U7354-00-10	SHIM (T=1.0)	10	UR
	EU0-U7354-00-20	SHIM (T=2.0)	10	UR
35	6E0-28193-00-94	PLUG, WATER CHECK	1	UR FOR EXCEPT USA
	626-28193-01-94	PLUG, WATER CHECK	1	UR FOR JAPAN

FN8100-2010

B3

FIG. 2 CRANKSHAFT. PISTON



REF. NO.	PART NO.	DESCRIPTION	Q'TY	REMARKS
1	61X-11A00-01	CRANKSHAFT ASSY	1	
2	93303-30601	.BEARING	1	
3	93306-307U1	.BEARING	1	
4	93440-80023	.CIRCLIP	1	
5	6M6-45526-00	.COLLAR, DRIVE SHAFT	1	
6	93102-36M33	OIL SEAL	1	
7	93101-36M46	OIL SEAL	1	
8	93103-32M01	OIL SEAL	1	
9	61X-11631-00-93	PISTON (STD)	2	
	61X-11635-00	PISTON (0.25MM O/S)	2	AP
	61X-11636-00	PISTON (0.50MM O/S)	2	AP
10	61X-11603-00	PISTON RING SET (STD)	2	
	61X-11604-00	PISTON RING SET (0.25MM O/S)	2	AP
	61X-11605-00	PISTON RING SET (0.50MM O/S)	2	AP
11	61X-11633-00	PIN, PISTON	2	
12	90201-20M04	WASHER, PLATE	4	
13	93310-320U0	BEARING, CYLINDRICAL	2	
14	93450-21053	CIRCLIP	4	
15	6M6-45813-10-9M	FLANGE, COUPLING	1	
16	61X-4581J-00	RUBBER SHAFT COUPLING	1	
17	6M6-5114E-00	NUT, RING	1	
18	93210-30M31	O-RING	1	
19	6R7-45813-11-9M	FLANGE, COUPLING	1	
20	6R7-5114E-01	NUT, RING	1	
21	93210-30M31	O-RING	1	
22	90201-24M02	WASHER, PLATE	1	

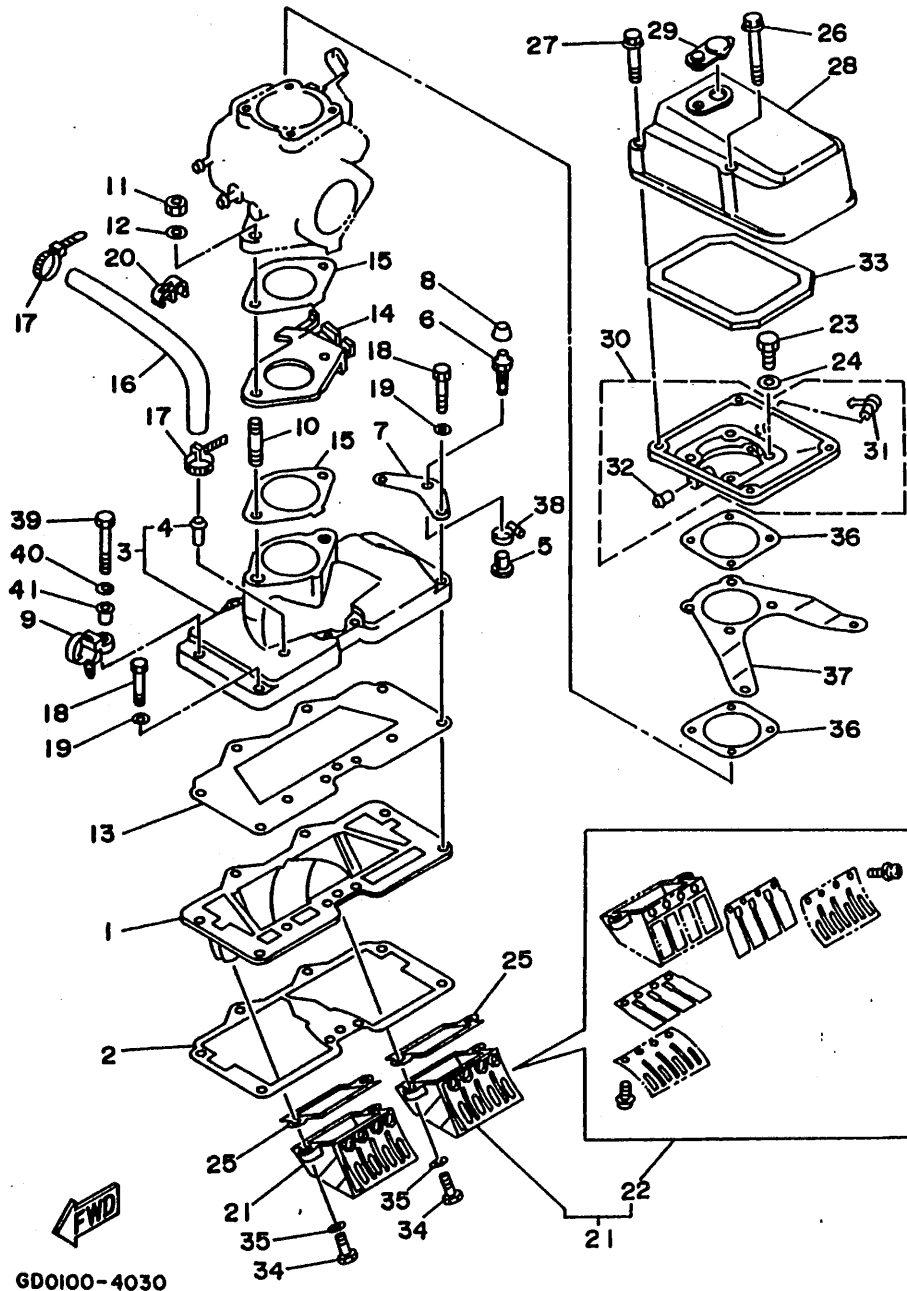


GD02010-3020

B4

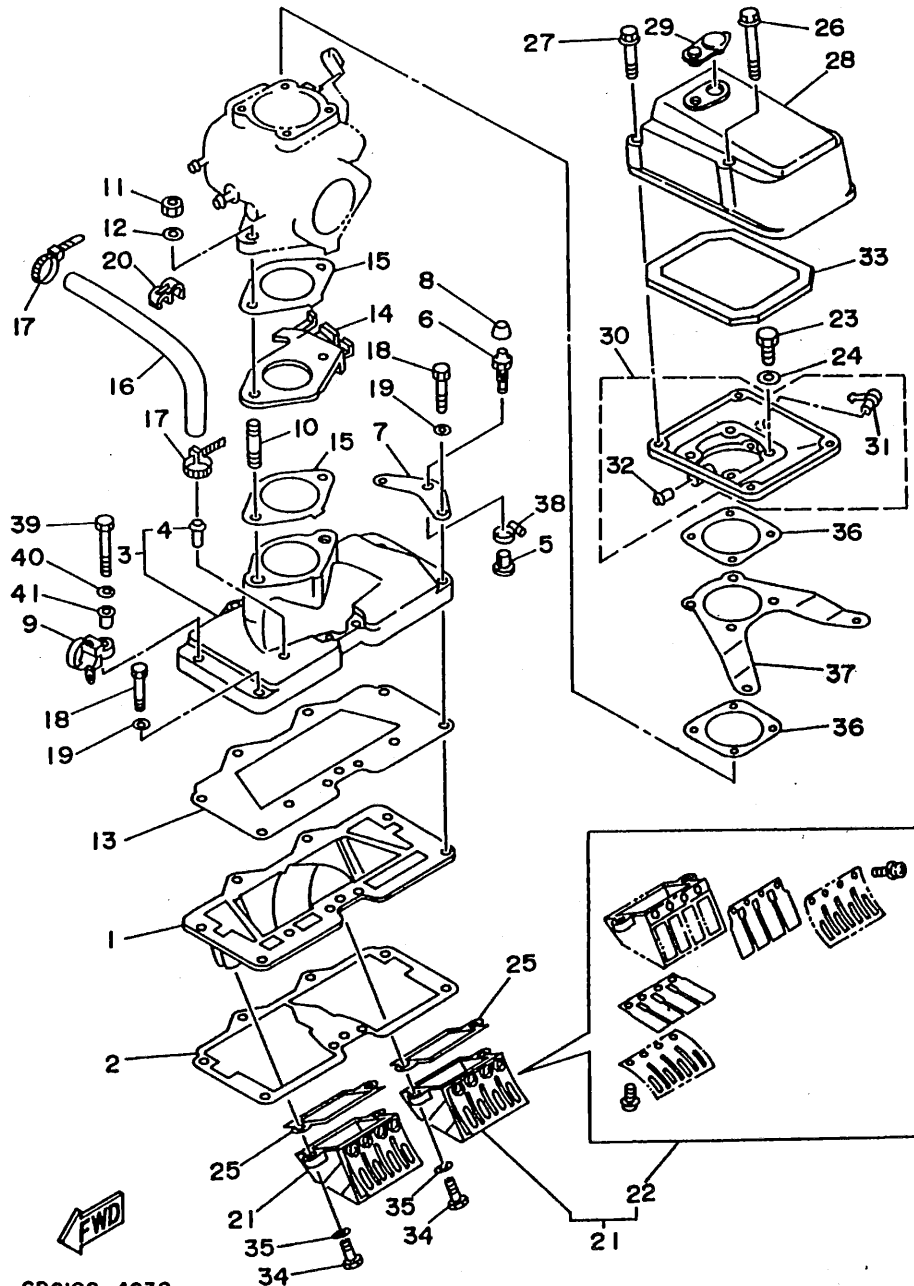
FIG. 3 INTAKE

REF. NO.	PART NO.	DESCRIPTION	Q'TY	REMARKS
1	61X-13641-00-94	MANIFOLD 1	1	
2	61X-13566-A0	GASKET	1	
3	61X-13555-00-94	MANIFOLD, INTAKE	1	
4	650-24378-00	.PIPE, JOINT 4	1	
5	90386-08006	BUSH	1	
6	61L-5169A-00	NIPPLE, GREASE	1	
7	61L-14243-00	PLATE	1	
8	663-45119-00	CAP, GREASE NIPPLE	1	
9	90465-12M53	CLAMP	1	
10	90116-08M14	BOLT, STUD	2	
11	95380-08600	NUT	2	
12	92990-08600	WASHER, PLATE	2	
13	61X-13563-A0	GASKET	1	
14	6M6-14527-02-4D	PLATE	1	
15	6M6-13556-A1	GASKET, MANIFOLD	2	
16	90445-10M48	HOSE	1	
17	90465-11M10	CLAMP	2	
18	97013-06035	BOLT	7	
19	92990-06600	WASHER, PLATE	7	
20	90464-10M38	CLAMP	2	
21	61X-13610-01	REED VALVE ASSY	2	
22	61X-W0004-00	.REED SET	1	
23	97313-06020	BOLT	4	
24	92990-06600	WASHER, PLATE	4	
25	61X-13621-A0	GASKET, VALVE SEAT	2	
26	90105-05M46	BOLT, WASHER BASED	2	
27	90105-05M53	BOLT, WASHER BASED	2	
28	61X-14283-01	COVER, CARBURETOR 1	1	



GD0100-4030

B5



GD0100-4030

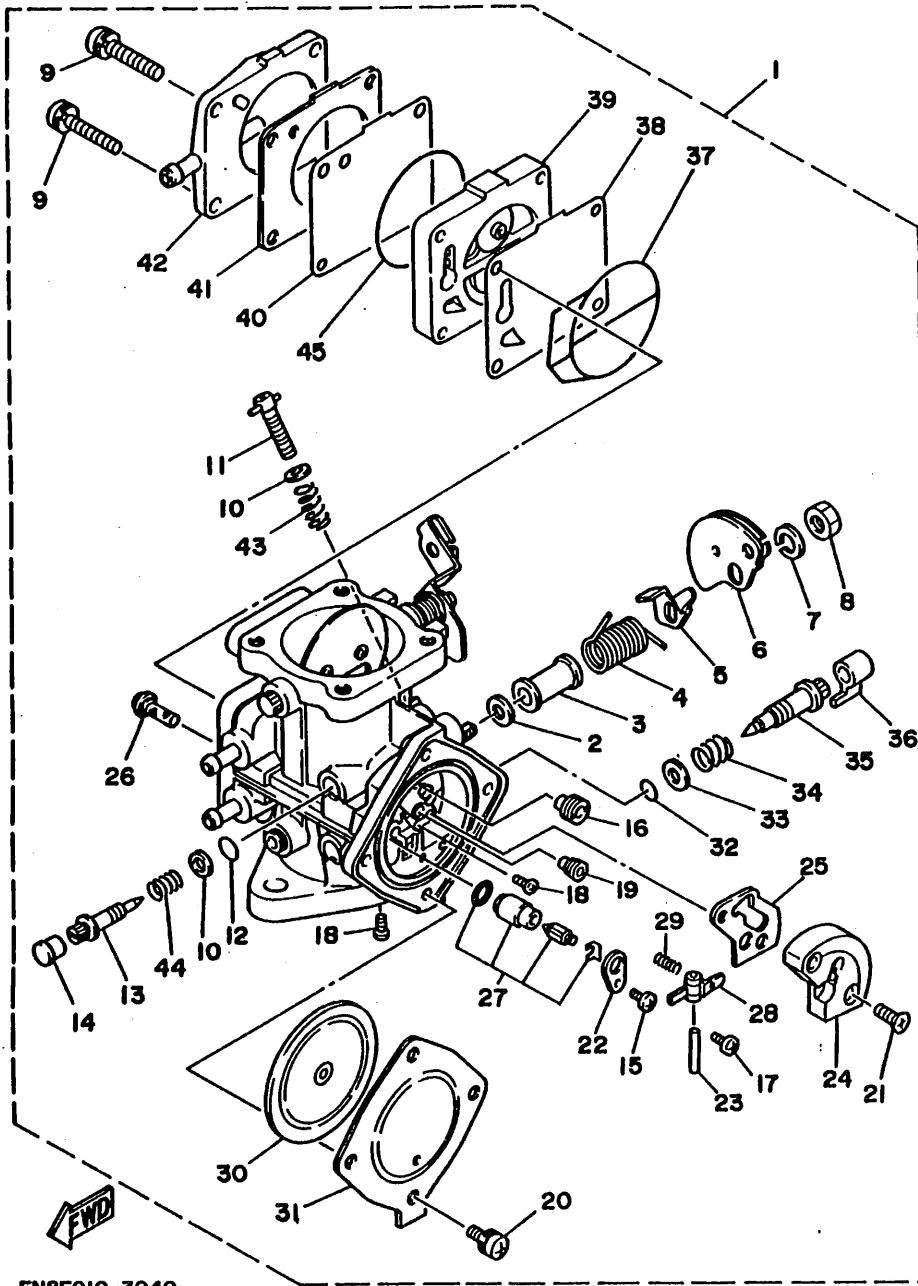
FIG. 3 INTAKE

REF. NO.	PART NO.	DESCRIPTION	Q'TY	REMARKS
29	6K8-14435-00	GROMMET	1	
30	6R8-14284-00-98	COVER, CARBURETOR 2	1	
31	6E5-11372-00	.NIPPLE, HOSE	1	
32	6H1-14485-00	.PIPE, JOINT	1	
33	6M6-14451-00	ELEMENT, AIR CLEANER	1	
34	97313-06020	SCREW, PAN HEAD	4	
35	92903-06600	WASHER, PLATE	4	
36	6M6-13674-A1	GASKET, AIR COOLER COVER 1	2	
37	6R7-14255-00	PLATE	1	
38	90460-11M17	CLAMP, HOSE	1	
39	97395-06045	BOLT	1	
40	92990-06600	WASHER, PLATE	1	
41	90387-06M05	COLLAR	1	

B6

FIG. 4 CARBURETOR

REF. NO.	PART NO.	DESCRIPTION	Q'TY	REMARKS
1	61X-14301-01	CARBURETOR ASSY 1	1	
2	6R7-14596-01	.WASHER	2	
3	6K8-14534-10	.COLLAR	1	
4	6K8-14556-10	.SPRING	1	
5	6K8-14926-10	.BRACKET, THROTTLE 1	1	
6	6K8-14930-00	.THROTTLE SHAFT ASSY	1	
7	92990-08100	.WASHER, SPRING	1	
8	95380-08700	.NUT	1	
9	97980-05330	.SCREW, WITH WASHER	4	
10	6K8-14559-00	.WASHER	2	
11	6M6-14521-00	.SCREW, ADJUST	1	
12	6K8-14562-00	.O-RING	1	
13	6K8-14946-10	.PLATE, NEEDLE FITTING	1	
14	6K8-14471-00	.CAP, CARBURETOR	1	
15	6M6-14503-00	.SCREW	3	
16	3G2-14231-23-A0	.JET, MAIN (#115)	1	
17	6K8-14503-02	.SCREW	3	
18	6K8-14521-10	.SCREW	2	
19	830-14231-23	.JET, MAIN (#115)	1	
20	6K8-14591-10	.SCREW	4	
21	6K8-14523-11	.SCREW, STOP	1	
22	6K8-14527-11	.PLATE	1	
23	6K8-14579-00	.SPRING	1	
24	6R7-24412-01	.BODY 1	1	
25	6K8-14536-11	.GASKET	1	
26	6R7-14569-00	.STRAINER	1	
27	61X-14916-15	.NEEDLE	1	
28	6K8-14547-01	.ARM, FLOAT	1	

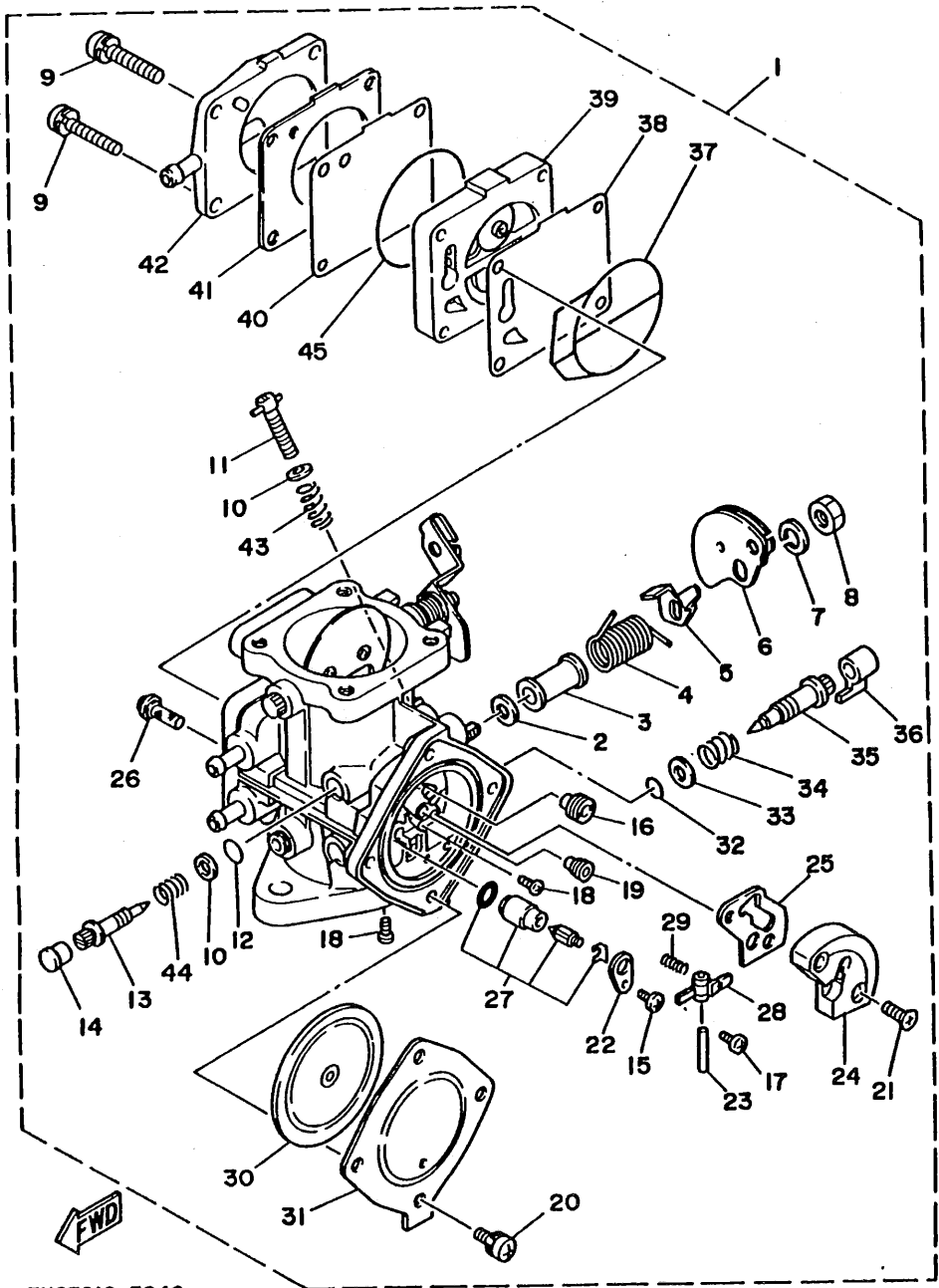


FN8F010-3040

B7

FIG. 4 CARBURETOR

REF. NO.	PART NO.	DESCRIPTION	Q'TY	REMARKS
29	6R7-14253-00	.SPRING	1	
30	6R7-14541-00	.DIAPHRAGM, PUMP	1	
31	6R7-14542-00	.BODY, PUMP 1	1	
32	583-14561-00	.O-RING	1	
33	6K8-14537-00	.GASKET	1	
34	6K8-14589-00	.SPRING	1	
35	6M6-14923-10	.SCREW, PILOT	1	
36	6K8-14481-10	.CAP, CARBURETOR	1	
37	6K8-14564-00	.O-RING	1	
38	6K8-24411-20	.DIAPHRAGM	1	
39	6M6-24413-00	.BODY 2	1	
40	6K8-24421-10	.VALVE, CHECK	1	
41	6K8-24431-20	.GASKET, FUEL PUMP 1	1	
42	6K8-24452-10	.COVER	1	
43	6K8-14531-00	.SPRING, ADJUST SCREW	1	
44	6K8-14533-00	.SPRING, ADJUST SCREW	1	
45	6K8-14563-00	.O-RING	1	

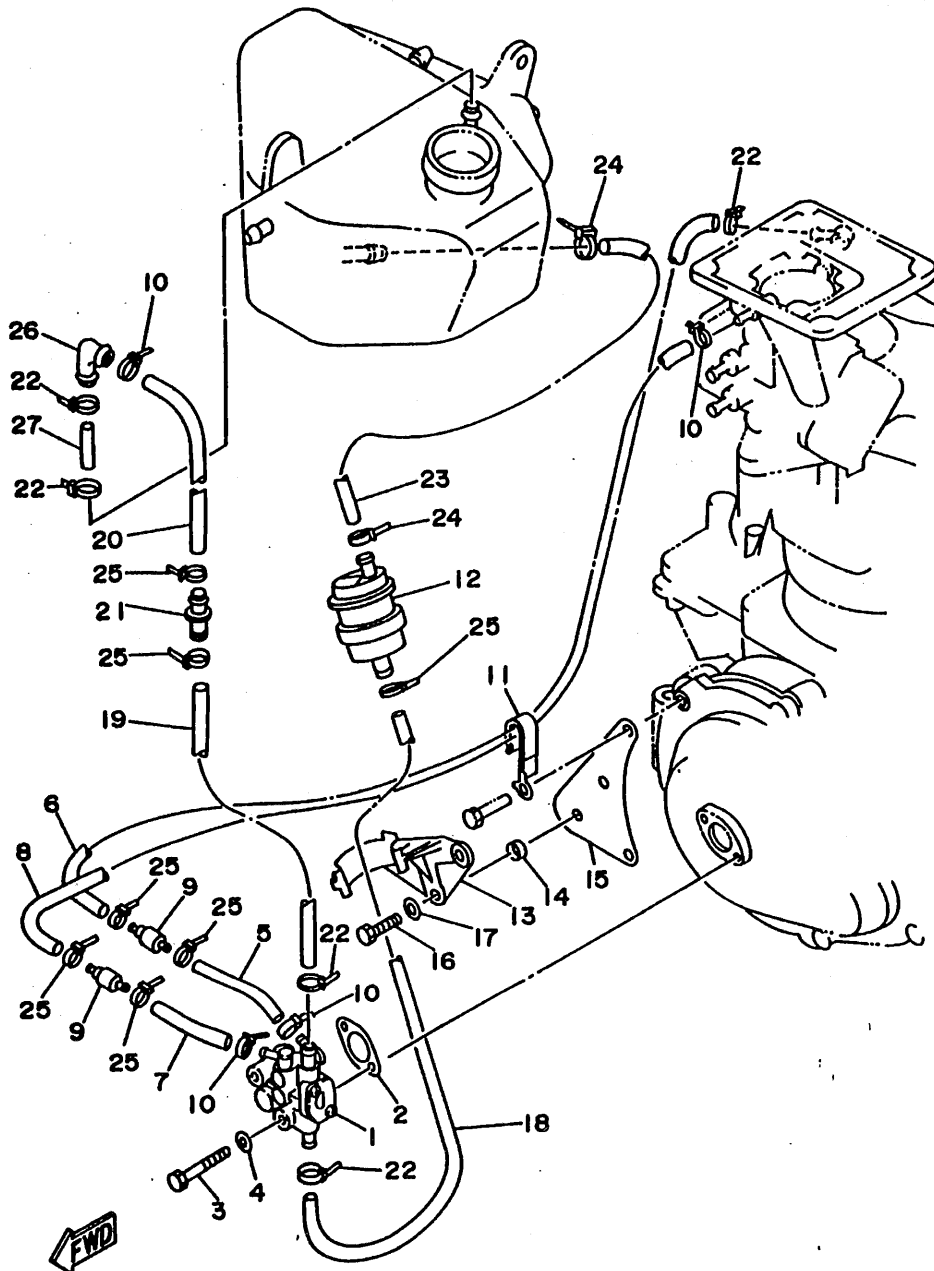


FN8F010-3040

B8

FIG. 5 OIL PUMP

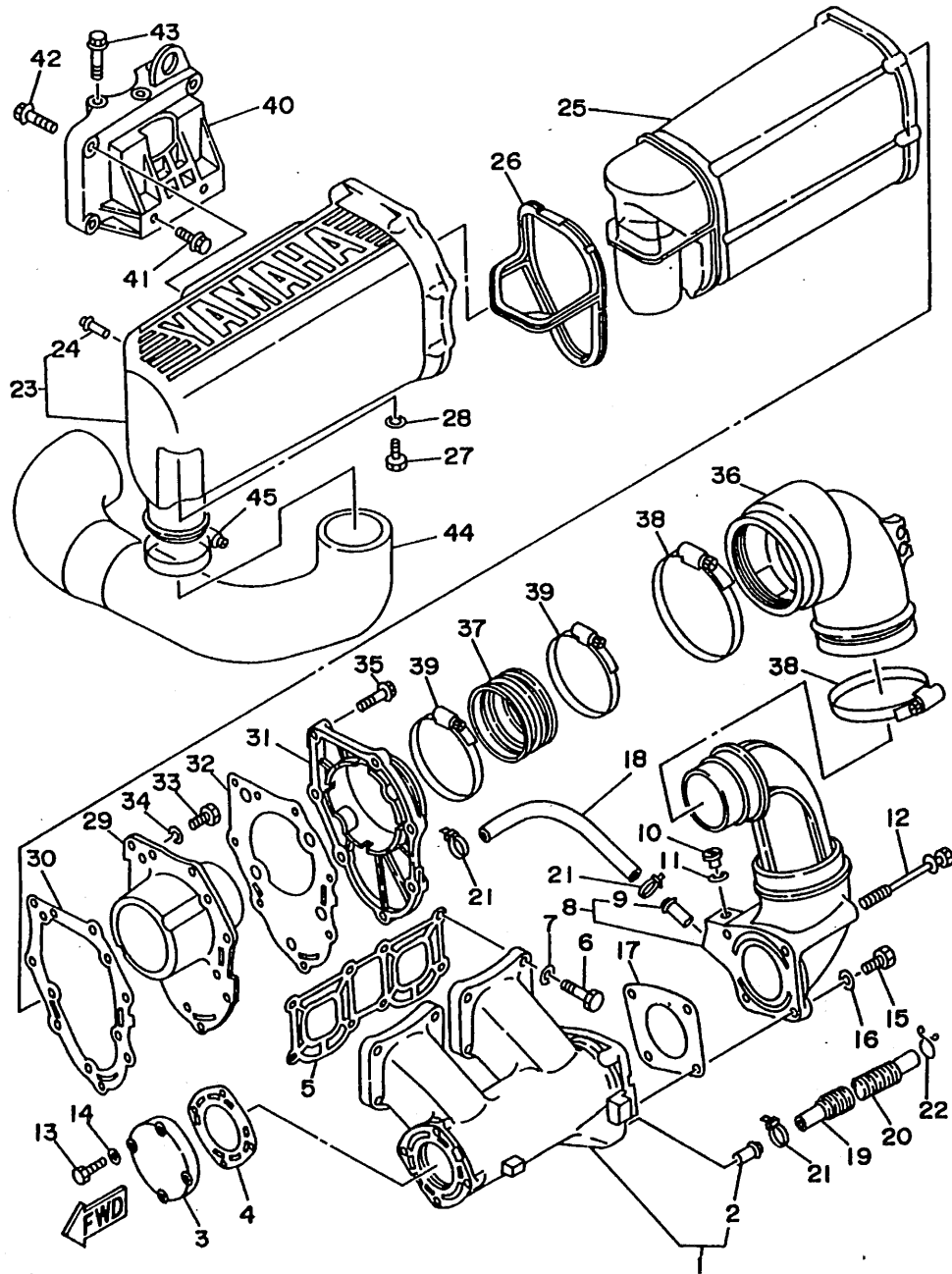
REF. NO.	PART NO.	DESCRIPTION	Q'TY	REMARKS
1	61X-13200-00	OIL INJECTION PUMP ASSY	1	
2	6R8-13116-A0	GASKET, PUMP CASE	1	
3	97395-06035	BOLT	2	
4	92990-06600	WASHER, PLATE	2	
5	90446-07M14	HOSE	1	
6	90446-07M35	HOSE	1	
7	90446-07M17	HOSE	1	
8	90446-07M36	HOSE	1	
9	6R3-13183-00	VALVE, CHECK	2	
10	90465-11M10	CLAMP	4	
11	90465-08M37	CLAMP	1	
12	6R8-21733-00	SUB TANK, OIL	1	
13	6R8-21734-00	HOLDER, OIL SUB TANK	1	
14	90387-06M72	COLLAR	2	
15	61L-14255-00	PLATE	1	
16	97395-06012	BOLT	2	
17	92990-06600	WASHER, PLATE	2	
18	90445-11M24	HOSE	1	
19	90446-12M32	HOSE	1	
20	90446-11M33	HOSE	1	
21	6R8-24377-00	PIPE, JOINT 3	1	
22	90465-11M10	CLAMP	5	
23	90445-11M27	HOSE	1	
24	90465-11M10	CLAMP	2	
25	90465-11M47	CLAMP	7	
26	61L-24378-00	PIPE, JOINT 4	1	
27	90445-09M28	HOSE	1	



GDO100-4050

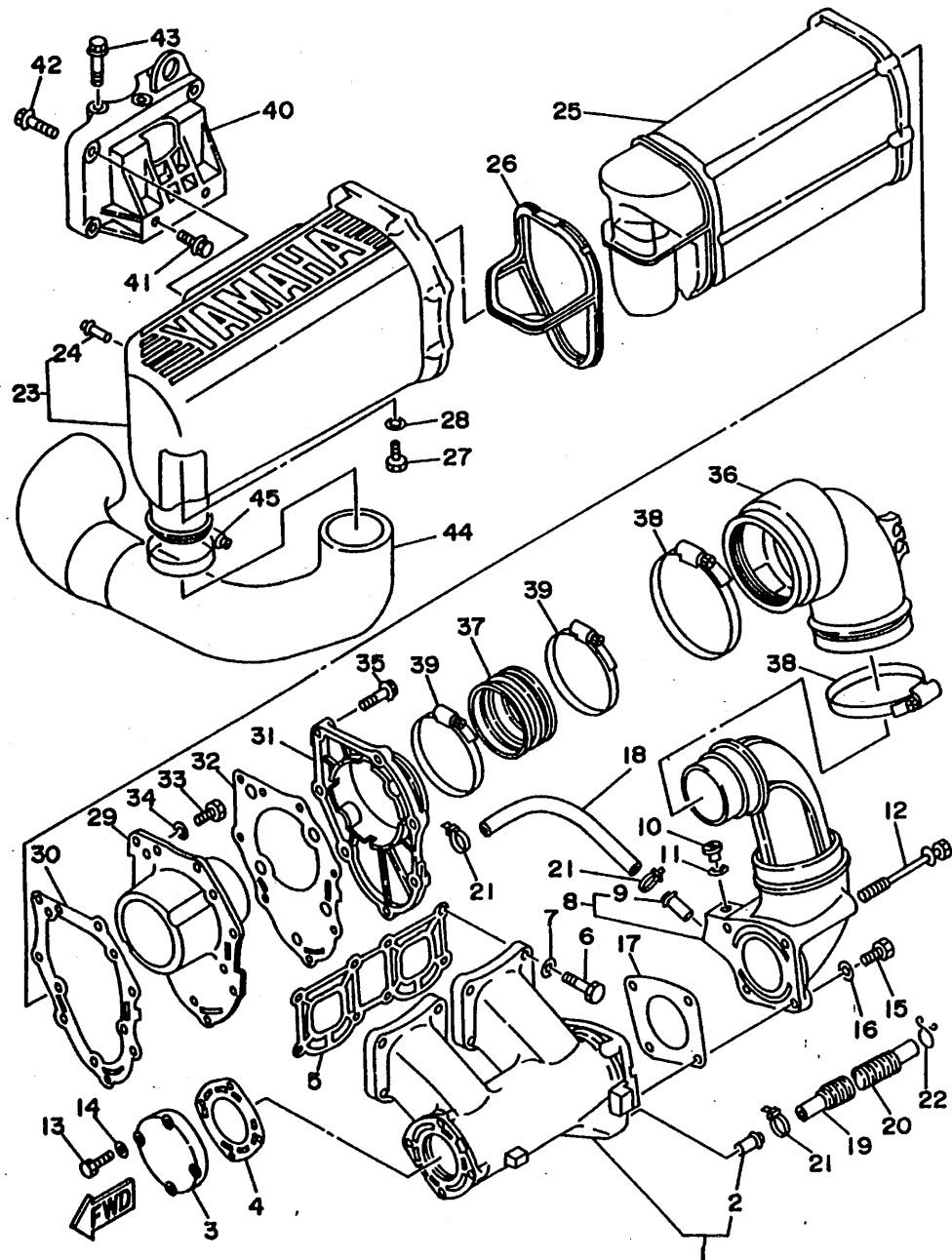
B9

FIG. 6 EXHAUST 1



GDO100-4060

REF. NO.	PART NO.	DESCRIPTION	Q'TY	REMARKS
1	61X-14711-01-9M	MUFFLER 1	1	
2	6K8-51129-00	.NIPPLE	1	
3	6M6-14718-01-9M	PROTECTOR, MUFFLER 1	1	
4	6M6-14739-A1	GASKET, MUFFLER DAMPER 1	1	
5	61X-14613-A0	GASKET, EXHAUST PIPE	1	
6	97313-08035	BOLT	8	
7	92990-08600	WASHER, PLATE	8	
8	61L-14712-00-9M	RING, JOINT	1	
9	6K8-51129-00	.NIPPLE	1	
10	90340-08M04	PLUG, STRAIGHT SCREW	1	
11	90430-08020	GASKET	1	
12	90119-08M73	BOLT, WITH WASHER	2	
13	97313-06025	BOLT	4	
14	92990-06600	WASHER, PLATE	4	
15	97013-08025	BOLT	2	
16	92990-08600	WASHER, PLATE	2	
17	6R7-14749-A0	GASKET, MUFFLER DAMPER 2	1	
18	90446-14M34	HOSE	1	
19	90445-14M06	HOSE	1	
20	90446-20M31	HOSE	1	
21	90465-13M11	CLAMP	3	
22	90467-13M13	CLIP	1	
23	6R7-14721-00-9M	MUFFLER 2	1	
24	6R7-14485-00	.PIPE, JOINT	1	
25	6R7-14753-00-9M	SILENCER, EXHAUST	1	
26	6R7-15761-00	SEAL, RUBBER 1	1	
27	97313-06016	BOLT	1	
28	92990-06600	WASHER, PLATE	1	



GDO100-4060

FIG. 6 EXHAUST 1

REF. NO.	PART NO.	DESCRIPTION	Q'TY	REMARKS
29	6R7-14785-00-9M	DIFFUSER	1	
30	6R7-14755-A0	GASKET, SILENCER	1	
31	6R7-41113-00-9M	OUTER COVER, EXHAUST	1	
32	6R7-41114-A0	GASKET, EXHAUST OUTER COVER	1	
33	97395-06016	BOLT	5	
34	92990-06600	WASHER, PLATE	5	
35	90119-06MA1	BOLT, WITH WASHER	7	
36	61L-14615-00	JOINT, EXHAUST 1	1	
37	61L-14625-00	JOINT, EXHAUST 2	1	
38	90460-90M11	CLAMP, HOSE	2	
39	90460-70M16	CLAMP, HOSE	2	
40	6M6-14771-00-94	STAY, MUFFLER 1	1	
41	90105-10M49	BOLT, WASHER BASED	2	
42	90105-10M45	BOLT, WASHER BASED	3	
43	90119-10M72	BOLT, WITH WASHER	3	
44	GDO-E4752-00	PIPE, OUTLET	1	YMUS
45	90460-64M15	CLAMP, HOSE	1	

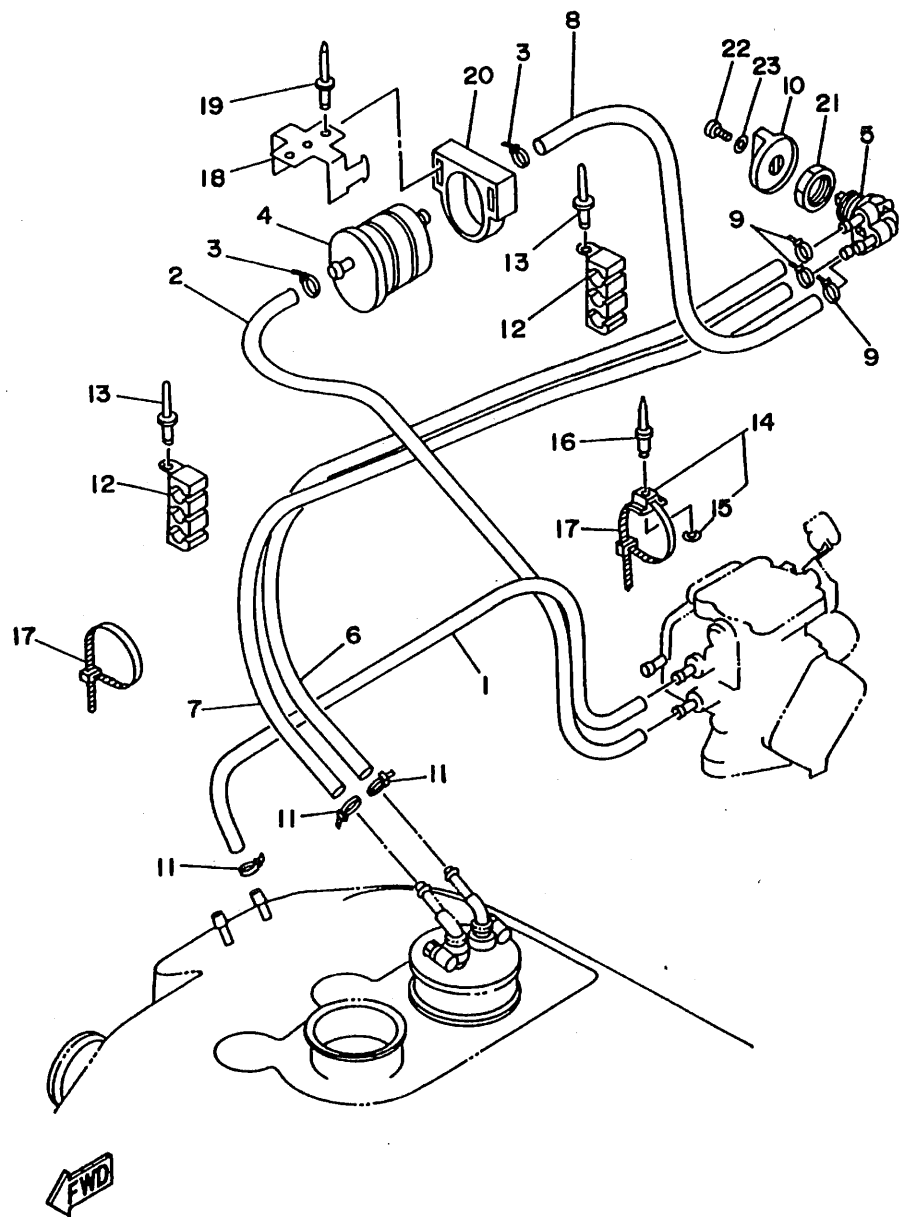


FIG. 7 FUEL

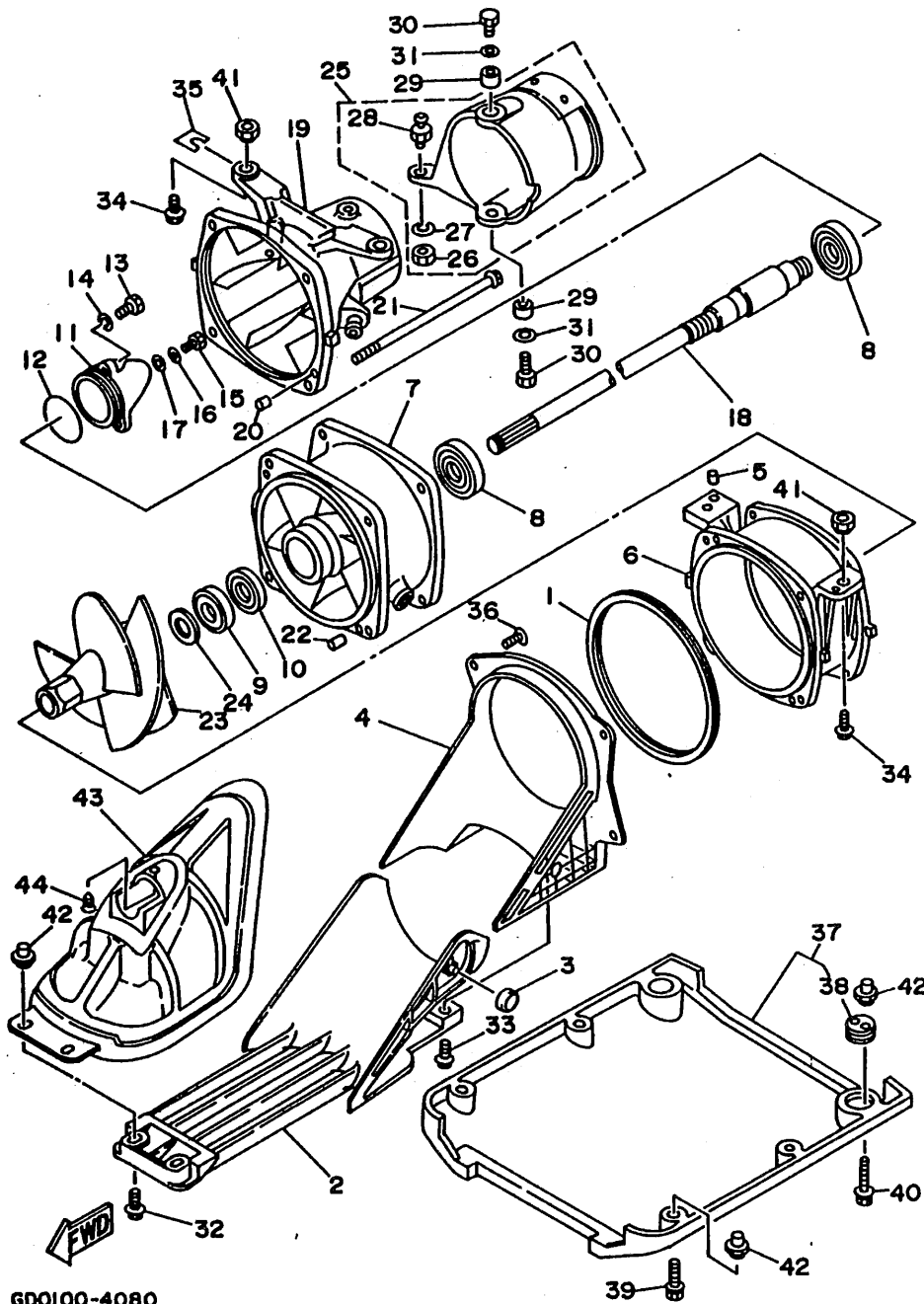
REF. NO.	PART NO.	DESCRIPTION	Q'TY	REMARKS
1	90445-10M62	HOSE	1	
2	90445-10M33	HOSE	1	
3	90465-11M10	CLAMP	2	
4	6K8-24560-10	FILTER ASSY	1	
5	6K8-24500-02	FUEL COCK ASSY 1	1	
6	90445-10M59	HOSE	1	
7	90445-10M61	HOSE	1	
8	90445-10M60	HOSE	1	
9	90465-11M10	CLAMP	3	
10	6K8-24524-10	LEVER, COCK	1	
11	90465-11M10	CLAMP	3	
12	EW2-U7812-00	HOLDER, PIPE 2	2	YMUS
13	90267-489U7	RIVET, BLIND	2	
14	90600-91736	CLAMP	2	
15	90201-05925	.WASHER, PLATE	1	
16	90267-489U6	RIVET, BLIND	1	YMUS
17	90601-20006	NYLON CLIP 1	2	
18	FN8-67816-00	BRACKET, FUEL FILTER	1	
19	90267-489U9	RIVET, BLIND	3	YMUS
20	EU0-67817-00	HOLDER	1	
21	90170-22M11	NUT	1	
22	98580-04010	SCREW, PAN HEAD	1	
23	92990-04600	WASHER, PLATE	1	

GD02010-3070

B12

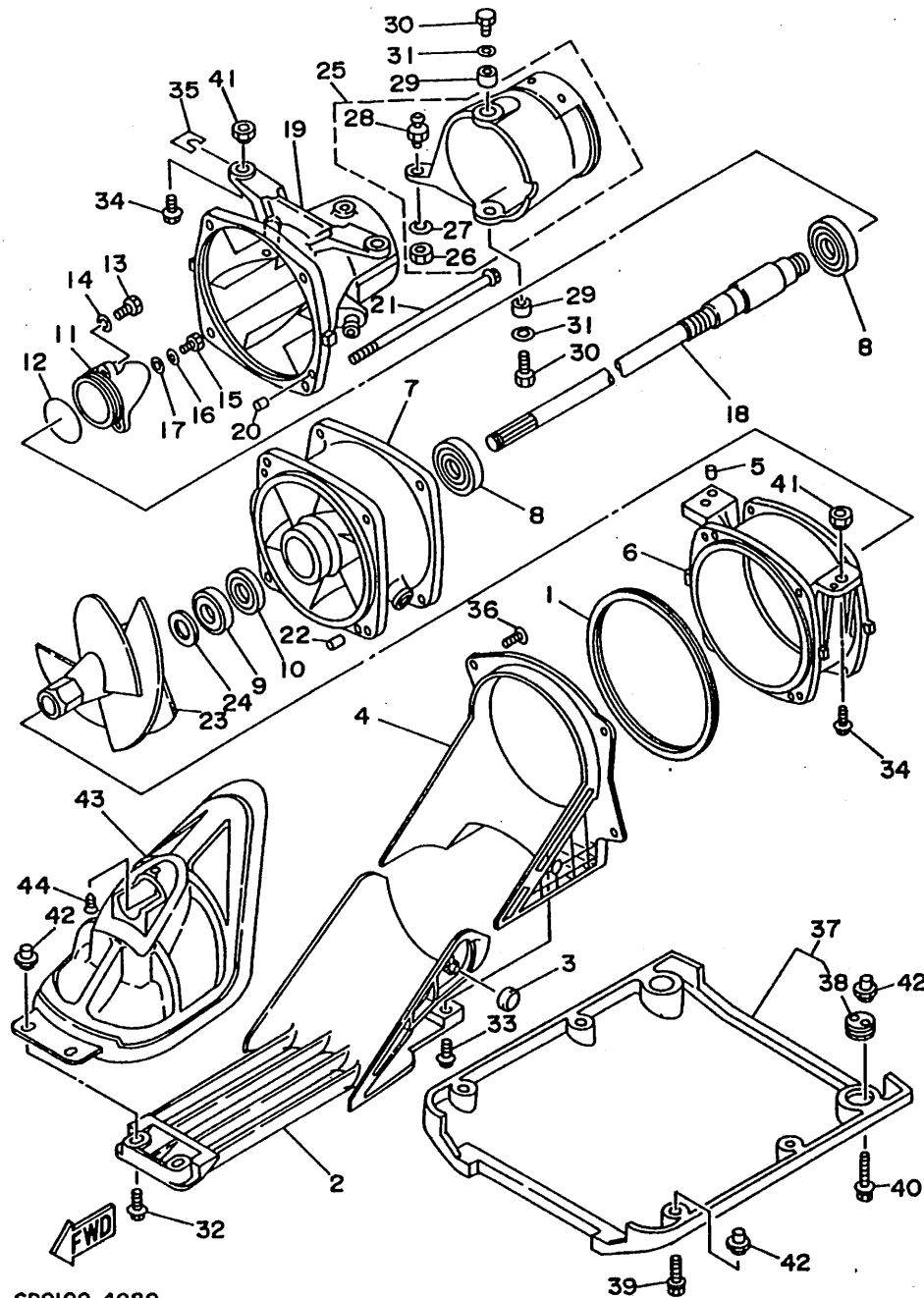
FIG. 8 JET UNIT 1

REF. NO.	PART NO.	DESCRIPTION	Q'TY	REMARKS
1	6R7-51117-01	PACKING	1	
2	61X-51333-00-5B	SCREEN, INTAKE	1	
3	90480-05M61	GROMMET	2	
4	61L-51311-01	DUCT, INTAKE	1	
5	93606-09M19	PIN, DOWEL	2	
6	6R7-51312-00-94	HOUSING, IMPELLER	1	
7	61L-51315-00-94	DUCT, IMPELLER	1	
8	93306-205U0	BEARING	2	
9	93102-25M34	OIL SEAL	1	
10	93101-25M50	OIL SEAL	1	
11	6R7-51326-00-94	CAP	1	
12	93210-46M16	O-RING	1	
13	97095-06016	BOLT	3	
14	92990-06600	WASHER, PLATE	3	
15	97095-06012	BOLT	1	
16	92990-06600	WASHER, PLATE	1	
17	90430-06M03	GASKET	1	
18	61X-45511-00	SHAFT, DRIVE	1	
19	61X-51318-00-5B	NOZZLE	1	
20	93606-12019	PIN, DOWEL	1	
21	90119-06M70	BOLT, WITH WASHER	4	
22	93606-12019	PIN, DOWEL	2	
23	62E-51321-00	IMPELLER	1	
24	90209-20M20	WASHER	1	
25	61L-51313-00	ADJUSTER	1	
26	95380-06700	.NUT	1	
27	90201-06M02	.WASHER, PLATE	1	
28	6R7-42316-00	.BOLT, JOINT	1	



GDO100-4080

B13



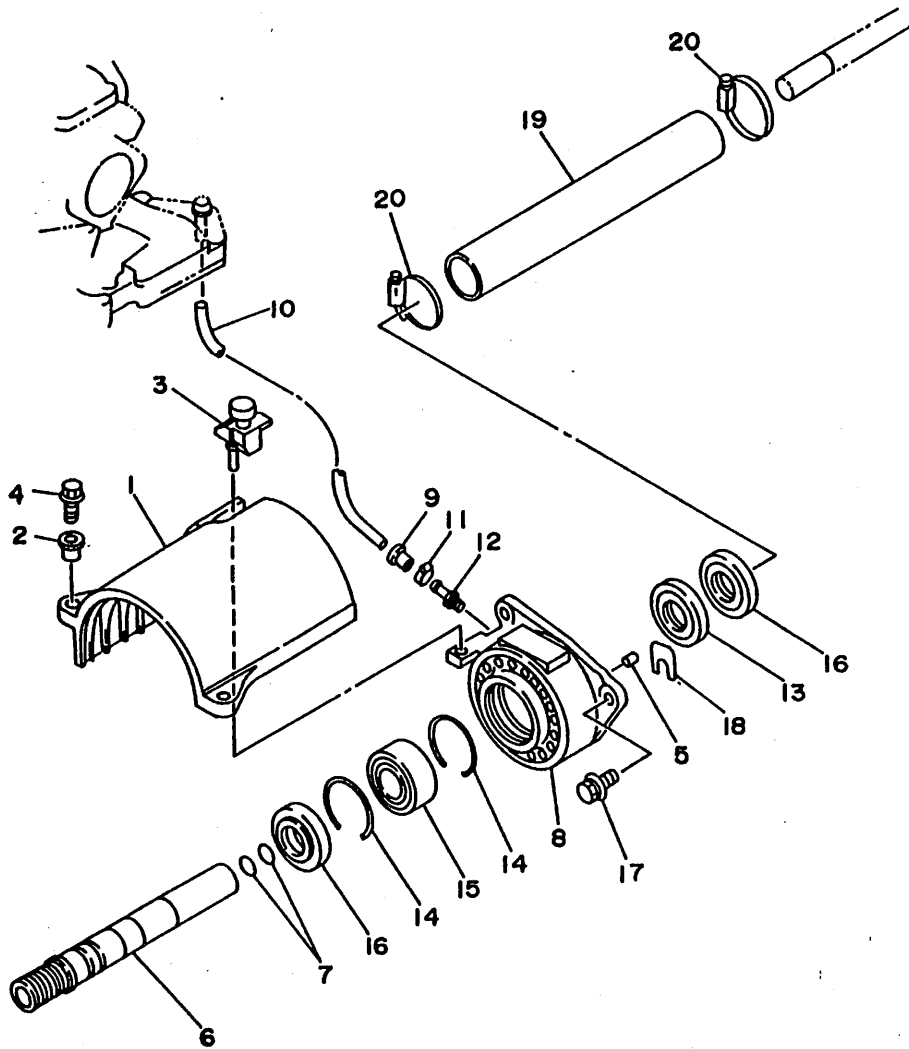
GD0100-4080

FIG. 8 JET UNIT 1

REF. NO.	PART NO.	DESCRIPTION	QTY	REMARKS
29	90387-08M06	COLLAR	2	
30	97395-08018	BOLT	2	
31	92995-08600	WASHER	2	
32	90119-06929	BOLT, WITH WASHER	2	
33	90119-06931	BOLT, WITH WASHER	2	
34	90119-10906	BOLT, WITH WASHER	4	
35	EW2-67354-00-01	SHIM (T=0.1)	8	UR
	EW2-67354-00-03	SHIM (T=0.3)	8	UR
	EW2-67354-00-05	SHIM (T=0.5)	8	UR
	EW2-67354-00-10	SHIM (T=1.0)	8	UR
36	97780-60520	SCREW, TAPPING	4	
37	GD0-6273A-00	PLATE 2 ASSY	1	
38	FK7-62732-00	.BOLT, JACK	2	
39	90119-06929	BOLT, WITH WASHER	4	
40	90119-06930	BOLT, WITH WASHER	2	
41	90179-10925	NUT	4	
42	90179-06947	NUT	8	
43	GD0-6884E-00	DUCT, INTAKE 1	1	
44	97780-50215	SCREW, TAPPING	1	

FIG. 9 JET UNIT 2

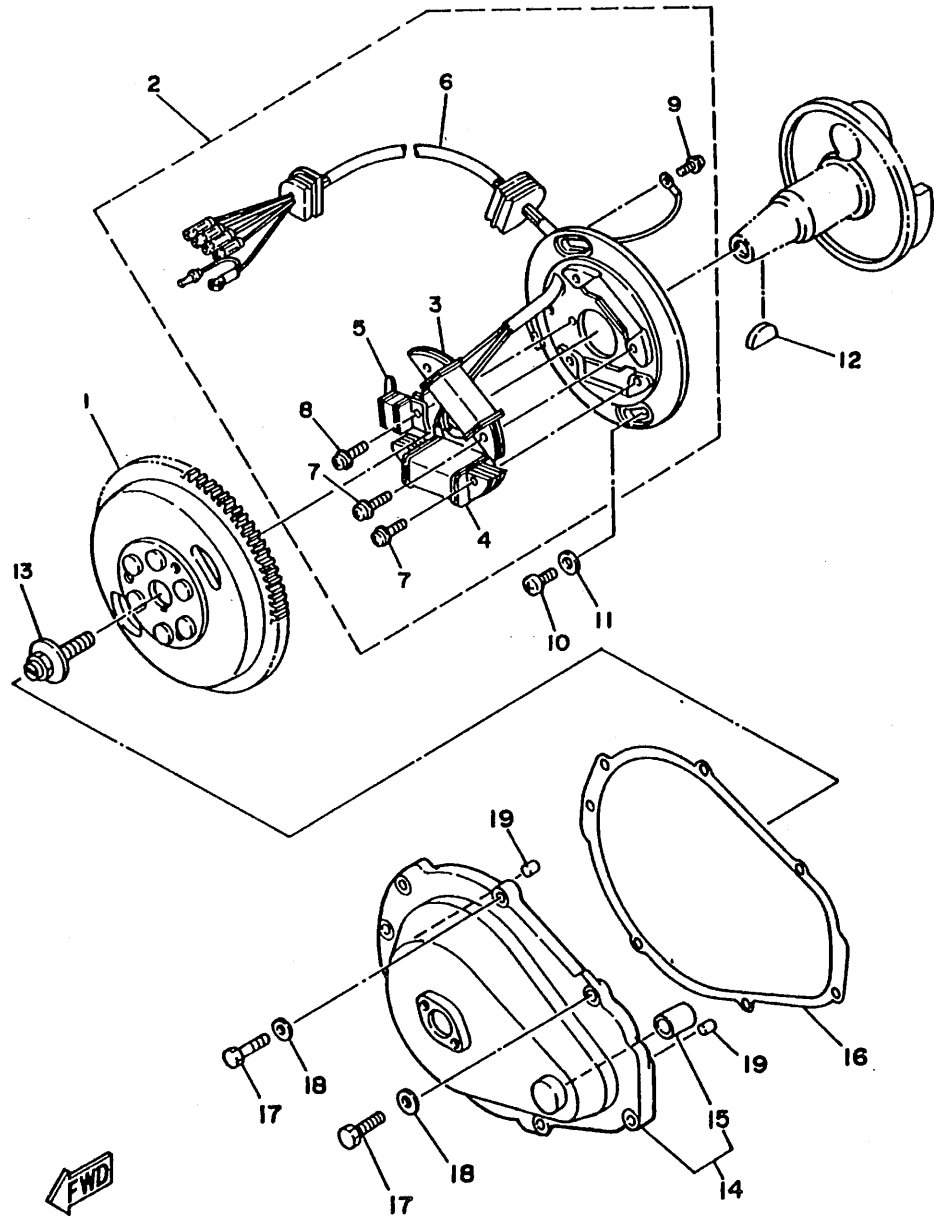
REF. NO.	PART NO.	DESCRIPTION	Q'TY	REMARKS
1	61X-51381-00	COVER	1	
2	90387-06M60	COLLAR	2	
3	90480-06M69	GROMMET	1	
4	97595-06525	BOLT, WITH WASHER	2	
5	93606-07M17	PIN, DOWEL	2	
6	61X-51323-00	SHAFT, COUPLOR	1	
7	93210-17MA4	O-RING	2	
8	61X-45332-00-9M	HOUSING, BEARING	1	
9	90386-08006	BUSH	1	
10	90445-09M23	HOSE	1	
11	90460-11M17	CLAMP, HOSE	1	
12	61L-45378-00	NIPPLE, HOSE	1	
13	93101-25M52	OIL SEAL	1	
14	93430-47M04	CIRCLIP	2	
15	93305-205U0	BEARING	1	
16	93101-25M54	OIL SEAL	2	
17	90119-08907	BOLT, WITH WASHER	3	
18	GDO-67249-00-05	SHIM (T=0.5)	2	UR
	GDO-67249-00-10	SHIM (T=1.0)	2	UR
19	FN8-68838-01	PIPE, 1	1	
20	90601-152U3	CLAMP	2	YMUS



GDO2010-3090

B15

FIG. 10 GENERATOR



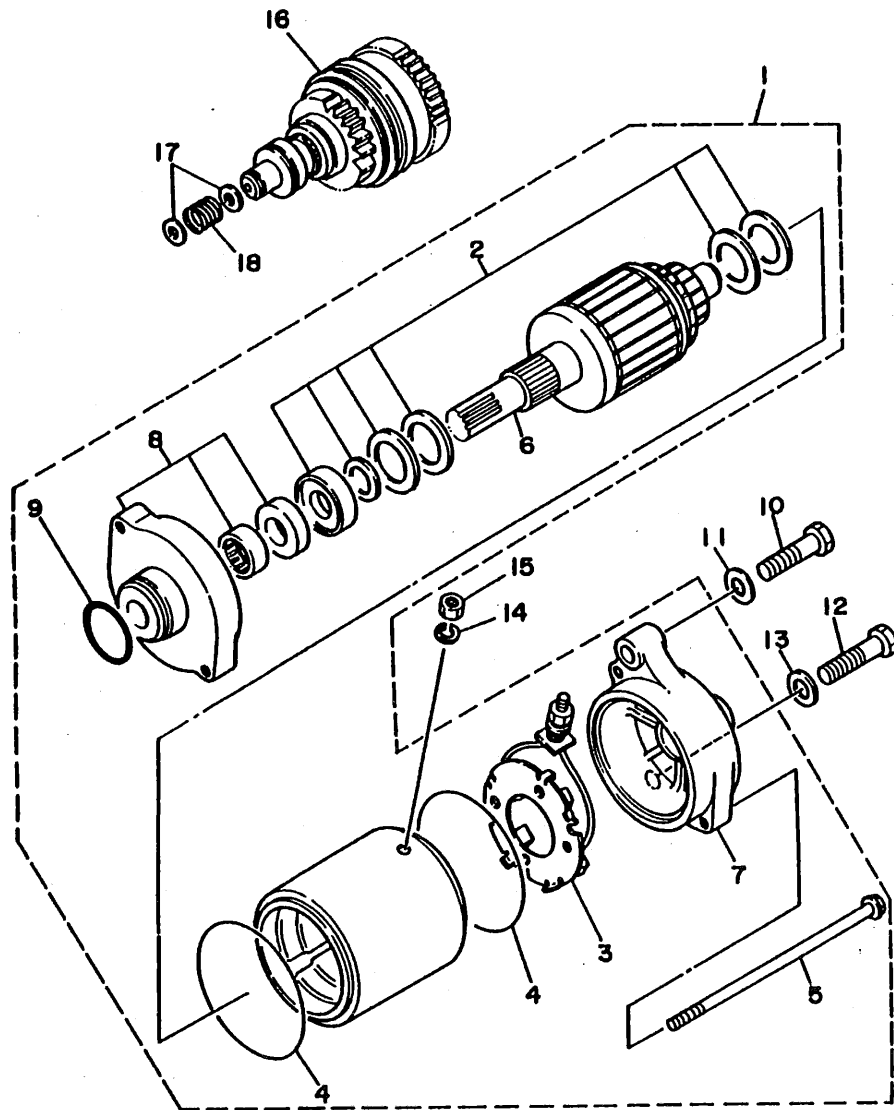
REF. NO.	PART NO.	DESCRIPTION	Q'TY	REMARKS
1	6R7-85550-00	ROTOR ASSY	1	
2	6R7-85560-00	BASE ASSY	1	
3	6M6-85520-00	.COIL, CHARGE	1	
4	6M6-85533-00	.COIL, LIGHTING	1	
5	6M6-85580-00	.COIL, PULSER	1	
6	6R7-85515-00	.LEAD WIRE ASSY	1	
7	97902-05125	.SCREW, WITH WASHER	4	
8	97902-04122	.SCREW, WITH WASHER	2	
9	98580-04008	.SCREW, PAN HEAD	1	
10	98580-06016	SCREW, PAN HEAD	2	
11	92990-06600	WASHER, PLATE	2	
12	90280-16053	KEY, WOODRUFF	1	
13	90109-10M47	BOLT	1	
14	6R8-81337-00-9M	COVER, FLYWHEEL	1	
15	90380-12M29	.BUSH, SOLID	1	
16	6M6-81365-A0	GASKET, HOLE COVER	1	
17	97595-06525	BOLT, WITH WASHER	7	
18	92990-06600	WASHER, PLATE	7	
19	93606-12019	PIN, DOWEL	2	


FN81110-1100

C2

FIG. 11 STARTING MOTOR

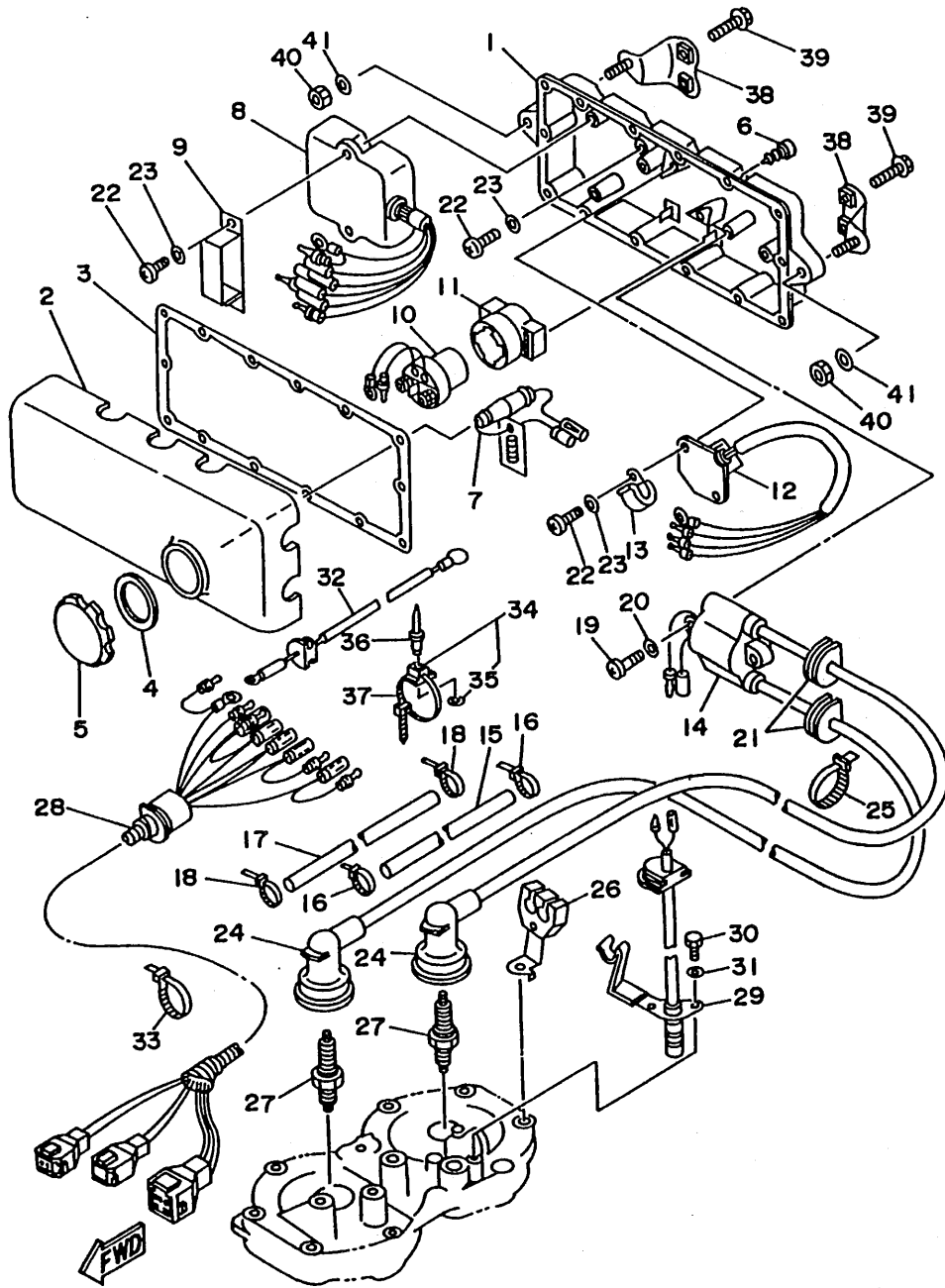
REF. NO.	PART NO.	DESCRIPTION	Q'TY	REMARKS
1	6M6-81800-10	STARTING MOTOR ASSY	1	
2	3AJ-81809-00	.WASHER KIT	1	
3	6M6-81840-10	.BRUSH HOLDER ASSY	1	
4	11H-81844-00	.GASKET	2	
5	6M6-81826-00	.BOLT	2	
6	6M6-81850-00	.ARMATURE ASSY	1	
7	6M6-81820-00	.REAR BRACKET ASSY	1	
8	6M6-81830-00	.FRONT BRACKET ASSY	1	
9	26H-81847-00	.O-RING	1	
10	97313-08040	BOLT	1	
11	92990-08600	WASHER, PLATE	1	
12	97313-08035	BOLT	1	
13	92990-08600	WASHER, PLATE	1	
14	92995-06100	WASHER	1	
15	95380-06700	NUT	1	
16	6M6-8183E-00	IDLE GEAR COMP	1	
17	92990-06600	WASHER, PLATE	2	
18	90501-14M73	SPRING, COMPRESSION	1	



FN81110-1110

FIG. 12 ELECTRICAL 1

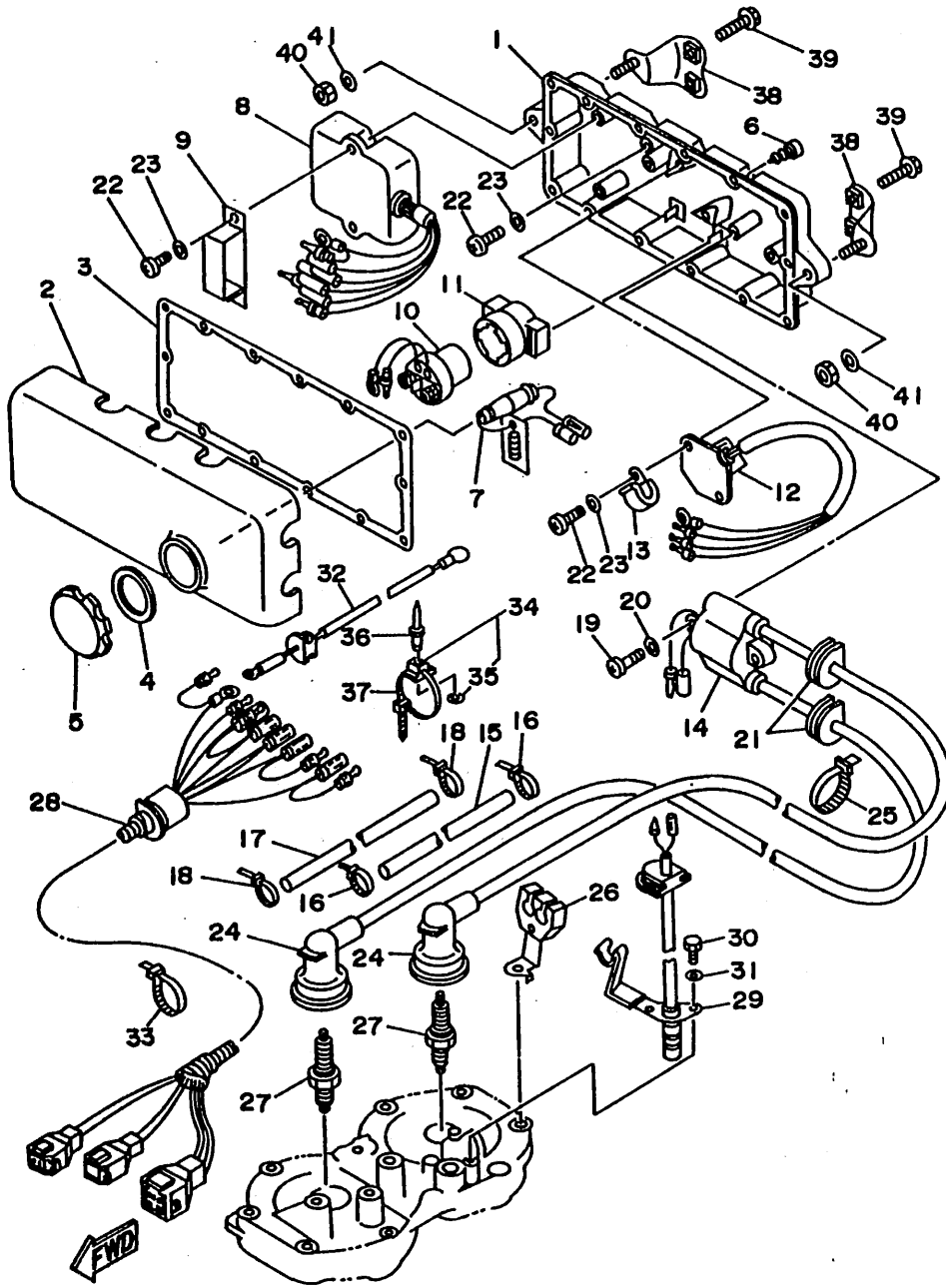
REF. NO.	PART NO.	DESCRIPTION	Q'TY	REMARKS
1	6M6-8552A-00-98	HOUSING	1	LOW GLOSS BLACK
2	6M6-8552E-00	COVER, CASE	1	
3	6M6-81921-00	GASKET, TERMINAL	1	
4	6M6-81844-00	GASKET	1	
5	6M6-8132W-00	CAP	1	
6	97780-60525	SCREW, TAPPING	14	
7	6K8-82150-01	FUSE HOLDER ASSY	1	
8	61X-85540-01	C.D.I. UNIT ASSY	1	
9	90464-06M29	CLAMP	1	
10	6G1-81941-10	STARTER RELAY ASSY	1	
11	6M6-81952-01	HOLDER, RELAY	1	
12	6M6-81960-A0	RECTIFIER & REGULATOR ASSY	1	
13	90465-08028	CLAMP	1	
14	61L-85570-00	IGNITION COIL ASSY	1	
15	61L-82351-00	TUBE, CORD	1	
16	90465-11M10	CLAMP	2	
17	61L-82352-00	TUBE, CORD 2	1	
18	90465-11M10	CLAMP	2	
19	98580-06030	SCREW, PAN HEAD	2	
20	92990-06600	WASHER, PLATE	2	
21	90480-06M43	GROMMET	2	
22	98503-06014	SCREW, PAN HEAD	6	
23	92990-06600	WASHER, PLATE	6	
24	6K8-82370-11	PLUG CAP ASSY	2	
25	90465-11M10	CLAMP	2	
26	6R7-82361-00	CLAMP, CORD	1	
27	94702-00195	PLUG, SPARK (NGK BR8HS)	2	
28	61X-82553-00	EXTENSION, WIRE LEAD	1	



GDO2010-3120

C4

FIG. 12 ELECTRICAL 1

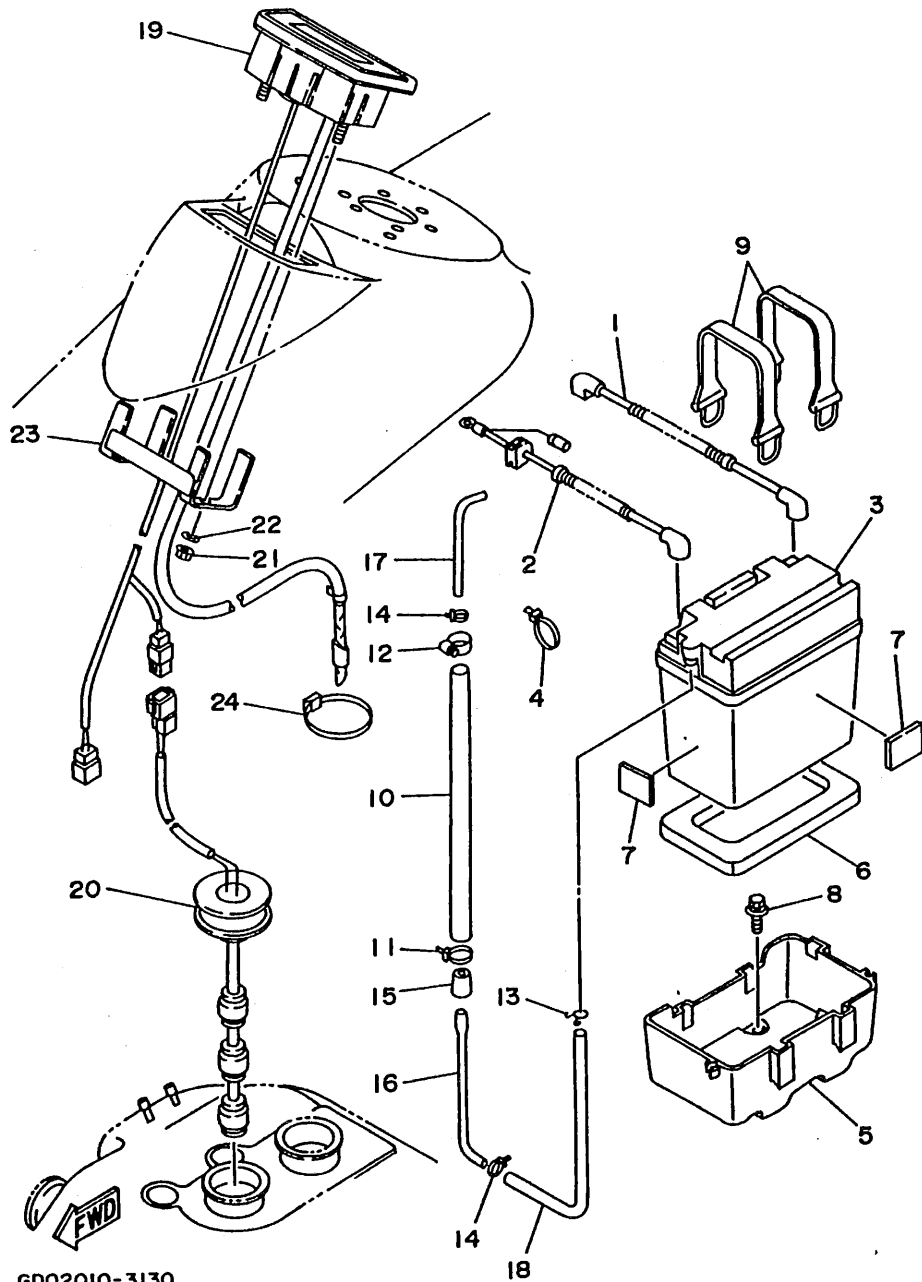


REF. NO.	PART NO.	DESCRIPTION	Q'TY	REMARKS
29	6R7-82560-00	THERMO SWITCH ASSY	1	
30	97395-06016	BOLT	2	
31	92995-06100	WASHER	2	
32	6R7-82117-21	WIRE, LEAD	1	
33	90465-13M11	CLAMP	1	
34	90600-91736	CLAMP	1	
35	90201-05925	WASHER, PLATE	1	
36	90267-489UE	RIVET, BLIND	1	
37	90601-20006	NYLON CLIP 1	1	
38	EW2-68156-00	BRACKET, ELECTRIC BOX	2	
39	90105-06903	BOLT, WASHER BASED	4	
40	95380-08700	NUT	2	
41	92990-08200	WASHER, PLAIN	2	

GD02010-3120

FIG. 13 ELECTRICAL 2

REF. NO.	PART NO.	DESCRIPTION	Q'TY	REMARKS
1	61L-82117-00	WIRE, LEAD	1	
2	61L-82117-10	WIRE, LEAD	1	
3	EU0-82110-77	BATTERY ASSY	1	
4	90601-20006	NYLON CLIP 1	1	
5	EW2-68211-00	CASE, BATTERY	1	
6	EU0-U8221-00	PAD, BATTERY 1	1	YMUS
7	EU0-68221-30	PAD, BATTERY 2	4	
8	90119-06920	BOLT, WITH WASHER	4	
9	EU0-68218-04	BAND, BATTERY	2	
10	90669-03003	HOSE 1	1	
11	90601-200U1	NYLON CLIP 1	1	YMUS
12	90460-25M09	CLAMP, HOSE	1	
13	90467-08M10	CLIP	1	
14	90465-11M10	CLAMP	2	
15	EU0-62155-00	CAP	1	
16	EU0-62156-32	ELBOW, VENTILATOR 12	1	
17	FN8-62156-50	ELBOW, VENTILATER 14	1	
18	FJ0-67856-40	HOSE, AIR VENT 5	1	
19	GDO-6820A-00	METER ASSY	1	FOR USA/GUAM/AUSTRALIA
	GDO-6820A-10	METER ASSY	1	FOR CANADA/FRANCE
20	GDO-6824B-00	SENDER, FUEL	1	
21	95720-05300	NUT, FLANGE	2	
22	92990-05200	WASHER, PLAIN	2	
23	GDO-68238-00	BRACKET, METER	1	
24	90601-20016	NYLON CLIP 1	3	

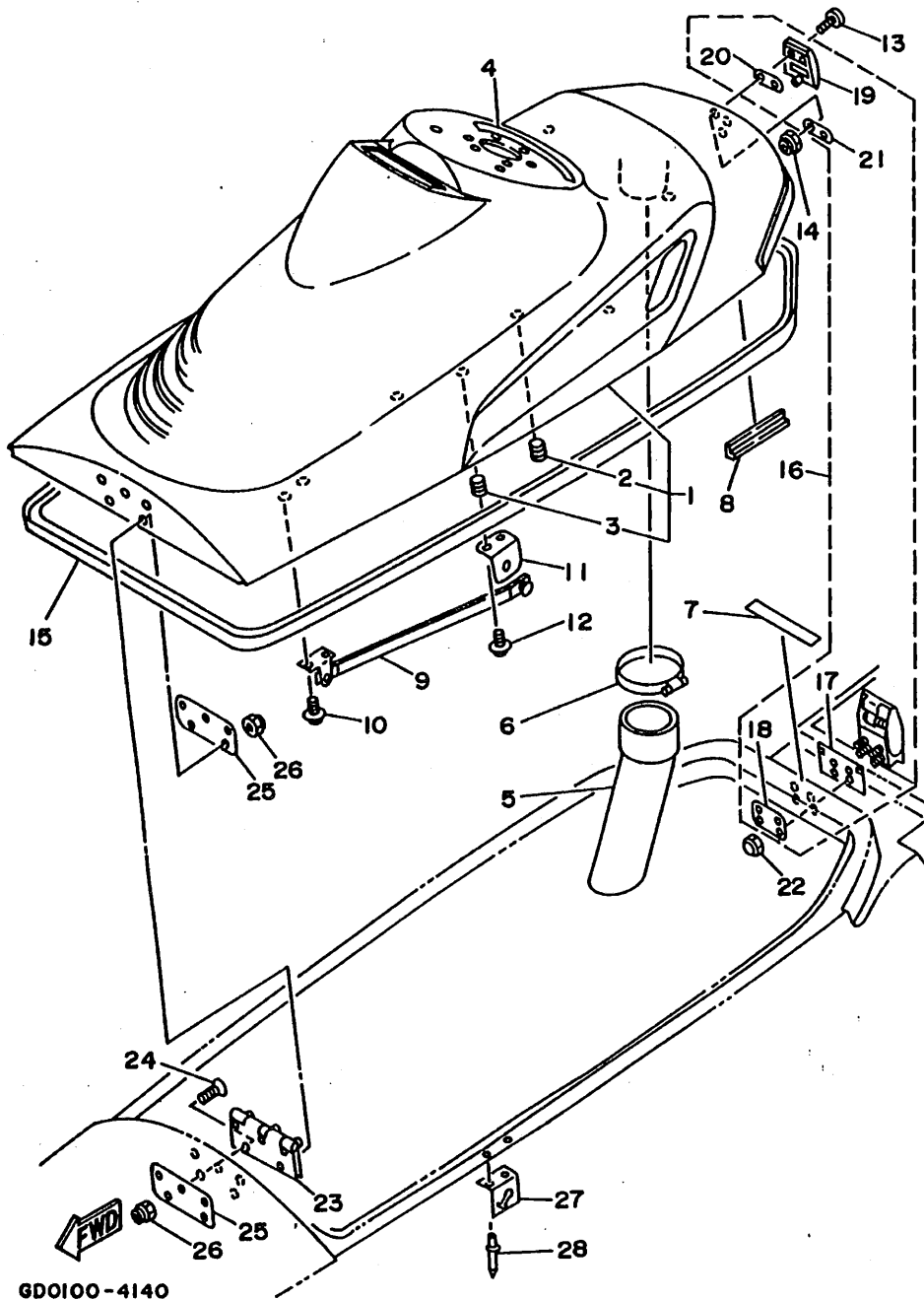


GDO2010-3130

C6

FIG. 14 ENGINE HATCH

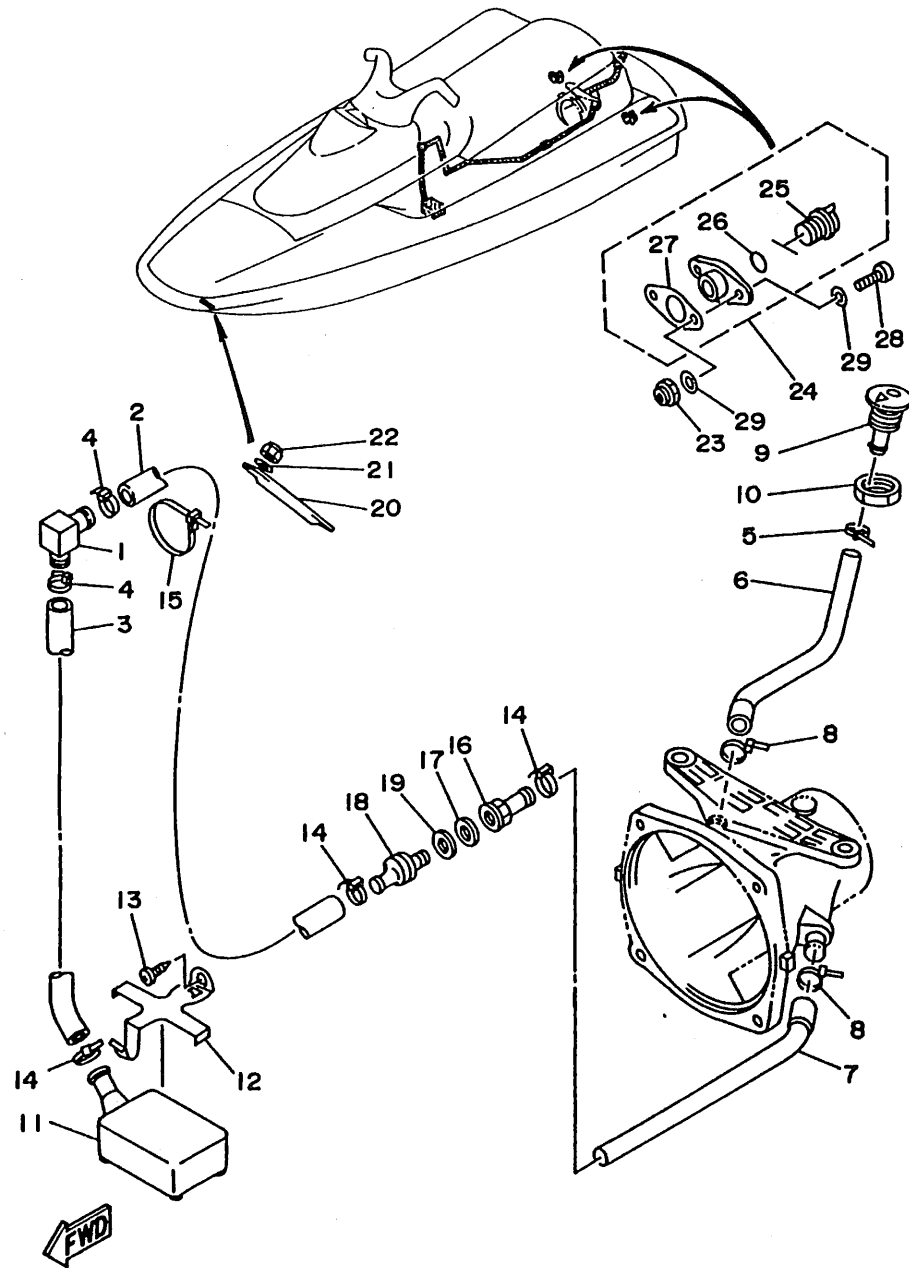
REF. NO.	PART NO.	DESCRIPTION	Q'TY	REMARKS
1	GDO-U516H-00-P1	ENGINE HATCH COMP.	1	YMUS
2	90179-08927	.NUT	4	
3	90179-06926	.NUT	4	
4	FN8-65578-00	TAPE	1	
5	EW2-62136-01	HOSE, VENTILATOR 1	1	
6	90601-168U7	BAND, HOSE 68	1	YMUS
7	FN8-U5162-00	TRIM	1	YMUS
8	FN8-6516C-00	TRIM 1	2	
9	FN8-62891-00	SUPPORT, HATCH	1	
10	90159-06901	SCREW, WITH WASHER	2	
11	FN8-62892-00	FIX, PLATE	1	
12	90159-06901	SCREW, WITH WASHER	2	
13	90149-05970	SCREW	2	
14	95720-05300	NUT, FLANGE	2	
15	FN8-U2664-00	PACKING	1	YMUS
16	FN8-62840-00	HATCH LOCK ASSY	1	
17	EW2-62845-00	.PACKING, HATCH LOCK	1	
18	EW2-62846-00	.PLATE, HATCH LOCK	1	
19	FN8-62843-00	.HOOK, HATCH LOCK	1	
20	EW2-62847-00	.PACKING, HOOK	1	
21	EW2-62848-00	.PLATE, HOOK	1	
22	95380-05800	NUT	4	
23	90600-70069	HINGE	1	
24	98780-05020	SCREW, FLAT HEAD	5	
25	FN8-U5193-00	PLATE	2	YMUS
26	95720-05300	NUT, FLANGE	10	
27	FN8-62884-00	BRACKET, HATCH SUPPORT	1	
28	90267-489U1	RIVET, BLIND	2	YMUS



GDO100-4140

C7

FIG. 15 HULL. DECK



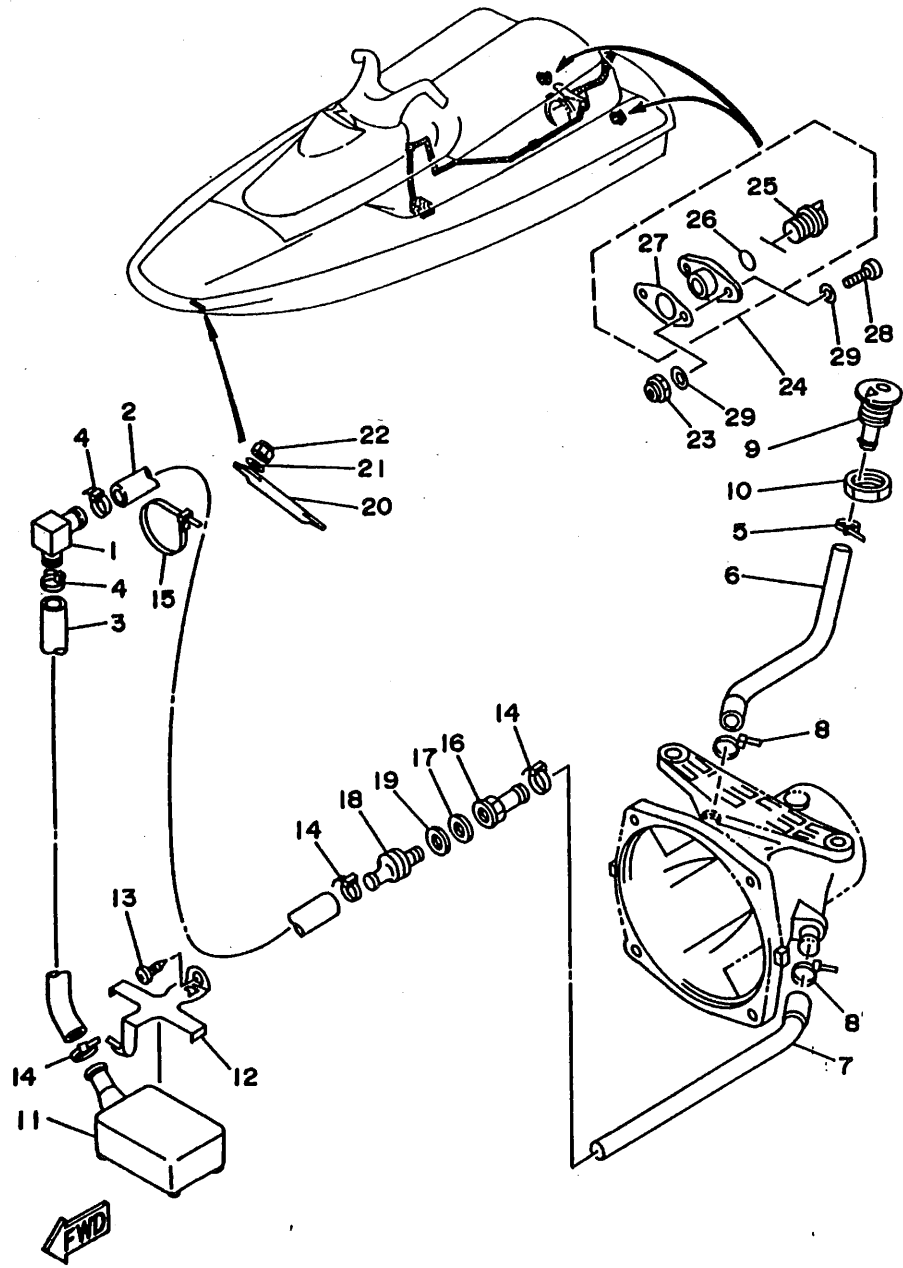
GDO100-4150

REF. NO.	PART NO.	DESCRIPTION	Q'TY	REMARKS
1	61X-51162-00	JOINT, HOSE	1	
2	90445-19M00	HOSE	1	
3	90445-19M01	HOSE	1	
4	90465-13M11	CLAMP	2	
5	90465-13M11	CLAMP	1	
6	61X-51673-00	PIPE	1	
7	90445-14M19	HOSE	1	
8	90465-13M11	CLAMP	2	
9	FN8-6269B-00	SPOUT	1	
10	EU0-61652-00	NUT	1	
11	GDO-6761D-00	STRAINER, BILGE	1	
12	EW2-67618-00	BASE, STRAINER BLIGE	1	
13	97780-50114	SCREW, PAN HEAD TAPPING	1	
14	90465-13M11	CLAMP	3	
15	90601-20006	NYLON CLIP 1	1	
16	90604-80759	CONNECTION, THRU-HULL 1/4	1	
17	90430-13909	GASKET	1	
18	90604-80775	THROUGH, HULL CONNECTION	1	
19	90430-13909	GASKET	1	
20	FN8-61624-00	BOWEYE 1 (S)	1	
21	92990-08200	WASHER, PLAIN	2	
22	95720-08300	NUT, SELF-LOCKING	2	
23	95720-05300	NUT, FLANGE	4	
24	EU0-62280-00	DRAIN PLUG ASSY	2	
25	EU0-62282-00	.PLUG, DRAIN	1	
26	EU0-62283-00	.O-RING	1	
27	EU0-62285-01	.PACKING, DRAIN	1	
28	98580-05020	SCREW, PAN HEAD	4	

C8

FIG. 15 HULL. DECK

REF. NO.	PART NO.	DESCRIPTION	Q'TY	REMARKS
29	92990-05200	WASHER, PLAIN	8	

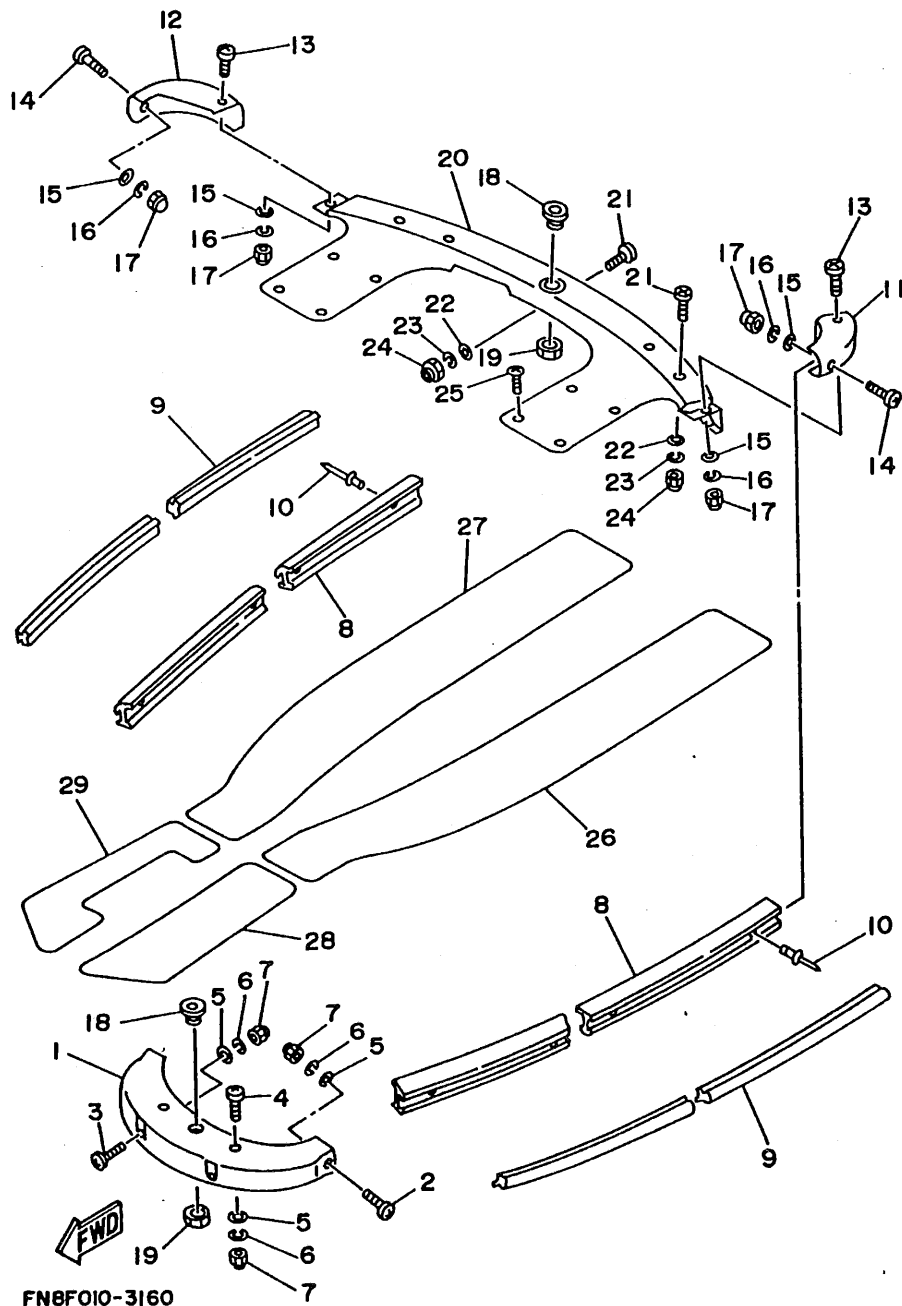


GDO100-4150

C9

FIG. 16 GUNWALE. MAT

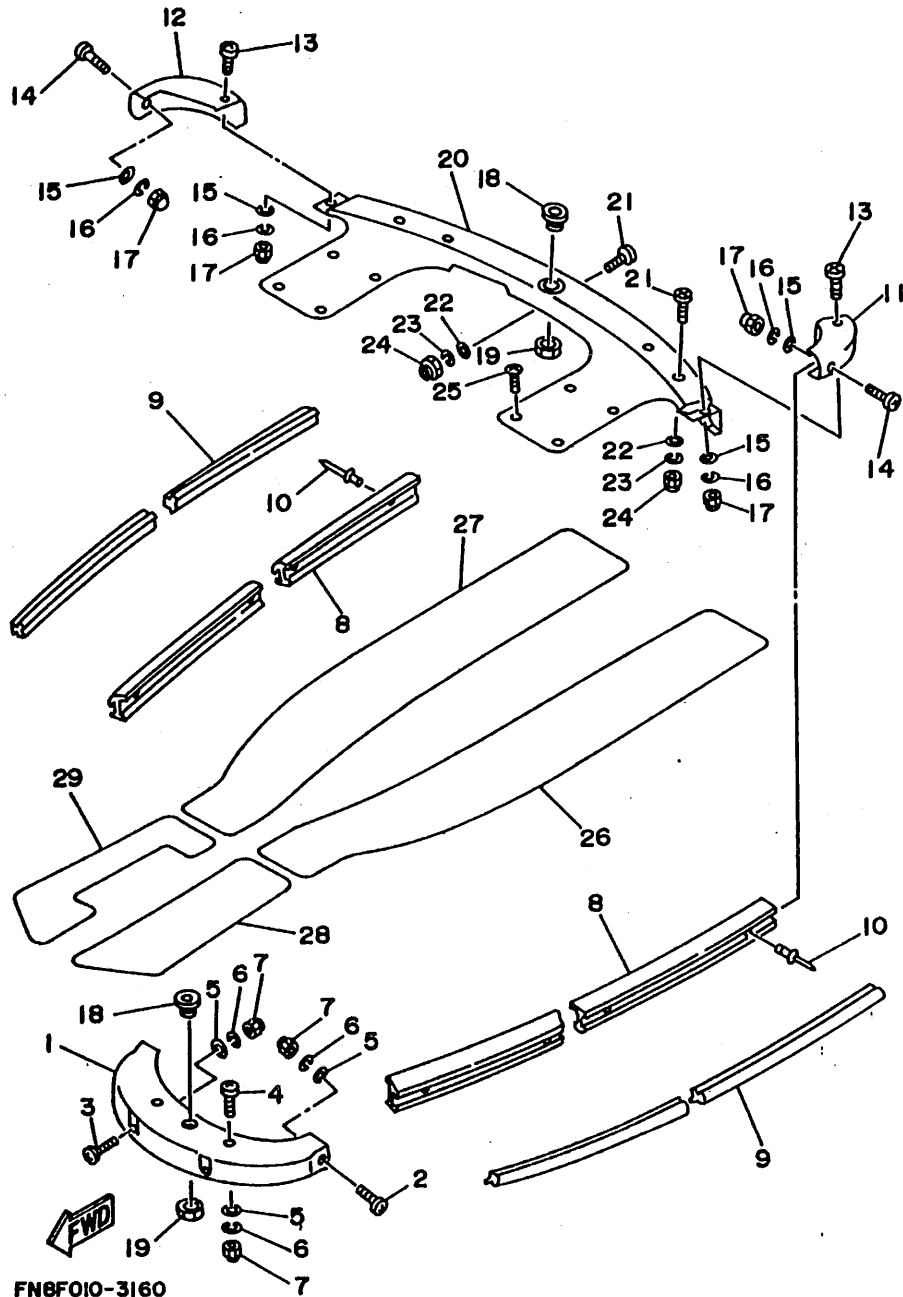
REF. NO.	PART NO.	DESCRIPTION	Q'TY	REMARKS
1	FN8-U2501-00	BOW GUNWALE COMP.	1	YMUS
2	90149-06976	SCREW	2	
3	90149-06975	SCREW	2	
4	90149-06968	SCREW	2	
5	92990-06200	WASHER, PLAIN	6	
6	92995-06100	WASHER	6	
7	95380-06800	NUT	6	
8	FN8-U2512-10	GUNWALE, SIDE	2	YMUS
9	FN8-U2519-10	INNER GUNWALE	2	YMUS
10	90267-489U8	RIVET, BLIND	32	YMUS
11	FN8-62513-30	GUNWALE, STERN	1	
12	FN8-62513-40	GUNWALE, STERN	1	
13	90149-06973	SCREW	4	
14	90149-06971	SCREW	2	
15	92990-06200	WASHER, PLAIN	6	
16	92995-06100	WASHER	6	
17	95380-06800	NUT	6	
18	FN8-61651-00	ROPE HOLE	2	
19	EU0-61652-00	NUT	2	
20	FN8-U3580-01	MAT UPPER COMP.	1	YMUS
21	90149-06968	SCREW	9	
22	92990-06200	WASHER, PLAIN	9	
23	92995-06100	WASHER	9	
24	95380-06800	NUT	9	
25	90149-06967	SCREW	8	
26	FN8-6759B-10	MAT 1	1	
27	FN8-6759B-20	MAT 1	1	
28	FN8-6759C-10	MAT 2	1	



FN8FO10-3160

FIG. 16 GUNWALE. MAT

REF. NO.	PART NO.	DESCRIPTION	Q'TY	REMARKS
29	FN8-6759C-20	MAT 2	1	

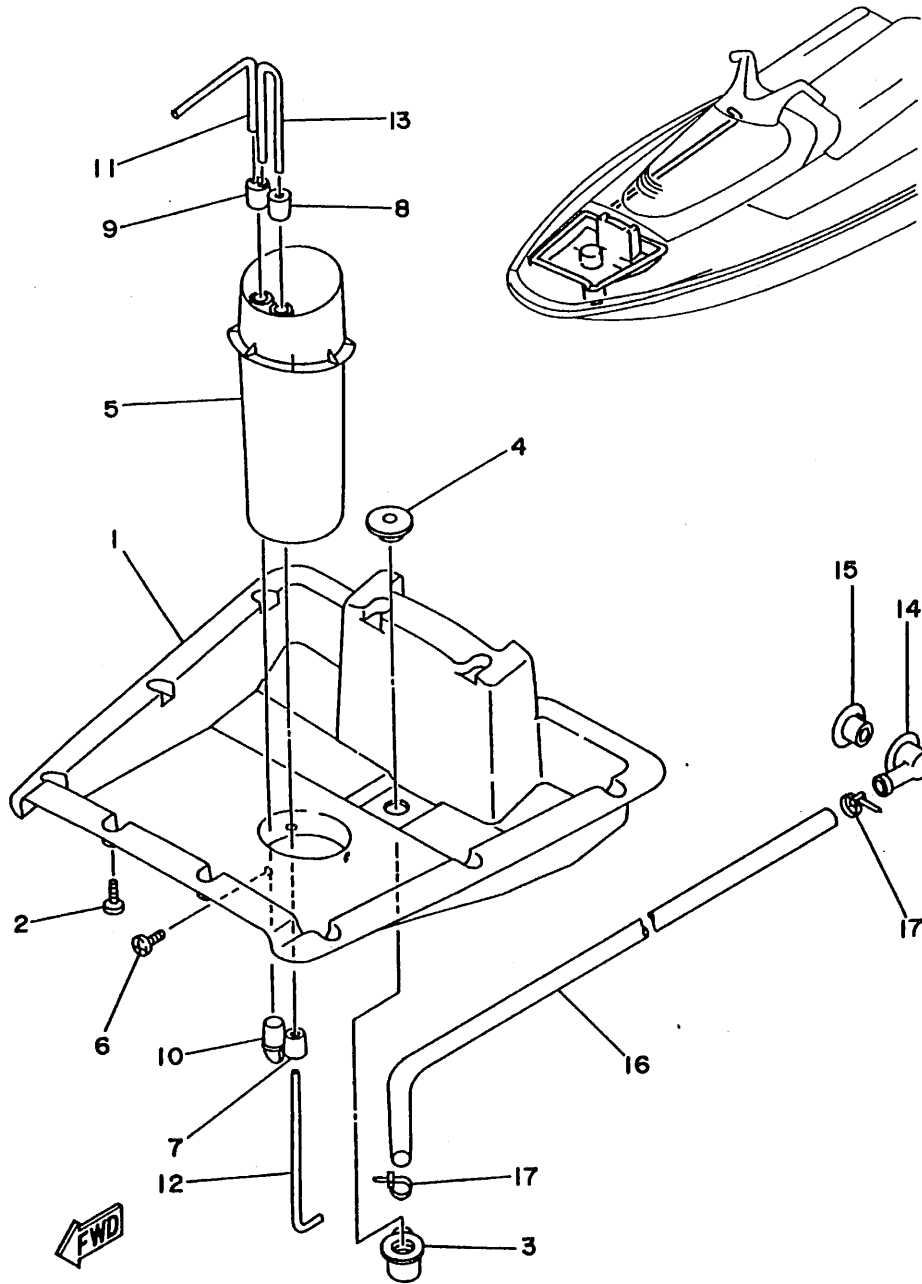


FN8FO10-3160

C11

FIG. 17 VENTILATION

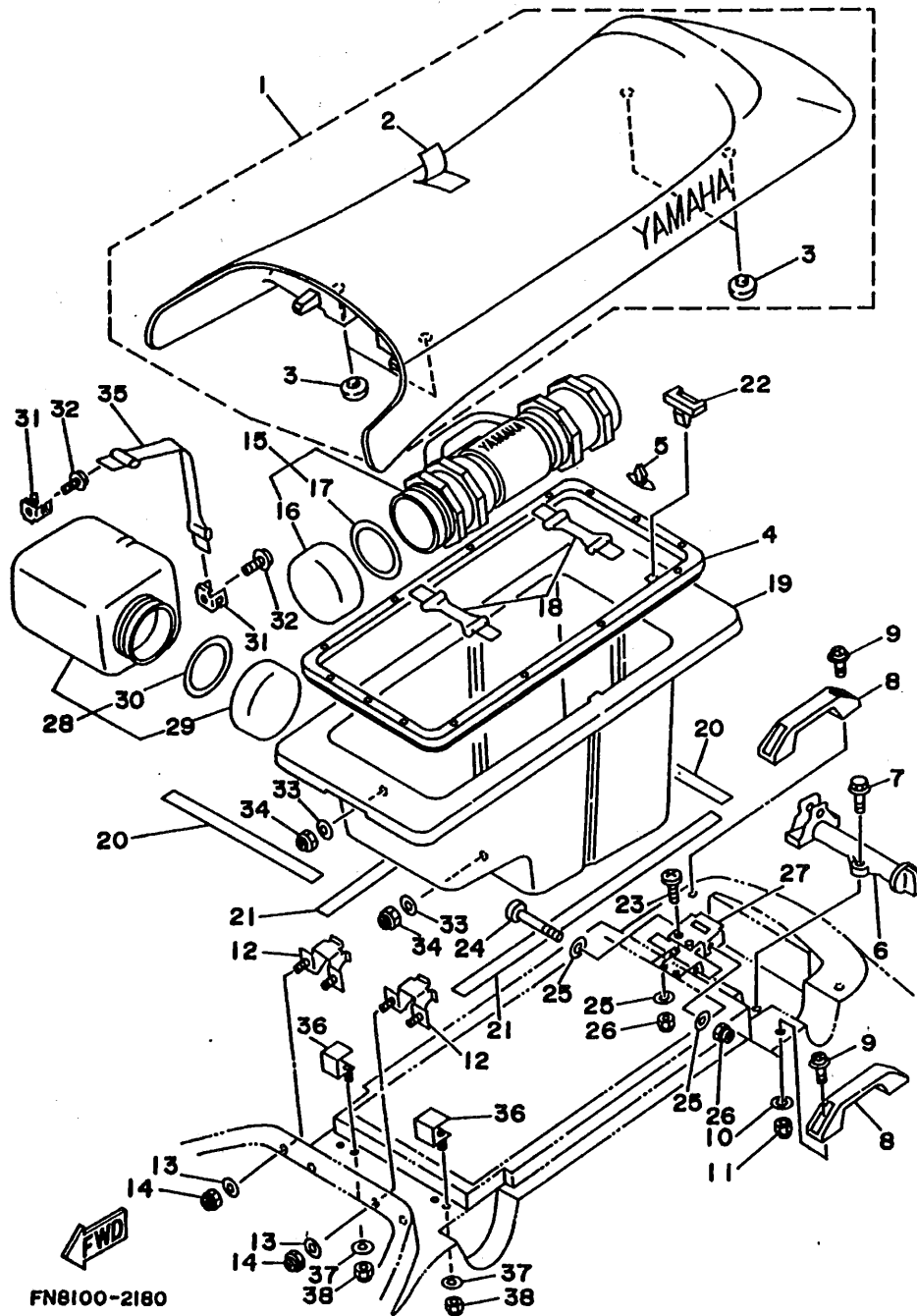
REF. NO.	PART NO.	DESCRIPTION	Q'TY	REMARKS
1	FN8-U2131-00	COVER, VENTILATION	1	YMUS
2	97780-50116	SCREW, TAPPING	10	
3	FN8-6224E-00	BODY, DRAIN 3	1	
4	FN8-6224F-01	BODY, DRAIN 4	1	
5	EU0-U2149-40	PIPE, VENTILATION	1	YMUS
6	97780-40112	SCREW, TAPPING	3	
7	EU0-62155-00	CAP	1	
8	FN8-62155-00	CAP	1	
9	FN8-62155-30	CAP	1	
10	FN8-62155-50	CAP	1	
11	FN8-62156-00	ELBOW, VENTILATOR 11	1	
12	EU0-62156-32	ELBOW, VENTILATOR 12	1	
13	FN8-62156-40	ELBOW, VENTILATOR 13	1	
14	FN8-6224E-00	BODY, DRAIN 3	1	
15	FN8-6224F-01	BODY, DRAIN 4	1	
16	FN8-62249-00	HOSE, DRAIN	1	
17	90601-200U1	NYLON CLIP 1	2	YMUS



FN8FO10-3170

C12

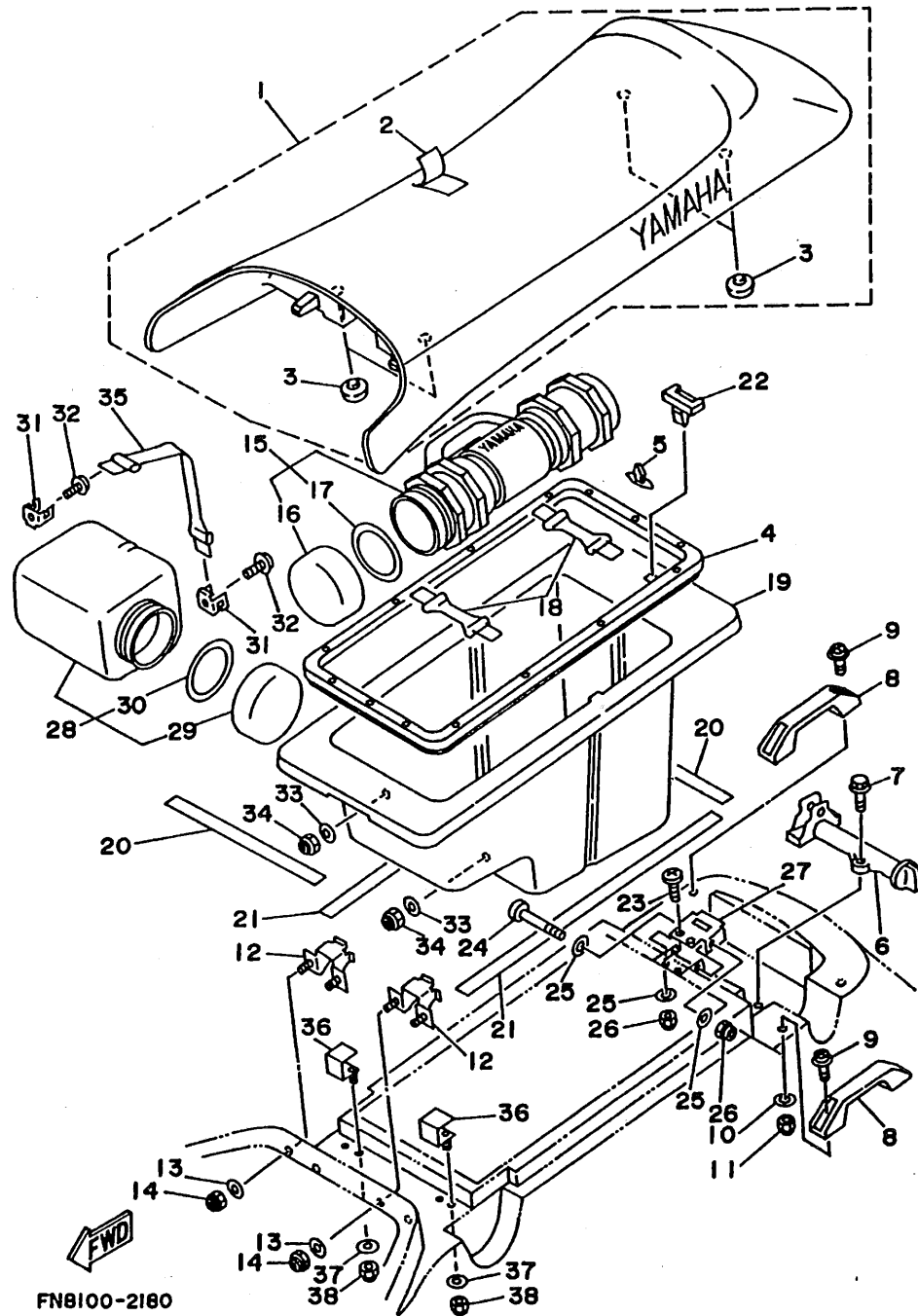
FIG. 18 SEAT-UNDER LOCKER



REF. NO.	PART NO.	DESCRIPTION	Q'TY	REMARKS
1	GDO-U371A-10	DOUBLE SEAT ASSY	1	YMUS
2	GDO-U371B-10	.COVER, SEAT 1	1	YMUS
3	1L9-24741-00	.PAD, SEAT	4	
4	FN8-U2663-00	PACKING 1	1	YMUS
5	90269-06916	RIVET	13	
6	FJ0-63850-30	SEAT LOCK ASSY	1	
7	90119-06900	BOLT, WITH WASHER	3	
8	GDO-6271B-00	GRIP, HAND	2	
9	90159-06904	SCREW, WITH WASHER	4	
10	92990-06200	WASHER, PLAIN	4	
11	95720-06300	NUT, SELF-LOCKING	4	
12	FN8-6378C-00	STAY, SEAT 1	2	
13	92990-06200	WASHER, PLAIN	4	
14	95720-06300	NUT, SELF-LOCKING	4	
15	EW2-65920-00	CASE 2 ASSY	1	
16	EW2-65912-30	.CAP, CASE	1	
17	EW2-65913-00	.PACKING, CASE	1	
18	EU0-67569-02	BAND, WATER LOCK	2	
19	FN8-U4742-00	LOCKER, UNDER 2	1	YMUS
20	FN8-6266B-00	PAKING 3	2	
21	FN8-6266C-00	PACKING 4	2	
22	FN8-65172-00	LOCK, LID	1	
23	98780-05020	SCREW, FLAT HEAD	2	
24	90149-05977	SCREW	1	
25	92990-05200	WASHER, PLAIN	4	
26	95720-05300	NUT, FLANGE	3	
27	FN8-U5174-00	HOOK, LID LOCK	1	YMUS
28	FN8-65910-00	CASE 1 ASSY	1	

FIG. 18 SEAT-UNDER LOCKER

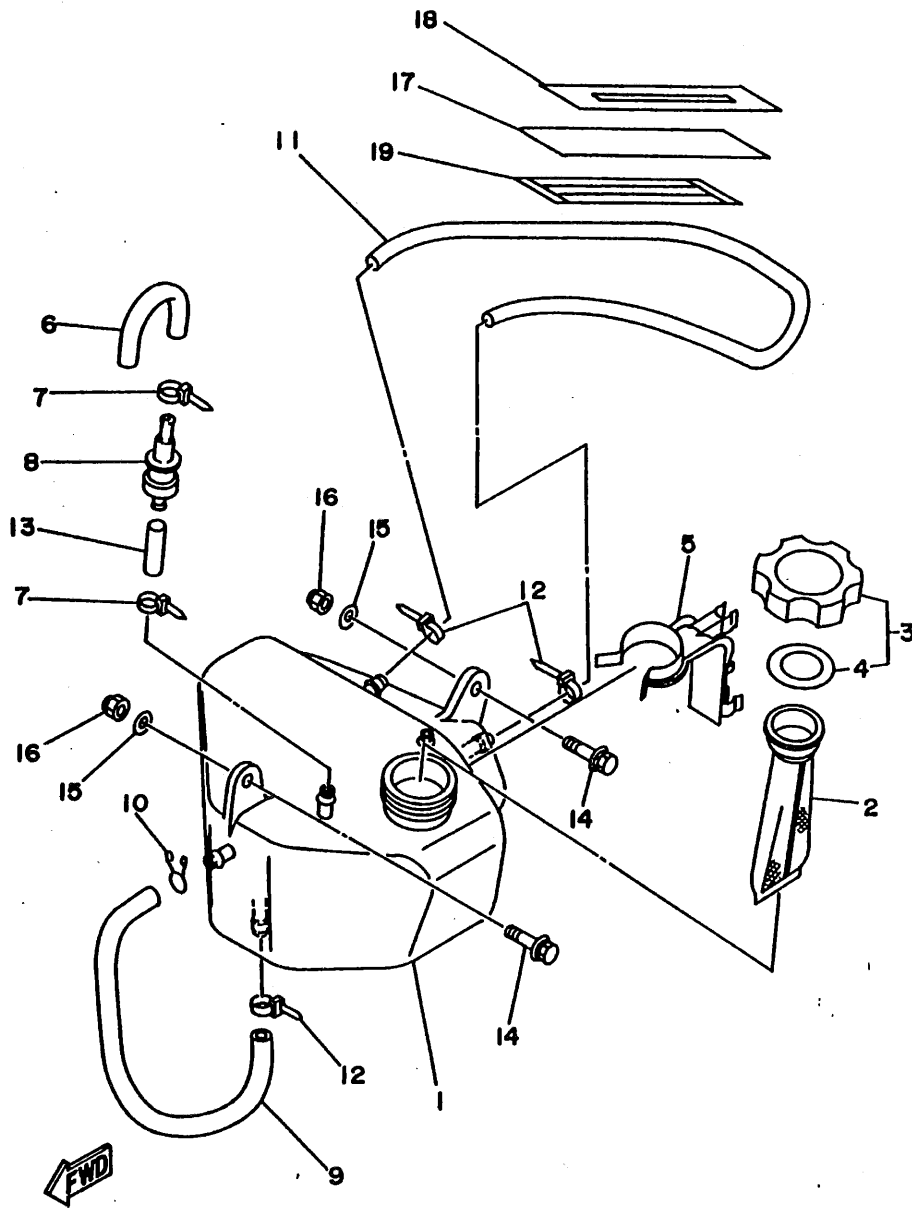
REF. NO.	PART NO.	DESCRIPTION	Q'TY	REMARKS
29	EW2-65912-00	.CAP, CASE	1	
30	EW2-65913-00	.PACKING, CASE	1	
31	EU0-65772-30	HOOK A	2	
32	90159-06901	SCREW, WITH WASHER	2	
33	90201-06931	WASHER, PLATE	2	
34	95720-06300	NUT, SELF-LOCKING	2	
35	FJ0-67569-00	BAND	1	
36	FN8-64744-00	GUIDE	2	
37	92990-05200	WASHER, PLAIN	4	
38	95720-05300	NUT, FLANGE	4	



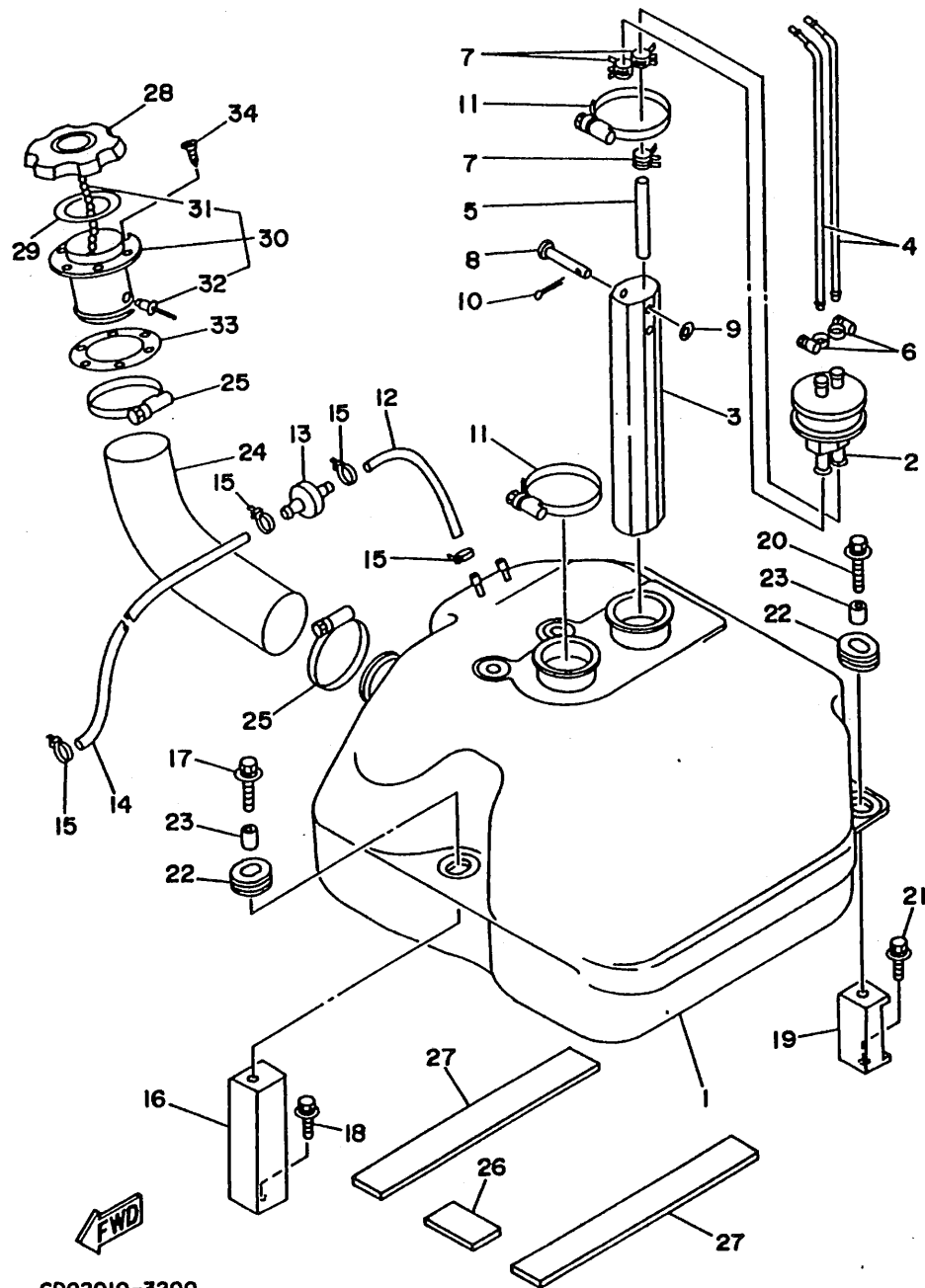
FN8100-2180

FIG. 19 OIL TANK

REF. NO.	PART NO.	DESCRIPTION	Q'TY	REMARKS
1	FN8-67751-00	TANK, OIL	1	
2	FJ0-67752-00	FILTER	1	
3	FJ0-67840-00	OIL TANK CAP ASSY	1	
4	FJ0-67841-00	.PACKING, OIL CAP	1	
5	FN8-13173-00	HOLDER, OIL PIPE 2	1	
6	FJ0-62158-00	HOSE	1	
7	90465-11M10	CLAMP	2	
8	FJ0-67766-00	ROLL OVER VALVE	1	
9	90446-11905	HOSE	1	
10	90467-11019	CLIP	1	
11	90446-09904	HOSE	1	
12	90465-11M10	CLAMP	3	
13	90445-09901	HOSE	1	
14	90119-06924	BOLT, WITH WASHER	2	
15	90201-065F3	WASHER, PLATE	2	
16	95720-06300	NUT, SELF-LOCKING	2	
17	FN8-67753-00	LEVEL GAUGE 1	1	
18	FN8-64189-00	LABEL, OIL GAUGE	1	
19	90654-91004	TAPE	1	



FN81110-1190



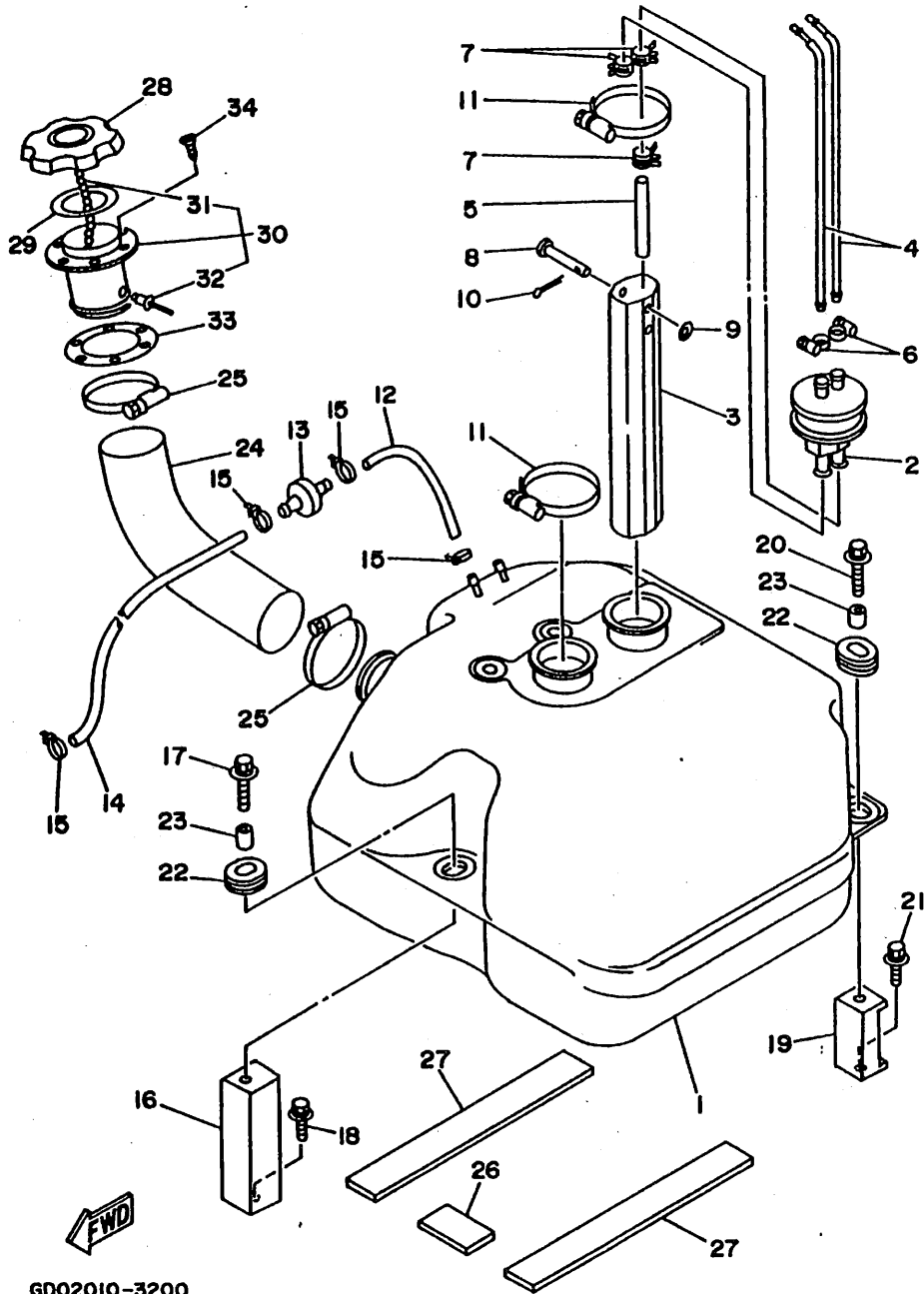
G002010-3200

FIG. 20 FUEL TANK

REF. NO.	PART NO.	DESCRIPTION	Q'TY	REMARKS
1	FN8-67711-01	TANK, FUEL	1	
2	FJ0-67713-00	PIPE, JOINT	1	
3	FN8-67716-00	SLEEVE 1	1	
4	FN8-67714-00	PIPE, SUCTION 3	2	
5	90445-11900	HOSE	1	
6	90601-11062	BAND, HOSE 11	2	
7	90467-11044	CLIP	3	
8	91790-05040	PIN, CLEVIS	1	
9	92990-05600	WASHER, PLATE	1	
10	91490-16010	PIN, COTTER	1	
11	90601-162U5	BAND, HOSE 62	2	YMUS
12	EU0-67856-00	HOSE, AIR VENT 1	1	
13	EU0-67767-30	CHECK, VALVE	1	
14	EU0-67856-30	HOSE, AIRVENT 1	1	
15	90465-11M10	CLAMP	4	
16	FN8-67777-00	FIX, FUEL TANK	1	
17	90119-08916	BOLT, WITH WASHER	1	
18	90119-08903	BOLT, WITH WASHER	1	
19	FN8-67777-31	FIX, FUEL TANK	2	
20	90119-08916	BOLT, WITH WASHER	2	
21	90119-08903	BOLT, WITH WASHER	2	
22	90480-19906	GROMMET	3	
23	90387-08904	COLLAR	3	
24	FN8-U7844-00	HOSE	1	YMUS
25	90601-155U4	BAND, HOSE 55	2	YMUS
26	FN8-U7593-00	MAT	1	UR YMUS
	FN8-67593-00	MAT	1	UR FOR JAPAN
27	FN8-U7593-30	MAT	2	UR YMUS

FIG. 20 FUEL TANK

REF. NO.	PART NO.	DESCRIPTION	Q'TY	REMARKS
27	FN8-67593-30	MAT	2	UR FOR JAPAN
28	FN8-67831-00	CAP, FUEL FILLER	1	
29	EU0-67832-00	PACKING 1	1	
30	FN8-W6783-00	SOCKET COMP.	1	
31	EU0-67835-00	.CHAIN BALL	1	
32	90267-40935	.RIVET, BLIND	1	
33	EU0-67834-00	PACKING, FUEL FILLER	1	
34	FN8-U7869-00	SCREW, FLAT HEAD	6	



GD02010-3200

D3

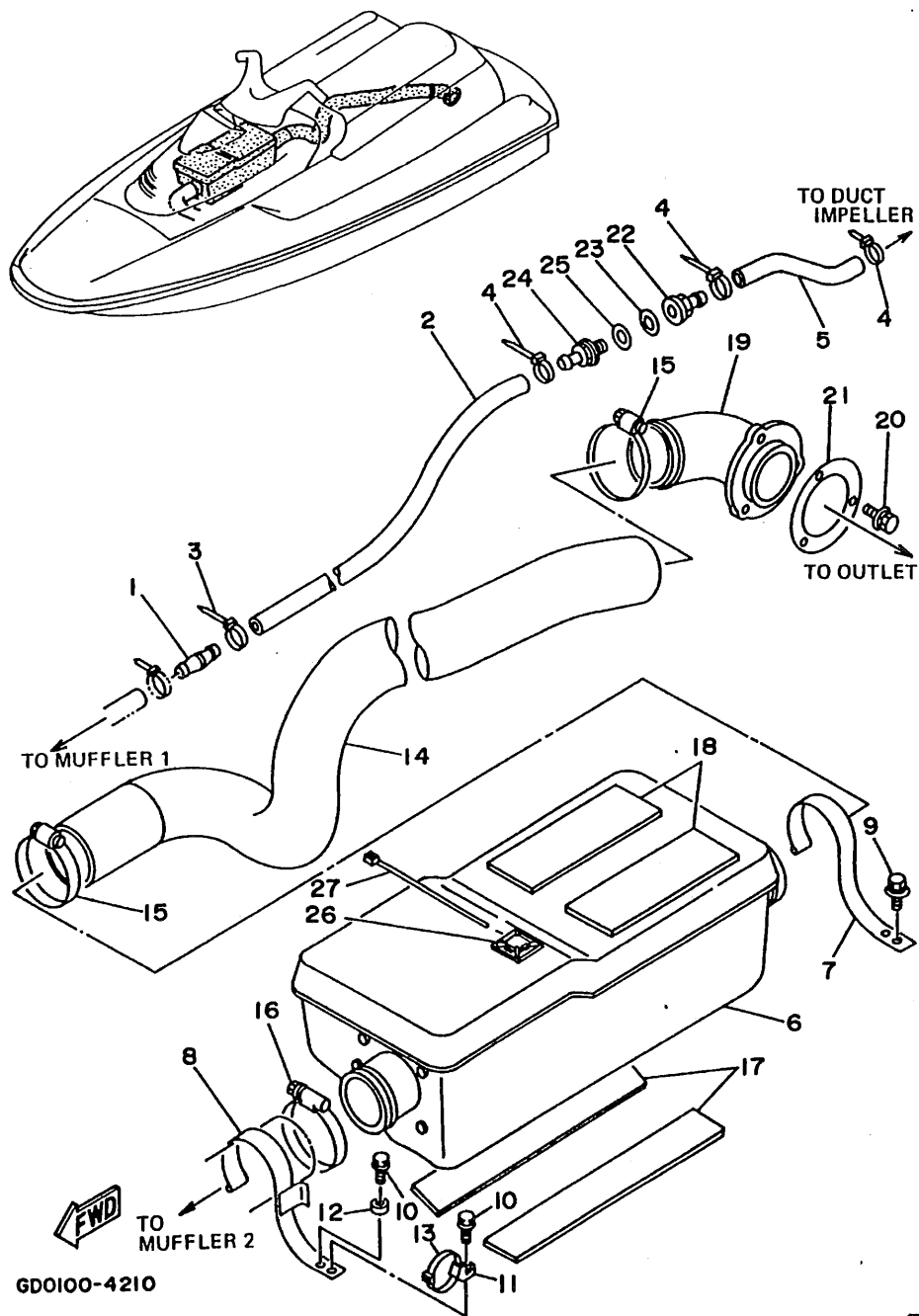
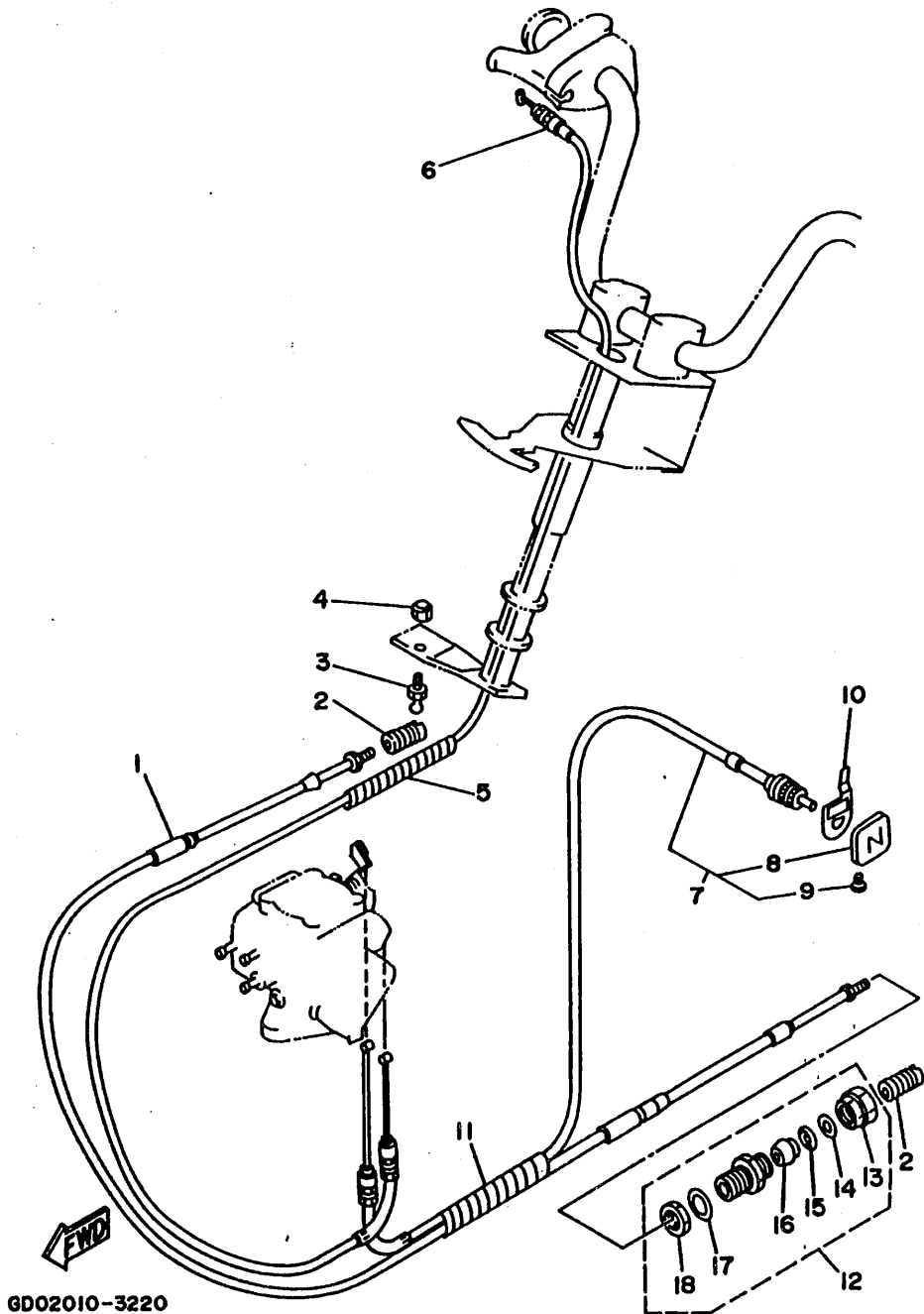


FIG. 21 EXHAUST 2

REF. NO.	PART NO.	DESCRIPTION	Q'TY	REMARKS
1	6M6-51142-00	CONNECTION	1	
2	90445-14M15	HOSE	1	
3	90465-13M11	CLAMP	1	
4	90465-13M11	CLAMP	3	
5	90445-14M17	HOSE	1	
6	GDO-U7550-00	WATER LOCK	1	YMUS
7	FN8-67559-00	CLIP, HOSE EXHAUST	1	
8	GDO-6755K-00	CLIP, EXHAUST HOSE	1	
9	90119-06913	BOLT, WITH WASHER	2	
10	90119-06908	BOLT, WITH WASHER	2	
11	90600-90005	BASE, CLAMP	1	
12	90387-06912	COLLAR	1	
13	90465-13M11	CLAMP	1	
14	GDO-U7555-00	HOSE	1	YMUS
15	90601-168U7	BAND, HOSE 68	2	YMUS
16	90601-179U8	BAND, HOSE 79	1	YMUS
17	EU0-U7593-30	MAT 2	2	YMUS
18	EU0-U7593-50	MAT	2	YMUS
19	FN8-67565-01	THRU-HULL	1	
20	90119-05912	BOLT, WITH WASHER	3	
21	FN8-U7525-00	PACKING	1	YMUS
22	90604-80757	CONNECTION, THRU-HULL 1/4	1	
23	90430-13909	GASKET	1	
24	90604-80758	CONNECTION, THRU-HULL 1/4	1	
25	90430-13909	GASKET	1	
26	90600-90004	BASE, CLAMP	1	
27	90601-20015	NYLON CLIP 1	1	

FIG. 22 CONTROL CABLE

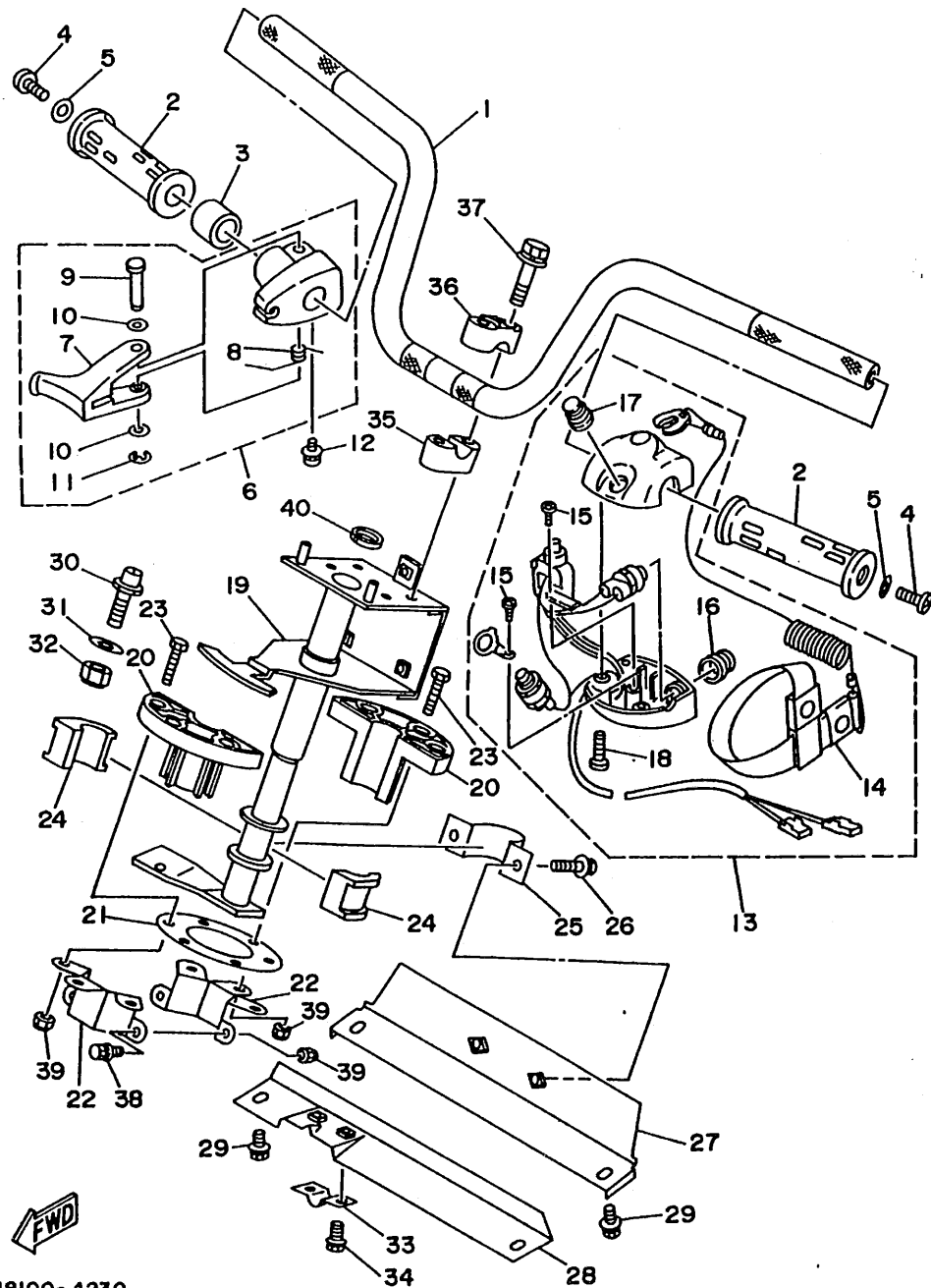
REF. NO.	PART NO.	DESCRIPTION	Q'TY	REMARKS
1	FN8-U1481-00	CABLE, STEERING	1	YMUS
2	EU0-U1461-30	SHAFT, JOINT BALL	2	UR YMUS
	EU0-61461-30	SHAFT, JOINT BALL	2	UR FOR JAPAN
3	EU0-U1461-01	STUD, JOINT BALL	1	UR YMUS
	EU0-61461-01	STUD, JOINT BALL	1	UR FOR JAPAN
4	95720-06300	NUT, SELF-LOCKING	1	
5	90699-U1100	SPIRAP, 11	1	YMUS
6	EU0-67252-02	CABLE, THROTTLE 1	1	
7	FN8-U7242-00	CABLE, CHOKE	1	YMUS
8	EW2-67243-00	.KNOB	1	
9	90149-03930	.SCREW	1	
10	FN8-67243-00	PLATE, CHOKE	1	
11	90699-36U02	SPIRAP, 11	1	YMUS
12	EU0-67267-00	CONNECTOR, CABLE	1	
13	EU0-62694-00	.CAP	1	
14	EU0-61446-00	.WASHER 30	1	
15	EU0-61486-00	.STOPPER	1	
16	EU0-61435-00	.SEAL, PIPE 30	1	
17	EU0-61438-00	.PACKING (C)	1	
18	EU0-62241-30	.NUT, DRAIN 1	1	



GD02010-3220

D5

FIG. 23 STEERING 1

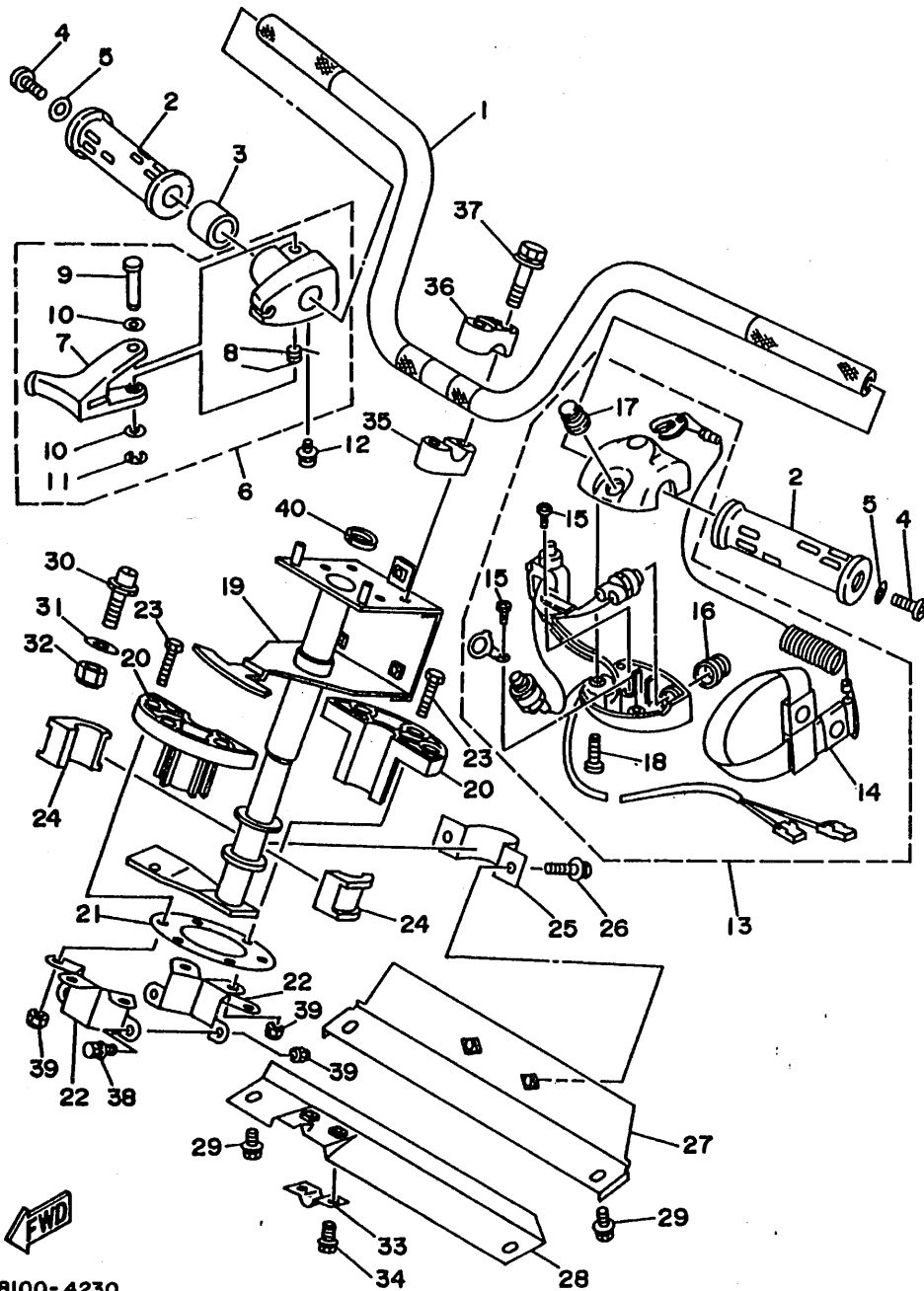


FN8100-4230

REF. NO.	PART NO.	DESCRIPTION	Q'TY	REMARKS
1	FN8-U1552-00	HANDLE	1	YMUS
2	EW2-61553-00	GRIP, HANDLE 1	2	
3	90560-22281	SPACER	1	
4	90149-05959	SCREW	2	
5	90201-05928	WASHER, PLATE	2	
6	EW2-67250-00	THROTTLE LEVER ASSY	1	
7	EW2-67255-00	.LEVER, THROTTLE	1	
8	EW2-67256-00	.SPRING	1	
9	EW2-67257-00	.SHAFT	1	
10	EW2-67258-00	.WASHER	2	
11	EW2-67259-00	.E-RING	1	
12	90159-05900	SCREW, WITH WASHER	1	
13	FK7-68310-06	SWITCH BOX ASSY	1	
14	EW2-68348-00	.LANYARD, STOP SWITCH	1	
15	98580-03008	.SCREW, PAN HEAD	2	
16	FK7-68312-02	.STOP BUTTON COMP.	1	
17	FK7-68313-01	.START BUTTON COMP.	1	
18	98580-05525	.SCREW, PAN HEAD	2	
19	FN8-61541-01	COLUMN, STEERING	1	
20	EU0-61417-00	COLUMN, STEERING	2	
21	EU0-61439-30	SEAL, RUBBER	1	
22	FN8-61588-01	JOINT, BEARING 1	2	
23	97395-06030	BOLT	6	
24	8F3-23812-00	PLANE BEARING, STEERING	2	
25	EU0-61588-00	JOINT, BEARING	1	
26	90119-08903	BOLT, WITH WASHER	2	
27	FN8-61433-00	BRACKET, BEARING	1	
28	FN8-61467-00	BRACKET, STOPPER CABLE	1	

D6

FIG. 23 STEERING 1



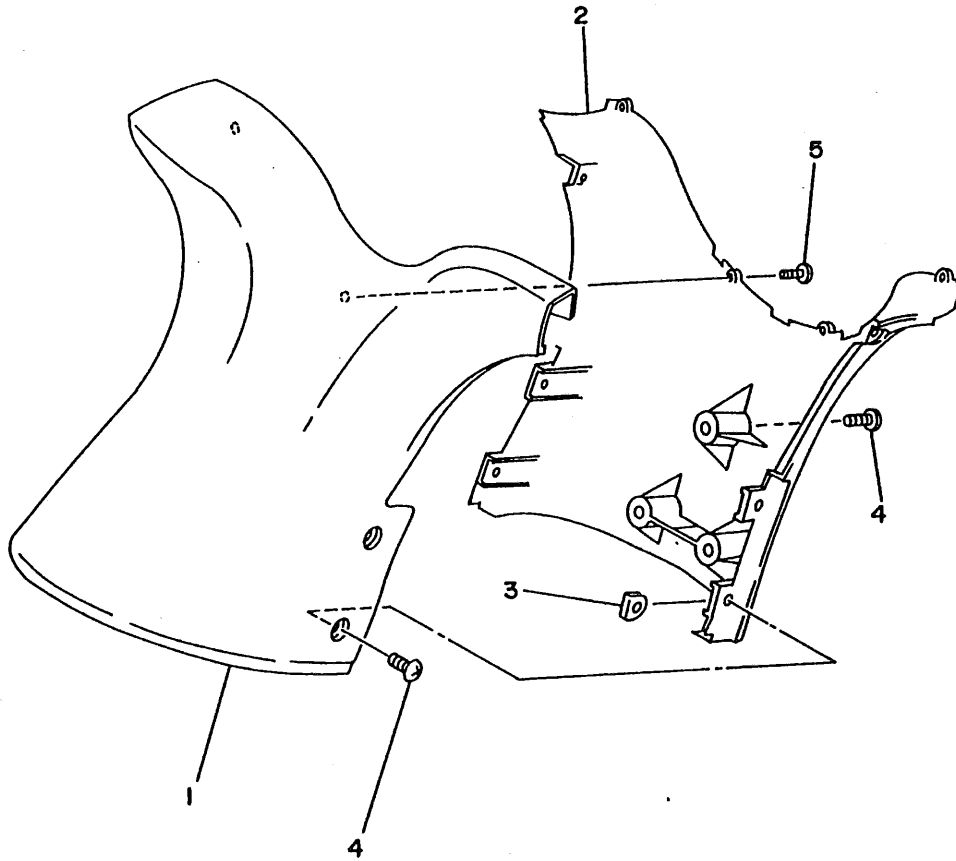
REF. NO.	PART NO.	DESCRIPTION	Q'TY	REMARKS
29	90119-08903	BOLT, WITH WASHER	4	
30	FN8-6131B-00	PIN, STOPPER	2	
31	92990-10200	WASHER, PLAIN	2	
32	95720-10300	NUT	2	
33	EU0-U1468-00	STOPPER CABLE	1	UR YMUS
	EU0-61468-00	STOPPER CABLE	1	UR FOR JAPAN
34	90119-06926	BOLT, WITH WASHER	2	
35	EU0-23814-01	HOLDER, HANDLE LOWER	2	
36	EU0-23814-30	HOLDER, HANDLE UPPER	2	
37	90119-08925	BOLT, WITH WASHER	4	
38	90119-06913	BOLT, WITH WASHER	2	
39	95720-06300	NUT, SELF-LOCKING	8	
40	EU0-61469-00	PACKING, STEERING COLUMN	1	

FN8100-4230

D7

FIG. 24 STEERING 2

REF. NO.	PART NO.	DESCRIPTION	Q'TY	REMARKS
1	FN8-6143D-40	PAD, STEERING 1	1	
2	FN8-6143E-40	PAD, STEERING 2	1	
3	FJ0-61432-00	NUT	4	
4	90149-05990	SCREW	7	
5	90149-03989	SCREW	6	

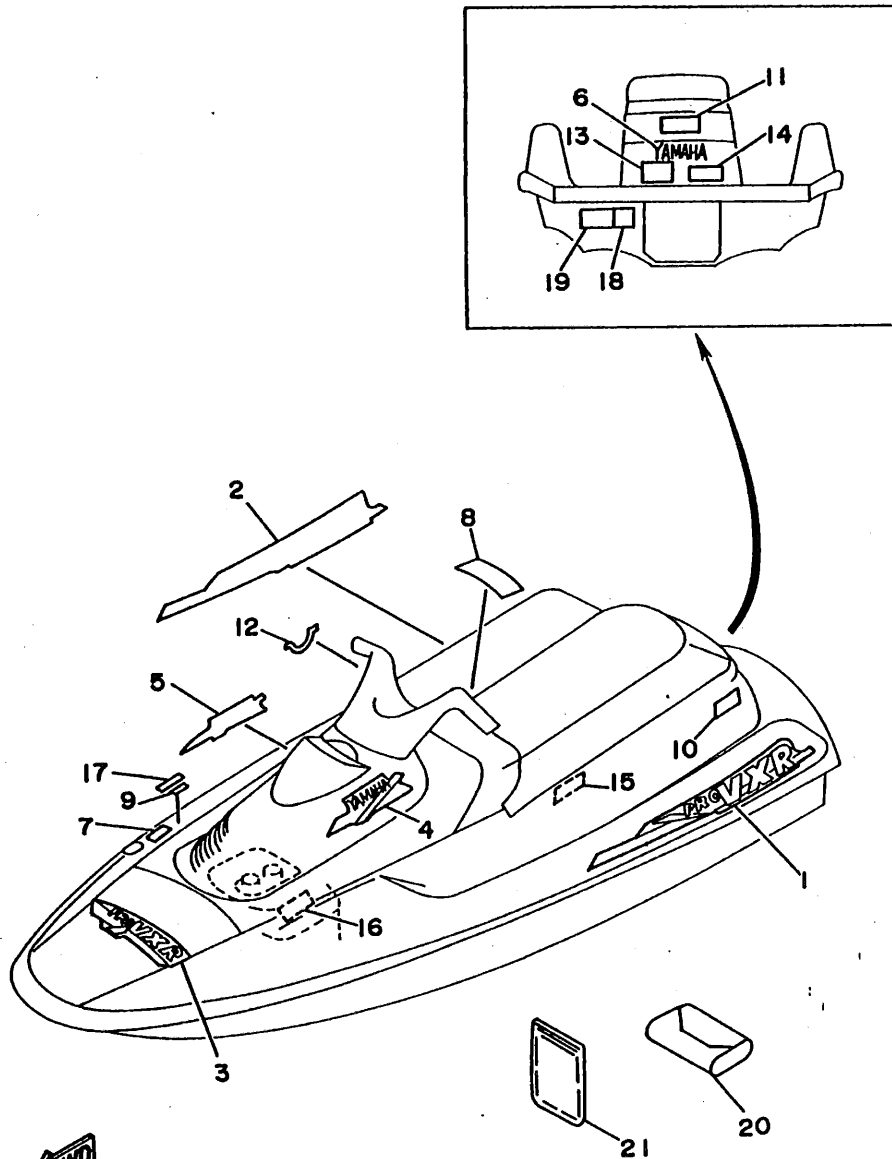


FN81110-1240

D8

FIG. 25 GRAPHIC 1. TOOL (FOR USA)

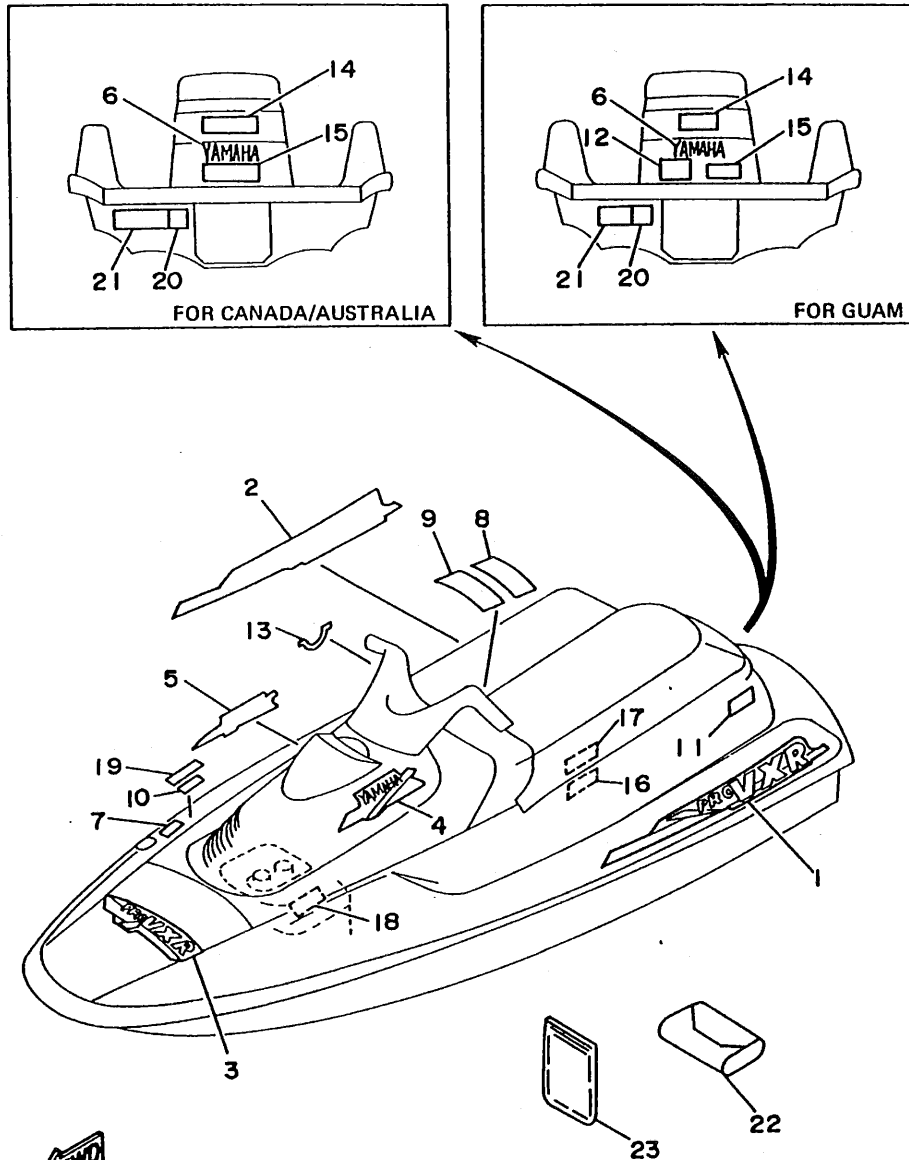
REF. NO.	PART NO.	DESCRIPTION	Q'TY	REMARKS
1	GDO-6417B-50	GRAPHIC 1	1	
2	GDO-6417B-60	GRAPHIC 1	1	
3	GDO-6417C-50	GRAPHIC 2	1	
4	GDO-64121-50	EMBLEM 1	1	
5	GDO-64121-60	EMBLEM 1	1	
6	99231-00160	EMBLEM, YAMAHA	1	
7	GDO-U416B-00	LABEL, WARNING (FUEL)	1	
8	GDO-6416C-00	LABEL, WARNING 1	1	
9	GDO-U416F-00	LABEL, WARNING 4	1	
10	GDO-U419B-00	LABEL 1	1	
11	GDO-U418E-00	LABEL, USCG	1	
12	GDO-6419C-00	LABEL 2	1	
13	GDO-U419D-00	LABEL 3	1	
14	GDO-U418G-00	LABEL, CAUTION (DRAIN)	1	
15	EUO-U418B-00	LABEL, CAUTION (BATTERY)	1	
16	FN8-64183-A0	LABEL, CAUTION 9	1	
17	GDO-U418J-00	LABEL, CAUTION (OIL)	1	
18	GDO-U418F-00	LABEL, RIGHTING	1	
19	GDO-U416G-00	LABEL, WARNING 5	1	
20	EUO-28100-01	TOOL ASSY	1	
21	EUO-65901-01	BAG, VINYL	1	



GDO100-4250

D9

FIG. 26 GRAPHIC 2. TOOL (FOR CANADA, AUSTRALIA, GUAM)



REF. NO.	PART NO.	DESCRIPTION	Q'TY	REMARKS
1	GDO-6417B-50	GRAPHIC 1	1	
2	GDO-6417B-60	GRAPHIC 1	1	
3	GDO-6417C-50	GRAPHIC 2	1	
4	GDO-6412I-50	EMBLEM 1	1	
5	GDO-6412I-60	EMBLEM 1	1	
6	99231-00160	EMBLEM, YAMAHA	1	
7	GA7-6416B-20	LABEL, WARNING (FUEL)	1	
8	GDO-6416C-10	LABEL, WARNING 1	1	
9	GDO-6416C-20	LABEL, WARNING 1	1	
10	GA7-6416F-20	LABEL, WARNING 4	1	
11	GDO-6419B-10	LABEL 1	1	
12	GDO-U418E-00	LABEL, USCG	1	FOR GUAM
13	GDO-6419C-00	LABEL 2	1	
14	GA7-6419D-20	LABEL 3	1	
15	GDO-6418G-10	LABEL, CAUTION (DRAIN)	1	
16	EU0-U418B-00	LABEL, CAUTION (BATTERY)	1	
17	FJ0-64183-M0	LABEL, CAUTION 11	1	
18	FN8-64183-A0	LABEL, CAUTION 9	1	
19	GA7-6418J-20	LABEL, CAUTION (OIL)	1	
20	GDO-U418F-00	LABEL, RIGHTING	1	
21	GDO-6416G-10	LABEL, WARNING 5	1	
22	EU0-28100-01	TOOL ASSY	1	
23	EU0-65901-01	BAG, VINYL	1	

GDO100-4260

D10

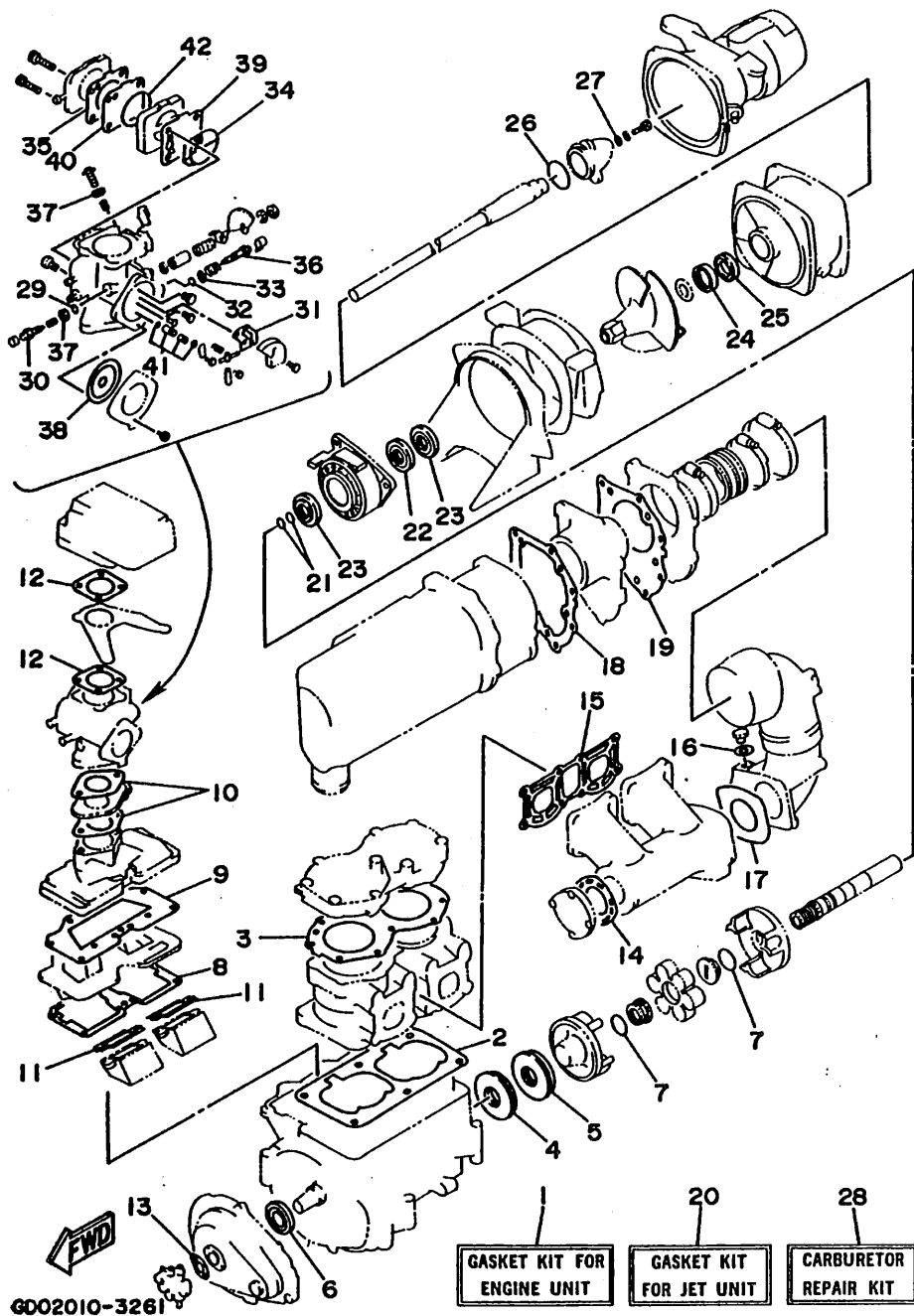


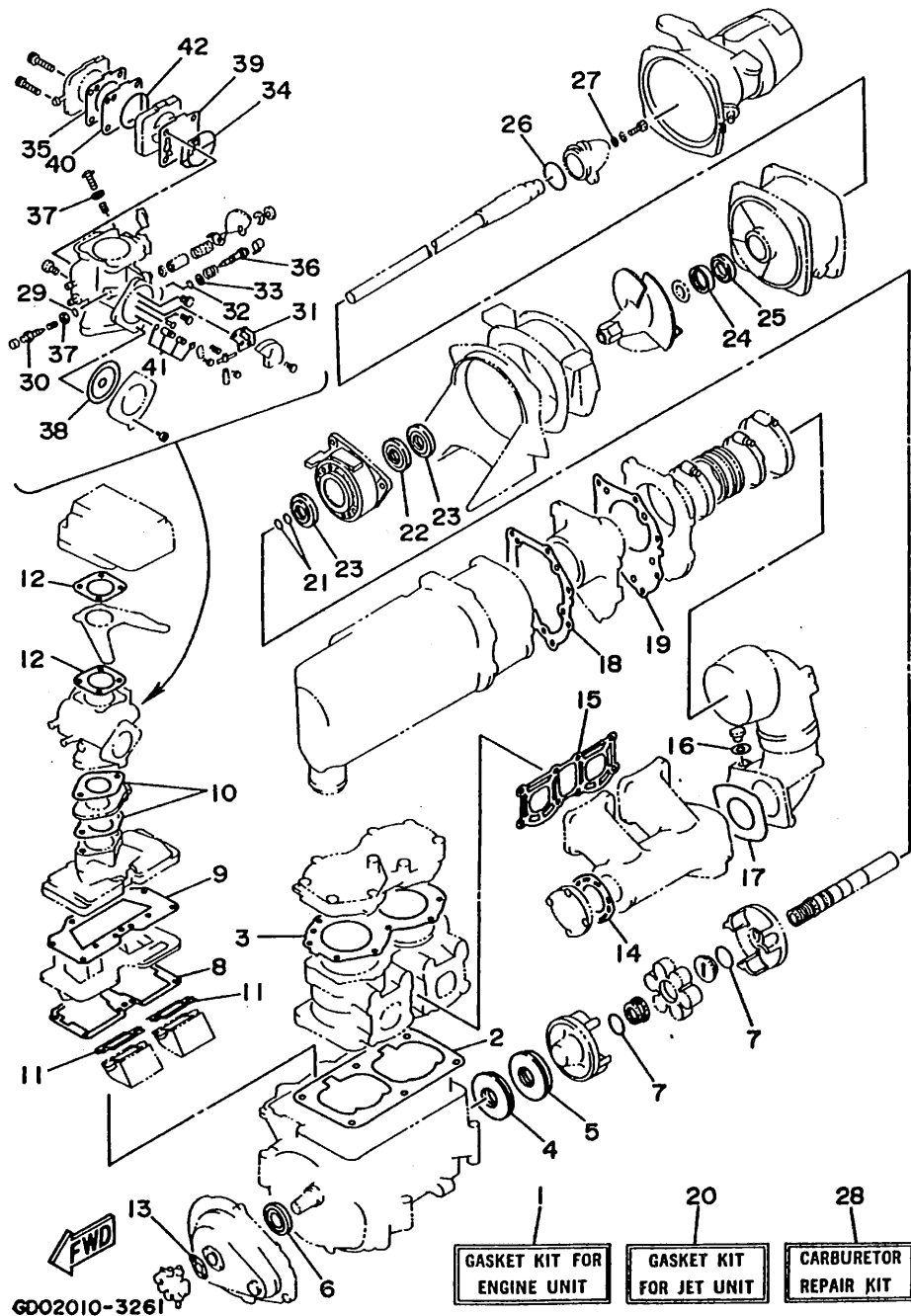
FIG. 27 GASKET KIT

REF. NO.	PART NO.	DESCRIPTION	Q'TY	REMARKS
1	61X-W0001-00	GASKET KIT	1	FOR ENGINE UNIT
2	6M6-11351-A1	.GASKET, CYLINDER	1	
3	61X-11181-A0	.GASKET, CYLINDER HEAD 1	1	
4	93102-36M33	.OIL SEAL	1	
5	93101-36M46	.OIL SEAL	1	
6	93103-32M01	.OIL SEAL	1	
7	93210-30M31	.O-RING	2	
8	61X-13566-A0	.GASKET	1	
9	61X-13563-A0	.GASKET	1	
10	6M6-13556-A1	.GASKET, MANIFOLD	2	
11	61X-13621-A0	.GASKET, VALVE SEAT	2	
12	6M6-13674-A1	.GASKET, AIR COOLER COVER 1	2	
13	6R8-13116-A0	.GASKET, PUMP CASE	1	FOR OIL INJECTION
14	6M6-14739-A1	.GASKET, MUFFLER DAMPER 1	2	
15	61X-14613-A0	.GASKET, EXHAUST PIPE	1	
16	90430-08020	.GASKET	1	
17	6R7-14749-A0	.GASKET, MUFFLER DAMPER 2	1	
18	6R7-14755-A0	.GASKET, SILENCER	1	
19	6R7-41114-A0	.GASKET, EXHAUST OUTER COVER	1	
20	61X-W0001-20	GASKET KIT	1	FOR JET UNIT
21	93210-17MA4	.O-RING	2	
22	93101-25M52	.OIL SEAL	1	
23	93101-25M54	.OIL SEAL	2	
24	93102-25M34	.OIL SEAL	1	
25	93101-25M50	.OIL SEAL	1	
26	93210-46M16	.O-RING	1	
27	90430-06M03	.GASKET	1	
28	6M6-W0093-12	CARBURETOR REPAIR KIT	1	

D11

FIG. 27 GASKET KIT

REF. NO.	PART NO.	DESCRIPTION	Q'TY	REMARKS
29	6K8-14562-00	.O-RING	1	
30	6K8-14946-10	.PLATE, NEEDLE FITTING	1	
31	6K8-14536-11	.GASKET	1	
32	583-14561-00	.O-RING	1	
33	6K8-14537-00	.GASKET	1	
34	6K8-14564-00	.O-RING	1	
35	6K8-24431-20	.GASKET, FUEL PUMP 1	1	
36	6M6-14923-10	.SCREW, PILOT	1	
37	6K8-14559-00	.WASHER	2	
38	6R7-14541-00	.DIAPHRAGM, PUMP	1	
39	6K8-24411-20	.DIAPHRAGM	1	
40	6K8-24421-10	.VALVE, CHECK	1	
41	61X-14916-15	.NEEDLE	1	
42	6K8-14563-00	.O-RING	1	



NUMERICAL INDEX

PART NO.	GRID NO.	PART NO.	GRID NO.	PART NO.	GRID NO.	PART NO.	GRID NO.	PART NO.	GRID NO.	PART NO.	GRID NO.
GDO-E4752-00	B-11	FN8-U7844-00	D- 2	61L-14255-00	B- 9	61L-14625-00	B-11	EU0-28100-01	D-10	EU0-61461-30	D- 5
EU0-U1461-01	D- 5	FN8-U7869-00	D- 3	61X-14283-01	B- 5	61X-14711-01-9M	B-10	6E0-28193-00-94	B- 3	FN8-61467-00	D- 6
EU0-U1461-30	D- 5	EU0-U8221-00	C- 6	6R8-14284-00-98	B- 6	61L-14712-00-9M	B-10	626-28193-01-94	B- 3	EU0-61468-00	D- 7
EU0-U1468-00	D- 7	61X-W0001-00	D-11	61X-14301-01	B- 7	6M6-14718-01-9M	B-10	6R7-41113-00-9M	B-11	EU0-61469-00	D- 7
FN8-U1481-00	D- 5	61X-W0001-20	D-11	6K8-14435-00	B- 6	6R7-14721-00-9M	B-10	6R7-41114-A0	B-11	EU0-61486-00	D- 5
FN8-U1552-00	D- 6	61X-W0004-00	B- 5	6M6-14451-00	B- 6	6M6-14739-A1	B-10		D-11	FN8-61541-01	D- 6
FN8-U2131-00	C-12	61X-W0090-01-4D	B- 2	6K8-14471-00	B- 7		D-11	6R7-42316-00	B-13	EW2-61553-00	D- 6
EU0-U2149-40	C-12	6M6-W0093-12	D-11	6K8-14481-10	B- 8	6R7-14749-A0	B-10	6M6-44517-00-5B	B- 3	FN8-61588-01	D- 6
FN8-U2501-00	C-10	FN8-W6783-00	D- 3	6H1-14485-00	B- 6		B- 2	61L-44532-00	B- 2	EU0-61588-00	D- 6
FN8-U2512-10	C-10	61X-11111-00-94	B- 2	6R7-14485-00	B- 2	6R7-14753-00-9M	B-10	663-45119-00	B- 5	FN8-61624-00	C- 8
FN8-U2519-10	C-10	61X-11181-A0	B- 2		B-10	6R7-14755-A0	B-11	61X-45332-00-9M	B-15	FN8-61651-00	C-10
FN8-U2663-00	C-13		D-11	6K8-14503-02	B- 7		D-11	61L-45378-00	B-15	EU0-61652-00	C- 8
FN8-U2664-00	C- 7	61X-11311-00-94	B- 2	6M6-14503-00	B- 7	6M6-14771-00-94	B-11	61X-45511-00	B-13		C-10
FN8-U3580-01	C-10	6E5-11325-00	B- 2	6K8-14521-10	B- 7	6R7-14785-00-9M	B-11	6M6-45526-00	B- 4	EW2-62136-01	C- 7
GDO-U371A-10	C-13	6M6-11351-A1	B- 2	6M6-14521-00	B- 7	61X-14916-15	B- 7	61X-4581J-00	B- 4	EU0-62155-00	C- 6
GDO-U371B-10	C-13		D-11	6K8-14523-11	B- 7		D-12	6M6-45813-10-9M	B- 4		C-12
GDO-U416B-00	D- 9	6E5-11372-00	B- 6	6K8-14527-11	B- 7	6M6-14923-10	B- 8	6R7-45813-11-9M	B- 4	FN8-62155-00	C-12
GDO-U416F-00	D- 9	61X-11400-01	B- 4	6M6-14527-02-4D	B- 5		D-12	6R7-51117-01	B-13	FN8-62155-30	C-12
GDO-U416G-00	D- 9	61X-11603-00	B- 4	6K8-14531-00	B- 8	6K8-14926-10	B- 7	6K8-51129-00	B- 2	FN8-62155-50	C-12
EU0-U418B-00	D- 9	61X-11604-00	B- 4	6K8-14533-00	B- 8	6K8-14930-00	B- 7		B-10	EU0-62156-32	C- 6
	D-10	61X-11605-00	B- 4	6K8-14534-10	B- 7	6K8-14946-10	B- 7		B-10		C-12
GDO-U418E-00	D- 9	61X-11631-00-93	B- 4	6K8-14536-11	B- 7		D-12	6M6-5114E-00	B- 4	FN8-62156-00	C-12
	D-10	61X-11633-00	B- 4		D-12	61X-15100-00-94	B- 2	6R7-5114E-01	B- 4	FN8-62156-40	C-12
GDO-U418F-00	D- 9	61X-11635-00	B- 4	6K8-14537-00	B- 8	6R7-15761-00	B-10	6M6-51142-00	D- 4	FN8-62156-50	C- 6
	D-10	61X-11636-00	B- 4		D-12	6R7-21415-00-94	B- 2	61X-51162-00	C- 8	FJO-62158-00	C-15
	D- 9	6R8-13116-A0	B- 9	6R7-14541-00	B- 8	6R7-21425-00-94	B- 2	61L-51311-01	B-13	FN8-6224E-00	C-12
GDO-U418G-00	D- 9		D-11		D-12	6R8-21733-00	B- 9	6R7-51312-00-94	B-13		C-12
GDO-U418J-00	D- 9	FN8-13173-00	C-15	6R7-14542-00	B- 8	6R8-21734-00	B- 9	61L-51313-00	B-13	FN8-6224F-01	C-12
GDO-U419B-00	D- 9	6R3-13183-00	B- 9	6K8-14547-01	B- 7	8F3-23812-00	D- 6	61L-51315-00-94	B-13		C-12
GDO-U419D-00	D- 9	61X-13200-00	B- 9	6K8-14556-10	B- 7	EU0-23814-01	D- 7	61X-51318-00-5B	B-13	EU0-62241-30	D- 5
FN8-U4742-00	C-13	61X-13555-00-94	B- 5	6K8-14559-00	B- 7	EU0-23814-30	D- 7	62E-51321-00	B-13	FN8-62249-00	C-12
GDO-U516H-00-PI	C- 7	6M6-13556-A1	B- 5		D-12	6R8-24377-00	B- 9	61X-51323-00	B-15	EU0-62280-00	C- 8
FN8-U5162-00	C- 7		D-11	583-14561-00	B- 8	61L-24378-00	B- 9	6R7-51326-00-94	B-13	EU0-62282-00	C- 8
FN8-U5174-00	C-13	61X-13563-A0	B- 5		D-12	650-24378-00	B- 5	61X-51333-00-5B	B-13	EU0-62283-00	C- 8
FN8-U5193-00	C- 7		D-11	6K8-14562-00	B- 7	6K8-24411-20	B- 8	61X-51381-00	B-15	EU0-62285-01	C- 8
FN8-U7242-00	D- 5		B- 5		D-12		D-12	61X-51673-00	C- 8	FN8-62513-30	C-10
EU0-U7354-00-01	B- 3	61X-13566-A0	B- 5	6K8-14563-00	B- 8	6R7-24412-01	B- 7	61L-5169A-00	B- 5	FN8-62513-40	C-10
EU0-U7354-00-03	B- 3		D-11		D-12	6M6-24413-00	B- 8	FN8-6131B-00	D- 7	FN8-6266B-00	C-13
EU0-U7354-00-05	B- 3	61X-13610-01	B- 5	6K8-14564-00	B- 8	6K8-24421-10	B- 8	EU0-61417-00	D- 6	FN8-6266C-00	C-13
EU0-U7354-00-10	B- 3	61X-13621-A0	B- 5		D-12		D-12	FN8-6143D-40	D- 8	FN8-6269B-00	C- 8
EU0-U7354-00-20	B- 3		D-11		B- 7	6K8-24431-20	B- 8	FN8-6143E-40	D- 8	EU0-62694-00	D- 5
FN8-U7525-00	D- 4	61X-13641-00-94	B- 5	6R7-14569-00	B- 7		D-12	FJO-61432-00	D- 8	GDO-6271B-00	C-13
GDO-U7550-00	D- 4	6M6-13674-A1	B- 6	6K8-14579-00	B- 7		B- 8	FN8-61433-00	D- 8	GDO-6273A-00	B-14
GDO-U7555-00	D- 4		D-11	6K8-14589-00	B- 8	6K8-24452-10	B- 8	EU0-61435-00	D- 6	FK7-62732-00	B-14
EU0-U7593-30	D- 4	3G2-14231-23-A0	B- 7	6K8-14591-10	B- 7	6K8-24500-02	B-12	EU0-61438-00	D- 5	FN8-62840-00	C- 7
EU0-U7593-50	D- 4	830-14231-23	B- 7	6R7-14596-01	B- 7	6K8-24524-10	B-12	EU0-61439-30	D- 6	FN8-62843-00	C- 7
FN8-U7593-00	D- 2	61L-14243-00	B- 5	61X-14613-A0	B-10	6K8-24560-10	B-12	EU0-61446-00	D- 5	EW2-62845-00	C- 7
FN8-U7593-30	D- 2	6R7-14253-00	B- 8		D-11	1L9-24741-00	C-13	EU0-61461-01	D- 5	EW2-62846-00	C- 7
EW2-U7812-00	B-12	6R7-14255-00	B- 6	61L-14615-00	B-11	EU0-28100-01	D- 9		D- 5		

NUMERICAL INDEX

PART NO.	GRID NO.	PART NO.	GRID NO.	PART NO.	GRID NO.	PART NO.	GRID NO.	PART NO.	GRID NO.	PART NO.	GRID NO.
EW2-62847-00	C- 7	GDO-67249-00-05	B-15	EU0-67856-30	D- 2	6M6-85520-00	C- 2	90149-05959	D- 6	90387-06912	D- 4
EW2-62848-00	C- 7	GDO-67249-00-10	B-15	FJO-67856-40	C- 6	6M6-85533-00	C- 2	90149-05970	C- 7	90387-08M06	B-14
FN8-62884-00	C- 7	EW2-67250-00	D- 6	EW2-68156-00	C- 5	61X-85540-01	C- 4	90149-05977	C-13	90387-08M10	B- 2
FN8-62891-00	C- 7	EU0-67252-02	D- 5	GDO-6820A-00	C- 6	6R7-85550-00	C- 2	90149-05990	D- 8	90387-08904	D- 2
FN8-62892-00	C- 7	EW2-67255-00	D- 6	GDO-6820A-10	C- 6	6R7-85560-00	C- 2	90149-06967	C-10	90430-06M03	B-13
FN8-6378C-00	C-13	EW2-67256-00	D- 6	EW2-68211-00	C- 6	61L-85570-00	C- 4	90149-06968	C-10		D-11
FJO-63850-30	C-13	EW2-67257-00	D- 6	EU0-68218-04	C- 6	6M6-85580-00	C- 2		C-10	90430-08020	B-10
GDO-64121-50	D- 9	EW2-67258-00	D- 6	EU0-68221-30	C- 6	90105-05M46	B- 5	90149-06971	C-10		D-11
	D-10	EW2-67259-00	D- 6	GDO-68238-00	C- 6	90105-05M53	B- 5	90149-06973	C-10	90430-13909	C- 8
GDO-64121-60	D- 9	EU0-67267-00	D- 5	GDO-68248-00	C- 6	90105-06903	C- 5	90149-06975	C-10		C- 8
	D-10	EU0-67324-00	B- 3	FK7-68310-06	D- 6	90105-10M45	B-11	90149-06976	C-10		D- 4
GA7-6416B-20	D-10	EW2-67354-00-01	B-14	FK7-68312-02	D- 6	90105-10M49	B-11	90159-05900	D- 6		D- 4
GDO-6416C-00	D- 9	EW2-67354-00-03	B-14	FK7-68313-01	D- 6	90109-10M47	C- 2	90159-06901	C- 7	90445-07M19	B- 2
GDO-6416C-10	D-10	EW2-67354-00-05	B-14	EW2-68348-00	D- 6	90116-08M14	B- 5		C- 7	90445-09M23	B-15
GDO-6416C-20	D-10	EW2-67354-00-10	B-14	FN8-68838-01	B-15	90119-05912	D- 4		C-14	90445-09M28	B- 9
GA7-6416F-20	D-10	GDO-6755K-00	D- 4	GDO-6884E-00	B-14	90119-06MA1	B-11	90159-06904	C-13	90445-09901	C-15
GDO-6416G-10	D-10	FN8-67559-00	D- 4	6M6-8132W-00	C- 4	90119-06M70	B-13	90170-22M11	B-12	90445-10M33	B-12
GDO-6417B-50	D- 9	FN8-67565-01	D- 4	6R8-81337-00-9M	C- 2	90119-06900	C-13	90179-06926	C- 7	90445-10M48	B- 5
	D-10	EU0-67569-02	C-13	6M6-81365-A0	C- 2	90119-06908	C- 2	90179-06947	D- 4	90445-10M59	B-12
GDO-6417B-60	D- 9	FJO-67569-00	C-14	6M6-81800-10	C- 3	90119-06913	C- 3	90179-08927	D- 4	90445-10M60	B-12
	D-10	FN8-6759B-10	C-10	3AJ-81809-00	C- 3			90179-10925	D- 7	90445-10M61	B-12
GDO-6417C-50	D- 9	FN8-6759B-20	C-10	6M6-81820-00	C- 3	90119-06920	C- 6	90201-05925	C- 6	90445-10M62	B-12
	D-10	FN8-6759C-10	C-10	6M6-81826-00	C- 3	90119-06924	C-15		D- 7	90445-11M24	B- 9
GDO-6418G-10	D-10	FN8-6759C-20	C-11	6M6-8183E-00	C- 3	90119-06926	D- 7	90201-05928	D- 7	90445-11M27	B- 9
GA7-6418J-20	D-10	FN8-67593-00	D- 2	6M6-81830-00	C- 3	90119-06929	B-14	90201-06M02	B-14	90445-11900	D- 2
FJO-64183-M0	D-10	FN8-67593-30	D- 3	6M6-81840-10	C- 3		B-14	90201-065F3	C-15	90445-14M06	B-10
FN8-64183-A0	D- 9	GDO-6761D-00	C- 8	11H-81844-00	C- 3	90119-06930	B-14	90201-06931	C-14	90445-14M15	D- 4
	D-10	EW2-67618-00	C- 8	6M6-81844-00	C- 4	90119-06931	B-14	90201-08M04	B- 2	90445-14M17	D- 4
FN8-64189-00	C-15	FN8-67711-01	D- 2	26H-81847-00	C- 3	90119-08M19	B- 2	90201-20M04	B- 4	90445-14M19	C- 8
GDO-6419B-10	D-10	FJO-67713-00	D- 2	6M6-81850-00	C- 3	90119-08M55	B- 2	90201-24M02	B- 4	90445-19M00	C- 8
GDO-6419C-00	D- 9	FN8-67714-00	D- 2	6M6-81921-00	C- 4	90119-08M69	B- 2	90209-20M20	B-13	90445-19M01	C- 8
	D-10	FN8-67716-00	D- 2	6G1-81941-10	C- 4	90119-08M73	B-10	90267-40935	D- 3	90446-07M14	B- 9
GA7-6419D-20	D-10	FN8-67751-00	C-15	6M6-81952-01	C- 4	90119-08038	B- 3	90267-489UE	C- 5	90446-07M17	B- 9
FN8-64744-00	C-14	FJO-67752-00	C-15	6M6-81960-A0	C- 4	90119-08903	D- 2	90267-489U1	C- 7	90446-07M35	B- 9
FN8-6516C-00	C- 7	FN8-67753-00	C-15	EU0-82110-77	C- 6		D- 2	90267-489U6	D- 2	90446-07M36	B- 9
FN8-65172-00	C-13	FJO-67766-00	C-15	6R7-82117-21	C- 5		D- 6	90267-489U7	D- 6	90446-09904	C-15
FN8-65578-00	C- 7	EU0-67767-30	D- 2	61L-82117-00	C- 6		D- 7	90267-489U8	D- 7	90446-11M33	B- 9
EU0-65772-30	C-14	FN8-67777-00	D- 2	61L-82117-10	C- 6	90119-08904	B- 3	90267-489U9	B- 3	90446-11905	C-15
EU0-65901-01	D- 9	FN8-67777-31	D- 2	6K8-82150-01	C- 4	90119-08907	B-15	90269-06916	C-13	90446-12M32	B- 9
	D-10	FN8-67816-00	B-12	61L-82351-00	C- 4	90119-08916	D- 2	90280-16053	C- 2	90446-14M34	B-10
FN8-65910-00	C-13	EU0-67817-00	B-12	61L-82352-00	C- 4		D- 2	90340-08M04	B-10	90446-20M31	B-10
EW2-65912-00	C-14	FN8-67831-00	D- 3	6R7-82361-00	C- 4	90119-08925	D- 7	90380-12M29	D- 7	90460-11M17	B- 6
EW2-65912-30	C-13	EU0-67832-00	D- 3	6K8-82370-11	C- 4	90119-10M07	B- 2		C- 2		B-15
EW2-65913-00	C-13	EU0-67834-00	D- 3	61X-82553-00	C- 4	90119-10M56	B- 2	90386-08006	B- 5	90460-25M09	C- 6
	C-14	EU0-67835-00	D- 3	6R7-82560-00	C- 5	90119-10M72	B-11		B-15	90460-64M15	B-11
EW2-65920-00	C-13	FJO-67840-00	C-15	6R7-85515-00	C- 2	90119-10906	B-14	90387-06M05	B- 6	90460-70M16	B-11
EW2-67243-00	D- 5	FJO-67841-00	C-15	6M6-8552A-00-98	C- 4	90149-03930	D- 5	90387-06M60	B-15	90460-90M11	B-11
FN8-67243-00	D- 5	EU0-67856-00	D- 2	6M6-8552E-00	C- 4	90149-03989	D- 8	90387-06M72	B- 9	90464-06M29	C- 4

NUMERICAL INDEX

PART NO.	GRID NO.	PART NO.	GRID NO.	PART NO.	GRID NO.	PART NO.	GRID NO.	PART NO.	GRID NO.	PART NO.	GRID NO.
90464-10M38	B- 5	90601-168U7	C- 7	92990-08100	B- 7	93606-12019	B- 2	97513-10580	B- 3		
90465-08M37	B- 9		D- 4	92990-08200	C- 5		B-13	97595-06525	B-15		
90465-08028	C- 4	90601-179U8	D- 4		C- 8		B-13		C- 2		
90465-11M10	B- 5	90601-200U1	C- 6	92990-08600	B- 5		C- 2	97780-40112	C-12		
	B- 9		C-12		B-10	94702-00195	C- 4	97780-50114	C- 8		
	B- 9	90601-20006	B-12		B-10	95380-05800	C- 7	97780-50116	C-12		
	B- 9		C- 5		C- 3	95380-06700	B-13	97780-50215	B-14		
	B-12		C- 6		C- 3		C- 3	97780-60520	B-14		
	B-12		C- 8	92990-10200	D- 7	95380-06800	C-10	97780-60525	C- 4		
	B-12	90601-20015	D- 4	92995-06100	C- 3		C-10	97902-04122	C- 2		
	C- 4	90601-20016	C- 6		C- 5		C-10	97902-05125	C- 2		
	C- 4	90604-80757	D- 4		C-10	95380-08600	B- 5	97980-05330	B- 7		
	C- 4	90604-80758	D- 4		C-10	95380-08700	B- 7	98503-06014	C- 4		
	C- 6	90604-80759	C- 8		C-10		C- 5	98580-03008	D- 6		
	C-15	90604-80775	C- 8	92995-08600	B-14	95720-05300	C- 6	98580-04008	C- 2		
	C-15	90654-91004	C-15	93101-25M50	B-13		C- 7	98580-04010	B-12		
	D- 2	90669-03003	C- 6		D-11		C- 7	98580-05020	C- 8		
90465-11M47	B- 9	90699-01100	D- 5	93101-25M52	B-15		C- 8	98580-05525	D- 6		
90465-12M53	B- 5	90699-36U02	D- 5		D-11		C-13	98580-06016	C- 2		
90465-13M11	B-10	91490-16010	D- 2	93101-25M54	B-15		C-14	98580-06030	C- 4		
	C- 5	91790-05040	D- 2		D-11	95720-06300	C-13	98680-04016	B- 2		
	C- 8	92903-06600	B- 6	93101-36M46	B- 4		C-13	98780-05020	C- 7		
	C- 8	92990-04600	B-12		D-11		C-14		C-13		
	C- 8	92990-05200	C- 6	93102-25M34	B-13		C-15	99231-00160	D- 9		
	D- 4		C- 9		D-11		D- 5		D-10		
	D- 4		C-13	93102-36M33	B- 4		D- 7				
	D- 4		C-14		D-11	95720-08300	C- 8				
	D- 4	92990-05600	D- 2	93103-32M01	B- 4	95720-10300	D- 7				
90467-06016	B- 2	92990-06200	C-10		D-11	97013-06035	B- 5				
90467-08M10	C- 6		C-10	93210-17MA4	B-15	97013-08025	B-10				
90467-11019	C-15		C-10		D-11	97095-06012	B-13				
90467-11044	D- 2		C-13	93210-30M31	B- 4	97095-06016	B-13				
90467-13M13	B-10		C-13		B- 4	97313-06016	B-10				
90480-05M61	B-13	92990-06600	B- 5		D-11	97313-06020	B- 5				
90480-06M43	C- 4		B- 5	93210-46M16	B-13		B- 6				
90480-06M69	B-15		B- 6		D-11	97313-06025	B-10				
90480-19906	D- 2		B- 9	93303-30601	B- 4	97313-08035	B-10				
90501-14M73	C- 3		B- 9	93305-205U0	B-15		C- 3				
90560-22281	D- 6		B-10	93306-205U0	B-13	97313-08040	C- 3				
90600-70069	C- 7		B-10	93306-307U1	B- 4	97395-06012	B- 9				
90600-90004	D- 4		B-11	93310-320U0	B- 4	97395-06016	B-11				
90600-90005	D- 4		B-13	93430-47M04	B-15		C- 5				
90600-91736	B-12		B-13	93440-80023	B- 4	97395-06030	D- 6				
	C- 5		C- 2	93450-21053	B- 4	97395-06035	B- 9				
90601-11062	D- 2		C- 2	93603-10049	B- 2	97395-06045	B- 6				
90601-152U3	B-15		C- 3	93604-07141	B- 2	97395-08018	B-14				
90601-155U4	D- 2		C- 4	93606-07M17	B-15	97513-10535	B- 2				
90601-162U5	D- 2		C- 4	93606-09M19	B-13	97513-10570	B- 2				

