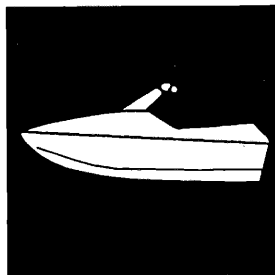


YAMAHA



PARTS CATALOGUE

WaveVenture

WVT1100V (GH34, GH35)

WVT1100 (GH35)

YAMAHA
GENUINE
Parts & Accessories

17GH3-100E2

FOREWORD

This Parts Catalogue is related to the parts for the model(s) in the below frame. When you are ordering replacement parts, please refer to this Parts Catalogue and quote both part numbers and part names correctly.

WVT1100V (GH34, GH35), WVT1100(GH35)

1. Modifications or additions which have been made after issue of the Parts Catalogue will be announced in the Yamaha Parts News. It is advisable that you make necessary corrections to the Parts Catalogue according to the Yamaha Parts News.

2. Abbreviations

The following abbreviations are used in this Parts Catalogue.

- "UR" Use specified parts number.
- "UN" Use as many as needed.
- "AP" Alternate Parts
- "LM" Local Made (Parts need to be ordered locally)
- "F#" Frame No. (Applicable machine No.)

3. Parts, which are to be supplied in an assembly, are listed with a dot (.) in front of the part name as shown below.

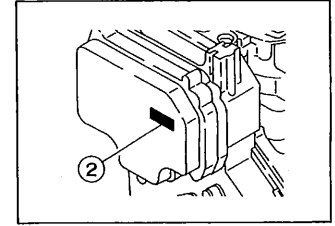
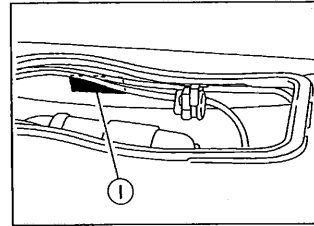
The numeral appearing to the right of each component part indicates the quantity of parts for each assembly unit.

EXAMPLE

PART NO.	DESCRIPTION	Q'TY	REMARKS
EU0-62280-00	DRAIN PLUG ASSY	2	
EU0-62282-00	. PLUG, DRAIN	1	

4. Applicable Serial No. and Color Code

① Hull Serial No.	(GH34) GH3-811211 ~
	(GH35) GH3-600301 ~
② Engine Serial No.	64T-012876 ~
	65A-000101 ~



Color Code	Color Name	Abbreviation
0240	PURE WHITE	PURW

5. Note that the illustrations are for reference in finding parts numbers, not to be used for assembling. When assembling, please use the applicable service manual.

6. A part with "YMUS" in the remarks column can be obtained from YMUS(USA) and not from YAMAHA MOTOR CO.,LTD (JAPAN).

EXAMPLE

PART NO.	DESCRIPTION	QTY	REMARKS
EW2-U5160-00	ENGINE HATCH COMP.	1	YMUS
90601-168U7	BAND, HOSE	1	YMUS

ADDRESS:

YAMAHA MOTOR CORPORATION U.S.A.
PARTS & ACCESSORY DIV.
6555 KATELLA AVENUE
CYPRESS, CALIFORNIA 90630, U.S.A.

CONTENTS

Cylinder. Crankcase	B2~B3
Crankshaft. Piston	B4
Intake	B5~B6
Carburetor	B7~B8
Oil Pump	B9
Exhaust 1	B10~B12
Fuel	B13~B14
Jet Unit 1	B15~C3
Jet Unit 2	C4~C5
Jet Unit 3	C6
Generator	C7
Starting Motor	C8
Electrical 1	C9~C11
Electrical 2	C12~C13
Engine Hatch	C14~C15
Hull. Deck	D2~D3
Gunwale. Mat	D4
Ventilation	D5
Seat - Under Locker	D6~D7
Oil Tank	D8

Fuel Tank	D9~D10
Exhaust 2	D11~D12
Control Cable	D13~D14
Steering 1	D15~E2
Steering 2	E3
Graphic 1. Tool (For USA)	E4
Graphic 2. Tool (For CANADA, FRANCE)	E5~E6
Repair Kit 1	E7~E8
Repair Kit 2	E9

INDEX

Numerical Index	M1~M4
-----------------------	-------

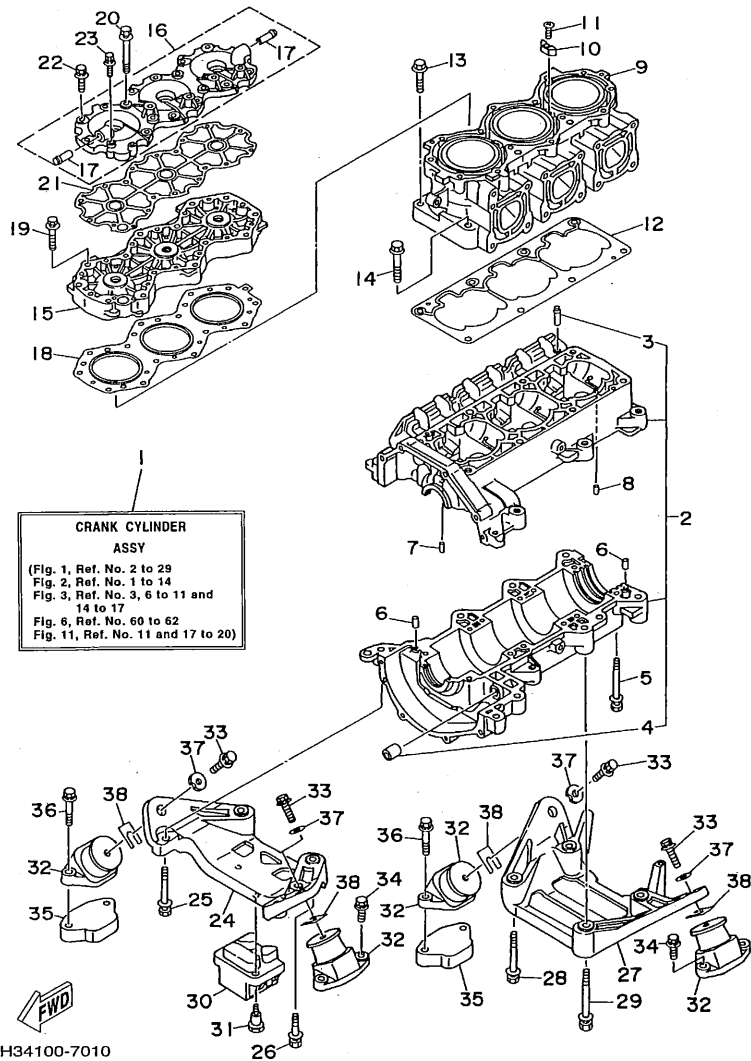


FIG. 1 CYLINDER. CRANKCASE

REF. NO.	PART NO.	DESCRIPTION	Q'TY	REMARKS
1	63M-W0090-01-4D	CRANK CYLINDER ASSY	1	
2	63M-15100-00-94	CRANKCASE ASSY	1	
3	62T-14251-00	.NIPPLE	1	
4	90380-12M29	.BUSH, SOLID	1	
5	90119-08M55	BOLT, WITH WASHER	12	
6	93606-12019	PIN, DOWEL	4	
7	93603-10049	PIN, DOWEL	7	
8	93604-07141	PIN, DOWEL	1	
9	63M-11311-00-94	CYLINDER 1	1	
10	6E5-11325-00	ANODE	2	
11	98780-04015	SCREW, FLAT HEAD	2	
12	63M-11351-01	GASKET, CYLINDER	1	
13	90105-10M63	BOLT, WASHER BASED	6	
14	90105-10M64	BOLT, WASHER BASED	2	
15	63M-11111-00-94	HEAD, CYLINDER 1	1	
16	63M-11191-00-94	COVER, CYLINDER HEAD 1	1	
17	6K8-51129-00	.NIPPLE	2	
18	63M-11181-00	GASKET, CYLINDER HEAD 1	1	
19	90119-08M19	BOLT, WITH WASHER	10	
20	90119-08M29	BOLT, WITH WASHER	4	
21	63M-11193-00	GASKET, HEAD COVER 1	1	
22	97513-08630	BOLT, WITH WASHER	13	
23	97513-06630	BOLT, WITH WASHER	2	
24	63M-21415-02-94	BRACKET, FRONT UPPER 1	1	
25	90119-10M02	BOLT, WITH WASHER	4	
26	90119-10M72	BOLT, WITH WASHER	1	
27	63M-21425-00-94	BRACKET, REAR UPPER 1	1	
28	90119-10M02	BOLT, WITH WASHER	2	

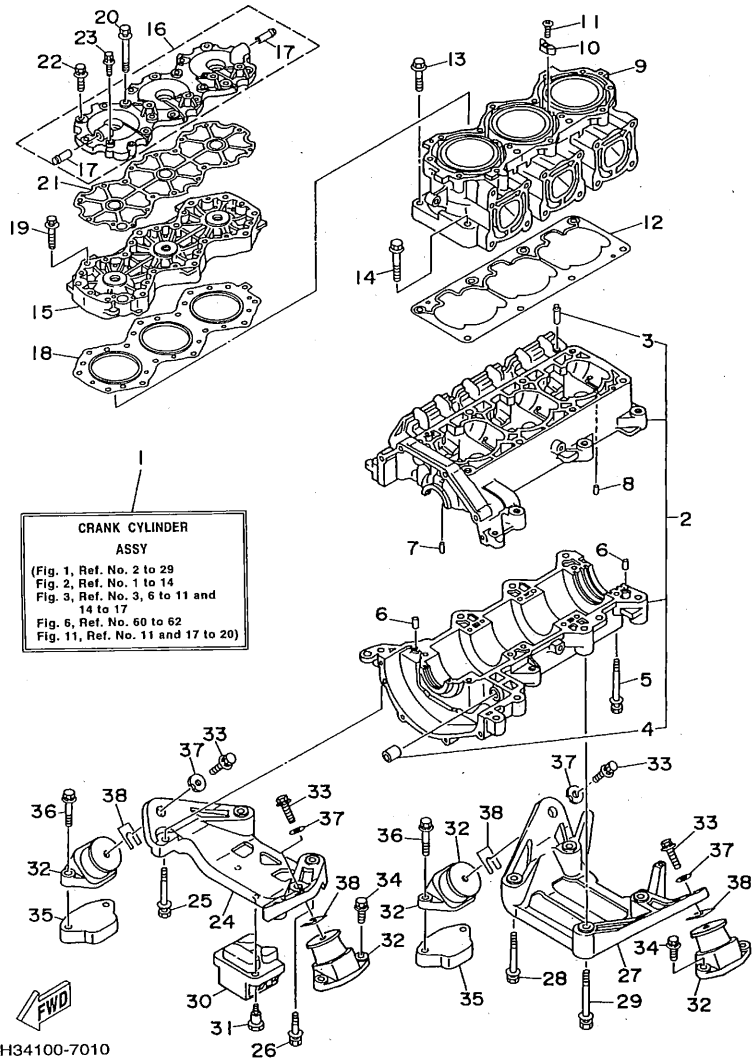


FIG. 1 CYLINDER. CRANKCASE

REF. NO.	PART NO.	DESCRIPTION	Q'TY	REMARKS
29	90119-10M03	BOLT, WITH WASHER	2	
30	64T-44532-00	STOPPER, UPPER MOUNT	1	
31	90109-06M70	BOLT	2	
32	63M-44517-01-5B	MOUNT RUBBER	4	
33	90119-08943	BOLT, WITH WASHER	4	
34	90119-089U1	BOLT, WITH WASHER	4	YMUS
35	GJ1-6721B-00	SPACER, ENGINE MOUNT	2	
36	90119-08904	BOLT, WITH WASHER	4	
37	EU0-67324-00	PLATE	4	
38	EU0-U7354-00-01	SHIM (T=0.1)	10	UR YMUS
	EU0-U7354-00-03	SHIM (T=0.3)	10	UR YMUS
	EU0-U7354-00-05	SHIM (T=0.5)	10	UR YMUS
	EU0-U7354-00-10	SHIM (T=1.0)	10	UR YMUS
	EU0-U7354-00-20	SHIM (T=2.0)	10	UR YMUS

B3

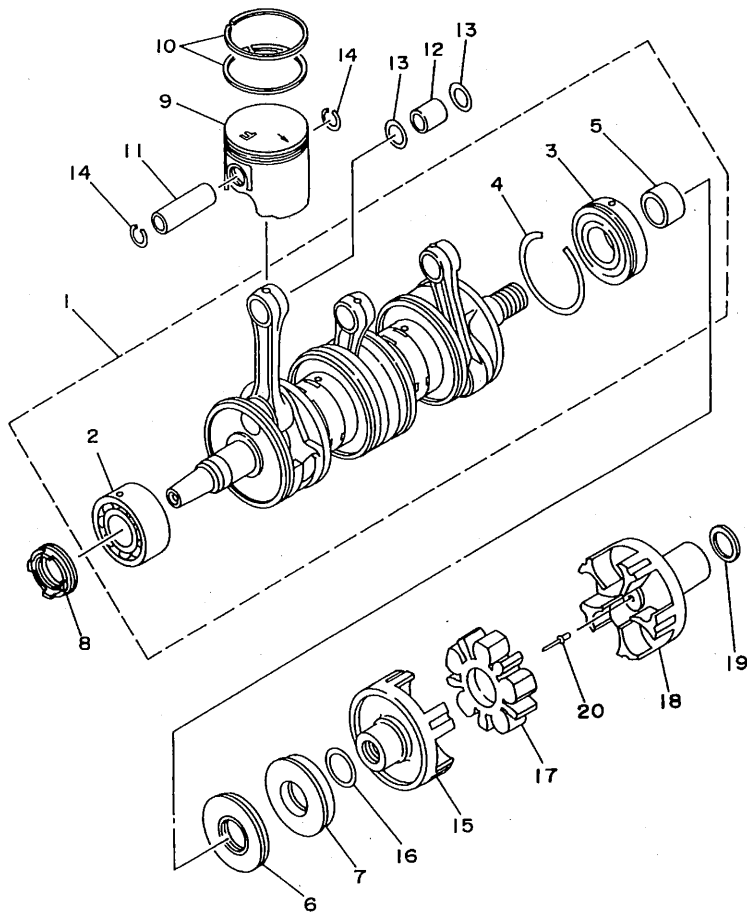
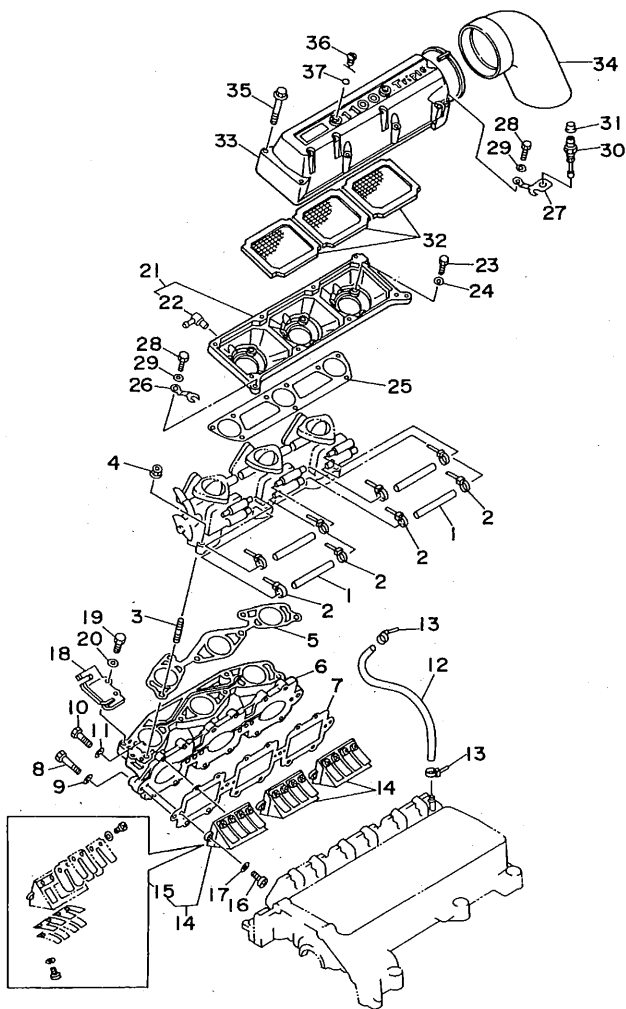


FIG. 2 CRANKSHAFT. PISTON

REF. NO.	PART NO.	DESCRIPTION	Q'TY	REMARKS
1	63M-11400-01	CRANKSHAFT ASSY	1	
2	93305-30601	.BEARING	1	
3	93306-307U3	.BEARING	1	
4	93440-80023	.CIRCLIP	1	
5	62T-45526-00	.COLLAR, DRIVE SHAFT	1	
6	93102-36M33	OIL SEAL	1	
7	93101-36M46	OIL SEAL	1	
8	93103-32M01	OIL SEAL	1	
9	63M-11631-00-89	PISTON (STD)	3	
	63M-11635-00	PISTON (0.25MM O/S)	3	AP
	63M-11636-00	PISTON (0.50MM O/S)	3	AP
10	61X-11603-00	PISTON RING SET (STD)	3	
	61X-11604-00	PISTON RING SET (0.25MM O/S)	3	AP
	61X-11605-00	PISTON RING SET (0.50MM O/S)	3	AP
11	62T-11633-00	PIN, PISTON	3	
12	93310-320U2	BEARING, CYLINDRICAL	3	
13	90201-20M04	WASHER, PLATE	6	
14	93450-21053	CIRCLIP	6	
15	63M-45813-01-5B	FLANGE, COUPLING	1	
16	62T-45127-00	SEAL	1	
17	63M-4581J-00	RUBBER SHAFT COUPLING	1	
18	64T-45813-01-5B	FLANGE, COUPLING	1	
19	90201-248M5	WASHER, PLATE	1	
20	90267-489UG	RIVET, BLIND	1	YMUS


GRI1010-6020

B4



GJ11100-5030

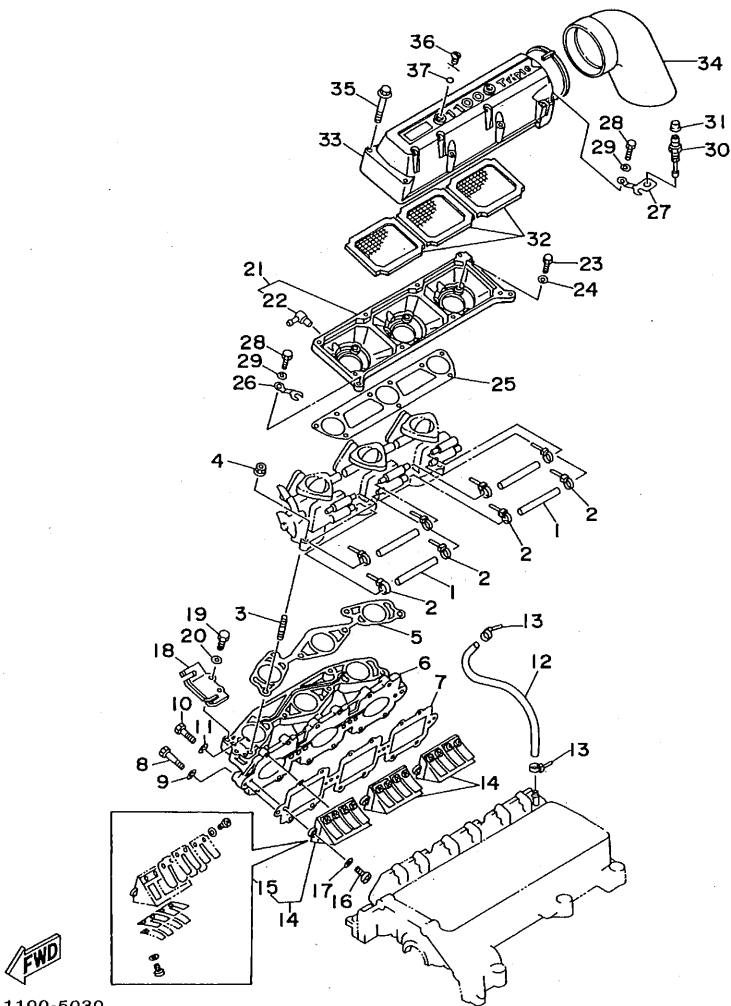
FIG. 3 INTAKE

REF. NO.	PART NO.	DESCRIPTION	Q'TY	REMARKS
1	90445-10M01	HOSE	4	
2	90465-11M10	CLAMP	8	
3	90116-08M55	BOLT, STUD	6	
4	90179-08M15	NUT	6	
5	63M-13556-00	GASKET, MANIFOLD	1	
6	63M-13555-00-94	MANIFOLD, INTAKE	1	
7	63M-13566-00	GASKET	1	
8	97013-06035	BOLT	4	
9	92903-06600	WASHER, PLATE	4	
10	97013-06025	BOLT	12	
11	92903-06600	WASHER, PLATE	12	
12	63M-24314-00	PIPE 4	1	
13	90465-11M10	CLAMP	2	
14	63M-13610-00	REED VALVE ASSY	3	
15	63M-W0004-00	.REED SET	1	
16	97880-05016	SCREW, PAN HEAD	6	
17	92990-05600	WASHER, PLATE	6	
18	62T-14527-01	PLATE	1	
19	97013-06016	BOLT	2	
20	92903-06600	WASHER, PLATE	2	
21	63M-14284-00-98	COVER, CARBURETOR 2	1	
22	6E5-11372-00	.NIPPLE, HOSE	3	
23	97013-06020	BOLT	9	
24	92903-06600	WASHER, PLATE	9	
25	63M-13674-00	GASKET, AIR COOLER COVER 1	1	
26	63M-14255-00	PLATE	1	
27	63M-14255-10	PLATE	1	
28	97013-06012	BOLT	2	

B5

FIG. 3 INTAKE

REF. NO.	PART NO.	DESCRIPTION	Q'TY	REMARKS
29	92903-06600	WASHER, PLATE	2	
30	61L-5169A-00	NIPPLE, GREASE	1	
31	663-45119-00	CAP, GREASE NIPPLE	1	
32	62T-14451-00	ELEMENT, AIR CLEANER	3	
33	63M-14283-00	COVER, CARBURETOR 1	1	
34	63M-14419-00	PIPE	1	
35	90105-05M46	BOLT, WASHER BASED	8	
36	62T-14435-00	GROMMET	2	
37	93210-13M63	O-RING	2	



GJ11100-5030

B6

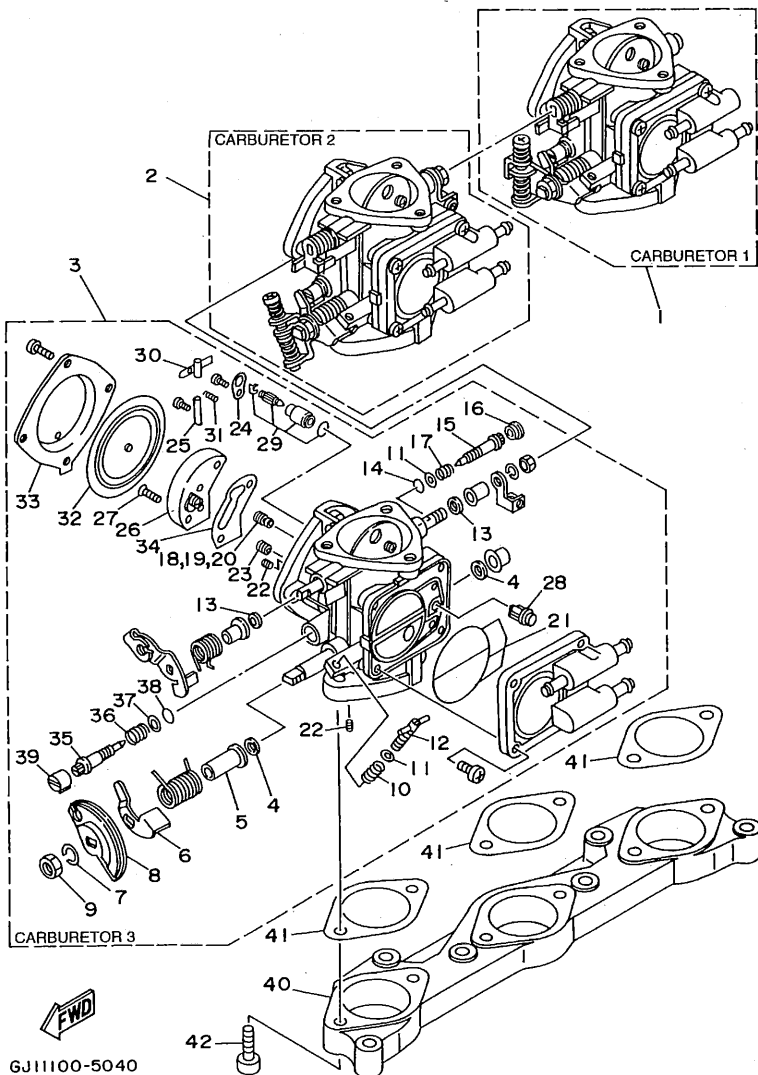


FIG. 4 CARBURETOR

REF. NO.	PART NO.	DESCRIPTION	Q'TY	REMARKS
1	64T-14301-01	CARBURETOR ASSY 1	1	
2	64T-14302-01	CARBURETOR ASSY 2	1	
3	64T-14303-01	CARBURETOR ASSY 3	1	
4	6R7-14596-01	.WASHER	6	
5	6K8-14534-10	.COLLAR	3	
6	6K8-14926-10	.BRACKET, THROTTLE 1	1	CARBURETOR 3
7	92990-08100	.WASHER, SPRING	3	
8	6K8-14930-00	.THROTTLE SHAFT ASSY	1	CARBURETOR 3
9	95380-08700	.NUT	3	
10	6K8-14531-00	.SPRING, ADJUST SCREW	1	CARBURETOR 3
11	6K8-14559-00	.WASHER	4	
12	6M6-14521-00	.SCREW, ADJUST	1	CARBURETOR 3
13	6K8-14597-11	.WASHER	6	
14	6K8-14562-00	.O-RING	3	
15	63M-14946-00	.PLATE, NEEDLE FITTING	3	
16	6K8-14471-10	.CAP, CARBURETOR	3	
17	6K8-14533-00	.SPRING, ADJUST SCREW	3	
18	3G2-1423A-72	.JET, MAIN (#107.5)	1	CARBURETOR 1
19	3G2-14231-19	.JET, POWER (# 95)	1	CARBURETOR 2
20	3G2-1423A-72	.JET, MAIN (#107.5)	1	CARBURETOR 3
21	6K8-14564-00	.O-RING	3	
22	6K8-14521-10	.SCREW	6	
23	830-14231-15	.JET, MAIN (# 75)	3	
24	6K8-14527-11	.PLATE	3	
25	6K8-14579-00	.PIN,FLOAT	3	
26	6R7-24412-01	.BODY 1	3	
27	6K8-14523-11	.SCREW, STOP	6	
28	6R7-14569-00	.STRAINER	3	

B7

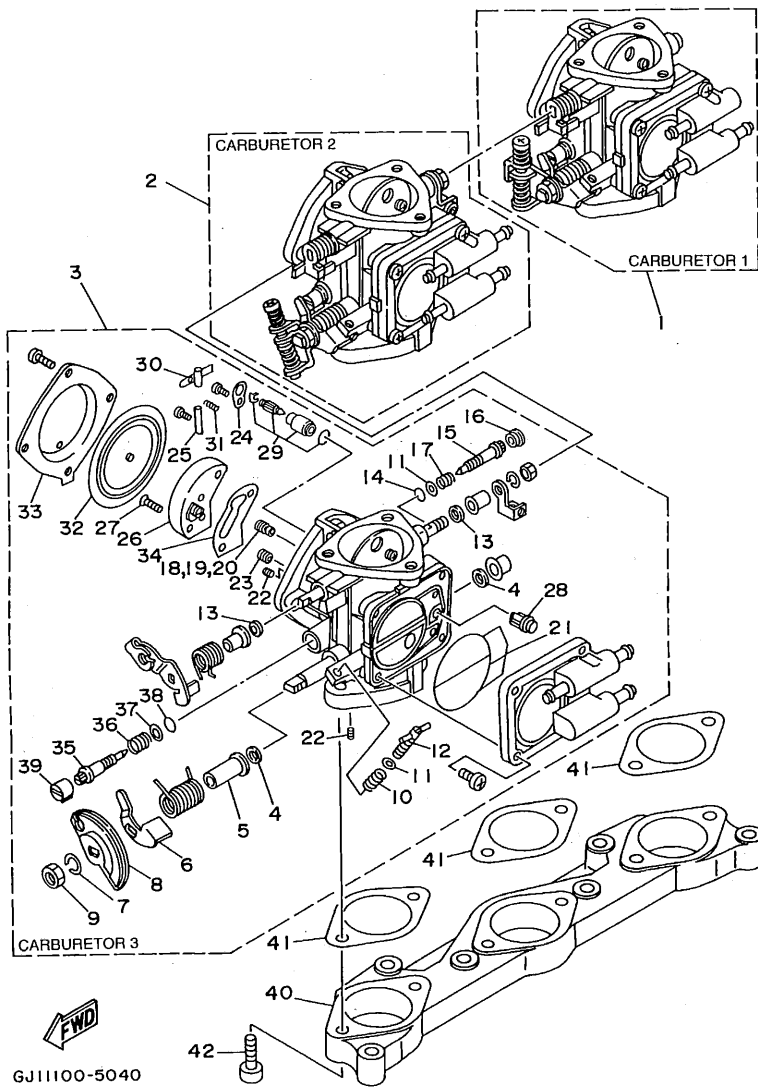
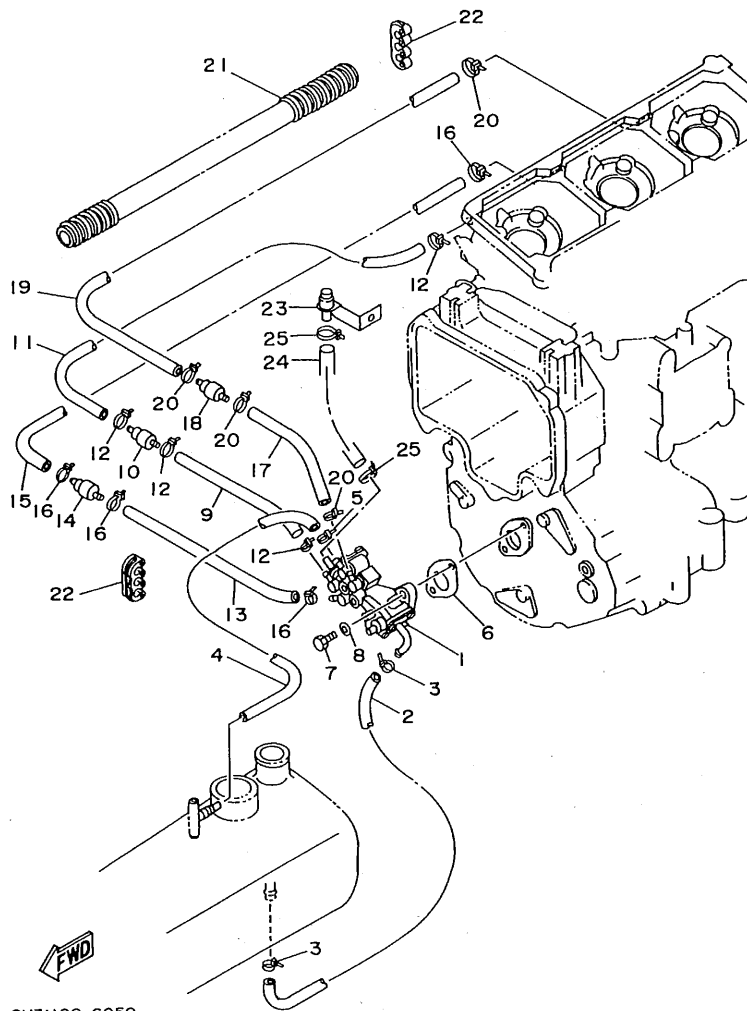


FIG. 4 CARBURETOR

REF. NO.	PART NO.	DESCRIPTION	Q'TY	REMARKS
29	64T-14916-00	.NEEDLE	3	
30	6K8-14547-01	.ARM, FLOAT	3	
31	63M-14253-00	.SPRING	1	UR CARBURETOR 1
	64T-14253-00	.SPRING	2	UR CARBURETOR 2, 3
32	6R7-14541-00	.DIAPHRAGM, PUMP	3	
33	6R7-14542-00	.BODY, PUMP 1	3	
34	6K8-14536-11	.GASKET	3	
35	63M-14923-00	.SCREW, PILOT	3	
36	6K8-14589-00	.SPRING	3	
37	6K8-14537-00	.GASKET	3	
38	583-14561-00	.O-RING	3	
39	6K8-14481-10	.CAP, CARBURETOR	3	
40	63M-14243-00	PLATE	1	
41	63M-14398-00	GASKET	3	
42	63M-14162-00	BOLT, HOLDING	6	

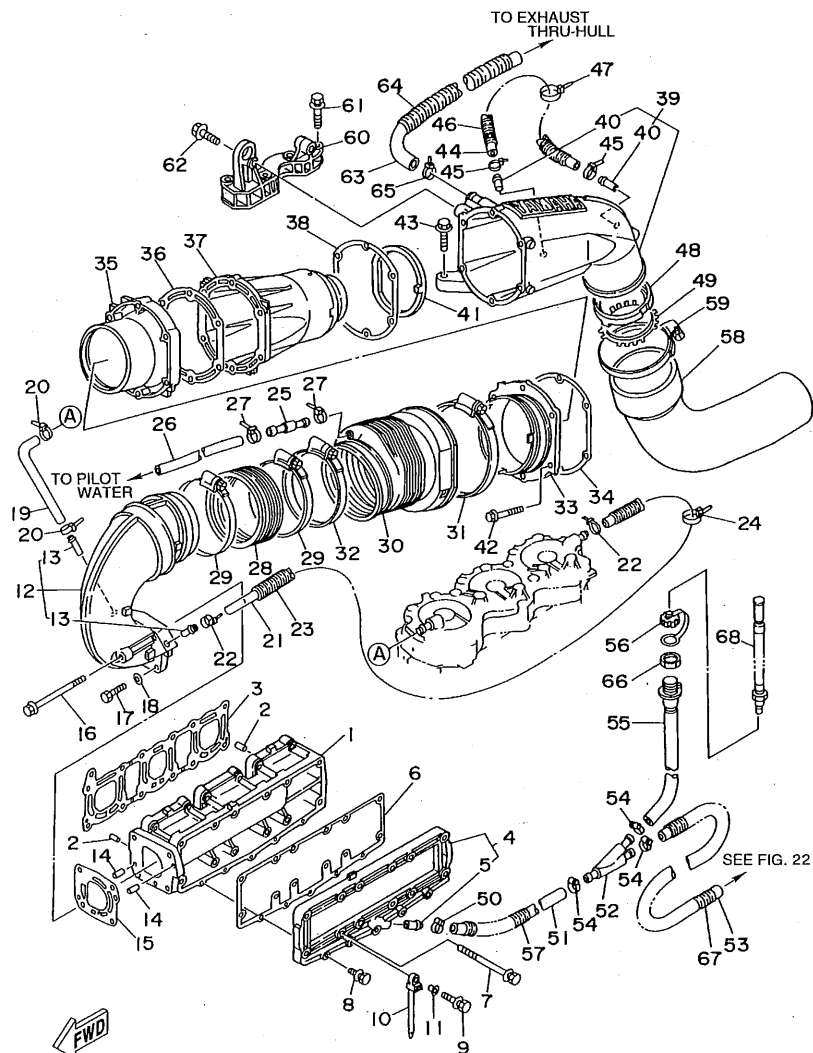


GH31100-6050

FIG. 5 OIL PUMP

REF. NO.	PART NO.	DESCRIPTION	Q'TY	REMARKS
1	64T-13200-00	OIL INJECTION PUMP ASSY	1	
2	90445-11M33	HOSE	1	
3	90465-11M10	CLAMP	2	
4	90445-07M82	HOSE	1	
5	90465-11M10	CLAMP	1	
6	63M-13116-00	GASKET, PUMP CASE	1	
7	97095-06020	BOLT	2	
8	92995-06600	WASHER	2	
9	90445-07M14	HOSE	1	
10	6R3-13183-00	VALVE, CHECK	1	
11	90446-07M35	HOSE	1	
12	90465-11M10	CLAMP	4	
13	90445-07M17	HOSE	1	
14	6R3-13183-00	VALVE, CHECK	1	
15	90446-07M36	HOSE	1	
16	90465-11M10	CLAMP	4	
17	90446-07M18	HOSE	1	
18	6R3-13183-00	VALVE, CHECK	1	
19	90446-07M36	HOSE	1	
20	90465-11M10	CLAMP	4	
21	90446-24M54	HOSE	1	
22	90464-07M05	CLAMP	2	
23	64T-13185-00	BOLT, BREATHER	1	
24	90445-11M46	HOSE	1	
25	90465-11M10	CLAMP	2	

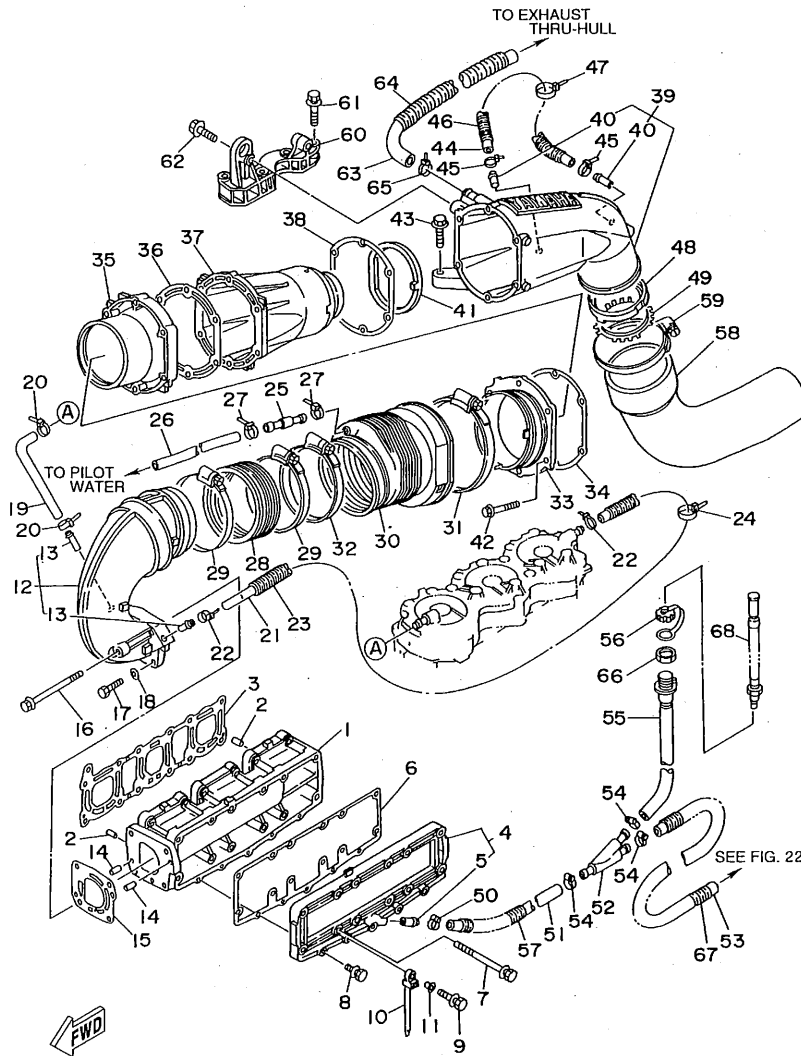
B9



GH34100-7060

FIG. 6 EXHAUST 1

REF. NO.	PART NO.	DESCRIPTION	Q'TY	REMARKS
1	63M-14711-00-94	MUFFLER 1	1	
2	93605-12M21	PIN, DOWEL	2	
3	63M-14613-00	GASKET, EXHAUST PIPE	1	
4	63M-14718-00-9M	PROTECTOR, MUFFLER 1	1	
5	63M-51129-00	.NIPPLE	1	
6	63M-14739-00	GASKET, MUFFLER DAMPER 1	1	
7	90119-08M36	BOLT, WITH WASHER	12	
8	97513-06530	BOLT, WITH WASHER	4	
9	97513-06540	BOLT, WITH WASHER	1	
10	90465-12M53	CLAMP	1	
11	90387-06M05	COLLAR	1	
12	63M-14712-00-9M	RING, JOINT	1	
13	6K8-51129-00	.NIPPLE	2	
14	93605-12M21	PIN, DOWEL	2	
15	63M-14749-00	GASKET, MUFFLER DAMPER 2	1	
16	90119-08M02	BOLT, WITH WASHER	2	
17	97013-08030	BOLT	2	
18	92990-08600	WASHER, PLATE	2	
19	63M-12576-00	HOSE 1	1	
20	90465-11M10	CLAMP	2	
21	63M-12577-00	HOSE 2	1	
22	90465-11M10	CLAMP	2	
23	90446-20M53	HOSE	1	
24	90465-13M24	CLAMP	1	
25	6R3-24377-00	PIPE, JOINT 3	1	
26	90445-14M16	HOSE	1	
27	90465-11M10	CLAMP	2	
28	62T-14625-00	JOINT, EXHAUST 2	1	

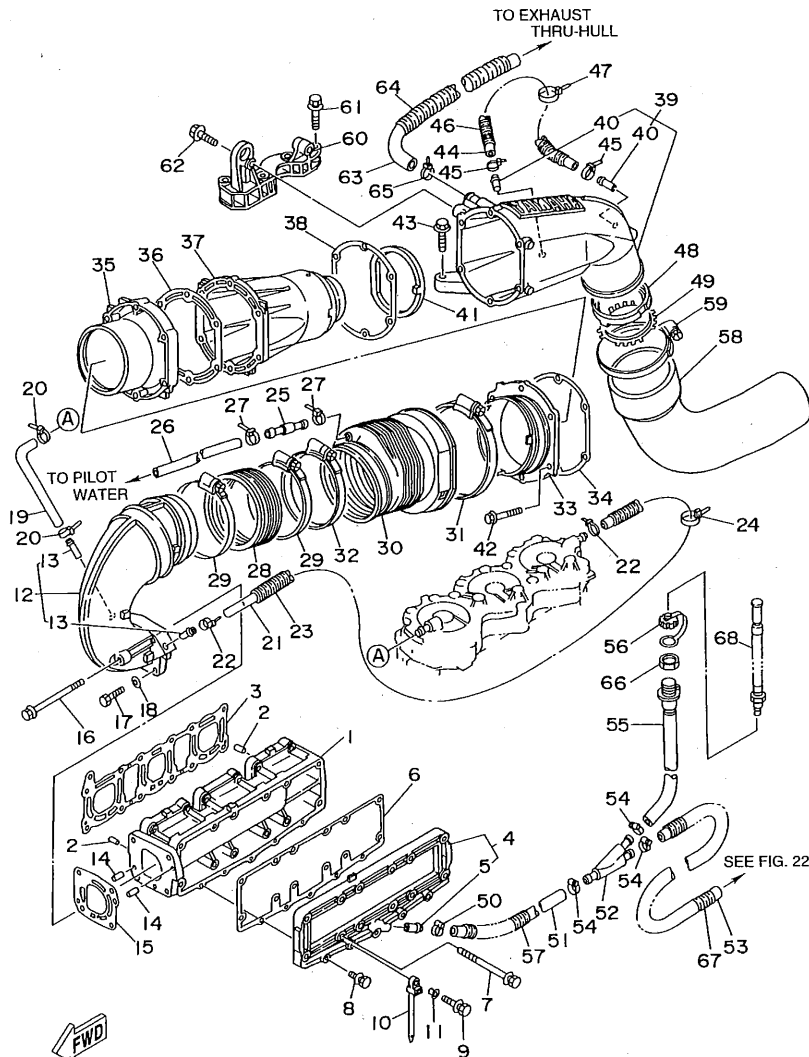


GH34100-7060

FIG. 6 EXHAUST 1

REF. NO.	PART NO.	DESCRIPTION	Q'TY	REMARKS
29	90450-99M06	HOSE CLAMP ASSY	2	
30	63M-14615-00	JOINT, EXHAUST 1	1	
31	90450-99M01	HOSE CLAMP ASSY	1	
32	90450-99M02	HOSE CLAMP ASSY	1	
33	63M-41113-00-94	OUTER COVER, EXHAUST	1	
34	63M-41114-00	GASKET, EXHAUST OUTER COVER	1	
35	63M-14721-00-94	MUFFLER 2	1	
36	63M-41122-00	GASKET, EXHAUST INNER COVER	1	
37	63M-41121-00-94	INNER COVER, EXHAUST	1	
38	63M-41114-00	GASKET, EXHAUST OUTER COVER	1	
39	63M-41123-00-94	OUTER COVER, EXHAUST	1	
40	6K8-51129-00	.NIPPLE	2	
41	63M-15761-00	SEAL, RUBBER 1	1	
42	90105-08M66	BOLT, WASHER BASED	6	
43	90105-10M60	BOLT, WASHER BASED	2	
44	90445-14M05	HOSE	1	
45	90465-11M10	CLAMP	2	
46	90446-20M39	HOSE	1	
47	90465-13M24	CLAMP	1	
48	63M-41138-00	SEAL, EXT. 1	1	
49	63M-14680-00	STOPPER	1	
50	90450-18M09	HOSE CLAMP ASSY	1	
51	90445-18M02	HOSE	1	
52	63M-12581-00	JOINT, HOSE 1	1	
53	90445-18M00	HOSE	1	
54	90450-18M09	HOSE CLAMP ASSY	3	
55	64T-12580-00	JOINT ASSY	1	
56	682-84385-01	CAP 1	1	

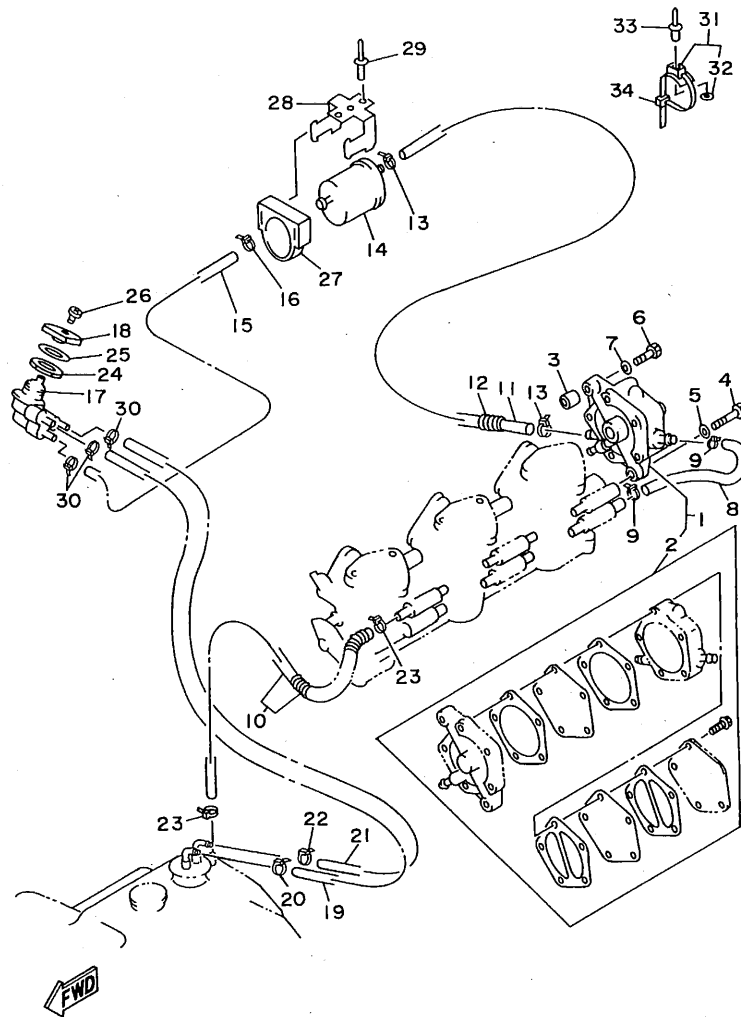
B11



GH34100-7060

FIG. 6 EXHAUST 1

REF. NO.	PART NO.	DESCRIPTION	Q'TY	REMARKS
57	90446-24M52	HOSE	1	
58	64T-14752-00	PIPE, OUTLET	1	
59	90450-99M02	HOSE CLAMP ASSY	1	
60	63M-14771-00-94	STAY, MUFFLER 1	1	
61	90119-10M72	BOLT, WITH WASHER	4	
62	90105-10M45	BOLT, WASHER BASED	2	
63	63M-12578-00	HOSE 3	1	
64	90446-27M55	HOSE	1	
65	90601-200U1	CLAMP	1	YMUS
66	EU0-61652-00	NUT	1	
67	90446-24M60	HOSE	1	
68	63M-12590-00	CONDUCTION ASSY	1	UR FOR USA
	63M-12590-20	CONDUCTION ASSY	1	UR FOR CANADA, EUROPE

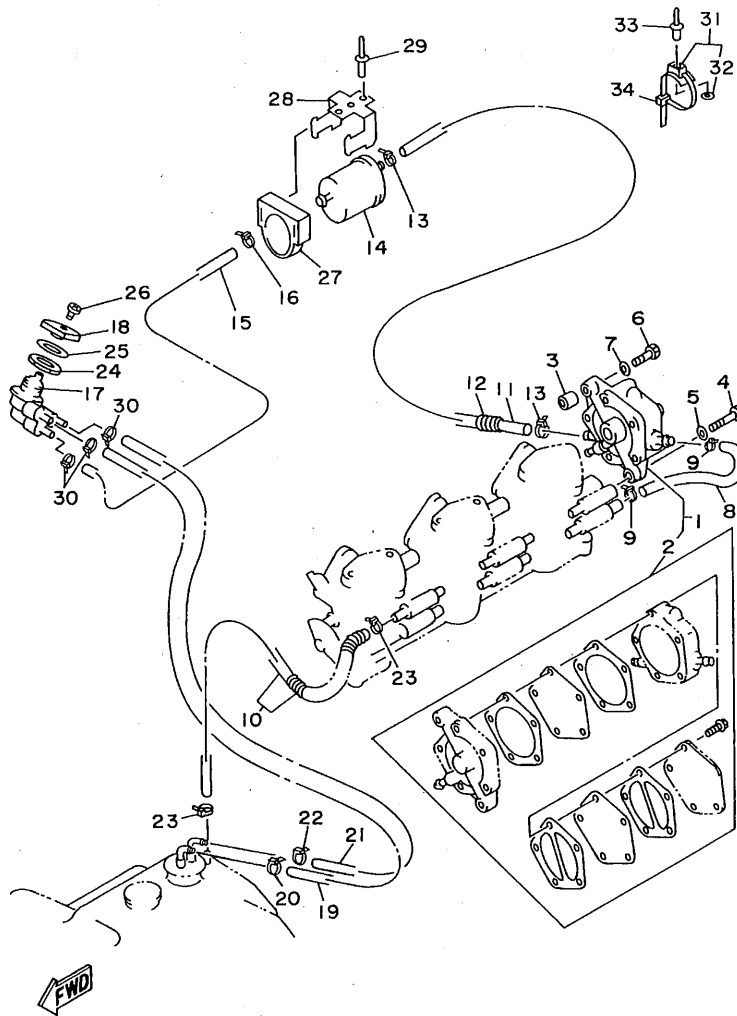


GH34100-7070

FIG. 7 FUEL

REF. NO.	PART NO.	DESCRIPTION	Q'TY	REMARKS
1	63M-24410-00	FUEL PUMP ASSY	1	
2	63M-W2442-00	FUEL PUMP REPAIR KIT	1	
3	90387-06M44	COLLAR	1	
4	97095-06035	BOLT	1	
5	92995-06600	WASHER	1	
6	97095-06022	BOLT	1	
7	92995-06600	WASHER	1	
8	63M-24313-00	PIPE 3	1	
9	90465-11M10	CLAMP	2	
10	63M-14298-00	PIPE	1	
11	90445-10M55	HOSE	1	
12	90446-14M62	HOSE	1	
13	90465-11M10	CLAMP	2	
14	6K8-24560-10	FILTER ASSY	1	
15	90445-10M72	HOSE	1	
16	90465-11M10	CLAMP	3	
17	6K8-24500-02	FUEL COCK ASSY 1	1	
18	6R7-24524-00	LEVER, COCK	1	
19	90445-10M81	HOSE	1	FUEL ON
20	90465-11M10	CLAMP	3	
21	90445-10M83	HOSE	1	FUEL RES
22	90465-11M10	CLAMP	3	
23	90465-11M10	CLAMP	2	
24	90170-22187	NUT	1	
25	90202-229U1	WASHER, PLATE	1	YMUS
26	98980-04008	SCREW, BIND	1	
27	EU0-67817-00	HOLDER	1	
28	FN8-67816-00	BRACKET, FUEL FILTER	1	

B13



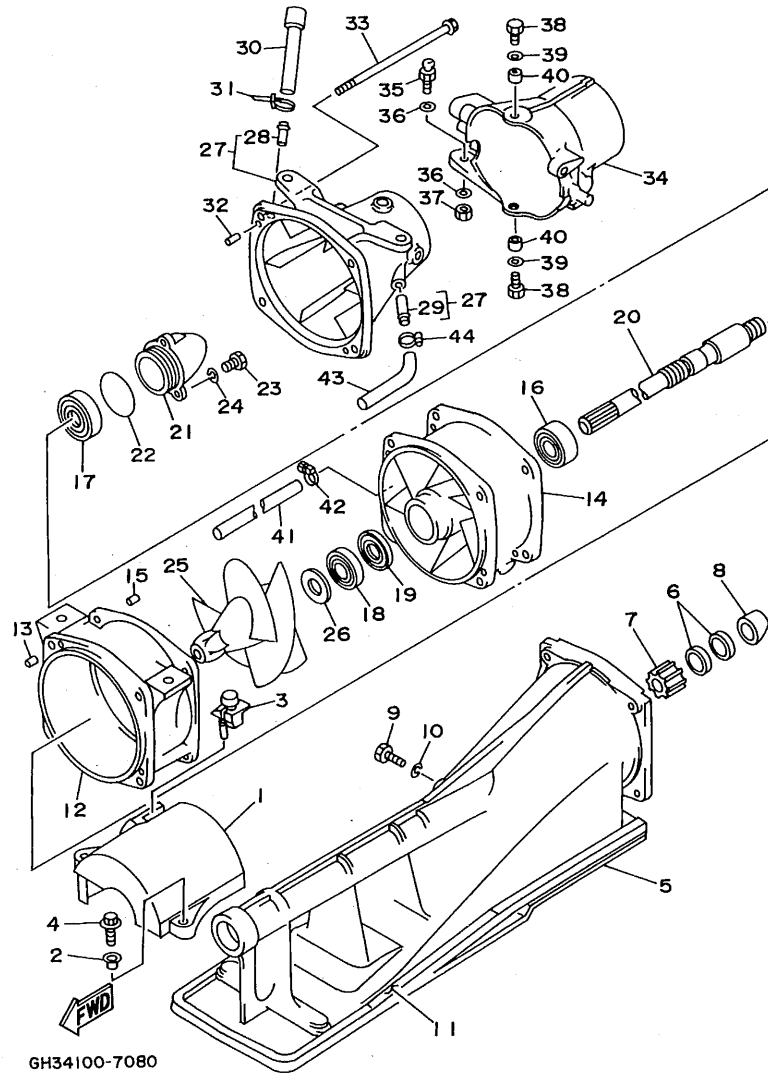
GH34100-7070

FIG. 7 FUEL

REF. NO.	PART NO.	DESCRIPTION	Q'TY	REMARKS
29	90267-489U1	RIVET, BLIND	2	YMUS
30	90465-11M10	CLAMP	3	
31	90600-91736	CLAMP	4	
32	90201-05925	.WASHER, PLATE	1	
33	90267-48925	RIVET, BLIND	4	
34	90601-20006	NYLON CLIP 1	4	

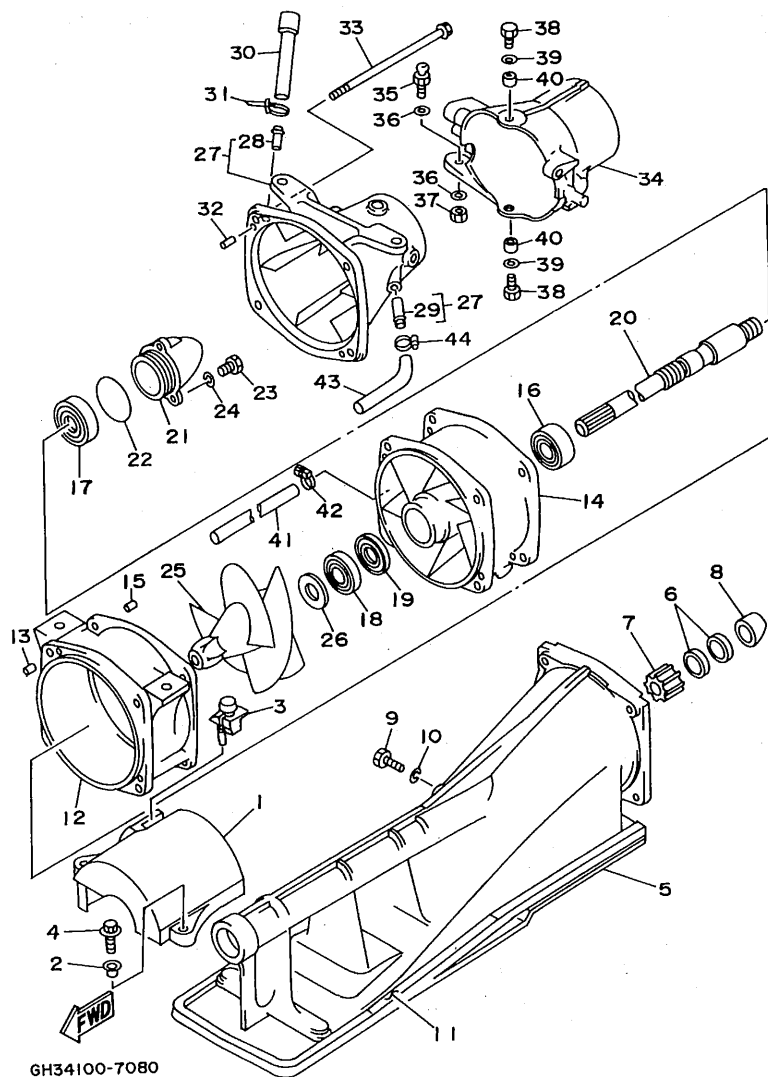
B14

FIG. 8 JET UNIT 1



REF. NO.	PART NO.	DESCRIPTION	Q'TY	REMARKS
1	64T-51381-00	COVER	1	
2	90387-06M60	COLLAR	2	
3	90480-06M69	GROMMET	1	UR FOR 64T
	90480-06M46	GROMMET	1	UR FOR 65A
4	97595-06525	BOLT, WITH WASHER	2	
5	63M-51311-01-94	DUCT, INTAKE	1	UR FOR 64T
	65A-R1311-00	DUCT, INTAKE	1	UR FOR 65A YMUS
6	93102-18M35	OIL SEAL	2	
7	6R8-45318-00	BUSHING, DRIVE SHAFT	1	
8	6R8-51348-01-94	SPACER	1	
9	97095-06025	BOLT	1	UR FOR 64T
	90119-069UD	BOLT, WITH WASHER	1	UR FOR 65A YMUS
10	92990-06600	WASHER, PLATE	1	FOR 64T
11	6R8-51367-01	FELT, PACKING	2	
12	63M-51312-02-94	HOUSING, IMPELLER	1	UR FOR 64T
	65A-R1312-00	HOUSING, IMPELLER	1	UR FOR 65A YMUS
13	93606-12019	PIN, DOWEL	2	
14	63M-51315-01-94	DUCT, IMPELLER	1	UR FOR 64T
	65A-R1315-00	DUCT, IMPELLER	1	UR FOR 65A YMUS
15	93606-12019	PIN, DOWEL	2	
16	93305-205U1	BEARING	1	
17	93306-205U0	BEARING	1	
18	93102-25M34	OIL SEAL	1	
19	93101-25M50	OIL SEAL	1	
20	63M-45511-00	SHAFT, DRIVE	1	
21	62T-51326-00	CAP	1	UR FOR 64T
	65A-R1326-00	CAP	1	UR FOR 65A YMUS
22	93210-46M16	O-RING	1	

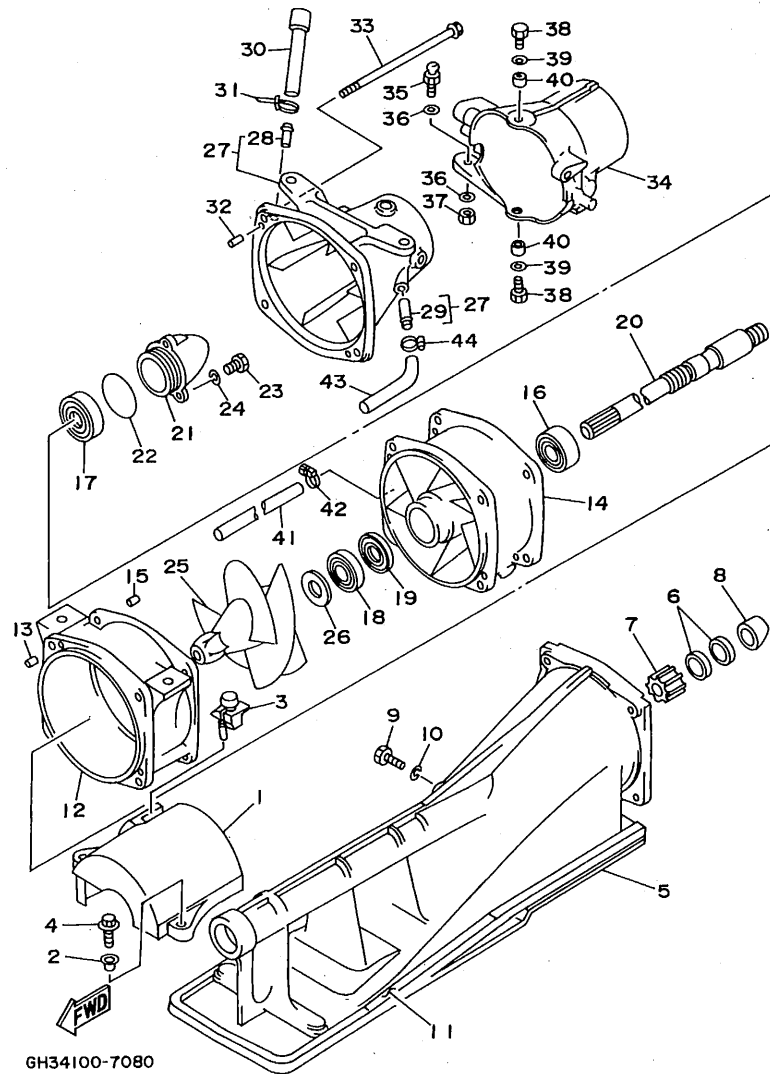
B15



GH34100-7080

FIG. 8 JET UNIT 1

REF. NO.	PART NO.	DESCRIPTION	Q'TY	REMARKS
23	97095-06016	BOLT	3	UR FOR 64T
	90119-069UB	BOLT, WITH WASHER	3	UR FOR 65A YMUS
24	92990-06600	WASHER, PLATE	3	FOR 64T
25	63M-51321-A1	IMPELLER	1	UR FOR 64T
	65A-R1321-00	IMPELLER	1	UR FOR 65A YMUS
26	62T-51348-00	SPACER	1	
27	64T-51318-01-94	NOZZLE	1	UR FOR 64T
	65A-R1318-00	NOZZLE	1	UR FOR 65A YMUS
28	6K8-51129-00	.NIPPLE	1	UR FOR 64T
	65A-R1129-00	.NIPPLE	1	UR FOR 65A YMUS
29	63M-51334-00	.NIPPLE HOSE	1	UR FOR 64T
	65A-R1334-00	.NIPPLE HOSE	1	UR FOR 65A YMUS
30	62E-51673-00	PIPE 1	1	
31	90465-11M10	CLAMP	1	UR FOR 64T
	90601-118UF	CLAMP	1	UR FOR 65A YMUS
32	93606-12019	PIN, DOWEL	2	
33	90105-08M65	BOLT, WASHER BASED	4	UR FOR 64T
	90105-089U1	BOLT, WASHER BASED	4	UR FOR 65A YMUS
34	64T-51313-01-94	NOZZLE, DEFLECTOR	1	UR FOR 64T
	65A-R1313-00	NOZZLE, DEFLECTOR	1	UR FOR 65A YMUS
35	GH3-U146E-00	BOLT, JOINT	1	
36	90201-068M4	WASHER, PLATE	2	
37	95380-06700	NUT	1	
38	97095-08020	BOLT	2	UR FOR 64T
	90119-089UE	BOLT, WITH WASHER	2	UR FOR 65A YMUS
39	92995-08600	WASHER	2	FOR 64T
40	90387-08M08	COLLAR	2	
41	90445-18M03	HOSE	1	



GH34100-7080

FIG. 8 JET UNIT 1

REF. NO.	PART NO.	DESCRIPTION	Q'TY	REMARKS
42	90450-18M09	HOSE CLAMP ASSY	1	
43	90445-14M30	HOSE	1	
44	90450-11829	HOSE CLAMP ASSY	1	

C3

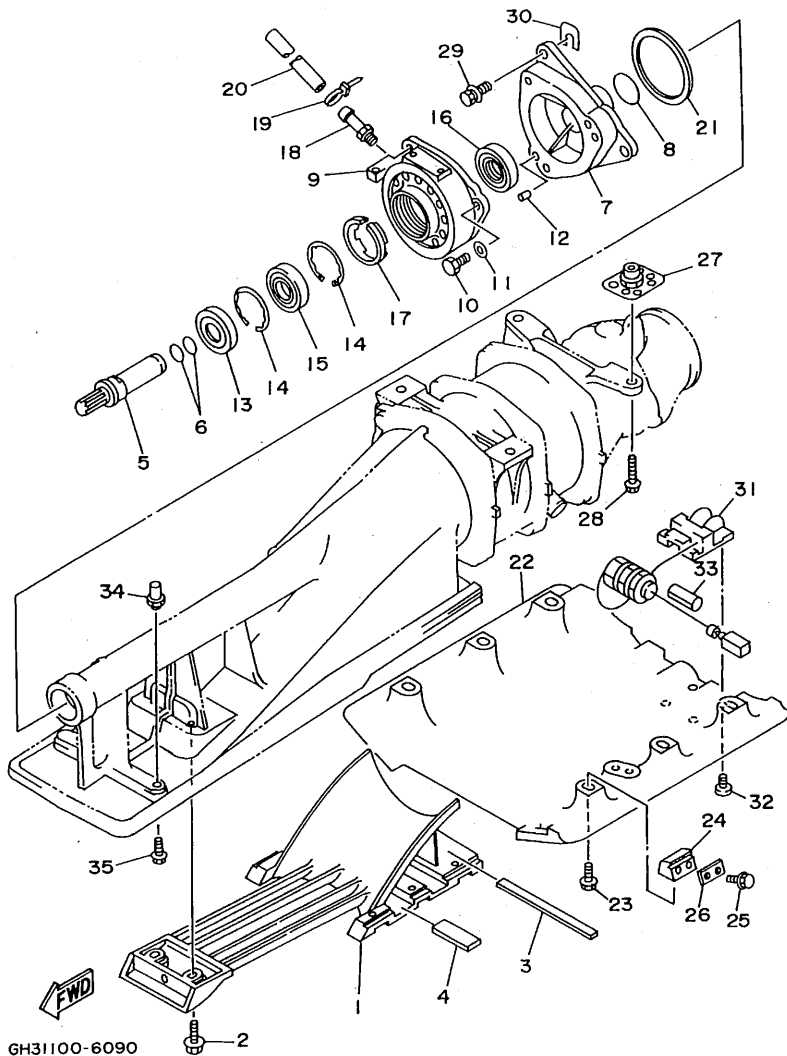


FIG. 9 JET UNIT 2

REF. NO.	PART NO.	DESCRIPTION	Q'TY	REMARKS
1	64T-51333-01-94	SCREEN, INTAKE	1	
2	90119-06M03	BOLT, WITH WASHER	8	UR FOR 64T
	90119-069UC	BOLT, WITH WASHER	8	UR FOR 65A YMUS
3	63M-51367-00	FELT, PACKING	1	
4	63M-51368-00	FELT, PACKING	2	
5	63M-51323-00	SHAFT, COUPLOR	1	
6	93210-17MA4	O-RING	2	
7	62G-45331-01-94	HOUSING, BEARING	1	UR FOR 64T
	65A-65331-00	HOUSING, BEARING	1	UR FOR 65A YMUS
8	93210-35M72	O-RING	1	
9	61X-45332-02-97	HOUSING, BEARING	1	
10	97095-08025	BOLT	3	UR FOR 64T
	90119-089UF	BOLT, WITH WASHER	3	UR FOR 65A YMUS
11	92995-08600	WASHER	3	FOR 64T
12	93606-12019	PIN, DOWEL	2	
13	93101-25M55	OIL SEAL	1	
14	93430-47M04	CIRCLIP	2	
15	93306-205U6	BEARING	1	
16	93101-25M56	OIL SEAL	1	
17	63M-51348-00	SPACER	1	UR FOR 64T
	65A-65538-00	SPACER 1	1	UR FOR 65A YMUS
18	61L-45378-00	NIPPLE, HOSE	1	
19	90465-11829	CLAMP	1	
20	90445-09M21	HOSE	1	
21	6K8-45127-00	SEAL	1	
22	G3J-U273B-00	PLATE 2	1	YMUS
23	90119-089U6	BOLT, WITH WASHER	6	YMUS
24	GJ1-62733-00	PACKING	6	

C4

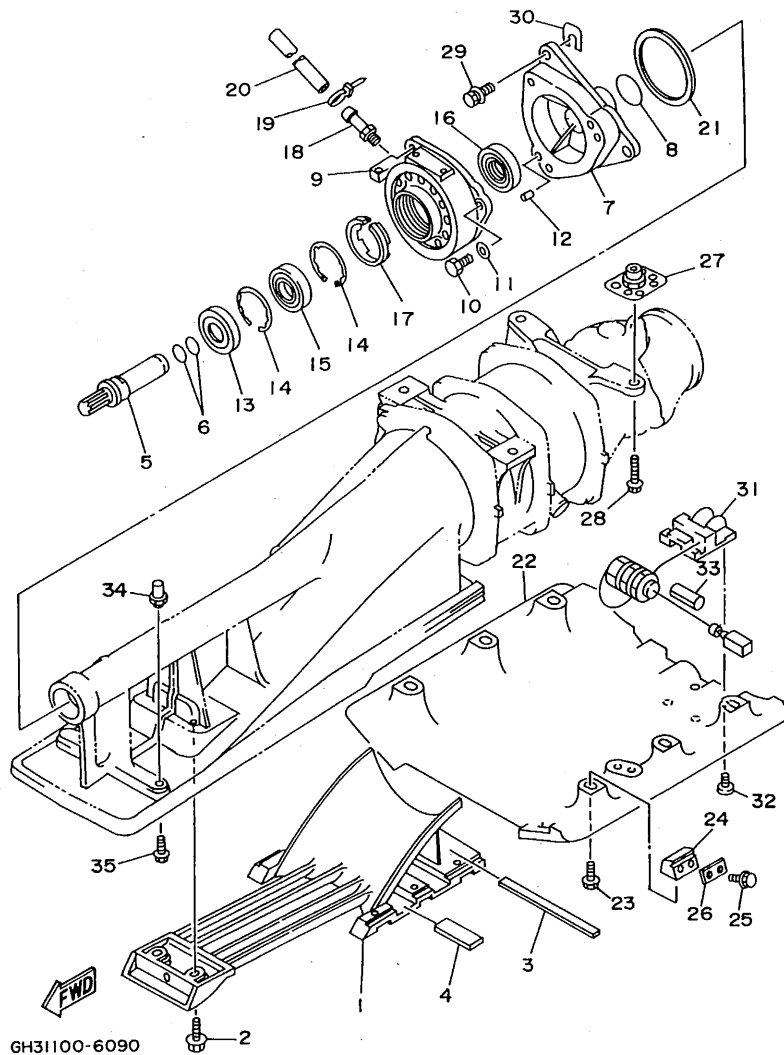
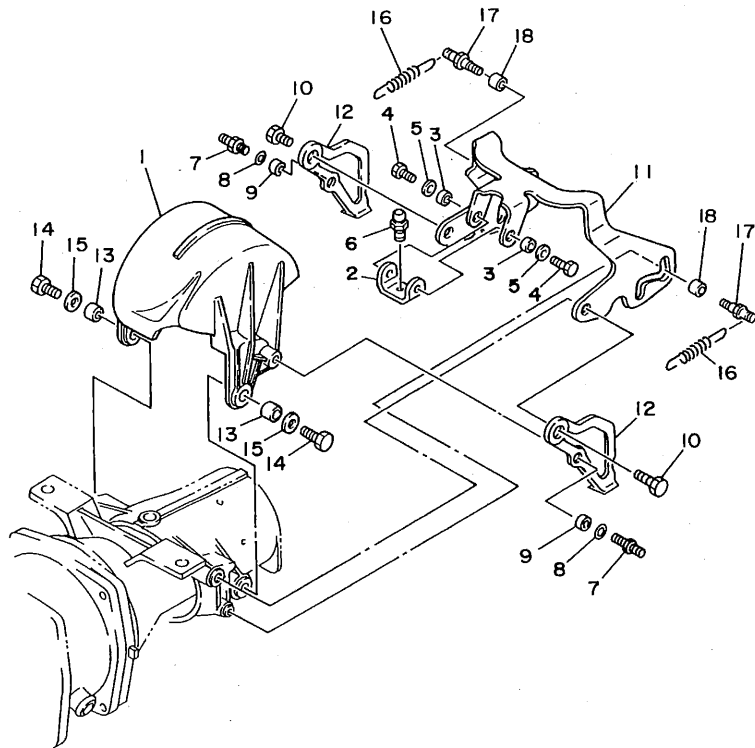


FIG. 9 JET UNIT 2

REF. NO.	PART NO.	DESCRIPTION	Q'TY	REMARKS
25	90119-089U5	BOLT, WITH WASHER	12	YMUS
26	GJ1-62663-00	PACKING 1	6	
27	90179-10925	NUT	4	
28	90119-109U8	BOLT, WITH WASHER	4	YMUS
29	90119-08907	BOLT, WITH WASHER	3	
30	GDO-U7249-00-05	SHIM (T=0.5)	2	UR YMUS
	GDO-U7249-00-10	SHIM (T=1.0)	2	UR YMUS
31	GJ1-U8K31-01	SENSOR, SPEED	1	YMUS
32	90149-05904	SCREW	4	
33	GJ1-6822E-00	GROMMET	1	
34	90179-06947	NUT	2	
35	90119-06929	BOLT, WITH WASHER	2	



GH3100-6100

FIG. 10 JET UNIT 3

REF. NO.	PART NO.	DESCRIPTION	Q'TY	REMARKS
1	6R8-51314-02-94	GATE, REVERSE	1	UR FOR 64T
	65A-R1314-00	GATE, REVERSE	1	UR FOR 65A YMUS
2	6R8-44125-00	LEVER, SHIFT ROD	1	
3	90387-06M24	COLLAR	2	
4	97095-06012	BOLT	2	UR FOR 64T
	90119-069UA	BOLT, WITH WASHER	2	UR FOR 65A YMUS
5	92990-06600	WASHER, PLATE	2	FOR 64T
6	6R8-42316-00	BOLT, JOINT	1	UR FOR 64T
	GH3-U146E-10	STAND, JOINT BALL	1	UR FOR 65A YMUS
7	6R8-44184-00	PIN	2	UR FOR 64T
	65A-64184-00	PIN	2	UR FOR 65A YMUS
8	90201-06M31	WASHER, PLATE	2	UR FOR 64T
	90201-068M4	WASHER, PLATE	2	UR FOR 65A YMUS
9	90387-06M30	COLLAR	2	
10	90109-08M73	BOLT	2	UR FOR 64T
	90109-089U1	BOLT	2	UR FOR 65A YMUS
11	64T-44121-00	LEVER, SHIFT ROD	1	
12	64T-51345-00	PLATE 1	2	
13	90387-08M27	COLLAR	2	
14	97095-08025	BOLT	2	UR FOR 64T
	90119-089UF	BOLT, WITH WASHER	2	UR FOR 65A YMUS
15	92995-08600	WASHER	2	FOR 64T
16	90506-12M35	SPRING, TENSION	2	
17	6R8-44137-00	PIN	2	UR FOR 64T
	65A-64137-00	PIN	2	UR FOR 65A YMUS
18	90387-08M26	COLLAR	2	

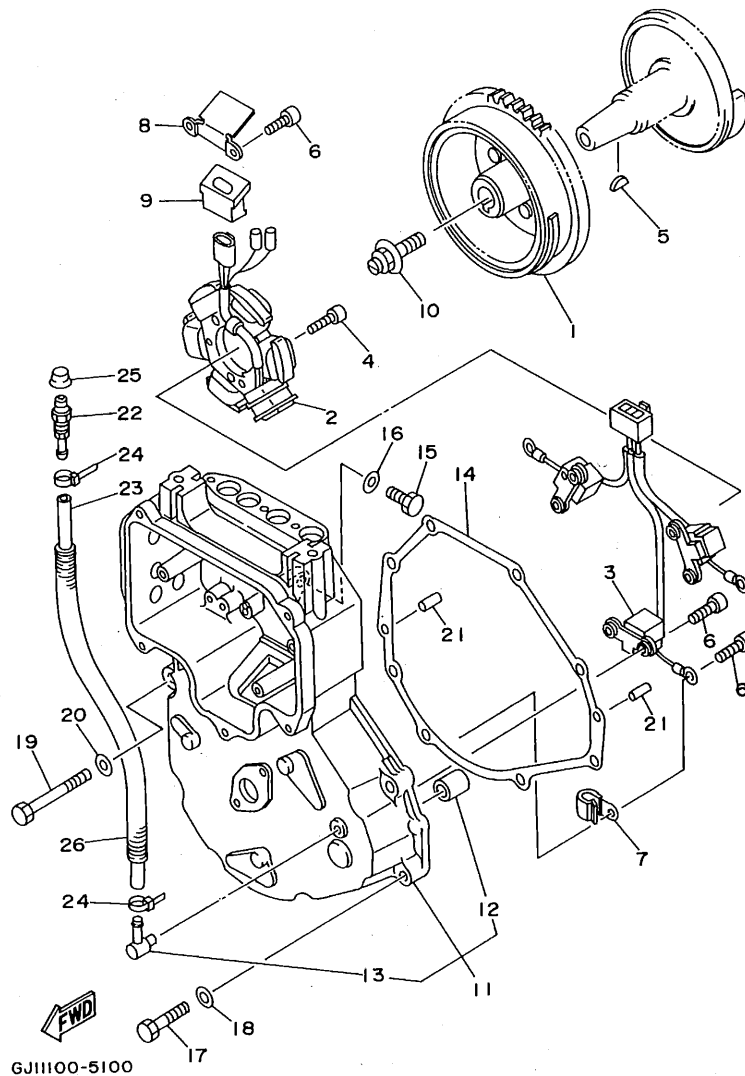
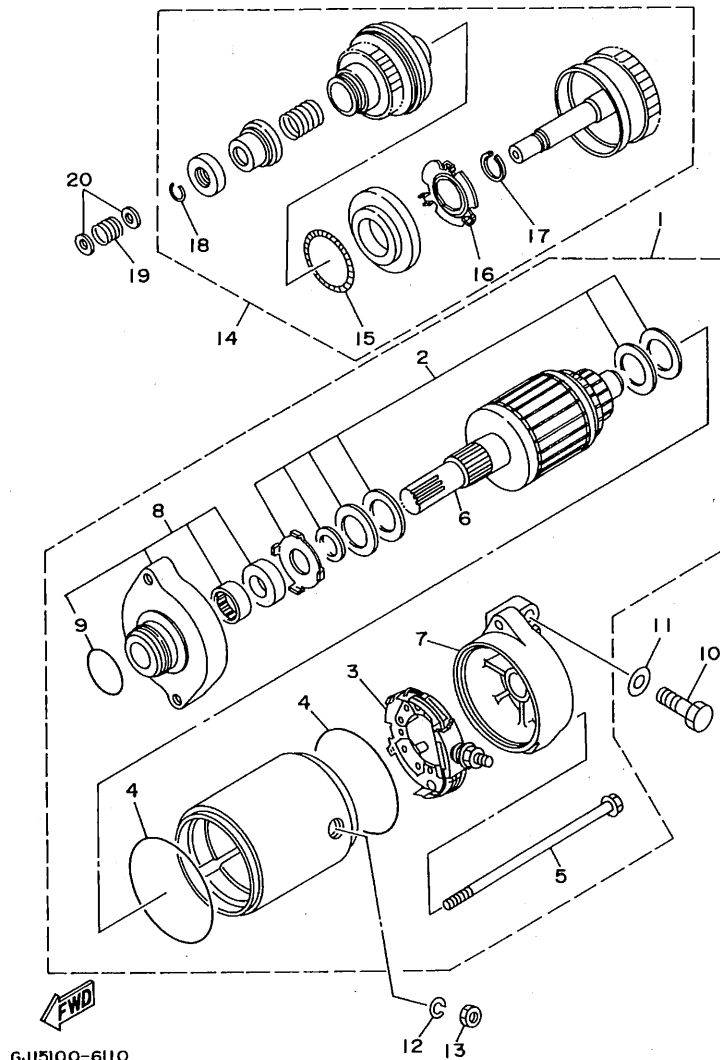


FIG. 11 GENERATOR

REF. NO.	PART NO.	DESCRIPTION	Q'TY	REMARKS
1	63M-85550-00	ROTOR ASSY	1	
2	63M-85510-00	STATOR ASSY	1	
3	63M-85580-00	COIL, PULSER	1	
4	91318-06025	BOLT	3	
5	90280-05013	KEY, WOODRUFF	1	
6	91318-06014	BOLT	11	
7	90465-06M28	CLAMP	3	
8	63M-81328-00	CLAMP	1	
9	63M-85564-00	GROMMET	1	
10	90109-10M72	BOLT	1	
11	63M-81337-00-4D	COVER, FLYWHEEL	1	
12	90380-12M29	.BUSH, SOLID	1	
13	676-11372-00	.NIPPLE, HOSE	1	
14	63M-81365-00	GASKET, HOLE COVER	1	
15	97095-08025	BOLT	1	
16	92995-08600	WASHER	1	
17	97095-08030	BOLT	7	
18	92995-08600	WASHER	7	
19	97095-08055	BOLT	1	
20	92995-08600	WASHER	1	
21	93606-12019	PIN, DOWEL	2	
22	61L-5169A-00	NIPPLE, GREASE	1	
23	90445-09M24	HOSE	1	
24	90465-11M10	CLAMP	2	
25	663-45119-00	CAP, GREASE NIPPLE	1	
26	90446-14M58	HOSE	1	

C7



GJ15100-6110

FIG. 12 STARTING MOTOR

REF. NO.	PART NO.	DESCRIPTION	Q'TY	REMARKS
1	63M-81800-00	STARTING MOTOR ASSY	1	
2	3AJ-81809-00	.WASHER KIT	1	
3	6M6-81840-10	.BRUSH HOLDER ASSY	1	
4	11H-81844-00	.GASKET	2	
5	6M6-81826-00	.BOLT	2	
6	6M6-81850-00	.ARMATURE ASSY	1	
7	63M-81820-00	.REAR BRACKET ASSY	1	
8	6M6-81830-00	.FRONT BRACKET ASSY	1	
9	26H-81847-00	.O-RING	1	
10	97013-08025	BOLT	2	
11	92903-08600	WASHER, PLATE	2	
12	92990-06100	WASHER, SPRING	1	
13	95380-06700	NUT	1	
14	6M6-8183E-00	IDLE GEAR COMP	1	
15	6M6-81866-00	.WEIGHT SPRING	1	
16	6M6-81865-00	.WEIGHT HOLDER	1	
17	93440-25M08	.CIRCLIP	1	
18	93450-18M06	.CIRCLIP	1	
19	90501-14M73	SPRING, COMPRESSION	1	
20	92990-06600	WASHER, PLATE	2	

C8

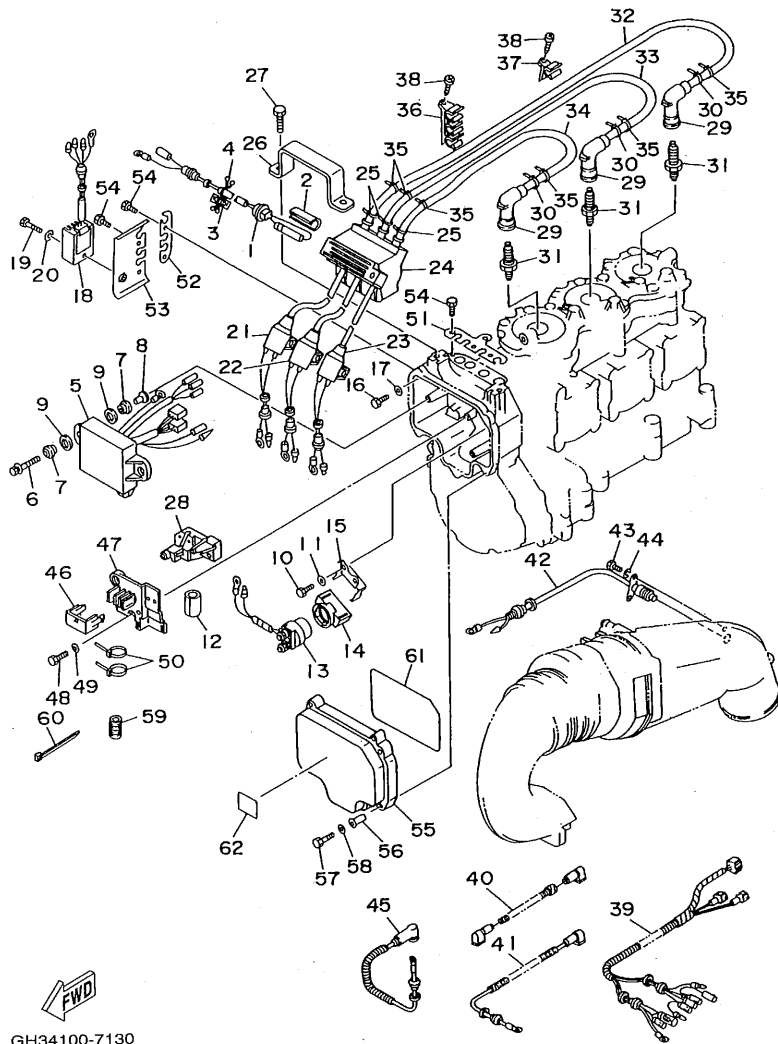
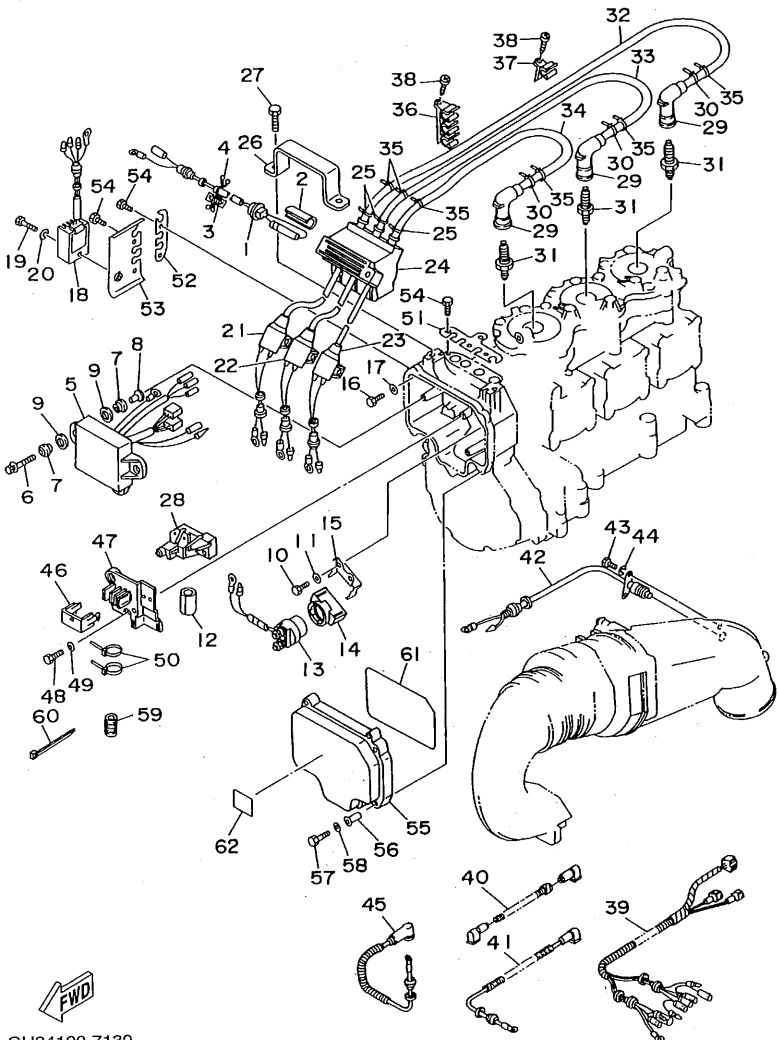


FIG. 13 ELECTRICAL 1

REF. NO.	PART NO.	DESCRIPTION	Q'TY	REMARKS
1	63M-82150-00	FUSE HOLDER ASSY	1	
2	63M-82176-00	DAMPER	1	
3	63M-82159-00	FUSE SPEAR	1	
4	90464-07M44	CLAMP	1	
5	63M-85540-01	C.D.I. UNIT ASSY	1	
6	90119-06M75	BOLT, WITH WASHER	3	
7	90480-09M25	GROMMET	6	
8	90387-06M03	COLLAR	3	
9	90201-16M00	WASHER, PLATE	6	
10	97095-06016	BOLT	2	
11	92995-06600	WASHER	2	
12	63M-82589-00	PROTECTOR, WIRE HARNESS	2	
13	661-81941-10	STARTER RELAY ASSY	1	
14	6H4-81952-00	HOLDER, RELAY	1	
15	63M-81945-00	PLATE, SWITCH FITTING	1	
16	97095-06016	BOLT	2	
17	92990-06600	WASHER, PLATE	2	
18	63M-81960-00	RECTIFIER & REGULATOR ASSY	1	
19	97095-06012	BOLT	1	
20	92995-06600	WASHER	1	
21	63M-85570-00	IGNITION COIL ASSY	1	
22	63M-85570-10	IGNITION COIL ASSY	1	
23	63M-85570-20	IGNITION COIL ASSY	1	
24	63M-85547-00	DAMPER	1	
25	90465-11M10	CLAMP	3	
26	63M-85542-00	BRACKET	1	
27	97013-08025	BOLT	2	
28	63M-85516-00	GROMMET	1	

GH34100-7130

C9

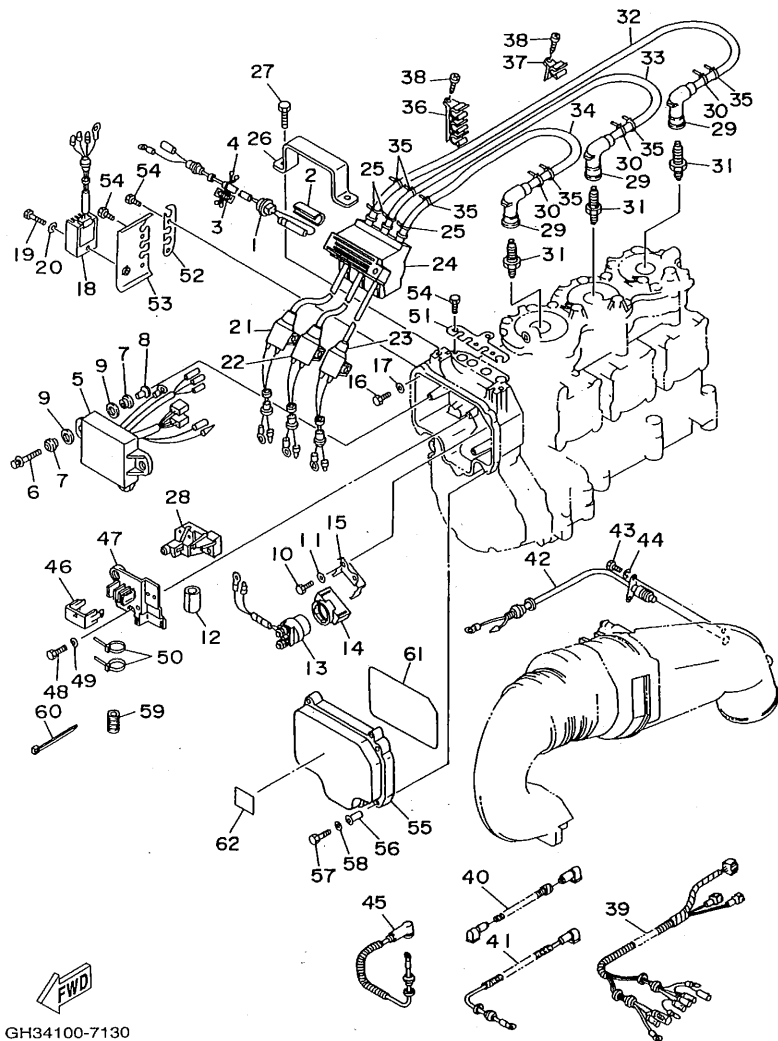



 GH34100-7130

FIG. 13 ELECTRICAL 1

REF. NO.	PART NO.	DESCRIPTION	Q'TY	REMARKS
29	63M-82370-00	PLUG CAP ASSY	3	
30	90465-11M10	CLAMP	3	
31	94702-00195	PLUG, SPARK (NGK BR8HS)	3	
32	63M-82351-00	TUBE, CORD	1	
33	63M-82351-10	TUBE, CORD	1	
34	63M-82351-20	TUBE, CORD	1	
35	90465-11M10	CLAMP	6	
36	63M-81317-00	CLAMP, CORD	3	
37	63M-81317-10	CLAMP, CORD	1	
38	97780-50116	SCREW, TAPPING	4	
39	63M-82553-01	EXTENSION, WIRE LEAD	1	
40	64T-82117-00	WIRE, LEAD	1	
41	64T-82117-10	WIRE, LEAD	1	
42	63M-82560-00	THERMO SWITCH ASSY	1	
43	97095-06016	BOLT	2	
44	92995-06100	WASHER, SPRING	2	
45	63M-82117-20	WIRE, LEAD	1	
46	63M-85546-00	BAND	1	
47	63M-85548-00	HOLDER	1	
48	97095-06014	BOLT	2	
49	92995-06600	WASHER	2	
50	90465-13M60	CLAMP	2	
51	63M-85599-01	COVER	1	
52	63M-85525-00	COVER	1	
53	63M-85644-00	PLATE	1	
54	97095-06012	BOLT	7	
55	63M-82314-00	COVER, IGNITION COIL	1	
56	90387-06M56	COLLAR	5	

C10

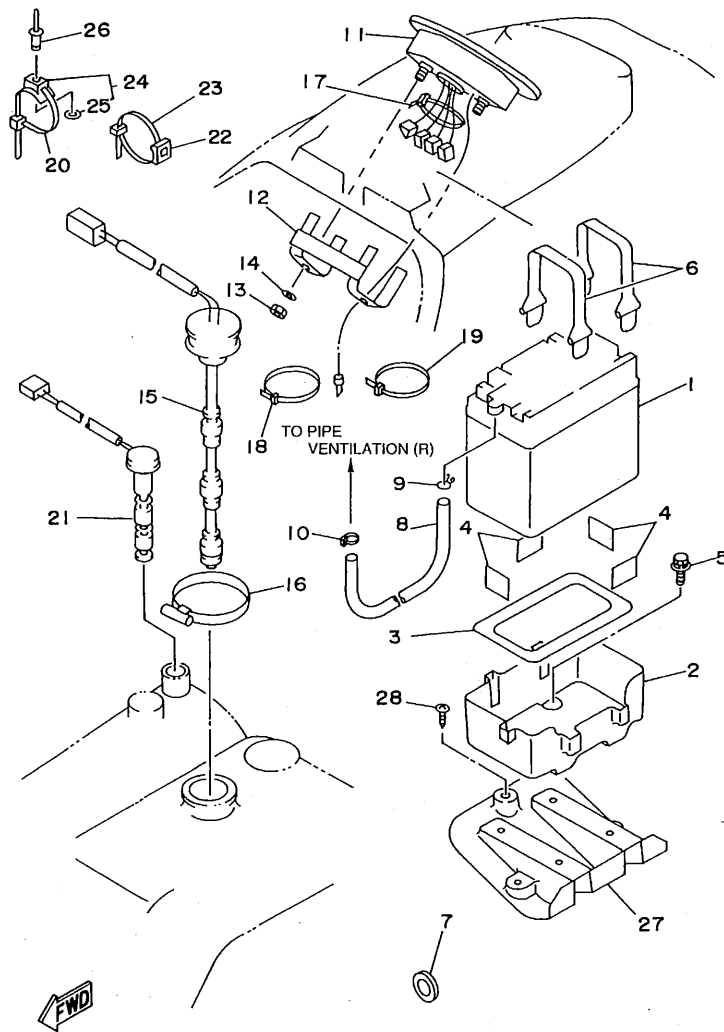


GH34100-7130

FIG. 13 ELECTRICAL I

REF. NO.	PART NO.	DESCRIPTION	Q'TY	REMARKS
57	97013-05020	BOLT	5	
58	92903-05600	WASHER, PLATE	5	
59	90446-14M56	HOSE	1	
60	90465-11M59	CLAMP	6	
61	63M-83623-00	MARK 3	1	
62	4GB-2155A-00	MARK, EC	1	FOR EUROPE

C11

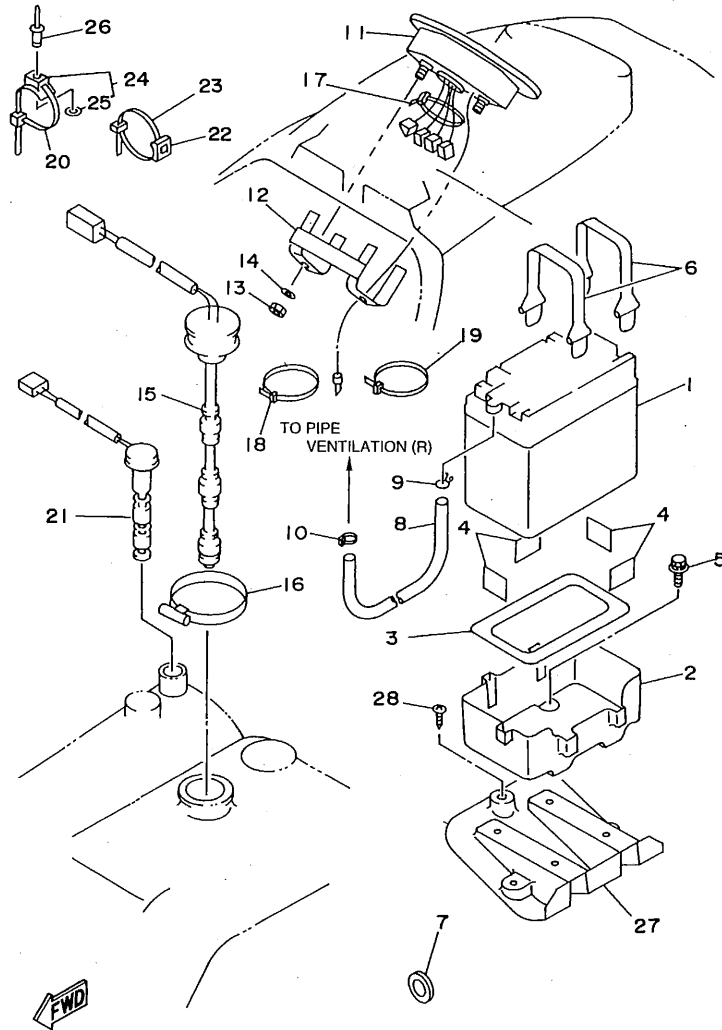


GH34100-7140

FIG. 14 ELECTRICAL 2

REF. NO.	PART NO.	DESCRIPTION	Q'TY	REMARKS
1	EU0-82110-09	BATTERY ASSY	1	
2	EW2-68211-00	CASE, BATTERY	1	
3	EU0-U8221-00	PAD, BATTERY 1	1	YMUS
4	EU0-U8221-30	PAD, BATTERY 2	4	YMUS
5	90119-06920	BOLT, WITH WASHER	4	
6	EU0-U821D-00	BAND, BATTERY	2	YMUS
7	FJ0-68222-01	GROMMET	1	
8	GJ3-67856-20	HOSE, AIR VENT 3	1	
9	90467-08M10	CLIP	1	
10	90465-11M10	CLAMP	1	
11	GH3-6820A-00	METER ASSY	1	UR FOR USA
	GH3-6820A-10	METER ASSY	1	UR FOR CANADA, EUROPE
12	GJ1-68238-00	BRACKET, METER	1	
13	95720-05300	NUT, FLANGE	2	
14	92990-05200	WASHER, PLAIN	2	
15	GJ1-68248-00	SENDER, FUEL	1	
16	90601-162U5	BAND, HOSE G2	1	YMUS
17	90601-20006	NYLON CLIP 1	1	
18	90601-20008	NYLON CLIP 1	1	
19	90601-20006	NYLON CLIP 1	2	
20	90601-20006	NYLON CLIP 1	2	
21	GJ1-6824C-01	SENDER, OIL	1	
22	90600-90004	BASE, CLAMP	3	
23	90601-200U1	NYLON CLIP 1	3	YMUS
24	90600-91736	CLAMP	2	
25	90201-05925	.WASHER, PLATE	1	
26	90267-48925	RIVET, BLIND	2	
27	GJ3-U821C-00	BATTERY CASE COMP.	1	YMUS

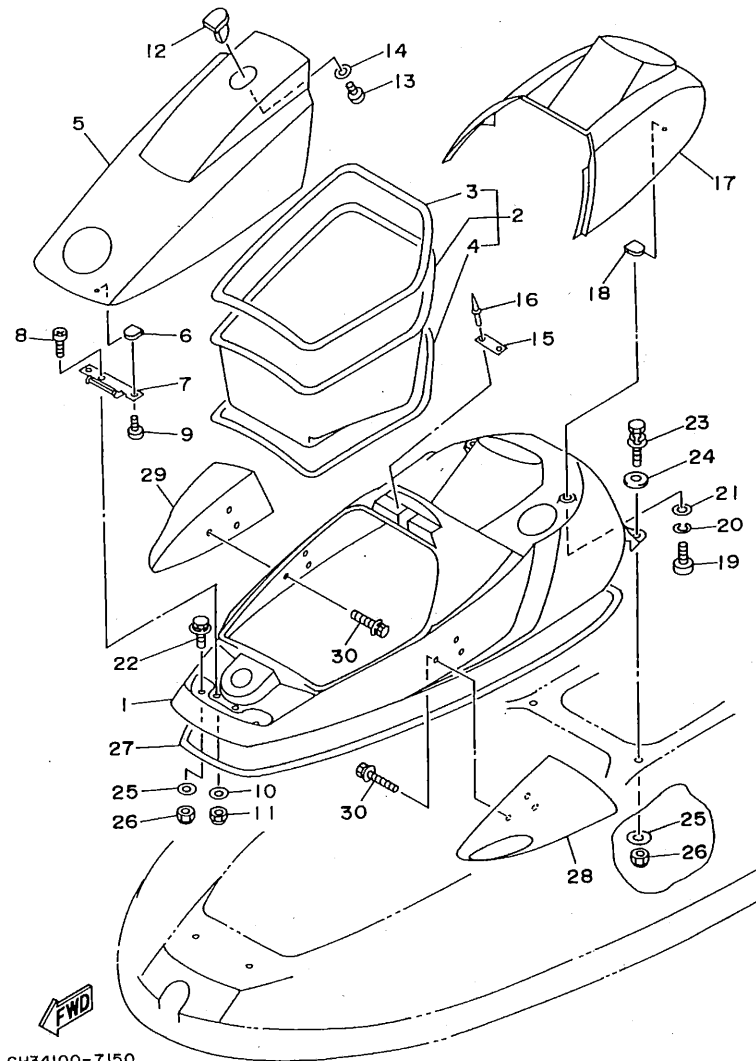
C12



GH34100-7140

FIG. 14 ELECTRICAL 2

REF. NO.	PART NO.	DESCRIPTION	Q'TY	REMARKS
28	97780-60116	SCREW, TAPPING	3	

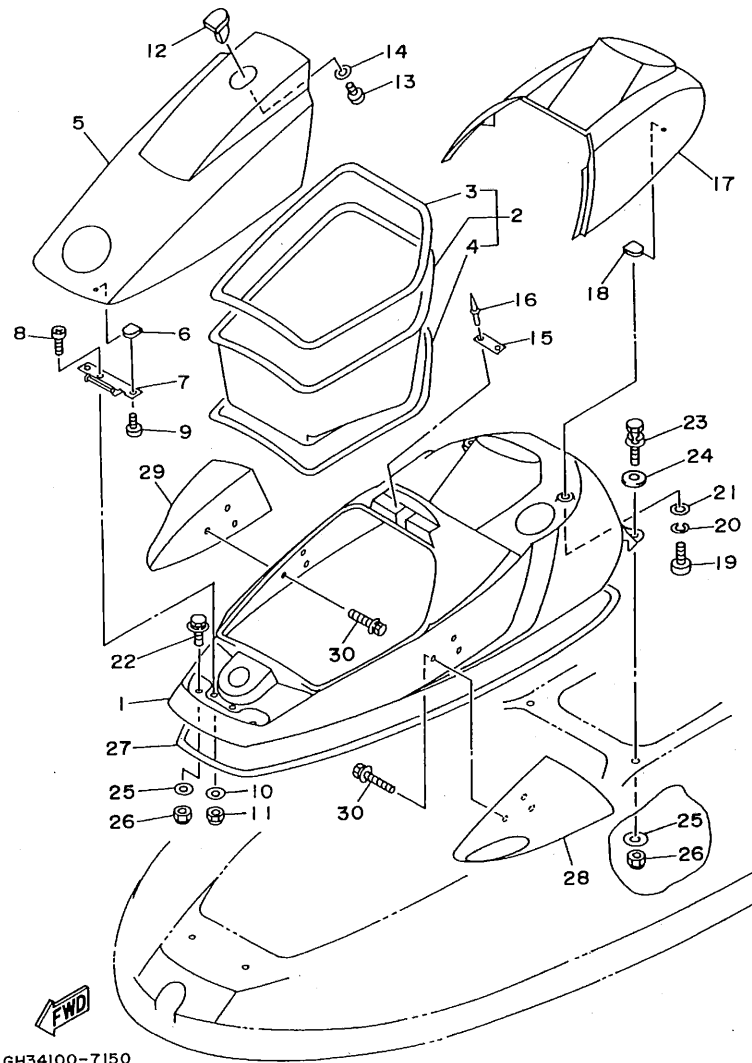


GH34100-7150

FIG. 15 ENGINE HATCH

REF. NO.	PART NO.	DESCRIPTION	Q'TY	REMARKS
1	GJ3-U516A-00-P0	ENGINE HATCH COMP.	1	YMUS DEEP PURPLE SOLID 1
2	GJ3-U475A-00	BOW, LOCKER ASSY	1	YMUS
3	GJ3-U266B-30	.PACKING 3	1	YMUS
4	GJ3-U266C-30	.PACKING 4	1	YMUS
5	GH3-U517B-00	LID, ENGINE HATCH	1	YMUS VIVID RED METALLIC 4
6	90183-06902	NUT, SPRING	2	
7	GJ3-6517D-01	HINGE, LID	1	
8	90149-06902	SCREW	2	
9	90149-069U2	SCREW	2	YMUS
10	92990-06200	WASHER, PLAIN	2	
11	95720-06300	NUT, SELF-LOCKING	2	
12	GJ3-6517C-01	LOCK, LID	1	
13	90149-059U3	SCREW	2	YMUS
14	92990-05200	WASHER, PLAIN	2	
15	GJ3-6517F-00	HOOK, LID LOCK	1	
16	90267-489U1	RIVET, BLIND	2	YMUS
17	GH3-U516N-00	COVER, ENGINE HATCH	1	YMUS VIVID RED METALLIC 4
18	90183-06902	NUT, SPRING	4	
19	90149-069U4	SCREW	4	
20	92995-06100	WASHER, SPRING	4	
21	92990-06600	WASHER, PLATE	4	
22	90119-089U9	BOLT, WITH WASHER	2	YMUS
23	90119-089U6	BOLT, WITH WASHER	2	YMUS
24	90201-099U1	WASHER, PLATE	2	YMUS
25	90201-08929	WASHER, PLATE	4	
26	95720-08300	NUT, SELF-LOCKING	4	
27	GJ3-U2663-00	PACKING 1	1	YMUS
28	GH3-U596B-00	MIRROR (LH)	1	YMUS

C14



GH34100-7150

FIG. 15 ENGINE HATCH

REF. NO.	PART NO.	DESCRIPTION	Q'TY	REMARKS
29	GH3-U596C-00	MIRROR (RH)	1	YMUS
30	90119-06920	BOLT, WITH WASHER	6	

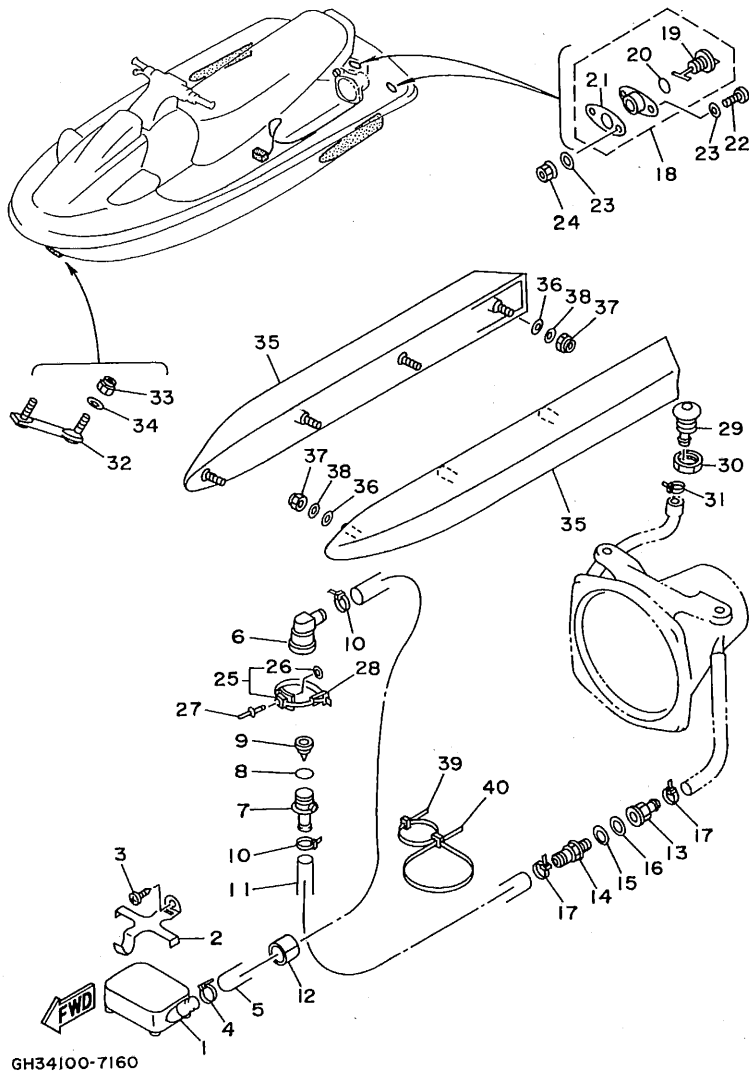
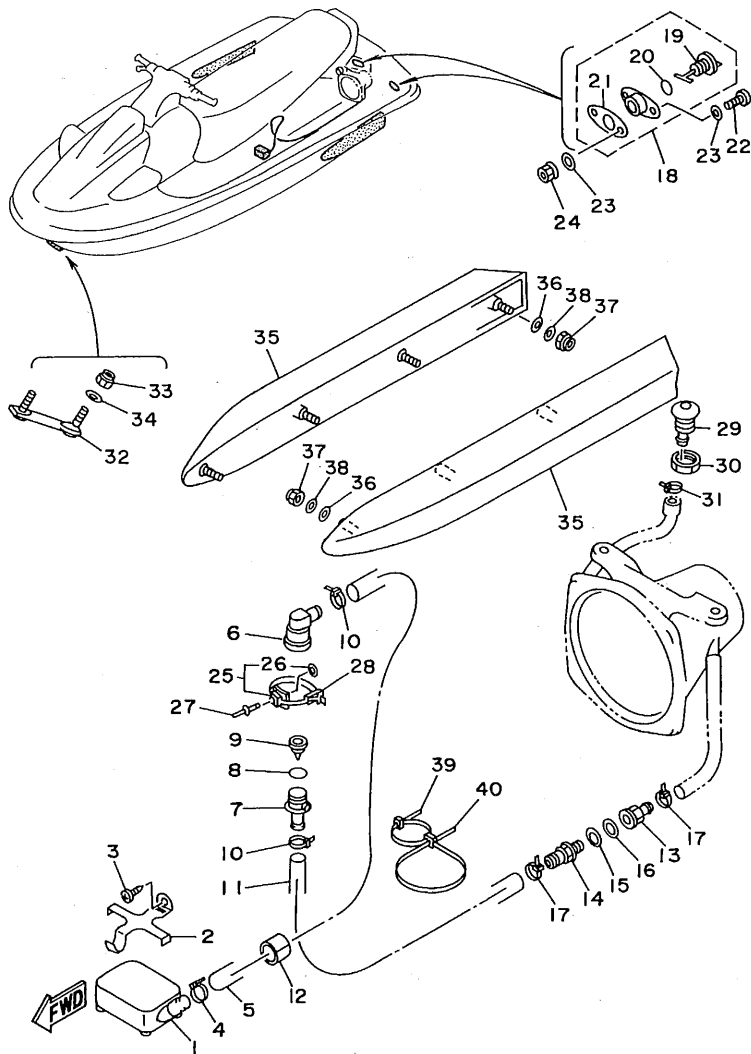


FIG. 16 HULL. DECK

REF. NO.	PART NO.	DESCRIPTION	Q'TY	REMARKS
1	G00-U761D-00	STRAINER, BILGE	1	YMUS
2	EW2-67618-00	BASE, STRAINER BLIGE	1	
3	97780-50612	SCREW, TAPPING	1	
4	90601-200U1	NYLON CLIP 1	2	YMUS
5	90445-19M12	HOSE	1	
6	63M-51162-00	JOINT, HOSE	1	
7	63M-51165-00	JOINT HOSE 2	1	
8	93210-22ME5	O-RING	1	
9	63M-5316M-00	VALVE 1	1	
10	90465-13M11	CLAMP	2	
11	90445-19M01	HOSE	1	
12	GJ1-U7578-10	PACKING, HOSE 2	1	YMUS
13	90604-80759	CONNECTION, THRU-HULL 1/4	1	
14	90604-80775	THROUGH, HULL CONNECTION	1	
15	90430-13909	GASKET	1	
16	90430-13909	GASKET	1	
17	90601-200U1	NYLON CLIP 1	2	YMUS
18	EU0-62280-00	DRAIN PLUG ASSY	2	
19	EU0-62282-00	.PLUG, DRAIN	1	
20	EU0-62283-00	.O-RING	1	
21	EU0-62285-01	.PACKING, DRAIN	1	
22	97880-05020	SCREW, PAN HEAD	4	
23	92990-05200	WASHER, PLAIN	8	
24	95720-05300	NUT, FLANGE	4	
25	90600-91736	CLAMP	1	
26	90201-05925	.WASHER, PLATE	1	
27	90267-489U7	RIVET, BLIND	1	YMUS
28	90601-20006	NYLON CLIP 1	1	

D2



GH34100-7160

FIG. 16 HULL DECK

REF. NO.	PART NO.	DESCRIPTION	Q'TY	REMARKS
29	FN8-6269B-00	SPOUT	1	
30	EU0-61652-00	NUT	1	
31	90600-91755	CLIP	1	
32	FN8-U1624-00	BOWEYE 1 (S)	1	YMUS
33	95720-08300	NUT, SELF-LOCKING	2	
34	92990-08200	WASHER, PLAIN	2	
35	GH3-U883M-00	STABILIZER	2	
36	GJ3-6883U-00	PACKING, STABILIZER	8	
37	95720-06300	NUT, SELF-LOCKING	8	
38	92990-06200	WASHER, PLAIN	8	
39	90601-20016	NYLON CLIP 1	1	
40	90601-200U4	NYLON CLIP 1	1	YMUS

D3

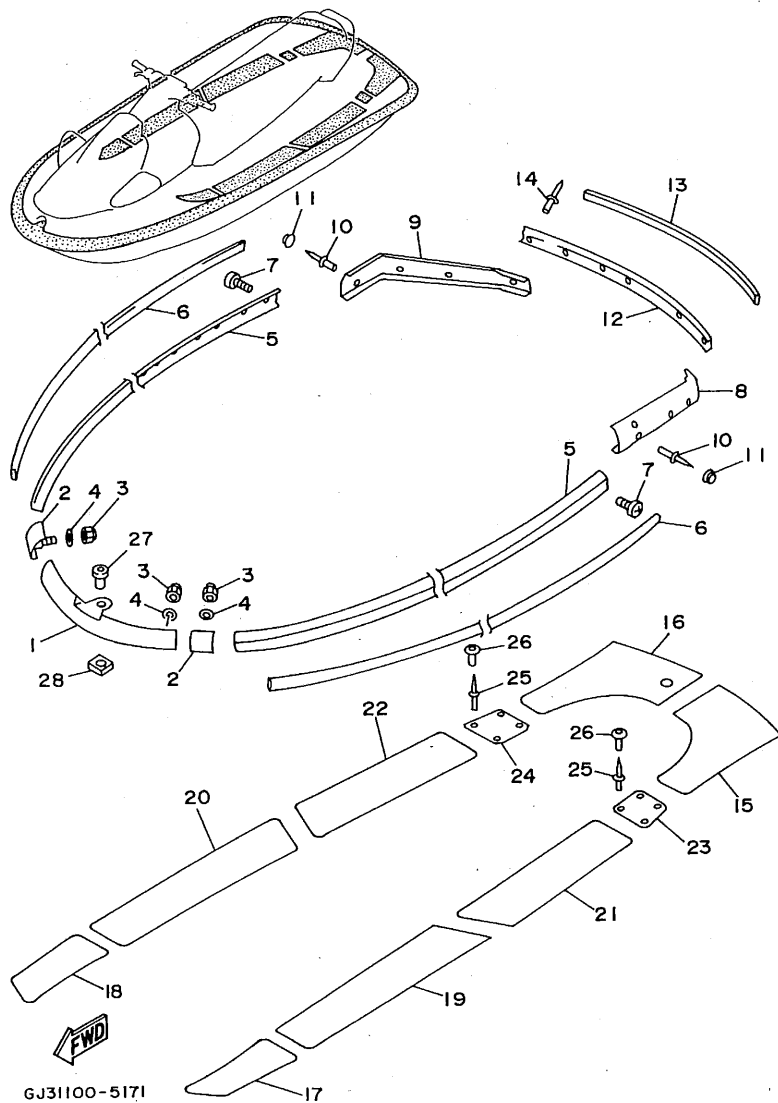
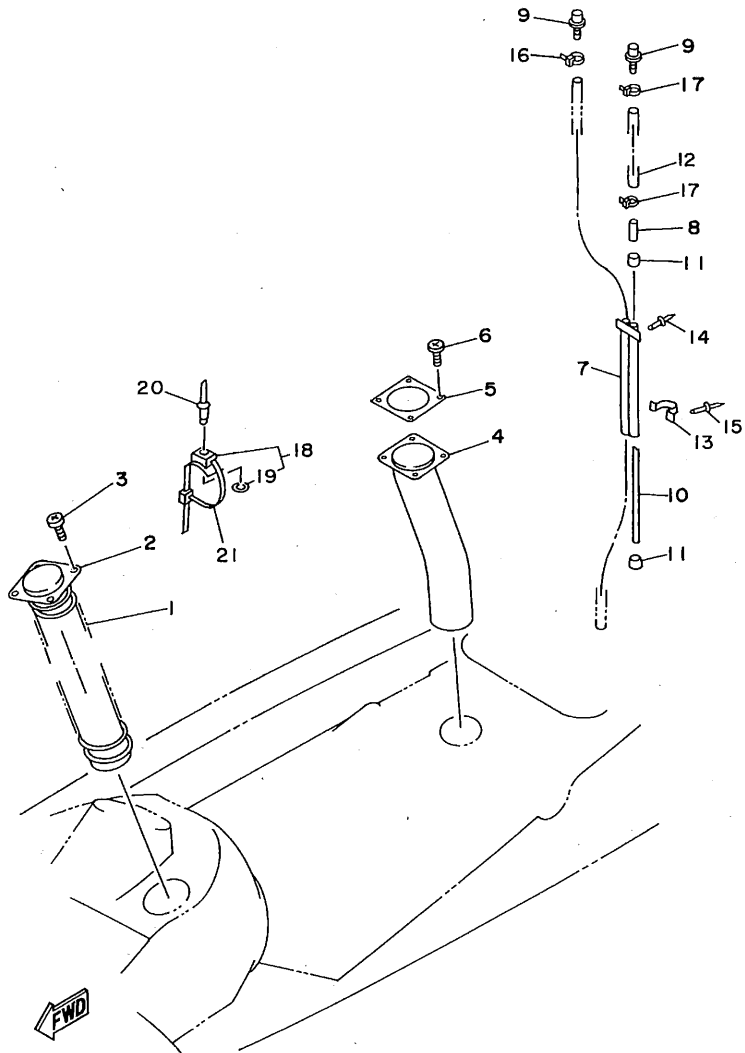


FIG. 17 GUNWALE. MAT

REF. NO.	PART NO.	DESCRIPTION	Q'TY	REMARKS
1	GJ3-U2501-10	BOW GUNWALE COMP.	1	YMUS
2	GJ1-6252A-30	JOINT, GUNWALE	2	
3	95720-06300	NUT, SELF-LOCKING	6	
4	92990-06200	WASHER, PLAIN	6	
5	GJ3-U2512-11	GUNWALE, SIDE	2	YMUS
6	GJ3-U2519-30	INNER GUNWALE	2	YMUS
7	90169-059U1	SCREW, TAPPING	28	YMUS
8	GJ3-U251D-10	GUNWALE, STERN 1	1	
9	GJ3-U251E-10	GUNWALE, STERN 2	1	
10	90267-489U8	RIVET, BLIND	10	YMUS
11	GJ3-U354D-10	CAP, HEAD	10	
12	GJ3-U252C-10	COVER, GUNWALE 1	1	YMUS
13	GJ3-U252D-30	COVER, GUNWALE 2	1	YMUS
14	90267-489U8	RIVET, BLIND	9	YMUS
15	GJ3-63581-31	MAT, UPPER	1	
16	GJ3-63581-41	MAT, UPPER	1	
17	GJ3-U351H-30	MAT, STEP 1	1	YMUS
18	GJ3-U351H-40	MAT, STEP 1	1	YMUS
19	GJ3-U351J-30	MAT, STEP 2	1	YMUS
20	GJ3-U351J-40	MAT, STEP 2	1	YMUS
21	GJ3-U351K-30	MAT, STEP 3	1	YMUS
22	GJ3-U351K-40	MAT, STEP 3	1	YMUS
23	GH3-U351M-10	MAT, STEP 4	1	YMUS
24	GH3-U351M-20	MAT, STEP 4	1	YMUS
25	90267-48925	RIVET, BLIND	8	
26	GJ3-U352E-20	PLUG, MUSHROOM	8	YMUS
27	FNB-61651-00	ROPE HOLE	2	
28	EU0-61652-00	NUT	2	

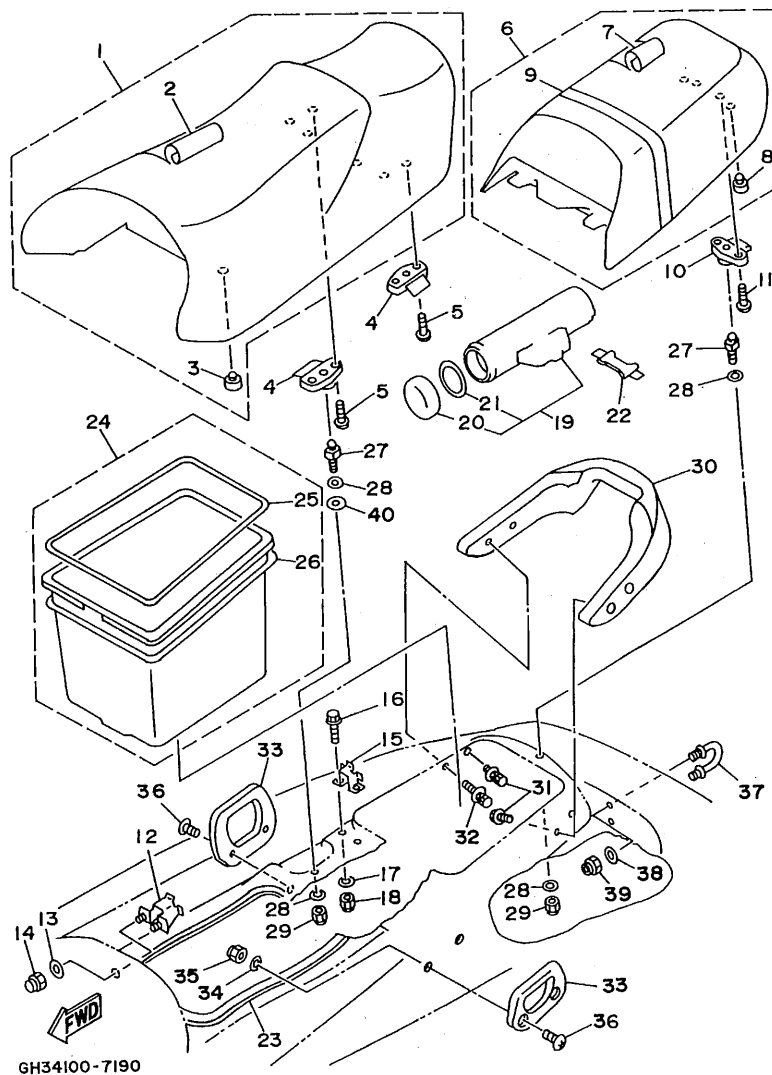


GH34100-7180

FIG. 18 VENTILATION

REF. NO.	PART NO.	DESCRIPTION	Q'TY	REMARKS
1	GJ3-U213F-01	HOSE, VENTILATOR 1	1	YMUS
2	GJ3-U2127-00	BASE, AIR INTAKE	1	
3	90149-059U1	SCREW	4	YMUS
4	GJ3-U213G-00	HOSE, VENTILATOR 2	1	YMUS
5	GJ3-6213J-00	PLATE, HOSE 2	1	
6	90149-059U1	SCREW	4	YMUS
7	FJ0-62149-00	PIPE, VENTILATION	1	
8	GH3-62156-00	PIPE	1	
9	GJ3-6215F-00	NIPPLE	2	
10	EU0-62156-32	ELBOW, VENTILATOR 12	1	
11	EU0-62155-00	CAP	2	
12	GJ3-67856-10	HOSE, AIR VENT 3	1	
13	FJ0-62151-00	SUPPORT	1	
14	90267-489U7	RIVET, BLIND	2	YMUS
15	90267-489U2	RIVET, BLIND	2	YMUS
16	90465-11M10	CLAMP	1	
17	90465-11M10	CLAMP	2	
18	90600-91736	CLAMP	2	
19	90201-05925	.WASHER, PLATE	1	
20	90267-48925	RIVET, BLIND	2	
21	90601-20008	NYLON CLIP 1	2	

D5

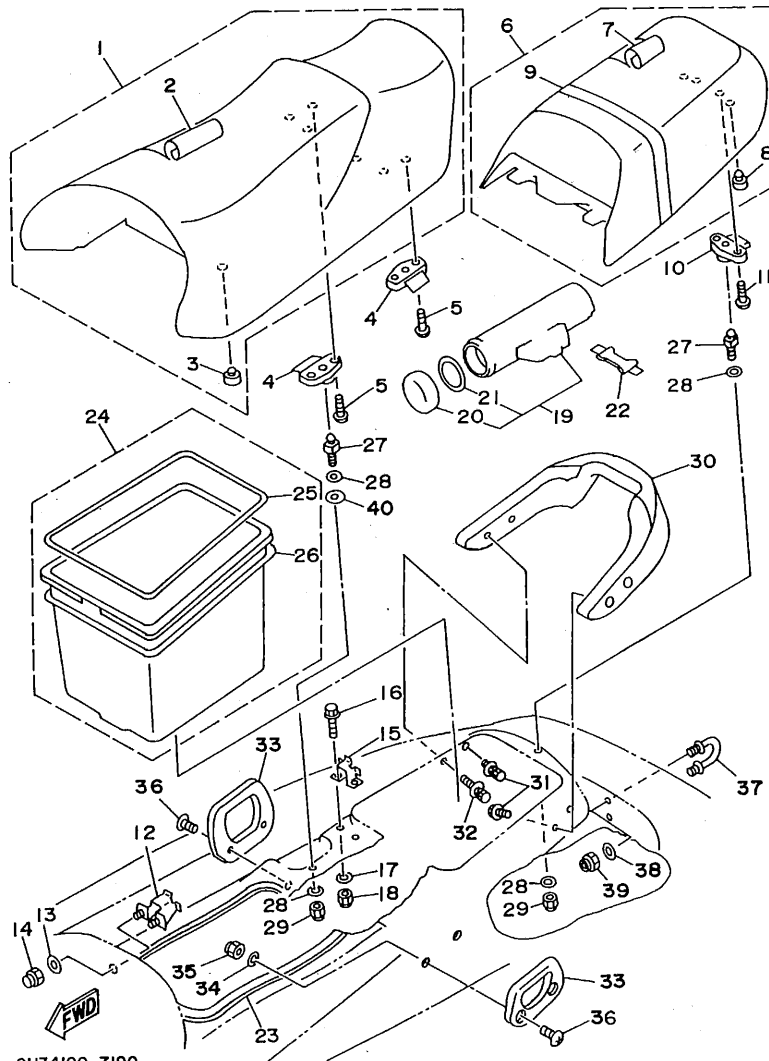


GH34100-7190

FIG. 19 SEAT - UNDER LOCKER

REF. NO.	PART NO.	DESCRIPTION	Q'TY	REMARKS
1	GH3-U371A-00	DOUBLE SEAT ASSY	1	YMUS DEEP PURPLE SOLID 1
2	GH3-U371B-00	.COVER, SEAT 1	1	YMUS DEEP PURPLE SOLID 1
3	278-27114-00	.STOPPER, MAIN STAND	4	
4	GJ3-63850-01	SEAT LOCK ASSY	2	
5	98980-06040	SCREW, BIND	4	
6	GH3-U372A-00	SINGLE SEAT ASSY	1	YMUS DEEP PURPLE SOLID 1
7	GH3-U372B-00	.COVER, SEAT	1	YMUS DEEP PURPLE SOLID 1
8	278-27114-00	.STOPPER, MAIN STAND	2	
9	GH3-U373D-00	.BAND, SEAT COMP	1	YMUS
10	GJ3-63850-01	SEAT LOCK ASSY	1	
11	98980-06040	SCREW, BIND	2	
12	GH3-6378C-00	STAY, SEAT 1	2	
13	92990-06200	WASHER, PLAIN	4	
14	95720-06300	NUT, SELF-LOCKING	4	
15	GJ3-6378D-00	STAY, SEAT 2	2	
16	90119-06900	BOLT, WITH WASHER	4	
17	92990-06200	WASHER, PLAIN	4	
18	95720-06300	NUT, SELF-LOCKING	4	
19	EW2-U5920-00	CASE 2 ASSY	1	
20	EW2-U5912-00	.CAP, CASE	1	
21	EW2-U5913-00	.PACKING, CASE	1	
22	EU0-U756E-00	BAND, WATER LOCK	2	YMUS
23	GJ3-62664-02	PACKING	1	
24	GJ3-U474A-00	UNDER LOCKER ASSY	1	YMUS
25	GJ3-6266B-00	.PACKING 3	1	
26	GJ3-U266C-00	.PACKING 4	1	YMUS
27	GH1-63774-01	PIN	3	
28	92990-10200	WASHER, PLAIN	6	

D6

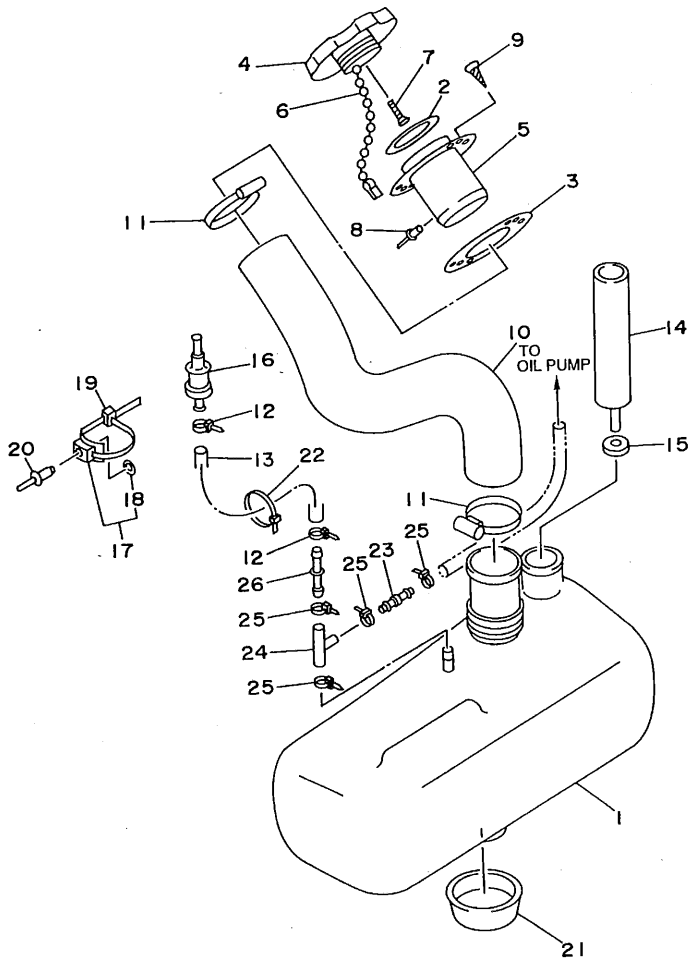


GH34100-7190

FIG. 19 SEAT - UNDER LOCKER

REF. NO.	PART NO.	DESCRIPTION	Q'TY	REMARKS
29	95720-10300	NUT	3	
30	GH3-U271B-00	GRIP, HAND	1	YMUS DEEP PURPLE SOLID 1
31	90119-06920	BOLT, WITH WASHER	3	
32	90119-06901	BOLT, WITH WASHER	1	
33	GJ3-U271E-10	GRIP, ASSIST	2	YMUS DEEP PURPLE SOLID 1
34	92990-08200	WASHER, PLAIN	4	
35	95720-08300	NUT, SELF-LOCKING	4	
36	90149-08993	SCREW	4	
37	A00-61626-40	BOW EYE 1 (S)	1	
38	92990-08200	WASHER, PLAIN	2	
39	95720-08300	NUT, SELF-LOCKING	2	
40	GJ3-65578-00	TAPE	2	

D7

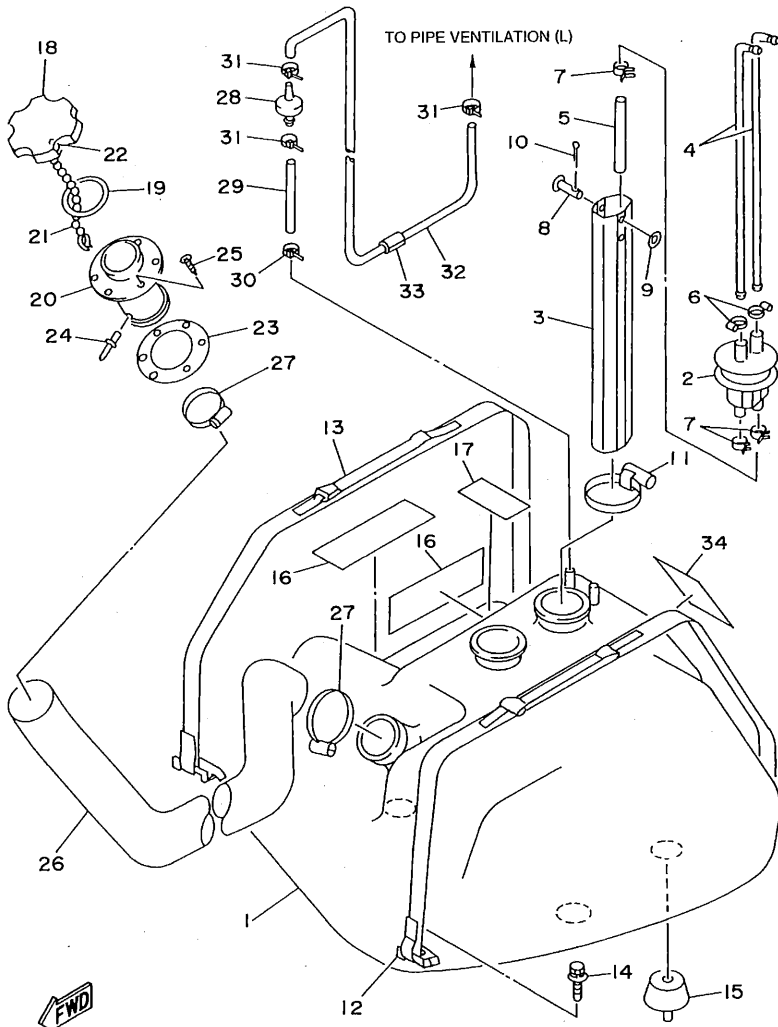


GH31100-6200

FIG. 20 OIL TANK

REF. NO.	PART NO.	DESCRIPTION	Q'TY	REMARKS
1	GJ3-U775B-01	TANK, OIL	1	YMUS
2	GJ3-U778C-00	PACKING, OIL CAP	1	
3	GJ3-U778E-00	PACKING, OIL FILLER	1	
4	GJ3-U778B-00	CAP, OIL FILLER	1	
5	GJ3-U778D-00	SOCKET, OIL FILLER	1	
6	EU0-U7835-00	CHAIN BALL	1	
7	97780-04110	SCREW, TAPPING	1	
8	90267-40935	RIVET, BLIND	1	
9	FX1-67869-00	SCREW, FLAT HEAD TAPPING	6	
10	GJ3-U776C-00	HOSE, OIL FILLER	1	YMUS
11	90601-152U3	CLAMP	2	YMUS
12	90465-11M10	CLAMP	2	
13	GH3-67856-00	HOSE, AIR VENT 3	1	
14	6J8-13411-00	STRAINER, OIL	1	
15	6J8-13414-00	GASKET, STRAINER COVER	1	
16	FJ0-67766-00	ROLL OVER VALVE	1	
17	90600-91736	CLAMP	1	
18	90201-05925	.WASHER, PLATE	1	
19	90601-20006	NYLON CLIP 1	1	
20	90267-48925	RIVET, BLIND	1	
21	GH1-6759D-00	MAT 3	1	
22	90601-200U2	BAND	1	
23	63M-13132-00	JOINT	1	
24	63M-24378-00	PIPE, JOINT 4	1	
25	90465-11M10	CLAMP	4	
26	6G8-24376-00	PIPE, JOINT 1	1	

D8



GH31100-6210

FIG. 21 FUEL TANK

REF. NO.	PART NO.	DESCRIPTION	Q'TY	REMARKS
1	GH3-U7711-00	TANK, FUEL	1	YMUS
2	FJ0-67713-00	PIPE, JOINT	1	
3	FJ0-67716-01	SLEEVE 1	1	
4	FJ0-67714-02	PIPE, SUCTION 3	2	
5	90445-11903	HOSE	1	
6	90601-11062	BAND, HOSE 11	2	
7	90467-11044	CLIP	3	
8	91790-05040	PIN, CLEVIS	1	
9	92990-05600	WASHER, PLATE	1	
10	91490-16010	PIN, COTTER	1	
11	90601-162U5	BAND, HOSE 62	1	YMUS
12	GJ1-67743-00	BELT, TANK 1	1	LH
13	GH3-67743-00	BELT, TANK 1	1	RH
14	90119-089U7	BOLT, WITH WASHER	4	YMUS
15	GH1-6782B-01	DAMPER, FUEL TANK	4	
16	GJ1-6759B-00	MAT 1	2	
17	GJ1-6759C-00	MAT 2	1	
18	FN8-67831-01	CAP, FUEL FILLER	1	
19	EU0-67832-00	PACKING 1	1	
20	FN8-67833-00	SOCKET	1	
21	EU0-67835-00	CHAIN BALL	1	
22	EU0-67839-00	COUPLING	1	
23	EU0-67834-00	PACKING, FUEL FILLER	1	
24	90267-40935	RIVET, BLIND	1	
25	FX1-67869-00	SCREW, FLAT HEAD TAPPING	6	
26	GJ3-U7844-00	HOSE	1	YMUS
27	90601-155U4	BAND, HOSE 55	2	YMUS
28	EU0-67767-31	CHECK VALVE	1	

D9

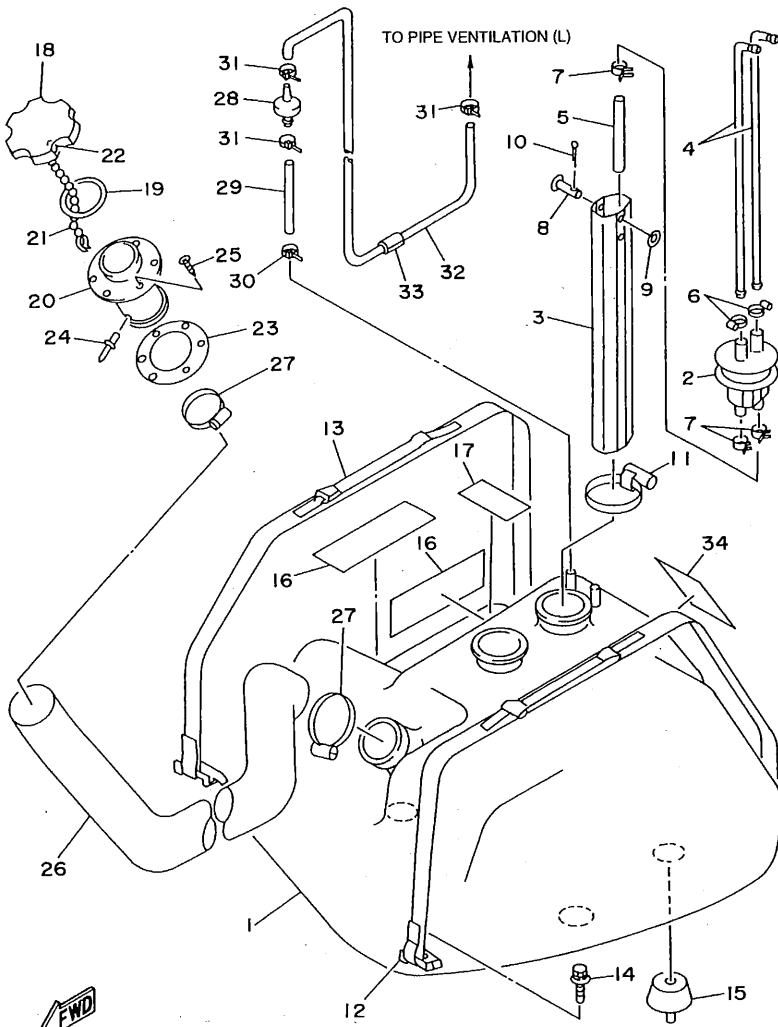


FIG. 21 FUEL TANK

REF. NO.	PART NO.	DESCRIPTION	Q'TY	REMARKS
29	GA7-6785G-00	HOSE, AIR VENT 1	1	
30	90465-11M10	CLAMP	1	
31	90465-11M10	CLAMP	3	
32	GA7-6785H-00	HOSE, AIR VENT 3	1	
33	GJ1-67578-00	PACKING, HOSE 2	1	
34	GH3-6418D-00	LABEL, FUEL TANK	1	

GH31100-6210



D10

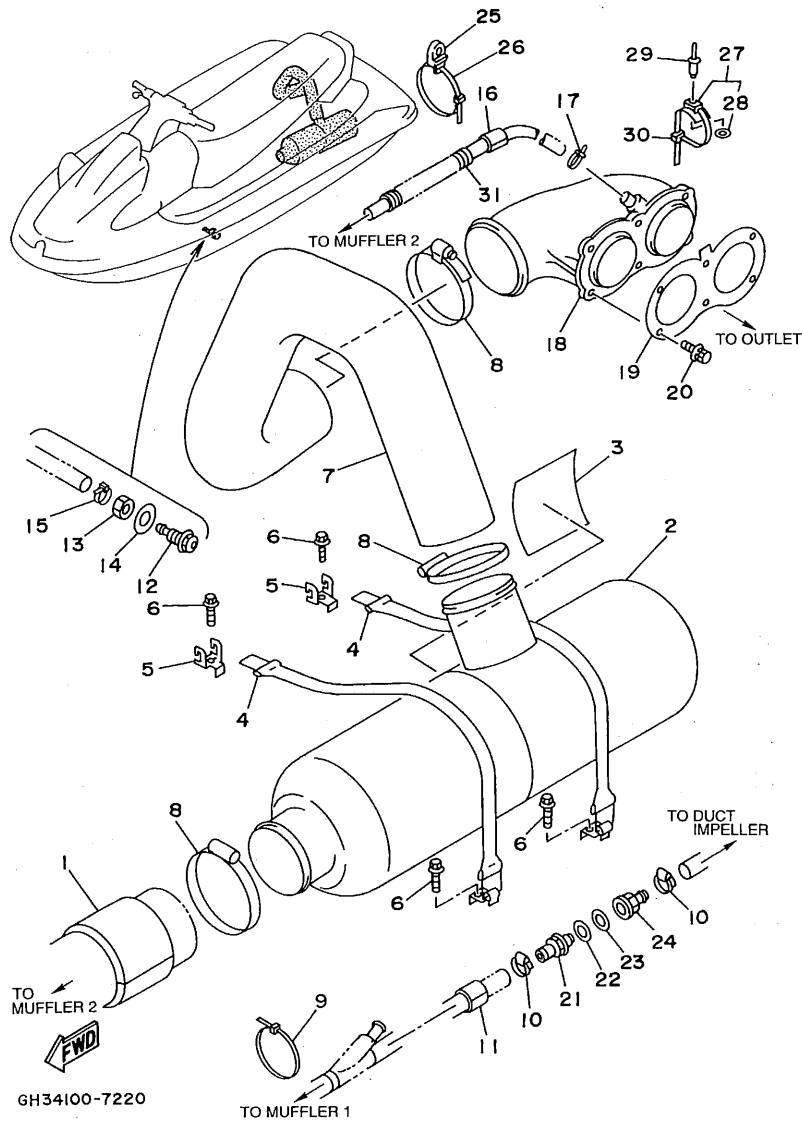
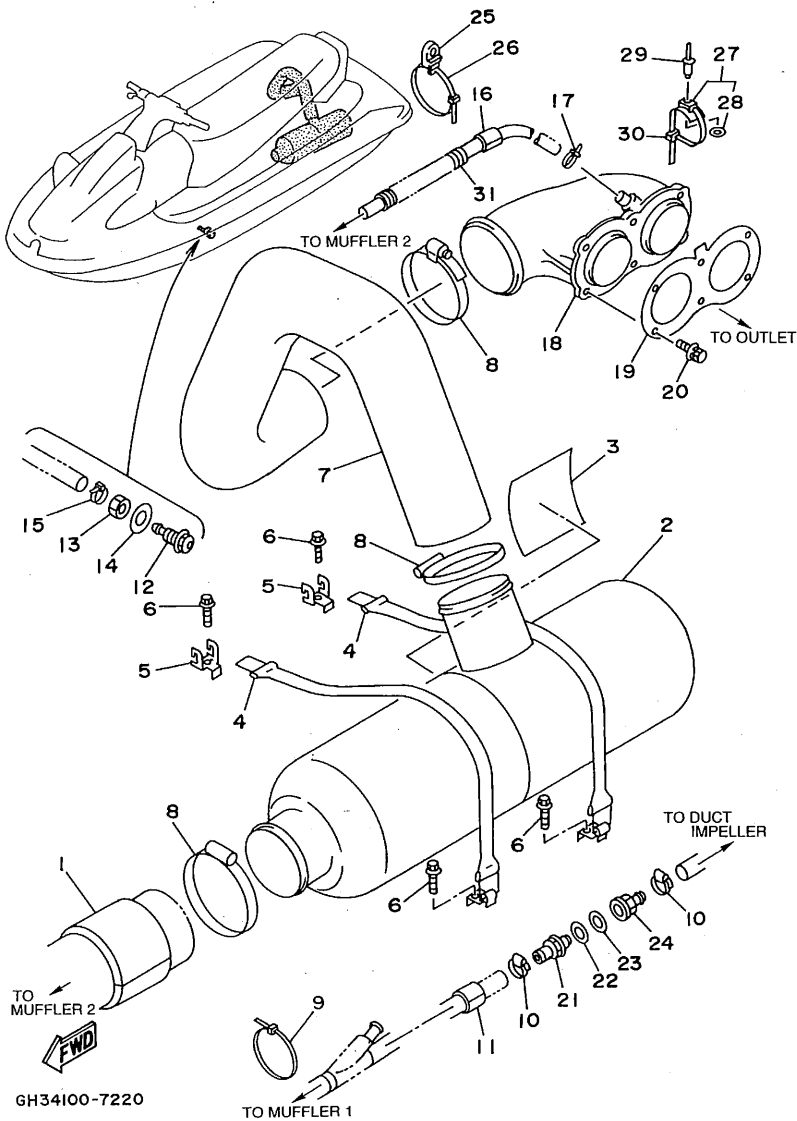


FIG. 22 EXHAUST 2

REF. NO.	PART NO.	DESCRIPTION	Q'TY	REMARKS
1	GJ1-67577-00	PACKING, HOSE 1	1	
2	GH3-U7550-00	WATER LOCK	1	YMUS
3	GJ3-U755J-00	MAT, WATER LOCK	1	YMUS
4	GJ3-U7570-00	HOOK C	2	YMUS
5	EW2-65772-00	HOOK A	2	
6	90105-06900	BOLT, WASHER BASED	4	
7	GH3-U7555-00	HOSE	1	YMUS
8	90601-195UD	NYLON CLIP 1	3	YMUS
9	90601-20006	NYLON CLIP 1	2	
10	90601-118UF	NYLON CLIP 1	2	YMUS
11	GJ1-67578-10	PACKING, HOSE 2	1	
12	GJ1-6753B-02	PILOT, WATER	1	
13	95380-14700	NUT	1	
14	92990-14200	WASHER, PLAIN	1	
15	90465-11M10	CLAMP	1	
16	GJ1-U7578-10	PACKING, HOSE 2	1	YMUS
17	90601-200U1	NYLON CLIP 1	1	YMUS
18	GJ1-U7560-00	EXHAUST, THRU-HALL COMP.	1	YMUS
19	GJ1-U7525-00	PACKING	1	YMUS
20	90119-059U4	BOLT, WITH WASHER	6	YMUS
21	90604-80794	THROGUH-HULL CONNECTION 3/8	1	
22	90430-16910	GASKET	1	
23	90430-16910	GASKET	1	
24	90604-80793	THROGUH-HULL CONNECTION 3/8	1	
25	90600-900U1	BASE CLAMP	1	YMUS
26	90601-200U4	NYLON CLIP 1	1	YMUS
27	90600-91736	CLAMP	1	
28	90201-05925	WASHER, PLATE	1	

D11

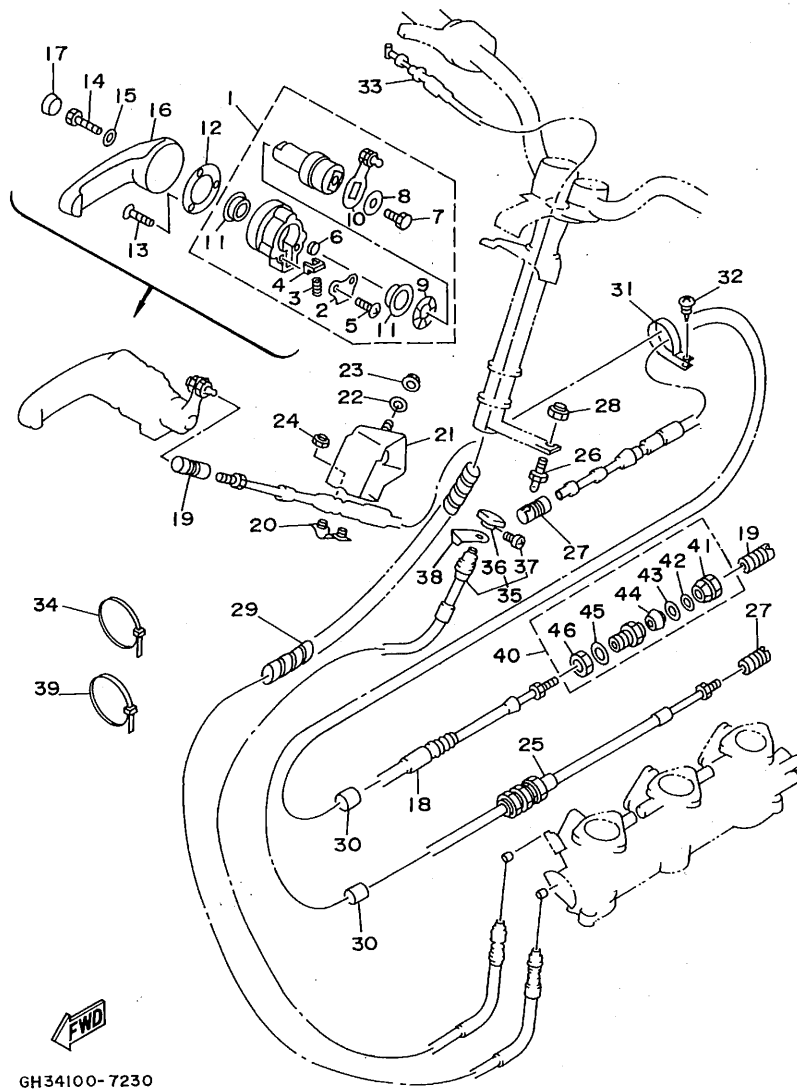


GH34100-7220

FIG. 22 EXHAUST 2

REF. NO.	PART NO.	DESCRIPTION	Q'TY	REMARKS
29	90267-48925	RIVET, BLIND	1	
30	90601-20006	NYLON CLIP 1	1	
31	90446-27M55	HOSE	1	

D12

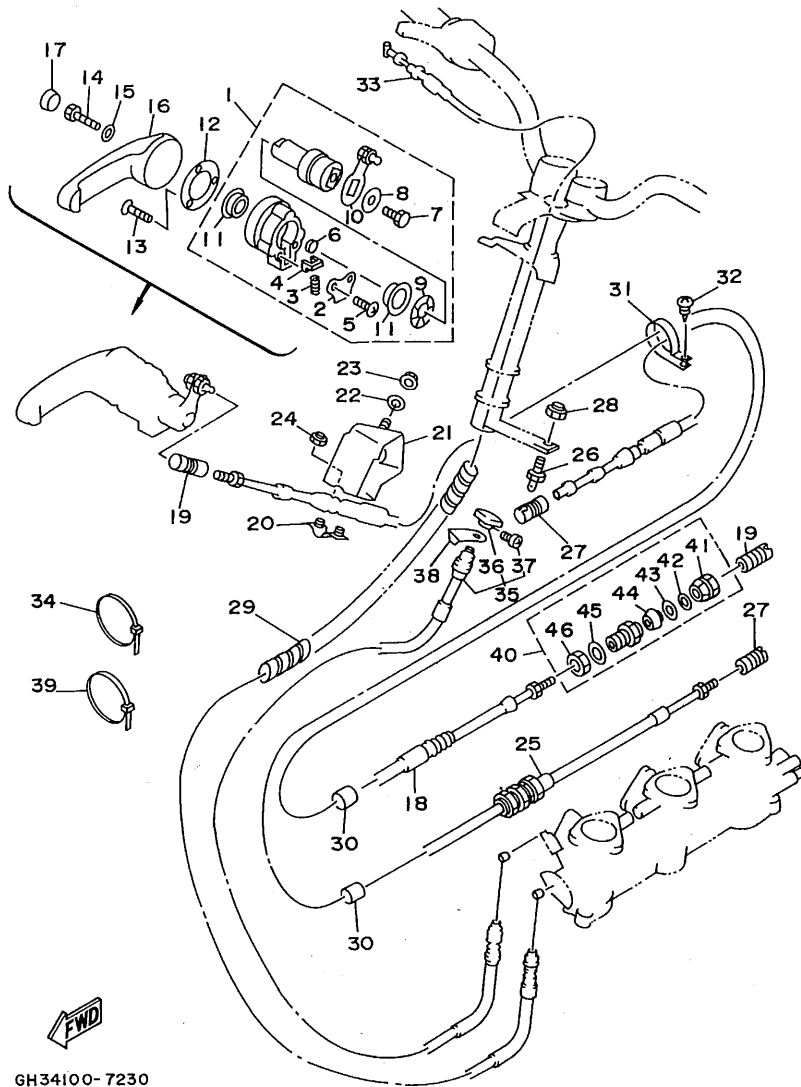


GH34100-7230

FIG. 23 CONTROL CABLE

REF. NO.	PART NO.	DESCRIPTION	Q'TY	REMARKS
1	GJ3-6134B-01	LEVER SUB-ASSY	1	
2	FJ0-61348-01	.PLATE	1	
3	FJ0-61349-00	.SPRING	1	
4	FJ0-61351-00	.DETENT ROLLER SET	1	
5	98580-05012	.SCREW, PAN HEAD	2	
6	FJ0-61352-00	.DETENT ROLLER	1	
7	97080-06014	.BOLT	1	
8	FJ0-61353-00	.WASHER	1	
9	FJ0-61354-00	.WAVE WASHER	1	
10	GJ3-6134N-01	.ARM	1	
11	FJ0-61347-00	.BEARING	2	
12	FJ0-61344-00	WASHER	1	
13	98780-05525	SCREW, FLAT HEAD	3	
14	97080-06035	BOLT	1	
15	92990-06200	WASHER, PLAIN	1	
16	GJ3-6134C-11	LEVER 1	1	DEEP PURPLE SOLID 1
17	GJ3-6135G-10	CAP, REMOCON.LEVER	1	
18	GH3-U149C-00	CABLE, REVERSE	1	YMUS
19	EU0-U1461-30	SHAFT, JOINT BALL	2	YMUS
20	GJ3-61468-01	STOPPER, CABLE	1	
21	GJ3-6146D-00	BRACKET, CABLE STOPPER 2	1	
22	92990-06200	WASHER, PLAIN	2	
23	95780-06300	NUT, FLANGE	2	
24	95720-06300	NUT, SELF-LOCKING	2	
25	GH3-61480-00	STEERING CABLE ASSY	1	
26	EU0-U1461-01	STUD, JOINT BALL	1	YMUS
27	GK5-6146F-00	SHAFT, JOINT BALL	2	
28	95780-06300	NUT, FLANGE	1	

D13



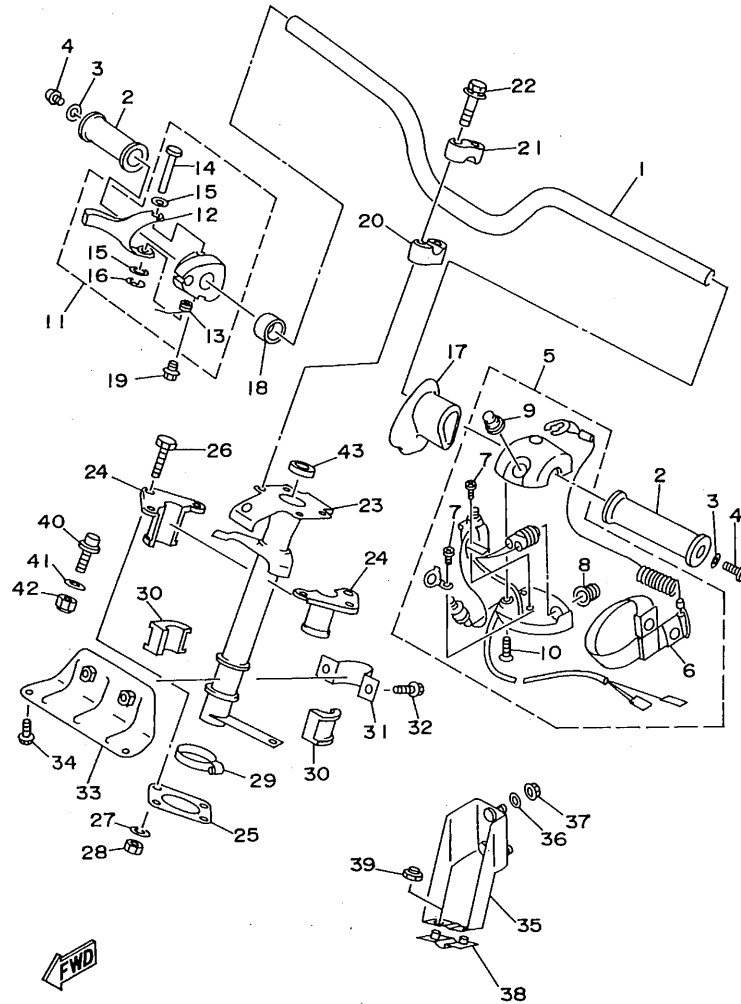
GH34100-7230

FIG. 23 CONTROL CABLE

REF. NO.	PART NO.	DESCRIPTION	Q'TY	REMARKS
29	90699-38U03	SPIRAP 25	1	YMUS
30	GJ1-67578-00	PACKING, HOSE 2	2	
31	90600-918U3	CLIP, NYLON 16	1	YMUS
32	97780-60116	SCREW, TAPPING	1	
33	GJ1-U7252-00	CABLE, THROTTLE	1	YMUS
34	90601-20006	NYLON CLIP 1	1	
35	GJ3-U7242-00	CABLE, CHOKE	1	YMUS
36	GA9-U724C-00	.KNOB	1	YMUS
37	GA9-U724D-00	.SCREW	1	YMUS
38	GJ3-6824D-00	PLATE, CHOKE	1	
39	90601-200U1	NYLON CLIP 1	1	
40	EU0-67267-00	CONNECTOR, CABLE	1	
41	EU0-62694-00	.CAP	1	
42	EU0-61446-00	.WASHER 30	1	
43	EU0-61486-00	.STOPPER	1	
44	EU0-61435-00	.SEAL, PIPE 30	1	
45	EU0-61438-00	.PACKING (C)	1	
46	EU0-62241-30	.NUT, DRAIN 1	1	

D14

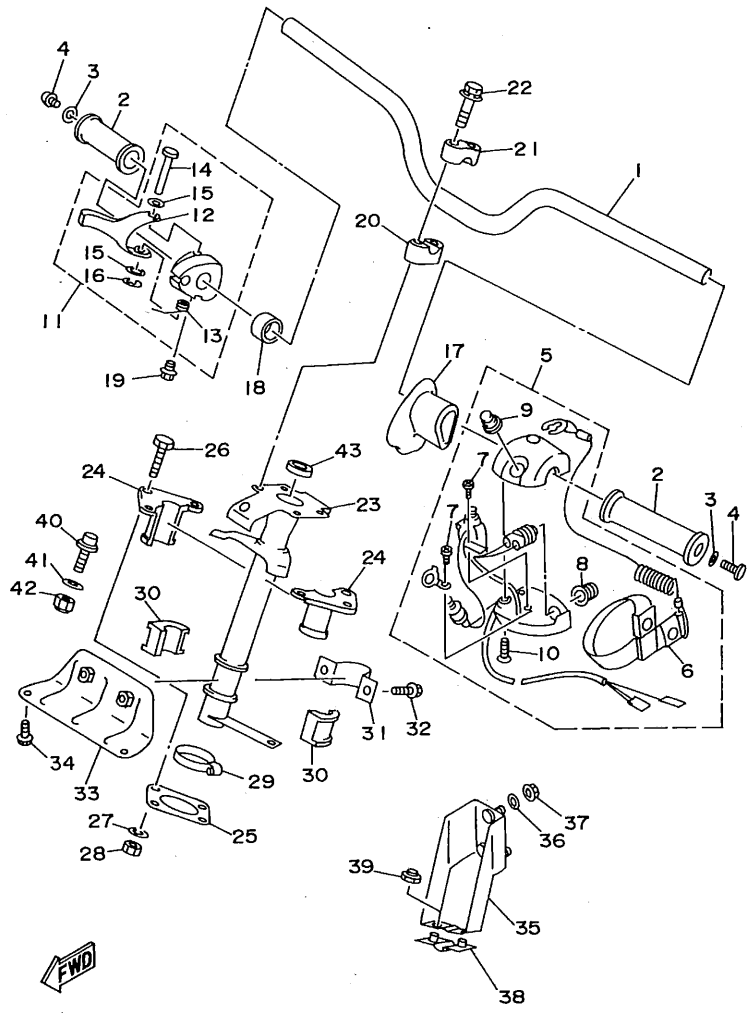
FIG. 24 STEERING 1



GJ35100-6240

REF. NO.	PART NO.	DESCRIPTION	Q'TY	REMARKS
1	GJ1-U1552-02	HANDLE	1	YMUS
2	EW2-61553-00	GRIP, HANDLE 1	2	
3	90201-05928	WASHER, PLATE	2	
4	90149-05959	SCREW	2	
5	GJ1-68310-00	SWITCH BOX ASSY	1	
6	EW2-68348-00	.LANYARD, STOP SWITCH	1	
7	98580-03008	.SCREW, PAN HEAD	2	
8	FK7-68312-02	.STOP BUTTON COMP.	1	
9	FK7-68313-01	.START BUTTON COMP.	1	
10	98580-05525	.SCREW, PAN HEAD	2	
11	GJ1-67250-01	THROTTLE LEVER ASSY	1	
12	GJ1-67255-00	.LEVER, THROTTLE	1	
13	EW2-67256-00	.SPRING	1	
14	EW2-67257-01	.SHAFT	1	
15	EW2-67258-01	.WASHER	2	
16	EW2-67259-01	.E-RING	1	
17	GJ3-6143G-00	SPACER	1	
18	90560-22281	SPACER	1	
19	90159-05900	SCREW, WITH WASHER	1	
20	EU0-23814-01	HOLDER, HANDLE LOWER	2	
21	EU0-23814-30	HOLDER, HANDLE UPPER	2	
22	90119-08925	BOLT, WITH WASHER	4	
23	GH3-61541-00	COLUMN, STEERING	1	
24	GH1-6141B-00	BEARING, COLUMN	2	
25	GH1-6143C-30	SEAL, RUBBER	1	
26	97080-06030	BOLT	4	
27	92990-06200	WASHER, PLAIN	4	
28	95720-06300	NUT, SELF-LOCKING	4	

D15



GJ35100-6240

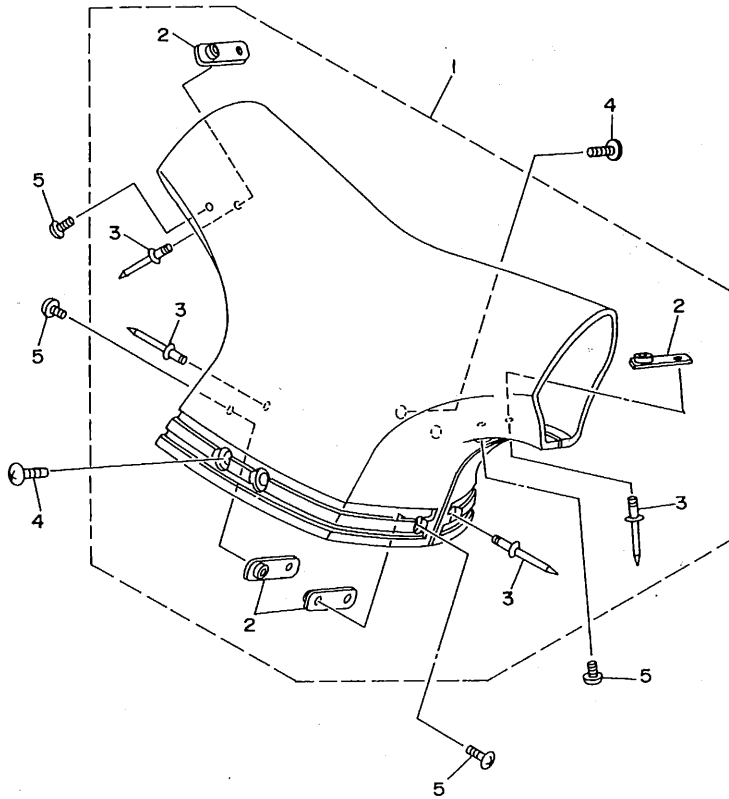
FIG. 24 STEERING 1

REF. NO.	PART NO.	DESCRIPTION	Q'TY	REMARKS
29	90601-142U6	NYLON CLIP 1	1	YMUS
30	GH1-6141D-01	BEARING, STEERING	2	
31	EU0-61588-00	JOINT, BEARING	1	
32	90119-089U7	BOLT, WITH WASHER	2	YMUS
33	GH3-61433-00	BRACKET, BEARING	1	
34	90119-089U7	BOLT, WITH WASHER	2	YMUS
35	GH3-61467-00	BRACKET, STOPPER CABLE	1	
36	92990-06200	WASHER, PLAIN	3	
37	95780-06300	NUT, FLANGE	3	
38	GH3-61468-00	STOPPER, CABLE	1	
39	95720-06300	NUT, SELF-LOCKING	2	
40	FN8-6131B-00	PIN, STOPPER	1	
41	92990-10200	WASHER, PLAIN	1	
42	95720-10300	NUT	1	
43	GH1-61469-00	PACKING, STEERING COLUMN	1	

E2

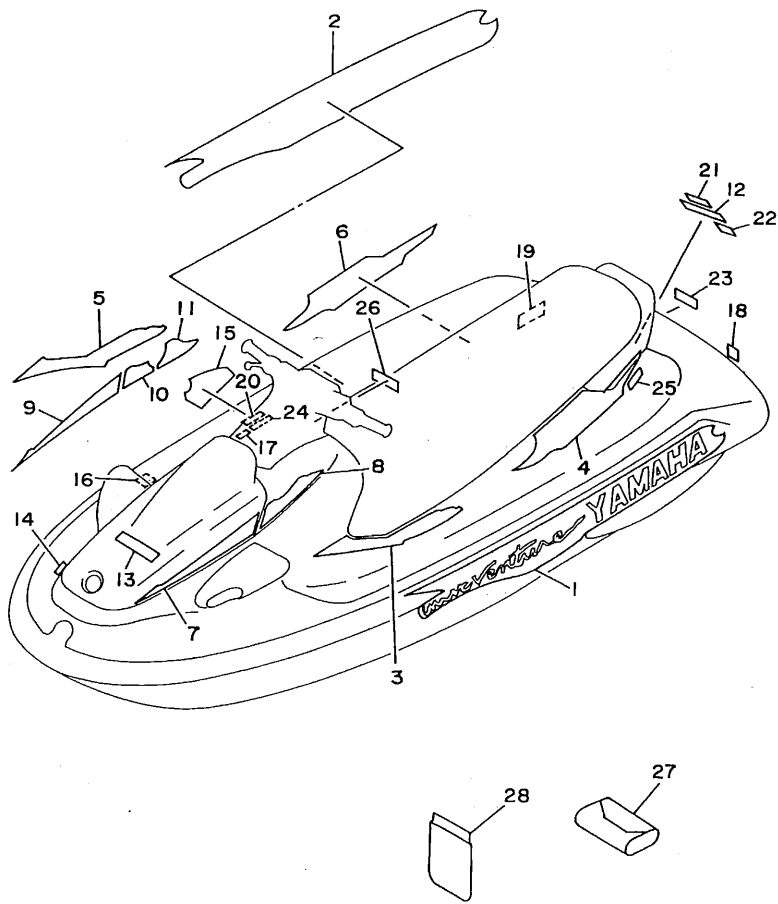
FIG. 25 STEERING 2

REF. NO.	PART NO.	DESCRIPTION	Q'TY	REMARKS
1	GJ3-U142A-00	STEERING PAD COMP.	1	DEEP PURPLE SOLID 1
2	GA7-6144D-00	.PLATE	4	
3	90267-48951	.RIVET, BLIND	4	
4	90149-05959	SCREW	4	
5	90149-04903	SCREW	4	



GH14010-4240

E3

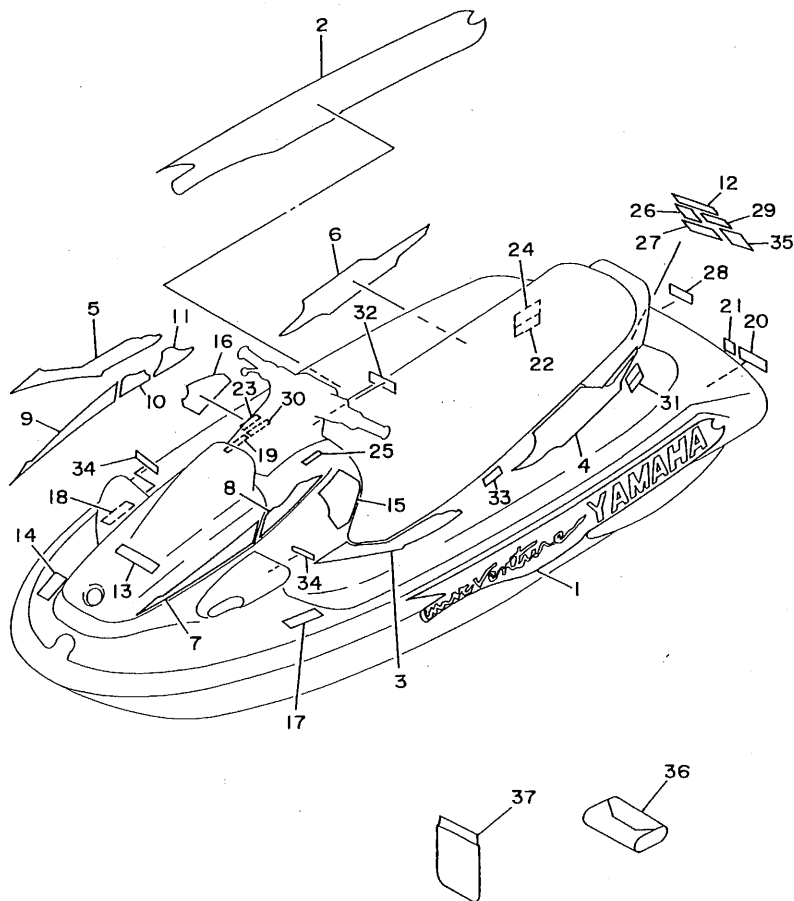


GH34100-7260

FIG. 26 GRAPHIC 1. TOOL (FOR USA)

REF. NO.	PART NO.	DESCRIPTION	Q'TY	REMARKS
1	GH3-U417B-10	GRAPHIC 1	1	YMUS
2	GH3-U417C-10	GRAPHIC 2	1	YMUS
3	GH3-U417D-20	GRAPHIC 3	1	YMUS
4	GH3-U417D-30	GRAPHIC 3	1	YMUS
5	GH3-U417E-20	GRAPHIC 4	1	YMUS
6	GH3-U417E-30	GRAPHIC 4	1	YMUS
7	GH3-U417F-20	GRAPHIC 5	1	YMUS
8	GH3-U417F-30	GRAPHIC 5	1	YMUS
9	GH3-U417G-30	GRAPHIC 6	1	YMUS
10	GH3-U417G-40	GRAPHIC 6	1	YMUS
11	GH3-U417G-50	GRAPHIC 6	1	YMUS
12	GJ3-U4114-30	MARK, YAMAHA A	1	YMUS
13	GJ3-U4122-00	EMBLEM 2	1	YMUS
14	GA9-U416B-00	LABEL, WARNING	1	YMUS
15	GJ3-U416C-02	LABEL, WARNING 1	1	YMUS
16	GJ3-U416E-00	LABEL, WARNING 3	1	YMUS
17	GDO-U416F-00	LABEL, WARNING 4	1	YMUS
18	GA9-U418F-00	LABEL, UP RIGHTING	1	YMUS
19	EU0-U418B-00	LABEL, CAUTION	1	YMUS
20	GJ3-U415E-11	LABEL, WARNING	1	YMUS
21	GJ1-U415F-01	LABEL, WARNING	1	YMUS
22	GJ3-U411A-00	LABEL, CAUTION	1	YMUS
23	GA9-U418G-00	LABEL, CAUTION	1	YMUS
24	GDO-U418J-01	LABEL, CAUTION	1	YMUS
25	GJ3-U419B-00	LABEL 1	1	YMUS
26	GJ3-U419C-00	LABEL 2	1	YMUS
27	EU0-28100-03	TOOL KIT	1	
28	EU0-65901-01	BAG, VINYL	1	

E4



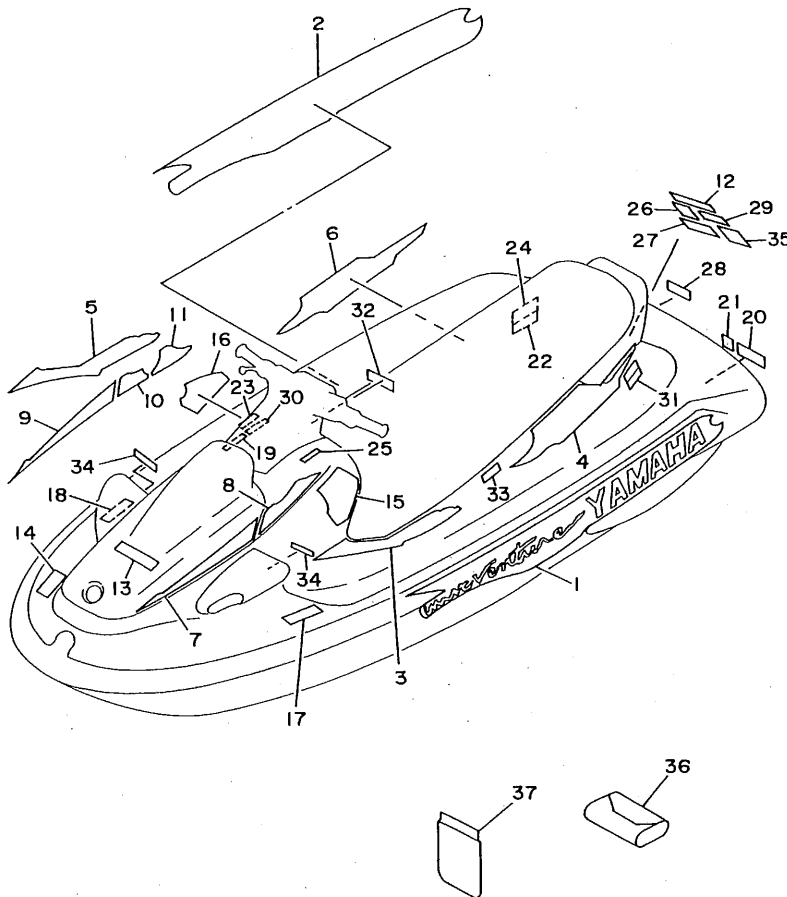
GH34100-7270

FIG. 27 GRAPHIC 2: TOOL (FOR CANADA, EUROPE)

REF. NO.	PART NO.	DESCRIPTION	Q'TY	REMARKS
1	GH3-U417B-10	GRAPHIC 1	1	YMUS
2	GH3-U417C-10	GRAPHIC 2	1	YMUS
3	GH3-U417D-20	GRAPHIC 3	1	YMUS
4	GH3-U417D-30	GRAPHIC 3	1	YMUS
5	GH3-U417E-20	GRAPHIC 4	1	YMUS
6	GH3-U417E-30	GRAPHIC 4	1	YMUS
7	GH3-U417F-20	GRAPHIC 5	1	YMUS
8	GH3-U417F-30	GRAPHIC 5	1	YMUS
9	GH3-U417G-30	GRAPHIC 6	1	YMUS
10	GH3-U417G-40	GRAPHIC 6	1	YMUS
11	GH3-U417G-50	GRAPHIC 6	1	YMUS
12	GJ3-U4114-30	MARK, YAMAHA A	1	YMUS
13	GJ3-U4122-00	EMBLEM 2	1	YMUS
14	GA9-U416B-10	LABEL, WARNING (FUEL)	1	YMUS
15	GJ3-U416C-12	LABEL, WARNING 1	1	YMUS
16	GJ3-U416C-22	LABEL, WARNING 3	1	YMUS
17	GJ3-U416H-00	LABEL, WARNING	1	YMUS
18	GJ3-U416E-10	LABEL, WARNING 3	1	YMUS
19	GJ3-U416F-10	LABEL, WARNING 4	1	YMUS
20	GA9-U416G-10	LABEL, WARNING 5	1	YMUS
21	GA9-U418F-00	LABEL, UP RIGHTING	1	YMUS
22	EU0-U418B-00	LABEL, CAUTION (BATTERY)	1	YMUS
23	GJ3-U415E-11	LABEL, WARNING	1	YMUS
24	EU0-U418B-10	LABEL, CAUTION (BATTERY)	1	YMUS
25	GJ1-U415F-10	LABEL, WARNING	1	YMUS
26	GJ1-U418C-10	LABEL, CAUTION	1	YMUS
27	GA9-U418C-10	LABEL, CAUTION	1	YMUS
28	GA9-U418G-10	LABEL, CAUTION (DRAIN)	1	YMUS

E5

FIG. 27 GRAPHIC 2. TOOL (FOR CANADA, EUROPE)

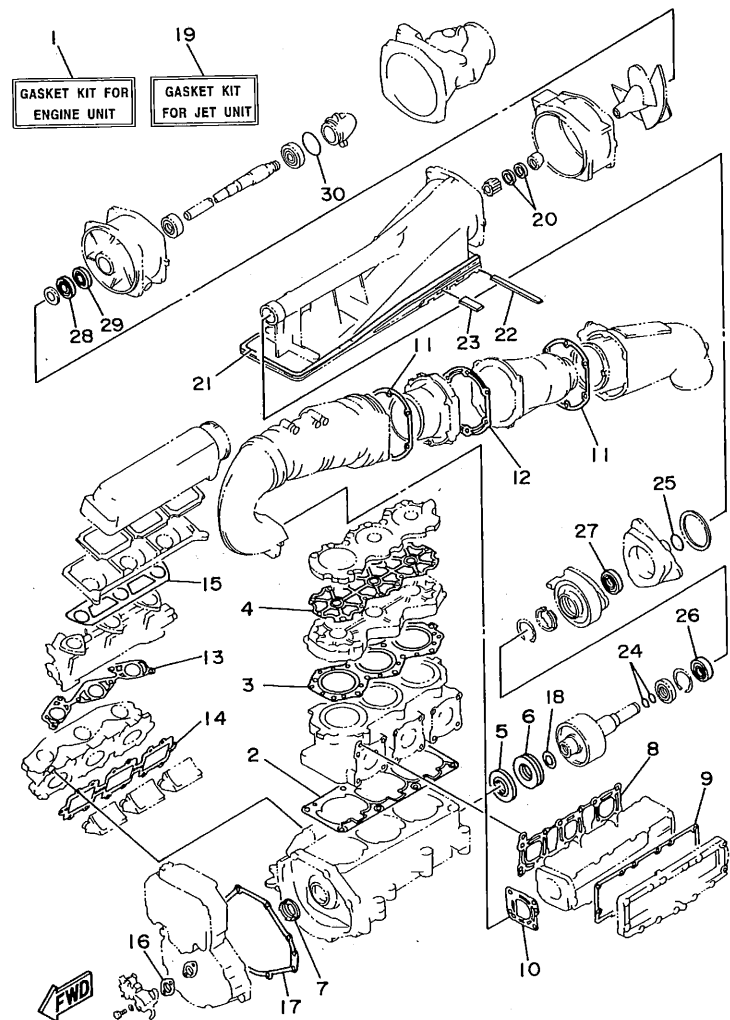


REF. NO.	PART NO.	DESCRIPTION	Q'TY	REMARKS
29	GJ3-U418H-10	LABEL, CAUTION (CLEAT)	1	YMUS
30	GJ3-U418J-10	LABEL, CAUTION (OIL)	1	YMUS
31	GJ3-U419B-10	LABEL 1	1	YMUS
32	GJ3-U419C-00	LABEL 2	1	YMUS
33	GJ3-U419E-00	LABEL 4	1	YMUS
34	GJ1-U419F-20	LABEL 5	2	YMUS
35	GJ3-U415E-20	LABEL, WARNING	1	YMUS
36	EU0-28100-03	TOOL KIT	1	
37	EU0-65901-01	BAG, VINYL	1	



GH34100-7270

E6

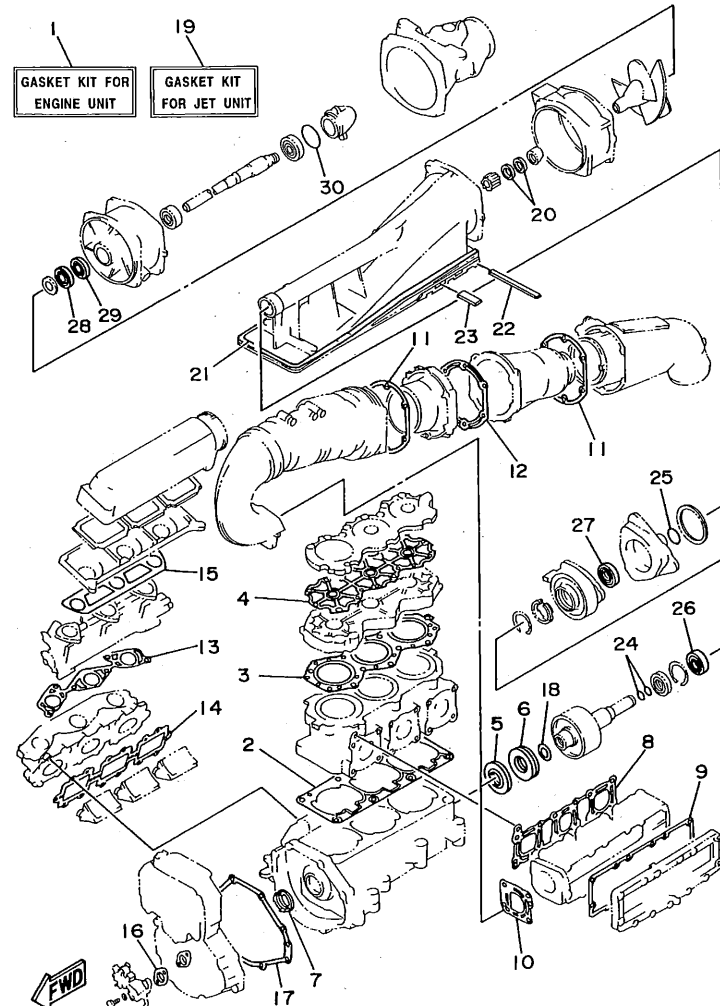


GJ15100-6270

FIG. 28 REPAIR KIT 1

REF. NO.	PART NO.	DESCRIPTION	Q'TY	REMARKS
1	63M-W0001-01	GASKET KIT FOR ENGINE UNIT	1	
2	63M-11351-00	.GASKET, CYLINDER	1	
3	63M-11181-00	.GASKET, CYLINDER HEAD 1	1	
4	63M-11193-00	.GASKET, HEAD COVER 1	1	
5	93102-36M33	.OIL SEAL	1	
6	93101-36M46	.OIL SEAL	1	
7	93103-32M01	.OIL SEAL	1	
8	63M-14613-00	.GASKET, EXHAUST PIPE	1	
9	63M-14739-00	.GASKET, MUFFLER DAMPER 1	1	
10	63M-14749-00	.GASKET, MUFFLER DAMPER 2	1	
11	63M-41114-00	.GASKET, EXHAUST OUTER COVER	2	
12	63M-41122-00	.GASKET, EXHAUST INNER COVER	1	
13	63M-13556-00	.GASKET, MANIFOLD	1	
14	63M-13566-00	.GASKET	1	
15	63M-13674-00	.GASKET, AIR COOLER COVER 1	1	
16	63M-13116-00	.GASKET, PUMP CASE	1	
17	63M-81365-00	.GASKET, HOLE COVER	1	
18	62T-45127-00	.SEAL	1	
19	63M-W0001-20	GASKET KIT FOR JET UNIT	1	
20	93102-18M35	.OIL SEAL	2	
21	6R8-51367-01	.FELT, PACKING	2	
22	63M-51367-00	.FELT, PACKING	1	
23	63M-51368-00	.FELT, PACKING	2	
24	93210-17MA4	.O-RING	2	
25	93210-35M72	.O-RING	1	
26	93101-25M55	.OIL SEAL	1	
27	93101-25M56	.OIL SEAL	1	
28	93102-25M34	.OIL SEAL	1	

E7



GJ15100-6270

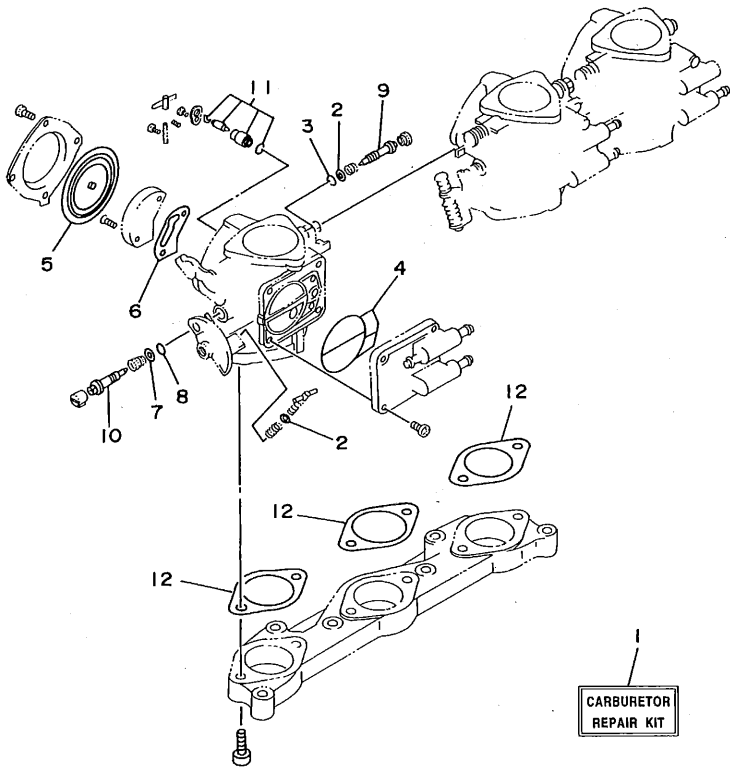
FIG. 28 REPAIR KIT 1

REF. NO.	PART NO.	DESCRIPTION	Q'TY	REMARKS
29	93101-25M50	.OIL SEAL	1	
30	93210-46M16	.O-RING	1	

E8

FIG. 29 REPAIR KIT 2

REF. NO.	PART NO.	DESCRIPTION	Q'TY	REMARKS
1	63M-W0093-00	CARBURETOR REPAIR KIT	1	
2	6K8-14559-00	.WASHER	4	
3	6K8-14562-00	.O-RING	3	
4	6K8-14564-00	.O-RING	3	
5	6R7-14541-00	.DIAPHRAGM, PUMP	3	
6	6K8-14536-11	.GASKET	3	
7	6K8-14537-00	.GASKET	3	
8	583-14561-00	.O-RING	3	
9	63M-14946-00	.PLATE, NEEDLE FITTING	3	
10	63M-14923-00	.SCREW, PILOT	3	
11	61X-14916-15	.NEEDLE	3	
12	63M-14398-00	.GASKET	3	



GJ11100-5280

E9

NUMERICAL INDEX

PART NO.	GRID NO.	PART NO.	GRID NO.	PART NO.	GRID NO.	PART NO.	GRID NO.	PART NO.	GRID NO.	PART NO.	GRID NO.
65A-G4137-00	C- 6	GJ3-U354D-10	D- 4	GH3-U417G-50	E- 5	GJ1-U7578-10	D-11	63M-12590-00	B-12	62T-14527-01	B- 5
65A-G4184-00	C- 6	GH3-U371A-00	D- 6	EU0-U418B-00	E- 4	GDO-U761D-00	D- 2	63M-12590-20	B-12	6K8-14531-00	B- 7
65A-G5331-00	C- 4	GH3-U371B-00	D- 6		E- 5	GH3-U7711-00	D- 9	63M-13116-00	B- 9	6K8-14533-00	B- 7
65A-G5538-00	C- 4	GH3-U372A-00	D- 6	EU0-U418B-10	E- 5	GJ3-U775B-01	D- 8		E- 7	6K8-14534-10	B- 7
65A-R1129-00	C- 2	GH3-U372B-00	D- 6	GA9-U418C-10	E- 5	GJ3-U776C-00	D- 8	63M-13132-00	D- 8	6K8-14536-11	B- 8
65A-R1311-00	B-15	GH3-U373D-00	D- 6	GJ1-U418C-10	E- 5	GJ3-U778B-00	D- 8	6R3-13183-00	B- 9		E- 9
65A-R1312-00	B-15	GJ3-U411A-00	E- 4	GA9-U418F-00	E- 4	GJ3-U778C-00	D- 8		B- 9	6K8-14537-00	B- 8
65A-R1313-00	C- 2	GJ3-U4114-30	E- 4		E- 5	GJ3-U778D-00	D- 8		B- 9		E- 9
65A-R1314-00	C- 6		E- 5	GA9-U418G-00	E- 4	GJ3-U778E-00	D- 8	64T-13185-00	B- 9	6R7-14541-00	B- 8
65A-R1315-00	B-15	GJ3-U4122-00	E- 4	GA9-U418G-10	E- 5	EU0-U7835-00	D- 8	64T-13200-00	B- 9		E- 9
65A-R1318-00	C- 2		E- 5	GJ3-U418H-10	E- 6	GJ3-U7844-00	D- 9	6J8-13411-00	D- 8	6R7-14542-00	B- 8
65A-R1321-00	C- 2	GJ3-U415E-11	E- 4	GDO-U418J-01	E- 4	GJ1-U8K31-01	C- 5	6J8-13414-00	D- 8	6K8-14547-01	B- 8
65A-R1326-00	B-15		E- 5	GJ3-U418J-10	E- 6	GJ3-U821C-00	C-12	63M-13555-00-94	B- 5	6K8-14559-00	B- 7
65A-R1334-00	C- 2	GJ3-U415E-20	E- 6	GJ3-U419B-00	E- 4	EU0-U821D-00	C-12	63M-13556-00	B- 5		E- 9
GJ3-U142A-00	E- 3	GJ1-U415F-01	E- 4	GJ3-U419B-10	E- 6	EU0-U8221-00	C-12		E- 7	583-14561-00	B- 8
GH3-U146E-00	C- 2	GJ1-U415F-10	E- 5	GJ3-U419C-00	E- 4	EU0-U8221-30	C-12	63M-13566-00	B- 5		E- 9
GH3-U146E-10	C- 6	GA9-U416B-00	E- 4		E- 6	GH3-U883M-00	D- 3		E- 7	6K8-14562-00	B- 7
EU0-U1461-01	D-13	GA9-U416B-10	E- 5	GJ3-U419E-00	E- 6	63M-W0001-01	E- 7	63M-13610-00	B- 5		E- 9
EU0-U1461-30	D-13	GJ3-U416C-02	E- 4	GJ1-U419F-20	E- 6	63M-W0001-20	E- 7	63M-13674-00	B- 5	6K8-14564-00	B- 7
GH3-U149C-00	D-13	GJ3-U416C-12	E- 5	GJ3-U474A-00	D- 6	63M-W0004-00	B- 5		E- 7		E- 9
GJ1-U1552-02	D-15	GJ3-U416C-22	E- 5	GJ3-U475A-00	C-14	63M-W0090-01-40	B- 2	63M-14162-00	B- 8	6R7-14569-00	B- 7
FN8-U1624-00	D- 3	GJ3-U416E-00	E- 4	GJ3-U516A-00-PO	C-14	63M-W0093-00	E- 9	3G2-1423A-72	B- 7	6K8-14579-00	B- 7
GJ3-U2127-00	D- 5	GJ3-U416E-10	E- 5	GH3-U516N-00	C-14	63M-W2442-00	B-13		B- 7	6K8-14589-00	B- 8
GJ3-U213F-01	D- 5	GDO-U416F-00	E- 4	GH3-U517B-00	C-14	63M-11111-00-94	B- 2	3G2-14231-19	B- 2	6R7-14596-01	B- 7
GJ3-U213G-00	D- 5	GJ3-U416F-10	E- 5	EW2-U5912-00	D- 6	63M-11181-00	B- 2	830-14231-15	B- 7	6K8-14597-11	B- 7
GJ3-U2501-10	D- 4	GA9-U416G-10	E- 5	EW2-U5913-00	D- 6		E- 7	63M-14243-00	B- 8	63M-14613-00	B-10
GJ3-U251D-10	D- 4	GJ3-U416H-00	E- 5	EW2-U5920-00	D- 6	63M-11191-00-94	B- 2	62T-14251-00	B- 2		E- 7
GJ3-U251E-10	D- 4	GH3-U417B-10	E- 4	GH3-U596B-00	C-14	63M-11193-00	B- 2	63M-14253-00	B- 8	63M-14615-00	B-11
GJ3-U2512-11	D- 4		E- 5	GH3-U596C-00	C-15		E- 7	64T-14253-00	B- 8	62T-14625-00	B-10
GJ3-U2519-30	D- 4	GH3-U417C-10	E- 4	GA9-U724C-00	D-14	63M-11311-00-94	B- 2	63M-14255-00	B- 5	63M-14680-00	B-11
GJ3-U252C-10	D- 4		E- 5	GA9-U724D-00	D-14	6E5-11325-00	B- 2	63M-14255-10	B- 5	63M-14711-00-94	B-10
GJ3-U252D-30	D- 4	GH3-U417D-20	E- 4	GJ3-U7242-00	D-14	63M-11351-00	E- 7	63M-14283-00	B- 6	63M-14712-00-9M	B-10
GJ3-U266B-30	C-14		E- 5	GDO-U7249-00-05	C- 5	63M-11351-01	B- 2	63M-14284-00-98	B- 5	63M-14718-00-9M	B-10
GJ3-U266C-00	D- 6	GH3-U417D-30	E- 4	GDO-U7249-00-10	C- 5	6E5-11372-00	B- 5	63M-14298-00	B-13	63M-14721-00-94	B-11
GJ3-U266C-30	C-14		E- 5	GJ1-U7252-00	D-14	676-11372-00	C- 7	64T-14301-01	B- 7	63M-14739-00	B-10
GJ3-U2663-00	C-14	GH3-U417E-20	E- 4	EU0-U7354-00-01	B- 3	63M-11400-01	B- 3	64T-14302-01	B- 7		E- 7
GH3-U271B-00	D- 7		E- 5	EU0-U7354-00-03	B- 3	61X-11603-00	B- 4	64T-14303-01	B- 7	63M-14749-00	B-10
GJ3-U271E-10	D- 7	GH3-U417E-30	E- 4	EU0-U7354-00-05	B- 3	61X-11604-00	B- 4	63M-14398-00	B- 8		E- 7
GJ3-U273B-00	C- 4		E- 5	EU0-U7354-00-10	B- 3	61X-11605-00	B- 4		E- 9	64T-14752-00	B-12
GJ3-U351H-30	D- 4	GH3-U417F-20	E- 4	EU0-U7354-00-20	B- 3	63M-11631-00-89	B- 4	63M-14419-00	B- 6	63M-14771-00-94	B-12
GJ3-U351H-40	D- 4		E- 5	GJ1-U7525-00	D-11	62T-11633-00	B- 4	62T-14435-00	B- 6	61X-14916-15	E- 9
GJ3-U351J-30	D- 4	GH3-U417F-30	E- 4	GJ3-U755J-00	D-11	63M-11635-00	B- 4	62T-14451-00	B- 6	64T-14916-00	B- 8
GJ3-U351J-40	D- 4		E- 5	GH3-U7550-00	D-11	63M-11636-00	B- 4	6K8-14471-10	B- 7	63M-14923-00	B- 8
GJ3-U351K-30	D- 4	GH3-U417G-30	E- 4	GH3-U7555-00	D-11	63M-12576-00	B-10	6K8-14481-10	B- 8		E- 9
GJ3-U351K-40	D- 4		E- 5	EU0-U756E-00	D- 6	63M-12577-00	B-10	6K8-14521-10	B- 7	6K8-14926-10	B- 7
GH3-U351M-10	D- 4	GH3-U417G-40	E- 4	GJ1-U7560-00	D-11	63M-12578-00	B-12	6M6-14521-00	B- 7	6K8-14930-00	B- 7
GH3-U351M-20	D- 4		E- 5	GJ3-U7570-00	D-11	64T-12580-00	B-11	6K8-14523-11	B- 7	63M-14946-00	B- 7
GJ3-U352E-20	D- 4	GH3-U417G-50	E- 4	GJ1-U7578-10	D- 2	63M-12581-00	B-11	6K8-14527-11	B- 7		E- 9

NUMERICAL INDEX

PART NO.	GRID NO.	PART NO.	GRID NO.	PART NO.	GRID NO.	PART NO.	GRID NO.	PART NO.	GRID NO.	PART NO.	GRID NO.
63M-15100-00-94	B- 2	63M-4581J-00	B- 4	FJ0-61354-00	D-13	GH3-6378C-00	D- 6	EU0-67856-40	C-12	63M-82314-00	C-10
63M-15761-00	B-11	63M-45813-01-5B	B- 4	GH1-6141B-00	D-15	GJ3-6378D-00	D- 6	GH3-67856-00	D- 8	63M-82351-00	C-10
63M-21415-02-94	B- 2	64T-45813-01-5B	B- 4	GH1-6141D-01	E- 2	GJ3-63850-01	D- 6	GJ3-67856-10	D- 5	63M-82351-10	C-10
63M-21425-00-94	B- 2	6K8-51129-00	B- 2	GH1-6143C-30	D-15		D- 6	FX1-67869-00	D- 8	63M-82351-20	C-10
46B-2155A-00	C-11		B-10	GJ3-61436-00	D-15	GH3-6418D-00	D-10		D- 9	63M-82370-00	C-10
EU0-23814-01	D-15		B-11	GH3-61433-00	E- 2	GJ3-6517C-01	C-14	GH3-6820A-00	C-12	63M-82553-01	C-10
EU0-23814-30	D-15		C- 2	EU0-61435-00	D-14	GJ3-6517D-01	C-14	GH3-6820A-10	C-12	63M-82560-00	C-10
63M-24313-00	B-13	63M-51129-00	B-10	EU0-61438-00	D-14	GJ3-6517F-00	C-14	EW2-68211-00	C-12	63M-82589-00	C- 9
63M-24314-00	B- 5	63M-51162-00	D- 2	GA7-6144D-00	E- 3	GJ3-65578-00	D- 7	GJ1-6822E-00	C- 5	63M-83623-00	C-11
668-24376-00	D- 8	63M-51165-00	D- 2	EU0-61446-00	D-14	EW2-65772-00	D-11	FJ0-68222-01	C-12	682-84385-01	B-11
6R3-24377-00	B-10	63M-51311-01-94	B-15	GJ3-6146D-00	D-13	EU0-65901-01	E- 4	GJ1-68238-00	C-12	63M-85510-00	C- 7
63M-24378-00	D- 8	63M-51312-02-94	B-15	GK5-6146F-00	D-13		E- 6	GJ1-6824B-00	C-12	63M-85516-00	C- 9
63M-24410-00	B-13	64T-51313-01-94	C- 2	GH3-61467-00	E- 2	GJ1-6721B-00	B- 3	GJ1-6824C-01	C-12	63M-85525-00	C-10
6R7-24412-01	B- 7	6R8-51314-02-94	C- 6	GH3-61468-00	E- 2	GJ1-67250-01	D-15	GJ3-6824D-00	D-14	63M-85540-01	C- 9
6K8-24500-02	B-13	63M-51315-01-94	B-15	GJ3-61468-01	D-13	GJ1-67255-00	D-15	GJ1-68310-00	D-15	63M-85542-00	C- 9
6R7-24524-00	B-13	64T-51318-01-94	C- 2	GH1-61469-00	E- 2	EW2-67256-00	D-15	FK7-68312-02	D-15	63M-85546-00	C-10
6K8-24560-10	B-13	63M-51321-A1	C- 2	GH3-61480-00	D-13	EW2-67257-01	D-15	FK7-68313-01	D-15	63M-85547-00	C- 9
278-27114-00	D- 6	63M-51323-00	C- 4	EU0-61486-00	D-14	EW2-67258-01	D-15	EW2-68348-00	D-15	63M-85548-00	C-10
	D- 6	62T-51326-00	B-15	GH3-61541-00	D-15	EW2-67259-01	D-15	GJ3-6883U-00	D- 3	63M-85550-00	C- 7
EU0-28100-03	E- 4	64T-51333-01-94	C- 4	EW2-61553-00	D-15	EU0-67267-00	D-14	63M-81317-00	C-10	63M-85564-00	C- 7
	E- 6	63M-51334-00	C- 2	EU0-61588-00	E- 2	EU0-67324-00	B- 3	63M-81317-10	C-10	63M-85570-00	C- 9
63M-41113-00-94	B-11	64T-51345-00	C- 6	A00-61626-40	D- 7	GJ1-6753B-02	D-11	63M-81328-00	C- 7	63M-85570-10	C- 9
63M-41114-00	B-11	6R8-51348-01-94	B-15	FN8-61651-00	D- 4	GJ1-67577-00	D-11	63M-81337-00-4D	C- 7	63M-85570-20	C- 9
	B-11	62T-51348-00	C- 2	EU0-61652-00	B-12	GJ1-67578-00	D-10	63M-81365-00	C- 7	63M-85580-00	C- 7
	E- 7	63M-51348-00	C- 4		D- 3		D-14		E- 7	63M-85599-01	C-10
63M-41121-00-94	B-11	6R8-51367-01	B-15		D- 4	GJ1-67578-10	D-11	63M-81800-00	C- 8	63M-85644-00	C-10
63M-41122-00	B-11		E- 7	GJ3-6213J-00	D- 5	GJ1-6759B-00	D- 9	3AJ-81809-00	C- 8	90105-05M46	B- 6
	E- 7	63M-51367-00	C- 4	FJ0-62149-00	D- 5	GJ1-6759C-00	D- 9	63M-81820-00	C- 8	90105-06900	D-11
63M-41123-00-94	B-11		E- 7	GJ3-6215F-00	D- 5	GH1-6759D-00	D- 8	6M6-81826-00	C- 8	90105-08M65	C- 2
63M-41138-00	B-11	63M-51368-00	C- 4	FJ0-62151-00	D- 5	EW2-67618-00	D- 2	6M6-8183E-00	C- 8	90105-08M66	B-11
6R8-42316-00	C- 6		E- 7	EU0-62155-00	D- 5	FJ0-67713-00	D- 9	6M6-81830-00	C- 8	90105-089U1	C- 2
64T-44121-00	C- 6	64T-51381-00	B-15	EU0-62156-32	D- 5	FJ0-67714-02	D- 9	6M6-81840-10	C- 8	90105-10M45	B-12
6R8-44125-00	C- 6	62E-51673-00	C- 2	GH3-62156-00	D- 5	FJ0-67716-01	D- 9	11H-81844-00	C- 8	90105-10M60	B-11
6R8-44137-00	C- 6	61L-5169A-00	B- 6	EU0-62241-30	D-14	GH3-67743-00	D- 9	26H-81847-00	C- 8	90105-10M63	B- 2
6R8-44184-00	C- 6		C- 7	EU0-62280-00	D- 2	GJ1-67743-00	D- 9	6M6-81850-00	C- 8	90105-10M64	B- 2
63M-44517-01-5B	B- 3	63M-5316M-00	D- 2	EU0-62282-00	D- 2	FJ0-67766-00	D- 8	6M6-81865-00	C- 8	90109-06M70	B- 3
64T-44532-00	B- 3	FN8-6131B-00	E- 2	EU0-62283-00	D- 2	EU0-67767-31	D- 9	6M6-81866-00	C- 8	90109-08M73	C- 6
663-45119-00	B- 6	GJ3-6134B-01	D-13	EU0-62285-01	D- 2	FN8-67816-00	B-13	661-81941-10	C- 9	90109-089U1	C- 6
	C- 7	GJ3-6134C-11	D-13	GJ1-6252A-30	D- 4	EU0-67817-00	B-13	63M-81945-00	C- 9	90109-10M72	C- 7
6K8-45127-00	C- 4	GJ3-6134N-01	D-13	GJ3-6266B-00	D- 6	GH1-6782B-01	D- 9	6H4-81952-00	C- 9	90116-08M55	B- 5
62T-45127-00	B- 4	FJ0-61344-00	D-13	GJ1-62663-00	C- 5	FN8-67831-01	D- 9	63M-81960-00	C- 9	90119-059U4	D-11
	E- 7	FJ0-61347-00	D-13	GJ3-62664-02	D- 6	EU0-67832-00	D- 9	EU0-82110-09	C-12	90119-06M03	C- 4
6R8-45318-00	B-15	FJ0-61348-01	D-13	FN8-6269B-00	D- 3	FN8-67833-00	D- 9	63M-82117-20	C-10	90119-06M75	C- 9
62G-45331-01-94	C- 4	FJ0-61349-00	D-13	EU0-62694-00	D-14	EU0-67834-00	D- 9	64T-82117-00	C-10	90119-069U5A	C- 6
61X-45332-02-97	C- 4	GJ3-61356-10	D-13	GJ1-62733-00	C- 4	EU0-67835-00	D- 9	64T-82117-10	C-10	90119-069UB	C- 2
61L-45378-00	C- 4	FJ0-61351-00	D-13	GJ3-63581-31	D- 4	EU0-67839-00	D- 9	63M-82150-00	C- 9	90119-069UC	C- 4
63M-45511-00	B-15	FJ0-61352-00	D-13	GJ3-63581-41	D- 4	GA7-6785G-00	D-10	63M-82159-00	C- 9	90119-069UD	B-15
62T-45526-00	B- 4	FJ0-61353-00	D-13	GH1-63774-01	D- 6	GA7-6785H-00	D-10	63M-82176-00	C- 9	90119-06900	D- 6

NUMERICAL INDEX

PART NO.	GRID NO.	PART NO.	GRID NO.	PART NO.	GRID NO.	PART NO.	GRID NO.	PART NO.	GRID NO.	PART NO.	GRID NO.
90119-06901	D- 7	90183-06902	C-14	90430-13909	D- 2	90464-07M44	C- 9	90560-22281	D-15	91490-16010	D- 9
90119-06920	C-12		C-14		D- 2	90465-06M28	C- 7	90600-900U1	D-11	91790-05040	D- 9
	C-15	90201-05925	B-14	90430-16910	D-11	90465-11M10	B- 5	90600-90004	C-12	92903-05600	C-11
	D- 7		C-12		D-11		B- 5	90600-91736	B-14	92903-06600	B- 5
90119-06929	C- 5		D- 2	90445-07M14	B- 9		B- 9		C-12		B- 5
90119-08M02	B-10		D- 5	90445-07M17	B- 9		B- 9		D- 2		B- 5
90119-08M19	B- 2		D- 8	90445-07M82	B- 9		B- 9		D- 5		B- 5
90119-08M29	B- 2		D-11	90445-09M21	C- 4		B- 9		D- 8		B- 6
90119-08M36	B-10	90201-05928	D-15	90445-09M24	C- 7		B- 9		D-11	92903-08600	C- 8
90119-08M55	B- 2	90201-06M31	C- 6	90445-10M01	B- 5		B- 9	90600-91755	D- 3	92990-05200	C-12
90119-089UE	C- 2	90201-068M4	C- 2	90445-10M55	B-13		B-10	90600-918U3	D-14		C-14
90119-089UF	C- 4		C- 6	90445-10M72	B-13		B-10	90601-11062	D- 9		D- 2
	C- 6	90201-08929	C-14	90445-10M81	B-13		B-10	90601-118UF	C- 2	92990-05600	B- 5
	B- 3	90201-099U1	C-14	90445-10M83	B-13		B-11		D-11		D- 9
90119-089U5	C- 5	90201-16M00	C- 9	90445-11M33	B- 9		B-13	90601-142U6	E- 2	92990-06100	C- 8
90119-089U6	C- 4	90201-20M04	B- 4	90445-11M46	B- 9		B-13	90601-152U3	D- 8	92990-06200	C-14
	C-14	90201-248M5	B- 4	90445-11903	D- 9		B-13	90601-155U4	D- 9		D- 3
90119-089U7	D- 9	90202-229U1	B-13	90445-14M05	B-11		B-13	90601-162U5	C-12		D- 4
	E- 2	90267-40935	D- 8	90445-14M16	B-10		B-13		D- 9		D- 6
	E- 2		D- 9	90445-14M30	C- 3		B-13	90601-195UD	D-11		D- 6
90119-089U9	C-14	90267-489UG	B- 4	90445-18M00	B-11		B-14	90601-200U1	B-12		D-13
90119-08904	B- 3	90267-489U1	B-14	90445-18M02	B-11		C- 2		C-12		D-13
90119-08907	C- 5		C-14	90445-18M03	C- 2		C- 7		D- 2		D-15
90119-08925	D-15	90267-489U2	D- 5	90445-19M01	D- 2		C- 9		D- 2		E- 2
90119-08943	B- 3	90267-489U7	D- 2	90445-19M12	D- 2		C-10		D-11	92990-06600	B-15
90119-10M02	B- 2		D- 5	90446-07M18	B- 9		C-10		D-14		C- 2
	B- 2	90267-489U8	D- 4	90446-07M35	B- 9		C-12	90601-200U2	D- 8		C- 6
	B- 3		D- 4	90446-07M36	B- 9		D- 5	90601-200U4	D- 3		C- 8
90119-10M03	B- 3		B-14		B- 9		D-11		D-11		C- 9
90119-10M72	B-12	90267-48925	C-12	90446-14M56	C-11		D- 8	90601-20006	B-14		C-14
	C- 5		D- 4	90446-14M58	C- 7		D- 8		C-12	92990-08100	B- 7
90119-109U8	E- 3		D- 5	90446-14M62	B-13		D-10		C-12	92990-08200	D- 3
90149-04903	D- 5		D- 8	90446-20M39	B-11		D-10		C-12		D- 7
90149-059U1	D- 5		D-12	90446-20M53	B-10		D-11		D- 2		D- 7
	C-14	90267-48951	E- 3	90446-24M52	B-12	90465-11M59	C-11		D- 8	92990-08600	B-10
90149-05904	C- 5	90280-05013	C- 7	90446-24M54	B- 9	90465-11829	C- 4		D-11	92990-10200	D- 6
90149-05959	D-15	90380-12M29	B- 2	90446-24M60	B-12	90465-12M53	B-10		D-12		E- 2
	E- 3		C- 7	90446-27M55	B-12	90465-13M11	D- 2		D-14	92990-14200	D-11
90149-069U2	C-14	90387-06M03	C- 9		D-12	90465-13M24	B-10	90601-20008	C-12	92995-06100	C-10
90149-069U4	C-14	90387-06M05	B-10	90450-11829	C- 3		B-11		D- 5		C-14
90149-06902	C-14	90387-06M24	C- 6	90450-18M09	B-11	90465-13M60	C-10	90601-20016	D- 3	92995-06600	B- 9
90149-08993	D- 7	90387-06M30	C- 6		B-11	90467-08M10	C-12	90604-80759	D- 2		B-13
90159-05900	D-15	90387-06M44	B-13		C- 3	90467-11044	D- 9	90604-80775	D- 2		B-13
90169-059U1	D- 4	90387-06M56	C-10	90450-99M01	B-11	90480-06M46	B-15	90604-80793	D-11		C- 9
90170-22187	B-13	90387-06M60	B-15	90450-99M02	B-11	90480-06M69	B-15	90604-80794	D-11		C- 9
90179-06947	C- 5	90387-08M08	C- 2		B-12	90480-09M25	C- 9	90699-38U03	D-14		C-10
90179-08M15	B- 5	90387-08M26	C- 6	90450-99M06	B-11	90501-14M73	C- 8	91318-06014	C- 7	92995-08600	C- 2
90179-10925	C- 5	90387-08M27	C- 6	90464-07M05	B- 9	90506-12M35	C- 6	91318-06025	C- 7		C- 4

NUMERICAL INDEX

PART NO.	GRID NO.	PART NO.	GRID NO.	PART NO.	GRID NO.	PART NO.	GRID NO.	PART NO.	GRID NO.	PART NO.	GRID NO.
92995-08600	C- 6	93606-12019	C- 7	97095-06035	B-13						
	C- 7	94702-00195	C-10	97095-08020	C- 2						
	C- 7	95380-06700	C- 2	97095-08025	C- 4						
	C- 7		C- 8		C- 6						
93101-25M50	B-15	95380-08700	B- 7		C- 7						
	E- 8	95380-14700	D-11	97095-08030	C- 7						
93101-25M55	C- 4	95720-05300	C-12	97095-08055	C- 7						
	E- 7		D- 2	97513-06530	B-10						
93101-25M56	C- 4	95720-06300	C-14	97513-06540	B-10						
	E- 7		D- 3	97513-06630	B- 2						
93101-36M46	B- 4		D- 4	97513-08630	B- 2						
	E- 7		D- 6	97595-06525	B-15						
93102-18M35	B-15		D- 6	97780-04110	D- 8						
	E- 7		D-13	97780-50116	C-10						
93102-25M34	B-15		D-15	97780-50612	D- 2						
	E- 7		E- 2	97780-60116	C-13						
93102-36M33	B- 4	95720-08300	C-14		D-14						
	E- 7		D- 3	97880-05016	B- 5						
93103-32M01	B- 4		D- 7	97880-05020	D- 2						
	E- 7		D- 7	98580-03008	D-15						
93210-13M63	B- 6	95720-10300	D- 7	98580-05012	D-13						
93210-17MA4	C- 4		E- 2	98580-05525	D-15						
	E- 7	95780-06300	D-13	98780-04015	B- 2						
93210-22ME5	D- 2		D-13	98780-05525	D-13						
93210-35M72	C- 4		E- 2	98980-04008	B-13						
	E- 7	97013-05020	C-11	98980-06040	D- 6						
93210-46M16	B-15	97013-06012	B- 5		D- 6						
	E- 8	97013-06016	B- 5								
93305-205U1	B-15	97013-06020	B- 5								
93305-30601	B- 4	97013-06025	B- 5								
93306-205U0	B-15	97013-06035	B- 5								
93306-205U6	C- 4	97013-08025	C- 8								
93306-307U3	B- 4		C- 9								
93310-320U2	B- 4	97013-08030	B-10								
93430-47M04	C- 4	97080-06014	D-13								
93440-25M08	C- 8	97080-06030	D-15								
93440-80023	B- 4	97080-06035	D-13								
93450-18M06	C- 8	97095-06012	C- 6								
93450-21053	B- 4		C- 9								
93603-10049	B- 2		C-10								
93604-07141	B- 2	97095-06014	C-10								
93605-12M21	B-10	97095-06016	C- 2								
	B-10		C- 9								
93606-12019	B- 2		C- 9								
	B-15		C-10								
	B-15	97095-06020	B- 9								
	C- 2	97095-06022	B-13								
	C- 4	97095-06025	B-15								

*COPYRIGHT: All rights reserved. No part of this publication
may be reproduced without permission.*

YAMAHA

YAMAHA MOTOR CO., LTD.
2500 SHINGA I IWATA SHIZUOKA JAPAN
SERVICE INFORMATION DIV.

PRINTED ON RECYCLED PAPER

Printed in Japan
Second edition NOV., 1996