

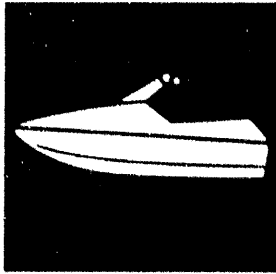
CONTENTS

CYLINDER, CRANKCASE	B2
CRANKSHAFT, PISTON	B4
INTAKE	B6
CARBURETOR	B8
OIL PUMP	B10
EXHAUST 1	B11
FUEL	B14
JET UNIT 1	C2
JET UNIT 2	C4
GENERATOR	C6
STARTING MOTOR	C7
ELECTRICAL 1	C8
ELECTRICAL 2	C10
ENGINE HATCH 1	C11
ENGINE HATCH 2	C12
HULL, DECK	C14
GUNWALE, MAT	D2
VENTILATION	D4
SEAT - UNDER LOCKER	D5
OIL TANK	D7

FUEL TANK	D8
EXHAUST 2	D10
CONTROL CABLE	D11
STEERING 1	D12
STEERING 2	D14
GRAPHIC 1, TOOL	D15
GRAPHIC 2, TOOL	E2
GRAPHIC 3, TOOL	E4
REPAIR KIT 1	E6
REPAIR KIT 2	E8

INDEX

NUMERICAL INDEX	M1
-----------------------	----



PARTS CATALOGUE

XL700X (F0M1, F0M2, F0M3)
MJ-700XL'99 (F0M4)

YAMAHA
GENUINE
Parts & Accessories

29F0M-100E1

A2

FOREWORD

This Parts Catalogue is related to the parts for the model(s) in the below frame. When you are ordering replacement parts, please refer to this Parts Catalogue and quote both part numbers and part names correctly.

XL700X(F0M1, F0M2, F0M3), MJ-700XL'99(F0M4)

1. Modifications or additions which have been made after issue of the Parts Catalogue will be announced in the Yamaha Parts News. It is advisable that you make necessary corrections to the Parts Catalogue according to the Yamaha Parts News.

2. Abbreviations

The following abbreviations are used in this Parts Catalogue.

"UR" Use specified parts number.

"UN" Use as many as needed

"AP" Alternate Parts

"LM" Local Made (Parts need to be ordered locally)

"F#" Frame No. (Applicable machine No.)

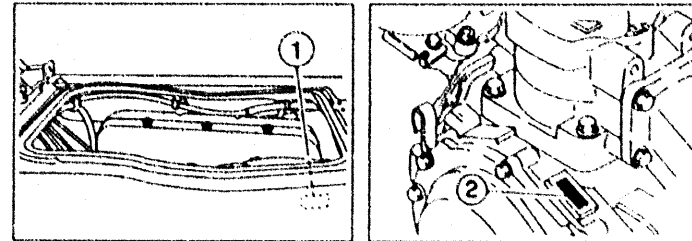
3. Parts, which are to be supplied in an assembly, are listed with a dot (.) in front of the part name as shown below. The numeral appearing to the right of each component part indicates the quantity of parts for each assembly unit.

EXAMPLE

PART NO.	DESCRIPTION	QTY	REMARKS
EU0-62280-00	DRAIN PLUG ASSY	2	
EU0-62282-00	PLUG, DRAIN	1	

4. Applicable Serial No. and Color Code

① Hull Serial No.	(F0M1, F0M2, F0M3) (F0M4)	F0M-800101~ F0M-0100101~
② Engine Serial No.		67E-300101~



Color Code	Color Name	Abbreviation
0240	PURE WHITE	PURW

5. Note that the illustration for reference in finding parts numbers, not to be used for assembling. When assembling, please use the applicable service manual.
6. A part with "YMUS" in the remarks column can be obtained from YMUS (USA) and not from YAMAHA MOTOR CO., LTD (JAPAN).

EXAMPLE

PART NO.	DESCRIPTION	QTY	REMARKS
EW2-U5160-00	ENGINE HATCH COMP.	2	YMUS
90601-168U7	BAND, HOSE	1	YMUS

ADDRESS

YAMAHA MOTOR CORPORATION U.S.A.
PARTS & ACCESSORY DIV.
6555 KATELLA AVENUE
CYPRESS, CALIFORNIA 90630 U.S.A.

CONTENTS

CYLINDER, CRANKCASE	B2
CRANKSHAFT, PISTON	B4
INTAKE	B6
CARBURETOR	B8
OIL PUMP	B10
EXHAUST 1	B11
FUEL	B14
JET UNIT 1	C2
JET UNIT 2	C4
GENERATOR	C6
STARTING MOTOR	C7
ELECTRICAL 1	C8
ELECTRICAL 2	C10
ENGINE HATCH 1	C11
ENGINE HATCH 2	C12
HULL, DECK	C14
GUNWALE, MAT	D2
VENTILATION	D4
SEAT • UNDER LOCKER	D5
OIL TANK	D7

FUEL TANK	D8
EXHAUST 2	D10
CONTROL CABLE	D11
STEERING 1	D12
STEERING 2	D14
GRAPHIC 1, TOOL	D15
GRAPHIC 2, TOOL	E2
GRAPHIC 3, TOOL	E4
REPAIR KIT 1	E6
REPAIR KIT 2	E8

INDEX

NUMERICAL INDEX	M1
-----------------------	----

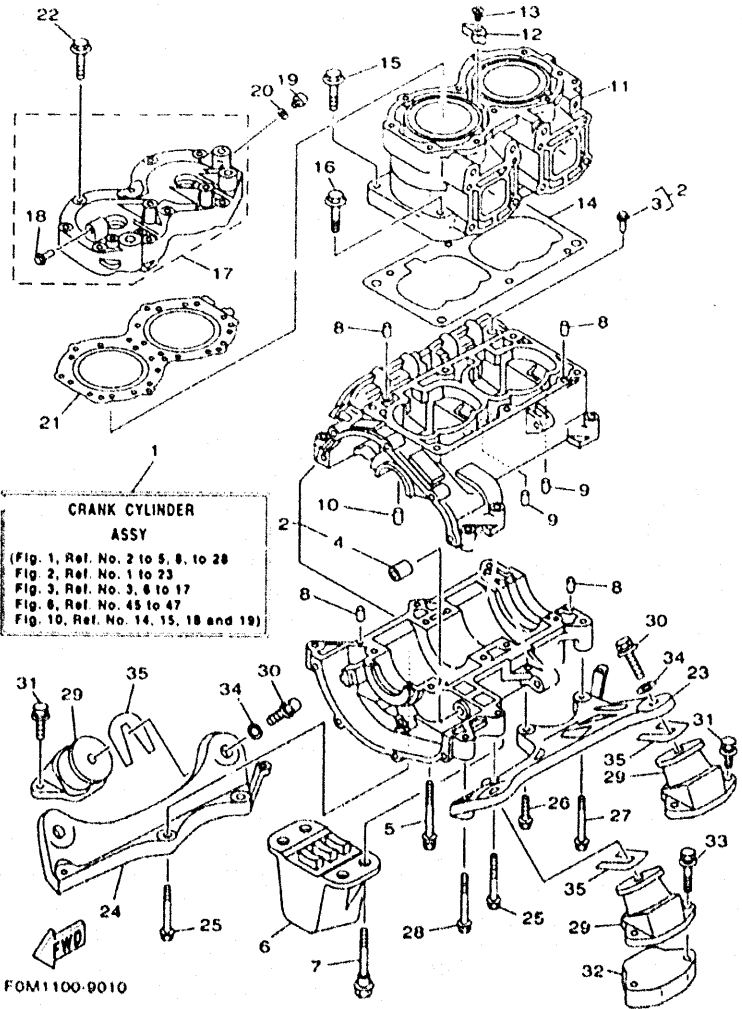


FIG. 1 CYLINDER, CRANKCASE

REF. NO.	PART NO.	DESCRIPTION	FOM1	FOM2	FOM3	FOM4	REMARKS
1	62T-W0090-01-8P	CRANK CYLINDER ASSY	1	1	1	1	
2	62T-15100-00-94	CRANKCASE ASSY	1	1	1	1	
3	62T-14251-10	NIPPLE	1	1	1	1	
4	90380-12M29	BUSH, SOLID	1	1	1	1	
5	90119-08M55	BOLT, WITH WASHER	4	4	4	4	
6	63N-44532-01	STOPPER, UPPER MOUNT	1	1	1	1	
7	90109-08M56	BOLT	4	4	4	4	
8	93606-12019	PIN, DOWEL	4	4	4	4	
9	93603-10049	PIN, DOWEL	4	4	4	4	
10	93604-07141	PIN, DOWEL	1	1	1	1	
11	62T-11311-00-94	CYLINDER 1	1	1	1	1	
12	6E5-11325-00	ANODE	1	1	1	1	
13	98780-04015	SCREW, FLAT HEAD	1	1	1	1	
14	6M6-11351-A2	GASKET, CYLINDER	1	1	1	1	
15	90119-10M56	BOLT, WITH WASHER	4	4	4	4	
16	90119-10M07	BOLT, WITH WASHER	2	2	2	2	
17	62T-11111-00-94	HEAD, CYLINDER 1	1	1	1	1	
18	6K8-51129-00	NIPPLE	1	1	1	1	
19	90340-08M04	PLUG, STRAIGHT SCREW	1	1	1	1	
20	90430-08020	GASKET	1	1	1	1	
21	62T-11181-00	GASKET, CYLINDER HEAD 1	1	1	1	1	
22	90119-08M19	BOLT, WITH WASHER	10	10	10	10	
23	6R7-21415-01-94	BRACKET, FRONT UPPER 1	1	1	1	1	
24	6R7-21425-01-94	BRACKET, REAR UPPER 1	1	1	1	1	
25	90119-10M02	BOLT, WITH WASHER	4	4	4	4	
26	90119-10M00	BOLT, WITH WASHER	1	1	1	1	
27	90119-10M03	BOLT, WITH WASHER	1	1	1	1	

B2

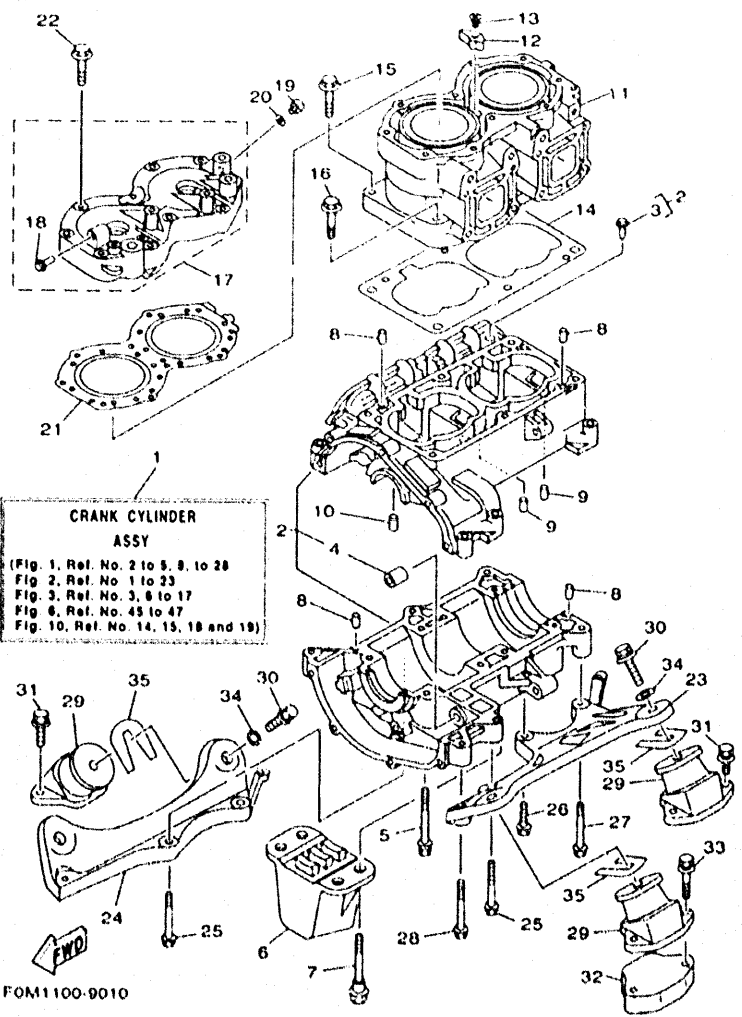


FIG. 1 CYLINDER, CRANKCASE

REF. NO.	PART NO.	DESCRIPTION	FOM1	FOM2	FOM3	FOM4	REMARKS
28	90119-10M01	BOLT, WITH WASHER	1	1	1	1	
29	6M6-44517-A1-5B	MOUNT RUBBER	4	4	4	4	
30	90119-089UT	BOLT, WITH WASHER	4	4	4	4	YMUS
31	90119-089UU	BOLT, WITH WASHER	4	4	4	4	YMUS
32	GJ1-6721B-00	SPACER, ENGINE MOUNT	2	2	2	2	
33	90119-089UR	BOLT, WITH WASHER	4	4	4	4	YMUS
34	EU0-67324-00	PLATE	4	4	4	4	
35	EU0-U7354-00-01	SHIM (T=0.1)	10	10	10	10	UR YMUS
	EU0-U7354-00-03	SHIM (T=0.3)	10	10	10	10	UR YMUS
	EU0-U7354-00-05	SHIM (T=0.5)	10	10	10	10	UR YMUS
	EU0-U7354-00-10	SHIM (T=1.0)	10	10	10	10	UR YMUS
	EU0-U7354-00-20	SHIM (T=2.0)	10	10	10	10	UR YMUS

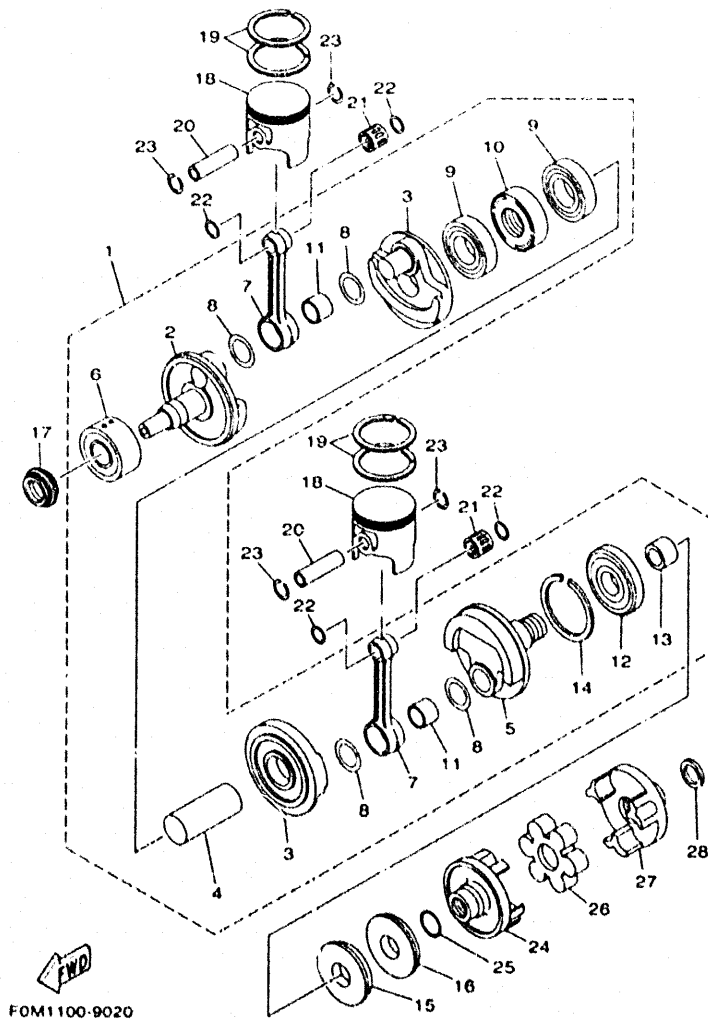
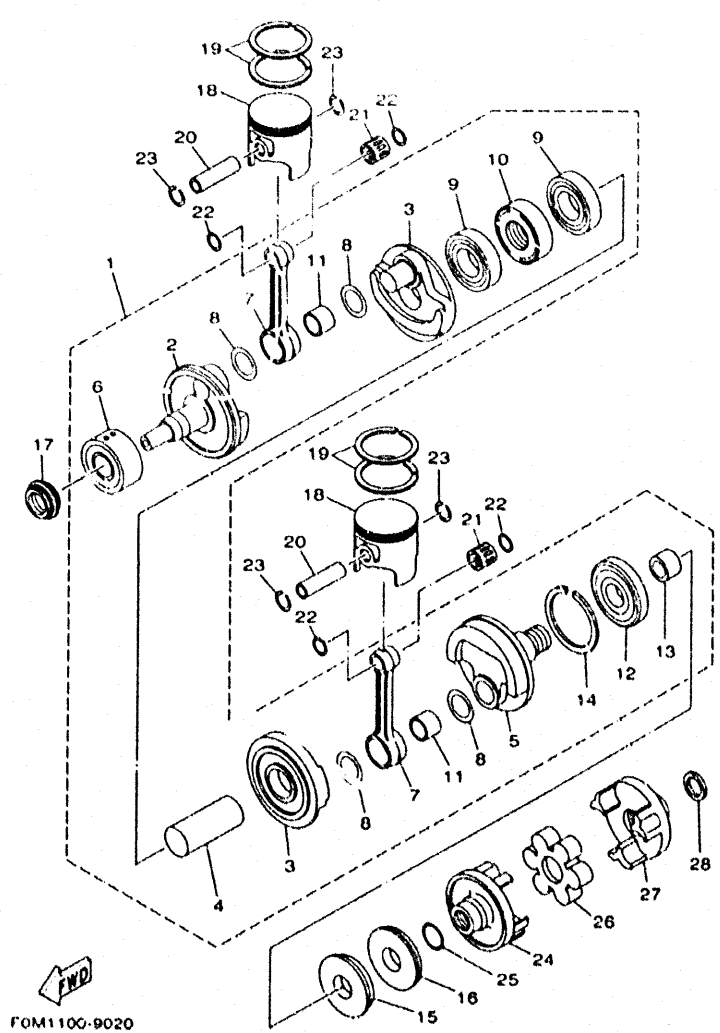


FIG. 2 CRANKSHAFT, PISTON

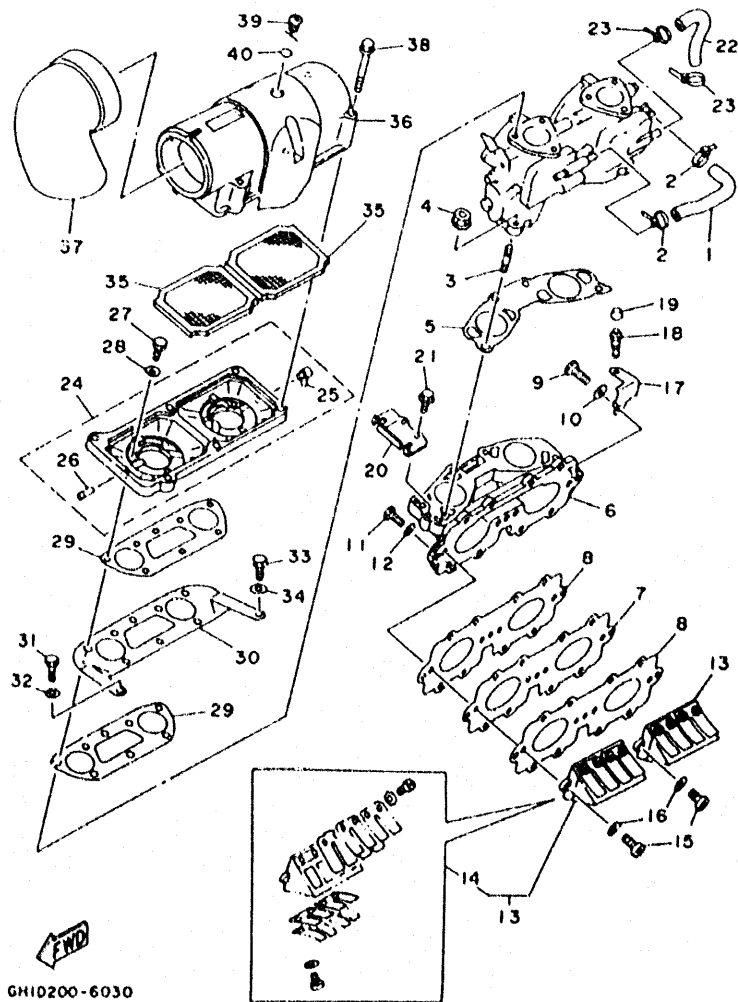
REF. NO.	PART NO.	DESCRIPTION	FOM1	FOM2	FOM3	FOM4	REMARKS
1	62T-11400-02	CRANKSHAFT ASSY	1	1	1	1	
2	6M6-11412-00	CRANK 1	1	1	1	1	
3	6M6-11422-00	CRANK 2	2	2	2	2	
4	6M6-11431-00	CRANK 3	1	1	1	1	
5	6M6-11442-01	CRANK 4	1	1	1	1	
6	93305-30601	BEARING	1	1	1	1	
7	62T-11651-00	ROD, CONNECTING	2	2	2	2	
8	82M-11685-00	WASHER, CRANK PIN	4	4	4	4	
9	93306-207U2	BEARING	2	2	2	2	
10	82M-11515-00	SEAL, LABYRINTH 1	1	1	1	1	
11	93310-525U3	BEARING	2	2	2	2	
12	93306-307U3	BEARING	1	1	1	1	
13	62T-45526-00	COLLAR, DRIVE SHAFT	1	1	1	1	
14	93440-80023	CIRCLIP	1	1	1	1	
15	93102-36M33	OIL SEAL	1	1	1	1	
16	93101-36M46	OIL SEAL	1	1	1	1	
17	93103-32M01	OIL SEAL	1	1	1	1	
11)	62T-11631-00-92	PISTON (STD)	2	2	2	2	
	62T-11635-00	PISTON (0.25MM O/S)	2	2	2	2	AP
	62T-11636-00	PISTON (0.50MM O/S)	2	2	2	2	AP
19	61X-11603-00	PISTON RING SET (STD)	2	2	2	2	
	61X-11604-00	PISTON RING SET (0.25MM O/S)	2	2	2	2	AP
	61X-11605-00	PISTON RING SET (0.50MM O/S)	2	2	2	2	AP
20	62T-11633-00	PIN, PISTON	2	2	2	2	
21	93310-320U2	BEARING	2	2	2	2	
22	90201-20M04	WASHER, PLATE	4	4	4	4	
23	93450-21053	CIRCLIP	4	4	4	4	



FOM1100-9020

FIG. 2 CRANKSHAFT, PISTON

REF. NO.	PART NO.	DESCRIPTION	FOM1	FOM2	FOM3	FOM4	REMARKS
24	6M6-45813-32-8P	FLANGE, COUPLING	1	1	1	1	
25	62T-45127-00	SEAL	1	1	1	1	
26	61X-4581J-00	RUBBER SHAFT COUPLING	1	1	1	1	
27	6M6-45813-22-8P	FLANGE, COUPLING	1	1	1	1	
28	90201-248M5	WASHER, PLATE	1	1	1	1	



GH10200-6030

FIG. 3 INTAKE

REF. NO.	PART NO.	DESCRIPTION	FOM1	FOM2	FOM3	FOM4	REMARKS
1	62T-24313-01	PIPE 3	1	1	1	1	
2	90465-11M10	CLAMP	2	2	2	2	
3	90116-08M60	BOLT, STUD	4	4	4	4	
4	90179-08M15	NUT	4	4	4	4	
5	62T-13556-00	GASKET, MANIFOLD	1	1	1	1	
6	62T-13555-00-8P	MANIFOLD, INTAKE	1	1	1	1	
7	62T-13624-00	PLATE, REED VALVE	1	1	1	1	
8	62T-13566-00	GASKET	2	2	2	2	
9	97013-06035	BOLT	3	3	3	3	
10	92903-06600	WASHER, PLATE	3	3	3	3	
11	97013-06025	BOLT	8	8	8	8	
12	92903-06600	WASHER, PLATE	8	8	8	8	
13	62T-13610-00	REED VALVE ASSY	2	2	2	2	
14	62T-W0004-00	REED SET	1	1	1	1	
15	97880-05018	SCREW, PAN HEAD	4	4	4	4	
16	92990-05600	WASHER, PLATE	4	4	4	4	
17	62T-14243-01	PLATE	1	1	1	1	
18	61L-5169A-00	NIPPLE, GREASE	1	1	1	1	
19	663-45119-00	CAP, GREASE NIPPLE	1	1	1	1	
20	62T-14527-02	PLATE	1	1	1	1	
21	97513-06516	BOLT, WITH WASHER	2	2	2	2	
22	62T-24314-01	PIPE 4	1	1	1	1	
23	90465-11M10	CLAMP	2	2	2	2	
24	62T-14284-01-8P	COVER, CARBURETOR 2	1	1	1	1	
25	6E5-11372-00	NIPPLE, HOSE	1	1	1	1	
26	6H1-14485-00	PIPE, JOINT	1	1	1	1	
27	97013-06020	BOLT	6	6	6	6	

B6

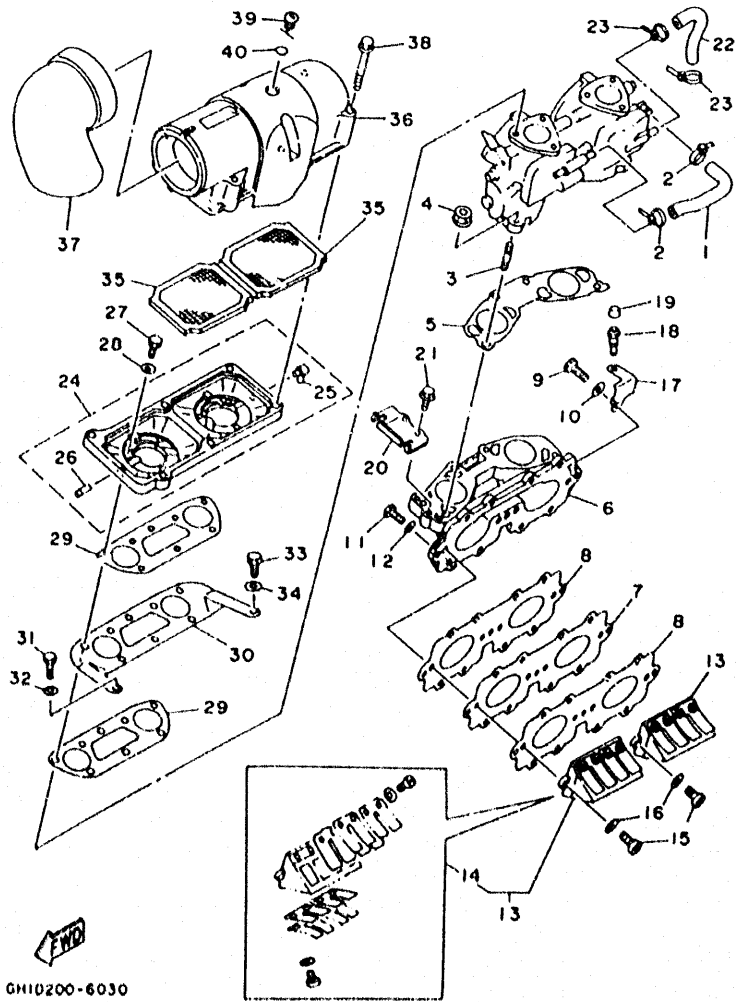


FIG. 3 INTAKE

REF. NO.	PART NO.	DESCRIPTION	FOM1	FOM2	FOM3	FOM4	REMARKS
28	92903-06600	WASHER, PLATE	6	6	6	6	
29	62T-13674-00	GASKET, AIR COOLER COVER 1	2	2	2	2	
30	62T-14255-00	PLATE	1	1	1	1	
31	97013-06012	BOLT	1	1	1	1	
32	92903-06600	WASHER, PLATE	1	1	1	1	
33	90109-06M66	BOLT	1	1	1	1	
34	90201-06M31	WASHER, PLATE	1	1	1	1	
35	62T-14451-00	ELEMENT, AIR CLEANER	2	2	2	2	
36	62T-14283-00	COVER, CARBURETOR 1	1	1	1	1	
37	62T-14419-00	PIPE	1	1	1	1	
38	90119-05M02	BOLT, WITH WASHER	6	6	6	6	
39	62T-14435-00	GROMMET	1	1	1	1	
40	93210-13M63	O-RING	1	1	1	1	

B7

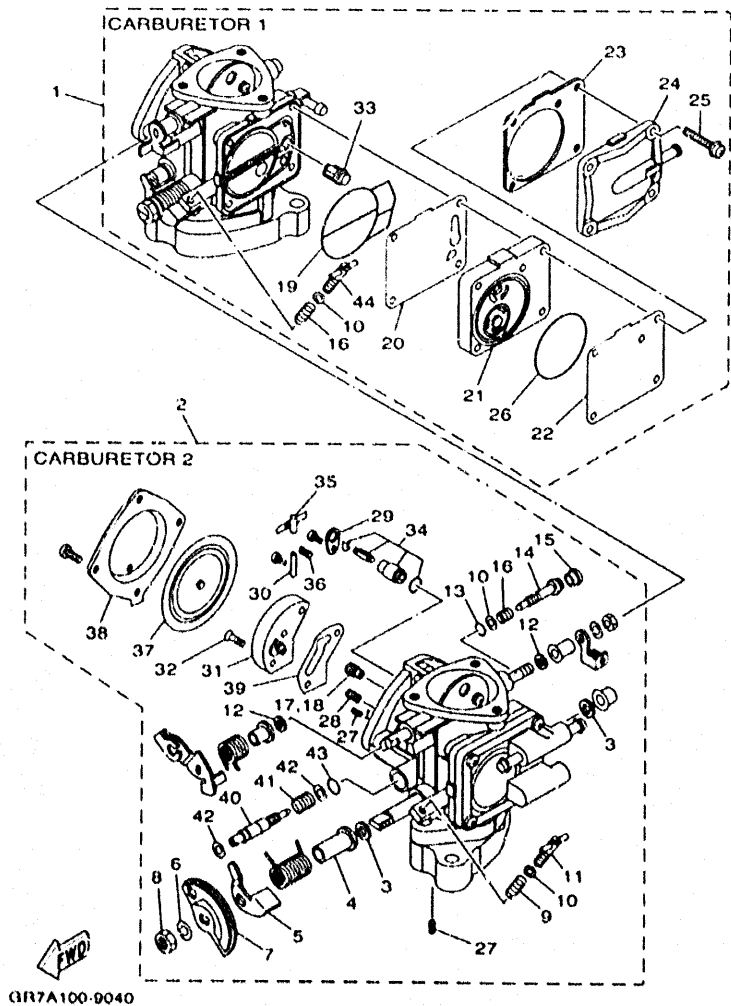


FIG. 4 CARBURETOR

REF. NO.	PART NO.	DESCRIPTION	FOM1	FOM2	FOM3	FOM4	REMARKS
1	62T-14301-02	CARBURETOR ASSY 1	1	1	1	1	
2	62T-14302-02	CARBURETOR ASSY 2	1	1	1	1	
3	6R7-14596-01	WASHER	4	4	4	4	
4	6K8-14534-10	COLLAR	2	2	2	2	
5	6K8-14926-10	BRACKET, THROTTLE 1	1	1	1	1	CARBURETOR 2
6	92990-08100	WASHER, SPRING	2	2	2	2	
7	6K8-14930-00	THROTTLE SHAFT ASSY	1	1	1	1	CARBURETOR 2
8	95380-08700	NUT	2	2	2	2	
9	6K8-14531-00	SPRING, ADJUST SCREW	1	1	1	1	CARBURETOR 2
10	6K8-14559-00	WASHER	4	4	4	4	
11	6M6-14521-00	SCREW, ADJUST	1	1	1	1	CARBURETOR 2
12	6K8-14597-11	WASHER	4	4	4	4	
13	6K8-14562-00	O-RING	2	2	2	2	
14	6K8-14946-10	METERING NEEDLE	2	2	2	2	
15	6K8-14471-10	CAP, CARBURETOR	2	2	2	2	
16	6K8-14533-00	SPRING, ADJUST SCREW	3	3	3	3	
17	3G2-14231-28	JET, MAIN (#130)	1	1	1	1	CARBURETOR 1
18	3G2-14231-24	JET, MAIN (#120)	1	1	1	1	CARBURETOR 2
19	6K8-14564-00	O-RING	2	2	2	2	
20	6K8-24411-20	DIAPHRAGM	1	1	1	1	CARBURETOR 1
21	6M6-24413-00	BODY 2	1	1	1	1	CARBURETOR 1
22	6K8-24421-10	VALVE, CHECK	1	1	1	1	CARBURETOR 1
23	6K8-24431-20	GASKET, FUEL PUMP 1	1	1	1	1	CARBURETOR 1
24	6K8-24452-10	COVER	1	1	1	1	CARBURETOR 1
25	97980-05330	SCREW, WITH WASHER	4	4	4	4	CARBURETOR 1
26	6K8-14563-00	O-RING	1	1	1	1	CARBURETOR 1
27	6K8-14521-10	SCREW	4	4	4	4	

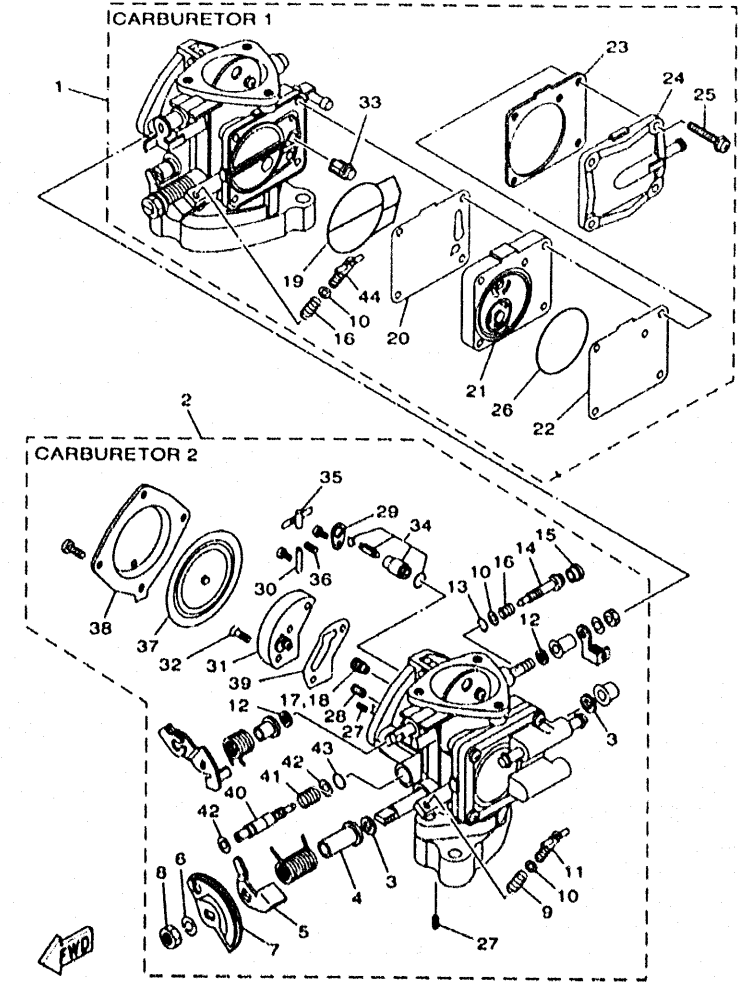


FIG. 4 CARBURETOR

REF. NO.	PART NO.	DESCRIPTION	FOM1	FOM2	FOM3	FOM4	REMARKS
28	830-1423A-64	.JET, MAIN (# 67.5)	2	2	2	2	
29	6K8-14527-11	.PLATE	2	2	2	2	
30	6K8-14579-00	.PIN, FLOAT	2	2	2	2	
31	6R7-24412-01	.BODY 1	2	2	2	2	
32	6K8-14523-11	.SCREW, STOP	4	4	4	4	
33	6R7-14569-00	.STRAINER	2	2	2	2	
34	61X-14916-15	.NEEDLE	2	2	2	2	
35	6K8-14547-01	.ARM, FLOAT	2	2	2	2	
36	6R7-14253-00	.SPRING	2	2	2	2	
37	6R7-14541-00	.DIAPHRAGM, PUMP	2	2	2	2	
38	6R7-14542-00	.BODY, PUMP 1	2	2	2	2	
39	6K8-14536-11	.GASKET	2	2	2	2	
40	65U-14923-10	.SCREW, PILOT	2	2	2	2	
41	6K8-14589-00	.SPRING	2	2	2	2	
42	6K8-14537-00	.GASKET	4	4	4	4	
43	583-14561-00	.O-RING	2	2	2	2	
44	6K8-14521-00	.SCREW, ADJUST	1	1	1	1	CARBURETOR 1

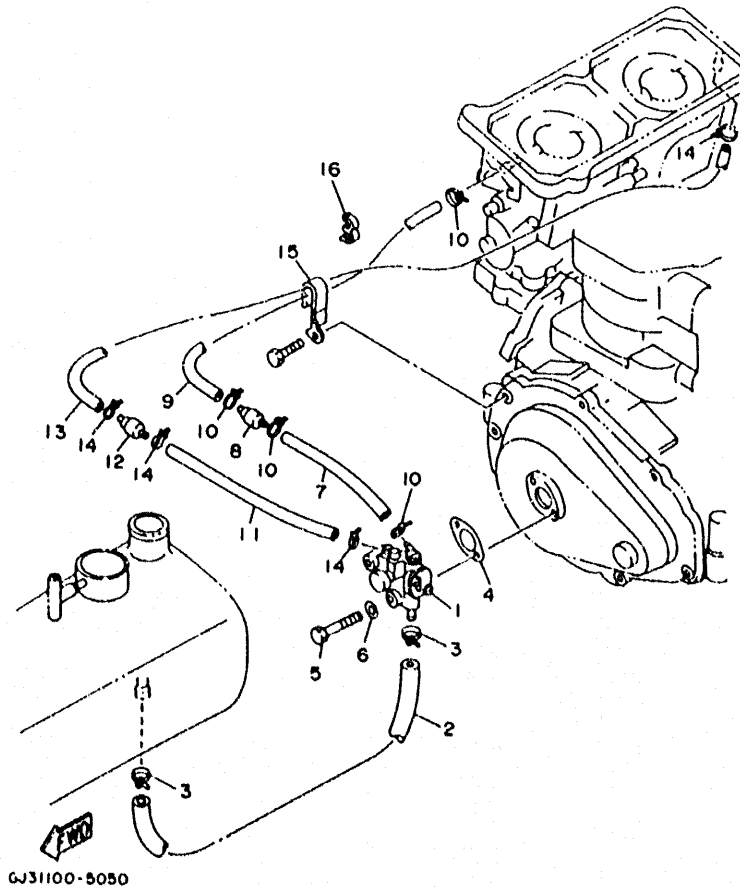
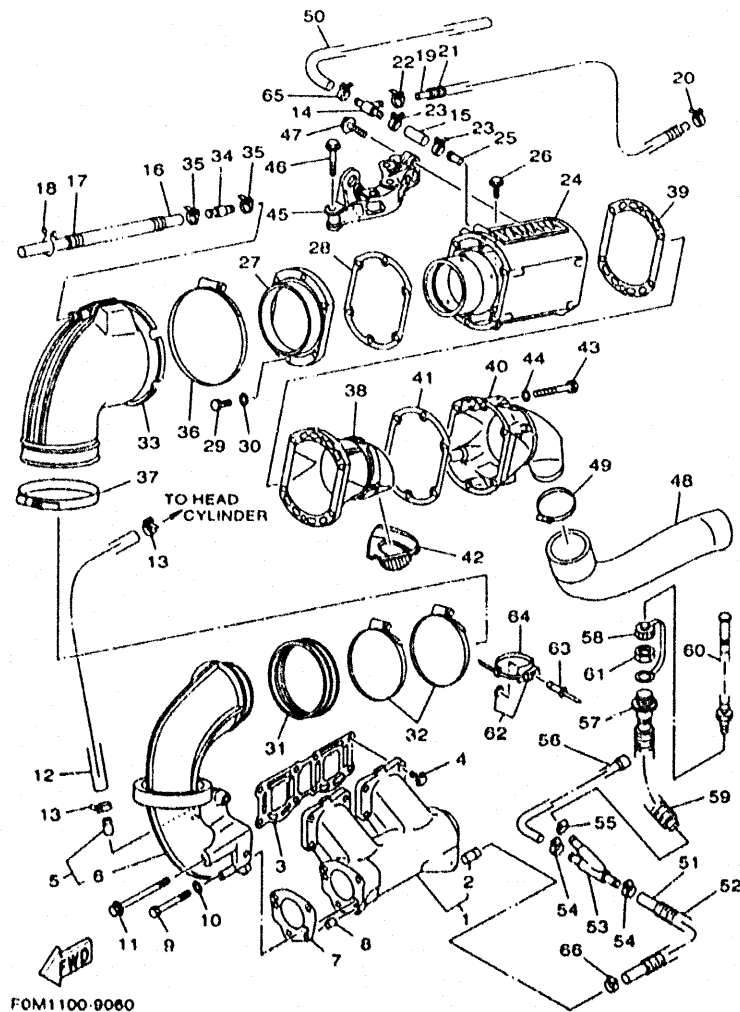


FIG. 5 OIL PUMP

REF. NO.	PART NO.	DESCRIPTION	FOM1	FOM2	FOM3	FOM4	REMARKS
1	61X-13200-12	OIL INJECTION PUMP ASSY	1	1	1	1	
2	90445-11M34	HOSE	1	1	1	1	
3	90465-11M10	CLAMP	2	2	2	2	
4	6R8-13116-A0	GASKET, PUMP CASE	1	1	1	1	
5	97095-06035	BOLT	2	2	2	2	
6	92995-06600	WASHER	2	2	2	2	
7	90446-07M14	HOSE	1	1	1	1	
8	6R3-13183-00	VALVE, CHECK	1	1	1	1	
9	90446-07M18	HOSE	1	1	1	1	
10	90465-11M10	CLAMP	4	4	4	4	
11	90446-07M17	HOSE	1	1	1	1	
12	6R3-13183-00	VALVE, CHECK	1	1	1	1	
13	90446-07M48	HOSE	1	1	1	1	
14	90465-11M10	CLAMP	4	4	4	4	
15	90465-08M69	CLAMP	1	1	1	1	
16	90464-10M38	CLAMP	2	2	2	2	



FOM1100-9060

FIG. 6 EXHAUST 1

REF. NO.	FART NO.	DESCRIPTION	FOM1	FOM2	FOM3	FOM4	REMARKS
1	62T-14711-10-9P	MUFFLER 1	1	1	1	1	
2	6K8-51129-00	NIPPLE	1	1	1	1	
3	62T-14613-00	GASKET, EXHAUST PIPE	1	1	1	1	
4	90105-10M60	BOLT, WASHER BASED	8	8	8	8	
5	62T-14712-00-9P	RING, JOINT	1	1	1	1	
6	6K8-51129-00	NIPPLE	1	1	1	1	
7	62T-14749-00	GASKET, MUFFLER DAMPER 2	1	1	1	1	
8	93605-12M21	PIN, DOWEL	2	2	2	2	
9	97013-08075	BOLT	2	2	2	2	
10	92903-08600	WASHER, PLATE	2	2	2	2	
11	90119-08M11	BOLT, WITH WASHER	2	2	2	2	
12	90445-14M24	HOSE	1	1	1	1	
13	90465-11M10	CLAMP	2	2	2	2	
14	63N-24378-00	PIPE, JOINT 4	1	1	1	1	
15	90445-21M02	HOSE	1	1	1	1	
16	90445-14M21	HOSE	1	1	1	1	
17	90446-20M31	HOSE	1	1	1	1	
18	90464-15M11	CLAMP	1	1	1	1	
19	90445-14M25	HOSE	1	1	1	1	
20	90465-11M10	CLAMP	1	1	1	1	
21	90446-20M31	HOSE	1	1	1	1	
22	90465-11M10	CLAMP	1	1	1	1	
23	90465-11M59	CLAMP	2	2	2	2	
24	62T-14721-00-94	MUFFLER 2	1	1	1	1	
25	62T-14485-10	PIPE, JOINT	1	1	1	1	
26	90105-10M60	BOLT, WASHER BASED	2	2	2	2	
27	62T-41113-00-9M	OUTER COVER, EXHAUST	1	1	1	1	

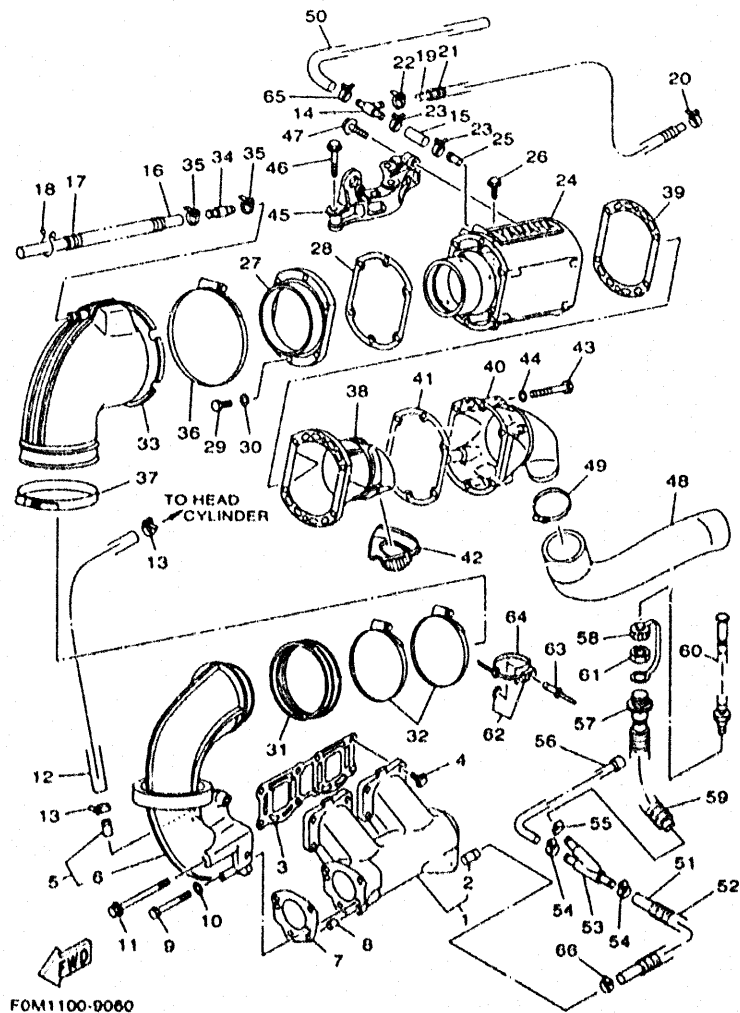


FIG. 6 EXHAUST 1

REF. NO.	PART NO.	DESCRIPTION	FOM1	FOM2	FOM3	FOM4	REMARKS
28	62T-41114-01	GASKET, EXHAUST OUTER COVER	1	1	1	1	
29	97013-06025	BOLT	6	6	6	6	
30	92903-06600	WASHER, PLATE	6	6	6	6	
31	62T-14625-00	JOINT, EXHAUST 2	1	1	1	1	
32	90450-99M06	HOSE CLAMP ASSY	2	2	2	2	
33	62T-14615-01	JOINT, EXHAUST 1	1	1	1	1	
34	6R3-24377-00	PIPE, JOINT 3	1	1	1	1	
35	90465-11M10	CLAMP	2	2	2	2	
36	90450-99M01	HOSE CLAMP ASSY	1	1	1	1	
37	90450-99M02	HOSE CLAMP ASSY	1	1	1	1	
38	62T-41121-00-9M	INNER COVER, EXHAUST	1	1	1	1	
39	62T-41122-00	GASKET, EXHAUST INNER COVER	1	1	1	1	
40	62T-41123-01-9M	OUTER COVER, EXHAUST	1	1	1	1	
41	62T-41124-00	GASKET, EXHAUST OUTER COVER	1	1	1	1	
42	63N-15761-00	SEAL, RUBBER 1	1	1	1	1	
43	97013-06070	BOLT	6	6	6	6	
44	92903-06600	WASHER, PLATE	6	6	6	6	
45	62T-14771-00-94	STAY, MUFFLER 1	1	1	1	1	
46	90119-10M72	BOLT, WITH WASHER	4	4	4	4	
47	90105-10M45	BOLT, WASHER BASED	2	2	2	2	
48	63N-14752-30	PIPE, OUTLET	1	1	1	1	
49	90450-70M03	HOSE CLAMP ASSY	1	1	1	1	
50	90445-21M00	HOSE	1	1	1	1	
51	90445-14M10	HOSE	1	1	1	1	
52	90446-20M65	HOSE	1	1	1	1	
53	64X-12501-00	JOINT, HOSE 1	1	1	1	1	
54	90450-14M05	HOSE CLAMP ASSY	2	2	2	2	

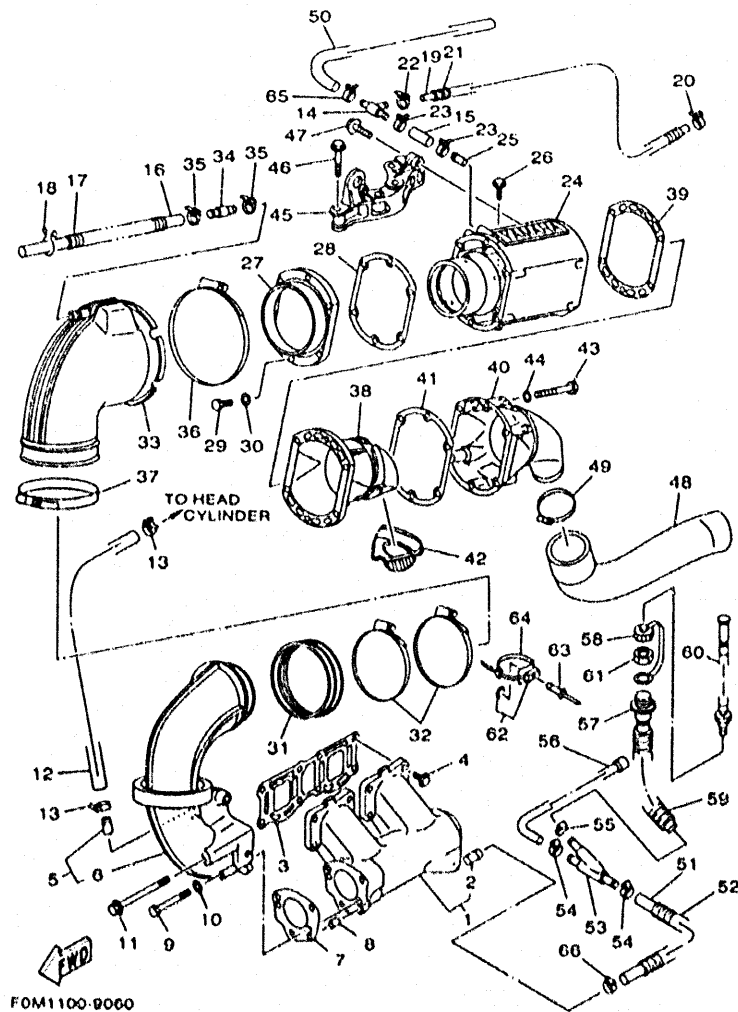


FIG. 6 EXHAUST 1

REF. NC.	PART NO.	DESCRIPTION	FOM1	FOM2	FOM3	FOM4	REMARKS
55	90450-18M09	HOSE CLAMP ASSY	1	1	1	1	
56	65R-12564-00	PIPE, WATER	1	1	1	1	
57	64T-12580-00	JOINT ASSY	1	1	1	1	
58	682-84385-01	CAP,1	1	1	1	1	
59	90446-24M89	HOSE	1	1	1	1	
60	63M-12590-00	CONDUCTION ASSY	1				
	63M-12590-10	CONDUCTION ASSY				1	
	63M-12590-20	CONDUCTION ASSY		1	1		
61	EU0-61652-00	NUT	1	1	1	1	
62	90600-91736	CLAMP COMP.	1	1	1	1	
63	90267-489U7	RIVET, BLIND	1	1	1	1	YMUS
64	90601-20000	BAND	1	1	1	1	
65	90601-200U1	BAND	1	1	1	1	YMUS
66	90601-118UF	BAND, HOSE 18	1	1	1	1	YMUS

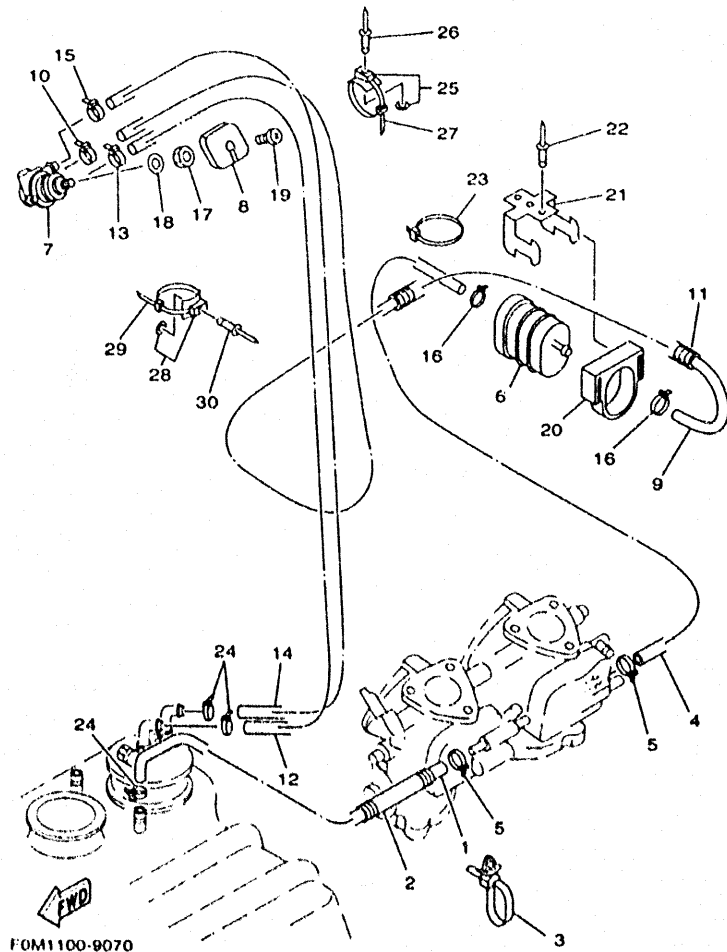


FIG. 7 FUEL

REF. NO.	PART NO.	DESCRIPTION	FOM1	FOM2	FOM3	FOM4	REMARKS
1	90445-10MA1	HOSE	1	1	1	1	
2	90446-14M61	HOSE	1	1	1	1	
3	90465-12M56	CLAMP	1	1	1	1	
4	90445-10MG0	HOSE	1	1	1	1	
5	90465-11M10	CLAMP	2	2	2	2	
6	6K8-24560-10	FILTER ASSY	1	1	1	1	
7	65U-24500-00	FUEL COCK ASSY 1	1	1	1	1	
8	6R7-24524-00	LEVER, COCK	1	1	1	1	
9	90445-10MG2	HOSE	1	1	1	1	
10	90465-11M10	CLAMP	1	1	1	1	
11	90446-14M62	HOSE	1	1	1	1	
12	90445-10MG1	HOSE	1	1	1	1	
13	90465-11M10	CLAMP	1	1	1	1	
14	90445-10MG3	HOSE	1	1	1	1	
15	90465-11M10	CLAMP	1	1	1	1	
16	90465-11M10	CLAMP	2	2	2	2	
17	90170-22187	NUT	1	1	1	1	
18	90202-229U1	WASHER, PLATE	1	1	1	1	YMUS
19	98980-04008	SCREW, BIND	1	1	1	1	
20	EU0-67817-00	HOLDER	1	1	1	1	
21	EU0-67816-30	BRACKET, FUEL FILTER	1	1	1	1	
22	90267-489U1	RIVET, BLIND	2	2	2	2	YMUS
23	90601-20006	BAND	1	1	1	1	
24	90465-11829	CLAMP	3	3	3	3	
25	90600-91736	CLAMP COMP.	6	6	6	6	
26	90267-48925	RIVET, BLIND	6	6	6	6	
27	90601-20006	BAND	6	6	6	6	

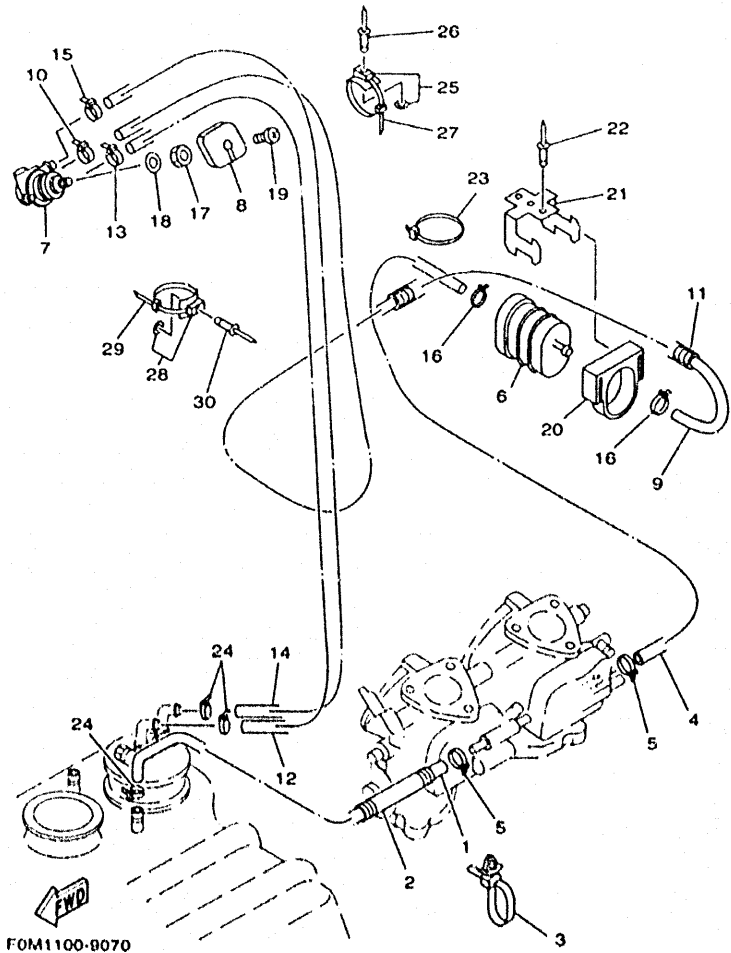


FIG. 7 FUEL

REF. NO.	PART NO.	DESCRIPTION	FOM1	FOM2	FOM3	FOM4	REMARKS
28	90600-91736	CLAMP COMP.	1	1	1	1	
29	90601-20006	BAND	1	1	1	1	
30	90267-48925	RIVET, BLIND	1	1	1	1	

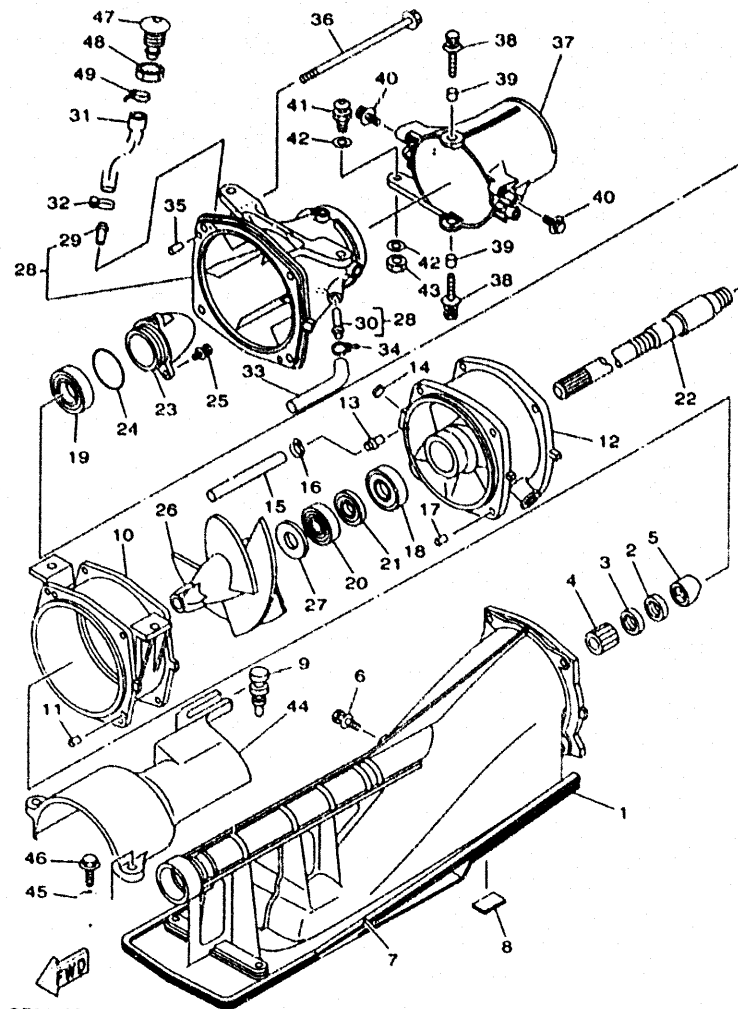
CONTENTS

CYLINDER, CRANKCASE	B2
CRANKSHAFT, PISTON	B4
INTAKE	B6
CARBURETOR	B8
OIL PUMP	B10
EXHAUST 1	B11
FUEL	B14
JET UNIT 1	C2
JET UNIT 2	C4
GENERATOR	C6
STARTING MOTOR	C7
ELECTRICAL 1	C8
ELECTRICAL 2	C10
ENGINE HATCH 1	C11
ENGINE HATCH 2	C12
HULL, DECK	C14
GUNWALE, MAT	D2
VENTILATION	D4
SEAT, UNDER LOCKER	D5
OIL TANK	D7

FUEL TANK	D8
EXHAUST 2	D10
CONTROL CABLE	D11
STEERING 1	D12
STEERING 2	D14
GRAPHIC 1, TOOL	D15
GRAPHIC 2, TOOL	E2
GRAPHIC 3, TOOL	E4
REPAIR KIT 1	E6
REPAIR KIT 2	E8

INDEX

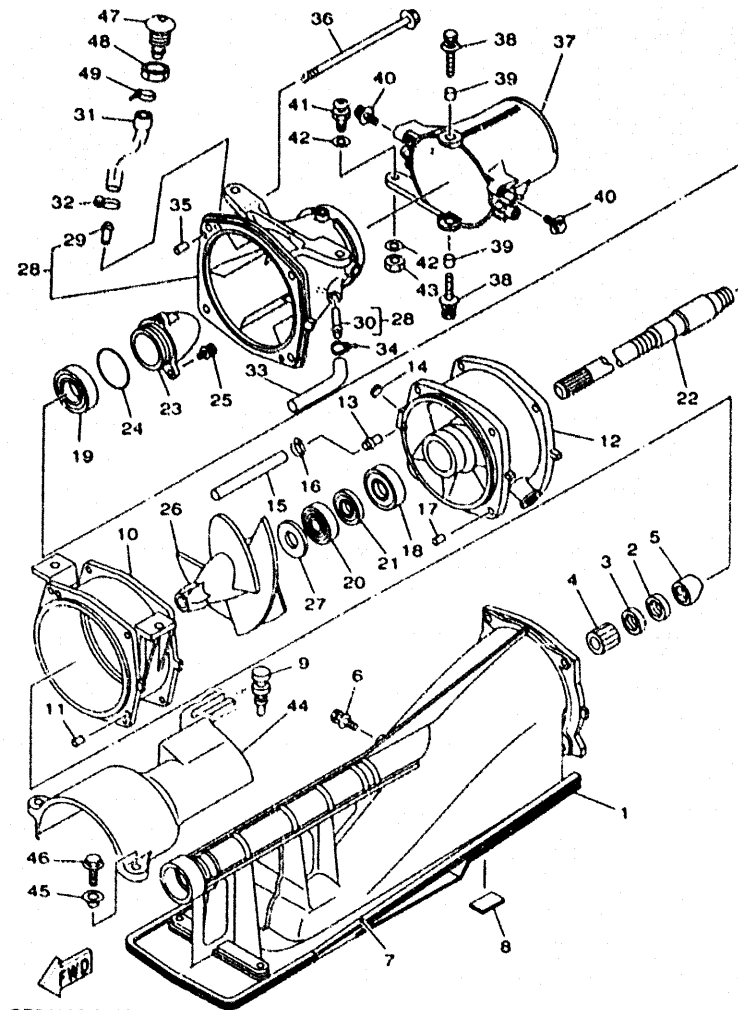
NUMERICAL INDEX	M1
-----------------------	----



GT34100-8080

FIG. 8 JET UNIT 1

REF. NO.	PART NO.	DESCRIPTION	F0M1	F0M2	F0M3	F0M4	REMARKS
1	65U-R1311-00	DUCT, INTAKE	1	1	1	1	YMUS
2	93102-17M49	OIL SEAL	1	1	1	1	
3	93102-17M50	OIL SEAL	1	1	1	1	
4	65V-45318-00	BUSHING, DRIVE SHAFT	1	1	1	1	
5	65U-R1348-01	SPACER	1	1	1	1	YMUS
6	90119-069UD	BOLT, WITH WASHER	1	1	1	1	YMUS
7	6R8-51367-01	FELT, PACKING	2	2	2	2	
8	63M-51368-00	FELT, PACKING	2	2	2	2	
9	90480-06M46	GROMMET	1	1	1	1	
10	63M-51312-02-94	HOUSING, IMPELLER	1	1	1	1	
11	93606-12019	PIN, DOWEL	2	2	2	2	
12	63M-51315-02-94	DUCT, IMPELLER	1	1	1	1	
13	65A-R1129-10	NIPPLE	1	1	1	1	YMUS
14	90331-12M05	PLUG	1	1	1	1	
15	90445-18M03	HOSE	1	1	1	1	
16	90601-118UF	BAND, HOSE 18	1	1	1	1	YMUS
17	93606-12019	PIN, DOWEL	2	2	2	2	
18	93305-205U1	BEARING	1	1	1	1	
19	93306-205U0	BEARING	1	1	1	1	
20	93102-25M34	OIL SEAL	1	1	1	1	
21	93101-25M50	OIL SEAL	1	1	1	1	
22	65R-45511-00	SHAFT, DRIVE	1	1	1	1	
23	65A-R1326-00	CAP	1	1	1	1	YMUS
24	93210-46M16	O-RING	1	1	1	1	
25	90119-069UB	BOLT, WITH WASHER	3	3	3	3	YMUS
26	65R-R1321-10	IMPELLER	1	1	1	1	YMUS
27	62T-51348-00	SPACER	1	1	1	1	



GT34100-8080

FIG. 8 JET UNIT 1

REF. NO.	PART NO.	DESCRIPTION	FOM1	FOM2	FOM3	FOM4	REMARKS
28	65R-R1318-00	NOZZLE	1	1	1	1	YMUS
29	65A-R1129-00	NIPPLE	1	1	1	1	YMUS
30	65A-R1334-01	NIPPLE,HOSE	1	1	1	1	YMUS
31	62C-51673-00	PIPE 1	1	1	1	1	
32	90601-118UF	BAND, HOSE 18	1	1	1	1	YMUS
33	90445-14898	HOSE	1	1	1	1	
34	90465-11829	CLAMP	1	1	1	1	
35	93606-12019	PIN, DOWEL	2	2	2	2	
36	90105-089U1	BOLT, WASHER BASED	4	4	4	4	YMUS
37	65R-R1313-01	NOZZLE,DEFLECTOR	1	1	1	1	YMUS
38	90119-089UE	BOLT, WITH WASHER	2	2	2	2	YMUS
39	90387-08M08	COLLAR	2	2	2	2	
40	90119-089UE	BOLT, WITH WASHER	2	2	2	2	YMUS
41	GH3-U146E-00	STUD, JOINT BALL	1	1	1	1	YMUS
42	90201-068M4	WASHER, PLATE	2	2	2	2	YMUS
43	95380-06700	NUT	1	1	1	1	
44	65R-R1381-00	COVER	1	1	1	1	YMUS
45	90387-06M60	COLLAR	2	2	2	2	
46	90119-069UD	BOLT, WITH WASHER	2	2	2	2	YMUS
47	FN8-6269B-00	SPOUT	1	1	1	1	
48	EU0-61652-00	NUT	1	1	1	1	
49	90600-91755	CLIP	1	1	1	1	

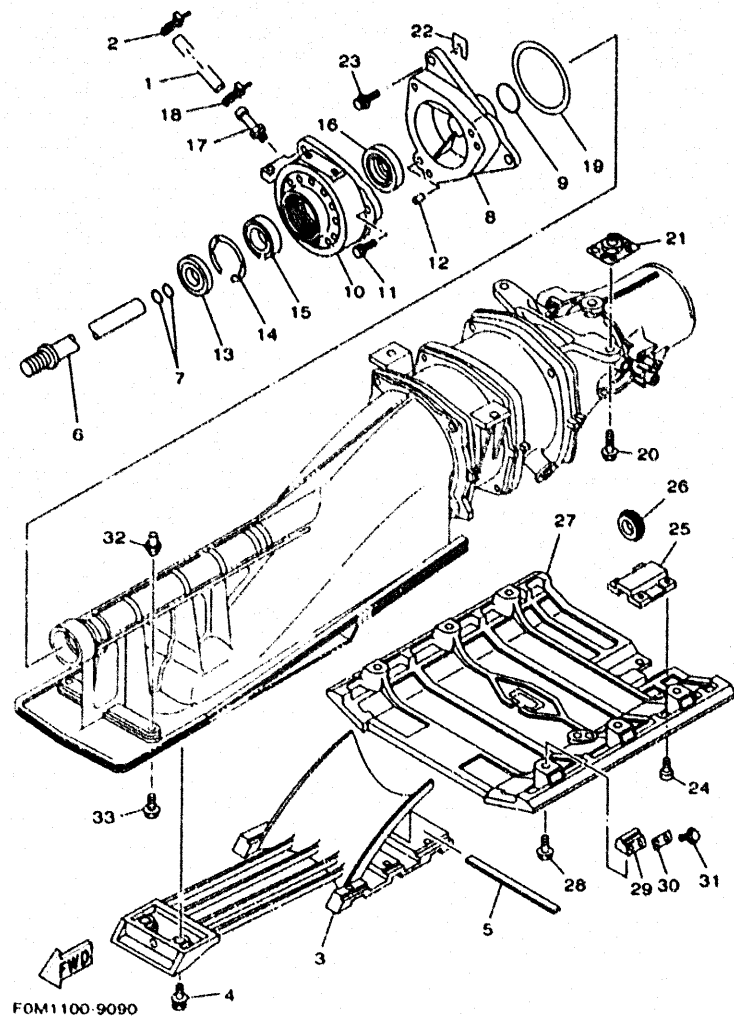


FIG. 9 JET UNIT 2

REF. NO.	PART NO.	DESCRIPTION	FOM1	FOM2	FOM3	FOM4	REMARKS
1	90445-09M21	HOSE	1	1	1	1	
2	90465-11M10	CLAMP	1	1	1	1	
3	65R-R1333-00	SCREEN, INTAKE	1	1	1	1	YMUS
4	90119-069UC	BOLT, WITH WASHER	8	8	8	8	YMUS
5	63M-51367-00	FELT, PACKING	1	1	1	1	
6	83N-51323-10	SHAFT, COUPLOR	1	1	1	1	
7	93210-17MA4	O-RING	2	2	2	2	
8	65A-G5331-00	HOUSING, BEARING	1	1	1	1	YMUS
9	93210-35M72	O-RING	1	1	1	1	
10	65U-45332-01-94	HOUSING, BEARING	1	1	1	1	
11	90119-089UF	BOLT, WITH WASHER	3	3	3	3	YMUS
12	93806-12019	PIN, DOWEL	2	2	2	2	
13	93101-25M55	OIL SEAL	1	1	1	1	
14	93430-47M04	CIRCLIP	1	1	1	1	
15	93306-205U6	BEARING	1	1	1	1	
16	93101-25M56	OIL SEAL	1	1	1	1	
17	61L-45378-00	NIPPLE, HOSE	1	1	1	1	
18	90465-11829	CLAMP	1	1	1	1	
19	6K8-45127-00	SEAL	1	1	1	1	
20	90119-109U8	BOLT, WITH WASHER	4	4	4	4	YMUS
21	90179-10925	NUT	4	4	4	4	
22	GD0-U7249-00-05	SHIM (T=0.5)	2	2	2	2	UR YMUS
	GD0-U7249-00-10	SHIM (T=1.0)	2	2	2	2	UR YMUS
23	90119-08907	BOLT, WITH WASHER	3	3	3	3	
24	90149-05904	SCREW	4	4	4	4	
25	GT3-6273C-00	COVER, PLATE	1	1	1	1	
26	GJ8-60469-01	CAP	1	1	1	1	

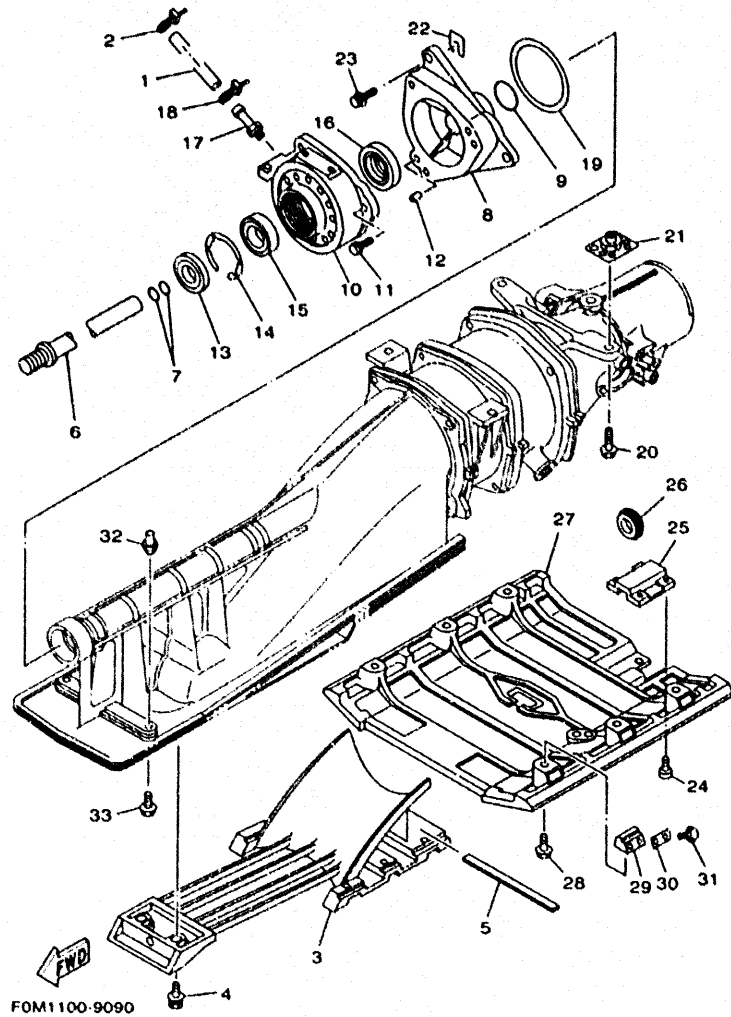
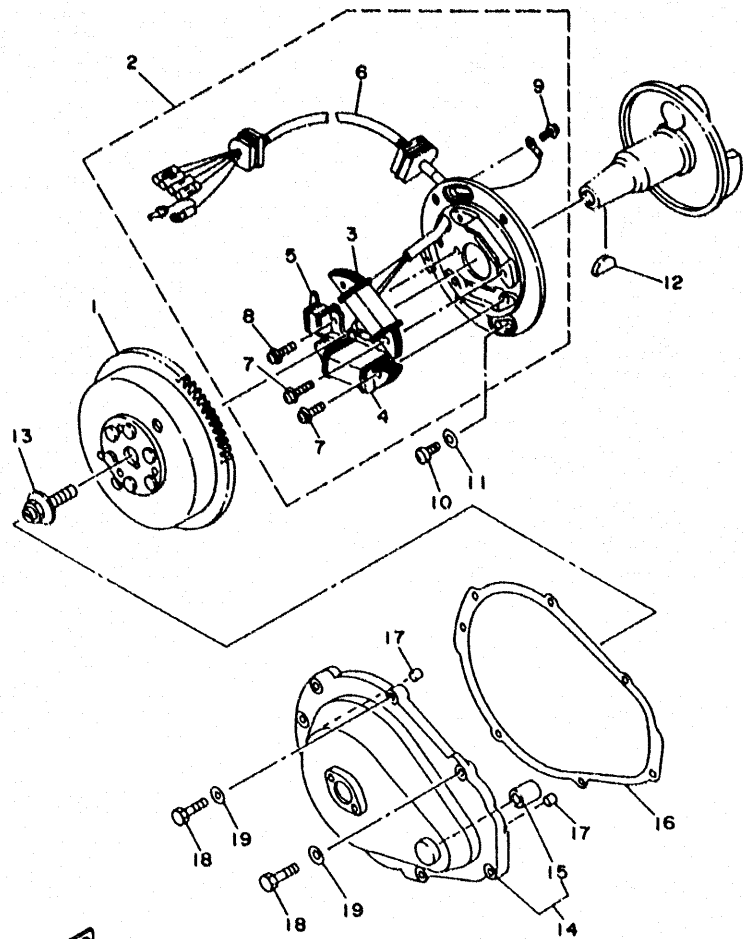


FIG. 9 JET UNIT 2

REF. NO.	PART NO.	DESCRIPTION	FOM1	FOM2	FOM3	FOM4	REMARKS
27	GJ3-U273B-00	PLATE 2	1	1	1	1	YMUS
28	90119-089U6	BOLT, WITH WASHER	6	6	6	6	YMUS
29	GJ1-62733-00	PACKING	6	6	6	6	
30	GJ1-62663-00	PACKING 1	6	6	6	6	
31	90119-089U5	BOLT, WITH WASHER	12	12	12	12	YMUS
32	90179-06947	NUT	2	2	2	2	
33	90119-069UK	BOLT, WITH WASHER	2	2	2	2	YMUS

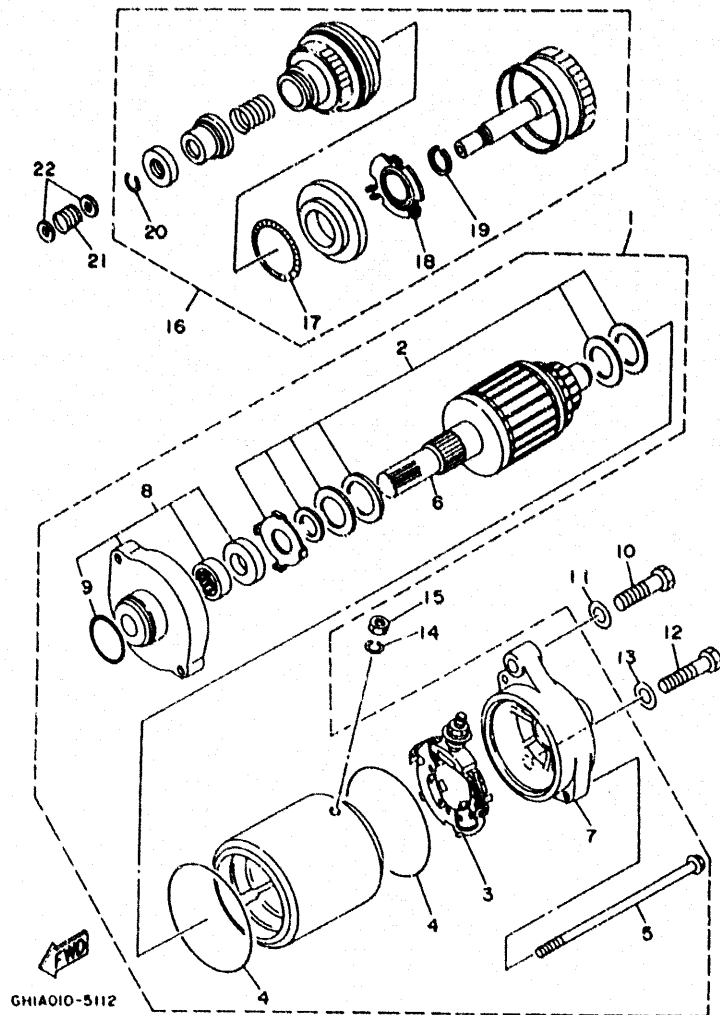
C5



FWD
GHI4010-4100

FIG. 10 GENERATOR

REF. NO.	PART NO.	DESCRIPTION	F0M1	F0M2	F0M3	F0M4	REMARKS
1	62T-85550-00	ROTOR ASSY	1	1	1	1	
2	62T-85560-00	BASE ASSY	1	1	1	1	
3	62T-85520-00	.COIL, CHARGE	1	1	1	1	
4	62T-85533-00	.COIL, LIGHTING	1	1	1	1	
5	6M6-85580-00	.COIL, PULSER	1	1	1	1	
6	62T-85515-00	.LEAD WIRE ASSY	1	1	1	1	
7	97902-05125	.SCREW, WITH WASHER	4	4	4	4	
8	97902-04122	.SCREW, WITH WASHER	2	2	2	2	
9	97802-04008	.SCREW, PAN HEAD	1	1	1	1	
10	97880-06016	SCREW, PAN HEAD	2	2	2	2	
11	92990-06600	WASHER, PLATE	2	2	2	2	
12	90280-05013	KEY, WOODRUFF	1	1	1	1	
13	90109-10M47	BOLT	1	1	1	1	
14	6R8-81337-00-8P	COVER, FLYWHEEL	1	1	1	1	
15	90380-12M29	.BUSH, SOLID	1	1	1	1	
16	6M6-81365-A0	GASKET, HOLE COVER	1	1	1	1	
17	93606-12019	PIN, DOWEL	2	2	2	2	
18	C7095-06025	BOLT	7	7	7	7	
19	92995-06600	WASHER	7	7	7	7	



GHIA010-5112

FIG. 11 STARTING MOTOR

REF. NO.	PART NO.	DESCRIPTION	F0M1	F0M2	F0M3	F0M4	REMARKS
1	6M6-81800-10	STARTING MOTOR ASSY	1	1	1	1	
2	3AJ-81809-00	.WASHER KIT	1	1	1	1	
3	6M6-81840-10	.BRUSH HOLDER ASSY	1	1	1	1	
4	11H-81844-00	.GASKET	2	2	2	2	
5	6M6-81826-00	.BOLT	2	2	2	2	
6	6M6-81850-00	.ARMATURE ASSY	1	1	1	1	
7	6M6-81820-00	.REAR BRACKET ASSY	1	1	1	1	
8	6M6-81830-00	.FRONT BRACKET ASSY	1	1	1	1	
9	26H-81847-00	.O-RING	1	1	1	1	
10	97013-08040	BOLT	1	1	1	1	
11	92903-08600	WASHER, PLATE	1	1	1	1	
12	97013-08035	BOLT	1	1	1	1	
13	92903-08600	WASHER, PLATE	1	1	1	1	
14	92990-06100	WASHER, SPRING	1	1	1	1	
15	953PC-06700	NUT	1	1	1	1	
16	6M6-8183E-00	IDLE GEAR COMP	1	1	1	1	
17	6M6-81866-00	.WEIGHT SPRING	1	1	1	1	
18	6M6-81865-00	.WEIGHT HOLDER	1	1	1	1	
19	93440-25M08	.CIRCLIP	1	1	1	1	
20	93450-18M06	.CIRCLIP	1	1	1	1	
21	90501-14M73	SPRING, COMPRESSION	1	1	1	1	
22	92903-06600	WASHER, PLATE	2	2	2	2	

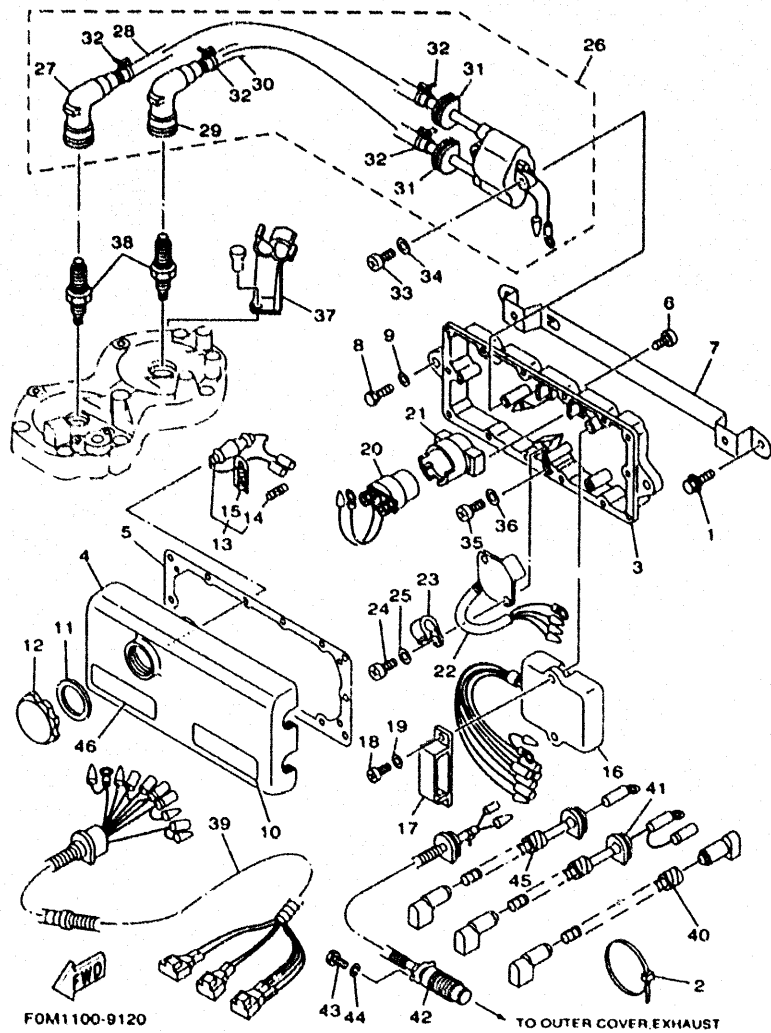


FIG. 12 ELECTRICAL 1

REF. NO.	PART NO.	DESCRIPTION	FOM1	FOM2	FOM3	FOM4	REMARKS
1	90119-089U7	BOLT, WITH WASHER	2	2	2	2	YMUS
2	90601-20009	BAND	2	2	2	2	
3	62L-8552A-00-8P	HOUSING	1	1	1	1	
4	6M6-8552E-01	COVER, CASE	1	1	1	1	
5	6M6-81921-00	GASKET, TERMINAL	1	1	1	1	
6	97780-60525	SCREW, TAPPING	14	14	14	14	
7	66D-85542-00	BRACKET	1	1	1	1	
8	97095-08025	BOLT	2	2	2	2	
9	92995-08600	WASHER	2	2	2	2	
10	63N-83623-00	MARK 3				1	
	6R7-83623-40	MARK 3	1	1	1		
11	6M6-81844-00	GASKET	1	1	1	1	
12	6M6-8132W-00	CAP	1	1	1	1	
13	6K8-82150-01	FUSE HOLDER ASSY	1	1	1	1	
14	6G1-82151-00	FUSE	1	1	1	1	
15	6K8-82159-00	FUSE SPEAR	1	1	1	1	
16	62T-85540-01	C.D.I. UNIT ASSY	1	1	1	1	
17	90464-06M29	CLAMP	1	1	1	1	
18	97880-06018	SCREW, PAN HEAD	2	2	2	2	
19	92990-06600	WASHER, PLATE	2	2	2	2	
20	6G1-81941-10	STARTER RELAY ASSY	1	1	1	1	
21	6M6-81952-01	HOLDER, RELAY	1	1	1	1	
22	6M6-81960-A0	RECTIFIER & REGULATOR ASSY	1	1	1	1	
23	90465-06M86	CLAMP	1	1	1	1	
24	97880-06016	SCREW, PAN HEAD	2	2	2	2	
25	92990-06600	WASHER, PLATE	2	2	2	2	
26	62E-85570-11	IGNITION COIL ASSY	1	1	1	1	

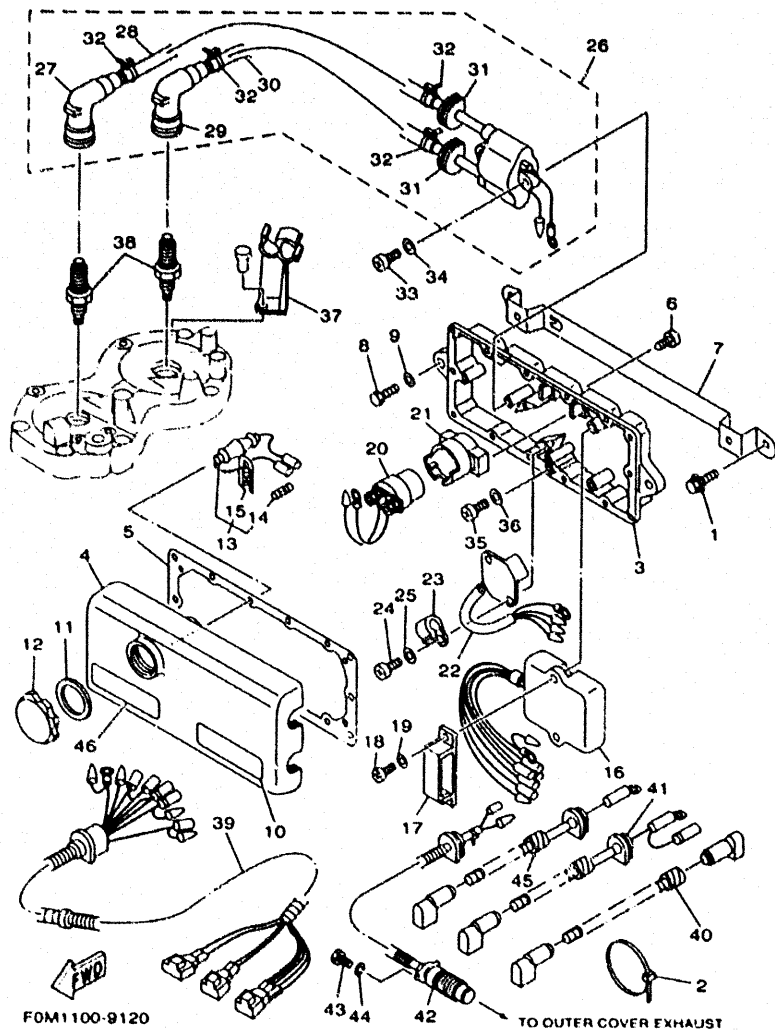


FIG. 12 ELECTRICAL 1

REF. NO.	PART NO.	DESCRIPTION	FOM1	FOM2	FOM3	FOM4	REMARKS
27	62E-82371-11	.CAP, PLUG	1	1	1	1	
28	62E-82351-01	.TUBE, CORD	1	1	1	1	
29	62E-82371-11	.CAP, PLUG	1	1	1	1	
30	62E-82352-01	.TUBE, CORD 2	1	1	1	1	
31	90480-06M43	.GROMMET	2	2	2	2	
32	90465-11M10	.CLAMP	4	4	4	4	
33	97880-06030	SCREW, PAN HEAD	2	2	2	2	
34	92990-06600	WASHER, PLATE	2	2	2	2	
35	97880-06016	SCREW, PAN HEAD	2	2	2	2	
36	92990-06600	WASHER, PLATE	2	2	2	2	
37	62T-82351-00	CLAMP, CORD	1	1	1	1	
38	94702-00195	PLUG, SPARK (NGK BR8HS)	2	2	2		
	94709-00195	PLUG, SPARK(51X) NGK BR8HS				2	
39	63N-82553-00	EXTENSION, WIRE LEAD	1	1	1	1	
40	63N-82117-00	WIRE, LEAD	1	1	1	1	
41	63N-82117-10	WIRE, LEAD	1	1	1	1	
42	62T-82560-01	THERMO SWITCH ASSY	1	1	1	1	
43	97095-06016	BOLT	2	2	2	2	
44	92995-06100	WASHER, SPRING	2	2	2	2	
45	62L-82117-20	WIRE, LEAD	1	1	1	1	
46	6R7-83623-50	MARK 3	1	1			

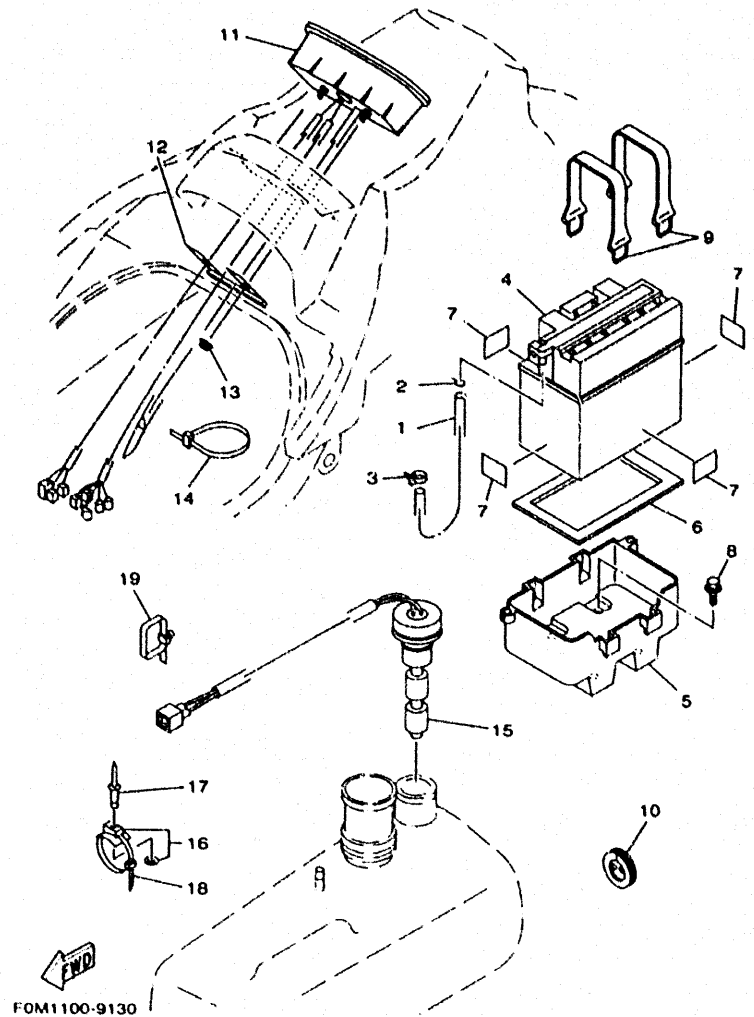


FIG. 13 ELECTRICAL 2

REF. NO.	PART NO.	DESCRIPTION	FOM1	FOM2	FOM3	FOM4	REMARKS
1	EU0-U7856-40	HOSE, AIR VENT 3	1	1	1	1	YMUS
2	90467-089U1	CLIP	1	1	1	1	YMUS
3	90600-91060	CLAMP	1	1	1	1	
4	EU0-82110-09	BATTERY ASSY	1	1	1	1	
5	GP7-U8211-00	CASE, BATTERY	1	1	1	1	YMUS
6	EU0-U8221-00	PAD, BATTERY 1	1	1	1	1	YMUS
7	EU0-U8221-30	PAD, BATTERY 2	4	4	4	4	YMUS
8	90119-069US	BOLT, WITH WASHER	4	4	4	4	YMUS
9	EU0-U821D-00	BAND, BATTERY 2	2	2	2	2	YMUS
10	FJ0-68222-01	GROMMET	1	1	1	1	
11	FOM-6820A-10	METER ASSY	1	1	1	1	
12	FOM-68238-00	BRACKET, METER	1	1	1	1	
13	95720-05300	NUT, FLANGE	2	2	2	2	
14	90601-20006	BAND	1	1	1	1	
15	GJ8-U824C-00	SENDER, OIL	1	1	1	1	YMUS
16	90600-91736	CLAMP COMP.	4	4	4	4	
17	90267-48925	RIVET, BLIND	4	4	4	4	
18	90601-20006	BAND	4	4	4	4	
19	90600-944U8	CLAMP	1	1	1	1	YMUS

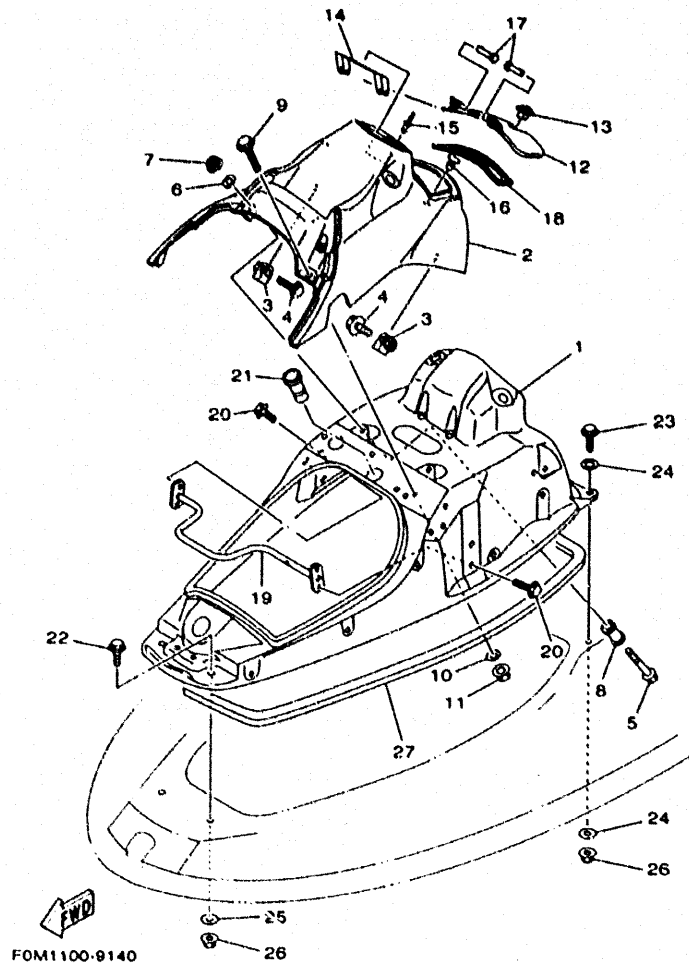


FIG. 14 ENGINE HATCH 1

REF. NO.	PART NO.	DESCRIPTION	FOM1	FOM2	FOM3	FOM4	REMARKS
1	FOM-U516A-00	ENGINE HATCH COMP.	1	1	1	1	YMUS
2	FCM-U516N-00-P0	COVER, ENGINE HATCH	1	1	1	1	YMUS
3	90183-06902	NUT, SPRING	2	2	2	2	
4	90119-069UH	BOLT, WITH WASHER	2	2	2	2	YMUS
5	90119-06914	BOLT, WITH WASHER	1	1	1	1	
6	92990-06200	WASHER, PLAIN	1	1	1	1	
7	95720-06300	NUT, SELF-LOCKING	1	1	1	1	
8	90387-06922	COLLAR	1	1	1	1	
9	90119-06900	BOLT, WITH WASHER	1	1	1	1	
10	92990-06200	WASHER, PLAIN	1	1	1	1	
11	95720-06300	NUT, SELF-LOCKING	1	1	1	1	
12	GU2-U517H-30-P2	LID HATCH	1	1	1	1	YMUS
13	GU2-62875-00	LOCK	1	1	1	1	
14	GU2-U517G-00	HINGE, HATCH	1	1	1	1	YMUS
15	90267-40937	RIVET, BLIND	3	3	3	3	
16	90605-502U2	PLUG	1	1	1	1	YMUS
17	GU2-6517R-00	PIN, HINGE	2	2	2	2	
18	GU2-U519D-00	PACKING CASE	1	1	1	1	YMUS
19	GU2-6516L-00	BEAM, ENGINE HATCH	1	1	1	1	
20	90119-069UH	BOLT, WITH WASHER	4	4	4	4	YMUS
21	GU2-6822E-01	GRÖMMET	1	1	1	1	
22	90119-089U9	BOLT, WITH WASHER	2	2	2	2	YMUS
23	90119-089U6	BOLT, WITH WASHER	2	2	2	2	YMUS
24	90201-099U1	WASHER, PLATE	4	4	4	4	YMUS
25	90201-08929	WASHER, PLATE	2	2	2	2	
26	95720-06300	NUT, SELF-LOCKING	4	4	4	4	
27	GJ3-U2663-01	PACKING 1	1	1	1	1	YMUS

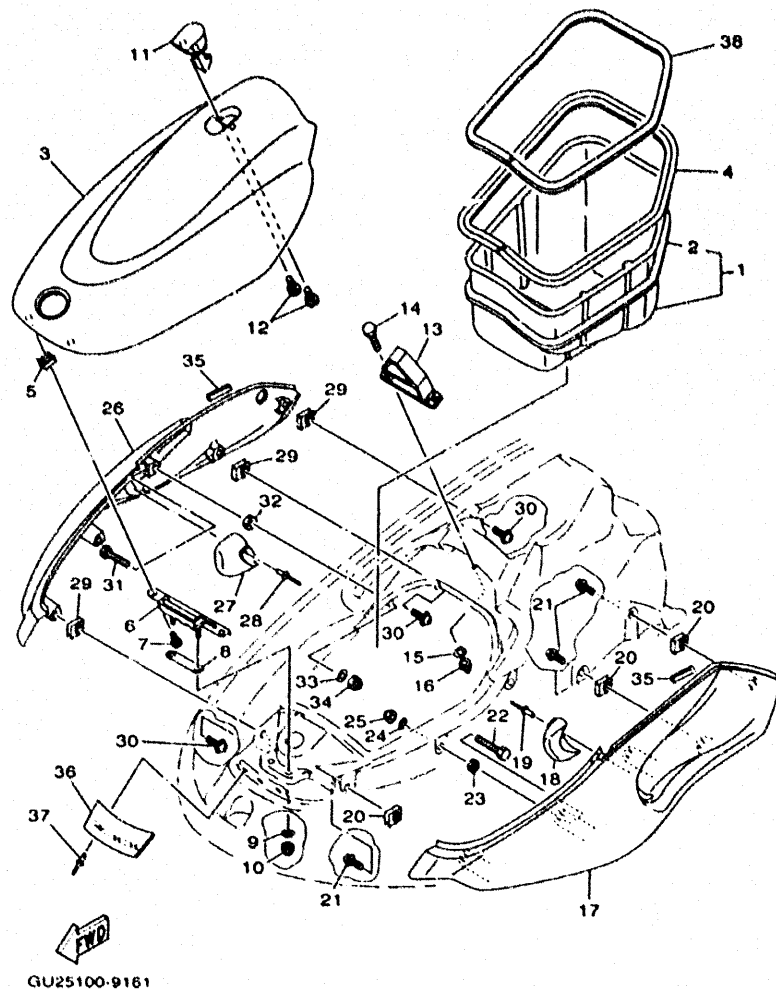


FIG. 15 ENGINE HATCH 2

REF. NO.	PART NO.	DESCRIPTION	FORM1	FORM2	FORM3	FORM4	REMARKS
1	GU2-U475A-00	BOWLOCKER ASSY	1	1	1	1	YMUS
2	GJ3-U286C-31	.PACKING 4	1	1	1	1	YMUS
3	GU2-U517B-30-P1	LID, ENGINE ROOM	1	1	1	1	YMUS
4	GU2-U286B-30	PACKING 3	1	1	1	1	YMUS
5	90183-06902	NUT, SPRING	2	2	2	2	
6	GU2-6517D-00	HINGE, LID	1	1	1	1	
7	90119-069UJ	BOLT, WITH WASHER	2	2	2	2	YMUS
8	GU2-U518E-00	PRATE, HINGE LID	1	1	1	1	YMUS
9	92990-06200	WASHER, PLAIN	2	2	2	2	
10	95720-06300	NUT, SELF-LOCKING	2	2	2	2	
11	GP7-6517C-00	LOCK, LID	1	1	1	1	
12	90159-059U2	SCREW, WITH WASHER	2	2	2	2	YMUS
13	GU2-6517F-00	HOOK, LID LOCK	1	1	1	1	
14	97080-06020	BOLT	2	2	2	2	
15	92990-06200	WASHER, PLAIN	2	2	2	2	
16	95720-06300	NUT, SELF-LOCKING	2	2	2	2	
17	GU2-U377B-30-P1	COVER, SIDE 1	1	1	1	1	YMUS
18	GU2-U377H-01	INNER, COVER SIDE 1	1	1	1	1	YMUS
19	90267-48925	RIVET, BLIND	2	2	2	2	
20	90183-06902	NUT, SPRING	3	3	3	3	
21	90119-069UH	BOLT, WITH WASHER	3	3	3	3	YMUS
22	90101-069U0	BOLT	2	2	2	2	YMUS
23	95380-0S700	NUT	2	2	2	2	
24	92990-06200	WASHER, PLAIN	2	2	2	2	
25	95720-06300	NUT, SELF-LOCKING	2	2	2	2	
26	GU2-U377C-30-P1	COVER, SIDE 2	1	1	1	1	YMUS
27	GU2-U377J-01	INNER, COVER SIDE 2	1	1	1	1	YMUS

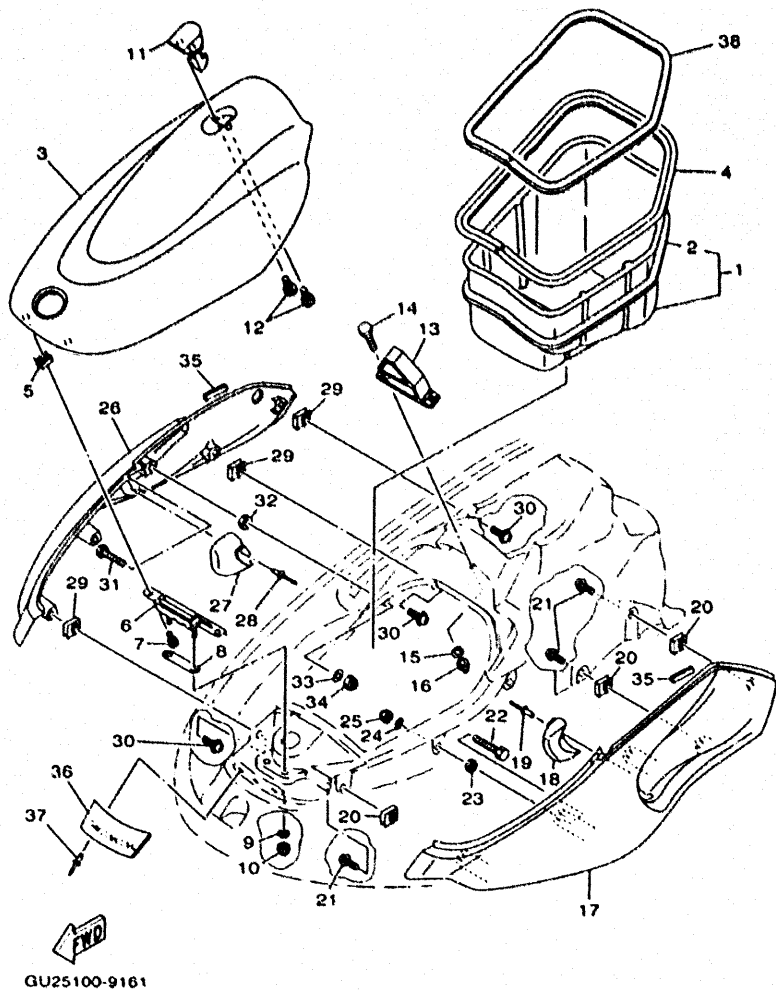


FIG. 15 ENGINE HATCH 2

REF. NO.	PART NO.	DESCRIPTION	FM1	FM2	FM3	FM4	REMARKS
28	90267-48925	RIVET, BLIND	2	2	2	2	
29	90183-06902	NUT, SPRING	3	3	3	3	
30	90119-069UH	BOLT, WITH WASHER	3	3	3	3	YMUS
31	90101-069U0	BOLT	2	2	2	2	YMUS
32	95380-06700	NUT	2	2	2	2	
33	92990-06200	WASHER, PLAIN	2	2	2	2	
34	95720-06300	NUT, SELF-LOCKING	2	2	2	2	
35	GU2-U5162-00	TRIM	2	2	2	2	YMUS
36	GU2-U513M-30-P1	COVER, FRONT	1	1	1	1	YMUS
37	90267-48925	RIVET, BLIND	3	3	3	3	
38	GJ3-U2664-02	PACKING	1	1	1	1	YMUS

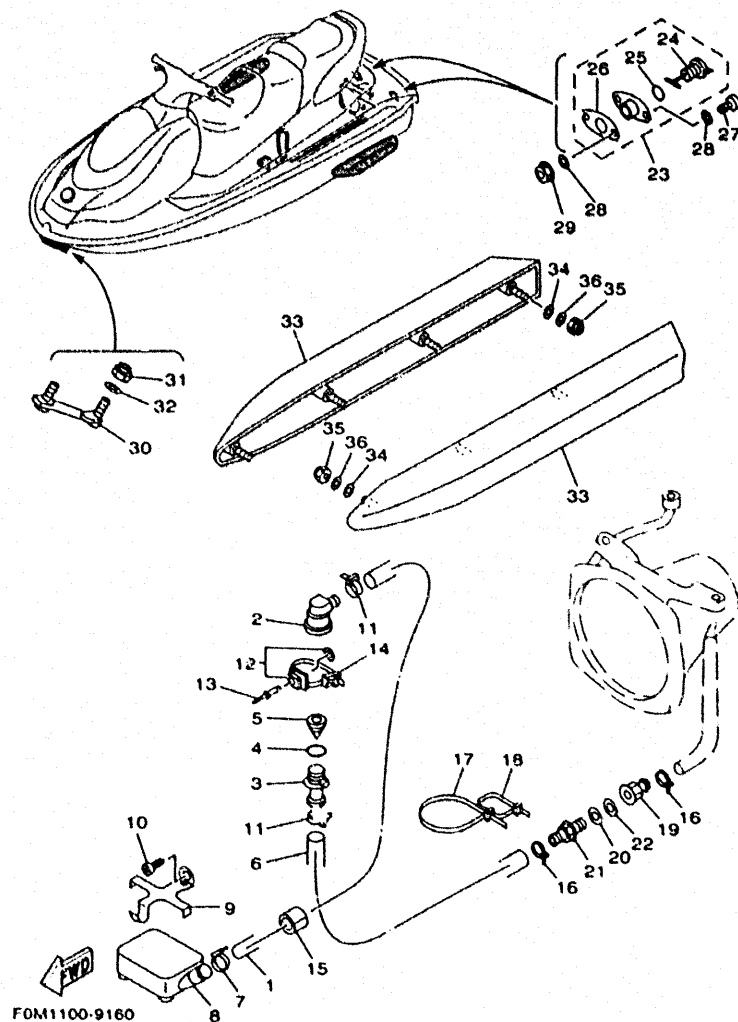


FIG. 16 HULL DECK

REF. NO.	PART NO.	DESCRIPTION	FOM1	FOM2	FOM3	FOM4	REMARKS
1	90445-19895	HOSE	1	1	1	1	
2	63M-51162-00	JOINT, HOSE	1	1	1	1	
3	63M-51165-00	JOINT HOSE 2	1	1	1	1	
4	93210-22ME5	O-RING	1	1	1	1	
5	63M-5316M-00	VALVE 1	1	1	1	1	
6	90445-19896	HOSE	1	1	1	1	
7	90601-200U1	BAND	1	1	1	1	YMUS
8	GD0-U761D-00	STRAINER, BILGE	1	1	1	1	YMUS
9	EW2-67618-00	BASE, STRAINER BILGE	1	1	1	1	
10	97780-50112	SCREW, TAPPING	1	1	1	1	
11	90601-200U1	BAND	2	2	2	2	YMUS
12	90600-91736	CLAMP COMP.	1	1	1	1	
13	90267-489U7	RIVET, BLIND	1	1	1	1	YMUS
14	90601-20006	BAND	1	1	1	1	
15	GJ1-U7578-11	PACKING, HOSE 2	1	1	1	1	YMUS
16	90601-200U1	BAND	2	2	2	2	YMUS
17	90601-20016	BAND	1	1	1	1	
18	90601-200U4	BAND	1	1	1	1	YMUS
19	90604-80759	CONNECTION, THRU-HULL 1/4	1	1	1	1	
20	90430-13909	GASKET	1	1	1	1	
21	90604-80775	THROUGH, HULL CONNECTION	1	1	1	1	
22	90430-13909	GASKET	1	1	1	1	
23	EU0-62280-00	DRAIN PLUG ASSY	2	2	2	2	
24	EU0-62282-00	.PLUG, DRAIN	1	1	1	1	
25	EU0-62283-00	.O-RING	1	1	1	1	
26	EU0-62285-01	.PACKING DRAIN (EU0)	1	1	1	1	
27	97880-05025	SCREW, PAN HEAD	4	4	4	4	

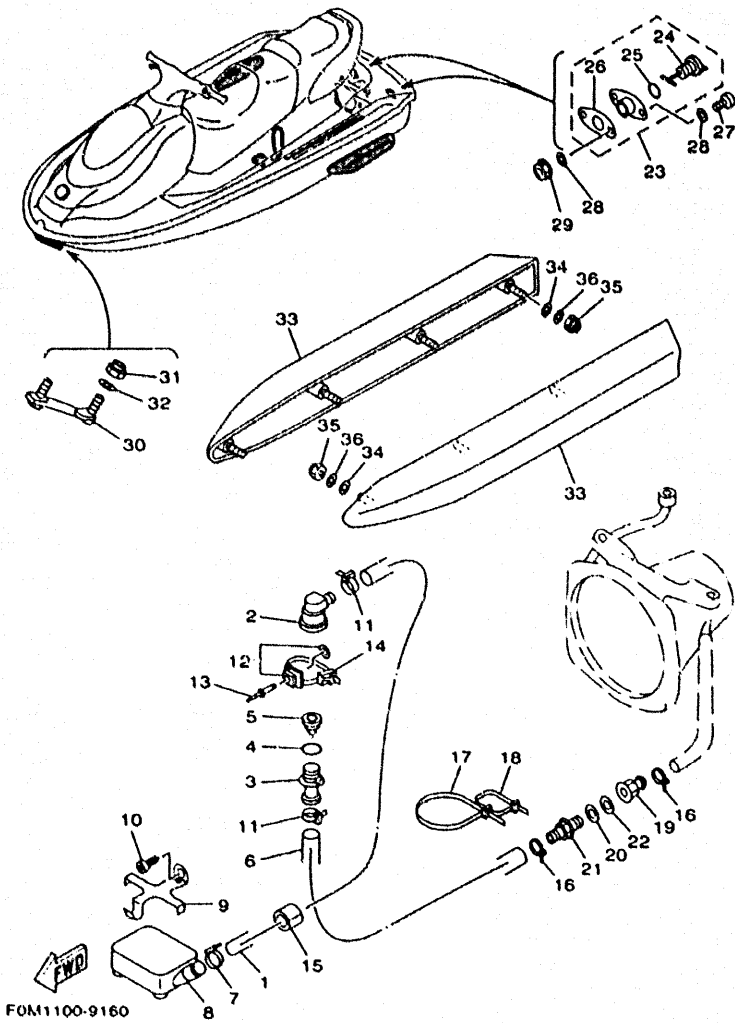


FIG. 16 HULL, DECK

REF. NO.	PART NO.	DESCRIPTION	FOM1	FOM2	FOM3	FOM4	REMARKS
28	92990-05200	WASHER, PLAIN	8	8	8	8	
29	95720-05300	NUT, FLANGE	4	4	4	4	
30	FN8-U1624-00	BOWEYE 1 (S)	1	1	1	1	YMUS
31	95720-08300	NUT, SELF-LOCKING	2	2	2	2	
32	92990-08200	WASHER, PLAIN	2	2	2	2	
33	GH3-U883M-30	STABILIZER	2	2	2	2	YMUS
34	GT3-U883U-00	PACKING, STABILIZER	8	8	8	8	YMUS
35	95720-06300	NUT, SELF-LOCKING	8	8	8	8	
36	92990-06200	WASHER, PLAIN	8	8	8	8	

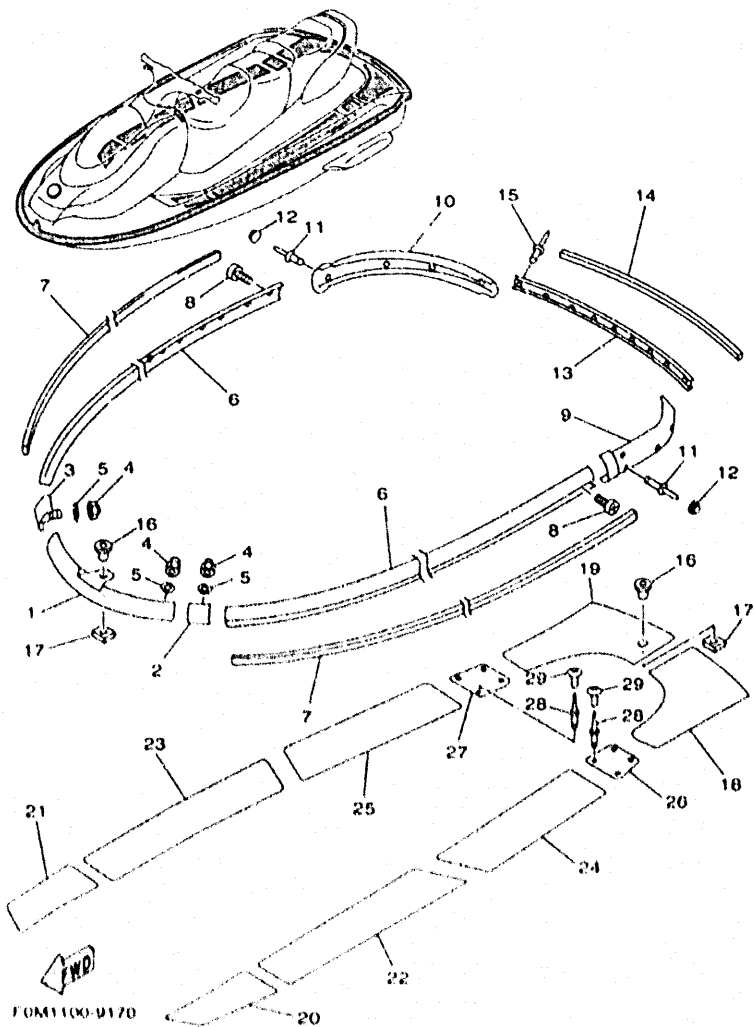
CONTENTS

CYLINDER, CRANKCASE	B2
CRANKSHAFT, PISTON	B4
INTAKE	B6
CARBURETOR	B8
OIL PUMP	B10
EXHAUST 1	B11
FUEL	B14
JET UNIT 1	C2
JET UNIT 2	C4
GENERATOR	C6
STARTING MOTOR	C7
ELECTRICAL 1	C8
ELECTRICAL 2	C10
ENGINE HATCH 1	C11
ENGINE HATCH 2	C12
HULL, DECK	C14
GUNWALE, MAT	D2
VENTILATION	D4
SEAT • UNDER LOCKER	D5
OIL TANK	D7

FUEL TANK	D8
EXHAUST 2	D10
CONTROL CABLE	D11
STEERING 1	D12
STEERING 2	D14
GRAPHIC 1, TOOL	D15
GRAPHIC 2, TOOL	E2
GRAPHIC 3, TOOL	E4
REPAIR KIT 1	E6
REPAIR KIT 2	E8

INDEX

NUMERICAL INDEX	M1
-----------------------	----



FOM1100-0170

FIG. 17 GUNWALE, MAT

REF. NO.	PART NO.	DESCRIPTION	FOM1	FOM2	FOM3	FOM4	REMARKS
1	GJ3-U2501-20	BOW GUNWALE COMP.	1	1	1	1	YMUS
2	GU2-6252E-10	JOINT, GUNWALE LH	1	1	1	1	
3	GU2-6252F-10	JOINT, GUNWALE RH	1	1	1	1	
4	95720-06300	NUT, SELF-LOCKING	6	6	6	6	
5	92990-06200	WASHER, PLAIN	6	6	6	6	
6	GH3-U2512-20	GUNWALE, SIDE	2	2	2	2	YMUS
7	GJ3-U2519-40	INNER, GUNWALE	2	2	2	2	YMUS
8	90169-059U1	SCREW, TAPPING	28	28	28	28	YMUS
9	GJ3-U251D-21	GUNWALE, STERN 1	1	1	1	1	YMUS
10	GJ3-U251E-21	GUNWALE, STERN 2	1	1	1	1	YMUS
11	90267-489U8	RIVET, BLIND	10	10	10	10	YMUS
12	GJ3-U354D-30	CAP, HEAD	10	10	10	10	YMUS
13	GJ3-U252C-20	COVER, GUNWALE 1	1	1	1	1	YMUS
14	GJ3-U252D-40	COVER, GUNWALE 2	1	1	1	1	YMUS
15	90267-489U8	RIVET, BLIND	9	9	9	9	YMUS
16	FN8-61651-00	ROPE HOLE	2	2	2	2	
17	EL0-61652-00	NUT	2	2	2	2	
18	GU2-U358F-00	MAT, UPPER LH	1	1	1	1	YMUS
19	GU2-U358G-00	MAT, UPPER RH	1	1	1	1	YMUS
20	GU2-U351H-00	MAT, STEP 1	1	1	1	1	YMUS
21	GU2-U351J-00	MAT, STEP 2	1	1	1	1	YMUS
22	GU2-U351N-00	MAT, STEP 5	1	1	1	1	YMUS
23	GU2-U351P-00	MAT, STEP 6	1	1	1	1	YMUS
24	GU2-U351R-00	MAT, STEP 7	1	1	1	1	YMUS
25	GU2-U351S-00	MAT, STEP 8	1	1	1	1	YMUS
26	GH3-U351M-30	MAT, STEP 4	1	1	1	1	YMUS
27	GH3-U351M-00	MAT, STEP 4	1	1	1	1	YMUS

D2

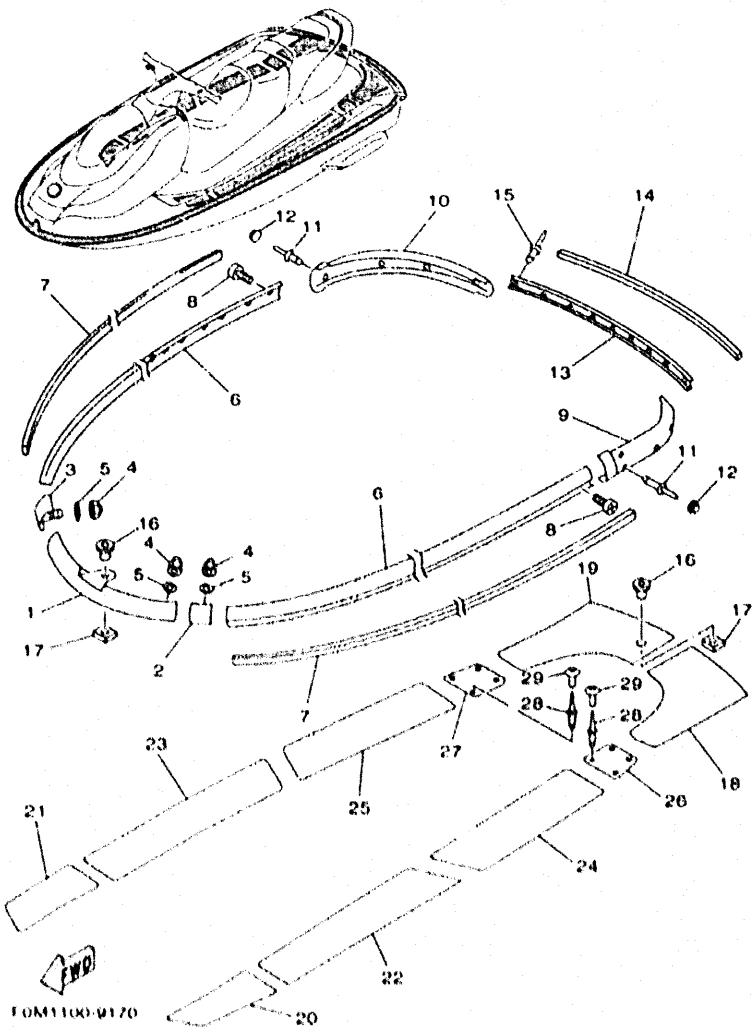
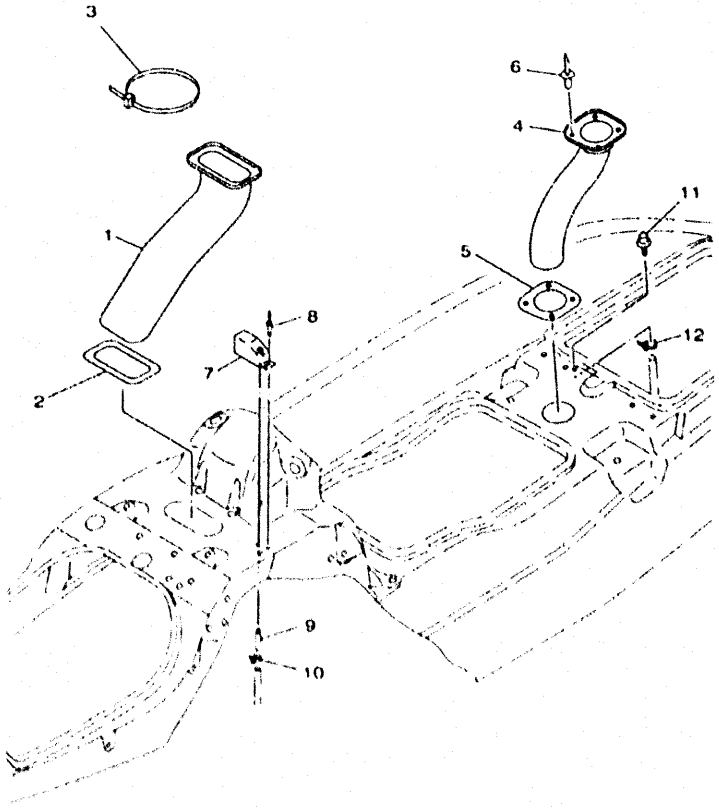


FIG. 17 GUNWALE. MAT

REF. NO.	PART NO.	DESCRIPTION	FOM1	FOM2	FOM3	FOM4	REMARKS
28	90267-48925	RIVET, BLIND	8	8	8	8	
29	GJ3-U352E-50	MAT, BOW	8	8	8	8	YMUS

D3



FWD
 GU21100-B190

FIG. 18 VENTILATION

REF. NO.	PART NO.	DESCRIPTION	FOM1	FOM2	FOM3	FOM4	REMARKS
1	GU2-U213F-01	HOSE, VENTILATOR 1	1	1	1	1	YMUS
2	GU2-U2117-00	SEAL, AIRINTAKE 1	1	1	1	1	YMUS
3	90601-200U7	BAND	1	1	1	1	YMUS
4	GU2-U213G-00	HOSE, VENTILATOR 2	1	1	1	1	YMUS
5	GU2-U2118-00	SEAL, AIRINTAKE 2	1	1	1	1	YMUS
6	90269-07923	RIVET	2	2	2	2	
7	GP7-62159-01	SOCKET, VENTILATION	1	1	1	1	
8	90267-48925	RIVET, BLIND	2	2	2	2	
9	EW2-62149-00	PIPE, VENTILATION 1	1	1	1	1	
10	90465-11829	CLAMP	1	1	1	1	
11	GJ3-6215F-00	NIPPLE	1	1	1	1	
12	90465-11829	CLAMP	1	1	1	1	

D4

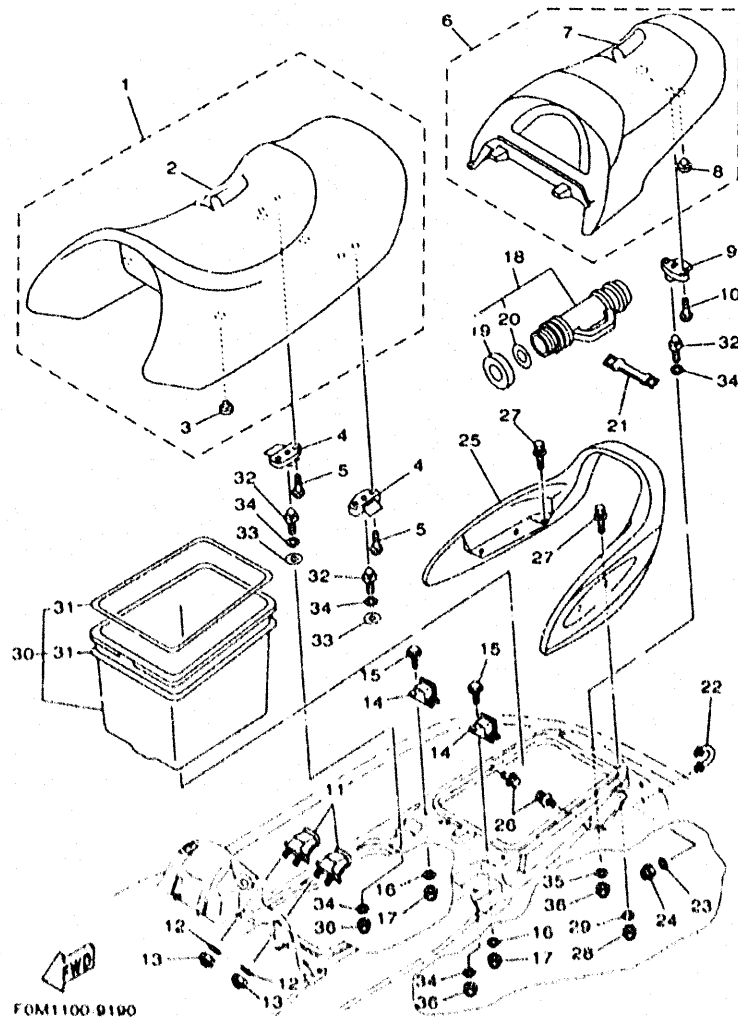


FIG. 19 SEAT - UNDER LOCKER

REF. NO.	PART NO.	DESCRIPTION	FOM1	FOM2	FOM3	FOM4	REMARKS
1	GU2-U371A-00	DOUBLE SEAT ASSY	1	1	1	1	YMUS
2	GU2-U371B-00	COVER, SEAT 1	1	1	1	1	YMUS
3	278-27114-00	STOPPER, MAIN STAND	4	4	4	4	
4	GJ3-63850-02	SEAT LOCK ASSY	2	2	2	2	
5	98980-06040	SCREW, BIND	4	4	4	4	
6	GU2-U372A-00	SINGLE SEAT ASSY	1	1	1	1	YMUS
7	GU2-U372B-00	COVER, SEAT	1	1	1	1	YMUS
8	278-27114-00	STOPPER, MAIN STAND	2	2	2	2	
9	GJ3-63850-02	SEAT LOCK ASSY	1	1	1	1	
10	98980-06040	SCREW, BIND	2	2	2	2	
11	GU2-6378C-00	STAY, SEAT 1	2	2	2	2	
12	92990-06200	WASHER, PLAIN	4	4	4	4	
13	95720-06300	NUT, SELF-LOCKING	4	4	4	4	
14	GU2-6378D-01	STAY, SEAT 2	2	2	2	2	
15	90101-069U0	BOLT	4	4	4	4	YMUS
16	92090-06200	WASHER, PLAIN	4	4	4	4	
17	95720-06300	NUT, SELF-LOCKING	4	4	4	4	
18	EW2-U5920-00	CASE 2 ASSY.	1	1	1	1	YMUS
19	EW2-U5912-01	CAP, CASE	1	1	1	1	YMUS
20	EW2-U5913-00	PACKING, CASE	1	1	1	1	YMUS
21	EU0-U758E-00	BAND, WATER LOCK	2	2	2	2	YMUS
22	A00-81624-00	BOWEYE 1 (S)	1	1	1	1	
23	92090-06200	WASHER, PLAIN	2	2	2	2	
24	95720-06300	NUT, SELF-LOCKING	2	2	2	2	
25	GU2-U271B-00	GRIP, HAND	1	1	1	1	YMUS
26	90119-06920	BOLT, WITH WASHER	4	4	4	4	
27	90119-06924	BOLT, WITH WASHER	2	2	2	2	

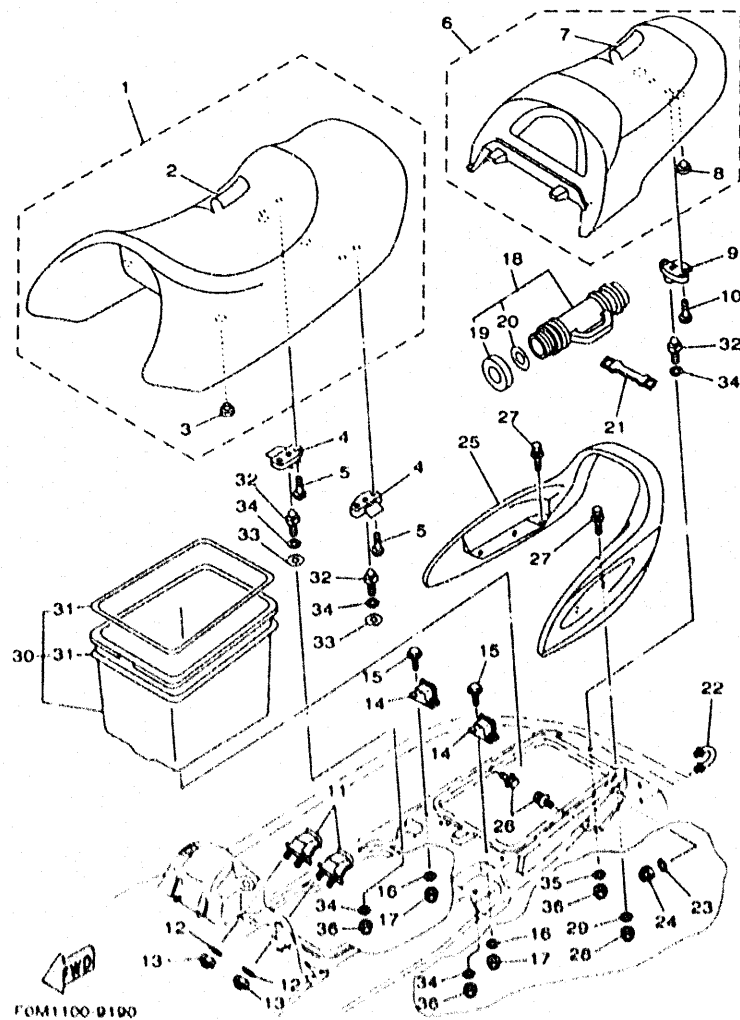
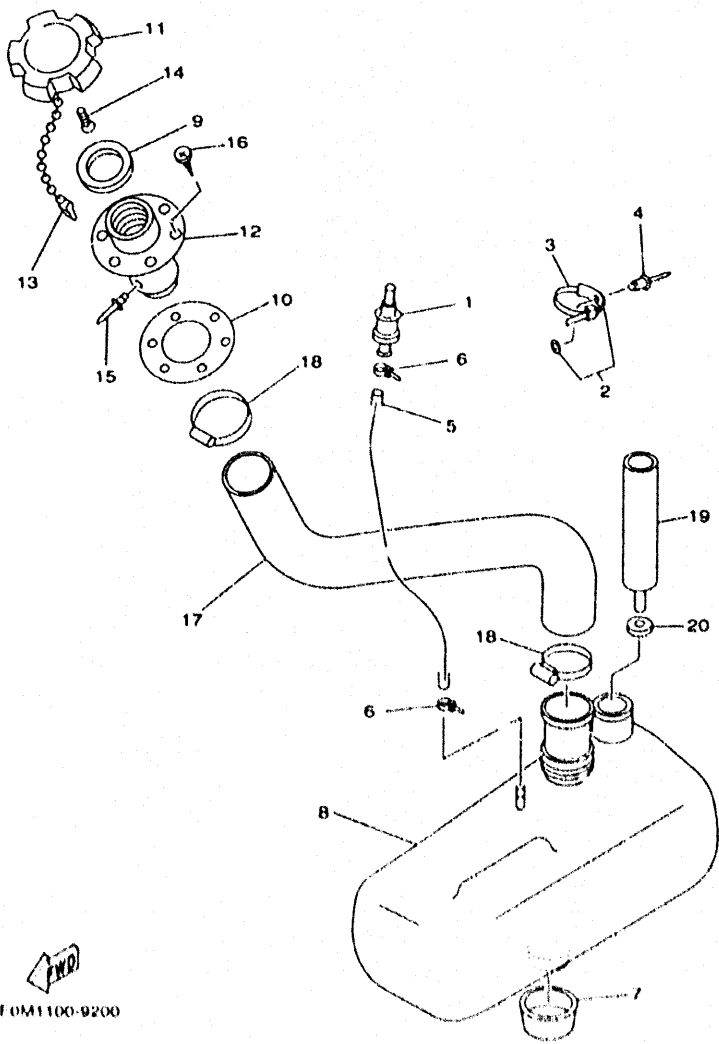


FIG. 19 SEAT · UNDER LOCKER

REF. NO.	PART NO.	DESCRIPTION	FOM1	FOM2	FOM3	FOM4	REMARKS
28	95720-06300	NUT, SELF-LOCKING	2	2	2	2	
29	92990-06200	WASHER, PLAIN	2	2	2	2	
30	GJ3-U474A-01	UNDER LOCKER ASSY	1	1	1	1	YMUS
31	GJ3-U266C-02	PACKING 4	2	2	2	2	YMUS
32	GH1-63774-01	PIN	3	3	3	3	
33	GJ3-U5578-00	TAPE	2	2	2	2	YMUS
34	92990-10200	WASHER, PLAIN	5	5	5	5	
35	90201-109U6	WASHER, PLATE	1	1	1	1	YMUS
36	95720-10300	NUT	3	3	3	3	

D6



FOM1100-9200

FIG. 20 OIL TANK

REF. NO.	PART NO.	DESCRIPTION	FOM1	FOM2	FOM3	FOM4	REMARKS
1	FJ0-67766-00	ROLL OVER VALVE	1	1	1	1	
2	90600-91736	CLAMP COMP.	1	1	1	1	
3	90601-20006	BAND	1	1	1	1	
4	90267-48925	RIVET, BLIND	1	1	1	1	
5	GJ3-U7856-20	HOSE, AIR VENT 3	1	1	1	1	YMUS
6	90465-11829	CLAMP	2	2	2	2	
7	GH1-U759D-00	MAT 3	1	1	1	1	YMUS
8	GJ3-U775B-01	TANK, OIL	1	1	1	1	YMUS
9	GJ3-U778C-00	PACKING,OIL CAP	1	1	1	1	YMUS
10	GJ3-U778E-00	PACKING,OIL FILLER	1	1	1	1	YMUS
11	GJ3-U778B-00	CAP,OIL FILLER	1	1	1	1	YMUS
12	GJ3-U778D-00	SOCKET,OIL FILLER	1	1	1	1	YMUS
13	EU0-U7835-00	CHAIN BALL	1	1	1	1	YMUS
14	97780-04110	SCREW, TAPPING	1	1	1	1	
15	90267-40935	RIVET, BLIND	1	1	1	1	
16	FX1-67869-00	SCREW, FLAT HEAD TAPPING	6	6	6	6	
17	GU2-U776C-00	HOSE,OIL FILLER	1	1	1	1	YMUS
18	90601-152U3	BAND, HOSE 52	2	2	2	2	YMUS
19	GJ8-13411-00	STRAINER, OIL	1	1	1	1	
20	GJ8-13414-00	GASKET, STRAINER COVER	1	1	1	1	

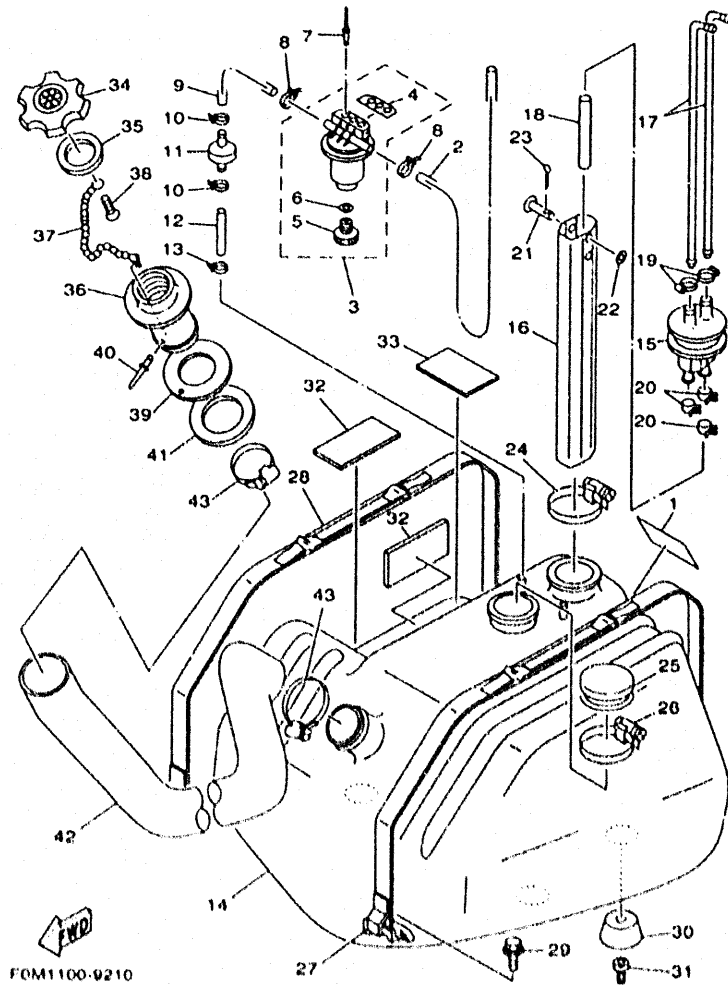


FIG. 21 FUEL TANK

REF. NO.	PART NO.	DESCRIPTION	FOM1	FOM2	FOM3	FOM4	REMARKS
1	GH3-6418D-00	LABEL,FUEL TANK	1	1	1		
2	GP7-U785J-00	HOSE A,R VENT	1	1	1	1	YMUS
3	EW2-62140-00	FILTER, VENT ASSY	1	1	1	1	
4	EW2-62142-00	.PLATE, FILTER	1	1	1	1	
5	70R-24543-00	.PLUG, DRAIN	1	1	1	1	
6	70R-24489-00	.O-RING	1	1	1	1	
7	90267-489U2	RIVET, BLIND	2	2	2	2	YMUS
8	90465-11829	CLAMP	2	2	2	2	
9	GU2-U785H-00	HOSE, AIR VENT 3	1	1	1	1	YMUS
10	90465-11829	CLAMP	2	2	2	2	
11	EU0-67767-31	CHECK VALVE	1	1	1	1	
12	GA7-U785G-00	HOSE, AIR VENT	1	1	1	1	YMUS
13	90465-11829	CLAMP	1	1	1	1	
14	GH3-U7711-00	TANK, FUEL	1	1	1	1	YMUS
15	FJ0-67713-00	PIPE, JOINT	1	1	1	1	
16	FJ0-67716-01	PIPE, FILLER	1	1	1	1	
17	FJ0-67714-02	PIPE, SUCTION 3	2	2	2	2	
18	90445-11903	HOSE	1	1	1	1	
19	90801-11062	BAND, HOSE 11	2	2	2	2	
20	90467-11032	CLIP	3	3	3	3	
21	91790-05040	PIN, CLEVIS	1	1	1	1	
22	92990-05000	WASHER, PLATE	1	1	1	1	
23	91400-16010	PIN, GOTTER	1	1	1	1	
24	90601-162U5	BAND, HOSE 62	1	1	1	1	YMUS
25	FN8-6771K-00	COVER	1	1	1	1	
26	90601-162U5	BAND, HOSE 62	1	1	1	1	YMUS
27	GJ1-67743-01	DELT, TANK 1	1	1	1	1	

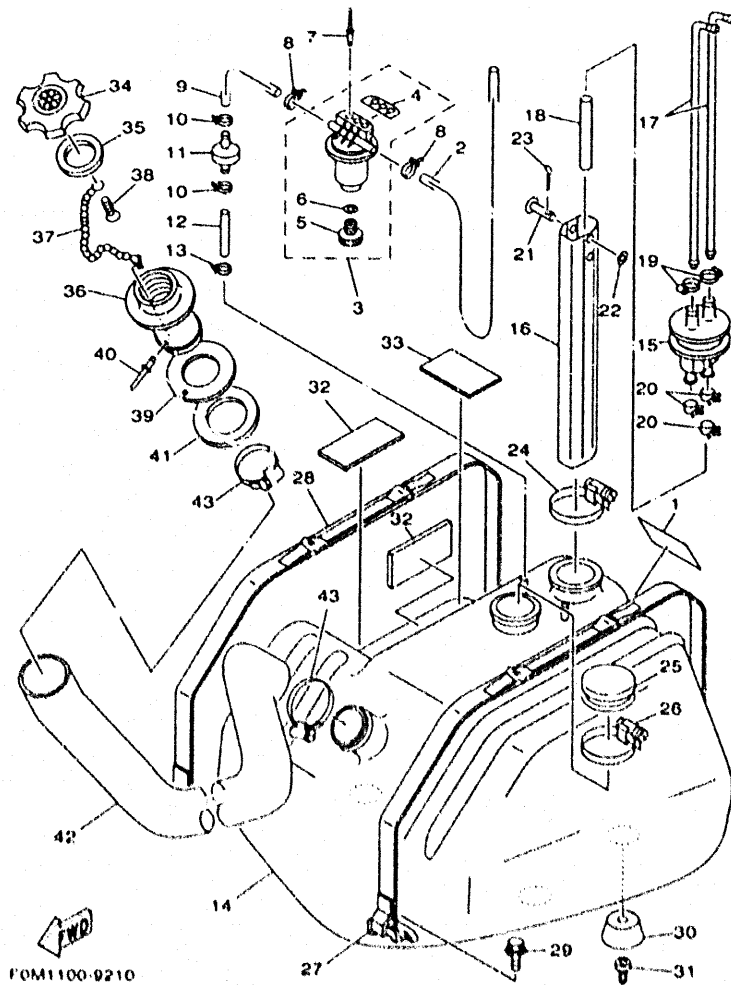


FIG. 21 FUEL TANK

REF. NO.	PART NO.	DESCRIPTION	FOM1	FOM2	FOM3	FOM4	REMARKS
28	GH3-67743-01	BELT, TANK 1	1	1	1	1	
29	90119-089U7	BOLT, WITH WASHER	4	4	4	4	YMUS
30	GH1-U782B-00	DAMPER, FUEL TANK	4	4	4	4	YMUS
31	90110-089U1	BOLT, HEXAGON SOCKET HEAD	4	4	4	4	YMUS
32	GJ1-U759B-00	MAT 1	2	2	2	2	YMUS
33	GJ1-U759C-00	MAT 2	1	1	1	1	YMUS
34	GP7-U7831-10	CAP, FUEL FILLER	1	1	1	1	YMUS
35	GP7-U7832-00	PACKING	1	1	1	1	YMUS
36	GP7-U7833-10	SOCKET	1	1	1	1	YMUS
37	GP7-U7835-00	CHAIN BALL	1	1	1	1	YMUS
38	90189-049U1	TAPPING SCREW	1	1	1	1	YMUS
39	GP7-U7834-10	PACKING FUEL FILLER	1	1	1	1	YMUS
40	80267-329UR	RIVET, BLIND	1	1	1	1	YMUS
41	GP7-U783F-00	NUT, FUEL FILLER	1	1	1	1	YMUS
42	GP3-U7844-00	HOSE	1	1	1	1	YMUS
43	80601-155U4	BAND, HOSE 55	2	2	2	2	YMUS

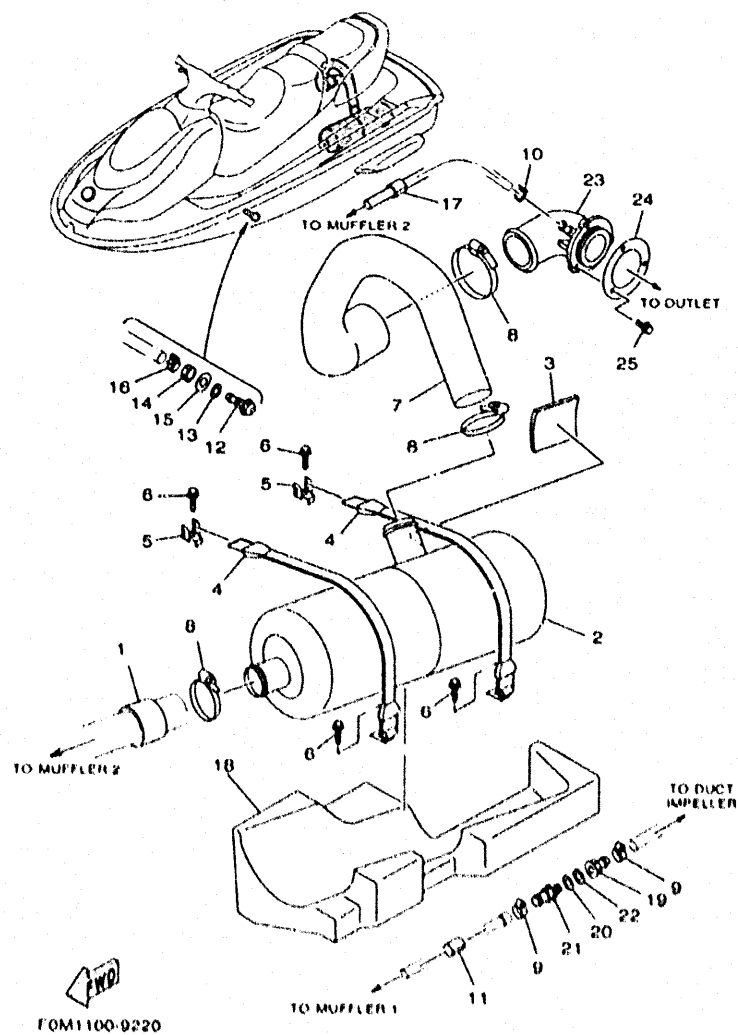
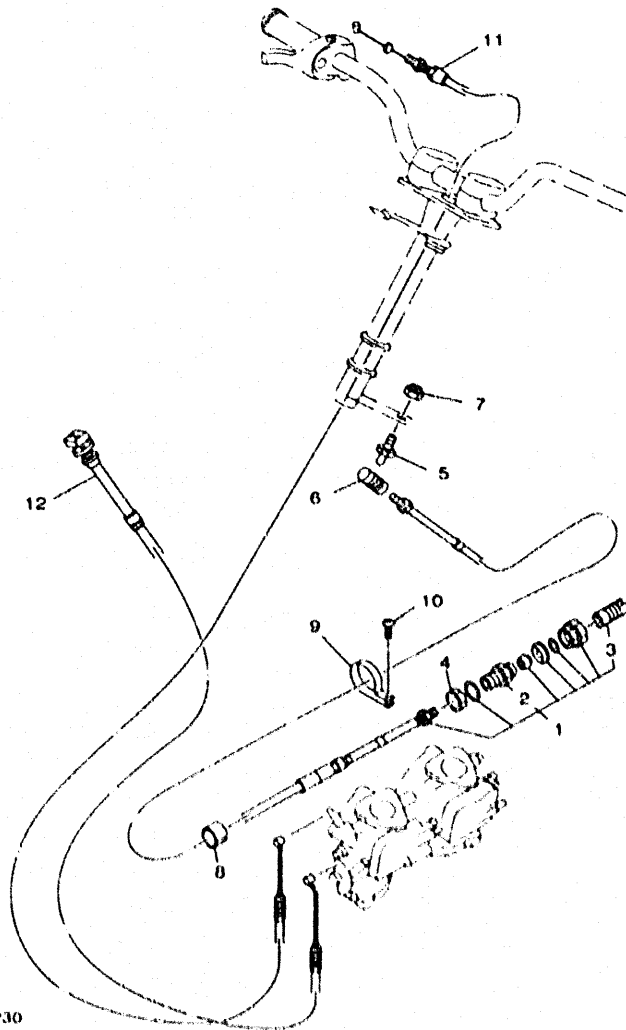


FIG. 22 EXHAUST 2

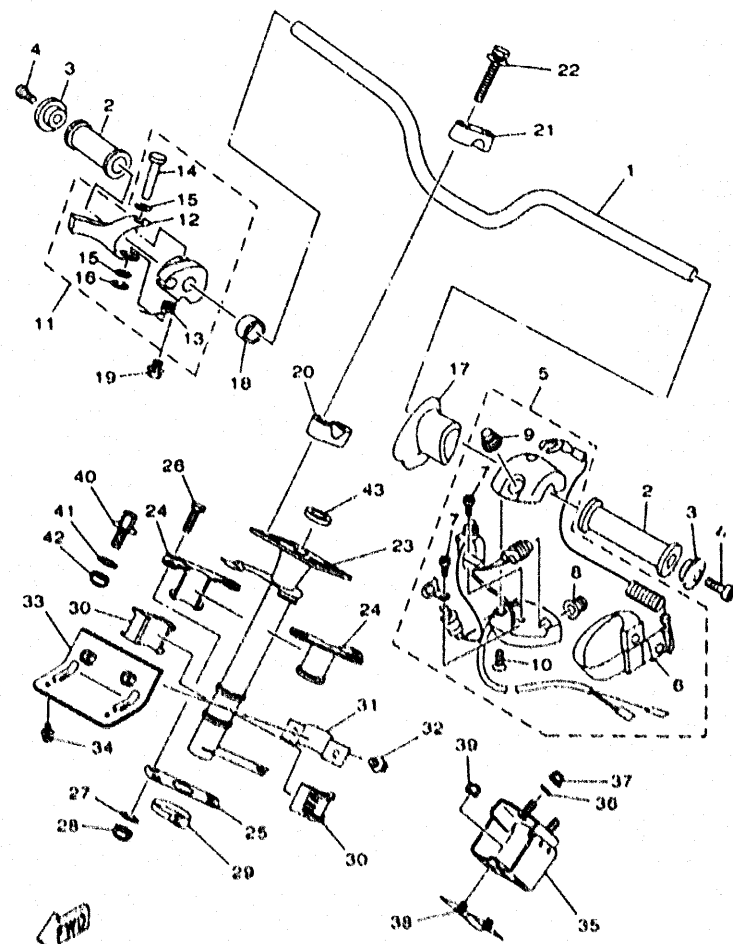
REF. NO.	PART NO.	DESCRIPTION	FOM1	FOM2	FOM3	FOM4	REMARKS
1	GH6-67577-01	PACKING, HOSE 1	1	1	1	1	
2	GJ3-U7550-00	WATER LOCK COMP.	1	1	1	1	YMUS
3	GJ3-U755J-00	MAT,WATER LOCK	1	1	1	1	YMUS
4	GJ3-U7570-00	C HOOK COMP.	2	2	2	2	YMUS
5	EW2-65772-00	HOOK A	2	2	2	2	
6	90119-069UJ	BOLT, WITH WASHER	4	4	4	4	YMUS
7	GJ3-U7555-00	HOSE, EXHAUST	1	1	1	1	YMUS
8	90601-170UG	BAND, HOSE 70	3	3	3	3	YMUS
9	90601-118UF	BAND, HOSE 18	2	2	2	2	YMUS
10	90601-118UF	BAND, HOSE 18	1	1	1	1	YMUS
11	GJ1-U7578-11	PACKING, HOSE 2	1	1	1	1	YMUS
12	GJ1-6753B-02	PILOT,WATER	1	1	1	1	
13	GP3-U1438-00	PACKING	1	1	1	1	YMUS
14	GP7-61652-00	NUT	1	1	1	1	
15	92090-14200	WASHER, PLAIN	1	1	1	1	
16	90465-11829	CLAMP	1	1	1	1	
17	GJ1-U7578-11	PACKING, HOSE 2	1	1	1	1	YMUS
18	GJ3-U892F-01	FLOATATION, BASE 1	1	1	1	1	YMUS
19	90604-80793	THROGUH-HULL CONNECTION 3/8	1	1	1	1	
20	90430-16910	GASKET	1	1	1	1	
21	90604-80794	THROGUH-HULL CONNECTION 3/8	1	1	1	1	
22	90430-16910	GASKET	1	1	1	1	
23	GJ3-U7560-01	EXHAUST, THRU-HALL COMP.	1	1	1	1	YMUS
24	GA9-U7525-00	PACKING	1	1	1	1	YMUS
25	90119-050U4	BOLT, WITH WASHER	3	3	3	3	YMUS



FOM1100-9230

FIG. 23 CONTROL CABLE

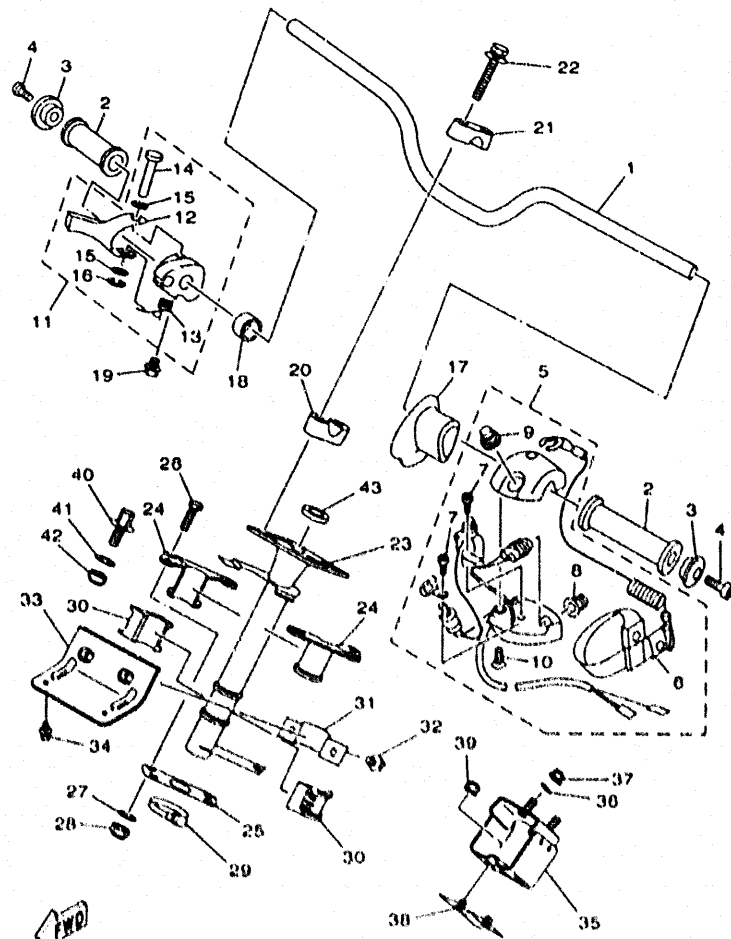
REF. NO.	PART NO.	DESCRIPTION	FOM1	FOM2	FOM3	FOM4	REMARKS
1	GU2-U1481-01	CABLE, STEERING	1	1	1	1	YMUS
2	GK5-67267-10	.CONNECTOR, CABLE	1	1	1	1	
3	GK5-U146F-00	.SHAFT,JOINT BALL	1	1	1	1	YMUS
4	EU0-62241-30	NUT, DRAIN 1	1	1	1	1	
5	EU0-U1461-01	STOOD. JOINT BALL	1	1	1	1	YMUS
6	GK5-U146F-00	SHAFT,JOINT BALL	1	1	1	1	YMUS
7	95780-06300	NUT, FLANGE	1	1	1	1	
8	GJ1-U7578-01	PACKING, HOSE 2	1	1	1	1	YMUS
9	90600-918U3	CLIP, NYLON 18	1	1	1	1	YMUS
10	97780-60116	SCREW, TAPPING	1	1	1	1	
11	FOM-U7252-00	CABLE, THROTTLE	1	1	1	1	YMUS
12	FOM-U7242-00	CABLE, CHOKE	1	1	1	1	YMUS



GU21100 8250

FIG. 24 STEERING 1

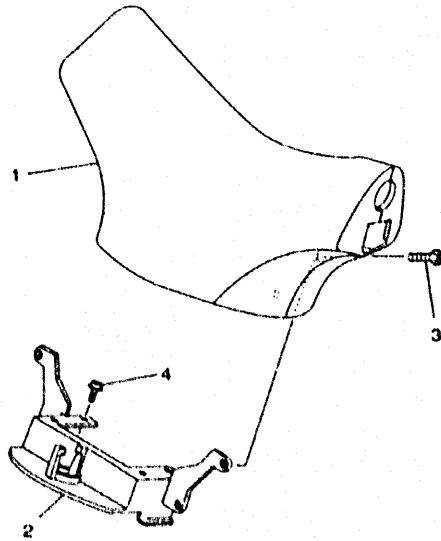
REF. NO.	PART NO.	DESCRIPTION	FOM1	FOM2	FOM3	FOM4	REMARKS
1	GU2-U1552-00	HANDLE	1	1	1	1	YMUS
2	GP7-U155D-00	GRIP, HANDLE	2	2	2	2	YMUS
3	GP7-U155F-00	GRIP, END	2	2	2	2	YMUS
4	91380-05035	BOLT	2	2	2	2	
5	FK7-68310-06	SWITCH BOX ASSY	1	1	1	1	
6	EW2-68348-00	LANYARD, STOP SWITCH	1	1	1	1	
7	97880-03008	SCREW, PAN HEAD	2	2	2	2	
8	FK7-68312-02	STOP BUTTON COMP	1	1	1	1	
9	FK7-68313-01	START BUTTON COMP	1	1	1	1	
10	97880-05025	SCREW, PAN HEAD	2	2	2	2	
11	GJ1-67250-01	THROTTLE LEVER ASSY	1	1	1	1	
12	GJ1-67255-00	LEVER, THROTTLE	1	1	1	1	
13	EW2-67256-00	SPRING	1	1	1	1	
14	EW2-67257-01	SHAFT	1	1	1	1	
15	EW2-67258-01	WASHER	2	2	2	2	
16	EW2-67259-01	E RING	1	1	1	1	
17	GU2-U143G-00	SPACER	1	1	1	1	
18	90500-22281	SPACER	1	1	1	1	
19	90159-059U2	SCREW, WITH WASHER	1	1	1	1	YMUS
20	EU0-23814-01	HOLDER, HANDLE LOWER	2	2	2	2	
21	EU0-23814-30	HOLDER, HANDLE UPPER	2	2	2	2	
22	90119-08925	BOLT, WITH WASHER	4	4	4	4	
23	GU2-U1541-00	COLUMN, STEERING	1	1	1	1	
24	GHI-8141B-00	BEARING, COLUMN	2	2	2	2	
25	GHI-U143C-30	SEAL, RUBBER	1	1	1	1	YMUS
26	97080-06030	BOLT	4	4	4	4	
27	92990-06200	WASHER, PLAIN	4	4	4	4	



GU21100-8280

FIG. 24 STEERING 1

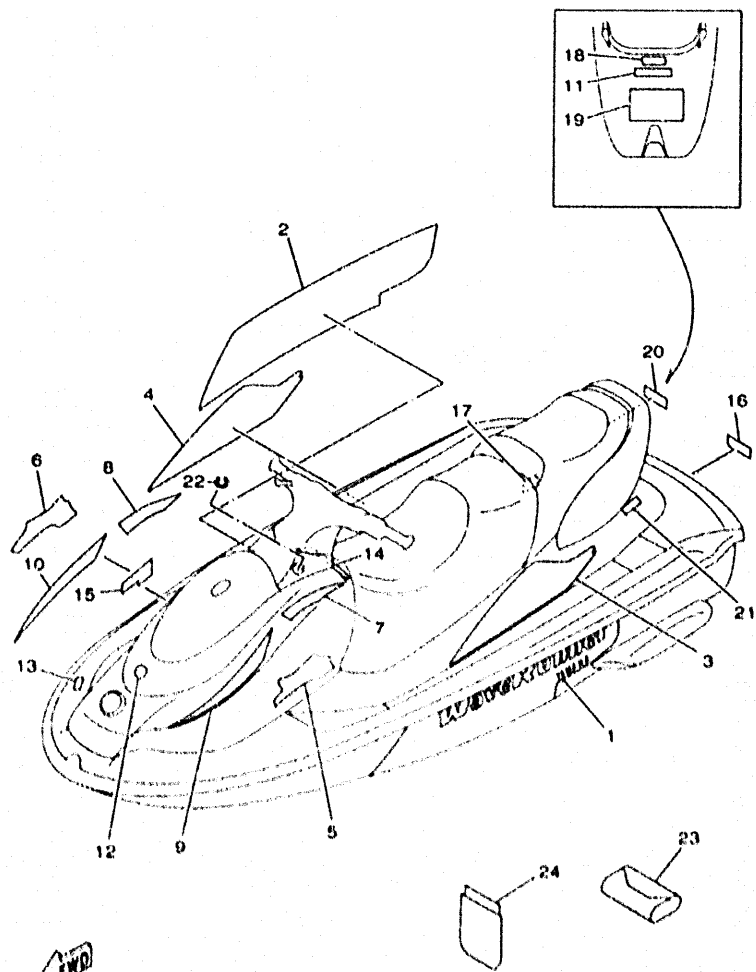
REF. NO.	PART NO.	DESCRIPTION	FOM1	FOM2	FOM3	FOM4	REMARKS
28	95720-06300	NUT, SELF-LOCKING	4	4	4	4	
29	90601-142U6	BAND, HOSE 42	1	1	1	1	YMUS
30	GH1-6141D-01	BEARING, STEERING	2	2	2	2	
31	EU0-61588-00	JOINT, BEARING	1	1	1	1	
32	90119-089U7	BOLT, WITH WASHER	2	2	2	2	YMUS
33	GU2-61433-00	BRACKET, BEARING	1	1	1	1	
34	90119-089U7	BOLT, WITH WASHER	2	2	2	2	YMUS
35	GU2-61467-00	BRACKET, STOPPER CABLE	1	1	1	1	
36	92990-06200	WASHER, PLAIN	3	3	3	3	
37	95780-06300	NUT, FLANGE	3	3	3	3	
38	GH3-61468-00	STOPPER, CABLE	1	1	1	1	
39	95720-06300	NUT, SELF-LOCKING	2	2	2	2	
40	FN8-6131B-00	PIN, STOPPER	1	1	1	1	
41	92990-10200	WASHER, PLAIN	1	1	1	1	
42	95720-10300	NUT	1	1	1	1	
43	GH1-U1469-00	PACKING, STEERING COLUMN	1	1	1	1	YMUS




 QU21100 8260

FIG. 25 STEERING 2

REF. NO.	PART NO.	DESCRIPTION	FOM1	FOM2	FOM3	FOM4	REMARKS
1	GP7-U142A-10	STEERING PAD COMP	1	1	1	1	YMUS
2	GP7-U142K-00	FIX, STEERING PAD	1	1	1	1	YMUS
3	90149-069U9	SCREW	4	4	4	4	YMUS
4	90159-069U1	SCREW, WITH WASHER	4	4	4	4	YMUS



FWD
FOM1100-0260

FIG. 26 GRAPHIC 1. TOOL

REF. NO.	PART NO.	DESCRIPTION	FOM1	FOM2	FOM3	FOM4	REMARKS
1	FOM-U417B-00	GRAPHIC 1	1				YMUS
2	FOM-U417C-00	GRAPHIC 2	1				YMUS
3	FOM-U417D-00	GRAPHIC 3	1				YMUS
4	FOM-U417E-00	GRAPHIC 4	1				YMUS
5	FOM-U417F-00	GRAPHIC 5	1				YMUS
6	FOM-U417G-00	GRAPHIC 6	1				YMUS
7	FOM-U417H-00	GRAPHIC 7	1				YMUS
8	FOM-U417J-00	GRAPHIC 8	1				YMUS
9	FOM-U417K-00	GRAPHIC 9	1				YMUS
10	FOM-U417L-00	GRAPHIC B	1				YMUS
11	GJ3-U4114-51	MARK, YAMAHA A	1				YMUS
12	GU2-U411H-00	EMBLEM, TUNING FORK	1				YMUS
13	GP7-U416B-00	LABEL, WARNING	1				YMUS
14	GU2-U416C-00	LABEL, WARNING 1	1				YMUS
15	GH3-U411A-00	LABEL, CAUTION	1				YMUS
16	GH3-U411A-10	LABEL, CAUTION	1				YMUS
17	EU0-U418B-00	LABEL, CAUTION	1				YMUS
18	GJ1-U415F-01	LABEL, WARNING	1				YMUS
19	GJ3-U411A-00	LABEL, CAUTION	1				YMUS
20	GA9-U418G-00	LABEL, CAUTION	1				YMUS
21	GJ3-U419B-00	LABEL 1	1				YMUS
22	GU2-U419C-01	LABEL 2	1				YMUS
23	EU0-05906-00	TOOL SET	1				
24	EU0-05901-01	TOOL BAG	1				

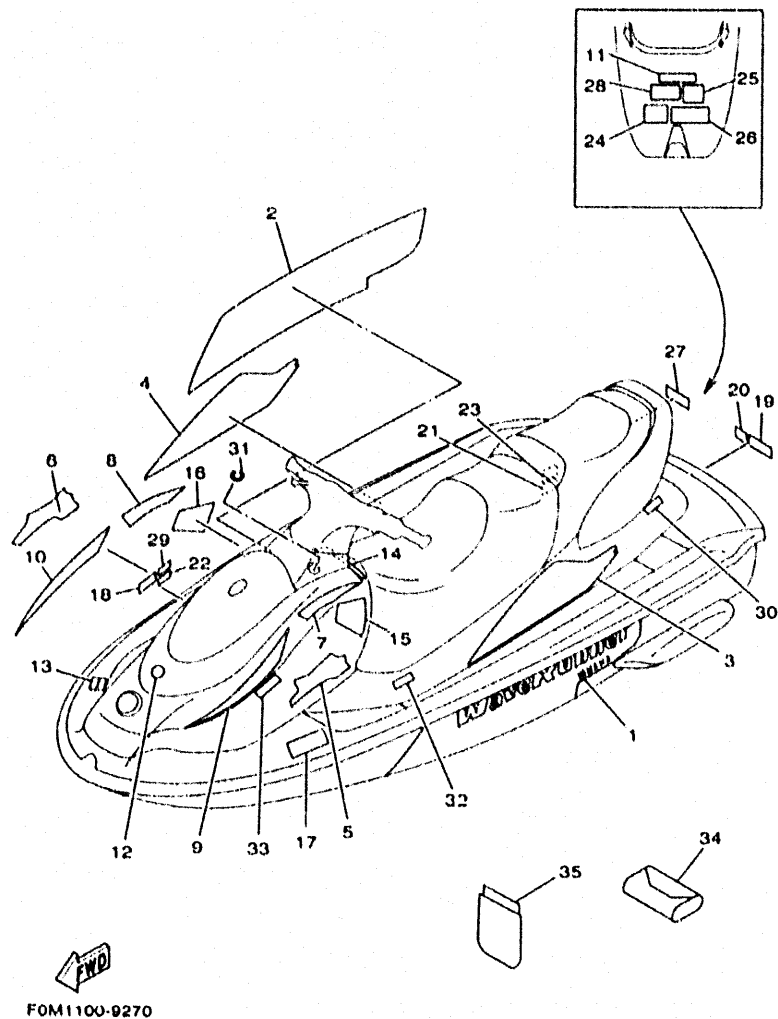
CONTENTS

CYLINDER, CRANKCASE	B2
CRANKSHAFT, PISTON	B4
INTAKE	B6
CARBURETOR	B8
OIL PUMP	B10
EXHAUST 1	B11
FUEL	B14
JET UNIT 1	C2
JET UNIT 2	C4
GENERATOR	C6
STARTING MOTOR	C7
ELECTRICAL 1	C8
ELECTRICAL 2	C10
ENGINE HATCH 1	C11
ENGINE HATCH 2	C12
HULL, DECK	C14
GUNWALE, MAT	D2
VENTILATION	D4
SEAT • UNDER LOCKER	D5
OIL TANK	D7

FUEL TANK	D8
EXHAUST 2	D10
CONTROL CABLE	D11
STEERING 1	D12
STEERING 2	D14
GRAPHIC 1, TOOL	D15
GRAPHIC 2, TOOL	E2
GRAPHIC 3, TOOL	E4
REPAIR KIT 1	E6
REPAIR KIT 2	E8

INDEX

NUMERICAL INDEX	M1
-----------------------	----



FOM1100-9270

FIG. 27 GRAPHIC 2. TOOL

REF. NO.	PART NO.	DESCRIPTION	FOM1	FOM2	FOM3	FOM4	REMARKS
1	FOM-U417B-00	GRAPHIC 1			1	1	YMUS
2	FOM-U417C-00	GRAPHIC 2			1	1	YMUS
3	FOM-U417D-00	GRAPHIC 3			1	1	YMUS
4	FOM-U417E-00	GRAPHIC 4			1	1	YMUS
5	FOM-U417F-00	GRAPHIC 5			1	1	YMUS
6	FOM-U417G-00	GRAPHIC 6			1	1	YMUS
7	FOM-U417H-00	GRAPHIC 7			1	1	YMUS
8	FOM-U417J-00	GRAPHIC 8			1	1	YMUS
9	FOM-U417K-00	GRAPHIC 9			1	1	YMUS
10	FOM-U417L-00	GRAPHIC B			1	1	YMUS
11	GJ3-U4114-51	MARK, YAMAHA A			1	1	YMUS
12	GU2-U411H-00	EMBLEM, TUNING FORK			1	1	YMUS
13	GP7-U416B-11	LABEL, WARNING			1	1	YMUS
14	GU2-U416C-10	LABEL, WARNING 1			1	1	YMUS
15	GU2-U416C-20	LABEL, WARNING 1			1	1	YMUS
16	GU2-U416C-40	LABEL, WARNING 1			1	1	YMUS
17	GJ3-U416H-00	LABEL, WARNING (FRANCE)				1	YMUS
18	GJ3-U416F-10	LABEL, WARNING 4			1	1	YMUS
19	GA9-U416G-10	LABEL, WARNING			1	1	YMUS
20	GA9-U418F-00	LABEL, RIGHTING			1	1	YMUS
21	EU0-U418B-00	LABEL, CAUTION			1	1	YMUS
22	GJ3-U415E-12	LABEL, WARNING			1	1	YMUS
23	EU0-U418B-10	LABEL, CAUTION			1	1	YMUS
24	GJ1-U415F-10	LABEL, WARNING			1	1	YMUS
25	GJ1-U418C-10	LABEL, CAUTION			1	1	YMUS
26	GA9-U418C-10	LABEL, CAUTION			1	1	YMUS
27	GA9-U418G-10	LABEL, CAUTION			1	1	YMUS

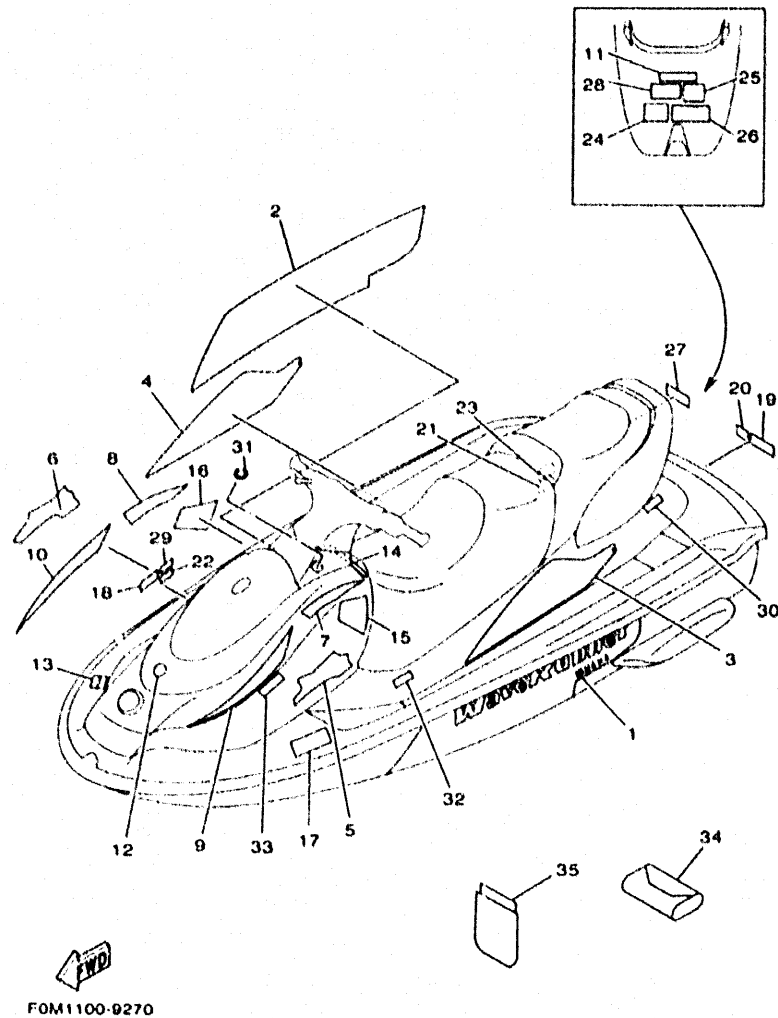
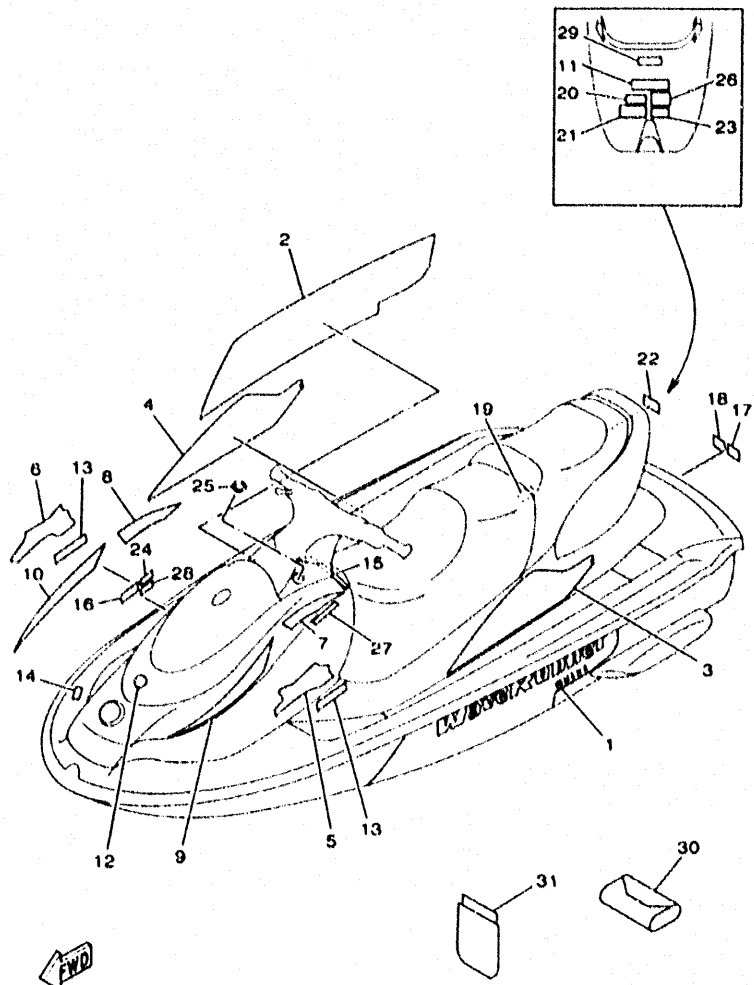


FIG. 27 GRAPHIC 2. TOOL

REF. NO.	PART NO.	DESCRIPTION	FOM1	FOM2	FOM3	FOM4	REMARKS
28	GJ3-U418H-10	LABEL.CAUTION(CLEAT)			1	1	YMUS
29	GJ3-U418J-10	LABEL.CAUTION			1	1	YMUS
30	GJ3-U419B-10	LABEL 1			1	1	YMUS
31	GU2-U419C-01	LABEL 2			1	1	YMUS
32	GJ3-U419E-00	LABEL 4			1		YMUS
33	GJ3-U415E-20	LABEL, WARNING			1	1	YMUS
34	EU0-65986-00	TOOL SET			1	1	
35	EU0-65901-01	TOOL BAG			1	1	

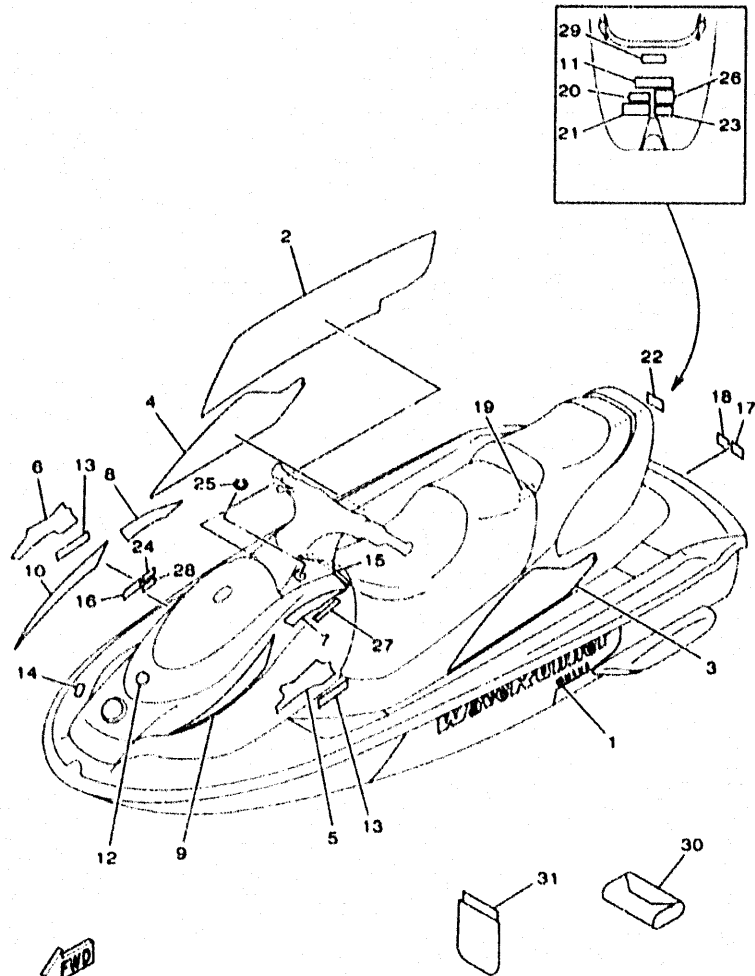


FOM1100-9280

FIG. 28 GRAPHIC 3. TOOL

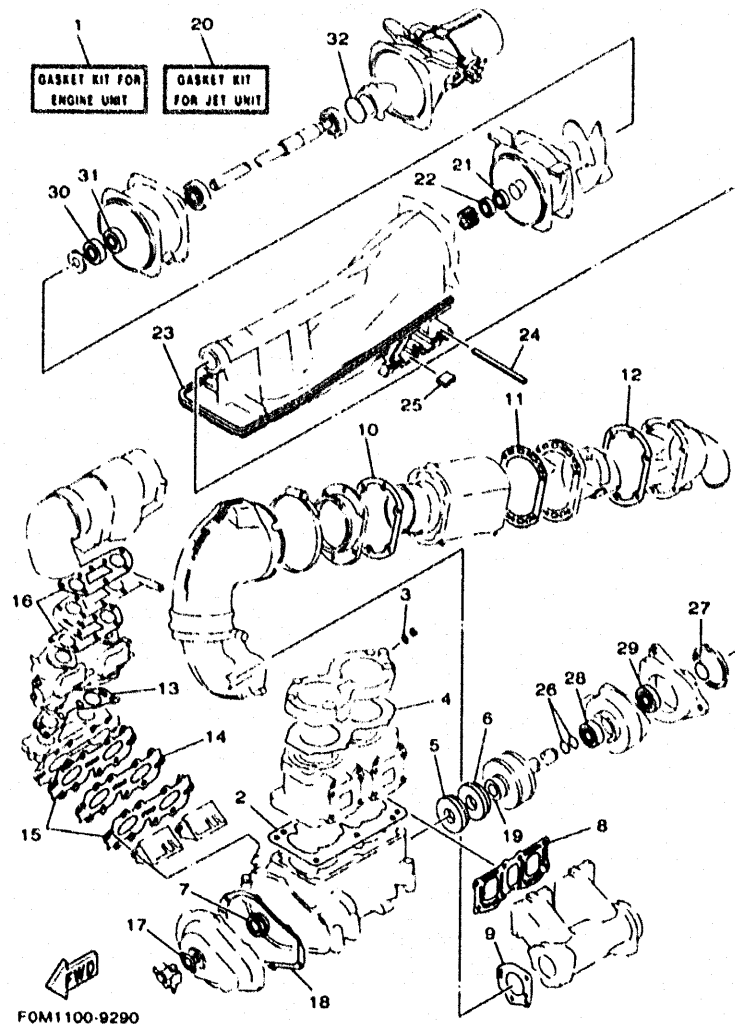
REF. NO.	PART NO.	DESCRIPTION	FOM1	FOM2	FOM3	FOM4	REMARKS
1	FOM-U417B-00	GRAPHIC 1				1	YMUS
2	FOM-U417C-00	GRAPHIC 2				1	YMUS
3	FOM-U417D-00	GRAPHIC 3				1	YMUS
4	FOM-U417E-00	GRAPHIC 4				1	YMUS
5	FOM-U417F-00	GRAPHIC 5				1	YMUS
6	FOM-U417G-00	GRAPHIC 6				1	YMUS
7	FOM-U417H-00	GRAPHIC 7				1	YMUS
8	FOM-U417J-00	GRAPHIC 8				1	YMUS
9	FOM-U417K-00	GRAPHIC 9				1	YMUS
10	FOM-U417L-00	GRAPHIC B				1	YMUS
11	GJ3-U4114-51	MARK, YAMAHA A				1	YMUS
12	GU2-U411H-00	EMBLEM, TUNING FORK				1	YMUS
13	FOM-U4125-00	EMBLEM				2	YMUS
14	GP7-6415B-00	LABEL, WARNING(FUEL)				1	
15	GU2-6416C-30	LABEL, WARNING 1				1	
16	GL3-6416F-00	LABEL, WARNING 4				1	
17	GL3-6415G-01	LABEL, WARNING 5				1	
18	GA9-U418F-00	LABEL, RIGHTING				1	YMUS
19	GL3-6418B-00	LABEL, CAUTION				1	
20	GL3-6418C-00	LABEL, CAUTION				1	
21	FT4-64178-00	LABEL, CAUTION 1				1	
22	GL3-6418G-00	LABEL, CAUTION				1	
23	GL3-6418H-01	LABEL, CAUTION(CLEAT)				1	
24	GA7-6418J-10	LABEL, CAUTION				1	
25	GU2-U419C-01	LABEL 2				1	YMUS
26	FJ1-64197-00	PLATE, CAPACITY				1	
27	GA9-U411B-00	PLATE, ASSY				1	YMUS

FIG. 28 GRAPHIC 3. TOOL



FWD
FOM1100-9280

REF. NO.	PART NO.	DESCRIPTION	FOM1	FOM2	FOM3	FOM4	REMARKS
28	GK5-6415E-20	LABEL, WARNING				1	
29	GK5-6415F-20	LABEL, WARNING				1	
30	EU0-65986-00	TOOL SET				1	
31	EU0-65901-01	TOOL BAG				1	



FOM1100-9290

FIG. 29 REPAIR KIT 1

REF. NO.	PART NO.	DESCRIPTION	FOM1	FOM2	FOM3	FOM4	REMARKS
1	62T-W0001-02	GASKET KIT FOR ENGINE UNIT	1	1	1	1	
2	6M6-11351-A2	GASKET, CYLINDER	1	1	1	1	
3	90430-08020	GASKET	1	1	1	1	
4	62T-11181-00	GASKET, CYLINDER HEAD 1	1	1	1	1	
5	93102-36M33	OIL SEAL	1	1	1	1	
6	93101-30M46	OIL SEAL	1	1	1	1	
7	93103-32M01	OIL SEAL	1	1	1	1	
8	62T-14613-00	GASKET, EXHAUST PIPE	1	1	1	1	
9	62T-14749-00	GASKET, MUFFLER DAMPER 2	1	1	1	1	
10	62T-41114-01	GASKET, EXHAUST OUTER COVER	1	1	1	1	
11	62T-41122-00	GASKET, EXHAUST INNER COVER	1	1	1	1	
12	62T-41124-00	GASKET, EXHAUST OUTER COVER	1	1	1	1	
13	62T-13556-00	GASKET, MANIFOLD	1	1	1	1	
14	62T-13624-00	PLATE, REED VALVE	1	1	1	1	
15	62T-13566-00	GASKET	2	2	2	2	
16	62T-13674-00	GASKET, AIR COOLER COVER 1	2	2	2	2	
17	6R8-13116-A0	GASKET, PUMP CASE	1	1	1	1	
18	6M6-81365-A0	GASKET, HOLE COVER	1	1	1	1	
19	62T-45127-00	SEAL	1	1	1	1	
20	65U-W0001-20	GASKET KIT FOR JET UNIT	1	1	1	1	
21	93102-17M49	OIL SEAL	1	1	1	1	
22	93102-17M50	OIL SEAL	1	1	1	1	
23	6R8-51367-01	FELT, PACKING	2	2	2	2	
24	63M-51367-00	FELT, PACKING	1	1	1	1	
25	63N-51368-00	FELT, PACKING	2	2	2	2	
26	93210-17MA4	O-RING	2	2	2	2	
27	93210-35M72	O-RING	1	1	1	1	

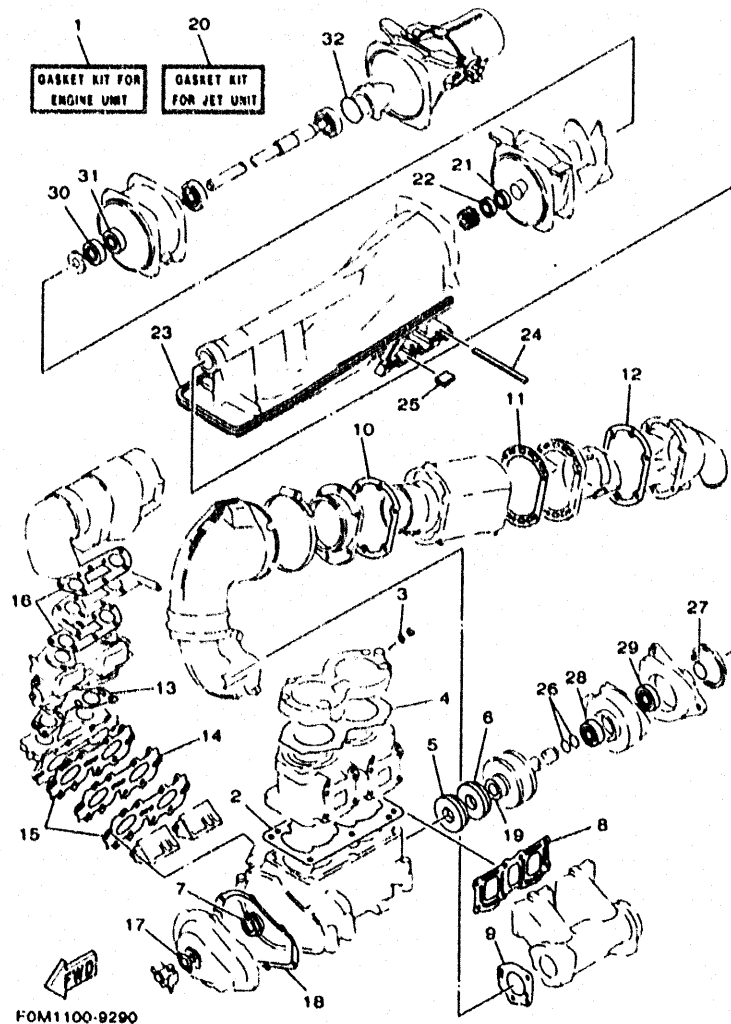
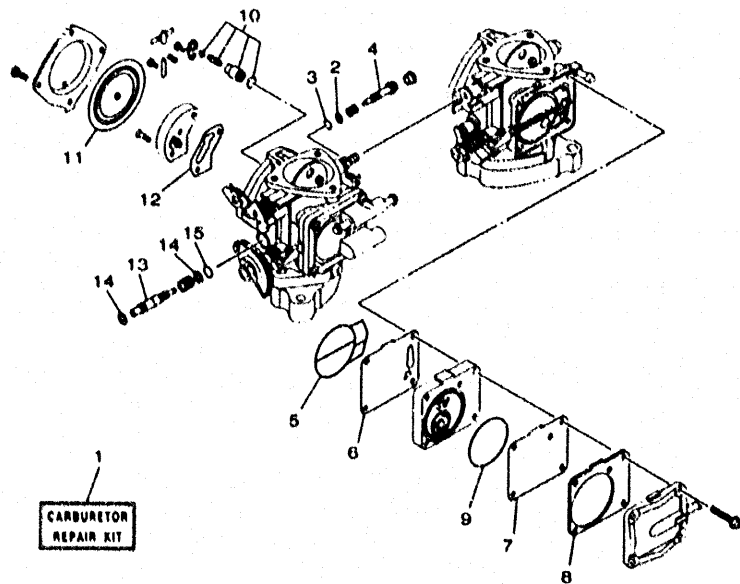


FIG. 29 REPAIR KIT 1

REF. NO.	PART NO.	DESCRIPTION	FOM1	FOM2	FOM3	FOM4	REMARKS
28	93101-25M55	OIL SEAL	1	1	1	1	
29	93101-25M56	OIL SEAL	1	1	1	1	
30	93102-25M34	OIL SEAL	1	1	1	1	
31	93101-25M50	OIL SEAL	1	1	1	1	
32	93210-46M16	O-RING	1	1	1	1	




 GM6D100-9250

FIG. 30 REPAIR KIT 2

REF. NO.	PART NO.	DESCRIPTION	FOM1	FOM2	FOM3	FOM4	REMARKS
1	62T-W0093-01	CARBURETOR REPAIR KIT	1	1	1	1	
2	6K8-14559-00	.WASHER	4	4	4	4	
3	6K8-14582-00	.O-RING	2	2	2	2	
4	6K8-14948-10	.METERING NEEDLE	2	2	2	2	
5	6K8-14584-00	.O-RING	2	2	2	2	
6	6K8-24411-20	.DIAPHRAGM	1	1	1	1	
7	6K8-24421-10	.VALVE, CHECK	1	1	1	1	
8	6K8-24431-20	.GASKET, FUEL PUMP 1	1	1	1	1	
9	6K8-14583-00	.O-RING	1	1	1	1	
10	61X-14916-15	.NEEDLE	2	2	2	2	
11	6R7-14541-00	.DIAPHRAGM, PUMP	2	2	2	2	
12	6K8-14536-11	GASKET	2	2	2	2	
13	65U-14923-10	.SCREW, PILOT	2	2	2	2	
14	6K8-14537-00	.GASKET	4	4	4	4	
15	583-14561-00	O-RING	2	2	2	2	

NUMERICAL INDEX

PARTNO.	GRID NO.	PARTNO.	GRID NO.	PARTNO.	GRID NO.	PARTNO.	GRID NO.	PARTNO.	GRID NO.	PARTNO.	GRID NO.
65A-G5331-00	C-4	GU2-U351P-00	D-2	FOM-U417E-00	D-15	GU2-U519D-00	C-11	GJ3-U7856-20	D-7	6J8-13414-00	D-7
65A-R1129-00	C-3	GU2-U351R-00	D-2		E-2	GJ3-U5578-00	D-6	EU0-U821D-00	C-10	62T-13555-00-8P	B-6
65A-R1129-10	C-2	GU2-U351S-00	D-2		E-4	EW2-U5912-01	D-5	GP7-U8211-00	C-10	62T-13556-00	B-6
65U-R1311-00	C-2	GJ3-U352E-50	D-3	FOM-U417F-00	D-15	EW2-U5913-00	D-5	EU0-U8221-00	C-10		E-6
65R-R1313-01	C-3	GJ3-U354D-30	D-2		E-2	EW2-U5920-00	D-5	EU0-U8221-30	C-10	62T-13566-00	B-6
65R-R1318-00	C-3	GU2-U358F-00	D-2		E-4	FOM-U7242-00	D-11	GJ8-U824C-00	C-10		E-6
65R-R1321-10	C-2	GU2-U358G-00	D-2	FOM-U417G-00	D-15	GDO-U7249-00-05	C-4	GH3-U883M-30	C-15	62T-13610-00	B-6
65A-R1326-00	C-2	GU2-U371A-00	D-5		E-2	GDO-U7249-00-10	C-4	GT3-U883U-00	C-15	62T-13624-00	B-6
65R-R1333-00	C-4	GU2-U371B-00	D-5		E-4	FOM-U7252-00	D-11	GJ3-U892F-01	D-10		E-6
65A-R1334-01	C-3	GU2-U372A-00	D-5	FOM-U417H-00	D-15	EU0-U7354-00-01	B-3	62T-W0001-02	E-6	62T-13674-00	B-7
65U-R1348-01	C-2	GU2-U372B-00	D-5		E-2	EU0-U7354-00-03	B-3	65U-W0001-20	E-6		E-6
65R-R1381-00	C-3	GU2-U377B-30-P1	C-12		E-4	EU0-U7354-00-05	B-3	62T-W0004-00	B-6	830-1423A-64	B-9
GP7-U1429-10	D-14	GU2-U377C-30-P1	C-12	FOM-U417J-00	D-15	EU0-U7354-00-10	B-3	62T-W0090-01-8P	B-2	3G2-14231-24	B-8
GP7-U142K-00	D-14	GU2-U377H-01	C-12		E-2	EU0-U7354-00-20	B-3	62T-W0093-01	E-8	3G2-14231-25	B-8
GH1-U143C-30	D-12	GU2-U377J-01	C-12		E-4	GA9-U7525-00	D-10	62T-11111-00-84	B-2	62T-14243-01	B-6
GP3-U1438-00	D-10	GH3-U411A-00	D-15	FOM-U417K-00	D-15	GJ3-U755J-00	D-10	62T-11181-00	B-2	62T-14251-10	B-2
GH3-U146E-00	C-3	GH3-U411A-10	D-15		E-2	GJ3-U7550-00	D-10		E-6	6R7-14253-00	B-9
GK5-U146F-00	D-11	GJ3-U411A-00	D-15		E-4	GJ3-U7555-00	D-10	62T-11311-00-84	B-2	62T-14255-00	B-7
EU0-U1461-01	D-11	GA9-U411B-00	E-4	FOM-U417L-00	D-15	EU0-U756E-00	D-5	6E5-11325-00	B-2	62T-14283-00	B-7
GH1-U1469-00	D-13	GU2-U411H-00	D-15		E-2	GJ3-U7560-01	D-10	6M6-11351-A2	B-2	62T-14284-01-8P	B-6
GU2-U1481-01	D-11		E-2	EU0-U418B-00	D-15	GJ3-U7570-00	D-10		E-6	62T-14301-02	B-8
GP7-U155D-00	D-12		E-4		E-2	GJ1-U7578-01	D-11	6E5-11372-00	B-6	62T-14302-02	B-8
GP7-U155F-00	D-12	GJ3-U4114-51	D-15		E-2	GJ1-U7578-11	C-14	62T-11400-02	B-4	62T-14419-00	B-7
GU2-U1552-00	D-12		E-2	EU0-U418B-10	E-2		D-10	6M6-11412-00	B-4	62T-14435-00	B-7
FN8-U1624-00	C-15		E-4	GA9-U418C-10	E-2	GJ1-U759B-00	D-9	6M6-11422-00	B-4	62T-14451-00	B-7
GU2-U2117-00	D-4	FOM-U4125-00	E-4	GJ1-U418C-10	E-2	GJ1-U759C-00	D-9	6M6-11431-00	B-4	62T-14451-10	B-8
GU2-U2118-00	D-4	GJ3-U415E-12	E-2	GA9-U418F-00	E-2	GH1-U759D-00	D-7	6M6-11442-01	B-4	6H1-14485-00	B-6
GU2-U213F-01	D-4	GJ3-U415E-20	E-3		E-4	GDO-U761D-00	C-14	82M-11515-00	B-4	62T-14485-10	B-11
GU2-U213G-00	D-4	GJ1-U415F-01	D-15	GA9-U418G-00	D-15	GH3-U7711-00	D-8	61X-11603-00	B-4	6K8-14521-00	B-9
GJ3-U2501-20	D-2	GJ1-U415F-10	E-2	GA9-U418G-10	E-2	GJ3-U775B-01	D-7	61X-11604-00	B-4	6K8-14521-10	B-8
GJ3-U251D-21	D-2	GP7-U416B-00	D-15	GJ3-U418H-10	E-3	GU2-U776C-00	D-7	61X-11605-00	B-4	6M6-14521-00	B-8
GJ3-U251E-21	D-2	GP7-U416B-11	E-2	GJ3-U418J-10	E-3	GJ3-U778B-00	D-7	62T-11631-00-92	B-4	6K8-14523-11	B-9
CH3-U2512-20	D-2	GU2-U416C-00	D-15	GJ3-U419B-00	D-15	GJ3-U778C-00	D-7	62T-11633-00	B-4	6K8-14527-11	B-9
GJ3-U2519-40	D-2	GU2-U416C-10	E-2	GJ3-U419B-10	E-3	GJ3-U778D-00	D-7	62T-11635-00	B-4	62T-14527-02	B-6
GJ3-U252C-20	D-2	GU2-U416C-20	E-2	GU2-U419C-01	D-15	GJ3-U778E-00	D-7	62T-11636-00	B-4	6K8-14531-00	B-8
GJ3-U252D-40	D-2	GU2-U416C-40	E-2		E-3	GH1-U782B-00	D-9	62T-11651-00	B-4	6K8-14533-00	B-8
GU2-U266B-30	C-12	GJ3-U416F-10	E-2	GJ3-U419E-00	E-3	GP7-U783F-00	D-9	82M-11685-00	B-4	6K8-14534-10	B-8
GJ3-U266C-02	D-6	GA9-U416G-10	E-2	GJ3-U474A-01	D-6	GP7-U7831-10	D-9	65R-12564-00	B-13	6K8-14536-11	B-9
GJ3-U266C-31	C-12	GJ3-U416H-00	E-2	GU2-U475A-00	C-12	GP7-U7832-00	D-9	64T-12580-00	B-13		E-8
GJ3-U2663-01	C-11	FOM-U417B-00	D-15	GU2-U475A-30-P1	C-13	GP7-U7833-10	D-9	64X-12581-00	B-12	6K8-14537-00	B-9
GJ3-U2664-02	C-13		E-2	FOM-U516A-00	C-11	GP7-U7834-10	D-9	63M-12590-00	B-13		E-8
GU2-U271B-00	D-5		E-4	FOM-U518N-00-P0	C-11	EU0-U7835-00	D-7	6CM-12590-10	B-13	6R7-14541-00	B-9
GJ3-U273B-00	C-5	FOM-U417C-00	D-15	GU2-U5162-00	C-13	GP7-U7835-00	D-9	63M-12590-20	B-13		E-8
GU2-U351H-00	D-2		E-2	GU2-U517B-30-P1	C-12	GP3-U7844-00	D-9	6R8-13116-A0	B-10	6R7-14542-00	B-9
GU2-U351J-00	D-2		E-4	GU2-U517G-00	C-11	GA7-U785G-00	D-8		E-6	6K8-14547-01	B-9
GH3-U351M-50	D-2	FOM-U417D-00	D-15	GU2-U517H-30-P2	C-11	GU2-U785H-00	D-8	6R3-13183-00	B-10	6K8-14559-00	B-8
GH3-U351M-60	D-2		E-2	GU2-U518E-00	C-12	GP7-U785J-00	D-8	61X-13200-12	B-10		E-8
GU2-U351N-00	D-2		E-4			EU0-U7856-40	C-10	6J8-13411-00	D-7	583-14561-00	B-9

NUMERICAL INDEX

PARTNO.	GRID NO.	PARTNO.	GRID NO.	PARTNO.	GRID NO.	PARTNO.	GRID NO.	PARTNO.	GRID NO.	PARTNO.	GRID NO.
583-14561-00	F-8	6K8-24431-20	E-8	GJ8-60469-01	C-4	GL3-6418H-01	E-4	6M6-81365-A0	C-6	90101-069U0	C-13
6K8-14562-00	B-8	6K8-24452-10	B-8	FN8-6131B-00	D-13	GA7-6418J-10	E-4		E-6		D-5
	E-8	70R-24489-00	D-8	GH1-6141B-00	D-12	FJ1-64197-00	E-4	6M6-81800-10	C-7	90105-089U1	C-3
6K8-14563-00	B-8	65U-24500-00	B-14	GH1-6141D-01	D-13	GU2-6516L-00	C-11	3AJ-81809-0C	C-7	90105-10M45	B-12
	E-8	6R7-24524-00	B-14	GU2-6143G-00	D-12	GP7-6517C-00	C-12	6M6-81820-00	C-7	90105-10M60	B-11
6K8-14564-00	B-8	70R-24543-0C	D-8	GU2-61433-00	D-13	GU2-6517D-00	C-12	6M6-81928-00	C-7	90109-06M66	B-7
	E-8	6K8-24560-10	B-14	GU2-61467-00	D-13	GU2-6517F-00	C-12	6M6-8183E-00	C-7	90109-08M56	B-2
6R7-14569-00	B-9	278-27114-00	D-5	GH3-61468-00	D-13	GU2-6517R-00	C-11	6M6-81830-00	C-7	90109-10M47	C-6
6K8-14579-00	B-9	62T-41113-00-9M	B-11	GU2-61541-00	D-12	EW2-65772-00	D-10	6M6-81840-10	C-7	90110-089U1	D-9
6K8-14589-00	B-9	62T-41114-01	B-12	EU0-61588-00	D-13	EU0-65901-01	D-15	11H-81844-00	C-7	90116-08M60	B-9
6R7-14596-01	B-8		E-6	A00-61624-60	D-5		E-3	6M6-81844-00	C-8	90119-05M02	B-7
6K8-14597-11	B-8	62T-41121-00-9M	B-12	FN8-61651-00	D-12		E-5	26H-81847-00	C-7	90119-059U4	D-10
62T-14613-00	B-11	62T-41122-00	B-12	EU0-61652-00	B-2	EU0-65986-00	D-15	6M6-81850-00	C-7	90119-069U3	C-2
	E-6		E-6		C-3		E-3	6M6-81865-00	C-7	90119-069UC	C-4
62T-14615-01	B-12	62T-41123-01-9M	B-12		D-2		E-5	6M6-81868-00	C-7	90119-069UD	C-2
62T-14625-00	B-12	62T-41124-00	B-12	GP7-61652-00	D-10	GJ1-6721B-00	B-3	6M6-81921-00	C-8		C-3
62T-14711-10-8P	B-11		E-6	EW2-62140-00	D-8	GJ1-67250-01	D-12	6G1-81841-10	C-8	90119-069UH	C-11
62T-14712-00-9P	B-11	6M6-44517-A1-5B	B-3	EW2-62142-00	D-8	GJ1-67255-00	D-12	6M6-81952-01	C-8		C-12
62T-14721-00-94	B-11	63N-44532-01	B-2	EW2-62149-00	D-4	EW2-67258-00	D-12	6M6-81960-A0	C-8		C-13
62T-14749-00	B-11	663-45119-00	B-6	GJ3-6215F-00	D-4	EW2-67257-01	D-12	EU0-82110-09	C-10	90119-069UJ	C-12
	E-6	6K8-45127-00	C-4	GP7-62159-01	D-4	EW2-67258-01	D-12	62L-82117-20	C-9		D-10
63N-14752-30	B-12	62T-45127-00	B-5	EU0-62241-30	D-11	EW2-67259-01	D-12	63N-82117-00	C-9	90119-069UK	C-5
62T-14771-00-94	B-12		E-6	EU0-62280-00	C-14	GK5-67267-10	D-11	63N-82117-10	C-9	90119-069US	C-10
61X-14916-15	B-9	65V-45318-00	C-2	EU0-62282-00	C-14	EU0-67324-00	B-3	6K8-82150-01	C-8	90119-06900	C-11
	E-8	65U-45332-01-94	C-4	EU0-62283-00	C-14	GJ1-6753B-02	D-10	6G1-82151-00	C-8	90119-06914	C-11
65U-14923-10	B-9	61L-45378-00	C-4	EU0-62285-01	C-14	GH6-67577-01	D-10	6K8-82159-00	C-8	90119-06920	D-5
	E-8	65R-45511-00	C-2	GU2-6252E-10	D-2	EW2-67618-00	C-14	62E-82351-01	C-9	90119-06924	D-5
6K8-14926-10	B-8	62T-45526-00	B-4	GU2-6252F-10	D-2	FN8-6771K-00	D-8	62E-82352-01	C-9	90119-08M11	B-11
6K8-14930-00	B-8	61X-4581J-00	B-5	GJ1-62663-00	C-5	FJ0-67713-00	D-8	62T-82361-00	C-9	90119-08M19	B-2
6K8-14946-10	B-8	6M6-45813-22-8P	B-5	FN8-6269B-00	C-3	FJ0-67714-02	D-8	62E-82371-11	C-9	90119-08M55	B-2
	E-8	6M6-45813-32-8P	B-5	GT3-6273C-00	C-4	FJ0-67716-01	D-8	63N-82553-00	C-9	90119-089UE	C-3
62T-15100-00-94	B-2	6K8-51129-00	B-11	GJ1-62733-00	C-5	GH3-67743-01	D-9	62T-82560-01	C-9	90119-089UF	C-4
63N-15761-00	B-12		B-2	GU2-62875-00	C-11	GJ1-67743-01	D-8	6R7-83623-40	C-8	90119-089UR	B-3
6R7-21415-01-94	B-2	63M-51162-00	C-14	GH1-63774-01	D-6	FJ0-67768-00	D-7	6R7-83623-50	C-9	90119-089UT	B-3
6R7-21425-01-94	B-2	63M-51165-00	C-14	GU2-6378C-00	D-5	EU0-67767-31	D-8	63N-83623-00	C-8	90119-089UU	B-3
EU0-23814-01	D-12	63M-51312-02-f4	C-2	GU2-6378D-01	D-5	EU0-67816-30	B-14	682-84385-01	B-13	90119-089U5	C-5
EU0-23814-30	D-12	63M-51315-02-94	C-2	GJ3-63850-02	D-5	EU0-67817-00	B-14	62T-85515-00	C-8	90119-089U6	C-11
62T-24313-01	B-6	63N-51323-10	C-4	GP7-6415B-00	E-4	FX1-67869-00	D-7	62L-8552A-00-8P	C-6		C-5
62T-24314-01	B-6	62T-51348-00	C-2	GK5-6415E-20	E-5	FOM-6820A-10	C-10	6M6-8552E-01	C-8	90119-089U7	C-8
6R3-24377-00	B-12	6R8-51367-01	C-2	GK5-6415F-20	E-5	GU2-6822E-01	C-11	62T-85520-00	C-6		D-13
63N-24378-00	B-11		E-6	GL3-6415G-01	E-4	FJ0-68222-01	C-10	62T-85533-00	C-6		D-9
6K8-24411-20	B-8	63M-51367-00	C-4	GU2-6416C-30	E-4	FOM-68238-00	C-10	62T-85540-01	C-8	90119-089U9	C-11
	E-8		E-6	GL3-6416F-00	E-4	FK7-68310-06	D-12	68D-85542-00	C-8	90119-08907	C-4
6R7-24412-01	B-9	63M-51368-00	C-2	FT4-6417B-00	E-4	FK7-68312-02	D-12	62T-85550-00	C-6	90119-08925	D-12
6M6-24413-00	B-8	63N-51368-00	E-6	GL3-6418B-00	E-4	FK7-68313-01	D-12	62T-85560-00	C-6	90119-10M00	B-2
6K8-24421-10	B-8	62E-51673-00	C-3	GL3-6418C-00	E-4	EW2-68348-00	D-12	62E-85570-11	C-8	90119-10M01	B-3
	E-8	61L-5109A-00	B-6	GH3-6418D-00	D-8	6M6-8132W-00	C-8	6M6-85580-00	C-6	90119-10M02	B-2
6K8-24431-20	B-8	63M-5316M-00	C-14	GL3-6418G-00	E-4	6R8-81337-00-8P	C-6	90101-069U0	C-12	90119-10M03	B-2

NUMERICAL INDEX

PARTNO.	GRID NO.	PARTNO.	GRID NO.	PARTNO.	GRID NO.	PARTNO.	GRID NO.	PARTNO.	GRID NO.	PARTNO.	GRID NO.
90119-10M07	B-2	90387-06M60	C-3	90465-11M10	B-14	90601-20006	D-7	93101-25M56	E-7	95380-08700	B-8
90119-10M56	B-2	90387-06922	C-11		B-6	90601-20009	C-8	93101-36M46	B-4	95720-05300	C-10
90119-10M72	B-12	90387-08M08	C-3		C-4	90601-20018	C-14		E-6		C-15
90119-109U8	C-4	90430-08020	B-2		C-9	90604-80759	C-14	93102-17M49	C-2	95720-06300	C-11
90149-05904	C-4		E-6	90465-11M59	B-11	90604-80775	C-14		E-6		C-12
90149-069U9	D-14	90430-13909	C-14	90465-11829	B-14	90604-80793	D-10	93102-17M50	C-2		C-13
90159-059U2	C-12	90430-16910	D-10		C-3	90604-80794	D-10		E-6		C-15
	D-12	90445-09M21	C-4		C-4	90605-502U2	C-11	93102-25M34	C-2		D-13
90159-069U1	D-14	90445-10MA1	B-14		D-10	91380-05035	D-12		E-7		D-2
90169-049U1	D-9	90445-10MG0	B-14		D-4	91490-18010	D-8	93102-36M33	B-4		D-5
90169-059U1	D-2	90445-10MG1	B-14		D-7	91790-05040	D-8		E-6		D-6
90170-22187	B-14	90445-10MG2	B-14		D-8	92903-06600	B-12	93103-32M01	B-4	95720-08300	C-11
90170-08947	C-5	90445-10MG3	B-14	90465-12M56	B-14		B-6		E-6		C-15
90170-08M15	B-6	90445-11M34	B-10	90467-089U1	C-10		B-7	93210-13M63	B-7		D-5
90170-10925	C-4	90445-11903	D-8	90467-11032	D-8		C-7	93210-17MA4	C-4	95720-10300	D-13
90183-06902	C-11	90445-14M10	B-12	90480-06M43	C-9	92903-08600	B-11		E-6		D-6
	C-12	90445-14M21	B-11	90480-06M46	C-2		C-7	93210-22ME5	C-14	95780-06300	D-11
	C-13	90445-14M24	B-11	90501-14M73	C-7	92990-05200	C-15	93210-35M72	C-4		D-13
90201-06M31	B-7	90445-14M25	B-11	90560-22281	D-12	92990-05600	B-6		E-6	97013-06012	B-7
90201-068M4	C-3	90445-14898	C-3	90600-91080	C-10		D-8	93210-46M16	C-2	97013-06020	B-6
90201-08929	C-11	90445-18M03	C-2	90600-91736	B-13	92990-06100	C-7		E-7	97013-06025	B-12
90201-099U1	C-11	90445-19895	C-14		B-14	92990-06200	C-11	93305-205U1	C-2		B-6
90201-109U6	D-6	90445-19896	C-14		B-15		C-12	93305-30601	B-4	97013-06035	B-6
90201-20M04	B-4	90445-21M00	B-12		C-10		C-13	93306-205U0	C-2	97013-06070	B-12
90201-248M5	B-5	90445-21M02	B-11		C-14		C-15	93306-205U6	C-4	97013-08035	C-7
90202-229U1	B-14	90446-07M14	B-10		D-7		D-12	93306-207U2	B-4	97013-08040	C-7
90267-329UR	D-9	90446-07M17	B-10	90600-91755	C-3		D-13	93306-307U3	B-4	97013-08075	B-11
90267-40935	D-7	90446-07M18	B-10	90600-918U3	D-11		D-2	93310-320U2	B-4	97080-06020	C-12
90267-40937	C-11	90446-07M48	B-10	90600-944U8	C-10		D-5	93310-525U3	B-4	97080-06030	D-12
90267-489U1	B-14	90446-14M61	B-14	90601-11062	D-8		D-6	93430-47M04	C-4	97095-06016	C-9
90267-489U2	D-8	90446-14M62	B-14	90601-118UF	B-13	92990-06600	C-6	93440-25M08	C-7	97095-06025	C-6
90267-489U7	B-13	90446-20M31	B-11		C-2		C-8	93440-80023	B-4	97095-06035	B-10
	C-14	90446-20M65	B-12		C-3		C-9	93450-18M06	C-7	97095-08025	C-8
90267-489U8	D-2	90446-24M89	B-13		D-10	92990-08100	B-8	93450-21053	B-4	97513-06516	B-6
90267-48925	B-14	90450-14M05	B-12	90601-142U6	D-13	92990-08200	C-15	93603-10049	B-2	97780-04110	D-7
	B-15	90450-18M09	B-13	90601-152U3	D-7		D-5	93604-071	B-2	97780-50112	C-14
	C-10	90450-70M03	B-12	90601-155U4	D-9	92990-10200	D-13	93605-12M21	B-11	97780-60116	D-11
	C-12	90450-99M01	B-12	90601-162U5	D-8		D-6	93606-12019	B-2	97780-60525	C-8
	C-13	90450-99M02	B-12	90601-170UG	D-10	92990-14200	D-10		C-2	97802-04008	C-6
	D-3	90450-99M06	B-12	90601-200U1	B-13	92995-06100	C-9		C-3	97880-03008	D-12
	D-4	90464-06M29	C-8		C-14	92995-06600	B-10		C-4	97880-05016	B-6
	D-7	90464-10M38	B-10	90601-200U4	C-14		C-6		C-6	97880-05025	C-14
90269-07923	D-4	90464-15M11	B-11	90601-200U7	D-4	92995-08600	C-8	94702-00195	C-9		D-12
90280-05013	C-6	90465-06M86	C-8	90601-20006	B-13	93101-25M50	C-2	94709-00195	C-9	97880-06016	C-6
90331-12M05	C-2	90465-08M69	B-10		B-14		E-7	95380-06700	C-12		C-8
90340-08M04	B-2	90465-11M10	B-10		B-15	93101-25M55	C-4		C-13		C-9
90380-12M28	B-2		B-11		C-10		E-7		C-3	97880-06030	C-9
	C-6		B-12		C-14	93101-25M56	C-4		C-7	97802-04122	C-6

NUMERICAL INDEX

PARTNO.	GRID NO.	PARTNO.	GRID NO.	PARTNO.	GRID NO.	PARTNO.	GRID NO.	PARTNO.	GRID NO.
97902-05125	C - 6								
97980-05330	B - 8								
98780-04015	B - 2								
98980-04008	B - 14								
98980-06040	D - 5								

M4