

CATÁLOGO DE PEÇAS

CW50'96 (BW'S) (4TY1) BRASIL



164TY-280E1

CW50
CATÁLOGO DE PEÇAS

©1996, Yamaha Motor do Brasil Ltda.
1ª edição, Novembro 1995

Todos os Reservados

É proibida expressamente toda e qualquer reimpressão
ou utilização sem a autorização por escrita da

Yamaha Motor do Brasil Ltda.

Impresso no Brasil



FOREWORD

This Parts Catalogue is related to the parts in use for the Yamaha CW50'96 (4TY1).
When you are ordering replacement parts for the CW50'96, refer to this Parts Catalogue and quote both part numbers and part names correctly.

1. Modifications or additions which have been made after issue of the Parts Catalogue will be announced in the Yamaha Parts News.

It is advisable that according to the Yamaha Parts News you make necessary corrections to the Parts Catalogue on hand to keep it up-to-date.

2. Abbreviations

- U.R. Use size (thickness) and / or number as required
- U.N. Use as many as you need
- A.P. Alternative Parts
- L.M. Local Made
- F# Frame No. (Applicable machine No.)

3. The parts marked with (*) in the parts number column of this Catalogue are not supplied with by Yamaha, those have to be found locally.

4. Parts, which are to be supplied in the form of assemblies, are listed with an indention of one letter's space, and a dot (.) is put against the name of each part.

EXAMPLE

CARBURATOR ASS'Y
 . JET, pilot
 . NOZZLE, main

5. Indication of No. of constituent parts for assembly

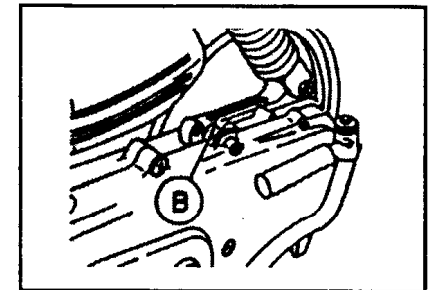
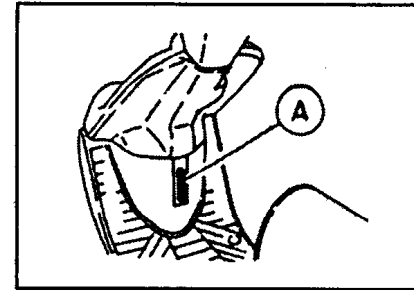
The numeral apperaring to the right of each constituent part under the description indicates the quantity of such parts for each individual assembly unit

EXAMPLE

Part No.	Description	Q'ty	Remarks
2F5-83310-60	FRONT FLASHER LIGHT ASS'Y	01	
115-83311-60	. BULB (6V-18W)	01	
1M1-83309-60	. REFLECTOR	01	

6. Initial Serial No. and Color Code

(A)	Frame Serial No.	9C64TY000T0000101
(B)	Engine Serial No.	4TY-0000101



Color Code	Color Name	Abreviate
0448	BLUE METALLIC 9	BM9
0315	BLUE OCEAN	BOC

7. Applicable colors of graphics are represented in the "Remarks" column by the letter(s) appropriately picked out of the full words(s) showing such colors.

EXAMPLE

Part No.	Description	Q'ty	Remarks
2N4-24110-00-X5	FUEL TANK COMP.	01	
3J1-24240-10	. GRAPHIC, fuel tank set	01	

CONTENTES

ENGINE

FIG. 01	CYLINDER	1
FIG. 02	CRANKSHAFT PISTON	2
FIG. 03	AIR SHROUD	3
FIG. 04	OIL PUMP	4
FIG. 05	INTAKE	5
FIG. 06	CARBURATOR	6
FIG. 07	EXHAUST	7
FIG. 08	CRANKCASE	8
FIG. 09	STARTER	9
FIG. 10	CLUTCH	10
FIG. 11	TRANSMISSION	11

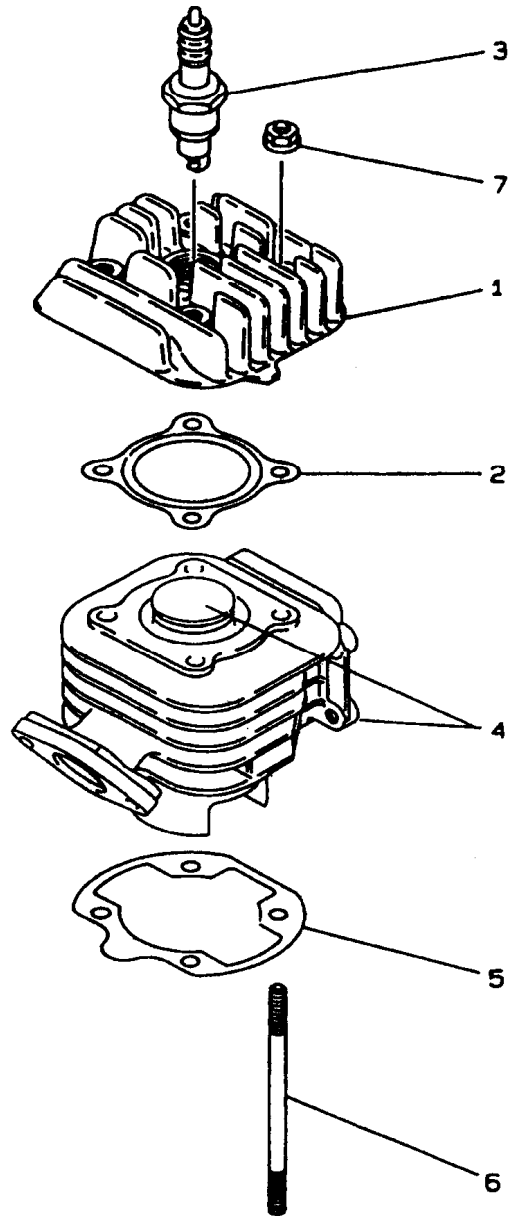
FRAME

FIG. 12	FRAME	12
FIG. 13	FENDER	13
FIG. 14	SIDE COVER	14
FIG. 15	OIL TANK	15
FIG. 16	REAR SUSPENSION	16
FIG. 17	STEERING	17
FIG. 18	FUEL TANK	18
FIG. 19	SEAT CARRIER	19
FIG. 20	FRONT WHEEL	20
FIG. 21	REAR WHEEL	21
FIG. 22	STEERING HANDLE CABLE	22
FIG. 23	STAND FOOTREST	23
FIG. 24	LEG SHIELD	24
FIG. 25	COWLING	25
FIG. 26	GENERATOR	26
FIG. 27	FLASHER	27
FIG. 28	METER	28
FIG. 29	HEADLIGHT	29
FIG. 30	TAILLIGHT	30
FIG. 31	HANDLE SWITCH LEVER	31
FIG. 32	ELECTRICAL 1	32
FIG. 33	ELECTRICAL 2	33

GENERAL INDEX

NUMERICAL INDEX	35
-----------------------	----

FIG. 1 - CYLINDER

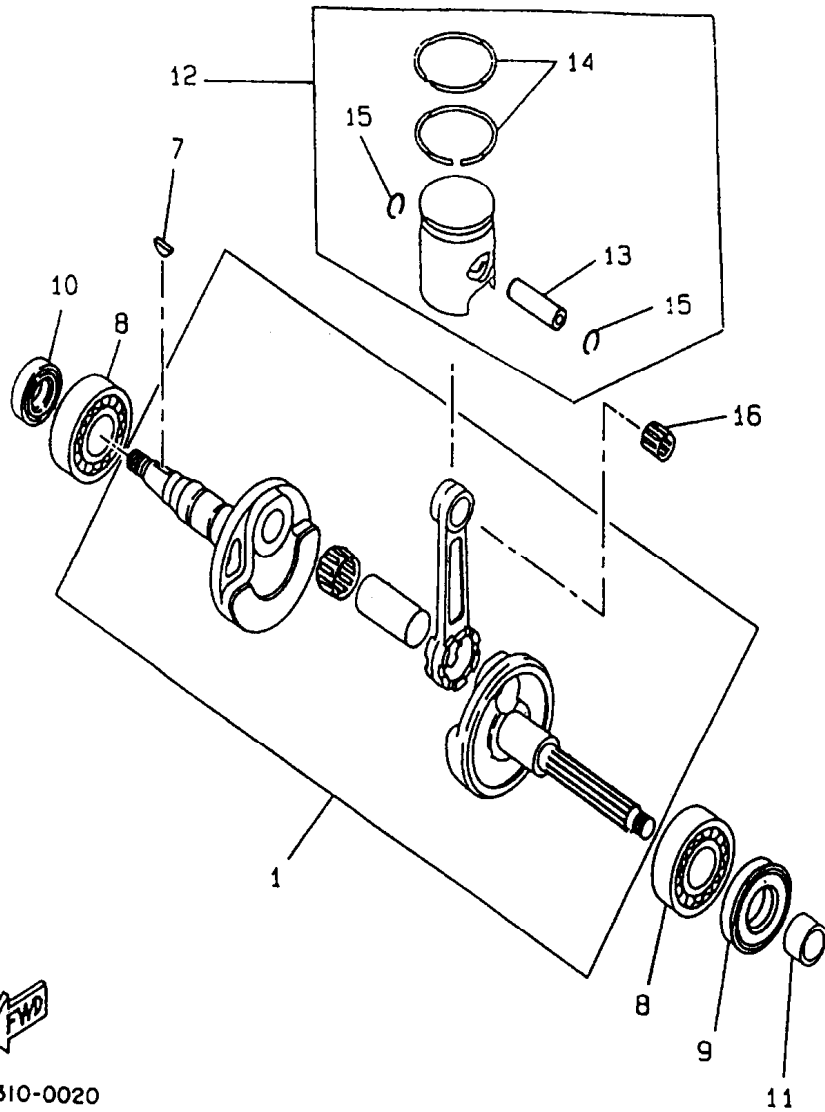


REF. No.	PART. No.	DESCRIPTION	QTY	REMARKS
01 - 1	4SB-E1111-00	HEAD, CYLINDER 1	1	
2	3VL-E1181-00	GASKET, CYLINDER HEAD	1	
3	94700-00195	PLUG, SPARK	1	
4	4SB-E1311-00	CYLINDER 1	1	
	3VL-E1631-00-96	. PISTON (STD)	1	
	3VL-E1633-00	. PIN PISTON	1	
	3VL-E1610-00	. PISTON RING SET	1	
	93450-11120	. CIRCLIPS	2	
5	3VL-E1351-00	GASKET, CYLINDER	1	
6	90116-06418	BOLT, STUD	4	
7	95707-06500	NUT, FLANGE	4	



Y3FC010-8010

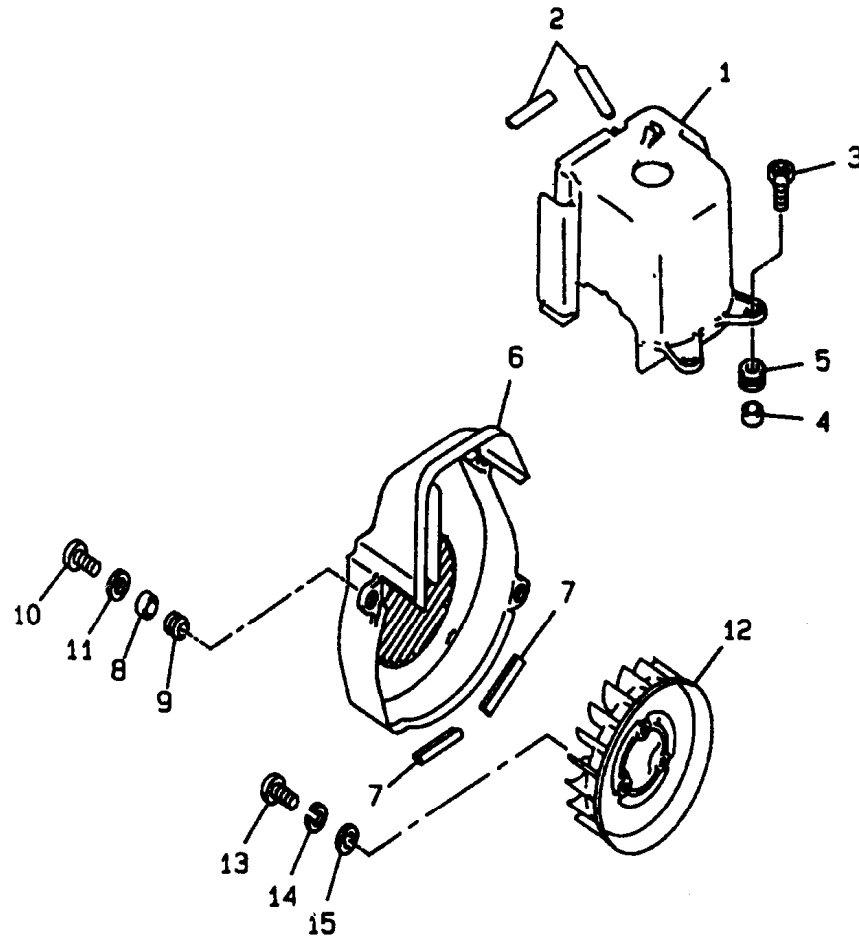
FIG. 2 - CRANKSHAFT PISTON



3TXI310-0020

REF. No.	PART. No.	DESCRIPTION	QTY	REMARKS
02 - 1	3VL-E1400-10	CRANKSHAFT ASSY	1	
	7	KEY, WOODRUFF	1	
	8	BEARING	2	
	9	OIL SEAL	1	
	10	OIL SEAL	1	
	11	COLLAR	1	
	12	PISTON (STD)	1	
		4SB-E1636-00	1	UR AP
	13	.PIN, PISTON	1	
		4SB-E1603-00	1	
		4SB-E1605-00	1	UR AP
	15	.CIRCLIP	2	
	16	BEARING, CYLINDRICAL	1	

FIG. 3 - AIR SHROUD

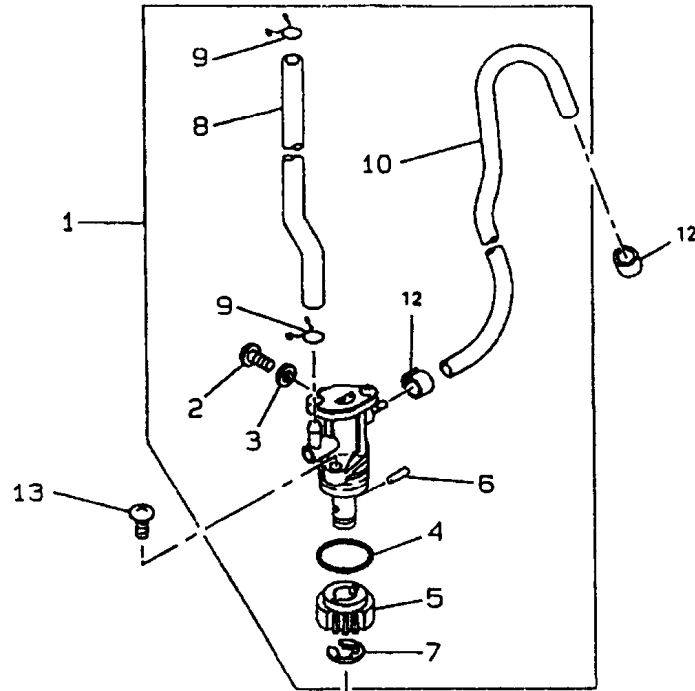


REF. No.	PART. No.	DESCRIPTION	QTY	REMARKS
03 -	1	3VL-E2651-00	AIR SHROUD, CYLINDER	1
	2	3VL-E2658-00	DAMPER, AIR SHROUD 1	2
	3	90153-06022	SCREW, HEXAGON	2
	4	90387-06023	COLLAR	2
	5	90480-12237	GROMMET	2
	6	3VL-E2653-00	AIR SHROUD, CYLINDER	1
	7	3VL-E2658-00	DAMPER, AIR SHROUD 1	2
	8	90387-067T6	COLLAR	3
	9	90480-12237	GROMMET	3
	10	98517-06020	SCREW, PAN HEAD	3
	11	92907-06600	WASHER	3
	12	3VL-E2611-01	FAN	1
	13	98580-06016	SCREW, PAN HEAD	3
	14	92995-06100	WASHER	3
	15	92990-06600	WASHER, PLATE	3



3AA010-8030

FIG. 4 - OIL PUMP



REF. No.	PART. No.	DESCRIPTION	QTY	REMARKS
4 - 1	3AA-13100-03	OIL PUMP ASSY	1	
	2	.BOLT, BREATHER	1	
	3	.GASKET, BREATHER BOLT	1	
	4	.O-RING	1	
	5	.GEAR, WORM WHEEL	1	
	6	.PIN, DOWEL	1	
	7	.CLIP	1	
	8	.HOSE	1	
	9	CLIP	2	
	10	.PIPE, OIL 2	1	
	12	.CLIP	2	
	13	SCREW, PAN HEAD	2	
	14	GEAR, PUMP DRIVE	1	
	16	PIN, DOWEL	1	
	17	CIRCLIP	2	

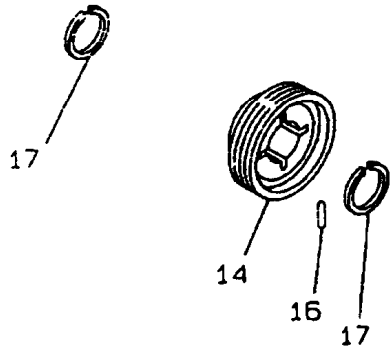
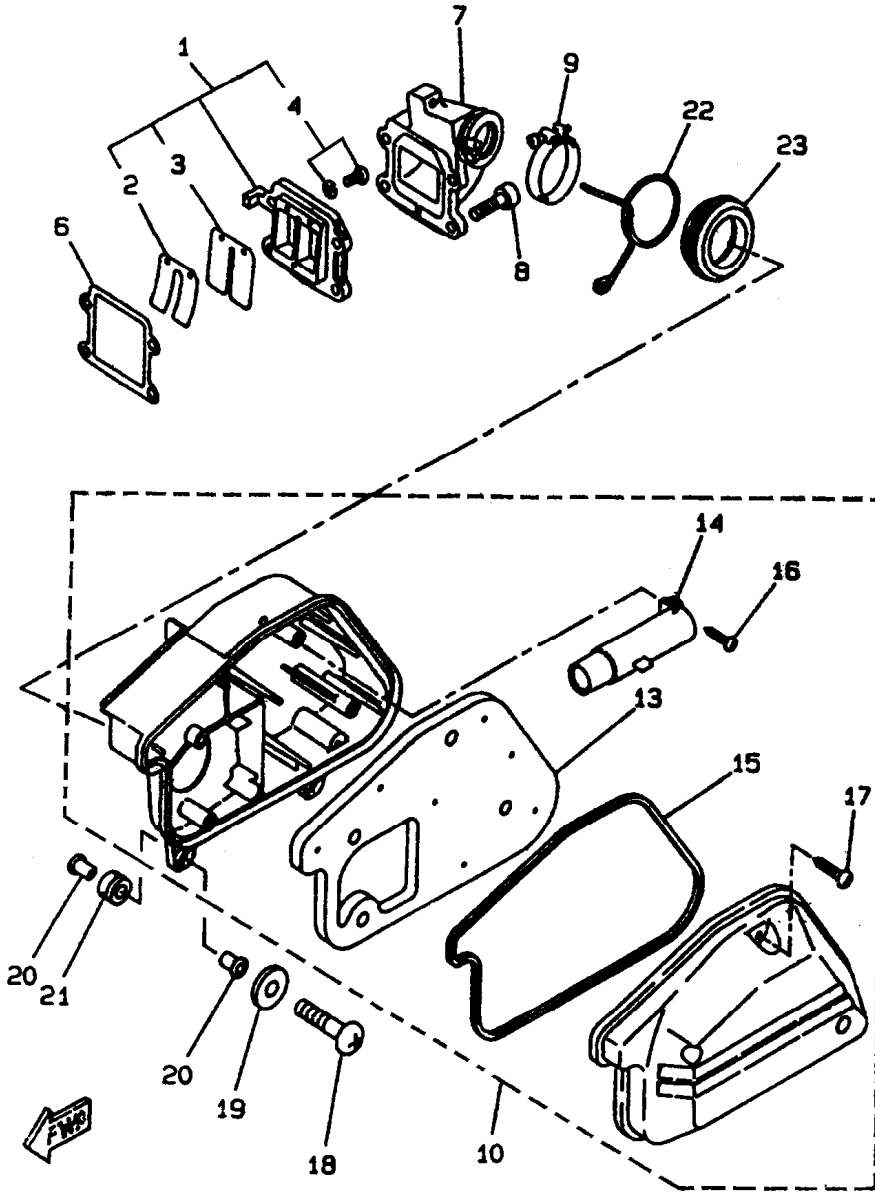


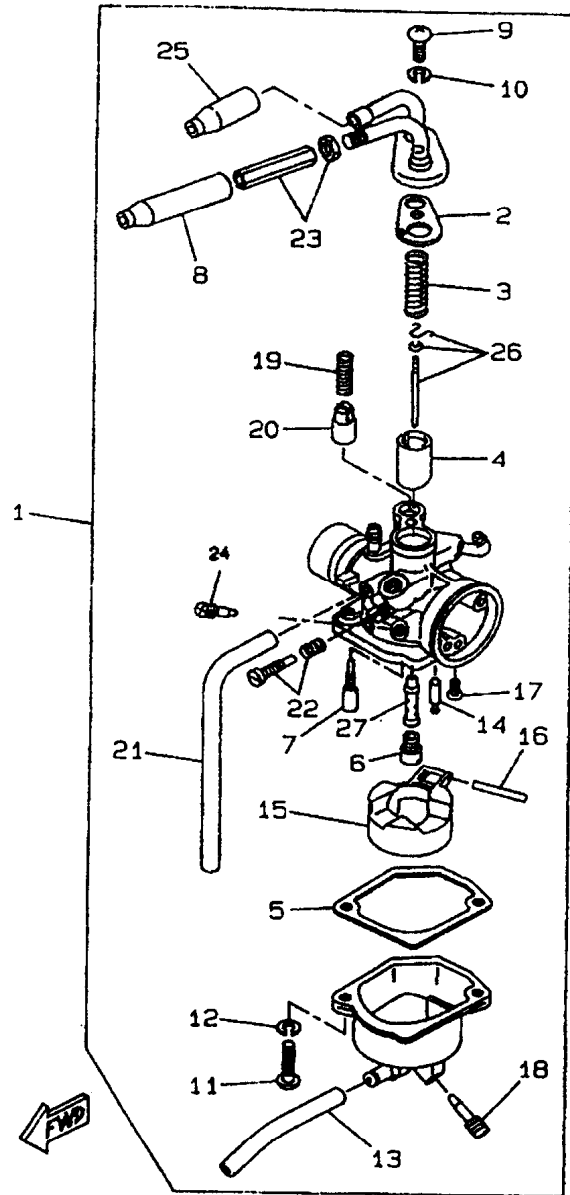
FIG. 5 - INTAKE



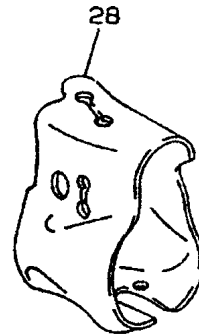
Y3AA010-8050

REF. No.	PART. No.	DESCRIPTION	QTY	REMARKS
5 -	1	3VL-E3610-00	1	REED VALVE ASSY
	2	3VL-E3613-00	1	.REED, VALVE
	3	3VL-E3616-00	1	.STOPPER, REED VALVE
	4	97607-03208	2	.SCREW, WITH WASHER
	6	4KN-13621-00	1	GASKET, VALVE SEAT
	7	3VL-E3555-00	1	MANIFOLD, INTAKE
	8	91317-06020	4	BOLT
	9	90450-32081	1	HOSE CLAMP ASSY
	10	4PB-E4410-00	1	AIR CLEANER ASSY.
	13	4PB-E4451-00	1	.ELEMENT, AIR CLEANER
	14	3VL-E4437-00	1	.DUCT
	15	3VL-E4452-00	1	.SEAL
	16	3VL-E4429-00	1	.SCREW
	17	3VL-E4565-00	4	.SCREW
	18	98517-06025	2	SCREW, PAN HEAD
	19	92907-06600	2	WASHER
	20	90387-061V4	4	COLLAR
	21	90480-12497	2	GROMMET
	22	90467-24140	1	CLIP
	23	3VL-E4453-00	1	JOINT, AIR CLEANER 1

FIG. 6 CARBURATOR

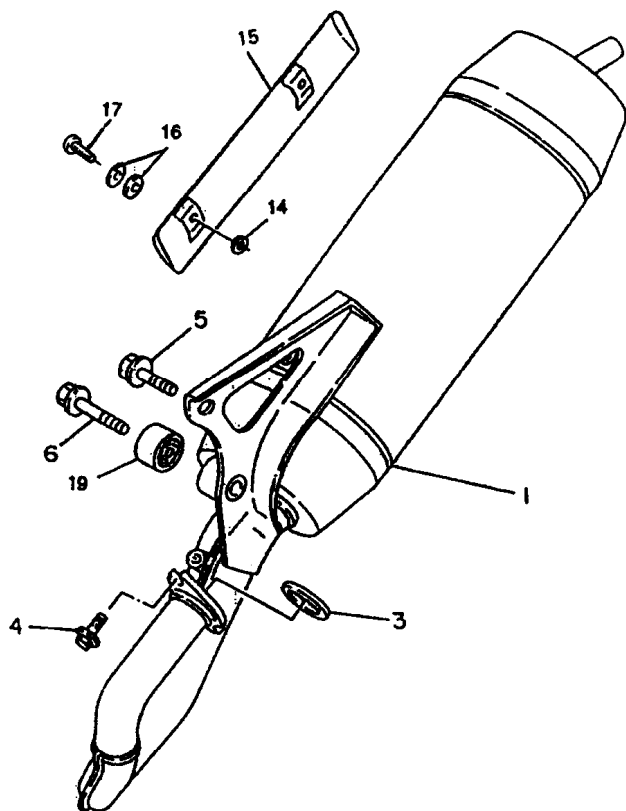


Y3AA010-8060



REF. No.	PART. No.	DESCRIPTION	QTY	REMARKS
6 - 1	4TY-14301-00	.CARBURETOR ASSY 1	1	
2	1YU-14126-00	.GASKET	1	
3	1YU-14331-00	.SPRING THROTTLE VALVE	1	
4	3KJ-14312-30	.VALVE THROTTLE 1	1	
5	1YU-14384-00	.GASKET FLOAT CHAMBER	1	
6	14T-14343-45	.JET MAIN	1	
7	1YU-14353-25	.JET PILOT	1	
8	1UV-14169-00	.CAP	1	
9	98580-05012	.SCREW PAN HEAD	1	
10	92990-05100	.WASHER SPRING	1	
11	98580-04016	.SCREW PAN HEAD	2	
12	92990-04100	.WASHER SPRING	2	
13	3AA-14349-00	.PIPE1	1	
14	4GF-14392-00	.VALVE NEEDLE	1	
15	1YU-14385-00	.FLOAT	1	
16	14T-14386-00	.PIN FLOAT	1	
17	98501-03006	.SCREW PAN HEAD	1	
18	14T-14323-00	.AIR SCREW SET	1	
19	1YU-14335-00	.SPRING PLUNGER	1	
20	1YU-14371-00	.PLUNGER STARTER	1	
21	1YU-14197-01	.PIPE	1	
22	1YU-14103-00	.THROTTLE SCREW SET	1	
23	1UV-14106-00	.CABLE ADJUSTING SCREW	1	
24	14T-14104-00	.AIR SCREW SET	2	
25	14T-14169-00	.CAP	1	
26	3AA-1490J-00	.NEEDLE SET	1	
27	2XX-14341-00	.NOZZLE MAIN	1	
28	1YU-14283-01	COVER, CARBURETOR 1	1	

FIG. 7 - EXHAUST



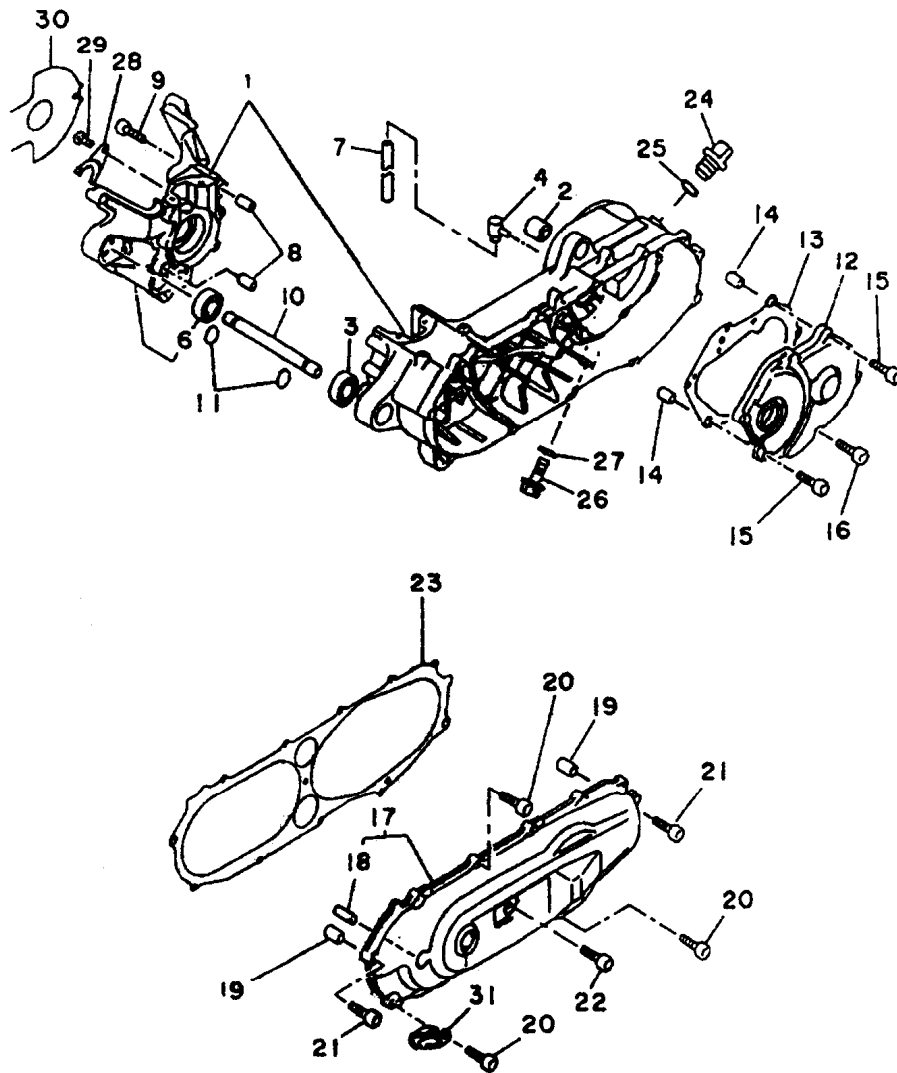
REF. No.	PART. No.	DESCRIPTION	QTY	REMARKS
7 -	1	4TY-E4610-00	1	EXHAUST PIPE ASSY 1
	3	3HK-14613-00	1	GASKET, EXHAUST PIPE
	4	90153-06061	2	SCREW, HEXAGON
	5	95817-08020	1	BOLT, FLANGE
	6	95817-08040	1	BOLT, FLANGE
	14	3WX-14766-00	2	WASHER, PROTECTOR
	15	4TY-E4729-00-P0	1	EMBLEM, PROTECTOR
	16	NH8-52480-00	4	WASHER ONDUFLEX
	17	NJ6-54041-00	2	SCREW,BIND
	19	2JA-14737-00	1	DAMPER MUFFLER

{ LIGHT GRAY
METALLIC 1



3TX1310-0070

FIG. 8 - CRANKCASE

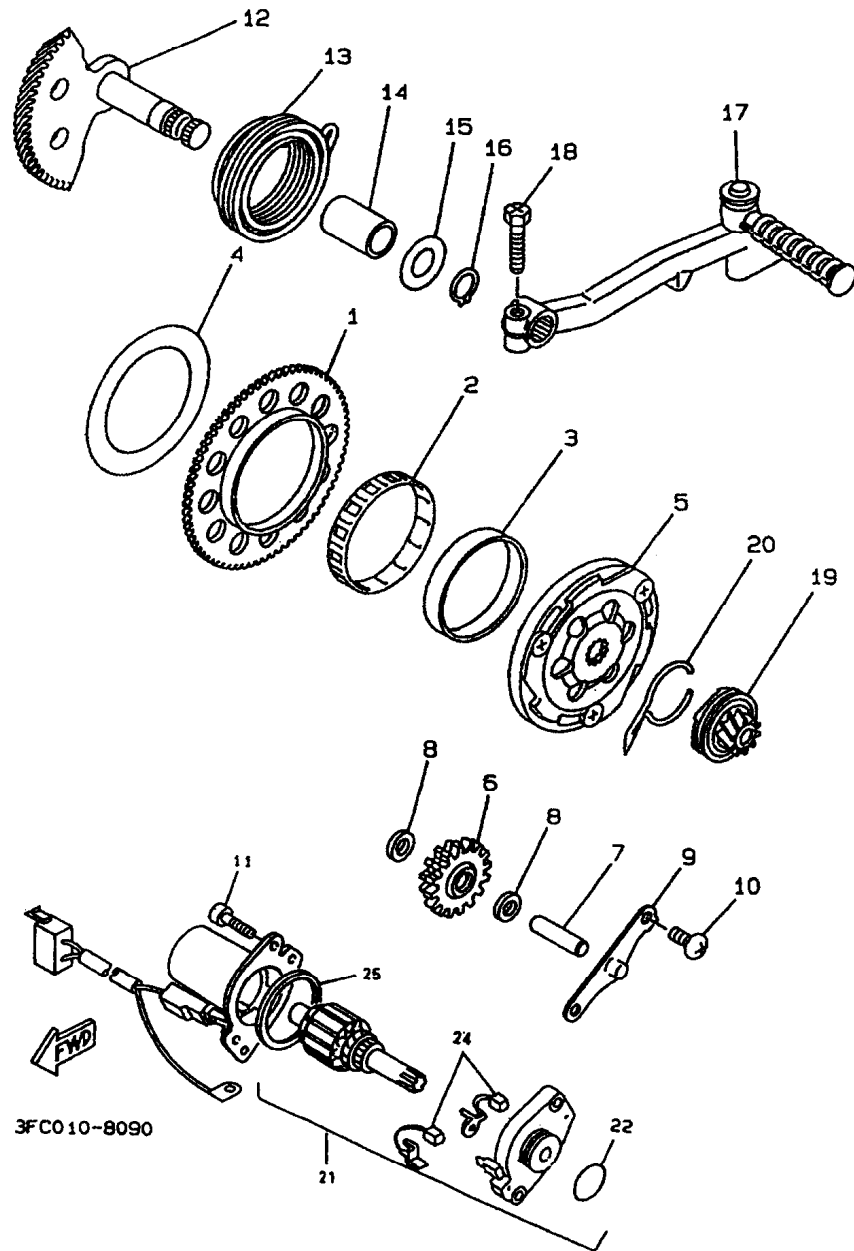


REF. No.	PART. No.	DESCRIPTION	QTY	REMARKS
8 -	1	3VL-E5150-00	1	CRANKCASE ASSY
	2	164-22216-00	1	BUSH, REAR SHOCK ABS
	3	93306-00203	2	BEARING (B6002)
	4	3VL-E5371-00	1	BREATHER
	7	90446-13311	1	HOSE
	8	99510-12016	2	PIN, DOWEL
	9	91317-06035	6	BOLT
	10	3VL-E5317-00	1	SPACER, ENGINE MOUNTING
	11	93440-15012	2	CIRCLIP
	12	3VL-E5421-00	1	COVER, CRANKCASE 2
	13	3VL-E5461-00	1	GASKET, CRANKCASE CPLT
	14	99530-10014	2	PIN, DOWEL
	15	91317-06035	2	BOLT
	16	91317-06020	4	BOLT
	17	3VL-E5411-00	1	COVER, CRANKCASE 1
	18	3VL-E5859-00	1	SHAFT
	19	99530-10014	2	PIN, DOWEL
	20	91317-06025	9	BOLT
	21	91317-06035	2	BOLT
	22	91317-06045	1	BOLT
	23	3VL-E5451-00	1	GASKET, CRANKCASE CPLT
	24	3VL-E5363-00	1	PLUG, OIL
	25	93210-14104	1	O-RING
	26	95817-08016	1	BOLT, FLANGE
	27	90430-08206	1	GASKET
	28	3VL-E5128-00	1	HOLDER
	29	98517-06012	1	SCREW, PAN HEAD
	30	3VL-E5462-00	1	GASKET, CRANKCASE CPLT
	31	90465-08122	1	CLAMP



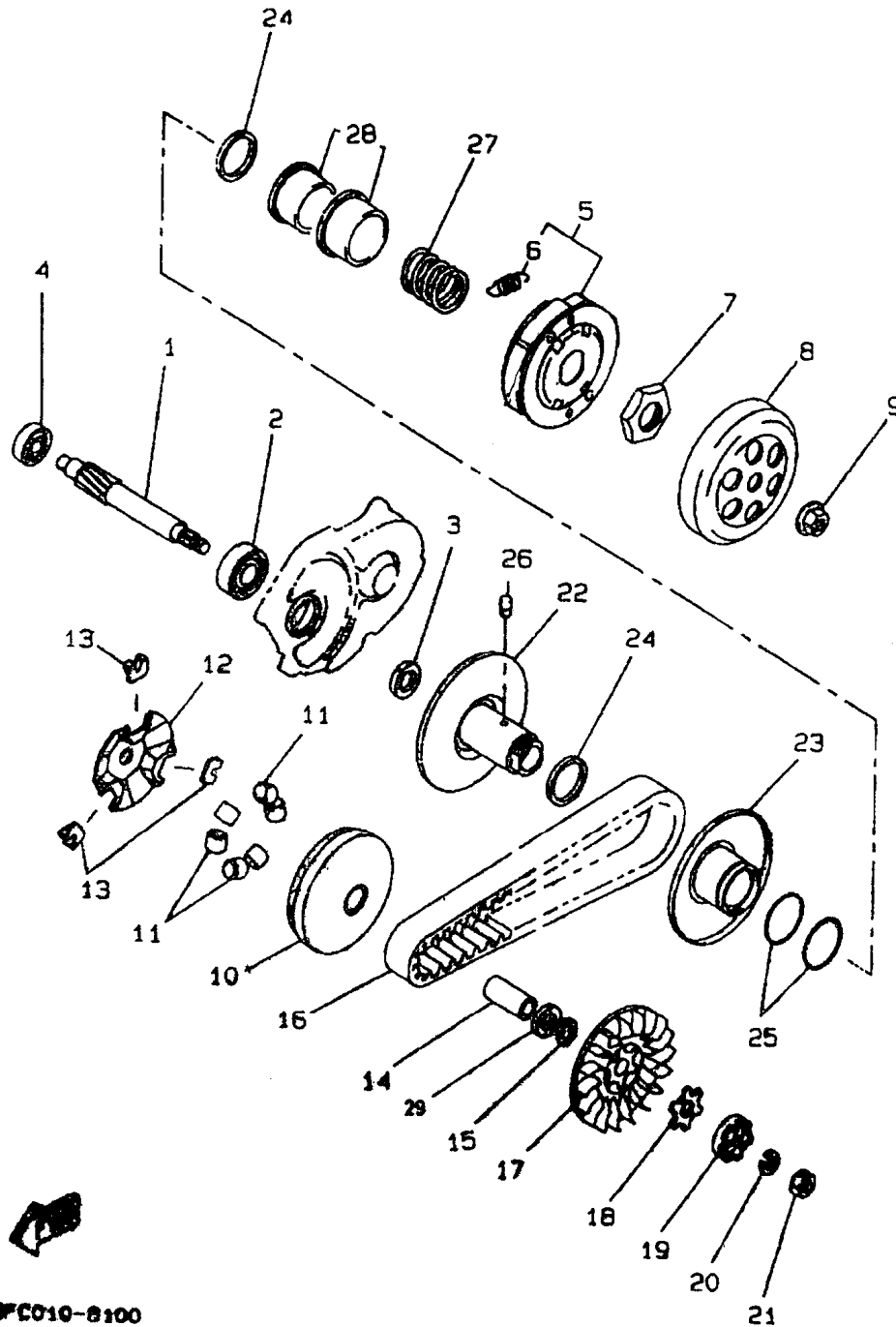
MX1110-0080

FIG. 9 - STARTER



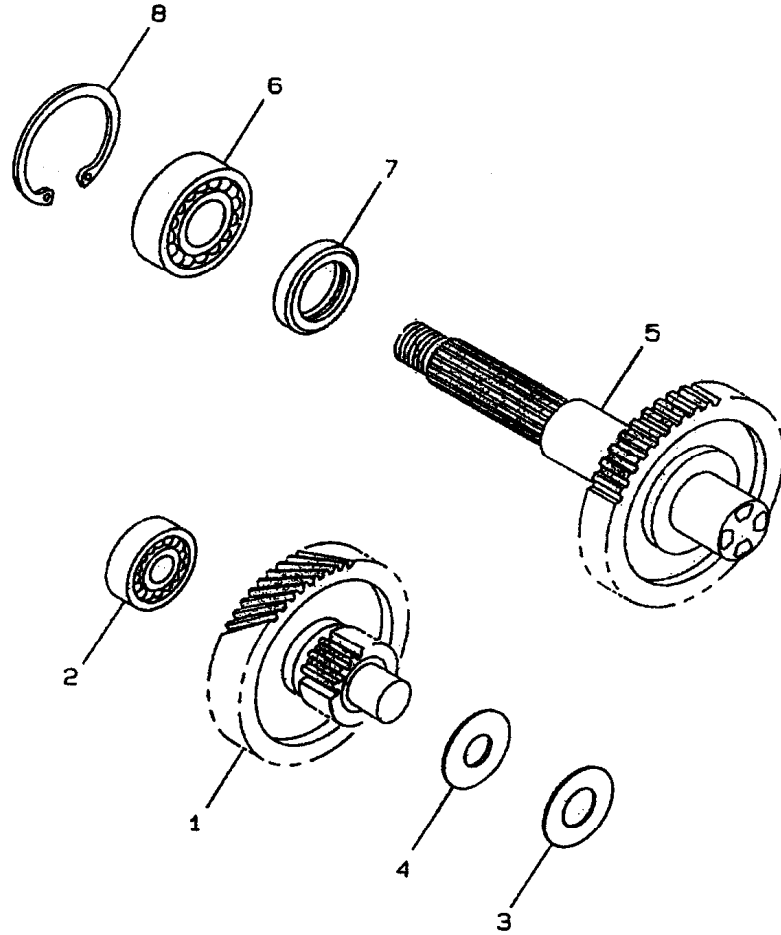
REF. No.	PART. No.	DESCRIPTION	QTY	REMARKS
8 - .1	3AA-15513-00	GEAR 1	1	
2	93310-257R1	BEARING, CYLINDRICAL	1	
3	3VL-E5528-00	BOSS, GEAR	1	
4	90201-574L1	WASHER, PLATE	1	
5	3VL-15570-00	STARTER CLUTCH ASSY	1	
6	3AA-15650-00	IDLE GEAR ASSY	1	
7	3VL-E5659-00	SHAFT	1	
8	90201-08088	WASHER, PLATE	2	
9	3VL-E5532-00	PLATE, IDLE GEAR	1	
10	98517-06012	SCREW, PAN HEAD	2	
11	91317-06020	BOLT	2	
12	3ES-15601-00	KICK SHAFT ASSY	1	
13	90508-32609	SPRING, TORSION	1	
14	90380-15083	BUSH, SOLID	1	
15	90201-155G5	WASHER, PLATE	1	
16	99009-15400	CIRCLIP	1	
17	3VL-E5620-01	KICK CRANK ASSY	1	
18	3VL-E5793-00	SCREW	1	
19	1NT-15630-01	GEAR, KICK PINION	1	
20	3VL-E5673-00	CLIP	1	
21	3AA-81800-02	STARTING MOTOR ASSY	1	
22	93210-23614	O-RING	1	
24	1YU-81801-M0	.BRUSH SET	1	
25	53L-8181Y-M0	.GASKET, YOKE	1	

FIG. 10 - CLUTCH



REF. No.	PART. No.	DESCRIPTION	QTY	REMARKS
10 - 1	3VL-E6111-00	GEAR, PRIMARY DRIVE	1	
2	93306-20301	BEARING	1	
3	93102-17342	OIL SEAL	1	
4	93306-20006	BEARING (B6200)	1	
5	3VL-E6620-01	CLUTCH CARRIER ASSY	1	
6	3VL-E6626-00	SPRING, CLUTCH WEIGHT 1	2	
7	90179-28415	NUT, POP	1	
8	24G-16611-03	CLUTCH HOUSING COMP.	2	
9	90179-10370	NUT	1	
10	3YJ-17620-00	PRIMARY SLIDING SHEAVE	1	
11	4KH-E7632-00	WEIGHT	6	
12	3VL-E7623-00	CAM	1	
13	3VL-E7653-00	SLIDER	3	
14	90387-135U9	COLLAR	1	
15	90201-133M8	WASHER, PLATE	1	
16	3AA-17641-00	V-BELT	1	
17	3VL-E7611-00	SHEAVE, PRIMARY FIXE	1	
18	90214-13055	WASHER, CLAW (0.5T)	1	
19	3VL-E5657-00	CLUTCH, ONEWAY	1	
20	90208-10012	WASHER, CONICAL SPRI	1	
21	90170-10219	NUT	1	
22	3GF-17660-02	SECONDARY FIXED SHEA	1	
23	3WG-17608-00	SECONDARY SLIDING SHEAVE	1	
24	93109-33052	OIL SEAL	2	
25	93210-38687	O-RING	2	
26	24G-17664-00	PIN, GUIDE	2	
27	90501-351F6	SPRING, COMPRESSION	1	
28	24G-17684-00	SEAT, SECONDARY SPRI	1	
29	3VL-E7654-00	SPACER 1	1	

FIG. 11 - TRANSMISSION

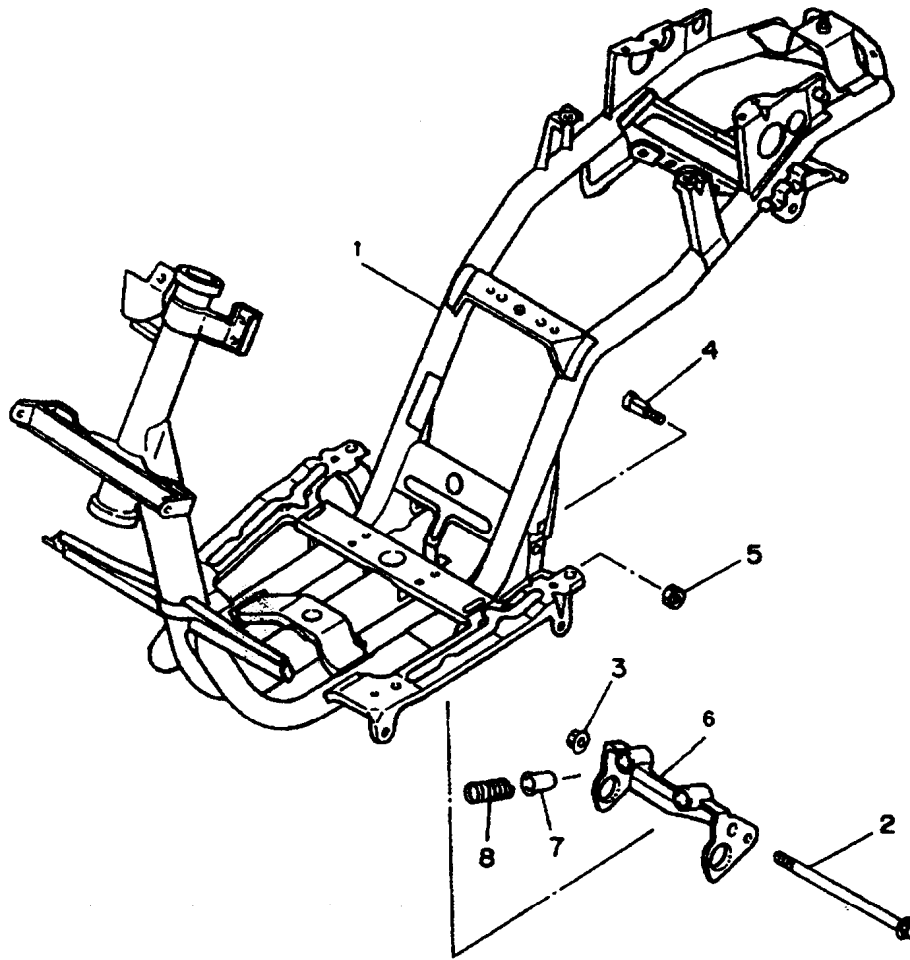


REF. No.	PART. No.	DESCRIPTION	QTY	REMARKS
11 - 1	4SB-E7410-00	MAIN AXLE COMP.	1	
2	93306-20006	BEARING (B6200)	1	
3	90201-140G5	WASHER, PLATE	1	
4	90208-14047	WASHER, CONICAL SPRI	1	
5	4SB-E7420-00	DRIVE AXLE ASSY	1	
6	93306-20314	BEARING (B6203)	1	
7	93102-22314	OIL SEAL	1	
8	93420-40064	CIRCLIP	1	



3FC010-8110

FIG. 12 - FRAME

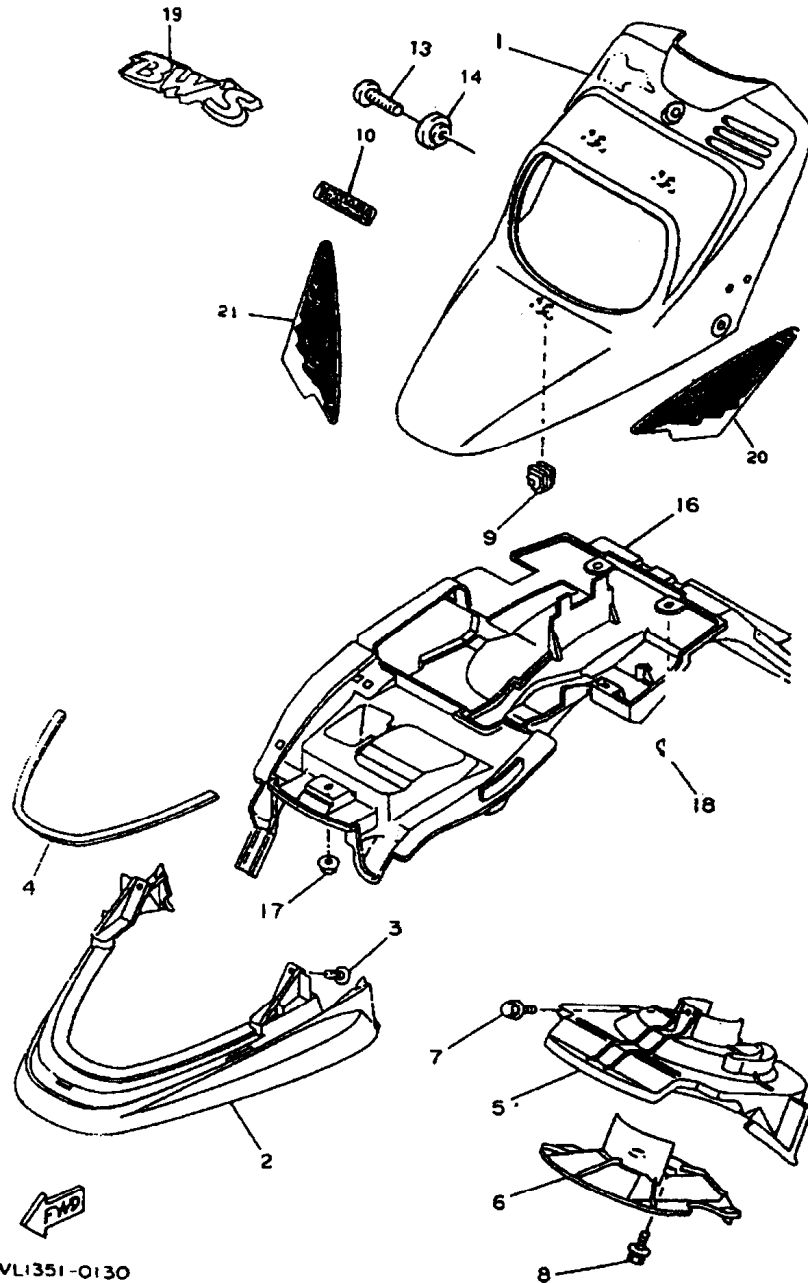


REF. No.	PART. No.	DESCRIPTION	QTY	REMARKS
12 - 1	4BX-F1110-21	FRAME COMP.	1	
2	90105-10063	BOLT, WASHER BASED	1	
3	90179-10279	NUT, POP	1	
4	2T4-21481-01	BOLT, ENGINE MOUNTIN	2	
5	95617-10100	BOLT, STUD	2	
6	4TY-F1410-00	ENGINE BRACKET COMP.	1	
7	2T4-2139X-00	DAMPER	2	
8	90501-29517	SPRING, COMPRESSION	1	
		NO ILLUSTRATED		
	4TY-F1568-10	LABEL, WARNING	1	



3VL1351-0120

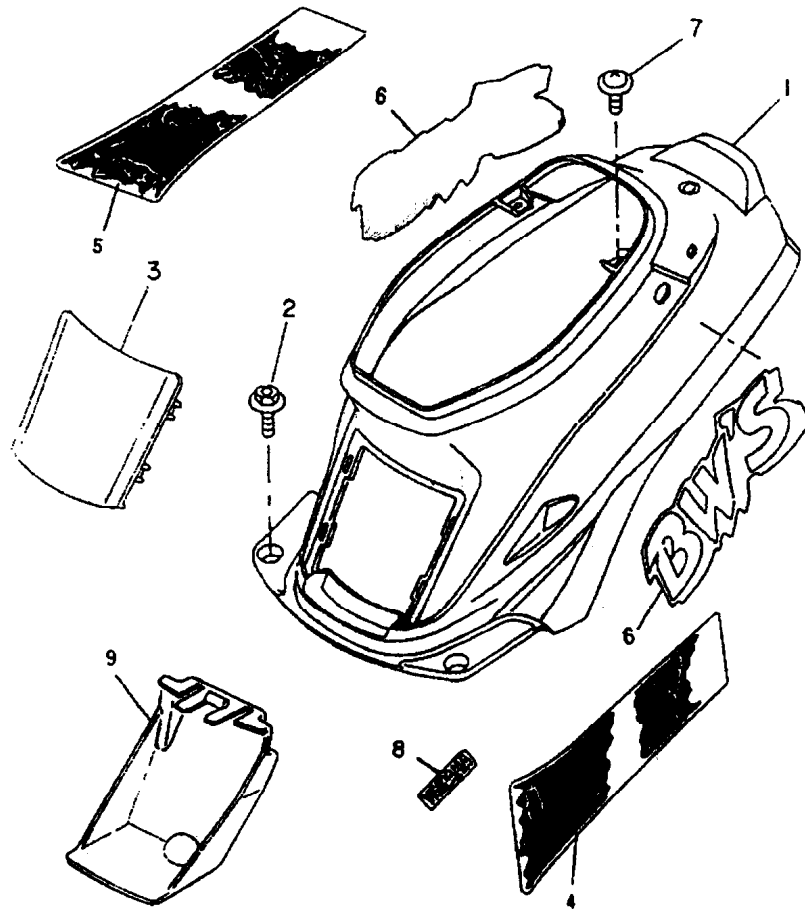
FIG. 13 - FENDER



3VL1351-0130

REF. No.	PART. No.	DESCRIPTION	QTY	REMARKS
13 - 1	3VL-F1511-00-18	FENDER, FRONT	1	UR BLUE OCEAN
	3VL-F1511-00-PK	FENDER, FRONT	1	UR BLUE METALLIC 9
2	3VL-F1551-10	OVER, FENDER BLACK	1	UR.BM9
	3VL-F1551-60	OVER, FENDER	1	BLUE OCEAN
3	97707-50016	SCREW, TAPPING	2	
4	3VL-F7482-00	MOLD, FOOTREST	1	BLACK
5	3VL-F1552-01	FENDER, INNER	1	BLACK
6	3VL-F1553-00	FENDER, INNER 2	1	BLACK
7	95817-06010	BOLT, FLANGE	1	
8	90119-06085	BOLT, WITH WASHER	2	
9	35R-26294-00	NUT1	3	
10	3WV-F1565-00	EMBLEM 2	1	UR BOC
	3WV-F1565-20	EMBLEM 2	1	UR BM9
13	90154-06808	SCREW, BINDING	3	
14	3VL-F1545-00	PLATE 3	3	
16	3VL-F1629-00	GUARD, MUD	1	BLACK
17	95707-06500	NUT, FLANGE	1	
18	90119-06018	BOLT, WITH WASHER	2	
19	4LJ-F1599-00	EMBLEM BW'S	1	UR BOC
	4LJ-F1599-20	EMBLEM BW'S	1	UR BM9
20	3WV-F1569-20	GRAPHIC 1	1	UR BM9
21	3WV-F1579-20	GRAPHIC 2	1	UR BM9

FIG. 14 - SIDE COVER

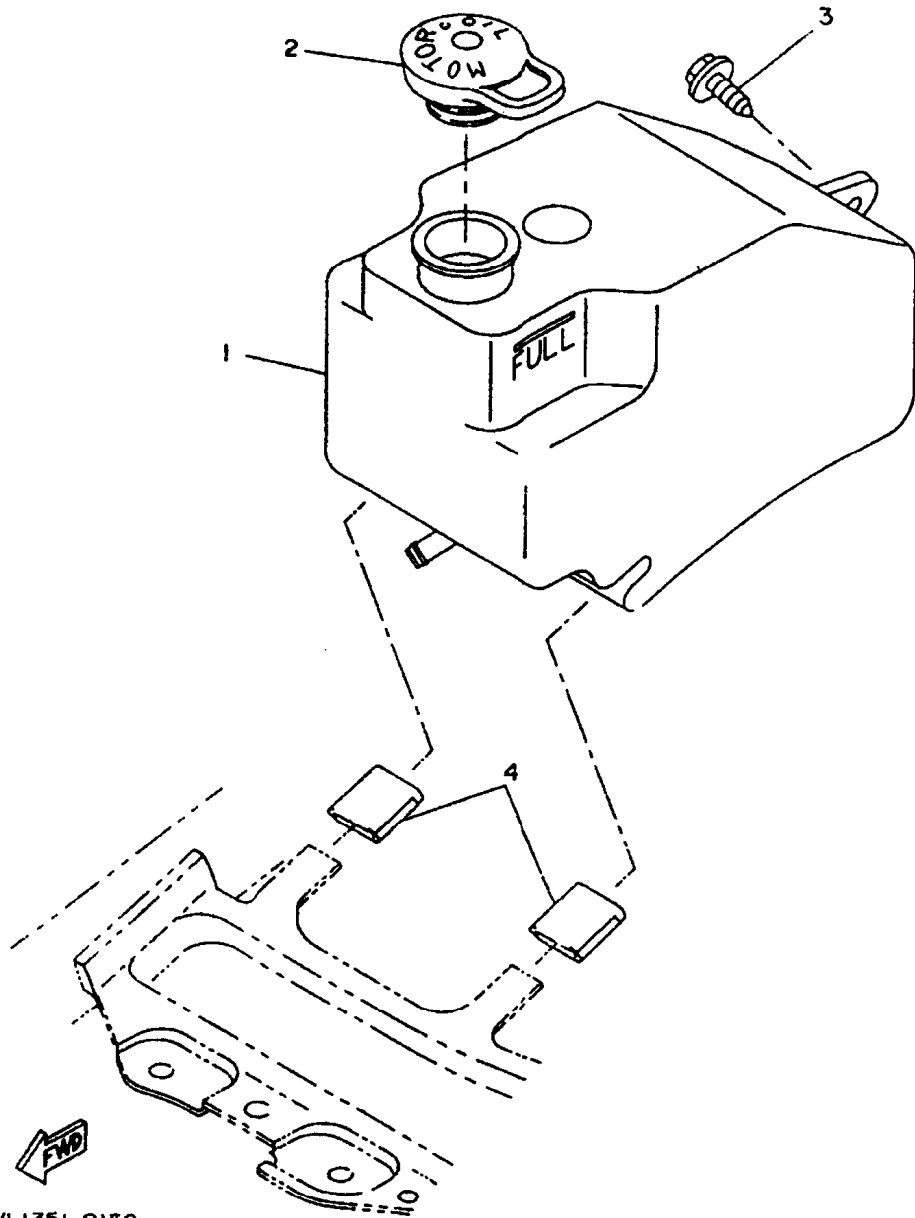


REF. No.	PART. No.	DESCRIPTION	QTY	REMARKS	
14 -	1	3VL-F1711-20-LK	COVER, SIDE 1 FINE SILVER	1	UR BM9
		3VL-F1711-20-13	COVER, SIDE 1	1	BLUE OCEAN
	2	90119-06060	BOLT, WITH WASHER	2	
	3	3VL-F1721-00-21	COVER, SIDE 2	1	BLUE OCEAN
		3VL-F1721-00-LK	COVER, SIDE 2	1	FINE SILVER
	4	3WV-F173E-20	GRAPHIC 1	1	UR BM9
	5	3WV-F173F-20	GRAPHIC 2	1	UR BM9
	6	4LJ-F1788-00	GRAPHIC BW'S	2	UR BOC
		4LJ-F1788-20	GRAPHIC BW'S	2	UR BM9
	8	4LJ-F1565-00	EMBLEM 2	2	UR BOC
	4LJ-F1565-20	EMBLEM 2	2	UR BM9	
9	3VL-F172A-00	PANEL 1	1	BLACK	
10	90159-06059	SCREW, WITH WASHER	2		



3VL1351-0140

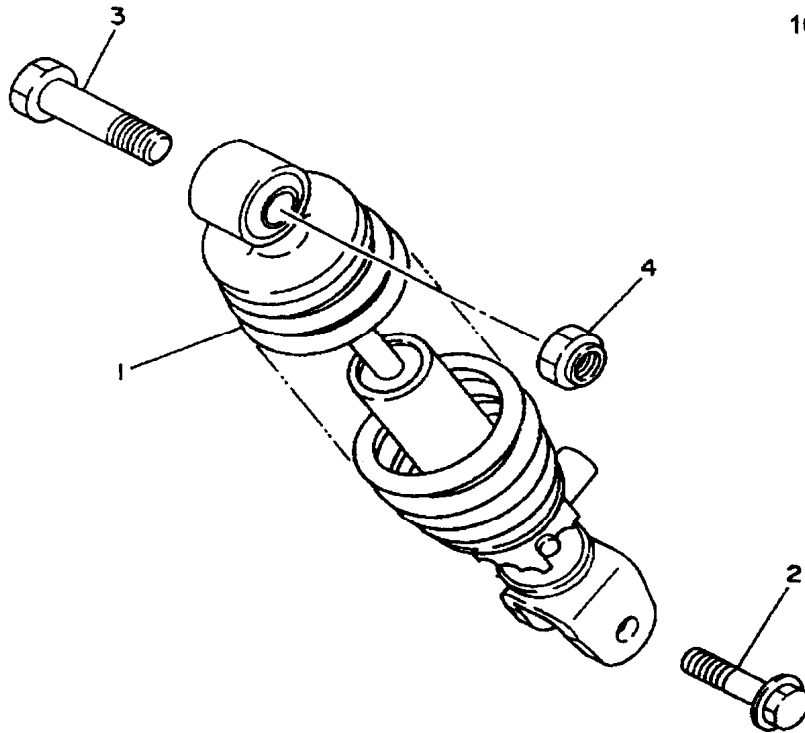
FIG. 15 - OIL TANK



3VL1351-0150

REF. No.	PART. No.	DESCRIPTION	QTY	REMARKS
15 - 1	4TY-F1751-00	TANK, OIL	1	
2	2N3-21771-01	BODY, CAP	1	
3	90119-06018	BOLT, WITH WASHER	1	
4	2E9-24182-00	DAMPER, LOCATING 2	2	

FIG. 16 - REAR ARM. SUSPENSION

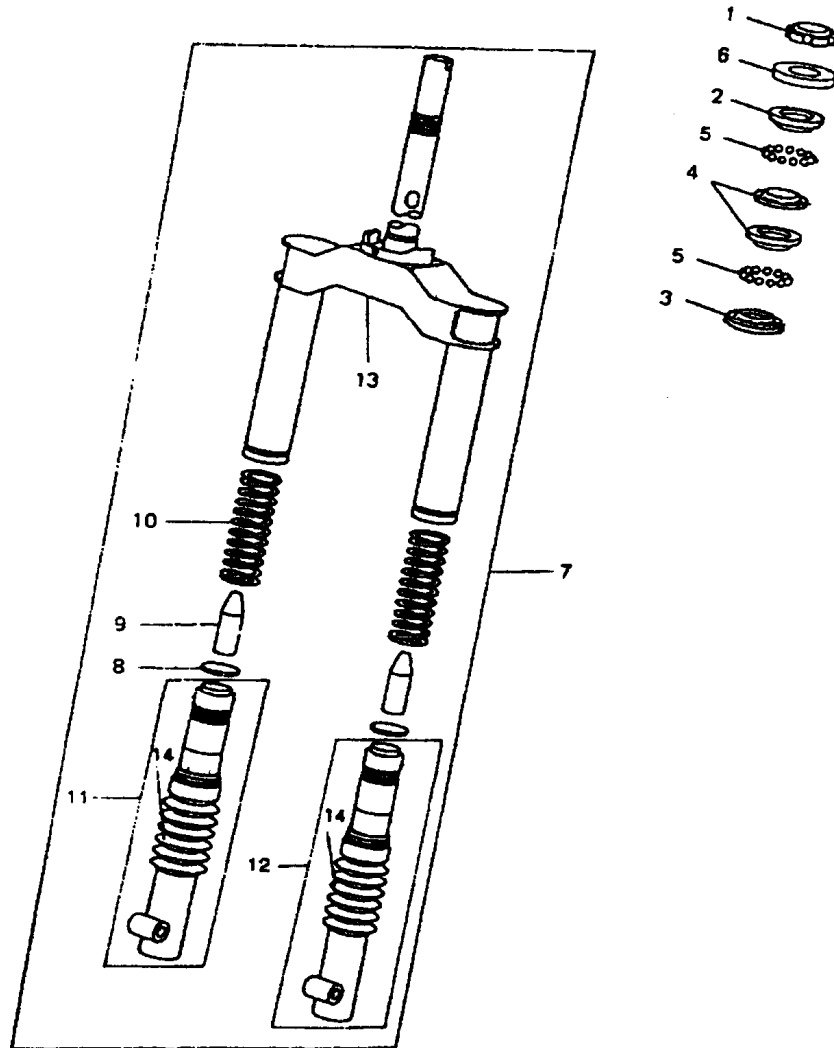


REF. No.	PART. No.	DESCRIPTION	QTY	REMARKS
16 - 1	4LJ-F2210-00	SHOCK ABSORBER ASSY	1	REAR
2	90105-08121	BOLT, WASHER BASED	1	
3	90101-10776	BOLT	1	
4	95617-10200	BOLT. STUD	1	



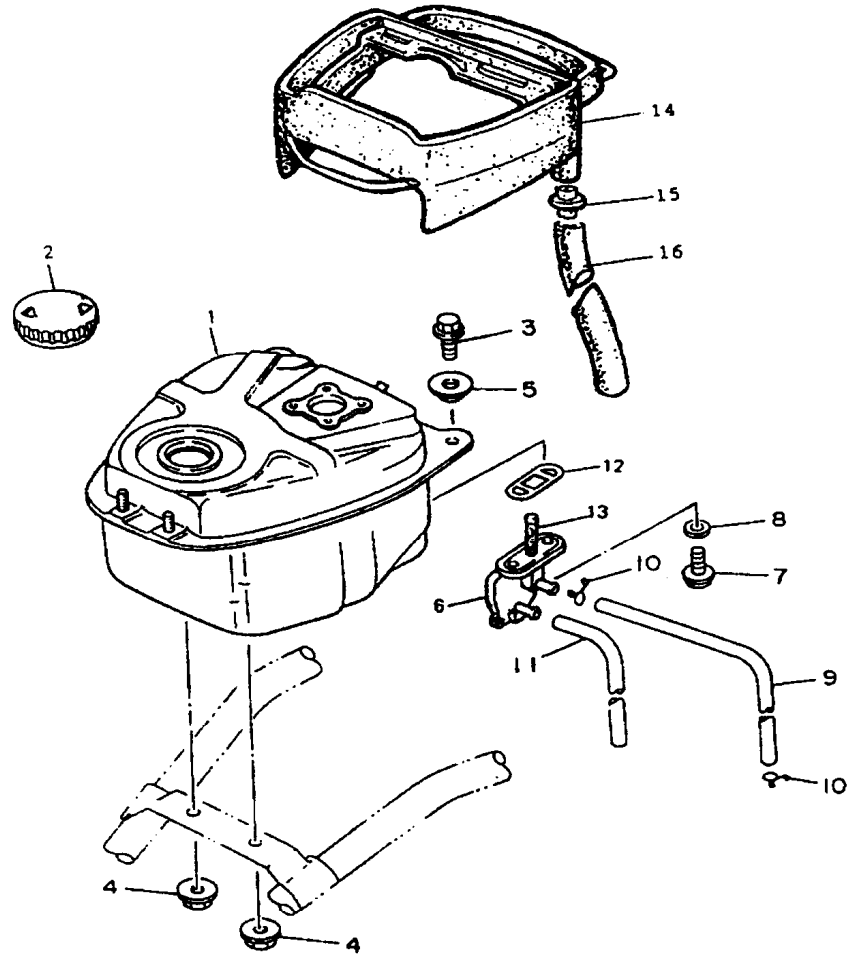
3MX1110-0160

FIG. 17 - FRONT FORK



REF. No.	PART. No.	DESCRIPTION	QTY	REMARKS
17 -	1	90179-25033	NUT, POP	2
	2	22F-23411-01	RACE, BALL 1	1
	3	22F-23414-01	RACE, BALL 4	1
	4	22F-23412-01	RACE, BALL 2	2
	5	93503-16010	BALL	4
	6	122-23416-00	COVER, BALL RACE 2	1
	7	3VL-F3100-00	FRONT FORK ASSY	1
	8	3VL-F3143-00	.SEAT, SPRING LOWER	2
	9	3VL-F3195-00	.RUBBER	2
	10	3VL-F3141-00	.SPRING, FRONT FORK	2
	11	3VL-F3120-00	.INNER TUBE COMP.2	1
	12	3VL-F3110-00	.INNER TUBE COMP.2	1
	13	3VL-F3340-20	.UNDER BRACKET COMP.	2
	14	3VL-F3191-00	.BOOT	2

FIG. 18 - FUEL TANK

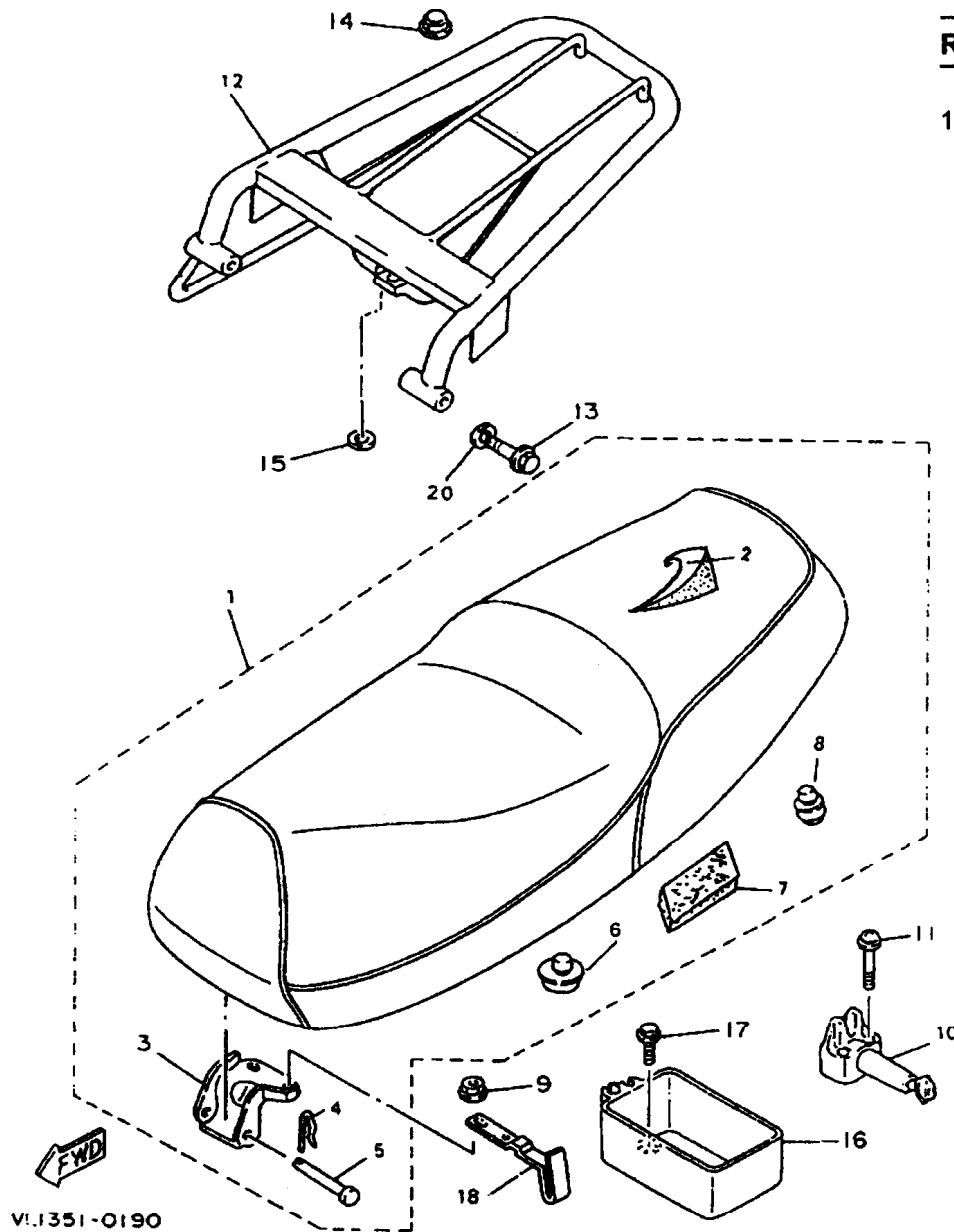


REF. No.	PART. No.	DESCRIPTION	QTY	REMARKS
18 - 1	4TY-F4110-00	FUEL TANK COMP.	1	
2	3VL-F4610-01	CAP ASSY	1	
3	95027-06012	BOLT, FLANGE	2	
4	95707-06500	NUT, FLANGE	2	
5	90209-06306	WASHER (0.6T)	2	
6	3VL-F4500-00	FUEL COCK ASSY 1	1	
7	90149-06011	SCREW	2	
8	90202-05193	WASHER, PLATE	2	
9	3AA-24311-00	PIPE, FUEL 1	1	
10	90467-09006	CLIP	2	
11	90445-07370	HOSE (L850)	1	
12	3VL-F4512-00	GASKET	1	
13	3VL-F4501-00	FILTER, FUEL	1	
14	3VL-F414A-10	COVER, FILLER	1	
15	3VL-F4545-00	SPACER, FUEL COCK	1	
16	3VL-F4318-00	PIPE, OVERFLOW	1	



3VL1351-0180

FIG. 19 - SEAT

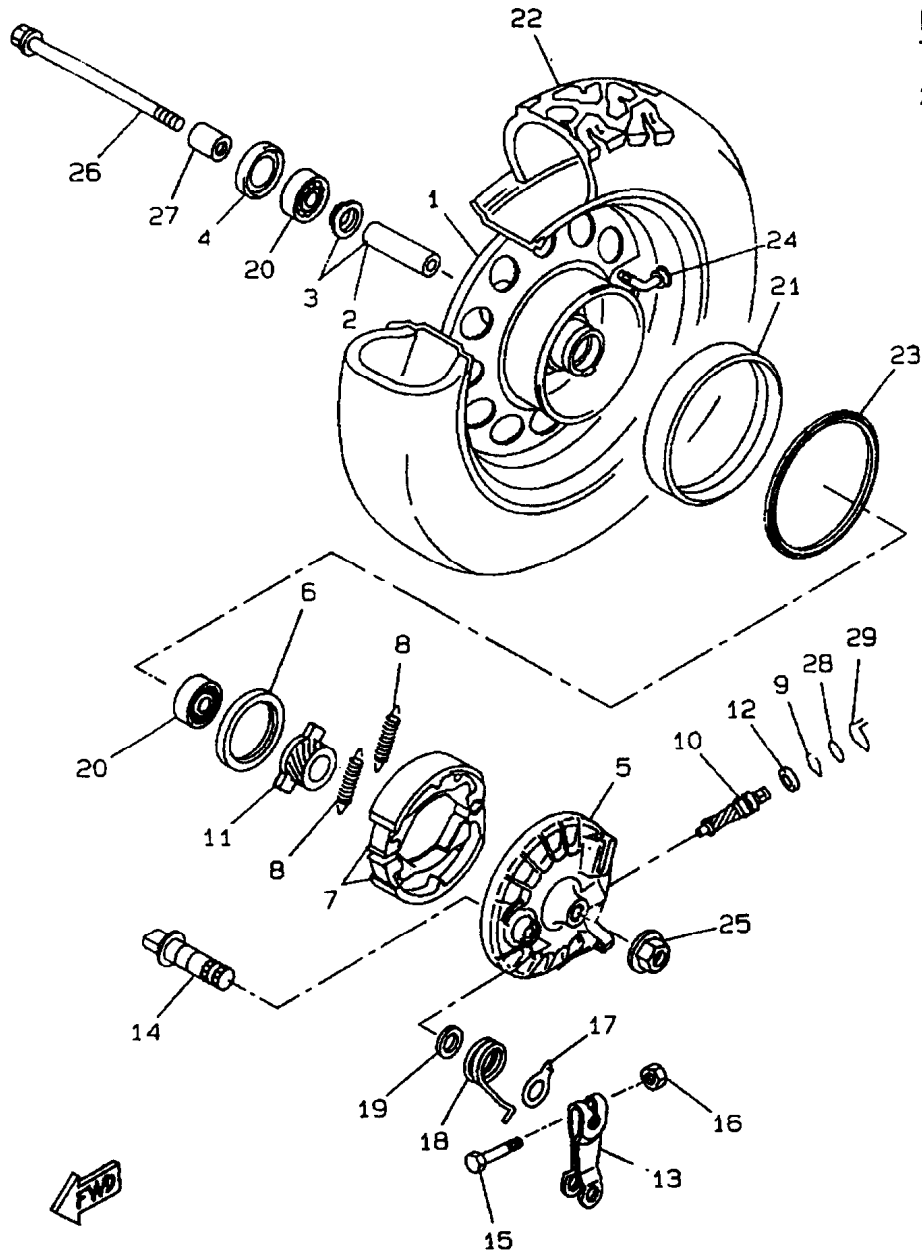


VI.1351-0190

REF. No.	PART. No.	DESCRIPTION	QTY	REMARKS
19 -	1	4PB-F4730-11	1	DOUBLE SEAT ASSY
	2	4PB-F4731-10	1	.COVER SEAT
	3	3VL-F4726-00	1	.HINGE, SEAT
	4	3VL-F4623-00	1	.PIN 1
	5	3VL-F4572-00	1	.SHAFT, FUEL CHARGE
	6	3VL-F4741-00	1	.PAD, SEAT
	7	3VL-F4737-00	1	.DAMPER, SEAT
	8	3VL-F4741-10	1	.PAD, SEAT
	9	95707-06500	2	NUT, FLANGE
	10	4BX-F4780-00	1	SEAT LOCK ASSY
	11	90159-06064	2	SCREW, WITH WASHER
	12	3VV-F4842-00-P1	1	CARRIER, REAR
	13	95024-08055	2	BOLT, FLANGE
	14	90176-08068	1	NUT, CROWN
	15	90201-08326	1	WASHER, PLATE
	16	3VL-F1171-00	1	BOX, TOOL
	17	90119-06018	2	BOLT, WITH WASHER
	18	4TY-F1398-00	1	HANGER, HELMET
	20	92990-08600	2	WASHER, PLATE

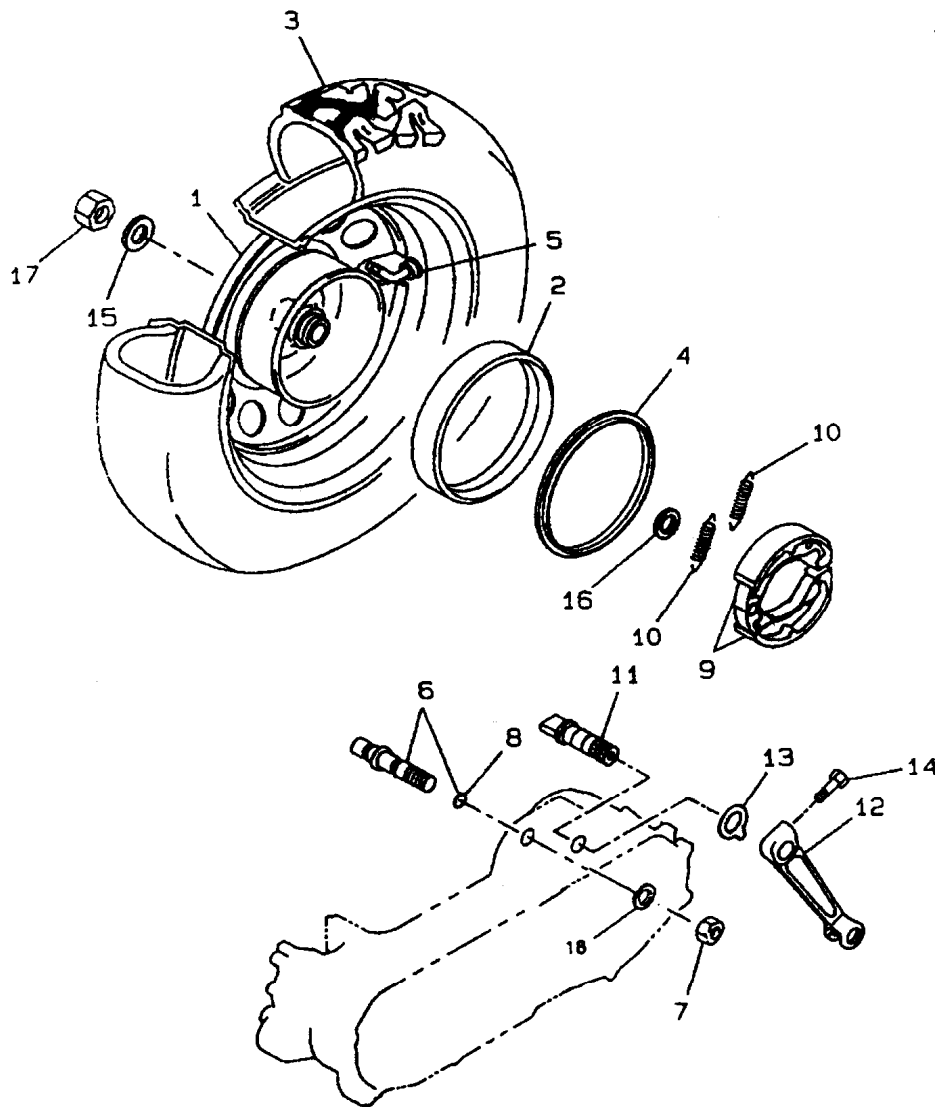
LIGHT GRAY
METALLIC 1

FIG. 20 - FRONT WHEEL



REF. No.	PART. No.	DESCRIPTION	QTY	REMARKS
20	1	4TY-F5180-00-P0	1	LIGHT GRAY METALLIC 1
	2	90560-10347	1	
	3	4KH-W5115-17	1	
	4	93106-20001	1	
	5	3AA-25121-00-P2	1	LIGHT YELLOWISH GRAY ME 3
	6	93102-40367	1	
	7	4BX-W2534-00	1	
	8	90506-15260	2	
	9	2T4-25137-00	1	
	10	3AA-25138-00	1	
	11	3AA-25135-00	1	
	12	90201-064L6	1	
	13	3E1-25155-00	1	
	14	3Y6-25351-00	1	
	15	90101-06278	1	
	16	95307-06600	1	
	17	3Y6-2533A-01	1	
	18	90508-26393	1	
	19	36F-25159-00	1	
	20	93306-30003	2	
	21	3VL-F5185-00	1	
	22	4TY-F5108-00	1	
	23	3VL-F514A-00	1	
	24	3VL-F5170-10	1	
	25	95617-10200	1	
	26	3AA-25181-00-01	1	
	27	90387-102V7	1	
	28	93210-10010	1	
	29	2E9-25137-01	1	

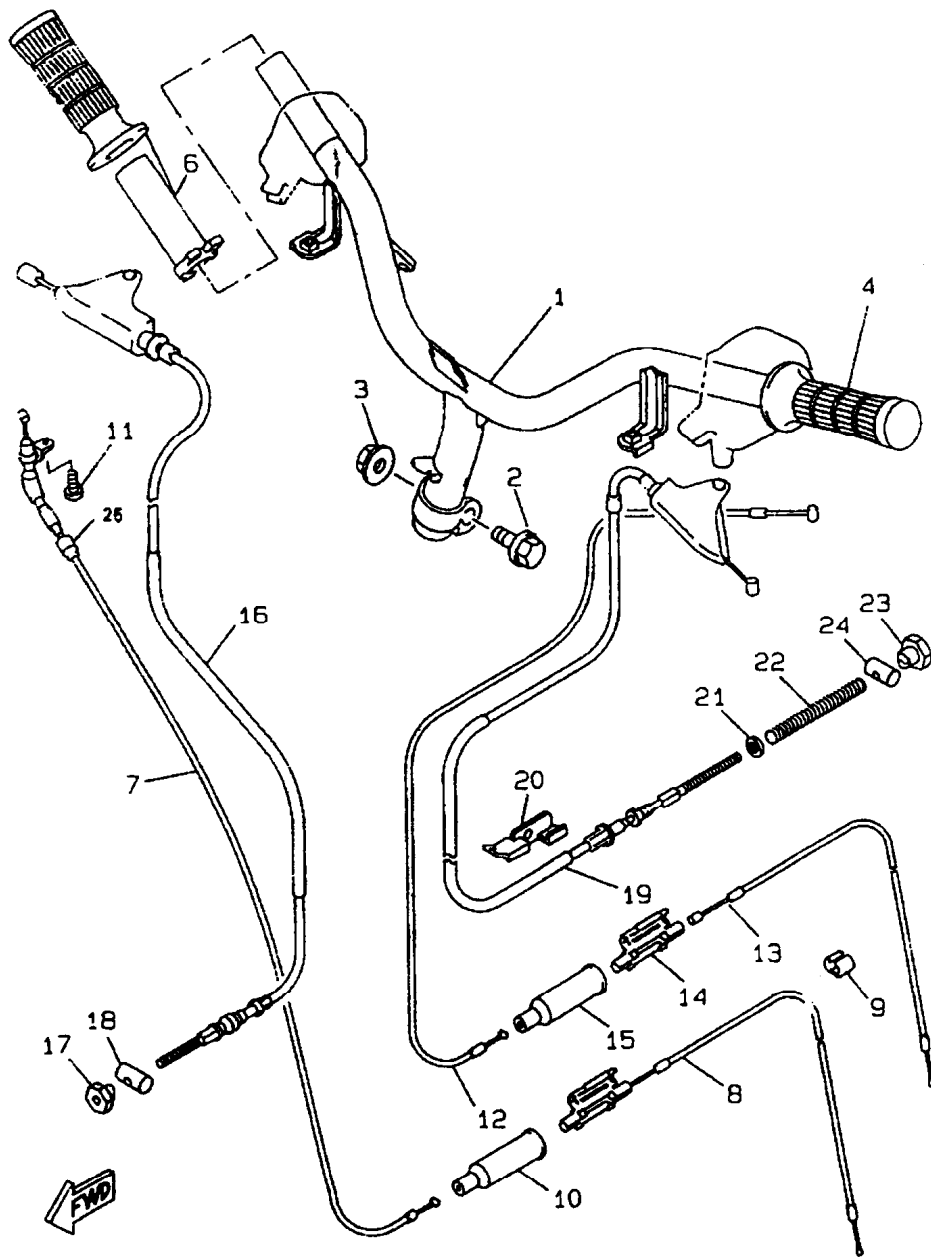
FIG. 21 - REAR WHEEL



REF. No.	PART. No.	DESCRIPTION	QTY	REMARKS
21 - 1	4TY-F5390-00-P0	REAR WHEEL COMP.	1	LIGHT GRAY METALLIC 1
2	3VL-F5336-00	RING 2	1	
3	4TY-F5308-00	REAR TIRE SET	1	
4	3VL-F514A-00	RING, WHEEL 1 (LEFT)	1	
5	3VL-F5170-10	AIR VALVE ASSY	1	
6	4TY-W5326-00	PIN PIVOT ASSY	1	
7	3VL-F5182-00	NUT, AXLE	1	
8	93210-07435	O-RING	1	
9	4BX-W2534-00	BRAKE SHOE KIT 2	1	
10	90506-15260	SPRING	2	
11	3AA-25351-00	CAMSHAFT	1	
12	3AA-25355-03	LEVER, CAMSHAFT	1	
13	3Y6-2533A-01	PLATE, INDICATOR	1	
14	90101-06291	BOLT (L:130MM)	1	
15	90201-142M6	WASHER, PLATE	1	
16	90201-177G4	WASHER, PLATE	1	
17	90185-14150	NUT, SELF-LOCKING	1	
18	3VL-F5384-00	.WASHER, WHEEL	1	

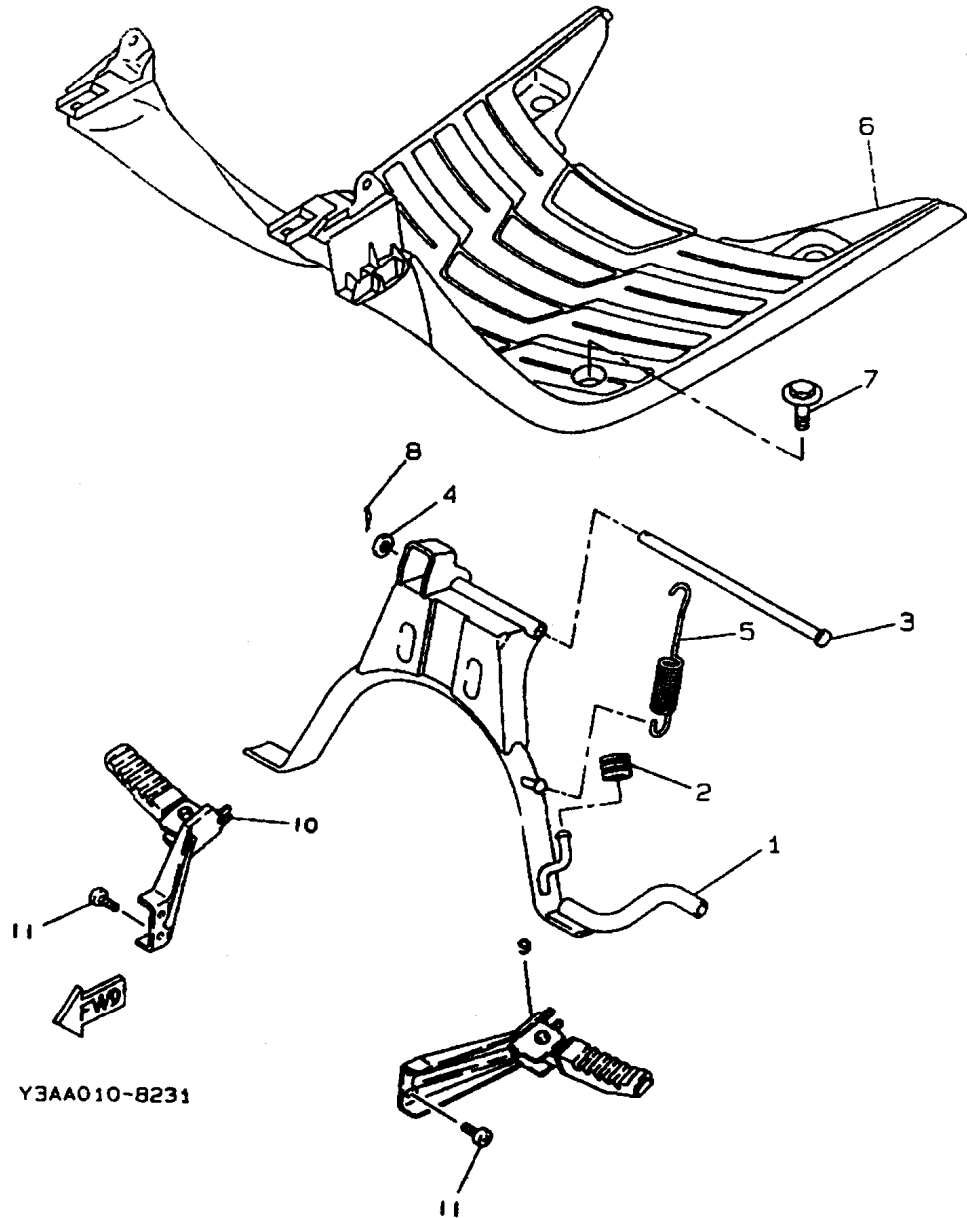


FIG. 22 - STEERING HANDLE. CABLE



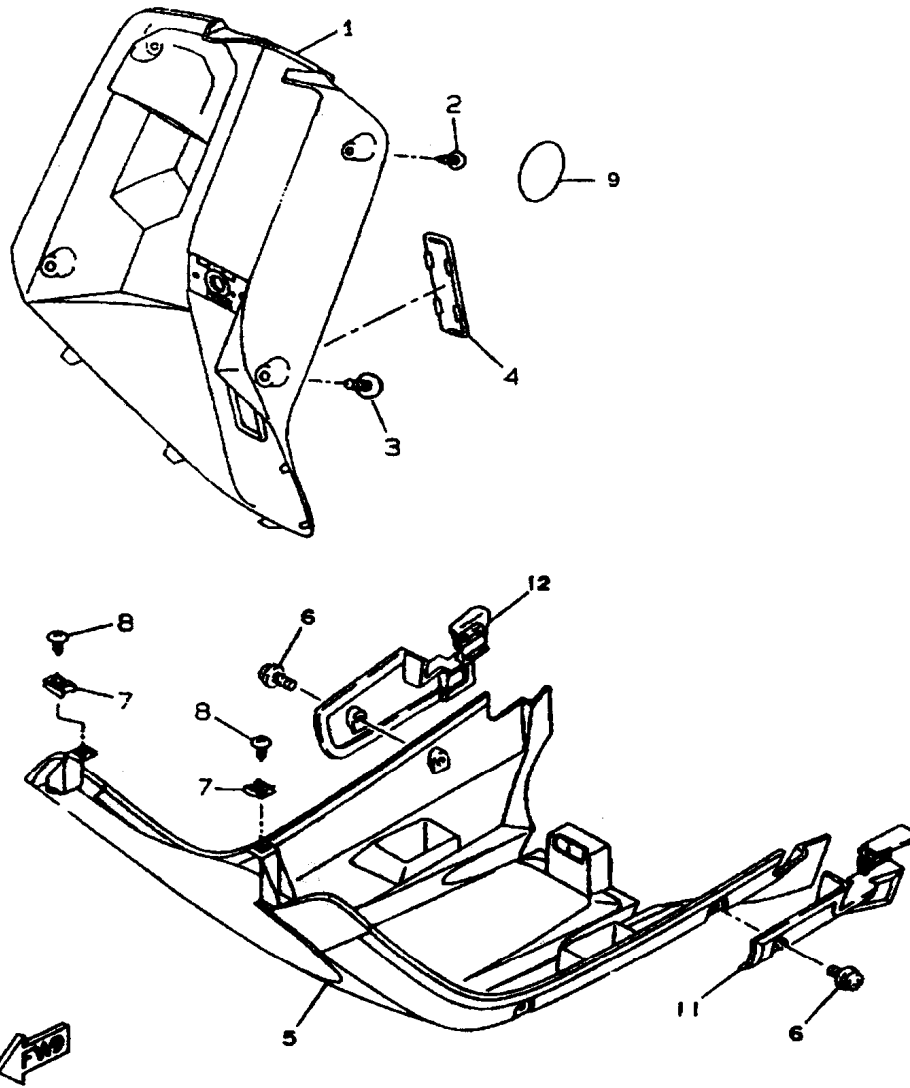
REF. No.	PART. No.	DESCRIPTION	QTY	REMARKS
22 -	1	4TY-F6110-00	1	HANDLE COMP.
	2	90105-10036	1	BOLT, WASHER BASED
	3	95617-10200	1	BOLT, STUD
	4	3VL-F6241-00	1	GRIP
	6	3VL-F6240-00	1	GRIP ASSY
	7	3VL-F6311-01	1	CABLE, THROTTLE 1
	8	3VL-F6312-01	1	CABLE, THROTTLE 2
	9	90468-15009	1	CLIP
	10	3WG-F6329-00	1	CAP, RUBBER
	11	98507-05010	1	SCREW, PAN HEAD
	12	3VL-F6331-00	1	CABLE, STARTER 1
	13	3VL-F6334-02	1	CABLE, STARTER 2
	14	3VL-F6261-00	1	CONNECTOR, CABLE
	15	3WG-F6329-00	1	CAP, RUBBER
	16	3VL-F6341-00	1	CABLE, BRAKE
	17	90179-06176	1	NUT
	18	90249-12008	1	PIN
	19	3VL-F6351-00	1	CABLE, BRAKE
	20	4SB-F6475-00	1	HOLDER
	21	90202-08175	1	WASHER, PLATE
	22	90501-122E1	1	SPRING, COMPRESSION
	23	90179-06176	1	NUT
	24	90249-12008	1	PIN
	25	3VL-F6316-00	1	BOOT, THROTTLE CABLE
		NO ILLUSTRATED		
		3VL-F6262-00	2	CAP, CABLE CONNECTOR

FIG. 23 - STAND. FOOTREST



REF. No.	PART. No.	DESCRIPTION	QTY	REMARKS
23 - 1	4TY-F7111-00	STAND, MAIN	1	
2	90387-076V1	COLLAR	1	
3	4SB-F7112-00	SHAFT, MAIN STAND	1	
4	90202-10120	WASHER, PLATE	1	
5	90506-29280	SPACER	1	
6	3VL-F7481-10	BOARD, FOOTREST	1	
7	90119-06060	BOLT, WITH WASHER	2	
8	90468-12006	CLIP	1	
9	4TY-F7430-00	REAR FOOTREST ASSY 1	1	
10	4TY-F7440-00	REAR FOOTREST ASSY 2	1	
11	92017-08016	SCREW	4	

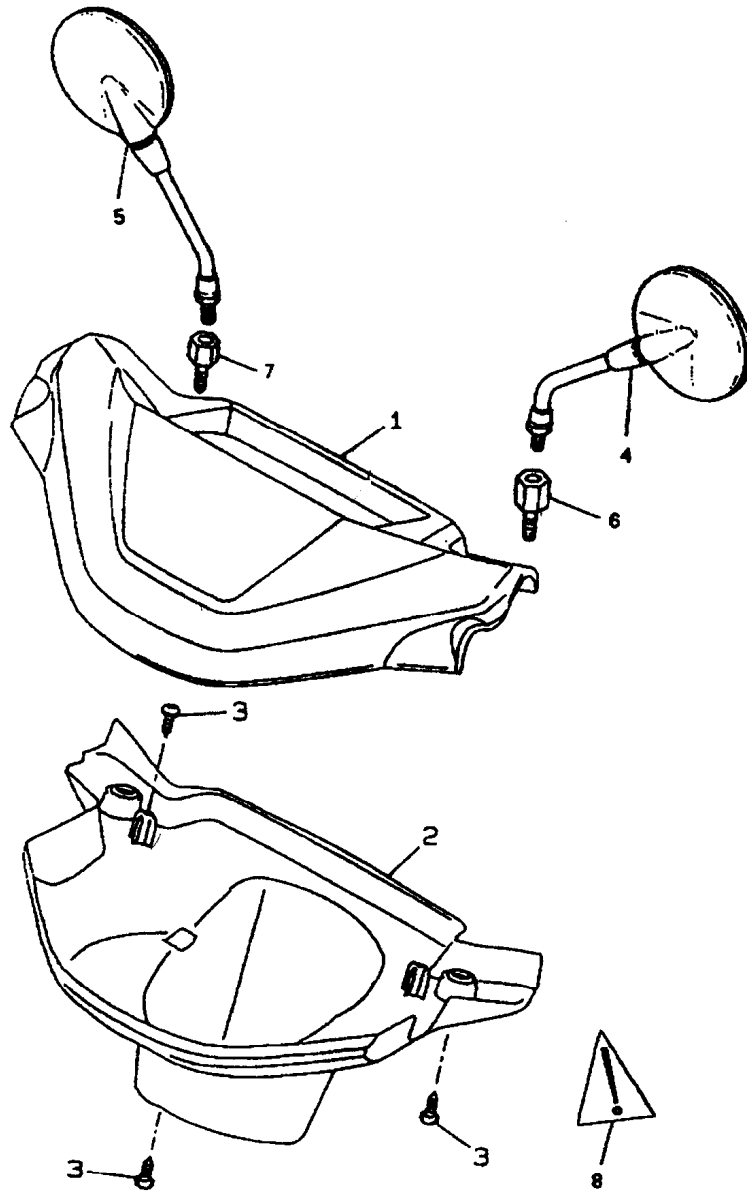
FIG. 24 - LEG SHIELD



REF. No.	PART. No.	DESCRIPTION	QTY	REMARKS
24 - 1	3VL-F8311-50	LEG SHIELD 1	1	BLUE OCEAN
	3VL-F8311-40-LK	LEG SHIELD 1 FINE SILVER	1	UR BLUE METALLIC 9
2	97707-50016	SCREW, TAPPING	2	
3	90159-06182	SCREW, WITH WASHER	2	
4	3WV-F8349-10	CAP	1	BLUE OCEAN
	3WV-F8349-00-LK	CAP FINE SILVER	1	UR BLUE METALLIC 9
5	4CA-F8385-10	COVER, LOWER BLACK	1	UR BM9
	4CA-F8385-50	COVER, LOWER	1	BLUE OCEAN
6	90159-06182	SCREW, WITH WASHER	4	
7	90183-05042	NUT, SPRING	2	
8	90167-05025	SCREW, TAPPING	2	
9	3VL-F8315-40	EMBLEM	1	UR BM9
	3VL-F8315-50	EMBLEM	1	UR BOC
11	3MX-27486-20	COVER 1	1	
12	3MX-27487-20	COVER 2	1	

3VL1351-0240

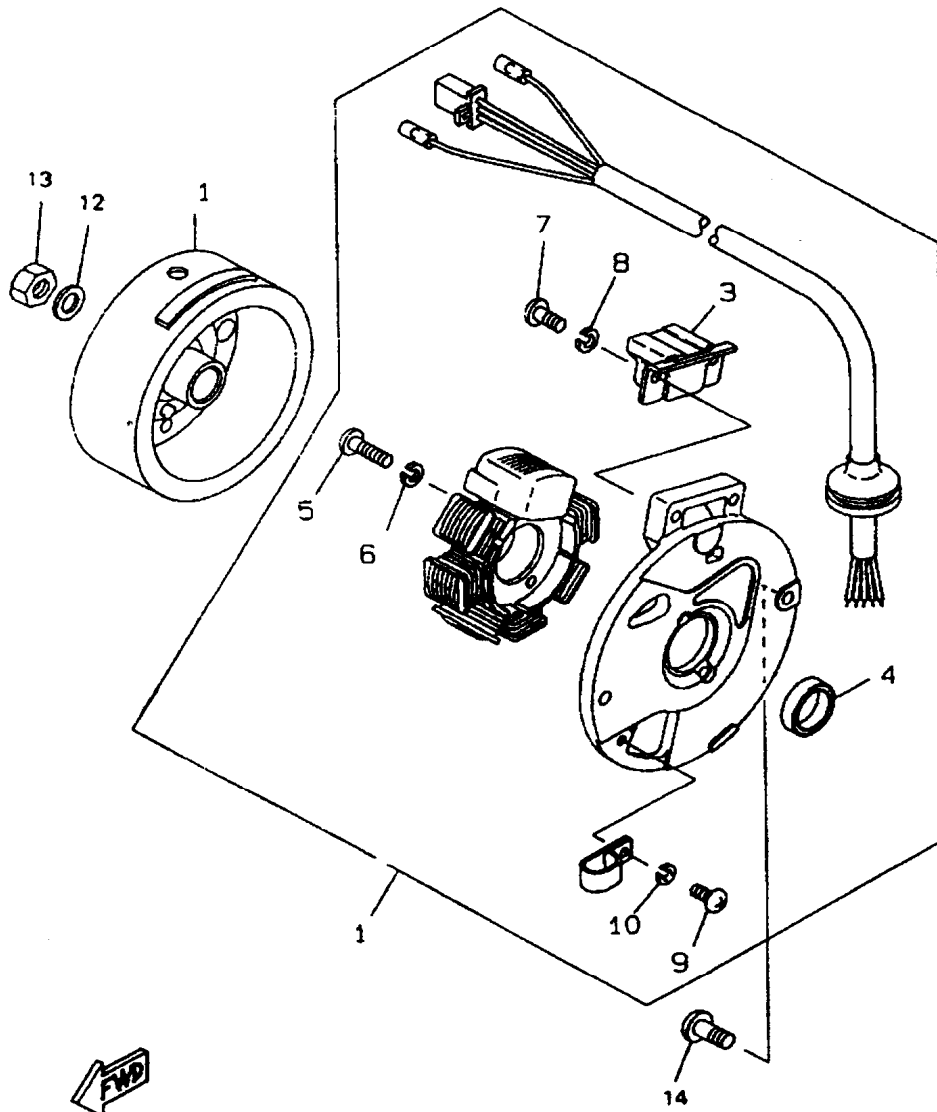
FIG. 25 - COWLING 1



REF. No.	PART. No.	DESCRIPTION	QTY	REMARKS
25 -	1	3VL-F6213-40-P7	1	COVER, UPPER BM9/YB
		3VL-F6213-20-P1	1	COVER, UPPER
	2	3VL-F6215-40	1	COVER, LOWER FINE SILVER
		3VL-F6215-50	1	COVER, LOWER
	3	97707-50016	5	SCREW, TAPPING
	4	3VL-F6280-00	1	REAR VIEW MIRROR ASS
	5	9079Q-71878	1	REAR VIEW MIRROR ASSY
	6	3VL-F629R-00	1	BRACKET, MIRROR 1
7	3VL-F629N-00	1	BRACKET, MIRROR 1	
8	4TY-F1568-00	1	LABEL, WARNING	

3VL1351-0250

FIG. 26 - GENERATOR



REF. No.	PART. No.	DESCRIPTION	QTY	REMARKS
26 -	1	4PB-85560-00	1	BASE ASSY
	3	2JA-85580-M0	1	.COIL, PULSER
	4	93104-19097	1	.OIL SEAL
	5	98517-05020	2	.SCREW, PAN HEAD
	6	92901-05100	2	.WASHER, SPRING
	7	98517-05010	2	.SCREW, PAN HEAD
	8	92901-05100	2	.WASHER, SPRING
	9	98507-04006	1	.SCREW, PAN HEAD
	10	92907-04100	1	.WASHER
	11	2JA-85550-00	1	ROTOR ASSY
	12	92907-10600	1	WASHER
	13	90170-10219	1	NUT
	14	98507-06016	2	SCREW, PAN HEAD

Y3FC010-8260

FIG. 27 - FLASHER LIGHT

REF. No.	PART. No.	DESCRIPTION	QTY	REMARKS
----------	-----------	-------------	-----	---------

27 -	1	3VL-H3310-00	FRONT FLASHER LIGHT	1
	2	3VL-H3320-00	FRONT FLASHER LIGHT	1
	3	3WW-H3327-00	.BOLT, FLASHER 2	1
	4	3VL-H3312-00	.LENS, FLASHER	1
	5	NDH-H3311-00-01	.BULB	1

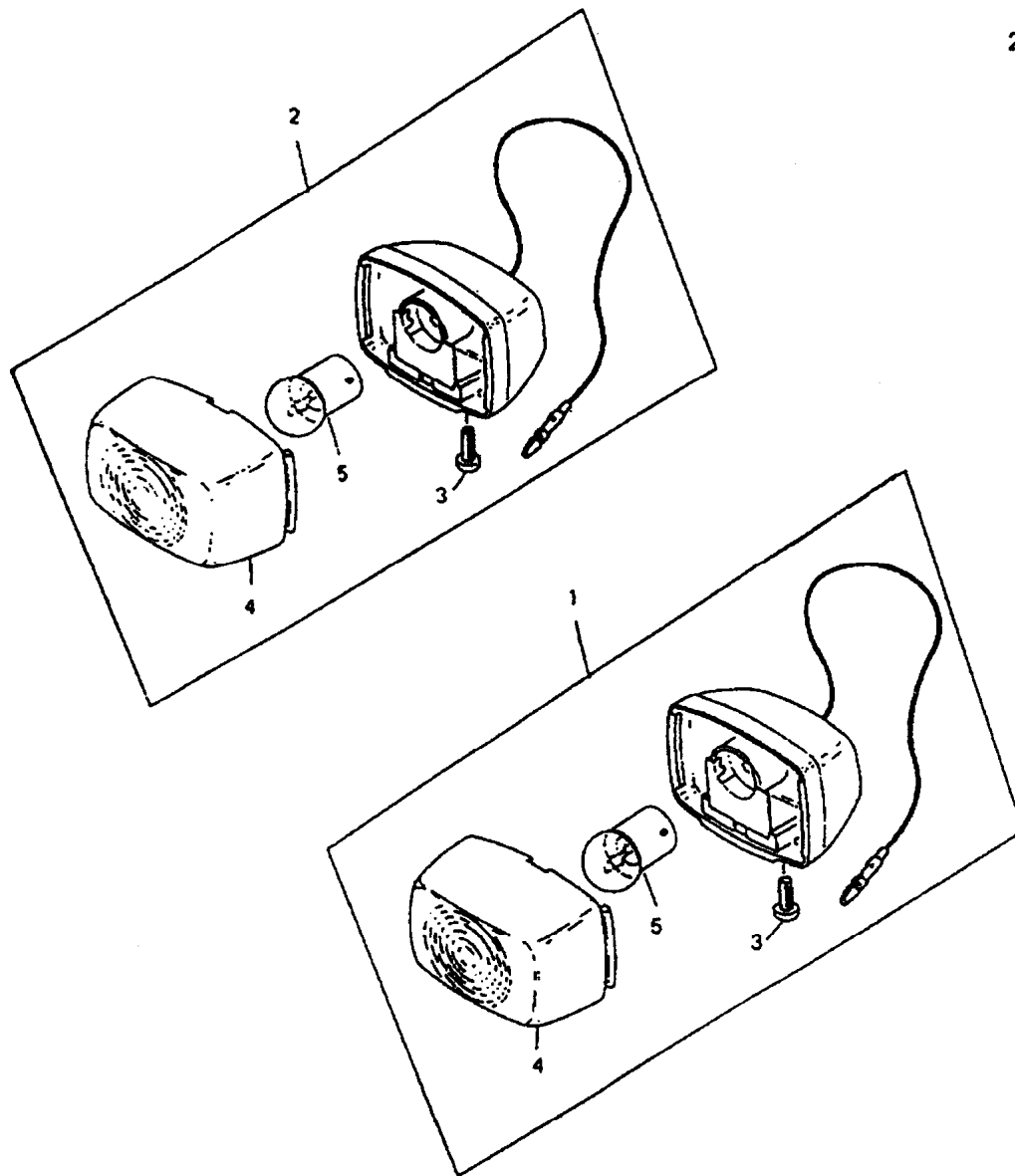
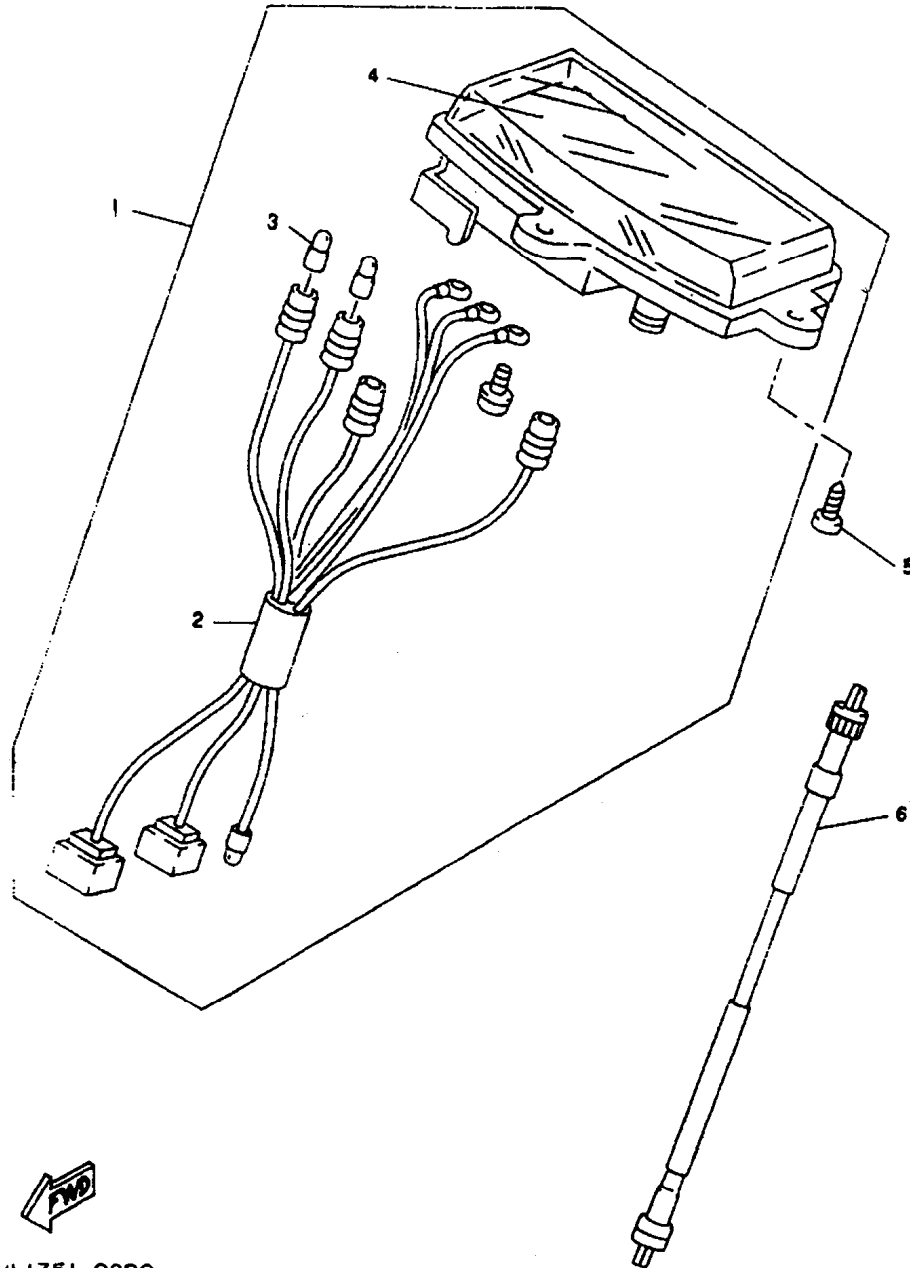


FIG. 28 - METER

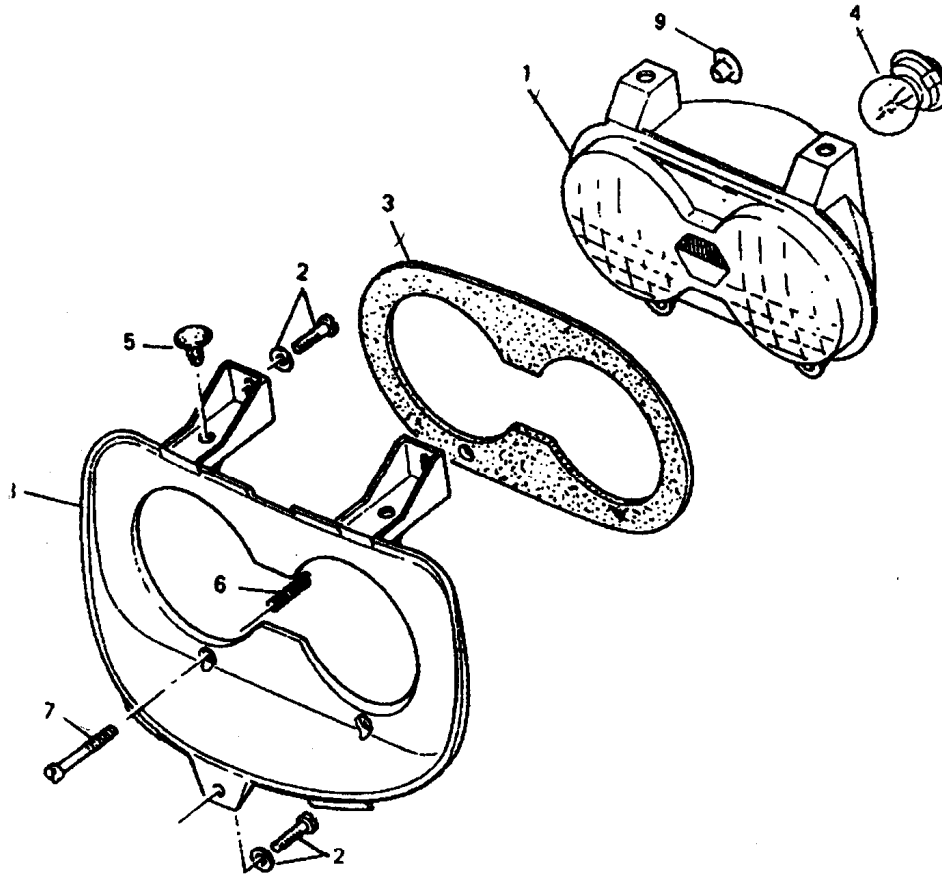


REF. No.	PART. No.	DESCRIPTION	QTY	REMARKS
28 - 1	3VL-H3510-01	SPEEDOMETER ASSY	1	
2	3VL-H3573-00	.SOCKET CORD ASSY 3	1	
3	3UP-H4347-00	.BULB	3	
4	4CU-H3511-00	.LENS, SPEEDOMETER	1	
5	97707-50016	SCREW, TAPPING	2	
6	3VL-H3550-00	SPEEDOMETER CABLE AS	1	



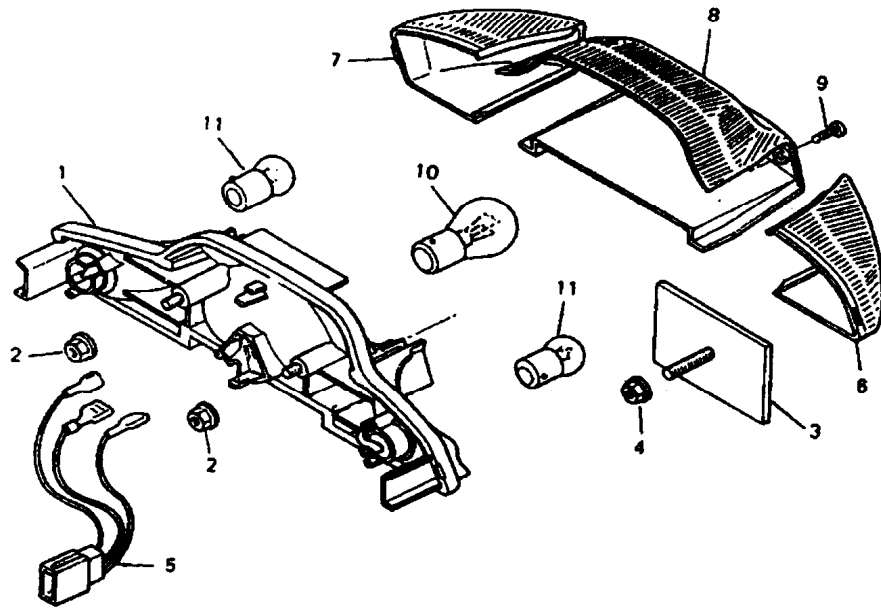
3VLI351-0280

FIG. 29 - HEADLIGHT



REF. No.	PART. No.	DESCRIPTION	QTY	REMARKS
29 - 1	3VL-H4320-00	LENS ASSY	1	
2	90159-05089	SCREW, WITH WASHER	3	
3	3VL-H4144-00	COVER, HEADLIGHT	1	
4	3ÉC-H4314-10	BULB, HEADLIGHT	1	
5	3VL-H4316-00	NUT, BODY FITTING	2	
6	3VL-H4332-10	SPRING, SCREW	2	
7	3VL-H4331-10	SCREW, RIM ADJUSTING	2	
8	3VL-H4196-01	COVER, SOCKET	1	
9	3VL-H4352-00	GROMMET	1	

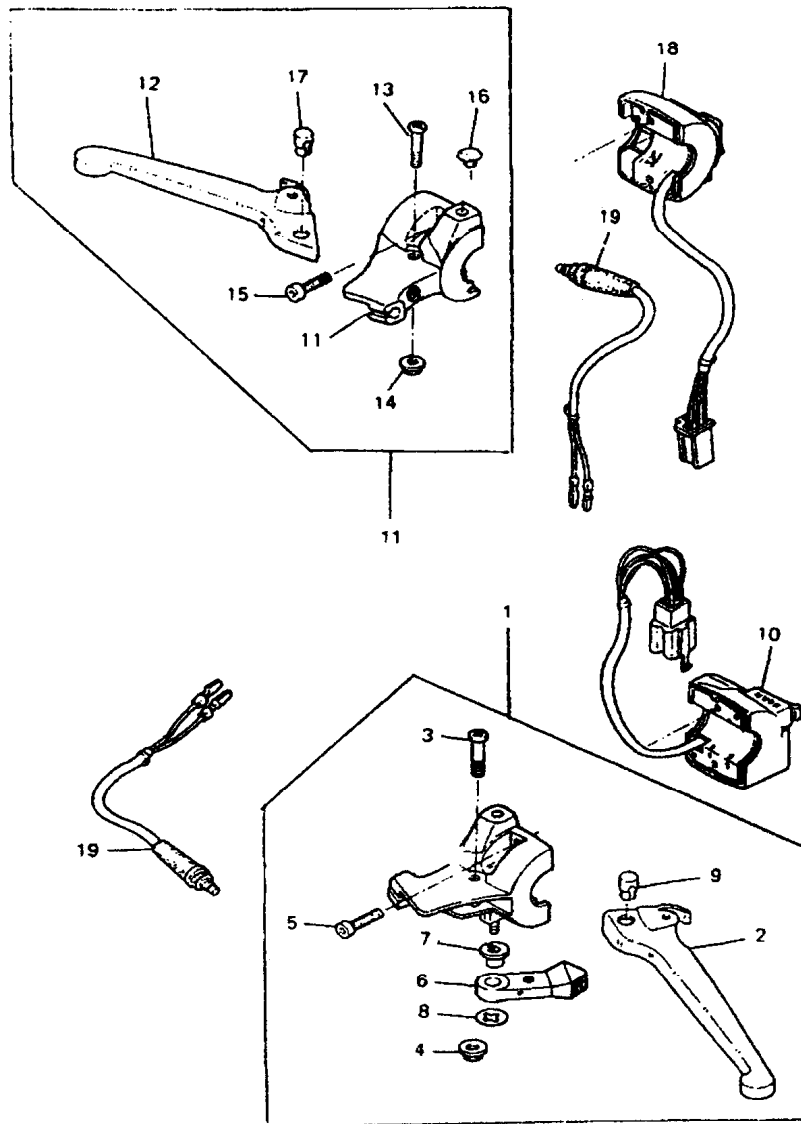
FIG. 30 - TAILLIGHT



REF. No.	PART. No.	DESCRIPTION	QTY	REMARKS
30 -	1	3VL-H4720-00	1	BASE ASSY
	3	3NC-H5130-00	1	REAR REFLECTOR ASSY
	4	95707-06500	2	NUT, FLANGE
	4	4RV-H5114-00	1	NUT
	5	3VL-H4735-00	1	CORD ASSY
	6	3VL-H3332-00	1	LENS, FLASHER 1
	7	3VL-H3342-00	1	LENS, FLASHER 2
	8	3VL-H4721-00	1	LENS, TAILLIGHT
	9	3VL-H4761-00	2	BOLT
	10	3HL-H4535-00	1	BULB
	11	NDH-H3311-00-01	2	BULB

FWD

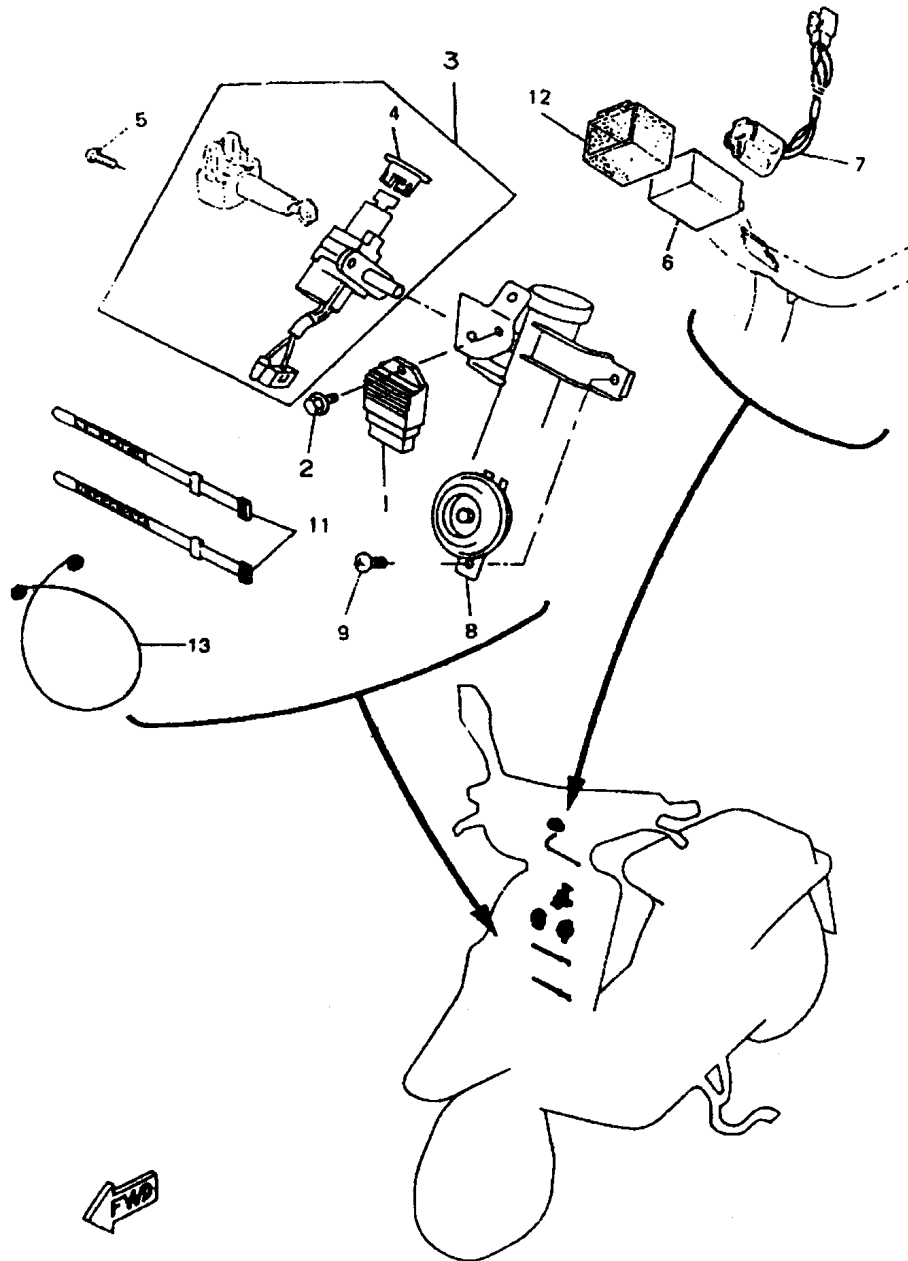
FIG. 31 - HANDLE SWITCH. LEVER



REF. No.	PART. No.	DESCRIPTION	QTY	REMARKS
31 -	1	3VL-H2910-00	LEVER HOLDER ASSY (LEFT)	1
	2	3VL-H3912-00	.LEVER 1	1
	3	3VL-H3915-00	.SCREW, LEVER FITTING	1
	4	3VL-H3916-00	.NUT, LEVER FITTING	1
	5	3VL-H3945-00	.BOLT, LEVER	2
	6	3VL-H3941-00	.LEVER, STARTER	1
	7	3VL-H3982-00	.COLLAR, DECOMPRESSION	1
	8	3VL-H3943-00	.WASHER, STARTER	1
	9	3VL-F636A-00	.END WIRE 1	1
	10	3VL-H3976-10	SWITCH, HANDLE 1	1
	11	3VL-H2920-01	LEVER HOLDER ASSY (RIGHT)	1
	12	3VL-H3922-00	.LEVER 2	1
	13	3VL-H3915-00	.SCREW, LEVER FITTING	1
	14	3VL-H3916-00	.NUT, LEVER FITTING	1
	15	3VL-H3945-00	.BOLT, LEVER	2
	16	3VL-H3929-00	.PLATE, SPRING	1
	17	3VL-F636A-00	.END, WIRE 1	1
	18	3VL-H3975-10	SWITCH, HANDLE 2	1
	19	3VL-H3980-00	FRONT STOP SWITCH	2



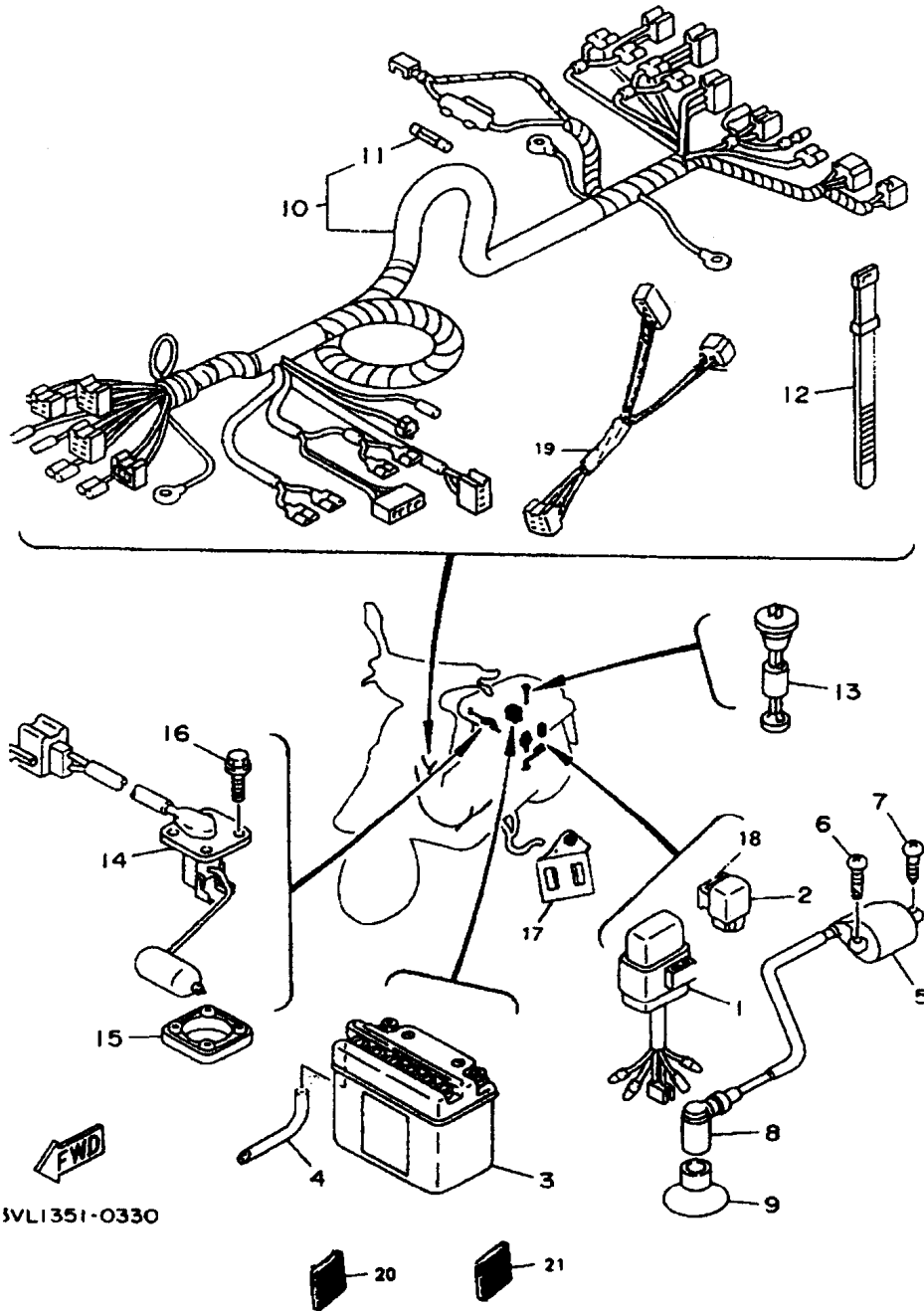
FIG. 32 - ELECTRICAL 1



REF. No.	PART. No.	DESCRIPTION	QTY	REMARKS
32 -	1	4VV-H1960-00	1	RECTIFIER & REGULATOR
	2	95027-06016	1	BOLT, FLANGE
	3	4VV-H2021-00	1	KEY SET
	4	4BX-H251J-00	1	RING, KEY
	5	90109-06851	2	BOLT
	6	3VL-H3350-00	1	FLASHER RELAY ASSY
	7	4CA-H2509-00	1	WIRE, SUB LEAD
	8	4CU-H3371-00	1	HORN
	9	98507-06010	1	SCREW, PAN HEAD
	11	4KH-H3936-00	3	BAND, SWITCH CORD
	12	3VL-H5546-00	1	BAND
	13	90465-18147	1	CLAMP



FIG. 33 - ELECTRICAL 2



REF. No.	PART. No.	DESCRIPTION	QTY	REMARKS
33 -	1	3KJ-85540-10	1	C.D.I. UNIT ASSY
	2	29U-81950-93	1	STARTER RELAY ASSY
	3	4CU-H2110-00	1	BATTERY ASSY
	4	90445-083F2	1	HOSE (L850)
	5	3KJ-82310-01	1	IGNITION COIL ASSY
	6	90149-06262	1	SCREW
	7	97707-60525	1	SCREW, TAPPING
	8	56J-82370-00	1	PLUG CAP ASSY
	9	3KJ-82372-00	1	SEAL, PLUG CAP
	10	3VL-H2590-00	1	WIRE HARNESS ASSY
	11	27V-82151-00	1	FUSE
	12	4KH-H3936-00	2	BAND, SWITCH CORD
	13	3VL-H5720-10	1	OIL LEVEL GAUGE ASSY
	14	3VL-85752-00	1	SENDER UNIT ASSY, FU
	15	5G3-85753-00	1	GASKET, SENDER UNIT
	16	90119-05071	4	BOLT, WITH WASHER
	17	3WW-H553A-00	1	STAY UNIT
	18	90465-13275	1	CLAMP
	19	3VL-H5721-00	1	WIRE, LEAD
	20	3EC-H5111-00	2	REFLECTOR, REAR 2
	21	3VL-H5111-00	2	REFLECTOR, FRONT 1

SVLI351-0330

**PARTS
NUMERICAL
INDEX**

CÓDIGO	REF. Nº	CÓDIGO	REF. Nº	CÓDIGO	REF. Nº	CÓDIGO	REF. Nº
3AA - 13100 - 03	04-01	14T - 14386 - 00	06-16	2T4 - 25137 - 00	20-09	4SB - E1311 - 00	01-04
3AA - 13124 - 00	04-05	4GF - 14392 - 00	06-14	2E9 - 25137 - 01	20-29	3VL - E1351 - 00	01-05
2GM - 13178 - 00	04-14	3HK - 14613 - 00	07-03	3AA - 25138 - 00	20-10	3VL - E1400 - 10	02-01
3WF - 13185 - 00	04-02	2JA - 14737 - 00	07-19	3E1 - 25155 - 00	20-13	4SB - E1603 - 00	02-14
1YU - 13187 - 00	04-03	3WX - 14766 - 00	07-14	36F - 25159 - 00	20-19	4SB - E1605 - 00	02-14
1YU - 13418 - 00	04-10	3AA - 1490J - 00	06-26	3AA - 25181 - 00 - 01	20-26	4SB - E1631 - 00	02-12
1YU - 13473 - 00	04-04	3AA - 15513 - 00	09-01	3Y6 - 2533A - 01	20-17	3VL - E1633 - 00	02-13
1YU - 13516 - 00	04-06	3VL - 15570 - 00	09-05	3Y6 - 2533A - 01	21-13	4SB - E1636 - 00	02-12
1YU - 13577 - 00	04-07	3ES - 15601 - 00	09-12	3AA - 25351 - 00	21-11	3VL - E2611 - 01	03-12
4KN - 13621 - 00	05-06	1NT - 15630 - 01	09-19	3Y6 - 25351 - 00	20-14	3VL - E2651 - 00	03-01
1YU - 14103 - 00	06-22	3AA - 15650 - 00	09-06	3AA - 25355 - 03	21-12	3VL - E2653 - 00	03-06
14T - 14104 - 00	06-24	24G - 16611 - 03	10-08	35R - 26294 - 00	13-09	3VL - E2658 - 00	03-02
1UV - 14106 - 00	06-23	3WG - 17608 - 00	10-23	3MX - 27486 - 20	24-11	3VL - E2658 - 00	03-07
1YU - 14126 - 00	06-02	3YJ - 17620 - 00	10-10	3MX - 27487 - 20	24-12	3VL - E3555 - 00	05-07
14T - 14169 - 00	06-25	3AA - 17641 - 00	10-16	3AA - 81800 - 02	09-21	3VL - E3555 - 00	05-07
1UV - 14169 - 00	06-08	3GF - 17660 - 02	10-22	1YU - 81801 - M0	09-24	3VL - E3610 - 00	05-01
1YU - 14197 - 01	06-21	24G - 17664 - 00	10-26	53L - 8181Y - M0	09-25	3VL - E3613 - 00	05-02
1YU - 14283 - 01	06-28	24G - 17684 - 00	10-28	29U - 81950 - 93	33-02	3VL - E3616 - 00	05-03
4TY - 14301 - 00	06-01	2T4 - 2139X - 00	12-07	27V - 82151 - 00	33-11	4PB - E4410 - 00	05-10
3KJ - 14312 - 30	06-04	2T4 - 21481 - 01	12-04	3KJ - 82310 - 01	33-05	3VL - E4429 - 00	05-16
14T - 14323 - 00	06-18	2N3 - 21771 - 01	15-02	56J - 82370 - 00	33-08	3VL - E4437 - 00	05-14
1YU - 14331 - 00	06-03	164 - 22216 - 00	08-02	3KJ - 82372 - 00	33-09	4PB - E4451 - 00	05-13
1YU - 14335 - 00	06-19	22F - 23411 - 01	17-02	3KJ - 85540 - 10	33-01	3VL - E4452 - 00	05-15
2XX - 14341 - 00	06-27	22F - 23412 - 01	17-04	2JA - 85550 - 00	26-11	3VL - E4453 - 00	05-23
14T - 14343 - 45	06-06	22F - 23414 - 01	17-03	4PB - 85560 - 00	26-01	3VL - E4465 - 00	05-17
3AA - 14349 - 00	06-13	122 - 23416 - 00	17-06	2JA - 85580 - M0	26-03	4TY - E4610 - 00	07-01
1YU - 14353 - 25	06-07	2E9 - 24182 - 00	15-04	3VL - 85752 - 00	33-14	4TY - E4729 - 00 - P0	07-15
1YU - 14371 - 00	06-20	3AA - 24311 - 00	18-09	5G3 - 85753 - 00	33-15	3VL - E5128 - 00	08-28
1YU - 14384 - 00	06-05	3AA - 25121 - 00 - P2	20-05	4SB - E1111 - 00	01-01	3VL - E5150 - 00	08-01
1YU - 14385 - 00	06-15	3AA - 25135 - 00	20-11	3VL - E1181 - 00	01-02	3VL - E5317 - 00	08-10

CÓDIGO	REF. Nº	CÓDIGO	REF. Nº	CÓDIGO	REF. Nº	CÓDIGO	REF. Nº
3VL - E5363 - 00	08-24	3VL - F1511 - 00 - PK	13-01	3VL - F3120 - 00	17-11	3VL - F5182 - 00	21-07
3VL - E5371 - 00	08-04	3VL - F1545 - 00	13-14	3VL - F3141 - 00	17-10	3VL - F5185 - 00	20-21
3VL - E5411 - 00	08-17	3VL - F1551 - 10	13-02	3VL - F3143 - 00	17-08	4TY - F5308 - 00	21-03
3VL - E5421 - 00	08-12	3VL - F1551 - 60	13-02	3VL - F3191 - 00	17-14	3VL - F5336 - 00	21-02
3VL - E5451 - 00	08-23	3VL - F1552 - 01	13-05	3VL - F3195 - 00	18-09	3VL - F5384 - 00	21-18
3VL - E5461 - 00	08-13	3VL - F1553 - 00	13-06	3VL - F3340 - 20	17-13	4TY - F5390 - 00 - P0	21-01
3VL - E5462 - 00	08-30	3WV - F1565 - 00	13-10	4TY - F4110 - 00	18-01	4TY - F6110 - 00	22-01
3VL - E5528 - 00	09-03	4LJ - F1565 - 00	14-08	3VL - F414A - 10	18-14	3VL - F6213 - 20 - P1	25-01
3VL - E5532 - 00	09-09	3WV - F1565 - 20	13-10	3VL - F4318 - 00	18-16	3VL - F6213 - 40 - P7	25-01
3VL - E5620 - 01	09-17	4LJ - F1565 - 20	14-08	3VL - F4500 - 00	18-06	3VL - F6215 - 40	25-02
3VL - E5657 - 00	10-19	4TY - F1568 - 00	25-08	3VL - F4501 - 00	18-13	3VL - F6215 - 50	25-02
3VL - E5659 - 00	08-18	4TY - F1568 - 10	12	3VL - F4512 - 00	18-12	3VL - F6240 - 00	22-06
3VL - E5659 - 00	09-07	3WV - F1569 - 20	13-20	3VL - F4545 - 00	18-15	3VL - F6241 - 00	22-04
3VL - E5673 - 00	09-20	3WV - F1579 - 20	13-21	3VL - F4572 - 00	19-05	3VL - F6281 - 00	22-14
3VL - E5793 - 00	09-18	4LJ - F1599 - 00	13-19	3VL - F4610 - 01	18-02	3VL - F6282 - 00	22
3VL - E6111 - 00	10-01	4LJ - F1599 - 20	13-19	3VL - F4623 - 00	19-04	3VL - F6280 - 00	25-04
3VL - E6620 - 01	10-05	3VL - F1629 - 00	13-16	3VL - F4726 - 00	19-03	3VL - F629N - 00	25-07
3VL - E6626 - 00	10-06	3VL - F1711 - 20 - 13	14-01	4BP - F4730 - 11	19-01	3VL - F629R - 00	25-06
4SB - E7410 - 00	11-01	3VL - F1711 - 20 - LK	14-01	4BP - F4731 - 10	19-02	3VL - F6311 - 01	22-07
4SB - E7420 - 00	11-05	3VL - F1721 - 00 - 21	14-03	3VL - F4737 - 00	19-07	3VL - F6312 - 01	22-08
3VL - E7611 - 00	10-17	3VL - F1721 - 00 - LK	14-03	3VL - F4741 - 00	19-06	3VL - F6316 - 00	22-25
3VL - E7623 - 00	10-12	3VL - F172A - 00	14-09	3VL - F4741 - 10	19-08	3WG - F6329 - 00	22-10
4KH - E7632 - 00	10-11	3WV - F173E - 20	14-04	4BX - F4780 - 00	19-10	3WG - F6329 - 00	22-15
3VL - E7653 - 00	10-13	3WV - F173F - 20	14-05	3WV - F4842 - 00 - P1	19-12	3VL - F6331 - 00	22-12
3VL - E7654 - 00	10-29	4TY - F1751 - 00	15-01	4TY - F5108 - 00	20-22	3VL - F6334 - 02	22-13
4BX - F1110 - 21	12-01	4LJ - F1788 - 00	14-06	3VL - F514A - 00	20-23	3VL - F6341 - 00	22-16
3VL - F1171 - 00	19-16	4LJ - F1788 - 20	14-06	3VL - F514A - 00	21-04	3VL - F6351 - 00	22-19
4TY - F1398 - 00	19-18	4LJ - F2210 - 00	16-01	3VL - F5170 - 10	20-24	3VL - F636A - 00	31-09
4TY - F1410 - 00	12-06	3VL - F3100 - 00	17-07	3VL - F5170 - 10	21-05	3VL - F636A - 00	31-17
3VL - F1511 - 00 - 18	13-01	3VL - F3110 - 00	17-12	4TY - F5180 - 00 - P0	20-01	4SB - F6475 - 00	22-20

CÓDIGO	REF. N°	CÓDIGO	REF. N°	CÓDIGO	REF. N°	CÓDIGO	REF. N°
4TY - F7111 - 00	23-01	3VL - H3510 - 01	28-01	3HL - H4535 - 00	30-10	90119 - 06018	13-18
4SB - F7112 - 00	23-03	4CU - H3511 - 00	28-04	3VL - H4720 - 00	30-01	90119 - 06018	15-03
4TY - F7430 - 00	23-09	3VL - H3550 - 00	28-06	3VL - H4721 - 00	30-08	90119 - 06018	19-17
4TY - F7440 - 00	23-10	3VL - H3573 - 00	28-02	3VL - H4735 - 00	30-05	90119 - 06060	14-02
3VL - F7481 - 10	23-06	3VL - H3912 - 00	31-02	3VL - H4761 - 00	30-09	90119 - 06060	27-07
3VL - F7482 - 00	13-04	3VL - H3915 - 00	31-03	3EC - H5111 - 00	33-20	90119 - 06085	13-08
3VL - F8311 - 40 - LK	24-01	3VL - H3915 - 00	31-13	3VL - H5111 - 00	33-21	90149 - 06011	18-07
3VL - F8311 - 50	24-01	3VL - H3916 - 00	31-04	4RV - H5114 - 00	30-04	90149 - 06262	33-06
3VL - F8315 - 40	24-09	3VL - H3916 - 00	31-14	3NC - H5130 - 00	30-03	90153 - 06022	03-03
3VL - F8315 - 50	24-09	3VL - H3922 - 00	31-12	3WW- H553A - 00	33-17	90153 - 06061	07-04
3WV - F8349 - 00 - LK	24-04	3VL - H3929 - 00	31-16	3VL - H5546 - 00	32-12	90154 - 06808	13-13
3WV - F8349 - 10	24-04	4KH - H3936 - 00	32-11	3VL - H5720 - 10	33-13	90159 - 05089	29-02
4CA - F8385 - 10	24-05	4KH - H3936 - 00	33-12	3VL - H5721 - 00	33-19	90159 - 06059	14-10
4CA - F8385 - 50	24-05	3VL - H3941 - 00	31-06	4BX - W2534 - 00	20-07	90159 - 06064	19-11
4VV - H1960 - 00	32-01	3VL - H3943 - 00	31-08	4BX - W2534 - 00	21-09	90159 - 06182	24-03
4VV - H2021 - 00	32-03	3VL - H3945 - 00	31-05	4KH - W5115 - 17	20-03	90159 - 06182	24-06
4CU - H2110 - 00	33-03	3VL - H3945 - 00	31-15	4TY - W5326 - 00	21-06	90167 - 05025	24-08
4CA - H2509 - 00	32-07	3VL - H3975 - 10	31-18	NDH - H3311 - 00 - 01	27-05	90170 - 10219	10-21
4BX - H251J - 00	32-04	3VL - H3976 - 10	31-10	NDH - H3311 - 00 - 01	30-11	90170 - 10219	26-13
3VL - H2590 - 00	33-10	3VL - H3980 - 00	31-19	NH8 - 52480 - 00	07-16	90176 - 08068	19-14
3VL - H2910 - 00	31-01	3VL - H3982 - 00	31-07	NJ6 - 54041 - 00	07-17	90179 - 06176	22-17
3VL - H2920 - 01	31-11	3VL - H4144 - 00	29-03	90101 - 06278	20-15	90179 - 06176	22-23
3VL - H3310 - 00	27-01	3VL - H4196 - 01	29-08	90101 - 06291	21-14	90179 - 10279	12-03
3VL - H3312 - 00	27-04	3EC - H4314 - 10	29-04	90101 - 10776	16-03	90179 - 10370	10-09
3VL - H3320 - 00	27-02	3VL - H4316 - 00	29-05	90105 - 08121	16-02	90179 - 25033	17-01
3WW- H3327 - 00	27-03	3VL - H4320 - 00	29-01	90105 - 10036	22-02	90179 - 28415	10-07
3VL - H3332 - 00	30-06	3VL - H4331 - 10	29-07	90105 - 10063	12-02	90183 - 05042	24-07
3VL - H3342 - 00	30-07	3VL - H4332 - 10	29-06	90109 - 06851	32-05	90185 - 14150	21-17
3VL - H3350 - 00	32-06	3UP - H4347 - 00	28-03	90116 - 06418	01-06	90201 - 064L6	20-12
4CU - H3371 - 00	32-08	3VL - H4352 - 00	29-09	90119 - 05071	33-16	90201 - 08088	09-08

CÓDIGO	REF. N°	CÓDIGO	REF. N°	CÓDIGO	REF. N°	CÓDIGO	REF. N°
90201 - 08326	19-15	90465 - 08122	08-31	91317 - 06045	08-22	93306 - 20301	10-02
90201 - 133M8	10-15	90465 - 13275	33-18	92017 - 08016	23-11	93306 - 20314	11-06
90201 - 140G5	11-03	90465 - 18147	32-13	92901 - 05100	26-08	93306 - 20468	02-08
90201 - 142M6	21-15	90467 - 08075	04-12	92901 - 05100	26-06	93306 - 30003	20-20
90201 - 155G5	09-15	90467 - 09006	18-10	92907 - 04100	26-10	93310 - 210M0	02-16
90201 - 177G4	21-16	90467 - 24140	05-22	92907 - 06600	03-11	93310 - 257R1	09-02
90201 - 574L1	09-04	90468 - 02033	04-09	92907 - 06600	05-19	93420 - 40064	11-08
90202 - 05193	18-08	90468 - 12006	23-08	92907 - 10600	26-12	93440 - 15012	08-11
90202 - 08175	22-21	90468 - 15009	22-09	92990 - 04100	06-12	93450 - 11120	02-15
90202 - 10120	23-04	90480 - 12237	03-05	92990 - 05100	06-10	93503 - 16010	17-05
90208 - 10012	10-20	90480 - 12237	03-09	92990 - 06600	03-15	93603 - 12007	04-16
90208 - 14047	11-04	90480 - 12497	05-21	92990 - 08600	19-20	94700 - 00195	01-03
90209 - 06306	18-05	90501 - 122E1	22-22	92995 - 06100	03-14	95024 - 08055	19-13
90214 - 13055	10-18	90501 - 29517	12-08	93101 - 20138	02-10	95027 - 06012	18-03
90249 - 12008	22-18	90501 - 351F6	10-27	93102 - 17342	10-03	95027 - 06016	32-02
90249 - 12008	22-24	90506 - 15260	20-08	93102 - 20371	02-09	95307 - 06600	20-16
90280 - 03017	02-07	90506 - 15260	21-10	93102 - 22314	11-07	95617 - 10100	12-05
90380 - 15083	09-14	90506 - 29280	23-05	93102 - 40367	20-06	95617 - 10200	16-04
90387 - 06023	03-04	90508 - 26393	20-18	93104 - 19097	26-04	95617 - 10200	20-25
90387 - 061V4	05-20	90508 - 32609	09-13	93106 - 20001	20-04	95617 - 10200	22-03
90387 - 067T6	03-08	90560 - 10347	20-02	93109 - 33052	10-24	95707 - 06500	01-07
90387 - 076V1	23-02	9079Q - 71878	25-05	93210 - 07435	21-08	95707 - 06500	13-17
90387 - 102V7	20-27	91317 - 06020	05-08	93210 - 10010	20-28	95707 - 06500	18-04
90387 - 135U9	10-14	91317 - 06020	08-16	93210 - 14104	08-25	95707 - 06500	19-09
90387 - 156U0	02-11	91317 - 06020	09-11	93210 - 23614	09-22	95707 - 06500	30-04
90430 - 08206	08-27	91317 - 06025	08-20	93210 - 38687	10-25	95817 - 06010	13-07
90445 - 07370	18-11	91317 - 06035	08-21	93306 - 00203	08-03	95817 - 08016	08-26
90445 - 083F2	33-04	91317 - 06035	08-09	93306 - 20006	10-04	95817 - 08020	07-05
90445 - 083J7	04-08	91317 - 06035	08-15	93306 - 20006	11-02	95817 - 08040	07-06

Todos os direitos reservados. É proibida a reprodução total ou parcial desta publicação sem a autorização por escrito da Yamaha Motor do Brasil Ltda.



YAMAHA MOTOR DO BRASIL LTDA.
Rod. Presidente Dutra, km 214 - Guarulhos - SP
DEPARTAMENTO DE PEÇAS E ACESSÓRIOS

IMPRESSO NO BRASIL
1ª EDIÇÃO, NOVEMBRO 1995