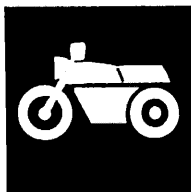


YAMAHA



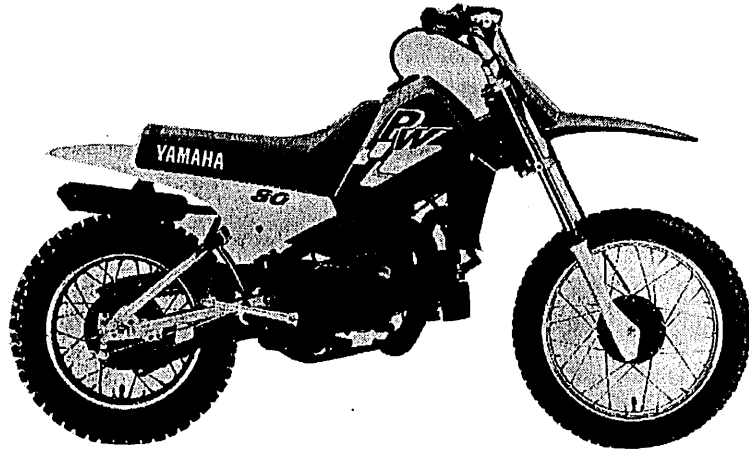
**PARTS
CATALOGUE**

PW80J (3RVA) U.S.A., CANADA, OCEANIA

173RV-100E1

YAMAHA
GENUINE
Parts & Accessories

A2



A3

FOREWORD

This Parts Catalogue is related to the parts for the model(s) in the below frame. When you are ordering replacement parts, please refer to this Parts Catalogue and quote both part numbers and part names correctly.

PW80J(3RVA)

1. Modifications or additions which have been made after issue of the Parts Catalogue will be announced in the Yamaha Parts News.
It is advisable that you make necessary corrections to the Parts Catalogue according to the Yamaha Parts News.

2. Abbreviations

The following abbreviations are used in this Parts Catalogue.

- "UR" Use specified parts number.
- "UN" Use as many as needed.
- "AP" Alternate Parts
- "LM" Local Made (Parts need to be ordered locally)
- "F#" Frame No. (Applicable machine No.)

3. Parts, which are to be supplied in an assembly, are listed with a dot (.) in front of the part name as shown below.

EXAMPLE

- CARBURETOR ASSY
- . JET, PILOT
- . NOZZLE, MAIN

4. Number of component for assembly

The numeral appearing to the right of each component part indicates the quantity of parts for each assembly unit.

EXAMPLE

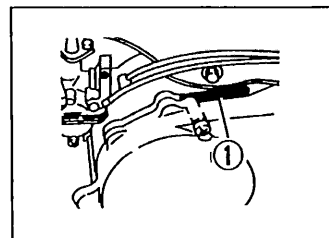
| PART NO. | DESCRIPTION | Q'TY | REMARKS |
|--------------|--------------------------|------|---------|
| 2F5-83310-60 | FRONT FLASHER LIGHT ASSY | 2 | |
| 115-83311-60 | . BULB (6V-18W) | 1 | |

5. Applicable colors of graphics are represented in the "REMARKS" as shown below.

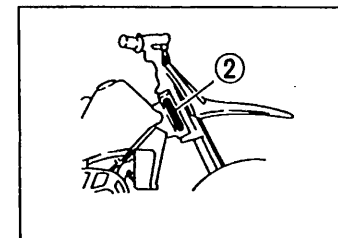
| PART NO. | DESCRIPTION | Q'TY | REMARKS |
|-----------------|----------------------|------|-----------|
| 2N4-24110-00-X5 | FUEL TANK COMP. | 1 | MAXIM RED |
| 3J1-24240-10 | . GRAPHIC, FUEL TANK | 1 | for MXR |

6. Applicable Serial No.

① Engine Serial No.



② Frame Serial No.



7. Note that the illustrations are for reference in finding parts numbers, not to be used for assembling. When assembling, please use the applicable service manual.
8. The asterisk (*) before a reference number indicates modification items after the first edition.

CONTENTS

ENGINE

| | |
|---------------------------|-----------|
| Cylinder | B2 |
| Crankshaft · Piston | B3 |
| Oil Pump | B4 |
| Intake | B5 |
| Carburetor | B6 ~ B7 |
| Exhaust | B8 |
| Crankcase | B9 |
| Crankcase Cover 1 | B10 |
| Starter | B11 |
| Clutch | B12 ~ B13 |
| Transmission | B14 |
| Shift Cam · Fork | B15 |
| Shift Shaft | C2 |

CHASSIS

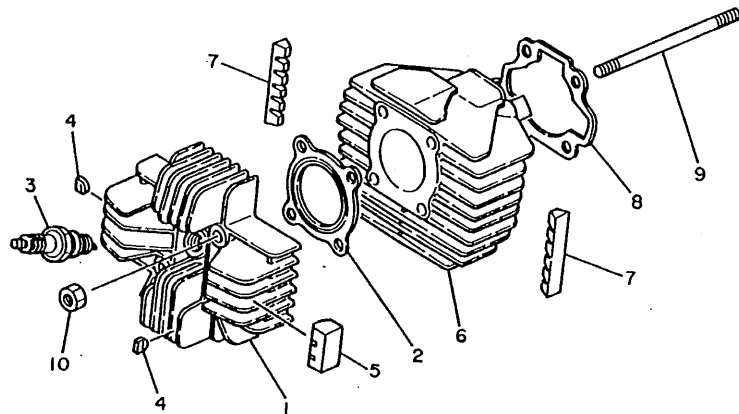
| | |
|-----------------------------|----|
| Frame | C3 |
| Front Fender | C4 |
| Side Cover | C5 |
| Oil Tank | C6 |
| Rear Arm · Suspension | C7 |

| | |
|-------------------------------|-----------|
| Steering | C8 ~ C9 |
| Front Fork | C10 ~ C11 |
| Fuel Tank | C12 |
| Seat | C13 |
| Front Wheel | C14 |
| Rear Wheel | C15 ~ D2 |
| Steering Handle · Cable | D3 |
| Stand · Footrest | D4 |
| Generator | D5 |
| Handle Switch · Lever | D6 |
| Electrical 1 | D7 |

INDEX

| | |
|-----------------------|---------|
| NUMERICAL INDEX | L1 ~ L2 |
|-----------------------|---------|

FIG. 1 CYLINDER

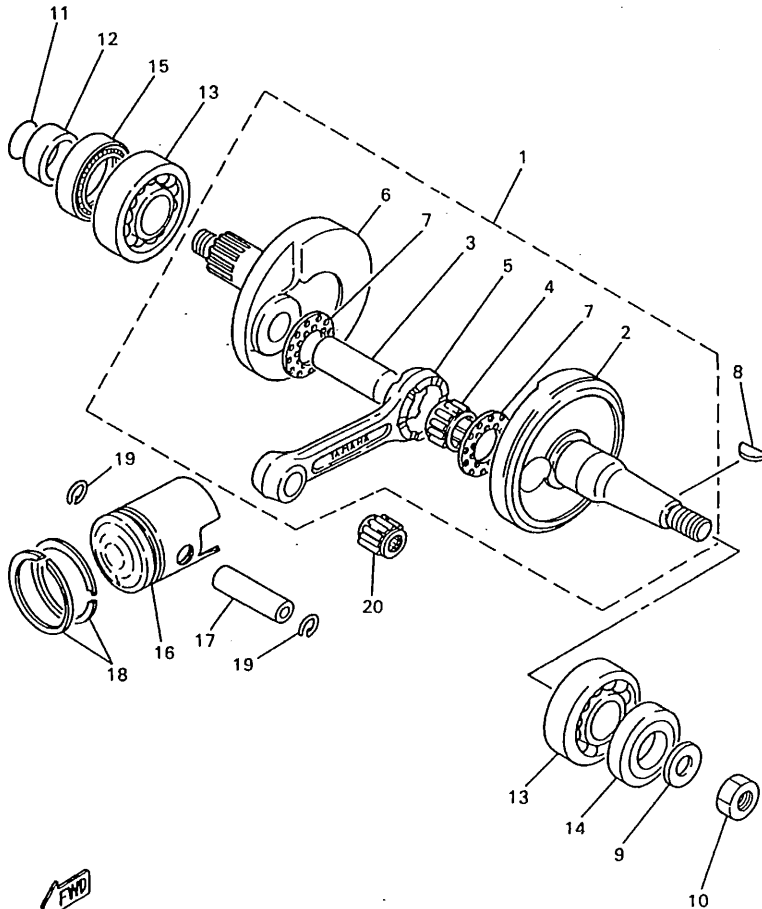


| REF. NO. | PART NO. | DESCRIPTION | Q'TY | REMARKS |
|----------|--------------|---------------------------|------|---------------|
| 1 | 21W-11111-00 | HEAD, cylinder 1 | 1 | |
| 2 | 1W7-11181-00 | GASKET, cylinder head 1 | 1 | |
| 3 | 94701-00108 | PLUG, spark (NGK BP6HS) | 1 | UR |
| | 94701-00175 | PLUG, spark (ND-W20FP) | 1 | UR |
| | 94701-00198 | PLUG, spark (NGK BPR6HS) | 1 | UR FOR CANADA |
| | 94701-00235 | PLUG, spark (ND W20FRP-U) | 1 | UR FOR CANADA |
| 4 | 463-11161-01 | ABSORBER 1 | 4 | |
| 5 | 21W-11162-00 | ABSORBER 2 | 1 | |
| 6 | 3E5-11311-01 | CYLINDER 1 | 1 | |
| 7 | 3E5-11162-00 | ABSORBER 2 | 2 | |
| 8 | 4AW-11351-00 | GASKET, cylinder | 1 | |
| 9 | 90116-07035 | BOLT, stud | 4 | |
| 10 | 90179-07381 | NUT | 4 | |



3RV110-1010

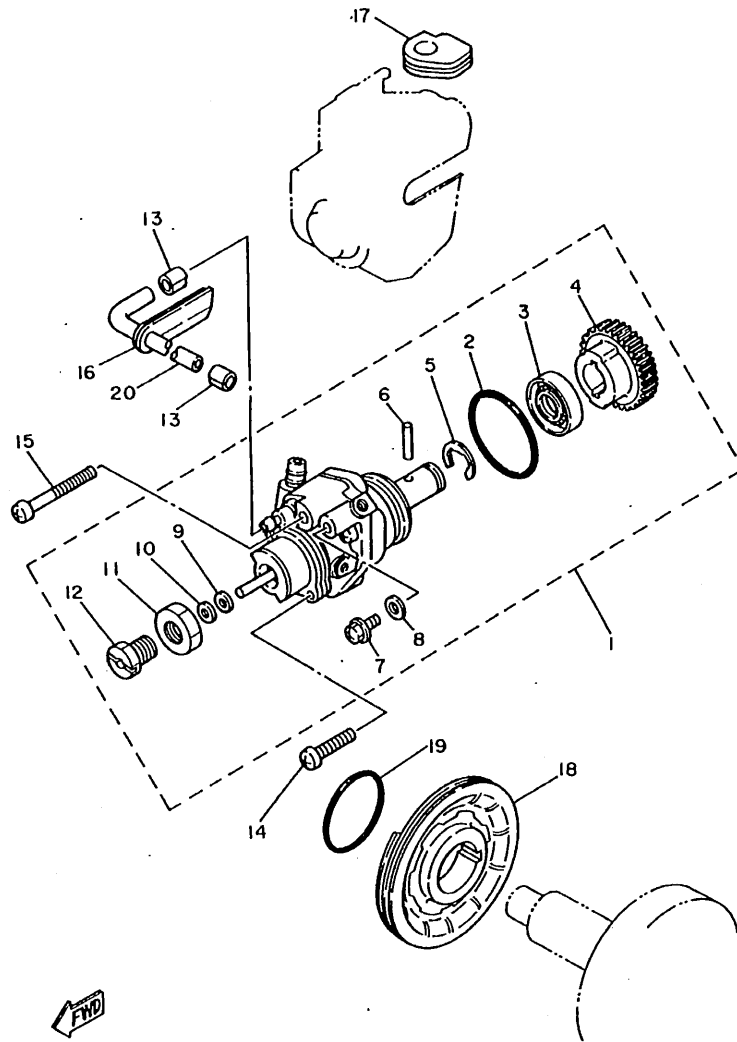
FIG. 2 CRANKSHAFT • PISTON



3RV100-6020

| REF. NO. | PART NO. | DESCRIPTION | Q'TY | REMARKS |
|----------|-----------------|------------------------------|------|---------|
| 1 | 1HA-11400-00 | CRANKSHAFT ASSY | 1 | |
| 2 | 1W7-11412-00 | .CRANK 1 | 1 | |
| 3 | 2Y1-11681-00 | .PIN, CRANK 1 | 1 | |
| 4 | 93310-420F2 | .BEARING, CYLINDRICAL | 1 | |
| 5 | 1W7-11651-00 | .ROD, CONNECTING | 1 | |
| 6 | 1HA-11422-00 | .CRANK 2 | 1 | |
| 7 | 90209-20159 | .WASHER | 2 | |
| 8 | 90280-03017 | KEY, WOODRUFF | 1 | |
| 9 | 90201-12535 | WASHER | 1 | |
| 10 | 95317-12600 | NUT | 1 | |
| 11 | 93210-180A6 | O-RING | 1 | |
| 12 | 90387-20603 | COLLAR | 1 | |
| 13 | 93306-20529 | BEARING (B6205C4) | 2 | |
| 14 | 93103-25098 | OIL SEAL | 1 | |
| 15 | 93103-32099 | OIL SEAL | 1 | |
| 16 | 3E5-11631-00-97 | PISTON (STD) | 1 | UR |
| | 3E5-11635-00 | PISTON (0.25MM O/S) | 1 | AP |
| | 3E5-11636-00 | PISTON (0.50MM O/S) | 1 | AP |
| 17 | 527-11633-00 | PIN, PISTON | 1 | |
| 18 | 14N-11610-00 | PISTON RING SET (STD) | 1 | UR |
| | 14N-11610-10 | PISTON RING SET (0.25MM O/S) | 1 | AP |
| | 14N-11610-20 | PISTON RING SET (0.50MM O/S) | 1 | AP |
| 19 | 93450-13022 | CIRCLIP | 2 | |
| 20 | 93310-11268 | BEARING, CYLINDRICAL | 1 | |

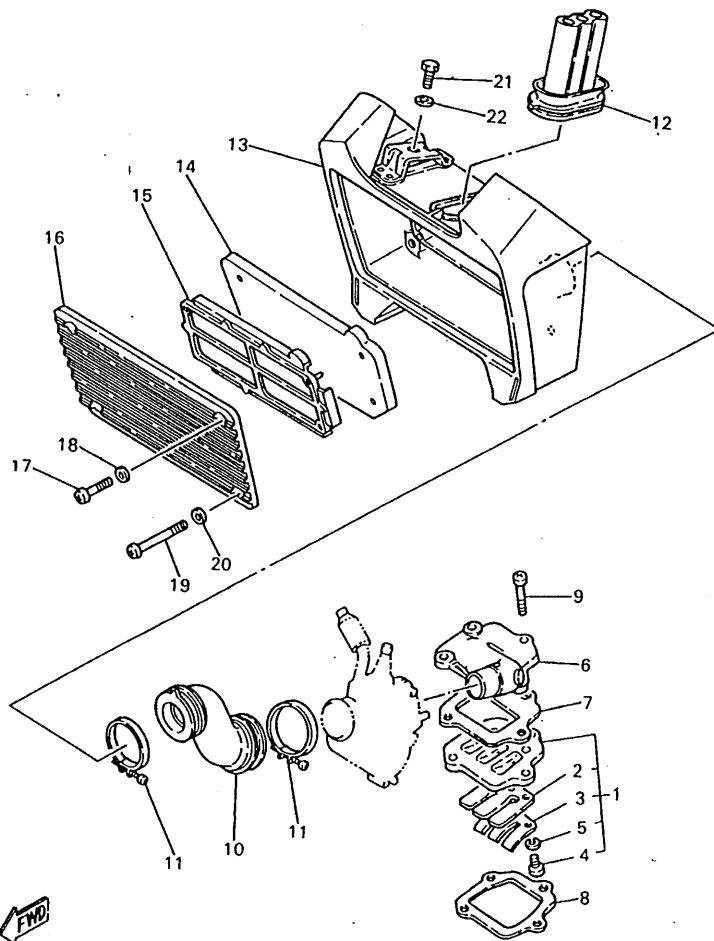
FIG. 3 OIL PUMP



3RV110-1030

| REF. NO. | PART NO. | DESCRIPTION | Q'TY | REMARKS |
|----------|--------------|-------------------------|------|---------|
| 1 | 3KX-13101-01 | OIL PUMP ASSY | 1 | |
| 2 | 93210-26240 | •O-RING | 1 | |
| 3 | 93101-10090 | •OIL SEAL | 1 | |
| 4 | 2T5-13124-00 | •GEAR, worm wheel (71T) | 1 | |
| 5 | 99080-07600 | •CIRCLIP | 1 | |
| 6 | 93603-14026 | •PIN, dowel | 1 | |
| 7 | 90149-04135 | •SCREW | 1 | |
| 8 | 90430-04004 | •GASKET | 1 | |
| 9 | 296-13147-00 | •SHIM | 1 | |
| 10 | 384-13138-00 | •PLATE, adjusting | 1 | |
| 11 | 90170-10105 | •NUT | 1 | |
| 12 | 90401-10029 | •BOLT, union | 1 | |
| 13 | 90468-02033 | CLIP | 2 | |
| 14 | 98507-05020 | SCREW, pan head | 1 | |
| 15 | 98507-05035 | SCREW, pan head | 1 | |
| 16 | 90480-10005 | GROMMET | 1 | |
| 17 | 384-13174-00 | HOLDER, oil pipe | 1 | |
| 18 | 53F-13178-00 | GEAR, pump drive | 1 | |
| 19 | 93210-29282 | O-RING | 1 | |
| 20 | 384-13161-02 | PIPE, delivery 1 | 1 | |

FIG. 4 INTAKE

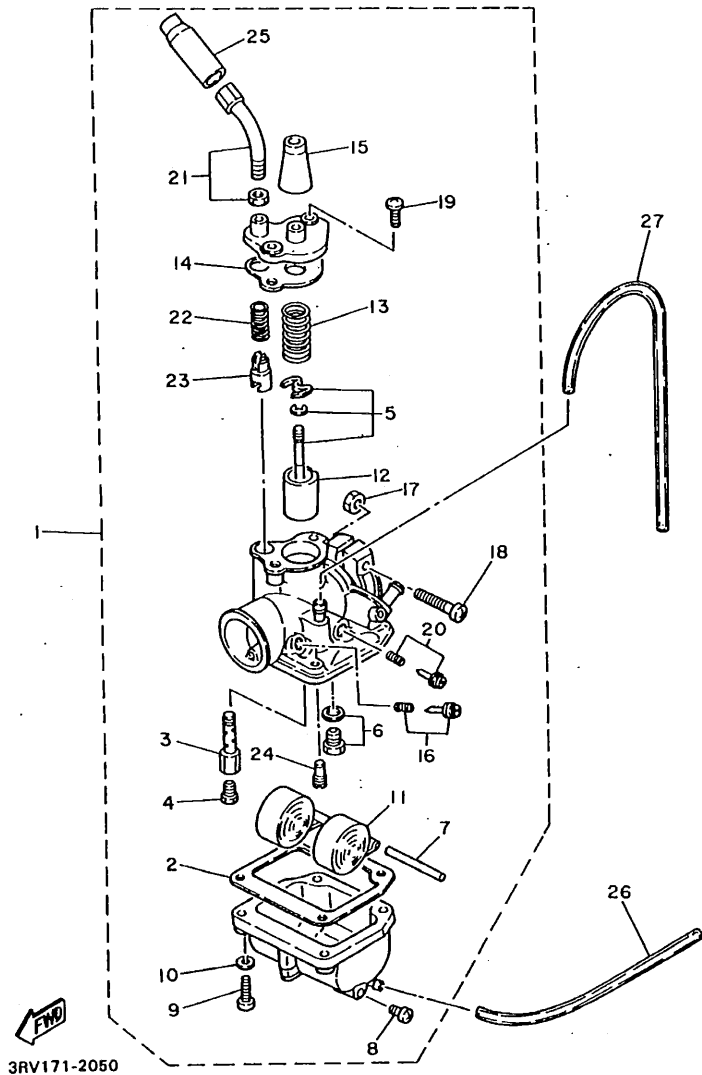


| REF. NO. | PART NO. | DESCRIPTION | Q'TY | REMARKS |
|----------|--------------|------------------------|------|---------|
| 1 | 300-13610-04 | REED VALVE ASSY | 1 | |
| 2 | 56J-13613-00 | •REED, valve | 1 | |
| 3 | 300-13616-00 | •STOPPER, reed valve | 1 | |
| 4 | 98507-03008 | •SCREW, pan head | 3 | |
| 5 | 92907-03100 | •WASHER | 3 | |
| 6 | 21W-13555-00 | MANIFOLD, intake | 1 | |
| 7 | 300-13622-10 | GASKET, valve seat | 1 | |
| 8 | 300-13621-10 | GASKET, valve seat | 1 | |
| 9 | 98507-06030 | SCREW, pan head | 4 | |
| 10 | 21W-14453-00 | JOINT, air cleaner 1 | 1 | |
| 11 | 90460-37130 | CLAMP, hose | 2 | |
| 12 | 5U8-14454-00 | JOINT | 1 | |
| 13 | 3RV-W1441-30 | AIR CLEANER CASE COMP. | 1 | |
| 14 | 21W-14451-00 | ELEMENT, air cleaner | 1 | |
| 15 | 21W-14458-00 | GUIDE | 1 | |
| 16 | 21W-14412-00 | CAP, cleaner case 1 | 1 | |
| 17 | 98507-05025 | SCREW, pan head | 2 | |
| 18 | 92907-05600 | WASHER | 2 | |
| 19 | 98507-05050 | SCREW, pan head | 2 | |
| 20 | 92907-05600 | WASHER | 2 | |
| 21 | 97007-08016 | BOLT | 2 | |
| 22 | 92907-08600 | WASHER | 2 | |



3RV100-4040

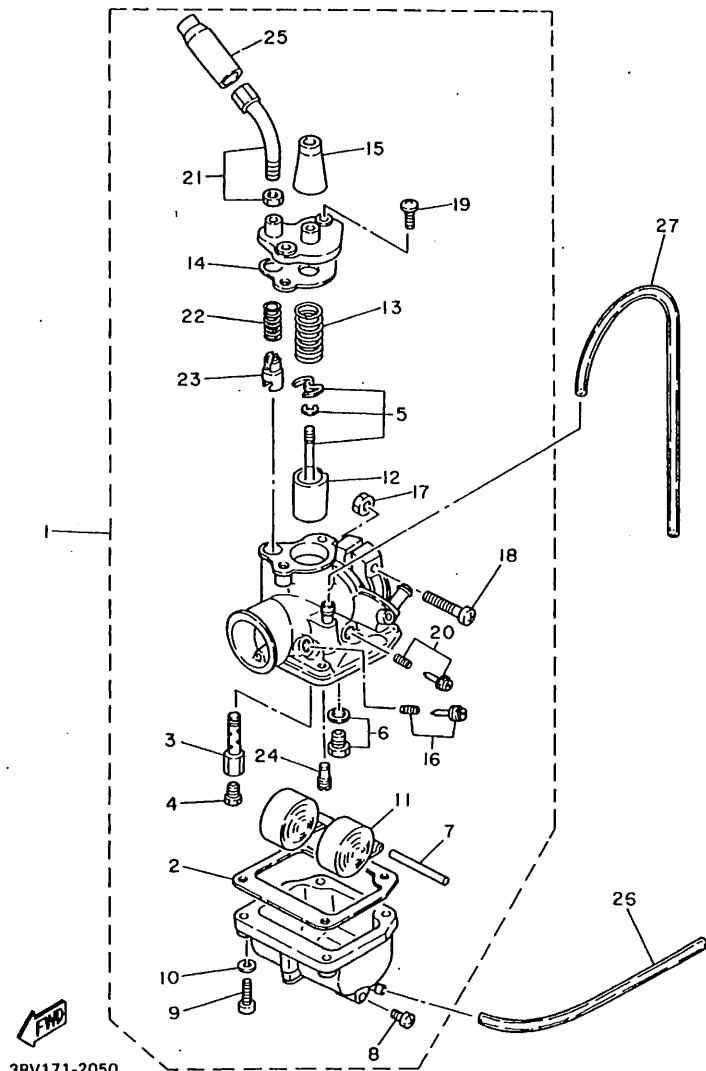
FIG. 5 CARBURETOR



| REF. NO. | PART NO. | DESCRIPTION | Q'TY | REMARKS |
|----------|-----------------|-------------------------|------|---------|
| 1 | 21W-14101-00 | CARBURETOR ASSY 1 | 1 | |
| 2 | 296-14184-01 | .GASKET, float chamber | 1 | |
| 3 | 127-14141-14 | .NOZZLE, main | 1 | |
| 4 | 127-14143-25 | .JET, main (#125) | 1 | UR STD |
| | 127-14143-24 | .JET, main (#120) | 1 | UR |
| | 127-14143-26 | .JET, main (#130) | 1 | UR |
| 5 | 21W-1490J-00 | .NEEDLE SET | 1 | |
| 6 | 21W-14107-12 | .NEEDLE VALVE SET | 1 | |
| 7 | 127-14186-00 | .PIN, float | 1 | |
| 8 | 12R-14191-00 | .PLUG, drain | 1 | |
| 9 | 98506-04018 | .SCREW, pan head | 4 | |
| 10 | 92902-04100 | .WASHER, spring | 4 | |
| 11 | 2E9-14185-00 | .FLOAT | 1 | |
| 12 | 296-14112-25 | .VALVE, throttle 1 | 1 | |
| 13 | 296-14131-00 | .SPRING, throttle valve | 1 | |
| 14 | 296-14198-01 | .GASKET | 1 | |
| 15 | 307-14169-10 | .CAP | 1 | |
| 16 | 12G-14104-00 | .AIR SCREW SET | 1 | |
| 17 | 95303-05600 | .NUT | 1 | |
| 18 | 98501-05030 | .SCREW, pan head | 1 | |
| 19 | 98580-04010 | .SCREW, pan head | 2 | |
| 20 | 12G-14103-00 | .THROTTLE SCREW SET | 1 | |
| 21 | 21W-14503-00 | .ADJUST SCREW SET | 1 | |
| 22 | 127-14135-00 | .SPRING, plunger | 1 | |
| 23 | 58E-14171-00 | .PLUNGER, starter | 1 | |
| 24 | 193-14142-15-A0 | .JET, pilot (# 15) | 1 | |
| 25 | 1R0-14169-00 | .CAP | 1 | |
| 26 | 90445-05390 | HOSE | 1 | |

FIG. 5 CARBURETOR

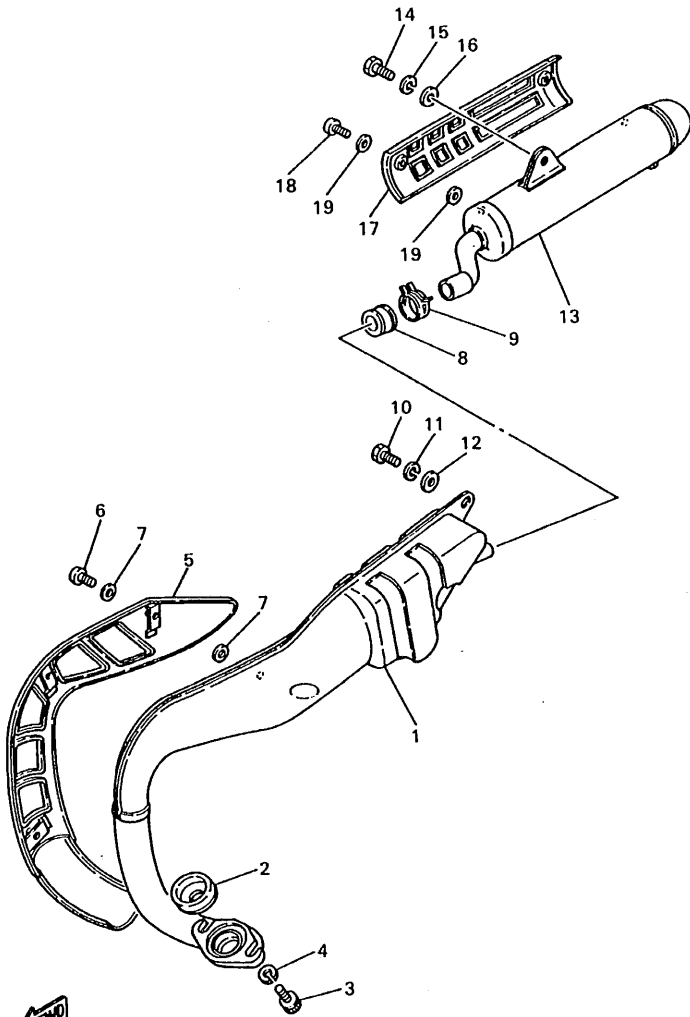
| REF. NO. | PART NO. | DESCRIPTION | Q'TY | REMARKS |
|----------|-------------|-------------|------|---------|
| 27 | 90445-07036 | HOSE | 1 | |



3RV171-2050

B7

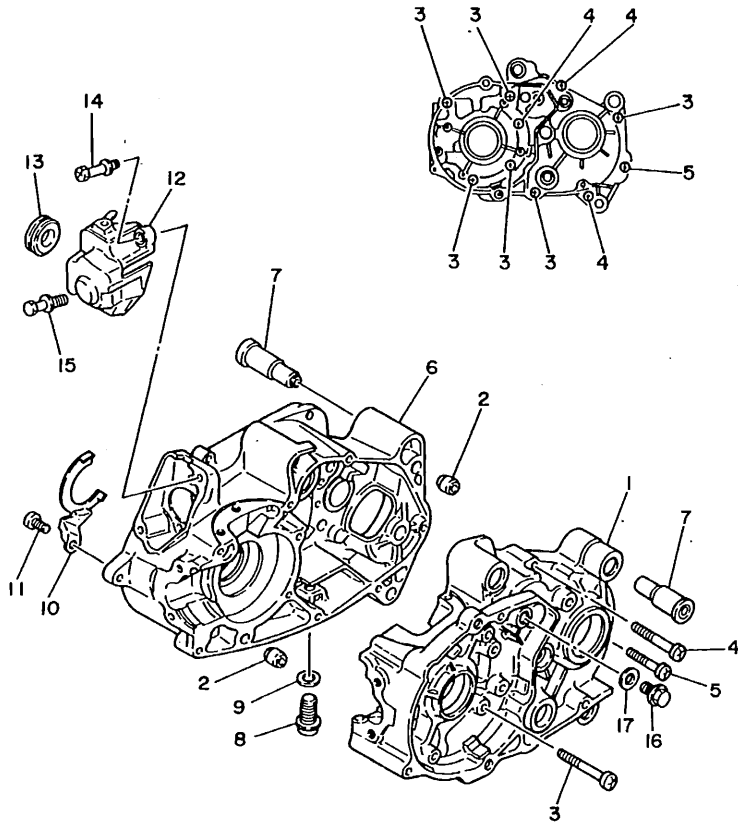
FIG. 6 EXHAUST



3RV100-5060

| REF. NO. | PART NO. | DESCRIPTION | Q'TY | REMARKS |
|----------|--------------|----------------------|------|---------|
| 1 | 21W-14610-02 | EXHAUST PIPE ASSY 1 | 1 | |
| 2 | 3RV-14623-00 | GASKET, exhaust pipe | 1 | |
| 3 | 97007-08020 | BOLT | 2 | |
| 4 | 92907-08100 | WASHER | 2 | |
| 5 | 21W-14708-00 | PROTECTOR ASSY | 1 | |
| 6 | 98507-05006 | SCREW, pan head | 3 | |
| 7 | 3RV-14766-00 | WASHER, protector | 6 | |
| 8 | 4X4-14714-00 | GASKET, muffler | 1 | |
| 9 | 90467-22048 | CLIP | 1 | |
| 10 | 97007-08016 | BOLT | 1 | |
| 11 | 92907-08100 | WASHER | 1 | |
| 12 | 92907-08600 | WASHER | 1 | |
| 13 | 21W-14753-02 | SILENCER, exhaust | 1 | |
| 14 | 97007-08016 | BOLT | 1 | |
| 15 | 92907-08100 | WASHER | 1 | |
| 16 | 92907-08600 | WASHER | 1 | |
| 17 | 21W-14758-00 | PROTECTOR, silencer | 1 | |
| 18 | 98507-05006 | SCREW, pan head | 2 | |
| 19 | 3RV-14766-00 | WASHER, protector | 4 | |

FIG. 7 CRANKCASE

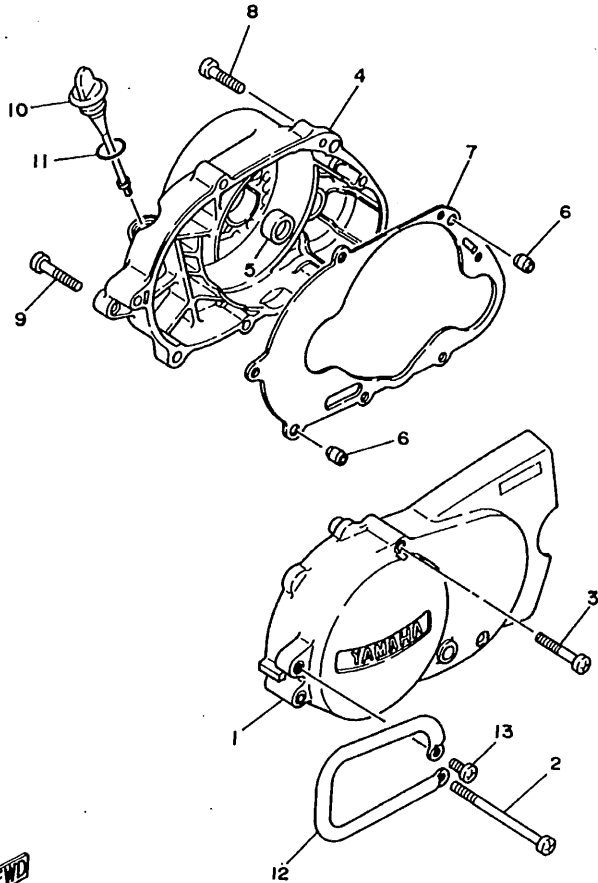


| REF. NO. | PART NO. | DESCRIPTION | Q'TY | REMARKS |
|----------|--------------|------------------------|------|---------|
| 1 | 1W7-15111-03 | CRANKCASE 1 | 1 | |
| 2 | 99510-12016 | PIN, dowel | 2 | |
| 3 | 98507-06050 | SCREW, pan head | 6 | |
| 4 | 98507-06045 | SCREW, pan head | 3 | |
| 5 | 98507-06035 | SCREW, pan head | 1 | |
| 6 | 1W7-15121-03 | CRANKCASE 2 | 1 | |
| 7 | 5T9-15316-01 | DAMPER, engine mount 1 | 6 | |
| 8 | 90340-12005 | PLUG, straight screw | 1 | |
| 9 | 90430-12227 | GASKET | 1 | |
| 10 | 300-15128-00 | HOLDER | 1 | |
| 11 | 98507-08010 | SCREW, pan head | 1 | |
| 12 | 517-15416-01 | COVER, oil pump | 1 | |
| 13 | 90480-21436 | GROMMET | 1 | |
| 14 | 90149-06157 | SCREW | 1 | |
| 15 | 90101-06394 | BOLT | 1 | |
| 16 | 90105-10147 | BOLT, washer based | 1 | |
| 17 | 90430-10215 | GASKET | 1 | |



3RV110-1070

FIG. 8 CRANKCASE COVER 1

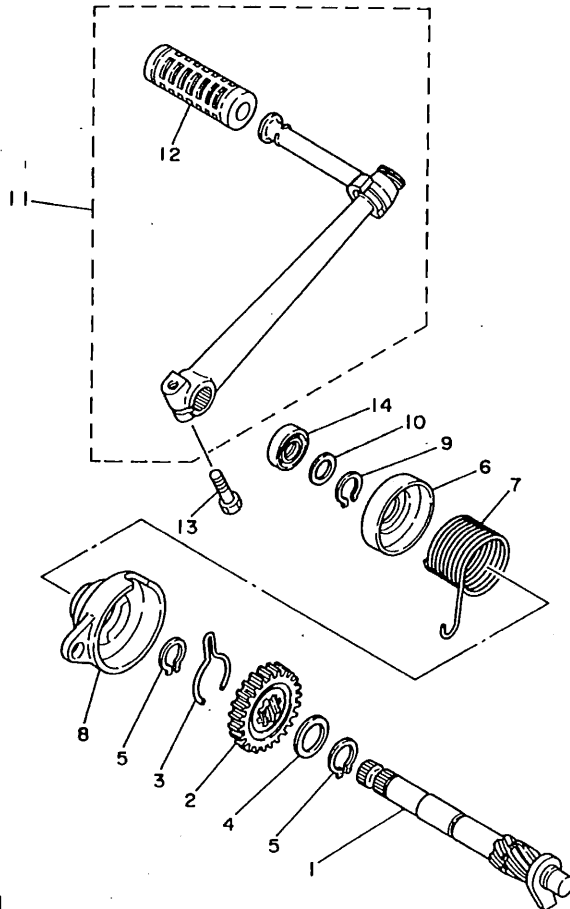


| REF. NO. | PART NO. | DESCRIPTION | Q'TY | REMARKS |
|----------|--------------|---------------------------|------|---------|
| 1 | 21W-15411-00 | COVER, crankcase 1 | 1 | |
| 2 | 98507-06100 | SCREW, pan head | 1 | |
| 3 | 98507-06045 | SCREW, pan head | 3 | |
| 4 | 5R7-15421-00 | COVER, crankcase 2 | 1 | |
| 5 | 93104-11053 | OIL SEAL | 1 | |
| 6 | 99530-10014 | PIN, dowel | 2 | |
| 7 | 4AW-15451-00 | GASKET, crankcase cover 1 | 1 | |
| 8 | 98507-06035 | SCREW, pan head | 6 | |
| 9 | 98507-06040 | SCREW, pan head | 1 | |
| 10 | 517-15362-02 | PLUG, oil level | 1 | |
| 11 | 93210-19123 | O-RING | 1 | |
| 12 | 21W-15491-01 | PROTECTOR | 1 | |
| 13 | 98507-06012 | SCREW, pan head | 1 | |



3RV110-1080

FIG. 9 STARTER

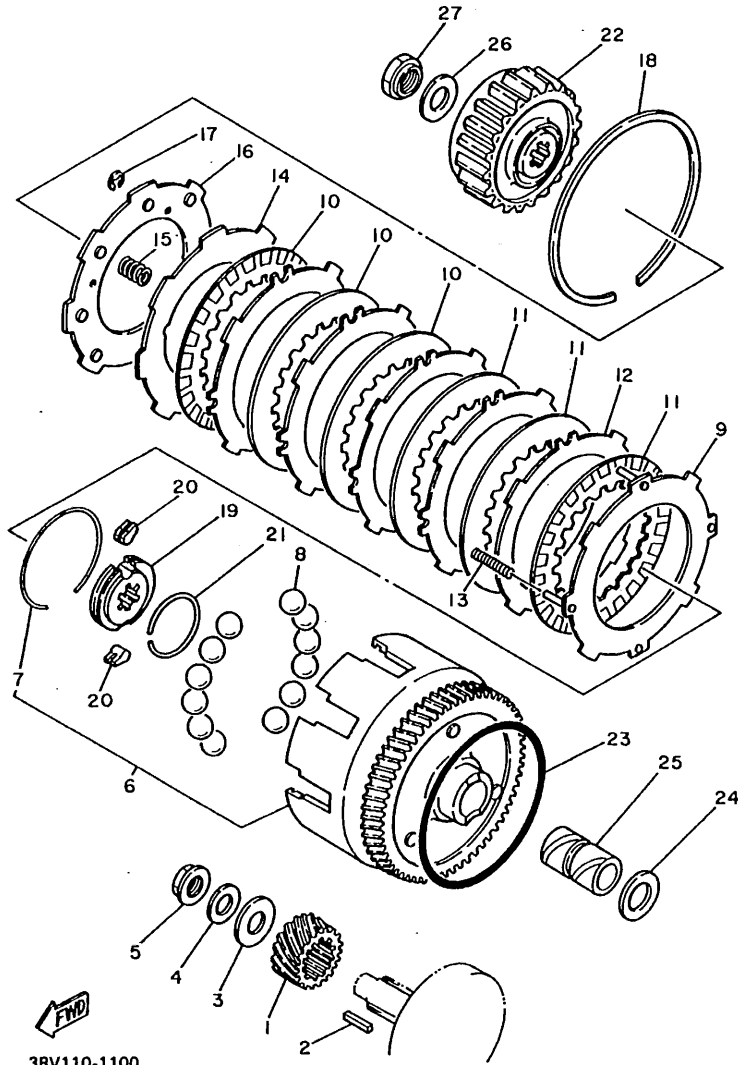


| REF. NO. | PART NO. | DESCRIPTION | Q'TY | REMARKS |
|----------|--------------|----------------------|------|---------|
| 1 | 3E5-15660-00 | KICK AXLE ASSY | 1 | |
| 2 | 3E5-15641-00 | GEAR, KICK (21T) | 1 | |
| 3 | 90468-23194 | CLIP | 1 | |
| 4 | 90201-20266 | WASHER, PLATE (1.0T) | 1 | |
| 5 | 99009-20400 | CIRCLIP | 2 | |
| 6 | 3E5-15676-00 | COVER, SPRING | 1 | |
| 7 | 90508-26136 | SPRING, TORSION | 1 | |
| 8 | 3E5-15664-00 | GUIDE, SPRING | 1 | |
| 9 | 99009-17400 | CIRCLIP | 1 | |
| 10 | 90201-15701 | WASHER, PLATE (1.0T) | 1 | |
| 11 | 5T9-15620-00 | KICK CRANK ASSY | 1 | |
| 12 | 156-15618-01 | COVER, KICK LEVER | 1 | |
| 13 | 97017-06025 | BOLT | 1 | |
| 14 | 93109-15001 | OIL SEAL | 1 | |



3RV110-1090

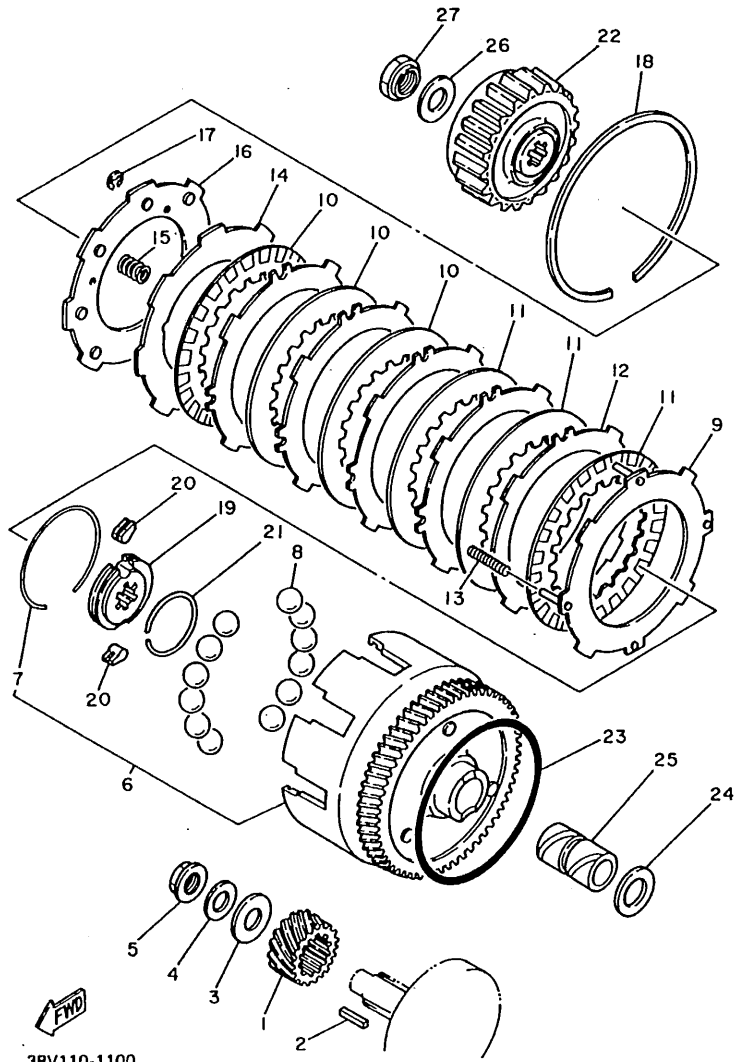
FIG. 10 CLUTCH



3RV110-1100

| REF. NO. | PART NO. | DESCRIPTION | Q'TY | REMARKS |
|----------|-----------------|---------------------------|------|---------|
| 1 | 56H-16110-00-30 | PRIMARY DRIVE GEAR ASSY | 1 | |
| 2 | 90282-04064 | KEY, STRAIGHT | 1 | |
| 3 | 90209-12280 | WASHER | 1 | |
| 4 | 90208-12015 | WASHER, CONICAL SPRING | 1 | |
| 5 | 90179-12659 | NUT | 1 | |
| 6 | 3E5-16150-02 | PRIMARY DRIVEN GEAR COMP. | 1 | |
| 7 | 90468-16090 | .CLIP | 1 | |
| 8 | 93505-08030 | BALL | 12 | |
| 9 | 527-16520-10 | PLATE, THRUST WEIGHT | 1 | |
| 10 | 3E5-16521-00 | PLATE, FRICTION | 3 | |
| 11 | 3E5-16521-00 | PLATE, FRICTION | 3 | |
| 12 | 517-16524-10 | PLATE, CLUTCH 1 (1.2T) | 5 | UR |
| | 517-16524-20 | PLATE, CLUTCH 1 (1.4T) | 5 | UR |
| | 517-16524-30 | PLATE, CLUTCH 1 (1.6T) | 5 | UR |
| 13 | 90501-10602 | SPRING, COMPRESSION | 4 | PINK |
| 14 | 517-16550-10 | PRESSURE PLATE ASSY | 1 | |
| 15 | 90501-12088 | SPRING, COMPRESSION | 6 | |
| 16 | 517-16561-01 | PLATE, PRESSURE 2 | 1 | |
| 17 | 99080-03600 | CIRCLIP | 2 | |
| 18 | 93451-08094 | CIRCLIP | 1 | |
| 19 | 517-16180-00 | ONE WAY BOSS COMP. | 1 | |
| 20 | 384-15635-00 | PAWL, KICK | 2 | |
| 21 | 2T4-15637-01 | SPRING, PAWL | 1 | |
| 22 | 527-16571-01 | BOSS, CLUTCH | 1 | |
| 23 | 93210-98202 | O-RING | 1 | |
| 24 | 122-16164-00 | PLATE, THRUST 2 | 1 | |
| 25 | 90560-17146 | SPACER | 1 | |
| 26 | 90208-16019 | WASHER, CONICAL SPRING | 1 | |

FIG. 10 CLUTCH

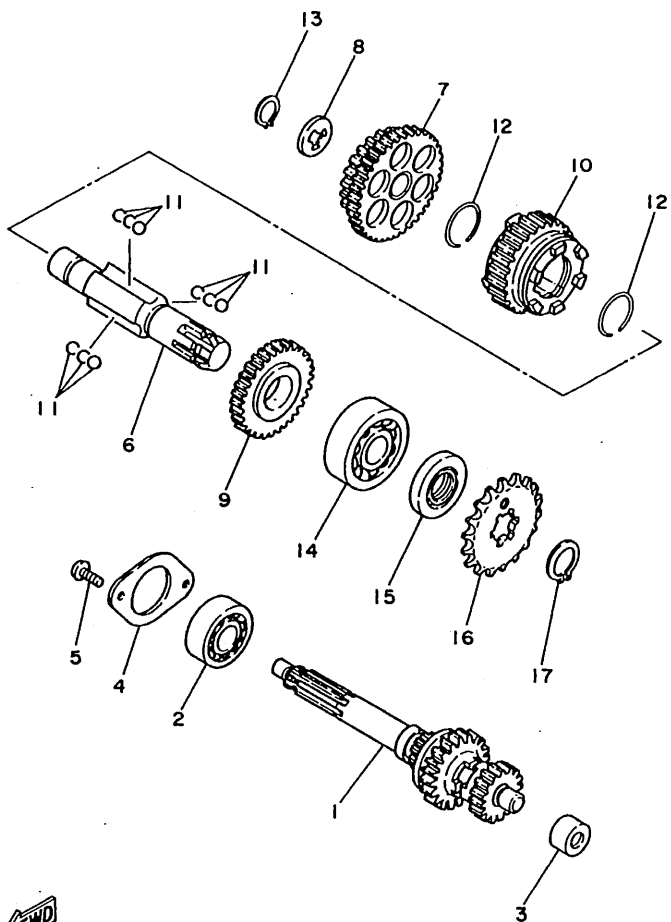


| REF. NO. | PART NO. | DESCRIPTION | Q'TY | REMARKS |
|----------|-------------|-------------|------|---------|
| 27 | 90179-16190 | NUT | 1 | |

3RV110-1100

B13

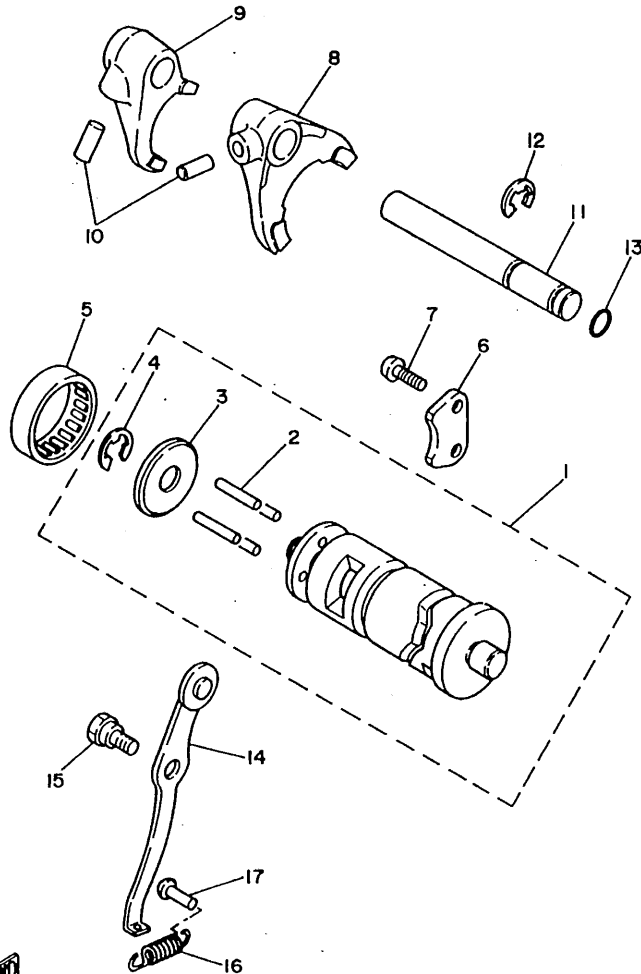
FIG. 11 TRANSMISSION



| REF. NO. | PART NO. | DESCRIPTION | Q'TY | REMARKS |
|----------|--------------|--------------------------------|------|---------|
| 1 | 21W-17410-00 | MAIN AXLE COMP. | 1 | |
| 2 | 93306-20301 | BEARING | 1 | |
| 3 | 93320-41202 | BEARING (BK1212V1) | 1 | |
| 4 | 296-17471-00 | PLATE, cover | 1 | |
| 5 | 98507-06012 | SCREW, pan head | 2 | |
| 6 | 1W7-17421-10 | AXLE, drive | 1 | |
| 7 | 1W7-17211-12 | GEAR, 1st wheel (39T/26T) | 1 | |
| 8 | 90209-15178 | WASHER (0.6T) | 1 | UR |
| | 90209-15179 | WASHER (0.8T) | 1 | UR |
| | 90209-15180 | WASHER (1.0T) | 1 | UR |
| 9 | 1W7-17221-20 | GEAR, 2nd wheel (29T) | 1 | |
| 10 | 21W-17231-00 | GEAR, 3rd wheel (22T) | 1 | |
| 11 | 93509-32012 | BALL | 9 | |
| 12 | 93450-28049 | CIRCLIP | 2 | |
| 13 | 93440-15012 | CIRCLIP | 1 | |
| 14 | 93306-20401 | BEARING (B6204) | 1 | |
| 15 | 93102-20143 | OIL SEAL | 1 | |
| 16 | 93812-15063 | SPROCKET,drive 15t(5171746152) | 1 | |
| 17 | 93410-20038 | CIRCLIP | 1 | |


3RV110-1110

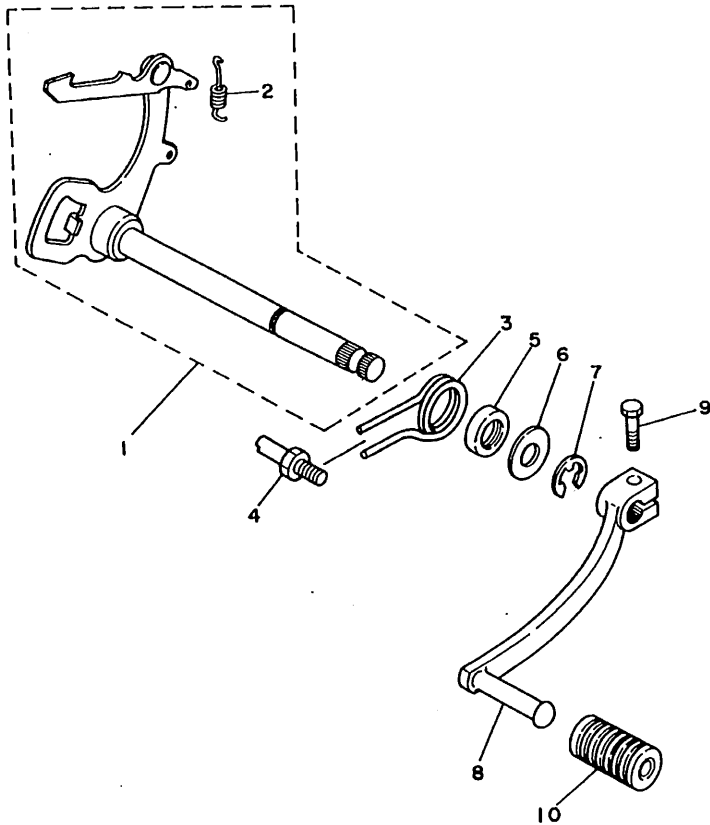
FIG. 12 SHIFT CAM • FORK



3RV110-1120

| REF. NO. | PART NO. | DESCRIPTION | Q'TY | REMARKS |
|----------|--------------|-------------------------|------|---------|
| 1 | 21W-18540-01 | SHIFT CAM ASSY | 1 | |
| 2 | 93604-22050 | .PIN, dowel | 4 | |
| 3 | 296-18561-00 | .PLATE, side 1 | 1 | |
| 4 | 99001-09600 | .CIRCLIP | 1 | |
| 5 | 93315-23208 | BEARING, cylindrical | 1 | |
| 6 | 296-18562-01 | PLATE, stopper 2 | 1 | |
| 7 | 90150-06032 | SCREW, round head | 2 | |
| 8 | 58H-18511-00 | FORK, shift 1 | 1 | |
| 9 | 1W7-18512-02 | FORK, shift 2 | 1 | |
| 10 | 93606-14081 | PIN, dowel | 2 | |
| 11 | 2N8-18531-00 | BAR, shift fork guide 1 | 1 | |
| 12 | 99006-10600 | CIRCLIP | 1 | |
| 13 | 93210-09729 | O-RING | 1 | |
| 14 | 296-18140-02 | STOPPER LEVER ASSY | 1 | |
| 15 | 90109-063F6 | BOLT | 1 | |
| 16 | 90506-10184 | .SPRING, tension | 1 | |
| 17 | 132-16346-00 | HOOK, spring | 1 | |

FIG. 13 SHIFT SHAFT



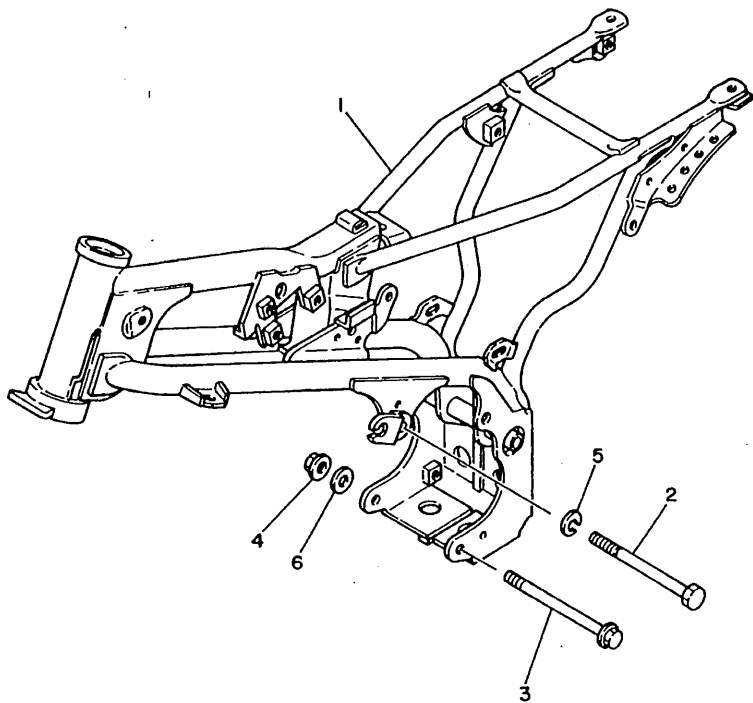
| REF. NO. | PART NO. | DESCRIPTION | Q'TY | REMARKS |
|----------|--------------|--------------------------|------|---------|
| 1 | 58H-18101-04 | SHIFT SHAFT ASSY | 1 | |
| 2 | 90506-08122 | SPRING, TENSION | 1 | |
| 3 | 90508-32263 | SPRING, TORSION | 1 | |
| 4 | 278-18127-01 | STOPPER, SCREW | 1 | |
| 5 | 93102-12106 | OIL SEAL (SD 12-22-5 HS) | 1 | |
| 6 | 90201-12575 | WASHER, PLATE | 1 | |
| 7 | 99006-10600 | CIRCLIP | 1 | |
| 8 | 21W-18111-00 | PEDAL, SHIFT | 1 | |
| 9 | 97027-06020 | BOLT | 1 | |
| 10 | 132-18113-01 | COVER, SHIFT PEDAL | 1 | |



3RV110-1130

FIG. 14 FRAME

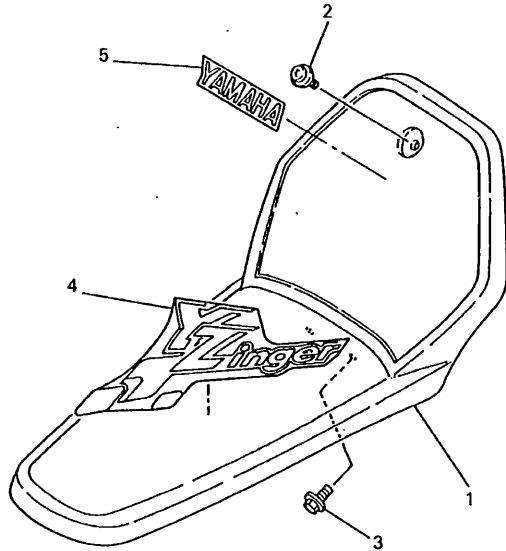
| REF. NO. | PART NO. | DESCRIPTION | Q'TY | REMARKS |
|----------|-----------------|---------------|------|--------------|
| 1 | 21W-21110-02-33 | FRAME COMP. | 1 | YAMAHA BLACK |
| 2 | 90101-08286 | BOLT | 1 | |
| 3 | 95827-08120 | BOLT, flange | 2 | |
| 4 | 95707-08500 | NUT, flange | 2 | |
| 5 | 92907-08100 | WASHER | 1 | |
| 6 | 90201-086P8 | WASHER, plate | 2 | |



3RV110-1140

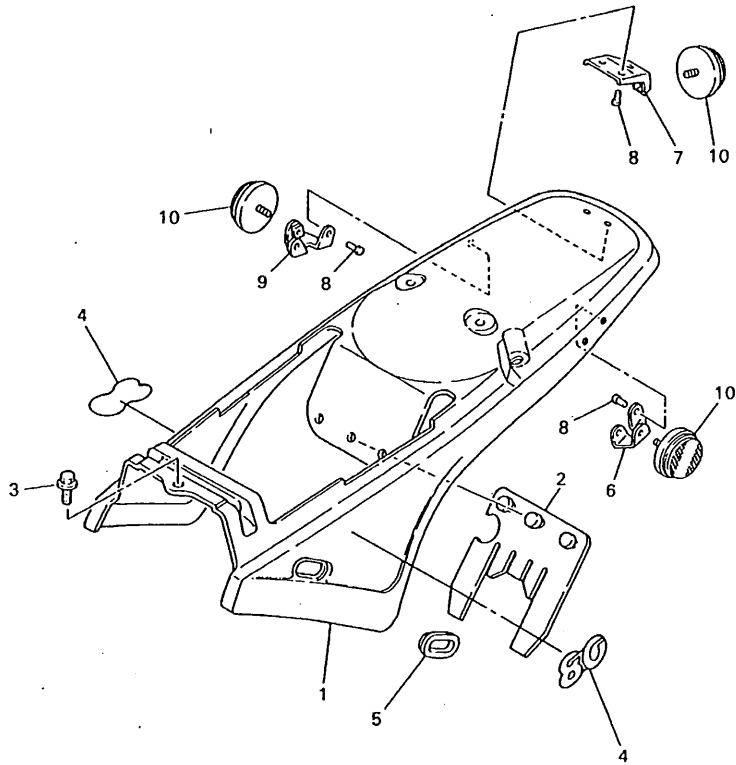
FIG. 15 FRONT FENDER

| REF. NO. | PART NO. | DESCRIPTION | Q'TY. | REMARKS |
|----------|--------------|--------------------|-------|---------|
| 1 | 3RV-21511-10 | FENDER, FRONT | 1 | |
| 2 | 90159-06033 | SCREW, WITH WASHER | 1 | |
| 3 | 90119-06044 | BOLT, WITH WASHER | 2 | |
| 4 | 3RV-21569-20 | GRAPHIC 1 | 1 | |
| 5 | 99241-00080 | EMBLEM, YAMAHA | 1 | |



3RV100-7150

FIG. 16 SIDE COVER

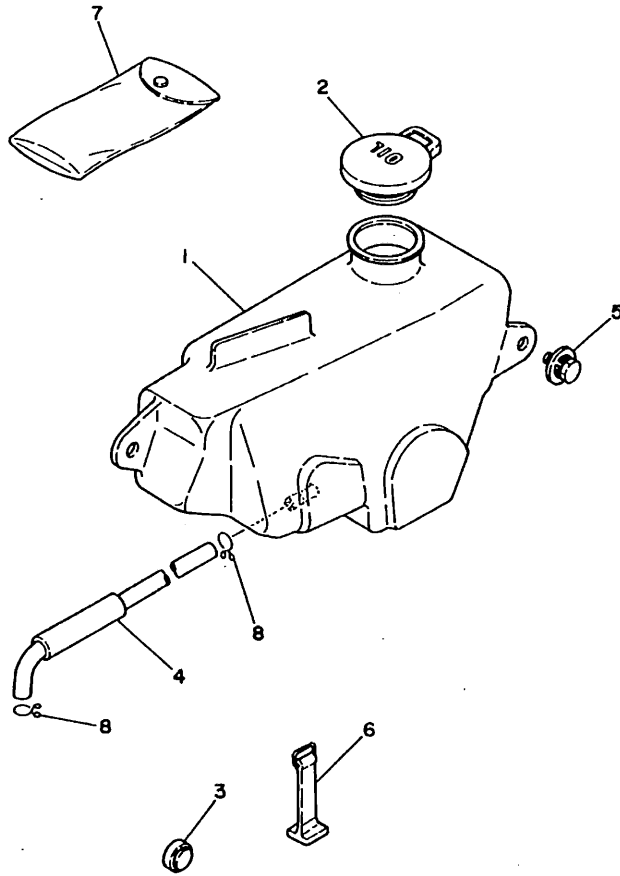


| REF. NO. | PART NO. | DESCRIPTION | Q'TY | REMARKS |
|----------|--------------|--------------------|------|---------------|
| 1 | 3RV-21711-00 | COVER, SIDE 1 | 1 | UR |
| | 3RV-21711-10 | COVER, SIDE 1 | 1 | UR FOR CANADA |
| 2 | 4V0-21621-00 | FLAP | 1 | |
| 3 | 90159-06016 | SCREW, WITH WASHER | 3 | |
| 4 | 4ES-21781-00 | EMBLEM 1 | 2 | |
| 5 | 21W-21719-00 | GROMMET | 1 | |
| 6 | 21W-2172K-00 | BRACKET 1 | 1 | FOR CANADA |
| 7 | 21W-2172L-00 | BRACKET 2 | 1 | FOR CANADA |
| 8 | 90267-40075 | RIVET, BLIND | 6 | FOR CANADA |
| 9 | 21W-2172M-00 | BRACKET 3 | 1 | FOR CANADA |
| 10 | 449-85131-02 | REFLECTOR, REAR | 3 | FOR CANADA |



3RV100-7160

FIG. 17 OIL TANK

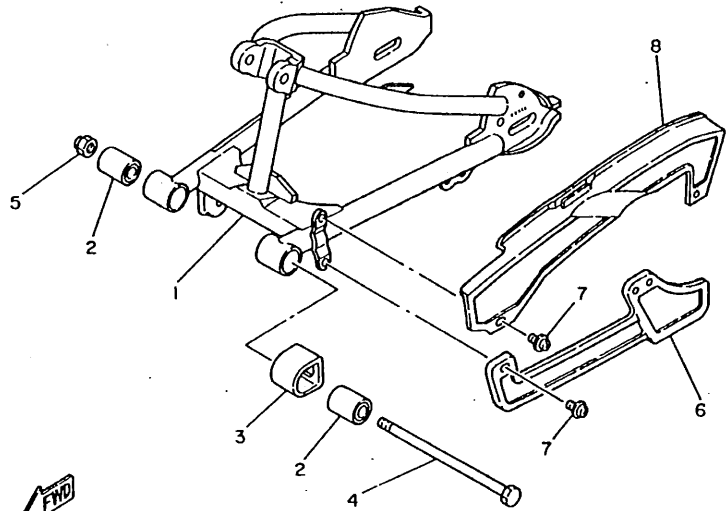
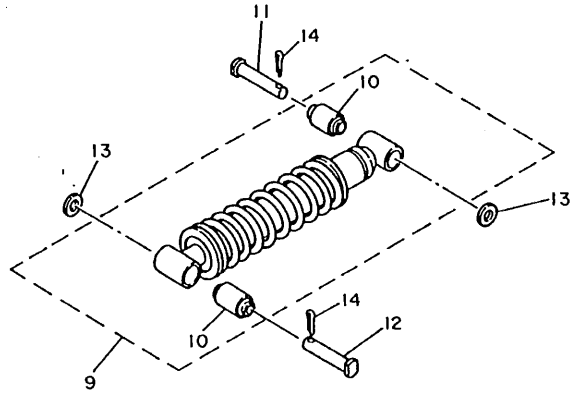


| REF. NO. | PART NO. | DESCRIPTION | Q'TY | REMARKS |
|----------|--------------|--------------------|------|---------|
| 1 | 21W-21751-01 | TANK, OIL | 1 | |
| 2 | 5R2-21771-00 | BODY, CAP | 1 | |
| 3 | 22W-24181-00 | DAMPER, LOCATING 1 | 1 | |
| 4 | 21W-21766-00 | PIPE, OIL | 1 | |
| 5 | 90119-06056 | BOLT, WITH WASHER | 2 | |
| 6 | 21W-21646-00 | BAND | 2 | |
| 7 | 50W-28100-00 | TOOL KIT | 1 | |
| 8 | 90467-08003 | CLIP | 2 | |



3RV110-1170

FIG. 18 REAR ARM • SUSPENSION

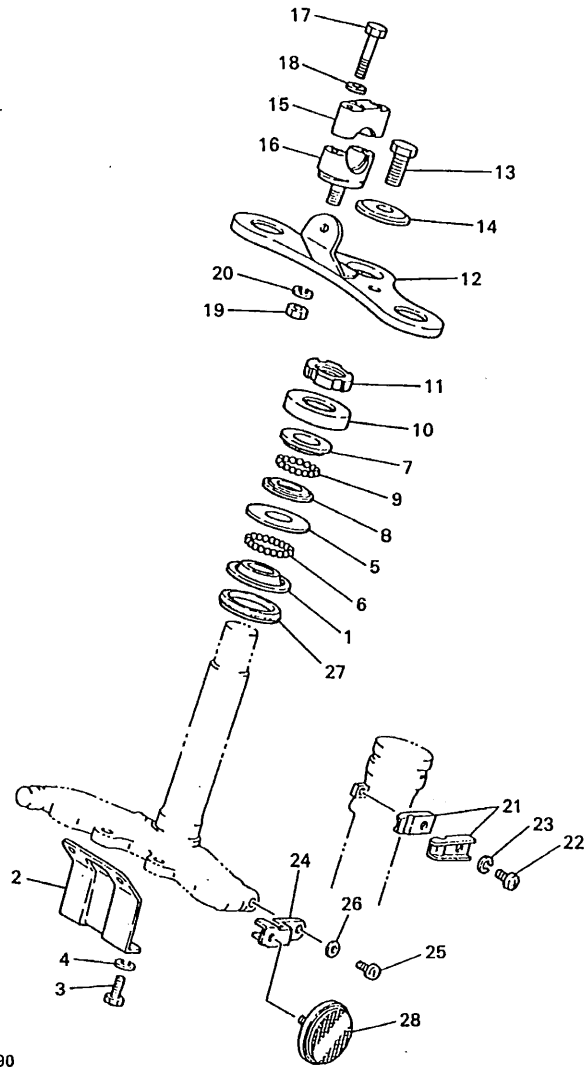


| REF. NO. | PART NO. | DESCRIPTION | Q'TY | REMARKS |
|----------|-----------------|---------------------------|------|----------------|
| 1 | 21W-22110-00-35 | REAR ARM COMP. | 1 | SILVER |
| 2 | 102-22123-00 | BUSH 1 | 2 | |
| 3 | 3R0-22151-00 | SEAL, GUARD | 1 | |
| 4 | 288-22141-00 | SHAFT, PIVOT | 1 | |
| 5 | 90185-10037 | NUT, SELF-LOCKING | 1 | |
| 6 | 21W-22199-00 | SUPPORT, CHAIN | 1 | |
| 7 | 90159-05121 | SCREW, WITH WASHER | 5 | |
| 8 | 21W-22311-00 | CASE, CHAIN | 1 | |
| 9 | 21W-22210-02 | SHOCK ABSORBER ASSY, REAR | 1 | UR |
| | 4BC-22210-01 | SHOCK ABSORBER ASSY, REAR | 1 | UR FOR CANADA |
| | 3RV-22210-11 | SHOCK ABSORBER ASSY, REAR | 1 | UR FOR OCEANIA |
| 10 | 3M7-22216-00 | BUSH, REAR SHOCK ABSORBER | 2 | |
| 11 | 90240-10072 | PIN, CLEVIS | 1 | |
| 12 | 90240-10069 | PIN, CLEVIS | 1 | |
| 13 | 90201-106H5 | WASHER, PLATE | 2 | |
| 14 | 91401-25020 | PIN, COTTER | 2 | |



3RV110-1180

FIG. 19 STEERING

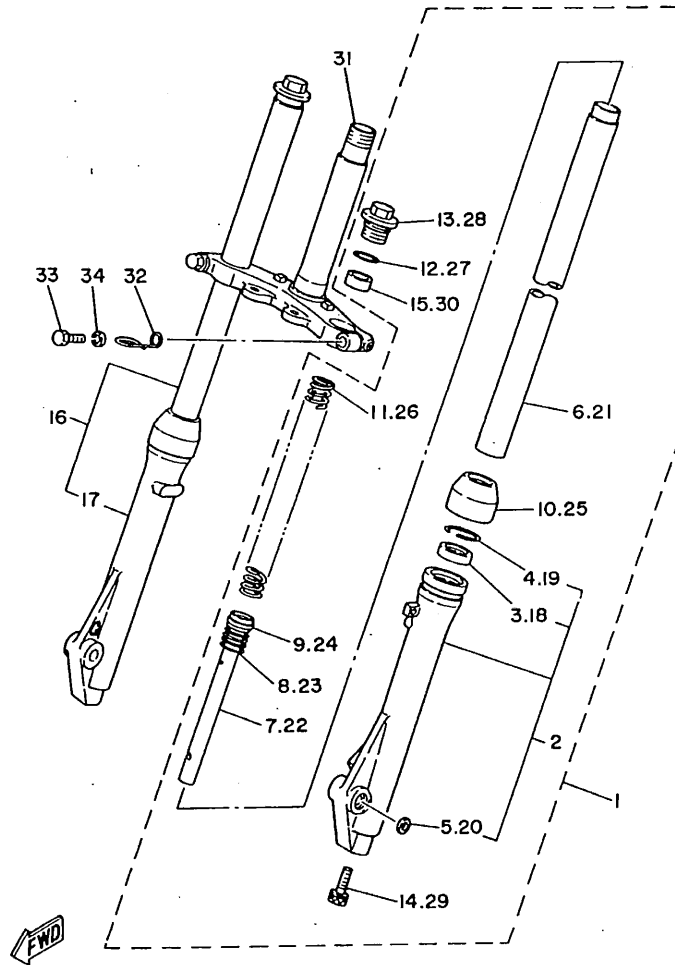


| REF. NO. | PART NO. | DESCRIPTION | Q'TY | REMARKS |
|----------|-----------------|----------------------|------|------------|
| 1 | 156-23411-00 | RACE, BALL 1 | 1 | |
| 2 | 21W-23486-00 | STAY, PLATE | 1 | |
| 3 | 97007-06016 | BOLT | 2 | |
| 4 | 92907-06100 | WASHER | 2 | |
| 5 | 156-23412-00 | RACE, BALL 2 | 1 | |
| 6 | 93501-04011 | BALL | 19 | |
| 7 | 22F-23411-01 | RACE, BALL 1 | 1 | |
| 8 | 22F-23412-01 | RACE, BALL 2 | 1 | |
| 9 | 93503-16003 | BALL | 22 | |
| 10 | 122-23416-00 | COVER, BALL RACE 2 | 1 | |
| 11 | 90179-25051 | NUT | 1 | |
| 12 | 3RV-23435-00 | CROWN, HANDLE | 1 | |
| 13 | 90105-10006 | BOLT, WASHER BASED | 1 | |
| 14 | 90209-10160 | WASHER | 1 | |
| 15 | 3RV-23441-00 | HOLDER, HANDLE UPPER | 2 | |
| 16 | 462-23442-00-35 | HOLDER, HANDLE LOWER | 2 | SILVER |
| 17 | 97014-06035 | BOLT | 4 | |
| 18 | 92990-06600 | WASHER, PLATE | 4 | |
| 19 | 95307-10600 | NUT | 2 | |
| 20 | 92907-10100 | WASHER | 2 | |
| 21 | 90462-14055 | CLAMP | 2 | |
| 22 | 98507-06012 | SCREW, PAN HEAD | 1 | |
| 23 | 92907-06100 | WASHER | 1 | |
| 24 | 21W-2317E-00 | STAY | 2 | FOR CANADA |
| 25 | 98507-05008 | SCREW, PAN HEAD | 2 | FOR CANADA |
| 26 | 92907-05600 | WASHER, SPRING | 2 | FOR CANADA |
| 27 | 164-23462-00 | SEAL, STEERING | 1 | |
| 28 | 355-85111-01 | REFLECTOR, FRONT | 2 | FOR CANADA |



3RV100-7190

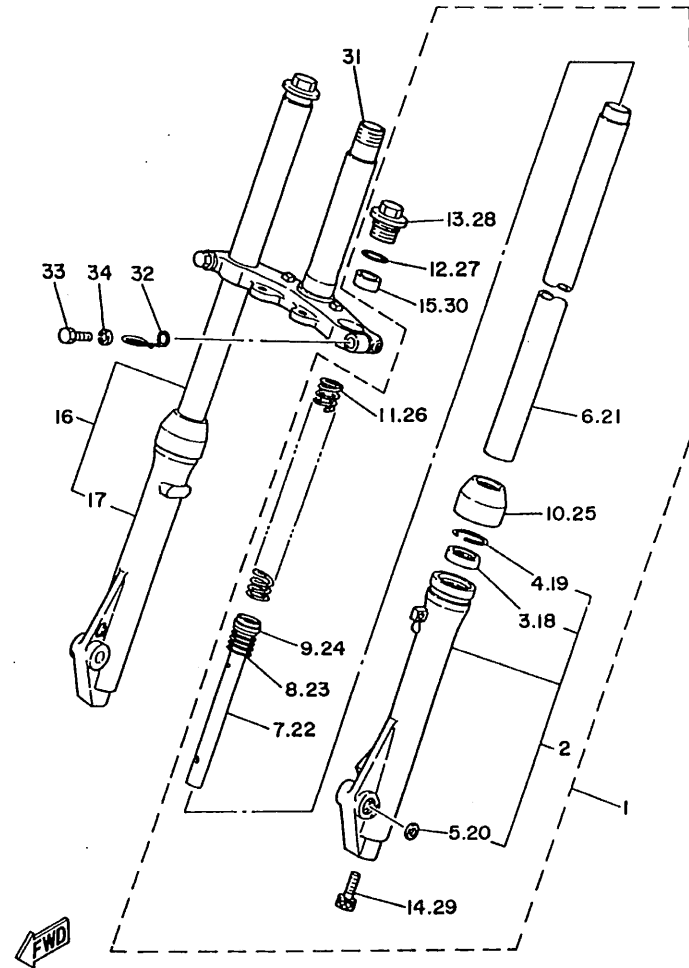
FIG. 20 FRONT FORK



3RV110-1200

| REF. NO. | PART NO. | DESCRIPTION | Q'TY | REMARKS |
|----------|-----------------|----------------------------|------|-------------|
| 1 | 3RV-23102-00 | FRONT FORK ASSY (L.H) | 1 | |
| 2 | 3R0-23126-00-35 | .TUBE, OUTER 1 | 1 | SILVER |
| 3 | 3M7-23145-00 | ..OIL SEAL | 1 | |
| 4 | 3M7-23156-00 | ..CLIP, OIL SEAL | 1 | |
| 5 | 3R0-23392-00 | ..WASHER, SPECIAL | 1 | |
| 6 | 21W-23110-00 | .INNER TUBE COMP.1 | 1 | |
| 7 | 3R0-23170-00 | .CYLINDER COMP, FRONT FORK | 1 | |
| 8 | 2J5-23151-00 | .SPRING, REBOUND | 1 | |
| 9 | 2J5-23157-00 | .RING, PISTON | 1 | |
| 10 | 3M7-23144-00 | .SEAL, DUST | 1 | |
| 11 | 21W-23141-00 | .SPRING, FRONT FORK | 1 | |
| 12 | 2J5-23147-00 | .O-RING | 1 | |
| 13 | 3M7-23111-01 | .BOLT, CAP | 1 | |
| 14 | 3M7-23181-00 | .BOLT, HEXAGON SOCKET HEAD | 1 | WITH WASHER |
| 15 | 3M7-23142-00 | .SEAT, SPRING UPPER | 1 | |
| 16 | 3RV-23103-00 | FRONT FORK ASSY (R.H) | 1 | |
| 17 | 3R0-23136-00-35 | .TUBE, OUTER 2 | 1 | SILVER |
| 18 | 3M7-23145-00 | ..OIL SEAL | 1 | |
| 19 | 3M7-23156-00 | ..CLIP, OIL SEAL | 1 | |
| 20 | 3R0-23392-00 | ..WASHER, SPECIAL | 1 | |
| 21 | 21W-23110-00 | .INNER TUBE COMP.1 | 1 | |
| 22 | 3R0-23170-00 | .CYLINDER COMP, FRONT FORK | 1 | |
| 23 | 2J5-23151-00 | .SPRING, REBOUND | 1 | |
| 24 | 2J5-23157-00 | .RING, PISTON | 1 | |
| 25 | 3M7-23144-00 | .SEAL, DUST | 1 | |
| 26 | 21W-23141-00 | .SPRING, FRONT FORK | 1 | |
| 27 | 2J5-23147-00 | .O-RING | 1 | |
| 28 | 3M7-23111-01 | .BOLT, CAP | 1 | |

FIG. 20 FRONT FORK

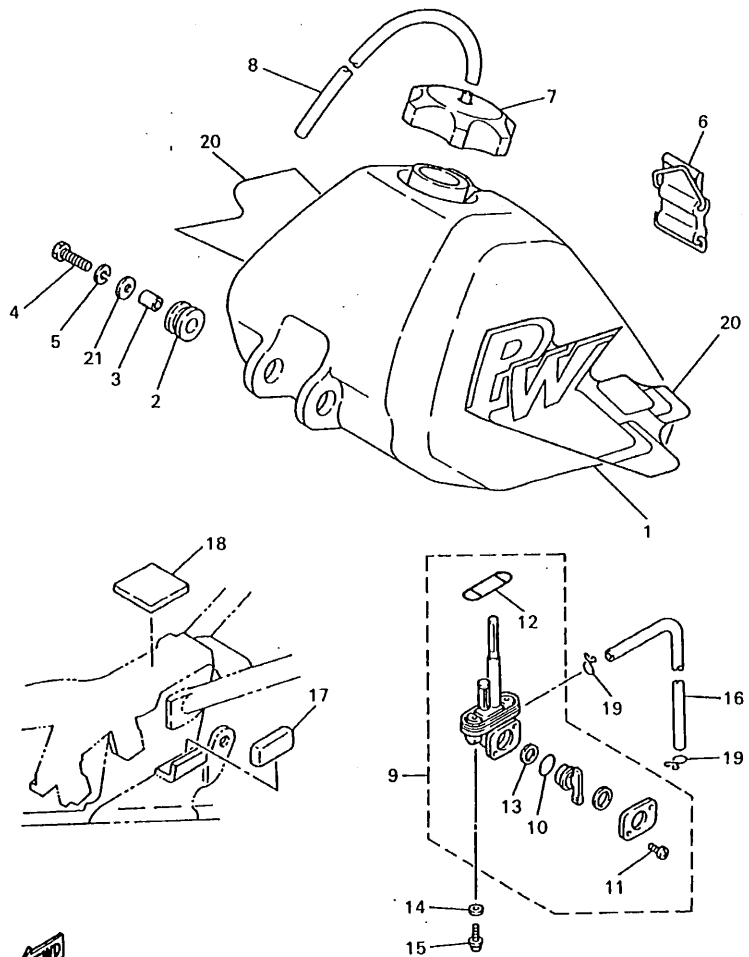


3RV110-1200

| REF. NO. | PART NO. | DESCRIPTION | Q'TY | REMARKS |
|----------|--------------|----------------------------|------|-------------|
| 29 | 3M7-23181-00 | .BOLT, HEXAGON SOCKET HEAD | 1 | WITH WASHER |
| 30 | 3M7-23142-00 | .SEAT, SPRING UPPER | 1 | |
| 31 | 21W-23340-00 | UNDER BRACKET COMP. | 1 | |
| 32 | 3R0-23318-00 | HOLDER, CABLE 1 | 1 | |
| 33 | 451-23346-00 | BOLT 1 | 2 | |
| 34 | 92901-10100 | WASHER, SPRING | 2 | |

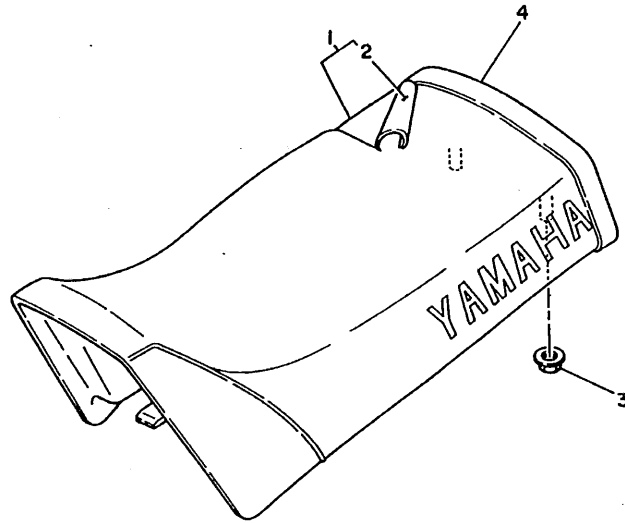
FIG. 21 FUEL TANK

| REF. NO. | PART NO. | DESCRIPTION | Q'TY | REMARKS |
|----------|--------------|----------------------|------|---------|
| 1 | 3RV-24110-10 | FUEL TANK COMP. | 1 | |
| 2 | 90480-18290 | GROMMET | 2 | |
| 3 | 90387-07598 | COLLAR | 2 | |
| 4 | 97027-06030 | BOLT | 2 | |
| 5 | 92907-06100 | WASHER | 2 | |
| 6 | 59V-24173-00 | BAND, TANK FITTING 1 | 1 | |
| 7 | 2FG-24610-00 | CAP ASSY | 1 | |
| 8 | 90445-084J1 | HOSE | 1 | |
| 9 | 4X8-24500-02 | FUEL COCK ASSY 1 | 1 | |
| 10 | 3AJ-24534-00 | .SEAL, COCK | 1 | |
| 11 | 98503-03008 | .SCREW | 2 | |
| 12 | 4X8-24512-00 | .GASKET | 1 | |
| 13 | 3AJ-24523-00 | .VALVE | 1 | |
| 14 | 90202-05193 | WASHER, PLATE | 2 | |
| 15 | 90149-06011 | SCREW | 2 | |
| 16 | 90445-09083 | HOSE | 1 | |
| 17 | 21W-24181-00 | DAMPER, LOCATING 1 | 2 | |
| 18 | 51L-28371-00 | DAMPER | 1 | |
| 19 | 90467-08003 | CLIP | 2 | |
| 20 | 3RV-24240-20 | GRAPHIC SET | 1 | |
| 21 | 90201-06072 | WASHER, PLATE | 2 | |



3RV100-7210

FIG. 22 SEAT

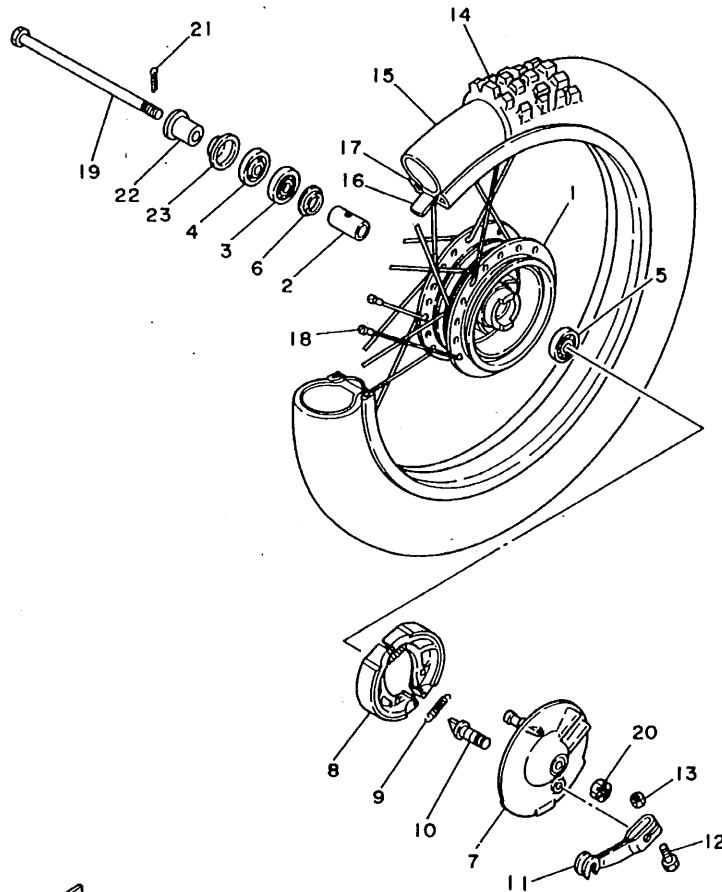


| REF. NO. | PART NO. | DESCRIPTION | Q'TY | REMARKS |
|----------|--------------|-----------------------|------|---------|
| 1 | 3RV-24770-30 | SEMI-DOUBLE SEAT ASSY | 1 | |
| 2 | 3RV-24731-30 | COVER, SEAT | 1 | |
| 3 | 90179-06403 | NUT | 2 | |
| 4 | 3RV-24734-30 | BAND, SEAT | 1 | |



3RV110-1220

FIG. 23 FRONT WHEEL

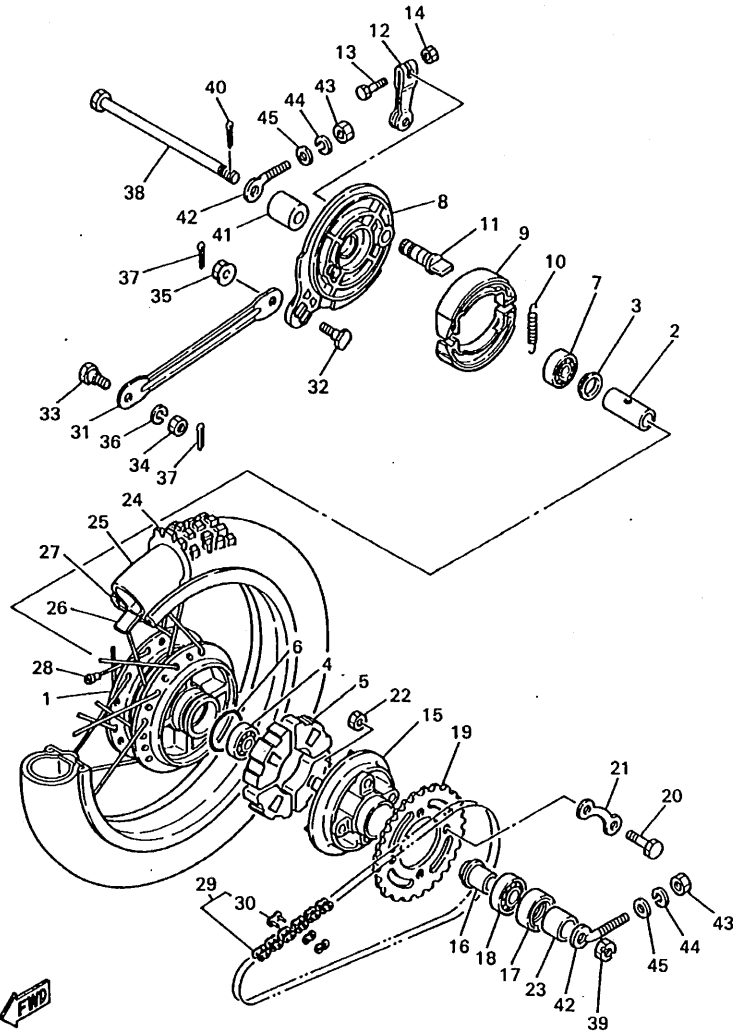


| REF. NO. | PART NO. | DESCRIPTION | Q'TY | REMARKS |
|----------|-----------------|---------------------|------|-----------------|
| 1 | 451-25111-00-98 | HUB, FRONT | 1 | LOW GLOSS BLACK |
| 2 | 90560-10103 | SPACER | 1 | |
| 3 | 93306-20006 | BEARING (B6200) | 1 | NTN |
| 4 | 93106-17006 | OIL SEAL | 1 | |
| 5 | 93306-20009 | BEARING (B6200RS) | 1 | |
| 6 | 2E9-25116-00 | FLANGE, SPACER 2 | 1 | |
| 7 | 3R0-25121-00-98 | PLATE, BRAKE SHOE | 1 | LOW GLOSS BLACK |
| 8 | 3EC-W2535-00 | BRAKE SHOE SET | 1 | |
| 9 | 90506-14081 | SPRING, TENSION | 2 | |
| 10 | 1YT-25351-00 | CAMSHAFT | 1 | |
| 11 | 451-25155-00 | LEVER, CAMSHAFT 1 | 1 | |
| 12 | 90101-06291 | BOLT | 1 | |
| 13 | 95307-06600 | NUT | 1 | |
| 14 | 94125-14642 | TIRE (2.50-14) | 1 | INOUE MK-2 |
| 15 | 94225-14147 | TUBE (2.50-14) | 1 | INOUE |
| 16 | 94325-14099 | BAND, RIM (2.75-14) | 1 | INOUE |
| 17 | 94414-14227 | RIM (1.40-14) | 1 | TAKASAGO |
| 18 | 3R0-25104-00 | SPOKE SET, FRONT | 1 | |
| 19 | 353-25181-03 | AXLE, WHEEL | 1 | |
| 20 | 90171-10004 | NUT, CASTLE | 1 | |
| 21 | 91401-20020 | PIN, COTTER | 1 | |
| 22 | 90387-10744 | COLLAR | 1 | |
| 23 | 451-25118-00 | COVER, HUB DUST | 1 | |



3RV110-1230

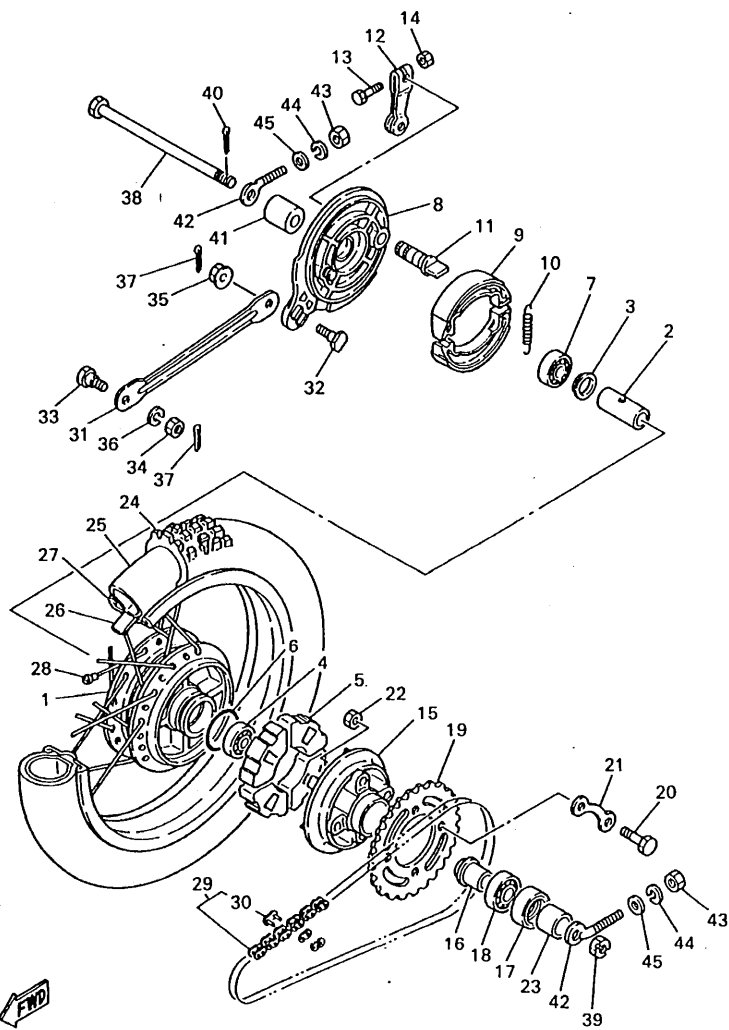
FIG. 24 REAR WHEEL



3RV100-7240

| REF. NO. | PART NO. | DESCRIPTION | Q'TY | REMARKS |
|----------|-----------------|------------------------|------|-----------------|
| 1 | 21W-25311-00-98 | HUB, REAR | 1 | LOW GLOSS BLACK |
| 2 | 90560-12145 | SPACER | 1 | |
| 3 | 109-25315-00 | FLANGE, SPACER | 1 | |
| 4 | 93306-30102 | BEARING (B6301) | 1 | |
| 5 | 304-25364-01 | DAMPER | 4 | |
| 6 | 93210-41041 | O-RING | 1 | |
| 7 | 93306-30103 | BEARING | 1 | |
| 8 | 1M3-25321-02-98 | PLATE, BRAKE SHOE | 1 | LOW GLOSS BLACK |
| 9 | 4BE-W2536-00 | BRAKE SHOE KIT 2 | 1 | |
| 10 | 90506-15260 | SPRING, TENSION | 2 | |
| 11 | 3Y6-25351-00 | CAMSHAFT | 1 | |
| 12 | 538-25355-00 | LEVER, CAMSHAFT | 1 | |
| 13 | 90101-06278 | BOLT | 1 | |
| 14 | 95307-06600 | NUT | 1 | |
| 15 | 296-25366-01-98 | CLUTCH, HUB | 1 | LOW GLOSS BLACK |
| 16 | 21W-25387-00 | AXLE, SPROCKET | 1 | |
| 17 | 93106-30004 | OIL SEAL | 1 | |
| 18 | 93306-00406 | BEARING (B6004Z) | 1 | |
| 19 | 21W-25432-10 | SPROCKET, DRIVEN (32T) | 1 | |
| 20 | 90101-08672 | BOLT | 4 | |
| 21 | 102-25412-00 | WASHER | 2 | |
| 22 | 90170-08366 | NUT | 4 | |
| 23 | 90387-207G3 | COLLAR | 1 | |
| 24 | 94130-12720 | TIRE (3.00-12) | 1 | INOUE MK-2 |
| 25 | 94230-12208 | TUBE (3.00-12) | 1 | SUMITOMO |
| 26 | 94330-12100 | BAND, RIM (3.00-12) | 1 | INOUE |
| 27 | 94416-12334 | RIM (1.60-12) | 1 | TAKASAGO |
| 28 | 21W-25304-00 | SPOKE SET, REAR | 1 | |

FIG. 24 REAR WHEEL



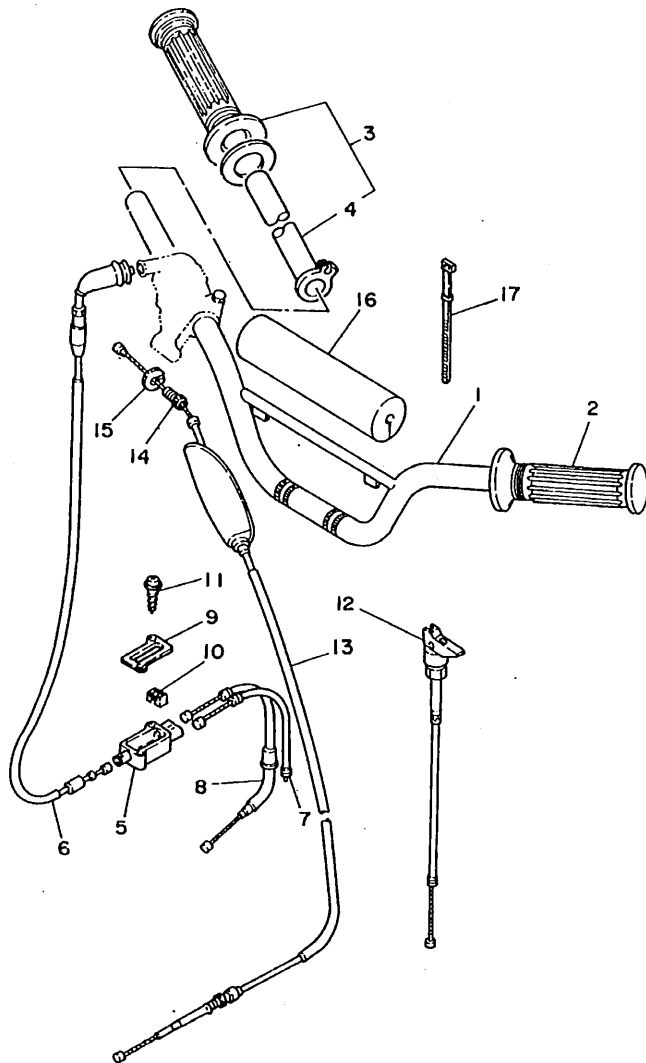
| REF. NO. | PART NO. | DESCRIPTION | Q'TY | REMARKS |
|----------|--------------|---------------------------|------|---------|
| 29 | 94580-52084 | CHAIN (D.I.D 420-84L) | 1 | |
| 30 | 94680-52001 | JOINT, CHAIN(D.I.D.-420M) | 1 | |
| 31 | 21W-25371-00 | BAR, TENSION | 1 | |
| 32 | 90109-08183 | BOLT | 1 | |
| 33 | 90109-08368 | BOLT | 1 | |
| 34 | 95307-08700 | NUT | 1 | |
| 35 | 95707-08500 | NUT, FLANGE | 1 | |
| 36 | 92907-08600 | WASHER | 1 | |
| 37 | 91401-20015 | PIN, COTTER | 2 | |
| 38 | 367-25381-01 | AXLE, WHEEL | 1 | |
| 39 | 90171-12005 | NUT, CASTLE | 1 | |
| 40 | 91401-30030 | PIN, COTTER | 1 | |
| 41 | 90387-12412 | COLLAR | 1 | |
| 42 | 102-25389-00 | PULLER, CHAIN 2 | 2 | |
| 43 | 95307-06600 | NUT | 2 | |
| 44 | 92907-06100 | WASHER | 2 | |
| 45 | 90201-061A5 | WASHER, PLATE | 2 | |

FWD

3RV100-7240

C15

FIG. 25 STEERING HANDLE • CABLE

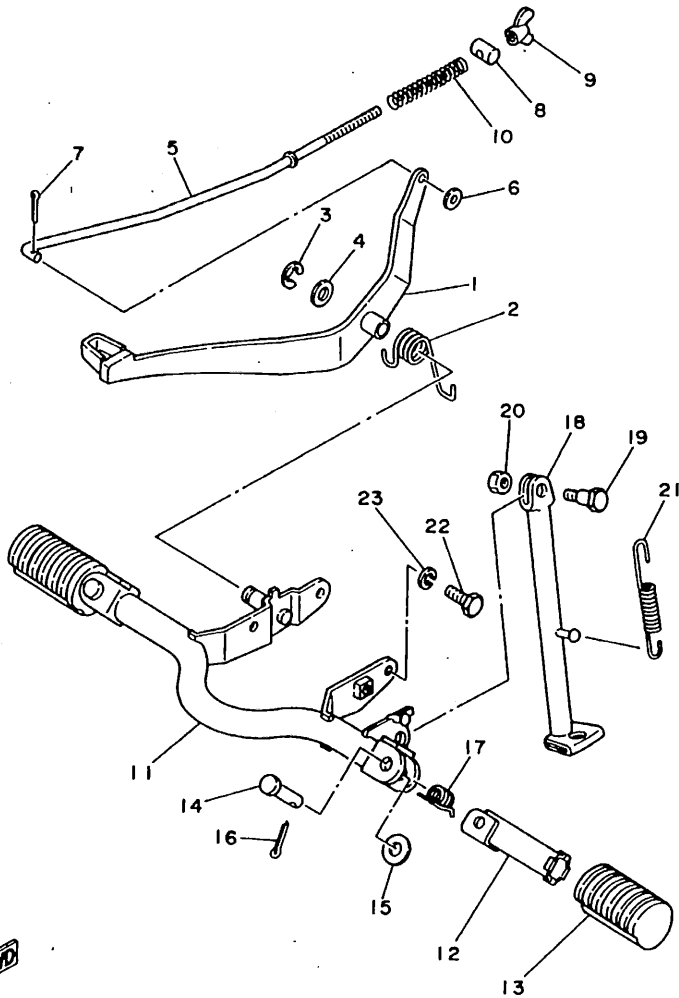


| REF. NO. | PART NO. | DESCRIPTION | Q'TY | REMARKS |
|----------|--------------|----------------------|------|---------|
| 1 | 3RV-26111-00 | HANDLEBAR | 1 | |
| 2 | 2N3-26241-00 | GRIP (LEFT) | 1 | BLACK |
| 3 | 21W-26240-00 | GRIP ASSY | 1 | |
| 4 | 434-26243-12 | TUBE, THROTTLE GUIDE | 1 | |
| 5 | 21W-26261-00 | CONNECTOR, CABLE | 1 | |
| 6 | 21W-26311-01 | CABLE, THROTTLE 1 | 1 | |
| 7 | 21W-26312-00 | CABLE, THROTTLE 2 | 1 | |
| 8 | 21W-26321-01 | CABLE, PUMP | 1 | |
| 9 | 21W-26262-00 | CAP, CABLE CONNECTOR | 1 | |
| 10 | 21W-26263-00 | PIECE, CONNECTING | 1 | |
| 11 | 90167-03004 | SCREW, TAPPING | 2 | |
| 12 | 21W-26331-00 | CABLE, STARTER 1 | 1 | |
| 13 | 21W-26341-00 | CABLE, BRAKE | 1 | |
| 14 | 90123-08013 | BOLT | 1 | |
| 15 | 90179-08148 | NUT | 1 | |
| 16 | 21W-26124-00 | PROTECTOR, HANDLEBAR | 1 | |
| 17 | 437-83936-11 | BAND, SWITCH CORD | 2 | |



3RV110-1250

FIG. 26 STAND • FOOTREST



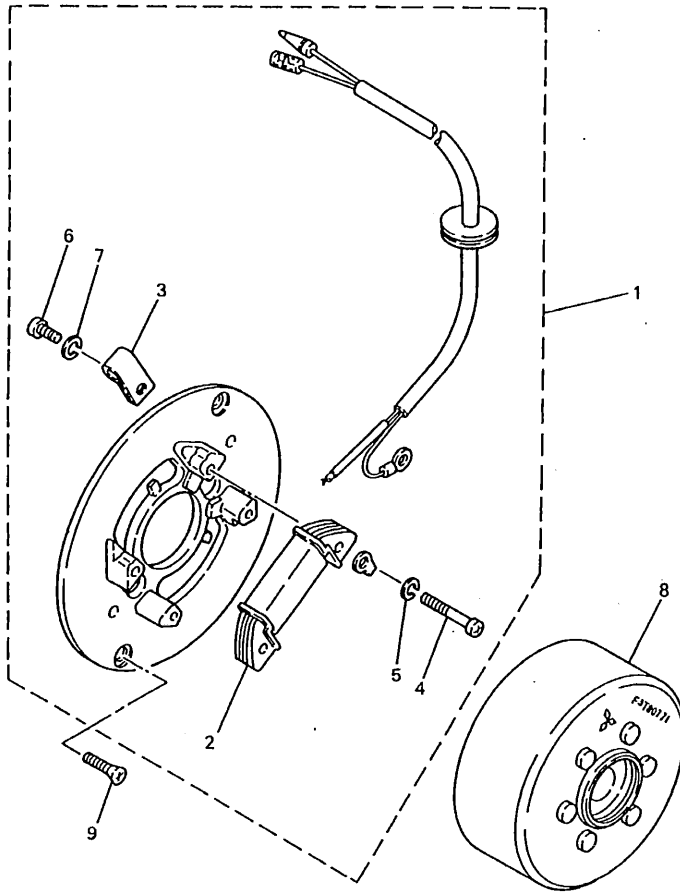
| REF. NO. | PART NO. | DESCRIPTION | Q'TY | REMARKS |
|----------|-----------------|---------------------|------|-------------------|
| 1 | 21W-27211-00 | PEDAL, BRAKE | 1 | |
| 2 | 90508-29578 | SPRING, TORSION | 1 | |
| 3 | 99080-09600 | CIRCLIP | 1 | |
| 4 | 92907-12600 | WASHER | 1 | |
| 5 | 21W-27231-00 | ROD, BRAKE | 1 | |
| 6 | 92907-06600 | WASHER | 1 | |
| 7 | 91401-20015 | PIN, COTTER | 1 | |
| 8 | 90249-12008 | PIN | 1 | |
| 9 | 90175-06013 | NUT, WING | 1 | |
| 10 | 90501-10245 | SPRING, COMPRESSION | 1 | |
| 11 | 21W-27411-01-33 | FOOTREST 1 | 1 | YAMAHA BLACK |
| 12 | 214-27421-00 | FOOTREST 2 | 2 | UNICHROME (BLACK) |
| 13 | 214-27413-00 | COVER, FOOTREST | 2 | |
| 14 | 91701-08038 | PIN, CLEVIS | 2 | |
| 15 | 92907-08600 | WASHER | 2 | |
| 16 | 91401-25015 | PIN, COTTER | 2 | |
| 17 | 90508-20023 | SPRING, TORSION | 2 | |
| 18 | 21W-27311-01 | STAND, SIDE | 1 | |
| 19 | 90109-08666 | BOLT | 1 | |
| 20 | 95307-08700 | NUT | 1 | |
| 21 | 90506-26270 | SPRING, TENSION | 1 | |
| 22 | 97027-08020 | BOLT | 2 | |
| 23 | 92907-08100 | WASHER | 2 | |



3RV110-1260

FIG. 27 GENERATOR

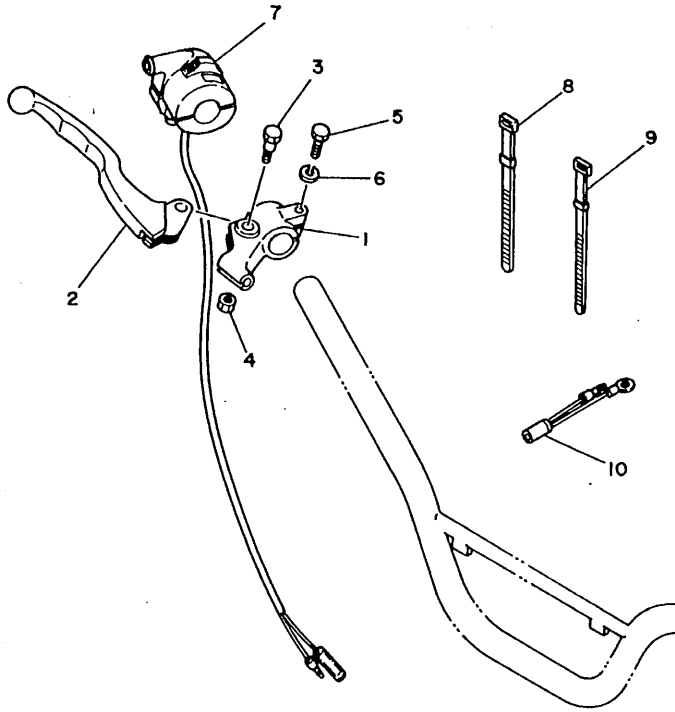
| REF. NO. | PART NO. | DESCRIPTION | Q'TY | REMARKS |
|----------|--------------|--------------------|------|---------|
| 1 | 21W-85510-21 | STATOR ASSY | 1 | |
| 2 | 21W-85512-21 | .COIL, SOURCE | 1 | |
| 3 | 104-81328-20 | .CLAMP | 1 | |
| 4 | 98511-04025 | .SCREW, PAN HEAD | 2 | |
| 5 | 92902-04100 | .WASHER, SPRING | 2 | |
| 6 | 98580-04008 | .SCREW, PAN HEAD | 1 | |
| 7 | 92902-04100 | .WASHER, SPRING | 1 | |
| 8 | 21W-85550-21 | ROTOR ASSY | 1 | |
| 9 | 90151-05055 | SCREW, COUNTERSUNK | 2 | |



3RV110-5271

D4

FIG. 28 HANDLE SWITCH • LEVER



| REF. NO. | PART NO. | DESCRIPTION | Q'TY | REMARKS |
|----------|--------------|-------------------|------|---------|
| 1 | 233-82921-31 | HOLDER, LEVER 2 | 1 | |
| 2 | 23X-83922-00 | LEVER 2 | 1 | |
| 3 | 90109-06798 | BOLT | 1 | |
| 4 | 95607-06100 | NUT, U | 1 | |
| 5 | 97007-06022 | BOLT | 1 | |
| 6 | 92907-06100 | WASHER | 1 | |
| 7 | 21W-83976-00 | SWITCH, HANDLE 1 | 1 | |
| 8 | 437-83936-01 | BAND, SWITCH CORD | 1 | |
| 9 | 437-83936-11 | BAND, SWITCH CORD | 1 | |
| 10 | 4V0-82519-00 | WIRE, EARTH LEAD | 1 | |

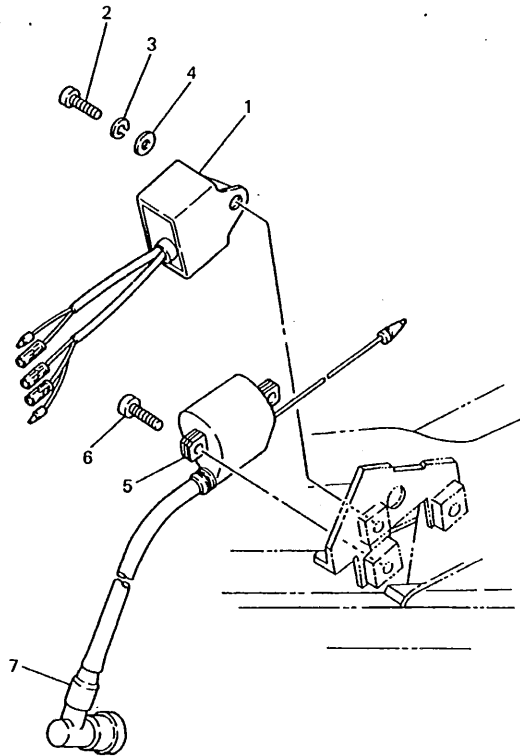


3RV110-1280

D5

FIG. 29 ELECTRICAL 1

| REF. NO. | PART NO. | DESCRIPTION | Q'TY | REMARKS |
|----------|--------------|---------------------|------|---------|
| 1 | 21W-85540-20 | C.D.I. UNIT ASSY | 1 | |
| 2 | 98507-06020 | SCREW, PAN HEAD | 1 | |
| 3 | 92907-06100 | WASHER | 1 | |
| 4 | 92907-06600 | WASHER | 1 | |
| 5 | 20N-82310-40 | IGNITION COIL, ASSY | 1 | |
| 6 | 98507-06020 | SCREW, PAN HEAD | 2 | |
| 7 | 166-82370-20 | PLUG CAP ASSY | 1 | |



3RV100-4290

D6

NUMERICAL INDEX

| PART NO. | GRID NO. | PART NO. | GRID NO. | PART NO. | GRID NO. |
|-----------------|----------|-----------------|----------|-----------------|----------|
| 3RV-W1441-30 | B - 5 | 307-14169-10 | B - 6 | 517-16524-30 | B -12 |
| 3EC-W2535-00 | C -13 | 58E-14171-00 | B - 6 | 517-16550-10 | B -12 |
| 4BE-W2536-00 | C -14 | 296-14184-01 | B - 6 | 517-16561-01 | B -12 |
| 21W-11111-00 | B - 2 | 2E9-14185-00 | B - 6 | 527-16571-01 | B -12 |
| 463-11161-01 | B - 2 | 127-14186-00 | B - 6 | 1W7-17211-12 | B -14 |
| 21W-11162-00 | B - 2 | 12R-14191-00 | B - 6 | 1W7-17221-20 | B -14 |
| 3E5-11162-00 | B - 2 | 296-14198-01 | B - 6 | 21W-17231-00 | B -14 |
| 1W7-11181-00 | B - 2 | 21W-14412-00 | B - 5 | 21W-17410-00 | B -14 |
| 3E5-11311-01 | B - 2 | 21W-14451-00 | B - 5 | 1W7-17421-10 | B -14 |
| 4AW-11351-00 | B - 2 | 21W-14453-00 | B - 5 | 296-17471-00 | B -14 |
| 1HA-11400-00 | B - 3 | 5U8-14454-00 | B - 5 | 58H-18101-04 | C - 2 |
| 1W7-11412-00 | B - 3 | 21W-14458-00 | B - 5 | 21W-18111-00 | C - 2 |
| 1HA-11422-00 | B - 3 | 21W-14503-00 | B - 6 | 132-18113-01 | C - 2 |
| 14N-11610-00 | B - 3 | 21W-14610-02 | B - 8 | 278-18127-01 | C - 2 |
| 14N-11610-10 | B - 3 | 3RV-14623-00 | B - 8 | 296-18140-02 | B -15 |
| 14N-11610-20 | B - 3 | 21W-14708-00 | B - 8 | 58H-18511-00 | B -15 |
| 3E5-11631-00-97 | B - 3 | 4X4-14714-00 | B - 8 | 1W7-18512-02 | B -15 |
| 527-11633-00 | B - 3 | 21W-14753-02 | B - 8 | 2N8-18531-00 | B -15 |
| 3E5-11635-00 | B - 3 | 21W-14758-00 | B - 8 | 21W-18540-01 | B -15 |
| 3E5-11636-00 | B - 3 | 3RV-14766-00 | B - 8 | 296-18561-00 | B -15 |
| 1W7-11651-00 | B - 3 | 21W-1490J-00 | B - 6 | 296-18562-01 | B -15 |
| 2Y1-11681-00 | B - 3 | 1W7-15111-03 | B - 9 | 21W-21110-02-33 | C - 3 |
| 3KX-13101-01 | B - 4 | 1W7-15121-03 | B - 9 | 3RV-21511-10 | C - 4 |
| 2T5-13124-00 | B - 4 | 300-15128-00 | B - 9 | 3RV-21569-20 | C - 4 |
| 384-13138-00 | B - 4 | 5T9-15316-01 | B - 9 | 4V0-21621-00 | C - 5 |
| 296-13147-00 | B - 4 | 517-15362-02 | B -10 | 21W-21646-00 | C - 6 |
| 384-13161-02 | B - 4 | 21W-15411-00 | B -10 | 3RV-21711-00 | C - 5 |
| 384-13174-00 | B - 4 | 517-15416-01 | B - 9 | 3RV-21711-10 | C - 5 |
| 53F-13178-00 | B - 4 | 5R7-15421-00 | B -10 | 21W-21719-00 | C - 5 |
| 21W-13555-00 | B - 5 | 4AW-15451-00 | B -10 | 21W-2172K-00 | C - 5 |
| 300-13610-04 | B - 5 | 21W-15491-01 | B -10 | 21W-2172L-00 | C - 5 |
| 56J-13613-00 | B - 5 | 156-15618-01 | B -11 | 21W-2172M-00 | C - 5 |
| 300-13616-00 | B - 5 | 5T9-15620-00 | B -11 | 21W-21751-01 | C - 6 |
| 300-13621-10 | B - 5 | 384-15635-00 | B -12 | 21W-21766-00 | C - 6 |
| 300-13622-10 | B - 5 | 2T4-15637-01 | B -12 | 5R2-21771-00 | C - 6 |
| 21W-14101-00 | B - 6 | 3E5-15641-00 | B -11 | 4ES-21781-00 | C - 5 |
| 12G-14103-00 | B - 6 | 3E5-15660-00 | B -11 | 21W-22110-00-35 | C - 7 |
| 12G-14104-00 | B - 6 | 3E5-15664-00 | B -11 | 102-22123-00 | C - 7 |
| 21W-14107-12 | B - 6 | 3E5-15676-00 | B -11 | 288-22141-00 | C - 7 |
| 296-14112-25 | B - 6 | 56H-16110-00-30 | B -12 | 3R0-22151-00 | C - 7 |
| 296-14131-00 | B - 6 | 3E5-16150-02 | B -12 | 21W-22199-00 | C - 7 |
| 127-14135-00 | B - 6 | 122-16164-00 | B -12 | 21W-22210-02 | C - 7 |
| 127-14141-14 | B - 6 | 517-16180-00 | B -12 | 3RV-22210-11 | C - 7 |
| 193-14142-15-A0 | B - 6 | 132-16346-00 | B -15 | 4BC-22210-01 | C - 7 |
| 127-14143-24 | B - 6 | 527-16520-10 | B -12 | 3M7-22216-00 | C - 7 |
| 127-14143-25 | B - 6 | 3E5-16521-00 | B -12 | 21W-22311-00 | C - 7 |
| 127-14143-26 | B - 6 | 517-16524-10 | B -12 | 3RV-23102-00 | C - 9 |
| 1R0-14169-00 | B - 6 | 517-16524-20 | B -12 | 3RV-23103-00 | C - 9 |

NUMERICAL INDEX

| PART NO. | GRID NO. | PART NO. | GRID NO. | PART NO. | GRID NO. |
|-----------------|----------|-----------------|----------|--------------|----------|
| 21W-23110-00 | C - 9 | 3R0-25121-00-98 | C -13 | 21W-83976-00 | D - 5 |
| 3M7-23111-01 | C - 9 | 451-25155-00 | C -13 | 355-85111-01 | C - 8 |
| 3R0-23126-00-35 | C - 9 | 353-25181-03 | C -13 | 449-85131-02 | C - 5 |
| 3R0-23136-00-35 | C - 9 | 21W-25304-00 | C -14 | 21W-85510-21 | D - 4 |
| 21W-23141-00 | C - 9 | 21W-25311-00-98 | C -14 | 21W-85512-12 | D - 4 |
| 3M7-23142-00 | C - 9 | 109-25315-00 | C -14 | 21W-85540-20 | D - 6 |
| | | 1M3-25321-02-98 | C -14 | 21W-85550-21 | D - 4 |
| 3M7-23144-00 | C - 9 | 1YT-25351-00 | C -13 | 90101-06278 | C -14 |
| 3M7-23145-00 | C - 9 | 3Y6-25351-00 | C -14 | 90101-06291 | C -13 |
| 2J5-23147-00 | C - 9 | 538-25355-00 | C -14 | 90101-06394 | B - 9 |
| 2J5-23151-00 | C - 9 | 304-25364-01 | C -14 | 90101-08286 | C - 3 |
| 3M7-23156-00 | C - 9 | 296-25366-01-98 | C -14 | 90101-08672 | C -14 |
| 2J5-23157-00 | C - 9 | 21W-25371-00 | C -15 | 90105-10006 | C - 8 |
| 21W-2317E-00 | C - 8 | 367-25381-01 | C -15 | 90105-10147 | B - 9 |
| 3R0-23170-00 | C - 9 | 21W-25387-00 | C -14 | 90109-063F6 | B -15 |
| 3M7-23181-00 | C - 9 | 102-25389-00 | C -15 | 90109-06798 | D - 5 |
| | | 102-25412-00 | C -14 | 90109-08183 | C -15 |
| 3R0-23318-00 | C -10 | 21W-25432-10 | C -14 | 90109-08368 | C -15 |
| 21W-23340-00 | C -10 | 3RV-26111-00 | D - 2 | 90109-08666 | D - 3 |
| 451-23346-00 | C -10 | 21W-26124-00 | D - 2 | 90116-07035 | B - 2 |
| 3R0-23392-00 | C - 9 | 21W-26240-00 | D - 2 | 90119-06044 | C - 4 |
| 156-23411-00 | C - 8 | 2N3-26241-00 | D - 2 | 90119-06056 | C - 6 |
| 22F-23411-01 | C - 8 | 434-26243-12 | D - 2 | 90123-08013 | D - 2 |
| 156-23412-00 | C - 8 | 21W-26261-00 | D - 2 | 90149-04135 | B - 4 |
| 22F-23412-01 | C - 8 | 21W-26262-00 | D - 2 | 90149-06011 | C -11 |
| 122-23416-00 | C - 8 | 21W-26263-00 | D - 2 | 90149-06157 | B - 9 |
| 3RV-23435-00 | C - 8 | 21W-26311-01 | D - 2 | 90150-06032 | B -15 |
| 3RV-23441-00 | C - 8 | 21W-26312-00 | D - 2 | 90151-05055 | D - 4 |
| 462-23442-00-35 | C - 8 | 21W-26321-01 | D - 2 | 90159-05121 | C - 7 |
| 164-23462-00 | C - 8 | 21W-26331-00 | D - 2 | 90159-06016 | C - 5 |
| 21W-23486-00 | C - 8 | 21W-26341-00 | D - 2 | 90159-06033 | C - 4 |
| 3RV-24110-10 | C -11 | 21W-27211-00 | D - 3 | 90167-03004 | D - 2 |
| 59V-24173-00 | C -11 | 21W-27231-00 | D - 3 | 90170-08366 | C -14 |
| 21W-24181-00 | C -11 | 21W-27311-01 | D - 3 | 90170-10105 | B - 4 |
| 22W-24181-00 | C - 6 | 21W-27411-01-33 | D - 3 | 90171-10004 | C -13 |
| 3RV-24240-20 | C -11 | 214-27413-00 | D - 3 | 90171-12005 | C -15 |
| 4X8-24500-02 | C -11 | 214-27421-00 | D - 3 | 90175-06013 | D - 3 |
| 4X8-24512-00 | C -11 | 50W-28100-00 | C - 6 | 90179-06403 | C -12 |
| 3AJ-24523-00 | C -11 | 51L-28371-00 | C -11 | 90179-07381 | B - 2 |
| 3AJ-24534-00 | C -11 | 104-81328-20 | D - 4 | 90179-08148 | D - 2 |
| 2FG-24610-00 | C -11 | 20N-82310-40 | D - 6 | 90179-12659 | B -12 |
| 3RV-24731-30 | C -12 | 166-82370-20 | D - 6 | 90179-16190 | B -13 |
| 3RV-24734-30 | C -12 | 4V0-82519-00 | D - 5 | 90179-25051 | C - 8 |
| 3RV-24770-30 | C -12 | 233-82921-31 | D - 5 | 90185-10037 | C - 7 |
| 3R0-25104-00 | C -13 | 23X-83922-00 | D - 5 | 90201-06072 | C -11 |
| 451-25111-00-98 | C -13 | 437-83936-01 | D - 5 | 90201-061A5 | C -15 |
| 2E9-25116-00 | C -13 | 437-83936-11 | D - 2 | 90201-086P8 | C - 3 |
| 451-25118-00 | C -13 | | D - 5 | 90201-106H5 | C - 7 |

NUMERICAL INDEX

| | | NUMERICAL INDEX | | | | NUMERICAL INDEX | | | |
|-------------|----------|-----------------|----------|-------------|----------|-----------------|----------|-------------|----------|
| PART NO. | GRID NO. | PART NO. | GRID NO. | PART NO. | GRID NO. | PART NO. | GRID NO. | PART NO. | GRID NO. |
| 90201-12535 | B - 3 | 90506-10184 | B -15 | 93106-30004 | C -14 | 95303-05600 | B - 6 | 99001-09600 | B -15 |
| 90201-12575 | C - 2 | 90506-14081 | C -13 | 93109-15001 | B -11 | 95307-06600 | C -13 | 99006-10600 | B -15 |
| 90201-15701 | B -11 | 90506-15260 | C -14 | 93210-09729 | B -15 | | C -14 | | C - 2 |
| 90201-20266 | B -11 | 90506-26270 | D - 3 | 93210-180A6 | B - 3 | | C -15 | 99009-17400 | B -11 |
| 90202-05193 | C -11 | 90508-20023 | D - 3 | 93210-19123 | B -10 | 95307-08700 | C -15 | 99009-20400 | B -11 |
| 90208-12015 | B -12 | 90508-26136 | B -11 | 93210-26240 | B - 4 | | D - 3 | 99080-03600 | B -12 |
| 90208-16019 | B -12 | 90508-29578 | D - 3 | 93210-29282 | B - 4 | 95307-10600 | C - 8 | 99080-07600 | B - 4 |
| 90209-10160 | C - 8 | 90508-32263 | C - 2 | 93210-41041 | C -14 | 95317-12600 | B - 3 | 99080-09600 | D - 3 |
| 90209-12280 | B -12 | 90560-10103 | C -13 | 93210-98202 | B -12 | 95607-06100 | D - 5 | 99241-00080 | C - 4 |
| 90209-15178 | B -14 | 90560-12145 | C -14 | 93306-00406 | C -14 | 95707-08500 | C - 3 | 99510-12016 | B - 9 |
| 90209-15179 | B -14 | 90560-17146 | B -12 | 93306-20006 | C -13 | | C -15 | 99530-10014 | B -10 |
| 90209-15180 | B -14 | 91401-20015 | C -15 | 93306-20009 | C -13 | 95827-08120 | C - 3 | | |
| 9209-20159 | B - 3 | | D - 3 | 93306-20301 | B -14 | 97007-06016 | C - 8 | | |
| 90240-10069 | C - 7 | 91401-20020 | C -13 | 93306-20401 | B -14 | 97007-06022 | D - 5 | | |
| 90240-10072 | C - 7 | 91401-25015 | D - 3 | 93306-20529 | B - 3 | 97007-08016 | B - 5 | | |
| 90249-12008 | D - 3 | 91401-25020 | C - 7 | 93306-30102 | C -14 | | B - 8 | | |
| 90267-40075 | C - 5 | 91401-30030 | C -15 | 93306-30103 | C -14 | 97007-08020 | B - 8 | | |
| 90280-03017 | B - 3 | 91701-08038 | D - 3 | 93310-11268 | B - 3 | 97014-06035 | C - 8 | | |
| 90282-04064 | B -12 | 92901-10100 | C -10 | 93310-420F2 | B - 3 | 97017-06025 | B -11 | | |
| 90340-12005 | B - 9 | 92902-04100 | B - 6 | 93315-23208 | B -15 | 97027-06020 | C - 2 | | |
| 90387-07598 | C -11 | | D - 4 | 93320-41202 | B -14 | 97027-06030 | C -11 | | |
| 90387-10744 | C -13 | 92907-03100 | B - 5 | 93410-20038 | B -14 | 97027-08020 | D - 3 | | |
| 90387-12412 | C -15 | 92907-05600 | B - 5 | 93440-15012 | B -14 | 98501-05030 | B - 6 | | |
| 90387-20603 | B - 3 | | C - 8 | 93450-13022 | B - 3 | 98503-03008 | C -11 | | |
| 90387-207G3 | C -14 | 92907-06100 | C - 8 | 93450-28049 | B -14 | 98506-04018 | B - 6 | | |
| 90401-10029 | B - 4 | | C -11 | 93451-08094 | B -12 | 98507-03008 | B - 5 | | |
| 90430-04004 | B - 4 | | C -15 | 93501-04011 | C - 8 | 98507-05006 | B - 8 | | |
| 90430-10215 | B - 9 | | D - 5 | 93503-16003 | C - 8 | 98507-05008 | C - 8 | | |
| 90430-12227 | B - 9 | | D - 6 | 93505-08030 | B -12 | 98507-05020 | B - 4 | | |
| 90445-05390 | B - 6 | 92907-06600 | D - 3 | 93509-32012 | B -14 | 98507-05025 | B - 5 | | |
| 90445-07036 | B - 7 | | D - 6 | 93603-14026 | B - 4 | 98507-05035 | B - 4 | | |
| 90445-084J1 | C -11 | 92907-08100 | B - 8 | 93604-22050 | B -15 | 98507-05050 | B - 5 | | |
| 90445-09083 | C -11 | | C - 3 | 93606-14081 | B -15 | 98507-06012 | B -10 | | |
| 90460-37130 | B - 5 | | D - 3 | 93812-15063 | B -14 | | B -14 | | |
| 90462-14055 | C - 8 | 92907-08600 | B - 5 | 94125-14642 | C -13 | | C - 8 | | |
| 90467-08003 | C - 6 | | B - 8 | 94130-12720 | C -14 | 98507-06020 | D - 6 | | |
| | C -11 | | C -15 | 94225-14147 | C -13 | 98507-06030 | B - 5 | | |
| 90467-22048 | B - 8 | | D - 3 | 94230-12208 | C -14 | 98507-06035 | B - 9 | | |
| 90468-02033 | B - 4 | 92907-10100 | C - 8 | 94325-14099 | C -13 | | B -10 | | |
| 90468-16090 | B -12 | 92907-12600 | D - 3 | 94330-12100 | C -14 | 98507-06040 | B -10 | | |
| 90468-23194 | B -11 | 92990-06600 | C - 8 | 94414-14227 | C -13 | 98507-06045 | B - 9 | | |
| 90480-10005 | B - 4 | 93101-10090 | B - 4 | 94416-12334 | C -14 | | B -10 | | |
| 90480-18290 | C -11 | 93102-12106 | C - 2 | 94580-52084 | C -15 | 98507-06050 | B - 9 | | |
| 90480-21436 | B - 9 | 93102-20143 | B -14 | 94680-52001 | C -15 | 98507-06100 | B -10 | | |
| 90501-10245 | D - 3 | 93103-25098 | B - 3 | 94701-00108 | B - 2 | 98507-08010 | B - 9 | | |
| 90501-10602 | B -12 | 93103-32099 | B - 3 | 94701-00175 | B - 2 | 98511-04025 | D - 4 | | |
| 90501-12088 | B -12 | 93104-11053 | B -10 | 94701-00198 | B - 2 | 98580-04008 | D - 4 | | |
| 90506-08122 | C - 2 | 93106-17006 | C -13 | 94701-00235 | B - 2 | 98580-04010 | B - 6 | | |

*COPYRIGHT: All rights reserved. No part of this publication
may be reproduced without permission.*

YAMAHA

YAMAHA MOTOR CO., LTD.

2500 SHINGA I IWATA SHIZUOKA JAPAN
SERVICE INFORMATION DIV.

Printed in Japan
First edition JUN., 1996