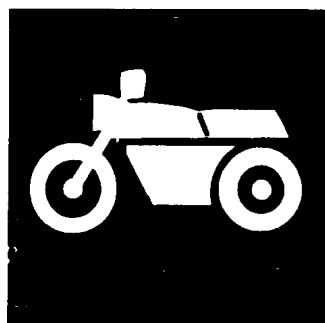


**YAMAHA**



**PARTS  
CATALOGUE**

**WR250ZJ (4XK1)**  
**WR250Z'97 (4XK1)**  
**WR250Z (4XK2) ALL**

---

**YAMAHA**  
**GENUINE**  
Parts & Accessories

174XK-100E1



A3

## FOREWORD

This Parts Catalogue is related to the parts for the model(s) in the below frame. When you are ordering replacement parts, please refer to this Parts Catalogue and quote both part numbers and part names correctly.

WR250ZJ(4XK1), WR250Z'97(4XK1), WR250Z(4XK2)

1. Modifications or additions which have been made after issue of the Parts Catalogue will be announced in the Yamaha Parts News.  
It is advisable that you make necessary corrections to the Parts Catalogue according to the Yamaha Parts News.

2. Abbreviations  
The following abbreviations are used in this Parts Catalogue.

"UR" Use specified parts number.  
 "UN" Use as many as needed.  
 "AP" Alternate Parts  
 "LM" Local Made (Parts need to be ordered locally)  
 "F#" Frame No. (Applicable machine No.)

3. Parts, which are to be supplied in an assembly, are listed with a dot (.) in front of the part name as shown below.

EXAMPLE  
 CARBURETOR ASSY  
 . JET, PILOT  
 . NOZZLE, MAIN

4. Number of component for assembly  
The numeral appearing to the right of each component part indicates the quantity of parts for each assembly unit.

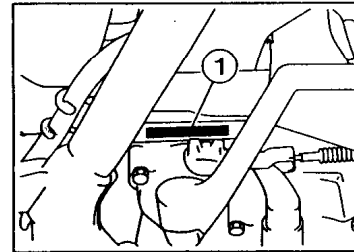
PART NO.	DESCRIPTION	Q'TY	REMARKS
2F5-83310-60	FRONT FLASHER LIGHT ASSY	2	
115-83311-60	. BULB (6V-18W)	1	

5. Applicable colors of graphics are represented in the "REMARKS" as shown below.

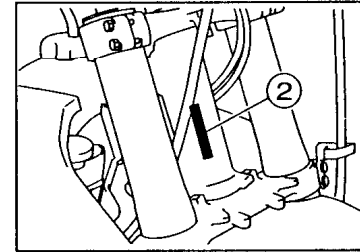
PART NO.	DESCRIPTION	Q'TY	REMARKS
2N4-24110-00-X5	FUEL TANK COMP.	1	MAXIM RED
3J1-24240-10	. GRAPHIC, FUEL TANK	1	for MXR

6. Applicable Serial No.

① Engine Serial No.



② Frame Serial No.

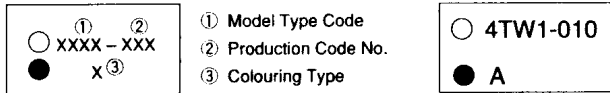


7. Note that the illustrations are for reference in finding parts numbers, not to be used for assembling. When assembling, please use the applicable service manual.
8. The asterisk (\*) before a reference number indicates modification items after the first edition.

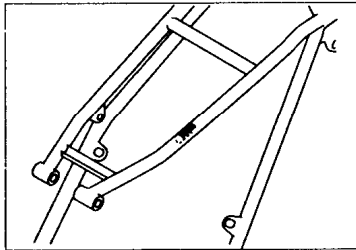
# MODEL LABEL

(1) A label called "Model Label" is affixed in the location as indicated in (3) below. When using this parts catalogue, please be sure to cross-refer the "model code – production code No." in the catalogue to the "model code – production code No." indicated on the Model Label affixed onto the product concerned.

(2) "Model Label" Indication



(3) Model Label Affixing Location



(4) Model Code – Production Code Number of Model Listed in This Parts Catalog

Model code	Production code No.	Country (destination)	Model code	Production code No.	Country (destination)
4XK1	020	OCEANIA			
	030	BELGIUM			
	040	CANADA			
	050	GERMANY			
	060	SPAIN			
	070	FINLAND			
	070	IRELAND			
	080	FRANCE			
	100	GREECE			
	110	ITALY			
	120	PORTUGAL			
	130	SWEDEN			
4XK2	010	JAPAN			

(5) Colouring Information

Colouring type code	Colour code	Colour Name	Abbreviation
A	00EX	INK BLUE	IKB

# CONTENTS

## ENGINE

Cylinder Head.....	B2~B3
Governor .....	B4
Crankshaft. Piston .....	B5
Water Pump .....	B6
Radiator. Hose .....	B7
Intake .....	B8~B9
Carburetor .....	B10~B11
Exhaust .....	B12
Crankcase .....	B13
Crankcase Cover 1.....	B14
Starter .....	B15
Clutch .....	C2
Transmission.....	C3~C4
Shift Cam. Fork .....	C5
Shift Shaft.....	C6

## CHASSIS

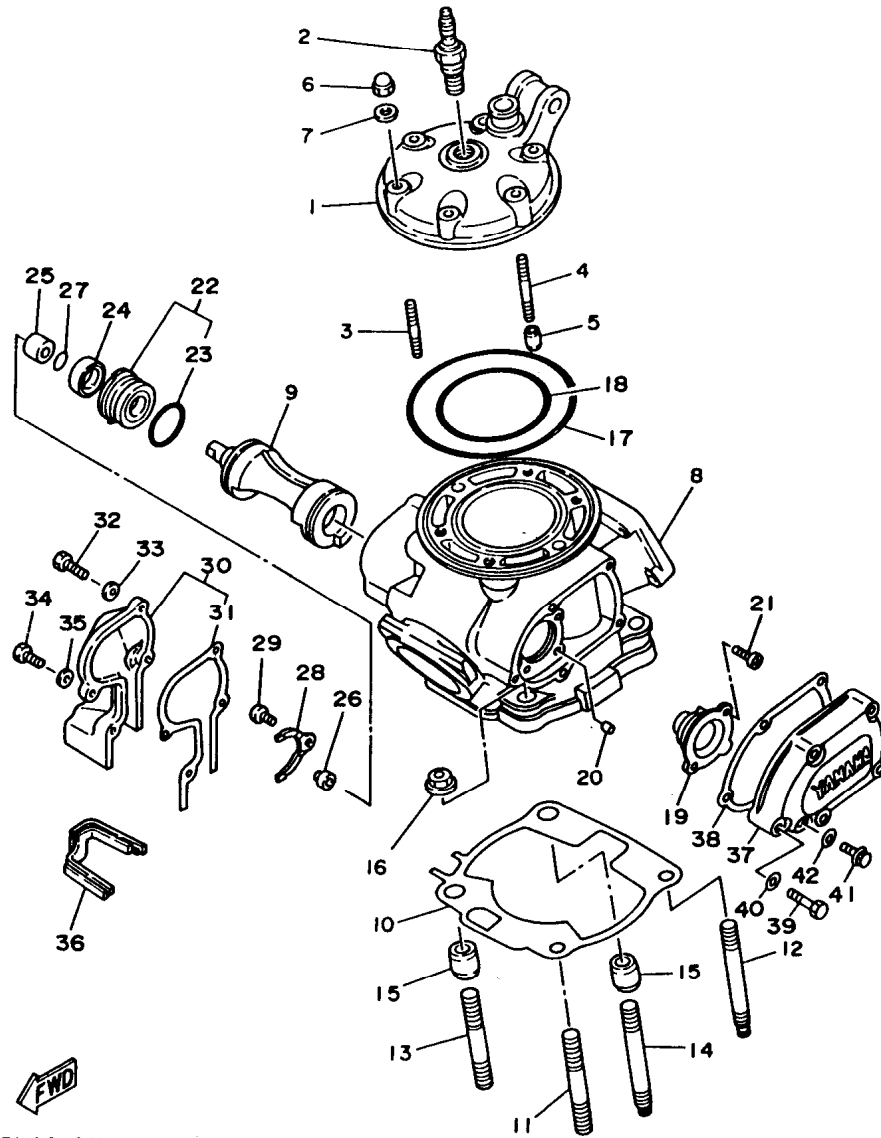
Frame .....	C7
Fender .....	C8
Side Cover .....	C9
Rear Arm .....	C10~C11
Rear Suspension.....	C12
Steering .....	C13
Front Fork.....	C14~D2
Fuel Tank .....	D3~D4
Seat .....	D5
Front Wheel.....	D6
Front Brake Caliper .....	D7
Rear Wheel .....	D8~D9

Rear Brake Caliper.....	D10
Steering Handle. Cable .....	D11
Front Master Cylinder.....	D12
Stand. Footrest.....	D13
Rear Master Cylinder .....	D14
Generator .....	D15
Handle Switch. Lever .....	E2
Electrical 1.....	E3
Alternate (Chassis).....	E4
Optional Parts 1.....	E5

## INDEX

Numerical Index .....	M1~M3
-----------------------	-------

FIG. 1 CYLINDER HEAD

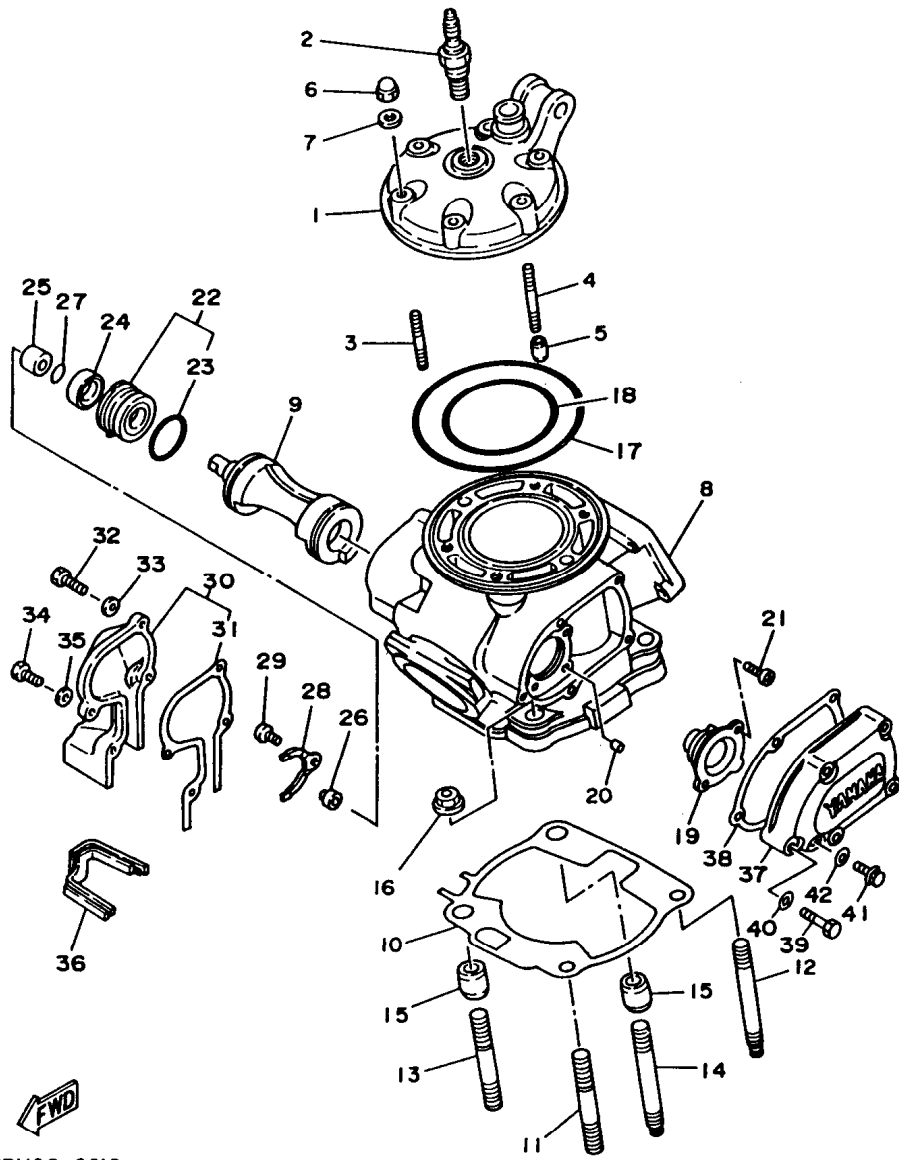


4SR1100-6010

REF. NO.	PART NO.	DESCRIPTION	OCE	EUR	CAN	JPN	REMARKS
1	4SR-11111-00	HEAD, CYLINDER 1	1	1	1	1	
2	94702-00326	PLUG, SPARK (NGK BR8EG)	1	1	1		
	94709-00326	PLUG, SPARK (NGK BR8EG)				1	
3	90116-08394	BOLT, STUD	4	4	4	4	
4	90116-08392	BOLT, STUD	2	2	2	2	
5	99510-10114	PIN, DOWEL	2	2	2	2	
6	90176-08026	NUT, CROWN	6	6	6	6	
7	90201-08087	WASHER, PLATE	6	6	6	6	
8	4SR-11311-00	CYLINDER 1	1	1	1	1	
9	4SR-1131A-00	VALVE 1	1	1	1	1	
10	2VM-11351-10	GASKET, CYLINDER	1	1	1	1	
	2VM-11351-20	GASKET, CYLINDER		1			FOR FRA
11	90116-10314	BOLT, STUD	1	1	1	1	
12	90116-10547	BOLT, STUD	1	1	1	1	
13	90116-10314	BOLT, STUD	1	1	1	1	
14	90116-10547	BOLT, STUD	1	1	1	1	
15	99530-14016	PIN, DOWEL	2	2	2	2	
16	95707-10500	NUT, FLANGE	4	4	4	4	
17	93210-77363	O-RING	1	1	1	1	
18	93211-11770	O-RING	1	1	1	1	
19	3JE-Y113E-00	HOLDER 1	1	1	1	1	
20	93604-08071	PIN, DOWEL	1	1	1	1	
21	98507-05012	SCREW, PAN HEAD	2	2	2	2	
22	5X4-Y113F-10	HOLDER 2 ASSY	1	1	1	1	
23	93210-270A8	O-RING	1	1	1	1	
24	93104-16074	OIL SEAL	1	1	1	1	
25	90387-102W0	COLLAR	1	1	1	1	

B2

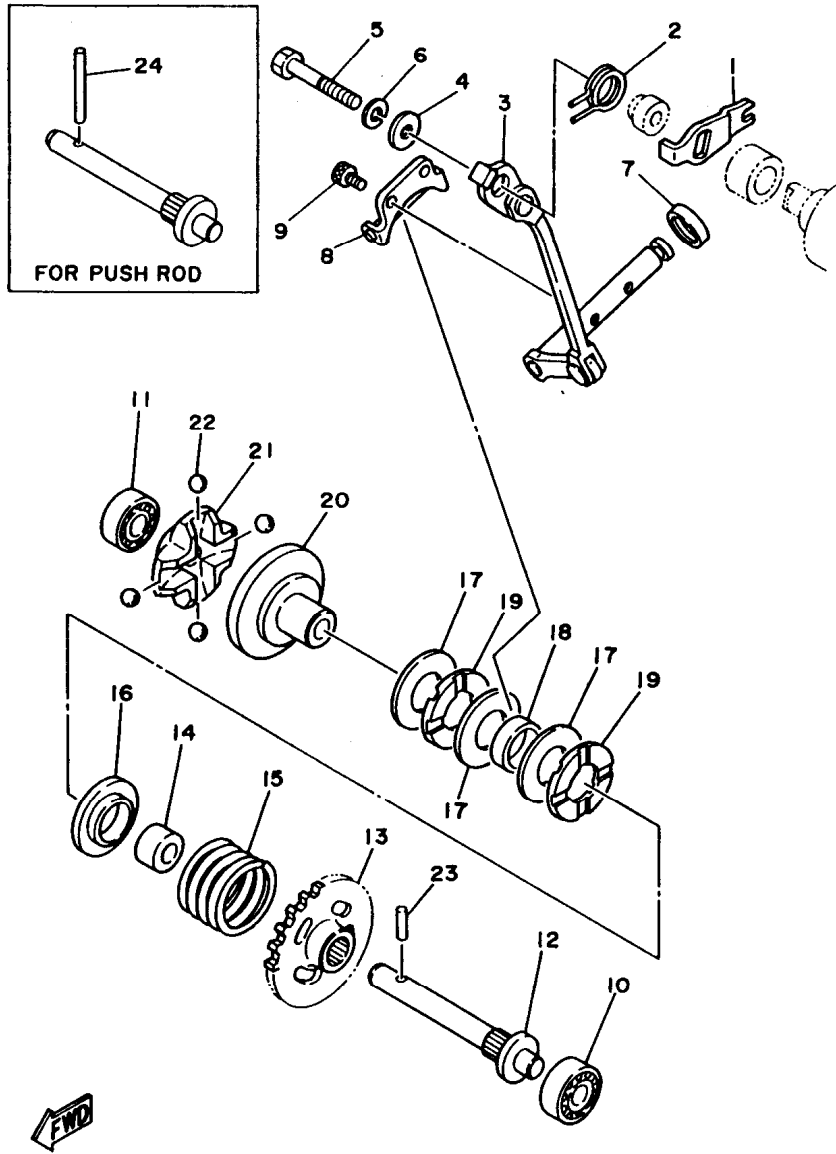
FIG. 1 CYLINDER HEAD



REF. NO.	PART NO.	DESCRIPTION	OCE	EUR	CAN	JPN	REMARKS
26	3JE-11937-01	BOSS, LEVER	1	1	1	1	
27	93210-09192	O-RING	1	1	1	1	
28	1LX-11915-00	PLATE, THRUST 1	1	1	1	1	
29	98507-05008	SCREW, PAN HEAD	1	1	1	1	
30	3SP-11992-11	HOUSING 2	1	1	1	1	
31	3SP-11993-10	.GASKET	1	1	1	1	
32	97007-05020	BOLT	2	2	2	2	
33	92907-05600	WASHER, PLATE	2	2	2	2	
34	97007-05016	BOLT	2	2	2	2	
35	92907-05600	WASHER, PLATE	2	2	2	2	
36	2VM-11995-01	SEAL, HOUSING	1	1	1	1	
37	4MX-1131M-00	COVER	1	1	1	1	
38	4MX-11354-00	GASKET	1	1	1	1	
39	97017-05030	BOLT	5	5	5	5	
40	92907-05600	WASHER, PLATE	5	5	5	5	
41	95027-06008	BOLT, FLANGE	1	1	1	1	
42	90430-06014	GASKET	1	1	1	1	

FWD  
4SR1100-6010

B3



4EW1100-3020

FIG. 2 GOVERNOR

REF. NO.	PART NO.	DESCRIPTION	OCE	EUR	CAN	JPN	REMARKS
1	3JE-11931-01	LEVER	1	1	1	1	
2	90508-14783	SPRING, TORSION	1	1	1	1	
3	3SP-11990-00	PUSH ROD ASSY	1	1	1	1	
4	90201-057H5	WASHER, PLATE	1	1	1	1	
5	97007-05030	BOLT	1	1	1	1	
6	92907-05100	WASHER, SPRING	1	1	1	1	
7	93104-08040	OIL SEAL	1	1	1	1	
8	3JE-11922-01	FORK, GOVERNOR	1	1	1	1	
9	91317-04006	BOLT	2	2	2	2	
10	93300-60801	BEARING (B0060)	1	1	1	1	KOYO
11	93300-60801	BEARING (B0060)	1	1	1	1	KOYO
12	5X4-11921-02	SHAFT, GOVERNOR	1	1	1	1	
13	24X-11953-01	GEAR, GOVERNOR	1	1	1	1	
14	90560-08213	SPACER	1	1	1	1	
15	90501-244J5	SPRING, COMPRESSION	1	1	1	1	
16	5X4-11952-00	PLATE	1	1	1	1	
17	90201-151A7	WASHER, PLATE (T=1.0)	3	3	3	3	
18	90387-152F2	COLLAR	1	1	1	1	
19	93340-21505	BEARING	2	2	2	2	
20	5X5-11912-01	RETAINER, WEIGHT	1	1	1	1	
21	5X5-11911-01	RETAINER	1	1	1	1	
22	93521-64032	BALL	4	4	4	4	
23	93603-14240	PIN, DOWEL	1	1	1	1	
24	93604-29184	PIN, DOWEL	1	1	1	1	AP FOR PUSH ROD

B4



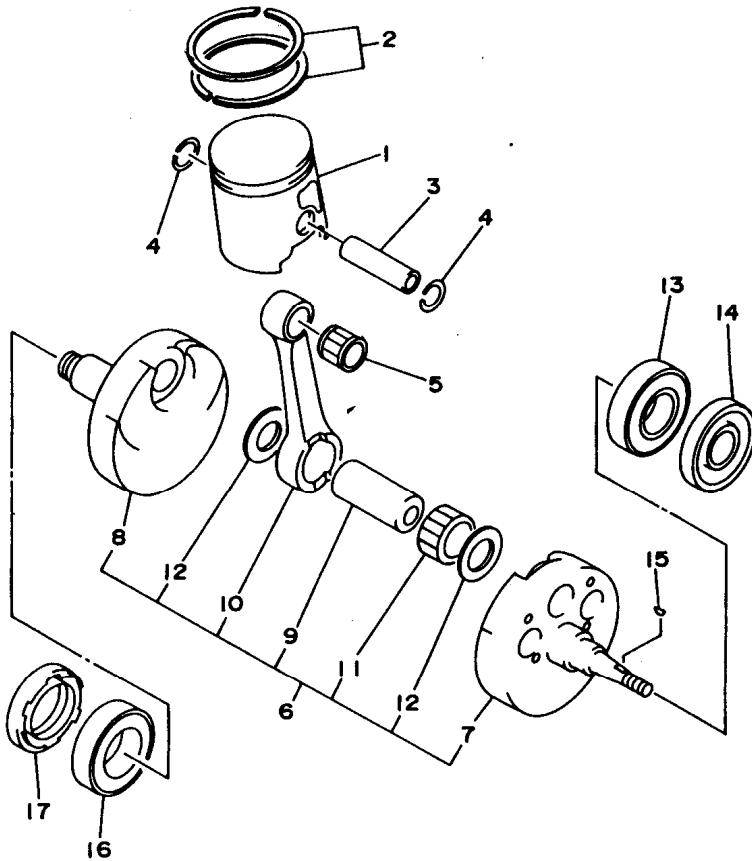


FIG. 3 CRANKSHAFT. PISTON

REF. NO.	PART NO.	DESCRIPTION	OCE	EUR	CAN	JPN	REMARKS
1	4SR-11631-00-A0	PISTON (STD)	1	1	1	1	
	4SR-11631-00-B0	PISTON (STD)	1	1	1	1	
	4SR-11631-00-C0	PISTON (STD)	1	1	1	1	
	4SR-11631-00-D0	PISTON (STD)	1	1	1	1	
2	4JX-11603-00	PISTON RING SET (STD)	1	1	1	1	
3	2VM-11633-01	PIN, PISTON	1	1	1	1	
4	93450-19052	CIRCLIP	2	2	2	2	
5	93310-418E9	BEARING	1	1	1	1	
6	4SR-11400-00	CRANKSHAFT ASSY	1	1	1	1	
7	4SR-11410-00	.CRANKSHAFT	1	1	1	1	
8	4SR-11420-00	.CRANKSHAFT	1	1	1	1	
9	4SR-11681-00	.PIN, CRANK 1	1	1	1	1	
10	5X5-11651-03	.ROD, CONNECTING	1	1	1	1	
11	93310-425P2	.BEARING	1	1	1	1	
12	90209-25085	.WASHER	2	2	2	2	
13	93306-37802	BEARING	1	1	1	1	
14	93102-22363	OIL SEAL	1	1	1	1	
15	90280-03045	KEY, WOODRUFF	1	1	1	1	
16	93306-37802	BEARING	1	1	1	1	
17	93103-40091	OIL SEAL	1	1	1	1	

  
4SR1100-6030

**B5**

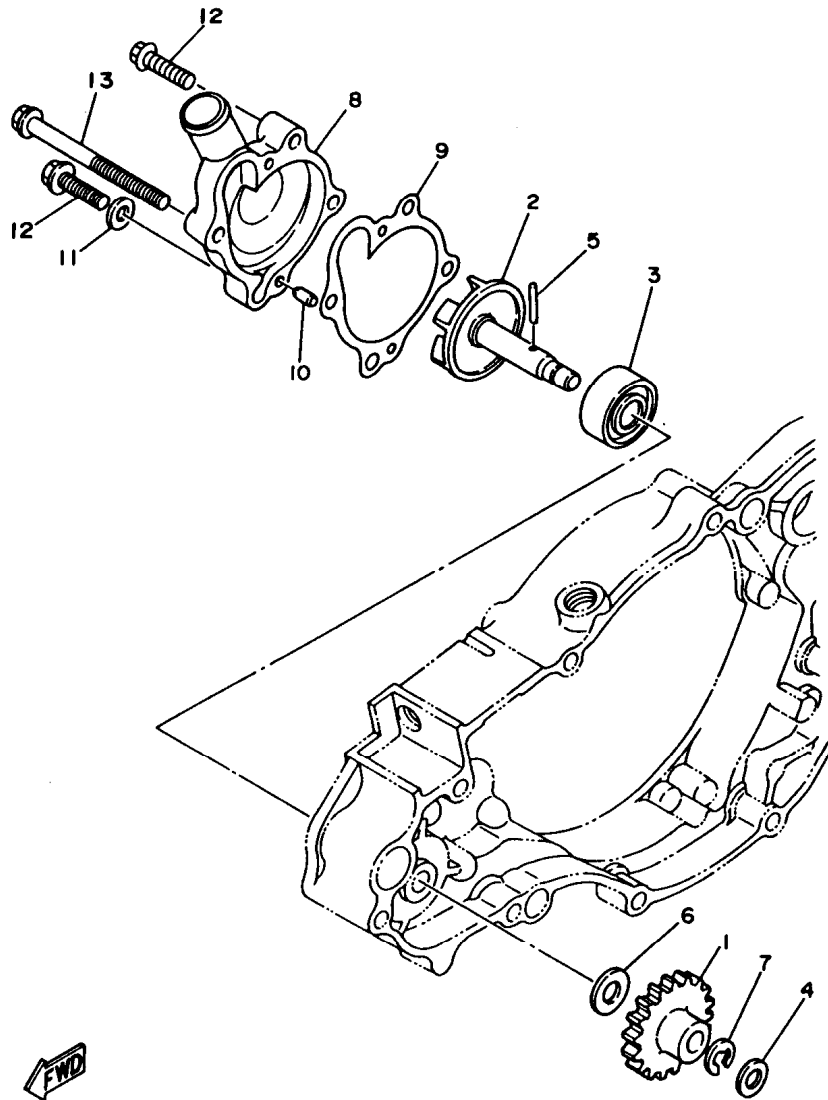


FIG. 4 WATER PUMP

REF. NO.	PART NO.	DESCRIPTION	OCE	EUR	CAN	JPN	REMARKS
1	4SR-12459-00	GEAR, IMPELLER SHAFT	1	1	1	1	
2	2VM-12450-00	IMPELLER SHAFT ASSY	1	1	1	1	
3	93103-10147	OIL SEAL	1	1	1	1	
4	90201-105E8	WASHER, PLATE	1	1	1	1	
5	93603-22028	PIN, DOWEL	1	1	1	1	
6	90201-08784	WASHER, PLATE	1	1	1	1	
7	99001-06600	CIRCLIP	1	1	1	1	
8	4SR-12422-00	COVER, HOUSING	1	1	1	1	
9	2VM-12428-11	GASKET, HOUSING COVER 2	1	1	1	1	
10	93604-10011	PIN, DOWEL	2	2	2	2	
11	90430-06166	GASKET	1	1	1	1	
12	95027-06025	BOLT, FLANGE	3	3	3	3	
13	95027-06065	BOLT, FLANGE	1	1	1	1	



4SR1100-6040

**B6**

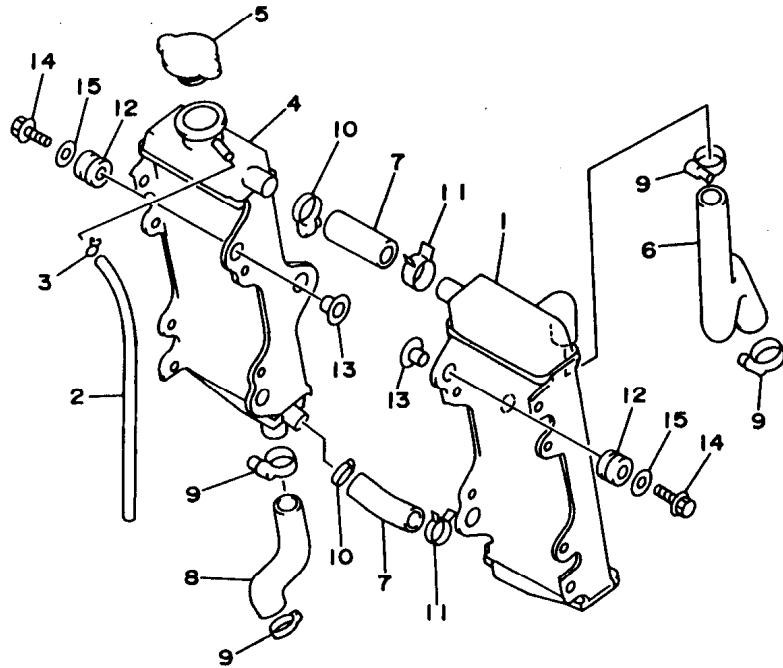


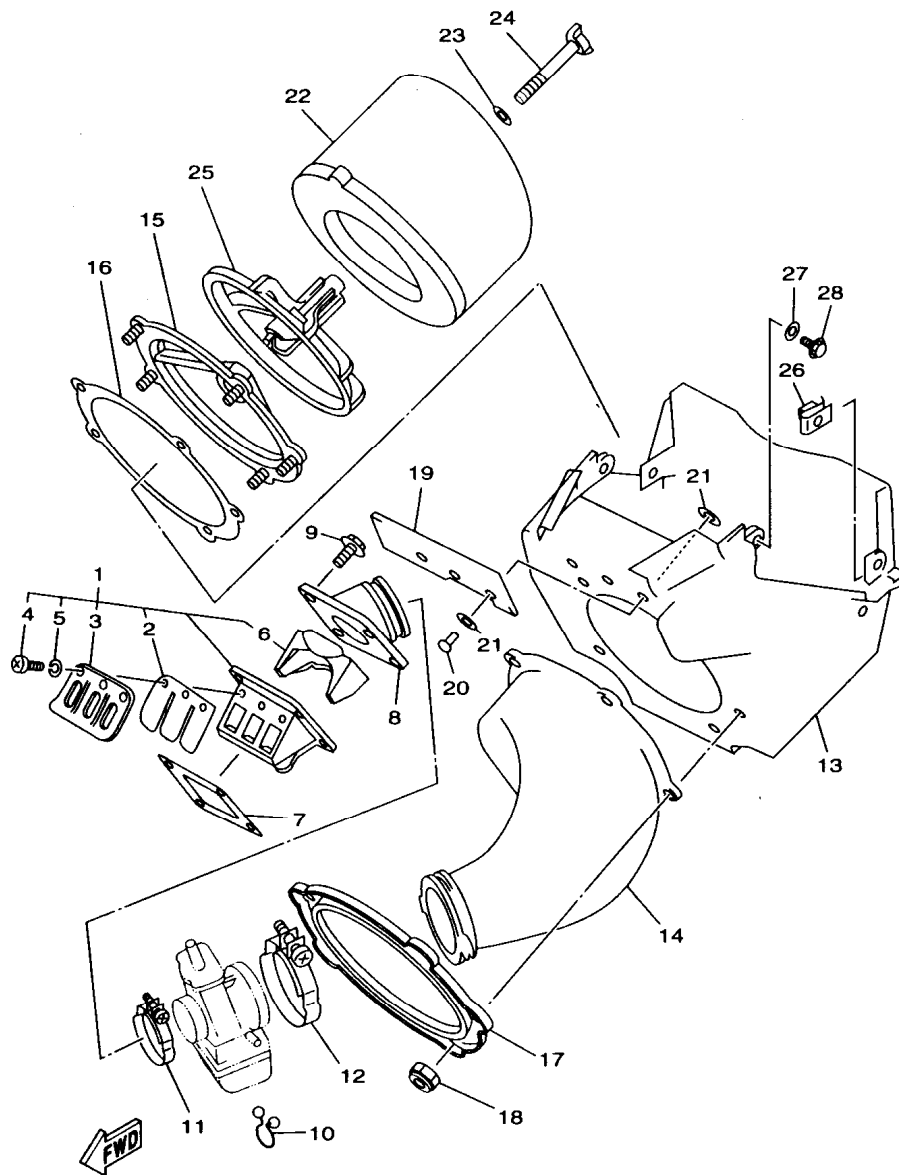
FIG. 5 RADIATOR. HOSE

REF. NO.	PART NO.	DESCRIPTION	OCE	EUR	CAN	JPN	REMARKS
1	4SR-1240A-00	RADIATOR ASSY	1	1	1	1	
2	91A20-05065	TUBE, FLEXIBLE VINYL	1	1	1	1	
3	90467-09006	CLIP	1	1	1	1	
4	4SR-12461-00	RADIATOR ASSY	1	1	1	1	
5	22W-12462-00	CAP, RADIATOR	1	1	1	1	
6	4SR-12481-00	PIPE 1	1	1	1	1	
7	4SS-12482-00	PIPE 2	2	2	2	2	
8	4SR-12484-00	PIPE 4	1	1	1	1	
9	90450-28014	HOSE CLAMP ASSY	4	4	4	4	
10	90450-25037	HOSE CLAMP ASSY	2	2	2	2	
11	90467-21068	CLIP	2	2	2	2	
12	90480-15528	GROMMET	6	6	6	6	
13	90387-0700G	COLLAR	6	6	6	6	
14	95027-06030	BOLT, FLANGE	6	6	6	6	
15	90201-06071	WASHER, PLATE	6	6	6	6	



4SR1100-6050

B7



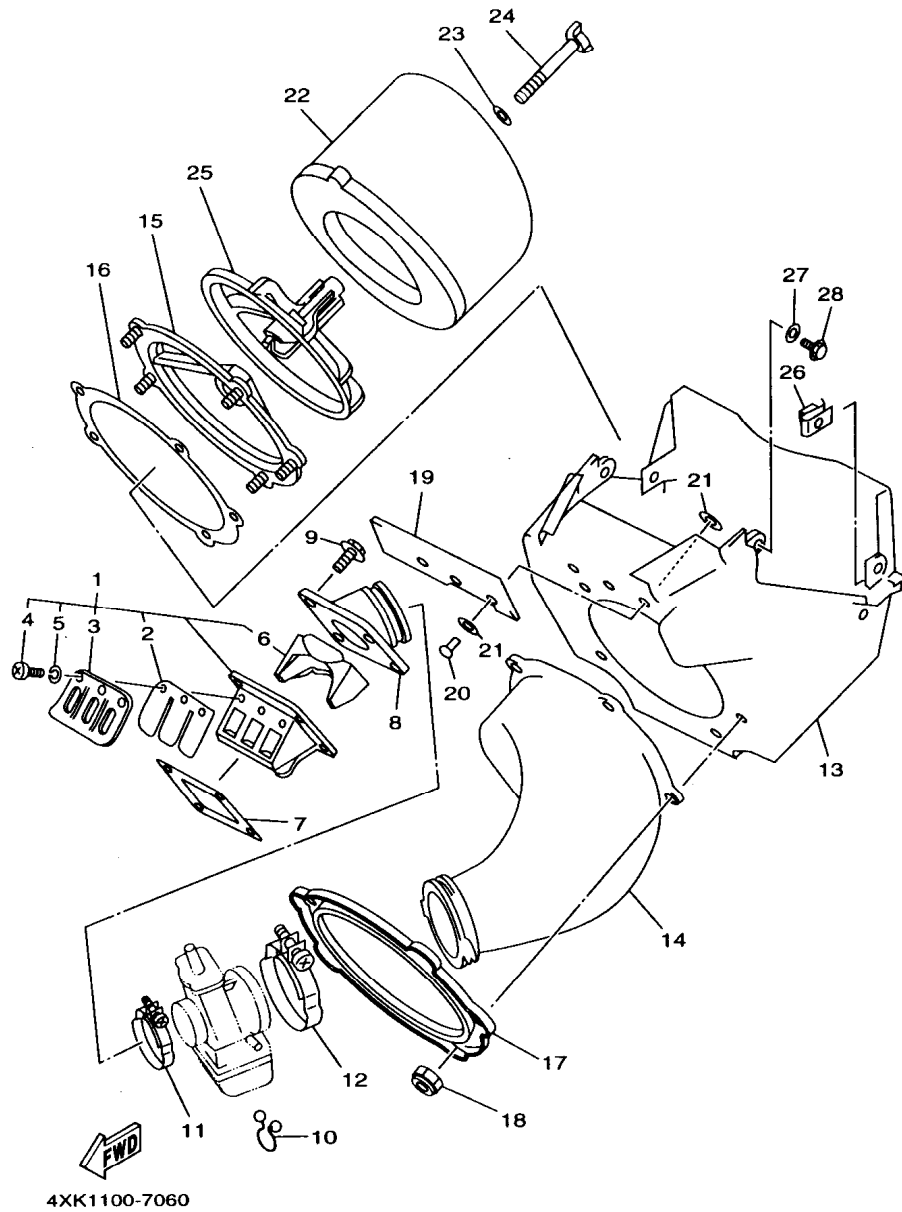
4XK1100-7060

FIG. 6 INTAKE

REF. NO.	PART NO.	DESCRIPTION	OCE	EUR	CAN	JPN	REMARKS
1	4MX-13610-00	REED VALVE ASSY	1	1	1	1	
2	3SP-13613-00	.REED, VALVE	2	2	2	2	
3	4DA-13616-00	.STOPPER, REED VALVE	2	2	2	2	
4	98507-03008	.SCREW, PAN HEAD	6	6	6	6	
5	92907-03100	.WASHER	6	6	6	6	
6	4MX-13625-00	.SPACER, REED VALVE	1	1	1	1	
7	2K7-13621-10	GASKET, VALVE SEAT	1	1	1	1	
8	4SR-13565-00	JOINT, CARBURETOR	1	1	1	1	
9	95027-06020	BOLT, FLANGE	4	4	4	4	
10	90464-16039	CLAMP	2	2	2	2	
11	90450-51070	HOSE CLAMP ASSY	1	1	1	1	
12	90450-70072	HOSE CLAMP ASSY	1	1	1	1	
13	4SS-14401-01	AIR CLEANER CASE ASSY	1	1	1	1	
14	4SR-14453-00	JOINT, AIR CLEANER 1	1	1	1	1	
15	3JD-14459-01	HOLDER, GUIDE	1	1	1	1	
16	3JD-14462-00	SEAL	1	1	1	1	
17	3JD-14477-00	PLATE	1	1	1	1	
18	95607-05100	NUT, U	5	5	5	5	
19	4SS-14417-00	COVER 1	1	1	1	1	
20	90267-32070	RIVET, BLIND	3	3	3	3	
21	90201-03313	WASHER, PLATE	6	6	6	6	
22	4XM-14451-00	ELEMENT, AIR CLEANER	1	1	1	1	
23	90209-06096	WASHER	1	1	1	1	
24	90122-06035	BOLT, WING	1	1	1	1	
25	3JD-14458-01	GUIDE	1	1	1	1	
26	90183-06023	NUT, SPRING	4	4	4	4	
27	90201-061A5	WASHER, PLATE	2	2	2	2	

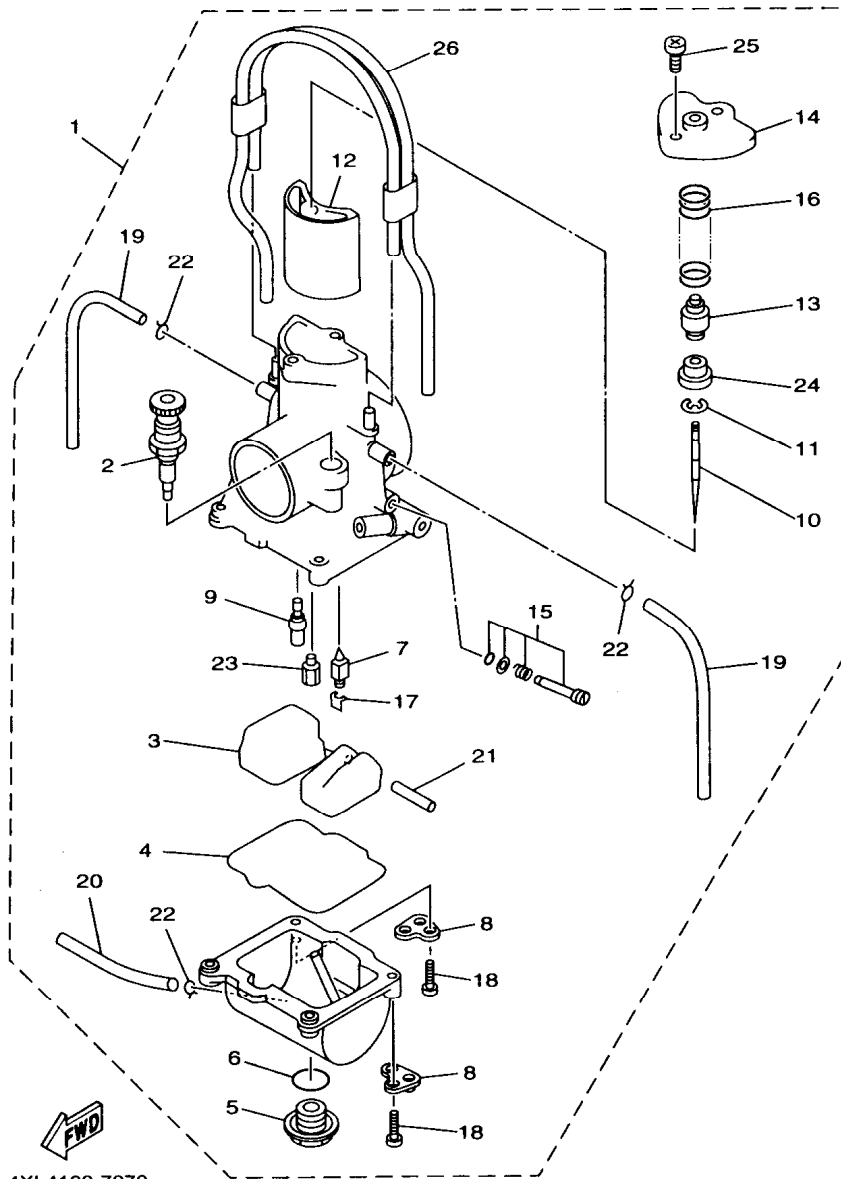
**B8**

FIG. 6 INTAKE



REF. NO.	PART NO.	DESCRIPTION	OCE	EUR	CAN	JPN	REMARKS
28	90105-06553	BOLT, WASHER BASED	2	2	2	2	

**B9**

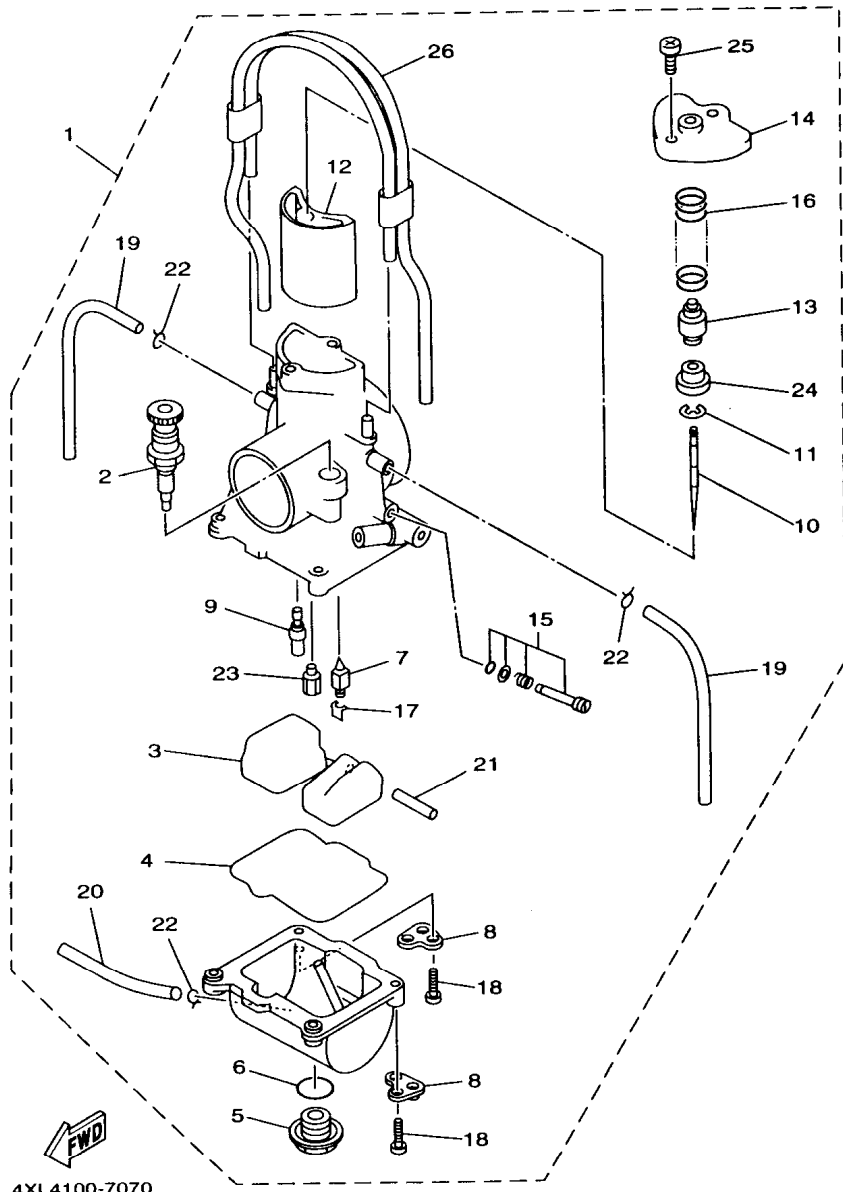


4XL4100-7070

FIG. 7 CARBURETOR

REF. NO.	PART NO.	DESCRIPTION	OCE	EUR	CAN	JPN	REMARKS
1	4XK-14101-00	CARBURETOR ASSY 1	1	1	1	1	
2	4SR-14171-00	.PLUNGER, STARTER	1	1	1	1	
3	4SR-14985-00	.FLOAT	1	1	1	1	
4	4MX-14984-00	.GASKET, FLOAT CHAMBER	1	1	1	1	
5	4MX-14115-00	.PLUG, SCREW	1	1	1	1	
6	4MX-14561-00	.O-RING	1	1	1	1	
7	4MX-14392-00	.VALVE, NEEDLE	1	1	1	1	
8	4XL-14146-00	.PLATE	2	2	2	2	
9	4MX-14948-05	.JET, SLOW (#45)	1	1	1	1	STD
	4SR-14948-02	.JET, SLOW (#38)	1	1	1	1	AP
	4SR-14948-03	.JET, SLOW (#40)	1	1	1	1	AP
	4MX-14948-04	.JET, SLOW (#42)	1	1	1	1	AP
	4MX-14948-06	.JET, SLOW (#48)	1	1	1	1	AP
	4MX-14948-07	.JET, SLOW (#50)	1	1	1	1	AP
	4MX-14948-08	.JET, SLOW (#52)	1	1	1	1	AP
	4MX-14948-09	.JET, SLOW (#55)	1	1	1	1	AP
10	4XL-14916-DF	.NEEDLE (N4DF)	1	1	1	1	STD
	4XL-14916-VF	.NEEDLE (N3VF)	1	1	1	1	AP
	4XL-14916-VG	.NEEDLE (N3VG)	1	1	1	1	AP
	4XL-14916-VH	.NEEDLE (N3VH)	1	1	1	1	AP
	4XL-14916-DG	.NEEDLE (N4DG)	1	1	1	1	AP
	4XL-14916-DH	.NEEDLE (N4DH)	1	1	1	1	AP
	4XL-14916-AF	.NEEDLE (N4AF)	1	1	1	1	AP
	4XL-14916-AG	.NEEDLE (N4AG)	1	1	1	1	AP
	4XL-14916-AH	.NEEDLE (N4AH)	1	1	1	1	AP
11	4MX-14919-00	.CLIP	1	1	1	1	
12	4SR-14340-A6	.VALVE ASSY	1	1	1	1	

**B10**

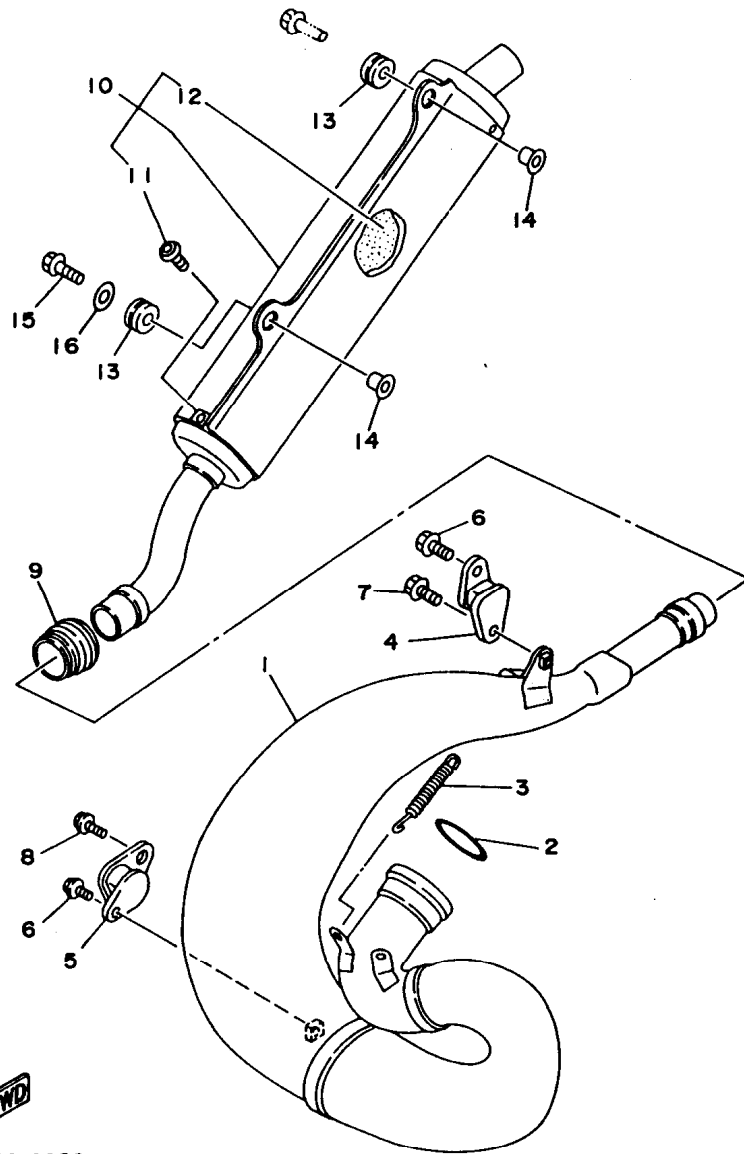


4XL4100-7070

FIG. 7 CARBURETOR

REF. NO.	PART NO.	DESCRIPTION	OCE	EUR	CAN	JPN	REMARKS
13	4SR-14261-00	.HOLDER	1	1	1	1	
14	4SR-14126-00	.GASKET	1	1	1	1	
15	4SR-14105-00	.PILOT SCREW SET	1	1	1	1	
16	4MX-14131-00	.SPRING, THROTTLE VALVE	1	1	1	1	
17	663-14159-00	.CLIP	1	1	1	1	
18	98502-04014	.SCREW, PAN HEAD	4	4	4	4	
19	4XL-14197-00	.PIPE	2	2	2	2	
20	4XL-14196-00	.PIPE	1	1	1	1	
21	676-14548-00	.PIN, FLOAT ARM	1	1	1	1	
22	3TJ-14137-40	.CLIP	5	5	5	5	
23	4MX-14943-93	.JET, MAIN (#178)	1	1	1	1	STD
	4SR-14943-90	.JET, MAIN (#162)	1	1	1	1	AP
	4MX-14943-40	.JET, MAIN (#165)	1	1	1	1	AP
	4MX-14943-91	.JET, MAIN (#168)	1	1	1	1	AP
	4MX-14943-41	.JET, MAIN (#170)	1	1	1	1	AP
	4MX-14943-92	.JET, MAIN (#172)	1	1	1	1	AP
	4MX-14943-42	.JET, MAIN (#175)	1	1	1	1	AP
	4MX-14943-43	.JET, MAIN (#180)	1	1	1	1	AP
	4MX-14943-94	.JET, MAIN (#182)	1	1	1	1	AP
	4MX-14943-44	.JET, MAIN (#185)	1	1	1	1	AP
	4MX-14943-95	.JET, MAIN (#188)	1	1	1	1	AP
	4MX-14943-45	.JET, MAIN (#190)	1	1	1	1	AP
24	4MX-14194-00	.RING	1	1	1	1	
25	98502-04012	.SCREW, PAN HEAD	2	2	2	2	
26	4XL-1410E-00	.HOSE	1	1	1	1	

B11



4SR1100-6080

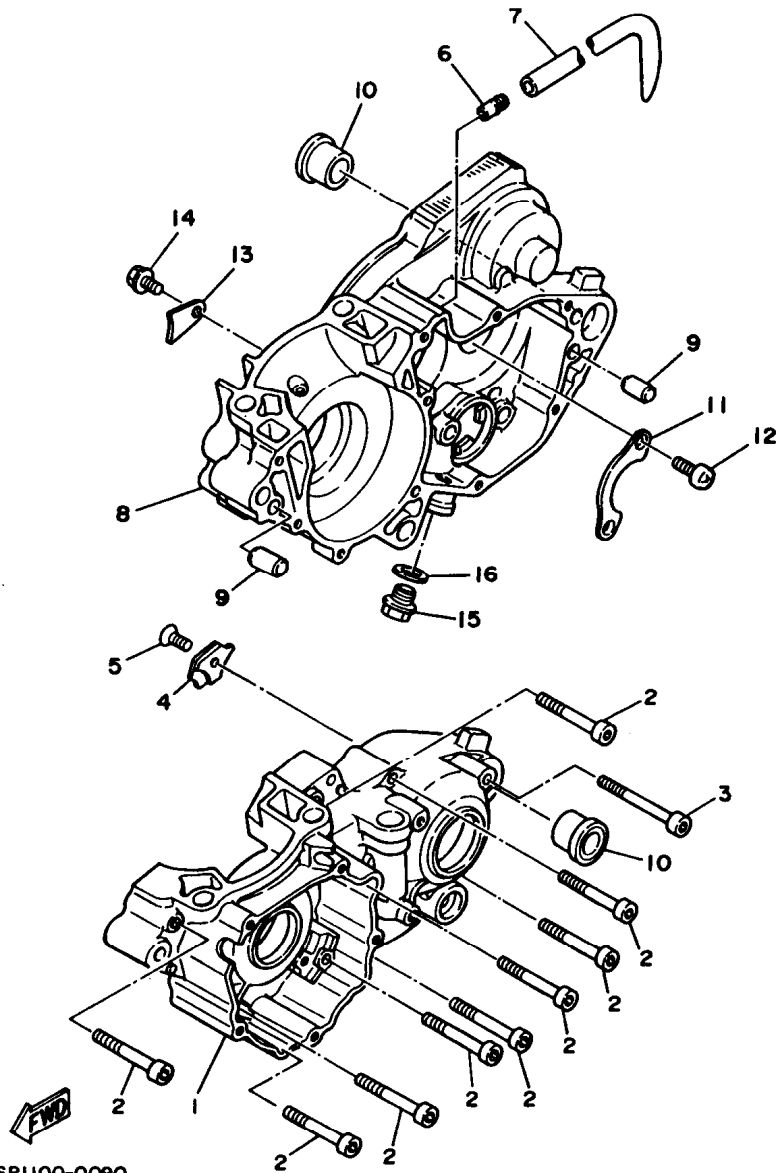
FIG. 8 EXHAUST

REF. NO.	PART NO.	DESCRIPTION	OCE	EUR	CAN	JPN	REMARKS
1	4SR-14610-00	EXHAUST PIPE ASSY 1	1	1	1	1	
2	93210-472A9	O-RING	1	1	1	1	
3	90507-20052	SPRING, TENSION	3	3	3	3	
4	565-14771-00	STAY, MUFFLER 1	1	1	1	1	
5	483-14781-02	STAY, MUFFLER 2	1	1	1	1	
6	95027-06012	BOLT, FLANGE	2	2	2	2	
7	90119-06185	BOLT, WITH WASHER	1	1	1	1	
8	95027-08012	BOLT, FLANGE	1	1	1	1	
9	3JE-14615-01	JOINT, EXHAUST 1	1	1	1	1	
10	4SR-14753-01	SILENCER, EXHAUST	1	1	1	1	
11	92017-06010	.BOLT, BUTTON HEAD	2	2	2	2	
12	4SR-1469A-00	.FIBER	1	1	1	1	
13	90480-16561	GROMMET	2	2	2	2	
14	90387-063G3	COLLAR	2	2	2	2	
15	95027-06025	BOLT, FLANGE	1	1	1	1	
16	90201-06071	WASHER, PLATE	1	1	1	1	

**B12**



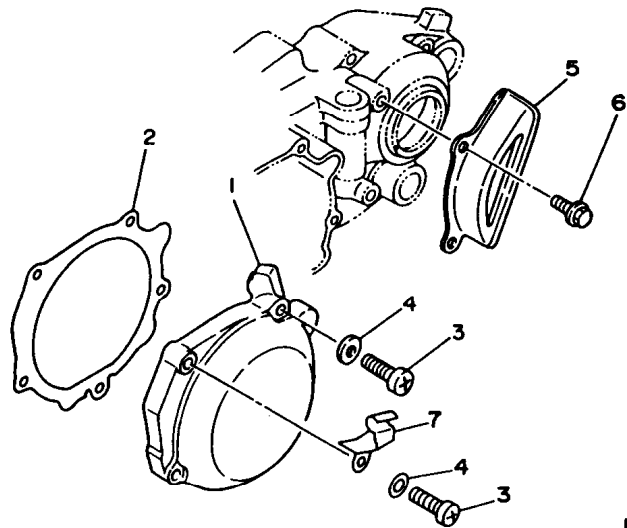
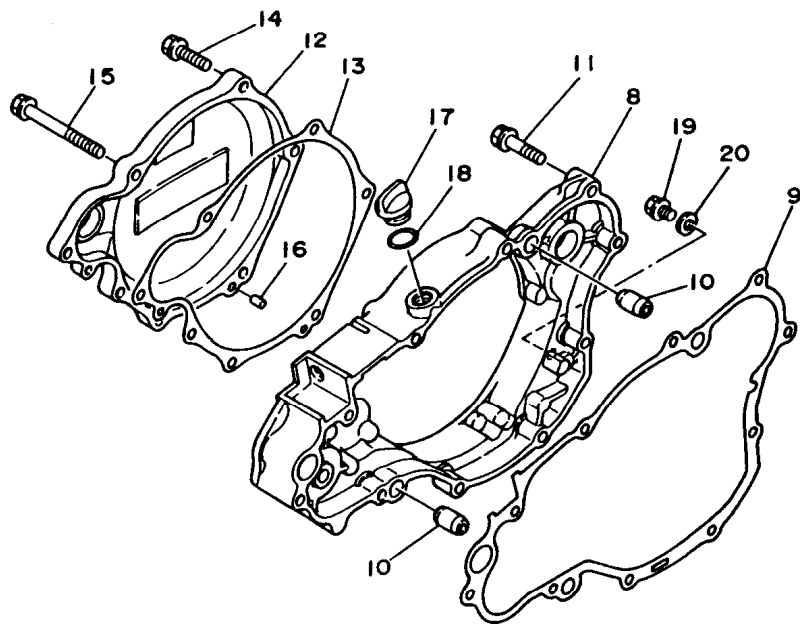
FIG. 9 CRANKCASE



3SP1100-0090

REF. NO.	PART NO.	DESCRIPTION	OCE	EUR	CAN	JPN	REMARKS
1	2VM-15111-06	CRANKCASE 1	1	1	1	1	
2	91317-06050	BOLT	9	9	9	9	
3	91317-06070	BOLT	1	1	1	1	
4	3SP-15381-00	PLATE, BEARING COVER	1	1	1	1	
5	90151-06037	SCREW, COUNTERSUNK	1	1	1	1	
6	353-13115-01	CONNECTOR, SUCTION PIPE	1	1	1	1	
7	90445-086A8	HOSE	1	1	1	1	
8	2VM-15121-03	CRANKCASE 2	1	1	1	1	
9	99530-12016	PIN, DOWEL	2	2	2	2	
10	90387-160H4	COLLAR	2	2	2	2	
11	4L0-17471-00	PLATE, COVER	1	1	1	1	
12	90157-06077	SCREW, PAN HEAD	2	2	2	2	
13	4V4-15118-00	HOLDER	1	1	1	1	
14	90105-06556	BOLT, WASHER BASED	1	1	1	1	
15	90340-12059	PLUG, STRAIGHT SCREW	1	1	1	1	
16	90430-12227	GASKET	1	1	1	1	

**B13**



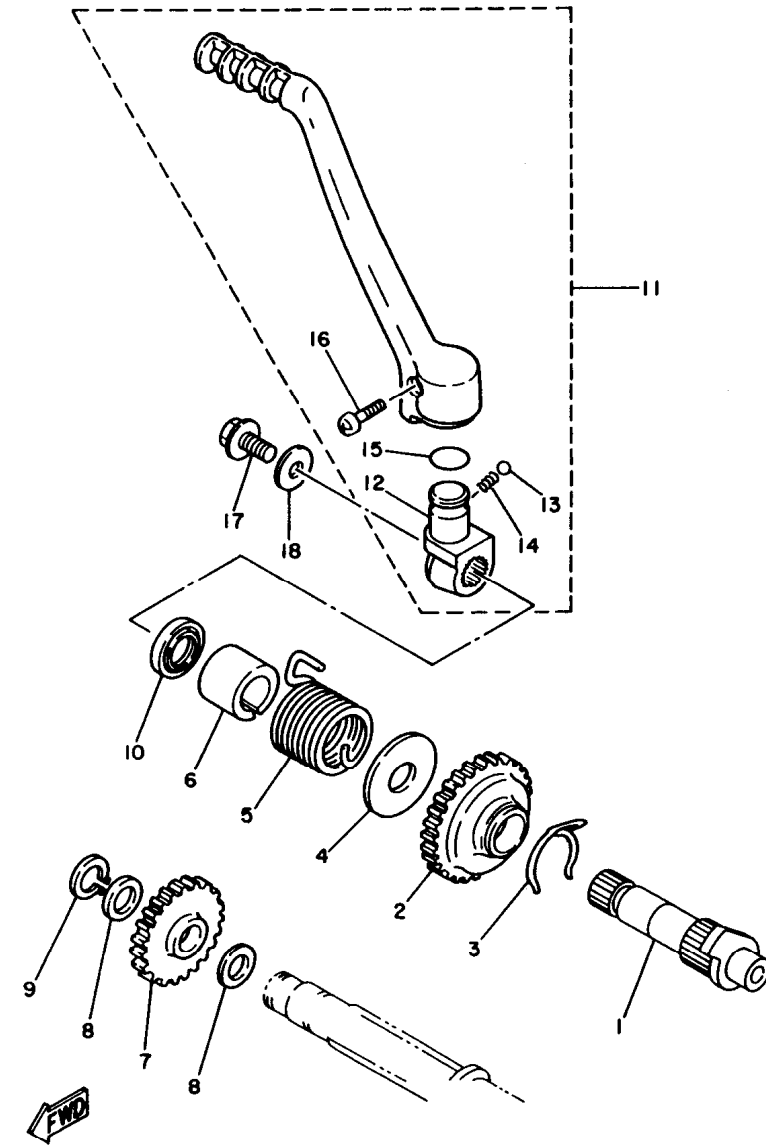
4SR1100-6100

FIG. 10 CRANKCASE COVER 1

REF. NO.	PART NO.	DESCRIPTION	OCE	EUR	CAN	JPN	REMARKS
1	2VM-15411-00	COVER, CRANKCASE 1	1	1	1	1	
2	2VM-15451-11	GASKET, CRANKCASE COVER 1	1	1	1	1	
3	98507-06030	SCREW, PAN HEAD	5	5	5	5	
4	92907-06600	WASHER, PLATE	5	5	5	5	
5	2VM-15421-02	COVER, CRANKCASE 2	1	1	1	1	
6	95027-06012	BOLT, FLANGE	2	2	2	2	
7	4SR-15441-00	HOLDER, CLUTCH CABLE	1	1	1	1	
8	3SP-Y1543-00	COVER, CRANKCASE 3	1	1	1	1	
9	2VM-15462-10	GASKET, CRANKCASE COVER 3	1	1	1	1	
10	99530-12016	PIN, DOWEL	2	2	2	2	
11	95027-06030	BOLT, FLANGE	7	7	7	7	
12	4EW-15415-00	COVER, GENERATOR	1	1	1	1	
13	3SP-15463-11	GASKET, CARBURETOR COVER 2	1	1	1	1	
14	95027-06025	BOLT, FLANGE	5	5	5	5	
15	95027-06070	BOLT, FLANGE	2	2	2	2	
16	93604-10011	PIN, DOWEL	2	2	2	2	
17	1G8-15362-00	PLUG, OIL LEVEL	1	1	1	1	
18	93210-14104	O-RING	1	1	1	1	
19	95027-06008	BOLT, FLANGE	1	1	1	1	
20	90430-06014	GASKET	1	1	1	1	

**B14**

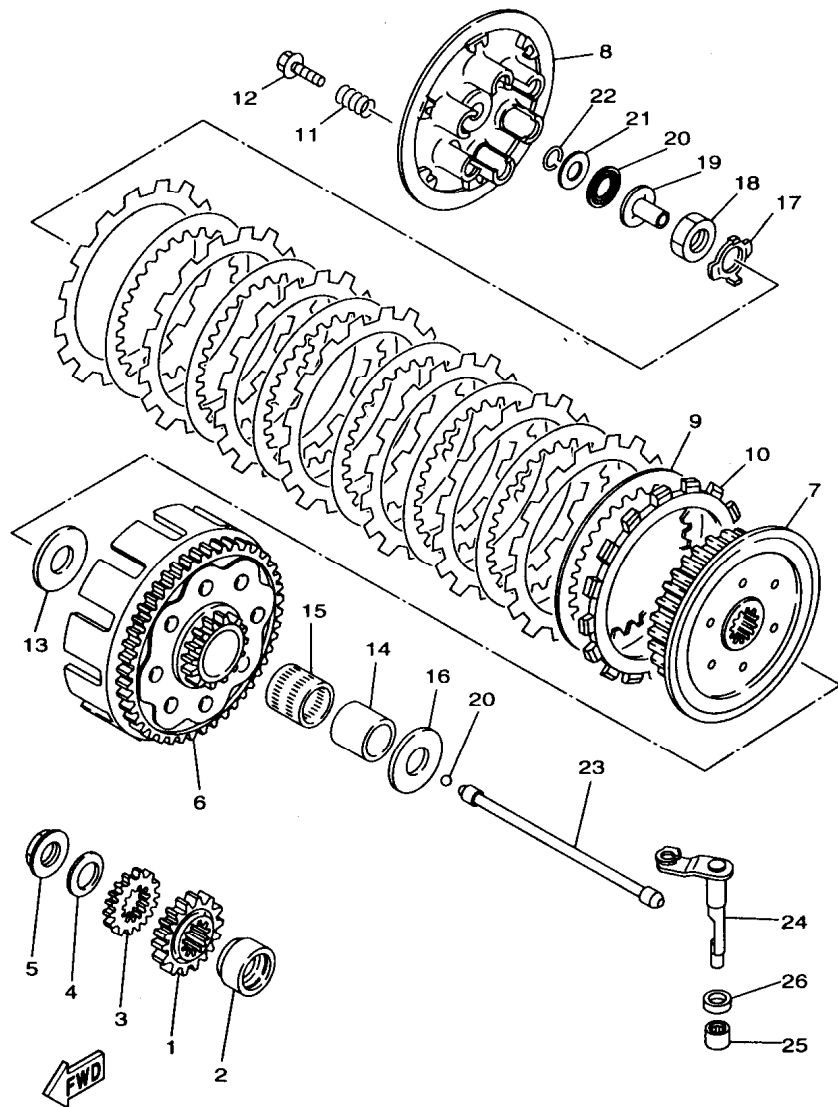
FIG. 11 STARTER



4JW1100-4110

REF. NO.	PART NO.	DESCRIPTION	OCE	EUR	CAN	JPN	REMARKS
1	4JW-15660-00	KICK AXLE ASSY	1	1	1	1	
2	3R4-15641-00	GEAR, KICK (26T)	1	1	1	1	
3	90468-26048	CLIP	1	1	1	1	
4	90201-20358	WASHER, PLATE	1	1	1	1	
5	90508-30743	SPRING, TORSION	1	1	1	1	
6	2VM-15664-00	GUIDE, SPRING	1	1	1	1	
7	38V-15651-00	GEAR, KICK IDLE (23T)	1	1	1	1	
8	90201-17545	WASHER, PLATE	2	2	2	2	
9	99009-17400	CIRCLIP	1	1	1	1	
10	93102-20309	OIL SEAL	1	1	1	1	
11	4JW-15620-00	KICK CRANK ASSY	1	1	1	1	
12	3SP-15621-02	.BOSS, KICK CRANK	1	1	1	1	
13	93501-04011	.BALL	1	1	1	1	
14	90501-13720	.SPRING, COMPRESSION	1	1	1	1	
15	93210-19216	.O-RING	1	1	1	1	
16	90157-06048	.SCREW, PAN HEAD	1	1	1	1	
17	95027-08020	BOLT, FLANGE	1	1	1	1	
18	90201-087A9	WASHER, PLATE	1	1	1	1	

**B15**



4XL4100-7120

FIG. 12 CLUTCH

REF. NO.	PART NO.	DESCRIPTION	OCE	EUR	CAN	JPN	REMARKS
1	2VM-16111-00	GEAR, PRIMARY DRIVE	1	1	1	1	
2	90387-252F6	COLLAR	1	1	1	1	
3	3XK-11956-00	GEAR, GOVERNOR DRIVE	1	1	1	1	
4	90208-18025	WASHER, CONICAL SPRING	1	1	1	1	
5	90179-18172	NUT	1	1	1	1	
6	4EW-16150-01	PRIMARY DRIVEN GEAR COMP.	1	1	1	1	
7	4EW-16371-01	BOSS, CLUTCH	1	1	1	1	
8	4EW-16351-01	PLATE, PRESSURE 1	1	1	1	1	
9	4X7-16325-00	PLATE, CLUTCH 2	7	7	7	7	
10	3XK-16321-00	PLATE, FRICTION	8	8	8	8	
11	90501-23598	SPRING, COMPRESSION	6	6	6	6	
12	90159-06016	SCREW, WITH WASHER	6	6	6	6	
13	2K7-16154-00	PLATE, THRUST 1	1	1	1	1	
14	2VM-16181-00	SPACER 1	1	1	1	1	
15	93310-230T7	BEARING	1	1	1	1	
16	3SP-16154-00	PLATE, THRUST 1	1	1	1	1	
17	90215-20231	WASHER, LOCK	1	1	1	1	
18	90170-20255	NUT	1	1	1	1	
19	4XL-16356-00	ROD, PUSH 1	1	1	1	1	
20	93340-21505	BEARING	1	1	1	1	
21	90201-125L6	WASHER, PLATE	1	1	1	1	
22	93440-10085	CIRCLIP	1	1	1	1	
23	4EW-16357-00	ROD, PUSH 2	1	1	1	1	
24	4EW-16381-01	PUSH LEVER COMP.	1	1	1	1	
25	93315-11206	BEARING	1	1	1	1	
26	93102-12224	OIL SEAL	1	1	1	1	

C2

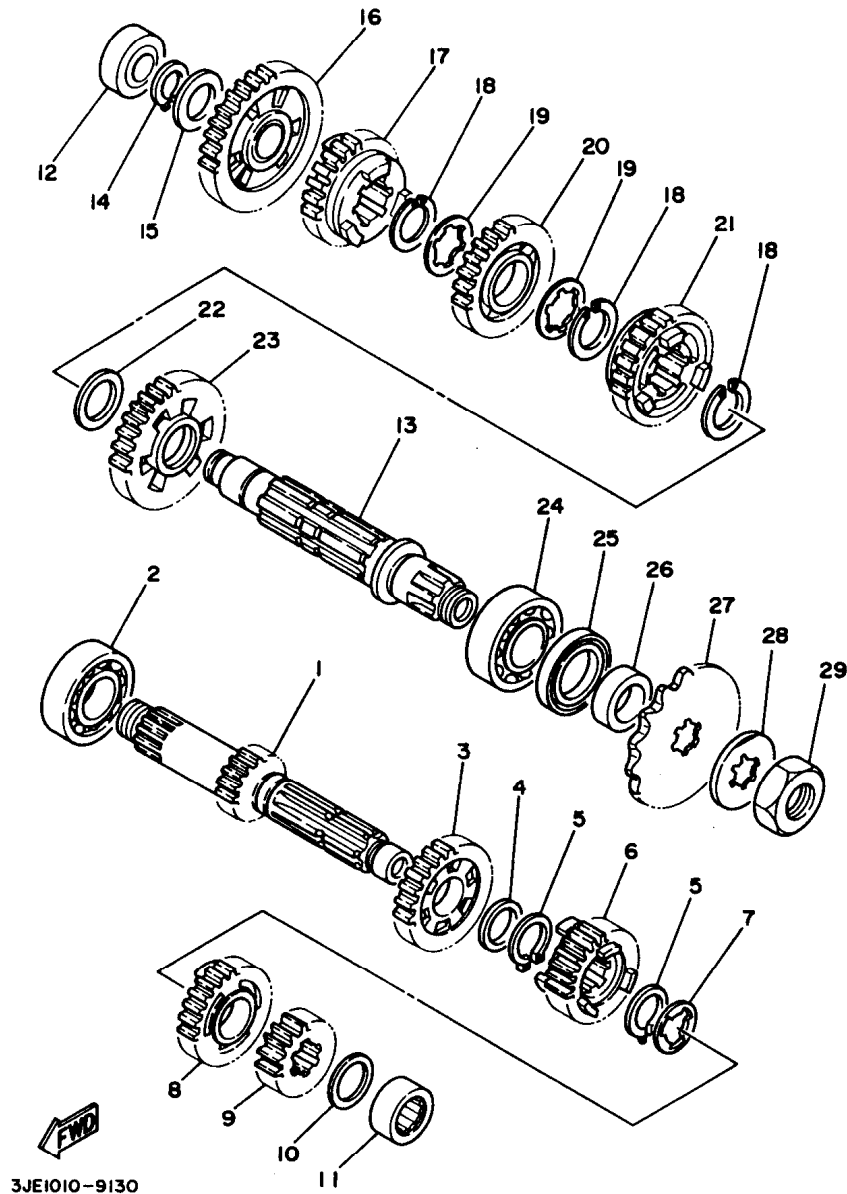
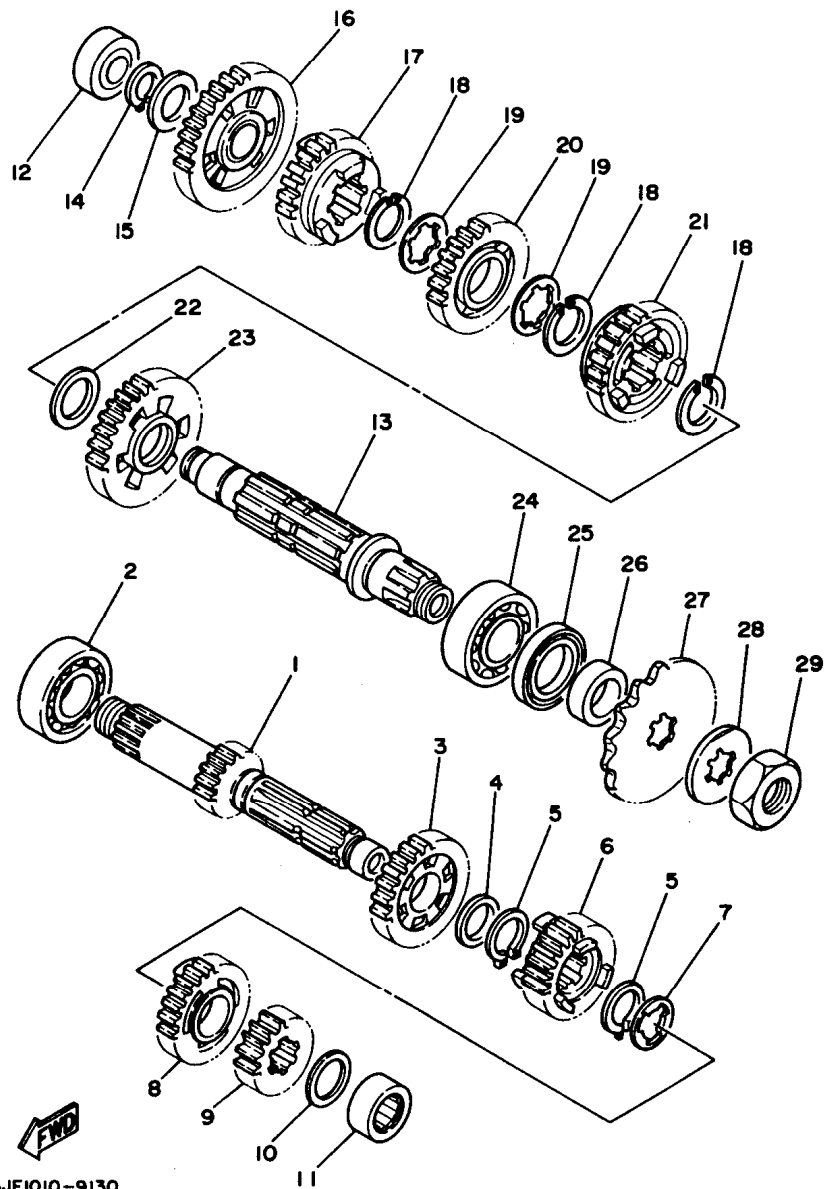


FIG. 13 TRANSMISSION

REF. NO.	PART NO.	DESCRIPTION	OC	EUR	CAN	JPN	REMARKS
1	4JW-17411-00	AXLE, MAIN	1	1	1	1	
2	93306-20540	BEARING	1	1	1	1	
3	3RB-17151-00	GEAR, 5TH PINION (25T)	1	1	1	1	
4	90201-22555	WASHER, PLATE	1	1	1	1	
5	93410-22039	CIRCLIP	2	2	2	2	
6	3RB-17131-00	GEAR, 3RD PINION	1	1	1	1	
7	90209-18135	WASHER	1	1	1	1	
8	3RB-17141-10	GEAR, 4TH PINION	1	1	1	1	
9	2VM-17121-01	GEAR, 2ND PINION	1	1	1	1	
10	90209-17311	WASHER	1	1	1	1	
11	93311-41734	BEARING	1	1	1	1	
12	93311-62035	BEARING	1	1	1	1	
13	2VM-17421-01	AXLE, DRIVE	1	1	1	1	
14	93410-20038	CIRCLIP	1	1	1	1	
15	90201-20278	WASHER, PLATE	1	1	1	1	
16	3RB-17211-00	GEAR, 1ST WHEEL (32T)	1	1	1	1	
17	3RB-17251-00	GEAR, 5TH WHEEL (21T)	1	1	1	1	
18	93440-25084	CIRCLIP	3	3	3	3	
19	90209-22082	WASHER (0.5T)	2	2	2	2	
20	3RB-17231-00	GEAR, 3RD WHEEL	1	1	1	1	
21	3RB-17241-10	GEAR, 4TH WHEEL	1	1	1	1	
22	90201-253K0	WASHER, PLATE (T=1.0)	1	1	1	1	
23	2VM-17221-00	GEAR, 2ND WHEEL (29T)	1	1	1	1	
24	93306-20574	BEARING	1	1	1	1	
25	93102-32337	OIL SEAL	1	1	1	1	
26	90387-25663	COLLAR	1	1	1	1	
27	93834-13207	SPROCKET, DRIVE (13T)	1	1	1	1	UR STD

C3

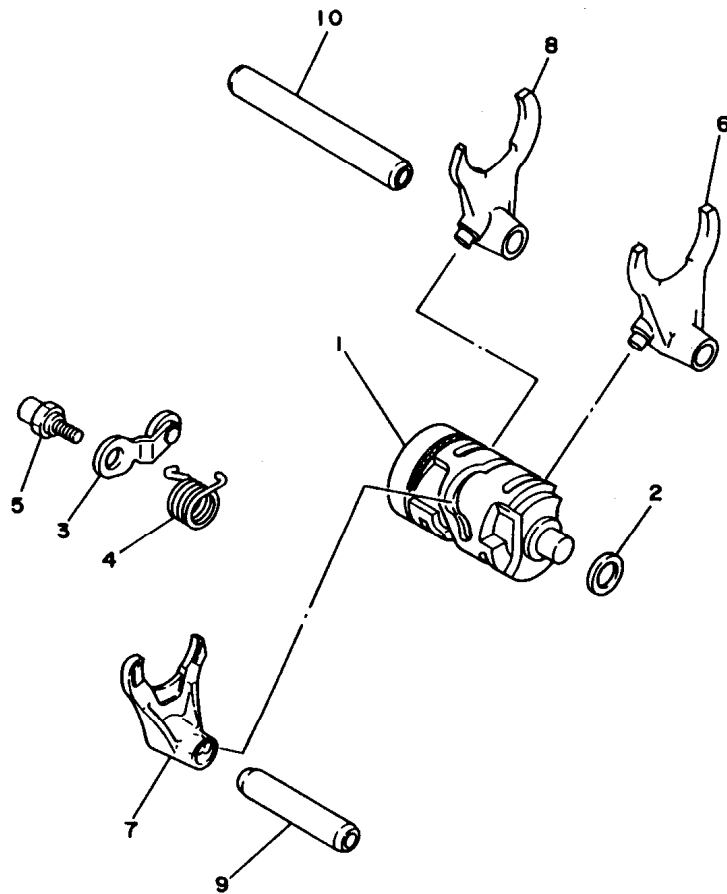


3JE1010-9130

FIG. 13 TRANSMISSION

REF. NO.	PART NO.	DESCRIPTION	OCE	EUR	CAN	JPN	REMARKS
27	93834-14049	SPROCKET,DRIVE 14T(1W41746140)	1	1	1		AP
	93834-15075	SPROCKET,DRIVE 15T(1W41746150)	1	1	1	1	AP
28	90215-21239	WASHER, LOCK	1	1	1	1	
29	90179-20255	NUT	1	1	1	1	

C4



**FIG. 14 SHIFT CAM. FORK**

REF. NO.	PART NO.	DESCRIPTION	OCE	EUR	CAN	JPN	REMARKS
1	3XK-18540-01	SHIFT CAM ASSY	1	1	1	1	
2	90201-12166	WASHER, PLATE	1	1	1	1	
3	3XK-18140-00	STOPPER LEVER ASSY	1	1	1	1	
4	90508-26561	SPRING, TORSION	1	1	1	1	
5	3XK-18177-00	BOLT, STOPPER	1	1	1	1	
6	4SR-18511-00	FORK, SHIFT 1	1	1	1	1	
7	2VM-18512-00	FORK, SHIFT 2	1	1	1	1	
8	4SR-18513-00	FORK, SHIFT 3	1	1	1	1	
9	4EX-18531-00	BAR, SHIFT FORK GUIDE 1	1	1	1	1	
10	3XV-18535-00	BAR, SHIFT FORK GUIDE 2	1	1	1	1	



4SR1100-6140

**C5**

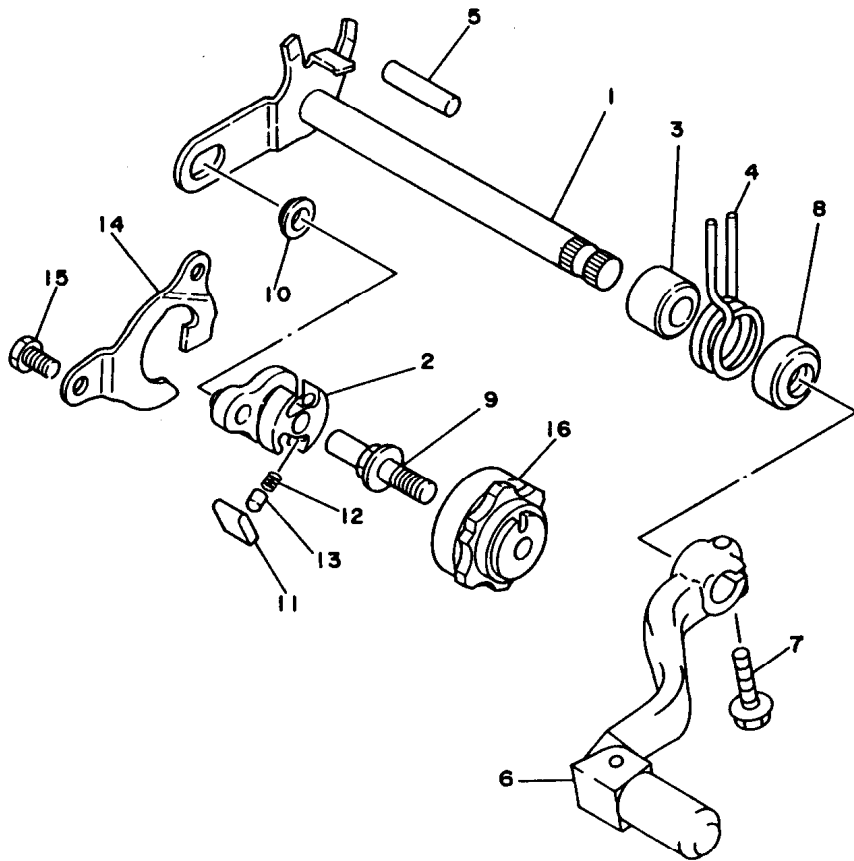


FIG. 15 SHIFT SHAFT

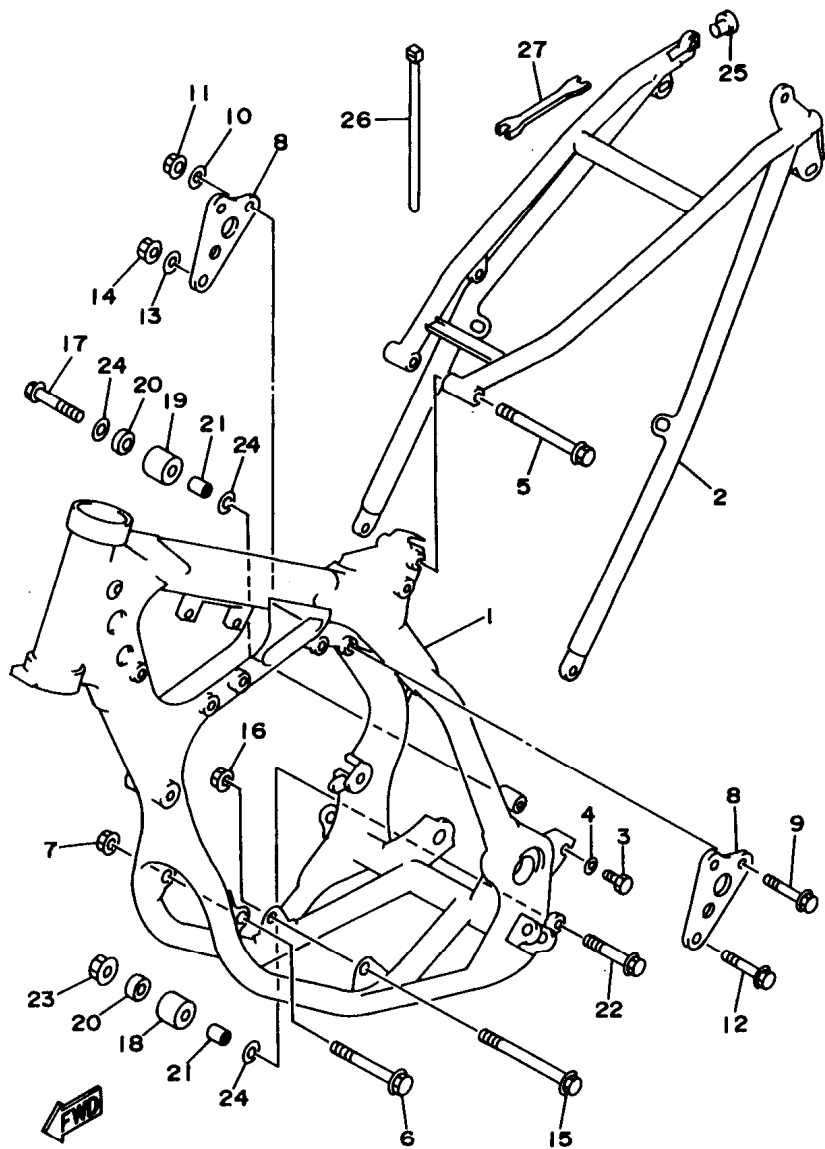
REF. NO.	PART NO.	DESCRIPTION	OCE	EUR	CAN	JPN	REMARKS
1	3XK-18101-02	SHIFT SHAFT ASSY	1	1	1	1	
2	3XK-18122-00	LEVER, SHIFT 2	1	1	1	1	
3	90560-12280	SPACER	1	1	1	1	
4	90508-291A8	SPRING, TORSION	1	1	1	1	
5	93608-33046	PIN, DOWEL	1	1	1	1	
6	4SS-18110-00	SHIFT PEDAL ASSY	1	1	1	1	
7	95027-06020	BOLT, FLANGE	1	1	1	1	
8	93101-12004	OIL SEAL	1	1	1	1	
9	3XJ-18173-00	PIN, SHIFT	1	1	1	1	
10	3XJ-18178-00	ROLLER, SHIFT LEVER	1	1	1	1	
11	3XJ-18182-00	PAWL, SHIFTER	2	2	2	2	
12	90501-052G5	SPRING, COMPRESSION	2	2	2	2	
13	3XJ-18184-00	PIN, PAWL	2	2	2	2	
14	4DA-18172-00	GUIDE, SHIFT	1	1	1	1	
15	90101-06664	BOLT	2	2	2	2	
16	4EW-18185-00	SEGMENT	1	1	1	1	



4SR1100-6150

C6



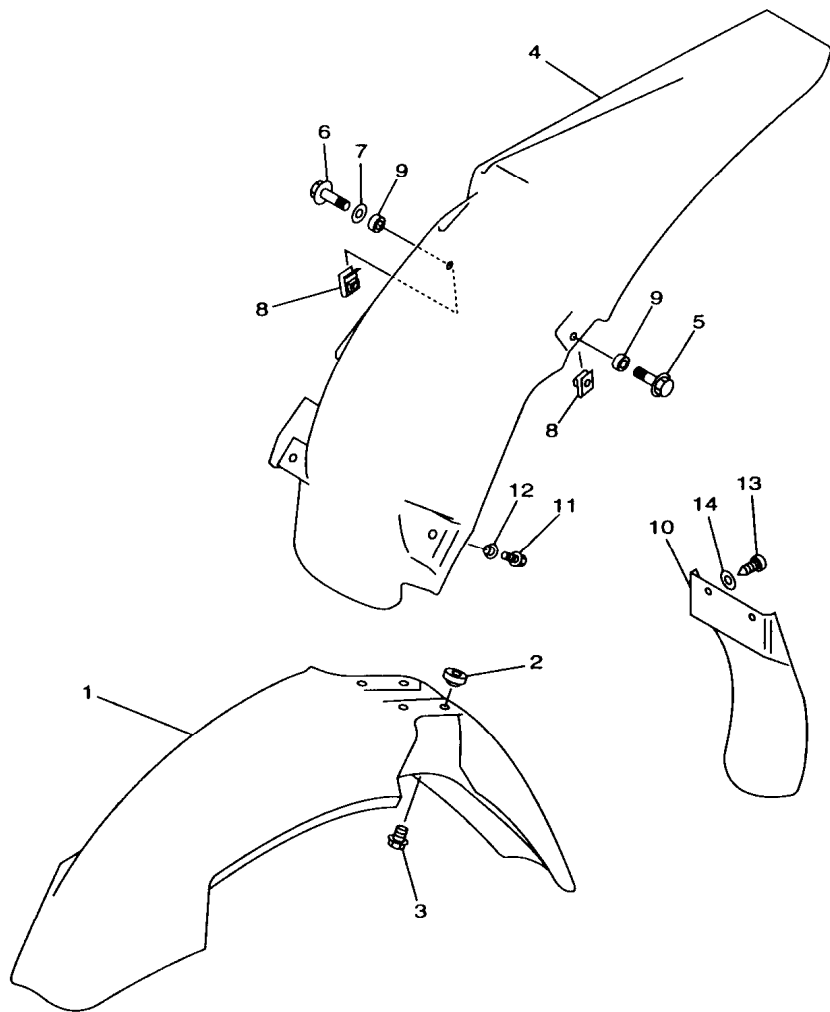


4SR1100-6160

FIG. 16 FRAME

REF. NO.	PART NO.	DESCRIPTION	OCE	EUR	CAN	JPN	REMARKS
1	4XK-21101-00-2F	FRONT FRAME COMP.	1	1	1	1	SB
2	4XM-21190-10-2F	REAR FRAME COMP.	1	1	1	1	SB
3	90106-08051	BOLT	2	2	2	2	
4	90201-080E2	WASHER, PLATE	2	2	2	2	
5	90105-08099	BOLT, WASHER BASED	1	1	1	1	
6	90105-08100	BOLT, WASHER BASED	1	1	1	1	
7	95617-08200	NUT, SELF-LOCKING	1	1	1	1	
8	4SR-21425-00	BRACKET, REAR UPPER 1	2	2	2	2	
9	95817-08050	BOLT, FLANGE	2	2	2	2	
10	90201-08730	WASHER, PLATE	2	2	2	2	
11	95607-08200	NUT, SELF-LOCKING	2	2	2	2	
12	95817-10050	BOLT, FLANGE	1	1	1	1	
13	92907-10200	WASHER, PLAIN	1	1	1	1	
14	95617-10200	NUT, SELF-LOCKING	1	1	1	1	
15	90105-10733	BOLT, WASHER BASED	1	1	1	1	
16	95617-10200	NUT, SELF-LOCKING	1	1	1	1	
17	95027-08040	BOLT, FLANGE	1	1	1	1	
18	3JD-22178-10	TENSIONER	1	1	1	1	
19	4EW-22178-10	TENSIONER	1	1	1	1	
20	93300-60804	BEARING	2	2	2	2	
21	90387-086N4	COLLAR	2	2	2	2	
22	95027-08065	BOLT, FLANGE	1	1	1	1	
23	95707-08500	NUT, FLANGE	1	1	1	1	
24	90201-086P8	WASHER, PLATE	3	3	3	3	
25	90338-16148	PLUG	2	2	2	2	
26	90464-15152	CLAMP	1	1	1	1	
27	56A-28166-00	WRENCH, HEXAGON	1	1	1	1	

C7

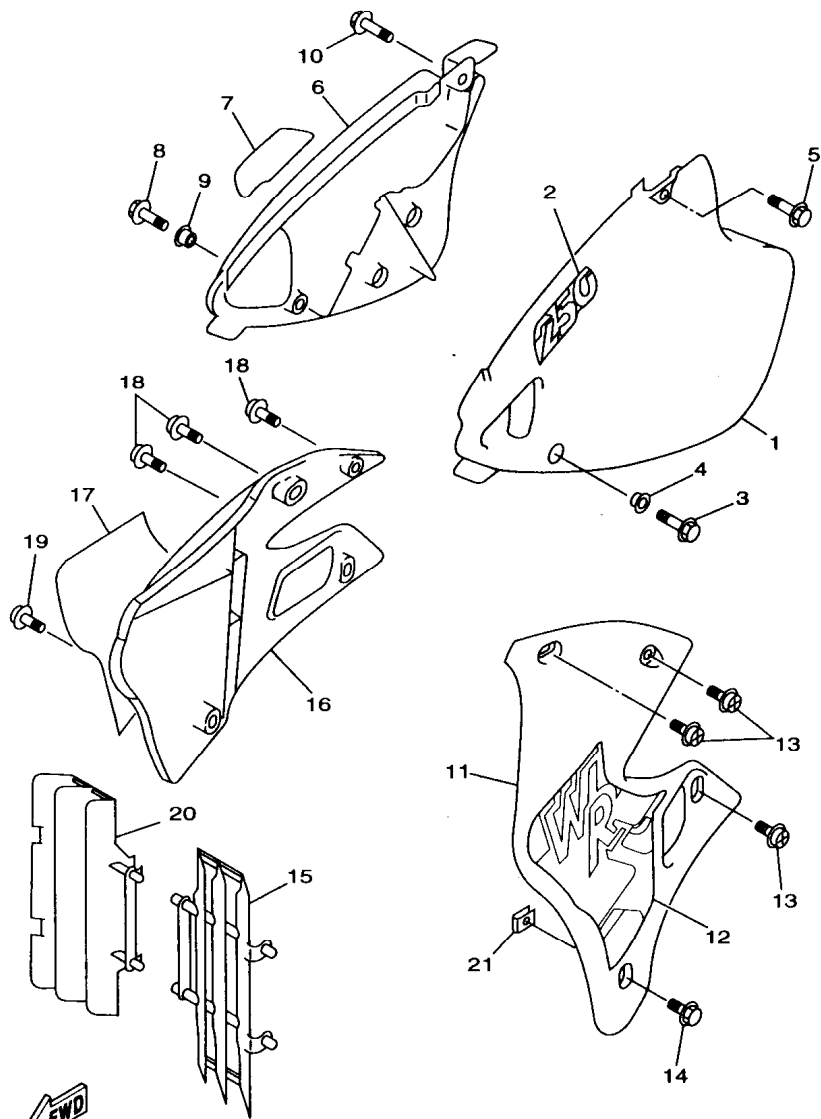


4SR1100-6170

FIG. 17 FENDER

REF. NO.	PART NO.	DESCRIPTION	OCE	EUR	CAN	JPN	REMARKS
1	4DA-21511-10	FENDER, FRONT	1	1	1	1	
2	3JD-21748-00	COLLAR	4	4	4	4	
3	90119-06096	BOLT, WITH WASHER	4	4	4	4	
4	4SS-21611-00	FENDER, REAR	1	1	1	1	
5	95027-06012	BOLT, FLANGE	1	1	1	1	
6	95027-06030	BOLT, FLANGE	1	1	1	1	
7	90201-06071	WASHER, PLATE	1	1	1	1	
8	90183-06023	NUT, SPRING	2	2	2	2	
9	90387-0701A	COLLAR	2	2	2	2	
10	4ES-21642-00	GUARD, FLAP	1	1	1	1	
11	95027-06020	BOLT, FLANGE	2	2	2	2	
12	90387-0600F	COLLAR	2	2	2	2	
13	97707-60016	SCREW, TAPPING	2	2	2	2	
14	90201-06557	WASHER, PLATE	2	2	2	2	

C8

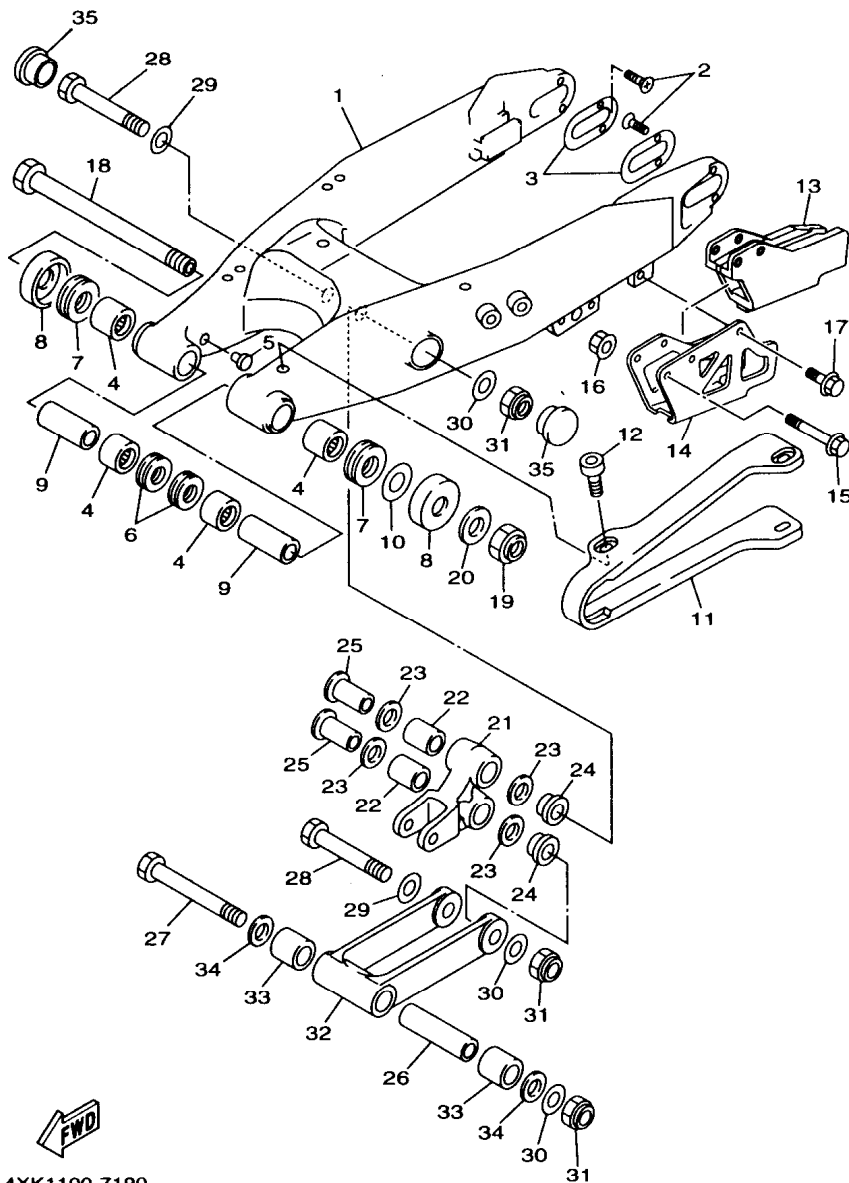


4XK1100-7180

FIG. 18 SIDE COVER

REF. NO.	PART NO.	DESCRIPTION	OCE	EUR	CAN	JPN	REMARKS
1	4SS-21711-00	COVER, SIDE 1	1	1	1	1	
2	4XK-21781-00	EMBLEM 1	1	1	1	1	
3	95827-06016	BOLT, FLANGE	1	1	1	1	
4	90387-0600F	COLLAR	1	1	1	1	
5	95827-06016	BOLT, FLANGE	1	1	1	1	
6	4SS-21721-00	COVER, SIDE 2	1	1	1	1	
7	4XK-21781-00	EMBLEM 1	1	1	1	1	
8	95827-06016	BOLT, FLANGE	1	1	1	1	
9	90387-0600F	COLLAR	1	1	1	1	
10	95827-06016	BOLT, FLANGE	1	1	1	1	
11	4SS-21731-00	COVER, SIDE 3	1	1	1	1	
12	4XK-2173E-00	GRAPHIC 1	1	1	1	1	
13	90159-06182	SCREW, WITH WASHER	3	3	3	3	
14	90159-06078	SCREW, WITH WASHER	1	1	1	1	
15	4EW-2172A-10	PANEL 1	1	1	1	1	
16	4SS-21741-00	COVER, SIDE 4	1	1	1	1	
17	4XK-2173F-00	GRAPHIC 2	1	1	1	1	
18	90159-06182	SCREW, WITH WASHER	3	3	3	3	
19	90159-06078	SCREW, WITH WASHER	1	1	1	1	
20	4EW-2172A-10	PANEL 1	1	1	1	1	
21	90183-06069	NUT, SPRING	2	2	2	2	

C9

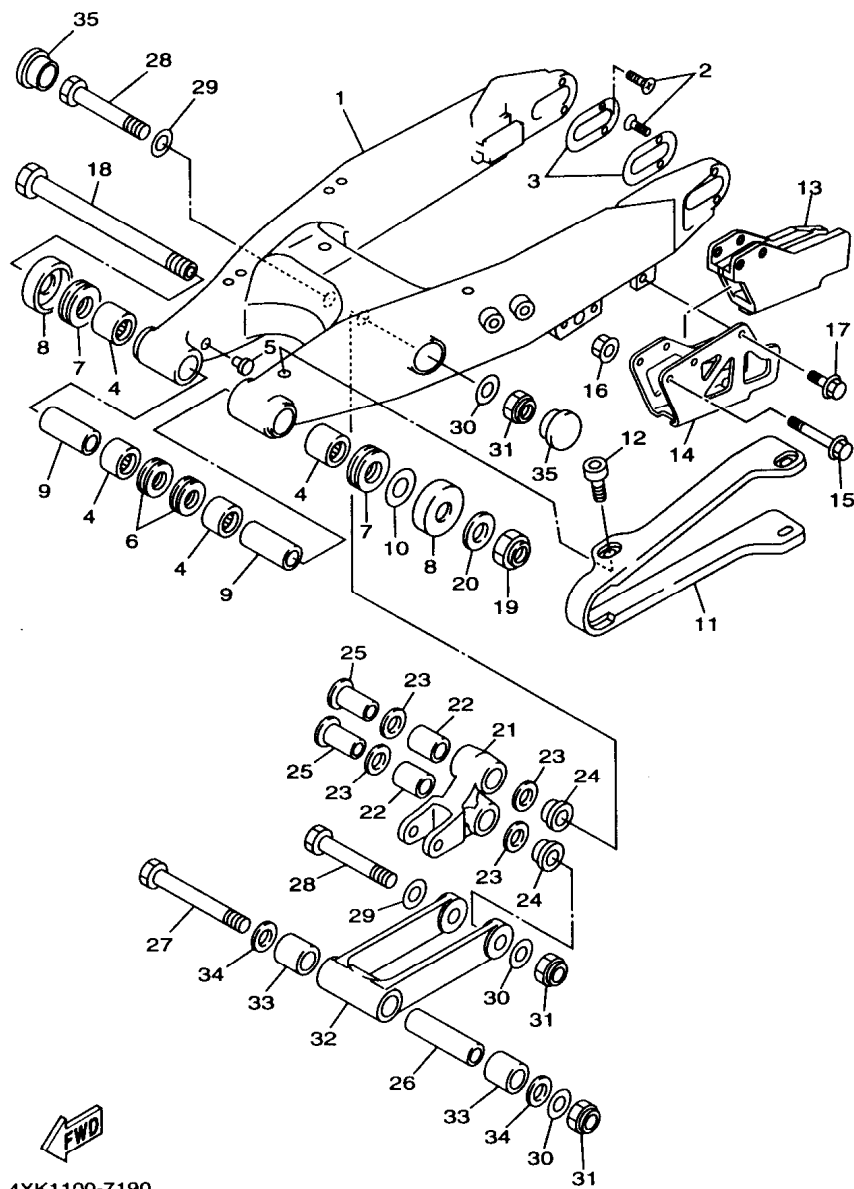


4XK1100-7190

FIG. 19 REAR ARM

REF. NO.	PART NO.	DESCRIPTION	OCE	EUR	CAN	JPN	REMARKS
1	4XK-22110-00	REAR ARM COMP.	1	1	1	1	
2	90151-04048	SCREW, COUNTERSUNK	4	4	4	4	
3	4SS-22355-00	PATCH	2	2	2	2	
4	93317-22262	BEARING	4	4	4	4	
5	90338-16148	PLUG	2	2	2	2	
6	93106-22019	OIL SEAL (DC 22-28-8)	2	2	2	2	
7	93342-22215	BEARING	2	2	2	2	
8	4EW-22129-00	COVER, THRUST 2	2	2	2	2	
9	90380-16158	BUSH, SOLID	2	2	2	2	
10	156-22127-00	SHIM (0.3T)	1	1	1	1	
11	4EW-22151-01	SEAL, GUARD	1	1	1	1	
12	90110-05201	BOLT, HEXAGON SOCKET HEAD	4	4	4	4	
13	4XM-22199-00	SUPPORT, CHAIN	1	1	1	1	
14	4XM-22128-00	COVER, THRUST 1	1	1	1	1	
15	95027-06050	BOLT, FLANGE	2	2	2	2	
16	90179-06568	NUT	2	2	2	2	
17	95027-06010	BOLT, FLANGE	1	1	1	1	
18	1LX-22141-00	SHAFT, PIVOT	1	1	1	1	
19	90185-16127	NUT, SELF-LOCKING	1	1	1	1	
20	90201-164H4	WASHER, PLATE	1	1	1	1	
21	4SS-2217A-00	ARM, RELAY	1	1	1	1	
22	93315-32056	BEARING	2	2	2	2	
23	93109-20029	OIL SEAL	4	4	4	4	
24	90387-164N2	COLLAR	2	2	2	2	
25	90387-164N3	COLLAR	2	2	2	2	
26	90387-167Y9	COLLAR	1	1	1	1	
27	90109-147F2	BOLT	1	1	1	1	

C10

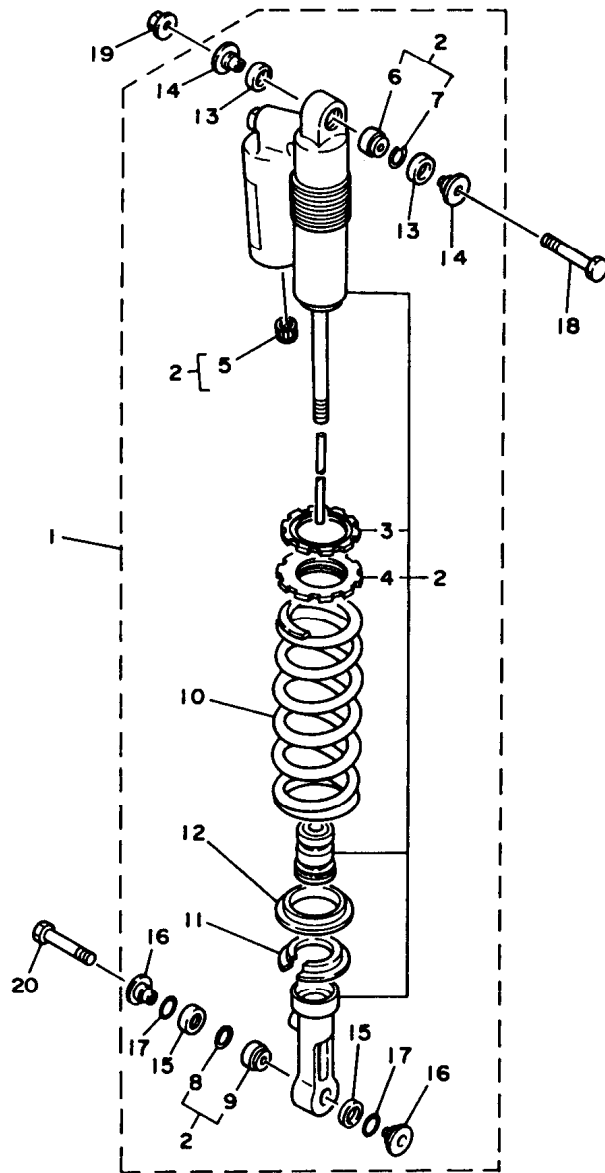


4XK1100-7190

FIG. 19 REAR ARM

REF. NO.	PART NO.	DESCRIPTION	OCE	EUR	CAN	JPN	REMARKS
28	90109-142F4	BOLT	2	2	2	2	
29	90201-164H4	WASHER, PLATE	2	2	2	2	
30	90201-14740	WASHER, PLATE	3	3	3	3	
31	90185-14112	NUT, SELF-LOCKING	3	3	3	3	
32	4SS-2217F-00	ROD, CONNECTING 1	1	1	1	1	
33	93315-32056	BEARING	2	2	2	2	
34	93109-20029	OIL SEAL	2	2	2	2	
35	1HX-2135F-10	COVER	2	2	2	2	

C11

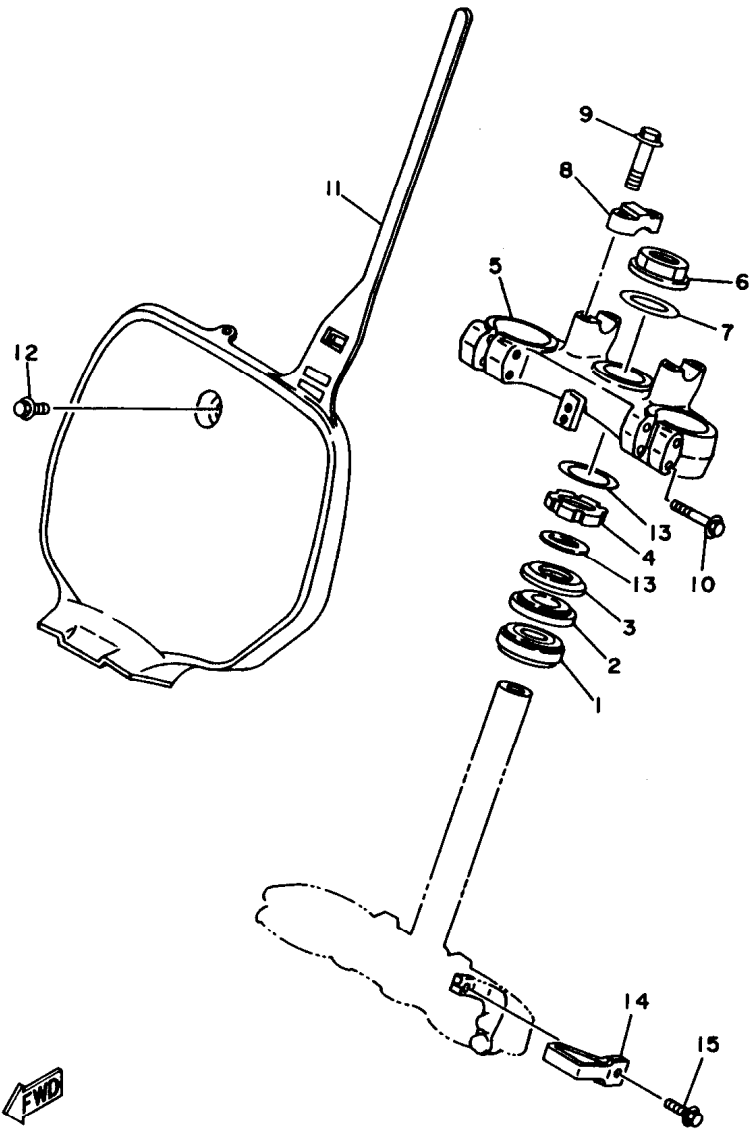


4JX1100-4200

FIG. 20 REAR SUSPENSION

REF. NO.	PART NO.	DESCRIPTION	OCE	EUR	CAN	JPN	REMARKS
1	4XK-22210-20	SHOCK ABSORBER ASSY, REAR	1	1			
	4XK-22210-10	SHOCK ABSORBER ASSY, REAR			1		
	4XK-22210-30	SHOCK ABSORBER ASSY, REAR				1	
2	4XM-22201-00	.DAMPER SUB ASSY	1	1			
	4XM-22201-30	.DAMPER SUB ASSY			1		
	4XM-22201-20	.DAMPER SUB ASSY				1	
3	3SP-22234-00	..GUIDE, SPRING 3	1	1	1	1	
4	3SP-22213-00	..SEAT, SPRING UPPER	1	1	1	1	
5	509-23184-L0	..CAP, AIR VALVE	1	1	1	1	
6	4MX-22216-00	..BUSH, REAR SHOCK ABSORBER	1	1	1	1	
7	43M-22274-00	..RING, STOP	1	1	1	1	
8	3Y6-23183-00	..CIRCLIP	1	1	1	1	
9	4JX-22226-00	..BUSH, SHOCK ABSORBER LOWER	1	1	1	1	
10	4XM-22212-30	.SPRING (K=5.0)	1	1	1	1	
11	3JD-22214-00	.GUIDE, SPRING 1	1	1	1	1	
12	3JD-22224-00	.GUIDE, SPRING 2	1	1	1	1	
13	3JD-22475-00	.SEAL, DUST	2	2	2	2	
14	3XJ-22253-00	.COLLAR, DISTANCE	2	2	2	2	
15	3JE-22475-00	.SEAL, DUST	2	2	2	2	
16	4EW-22253-00	.COLLAR, DISTANCE	2	2	2	2	
17	4EW-22474-00	.SEAL, RING	2	2	2	2	
18	3SP-22241-00	BOLT 1	1	1	1	1	
19	95617-10200	NUT, SELF-LOCKING	1	1	1	1	
20	90105-10614	BOLT, WASHER BASED	1	1	1	1	

C12



4JX1100-4210

FIG. 21 STEERING

REF. NO.	PART NO.	DESCRIPTION	OCE	EUR	CAN	JPN	REMARKS
1	93332-00081	BEARING	1	1	1	1	
2	93332-00068	BEARING	1	1	1	1	
3	4EW-23416-00	COVER, BALL RACE 2	1	1	1	1	
4	90179-28650	NUT	1	1	1	1	
5	4SS-23435-00	CROWN, HANDLE	1	1	1	1	
6	90170-24373	NUT	1	1	1	1	
7	90201-247L2	WASHER, PLATE	1	1	1	1	
8	3SP-23441-00	HOLDER, HANDLE UPPER	2	2	2	2	
9	95027-08035	BOLT, FLANGE	4	4	4	4	
10	95027-08040	BOLT, FLANGE	4	4	4	4	
11	4DA-23485-10	PLATE, NUMBER	1	1	1	1	
12	90119-06185	BOLT, WITH WASHER	1	1	1	1	
13	90201-286K9	WASHER, PLATE	2	2	2	2	
14	4DA-23389-00	GUIDE, CABLE	1	1	1	1	
15	90105-05361	BOLT, WASHER BASED	1	1	1	1	

C13

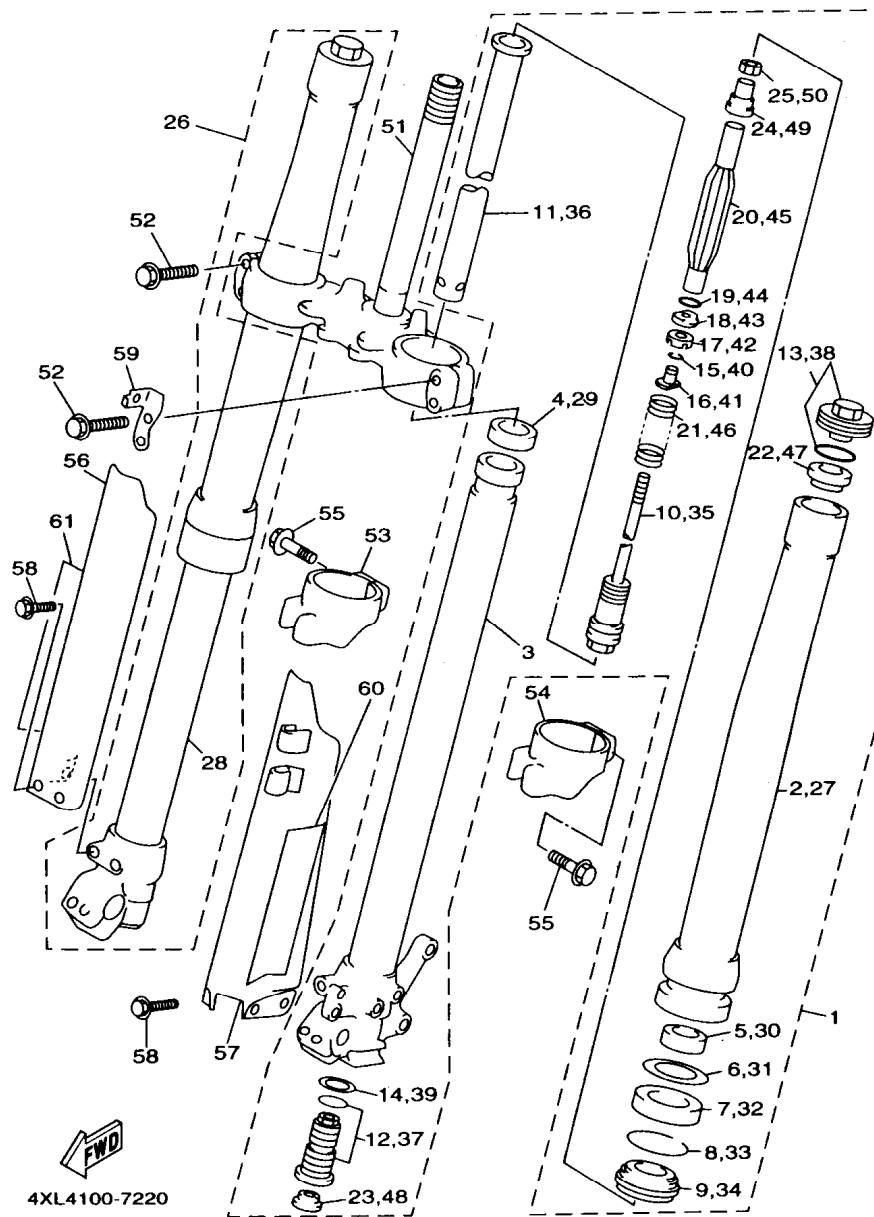


FIG. 22 FRONT FORK

REF. NO.	PART NO.	DESCRIPTION	OCE	EUR	CAN	JPN	REMARKS
1	4XK-23102-00	FRONT FORK ASSY (L.H)	1	1	1	1	
2	4XM-23136-L0	.TUBE, OUTER (RIGHT)	1	1	1	1	
3	4SS-23120-L0	.INNER TUBE COMP.2	1	1	1	1	
4	4SS-23171-L0	.PISTON, FRONT FORK	1	1	1	1	
5	4SS-23125-L0	.METAL. SLIDE 1	1	1	1	1	
6	4SS-23146-L0	.WASHER, OIL SEAL	1	1	1	1	
7	4SS-23145-L0	.OIL SEAL	1	1	1	1	
8	4SS-23153-L0	.RING, SNAP	1	1	1	1	
9	4SS-23144-L0	.SEAL, DUST	1	1	1	1	
10	4XM-2314A-L0	.PISTON ROD ASSY	1	1	1	1	
11	4SS-23170-L0	.CYLINDER COMP., FRONT FORK	1	1	1	1	
12	4XK-2316A-00	.VALVE COMP.	1	1	1	1	
13	4SS-23111-L0	.BOLT, CAP	1	1	1	1	
14	4SS-23158-L0	.GASKET	1	1	1	1	
15	3SP-23153-L0	.RING, SNAP	2	2	2	2	
16	3SP-23113-L0	.COLLAR	1	1	1	1	
17	3SP-23166-L0	.SPACER, OIL LOCK	1	1	1	1	
18	3SP-23393-L0	.NUT, SPECIAL	1	1	1	1	
19	3JD-23147-L0	.O-RING	1	1	1	1	
20	4SS-23142-L0	.SEAT, SPRING UPPER	1	1	1	1	
21	4SS-23141-L0	.SPRING, FRONT FORK (K=0.40)	1	1	1	1	
22	4SS-23143-L0	.SEAT, SPRING LOWER	1	1	1	1	
23	3JD-2312G-L0	.PLUG	1	1	1	1	
24	4SS-23363-L0	.COLLAR 1	1	1	1	1	
25	3SP-23357-L0	.NUT	1	1	1	1	
26	4XK-23103-00	FRONT FORK ASSY (R.H)	1	1	1	1	
27	4XM-23136-L0	.TUBE, OUTER (RIGHT)	1	1	1	1	

C14



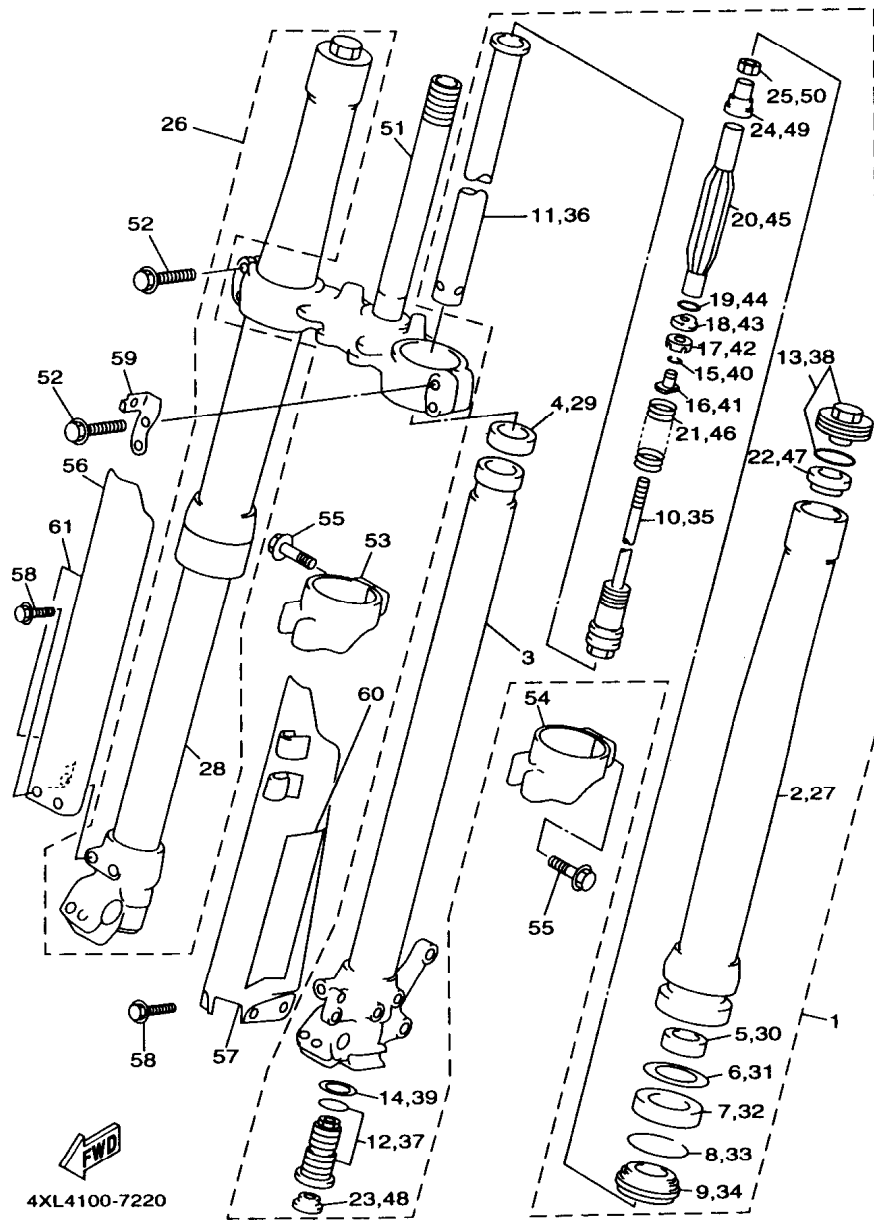


FIG. 22 FRONT FORK

REF. NO.	PART NO.	DESCRIPTION	OCE	EUR	CAN	JPN	REMARKS
28	4SS-23110-L0	.INNER TUBE COMP.1	1	1	1	1	
29	4SS-23171-L0	.PISTON, FRONT FORK	1	1	1	1	
30	4SS-23125-L0	.METAL, SLIDE 1	1	1	1	1	
31	4SS-23146-L0	.WASHER, OIL SEAL	1	1	1	1	
32	4SS-23145-L0	.OIL SEAL	1	1	1	1	
33	4SS-23153-L0	.RING, SNAP	1	1	1	1	
34	4SS-23144-L0	.SEAL, DUST	1	1	1	1	
35	4XM-2314A-L0	.PISTON ROD ASSY	1	1	1	1	
36	4SS-23170-L0	.CYLINDER COMP., FRONT FORK	1	1	1	1	
37	4XK-2316A-00	.VALVE COMP.	1	1	1	1	
38	4SS-23111-L0	.BOLT, CAP	1	1	1	1	
39	4SS-23158-L0	.GASKET	1	1	1	1	
40	3SP-23153-L0	.RING, SNAP	1	1	2	2	
41	3SP-23113-L0	.COLLAR	1	1	1	1	
42	3SP-23166-L0	.SPACER, OIL LOCK	1	1	1	1	
43	3SP-23393-L0	.NUT, SPECIAL	1	1	1	1	
44	3JD-23147-L0	.O-RING	1	1	1	1	
45	4SS-23142-L0	.SEAT, SPRING UPPER	1	1	1	1	
46	4SS-23141-L0	.SPRING, FRONT FORK (K=0.40)	1	1	1	1	
47	4SS-23143-L0	.SEAT, SPRING LOWER	1	1	1	1	
48	3JD-2312G-L0	.PLUG	1	1	1	1	
49	4SS-23363-L0	.COLLAR 1	1	1	1	1	
50	3SP-23357-L0	.NUT	1	1	1	1	
51	4SR-23340-L0	UNDER BRACKET COMP.	1	1	1	1	
52	95021-08040	BOLT, FLANGE	8	8	8	8	
53	4SS-2314G-L0	PROTECTOR GUIDE COMP., 2	1	1	1	1	
54	4SS-2314F-L0	PROTECTOR GUIDE COMP., 1	1	1	1	1	

C15

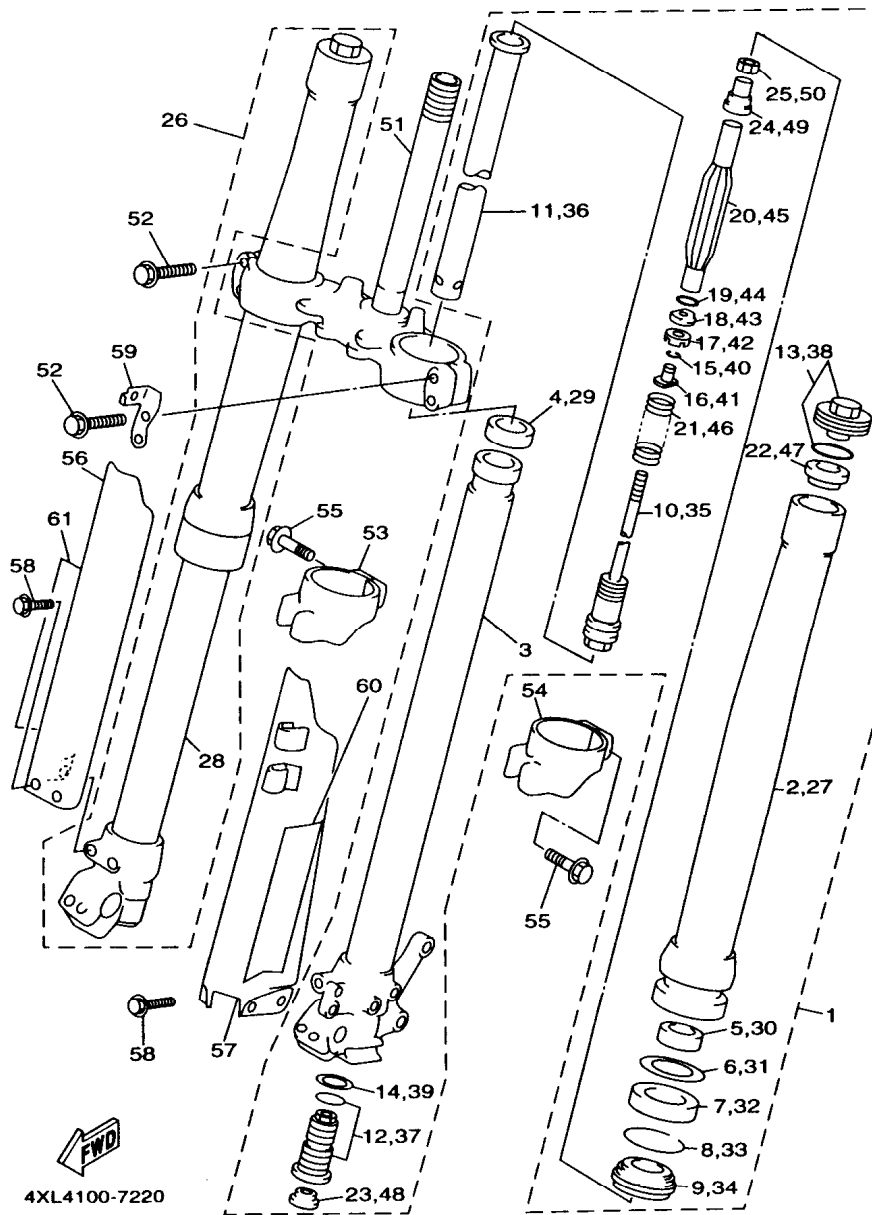


FIG. 22 FRONT FORK

REF. NO.	PART NO.	DESCRIPTION	OCE	EUR	CAN	JPN	REMARKS
55	4SS-23346-L0	BOLT 1	2	2	2	2	
56	4SS-2314J-00	PROTECTOR COMP., 2	1	1	1	1	
57	4SS-2314H-00	PROTECTOR COMP., 1	1	1	1	1	
58	3SP-23356-L0	BOLT 2	6	6	6	6	
59	4EW-2331E-L0	GUIDE, CABLE	1	1	1	1	
60	4XL-2153A-00	EMBLEM, YAMAHA	1	1	1	1	
61	4XL-2153A-00	EMBLEM, YAMAHA	1	1	1	1	

D2

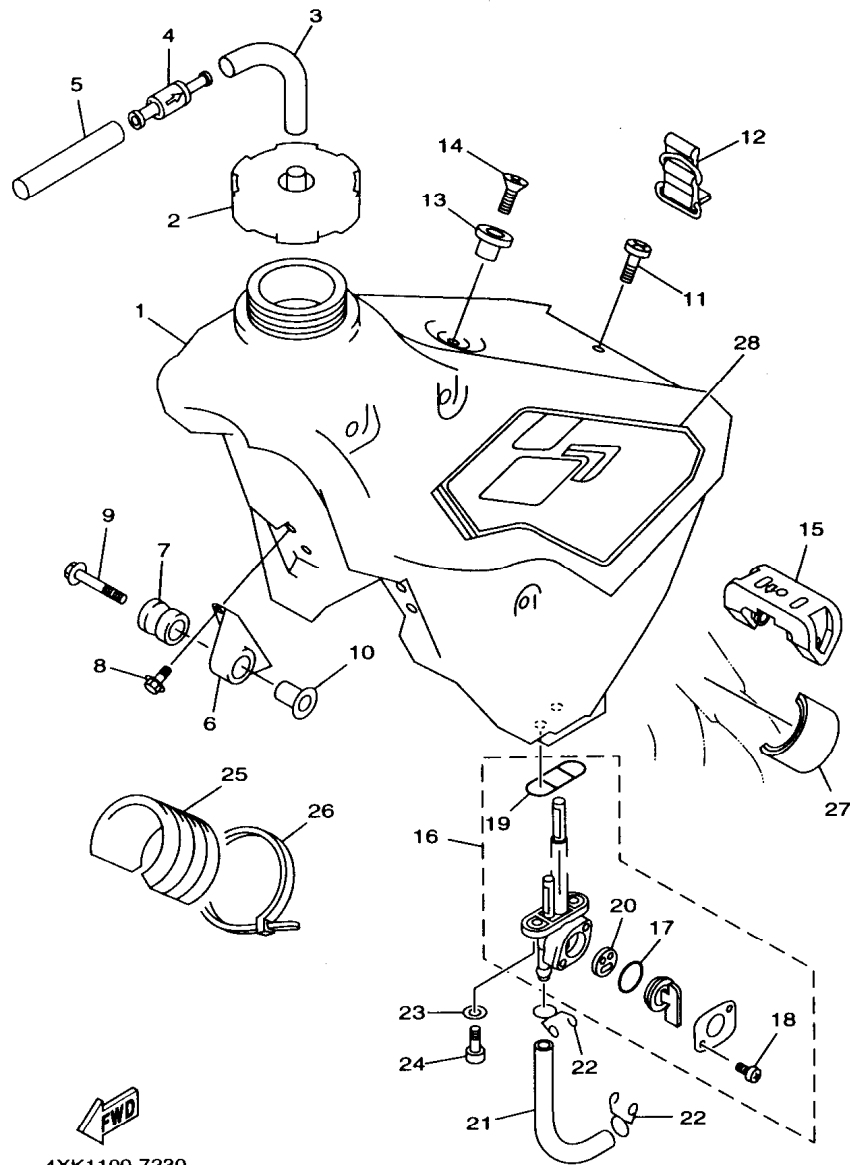
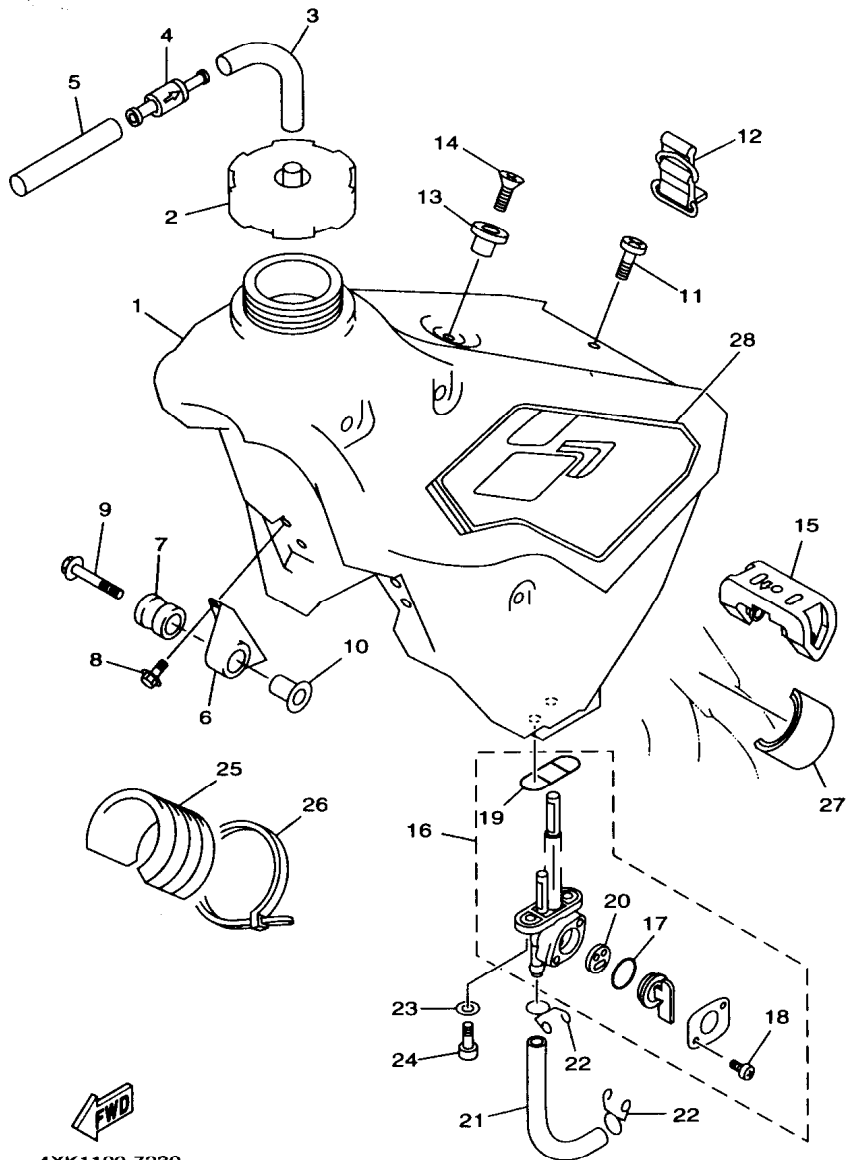


FIG. 23 FUEL TANK

REF. NO.	PART NO.	DESCRIPTION	OCE	EUR	CAN	JPN	REMARKS
1	4SS-24110-01	FUEL TANK COMP.	1	1	1	1	
2	1UY-24610-00	CAP ASSY	1	1	1	1	
3	90445-09220	HOSE	1	1	1	1	
4	3XJ-24380-00	PIPE JOINT ASSY	1	1	1	1	
5	90445-09104	HOSE	1	1	1	1	
6	24X-24144-00	HOLDER, DAMPER	2	2	2	2	
7	90480-18549	GROMMET	2	2	2	2	
8	95027-06016	BOLT, FLANGE	4	4	4	4	
9	90119-06214	BOLT, WITH WASHER	2	2	2	2	
10	3JD-24186-00	WASHER, SPECIAL	2	2	2	2	
11	98907-06020	SCREW, BIND	1	1	1	1	
12	3SP-24173-00	BAND, TANK FITTING 1	1	1	1	1	
13	4EW-2412F-00	BRACKET, SEAT	1	1	1	1	
14	98707-06025	SCREW, FLAT HEAD	1	1	1	1	
15	4SS-24181-00	DAMPER, LOCATING 1	1	1	1	1	
16	4JW-24500-00	FUEL COCK ASSY 1	1	1	1	1	
17	3AJ-24534-00	.SEAL, COCK	1	1	1	1	
18	97801-03008	.SCREW, PAN HEAD	2	2	2	2	
19	4X8-24512-00	.O-RING	1	1	1	1	
20	3AJ-24523-00	.VALVE PACKING	1	1	1	1	
21	90445-116G8	HOSE	1	1	1	1	
22	90467-10008	CLIP	2	2	2	2	
23	90202-05193	WASHER, PLATE	2	2	2	2	
24	90149-06011	SCREW	2	2	2	2	
25	4SS-24182-00	DAMPER, LOCATING 2	1	1	1	1	
26	90465-13275	CLAMP	1	1	1	1	
27	3V6-22358-00	SEAL 1	2	2	2	2	

D3



4XK1100-7230

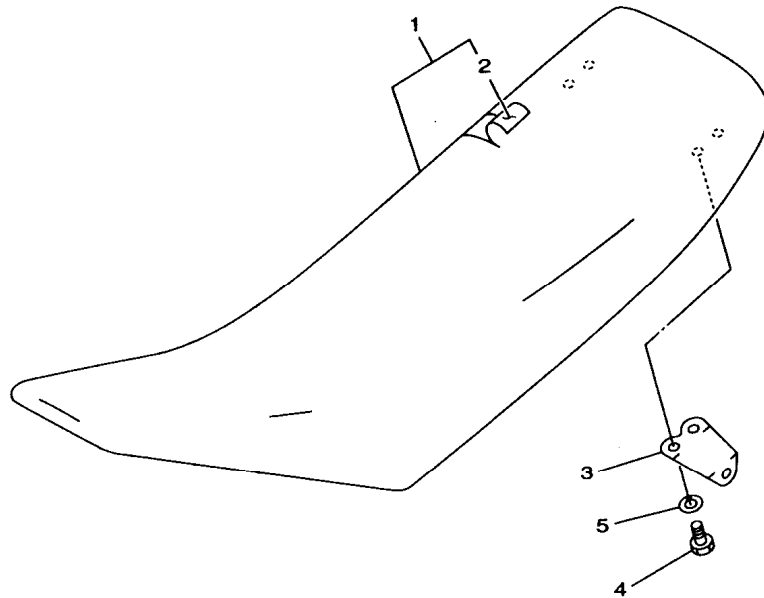
FIG. 23 FUEL TANK

REF. NO.	PART NO.	DESCRIPTION	OCE	EUR	CAN	JPN	REMARKS
28	4XL-24240-00	GRAPHIC SET	1	1	1	1	

**D4**

**FIG. 24 SEAT**

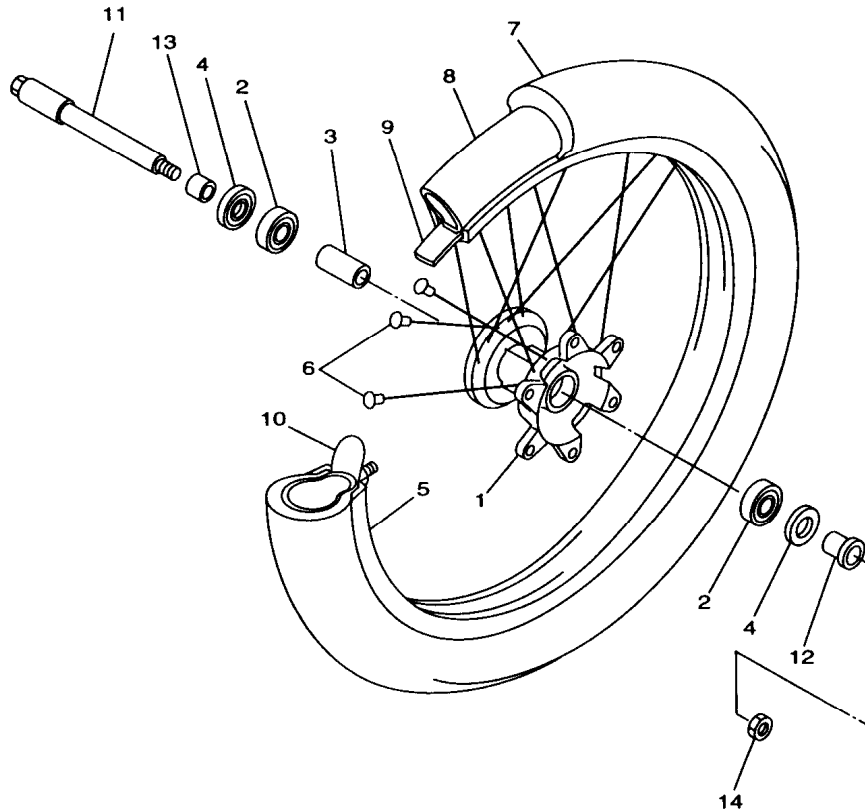
REF. NO.	PART NO.	DESCRIPTION	OCE	EUR	CAN	JPN	REMARKS
1	4SS-24770-00	SEMI-DOUBLE SEAT ASSY	1	1	1	1	
2	4SS-24731-00	.COVER, SEAT	1	1	1	1	
3	4SS-24728-00	.BRACKET, SEAT	2	2	2	2	
4	97007-06012	.BOLT	4	4	4	4	
5	92907-06100	.WASHER, SPRING	4	4	4	4	



4SS1100-6240

**D5**

FIG. 25 FRONT WHEEL

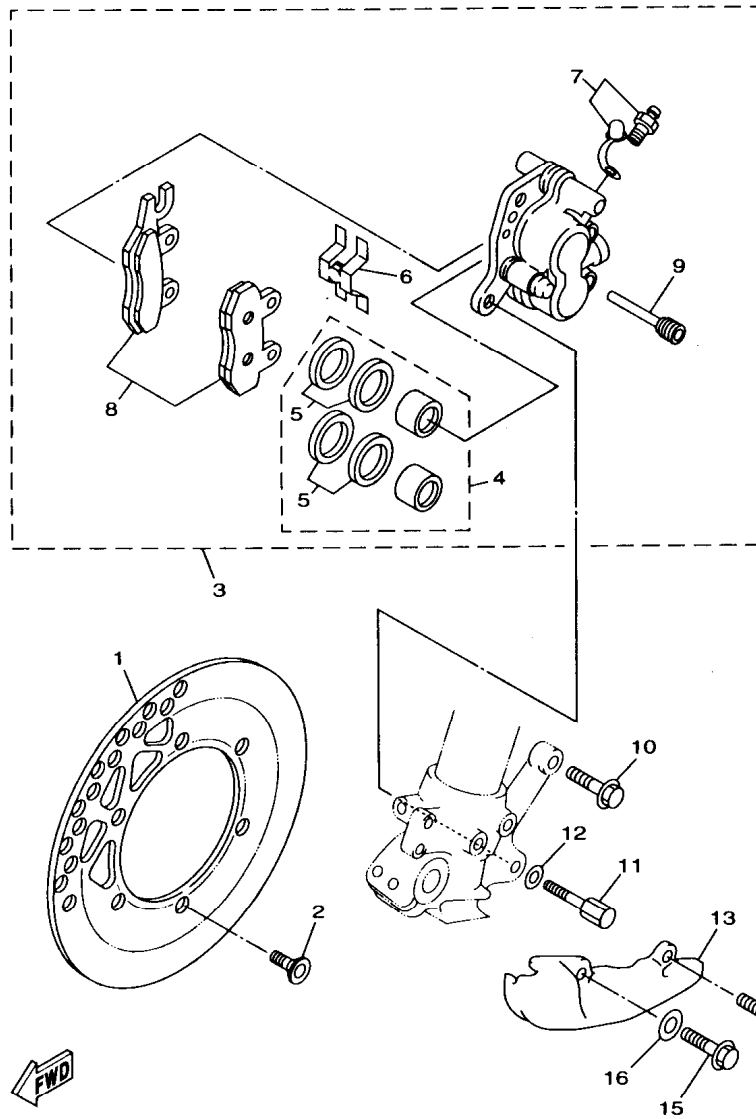


REF. NO.	PART NO.	DESCRIPTION	OCE	EUR	CAN	JPN	REMARKS
1	4SS-25111-00	HUB, FRONT	1	1	1	1	
2	93306-90403	BEARING	2	2	2	2	
3	90387-2007U	COLLAR	1	1	1	1	
4	93102-25360	OIL SEAL	2	2	2	2	
5	94416-21509	RIM (1.60-21)	1	1	1	1	
6	4DA-25104-00	SPOKE SET, FRONT	1	1	1	1	
7	94108-217X8	TIRE (80/100-21-ED11)	1	1		1	BRIDGESTONE
	*	TIRE (90/90-21)		1			LM MICHELIN FOR FRA
	94108-217X2	TIRE (80/100-21 K490)			1		DUNLOP
8	94209-21229	TUBE (80/100C-21 TR4)	1	1		1	BRIDGESTONE
	*	TUBE (90/90-21)		1			LM MICHELIN FOR FRA
	94227-21101	TUBE (80/100-21 TR4 BTL)			1		DUNLOP
9	94330-21084	BAND, RIM (3.00-21)	1	1		1	BRIDGESTONE
	*	BAND, RIM (2.75-21)		1			LM MICHELIN FOR FRA
	94307-21145	BAND, RIM (70-80/100-21)				1	DUNLOP
10	2J5-25394-01	SPACER, BEAD	1	1	1	1	
11	4SS-25181-00	AXLE, WHEEL	1	1	1	1	
12	90387-2007T	COLLAR	1	1	1	1	
13	90387-2007S	COLLAR	1	1	1	1	
14	90179-16672	NUT	1	1	1	1	

  
4SS1100-6250

**D6**

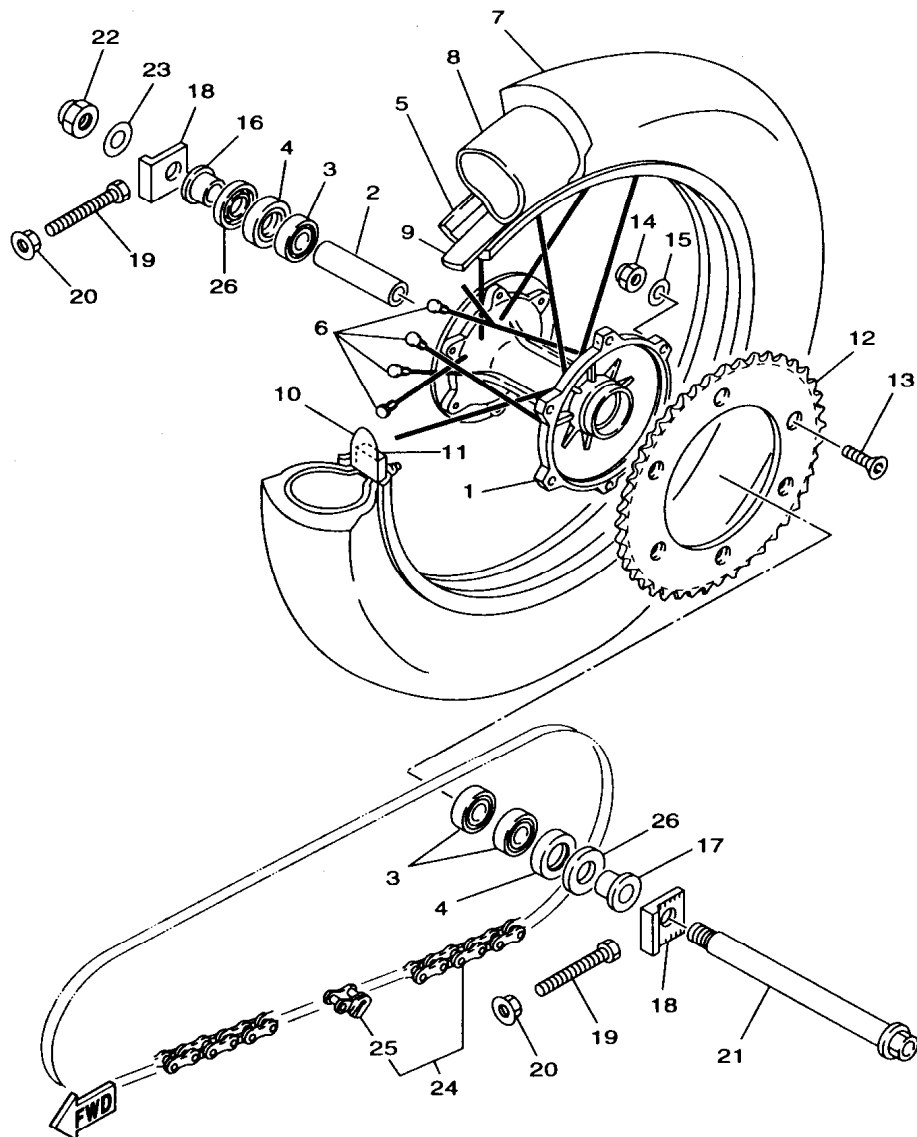
FIG. 26 FRONT BRAKE CALIPER



4SS1100-6260

REF. NO.	PART NO.	DESCRIPTION	OCE	EUR	CAN	JPN	REMARKS
1	4XM-2582T-00	DISC, BRAKE	1	1	1	1	
2	90149-06272	SCREW	6	6	6	6	
3	4SS-2580T-00	CALIPER ASSY (LEFT)	1	1	1	1	
4	4EW-W0057-00	.PISTON ASSY, CALIPER	1	1	1	1	
5	3JD-W0047-00	.CALIPER SEAL KIT	1	1	1	1	
6	3SP-25919-00	.SUPPORT, PAD	1	1	1	1	
7	1UY-W0048-50	.BLEED SCREW KIT	1	1	1	1	
8	4SS-W0045-00	.BRAKE PAD KIT	1	1	1	1	
9	3GD-25933-00	.PIN, PAD	2	2	2	2	
10	90105-08659	BOLT, WASHER BASED	1	1	1	1	
11	90109-080G6	BOLT	1	1	1	1	
12	90201-090J9	WASHER, PLATE	1	1	1	1	
13	4SS-2314E-00	COVER, HOSE	1	1	1	1	
14	95827-06012	BOLT, FLANGE	1	1	1	1	
15	95027-08020	BOLT, FLANGE	1	1	1	1	
16	92907-08200	WASHER	1	1	1	1	

D7



4XK1100-7270

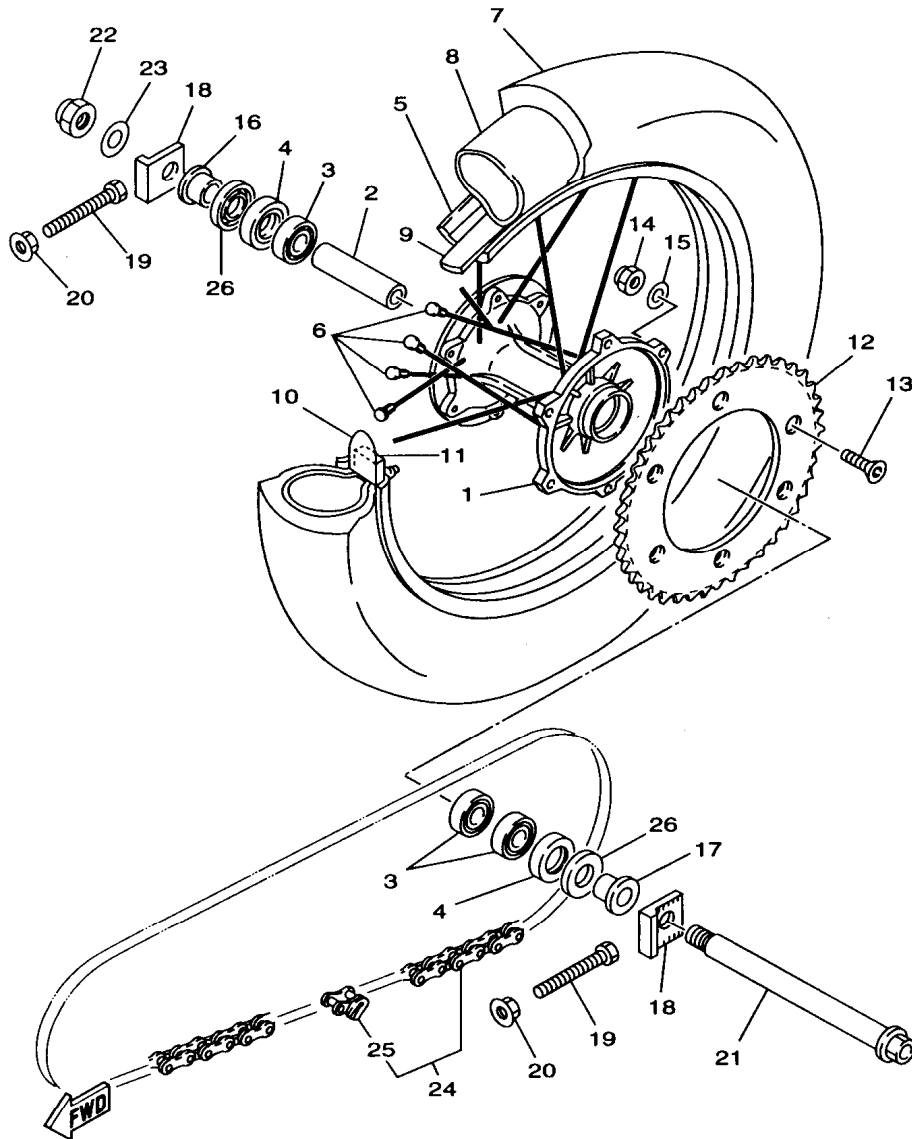
FIG. 27 REAR WHEEL

REF. NO.	PART NO.	DESCRIPTION	OCE	EUR	CAN	JPN	REMARKS
1	4EW-25311-00	HUB, REAR	1	1	1	1	
2	4EW-25317-00	SPACER, BEARING	1	1	1	1	
3	93306-00418	BEARING	3	3	3	3	
4	93106-28023	OIL SEAL	2	2	2	2	
5	94421-18498	RIM (2.15-18)	1	1	1	1	
6	2VN-25304-00	SPOKE SET, REAR	1	1	1	1	
7	94111-187X9	TIRE (110/100-18-ED12)	1	1		1	BRIDGESTONE
	*	TIRE (120/90-18)		1			LM MICHELIN FOR FRA
	94111-1810U	TIRE (110/100-18 64M D737)				1	DUNLOP
8	94213-18232	TUBE (MC130/80-18)	1	1		1	BRIDGESTONE
	*	TUBE (120/90-18)		1			LM MICHELIN FOR FRA
	94212-18188	TUBE (120/90-18)				1	DUNLOP
9	94340-18086	BAND, RIM (4.00-18)	1	1		1	BRIDGESTONE
	*	BAND, RIM (2.15-18)		1			LM MICHELIN FOR FRA
	94309-18146	BAND, RIM (110/100-18)				1	DUNLOP
10	3JE-25394-00	SPACER, BEAD	2	2	2	2	
11	4XM-25364-00	DAMPER	2	2	2	2	
12	26A-25448-50	SPROCKET, DRIVEN (48T)	1	1	1	1	STD
	26A-25444-50	SPROCKET, DRIVEN (44T)	1	1	1	1	AP
	26A-25446-50	SPROCKET, DRIVEN (46T)	1	1	1	1	AP
	26A-25450-50	SPROCKET, DRIVEN (50T)	1	1	1	1	AP
13	90109-081G1	BOLT	6	6	6	6	
14	95617-08200	NUT, SELF-LOCKING	6	6	6	6	
15	90201-08326	WASHER, PLATE	6	6	6	6	
16	90387-2000B	COLLAR	1	1	1	1	
17	90387-2000C	COLLAR	1	1	1	1	
18	3SP-25388-00	PULLER, CHAIN 1	2	2	2	2	

D8



FIG. 27 REAR WHEEL

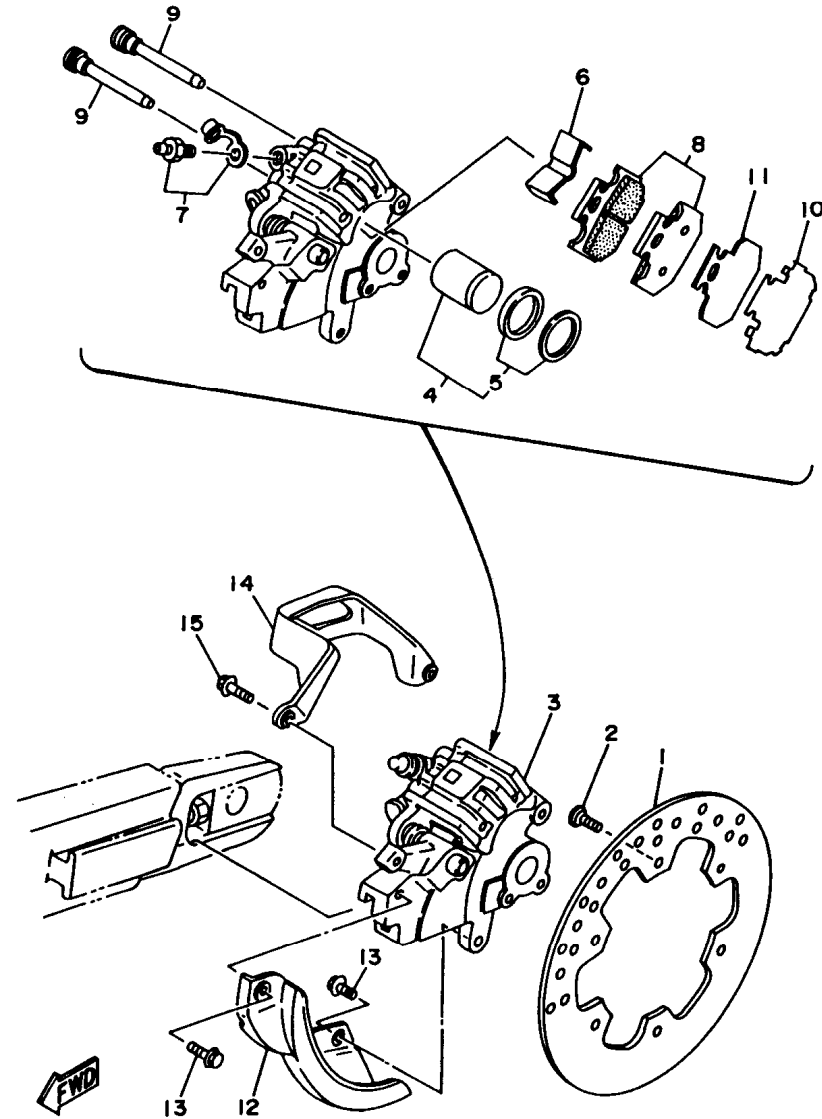


4XK1100-7270

REF. NO.	PART NO.	DESCRIPTION	OCE	EUR	CAN	JPN	REMARKS
19	90101-08777	BOLT	2	2	2	2	
20	95707-08500	NUT, FLANGE	2	2	2	2	
21	3JD-25381-01	AXLE, WHEEL	1	1	1	1	
22	90185-18104	NUT, SELF-LOCKING	1	1	1	1	
23	92907-18600	WASHER	1	1	1	1	
24	94581-47112	CHAIN (D.I.D.520V2-112LL)	1	1	1	1	
25	94681-47011	JOINT, CHAIN	1	1	1	1	
26	4V4-25367-00	COVER, HUB DUST	2	2	2	2	

**D9**

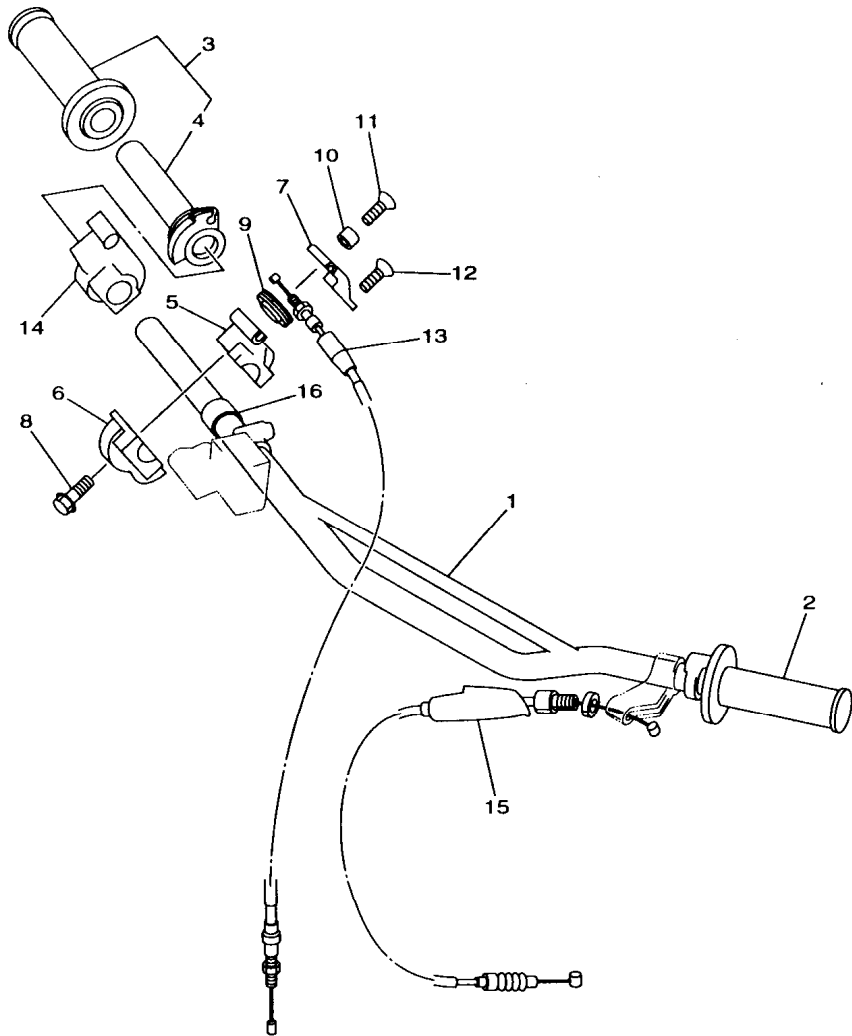
FIG. 28 REAR BRAKE CALIPER



4XL4100-7280

REF. NO.	PART NO.	DESCRIPTION	OCE	EUR	CAN	JPN	REMARKS
1	4MX-2582W-00	DISC, REAR BRAKE 2	1	1	1	1	
2	90149-06272	SCREW	6	6	6	6	
3	4XL-2580W-00	CALIPER ASSY, REAR 2	1	1	1	1	
4	3SP-W0057-50	.PISTON ASSY, CALIPER	1	1	1	1	
5	3JD-W0047-50	.CALIPER SEAL KIT	1	1	1	1	
6	4GY-25919-50	.SUPPORT, PAD	1	1	1	1	
7	1UY-W0048-50	.BLEED SCREW KIT	1	1	1	1	
8	4GY-W0046-00	.BRAKE PAD KIT 2	1	1	1	1	
9	3SP-25924-51	.PIN, PAD	2	2	2	2	
10	4XM-25827-50	.SHIM, CALIPER	1	1	1	1	
11	4GY-22898-50	.INSULATOR, HEAT	1	1	1	1	
12	4MX-25718-00	PROTECTOR, DISK BRAKE	1	1	1	1	
13	95027-06012	BOLT, FLANGE	2	2	2	2	
14	4GY-27491-00	PROTECTOR	1	1	1	1	
15	95027-06016	BOLT, FLANGE	2	2	2	2	

D10

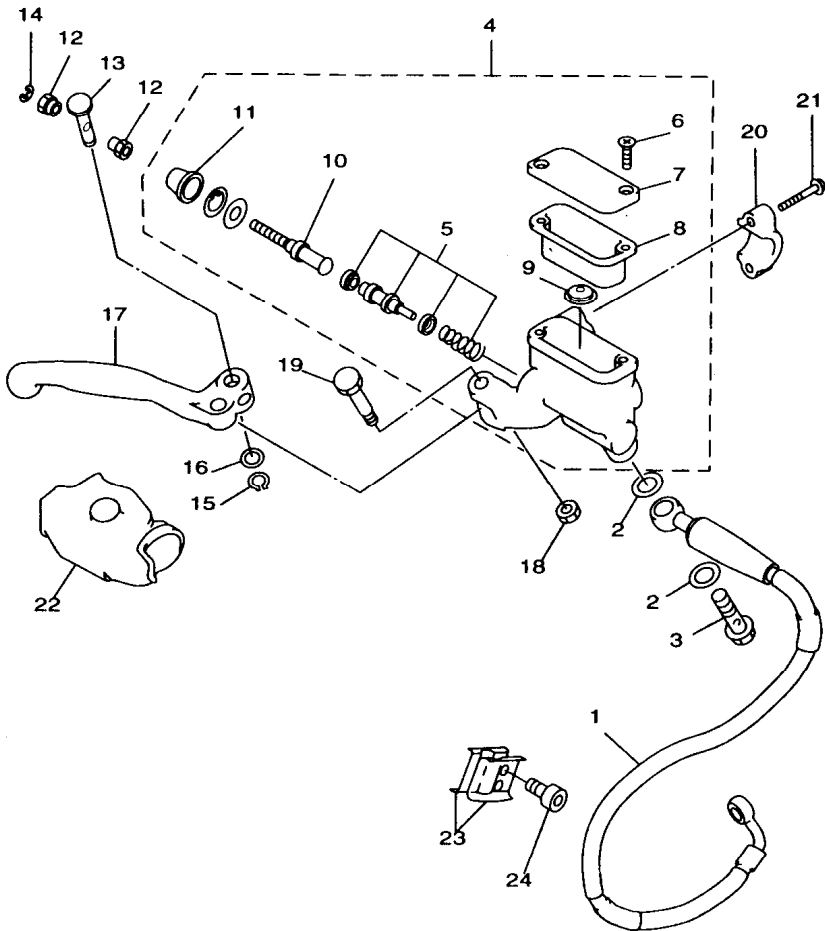


4XL4100-7290

FIG. 29 STEERING HANDLE. CABLE

REF. NO.	PART NO.	DESCRIPTION	OCE	EUR	CAN	JPN	REMARKS
1	4XM-26111-00	HANDLEBAR	1	1	1	1	
2	4GY-26241-00	GRIP (LEFT)	1	1	1	1	
3	4XM-26240-00	GRIP ASSY	1	1	1	1	
4	4XM-26243-00	.TUBE, THROTTLE GUIDE	1	1	1	1	
5	4SS-26281-00	CAP, GRIP UPPER	1	1	1	1	
6	4SS-26282-10	CAP, GRIP LOWER	1	1	1	1	
7	4SS-2628H-00	CAP, WIRE	1	1	1	1	
8	95027-06025	BOLT, FLANGE	2	2	2	2	
9	4SS-26273-00	ROTOR	1	1	1	1	
10	4SS-26259-00	COLLAR	1	1	1	1	
11	4SS-26256-00	SCREW, GRIP END	1	1	1	1	
12	4SS-2632G-00	SCREW	1	1	1	1	
13	4SS-26311-01	CABLE, THROTTLE 1	1	1	1	1	
14	4SS-26287-01	COVER, CAP GRIP	1	1	1	1	
15	4EW-26335-00	CABLE, CLUTCH	1	1	1	1	
16	90387-227H7	COLLAR	1	1	1	1	

D11



**FIG. 30 FRONT MASTER CYLINDER**

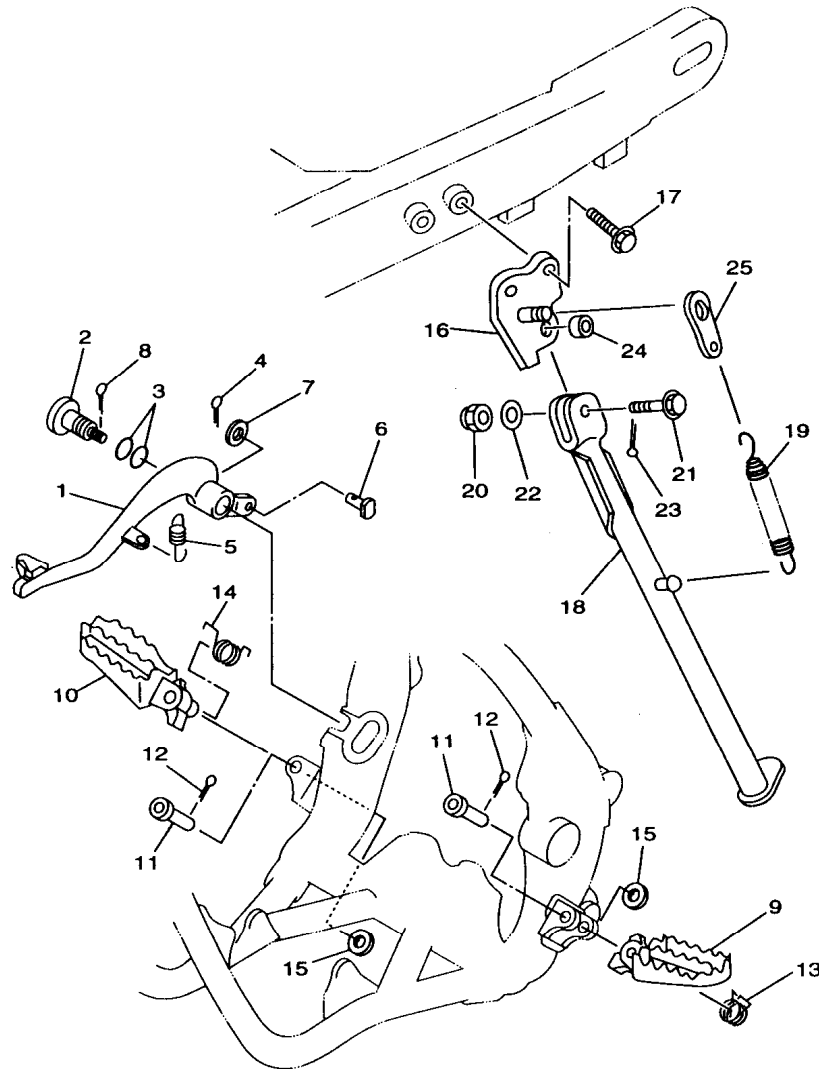
REF. NO.	PART NO.	DESCRIPTION	OE	EUR	CAN	JPN	REMARKS
1	4SS-25872-00	HOSE, BRAKE 1	1	1	1	1	
2	90201-10118	WASHER, PLATE	4	4	4	4	
3	90401-10159	BOLT, UNION	2	2	2	2	
4	4SS-W2587-00	MASTER CYLINDER SUB ASSY	1	1	1	1	
5	4SS-W0041-00	.CYLINDER KIT, MASTER	1	1	1	1	
6	98706-04012	.SCREW, FLAT HEAD	2	2	2	2	
7	4SS-25852-00	.CAP, RESERVOIR	1	1	1	1	
8	4SS-25854-00	.DIAPHRAGM, RESERVOIR	1	1	1	1	
9	4SS-25889-00	.SEPARATOR ASSY	1	1	1	1	
10	4SS-25880-00	.PUSH ROD COMP.	1	1	1	1	
11	4SS-25868-00	.BOOT, MASTER CYLINDER	1	1	1	1	
12	4SS-2538E-00	NUT, ADJUSTING	2	2	2	2	
13	4SS-83913-00	COLLAR, LEVER 1	1	1	1	1	
14	3YX-25866-10	CIRCLIP	1	1	1	1	
15	4SS-25866-00	CIRCLIP	1	1	1	1	
16	4SS-2583G-00	WASHER	1	1	1	1	
17	4SS-83922-01	LEVER 2	1	1	1	1	
18	95606-06100	NUT, U	1	1	1	1	
19	4SS-2589F-00	BOLT, LEVER	1	1	1	1	
20	3YK-25867-00	BRACKET, MASTER CYLINDER	1	1	1	1	
21	4SS-25833-00	BOLT, FITTING	2	2	2	2	
22	4SS-26372-00	COVER, HANDLE LEVER 1	1	1	1	1	
23	90465-16258	CLAMP	2	2	2	2	
24	91317-06014	BOLT	2	2	2	2	



4SS1100-6300

**D12**

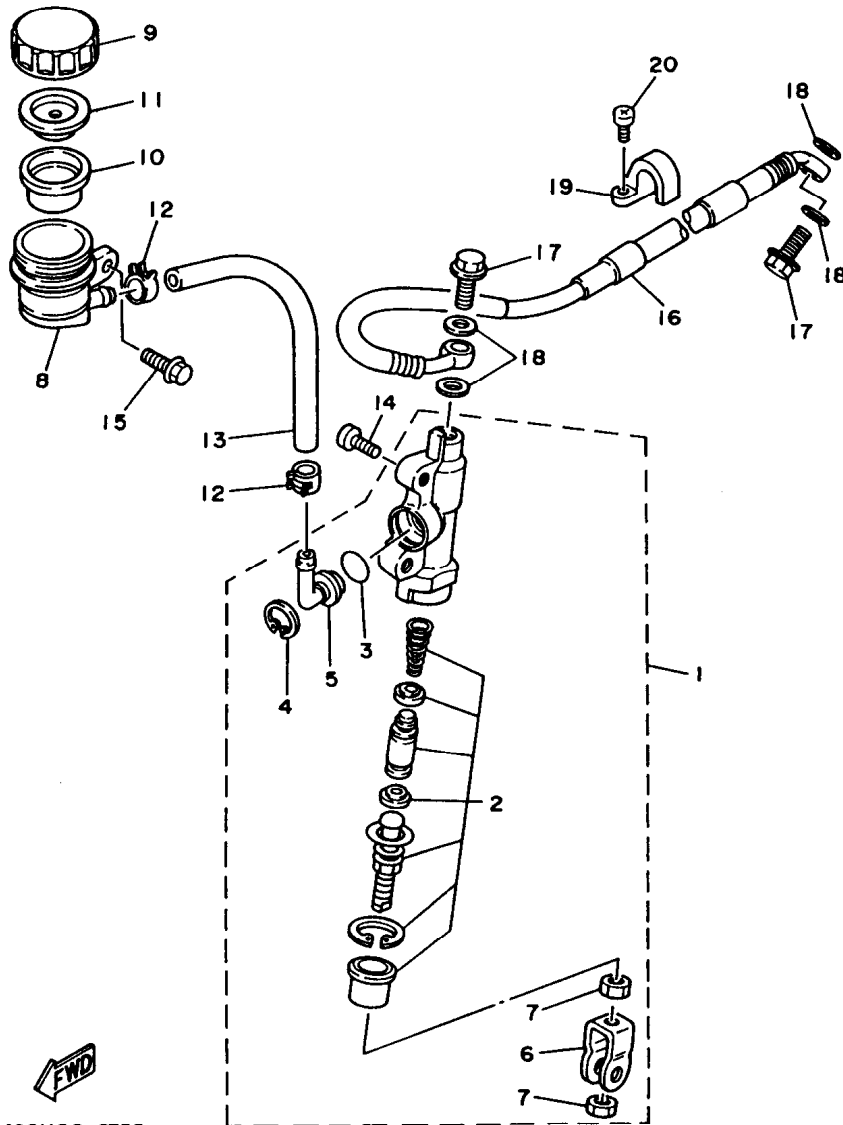
FIG. 31 STAND. FOOTREST



4XK1100-7310

REF. NO.	PART NO.	DESCRIPTION	OCE	EUR	CAN	JPN	REMARKS
1	4XM-27200-00	PEDAL, BRAKE	1	1	1	1	
2	4SS-27217-00	BOLT	1	1	1	1	
3	93210-11073	O-RING	2	2	2	2	
4	91401-20012	PIN, COTTER	1	1	1	1	
5	90506-16500	SPRING, TENSION	1	1	1	1	
6	90240-08120	PIN, CLEVIS	1	1	1	1	
7	90201-08089	WASHER, PLATE	1	1	1	1	
8	90468-16191	CLIP	1	1	1	1	
9	4XM-27411-00	FOOTREST 1	1	1	1	1	
10	4XM-27421-00	FOOTREST 2	1	1	1	1	
11	90240-10142	PIN, CLEVIS	2	2	2	2	
12	91401-25015	PIN, COTTER	2	2	2	2	
13	90508-261B0	SPRING, TORSION	1	1	1	1	
14	90508-260B9	SPRING, TORSION	1	1	1	1	
15	90201-10119	WASHER, PLATE	2	2	2	2	
16	4JW-27321-00-T9	BRACKET, SIDE STAND	1	1	1	1	COMS
17	90105-10666	BOLT, WASHER BASED	2	2	2	2	
18	4JW-27311-00	STAND, SIDE	1	1	1	1	
19	90507-32059	SPRING, TENSION	1	1	1	1	
20	90185-10120	NUT, SELF-LOCKING	1	1	1	1	
21	90105-10549	BOLT, WASHER BASED	1	1	1	1	
22	92990-10200	WASHER, PLAIN	1	1	1	1	
23	91401-25020	PIN, COTTER	1	1	1	1	
24	90387-1003G	COLLAR	1	1	1	1	
25	4AA-27263-00	BRACKET 1	1	1	1	1	

D13



**FWD**  
4SSI100-6320

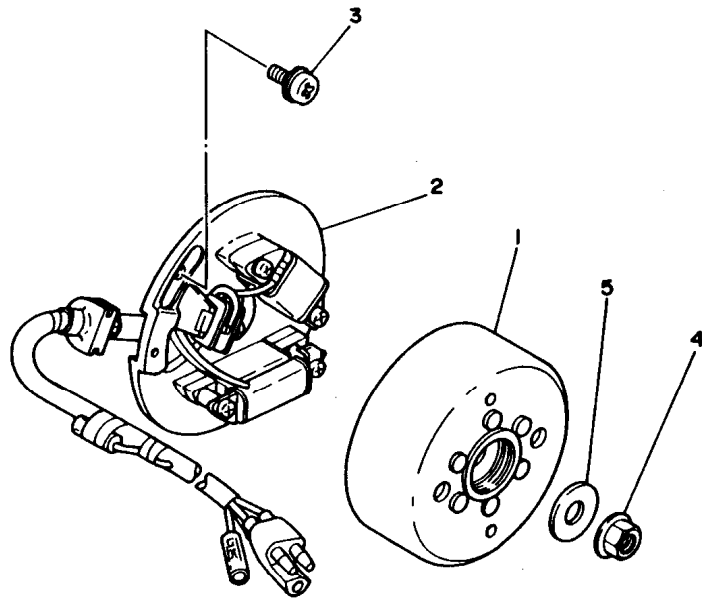
**FIG. 32 REAR MASTER CYLINDER**

REF. NO.	PART N <sup>o</sup> .	DESCRIPTION	OCE	EUR	CAN	JPN	REMARKS
1	3SP-2583V-00	RR. MASTER CYLINDER ASSY.	1	1	1	1	
2	4SS-W0042-50	.CYLINDER KIT, MASTER	1	1	1	1	
3	93210-15620	.O-RING	1	1	1	1	
4	2VN-25866-00	.CIRCLIP	1	1	1	1	
5	2VN-2582A-50	.JOINT	1	1	1	1	
6	3SP-27222-00	.JOINT	1	1	1	1	
7	4SS-27218-00	.NUT	2	2	2	2	
8	4EW-25894-00	TANK, RESERVOIR	1	1	1	1	
9	3XP-25852-50	CAP, RESERVOIR	1	1	1	1	
10	2VN-25854-00	DIAPHRAGM, RESERVOIR	1	1	1	1	
11	2VN-25855-00	BUSH,DIAPHRAGM	1	1	1	1	
12	90467-12053	CLIP	2	2	2	2	
13	90445-137H9	HOSE	1	1	1	1	
14	92014-06016	BOLT, BUTTON HEAD	2	2	2	2	
15	95027-06012	BOLT, FLANGE	1	1	1	1	
16	4XL-25873-00	HOSE, BRAKE 2	1	1	1	1	
17	90401-10159	BOLT, UNION	2	2	2	2	
18	90201-10118	WASHER, PLATE	4	4	4	4	
19	2VM-25876-00	HOLDER, BRAKE HOSE 2	2	2	2	2	
20	97780-50510	SCREW, TAPPING	4	4	4	4	

**D14**

**FIG. 33 GENERATOR**

REF. NO.	PART NO.	DESCRIPTION	OCE	EUR	CAN	JPN	REMARKS
1	3SR-85550-10	ROTOR ASSY	1	1	1	1	
2	3RB-85560-11	BASE ASSY	1	1	1	1	
3	90149-06011	SCREW	2	2	2	2	
4	90179-10394	NUT	1	1	1	1	
5	90201-10591	WASHER, PLATE	1	1	1	1	

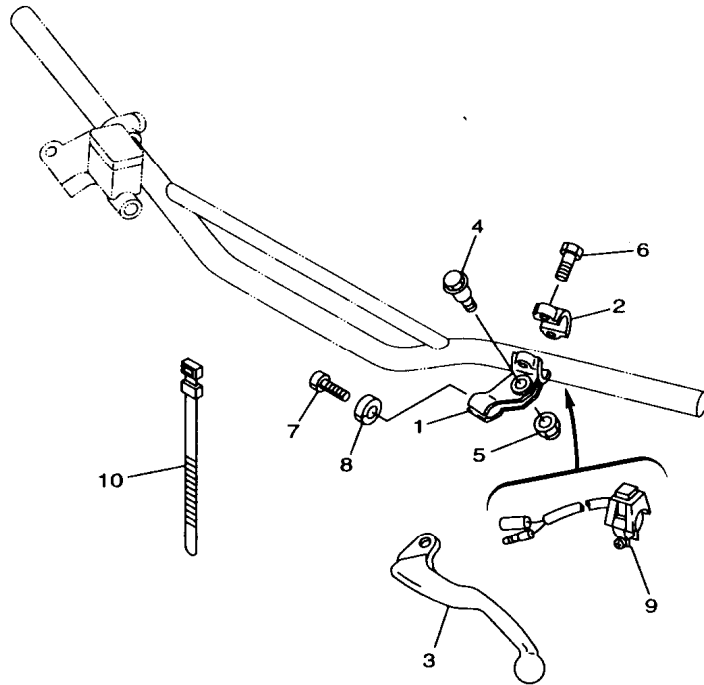


3RB2100-0330

**D15**

**FIG. 34 HANDLE SWITCH. LEVER**

REF. NO.	PART NO.	DESCRIPTION	OCE	EUR	CAN	JPN	REMARKS
1	38V-82911-00	HOLDER, LEVER 1	1	1	1	1	
2	38V-82913-00	HOLDER, LEVER LOWER 1	1	1	1	1	
3	4GY-83912-00	LEVER 1	1	1	1	1	
4	90109-06799	BOLT	1	1	1	1	
5	95607-06100	NUT, U	1	1	1	1	
6	97007-05016	BOLT	2	2	2	2	
7	90123-08090	BOLT	1	1	1	1	
8	90179-08401	NUT	1	1	1	1	
9	23X-83976-00	SWITCH, HANDLE 1	1	1	1	1	
10	437-83936-01	BAND, SWITCH CORD	2	2	2	2	

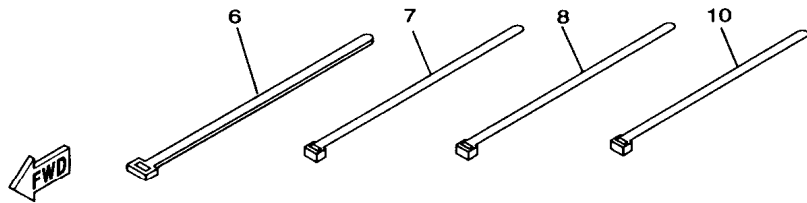
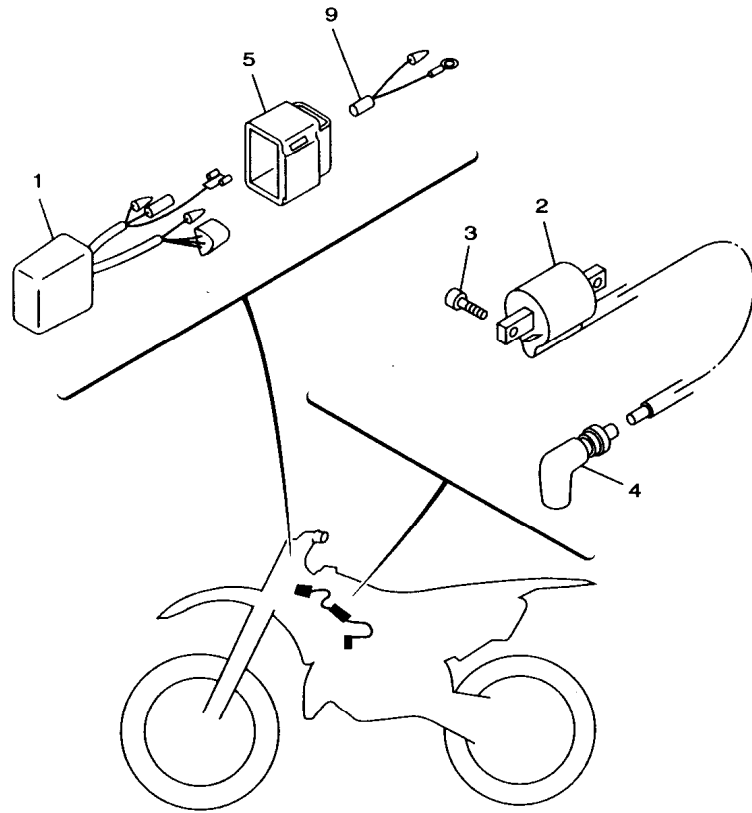


4SS1100-6340

**E2**



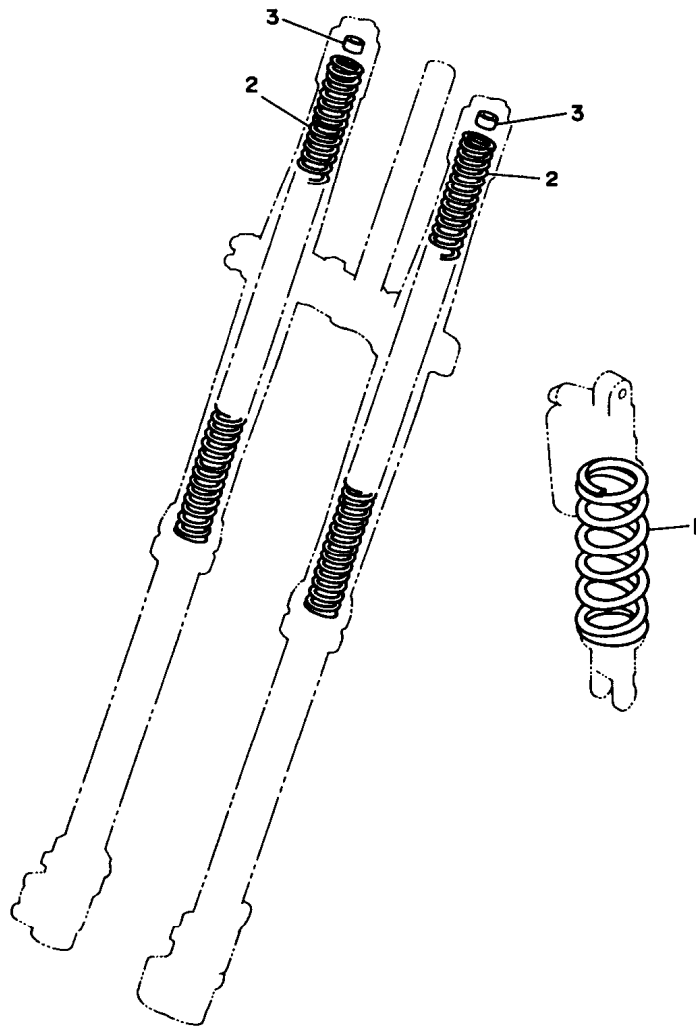
FIG. 35 ELECTRICAL 1



4XK1100-7350

REF. NO.	PART NO.	DESCRIPTION	OCE	EUR	CAN	JPN	REMARKS
1	4MX-85540-00	C.D.I. UNIT ASSY	1	1	1	1	
2	4SR-82310-00	IGNITION COIL ASSY	1	1	1	1	
3	91317-06016	BOLT	2	2	2	2	
4	4PE-82370-00	PLUG CAP ASSY	1	1	1	1	
5	4XK-85546-00	BAND	1	1	1	1	
6	447-82591-00	BAND	1	1	1	1	
7	90465-13152	CLAMP	1	1	1	1	
8	90465-13275	CLAMP	1	1	1	1	
9	5X1-82519-01	WIRE, EARTH LEAD	1	1	1	1	
10	5Y9-12491-00	CLAMP 1	1	1	1	1	

E3



3XJ1100-1360

FIG. 36 ALTERNATE (CHASSIS)

REF. NO.	PART NO.	DESCRIPTION	OCE	EUR	CAN	JPN	REMARKS
1	4XM-22212-10	SPRING (K=4.6)	1	1	1	1	AP
	4XM-22212-20	SPRING (K=4.8)	1	1	1	1	AP
	4XM-22212-30	SPRING (K=5.0)	1	1	1	1	AP
	4XM-22212-40	SPRING (K=5.2)	1	1	1	1	AP
	4XM-22212-50	SPRING (K=5.4)	1	1	1	1	AP
	4XM-22212-60	SPRING (K=5.6)	1	1	1	1	AP
2	4SS-23141-10	SPRING, FRONT FORK (K=0.38)	2	2	2	2	AP
	4SS-23141-20	SPRING, FRONT FORK (K=0.39)	2	2	2	2	AP
	4SS-23141-30	SPRING, FRONT FORK (K=0.40)	2	2	2	2	AP
	4SS-23141-40	SPRING, FRONT FORK (K=0.41)	2	2	2	2	AP
	4SS-23141-50	SPRING, FRONT FORK (K=0.42)	2	2	2	2	AP
	4SS-23141-60	SPRING, FRONT FORK (K=0.43)	2	2	2	2	AP
	4SS-23141-70	SPRING, FRONT FORK (K=0.44)	2	2	2	2	AP
3	4SS-23364-L0	COLLAR 2	1	1	1	1	UN

E4

**FIG. 37 OPTIONAL PARTS 1**

REF. NO.	PART NO.	DESCRIPTION	OCE	EUR	CAN	JPN	REMARKS
1	4SR-11630-00	PISTON ASSY (STD)	1	1	1	1	
2	4SR-11631-00-B0	.PISTON (STD)	1	1	1	1	
3	4JX-11603-00	.PISTON RING SET (STD)	1	1	1	1	
4	2VM-11633-01	.PIN, PISTON	1	1	1	1	
5	93450-19052	.CIRCLIP	2	2	2	2	
6	4SR-11650-00	CONNECTING ROD ASSY	1	1	1	1	
7	5X5-11651-03	.ROD, CONNECTING	1	1	1	1	
8	4SR-11681-00	.PIN, CRANK 1	1	1	1	1	
9	90209-25085	.WASHER	2	2	2	2	
10	93310-425P2	.BEARING	1	1	1	1	
11	93310-418E9	.BEARING	1	1	1	1	

**E5**

# **INDEX**

NUMERICAL INDEX

PART NO.	GRID NO.	PART NO.	GRID NO.	PART NO.	GRID NO.	PART NO.	GRID NO.	PART NO.	GRID NO.	PART NO.	GRID NO.
4SS-W0041-00	D- 12	3XK-11956-00	C- 2	4MX-14561-00	B- 10	2VM-15451-11	B- 14	3XV-18535-00	C- 5	4MX-22216-00	C- 12
4SS-W0042-50	D- 14	3SP-11990-00	B- 4	4SR-14610-00	B- 12	2VM-15462-10	B- 14	3XK-18540-01	C- 5	3JD-22224-00	C- 12
4SS-W0045-00	D- 7	3SP-11992-11	B- 3	3JE-14615-01	B- 12	3SP-15463-11	B- 14	4XK-21101-00-2F	C- 7	4JX-22226-00	C- 12
4GY-W0046-00	D- 10	3SP-11993-10	B- 3	4SR-1469A-00	B- 12	4JW-15620-00	B- 15	4XM-21190-10-2F	C- 7	3SP-22234-00	C- 12
3JD-W0047-00	D- 7	2VM-11995-01	B- 3	4SR-14753-01	B- 12	3SP-15621-02	B- 15	1HX-2135F-10	C- 11	3SP-22241-00	C- 12
3JD-W0047-50	D- 10	4SR-1240A-00	B- 7	565-14771-00	B- 12	3R4-15641-00	B- 15	4SR-21425-00	C- 7	3XJ-22253-00	C- 12
1UY-W0048-50	D- 7	4SR-12422-00	B- 6	483-14781-02	B- 12	38V-15651-00	B- 15	4DA-21511-10	C- 8	4EW-22253-00	C- 12
	D- 10	2VM-12428-11	B- 6	4XL-14916-AF	B- 10	4JW-15660-00	B- 15	4XL-2153A-00	D- 2	43M-22274-00	C- 12
3SP-W0057-50	D- 10	2VM-12450-00	B- 6	4XL-14916-AG	B- 10	2VM-15664-00	B- 15		D- 2	4SS-22355-00	C- 10
4EW-W0057-00	D- 7	4SR-12459-00	B- 6	4XL-14916-AH	B- 10	2VM-16111-00	C- 2	4SS-21611-00	C- 8	3V6-22358-00	D- 3
4SS-W2587-00	D- 12	4SR-12461-00	B- 7	4XL-14916-DF	B- 10	4EW-16150-01	C- 2	4ES-21642-00	C- 8	4EW-22474-00	C- 12
3JE-Y113E-00	B- 2	22W-12462-00	B- 7	4XL-14916-DG	B- 10	2K7-16154-00	C- 2	4SS-21711-00	C- 9	3JD-22475-00	C- 12
5X4-Y113F-10	B- 2	4SR-12481-00	B- 7	4XL-14916-DH	B- 10	3SP-16154-00	C- 2	4EW-2172A-10	C- 9	3JE-22475-00	C- 12
3SP-Y1543-00	B- 14	4SS-12482-00	B- 7	4XL-14916-VF	B- 10	2VM-16181-00	C- 2		C- 9	4GY-22898-50	D- 10
4SR-11111-00	B- 2	4SR-12484-00	B- 7	4XL-14916-VG	B- 10	3XK-16321-00	C- 2	4SS-21721-00	C- 9	4XK-23102-00	C- 14
4SR-1131A-00	B- 2	5Y9-12491-00	E- 3	4XL-14916-VH	B- 10	4X7-16325-00	C- 2	4XK-2173E-00	C- 9	4XK-23103-00	C- 14
4MX-1131M-00	B- 3	353-13115-01	B- 13	4MX-14919-00	B- 10	4EW-16351-01	C- 2	4XK-2173F-00	C- 9	4SS-23110-L0	C- 15
4SR-11311-00	B- 2	4SR-13565-00	B- 8	4MX-14943-40	B- 11	4XL-16356-00	C- 2	4SS-21731-00	C- 9	4SS-23111-L0	C- 14
2VM-11351-10	B- 2	4MX-13610-00	B- 8	4MX-14943-41	B- 11	4EW-16357-00	C- 2	4SS-21741-00	C- 9		C- 15
2VM-11351-20	B- 2	3SP-13613-00	B- 8	4MX-14943-42	B- 11	4EW-16371-01	C- 2	3JD-21748-00	C- 8	3SP-23113-L0	C- 14
4MX-11354-00	B- 3	4DA-13616-00	B- 8	4MX-14943-43	B- 11	4EW-16381-01	C- 2	4XK-21781-00	C- 9		C- 15
4SR-11400-00	B- 5	2K7-13621-10	B- 8	4MX-14943-44	B- 11	2VM-17121-01	C- 3		C- 9	3JD-2312G-L0	C- 14
4SR-11410-00	B- 5	4MX-13625-00	B- 8	4MX-14943-45	B- 11	3RB-17131-00	C- 3	4XK-22110-00	C- 10		C- 15
4SR-11420-00	B- 5	4XL-1410E-00	B- 11	4MX-14943-91	B- 11	3RB-17141-10	C- 3	156-22127-00	C- 10	4SS-23120-L0	C- 14
4JX-11603-00	B- 5	4XK-14101-00	B- 10	4MX-14943-92	B- 11	3RB-17151-00	C- 3	4XM-22128-00	C- 10	4SS-23125-L0	C- 14
	E- 5	4SR-14105-00	B- 11	4MX-14943-93	B- 11	3RB-17211-00	C- 3	4EW-22129-00	C- 10		C- 15
4SR-11630-00	E- 5	4MX-14115-00	B- 10	4MX-14943-94	B- 11	2VM-17221-00	C- 3	1LX-22141-00	C- 10	4XM-23136-L0	C- 14
4SR-11631-00-A0	B- 5	4SR-14126-00	B- 11	4MX-14943-95	B- 11	3RB-17231-00	C- 3	4EW-22151-01	C- 10		C- 14
4SR-11631-00-B0	B- 5	4MX-14131-00	B- 11	4SR-14943-90	B- 11	3RB-17241-10	C- 3	4SS-2217A-00	C- 10	4XM-2314A-L0	C- 14
	E- 5	3TJ-14137-40	B- 11	4MX-14948-04	B- 10	3RB-17251-00	C- 3	4SS-2217F-00	C- 11		C- 15
4SR-11631-00-C0	B- 5	4XL-14146-00	B- 10	4MX-14948-05	B- 10	4JW-17411-00	C- 3	3JD-22178-10	C- 7	4SS-2314E-00	D- 7
4SR-11631-00-D0	B- 5	663-14159-00	B- 11	4MX-14948-06	B- 10	2VM-17421-01	C- 3	4EW-22178-00	C- 7	4SS-2314F-L0	C- 15
2VM-11633-01	B- 5	4SR-14171-00	B- 10	4MX-14948-07	B- 10	4L0-17471-00	B- 13	4XM-22199-00	C- 10	4SS-2314G-L0	C- 15
	E- 5	4MX-14194-00	B- 11	4MX-14948-08	B- 10	3XK-18101-02	C- 6	4XM-22201-00	C- 12	4SS-2314H-00	D- 2
4SR-11650-00	E- 5	4XL-14196-00	B- 11	4MX-14948-09	B- 10	4SS-18110-00	C- 6	4XM-22201-20	C- 12	4SS-2314J-00	D- 2
5X5-11651-03	B- 5	4XL-14197-00	B- 11	4SR-14948-02	B- 10	3XK-18122-00	C- 6	4XM-22201-30	C- 12	4SS-23141-L0	C- 14
	E- 5	4SR-14261-00	B- 11	4SR-14948-03	B- 10	3XK-18140-00	C- 5	4XK-22210-10	C- 12		C- 15
4SR-11681-00	B- 5	4SR-14340-A6	B- 10	4MX-14984-00	B- 10	4DA-18172-00	C- 6	4XK-22210-20	C- 12	4SS-23141-10	E- 4
	E- 5	4MX-14392-00	B- 10	4SR-14985-00	B- 10	3XJ-18173-00	C- 6	4XK-22210-30	C- 12	4SS-23141-20	E- 4
5X5-11911-01	B- 4	4SS-14401-01	B- 8	2VM-15111-06	B- 13	3XK-18177-00	C- 5	4XM-22212-10	E- 4	4SS-23141-30	E- 4
5X5-11912-01	B- 4	4SS-14417-00	B- 8	4V4-15118-00	B- 13	3XJ-18178-00	C- 6	4XM-22212-20	E- 4	4SS-23141-40	E- 4
1LX-11915-00	B- 3	4XM-14451-00	B- 8	2VM-15121-03	B- 13	3XJ-18182-00	C- 6	4XM-22212-30	C- 12	4SS-23141-50	E- 4
5X4-11921-02	B- 4	4SR-14453-00	B- 8	1G8-15362-00	B- 14	3XJ-18184-00	C- 6		E- 4	4SS-23141-60	E- 4
3JE-11922-01	B- 4	3JD-14458-01	B- 8	3SP-15381-00	B- 13	4EW-18185-00	C- 6	4XM-22212-40	E- 4	4SS-23141-70	E- 4
3JE-11931-01	B- 4	3JD-14459-01	B- 8	2VM-15411-00	B- 14	4SR-18511-00	C- 5	4XM-22212-50	E- 4	4SS-23142-L0	C- 14
3JE-11937-01	B- 3	3JD-14462-00	B- 8	4EW-15415-00	B- 14	2VM-18512-00	C- 5	4XM-22212-60	E- 4		C- 15
5X4-11952-00	B- 4	3JD-14477-00	B- 8	2VM-15421-02	B- 14	4SR-18513-00	C- 5	3SP-22213-00	C- 12	4SS-23143-L0	C- 14
24X-11953-01	B- 4	676-14548-00	B- 11	4SR-15441-00	B- 14	4EX-18531-00	C- 5	3JD-22214-00	C- 12		C- 15

NUMERICAL INDEX

PART NO.	GRID NO.	PART NO.	GRID NO.	PART NO.	GRID NO.	PART NO.	GRID NO.	PART NO.	GRID NO.	PART NO.	GRID NO.
4SS-23144-L0	C- 14	3XJ-24380-00	D- 3	2VM-25876-00	D- 14	3SR-85550-10	D- 15	90176-08026	B- 2	90201-286K9	C- 13
	C- 15	4JM-24500-00	D- 3	4SS-25880-00	D- 12	3FB-85560-11	D- 15	90179-06568	C- 10	90202-05193	D- 3
4SS-23145-L0	C- 14	4X8-24512-00	D- 3	4SS-25889-00	D- 12	90101-06664	C- 6	90179-08401	E- 2	90208-18025	C- 2
	C- 15	3AJ-24523-00	D- 3	4SS-2589F-00	D- 12	90101-08777	D- 9	90179-10394	D- 15	90209-06096	B- 8
4SS-23146-L0	C- 14	3AJ-24534-00	D- 3	4EW-25894-00	D- 14	90105-05361	C- 13	90179-16672	D- 6	90209-17311	C- 3
	C- 15	1UY-24610-00	D- 3	3SP-25919-00	D- 7	90105-06553	B- 9	90179-18172	C- 2	90209-18135	C- 3
3JD-23147-L0	C- 14	4SS-24728-00	D- 5	4GY-25919-50	D- 10	90105-06556	B- 13	90179-20255	C- 4	90209-22082	C- 3
	C- 15	4SS-24731-00	D- 5	3SP-25924-51	D- 10	90105-08099	C- 7	90179-28650	C- 13	90209-25085	B- 5
3SP-23153-L0	C- 14	4SS-24770-00	D- 5	3GD-25933-00	D- 7	90105-08100	C- 7	90183-06023	B- 8		E- 5
	C- 15	4DA-25104-00	D- 6	4XM-26111-00	D- 11	90105-08659	D- 7		C- 8	90215-20231	C- 2
4SS-23153-L0	C- 14	4SS-25111-00	D- 6	4XM-26240-00	D- 11	90105-10549	D- 13	90183-06069	C- 9	90215-21239	C- 4
	C- 15	4SS-25181-00	D- 6	4GY-26241-00	D- 11	90105-10614	C- 12	90185-10120	D- 13	90240-08120	D- 13
4SS-23158-L0	C- 14	2VN-25304-00	D- 8	4XM-26243-00	D- 11	90105-10666	D- 13	90185-14112	C- 11	90240-10142	D- 13
	C- 15	4EW-25311-00	D- 8	4SS-26256-00	D- 11	90105-10733	C- 7	90185-16127	C- 10	90267-32070	B- 8
4XK-2316A-00	C- 14	4EW-25317-00	D- 8	4SS-26259-00	D- 11	90106-08051	C- 7	90185-18104	D- 9	90280-03045	B- 5
	C- 15	4XM-25364-00	D- 8	4SS-26273-00	D- 11	90109-06799	E- 2	90201-03313	B- 8	90338-16148	C- 7
3SP-23166-L0	C- 14	4V4-25367-00	D- 9	4SS-2628H-00	D- 11	90109-08066	D- 7	90201-057H5	B- 4		C- 10
	C- 15	4SS-2538E-00	D- 12	4SS-26281-00	D- 11	90109-081G1	D- 8	90201-06071	B- 7	90340-12059	B- 13
4SS-23170-L0	C- 14	3JD-25381-01	D- 9	4SS-26282-10	D- 11	90109-142F4	C- 11		B- 12	90380-16158	C- 10
	C- 15	3SP-25388-00	D- 8	4SS-26287-01	D- 11	90109-147F2	C- 10		C- 8	90387-0600F	C- 8
4SS-23171-L0	C- 14	2J5-25394-01	D- 6	4SS-26311-01	D- 11	90110-05201	C- 10	90201-061A5	B- 8		C- 9
	C- 15	3JE-25394-00	D- 8	4SS-2632G-00	D- 11	90116-08392	B- 2	90201-06557	C- 8		C- 9
3Y6-23183-00	C- 12	26A-25444-50	D- 8	4EW-26335-00	D- 11	90116-08394	B- 2	90201-080E2	C- 7	90387-063G3	B- 12
509-23184-L0	C- 12	26A-25446-50	D- 8	4SS-26372-00	D- 12	90116-10314	B- 2	90201-08087	B- 2	90387-0700G	B- 7
4EW-2331E-L0	D- 2	26A-25448-50	D- 8	4XM-27200-00	D- 13		B- 2	90201-08089	D- 13	90387-0701A	C- 8
4SR-23340-L0	C- 15	26A-25450-50	D- 8	4SS-27217-00	D- 13	90116-10547	B- 2	90201-08326	D- 8	90387-086N4	C- 7
4SS-23346-L0	C- 15	4MX-25718-00	D- 10	4SS-27218-00	D- 14		B- 2	90201-086P8	C- 7	90387-1003G	D- 13
3SP-23356-L0	D- 2	4SS-2580T-00	D- 7	3SP-27222-00	D- 14	90119-06096	C- 8	90201-087A9	B- 15	90387-102W0	B- 2
3SP-23357-L0	C- 14	4XL-2580W-00	D- 10	4AA-27263-00	D- 13	90119-06185	B- 12	90201-08730	C- 7	90387-152F2	B- 4
	C- 15	2VN-2582A-50	D- 14	4JM-27311-00	D- 13		C- 13	90201-08784	B- 6	90387-160H4	B- 13
4SS-23363-L0	C- 14	4XM-2582T-00	D- 7	4JM-27321-00-T9	D- 13	90119-06214	D- 3	90201-090J9	D- 7	90387-164N2	C- 10
	C- 15	4MX-2582W-00	D- 10	4XM-27411-00	D- 13	90122-06035	B- 8	90201-10118	D- 12	90387-164N3	C- 10
4SS-23364-L0	E- 4	4XM-25827-50	D- 10	4XM-27421-00	D- 13	90123-08090	E- 2		D- 14	90387-167Y9	C- 10
4DA-23389-00	C- 13	4SS-2583G-00	D- 12	4GY-27491-00	D- 10	90149-06011	D- 3	90201-10119	D- 13	90387-2000B	D- 8
3SP-23393-L0	C- 14	3SP-2583V-00	D- 14	56A-28166-00	C- 7		D- 15	90201-105E8	B- 6	90387-2000C	D- 8
	C- 15	4SS-25833-00	D- 12	4SR-82310-00	E- 3	90149-06272	D- 7	90201-10591	D- 15	90387-2007S	D- 6
4EW-23416-00	C- 13	3XP-25852-50	D- 14	4PE-82370-00	E- 3		D- 10	90201-12166	C- 5	90387-2007T	D- 6
4SS-23435-00	C- 13	4SS-25852-00	D- 12	5X1-82519-01	E- 3	90151-04048	C- 10	90201-125L6	C- 2	90387-2007U	D- 6
3SP-23441-00	C- 13	2VN-25854-00	D- 14	447-82591-00	E- 3	90151-06037	B- 13	90201-14740	C- 11	90387-227H7	D- 11
4DA-23485-10	C- 13	4SS-25854-00	D- 12	38V-82911-00	E- 2	90157-06048	B- 15	90201-151A7	B- 4	90387-252F6	C- 2
4SS-24110-01	D- 3	2VN-25855-00	D- 14	38V-82913-00	E- 2	90157-06077	B- 13	90201-164H4	C- 10	90387-25663	C- 3
4EW-2412F-00	D- 3	2VN-25866-00	D- 14	4GY-83912-00	E- 2	90159-06016	C- 2		C- 11	90401-10159	D- 12
24X-24144-00	D- 3	3YX-25866-10	D- 12	4SS-83913-00	D- 12	90159-06078	C- 9	90201-17545	B- 15		D- 14
3SP-24173-00	D- 3	4SS-25866-00	D- 12	4SS-83922-01	D- 12		C- 9	90201-20278	C- 3	90430-06014	B- 3
4SS-24181-00	D- 3	3YK-25867-00	D- 12	437-83936-01	E- 2	90159-06182	C- 9	90201-20358	B- 15		B- 14
4SS-24182-00	D- 3	4SS-25868-00	D- 12	23X-83976-00	E- 2		C- 9	90201-22555	C- 3	90430-06166	B- 6
3JD-24186-00	D- 3	4SS-25872-00	D- 12	4MX-85540-00	E- 3	90170-20255	C- 2	90201-247L2	C- 13	90430-12227	B- 13
4XL-24240-00	D- 4	4XL-25873-00	D- 14	4XK-85546-00	E- 3	90170-24373	C- 13	90201-253K0	C- 3	90445-086A8	B- 13

NUMERICAL INDEX

PART NO.	GRID NO.	PART NO.	GRID NO.	PART NO.	GRID NO.	PART NO.	GRID NO.	PART NO.	GRID NO.	PART NO.	GRID NO.
90445-09104	D- 3	92017-06010	B- 12	93310-425P2	E- 5	95021-08040	C- 15	95827-06016	C- 9		
90445-09220	D- 3	92907-03100	B- 8	93311-41734	C- 3	95027-06008	B- 3		C- 9		
90445-11668	D- 3	92907-05100	B- 4	93311-62035	C- 3		B- 14	97007-05016	B- 3		
90445-137H9	D- 14	92907-05600	B- 3	93315-11206	C- 2	95027-06010	C- 10		E- 2		
90450-25037	B- 7		B- 3	93315-32056	C- 10	95027-06012	B- 12	97007-05020	B- 3		
90450-28014	B- 7		B- 3		C- 11		B- 14	97007-05030	B- 4		
90450-51070	B- 8	92907-06100	D- 5	93317-22262	C- 10		C- 8	97007-06012	D- 5		
90450-70072	B- 8	92907-06600	B- 14	93332-00068	C- 13		D- 10	97017-05030	B- 3		
90464-15152	C- 7	92907-08200	D- 7	93332-00081	C- 13		D- 14	97707-60016	C- 8		
90464-16039	B- 8	92907-10200	C- 7	93340-21505	B- 4	95027-06016	D- 3	97780-50510	D- 14		
90465-13152	E- 3	92907-18600	D- 9		C- 2		D- 10	97801-03008	D- 3		
90465-13275	D- 3	92990-10200	D- 13	93342-22215	C- 10	95027-06020	B- 8	98502-04012	B- 11		
	E- 3	93101-12004	C- 6	93410-20038	C- 3		C- 6	98502-04014	B- 11		
90465-16258	D- 12	93102-12224	C- 2	93410-22039	C- 3		C- 8	98507-03008	B- 8		
90467-09006	B- 7	93102-20309	B- 15	93440-10085	C- 2	95027-06025	B- 6	98507-05008	B- 3		
90467-10008	D- 3	93102-22363	B- 5	93440-25084	C- 3		B- 12	98507-05012	B- 2		
90467-12053	D- 14	93102-25360	D- 6	93450-19052	B- 5		B- 14	98507-06030	B- 14		
90467-21068	B- 7	93102-32337	C- 3		E- 5		D- 11	98706-04012	D- 12		
90468-16191	D- 13	93103-10147	B- 6	93501-04011	B- 15	95027-06030	B- 7	98707-06025	D- 3		
90468-26048	B- 15	93103-40091	B- 5	93521-64032	B- 4		B- 14	98907-06020	D- 3		
90480-15528	B- 7	93104-08040	B- 4	93603-14240	B- 4		C- 8	99001-06600	B- 6		
90480-16561	B- 12	93104-16074	B- 2	93603-22028	B- 6	95027-06050	C- 10	99009-17400	B- 15		
90480-18549	D- 3	93106-22019	C- 10	93604-08071	B- 2	95027-06065	B- 6	99510-10114	B- 2		
90501-05265	C- 6	93106-28023	D- 8	93604-10011	B- 6	95027-06070	B- 14	99530-12016	B- 13		
90501-13720	B- 15	93109-20029	C- 10		B- 14	95027-08012	B- 12		B- 14		
90501-23598	C- 2		C- 11	93604-29184	B- 4	95027-08020	B- 15	99530-14016	B- 2		
90501-244J5	B- 4	93210-09192	B- 3	93608-33046	C- 6		D- 7				
90506-16500	D- 13	93210-11073	D- 13	93834-13207	C- 3	95027-08035	C- 13				
90507-20052	B- 12	93210-14104	B- 14	93834-14049	C- 4	95027-08040	C- 7				
90507-32059	D- 13	93210-15620	D- 14	93834-15075	C- 4		C- 13				
90508-14783	B- 4	93210-19216	B- 15	94108-217X2	D- 6	95027-08065	C- 7				
90508-260B9	D- 13	93210-270A8	B- 2	94108-217X8	D- 6	95606-06100	D- 12				
90508-261B0	D- 13	93210-472A9	B- 12	94111-1810U	D- 8	95607-05100	B- 8				
90508-26561	C- 5	93210-77363	B- 2	94111-187X9	D- 8	95607-06100	E- 2				
90508-291A8	C- 6	93211-11770	B- 2	94209-21229	D- 6	95607-08200	C- 7				
90508-30743	B- 15	93300-60801	B- 4	94212-18188	D- 8	95617-08200	C- 7				
90560-08213	B- 4		B- 4	94213-18232	D- 8		D- 8				
90560-12280	C- 6	93300-60804	C- 7	94227-21101	D- 6	95617-10200	C- 7				
91A20-05065	B- 7	93306-00418	D- 8	94307-21145	D- 6		C- 7				
91317-04006	B- 4	93306-20540	C- 3	94309-18146	D- 8		C- 12				
91317-06014	D- 12	93306-20574	C- 3	94330-21084	D- 6	95707-08500	C- 7				
91317-06016	E- 3	93306-37802	B- 5	94340-18086	D- 8		D- 9				
91317-06050	B- 13		B- 5	94416-21509	D- 6	95707-10500	B- 2				
91317-06070	B- 13	93306-90403	D- 6	94421-18498	D- 8	95817-08050	C- 7				
91401-20012	D- 13	93310-230T7	C- 2	94581-47112	D- 9	95817-10050	C- 7				
91401-25015	D- 13	93310-418E9	B- 5	94681-47011	D- 9	95827-06012	D- 7				
91401-25020	D- 13		E- 5	94702-00326	B- 2	95827-06016	C- 9				
92014-06016	D- 14	93310-425P2	B- 5	94709-00326	B- 2		C- 9				

*COPYRIGHT: All rights reserved. No part of this publication  
may be reproduced without permission.*

**YAMAHA**

YAMAHA MOTOR CO., LTD.  
2500 SHINGA I IWATA SHIZUOKA JAPAN  
SERVICE INFORMATION DIV.

PRINTED ON RECYCLED PAPER

---

Printed in Japan  
First edition AUG., 1996