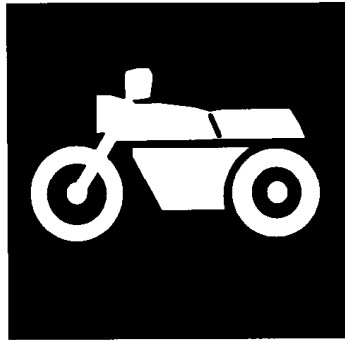


**YAMAHA**



**PARTS  
CATALOGUE**

**YZ250LC'96 (4SR1) EUROPE**

**YZ250H (4SR2) U.S.A., CANADA, S.AFRICA**

**YZ250'96 (4SR3) JAPAN**

**YZ250H (4SR4) OCEANIA**

---

164SR-100E1

**YAMAHA**  
**GENUINE**  
Parts & Accessories



**A3**

## FOREWORD

This Parts Catalogue is related to the parts for the model(s) in the below frame. When you are ordering replacement parts, please refer to this Parts Catalogue and quote both part numbers and part names correctly.

YZ250LC'96(4SR1), YZ250H(4SR2, 4SR4), YZ250'96(4SR3)

1. Modifications or additions which have been made after issue of the Parts Catalogue will be announced in the Yamaha Parts News.  
It is advisable that you make necessary corrections to the Parts Catalogue according to the Yamaha Parts News.

2. Abbreviations

The following abbreviations are used in this Parts Catalogue.

- "UR" Use specified parts number.
- "UN" Use as many as needed.
- "AP" Alternate Parts
- "LM" Local Made (Parts need to be ordered locally)
- "F#" Frame No. (Applicable machine No.)

3. Parts, which are to be supplied in an assembly, are listed with a dot (.) in front of the part name as shown below.

EXAMPLE  
 CARBURETOR ASSY  
 . JET, PILOT  
 . NOZZLE, MAIN

4. Number of component for assembly

The numeral appearing to the right of each component part indicates the quantity of parts for each assembly unit.

EXAMPLE

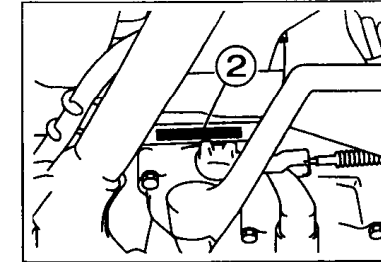
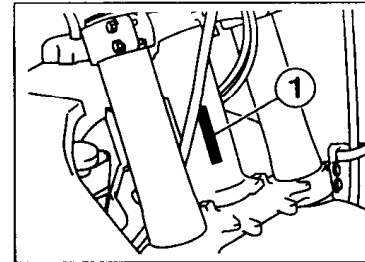
PART NO.	DESCRIPTION	Q'TY	REMARKS
2F5-83310-60	FRONT FLASHER LIGHT ASSY	2	
115-83311-60	. BULB (6V-18W)	1	

5. Applicable colors of graphics are represented in the "REMARKS" as shown below.

PART NO.	DESCRIPTION	Q'TY	REMARKS
2N4-24110-00-X5	FUEL TANK COMP.	1	MAXIM RED
3J1-24240-10	. GRAPHIC, FUEL TANK	1	for MXR

6. Applicable Serial No. and Color Code

4SR1	①	Frame Serial No.	4SR-000101	~
	②	Engine Serial No.	4SR-000101	~
4SR2	①	Frame Serial No.	4SR-005101	~
	②	Engine Serial No.	4SR-005101	~
4SR3	①	Frame Serial No.	4SR-015101	~
	②	Engine Serial No.	4SR	~
4SR4	①	Frame Serial No.	4SR-017101	~
	②	Engine Serial No.	4SR-017101	~



Color Code	Color Name	Abbreviation
0206	PURPLISH WHITE SOLID 1	PWS1

7. Note that the illustrations are for reference in finding parts numbers, not to be used for assembling. When assembling, please use the applicable service manual.

8. The asterisk (\*) before a reference number indicates modification items after the first edition.

# CONTENTS

## ENGINE

Cylinder Head .....	B2~B3
Governor .....	B4
Crankshaft. Piston .....	B5
Water Pump .....	B6
Radiator. Hose .....	B7
Intake .....	B8~B9
Carburetor .....	B10~B11
Exhaust .....	B12
Crankcase .....	B13
Crankcase Cover 1 .....	B14
Starter .....	B15
Clutch .....	C2
Transmission .....	C3~C4
Shift Cam. Fork .....	C5
Shift Shaft .....	C6

Rear Brake Caliper .....	D9
Steering Handle. Cable .....	D10
Front Master Cylinder .....	D11
Stand. Footrest .....	D12
Rear Master Cylinder .....	D13
Generator .....	D14
Handle Switch. Lever .....	D15
Electrical 1 .....	E2
Alternate (Chassis) .....	E3
Optional Parts 1 .....	E4

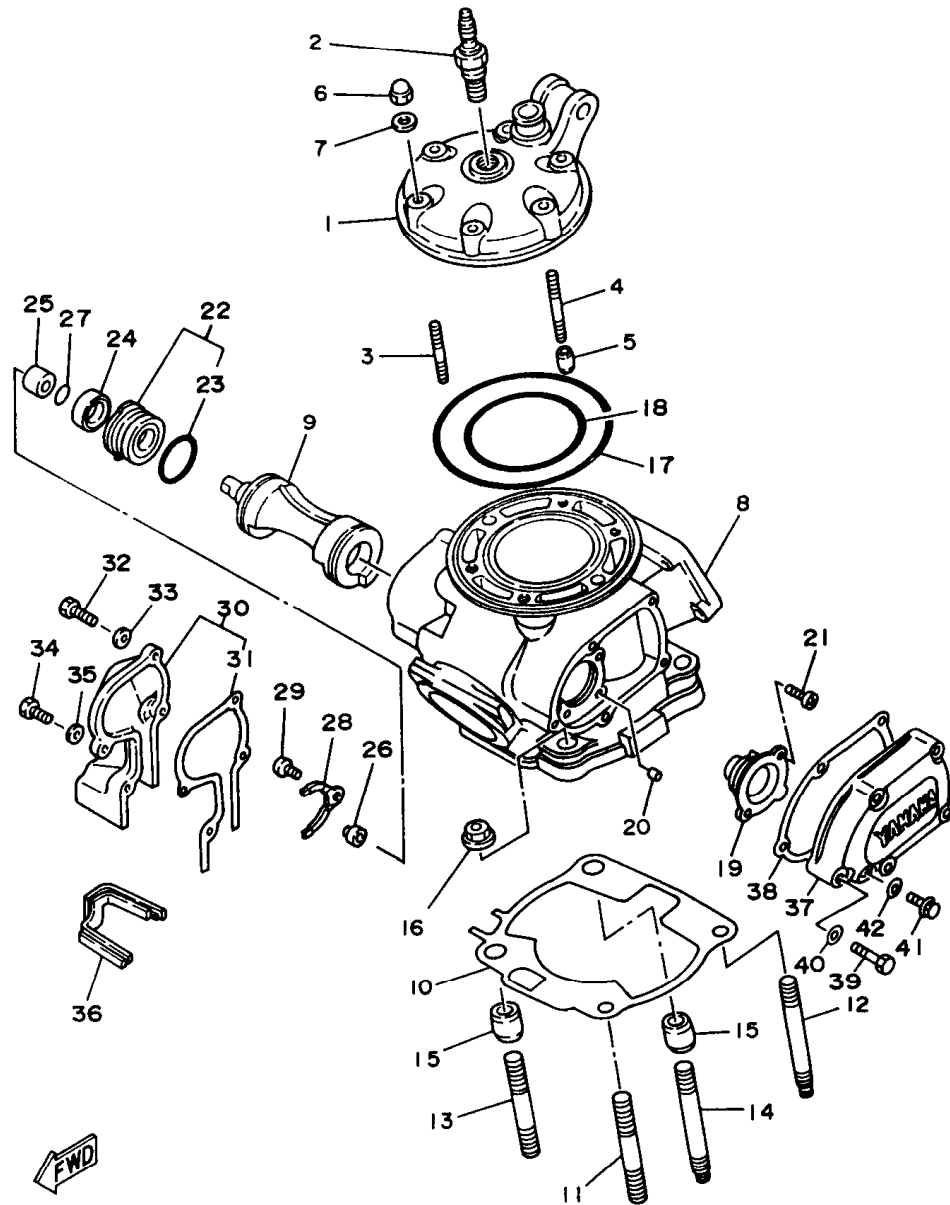
## INDEX

Numerical Index .....	M1~M3
-----------------------	-------

## CHASSIS

Frame .....	C7
Fender .....	C8
Side Cover .....	C9
Rear Arm .....	C10~C11
Rear Suspension .....	C12
Steering .....	C13
Front Fork .....	C14~D2
Fuel Tank .....	D3
Seat .....	D4
Front Wheel .....	D5
Front Brake Caliper .....	D6
Rear Wheel .....	D7~D8

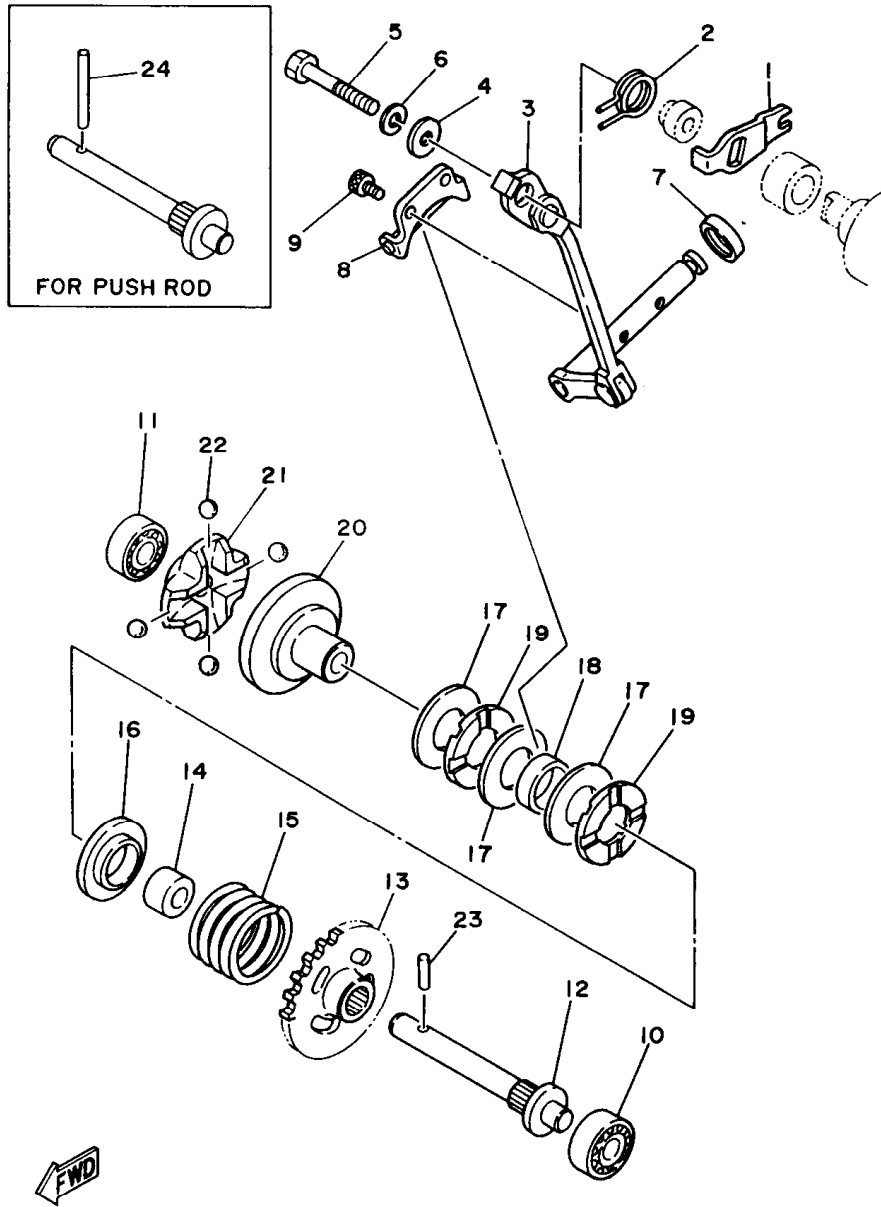
FIG. 1 CYLINDER HEAD



4SR1100-6010

REF. NO.	PART NO.	DESCRIPTION	Q'TY	REMARKS
1	4SR-11111-00	HEAD, CYLINDER 1	1	
2	94702-00326	PLUG, SPARK (NGK BR8EG)	1	UR
	94709-00326	PLUG, SPARK (NGK BR8EG)	1	UR FOR JAPAN
3	90116-08394	BOLT, STUD	4	
4	90116-08392	BOLT, STUD	2	
5	99510-10114	PIN, DOWEL	2	
6	90176-08026	NUT, CROWN	6	
7	90201-08087	WASHER, PLATE	6	
8	4SR-11311-00	CYLINDER 1	1	
9	4SR-1131A-00	VALVE 1	1	
10	2VM-11351-10	GASKET, CYLINDER	1	
11	90116-10314	BOLT, STUD	1	
12	90116-10547	BOLT, STUD	1	
13	90116-10314	BOLT, STUD	1	
14	90116-10547	BOLT, STUD	1	
15	99530-14016	PIN, DOWEL	2	
16	95707-10500	NUT, FLANGE	4	
17	93210-77363	O-RING	1	
18	93211-11770	O-RING	1	
19	3JE-Y113E-00	HOLDER 1	1	
20	93604-08071	PIN, DOWEL	1	
21	98507-05012	SCREW, PAN HEAD	2	
22	5X4-Y113F-10	HOLDER 2 ASSY	1	
23	93210-270A8	O-RING	1	
24	93104-16074	OIL SEAL	1	
25	90387-102W0	COLLAR	1	
26	3JE-11937-01	BOSS, LEVER	1	
27	93210-09192	O-RING	1	





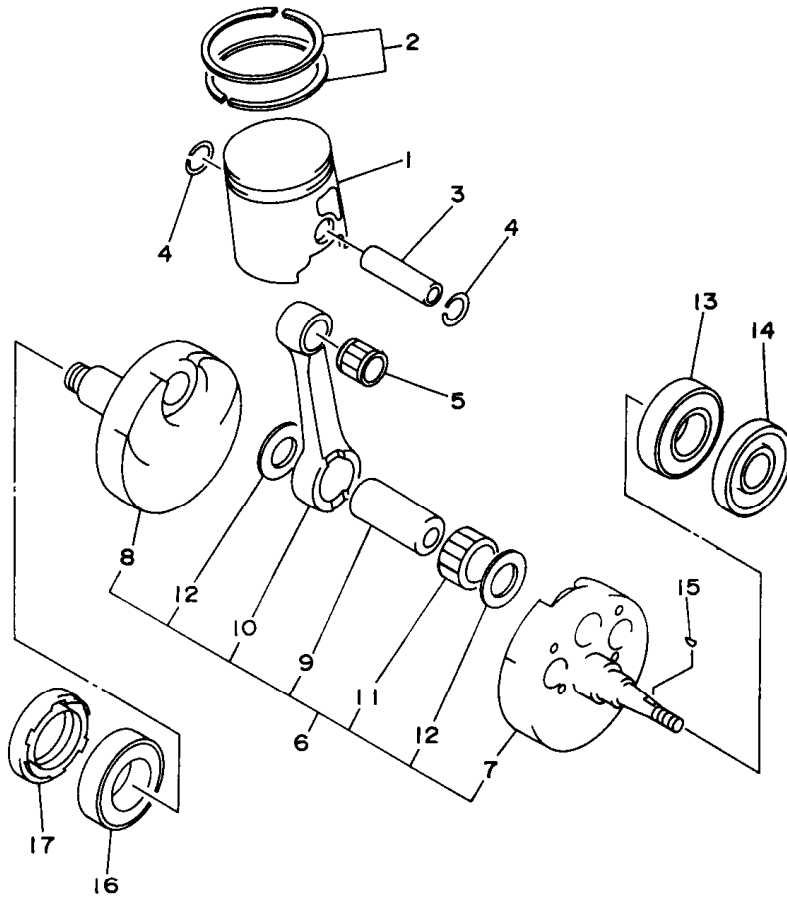
4EW1100-3020

FIG. 2 GOVERNOR

REF. NO.	PART NO.	DESCRIPTION	Q'TY	REMARKS
1	3JE-11931-01	LEVER	1	
2	90508-14783	SPRING, TORSION	1	
3	3SP-11990-00	PUSH ROD ASSY	1	
4	90201-057H5	WASHER, PLATE	1	
5	97017-05030	BOLT	1	
6	92907-05100	WASHER, SPRING	1	
7	93104-08040	OIL SEAL	1	
8	3JE-11922-01	FORK, GOVERNOR	1	
9	91317-04006	BOLT, SOCKET HEAD	2	
10	93300-60814	BEARING (608M4ML01)	1	NMB
11	93300-60814	BEARING (608M4ML01)	1	NMB
12	5X4-11921-02	SHAFT, GOVERNOR	1	
13	24X-11953-01	GEAR, GOVERNOR	1	
14	90560-08213	SPACER	1	
15	90501-244J5	SPRING, COMPRESSION	1	
16	5X4-11952-00	PLATE	1	
17	90201-154E9	WASHER, PLATE	3	
18	90387-152F2	COLLAR	1	
19	93340-21505	BEARING, THRUST	2	
20	5X5-11912-01	RETAINER, WEIGHT	1	
21	5X5-11911-01	RETAINER	1	
22	93521-64032	BALL	4	
23	93603-14179	PIN, DOWEL	1	
24	93604-29184	PIN, DOWEL	1	AP FOR PUSH ROD

**B4**

FIG. 3 CRANKSHAFT. PISTON



REF. NO.	PART NO.	DESCRIPTION	Q'TY	REMARKS
1	4SR-11631-00-A0	PISTON (STD)	1	UR
	4SR-11631-00-B0	PISTON (STD)	1	UR
	4SR-11631-00-C0	PISTON (STD)	1	UR
	4SR-11631-00-D0	PISTON (STD)	1	UR
2	4JX-11603-00	PISTON RING SET (STD)	1	
3	2VM-11633-01	PIN, PISTON	1	
4	93450-19052	CIRCLIP	2	
5	93310-418E9	BEARING, CYLINDRICAL	1	
6	4SR-11400-00	CRANKSHAFT ASSY	1	
7	4SR-11410-00	.CRANKSHAFT	1	
8	4SR-11420-00	.CRANKSHAFT	1	
9	4SR-11681-00	.PIN, CRANK 1	1	
10	5X5-11651-03	.ROD, CONNECTING	1	
11	93310-425P2	.BEARING, CYLINDRICAL	1	
12	90209-25085	.WASHER	2	
13	93306-37804	BEARING	1	
14	93102-22363	OIL SEAL	1	
15	90280-03017	KEY, WOODRUFF	1	
16	93306-37804	BEARING	1	
17	93103-40091	OIL SEAL	1	

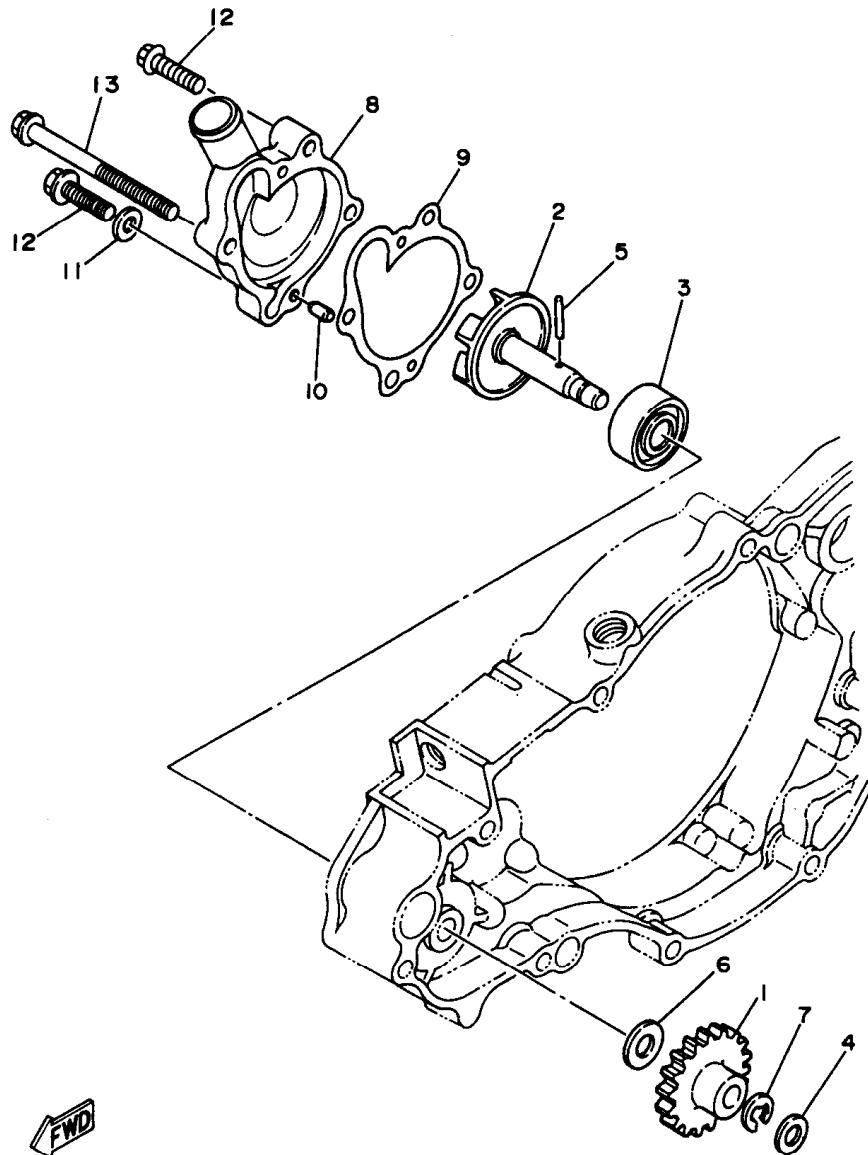


4SR1100-6030

**B5**



FIG. 4 WATER PUMP

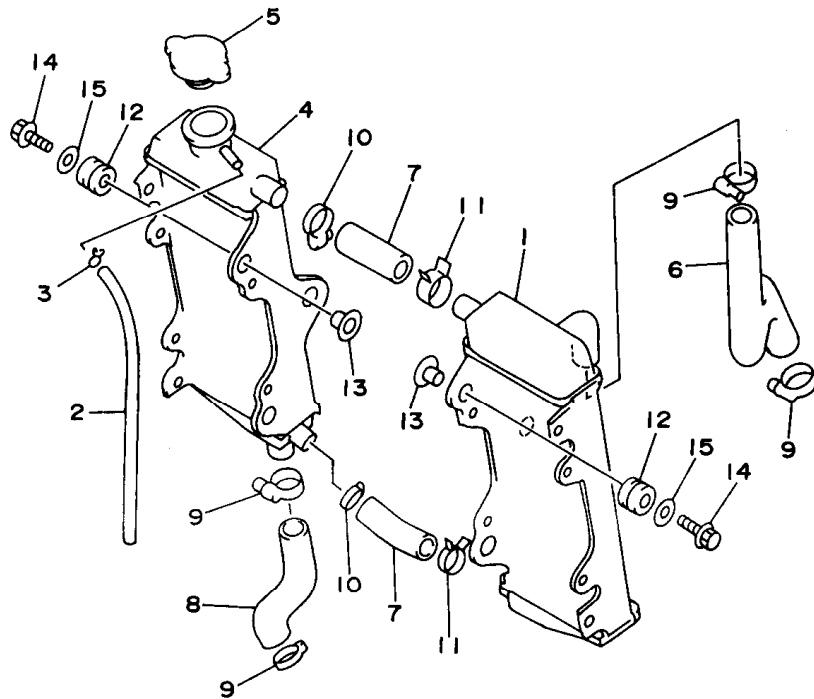


REF. NO.	PART NO.	DESCRIPTION	Q'TY	REMARKS
1	4SR-12459-00	GEAR, IMPELLER SHAFT	1	
2	2VM-12450-00	IMPELLER SHAFT ASSY	1	
3	93103-10168	OIL SEAL	1	
4	90201-08759	WASHER, PLATE	1	
5	93603-22028	PIN, DOWEL	1	
6	90201-08784	WASHER, PLATE	1	
7	99009-06600	CIRCLIP	1	
8	4SR-12422-00	COVER, HOUSING	1	
9	2VM-12428-11	GASKET, HOUSING COVER 2	1	
10	93604-10011	PIN, DOWEL	2	
11	90430-06166	GASKET	1	
12	95027-06025	BOLT, FLANGE	3	
13	95027-06065	BOLT, FLANGE	1	

**FWD**  
4SR1100-6040

**B6**

FIG. 5 RADIATOR. HOSE



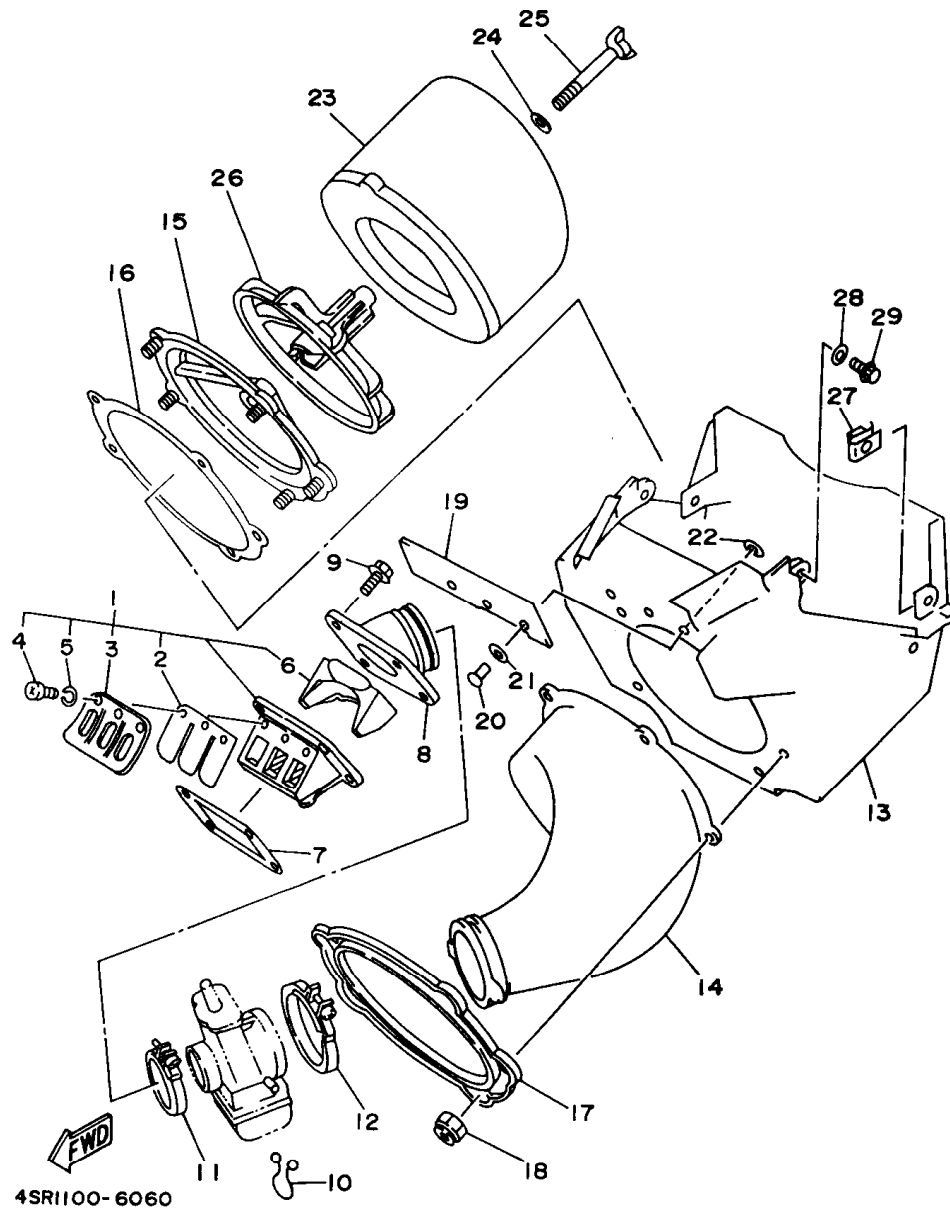
REF. NO.	PART NO.	DESCRIPTION	Q'TY	REMARKS
1	4SR-1240A-00	RADIATOR ASSY	1	
2	91A20-05080	TUBE, FLEXIBLE VINYL	1	
3	90467-09006	CLIP	1	
4	4SR-12461-00	RADIATOR ASSY	1	
5	22W-12462-00	CAP, RADIATOR	1	
6	4SR-12481-00	PIPE 1	1	
7	4SS-12482-00	PIPE 2	2	
8	4SR-12484-00	PIPE 4	1	
9	90450-28014	HOSE CLAMP ASSY	4	
10	90450-25037	HOSE CLAMP ASSY	2	
11	90467-21068	CLIP	2	
12	90480-15528	GROMMET	6	
13	90387-0700G	COLLAR	6	
14	95027-06030	BOLT, FLANGE	6	
15	90201-063J2	WASHER, PLATE	6	



4SR1100-6050

**B7**

FIG. 6 INTAKE

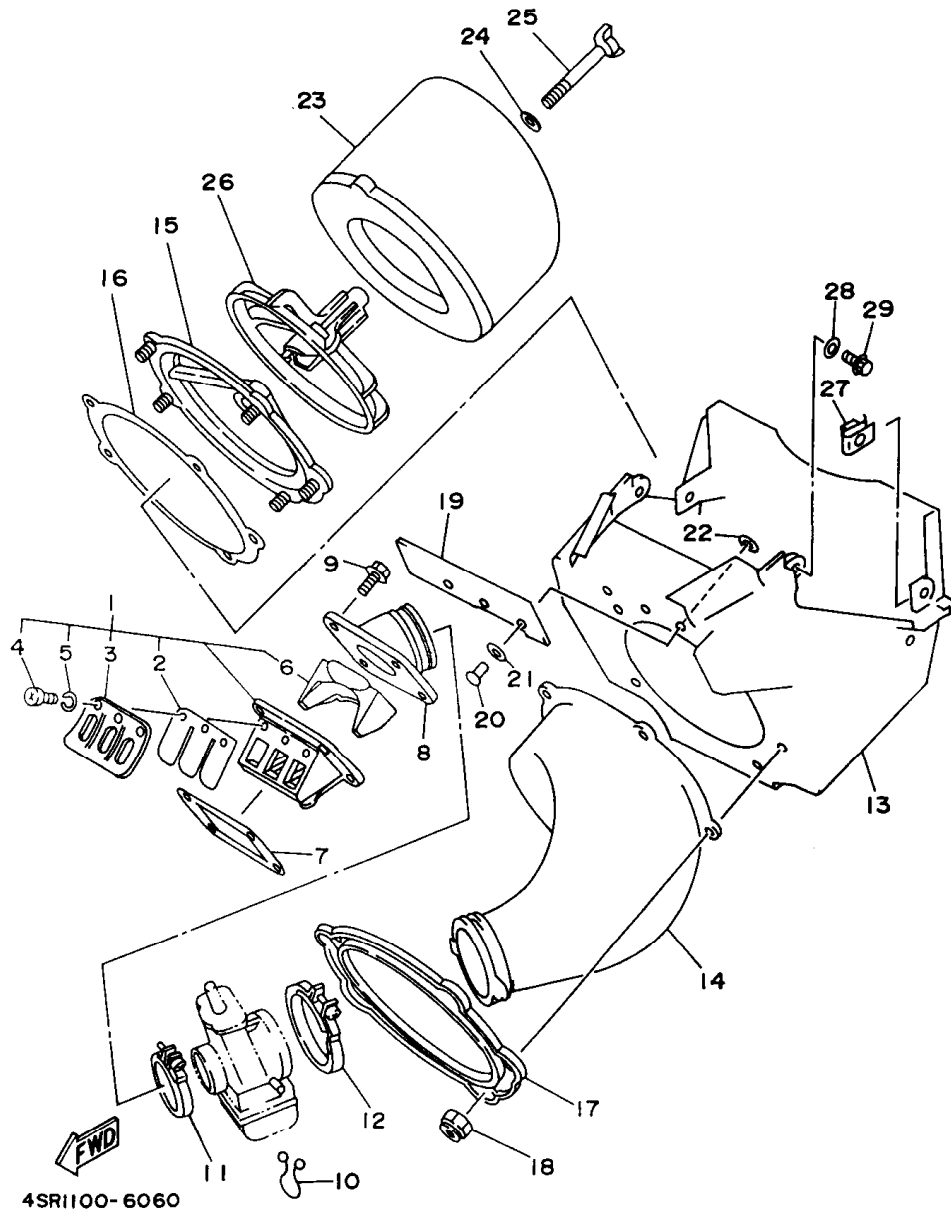


REF. NO.	PART NO.	DESCRIPTION	Q'TY	REMARKS
1	4MX-13610-00	REED VALVE ASSY	1	
2	3SP-13613-00	.REED, VALVE	2	
3	4DA-13616-00	.STOPPER, REED VALVE	2	
4	98507-03008	.SCREW, PAN HEAD	6	
5	92990-03100	.WASHER, SPRING	6	
6	4MX-13625-00	.SPACER, REED VALVE	1	
7	2K7-13621-10	GASKET, VALVE SEAT	1	
8	4SR-13565-00	JOINT, CARBURETOR	1	
9	95027-06020	BOLT, FLANGE	4	
10	90464-16039	CLAMP	1	
11	90450-51070	HOSE CLAMP ASSY	1	
12	90450-70072	HOSE CLAMP ASSY	1	
13	4SS-14401-00	AIR CLEANER CASE ASSY	1	
14	4SR-14453-00	JOINT, AIR CLEANER 1	1	
15	3JD-14459-00	HOLDER, GUIDE	1	
16	3JD-14462-00	SEAL	1	
17	3JD-14477-00	PLATE	1	
18	95617-05100	NUT, U	5	
19	4SS-14417-00	COVER 1	1	
20	90267-32119	RIVET, BLIND	3	
21	90201-03644	WASHER, PLATE	3	
22	92907-03200	WASHER	3	
23	4SS-14451-00	ELEMENT, AIR CLEANER	1	
24	90209-06096	WASHER	2	
25	90122-06035	BOLT, WING	2	
26	3JD-14458-00	GUIDE	1	
27	90183-06023	NUT, SPRING	4	
28	90201-061A5	WASHER, PLATE	2	

**B8**

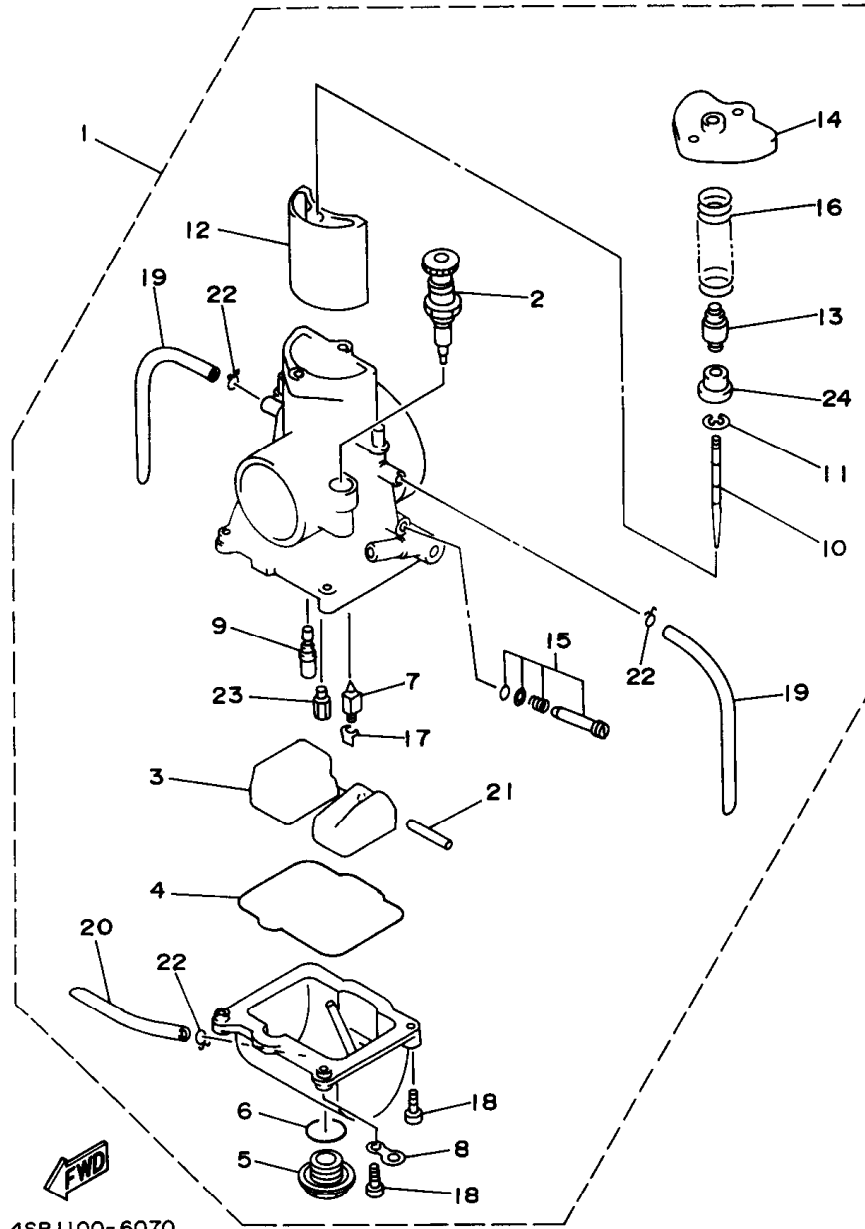
FIG. 6 INTAKE

REF. NO.	PART NO.	DESCRIPTION	Q'TY	REMARKS
29	90105-06553	BOLT, WASHER BASED	2	



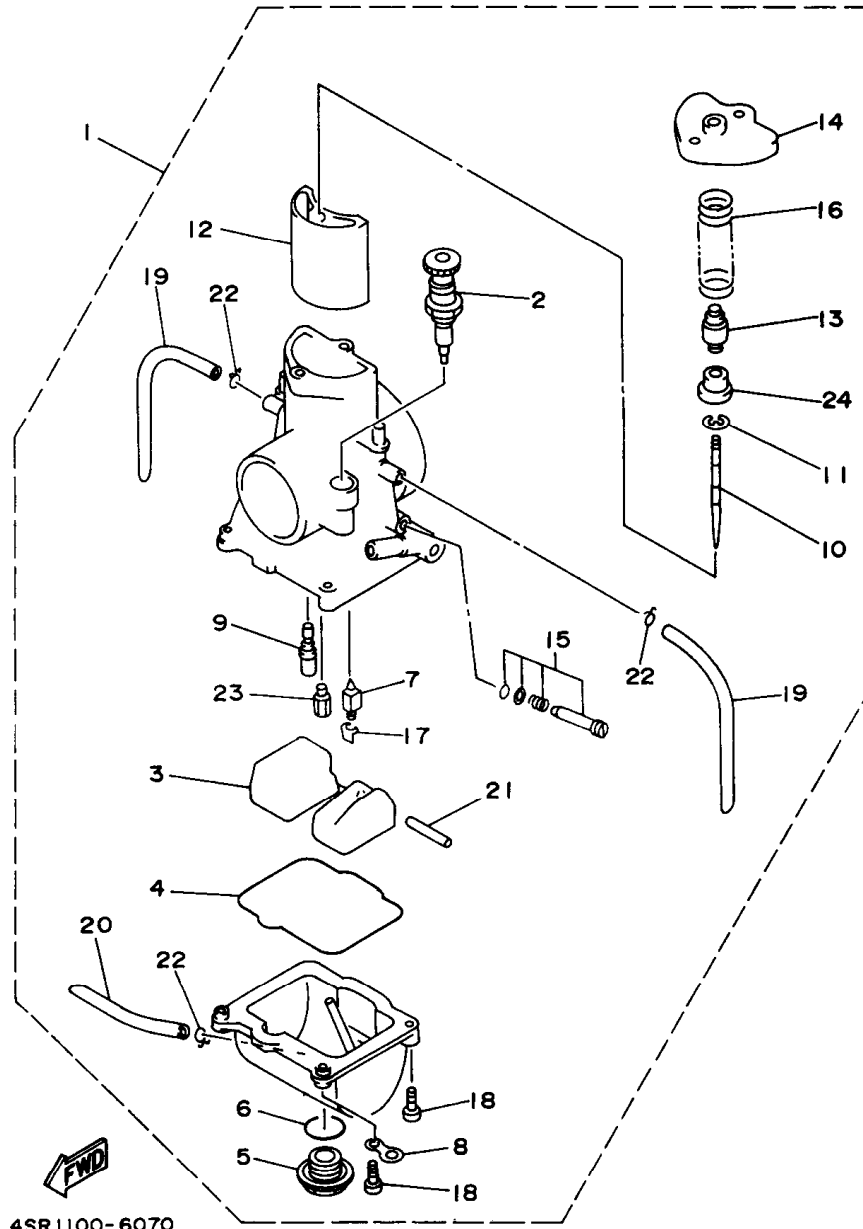
**B9**

FIG. 7 CARBURETOR



REF. NO.	PART NO.	DESCRIPTION	Q'TY	REMARKS
1	4SR-14101-00	CARBURETOR ASSY 1	1	
2	4SR-14171-00	.PLUNGER, STARTER	1	
3	4SR-14985-00	.FLOAT	1	
4	4MX-14984-00	.GASKET, FLOAT CHAMBER	1	
5	4MX-14115-00	.PLUG, SCREW	1	
6	4MX-14561-00	.O-RING	1	
7	4MX-14392-00	.VALVE, NEEDLE	1	
8	4MX-14146-00	.PLATE	2	
9	4MX-14948-04	.JET, PILOT (#42)	1	STD
	4SR-14948-02	.JET, PILOT (#38)	1	AP
	4SR-14948-03	.JET, PILOT (#40)	1	AP
	4MX-14948-05	.JET, PILOT (#45)	1	AP
	4MX-14948-06	.JET, PILOT (#48)	1	AP
	4MX-14948-07	.JET, PILOT (#50)	1	AP
	4MX-14948-08	.JET, PILOT (#52)	1	AP
	4MX-14948-09	.JET, PILOT (#55)	1	AP
10	4SR-14916-CD	.NEEDLE (N3CD)	1	STD
	4SR-14916-CC	.NEEDLE (N3CC)	1	AP
	4SR-14916-CE	.NEEDLE (N3CE)	1	AP
	4SR-14916-EC	.NEEDLE (N3EC)	1	AP
	4SR-14916-ED	.NEEDLE (N3ED)	1	AP
	4SR-14916-EE	.NEEDLE (N3EE)	1	AP
11	4MX-14919-00	.CLIP	1	
12	4SR-14340-A6	.VALVE ASSY	1	
13	4SR-14261-00	.HOLDER	1	
14	4SR-14126-00	.GASKET	1	
15	4SR-14105-00	.PILOT SCREW SET	1	
16	4MX-14131-00	.SPRING, THROTTLE VALVE	1	

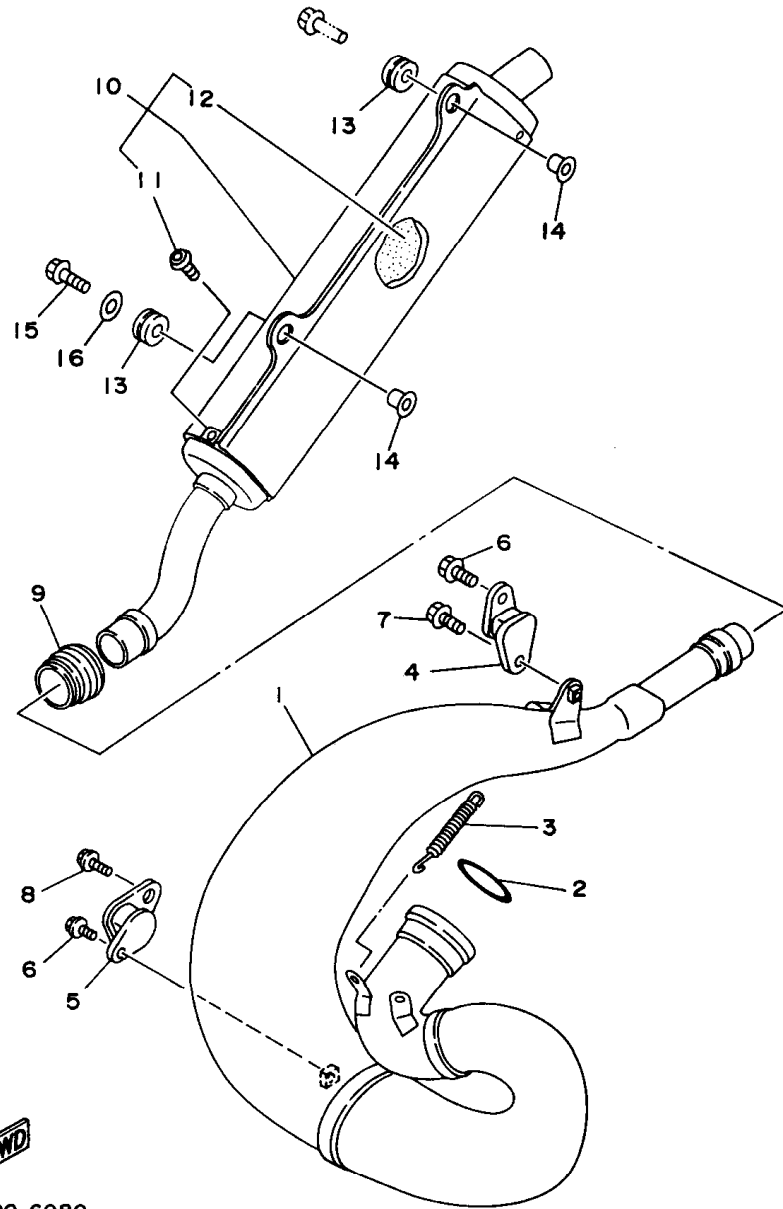
FIG. 7 CARBURETOR



REF. NO.	PART NO.	DESCRIPTION	Q'TY	REMARKS
17	663-14159-00	.CLIP	1	
18	98507-04014	.SCREW, PAN HEAD	4	
19	4MX-14197-00	.PIPE	2	
20	4MX-14196-00	.PIPE	1	
21	663-14548-00	.PIN, FLOAT ARM	1	
22	3TJ-14137-40	.CLIP	3	
23	4MX-14943-42	.JET, MAIN (#175)	1	STD
	4SR-14943-90	.JET, MAIN (#162)	1	AP
	4MX-14943-40	.JET, MAIN (#165)	1	AP
	4MX-14943-91	.JET, MAIN (#168)	1	AP
	4MX-14943-41	.JET, MAIN (#170)	1	AP
	4MX-14943-92	.JET, MAIN (#172)	1	AP
	4MX-14943-93	.JET, MAIN (#178)	1	AP
	4MX-14943-43	.JET, MAIN (#180)	1	AP
	4MX-14943-94	.JET, MAIN (#182)	1	AP
	4MX-14943-44	.JET, MAIN (#185)	1	AP
	4MX-14943-95	.JET, MAIN (#188)	1	AP
	4MX-14943-45	.JET, MAIN (#190)	1	AP
24	4MX-14194-00	.RING	1	

**B11**

FIG. 8 EXHAUST



4SR1100-6080

REF. NO.	PART NO.	DESCRIPTION	Q'TY	REMARKS
1	4SR-14610-00	EXHAUST PIPE ASSY 1	1	
2	93210-472A9	O-RING	1	
3	90507-20052	SPRING, TENSION	3	
4	565-14771-00	STAY, MUFFLER 1	1	
5	483-14781-02	STAY, MUFFLER 2	1	
6	95027-06012	BOLT, FLANGE	2	
7	90119-06185	BOLT, WITH WASHER	1	
8	95027-08012	BOLT, FLANGE	1	
9	3JE-14615-01	JOINT, EXHAUST 1	1	
10	4SR-14753-00	SILENCER, EXHAUST	1	
11	92017-06010	.SCREW	2	
12	4SR-1469A-00	.FIBER	1	
13	90480-16561	GROMMET	2	
14	90387-063G3	COLLAR	2	
15	95027-06025	BOLT, FLANGE	1	
16	90201-063J2	WASHER, PLATE	1	

**B12**

FIG. 9 CRANKCASE

REF. NO.	PART NO.	DESCRIPTION	Q'TY	REMARKS
1	2VM-15111-06	CRANKCASE 1	1	
2	91317-06050	BOLT, SOCKET HEAD	9	
3	91317-06070	BOLT, SOCKET HEAD	1	
4	3SP-15381-00	PLATE, BEARING COVER	1	
5	90151-06037	SCREW, COUNTERSUNK	1	
6	353-13115-01	CONNECTOR, SUCTION PIPE	1	
7	90445-086A8	HOSE	1	
8	2VM-15121-03	CRANKCASE 2	1	
9	99510-12016	PIN, DOWEL	2	
10	90387-160H4	COLLAR	2	
11	4L0-17471-00	PLATE, COVER	1	
12	90157-06077	SCREW, PAN HEAD	2	
13	4V4-15118-00	HOLDER	1	
14	90105-06556	BOLT, WASHER BASED	1	
15	90340-12097	PLUG, STRAIGHT SCREW	1	
16	90430-12227	GASKET	1	

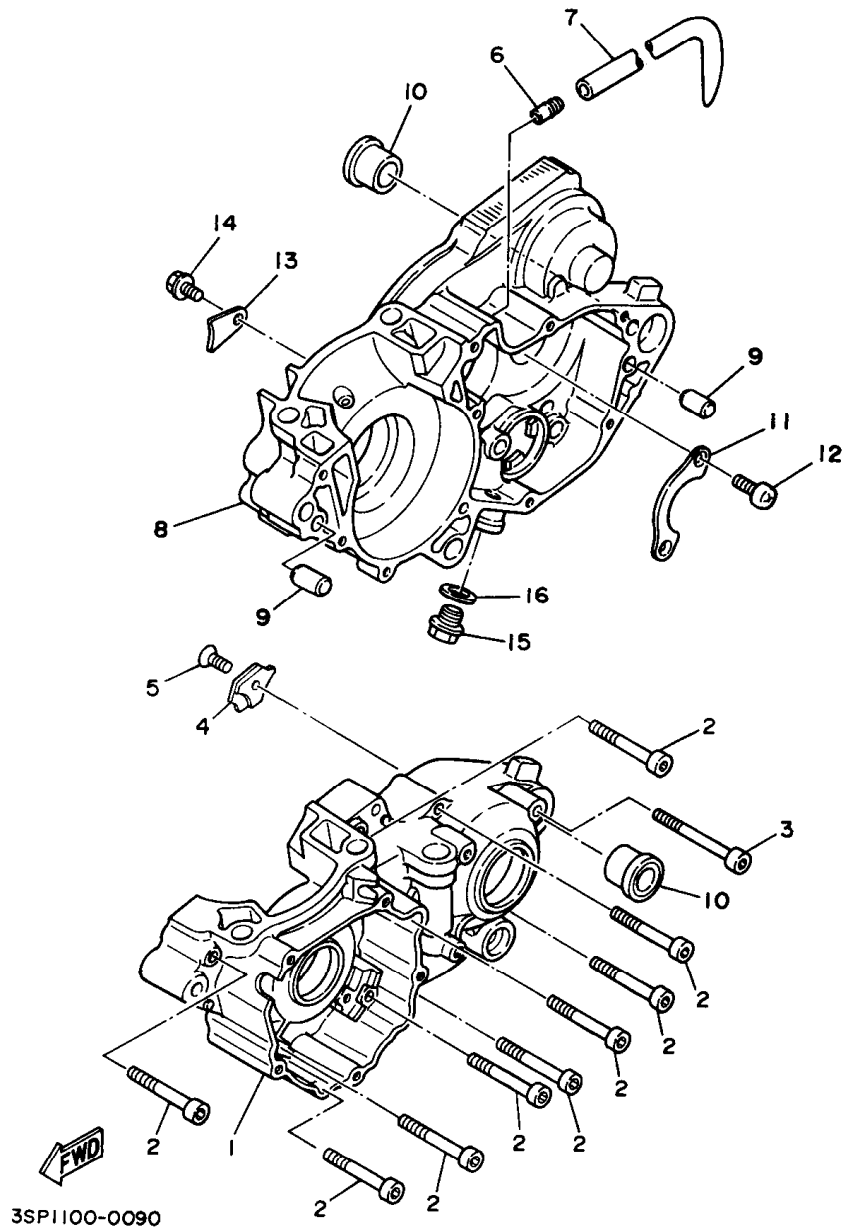
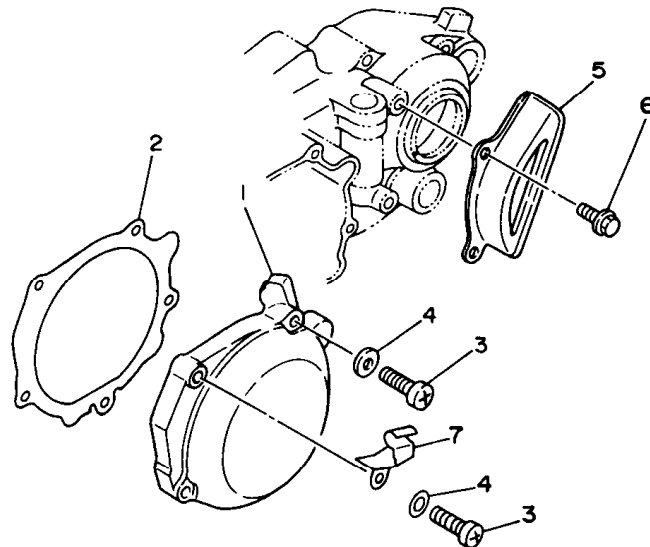
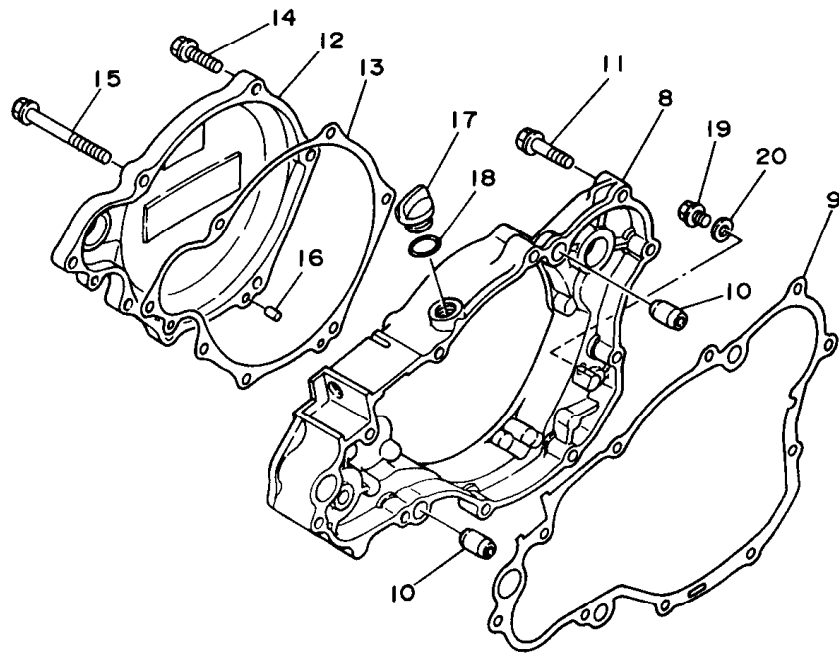




FIG. 10 CRANKCASE COVER 1

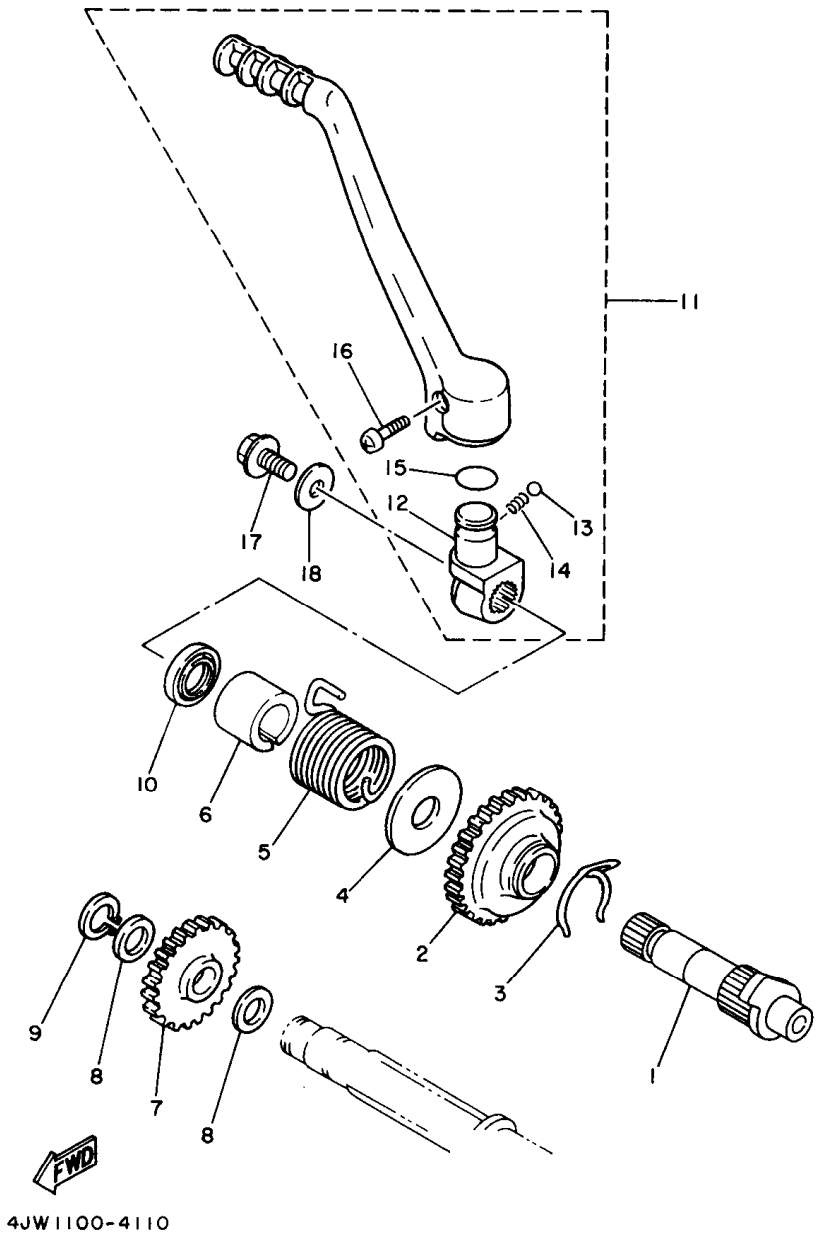


4SR1100-6100

REF. NO.	PART NO.	DESCRIPTION	Q'TY	REMARKS
1	2VM-15411-00	COVER, CRANKCASE 1	1	
2	2VM-15451-11	GASKET, CRANKCASE COVER 1	1	
3	98517-06030	SCREW, PAN HEAD	5	
4	92907-06600	WASHER, PLATE	5	
5	2VM-15421-02	COVER, CRANKCASE 2	1	
6	95027-06012	BOLT, FLANGE	2	
7	4SR-15441-00	HOLDER, CLUTCH CABLE	1	
8	3SP-Y1543-00	COVER, CRANKCASE 3	1	
9	2VM-15462-10	GASKET, CRANKCASE COVER 3	1	
10	99510-12016	PIN, DOWEL	2	
11	95027-06030	BOLT, FLANGE	7	
12	4EW-15415-00	COVER, GENERATOR	1	
13	3SP-15463-11	GASKET, CARBURETOR COVER 2	1	
14	95027-06025	BOLT, FLANGE	5	
15	95027-06070	BOLT, FLANGE	2	
16	93604-10011	PIN, DOWEL	2	
17	1G8-15362-00	PLUG, OIL LEVEL	1	
18	93210-14104	O-RING	1	
19	95027-06008	BOLT, FLANGE	1	
20	90430-06014	GASKET	1	

**B14**

FIG. 11 STARTER

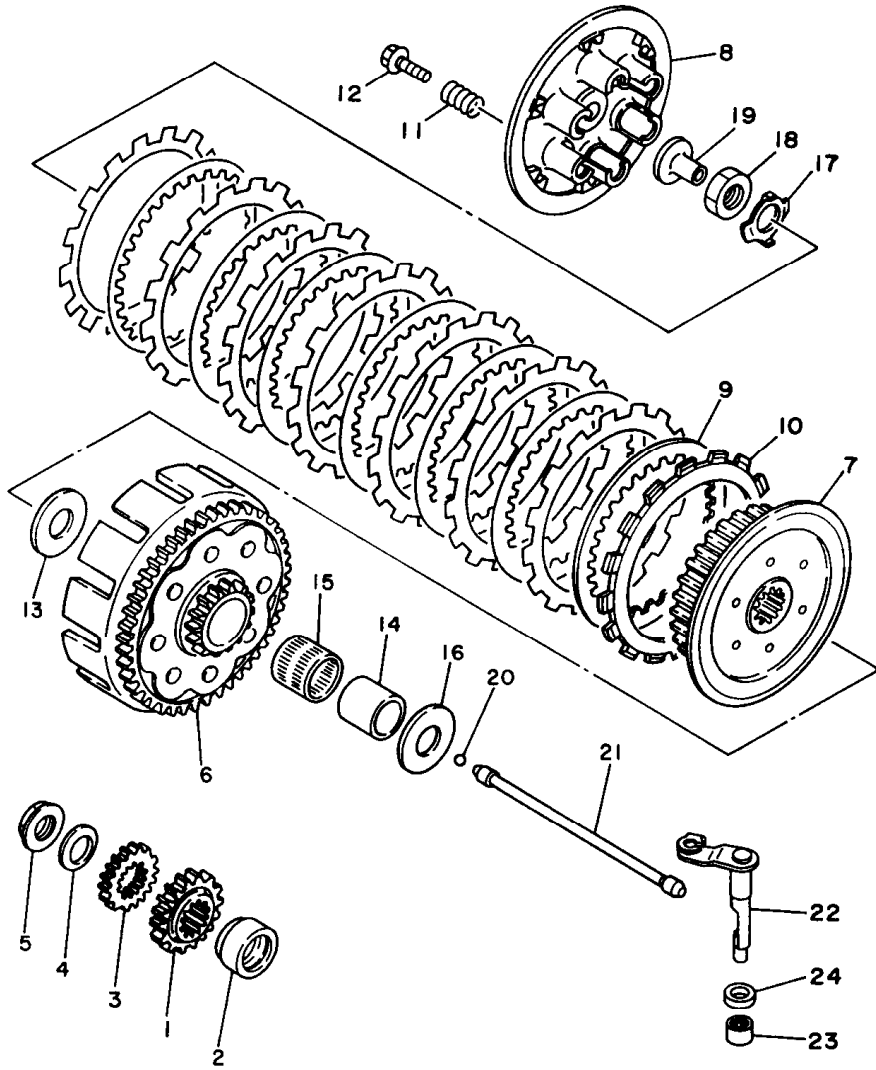


REF. NO.	PART NO.	DESCRIPTION	Q'TY	REMARKS
1	4JW-15660-00	KICK AXLE ASSY	1	
2	3R4-15641-00	GEAR, KICK (26T)	1	
3	90468-26048	CLIP	1	
4	90201-20358	WASHER, PLATE	1	
5	90508-30743	SPRING, TORSION	1	
6	2VM-15664-00	GUIDE, SPRING	1	
7	38V-15651-00	GEAR, KICK IDLE (23T)	1	
8	90201-17545	WASHER, PLATE	2	
9	99009-17400	CIRCLIP	1	
10	93102-20309	OIL SEAL	1	
11	4JW-15620-00	KICK CRANK ASSY	1	
12	3SP-15621-02	.BOSS, KICK CRANK	1	
13	93501-04011	.BALL	1	
14	90501-13720	.SPRING, COMPRESSION	1	
15	93210-19216	.O-RING	1	
16	90157-06048	.SCREW, PAN HEAD	1	
17	95027-08020	BOLT, FLANGE	1	
18	90201-087A9	WASHER, PLATE	1	

4JW1100-4110

**B15**

FIG. 12 CLUTCH

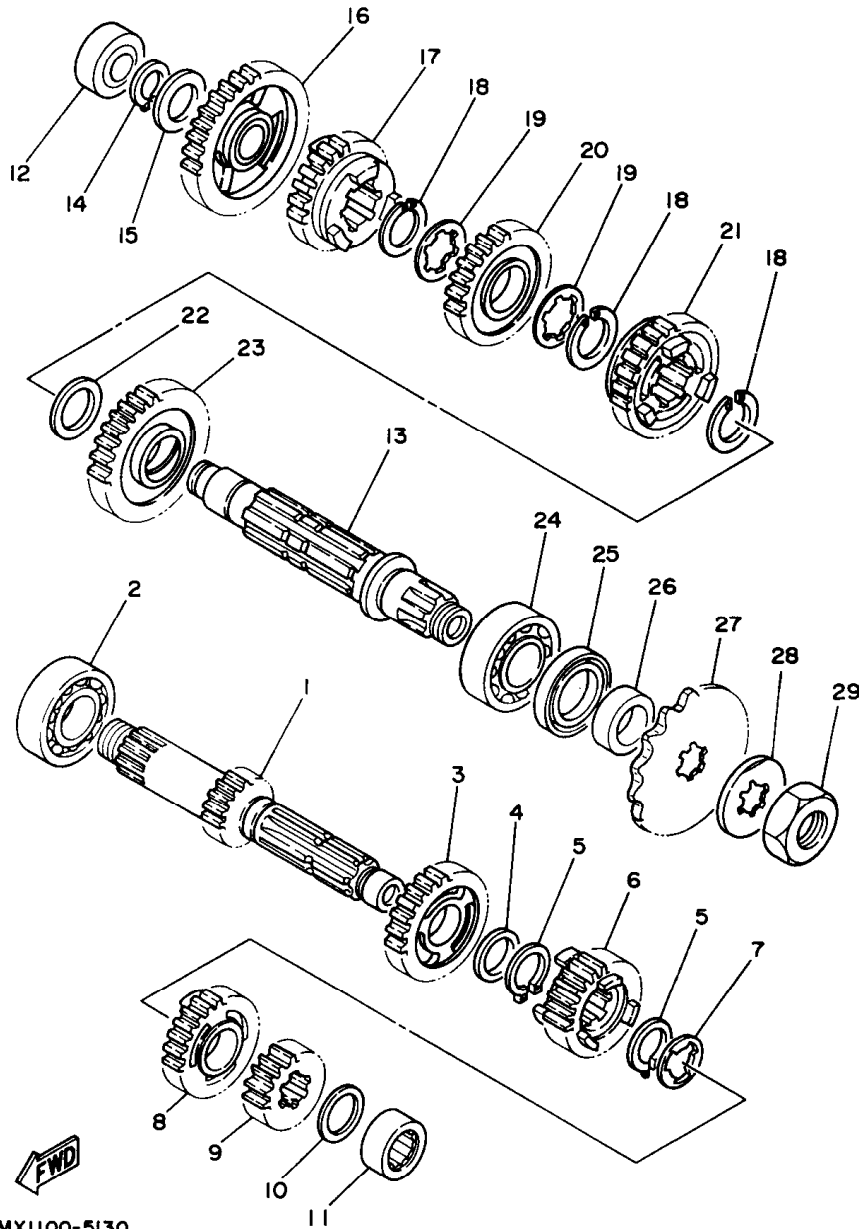


REF. NO.	PART NO.	DESCRIPTION	Q'TY	REMARKS
1	2VM-16111-00	GEAR, PRIMARY DRIVE	1	
2	90387-252F6	COLLAR	1	
3	3XK-11956-00	GEAR, GOVERNOR DRIVE	1	
4	90208-18025	WASHER, CONICAL SPRING	1	
5	90179-18172	NUT	1	
6	4EW-16150-01	PRIMARY DRIVEN GEAR COMP.	1	
7	4EW-16371-01	BOSS, CLUTCH	1	
8	4EW-16351-01	PLATE, PRESSURE 1	1	
9	4X7-16325-00	PLATE, CLUTCH 2	7	
10	3XK-16321-00	PLATE, FRICTION	8	
11	90501-23598	SPRING, COMPRESSION	6	
12	90159-06016	SCREW, WITH WASHER	6	
13	2K7-16154-00	PLATE, THRUST 1	1	
14	2VM-16181-00	SPACER 1	1	
15	93310-230T7	BEARING, CYLINDRICAL	1	
16	3SP-16154-00	PLATE, THRUST 1	1	
17	90215-20231	WASHER, LOCK	1	
18	90170-20255	NUT	1	
19	4EW-16356-00	ROD, PUSH 1	1	
20	93511-32027	BALL	1	
21	4EW-16357-00	ROD, PUSH 2	1	
22	4EW-16381-01	PUSH LEVER COMP.	1	
23	93315-11206	BEARING, CYLINDRICAL	1	
24	93102-12224	OIL SEAL	1	



4JX1100-4120

FIG. 13 TRANSMISSION

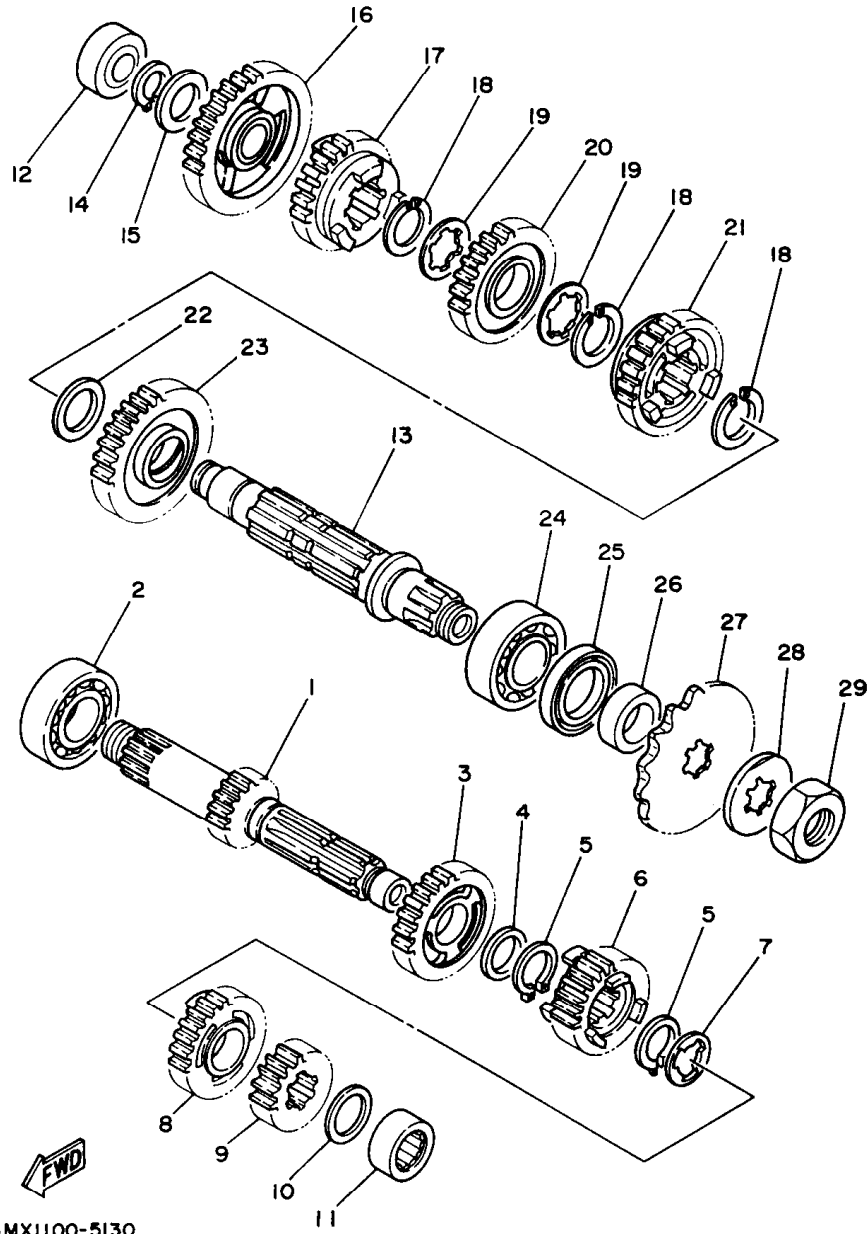


4MX1100-5130

REF. NO.	PART NO.	DESCRIPTION	Q'TY	REMARKS
1	4JX-17411-00	AXLE, MAIN	1	
2	93306-20576	BEARING (83B247SH2C3)	1	
3	4MX-17151-00	GEAR, 5TH PINION	1	
4	90201-22555	WASHER, PLATE	1	
5	93410-22039	CIRCLIP	2	
6	4MX-17131-00	GEAR, 3RD PINION	1	
7	90209-18135	WASHER	1	
8	3RB-17141-00	GEAR, 4TH PINION (22T)	1	
9	4JX-17121-00	GEAR, 2ND PINION	1	
10	90209-17311	WASHER	1	
11	93311-41734	BEARING, CYLINDRICAL	1	
12	93311-62035	BEARING, CYLINDRICAL	1	
13	2VM-17421-01	AXLE, DRIVE	1	
14	93410-20038	CIRCLIP	1	
15	90201-20278	WASHER, PLATE	1	
16	4MX-17211-00	GEAR, 1ST WHEEL	1	
17	4MX-17251-00	GEAR, 5TH WHEEL	1	
18	93440-25084	CIRCLIP	3	
19	90209-22082	WASHER (0.5T)	2	
20	4MX-17231-00	GEAR, 3RD WHEEL	1	
21	4MX-17241-00	GEAR, 4TH WHEEL	1	
22	90201-253K0	WASHER, PLATE (T=1.0)	1	
23	4MX-17221-00	GEAR, 2ND WHEEL	1	
24	93306-20577	BEARING	1	
25	93102-32M07	OIL SEAL	1	
26	90387-25663	COLLAR	1	
27	93834-13030	SPROCKET,DRIVE 13T (23X1746130)	1	STD
	93834-14049	SPROCKET,DRIVE 14T (1W41746140)	1	AP

C3

FIG. 13 TRANSMISSION

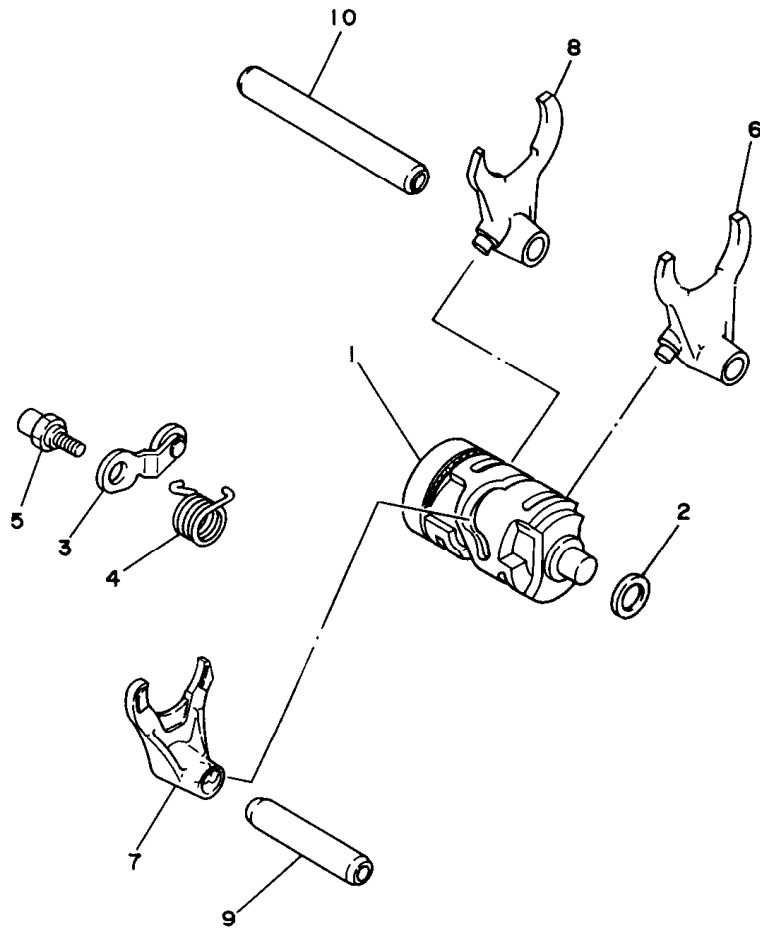


4MX1100-5130

REF. NO.	PART NO.	DESCRIPTION	Q'TY	REMARKS
27	93834-15076	SPROCKET,DRIVE 15T (23X1746150)	1	AP
28	90215-21239	WASHER, LOCK	1	
29	90179-20255	NUT	1	

**C4**

FIG. 14 SHIFT CAM. FORK



REF. NO.	PART NO.	DESCRIPTION	Q'TY	REMARKS
1	3XK-18540-01	SHIFT CAM ASSY	1	
2	90201-12166	WASHER, PLATE	1	
3	3XK-18140-00	STOPPER LEVER ASSY	1	
4	90508-26561	SPRING, TORSION	1	
5	3XK-18177-00	BOLT, STOPPER	1	
6	4SR-18511-00	FORK, SHIFT 1	1	
7	2VM-18512-00	FORK, SHIFT 2	1	
8	4SR-18513-00	FORK, SHIFT 3	1	
9	4EX-18531-00	BAR, SHIFT FORK GUIDE 1	1	
10	3XV-18535-00	BAR, SHIFT FORK GUIDE 2	1	

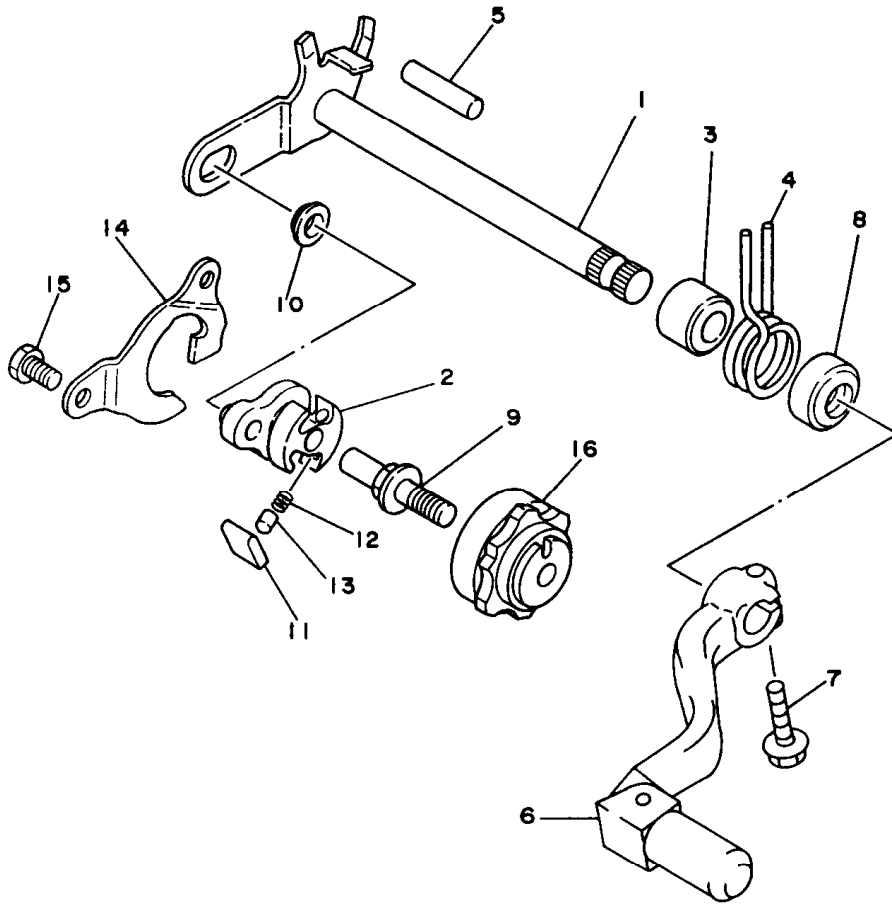


4SR1100-6140

C5

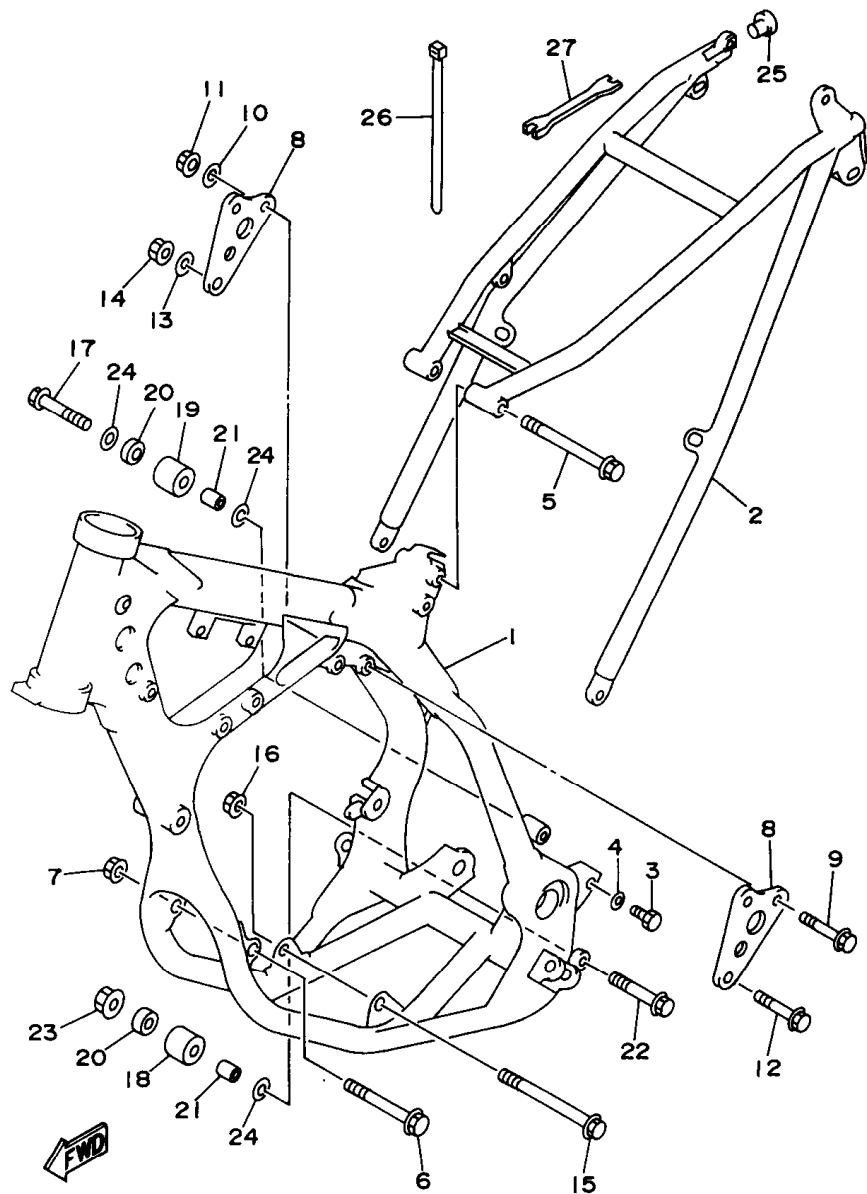
FIG. 15 SHIFT SHAFT

REF. NO.	PART NO.	DESCRIPTION	Q'TY	REMARKS
1	3XK-18101-02	SHIFT SHAFT ASSY	1	
2	3XK-18122-00	LEVER, SHIFT 2	1	
3	90560-12280	SPACER	1	
4	90508-291A8	SPRING, TORSION	1	
5	93608-33046	PIN, DOWEL	1	
6	4SS-18110-00	SHIFT PEDAL ASSY	1	
7	95027-06020	BOLT, FLANGE	1	
8	93102-12106	OIL SEAL (SD 12-22-5 HS)	1	
9	3XJ-18173-00	PIN, SHIFT	1	
10	3XJ-18178-00	ROLLER, SHIFT LEVER	1	
11	3XJ-18182-00	PAWL, SHIFTER	2	
12	90501-05265	SPRING, COMPRESSION	2	
13	3XJ-18184-00	PIN, PAWL	2	
14	4DA-18172-00	GUIDE, SHIFT	1	
15	90101-06664	BOLT	2	
16	4EW-18185-00	SEGMENT	1	



4SR1100-6150

C6



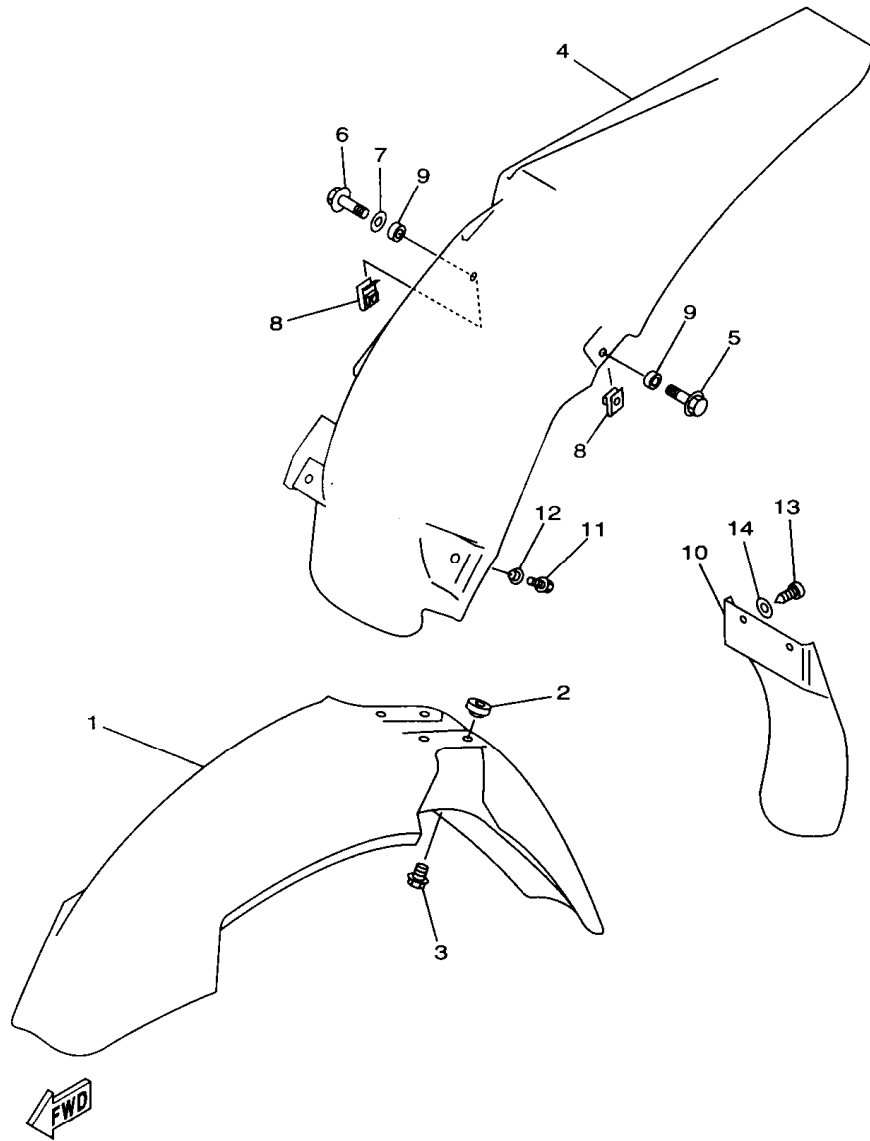
4SR1100-6160

FIG. 16 FRAME

REF. NO.	PART NO.	DESCRIPTION	Q'TY	REMARKS
1	4SR-21101-00-UJ	FRONT FRAME COMP.	1	RADICAL WHITE
2	4SR-21190-00-UJ	REAR FRAME COMP.	1	RADICAL WHITE
3	90106-08051	BOLT	2	
4	90201-080E2	WASHER, PLATE	2	
5	90105-08099	BOLT, WASHER BASED	1	
6	90105-08100	BOLT, WASHER BASED	1	
7	95617-08200	NUT, SELF-LOCKING	1	
8	4SR-21425-00	BRACKET, REAR UPPER 1	2	
9	95817-08050	BOLT, FLANGE	2	
10	90201-08730	WASHER, PLATE	2	
11	95617-08200	NUT, SELF-LOCKING	2	
12	95817-10050	BOLT, FLANGE	1	
13	92907-10200	WASHER, PLAIN	1	
14	95617-10200	NUT, SELF-LOCKING	1	
15	90105-10733	BOLT, WASHER BASED	1	
16	95617-10200	NUT, SELF-LOCKING	1	
17	95027-08040	BOLT, FLANGE	1	
18	3JD-22178-10	TENSIONER	1	
19	4EW-22178-00	TENSIONER	1	
20	93300-60804	BEARING	2	
21	90387-086N4	COLLAR	2	
22	95027-08065	BOLT, FLANGE	1	
23	95707-08500	NUT, FLANGE	1	
24	90201-086P8	WASHER, PLATE	3	
25	90338-16148	PLUG	2	
26	90464-14117	CLAMP	1	
27	56A-28166-00	WRENCH, HEXAGON	1	



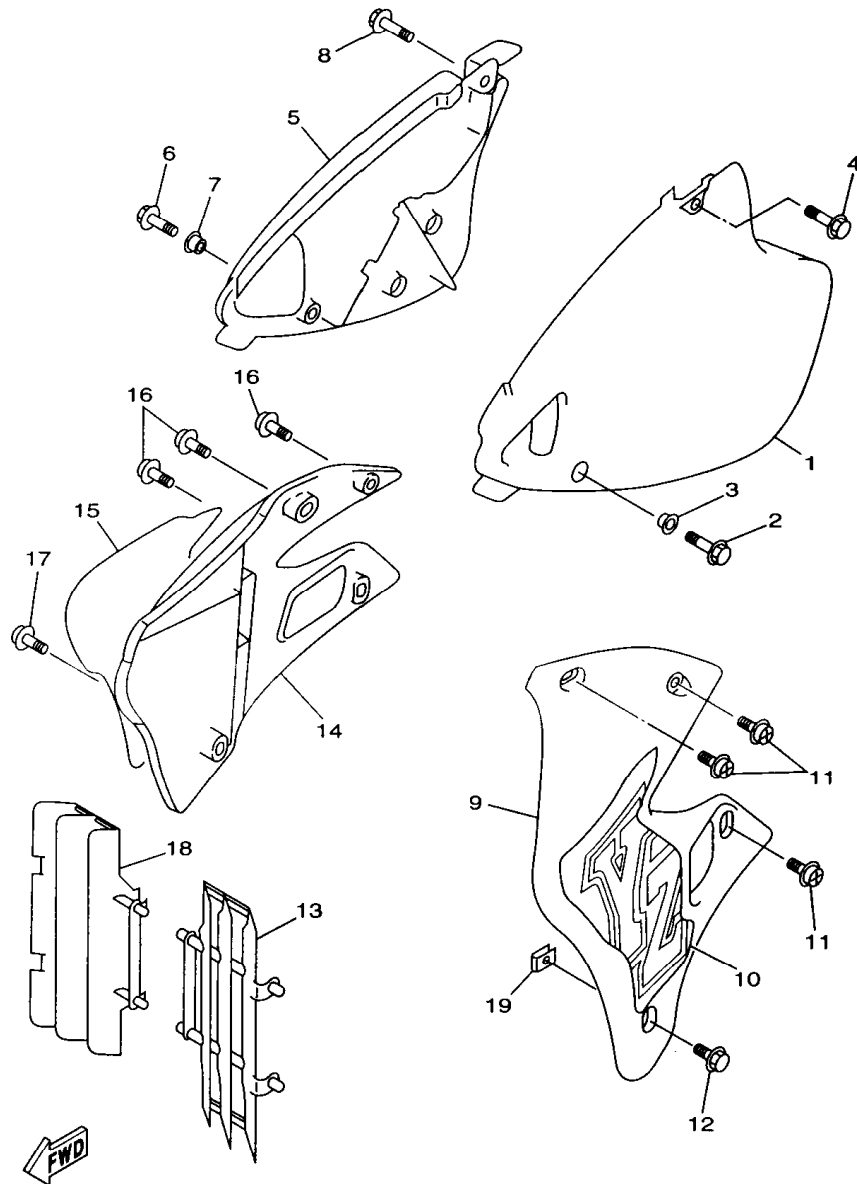
FIG. 17 FENDER



4SR1100-6170

REF. NO.	PART NO.	DESCRIPTION	Q'TY	REMARKS
1	4DA-21511-00	FENDER, FRONT	1	
2	3JD-21748-00	COLLAR	4	
3	90119-06096	BOLT, WITH WASHER	4	
4	4SS-21611-00	FENDER, REAR	1	
5	95027-06012	BOLT, FLANGE	1	
6	95027-06030	BOLT, FLANGE	1	
7	90201-063J2	WASHER, PLATE	1	
8	90183-06023	NUT, SPRING	2	
9	90387-0701A	COLLAR	2	
10	4ES-21642-00	GUARD, FLAP	1	
11	95027-06020	BOLT, FLANGE	2	
12	90387-0600F	COLLAR	2	
13	97707-60016	SCREW, TAPPING	2	
14	90201-065F3	WASHER, PLATE	2	

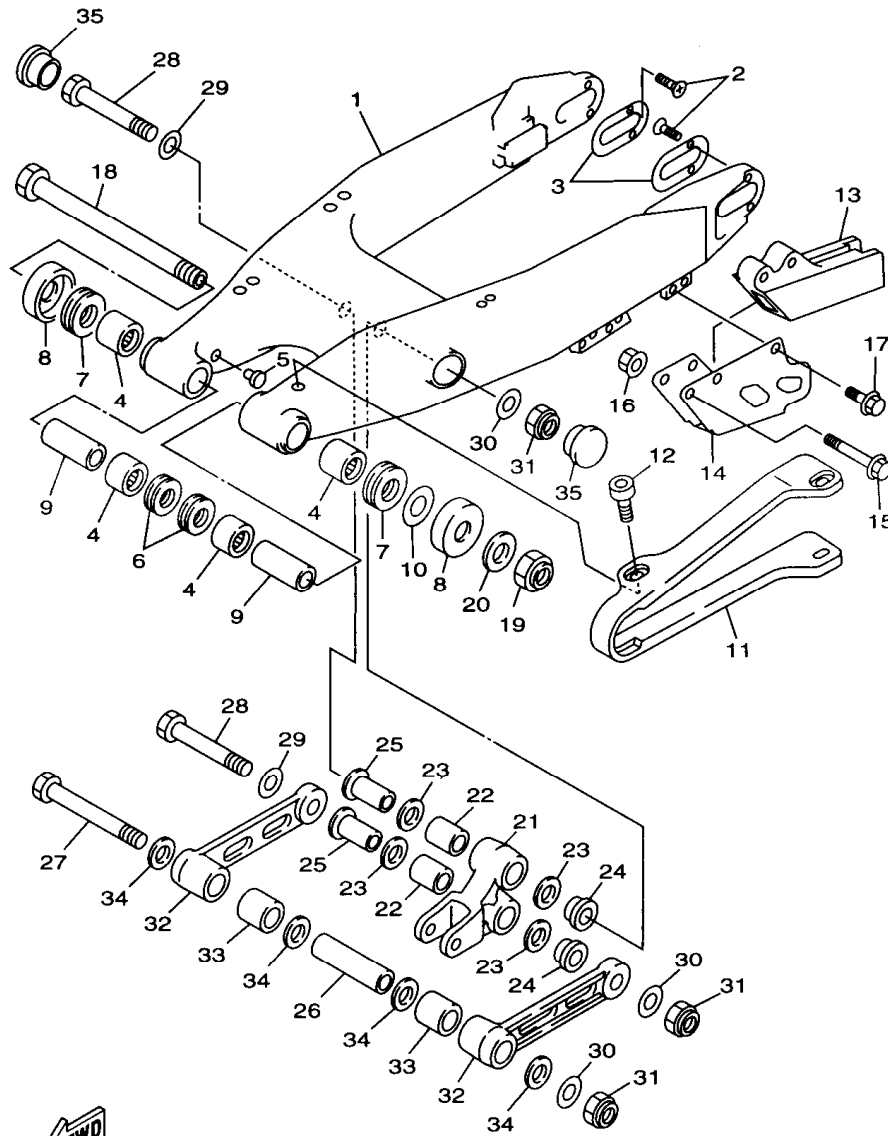
FIG. 18 SIDE COVER



4SS1100-6180

REF. NO.	PART NO.	DESCRIPTION	Q'TY	REMARKS
1	4SS-21711-00	COVER, SIDE 1	1	
2	95817-06016	BOLT, FLANGE	1	
3	90387-0600F	COLLAR	1	
4	95817-06016	BOLT, FLANGE	1	
5	4SS-21721-00	COVER, SIDE 2	1	
6	95817-06016	BOLT, FLANGE	1	
7	90387-0600F	COLLAR	1	
8	95817-06016	BOLT, FLANGE	1	
9	4SS-21731-00	COVER, SIDE 3	1	
10	4SS-21783-01	EMBLEM 3	1	
11	90159-06182	SCREW, WITH WASHER	3	
12	90159-06078	SCREW, WITH WASHER	1	
13	4EW-2172A-10	PANEL 1	1	
14	4SS-21741-00	COVER, SIDE 4	1	
15	4SS-21784-01	EMBLEM 4	1	
16	90159-06182	SCREW, WITH WASHER	3	
17	90159-06078	SCREW, WITH WASHER	1	
18	4EW-2172A-10	PANEL 1	1	
19	90183-06069	NUT, SPRING	2	

FIG. 19 REAR ARM

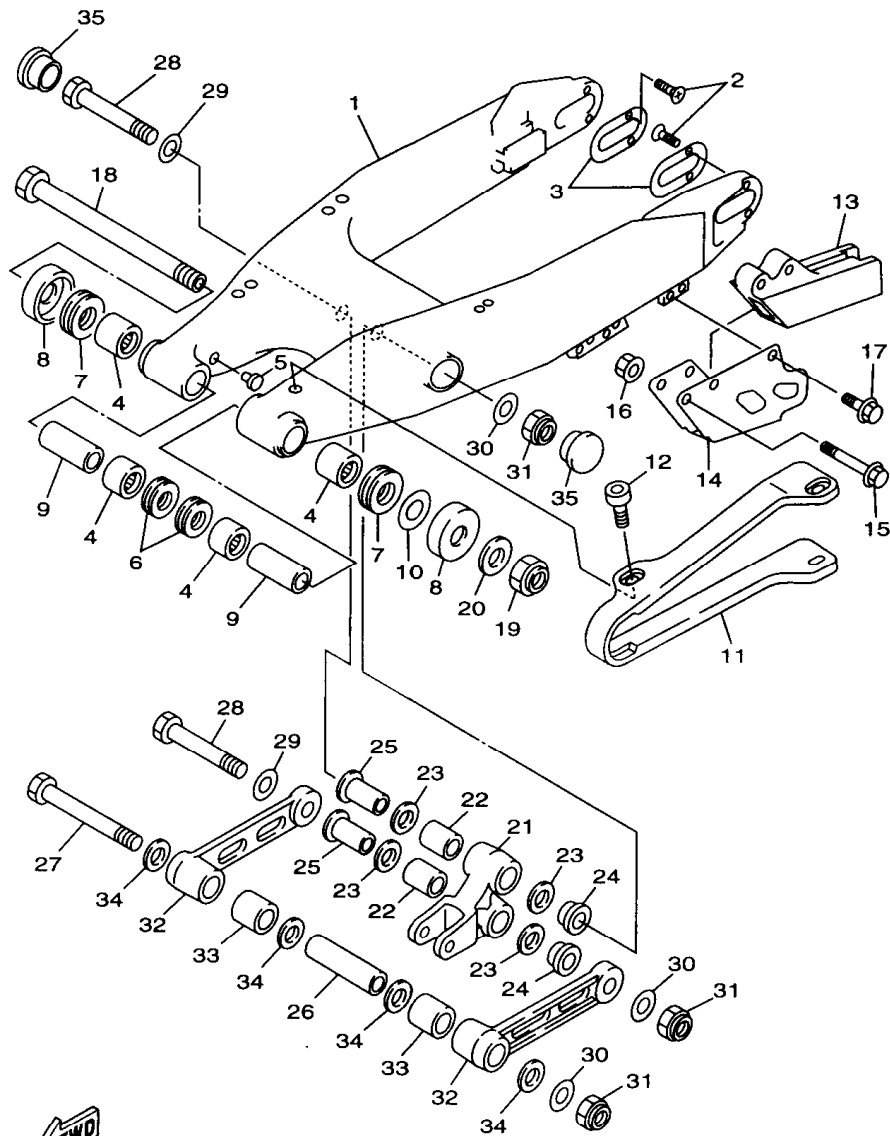


4SS1100-6190

REF. NO.	PART NO.	DESCRIPTION	Q'TY	REMARKS
1	4SR-22110-00	REAR ARM COMP.	1	
2	90151-04048	SCREW, COUNTERSUNK	4	
3	4SS-22355-00	PATCH A	2	
4	93317-22262	BEARING, CYLINDRICAL	4	
5	90338-16148	PLUG	2	
6	93106-22019	OIL SEAL (DC 22-28-8)	2	
7	93342-22215	BEARING, THRUST	2	
8	4EW-22129-00	COVER, THRUST 2	2	
9	90380-16158	BUSH, SOLID	2	
10	156-22127-00	SHIM (0.3T)	1	
11	4EW-22151-01	SEAL, GUARD	1	
12	90110-05201	BOLT, HEXAGON SOCKET HEAD	4	
13	4EW-22199-01	SUPPORT, CHAIN	1	
14	4MX-22128-00	COVER, THRUST 1	1	
15	95027-06045	BOLT, FLANGE	2	
16	90179-06568	NUT	2	
17	95027-06010	BOLT, FLANGE	1	
18	1LX-22141-00	SHAFT, PIVOT	1	
19	90185-16127	NUT, SELF-LOCKING	1	
20	90201-164H4	WASHER, PLATE	1	
21	4SS-2217A-00	ARM, RELAY	1	
22	93315-22046	BEARING, CYLINDRICAL	2	
23	93109-20029	OIL SEAL	4	
24	90387-164N2	COLLAR	2	
25	90387-164N3	COLLAR	2	
26	90387-167Y9	COLLAR	1	
27	90109-147F2	BOLT	1	
28	90109-142F4	BOLT	2	

**C10**

FIG. 19 REAR ARM

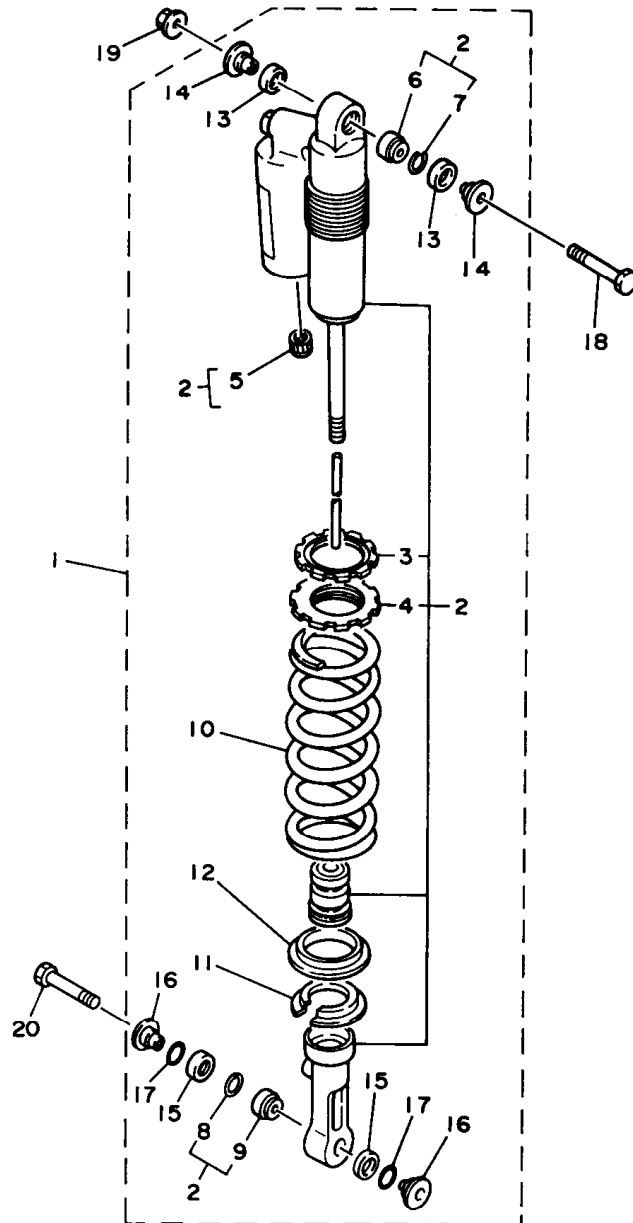


REF. NO.	PART NO.	DESCRIPTION	QTY	REMARKS
29	90201-164H4	WASHER, PLATE	2	
30	90201-14740	WASHER, PLATE	3	
31	90185-14070	NUT, SELF-LOCKING	3	
32	4SS-2217F-00	ROD, CONNECTING 1	1	
33	93315-22046	BEARING, CYLINDRICAL	2	
34	93109-20029	OIL SEAL	2	
35	1HX-2135F-10	COVER	2	

4SS1100-6190

**C11**

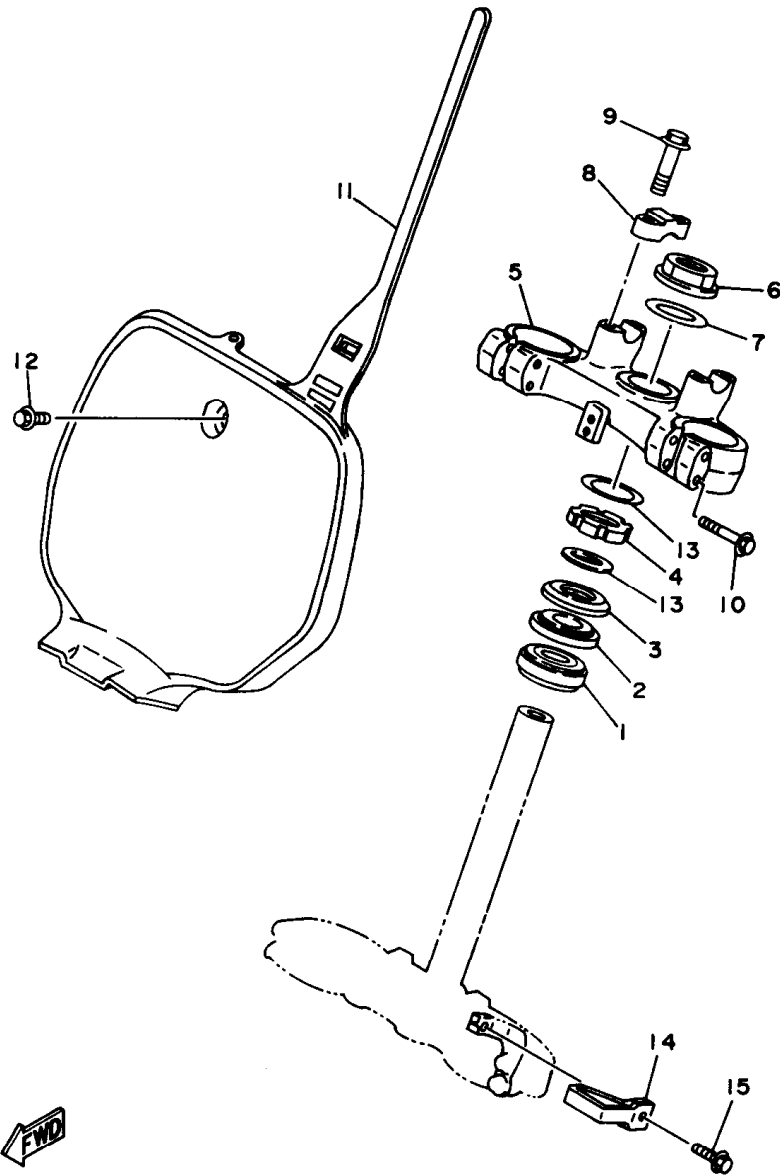
FIG. 20 REAR SUSPENSION



REF. NO.	PART NO.	DESCRIPTION	Q'TY	REMARKS
1	4SR-22210-10	SHOCK ABSORBER ASSY, REAR	1	UR FOR U.S.A
	4SR-22210-00	SHOCK ABSORBER ASSY, REAR	1	UR FOR EUROPE, OCEANIA, S.AFRICA
	4SR-22210-20	SHOCK ABSORBER ASSY, REAR	1	UR FOR JAPAN
	4SR-22210-30	SHOCK ABSORBER ASSY, REAR	1	UR FOR CANADA
2	4SR-22201-10	.DAMPER SUB ASSY	1	UR FOR U.S.A
	4SR-22201-00	.DAMPER SUB ASSY	1	UR FOR EUROPE, OCEANIA, S.AFRICA
	4SR-22201-20	.DAMPER SUB ASSY	1	UR FOR JAPAN
	4SR-22201-30	.DAMPER SUB ASSY	1	UR FOR CANADA
3	3SP-22234-00	..GUIDE, SPRING 3	1	
4	3SP-22213-00	..SEAT, SPRING UPPER	1	
5	509-23184-L0	..CAP, AIR VALVE	1	
6	4MX-22216-00	..BUSH, REAR SHOCK ABSORBER	1	
7	43M-22274-00	..RING, STOP	1	
8	3Y6-23183-00	..CIRCLIP	1	
9	4JX-22226-00	..BUSH, SHOCK ABSORBER LOWER	1	
10	4JX-22212-40	.SPRING (K=5.0)	1	
11	3JD-22214-00	.GUIDE, SPRING 1	1	
12	3JD-22224-00	.GUIDE, SPRING 2	1	
13	3JD-22475-00	.SEAL, DUST	2	
14	3XJ-22253-00	.COLLAR, DISTANCE	2	
15	3JE-22475-00	.SEAL, DUST	2	
16	4EW-22253-00	.COLLAR, DISTANCE	2	
17	4EW-22474-00	.SEAL, RING	2	
18	3SP-22241-00	BOLT 1	1	
19	95617-10200	NUT, SELF-LOCKING	1	
20	90105-10614	BOLT, WASHER BASED	1	

FWD  
4JX1100-4200

FIG. 21 STEERING



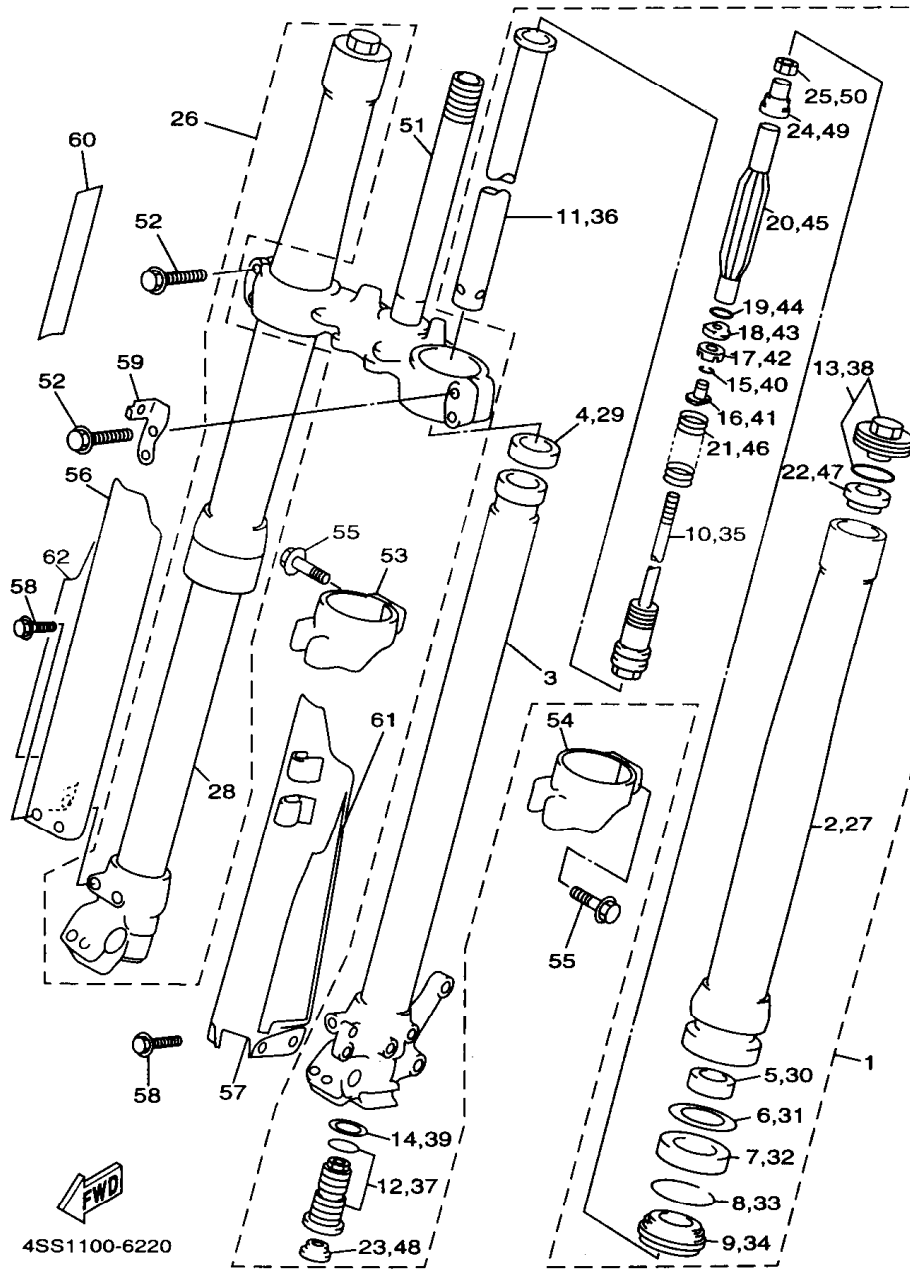
REF. NO.	PART NO.	DESCRIPTION	Q'TY	REMARKS
1	93332-00081	BEARING	1	
2	93332-00078	BEARING	1	
3	4EW-23416-00	COVER, BALL RACE 2	1	
4	90179-28650	NUT	1	
5	4SS-23435-00	CROWN, HANDLE	1	
6	90170-24373	NUT	1	
7	90201-247L2	WASHER, PLATE	1	
8	3SP-23441-00	HOLDER, HANDLE UPPER	2	
9	95027-08035	BOLT, FLANGE	4	
10	95027-08040	BOLT, FLANGE	4	
11	4DA-23485-01	PLATE, NUMBER	1	
12	90119-06185	BOLT, WITH WASHER	1	
13	90201-286K9	WASHER, PLATE	2	
14	4DA-23389-00	GUIDE, CABLE	1	
15	90105-05361	BOLT, WASHER BASED	1	



4JX1100-4210

**C13**

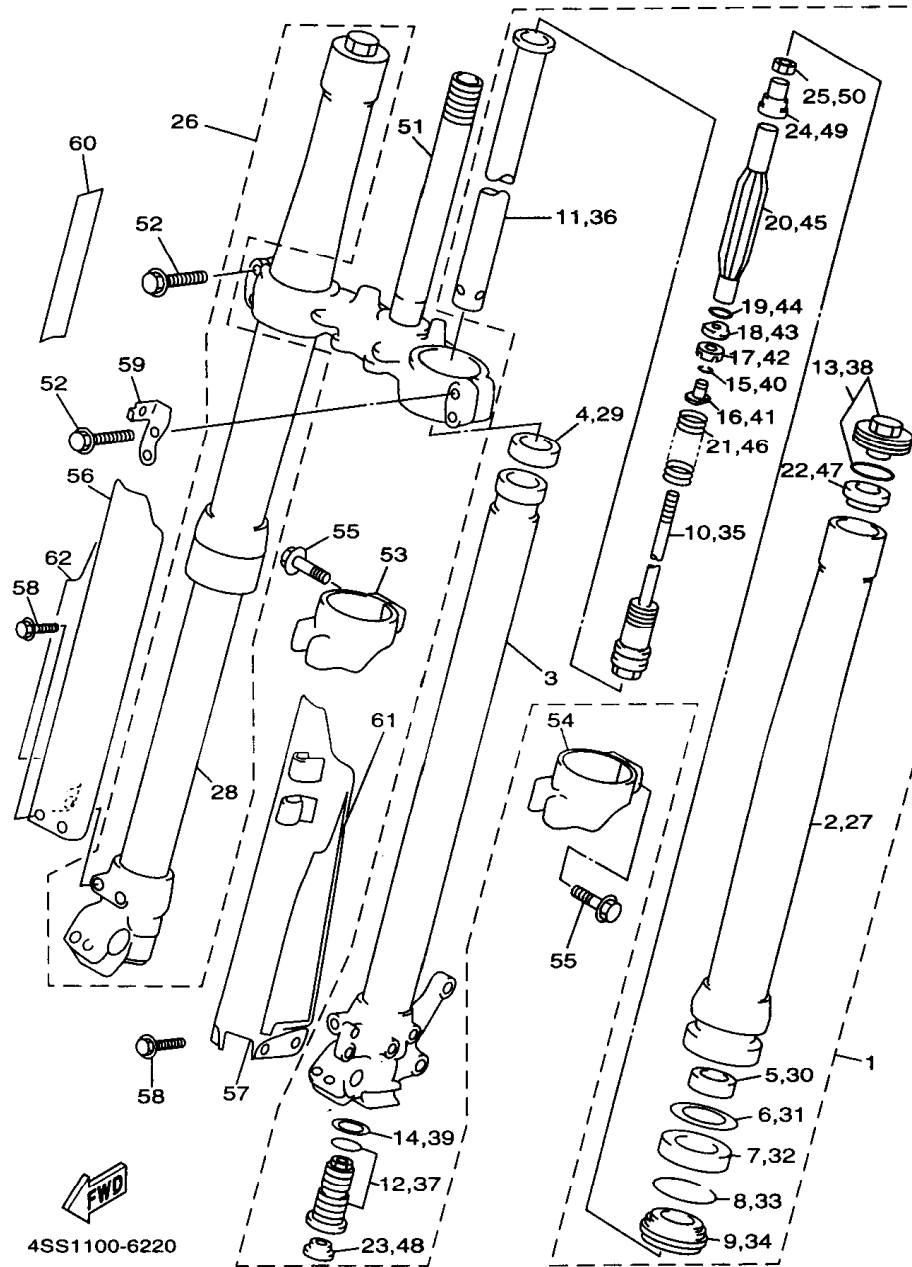
FIG. 22 FRONT FORK



REF. NO.	PART NO.	DESCRIPTION	Q'TY	REMARKS
1	4SR-23102-LO	FRONT FORK ASSY (L.H)	1	
2	4SS-23136-LO	.TUBE, OUTER (RIGHT)	1	
3	4SS-23120-LO	.INNER TUBE COMP.2	1	
4	4SS-23171-LO	.PISTON, FRONT FORK	1	
5	4SS-23125-LO	.METAL, SLIDE 1	1	
6	4SS-23146-LO	.WASHER, OIL SEAL	1	
7	4SS-23145-LO	.OIL SEAL	1	
8	4SS-23153-LO	.RING, SNAP	1	
9	4SS-23144-LO	.SEAL, DUST	1	
10	4SS-2314A-LO	.PISTON ROD ASSY	1	
11	4SS-23170-LO	.CYLINDER COMP., FRONT FORK	1	
12	4SR-2316A-LO	.VALVE COMP.	1	
13	4SS-23111-LO	.BOLT, CAP	1	
14	4SS-23158-LO	.GASKET	1	
15	3SP-23153-LO	.RING, SNAP	2	
16	3SP-23113-LO	.COLLAR	1	
17	3SP-23166-LO	.SPACER, OIL LOCK	1	
18	3SP-23393-LO	.NUT, SPECIAL	1	
19	3JD-23147-LO	.O-RING	1	
20	4SR-23142-LO	.SEAT, SPRING UPPER	1	
21	4SR-23141-LO	.SPRING, FRONT FORK (K=0.42)	1	
22	4SS-23143-LO	.SEAT, SPRING LOWER	1	
23	3JD-2312G-LO	.PLUG	1	
24	4SS-23363-LO	.COLLAR 1	1	
25	3SP-23357-LO	.NUT	1	
26	4SR-23103-LO	FRONT FORK ASSY (R.H)	1	
27	4SS-23136-LO	.TUBE, OUTER (RIGHT)	1	
28	4SS-23110-LO	.INNER TUBE COMP.1	1	

**C14**

FIG. 22 FRONT FORK



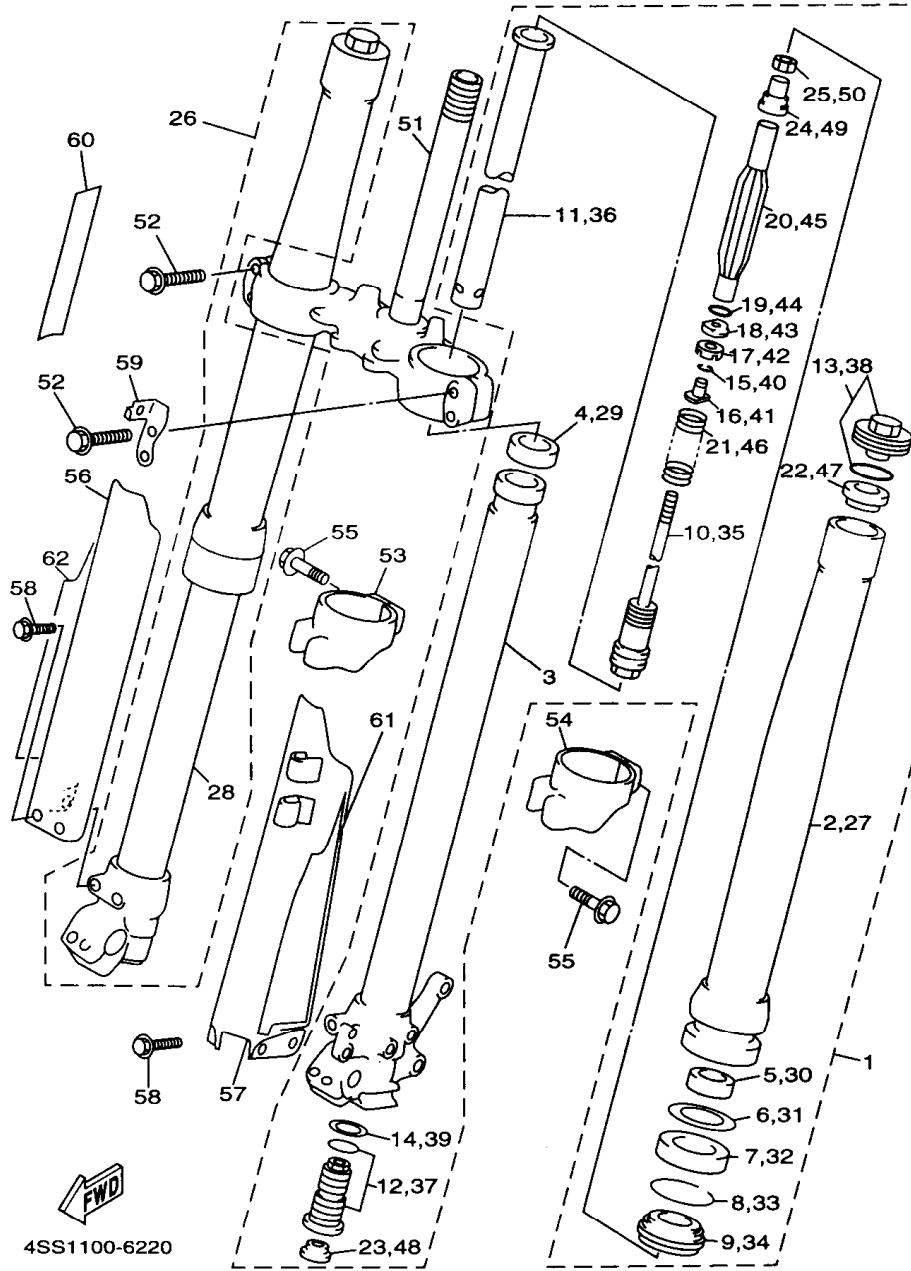
REF. NO.	PART NO.	DESCRIPTION	Q'TY	REMARKS
29	4SS-23171-L0	.PISTON, FRONT FORK	1	
30	4SS-23125-L0	.METAL, SLIDE 1	1	
31	4SS-23146-L0	.WASHER, OIL SEAL	1	
32	4SS-23145-L0	.OIL SEAL	1	
33	4SS-23153-L0	.RING, SNAP	1	
34	4SS-23144-L0	.SEAL, DUST	1	
35	4SS-2314A-L0	.PISTON ROD ASSY	1	
36	4SS-23170-L0	.CYLINDER COMP., FRONT FORK	1	
37	4SR-2316A-L0	.VALVE COMP.	1	
38	4SS-23111-L0	.BOLT, CAP	1	
39	4SS-23158-L0	.GASKET	1	
40	3SP-23153-L0	.RING, SNAP	2	
41	3SP-23113-L0	.COLLAR	1	
42	3SP-23166-L0	.SPACER, OIL LOCK	1	
43	3SP-23393-L0	.NUT, SPECIAL	1	
44	3JD-23147-L0	.O-RING	1	
45	4SR-23142-L0	.SEAT, SPRING UPPER	1	
46	4SR-23141-L0	.SPRING, FRONT FORK (K=0.42)	1	
47	4SS-23143-L0	.SEAT, SPRING LOWER	1	
48	3JD-23126-L0	.PLUG	1	
49	4SS-23363-L0	.COLLAR 1	1	
50	3SP-23357-L0	.NUT	1	
51	4SR-23340-L0	UNDER BRACKET COMP.	1	
52	95024-08040	BOLT, FLANGE	8	
53	4SS-2314G-L0	PROTECTOR GUIDE COMP., 2	1	
54	4SS-2314F-L0	PROTECTOR GUIDE COMP., 1	1	
55	4SS-23346-L0	BOLT 1	2	
56	4SS-2314J-00	PROTECTOR COMP., 2	1	

**C15**



FIG. 22 FRONT FORK

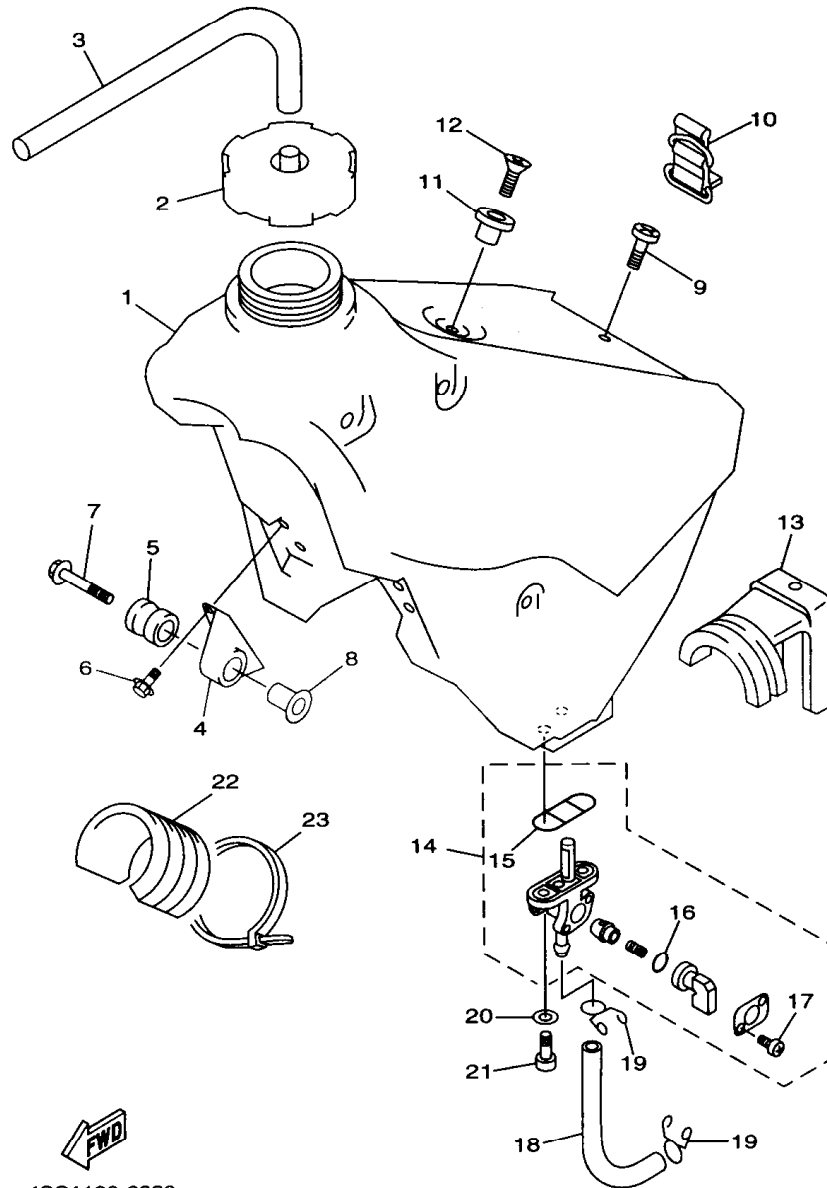
REF. NO.	PART NO.	DESCRIPTION	Q'TY	REMARKS
57	4SS-2314H-00	PROTECTOR COMP., 1	1	
58	3SP-23356-L0	BOLT 2	6	
59	4EW-2331E-L0	GUIDE, CABLE	1	
60	99241-00160	EMBLEM, YAMAHA	2	
61	4SS-2313B-11	EMBLEM 1	1	
62	4SS-2313C-11	EMBLEM 2	1	



4SS1100-6220

**D2**

FIG. 23 FUEL TANK



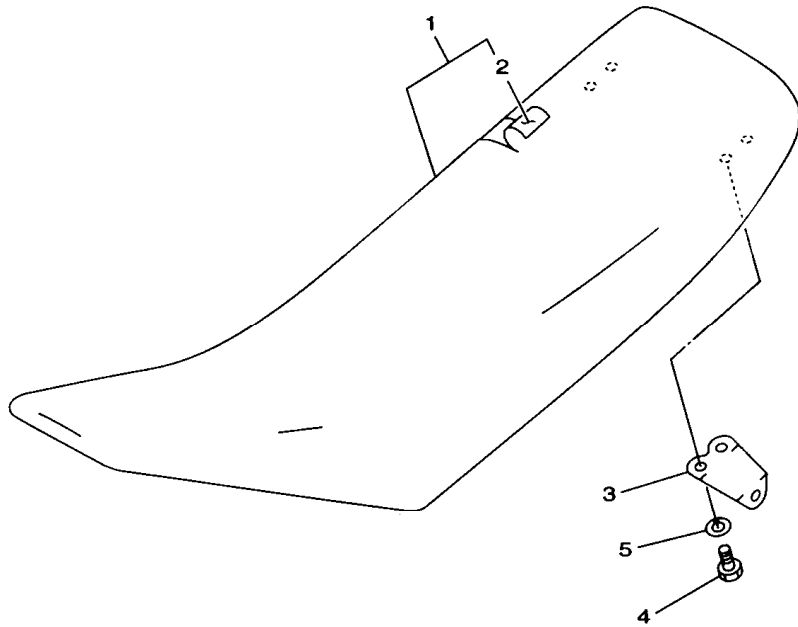
4SS1100-6230

REF. NO.	PART NO.	DESCRIPTION	Q'TY	REMARKS
1	4SS-24110-00	FUEL TANK COMP.	1	
2	1UY-24610-00	CAP ASSY	1	
3	90445-09252	HOSE	1	
4	24X-24144-00	HOLDER, DAMPER	2	
5	90480-18549	GROMMET	2	
6	95027-06016	BOLT, FLANGE	4	
7	90119-06214	BOLT, WITH WASHER	2	
8	3JD-24186-00	WASHER, SPECIAL	2	
9	98907-06020	SCREW, BIND	1	
10	3SP-24173-00	BAND, TANK FITTING 1	1	
11	4EW-2412F-00	BRACKET, SEAT	1	
12	98707-06025	SCREW, FLAT HEAD	1	
13	4SS-24181-00	DAMPER, LOCATING 1	1	
14	3JD-24500-01	FUEL COCK ASSY 1	1	
15	4X8-24512-00	.O-RING	1	
16	3AJ-24534-00	.SEAL, COCK	1	
17	98580-03008	.SCREW, PAN HEAD	2	
18	90445-116G8	HOSE	1	
19	90467-10008	CLIP	2	
20	90202-05187	WASHER, PLATE	2	
21	90149-06011	SCREW	2	
22	4SS-24182-00	DAMPER, LOCATING 2	1	
23	90464-14117	CLAMP	1	

D3

FIG. 24 SEAT

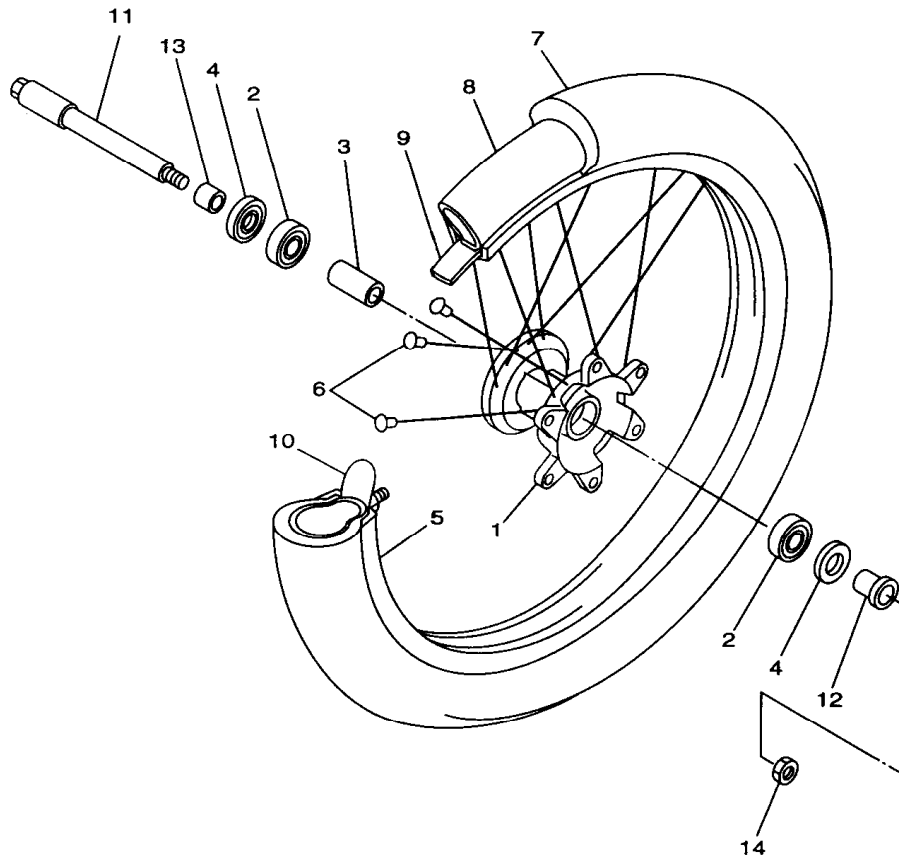
REF. NO.	PART NO.	DESCRIPTION	Q'TY	REMARKS
1	4SS-24770-00	SEMI-DOUBLE SEAT ASSY	1	
2	4SS-24731-00	.COVER, SEAT	1	
3	4SS-24728-00	.BRACKET, SEAT	2	
4	97027-06012	.BOLT	4	
5	92907-06100	.WASHER, SPRING	4	



4SS1100-6240

**D4**

FIG. 25 FRONT WHEEL



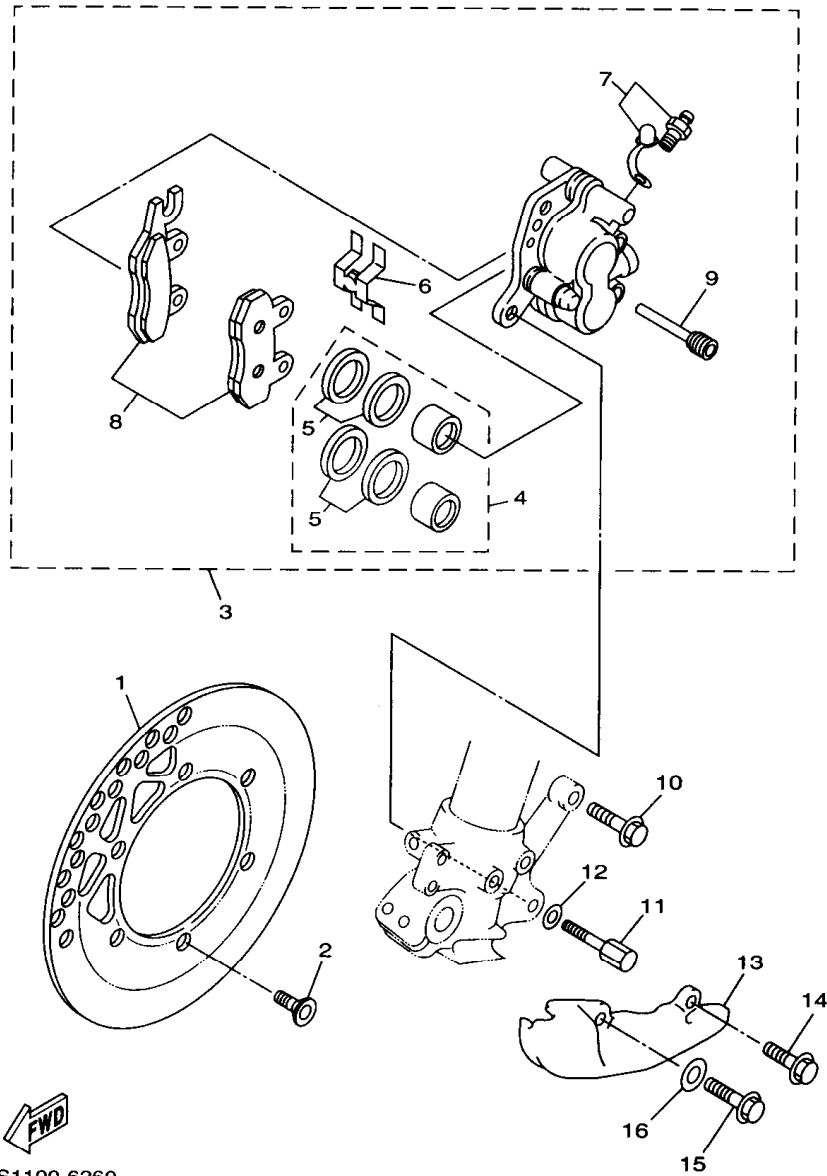
REF. NO.	PART NO.	DESCRIPTION	Q'TY	REMARKS
1	4SS-25111-00	HUB, FRONT	1	
2	93306-90403	BEARING	2	
3	90387-2007U	COLLAR	1	
4	93102-25360	OIL SEAL	2	
5	94416-21547	RIM (1.60-21)	1	
6	4DA-25104-00	SPOKE SET, FRONT	1	
7	94108-217X2	TIRE (80/100-21 K490)	1	UR DUNLOP
	94108-2102V	TIRE (80/100-21 51M D752F)	1	UR DUNLOP FOR EUROPE, CANADA
8	94227-21123	TUBE (2.75-21)	1	BRIDGESTONE
9	94307-21145	BAND, RIM (70-80/100-21)	1	DUNLOP
10	5X2-25394-00	SPACER, BEAD	1	
11	4SS-25181-00	AXLE, WHEEL	1	
12	90387-2007T	COLLAR	1	
13	90387-2007S	COLLAR	1	
14	90179-16672	NUT	1	



4SS1100-6250

**D5**

FIG. 26 FRONT BRAKE CALIPER

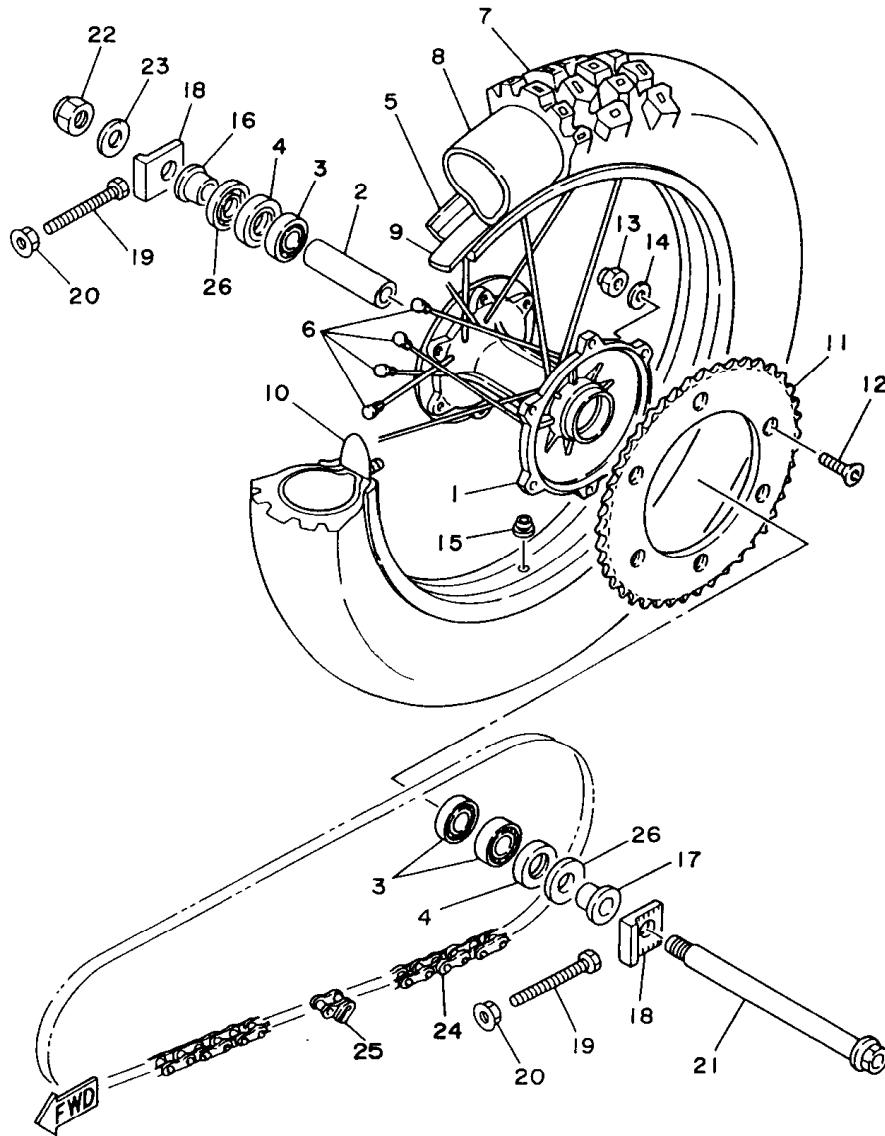


REF. NO.	PART NO.	DESCRIPTION	Q'TY	REMARKS
1	4JX-2582T-00	DISC, BRAKE	1	
2	90149-06272	SCREW	6	
3	4SS-2580T-00	CALIPER ASSY (LEFT)	1	
4	4EW-W0057-00	.PISTON ASSY, CALIPER	1	
5	3JD-W0047-00	..CALIPER SEAL KIT	1	
6	3SP-25919-01	.SUPPORT, PAD	1	
7	36Y-W0048-00	.BLEED SCREW KIT	1	
8	4SS-W0045-00	.BRAKE PAD KIT	1	
9	3GD-25933-00	.PIN, PAD	2	
10	90105-08659	BOLT, WASHER BASED	1	
11	90109-080G6	BOLT	1	
12	90201-090J9	WASHER, PLATE	1	
13	4SS-2314E-00	COVER, HOSE	1	
14	95817-06012	BOLT, FLANGE	1	
15	95027-08020	BOLT, FLANGE	1	
16	92907-08200	WASHER	1	

4SS1100-6260

**D6**

FIG. 27 REAR WHEEL



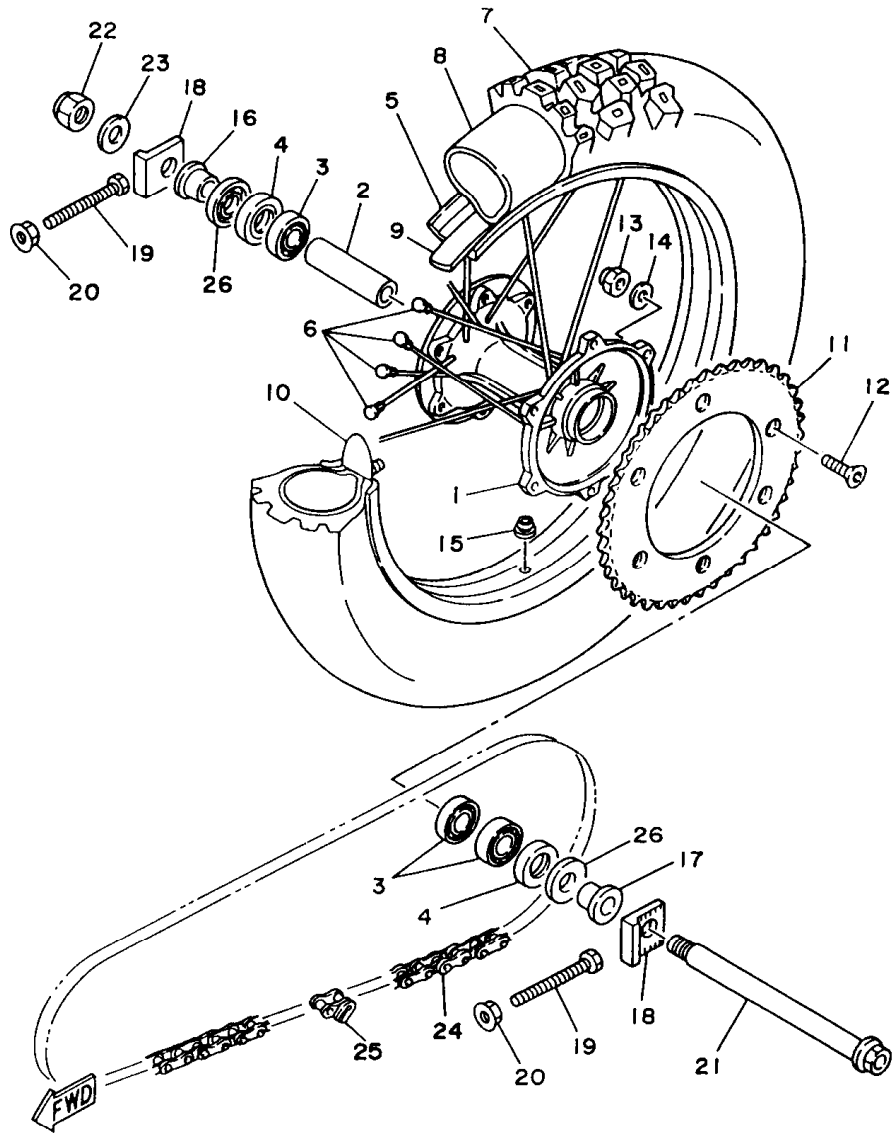
4SR1100-6270

REF. NO.	PART NO.	DESCRIPTION	Q'TY	REMARKS
1	4EW-25311-00	HUB, REAR	1	
2	90560-20278	SPACER	1	
3	93306-00418	BEARING	3	
4	93106-28023	OIL SEAL	2	
5	94421-19538	RIM (2.15-19)	1	
6	3JD-25304-00	SPOKE SET, REAR	1	
7	94111-1902Y	TIRE (110/90-19 62M K695)	1	UR DUNLOP
	94111-1902W	TIRE (110/90-19 62M D752)	1	UR DUNLOP FOR EUROPE, CANADA
8	94211-19273	TUBE (110/90 110/100-19TR4)	1	DUNLOP
9	94311-19155	BAND, RIM (110/90 110/100-19)	1	DUNLOP
10	3JE-25394-00	SPACER, BEAD	1	
11	4SS-25449-00	SPROCKET, DRIVEN (49T)	1	STD
	4SS-25447-00	SPROCKET, DRIVEN (47T)	1	AP
	4SS-25448-00	SPROCKET, DRIVEN (48T)	1	AP
	4SS-25450-00	SPROCKET, DRIVEN (50T)	1	AP
	4SS-25451-00	SPROCKET, DRIVEN (51T)	1	AP
	4SS-25452-00	SPROCKET, DRIVEN (52T)	1	AP
12	90109-08161	BOLT	6	
13	95617-08100	NUT, U	6	
14	90201-086P8	WASHER, PLATE	6	
15	90480-10068	GROMMET	1	
16	90387-2000B	COLLAR	1	
17	90387-2000C	COLLAR	1	
18	3SP-25388-00	PULLER, CHAIN 1	2	
19	90101-08777	BOLT	2	
20	95707-08500	NUT, FLANGE	2	
21	3JD-25381-01	AXLE, WHEEL	1	
22	90185-18104	NUT, SELF-LOCKING	1	

**D7**

FIG. 27 REAR WHEEL

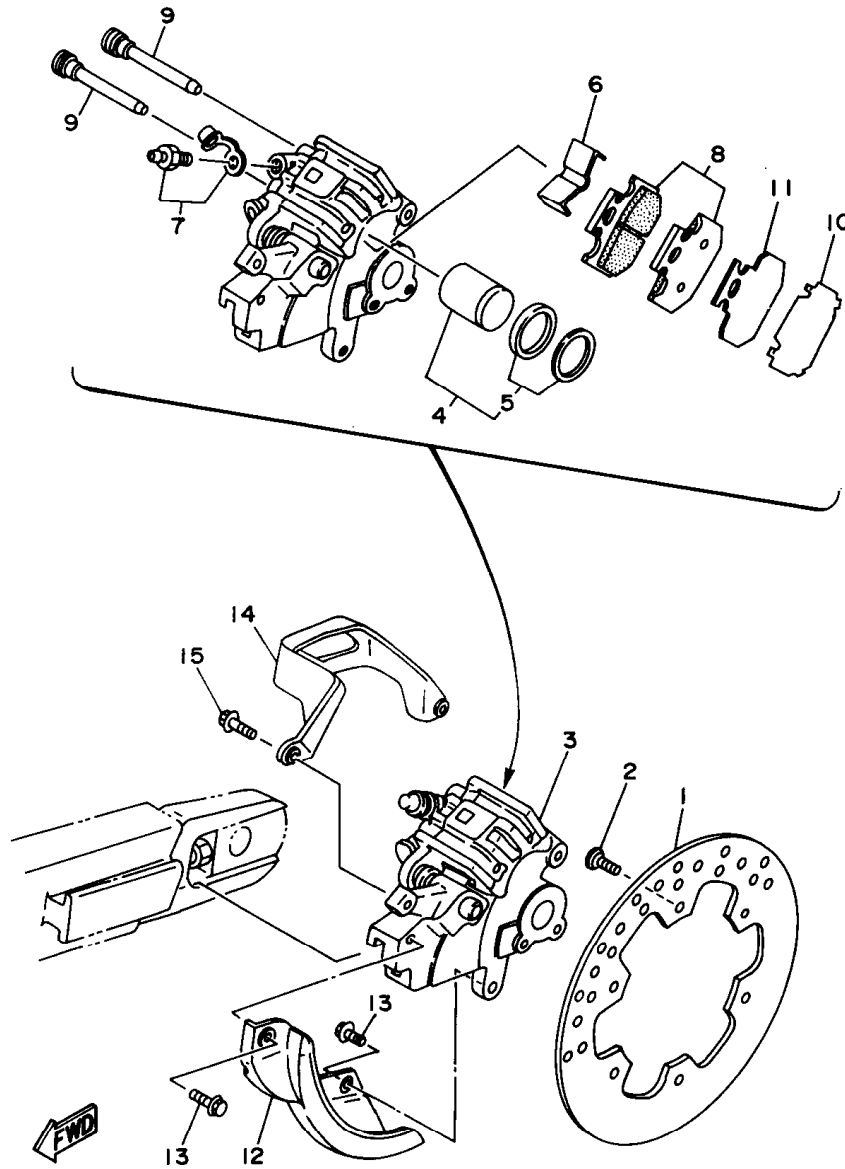
REF. NO.	PART NO.	DESCRIPTION	Q'TY	REMARKS
23	92907-18600	WASHER	1	
24	94561-55113	CHAIN (REGINA 135RX3-113L)	1	
25	94661-55001	JOINT, CHAIN	1	
26	4V4-25367-00	COVER, HUB DUST	2	



4SR1100-6270

**D8**

FIG. 28 REAR BRAKE CALIPER



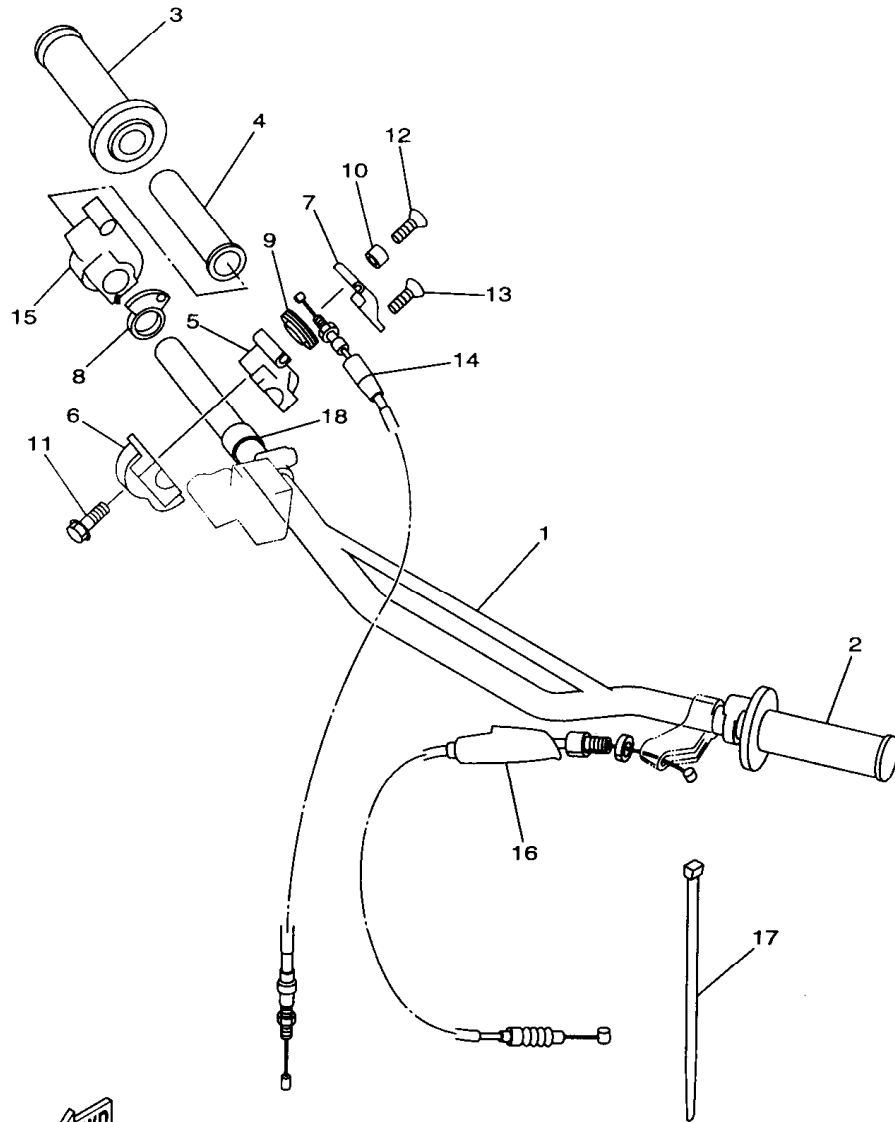
4PE1100-5280

REF. NO.	PART NO.	DESCRIPTION	Q'TY	REMARKS
1	4MX-2582W-00	DISC, REAR BRAKE 2	1	
2	90149-06272	SCREW	6	
3	4MX-2580W-00	CALIPER ASSY, REAR 2	1	
4	3SP-W0057-50	.PISTON ASSY, CALIPER	1	
5	3JD-W0047-50	..CALIPER SEAL KIT	1	
6	4GY-25919-50	.SUPPORT, PAD	1	
7	36Y-W0048-00	.BLEED SCREW KIT	1	
8	4GY-W0046-00	.BRAKE PAD KIT 2	1	
9	3SP-25924-51	.PIN, PAD	2	
10	4GY-25827-50	.SHIM, CALIPER	1	
11	4GY-22898-50	.INSULATOR, HEAT	1	
12	4MX-25718-00	PROTECTOR, DISK BRAKE	1	
13	95027-06012	BOLT, FLANGE	2	
14	4GY-27491-00	PROTECTOR	1	
15	95027-06016	BOLT, FLANGE	2	

**D9**



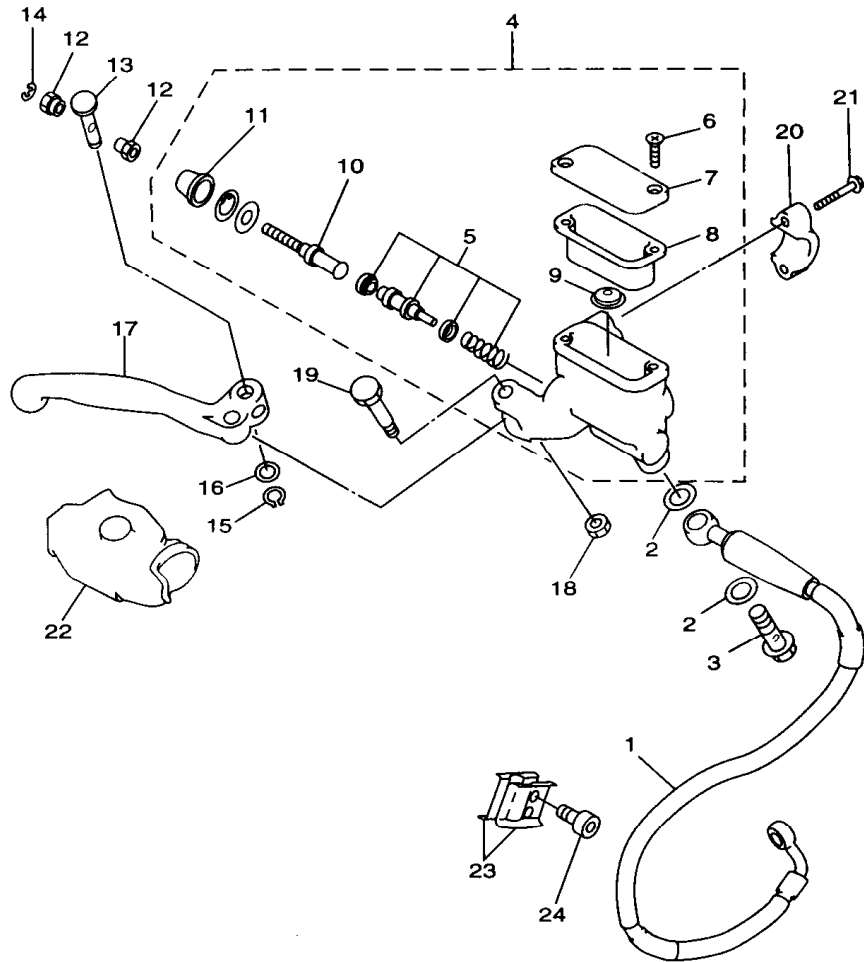
FIG. 29 STEERING HANDLE. CABLE



REF. NO.	PART NO.	DESCRIPTION	Q'TY	REMARKS
1	4JX-26111-00	HANDLEBAR	1	
2	4SS-26241-00	GRIP (LEFT)	1	
3	4SS-26242-00	GRIP (RIGHT)	1	
4	4SS-26243-00	TUBE, THROTTLE GUIDE	1	
5	4SS-26281-00	CAP, GRIP UPPER	1	
6	4SS-26282-01	CAP, GRIP LOWER	1	
7	4SS-2628H-00	CAP, WIRE	1	
8	4SS-2627A-00	ROTOR 2	1	
9	4SS-26273-00	ROTOR	1	
10	4SS-26259-00	COLLAR	1	
11	95027-06025	BOLT, FLANGE	2	
12	98707-04018	SCREW, FLAT HEAD	1	
13	98707-04010	SCREW, FLAT HEAD	1	
14	4SS-26311-01	CABLE, THROTTLE 1	1	
15	4SS-26287-01	COVER, CAP GRIP	1	
16	4EW-26335-00	CABLE, CLUTCH	1	
17	90464-14117	CLAMP	1	
18	90387-227H7	COLLAR	1	

4SR1100-6290

FIG. 30 FRONT MASTER CYLINDER



REF. NO.	PART NO.	DESCRIPTION	Q'TY	REMARKS
1	4SS-25872-00	HOSE, BRAKE 1	1	
2	90201-10118	WASHER, PLATE	4	
3	90401-10159	BOLT, UNION	2	
4	4SS-W2587-00	MASTER CYLINDER SUB ASSY	1	
5	4SS-W0041-00	.CYLINDER KIT, MASTER	1	
6	98707-04012	.SCREW, FLAT HEAD	2	
7	4SS-25852-00	.CAP, RESERVOIR	1	
8	4SS-25854-00	.DIAPHRAGM, RESERVOIR	1	
9	4SS-25889-00	.SEPARATOR ASSY	1	
10	4SS-25880-00	.PUSH ROD COMP.	1	
11	4SS-25868-00	.BOOT, MASTER CYLINDER	1	
12	4SS-2538E-00	NUT, ADJUSTING	2	
13	4SS-83913-00	COLLAR, LEVER 1	1	
14	3YX-25866-10	CIRCLIP	1	
15	4SS-25866-00	CIRCLIP	1	
16	4SS-2583G-00	WASHER	1	
17	4SS-83922-00	LEVER 2	1	
18	95617-06100	NUT, U	1	
19	4SS-2589F-00	BOLT, LEVER	1	
20	3YK-25867-00	BRACKET, MASTER CYLINDER	1	
21	4SS-25833-00	BOLT, FITTING	2	
22	4SS-26372-00	COVER, HANDLE LEVER 1	1	
23	90465-16258	CLAMP	2	
24	91317-06014	BOLT, SOCKET HEAD	2	

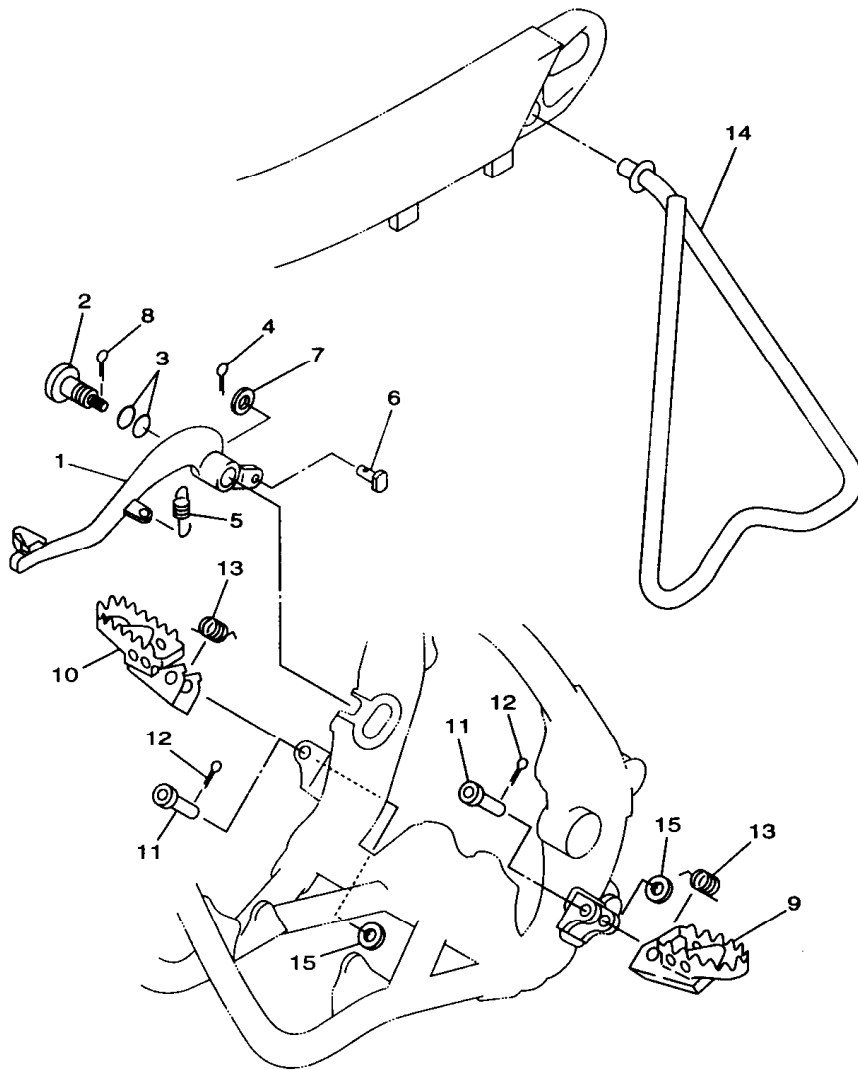


4SS1100-6300

**D11**

FIG. 31 STAND, FOOTREST

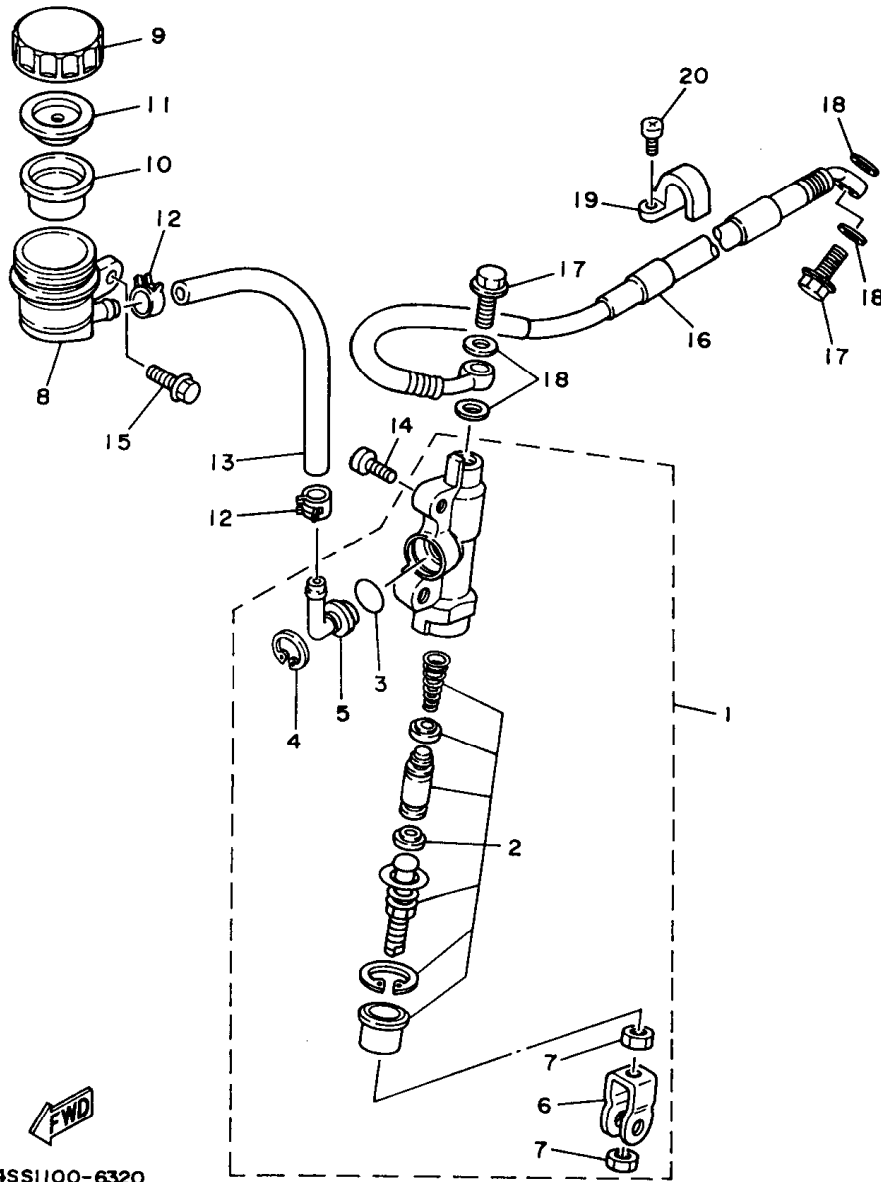
REF. NO.	PART NO.	DESCRIPTION	Q'TY	REMARKS
1	4SS-27200-00	PEDAL, BRAKE	1	
2	4SS-27217-00	BOLT	1	
3	93210-11073	O-RING	2	
4	91490-20025	PIN, COTTER	1	
5	90506-16500	SPRING, TENSION	1	
6	90240-08120	PIN, CLEVIS	1	
7	92990-08600	WASHER, PLATE	1	
8	90468-16191	CLIP	1	
9	4DA-27411-00	FOOTREST 1	1	
10	4DA-27421-00	FOOTREST 2	1	
11	90240-10117	PIN, CLEVIS	2	
12	91401-25020	PIN, COTTER	2	
13	90508-28777	SPRING, TORSION	2	
14	4ES-27311-00	STAND, SIDE	1	
15	90201-10119	WASHER, PLATE	2	



4SS1100-6310

**D12**

FIG. 32 REAR MASTER CYLINDER



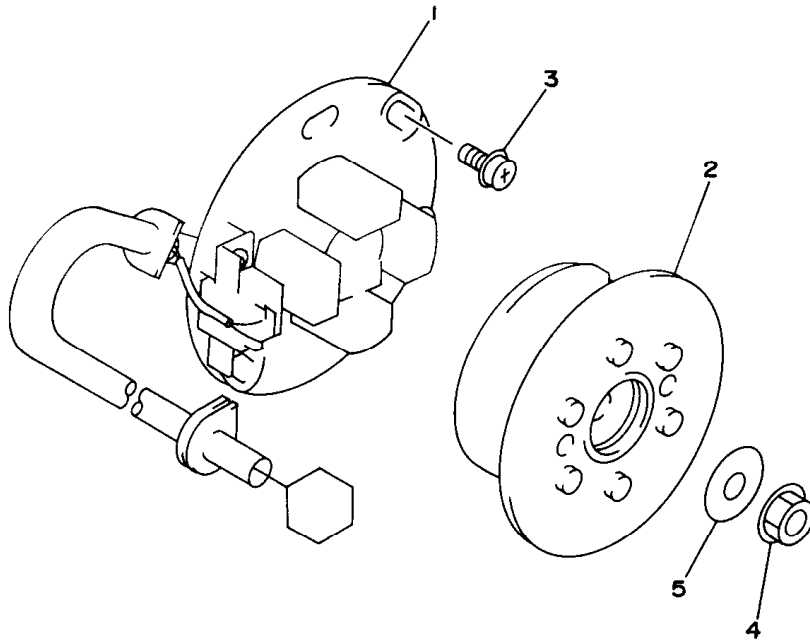
4SS1100-6320

REF. NO.	PART NO.	DESCRIPTION	Q'TY	REMARKS
1	3SP-2583V-00	RR. MASTER CYLINDER ASSY.	1	
2	4SS-W0042-50	.CYLINDER KIT, MASTER	1	
3	93210-15620	.O-RING	1	
4	2VN-25866-00	.CIRCLIP	1	
5	2VN-2582A-50	.JOINT	1	
6	3SP-27222-00	.JOINT	1	
7	95337-08600	.NUT	2	
8	4EW-25894-00	TANK, RESERVOIR	1	
9	3XP-25852-50	CAP, RESERVOIR	1	
10	2VN-25854-00	DIAPHRAGM, RESERVOIR	1	
11	2VN-25855-00	BUSH,DIAPHRAGM	1	
12	90467-11044	CLIP	2	
13	90445-137H9	HOSE	1	
14	92014-06016	BOLT, BUTTON HEAD	2	
15	95027-06012	BOLT, FLANGE	1	
16	4SS-25873-00	HOSE, BRAKE 2	1	
17	90401-10159	BOLT, UNION	2	
18	90201-10118	WASHER, PLATE	4	
19	2VM-25876-00	HOLDER, BRAKE HOSE 2	2	
20	97780-50110	SCREW, TAPPING	4	

**D13**

FIG. 33 GENERATOR

REF. NO.	PART NO.	DESCRIPTION	Q'TY	REMARKS
1	4SR-85560-00	BASE ASSY	1	
2	4SR-85550-00	ROTOR ASSY	1	
3	90149-06011	SCREW	2	
4	90179-10394	NUT	1	
5	90201-10774	WASHER, PLATE	1	

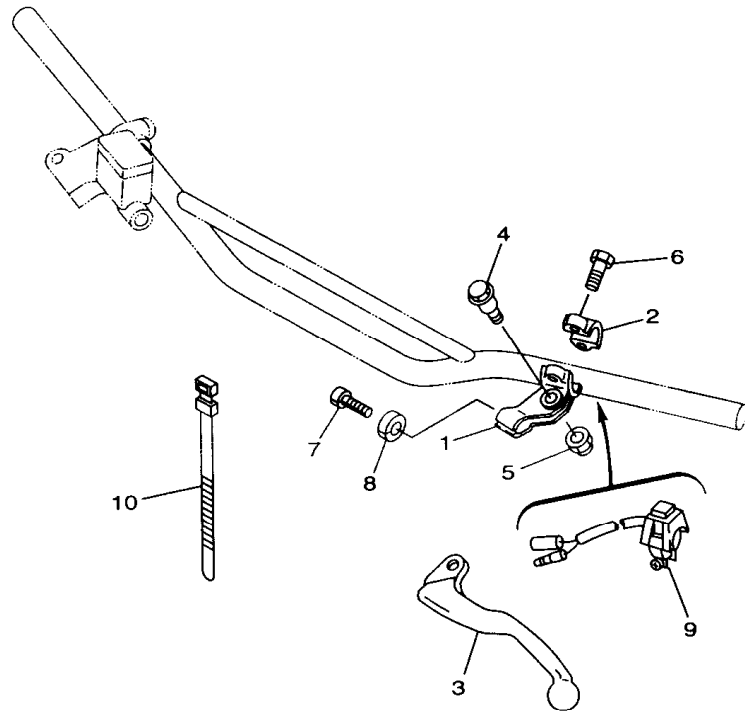


4SR1100-6330

**D14**

FIG. 34 HANDLE SWITCH. LEVER

REF. NO.	PART NO.	DESCRIPTION	Q'TY	REMARKS
1	38V-82911-00	HOLDER, LEVER 1	1	
2	38V-82913-00	HOLDER, LEVER LOWER 1	1	
3	4GY-83912-00	LEVER 1	1	
4	90109-06799	BOLT	1	
5	95617-06100	NUT, U	1	
6	97007-05016	BOLT	2	
7	90123-08090	BOLT	1	
8	90179-08401	NUT	1	
9	23X-83976-00	SWITCH, HANDLE 1	1	
10	437-83936-01	BAND, SWITCH CORD	2	

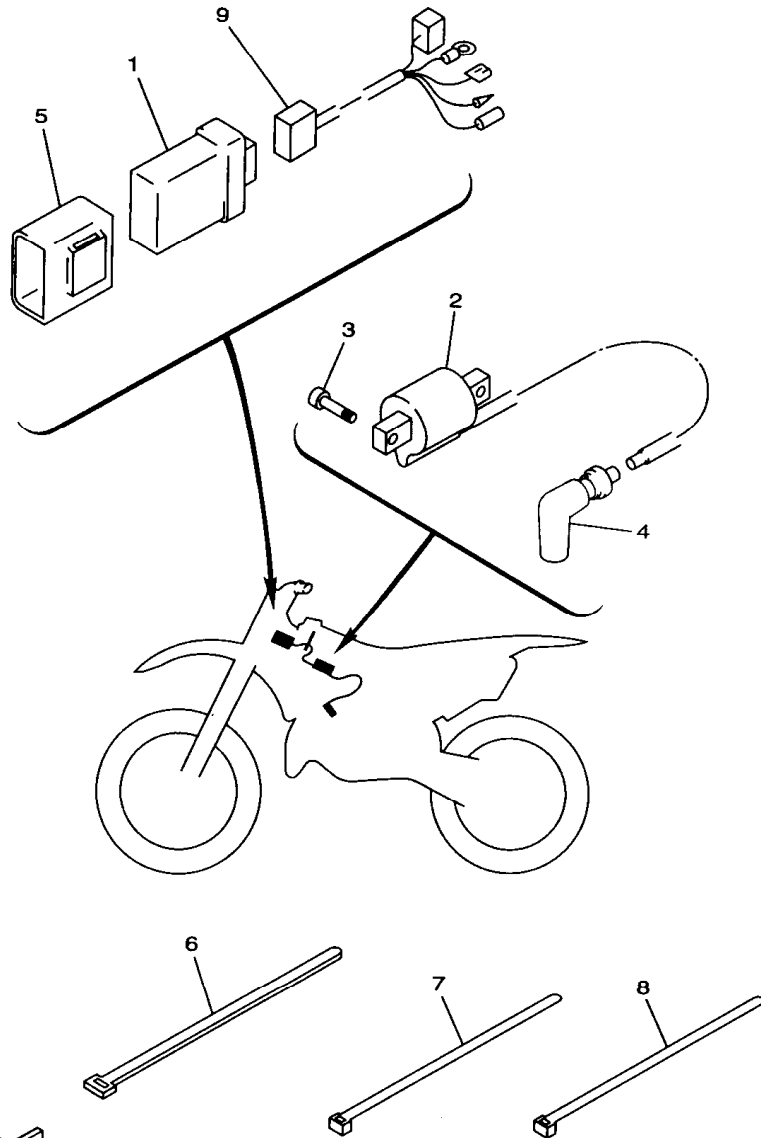


4SS1100-6340

**D15**

FIG. 35 ELECTRICAL 1

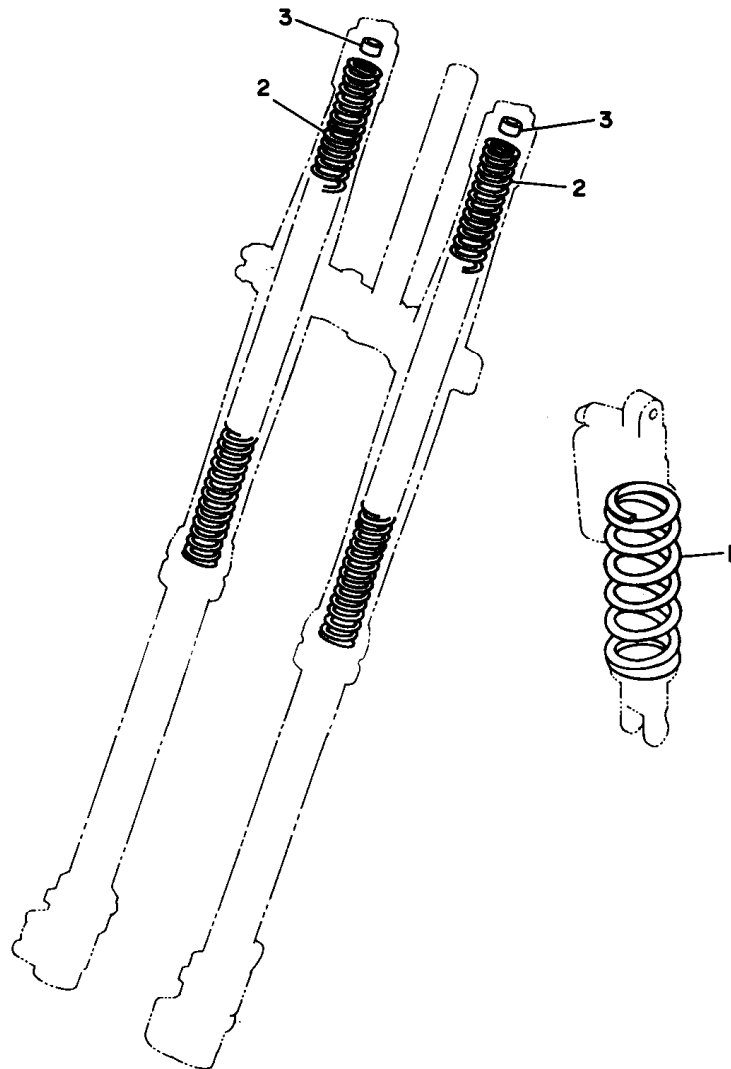
REF. NO.	PART NO.	DESCRIPTION	Q'TY	REMARKS
1	4SR-85540-00	C.D.I. UNIT ASSY	1	
2	4SR-82310-00	IGNITION COIL ASSY	1	
3	91317-06016	BOLT, SOCKET HEAD	2	
4	4PE-82370-00	PLUG CAP ASSY	1	
5	4SS-85546-00	BAND	1	
6	25G-83936-01	BAND, SWITCH CORD	1	
7	90464-13080	CLAMP	1	
8	90464-14117	CLAMP	1	
9	4SS-82509-00	WIRE, SUB LEAD	1	



4SS1100-6350

**E2**

FIG. 36 ALTERNATE (CHASSIS)



REF. NO.	PART NO.	DESCRIPTION	Q'TY	REMARKS
1	4JX-22212-10	SPRING (K=4.4)	1	AP
	4JX-22212-20	SPRING (K=4.6)	1	AP
	4JX-22212-30	SPRING (K=4.8)	1	AP
	4JX-22212-60	SPRING (K=5.4)	1	AP
	4JX-22212-40	SPRING (K=5.0)	1	AP
	4JX-22212-50	SPRING (K=5.2)	1	AP
2	4SS-23141-10	SPRING, FRONT FORK (K=0.38)	2	AP
	4SS-23141-20	SPRING, FRONT FORK (K=0.39)	2	AP
	4SS-23141-30	SPRING, FRONT FORK (K=0.40)	2	AP
	4SS-23141-40	SPRING, FRONT FORK (K=0.41)	2	AP
	4SS-23141-50	SPRING, FRONT FORK (K=0.42)	2	AP
	4SS-23141-60	SPRING, FRONT FORK (K=0.43)	2	AP
	4SS-23141-70	SPRING, FRONT FORK (K=0.44)	2	AP
3	4SS-23364-L0	COLLAR 2	1	UN



3XJ1100-1360

**E3**



FIG. 37 OPTIONAL PARTS 1

REF. NO.	PART NO.	DESCRIPTION	Q'TY	REMARKS
1	4SR-11630-00	PISTON ASSY (STD)	1	
2	4SR-11631-00-B0	.PISTON (STD)	1	
3	4JX-11603-00	.PISTON RING SET (STD)	1	
4	2VM-11633-01	.PIN, PISTON	1	
5	93450-19052	.CIRCLIP	2	
6	4SR-11650-00	CONNECTING ROD ASSY	1	
7	5X5-11651-03	.ROD, CONNECTING	1	
8	4SR-11681-00	.PIN, CRANK 1	1	
9	90209-25085	.WASHER	2	
10	93310-425P2	.BEARING, CYLINDRICAL	1	
11	93310-418E9	.BEARING, CYLINDRICAL	1	

# **INDEX**

NUMERICAL INDEX

PART NO.	GRID NO.	PART NO.	GRID NO.	PART NO.	GRID NO.	PART NO.	GRID NO.	PART NO.	GRID NO.	PART NO.	GRID NO.
4SS-W0041-00	D-11	3SP-11990-00	B- 4	4SR-1469A-00	B-12	38V-15651-00	B-15	4DA-21511-00	C- 8	4SS-22355-00	C-10
4SS-W0042-50	D-13	3SP-11992-11	B- 3	4SR-14753-00	B-12	4JW-15660-00	B-15	4SS-21611-00	C- 8	4EW-22474-00	C-12
4SS-W0045-00	D- 6	3SP-11993-10	B- 3	565-14771-00	B-12	2VM-15664-00	B-15	4ES-21642-00	C- 8	3JD-22475-00	C-12
4GY-W0046-00	D- 9	2VM-11995-01	B- 3	483-14781-02	B-12	2VM-16111-00	C- 2	4SS-21711-00	C- 9	3JE-22475-00	C-12
3JD-W0047-00	D- 6	4SR-1240A-00	B- 7	4SR-14916-CC	B-10	4EW-16150-01	C- 2	4EW-2172A-10	C- 9	4GY-22898-50	D- 9
3JD-W0047-50	D- 9	4SR-12422-00	B- 6	4SR-14916-CD	B-10	2K7-16154-00	C- 2		C- 9	4SR-23102-L0	C-14
36V-W0048-00	D- 6	2VM-12428-11	B- 6	4SR-14916-CE	B-10	3SP-16154-00	C- 2	4SS-21721-00	C- 9	4SR-23103-L0	C-14
	D- 9	2VM-12450-00	B- 6	4SR-14916-EC	B-10	2VM-16181-00	C- 2	4SS-21731-00	C- 9	4SS-23110-L0	C-14
	D- 9	4SR-12459-00	B- 6	4SR-14916-ED	B-10	3XK-16321-00	C- 2	4SS-21741-00	C- 9	4SS-23111-L0	C-14
3SP-W0057-50	D- 9	4SR-12461-00	B- 7	4SR-14916-EE	B-10	4X7-16325-00	C- 2	3JD-21748-00	C- 8		C-15
4EW-W0057-00	D- 6	22W-12462-00	B- 7	4SR-14919-00	B-10	4EW-16351-01	C- 2	4SS-21783-01	C- 9	3SP-23113-L0	C-14
4SS-W2587-00	D-11	4SR-12481-00	B- 7	4MX-14943-40	B-11	4EW-16356-00	C- 2	4SS-21784-01	C- 9		C-15
3JE-Y113E-00	B- 2	4SS-12482-00	B- 7	4MX-14943-41	B-11	4EW-16357-00	C- 2	4SR-22110-00	C-10	3JD-2312G-L0	C-14
5X4-Y113F-10	B-2	4SR-12484-00	B- 7	4MX-14943-42	B-11	4EW-16371-01	C- 2	156-22127-00	C-10		C-15
3SP-Y1543-00	B-14	353-13115-01	B-13	4MX-14943-43	B-11	4EW-16381-01	C- 2	4MX-22128-00	C-10	4SS-23120-L0	C-14
4SR-11111-00	B- 2	4SR-13565-00	B- 8	4MX-14943-44	B-11	4JX-17121-00	C- 3	4EW-22129-00	C-10	4SS-23125-L0	C-14
4SR-1131A-00	B- 2	4MX-13610-00	B- 8	4MX-14943-45	B-11	4MX-17131-00	C- 3	1LX-22141-00	C-10		C-15
4MX-1131M-00	B- 3	3SP-13613-00	B- 8	4MX-14943-91	B-11	3RB-17141-00	C- 3	4EW-22151-01	C-10	4SS-2313B-11	D- 2
4SR-11311-00	B- 2	4DA-13616-00	B- 8	4MX-14943-92	B-11	4MX-17151-00	C- 3	4SS-2217A-00	C-10	4SS-2313C-11	D- 2
2VM-11351-10	B- 2	2K7-13621-10	B- 8	4MX-14943-93	B-11	4MX-17211-00	C- 3	4SS-2217F-00	C-11	4SS-23136-L0	C-14
4MX-11354-00	B- 3	4MX-13625-00	B- 8	4MX-14943-94	B-11	4MX-17221-00	C- 3	3JD-22178-10	C- 7		C-14
4SR-11400-00	B- 5	4SR-14101-00	B-10	4MX-14943-95	B-11	4MX-17231-00	C- 3	4EW-22178-00	C- 7	4SS-2314A-L0	C-14
4SR-11410-00	B- 5	4SR-14105-00	B-10	4SR-14943-90	B-11	4MX-17241-00	C- 3	4EW-22199-01	C-10		C-15
4SR-11420-00	B- 5	4MX-14115-00	B-10	4MX-14948-04	B-10	4MX-17251-00	C- 3	4SR-22201-00	C-12	4SS-2314E-00	D- 6
4JX-11603-00	E- 4	4SR-14126-00	B-10	4MX-14948-05	B-10	4JX-17411-00	C- 3	4SR-22201-10	C-12	4SS-2314F-L0	C-15
	E- 4	4MX-14131-00	B-10	4MX-14948-06	B-10	2VM-17421-01	C- 3	4SR-22201-20	C-12	4SS-2314G-L0	C-15
4SR-11630-00	B- 5	3TJ-14137-40	B-11	4MX-14948-07	B-10	4L0-17471-00	B-13	4SR-22201-30	C-12	4SS-2314H-00	D- 2
4SR-11631-00-A0	B- 5	4MX-14146-00	B-10	4MX-14948-08	B-10	3XK-18101-02	C- 6	4SR-22210-00	C-12	4SS-2314J-00	C-15
4SR-11631-00-B0	B- 5	663-14159-00	B-11	4MX-14948-09	B-10	4SS-18110-00	C- 6	4SR-22210-10	C-12	4SR-23141-L0	C-14
	E- 4	4SR-14171-00	B-10	4SR-14948-02	B-10	3XK-18122-00	C- 6	4SR-22210-20	C-12		C-15
4SR-11631-00-C0	B- 5	4MX-14194-00	B-11	4SR-14948-03	B-10	3XK-18140-00	C- 5	4SR-22210-30	C-12	4SS-23141-10	E- 3
4SR-11631-00-D0	B- 5	4MX-14196-00	B-11	4MX-14984-00	B-10	4DA-18172-00	C- 6	4JX-22212-10	E- 3	4SS-23141-20	E- 3
2VM-11633-01	B- 5	4MX-14197-00	B-11	4SR-14985-00	B-10	3XJ-18173-00	C- 6	4JX-22212-20	E- 3	4SS-23141-30	E- 3
	E- 4	4SR-14261-00	B-10	2VM-15111-06	B-13	3XK-18177-00	C- 5	4JX-22212-30	E- 3	4SS-23141-40	E- 3
4SR-11650-00	E- 4	4SR-14340-A6	B-10	4V4-15118-00	B-13	3XJ-18178-00	C- 6	4JX-22212-40	C-12	4SS-23141-50	E- 3
5X5-11651-03	E- 4	4MX-14392-00	B-10	2VM-15121-03	B-13	3XJ-18182-00	C- 6		E- 3	4SS-23141-60	E- 3
	B- 5	4SS-14401-00	B- 8	1G8-15362-00	B-14	3XJ-18184-00	C- 6	4JX-22212-50	E- 3	4SS-23141-70	E- 3
4SR-11681-00	E- 4	4SS-14417-00	B- 8	3SP-15381-00	B-13	4EW-18185-00	C- 6	4JX-22212-60	E- 3	4SR-23142-L0	C-14
	B- 4	4SS-14451-00	B- 8	2VM-15411-00	B-14	4SR-18511-00	C- 5	3SP-22213-00	C-12		C-15
5X5-11911-01	B- 4	4SR-14453-00	B- 8	4EW-15415-00	B-14	2VM-18512-00	C- 5	3JD-22214-00	C-12	4SS-23143-L0	C-14
5X5-11912-01	B- 4	3JD-14458-00	B- 8	2VM-15421-02	B-14	4SR-18513-00	C- 5	4MX-22216-00	C-12		C-15
1LX-11915-00	B- 3	3JD-14459-00	B- 8	4SR-15441-00	B-14	4EX-18531-00	C- 5	3JD-22224-00	C-12	4SS-23144-L0	C-14
5X4-11921-02	B- 4	3JD-14462-00	B- 8	2VM-15451-11	B-14	3XV-18535-00	C- 5	4JX-22226-00	C-12		C-15
3JE-11922-01	B- 4	3JD-14477-00	B- 8	2VM-15462-10	B-14	3XK-18540-01	C- 5	3SP-22234-00	C-12	4SS-23145-L0	C-14
3JE-11931-01	B- 4	663-14548-00	B-11	3SP-15463-11	B-14	4SR-21101-00-UJ	C- 7	3SP-22241-00	C-12		C-15
3JE-11937-01	B- 2	4MX-14561-00	B-10	4JW-15620-00	B-15	4SR-21190-00-UJ	C- 7	3XJ-22253-00	C-12	4SS-23146-L0	C-14
5X4-11952-00	B- 4	4SR-14610-00	B-12	3SP-15621-02	B-15	1HX-2135F-10	C-11	4EW-22253-00	C-12		C-15
24X-11953-01	B- 4	3JE-14615-01	B-12	3R4-15641-00	B-15	4SR-21425-00	C- 7	43M-22274-00	C-12	3JD-23147-L0	C-14
3XK-11956-00	C- 2										

NUMERICAL INDEX

PART NO.	GRID NO.	PART NO.	GRID NO.	PART NO.	GRID NO.	PART NO.	GRID NO.	PART NO.	GRID NO.	PART NO.	GRID NO.
3JD-23147-L0	C-15	4SS-25111-00	D- 5	4SS-26241-00	D-10	90109-08066	D- 6	90201-061A5	B- 8	90387-0600F	C- 8
3SP-23153-L0	C-14	4SS-25181-00	D- 5	4SS-26242-00	D-10	90109-081G1	D- 7	90201-063J2	B- 7		C- 9
	C-15	3JD-25304-00	D- 7	4SS-26243-00	D-10	90109-142F4	C-10		B-12		C- 9
4SS-23153-L0	C-14	4EW-25311-00	D- 7	4SS-26259-00	D-10	90109-147F2	C-10		C- 8	90387-063G3	B-12
	C-15	4V4-25367-00	D- 8	4SS-2627A-00	D-10	90110-05201	C-10	90201-065F3	C- 8	90387-0700G	B- 7
4SS-23158-L0	C-14	4SS-2538E-00	D-11	4SS-26273-00	D-10	90116-08392	B- 2	90201-080E2	C- 7	90387-0701A	C- 8
	C-15	3JD-25381-01	D- 7	4SS-2628H-00	D-10	90116-08394	B- 2	90201-08087	B- 2	90387-086N4	C- 7
4SR-2316A-L0	C-14	3SP-25388-00	D- 7	4SS-26281-00	D-10	90116-10314	B- 2	90201-086P8	B- 2	90387-102W0	B- 2
	C-15	3JE-25394-00	D- 7	4SS-26282-01	D-10		B- 2		D- 7	90387-152F2	B- 4
3SP-23166-L0	C-14	5X2-25394-00	D- 5	4SS-26287-01	D-10	90116-10547	B- 2	90201-087A9	B-15	90387-160H4	B-13
	C-15	4SS-25447-00	D- 7	4SS-26311-01	D-10		B- 2	90201-08730	C- 7	90387-164N2	C-10
4SS-23170-L0	C-14	4SS-25448-00	D- 7	4EW-26335-00	D-10	90119-06096	C- 8	90201-08759	B- 6	90387-164N3	C-10
	C-15	4SS-25449-00	D- 7	4SS-26372-00	D-11	90119-06185	B-12	90201-08784	B- 6	90387-167Y9	C-10
4SS-23171-L0	C-14	4SS-25450-00	D- 7	4SS-27200-00	D-12		C-13	90201-090J9	D- 6	90387-20008	D- 7
	C-15	4SS-25451-00	D- 7	4SS-27217-00	D-12	90119-06214	D- 3	90201-10118	D-11	90387-2000C	D- 7
3Y6-23183-00	C-12	4SS-25452-00	D- 7	3SP-27222-00	D-13	90122-06035	B- 8		D-13	90387-2007S	D- 5
509-23184-L0	C-12	4MX-25718-00	D- 9	4SS-27311-00	D-12	90123-08090	D-15	90201-10119	D-12	90387-2007T	D- 5
4EW-2331E-L0	D- 2	4SS-2580T-00	D- 6	4DA-27411-00	D-12	90149-06011	D- 3	90201-10774	D-14	90387-2007U	D- 5
4SR-23340-L0	C-15	4MX-2580W-00	D- 9	4DA-27421-00	D-12		D-14	90201-12166	C- 5	90387-227H7	D-10
4SS-23346-L0	C-15	2VN-2582A-50	D-13	4GY-27491-00	D- 9	90149-06272	D- 6	90201-14740	C-11	90387-252F6	C- 2
3SP-23356-L0	D- 2	4JX-2582T-00	D- 6	56A-28166-00	C- 7		D- 9	90201-154E9	B- 4	90387-25663	C- 3
3SP-23357-L0	C-14	4MX-2582W-00	D- 9	4SR-82310-00	E- 2	90151-04048	C-10	90201-164H4	C-10	90401-10159	D-11
	C-15	4GY-25827-50	D- 9	4PE-82370-00	E- 2	90151-06037	B-13		C-11		D-13
4SS-23363-L0	C-14	4SS-2583G-00	D-11	4SS-82509-00	E- 2	90157-06048	B-15	90201-17545	B-15	90430-06014	B- 3
	C-15	3SP-2583V-00	D-13	38V-82911-00	D-15	90157-06077	B-13	90201-20278	C- 3		B-14
4SS-23364-L0	E- 3	4SS-25833-00	D-11	38V-82913-00	D-15	90159-06016	C- 2	90201-20358	B-15	90430-06166	B- 6
4DA-23389-00	C-13	3XP-25852-50	D-13	4GY-83912-00	D-15	90159-06078	C- 9	90201-22555	C- 3	90430-12227	B-13
3SP-23393-L0	C-14	4SS-25852-00	D-11	4SS-83913-00	D-11		C- 9	90201-247L2	C-13	90445-086A8	B-13
	C-15	2VN-25854-00	D-13	4SS-83922-00	D-11	90159-06182	C- 9	90201-253K0	C- 3	90445-09252	D- 3
4EW-23416-00	C-13	4SS-25854-00	D-11	25G-83936-01	E- 2		C- 9	90201-286K9	C-13	90445-116G8	D- 3
4SS-23435-00	C-13	2VN-25855-00	D-13	437-83936-01	D-15	90170-20255	C- 2	90202-05187	D- 3	90445-137H9	D-13
3SP-23441-00	C-13	2VN-25866-00	D-13	23X-83976-00	D-15	90170-24373	C-13	90208-18025	C- 2	90450-25037	B- 7
4DA-23485-01	C-13	3YX-25866-10	D-11	4SR-85540-00	E- 2	90176-08026	B- 2	90209-06096	B- 8	90450-28014	B- 7
4SS-24110-00	D- 3	4SS-25866-00	D-11	4SS-85546-00	E- 2	90179-06568	C-10	90209-17311	C- 3	90450-51070	B- 8
4EW-2412F-00	D- 3	3YK-25867-00	D-11	4SR-85550-00	D-14	90179-08401	D-15	90209-18135	C- 3	90450-70072	B- 8
24X-24144-00	D- 3	4SS-25868-00	D-11	4SR-85560-00	D-14	90179-10394	D-14	90209-22082	C- 3	90464-13080	E- 2
3SP-24173-00	D- 3	4SS-25872-00	D-11	90101-06664	C- 6	90179-16672	D- 5	90209-25085	B- 5	90464-14117	C- 7
4SS-24181-00	D- 3	4SS-25873-00	D-13	90101-08777	D- 7	90179-18172	C- 2		E- 4		D- 3
4SS-24182-00	D- 3	2VM-25876-00	D-13	90105-05361	C-13	90179-20255	C- 4	90215-20231	C- 2		D-10
3JD-24186-00	D- 3	4SS-25880-00	D-11	90105-06553	B- 9	90179-28650	C-13	90215-21239	C- 4		E- 2
3JD-24500-01	D- 3	4SS-25889-00	D-11	90105-06556	B-13	90183-06023	B- 8	90240-08120	D-12	90464-16039	B- 8
4X8-24512-00	D- 3	4SS-2589F-00	D-11	90105-08099	C- 7		C- 8	90240-10117	D-12	90465-16258	D-11
3AJ-24534-00	D- 3	4EW-25894-00	D-13	90105-08100	C- 7	90183-06069	C- 9	90267-32119	B- 8	90467-09006	B- 7
1UY-24610-00	D- 3	3SP-25919-01	D- 6	90105-08659	D- 6	90185-14070	C-11	90280-03017	B- 5	90467-10008	D- 3
4SS-24728-00	D- 4	4GY-25919-50	D- 9	90105-10614	C-12	90185-16127	C-10	90338-16148	C- 7	90467-11044	D-13
4SS-24731-00	D- 4	3SP-25924-51	D- 9	90105-10733	C- 7	90185-18104	D- 7		C-10	90467-21068	B- 7
4SS-24770-00	D- 4	3GD-25933-00	D- 6	90106-08051	C- 7	90201-03644	B- 8	90340-12097	B-13	90468-16191	D-12
4DA-25104-00	D- 5	4JX-26111-00	D-10	90109-06799	D-15	90201-057H5	B- 4	90380-16158	C-10	90468-26048	B-15

NUMERICAL INDEX

PART NO.	GRID NO.	PART NO.	GRID NO.	PART NO.	GRID NO.	PART NO.	GRID NO.	PART NO.	GRID NO.	PART NO.	GRID NO.
90480-10068	D- 7	93104-08040	B- 4	93603-22028	B- 6	95027-08020	B-15	99510-10114	B- 2		
90480-15528	B- 7	93104-16074	B- 2	93604-08071	B- 2		D- 6	99510-12016	B-13		
90480-16561	B-12	93106-22019	C-10	93604-10011	B- 6	95027-08035	C-13		B-14		
90480-18549	D- 3	93106-28023	D- 7		B-14	95027-08040	C- 7	99530-14016	B- 2		
90501-05265	C- 6	93109-20029	C-10	93604-29184	B- 4		C-13				
90501-13720	B-15		C-11	93608-33046	C- 6	95027-08065	C- 7				
90501-23598	C- 2	93210-09192	B- 2	93834-13030	C- 3	95337-08600	D-13				
90501-244J5	B- 4	93210-11073	D-12	93834-14049	C- 3	95617-05100	B- 8				
90506-16500	D-12	93210-14104	B-14	93834-15076	C- 4	95617-06100	D-11				
90507-20052	B-12	93210-15620	D-13	94108-2102V	D- 5		D-15				
90508-14783	B- 4	93210-19216	B-15	94108-217X2	D- 5	95617-08100	D- 7				
90508-26561	C- 5	93210-270A8	B- 2	94111-1902W	D- 7	95617-08200	C- 7				
90508-28777	D-12	93210-472A9	B-12	94111-1902Y	D- 7		C- 7				
90508-291A8	C- 6	93210-77363	B- 2	94211-19273	D- 7	95617-10200	C- 7				
90508-30743	B-15	93211-11770	B- 2	94227-21123	D- 5		C- 7				
90560-08213	B- 4	93300-60804	C- 7	94307-21145	D- 5		C-12				
90560-12280	C- 6	93300-60814	B- 4	94311-19155	D- 7	95707-08500	C- 7				
90560-20278	D- 7		B- 4	94416-21547	D- 5		D- 7				
91A20-05080	B- 7	93306-00418	D- 7	94421-19538	D- 7	95707-10500	B- 2				
91317-04006	B- 4	93306-20576	C- 3	94561-55113	C- 3	95817-06012	D- 6				
91317-06014	D-11	93306-20577	C- 3	94661-55001	D- 8	95817-06016	C- 9				
91317-06016	E- 2	93306-37804	B- 5	94702-00326	B- 2		C- 9				
91317-06050	B-13		B- 5	94709-00326	B- 2		C- 9				
91317-06070	B-13	93306-90403	D- 5	95024-08040	C-15		C- 9				
91401-25020	D-12	93310-230T7	C- 2	95027-06008	B- 3	95817-08050	C- 7				
91490-20025	D-12	93310-418E9	B- 5		B-14	95817-10050	C- 7				
92014-06016	D-13		E- 4	95027-06010	C-10	97007-05016	B- 3				
92017-06010	B-12	93310-425P2	B- 5	95027-06012	B-12		D-15				
92907-03200	B- 8		E- 4		B-14	97017-05030	B- 3				
92907-05100	B- 4	93311-41734	C- 3		C- 8		B- 4				
92907-05600	B- 3	93311-62035	C- 3		D- 9	97027-05020	B- 3				
	B- 3	93315-11206	C- 2		D-13	97027-06012	D- 4				
	B- 3	93315-22046	C-10	95027-06016	D- 3	97707-60016	C- 8				
	D- 4		C-11		D- 9	97780-50110	D-13				
92907-06100	B-14	93317-22262	C-10	95027-06020	B- 8	98507-03008	B- 8				
92907-06600	D- 6	93332-00078	C-13		C- 6	98507-04014	B-11				
92907-08200	C- 7	93332-00081	C-13		C- 8	98507-05008	B- 3				
92907-10200	D- 8	93340-21505	B- 4	95027-06025	B- 6	98507-05012	B- 2				
92907-18600	B- 8	93342-22215	C-10		B-12	98517-06030	B-14				
92990-03100	D-12	93410-20038	C- 3		B-14	98580-03008	D- 3				
92990-08600	C- 6	93410-22039	C- 3		D-10	98707-04010	D-10				
93102-12106	C- 2	93440-25084	C- 3	95027-06030	B- 7	98707-04012	D-11				
93102-12224	B-15	93450-19052	B- 5		B-14	98707-04018	D-10				
93102-20309	B- 5		E- 4		C- 8	98707-06025	D- 3				
93102-22363	D- 5	93501-04011	B-15	95027-06045	C-10	98907-06020	D- 3				
93102-25360	C- 3	93511-32027	C- 2	95027-06065	B- 6	99009-06600	B- 6				
93102-32M07	B- 6	93521-64032	B- 4	95027-06070	B-14	99009-17400	B-15				
93103-10168	B- 5	93603-14179	B- 4	95027-08012	B-12	99241-00160	D- 2				
93103-40091											

*COPYRIGHT: All rights reserved. No part of this publication  
may be reproduced without permission.*

**YAMAHA**

YAMAHA MOTOR CO., LTD.  
2500 SHINGA I IWATA SHIZUOKA JAPAN  
SERVICE INFORMATION DIV.

PRINTED ON RECYCLED PAPER

---

Printed in Japan  
First edition AUG., 1995