

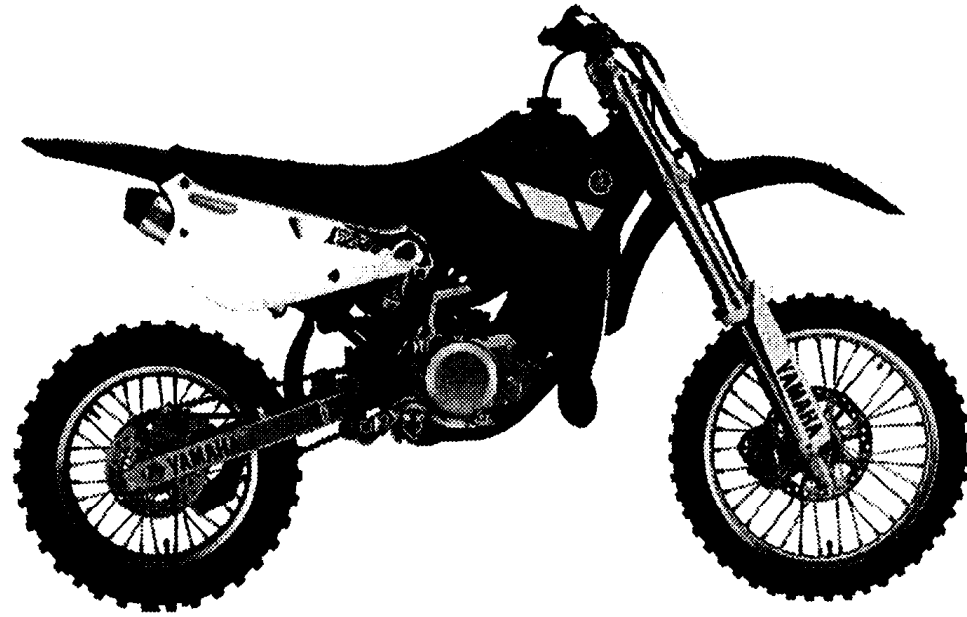
PARTS CATALOGUE

YZ80N (4ESA) U.S.A., CANADA, EUROPE, SOUTH AFRICA

YZ80 (4ESC) JAPAN

YZ80LW (4LC8) EUROPE

YZ80LW (4LCA) JAPAN



A3

FOREWORD

This Parts Catalogue is related to the parts for the model(s) in the below frame. When you are ordering replacement parts, please refer to this Parts Catalogue and quote both part numbers and part names correctly.

YZ80N(4ESA), YZ80(4ESC), YZ80LW(4LC8/4LCA)

1. Modifications or additions which have been made after issue of the Parts Catalogue will be announced in the Yamaha Parts News. It is advisable that you make necessary corrections to the Parts Catalogue according to the Yamaha Parts News.

2. Abbreviations

The Following abbreviations are used in this Parts Catalogue.

- "UR" Use specified parts number.
- "UN" Use as many as needed.
- "AP" Alternate Parts
- "LM" Local Made (Parts need to be ordered locally)
- "F#" Frame No. (Applicable machine No.)

3. Parts, which are to be supplied in an assembly, are listed with a dot(.) in front of the part name as shown below.

EXAMPLE

CARBURETOR ASSY
 .JET, PILOT
 .NOZZLE, MAIN

4. Number of component for assembly

The numeral appearing to the right of each component part indicates the quantity of parts for each assembly unit.

EXAMPLE

PART NO.	DESCRIPTION	Q'TY	REMARKS
2F5-83310-60	FRONT FLASHER LIGHT ASSY	2	
115-83311-60	.BULB (6V-18W)	1	
1M1-83309-60	.REFLECTOR	1	

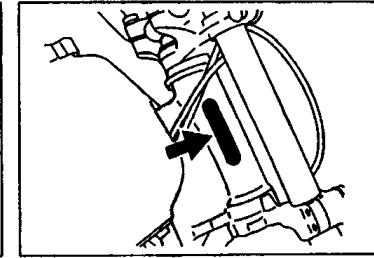
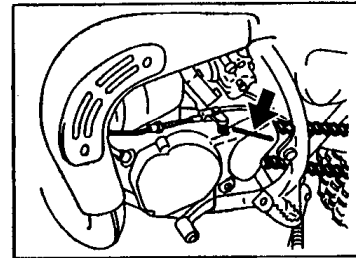
5. Applicable colors of graphics are represented in the "REMARKS" as shown below.

PART NO.	DESCRIPTION	Q'TY	REMARKS
2N4-24110-00-X5	FUEL TANK COMP.	2	MXR
3J1-24240-10	.GRAPHIC, FUEL TANK	1	for MXR

6. Applicable Serial No.

Engine Serial No.

Frame Serial No.



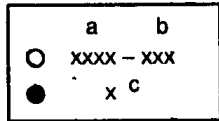
7. Note that the illustrations for reference in finding parts numbers, not to be used for assembling. When assembling, please use the applicable service manual.

8. The asterisk (*) before a reference number indicates modification items after the first edition.

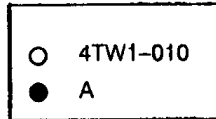
MODEL LABEL

(1) A label called "Model Label" is affixed in the location as indicated in (3) below. When using this parts catalogue, please be sure to cross-refer the "model code - production code No." in the catalogue to the "model code - production code No." indicated on the Model Label affixed onto the product concerned.

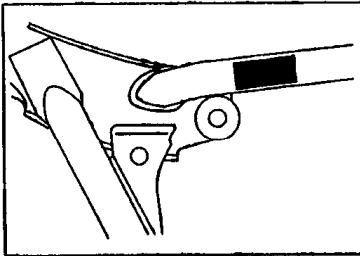
(2) "Model Label" Indication



a: Model Type Code
b: Production Code No.
c: Colouring Type



(3) Model Label Affixing Location



(4) Model Code - Production Code Number of Model Listed in This Parts Catalog

Model Code	Production Code No.	Country (destination)	Model Code	Production Code No.	Country (destination)
4ESA	010	U.S.A.	4LC8	070	SWEDEN
	020	CANADA	4LCA	010	JAPAN
	030	GERMANY			
	040	SPAIN			
	050	FRANCE			
	060	ENGLAND			
	070	ITALY			
	090	SWEDEN			
	100	SOUTH AFRICA			
4ESC	010	JAPAN			
4LC8	020	GERMANY			
	030	SPAIN			
	040	FRANCE			
	050	ENGLAND			
	060	ITALY			

(5) Colouring Information

Model Code	Colouring type code	Colour code	Colour Name	Abbreviation
4ESA 4ESC 4LC8 4LCA	A	0583	DEEP PURPLISH BLUE SOLID E	DPBSE

CONTENTS

ENGINE

CYLINDER	B2
CRANKSHAFT. PISTON	B3
WATER PUMP	B4
RADIATOR. HOSE	B5
INTAKE	B6
CARBURETOR	B7
EXHAUST	B9
CRANKCASE	B10
CRANKCASE COVER 1	B11
STARTER	B12
CLUTCH	B13
TRANSMISSION	B14
SHIFT CAM. FORK	C2
SHIFT SHAFT	C3

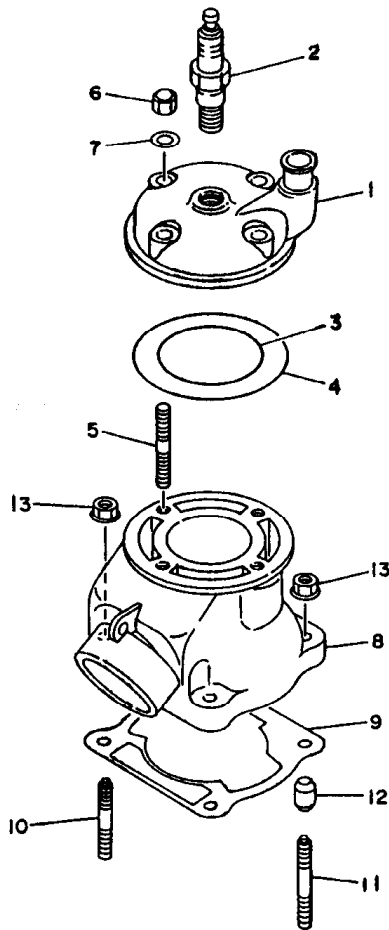
CHASSIS

FRAME	C4
FENDER	C5
SIDE COVER	C6
REAR ARM	C7
REAR SUSPENSION	C9
STEERING	C10
FRONT FORK	C11
FUEL TANK	C13
SEAT	C14
FRONT WHEEL	C15
FRONT BRAKE CALIPER	D2
REAR WHEEL	D3
REAR BRAKE CALIPER	D5
STEERING HANDLE. CABLE	D6
FRONT MASTER CYLINDER	D7
STAND. FOOTREST	D8

REAR MASTER CYLINDER	D9
GENERATOR	D10
HANDLE SWITCH. LEVER	D11
ELECTRICAL 1	D12
ALTERNATE (CHASSIS)	D13
OPTIONAL PARTS 1	D14

INDEX

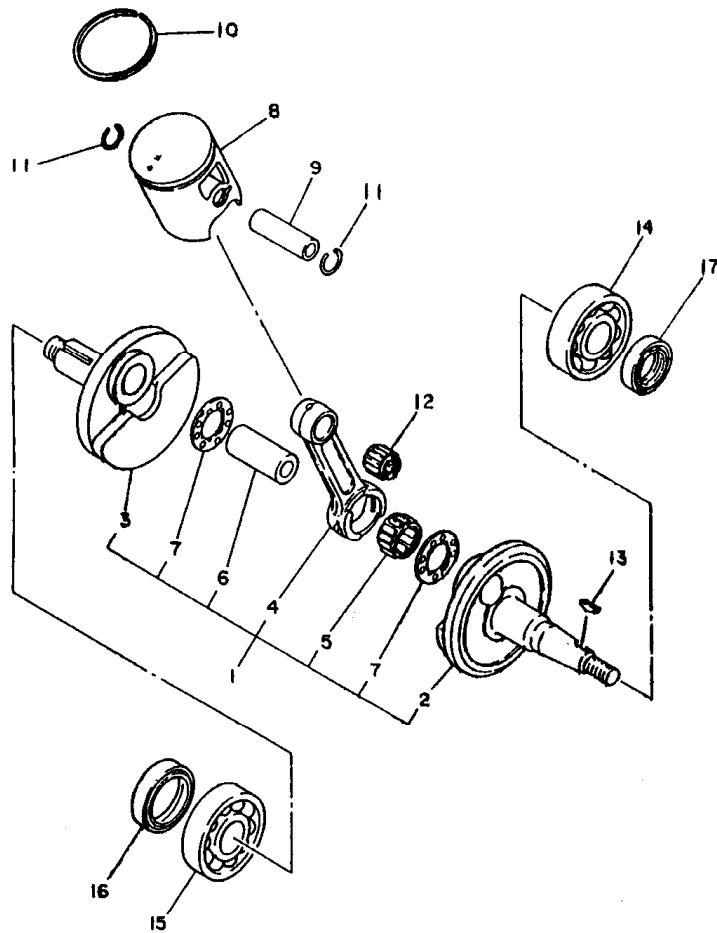
NUMERICAL INDEX	M1
-----------------------	----




4ES1100-3010

FIG. 1 CYLINDER

REF. NO.	PART NO.	DESCRIPTION	4ESA	4ESC	4LCB	4LCA	REMARKS
1	4LC-11111-00	HEAD, CYLINDER 1	1	1	1	1	
2	94702-00368	PLUG, SPARK (NGK BR10EG)	1		1		
	90793-20136	PLUG, SPARK (NGK BR10EG)			1	1	
3	93210-56459	O-RING	1	1	1	1	
4	93210-84724	O-RING	1	1	1	1	
5	90116-08394	BOLT, STUD	4	4	4	4	
6	90176-08026	NUT, CROWN	4	4	4	4	
7	90201-08087	WASHER, PLATE	4	4	4	4	
8	4ES-11311-10	CYLINDER 1	1	1	1	1	
9	4ES-11351-00	GASKET, CYLINDER	1	1	1	1	
10	90116-08318	BOLT, STUD	2	2	2	2	
11	90116-08388	BOLT, STUD	2	2	2	2	
12	99530-10114	PIN, DOWEL	2	2	2	2	
13	90179-08299	NUT	4	4	4	4	

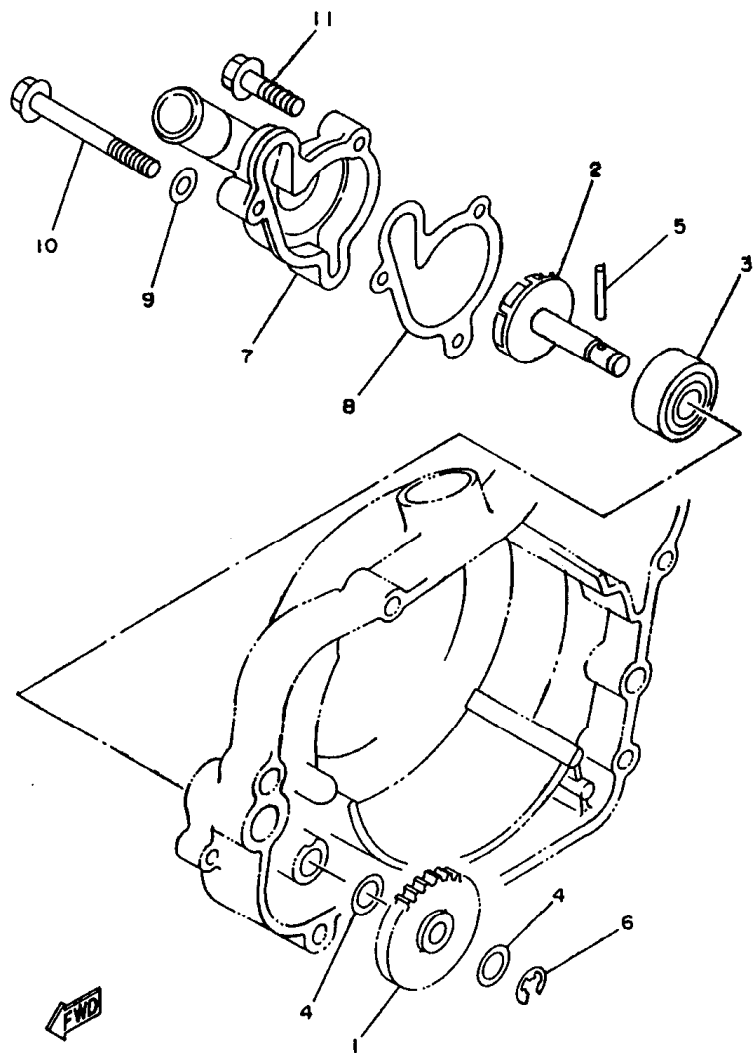


4ES1100-3020

FIG. 2 CRANKSHAFT, PISTON

REF. NO.	PART NO.	DESCRIPTION	4ESA	4ESC	4LC8	4LCA	REMARKS
1	4ES-11400-02	CRANKSHAFT ASSY	1	1	1	1	
2	4ES-11412-00	.CRANK 1	1	1	1	1	
3	4ES-11422-00	.CRANK 2	1	1	1	1	
4	4ES-11651-01	.ROD, CONNECTING	1	1	1	1	
5	93310-320T3	.BEARING	1	1	1	1	
6	2RA-11681-00	.PIN, CRANK 1	1	1	1	1	
7	90209-20159	.WASHER	2	2	2	2	
8	4ES-11631-01-A0	PISTON (STD)	1	1	1	1	UR RED
	4ES-11631-01-B0	PISTON (STD)	1	1	1	1	UR ORANGE
	4ES-11631-01-C0	PISTON (STD)	1	1	1	1	UR GREEN
	4ES-11631-01-D0	PISTON (STD)	1	1	1	1	UR PURPLE
9	4ES-11633-00	PIN, PISTON	1	1	1	1	
10	43K-11611-00	RING, PISTON	1	1	1	1	
11	93450-18115	CIRCLIP	2	2	2	2	
12	93310-214F8	BEARING	1	1	1	1	KOYO
13	90280-03017	KEY, WOODRUFF	1	1	1	1	
14	93306-20438	BEARING	1	1	1	1	
15	93306-30421	BEARING (B6304C3)	1	1	1	1	
16	93103-28128	OIL SEAL	1	1	1	1	
17	93102-20447	OIL SEAL	1	1	1	1	

B3

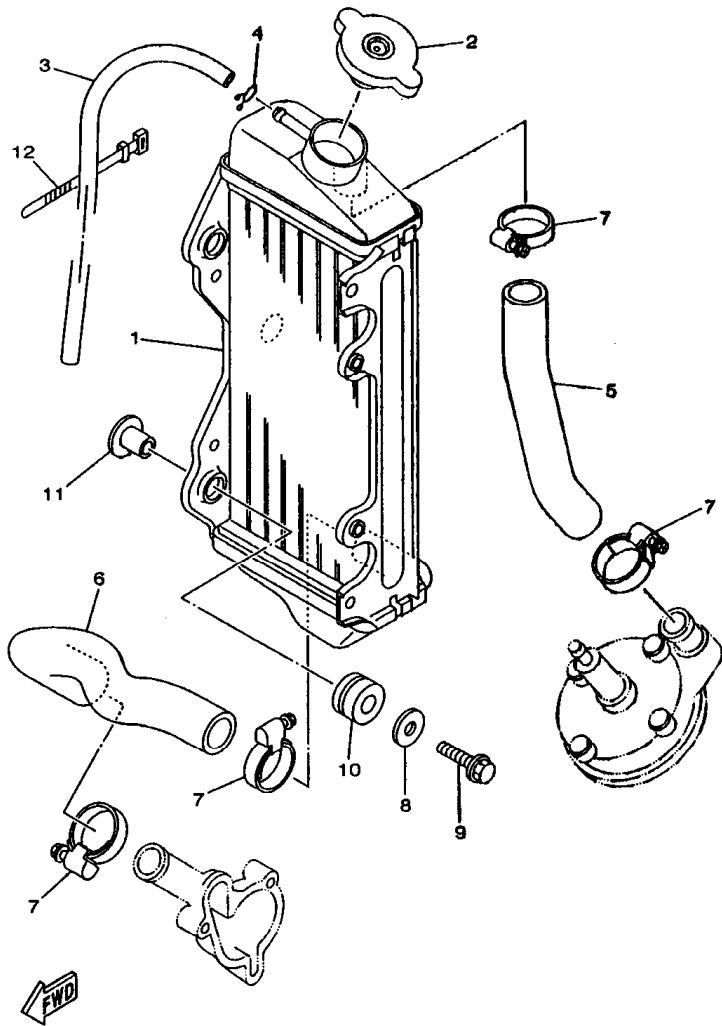


4ES1100-3030

FIG. 3 WATER PUMP

REF. NO.	PART NO.	DESCRIPTION	4ESA	4ESC	4LC8	4LCA	REMARKS
1	4ES-12459-00	GEAR, IMPELLER SHAFT	1	1	1	1	
2	36F-12450-00	IMPELLER SHAFT ASSY	1	1	1	1	
3	93103-10147	OIL SEAL	1	1	1	1	
4	90201-08512	WASHER, PLATE	2	2	2	2	
5	93603-22028	PIN, DOWEL	1	1	1	1	
6	99001-07600	CIRCLIP	1	1	1	1	
7	4BA-12422-00	COVER, HOUSING	1	1	1	1	
8	4BA-12428-00	GASKET, HOUSING COVER 2	1	1	1	1	
9	90430-08168	GASKET	1	1	1	1	
10	95827-06080	BOLT, FLANGE	1	1	1	1	
11	95027-06025	BOLT, FLANGE	2	2	2	2	

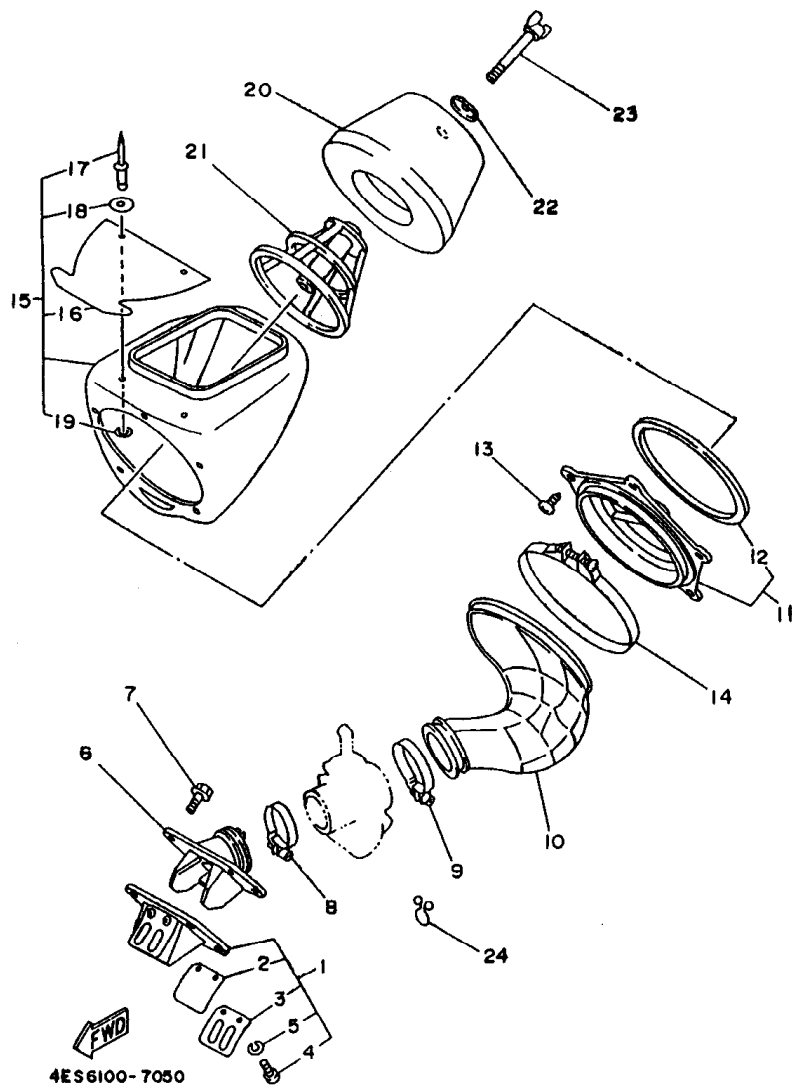
FIG. 4 RADIATOR.HOSE



4ESA100-1040

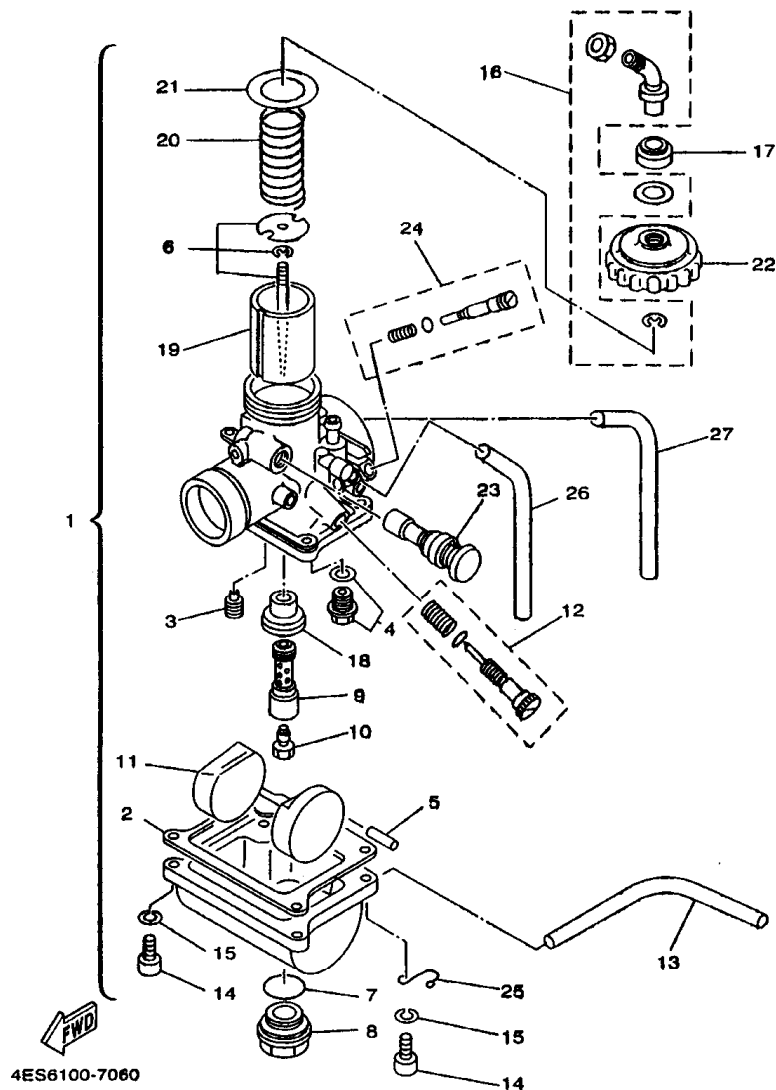
REF. NO.	PART NO.	DESCRIPTION	4ESA	4ESC	4LC8	4LCA	REMARKS
1	4ES-12461-10	RADIATOR ASSY	1	1	1	1	
2	5HD-12462-00	CAP, RADIATOR	1	1	1	1	
3	22W-12483-00	PIPE, BREATHER	1	1	1	1	
4	90467-08002	CLIP	1	1	1	1	
5	4ES-12481-00	PIPE 1	1	1	1	1	
6	4ES-12482-00	PIPE 2	1	1	1	1	
7	90450-28014	HOSE CLAMP ASSY	4	4	4	4	
8	90201-06071	WASHER, PLATE	3	3	3	3	
9	95027-06030	BOLT, FLANGE	3	3	3	3	
10	90480-15528	GROMMET	3	3	3	3	
11	90387-0814M	COLLAR	3	3	3	3	
12	437-83936-01	BAND, SWITCH CORD	1	1	1	1	

FIG. 5 INTAKE



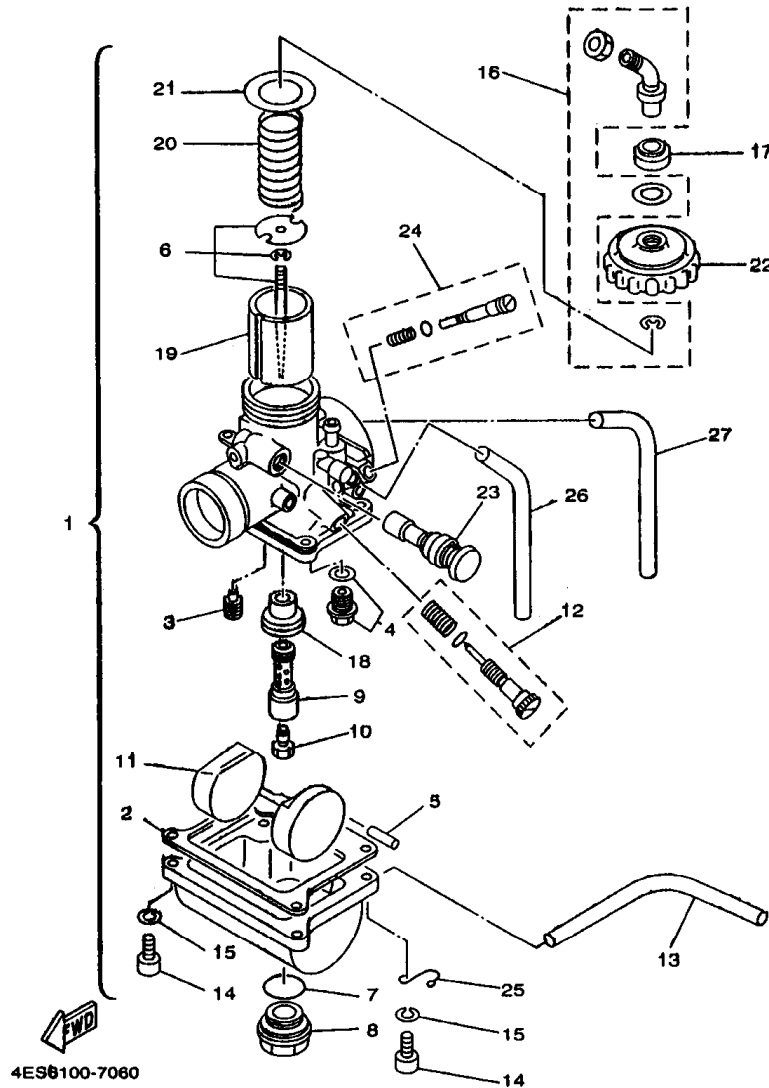
REF. NO.	PART NO.	DESCRIPTION	4ESA	4ESC	4LC8	4LCA	REMARKS
1	4ES-13610-00	REED VALVE ASSY	1	1	1	1	
2	4ES-13613-00	.REED, VALVE	2	2	2	2	
3	4ES-13616-00	.STOPPER, REED VALVE	2	2	2	2	
4	98507-03008	.SCREW, PAN HEAD	4	4	4	4	
5	92907-03100	.WASHER	4	4	4	4	
6	4ES-13565-00	JOINT, CARBURETOR	1	1	1	1	
7	95027-06020	BOLT, FLANGE	4	4	4	4	
8	90450-45075	HOSE CLAMP ASSY	1	1	1	1	
9	90460-51059	CLAMP, HOSE	1	1	1	1	
10	4ES-14453-00	JOINT, AIR CLEANER 1	1	1	1	1	
11	4ES-14459-00	HOLDER, GUIDE	1	1	1	1	
12	4ES-14462-00	.SEAL	1	1	1	1	
13	97707-50014	SCREW, TAPPING	5	5	5	5	
14	90450-99064	HOSE CLAMP ASSY	1	1	1	1	
15	4ES-14411-01	CASE, AIR CLEANER 1	1	1	1	1	
16	4ES-14417-00	.COVER 1	1	1	1	1	
17	90267-40077	.RIVET, BLIND	2	2	2	2	
18	90201-047A2	.WASHER, PLATE	2	2	2	2	
19	92907-04600	.WASHER	2	2	2	2	
20	4ES-14451-00	ELEMENT, AIR CLEANER	1	1	1	1	
21	4ES-14458-00	GUIDE	1	1	1	1	
22	90209-06096	WASHER	1	1	1	1	
23	90122-06038	BOLT, WING	1	1	1	1	
24	90464-16039	CLAMP	1	1	1	1	

FIG. 6 CARBURETOR



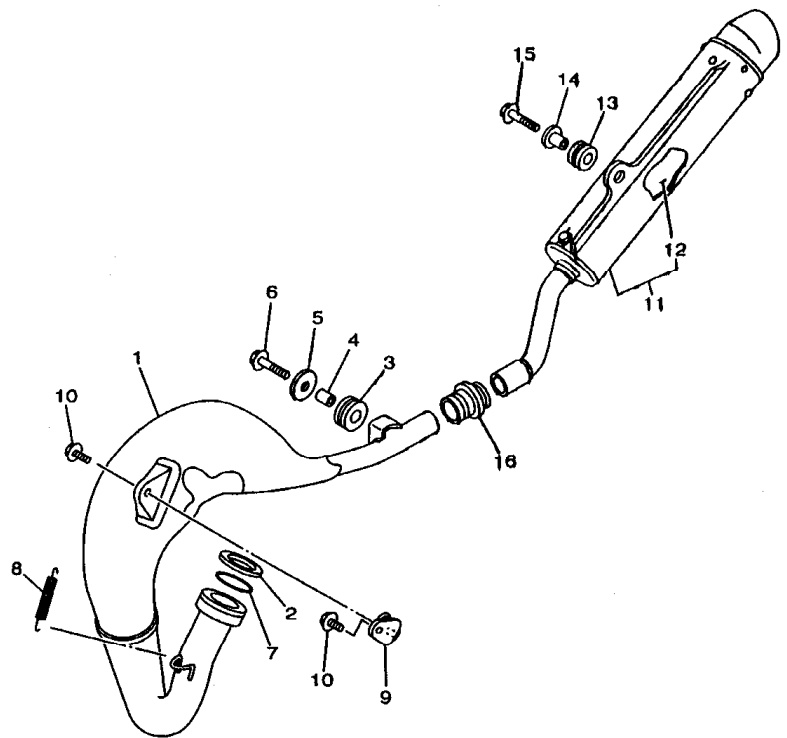
REF. NO.	PART NO.	DESCRIPTION	4ESA	4ESC	4LC8	4LCA	REMARKS
1	4ES-14101-10	CARBURETOR ASSY 1	1	1	1	1	
2	304-14184-00	.GASKET, FLOAT CHAMBER	1	1	1	1	
3	260-14142-32	.JET, PILOT (# 32.5)	1	1	1	1	STD
	260-14142-30	.JET, PILOT (# 30)	1	1	1	1	AP
	260-14142-35	.JET, PILOT (# 35)	1	1	1	1	AP
4	23L-14107-25	.NEEDLE VALVE SET	1	1	1	1	
5	127-14186-00	.PIN, FLOAT	1	1	1	1	
6	58T-1490J-00	.NEEDLE SET	1	1	1	1	
7	93210-18288	.O-RING	1	1	1	1	
8	3R1-14115-00	.PLUG, SCREW	1	1	1	1	
9	3R1-14141-52	.NOZZLE, MAIN	1	1	1	1	STD
	3R1-14141-50	.NOZZLE, MAIN	1	1	1	1	AP
	3R1-14141-54	.NOZZLE, MAIN	1	1	1	1	AP
10	137-14143-60	.JET, MAIN (#300)	1	1	1	1	STD
	137-14143-58	.JET, MAIN (#290)	1	1	1	1	AP
	137-14143-62	.JET, MAIN (#310)	1	1	1	1	AP
11	314-14185-00	.FLOAT	1	1	1	1	
12	31J-14103-00	.THROTTLE SCREW SET	1	1	1	1	
13	10V-14196-00	.PIPE	1	1	1	1	
14	98507-04018	.SCREW, PAN HEAD	4	4	4	4	
15	92907-04100	.WASHER, SPRING	4	4	4	4	
16	22W-14106-00	.CABLE ADJUST SCREW SET	1	1	1	1	
17	3X3-14169-00	.CAP	1	1	1	1	
18	39K-14153-00	.WASHER, MAIN JET	1	1	1	1	
19	2X6-14112-30	.VALVE, THROTTLE 1	1	1	1	1	STD
	2X6-14112-25	.VALVE, THROTTLE 1	1	1	1	1	AP
	2X6-14112-35	.VALVE, THROTTLE 1	1	1	1	1	AP

FIG. 6 CARBURETOR



REF. NO.	PART NO.	DESCRIPTION					REMARKS
			4ESA	4ESC	4LC8	4LCA	
20	248-14131-00	.SPRING, THROTTLE VALVE	1	1	1	1	
21	2A6-14126-00	.GASKET	1	1	1	1	
22	2A6-14158-00	.TOP, MIXING CHAMBER	1	1	1	1	
23	3SB-14171-00	.PLUNGER, STARTER	1	1	1	1	
24	10W-14104-00	.AIR SCREW SET	1	1	1	1	
25	25G-14937-00	.CLIP	2	2	2	2	
26	3JN-14198-00	.PIPE	1	1	1	1	
27	3Y1-14197-00	.PIPE	1	1	1	1	

FIG. 7 EXHAUST

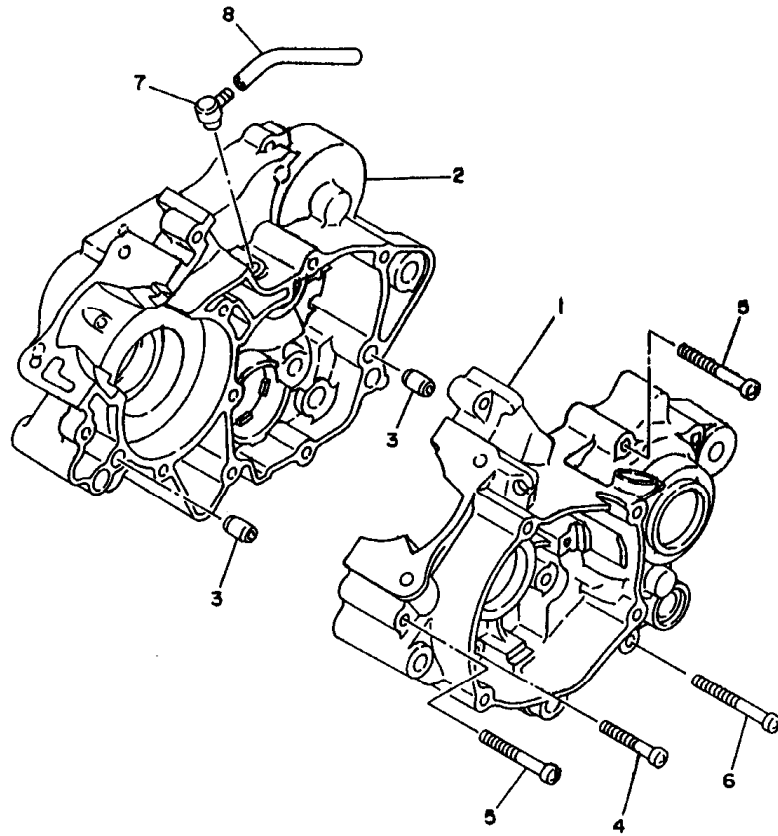


REF. NO.	PART NO.	DESCRIPTION	4ESA	4ESC	4LC8	4LCA	REMARKS
1	4ES-14610-10	EXHAUST PIPE ASSY 1	1	1	1	1	
2	90201-33299	WASHER, PLATE	1	1	1	1	
3	90480-18411	GROMMET	1	1	1	1	
4	90387-106L0	COLLAR	1	1	1	1	
5	90201-060A3	WASHER, PLATE	1	1	1	1	
6	95027-08025	BOLT, FLANGE	1	1	1	1	
7	93210-371A9	O-RING	1	1	1	1	
8	90507-20030	SPRING, TENSION	1	1	1	1	
9	565-14771-00	STAY, MUFFLER 1	1	1	1	1	
10	95027-08012	BOLT, FLANGE	2	2	2	2	
11	4ES-14753-10	SILENCER, EXHAUST	1	1	1	1	
12	4ES-1469A-00	.FIBER	1	1	1	1	
13	90480-18561	GROMMET	1	1	1	1	
14	90387-063G3	COLLAR	1	1	1	1	
15	95027-08025	BOLT, FLANGE	1	1	1	1	
16	17W-14615-00	JOINT, EXHAUST 1	1	1	1	1	


4ESA100-1070

B9

FIG. 8 CRANKCASE

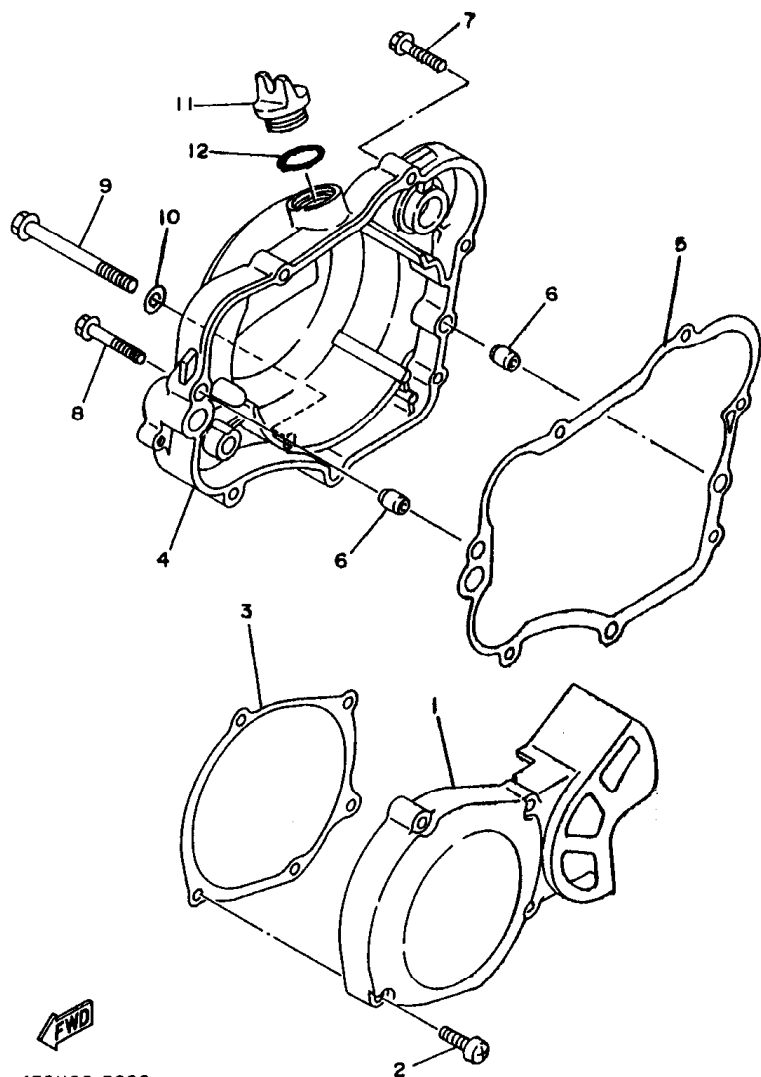


REF. NO.	PART NO.	DESCRIPTION	4ESA	4ESC	4LCB	4LCA	REMARKS
1	4ES-15111-00	CRANKCASE 1	1	1	1	1	
2	4ES-15121-02	CRANKCASE 2	1	1	1	1	
3	99530-10014	PIN, DOWEL	2	2	2	2	
4	98507-08040	SCREW, PAN HEAD	3	3	3	3	
5	98507-06050	SCREW, PAN HEAD	5	5	5	5	
6	98507-06060	SCREW, PAN HEAD	3	3	3	3	
7	120-15371-00	BREATHER	1	1	1	1	
8	90446-07349	HOSE	1	1	1	1	



4ES1100-3080

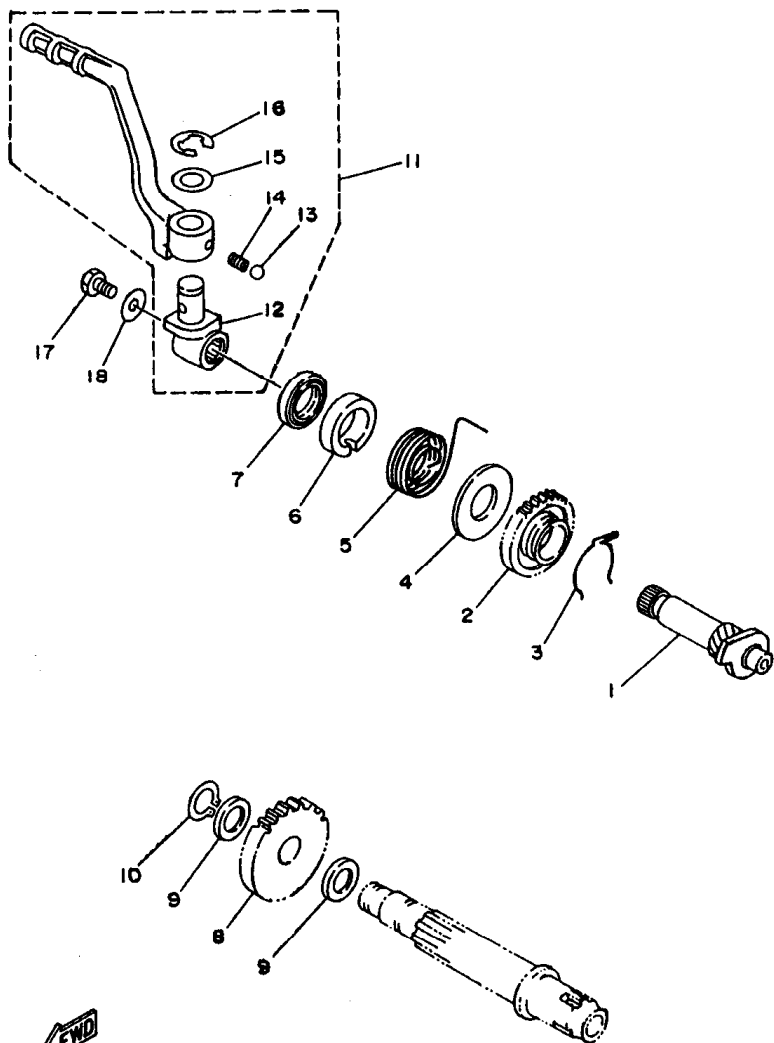
FIG. 9 CRANKCASE COVER 1



4ES1100-3090

REF. NO.	PART NO.	DESCRIPTION	4ESA	4ESC	4LCB	4LCA	REMARKS
1	4ES-15411-00	COVER, CRANKCASE 1	1	1	1	1	
2	98507-08030	SCREW, PAN HEAD	4	4	4	4	
3	4ES-15451-00	GASKET, CRANKCASE COVER 1	1	1	1	1	
4	4ES-15421-01	COVER, CRANKCASE 2	1	1	1	1	
5	4ES-15461-00	GASKET, CRANKCASE COVER 2	1	1	1	1	
6	99530-10014	PIN, DOWEL	2	2	2	2	
7	95027-08030	BOLT, FLANGE	4	4	4	4	
8	95027-08040	BOLT, FLANGE	1	1	1	1	
9	95027-08080	BOLT, FLANGE	1	1	1	1	
10	90430-08119	GASKET	1	1	1	1	
11	3Y1-15363-00	PLUG, OIL	1	1	1	1	
12	93210-19123	O-RING	1	1	1	1	

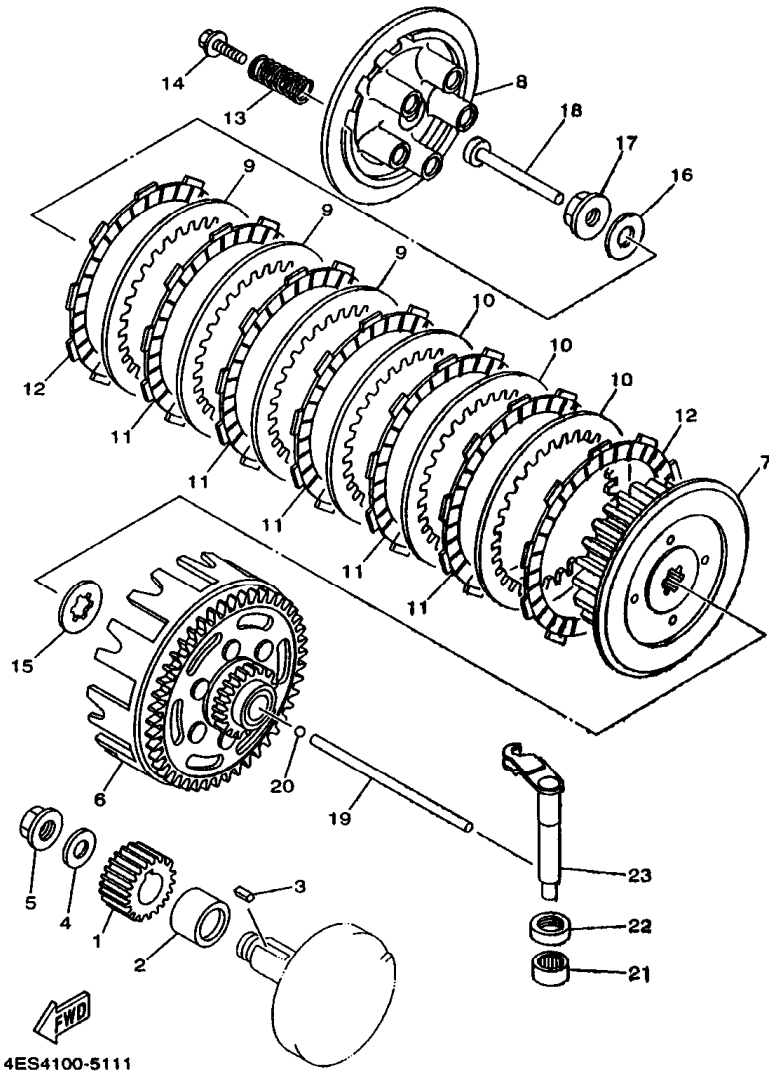
FIG. 10 STARTER



FWD
4ES1100-3100

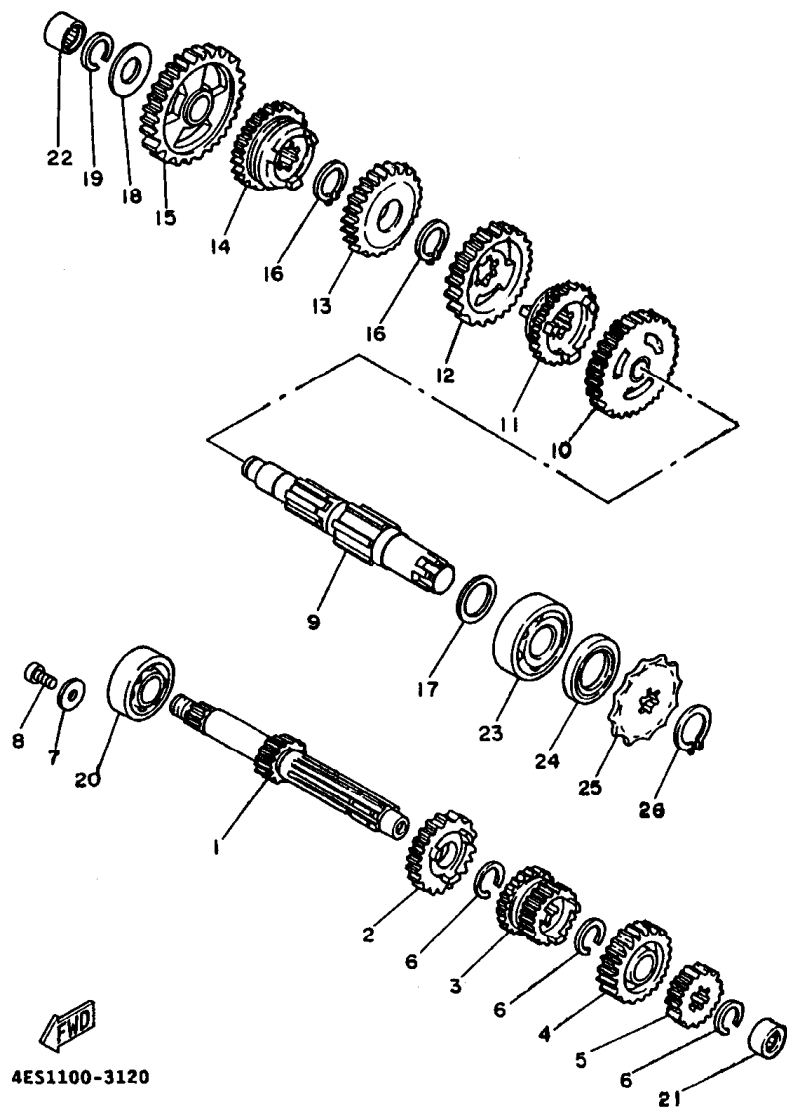
REF. NO.	PART NO.	DESCRIPTION	4ESA	4ESC	4LCB	4LCA	REMARKS
1	4ES-15660-00	KICK AXLE ASSY	1	1	1	1	
2	4ES-15641-00	GEAR, KICK	1	1	1	1	
3	90468-23194	CLIP	1	1	1	1	
4	90201-176L4	WASHER, PLATE	1	1	1	1	
5	90508-26750	SPRING, TORSION	1	1	1	1	
6	4ES-15664-00	GUIDE, SPRING	1	1	1	1	
7	93102-17283	OIL SEAL	1	1	1	1	
8	4ES-15651-00	GEAR, KICK IDLE	1	1	1	1	
9	90201-124F8	WASHER, PLATE	2	2	2	2	
10	99009-12400	CIRCLIP	1	1	1	1	
11	4ES-15620-00	KICK CRANK ASSY	1	1	1	1	
12	4ES-15621-00	BOSS, KICK CRANK	1	1	1	1	
13	93507-32009	BALL	1	1	1	1	
14	90501-12081	SPRING, COMPRESSION	1	1	1	1	
15	90201-12631	WASHER, PLATE	1	1	1	1	
16	93430-08007	CIRCLIP	1	1	1	1	
17	95027-06012	BOLT, FLANGE	1	1	1	1	
18	90201-06060	WASHER, PLATE	1	1	1	1	

FIG. 11 CLUTCH



REF. NO.	PART NO.	DESCRIPTION	4ESA	4ESC	4LC8	4LCA	REMARKS
1	4ES-16111-00	GEAR, PRIMARY DRIVE	1	1	1	1	
2	90387-20488	COLLAR	1	1	1	1	
3	90282-05001	KEY, STRAIGHT (5MMX16MM)	1	1	1	1	
4	90208-12015	WASHER, CONICAL SPRING	1	1	1	1	
5	90179-12659	NUT	1	1	1	1	
6	4ES-16150-11	PRIMARY DRIVEN GEAR COMP.	1	1	1	1	
7	37F-16371-01	BOSS, CLUTCH	1	1	1	1	
8	2TK-16351-00	PLATE, PRESSURE 1	1	1	1	1	
9	257-16324-00	PLATE, CLUTCH 1	3	3	3	3	
10	131-16324-00	PLATE, CLUTCH 1	3	3	3	3	
11	4ES-16321-00	PLATE, FRICTION	5	5	5	5	
12	21V-16321-00	PLATE, FRICTION	2	2	2	2	
13	90501-20735	SPRING, COMPRESSION	5	5	5	5	
14	90119-05001	BOLT, WITH WASHER	5	5	5	5	
15	4V0-16154-00	PLATE, THRUST 1	1	1	1	1	
16	90208-12015	WASHER, CONICAL SPRING	1	1	1	1	
17	90179-12659	NUT	1	1	1	1	
18	4ES-16356-00	ROD, PUSH 1	1	1	1	1	
19	2RA-16357-00	ROD, PUSH 2	1	1	1	1	
20	93503-16003	BALL	1	1	1	1	
21	93315-11206	BEARING	1	1	1	1	
22	93102-12224	OIL SEAL	1	1	1	1	
23	4ES-16361-00	PUSH LEVER COMP.	1	1	1	1	

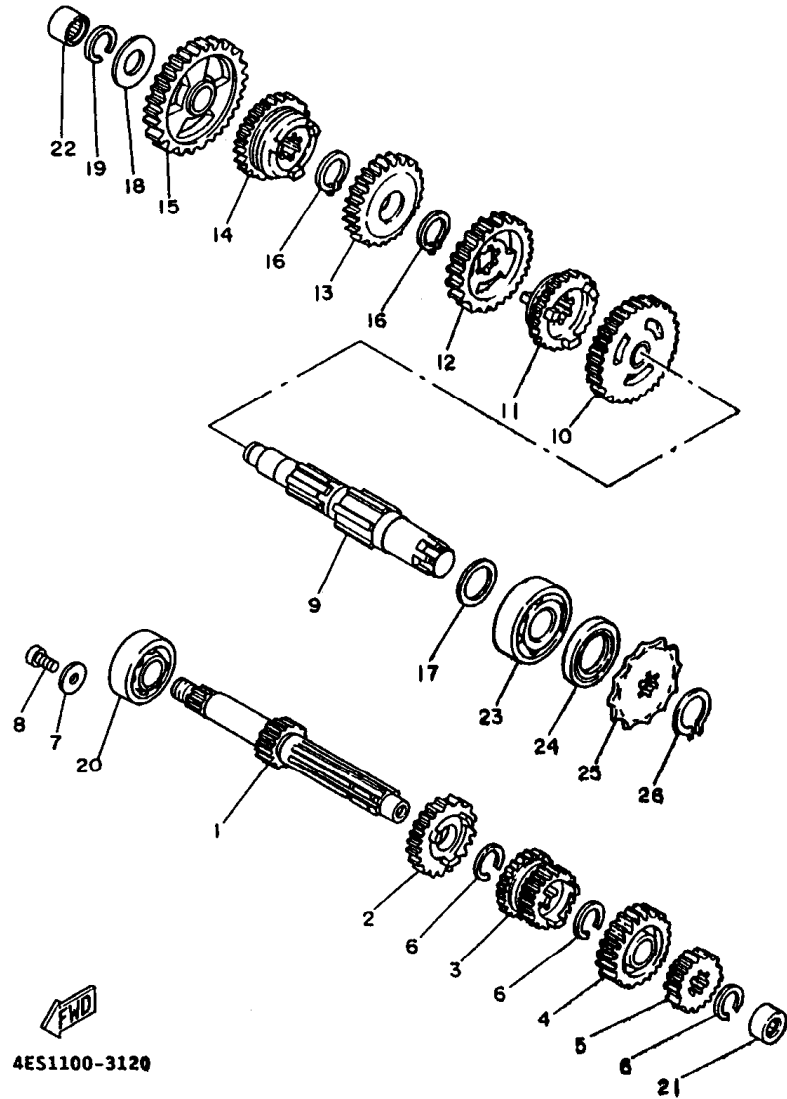
FIG. 12 TRANSMISSION



4ES1100-3120

REF. NO.	PART NO.	DESCRIPTION	4ESA	4ESC	4LCB	4LCA	REMARKS
1	4ES-17411-01	AXLE, MAIN	1	1	1	1	
2	4ES-17151-00	GEAR, 5TH PINION	1	1	1	1	
3	4ES-17131-00	GEAR, 3RD PINION	1	1	1	1	
4	4ES-17161-00	GEAR, 6TH PINION	1	1	1	1	
5	4ES-17121-01	GEAR, 2ND PINION	1	1	1	1	
6	93440-17064	CIRCLIP	3	3	3	3	
7	90201-06060	WASHER, PLATE	2	2	2	2	
8	90157-06071	SCREW, PAN HEAD	2	2	2	2	
9	4ES-17421-00	AXLE, DRIVE	1	1	1	1	
10	4ES-17221-01	GEAR, 2ND WHEEL	1	1	1	1	
11	4ES-17261-01	GEAR, 6TH WHEEL	1	1	1	1	
12	4ES-17231-01	GEAR, 3RD WHEEL	1	1	1	1	
13	4ES-17241-00	GEAR, 4TH WHEEL	1	1	1	1	
14	4ES-17251-00	GEAR, 5TH WHEEL	1	1	1	1	
15	4ES-17211-01	GEAR, 1ST WHEEL	1	1	1	1	
16	93410-20038	CIRCLIP	2	2	2	2	
17	90201-203E7	WASHER, PLATE	1	1	1	1	
18	164-17427-00-06	SHIM 1 (0.6T)	1	1	1	1	UR
	164-17427-00-08	SHIM 1 (0.8T)	1	1	1	1	UR
	164-17427-00-10	SHIM 1 (1.0T)	1	1	1	1	UR
19	93440-15012	CIRCLIP	1	1	1	1	
20	93306-20333	BEARING	1	1	1	1	
21	93317-11245	BEARING	1	1	1	1	
22	93315-31502	BEARING	1	1	1	1	
23	93306-20401	BEARING (B8204)	1	1	1	1	
24	93102-20143	OIL SEAL	1	1	1	1	
25	93822-14037	SPROCKET,DRIVE 14T(1741746140)	1	1			STD

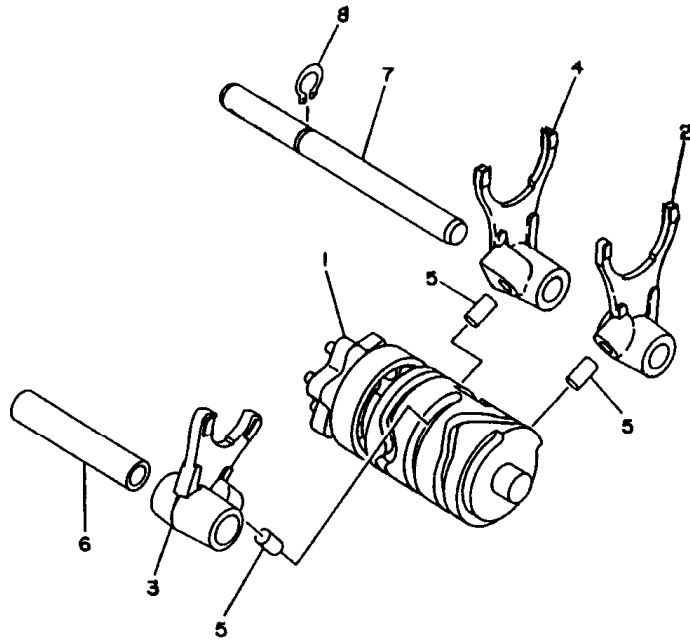
FIG. 12 TRANSMISSION



FWD
4ES1100-3120

REF. NO.	PART NO.	DESCRIPTION	4ESA	4ESC	4LC8	4LCA	REMARKS
25	93822-13024	SPROCKET,DRIVE 13T(1741746130)			1	1	STD
	93822-12012	SPROCKET,DRIVE 12T(1741746120)	1	1	1	1	AP
	93822-13024	SPROCKET,DRIVE 13T(1741746130)	1	1			AP
	93822-14037	SPROCKET,DRIVE 14T(1741746140)			1	1	AP
	93822-15065	SPROCKET,DRIVE 15T(1741746150)	1	1	1	1	AP
26	99009-18400	CIRCLIP	1	1	1	1	

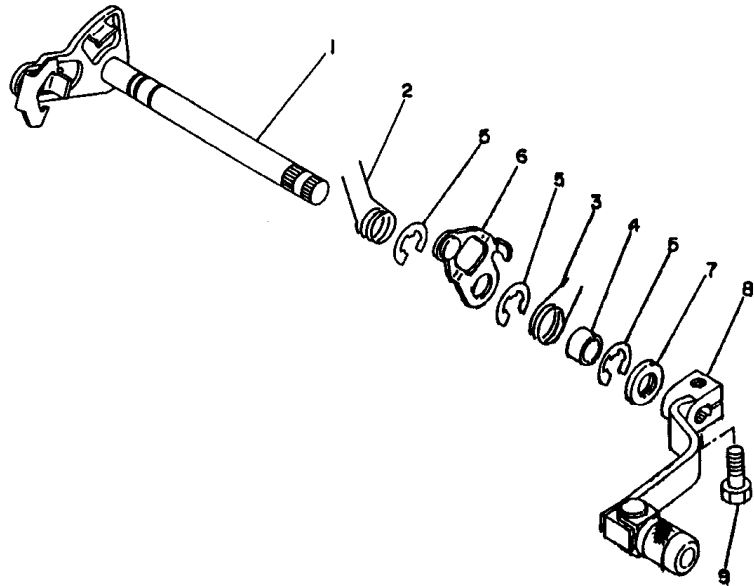
FIG. 13 SHIFT CAM. FORK



REF. NO.	PART NO.	DESCRIPTION	4ESA	4ESC	4LCB	4LCA	REMARKS
1	4ES-18540-00	SHIFT CAM ASSY	1	1	1	1	
2	4ES-18511-02	FORK, SHIFT 1	1	1	1	1	
3	5R2-18512-00	FORK, SHIFT 2	1	1	1	1	
4	4ES-18513-01	FORK, SHIFT 3	1	1	1	1	
5	90250-06013	PIN, STRAIGHT	3	3	3	3	
6	4BA-18531-00	BAR, SHIFT FORK GUIDE 1	1	1	1	1	
7	4BA-18535-00	BAR, SHIFT FORK GUIDE 2	1	1	1	1	
8	99009-10400	CIRCLIP	1	1	1	1	

END
4E93100-4130

FIG. 14 SHIFT SHAFT

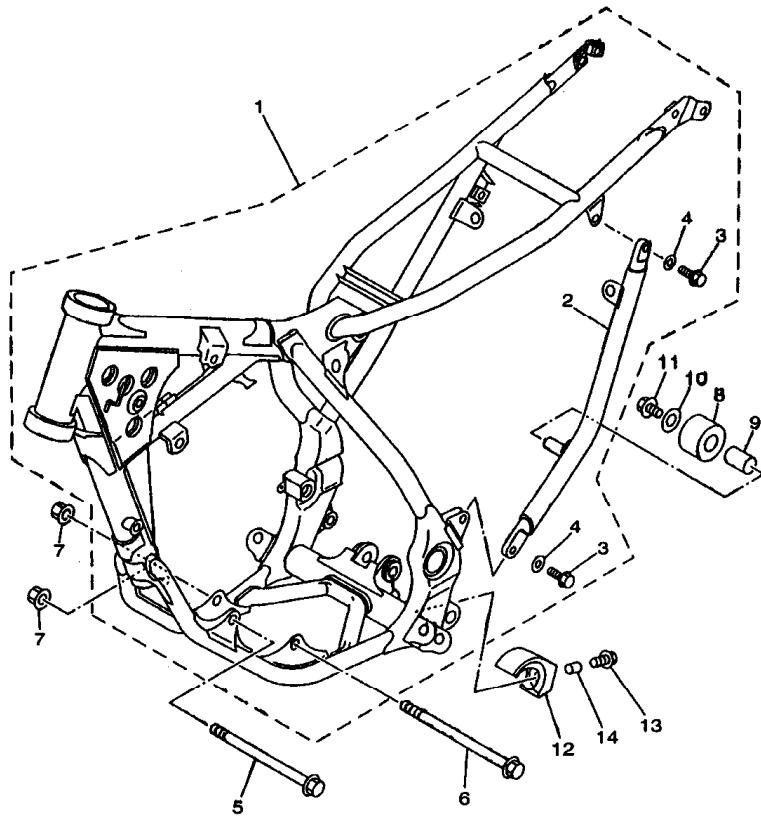


REF. NO.	PART NO.	DESCRIPTION	4ESA	4ESC	4LC8	4LCA	REMARKS
1	4ES-18101-00	SHIFT SHAFT ASSY	1	1	1	1	
2	90508-32553	SPRING, TORSION	1	1	1	1	
3	90508-242A6	SPRING, TORSION	1	1	1	1	
4	90387-128Y7	COLLAR	1	1	1	1	
5	99001-10800	CIRCLIP	3	3	3	3	
6	4BA-18140-00	STOPPER LEVER ASSY	1	1	1	1	
7	93101-12173	OIL SEAL	1	1	1	1	
8	2HF-18110-01	SHIFT PEDAL ASSY	1	1	1	1	
9	97027-08020	BOLT	1	1	1	1	


4ES1100-3140

C3

FIG. 15 FRAME

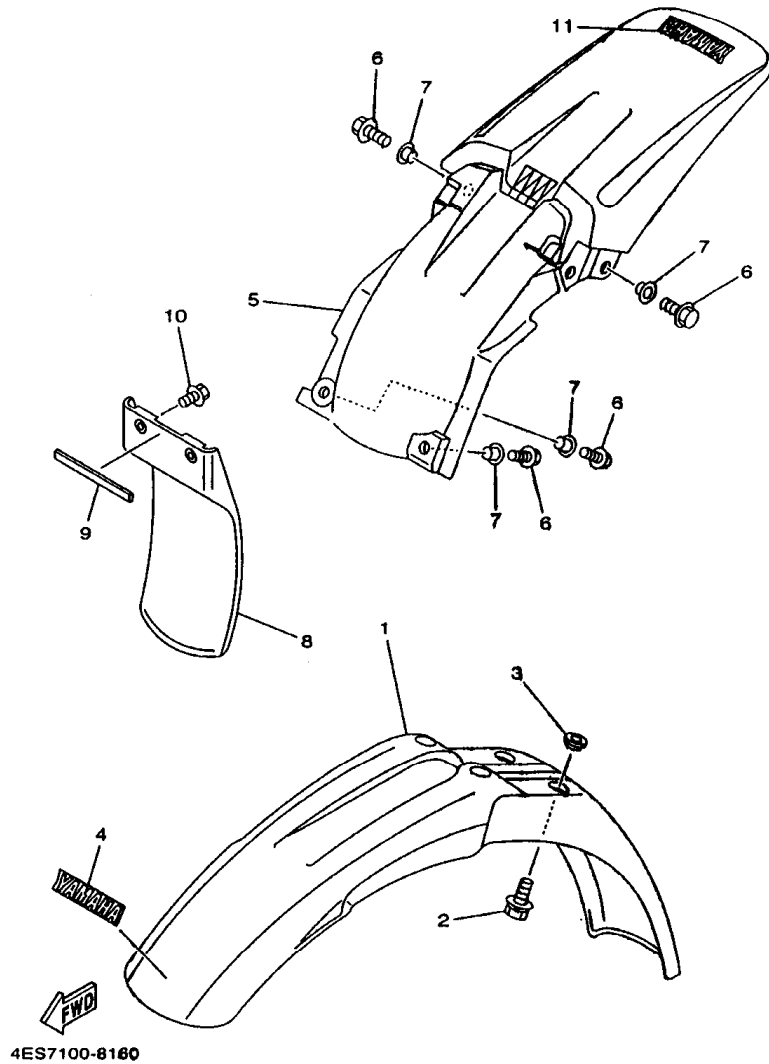


REF. NO.	PART NO.	DESCRIPTION	4ESA	4ESC	4LC8	4LCA	REMARKS
1	4ES-21110-02-P0	FRAME COMP.	1	1	1	1	DPBMC
2	4ES-21123-00-P2	.BACK, STAY LH.	1	1	1	1	DPBMC
3	95027-08020	.BOLT, FLANGE	2	2	2	2	
4	90201-080E2	.WASHER, PLATE	2	2	2	2	
5	95817-08125	BOLT, FLANGE	1	1	1	1	
6	95817-08135	BOLT, FLANGE	1	1	1	1	
7	95607-08200	NUT, SELF-LOCKING	2	2	2	2	
8	30X-22178-00	TENSIONER	1	1	1	1	
9	4V4-22184-00	BUSH	1	1	1	1	
10	90201-081R9	WASHER, PLATE	1	1	1	1	
11	95027-08012	BOLT, FLANGE	1	1	1	1	
12	4ES-22178-00	TENSIONER	1	1	1	1	
13	90119-06118	BOLT, WITH WASHER	1	1	1	1	
14	90387-060A3	COLLAR	1	1	1	1	

4GTF700-0150

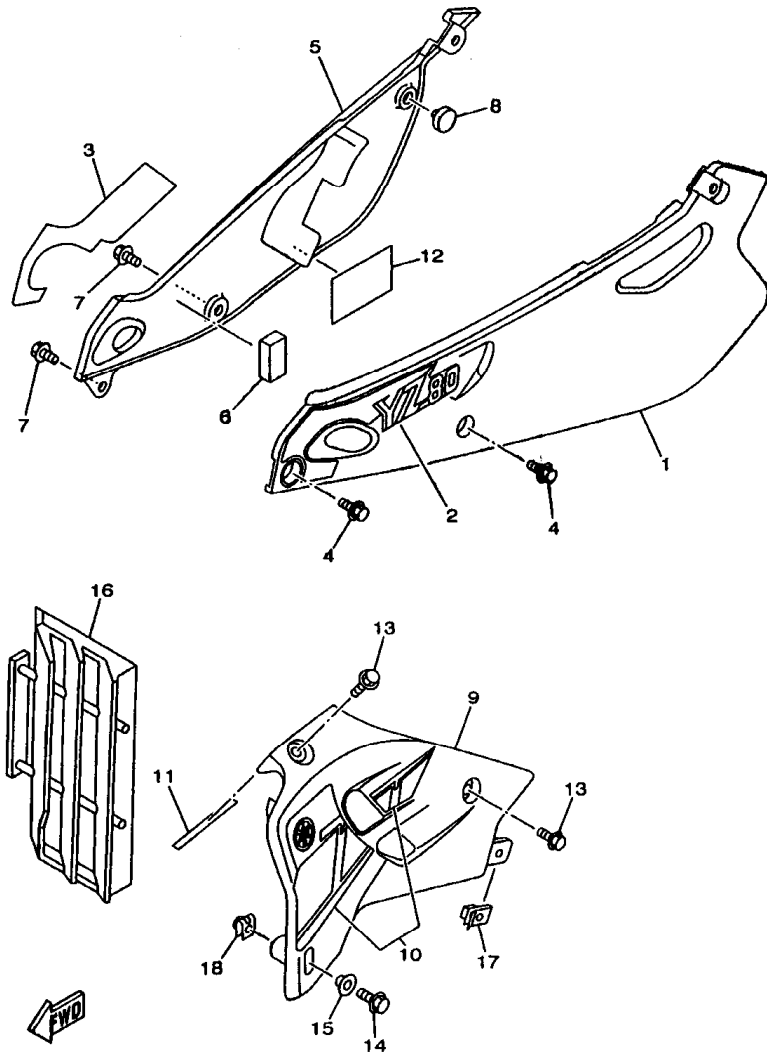
C4

FIG. 16 FENDER



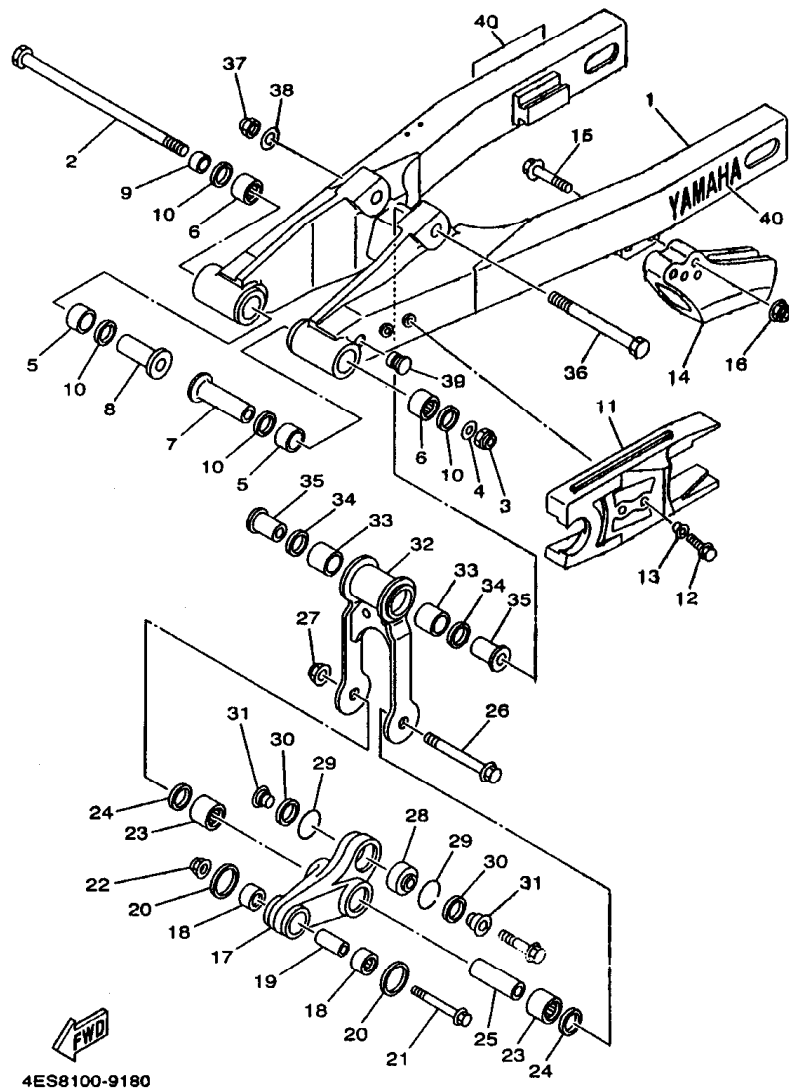
REF. NO.	PART NO.	DESCRIPTION	4ESA	4ESC	4LC8	4LCA	REMARKS
1	4ES-21511-20	FENDER, FRONT	1	1	1	1	
2	90119-06063	BOLT, WITH WASHER	4	4	4	4	
3	90209-06187	WASHER	4	4	4	4	
4	4ES-2153E-01	EMBLEM, YAMAHA	1	1	1	1	
5	4ES-21611-10	FENDER, REAR	1	1	1	1	
6	95027-06016	BOLT, FLANGE	4	4	4	4	
7	90387-064X4	COLLAR	4	4	4	4	
8	4ES-21642-00	GUARD, FLAP	1	1	1	1	
9	25G-21675-00	SEAL 1			1	1	
10	90119-06185	BOLT, WITH WASHER	2	2	2	2	
11	4ES-2153E-00	EMBLEM, YAMAHA	1	1	1	1	EXCEPT FOR CANADA

FIG. 17 SIDE COVER



4ESA100-1170

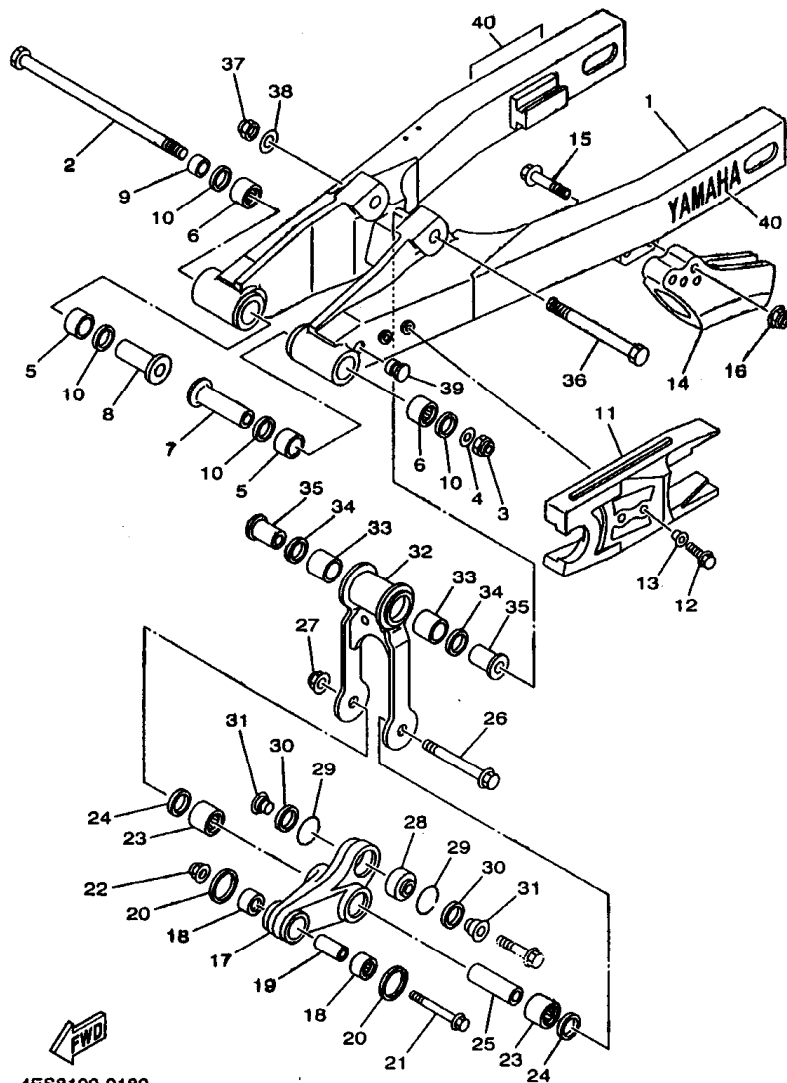
REF. NO.	PART NO.	DESCRIPTION	4ESA	4ESC	4LC8	4LCA	REMARKS
1	4ES-21711-00	COVER, SIDE 1	1	1	1	1	
2	4ES-2173E-50	GRAPHIC 1	1	1	1	1	
3	4ES-2173F-50	GRAPHIC 2	1	1	1	1	
4	90119-08217	BOLT, WITH WASHER	2	2	2	2	
5	4ES-21721-00	COVER, SIDE 2	1	1	1	1	
6	4ES-21735-00	SEAL 2	1	1	1	1	
7	90119-08217	BOLT, WITH WASHER	2	2	2	2	
8	22W-24181-00	DAMPER, LOCATING 1	1	1	1	1	
9	4ES-21731-20	COVER, SIDE 3	1	1	1	1	
10	4ES-2173L-40	GRAPHIC SET 1	1	1	1	1	
11	4ES-21732-00	SEAL 1	1	1	1	1	
12	4DJ-2174A-00	INSULATOR, SIDE COVER	1	1	1	1	
13	90109-087F4	BOLT	2	2	2	2	
14	95027-06018	BOLT, FLANGE	1	1	1	1	
15	90387-082M9	COLLAR	1	1	1	1	
16	4EW-2172A-00	PANEL 1	1	1	1	1	
17	90183-06023	NUT, SPRING	1	1	1	1	
18	90183-06069	NUT, SPRING	1	1	1	1	



4ES8100-9180

FIG. 18 REAR ARM

REF. NO.	PART NO.	DESCRIPTION	4ES4	4ESC	4LC8	4LCA	REMARKS
1	4ES-22110-01	REAR ARM COMP.	1	1			
	4LB-22110-01	REAR ARM COMP.			1	1	
2	22W-25181-01	AXLE, WHEEL	1	1	1	1	
3	95617-12100	NUT, U	1	1	1	1	
4	90201-124G9	WASHER, PLATE	1	1	1	1	
5	90385-17042	BUSH	2	2	2	2	
6	93317-21746	BEARING	2	2	2	2	
7	90387-127J8	COLLAR	1	1	1	1	
8	90387-127J7	COLLAR	1	1	1	1	
9	90387-1200U	COLLAR	1	1	1	1	
10	93109-17071	OIL SEAL	4	4	4	4	
11	4ES-22151-10	SEAL, GUARD	1	1	1	1	
12	95027-06014	BOLT, FLANGE	2	2	2	2	
13	90387-082X0	COLLAR	2	2	2	2	
14	39K-22199-00	SUPPORT, CHAIN	1	1	1	1	
15	90105-08310	BOLT, WASHER BASED	2	2	2	2	
16	95807-08200	NUT, SELF-LOCKING	2	2	2	2	
17	4ES-2217A-00	ARM, RELAY	1	1	1	1	
18	93315-21455	BEARING	2	2	2	2	
19	90380-10218	BUSH, SOLID	1	1	1	1	
20	4ES-22129-00	COVER, THRUST 2	2	2	2	2	
21	90105-10582	BOLT, WASHER BASED	1	1	1	1	
22	95807-10200	NUT, SELF-LOCKING	1	1	1	1	
23	93317-31771	BEARING	2	2	2	2	
24	93101-17062	OIL SEAL	2	2	2	2	
25	90380-12219	BUSH, SOLID	1	1	1	1	
26	90105-12382	BOLT, WASHER BASED	1	1	1	1	

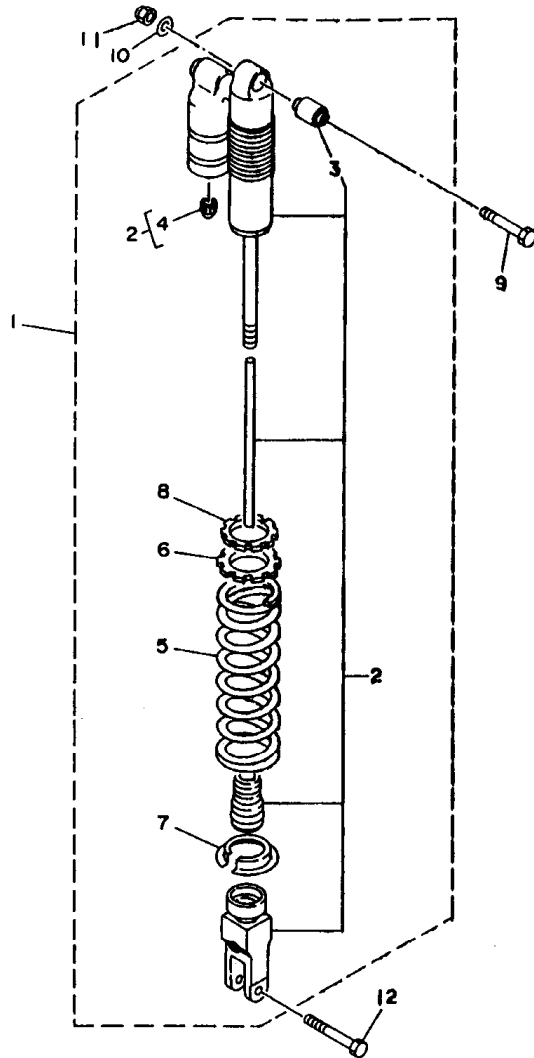


4ES8100-9180

FIG. 18 REAR ARM

REF. NO.	PART NO.	DESCRIPTION	4ESA	4ESC	4LC8	4LCA	REMARKS
27	95807-12200	NUT, SELF-LOCKING	1	1	1	1	
28	93399-99921	BEARING	1	1	1	1	
29	93440-30113	CIRCLIP	2	2	2	2	
30	3XJ-22475-00	SEAL, DUST	2	2	2	2	
31	90387-103X9	COLLAR	2	2	2	2	
32	4ES-2217F-00	ROD, CONNECTING 1	1	1	1	1	
33	93317-31771	BEARING	2	2	2	2	
34	93101-17062	OIL SEAL	2	2	2	2	
35	90381-12091	BUSH, SOLID	2	2	2	2	
36	90101-12755	BOLT	1	1	1	1	
37	90185-12119	NUT, SELF-LOCKING	1	1	1	1	
38	90201-12749	WASHER, PLATE	1	1	1	1	
39	90338-10150	PLUG	2	2	2	2	
40	99244-00140	EMBLEM, YAMAHA	2	2	2	2	

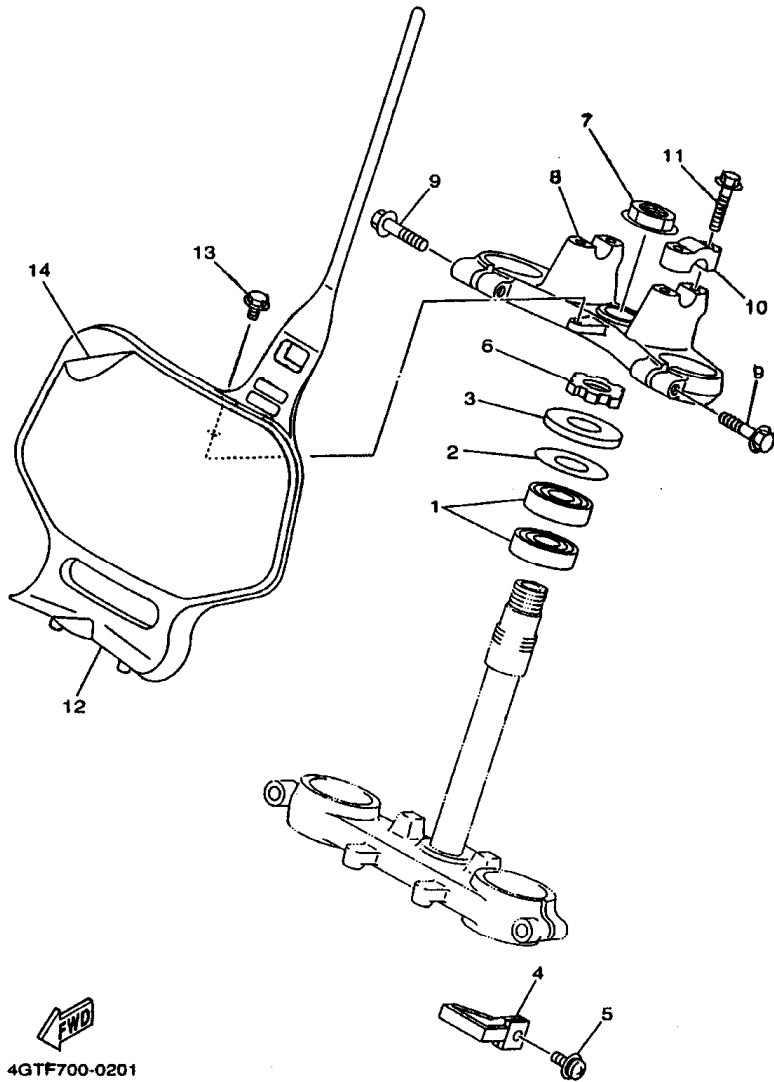
FIG. 19 REAR SUSPENSION



4ES1100-3190

REF. NO.	PART NO.	DESCRIPTION	4ESA	4ESC	4LCB	4LCA	REMARKS
1	4ES-22210-C0	SHOCK ABSORBER ASSY, REAR	1				FOR USA
	4ES-22210-D0	SHOCK ABSORBER ASSY, REAR	1				FOR CAN
	4ES-22210-E0	SHOCK ABSORBER ASSY, REAR	1				FOR ZAF
	4ES-22210-F0	SHOCK ABSORBER ASSY, REAR	1				FOR EUR
	4GT-22210-40	SHOCK ABSORBER ASSY, REAR		1			
	4LB-22210-70	SHOCK ABSORBER ASSY, REAR				1	
	4LB-22210-80	SHOCK ABSORBER ASSY, REAR			1		
2	4ES-22201-30	.DAMPER SUB ASSY	1				FOR USA
	4ES-22201-40	.DAMPER SUB ASSY	1				FOR CAN
	4ES-22201-50	.DAMPER SUB ASSY	1				FOR ZAF
	4ES-22201-60	.DAMPER SUB ASSY	1				FOR EUR
	4GT-22201-10	.DAMPER SUB ASSY		1			
	4LB-22201-50	.DAMPER SUB ASSY				1	
	4LB-22201-60	.DAMPER SUB ASSY			1		
3	4ES-22216-00	.BUSH, REAR SHOCK ABSORBER	1	1	1	1	
4	58T-23184-L0	.CAP, AIR VALVE	1	1	1	1	
5	4ES-22212-F0	.SPRING (K=5.0)	1	1			
	4ES-22212-K0	.SPRING (K=4.6)	1				FOR EUR
	4ES-22212-G0	.SPRING (K=4.8)			1		
	4ES-22212-H0	.SPRING (K=5.2)				1	
6	4ES-22214-00	.GUIDE, SPRING 1	1	1	1	1	
7	3JD-22214-00	.GUIDE, SPRING 1	1	1	1	1	
8	4ES-22251-00	.NUT 1	1	1	1	1	
9	90109-10729	BOLT	1	1	1	1	
10	92907-10600	WASHER, PLATE	1	1	1	1	
11	90185-10110	NUT, SELF-LOCKING	1	1	1	1	
12	90105-10614	BOLT, WASHER BASED	1	1	1	1	

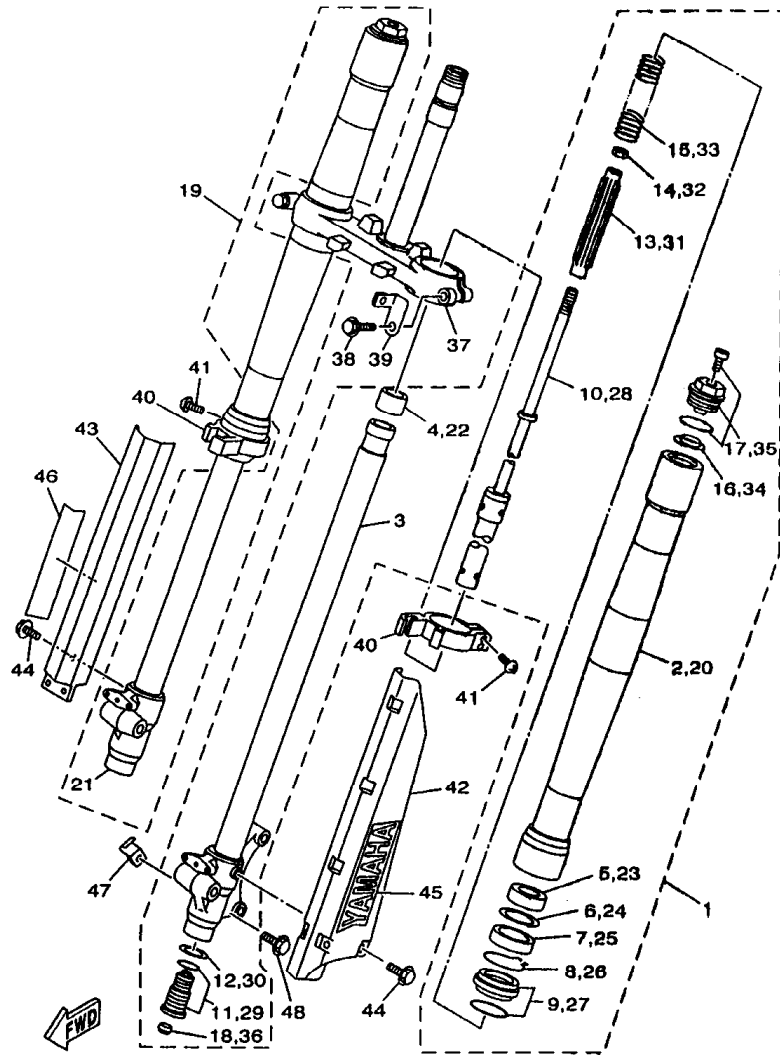
FIG. 20 STEERING



REF. NO.	PART NO.	DESCRIPTION	MESA	MESC	ALC8	ALCA	REMARKS
1	93332-00079	BEARING	2	2	2	2	
2	90201-259K5	WASHER, PLATE (0.5T)	1	1	1	1	
3	1J7-23415-00	COVER, BALL RACE 1	1	1	1	1	
4	4DA-23389-00	GUIDE, CABLE	1	1	1	1	
5	90157-05079	SCREW, PAN HEAD	1	1	1	1	
6	90179-25033	NUT	1	1	1	1	
7	90179-22412	NUT	1	1	1	1	
8	4ES-23435-00	CROWN, HANDLE	1	1	1	1	
9	95807-08035	BOLT, FLANGE	2	2	2	2	
10	3SP-23441-00	HOLDER, HANDLE UPPER	2	2	2	2	
11	95027-08030	BOLT, FLANGE	4	4	4	4	
12	4ES-23485-20	PLATE, NUMBER	1	1	1	1	
13	95027-06012	BOLT, FLANGE	1	1	1	1	
14	4ES-2339E-00	GRAPHIC 1	1	1	1	1	


4GTF700-0201

FIG. 21 FRONT FORK



4ESA100-1210

REF. NO.	PART NO.	DESCRIPTION	4ESA	4ESC	4LC8	4LCA	REMARKS
1	4ES-23102-20	FRONT FORK ASSY (L.H)	1	1			
	4LB-23102-20	FRONT FORK ASSY (L.H)			1	1	
2	4ES-23136-20	.TUBE, OUTER (RIGHT)	1	1	1	1	
3	4ES-23120-00	.INNER TUBE COMP.2	1	1	1	1	
4	4ES-23171-00	.PISTON, FRONT FORK	1	1	1	1	
5	4ES-23125-00	.METAL, SLIDE 1	1	1	1	1	
6	5K5-23149-00	.WASHER, SPRING UPPER	1	1	1	1	
7	4ES-23145-00	.OIL SEAL	1	1	1	1	
8	4A1-23156-00	.CLIP, OIL SEAL	1	1	1	1	
9	4ES-23144-00	.SEAL, DUST	1	1	1	1	
10	4ES-23170-10	.CYLINDER COMP., FRONT FORK	1	1	1	1	
11	4ES-2316A-10	.VALVE COMP.	1	1			
	4LB-2316A-20	.VALVE COMP.			1	1	
12	2HH-23158-L0	.GASKET	1	1	1	1	
13	4ES-23142-00	.SEAT, SPRING UPPER	1	1	1	1	
14	3XJ-23357-L0	.NUT	1	1	1	1	
15	4ES-23141-40	.SPRING, FRONT FORK (K=0.29)	1	1			
	4LB-23141-10	.SPRING, FRONT FORK (K=0.30)			1	1	
16	3GM-23142-00	.SEAT, SPRING UPPER	1	1	1	1	
17	4ES-23111-10	.BOLT, CAP	1	1	1	1	
18	3JD-2312G-L0	.PLUG	1	1	1	1	
19	4ES-23103-20	FRONT FORK ASSY (R.H)	1	1			
	4LB-23103-20	FRONT FORK ASSY (R.H)			1	1	
20	4ES-23136-20	.TUBE, OUTER (RIGHT)	1	1	1	1	
21	4ES-23110-00	.INNER TUBE COMP.1	1	1	1	1	
22	4ES-23171-00	.PISTON, FRONT FORK	1	1	1	1	
23	4ES-23125-00	.METAL, SLIDE 1	1	1	1	1	

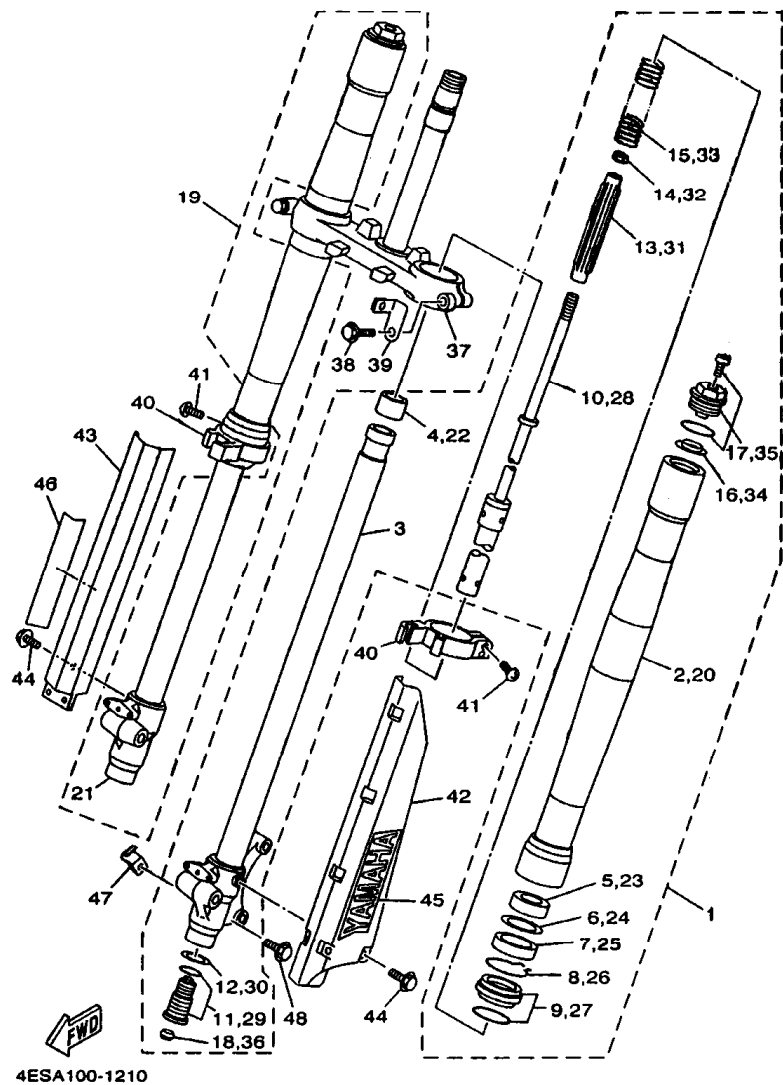
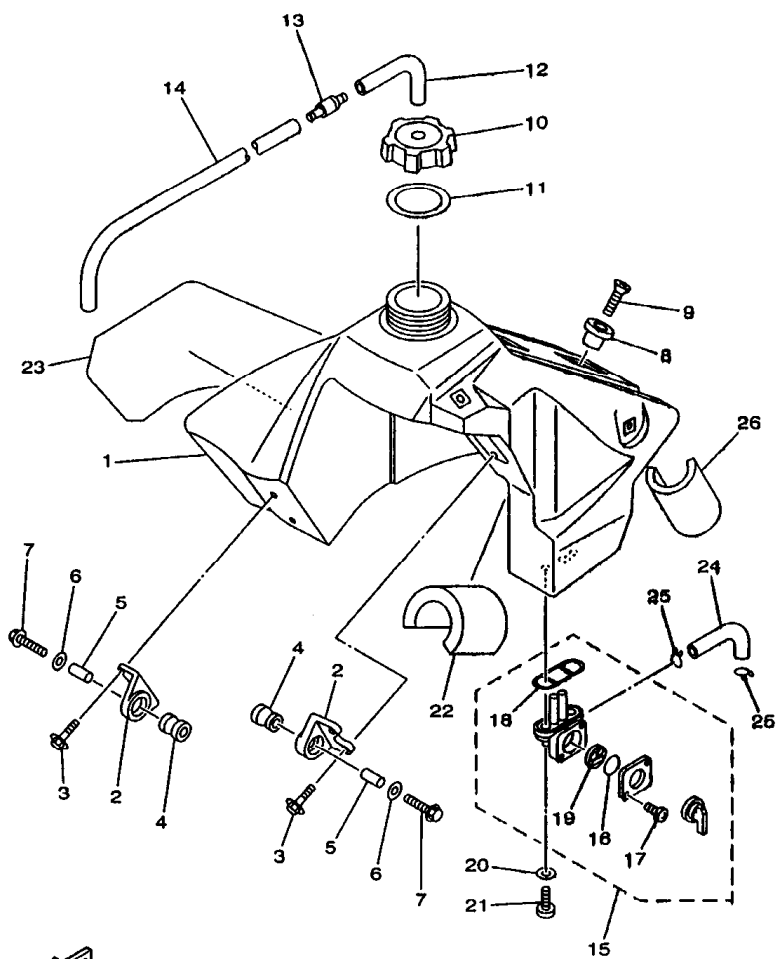


FIG. 21 FRONT FORK

REF. NO.	PART NO.	DESCRIPTION	4ESA	4ESC	4LC8	4LCA	REMARKS
24	5K5-23149-00	.WASHER, SPRING UPPER	1	1	1	1	
25	4ES-23145-00	.OIL SEAL	1	1	1	1	
26	4A1-23158-00	.CLIP, OIL SEAL	1	1	1	1	
27	4ES-23144-00	.SEAL, DUST	1	1	1	1	
28	4ES-23170-10	.CYLINDER COMP., FRONT FORK	1	1	1	1	
29	4ES-2316A-10	.VALVE COMP.	1	1			
	4LB-2316A-20	.VALVE COMP.			1	1	
30	2HH-23158-L0	.GASKET	1	1	1	1	
31	4ES-23142-00	.SEAT, SPRING UPPER	1	1	1	1	
32	3XJ-23357-L0	.NUT	1	1	1	1	
33	4ES-23141-40	.SPRING, FRONT FORK (K=0.29)	1	1			
	4LB-23141-10	.SPRING, FRONT FORK (K=0.30)			1	1	
34	3GM-23142-00	.SEAT, SPRING UPPER	1	1	1	1	
35	4ES-23111-10	.BOLT, CAP	1	1	1	1	
36	3JD-2312G-L0	.PLUG	1	1	1	1	
37	4ES-23340-00	UNDER BRACKET COMP.	1	1	1	1	
38	95021-10040	BOLT, FLANGE	2	2	2	2	
39	4ES-2331E-00	GUIDE, CABLE	1	1	1	1	
40	4ES-2314F-00	PROTECTOR GUIDE COMP., 1	2	2	2	2	
41	4V4-23194-L0	SCREW, BOOT BAND	4	4	4	4	
42	4ES-2314H-L1	PROTECTOR COMP., 1	1	1	1	1	
43	4ES-2314J-L0	PROTECTOR COMP., 2	1	1	1	1	
44	95024-06010	BOLT, FLANGE	6	6	6	6	
45	4XL-2153A-10	EMBLEM, YAMAHA	1	1	1	1	
46	4XL-2153A-10	EMBLEM, YAMAHA	1	1	1	1	
47	4ES-23318-00	HOLDER, CABLE 1	1	1	1	1	
48	95027-06016	BOLT, FLANGE	1	1	1	1	

FIG. 22 FUEL TANK



4ES7100-8220

REF. NO.	PART NO.	DESCRIPTION	4ESA	4ESC	4LC8	4LCA	REMARKS
1	4ES-24110-20	FUEL TANK COMP.	1	1	1	1	
2	24X-24144-00	HOLDER, DAMPER	2	2	2	2	
3	95027-06016	BOLT, FLANGE	4	4	4	4	
4	90480-18549	GROMMET	2	2	2	2	
5	90387-06027	COLLAR	2	2	2	2	
6	90201-06071	WASHER, PLATE	2	2	2	2	
7	95027-06030	BOLT, FLANGE	2	2	2	2	
8	4EW-2412F-00	BRACKET, SEAT	1	1	1	1	
9	98707-06025	SCREW, FLAT HEAD	1	1	1	1	
10	5X7-24611-01	BODY, CAP	1	1	1	1	
11	5X7-24612-00	GASKET, CAP	1	1	1	1	
12	90445-09220	HOSE	1	1	1	1	
13	3XJ-24380-00	PIPE JOINT ASSY	1	1	1	1	
14	90445-09100	HOSE	1	1	1	1	
15	4DP-24500-00	FUEL COCK ASSY 1	1	1	1	1	
16	3AJ-24534-00	.SEAL, COCK	1	1	1	1	
17	97801-03008	.SCREW, PAN HEAD	2	2	2	2	
18	4X8-24512-00	.O-RING	1	1	1	1	
19	3AJ-24523-00	.VALVE PACKING	1	1	1	1	
20	90202-06193	WASHER, PLATE	2	2	2	2	
21	90149-06011	SCREW	2	2	2	2	
22	3Y0-24183-00	DAMPER, LOCATING 3	1	1	1	1	
23	4ES-24244-10	GRAPHIC, FUEL TANK 1	1	1	1	1	
24	4ES-24311-10	PIPE, FUEL 1	1	1	1	1	
25	90467-10008	CLIP	2	2	2	2	
26	51L-28371-00	DAMPER	1	1	1	1	

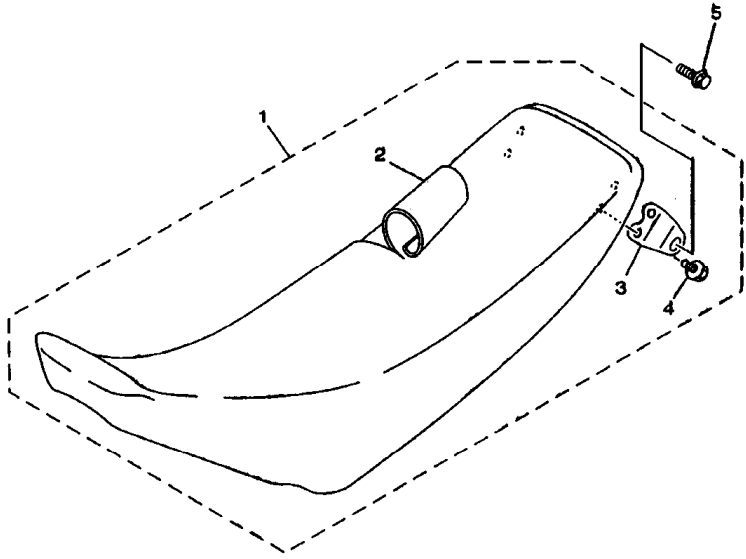
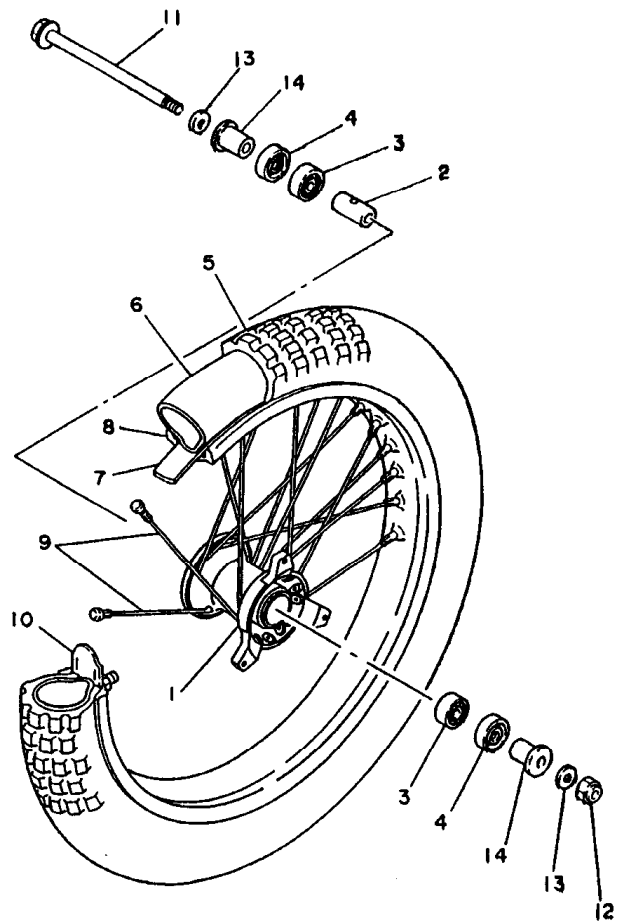


FIG. 23 SEAT

REF. NO.	PART NO.	DESCRIPTION	4ESA	4ESC	4LCB	4LCA	REMARKS
1	4ES-24770-50	SEMI-DOUBLE SEAT ASSY	1	1	1	1	
2	4ES-24731-50	COVER, SEAT	1	1	1	1	
3	4ES-24728-00	BRACKET, SEAT	2	2	2	2	
4	95027-08012	BOLT, FLANGE	4	4	4	4	
5	90119-08225	BOLT, WITH WASHER	2	2	2	2	


4ES8100-9230

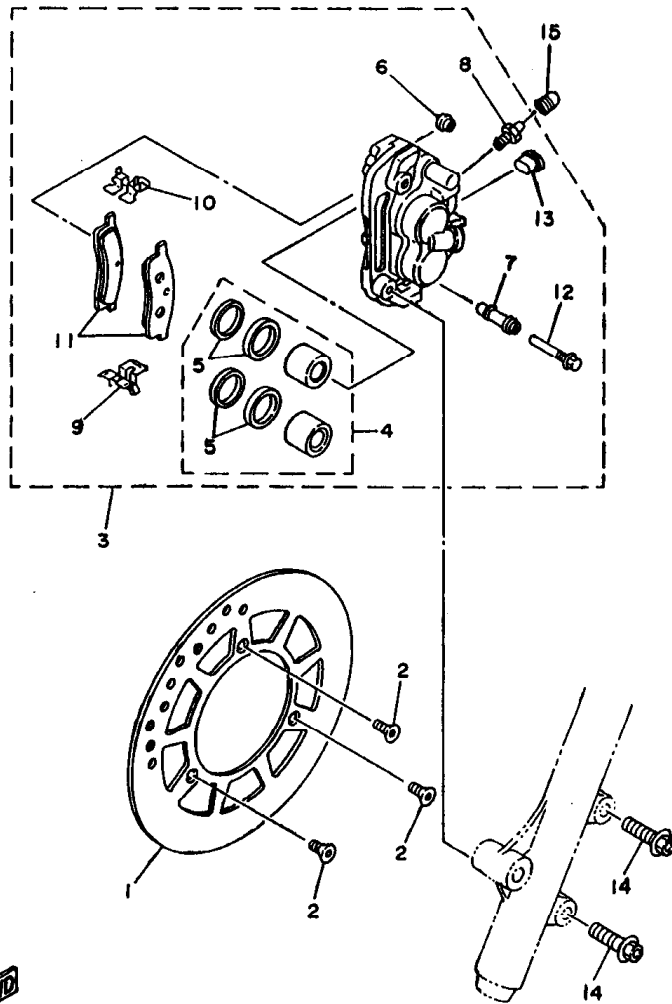


4ES1100-3240

FIG. 24 FRONT WHEEL

REF. NO.	PART NO.	DESCRIPTION	4ESA	4ESC	4LCB	4LCA	REMARKS
1	4ES-25111-00	HUB, FRONT	1	1	1	1	
2	90387-124H0	COLLAR	1	1	1	1	
3	93306-20120	BEARING	2	2	2	2	
4	93106-20031	OIL SEAL	2	2	2	2	
5	94107-1706B	TIRE (70/100-17 40M D752F)	1				DUNLOP
	94107-177Y5	TIRE (70/100-17 40M K490)	1	1			DUNLOP EXCEPT FOR CAN DUNLOP
	94107-1906D	TIRE (70/100-19 42M D752F)			1		
	94107-1902L	TIRE (70/100-19 42M K490)				1	DUNLOP
6	94207-17284	TUBE (70/100-17 TR4)	1	1			DUNLOP
	94207-19290	TUBE (70/100-19 TR-4)			1	1	DUNLOP
7	94307-17166	BAND, RIM (80/90,70/100-17)	1	1			DUNLOP
	94307-19170	BAND, RIM (70/100-19)			1	1	DUNLOP
8	94414-17530	RIM (1.40-17)	1	1			
	94414-19521	RIM (1.40-19)			1	1	
9	4ES-25104-20	SPOKE SET, FRONT	1	1			
	4LB-25104-00	SPOKE SET, FRONT			1	1	
10	1T1-25194-00	SPACER, BEAD	1	1	1	1	
11	4ES-25181-00	AXLE, WHEEL	1	1	1	1	
12	90185-12046	NUT, SELF-LOCKING	1	1	1	1	
13	90201-12362	WASHER, PLATE	2	2	2	2	
14	4ES-25183-10	COLLAR, WHEEL	2	2	2	2	

FIG. 25 FRONT BRAKE CALIPER



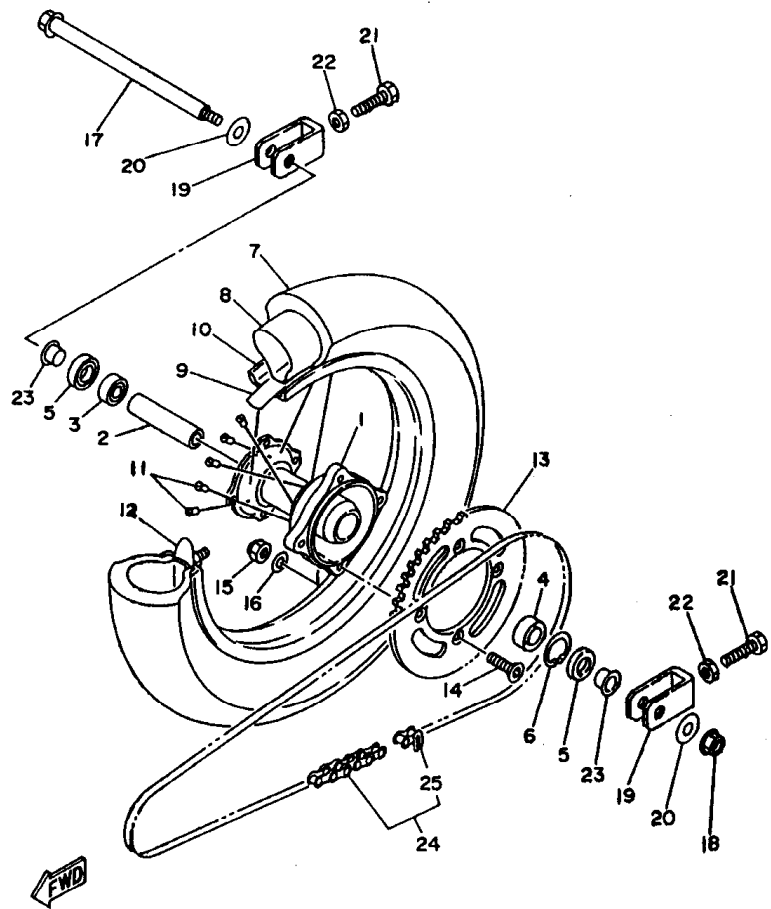
REF. NO.	PART NO.	DESCRIPTION	4ESA	4ESC	4LCB	4LCA	REMARKS
1	4ES-2582T-00	DISC, BRAKE	1	1	1	1	
2	90149-08327	SCREW	3	3	3	3	
3	4ES-2580T-20	CALIPER ASSY (LEFT)	1	1	1	1	
4	4ES-W0087-10	.PISTON ASSY, CALIPER	1	1	1	1	
5	4ES-W0047-10	..CALIPER SEAL KIT	1	1	1	1	
6	5R2-25937-00	.BOOT 2	1	1	1	1	
7	56A-25937-00	.BOOT 2	1	1	1	1	
8	47X-25824-00	.SCREW, BLEED	1	1	1	1	
9	56A-25919-00	.SUPPORT, PAD	1	1	1	1	
10	56A-25919-10	.SUPPORT, PAD	1	1	1	1	
11	4ES-W0045-20	.BRAKE PAD KIT	1	1	1	1	
12	56A-25928-00	.BOLT	1	1	1	1	
13	34X-25845-00	.CAP, INDICATOR	1	1	1	1	
14	90105-08211	BOLT, WASHER BASED	2	2	2	2	
15	51L-25825-00	CAP	1	1	1	1	



4ES3100-4250

D2

FIG. 26 REAR WHEEL

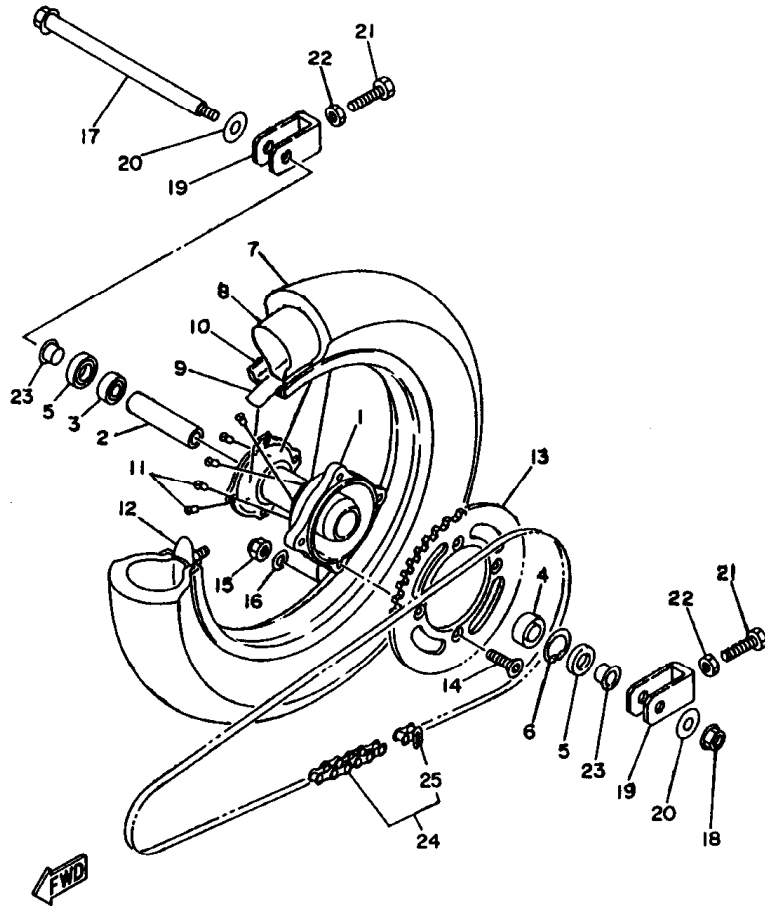


4ES1100-3260

REF. NO.	PART NO.	DESCRIPTION	4ESA	4ESC	4LCB	4LCA	REMARKS
1	4ES-25311-00	HUB, REAR	1	1	1	1	
2	4ES-25383-00	COLLAR, WHEEL	1	1	1	1	
3	93306-00210	BEARING	1	1	1	1	
4	93306-20227	BEARING	1	1	1	1	
5	93102-20009	OIL SEAL	2	2	2	2	
6	99009-35500	CIRCLIP	1	1	1	1	
7	94109-1406C	TIRE (90/100-14 49M D752)	1				DUNLOP
	94109-147Y6	TIRE (90/100-14 49M K695)	1	1			DUNLOP EXCEPT FOR CAN
	94109-1606E	TIRE (90/100-16 52M D752)			1		DUNLOP
	94109-1602M	TIRE (90/100-16 52M K695)				1	DUNLOP
8	94208-14285	TUBE (80-90/100-14 TR4)	1	1			DUNLOP
	94209-16291	TUBE (90/100-16 TR-4)			1	1	DUNLOP
9	94308-14165	BAND, RIM (80-90/100-14)	1	1			DUNLOP
	94307-16171	BAND, RIM (70-90/100-16)			1	1	DUNLOP
10	94418-14529	RIM (1.60-14)	1	1			
	94418-16522	RIM (1.85-16)			1	1	
11	4ES-25304-20	SPOKE SET, REAR	1	1			
	4LB-25304-00	SPOKE SET, REAR			1	1	
12	5X2-25384-00	SPACER, BEAD	1	1			
	1T2-25394-00	SPACER, BEAD			1	1	
13	4ES-25447-20	SPROCKET, DRIVEN (47T)	1	1	1	1	STD AFAM
	4ES-25446-00	SPROCKET, DRIVEN (46T)	1	1	1	1	AP
	4ES-25448-00	SPROCKET, DRIVEN (48T)	1	1	1	1	AP
14	90109-081G2	BOLT	4	4	4	4	
15	95617-08100	NUT, U	4	4	4	4	
16	90201-086P8	WASHER, PLATE	4	4	4	4	
17	4ES-25381-01	AXLE, WHEEL	1	1	1	1	

D3

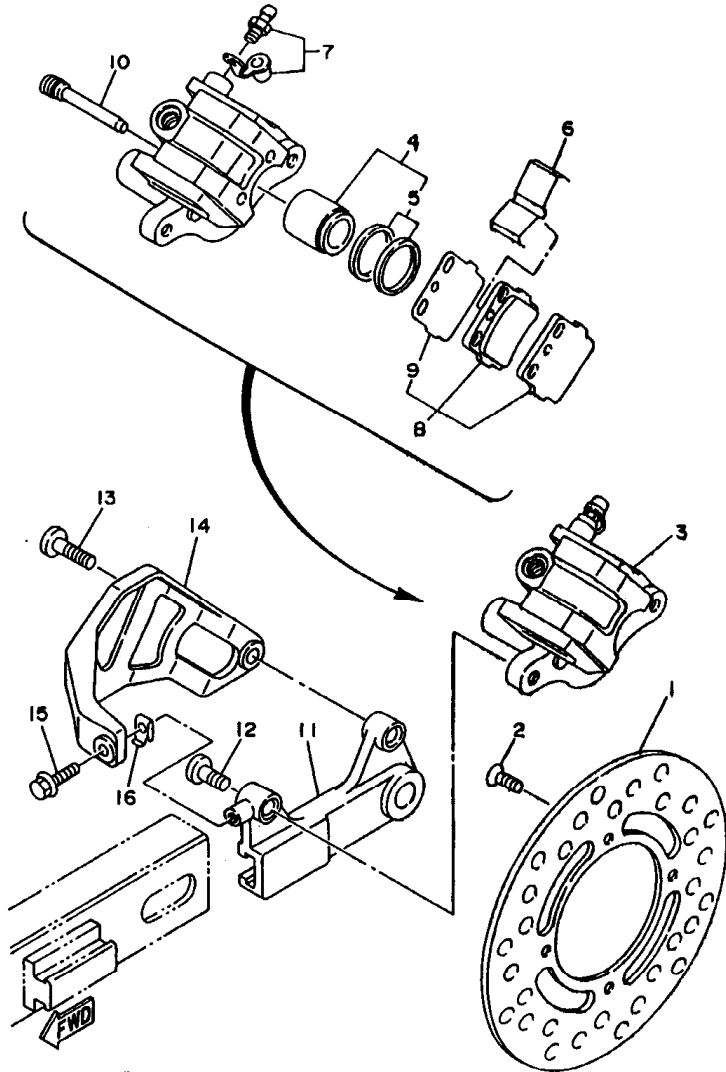
FIG. 26 REAR WHEEL



4ES1100-3260

REF. NO.	PART NO.	DESCRIPTION	4ESA	4ESC	4LCB	4LCA	REMARKS
18	95807-14200	NUT, SELF-LOCKING	1	1	1	1	
19	4ES-25388-00	PULLER, CHAIN 1	2	2	2	2	
20	90201-161R1	WASHER, PLATE	2	2	2	2	
21	90101-08475	BOLT	2	2	2	2	
22	95307-08700	NUT	2	2	2	2	
23	4ES-25383-10	COLLAR, WHEEL	2	2	2	2	
24	9Y581-58117	CHAIN (DID428G2 118L)	1	1			
	9Y581-58119	CHAIN (DID428G2 120L)			1		
	94581-58120	CHAIN (DID428G2 120L)				1	
25	94881-98001	.JOINT, CHAIN	1	1	1	1	

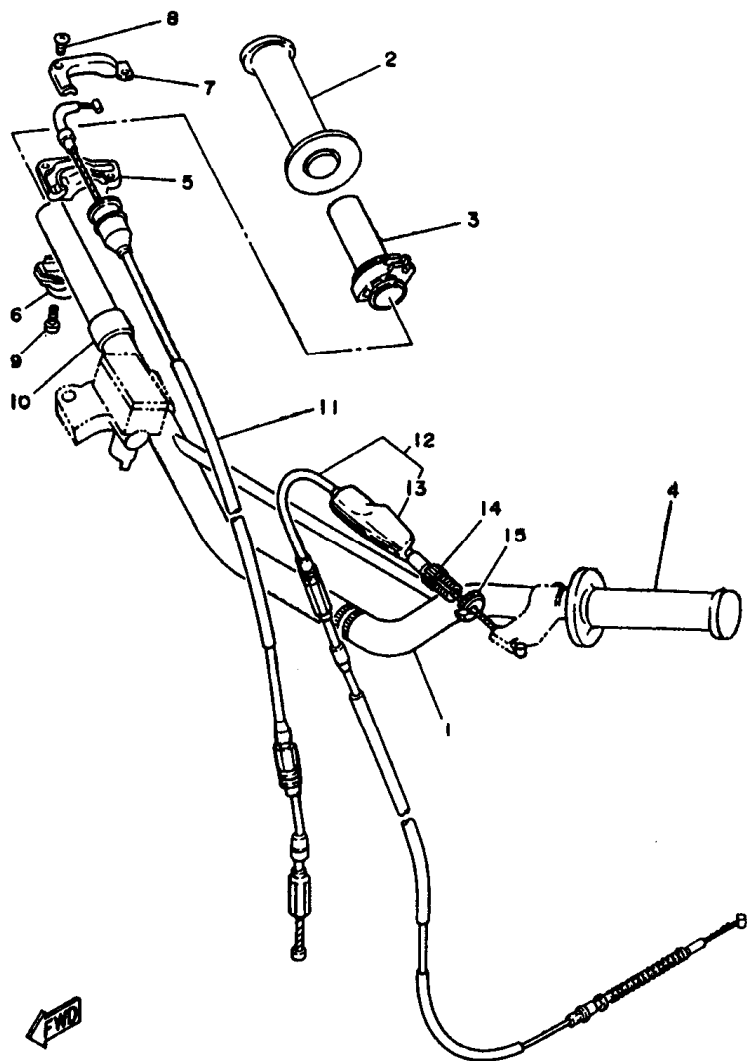
FIG. 27 REAR BRAKE CALIPER



4ES1100-3270

REF. NO.	PART NO.	DESCRIPTION	4ESA	4ESC	4LC8	4LCA	REMARKS
1	4ES-2582W-00	DISC, REAR BRAKE 2	1	1	1	1	
2	90149-06327	SCREW	4	4	4	4	
3	4ES-2580W-00	CALIPER ASSY, REAR 2	1	1	1	1	
4	4ES-W0057-00	.PISTON ASSY, CALIPER	1	1	1	1	
5	4ES-W0047-00	.CALIPER SEAL KIT	1	1	1	1	
6	1UY-25919-51	.SUPPORT, PAD	1	1	1	1	
7	1UY-W0048-50	.BLEED SCREW KIT	1	1	1	1	
8	4ES-W0046-50	.BRAKE PAD KIT 2	1	1	1	1	
9	3GD-25827-00	.SHIM, CALIPER	1	1	1	1	
10	3GD-25933-00	.PIN, PAD	2	2	2	2	
11	4ES-25920-00	SUPT. BRKT. ASSY.	1	1	1	1	
12	90110-08096	BOLT, HEXAGON SOCKET HEAD	1	1	1	1	
13	90109-08718	BOLT	1	1	1	1	
14	4ES-27491-00	PROTECTOR	1	1	1	1	
15	95027-06012	BOLT, FLANGE	1	1	1	1	
16	4ES-27114-00	STOPPER, MAIN STAND	1	1	1	1	

FIG. 28 STEERING HANDLE. CABLE

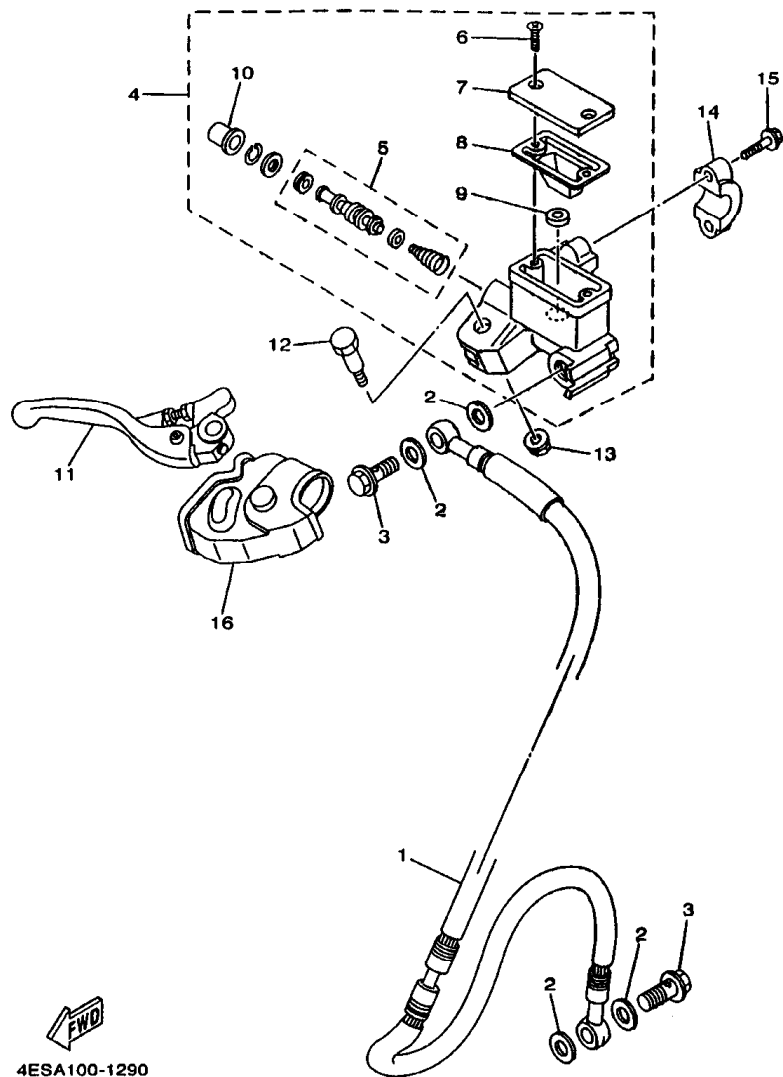


4ES6100-7280

REF. NO.	PART NO.	DESCRIPTION	4ESA	4ESC	4LCB	4LCA	REMARKS
1	4ES-26111-30	HANDLEBAR	1	1	1	1	
2	4GY-26242-00	GRIP (RIGHT)	1	1	1	1	
3	22W-26243-00	TUBE, THROTTLE GUIDE	1	1	1	1	
4	4GY-26241-00	GRIP (LEFT)	1	1	1	1	
5	5X2-26281-00	CAP, GRIP UPPER	1	1	1	1	
6	322-26282-00	CAP, GRIP LOWER	1	1	1	1	
7	5X2-2628H-01	CAP, WIRE	1	1	1	1	
8	98707-04012	SCREW, FLAT HEAD	2	2	2	2	
9	98507-05018	SCREW, PAN HEAD	2	2	2	2	
10	90387-227H7	COLLAR	1	1	1	1	
11	4ES-26311-01	CABLE, THROTTLE 1	1	1	1	1	
12	4ES-26335-11	CABLE, CLUTCH	1	1	1	1	
13	498-26372-00	COVER, HANDLE LEVER 1	1	1	1	1	
14	90123-08046	BOLT	1	1	1	1	
15	90179-08148	NUT	1	1	1	1	

D6

FIG. 29 FRONT MASTER CYLINDER

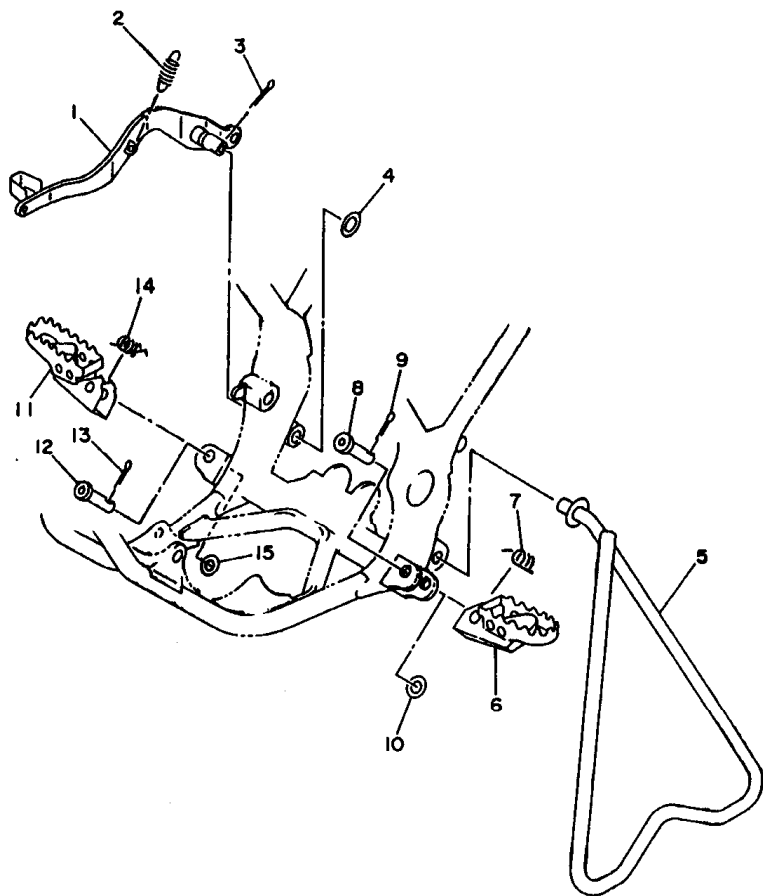



4ESA100-1290

REF. NO.	PART NO.	DESCRIPTION	4ESA	4ESC	4LC8	4LCA	REMARKS
1	4ES-25872-10	HOSE, BRAKE 1	1	1	1	1	
2	90201-10118	WASHER, PLATE	4	4	4	4	
3	90401-10168	BOLT, UNION	2	2	2	2	
4	5MV-W2587-00	MASTER CYLINDER SUB ASSY	1	1	1	1	
5	5MV-W0041-00	.CYLINDER KIT, MASTER	1	1	1	1	
6	98706-04012	.SCREW, FLAT HEAD	2	2	2	2	
7	5MV-25852-00	.CAP, RESERVOIR	1	1	1	1	
8	56A-25854-00	.DIAPHRAGM, RESERVOIR	1	1	1	1	
9	8CR-25715-00	.COVER 1	1	1	1	1	
10	5G2-25868-00	.BOOT, MASTER CYLINDER	1	1	1	1	
11	5MV-83922-00	LEVER 2	1	1	1	1	
12	5MV-2589F-00	BOLT, LEVER	1	1	1	1	
13	95701-06500	NUT, FLANGE	1	1	1	1	
14	5MV-25867-00	BRACKET, MASTER CYLINDER	1	1	1	1	
15	5MV-25833-00	BOLT, FITTING	2	2	2	2	
16	5MV-26372-00	COVER, HANDLE LEVER 1	1	1	1	1	

D7

FIG. 30 STAND, FOOTREST

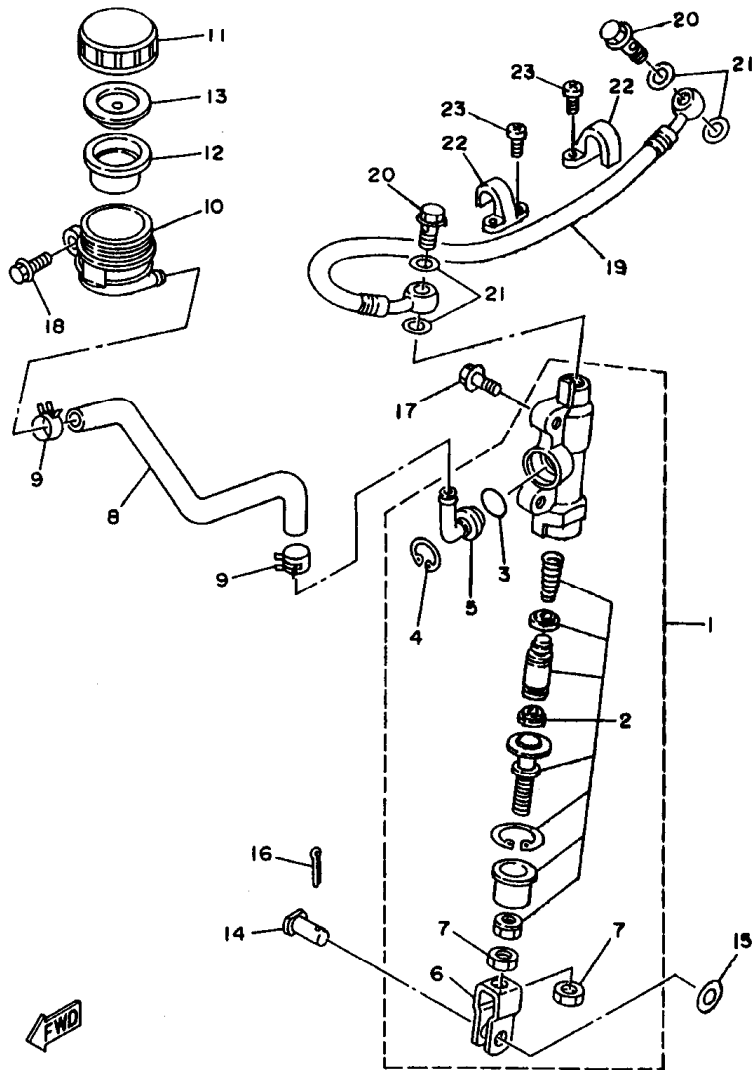


REF. NO.	PART NO.	DESCRIPTION	4ESA	4ESC	4LC8	4LCA	REMARKS
1	4ES-27211-00	PEDAL, BRAKE	1	1	1	1	
2	90508-15480	SPRING, TENSION	1	1	1	1	
3	91401-20025	PIN, COTTER	1	1	1	1	
4	90201-15700	WASHER, PLATE	1	1	1	1	
5	4ES-27311-00	STAND, SIDE	1	1			
	4LB-27311-00	STAND, SIDE			1	1	
6	4DA-27411-00	FOOTREST 1	1	1	1	1	
7	90508-28777	SPRING, TORSION	1	1	1	1	
8	90240-10117	PIN, CLEVIS	1	1	1	1	
9	91401-25015	PIN, COTTER	1	1	1	1	
10	90201-10119	WASHER, PLATE	1	1	1	1	
11	4DA-27421-00	FOOTREST 2	1	1	1	1	
12	90240-10117	PIN, CLEVIS	1	1	1	1	
13	91401-25015	PIN, COTTER	1	1	1	1	
14	90508-28777	SPRING, TORSION	1	1	1	1	
15	90201-10119	WASHER, PLATE	1	1	1	1	



4ES1100-3300

D8



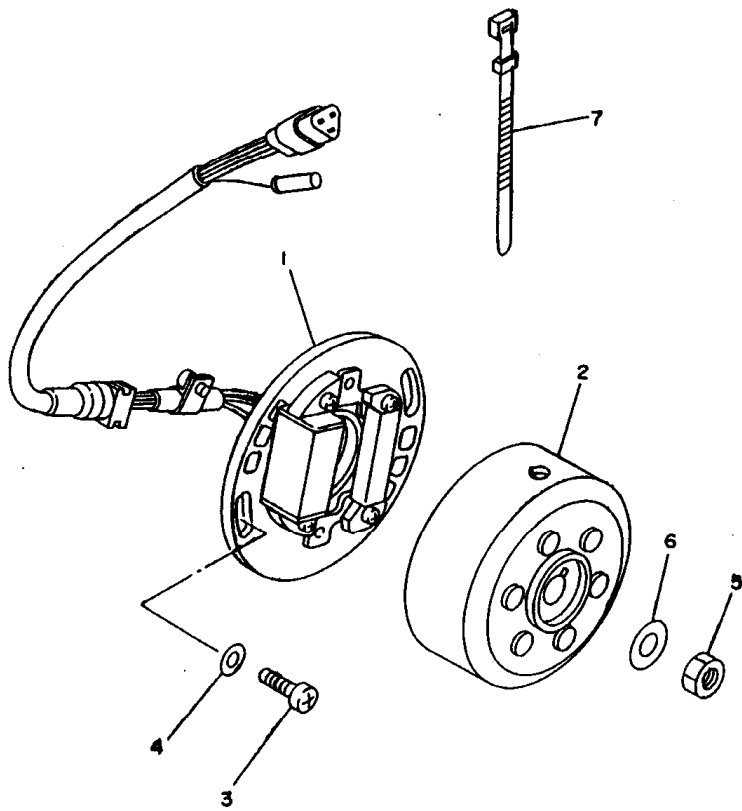
4ES1100-3310

FIG. 31 REAR MASTER CYLINDER

REF. NO.	PART NO.	DESCRIPTION	4ESA	4ESC	4LC8	4LCA	REMARKS
1	4ES-2583V-00	RR. MASTER CYLINDER ASSY.	1	1	1	1	
2	1FK-W0042-50	.CYLINDER KIT, MASTER	1	1	1	1	
3	93210-15620	.O-RING	1	1	1	1	
4	2VN-25866-00	.CIRCLIP	1	1	1	1	
5	2VN-2582A-50	.JOINT	1	1	1	1	
6	2YK-27222-00	.JOINT	1	1	1	1	
7	95307-08600	.NUT	2	2	2	2	
8	4ES-25895-00	HOSE, RESERVOIR	1	1	1	1	
9	90467-11044	CLIP	2	2	2	2	
10	4EW-25894-00	TANK, RESERVOIR	1	1	1	1	
11	3XP-25852-50	CAP, RESERVOIR	1	1	1	1	
12	2VN-25854-00	DIAPHRAGM, RESERVOIR	1	1	1	1	
13	2VN-25855-00	BUSH, DIAPHRAGM	1	1	1	1	
14	90240-08124	PIN, CLEVIS	1	1	1	1	
15	90201-08083	WASHER, PLATE	1	1	1	1	
16	91401-16012	PIN, COTTER	1	1	1	1	
17	95027-06016	BOLT, FLANGE	2	2	2	2	
18	95027-06012	BOLT, FLANGE	1	1	1	1	
19	4ES-25873-01	HOSE, BRAKE 2	1	1			
	4LB-25873-01	HOSE, BRAKE 2			1	1	
20	90401-10168	BOLT, UNION	1	1	1	1	
21	90201-10118	WASHER, PLATE	4	4	4	4	
22	2VM-25876-00	HOLDER, BRAKE HOSE 2	2	2	2	2	
23	97780-50510	SCREW, TAPPING	4	4	4	4	

D9

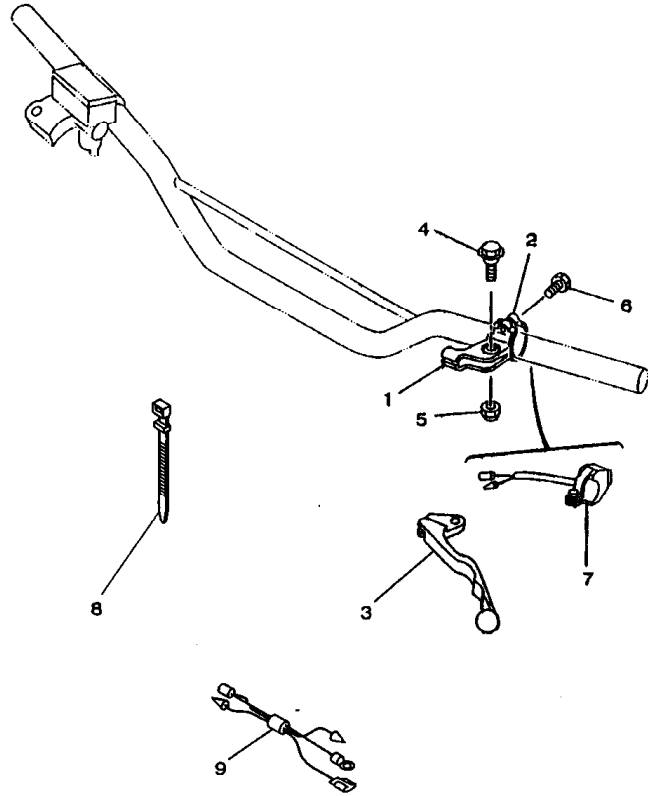
FIG. 32 GENERATOR



REF. NO.	PART NO.	DESCRIPTION	4ESA	4ESC	4LCB	4LCA	REMARKS
1	4ES-85510-20	STATOR ASSY	1	1	1	1	
2	4ES-85550-10	ROTOR ASSY	1	1	1	1	
3	98507-06016	SCREW, PAN HEAD	2	2	2	2	
4	92907-06600	WASHER, PLATE	2	2	2	2	
5	95317-10600	NUT	1	1	1	1	
6	90201-10591	WASHER, PLATE	1	1	1	1	
7	437-83936-01	BAND, SWITCH CORD	3	3	3	3	

4GT3300-4320

FIG. 33 HANDLE SWITCH. LEVER

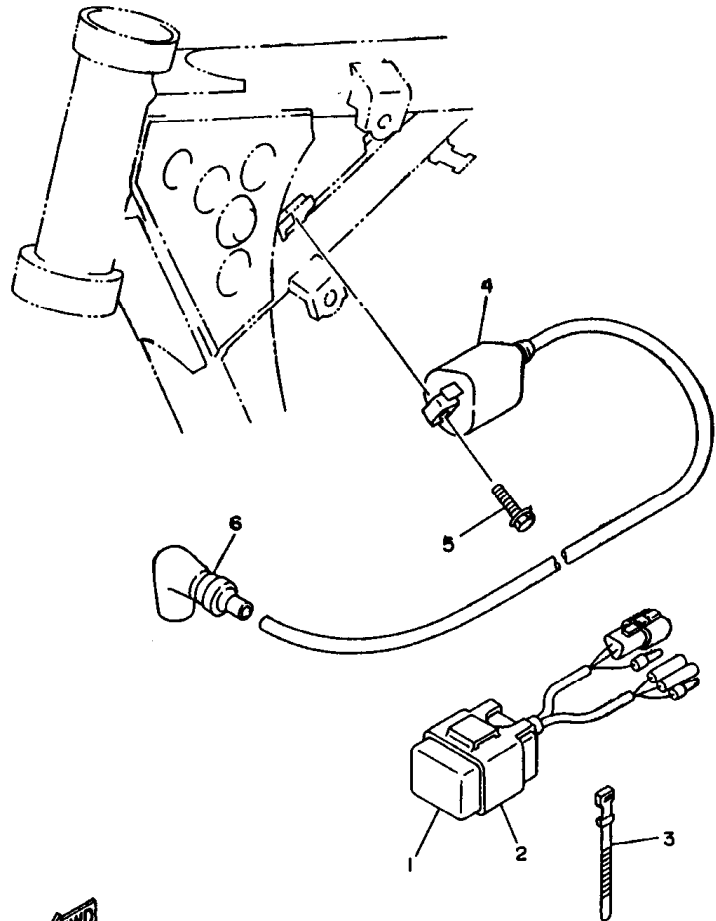


REF. NO.	PART NO.	DESCRIPTION	4ESA	4ESC	4LCB	4LCA	REMARKS
1	38V-82911-00	HOLDER, LEVER 1	1	1	1	1	
2	38V-82913-00	HOLDER, LEVER LOWER 1	1	1	1	1	
3	4GY-83912-00	LEVER 1	1	1	1	1	
4	90109-06799	BOLT	1	1	1	1	
5	95607-06100	NUT, U	1	1	1	1	
6	97007-05016	BOLT	2	2	2	2	
7	22W-83976-00	SWITCH, HANDLE 1	1	1	1	1	
8	437-83936-01	BAND, SWITCH CORD	2	2	2	2	
9	4ES-82509-00	WIRE, SUB LEAD	1	1	1	1	


4ES6100-7330

D11

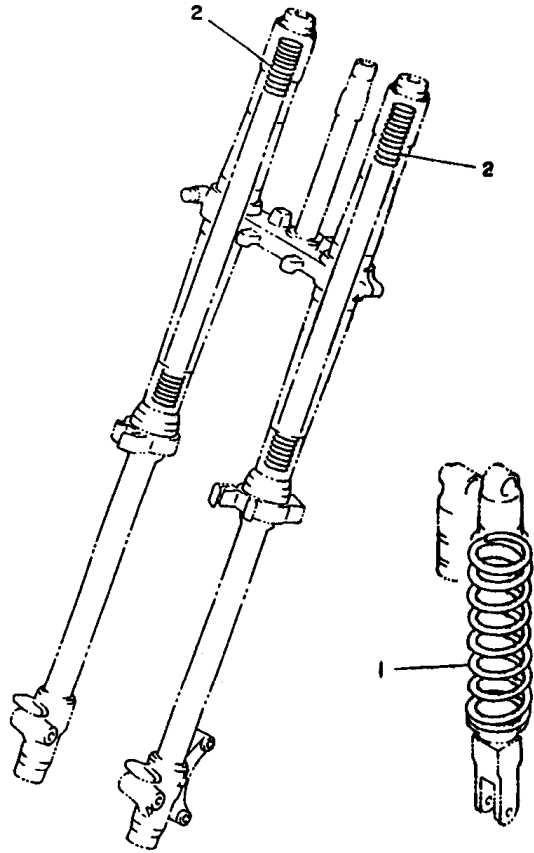
FIG. 34 ELECTRICAL 1



 4ES6100-7340

REF. NO.	PART NO.	DESCRIPTION	4ESA	4ESC	4LC8	4LCA	REMARKS
1	4ES-85540-20	C.D.I. UNIT ASSY	1	1	1	1	
2	2A7-85548-00	BAND	1	1	1	1	
3	437-83936-11	BAND, SWITCH CORD	1	1	1	1	
4	4KJ-82310-10	IGNITION COIL ASSY	1	1	1	1	
5	95027-06016	BOLT, FLANGE	2	2	2	2	
6	1M1-82370-30	PLUG CAP ASSY	2	2	2	2	

FIG. 35 ALTERNATE (CHASSIS)



REF. NO.	PART NO.	DESCRIPTION	4ESA	4ESC	4LC8	4LCA	REMARKS
1	4ES-22212-G0	SPRING (K=4.8)	1	1			AP SOFT
	4ES-22212-M0	SPRING (K=4.4)	1				AP SOFT
	4ES-22212-K0	SPRING (K=4.6)			1		AP SOFT
	4ES-22212-F0	SPRING (K=5.0)			1	1	AP SOFT
	4ES-22212-H0	SPRING (K=5.2)	1	1			AP HARD
	4ES-22212-J0	SPRING (K=5.4)				1	AP HARD
2	4ES-23141-50	SPRING, FRONT FORK (K=0.28)	2	2			AP
	4ES-23141-40	SPRING, FRONT FORK (K=0.29)			2	2	AP
	4ES-23141-60	SPRING, FRONT FORK (K=0.30)	2	2			AP
	4ES-23141-70	SPRING, FRONT FORK (K=0.31)			2	2	AP


4ES1100-3350

FIG. 36 OPTIONAL PARTS 1

REF. NO.	PART NO.	DESCRIPTION	RESA	RESC	ALC8	ALCA	REMARKS
1	4ES-11830-01	PISTON ASSY (STD)	1	1	1	1	
2	4ES-11831-01-A0	.PISTON (STD)	1	1	1	1	
	4ES-11831-01-B0	.PISTON (STD)	1	1	1	1	
	4ES-11831-01-C0	.PISTON (STD)	1	1	1	1	
	4ES-11831-01-D0	.PISTON (STD)	1	1	1	1	
3	43K-11611-00	.RING, PISTON	1	1	1	1	
4	4ES-11833-00	.PIN, PISTON	1	1	1	1	
5	93450-16115	.CIRCLIP	2	2	2	2	
6	4ES-11850-01	CONNECTING ROD ASSY	1	1	1	1	
7	4ES-11851-01	.ROD, CONNECTING	1	1	1	1	
8	93310-320T3	.BEARING	1	1	1	1	
9	2RA-11681-00	.PIN, CRANK 1	1	1	1	1	
10	90209-20159	.WASHER	2	2	2	2	
11	93310-214F8	.BEARING	1	1	1	1	KOYO

NUMERICAL INDEX

PARTNO.	GRID NO.	PARTNO.	GRID NO.	PARTNO.	GRID NO.	PARTNO.	GRID NO.	PARTNO.	GRID NO.	PARTNO.	GRID NO.
5MV-W0041-00	D - 7	31J-14103-00	B - 7	4ES-15421-01	B - 11	4XL-2153A-10	C - 12	4ES-22212-M0	D - 13	4ES-23170-10	C - 12
1FK-W0042-50	D - 9	10W-14104-00	B - 8	4ES-15451-00	B - 11	4ES-2153E-01	C - 5	3JD-22214-00	C - 9	4ES-23171-00	C - 11
4ES-W0045-20	D - 2	22W-14106-00	B - 7	4ES-15461-00	B - 11	25G-21575-00	C - 5	4ES-22214-00	C - 9	58T-23184-L0	C - 9
4ES-W0046-50	D - 5	23L-14107-2S	B - 7	4ES-15620-00	B - 12	4ES-21611-10	C - 5	4ES-22216-00	C - 9	4V4-23194-L0	C - 12
4ES-W0047-00	D - 5	2X6-14112-2S	B - 7	4ES-15621-00	B - 12	4ES-21642-00	C - 5	4ES-22251-00	C - 9	4ES-2331E-00	C - 12
4ES-W0047-10	D - 2	2X6-14112-30	B - 7	4ES-15641-00	B - 12	4ES-21711-00	C - 6	3XJ-22475-00	C - 8	4ES-23318-00	C - 12
1UY-W0048-50	D - 5	2X6-14112-35	B - 7	4ES-15651-00	B - 12	4EW-2172A-00	C - 6	4ES-23102-20	C - 11	4ES-23340-00	C - 12
4ES-W0057-00	D - 5	3R1-14115-00	B - 7	4ES-15660-00	B - 12	4ES-21721-00	C - 6	4LB-23102-20	C - 11	3XJ-23357-L0	C - 11
4ES-W0057-10	D - 2	2A6-14126-00	B - 8	4ES-15664-00	B - 12	4ES-2173E-50	C - 6	4ES-23103-20	C - 11		C - 12
5MV-W2587-00	D - 7	248-14131-00	B - 8	4ES-16111-00	B - 13	4ES-2173F-50	C - 6	4LB-23103-20	C - 11	4DA-23389-00	C - 10
4LC-11111-00	B - 2	3R1-14141-50	B - 7	4ES-16150-11	B - 13	4ES-2173L-40	C - 8	4ES-23110-00	C - 11	4ES-2339E-00	C - 10
4ES-11311-10	B - 2	3R1-14141-52	B - 7	4V0-16154-00	B - 13	4ES-21731-20	C - 6	4ES-23111-10	C - 11	1J7-23415-00	C - 10
4ES-11351-00	B - 2	3R1-14141-54	B - 7	21V-16321-00	B - 13	4ES-21732-00	C - 6		C - 12	4ES-23435-00	C - 10
4ES-11400-02	B - 3	260-14142-30	B - 7	4ES-16321-00	B - 13	4ES-21735-00	C - 6	3JD-2312G-L0	C - 11	3SP-23441-00	C - 10
4ES-11412-00	B - 3	260-14142-32	B - 7	131-16324-00	B - 13	4DJ-2174A-00	C - 6		C - 12	4ES-23485-20	C - 10
4ES-11422-00	B - 3	260-14142-35	B - 7	257-16324-00	B - 13	4ES-22110-01	C - 7	4ES-23120-00	C - 11	4ES-24110-20	C - 13
43K-11611-00	B - 3	137-14143-58	B - 7	2TK-16351-00	B - 13	4LB-22110-01	C - 7	4ES-23125-00	C - 11	4EW-2412F-00	C - 13
	D - 14	137-14143-60	B - 7	4ES-16356-00	B - 13	4ES-22129-00	C - 7	4ES-23136-20	C - 11	24X-24144-00	C - 13
4ES-11630-01	D - 14	137-14143-62	B - 7	2RA-16357-00	B - 13	4ES-22151-10	C - 7	4ES-2314F-00	C - 12	22W-24181-00	C - 6
4ES-11631-01-A0	B - 3	39K-14153-00	B - 7	37F-16371-01	B - 13	4ES-2217A-00	C - 7	4ES-2314H-L1	C - 12	3Y0-24183-00	C - 13
	D - 14	2A6-14158-00	B - 8	4ES-16381-00	B - 13	4ES-2217F-00	C - 8	4ES-2314J-L0	C - 12	4ES-24244-10	C - 13
4ES-11631-01-B0	B - 3	3X3-14169-00	B - 7	4ES-17121-01	B - 14	30X-22178-00	C - 4	4ES-23141-40	C - 11	4ES-24311-10	C - 13
	D - 14	35B-14171-00	B - 8	4ES-17131-00	B - 14	4ES-22178-00	C - 4		C - 12	3XJ-24380-00	C - 13
4ES-11631-01-C0	B - 3	304-14184-00	B - 7	4ES-17151-00	B - 14	4V4-22184-00	C - 4		D - 13	4DP-24500-00	C - 13
	D - 14	314-14185-00	B - 7	4ES-17161-00	B - 14	39K-22199-00	C - 7	4ES-23141-50	D - 13	4X8-24512-00	C - 13
4ES-11631-01-D0	B - 3	127-14186-00	B - 7	4ES-17211-01	B - 14	4ES-22201-30	C - 9	4ES-23141-60	D - 13	3AJ-24523-00	C - 13
	D - 14	10V-14196-00	B - 7	4ES-17221-01	B - 14	4ES-22201-40	C - 9	4ES-23141-70	D - 13	3AJ-24534-00	C - 13
4ES-11633-00	B - 3	3JN-14196-00	B - 8	4ES-17231-01	B - 14	4ES-22201-50	C - 9	4LB-23141-10	C - 11	5X7-24611-01	C - 13
	D - 14	3Y1-14197-00	B - 8	4ES-17241-00	B - 14	4ES-22201-60	C - 9		C - 12	5X7-24612-00	C - 13
4ES-11650-01	D - 14	4ES-14411-01	B - 6	4ES-17251-00	B - 14	4GT-22201-10	C - 9	3GM-23142-00	C - 11	4ES-24728-00	C - 14
4ES-11651-01	B - 3	4ES-14417-00	B - 6	4ES-17261-01	B - 14	4LB-22201-50	C - 9		C - 12	4ES-24731-50	C - 14
	D - 14	4ES-14451-00	B - 6	4ES-17411-01	B - 14	4LB-22201-60	C - 9	4ES-23142-00	C - 11	4ES-24770-50	C - 14
2RA-11681-00	B - 3	4ES-14453-00	B - 6	4ES-17421-00	B - 14	4ES-22210-C0	C - 9		C - 12	4ES-25104-20	C - 15
	D - 14	4ES-14458-00	B - 6	164-17427-00-06	B - 14	4ES-22210-D0	C - 9	4ES-23144-00	C - 11	4LB-25104-00	C - 15
4BA-12422-00	B - 4	4ES-14459-00	B - 6	164-17427-00-08	B - 14	4ES-22210-E0	C - 9		C - 12	4ES-25111-00	C - 15
4BA-12428-00	B - 4	4ES-14462-00	B - 6	164-17427-00-10	B - 14	4ES-22210-F0	C - 9	4ES-23145-00	C - 11	22W-25181-01	C - 7
36F-12450-00	B - 4	4ES-14610-10	B - 9	4ES-18101-00	C - 3	4GT-22210-40	C - 9		C - 12	4ES-25181-00	C - 15
4ES-12459-00	B - 4	17W-14615-00	B - 9	2HF-18110-01	C - 3	4LB-22210-70	C - 9	5K5-23149-00	C - 11	4ES-25183-10	C - 15
4ES-12461-10	B - 5	4ES-1469A-00	B - 9	4BA-18140-00	C - 3	4LB-22210-80	C - 9		C - 12	1T1-25194-00	C - 15
5HD-12462-00	B - 5	4ES-14753-10	B - 9	4ES-18511-02	C - 2	4ES-22212-F0	C - 9	4A1-23156-00	C - 11	4ES-25304-20	D - 3
22W-12463-00	B - 5	56S-14771-00	B - 9	5R2-18512-00	C - 2		D - 13		C - 12	4LB-25304-00	D - 3
4ES-12481-00	B - 5	58T-1490J-00	B - 7	4ES-18513-01	C - 2	4ES-22212-G0	C - 9	2HH-23158-L0	C - 11	4ES-25311-00	D - 3
4ES-12482-00	B - 5	25G-14937-00	B - 8	4BA-18531-00	C - 2		D - 13		C - 12	4ES-25381-01	D - 3
4ES-13565-00	B - 6	4ES-15111-00	B - 10	4BA-18535-00	C - 2	4ES-22212-H0	C - 9	4ES-2316A-10	C - 11	4ES-25383-00	D - 3
4ES-13610-00	B - 6	4ES-15121-02	B - 10	4ES-18540-00	C - 2		D - 13		C - 12	4ES-25383-10	D - 4
4ES-13613-00	B - 6	3Y1-15363-00	B - 11	4ES-21110-02-P0	C - 4	4ES-22212-J0	D - 13	4LB-2316A-20	C - 11	4ES-25388-00	D - 4
4ES-13616-00	B - 6	120-15371-00	B - 10	4ES-21123-00-P2	C - 4	4ES-22212-K0	C - 9		C - 12	1T2-25394-00	D - 3
4ES-14101-10	B - 7	4ES-15411-00	B - 11	4ES-21511-20	C - 8		D - 13	4ES-23170-10	C - 11	5X2-25394-00	D - 3

NUMERICAL INDEX

PARTNO.	GRID NO.	PARTNO.	GRID NO.	PARTNO.	GRID NO.	PARTNO.	GRID NO.	PARTNO.	GRID NO.	PARTNO.	GRID NO.
4ES-25446-00	D-3	5MV-26372-00	D-7	90119-06217	C-6	90208-12015	B-13	90480-15528	B-5	93310-320T3	B-3
4ES-25447-20	D-3	4ES-27114-00	D-8	90119-06228	C-14	90209-06096	B-8	90480-16561	B-9		D-14
4ES-25448-00	D-3	4ES-27211-00	D-8	90122-06038	B-6	90209-06187	C-8	90480-18411	B-9	93315-11206	B-13
8CR-25715-00	D-7	2VK-27222-00	D-9	90123-08048	D-6	90209-20159	B-9	90480-18549	C-13	93315-21455	C-7
4ES-2580T-20	D-2	4ES-27311-00	D-8	90149-08011	C-13		D-14	90501-12081	B-12	93315-31502	B-14
4ES-2580W-00	D-5	4LB-27311-00	D-8	90149-08327	D-2	90240-08124	D-9	90501-20735	B-13	93317-11245	B-14
2VN-2582A-50	D-9	4DA-27411-00	D-8		D-5	90240-10117	D-8	90506-15480	D-8	93317-21746	C-7
4ES-2582T-00	D-2	4DA-27421-00	D-8	90157-05079	C-10	90250-06013	C-2	90507-20030	B-9	93317-31771	C-7
4ES-2582W-00	D-5	4ES-27491-00	D-5	90157-06071	B-14	90267-40077	B-6	90508-242A6	C-3		C-8
47X-25824-00	D-2	51L-28371-00	C-13	90176-08028	B-2	90280-03017	B-3	90508-26750	B-12	93332-00079	C-10
51L-25825-00	D-2	4KJ-82310-10	D-12	90179-08148	D-6	90282-05001	B-13	90508-28777	D-8	93399-99921	C-8
3GD-25827-00	D-5	1M1-82370-30	D-12	90179-08299	B-2	90338-10150	C-8	90508-32553	C-3	93410-20038	B-14
4ES-2583V-00	D-9	4ES-82509-00	D-11	90179-12659	B-13	90380-10218	C-7	90793-20136	B-2	93430-08007	B-12
5MV-25833-00	D-7	38V-82911-00	D-11	90179-22412	C-10	90380-12219	C-7	91401-16012	D-9	93440-15012	B-14
34X-25845-00	D-2	38V-82913-00	D-11	90179-25033	C-10	90381-12091	C-8	91401-20025	D-8	93440-17064	B-14
3XP-25852-50	D-9	4GY-83912-00	D-11	90183-06023	C-6	90385-17042	C-7	91401-25015	D-8	93440-30113	C-8
5MV-25852-00	D-7	5MV-83922-00	D-7	90183-08089	C-8	90387-060A3	C-4	92907-03100	B-6	93450-16115	B-3
2VN-25854-00	D-9	437-83936-01	B-5	90185-10110	C-9	90387-06027	C-13	92907-04100	B-7		D-14
56A-25854-00	D-7		D-10	90185-12048	C-15	90387-0814M	B-5	92907-04600	B-6	93503-16003	B-13
2VN-25855-00	D-9		D-11	90185-12119	C-8	90387-082M9	C-8	92907-08600	D-10	93507-32009	B-12
2VN-25866-00	D-9	437-83936-11	D-12	90201-047A2	B-6	90387-082X0	C-7	92907-10600	C-9	93603-22028	B-4
5MV-25867-00	D-7	22W-83976-00	D-11	90201-060A3	B-9	90387-063G3	B-9	93101-12173	C-3	93822-12012	B-15
5G2-25868-00	D-7	4ES-85510-20	D-10	90201-06060	B-12	90387-084X4	C-8	93101-17062	C-7	93822-13024	B-15
4ES-25872-10	D-7	4ES-85540-20	D-12		B-14	90387-103X9	C-8		C-8	93822-14037	B-14
4ES-25873-01	D-9	2A7-85546-00	D-12	90201-06071	B-5	90387-105L0	B-8	93102-12224	B-13		B-15
4LB-25873-01	D-9	4ES-85550-10	D-10		C-13	90387-1200U	C-7	93102-17263	B-12	93822-15065	B-15
2VM-25876-00	D-9	9Y581-58117	D-4	90201-080E2	C-4	90387-124H0	C-15	93102-20009	D-3	94107-1706E	C-15
5MV-2589F-00	D-7	9Y581-58119	D-4	90201-08083	D-9	90387-124Y7	C-8	93102-20143	B-14	94107-177Y5	C-15
4EW-25894-00	D-9	90101-08475	D-4	90201-08087	B-2	90387-127J7	C-7	93102-20447	B-3	94107-1902L	C-15
4ES-25895-00	D-9	90101-12755	C-8	90201-081R9	C-4	90387-127J8	C-7	93103-10147	B-4	94107-1906D	C-15
1UY-25919-51	D-5	90105-08211	D-2	90201-08512	B-4	90387-20488	B-13	93103-28126	B-3	94109-1406C	D-3
56A-25919-00	D-2	90105-08310	C-7	90201-086P8	D-3	90387-227H7	D-8	93106-20031	C-15	94109-147Y6	D-3
56A-25919-10	D-2	90105-10582	C-7	90201-10118	D-7	90401-10168	D-7	93109-17071	C-7	94109-1602M	D-3
4ES-25920-00	D-5	90105-10614	C-9		D-9		D-9	93210-15620	D-9	94109-1606E	D-3
56A-25926-00	D-2	90105-12382	C-7	90201-10119	D-8	90430-06166	B-4	93210-18288	B-7	94207-17284	C-15
3GD-25933-00	D-5	90109-067F4	C-6	90201-10591	D-10	90430-08119	B-11	93210-19123	B-11	94207-19290	C-15
5R2-25937-00	D-2	90109-06799	D-11	90201-12382	C-15	90445-09100	C-13	93210-371A9	B-9	94208-14285	D-3
56A-25937-00	D-2	90109-081G2	D-3	90201-124F8	B-12	90445-09220	C-13	93210-56459	B-2	94209-16291	D-3
4ES-26111-30	D-6	90109-08718	D-8	90201-124G9	C-7	90446-07349	B-10	93210-84724	B-2	94307-16171	D-3
4GY-26241-00	D-6	90109-10729	C-9	90201-12631	B-12	90450-28014	B-8	93306-00210	D-3	94307-17166	C-15
4GY-26242-00	D-6	90110-08096	D-5	90201-12749	C-8	90450-45075	B-8	93306-20120	C-15	94307-19170	C-15
22W-26243-00	D-6	90116-08318	B-2	90201-15700	D-8	90450-99064	B-6	93306-20227	D-3	94308-14185	D-3
5X2-2628H-01	D-6	90116-08388	B-2	90201-161H1	D-4	90460-51059	B-6	93306-20333	B-14	94414-17530	C-15
5X2-26281-00	D-6	90116-08394	B-2	90201-176L4	B-12	90464-16039	B-8	93306-20401	B-14	94414-19521	C-15
322-26282-00	D-6	90119-05001	B-13	90201-203E7	B-14	90467-08002	B-5	93306-20438	B-3	94416-14529	D-3
4ES-26311-01	D-6	90119-06063	C-5	90201-256K5	C-10	90467-10008	C-13	93306-30421	B-3	94418-16522	D-3
4ES-26335-11	D-6	90119-06118	C-4	90201-33299	B-9	90467-11044	D-9	93310-214F8	B-3	94581-58120	D-4
498-26372-00	D-6	90119-06185	C-5	90202-05193	C-13	90468-23194	B-12		D-14	94681-58001	D-4

NUMERICAL INDEX

PARTNO.	GRID NO.	PARTNO.	GRID NO.	PARTNO.	GRID NO.	PARTNO.	GRID NO.	PARTNO.	GRID NO.
94702-00368	B - 2	98507-03008	B - 6						
95021-10040	C - 12	98507-04018	B - 7						
95024-06010	C - 12	98507-05016	D - 6						
95027-06012	B - 9	98507-06016	D - 10						
	B - 12	98507-06030	B - 11						
	C - 10	98507-06040	B - 10						
	C - 14	98507-06050	B - 10						
	D - 5	98507-06060	B - 10						
	D - 9	98706-04012	D - 7						
95027-06014	C - 7	98707-04012	D - 8						
95027-06016	C - 5	98707-06025	C - 13						
	C - 6	99001-07600	B - 4						
	C - 12	99001-10600	C - 3						
	C - 13	99009-10400	C - 2						
	D - 9	99009-12400	B - 12						
	D - 12	99009-18400	B - 15						
95027-06020	B - 6	99009-35500	D - 3						
95027-06025	B - 4	99244-00140	C - 8						
	B - 9	99530-10014	B - 10						
95027-06030	B - 5		B - 11						
	B - 11	99530-10114	B - 2						
	C - 13								
95027-06040	B - 11								
95027-08012	C - 4								
95027-08020	C - 4								
95027-08030	C - 10								
95027-08080	B - 11								
95307-08600	D - 9								
95307-08700	D - 4								
95317-10600	D - 10								
95607-06100	D - 11								
95607-08200	C - 4								
	C - 7								
95607-10200	C - 7								
95607-12200	C - 8								
95607-14200	D - 4								
95617-08100	D - 3								
95617-12100	C - 7								
95701-06500	D - 7								
95807-08035	C - 10								
95817-08125	C - 4								
95817-08135	C - 4								
95827-08060	B - 4								
97007-05016	D - 11								
97027-06020	C - 3								
97707-50014	B - 8								
97780-50510	D - 9								
97801-03008	C - 13								