



# PARTS CATALOGUE

**YFM25RSEY** (4D3N) CANADA  
**YFM25RSEY** (4D3P) EUROPE  
**YFM25RSEY** (4D3R) OCEANIA



2009/1/27

1H4D3-100EA

( )

NEWS NO.	DATE	COMMENT
PE0-MC-080067	Oct.,21,2008	FIG.15 TRANSMISSION LIST CORRECTION

YFM25RSEY  
PARTS CATALOGUE  
©2008 by Yamaha Motor Co., Ltd.  
1st edition, June 2008  
All rights reserved.  
Any reprinting or unauthorized use  
without the written permission of  
Yamaha Motor Co., Ltd.  
is expressly prohibited.  
Printed in Japan.

# FOREWORD

This Parts Catalogue is related to the parts for the model(s) on the cover page. When you are ordering replacement parts, please refer to this Parts Catalogue and quote both part numbers and part names correctly.

1. Modifications or additions which have been made after the issue of the Parts Catalogue will be announced in the Parts News.

It is advisable that you make the necessary corrections to the Parts Catalogue according to the Parts News.

2. Abbreviations

The following abbreviations are used in this Parts Catalogue.

“UR” Use specified parts number.

“UN” Use as many as needed.

“AP” Alternate Parts

“LM” Locally Made (Parts need to be ordered locally)

“F#” Frame No. (Applicable machine No.)

“O/S” Over Size

3. The number of components for assembly

- Parts, which are to be supplied in an assembly, are listed with a dot (.) in front of the part name as shown below.
- The numeral appearing to the right of each component part indicates the quantity of parts for each assembly unit.

PART NO.	DESCRIPTION	Q'TY	REMARKS
2F5-83310-60	FRONT FLASHER LIGHT ASSY	2	
115-83311-60	.BULB (6V-18W)	1	

4. Applicable colours of graphics are represented in the “REMARKS” as shown below.

PART NO.	DESCRIPTION	Q'TY	REMARKS
2N4-24110-00-X5	FUEL TANK COMP.	2	MXR
3J1-24240-10	.GRAPHIC, FUEL TANK	1	FOR MXR

5. Note that the illustrations for reference in finding parts numbers are not to be used for assembling. When assembling, please use the applicable service manual.

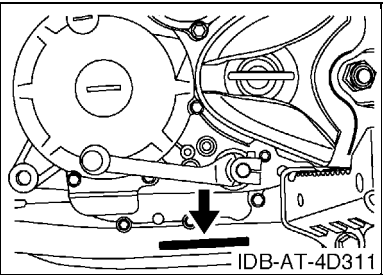
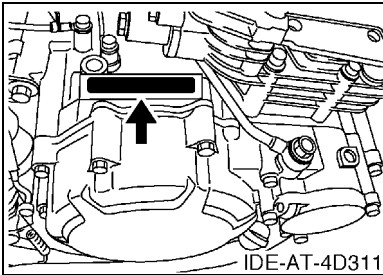
6. The asterisk (\*) before a reference number indicates modified items after the first edition.

# FOREWORD

7. Applicable Serial No.

Engine Serial No.

Frame Serial No.



8. Applicable Colour Code (The (\*) mark shows Model colour.)

Abbreviation	Colour Name	Colour Code
HPB	BLACK (FOR ELECTRODEPOSIT)	00R4
S8	SILVER 8	0895
SL	SILVER	0035
YB(*)	YAMAHA BLACK	0033

9. Quantity Column Information

Column No.	Name Of Q'ty Column	Destination
1	CAN	CANADA
2	EUR	EUROPE
3	OCE	OCEANIA



# CONTENTS

## ENGINE

CYLINDER HEAD .....	1
CYLINDER .....	2
CRANKSHAFT & PISTON .....	3
VALVE .....	5
CAMSHAFT & CHAIN .....	6
OIL PUMP .....	7
OIL COOLER .....	8
INTAKE .....	9
CARBURETOR .....	10
EXHAUST .....	13
CRANKCASE .....	14
CRANKCASE COVER 1 .....	15
STARTER CLUTCH .....	17
CLUTCH .....	18
TRANSMISSION .....	20
SHIFT CAM & FORK .....	21

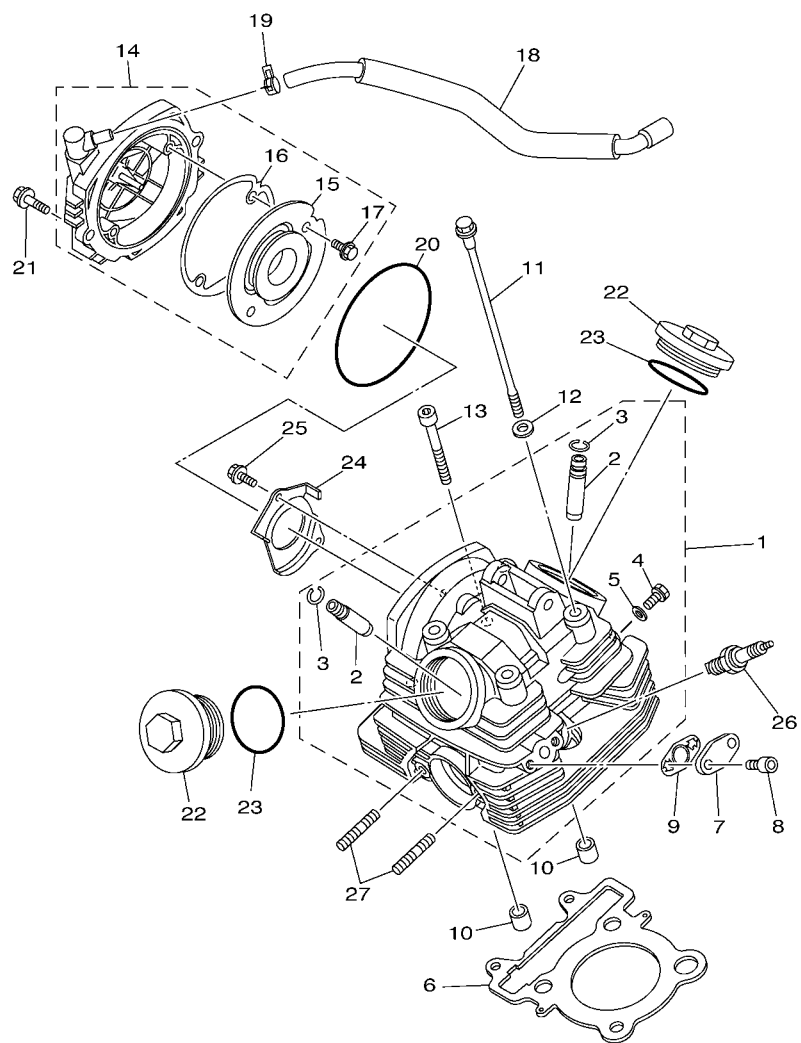
## CHASSIS

FRAME .....	22
FRONT FENDER .....	23
REAR FENDER .....	24
REAR ARM .....	26
REAR SUSPENSION .....	27
FRONT SUSPENSION & WHEEL .....	28
STEERING .....	30
FUEL TANK .....	31
SEAT .....	32
FRONT WHEEL .....	33
FRONT BRAKE CALIPER .....	34
REAR WHEEL .....	36
REAR BRAKE CALIPER .....	37
STEERING HANDLE & CABLE .....	38
FRONT MASTER CYLINDER .....	39
STAND & FOOTREST .....	40
REAR MASTER CYLINDER .....	41
GUARD .....	42
GENERATOR .....	43
STARTING MOTOR .....	44
HEADLIGHT .....	45
TAILLIGHT .....	46
TAILLIGHT 2 .....	47

HANDLE SWITCH & LEVER .....	48
ELECTRICAL 1 .....	49
ELECTRICAL 2 .....	51
GRAPHICS .....	52
EMBLEM & LABEL 1 .....	53
EMBLEM & LABEL 2 .....	54
EMBLEM & LABEL 3 .....	55

## INDEX

NUMERICAL INDEX .....	56
-----------------------	----



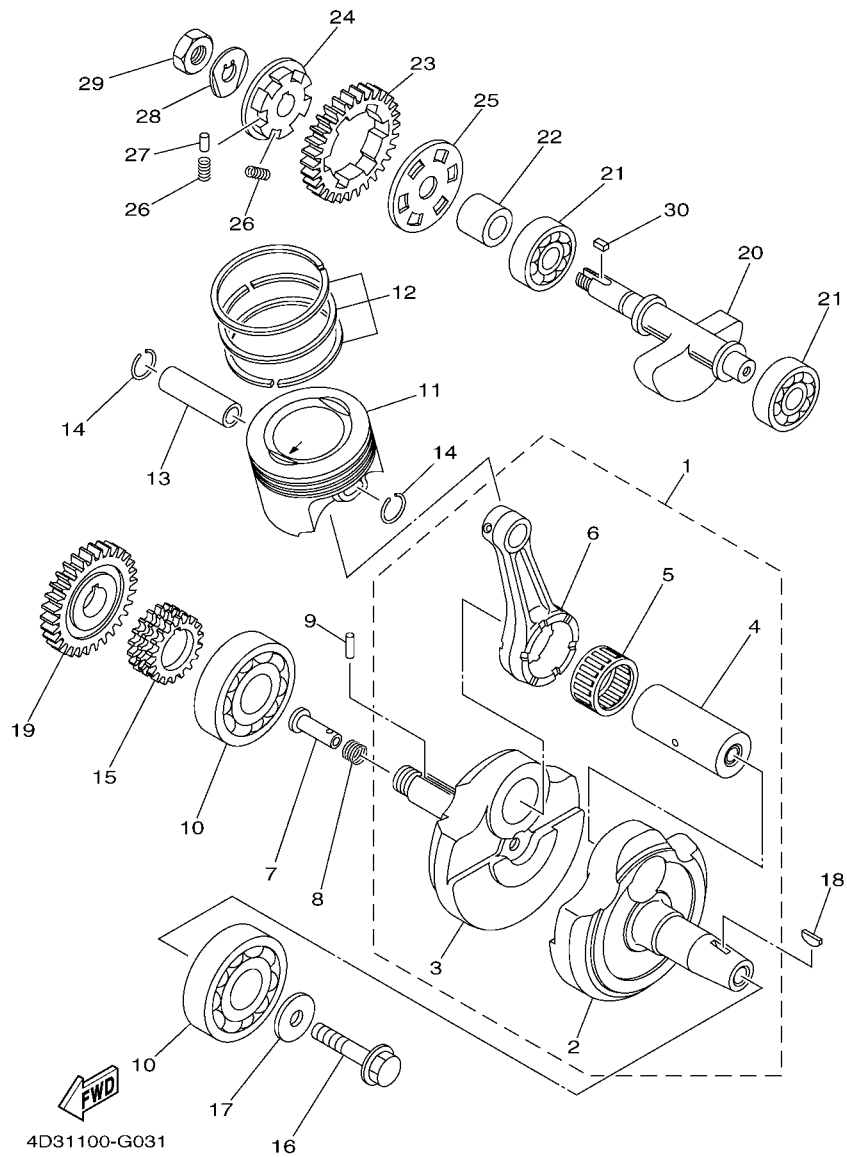
  
 4D31100-G010

**FIG. 1 CYLINDER HEAD**

REF. NO.	PART NO.	DESCRIPTION	CAN	EUR	OCÉ	REMARKS
1	3C5-11102-00	CYLINDER HEAD ASSY	1	1	1	
2	5H0-11133-11	.GUIDE, VALVE 1	2	2	2	
3	93440-10085	.CIRCLIP	2	2	2	
4	90153-06002	.SCREW, HEXAGON	1	1	1	
5	90430-06014	.GASKET	1	1	1	
6	5XT-11181-00	GASKET, CYLINDER HEAD 1	1	1	1	
7	4D3-1112F-00	PLATE 2	1	1	1	
8	91312-06016	BOLT	2	2	2	
9	5XT-14815-00	GASKET	1	1	1	
10	99530-14016	PIN, DOWEL	2	2	2	
11	90105-08160	BOLT, FLANGE	4	4	4	
12	90201-08609	WASHER, PLATE	4	4	4	
13	91312-08045	BOLT	2	2	2	
14	4D3-11190-00	COVER, CYLINDER HEAD 1	1	1	1	
15	5XT-11165-00	.PLATE, BREATHER	1	1	1	
16	4D3-11196-00	.GASKET, CYLINDER HEAD SIDE	1	1	1	
17	90105-06126	.BOLT, FLANGE	2	2	2	
18	4D3-11166-00	PIPE, BREATHER 1	1	1	1	
19	90467-12053	CLIP	1	1	1	
20	93211-05471	O-RING	1	1	1	
21	95022-06020	BOLT, FLANGE	2	2	2	
22	4D3-11186-00	COVER, CYLINDER HEAD SIDE 2	2	2	2	
23	93210-54001	O-RING	2	2	2	
24	5XT-1111F-00	PLATE	1	1	1	
25	90105-06078	BOLT, FLANGE	2	2	2	
26	94701-00345	PLUG, SPARK (NGK DR7EA)	1	1	1	WITH RESISTER
27	90116-08023	BOLT, STUD	2	2	2	



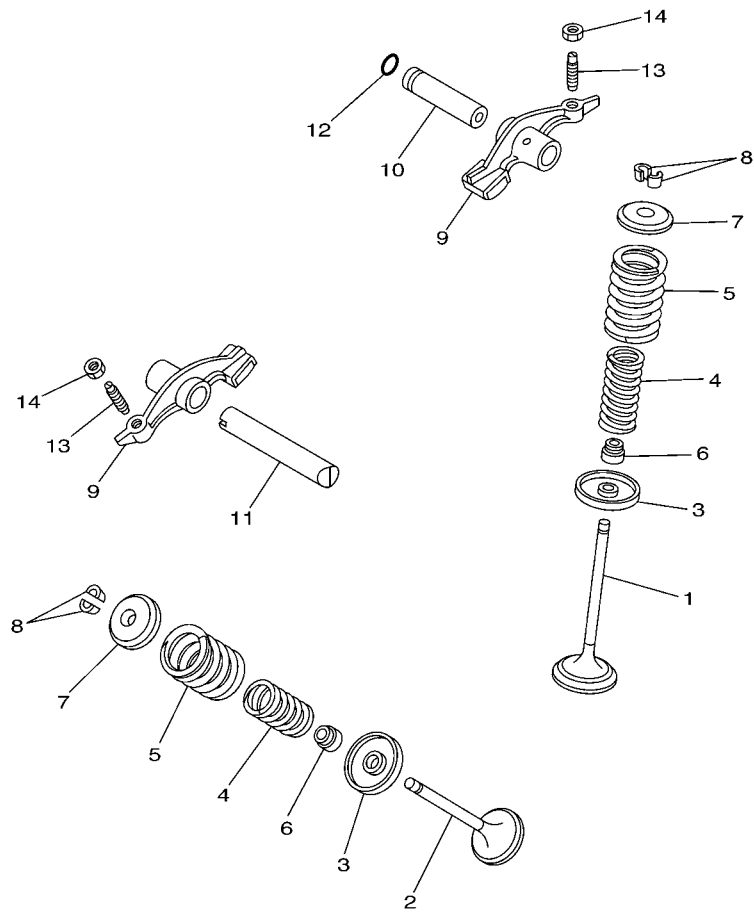




**FIG. 3 CRANKSHAFT & PISTON**

REF. NO.	PART NO.	DESCRIPTION	CAN	EUR	OCE	REMARKS
1	4D3-11400-00	CRANKSHAFT ASSY	1	1	1	
2	4D3-11412-00	.CRANK 1	1	1	1	
3	4D3-11422-00	.CRANK 2	1	1	1	
4	1S4-11681-00	.PIN, CRANK 1	1	1	1	
5	93310-63239	.BEARING	1	1	1	
6	1S4-11651-00	.ROD, CONNECTING	1	1	1	
7	90240-07105	PIN, CLEVIS	1	1	1	
8	90501-07629	SPRING, COMPRESSION	1	1	1	
9	93602-13177	PIN, DOWEL	1	1	1	
10	93306-37804	BEARING	2	2	2	
11	1S4-11631-10-A0	PISTON (STD)	1	1	1	
12	4XV-11603-00	PISTON RING SET (STD)	1	1	1	
13	4XV-11633-00	PIN, PISTON	1	1	1	
14	90468-12069	CLIP	2	2	2	
15	5BP-11549-00	SPROCKET, CAM CHAIN	1	1	1	
16	90105-10430	BOLT, FLANGE	1	1	1	
17	90201-102R1	WASHER, PLATE	1	1	1	
18	90280-05048	KEY, WOODRUFF	1	1	1	
19	1S4-11536-00	GEAR, DRIVE	1	1	1	
20	5XT-11454-00	WEIGHT 1	1	1	1	
21	93306-30214	BEARING	2	2	2	
22	5XT-11478-00	COLLAR	1	1	1	
23	1S4-11531-00	GEAR, BALANCE WEIGHT	1	1	1	
24	5XT-11496-00	BOSS, BUFFER	1	1	1	
25	5XT-11533-00	PLATE, ABSORBER	1	1	1	
26	90501-22721	SPRING, COMPRESSION	6	6	6	
27	93605-10090	PIN, DOWEL	3	3	3	



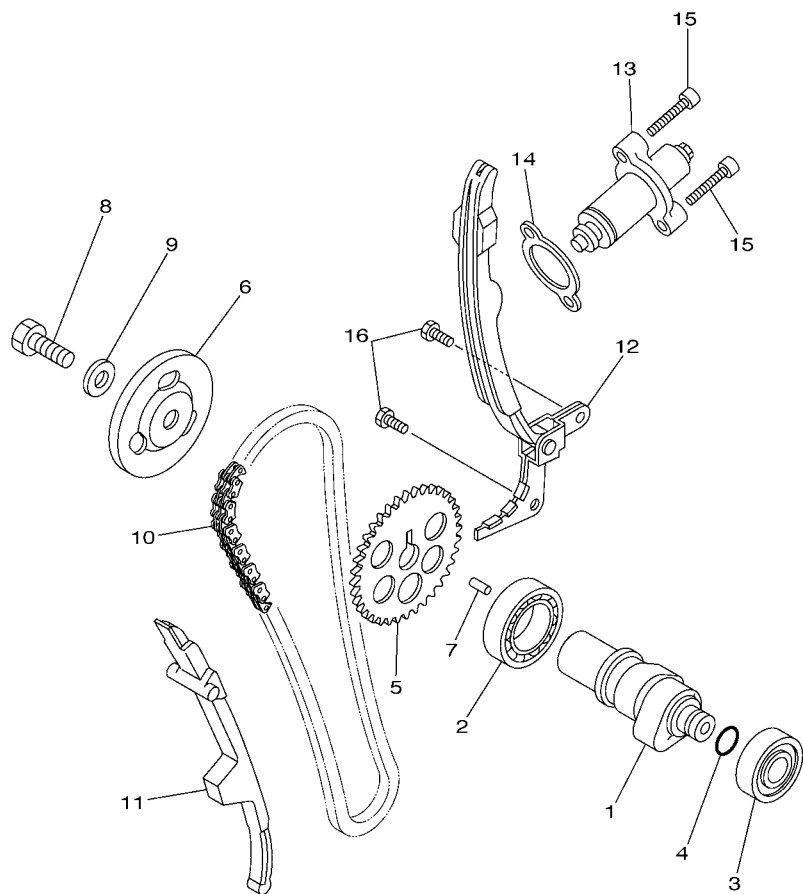


5BP1460-1040

FIG. 4 VALVE

REF. NO.	PART NO.	DESCRIPTION	CAN	EUR	OCE	REMARKS
1	5H0-12111-02	VALVE, INTAKE	1	1	1	
2	5XT-12121-00	VALVE, EXHAUST	1	1	1	
3	4G0-12116-01	SEAT, VALVE SPRING	2	2	2	
4	11H-12113-00	SPRING, VALVE INNER	2	2	2	
5	11H-12114-00	SPRING, VALVE OUTER	2	2	2	
6	5H0-12119-00	SEAL, VALVE STEM	2	2	2	
7	4G0-12117-00	RETAINER, VALVE SPRING	2	2	2	
8	4G0-12118-00	COTTER, VALVE	4	4	4	
9	36X-12151-00	ARM, VALVE ROCKER	2	2	2	
10	5H0-12156-00	SHAFT, ROCKER 2	1	1	1	
11	5H0-12146-00	SHAFT, ROCKER	1	1	1	
12	93210-09165	O-RING	1	1	1	
13	5XT-12159-00	SCREW, VALVE ADJUSTING	2	2	2	
14	90170-06128	NUT	2	2	2	

**FIG. 5 CAMSHAFT & CHAIN**



  
4D31100-G050

REF. NO.	PART NO.	DESCRIPTION	CAN	EUR	OCE	REMARKS
1	1S4-12171-00	CAMSHAFT 1	1	1	1	
2	93306-00518	BEARING	1	1	1	
3	93306-20204	BEARING	1	1	1	KOYO
4	93210-11453	O-RING	1	1	1	
5	5XT-12176-00	SPROCKET, CAM CHAIN	1	1	1	
6	4KB-11145-00	PLATE, BREATHER 2	1	1	1	
7	93604-10011	PIN, DOWEL	1	1	1	
8	90101-10016	BOLT	1	1	1	
9	90201-10591	WASHER, PLATE	1	1	1	
10	94582-19104	CHAIN (DID SCR-0404 SV 104LE)	1	1	1	
11	5BP-12231-00	GUIDE, STOPPER 1	1	1	1	
12	5XT-12241-00	GUIDE, STOPPER 2	1	1	1	
13	5XT-12210-00	TENSIONER ASSY, CAM CHAIN	1	1	1	
14	4FM-12213-00	GASKET, TENSIONER CASE	1	1	1	
15	91312-06025	BOLT	2	2	2	
16	90101-06043	BOLT	2	2	2	

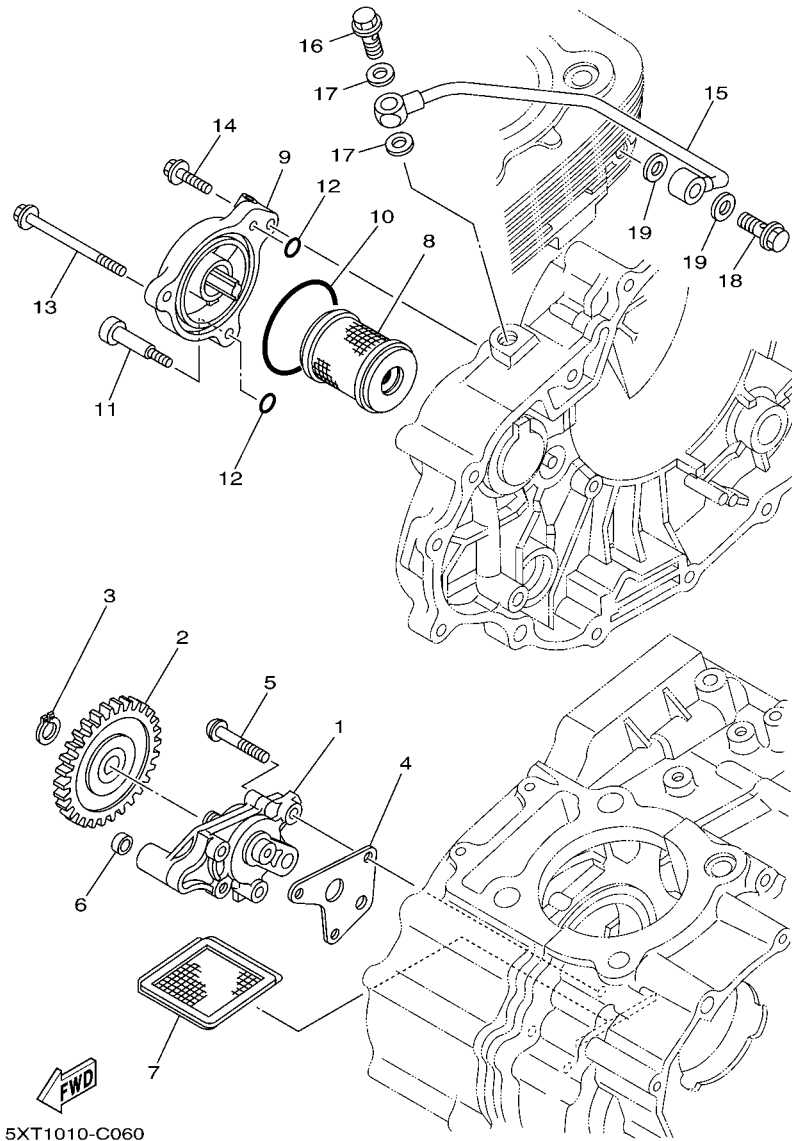
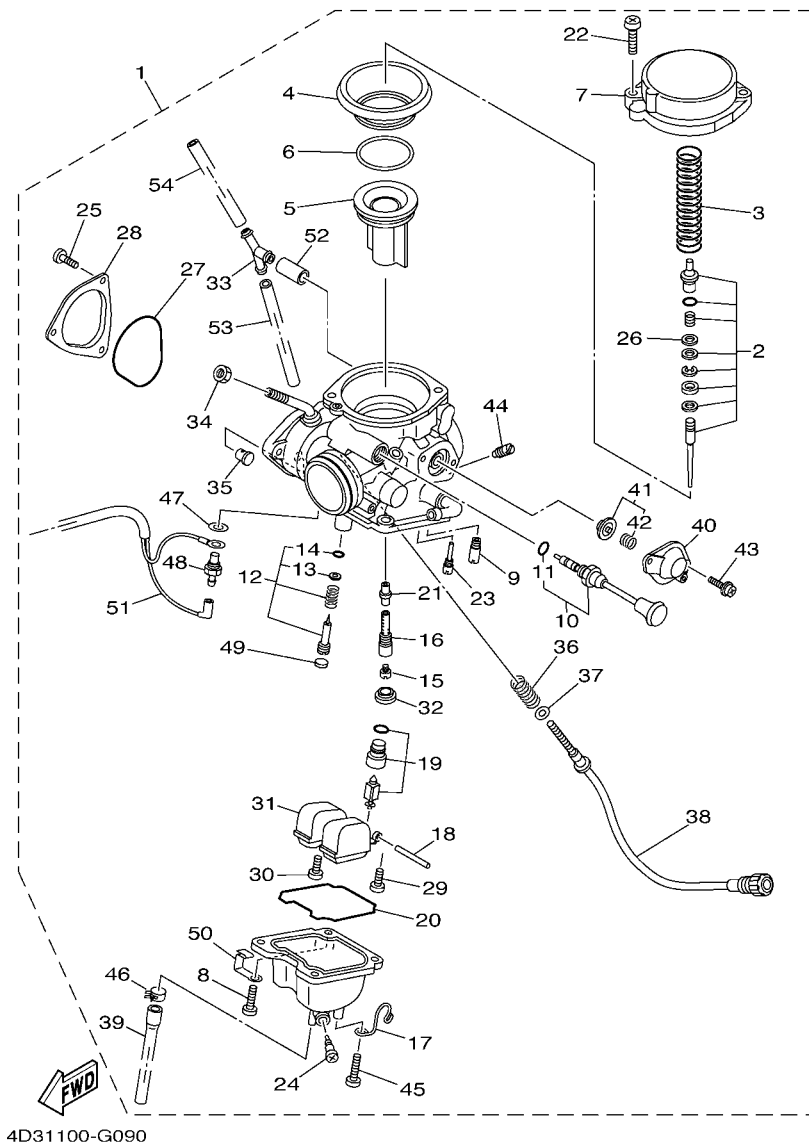


FIG. 6 OIL PUMP

REF. NO.	PART NO.	DESCRIPTION	CAN	EUR	OC	REMARKS
1	4D3-13300-00	OIL PUMP ASSY	1	1	1	
2	4D3-13326-00	GEAR, PUMP DRIVEN 2	1	1	1	
3	99009-11400	CIRCLIP	1	1	1	
4	4D3-13329-00	GASKET, PUMP COVER	1	1	1	
5	90149-06093	SCREW	3	3	3	
6	90430-06156	GASKET	1	1	1	
7	22F-13411-01	STRAINER, OIL	1	1	1	
8	5D3-13440-00	ELEMENT ASSY, OIL CLEANER	1	1	1	
9	4D3-13447-00	COVER, OIL ELEMENT	1	1	1	
10	93210-54175	O-RING	1	1	1	
11	90109-06169	BOLT	1	1	1	
12	93210-07135	O-RING	2	2	2	
13	91312-06070	BOLT	1	1	1	
14	91312-06020	BOLT	1	1	1	
15	5XT-13161-00	PIPE, DELIVERY 1	1	1	1	
16	90401-10061	BOLT, UNION	1	1	1	
17	90430-10171	GASKET	2	2	2	
18	90401-08009	BOLT, UNION	1	1	1	
19	90430-08119	GASKET	2	2	2	



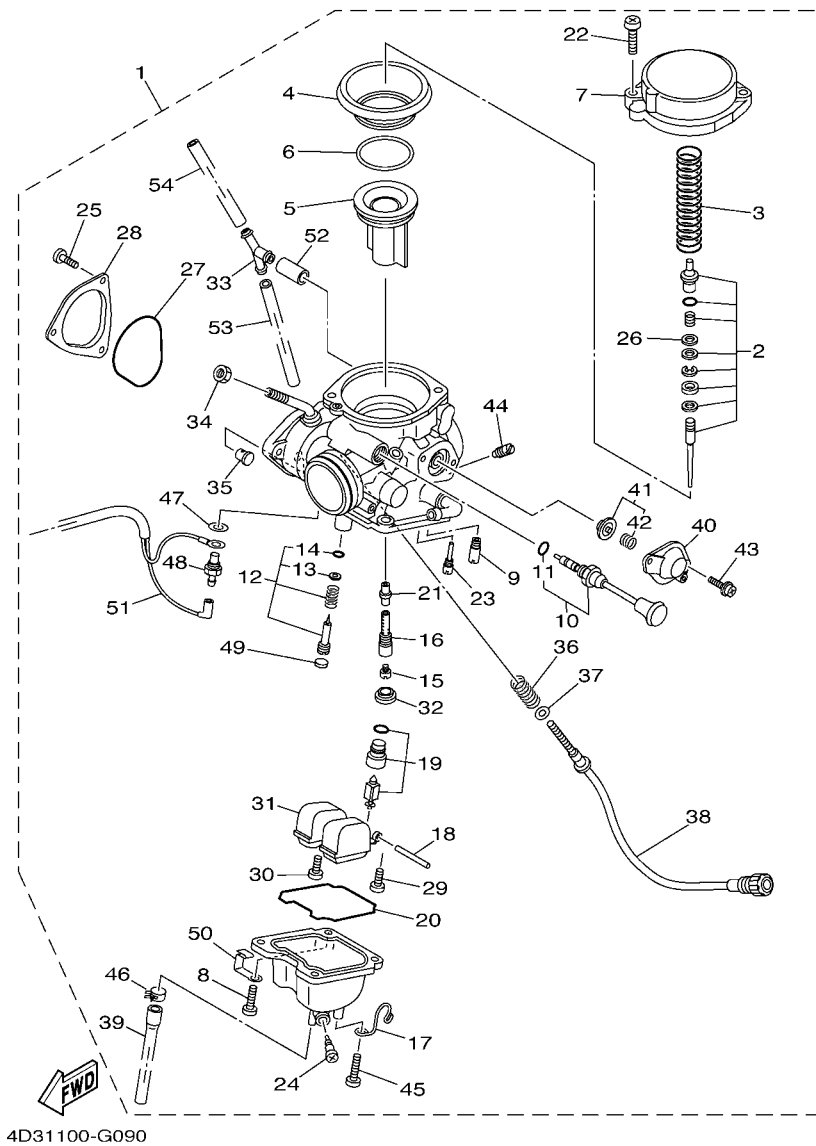




**FIG. 9 CARBURETOR**

REF. NO.	PART NO.	DESCRIPTION	CAN	EUR	OCF	REMARKS
1	4D3-14901-00	CARBURETOR ASSY 1	1			
	4D3-14901-10	CARBURETOR ASSY 1		1	1	
2	4D3-1490J-00	.NEEDLE SET	1			
	4D3-1490J-10	.NEEDLE SET		1	1	
3	4D3-14933-00	.SPRING, DIAPHRAGM	1	1	1	
4	4D3-14841-00	.DIAPHRAGM	1	1	1	
5	4D3-14112-00	.VALVE, THROTTLE 1	1	1	1	
6	5GH-14918-10	.RING	1	1	1	
7	4D3-14958-00	.COVER, DIAPHRAGM	1	1	1	
8	98507-04010	.SCREW, PAN HEAD	4	4	4	
9	4KM-14142-25	.JET, PILOT (# 25)	1	1	1	
10	4D3-1490A-00	.DIAPHRAGM SET 1	1	1	1	
11	1AE-14147-00	..O-RING	1	1	1	
12	4D3-14105-00	.PILOT SCREW SET	1	1	1	
13	3H1-14962-00	..WASHER	1	1	1	
14	3H1-14147-00	..O-RING	1	1	1	
15	620-1423E-53	.JET, MAIN (#133.8)	1	1	1	
16	4D3-14261-00	.HOLDER	1	1	1	
17	4D3-14937-00	.CLIP	1	1	1	
18	127-14186-00	.PIN, FLOAT	1	1	1	
19	5YT-14107-20	.NEEDLE VALVE SET	1	1	1	
20	5DM-14561-00	.O-RING	1	1	1	
21	5DM-1414M-40	.NOZZLE, MAIN	1	1	1	
22	4KM-14216-00	.SCREW	2	2	2	
23	3G2-14231-11	.JET, POWER (# 55)	1	1	1	
24	12R-14191-00	.PLUG, DRAIN	1	1	1	
25	98507-04006	.SCREW, PAN HEAD	3	3	3	



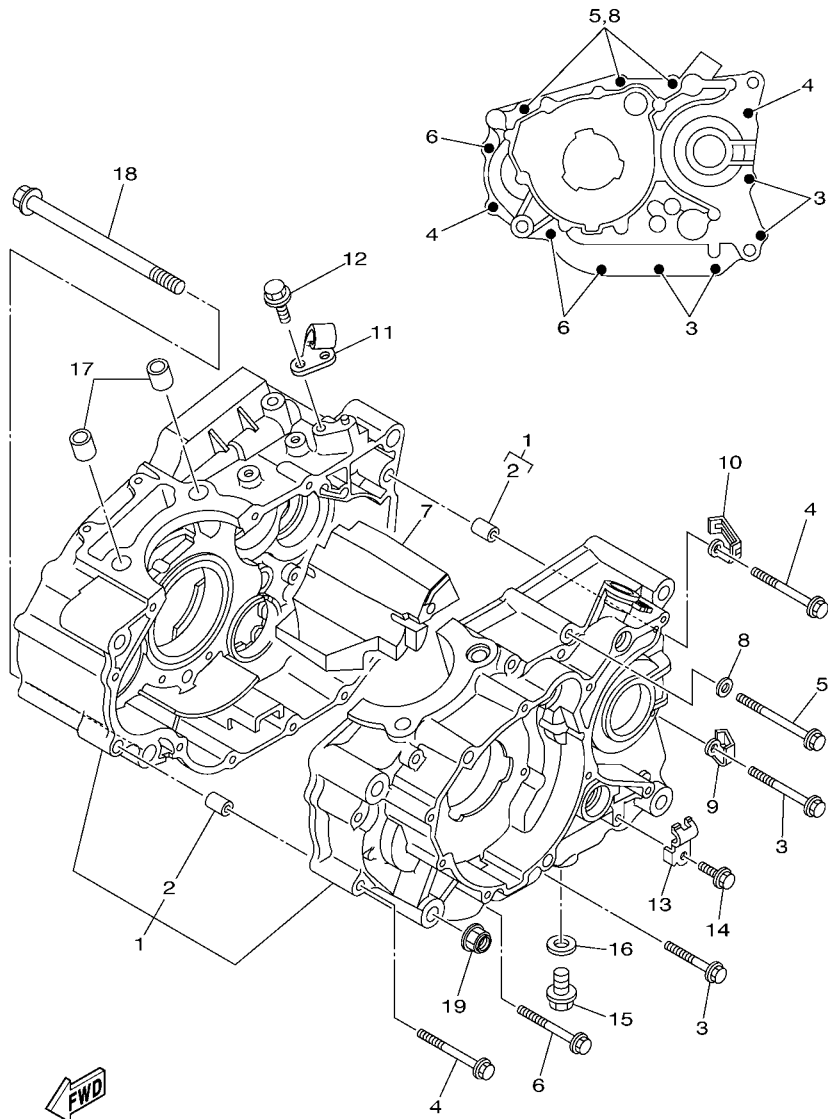


**FIG. 9 CARBURETOR**

REF. NO.	PART NO.	DESCRIPTION	CAN	EUR	OC	REMARKS
26	5DM-14952-00	.WASHER	1	1	1	
27	5LP-14147-00	.O-RING	1	1	1	
28	4WV-14293-00	.COVER 1	1	1	1	
29	98507-04008	.SCREW, PAN HEAD	1	1	1	
30	1FN-14565-00	.SCREW	1	1	1	
31	5DM-14985-00	.FLOAT	1	1	1	
32	5V7-14153-00	.PLATE,BAFFLE	1	1	1	
33	4D3-14988-00	.PIPE, STARTER CONNECTING	1	1	1	
34	1S3-14161-00	.NUT, CABLE ADJUSTING	1	1	1	
35	3GD-14155-00	.GUIDE, CABLE	1	1	1	
36	137-14133-00	.SPRING, THROTTLE STOP	1	1	1	
37	5FU-14962-00	.WASHER	1	1	1	
38	4D3-14123-00	.SCREW, AIR ADJUSTING	1	1	1	
39	4D3-14193-00	.PIPE	1	1	1	
40	5AP-14280-00	.COVER, CARBURETOR	1	1	1	
41	4D3-1490H-00	.DIAPHRAGM SET 5	1	1	1	
42	3HT-14934-00	.SPRING, THROTTLE STOP	1	1	1	
43	97607-04114	.SCREW,WITH WASHER	2	2	2	
44	1HX-14231-34	.JET, MAIN (#170)	1	1	1	
45	98507-05010	.SCREW, PAN HEAD	1	1	1	
46	90467-09026	.CLIP	1	1	1	
47	5CY-14951-00	.WASHER	1	1	1	
48	5FU-83790-00	.HEATER ASSY (15W)	1	1	1	
49	3F9-14118-00	.CAP	1			
50	90461-06087	.CLAMP	1	1	1	
51	4D3-82509-00	.WIRE, SUB LEAD	1	1	1	
52	4D3-14196-00	.PIPE	1	1	1	







4D31100-G110

FIG. 11 CRANKCASE

REF. NO.	PART NO.	DESCRIPTION	CAN	EUR	OCÉ	REMARKS
1	5XT-15100-07	CRANKCASE ASSY	1	1	1	
2	99530-10114	.PIN, DOWEL	2	2	2	
3	95022-06045	BOLT, FLANGE	4	4	4	
4	95022-06060	BOLT, FLANGE	2	2	2	
5	95022-06070	BOLT, FLANGE	3	3	3	
6	95022-06055	BOLT, FLANGE	3	3	3	
7	4D3-15327-00	SPACER, ENGINE MOUNT	1	1	1	
8	90430-06014	GASKET	3	3	3	
9	90462-08045	CLAMP	1	1	1	
10	90461-08001	CLAMP	1	1	1	
11	4D3-15441-00	HOLDER, CLUTCH CABLE	1	1	1	
12	95812-06016	BOLT, FLANGE	1	1	1	
13	90462-10215	CLAMP	1	1	1	
14	95022-06010	BOLT, FLANGE	1	1	1	
15	90340-12059	PLUG, STRAIGHT SCREW	1	1	1	
16	90430-12213	GASKET	1	1	1	
17	99530-14016	PIN, DOWEL	2	2	2	
18	95812-10170	BOLT, FLANGE	1	1	1	
19	95602-10200	NUT, U FLANGE	1	1	1	

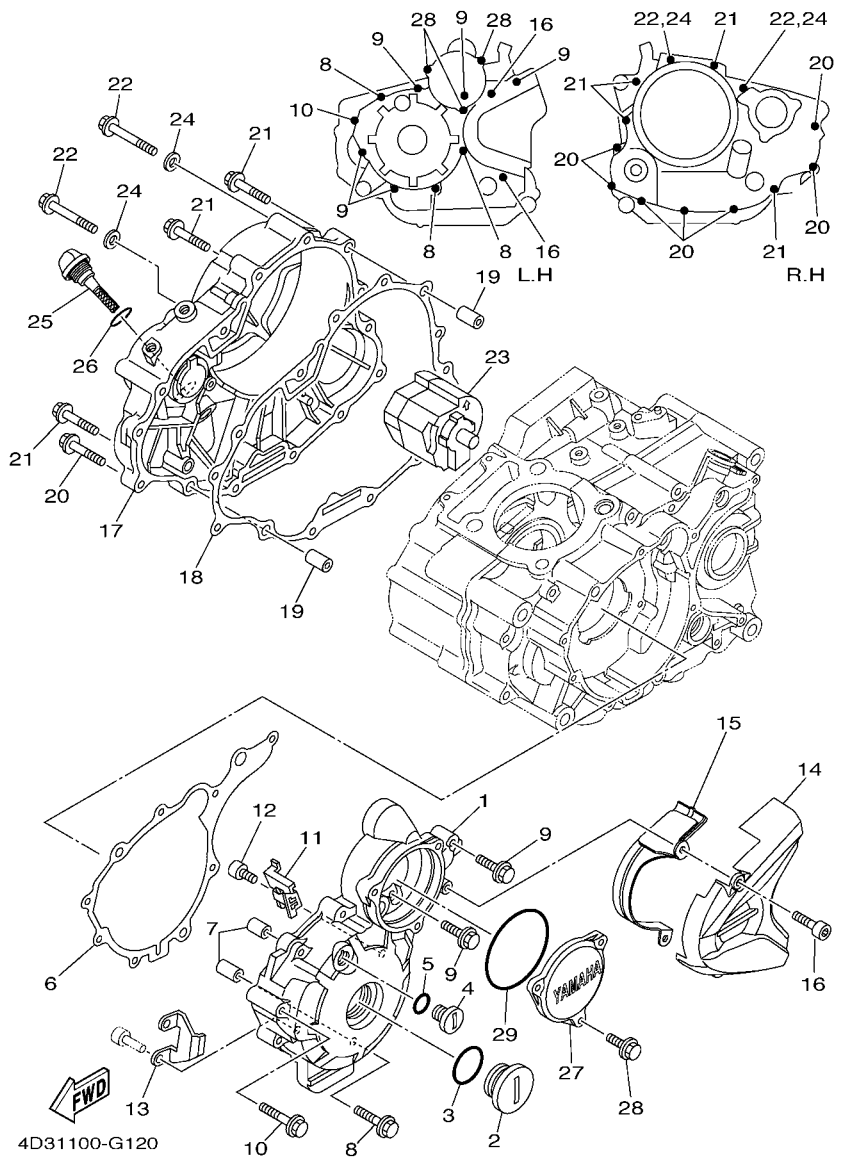
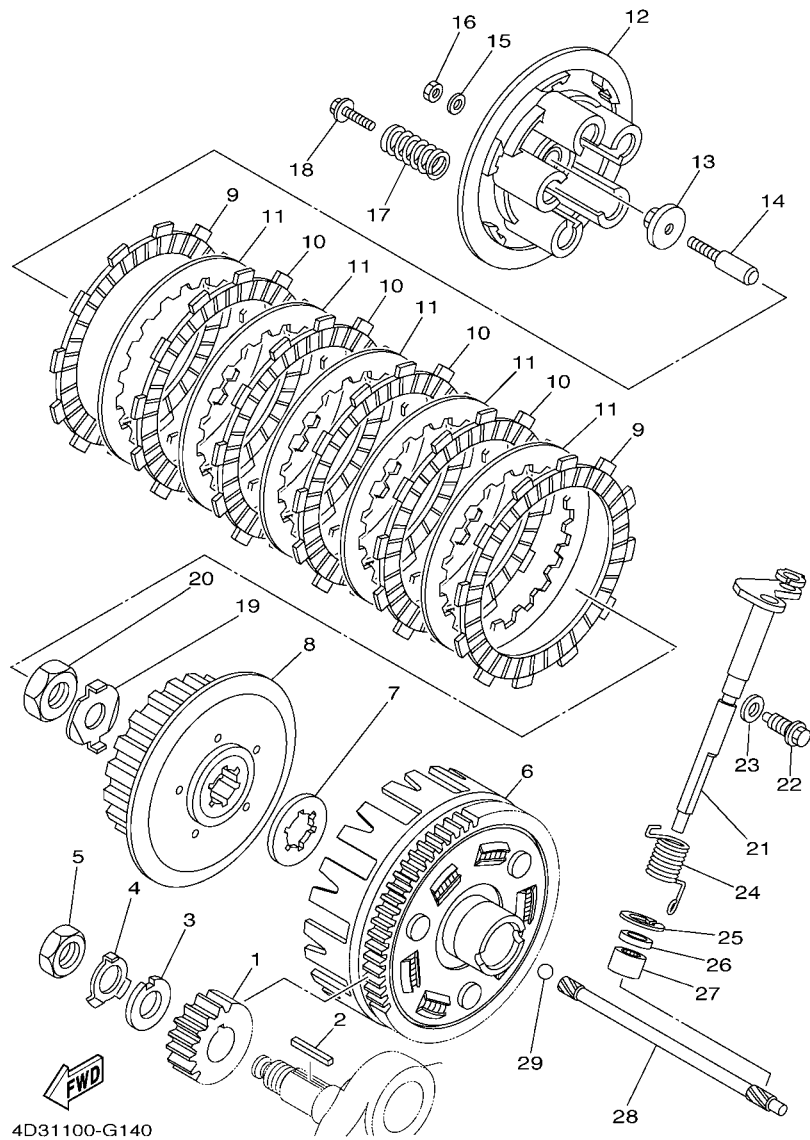


FIG. 12 CRANKCASE COVER 1

REF. NO.	PART NO.	DESCRIPTION	CAN	EUR	OC	REMARKS
1	4D3-15411-00	COVER, CRANKCASE 1	1	1	1	
2	90340-32005	PLUG, STRAIGHT SCREW	1	1	1	
3	93210-32172	O-RING	1	1	1	
4	90340-14014	PLUG, STRAIGHT SCREW	1	1	1	
5	93210-14369	O-RING	1	1	1	
6	4D3-15451-00	GASKET, CRANKCASE COVER 1	1	1	1	
7	99530-10114	PIN, DOWEL	2	2	2	
8	95022-06040	BOLT, FLANGE	3	3	3	
9	95022-06030	BOLT, FLANGE	5	5	5	
10	95022-06045	BOLT, FLANGE	1	1	1	
11	90465-16011	CLAMP	1	1	1	
12	90110-05032	BOLT, HEXAGON SOCKET HEAD	1	1	1	
13	5XT-15113-00	PLATE	1	1	1	
14	4D3-15418-00	COVER, CHAIN CASE	1	1	1	
15	4D3-15493-00	PROTECTOR	1	1	1	
16	91312-06016	BOLT	2	2	2	
17	4D3-15421-00	COVER, CRANKCASE 2	1	1	1	
18	4D3-15461-00	GASKET, CRANKCASE COVER 2	1	1	1	
19	99530-10114	PIN, DOWEL	2	2	2	
20	95022-06025	BOLT, FLANGE	7	7	7	
21	95022-06040	BOLT, FLANGE	4	4	4	
22	95022-06050	BOLT, FLANGE	2	2	2	
23	4D3-15328-00	SPACER, DAMPER	1	1	1	
24	90430-06014	GASKET	2	2	2	
25	4D3-15362-00	PLUG, OIL LEVEL	1	1	1	
26	93210-19123	O-RING	1	1	1	
27	4D3-15415-00	COVER, GENERATOR	1	1	1	







4D31100-G140

FIG. 14 CLUTCH

REF. NO.	PART NO.	DESCRIPTION	CAN	EUR	OCÉ	REMARKS
1	4D3-16111-00	GEAR, PRIMARY DRIVE	1	1	1	
2	90282-05077	KEY, STRAIGHT	1	1	1	
3	90214-16063	WASHER, CLAW	1	1	1	
4	90215-16293	WASHER, LOCK	1	1	1	
5	90170-16003	NUT	1	1	1	
6	4D3-16150-00	PRIMARY DRIVEN GEAR COMP.	1	1	1	
7	30X-16154-00	PLATE, THRUST 1	1	1	1	
8	4D3-16371-00	BOSS, CLUTCH	1	1	1	
9	3XJ-16321-00	PLATE, FRICTION	2	2	2	
10	5DH-16321-00	PLATE, FRICTION	4	4	4	
11	3XJ-16324-01	PLATE, CLUTCH 1	5	5	5	
12	4GY-16351-00	PLATE, PRESSURE 1	1	1	1	
13	1W1-16358-01	PLATE, PUSH	1	1	1	
14	5XT-16356-00	ROD, PUSH 1	1	1	1	
15	92902-06200	WASHER	1	1	1	
16	95302-06600	NUT	1	1	1	
17	90501-231E9	SPRING, COMPRESSION	5	5	5	
18	90159-06029	SCREW, WITH WASHER	5	5	5	
19	90215-16289	WASHER, LOCK	1	1	1	
20	90170-16326	NUT	1	1	1	
21	4D3-16381-00	PUSH LEVER COMP.	1	1	1	
22	90109-08105	BOLT	1	1	1	
23	90430-08119	GASKET	1	1	1	
24	90508-203B3	SPRING, TORSION	1	1	1	
25	99009-20500	CIRCLIP	1	1	1	
26	93102-12224	OIL SEAL	1	1	1	
27	93317-11287	BEARING	1	1	1	





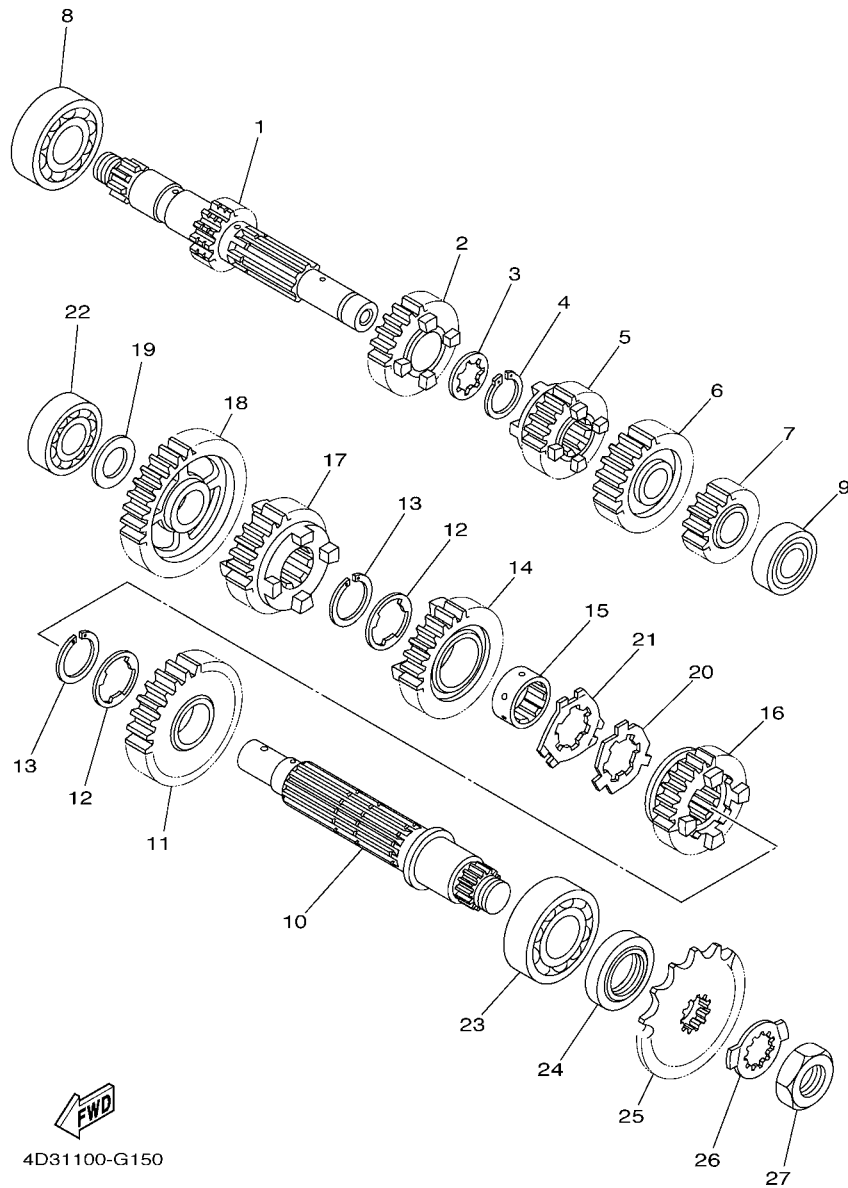
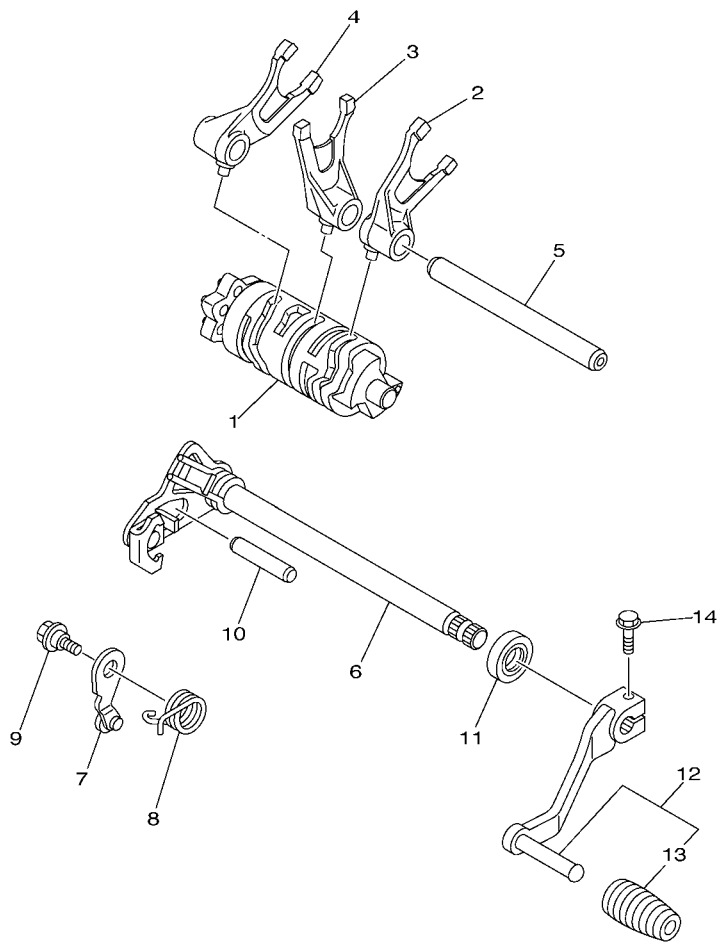


FIG. 15 TRANSMISSION

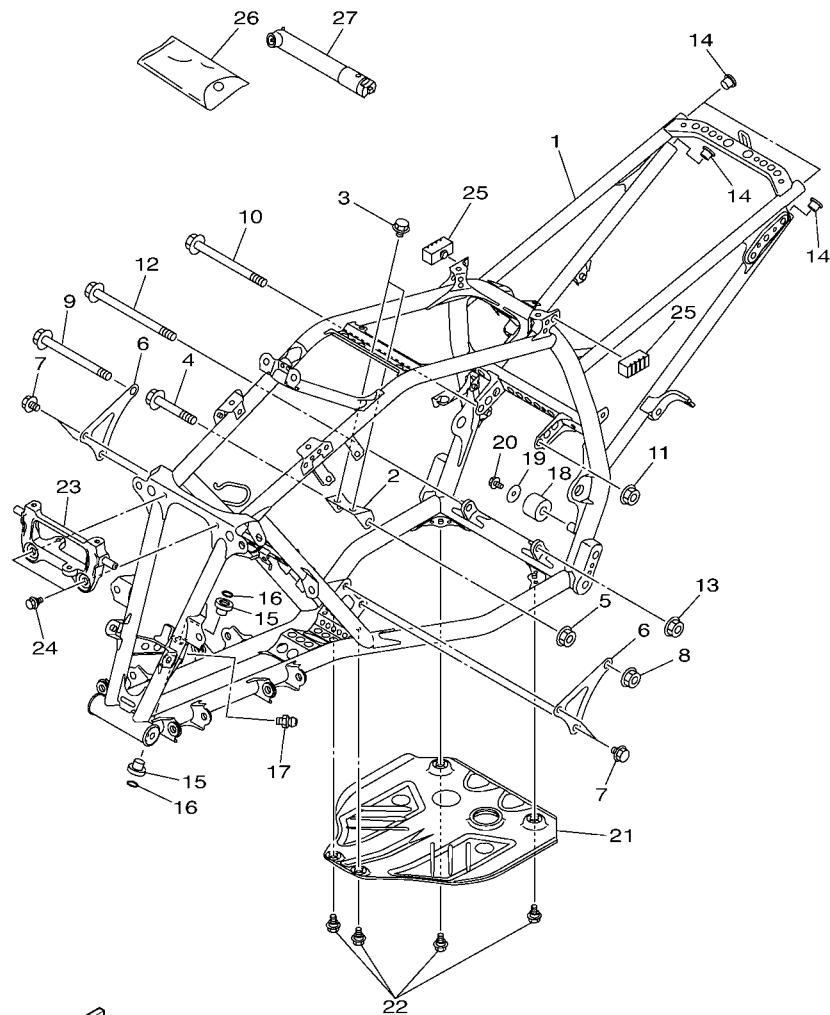
REF. NO.	PART NO.	DESCRIPTION	CAN	EUR	OCF	REMARKS
1	4D3-17411-00	AXLE, MAIN	1	1	1	
2	4D3-17141-00	GEAR, 4TH PINION (24T)	1	1	1	
3	90209-18208	WASHER	1	1	1	
4	93410-22039	CIRCLIP	1	1	1	
5	4D3-17131-00	GEAR, 3RD PINION (21T)	1	1	1	
6	4D3-17151-00	GEAR, 5TH PINION (29T)	1	1	1	
7	4D3-17121-00	GEAR, 2ND PINION (18T)	1	1	1	
8	93306-20427	BEARING	1	1	1	
9	93306-00320	BEARING	1	1	1	
10	4D3-17402-00	DRIVE AXLE ASSY	1	1	1	
11	4D3-17221-00	GEAR, 2ND WHEEL (33T)	1	1	1	
12	90209-22191	WASHER	2	2	2	
13	93440-25084	CIRCLIP	2	2	2	
14	4D3-17231-00	GEAR, 3RD WHEEL (29T)	1	1	1	
15	90387-22017	COLLAR	1	1	1	
16	4D3-17251-00	GEAR, 5TH WHEEL (28T)	1	1	1	
17	4D3-17241-00	GEAR, 4TH WHEEL (24T)	1	1	1	
18	4D3-17211-00	GEAR, 1ST WHEEL (37T)	1	1	1	
19	90201-17255	WASHER, PLATE	1	1	1	
20	90214-22004	WASHER, CLAW	1	1	1	
21	90214-22005	WASHER, CLAW	1	1	1	
22	93306-20332	BEARING	1	1	1	
23	93306-20532	BEARING	1	1	1	
24	93102-25226	OIL SEAL	1	1	1	
25	9383R-14236	SPROCKET,DRIVE (14T)	1	1	1	
26	90215-23265	WASHER, LOCK	1	1	1	
27	90179-18552	NUT	1	1	1	

**FIG. 16 SHIFT CAM & FORK**



  
4D31100-G160

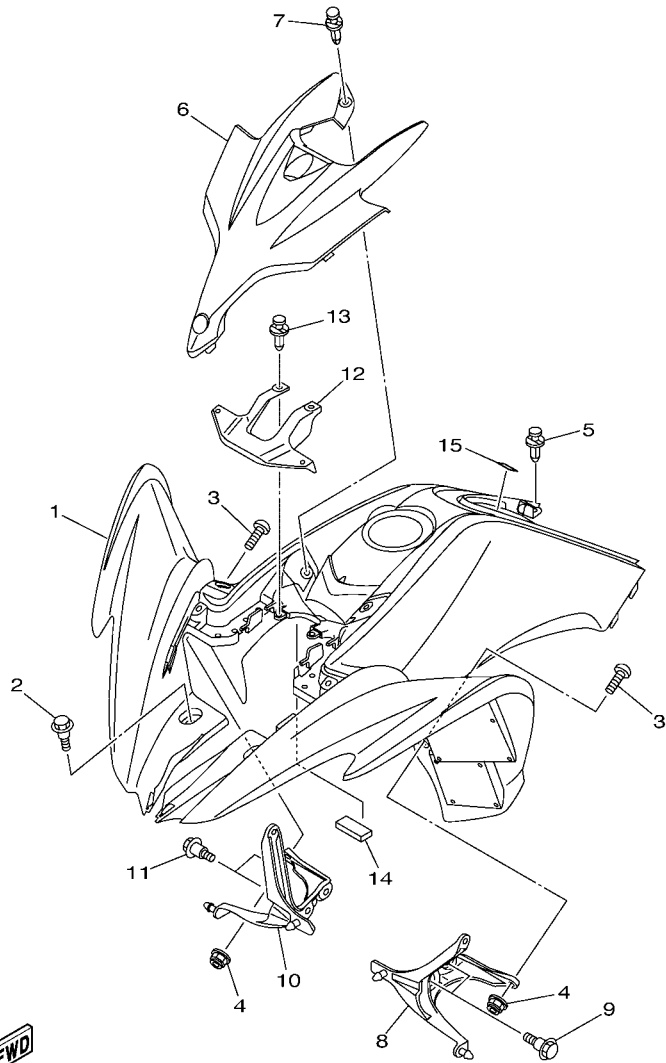
REF. NO.	PART NO.	DESCRIPTION	CAN	EUR	OCE	REMARKS
1	1S4-18540-00	SHIFT CAM ASSY	1	1	1	
2	4D3-18511-00	FORK, SHIFT 1	1	1	1	
3	4D3-18512-00	FORK, SHIFT 2	1	1	1	
4	4D3-18513-00	FORK, SHIFT 3	1	1	1	
5	4GY-18531-00	BAR, SHIFT FORK GUIDE 1	1	1	1	
6	4D3-18101-00	SHIFT SHAFT ASSY	1	1	1	
7	4TP-18140-00	STOPPER LEVER ASSY	1	1	1	
8	90508-26020	SPRING, TORSION	1	1	1	
9	90109-06189	BOLT	1	1	1	
10	93608-43228	PIN, DOWEL	1	1	1	
11	93102-14209	OIL SEAL	1	1	1	
12	4D3-18110-00	SHIFT PEDAL ASSY	1	1	1	
13	5YT-18113-00	.COVER, SHIFT PEDAL	1	1	1	
14	95812-06020	BOLT, FLANGE	1	1	1	



4D31100-G170

FIG. 17 FRAME

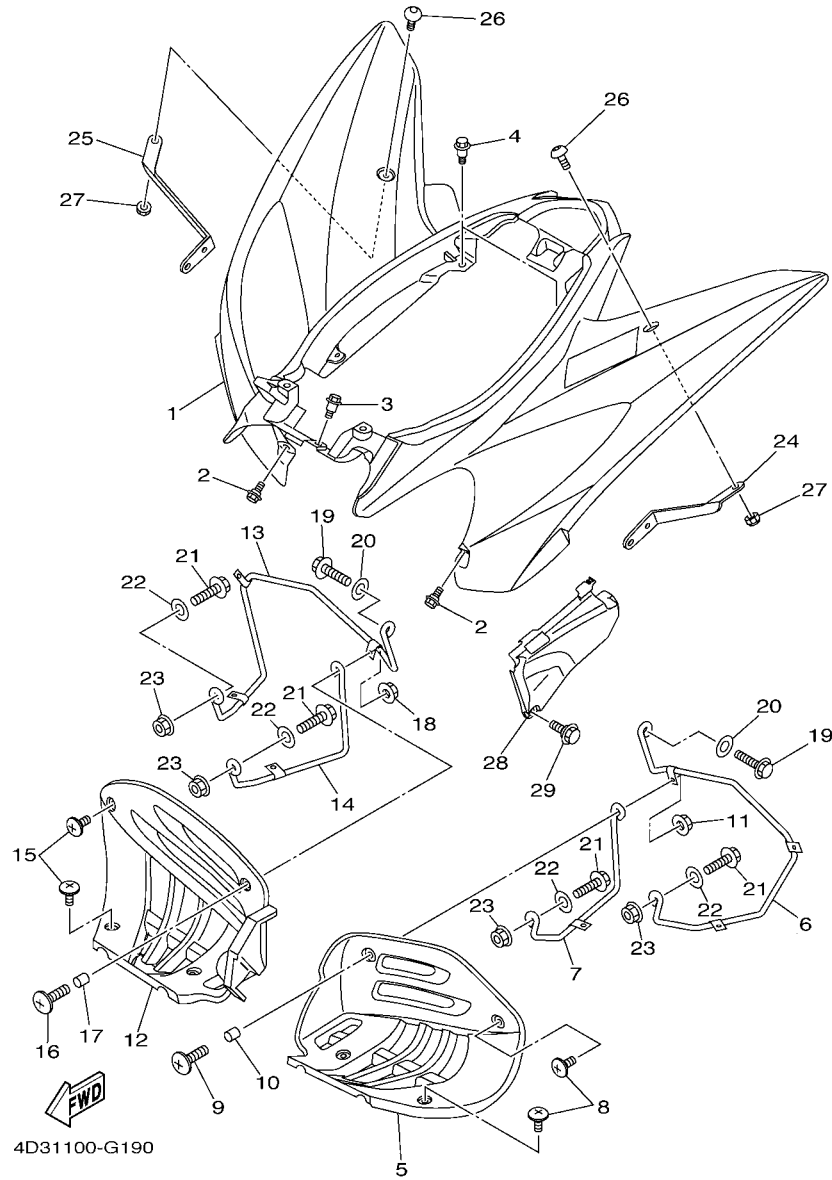
REF. NO.	PART NO.	DESCRIPTION	CAN	EUR	OCÉ	REMARKS
1	4D3-21110-10-33	FRAME COMP.	1	1	1	
2	4D3-21315-00	STAY, ENGINE 2	1	1	1	
3	95812-08014	BOLT, FLANGE	2	2	2	
4	90105-10221	BOLT, FLANGE	1	1	1	
5	95602-10200	NUT, U FLANGE	1	1	1	
6	4D3-21316-00	STAY, ENGINE 3	2	2	2	
7	95812-08014	BOLT, FLANGE	4	4	4	
8	90105-10220	BOLT, FLANGE	1	1	1	
9	95602-10200	NUT, U FLANGE	1	1	1	
10	90105-10219	BOLT, FLANGE	1	1	1	
11	95602-10200	NUT, U FLANGE	1	1	1	
12	90105-10214	BOLT, FLANGE	1	1	1	
13	95602-10200	NUT, U FLANGE	1	1	1	
14	90338-16148	PLUG	4	4	4	
15	90381-15040	BUSH, SOLID	2	2	2	
16	93210-15414	O-RING	2	2	2	
17	93700-06004	NIPPLE, GREASE	1	1	1	
18	4D3-22178-00	TENSIONER	1	1	1	
19	90201-08054	WASHER, PLATE	1	1	1	
20	95822-08012	BOLT, FLANGE	1	1	1	
21	4D3-21471-00	PROTECTOR, ENGINE	1	1	1	
22	90109-06172	BOLT	4	4	4	
23	4D3-2137G-00	STAY 2	1	1	1	
24	90109-06172	BOLT	2	2	2	
25	3C3-24741-00	PAD, SEAT	2	2	2	
26	4D3-28100-00	TOOL KIT	1	1	1	
27	1NV-2811A-01	GAUGE, AIR	1	1	1	



4D31100-G180

FIG. 18 FRONT FENDER

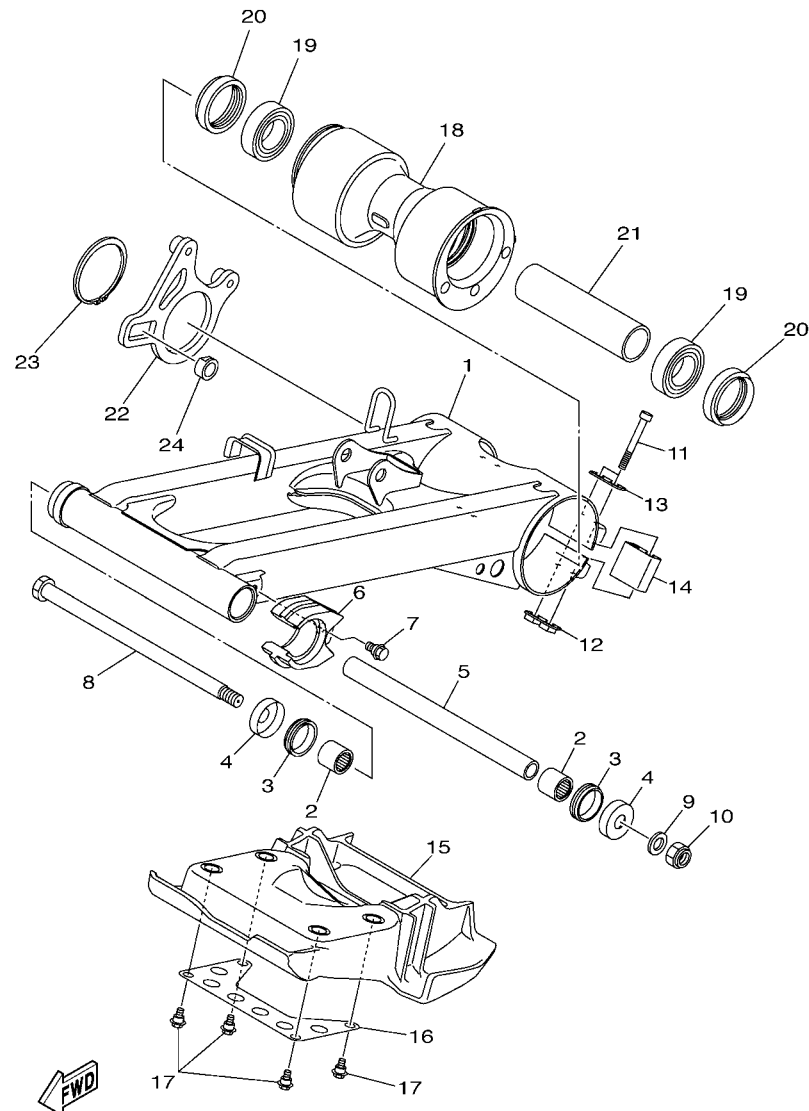
REF. NO.	PART NO.	DESCRIPTION	CAN	EUR	OCE	REMARKS
1	4D3-W215C-31	FRONT FENDER COMP.2	1			
	4D3-W215B-30	FRONT FENDER COMP. 2		1		
	4D3-W215D-31	FRONT FENDER COMP. 2			1	
2	90109-06172	BOLT	2	2	2	
3	90111-06086	BOLT,HEX. SOCKET BUTTON	2	2	2	
4	95602-06200	NUT, SELF-LOCKING	2	2	2	
5	90269-07010	RIVET	2	2	2	
6	4D3-23391-20	PANEL, FRONT	1	1	1	
7	90269-07010	RIVET	2	2	2	
8	4D3-21513-00	STAY, FENDER 1	1	1	1	
9	90109-06214	BOLT	2	2	2	
10	4D3-21514-00	STAY, FENDER 2	1	1	1	
11	90109-06214	BOLT	2	2	2	
12	4D3-21523-00	PLATE 1	1	1	1	
13	90269-07010	RIVET	4	4	4	
14	8ET-21747-00	DAMPER	2	2	2	
15	3MA-27491-00	PROTECTOR	1	1	1	



**FIG. 19 REAR FENDER**

REF. NO.	PART NO.	DESCRIPTION	CAN	EUR	OCE	REMARKS
1	4D3-W216C-30	REAR FENDER COMP.2	1			
	4D3-W216B-30	REAR FENDER COMP.2		1		
	4D3-W216D-30	REAR FENDER COMP			1	
2	90109-06172	BOLT	2	2	2	
3	90109-06241	BOLT	1	1	1	
4	90109-06241	BOLT	2	2	2	
5	4D3-21621-00	FLAP	1	1	1	
6	4D3-2164F-00	STAY 1	1	1	1	
7	4D3-2164H-00	STAY 3	1	1	1	
8	90154-05013	SCREW, BINDING	3	3	3	
9	90154-06061	SCREW, BINDING	1	1	1	
10	90387-062E0	COLLAR	1	1	1	
11	95602-06200	NUT, SELF-LOCKING	1	1	1	
12	5LP-21691-00	FLAP	1	1	1	
13	4D3-2164G-00	STAY 2	1	1	1	
14	5YT-2164J-10	STAY 4	1	1	1	
15	90154-05013	SCREW, BINDING	3	3	3	
16	90154-06061	SCREW, BINDING	1	1	1	
17	90387-062E0	COLLAR	1	1	1	
18	95602-06200	NUT, SELF-LOCKING	1	1	1	
19	95822-08016	BOLT, FLANGE	2	2	2	
20	90201-08048	WASHER, PLATE	2	2	2	
21	95822-08025	BOLT, FLANGE	4	4	4	
22	90201-08048	WASHER, PLATE	4	4	4	
23	95602-08200	NUT, SELF-LOCKING	4	4	4	
24	4D3-21613-00	STAY, FENDER 1	1	1	1	
25	4D3-21614-00	STAY, FENDER 2	1	1	1	



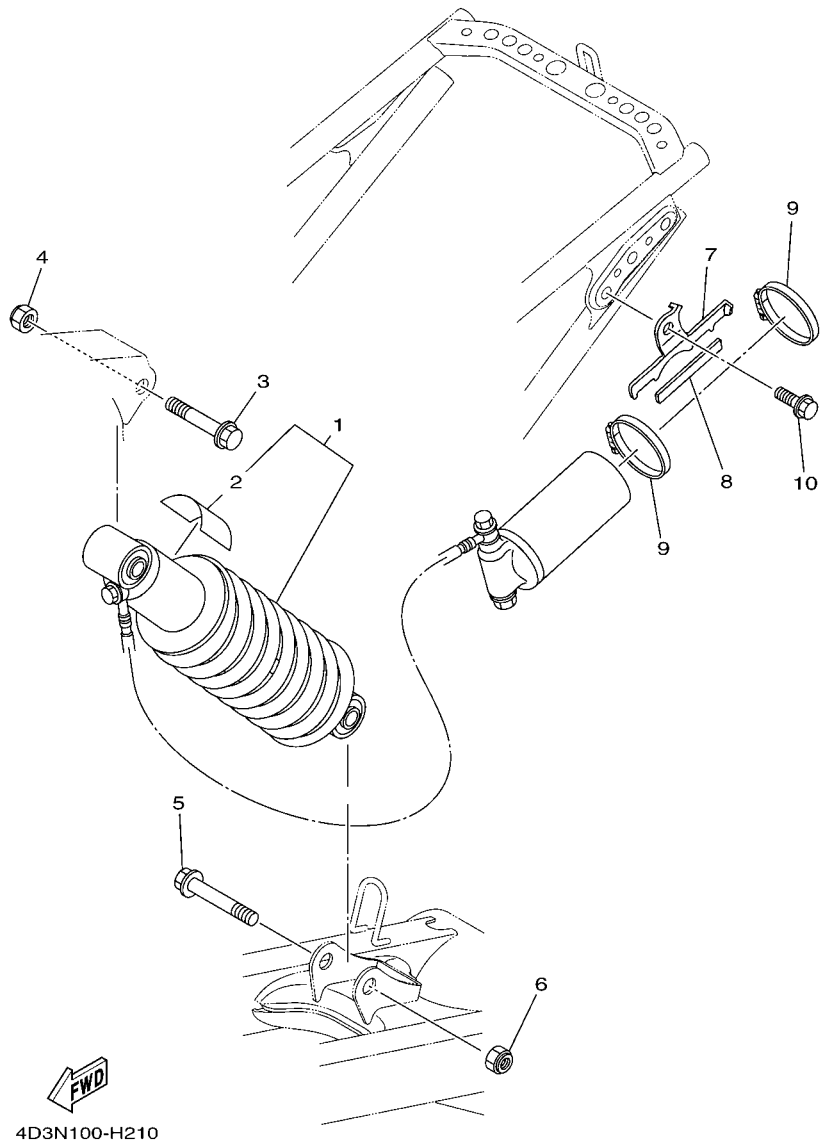


4D31100-G200

FIG. 20 REAR ARM

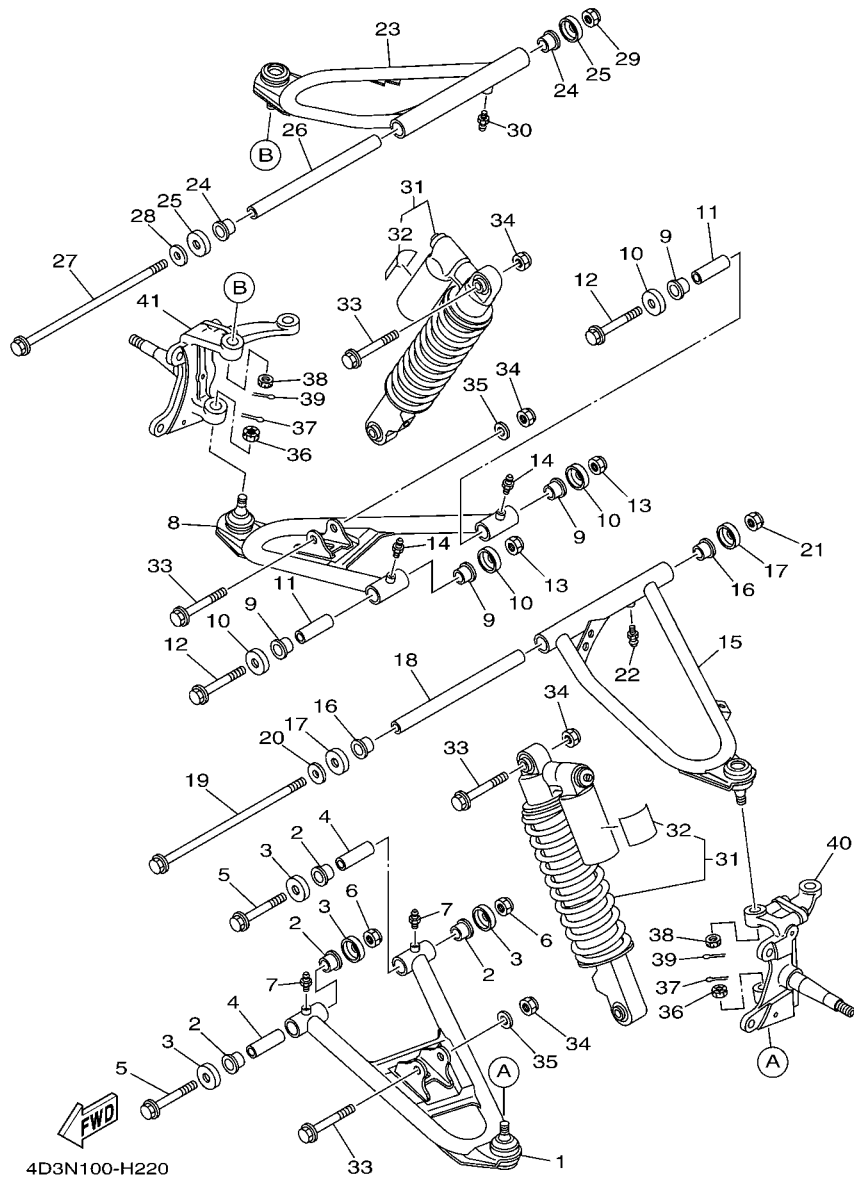
REF. NO.	PART NO.	DESCRIPTION	CAN	EUR	OCE	REMARKS
1	4D3-22110-00-P0	REAR ARM COMP.	1	1	1	S8
2	93317-22237	BEARING	2	2	2	
3	93108-35004	OIL SEAL (35-41-8)	2	2	2	
4	30X-2219X-00	COVER	2	2	2	
5	4D3-22184-00	BUSH	1	1	1	
6	4D3-22151-00	SEAL, GUARD	1	1	1	
7	90109-06172	BOLT	1	1	1	
8	2JN-22141-00	SHAFT, PIVOT	1	1	1	
9	90201-14020	WASHER, PLATE	1	1	1	
10	90185-14009	NUT, SELF-LOCKING	1	1	1	
11	91312-08060	BOLT	4	4	4	
12	4D3-22314-00	NUT, PJTN.	2	2	2	
13	4D3-22348-00	PLATE 2	2	2	2	
14	4D3-2217H-00	COVER, DUST	2	2	2	
15	4D3-2219X-00	COVER	1	1	1	
16	4D3-22347-00	PLATE, CHAIN CASE RUBBER	1	1	1	
17	90109-06236	BOLT	4	4	4	
18	4D3-25311-00	HUB, REAR	1	1	1	
19	93306-00710	BEARING	2	2	2	
20	93106-46001	OIL SEAL	2	2	2	
21	4D3-25317-00	SPACER, BEARING	1	1	1	
22	4D3-25721-00	BRACKET, CALIPER	1	1	1	
23	93410-67085	CIRCLIP	1	1	1	
24	4D3-25377-00	COLLAR, WHEEL	1	1	1	





**FIG. 21 REAR SUSPENSION**

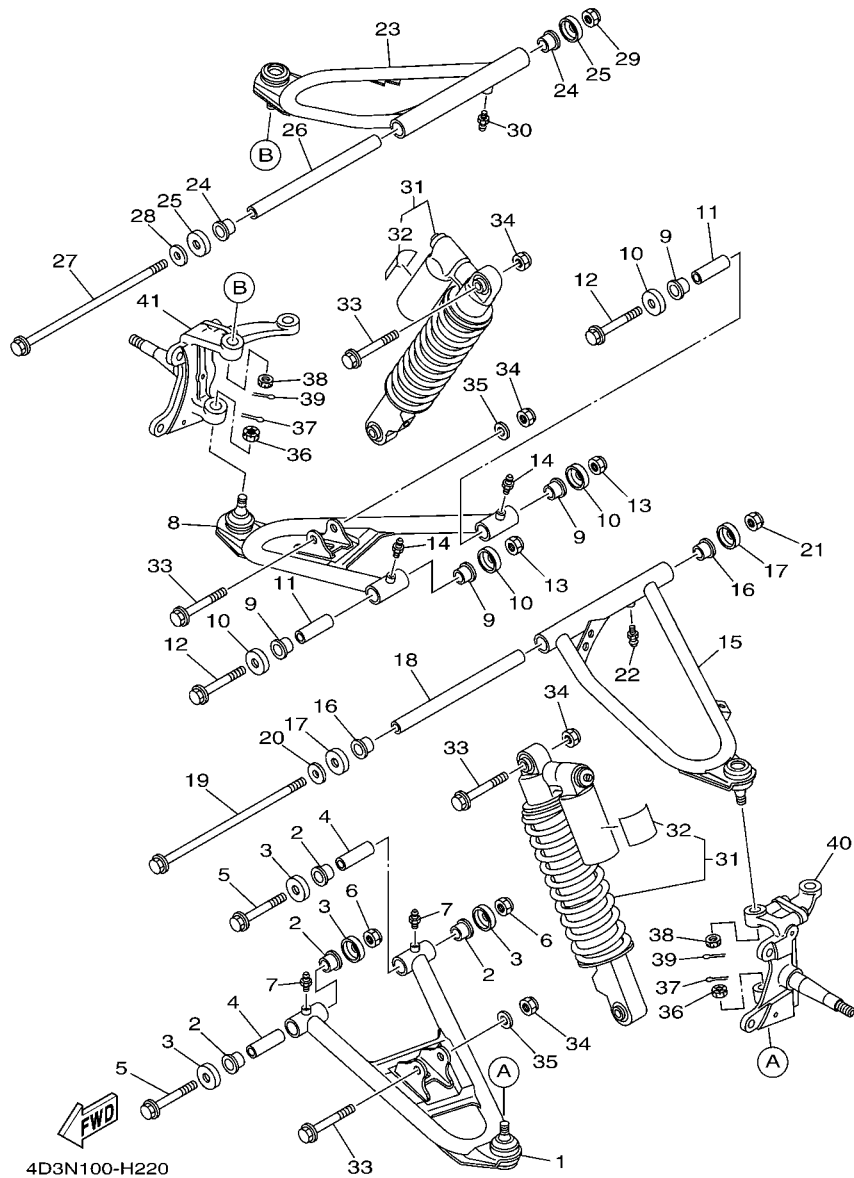
REF. NO.	PART NO.	DESCRIPTION	CAN	EUR	OCE				REMARKS
1	4D3-22210-50-35	SHOCK ABSORBER ASSY, REAR	1						SL
	4D3-22210-60-35	SHOCK ABSORBER ASSY, REAR		1	1				SL
2	4AA-22259-70	.LABEL, WARNING	1						
	4AA-22259-40	.LABEL, WARNING		1	1				
3	90105-12051	BOLT, FLANGE	1	1	1				
4	95612-12100	NUT, U	1	1	1				
5	90105-12051	BOLT, FLANGE	1	1	1				
6	95612-12100	NUT, U	1	1	1				
7	4D3-22262-00	HOLDER, SUB TANK	1	1	1				
8	4GY-22261-00	DAMPER, SUB TANK	1	1	1				
9	90460-50079	CLAMP, HOSE	2	2	2				
10	95812-08014	BOLT, FLANGE	1	1	1				



4D3N100-H220

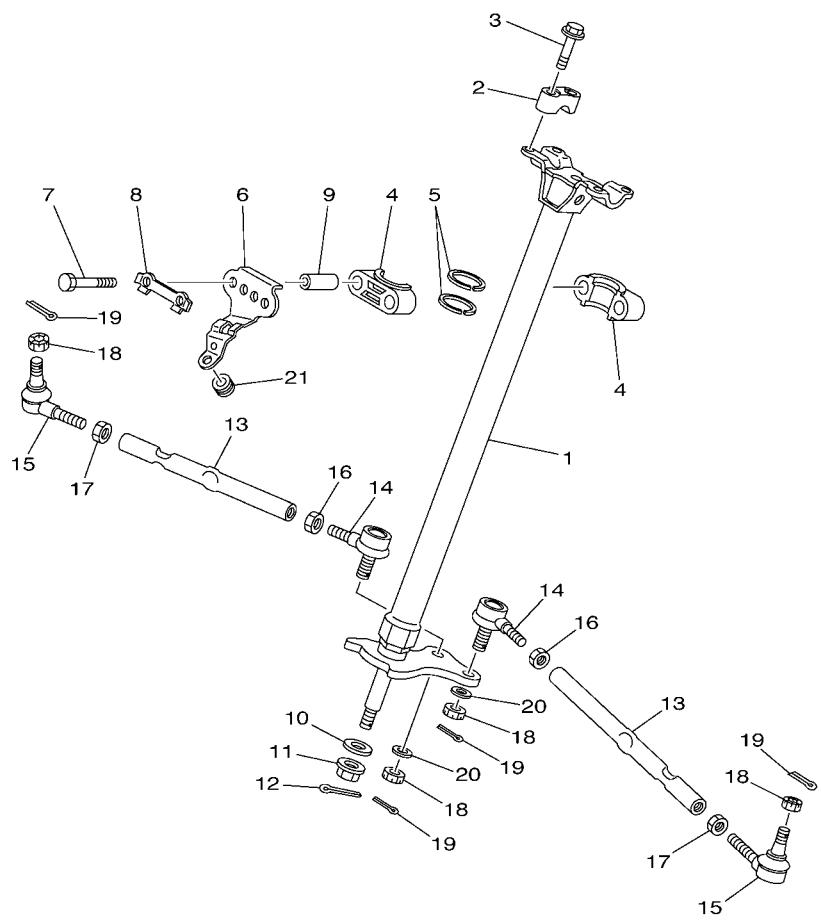
FIG. 22 FRONT SUSPENSION & WHEEL

REF. NO.	PART NO.	DESCRIPTION	CAN	EUR	OCÉ	REMARKS
1	4D3-23570-00-P0	FRONT LOWER ARM COMP. (LEFT)	1	1	1	S8
2	90381-15088	BUSH, SOLID	4	4	4	
3	5YT-23517-00	COVER, THRUST 1	4	4	4	
4	90387-101R3	COLLAR	2	2	2	
5	90105-10241	BOLT, FLANGE	2	2	2	
6	90185-10012	NUT, SELF-LOCKING	2	2	2	
7	93700-06004	NIPPLE, GREASE	2	2	2	
8	4D3-23580-00-P0	FRONT LOWER ARM COMP. (RIGHT)	1	1	1	S8
9	90381-15088	BUSH, SOLID	4	4	4	
10	5YT-23517-00	COVER, THRUST 1	4	4	4	
11	90387-101R3	COLLAR	2	2	2	
12	90105-10241	BOLT, FLANGE	2	2	2	
13	90185-10012	NUT, SELF-LOCKING	2	2	2	
14	93700-06004	NIPPLE, GREASE	2	2	2	
15	4D3-23540-00-P0	FRONT UPPER ARM COMP. (LEFT)	1	1	1	S8
16	90381-15088	BUSH, SOLID	2	2	2	
17	5YT-23517-00	COVER, THRUST 1	2	2	2	
18	90387-100Y6	COLLAR	1	1	1	
19	109-22141-01	SHAFT, PIVOT	1	1	1	
20	90201-10035	WASHER, PLATE	1	1	1	
21	90185-10012	NUT, SELF-LOCKING	1	1	1	
22	93700-06004	NIPPLE, GREASE	1	1	1	
23	4D3-23550-00-P0	FRONT UPPER ARM COMP. (RIGHT)	1	1	1	S8
24	90381-15088	BUSH, SOLID	2	2	2	
25	5YT-23517-00	COVER, THRUST 1	2	2	2	
26	90387-100Y6	COLLAR	1	1	1	
27	109-22141-01	SHAFT, PIVOT	1	1	1	



**FIG. 22 FRONT SUSPENSION & WHEEL**

REF. NO.	PART NO.	DESCRIPTION	CAN	EUR	OCE	REMARKS
28	90201-10035	WASHER, PLATE	1	1	1	
29	90185-10012	NUT, SELF-LOCKING	1	1	1	
30	93700-06004	NIPPLE, GREASE	1	1	1	
31	4D3-23350-40	SHOCK ABSORBER ASSY	2			
	4D3-23350-50	SHOCK ABSORBER ASSY		2	2	
32	4AA-22259-70	.LABEL, WARNING	1			
	4AA-22259-40	.LABEL, WARNING		1	1	
33	90105-10131	BOLT, FLANGE	4	4	4	
34	90185-10012	NUT, SELF-LOCKING	4	4	4	
35	90201-10035	WASHER, PLATE	2	2	2	
36	90171-10001	NUT, CASTLE	2	2	2	
37	91401-20020	PIN, COTTER	2	2	2	
38	90171-10001	NUT, CASTLE	2	2	2	
39	91401-20020	PIN, COTTER	2	2	2	
40	3GD-23501-10	STEERING KNUCKLE ASSY (LEFT)	1	1	1	
41	3GD-23502-10	STEERING KNUCKLE ASSY (RIGHT)	1	1	1	



**FWD**  
4D31100-G230

**FIG. 23 STEERING**

REF. NO.	PART NO.	DESCRIPTION	CAN	EUR	OCE	REMARKS
1	4D3-23813-00	COLUMN, STEERING 2	1	1	1	
2	8K1-23814-00	HOLDER, HANDLE	2	2	2	
3	95822-08030	BOLT, FLANGE	4	4	4	
4	1UY-23812-00	PLANE BEARING, STEERING	2	2	2	
5	93112-31011	OIL SEAL	2	2	2	
6	4D3-23868-00	BRACKET, STEERING LOWER	1	1	1	
7	97022-08055	BOLT	2	2	2	
8	1UY-23894-01	WASHER, LOCK 1	1	1	1	
9	90387-090R0	COLLAR	2	2	2	
10	90201-10036	WASHER, PLATE	1	1	1	
11	90185-10019	NUT, SELF-LOCKING	1	1	1	
12	91401-20020	PIN, COTTER	1	1	1	
13	4D3-23831-00	ROD, TIE	2	2	2	
14	1UY-23841-01	JOINT, UNIVERSAL 1	2	2	2	
15	1UY-23845-01	JOINT, UNIVERSAL 2	2	2	2	
16	95302-10700	NUT	2	2	2	
17	90170-10010	NUT	2	2	2	(L.H. THREAD)
18	90171-10001	NUT, CASTLE	4	4	4	
19	91401-20020	PIN, COTTER	4	4	4	
20	90209-10229	WASHER	2	2	2	
21	90480-15235	GROMMET	1	1	1	

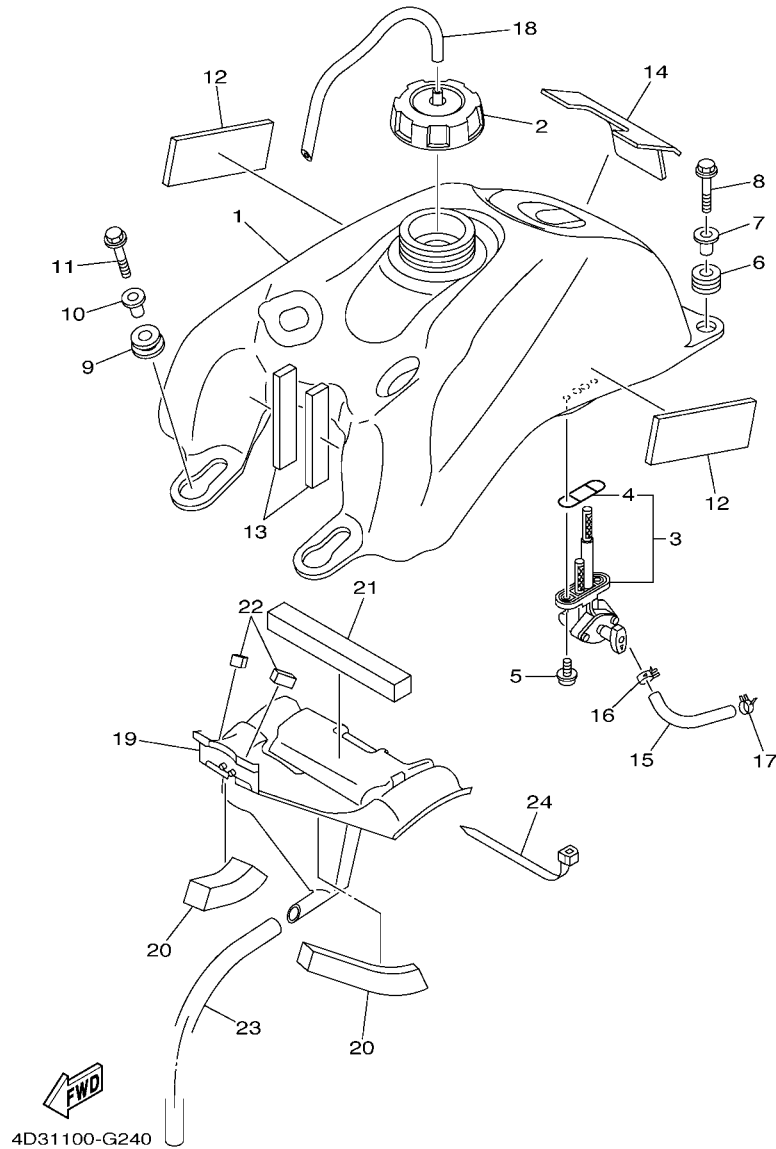
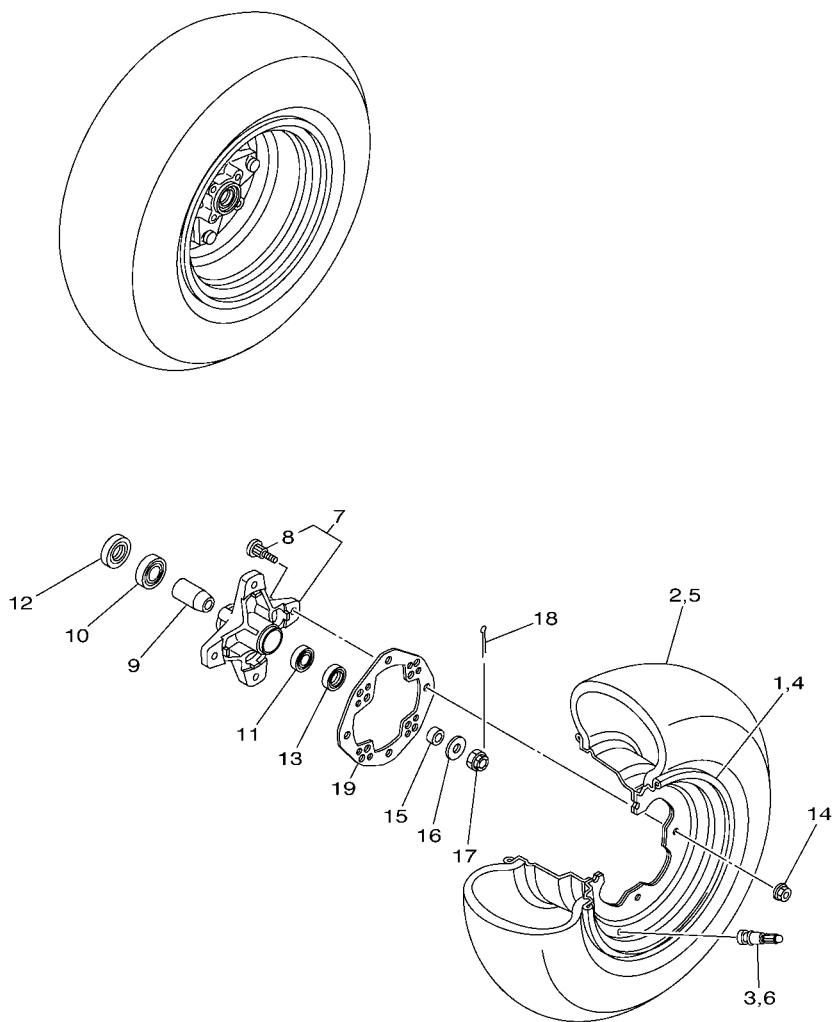


FIG. 24 FUEL TANK

REF. NO.	PART NO.	DESCRIPTION	CAN	EUR	OCE				REMARKS
1	4D3-24110-10	FUEL TANK COMP.	1						
	4D3-24110-00	FUEL TANK COMP.		1	1				
2	5KM-24610-00	CAP ASSY	1	1	1				
3	4D3-24500-00	FUEL COCK ASSY 1	1	1	1				
4	1P6-24512-00	.O-RING	1	1	1				
5	90149-06108	SCREW	2	2	2				
6	90480-18290	GROMMET	2	2	2				
7	90387-066J1	COLLAR	2	2	2				
8	95802-06025	BOLT, FLANGE	2	2	2				
9	90480-18004	GROMMET	2	2	2				
10	90387-066J1	COLLAR	2	2	2				
11	95802-06025	BOLT, FLANGE	2	2	2				
12	5TG-21541-00	DAMPER 1	2	2	2				
13	4D3-24181-00	DAMPER, LOCATING 1	2	2	2				
14	4D3-21541-00	DAMPER 1	1	1	1				
15	90445-11050	HOSE (L105)	1						
	90445-11049	HOSE (L105)		1	1				
16	90467-09037	CLIP	1	1	1				
17	90467-100A2	CLIP	1	1	1				
18	90445-08376	HOSE (L330)	1	1	1				
19	4D3-2414H-00	DAMPEN, PLATE 1	1	1	1				
20	4D3-24182-00	DAMPER, LOCATING 2	2	2	2				
21	4D3-24183-00	DAMPER, LOCATING 3	1	1	1				
22	4D3-24184-00	DAMPER, LOCATING 4	2	2	2				
23	90445-16007	HOSE (L400)	1	1	1				
24	90464-15195	CLAMP	1	1	1				





**FWD**  
4D31100-G260

**FIG. 26 FRONT WHEEL**

REF. NO.	PART NO.	DESCRIPTION	CAN	EUR	OCE	REMARKS
1	5LP-25180-21	WHEEL COMP.	1	1	1	
2	94107-10024	TIRE (AT20X7-10** KT201 T/L N)	1	1	1	DUNLOP
3	93900-00022	VALVE, RIM (TR413)	1	1	1	TAIHEIYO
4	5LP-25180-21	WHEEL COMP.	1	1	1	
5	94107-10024	TIRE (AT20X7-10** KT201 T/L N)	1	1	1	DUNLOP
6	93900-00022	VALVE, RIM (TR413)	1	1	1	TAIHEIYO
7	3GD-25111-20	HUB, FRONT	2	2	2	
8	90114-10006	.BOLT, SERRATION	4	4	4	
9	1UY-25117-00	SPACER, BEARING	2	2	2	
10	93306-00446	BEARING	2	2	2	
11	93306-20231	BEARING	2	2	2	
12	93105-26026	OIL SEAL	2	2	2	
13	93102-22216	OIL SEAL	2	2	2	
14	95702-10500	NUT, WITH WASHER	8	8	8	
15	90387-150R1	COLLAR	2	2	2	
16	90201-14586	WASHER, PLATE	2	2	2	
17	90171-14002	NUT, CASTLE	2	2	2	
18	91401-30025	PIN, COTTER	2	2	2	
19	1S3-25127-00	COVER, PLATE	2	2	2	

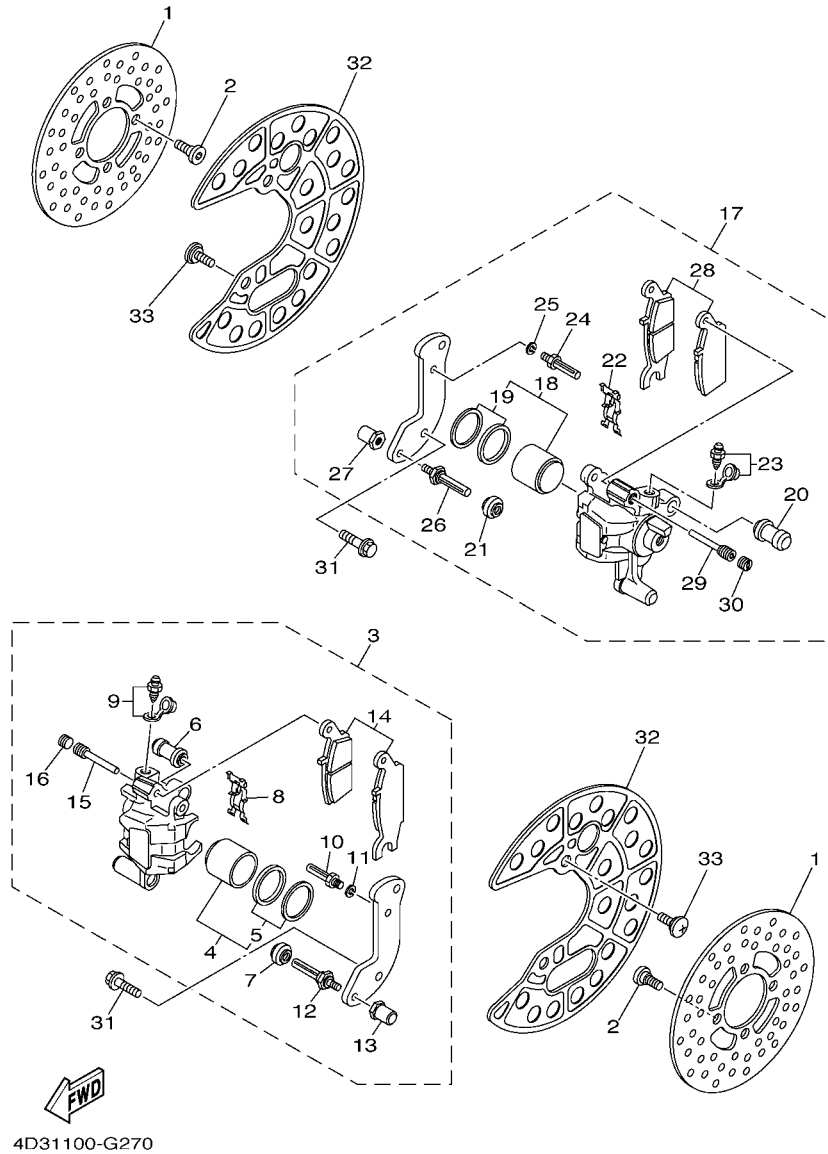
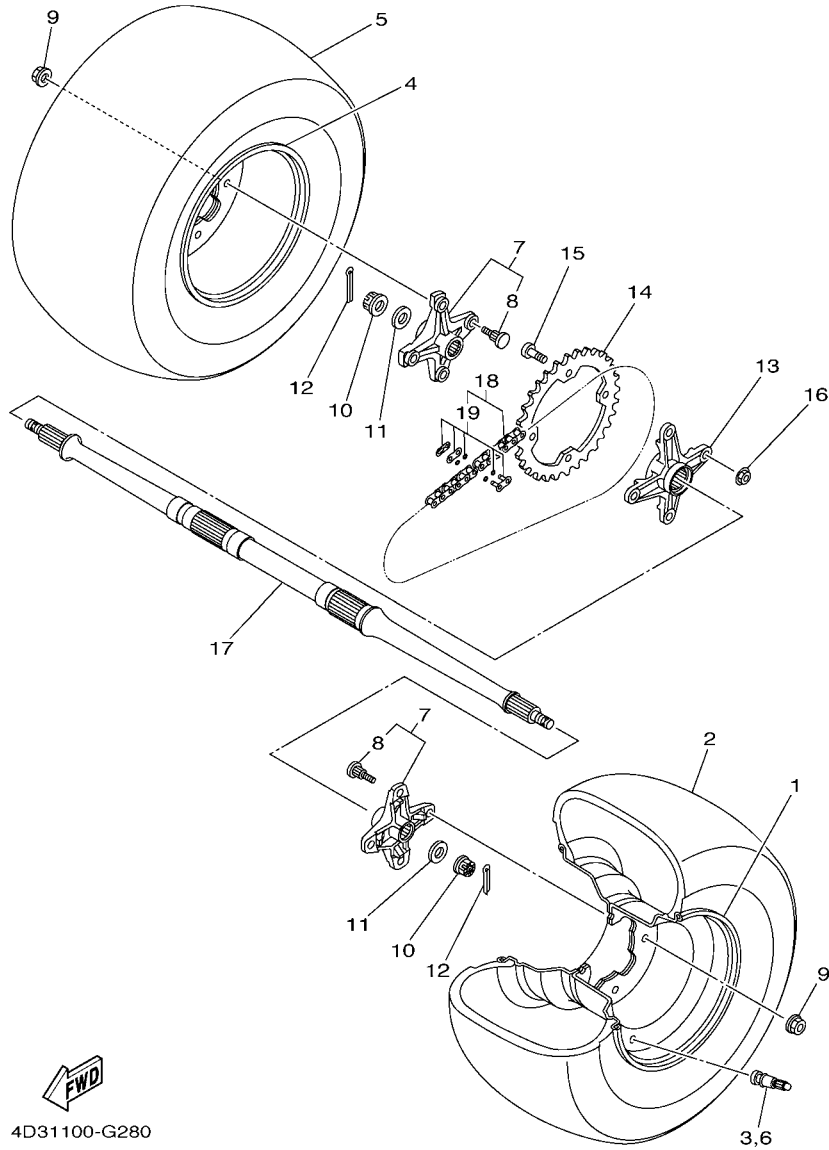


FIG. 27 FRONT BRAKE CALIPER

REF. NO.	PART NO.	DESCRIPTION	CAN	EUR	OCE	REMARKS
1	3GD-2582T-10	DISC, BRAKE (LEFT)	2	2	2	
2	90109-08082	BOLT	8	8	8	
3	4D3-2580T-00	CALIPER ASSY (LEFT)	1	1	1	
4	3B4-W0057-00	.PISTON ASSY, CALIPER	1	1	1	
5	3B4-W0047-00	..CALIPER SEAL KIT	1	1	1	
6	1UY-25937-51	.BOOT 2	1	1	1	
7	3JD-25917-00	.BOOT, CALIPER	1	1	1	
8	5DH-25919-00	.SUPPORT, PAD	1	1	1	
9	1UY-W0048-50	.BLEED SCREW KIT	1	1	1	
10	1UY-25926-51	.BOLT	1	1	1	
11	1UY-25938-51	.WASHER, SPRING	1	1	1	
12	3JD-25926-00	.BOLT	1	1	1	
13	3JD-25961-00	.NUT	1	1	1	
14	4D3-W0045-00	.BRAKE PAD KIT	1	1	1	
15	5DH-25933-00	.PIN, PAD	1	1	1	
16	8CR-25926-00	.BOLT	1	1	1	
17	4D3-2580U-00	CALIPER ASSY (RIGHT)	1	1	1	
18	3B4-W0057-00	.PISTON ASSY, CALIPER	1	1	1	
19	3B4-W0047-00	..CALIPER SEAL KIT	1	1	1	
20	1UY-25937-51	.BOOT 2	1	1	1	
21	3JD-25917-00	.BOOT, CALIPER	1	1	1	
22	5DH-25919-00	.SUPPORT, PAD	1	1	1	
23	1UY-W0048-50	.BLEED SCREW KIT	1	1	1	
24	1UY-25926-51	.BOLT	1	1	1	
25	1UY-25938-51	.WASHER, SPRING	1	1	1	
26	3JD-25926-00	.BOLT	1	1	1	
27	3JD-25961-00	.NUT	1	1	1	



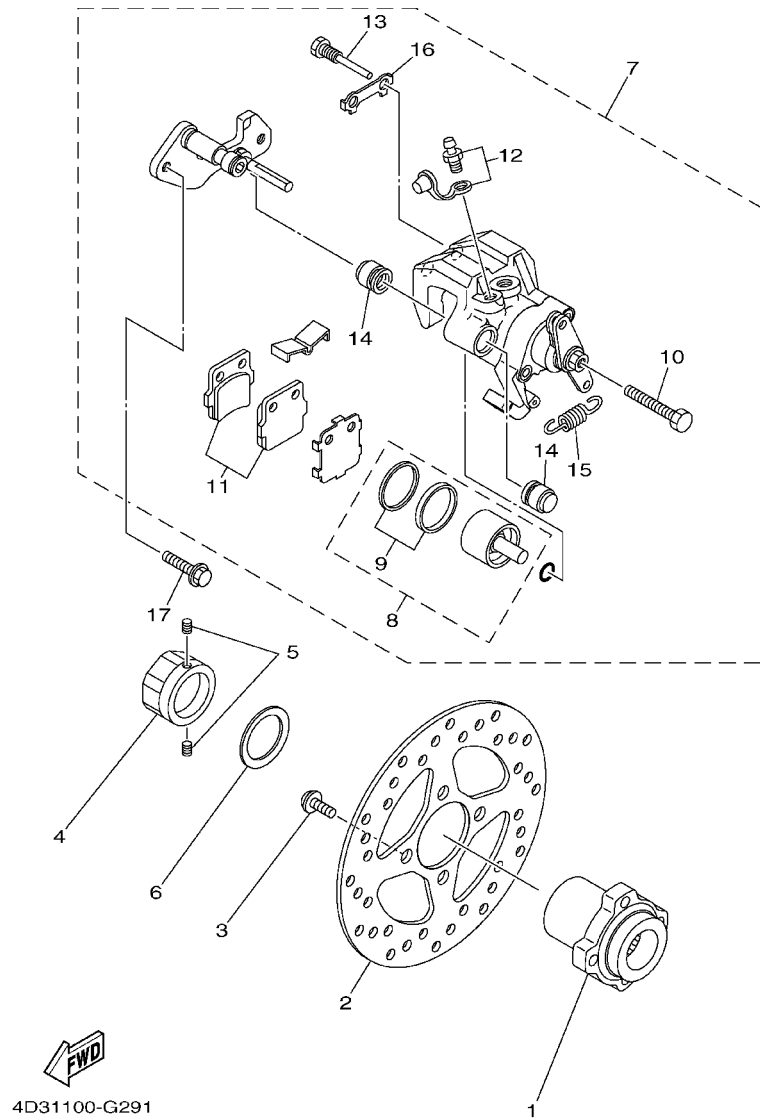




4D31100-G280

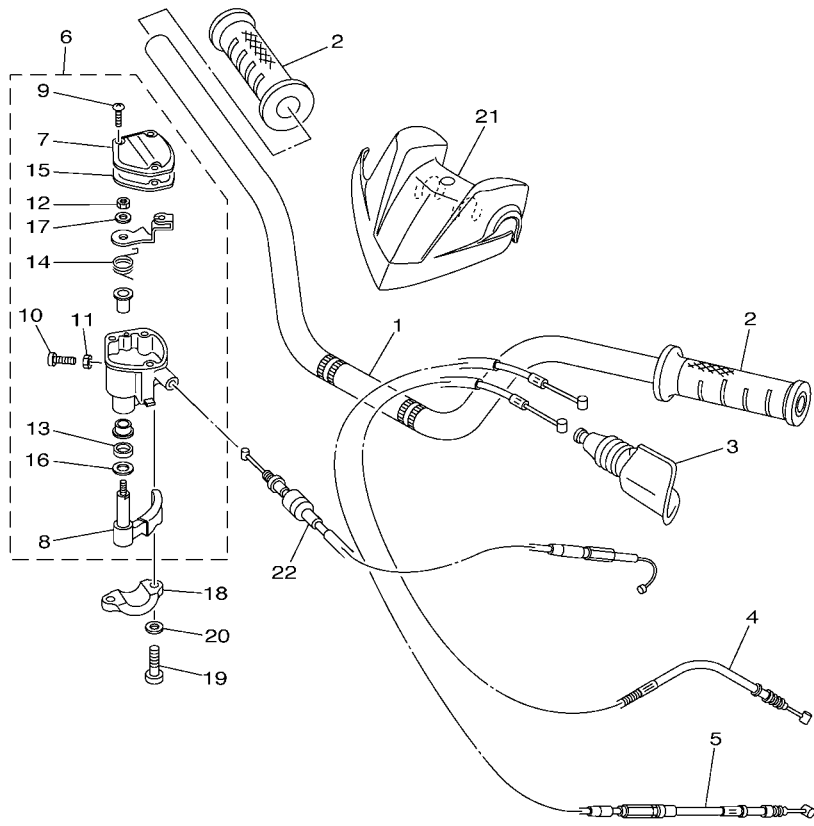
FIG. 28 REAR WHEEL

REF. NO.	PART NO.	DESCRIPTION	CAN	EUR	OCÉ	REMARKS
1	4D3-25390-01	REAR WHEEL COMP.	1	1	1	
2	94110-09024	TIRE (AT19X10-9** KT205 T/L N)	1	1	1	DUNLOP
3	93900-00022	VALVE, RIM (TR413)	1	1	1	TAIHEIYO
4	4D3-25390-01	REAR WHEEL COMP.	1	1	1	
5	94110-09024	TIRE (AT19X10-9** KT205 T/L N)	1	1	1	DUNLOP
6	93900-00022	VALVE, RIM (TR413)	1	1	1	TAIHEIYO
7	1S3-25383-20	COLLAR, WHEEL	2	2	2	
8	90114-10013	.BOLT, SERRATION	4	4	4	
9	95702-10500	NUT, WITH WASHER	8	8	8	
10	90171-14004	NUT, CASTLE	2	2	2	
11	90201-14021	WASHER, PLATE	2	2	2	
12	91401-30030	PIN, COTTER	2	2	2	
13	5YT-25386-00	COLLAR, SPROCKET AXLE	1	1	1	
14	5TG-25438-10	SPROCKET, DRIVEN (38T)	1	1	1	
15	90109-10010	BOLT	4	4	4	
16	95602-10200	NUT, U FLANGE	4	4	4	
17	4D3-25381-00	AXLE, WHEEL	1	1	1	
18	94581-87092	CHAIN (DID520V)	1	1	1	
19	94681-87011	.JOINT, CHAIN (DID520V FJ)	1	1	1	



**FIG. 29 REAR BRAKE CALIPER**

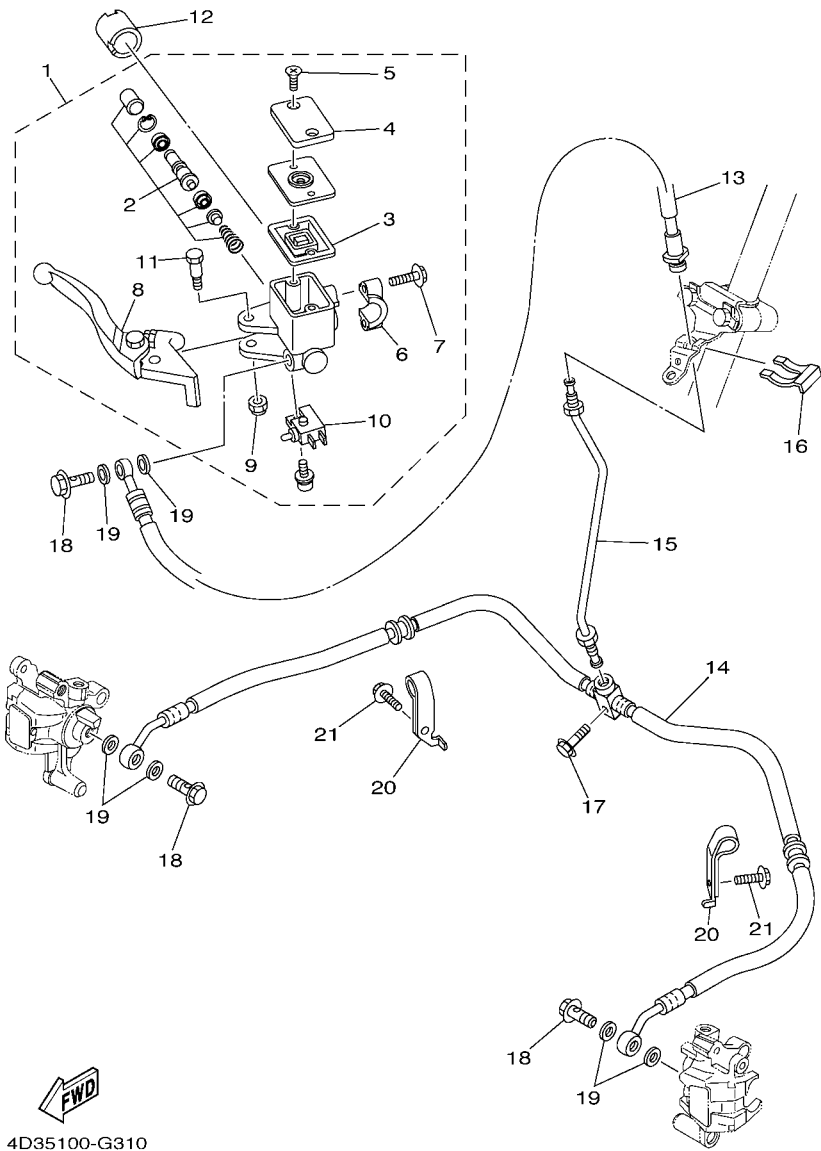
REF. NO.	PART NO.	DESCRIPTION	CAN	EUR	OCE	REMARKS
1	5YT-25712-00	BRACKET, DISC	1	1	1	
2	4D3-2582W-00	DISK, REAR BRAKE 2	1	1	1	
3	90109-081F0	BOLT	4	4	4	
4	90170-33010	NUT	1	1	1	
5	90113-06055	BOLT, SET	2	2	2	
6	90208-34001	WASHER, CONICAL SPRING	1	1	1	
7	5YT-2580W-10	CALIPER ASSY, REAR 2	1	1	1	
8	5LP-W0057-50	.PISTON ASSY, CALIPER	1	1	1	
9	5LP-W0047-50	..CALIPER SEAL KIT	1	1	1	
10	1UY-25972-51	.ADJUSTBOLT	1	1	1	
11	4D3-W0046-50	.BRAKE PAD KIT 2	1	1	1	
12	1UY-W0048-50	.BLEED SCREW KIT	1	1	1	
13	1UY-25924-51	.PIN, PAD	2	2	2	
14	1UY-25917-51	.BOOT, CALIPER	2	2	2	
15	5YT-25977-50	.SPRING, RETURN	1	1	1	
16	1UY-25933-51	.WASHER, PAD PIN	1	1	1	
17	90105-08183	BOLT, FLANGE	2	2	2	



4D31100-G300

FIG. 30 STEERING HANDLE & CABLE

REF. NO.	PART NO.	DESCRIPTION	CAN	EUR	OCE	REMARKS
1	4D3-26111-00	HANDLEBAR	1	1	1	
2	5LP-26241-00	GRIP	2	2	2	
3	31A-26372-00	COVER, HANDLE LEVER 1	1	1	1	
4	4D3-26335-00	CABLE, CLUTCH	1	1	1	
5	4D3-26341-00	WIRE, BRAKE 1	1	1	1	
6	4KB-26250-20	THROTTLE LEVER ASSY	1	1	1	
7	4KB-2628F-20	.CAP, GEAR	1	1	1	
8	1NV-2625G-01	.LEVER, THROTTLE	1	1	1	
9	4KB-2632G-00	.SCREW	3	3	3	
10	4KB-26256-00	.SCREW, GRIP END	1	1	1	
11	95607-05100	.NUT, U	1	1	1	
12	4KB-26258-00	.NUT, LOCK	1	1	1	
13	93104-09025	.OIL SEAL	1	1	1	
14	1NV-26304-00	.SPRING	1	1	1	
15	4KB-2628G-00	.GASKET	1	1	1	
16	1NV-26129-00	.WASHER	1	1	1	
17	1NV-26398-00	.WASHER	1	1	1	
18	4V4-82913-00	HOLDER, LEVER LOWER 1	1	1	1	
19	98502-05020	SCREW, PAN HEAD	2	2	2	
20	92902-05600	WASHER, PLATE	2	2	2	
21	4D3-26124-00	PROTECTOR, HANDLEBAR	1	1	1	
22	4D3-26311-00	CABLE, THROTTLE 1	1	1	1	

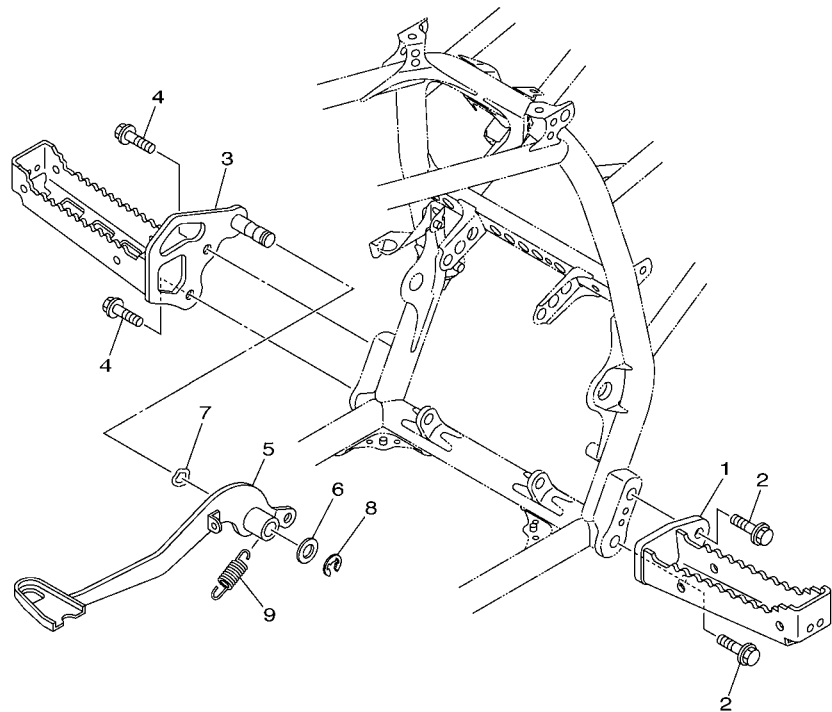


4D35100-G310

FIG. 31 FRONT MASTER CYLINDER

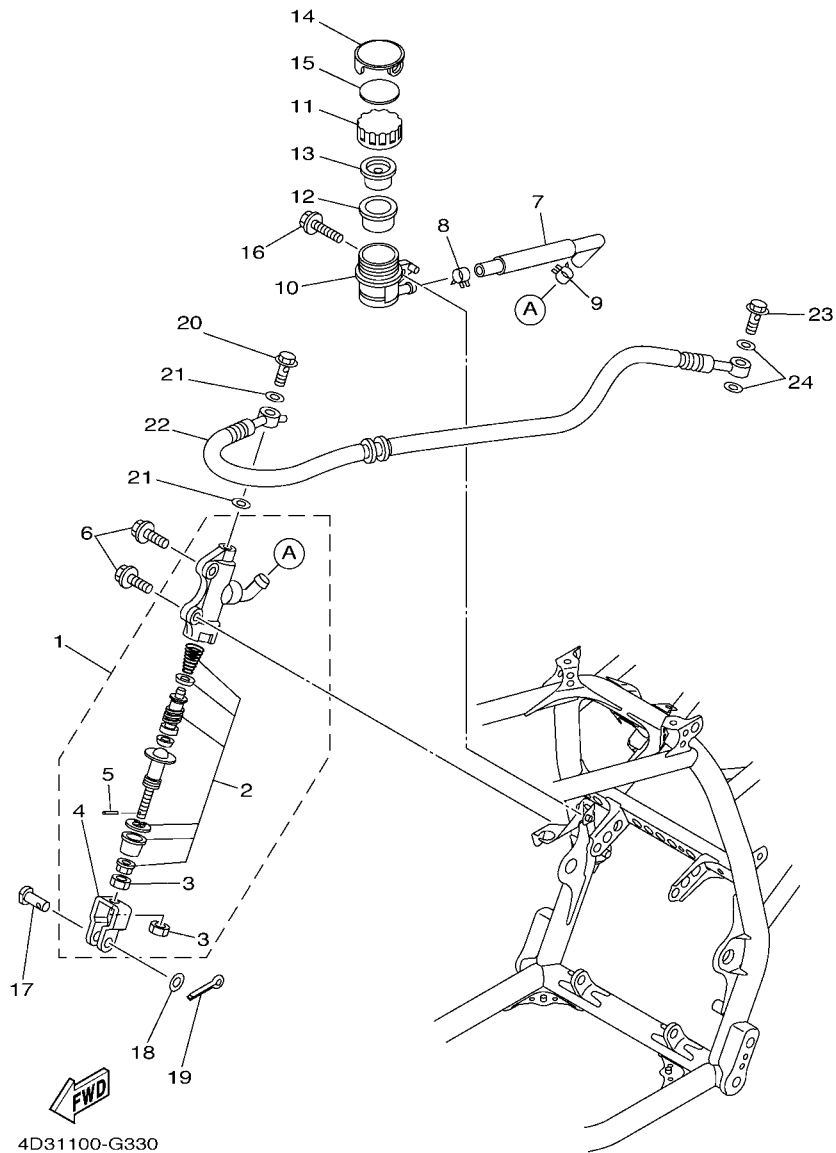
REF. NO.	PART NO.	DESCRIPTION	CAN	EUR	OCE	REMARKS
1	5D3-2583T-00	MASTER CYLINDER ASSY	1	1	1	
2	5D3-W0041-00	.CYLINDER KIT, MASTER	1	1	1	
3	4TT-25854-00	.GASKET, DIAPHRAGM	1	1	1	
4	5D3-25852-00	.CAP, RESERVOIR	1	1	1	
5	4NK-2589H-00	.SCREW	2	2	2	
6	5LP-25867-00	.HOLDER	1	1	1	
7	5MV-25833-00	.BOLT, FITTING	2	2	2	
8	5D3-83922-00	.LEVER 2	1	1	1	
9	95604-06100	.NUT, U	1	1	1	
10	5D3-83980-00	.FRONT STOP SWITCH ASSY	1	1	1	
11	5MV-2589F-00	.BOLT, LEVER	1	1	1	
12	1UY-26259-00	COLLAR	1	1	1	
13	4D3-25872-00	HOSE, BRAKE 1	1	1	1	
14	4D3-25873-00	HOSE, BRAKE 2	1	1	1	
15	4D3-25871-00	PIPE, BRAKE	1	1	1	
16	2GU-25866-00	CIRCLIP	1	1	1	
17	95822-06025	BOLT, FLANGE	1	1	1	
18	90401-10015	BOLT, UNION	3	3	3	
19	90201-10118	WASHER, PLATE	6	6	6	
20	4D3-25886-10	HOLDER, BRAKE HOSE	2	2	2	
21	95802-06016	BOLT, FLANGE	2	2	2	

FIG. 32 STAND & FOOTREST



REF. NO.	PART NO.	DESCRIPTION	CAN	EUR	OCÉ	REMARKS
1	4D3-27411-00	FOOTREST 1	1	1	1	
2	95812-10020	BOLT, FLANGE	2	2	2	
3	4D3-27421-00	FOOTREST 2	1	1	1	
4	95812-10020	BOLT, FLANGE	2	2	2	
5	4D3-27211-00	PEDAL, BRAKE	1	1	1	
6	90201-15018	WASHER, PLATE	1	1	1	
7	90206-15021	WASHER, WAVE	1	1	1	
8	93430-12008	CIRCLIP	1	1	1	
9	90506-20026	SPRING, TENSION	1	1	1	

  
4D31100-G320



**FIG. 33 REAR MASTER CYLINDER**

REF. NO.	PART NO.	DESCRIPTION	CAN	EUR	OCE	REMARKS
1	5TG-2580E-20	REAR MASTER CYLINDER ASSY	1	1	1	
2	5TG-W0042-50	.CYLINDER KIT, MASTER	1	1	1	
3	4SS-27218-00	.NUT	2	2	2	
4	2YK-27222-00	.JOINT	1	1	1	
5	3KW-27234-00	.PIN, BRAKE ROD	1	1	1	
6	95022-08025	BOLT, FLANGE	2	2	2	
7	4D3-25895-00	HOSE, RESERVOIR	1	1	1	
8	90467-11044	CLIP	1	1	1	
9	90467-11044	CLIP	1	1	1	
10	5TG-25894-00	TANK, RESERVOIR	1	1	1	
11	3XP-25852-50	CAP, RESERVOIR	1	1	1	
12	2VN-25854-00	GASKET, DIAPHRAGM	1	1	1	
13	2VN-25855-00	BUSH, DIAPHRAGM	1	1	1	
14	4D3-25888-00	COVER, RESERVOIR TANK	1	1	1	
15	4D3-27491-00	PROTECTOR	1	1	1	
16	90109-06240	BOLT	1	1	1	
17	90240-08005	PIN, CLEVIS	1	1	1	
18	90201-08066	WASHER, PLATE	1	1	1	
19	91401-16012	PIN, COTTER	1	1	1	
20	90401-10015	BOLT, UNION	1	1	1	
21	90201-10118	WASHER, PLATE	2	2	2	
22	4D3-25874-00	HOSE, BRAKE	1	1	1	
23	90401-10015	BOLT, UNION	1	1	1	
24	90201-10118	WASHER, PLATE	2	2	2	





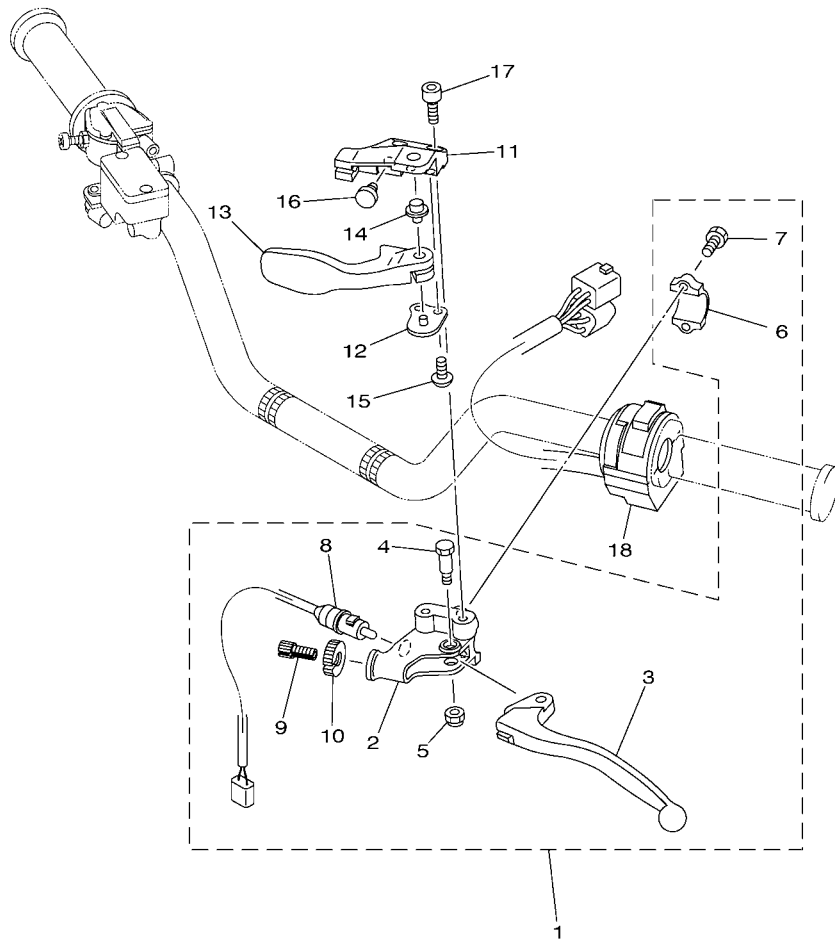












  
4D31100-G400

**FIG. 40 HANDLE SWITCH & LEVER**

REF. NO.	PART NO.	DESCRIPTION	CAN	EUR	OCE	REMARKS
1	4D3-82910-00	LEVER HOLDER ASSY (LEFT)	1	1	1	
2	5YT-82911-10	.HOLDER, LEVER 1	1	1	1	
3	3RN-83912-00	.LEVER 1	1	1	1	
4	90109-06798	.BOLT	1	1	1	
5	95602-06100	.NUT, U	1	1	1	
6	5TG-82913-00	.HOLDER, LEVER LOWER 1	1	1	1	
7	97002-05016	.BOLT	2	2	2	
8	5KM-82917-00	.SWITCH	1	1	1	
9	90123-08046	.BOLT	1	1	1	
10	90179-08148	.NUT	1	1	1	
11	5TG-25727-00	BRACKET, LEVER	1	1	1	
12	5D3-25689-00	PLATE, GUIDE	1	1	1	
13	5TG-25726-00	LEVER, BRAKE	1	1	1	
14	5TG-83923-00	COLLAR, LEVER 2	1	1	1	
15	92012-06014	BOLT, BUTTON HEAD	2	2	2	
16	90338-07007	PLUG	1	1	1	
17	92012-06014	BOLT, BUTTON HEAD	2	2	2	
18	4KB-83973-21	SWITCH, HANDLE 3	1	1	1	

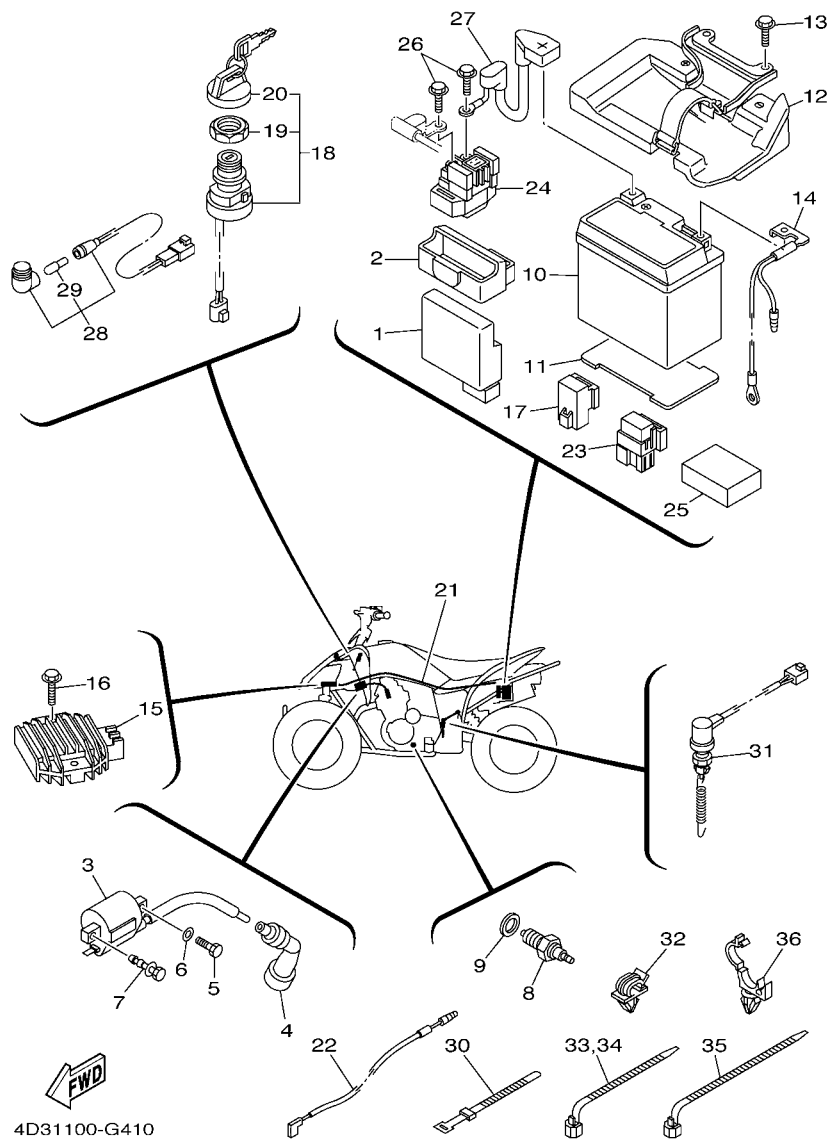


FIG. 41 ELECTRICAL 1

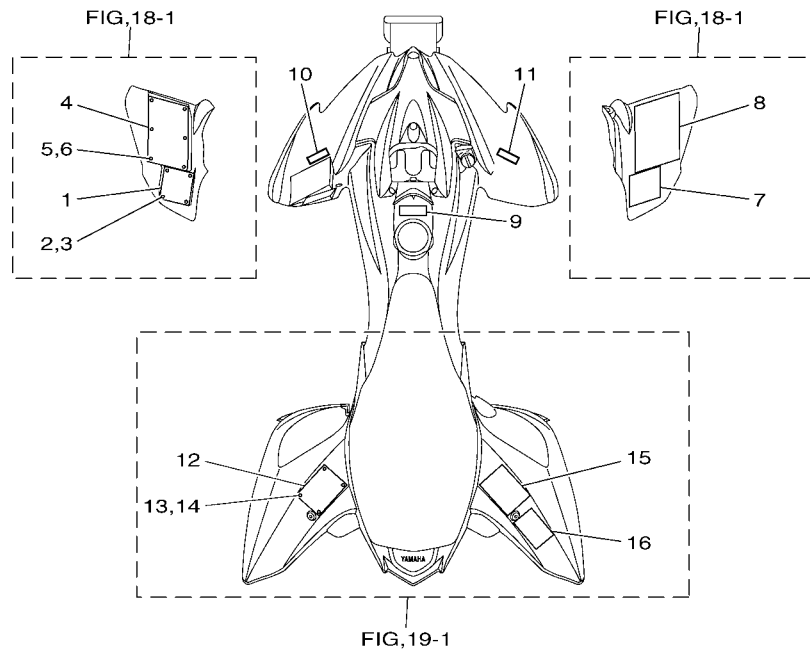
REF. NO.	PART NO.	DESCRIPTION	CAN	EUR	OCÉ	REMARKS
1	4D3-85540-00	C.D.I. UNIT ASSY	1	1	1	
2	4D3-85546-00	BAND	1	1	1	
3	3NS-82310-10	IGNITION COIL ASSY	1	1	1	
4	3NS-82370-00	PLUG CAP ASSY	1	1	1	
5	97002-06020	BOLT	1	1	1	
6	92902-06600	WASHER, PLATE	1	1	1	
7	90109-06723	BOLT	1	1	1	
8	3GB-82540-01	NEUTRAL SWITCH ASSY	1	1	1	
9	90430-10148	GASKET	1	1	1	
10	1S4-82100-10	BATTERY ASSY (YT Z7S)	1	1	1	
11	4D3-82122-00	SEAT, BATTERY	1	1	1	
12	4D3-82106-00	BATTERY PLATE COMP	1	1	1	
13	95812-06016	BOLT, FLANGE	2	2	2	
14	4D3-82116-00	WIRE, MINUS LEAD	1	1	1	
15	5GT-81960-00	RECTIFIER & REGULATOR ASSY	1	1	1	
16	95802-06020	BOLT, FLANGE	2	2	2	
17	1RL-81950-92	RELAY ASSY	1	1	1	
18	5LP-82510-00	MAIN SWITCH ASSY	1	1	1	
19	3HN-82569-00	.NUT, MAIN SWITCH	1	1	1	
20	3HN-82579-00	.CAP, KEY	1	1	1	
21	4D3-82590-00	WIRE HARNESS ASSY	1	1	1	
22	4D3-82541-00	WIRE, LEAD	1	1	1	
23	5DM-81950-00	RELAY ASSY (G8HN-1C4T-DJ-Y52)	1	1	1	
24	4D3-81940-00	STARTER RELAY ASSY	1	1	1	
25	4D3-8252R-00	DAMPER	1	1	1	
26	95022-06008	BOLT, FLANGE	2	2	2	
27	4D3-82115-00	WIRE, PLUS LEAD	1	1	1	











  
 4D3E100-H440

**FIG. 44 EMBLEM & LABEL 1**

REF. NO.	PART NO.	DESCRIPTION	CAN	EUR	OCE	REMARKS
1	4D3-2816L-00	LABEL, WARNING AGE	1			ENGLISH
2	90267-32004	RIVET, BLIND	4			
3	90201-03008	WASHER, PLATE	4			
4	5FE-21568-01	LABEL, WARNING	1			ENGLISH
5	90267-32004	RIVET, BLIND	6			
6	90201-03008	WASHER, PLATE	6			
7	4D3-2816L-10	LABEL, WARNING AGE	1			FRENCH
8	4WU-21568-10	LABEL, WARNING	1			FRENCH
9	4SH-2416E-00	LABEL, CAUTION CANADA	1			ENGLISH
10	4D3-2817J-00	PLATE, ANSI SVIA	1			ENGLISH
11	4D3-2817J-10	PLATE, ANSI SVIA	1			FRENCH
12	4D3-2816M-00	LABEL, WARNING TIRE & LOAD	1			ENGLISH
13	90267-32004	RIVET, BLIND	4			
14	90201-03008	WASHER, PLATE	4			
15	4D3-2816M-10	LABEL, WARNING TIRE & LOAD	1			FRENCH
16	4WU-2151H-10	LABEL 5	1			FRENCH





NUMERICAL INDEX

PART NO.	REF. NO.	PART NO.	REF. NO.	PART NO.	REF. NO.	PART NO.	REF. NO.	PART NO.	REF. NO.	PART NO.	REF. NO.
3C5-11102-00	1 - 1	4D3-13326-00	6 - 2	5DM-14561-00	9 - 20	4D3-16150-00	14 - 6	4WU-21568-10	44 - 8	4D3-23570-00-P0	22 - 1
5XT-1111F-00	1 - 24	4D3-13329-00	6 - 4	1FN-14565-00	9 - 30	30X-16154-00	14 - 7	5FE-21568-11	46 - 4	4D3-23580-00-P0	22 - 8
4D3-1112F-00	1 - 7	22F-13411-01	6 - 7	4D3-14611-00	10 - 1	3XJ-16321-00	14 - 9	4D3-21613-00	19 - 24	1UY-23812-00	23 - 4
5H0-11133-11	1 - 2	5D3-13440-00	6 - 8	3GD-14613-00	10 - 9	5DH-16321-00	14 - 10	4D3-21614-00	19 - 25	4D3-23813-00	23 - 1
4KB-11145-00	5 - 6	4D3-13447-00	6 - 9	4D3-14628-00	10 - 2	3XJ-16324-01	14 - 11	4D3-21621-00	19 - 5	8K1-23814-00	23 - 2
5XT-11165-00	1 - 15	4D3-13464-00	7 - 4	4D3-14710-00	10 - 5	4GY-16351-00	14 - 12	4D3-2163A-00	19 - 28	4D3-23831-00	23 - 13
4D3-11166-00	1 - 18	4D3-13465-00	7 - 5	3YF-14714-00	10 - 6	5XT-16356-00	14 - 14	5D3-2164B-00	43 - 4	1UY-23841-01	23 - 14
5XT-11181-00	1 - 6	4KB-13470-00	7 - 3	4D3-14718-00	10 - 7	4GY-16357-00	14 - 28	4D3-2164F-00	19 - 6	1UY-23845-01	23 - 15
4D3-11186-00	1 - 22	4D3-13586-00	8 - 1	5XT-14815-00	1 - 9	1W1-16358-01	14 - 13	4D3-2164G-00	19 - 13	4D3-23868-00	23 - 6
4D3-11190-00	1 - 14	4D3-13596-00	8 - 4	4D3-14841-00	9 - 4	4D3-16371-00	14 - 8	4D3-2164H-00	19 - 7	1UY-23894-01	23 - 8
4D3-11196-00	1 - 16	4D3-14105-00	9 - 12	4D3-14901-00	9 - 1	4D3-16381-00	14 - 21	5YT-2164J-10	19 - 14	4D3-24110-00	24 - 1
4D3-11311-00	2 - 1	5YT-14107-20	9 - 19	4D3-14901-10	9 - 1	4D3-17121-00	15 - 7	5LP-21691-00	19 - 12	4D3-24110-10	24 - 1
4D3-11351-00	2 - 2	4D3-14112-00	9 - 5	4D3-1490A-00	9 - 10	4D3-17131-00	15 - 5	5LP-21696-M0	45 - 8	4D3-2414H-00	24 - 19
4D3-11400-00	3 - 1	3F9-14118-00	9 - 49	4D3-1490H-00	9 - 41	4D3-17141-00	15 - 2	5FK-21697-00	45 - 1	3ME-2415E-01	45 - 7
4D3-11412-00	3 - 2	4D3-14123-00	9 - 38	4D3-1490J-00	9 - 2	4D3-17151-00	15 - 6	8ET-21747-00	18 - 14	4SH-2416E-00	44 - 9
4D3-11422-00	3 - 3	137-14133-00	9 - 36	4D3-1490J-10	9 - 2	4D3-17211-00	15 - 18	5FK-2175C-10	43 - 3	4D3-24181-00	24 - 13
5XT-11454-00	3 - 20	4KM-14142-25	9 - 9	5GH-14918-10	9 - 6	4D3-17221-00	15 - 11	4D3-22110-00-P0	20 - 1	4D3-24182-00	24 - 20
5XT-11478-00	3 - 22	1AE-14147-00	9 - 11	4D3-14933-00	9 - 3	4D3-17231-00	15 - 14	2JN-22141-00	20 - 8	4D3-24183-00	24 - 21
5XT-11496-00	3 - 24	3H1-14147-00	9 - 14	3HT-14934-00	9 - 42	4D3-17241-00	15 - 17	109-22141-01	22 - 19	4D3-24184-00	24 - 22
1S4-11531-00	3 - 23	5LP-14147-00	9 - 27	4D3-14937-00	9 - 17	4D3-17251-00	15 - 16		22 - 27	4D3-24500-00	24 - 3
5XT-11533-00	3 - 25	5DM-1414M-40	9 - 21	5CY-14951-00	9 - 47	4D3-17402-00	15 - 10	4D3-22151-00	20 - 6	1P6-24512-00	24 - 4
1S4-11536-00	3 - 19	5V7-14153-00	9 - 32	5DM-14952-00	9 - 26	4D3-17411-00	15 - 1	4D3-22178-00	17 - 18	5KM-24610-00	24 - 2
5BP-11549-00	3 - 15	3GD-14155-00	9 - 35	4D3-14958-00	9 - 7	4D3-18101-00	16 - 6	4D3-2217H-00	20 - 14	4D3-2470F-40	25 - 2
4XV-11603-00	3 - 12	1S3-14161-00	9 - 34	3H1-14962-00	9 - 13	4D3-18110-00	16 - 12	4D3-22184-00	20 - 5	4D3-2470F-50	25 - 2
1S4-11631-10-A0	3 - 11	127-14186-00	9 - 18	5FU-14962-00	9 - 37	5YT-18113-00	16 - 13	30X-2219X-00	20 - 4	4D3-24710-40	25 - 1
4XV-11633-00	3 - 13	12R-14191-00	9 - 24	5DM-14985-00	9 - 31	4TP-18140-00	16 - 7	4D3-2219X-00	20 - 15	4D3-24710-50	25 - 1
1S4-11651-00	3 - 6	24W-14193-00	8 - 6	5JJ-14987-00	9 - 54	4D3-18511-00	16 - 2	4D3-22210-50-35	21 - 1	509-24724-00	25 - 4
1S4-11681-00	3 - 4	4D3-14193-00	9 - 39	4D3-14988-00	9 - 33	4D3-18512-00	16 - 3	4D3-22210-60-35	21 - 1	3C3-24741-00	17 - 25
5H0-12111-02	4 - 1	4D3-14196-00	9 - 52	5XT-15100-07	11 - 1	4D3-18513-00	16 - 4	4AA-22259-40	21 - 2	3GD-25111-20	26 - 7
11H-12113-00	4 - 4	1UM-14197-00	9 - 53	5XT-15113-00	12 - 13	4GY-18531-00	16 - 5		22 - 32	1UY-25117-00	26 - 9
11H-12114-00	4 - 5	4KM-14216-00	9 - 22	4D3-15327-00	11 - 7	1S4-18540-00	16 - 1	4AA-22259-70	21 - 2	1S3-25127-00	26 - 19
4G0-12116-01	4 - 3	3G2-14231-11	9 - 23	4D3-15328-00	12 - 23	4D3-21110-10-33	17 - 1		22 - 32	4D3-2514A-00	27 - 32
4G0-12117-00	4 - 7	1HX-14231-34	9 - 44	4D3-15362-00	12 - 25	4D3-21315-00	17 - 2	4GY-22261-00	21 - 8	5LP-25180-21	26 - 1
4G0-12118-00	4 - 8	620-1423E-53	9 - 15	4D3-15411-00	12 - 1	4D3-21316-00	17 - 6	4D3-22262-00	21 - 7		26 - 4
5H0-12119-00	4 - 6	4D3-14261-00	9 - 16	4D3-15415-00	12 - 27	4D3-2137G-00	17 - 23	4D3-22314-00	20 - 12	4D3-25311-00	20 - 18
5XT-12121-00	4 - 2	5AP-14280-00	9 - 40	4D3-15418-00	12 - 14	4D3-21471-00	17 - 21	4D3-22347-00	20 - 16	4D3-25317-00	20 - 21
5H0-12146-00	4 - 11	4WV-14293-00	9 - 28	4D3-15421-00	12 - 17	4D3-21513-00	18 - 8	4D3-22348-00	20 - 13	4D3-25377-00	20 - 24
36X-12151-00	4 - 9	4D3-14411-00	8 - 9	4D3-15441-00	11 - 11	4D3-21514-00	18 - 10	4D3-23350-40	22 - 31	4D3-25381-00	28 - 17
5H0-12156-00	4 - 10	4D3-14412-00	8 - 19	4D3-15451-00	12 - 6	4WU-2151H-10	44 - 16	4D3-23350-50	22 - 31	1S3-25383-20	28 - 7
5XT-12159-00	4 - 13	31A-14419-00	8 - 11	4D3-15461-00	12 - 18	4D3-21523-00	18 - 12	4D3-23391-20	18 - 6	5YT-25386-00	28 - 13
1S4-12171-00	5 - 1	5GH-14436-00	8 - 21	4D3-15493-00	12 - 15	3GD-2153E-20	43 - 5	3GD-23501-10	22 - 40	4D3-25390-01	28 - 1
5XT-12176-00	5 - 5	2XJ-14451-00	8 - 15	5XT-15512-00	13 - 1		43 - 5	3GD-23502-10	22 - 41		28 - 4
5XT-12210-00	5 - 13	4D3-14452-00	8 - 20	5XT-15515-00	13 - 5	4D3-21541-00	24 - 14	5YT-23517-00	22 - 3	5TG-25438-10	28 - 14
4FM-12213-00	5 - 14	4D3-14453-00	8 - 10	5XT-15517-00	13 - 3	5TG-21541-00	24 - 12		22 - 10	5D3-25689-00	40 - 12
5BP-12231-00	5 - 11	59V-14457-00	8 - 22	1VJ-15521-00	13 - 2	4D3-21565-30	43 - 2		22 - 17	5YT-25712-00	29 - 1
5XT-12241-00	5 - 12	2XJ-14458-00	8 - 16	36Y-15521-01	13 - 4	4D3-21565-40	43 - 2		22 - 25	4D3-25721-00	20 - 22
5XT-13161-00	6 - 15	4D3-14459-00	8 - 13	5BP-15590-00	13 - 8	5FK-21568-00	45 - 4	4D3-23540-00-P0	22 - 15	5TG-25726-00	40 - 13
4D3-13300-00	6 - 1	2XJ-14477-00	8 - 12	4D3-16111-00	14 - 1	5FE-21568-01	44 - 4	4D3-23550-00-P0	22 - 23	5TG-25727-00	40 - 11

NUMERICAL INDEX

PART NO.	REF. NO.	PART NO.	REF. NO.	PART NO.	REF. NO.	PART NO.	REF. NO.	PART NO.	REF. NO.	PART NO.	REF. NO.	PART NO.	REF. NO.
5TG-2580E-20	33 - 1	4D3-26111-00	30 - 1	3C5-81890-00	36 - 1	4D3-84710-01	39 - 1	90109-06172	17 - 24	90171-14002	26 - 17		
4D3-2580T-00	27 - 3	4D3-26124-00	30 - 21	4D3-81940-00	41 - 24	4D3-84751-00	38 - 8		18 - 2	90171-14004	28 - 10		
4D3-2580U-00	27 - 17	1NV-26129-00	30 - 16	5DM-81950-00	41 - 23	2EK-85111-00	42 - 6		19 - 2	90176-06014	38 - 7		
5YT-2580W-10	29 - 7	5LP-26241-00	30 - 2	1RL-81950-92	41 - 17	4D3-85112-00	42 - 5		19 - 29		39 - 8		
3GD-2582T-10	27 - 1	4KB-26250-20	30 - 6	5GT-81960-00	41 - 15	3Y6-85130-02	42 - 1		20 - 7	90179-08148	40 - 10		
4D3-2582W-00	29 - 2	4KB-26256-00	30 - 10	1S4-82100-10	41 - 10	449-85131-02	42 - 3	90109-06189	16 - 9	90179-18552	15 - 27		
5MV-25833-00	31 - 7	4KB-26258-00	30 - 12	4D3-82106-00	41 - 12	4D3-85540-00	41 - 1	90109-06214	18 - 9	90185-10012	22 - 6		
5D3-2583T-00	31 - 1	1UY-26259-00	31 - 12	4D3-82115-00	41 - 27	4D3-85546-00	41 - 2		18 - 11		22 - 13		
5D3-25852-00	31 - 4	1NV-2625G-01	30 - 8	4D3-82116-00	41 - 14	5D3-W0041-00	31 - 2	90109-06236	20 - 17		22 - 21		
3XP-25852-50	33 - 11	4KB-2628F-20	30 - 7	4D3-82122-00	41 - 11	5TG-W0042-50	33 - 2	90109-06240	33 - 16		22 - 29		
2VN-25854-00	33 - 12	4KB-2628G-00	30 - 15	3NS-82310-10	41 - 3	4D3-W0045-00	27 - 14	90109-06241	19 - 3		22 - 34		
4TT-25854-00	31 - 3	1NV-26304-00	30 - 14	3NS-82370-00	41 - 4	4D3-W0045-10	27 - 28		19 - 4	90185-10019	23 - 11		
2VN-25855-00	33 - 13	4D3-26311-00	30 - 22	4D3-82509-00	9 - 51	4D3-W0046-50	29 - 11	90109-06723	41 - 7	90185-14009	20 - 10		
2GU-25866-00	31 - 16	4KB-2632G-00	30 - 9	5LP-82510-00	41 - 18	3B4-W0047-00	27 - 5	90109-06798	40 - 4	90201-03008	44 - 3		
5LP-25867-00	31 - 6	4D3-26335-00	30 - 4	4D3-8252R-00	41 - 25		27 - 19	90109-08082	27 - 2		44 - 6		
4D3-25871-00	31 - 15	4D3-26341-00	30 - 5	4D3-82530-00	41 - 31	5LP-W0047-50	29 - 9	90109-08105	14 - 22		44 - 14		
4D3-25872-00	31 - 13	31A-26372-00	30 - 3	3GB-82540-01	41 - 8	1UY-W0048-50	27 - 9	90109-081F0	29 - 3		45 - 3		
4D3-25873-00	31 - 14	1NV-26398-00	30 - 17	4D3-82541-00	41 - 22		27 - 23	90109-10010	28 - 15		45 - 6		
4D3-25874-00	33 - 22	157-27114-00	25 - 3	3HN-82569-00	41 - 19		29 - 12	90110-05032	12 - 12		45 - 10		
4D3-25886-10	31 - 20	4D3-27211-00	32 - 5	3HN-82579-00	41 - 20	3B4-W0057-00	27 - 4	90110-06161	35 - 4		46 - 3		
4D3-25888-00	33 - 14	4SS-27218-00	33 - 3	4D3-82590-00	41 - 21		27 - 18	90110-06169	35 - 3		46 - 6		
5TG-25894-00	33 - 10	2YK-27222-00	33 - 4	4D3-82910-00	40 - 1	5LP-W0057-50	29 - 8	90110-06200	19 - 26		46 - 9		
4D3-25895-00	33 - 7	3KW-27234-00	33 - 5	5YT-82911-10	40 - 2	4D3-W215B-30	18 - 1	90110-08053	13 - 9	90201-05017	10 - 4		
5MV-2589F-00	31 - 11	4D3-27411-00	32 - 1	4V4-82913-00	30 - 18	4D3-W215C-31	18 - 1	90111-06086	18 - 3	90201-06036	39 - 7		
4NK-2589H-00	31 - 5	4D3-27421-00	32 - 3	5TG-82913-00	40 - 6	4D3-W215D-31	18 - 1	90113-06055	29 - 5	90201-06078	37 - 12		
3JD-25917-00	27 - 7	3MA-27491-00	18 - 15	5KM-82917-00	40 - 8	4D3-W216B-30	19 - 1	90114-10006	26 - 8	90201-08048	19 - 20		
		4D3-27491-00	33 - 15	5GH-83516-00	41 - 29	4D3-W216C-30	19 - 1	90114-10013	28 - 8		19 - 22		
1UY-25917-51	29 - 14	4D3-28100-00	17 - 26	4D3-83530-00	41 - 28	4D3-W216D-30	19 - 1	90116-08023	1 - 27	90201-08054	17 - 19		
5DH-25919-00	27 - 8	1NV-2811A-01	17 - 27	5FU-83790-00	9 - 48	90101-06043	5 - 16	90122-06035	8 - 18	90201-08066	33 - 18		
		4D3-2816L-00	44 - 1	3RN-83912-00	40 - 3	90101-10016	5 - 8	90123-08046	40 - 9	90201-08609	1 - 12		
1UY-25924-51	29 - 13		46 - 1	5D3-83922-00	31 - 8	90105-06078	1 - 25	90149-06093	6 - 5	90201-10035	22 - 20		
3JD-25926-00	27 - 12	4D3-2816L-10	44 - 7	5TG-83923-00	40 - 14	90105-06125	36 - 8	90149-06108	24 - 5		22 - 28		
		4D3-2816M-00	44 - 12	437-83936-01	41 - 30	90105-06126	1 - 17	90153-06002	1 - 4		22 - 35		
8CR-25926-00	27 - 16		46 - 7	4KB-83973-21	40 - 18	90105-08160	1 - 11	90154-05013	19 - 8	90201-10036	23 - 10		
		4D3-2816M-10	44 - 15	5D3-83980-00	31 - 10	90105-08161	27 - 31		19 - 15	90201-10118	31 - 19		
1UY-25926-51	27 - 10	4D3-2817J-00	44 - 10	5TG-84110-03	37 - 2	90105-08183	29 - 17	90154-06014	27 - 33		33 - 21		
		4D3-2817J-10	44 - 11	5TG-84140-01	37 - 4	90105-10131	22 - 33	90154-06061	19 - 9		33 - 24		
5DH-25933-00	27 - 15	4KN-2836B-10	43 - 1	5TG-84165-01	37 - 3	90105-10214	17 - 12		19 - 16	90201-102R1	3 - 17		
		4D3-2845N-00-R4	34 - 1	5TG-84166-01	37 - 8	90105-10219	17 - 10	90159-06029	14 - 18	90201-10591	5 - 9		
1UY-25933-51	29 - 16	4D3-2845R-00-R4	34 - 3	5TG-84310-03	37 - 7	90105-10220	17 - 8	90170-06128	4 - 14	90201-14020	20 - 9		
1UY-25937-51	27 - 6	4D3-2845R-10-R4	34 - 3	4KB-84314-01	37 - 1	90105-10221	17 - 4	90170-10010	23 - 17	90201-14021	28 - 11		
		4D3-81410-00	35 - 1		37 - 6	90105-10241	22 - 5	90170-12370	3 - 29	90201-14586	26 - 16		
1UY-25938-51	27 - 11	5XT-81450-01	35 - 2	5TG-84340-01	37 - 9		22 - 12	90170-16003	14 - 5	90201-15018	32 - 6		
		3C5-81801-00	36 - 2	4D3-84516-00	38 - 2	90105-10430	3 - 16	90170-16326	14 - 20	90201-17255	15 - 19		
3JD-25961-00	27 - 13	5HP-81828-00	36 - 4		39 - 2	90105-12051	21 - 3	90170-33010	29 - 4	90201-25291	13 - 6		
		5TJ-81828-01	36 - 7	4D3-84519-00	38 - 3		21 - 5	90171-10001	22 - 36	90206-15021	32 - 7		
1UY-25972-51	29 - 10	5HP-8182M-00	36 - 3		39 - 3	90109-06169	6 - 11		22 - 38	90208-34001	29 - 6		
5YT-25977-50	29 - 15	4D3-8183G-00	36 - 6	4D3-84710-01	38 - 1	90109-06172	17 - 22		23 - 18	90209-06096	8 - 17		

NUMERICAL INDEX

PART NO.	REF. NO.	PART NO.	REF. NO.	PART NO.	REF. NO.	PART NO.	REF. NO.	PART NO.	REF. NO.	PART NO.	REF. NO.
90209-10229	23 - 20	90387-101R3	22 - 11	90480-15235	23 - 21	93210-14369	12 - 5	94110-09024	28 - 2	95802-06025	24 - 8
90209-18208	15 - 3	90387-150R1	26 - 15	90480-18004	24 - 9	93210-15414	17 - 16		28 - 5		24 - 11
90209-22191	15 - 12	90387-22017	15 - 15	90480-18290	24 - 6	93210-19123	12 - 26	94581-87092	28 - 18	95812-06016	11 - 12
90214-16063	14 - 3	90401-08009	6 - 18	90501-07629	3 - 8	93210-25711	36 - 5	94582-19104	5 - 10		41 - 13
90214-22004	15 - 20	90401-10015	31 - 18	90501-22721	3 - 26	93210-32172	12 - 3	94681-87011	28 - 19	95812-06020	16 - 14
90214-22005	15 - 21		33 - 20	90501-231E9	14 - 17	93210-35537	8 - 2	94701-00345	1 - 26	95812-06025	37 - 13
90215-12272	3 - 28		33 - 23	90506-20026	32 - 9	93210-54001	1 - 23	95022-06008	41 - 26	95812-08012	34 - 2
90215-16289	14 - 19	90401-10061	6 - 16	90508-203B3	14 - 24	93210-54175	6 - 10	95022-06010	11 - 14	95812-08014	17 - 3
90215-16293	14 - 4	90430-06014	1 - 5	90508-26020	16 - 8	93210-74M68	12 - 29	95022-06016	12 - 28		17 - 7
90215-23265	15 - 26		11 - 8	91312-06016	1 - 8	93211-05471	1 - 20	95022-06020	1 - 21		21 - 10
90240-07105	3 - 7		12 - 24		7 - 1	93306-00320	15 - 9	95022-06025	12 - 20		34 - 4
90240-08005	33 - 17	90430-06156	6 - 6		12 - 16	93306-00446	26 - 10	95022-06030	12 - 9	95812-08016	10 - 11
90267-32004	44 - 2	90430-08119	6 - 19	91312-06020	6 - 14	93306-00518	5 - 2	95022-06040	12 - 8	95812-10020	32 - 2
	44 - 5		14 - 23		8 - 3	93306-00710	20 - 19		12 - 21		32 - 4
	44 - 13	90430-10148	41 - 9	91312-06025	5 - 15	93306-20204	5 - 3	95022-06045	11 - 3	95812-10170	11 - 18
	45 - 2	90430-10171	6 - 17	91312-06065	2 - 3	93306-20231	26 - 11		12 - 10	95822-06025	31 - 17
	45 - 5	90430-12213	11 - 16	91312-06070	6 - 13	93306-20332	15 - 22	95022-06050	12 - 22	95822-08012	17 - 20
	45 - 9	90445-08376	24 - 18	91312-08045	1 - 13	93306-20427	15 - 8	95022-06055	11 - 6	95822-08016	19 - 19
	46 - 2	90445-11049	24 - 15	91312-08060	20 - 11	93306-20532	15 - 23	95022-06060	11 - 4	95822-08025	19 - 21
	46 - 5	90445-11050	24 - 15	91401-16012	33 - 19	93306-30214	3 - 21	95022-06070	11 - 5	95822-08030	23 - 3
	46 - 8	90445-16007	24 - 23	91401-20020	22 - 37	93306-37804	3 - 10	95022-08025	33 - 6	97002-05016	40 - 7
90269-07010	18 - 5	90450-47002	8 - 5		22 - 39	93310-225N0	13 - 7	95024-08025	10 - 8	97002-06020	41 - 5
	18 - 7	90450-58003	8 - 8		23 - 12	93310-63239	3 - 5	95302-05600	42 - 2	97022-08055	23 - 7
	18 - 13	90460-50079	21 - 9		23 - 19	93317-11287	14 - 27		42 - 8	97607-04114	9 - 43
90280-05048	3 - 18	90461-06087	9 - 50	91401-30025	26 - 18	93317-22237	20 - 2	95302-06600	14 - 16	97702-50016	38 - 4
90282-05013	3 - 30	90461-08001	11 - 10	91401-30030	28 - 12	93410-22039	15 - 4	95302-10700	23 - 16		39 - 4
90282-05077	14 - 2	90462-08045	11 - 9	91A20-07010	8 - 7	93410-67085	20 - 23	95602-05100	8 - 14	98502-05020	30 - 19
90338-07007	40 - 16	90462-10215	11 - 13	92012-06014	40 - 15	93430-12008	32 - 8	95602-06100	40 - 5	98507-04006	9 - 25
90338-16148	17 - 14	90464-07011	41 - 32		40 - 17	93440-10085	1 - 3	95602-06200	18 - 4	98507-04008	9 - 29
90340-12059	11 - 15	90464-13073	41 - 33	92902-05200	42 - 4	93440-25084	15 - 13		19 - 11	98507-04010	9 - 8
90340-14014	12 - 4		41 - 34		42 - 7	93511-32017	14 - 29		19 - 18	98507-05010	9 - 45
90340-32005	12 - 2	90464-15195	24 - 24	92902-05600	30 - 20	93602-13177	3 - 9		19 - 27	98902-06008	10 - 3
90381-15040	17 - 15		41 - 35	92902-06200	14 - 15	93604-10011	5 - 7	95602-08200	19 - 23	99009-11400	6 - 3
90381-15088	22 - 2	90464-20010	41 - 36	92902-06600	41 - 6	93605-10090	3 - 27	95602-10200	11 - 19	99009-20500	14 - 25
	22 - 9	90465-16011	12 - 11	93102-12224	14 - 26	93608-43228	16 - 10		17 - 5	99530-10114	11 - 2
	22 - 16	90467-09026	9 - 46	93102-14209	16 - 11	93612-16254	7 - 8		17 - 9		12 - 7
	22 - 24	90467-09037	24 - 16	93102-22216	26 - 13	93700-06004	17 - 17		17 - 11		12 - 19
90387-06136	37 - 11	90467-100A2	24 - 17	93102-25226	15 - 24		22 - 7		17 - 13	99530-14016	1 - 10
90387-06158	38 - 5	90467-11044	33 - 8	93104-09025	30 - 13		22 - 14		28 - 16		11 - 17
	39 - 5		33 - 9	93105-26026	26 - 12		22 - 22	95604-06100	31 - 9		
90387-062E0	19 - 10	90467-12053	1 - 19	93106-46001	20 - 20		22 - 30	95607-05100	30 - 11		
	19 - 17	90467-220A1	8 - 23	93108-35004	20 - 3	9383R-14236	15 - 25	95612-12100	21 - 4		
90387-066J1	24 - 7	90468-12069	3 - 14	93112-31011	23 - 5	93900-00022	26 - 3		21 - 6		
	24 - 10	90480-14102	37 - 5	93210-07135	6 - 12		26 - 6	95702-08500	10 - 10		
90387-090R0	23 - 9		37 - 10	93210-09165	4 - 12		28 - 3	95702-10500	26 - 14		
90387-100Y6	22 - 18	90480-14229	38 - 6	93210-10197	7 - 2		28 - 6		28 - 9		
	22 - 26		39 - 6	93210-11453	5 - 4	94107-10024	26 - 2	95802-06016	31 - 21		
90387-101R3	22 - 4	90480-15235	7 - 6	93210-12152	7 - 7		26 - 5	95802-06020	41 - 16		